



**Palestine**  
**Palestinian Central Bureau of**  
**Statistics**

**Palestine in Figures**  
**1999**

**October, 1999**

## Explanation of Symbols:

-	= not available
...	= not reported
Scholastics Year	= starts in August and ends in June
Agricultural Year	= starts in October and ends in September

*Note: The data mentioned in this report covers the whole of the Palestinian Territory, unless mentioned otherwise in the context.*

© October, 1999

**All rights Reserved**

### **Suggested Citation:**

Palestinian Central Bureau of Statistics, 1999. *Palestine in Figures, 1999*.  
Ramallah - Palestine

**All correspondence should be directed to:**

**Department of Users Services  
Palestinian Central Bureau of Statistics  
P. O. Box 1647  
Ramallah - Palestine**

**Tel: 972 2 2406340**

**Fax: 972 2 2406343**

**Website:**

<http://www.pcbs.pna.org>

**E-Mail:**

[diwan@pcbs.pna.org](mailto:diwan@pcbs.pna.org)

## ***About the Palestinian Central Bureau of Statistics***

Palestinian Central Bureau of Statistics (PCBS) is the central statistical office in Palestine. Its main function is to provide truthful and impartial official statistics on demographic, social, economic and environmental states and trend to serve the Palestinian citizenry, and to serve the instrumental needs of businesses and their organizations for statistical information.

PCBS plays a vital role in providing essential statistical information to the citizens and their organizations as well as elected representatives, scholars, governmental and non-governmental organizations, mass media, the private sector, and international organizations.

By presenting this booklet, PCBS intends to provide easy and accessible indicators covering the different areas of the Palestinian reality. For more detailed information on any data required, please do not hesitate to contact us.

### ***How can PCBS help you?***

Over the last few years we have laid great emphasis on developing and enhancing our services in order to meet our users' demand, and to achieve the overall goal of providing our users with top-quality products and excellent services. PCBS' **User Services Department** is responsible for enabling the public to access statistical information on Palestine, and answer specific questions for users on a daily basis through direct communication with PCBS statisticians.

### ***How to contact us?***

Personal visits to PCBS are encouraged. We welcome you to visit our office:

***Palestinian Central Bureau of Statistics  
User Services Department  
Al-Balo', EHSa St. Bld. 5  
P.O. Box 1647  
Ramallah, PALESTINE  
Tel: 972 2 2406340  
Fax: 972 2 2406343  
E-mail: [diwan@pcbs.pna.org](mailto:diwan@pcbs.pna.org)***

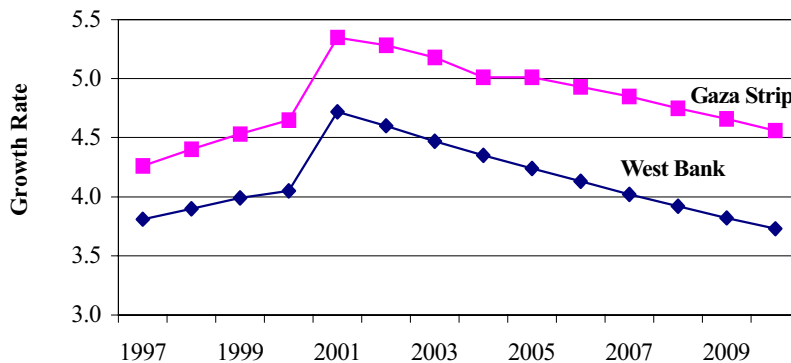
تم طباعة هذا الكتيب على نفقة الوكالة البريطانية للتنمية (DFID)  
This booklet was made possible by a generous contribution from (DFID)

# Population

## Projections of Population and Growth Rate

Years	Estimated Growth Rate	Midyear Population
1997	3.97	2,783,084
1998	4.08	2,897,452
1999	4.18	3,019,704
2000	4.27	3,150,056
2001	4.95	3,298,951
2002	4.85	3,464,550
2003	4.73	3,634,495
2004	4.63	3,808,591
2005	4.52	3,986,813
2006	4.42	4,169,148
2007	4.33	4,355,594
2008	4.23	4,546,028
2009	4.14	4,740,283
2010	4.05	4,938,264

Estimated Growth Rate by Year



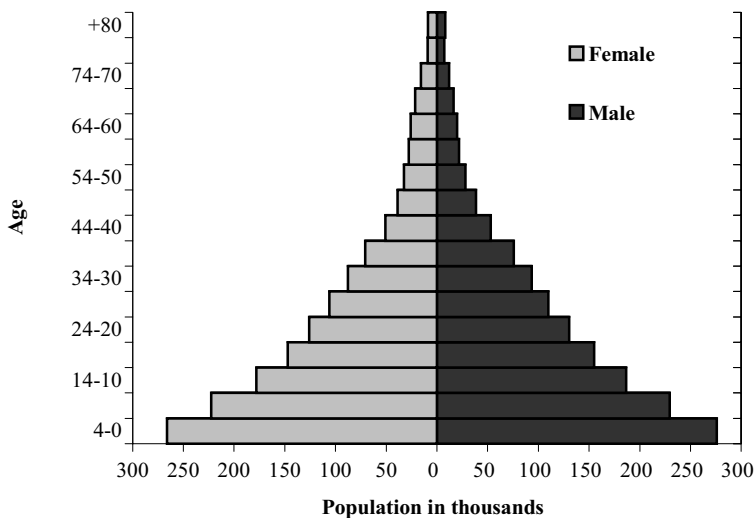
### Projected Mid-Year Population by Governorate

Governorate/District	1998	1999
Jenin	200,041	207,837
Tubas District	36,158	37,650
Tulkarm	132,209	137,381
Qalqiliya	71,385	74,605
Salfit District	47,974	49,993
Nablus	257,566	267,650
Ramallah and Al-Birch	211,800	221,436
Jerusalem	331,553	342,756
Jericho	32,428	33,849
Bethlehem	135,604	141,187
Hebron	401,154	418,293
<b>Total West Bank</b>	<b>1,857,872</b>	<b>1,932,637</b>
North Gaza	188,277	198,660
Gaza	372,310	388,031
Deir Al-Balah	150,498	157,450
Khan Yunis	203,686	212,572
Rafah	124,809	130,354
<b>Total Gaza Strip</b>	<b>1,039,580</b>	<b>1,087,067</b>
<b>Palestinian Territory</b>	<b>2,897,452</b>	<b>3,019,704</b>

## Infant and Under Five Mortality Rate

	1980-1984	1985-1989	1990-1994
<b>Infant Mortality Rate (under 1 year)</b>			
West Bank	51.1	35.0	25.5
Gaza Strip	49.7	35.5	30.2
<b>Palestinian Territory</b>	<b>50.6</b>	<b>35.2</b>	<b>27.3</b>
<b>Under Five Mortality Rate</b>			
West Bank	58.3	40.1	31.0
Gaza Strip	57.2	42.3	37.0
<b>Palestinian Territory</b>	<b>57.9</b>	<b>40.9</b>	<b>33.2</b>

### Palestinian Population Pyramid, Midyear 1998



## Labour Force

### Percentage Distribution of Population Aged 15 Years and Over by Labour Force Status and Region

Labour Force Status and Sex	1995	1996	1997*	1998
<b>Palestinian Territory</b>				
In Labour Force	39.0	40.0	40.5	41.4
Not in Labour Force	61.0	60.0	59.5	58.6
<b>Total</b>	<b>100</b>	<b>100</b>	<b>100</b>	<b>100</b>
Full Employment	60.7	64.3	70.4	79.1
Underemployment	21.1	11.9	9.3	6.5
Unemployment	18.2	23.8	20.3	14.4
<b>Total</b>	<b>100</b>	<b>100</b>	<b>100</b>	<b>100</b>
<b>West Bank</b>				
In Labour Force	40.6	42.0	43.2	44.2
Not in Labour Force	59.4	58.0	56.8	55.8
<b>Total</b>	<b>100</b>	<b>100</b>	<b>100</b>	<b>100</b>
Full Employment	65.3	67.6	71.1	80.1
Underemployment	20.7	12.8	11.6	8.4
Unemployment	13.9	19.6	17.3	11.5
<b>Total</b>	<b>100</b>	<b>100</b>	<b>100</b>	<b>100</b>
<b>Gaza Strip</b>				
In Labour Force	35.4	36.4	35.7	36.4
Not in Labour Force	64.6	63.6	64.3	63.6
<b>Total</b>	<b>100</b>	<b>100</b>	<b>100</b>	<b>100</b>
Full Employment	48.6	57.5	68.8	76.8
Underemployment	22.0	10.0	4.4	2.3
Unemployment	29.4	32.5	26.8	20.9
<b>Total</b>	<b>100</b>	<b>100</b>	<b>100</b>	<b>100</b>

\* The above data does not include the fourth quarter of 1997.



## Unemployment Rate by Sex and Years of Schooling (%)

Years of Schooling and Sex	1995	1996	1997*	1998
<b>Both Sexes</b>				
0	10.8	12.9	11.7	6.9
1-6	18.5	26.1	22.1	15.2
7-9	18.4	25.9	21.3	14.7
10-12	20.3	25.4	21.2	15.1
13+	16.8	19.1	17.7	14.1
<b>Total</b>	<b>18.2</b>	<b>23.8</b>	<b>20.3</b>	<b>14.4</b>
<b>Male</b>				
0	13.9	18.9	17.0	10.0
1-6	19.6	28.1	23.3	16.3
7-9	18.9	26.5	21.6	15.0
10-12	19.8	25.2	21.0	15.0
13+	14.2	16.6	14.2	10.9
<b>Total</b>	<b>18.3</b>	<b>24.5</b>	<b>20.3</b>	<b>14.4</b>
<b>Female</b>				
0	6.3	3.6	3.8	2.3
1-6	8.0	8.3	11.8	4.7
7-9	12.6	17.8	17.8	10.5
10-12	25.3	26.6	23.7	16.5
13+	24.1	26.1	26.8	23.5
<b>Total</b>	<b>17.9</b>	<b>19.6</b>	<b>20.1</b>	<b>15.2</b>

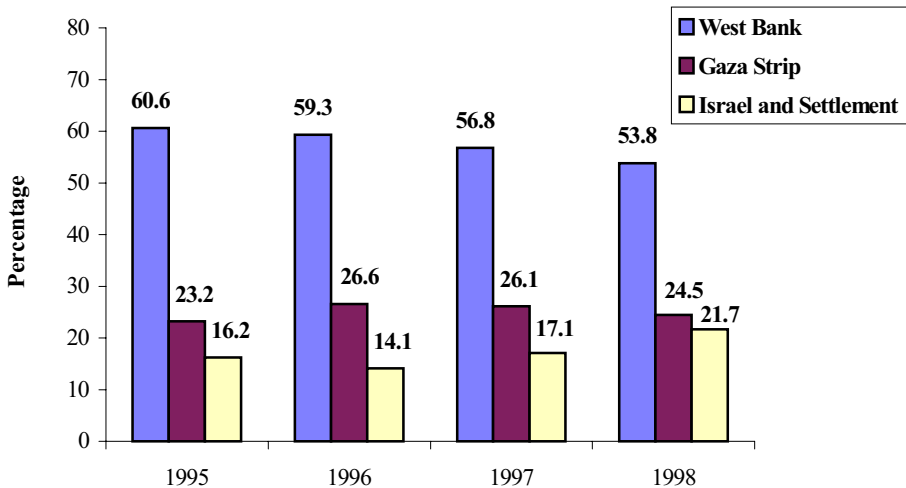
\* The above data does not include the fourth quarter of 1997.

## Percentage Distribution of Employed Persons by Industry

Industry	1995	1996	1997*	1998
Agriculture, Hunting, Forestry & Fishing	12.7	14.2	13.1	12.1
Mining, Quarrying & Manufacturing	18.0	16.8	16.4	15.9
Construction	19.2	16.8	18.4	22.0
Commerce, Hotels & Restaurants	19.6	18.2	19.1	18.2
Transportation, Storage & Communication	4.9	4.8	4.8	4.7
Services & Other Branches	25.6	29.2	28.2	27.1
<b>Total (%)</b>	<b>100</b>	<b>100</b>	<b>100</b>	<b>100</b>

\*: The above data does not include the fourth quarters of 1997.

## Percentage of Employed Persons by Place of Work and Year



## Education

### Higher Education Indicators

#### Scholastic Years

Indicator	1994/1995	1995/1996	1996/1997	1997/1998	1998/1999
<b>University Students</b>					
Male	16,042	21,190	26,533	29,546	33,548
Female	13,338	15,904	19,643	22,881	27,298
<b>Total</b>	<b>29,380</b>	<b>37,094</b>	<b>46,176</b>	<b>52,427</b>	<b>60,846</b>
<b>University Graduates***</b>					
Male	1,584	1,778	2,838	3,328	3,309
Female	1,448	1,663	2,762	2,995	3,287
<b>Total</b>	<b>3,032</b>	<b>3,441</b>	<b>5,600</b>	<b>6,323</b>	<b>6,596</b>
<b>Teaching Staff at Universities*</b>					
Male	1,051	1,199	1,496	1,489	1,579
Female	169	170	209	235	215
<b>Total</b>	<b>1,220</b>	<b>1,369</b>	<b>1,705</b>	<b>1,724</b>	<b>1,794</b>
<b>Community College Students**</b>					
Male	1,876	1,842	2,254	1,949	2,533
Female	2,234	1,980	2,345	2,350	2,903
<b>Total</b>	<b>4,110</b>	<b>3,822</b>	<b>4,599</b>	<b>4,299</b>	<b>5,436</b>
<b>Community College Graduates***</b>					
Male	711	505	619	798	700
Female	876	908	815	1,167	1,090
<b>Total</b>	<b>1,587</b>	<b>1,413</b>	<b>1,434</b>	<b>1,965</b>	1,790
<b>Teaching Staff at Community Colleges*</b>					
Male	310	246	184	175	240
Female	91	52	70	80	89
<b>Total</b>	<b>401</b>	<b>298</b>	<b>254</b>	<b>255</b>	<b>329</b>

\* Full Time Only

\*\* Data on community college students for the scholastic year 1997/1998 does not include second year students at An-Najah Community College, nor students at Kalandia Community College

\*\*\* Data for the scholastic year 1998/1999 include graduates of first and second semesters only

## General Education Indicators

### Scholastic Years

Indicator*	1994/1995	1995/1996	1996/1997	1997/1998	1998/1999
<b>Schools and Kindergartens</b>					
Government*	1,080	1,070	1,113	1,175	1,230
UNRWA	259	253	261	265	265
Private \ Schools	135	147	158	171	196
Private \ Kindergartens	436	532	705	789	823
<b>Total</b>	<b>1,910</b>	<b>2,002</b>	<b>2,237</b>	<b>2,400</b>	<b>2,514</b>
<b>Students of Schools and Kindergartens</b>					
Male	337,866	363,861	400,200	427,286	452,097
Female	316,831	343,693	381,754	411,213	437,798
<b>Total</b>	<b>654,697</b>	<b>707,554</b>	<b>781,954</b>	<b>838,499</b>	<b>889,895</b>
<b>Classes of Schools and Kindergartens</b>					
Male	7,080	7,444	8,063	8,638	9,052
Female	6,445	6,917	7,527	8,263	8,749
Co-education	4,700	5,220	6,333	6,710	7,311
<b>Total</b>	<b>18,225</b>	<b>19,581</b>	<b>21,923</b>	<b>23,611</b>	<b>25,112</b>
<b>Teachers in Schools and Kindergartens</b>					
Male	10,986	11,667	12,672	13,519	13,933
Female	10,068	11,353	13,558	15,174	16,229
<b>Total</b>	<b>21,054</b>	<b>23,020</b>	<b>26,230</b>	<b>28,693</b>	<b>30,162</b>

\* Does not include Municipality and Culture Committee Schools in Jerusalem

\*\* The number of schools in the scholastic years 1995/1996 decreased due to some schools joining together

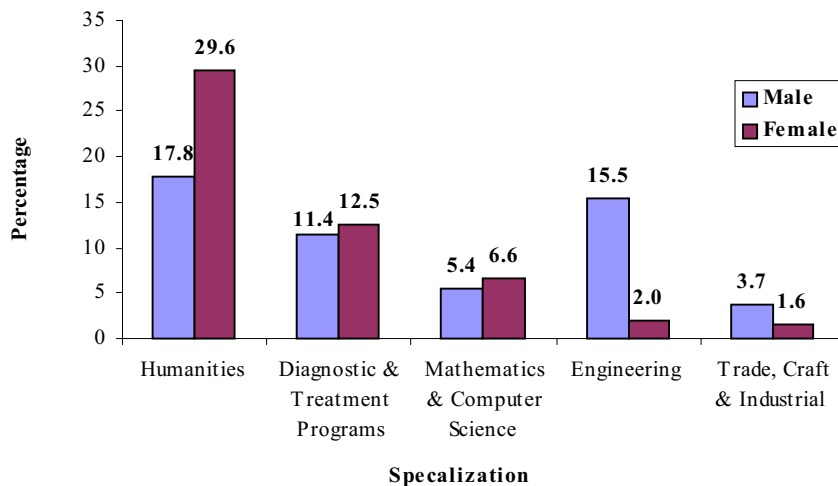
## Repetition and Drop-out Percentages at Schools by Sex

### Scholastic Years

Indicators*	1993/1994	1994/1995	1995/1996	1996/1997	1997/1998
<b>Repetition Rate</b>					
Male	5.7	5.1	4.3	3.6	2.8
Female	5.0	4.2	3.6	3.0	2.3
<b>Total</b>	<b>5.3</b>	<b>4.6</b>	<b>3.9</b>	<b>3.3</b>	<b>2.6</b>
<b>Dropout Rate</b>					
Male	2.3	2.9	2.7	2.3	2.2
Female	2.2	2.9	2.8	2.1	2.0
<b>Total</b>	<b>2.3</b>	<b>2.9</b>	<b>2.8</b>	<b>2.2</b>	<b>2.1</b>

\*: Does not include Municipality and Culture Committee Schools in Jerusalem

### Female and Male who Completed an Associate Diploma and above by Selected Specialization, 1997



## Living Standard

### Percentage and Average Monthly Per Capita Consumption in \$US

<b>Consumption Groups</b>	<b>1996</b>	<b>1997</b>	<b>1998</b>
Food	37.57	36.92	38.01
Clothing	8.52	7.93	7.67
Housing	19.55	21.05	20.60
Furniture, utensils, HH operations	6.18	5.29	4.95
Medical care	3.22	3.64	3.57
Transport\ communication	10.00	9.82	9.24
Education\ recreation	6.10	5.78	6.02
Other goods	8.87	9.58	9.94
<b>Total</b>	<b>100</b>	<b>100</b>	<b>100</b>
<b>Monthly Consumption in \$US</b>	<b>127</b>	<b>125</b>	<b>119</b>

*Note: The above data was derived from the Expenditure and Consumption Levels Survey for (October 1995-September 1996), (January -December 1997), and (January-December 1998)*

### Average Monthly Household (composed of seven persons) Expenditure and Consumption in \$US

<b>Region</b>	<b><u>Monthly Expenditure</u></b>			<b><u>Monthly Consumption</u></b>		
	<b>1996</b>	<b>1997</b>	<b>1998</b>	<b>1996</b>	<b>1997</b>	<b>1998</b>
West Bank	879	871	812	945	945	894
Gaza Strip	704	691	681	760	754	739
<b>Palestinian Territory</b>	<b>829</b>	<b>816</b>	<b>771</b>	<b>892</b>	<b>887</b>	<b>846</b>

## Health

### Governmental & Non-Governmental Hospitals\* Activities

Item	1996	1997	1998
Governmental Hospitals	14	14	14
Non-Governmental Hospitals	23	27	40
Total Number of Beds	2,886	3,102	3,771
Grand Total of Beds Occupancy Rate	75	77	62
Grand Total of Mean of Duration	4	4	3
Grand Total of Hospitalization Days	785,376	873,086	857,50476

\* Only hospitals that provided complete data for the purpose of publishing

### Certain Reported Communicable Diseases

Disease	1995	1996	1997	1998
Hepatitis A,B,C	1,113	6,502	3,492	2,431
Measles	23	25	28	40
Rubilla	136	157	129	84
Mumps	738	951	397	265
Chicken Pox	3,022	6,672	2,029	7,783
Typhoid & Para Typhoid	175	256	159	99
Malaria	9	6	4	5
Tuberculosis	82	113	67	82
Brucellosis	355	581	581	837
Ameobiasis	...	...	4,673	5,590
Giardiasis	...	3,951	3,793	3,303
Scabies	...	...	250	4,156

*Source: Ministry of Health, Nablus, Gaza, Annual Reports- 1995, 1996, 1997*

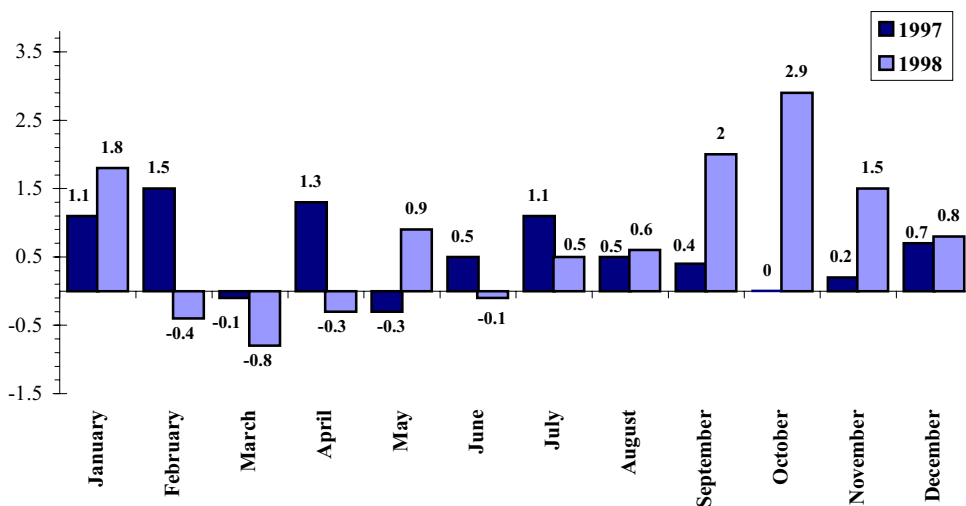
## Consumer Price Index

### Consumer Price Index & Inflation Rate by Major Groups of Expenditure

(Base Year 1996=100)

Major groups	Ave.1997	Ave.1998	Inflation Rate
Food	106.17	113.91	7.29
Beverages and Tobacco	109.62	117.07	6.80
Textiles, clothing and footwear	112.79	121.87	8.05
Housing	105.48	109.40	3.72
Furniture, household goods & services	110.79	117.29	5.87
Transport and communications	106.64	107.85	1.13
Education	104.89	106.57	1.60
Medical care	110.44	116.11	5.13
Recreational, cultural goods & services	106.94	111.16	3.95
Miscellaneous goods and services	106.77	110.68	3.66
<b>All-Items consumer price index</b>	<b>107.62</b>	<b>113.63</b>	<b>5.58</b>

### Percentage of Cost of Living by Month for 1997, 1998





## Foreign Trade

### Foreign Trade Statistics

Value in Million US \$

<b>Exports Imports Indicators</b>	<b>1995</b>	<b>1996</b>	<b>1997</b>
<b>Total Palestinian Exports</b>	<b>394</b>	<b>340</b>	<b>381</b>
National Exports	322	243	259
Re- Exports	72	97	122
Total Palestinian Exports by Country			
Exports to Israel	363	319	358
Exports to Arab Countries	25	19	19
Export to other countries	6	2	4
Total Exports by region			
From West Bank	252	307	338
From Gaza Strip	142	33	43
Total Exports By Land	394	340	381
<b>Total Palestinian Imports</b>	<b>1658</b>	<b>2017</b>	<b>2164</b>
Total Imports by Means of Transportation			
By Land	1,604	1,875	2,052
By Postal Packages	0.076	0.088	0.11
Through Electricity Networks & Petroleum Pipes	54	141	112
Total Imports by Country			
From Israel	1,459	1,743	1,803
From EUCC	104	147	155
From Arab Countries	19	27	54
From American Countries	20	29	28
From other countries	56	71	124
<b>Net Trade Balance</b>	<b>-1264</b>	<b>-1677</b>	<b>-1784</b>

*Note: PCBS advises to use the numbers cautiously as they are based on variant statistical sources due to the Palestinian particularities in terms of entries and borders.*

## Establishments

### Number of Enterprises\* by Economic Activity

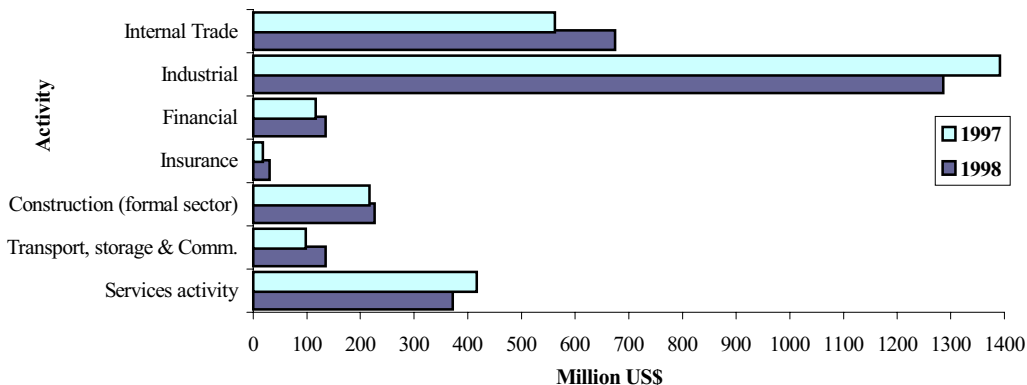
Economic Activity	1995	1996	1997	1998
Industrial	11,276	11,306	14,438	14,471
Financial **	214	216	281	286
Insurance **	122	125	196	196
Construction (Formal Sector)	448	447	488	408
Transport, storage & communications	365	377	621	650
Services activities (profit and non-profit)	9,380	9,388	12,439	12,373
Wholesale, retail trade & repairs	32,137	32,646	39,329	38,904
<b>Grand Total</b>	<b>53,942</b>	<b>54,505</b>	<b>67,354</b>	<b>66,850</b>

\* Including establishments

\*\* Financial and Insurance data excludes data on that part of Jerusalem annexed by Israel after 1967.

*Note: The issued data is based on the economic surveys series for the given years including Jerusalem Governorate.*

### Production by Economic Activity and Year



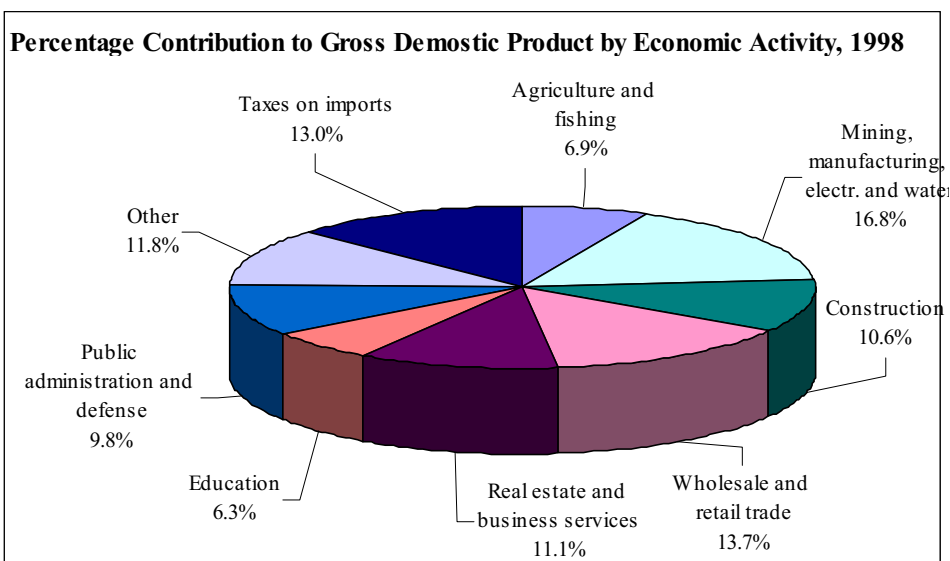
## Gross Domestic Product

### Gross Domestic Product (GDP) and GDP Per Capita by Region, 1998

Region	GDP (Million US\$)	GDP per Capita (US\$)
West Bank*	2758.3	1678.8
Gaza Strip	1367.9	1315.8
<b>Palestinian Territory</b>	<b>4484.5</b>	<b>1547.7</b>

\* Excluding Jerusalem Governorate

**Notes:** Estimates are at current prices, therefore no inferences with respect to real growth rates can be made.



## Agriculture

### Olive Presses

Quantity: Metric ton , Value: US\$1000

<b>Indicator</b>	<b>1995</b>	<b>1996</b>	<b>1997</b>	<b>1998</b>
Number of Operating Olive Presses	214	228	209	227
Quantity of Olives Pressed	50,050	50,884	24,127	64,213
Quantity of Oil Extracted	13,154	12,344	5,961	14,998
Number of Persons Engaged	2,281	1,111	1,038	1,237
Number of Paid Employees	1,927	920	786	892
Olive Presses Revenues	3,439	3,539	1,945	4,437
Value Added	2,399	2,097	1,276	3,237

### Agricultural Indicators

Area: dunum, Value: US\$1000

<b>Indicator</b>	<b>Agricultural Year</b>			
	<b>1993/1994</b>	<b>1994/1995</b>	<b>1995/1996</b>	<b>1996/1997</b>
Field Crops Area	478,434	563,152	520,110	510,568
Vegetables Area	191,660	197,752	190,984	185,812
Fruit Trees Area	1,156,707	1,143,598	1,118,075	1,137,326
Cattle	16,470	18,024	19,312	20,976
Sheep	521,685	445,151	634,489	504,903
Goats	259,202	252,235	272,636	267,101
Broilers (1000)	28,421	28,564	25,558	35,505
Layers (1000)	1,778	1,413	1,638	1,976
Bee Hives	45,100	43,088	56,050	47,625
Value of Agricultural Production	576,172	649,391	754,291	786,510
Value Added in Agricultural Sector	381,909	390,397	458,395	408,518

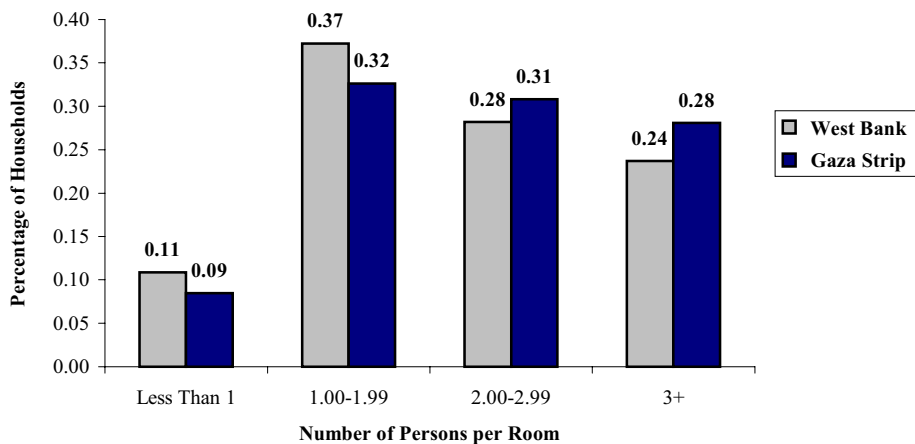
*Note: PCBS advises to use the numbers cautiously as they are based on localities instead of holdings as normally recommended by FAO*

## Housing Conditions

### Households by Facilities and Durable Goods in Housing Unit (%)

Item	1995*	1997**
Average number of rooms per housing unit	3.4	3.4
Housing density (average number of person per room)	2.3	2.0
Percentage of Households by Availability of Services and durable goods in the House		
Water public network	81.1	83.4
Public Sewer	31.7	33.3
Electricity public network	97.9	97.1
Telephone	22.7	19.5
Washing machine	71.8	73.2
Refrigerator	85.0	80.4
Video	17.9	13.3
Private car	22.8	20.4

### Percentage of Households by Number of Persons Per Room and Region, 1997\*\*



\* 1995 data based on the Demographic Survey in the West Bank and Gaza Strip 1995

\*\* 1997 data based on the Population, Housing and Establishment Census 1997, and does not include those part of Jerusalem Governorate which were annexed by Israel in 1967



## Transportation & Communication

### Main Indicators of Transportation & Communication Statistics \*

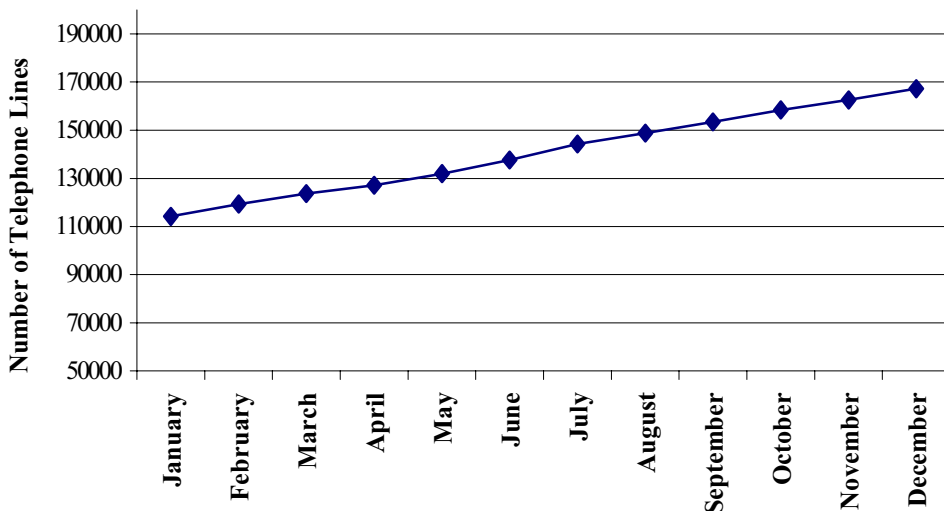
Indicator	1997	1998
Road network Length (kilometers)	2,055 <sup>(1)</sup>	2,495
Number of Road Vehicles <sup>(2)</sup>	160,407	162,680
Number of material received by mail	-	3,549,481
Number of material dispatched by mail	-	1,693,062
Number of Main Telephone Lines	110,893	167,271
Monthly average of Calls number	-	19,809,806
Monthly average of Calls length (minutes)	-	47,629,336

<sup>1</sup> Data does not include Tubas District

<sup>2</sup> Data does not include vehicles, which are registered in Jericho Governorate.

\*Data does not include those parts of Jerusalem Governorate which were annexed by Israel in 1967.

### Number of Main Telephone Lines by Month, 1998\*



\*Data does not include those parts of Jerusalem Governorate which were annexed by Israel in 1967.

## Water and Rainfall

### Water Quantities Pumped from the Water Well for West Bank by Use and Governorate

Quantity: 1000 M<sup>3</sup>

Governorate	Use	1995	1996	1997	1998
Jenin	Domestic	3067.9	3132.7	3306.4	3385.2
	Agricultural	5509.7	5161.4	5023.7	5740.4
Tubas	Domestic	252.0	264.7	285.0	280.9
	Agricultural	1218.4	1287.9	1253.4	1795.7
Tulkarm	Domestic	2347.2	3053.7	3955.2	3749.0
	Agricultural	9824.8	9938.8	9205.0	10064.4
Nablus	Domestic	4940.9	4211.2	4594.8	5960.5
	Agricultural	2090.1	2219.1	1934.3	2368.0
Qalqilya	Domestic	2070.7	2362.3	2738.2	2424.1
	Agricultural	6321.4	5878.6	5820.6	6278.4
Salfit	Domestic	0.9	0.6	1.4	153.9
Ramallah & Al-Bireh	Domestic	2908.0	826.0	3183.7	1405.4
Jericho	Agricultural	10724.5	8102.8	9126.9	9541.3
Bethlehem	Domestic	6848.4	6967.4	6542.7	5984.6
Hebron	Domestic	5784.6	5617.5	5715.7	4366.5
<b>Total</b>	<b>Domestic</b>	<b>28220.6</b>	<b>26436.0</b>	<b>30323.2</b>	<b>27710.1</b>
	<b>Agricultural</b>	<b>35688.9</b>	<b>32588.6</b>	<b>32363.9</b>	<b>35788.1</b>

*Note: data about Jerusalem governorate and Gaza Strip is not available*

### Total Rainfall by Meteorological Station Location and Year(mm)

