



Palestine
Palestinian Central Bureau of Statistics

Palestine in Figures
2001

April, 2002

© April, 2002

All rights Reserved

Suggested Citation:

Palestinian Central Bureau of Statistics, 2002. *Palestine in Figures 2001*. Ramallah - Palestine

All correspondence should be directed to :

Dissemination and Documentation Department/Division of Users Services

Palestinian Central Bureau of Statistics

P. O. Box 1647. Ramallah - Palestine

Tel: 970-2-2406340

Fax: 970-2-2406343

Website: <http://www.pcbs.org>

E-Mail: diwan@pcbs.pna.org

MAP OF PALESTINE

About the Palestinian Central Bureau of Statistics

Palestinian Central Bureau of Statistics (PCBS) is the central statistical office in Palestine. Its main function is to provide truthful and impartial official statistics on demographic, social, economic and area statistics and trends to serve the Palestinian citizenry, and to serve the instrumental needs of businesses and their organizations for statistical information.

PCBS plays a vital role in providing essential statistical information to the citizens and their organizations as well as elected representatives, scholars, governmental and non-governmental organizations, mass media, the private sector, and international organizations.

By presenting this booklet, PCBS intends to provide easy and accessible statistics covering different areas of the Palestinian society. For more information, please do not hesitate to contact us.

How can PCBS help you?

Over the last few years we have laid great emphasis on developing and enhancing our services in order to meet our users' needs, and to achieve the overall goal of providing our users with better-quality products and services. PCBS' Division of Users Services is responsible for enabling the public to access statistical information on Palestine, and answer specific questions for users on a daily basis through direct communication with PCBS statisticians.

Personal visits to PCBS are encouraged. We welcome you to visit our office:

Division of Users Services, *Palestinian Central Bureau of Statistics, Al-Balo', EHSA St. Bld. 5*

Ramallah, Palestine

Tel: 970-2- 2406340

Fax: 970-2- 2406343

E-mail: diwan@pcbs.pna.org

Explanation of Symbols:

(-)	= Nil
(0)	= Less than half of the unit
(..)	= not available
Scholastics Year	= starts in August from every year and ends in June of the next year
Agricultural Year	= starts in October from every year and ends in September of the next year

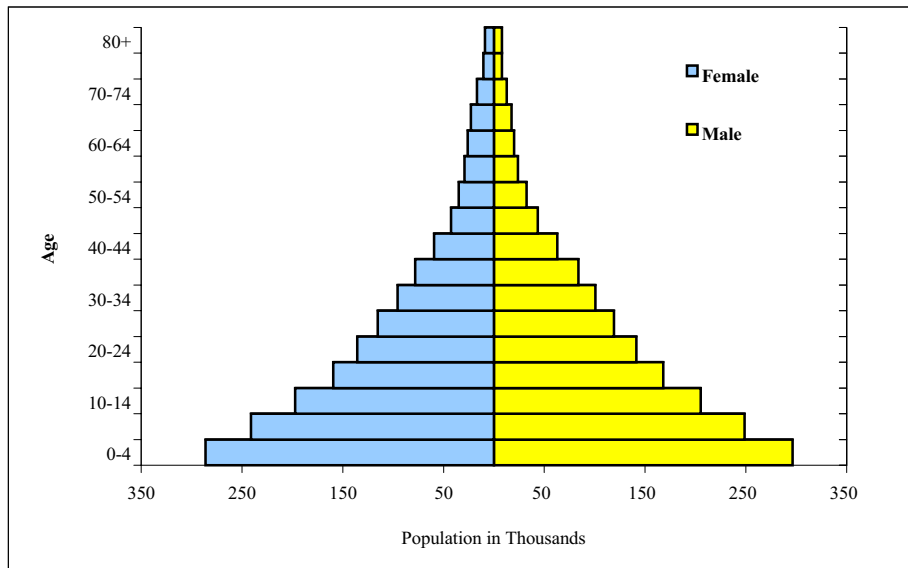
Note: The data mentioned in this report represent the Palestinian Territory, unless otherwise stated.

Population

Projected Population at the End Year by Region, 1997-2005

Years	Palestinian Territory	West Bank	Gaza Strip
1997	2,840,268	1,822,717	1,017,551
1998	2,958,578	1,895,254	1,063,324
1999	3,084,880	1,972,283	1,112,597
2000	3,224,504	2,057,145	1,167,359
2001	3,381,751	2,152,501	1,229,250
2002	3,549,523	2,253,733	1,295,790
2003	3,721,543	2,356,810	1,364,733
2004	3,897,702	2,461,637	1,436,065
2005	4,077,981	2,568,149	1,509,832

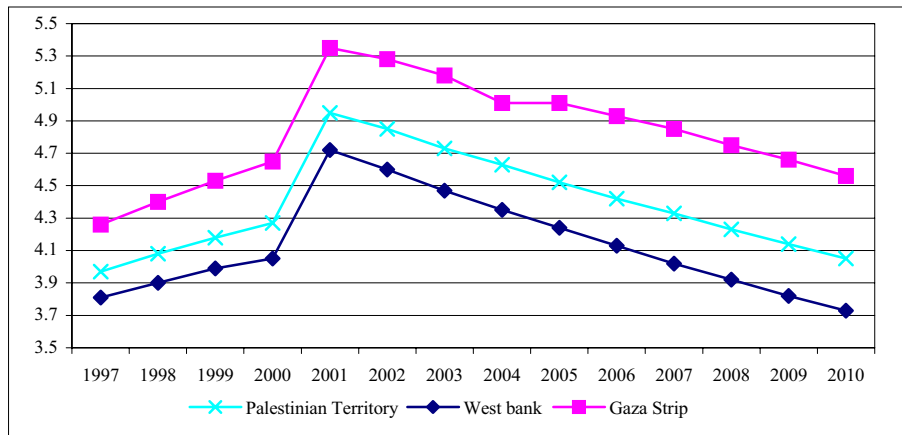
Palestinian Population Pyramid, Projected End Year, 2001



Projected Population in The End Year by Governorate, 1999-2002

Governorate/District	1999	2000	2001	2002
Palestinian Territory	3,084,880	3,224,504	3,381,751	3,549,523
Total West Bank	1,792,283	2,057,145	2,152,501	2,253,733
Jenin	211,981	220,918	231,070	241,867
Tubas District	38,445	40,153	42,088	44,148
Tulkarm	140,123	146,027	152,715	159,819
Qalqiliya	76,317	79,986	84,116	88,509
Salfit District	51,065	53,366	55,967	58,735
Nablus	272,983	284,469	297,484	311,294
Ramallah and Al-Bireh	226,563	237,561	249,958	263,155
Jerusalem	348,586	360,710	373,713	387,264
Jericho	34,601	36,209	38,017	39,931
Bethlehem	144,154	150,537	157,766	165,448
Hebron	427,465	447,209	469,607	493,563
Total Gaza Strip	1,112,597	1,167,359	1,229,250	1,295,790
North Gaza	204,214	216,056	229,321	243,570
Gaza	396,502	414,741	435,463	457,769
Deir Al-Balah	161,185	169,168	178,149	187,769
Khan Yunis	217,364	227,679	239,395	252,023
Rafah	133,332	139,715	146,922	154,659

Projected Annual Population Growth Rate by Region, 1997-2010



Labor Force

Population Aged 15 Years and Over by Labor Force Status and Region, 1996-2001

Labor Force Status and Region	1996*	1997*	1998	1999	2000	2001
Palestinian Territory						
Labor Force Participation Rate	40.0	40.5	41.4	41.6	41.5	38.7
Unemployment Rate	23.8	20.3	14.4	11.8	14.1	25.5
West Bank						
Labor Force Participation Rate	42.0	43.2	44.2	43.4	43.6	41.5
Unemployment Rate	19.6	17.3	11.5	9.5	12.1	21.9
Gaza Strip						
Labor Force Participation Rate	36.4	35.7	36.4	38.0	37.5	33.4
Unemployment Rate	32.5	26.8	20.9	16.9	18.7	34.2

* The above data does not cover all of the year (For more details, please refer to the annual reports of Labor Force Survey).

Unemployment Rate by Sex and Years of Schooling (%), 1996-2001

Years of Schooling and Sex	1996*	1997*	1998	1999	2000	2001
Male						
0	18.9	17.0	10.0	9.3	11.9	22.4
1-6	28.1	23.3	16.3	13.4	17.6	33.8
7-9	26.5	21.6	15.0	12.4	15.9	31.1
10-12	25.2	21.0	15.0	11.7	14.7	28.9
13+	16.6	14.2	10.9	8.8	9.3	14.1
Total	24.5	20.3	14.4	11.6	14.4	27.3
Female						
0	3.6	3.8	2.3	1.1	0.3	0.7
1-6	8.3	11.8	4.7	3.2	3.2	5.2
7-9	17.8	17.8	10.5	6.3	7.8	8.7
10-12	26.6	23.7	16.5	11.6	8.0	7.7
13+	26.1	26.8	23.5	21.9	21.9	22.2
Total	19.6	20.1	15.2	13.0	12.3	14.1
Both Sexes						
0	12.9	11.7	6.9	5.4	5.7	12.2
1-6	26.1	22.1	15.2	12.2	16.0	31.1
7-9	25.9	21.3	14.7	11.9	15.3	29.8
10-12	25.4	21.2	15.1	11.7	14.0	27.4
13+	19.1	17.7	14.1	12.5	12.8	16.3
Total	23.8	20.3	14.4	11.8	14.1	25.5

* The above data does not cover all of the year (For more details, please refer to the annual reports of Labor Force Survey).

Basic Changes in the Labor Force, Q2- 2000 – Q4- 2001 (ILO Standards)

Indicator	Q2-2000	Q3-2000	Q4-2000	Q1-2001	Q2-2001	Q3-2001	Q4-2001
Labor Force Participation Rate	42.5	43.5	39.2	38.8	38.3	38.3	39.1
Unemployment Rate	8.8	10.0	28.3	26.9	23.7	25.3	26.2
Employed in Agriculture	13.4	12.7	16.9	12.1	12.4	11.4	12.1
Employed in Construction	22.3	21.7	10.8	13.6	14.9	15.1	14.6
Employed in Manufacturing	14.4	15.0	12.8	14.9	14.0	13.3	13.5
Employed in Services	28.6	28.6	35.2	35.1	33.6	35.5	34.6
Elementary Occupation Workers	20.4	19.8	13.7	15.9	16.2	16.1	15.7
Craft and Related Trade Workers	23.1	24.5	16.2	18.8	19.5	18.7	19.0
Employed in Israel & Settlements	22.3	22.1	9.1	14.6	14.4	12.5	13.2
Self - Employed	18.7	18.1	23.1	21.6	23.6	24.4	26.0
Wage Employees	68.1	67.6	59.3	64.1	61.8	62.3	60.5
Average Monthly Work Days *	22.5	22.8	23.3	22.6	23.2	23.4	23.2
Median Daily Net Wage (NIS) *	70.0	70.0	61.5	61.5	65.4	60.0	60.0

* Workers in Israel and Settlements are included

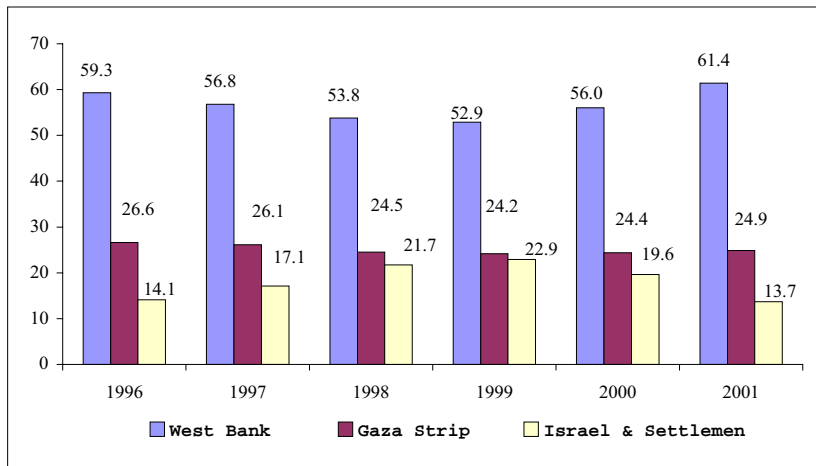
Note: Q: Quarter, Example: Q4-2000 means: 4th Quarter of 2000

Percentage Distribution of Employed Persons by Industry, 1996-2001

Industry	1996*	1997*	1998	1999	2000	2001
Agriculture, Hunting, Forestry & Fishing	14.2	13.1	12.1	12.6	13.7	12.0
Mining, Quarrying & Manufacturing	16.8	16.4	15.9	15.5	14.3	14.0
Construction	16.8	18.4	22.0	22.1	19.7	14.6
Commerce, Hotels & Restaurants	18.2	19.1	18.2	17.0	17.5	19.4
Transportation, Storage & Communication	4.8	4.8	4.7	4.7	4.9	5.5
Services & Other Branches	29.2	28.2	27.1	28.1	29.9	34.5
Total (%)	100.0	100.0	100.0	100.0	100.0	100.0

** The above data does not cover all of the year (For more details, please refer to the annual reports of Labor Force Survey).*

Percentage Distribution of Employed Persons by Place of Work, 1996-2001



Education

Higher Education Indicators, 1996/1997-2000/2001

Indicator	Scholastic Years				
	1996/1997	1997/1998	1998/1999	1999/2000	2000/2001
University Students					
Male	26,533	29,546	33,548	35,696	40,220
Female	19,643	22,881	27,298	30,354	35,359
Both Sexes	46,176	52,427	60,846	66,050	75,579
University Graduates					
Male	2,838	3,328	4,449	4,717	..
Female	2,762	2,995	3,931	3,587	..
Both Sexes	5,600	6,323	8,380	8,304	..
Teaching Staff at Universities*					
Male	1,496	1,489	1,579	1,666	2,045
Female	209	235	215	238	294
Both Sexes	1,705	1,724	1,794	1,904	2,339
Community College Students**					
Male	2,254	1,949	2,533	2,388	2,129
Female	2,345	2,350	2,903	2,769	2,835
Both Sexes	4,599	4,299	5,436	5,157	4,964

Higher Education Indicators, 1996/1997-2000/2001 (Cont.)

Indicator	Scholastic Years				
	1996/1997	1997/1998	1998/1999	1999/2000	2000/2001
Community College Graduates					
Male	619	798	722	797	..
Female	815	1,167	1,058	1,207	..
Both Sexes	1,434	1,965	1,780	2,004	..
Teaching Staff at Community Colleges*					
Male	184	175	240	269	286
Female	70	80	89	113	106
Both Sexes	254	255	329	382	392

*Full Time Only

** Data on community college students for the scholastic year 1997/1998 does not include second year students at An-Najah Community College, nor students at Kalandia Community College

General Education Indicators, 1997/1998-2001/2002

Indicator	Scholastic Years				
	1997/1998	1998/1999	1999/2000	2000/2001	2001/2002*
Schools and Kindergartens					
Government	1,175	1,230	1,292	1,345	1,406
UNRWA	265	265	264	263	264
Private \ Schools	171	196	214	228	244
Private \ Kindergartens	789	823	840	810	..
Total	2,400	2,514	2,610	2,646	1,894
Students of schools and Kindergartens					
Male	427,286	452,097	477,042	491,375	478,828
Female	411,213	437,798	465,900	485,000	474,654
Both Sexes	838,499	889,895	942,942	976,375	953,482

General Education Indicators, 1997/1998-2001/2002 (Cont.)

Indicator	Scholastic Years				
	1997/1998	1998/1999	1999/2000	2000/2001	2001/2002*
Classes of Schools and Kindergartens					
Male	8,638	9,052	9489	9,790	10,176
Female	8,263	8,749	9221	9,708	10,223
Co-education	6,710	7,311	7,739	8,057	5,461
Total	23,611	25,112	26,449	27,555	25,860
Teachers in Schools and kindergartens					
Male	13,519	13,933	14,550	15,804	19,337
Female	15,174	16,229	17,510	19,441	20,000
Both Sexes	28,693	30,162	32,060	35,245	39,337

Note: the data does not include the Israeli Municipality and Culture Committee Schools in Jerusalem

**Data for the Scholastic Year 2011/2002 Considered as Primary Data and does not Include Kindergartens*

Drop-Out Rates from Schools by Stage and Sex, 1995/1996-1999/2000

Stage and Sex	Scholastic Year				
	1995/1996	1996/1997	1997/1998	1998/1999	1999/2000
Basic Stage					
Male	2.4	2.1	2.0	1.8	1.7
Female	2.4	1.6	1.5	1.4	1.1
Both Sexes	2.4	1.9	1.8	1.6	1.4
Secondary Stage					
Male	6.0	3.9	4.3	4.0	4.4
Female	8.1	7.9	8.3	6.6	7.3
Both Sexes	7.0	5.8	6.2	5.3	5.9

Note: the data does not include the Israeli Municipality and Culture Committee Schools in Jerusalem

Repetition Rates at Schools by Stage and Sex, 1995/1996-1999/2000

Stage and Sex	Scholastic Year				
	1995/1996	1996/1997	1997/1998	1998/1999	1999/2000
Basic Stage					
Male	4.3	3.6	3.0	2.8	2.6
Female	3.8	3.2	2.4	2.3	2.0
Both Sexes	4.1	3.4	2.7	2.5	2.3
Secondary Stage					
Male	3.5	3.5	1.2	1.5	1.6
Female	1.1	1.2	0.7	0.7	1.9
Both Sexes	2.4	2.4	0.9	1.1	1.8

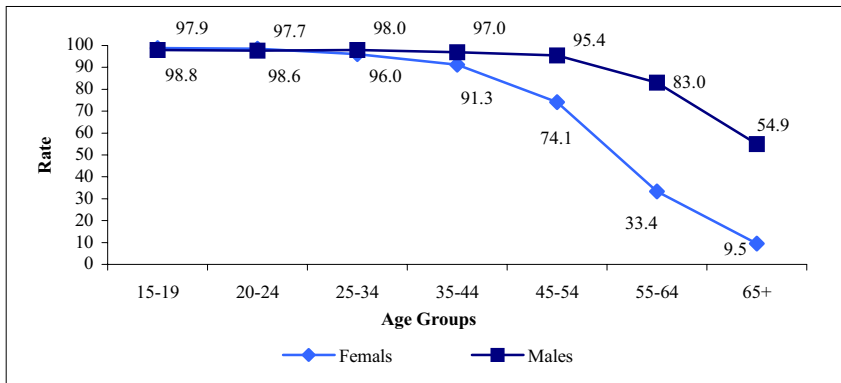
Note: the data does not include the Israeli Municipality and Culture Committee Schools in Jerusalem.

Gross Enrollment Rates by Stage and Sex, 1997/1998 - 2001/2002

Stage and Sex	Scholastic Year				
	1997/1998	1998/1999	1999/2000	2000/2001	2001/2002
Basic Stage					
Male	93.1	94.8	96.0	95.8	95.6
Female	94.1	95.9	97.6	98.0	97.2
Both Sexes	93.6	95.3	96.8	96.8	96.4
Secondary Stage					
Male	51.7	52.2	54.3	53.7	57.2
Female	51.5	55.1	59.6	61.5	65.5
Both Sexes	51.6	53.6	56.9	57.5	61.2

Note: the data does not include the Israeli Municipality and Culture Committee Schools in Jerusalem.

Literacy Rate For Palestinian Population (15 Years and Over) By Sex and Age Groups, 2000



Culture

Selected Indicators for Households by Availability of Mass Media for the Household, 2000

Indicator	Palestinian Territory	West Bank	Gaza Strip
Availability of TV Set	89.7	90.6	87.9
Availability of Satellite Dish for Household Having TV Set	45.4	42.4	51.1
Availability of Video Player for Household Having TV Set	23.0	26.4	16.4
Availability of Israeli Mobile Phone (Not Jawwal) with any Member of the Household	40.3	48.6	24.6
Availability of Jawwal Phone with any Member of the Household	5.0	4.4	6.2
Availability of Telephone Line	42.1	45.0	36.5
Availability of Computer	10.8	11.4	9.6
Availability of Internet at Home	1.9	2.3	1.1

Percentage of Persons (6 -17 Years) by Using of Mass Media, Sex and Region, 2000

Indicator	Palestinian Territory	West Bank	Gaza Strip
Both Sexes			
Newspapers Reading	21.8	26.9	13.5
Magazines Reading	25.6	31.1	16.7
Radio Listening	31.7	32.7	30.2
Television Viewing	94.0	94.5	93.2
Video Viewing	11.2	14.6	5.6
Computer Usage	23.0	25.5	18.9
Male			
Newspapers Reading	20.5	25.2	12.9
Magazines Reading	21.7	27.3	12.7
Radio Listening	28.5	28.1	29.0
Television Viewing	93.6	94.3	92.6
Video Viewing	11.1	13.7	7.0
Computer Usage	26.4	28.0	23.8

Percentage of Persons (6 -17 Years) by Using of Mass Media, Sex and Region, 2000 (cont.)

Indicator	Palestinian Territory	West Bank	Gaza Strip
Female			
Newspapers Reading	23.0	28.7	14.0
Magazines Reading	29.6	35.1	20.9
Radio Listening	35.1	37.5	31.4
Television Viewing	94.4	94.8	93.8
Video Viewing	11.2	15.5	4.3
Computer Usage	19.5	22.9	13.9

Percentage of Persons (10 years and over) who Performed the Activities and Average Time Spent by Persons Performed Activities by Sex, (Average for all Days in Hours and Minutes), 1999-2000

Activities	Percentage of Persons			Average Time Spent in Practicing Activities for those Who Practice them		
	Males	Females	Both Sexes	Males	Females	Both Sexes
				H M	H M	H M
Employment in Establishments	43.9	5.2	24.6	7:39	6:17	7:31
Primary Production Activities (not in Establishments)	9.3	5.9	7.6	4:16	2:01	3:24
Services for Income and other Production of Goods (not in Establishments)	17.1	4.4	10.8	8:00	2:18	6:50
Household Maintenance, Management and Shopping for Own Household	39.8	90.9	65.2	1:20	4:07	3:16
Care for Children, the Sick, Elderly and Disabled for Own Household	20.8	50.3	35.4	0:59	2:12	1:51
Community Services and Help to other	7.2	10.4	8.8	2:13	1:35	1:51
Learning	23.6	22.7	23.2	6:47	7:08	6:57
Social and Cultural Activities	89.5	88.8	89.2	3:50	3:14	3:32
Mass Media Use	84.7	87.3	86.0	2:28	2:47	2:37
Personal Care and Self-Maintenance	99.9	100.0	100.0	10:50	11:25	11:07
Other Activities in the Main Group	9.6	25.5	17.3	0:26	0:26	0:26

Note: M= minute, H= hour

Percentage of Proprietor Females (18 years and above) by Nature of Ownership, Age Groups and Educational Attainment,1999

Age Groups & Educational Attainment	Nature of Ownership				
	Land or share in it	House/ Real Estate or share in it	Investment Enterprise or share in it	Private Car	Other
Age Groups					
18-29	3.7	2.3	0.0	0.7	8.2
30-49	5.0	5.8	0.0	1.1	11.4
50-64	4.6	11.4	0.7	1.6	10.5
65+	10.3	26.1	1.0	0.4	1.3
Educational Attainment					
Less than elementary	6.3	13.9	0.5	0.2	8.2
Elementary	5.0	4.8	0.3	1.1	7.5
Preparatory	3.5	2.8	0.1	1.0	8.4
Secondary	4.6	5.1	-	0.8	11.4
Associate Diploma & Higher	4.5	4.1	-	4.7	13.1

Health

Main Health Indicators by Region, 1996, 2000

Indicator	Palestinian Territory		West Bank		Gaza Strip	
	1996	2000	1996	2000	1996	2000
Women Received Ante-Natal Care	94.6	95.6	93.5	94.0	96.7	98.3
Women Received Post-Natal Care	19.5	26.3	22.4	29.0	13.8	21.4
Births Occurred at Health Institutions	90.0	94.8	87.1	92.3	95.9	99.2
Births Occurred at Home	10.0	5.2	12.9	7.7	4.1	0.8
Women Currently Using Modern Contraceptive Method	30.8	36.7	33.7	38.8	24.5	32.7
Children who Breastfed (last child)	96.0	97.2	95.5	96.8	97.0	98.0
Children who Suffered from Wasting	2.8	1.4	2.3	1.5	3.7	1.4
Children who Suffered from Stunting	7.2	7.5	6.7	7.0	8.2	8.3
Children who Suffered from under weight	4.0	2.5	3.6	2.6	4.7	2.4

Governmental & Non-Governmental Hospitals* Activities by Activity, 1996-2000

Item	1996	1997	1998	1999	2000
Number of Governmental Hospitals	14	14	14	15	17
Number of Non-Governmental Hospitals	23	27	40	42	48
Total Number of Beds	2,886	3,102	3,771	3,850	4,555
Grand Total of Beds Occupancy Rate (%)	75.0	77.0	63.3	61.8	71.4 ⁽¹⁾
Mean of Duration (Days)	4.0	4.0	3.0	3.0	3.0 ⁽¹⁾
Grand Total of Hospitalization Days	785,376	873,086	871,452	868,869	570,674 ⁽¹⁾

* Only hospitals that provided complete data for purpose of publishing

⁽¹⁾ Data represent government hospitals only.

Certain Reported Communicable Diseases, 1996-2000

Disease	1996	1997	1998	1999	2000
Hepatitis A,B,C	6,502	3,492	2,431	4,392	4,086
Measles	25	28	40	138	5
Rubilla	157	129	84	59	99
Mumps	951	397	265	391	526
Chicken Pox	6,672	2,029	7,783	5,064	4,420
Typhoid & Para Typhoid	256	159	99	81	238
Malaria	6	4	5	2	3
Tuberculosis	113	67	82	38	68
Brucellosis	581	581	837	747	303
Ameobiasis	..	4,673	5,590	6,470	839
Giardiasis	3,951	3,793	3,303	3,707	32
Scabies	..	250	4,156	2,183	3,929

Source: Ministry of Health, Annual Reports for the years (1996-2000) Gaza - Palestine

Rates of Physicians, Dentists, and Beds per 1000 Population, 1996-2000

Year	Rates per 1000 Population		
	Physicians	Dentists	Beds
1996	1.09	0.27	1.09
1997	0.99	0.25	1.09
1998	1.15	0.33	1.30
1999	1.28	0.37	1.27
2000	1.40	0.39	1.40

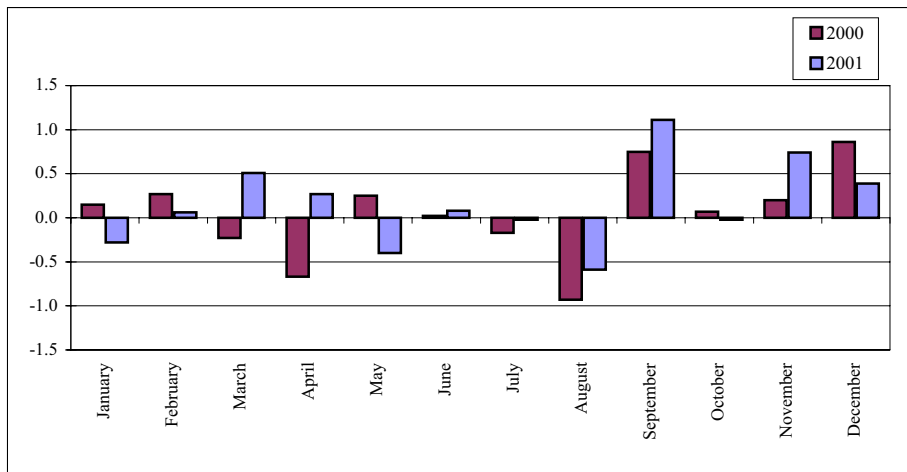
Consumer Price Index

Consumer Price Index and Rate of Change by Major Groups of Expenditure, 2000-2001

(Base Year 1996=100)

Major groups of Expenditure	Ave.2000	Ave.2001	Inflation Rate
Food	121.22	120.65	-0.47
Beverages and tobacco	130.22	131.94	1.32
Textiles, clothing and footwear	125.89	123.35	-2.02
Housing	126.46	133.16	5.30
Furniture, household goods & services	123.68	118.76	-3.97
Transport and communications	125.19	137.04	9.47
Education	114.62	117.87	2.84
Medical care	126.65	128.73	1.64
Recreational, cultural goods & services	95.50	93.43	-2.16
Miscellaneous goods and services	127.56	128.71	0.90
All-Items consumer price index	123.28	124.79	1.23

Monthly Percent Change for Consumer Price Index: January-December, 2000-2001



Foreign Trade Indicators, 1995-1999

Value in Million US \$

Exports Imports Indicators	1995	1996	1997	1998	1999
Total Palestinian Exports	394	340	382	395	372
Total Palestinian Exports by Country					
Exports to Israel	363	319	358	382	360
Exports to Arab Countries	25	19	19	11	10
Export to other countries	6	2	5	2	2
Total Exports by Country of Origin					
National Exports	322	243	259	267	269
Re- Exports	72	97	123	128	103
Total Exports by region					
From West Bank	252	307	338	355	330
From Gaza Strip	142	33	44	40	42
Total Exports By Land	394	340	382	395	372

Foreign Trade Indicators, 1995-1999 (Cont.)

Value in Million US \$

Exports Imports Indicators	1995	1996	1997	1998	1999
Total Palestinian Imports	1,658	2,016	2,239	2,375	2,629
Total Imports by Means of Transportation					
By Land*	1,604	1,875	2,077	2,157	2,437
By Postal Packages	0.076	0.088	1	0.1	0.1
Through Electricity Networks & Petroleum Pipes	54	141	160	218	191
Total Imports by Country					
From Israel	1,459	1,743	1,852	1,833	1,854
From EUCC	104	147	155	231	406
From Arab Countries	19	27	54	85	74
From American Countries	20	29	28	39	57
From other countries	56	70	150	187	238
Net Trade Balance	-1,264	-1,676	-1,857	-1,980	-2,257

Note: PCBS advises to use the numbers cautiously as they are based on variant statistical sources due to the Palestinian particularities in terms of entries and borders

** Include imports through crossing borders, ports and deliveries from Israel.*

Establishments

Number of Enterprises by Economic Activity, 1997- 2001

Economic Activity	1997*	1999	2000	2001
Industrial	15,453	16,057	16,030	14,578
Financial Intermediation	417	691	696	578
Construction	486	502	462	328
Transport, storage & communications	620	756	750	507
Services activities (profit and non-profit)	12,351	14,318	14,332	12,708
Wholesale, retail trade & repairs	38,397	41,918	41,918	39,421

* Excludes data on that part of Jerusalem annexed by Israel after 1967.

Production by Economic Activity, 1998-1999

Value in Million US \$

Economic Activity	1998	1999
Agriculture and fishing	819.7	739.5
Mining, manufacturing, electr. and water	1,757.9	1,825.0
Construction	1,398.1	1,420.7
Wholesale and retail trade	683.8	740.5
Transport	321.3	339.1
Financial intermediation	167.8	193.5
Other services	1,149.4	1,221.6
Public administration and defense	792.1	899.5
other	771.4	707.5

Gross Domestic Product

Gross Domestic Product (GDP) and GDP Per Capita by Region, 1999

Region	GDP (Million US\$)	GDP per Capita (US\$)
Palestinian Territory*	4,860.9	1,609.7
Remaining West Bank**	3,144.5	1,837.6
Gaza Strip	1,384.8	1,273.9

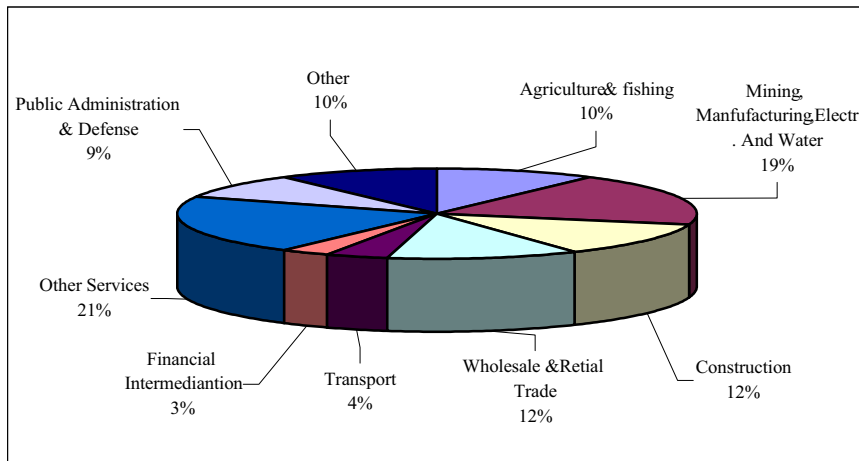
*Data include those parts of Jerusalem which were annexed by Israel in 1967.

**Data does not include those parts of Jerusalem which were annexed by Israel in 1967.

Notes: 1. Estimates are at current prices, therefore no inferences with respect to real growth rates can be made.

2. Data above is primary, subjected to modification and revision.

Percentage Contribution to GDP by Economic Activity, 1999



Agriculture

Olive Presses, 1997-2001

Quantity: Metric ton , Value:US\$1000

Indicator	1997	1998	1999	2000	2001
Number of Operating Olive Presses	209	227	165	249	194
Quantity of Olives Pressed	24,127	64,213	15,092	126,149	22,154
Quantity of Oil Extracted	5,961	14,998	3,436	27,062	5,443
Number of Persons Engaged	1,038	1,237	641	1,406	1,003
Number of Paid Employees	786	892	372	971	670
Olive Presses Revenues	1,945	4,437	1,335	8,099	2,033
Value Added	1,276	3,237	968	6,747	1,090

Agricultural Indicators, 1995/1996-1999/2000

Area: dunum, Value:US\$1000

Indicator	Agricultural Year				
	1995/1996	1996/1997	1997/1998	1998/1999	1999/2000
Field Crops Area	520,110	510,568	530,276	328,882	469,682
Vegetables Area	190,984	185,812	181,984	159,116	173,862
Fruit Trees Area	1,118,075	1,137,326	1,148,405	1,124,015	1,192,630
Cattle	19,312	20,976	22,050	23,858	23,688
Sheep	634,489	504,903	537,998	504,078	566,409
Goats	272,636	267,101	252,258	295,033	308,845
Broilers (1000)	25,558	35,505	38,550	48,418	43,457
Layers (1000)	1,638	1,976	2,061	2,059	2,518
Bee Hives	56,050	47,625	57,850	46,195	46,020
Value of Agricultural Production	754,291	786,510	953,617	760,639	979,817
Value Added in Agricultural Sector	458,395	408,518	570,840	431,326	588,680

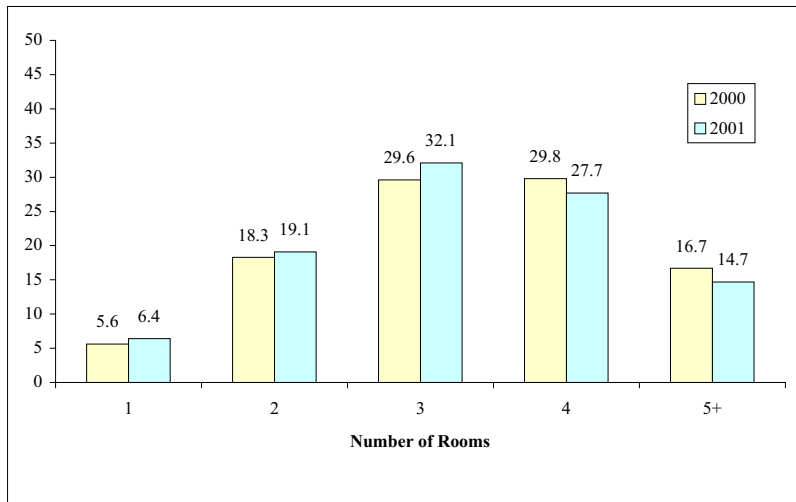
Note: PCBS advises to use the numbers cautiously as they are based on localities instead of holdings as normally recommended by FAO

Housing Conditions

Percentage Distribution of Households by Housing Density and Year

Housing Density	1997	1999	2000	2001
Less than 1	10.1	8.0	9.4	8.8
1.00- 1.99	35.5	37.7	39.2	36.6
2.00- 2.99	29.1	30.8	30.8	32.9
3.00+	25.3	23.5	20.6	21.7
Total	100.0	100.0	100.0	100.0
Average Housing Density	2.0	1.98	1.9	2.0

Percentage Distribution of Households by Number of Rooms in the Housing Units, 2000-2001

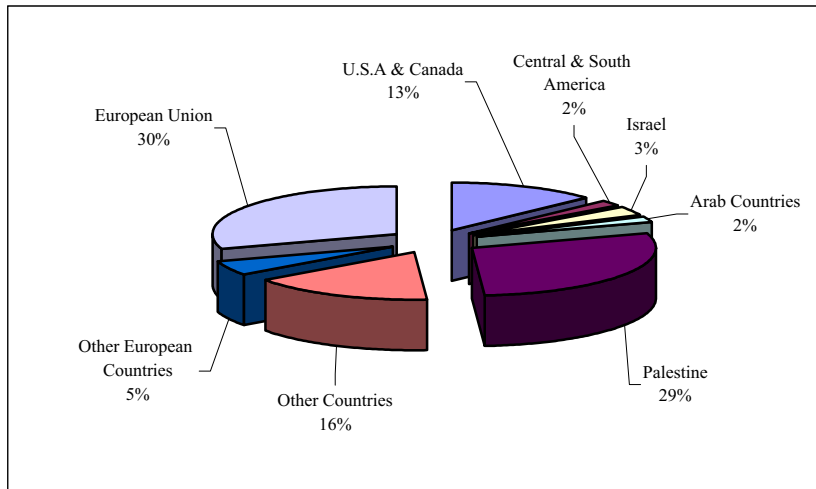


Tourism

Hotel Activities, 1997-2001

Indicator	1997	1998	1999	2000	2001
Number of Hotels	85	92	91	106	84
Number of Guests	220,850	214,220	316,871	335,711	60,208
Number of Beds	7,419	7,986	8,053	10,063	6,240
Number of Rooms	3,425	3,682	3,781	4,708	2,860
Number of Guest Nights	639,344	601,085	895,540	1,016,683	184,857

Percent Distribution of Guest Nights by Nationality, 2001



Transportation & Communication

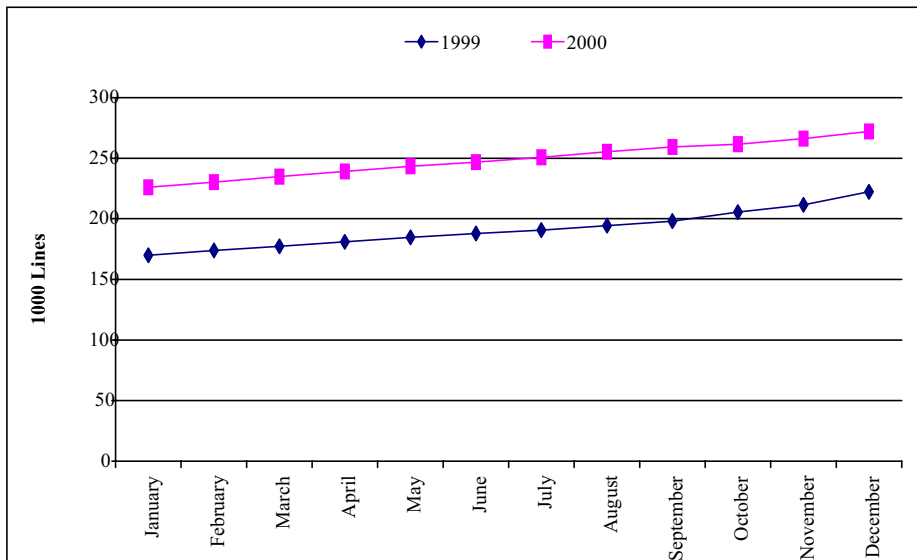
Main Indicators of Transportation & Communication *1998-2000

Indicator	1998	1999	2000
Road network Length (kilometers)**	2,495	4,924	..
Number of Licensed Road Vehicles	140,212	137,057	123,868
Number of Material Received by Mail	3,549,481	3,526,136	5,213,175
Number of Material Dispatched by Mail	1,693,062	1,877,153	3,810,276
Number of Main Telephone	167,271	222,198	272,311
Monthly Average of Calls Number	19,809,806	25,910,943	30,848,326
Monthly Average of Calls Length (minutes)	47,629,336	67,244,469	83,299,749

*Data does not include those parts of Jerusalem Governorate which were annexed by Israel in 1967.

** Data does not include By pass roads , but includes those parts of Jerusalem Governorate which were annexed by Israel in 1967.

Number of Main Telephone Lines in the Remaining West Bank and Gaza Strip by Month, 1999-2000 (in thousands)



Water

Water Quantity Pumped from Water Wells by Use and Governorate, 1996-2000

1000 M³

Governorate	Use	1996	1997	1998	1999	2000
Jenin	Domestic	3,132.7	3,306.4	3,385.2	4,021.3	3,633.8
	Agricultural	4,470.4	4,498.9	5,030.7	3,989.7	4,754.1
Tubas	Domestic	264.7	285.0	280.9	293.7	272.1
	Agricultural	1,287.8	1,253.4	1,795.7	1,596.9	1,531.8
Tulkarm	Domestic	3,623.9	4,402.4	4,309.9	4,370.8	3,766.3
	Agricultural	8,322.8	7,731.8	8,523.5	8,761.1	10,831.7
Qalqiliya	Domestic	2,380.6	2,427.2	2,424.1	2,610.9	2,952.5
	Agricultural	5,881.9	5,822.0	6,278.3	6,614.3	5,969.8
Salfit	Domestic	0.6	1.4	153.9	140.0	109.3
Nablus	Domestic	4,364.9	4,699.0	5,960.5	7,093.8	7,302.4
	Agricultural	2,219.1	1,934.3	2,368.0	2,547.4	2,535.4
Ramallah & Al-Bireh	Domestic	2,095.7	3,844.7	4,190.6	3,434.2	729.2
Jerusalem	
Jericho	Agricultural	10,177.7	10,101.6	10,551.2	11,281.3	11,073.8
Bethlehem	Domestic	6,961.2	6,542.7	6,227.8	5,819.1	5,205.0
Hebron	Domestic	5,832.4	5,715.6	4,434.8	5,162.4	3,128.6
Gaza Strip	

Source: Palestinian Water Authority

Environment

Estimated Quantities for Separated Waste Produced from Private Medical Establishment by Type of Medical Waste and Region, 2000

Type of Separated Medical Waste	Palestinian Territory		Region			
	Quantities Estimated by liter	Quantities Estimated by Kg	West Bank		Gaza Strip	
			Quantities Estimated by liter	Quantities Estimated by Kg	Quantities Estimated by liter	Quantities Estimated by Kg
General Waste	0	15,403	0	5,745	0	9,658
Infectious Waste	51	1,831	51	1,184	0	647
Chemical, Pharmaceutical and non radioactive Wastes	8	622	0	457	8	165
Radioactive Waste	8	18	8	18	0	0
Sharp Waste	103	2,164	103	1,310	0	854
Total	170	20,038	162	8,714	8	11,324

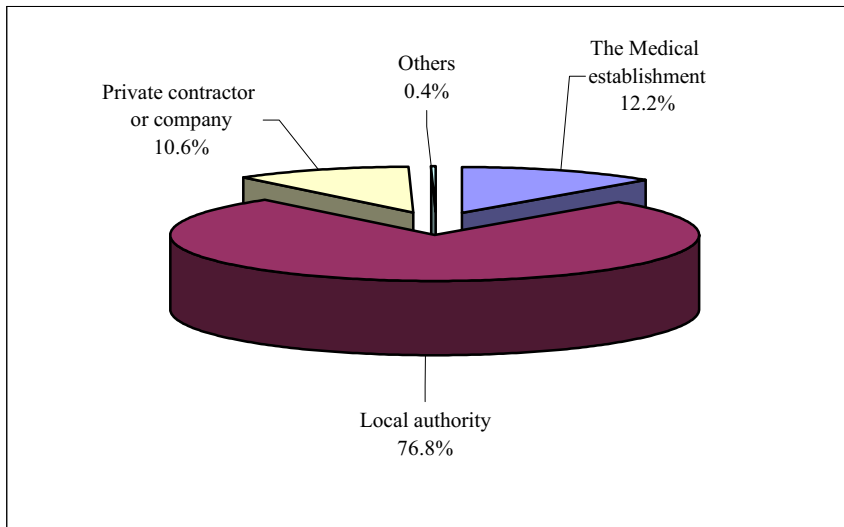
Note: It was not possible to collect the data using one unit.

Estimated Monthly Quantities of Medical Waste Produced from Private Medical Establishment by Medical Activity and Region, 2000

Quantities (ton/month)

Region	Medical Activity			Total
	Hospital activities	Medical and dental practice activities	Other human health activities	
Palestinian Territory	378.0	35.6	17.9	431.5
West Bank	377.8	27.4	12.8	418.0
Gaza Strip	0.2	8.2	5.1	13.5

Percent Distribution of Medical Establishments by the Party of Transporting Medical Waste to its Final Disposal Place and Region, 2001



Main Wastewater Indicators by Year, 1997-2000

Indicator	1997	1998	1999	2000
Percentage of households that obtain water from public network	83.6*	85.9	84.8	85.5
Percentage of households that use sewage network to dispose their wastewater	32.9	37.9	39.3	43.9
Percentage of households that use cesspit to dispose their wastewater	64.5	62.1	59.5	55.4

*: This Number refers to Housing Units.

Energy

Main Indicators for Energy 1996-1999

(value in Tera Joule)

Indicator	1996	1997	1998	1999
Average Per capita consumption of Total energy	6.4	6.5	7.9	-
Total Energy Imports	12,695	16,728	25,942	25,736
Total Energy Losses in Economic Activities	0.4	1.6	1.6	4.1

Tera Joule= 10^{12} watt. Second

Al-Aqsa Uprising (Intifada)

Palestinians Martyrs in Al-Aqsa Uprising (Intifada) by District of Residence and Age Group, 29/9/2000-8/5/2002

District of Residence (Governorate)	Age Groups						Total
	Less than 18	18-29	30-39	40-49	50+	Not Stated	
Total	267	846	231	84	94	11	1,533
West Bank	137	489	160	56	66	9	917
Jenin	17	83	25	5	10	-	140
Tubas	1	16	5	-	-	1	23
Tulkarm	10	50	21	10	9	-	100
Qalqiliya	9	18	9	1	3	-	40
Salfit	4	9	3	4	2	-	22
Nablus	27	118	31	11	12	7	206
Ramallah & Al-Bireh	21	42	13	8	8	-	92
Jericho	-	7	3	1	1	-	12
Jerusalem	12	25	6	1	1	-	45
Bethlehem	12	50	20	8	10	-	100
Hebron	24	71	24	7	10	1	137

**Palestinians Martyrs in Al-Aqsa Uprising (Intifada) by District of Residence and Age Group,
29/9/2000-8/5/2002 (Cont.)**

District of Residence (Governorate)	Age Groups						Total
	Less than 18	18-29	30-39	40-49	50+	Not Stated	
Gaza Strip	129	341	68	25	27	1	591
North Gaza	13	60	8	1	2	-	84
Gaza	40	106	21	13	8	1	189
Deir Al-Balah	16	45	8	2	7	-	78
Khan Younis	28	61	14	6	4	-	113
Rafah	32	69	17	3	6	-	127
Within Israel	1	11	2	2	1	-	17
Abroad:٤	-	5	1	1	-	1	8

Injured Palestinians in Al-Aqsa Uprising (Intifada) by Month and Tool of Injury, 29/9/2000-30/4/2002

Month & Year	Tool of Injury					Total
	Live Ammunition	Metal Bullet	Gas	Other	Not Stated	
2000						
September	164	646	71	41	-	922
October	1,032	2,391	1,464	175	-	5,062
November	815	960	1,627	436	-	3,838
December	217	252	201	111	-	781
2001						
January	61	104	228	78	-	471
February	113	177	189	111	-	590
March	150	325	290	162	-	927
April	144	137	135	301	-	717
May	172	127	192	455	-	946
June	69	97	82	71	-	319
July	58	44	56	237	-	395
August	181	59	69	193	-	502
September	225	76	87	269	-	657

**Injured Palestinians in Al-Aqsa Uprising (Intifada) by Month and Tool of Injury, 29/9/2000-30/4/2002
(Cont.)**

Month & Year	Tool of Injury					Total
	Live Ammunition	Metal Bullet	Gas	Other	Not Stated	
October	157	41	66	143	-	407
November	47	26	34	53	-	160
December	64	20	61	159	-	304
2002						
January	36	56	91	148	-	331
February	154	33	39	203	-	429
March	489	9	63	247	65	873
April	32	5	13	13	455	518
Total	4,380	5,585	5,058	3,606	520	19,149

Percentage Distribution of Disabled Persons during Al-Aqsa Intifada by Site of Injury, 2000

Site of Injury	Number of Disabled	Percent
Head and neck	194	21.4
Chest	81	9.0
Abdomen	107	11.8
Upper Limbs	178	19.7
Lower Limbs	321	35.5
Others	24	2.6
Total	905	100.0

Number of Destroyed, Damaged Housing Units and Value of Losses by Region, 28/9/2000 – 31/12/2001

Region	Destroyed Housing Units (completely)*	Damaged Housing Units	Value of Losses (in US.\$)
Palestinian Territory	536	9,942	63,158,846
West Bank	136	8,703	35,965,156
Gaza Strip	400	1,239	27,193,690

*Data Presents the Period from 29/9/2000 Until October 2001.