

Palestinian Central Bureau of Statistics (PCBS)

Decrease in the Consumer Price Index during December, 12/2017

The overall CPI for Palestine during December 2017 decreased by 0.41% compared with November 2017 (by 0.44% in Gaza Strip, and by 0.43% in the West Bank**, while it slightly increased by 0.07% in Jerusalem J1*).

The changes in Palestinian CPI for December 2017 is traced back to changes in prices of the following expenditure sub groups compared with previous month:

Sub Groups	% Change
Potatoes and other Tubers	- 6.73%
Fresh Vegetables	- 6.44%
Eggs	- 6.42%
Fresh Fruit	- 5.84%
Fresh Fish	- 4.33%
Gas	+ 2.40%
Liquid Fuel for Cars	+ 1.62%
Liquid Fuel for House	+ 1.32%
Rice	+ 1.15%

The Palestinian CPI during December 2017 slightly decreased by 0.02% compared with December 2016 (by 1.01% in the West Bank**, while it increased by 1.43% in Jerusalem J1*, and by 0.30% in Gaza Strip).

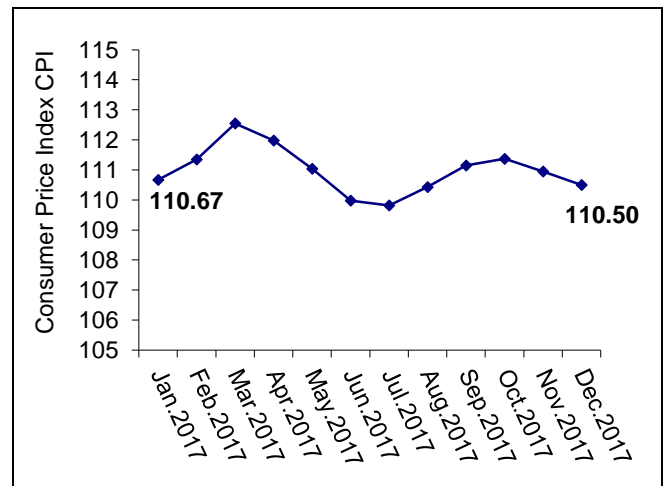
The Palestinian CPI during 2017 increased by 0.21% compared with 2016 (by 2.18% in

Jerusalem J1*, and by 0.11% in Gaza Strip, while it slightly decreased by 0.01% in the West Bank**).

The table shows monthly percent changes in CPI by region for the months of 2017:

Month	Monthly Percent Change			
	Palestine	West Bank**	Gaza Strip	Jerusal-em J1*
January	+ 0.14	+ 0.03	+ 0.38	+ 1.02
February	+ 0.62	+ 0.78	+ 0.40	+ 0.35
March	+ 1.08	+ 0.22	+ 2.33	- 0.70
April	- 0.50	- 1.01	+ 0.13	+ 0.61
May	- 0.84	- 0.50	- 1.62	- 0.17
June	- 0.96	- 0.90	- 1.61	- 0.29
July	- 0.15	+ 0.36	- 0.58	- 0.13
August	+ 0.56	+ 0.57	+ 0.31	+ 0.47
September	+ 0.65	+ 0.14	+ 1.39	+ 0.28
October	+ 0.20	- 0.08	+ 0.65	+ 0.08
November	- 0.38	- 0.17	- 0.96	- 0.16
December	- 0.41	- 0.43	- 0.44	+ 0.07
2017	+ 0.21	- 0.01	+ 0.11	+ 2.18

The trend line of Consumer Price Index in Palestine for the months of 2017
(Base Year 2010=100)



Notes:

*The data of Jerusalem J1 includes that part of Jerusalem governorate which was annexed forcefully by Israel following its occupation of the West Bank in 1967.

**The data of the West Bank doesn't include that part of Jerusalem governorate which was annexed forcefully by Israel following its occupation of the West Bank in 1967.

NB:

Data collection of Consumer Price Index survey was funded by the European Union.

Date: 14/01/2018