

**2005**

**2007 /**

http://www.pcbs.gov.ps

**2006**

2007 – 1428 ©

**.2007**

*2005*

**1647 . . .**

(970/972) 2 240 6343 :

http://www.pcbs.gov.ps :

(970/972) 2 240 6340 :

diwan @pcbs.gov.ps :



2007 -

**(PNA)**

**2005**

**2006 (CFG)**

**.(SDC)**

**(CFG)**

•

•

•

•

•

2005

( .... )

2007



<b>17</b>		:
17	1.1	
17	2.1	
17	3.1	
17	4.1	
<b>21</b>		:
21	1.2	
22	2.2	
23	3.2	
<b>25</b>		:
25	1.3	
26	2.3	
27	3.3	
28	4.3	
29	5.3	
30	6.3	
<b>31</b>		:
31	1.4	
32	2.4	
33	3.4	
33	1.3.4	
33	2.3.4	
34	4.4	



<b>37</b>	:
37	1.5
37	1.1.5
38	2.1.5
39	2.5
39	3.5
<b>41</b>	:

<b>22</b>	-		<b>:1</b>
<b>23</b>		2005	<b>:2</b>
<b>26</b>	2005-	2005-	<b>:3</b>
<b>27</b>			<b>:4</b>
<b>28</b>		2005-	<b>:5</b>
<b>29</b>		2005-	<b>:6</b>
<b>30</b>		2005-	<b>:7</b>
<b>32</b>			<b>:8</b>
<b>33</b>		2005-	<b>:9</b>
<b>35</b>		2005-	<b>:10</b>
<b>37</b>			<b>:11</b>
<b>38</b>		2005-	<b>:12</b>
		2005-	

2005

%60

.%4

%36

5

%17

%83

%59

.(

)

.%41

2005

955.2

%31

%55

(

5

)

و.%.14

54.6

2005

(

)

%50

%37

(19.9-)

(1.4-)

(6.1-)

%,14

(

)



	)		%84.1	(	
%43.5					%71.9
					<b>1.1</b>
					<b>2.1</b>
					<b>3.1</b>
					<b>4.1</b>
					•
					•
					•
(	)	(	)	(	)

( )

•

)

(

•

-

=

•

(2/(

+

))

•

•

•

.( %51 )

•

•

•

•

•

.( )

1993

:

:

.( ) 4  
.( ) 9 - 5  
.( ) 10

:

:

:

.1967





:

**1.2**

%18.0

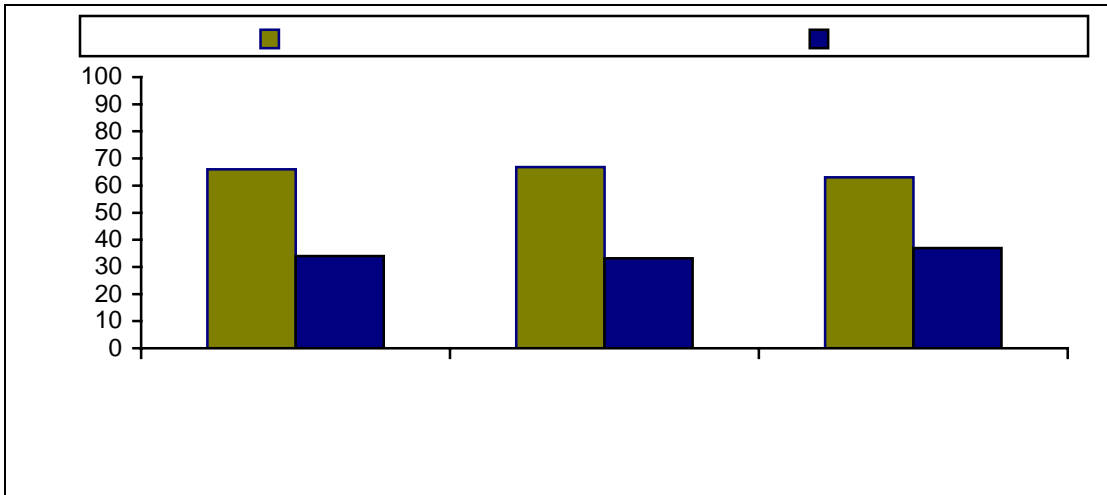
%1.0

%80

%20

2005-

:1



:

2.2

4

%85

9 5

%14

10

%86

%90

5

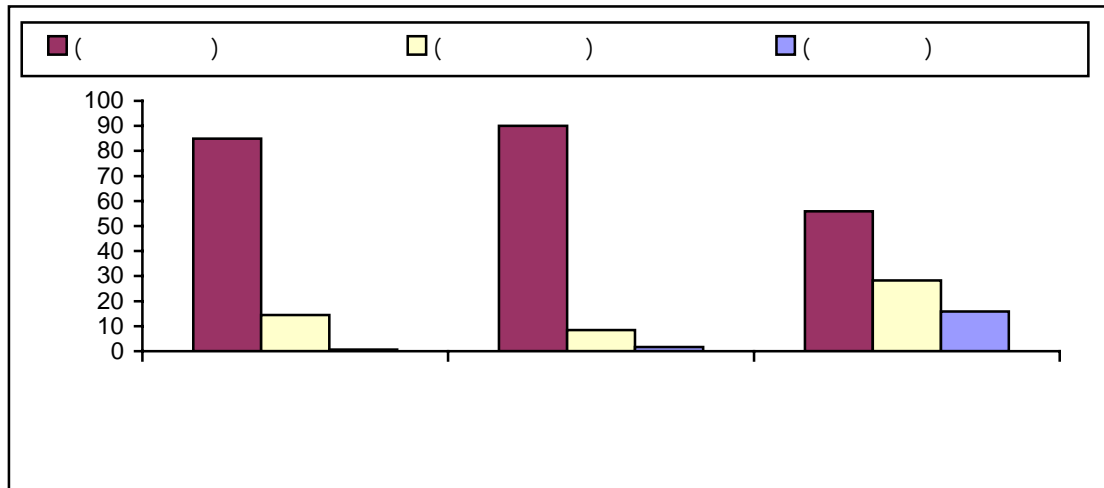
%10

%55

%45

:2

2005-



:

3.2

2005

%88

.%1

.%92

%10

%53

%12

.  
.  
%1

.  
%10

:

1.3

2005

%4

%1

.

|

)

(

%7

,

%25

%20

.

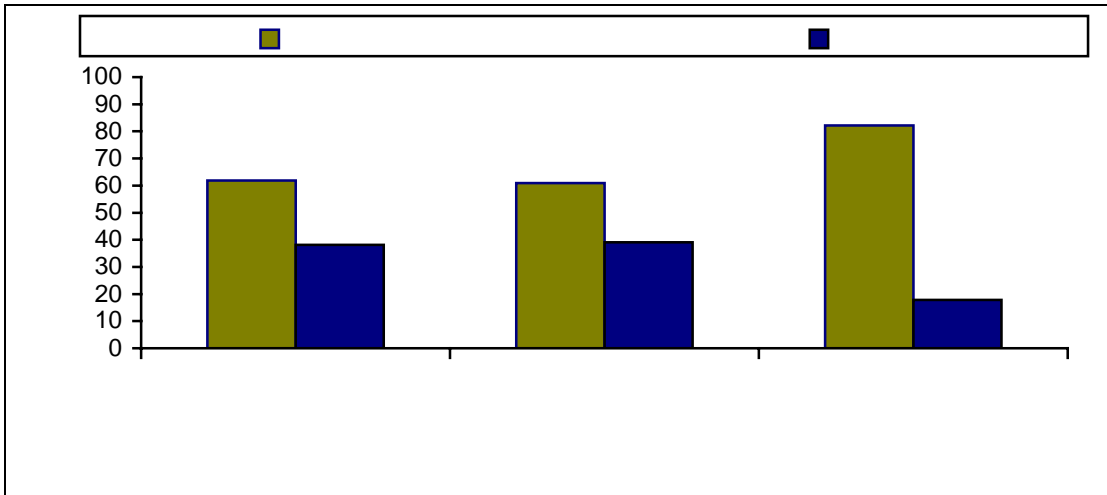
%.20

%36

.

2005-

:3



:

2.3

5

%70

%5

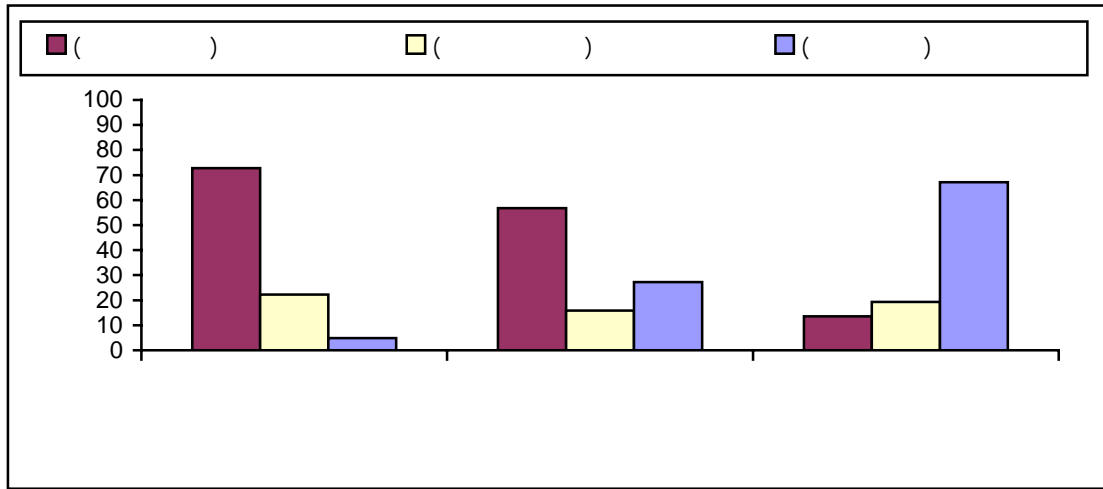
%55

10

%39

:4

2005-



:

3.3

%93

%1

%.7

%.5 و%.9

%33

%55

%.7

%.28

%.36

%86

%.0.6

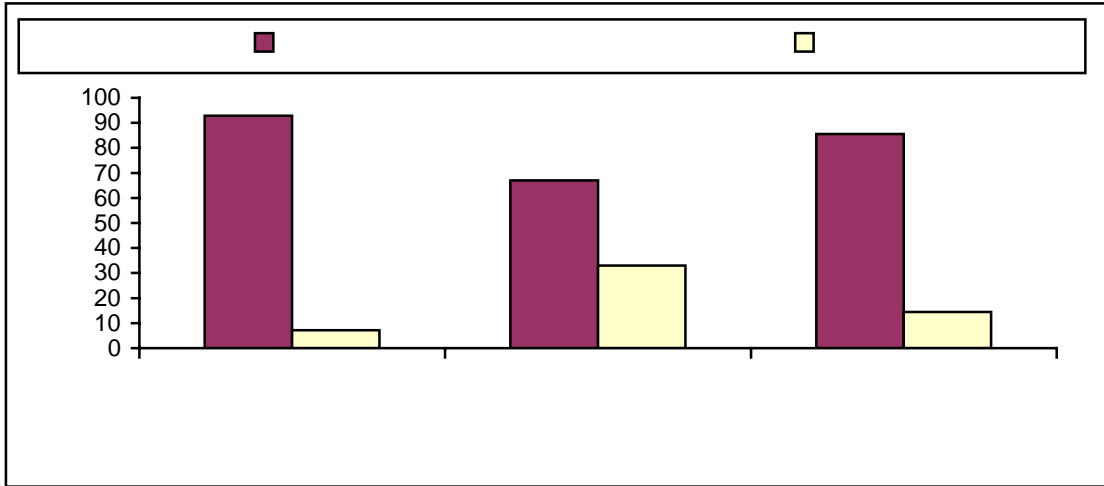
%29

%5

%17

:5

2005-



:

4.3

( %31  
%75

%69) %76  
.%79

%66

%68 %64

%86

%88

.%75

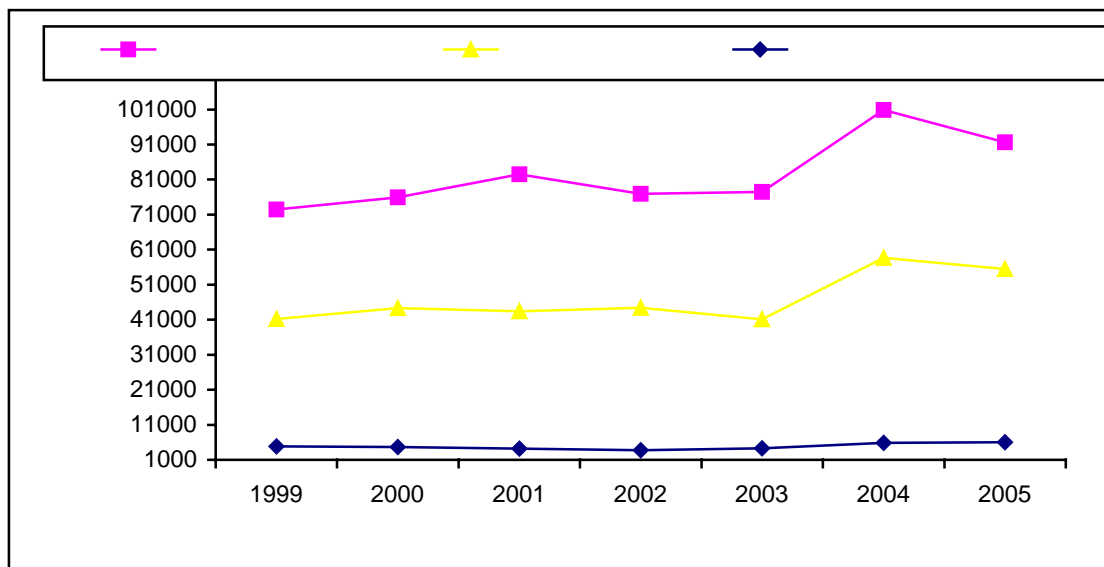




:

2005  
 2004 %9  
 1999 %27  
 2004 %8  
 %48  
 1999  
 .%16  
 2004 %6  
 2005  
 1999 %35  
 2004 %1  
 %14  
 %77  
 .%17  
 %2.3  
 2005  
 1999 %24  
 2004  
 عام %6  
 %4  
 1999  
 %20  
 %25  
 1999  
 .2004

:7



:

**1.4**

2005

%31

€%14

%60

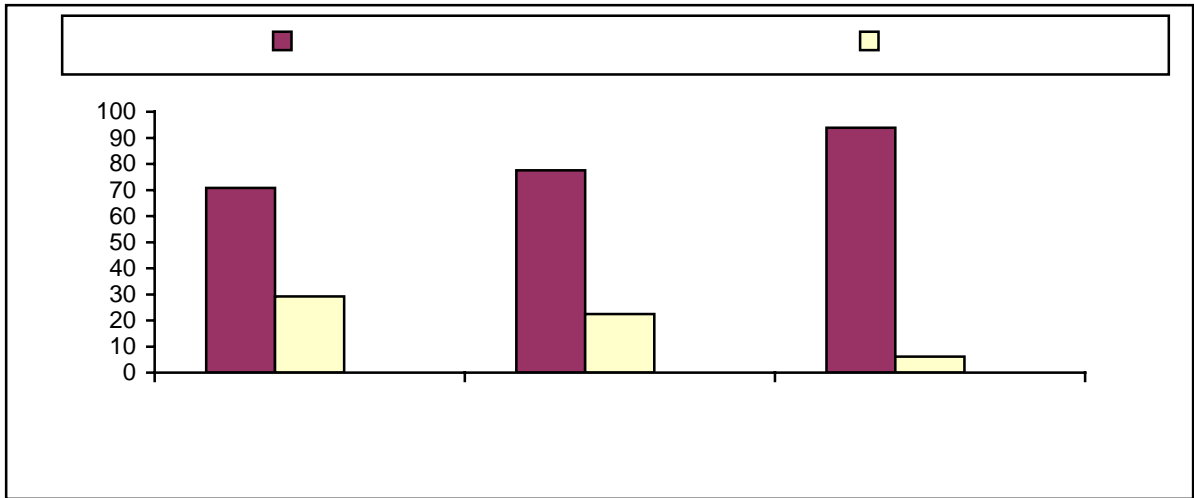
€%27

.%15

€%94

2005-

:8



:

2.4

5

2005

%42

%36

%39

%46

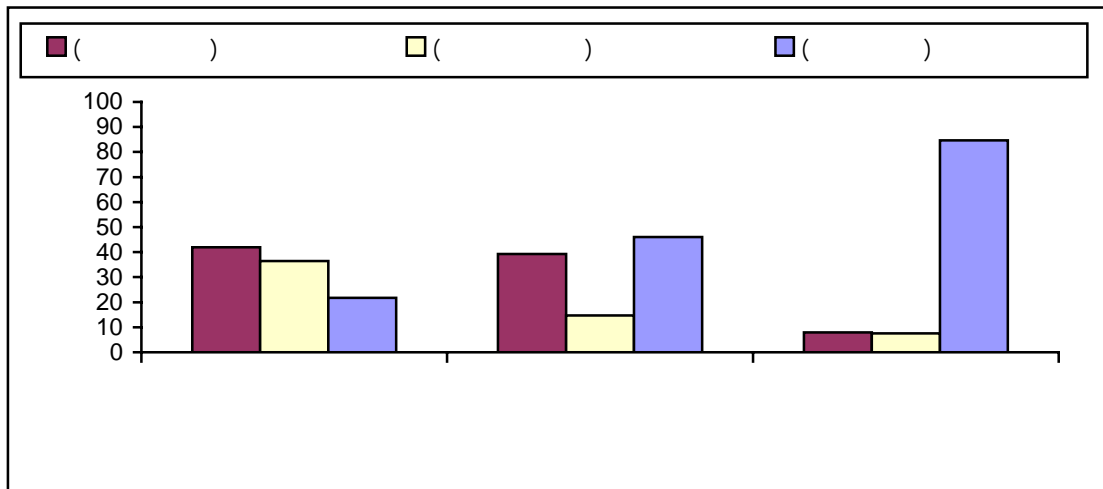
10

%85

%88

%43

2005-



: 3.4

: 1.3.4

2005

343256

26883

15740

2005

: 2.3.4

3443

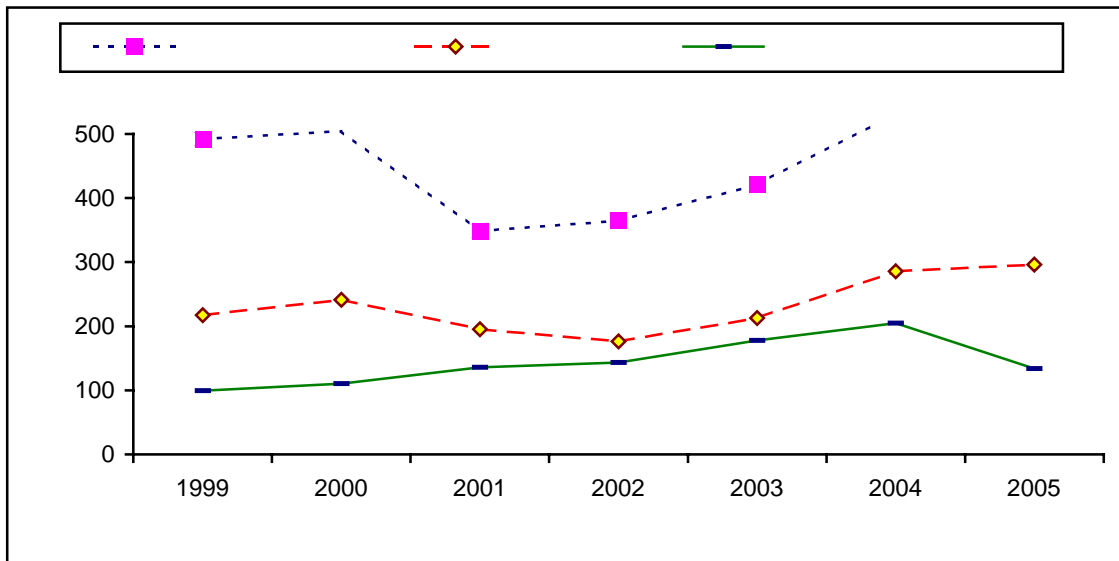
7852 ,7965

4.4

:

2005

%7	1999	2004	%1	
%21		2004		
	1999	.%10		
		%5	%11	
%36	1999	2004	%4	2005
	2004			
	%19	%28		
	%50		1999	.%9
1999	%35	2004	%35	2005
%37				
	1999	%34		
		%32	%35	







: 1.5

1.1.5

( )

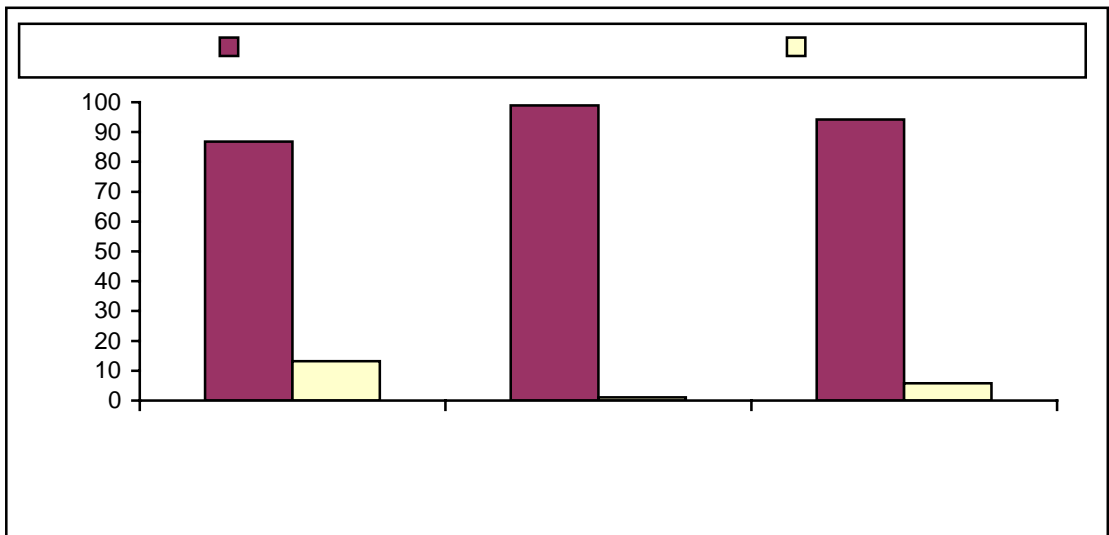
%50

2005

%37

2005-

:11





: **2.5**

2005 ( )

(19.9-)

(3.1-) (13.1-)

(3.7 -)

(8.7-)

(11.2-)

(6.1-)

8.0  
(7.5-)

(11.1-)

5

(1.4-)

2.7

2005

0.6-)

(3.5-) (

-)

(0.2)

(1.7

: **3.5**

310.7

%66

%17

2005

%58

%12

%3

%9

478.1 2005

30%

24%

11% 12%

7% 8%

3 5%

53%

14%

2% 5%

232.4 2005

8%

3%

89%

6%

7%

81%

) 2005 ( : .1  
 : .  
 .( ) .  
 .  
 5 .2  
 10 .  
 .  
 .3  
 .  
 .4  
 .5  
 2005 2004 .6

:

.1

5

.2

10

( )

.3

2005

2004

.4

:

.1

.( )

5

.2

)

.3

.( )

(

( )

:

.1

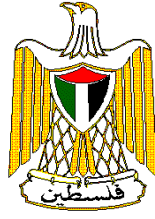
5

2005

.2

10

.3



**Palestinian National Authority**  
**Palestinian Central Bureau of Statistics**

**Characteristics of Services Activities**  
**(Economic Survey Series 2005)**

**March, 2007**



**New Web Site:**

- All of PCBS publications are available online in electronic format on PCBS web site <http://www.pcbs.gov.ps>
- For additional data requests, online form is available on PCBS web site and users can track the status of their request and download the data once made available.

**This document is prepared in accordance with the standard procedures stated in the Code of Practice for Palestine Official Statistics 2006**

© March 2007  
All rights reserved

**Suggested Citation:**

*Palestinian Central Bureau of Statistics 2007, Services Activities: Characteristics and Reliability (Economic Survey Series 2005). Ramallah - Palestine*

All correspondence should be directed to:  
Dissemination and Documentation Department/ Division of User Services

**Palestinian Central Bureau of Statistics**

**P.O. Box 1647, Ramallah - Palestine**

Tel: 972/970 2 240 6340

Fax: 972/970 2 240 6343

E-Mail: [diwan@pcbs.gov.ps](mailto:diwan@pcbs.gov.ps)

Web-site: <http://www.pcbs.gov.ps>



## Population, Housing and Establishment Census - 2007

## **Acknowledgement**

**The Palestinian National Authority (PNA) is providing this study and the Core Funding Group (CFG) for 2006 represented by the Representative Office of Norway to PNA; the Representative Office of Netherlands to PNA; Swiss Agency for Development and Cooperation (SDC).**

**On this occasion, the PCBS extends special thanks to the members of the Core Funding Group (CFG) who contributed in funding for this study.**

## **Team Work**

- **Study Preparation**

Rashad Yousef

Iyad Mustafa

- **Preliminary Review**

Ibraheem Al Tarsha

- **Dissemination Standard**

Hanan Janajreh

- **Final Review**

Sufian Dughrah

Mahmoud Jaradat

- **Overall Supervision**

Luay Shabaneh

PCBS President

## **Preface**

There is no doubt that establishing a comprehensive and detailed statistical data base for any economic activity is considered a prerequisite for planning and formulating policy aiming at the development and improvement of its performance. This naturally applies on the services activities which is paid special attention in most contemporary economics all over the world.

The Palestinian Central Bureau of Statistics (PCBS) presents this study as another qualitative addition to its work, covering the descriptive of services sectors in the Remaining West Bank and Gaza Strip through the analysis of the results of the economic survey series 2005, which would lead to the facilitation on the data users and their providing with the data who answer their needs and provides for them their requirements.

This study presents an analytical view on services activities, and we hope at the same time that it serves the needs for policy makers and decision takers, for the sake of Palestinian economy.

**March, 2007**

**Luay Shabaneh  
President**

## Summary of Main Findings

### Internal trade activities:

- The results show that operating establishments in Remaining West Bank and Gaza Strip reached 45,539 establishments by the end of 2005, distributed as 12.6% in sale and repair of motor vehicles activities, 3.4% in wholesale trade and commission trade activities, and 84.0% in retail trade, repair of personal goods activities.
- The distribution of establishments in Remaining West Bank and Gaza Strip by labor group shows that 84.9% of the establishments are small establishments (hire less than 5 employees), 14.4% are medium establishments (hire 5-9 employees), and 0.7% are big establishments (hire over 10 employees).
- According to value added, the results of internal trade survey 2005 indicated that the total value added in Remaining West Bank and Gaza Strip was 525.1 US Million Dollars, the retail trade and repair of personal good activities represent 64.2% from the value added, while the wholesale trade and commission trade represent 22.5%, and sale and repair of motor vehicles activities represent 14.3% .
- The distribution of the value added in the Remaining West Bank and Gaza Strip by labor group shows that 41.9% of the value added is generated by small establishments ( hire less than 5 employees), and 36.4% from medium establishments (hire 5-9 employees), and 21.7% from big establishments (hire over 10 employees).
- The results show that the Gross Fixed Capital Formation for the wholesale and retail and repairs was 7.0 US Million Dollars, the retail trade and repair of personal good activities represent 68.1%, while the contribution of sale and repair of motor vehicles activities was 17.1%, finally the contribution of wholesale trade and commission trade activities in gross fixed capital formation was 14.8%.
- The results show that output per person engaged was 7,825.3 US Dollars, while the output per establishment was 15,739.9 US Dollars.
- The results indicate that employees in the Remaining West Bank and Gaza Strip were distributed as 92.9% male, 7.1% female, and 76.2% are un paid employees.

### Transport, storage and communication activities:

- The results show that operating establishments in Remaining West Bank and Gaza Strip was 619 establishment by the end of 2005, distributed as 44.1%for land transport, and 44.1% for supporting and auxiliary transport and 11.8% for post and telecommunications.
- The distribution of establishments in the Remaining West Bank and Gaza Strip by labor group shows that 55.9% of the establishments are small establishments ( hire less than 5 employees), 28.3% are medium establishments (hire 5-9 employees),and 15.8% are large establishments (hire over 10 employees).
- According to the value added, the results of the 2005 Survey indicate that the value added in Remaining West Bank and Gaza Strip was 133.8 million US \$, the contribution of Post and telecommunications activity was 73.8%, 16.2%for the land transport 16.2%, while the supporting and auxiliary transport contributes by 10.0% in the value added.
- The distribution of the Value Added in Remaining West Bank and Gaza Strip by labor group shows that 7.9% of it for small establishments ( hire less than 5 employees), 7.5% for medium establishments (hire 5-9 employees), and 84.6% for large establishments (hire over 10 employees).

- According to the gender, 85.5% of the employed persons were male, and 15.5% were female. The result indicate that 85.6% were paid employees, and 14.4% were unpaid employees.
- According to the capital investment in the operating establishments, the results of economic survey 2005 show that the total capital investment was 20.2 million US \$ in Remaining West Bank and Gaza Strip. The contribution of land transport in capital investment was 32.6%, while the contribution of the supporting and auxiliary transport was 0.5% .and 66.9%for the Post and telecommunications.
- The results show that output per person engaged was 30,442.8 US \$, while the output per establishment was 343,225.7 US \$.

### **Services activities:**

- The results show that the operating establishments in Remaining West Bank and Gaza Strip was 16,422 establishment at the end of 2005, the percentage of hotels and restaurants was 20.4%, and the percentage of other service activities was 22.3%, 19.1%for the health and social work, and 14.1%for other business activities.
- The distribution of establishments in Remaining West Bank and Gaza Strip by labor group shows that 90.0% of the establishments were small establishments (hire less than 5 employees), 8.4% were medium establishments (hire 5-9 employees), and 1.6% were large establishments (hire over 10 employees).
- The results show that education activities contributed by 23.8% from employees in Remaining West Bank and Gaza Strip, while the health and social work contributed by 20.9%, and the contribution of hotels and restaurants was 17.0% from total employees in the services activities, the activities of membership organizations contributed by 9.7%.
- According to the value added in the operating establishments, the results of economic survey 2005 show that the total value added was 296.4 million US \$ in Remaining West Bank and Gaza Strip, the contribution of education in value added was 27.1%, while the contribution of the real estate activities was 27.0%, and the contribution of health and social work was 20.3%, and others services activities ( hotels and restaurants) contributed by 18.0%.
- The distribution of value added in Remaining West Bank and Gaza Strip by labor group shows that 39.3% of the establishments were small establishments (hire less than 5 employees), 14.7% were medium establishments (hire 5-9 employees), and 46.0% were large establishments (hire over 10 employees).
- According to the capital investment in the operating establishments, the results show that the total capital investment was 27.4 US million US \$ in Remaining West Bank and Gaza Strip in the services activities. The contribution of education in capital investment was 63.3%, while the contribution of health and social work was 15.0%.
- The results show that output per person engaged was 7,965.2 US \$, while the output per establishment was 26,883.1 US \$.