

2007

**1 :
2007 /**

:

<http://atlas.pcbs.gov.ps>

<http://www.pcbs.gov.ps>

2006

.2007 - 1428 ©

:

.2007 - .2007

:

/

- 1647 . .

(970/972) 2 240 6343 :

(970/972) 2 240 6340 :

<http://www.pcbs.gov.ps> :

diwan@pcbs.gov.ps :



2007 -

.

2007

(PNA)

2007

(CFG)

.(SDC)

.

(CFG)

•

•

•

•

•

1994

.1996

.2007

.1996

2007

19		:
19	1.1	
19	2.1	
20	3.1	
21		:
23		:
27		:
27	1.4	
27	2.4	
28	3.4	
28	4.4	
28	5.4	
31		:
31	1.5	
31	2.5	
31	3.5	
33		

35	1997					:1
				2007		
36						:2
				2007	-	
38						:3
				2007	-	
39						:4
		2007	-	/		
44						:5
		2007	-	/		
49						:6
	-	/				
					2007	
53						:7
	/					
				2007	-	
55						:8
	2007	-	/			
60						:9
		2007	-	/		
65						:10
		2007	-	/		
70						:11
			2007	-	/	

23 ٢

:1

2007 -2004

25

:2

2007

: .2007

: .1

1,044

: 2007

505 •

255 •

+ 18 •

246 •

20 •

: .2

: 404.7 ()

88.8 223.4 312.2 •

18.6 73.9 92.6 •

: .3

4.3 38

: .4

267.8 1,579

199.8 1,160 •

68.0 419 •

2006 -2004

2004

%7.7 2007

2006 2005

%53.0 %17.6

%39.1

2004

2007

% 72.4

2007

%40.2

%41.7

%70.9 %45.5

2005

.2006

2007

. 2006 2005 2004

	:	1.1
	:	
	:	
	:	
	:	
	:	2.1
:		
		•
		•
		•
		•
		•

: 3.1

:

:

•

:

•

:

•

:

•

:

•

:

•

.1 :

2007

2006 2005 2004

2006 (%)	2005 (%)	2004 (%)	*			
			2007	2006	2005	2004
-43.8	-35.9	-25.7	505	899	788	680
-20.1	7.6	-5.2	255	319	237	269
-81.4	-33.3	-40.0	18	97	27	30
-71.5	31.6	89.2	246	863	187	130
-51.2	-28.8	-9.1	20	41	28	22
-53.0	-17.6	-7.7	1044	2219	1267	1131

*

2004

%7.7

2007

2006 2005

%53.0 %17.6

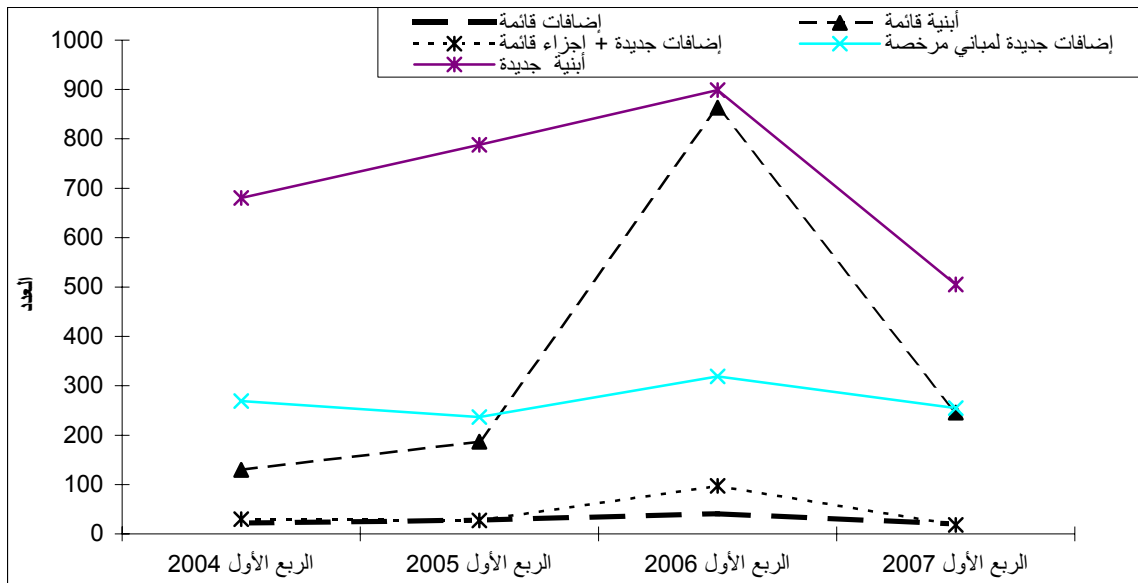
2005 2004

()

.2007 2006

:1

2007 2006 2005 2004



: .2

2007

:2006 2005 2004

2006 (%)	2005 (%)	2004 (%)	*()				
			2007	2006	2005	2004	
-48.1	-26.0	-7.6	404.7	779.7	546.8	438.0	*
-36.0	-34.5	-19.2	312.2	487.4	476.3	386.6	:
-42.8	-39.5	-28.9	223.4	390.3	369.0	314.0	
-8.6	-17.2	22.3	88.8	97.1	107.3	72.6	
-68.3	31.4	80.2	92.6	292.3	70.5	51.4	:
-70.4	39.7	94.0	73.9	249.5	52.9	38.1	
-56.5	5.7	39.9	18.6	42.8	17.6	13.3	

*

: .3

2007

:2006 2005 2004

2006 (%)	2005 (%)	2004 (%)					
			2007	2006	2005	2004	
-15.6	11.8	46.2	38	45	34	26	
-28.1	31.6	51.1	4300	5983	3267	2845	()

2007

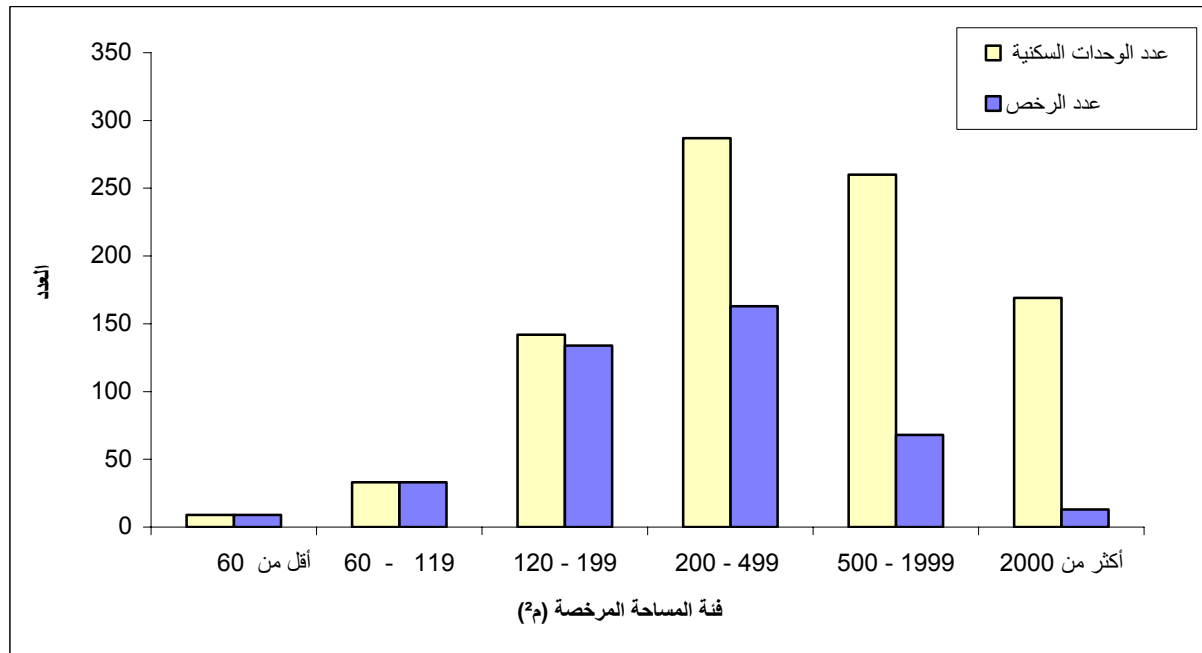
:2006 2005 2004

2006 (%)	2005 (%)	2004 (%)					
			2007	2006	2005	2004	
-45.5	-41.7	-39.1	1160	2128	1989	1906	
-44.5	-40.2	-28.8	199.8	359.9	334.1	280.6	()
-70.9	40.1	72.4	419	1441	299	243	
-70.3	45.3	102.4	68.0	228.6	46.8	33.6	()

:2007

:2

2007



: **3.4**

:

.

:

.

:

.

:

.

.

:

.

4.4

:

.

:

5.4

:

.

:

.

:

.

: 1.5

1.1.5

2.1.5

2.5

: 3.5

•

•

() 1967

(J2)

•

2007

1997

*

:1

Table1: Building Licenses Issued* in Remaining West Bank and Gaza Strip During the Period 1997 to First Quarter 2007

Period	Licensed Dwellings				Licensed Area (1000m ²)			Number of Licenses						
	Existing Dwellings		New Dwellings		Existing Areas	All New Areas	Total	Existing Extensions	Existing Buildings	+ Additions+ Existing Parts	Additions to Licensed Buildings	أبنية جديدة New Buildings	Total	
	(²) Area (1000 m ²)	No.	(²) Area (1000 m ²)	No.										
1997	391.8	2759	1768.5	13230	500.1	2391.9	2892.0	263	1155	187	1994	4789	8388	1997
1998	387.1	2735	1786.7	12826	469.1	2505.7	2974.8	178	1144	265	2252	5117	8956	1998
1999	439.0	3675	2050.6	14587	554.4	2860.1	3414.5	115	1470	475	2055	5803	9918	1999
2000	383.3	2730	1646.1	10708	482.4	2457.6	2940.0	185	1318	448	1852	4498	8301	2000
2001	256.0	1847	1041.9	7037	341.0	1633.9	1974.9	124	774	273	1181	2781	5133	2001
2002	137.6	975	794.3	5089	171.8	1080.4	1252.2	52	554	131	675	1913	3325	2002
2003	175.8	1671	1234.2	8152	226.1	1863.9	2090.0	99	749	138	1268	2981	5235	2003
2004	161.6	1229	1248.6	8184	222.0	1803.9	2025.8	111	706	149	1113	2929	5008	2004
2005	366.7	2522	1729.5	10362	474.2	2427.4		127	1469	223	1293	3996	7108	2005
2006	524.2	3301	1193.6	6909	679.2	1666.9	2346.1	112	1894	265	1087	2703	6061	2006
Quarter I	68.0	419	199.8	1160	92.6	312.2	404.7	20	246	18	255	505	1044	2007

*Excluding boundary walls licenses

*

Table2: Building Licenses Issued in Remaining West Bank and Gaza Strip by Building Ownership and Utilization - First Quarter 2007

Building Ownership	Licensed Dwellings				*(²) Licensed Area (1000m ²)*			Number of Licenses						
	Existing Dwellings		New Dwellings		Existing Areas	All New Areas	Total	Existing Extensions	Existing Buildings	+	Additions + Existing Parts	Additions to Licensed Buildings	New Buildings	Total
	(²) Area (1000 m ²)	No.	(²) Area (1000 m ²)	No.										
Total	66.7	411	196.9	1145	73.9	223.4	297.3	20	225	18	232	420	915	
Residential Building	1.3	8	2.9	15	18.6	88.8	107.5	0	21	0	23	85	129	
Non-Res. Building	0.0	0	0.0	0	0.2	4.1	4.3	1	0	1	14	22	38	
Boundary walls														
Private														
Residential Buildings	66.7	411	193.3	1127	73.9	217.8	291.8	20	225	18	231	418	912	
Non-Res. Buildings	1.3	8	2.4	12	13.7	63.6	77.3	0	18	0	18	69	105	
Boundary walls	0.0	0	0.0	0	0.2	4.1	4.3	1	0	1	14	22	38	
Governmental														
Residential Buildings	0.0	0	1.0	6	0.0	2.9	2.9	0	0	0	0	1	1	
Non-Res. Buildings	0.0	0	0.4	2	2.6	13.1	15.7	0	1	0	0	8	9	
Boundary walls	0.0	0	0.0	0	0.0	0.0	0.0	0	0	0	0	0	0	
Local Authority														
Residential Buildings	0.0	0	0.0	0	0.0	0.0	0.0	0	0	0	0	0	0	
Non-Res. Buildings	0.0	0	0.0	0	1.0	5.7	6.7	0	1	0	1	4	6	
Boundary walls	0.0	0	0.0	0	0.0	0.0	0.0	0	0	0	0	0	0	

*For boundary walls it refers to length in (1000 m.r)

*

2007

-

:() 2

Table2 (cont.): Building Licenses Issued in Remaining West Bank and Gaza Strip by Building Ownership and Utilization - First Quarter 2007

Building Ownership	Licensed Dwellings				*(²) Licensed Area (1000m ²)*			Number of Licenses						
	Existing Dwellings		New Dwellings		Existing Areas	All New Areas	Total	Existing Extensions	Existing Buildings	+	Additions + Existing Parts	Additions to Licensed Buildings	New Buildings	Total
	(²) Area (1000 m ²)	No.	(²) Area (1000 m ²)	No.										
Cooperative														
Residential Buildings	0.0	0	0.0	0	0.0	0.0	0.0	0	0	0	0	0	0	0
Non-Res. Buildings	0.0	0	0.2	1	0.0	0.2	0.2	0	0	0	0	0	1	1
Boundary walls	0.0	0	0.0	0	0.0	0.0	0.0	0	0	0	0	0	0	0
Charity														
Residential Buildings	0.0	0	2.7	12	0.0	2.7	2.7	0	0	0	1	1	1	2
Non-Res. Buildings	0.0	0	0.0	0	1.3	2.1	3.4	0	1	0	3	1	1	5
Boundary walls	0.0	0	0.0	0	0.0	0.0	0.0	0	0	0	0	0	0	0
Others														
Residential Buildings	0.0	0	0.0	0	0.0	0.0	0.0	0	0	0	0	0	0	0
Non-Res. Buildings	0.0	0	0.0	0	0.0	4.2	4.2	0	0	0	1	2	2	3
Boundary walls	0.0	0	0.0	0	0.0	0.0	0.0	0	0	0	0	0	0	0

*For boundary walls it refers to length in (1000 m.r)

*

Table 3: Building Licenses Issued in Remaining West Bank and Gaza Strip by Issuing Authority and Utilization - First Quarter 2007

License Issuing Authority	Licensed Dwellings				*(²) Licensed Area (1000 m ²)*			Number of Licenses						
	Existing Dwellings		New Dwellings		Existing Areas	All New Areas	Total	Existing Extensions	Existing Buildings	+ Additions + Existing Parts	Additions to Licensed Buildings	New Buildings	Total	
	(²) Area (1000 m ²)	No.	(²) Area (1000 m ²)	No.										
All Authorities														
Residential Buildings	66.7	411	196.9	114	73.9	223.4	297.3	20	225	18	232	420	915	
Non-Res. Buildings	1.3	8	2.9	15	18.6	88.8	107.5	0	21	0	23	85	129	
Boundary walls	0.0	0	0.0	0	0.2	4.1	4.3	1	0	1	14	22	38	
Municipalities														
Residential Buildings	58.4	374	174.9	101	65.3	201.1	266.4	20	204	17	228	343	812	
Non-Res. Buildings	1.3	8	2.4	12	18.5	81.1	99.6	0	20	0	22	76	118	
Boundary walls	0.0	0	0.0	0	0.2	4.1	4.3	1		1	14	22	38	
Construction authorities														
Residential Buildings	8.3	37	22.0	126	8.6	22.2	30.9		21	1	4	77	103	
Non-Res. Buildings	0.0	0	0.6	3	0.1	7.7	7.8	0	1	0	1	9	11	
Boundary walls	0.0	0	0.0	0	0.0	0.0	0.0	0	0	0	0	0	0	

*For boundary walls it refers to length in (1000 m.r)

*

Table 4: Building Licenses Issued in Remaining West Bank and Gaza Strip for New Buildings by Categories of Licensed Area and Governorate/District - First Quarter 2007

Governorate/District &Area Category	Non-Res. Buildings		Residential Buildings				/
	متوسط عدد الطوابق Average No. of Storeys	عدد الرخص No. of Licenses	متوسط عدد الطوابق Average No. of Storeys	متوسط عدد الوحدات السكنية Average No. of Dwellings	مجموع عدد الوحدات السكنية Total No. of Dwellings	عدد الرخص No. of Licenses	
All Governorates							
Less than 60 m ²	1.0	7	1.1	1.0	9	9	² 60
60- 119 m ²	1.0	8	1.0	1.0	33	33	² 119 -60
120-199m ²	1.0	9	1.1	1.1	142	134	² 199 -120
200- 499 m ²	1.3	18	1.9	1.8	287	163	² 499-200
500-1999 m ²	2.0	31	3.2	3.8	260	68	² 1999 -500
2000- m ² and more	3.6	12	6.8	13.0	169	13	² 2000
Jenin							
Less than 60 m ²	0.0	0	0.0	0.0	0	0	² 60
60-119 m ²	0.0	0	1.0	1.0	3	3	² 119 -60
120- 199 m ²	0.0	0	1.0	1.0	11	11	² 199 -120
200- 499 m ²	0.0	0	1.5	1.5	19	13	² 499 -200
500- 1999 m ²	2.5	2	4.0	6.5	26	4	² 1999 -500
2000 m ² and more	0.0	0	0.0	0.0	0	0	² 2000
Tubas							
Less than 60 m ²	0.0	0	0.0	0.0	0	0	² 60
60- 119 m ²	1.0	2	1.0	1.0	1	1	² 119 -60
120-199m ²	0.0	0	1.0	1.0	7	7	² 199 -120
200- 499 m ²	1.0	2	2.0	1.7	10	6	² 499-200
500-1999 m ²	0.0	0	0.0	0.0	0	0	² 1999 -500
2000- m ² and more	0.0	0	4.0	14.0	14	1	² 2000

Table 4 (Cont.): Building Licenses Issued in Remaining West Bank and Gaza Strip for New Buildings by Categories of Licensed Area and Governorate/District – First Quarter 2007

Governorate/District &Area Category	Non-Res. Buildings		Residential Buildings				/
	Average No. of Storeys	No. of Licenses	Average No. of Storeys	Average No. of Dwellings	Total No. of Dwellings	No. of Licenses	
Tulkarm							
Less than 60 m ²	1.0	2	2.0	1.0	1	1	² 60
60-119 m ²	1.0	2	1.0	1.0	3	3	² 119 -60
120- 199 m ²	1.0	1	1.1	1.0	14	14	² 199 -120
200- 499 m ²	0.0	0	1.8	1.8	46	26	² 499 -200
500- 1999 m ²	1.6	5	2.7	2.3	7	3	² 1999 -500
2000 m ² and more	3.0	1	0.0	0.0	0	0	² 2000
Nablus							
Less than 60 m ²	1.0	2	1.0	1.0	1	1	² 60
60- 119 m ²	1.0	2	1.0	1.0	4	4	² 119 -60
120-199m ²	1.0	3	1.1	1.0	11	11	² 199 -120
200- 499 m ²	1.0	5	2.1	1.7	31	18	² 499-200
500-1999 m ²	1.8	8	3.6	3.5	46	13	² 1999 -500
2000- m ² and more	4.0	1	8.0	14.8	59	4	² 2000
Qalqilya							
Less than 60 m ²	1.0	1	1.0	1.0	2	2	² 60
60-119 m ²	1.0	1	1.0	1.0	3	3	² 119 -60
120- 199 m ²	1.0	1	1.5	1.1	14	13	² 199 -120
200- 499 m ²	3.0	2	1.8	1.8	16	9	² 499 -200
500- 1999 m ²	1.0	1	2.5	3.5	14	4	² 1999 -500
2000 m ² and more	0.0	0	0.0	0.0	0	0	² 2000

Table 4 (Cont.): Building Licenses Issued in Remaining West Bank and Gaza Strip for New Buildings by Categories of Licensed Area and Governorate/District – First Quarter 2007

Governorate/District &Area Category	Non-Res. Buildings		Residential Buildings				/
	Average No. of Storeys	No. of Licenses	Average No. of Storeys	Average No. of Dwellings	Total No. of Dwellings	No. of Licenses	
Salfit							
Less than 60 m ²	0.0	0	0.0	0.0	0	0	² 60
60- 119 m ²	0.0	0	1.0	1.0	2	2	² 119 -60
120-199m ²	0.0	0	1.1	1.0	7	7	² 199 -120
200- 499 m ²	1.0	1	2.1	1.6	13	8	² 499-200
500-1999 m ²	0.0	0	0.0	0.0	0	0	² 1999 -500
2000- m ² and more	2.0	1	0.0	0.0	0	0	² 2000
Ramallah and Al-Bireh							
Less than 60 m ²	0.0	0	0.0	0.0	0	0	² 60
60-119 m ²	0.0	0	0.0	0.0	0	0	² 119 -60
120- 199 m ²	1.0	1	1.0	1.0	10	10	² 199 -120
200- 499 m ²	0.0	0	1.7	1.7	31	18	² 499 -200
500- 1999 m ²	1.0	2	3.0	3.7	56	15	² 1999 -500
2000 m ² and more	5.0	3	6.2	11.0	55	5	² 2000
Jericho and Al Aghwar							
Less than 60 m ²	0.0	0	1.0	1.0	2	2	² 60
60- 119 m ²	0.0	0	1.0	1.0	3	3	² 119 -60
120-199m ²	0.0	0	1.3	1.6	11	7	² 199 -120
200- 499 m ²	0.0	0	2.0	2.0	10	5	² 499-200
500-1999 m ²	0.0	0	0.0	0.0	0	0	² 1999 -500
2000- m ² and more	0.0	0	0.0	0.0	0	0	² 2000

Table 4 (Cont.): Building Licenses Issued in Remaining West Bank and Gaza Strip for New Buildings by Categories of Licensed Area and Governorate/District – First Quarter 2007

Governorate/District &Area Category	Non-Res. Buildings		Residential Buildings				/
	Average No. of Storeys	No. of Licenses	Average No. of Storeys	Average No. of Dwellings	Total No. of Dwellings	No. of Licenses	
Jerusalem							
Less than 60 m ²	0.0	0	0.0	0.0	0	0	² 60
60-119 m ²	0.0	0	0.0	0.0	0	0	² 119 -60
120- 199 m ²	0.0	0	1.0	1.0	4	4	² 199 -120
200- 499 m ²	0.0	0	1.8	1.8	7	4	² 499 -200
500- 1999 m ²	0.0	0	4.5	5.5	11	2	² 1999 -500
2000 m ² and more	3.0	1	0.0	0.0	0	0	² 2000
Bethlehem							
Less than 60 m ²	1.0	2	0.0	0.0	0	0	² 60
60- 119 m ²	1.0	1	1.0	1.0	2	2	² 119 -60
120-199m ²	0.0	0	1.4	1.3	12	9	² 199 -120
200- 499 m ²	1.0	1	1.9	1.8	46	26	² 499-200
500-1999 m ²	2.8	8	1.8	2.3	9	4	² 1999 -500
2000- m ² and more	4.0	3	5.0	5.0	5	1	² 2000
Hebron							
Less than 60 m ²	0.0	0	1.0	1.0	3	3	² 60
60-119 m ²	0.0	0	1.0	1.0	11	11	² 119 -60
120- 199 m ²	0.7	3	1.0	1.0	37	37	² 199 -120
200- 499 m ²	1.1	7	2.1	1.9	52	27	² 499 -200
500- 1999 m ²	2.0	3	2.5	3.1	44	14	² 1999 -500
2000 m ² and more	2.0	2	11.0	16.0	16	1	² 2000

Table 4 (Cont.): Building Licenses Issued in Remaining West Bank and Gaza Strip for New Buildings by Categories of Licensed Area and Governorate/District – First Quarter 2007

Governorate/District &Area Category	Non-Res. Buildings		Residential Buildings				/
	Average No. of Storeys	No. of Licenses	Average No. of Storeys	Average No. of Dwellings	Total No. of Dwellings	No. of Licenses	
North Gaza							
Less than 60 m ²	0.0	0	0.0	0.0	0	0	² 60
60- 119 m ²	0.0	0	1.0	1.0	1	1	² 119 -60
120-199m ²	0.0	0	1.0	1.0	3	3	² 199 -120
200- 499 m ²	0.0	0	2.0	2.0	6	3	² 499-200
500-1999 m ²	2.0	1	3.5	4.0	8	2	² 1999 -500
2000- m ² and more	0.0	0	0.0	0.0	0	0	² 2000
Gaza							
Less than 60 m ²	0.0	0	0.0	0.0	0	0	² 60
60-119 m ²	0.0	0	0.0	0.0	0	0	² 119 -60
120- 199 m ²	0.0	0	1.0	1.0	1	1	² 199 -120
200- 499 m ²	0.0	0	0.0	0.0	0	0	² 499 -200
500- 1999 m ²	3.0	1	4.6	5.6	39	7	² 1999 -500
2000 m ² and more	0.0	0	5.0	20.0	20	1	² 2000

Table 5: Building Licenses Issued in Remaining West Bank and Gaza Strip for New Buildings by Construction Material of External Walls and Governorate/District – First Quarter 2007

Governorate/District	Non-Res. Buildings			Residential Buildings					/
	Average No. of Storeys	(2) Licensed Area (1000m2)	No. of Licenses	Average No. of Storeys	Average No. of Dwellings	Total No. of Dwellings	(2) Licensed Area (1000m2)	No. of Licenses	
All Governorates									
Stone	2.0	70.5	60	2.0	2.3	671	143.0	291	
Cement Block	1.4	8.1	20	1.7	1.8	229	37.9	129	
Concrete	1.0	0.8	1	0.0	0.0	0	0.0	0	
Metal Source	1.0	2.4	4	0.0	0.0	0	0.0	0	
Others	0.0	0.0	0	0.0	0.0	0	0.0	0	
Jenin									
Stone	2.5	3.1	2	1.7	2.0	51	9.2	25	
Cement Block	0.0	0.0	0	1.3	1.3	8	1.3	6	
Concrete	0.0	0.0	0	0.0	0.0	0	0.0	0	
Metal Source	0.0	0.0	0	0.0	0.0	0	0.0	0	
Others	0.0	0.0	0	0.0	0.0	0	0.0	0	
Tubas									
Stone	1.0	0.3	1	1.9	2.9	26	5.2	9	
Cement Block	1.0	0.5	3	1.2	1.0	6	0.9	6	
Concrete	0.0	0.0	0	0.0	0.0	0	0.0	0	
Metal Source	0.0	0.0	0	0.0	0.0	0	0.0	0	
Others	0.0	0.0	0	0.0	0.0	0	0.0	0	

2007

- /

:() 5

Table 5 (Cont.): Building Licenses Issued in Remaining West Bank and Gaza Strip for New Buildings by Construction Material of External Walls and Governorate/District - First Quarter 2007

Governorate/District	Non-Res. Buildings			Residential Buildings					/
	Average No. of Storeys	(2) Licensed Area (1000m2)	No. of Licenses	Average No. of Storeys	Average No. of Dwellings	Total No. of Dwellings	(2) Licensed Area (1000m2)	No. of Licenses	
Tulkarm									
Stone	2.3	4.0	4	1.9	1.8	25	4.8	14	
Cement Block	1.0	1.0	5	1.5	1.4	46	7.3	33	
Concrete	0.0	0.0	0	0.0	0.0	0	0.0	0	
Metal Source	1.0	2.2	2	0.0	0.0	0	0.0	0	
Others	0.0	0.0	0	0.0	0.0	0	0.0	0	
Nablus									
Stone	1.6	12.2	16	3.1	3.6	133	28.2	37	
Cement Block	1.0	0.5	3	1.4	1.4	19	2.5	14	
Concrete	0.0	0.0	0	0.0	0.0	0	0.0	0	
Metal Source	1.0	0.2	2	0.0	0.0	0	0.0	0	
Others	0.0	0.0	0	0.0	0.0	0	0.0	0	
Qalqilya									
Stone	0.0	0.0	0	2.3	3.0	12	2.6	4	
Cement Block	1.8	1.1	5	1.5	1.4	37	5.9	27	
Concrete	1.0	0.8	1	0.0	0.0	0	0.0	0	
Metal Source	0.0	0.0	0	0.0	0.0	0	0.0	0	
Others	0.0	0.0	0	0.0	0.0	0	0.0	0	

Table 5 (Cont.): Building Licenses Issued in Remaining West Bank and Gaza Strip for New Buildings by Construction Material of External Walls and Governorate/District - First Quarter 2007

Governorate/District	Non-Res. Buildings			Residential Buildings					/
	Average No. of Storeys	(2) Licensed Area (1000m2)	No. of Licenses	Average No. of Storeys	Average No. of Dwellings	Total No. of Dwellings	(2) Licensed Area (1000m2)	No. of Licenses	
Salfit									
Stone	0.0	0.0	0	1.5	1.0	2	0.4	2	
Cement Block	1.5	2.3	2	1.6	1.3	20	3.4	15	
Concrete	0.0	0.0	0	0.0	0.0	0	0.0	0	
Metal Source	0.0	0.0	0	0.0	0.0	0	0.0	0	
Others	0.0	0.0	0	0.0	0.0	0	0.0	0	
Ramallah and Al-Bireh									
Stone	3.0	18.1	6	2.4	3.2	152	38.9	48	
Cement Block	0.0	0.0	0	0.0	0.0	0	0.0	0	
Concrete	0.0	0.0	0	0.0	0.0	0	0.0	0	
Metal Source	0.0	0.0	0	0.0	0.0	0	0.0	0	
Others	0.0	0.0	0	0.0	0.0	0	0.0	0	
Jericho and Al Aghwar									
Stone	0.0	0.0	0	1.3	1.6	11	1.1	7	
Cement Block	0.0	0.0	0	1.5	1.5	15	1.5	10	
Concrete	0.0	0.0	0	0.0	0.0	0	0.0	0	
Metal Source	0.0	0.0	0	0.0	0.0	0	0.0	0	
Others	0.0	0.0	0	0.0	0.0	0	0.0	0	
Jerusalem									
Stone	3.0	2.2	1	2.0	2.2	22	3.9	10	
Cement Block	0.0	0.0	0	0.0	0.0	0	0.0	0	
Concrete	0.0	0.0	0	0.0	0.0	0	0.0	0	

Table 5 (Cont.): Building Licenses Issued in Remaining West Bank and Gaza Strip for New Buildings by Construction Material of External Walls and Governorate/District - First Quarter 2007

Governorate/District	Non-Res. Buildings			Residential Buildings					/
	Average No. of Storeys	(2) Licensed Area (1000m2)	No. of Licenses	Average No. of Storeys	Average No. of Dwellings	Total No. of Dwellings	(2) Licensed Area (1000m2)	No. of Licenses	
Metal Source	0.0	0.0	0	0.0	0.0	0	0.0	0	
Others	0.0	0.0	0	0.0	0.0	0	0.0	0	
Bethlehem									
Stone	2.5	18.0	15	1.8	1.8	74	17.4	42	
Cement Block	0.0	0.0	0	0.0	0.0	0	0.0	0	
Concrete	0.0	0.0	0	0.0	0.0	0	0.0	0	
Metal Source	0.0	0.0	0	0.0	0.0	0	0.0	0	
Others	0.0	0.0	0	0.0	0.0	0	0.0	0	
Hebron									
Stone	1.3	12.5	15	1.7	1.8	163	31.2	93	
Cement Block	0.0	0.0	0	0.0	0.0	0	0.0	0	
Concrete	0.0	0.0	0	0.0	0.0	0	0.0	0	
Metal Source	0.0	0.0	0	0.0	0.0	0	0.0	0	
Others	0.0	0.0	0	0.0	0.0	0	0.0	0	
North Gaza									
Stone	0.0	0.0	0	0.0	0.0	0	0.0	0	
Cement Block	2.0	1.2	1	1.9	2.0	18	3.2	9	
Concrete	0.0	0.0	0	0.0	0.0	0	0.0	0	
Metal Source	0.0	0.0	0	0.0	0.0	0	0.0	0	
Others	0.0	0.0	0	0.0	0.0	0	0.0	0	

Table 5 (Cont.): Building Licenses Issued in Remaining West Bank and Gaza Strip for New Buildings by Construction Material of External Walls and Governorate/District - First Quarter 2007

Governorate/District	Non-Res. Buildings			Residential Buildings					/
	Average No. of Storeys	(2) Licensed Area (1000m2)	No. of Licenses	Average No. of Storeys	Average No. of Dwellings	Total No. of Dwellings	(2) Licensed Area (1000m2)	No. of Licenses	
Gaza									
Stone	0.0	0.0	0	0.0	0.0	0	0.0	0	
Cement Block	3.0	1.6	1	4.2	6.7	60	12.0	9	
Concrete	0.0	0.0	0	0.0	0.0	0	0.0	0	
Metal Source	0.0	0.0	0	0.0	0.0	0	0.0	0	
Others	0.0	0.0	0	0.0	0.0	0	0.0	0	

Table 6 : Building Licenses Issued in Remaining West Bank and Gaza Strip for Additions to Licensed Existing Buildings by Construction Material of External Walls and Governorate/District – First Quarter 2007

Governorate/District	Non-Res. Buildings			Residential Buildings					/
	Average No. of Storeys	(2) Licensed Area (1000m2)	No. of Licenses	Average No. of Storeys	Average No. of Dwellings	Total No. of Dwellings	(2) Licensed Area (1000m2)	No. of Licenses	
All Governorates									
Stone	0.9	2.1	14	1.4	1.1	161	30.0	153	
Cement Block	2.3	4.6	4	1.3	0.9	57	8.6	66	
Concrete	0.5	0.0	2	0.2	0.0	0	0.1	5	
Metal Source	1.0	0.2	2	0.0	0.0	0	0.0	0	
Others	0.0	0.0	1	0.3	0.0	0	0.0	8	
Jenin									
Stone	1.5	0.5	2	2.1	1.7	17	2.9	10	
Cement Block	0.0	0.0	0	1.0	1.0	2	0.3	2	
Concrete	0.0	0.0	0	0.0	0.0	0	0.0	0	
Metal Source	0.0	0.0	0	0.0	0.0	0	0.0	0	
Others	0.0	0.0	0	0.0	0.0	0	0.0	0	
Tubas									
Stone	0.0	0.0	0	0.0	0.0	0	0.0	0	
Cement Block	0.0	0.0	0	1.6	1.4	7	1.0	5	
Concrete	0.0	0.0	0	0.0	0.0	0	0.0	0	
Metal Source	0.0	0.0	0	0.0	0.0	0	0.0	0	
Others	0.0	0.0	0	0.0	0.0	0	0.0	0	
Tulkarm									
Stone	1.0	0.5	2	1.0	1.0	8	1.3	8	
Cement Block	3.0	0.5	1	1.5	1.2	12	1.5	10	
Concrete	0.0	0.0	0	0.0	0.0	0	0.0	0	

Table 6 (Cont.): Building Licenses Issued in Remaining West Bank and Gaza Strip for Additions to Licensed Existing Buildings by Construction Material of External Walls and Governorate/District – First Quarter 2007

Governorate/District	Non-Res. Buildings			Residential Buildings					/
	Average No. of Storeys	(2) Licensed Area (1000m2)	No. of Licenses	Average No. of Storeys	Average No. of Dwellings	Total No. of Dwellings	(2) Licensed Area (1000m2)	No. of Licenses	
Metal Source	0.0	0.0	0	0.0	0.0	0	0.0	0	
Others	0.0	0.0	0	0.0	0.0	0	0.0	0	
Nablus									
Stone	0.8	1.1	9	1.3	1.0	109	21.5	104	
Cement Block	1.0	0.0	1	0.7	0.3	4	0.8	15	
Concrete	0.5	0.0	2	0.2	0.0	0	0.1	5	
Metal Source	1.0	0.2	2	0.0	0.0	0	0.0	0	
Others	0.0	0.0	1	0.3	0.0	0	0.0	8	
Qalqilya									
Stone	0.0	0.0	0	1.5	2.5	5	0.7	2	
Cement Block	3.0	3.0	1	1.6	1.0	17	2.8	17	
Concrete	0.0	0.0	0	0.0	0.0	0	0.0	0	
Metal Source	0.0	0.0	0	0.0	0.0	0	0.0	0	
Others	0.0	0.0	0	0.0	0.0	0	0.0	0	
Salfit									
Stone	0.0	0.0	0	0.0	0.0	0	0.0	0	
Cement Block	0.0	0.0	0	1.0	1.0	1	0.1	1	
Concrete	0.0	0.0	0	0.0	0.0	0	0.0	0	
Metal Source	0.0	0.0	0	0.0	0.0	0	0.0	0	
Others	0.0	0.0	0	0.0	0.0	0	0.0	0	

Table 6 (Cont.): Building Licenses Issued in Remaining West Bank and Gaza Strip for Additions to Licensed Existing Buildings by Construction Material of External Walls and Governorate/District – First Quarter 2007

Governorate/District	Non-Res. Buildings			Residential Buildings					/
	Average No. of Storeys	(2) Licensed Area (1000m2)	No. of Licenses	Average No. of Storeys	Average No. of Dwellings	Total No. of Dwellings	(2) Licensed Area (1000m2)	No. of Licenses	
Ramallah and Al-Birah									
Stone	1.0	0.1	1	1.3	0.0	0	0.9	20	
Cement Block	0.0	0.0	0	1.8	0.0	0	0.2	6	
Concrete	0.0	0.0	0	0.0	0.0	0	0.0	0	
Metal Source	0.0	0.0	0	0.0	0.0	0	0.0	0	
Others	0.0	0.0	0	0.0	0.0	0	0.0	0	
Bethlehem									
Stone	0.0	0.0	0	2.5	2.3	14	1.6	6	
Cement Block	0.0	0.0	0	0.0	0.0	0	0.0	0	
Concrete	0.0	0.0	0	0.0	0.0	0	0.0	0	
Metal Source	0.0	0.0	0	0.0	0.0	0	0.0	0	
Others	0.0	0.0	0	0.0	0.0	0	0.0	0	
Hebron									
Stone	0.0	0.0	0	1.3	2.7	8	1.0	3	
Cement Block	0.0	0.0	0	0.0	0.0	0	0.0	0	
Concrete	0.0	0.0	0	0.0	0.0	0	0.0	0	
Metal Source	0.0	0.0	0	0.0	0.0	0	0.0	0	
Others	0.0	0.0	0	0.0	0.0	0	0.0	0	
North Gaza									
Stone	0.0	0.0	0	0.0	0.0	0	0.0	0	
Cement Block	0.0	0.0	0	2.0	1.5	3	0.5	2	
Concrete	0.0	0.0	0	0.0	0.0	0	0.0	0	

Table 6 (Cont.): Building Licenses Issued in Remaining West Bank and Gaza Strip for Additions to Licensed Existing Buildings by Construction Material of External Walls and Governorate/District – First Quarter 2007

Governorate/District	Non-Res. Buildings			Residential Buildings					/
	Average No. of Storeys	(2) Licensed Area (1000m2)	No. of Licenses	Average No. of Storeys	Average No. of Dwellings	Total No. of Dwellings	(2) Licensed Area (1000m2)	No. of Licenses	
Metal Source	0.0	0.0	0	0.0	0.0	0	0.0	0	
Others	0.0	0.0	0	0.0	0.0	0	0.0	0	
Gaza									
Stone	0.0	0.0	0	0.0	0.0	0	0.0	0	
Cement Block	2.0	1.1	1	1.3	1.4	11	1.4	8	
Concrete	0.0	0.0	0	0.0	0.0	0	0.0	0	
Metal Source	0.0	0.0	0	0.0	0.0	0	0.0	0	
Others	0.0	0.0	0	0.0	0.0	0	0.0	0	

2007 - /

Table 7: Building Licenses Issued in Remaining West Bank and Gaza Strip for New Additions to Unlicensed Existing Buildings by Construction Material of External Walls and Governorate/District – First Quarter 2007

Governorate/district	Non- Res. Buildings			Residential Buildings					/
	Average No. of Storeys	(²) Licensed Area (1000 m ²)	No. of Licenses	Average No of Storeys	Average No. of Dwellings	Total No. of Dwellings	(²) Licensed Area (1000 m ²)	No. of Licenses	
All Governorates									
Stone	0.0	0.0	0	15	2.8	3	2.6	5	
Cement Block	0.0	0.0	0	25	2.2	2	3.5	12	
Concrete	0.0	0.0	0	0	0.0	0	0.0	1	
Tubas									
Stone	0.0	0.0	0	0	0.0	0	0.0	0	
Cement Block	0.0	0.0	0	4	2.0	2	0.5	2	
Concrete	0.0	0.0	0	0	0.0	0	0.0	0	
Tulkarem									
Stone	0.0	0.0	0	8	7.0	8	1.3	1	
Cement Block	0.0	0.0	0	19	2.1	2	3.0	9	
Concrete	0.0	0.0	0	0	0.0	0	0.0	0	
Nablus									
Stone	0.0	0.0	0	5	1.7	2	0.9	3	
Cement Block	0.0	0.0	0	0	0.0	0	0.0	0	
Concrete	0.0	0.0	0	0	0.0	0	0.0	1	

2007 - /

Table 7 (Cont.): Building Licenses Issued in Remaining West Bank and Gaza Strip for New Additions to Unlicensed Existing Buildings by Construction Material of External Walls and Governorate/District – First Quarter 2007

Governorate/district	Non- Res. Buildings			Residential Buildings					/
	Average No. of Storeys	(²) Licensed Area (1000 m ²)	No. of Licenses	Average No of Storeys	Average No. of Dwellings	Total No. of Dwellings	(²) Licensed Area (1000 m ²)	No. of Licenses	
Ramallah and Al-Bireh									
Stone	0.0	0.0	0	2	2.0	2	0.4	1	
Cement Block	0.0	0.0	0	0	0.0	0	0.0	0	
Concrete	0.0	0.0	0	0	0.0	0	0.0	0	
Jericho and Al Aghwar									
Stone	0.0	0.0	0	0	0.0	0	0.0	0	
Cement Block	0.0	0.0	0	2	3.0	2	0.1	1	
Concrete	0.0	0.0	0	0	0.0	0	0.0	0	

Table 8: Building Licenses Issued in Remaining West Bank and Gaza Strip for Existing Buildings and Extensions by Construction Material of External Walls and Governorate/District – First Quarter 2007

Governorate/district	Non- Res. Buildings			Residential Buildings					/
	Average No. of Storeys	(²) Licensed Area (1000 m ²)	No. of Licenses	Average No of Storeys	Average No. of Dwellings	Total No. of Dwellings	(²) Licensed Area (1000 m ²)	No. of Licenses	
All Governorates									
Stone	2.2	9.0	13	263	1.8	2	52.1	143	
Cement Block	1.7	8.4	6	129	1.4	1	18.8	98	
Concrete	1.0	0.1	1	6	1.5	2	0.8	4	
Metal Source	0.0	0.0	0	0	0.0	0	0.0	0	
Others	3.0	1.2	1	0	0.0	0	0.0	0	
Jenin									
Stone	0.0	0.0	0	0	0.0	0	0.0	0	
Cement Block	0.0	0.0	0	0	0.0	0	0.0	0	
Concrete	0.0	0.0	0	3	3.0	3	0.4	1	
Metal Source	0.0	0.0	0	0	0.0	0	0.0	0	
Others	0.0	0.0	0	0	0.0	0	0.0	0	
Tubas									
Stone	0.0	0.0	0	2	1.0	1	0.5	2	
Cement Block	1.0	0.1	1	10	1.2	1	1.5	9	
Concrete	0.0	0.0	0	0	0.0	0	0.0	0	
Metal Source	0.0	0.0	0	0	0.0	0	0.0	0	
Other	0.0	0.0	0	0	0.0	0	0.0	0	
Tulkarm									
Stone	1.0	0.3	1	10	1.7	1	2.4	11	
Cement Block	0.0	0.0	0	16	1.2	1	2.5	16	

Table 8 (Cont.): Building Licenses Issued in Remaining West Bank and Gaza Strip for Existing Buildings and Extensions by Construction Material of External Walls and Governorate/District – First Quarter 2007

Governorate/district	Non- Res. Buildings			Residential Buildings					/
	Average No. of Storeys	(²) Licensed Area (1000 m ²)	No. of Licenses	Average No of Storeys	Average No. of Dwellings	Total No. of Dwellings	(²) Licensed Area (1000 m ²)	No. of Licenses	
Concrete	0.0	0.0	0	0	0.0	0	0.0	0	
Metal Source	0.0	0.0	0	0	0.0	0	0.0	0	
Others	0.0	0.0	0	0	0.0	0	0.0	0	
Nablus									
Stone	0.0	0.0	0	19	1.1	1	3.2	27	
Cement Block	0.0	0.0	0	3	0.8	1	0.4	4	
Concrete	0.0	0.0	0	0	0.0	0	0.0	0	
Metal Source	0.0	0.0	0	0	0.0	0	0.0	0	
Others	0.0	0.0	0	0	0.0	0	0.0	0	
Qalqilya									
Stone	0.0	0.0	0	0	0.0	0	0.0	0	
Cement Block	0.0	0.0	0	4	1.3	1	0.7	4	
Concrete	0.0	0.0	0	0	0.0	0	0.0	0	
Metal Source	0.0	0.0	0	0	0.0	0	0.0	0	
Others	0.0	0.0	0	0	0.0	0	0.0	0	
Salfit									
Stone	0.0	0.0	0	8	1.8	2	1.3	5	
Cement Block	0.0	0.0	0	14	1.5	1	2.1	12	
Concrete	0.0	0.0	0	0	0.0	0	0.0	0	
Metal Source	0.0	0.0	0	0	0.0	0	0.0	0	
Others	0.0	0.0	0	0	0.0	0	0.0	0	

Table 8 (Cont.): Building Licenses Issued in Remaining West Bank and Gaza Strip for Existing Buildings and Extensions by Construction Material of External Walls and Governorate/District – First Quarter 2007

Governorate/district	Non- Res. Buildings			Residential Buildings					/
	Average No. of Storeys	(²) Licensed Area (1000 m ²)	No. of Licenses	Average No of Storeys	Average No. of Dwellings	Total No. of Dwellings	(²) Licensed Area (1000 m ²)	No. of Licenses	
Ramallah and Al-Bireh									
Stone	0.0	0.0	0	58	2.1	2	11.1	25	
Cement Block	0.0	0.0	0	0	0.0	0	0.0	0	
Concrete	0.0	0.0	0	3	1.0	1	0.4	3	
Metal Source	0.0	0.0	0	0	0.0	0	0.0	0	
Others	0.0	0.0	0	0	0.0	0	0.0	0	
Jericho and Al-Aghwar									
Stone	0.0	0.0	0	0	0.0	0	0.0	0	
Cement Block	0.0	0.0	0	5	1.2	1	0.8	5	
Concrete	0.0	0.0	0	0	0.0	0	0.0	0	
Metal Source	0.0	0.0	0	0	0.0	0	0.0	0	
Others	0.0	0.0	0	0	0.0	0	0.0	0	
Jerusalem									
Stone	0.0	0.0	0	38	3.0	5	7.4	8	
Cement Block	0.0	0.0	0	0	0.0	0	0.0	0	
Concrete	0.0	0.0	0	0	0.0	0	0.0	0	
Metal Source	0.0	0.0	0	0	0.0	0	0.0	0	
Others	0.0	0.0	0	0	0.0	0	0.0	0	
Bethlehem									
Stone	4.0	3.1	3	28	2.8	3	8.2	10	
Cement Block	0.0	0.0	0	0	0.0	0	0.0	0	

Table 8 (Cont.): Building Licenses Issued in Remaining West Bank and Gaza Strip for Existing Buildings and Extensions by Construction Material of External Walls and Governorate/District – First Quarter 2007

Governorate/district	Non- Res. Buildings			Residential Buildings					/
	Average No. of Storeys	(²) Licensed Area (1000 m ²)	No. of Licenses	Average No of Storeys	Average No. of Dwellings	Total No. of Dwellings	(²) Licensed Area (1000 m ²)	No. of Licenses	
Concrete	0.0	0.0	0	0	0.0	0	0.0	0	
Metal Source	0.0	0.0	0	0	0.0	0	0.0	0	
Others	0.0	0.0	0	0	0.0	0	0.0	0	
Hebron									
Stone	1.7	5.6	9	100	1.7	2	18.0	55	
Cement Block	0.0	0.0	0	0	0.0	0	0.0	0	
Concrete	1.0	0.1	1	0	0.0	0	0.0	0	
Metal Source	0.0	0.0	0	0	0.0	0	0.0	0	
Others	3.0	1.2	1	0	0.0	0	0.0	0	
Gaza									
Stone	0.0	0.0	0	0	0.0	0	0.0	0	
Cement Block	0.0	0.0	0	7	2.0	3	0.9	2	
Concrete	0.0	0.0	0	0	0.0	0	0.0	0	
Metal Source	0.0	0.0	0	0	0.0	0	0.0	0	
Others	0.0	0.0	0	0	0.0	0	0.0	0	
Dier-Albalah									
Stone	0.0	0.0	0	0	0.0	0	0.0	0	
Cement Block	1.0	0.3	1	13	2.1	2	3.0	7	
Concrete	0.0	0.0	0	0	0.0	0	0.0	0	
Metal Source	0.0	0.0	0	0	0.0	0	0.0	0	
Others	0.0	0.0	0	0	0.0	0	0.0	0	

Table 8 (Cont.): Building Licenses Issued in Remaining West Bank and Gaza Strip for Existing Buildings and Extensions by Construction Material of External Walls and Governorate/District – First Quarter 2007

Governorate/district	Non- Res. Buildings			Residential Buildings					/
	Average No. of Storeys	(²) Licensed Area (1000 m ²)	No. of Licenses	Average No of Storeys	Average No. of Dwellings	Total No. of Dwellings	(²) Licensed Area (1000 m ²)	No. of Licenses	
Khan Younis									
Stone	0.0	0.0	0	0	0.0	0	0.0	0	
Cement Block	0.0	0.0	0	1	1.0	1	0.2	1	
Concrete	0.0	0.0	0	0	0.0	0	0.0	0	
Metal Source	0.0	0.0	0	0	0.0	0	0.0	0	
Others	0.0	0.0	0	0	0.0	0	0.0	0	
Rafah									
Stone	0.0	0.0	0	0	0.0	0	0.0	0	
Cement Block	2.0	7.9	4	56	1.4	2	6.7	38	
Concrete	0.0	0.0	0	0	0.0	0	0.0	0	
Metal Source	0.0	0.0	0	0	0.0	0	0.0	0	
Others	0.0	0.0	0	0	0.0	0	0.0	0	

Table 9: Building Licenses Issued in Remaining West Bank and Gaza Strip for Residential Buildings by Status of Licensed Building and Governorate/District – First Quarter 2007

Governorate/District	Licensed Area (1000 m ²)			Number of Licenses						/
	Existing Areas	New Areas	Total	Existing Extensions	Existing Buildings	+ New Additions+Existing Parts	Additions to Licensed Buildings	New Buildings	Total	
All Governorates										
Complete Dwellings	72.5	218.9	291.4	2	217	15	130	419	783	
Extension of Rooms	0.4	2.2	2.6	1	0	1	38	0	40	
Other Extensions	0.5	0.7	1.2	3	0	0	24	1	28	
Other	0.5	1.5	2.1	14	8	2	40	0	64	
Jenin										
Complete Dwellings	0.4	13.5	13.9	0	1	0	9	31	41	
Extension of Rooms	0.0	0.1	0.1	0	0	0	1	0	1	
Other Extensions	0.0	0.0	0.0	0	0	0	2	0	2	
Other	0.0	0.0	0.0	0	0	0	0	0	0	
Tubas										
Complete Dwellings	2.2	7.2	9.4	1	10	2	4	15	32	
Extension of Rooms	0.0	0.1	0.1	0	0	0	1	0	1	
Other Extensions	0.0	0.0	0.0	0	0	0	0	0	0	
Other	0.0	0.0	0.0	0	0	0	0	0	0	
Tulkarm										
Complete Dwellings	6.1	17.2	23.3	0	21	10	14	47	92	
Extension of Rooms	0.0	0.2	0.2	0	0	0	3	0	3	
Other Extensions	0.3	0.1	0.4	2	0	0	1	0	3	
Other	0.3	0.0	0.3	3	1	0	0	0	4	

Table 9 (Cont.): Building Licenses Issued in Remaining West Bank and Gaza Strip for Residential Buildings by Status of Licensed Building and Governorate/District – First Quarter 2007

Governorate/District	Licensed Area (1000 m ²)			Number of Licenses						/
	Existing Areas	New Areas	Total	Existing Extensions	Existing Buildings	+ New Additions+Existing Parts	Additions to Licensed Buildings	New Buildings	Total	
Nablus										
Complete Dwellings	3.3	51.6	54.9	0	12	2	67	51	132	
Extension of Rooms	0.0	0.3	0.3	0	0	0	4	0	4	
Other Extensions	0.1	0.5	0.6	1	0	0	21	0	22	
Other	0.3	1.5	1.8	11	7	2	40	0	60	
Qalqilya										
Complete Dwellings	0.7	11.7	12.4	0	4	0	16	31	51	
Extension of Rooms	0.0	0.3	0.3	0	0	0	3	0	3	
Other Extensions	0.0	0.0	0.0	0	0	0	0	0	0	
Other	0.0	0.0	0.0	0	0	0	0	0	0	
Salfit										
Complete Dwellings	3.4	3.9	7.3	0	17	0	1	17	35	
Extension of Rooms	0.0	0.0	0.0	0	0	0	0	0	0	
Other Extensions	0.0	0.0	0.0	0	0	0	0	0	0	
Other	0.0	0.0	0.0	0	0	0	0	0	0	
Ramallah & Al- Bireh										
Complete Dwellings	11.3	38.9	50.2	0	27	0	0	48	75	
Extension of Rooms	0.4	1.3	1.7	1	0	1	26	0	28	
Other Extensions	0.0	0.0	0.0	0	0	0	0	0	0	
Other	0.0	0.0	0.0	0	0	0	0	0	0	

Table 9(Cont): Building Licenses Issued in Remaining West Bank and Gaza Strip for Residential Buildings by Status of Licensed Building and Governorate/District – First Quarter 2007

Governorate/District	Licensed Area (1000 m ²)			Number of Licenses						/
	Existing Areas	New Areas	Total	Existing Extensions	Existing Buildings	+ New Additions+Existing Parts	Additions to Licensed Buildings	New Buildings	Total	
Jericho and Al Aghwar										
Complete Dwellings	0.8	2.6	3.4	0	5	1	0	17	23	
Extension of Rooms	0.0	0.0	0.0	0	0	0	0	0	0	
Other Extensions	0.0	0.0	0.0	0	0	0	0	0	0	
Other	0.0	0.0	0.0	0	0	0	0	0	0	
Jerusalem										
Complete Dwellings	7.4	3.9	11.3	0	8	0	0	10	18	
Extension of Rooms	0.0	0.0	0.0	0	0	0	0	0	0	
Other Extensions	0.0	0.0	0.0	0	0	0	0	0	0	
Other	0.0	0.0	0.0	0	0	0	0	0	0	
Bethlehem										
Complete Dwellings	8.2	19.1	27.3	0	10	0	6	42	58	
Extension of Rooms	0.0	0.0	0.0	0	0	0	0	0	0	
Other Extensions	0.0	0.0	0.0	0	0	0	0	0	0	
Other	0.0	0.0	0.0	0	0	0	0	0	0	
Hebron										
Complete Dwellings	18.0	32.1	50.2	1	54	0	3	92	150	
Extension of Rooms	0.0	0.0	0.0	0	0	0	0	0	0	
Other Extensions	0.0	0.1	0.1	0	0	0	0	1	1	
Other	0.0	0.0	0.0	0	0	0	0	0	0	

Table 9(Cont): Building Licenses Issued in Remaining West Bank and Gaza Strip for Residential Buildings by Status of Licensed Building and Governorate/District – First Quarter 2007

Governorate/District	Licensed Area (1000 m ²)			Number of Licenses						/
	Existing Areas	New Areas	Total	Existing Extensions	Existing Buildings	+ New Additions+Existing Parts	Additions to Licensed Buildings	New Buildings	Total	
North Gaza										
Complete Dwellings	0.0	3.7	3.7	0	0	0	2	9	11	
Extension of Rooms	0.0	0.0	0.0	0	0	0	0	0	0	
Other Extensions	0.0	0.0	0.0	0	0	0	0	0	0	
Other	0.0	0.0	0.0	0	0	0	0	0	0	
Gaza										
Complete Dwellings	0.9	13.4	14.3	0	2	0	8	9	19	
Extension of Rooms	0.0	0.0	0.0	0	0	0	0	0	0	
Other Extensions	0.0	0.0	0.0	0	0	0	0	0	0	
Other	0.0	0.0	0.0	0	0	0	0	0	0	
Dier-ALBalah										
Complete Dwellings	3.0	0.0	3.0	0	7	0	0	0	7	
Extension of Rooms	0.0	0.0	0.0	0	0	0	0	0	0	
Other Extensions	0.0	0.0	0.0	0	0	0	0	0	0	
Other	0.0	0.0	0.0	0	0	0	0	0	0	
Khan Younis										
Complete Dwellings	0.2	0.0	0.2	0	1	0	0	0	1	
Extension of Rooms	0.0	0.0	0.0	0	0	0	0	0	0	
Other Extensions	0.0	0.0	0.0	0	0	0	0	0	0	
Other	0.0	0.0	0.0	0	0	0	0	0	0	

Table 9(Cont): Building Licenses Issued in Remaining West Bank and Gaza Strip for Residential Buildings by Status of Licensed Building and Governorate/District – First Quarter 2007

Governorate/District	() Licensed Area (1000 m ²)			Number of Licenses						/
	Existing Areas	New Areas	Total	Existing Extensions	Existing Buildings	+ New Additions+Existing Parts	Additions to Licensed Buildings	New Buildings	Total	
Rafah	6.7	0.0	6.7	0	38	0	0	0	38	
Complete Dwellings	0.0	0.0	0.0	0	0	0	0	0	0	
Extension of Rooms	0.0	0.0	0.0	0	0	0	0	0	0	
Other Extensions	0.0	0.0	0.0	0	0	0	0	0	0	
Other	6.7	0.0	6.7	0	38	0	0	0	38	

Table 10: Building Licenses Issued in Remaining West Bank and Gaza Strip for Non-Residential Buildings by Utilization and Governorate/District – First Quarter 2007

Governorate/ District & Utilization	Stores		Licensed Area (1000 m ²)			Number of Licenses						/
	(² 1000) Area (1000 m ²)	No.	Existing Areas	New Areas	Total	Existing Extensions	Existing Buildings	+ New Additions +Existing Parts	Additions to Licensed Buildings	New Buildings	Total	
All Governorates												
Industrial	0.0	0	0.0	2.4	2.4	0	0	0	4	3	7	
Commercial	47.5	296	10.6	43.3	53.9	0	15	0	8	44	67	
Educational	3.7	0	1.2	19.2	20.4	0	1	0	1	9	11	
Health	0.0	0	0.0	0.6	0.6	0	0	0	0	1	1	
Others	11.6	35	6.9	23.3	30.2	0	5	0	10	28	43	
Jenin												
Industrial	0.0	0	0.0	0.0	0.0	0	0	0	0	0	0	
Commercial	0.5	3	0.0	0.5	0.5	0	0	0	2	0	2	
Educational	0.0	0	0.0	3.1	3.1	0	0	0	0	2	2	
Health	0.0	0	0.0	0.0	0.0	0	0	0	0	0	0	
Others	0.0	0	0.0	0.0	0.0	0	0	0	0	0	0	
Tubas												
Industrial	0.0	0	0.0	0.0	0.0	0	0	0	0	0	0	
Commercial	0.9	20	0.1	0.8	0.9	0	1	0	0	4	5	
Educational	0.0	0	0.0	0.0	0.0	0	0	0	0	0	0	
Health	0.0	0	0.0	0.0	0.0	0	0	0	0	0	0	
Others	0.0	0	0.0	0.0	0.0	0	0	0	0	0	0	

Table 10 (Cont.): Building Licenses Issued in Remaining West Bank and Gaza Strip for Non-Residential Buildings by Utilization and Governorate/District – First Quarter 2007

Governorate/ District & Utilization	Stores		Licensed Area (1000 m ²)			Number of Licenses						/
	(² 1000) Area (1000 m ²)	No.	Existing Areas	New Areas	Total	Existing Extensions	Existing Buildings	+ New Additions +Existing Parts	Additions to Licensed Buildings	New Buildings	Total	
Tulkarm												
Industrial	0.0	0	0.0	0.7	0.7	0	0	0	0	1	1	
Commercial	1.4	20	0.3	1.1	1.4	0	1	0	0	6	7	
Educational	0.0	0	0.0	2.8	2.8	0	0	0	1	1	2	
Health	0.0	0	0.0	0.0	0.0	0	0	0	0	0	0	
Others	0.0	0	0.0	3.7	3.7	0	0	0	2	3	5	
Nablus												
Industrial	0.0	0	0.0	0.7	0.7	0	0	0	4	1	5	
Commercial	1.9	26	0.0	1.9	1.9	0	0	0	4	7	11	
Educational	0.0	0	0.0	2.3	2.3	0	0	0	0	1	1	
Health	0.0	0	0.0	0.0	0.0	0	0	0	0	0	0	
Others	0.5	6	0.0	9.2	9.2	0	0	0	7	12	19	
Qalqilya												
Industrial	0.0	0	0.0	0.0	0.0	0	0	0	0	0	0	
Commercial	4.7	17	0.0	4.9	4.9	0	0	0	1	6	7	
Educational	0.0	0	0.0	0.0	0.0	0	0	0	0	0	0	
Health	0.0	0	0.0	0.0	0.0	0	0	0	0	0	0	
Others	0.0	0	0.0	0.0	0.0	0	0	0	0	0	0	

Table 10 (Cont.): Building Licenses Issued in Remaining West Bank and Gaza Strip for Non-Residential Buildings by Utilization and Governorate/District – First Quarter 2007

Governorate/ District & Utilization	Stores		Licensed Area (1000 m ²)			Number of Licenses						/
	(² 1000) Area (1000 m ²)	No.	Existing Areas	New Areas	Total	Existing Extensions	Existing Buildings	+ New Additions +Existing Parts	Additions to Licensed Buildings	New Buildings	Total	
Salfit												
Industrial	0.0	0	0.0	0.0	0.0	0	0	0	0	0	0	0
Commercial	2.0	16	0.0	2.0	2.0	0	0	0	0	1	1	
Educational	0.0	0	0.0	0.0	0.0	0	0	0	0	0	0	
Health	0.0	0	0.0	0.0	0.0	0	0	0	0	0	0	
Others	0.0	0	0.0	0.2	0.2	0	0	0	0	1	1	
Ramallah and Al-Bireh												
Industrial	0.0	0	0.0	1.0	1.0	0	0	0	0	1	1	
Commercial	14.0	26	0.0	17.0	17.0	0	0	0	0	5	5	
Educational	0.0	0	0.0	0.0	0.0	0	0	0	0	0	0	
Health	0.0	0	0.0	0.0	0.0	0	0	0	0	0	0	
Others	0.0	0	0.0	0.1	0.1	0	0	0	1	0	1	
Jerusalem												
Industrial	0.0	0	0.0	0.0	0.0	0	0	0	0	0	0	
Commercial	0.0	0	0.0	0.0	0.0	0	0	0	0	0	0	
Educational	0.0	0	0.0	2.2	2.2	0	0	0	0	1	1	
Health	0.0	0	0.0	0.0	0.0	0	0	0	0	0	0	
Others	0.0	0	0.0	0.0	0.0	0	0	0	0	0	0	

Table 10 (Cont.): Building Licenses Issued in Remaining West Bank and Gaza Strip for Non-Residential Buildings by Utilization and Governorate/District – First Quarter 2007

Governorate/ District & Utilization	Stores		Licensed Area (1000 m ²)			Number of Licenses						/
	(² 1000) Area (1000 m ²)	No.	Existing Areas	New Areas	Total	Existing Extensions	Existing Buildings	+ New Additions +Existing Parts	Additions to Licensed Buildings	New Buildings	Total	
Bethlehem												
Industrial	0.0	0	0.0	0.0	0.0	0	0	0	0	0	0	0
Commercial	10.5	5	3.1	9.4	12.4	0	3	0	0	5	8	
Educational	3.7	0	0.0	3.7	3.7	0	0	0	0	2	2	
Health	0.0	0	0.0	0.0	0.0	0	0	0	0	0	0	
Others	4.9	0	0.0	5.0	5.0	0	0	0	0	8	8	
Hebron												
Industrial	0.0	0	0.0	0.0	0.0	0	0	0	0	0	0	
Commercial	6.0	107	3.7	2.9	6.7	0	8	0	0	9	17	
Educational	0.0	0	1.2	5.1	6.3	0	1	0	0	2	3	
Health	0.0	0	0.0	0.6	0.6	0	0	0	0	1	1	
Others	0.0	0	2.0	3.9	5.9	0	2	0	0	3	5	
North Gaza												
Industrial	0.0	0	0.0	0.0	0.0	0	0	0	0	0	0	
Commercial	0.0	0	0.0	0.0	0.0	0	0	0	0	0	0	
Educational	0.0	0	0.0	0.0	0.0	0	0	0	0	0	0	
Health	0.0	0	0.0	0.0	0.0	0	0	0	0	0	0	
Others	1.2	2	0.0	1.2	1.2	0	0	0	0	1	1	

Table 10 (Cont.): Building Licenses Issued in Remaining West Bank and Gaza Strip for Non-Residential Buildings by Utilization and Governorate/District – First Quarter 2007

Governorate/ District & Utilization	Stores		Licensed Area (1000 m ²)			Number of Licenses						/
	(² 1000) Area (1000 m ²)	No.	Existing Areas	New Areas	Total	Existing Extensions	Existing Buildings	+ New Additions +Existing Parts	Additions to Licensed Buildings	New Buildings	Total	
Gaza												
Industrial	0.0	0	0.0	0.0	0.0	0	0	0	0	0	0	0
Commercial	2.3	30	0.0	2.8	2.8	0	0	0	1	1	2	
Educational	0.0	0	0.0	0.0	0.0	0	0	0	0	0	0	
Health	0.0	0	0.0	0.0	0.0	0	0	0	0	0	0	
Others	0.0	0	0.0	0.0	0.0	0	0	0	0	0	0	
Khan Younis												
Industrial	0.0	0	0.0	0.0	0.0	0	0	0	0	0	0	
Commercial	0.3	6	0.3	0.0	0.3	0	1	0	0	0	1	
Educational	0.0	0	0.0	0.0	0.0	0	0	0	0	0	0	
Health	0.0	0	0.0	0.0	0.0	0	0	0	0	0	0	
Others	0.0	0	0.0	0.0	0.0	0	0	0	0	0	0	
Rafah												
Industrial	0.0	0	0.0	0.0	0.0	0	0	0	0	0	0	
Commercial	3.0	20	3.0	0.0	3.0	0	1	0	0	0	1	
Educational	0.0	0	0.0	0.0	0.0	0	0	0	0	0	0	
Health	0.0	0	0.0	0.0	0.0	0	0	0	0	0	0	
Others	4.9	27	4.9	0.0	4.9	0	3	0	0	0	3	

Table 11: Building Licenses Issued in Remaining West Bank and Gaza Strip for Boundary Walls Only by Governorate/District – First Quarter 2007

Governorate/District	Existing and Existing Additions		New and New Additions		/
	(.) Total Length (1000 m.r)	Number	(.) Total Length (1000 m.r)	Number	
All Governorate	0.2	1	4.1	37	
Jenin	0.0	0	0.1	2	
Tulkarm	0.2	1	0.6	7	
Nablus	0.0	0	0.8	11	
Qalqilya	0.0	0	0.3	2	
Ramallah and Al-Bireh	0.0	0	0.2	4	
Jericho and Alaghwar	0.0	0	0.9	6	
Bethlehem	0.0	0	1.2	4	
Hebron	0.0	0	0.1	1	

* Excludes those parts of Jerusalem Governorate, which were annexed

.1967

*



**Palestinian National Authority
Palestinian Central Bureau of Statistics**

**Building Licenses Statistics
First Quarter, 2007**

**Volume 12, Issue No. 1
May, 2007**

Cover Price 3 US\$

**PAGE NUMBERS OF ENGLISH TEXT ARE PRINTED IN SQUARE BRACKETS
TABLES ARE PRINTED IN THE ARABIC ORDER (FROM RIGHT TO LEFT)**

New Web Site:

- PCBS has launched the electronic atlas of Palestine on <http://atlas.pcbs.gov.ps>
- All of PCBS publications are available online in electronic format on PCBS web site <http://www.pcbs.gov.ps>
- For additional data requests, online form is available on PCBS web site and users can track the status of their request and download the data once made available.

**This document is prepared in accordance with the standard
procedures stated in the Code of Practice for Palestine
Official Statistics 2006**

? May, 2007

All rights reserved

Suggested Citation

**Palestinian Central Bureau of Statistics, 2007. *Building Licenses Statistics –
First Quarter 2007*, Ramallah Palestine**

All correspondence should be directed to
Dissemination & Documentation Department/ Division of User Services

**Palestinian Central Bureau of Statistics
P.O.Box 1647, Ramallah, Palestine.**

Tel: (972/970) 2 240 6340

E-Mail diwan@pcbs.gov.ps

Fax: (972/970) 2 240 6343

web-site: <http://www.pcbs.gov.ps>



Population, Housing and Establishment Census-2007

Acknowledgment

The Palestinian Central Bureau of Statistics (PCBS) would like to thank the Ministry of Local Governments and Municipal Affairs, all municipalities, and rural councils and construction authorities for their cooperation in providing PCBS with the requested data.

The funding for this survey (Building Licenses Statistics First Quarter 2007) was provided by the Palestinian National Authority (PNA), and the Core Funding Group (CFG) for 2007. CFG member include Representative Office of Norway to PNA; Representative Office of Netherlands to PNA; Swiss Agency for Development and Cooperation (SDC).

On this occasion, the PCBS extends special thanks to the members of the Core Funding Group (CFG) who contributed in funding this survey for their support

Team Work

- **Report Preparation**
Eng. Sana' Tawil
Ayman Quneir
- **Preliminary Review**
Ibrahim Al-tarsha
Sufian Dagrah
- **Dissemination Standards**
Hanan Janajreh
- **Final Review**
Mahmoud Jaradat
- **Overall Supervision**
Luay Shabaneh, Ph.D PCBS President

Preface

Construction is considered one of the important economic activities in the Palestinian economy. It contributes substantially to the Gross Domestic Product, recruits a large share of employees, and directly influences other several economic activities. Building construction in particular represents one of the major construction activities in general.

It has been necessary for the Palestinian Central Bureau of Statistics (PCBS) to establish statistical database that covers several aspects of construction activities in order to accommodate the different needs of users. The annual economic surveys series conducted by PCBS as of 1994 includes a survey for construction contractors. PCBS had also conducted the annual Existing Buildings Survey starting from the reference year 1996.

PCBS is pleased to present this report of Building Licenses Statistics, which provides statistical data on the size, and characteristics of licensed buildings in the Palestinian Territory for the First Quarter 2007.

Statistical data is currently collected through filling the designated form from the administrative records of the different official licenses issuing authorities. This was initiated on quarterly basis since First Quarter of 1996.

Publication of building licenses statistics will be pursued in the following years. PCBS hopes that the means by which these data are archived in the issuing authorities are developed, in the foreseeable future, in a manner that would reduce cost and time needed for preparing these statistics

May, 2007

**Luay Shabaneh, Ph.D
President**

Table of Contents

Subject	Page
List of tables	
List of figures	
Summary Results	
Executive Summary	[19]
1. Introduction	[19]
2. Objectives	[19]
3. Definitions	[19]
4. Main Findings	[21]
5. Data Quality	[24]
Tables	33

List of Tables

Table	Page
Table 1: Building Licenses Issued in Remaining West Bank and Gaza Strip During the Period 1997 to First Quarter 2007	35
Table 2: Building Licenses Issued in Remaining West Bank and Gaza Strip by Building Ownership and Utilization - First Quarter 2007	36
Table 3: Building Licenses Issued in Remaining West Bank and Gaza Strip by Issuing Authority and Utilization - First Quarter 2007	38
Table 4: Building Licenses Issued in Remaining West Bank and Gaza Strip for New Buildings by Categories of Licensed Area and Governorate/District - First Quarter 2007	39
Table 5: Building Licenses Issued in Remaining West Bank and Gaza Strip for New Buildings by Construction Material of External Walls and Governorate/District - First Quarter 2007	44
Table 6: Building Licenses Issued in Remaining West Bank and Gaza Strip for Additions to Licensed Existing Buildings by Construction Material of External Walls and Governorate/District - First Quarter 2007	49
Table 7: Building Licenses Issued in Remaining West Bank and Gaza Strip for New Additions to Unlicensed Existing Buildings by Construction Material of External Walls and Governorate/District - First Quarter 2007	53
Table 8: Building Licenses Issued in Remaining West Bank and Gaza Strip for Existing Buildings and Extensions by Construction Material of External Walls and Governorate/District - First Quarter 2007	55
Table 9: Building Licenses Issued in Remaining West Bank and Gaza Strip for Residential Buildings by Status of Licensed Building and Governorate/District - First Quarter 2007	60
Table 10: Building Licenses Issued in Remaining West Bank and Gaza Strip for Non-Residential Buildings by Utilization and Governorate/District - First Quarter 2007	65
Table 11: Building Licenses Issued in Remaining West Bank and Gaza Strip for Boundary Walls Only by Governorate/District - First Quarter 2007	70

List of Figures

Figure	Page
Figure 1: Number of building licenses issued in Remaining West Bank and Gaza Strip for the First Quarter 2004 – 2007	21
Figure 2: Number of building licenses and number of dwellings for new residential buildings in Remaining West Bank and Gaza Strip by licensed area during the First Quarter of 2007	23

Summary Results

This report covers data on the First Quarter 2007, the most important results of this quarter as below:

The main findings of this quarter are as follow:

1. Number of licenses: The number of building licenses issued in the First Quarter 2007, amounted to 1,044 distributed as follow:
 - 505 licenses for new buildings.
 - 255 licenses for additions to licensed buildings.
 - 18 licenses for additions and existing parts.
 - 246 licenses for existing buildings.
 - 20 licenses for existing extensions.

2. Licensed areas: The total areas of licensed buildings (residential & non residential) amounted to 404.7 thousand m² distributed as follows:
 - 312.2 thousand m² for new areas, of which 223.4 residential and, 88.8 non-residential.
 - 92.6 thousand m² for existing areas, of which 73.9 residential and, 18.6 non-residential.

3. Licensed boundary walls: 38 licenses issued for walls with total length of 4.1 thousand meters.

4. Number and area of dwellings licensed:
 - New dwellings: 1,160 units with a total area of 199.8 thousand m².
 - Existing dwellings: 419 units with a total area of 68.0 thousand m².

There was an obvious decline in the total number of issued building licenses, there was a decrease in the total number of issued building licenses in the First Quarter 2007 compared with the First Quarter 2006 (around 7.7%), and there was a decrease in the number of issued building licenses in the First Quarter 2007 compared with the First Quarter 2005 (around 17.6%), and there was a decrease in the number of issued building licenses in the First Quarter 2007 compared with the First Quarter 2004 (around 53.0%).

The results showed that the number of new dwellings was decreased by 39.1%, and the number of existing dwellings was increased by 72.4% in the First Quarter 2007 compared with same Quarter 2004, and a decrease by 41.7% in the number of new dwellings and an increase by 40.1% in the number of existing dwellings in First Quarter 2007 compared with 2005, and a decrease for new & existing dwellings by 45.5% and 70.9% respectively for the First Quarter 2007 compared with First Quarter 2006.

The results showed in general an obvious drop for building licenses indicators during First Quarter 2007 compared with First Quarter 2004, 2005 and 2006.

Executive Summary

1. Introduction:

The construction is considered as one of the important economic activities, particularly in countries undergoing economic development. This activity plays a vital role in the Palestinian economy and significantly interrelated to the remaining economic activities. Thus, the Palestinian Central Bureau of Statistics (PCBS) committed to comply statistical data on all aspects of construction activity in order to measure the main related variables.

The administrative record statistics shed light on size and type of building licenses issued from official parties. Building licenses statistics are compiled in most countries all over the world. In addition to its own significance, building licenses statistics constitute the sampling frame of other surveys to be launched for identifying the actual constructed buildings against licenses, to endeavor estimating construction costs and obtaining data on the technical characteristics of these buildings.

2. Objectives:

These statistics provide data on numbers of building licenses, licensed areas, number and area of licensed dwellings and stores by the following variables:

- Issuing authorities.
- Geographic location.
- Status of building to be licensed (new, existing, new or existing additions, etc.).
- Building ownership (private, governmental, local authorities, cooperative, etc.).
- Utilization of the building (residential, non-residential: industrial, commercial, Educational, etc.).
- Major external construction material (stone, concrete, block, etc.).

3. Definitions:

4. Statistical Unit:

The license issued by any authorized authority. The issuing authorities are the reporting units for this administrative records statistics.

5. Building Ownership:

1. Private.
2. Governmental.
3. Local Authority.
4. Cooperative Society.
5. Charitable Society.
6. Other, e.g. religious groups, UNRWA, etc.

6. Status of the building to be licensed:

1. New, when the building site is entirely vacant.
2. Addition to an already existing licensed building - it could be vertical or horizontal addition.
3. Addition to non-licensed existing building (or part of building) that needs licensing.
4. Existing building.
5. Existing extensions.

7. Building Utilization:

1. Residential: The building is considered residential if more than half of its total area is prepared for residential purposes. The building could consist of:
 - Complete dwellings.
 - Rooms added to the dwellings.
 - Extension of other facilities, e.g. kitchen, bathroom, cesspool, garage.
2. Non-Residential: industrial, commercial, educational,...etc.
3. The boundary wall: This is when boundary wall undergoes separate licensing. If the building license includes the wall, then it is not included herein.

3.5 Dwelling:

The housing unit of a single household.

3.6 Remaining West Bank:

The West Bank except for those parts of Jerusalem Governorate, which were annexed after 1967 occupation by Israel.

4. Main Findings

1. Number of licenses: The following table shows comparison between the number of Building Licenses for the First Quarter 2007 with the same period for the years 2004, 2005, and 2006:

Indicator	No. of issued Licenses*				% Change of Q1 2006 from Q1 200	% Change of Q1 2006 from Q1 200	% Change of Q1 2006 from Q1 200
	Q1 2004	Q1 2005	Q1 2006	Q1 2007			
Licenses for new buildings.		788	899		-25.7	-35.9	-43.8
Licenses for additions to licensed buildings.	269	237	319	255	-5.2	7.6	-20.1
Licenses for additions + existing parts.	30	27	97	18	-40.0	-33.3	-81.4
Licenses for existing buildings.	130	187	863	246	89.2	31.6	-71.5
Licenses for existing extensions	22	28	41	20	-9.1	-28.8	-51.2
Total	1131	1267	2219	1044	-7.7	-17.6	-53.0

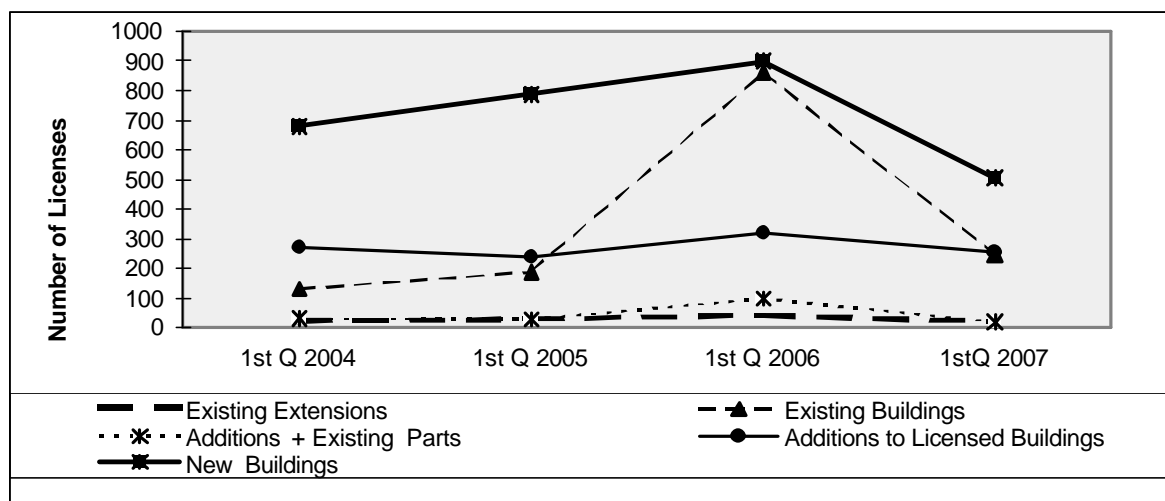
*Excluding boundary wall licenses

The results showed an obvious drop for building licenses indicators during First Quarter 2007 compared with First Quarter 2004-2006, despite of some of vacillation in some indicators, compared with same period or pervious quarters for the same years.

There was a decrease in the total number of issued building licenses in the First Quarter 2007 compared with the First Quarter 2004 (around 7.7%), and there was a decrease in the number of issued building licenses in the First Quarter 2007 compared with the First Quarter 2005 (around 17.6%), and there was a decrease in the number of issued building licenses in the First Quarter 2007 compared with the First Quarter 2006 (around 53.0%).

And this figure shows the number of building licenses issued in Remaining West Bank and Gaza Strip - 2004, 2005, 2006, 2007 (First Quarter):

Figure 1: Number of building licenses issued in Remaining West Bank and Gaza Strip for the First Quarter 2004 – 2007



2. Licensed areas: The following table shows comparison between the licensed areas First Quarter 2007 with the same period for the years 2004, 2005, and 2006:

Indicator	Licensed Areas				% Change of Q1 2006 from Q1 200	% Change of Q1 2006 from Q1 200	% Change of Q1 2006 from Q1 200
	Q1 2004	Q1 2005	Q1 2006	Q1 2007			
Total areas			.7	404.7	-7.6	-26.0	-48.1
New areas			.4	312.2	-19.2	-34.5	-36.0
Residential				223.4	-28.9	-39.5	-42.8
Non-residential				88.8	22.3	-17.2	-8.6
Existing areas				92.6	80.2	31.4	-68.3
Residential				73.9	94.0	39.7	-70.4
Non-residential				18.6	39.9	5.7	-56.5

3. Licensed boundary walls: The following table shows comparison between the licenses issued for walls for the First Quarter 200 with the same period for the years 2004, 2005, and 2006:

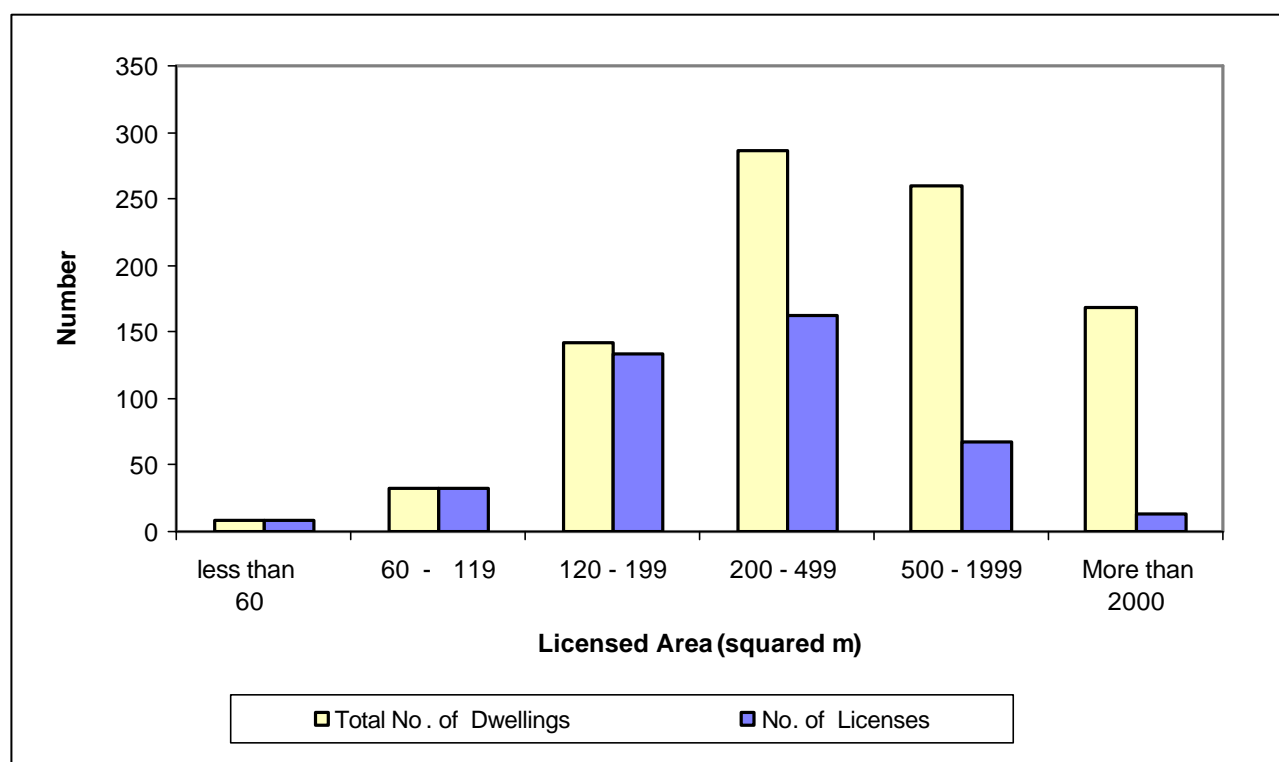
Indicator	Licensed boundary walls				% Change of Q1 2006 from Q1 2004	% Change of Q1 2006 from Q1 2005	% Change of Q1 2006 from Q1 2006
	Q1 2004	Q1 2005	Q1 2006	Q1 2007			
Number of Walls licenses	26	34	45	38	46.2	11.8	15.6
Length of Walls licenses (meters)	2845	3267	5983	4300	51.1	31.6	28.1

4. Number and area of dwellings licensed: The following table shows comparison between the number and total area for the licensed dwellings for the First Quarter 2007 and the same period for the years 2004, 2005, and 2006:

Indicator	Number of dwellings and their area				% Change of Q1 2006 from Q1 2004	% Change of Q1 2006 from Q1 2005	% Change of Q1 2006 from Q1 2006
	Q1 2004	Q1 2005	Q1 2006	Q1 2007			
Number of new dwellings				1160	-39.1	-41.7	-45.5
Area for new dwellings (1000 m ²)				199.8	-28.8	-40.2	-44.5
Number of existing dwellings				419	72.4	40.1	-70.9
Area for existing dwellings (1000 m ²)			.6	68.0	102.4	45.3	-70.3

This figure shows the number of licenses and number of dwellings for new residential buildings by licensed area in Remaining West Bank and Gaza Strip for the First Quarter of 2007:

Figure 2: Number of building licenses and number of dwellings for new residential buildings in Remaining West Bank and Gaza Strip by licensed area during the First Quarter of 2007



5. Data Quality

5.1 Accuracy of the Data

5.1.1 Statistical Errors

The survey was implemented on the basis of a comprehensive census for all studied statistical units (Licenses); therefore this survey was free of statistical (sampling) errors.

5.1.2 Non-Statistical Errors

Non-statistical errors are probable in all stages of the project, during data collection or processing. In this survey it is mostly referred to data entry errors. To avoid errors and reduce their effects, great efforts were made to train data entry staff, they were trained on the entry program that was examined before starting the data entry process, preparing data entry program before data collection for checking readiness of the program for data entry, a set of validation rules were applied on the program for checking consistency of data, periodic data files were received by project management for checking accuracy and consistency, notes of correction are provided for data entry management for correction .

5.2 Comparison of the Data

Comparison exercises was done with previous years survey of Building Licenses for the same quarter, the results reveals consistency with previous surveys data.

5.3 Technical Notes

There are important technical notes which should be taken into consideration when reviewing this report, which are as follows:

- Tables excluding building licenses for those parts of Jerusalem which were annexed force fully by Israel in 1967, while includes licenses for some villages of Jerusalem Governorate.
- It may be noticed that the details of the value of some indicators may not add to its total, due to rounding calculations.

