

**2006**

**2007 /**

:

<http://atlas.pcbs.gov.ps>

<http://www.pcbs.gov.ps>

**2006**

.2007

1428

©

:

**.2007**

. - .2006 :

:

/

. - **1647** . .

(970/972) 2 240 6343 :

<http://www.pcb.gov.ps> :

(970/972) 2 240 6340 :

Diwan@pcbs.gov.ps :



2007 -



2006

(PNA)

2007 (CFG)

.(SDC)

(CFG)



**:CFG**

**:GS**

( )

**:ISIC-3**

1967

**:J1**

**:NIS**

**:PCBS**

**:PNA**

**:RWB**

1967

**:RWBGS**

**:SDC**

(-)

(.) :





•

•

•

•

•



.2006

**2007**



<b>25</b>	:
<b>27</b>	:
<b>31</b>	:
31	:1.3
31	:2.3
37	:3.3
38	:4.3
42	:5.3
<b>47</b>	:
47	:1.4
47	:2.4
<b>49</b>	:
<b>53</b>	
<b>91</b>	

<b>55</b>				<b>:1</b>
			2006-2001	
<b>57</b>	2006	/		<b>:2</b>
<b>58</b>	2006			<b>:3</b>
<b>59</b>		2006		<b>:4</b>
<b>60</b>				<b>:5</b>
			2006	
<b>61</b>	2006			<b>:6</b>
<b>62</b>				<b>:7</b>
			2006	
<b>63</b>	2006			<b>:8</b>
<b>64</b>			1000	<b>:9</b>
			2006	
<b>65</b>				<b>:10</b>
			2006	
<b>66</b>				<b>:11</b>
	2006			
<b>67</b>				<b>:12</b>
			2006	
<b>68</b>				<b>:13</b>
			2006 -1999	
<b>69</b>				<b>:14</b>
			2006	
<b>70</b>				<b>:15</b>
			2006 -2002	
<b>71</b>	2006			<b>:16</b>
<b>72</b>				<b>:17</b>
			2006	

<b>73</b>			<b>:18</b>
		2006-1999	
<b>74</b>	2006		<b>:19</b>
<b>75</b>		2006	<b>:20</b>
<b>76</b>	2006		<b>:21</b>
<b>78</b>		2006	<b>:22</b>
<b>80</b>		2006	<b>:23</b>
<b>81</b>			<b>:24</b>
		2006	
<b>82</b>			<b>:25</b>
		2006-1999	
<b>83</b>			<b>:26</b>
		2006	
<b>84</b>			<b>:27</b>
		2006	
<b>85</b>			<b>:28</b>
		2006	
<b>86</b>			<b>:29</b>
		2006	
<b>87</b>	2006		<b>:30</b>
<b>88</b>			<b>:31</b>
		2006-2002	
<b>89</b>			<b>:32</b>
		2006	
<b>90</b>			<b>:33</b>
		2006	

<b>31</b>	2006	<b>:1</b>
<b>32</b>	2006	<b>:2</b>
<b>32</b>	2006	<b>:3</b>
<b>33</b>	2006	<b>:4</b>
<b>33</b>	2006	<b>:5</b>
<b>34</b>		<b>:6</b>
	2006	
<b>35</b>	2006	<b>:7</b>
<b>36</b>	2006	<b>:8</b>
<b>36</b>		<b>:9</b>
	2006	
<b>37</b>		<b>:10</b>
	2006	
<b>38</b>		<b>:11</b>
	2006	
<b>39</b>	2006	<b>:12</b>
<b>39</b>	2006	<b>:13</b>
<b>40</b>	2006	<b>:14</b>
<b>41</b>	2006	<b>:15</b>
<b>41</b>	2006	<b>:16</b>
<b>42</b>	2006	<b>:17</b>
<b>42</b>	2006	<b>:18</b>
<b>43</b>	2006	<b>:19</b>
<b>44</b>	2006	<b>:20</b>
<b>44</b>	2006	<b>:21</b>
<b>45</b>	2006	<b>:22</b>





<b>93</b>	2006	/	<b>:1</b>
<b>95</b>	2006	/	<b>:2</b>

.2006

:

%5.7

						•
	764.4	5,146.9				•
	57,499	116,646				•
				59,147		
		14,147				•
		3,509				•
				6,026		
	520,972					•
		86,633				
			2,048,986			
			14,812			•
		321,999				•
	45,243,238					•
			117,789,075			
	821,800		2006	" "		•

2006

:

"

"

.1

.2

.3

.4



) 9

( )

(

:

) 9

( )

(

:

400

$$3 \cdot 250 - 100 \cdot 3 \cdot 100 - 50 \cdot ( \quad )^3 \cdot 50 \cdot 250$$

$$. ( \quad ) \cdot 9$$

250

2,200

250

175

30

24

24

:  
 :  
 )  
 :  
 :  
 :  
 :

140  
 ( 2 ) 90  
 600 900  
 2,000 20

:  
 :  
 24  
 :

( 2 ) 90 140  
 900  
 2 600  
 5  
 - - :



140

( 2 ) 90  
600 900

2

1.5

3

20

20-5

.( J2 ) ( J1)

.1967

.1967

**:J1**

:1.3

%5.7

2006

. 23.4

23.1

) 73.1

60

.(1 ) ( 16.4

:2.3

:1.2.3

2006

4,516.4

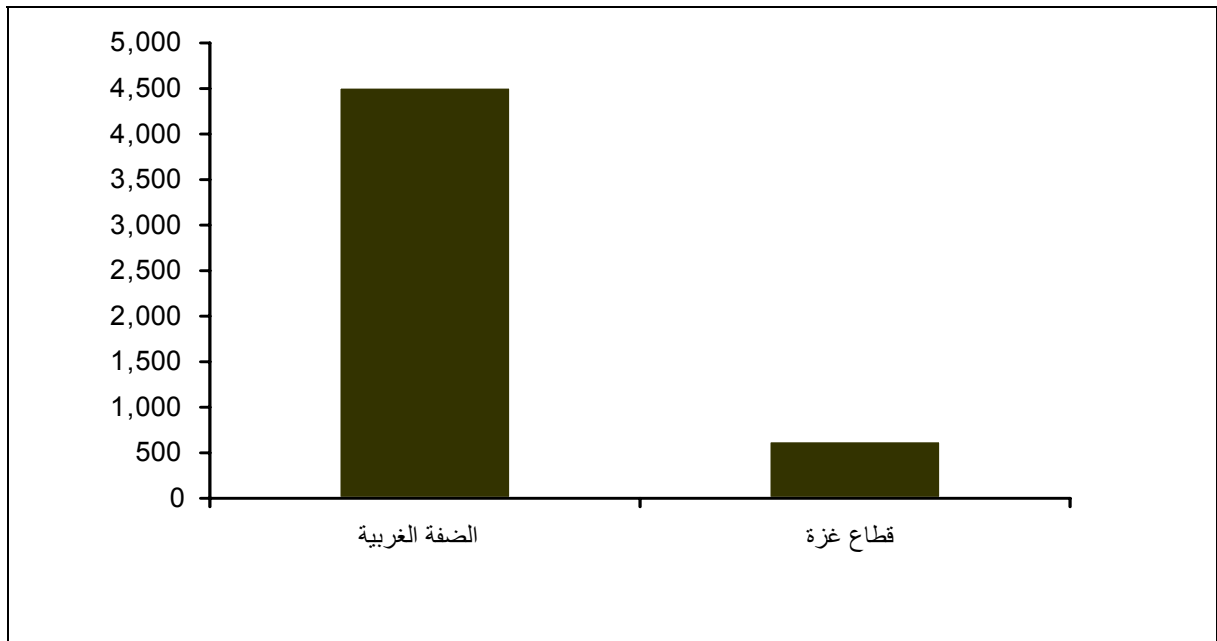
( 764.4 ) 5,146.9

.(1 2 ) 630.5

(2 1)

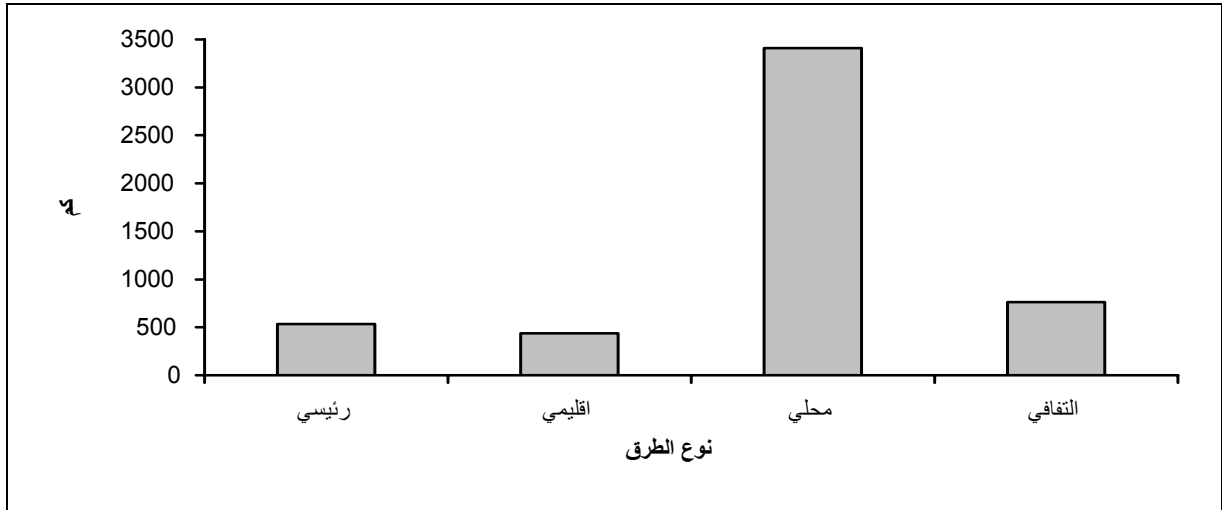
2006

:(1)



2006

(2)



2.2.3

116,646

%50.7

%49.3

2006

2006

%63.2

%67.5

19.5

%71.6

%18.2

%20.9

%

%12.8

%9.2

%1.4

%5.7

%1.9

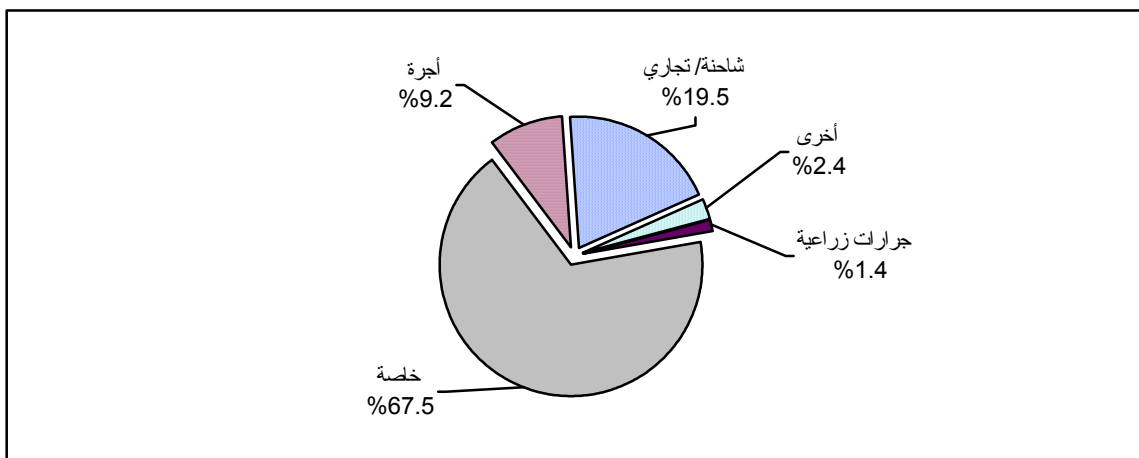
%0.9

( 3 4 )

%2.4

2006

(3)



2006

519

(6 5) %28.7

%71.3

2006

%16.6

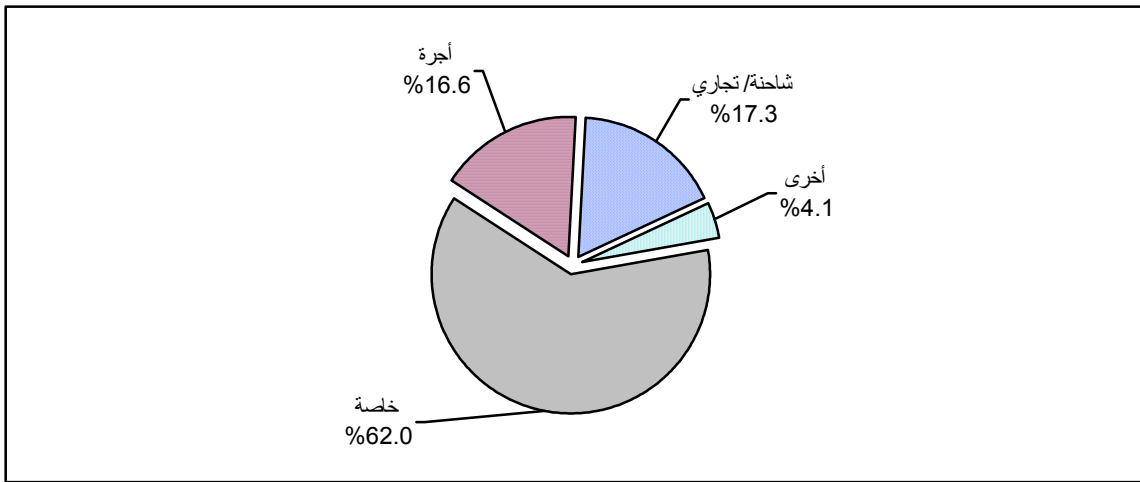
%62.0

.%17.3

(5) %4.1

2006

:(4)



2006

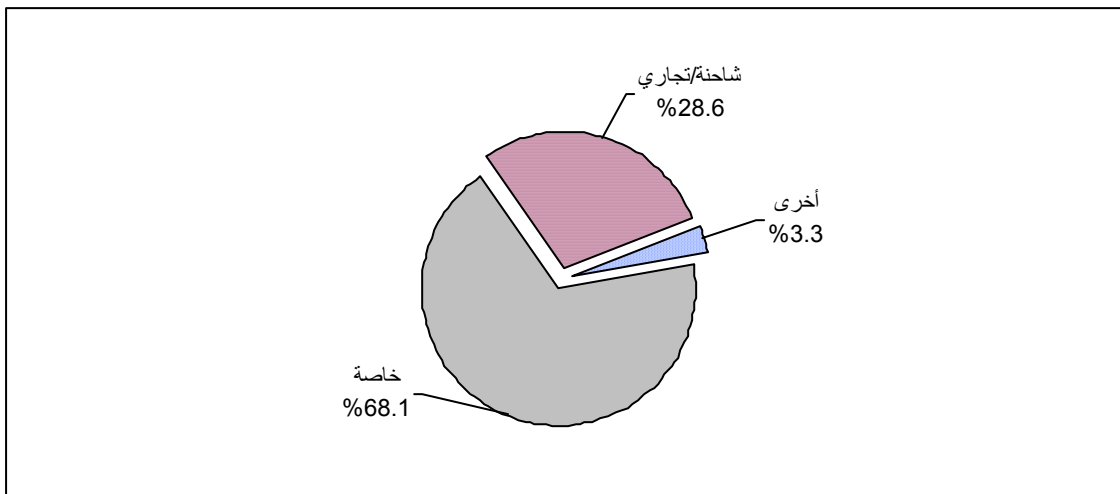
%28.6

%68.1

(8) %3.3

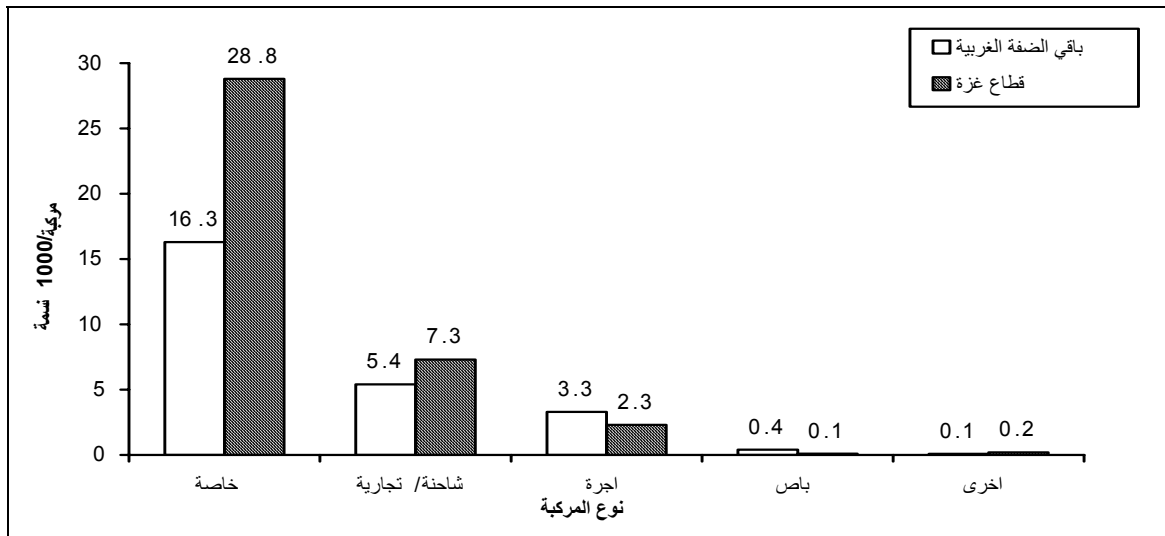
2006

:(5)



31.6  
 16.3  
 3.3  
 28.8  
 2.3  
 1.8  
 0.8  
 .(9 )  
 :(6)

2006



:3.2.3

240  
 2006  
 56  
 184  
 6.8  
 4.0  
 2.7  
 3.1  
 .(10 )

:4.2.3

2006  
 7  
 99  
 708  
 .(11 )  
 8.4  
 68  
 75  
 710  
 835  
 7

:5.2.3

125

.%45.4

%30.7

.(11 )

:6.2.3

1,974

%67.1

%32.9

2006

2006

%54.9

%48.0

%44.7

%29.7

%20.3

%17.0

%15.4

%31.7

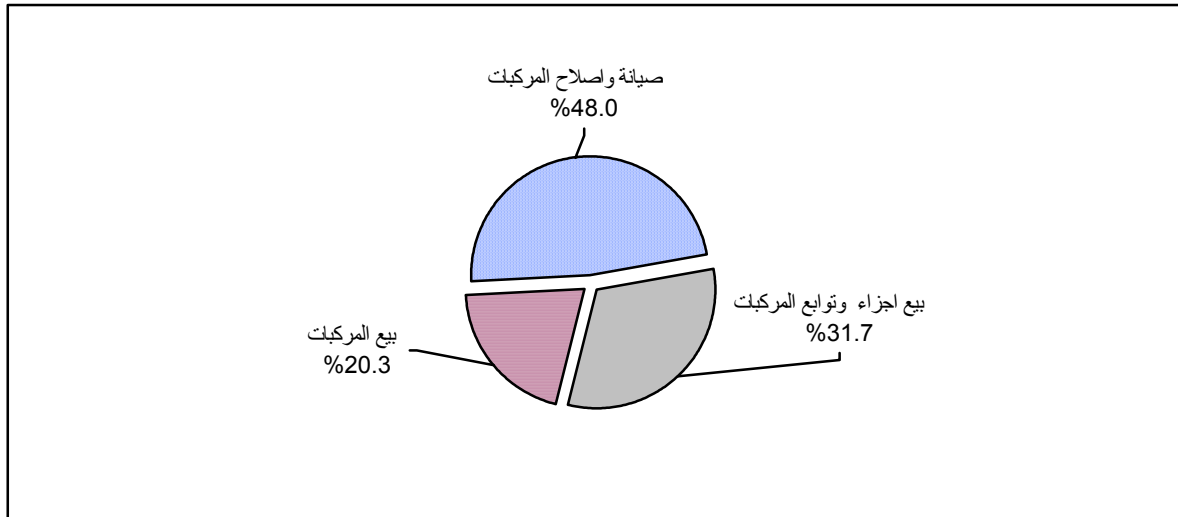
%39.6

)

.(12

2006

:(7)



:7.2.3

7,858

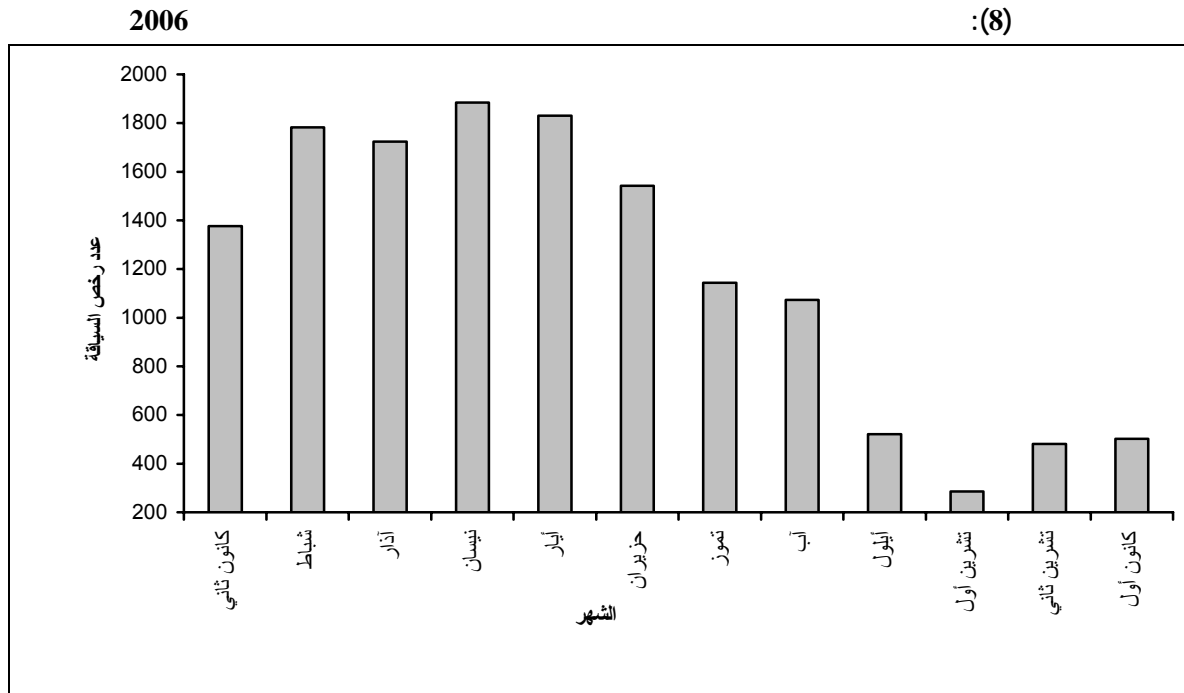
14,147

2006

8

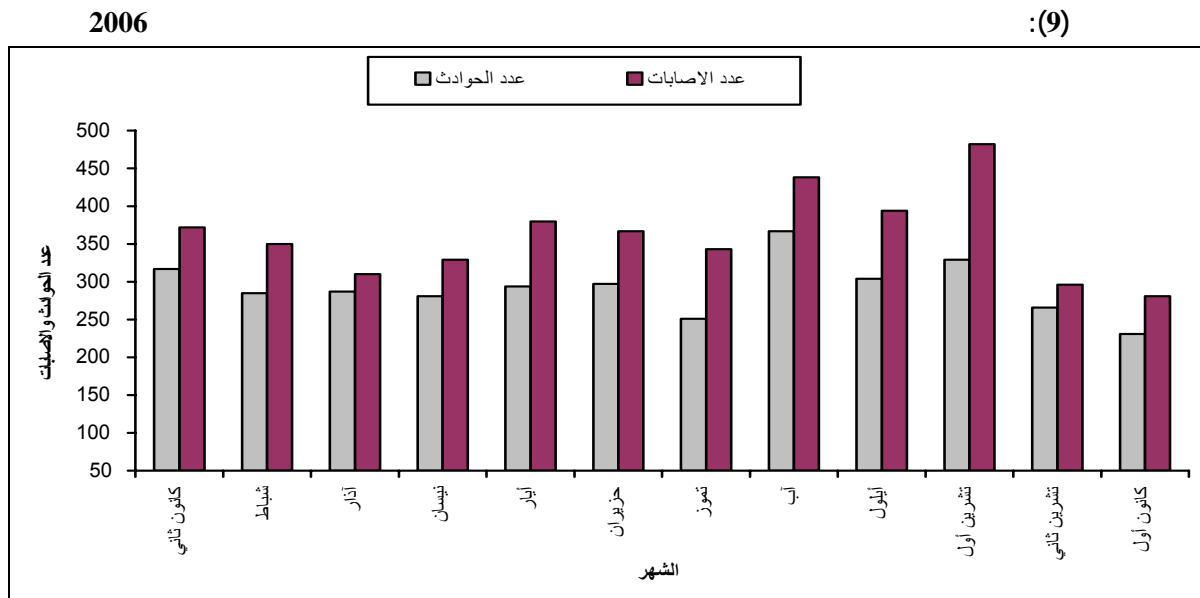
6,289

.( 14 )



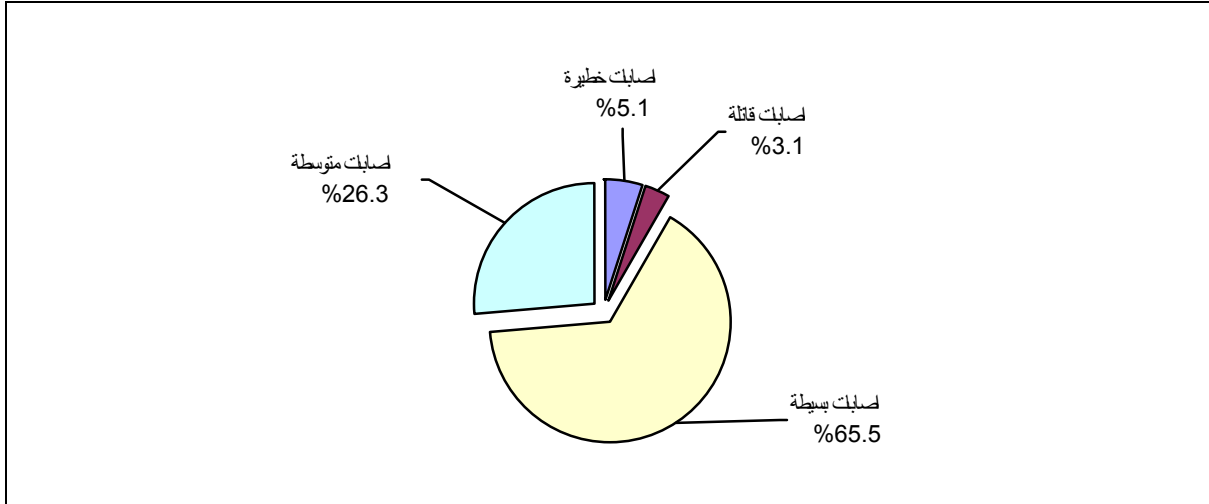
8.2.3

2,180 2006 3,509 ) ( 1,329



6,026 2006 9 1,676 4,350

%65.5  
 %3.1  
 %5.1  
 %26.3  
 %2.4  
 ) 2005  
**(17)**  
**2006**  
**:(10)**

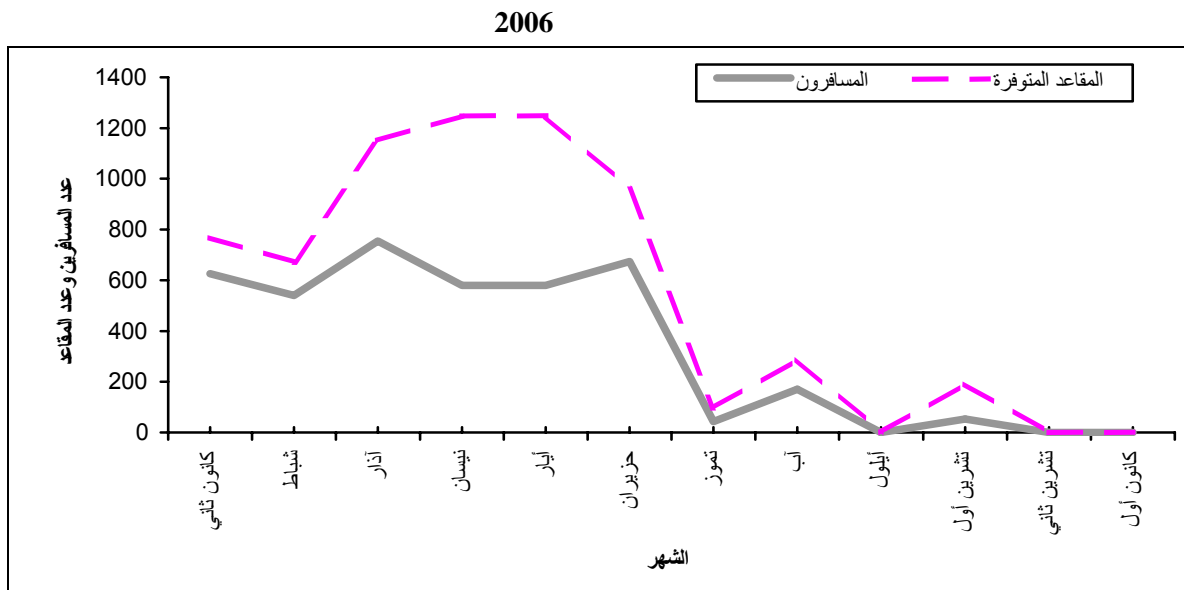


**:3.3**

)  
 4,227  
 %63.8  
 138  
 2006  
 224 ( )  
 6,624  
 4,267  
 86  
 %46.3 )  
**(20)**  
 9,212  
 12  
 2006  
 552  
 335  
 755  
 ) %65.5  
 1,152  
 24  
**(19)**



(11):



(11)

( ) .

53,457

2000

:4.3

2006

293,224

24,435

%65.2

%5.2

%25.2

%.4.4

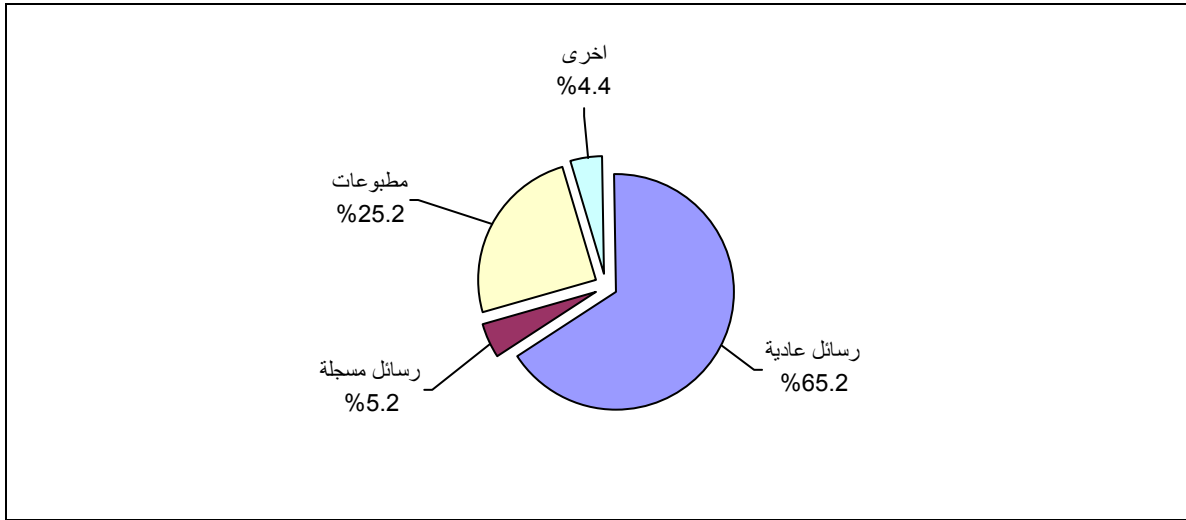
37,456

.(21 )

9,587

2006

:(12)



2006

4,804

57,647

%4.1

%3.5

%5.5

%86.9

8,576

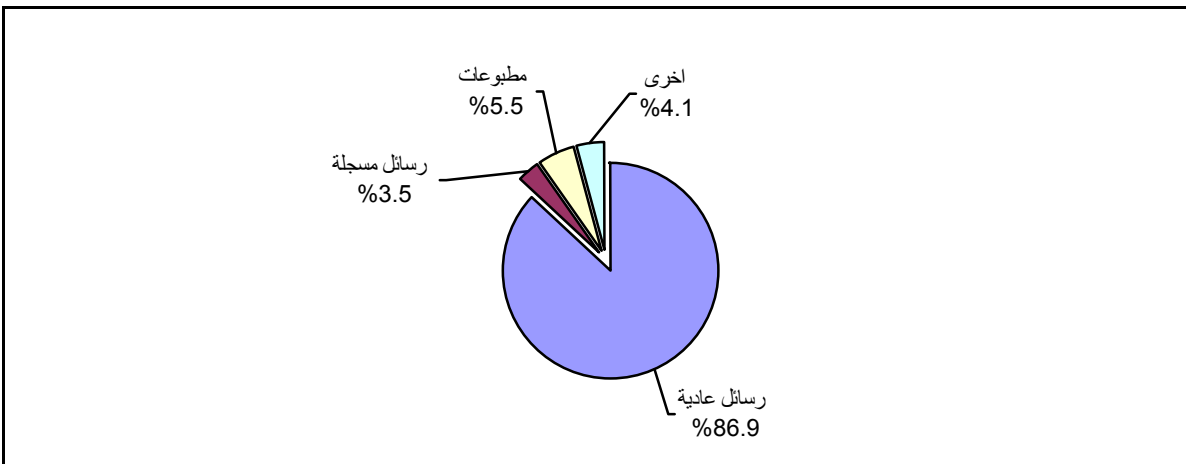
.(21

)

3,334

2006

:(13)



227,748

18,979

2006

%46.9

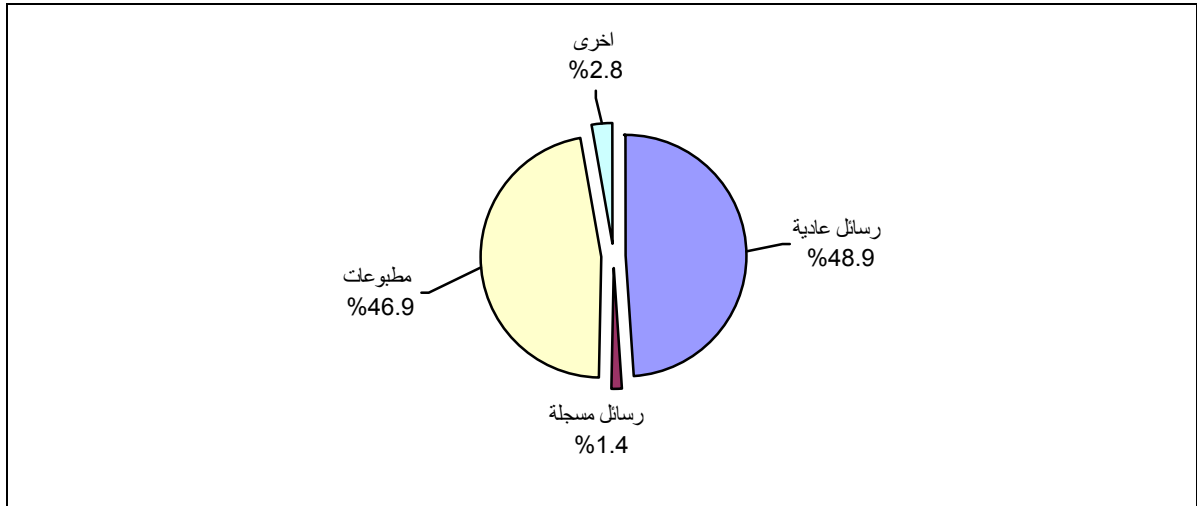
%1.4

%48.9

%2.8

2006

:(14)



35,622

.(22 ) 7,782

28,986

2,416

2006

798

12,602

%53.6

) .%2.0

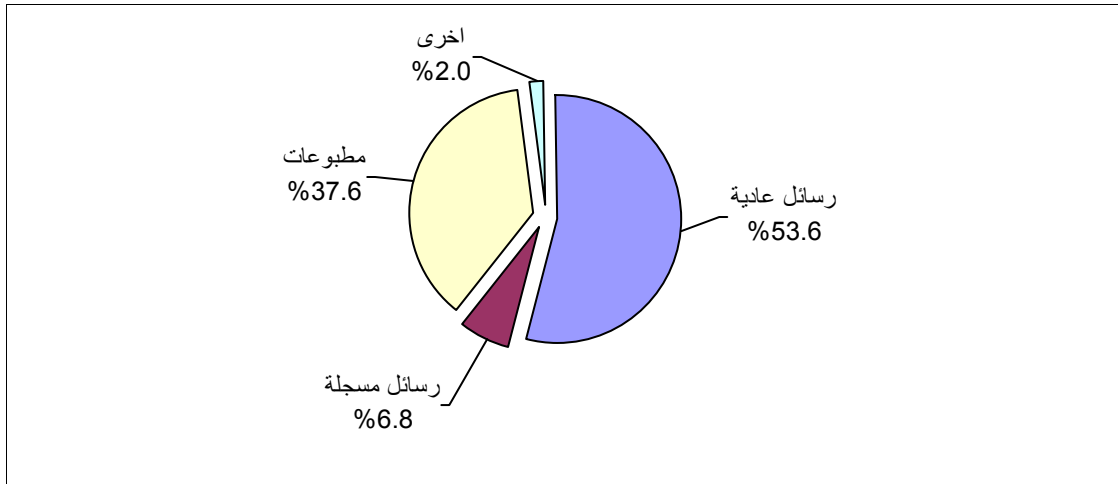
%6.8

%37.6

.(22

2006

:(15)



1,605,100

133,758

2006

%96.7

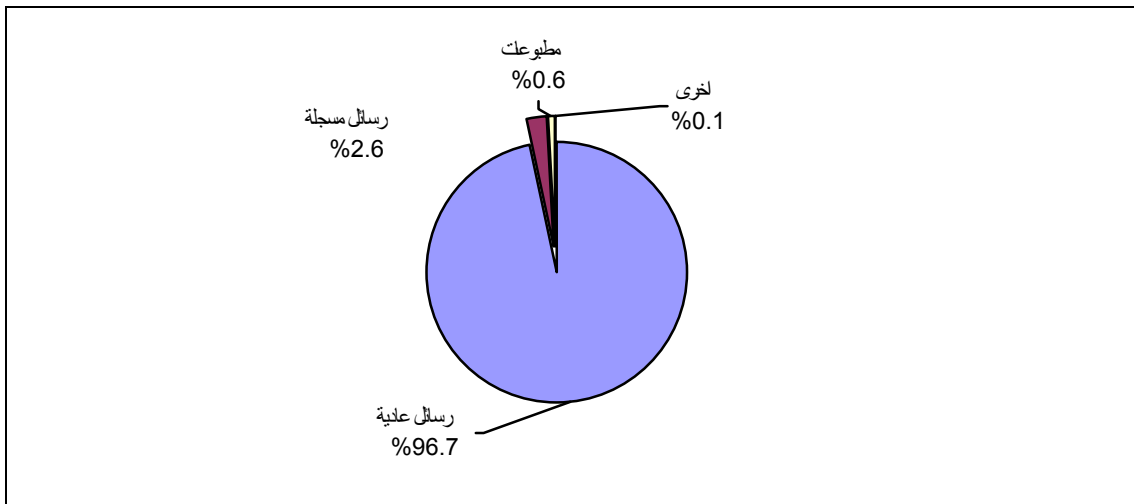
%0.6

%2.6

%0.1

2006

:(16)



443,886

36,991

2006

%0.6

%1.2

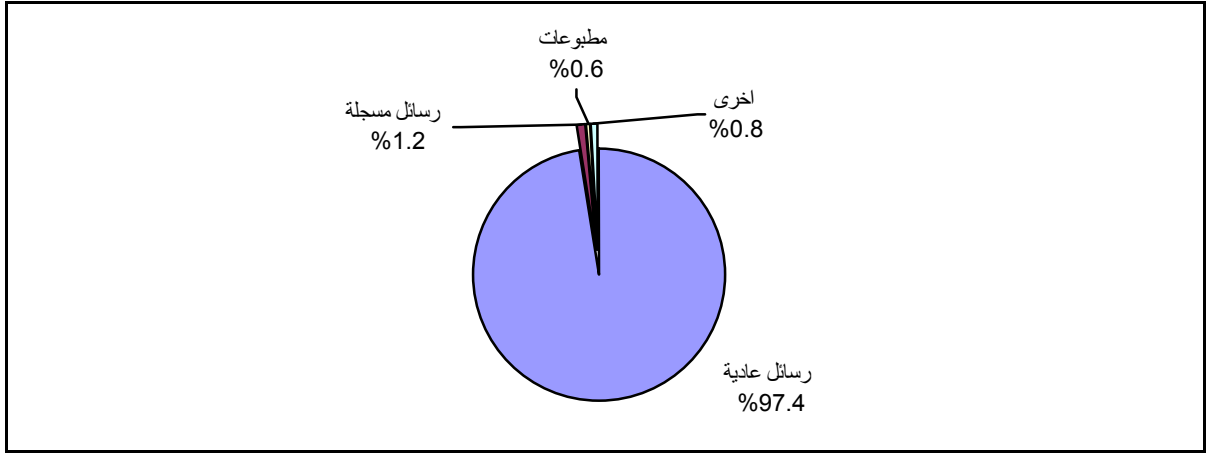
% 97.4

.(23 )

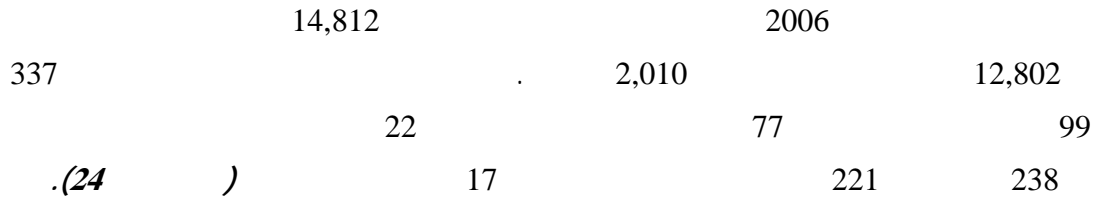
%0.8

2006

:(17)



:1.4.3

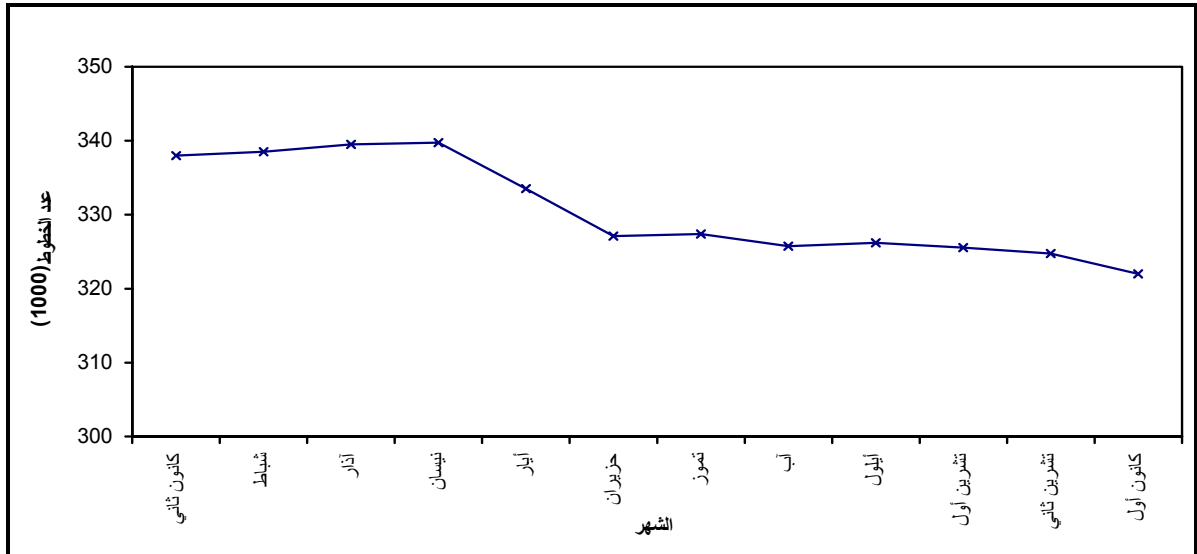


:5.3



2006

:(18)



1,942

.(27 )

485

1,457 2006

%79

2006

45,243,238

%30.8

%69.2

%22.9

%77.1

%17.3

%77.1

%1.2

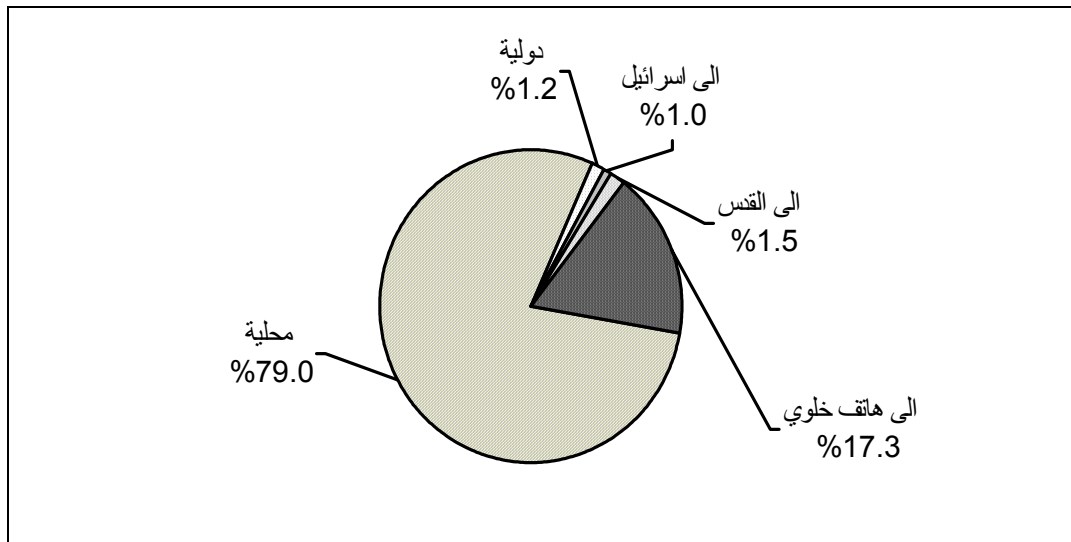
%1.0

%22.9

.%1.5

2006

:(19)



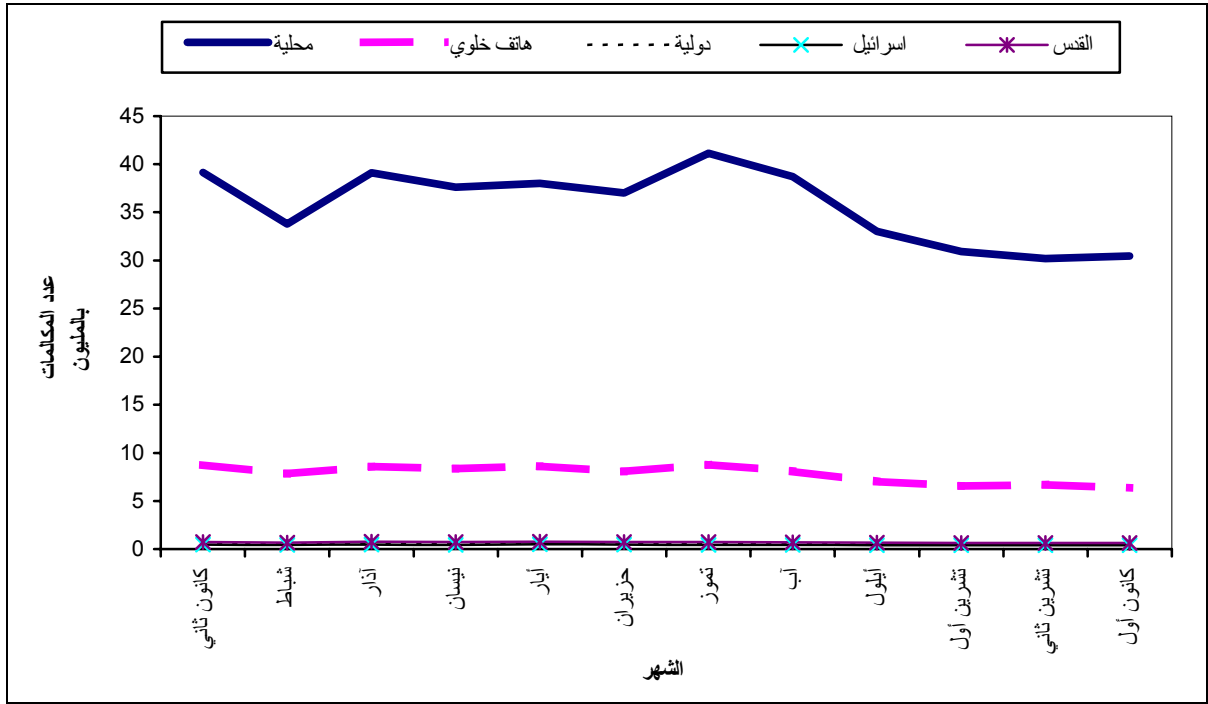
51,700,307

.(28 ) 2006

% 10

2006

:(20)



2006 : 117,789,075

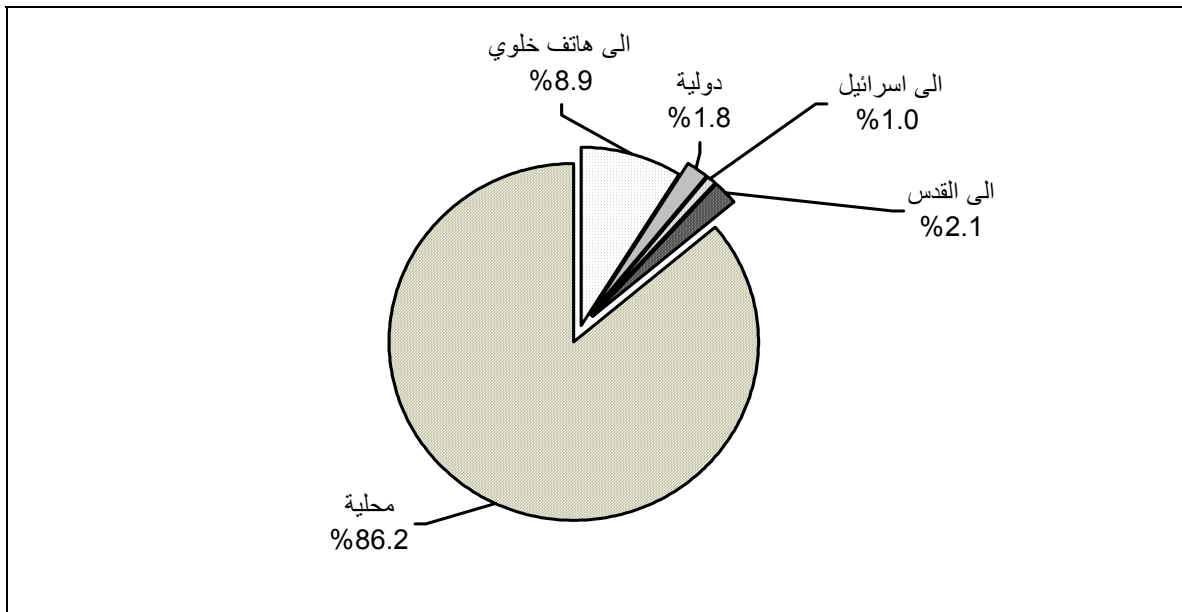
%1.8      %8.9      %86.2

%2.1      %1.0

.(29 )

2006

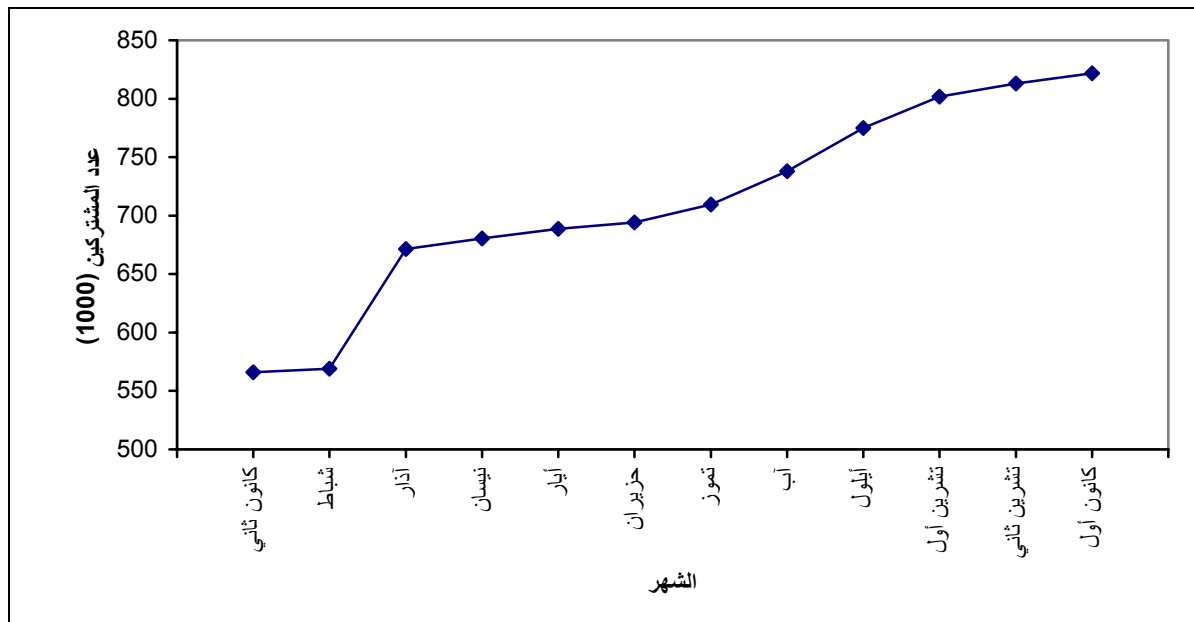
:(21)



:1.5.3

821,800 2006 " " ( )  
22 . (30 )

2006 " " : (22)



:2.5.3

4 5  
(31 ) 2006

38,337 52,866 .  
8,110 14,529 25,828 (ADSL)  
17,718 .(32 ) .2006

138 5 133 2006  
180 11 1,512  
(33 ) 1.3





.....

**:1.4**

**:2.4**



: 1.5

1.1.5

2.1.5

2.5

: 3.5

•

•

1967

•



	:	<b>.1995</b>	<i>.1</i>
	.	-	.
	.	<b>.1998</b>	<i>.2</i>
	-	<i>.(8 )</i>	.
-	<i>.(2007-1999)</i>	<b>.2006</b>	<i>.3</i>
	.	.	.
	.	-	<i>.(2006-1998)</i>
	.	.	<i>.4</i>

2006 -2001

:1

**Table 1: Employed Persons in the Transportation, Storage and Communication Activities in the Palestinian Territory by Selected Indicators, 2001-2006**

Year and Region	Paid Employees						Percentage of Employed Persons in Transportation, Storage and Communication of Total Employment	
	(* ) Median Daily Wage (NIS*)		Average Monthly Working Days per Employee		Average Weekly Working Hours			
	All Sectors	Transportation, Storage and Communication Sector	All Sectors	Transportation, Storage and Communication Sector	All Sectors	Transportation, Storage and Communication Sector		
<b>Palestinian Territory</b>								
2001	61.5	57.7	23.1	23.8	42.2	49.8	5.5	2001
2002	60.0	57.7	23.0	22.6	41.1	44.8	5.5	2002
2003	60.0	57.7	23.0	23.7	42.1	46.4	5.8	2003
2004	62.2	65.4	23.5	24.3	43.0	48.3	5.4	2004
2005	69.2	63.5	23.4	24.0	42.4	47.2	5.7	2005
2006	73.1	60.0	23.1	23.1	41.7	46.3	5.7	2006
<b>West Bank</b>								
2001	70.1	65.4	22.6	24.4	42.9	50.2	5.7	2001
2002	72.6	67.6	22.5	22.2	41.6	44.8	6.0	2002
2003	72.3	76.9	23.4	24.0	43.0	46.3	6.0	2003
2004	71.2	76.9	23.7	24.9	43.7	48.7	5.7	2004
2005	76.9	76.9	23.0	24.3	43.0	47	6.0	2005
2006	76.9	81.3	22.7	24.1	42.5	46.7	5.8	2006

2006 -2001

: ( ) 1

**Table 1 (Cont.): Employed Persons in the Transportation, Storage and Communication Activities in the Palestinian Territory by Selected Indicators, 2001-2006**

Year and Region	Paid Employees						Percentage of Employed Persons in Transportation, Storage and Communication of Total Employment	
	(*) Median Daily Wage (NIS*)		Average Monthly Working Days per Employee		Average Weekly Working Hours			
	All Sectors	Transportation, Storage and Communication Sector	All Sectors	Transportation, Storage and Communication Sector	All Sectors	Transportation, Storage and Communication Sector		
<b>Gaza Strip</b>								
2001	50.0	40.0	24.4	21.7	40.3	48.4	4.8	2001
2002	50.0	38.5	23.9	24.0	40.1	45.2	4.5	2002
2003	50.0	38.5	22.4	22.9	40.6	46.8	5.2	2003
2004	53.8	38.5	23.2	22.8	41.6	47.4	4.7	2004
2005	57.7	40.0	24.0	23.4	41.2	47.7	5.1	2005
2006	85.4	35.0	23.9	21.3	40.0	45.5	5.6	2006

•The average exchange rates of NIS per US\$ during the years, 2001, 2002, 2003, 2004, 2005, 2006. 2006 2005 2004 2003 2002 2001 :  
are: 0.238, 0.211, 0.220, 0.223. 0.223, 0.224 Respectively  
Source: Palestinian Central Bureau of Statistics, 2007. Database Labour Force Survey, (2001-2006). (2006-2001) 2007 :  
\* 0.224 ، 0.223 ، 0.223 ،0.220 ،0.211, 0.238 على التوالي.



2006

:2

**Table 2: Road Network Length in the Palestinian Territory by Governorate, Region and Road Type, 2006**

Units in Kilometers

Region / Governorate	Paved Roads						/
	Grand Total	Bypass	Total	Local	Regional	Main	
<b>Palestinian Territory</b>	<b>5146.9</b>	<b>764.4</b>	<b>4382.5</b>	<b>3410.1</b>	<b>437.8</b>	<b>534.6</b>	
<b>West Bank</b>	<b>4,516.4</b>	<b>764.4</b>	<b>3,752.0</b>	<b>2,899.1</b>	<b>380.0</b>	<b>472.9</b>	
Jenin	417.3	20.5	396.8	306.8	46.7	43.3	
Tubas	170.7	29.4	141.3	101.9	12.9	26.5	
Tulkarm	189.8	15.7	174.1	117.1	40.1	16.9	
Nablus	403.8	90.5	313.3	232.8	5.5	75.0	
Qalqiliya	188.6	39.8	148.8	100.1	24.7	24.0	
Salfit	171.5	55.3	116.2	96.2	19.6	0.4	
Ramallah & Al-Bireh	695.9	155.0	540.9	415.6	76.2	49.1	
Jericho & Al Aghwar	519.6	40.5	479.1	362.8	8.4	107.9	
Jerusalem	466.0	135.4	330.6	268.1	25.5	37.0	
Bethlehem	545.1	50.3	494.8	429.6	18.0	47.2	
Hebron	748.1	132.0	616.1	468.1	102.4	45.6	
<b>Gaza Strip</b>	<b>630.5</b>	-	<b>630.5</b>	<b>511.0</b>	<b>57.8</b>	<b>61.7</b>	
North Gaza	112.7	-	112.7	98.0	7.2	7.5	
Gaza	135.5	-	135.5	105.8	12.6	17.1	
Deir Al-Balah	94.1	-	94.1	83.1	1.2	9.8	
Khan Yunis	207.9	-	207.9	173.1	23.1	11.7	
Rafah	80.3	-	80.3	51.0	13.7	15.6	

Source: Palestinian Water Authority, 2006

.2006

:

2006

:3

Table 3: Licensed Road Vehicles in Remaining West Bank by Governorate and Type of Vehicle, 2006

Governorate	Total	Other Vehicles	Trucks and Commercial Cars	Road Tractors	Agricultural Tractors	Trailers and Semi-Trailers	Public Buses	Private Buses	Motorcycles and Moped	<sup>1</sup> Taxis	Private Cars	
Jenin*	6,801	38	1,650	12	138	4	107	25	1	797	4,029	*
Tulkarm	5,268	14	822	9	59	0	77	32	3	673	3,579	
Nablus**	10,770	20	2,101	9	85	4	111	44	4	1,301	7,091	**
Qalqiliya	2,412	11	625	5	49	3	6	5	2	284	1,422	
Ramallah & Al-Bireh	14,934	73	2,918	42	55	16	93	59	3	2,053	9,622	
Jericho & Al Aghwar	1,308	1	240	4	19	2	27	3	4	208	800	
Bethlehem	6,491	18	969	3	26	0	101	39	6	659	4,670	
Hebron	9,515	20	2,688	8	92	3	129	92	6	1,367	5,110	
<b>Remaining West Bank</b>	<b>57,499</b>	<b>195</b>	<b>12,013</b>	<b>92</b>	<b>523</b>	<b>32</b>	<b>651</b>	<b>299</b>	<b>29</b>	<b>7,342</b>	<b>36,323</b>	

<sup>1</sup> The number of taxis in this column does not reflect the actual number of working taxis in the governorates, because most of taxis were initially registered in Nablus and Ramallah & Al-Bireh governorates.

\* Include Tubas, \*\* Include Salfit

Source: Ministry of Transport, 2006.

2006

2006

:4

Table 4: Licensed Road Vehicles in Gaza Strip by Area and Type of Vehicle, 2006

Area	Total	Other Vehicles	Trucks and Commercial Cars	Road Tractors	Agricultural Tractors	Trailers and Semi-Trailers	Buses	Motorcycles and Moped	" " Taxis	Private Cars	
Northern Area <sup>1</sup>	<b>44,461</b>	291	8,337	250	579	383	190	180	2,031	32,220	<sup>1</sup>
Southern Area <sup>2</sup>	<b>14,686</b>	31	2,451	34	553	52	13	39	1,361	10,152	<sup>2</sup>
<b>Gaza Strip</b>	<b>59,147</b>	<b>322</b>	<b>10,788</b>	<b>284</b>	<b>1,132</b>	<b>435</b>	<b>203</b>	<b>219</b>	<b>3,392</b>	<b>42,372</b>	

<sup>1</sup> Northern Area includes both Gaza, and Gaza North governorates.

<sup>2</sup> Southern Area includes Deir Al-Balah, Khan Yunis, and Rafah governorates.

Source: Ministry of Transport, 2006.

2006

:5

Table 5: New Registered Road Vehicles in Remaining West Bank by Month and Type of Vehicle, 2006

Month	Total	Other Vehicles	Trucks and Commercial Cars	Road Tractors	Agricultural Tractors	ت Trailers and Semi-Trailers	Public Buses	Private Buses	Motorcycles and Moped	" Taxis"	Private Cars
January	1,372	31	219	3	1	0	12	1	28	167	910
February	849	5	162	3	1	2	13	7	1	212	443
March	583	3	131	2	3	0	15	1	0	140	288
April	408	2	74	2	4	0	12	0	0	87	227
May	350	3	75	2	2	1	2	0	0	59	206
June	247	3	27	0	3	0	4	0	0	29	181
July	279	0	42	0	1	0	2	0	0	24	210
August	319	0	37	1	1	2	4	0	1	17	256
September	1	0	0	0	0	0	0	0	0	0	1
October	0	0	0	0	0	0	0	0	0	0	0
November	30	0	0	0	0	0	0	0	0	1	29
December	6	0	0	0	0	0	0	0	0	0	6
<b>Total of Year</b>	<b>4,444</b>	<b>47</b>	<b>767</b>	<b>13</b>	<b>16</b>	<b>5</b>	<b>64</b>	<b>9</b>	<b>30</b>	<b>736</b>	<b>2,757</b>

Source: Ministry of Transport, 2006.

.2006

:

2006

:6

Table 6: : New Registered Road Vehicles in Gaza Strip by Month and Type of Vehicle, 2006

Month	Total	Other Vehicles	Trucks and Commercial Cars	Road Tractors	Agricultural Tractors	Trailers and Semi-Trailers	Buses	Motorcycles and Moped	" "	Taxis	Private Cars
January	390	5	168	2	3	0	2	0	0	0	210
February	225	0	38	0	0	0	1	0	0	0	186
March	153	0	50	0	1	0	1	0	0	0	101
April	152	0	88	0	0	0	0	0	0	0	64
May	89	0	17	2	0	0	0	0	3	0	67
June	60	0	15	0	1	0	0	0	0	0	44
July	95	0	31	0	0	0	1	0	2	0	61
August	253	1	35	0	0	0	0	0	7	0	210
September	145	3	29	1	2	0	2	0	8	0	100
October	57	1	12	0	2	0	0	0	1	0	41
November	60	0	9	0	0	0	0	0	0	0	51
December	106	2	18	0	1	0	0	0	4	0	81
<b>Total of Year</b>	<b>1,785</b>	<b>12</b>	<b>510</b>	<b>5</b>	<b>10</b>	<b>0</b>	<b>7</b>	<b>0</b>	<b>25</b>	<b>0</b>	<b>1,216</b>

Source: Ministry of Transport, 2006.

.2006

:

2006

:7

Table 7: New Registered Road Vehicles in Remaining West Bank by Governorate and Type of Vehicle, 2006

Governorate	Total	Other Vehicles	Trucks and Commercial Cars	جرارات Road Tractors	Agricultural Tractors	Trailers and Semi-Trailers	Public Buses	Private Buses	Motorcycles and Moped	Taxis	Private Cars	
Jenin*	374	2	85	4	4	0	21	5	0	93	160	*
Tulkarm	209	6	26	1	0	0	3	0	0	70	103	
Nablus**	475	1	29	0	0	2	8	0	0	182	253	**
Qalqiliya	123	3	23	1	0	0	0	0	0	27	69	
Ramallah & Al-Bireh	2,047	31	400	5	4	3	15	2	0	178	1,409	
Jericho & Al Aghwar	83	0	7	0	1	0	2	0	28	11	34	
Bethlehem	425	2	43	0	0	0	6	1	2	36	335	
Hebron	708	2	154	2	7	0	9	1	0	139	394	
<b>Remaining West Bank</b>	<b>4,444</b>	<b>47</b>	<b>767</b>	<b>13</b>	<b>16</b>	<b>5</b>	<b>64</b>	<b>9</b>	<b>30</b>	<b>736</b>	<b>2,757</b>	

\*Include Tubas, \*\* Include Salfit

\*\*

\*

Source: Ministry of Transport, 2006.

.2006

:

2006

:8

Table 8: New Registered Road Vehicles in Gaza Strip by Area and Type of Vehicle, 2006

Area	Total	Other Vehicles	Trucks and Commercial Cars	Road Tractors	Agricultural Tractors	Trailers and Semi-Trailers	Buses	Motorcycles and Moped	Taxis	Private Cars	
Northern Area <sup>1</sup>	1,785	12	510	5	10	0	7	0	25	1,216	<sup>1</sup>
Southern Area <sup>2</sup>	0	0	0	0	0	0	0	0	0	0	<sup>2</sup>
<b>Gaza Strip</b>	<b>1,785</b>	<b>12</b>	<b>510</b>	<b>5</b>	<b>10</b>	<b>0</b>	<b>7</b>	<b>0</b>	<b>25</b>	<b>1,216</b>	

<sup>1</sup>Northern Area includes both Gaza, and North Gaza governorates.

1

<sup>2</sup>Southern Area includes Deir Al-Balah, Khan Yunis, and Rafah governorates.

2

Source: Ministry of Transport, 2006.

.2006

:

2006

1000

:9

**Table 9: Rate of Licensed Motorization Per 1000 Capita in Remaining West Bank and Gaza Strip by Type of Vehicle and Region, 2006**

Vehicle Type	Remaining West Bank and Gaza Strip	Gaza Strip	Remaining West Bank	
Private Cars	21.29	28.79	16.32	
Taxis	2.90	2.30	3.30	( )
Motorcycles and Moped	0.07	0.15	0.01	
Buses	0.31	0.14	0.43	
Trailers and Semi-Trailers	0.13	0.30	0.01	
Agricultural Tractors	0.45	0.77	0.24	
Road Tractors	0.10	0.19	0.04	
Trucks and Commercial Cars	6.17	7.33	5.40	
Other Vehicles	0.14	0.22	0.09	
<b>All Types</b>	<b>31.56</b>	<b>40.19</b>	<b>25.84</b>	

Source: Direct calculation from the Ministry of Transport raw Data,

using the data of the Population Projections in the Palestinian Territory, 2006 Revised Series.

2006 .



2006

:10

Table 10: Driving Schools in Remaining West Bank and Gaza Strip by Governorate and Selected Indicators, 2006

Region / Governorate	Number of Vehicles	Number of Trainers	Number of Driving Schools	/
<b>Remaining West Bank</b>	<b>566</b>	<b>739</b>	<b>184</b>	
Jenin*	76	92	24	*
Tulkarm	42	59	14	
Nablus*	109	132	32	
Qalqiliya	22	23	6	
Ramallah & Al-Bireh**	131	153	36	**
Jericho & Al Aghwar	36	30	12	
Jerusalem ***	14	21	8	***
Bethlehem	66	82	27	
Hebron	70	147	25	
<b>Gaza Strip</b>	<b>150</b>	<b>380</b>	<b>56</b>	
Gaza North	3	26	1	
Gaza	92	262	30	
Deir El-Balah	15	22	8	
Khan Yunis	26	28	10	
Rafah	14	42	7	
<b>Remaining West Bank and Gaza Strip</b>	<b>716</b>	<b>1,119</b>	<b>240</b>	

\*Include Tubas, \*\* include Salfit.

\*\*\* Data does not Includes those parts of Jerusalem which were annexed by Israel in 1967. .1967

Source: Ministry of Transport, 2006.

.2006

2006

:11

**Table 11: Number of Bus Companies, Rent a Car Offices, Taxi Offices and Number of their Working Buses, Cars, Taxis in Remaining West Bank and Gaza Strip by Governorate, 2006**

Region / Governorate	Number of Taxis	Number of Taxi Offices	Number of Cars	Number of Rent a Car Offices	Number of Buses	Number of Bus Companies	/
<b>Remaining West Bank</b>	<b>3,223</b>	<b>273</b>	<b>710</b>	<b>68</b>	<b>573</b>	<b>83</b>	
Jenin*	77	32	30	5	112	19	*
Tulkarm	301	29	13	3	68	3	
Nablus**	798	43	45	9	111	15	**
Qalqiliya	170	12	67	4	8	1	
Ramallah & Al-Bireh	652	80	379	23	69	11	
Jericho & Al Aghwar	155	8	10	3	14	4	
Jerusalem ***	55	10	5	7	21	5	***
Bethlehem	239	19	101	11	56	8	
Hebron	776	40	60	3	114	17	
<b>Gaza Strip*****</b>	<b>157</b>	<b>28</b>	<b>125</b>	<b>7</b>	<b>135</b>	<b>16</b>	<b>****</b>
North Gaza	10	6	0	0	10	2	
Gaza	140	21	125	7	111	8	
Deir Al-Balah	7	1	0	0	6	2	
Khan Yunis	0	0	0	0	3	2	
Rafah	0	0	0	0	5	2	
<b>Remaining West Bank and Gaza Strip</b>	<b>3,380</b>	<b>301</b>	<b>835</b>	<b>75</b>	<b>708</b>	<b>99</b>	

\*Include Tubas, \*\* include Salfit.

\*\*\* Data does not Includes those parts of Jerusalem which were annexed by Israel in 1967. .1967

Source: Ministry of Transport, 2006.

2006

:12

Table 12: Licensed Garages in Remaining West Bank Governorates and Gaza Strip by Governorate and Type of Garage, 2006

Region / Governorate	Total	Spare parts Stores	Motor vehicles repair workshops	Motor vehicles trading shops	/
<b>Remaining West Bank</b>	<b>649</b>	<b>100</b>	<b>356</b>	<b>193</b>	
Jenin*	75	12	36	27	*
Tulkarm	66	14	40	12	
Nablus**	162	19	104	39	**
Qalqiliya	31	3	18	10	
Ramallah & Al-Bireh	146	25	68	53	
Jericho & Al Aghwar	13	0	1	12	
Bethlehem	56	6	30	20	
Hebron	100	21	59	20	
<b>Gaza Strip</b>	<b>1,325</b>	<b>525</b>	<b>592</b>	<b>208</b>	
North Gaza	178	78	64	36	
Gaza	956	372	430	154	
Deir Al-Balah	41	13	25	3	
Khan Yunis	120	44	61	15	
Rafah	30	18	12	0	
<b>Remaining West Bank and Gaza Strip</b>	<b>1,974</b>	<b>625</b>	<b>948</b>	<b>401</b>	

\*Include Tubas, \*\* Include Salfit.

\*\* \*

Source: Ministry of Transport, 2006.

.2006

:

2006-1999

:13

Table 13: Number of Driving Licences Issued in Remaining West Bank and Gaza Strip by Year and Region, 1999-2006

Year	Remaining West Bank and Gaza Strip	Gaza Strip	Remaining West Bank	
1999	20,434	6,910	13,524	1999
2000	21,597	7,188	14,409	2000
2001	17,088	5,916	11,172	2001
2002	11,338	5,408	5,930	2002
2003	15,575	6,647	8,928	2003
2004	17,838	7,622	10,216	2004
2005	21,133	6,392	14,741	2005
2006	14,147	6,289	7,858	2006

Source: Ministry of Transport, 2006.

.2006

:

2006

:14

Table 14: Number of Driving Licences Issued in Remaining West Bank and Gaza Strip by Month and Region, 2006

Month	Total	Gaza Strip	Remaining West Bank
January	1,377	506	871
February	1,782	581	1,201
March	1,724	660	1,064
April	1,885	631	1,254
May	1,830	553	1,277
June	1,542	536	1,006
July	1,144	493	651
August	1,073	588	485
September	521	519	2
October	286	286	0
November	481	435	46
December	502	501	1
<b>Total of year</b>	<b>14,147</b>	<b>6,285</b>	<b>7,858</b>

Source: Ministry of Transport, 2006.

.2006

:

2006–2002

:15

Table 15: Number of Registered Road Traffic Accidents and Casualties by Type of Injury in Remaining West Bank and Gaza Strip, 2002 –2006

Indicators	Remaining West Bank and Gaza Strip					Gaza Strip					Remaining West Bank					
	2006	2005	2004	2003	2002	2006	2005	2004	2003	2002	2006	2005	2004	2003	2002	
<b>Number of Road Accidents</b>	<b>3,509</b>	<b>5,628</b>	<b>4,722</b>	<b>3,978</b>	<b>2,503</b>	<b>1,329</b>	<b>1,939</b>	<b>1,786</b>	<b>1,778</b>	<b>1,504</b>	<b>2,180</b>	<b>3,689</b>	<b>2,936</b>	<b>2,200</b>	<b>999</b>	
<b>Total Number of Injured Persons:</b>	<b>6,026</b>	<b>6,667</b>	<b>5,107</b>	<b>4,589</b>	<b>2,693</b>	<b>1,676</b>	<b>2,367</b>	<b>1,966</b>	<b>2,162</b>	<b>1,667</b>	<b>4,350</b>	<b>4,300</b>	<b>3,141</b>	<b>2,427</b>	<b>1,026</b>	:
Slightly Injured	3,950	4,351	2,992	2,395	1,352	708	1161	765	797	645	3,242	3,190	2,227	1,598	707	
Moderate Injured	1,583	1,858	1,641	1,621	1,015	833	1062	981	1048	774	750	796	660	573	241	
Seriously Injured	305	299	311	398	229	62	80	144	237	177	243	219	167	161	52	
Fatally Injured	188	159	163	175	97	73	64	76	80	71	115	95	87	95	26	

Source: General Commisariat of the Palestinian Police, 2006.

.2006

:

2006

:16

Table 16: Registered Road Traffic Accidents in Remaining West Bank and Gaza Strip by Governorate and Month, 2006

Region / Governorate	Totl	December	November	October	September	August	July	June	May	April	March	February	January	/
<b>Remaining West Bank</b>	<b>2,180</b>	<b>164</b>	<b>181</b>	<b>200</b>	<b>188</b>	<b>235</b>	<b>163</b>	<b>193</b>	<b>182</b>	<b>159</b>	<b>164</b>	<b>178</b>	<b>173</b>	
Jenin*	167	10	14	12	17	26	15	13	16	9	11	9	15	*
Tulkarm	166	8	9	13	17	29	18	12	20	17	8	10	5	
Nablus**	242	18	12	22	21	17	22	22	16	23	15	31	22	**
Qalqiliya	118	10	6	10	2	9	17	12	12	9	7	9	15	
Ramallah & Al-Bireh	678	67	79	76	65	48	31	67	55	27	57	60	46	
Jericho & Al Aghwar	156	12	17	14	7	9	8	10	9	18	15	16	21	
Bethlehem	154	9	14	14	10	11	15	15	12	19	13	13	9	
Hebron	499	30	30	39	49	86	37	42	42	37	38	30	39	
<b>Gaza Strip</b>	<b>1,329</b>	<b>67</b>	<b>85</b>	<b>129</b>	<b>116</b>	<b>132</b>	<b>88</b>	<b>104</b>	<b>112</b>	<b>122</b>	<b>123</b>	<b>107</b>	<b>144</b>	
North Gaza	191	8	15	15	14	21	12	16	19	15	19	17	20	
Gaza	614	34	38	56	62	53	47	53	50	56	56	53	56	
Deir Al-Balah	251	8	15	32	20	28	12	17	22	24	31	19	23	
Khan Yunis	128	8	11	15	9	17	10	8	6	8	5	11	20	
Rafah	145	9	6	11	11	13	7	10	15	19	12	7	25	
<b>Remaining West Bank and Gaza Strip</b>	<b>3,509</b>	<b>231</b>	<b>266</b>	<b>329</b>	<b>304</b>	<b>367</b>	<b>251</b>	<b>297</b>	<b>294</b>	<b>281</b>	<b>287</b>	<b>285</b>	<b>317</b>	

\*Include Tubas, \*\* Include Salfit.

\*\* \*

Source: General Commisariat of the Palestinian Police, 2006.

.2006

2006

:17

Table 17 : Casualties in Registered Road Traffic Accidents in Remaining West Bank and Gaza Strip by Governorate and Type of Injury, 2006

Region / Governorate	Total	Fatally Injured	Seriously Injured	Moderately Injured	Slightly Injured	/
<b>Remaining West Bank</b>	<b>4,350</b>	<b>115</b>	<b>243</b>	<b>750</b>	<b>3,242</b>	
Jenin*	520	22	25	107	366	*
Tulkarm	360	7	14	74	265	
Nablus**	723	17	87	64	555	**
Qalqiliya	298	8	8	36	246	
Ramallah & Al-Bireh	1,138	23	32	162	921	
Jericho and Al Aghwar	200	5	19	19	157	
Bethlehem	479	10	12	131	326	
Hebron	632	23	46	157	406	
<b>Gaza Strip</b>	<b>1,676</b>	<b>73</b>	<b>62</b>	<b>833</b>	<b>708</b>	
Gaza	211	12	8	107	84	
North Gaza	764	15	20	345	384	
Deir Al-Balah	375	23	14	180	158	
Khan Yunis	151	9	12	70	60	
Rafah	175	14	8	131	22	
<b>Remaining West Bank and Gaza Strip</b>	<b>6,026</b>	<b>188</b>	<b>305</b>	<b>1,583</b>	<b>3,950</b>	

\*Include Tubas, \*\* Include Salfit.

\*\* \*

Source: General Commisariat of the Palestinian Police, 2006.

.2006

:



2006-1999

:18

**Table 18: Regular Flights of the Palestinian Airlines by Selected Indicators, 1999-2006**

Year	Number of Available Seats	Number of Passengers	Number of Flights	
1999	76,736	41,067	990	1999
2000	129,264	53,457	1,354	2000
2001*	16,540	9,723	268	*2001
2002*	15,828	6,035	156	*2002
2003*	5,136	2,542	104	*2003
2004*	9,704	5,318	202	*2004
2005*	7,776	5,327	162	*2005
2006*	6,624	4,022	138	*2006

\* The data include departure and arrival Palestinian Airlines flights from and to AL- Arish Airport (Egypt)

( )

\*

Source: Palestinian Airlines, 2006.

.2006

:

2006 \* :19  
**Table 19: Regular Flights of the Palestinian Airlines\* by Selected Indicators, 2006**

Month	Number of Available Seats	Number of Passengers	Number of Flights
January	768	626	16
February	672	540	14
March	1,152	755	24
April	1,248	580	26
May	1,248	580	26
June	960	674	20
July	96	43	2
August	288	171	6
September	0	0	0
October	192	53	4
November	0	0	0
December	0	0	0
<b>Total of year</b>	<b>6,624</b>	<b>4,022</b>	<b>138</b>
<b>Average</b>	<b>552.0</b>	<b>335.2</b>	<b>11.5</b>

\* The data include departure and arrival Palestinian Airlines flights

from and to AL- Arish Airport (Egypt).

Source: Palestinian Airlines, 2006.

.( )

.2006

:

2006 \* :20  
**Table 20: Departure and Arrival Flights\* by Selected Indicators, 2006**

Flight Type	Number of Available Seats	Number of Passengers	Number of Flights
<b>Regular</b>			
Departure	3,312	2,069	69
Arrival	3,312	2,158	69
<b>Total</b>	<b>6,624</b>	<b>4,227</b>	<b>138</b>
<b>Irregular</b>			
Departure	4,606	451	43
Arrival	4,606	3,816	43
<b>Total</b>	<b>9,212</b>	<b>4,267</b>	<b>86</b>

\* The data include departure and arrival Palestinian Airlines flights from and to AL- Arish Airport (EGYPT) due to the Israeli enclosure for the Gaza international airport.

Source: Palestinian Airlines, 2006.

2006

:21

Table 21: International Dispatched &amp; Receipt Mail From &amp; to Remaining West Bank by Month and Type of Mail, 2006

Month	Printed Matters		Registered Letters		Regular Letters		* Express Mail*		
	Receipt	Dispatched	Receipt	Dispatched	Receipt	Dispatched	Receipt	Dispatched	
January	9,002	180	714	149	25,302	5,400	177	-	
February	5,660	100	513	211	15,945	4,154	230	-	
March	20,416	662	1,185	339	30,200	7,424	188	-	
April	6,200	180	343	282	17,560	3,920	252	-	
May	13,400	124	2,258	188	21,030	2,985	195	-	
June	8,750	98	767	135	22,320	3,080	85	-	
July	9,030	88	1,233	104	20,850	4,028	167	-	
August	60	280	1,650	112	10,120	3,066	790	-	
September	55	268	1,542	106	8,260	3,322	805	-	
October	1,100	380	1,560	114	7,300	3,415	778	-	
November	40	400	1,665	138	6,100	4,187	880	-	
December	50	420	1,750	140	6,318	5,138	885	-	
<b>Total of year</b>	<b>73,763</b>	<b>3,180</b>	<b>15,180</b>	<b>2,018</b>	<b>191,305</b>	<b>50,119</b>	<b>5,432</b>	-	

\*The data does not include Private Companies for Transportation of Express Mail.

\*

2006

:( ) 21

Table 21 (cont.): International Dispatched &amp; Receipt Mail From &amp; to Remaining West Bank by Month and Type of Mail, 2006

Month	Total		Small Packets		Telegrams		Parcels		
	Receipt	Dispatched	Receipt	Dispatched	Receipt	Dispatched	Receipt	Dispatched	
January	35,935	5,798	450	36	36	22	254	11	
February	22,576	4,483	113	5	4	6	111	7	
March	52,649	8,576	408	132	4	9	248	10	
April	24,643	4,426	124	36	0	0	164	8	
May	37,456	3,334	268	24	7	0	298	13	
June	32,165	3,341	175	19	5	0	63	9	
July	31,604	4,245	180	17	0	0	144	8	
August	13,228	3,655	12	56	16	25	580	116	
September	11,456	3,967	12	53	22	30	760	188	
October	11,741	4,375	220	76	32	30	751	360	
November	9,587	5,177	8	80	44	42	850	330	
December	10,184	6,270	11	84	55	38	1,115	450	
<b>Total of year</b>	<b>293,224</b>	<b>57,647</b>	<b>1,981</b>	<b>618</b>	<b>225</b>	<b>202</b>	<b>5,338</b>	<b>1,510</b>	

Source: Ministry of Telecom &amp; Information Technology 2006.

.2006

:

2006

:22

Table 22: International Dispatched &amp; Receipt Mail From &amp; to Gaza Strip by Month and Type of Mail, 2006

Month	Printed Matters		Registered Letters		Regular Letters		* Express Mail*		
	Receipt	Dispatched	Receipt	Dispatched	Receipt	Dispatched	Receipt	Dispatched	
January	6,073	47	232	151	7,995	1,091	42	-	
February	7,359	107	370	160	6,492	1,116	35	-	
March	8,532	8	476	289	7,022	1,066	33	-	
April	8,331	41	270	129	11,802	977	29	-	
May	11	8,488	186	234	7,041	3,807	66	-	
June	8,536	15	205	117	6,869	740	45	-	
July	5,674	8	173	114	5,057	887	68	-	
August	9,821	959	355	199	13,277	2,215	51	-	
September	9,316	1,220	375	231	1,536	919	110	-	
October	14,115	0	206	99	16,369	687	45	-	
November	17,209	0	227	164	17,235	1,247	151	-	
December	11,762	0	204	96	10,616	789	70	-	
<b>Total of year</b>	<b>106,739</b>	<b>10,893</b>	<b>3,279</b>	<b>1,983</b>	<b>111,311</b>	<b>15,541</b>	<b>745</b>	-	

\*The data does not include Private Companies for Transportation of Express Mail.

\*

2006

:( ) 22

Table 22 (cont.): International Dispatched &amp; Receipt Mail From &amp; to Gaza Strip by Month and Type of Mail, 2006

Month	Total		Small Packets		Telegrams		Parcels		
	Receipt	Dispatched	Receipt	Dispatched	Receipt	Dispatched	Receipt	Dispatched	
January	14,880	1,467	139	1	2	0	397	177	
February	14,662	1,475	93	6	0	0	313	86	
March	16,388	1,365	79	2	2	0	244	0	
April	20,852	1,208	127	9	0	0	293	52	
May	7,782	12,602	127	73	1	0	350	0	
June	16,078	940	102	8	0	0	321	60	
July	11,161	1,010	47	1	0	0	142	0	
August	23,904	3,388	128	15	0	0	272	0	
September	11,789	2,384	153	14	0	0	299	0	
October	31,284	798	182	12	0	0	367	0	
November	35,622	1,434	204	23	0	0	596	0	
December	23,346	915	167	30	0	0	527	0	
<b>Total of year</b>	<b>227,748</b>	<b>28,986</b>	<b>1,548</b>	<b>194</b>	<b>5</b>	<b>0</b>	<b>4,121</b>	<b>375</b>	

Source: Ministry of Telecom &amp; Information Technology 2006.

.2006

:

2006

:23

Table 23: Domestic Mail in Remaining West Bank and Gaza Strip by Month and Type of Mail, 2006

Month	Gaza Strip						Remaining West Bank					
	Small Packets	Telegrams	Parcels	Printed Matters	Registered Letters	Regular Letters	Small Packets	Telegrams	Parcels	Printed Matters	Registered Letters	Regular Letters
January	45	16	267	124	504	74,103	95	125	1	203	1,402	230,700
February	24	7	0	382	545	75,090	78	91	0	127	3,739	223,952
March	19	3	244	185	704	32,315	71	72	1	1,176	5,309	213,417
April	32	3	231	359	379	32,838	40	43	0	203	2,027	240,312
May	62	10	236	439	610	27,419	45	52	0	180	1,755	128,720
June	37	11	25	200	378	29,131	30	48	0	163	1,995	70,980
July	17	2	96	187	271	24,760	25	0	0	116	2,540	78,450
August	61	2	272	227	911	25,388	22	145	2	380	3,640	70,215
September	65	5	210	310	203	26,812	15	95	0	1,540	4,250	72,012
October	76	6	364	135	369	25,527	6	88	3	1,500	4,290	70,234
November	114	2	308	148	381	29,393	8	80	1	2,384	4,883	72,488
December	60	9	522	0	205	29,491	20	180	6	2,400	5,580	80,350
<b>Total of year</b>	<b>612</b>	<b>76</b>	<b>2,775</b>	<b>2,696</b>	<b>5,460</b>	<b>432,267</b>	<b>455</b>	<b>1,019</b>	<b>14</b>	<b>10,372</b>	<b>41,410</b>	<b>1,551,830</b>

Source: Ministry of Telecom &amp; Information Technology 2006.

.2006

:



2006

:24

Table 24: Number of Mail Service Centers and P.O. Boxes in Remaining West Bank and Gaza Strip by Governorate, 2006

Region / Governorate	P.O. Boxes	Mail Service Centers			/
		Total	Mail Service Division	Mail Service Office	
<b>Remaining West Bank</b>	<b>12,802</b>	<b>298</b>	<b>221</b>	<b>77</b>	
Jenin*	675	50	37	13	*
Tulkarm	675	39	28	11	
Nablus**	2,100	61	51	10	**
Qalqiliya	437	28	21	7	
Ramallah & Al-Bireh	4,250	74	58	16	
Jericho & Al Aghwar	360	2	1	1	
Jerusalem***	150	2	1	1	***
Bethlehem	2,295	16	11	5	
Hebron	1,860	26	13	13	
<b>Gaza Strip</b>	<b>2,010</b>	<b>39</b>	<b>17</b>	<b>22</b>	
North Gaza	75	7	3	4	
Gaza	1,620	9	4	5	
Deir Al-Balah	60	9	4	5	
Khan Yunis	180	11	5	6	
Rafah	75	3	1	2	
<b>Remaining West Bank and Gaza Strip</b>	<b>14,812</b>	<b>337</b>	<b>238</b>	<b>99</b>	

Source: Ministry of Telecom. &amp; Information Technology 2006.

.2006

\*Include Tubas, \*\* Include Salfit.

\*\*

\*

\*\*\* Data does not Includes those parts of Jerusalem which were annexed by Israel in 1967. .1967

\*\*\*

2006-1999

:25

**Table 25: Number of Main Telephone Lines in Remaining West Bank and Gaza Strip by Year and Region, 1999-2006**

Year	Remaining West Bank and Gaza Strip	Gaza Strip	Remaining West Bank	
1999	222,198	68,385	153,813	1999
2000	272,211	84,187	188,024	2000
2001	255,218	78,351	176,867	2001
2002	241,894	77,124	164,770	2002
2003	243,494	81,240	162,254	2003
2004	271,458	90,699	180,759	2004
2005	337,025	111,937	225,088	2005
2006	321,999	104,426	217,573	2006

Source: Palestine Telecommunications Company, 2006.

.2006

:

2006

:26

**Table 26: Number of Main Telephone Lines in Remaining West Bank and Gaza Strip by Month, Region and Type of Subscription, 2006**

Month	Grand Total			Governmental			Commercial			Household		
	Total	Gaza Strip	Remaining West Bank	Total	Gaza Strip	Remaining West Bank	Total	Gaza Strip	Remaining West Bank	Total	Gaza Strip	Remaining West Bank
January	338,001	111,916	226,085	9,760	3,933	5,827	43,949	10,633	33,316	284,292	97,350	186,942
February	338,515	111,645	226,870	9,774	3,942	5,832	43,872	10,587	33,285	284,869	97,116	187,753
March	339,500	111,560	227,940	9,799	3,951	5,848	43,954	10,568	33,386	285,747	97,041	188,706
April	339,758	111,445	228,313	9,785	3,956	5,829	44,025	10,533	33,492	285,948	96,956	188,992
May	333,526	108,374	225,152	9,778	3,964	5,814	43,445	10,342	33,103	280,303	94,068	186,235
June	327,115	105,030	222,085	9,791	3,961	5,830	42,707	10,042	32,665	274,617	91,027	183,590
July	327,379	105,067	222,312	10,134	3,963	6,171	42,710	10,035	32,675	274,535	91,069	183,466
August	325,744	105,068	220,676	9,810	3,974	5,836	42,647	9,987	32,660	273,287	91,107	182,180
September	326,209	105,262	220,947	9,831	3,980	5,851	42,763	10,003	32,760	273,615	91,279	182,336
October	325,555	105,051	220,504	9,811	3,972	5,839	42,677	9,983	32,694	273,067	91,096	181,971
November	324,735	105,597	219,138	9,850	3,997	5,853	42,786	10,041	32,745	272,099	91,559	180,540
December	321,999	104,426	217,573	9,873	4,002	5,871	42,536	9,949	32,587	269,590	90,475	179,115

Source: Palestine Telecommunications Company, 2006.

.2006

:

2006

:27

Table 27: Number of Main Telephone Lines in Remaining West Bank and Gaza Strip by Governorate, Region and Type of Subscription, 2006

Governorate	Total	Public phone	Type of Subscription			المحافظة
			Governmental	Commercial	Residential	
<b>Remaining West Bank</b>	<b>219,030</b>	<b>1,457</b>	<b>5,871</b>	<b>32,587</b>	<b>179,115</b>	باقي الضفة الغربية
Jenin*	23,580	151	541	3,206	19,682	جنين*
Tulkarm	19,258	209	378	2,281	16,390	طولكرم
Nablus**	46,412	280	1017	5,911	39,204	نابلس**
Qalqiliya	10,081	55	299	1289	8,438	قلقيلية
Ramallah & Al-Bireh	43,929	191	1,921	8,416	33,401	رام الله والبيرة
Jericho and Al Aghwar	3,944	49	225	566	3,104	اريجا والأغوار
Jerusalem***	12,057	99	238	1,932	9,788	القدس***
Bethlehem	20,563	164	424	3,162	16,813	بيت لحم
Hebron	39,206	259	828	5,824	32,295	الخليل
<b>Gaza Strip</b>	<b>104,911</b>	<b>485</b>	<b>4,002</b>	<b>9,949</b>	<b>90,475</b>	قطاع غزة
North Gaza	12,304	64	213	685	11,342	شمال غزة
Gaza	54,920	240	2,986	6,462	45,232	غزة
Deir Al-Balah	12,950	70	221	770	11,889	دير البلح
Khan Yunis	14,534	59	331	1,211	12,933	خانيونس
Rafah	10,203	52	251	821	9,079	رفح
<b>Total</b>	<b>323,941</b>	<b>1,942</b>	<b>9,873</b>	<b>42,536</b>	<b>269,590</b>	المجموع

\*Include Tubas, \*\* Include Salfit.

\*\*\* Data does not Includes those parts of Jerusalem which were annexed by Israel in 1967.

Source: Palestine Telecommunications Company, 2006.

2006

:28

Table 28: Number of Telephone Calls in Remaining West Bank and Gaza Strip by Month, Region and Type of Call, 2006

Month	Total	To Jerusalem	To Israel	To Cellular Phone		Gaza Strip		Remaining West Bank	
				To Israeli Cellular Phone	To Palestinian Cellular Phone	International Calls	Local Calls	International Calls	Local Calls
January	<b>49,708,039</b>	466,984	720,316	6,783,253	1,959,085	12,557,537	145,277	490,219	26,585,368
February	<b>43,229,402</b>	441,847	676,825	5,844,603	1,963,384	10,727,282	123,674	393,331	23,058,456
March	<b>49,505,235</b>	467,130	765,300	6,405,452	2,196,700	12,227,055	141,553	419,489	26,882,556
April	<b>47,695,040</b>	433,675	723,982	6,255,965	2,103,980	11,324,336	147,861	416,182	26,289,059
May	<b>48,470,089</b>	493,077	773,959	6,498,843	2,110,815	11,277,719	148,080	433,426	26,734,170
June	<b>46,821,547</b>	449,612	739,279	6,164,923	1,895,852	11,165,484	137,449	430,881	25,838,067
July	<b>51,700,307</b>	438,185	747,633	6,945,177	1,855,827	14,207,802	112,278	468,659	26,924,746
August	<b>48,478,307</b>	433,466	712,075	6,351,822	1,726,993	12,743,627	111,895	438,988	25,959,441
September	<b>41,610,726</b>	407,785	659,817	5,502,122	1,521,641	9,457,782	105,646	399,814	23,556,119
October	<b>38,989,740</b>	403,042	624,903	5,137,621	1,403,113	9,191,401	109,218	398,494	21,721,948
November	<b>38,360,227</b>	393,157	633,137	5,314,034	1,389,138	8,668,715	104,001	345,706	21,512,339
December	<b>38,350,202</b>	384,527	637,544	5,079,919	1,292,767	8,625,523	105,302	397,608	21,827,012
<b>Total of Year</b>	<b>542,918,861</b>	<b>5,212,487</b>	<b>8,414,770</b>	<b>72,283,734</b>	<b>21,419,295</b>	<b>132,174,263</b>	<b>1,492,234</b>	<b>5,032,797</b>	<b>296,889,281</b>
<b>Average</b>	<b>45,243,238</b>	<b>434,374</b>	<b>701,231</b>	<b>6,023,645</b>	<b>1,784,941</b>	<b>11,014,522</b>	<b>124,353</b>	<b>419,400</b>	<b>24,740,773</b>

Source: Palestine Telecommunications Company, 2006.

.2006

:

**Table 29: Length of Calls in Minutes in Remaining West Bank and Gaza Strip by Month, Region and Type of Calls, 2006**

Month	Grand Total	To Jerusalem	To Israel	To Cellular phone			International Calls			Local Calls		
				Total	To Israeli Cellular	To Palestinian Cellular Phone	Total	Gaza Strip	Remaining West Bank	Total	Gaza Strip	Remaining West Bank
January	<b>122,551,135</b>	2,622,459	1,219,144	<b>11,410,872</b>	2,208,001	9,202,871	<b>2,549,846</b>	553,144	1,996,702	<b>104,748,814</b>	39,847,776	64,901,038
February	<b>111,715,263</b>	2,434,419	1,153,045	<b>10,598,293</b>	2,355,162	8,243,131	<b>2,021,053</b>	462,588	1,558,465	<b>95,508,453</b>	35,594,523	59,913,930
March	<b>127,975,590</b>	2,696,177	1,232,525	<b>11,588,741</b>	2,605,474	8,983,267	<b>2,259,293</b>	532,920	1,726,373	<b>110,198,854</b>	40,451,607	69,747,247
April	<b>126,378,485</b>	2,604,670	1,122,710	<b>11,356,073</b>	2,444,228	8,911,845	<b>2,401,884</b>	613,345	1,788,539	<b>108,893,148</b>	39,186,988	69,706,160
May	<b>130,225,437</b>	2,804,018	1,275,427	<b>12,001,800</b>	2,490,287	9,511,513	<b>2,400,810</b>	592,031	1,808,779	<b>111,743,382</b>	39,567,414	72,175,968
June	<b>122,486,529</b>	2,662,648	1,139,208	<b>11,050,146</b>	2,279,478	8,770,668	<b>2,272,440</b>	523,956	1,748,484	<b>105,362,087</b>	37,721,842	67,640,245
July	<b>133,214,820</b>	2,611,108	1,120,189	<b>11,987,509</b>	2,172,906	9,814,603	<b>2,270,527</b>	443,168	1,827,359	<b>115,225,487</b>	47,099,985	68,125,502
August	<b>124,351,388</b>	2,496,842	1,141,644	<b>10,755,509</b>	1,997,046	8,758,463	<b>2,151,633</b>	433,775	1,717,858	<b>107,805,760</b>	41,637,658	66,168,102
September	<b>109,575,260</b>	2,422,367	922,972	<b>9,475,293</b>	1,817,687	7,657,606	<b>2,003,727</b>	420,621	1,583,106	<b>94,750,901</b>	32,277,134	62,473,767
October	<b>100,617,324</b>	2,224,906	876,174	<b>8,511,828</b>	1,609,109	6,902,719	<b>2,045,948</b>	423,461	1,622,487	<b>86,958,468</b>	30,507,604	56,450,864
November	<b>102,233,246</b>	2,279,597	923,075	<b>9,024,312</b>	1,645,611	7,378,701	<b>1,732,115</b>	370,032	1,362,083	<b>88,274,147</b>	29,668,547	58,605,600
December	<b>102,144,425</b>	2,333,001	856,161	<b>8,370,832</b>	1,485,796	6,885,036	<b>1,988,983</b>	393,707	1,595,276	<b>88,595,448</b>	29,479,194	59,116,254
<b>Total of year</b>	<b>1,413,468,902</b>	<b>30,192,212</b>	<b>12,982,274</b>	<b>126,131,208</b>	<b>25,110,785</b>	<b>101,020,423</b>	<b>26,098,259</b>	<b>5,762,748</b>	<b>20,335,511</b>	<b>1,218,064,949</b>	<b>443,040,272</b>	<b>775,024,677</b>
<b>Average</b>	<b>117,789,075</b>	<b>2,516,018</b>	<b>1,081,856</b>	<b>10,510,934</b>	<b>2,092,565</b>	<b>8,418,369</b>	<b>2,174,855</b>	<b>480,229</b>	<b>1,694,626</b>	<b>101,505,412</b>	<b>36,920,023</b>	<b>64,585,390</b>

Source: Palestine Telecommunications Company, 2006.

.2006

:

2006

" "

:30

Table 30: Number of Jawwal Cellular Phone Subscriptions in the Palestinian Territory by Month, 2006

Month	Bill and Card system users	
January	565,942	
February	569,000	
March	671,336	
April	680,481	
May	688,686	
June	694,078	
July	709,499	
August	737,853	
September	774,849	
October	801,800	
November	812,926	
December	821,800	

Source: Palestine Cellular Communication, (LTD), 2006.

.2006 ( )

:

2006 -2002

:31

**Table 31: Companies Providing the Internet Service in Remaining West Bank and Gaza Strip by Selected Indicators, 2002-2006**

Item	Remaining West Bank and Gaza Strip					Gaza Strip					Remaining West Bank					
	2006	2005	2004	2003	2002	2006	2005	2004	2003	2002	2006	2005	2004	2003	2002	
<b>Number of Companies.</b>	5	47	9	11	13	1	12	2	1	1	4	35	7	10	12	
<b>Subscribers by Type of Service:*</b>	7,100	6,567	39,015	23,265	20,718	38	6,127	6,756	6,364	6,527	7062	440	32,259	16,901	14,191	*
Internet	5,600	4,967	32,661	14,064	19,420	38	4,527	6,712	6,320	6,489	5562	440	25,949	7,744	12,931	
E-mail only	1,500	1,600	6,354	9,201	1,298	0	1,600	44	44	38	1500	0	6,310	9,157	1,260	
<b>Employees in the companies by sex:*</b>	22	43	124	122	135	8	30	38	23	23	14	13	86	99	112	*
Male	16	35	100	90	104	4	26	33	21	21	12	9	67	69	83	
Female	6	8	24	32	31	4	4	5	2	2	2	4	19	30	29	

Source: Internet Providing Companies, 2006.  
Ministry of Telecom & Information Technology 2006.

.2006 :  
.2006



2006

:32

**Table 32: Number of Subscribers and Number of (ADSL) Lines in Internet Service in Remaining West Bank and Gaza Strip by Governorate, Region 2006**

Governorate	(ADSL) Number of (ADSL) Lines	Number of Users by Service free Internet	
<b>Remaining West Bank</b>	<b>17,718</b>	<b>38,337</b>	
Jenin	1,158	4,237	
Tubas,	0	625	
Tulkarm	1,460	3,054	
Nablus	4,046	7,098	
Qalqiliya	0	703	
Salfit	0	896	
Ramallah & Al-Bireh	4,997	7,761	
Jericho and Al Aghwar	0	514	
Jerusalem	1,286	2,659	
Bethlehem	2,476	3,333	
Hebron	2,295	7,457	
<b>Gaza Strip</b>	<b>8 110</b>	<b>14,529</b>	
Gaza North	630	2,969	
Gaza	5,155	6,479	
Deir El-Balah	611	1,946	
Khan Yunis	1,020	1,763	
Rafah	694	1,372	
<b>Total</b>	<b>25,828</b>	<b>52,866</b>	

Source: Palestine Telecommunications Company, 2006.

.2006

:

Table 33: Licensed Internet Cafés in Remaining West Bank and Gaza Strip by Governorate and Selected Indicators, 2006

Region / Governorate	Number of Employees	Number of Computers	Number of Internet Cafe's	/
<b>Remaining West Bank</b>	<b>171</b>	<b>1,480</b>	<b>133</b>	
Jenin	16	129	11	
Tubas,	3	24	2	
Tulkarm	19	155	13	
Nablus	13	132	11	
Qalqiliya	13	125	10	
Salfit	9	65	5	
Ramallah & Al-Bireh	41	360	38	
Jericho & Al Aghwar	8	59	5	
Jerusalem	-	-	-	
Bethlehem	12	97	7	
Hebron	37	334	31	
<b>Gaza Strip</b>	<b>9</b>	<b>32</b>	<b>5</b>	
Gaza North	-	-	-	
Gaza	3	12	3	
Deir El-Balah	3	10	1	
Khan Yunis	-	-	-	
Rafah	3	10	1	
<b>Remaining West Bank and Gaza Strip</b>	<b>180</b>	<b>1,512</b>	<b>138</b>	

Source: Ministry of Telecom &amp; Information Technology 2006.

.2006

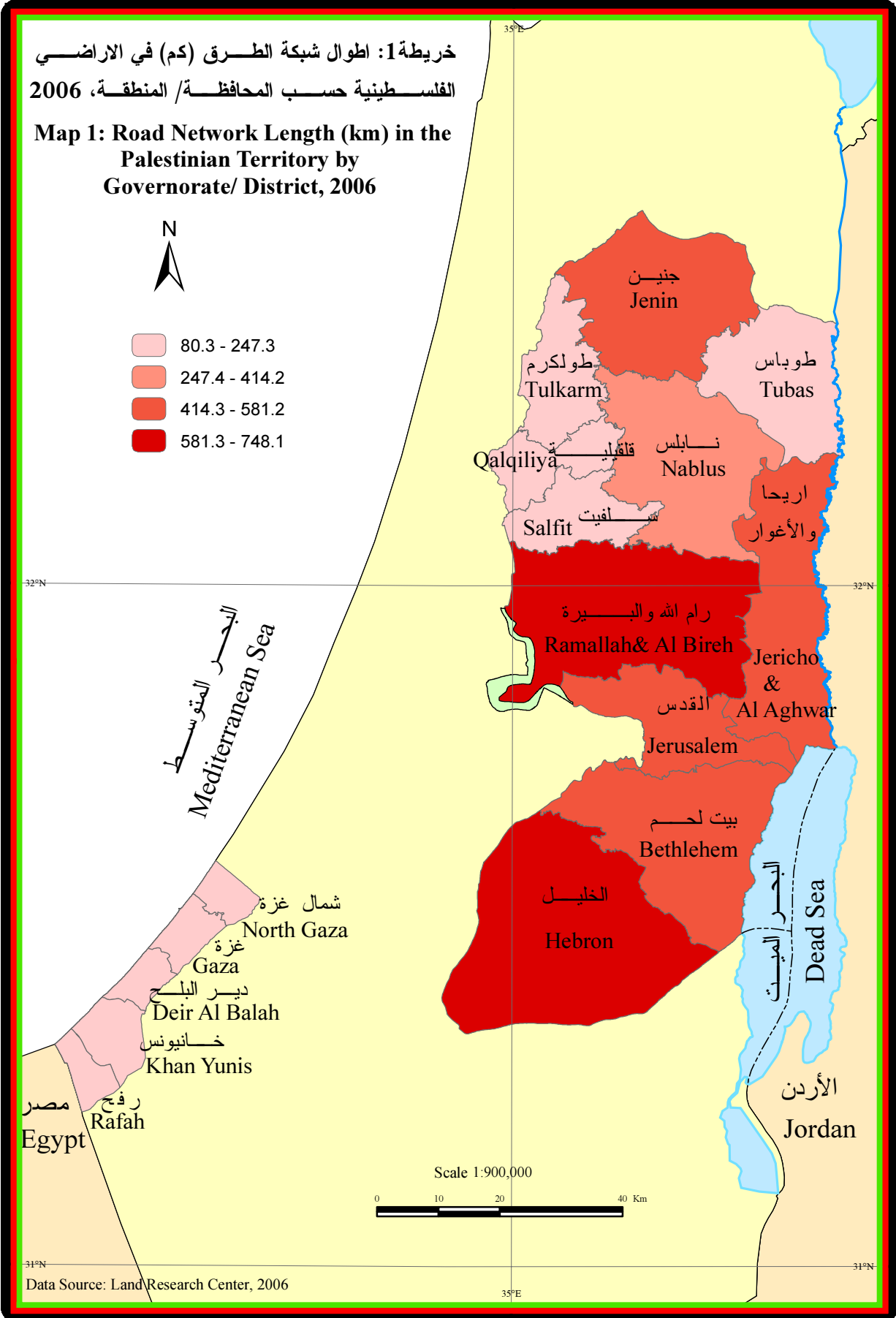
:





خريطة 1: اطوال شبكة الطرق (كم) في الاراضي الفلسطينية حسب المحافظة/ المنطقة، 2006

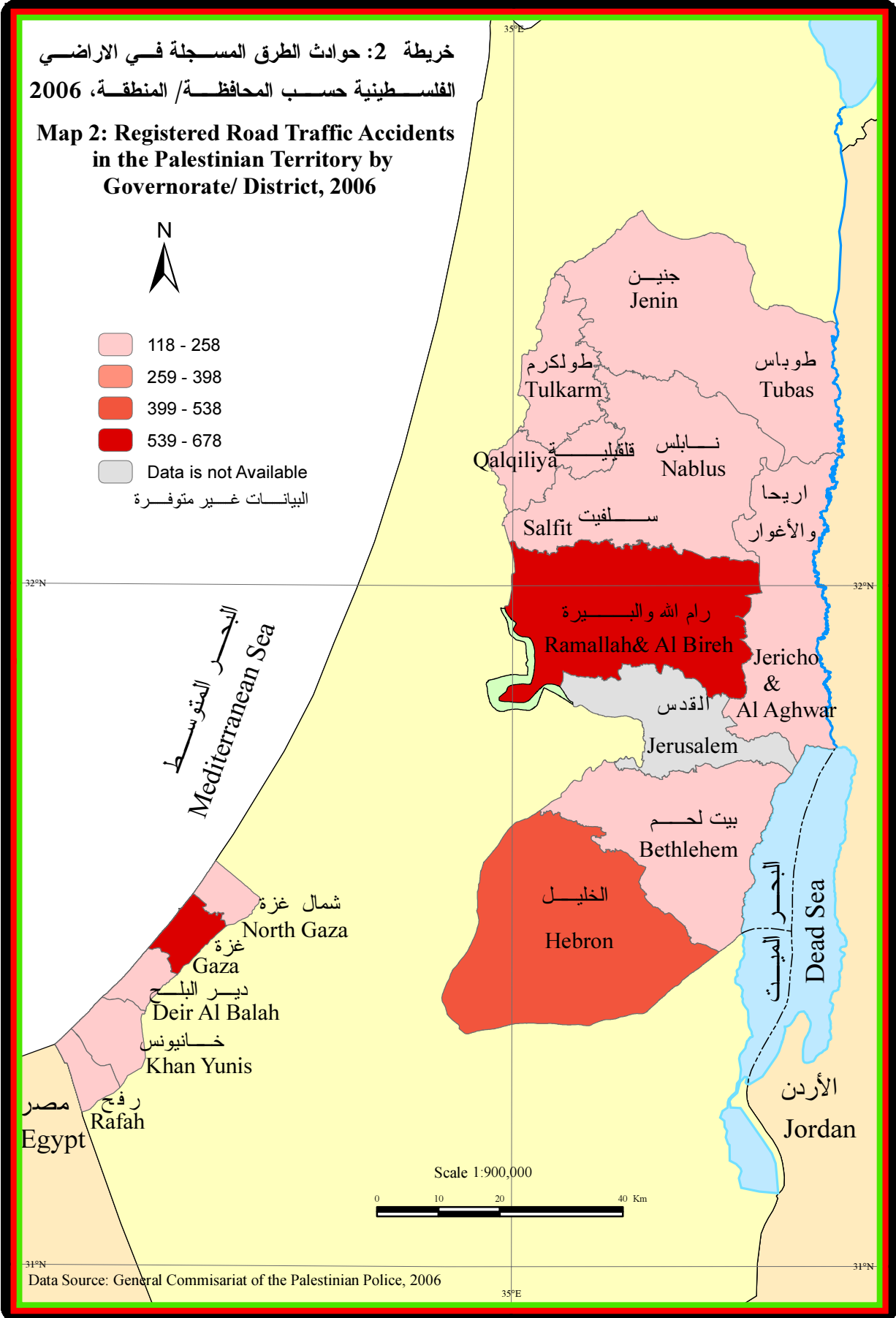
Map 1: Road Network Length (km) in the Palestinian Territory by Governorate/ District, 2006



Data Source: Land Research Center, 2006

خريطة 2: حوادث الطرق المسجلة في الأراضي الفلسطينية حسب المحافظة/ المنطقة، 2006

Map 2: Registered Road Traffic Accidents in the Palestinian Territory by Governorate/ District, 2006





**Palestinian National Authority  
Palestinian Central Bureau of Statistic**

**Transportation and Communication Statistics in the  
Palestinian Territory: Annual Report 2006**

**July, 2007**

"Cover price 3 US\$ "

PAGE NUMBERS OF ENGLISH TEXT ARE PRINTED IN SQUARE BRACKETS.  
TABLES ARE PRINTED IN THE ARABIC ORDER (FROM RIGHT TO LEFT)

**New Web Site:**

- PCBS has launched the electronic atlas of Palestine on <http://atlas.pcbs.gov.ps>
- All of PCBS publications are available online in electronic format on PCBS web site <http://www.pcbs.gov.ps>
- For additional data requests, online form is available on PCBS web site and users can track the status of their request and download the data once made available.

**This document is prepared in accordance with the standard  
procedures stated in the Code of Practice for Palestine  
Official Statistics 2006**

© July, 2007.  
**All rights reserved.**

**Suggested Citation:**

**Palestinian Central Bureau of Statistics, 2007.** *Transportation and Communication Statistics in the Palestinian Territory: Annual Report 2006.* Ramallah-Palestine.

All correspondence should be directed to:  
Dissemination and Documentation Department / Division of User Services  
**Palestinian Central Bureau of Statistics**  
**P.O.Box 1647, Ramallah, Palestine.**

Tel: (972/ 970) 2 240 6340  
E-Mail: [Diwan@gov.ps](mailto:Diwan@gov.ps)

Fax: (972/ 970) 2 240 6343  
website: <http://www.pcbs.gov.ps>





## Population, Housing and Establishment Census - 2007



## ***“Acknowledgement***

**The Palestinian Central Bureau of Statistics would like to thank the Palestinian Ministries and insituations, for their cooperation and response in providing data.**

**The funding for the Transportation and Communication report 2006 was provided by the Palestinian National Authority (PNA), and the Core Funding Group (CFG) for 2007. CFG member include Representative Office of Norway to PNA; Representative Office of Netherlands to PNA; Swiss Agency for Development and Cooperation (SDC).**

**On this occasion, the PCBS extends special thanks to the members of the Core Funding Group (CFG) who contributed in funding this survey for their support.**



## Abbrevitions

<b>CFG</b>	Core Funding Group
<b>GS:</b>	Gaza Strip.
<b>ISIC-3:</b>	International Standard Industrial Classification of All Economic Activities, version 3
<b>J1:</b>	Those parts of Jerusalem which were annexed by Israel in 1967.
<b>Km</b>	Units in Kilometers
<b>NIS</b>	New Israeli Shekel
<b>PCBS</b>	Palestinian Central Bureau of Statistics
<b>PNA</b>	Palestinian National Authority
<b>RWB:</b>	Remaining West Bank.
<b>RWBGS:</b>	Remaining West Bank and Gaza Strip.
<b>SDC</b>	Swiss Agency for Development and Cooperation
<b>Symbols Used in Tables:</b>	(-): Null. (.): Data not available.



## **Team Work**

- **Report Preparation**

Maher Al-shami

- **Preliminary Review**

Ayman Qanir

Ashraf Samara

Ibrahim Al-tarsha

- **Dissemination Standard**

Hanan Janajreh

- **Final Review**

Saleh AL kafri

- **Overall Supervision**

Luay Shabaneh, Ph.D

President of PCBS





## **Preface**

The Palestinian Central Bureau of Statistics (PCBS) is pleased to introduce the annual report 2006 as the ninth publication of report series on transportation and communication statistics in Palestinian Territory. The main objective of publishing this series is to establish a comprehensive database covering the main indicators on the transportation and communication sector in the Palestinian Territory, and to formulate a time series about these indicators that show the changes.

This report presents the available statistics on the main components of the transportation system. A major component is land transport which covers roads and their length, bypass roads which were built by the Israeli authorities to serve the Israeli settlements, vehicles by type, in addition to other indicators like driving schools, number of garages, etc. The report also shows the main indicators of the air transport sector, which covers the departure and arrival flights. Also the report presents figures on post including letters with their traditional classification, and the main elements of communication system including main telephone lines and their waiting list, telephone calls and their lengths.

PCBS hopes that this report will provide national governmental organizations, non-governmental organizations, and research institutions in the Palestinian Territory with the necessary statistical figures required for planning and development of Palestinian Territory.

**July, 2007**

**Luay Shabaneh, Ph.D**  
**President**



## Table of Contents

<b>Subject</b>	<b>Page</b>
List of Tables	
List of Figures	
List of Maps	
Executive Summary	
Chapter One: <b>Introduction</b>	<b>25</b>
Chapter Two: <b>Concepts and Definitions</b>	<b>27</b>
Chapter Three: <b>Main Findings</b>	<b>31</b>
3.1: Employed Perrsons in the Transportation and Communication Activities	31
3.2: Land Transportation	31
3.3: Air Transportation	36
3.4: The Post office data	37
3.5: Telecommunications	41
Chapter Four: <b>Methodology</b>	<b>45</b>
Chapter Five: <b>Data Quality</b>	<b>47</b>
<b>Tables</b>	<b>53</b>
<b>Maps</b>	<b>91</b>



## List of Tables

<b>Table</b>	<b>Page</b>
<b>Table 1:</b> Employed Persons in the Transportation, Storage and ommunication Activities in the Palestinian Territory by Selected Indicators, 2001- 2006	<b>55</b>
<b>Table 2:</b> Road Network Length in the Palestinian Territory by Governorate, Region and Road Type, 2006	<b>57</b>
<b>Table 3:</b> . Licensed Road Vehicles in Remaining West Bank by Governorate and Type of Vehicle, 2006	<b>58</b>
<b>Table 4:</b> Licensed Road Vehicles in Gaza Strip by Area and Type of Vehicle,2006	<b>59</b>
<b>Table 5:</b> New Registered Road Vehicles in Remaining West Bank by Month and Type of Vehicle, 2006	<b>60</b>
<b>Table 6:</b> New Registered Road Vehicles in Gaza Strip by Month and Type of Vehicle, 2006	<b>61</b>
<b>Table 7:</b> New Registered Road Vehicles in Remaining West Bank by Governorate and Type of Vehicle, 2006	<b>62</b>
<b>Table 8:</b> New Registered Road Vehicles in Gaza Strip by Area and Type of Vehicle, 2006	<b>63</b>
<b>Table 9:</b> Rate of Licensed Motorization Per 1000 Capita in Remaining West Bank and Gaza Strip by Type of Vehicle and Region, 2006	<b>64</b>
<b>Table 10:</b> Driving Schools in Remaining West Bank and Gaza Strip by Governorate and Selected Indicators, 2006	<b>65</b>
<b>Table 11:</b> Number of Bus Companies, Rent a Car Offices, Taxi Offices, and Number of their Working Buses, Cars, Taxis in Remaining West Bank and Gaza Strip by Governorate, 2006	<b>66</b>
<b>Table 12:</b> Licensed Garages in Remaining West Bank Governorates and Gaza Strip by Governorate and Type of Garage, 2006	<b>67</b>
<b>Table 13:</b> .Number of Driving Licences Issued in Remaining West Bank and Gaza Strip by Year and Region, 1999-2006.	<b>68</b>
<b>Table 14:</b> Number of Driving Licences Issued in Remaining West Bank and Gaza Strip by Month and Region, 2006.	<b>69</b>
<b>Table 15:</b> Total Number of Registered Road Traffic Accidents and Casualties by Type of Injury in Remaining West Bank and Gaza Strip, 2002-2006.	<b>70</b>
<b>Table 16:</b> Registered Road Traffic Accidents in Remaining West Bank and Gaza Strip by Governorate and Month, 2006	<b>71</b>
<b>Table 17:</b> Casualties in Registered Road Traffic Accidents in Remaining West Bank and Gaza Strip by Governorate and Type of Injury, 2006	<b>72</b>

<b>Table</b>	<b>Page</b>
<b>Table 18:</b> Regular Flights of the Palestinian Airlines by Selected Indicators, 1999-2006	<b>73</b>
<b>Table 19:</b> Regular Flights of the Palestinian Airlines by Selected Indicators,2006	<b>74</b>
<b>Table 20:</b> Departure and Arrival Flights by Selected Indicators, 2006	<b>75</b>
<b>Table 21:</b> International Dispatched & Receipt Mail From & to Remaining West Bank by Month and Type of Mail, 2006	<b>76</b>
<b>Table 22:</b> International Dispatched & Receipt Mail From & to Gaza Strip by Month and Type of Mail, 2006	<b>78</b>
<b>Table 23:</b> Domestic Mail in Remaining West Bank and Gaza Strip by Month and Type of Mail, 2006	<b>80</b>
<b>Table 24:</b> Number of Mail Service Centers and P.O.Boxes in Remaining West Bank and Gaza Strip by Governorate, 2006	<b>81</b>
<b>Table 25:</b> Number of Main Telephone Lines in Remaining West Bank and Gaza Strip by Year and Region, 1999-2006	<b>82</b>
<b>Table 26:</b> Number of Main Telephone Lines in Remaining West Bank and Gaza Strip by Month, Region and Type of Subscription, 2006	<b>83</b>
<b>Table 27:</b> Number of Main Telephone Lines in Remaining West Bank and Gaza Strip by Governorate, Region and Type of Subscription, 2006	<b>84</b>
<b>Table 28:</b> Number of Telephone Calls in Remaining West Bank and Gaza Strip by Month, Region and Type of Calls, 2006	<b>85</b>
<b>Table 29:</b> Length of Calls in Minutes in Remaining West Bank and Gaza Strip by Month, Region and Type of Calls, 2005	<b>86</b>
<b>Table 30:</b> Number of Jawwal Cellular Phone Subscriptions in the Palestinian Territory by Month, 2006	<b>87</b>
<b>Table 31:</b> Companies providing the Internet Service in Remaining West Bank and Gaza Strip by Selected Indicators, 2002-2006	<b>88</b>
<b>Table 32:</b> Number of Subscribers and Number of (ADSL) Lines in Internet Service in Remaining West Bank and Gaza Strip by Governorate, Region, 2006	<b>89</b>
<b>Table 33:</b> Internet Cafes in Remaining West Bank and Gaza Strip by Governorate and Selected Indicators, 2006	<b>90</b>

## List of Figures

<b>Figure</b>	<b>Page</b>
<b>Figure 1:</b> Road Network Length in Kilometers in the Palestinian Territory by Region, 2006.	<b>31</b>
<b>Figure 2:</b> Road Network Length in Kilometers in the Palestinian Territory by Road Type, 2006	<b>32</b>
<b>Figure 3:</b> Percentage Distribution of Vehicles in RWBGS by Type, 2006	<b>32</b>
<b>Figure 4:</b> Percentage Distribution of New Registered Road Vehicles in RWB by Type, 2006	<b>33</b>
<b>Figure 5:</b> Percentage Distribution of New Registered Vehicles in GS by Type of Vehicle, 2006	<b>33</b>
<b>Figure 6:</b> Rate of Licensed Motorization per 1000 Capita in RWBGS by Region and Type of Vehicle, 2006	<b>34</b>
<b>Figure 7:</b> Percentage Distribution of Garages in Remaining WB Governorates and GS by Type of Garage, 2006	<b>35</b>
<b>Figure 8:</b> Number of Issuing Driving Licences in Remaining West Bank and Gaza Strip by Month, 2006	<b>35</b>
<b>Figure 9:</b> Number of Registered Road Accidents and Casualties in RWBGS by Month, 2006	<b>36</b>
<b>Figure 10:</b> Percentage Distribution of Injury in RWBGS by Type, 2006	<b>36</b>
<b>Figure 11:</b> Number of Passengers and Number of Available Seats in Regular Flights of the Palestinian Airlines by Month, 2006	<b>37</b>
<b>Figure 12:</b> Percentage Distribution of International Mail to RWB, 2006	<b>38</b>
<b>Figure 13:</b> Percentage Distribution of International Dispatched Mail from RWB, 2006	<b>38</b>
<b>Figure 14:</b> Percentage Distribution of International Mail to GS, 2006	<b>39</b>
<b>Figure 15:</b> Percentage Distribution of International Dispatched Mail from GS, 2006	<b>39</b>
<b>Figure 16:</b> Percentage Distribution of Domestic Mail in RWB, 2006	<b>40</b>
<b>Figure 17:</b> Percentage Distribution of Domestic Mail in GS, 2006	<b>40</b>
<b>Figure 18:</b> Number of Main Telephone Lines (in thousands) in RWBGS by Month, 2006	<b>41</b>
<b>Figure 19:</b> Percentage Distribution of Number of Calls by Type, 2006	<b>41</b>
<b>Figure 20:</b> Number of Calls (in millions) in RWBGS by Type and Month, 2006	<b>42</b>
<b>Figure 21:</b> Percentage Distribution of Calls Length by Type, 2006	<b>42</b>
<b>Figure 22:</b> Number of Cellular phone Jawwal Subscriptions in Palestinian Territory by Month, 2006	<b>43</b>





## List of Maps

<b>Map</b>		<b>Page</b>
<b>Map 1:</b>	Road Network Length in the Palestinian Territory by Governorate, Region, 2006.	<b>93</b>
<b>Map 2:</b>	Number of Registered Road Accidents in the Palestinian Territory by Governorate / Region, 2006	<b>95</b>



## Executive Summary

The Transportation and communication sector is important due to its contribution to the gross domestic product and the provision of working opportunities, in addition to its vital role in connecting different localities.

The data of this report is based on the administrative records and the data extracted from some surveys conducted by the PCBS. This annual report provides data about transportation and communication statistics in the Palestinian Territory for the year 2006.

### Main Findings:

- The transportation and communication activities contributed 5.7% of the total job opportunities in the Palestinian Territory in 2006.
- The total road network length in the Palestinian Territory was 5,146.9 km at the end of 2006, out of which 764.4 Km bypass roads.
- The total number of licensed vehicles in RWBGS in 2006 was 116,646. out of which 57,499 in RWB and 59,147 in GS.
- The total number of driving licenses issued in RWBGS in 2006 was 14,147.
- The total number of registered road accidents in RWBGS amount to 3,509, and the number of casualties resulting from those accidents reached 6,026.
- The total number of main telephone lines in RWBGS at the end of 2006 was 321,999 lines.
- The total number of subscribers of Jawwal cellular phone at the end of 2006 in the Palestinian Territory was 821,800.
- The total number of Post Office boxes in RWBGS at the end of 2006 was 14,812.
- The total number of International Mail Received in RWBGS consisted of 520,972 postal materials, and the International dispatched mail was 86,633 postal materials, and the domestic mail in RWBGS was 2,048,986 postal materials.
- The monthly average number of telephone calls in RWBGS was 45,243,238, and the monthly average length of telephone calls was 117,789,075 minutes.

## Chapter One

### **Introduction**

The Transportation and Communication sector is one of the main economic sectors in Palestinian society. This sector contributes to the gross domestic product significantly, and provides working opportunities for a considerable amount of people.

Geographically, this sector occupies special importance because it represents the primary means of communication inside the society and between the society and the others.

This report is the ninth one of a series of annual reports which aims to provide the data required to describe the transportation and communication situation in Palestinian Territory in a comprehensive and standardized way.

The main objective of this report is to collect, arrange, classify, and publish data related to the main indicators of the transportation and communication sector in Palestine in 2006, in order to provide the necessary data for research, analysis, and decision making purposes.

Through this report, we hope to provide a continuous flow of data on:

1. Employees characteristics at the transportation and communication sector.
2. Land transportation section aims to present the results related to roads, vehicles, driving schools, bus companies, rent a car offices, garages, number of driving licence and road accidents
3. Air transportation including departure and arrival flights, The post office and telecommunications data including received and dispatched postal materials, telephone calls, main telephone lines, Cellular phone

This report consists of five chapters along with a group of tables and graphs. The first chapter comprises an introduction to the report and the basic objectives of this report. The second chapter sheds light on the main concepts and definitions used in this report. The third chapter presents the main findings of the report, The forth chapter presents the methodology, and the last chapter presents the data quality



## Chapter Two

### Concepts and Definitions

<b>Employee:</b>	A person who works for a public or private employer and receives remuneration in wage, salary, commission, tips, piece-rates or pay in kind
<b>Average Weekly Working Hours:</b>	Total weekly working hours of employees whose wages are known, divided by the number of employees.
<b>Average Monthly Working Days per Employee:</b>	Total monthly workdays of employees whose wages are known divided by the number of employees.
<b>Average Daily Wage per Employee:</b>	Total net wages paid to all employees divided by total working days. wages received in different currencies are converted into New Israeli Shiekles according to the exchange rate in the survey month.
<b>Main Road:</b>	Serves for national or internal district traffic and including road extension within a locality.
<b>Regional Road:</b>	Branching off from, or lining, main roads.
<b>Local Road:</b>	Serves the internal traffics within a locality.
<b>Bypass Road:</b>	Construct by Israeli Occupation to link the Settlements with each other and with Israel.
<b>Vehicle:</b>	A vehicle running on wheels and intended for use on roads.
<b>Motor Vehicle:</b>	A vehicle fitted with auto propulsive engine, it is normally used for carrying persons or goods, and drawing vehicles.
<b>Private Car:</b>	A motor vehicle, other than motorcycle intended for the carriage of passengers and designed to seat no more than 9 persons (including the driver).
<b>Taxi:</b>	A motor vehicle intended for the carriage of passengers (in return for payment), and designed to seat no more than 9 persons (including the driver), and described in its license as a taxi.
<b>Motorcycle:</b>	Two wheeled motor vehicles with or without sidecar. This category includes scooter, three-wheeled vehicles not exceeding 400 kg. Motorcycles are classified according to the engine capacity as: less than 50 cm <sup>3</sup> , 50-100 cm <sup>3</sup> , 100-250 cm <sup>3</sup> , and grater than 250 cm <sup>3</sup> .
<b>Bus:</b>	A motor vehicle designed to carry more than 9 passengers (including the driver).

<b>Trailer:</b>	Goods road vehicles designed to be hauled by a road motor vehicle. Excluding agricultural trailers and caravans.
<b>Semi-Trailer:</b>	Goods road vehicle with no front axle designed in such a way as to be hauled by road tractor.
<b>Road Tractor:</b>	A motor vehicle designed exclusively or primarily to haul other vehicles, which are not power-driven. Agricultural tractors are excluded.
<b>Truck:</b>	A motor vehicle designed for another purpose than passenger transport, its height is more than 250 cm, and described in its license as a truck.
<b>Commercial Car:</b>	A motor vehicle designed for another purpose than passenger transport, weights more than 2200 kg, its height is more than 175 cm and less than or equal to 250 cm, and described in its license as a commercial vehicle.
<b>Other Vehicle:</b>	A vehicle designed for purposes other than the carriage of passengers or goods. This category includes: ambulances, mobile cranes, self-propelled rollers, bulldozers with metallic wheels or tracks, vehicles for recording film, radio, and TV programs, mobile library vehicles, towing vehicles for vehicles in need of repair.
<b>Road Traffic Accident:</b>	An accident, which occurred as a result of the vehicle being in a state of motion and in which people were injured.
<b>Killed in Road Traffic Accident:</b>	A person who died as a result of the accident, or died of his injuries within 30 days of the accident.
<b>Seriously injured:</b>	A person who was hospitalized as a result of the accident for a period of 24 hours or more.
<b>Slightly injured:</b>	A person who was injured as a result of road traffic accident and was not hospitalized, or was hospitalized for short period (up to 24 hours).
<b>Regular Flights:</b>	A series of flights fulfilling at least the following conditions: they are performed by a passenger aircraft, their tickets are open for free sale to the general public; they are planned and adjusted according to the needs of traffic, carried out according to existing aviation agreements, The operating license and the fixed timetables are also available to the general public.
<b>Irregular Flights:</b>	All the flights for remuneration other than those reported under regular flights.
<b>Number of Passengers in a Flight:</b>	All passengers, excluding airplane staff and infants (less than 2 years of age).

<b>Number of Available Seats:</b>	The total number of passenger seats available for sale between each pair of airports on a flight stage (excludes seats not actually available for the carriage of passengers because of the weight of fuel or other load).
<b>Letter:</b>	A post matter that has the property of communication. It could be written, typed or both. This includes commercial samples, which are contained in an envelope. The lowest limit of the shortest length is 140, while the lowest limit of the shortest width is $90 \text{ mm} \pm 2 \text{ mm}$ . The sum of length, width, and thickness should not be greater than 900 mm. The highest limit of the length of any dimension is 600 mm. The weight of the letter should be between 20-2000 g.
<b>Regular Letter:</b>	A letter that is sent by normal post with regular fees.
<b>Express Mail:</b>	A letter intended to be delivered quickly (24 hours) from the moment of reception by the post center. Normally extra fees are applied.
<b>Printed Matter:</b>	A post matter, which is printed by a printing shop, or by any other method such as copying, books, and booklets. It has a cultural and scientific property, and not communication property. The lowest limit of the printed material length and width is 140, $90 \text{ mm} \pm 2 \text{ mm}$ respectively. The highest limit of the sum of length, width, and thickness is 900 mm. The highest limit of the length of any dimension is 600 mm. The highest weight of the printed material is 2 kg, it is also allowable to reach 5 kg when the printed material is book.
<b>Registered Letter:</b>	A letter to which extra fees is applied and for which the sender gets a receipt. It is normally delivered to the addressee or other person acting as such after checking his identity and taking his signature on a receipt.
<b>Post Packet:</b>	Material posted as presents, such as food, clothes, beauty-care materials, perfumes, and commercial samples. The lowest limit of post packet length and width is 140, $90 \text{ mm} \pm 2 \text{ mm}$ respectively. The highest limit for the sum of length, width, and thickness is 900 mm. The highest limit of the length of any dimension is 60 mm. The highest weight of the post packet is 2 kg.
<b>Parcel:</b>	Material posted as closed flexible or rigid packet, containing papers, books, food, clothes, etc. The highest limit for the sum of the parcel lengths, twice the width, and twice the thickness is 3 m. The highest limit of the length of any dimension is 1.5 m. The highest weight of inland parcel is 20 kg, while in case of parcels sent abroad the highest limit is 5-20 kg, or according to the rules of the receiving country.



<b>Telegram</b>	Letter with a limited amount of words, sent inland or abroad by telex, fax, or telephone. Fees are paid according to the number of words.
<b>Local Call:</b>	The call, which is sent or received by using the same switchboard.
<b>National Call:</b>	The call, which is sent or received by using two switchboards in the same country.
<b>International Call:</b>	The call, which is sent from one country to another.
<b>Remaining West Bank Governorates:</b>	Refers to the West Bank except the Jerusalem Governorate (i.e. J1 & J2).
<b>Remaining West Bank:</b>	Refers to all of the West Bank, excluding those parts of Jerusalem which were annexed by Israel in 1967.

## Main Findings

### 3.1: Employed Persons in the Transportation, and Communication Activities:

This report shows that the transportation and communication sector contributed with 5.7% of the total job opportunities in the Palestinian Territory in 2006. The average monthly working days in this sector were 23.1 days, and this is slightly lower than that of the total economic sectors (23.4 days).

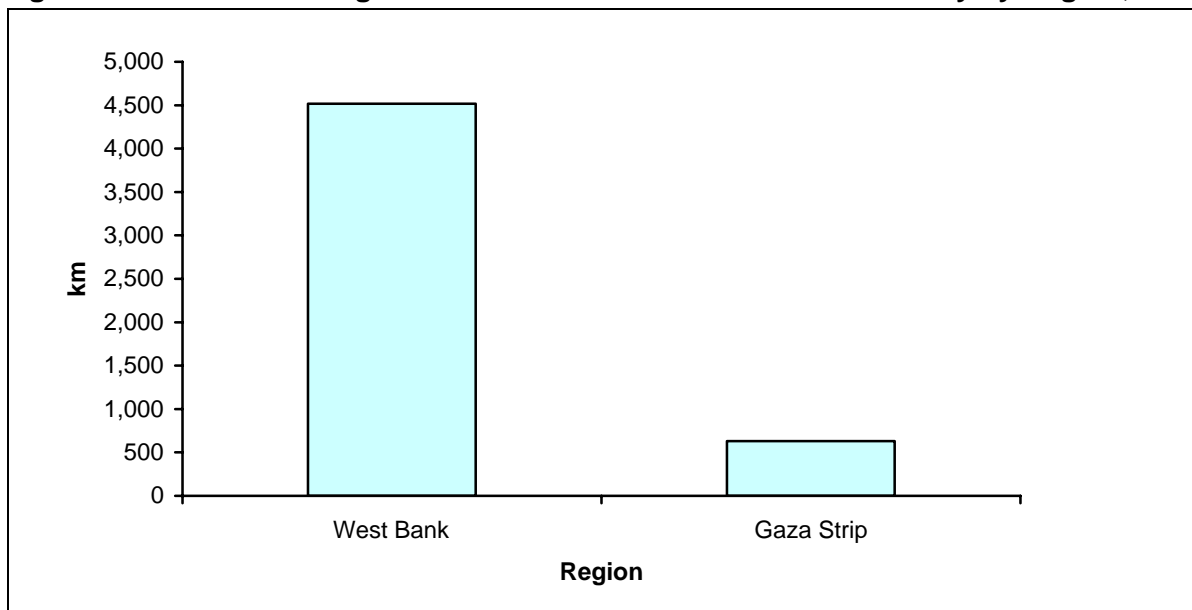
The daily median wage of working days in this sector was 60.0 New Israeli Shekel compared to 73.1 NIS (US \$16.4) in other economic sectors (*Table 1*).

### 3.2: Land Transportation:

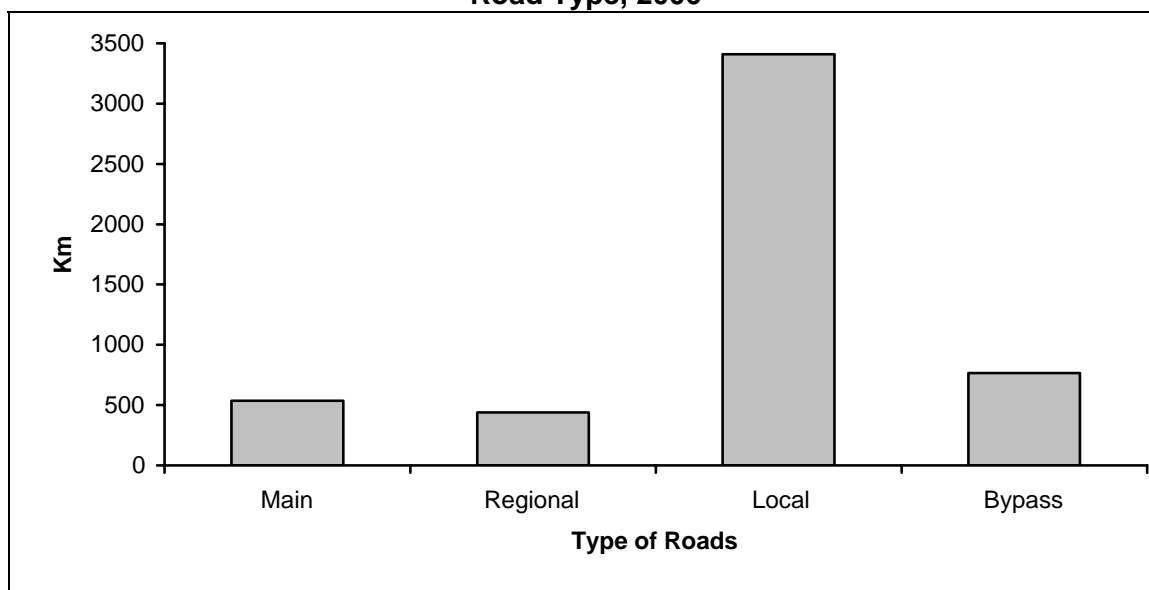
#### 3.2.1: Road Network:

The available data of the Palestinian road network varies according to the source of data. The data of the Palestinian Water Authority shows that the total road network length in the Palestinian Territory was 5,146.9 km at the end of 2006 (out of which 764.4Km bypass roads). also the data shows that the total length of the road network in the West Bank was 4,516.4 Km and 630.5 Km in Gaza Strip (*Table 2 & Map 1*).

**Fig. 1: Road Network Length in Kilometers in the Palestinian Territory by Region, 2006**



**Fig. 2: Road Network Length in Kilometers in the Palestinian Territory by Road Type, 2006**

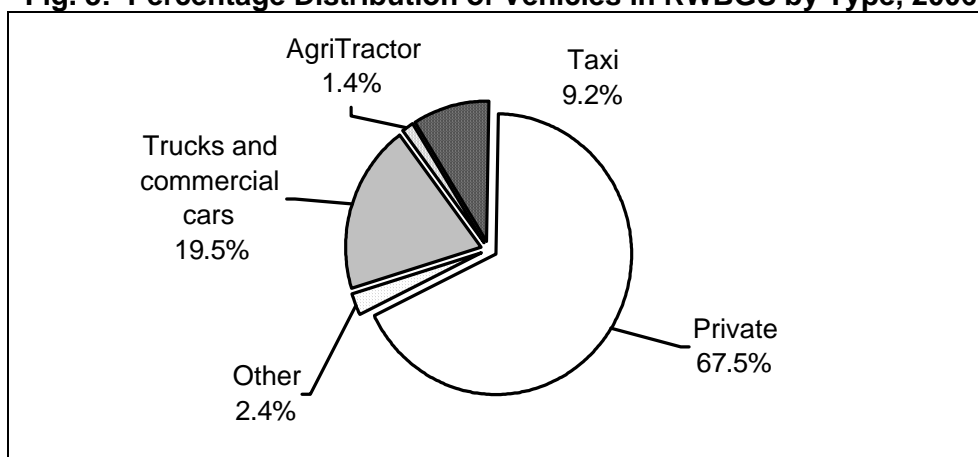


### 3.2.2: Vehicles

The total number of licensed vehicles in RWBGS in 2006 was 116,646 distributed as 49.3% in RWB, and 50.7% in GS.

The percentage distribution of licensed vehicles in RWBGS in 2006 shows that the majority were private cars 67.5%, (63.2% in RWB, and 71.6% in GS). On the other hand, the percentage of trucks and commercial cars was 19.5% in RWBGS, (20.9% in RWB compared to 18.2% in GS). Taxis formed 9.2% of the total vehicles in RWBGS, (12.8% in RWB and 5.7% in GS). The percentage of agricultural tractors in RWBGS was 1.4%, (0.9% in RWB compared to 1.9% in GS), while the remaining vehicles, formed 2.4% (*Tables 3 & 4*).

**Fig. 3: Percentage Distribution of Vehicles in RWBGS by Type, 2006**

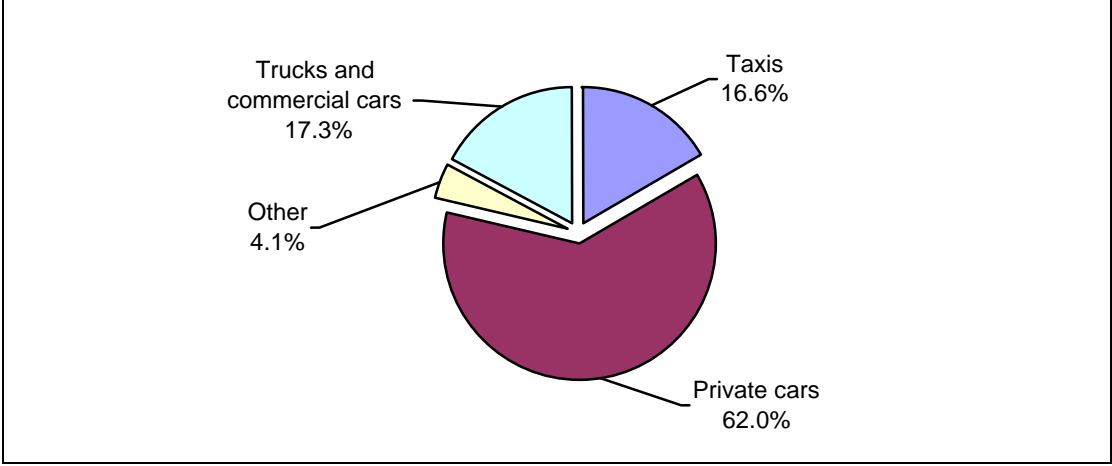


Regarding new registered road vehicles in RWBGS in 2006, the monthly average of registered vehicles was 519 vehicles, with 71.3% in RWB and 28.7% in GS (*Table 5 & Table 6*).

The percentage distribution of registered new vehicles in the RWB by type shows that the highest percentage was for registered private cars by 62% followed by the trucks and

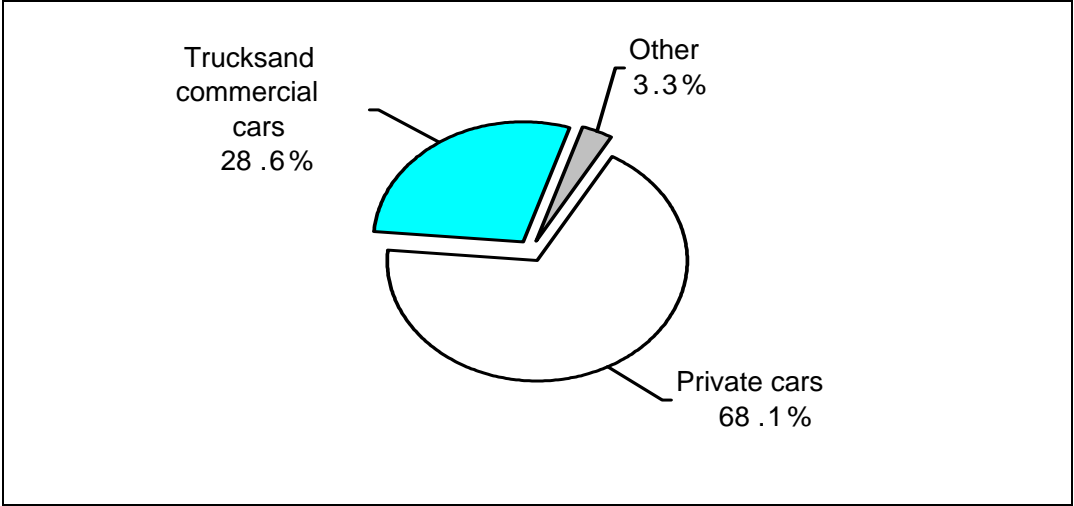
commercial cars, which was 17.3%. The percentage of taxis was 16.6%, on the other hand the percentage of other vehicles, which cover moped, motorcycles, buses, trailers and semi-trailers, road tractors, agricultural tractors, in addition to other vehicles, was 4.1% (*Table 5*).

**Fig. 4: Percentage Distribution of New Registered Road Vehicles in RWB by Type, 2006**



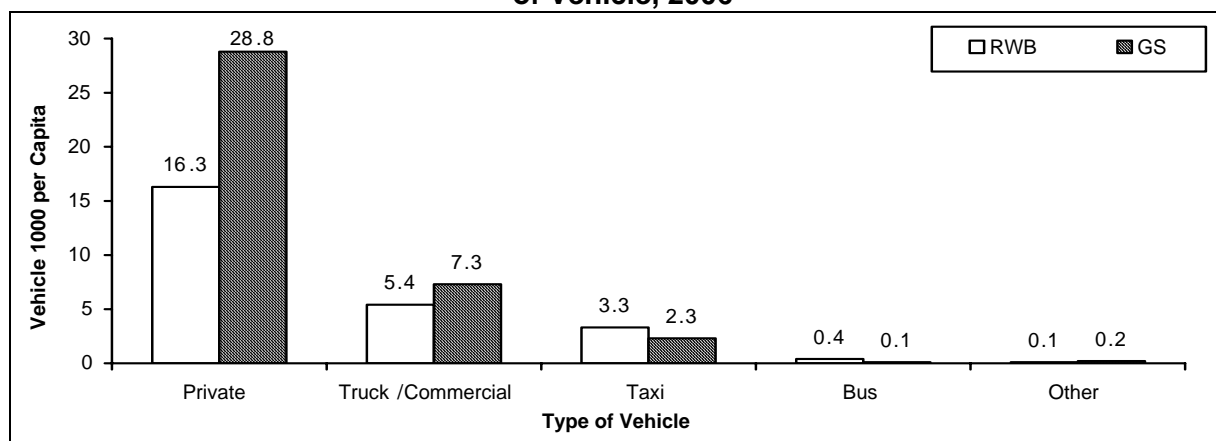
In GS, the majority of new registered vehicles in 2006 were private cars and trucks/commercial vehicles, where they formed 68.1% and 28.6% respectively. While the remaining vehicles, which include taxis, motorcycles, buses, trailers and semi-trailers, road tractors, and agricultural tractors, in addition to other vehicles formed 3.3% (*Table 8*).

**Fig. 5: Percentage Distribution of New Registered Vehicles in GS by Type of Vehicle, 2006**



Regarding to rate of motorization in RWBGS, it was 31.6 vehicles per 1000 capita. The rate of private cars was 16.3 and 28.8 vehicle per 1000 capita in RWB and GS respectively. While the rate of taxis was 3.3 in RWB, and 2.3 in GS and the rate of other vehicle (Motorcycles and moped, trailers and semi-trailers, other vehicle was 0.8 in RWB, and 1.8 in GS (*Table 9*).

**Fig. 6: Rate of Licensed Motorization per 1000 Capita in RWBGS by Region and Type of Vehicle, 2006**



### 3.2.3: Driving Schools

The total number of driving schools in RWBGS was 240, of which 184 were in RWB, and 56 were in GS in 2006.

We observe that the average number of trainers per school in RWB was 4.0, while it was 6.8 trainers in GS. The average number of working vehicles per school was 3.1 and 2.7 in RWB, and GS respectively (*Table 10*).

### 3.2.4: Bus Companies

The total number of bus companies in RWBGS was 99 companies at the end of 2006, and the total number of working buses in these companies was 708. The average number of buses per company in RWB was 7 buses, 8.4 Buses in GS (*Table 11*).

### 3.2.5: Rent a Car Offices

The total number of rent a car offices in RWBGS was 75, of which 68 were in RWB, and 7 were in GS, and the number of working rent a car in these offices was 835 of which 710 were in RWB, and 125 were in GS at the end of 2006.

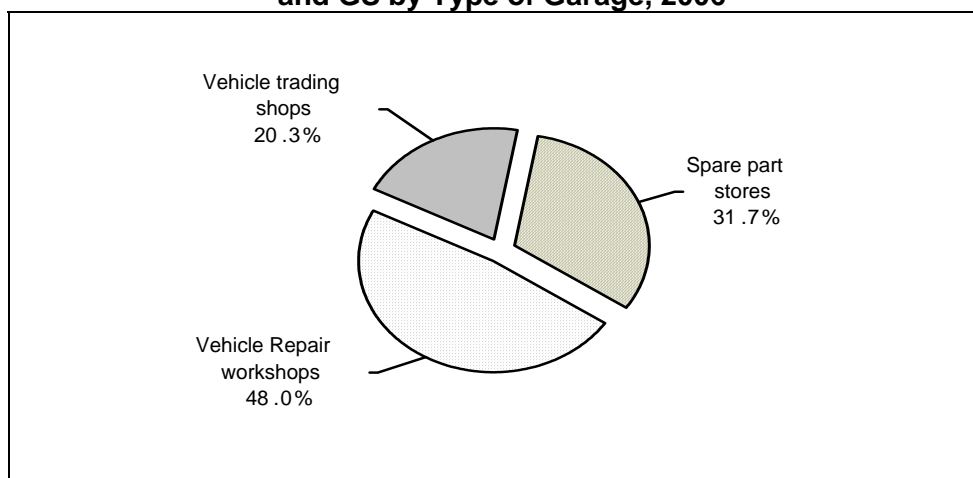
The percentage distribution of rent a car offices by governorate shows that the highest percentage was in Ramallah and Al-Bireh Governorate 30.7, including 45.4% of the total working vehicles. (*Table 11*).

### 3.2.6: Garages

This term locally describes vehicle repair workshops, spare part stores, and vehicle-trading shops, the total number of licensed garages in remaining governorate in WBGS was 1,974 garages at the end of 2006, ( 32.9% in remaining governorate in WB and 67.1% in GS).

The percentage distribution of licensed garages at the end of 2006 shows that the majority of garages were used for repair of motor vehicles 48.0%. This type of garages formed 54.9% in remaining WB governorates, and 44.7% in GS. On the other hand, 20.3% of garages were used for vehicles trading, (29.7% in remaining WB governorates compared with 17.0% in GS). However 31.7% of garages were used as stores of spare parts of motor vehicles, (15.4% in remaining WB governorates and 39.6% in GS) (*Table 12*).

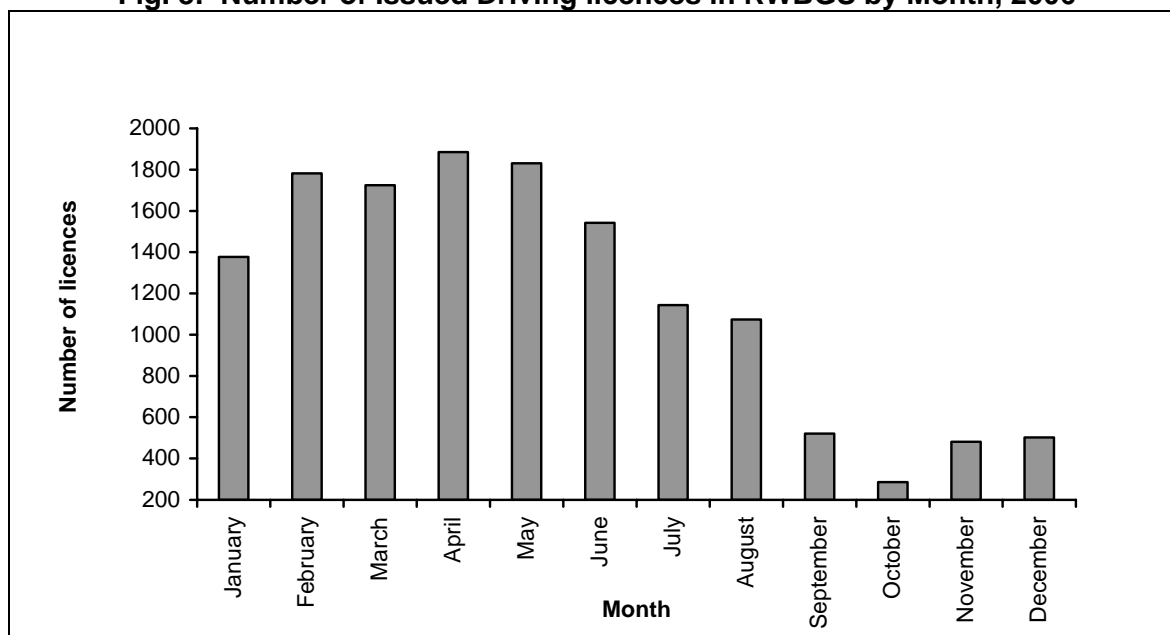
**Fig. 7: Percentage Distribution of Garages in Remaining WB Governorates and GS by Type of Garage, 2006**



### 3.2.7: Driving Licences

The total number of issued driving licences in RWBGS was 14,147 at the end of 2006, of which 7,858 in RWB and 6,289 in GS (*Table 14*).

**Fig. 8: Number of Issued Driving licences in RWBGS by Month, 2006**

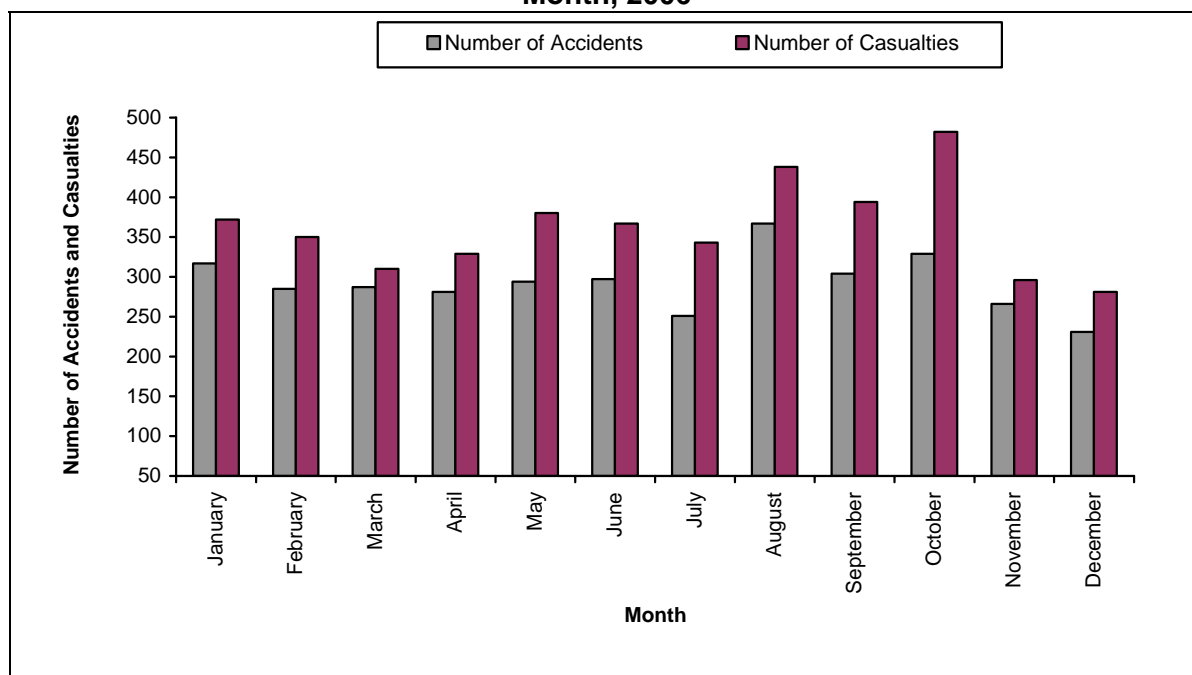


### 3.2.8: Road Accidents

The total number of registered road accidents in RWBGS amount to 3,509, of which 2,180 occurred in RWB and 1,329 in Gaza Strip (*Table 16 & Map 2*).

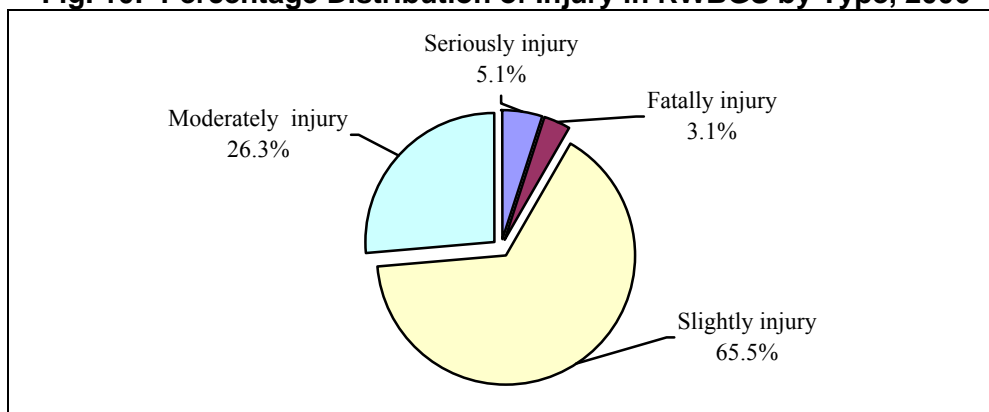
On the other hand, the number of casualties resulting from those accidents reached 6,026 (4,350 in RWB and 1,138 in Gaza Strip), figure 9 shows the number of road accidents and casualties in RWBGS.

**Fig. 9: Number of Registered Road Accidents and casualties in RWBGS by Month, 2006**



The percentage distribution of injuries by type in RWBGS in 2006 is as follows: 65.5% slightly injured, 26.3% moderately injured, 5.1% seriously injured, 3.1% fatally injured, compared with 2.4% fatally injured in 2005 (*Table 17*).

**Fig. 10: Percentage Distribution of Injury in RWBGS by Type, 2006**



### 3.3: Air Transportation

The total number of Palestinian departure and arrival flights from AL-Arish Airport in Egypt (due to the Israeli enclosure for the Gaza international airport), at 2006 was 224 flights, out of which 138 were regular flights with 4,227 passengers, and the total number of available seats in these flights was 6,624, with occupancy ratio of 63.8%. The total number of irregular flights was 86 with 4,267 passengers, and the total number of available seats was 9,212 with an occupancy ratio of 46.3% (*Table 20*).

Regarding the regular flights of the Palestinian Airlines in 2006, the monthly average of flights was 12, with an average number of 335 passengers. The average number of available seats was 552.

During the same period, the highest number of passengers was 755 that were carried in 24 flights, and the number of available seats was 1,152, making an occupancy ratio of 65.5% (Table 19).

**Fig. 11: Number of Passengers and Number of Available Seats in Regular Flights of the Palestinian Airlines by Month, 2006**

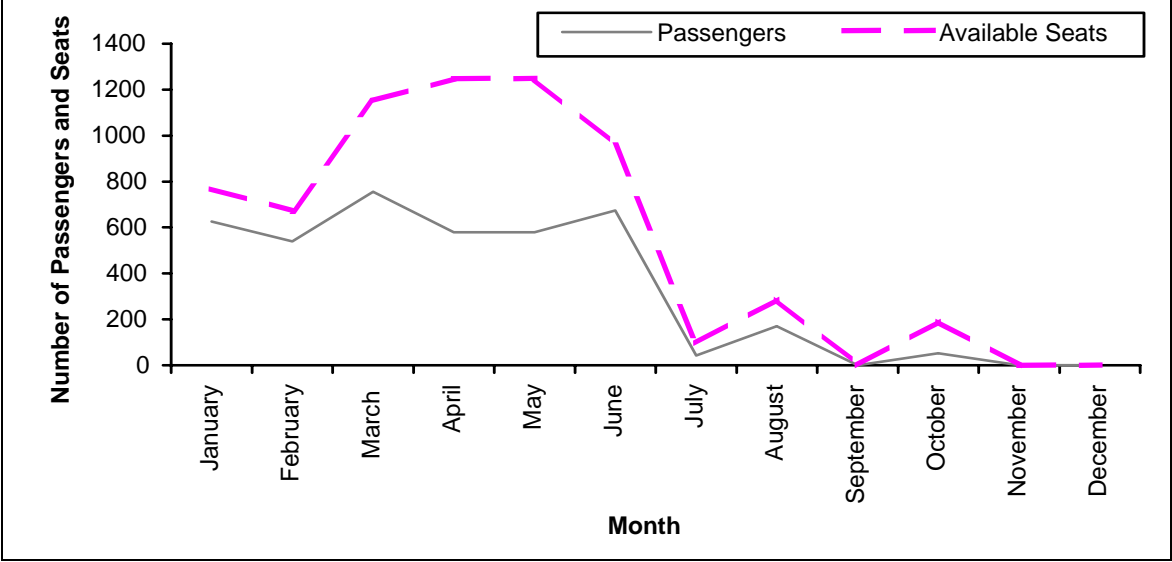


Figure (11) presents the regular flights of the Palestinian Airlines to and from AL-Arish Airport (Egypt). The table shows that the highest number of passengers was in March compared to the lowest number in July, and the highest number of available seats was in April and May compared to the lowest number in July.

Note that there was a decrease in the number of trips and passengers made compared with the year 2000 with 53,457 passengers and that was due to the Israeli measures imposed on the Palestinian Territory and Gaza International Airport.

**3.4: The Post office data**

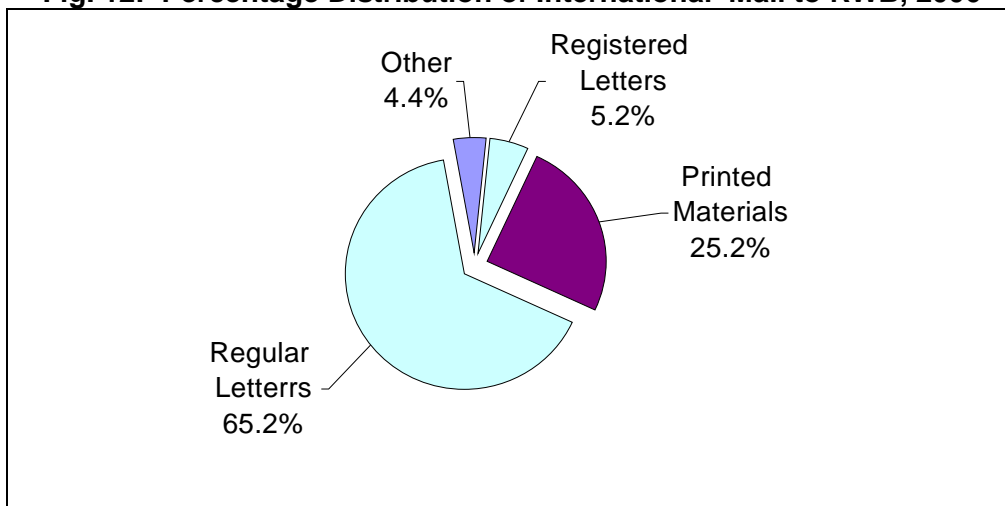
International received mail in RWB consisted of 293,224 postal materials in 2006, with a monthly average of 24,435 pieces.

The percentage distribution of these materials shows that the majority was regular letters, as they formed 65.2%. The percentage of printed materials was 25.2%, while the percentage of registered letters was 5.2%, and the remaining percentage 4.4% covered express mail, parcels, telegrams, and small packets.

The highest number of postal materials was in May, where there was 37,456 postal materials, and the lowest number of these materials was in November, where there was 9,587 pieces (Table 21).



**Fig. 12: Percentage Distribution of International Mail to RWB, 2006**

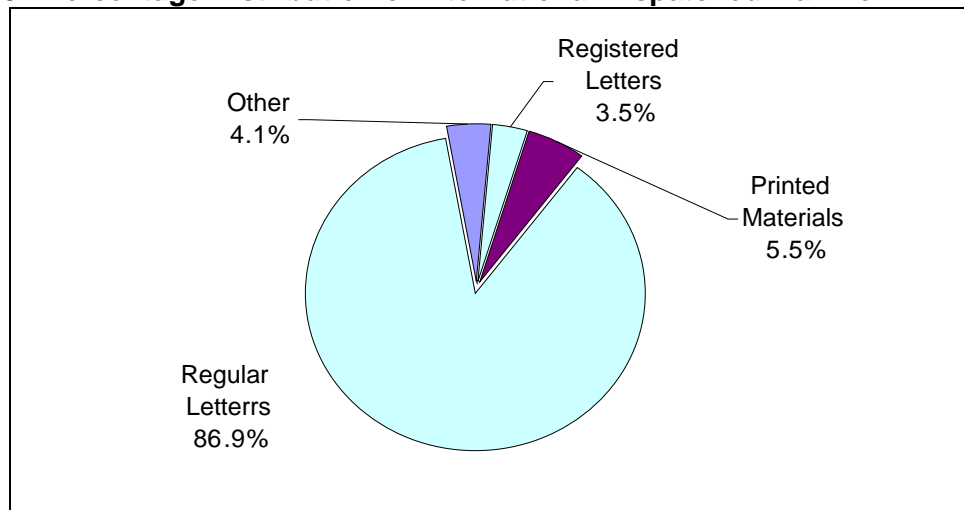


Regarding to international dispatched mail from RWB in 2006, there was 57,647 postal materials, with a monthly average of 4,804 pieces.

The percentage distribution of these materials shows that the majority was regular letters, where they formed 86.9%. Printed materials formed 5.5%, and that of Registered mail was 3.5%, while the remaining 4.1% was classified as other postal materials which contain parcels, telegrams, and small packets.

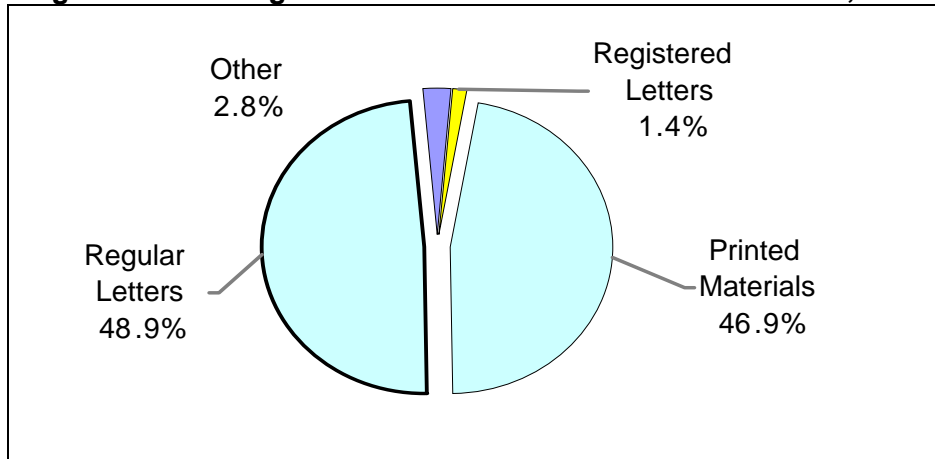
The highest number of these materials was in March 2006, there was 8,576 pieces in this month, and the lowest number of these materials 3,334 was in June (*Table 21*).

**Fig. 13: Percentage Distribution of International Dispatched Mail from RWB, 2006**



The total number of postal materials received in GS was 277,748 in 2006, with a monthly average of 18,979 material. Regular letters formed 48.9% of the total materials. Printed materials formed 46.9%. Registered letters formed only 1.4%, while the rest (remaining postal materials which contain express mail, parcels, telegrams, and small packets) formed only 2.8%.

**Fig. 14: Percentage Distribution of International Mail to GS, 2006**

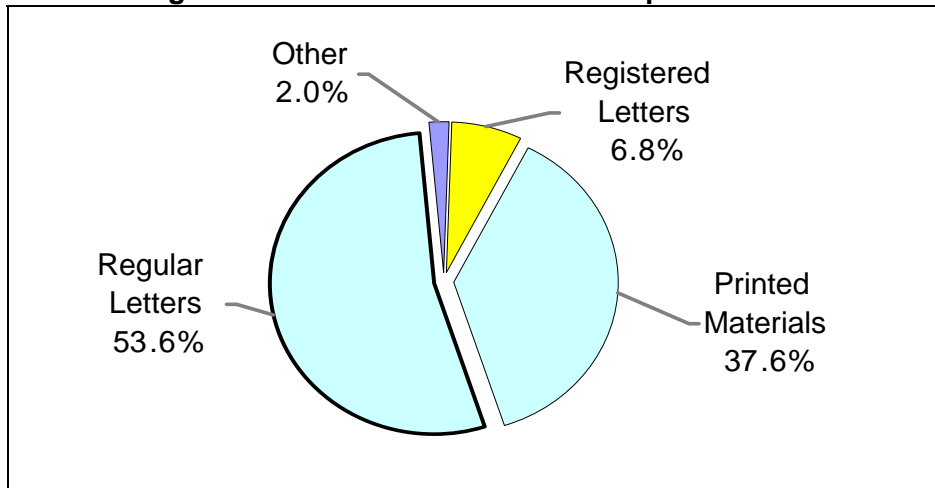


The highest number of these materials was 35,622 in November, while the lowest number was 7,782 in May (*Table 22*).

The dispatched mail from GS in the same year was 28,986 postal materials, average 2,416 pieces per month. The highest number of these materials was in May 12,602 while the lowest number was in October with 798 material.

The percentage distribution of dispatched mail shows that regular letters formed 53.6%, Printed materials formed 37.6%. Registered letters formed 6.8%. while the rest (remaining postal materials which contain telegrams, and small packets) formed only 2.0%. (*Table 22*).

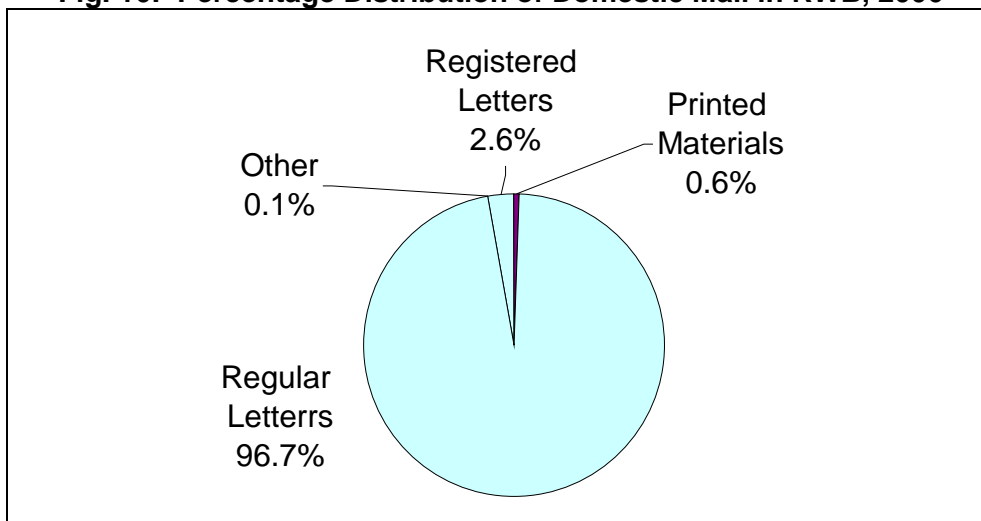
**Fig. 15: Percentage Distribution of International dispatched Mail from GS, 2006**



The total number of Domestic postal materials in RWB was 1,605,100 in 2006, with a monthly average of 133,758.

The percentage distribution of Domestic dispatched mail shows that regular letters formed 96.7%, this was due to the consideration of telephone bills as regular letters, printed materials formed 0.6%. Registered letters formed 2.6%. while the rest (remaining postal materials which contain telegrams, and small packets) formed only 0.1%. (*Table 23*).

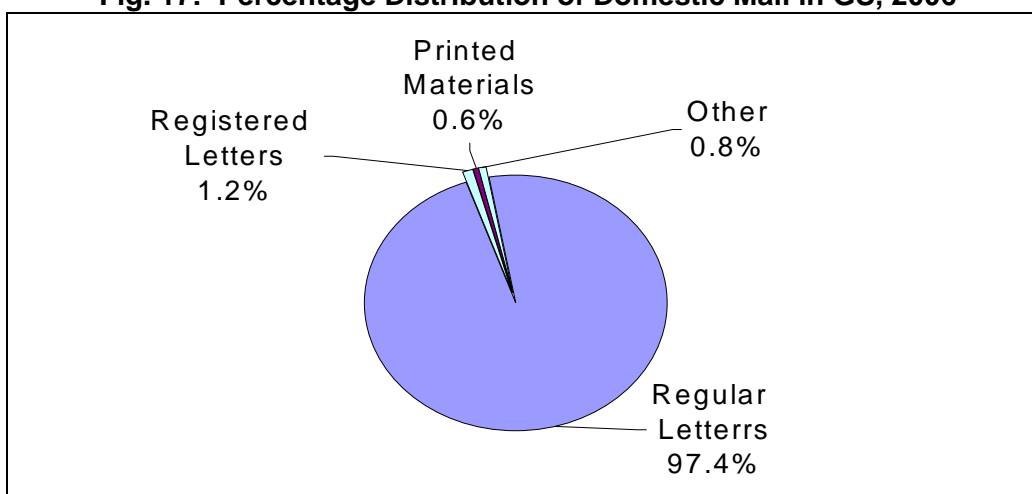
**Fig. 16: Percentage Distribution of Domestic Mail in RWB, 2006**



The total number of domestic postal materials in GS was 443,886 in 2006, with a monthly average of 36,991.

The fact that telephone bills are considered as regular letters made them a majority of postal materials 97.4%, printed materials formed 0.6%. Registered letters formed 1.2%. while the rest (remaining postal materials which contain telegrams, and small packets) formed 0.8% (*Table 23*).

**Fig. 17: Percentage Distribution of Domestic Mail in GS, 2006**



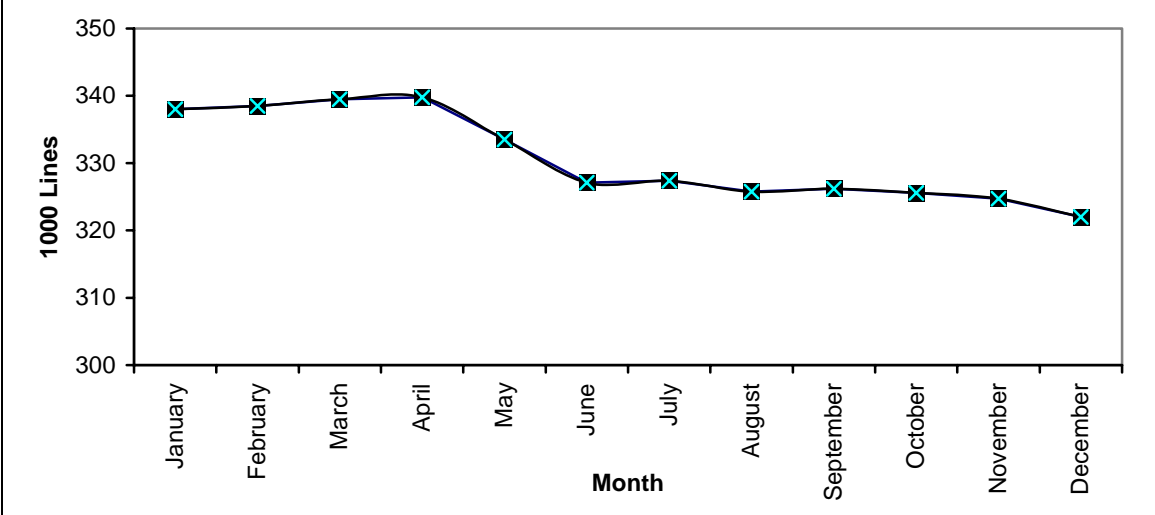
### 3.4.1: Post Boxes and Mail service Centers

The total number of post boxes in RWBGS was 14,812 at the end of 2006, out of which 12,802 were in RWB, 2,010 were in GS, The number of mail service centers was 322, out of them 99 mail service office and 238 mail service division (*Table 24*).

**3.5: Telecommunications**

The total number of main telephone lines in RWBGS at the end of 2006 was 321,999 lines with a crease rate of 4.5% compared with the previous year, as there was an crease by 1,252 lines during 2006. (Tables 25, 26).

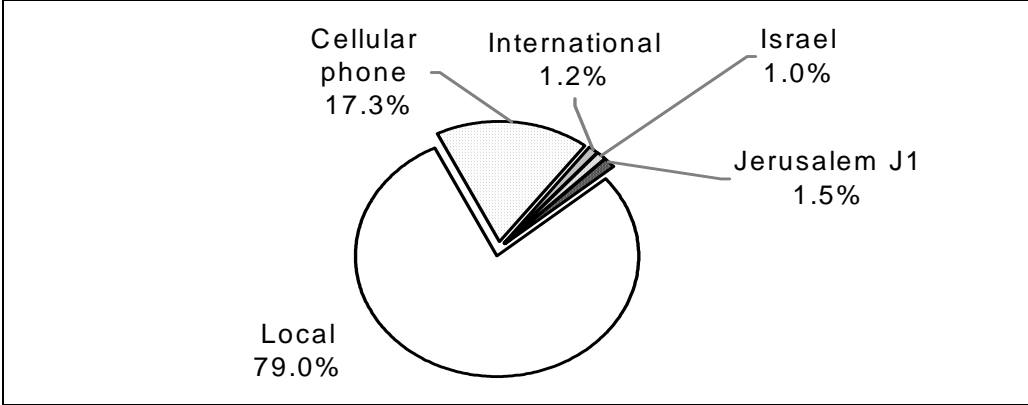
**Fig. 18: Number of Main Telephone Lines in RWBGS by Month, 2006 (In thousands)**



Regarding to the total number of public phone lines in RWBGS was 1,942 Lines at the end of 2006, and of which 1,457 in RWB and 485 in GS (Tables 27).

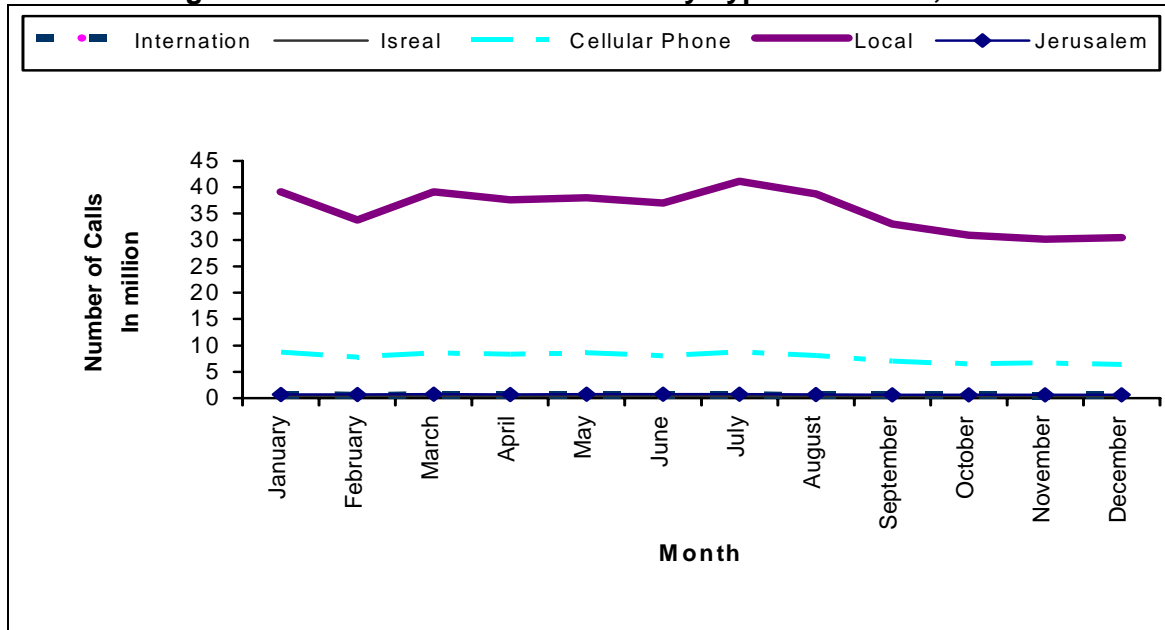
The monthly average number of telephone calls in RWBGS was 45,243,238 in 2006. The percentage distribution of number of calls shows that local calls (using the same switchboard in the same country) formed 79 % of the total calls, (69.2 % in RWB and 30.8% in GS). Cellular phone calls formed 17.3%, (77.1% to Palestinian Cellular phone and 22.9% to Israel Cellular phone). International calls formed 1.2%, (77.1% in RWB, and 22.9% in GS). On the other hand calls to Israel formed 1.0% and calls to Jerusalem and West- Jerusalem) formed 1.5%.

**Fig. 19: Percentage Distribution of Number of Calls by Type, 2006**



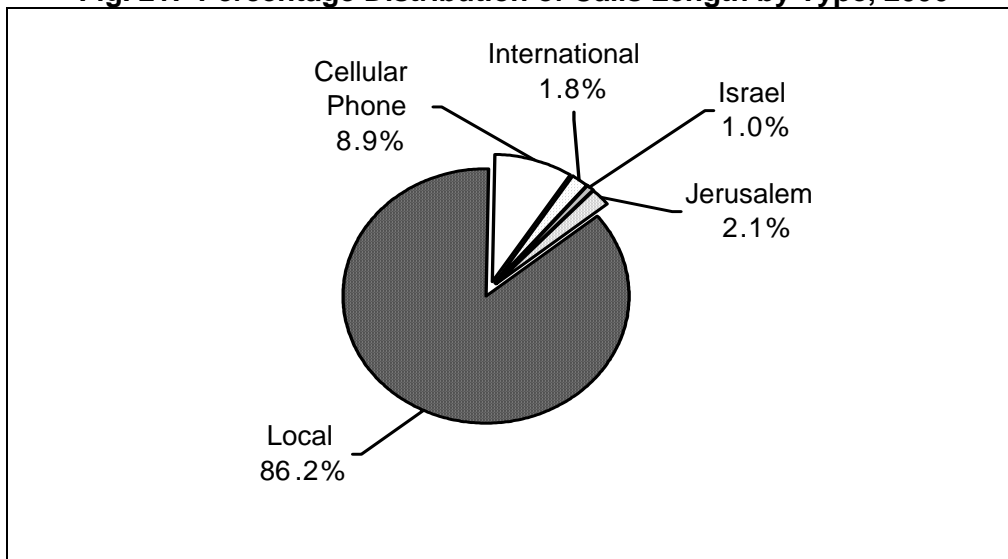
It is worth mentioning that the highest number of calls was in July, as there was 51,700,307 calls, which equivalent to 10% of total calls (Table 28).

**Fig. 20: Number of Calls in RWBGS by Type and Month, 2006.**



In respect to the total length of telephone calls, the monthly average was 117,789,075 minutes in 2006 distributed as follows: 86.2% for local calls, 8.9% for Cellular Phone calls, 1.8% for international calls, 1.0% for calls to Israel and 2.1% for calls to Jerusalem. (*Table 29*).

**Fig. 21: Percentage Distribution of Calls Length by Type, 2006**

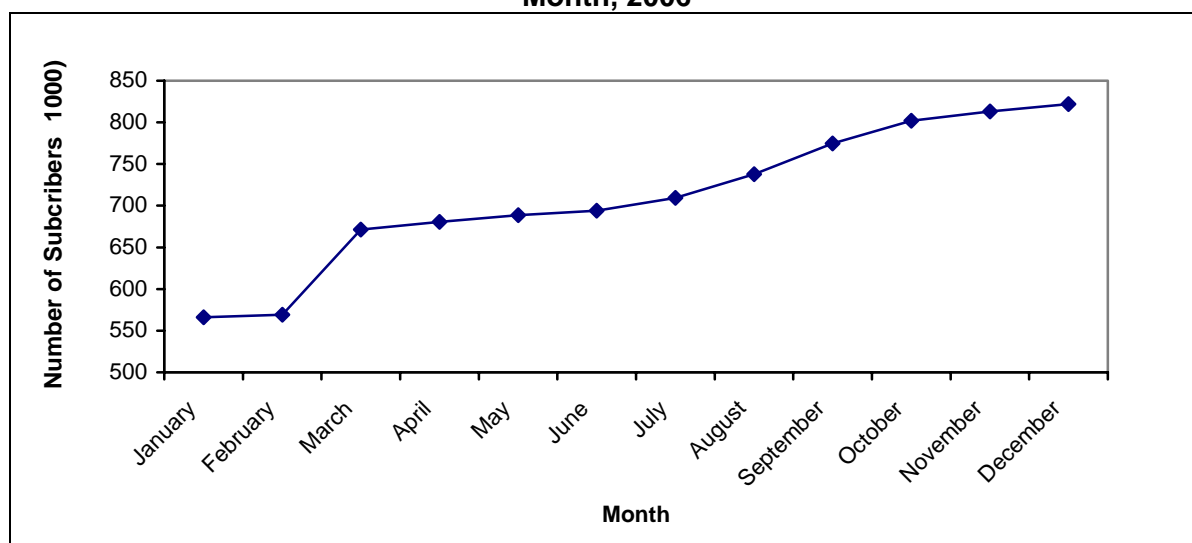


### 3.5.1: Cellular Phone

The total number of subscriptions of Jawwal cellular phone at the end of 2006 in Palestinian Territory was 821.800 used bill and card system.

Also there were 22 services centers distributed in most of the governorates (*Table 30*).

**Fig. 22: Number of Cellular phone "Jawwal " Subscriptions in Palestinian Territory by Month, 2006**



### 3.5.2: The Internet

The number of companies providing this service was 5 companies at the end of 2006, of which 4 companies in RWB and One companies in GS. (*Table 31*).

On the other hand the total number of subscribers service free internet was 52,866 users of which 38,337 in remaining west bank and 14,529 in gaza strip, while the ADSL lines was 25,828 line of which 17,718 in remaining west bank and 8,110 in gaza strip, at the end of 2006. (*Table 32*).

The total number of licensed internet coffees in RWBGS was 138 coffee at the end of 2006, of which 133 were in RWB, 5 were in GS. The number of computers in these coffees was 1,512 with average number of 11 computer per one coffee, and the number of employees in these coffees was 180 with average number of 1.3 employee per one coffee (*Table 33*).



## Chapter Four

### **Methodology**

- **Data Collection:**

The data of this report is based primarily on administrative records of various institutions, in addition to data extracted from some surveys performed by PCBS. After getting data from its sources, it was rearranged, reclassified, and then tabulated in a way to achieve the purpose of this report.

- **Coverage:**

Although the main objective of publishing annual reports on transportation and communication is to construct time series of the main indicators related to transportation and communication sector in the Palestinian Territory, it is noticed that this report mainly covers the main indicators related to transportation and communication during 2006, with only a few indicators from past years

The majority of data does not provide information about Jerusalem, except data on labor force, road network length, and Cellular Phone.





## Chapter Five

### Data Quality

#### 5.1 Accuracy of the Data

##### 5.1.1 Statistical Errors

The Report was implemented on the basis of a comprehensive census for all studied statistical units; therefore this survey was free of statistical (sampling) errors.

##### 5.1.2 Non-Statistical Errors

Non-statistical errors are probable in all stages of the project, during data collection or processing. In this survey it is mostly referred to data entry errors. To avoid errors and reduce their effects, great efforts were made to train data entry staff, they were trained on the entry program that was examined before starting the data entry process, preparing data entry program before data collection for checking readiness of the program for data entry, a set of validation rules were applied on the program for checking consistency of data.

#### 5.2 Comparison of the Data

Comparison exercises were done with previous year's survey of transportation and communication statistics, the results reveals consistency with previous surveys data.

#### 5.3 Technical Notes

There are important technical notes which should be taken into consideration when reviewing this report, which are as follows:

- Tables excluding data for those parts of Jerusalem which were annexed force fully by Israel in 1967, while includes road network data for Jerusalem Governorate.
- It may be noticed that the details of the value of some indicators may not add to its total, due to rounding calculations.



## References

1. **Palestinian Central Bureau of Statistics**, *Transportation and Communication Statistics in the Palestinian Territory: Annual Reports (1998-2003)*. Ramallah-Palestine.
2. **Palestinian Central Bureau of Statistics, 2006**. *Labour Force Survey. Database, (2000-2007)*. Ramallah-Palestine.
3. **Palestinian Central Bureau of Statistics, 1998**. *Transportation and Communication Statistics in the West Bank and Gaza Strip, Current Status Report (Series. No. 8)*. Ramallah-Palestine.
4. **The Intersecretariat Working Group on Transport Statistics** EUROSTAT, ECMT, UN/ECE. *Glossary for Transport Statistics. Second Edition*.