

**2007 -**

**(5) :**  
**2008 /**

**2006**

.2008 - 1429 ©

.2007

-

**.2008**

-

:

- **1647** . .

(970/972) 2 242 6340 :

(970/972) 2 242 6343 :

diwan@pcbs.gov.ps :

<http://www.pcbs.gov.ps> :



2007

(PNA)

2007 (CFG)

.(SDC)

(CFG)



•

•

•

•

•



.1995

.2007

**2008**





<b>21</b>			:
21			1.1
21			2.1
22			3.1
22			4.1
<b>23</b>			:
<b>27</b>			:
27		2007	1.3
28		2007	2.3
28		2007	3.3
28		2007	4.3
35			5.3
35		2007	6.3
35			7.3
<b>43</b>			:
43			1.4
43			2.4
43			3.4
44			4.4
44			5.4
<b>45</b>			:
45			1.5
45		2007	2.5
<b>47</b>			



<b>49</b>	2007	<b>:1-1</b>
<b>50</b>	2007	<b>:2-1</b>
<b>51</b>	2007	<b>:3-1</b>
<b>52</b>	2007	<b>:4-1</b>
<b>53</b>	2007	<b>:5-1</b>
<b>54</b>	2007	<b>:6-1</b>
<b>55</b>	2007	<b>:7-1</b>
<b>56</b>	( / ) -2007	<b>:8-1</b>
<b>57</b>		<b>:1-2</b>
		2007
<b>59</b>	2007	<b>:2-2</b>
<b>60</b>		<b>:3-2</b>
		2007
<b>60</b>	2007	<b>:4-2</b>
<b>61</b>		<b>:5-2</b>
		2007
<b>62</b>	2007	<b>:6-2</b>
<b>64</b>	2007	<b>:7-2</b>
<b>66</b>	2007	<b>:8-2</b>
<b>68</b>	2007	<b>:9-2</b>
<b>70</b>		<b>:10-2</b>
	( / ) -2007	



<b>27</b>	2007	<b>:1</b>
<b>28</b>	2007	<b>:2</b>
<b>31</b>	2007	<b>:3</b>
<b>31</b>	(2007-1999)	<b>:4</b>
<b>35</b>	2007	<b>:5</b>
<b>39</b>	1999 (2007-2000)	<b>:6</b>

<b>29</b>	2007	<b>:1</b>
<b>33</b>	2007	<b>:2</b>
<b>37</b>	2007	<b>:3</b>
<b>41</b>	2007	<b>:4</b>





	2007				
116					
2007					
9,088	4,109	2007			82
		2007	2000/9/28		
		:	2007		
315,866					•
.1999		%0.3		2007	
673,458					•
.1999		2007	%42.8		
169	1,094	1,263			•
		.%22.7		1999	
		1033.3		2007	•
		.1999		%22.5	
		2007	%25.1		•
			.1999	%25.1	
.2007	( / ) 2.1				•

**1.1**

1995

1995

.1996

.1996

**2.1**

:

**3.1**

:

.1

.2

.3

.4

.5

.6

**4.1**

:

:

•

:

•

:

•

:

•

:

•

:

•

1.2

:

:

:

:

(

(

:

.( )

:

:

:



$$100 \times \underline{\hspace{2cm}} = \hspace{10em} .5$$

$$100 \times \underline{\hspace{2cm}} = \hspace{10em} .6$$

$$\underline{\hspace{2cm}} = \hspace{10em} .7$$

:

**2.2.2**

$$\frac{\underline{\hspace{2cm}}}{3} = \hspace{10em} .1$$

$$\frac{\underline{\hspace{2cm}}}{3} = \hspace{10em} .2$$

$$\underline{\hspace{2cm}} = \hspace{10em} .3$$

$$100 \times \frac{\underline{\hspace{2cm}}}{\times} = \hspace{10em} .4$$

$$\underline{\hspace{2cm}} = \hspace{10em} (. / ) .5$$

$$\underline{\hspace{2cm}} = \hspace{10em} .6$$

$$100 \times \frac{\underline{\hspace{2cm}}}{\times} = \hspace{10em} .7$$

:

**3.2**

$$\frac{\underline{\hspace{2cm}}}{12} = \hspace{10em} .1$$

$$\frac{\underline{\hspace{2cm}}}{365} = \hspace{10em} .2$$

$$100 \times \frac{\underline{\hspace{2cm}}}{365 \times} = \hspace{10em} .3$$

$$\frac{\quad}{12} = .4$$

$$\frac{\quad}{365} = .5$$

$$100 \times \frac{\quad}{365 \times \quad} = .6$$

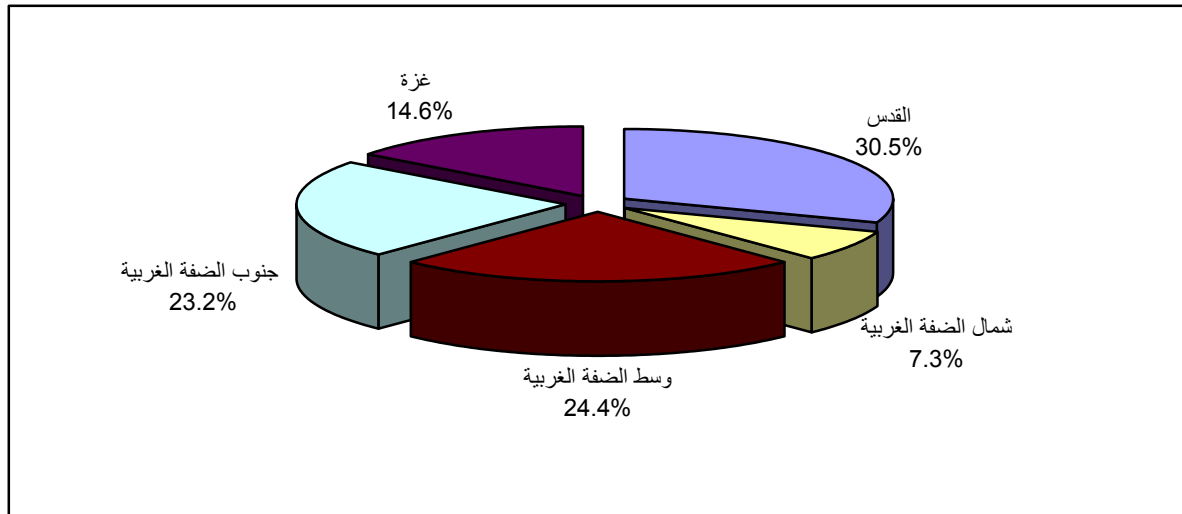
$$\frac{\quad}{\quad} = .7$$

: 2007

		2007		1.3
		116		
2007		82		
2007		9,088		4,109
:				
	261	112	6 :	•
	2,080	897	20 :	•
	2,537	1,143	25 :	•
	3,215	1,537	19 :	•
		754	421	12 :

2007

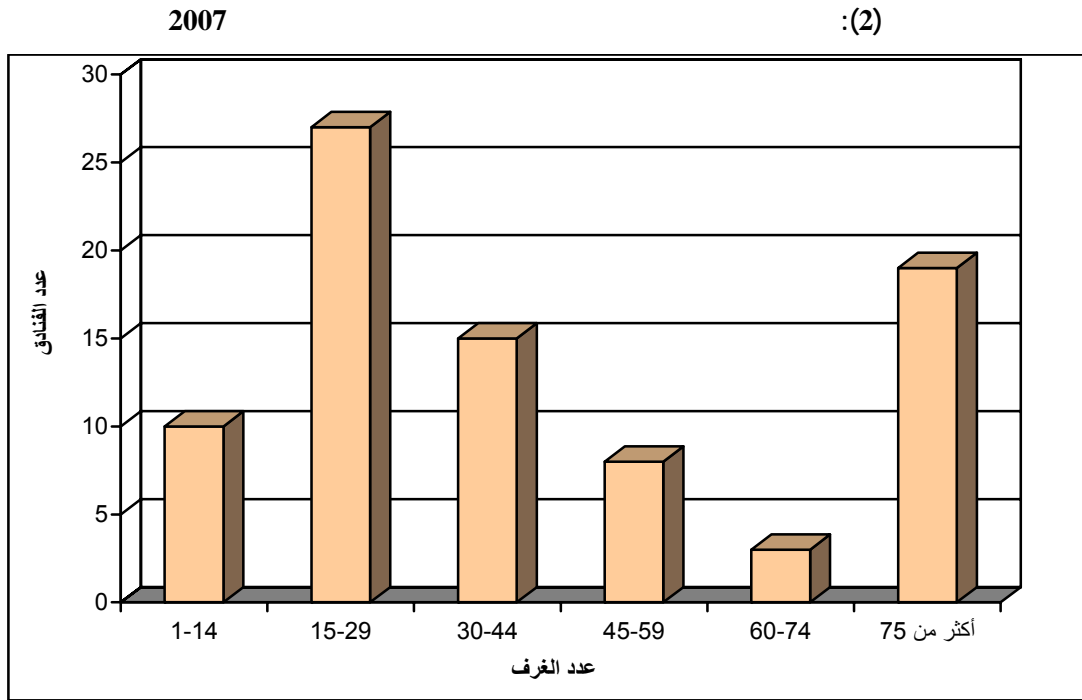
:(1)



%32.9

. 75 %23.2 . 29 15 2007

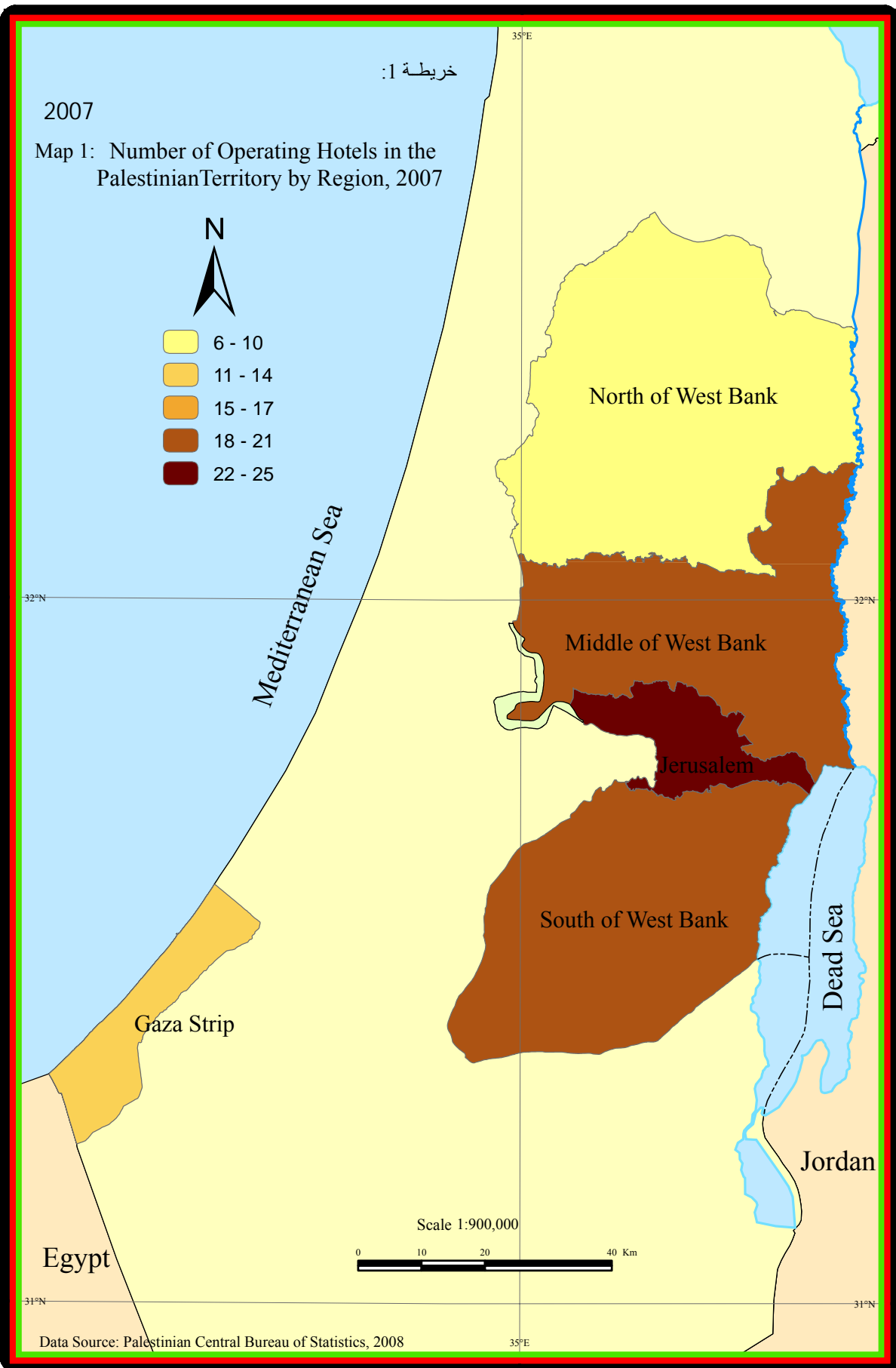




	<b>2007</b>		<b>2.3</b>
19,723		108	
73	16,249	111	
	14		2,584
		13	

	<b>2007</b>		<b>3.3</b>
:		1,263	
	46	217	•
	123	877	•

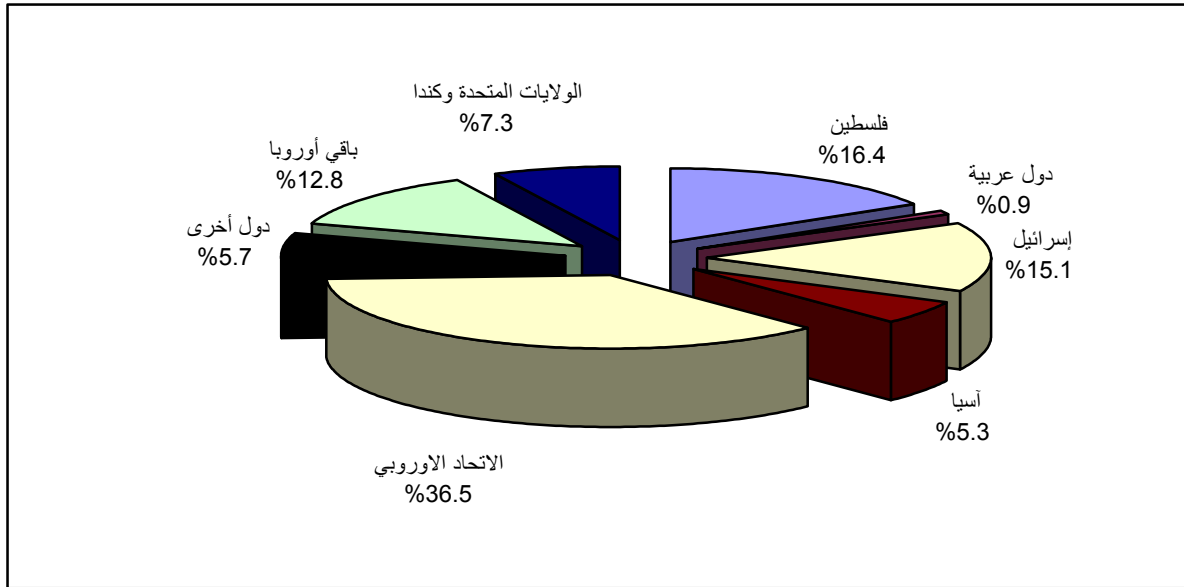
	<b>2007</b>		<b>4.3</b>
2007	315,866		
%36.5			





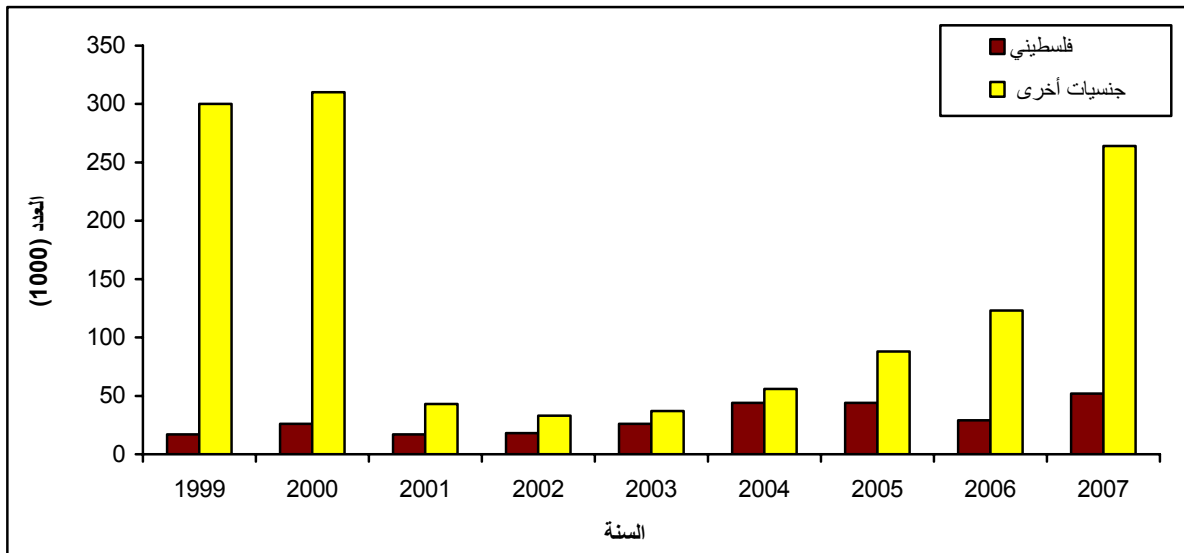
2007

:(3)



(2007 - 1999)

:(4)



.1999

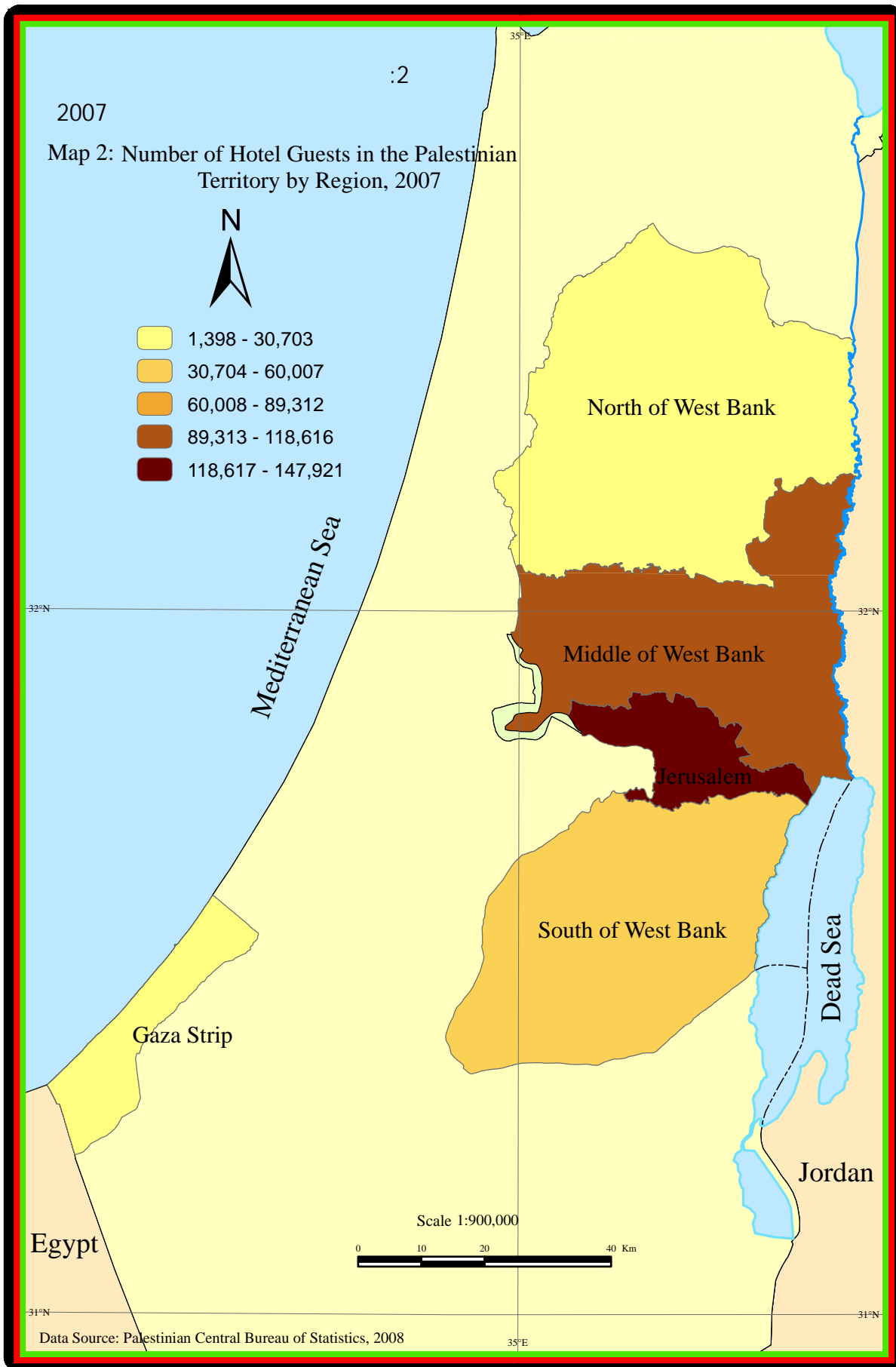
(4)

%46.8

%32.9

.(5)

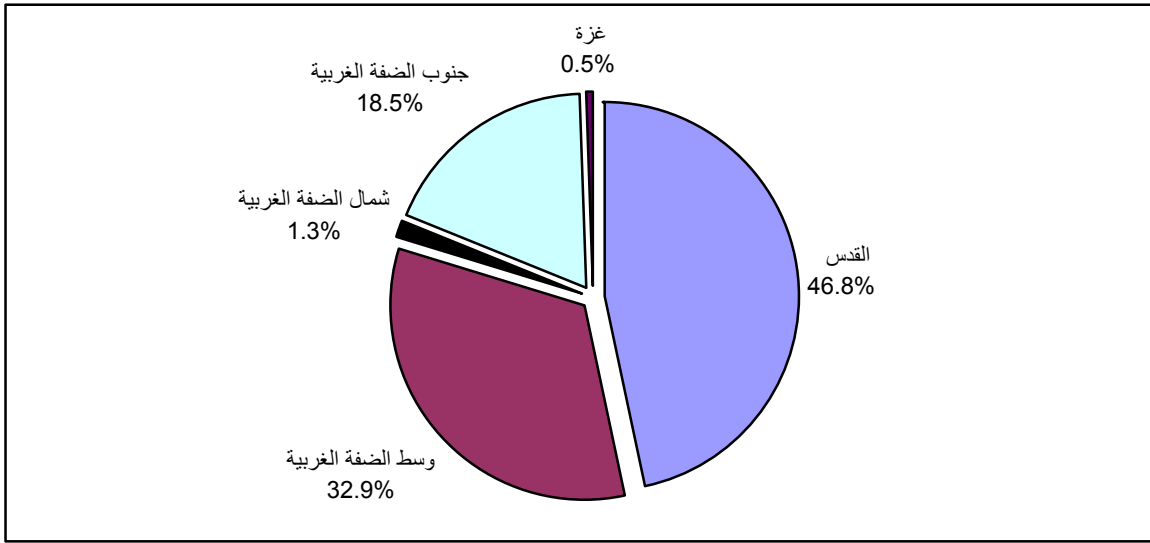






2007

(5):



5.3

1033.3

2007

%20.3

1845.1

%25.1

2.1 ( / ) .

2007

6.3

%11.4 2007

673,458

%43.1

%10.0

%9.1

%19.7

%20.1

%58.5

%0.5

%1.2

7.3

1999

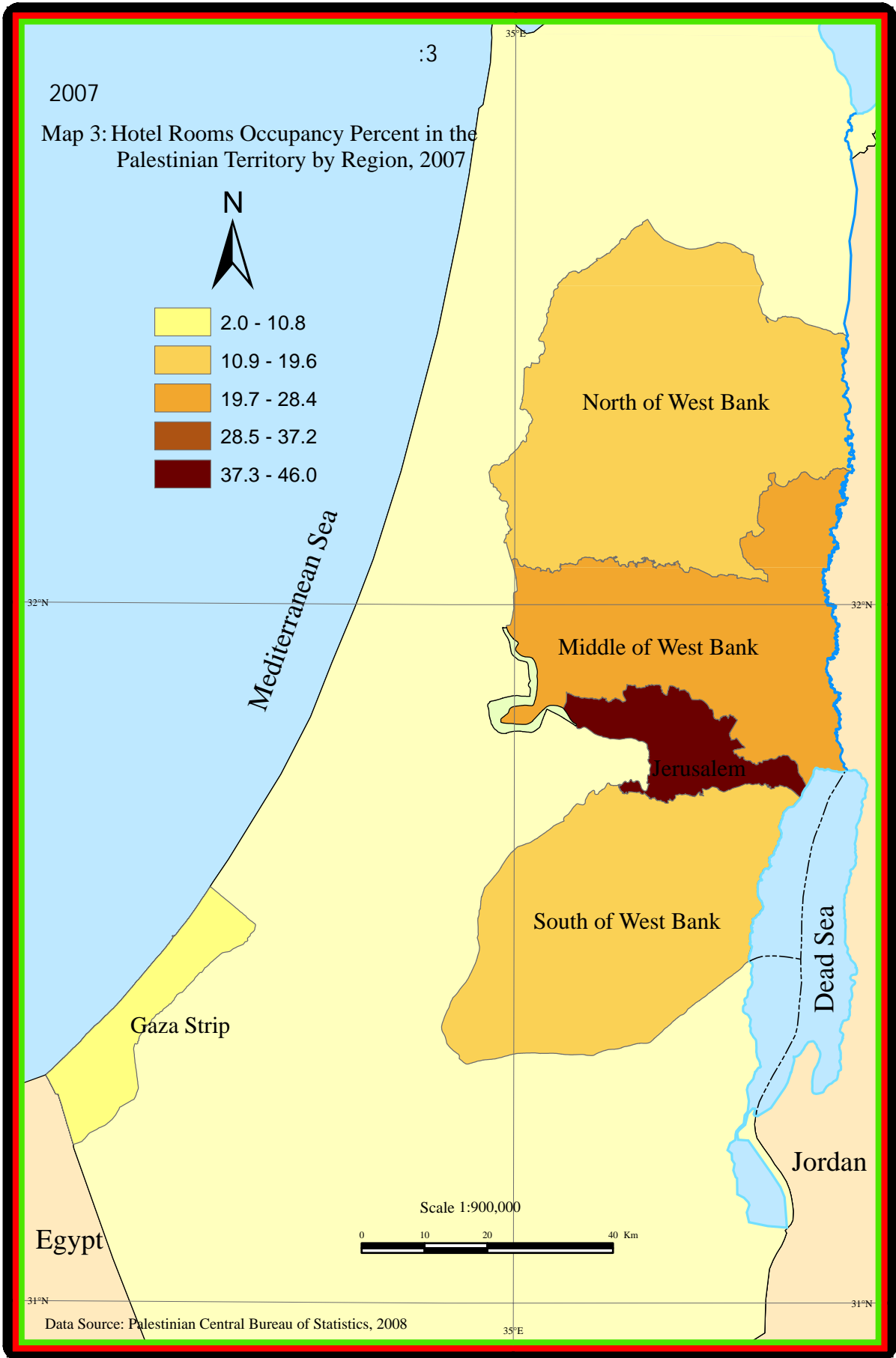
(2007 - 2000)

2000/9/28

:



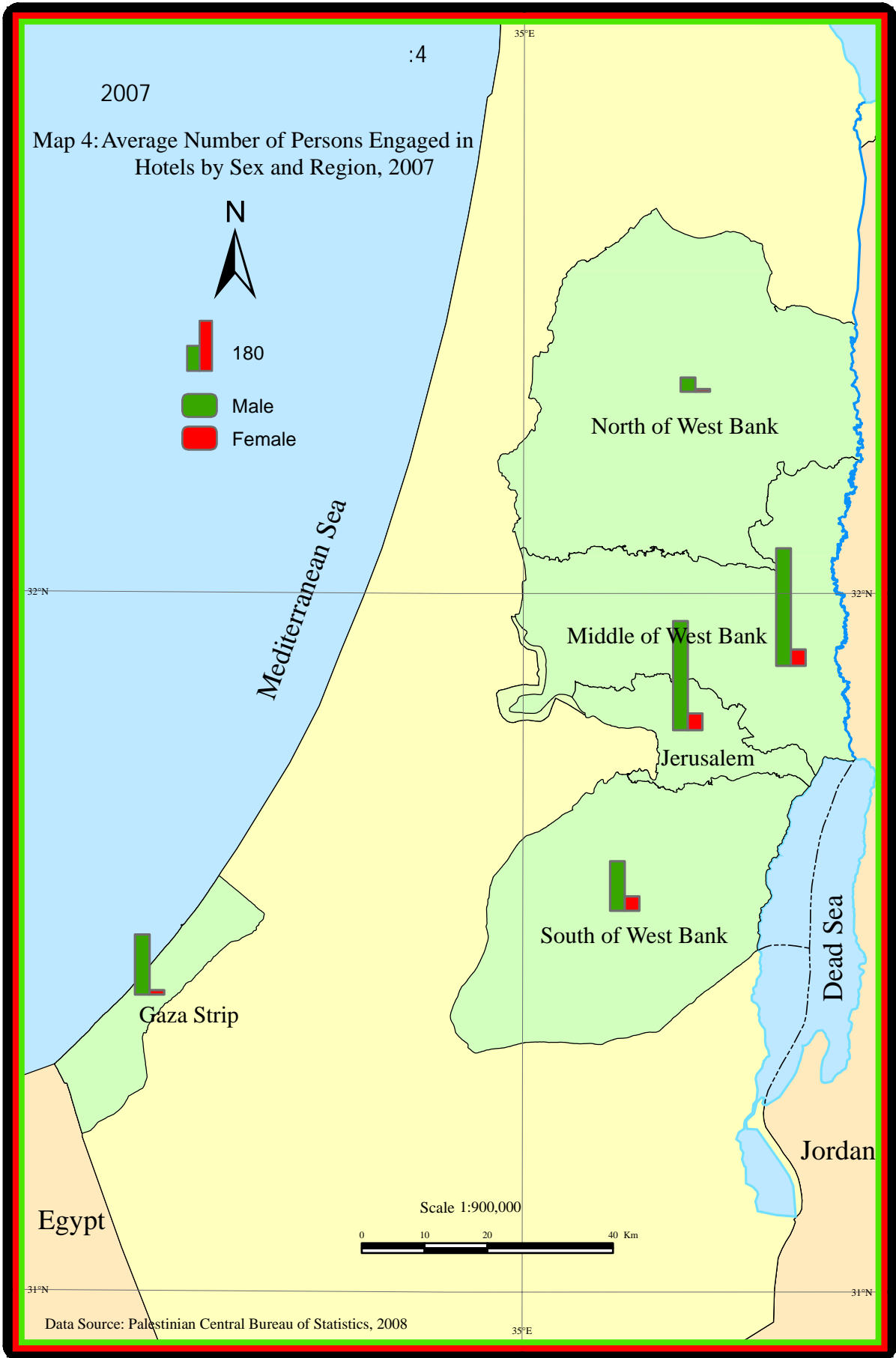














**1.4**

- 
- 
- 
- 
- 

**2.4**

.2004

**3.4**

**.1**

**.2**



.3

4.4

.1

.2

5.4

.1

.2

.3

.4

	:		.1
	:		.2
.%94	:		.3
	:		
	:		<b>1.5</b>
2007	:		•
	:		•
	:		•
	:	" "	•
	:	<b>2007</b>	<b>2.5</b>
	:		.1
2007	:		.2
	:		

2007

106,111	49,289	8,738	4,048	78	I
159,855	75,520	8,692	4,081	78	II
208,360	102,145	8,873	4,134	80	III
199,132	88,912	9,088	4,175	82	IV
106,111	49,289	8,738	4,048	78	I
158,943	75,241	8,666	4,058	77	II
208,360	102,142	8,873	4,134	80	III
199,132	88,912	9,088	4,175	82	IV

# Tables

2007

:1-1

Table 1-1: Main Indicators for Hotel Activities in the Palestinian Territory by Month, 2007

Month	Bed Occupancy		Room Occupancy		No. of Guest Nights	No. of Guests	No. of Beds	No. of Rooms	No. of Hotels
	% Rate%	Average	% Rate%	Average					
January	9.8	846.7	12.2	488.2	26249	12572	8604	3992	78
February	13.4	1179.0	12.8	518.4	33012	15794	8791	4042	78
March	17.1	1511.3	21.4	877.8	46850	20923	8820	4111	78
April	27.1	2366.9	31.4	1292.0	71008	35337	8734	4110	79
May	17.9	1553.6	24.0	975.0	48162	22018	8675	4067	77
June	15.6	1356.2	19.5	793.9	40685	18165	8667	4066	78
July	18.9	1679.5	25.6	1060.5	52064	26689	8866	4136	80
August	29.6	2622.6	35.0	1448.6	81302	42552	8866	4141	80
September	28.1	2499.8	34.0	1403.9	74994	32904	8887	4124	80
October	33.5	3068.5	36.5	1539.8	95124	43374	9165	4219	85
November	22.4	2060.5	27.4	1154.0	61814	26715	9197	4211	84
December	15.3	1361.1	19.9	814.6	42194	18823	8901	4094	82
<b>Annual Indicator *</b>	<b>20.3</b>	<b>1845.1</b>	<b>25.1</b>	<b>1033.3</b>	<b>673458</b>	<b>315866</b>	<b>8848</b>	<b>4109</b>	<b>82</b>

\* Represents the annual average of indicators except number of guests and number of guest nights which represents the annual total.

\*

2007

:2-1

Table 1-2: Distribution of Hotels, Rooms, and Beds by Categories of Number of Rooms, 2007

Categories of Number of Rooms	No. of Beds				No. of Rooms				No. of Hotels				
	December	September	June	March	December	September	June	March	December	September	June	March	
1 - 14	437	305	305	305	111	90	90	90	10	9	9	9	14 - 1
15 - 29	1276	1190	1146	1160	558	514	500	499	27	25	24	24	29 - 15
30 - 44	1140	1020	940	953	546	503	460	467	15	14	13	13	44 - 30
45 - 59	826	826	826	726	397	397	397	347	8	8	8	7	59 - 45
60 - 74	373	802	628	758	198	398	331	396	3	6	5	6	74 - 60
75 +	4849	4744	4822	4918	2284	2222	2288	2312	19	18	19	19	+ 75
<b>Total</b>	<b>8901</b>	<b>8887</b>	<b>8667</b>	<b>8820</b>	<b>4094</b>	<b>4124</b>	<b>4066</b>	<b>4111</b>	<b>82</b>	<b>80</b>	<b>78</b>	<b>78</b>	

2007

:3-1

Table 1-3: Number of Persons Engaged in Hotels by Type of Work, Sex and Month, 2007

Month	Total		Operation		Administration		No. of Hotels
	Female	Male	Female	Male	Female	Male	
January	168	1060	125	842	43	218	78
February	170	1095	125	879	45	216	78
March	184	1100	136	884	48	216	78
April	177	1110	130	892	47	218	79
May	172	1076	128	863	44	213	77
June	171	1107	126	890	45	217	78
July	174	1111	128	893	46	218	80
August	176	1108	131	891	45	217	80
September	173	1114	126	895	47	219	80
October	156	1127	107	900	49	227	85
November	152	1040	105	820	47	220	84
December	152	1089	103	879	49	210	82
<b>Annual average</b>	<b>169</b>	<b>1094</b>	<b>123</b>	<b>877</b>	<b>46</b>	<b>217</b>	<b>82</b>

2007

:4-1

Table 1- 4: Distribution of Guests in Hotels by Nationality and Month, 2007

Month	Nationality					No. of Hotels
	U.S.A & Canada	Asia	Israel	Arab Countries	Palestine	
January	1271	907	1724	415	2780	78
February	1790	1051	1222	144	2543	78
March	2071	1922	2114	338	3621	78
April	2635	981	3184	332	4153	79
May	2567	757	3559	171	4003	77
June	2136	981	2406	206	5172	78
July	1893	1057	5950	238	5175	80
August	2313	1261	17489	252	6758	80
September	674	1666	1372	104	3623	80
October	2123	2746	2032	266	3863	85
November	2321	2491	2511	256	4852	84
December	1324	1062	4283	163	5155	82
<b>Total</b>	<b>23118</b>	<b>16882</b>	<b>47846</b>	<b>2885</b>	<b>51698</b>	<b>82</b>

2007

:( ) 4-1

Table 1-4 (Cont.): Distribution of Guests in Hotels by Nationality and Month, 2007

Month	Total	Nationality				
		Australia & New Zeland	Africa	Other European Count.	European Union	Central & South America
January	<b>12572</b>	215	489	785	3647	339
February	<b>15794</b>	366	7	4815	3560	296
March	<b>20923</b>	17	904	1773	7887	276
April	<b>35337</b>	710	1029	10137	10263	1913
May	<b>22018</b>	345	776	2561	6078	1201
June	<b>18165</b>	104	315	849	5248	748
July	<b>26689</b>	378	225	838	10274	661
August	<b>42552</b>	984	188	1882	10291	1134
September	<b>32904</b>	358	157	10139	14483	328
October	<b>43374</b>	18	402	2080	28273	1571
November	<b>26715</b>	20	217	3314	10105	628
December	<b>18823</b>	27	242	1170	5170	227
<b>Total</b>	<b>315866</b>	<b>3542</b>	<b>4951</b>	<b>40343</b>	<b>115279</b>	<b>9322</b>



2007

:5-1

Table 1-5: Percentage Distribution of Guests in Hotels by Nationality and Month, 2007

Month	Nationality					No. of Hotels
	U.S.A & Canada	Asia	Israel	Arab Countries	Palestine	
January	10.1	7.2	13.7	3.3	22.1	78
February	11.3	6.7	7.7	0.9	16.1	78
March	9.9	9.2	10.1	1.6	17.3	78
April	7.5	2.8	9.0	0.9	11.8	79
May	11.7	3.4	16.2	0.8	18.2	77
June	11.8	5.4	13.2	1.1	28.5	78
July	7.1	4.0	22.3	0.9	19.4	80
August	5.4	3.0	41.1	0.6	15.9	80
September	2.0	5.1	4.2	0.3	11.0	80
October	4.9	6.3	4.7	0.6	8.9	85
November	8.7	9.3	9.4	1.0	18.2	84
December	7.0	5.6	22.8	0.9	27.4	82
<b>Total</b>	<b>7.3</b>	<b>5.3</b>	<b>15.1</b>	<b>0.9</b>	<b>16.4</b>	<b>82</b>

2007

:( ) 5-1

Table 1-5 (Cont.): Percentage Distribution of Guests in Hotels by Nationality and Month, 2007

Month	Total	Nationality				
		Australia & New Zeland	Africa	Other European Count.	European Union	Central & South America
January	100	1.7	3.9	6.2	29.1	2.7
February	100	2.3	0.0	30.6	22.5	1.9
March	100	0.1	4.3	8.5	37.7	1.3
April	100	2.0	2.9	28.7	29.0	5.4
May	100	1.6	3.5	11.5	27.6	5.5
June	100	0.6	1.7	4.7	28.9	4.1
July	100	1.4	0.8	3.1	38.5	2.5
August	100	2.3	0.4	4.4	24.2	2.7
September	100	1.1	0.5	30.8	44.0	1.0
October	100	0.0	0.9	4.9	65.2	3.6
November	100	0.1	0.8	12.3	37.8	2.4
December	100	0.1	1.3	6.2	27.5	1.2
<b>Total</b>	<b>100</b>	<b>1.1</b>	<b>1.6</b>	<b>12.8</b>	<b>36.5</b>	<b>3.0</b>

2007

: 6-1

Table 1-6: Distribution of Guest Nights in Hotels by Nationality and Month, 2007

Month	Nationality					No. of Hotels
	U.S.A & Canada	Asia	Israel	Arab Countries	Palestine	
January	3439	2536	3130	491	3603	78
February	3721	3011	2423	224	3467	78
March	5548	5090	3322	431	5077	78
April	4224	2723	5026	1138	5221	79
May	6384	2863	6401	228	4952	77
June	5703	3660	3968	252	7717	78
July	4605	4273	7200	264	8229	80
August	7639	4467	19132	290	10563	80
September	2907	5802	2273	133	6387	80
October	5724	8307	3441	397	6177	85
November	6843	6211	3813	384	6945	84
December	4411	3760	7064	301	8556	82
<b>Total</b>	<b>61148</b>	<b>52703</b>	<b>67193</b>	<b>4533</b>	<b>76894</b>	<b>82</b>

2007

:( ) 6-1

Table 1-6 (Cont.): Distribution of Guest Nights in Hotels by Nationality and Month, 2007

Month	Total	Nationality				
		Australia & New Zeland	Africa	Other European Count.	European Union	Central & South America
January	26249	272	556	1682	9660	880
February	33012	620	14	9396	9268	868
March	46850	96	1313	3872	21545	556
April	71008	812	1561	18878	26529	4896
May	48162	578	962	4961	17716	3117
June	40685	125	507	2076	15156	1521
July	52064	390	526	2934	22024	1619
August	81302	1918	507	4491	29987	2308
September	74994	395	709	20452	34958	978
October	95124	72	1224	3949	62336	3497
November	61814	66	449	7695	27338	2070
December	42194	104	514	3179	13580	725
<b>Total</b>	<b>673458</b>	<b>5448</b>	<b>8842</b>	<b>83565</b>	<b>290097</b>	<b>23035</b>

2007

:7-1

Table 1-7: Percentage Distribution of Guest Nights in Hotels by Nationality and Month, 2007

Month	Nationality					No. of Hotels
	U.S.A & Canada	Asia	Israel	Arab Countries	Palestine	
January	13.1	9.7	11.9	1.9	13.7	78
February	11.3	9.1	7.3	0.7	10.5	78
March	11.8	10.9	7.1	0.9	10.8	78
April	5.9	3.8	7.1	1.6	7.4	79
May	13.3	5.9	13.3	0.5	10.3	77
June	14.0	9.0	9.8	0.6	19.0	78
July	8.8	8.2	13.8	0.5	15.8	80
August	9.4	5.5	23.5	0.4	13.0	80
September	3.9	7.7	3.0	0.2	8.5	80
October	6.0	8.7	3.6	0.4	6.5	85
November	11.1	10.0	6.2	0.6	11.2	84
December	10.5	8.9	16.7	0.7	20.3	82
<b>Total</b>	<b>9.1</b>	<b>7.8</b>	<b>10.0</b>	<b>0.7</b>	<b>11.4</b>	<b>82</b>

2007

:( ) 7-1

Table 1-7(Cont.): Percentage Distribution of Guest Nights in Hotels by Nationality and Month, 2007

Month	Total	Nationality				
		Australia & New Zealand	Africa	Other European Count.	European Union	Central & South America
January	100	1.0	2.1	6.4	36.8	3.4
February	100	1.9	0.0	28.5	28.1	2.6
March	100	0.2	2.8	8.3	46.0	1.2
April	100	1.1	2.2	26.6	37.4	6.9
May	100	1.2	2.0	10.2	36.8	6.5
June	100	0.3	1.2	5.1	37.3	3.7
July	100	0.7	1.0	5.7	42.4	3.1
August	100	2.4	0.6	5.5	36.9	2.8
September	100	0.5	0.9	27.4	46.6	1.3
October	100	0.1	1.3	4.2	65.5	3.7
November	100	0.1	0.7	12.5	44.3	3.3
December	100	0.2	1.2	7.5	32.3	1.7
<b>Total</b>	<b>100</b>	<b>0.8</b>	<b>1.3</b>	<b>12.4</b>	<b>43.1</b>	<b>3.4</b>

( / ) -2007

:8-1

**Table 1-8: Average Length of Stay per Guest in Hotels by Nationality and Month, 2007 - ( Nights/Guest)**

Month	Nationality					No. of Hotels
	U.S.A & Canada	Asia	Israel	Arab Countries	Palestine	
January	2.7	2.8	1.8	1.2	1.3	78
February	2.1	2.9	2.0	1.6	1.4	78
March	2.7	2.6	1.6	1.3	1.4	78
April	1.6	2.8	1.6	3.4	1.3	79
May	2.5	3.8	1.8	1.3	1.2	77
June	2.7	3.7	1.6	1.2	1.5	78
July	2.4	4.0	1.2	1.1	1.6	80
August	3.3	3.5	1.1	1.2	1.6	80
September	4.3	3.5	1.7	1.3	1.8	80
October	2.7	3.0	1.7	1.5	1.6	85
November	2.9	2.5	1.5	1.5	1.4	84
December	3.3	3.5	1.6	1.8	1.7	82
<b>Total</b>	<b>2.6</b>	<b>3.1</b>	<b>1.4</b>	<b>1.6</b>	<b>1.5</b>	<b>82</b>

( / ) -2007

:( ) 8-1

**Table 1-8 (Cont.): Average Length of Stay per Guest in Hotels by Nationality and Month, 2007 - ( Nights/Guest)**

Month	Total	Nationality				
		Australia & New Zeland	Africa	Other European Count.	European Union	Central & South America
January	2.1	1.3	1.1	2.1	2.6	2.6
February	2.1	1.7	2.0	2.0	2.6	2.9
March	2.2	5.6	1.5	2.2	2.7	2.0
April	2.0	1.1	1.5	1.9	2.6	2.6
May	2.2	1.7	1.2	1.9	2.9	2.6
June	2.2	1.2	1.6	2.4	2.9	2.0
July	2.0	1.0	2.3	3.5	2.1	2.4
August	1.9	1.9	2.7	2.4	2.9	2.0
September	2.3	1.1	4.5	2.0	2.4	3.0
October	2.2	4.0	3.0	1.9	2.2	2.2
November	2.3	3.3	2.1	2.3	2.7	3.3
December	2.2	3.9	2.1	2.7	2.6	3.2
<b>Total</b>	<b>2.1</b>	<b>1.5</b>	<b>1.8</b>	<b>2.1</b>	<b>2.5</b>	<b>2.5</b>

2007

:1-2

Table 2-1: Main Indicators for Hotel Activities in the Palestinian Territory by Region and Quarter, 2007

Region/Quarter	** No. of Nights**	** No. of Guests**	Average No. of Beds	Average No. of Rooms	* No. of Hotels*	/
<b>Palestinian Territory</b>	<b>673458</b>	<b>315866</b>	<b>8848</b>	<b>4109</b>	<b>82</b>	
I	106111	49289	8738	4048	78	I
II	159855	75520	8692	4081	78	II
III	208360	102145	8873	4134	80	III
IV	199132	88912	9088	4175	82	IV
<b>North of West Bank</b>	7806	4205	261	112	6	
I	1509	1052	264	112	7	I
II	1835	899	264	115	7	II
III	2505	1221	264	112	7	III
IV	1957	1033	252	109	6	IV
<b>Middle of West Bank</b>	135613	103944	2080	897	20	
I	17777	13767	2075	899	19	I
II	32314	27529	2091	903	19	II
III	52756	41271	2095	907	19	III
IV	32766	21377	2059	879	20	IV
<b>Jerusalem</b>	394239	147921	2537	1143	25	
I	64370	24364	2416	1071	20	I
II	93168	34023	2371	1102	20	II
III	117920	44758	2531	1148	22	III
IV	118781	44776	2831	1249	25	IV
<b>South of West Bank</b>	132486	58398	3215	1537	19	
I	21332	9648	3229	1545	20	I
II	31829	12798	3225	1543	20	II
III	34456	14595	3225	1543	20	III
IV	44869	21357	3182	1516	19	IV
<b>Gaza Strip</b>	3314	1398	754	421	12	
I	1123	458	754	421	12	I
II	709	271	741	417	12	II
III	723	300	758	423	12	III
IV	759	369	763	423	12	IV

\* At the end of the quarter

\*

\*\* Represents the total of quarter months

\*\*

2007

:( ) 1-2

Table 2-1 (Cont.): Main Indicators for Hotel Activities in the Palestinian Territory by Region and Quarter, 2007

Region/Quarter	Bed Occupancy		Room Occupancy		( ) Average length of Stay (Night)	/
	% Rate%	Average Occupancy	% Rate%	Average Occupancy		
<b>Palestinian Territory</b>	<b>20.3</b>	<b>1845.1</b>	<b>25.1</b>	<b>1033.3</b>	<b>2.1</b>	
<b>I</b>	<b>13.5</b>	<b>1179.0</b>	<b>15.6</b>	<b>631.8</b>	<b>2.2</b>	<b>I</b>
<b>II</b>	<b>20.2</b>	<b>1756.6</b>	<b>25.0</b>	<b>1019.8</b>	<b>2.1</b>	<b>II</b>
<b>III</b>	<b>25.5</b>	<b>2264.8</b>	<b>31.5</b>	<b>1303.2</b>	<b>2.0</b>	<b>III</b>
<b>IV</b>	<b>23.8</b>	<b>2164.5</b>	<b>28.0</b>	<b>1169.6</b>	<b>2.2</b>	<b>IV</b>
<b>North of West Bank</b>	8.5	21.4	14.4	15.7	1.9	
<b>I</b>	6.4	16.8	11.5	12.8	1.4	<b>I</b>
<b>II</b>	7.6	20.2	13.1	15.1	2.0	<b>II</b>
<b>III</b>	10.3	27.2	16.4	18.4	2.1	<b>III</b>
<b>IV</b>	8.4	21.3	15.1	16.4	1.9	<b>IV</b>
<b>Middle of West Bank</b>	18.0	371.5	27.4	240.3	1.3	
<b>I</b>	9.5	197.5	16.9	151.7	1.3	<b>I</b>
<b>II</b>	17.0	355.1	27.6	249.5	1.2	<b>II</b>
<b>III</b>	27.4	573.4	35.7	323.8	1.3	<b>III</b>
<b>IV</b>	17.3	356.2	26.7	234.5	1.5	<b>IV</b>
<b>Jerusalem</b>	38.1	1080.1	45.5	568.4	2.7	
<b>I</b>	29.6	715.2	29.6	317.5	2.6	<b>I</b>
<b>II</b>	43.2	1023.8	50.1	552.3	2.7	<b>II</b>
<b>III</b>	50.6	1281.7	65.6	753.4	2.6	<b>III</b>
<b>IV</b>	45.6	1291.1	51.6	644.9	2.7	<b>IV</b>
<b>South of West Bank</b>	11.4	363.0	13.2	200.7	2.3	
<b>I</b>	7.3	237.0	8.9	137.6	2.2	<b>I</b>
<b>II</b>	10.8	349.8	12.8	197.2	2.5	<b>II</b>
<b>III</b>	11.6	374.5	13.0	200.5	2.4	<b>III</b>
<b>IV</b>	15.3	487.7	17.6	266.0	2.1	<b>IV</b>
<b>Gaza Strip</b>	1.2	9.1	1.9	8.2	2.4	
<b>I</b>	1.7	12.5	2.9	12.2	2.5	<b>I</b>
<b>II</b>	1.1	7.8	1.4	5.8	2.6	<b>II</b>
<b>III</b>	1.0	7.9	1.7	7.1	2.4	<b>III</b>
<b>IV</b>	1.1	8.3	1.9	7.9	2.1	<b>IV</b>

2007

:2-2

Table 2-2: Average Number of Hotel Rooms by Capacity, Region and Quarter, 2007

Region/Quarter	Total	Capacity						/
		Other	Suits	Quadruple	Triple	Double	Single	
<b>Palestinian Territory</b>	<b>4109</b>	<b>32</b>	<b>239</b>	<b>115</b>	<b>436</b>	<b>2759</b>	<b>530</b>	
I	4048	31	231	111	426	2745	505	I
II	4081	32	246	113	455	2730	506	II
III	4134	31	243	110	420	2811	519	III
IV	4175	34	234	125	444	2749	589	IV
<b>North of West Bank</b>	112	1	12	9	9	69	13	
I	112	0	12	9	9	69	13	I
II	115	3	12	9	9	69	13	II
III	112	0	12	9	9	69	13	III
IV	109	0	12	7	8	69	13	IV
<b>Middle of West Bank</b>	897	5	48	55	133	530	127	
I	899	4	48	54	130	553	111	I
II	903	4	50	55	127	558	109	II
III	907	4	50	55	127	558	113	III
IV	879	6	46	55	147	450	175	IV
<b>Jerusalem</b>	1143	25	55	15	135	799	114	
I	1071	25	47	12	125	759	103	I
II	1102	23	60	13	160	740	107	II
III	1148	25	57	10	124	817	115	III
IV	1249	26	55	27	131	879	131	IV
<b>South of West Bank</b>	1537	2	67	36	146	1100	186	
I	1545	2	68	36	148	1103	188	I
II	1543	2	68	36	145	1104	188	II
III	1543	2	68	36	145	1104	188	III
IV	1516	2	65	36	144	1088	180	IV
<b>Gaza Strip</b>	421	0	56	0	14	261	90	
I	421	0	56	0	14	261	90	I
II	417	0	56	0	14	259	89	II
III	423	0	56	0	14	263	90	III
IV	423	0	56	0	14	263	90	IV

2007

:3-2

Table 2-3: Number of Hotels and Rooms by Facilities and Region as of December, 2007

Region	Rooms Facilities								Total No. of Rooms	No. of Hotels
	Internet	Air Condition	Heaters	Private Bathroom	Radio	Telephone	Refrigerator	T.V		
<b>Palestinian Territory</b>	<b>1220</b>	<b>3392</b>	<b>3850</b>	<b>3892</b>	<b>1409</b>	<b>3631</b>	<b>2406</b>	<b>3551</b>	<b>4109</b>	<b>82</b>
North of West Bank	0	93	93	93	0	93	93	93	112	6
Middle of West Bank	472	745	842	864	360	821	735	842	897	20
Jerusalem	146	870	1089	1091	451	880	303	836	1143	25
South of West Bank	449	1342	1461	1461	582	1439	1046	1401	1537	19
Gaza Strip	153	342	365	383	16	398	312	379	421	12

2007

:4-2

Table 2-4: Public Utilities Available in Hotels by Region as of December, 2007

Region	Conference Halls		Restaurants		No. of Hotels
	Capacity	Number	Capacity	Number	
<b>Palestinian Territory</b>	<b>16249</b>	<b>111</b>	<b>19723</b>	<b>108</b>	<b>82</b>
North of West Bank	570	5	3088	8	6
Middle of West Bank	4360	33	3952	28	20
Jerusalem	1765	23	2350	27	25
South of West Bank	7234	29	7138	28	19
Gaza Strip	2320	21	3195	17	12

2007

:( ) 4-2

Table 2-4 (Cont.): Public Utilities Available in Hotels by Region as of December, 2007

Region	/ No. of Playgrounds/Sport Halls	No. of swimming Pools	No. of Lifts	Parking	
				السعة Capacity	العدد Number
<b>Palestinian Territory</b>	<b>13</b>	<b>14</b>	<b>94</b>	<b>2548</b>	<b>73</b>
North of West Bank	0	0	4	36	4
Middle of West Bank	4	11	42	1164	30
Jerusalem	0	1	12	226	12
South of West Bank	4	0	24	945	20
Gaza Strip	5	2	12	177	7



2007

:5-2

**Table 2-5: Average Number of Persons Engaged in Hotels by Type of Work, Sex, Region and Quarter, 2007**

Region/Quarter	Total		Operation		Administration		* No. of Hotels *	/
	Female	Male	Female	Male	Female	Male		
<b>Palestinian Territory</b>	<b>169</b>	<b>1094</b>	<b>123</b>	<b>877</b>	<b>46</b>	<b>217</b>	<b>82</b>	
I	175	1086	129	869	46	217	78	I
II	173	1097	128	881	45	216	78	II
III	174	1111	128	893	46	218	80	III
IV	154	1084	105	866	49	218	82	IV
<b>North of West Bank</b>	8	44	4	30	4	14	6	
I	8	44	4	30	4	14	7	I
II	8	44	4	30	4	14	7	II
III	8	44	4	30	4	14	7	III
IV	8	42	4	29	4	13	6	IV
<b>Middle of West Bank</b>	51	367	40	314	11	53	20	
I	56	360	45	308	11	52	19	I
II	56	363	45	311	11	52	19	II
III	56	364	45	312	11	52	19	III
IV	35	383	23	326	12	57	20	IV
<b>Jerusalem</b>	52	341	36	281	17	60	25	
I	51	333	36	272	15	61	20	I
II	50	342	34	283	16	59	20	II
III	55	359	38	299	17	60	22	III
IV	53	330	35	270	18	60	25	IV
<b>South of West Bank</b>	45	155	36	112	9	43	19	
I	45	154	36	111	9	43	20	I
II	46	158	37	115	9	43	20	II
III	42	150	33	107	9	43	20	III
IV	46	157	37	116	9	41	19	IV
<b>Gaza Strip</b>	14	188	8	140	6	48	12	
I	15	195	8	148	7	47	12	I
II	13	190	8	142	5	48	12	II
III	13	194	8	145	5	49	12	III
IV	12	172	6	125	6	47	12	IV

\*Represents No. of hotels at the end of the quarter

\*

2007

:6-2

Table 2-6: Distribution of Guests in Hotels by Nationality, Region and Quarter, 2007

Region/Quarter	Nationality					* No. of Hotels *	/
	U.S.A & Canada	Asia	Israel	Arab Countries	Palestine		
<b>Palestinian Territory</b>	<b>23118</b>	<b>16882</b>	<b>47846</b>	<b>2885</b>	<b>51698</b>	<b>82</b>	
<b>I</b>	<b>5132</b>	<b>3880</b>	<b>5060</b>	<b>897</b>	<b>8944</b>	<b>78</b>	<b>I</b>
<b>II</b>	<b>7338</b>	<b>2719</b>	<b>9149</b>	<b>709</b>	<b>13328</b>	<b>78</b>	<b>II</b>
<b>III</b>	<b>4880</b>	<b>3984</b>	<b>24811</b>	<b>594</b>	<b>15556</b>	<b>80</b>	<b>III</b>
<b>IV</b>	<b>5768</b>	<b>6299</b>	<b>8826</b>	<b>685</b>	<b>13870</b>	<b>82</b>	<b>IV</b>
<b>North of West Bank</b>	163	89	104	93	3140	6	
<b>I</b>	20	9	23	4	882	7	<b>I</b>
<b>II</b>	39	2	31	9	690	7	<b>II</b>
<b>III</b>	52	75	21	13	840	7	<b>III</b>
<b>IV</b>	52	3	29	67	728	6	<b>IV</b>
<b>Middle of West Bank</b>	8678	3319	25936	2079	41060	20	
<b>I</b>	1486	344	1385	662	6128	19	<b>I</b>
<b>II</b>	3664	121	3164	489	11136	19	<b>II</b>
<b>III</b>	2320	432	19739	534	12393	19	<b>III</b>
<b>IV</b>	1208	2422	1648	394	11403	20	<b>IV</b>
<b>Jerusalem</b>	11813	6203	16619	157	0	25	
<b>I</b>	3050	2102	3083	57	0	20	<b>I</b>
<b>II</b>	2867	1139	5048	17	0	20	<b>II</b>
<b>III</b>	2289	1833	4495	43	0	22	<b>III</b>
<b>IV</b>	3607	1129	3993	40	0	25	<b>IV</b>
<b>South of West Bank</b>	2317	7183	5133	536	7183	19	
<b>I</b>	530	1400	552	165	1767	20	<b>I</b>
<b>II</b>	743	1433	891	189	1441	20	<b>II</b>
<b>III</b>	181	1624	547	2	2281	20	<b>III</b>
<b>IV</b>	863	2726	3143	180	1694	19	<b>IV</b>
<b>Gaza Strip</b>	147	88	54	20	315	12	
<b>I</b>	46	25	17	9	167	12	<b>I</b>
<b>II</b>	25	24	15	5	61	12	<b>II</b>
<b>III</b>	38	20	9	2	42	12	<b>III</b>
<b>IV</b>	38	19	13	4	45	12	<b>IV</b>

\* Represents No. of hotels at the end of the quarter

\*

Table 2-6 (Cont.): Distribution of Guests in Hotels by Nationality, Region and Quarter, 2007

Region/Quarter	Total	Nationality					
		Australia & New Zeland	Africa	Other European Count.	European Union	Central & South America	
<b>Palestinian Territory</b>	<b>315866</b>	<b>3542</b>	<b>4951</b>	<b>40343</b>	<b>115279</b>	<b>9322</b>	
I	49289	598	1400	7373	15094	911	I
II	75520	1159	2120	13547	21589	3862	II
III	102145	1720	570	12859	35048	2123	III
IV	88912	65	861	6564	43548	2426	IV
<b>North of West Bank</b>	4205	17	2	15	575	7	
I	1052	3	0	5	100	6	I
II	899	11	0	0	117	0	II
III	1221	2	0	7	210	1	III
IV	1033	1	2	3	148	0	IV
<b>Middle of West Bank</b>	103944	1829	1834	5762	9771	3676	
I	13767	341	140	864	1786	631	I
II	27529	1072	1462	2508	2358	1555	II
III	41271	380	222	1271	2826	1154	III
IV	21377	36	10	1119	2801	336	IV
<b>Jerusalem</b>	147921	1663	2852	30918	72691	5005	
I	24364	248	1248	6391	7915	270	I
II	34023	70	511	9727	12342	2302	II
III	44758	1333	267	11051	22675	772	III
IV	44776	12	826	3749	29759	1661	IV
<b>South of West Bank</b>	58398	4	254	3547	31614	627	
I	9648	2	10	102	5119	1	I
II	12798	0	145	1299	6655	2	II
III	14595	0	80	495	9189	196	III
IV	21357	2	19	1651	10651	428	IV
<b>Gaza Strip</b>	1398	29	9	101	628	7	
I	458	4	2	11	174	3	I
II	271	6	2	13	117	3	II
III	300	5	1	35	148	0	III
IV	369	14	4	42	189	1	IV

2007

:7-2

Table 2-7: Percentage Distribution of Guests in Hotels by Nationality, Region and Quarter, 2007

Region/Quarter	Nationality					* No. of Hotels *	/
	U.S.A & Canada	Asia	Israel	Arab Countries	Palestine		
<b>Palestinian Territory</b>	7.3	5.3	15.1	0.9	16.4	82	
I	10.4	7.9	10.3	1.8	18.1	78	I
II	9.7	3.6	12.1	0.9	17.6	78	II
III	4.8	3.9	24.3	0.6	15.2	80	III
IV	6.5	7.1	9.9	0.8	15.6	82	IV
<b>North of West Bank</b>	3.9	2.1	2.5	2.2	74.7	6	
I	1.9	0.9	2.2	0.4	83.8	7	I
II	4.3	0.2	3.4	1.0	76.8	7	II
III	4.3	6.1	1.7	1.1	68.8	7	III
IV	5.0	0.3	2.8	6.5	70.5	6	IV
<b>Middle of West Bank</b>	8.3	3.2	25.0	2.0	39.5	20	
I	10.8	2.5	10.1	4.8	44.5	19	I
II	13.3	0.4	11.5	1.8	40.5	19	II
III	5.6	1.0	47.8	1.3	30.0	19	III
IV	5.7	11.3	7.7	1.8	53.3	20	IV
<b>Jerusalem</b>	8.0	4.2	11.2	0.1	0.0	25	
I	12.5	8.6	12.7	0.2	0.0	20	I
II	8.4	3.3	14.8	0.0	0.0	20	II
III	5.1	4.1	10.0	0.1	0.0	22	III
IV	8.1	2.5	8.9	0.1	0.0	25	IV
<b>South of West Bank</b>	4.0	12.3	8.8	0.9	12.3	19	
I	5.5	14.5	5.7	1.7	18.3	20	I
II	5.8	11.2	7.0	1.5	11.3	20	II
III	1.2	11.1	3.7	0.0	15.6	20	III
IV	4.0	12.8	14.7	0.8	7.9	19	IV
<b>Gaza Strip</b>	10.5	6.3	3.9	1.4	22.5	12	
I	10.0	5.5	3.7	2.0	36.5	12	I
II	9.2	8.9	5.5	1.8	22.5	12	II
III	12.7	6.7	3.0	0.7	14.0	12	III
IV	10.3	5.1	3.5	1.1	12.2	12	IV

\* Represents No. of hotels at the end of the quarter

\*

2007

:( )7-2

Table 2-7(Cont.): Percentage Distribution of Guests in Hotels by Nationality, Region and Quarter, 2007

Region/Quarter	Total	Nationality					/
		Australia & New Zeland	Africa	Other European Count.	European Union	Central & South America	
<b>Palestinian Territory</b>	<b>100</b>	<b>1.1</b>	<b>1.6</b>	<b>12.8</b>	<b>36.5</b>	<b>3.0</b>	
I	100	1.2	2.8	15.0	30.7	1.8	I
II	100	1.5	2.8	18.0	28.7	5.1	II
III	100	1.7	0.6	12.5	34.3	2.1	III
IV	100	0.1	1.0	7.3	49.0	2.7	IV
<b>North of West Bank</b>	<b>100</b>	<b>0.4</b>	<b>0.0</b>	<b>0.4</b>	<b>13.6</b>	<b>0.2</b>	
I	100	0.3	0.0	0.5	9.4	0.6	I
II	100	1.2	0.0	0.0	13.1	0.0	II
III	100	0.2	0.0	0.6	17.1	0.1	III
IV	100	0.1	0.2	0.3	14.3	0.0	IV
<b>Middle of West Bank</b>	<b>100</b>	<b>1.8</b>	<b>1.8</b>	<b>5.5</b>	<b>9.4</b>	<b>3.5</b>	
I	100	2.5	1.0	6.3	12.9	4.6	I
II	100	3.9	5.3	9.1	8.6	5.6	II
III	100	0.9	0.5	3.2	6.9	2.8	III
IV	100	0.2	0.0	5.3	13.1	1.6	IV
<b>Jerusalem</b>	<b>100</b>	<b>1.1</b>	<b>1.9</b>	<b>20.9</b>	<b>49.2</b>	<b>3.4</b>	
I	100	1.0	5.1	26.2	32.6	1.1	I
II	100	0.2	1.5	28.6	36.4	6.8	II
III	100	3.0	0.6	24.7	50.7	1.7	III
IV	100	0.0	1.8	8.4	66.5	3.7	IV
<b>South of West Bank</b>	<b>100</b>	<b>0.0</b>	<b>0.4</b>	<b>6.1</b>	<b>54.1</b>	<b>1.1</b>	
I	100	0.0	0.1	1.1	53.1	0.0	I
II	100	0.0	1.1	10.2	51.9	0.0	II
III	100	0.0	0.5	3.5	63.1	1.3	III
IV	100	0.0	0.1	7.8	49.9	2.0	IV
<b>Gaza Strip</b>	<b>100</b>	<b>2.1</b>	<b>0.6</b>	<b>7.3</b>	<b>44.9</b>	<b>0.5</b>	
I	100	0.9	0.4	2.4	37.9	0.7	I
II	100	2.2	0.7	4.8	43.3	1.1	II
III	100	1.7	0.3	11.7	49.2	0.0	III
IV	100	3.8	1.1	11.4	51.2	0.3	IV

Table 2-8: Distribution of Guest Nights in Hotels by Nationality, Region and Quarter, 2007

Region/Quarter	Nationality					No. of Hotels *	/
	U.S.A & Canada	Asia	Israel	Arab Countries	Palestine		
<b>Palestinian Territory</b>	<b>61148</b>	<b>52703</b>	<b>67193</b>	<b>4533</b>	<b>76894</b>	<b>82</b>	
I	12708	10637	8875	1146	12147	78	I
II	16311	9246	15395	1618	17890	78	II
III	15151	14542	28605	687	25179	80	III
IV	16978	18278	14318	1082	21678	82	IV
<b>North of West Bank</b>	396	167	177	149	5847	6	
I	57	12	39	4	1227	7	I
II	96	7	67	28	1395	7	II
III	165	145	32	31	1729	7	III
IV	78	3	39	86	1496	6	IV
<b>Middle of West Bank</b>	11112	4783	27442	2508	58566	20	
I	1979	451	1656	785	7995	19	I
II	3855	248	3209	566	13728	19	II
III	3325	857	20152	588	19362	19	III
IV	1953	3227	2425	569	17481	20	IV
<b>Jerusalem</b>	43007	31772	31927	218	0	25	
I	9013	7405	6262	98	0	20	I
II	10361	5685	10830	18	0	20	II
III	10752	9890	7483	60	0	22	III
IV	12881	8792	7352	42	0	25	IV
<b>South of West Bank</b>	6224	15772	7562	1551	11842	19	
I	1520	2717	885	191	2556	20	I
II	1915	3228	1266	982	2629	20	II
III	820	3612	927	4	4011	20	III
IV	1969	6215	4484	374	2646	19	IV
<b>Gaza Strip</b>	409	209	85	107	639	12	
I	139	52	33	68	369	12	I
II	84	78	23	24	138	12	II
III	89	38	11	4	77	12	III
IV	97	41	18	11	55	12	IV

\* Represents No. of hotels at the end of the quarter.

\*

Table 2-8 (Cont.): Distribution of Guest Nights in Hotels by Nationality, Region and Quarter, 2007

Region/Quarter	Total	Nationality					/
		Australia & New Zealand	Africa	Other European Count.	European Union	Central & South America	
<b>Palestinian Territory</b>	<b>673458</b>	<b>5448</b>	<b>8842</b>	<b>83565</b>	<b>290097</b>	<b>23035</b>	
<b>I</b>	<b>106111</b>	<b>988</b>	<b>1883</b>	<b>14950</b>	<b>40473</b>	<b>2304</b>	<b>I</b>
<b>II</b>	<b>159855</b>	<b>1515</b>	<b>3030</b>	<b>25915</b>	<b>59401</b>	<b>9534</b>	<b>II</b>
<b>III</b>	<b>208360</b>	<b>2703</b>	<b>1742</b>	<b>27877</b>	<b>86969</b>	<b>4905</b>	<b>III</b>
<b>IV</b>	<b>199132</b>	<b>242</b>	<b>2187</b>	<b>14823</b>	<b>103254</b>	<b>6292</b>	<b>IV</b>
<b>North of West Bank</b>	7806	46	2	43	963	16	
<b>I</b>	1509	15	0	5	136	14	<b>I</b>
<b>II</b>	1835	25	0	0	216	1	<b>II</b>
<b>III</b>	2505	5	0	35	362	1	<b>III</b>
<b>IV</b>	1957	1	2	3	249	0	<b>IV</b>
<b>Middle of West Bank</b>	135613	2324	2006	6567	15054	5251	
<b>I</b>	17777	551	146	975	2574	665	<b>I</b>
<b>II</b>	32314	1179	1478	2579	3388	2084	<b>II</b>
<b>III</b>	52756	427	368	1599	4281	1797	<b>III</b>
<b>IV</b>	32766	167	14	1414	4811	705	<b>IV</b>
<b>Jerusalem</b>	394239	3022	5979	69333	192793	16188	
<b>I</b>	64370	414	1713	13732	24122	1611	<b>I</b>
<b>II</b>	93168	297	1014	19670	37862	7431	<b>II</b>
<b>III</b>	117920	2261	1133	25292	58419	2630	<b>III</b>
<b>IV</b>	118781	50	2119	10639	72390	4516	<b>IV</b>
<b>South of West Bank</b>	132486	6	817	7415	79733	1564	
<b>I</b>	21332	2	20	216	13219	6	<b>I</b>
<b>II</b>	31829	0	534	3637	17626	12	<b>II</b>
<b>III</b>	34456	0	234	867	23504	477	<b>III</b>
<b>IV</b>	44869	4	29	2695	25384	1069	<b>IV</b>
<b>Gaza Strip</b>	3314	50	38	207	1554	16	
<b>I</b>	1123	6	4	22	422	8	<b>I</b>
<b>II</b>	709	14	4	29	309	6	<b>II</b>
<b>III</b>	723	10	7	84	403	0	<b>III</b>
<b>IV</b>	759	20	23	72	420	2	<b>IV</b>

2007

:9-2

**Table 2-9: Percentage Distribution of Guest Nights in Hotels by Nationality, Region and Quarter, 2007**

Region/Quarter	Nationality					* No. of Hotels *	/
	U.S.A & Canada	Asia	Israel	Arab Countries	Palestine		
<b>Palestinian Territory</b>	9.1	7.8	10.0	0.7	11.4	82	
I	12.0	10.0	8.4	1.1	11.4	78	I
II	10.2	5.8	9.6	1.0	11.2	78	II
III	7.3	7.0	13.7	0.3	12.1	80	III
IV	8.5	9.2	7.2	0.5	10.9	82	IV
<b>North of West Bank</b>	5.1	2.1	2.3	1.9	74.9	6	
I	3.8	0.8	2.6	0.3	81.3	7	I
II	5.2	0.4	3.7	1.5	76.0	7	II
III	6.6	5.8	1.3	1.2	69.0	7	III
IV	4.0	0.2	2.0	4.4	76.4	6	IV
<b>Middle of West Bank</b>	8.2	3.5	20.2	1.8	43.2	20	
I	11.1	2.5	9.3	4.4	45.0	19	I
II	11.9	0.8	9.9	1.8	42.5	19	II
III	6.3	1.6	38.2	1.1	36.7	19	III
IV	6.0	9.8	7.4	1.7	53.4	20	IV
<b>Jerusalem</b>	10.9	8.1	8.1	0.1	0.0	25	
I	14.0	11.5	9.7	0.2	0.0	20	I
II	11.1	6.1	11.6	0.0	0.0	20	II
III	9.1	8.4	6.3	0.1	0.0	22	III
IV	10.8	7.4	6.2	0.0	0.0	25	IV
<b>South of West Bank</b>	4.7	11.9	5.7	1.2	8.9	19	
I	7.1	12.7	4.1	0.9	12.0	20	I
II	6.0	10.1	4.0	3.1	8.3	20	II
III	2.4	10.5	2.7	0.0	11.6	20	III
IV	4.4	13.9	10.0	0.8	5.9	19	IV
<b>Gaza Strip</b>	12.3	6.3	2.6	3.2	19.3	12	
I	12.4	4.6	2.9	6.1	32.9	12	I
II	11.8	11.0	3.2	3.4	19.5	12	II
III	12.3	5.3	1.5	0.6	10.7	12	III
IV	12.8	5.4	2.4	1.4	7.2	12	IV

\* Represents No. of hotels at the end of the quarter.

\*



2007

:( ) 9-2

Table 2-9 (Cont.): Percentage Distribution of Guest Nights in Hotels by Nationality, Region and Quarter, 2007

Region/Quarter	Total	Nationality					/
		Australia & New Zeland	Africa	Other European Count.	European Union	Central & South America	
<b>Palestinian Territory</b>	<b>100</b>	<b>0.8</b>	<b>1.3</b>	<b>12.4</b>	<b>43.1</b>	<b>3.4</b>	
I	100	0.9	1.8	14.1	38.1	2.2	I
II	100	0.9	1.9	16.2	37.2	6.0	II
III	100	1.3	0.8	13.4	41.7	2.4	III
IV	100	0.1	1.1	7.4	51.9	3.2	IV
<b>North of West Bank</b>	<b>100</b>	0.6	0.0	0.6	12.3	0.2	
I	100	1.0	0.0	0.3	9.0	0.9	I
II	100	1.4	0.0	0.0	11.8	0.1	II
III	100	0.2	0.0	1.4	14.5	0.0	III
IV	100	0.1	0.1	0.2	12.7	0.0	IV
<b>Middle of West Bank</b>	<b>100</b>	1.7	1.5	4.8	11.1	3.9	
I	100	3.1	0.8	5.5	14.5	3.7	I
II	100	3.6	4.6	8.0	10.5	6.4	II
III	100	0.8	0.7	3.0	8.1	3.4	III
IV	100	0.5	0.0	4.3	14.7	2.2	IV
<b>Jerusalem</b>	<b>100</b>	0.8	1.5	17.6	48.9	4.1	
I	100	0.6	2.7	21.3	37.5	2.5	I
II	100	0.3	1.1	21.1	40.6	8.0	II
III	100	1.9	1.0	21.4	49.5	2.2	III
IV	100	0.0	1.8	9.0	60.9	3.8	IV
<b>South of West Bank</b>	<b>100</b>	0.0	0.6	5.6	60.2	1.2	
I	100	0.0	0.1	1.0	62.0	0.0	I
II	100	0.0	1.7	11.4	55.4	0.0	II
III	100	0.0	0.7	2.5	68.2	1.4	III
IV	100	0.0	0.1	6.0	56.6	2.4	IV
<b>Gaza Strip</b>	<b>100</b>	1.5	1.1	6.2	46.9	0.5	
I	100	0.5	0.4	2.0	37.6	0.7	I
II	100	2.0	0.6	4.1	43.6	0.8	II
III	100	1.4	1.0	11.6	55.7	0.0	III
IV	100	2.6	3.0	9.5	55.3	0.3	IV

**Table 2-10: Average Length of Stay per Guest by Nationality, Region and Quarter, 2007-  
(Nights/Guest)**

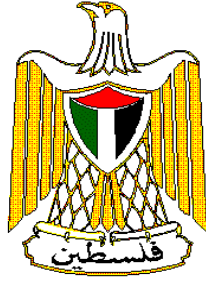
Region/Quarter	Nationality					* No. of Hotels *	/
	U.S.A & Canada	Asia	Israel	Arab Countries	Palestine		
<b>Palestinian Territory</b>	2.6	3.1	1.4	1.6	1.5	82	
I	2.5	2.7	1.8	1.3	1.4	78	I
II	2.2	3.4	1.7	2.3	1.3	78	II
III	3.1	3.7	1.2	1.2	1.6	80	III
IV	2.9	2.9	1.6	1.6	1.6	82	IV
<b>North of West Bank</b>	2.4	1.9	1.7	1.6	1.9	6	
I	2.9	1.3	1.7	1.0	1.4	7	I
II	2.5	3.5	2.2	3.1	2.0	7	II
III	3.2	1.9	1.5	2.4	2.1	7	III
IV	1.5	1.0	1.3	1.3	2.1	6	IV
<b>Middle of West Bank</b>	1.3	1.4	1.1	1.2	1.4	20	
I	1.3	1.3	1.2	1.2	1.3	19	I
II	1.1	2.0	1.0	1.2	1.2	19	II
III	1.4	2.0	1.0	1.1	1.6	19	III
IV	1.6	1.3	1.5	1.4	1.5	20	IV
<b>Jerusalem</b>	3.6	5.1	1.9	1.4	0.0	25	
I	3.0	3.5	2.0	1.7	0.0	20	I
II	3.6	5.0	2.1	1.1	0.0	20	II
III	4.7	5.4	1.7	1.4	0.0	22	III
IV	3.6	7.8	1.8	1.1	0.0	25	IV
<b>South of West Bank</b>	2.7	2.2	1.5	2.9	1.6	19	
I	2.9	1.9	1.6	1.2	1.4	20	I
II	2.6	2.3	1.4	5.2	1.8	20	II
III	4.5	2.2	1.7	2.0	1.8	20	III
IV	2.3	2.3	1.4	2.1	1.6	19	IV
<b>Gaza Strip</b>	2.8	2.4	1.6	5.4	2.0	12	
I	3.0	2.1	1.9	7.6	2.2	12	I
II	3.4	3.3	1.5	4.8	2.3	12	II
III	2.3	1.9	1.2	2.0	1.8	12	III
IV	2.6	2.2	1.4	2.8	1.2	12	IV

\* Represents No. of hotels at the end of the quarter

\*

**Table 2-10 (Cont.): Average Length of Stay per Guest by Nationality, Region and Quarter, 2007-  
(Nights/Guest)**

Region/Quarter	Total	Nationality					/
		Australia & New Zeland	Africa	Other European Count.	European Union	Central & South America	
<b>Palestinian Territory</b>	<b>2.1</b>	<b>1.5</b>	<b>1.8</b>	<b>2.1</b>	<b>2.5</b>	<b>2.5</b>	
I	2.2	1.7	1.3	2.0	2.7	2.5	I
II	2.1	1.3	1.4	1.9	2.8	2.5	II
III	2.0	1.6	3.1	2.2	2.5	2.3	III
IV	2.2	3.7	2.5	2.3	2.4	2.6	IV
<b>North of West Bank</b>	1.9	2.7	1.0	2.9	1.7	2.3	
I	1.4	5.0	0.0	1.0	1.4	2.3	I
II	2.0	2.3	0.0	0.0	1.8	0.0	II
III	2.1	2.5	0.0	5.0	1.7	1.0	III
IV	1.9	1.0	0.0	0.0	1.7	0.0	IV
<b>Middle of West Bank</b>	1.3	1.3	1.1	1.1	1.5	1.4	
I	1.3	1.6	1.0	1.1	1.4	1.1	I
II	1.2	1.1	1.0	1.0	1.4	1.3	II
III	1.3	1.1	1.7	1.3	1.5	1.6	III
IV	1.5	4.6	1.4	1.3	1.7	2.1	IV
<b>Jerusalem</b>	2.7	1.8	2.1	2.2	2.7	3.2	
I	2.6	1.7	1.4	2.1	3.0	6.0	I
II	2.7	4.2	2.0	2.0	3.1	3.2	II
III	2.6	1.7	4.2	2.3	2.6	3.4	III
IV	2.7	4.2	2.6	2.8	2.4	2.7	IV
<b>South of West Bank</b>	2.3	1.5	3.2	2.1	2.5	2.5	
I	2.2	1.0	0.0	2.1	2.6	6.0	I
II	2.5	0.0	0.0	2.8	2.6	6.0	II
III	2.4	0.0	2.9	1.8	2.6	2.4	III
IV	2.1	2.0	1.5	1.6	2.4	2.5	IV
<b>Gaza Strip</b>	2.4	1.7	4.2	2.0	2.5	2.3	
I	2.5	1.5	2.0	2.0	2.4	2.7	I
II	2.6	2.3	2.0	2.2	2.6	2.0	II
III	2.4	2.0	7.0	2.4	2.7	0.0	III
IV	2.1	1.4	5.8	1.7	2.2	2.0	IV



**Palestinian National Authority  
Palestinian Central Bureau of Statistics**

**Hotel Activities in the Palestinian Territory  
Annual Bulletin - 2007**

**Volume 13, Issue No. (5)  
April, 2008**

Cover price 4 US\$

**PAGE NUMBERS OF ENGLISH TEXT ARE PRINTED IN SQUARE BRACKETS.  
TABLES ARE PRINTED IN THE ARABIC ORDER (FROM RIGHT TO LEFT)**

**This document is prepared in accordance with the  
standard procedures stated in the Code of Practice for  
Palestine Official Statistics 2006**

© April, 2008  
All rights reserved.

**Suggested Citation:**

**Palestinian Central Bureau of Statistics, 2008.** *Hotel Activities in the Palestinian Territory, (Annual Bulletin – 2007).* Ramallah – Palestine.

All correspondence should be directed to:

**Palestinian Central Bureau of Statistics**  
P.O.Box 1647, Ramallah, Palestine.

Tel: (972/970) 2 242 6340

Fax: (972/970) 2 242 6343

E-Mail :diwan@pcbs.gov.ps

Web-Site: <http://www.pcbs.gov.ps>

## **Acknowledgment**

**The success of the Palestinian Central Bureau of Statistics (PCBS') fieldwork teams could not be possible without the kind reception and full cooperation of the hotels' owners and managers. The PCBS expresses its gratitude to all of them and appreciates their commitment to bringing this achievement into light.**

**The funding for the Hotel Activities in the Palestinian Territory, 2007 survey was provided by the Palestinian National Authority (PNA), and the Core Funding Group (CFG) for 2007. CFG member include Representative Office of Norway to PNA; Representative Office of Netherlands to PNA; Swiss Agency for Development and Cooperation (SDC).**

**On this occasion, the PCBS extends special thanks to the members of the Core Funding Group (CFG) who contributed in funding this survey for their support.**



## Team Work

- **Report Preparation**  
Fathi Farasin
- **Preliminary Review**  
Bassam Abdullah  
Mahmoud Abdalrahman
- **Graphic Design**  
Ahmad Sawalmeh
- **Dissemination Standard**  
Hanan Janajreh
- **Final Review**  
Mahmoud Jaradat
- **Overall Supervision**  
Luay Shabaneh, Ph.D PCBS President





## **Preface**

The Palestinian tourism sector has a great potential of becoming the main contributor to the Palestinian GDP. The tourism activities is however, crippled by a multiplicity of internal and external factors which are not leaving much room for this important economic activity to flourish.

PCBS has started collecting data on the tourism activities since November 1995. However, due to some reasons beyond our control, it was decided to limit these activities to the hotel activity.

The Palestinian Central Bureau of Statistics (PCBS) is pleased to present the eleventh annual bulletin issue on “Hotel Activities in Palestinian Territory” which covers the statistics of hotel activity in the year 2007. PCBS is looking forward to expanding its activities to cover all branches of the tourism industry in Palestine.

This report addresses the main indicators of the hotel activity. These indicators include number of operating hotels, number of rooms and beds, room and public facilities in the surveyed hotels, number of persons engaged in hotels, number of nights in the reference period, distribution of guests by nationality, and rates of bed occupancy and room occupancy.

This survey was conducted where the Israeli closure was imposed on the Palestinian territory; this closure had affected negatively all aspects of Palestinian life, mainly the tourism activities. As the report shows, there is a big decline in the value of all indicators of hotels survey compared with the year 1999.

It is hoped that the Hotels’ Survey conducted by PCBS comprises the first step towards a comprehensive statistical program that encompasses all aspects of tourism activities according to the latest international recommendations in this field.

**April, 2008**

**Luay Shabaneh, Ph.D  
President**



## Table of Contents

<b>Subject</b>	<b>Page</b>
List of Tables	
List of Figures	
Executive Summary	
Chapter One: <b>Introduction</b>	<b>[19]</b>
Chapter Two: <b>Concepts and Definitions</b>	<b>[21]</b>
Chapter Three: <b>Main Findings</b>	<b>[23]</b>
3.1. Distribution of Hotels During 2007	[23]
3.2. Service Facilities as of December 2007	[23]
3.3. Employment During 2007	[24]
3.4. Number of Guests During 2007	[24]
3.5. Annual Occupancy and Average Length of Stay	[25]
3.6. Number of Guest Nights During 2007	[26]
3.7. The Impact of Israeli Measures on the Hotel Activities.	[26]
Chapter Four: <b>Methodology</b>	<b>[29]</b>
Chapter Five: <b>Data Quality</b>	<b>[31]</b>
<b>Tables</b>	<b>47</b>



## List of Tables

<b>Table</b>		<b>Page</b>
<b>Table 1-1:</b>	Main Indicators for Hotel Activities in the Palestinian Territory by Month, 2007	<b>49</b>
<b>Table 1-2:</b>	Distribution of Hotels, Rooms, and Beds by Categories of Number of Rooms, 2007	<b>50</b>
<b>Table 1-3:</b>	Number of Persons Engaged in Hotels by Type of Work, Sex and Month, 2007	<b>51</b>
<b>Table 1-4:</b>	Distribution of Guests in Hotels by Nationality and Month, 2007	<b>52</b>
<b>Table 1-5:</b>	Percentage Distribution of Guests in Hotels by Nationality and Month, 2007	<b>53</b>
<b>Table 1-6:</b>	Distribution of Guest Nights in Hotels by Nationality and Month, 2007	<b>54</b>
<b>Table 1-7:</b>	Percentage Distribution of Guest Nights in Hotels by Nationality and Month, 2007	<b>55</b>
<b>Table 1-8:</b>	Average Length of Stay per Guest in Hotels by Nationality and Month, 2007 - (Nights/Guest)	<b>56</b>
<b>Table 2-1:</b>	Main Indicators for Hotel Activities in the Palestinian Territory by Region and Quarter, 2007.	<b>57</b>
<b>Table 2-2:</b>	Average Number of Hotel Rooms by Capacity, Region and Quarter, 2007	<b>59</b>
<b>Table 2-3:</b>	Number of Hotels and Rooms by Facilities and Region as of December, 2007	<b>60</b>
<b>Table 2-4:</b>	Public Utilities Available in Hotels by Region as of December, 2007	<b>60</b>
<b>Table 2-5:</b>	Average Number of Persons Engaged in Hotels by Type of Work, Sex, Region and Quarter, 2007	<b>61</b>
<b>Table 2-6:</b>	Distribution of Guests in Hotels by Nationality, Region and Quarter, 2007	<b>62</b>
<b>Table 2-7:</b>	Percentage Distribution of Guests in Hotels by Nationality, Region and Quarter, 2007	<b>64</b>
<b>Table 2-8:</b>	Distribution of Guest Nights in Hotels by Nationality, Region and Quarter, 2007	<b>66</b>
<b>Table 2-9:</b>	Percentage Distribution of Guest Nights in Hotels by Nationality, Region and Quarter, 2007	<b>68</b>
<b>Table 2-10:</b>	Average Length of Stay per Guest by Nationality, Region and Quarter, 2007 - (Nights/Guest)	<b>70</b>



## **List of Figures**

<b>Figure</b>	<b>Page</b>
<b>Figure 1:</b> Percentage Distribution of Operating Hotels by Region as of December, 2007	<b>23</b>
<b>Figure 2:</b> Distribution of Hotels By Number of Available Rooms as of December, 2007	<b>24</b>
<b>Figure 3:</b> Percentage Distribution of Guests by Nationality, 2007	<b>24</b>
<b>Figure 4:</b> Number of Palestinians and Other Nationalities Guests in Hotels During (1999-2007)	<b>25</b>
<b>Figure 5:</b> Percentage Distribution of Guests by Region, 2007	<b>25</b>
<b>Figure 6:</b> Percentage Changes of Hotel Indicators During (2000-2007) Compared with 1999.	<b>27</b>





## List of Maps

<b>Map</b>		<b>Page</b>
<b>Map 1:</b>	Number of Hotels in the Palestinian Territory by Region, 2007	<b>29</b>
<b>Map 2:</b>	Number of Hotel Guests in the Palestinian Territory by Region, 2007	<b>33</b>
<b>Map 3:</b>	Rooms Occupancy Percent in the Palestinian Territory by Region, 2007	<b>37</b>
<b>Map 4:</b>	Average Number of Persons Engaged in Hotels by Sex, Region, 2007	<b>41</b>



## Executive Summary

Results reveal that, the total number of hotels in the Palestinian Territory is 116 hotels, including the temporary closed hotels, there are 82 operating hotels in December 2007, with average number of room was 4,109 rooms, and average of beds was 9,088 beds.

In view of the Israeli closure imposed on the Palestinian Territory, it is quite obvious that the main indicators of hotel activities declined by various percentages, because of the Israeli siege, compared with the year 1999. The following indicators represent the effects of the closure on hotel indicators:

- During the year 2007, the total number of guests to the Palestinian Territory hotels reached 315,866 they declined by percentage of 0.3%, compared with year 1999.
- Total number of nights was 673,458 during the year 2007. It declined by 24.8% compared with the year 1999.
- The number of workers in the hotels were 1,263 of which 1,094 are males and 169 are females. The number of workers declined by 22.7% during the year 2007 compared with the year 1999.
- Average occupancy of rooms was 1033.3, it declined by 22.5% during the year 2007 compared with the year 1999.
- The percentage of room occupancy was 25.1%, it declined by 25.1% during the year 2007 compared with the year 1999.
- The average length of stay in the Palestinian hotels was 2.1 nights per guest during the year 2007.

## Chapter One

### **Introduction**

Palestinian Central Bureau of Statistics (PCBS) is conducting a hotel survey which aims at producing a comprehensive data base on the hotel activities in Palestine. The ultimate goal is to compile and maintain data on tourism industry. In this exercise, we hope eventually to be able to produce statistics regularly on the basic indicators recommended and adopted by World Tourism Organization (WTO) and the European Union (EU). In the mean time, this initiative in the present format aims to fill the existing gaps on the basic statistics of the hotel activities, which might help to provide data necessary for policy making to promote this industry in Palestine.

This survey is conducted on a monthly basis to identify the changes in this sector during all seasons of the year. All hotels operating in Palestine are covered. This periodic survey aims to establishing a time series including variables and indicators related to hotel activities.

#### **Objectives**

Through this survey program, we hope to provide a continuous flow of data on:

1. Number of operating hotels and their number of rooms and beds.
2. Room and public facilities in the surveyed hotels.
3. Number of persons engaged in hotels.
4. Number of guest nights in the reference period.
5. Number of guests by nationality.
6. Rates of bed occupancy and room occupancy.



## Chapter Two

### Concepts and Definitions

This section presents the main concepts and definitions used to derive the main indicators of tourism statistics. These concepts and definitions are based on international recommendations in the field of tourism statistics, and they are the same in all subjects in Palestinian Central Bureau of Statistics. The main concepts and expressions mentioned in this report were as follows:

<b>Hotel:</b>	It is defined as an accommodation establishment providing overnight lodging for the visitors in a room or unit. It should hold a number of persons exceeding that of an average single family. The establishment must be under one management, and provides different facilities and services to visitors.
<b>Hotel Workers:</b>	It refers to all persons working in the hotel on full or part time bases including owners and paid or unpaid household members.
<b>Number of Rooms:</b>	It refers to the furnished rooms for the use of guests. Such rooms might be single, double, triple, or quadruple. Rooms involving more than four beds were classified under (others) in the questionnaire. As for the suite, it is usually comprised of one bedroom or more, a living room and private toilet facilities.
<b>Available Beds and Rooms:</b>	It refers to beds and rooms, which are ready for use during the reference period. Closed rooms for maintenance or repairs are excluded.
<b>Guests:</b>	It refers to visitors staying in the hotels and using their facilities in return for a certain charge. Records of new guests are based on the number of visits regardless whether it's the same person or different.
<b>Number of Guest Nights:</b>	Number of beds booked for hotel guests. Such beds are considered as occupied whether they were actually used or not. It is measured by guest night unit.
<b>Room Occupancy:</b>	Number of booked and paid rooms. Such rooms are considered occupied whether they were actually used or not.
<b>Bed Occupancy:</b>	Number of booked and paid beds. Such beds are considered occupied whether they were actually used or not.
<b>Average (rooms, beds) Occupancy:</b>	It is defined as the total number of occupied (rooms, beds) divided by number of days
<b>Average Length of Stay:</b>	Represents the total of guest nights by nationality divided by number of guests of the same nationality .

<b>Percentage of (rooms, beds) Occupancy:</b>	It is defined as the average of (rooms, beds) occupancy divided by available (rooms, beds) multiplied by one hundred.
<b>North of West Bank Region:</b>	Jenin, Tubas, Tulkarm, Nablus, Qalqiliya, and Salfit governorates.
<b>Middle of West Bank Region:</b>	Ramallah and Al-Bireh, Jericho and Al-Aghwar governorates.
<b>Jerusalem Region:</b>	Jerusalem governorate.
<b>South of West Bank Region:</b>	Bethlehem and Hebron governorates.
<b>Gaza Strip:</b>	Gaza North, Gaza, Deir Al-Balah, Khan Yunis and Rafah governorates.



## Main Findings

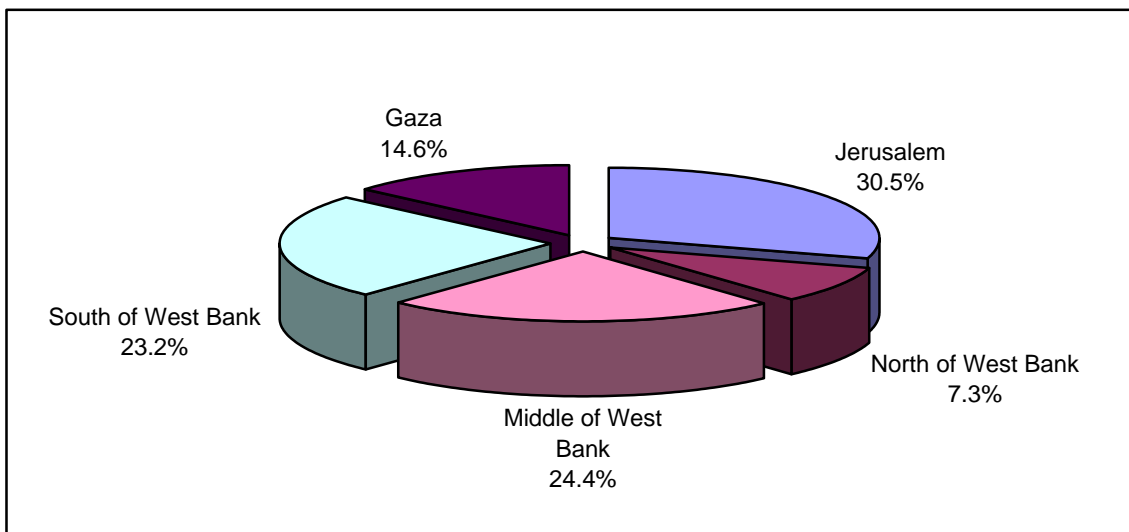
### 3.1 Distribution of Hotels During 2007

The total number of hotels in the Palestinian Territory is 116 hotels, including the temporary closed hotels. There are 82 operating hotels in December 2007, with average number of rooms was 4,109, and average number of beds was 9,088 beds.

The operating hotels in the Palestinian Territory are distributed as follows:

- North of West Bank: 6 hotels including 112 rooms comprising 261 beds.
- Middle of West Bank: 20 hotels including 897 rooms comprising 2,080 beds.
- Jerusalem Region: 25 hotels including 1,143 rooms comprising 2,537 beds.
- South of West Bank: 19 hotels including 1,537 rooms comprising 3,215 beds.
- Gaza Strip: 12 hotels including 421 rooms comprising 754 beds..

**Figure (1): Percentage Distribution of Operating Hotels by Region as of December, 2007**

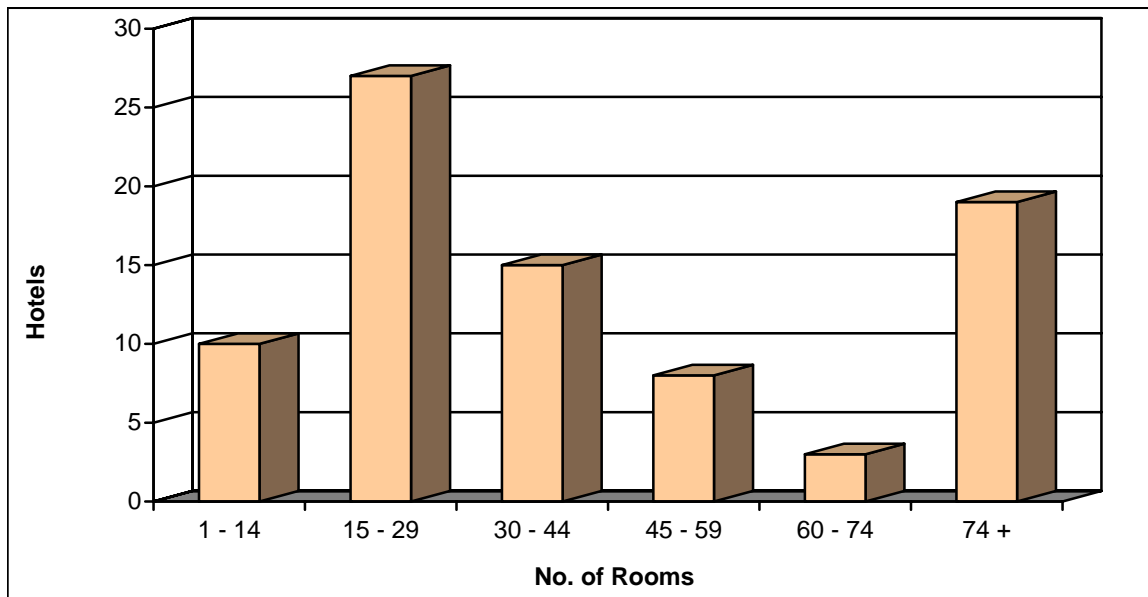


### 3.2 Service Facilities as of December 2007

- Restaurants: 108 restaurants accommodating 19,723 persons.
- Conference halls: 111 accommodating 16,249 persons.
- Parking: 73 accommodating 2,548 cars.
- Swimming pools: 14 pools.
- Playgrounds: 13 playgrounds.

Concerning the capacity of the hotels operating in the Palestinian Territory, 32.9% of these hotels have between 15 to 29 rooms.

**Figure (2): Distribution of Hotels By Number of Available Rooms as of December, 2007**



### 3.3 Employment During 2007

The number of persons employed in the hotels is 1,263. It distributed by type of work and sex as follows:

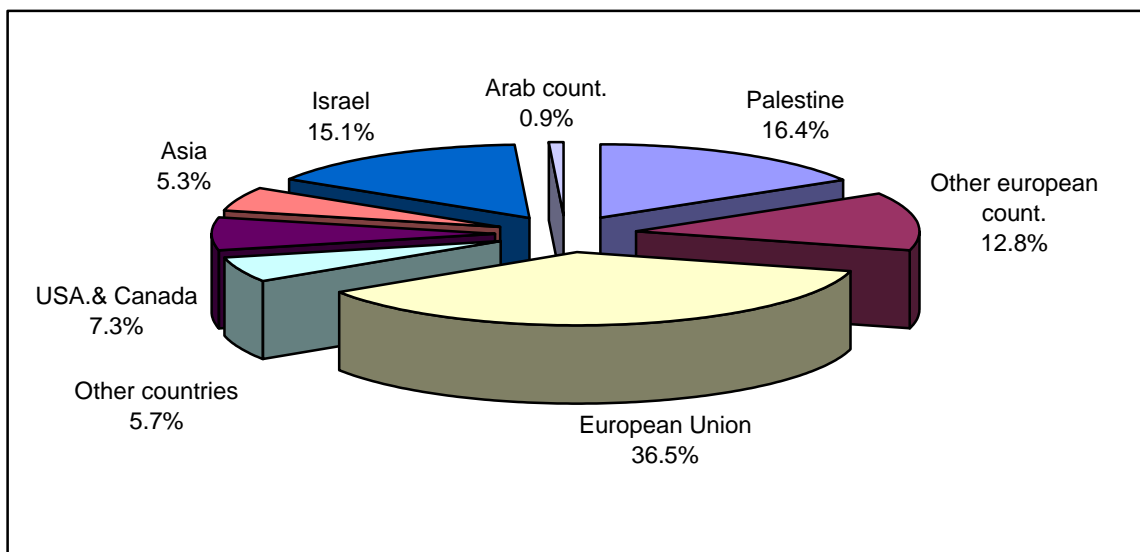
- 263 administrative staff of which 217 are males and 46 are females.
- 1,000 services workers of which 877 are males and 123 are females.

### 3.4 Number of Guests During 2007

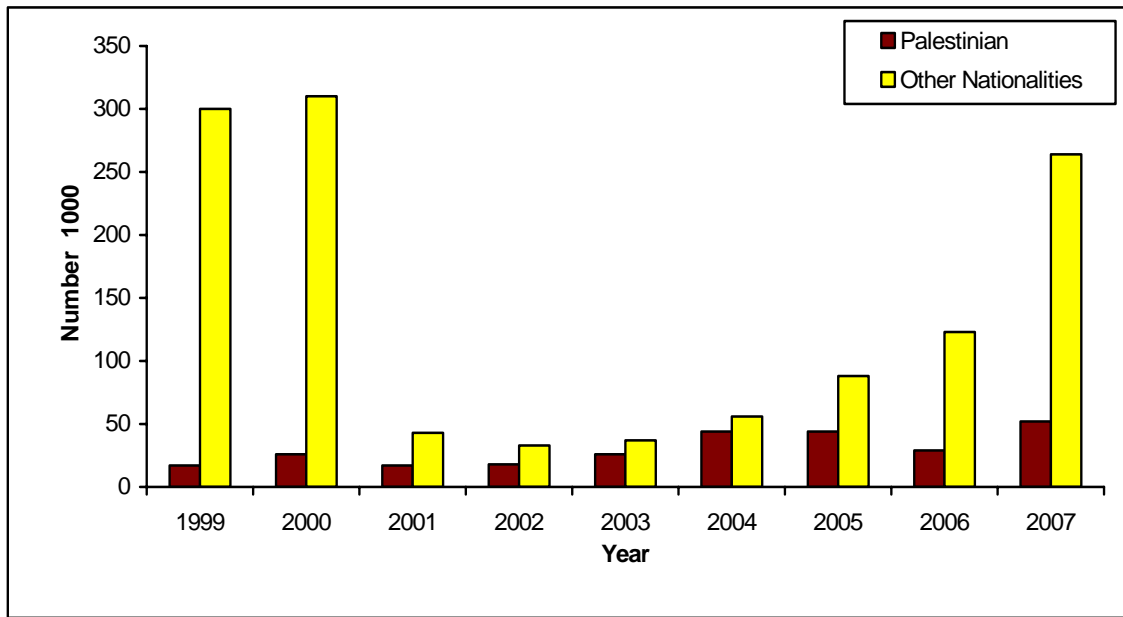
During the year 2007, the total number of guests in Palestinian hotels was 315,866 persons, of which 16.4% were Palestinian guests, and 36.5% were from European Union countries.

The percentage distribution of guests by nationality is as in the figure below.

**Figure (3): Percentage Distribution of Guests by Nationality, 2007**



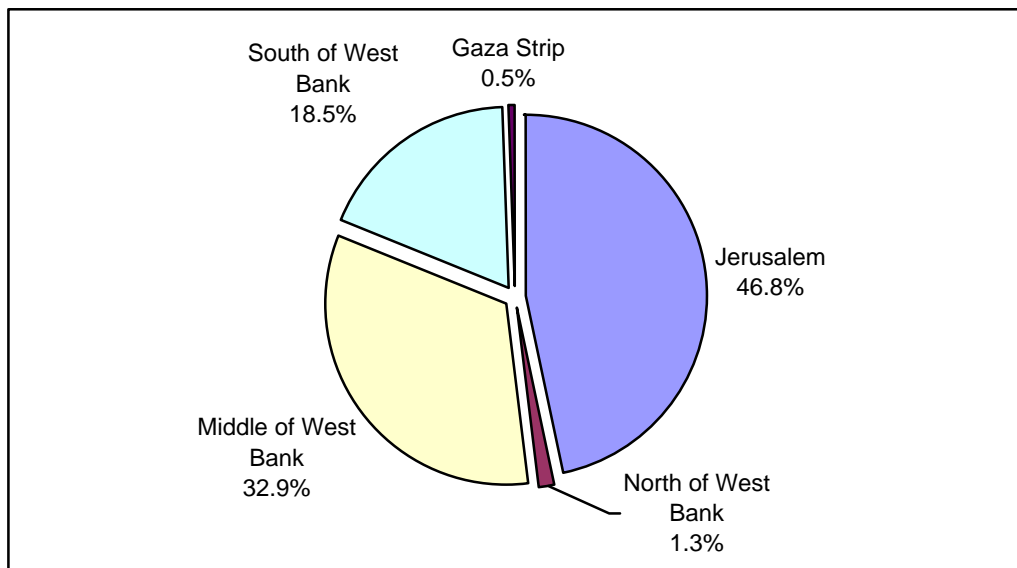
**Figure (4): Number of Palestinians and Other Nationalities Guests in Hotels During (1999-2007)**



The figure above, shows the developing of Palestinians and other nationalities guests in hotels during (1999-2007).

According to the distribution of guests by region, the hotels in Jerusalem region received 46.8% of the guests and 32.9% of the guests were in hotels in the middle region. The percentage distribution of guests by region is as in the figure below.

**Figure (5): Percentage Distribution of Guests by Region, 2007**



### 3.5 Annual Occupancy and Average Length of Stay

During the year 2007, the average occupancy of rooms was in the Palestinian hotels was 1033.3, and the percentage occupancy of room was 25.1%, while average occupancy of beds was 1845.1 or 20.3%, and the average length of stay was 2.1 (nights per guest).

### 3.6 Number of Guest Nights During 2007

During the year 2007, the total number of guest nights in Palestinian hotels was 673,458 nights, of which 11.4% of these nights was occupied by Palestinian guests, while 43.1% by the guests whom arrived from European Union countries, 9.1% of these nights were occupied by the guests whom arrived from United State and Canada, and finally 10.0% by the guests whom arrived from Israel.

According to the distribution of guest nights by region, the hotels in the Jerusalem region accounted for 58.5% of the nights, and 20.1%, 19.7%, 1.2% in the Middle of the West Bank, South of the West Bank, and North of the West Bank respectively, while the percentage of guest nights in Gaza Strip hotels was 0.5%.

### 3.7 The Impact of Israeli Measures on the Hotel Activities

The data for this publication was collected for the year 2007. Tourist activities for the Palestinian hotels during the years (2000-2007) can be compared with the year 1999 to reveal the effect on hotel tourism of Israeli measures after the Israeli siege and closure on the Palestinian Territory.

The following table indicates that there was a reduction in the number of guests and in the number of guest nights in comparison with the year 1999, which was 0.3% and 24.8% respectively.

The reduction for 2007 was low in the previous four years, which reflects an improvement in these indicators during the period.

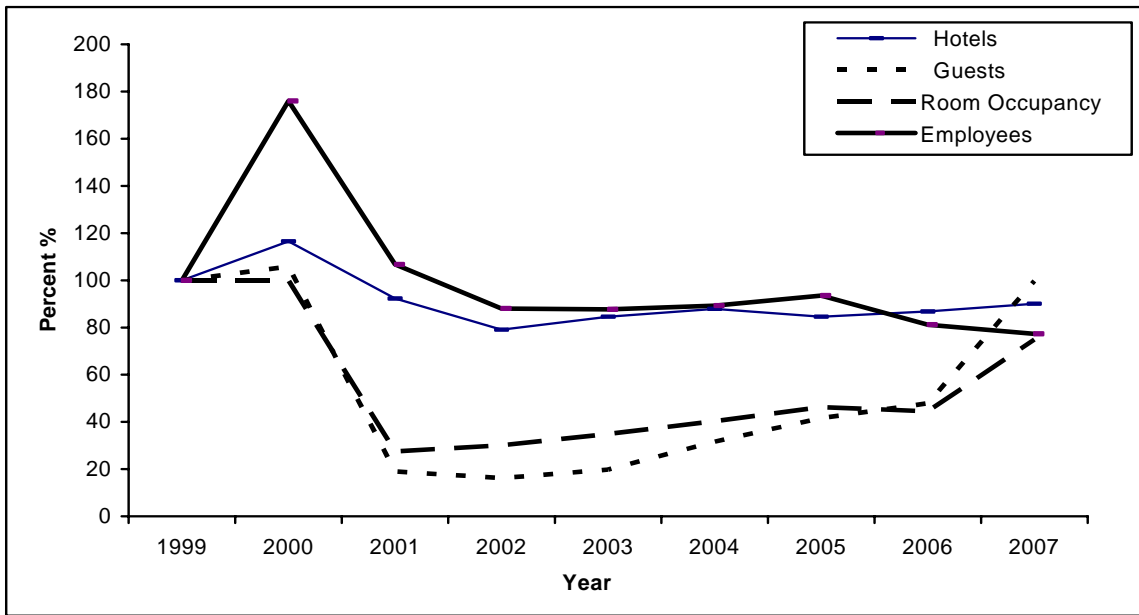
**Percentage Changes of Hotel Indicators During (2000-2007) Compared with 1999**

The Indicator	Value 2007	Percentage change (%)				
		2000	2002	2004	2006	2007
Number of operating hotels	82	16.5	-20.9	-12.1	-13.2	-9.9
Average number of workers	1,263	76.0	-11.9	-10.7	-18.8	-22.7
Number of guests	315,866	5.9	-83.8	-68.4	-52.1	-0.3
Number of guest nights	673,458	13.5	-81.1	-70.0	-57.2	-24.8
Average occupancy of rooms	1033.3	11.1	-77.3	-66.5	-53.8	-22.5
Average occupancy of beds	1845.1	13.6	-81.1	-70.0	-57.2	-24.8
Percentage occupancy of rooms %	25.1	0.0	-69.9	-59.7	-55.5	-25.1
Percentage occupancy of beds %	20.3	-2.3	-76.6	-66.3	-58.7	-31.0

The figures show the impact of Israeli measures on tourist activities at the hotels which negatively affects the tourism industry as a whole. The important main indicators that have been affected were the percentage occupancy of rooms and the percentage occupancy of beds were declined 25.1% and 31.0% respectively.

As for the average rooms occupancy declined by 22.5%, and the results showed that the average beds occupancy declined by 24.8% compared with the year 1999. This reduction is low during the previous years, which reflects an improvement in these indicators during this period.

**Figure (6): Percentage Changes of Hotel Indicators During (2000-2007) Compared with 1999**





## Methodology

- **Survey Questionnaire**

The questionnaire was designed according to the international standard and recommendations. Higher Council for the Arab Tourist Industry and the Arab Studies Society, have both contributed to the questionnaire design. The questionnaire was designed to provide hotel identification data, employed persons by type of work and sex, number of rooms and beds, number of guests, nationality, and occupancy of rooms and beds. The questionnaire was thoroughly updated as a result of field test, November-December 1995, and subject to continuous revision, and the survey questionnaire is available on PCBS website.

- **Coverage**

The survey frame was based on the Establishments Census conducted by the PCBS in 2004. This frame undergoes continuous updating, adding newly established hotels and eliminating closed ones. Hotels, which have ceased operations due to maintenance or repair activities, are not surveyed until they become functional again. In view of the significance of the project, and the small number of hotels operating in Palestine.

- **Field Work**

The field workers taking part in the implementation of the survey are selected from experienced staff. Before being recruited, field workers undergo theoretical and practical training to enable them to carry out their duty properly. Field Work activities include data collection, developing fieldwork forms and manuals and other needed tools. Regular data collection rounds are made to collect data from respondents and in order to ensure precision and accuracy of filled-in data, particularly regarding guests.

- **Office Work Activities**

The completed questionnaires are delivered for office editing after undergoing necessary field editing. Any faulty questionnaires are returned back to the field. Upon completion of data editing, the questionnaires undergo a process of verification and coding accordance to the coding manuals.

- **Tabulation and Data Processing**

After being edited, verified and coded, the data is entered using a special designed data-entry program. Such program is developed accordance with pre-designed tables and in a way that fulfills all survey objectives. Before initiating data entry, necessary theoretical and practical training sessions are offered to data entry operators, who are also provided with an instruction manual. The entered data undergoes electronic editing based on standard editing roles. In addition random quality checks is undertaken to ensure error free data entry. Accordingly, a list of faulty questionnaires is prepared, if needed.

After completing data entry, editing and cleaning, the intended tables are drawn up according to the pre-designed forms.





## Chapter Five

### Data Quality

- Coverage: includes hotels, variables, registration period, and Periodic survey.
- Completeness: the availability of the data and its completeness for most of the indicators of the hotels activities, and how much its (accurate is compared) with the data of the hotels administration registrations, was with the response of 94%.
- Validity: serial of editing operations are done, the questionnaires are being edited in the field and in the office. Then comparing its data with the previous months data, the questionnaires that contain mistakes returned to the hotels to modify it.

#### The fieldwork and office operations notes

The change in the number of hotels, room, and beds during the year of 2007 return to:

- Some hotels not included in this reports because restoration and maintenance operation.
- Non resonent hotels was not considered in this report.
- Many hotels included even it didn't receive any visitors in some month.
- Data includes all establishments that practice any hotel activity, either it is categorized or not.

#### Comparing with the quarterly reports and annual bulletin 2007:

The results show that some differences between the annual bulletin and the quarterly reports, because of delay of questionnaires from some hotels in the field work, and these data included in the annual bulletin.

The table below shows the main differences:

**Comparing the results of annual bulletin with quarterly reports, 2007**

Quarter	No. of Hotels	Average No. of Rooms	Average No. of beds	No. of Guests	No. of Guests nights	
Annual bulletin	I	78	4,048	8,738	49,289	106,111
	II	78	4,081	8,692	75,520	159,855
	III	80	4,134	8,873	102,145	208,360
	IV	82	4,175	9,088	88,912	199,132
Quarterly reports	I	78	4,048	8,738	49,289	106,111
	II	77	4,058	8,666	75,241	158,943
	III	80	4,134	8,873	102,142	208,360
	IV	82	4,175	9,088	88,912	199,132