

(2008 )

(2) :  
2008 /

**2006**

.2008 - 1429 ©

:

(2008 )

.2008

- .(2) :

:

- 1647 . .

(970/972) 2 242 6340 :

(970/972) 2 242 6343 :

diwan@pcbs.gov.ps :

<http://www.pcbs.gov.ps> :

2008

(PNA)

2008

(CFG)

.(SDC)

(CFG)

•

•

•

•

•

2007 2002  
2004

1996  
2006 2005 1998

2005

.2008

**2008**

<b>17</b>		:
<b>19</b>		:
<b>21</b>		:
21		1.3
21	2008	2.3
22	2008	3.3
22	2008	4.3
23	2008	5.3
<b>25</b>		

<b>27</b>	2008		<b>:1</b>
<b>28</b>			<b>:2</b>
		2008	
<b>29</b>	2008		<b>:3</b>
<b>30</b>			<b>:4</b>
		2008	
<b>31</b>	2008		<b>:5</b>
<b>33</b>	2008		<b>:6</b>
<b>35</b>		( / )	<b>:7</b>
		2008	
<b>21</b>	2008		<b>:1</b>
<b>22</b>	(2008 - 2000)		<b>:2</b>
<b>22</b>	2008		<b>:3</b>
<b>23</b>	2008		<b>:4</b>

2008

.

:

2008

3,957

2008

82

•

8,704

126,633

2008

•

.%68.3

2007

1,803.2

2008

•

2007

%70.0

%42.5

176

1,063

1,239

•

.%0.02

2007

%52.5

•

. %16.6 %29.8

323,892

•

.2007

2008

%103.8

.2008

( / ) 2.6

•



.1996

2000

.2008

2001



:

:

:

:

.1

.2

:

( )

:

:

:

:

/

:

:( )

( )

:( )

( )

( )

:

:

:

:

:

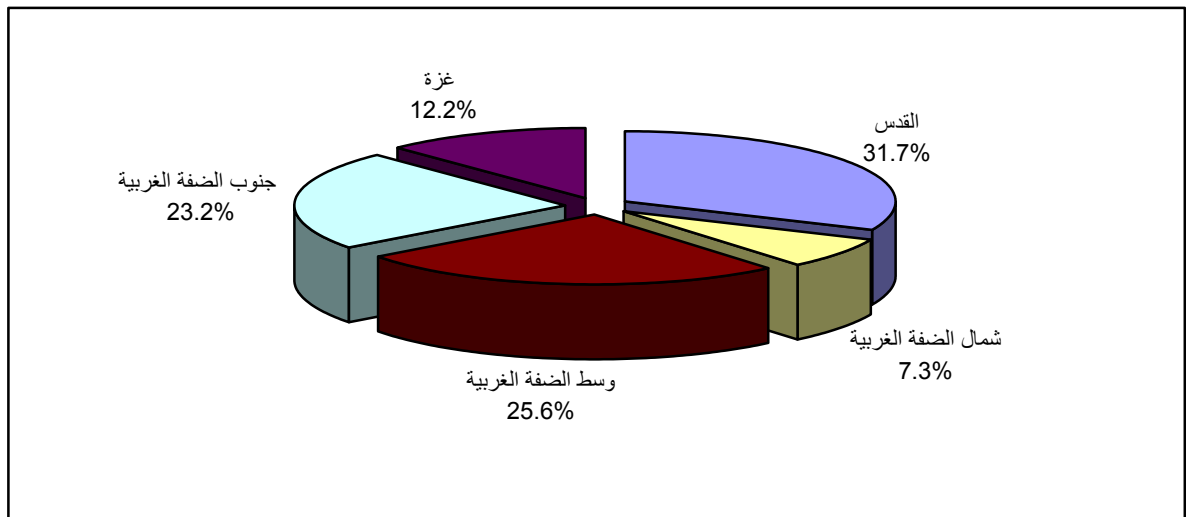
:

3,957	2008	118	82	8,704
<b>2008</b>				
246	107	6 :		•
2,041	877	21 :		•
2,566	1,089	26 :		•
3,137	1,493	19 :		•
714	391	10 :		•

2008

2008

:(1)



2008

2.3

%42.5

1,803.2

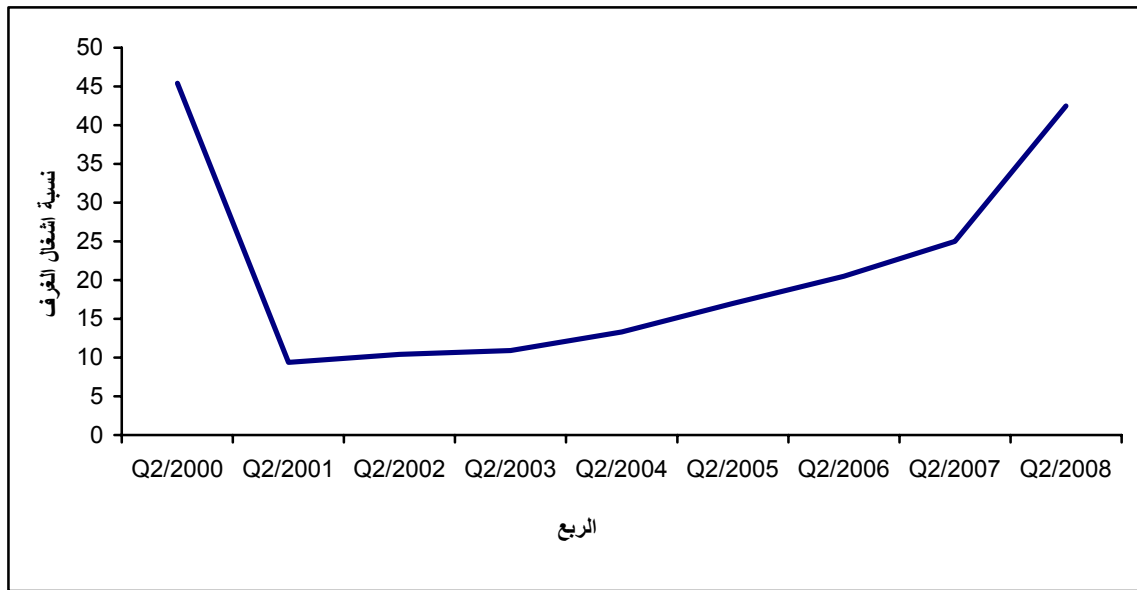
:

2000

2001

(2008 - 2000)

:(2)



2008

3.3

176 1,063

1,239

130

850

980

46

213

259

2008

4.3

%12.9

126,633

2008

2007

%41.8

%.68.3

%52.5

%16.6

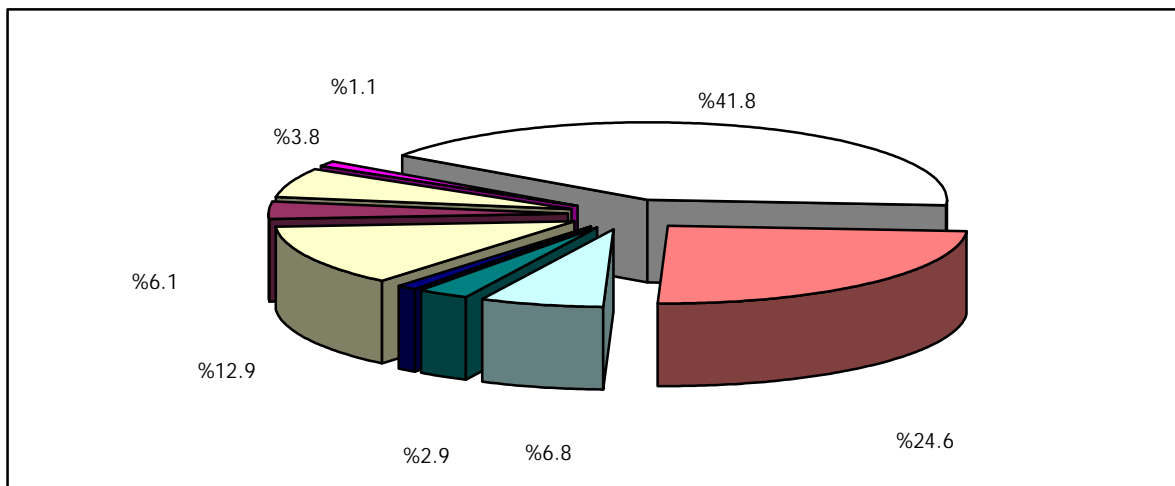
%29.8

%0.3

%0.8

2008

:(3)

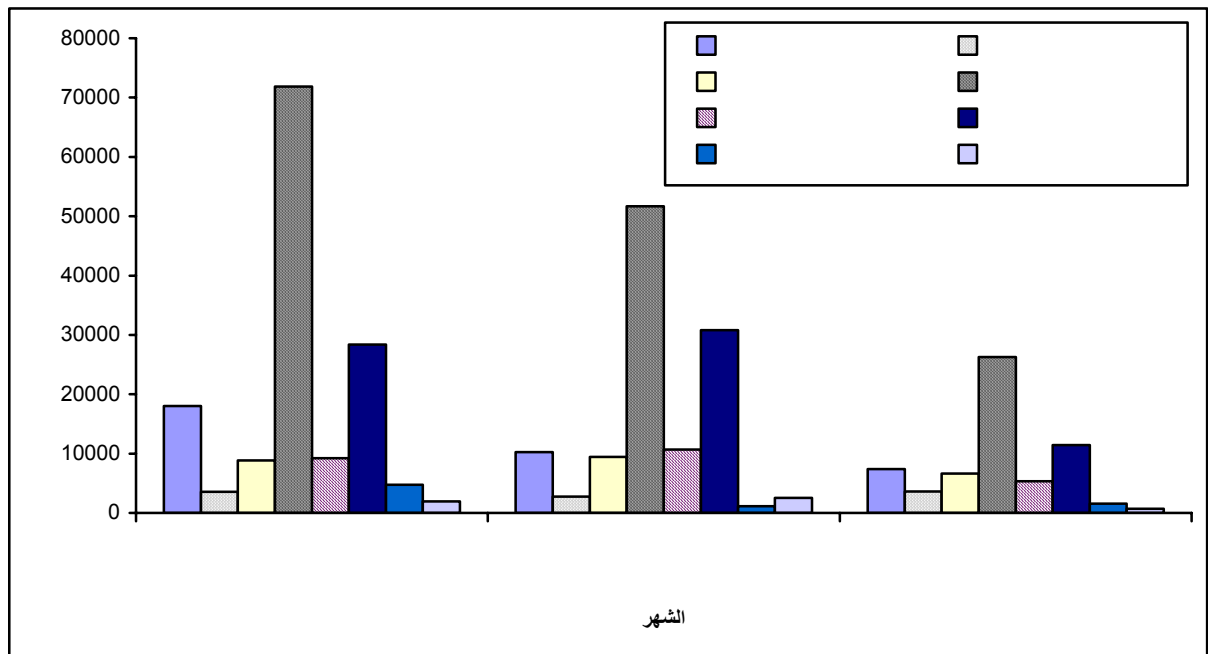


2008 323,892  
 %45.6 %10.7  
 .%7.4  
 .%103.8 2007

%29.6 %55.7 :

%0.4 %0.9 %13.4

2008 :(4)



2008 5.3

2.6

3.7

2.7

2.5 2.2 2.7

2008

2000

2000

2008

%19.1

:

**2000**

<b>2000</b>						<b>2008</b>	
(%)							
2008	2007	2006	2005	2003	2001		
-20.4	-25.2	-26.2	-24.3	-26.2	-19.4	82	
-45.1	-43.8	-39.5	-47.3	-47.6	-21.4	1,239	
19.1	-29.2	-56.8	-67.7	-86.0	-92.5	126,633	
-1.7	-51.8	-63.6	-72.2	-86.0	-83.9	323,892	
-5.7	-46.9	-59.5	-68.2	-81.7	-81.6	1,803.2	
27.4	-37.5	-52.9	-64.0	-81.9	-79.1	3,559.3	
-6.4	-44.9	-54.8	-62.6	-76.0	-79.3	42.5	%
22.6	-35.7	-49.0	-57.3	-76.8	-76.8	38.5	%



2008

:1

Table 1: Main Indicators for Hotel Activities by Month and Region During the Second Quarter, 2008

Region	Month	Bed Occupancy		Room Occupancy		No. of Nights	No. of Guests	No. of Beds	No. of Rooms	No. of Operating Hotels	
		%	Average	%	Average						
<b>Palestinian Territory *</b>		<b>38.5</b>	<b>3559.3</b>	<b>42.5</b>	<b>1803.2</b>	<b>323892</b>	<b>126633</b>	<b>8885</b>	<b>4049</b>	<b>82</b>	*
<b>All Regions</b>	<b>April</b>	<b>52.1</b>	<b>4826.9</b>	<b>52.7</b>	<b>2231.2</b>	<b>144808</b>	<b>60621</b>	<b>9034</b>	<b>4135</b>	<b>82</b>	
	<b>May</b>	<b>40.1</b>	<b>3793.2</b>	<b>45.4</b>	<b>1964.0</b>	<b>117590</b>	<b>43320</b>	<b>8916</b>	<b>4056</b>	<b>82</b>	
	<b>June</b>	<b>22.7</b>	<b>2049.8</b>	<b>29.0</b>	<b>1209.0</b>	<b>61494</b>	<b>22692</b>	<b>8704</b>	<b>3957</b>	<b>82</b>	
North of West Bank	April	12.2	29.9	20.7	22.1	926	345	246	107	6	
	May	11.6	28.5	16.9	18.1	855	321	246	107	6	
	June	14.7	35.8	23.7	25.5	1109	405	246	107	6	
Middle of West Bank	April	26.9	582.5	40.3	371.2	18059	9824	2096	906	21	
	May	30.5	589.8	44	364.5	17693	8050	2041	877	21	
	June	14.5	250.2	21.9	162.3	7756	3132	2041	877	21	
Jerusalem	April	86.0	2495.3	76.3	965	77354	31410	2901	1270	26	
	May	71.9	2248.1	78.6	1098.7	67442	22468	2890	1244	26	
	June	36.9	1143.9	50.5	694.3	35462	12568	2566	1089	26	
South of West Bank	April	47.8	1551.5	51.4	794.5	48095	18906	3077	1461	19	
	May	30.3	1043.3	33.9	542.4	31300	12351	3025	1437	19	
	June	16.4	531.9	18.3	282.4	16488	6414	3137	1493	19	
Gaza Strip**	April	1.9	13.6	1.6	6.7	374	136	714	391	10	**
	May	1.4	9.7	1.3	5.6	300	130	714	391	10	
	June	2.8	20.2	1.3	5.7	679	173	714	391	10	

\* Represents the quarter average except number of guests and number of guest nights which represent the total for the quarter.

\*\* Estimated data.

\*

\*\*

2008

:2

Table 2: Number of Hotels and Rooms by Facilities and Region as of June, 2008

Region	Facilities								No. of Rooms	No. of Operating Hotels
	Internet	DVD	Air Conditioning	Heating	Refrigerator	T.V	Radio	Private Bathroom		
<b>Palestinian Territory</b>	<b>1342</b>	<b>112</b>	<b>3129</b>	<b>3525</b>	<b>2497</b>	<b>3247</b>	<b>1566</b>	<b>3537</b>	<b>3957</b>	<b>82</b>
North of West Bank	0	0	93	93	93	93	0	93	107	6
Middle of West Bank	557	82	734	869	733	840	320	891	877	21
Jerusalem	388	30	911	1080	495	891	640	1070	1089	26
South of West Bank	375	0	1369	1461	1154	1401	606	1461	1493	19
Gaza Strip	22	0	22	22	22	22	0	22	391	10

2008

:3

**Table 3: Number of Hotels by Availability of Public Services and Region as of June, 2008**

Region	Public Services												No. of Operating Hotels
	Other	Room Services	Hair Dresser	Shops	Laundry	Photocopying	Cofeshop	Typing	Bar	Internet	Fax	Puplic Telephone	
<b>Palestinian Territory</b>	<b>22</b>	<b>62</b>	<b>6</b>	<b>10</b>	<b>56</b>	<b>56</b>	<b>32</b>	<b>47</b>	<b>20</b>	<b>50</b>	<b>65</b>	<b>42</b>	<b>82</b>
North of West bank	0	6	1	2	3	3	0	3	0	0	4	2	6
Middle of West bank	15	19	1	2	13	17	17	13	5	14	19	7	21
Jerusalem	1	18	3	4	32	18	14	15	7	23	26	21	26
South of West bank	6	18	1	2	8	17	1	15	8	12	15	7	19
Gaza Strip	0	1	0	0	0	1	0	1	0	1	1	5	10

2008

:4

**Table 4: Average Number of Workers in Hotels by Type of Work, Sex and Region During the Second Quarter, 2008**

Region	Total		Operation		Administration		* No. of Operating Hotels *
	Females	Males	Females	Males	Females	Males	
<b>Palestinian Territory</b>	<b>176</b>	<b>1063</b>	<b>130</b>	<b>850</b>	<b>46</b>	<b>213</b>	<b>82</b>
North of West Bank	8	42	4	29	4	13	6
Middle of West Bank	44	317	34	270	10	47	21
Jerusalem	64	377	47	311	17	66	26
South of West Bank	52	155	43	115	9	40	19
Gaza Strip	<b>8</b>	<b>172</b>	2	125	6	47	10

\* As in June, 2008

2008

\*

2008

:5

**Table 5: Number and Percentage of Guests by Nationality and Region During the Second Quarter, 2008**

Region	Month	Nationality										No. of Operating Hotels
		U.S.A & Canada		Asia		Israel		Arab Countries		Palestine		
		%	Number	%	Number	%	Number	%	Number	%	Number	
<b>Palestinian Territory</b>		<b>6.1</b>	<b>7801</b>	<b>6.8</b>	<b>8568</b>	<b>3.8</b>	<b>4889</b>	<b>0.4</b>	<b>476</b>	<b>12.9</b>	<b>16302</b>	<b>82</b>
<b>All Regions</b>	<b>April</b>	<b>4.6</b>	<b>2791</b>	<b>5.0</b>	<b>3004</b>	<b>2.7</b>	<b>1662</b>	<b>0.2</b>	<b>108</b>	<b>13.5</b>	<b>8261</b>	<b>82</b>
	<b>May</b>	<b>6.5</b>	<b>2832</b>	<b>9.8</b>	<b>4231</b>	<b>3.6</b>	<b>1556</b>	<b>0.6</b>	<b>266</b>	<b>11.1</b>	<b>4793</b>	<b>82</b>
	<b>June</b>	<b>9.6</b>	<b>2178</b>	<b>5.9</b>	<b>1333</b>	<b>7.4</b>	<b>1671</b>	<b>0.4</b>	<b>102</b>	<b>14.3</b>	<b>3248</b>	<b>82</b>
North of West Bank	April	3.8	13	1.4	5	5.8	20	0.9	3	59.7	206	6
	May	5.0	16	0.9	3	5.3	17	0.3	1	66.0	212	6
	June	3.5	14	0.0	0	2.7	11	3.0	12	68.4	277	6
Middle of West Bank	April	13.5	1326	2.6	258	1.6	155	0.9	88	44.4	4358	21
	May	12.8	1030	17.3	1392	1.6	129	0.6	51	44.4	3575	21
	June	6.0	187	2.8	87	5.9	184	0.5	15	72.1	2259	21
Jerusalem	April	3.7	1155	5.1	1610	3.8	1181	0.0	10	0.0	0	26
	May	5.6	1261	5.2	1161	5.6	1269	0.0	4	0.0	0	26
	June	12.1	1526	4.9	610	9.2	1158	0.1	7	0.0	0	26
South of West Bank	April	1.4	274	6.0	1125	1.6	301	0.0	5	19.3	3642	19
	May	4.0	498	13.5	1671	1.1	137	1.7	206	7.9	971	19
	June	6.5	419	9.7	622	4.9	316	1.0	66	10.8	690	19
Gaza Strip	April	14.7	23	3.3	6	6.2	5	1.1	2	35.9	55	10
	May	14.7	27	3.7	4	3.7	4	3.8	4	31.1	35	10
	June	17.2	32	9.1	14	1.0	2	0.7	2	12.8	22	10

2008

:( ) 5

Table 5 (Cont.): Number and Percentage of Guests by Nationality and Region During the Second Quarter, 2008

Region	Month	Total		Nationality									
				Australia & Newzeland		Africa		Other European Countries		European Union		Central & South America	
		%	العدد Number	%	العدد Number	%	العدد Number	%	العدد Number	%	العدد Number	%	العدد Number
<b>Palestinian Territory</b>		<b>100</b>	<b>126633</b>	<b>0.5</b>	<b>611</b>	<b>1.1</b>	<b>1421</b>	<b>24.6</b>	<b>31215</b>	<b>41.8</b>	<b>52877</b>	<b>2.0</b>	<b>2481</b>
<b>All Regions</b>	<b>April</b>	<b>100</b>	<b>60621</b>	<b>0.4</b>	<b>214</b>	<b>1.2</b>	<b>712</b>	<b>22.0</b>	<b>13317</b>	<b>48.0</b>	<b>29106</b>	<b>2.4</b>	<b>1449</b>
	<b>May</b>	<b>100</b>	<b>43320</b>	<b>0.8</b>	<b>360</b>	<b>1.4</b>	<b>623</b>	<b>30.8</b>	<b>13326</b>	<b>34.4</b>	<b>14898</b>	<b>1.0</b>	<b>437</b>
	<b>June</b>	<b>100</b>	<b>22692</b>	<b>0.2</b>	<b>37</b>	<b>0.4</b>	<b>86</b>	<b>20.1</b>	<b>4572</b>	<b>39.1</b>	<b>8873</b>	<b>2.6</b>	<b>595</b>
North of West Bank	April	100	345	0.6	2	0.0	0	2.3	8	24.1	83	1.4	5
	May	100	321	0.0	0	0.0	0	0.0	0	21.6	69	0.9	3
	June	100	405	0.0	0	0.0	0	8.6	35	13.8	56	0.0	0
Middle of West Bank	April	100	9824	1.0	97	3.1	307	1.9	187	30.3	2976	0.7	72
	May	100	8050	0.1	12	0.0	0	7.4	596	14.8	1184	1.0	81
	June	100	3132	0.5	17	0.1	3	3.3	103	6.7	212	2.1	65
Jerusalem	April	100	31410	0.4	113	0.7	216	37.4	11753	47.2	14839	1.7	533
	May	100	22468	1.5	344	0.3	66	42.9	9630	37.7	8465	1.2	268
	June	100	12568	0.1	7	0.6	81	32.1	4031	36.9	4649	4.0	499
South of West Bank	April	100	18906	0.0	0	1.0	189	7.2	1365	59.1	11166	4.4	839
	May	100	12351	0.0	2	4.5	556	25.1	3099	41.5	5128	0.7	83
	June	100	6414	0.1	5	0.0	1	6.2	399	60.3	3867	0.5	29
Gaza Strip	April	100	136	0.8	2	0.0	0	4.4	4	33.6	42	0.0	0
	May	100	130	2.3	2	0.5	1	0.2	1	39.5	52	0.5	2
	June	100	173	4.1	8	0.8	1	2.5	4	50.4	89	1.4	2

2008

:6

Table 6: Number and Percentage of Guest Nights by Nationality and Region During the Second Quarter, 2008

Region	Month	Nationality										No. of Operating Hotels
		U.S.A & Canada		Asia		Israel		Arab Countries		Palestine		
		%	Number	%	Number	%	Number	%	Number	%	Number	
<b>Palestinian Territory</b>		<b>7.4</b>	<b>24077</b>	<b>7.8</b>	<b>24943</b>	<b>3.0</b>	<b>9809</b>	<b>0.3</b>	<b>1057</b>	<b>10.7</b>	<b>34331</b>	<b>82</b>
<b>All Regions</b>	<b>April</b>	<b>5.9</b>	<b>8532</b>	<b>6.2</b>	<b>9028</b>	<b>2.4</b>	<b>3514</b>	<b>0.1</b>	<b>160</b>	<b>12.3</b>	<b>17701</b>	<b>82</b>
	<b>May</b>	<b>7.8</b>	<b>9141</b>	<b>9.1</b>	<b>10669</b>	<b>2.3</b>	<b>2716</b>	<b>0.6</b>	<b>694</b>	<b>8.2</b>	<b>9742</b>	<b>82</b>
	<b>June</b>	<b>10.4</b>	<b>6404</b>	<b>8.5</b>	<b>5246</b>	<b>5.8</b>	<b>3579</b>	<b>0.3</b>	<b>203</b>	<b>11.3</b>	<b>6888</b>	<b>82</b>
North of West Bank	April	2.8	26	1.0	9	2.2	20	0.6	6	51.8	480	6
	May	3.2	27	1.1	9	3.6	31	1.2	10	58.1	497	6
	June	3.3	37	0.0	0	1.2	13	1.9	21	63.7	706	6
Middle of West Bank	April	15.0	2706	4.0	725	1.8	319	0.7	128	46.7	8435	21
	May	10.5	1854	12.5	2203	1.3	226	0.8	147	41.1	7277	21
	June	8.0	624	5.9	455	4.9	383	0.4	34	61.9	4798	21
Jerusalem	April	6.4	4956	7.3	5676	3.4	2656	0.0	17	0.0	0	26
	May	8.6	5820	6.1	4129	3.4	2263	0.0	6	0.0	0	26
	June	12.8	4525	7.7	2741	7.7	2732	0.0	8	0.0	0	26
South of West Bank	April	1.6	784	5.4	2609	1.1	512	0.0	7	17.9	8596	19
	May	4.5	1395	13.8	4318	0.6	189	1.6	514	6.0	1886	19
	June	6.5	1073	12.2	2006	2.7	439	0.8	136	8.0	1317	19
Gaza Strip	April	17.1	60	1.9	9	3	7	0.5	2	43.7	190	10
	May	11.3	45	4.5	10	2.6	7	7.7	17	29	82	10
	June	17.7	145	11	44	1.7	12	0.6	4	9	67	10

2008

:( ) 6

Table 6 (Cont.): Number and Percentage of Guest Nights by Nationality and Region During the Second Quarter, 2008

Region	Month	Total		Nationality										الشهر
				& Australia NewZeland		Africa		Other European Countries		European Union		Central & South America		
		%	Number	%	Number	%	Number	%	Number	%	Number	%	Number	
<b>Palestinian Territory</b>		<b>100</b>	<b>323892</b>	<b>0.4</b>	<b>1447</b>	<b>0.7</b>	<b>2413</b>	<b>21.8</b>	<b>70594</b>	<b>45.6</b>	<b>147765</b>	<b>2.3</b>	<b>7462</b>	
<b>All Regions</b>	<b>April</b>	<b>100</b>	<b>144808</b>	<b>0.3</b>	<b>459</b>	<b>0.8</b>	<b>1212</b>	<b>19.6</b>	<b>28389</b>	<b>49.1</b>	<b>71099</b>	<b>3.3</b>	<b>4717</b>	
	<b>May</b>	<b>100</b>	<b>117590</b>	<b>0.7</b>	<b>798</b>	<b>0.8</b>	<b>973</b>	<b>26.2</b>	<b>30758</b>	<b>43.3</b>	<b>50931</b>	<b>1.0</b>	<b>1169</b>	
	<b>June</b>	<b>100</b>	<b>61494</b>	<b>0.3</b>	<b>190</b>	<b>0.4</b>	<b>228</b>	<b>18.6</b>	<b>11447</b>	<b>41.8</b>	<b>25735</b>	<b>2.6</b>	<b>1576</b>	
North of West Bank	April	100	926	1.3	12	0.0	0	1.9	18	37.4	346	1.0	9	
	May	100	855	0.0	0	0.0	0	0.0	0	32.3	277	0.5	4	
	June	100	1109	0.0	0	0.0	0	5.4	60	24.5	272	0.0	0	
Middle of West Bank	April	100	18059	0.6	108	1.7	309	1.5	275	25.5	4608	2.5	446	
	May	100	17693	0.3	48	0.0	0	14.3	2530	17.2	3056	2.0	352	
	June	100	7756	0.5	35	0.0	3	3.8	298	9.6	739	5.0	387	
Jerusalem	April	100	77354	0.4	336	0.5	384	32.8	25364	48.1	37151	1.1	814	
	May	100	67442	1.1	741	0.2	148	30.7	20697	48.9	32950	1.0	688	
	June	100	35462	0.3	118	0.6	222	29.7	10515	38.0	13477	3.2	1124	
South of West Bank	April	100	48095	0.0	0	1.1	519	5.7	2723	60.0	28897	7.2	3448	
	May	100	31300	0.0	4	2.6	823	24.1	7530	46.5	14536	0.3	105	
	June	100	16488	0.0	7	0.0	1	3.4	567	66.0	10882	0.4	60	
Gaza Strip	April	100	374	0.5	3	0	0	3.9	9	29.4	97	0	0	
	May	100	300	2	5	0.5	2	0.1	1	37.7	112	4.6	20	
	June	100	679	3.9	30	0.6	2	2	7	52.4	365	1.1	5	



2008

( / )

:7

**Table 7: Average Length of Stay for the Guests in Hotels (Nights/Guest) by Region, Month and Nationality During the Second Quarter, 2008**

Region	Month	Nationality					No. of Operating Hotels		
		U.S.A & Canada	Asia	Israel	Arab Countries	Palestine			
<b>Palestinian Territory</b>		<b>3.2</b>	<b>2.9</b>	<b>2.0</b>	<b>2.8</b>	<b>2.2</b>	<b>82</b>		
<b>All Regions</b>	<b>April</b>	<b>3.2</b>	<b>3.1</b>	<b>2.1</b>	<b>2.4</b>	<b>2.2</b>	<b>82</b>		
	<b>May</b>	<b>3.3</b>	<b>2.5</b>	<b>1.8</b>	<b>2.9</b>	<b>2.1</b>	<b>82</b>		
	<b>June</b>	<b>3.1</b>	<b>4.0</b>	<b>2.2</b>	<b>2.8</b>	<b>2.3</b>	<b>82</b>		
North of West Bank	April	2.0	1.8	1.0	2.0	2.3	6		
	May	1.7	3.0	1.8	10.0	2.3	6		
	June	2.6	0.0	1.2	1.8	2.5	6		
Middle of West Bank	April	2.0	2.8	2.1	1.5	1.9	21		
	May	1.8	1.6	1.8	2.9	2.0	21		
	June	3.3	5.2	2.1	2.3	2.1	21		
Jerusalem	April	4.3	3.5	2.2	1.7	0.0	26		
	May	4.6	3.6	1.8	1.5	0.0	26		
	June	3.0	4.5	2.4	1.1	0.0	26		
South of West Bank	April	2.9	2.3	1.7	1.4	2.4	19		
	May	2.8	2.6	1.4	2.5	1.9	19		
	June	2.6	3.2	1.4	2.1	1.9	19		
Gaza Strip	April	3.8	2.2	0.7	1.0	3.2	10		
	May	2.1	3.0	2.0	4.7	2.4	10		
	June	3.8	3.3	10.3	2.5	2.8	10		

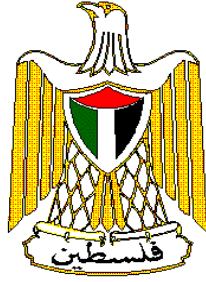
2008

( / )

:( ) 7

**Table 7 (Cont.): Average Length of Stay for the Guests in Hotels (Nights/Guest) by Region, Month and Nationality During the Second Quarter, 2008**

Region	Month	Total	Nationality						
			Australia & New Zeland	Africa	Other European Count.	European Union	Central & South America		
<b>Palestinian Territory</b>		<b>2.6</b>	<b>2.4</b>	<b>1.7</b>	<b>2.3</b>	<b>2.8</b>	<b>3.0</b>		
<b>All Regions</b>	<b>April</b>	<b>2.4</b>	<b>2.2</b>	<b>1.7</b>	<b>2.1</b>	<b>2.5</b>	<b>3.3</b>		
	<b>May</b>	<b>2.8</b>	<b>2.2</b>	<b>1.6</b>	<b>2.3</b>	<b>3.5</b>	<b>2.6</b>		
	<b>June</b>	<b>2.8</b>	<b>5.5</b>	<b>2.7</b>	<b>2.5</b>	<b>3.0</b>	<b>2.7</b>		
North of West Bank	April	2.7	6.0	0.0	2.3	4.2	1.8		
	May	2.7	0.0	0.0	0.0	4.0	1.3		
	June	2.7	0.0	0.0	1.7	4.9	0.0		
Middle of West Bank	April	1.8	1.1	1.0	1.5	1.5	6.2		
	May	2.2	4.0	0.0	4.2	2.6	4.3		
	June	2.5	2.1	1.0	2.9	3.5	6.0		
Jerusalem	April	2.5	3.0	1.8	2.2	2.5	1.5		
	May	3.0	2.2	2.2	2.1	3.9	2.6		
	June	2.8	16.9	2.7	2.6	2.9	2.3		
South of West Bank	April	2.5	0.0	2.7	2.0	2.6	4.1		
	May	2.5	2.0	1.5	2.4	2.8	1.3		
	June	2.6	1.4	1.0	1.4	2.8	2.1		
Gaza Strip	April	2.8	0.9	0.0	1.2	2.4	0.0		
	May	2.5	2.3	1.0	0.5	2.5	10.0		
	June	3.7	3.5	1.0	2.0	3.8	2.5		



**Palestinian National Authority  
Palestinian Central Bureau of Statistics**

**Hotel Activities in the Palestinian Territory  
(Second Quarter 2008)  
Executive Summary**

**Volume 14, Issue No. (2)  
August, 2008**

"Cover price 2 US\$"

PAGE NUMBERS OF ENGLISH TEXT ARE PRINTED IN SQUARE BRACKETS.  
TABLES ARE PRINTED IN THE ARABIC ORDER (FROM RIGHT TO LEFT)

**This document is prepared in accordance with the  
standard procedures stated in the Code of Practice for  
Palestine Official Statistics 2006**

© August, 2008  
All rights reserved.

**Suggested Citation:**

**Palestinian Central Bureau of Statistics, 2008.** *Hotel Activities in the Palestinian Territory, (Second Quarter, 2008) Executive Summary.* Ramallah - Palestine.

All correspondence should be directed to:  
**Palestinian Central Bureau of Statistics**  
P.O.Box 1647, Ramallah, Palestine.

Tel: (972/970) 2 242 6340  
Fax: (972/970) 2 242 6343  
E-Mail :diwan@pcbs.gov.ps  
Web-Site: <http://www.pcbs.gov.ps>

## **Acknowledgment**

**The success of the Palestinian Central Bureau of Statistics (PCBS') fieldwork teams could not be possible without the kind reception and full cooperation of the hotels' owners and managers. The PCBS expresses its gratitude to all of them and appreciates their commitment to bringing this achievement into light.**

**The funding for the Hotel Activities in the Palestinian Territory survey: Second Quarter 2008 was provided by the Palestinian National Authority (PNA), and the Core Funding Group (CFG) for 2008. CFG member include Representative Office of Norway to PNA; Representative Office of Netherlands to PNA; Swiss Agency for Development and Cooperation (SDC).**

**On this occasion, the PCBS extends special thanks to the members of the Core Funding Group (CFG) who contributed in funding this survey for their support.**

## Team Work

- **Report Preparation**

Fathi Farasin

- **Preliminary Review**

Bassam Abdullah

Mahmoud Abdalrahman

- **Dissemination Standard**

Hanan Janajreh

- **Final Review**

Mahmoud Jaradat

- **Overall Supervision**

Luay Shabaneh, Ph.D

PCBS President

## **Preface**

The Palestinian tourism sector has the potential to be a main contributor to the GDP in Palestine. However, the tourism industry is crippled by a multiplicity of problems especially the political situation, which must be overcome.

The Palestinian Central Bureau of Statistics (PCBS) started publishing reports about hotel activities since the first quarter of 1996. PCBS is pleased to present the second issue of the fourteenth volume on "Hotel Activities in the Palestinian Territory" which covers statistics on the hotel industry for the second quarter of 2008.

PCBS has implemented several surveys to cover the supply and demand sides of tourism, including Hotel Activity survey in the Palestinian Territory, a survey continuous and lasting since 1996, and a survey of Tourism Activities for the years 2002 and 2007, were also implemented Domestic Tourism survey for the years 1998, 2005 and 2006, in addition to the survey of Outbound Tourism in 2004, a survey of Inbound Tourism 2005, to cover an important aspect of tourist demand, an additional step for the further implementation of surveys related tourism statistics, in order to build the database necessary to establish the tourism satellite accounts (TSA) in the Palestinian Territory.

The data of hotel activities of this quarter was also collected during the Israeli siege and closure imposed on the Palestinian Territory, which reflects a decreasing for the main indicators comparing with the same quarter of the year 2000, but this decrease is low compared with the same quarters in the previous six years, which reflects a slight improvement during this period.

This report addresses the main indicators of the hotel industry. These indicators include the number of operating hotels, number of rooms and beds, public facilities in the surveyed hotels, number of employed persons in hotels, number of guest nights in the reference period, number of guests by nationality and rates of bed and room occupancy.

We hope that the Hotel Activities survey in the Palestinian Territory conducted by the PCBS comprises a step towards a comprehensive statistical program encompassing all aspects of tourism activities according to the latest international standards.

**August, 2008**

**Luay Shabaneh, Ph.D**  
**President**

## Table of Contents

<b>Subject</b>	<b>Page</b>
List of Tables and Figures	
Executive Summary	
Chapter One: <b>Introduction</b>	<b>[15]</b>
Chapter Two: <b>Concepts and Definitions</b>	<b>[17]</b>
Chapter Three: <b>Main Findings</b>	<b>[19]</b>
3.1 Hotels and Capacity During the Second Quarter 2008	[19]
3.2 Room Occupancy During the Second Quarter 2008	[19]
3.3 Hotel Workers During the Second Quarter 2008	[20]
3.4 Guests and Occupancy During the Second Quarter 2008	[20]
3.5 Average Length of Stay During the Second Quarter 2008	[21]
<b>Tables</b>	<b>25</b>





## **List of Tables and Figures**

<b>Table</b>	<b>Page</b>
<b>Table 1:</b> Main Indicators for Hotel Activities by Month and Region During the Second Quarter, 2008	<b>27</b>
<b>Table 2:</b> Number of Hotels and Rooms by Facilities and Region as of June, 2008	<b>28</b>
<b>Table 3:</b> Number of Hotels by Availability of Public Services and Region as of June, 2008	<b>29</b>
<b>Table 4:</b> Average Number of Workers in Hotels by Type of Work, Sex and Region During the Second Quarter, 2008	<b>30</b>
<b>Table 5:</b> Number and Percentage of Guests by Nationality and Region During the Second Quarter, 2008	<b>31</b>
<b>Table 6:</b> Number and Percentage of Guest Nights by Nationality and Region During the Second Quarter, 2008	<b>33</b>
<b>Table 7:</b> Average Length of Stay for the Guests in Hotels (Nights/Guest) by Region, Month and Nationality During the Second Quarter, 2008	<b>35</b>
<b>Figures</b>	
<b>Figure 1:</b> Percentage Distribution of Operating Hotels by Region as of June, 2008	<b>[19]</b>
<b>Figure 2:</b> Room Occupancy Percent During the Second Quarter (2000 - 2008)	<b>[20]</b>
<b>Figure 3:</b> Percentage Distribution of Guests by Nationality During the Second Quarter, 2008	<b>[20]</b>
<b>Figure 4:</b> Number of Guest Nights by Nationality During the Second Quarter 2008	<b>[21]</b>

## **Executive Summary**

Results reveal that, there are 82 operating hotels in June 2008, offers 3,957 rooms with total available beds of 8,704.

- The percentage occupancy of rooms was 42.5%, it was increased by 70.0% during the second quarter 2008 compared with the same quarter of the year 2007, while the average occupancy was 1,803.2.
- During the second quarter 2008, the total number of guests to the Palestinian Territory hotels reached 126,633 they increased by percentage of 68.3%, compared with the same quarter of the year 2007.
- The number of workers in the hotels administration were 259 of which 213 are males and 46 are females. There were 980 workers in hotels services, of which 850 are males and 130 are females.
- Most of the guests were in Jerusalem hotels with a percentage of 52.5% from the guests total, whereas the percentage reached up to 16.6% in the Middle of the West Bank hotels, it reached 29.8% in the South of the West Bank hotels, and 0.8% in North of the West Bank hotels, while the percentage of guests in Gaza Strip hotels was 0.3%.
- The total number of guest nights in the Palestinian hotels during the second quarter 2008 was 323,892 nights, of which 10.7% of these nights was occupied by Palestinian guests, while 45.6% by the guests whom arrived from European Union countries, and 7.4% of these nights were occupied by the guests whom arrived from the United States and Canada.
- The average length of stay in the Palestinian hotels was 2.6 nights per guest during the second quarter 2008.

## Chapter One

### **Introduction**

Tourism is considered as a cornerstone of the Palestinian economy because there are many attractive touristic resorts for people of different interests. Therefore, PCBS commenced to collect statistical data on tourism and monitor hotel activities through a comprehensive survey since 1996, and on regular basis. Such activity followed the World Tourism Organization and European Union recommendations. It is aimed to produce a comprehensive database and time series of basic indicators of hotel industry, hoping to enable the development and promotion of the tourism industry in Palestine.

This survey is carried out on monthly basis using a specifically designed questionnaire about hotel guests, nights, workers and facilities.

A quarterly report is regularly produced and a collective comprehensive report is produced annually. This publication presents data on hotels for the second quarter 2008, which its results indicate the increase of most indicators compared to the previous years.



## Chapter Two

### Concepts and Definitions

This section presents the main concepts and definitions used to derive the main indicators of tourism statistics. These concepts and definitions are based on international recommendations in the field of tourism statistics, and they are the same in all subjects in Palestinian Central Bureau of Statistics. The main concepts and expressions mentioned in this report were as follows:

#### **Hotel:**

It is defined as an accommodation establishment providing overnight lodging for the visitors in a room or unit. It should hold a number of persons exceeding that of an average single family. The establishment must be under one management, and provides different facilities and services to visitors.

#### **Hotel Workers:**

It refers to all persons working in the hotel on full or part time bases including owners and paid or unpaid household members.

#### **Number of Rooms:**

It refers to the furnished rooms for the use of guests. Such rooms might be single, double, triple, or quadruple. Rooms involving more than four beds were classified under (others) in the questionnaire. As for the suite, it is usually comprised of one bedroom or more, a living room and private toilet facilities.

#### **Available Beds and Rooms:**

It refers to beds and rooms, which are ready for use during the reference period. Closed rooms for maintenance or repairs are excluded.

#### **Guests:**

It refers to visitors staying in the hotels and using their facilities in return for a certain charge. Records of new guests are based on the number of visits regardless whether it's the same person or different.

#### **Number of Guest Nights:**

Number of beds booked for hotel guests. Such beds are considered as occupied whether they were actually used or not. It is measured by guest night unit.

#### **Room Occupancy:**

Number of booked and paid rooms. Such rooms are considered occupied whether they were actually used or not.

#### **Bed Occupancy:**

Number of booked and paid beds. Such beds are considered occupied whether they were actually used or not.

#### **Average (rooms, beds) Occupancy:**

It is defined as the total number of occupied (rooms, beds) divided by number of days

**Average Length of Stay:**

Represents the total of guest nights by nationality divided by number of guests of the same nationality .

**Percentage of (rooms, beds) Occupancy:**

It is defined as the average of (rooms, beds) occupancy divided by available (rooms, beds) multiplied by one hundred.

**North of West Bank Region:**

Jenin, Tulkarm, Nablus, Qalqiliya, Salfit and Tubas governorates.

**Middle of West Bank Region:**

Ramallah and Al-Bireh, Jericho and Al-Aghwar governorates.

**Jerusalem Region:**

Jerusalem governorate.

**South of West Bank Region:**

Bethlehem and Hebron governorates.

**Gaza Strip:**

North Gaza, Gaza, Deir Al-Balah, Khan Yunis and Rafah governorates.

## Main Findings

The total number of hotels in the Palestinian Territory is 118 hotels, including the temporary closed ones. There are 82 operating hotels in June 2008, that offer 3,957 rooms with total available beds of 8,704.

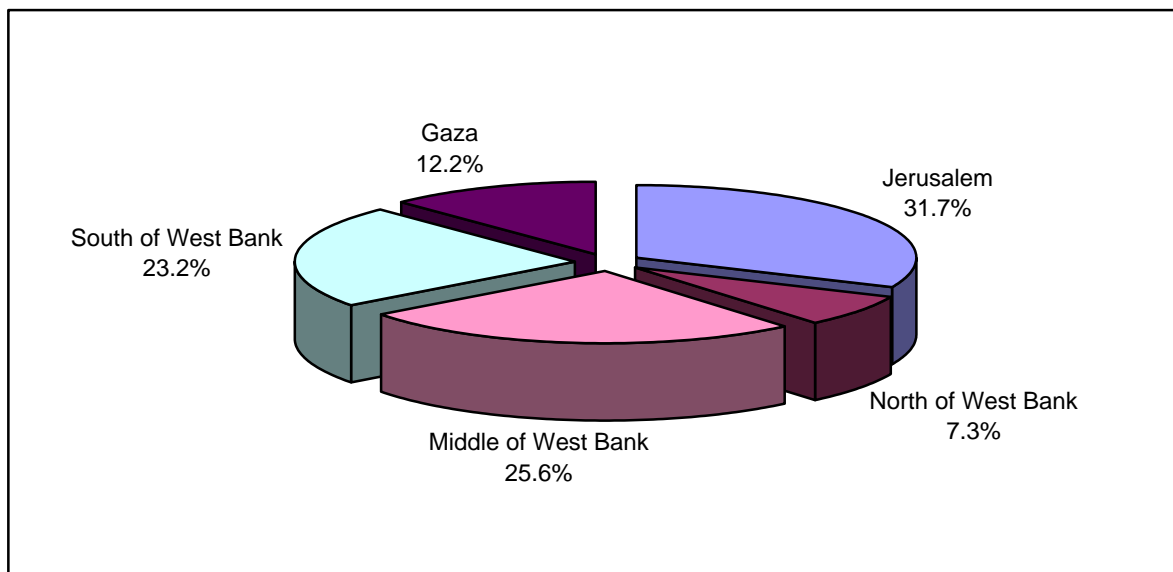
### 3.1 Hotels and Capacity During the Second Quarter 2008

The operating hotels within the Palestinian Territory as in June 2008, are distributed as follows:

- North of West Bank: 6 hotels including 107 rooms comprising 246 beds.
- Middle of West Bank: 21 hotels including 877 rooms comprising 2,041 beds.
- Jerusalem Region: 26 hotels including 1,089 rooms comprising 2,566 beds.
- South of West Bank: 19 hotels including 1,493 rooms comprising 3,137 beds.
- Gaza Strip: 10 hotels including 391 rooms comprising 714 beds.

The figure below shows the percentage distribution of operating hotels by region as of June 2008.

**Figure (1): Percentage Distribution of Operating Hotels by Region as of June, 2008**



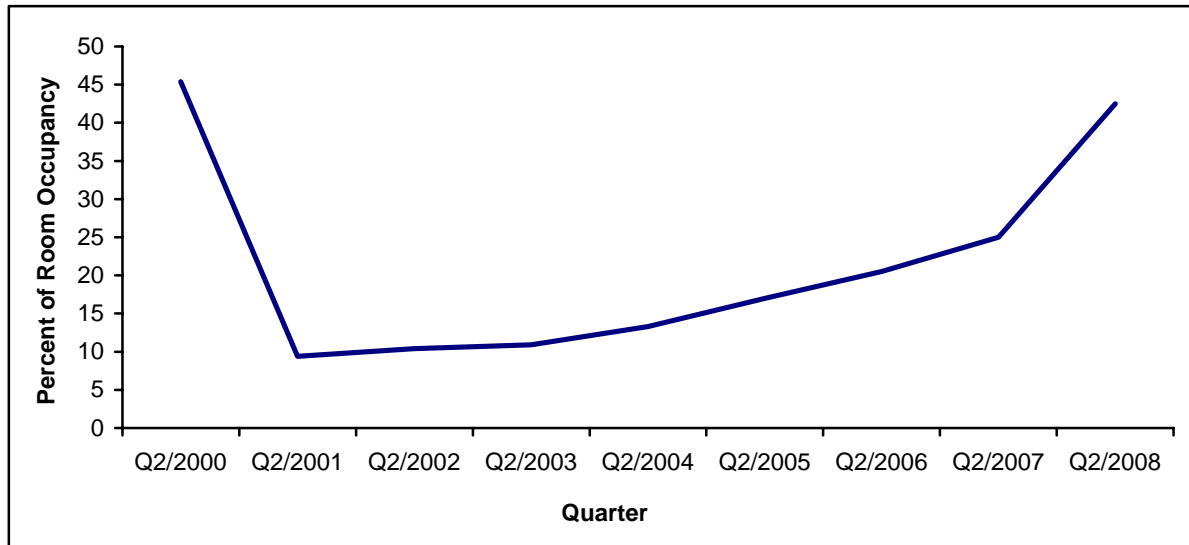
### 3.2 Room Occupancy During the Second Quarter 2008

The average occupancy of rooms in the Palestinian hotels was 1,803.2 and the percentage occupancy of rooms was 42.5%.

The value of this indicator showed a clear increase in comparison with the second quarter of the last seven years. The figure below presents the average occupancy of rooms during the second quarter for the years from 2000 to 2008:



**Figure (2): Room Occupancy Percent During the Second Quarter (2000 - 2008)**



### 3.3 Hotel Workers During the Second Quarter 2008

The number of workers in the hotels administration were 259 of which 213 are males and 46 are females. There were 980 workers in hotels services, of which 850 are males and 130 are females.

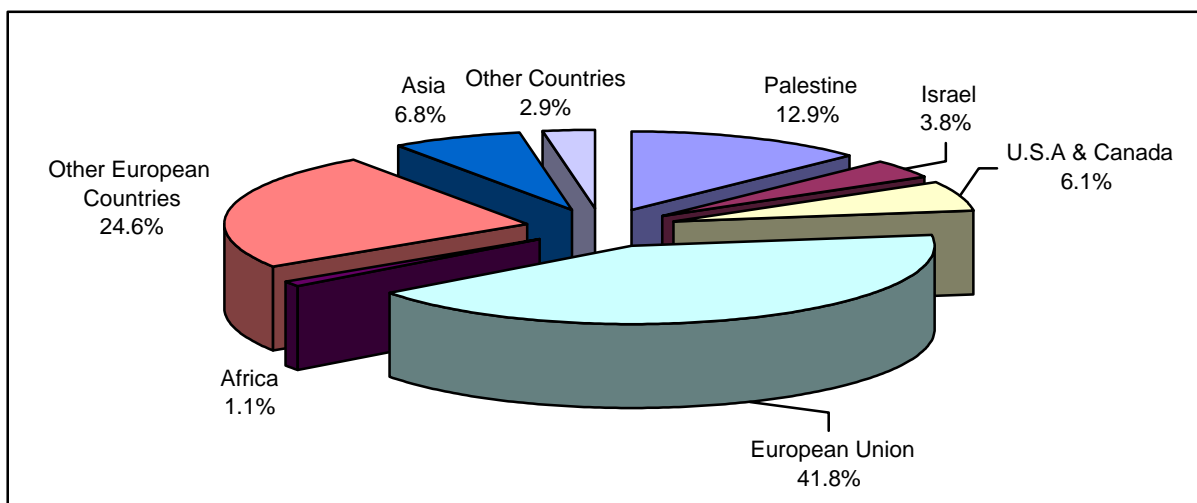
### 3.4 Guests and Occupancy During the Second Quarter 2008

The total number of guests to the Palestinian hotels was 126,633 persons, of which 12.9% of them were Palestinian guests, and 41.8% were from the European Union countries. The number of guests increased to 68.3%, compared with the same quarter of the year 2007.

Most of those guests were in Jerusalem hotels with a percentage of 52.5% from the guests total, whereas the percentage reached up to 16.6% in the Middle of the West Bank hotels, it reached 29.8% in the South of the West Bank hotels, and 0.8% in North of the West Bank hotels, while the percentage of guests in Gaza Strip hotels was 0.3%.

The percentage distribution of guests by nationality is as in the figure below.

**Figure (3): Percentage Distribution of Guests by Nationality During the Second Quarter, 2008**

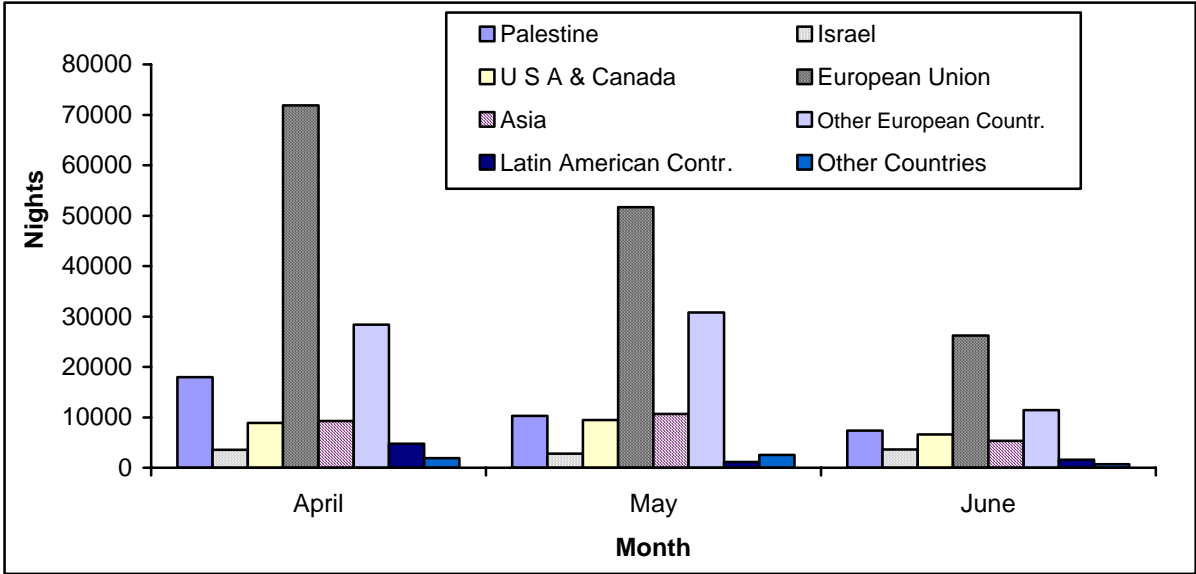


The total number of guest nights in the Palestinian hotels during the second quarter 2008 was 323,892 nights, of which 10.7% of these nights was occupied by Palestinian guests, while 45.6% by the guests whom arrived from European Union countries, and 7.4% of these nights were occupied by the guests whom arrived from the United States and Canada.

Whereas the guests spent 55.7% of those nights in Jerusalem hotels, while they spent 13.4%, 29.6%, 0.9% in the Middle, South, and North of the West Bank respectively, while the percentage of guest nights in Gaza Strip hotels was 0.4%.

The distribution of guests by nationality and month during this quarter are presented in the figure below.

**Figure (4): Number of Guest Nights by Nationality During the Second Quarter, 2008**



**3.5 Average Length of Stay During the Second Quarter 2008**

The average length of stay in the Palestinian hotels was 2.6 nights per guest, and the highest average was 3.7 nights in the Gaza Strip hotels, while in the North, Middle and South of the West Bank was 2.7, 2.2, 2.5 nights per guest respectively, whereas the average length of stay in Jerusalem hotels were 2.7 nights per guest.

The table below presents the main results of the second quarter of 2008, and explains the changes occurred on the main indicators of the Palestinian hotels activities, due to the Israeli siege, compared with the same quarter of the year 2000.

When comparing the results of the second quarter of 2008 with the same period in 2000, we note that the decline in the volume of main hotel indicators reached to the lowest, the number of guests which records a high number by an increase of a bout 19.1% by comparing to that time.

There is a decrease in the number of nights and average room occupancy reached 1.7% and 5.7% respectively, but this rate of decline is the lowest compared to previous years, having started these reductions recede gradually since 2001.

**Percentage Change in the Variables During the Second Quarter of the previous Years, in Compare with the Second Quarter 2000**

The Indicator	Value During the 2 <sup>nd</sup> Quarter 2008	Percentage change (%) comparing with 2 <sup>nd</sup> Quarter 2000					
		2001	2003	2005	2006	2007	2008
Number of operating hotels	82	-19.4	-26.2	-24.3	-26.2	-25.2	-20.4
Average number of workers	1,239	-21.4	-47.6	-47.3	-39.5	-43.8	-45.1
Number of guests	126,633	-92.5	-86.0	-67.7	-56.8	-29.2	19.1
Number of guest nights	323,892	-83.9	-86.0	-72.2	-63.6	-51.8	-1.7
Average occupancy of rooms	1,803.2	-81.6	-81.7	-68.2	-59.5	-46.9	-5.7
Average occupancy of beds	3,559.3	-79.1	-81.9	-64.0	-52.9	-37.5	27.4
Percentage occupancy of rooms %	42.5	-79.3	-76.0	-62.6	-54.8	-44.9	-6.4
Percentage occupancy of beds %	38.5	-76.8	-76.8	-57.3	-49.0	-35.7	22.6