

2008

**2 :
2008 /**

2006

.2008 - 1429 ©

.2008 - .2008

- 1647 . .

(970/972) 2 242 6340 :

(970/972) 2 242 6343 :

diwan@pcbs.gov.ps :

<http://www.pcbs.gov.ps> :



.

2008

(PNA)

2008

(CFG)

.(SDC)

.

(CFG)

•

•

•

•

•

1994

.1996

.2008

.1996

2008

19		:
19	1.1	
19	2.1	
20	3.1	
21		:
23		:
27		:
27	1.4	
27	2.4	
28	3.4	
28	4.4	
28	5.4	
31		:
31	1.5	
31	2.5	
31	3.5	
35		

35	1997				:1
				2008	
36					:2
				2008	-
38					:3
				2008	-
39					:4
			2008	-	
44					:5
			2008	-	
47					:6
	2008	-			
50					:7
	-				
				2008	
52					:8
		2008	-		
55					:9
			2008	-	
59					:10
			2008	-	
64					:11
				2008	-

23 ٢

:1

2008 -2005

25

:2

2008

: .2008

: .1

1,155

: 2008

614 •

208 •

+ 64 •

253 •

16 •

: .2

: 354.8 ()

67.8 212.0 279.8 •

11.3 63.7 75.0 •

: .3

3.8 50

: .4

195.2 1,062 •

60.7 331 •

2007 -2005

%27.4 2008

2007 2006 %1.7 %37.2 2005

%56.4

2005 2008 % 24.9

2006

2008 %64.4 %48.7

%14.9 %33.5

.2007

2008

.2007 2006 2005

	:	1.1
	:	
	:	
	:	
	:	
	:	2.1
:		
		•
		•
		•
		•
		•
		•

: 3.1

:

: •

: •

: •

: •

: •

: •

.(

:

.

:

)

:

:

.1967

.1 :

2008

:2007 - 2005

2007 (%)	2006 (%)	2005 (%)	*			
			2008	2007	2006	2005
-0.2	-25.7	-32.6	614	615	826	911
-23.8	-39.5	-35.6	208	273	344	323
60.0	-25.6	120.7	64	40	86	29
9.5	-54.8	-9.6	253	231	560	280
0.0	-33.3	-67.3	16	16	24	49
-1.7	-37.2	-27.4	1155	1175	1840	1592

*

2005

%27.4

2008

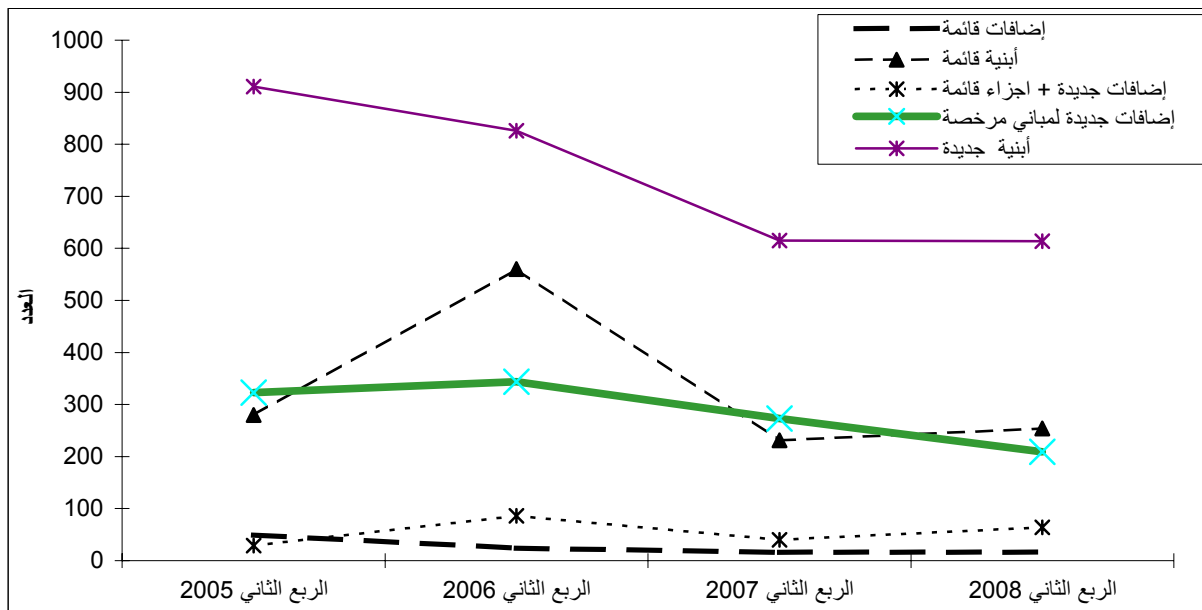
2007 2006

%1.7 %37.2

2008- 2005 ()

2008 - 2005

:1



: .2

2008

:2007 -2005

2007 (%)	2006 (%)	2005 (%)	*()				
			2008	2007	2006	2005	
-21.3	-48.5	-46.2	354.8	451.0	689.6	659.2	*
-22.4	-42.8	-52.1	279.8	360.6	488.9	584.6	:
-21.0	-44.2	-55.1	212.0	268.4	380.0	472.0	
-26.4	-37.6	-39.7	67.8	92.2	108.9	112.6	
-17.0	-62.6	0.5	75.0	90.4	200.7	74.6	:
-12.4	-60.3	1.3	63.7	72.6	160.1	62.8	
-36.5	-72.2	-4.2	11.3	17.8	40.6	11.8	

*

: .3

2008

:2007 -2005

2007 (%)	2006 (%)	2005 (%)					
			2008	2007	2006	2005	
6.4	35.1	8.7	50	47	37	46	
-15.6	31.0	26.7	3.8	4.5	2.9	3.0	()

: .4

2008

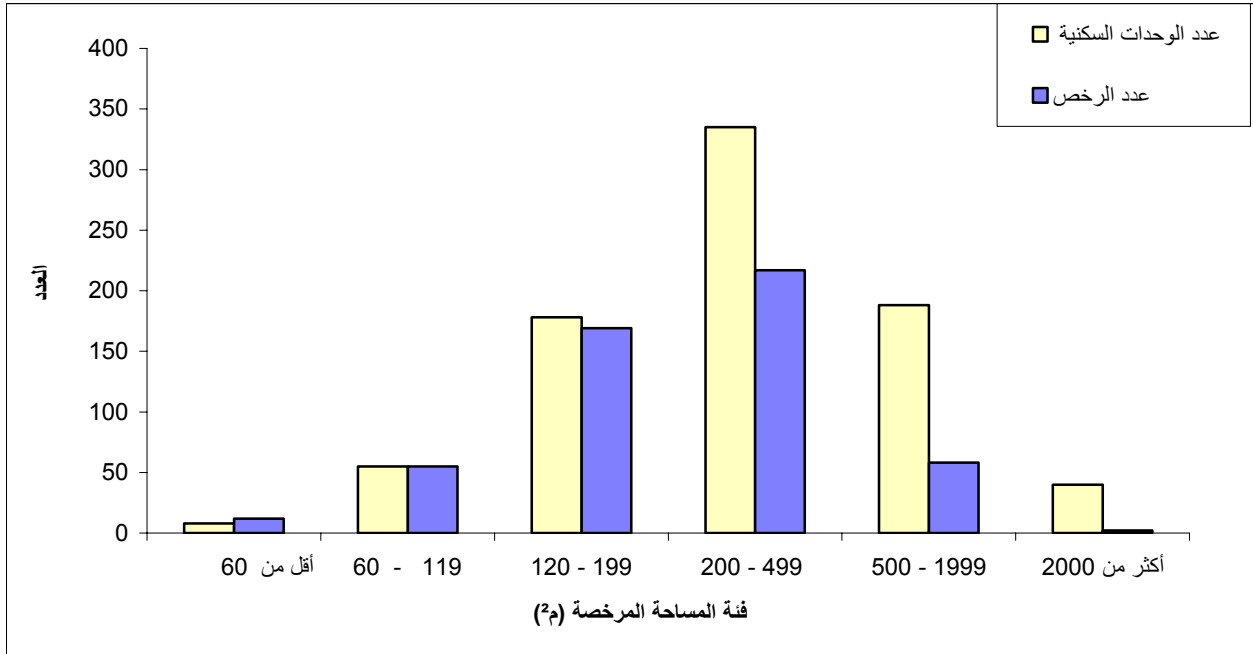
:2007 -2005

2007 (%)	2006 (%)	2005 (%)					
			2008	2007	2006	2005	
-33.5	-48.7	-56.4	1062	1597	2071	2438	
-18.0	-43.1	-55.1	195.1	238.1	343.1	434.7	()
-14.9	-64.4	-24.9	331	389	929	441	
-9.5	-57.9	5.6	60.7	67.1	144.3	57.5	()

:2008

:2

2008



1.4

-
-
-
-

2.4

-
-
-
-

()

.1996

: 3.4

:

:

:

:

:

4.4

:

:

5.4

:

.

:

.

:

.

: 1.5

1.1.5

2.1.5

2.5

: 3.5

•

•

(J2) 1967

•

•

2008

1997

*

:1

Table1: Buildings Licenses Issued* in Remaining West Bank and Gaza Strip During the Period 1997 to the Second Quarter 2008

Period	Licensed Dwellings				(²) Licensed Areas (1000m²)			Number of Licenses						
	Existing Dwellings		New Dwellings		Existing Areas	All New Areas	Total	Existing Extensions	Existing Buildings	+ Additions+ Existing Parts	Additions to Licensed Buildings	أبنية جديدة New Buildings	Total	
	(²) Area (1000 m²)	No.	(²) Area (1000 m²)	No.										
1997	391.8	2759	1768.5	13230	500.1	2391.9	2892.0	263	1155	187	1994	4789	8388	1997
1998	387.1	2735	1786.7	12826	469.1	2505.7	2974.8	178	1144	265	2252	5117	8956	1998
1999	439.0	3675	2050.6	14587	554.4	2860.1	3414.5	115	1470	475	2055	5803	9918	1999
2000	383.3	2730	1646.1	10708	482.4	2457.6	2940.0	185	1318	448	1852	4498	8301	2000
2001	256.0	1847	1041.9	7037	341.0	1633.9	1974.9	124	774	273	1181	2781	5133	2001
2002	137.6	975	794.3	5089	171.8	1080.4	1252.2	52	554	131	675	1913	3325	2002
2003	175.8	1671	1234.2	8152	226.1	1863.9	2090.0	99	749	138	1268	2981	5235	2003
2004	161.6	1229	1248.6	8184	222.0	1803.9	2025.8	111	706	149	1113	2929	5008	2004
2005	366.7	2522	1729.5	10362	474.2	2427.4	2901.6	127	1469	223	1293	3996	7108	2005
2006	524.2	3301	1193.6	6909	679.2	1666.9	2346.1	112	1894	265	1087	2703	6061	2006
2007														2007
Quarter I	68.0	419	199.8	1160	92.6	312.2	404.7	20	246	18	255	505	1044	
Quarter II	67.1	389	238.1	1597	90.4	360.6	451.0	16	231	40	273	615	1175	
Quarter III	64.1	567	258.9	2109	90.3	428.5	518.9	18	209	40	244	696	1207	
Quarter IIII	45.0	275	286.3	2612	52.5	347.1	399.6	10	173	42	197	640	1062	
2008														2008
Quarter I	88.3	414	297.5	1850	107.0	423.1	530.1	18	191	70	259	690	1228	
Quarter II	60.7	331	195.1	1062	75.0	279.8	354.8	16	253	64	208	614	1155	

*Excluding boundary walls licenses

*

Table2: Buildings Licenses Issued in Remaining West Bank and Gaza Strip by Building Ownership and Utilization - Second Quarter 2008

Building Ownership	Licensed Dwellings				*(²) Licensed Areas (1000m ²)*			Number of Issued Licenses						
	Existing Dwellings		New Dwellings		Existing Areas	All New Areas	Total	Existing Extensions	Existing Buildings	+	Additions + Existing Parts	Additions to Licensed Buildings	New Buildings	Total
	(²) Area (1000 m ²)	No.	(²) Area (1000 m ²)	No.										
Total	58.8	322	186.7	1039	63.7	212.0	275.7	16	225	63	162	513	979	
Residential Building	1.9	9	8.4	23	11.3	67.8	79.1	0	28	1	46	101	176	
Non-Res. Building	0.0	0	0.0	0	0.1	3.7	3.8	0	3	0	0	47	50	
Boundary walls														
Private														
Residential Buildings	58.8	322	186.7	1039	63.7	212.0	275.7	16	225	63	162	513	979	
Non-Res. Buildings	1.9	9	5.6	21	8.8	45.5	54.3	0	23	0	39	74	136	
Boundary walls	0.0	0	0.0	0	0.0	3.7	3.7	0	2	0	0	46	48	
Governmental														
Residential Buildings	0.0	0	0.0	0	0.0	0.0	0.0	0	0	0	0	0	0	
Non-Res. Buildings	0.0	0	0.0	0	0.9	7.0	8.0	0	2	0	1	9	12	
Boundary walls	0.0	0	0.0	0	0.0	0.0	0.0	0	0	0	0	0	0	
Local Authority														
Residential Buildings	0.0	0	0.0	0	0.0	0.0	0.0	0	0	0	0	0	0	
Non-Res. Buildings	0.0	0	2.8	2	1.0	11.0	12.0	0	2	1	2	14	19	
Boundary walls	0.0	0	0.0	0	0.0	0.0	0.0	0	0	0	0	0	0	

*For boundary walls it refers to length in (1000 m.r)

*

2008

-

:() 2

Table2 (cont.): Buildings Licenses Issued in Remaining West Bank and Gaza Strip by Building Ownership and Utilization - Second Quarter 2008

Building Ownership	Licensed Dwellings				*(²) Licensed Areas (1000m ²)*			Number of Issued Licenses						
	Existing Dwellings		New Dwellings		Existing Areas	All New Areas	Total	Existing Extensions	Existing Buildings	+ Additions + Existing Parts	Additions to Licensed Buildings	New Buildings	Total	
	(²) Area (1000 m ²)	No.	(²) Area (1000 m ²)	No.										
Charity														
Residential Buildings	0.0	0	0.0	0	0.0	0.0	0.0	0	0	0	0	0	0	0
Non-Res. Buildings	0.0	0	0.0	0	0.5	4.3	4.8	0	1	0	4	4	9	
Boundary walls	0.0	0	0.0	0	0.1	0.0	0.1	0	0	0	0	0	0	0
Others														
Residential Buildings	0.0	0	0.0	0	0.0	0.0	0.0	0	0	0	0	0	0	0
Non-Res. Buildings	0.0	0	0.0	0	0.0	0.0	0.0	0	0	0	0	0	0	0
Boundary walls	0.0	0	0.0	0	0.0	0.0	0.0	0	1	0	0	1	2	

*For boundary walls it refers to length in (1000 m.r)

*

Table 3: Buildings Licenses Issued in Remaining West Bank and Gaza Strip by Issuing Authority and Utilization - Second Quarter 2008

License Issuing Authority	Licensed Dwellings				*(²) Licensed Areas (1000 m ²)*			Number of Issued Licenses						
	Existing Dwellings		New Dwellings		Existing Areas	All New Areas	Total	Existing Extensions	Existing Buildings	+ Additions + Existing Parts	Additions to Licensed Buildings	New Buildings	Total	
	(²) Area (1000 m ²)	No.	(²) Area (1000 m ²)	No.										
All Authorities														
Residential Buildings	58.8	322	186.7	1039	63.7	211.9	275.7	16	225	63	162	513	979	
Non-Res. Buildings	1.9	9	8.4	23	11.3	67.8	79.1	0	28	1	46	101	176	
Boundary walls	0.0	0	0.0	0	0.1	3.7	3.8	0	3	0	0	47	50	
Municipalities														
Residential Buildings	52.9	285	165.4	919	56.7	188.1	244.9	13	202	54	161	433	863	
Non-Res. Buildings	1.1	5	7.2	17	7.7	57.9	65.6	0	21	0	43	84	148	
Boundary walls	0.0	0	0.0	0	0.0	3.4	3.4	0	2	0	0	44	46	
Construction Authorities														
Residential Buildings	5.9	37	21.1	118	7.0	23.6	30.6	3	23	9	1	79	115	
Non-Res. Buildings	0.9	4	1.2	6	3.7	9.9	13.6	0	7	1	3	17	28	
Boundary walls	0.0	0	0.0	0	0.1	0.3	0.4	0	1	0	0	3	4	
UNRWA														
Residential Buildings	0.0	0	0.2	2	0.0	0.2	0.2	0	0	0	0	1	1	
Non-Res. Buildings	0.0	0	0.0	0	0.0	0.0	0.0	0	0	0	0	0	0	
Boundary walls	0.0	0	0.0	0	0.0	0.0	0.0	0	0	0	0	0	0	

*For boundary walls it refers to length in (1000 m.r)

*

Table 4: Buildings Licenses Issued in Remaining West Bank and Gaza Strip for New Buildings by Category of Licensed Area and Governorate - Second Quarter 2008

Governorate &Area Category	Non-Res. Buildings		Residential Buildings				
	متوسط عدد الطوابق Average No. of Storeys	عدد الرخص No. of Licenses	متوسط عدد الطوابق Average No. of Storeys	متوسط عدد الوحدات السكنية Average No. of Dwellings	مجموع عدد الوحدات السكنية Total No. of Dwellings	عدد الرخص No. of Licenses	
All Governorates							
Less than 60 m ²	1.5	84	0.9	0.7	8	12	² 60
60- 119 m ²	2.0	1	1.1	1.0	55	55	² 119 -60
120-199m ²	1.7	3	1.2	1.1	178	169	² 199 -120
200- 499 m ²	2.2	10	2.0	1.5	335	217	² 499-200
500-1999 m ²	2.0	1	3.0	3.2	188	58	² 1999 -500
2000- m ² and more	3.0	2	5.0	20.0	40	2	² 2000
Jenin							
Less than 60 m ²	2.0	11	0.0	0.0	0	0	² 60
60-119 m ²	0.0	0	1.2	1.0	5	5	² 119 -60
120- 199 m ²	0.0	0	1.1	1.1	10	9	² 199 -120
200- 499 m ²	0.0	0	1.8	1.7	31	18	² 499 -200
500- 1999 m ²	0.0	0	4.0	6.0	12	2	² 1999 -500
2000 m ² and more	0.0	0	0.0	0.0	0	0	² 2000
Tubas							
Less than 60 m ²	0.0	0	0.0	0.0	0	0	² 60
60- 119 m ²	0.0	0	1.3	1.0	4	4	² 119 -60
120-199m ²	0.0	0	1.2	1.0	5	5	² 199 -120
200- 499 m ²	0.0	0	1.5	1.5	12	8	² 499-200
500-1999 m ²	0.0	0	0.0	0.0	0	0	² 1999 -500
2000- m ² and more	0.0	0	0.0	0.0	0	0	² 2000

Table 4 (Cont.): Buildings Licenses Issued in Remaining West Bank and Gaza Strip for New Buildings by Category of Licensed Area and Governorate– Second Quarter 2008

Governorate & Area Category	Non-Res. Buildings		Residential Buildings				
	Average No. of Storeys	No. of Licenses	Average No. of Storeys	Average No. of Dwellings	Total No. of Dwellings	No. of Licenses	
Tulkarm							
Less than 60 m ²	1.5	13	0.0	0.0	0	0	² 60
60-119 m ²	0.0	0	1.0	1.0	4	4	² 119 -60
120- 199 m ²	0.0	0	1.3	1.1	17	16	² 199 -120
200- 499 m ²	0.0	0	1.8	1.5	38	25	² 499 -200
500- 1999 m ²	0.0	0	6.0	10.0	10	1	² 1999 -500
2000 m ² and more	0.0	0	0.0	0.0	0	0	² 2000
Nablus							
Less than 60 m ²	1.0	17	1.0	0.0	0	1	² 60
60- 119 m ²	0.0	0	1.1	1.0	8	8	² 119 -60
120-199m ²	0.0	0	1.1	1.1	26	24	² 199 -120
200- 499 m ²	2.0	1	1.9	1.3	45	34	² 499-200
500-1999 m ²	0.0	0	3.5	3.3	36	11	² 1999 -500
2000- m ² and more	0.0	0	0.0	0.0	0	0	² 2000
Qalqilya							
Less than 60 m ²	1.2	9	0.5	0.5	1	2	² 60
60-119 m ²	0.0	0	1.4	1.0	7	7	² 119 -60
120- 199 m ²	2.0	1	1.1	1.0	31	31	² 199 -120
200- 499 m ²	2.0	1	2.0	1.5	29	19	² 499 -200
500- 1999 m ²	0.0	0	3.5	3.0	6	2	² 1999 -500
2000 m ² and more	0.0	0	0.0	0.0	0	0	² 2000

Table 4 (Cont.): Buildings Licenses Issued in Remaining West Bank and Gaza Strip for New Buildings by Category of Licensed Area and Governorate– Second Quarter 2008

Governorate & Area Category	Non-Res. Buildings		Residential Buildings				
	Average No. of Storeys	No. of Licenses	Average No. of Storeys	Average No. of Dwellings	Total No. of Dwellings	No. of Licenses	
Salfit							
Less than 60 m ²	1.3	3	0.0	0.0	0	0	² 60
60- 119 m ²	0.0	0	1.0	1.0	2	2	² 119 -60
120-199m ²	0.0	0	1.0	1.0	3	3	² 199 -120
200- 499 m ²	0.0	0	2.3	1.5	6	4	² 499-200
500-1999 m ²	0.0	0	0.0	0.0	0	0	² 1999 -500
2000- m ² and more	0.0	0	0.0	0.0	0	0	² 2000
Ramallah and Al-Bireh							
Less than 60 m ²	2.1	17	0.0	0.0	0	0	² 60
60-119 m ²	2.0	1	1.2	1.0	6	6	² 119 -60
120- 199 m ²	2.0	1	1.3	1.1	18	16	² 199 -120
200- 499 m ²	0.0	0	2.1	1.8	61	33	² 499 -200
500- 1999 m ²	0.0	0	3.1	3.3	50	15	² 1999 -500
2000 m ² and more	0.0	0	5.0	20.0	40	2	² 2000
Jericho and Al Aghwar							
Less than 60 m ²	0.0	0	1.0	1.0	3	3	² 60
60- 119 m ²	0.0	0	1.3	1.0	3	3	² 119 -60
120-199m ²	0.0	0	1.3	1.2	11	9	² 199 -120
200- 499 m ²	0.0	0	2.7	2.7	16	6	² 499-200
500-1999 m ²	0.0	0	3.0	2.5	5	2	² 1999 -500
2000- m ² and more	0.0	0	0.0	0.0	0	0	² 2000

Table 4 (Cont.): Buildings Licenses Issued in Remaining West Bank and Gaza Strip for New Buildings by Category of Licensed Area and Governorate– Second Quarter 2008

Governorate & Area Category	Non-Res. Buildings		Residential Buildings				
	Average No. of Storeys	No. of Licenses	Average No. of Storeys	Average No. of Dwellings	Total No. of Dwellings	No. of Licenses	
Jerusalem							
Less than 60 m ²	0.0	0	0.0	0.0	0	0	² 60
60-119 m ²	0.0	0	0.0	0.0	0	0	² 119 -60
120- 199 m ²	0.0	0	0.0	0.0	0	0	² 199 -120
200- 499 m ²	0.0	0	2.0	2.0	2	1	² 499 -200
500- 1999 m ²	0.0	0	3.7	6.0	18	3	² 1999 -500
2000 m ² and more	0.0	0	0.0	0.0	0	0	² 2000
Bethlehem							
Less than 60 m ²	1.7	7	1.0	0.5	1	2	² 60
60- 119 m ²	0.0	0	1.0	1.0	6	6	² 119 -60
120-199m ²	0.0	0	1.4	1.2	22	19	² 199 -120
200- 499 m ²	3.0	3	1.8	1.6	24	15	² 499-200
500-1999 m ²	0.0	0	3.0	2.9	23	8	² 1999 -500
2000- m ² and more	0.0	0	0.0	0.0	0	0	² 2000
Hebron							
Less than 60 m ²	0.6	7	1.5	1.0	2	2	² 60
60-119 m ²	0.0	0	1.0	1.0	10	10	² 119 -60
120- 199 m ²	1.0	1	1.1	0.9	35	37	² 199 -120
200- 499 m ²	2.0	4	2.1	1.3	71	54	² 499 -200
500- 1999 m ²	2.0	1	2.5	2.5	27	11	² 1999 -500
2000 m ² and more	3.0	2	0.0	0.0	0	0	² 2000

Table 4 (Cont.): Buildings Licenses Issued in Remaining West Bank and Gaza Strip for New Buildings by Category of Licensed Area and Governorate– Second Quarter 2008

Governorate &Area Category	Non-Res. Buildings		Residential Buildings				
	Average No. of Storeys	No. of Licenses	Average No. of Storeys	Average No. of Dwellings	Total No. of Dwellings	No. of Licenses	
North Gaza							
Less than 60 m ²	0.0	0	0.0	0.0	0	0	² 60
60- 119 m ²	0.0	0	0.0	0.0	0	0	² 119 -60
120-199m ²	0.0	0	0.0	0.0	0	0	² 199 -120
200- 499 m ²	1.0	1	0.0	0.0	0	0	² 499-200
500-1999 m ²	0.0	0	0.3	0.3	1	3	² 1999 -500
2000- m ² and more	0.0	0	0.0	0.0	0	0	² 2000
Rafah							
Less than 60 m ²	0.0	0	0.6	0.5	1	2	² 60
60-119 m ²	0.0	0	0.0	0.0	0	0	² 119 -60
120- 199 m ²	0.0	0	0.0	0.0	0	0	² 199 -120
200- 499 m ²	0.0	0	0.0	0.0	0	0	² 499 -200
500- 1999 m ²	0.0	0	0.0	0.0	0	0	² 1999 -500
2000 m ² and more	0.0	0	0.0	0.0	0	0	² 2000

Table 5: Buildings Licenses Issued in Remaining West Bank and Gaza Strip for New Buildings by Construction Material of External Walls and Governorate—Second Quarter 2008

Governorate and construction material	Non-Res. Buildings			Residential Buildings					
	Average No. of Storeys	(2) Licensed Area (1000 m ²)	No. of Licenses	Average No. of Storeys	Average No. of Dwellings	Total No. of Dwellings	(2) Licensed Area (1000 m ²)	No. of Licenses	
All Governorates									
Stone	1.8	58.0	71	1.9	1.8	602	139.3	344	
Cement Block	1.2	4.9	22	1.3	1.1	163	26.0	142	
Concrete	0.9	1.3	8	1.5	1.4	39	5.8	27	
Jenin									
Stone	2.1	9.6	8	2.0	2.2	24	4.6	11	
Cement Block	0.0	0.0	0	0.0	0.0	0	0.0	0	
Concrete	1.7	0.8	3	1.5	1.5	34	5.2	23	
Tubas									
Stone	0.0	0.0	0	1.4	1.2	13	2.6	11	
Cement Block	0.0	0.0	0	1.3	1.3	8	1.5	6	
Concrete	0.0	0.0	0	0.0	0.0	0	0.0	0	
Tulkarm									
Stone	2.0	2.5	6	2.2	1.9	37	7.4	19	
Cement Block	1.2	1.2	6	1.3	1.2	32	5.2	27	
Concrete	0.0	0.0	1	0.0	0.0	0	0.0	0	
Nablus									
Stone	1.1	7.8	15	2.0	1.6	93	23.9	57	
Cement Block	1.0	0.2	1	1.2	1.0	18	2.7	18	
Concrete	0.5	0.4	2	1.3	1.3	4	0.5	3	

Table 5 (Cont.): Buildings Licenses Issued in Remaining West Bank and Gaza Strip for New Buildings by Construction Material of External Walls and Governorate - Second Quarter 2008

Governorate and construction material	Non-Res. Buildings			Residential Buildings					
	Average No. of Storeys	(2) Licensed Area (1000 m ²)	No. of Licenses	Average No. of Storeys	Average No. of Dwellings	Total No. of Dwellings	(2) Licensed Area (1000 m ²)	No. of Licenses	
Qalqilya									
Stone	2.5	2.1	2	2.0	1.3	5	1.1	4	
Cement Block	1.1	2.1	9	1.4	1.2	69	11.5	57	
Concrete	0.0	0.0	0	0.0	0.0	0	0.0	0	
Salfit									
Stone	0.0	0.0	0	2.0	1.7	5	1.0	3	
Cement Block	1.3	0.7	3	1.3	1.0	6	1.0	6	
Concrete	0.0	0.0	0	0.0	0.0	0	0.0	0	
Ramallah and Al-Bireh									
Stone	2.3	21.0	15	2.2	2.6	162	35.5	63	
Cement Block	2.0	0.7	2	1.5	1.5	12	1.6	8	
Concrete	0.0	0.1	2	1.0	1.0	1	0.1	1	
Jericho and Al Aghwar									
Stone	0.0	0.0	0	2.9	2.8	22	8.9	8	
Cement Block	0.0	0.0	0	1.2	1.1	16	2.2	15	
Concrete	0.0	0.0	0	0.0	0.0	0	0.0	0	
Jerusalem									
Stone	0.0	0.0	0	3.3	5.0	20	4.1	4	
Cement Block	0.0	0.0	0	0.0	0.0	0	0.0	0	
Concrete	0.0	0.0	0	0.0	0.0	0	0.0	0	

Table 5 (Cont.): Buildings Licenses Issued in Remaining West Bank and Gaza Strip for New Buildings by Construction Material of External Walls and Governorate - Second Quarter 2008

Governorate and construction material	Non-Res. Buildings			Residential Buildings					
	Average No. of Storeys	(2) Licensed Area (1000 m ²)	No. of Licenses	Average No. of Storeys	Average No. of Dwellings	Total No. of Dwellings	(2) Licensed Area (1000 m ²)	No. of Licenses	
Bethlehem									
Stone	2.1	5.8	10	1.7	1.5	76	15.9	50	
Cement Block	0.0	0.0	0	0.0	0.0	0	0.0	0	
Concrete	0.0	0.0	0	0.0	0.0	0	0.0	0	
Hebron									
Stone	1.4	9.2	15	1.7	1.3	145	34.2	114	
Cement Block	0.0	0.0	0	0.0	0.0	0	0.0	0	
Concrete	0.0	0.0	0	0.0	0.0	0	0.0	0	
North Gaza									
Stone	0.0	0.0	0	0.0	0.0	0	0.0	0	
Cement Block	0.5	0.1	1	0.5	0.3	1	0.3	4	
Concrete	0.0	0.0	0	0.0	0.0	0	0.0	0	
Rafah									
Stone	0.0	0.0	0	0.0	0.0	0	0.0	0	
Cement Block	0.0	0.0	0	1.1	1.0	1	0.1	1	
Concrete	0.0	0.0	0	0.0	0.0	0	0.0	0	

Table 6 : Buildings Licenses Issued in Remaining West Bank and Gaza Strip for New Additions to Licensed Existing Buildings by Construction Material of External Walls and Governorate– Second Quarter 2008

Governorate and construction material	Non-Res. Buildings			Residential Buildings					
	Average No. of Storeys	(2) Licensed Area (1000 m ²)	No. of Licenses	Average No. of Storeys	Average No. of Dwellings	Total No. of Dwellings	(2) Licensed Area (1000 m ²)	No. of Licenses	
All Governorates									
Stone	0.4	2.3	37	1.3	0.9	97	18.4	104	
Cement Block	0.7	0.9	7	1.1	1.0	58	8.5	57	
Concrete	0.0	0.0	2	1.0	1.0	1	0.2	1	
Jenin									
Stone	0.0	0.0	0	2.0	1.7	5	0.8	3	
Cement Block	1.0	0.2	1	1.0	1.0	3	0.5	3	
Concrete	0.0	0.0	0	0.0	0.0	0	0.0	0	
Tubas									
Stone	0.0	0.0	0	1.0	1.0	1	0.1	1	
Cement Block	0.0	0.0	0	1.3	2.0	6	0.7	3	
Concrete	0.0	0.0	0	0.0	0.0	0	0.0	0	
Tulkarm									
Stone	1.0	0.4	1	1.5	1.5	3	0.6	2	
Cement Block	1.0	0.2	1	1.0	1.0	6	0.7	6	
Concrete	0.0	0.0	0	1.0	1.0	1	0.2	1	
Nablus									
Stone	0.2	1.6	30	1.3	0.9	72	14.2	80	
Cement Block	0.5	0.1	2	0.9	1.0	9	1.4	9	
Concrete	0.0	0.0	2	0.0	0.0	0	0.0	0	

Table 6 (Cont.): Buildings Licenses Issued in Remaining West Bank and Gaza Strip for New Additions to Licensed Existing Buildings by Construction Material of External Walls and Governorate – Second Quarter 2008

Governorate and construction material	Non-Res. Buildings			Residential Buildings					
	Average No. of Storeys	(2) Licensed Area (1000 m ²)	No. of Licenses	Average No. of Storeys	Average No. of Dwellings	Total No. of Dwellings	(2) Licensed Area (1000 m ²)	No. of Licenses	
Qalqilya									
Stone	1.0	0.1	1	1.0	1.0	2	0.5	2	
Cement Block	2.0	0.3	1	1.4	1.3	30	4.3	24	
Concrete	0.0	0.0	0	0.0	0.0	0	0.0	0	
Ramallah and Al-Birah									
Stone	1.0	0.1	2	1.2	0.0	0	0.4	6	
Cement Block	0.0	0.0	0	1.0	0.0	0	0.1	1	
Concrete	0.0	0.0	0	0.0	0.0	0	0.0	0	
Bethlehem									
Stone	1.0	0.3	3	1.4	1.4	11	1.4	8	
Cement Block	0.0	0.0	0	0.0	0.0	0	0.0	0	
Concrete	0.0	0.0	0	0.0	0.0	0	0.0	0	
Hebron									
Stone	0.0	0.0	0	1.5	1.5	3	0.3	2	
Cement Block	0.0	0.0	0	0.0	0.0	0	0.0	0	
Concrete	0.0	0.0	0	0.0	0.0	0	0.0	0	
North Gaza									
Stone	0.0	0.0	0	0.0	0.0	0	0.0	0	
Cement Block	0.0	0.2	2	0.5	0.4	4	0.9	11	
Concrete	0.0	0.0	0	0.0	0.0	0	0.0	0	

Table 7: Buildings Licenses Issued in Remaining West Bank and Gaza Strip for New Additions and Existing Parts to Unlicensed Existing Buildings by Construction Material of External Walls and Governorate – Second Quarter 2008

Governorate and construction material	Non- Res. Buildings			Residential Buildings					
	Average No. of Storeys	(²) Licensed Area (1000 m ²)	No. of Licenses	Average No of Storeys	Average No. of Dwellings	Total No. of Dwellings	(²) Licensed Area (1000 m ²)	No. of Licenses	
All Governorates									
Stone	0.0	0.0	0	2.6	1.3	54	9.9	41	
Cement Block	3.0	0.8	1	2.9	1.9	41	7.7	22	
Concrete	0.0	0.0	0	0.0	0.0	0	0.0	0	
Jenin									
Stone	0.0	0.0	0	0.0	0.0	0	0.0	0	
Cement Block	0.0	0.0	0	2.0	2.0	2	0.3	1	
Concrete	0.0	0.0	0	0.0	0.0	0	0.0	0	
Tubas									
Stone	0.0	0.0	0	2.8	2.0	8	1.6	4	
Cement Block	0.0	0.0	0	2.3	2.0	6	0.9	3	
Concrete	0.0	0.0	0	0.0	0.0	0	0.0	0	
Tulkarem									
Stone	0.0	0.0	0	3.3	1.3	5	1.0	4	
Cement Block	0.0	0.0	0	2.8	1.4	20	3.9	14	
Concrete	0.0	0.0	0	0.0	0.0	0	0.0	0	
Nablus									
Stone	0.0	0.0	0	2.5	1.3	41	7.3	33	
Cement Block	3.0	0.8	1	4.0	3.4	12	2.4	3	
Concrete	0.0	0.0	0	0.0	0.0	0	0.0	0	

Table 7 (Cont.): Buildings Licenses Issued in Remaining West Bank and Gaza Strip for New Additions and Existing Parts to Unlicensed Existing Buildings by Construction Material of External Walls and Governorate – Second Quarter 2008

Governorate and construction material	Non- Res. Buildings			Residential Buildings					
	Average No. of Storeys	(²) Licensed Area (1000 m ²)	No. of Licenses	Average No of Storeys	Average No. of Dwellings	Total No. of Dwellings	(²) Licensed Area (1000 m ²)	No. of Licenses	
Salfit									
Stone	0.0	0.0	0	0.0	0.0	0	0.0	0	
Cement Block	0.0	0.0	0	2.0	1.0	1	0.3	1	
Concrete	0.0	0.0	0	0.0	0.0	0	0.0	0	

Table 8: Buildings Licenses Issued in Remaining West Bank and Gaza Strip for Existing Buildings and Extensions by Construction Material of External Walls and Governorate– Second Quarter 2008

Governorate and construction material	Non- Res. Buildings			Residential Buildings				
	Average No. of Storeys	(²) Licensed Area (1000 m ²)	No. of Licenses	Average No of Storeys	Average No. of Dwellings	Total No. of Dwellings	(²) Licensed Area (1000 m ²)	No. of Licenses
All Governorates								
Stone	1.9	7.9	16	1.7	1.3	183	43.7	141
Cement Block	0.5	2.7	10	1.4	1.2	112	14.5	92
Concrete	1.0	0.4	2	1.8	1.3	10	1.4	8
Jenin								
Stone	0.0	0.0	0	1.0	1.0	1	0.2	1
Cement Block	0.0	0.0	0	2.0	2.0	2	0.2	1
Concrete	0.0	0.0	0	2.0	1.0	1	0.2	1
Tubas								
Stone	0.0	0.0	0	1.5	1.0	6	1.2	6
Cement Block	0.0	0.0	0	1.5	1.1	12	1.8	11
Concrete	0.0	0.0	0	0.0	0.0	0	0.0	0
Tulkarm								
Stone	1.5	0.9	2	1.5	0.5	1	0.2	2
Cement Block	1.0	1.4	3	1.5	1.0	11	2.0	11
Concrete	0.0	0.0	0	0.0	0.0	0	0.0	0
Nablus								
Stone	2.0	2.9	7	1.8	0.9	26	5.7	30
Cement Block	0.0	0.5	1	1.5	1.2	13	2.3	11
Concrete	1.0	0.4	2	1.5	1.3	8	0.9	6

Table 8 (Cont.): Buildings Licenses Issued in Remaining West Bank and Gaza Strip for Existing Buildings and Extensions by Construction Material of External Walls and Governorate – Second Quarter 2008

Governorate and construction material	Non- Res. Buildings			Residential Buildings				
	Average No. of Storeys	(²) Licensed Area (1000 m ²)	No. of Licenses	Average No of Storeys	Average No. of Dwellings	Total No. of Dwellings	(²) Licensed Area (1000 m ²)	No. of Licenses
Qalqilya								
Stone	0.0	0.0	0	0.0	0.0	0	0.0	0
Cement Block	0.0	0.0	0	1.7	1.6	11	1.8	7
Concrete	0.0	0.0	0	0.0	0.0	0	0.0	0
Salfit								
Stone	0.0	0.0	0	0.0	0.0	0	0.0	0
Cement Block	1.0	0.2	2	1.8	1.5	6	1.0	4
Concrete	0.0	0.0	0	3.0	1.0	1	0.4	1
Ramallah and Al-Bireh								
Stone	0.0	0.0	0	1.7	1.6	34	6.9	21
Cement Block	0.0	0.0	0	0.0	0.0	0	0.0	0
Concrete	0.0	0.0	0	0.0	0.0	0	0.0	0
Jericho and Al-Aghwar								
Stone	0.0	0.0	0	0.0	0.0	0	0.0	0
Cement Block	0.0	0.0	0	1.4	1.3	17	1.7	13
Concrete	0.0	0.0	0	0.0	0.0	0	0.0	0
Jerusalem								
Stone	4.0	1.1	1	3.5	1.5	3	1.5	2
Cement Block	0.0	0.0	0	0.0	0.0	0	0.0	0
Concrete	0.0	0.0	0	0.0	0.0	0	0.0	0

Table 8 (Cont.): Buildings Licenses Issued in Remaining West Bank and Gaza Strip for Existing Buildings and Extensions by Construction Material of External Walls and Governorate – Second Quarter 2008

Governorate and construction material	Non- Res. Buildings			Residential Buildings				
	Average No. of Storeys	(²) Licensed Area (1000 m ²)	No. of Licenses	Average No of Storeys	Average No. of Dwellings	Total No. of Dwellings	(²) Licensed Area (1000 m ²)	No. of Licenses
Bethlehem								
Stone	2.0	1.3	2	1.9	1.8	20	4.1	11
Cement Block	0.0	0.0	0	0.0	0.0	0	0.0	0
Concrete	0.0	0.0	0	0.0	0.0	0	0.0	0
Hebron								
Stone	1.5	1.8	4	1.5	1.4	92	23.8	68
Cement Block	0.0	0.0	0	0.0	0.0	0	0.0	0
Concrete	0.0	0.0	0	0.0	0.0	0	0.0	0
Khan Younis								
Stone	0.0	0.0	0	0.0	0.0	0	0.0	0
Cement Block	0.0	0.0	0	1.3	2.2	2	0.2	1
Concrete	0.0	0.0	0	0.0	0.0	0	0.0	0
Rafah								
Stone	0.0	0.0	0	0.0	0.0	0	0.0	0
Cement Block	0.0	0.5	4	1.2	1.2	38	3.6	33
Concrete	0.0	0.0	0	0.0	0.0	0	0.0	0

Table 9: Buildings Licenses Issued in Remaining West Bank and Gaza Strip for Residential Buildings by Status of Licensed Building and Governorate – Second Quarter 2008

Governorate and status	(²) Licensed Areas (000 m²)			Number of Issued Licenses					
	Existing Areas	New Areas	Total	Existing Extensions	Existing Buildings	+ New Additions+Existing Parts	Additions to Licensed Buildings	New Buildings	Total
All Governorates									
Complete Dwellings	61.4	207.8	269.2	1	224	44	116	510	895
Extension of Rooms	0.7	1.1	1.9	6	1	5	9	1	22
Other Extensions	0.3	0.4	0.7	3	0	2	10	0	15
Other	1.2	2.7	3.9	6	0	12	27	2	47
Jenin									
Complete Dwellings	0.7	11.2	11.9	1	2	1	6	34	44
Extension of Rooms	0.0	0.0	0.0	0	0	0	0	0	0
Other Extensions	0.0	0.0	0.0	0	0	0	0	0	0
Other	0.0	0.0	0.0	0	0	0	0	0	0
Tubas									
Complete Dwellings	3.4	6.6	10.0	0	15	6	4	17	42
Extension of Rooms	0.2	0.0	0.2	2	0	1	0	0	3
Other Extensions	0.0	0.0	0.0	0	0	0	0	0	0
Other	0.3	0.0	0.3	0	0	0	0	0	0
Tulkarm									
Complete Dwellings	3.5	16.6	20.2	0	10	12	9	46	77
Extension of Rooms	0.3	0.1	0.4	2	0	1	0	0	3
Other Extensions	0.1	0.0	0.1	1	0	1	0	0	2
Other	0.3	0.2	0.5	0	0	4	0	0	4

Table 9 (Cont.): Buildings Licenses Issued in Remaining West Bank and Gaza Strip for Residential Buildings by Status of Licensed Building and Governorate – Second Quarter 2008

Governorate and status	Licensed Areas (000 m ²)			Number of Issued Licenses					
	Existing Areas	New Areas	Total	Existing Extensions	Existing Buildings	+ New Additions+Existing Parts	Additions to Licensed Buildings	New Buildings	Total
Nablus									
Complete Dwellings	8.8	48.4	57.2	0	38	25	50	77	190
Extension of Rooms	0.2	0.3	0.5	1	0	2	3	0	6
Other Extensions	0.2	0.3	0.6	2	0	1	9	0	12
Other	0.7	2.4	3.1	6	0	8	27	1	42
Qalqilya									
Complete Dwellings	1.8	17.4	19.2	0	7	0	26	60	93
Extension of Rooms	0.0	0.0	0.0	0	0	0	0	0	0
Other Extensions	0.0	0.0	0.0	0	0	0	0	0	0
Other	0.0	0.1	0.1	0	0	0	0	1	1
Salfit									
Complete Dwellings	1.5	2.0	3.5	0	5	0	0	9	14
Extension of Rooms	0.0	0.1	0.1	0	0	1	0	0	1
Other Extensions	0.0	0.0	0.0	0	0	0	0	0	0
Other	0.0	0.0	0.0	0	0	0	0	0	0
Ramallah & Al- Bireh									
Complete Dwellings	6.9	37.2	44.1	0	21	0	0	72	93
Extension of Rooms	0.0	0.5	0.5	0	0	0	6	0	6
Other Extensions	0.0	0.0	0.0	0	0	0	1	0	1
Other	0.0	0.0	0.0	0	0	0	0	0	0

2008

-

:() 9

Table 9(Cont): Buildings Licenses Issued in Remaining West Bank and Gaza Strip for Residential Buildings by Status of Licensed Building and Governorate – Second Quarter 2008

Governorate and status	Licensed Areas (000 m ²)			Number of Issued Licenses					
	Existing Areas	New Areas	Total	Existing Extensions	Existing Buildings	+ New Additions+Existing Parts	Additions to Licensed Buildings	New Buildings	Total
Jericho and Al Aghwar									
Complete Dwellings	1.7	11.1	12.7	0	13	0	0	23	36
Extension of Rooms	0.0	0.0	0.0	0	0	0	0	0	0
Other Extensions	0.0	0.0	0.0	0	0	0	0	0	0
Other	0.0	0.0	0.0	0	0	0	0	0	0
Jerusalem									
Complete Dwellings	1.5	4.1	5.6	0	2	0	0	4	6
Extension of Rooms	0.0	0.0	0.0	0	0	0	0	0	0
Other Extensions	0.0	0.0	0.0	0	0	0	0	0	0
Other	0.0	0.0	0.0	0	0	0	0	0	0
Bethlehem									
Complete Dwellings	4.1	17.3	21.4	0	11	0	8	49	68
Extension of Rooms	0.0	0.1	0.1	0	0	0	0	1	1
Other Extensions	0.0	0.0	0.0	0	0	0	0	0	0
Other	0.0	0.0	0.0	0	0	0	0	0	0
Hebron									
Complete Dwellings	23.6	34.5	58.1	0	66	0	2	114	182
Extension of Rooms	0.1	0.0	0.1	1	1	0	0	0	2
Other Extensions	0.0	0.0	0.0	0	0	0	0	0	0
Other	0.0	0.0	0.0	0	0	0	0	0	0

Table 9(Cont): Buildings Licenses Issued in Remaining West Bank and Gaza Strip for Residential Buildings by Status of Licensed Building and Governorate– Second Quarter 2008

Governorate and status	() Licensed Areas (000 m ²)			Number of Issued Licenses					
	Existing Areas	New Areas	Total	Existing Extensions	Existing Buildings	+ New Additions+Existing Parts	Additions to Licensed Buildings	New Buildings	Total
North Gaza									
Complete Dwellings	0.0	1.2	0.9	0	0	0	11	3	14
Extension of Rooms	0.0	0.0	0.0	0	0	0	0	0	0
Other Extensions	0.0	0.0	0.0	0	0	0	0	0	0
Other	0.0	0.0	0.0	0	0	0	0	0	0
Khan Younis									
Complete Dwellings	0.2	0.0	0.3	0	1	0	0	0	1
Extension of Rooms	0.0	0.0	0.0	0	0	0	0	0	0
Other Extensions	0.0	0.0	0.0	0	0	0	0	0	0
Other	0.0	0.0	0.0	0	0	0	0	0	0
Rafah									
Complete Dwellings	3.7	0.1	4.1	0	33	0	0	2	35
Extension of Rooms	0.0	0.0	0.0	0	0	0	0	0	0
Other Extensions	0.0	0.0	0.0	0	0	0	0	0	0
Other	0.0	0.0	0.0	0	0	0	0	0	0

Table 10: Buildings Licenses Issued in Remaining West Bank and Gaza Strip for Non-Residential Buildings by Utilization and Governorate – Second Quarter 2008

Governorate & Utilization	Stores		(²) Licensed Areas (1000 m²)			Number of Issued Licenses					
	(² 1000) Area (1000 m²)	No.	Existing Areas	New Areas	Total	Existing Extensions	Existing Buildings	+	+	+	+
								New Additions +Existing Parts	Additions to Licensed Buildings	New Buildings	Total
All Governorates											
Industrial	0.1	1	1.3	0.2	1.5	0	2	0	1	1	4
Commercial	31.0	284	6.7	29.5	36.3	0	16	0	9	50	75
Educational	0.8	0	0.3	23.3	23.6	0	0	1	2	15	18
Health	1.9	0	0.0	4.6	4.6	0	0	0	1	7	8
Others	3.0	34	2.9	10.3	13.2	0	10	0	33	28	71
Jenin											
Industrial	0.0	0	0.0	0.0	0.0	0	0	0	0	0	0
Commercial	3.8	83	0.0	4.2	4.2	0	0	0	0	4	4
Educational	0.0	0	0.0	3.2	3.2	0	0	0	1	2	3
Health	0.0	0	0.0	0.4	0.4	0	0	0	0	1	1
Others	0.0	0	0.0	2.9	2.9	0	0	0	0	4	4
Tulkarm											
Industrial	0.0	0	0.8	0.0	0.8	0	1	0	0	0	1
Commercial	1.4	20	0.0	1.5	1.5	0	0	0	0	7	7
Educational	0.0	0	0.0	0.6	0.6	0	0	0	0	2	2
Health	0.0	0	0.0	0.2	0.2	0	0	0	0	1	1
Others	0.0	0	1.5	2.1	3.6	0	4	0	2	3	9

Table 10 (Cont.): Buildings Licenses Issued in Remaining West Bank and Gaza Strip for Non-Residential Buildings by Utilization and Governorate– Second Quarter 2008

Governorate & Utilization	Stores		(²) Licensed Areas (1000 m²)			Number of Issued Licenses					
	(² 1000) Area (1000 m²)	No.	Existing Areas	New Areas	Total	Existing Extensions	Existing Buildings	+ New Additions +Existing Parts	Additions to Licensed Buildings	New Buildings	Total
Nablus											
Industrial	0.0	0	0.5	0.0	0.5	0	1	0	1	0	2
Commercial	6.5	66	3.3	4.5	7.8	0	9	0	6	8	23
Educational	0.0	0	0.3	2.4	2.8	0	0	1	1	1	3
Health	0.0	0	0.0	0.9	0.9	0	0	0	1	2	3
Others	0.1	3	0.0	2.6	2.6	0	0	0	25	7	32
Nablus											
Industrial	0.0	0	0.0	0.0	0.0	0	0	0	0	0	0
Commercial	2.3	22	0.0	2.8	2.8	0	0	0	2	9	11
Educational	0.0	0	0.0	1.6	1.6	0	0	0	0	1	1
Health	0.0	0	0.0	0.0	0.0	0	0	0	0	0	0
Others	0.0	0	0.0	0.0	0.0	0	0	0	0	1	1
Salfit											
Industrial	0.1	1	0.0	0.1	0.1	0	0	0	0	1	1
Commercial	0.4	4	0.2	0.2	0.4	0	2	0	0	1	3
Educational	0.0	0	0.0	0.0	0.0	0	0	0	0	0	0
Health	0.0	0	0.0	0.0	0.0	0	0	0	0	0	0
Others	0.0	0	0.0	0.4	0.4	0	0	0	0	1	1

2008

-

:() 10

Table 10 (Cont.): Buildings Licenses Issued in Remaining West Bank and Gaza Strip for Non-Residential Buildings by Utilization and Governorate– Second Quarter 2008

Governorate & Utilization	Stores		Licensed Areas (1000 m ²)			Number of Issued Licenses					
	(² 1000) Area (1000 m ²)	No.	Existing Areas	New Areas	Total	Existing Extensions	Existing Buildings	+ New Additions +Existing Parts	Additions to Licensed Buildings	New Buildings	Total
Ramallah and Al-Bireh											
Industrial	0.0	0	0.0	0.0	0.0	0	0	0	0	0	0
Commercial	10.5	48	0.0	11.3	11.3	0	0	0	1	11	12
Educational	0.0	0	0.0	10.0	10.0	0	0	0	0	5	5
Health	0.0	0	0.0	0.4	0.4	0	0	0	0	1	1
Others	0.0	0	0.0	0.1	0.1	0	0	0	1	2	3
Jerusalem											
Industrial	0.0	0	0.0	0.0	0.0	0	0	0	0	0	0
Commercial	0.1	11	1.1	0.0	1.1	0	1	0	0	0	1
Educational	0.0	0	0.0	0.0	0.0	0	0	0	0	0	0
Health	0.0	0	0.0	0.0	0.0	0	0	0	0	0	0
Others	0.0	0	0.0	0.0	0.0	0	0	0	0	0	0
Bethlehem											
Industrial	0.0	0	0.0	0.0	0.0	0	0	0	0	0	0
Commercial	3.0	3	1.3	3.0	4.3	0	2	0	0	4	6
Educational	0.8	0	0.0	0.8	0.8	0	0	0	0	1	1
Health	1.9	0	0.0	1.9	1.9	0	0	0	0	1	1
Others	0.4	9	0.0	0.4	0.4	0	0	0	3	4	7

2008

-

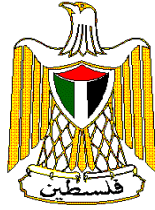
:() 10

Table 10 (Cont.): Buildings Licenses Issued in Remaining West Bank and Gaza Strip for Non-Residential Buildings by Utilization and Governorate– Second Quarter 2008

Governorate & Utilization	Stores		() Licensed Areas (1000 m ²)			Number of Issued Licenses					
	(² 1000) Area (1000 m ²)	No.	Existing Areas	New Areas	Total	Existing Extensions	Existing Buildings	+ New Additions +Existing Parts	Additions to Licensed Buildings	New Buildings	Total
Hebron											
Industrial	0.0	0	0.0	0.0	0.0	0	0	0	0	0	0
Commercial	3.0	27	0.9	2.1	3.0	0	2	0	0	6	8
Educational	0.0	0	0.0	4.6	4.6	0	0	0	0	3	3
Health	0.0	0	0.0	0.8	0.8	0	0	0	0	1	1
Others	0.1	6	0.9	1.7	2.6	0	2	0	0	5	7
North Gaza											
Industrial	0.0	0	0.0	0.0	0.0	0	0	0	0	0	0
Commercial	0.0	0	0.0	0.0	0.0	0	0	0	0	0	0
Educational	0.0	0	0.0	0.0	0.0	0	0	0	0	0	0
Health	0.0	0	0.0	0.0	0.0	0	0	0	0	0	0
Others	2.3	16	0.5	0.2	0.7	0	4	0	2	1	7

Table 11: Buildings Licenses Issued in Remaining West Bank and Gaza Strip for Boundary Walls Only by Governorate – Second Quarter 2008

Governorate	Existing and Existing Additions		New and New Additions		
	(.) Total Length (1000 m.r)	Number	(.) Total Length (1000 m.r)	Number	
All Governorate	0.1	3	3.7	47	
Tubas	0.0	0	0.2	1	
Tulkarm	0.0	0	0.6	6	
Nablus	0.0	0	1.1	23	
Ramallah and Al-Bireh	0.0	0	0.6	6	
Jericho and Alaghwar	0.0	1	0.8	7	
Bethlehem	0.0	0	0.2	3	
Hebron	0.0	0	0.1	1	
North Gaza	0.1	2	0.0	0	



**Palestinian National Authority
Palestinian Central Bureau of Statistics**

**Building Licenses Statistics
Second Quarter, 2008**

**Volume 13, Issue No. 2
August, 2008**

Cover Price 3 US\$

**PAGE NUMBERS OF ENGLISH TEXT ARE PRINTED IN SQUARE BRACKETS.
TABLES ARE PRINTED IN THE ARABIC ORDER (FROM RIGHT TO LEFT)**

**This document is prepared in accordance with the
standard procedures stated in the Code of Practice for
Palestine Official Statistics 2006**

© August, 2008
All rights reserved.

Suggested Citation:

Palestinian Central Bureau of Statistics, 2008. *Building Licenses Statistics – Second Quarter 2008*, Ramallah - Palestine.

All correspondence should be directed to:
Dissemination & Documentation Department/ Division of User Services
Palestinian Central Bureau of Statistics
P.O.Box 1647, Ramallah, Palestine.

Tel: (972/970) 2 242 6340

Fax: (972/970) 2 242 6343

E-Mail : diwan@pcbs.gov.ps

web-site: <http://www.pcbs.gov.ps>



Acknowledgment

The Palestinian Central Bureau of Statistics (PCBS) would like to thank the Ministry of Local Governments and Municipal Affairs, all municipalities, and rural councils and construction authorities for their cooperation in providing PCBS with the requested data.

The funding of the Building Licenses Statistics (Second Quarter 2008) was provided by the Palestinian National Authority (PNA), and the Core Funding Group (CFG) for 2008. CFG members include the Representative Office of Norway to PNA; the Representative Office of Netherlands to PNA; the Swiss Agency for Development and Cooperation (SDC).

On this occasion, the PCBS extends special thanks to the members of the Core Funding Group (CFG) who contributed to funding this survey for their support

Team Work

- **Report Preparation**
Niveen Sarraj
Ayman Qanir
Mohammed Qlalwa
- **Preliminary Review**
Ibrahim Al-tarsha
Saleh Al-Kafri
- **Dissemination Standards**
Hanan Janajreh
- **Final Review**
Mahmoud Jaradat
- **Overall Supervision**
Luay Shabaneh, Ph.D PCBS President

Preface

Construction is considered one of the important economic activities in the Palestinian economy. It contributes substantially to the Gross Domestic Product, recruits a large share of employees, and directly influences several other economic activities. Building construction in particular represents one of the major construction activities in general.

It has been necessary for the Palestinian Central Bureau of Statistics (PCBS) to establish statistical database that covers several aspects of construction activities in order to accommodate the different needs of users. The annual economic surveys series conducted by PCBS as of 1994 includes a survey for construction contractors. PCBS had also conducted the annual Existing Buildings Survey starting from the reference year 1996.

PCBS is pleased to present this report of Building Licenses Statistics, which provides statistical data on the size, and characteristics of licensed buildings in the Palestinian Territory for the Second Quarter 2008.

Statistical data is collected through filling the designated from the administrative records of the different official licenses issuing authorities. This was initiated on quarterly basis since the Second Quarter of 1996.

Publication of building licenses statistics will be pursued in the following years. PCBS hopes that the means by which these data are archived in the issuing authorities are developed, in the foreseeable future, in a manner that would reduce cost and time needed for preparing these statistics.

August, 2008

Luay Shabaneh, Ph.D
President

Table of Contents

Subject	Page
List of tables	
List of figures	
Summary Results	
Executive Summary	[19]
1. Introduction	[19]
2. Objectives	[19]
3. Definitions	[19]
4. Main Findings	[20]
5. Data Quality	[22]
Tables	35

List of Tables

Table	Page
Table 1: Buildings Licenses Issued in Remaining West Bank and Gaza Strip During the Period 1997 to the Second Quarter 2008	35
Table 2: Buildings Licenses Issued in Remaining West Bank and Gaza Strip by Building Ownership and Utilization - Second Quarter 2008	36
Table 3: Buildings Licenses Issued in Remaining West Bank and Gaza Strip by Issuing Authority and Utilization - Second Quarter 2008	38
Table 4: Buildings Licenses Issued in Remaining West Bank and Gaza Strip for New Buildings by Categories of Licensed Area and Governorate - Second Quarter 2008	39
Table 5: Buildings Licenses Issued in Remaining West Bank and Gaza Strip for New Buildings by Construction Material of External Walls and Governorate - Second Quarter 2008	44
Table 6: Buildings Licenses Issued in Remaining West Bank and Gaza Strip for Additions to Licensed Existing Buildings by Construction Material of External Walls and Governorate - Second Quarter 2008	47
Table 7: Buildings Licenses Issued in Remaining West Bank and Gaza Strip for New Additions to Unlicensed Existing Buildings by Construction Material of External Walls and Governorate - Second Quarter 2008	50
Table 8: Buildings Licenses Issued in Remaining West Bank and Gaza Strip for Existing Buildings and Extensions by Construction Material of External Walls and Governorate - Second Quarter 2008	52
Table 9: Buildings Licenses Issued in Remaining West Bank and Gaza Strip for Residential Buildings by Status of Licensed Building and Governorate - Second Quarter 2008	55
Table 10: Buildings Licenses Issued in Remaining West Bank and Gaza Strip for Non-Residential Buildings by Utilization and Governorate - Second Quarter 2008	59
Table 11: Buildings Licenses Issued in Remaining West Bank and Gaza Strip for Boundary Walls Only by Governorate - Second Quarter 2008	64

List of Figures

Figure		Page
Figure 1:	Number of building licenses issued in Remaining West Bank and Gaza Strip for the Second Quarter 2005 – 2008	[21]
Figure 2:	Number of building licenses and number of dwellings for new residential buildings in Remaining West Bank and Gaza Strip by licensed area during the Second Quarter of 2008	[22]

Summary Results

This report covers data for the Second Quarter 2008.

The main findings of this quarter are as follow:

1. Number of licenses: The number of building licenses issued in the Second Quarter 2008 totaled 1,155 and distributed as follows:
 - 614 licenses for new buildings
 - 208 licenses for additions to licensed buildings
 - 64 licenses for additions and existing parts
 - 253 licenses for existing buildings
 - 16 licenses for existing extensions
2. Licensed areas: The total areas of licensed buildings (residential & non residential) amounted to 354.8 thousand m² distributed as follows:
 - 279.8 thousand m² for new areas.
 - 75.0 thousand m² for existing areas.
3. Licensed boundary walls: 50 licenses issued for walls with total length of 3.8 thousand meters.
4. Number and area of dwellings licensed:
 - New dwellings: 1,062 units with a total area of 195.2 thousand m².
 - Existing dwellings: 331 units with a total area of 60.7 thousand m².

There was an obvious decline in the total number of issued building licenses when the Second Quarter of 2008 was compared with the Second Quarter in the three previous years; the decline was 27.4% when compared with the Second Quarter 2005, 37.2% when compared with the Second Quarter 2006, and 1.7% when compared with the Second Quarter 2007.

The results showed that in the Second Quarter 2008 the number of new dwellings decreased by 56.4%, and the number of existing dwellings decreased by 24.9% compared with the same Quarter 2005. There was a 48.7% decrease in the number of new dwellings and 64.4% in the number of existing dwellings when the Second Quarter 2008 was compared with the same Quarter 2006. The decrease for new & existing dwellings was 33.5% and 14.9% respectively for the Second Quarter 2008 when compared with Second Quarter 2007.

The results showed in general an obvious decline in building license indicators during the Second Quarter 2008 compared with the Second Quarter 2005, 2006 and 2007.

Executive Summary

1. Introduction:

Construction is considered an important economic activity, particularly in countries undergoing economic development. This activity plays a vital role in the Palestinian economy and is significantly interrelated to other economic activities. The Palestinian Central Bureau of Statistics (PCBS) is committed to compiling statistical data on all aspects of construction activity in order to measure the main related variables.

Administrative record statistics shed light on the size and type of building licenses issued by official parties. Building license statistics are compiled by most countries. In addition to its own importance, building license statistics constitute the sampling frame for other surveys to be launched concerning identification of the actual constructed buildings against licenses, estimating construction costs and obtaining data on the technical characteristics of these buildings.

2. Objectives:

These statistics provide data on the number of building licenses and licensed areas, and number and area of licensed dwellings and stores considering the following variables:

- Issuing authorities.
- Geographic location.
- Status of the buildings to be licensed (new, existing, new or existing additions, etc.).
- Building ownership (private, governmental, local authorities, cooperative, etc.).
- Utilization of the building (residential, non-residential: industrial, commercial, educational, etc.).
- Major external construction material (stone, concrete, block, etc.).

3. Definitions:

3.1 Statistical Unit:

The license issued by any authorized authority. The issuing authorities are the reporting units for this administrative records statistics.

3.2 Building Ownership:

1. Private.
2. Governmental.
3. Local Authority.
4. Cooperative Society.
5. Charitable Society.
6. Other, e.g. religious groups, UNRWA, etc.

3.3 Status of the building to be licensed:

1. New, when the building site is entirely vacant.
2. Addition to an already existing licensed building - either a vertical or horizontal addition.
3. Addition to non-licensed existing building (or part of a building) that needs licensing.
4. Existing building.
5. Existing extension.

3.4 Building Utilization:

1. Residential: The building is considered residential if more than half of its total area is prepared for residential purposes. The building could consist of:
 - Complete dwellings.
 - Rooms added to the dwellings.
 - Extension of other facilities, e.g. kitchen, bathroom, cesspool, garage.
2. Non-Residential: industrial, commercial, educational, etc.
3. The boundary wall: in cases when the boundary wall undergoes separate licensing. If the building license includes the wall, then it is not included here.

3.5 Dwelling:

The housing unit of a single household.

3.6 Remaining West Bank:

The West Bank, except for those parts of Jerusalem Governorate that were annexed after 1967 occupation by Israel.

4. Main Findings

1. Number of licenses: The following table shows comparison between the number of building licenses for the Second Quarter 2008 with the same period for the years 2005-2007:

Indicator	No. of issued Licenses*				% Change of Q2 2008 from Q2 2005	% Change of Q2 2008 from Q2 2006	% Change of Q2 2008 from Q2 2007
	Q2 2005	Q2 2006	Q2 2007	Q2 2008			
Licenses for new buildings.	911	826	615	614	-32.6	-25.7	-0.2
Licenses for additions to licensed buildings.	323	344	273	208	-35.6	-39.5	-23.8
Licenses for additions + existing parts.	29	86	40	64	120.7	-25.6	60.0
Licenses for existing buildings.	280	560	231	253	-9.6	-54.8	9.5
Licenses for existing extensions	49	24	16	16	-67.3	-33.3	0.0
Total	1592	1840	1175	1155	-27.4	-37.2	-1.7

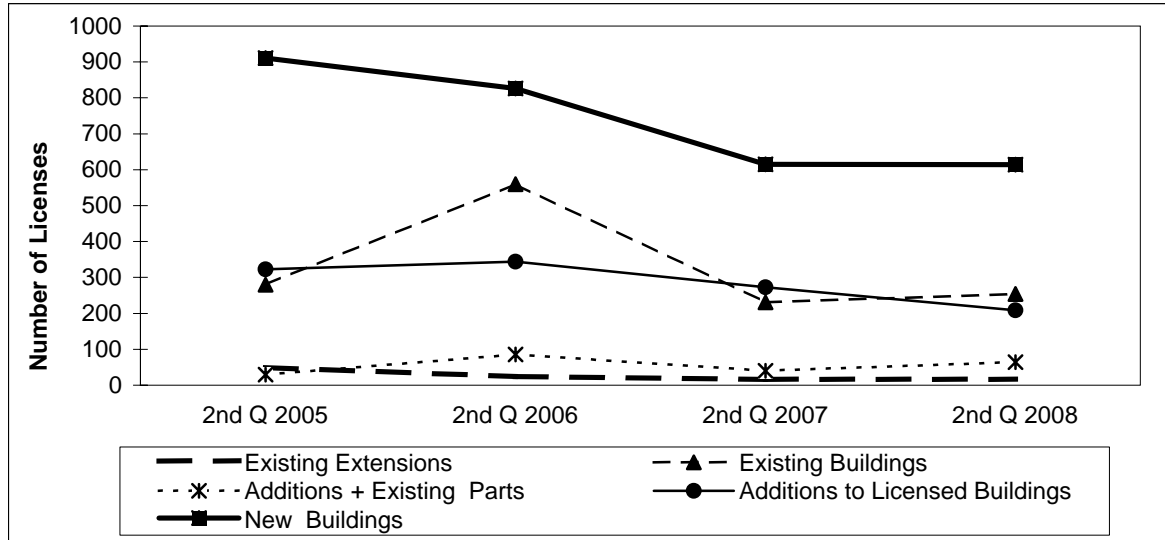
*Excluding boundary wall licenses

The results showed an obvious drop for building licenses indicators during the Second Quarter 2008 compared with the Second Quarter 2005-2007, despite some vacillation in some indicators, compared with same period or pervious quarters for the same years.

The decline was 27.4% when compared with the Second Quarter 2005, 37.2% when compared with the Second Quarter 2006, and 1.7% when compared with the Second Quarter 2007.

The following figure shows the number of building licenses issued in Remaining West Bank and Gaza Strip – 2005- 2008 (Second Quarter):

Figure 1: Number of building licenses issued in Remaining West Bank and Gaza Strip for the Second Quarter 2005 – 2008



2. Licensed areas: The following table shows comparison between the licensed areas for the Second Quarter 2008 with the same period for the years 2005-2007:

Indicator	Licensed Areas				% Change of Q2 2008 from Q2 2005	% Change of Q2 2008 from Q2 2006	% Change of Q2 2008 from Q2 2007
	Q2 2005	Q2 2006	Q2 2007	Q2 2008			
Total areas	659.2	689.6	451.0	354.8	-46.2	-48.5	-21.3
New areas	584.6	488.9	360.6	279.8	-52.1	-42.8	-22.4
Residential	472.0	380.0	268.4	212.0	-55.1	-44.2	-21.0
Non-residential	112.6	108.9	92.2	67.8	-39.7	-37.6	-26.4
Existing areas	74.6	200.7	90.4	75.0	0.5	-62.6	-17.0
Residential	62.8	160.1	72.6	63.7	1.3	-60.3	-12.4
Non-residential	11.8	40.6	17.8	11.3	-4.2	-72.2	-36.5

3. Licensed boundary walls: The following table shows comparison between the licenses issued for walls for the Second Quarter 2008 with the same period for the years 2005, 2006, and 2007:

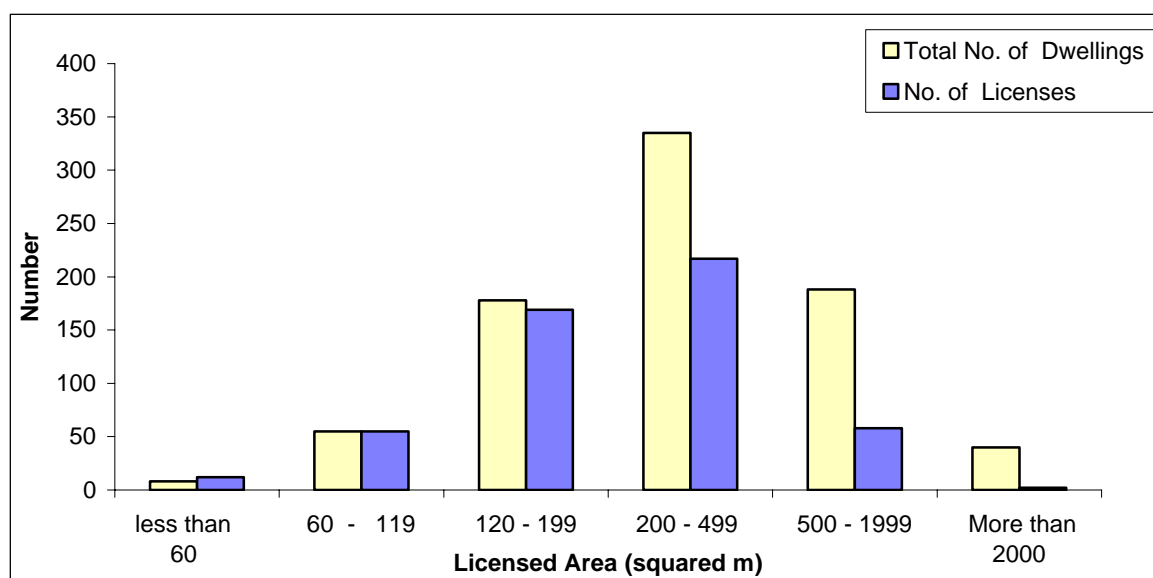
Indicator	Licensed boundary walls				% Change of Q2 2008 from Q2 2005	% Change of Q2 2008 from Q2 2006	% Change of Q2 2008 from Q2 2007
	Q2 2005	Q2 2006	Q2 2007	Q2 2008			
Number of Walls licenses	46	37	47	50	8.7	35.1	6.4
Length of Walls licenses (meters)	3.0	2.9	4.5	3.8	26.7	31.0	-15.6

4. Number and area of dwellings licensed: The following table shows comparison between the number and total area for the licensed dwellings for the Second Quarter 2008 and the same period for the years 2005, 2006, and 2007:

Indicator	Number of dwellings and their area				% Change of Q2 2008 from Q2 2005	% Change of Q2 2008 from Q2 2006	% Change of Q2 2008 from Q2 2007
	Q2 2005	Q2 2006	Q2 2007	Q2 2008			
Number of new dwellings	2438	2071	1597	1062	-56.4	-48.7	-33.5
Area for new dwellings (1000 m ²)	434.7	343.1	238.1	195.1	-55.1	-43.1	-18.0
Number of existing dwellings	441	929	389	331	-24.9	-64.4	-14.9
Area for existing dwellings (1000 m ²)	57.5	144.3	67.1	60.7	5.6	-57.9	-9.5

This figure shows the number of licenses and number of dwellings for new residential buildings by licensed area in Remaining West Bank and Gaza Strip for the Second Quarter of the year 2008:

Figure 2: Number of building licenses and number of dwellings for new residential buildings in Remaining West Bank and Gaza Strip by licensed area during the Second Quarter of 2008



5. Data Quality

5.1 Accuracy of the Data

5.1.1 Statistical Errors

The survey was implemented on the basis of a comprehensive census for all studied statistical units (Licenses); therefore this survey was free of statistical (sampling) errors.

5.1.2 Non-Statistical Errors

Non-statistical errors are probable in all stages of the project, during data collection or processing. In this survey it is mostly referred to data entry errors. To avoid errors and reduce their effects, great efforts were made to train data entry staff. They were trained on the entry

program that was examined before starting the data entry process, and preparing data entry program before data collection for checking readiness of the program for data entry. A set of validation rules was applied to the program for checking consistency of data. Periodic data files were received by project management for checking accuracy and consistency, and notes of correction were provided for data entry management for correction.

5.2 Comparison of the Data

Comparison exercises were done with previous years surveys of Building Licenses for the same quarter, and the results reveal consistency with previous survey data.

5.3 Technical Notes

There are important technical notes which should be taken into consideration when reviewing this report, which are as follows:

- Tables exclude building licenses for those parts of Jerusalem which were annexed illegally by Israel in 1967, while they include licenses for some villages of Jerusalem Governorate.
- It may be noticed that the details of the value of some indicators may not add up to its total, due to rounding calculations.
- Data were estimated to Gaza Strip.