



2008 -

2008 /

2006

.2008 - 1429 ©

:

. :2008 -

.2008

. -

:

. - **1647** . .

(970/972) 2 242 6340 :

(970/972) 2 242 6343 :

diwan@pcbs.gov.ps :

<http://www.pcbs.gov.ps> :



2008

(PNA)

2008 (CFG)

.(SDC)

(CFG)

•

•

•

•

•

•

•

•

2008

.2008/06/29-01

2008

25		:
25	1.1	
25	2.1	
26	3.1	
27		:
31		:
31	1.3	
31	2.3	
31	3.3	
33	4.3	
34	5.3	
36	6.3	
36	7.3	
37	8.3	
38	9.3	
38	10.3	
38	11.3	
39		:
39	1.4	
39	2.4	
40	3.4	
40	4.4	
41	5.4	

43	:
43	1.5
43	2.5
43	3.5
44	4.5
45	
47	
117	

49			:1
		2008 2005	
51	2007		:2
52			:3
		2008 2005	
53			:4
54			:5
		2008 2005	
55			:6
		2008	
56			:7
		2008	
57			:8
		2008	
58			:9
		2008	
59			:10
		2008	
60			:11
		2008 2005	
61			:12
		2008	
68			:13
		2008	
69			:14
		2008	

70			:15
		2008	
71			:16
		2008	
72			:17
		2008	
73			:18
74			:19
		2008	
75			:20
	2008		
76			:21
	2008		
77			:22
		2008	
78			:23
		2008	
79			:24
		2008	
80			:25
81			:26
		2008	
82			:27
		2008	
83			:28
	2008		

84		:29
	2008	
85		:30
	2008	
86		:31
	2008	
87		:32
	2008	
88		:33
	2008 ‘	
89		:34
	2008	
90		:35
	2008 ‘	
91		:36
	2008 ‘	
92		:37
	2008	
93		:38
	2008	
94		:39
	2008 ‘	
95		:40
	2008	
96		:41
	2008	
97		:42
	2008	

98		:43
	2008	
99		:44
	2008	
100		:45
	2008	
101		:46
	2008	
102		:47
	2008	
103		:48
	2008	
104		:49
	2008	
105		:50
	2008	
106		:51
	2008	
107		:52
	2008	
108		:53
	2008/2007	
109		:54
	2007/09/30-2006/10/01	
110		:55
	2007/09/30-2006/10/01	

111		:56
	2007/09/30-2006/10/01	
112		:57
	2007/09/30-2006/10/01	
113		:58
	2007/09/30-2006/10/01	
114		:59
	2008	
115		:60
	2008	

31	2007	:1
32		:2
	2008	
33		:3
	2008	
35		:4
	2008	
36		:5
	2008	
37		:6
	2008	

119		:1
	2008 2005	
121		:2
	2008	
123		:3
	2008 ()	
125		:4
	2008	
127		:5
	2008	
129		:6
	2008	
131		:7
	2008	
133		:8
	2008	

2008/06/29

2008/06/01

)

(

537 2008

12

121

517

20

29

355

(

)

343

.1993

7 2003-1999

61 2003

(%13.4)

563

3,651

4,214

(517)

3,790

2005

601) .

894

(

12,728)

(

4,706

.(

304)

(%30)

153

1,000

%22.9

123

177,275

112

110

(17)

6

38

%7

12,337

268

8

.(

%16

.
1998

(%18)

331

21

3

4

)

511

478

119

67

24

22

55

26

59,444

152

85

64

33

8

99

25

1.1

2003

1999

1994

.2005

2.1

:

.1

.2

.3

.4

.5

.6

3.1

:

:

:

.2008

:

:

:

()

:)

:

:

.(

)

()

(

:

:2008

1.3

2007

1,416,539

2,350,583

3,767,122

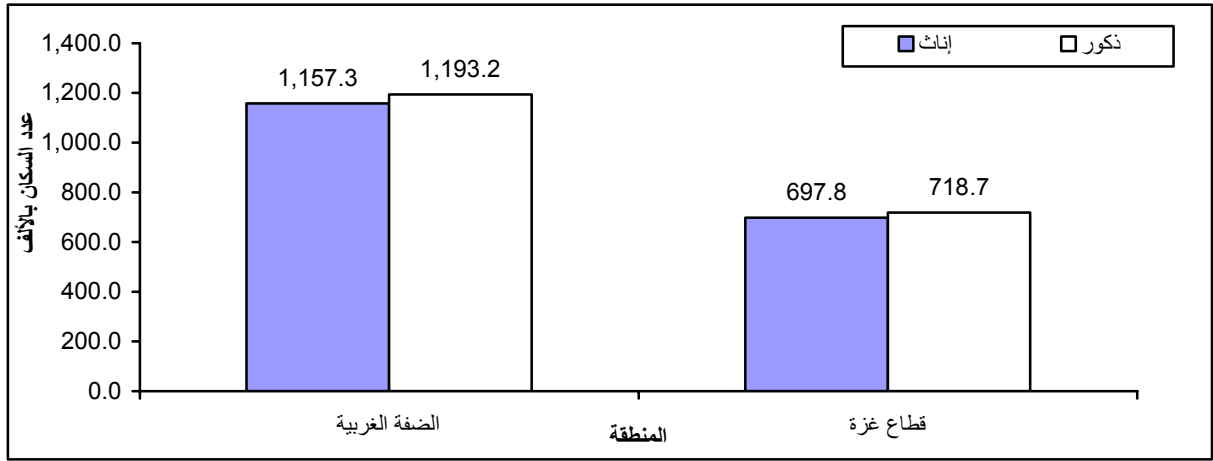
2007

1,855,170

1,911,952

2007

:1



2.3

557 2007

537

2008

3.3

121

517

20

29

355

12

)

343

.

.1993

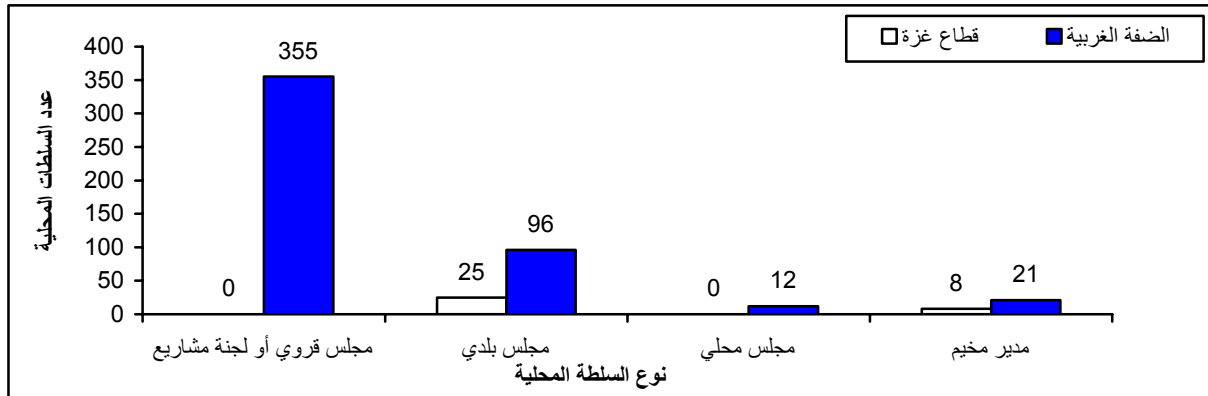
7 2003-1999

61 2003

(

2008

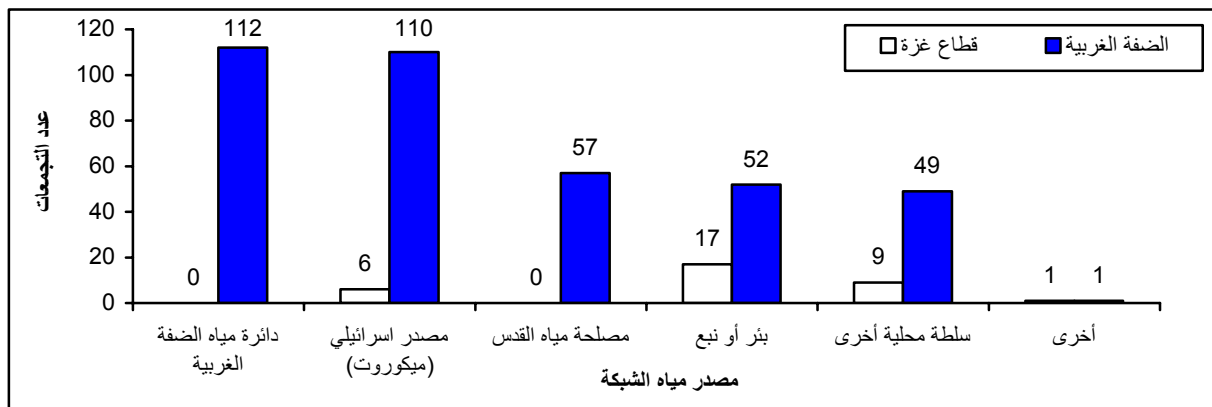
:2



(%13.4)	563	3,651	4,214	
	(517)			
			3,790	2005
%20.2	50 – 30	%76.5	30	%3.3
%85.1	30		%6.7	50
			50	%8.2
601) .	894			
(12,728)	(4,706	
		.(304)	
		(%30)	153	1,000
		2008		
110,493	2005	12,301	1,032	12,080
				13,112
				.2003
	241		264	
		60		
			270	250

2 468.2 416 2008
 (2 1,195.1) (2 409.5)
 45 344
 103 109 60
 361 295 %67.2
 4.3
 %22.9 123
 64 177,275
 58 1998
 112 110
 (17)
 6

2008 :3



234

414

%57

71

5

5

36

157 2008

421

398

()

123

247

251

192

172

91

106

58

5.3

38

%7

.(7)

(18)

12,337

.1998

102

268

8

24

152

4

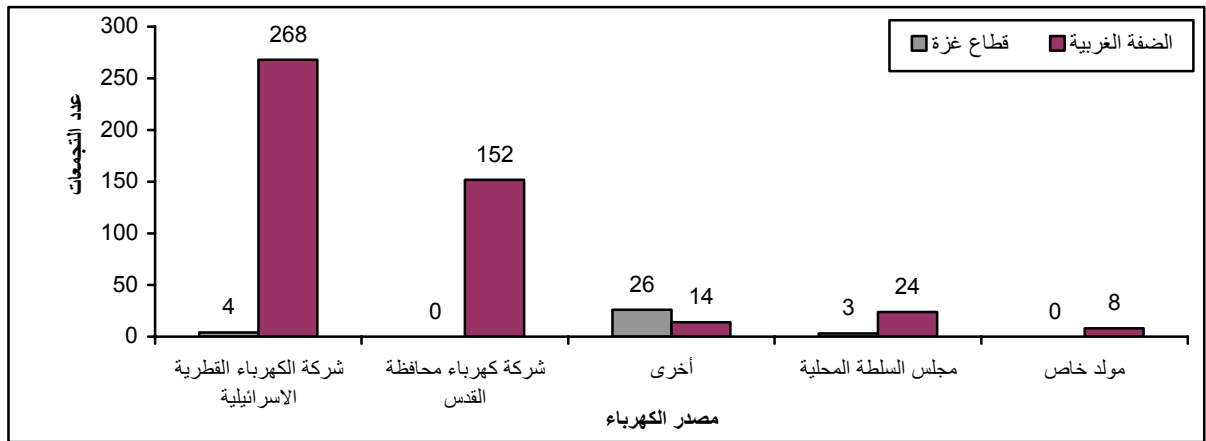
.(

)

26

2008

:4



84 . 130 133 %27

447 499

5 5 %90

5 6

305 38

201 154

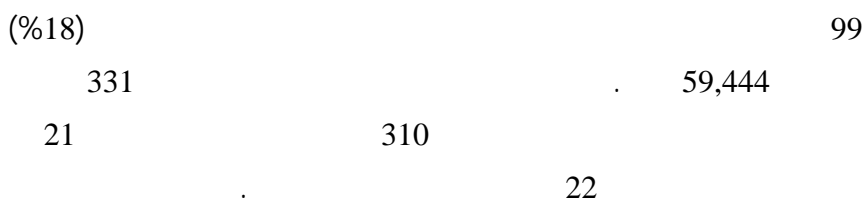
33 168 174

184

6.3

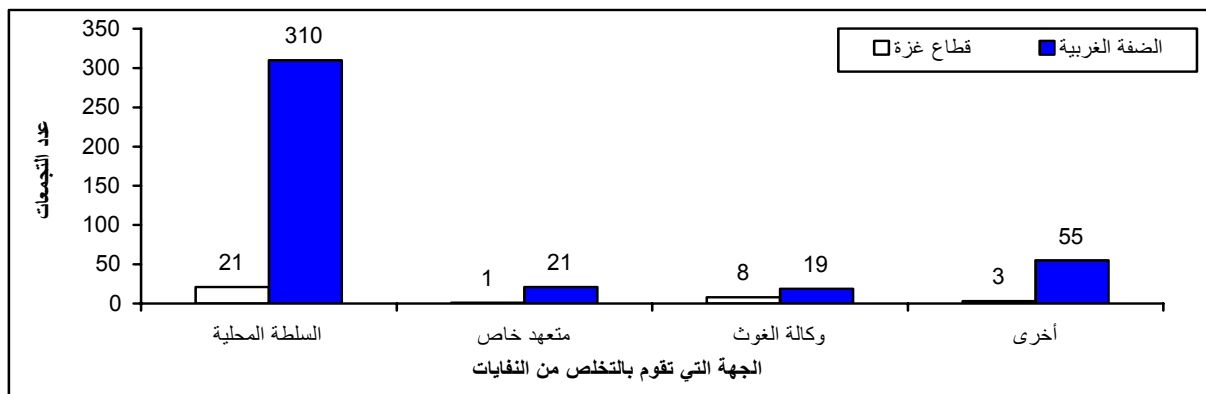


7.3



2008

:5



104
254

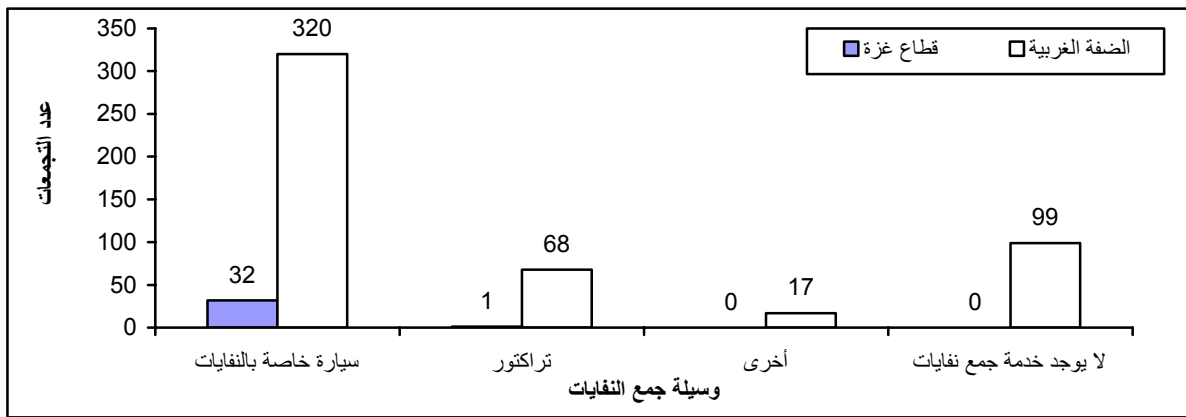
5

125
21
243

69
320
32
68
320

2008

:6



3

119

122

67

55

248

2008

245

223

8.3

515

558

237

262

43

25

9.3

	:	2008/2007		
621		1,809	2,430	
443,740		654,217	1,097,957	.
16,116		27,462	43,578	.
	4,959	6,526		.
1,430	3,182			1,567
		174	1,578	

10.3

	397	2008		%74
			320	.
	396		296	
79		77		346
	152		95	383
%42.5	%25.8			
			%9.6	

11.3

	124	
120		117

2008

1.4

2005 2003 1998 1994

.2008

:

(2007

)

2.4

557

2007

:

.1

.2

9

537

11

1967

2008

3.4

:

:

4.4

2008/05/26

38

(24)

.2008/06/01

.2008/07/20

20

5.4

:

.1

.2

()

.3

Access

:

•

•

•

•

•

.SPSS

•

•

.4

.1

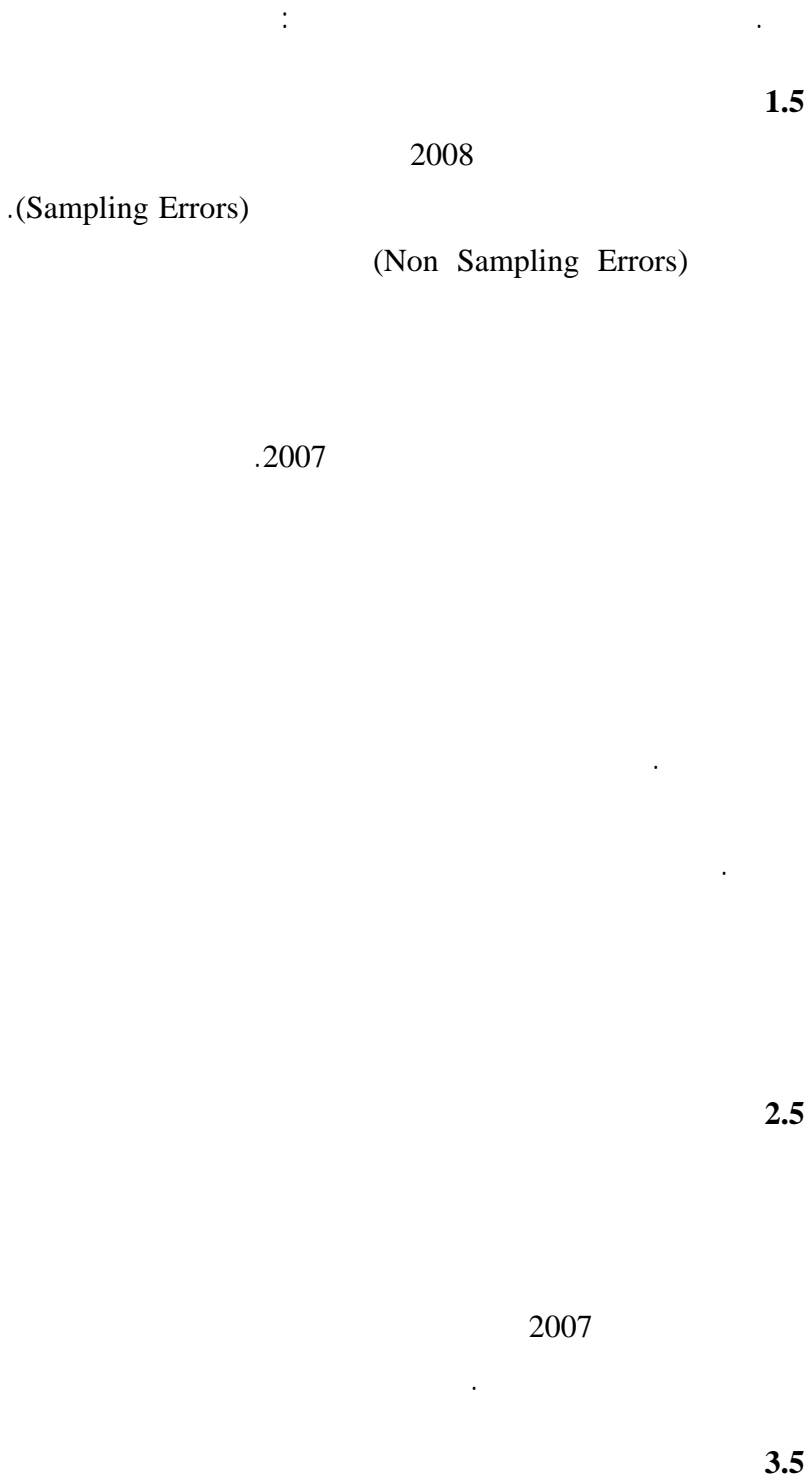
.2

.3

.4

.5

SPSS



4.5

:

()

.1

.2

:

.1

.2

.3

.1967

" "

.4

2005

2007

.	2003 -	.2003	.	-	.1
.	2005 -	.2005	.	-	.2
-2008/2007		.2008	.	-	.3
2007		.2008	.	-	.4
.	- .()	.	-	
2007		.2008	.	-	.5
	.	-()	-	

Tables

Table 1: Selected Indicators for Localities in the Palestinian Territory by Region and Year, 2005, 2008

Indicator	Region/Year /					
	Gaza Strip		West Bank		Palestinian Territory	
	2008	2005	2008	2005	2008	2005
Number of Local Authorities	33	30	484	479	517	509
Municipality	25	22	96	96	121	118
Local Council	0	0	12	11	12	11
Village Council or Project Committee	0	0	355	351	355	351
Camp Director	8	8	21	21	29	29
Number of members	301	267	3,913	3,523	4,214	3,790
Male	255	237	3,396	3,280	3,651	3,517
Female	46	30	517	243	563	273
Number of waged employees	3,692	4,007	9,420	8,294	13,112	12,301
Male	3,431	3,371	8,649	7,700	12,080	11,431
Female	261	276	771	594	1,032	870
Availability of headquarter for the Local Authority						
Available	31	29	385	352	416	381
Not Available	2	1	99	127	101	128
Main source of water supplied through networks in the localities						
Jerusalem Water Undertaking	0	0	57	55	57	55
West Bank Water Department	0	0	112	109	112	109
Israeli source (Mekorot)	6	4	110	117	116	121
Well or Spring	17	24	52	48	69	72
Others	10	1	50	56	60	57
No water network	0	1	123	183	123	184
Main electricity source in the localities						
Jerusalem Electricity Co.	0	0	152	152	152	152
Israeli Electricity Company	4	10	268	262	272	272
Private Generator	0	0	8	6	8	6
Community Council	3	0	24	68	27	68
Others	26	20	14	15	40	35
No electricity network	0	0	38	65	38	65
Street lighting services in the connected localities to electricity						
Main streets only	7	7	77	78	84	85
Main and sub-streets	23	22	259	257	282	279
No street lighting	3	1	130	168	133	169

()

The number of localities in 2005 was 598 localities, while it was 537 localities in 2008

537 598 2005

2008

Table 1(Cont.): Selected Indicators for Localities in the Palestinian Territory by Region and Year 2005, 2008

Indicator	Region/Year /					
	Gaza Strip		West Bank		Palestinian Territory	
	2008	2005	2008	2005	2008	2005
Wastewater Disposal Method in the localities*						
Cesspit	33	24	478	509	511	533
Uncovered Sewage Network	0	0	3	2	3	2
Open Channels Without Network	0	0	11	3	11	3
Sewage Net Work	21	19	64	55	85	74
Others	0	1	15	35	15	36
Doer of waste collection in the localities						
Local Authority	21	17	310	322	331	339
Private Contractor	1	0	21	20	22	20
UNRWA	8	5	19	19	27	24
Others	3	8	55	41	58	49
There is no solid waste collection service	0	0	99	166	99	166
Periodicity of solid waste collection in the served localities						
Daily	21	18	104	111	125	129
Once a week	1	0	53	31	54	31
More than once a week	11	12	243	254	254	266
Per two weeks or more	0	0	5	6	5	6

The number of localities in 2005 was 598 localities, while it was 537 localities in 2008

598 2005

2008

537

* In some localities there are more than one wastewater disposal method

*

2007

:2

Table 2: Number of Population in the Palestinian Territory by Governorate 2007

Governorate	Population			
	Total	Females	Males	
Palestinian Territory	3,767,122	1,855,170	1,911,952	*
West Bank	2,350,583	1,157,339	1,193,244	
Jenin	256,619	126,291	130,328	
Tubas	50,261	24,728	25,533	
Tulkarm	157,988	78,182	79,806	
Nablus	320,830	158,589	162,241	
Qalqiliya	91,217	44,453	46,764	
Salfit	59,570	29,295	30,275	
Ramallah and Al-Bireh	279,730	138,903	140,827	
Jericho and Al Aghwar	42,320	21,133	21,187	
Jerusalem	363,649	178,679	184,970	
Bethlehem	176,235	86,492	89,743	
Hebron	552,164	270,594	281,570	
Gaza Strip	1,416,539	697,831	718,708	*
North Gaza	270,245	132,649	137,596	
Gaza	496,410	243,946	252,464	
Deir AL-Balah	205,534	101,928	103,606	
Khan Yunis	270,979	133,402	137,577	
Rafah	173,371	85,906	87,465	

* Preliminary Findings

*

2008 2005

:3

Table 3: Distribution of Local Authorities in the Palestinian Territory by Type of Local Authority and Governorate, 2005, 2008

Governorate	Total		Type of Local Authority							
			Camp Director		Village Council or Project Committee		Local Council		Municipality	
	2008	2005	2008	2005	2008	2005	2008	2005	2008	2005
Palestinian Territory	517	509	29	29	355	351	12	11	121	118
West Bank	484	479	21	21	355	351	12	11	96	96
Jenin	78	79	1	1	65	66	0	0	12	12
Tubas	16	16	1	1	12	12	0	0	3	3
Tulkarm	35	35	2	2	22	22	0	0	11	11
Nablus	62	62	3	3	50	50	0	0	9	9
Qalqiliya	34	33	0	0	29	28	0	0	5	5
Salfit	19	19	0	0	10	10	0	0	9	9
Ramallah and Al-Bireh	74	73	5	5	51	50	0	0	18	18
Jericho and Al Aghwar	10	11	2	2	5	6	2	2	1	1
Jerusalem	31	30	2	2	18	18	10	9	1	1
Bethlehem	44	41	3	3	31	28	0	0	10	10
Hebron	81	80	2	2	62	61	0	0	17	17
Gaza Strip	33	30	8	8	0	0	0	0	25	22
North Gaza	5	5	1	1	0	0	0	0	4	4
Gaza	5	5	1	1	0	0	0	0	4	4
Deir AL-Balah	11	8	4	4	0	0	0	0	7	4
Khan Yunis	8	8	1	1	0	0	0	0	7	7
Rafah	4	4	1	1	0	0	0	0	3	3

Table 4: Distribution of Local Authorities in the Palestinian Territory by Year of Nominating the Current Local Authority and Governorate

Governorate	Year of Selection the Current Local Authority						
	Total	Not stated	2008-2004	2003-1999	1998-1994	1993-1987	
Palestinian Territory	517	3	343	61	103	7	
West Bank	484	3	321	59	94	7	
Jenin	78	0	48	12	17	1	
Tubas	16	0	8	1	7	0	
Tulkarm	35	0	27	5	2	1	
Nablus	62	0	46	10	6	0	
Qalqiliya	34	0	21	5	8	0	
Salfit	19	0	17	2	0	0	
Ramallah and Al-Bireh	74	0	58	3	12	1	
Jericho and Al Aghwar	10	0	5	0	4	1	
Jerusalem	31	1	24	2	3	1	
Bethlehem	44	2	33	2	7	0	
Hebron	81	0	34	17	28	2	
Gaza Strip	33	0	22	2	9	0	
North Gaza	5	0	4	1	0	0	
Gaza	5	0	2	0	3	0	
Deir AL-Balah	11	0	7	0	4	0	
Khan Yunis	8	0	6	0	2	0	
Rafah	4	0	3	1	0	0	

2008 2005

:5

Table 5: Distribution of the Current Local Authority Members in the Palestinian Territory by Sex and Governorate, 2005, 2008

Governorate	Average number of members	Number of Members					
		Total		Female		Male	
		2008	2005	2008	2005	2008	2005
Palestinian Territory	8	4,214	3,790	563	273	3,651	3,517
West Bank	8	3,913	3,523	517	243	3,396	3,280
Jenin	8	602	593	65	22	537	571
Tubas	7	117	103	8	5	109	98
Tulkarm	8	280	269	53	26	227	243
Nablus	8	495	476	72	21	423	455
Qalqiliya	9	300	206	31	15	269	191
Salfit	10	187	181	37	19	150	162
Ramallah and Al-Bireh	9	649	567	106	37	543	530
Jericho and Al Aghwar	9	86	76	8	6	78	70
Jerusalem	9	287	232	41	20	246	212
Bethlehem	8	342	313	53	36	289	277
Hebron	7	568	507	43	36	525	471
Gaza Strip	9	301	267	46	30	255	237
North Gaza	10	49	47	8	2	41	45
Gaza	8	39	39	6	6	33	33
Deir AL-Balah	8	89	70	14	10	75	60
Khan Yunis	11	86	79	12	8	74	71
Rafah	10	38	32	6	4	32	28

2008

:6

Table 6: Percentage Distribution of the Current Local Authority Members in the Palestinian Territory by Sex, Age and Governorate, 2008

Governorate	Female				Male				
	Total	51 51 and More	50 -30	30 Less Than 30	Total	51 51 and More	50 -30	30 Less Than 30	
Palestinian Territory	100	8.2	85.1	6.7	100	20.2	76.5	3.3	
West Bank	100	8.0	85.3	6.7	100	20.0	76.6	3.4	
Jenin	100	12.9	71.0	16.1	100	18.4	75.8	5.8	
Tubas	100	0.0	100.0	0.0	100	27.8	71.3	0.9	
Tulkarm	100	4.3	95.7	0.0	100	23.7	73.2	3.1	
Nablus	100	4.2	86.1	9.7	100	19.0	79.8	1.2	
Qalqiliya	100	3.2	96.8	0.0	100	16.6	80.2	3.2	
Salfit	100	10.5	89.5	0.0	100	21.8	77.6	0.6	
Ramallah and Al-Bireh	100	15.3	74.5	10.2	100	20.3	75.3	4.4	
Jericho and Al Aghwar	100	11.1	88.9	0.0	100	30.3	68.4	1.3	
Jerusalem	100	5.7	88.6	5.7	100	24.4	71.1	4.5	
Bethlehem	100	5.8	88.4	5.8	100	14.5	81.6	3.9	
Hebron	100	4.7	90.6	4.7	100	18.1	79.6	2.3	
Gaza Strip	100	11.1	83.3	5.6	100	24.9	73.0	2.1	
North Gaza	100	0.0	100.0	0.0	100	20.8	79.2	0.0	
Gaza	100	0.0	71.4	28.6	100	9.4	87.5	3.1	
Deir AL-Balah	100	20.0	80.0	0.0	100	28.9	68.9	2.2	
Khan Yunis	100	25.0	75.0	0.0	100	31.1	67.2	1.7	
Rafah	100	0.0	100.0	0.0	100	25.8	71.0	3.2	

Table 7: Distribution of Local Authorities in the Palestinian Territory by Number of Local Authority Members and Governorate, 2008

Governorate	Number of Members					
	Total	15-14	13-11	10-8	7-5	5 Less Than 5
Palestinian Territory	517	14	113	184	146	60
West Bank	484	12	96	178	146	52
Jenin	78	4	13	20	30	11
Tubas	16	0	4	1	5	6
Tulkarm	35	0	6	17	8	4
Nablus	62	1	9	30	14	8
Qalqiliya	34	1	3	24	6	0
Salfit	19	1	5	13	0	0
Ramallah and Al-Bireh	74	2	18	31	21	2
Jericho and Al Aghwar	10	1	1	4	3	1
Jerusalem	31	1	10	14	4	2
Bethlehem	44	1	10	14	13	6
Hebron	81	0	17	10	40	14
Gaza Strip	33	2	17	6	0	8
North Gaza	5	0	3	1	0	1
Gaza	5	0	1	3	0	1
Deir AL-Balah	11	1	4	2	0	4
Khan Yunis	8	0	7	0	0	1
Rafah	4	1	2	0	0	1

Table 8: Distribution of Local Authorities in the Palestinian Territory by Number of Women Among the Local Authority Members and Governorate, 2008

Governorate	Number of Women			
	Total	+3	2	1
Palestinian Territory	276	22	237	17
West Bank	253	22	214	17
Jenin	33	3	26	4
Tubas	5	0	3	2
Tulkarm	24	4	19	1
Nablus	36	2	32	2
Qalqiliya	15	1	14	0
Salfit	19	0	18	1
Ramallah and Al-Bireh	51	7	39	5
Jericho and Al Aghwar	4	0	4	0
Jerusalem	21	0	20	1
Bethlehem	23	5	18	0
Hebron	22	0	21	1
Gaza Strip	23	0	23	0
North Gaza	4	0	4	0
Gaza	3	0	3	0
Deir AL-Balah	7	0	7	0
Khan Yunis	6	0	6	0
Rafah	3	0	3	0

Table 9: Distribution of Local Authorities in the Palestinian Territory by Number of Paid Employees in the Local Authority and Governorate, 2008

Governorate	Average Number of Paid Employees	Number of Paid Employees					
		Total	+ 30	30-21	20-11	10-1	0
Palestinian Territory	24	517	46	21	53	249	148
West Bank	19	484	33	19	45	246	141
Jenin	22	78	5	2	5	52	14
Tubas	5	16	1	0	1	5	9
Tulkarm	20	35	2	1	7	21	4
Nablus	37	62	2	4	6	45	5
Qalqiliya	17	34	1	2	4	23	4
Salfit	10	19	2	0	2	14	1
Ramallah and Al-Bireh	10	74	4	1	4	41	24
Jericho and Al Aghwar	31	10	1	0	0	5	4
Jerusalem	9	31	3	0	6	14	8
Bethlehem	14	44	4	2	6	17	15
Hebron	20	81	8	7	4	9	53
Gaza Strip	112	33	13	2	8	3	7
North Gaza	88	5	2	0	1	0	2
Gaza	373	5	1	1	1	1	1
Deir AL-Balah	35	11	5	1	2	1	2
Khan Yunis	81	8	4	0	2	1	1
Rafah	89	4	1	0	2	0	1

Table 10: Distribution of Local Authorities in the Palestinian Territory by Number of Females Paid Employees in the Local Authority and Governorate, 2008

Governorate	Number of Paid Females Employees					
	Total	+ 11	10-6	5-1	0	
Palestinian Territory	517	15	11	108	383	
West Bank	484	11	8	98	367	
Jenin	78	1	0	5	72	
Tubas	16	0	0	1	15	
Tulkarm	35	1	0	11	23	
Nablus	62	2	0	14	46	
Qalqiliya	34	1	0	9	24	
Salfit	19	0	2	5	12	
Ramallah and Al-Bireh	74	2	2	14	56	
Jericho and Al Aghwar	10	1	1	1	7	
Jerusalem	31	0	0	9	22	
Bethlehem	44	2	2	12	28	
Hebron	81	1	1	17	62	
Gaza Strip	33	4	3	10	16	
North Gaza	5	1	0	1	3	
Gaza	5	1	0	0	4	
Deir AL-Balah	11	0	3	5	3	
Khan Yunis	8	1	0	4	3	
Rafah	4	1	0	0	3	

Table 11: Distribution of Paid Employees in Local Authorities in the Palestinian Territory by Sex, Year, and Governorate, 2005, 2008

Governorate	Number of Paid Employees					
	Total		Females		Males	
	2008	2005	2008	2005	2008	2005
Palestinian Territory	13,112	12,301	1,032	870	12,080	11,431
West Bank	9,420	8,294	771	594	8,649	7,700
Jenin	1,763	1,376	47	18	1,716	1,358
Tubas	103	107	4	4	99	103
Tulkarm	717	818	40	58	677	760
Nablus	2,269	2,253	253	234	2,016	2,019
Qalqiliya	586	412	31	15	555	397
Salfit	189	167	19	16	170	151
Ramallah and Al-Bireh	715	807	83	85	632	722
Jericho and Al Aghwar	337	294	39	40	298	254
Jerusalem	296	282	20	10	276	272
Bethlehem	628	528	91	63	537	465
Hebron	1,817	1,250	144	51	1,673	1,199
Gaza Strip	3,692	4,007	261	276	3,431	3,731
North Gaza	440	529	15	16	425	513
Gaza	1,864	1,851	182	182	1,682	1,669
Deir AL-Balah	388	334	28	24	360	310
Khan Yunis	645	617	24	23	621	594
Rafah	355	676	12	31	343	645

2008

:12

Table 12: Distribution of Localities in the Palestinian Territory by the Contribution of the Local Authority, the Available Services, and the Governorate, 2008

Service and Governorate	Contribution of Local Authority						
	Total	No Services	Not Provided by the Local Authority	Local Authority and Private Sector	Local Authority and Other Local Authority	Local Authority Only	
Palestinian Territory							
Collection of Wastes	537	99	26	20	128	264	
Cleaning the Streets	537	244	22	11	19	241	
Providing Electricity	537	40	188	15	44	250	
Providing Water	537	123	89	9	46	270	
Waste Water Network	537	453	11	8	5	60	
Others	537	503	4	2	6	22	
West Bank							
Collection of Wastes	504	99	25	20	124	236	
Cleaning the Streets	504	244	21	11	15	213	
Providing Electricity	504	40	168	15	34	247	
Providing Water	504	123	86	9	41	245	
Waste Water Network	504	441	9	8	5	41	
Others	504	477	2	2	4	19	
Jenin							
Collection of Wastes	80	12	13	3	22	30	
Cleaning the Streets	80	48	1	0	1	30	
Providing Electricity	80	4	1	2	7	66	
Providing Water	80	30	4	0	11	35	
Waste Water Network	80	77	0	0	0	3	
Others	80	77	0	0	2	1	

2008

:() 12

Table 12 (Cont.): Distribution of Localities in the Palestinian Territory by the Contribution of the Local Authority, the Available Services, and the Governorate, 2008

Service and Governorate	Contribution of Local Authority						
	Total	No Services	Not Provided by the Local Authority	Local Authority and Private Sector	Local Authority and Other Local Authority	Local Authority Only	
Tubas							
Collection of Wastes	21	13	0	0	6	2	
Cleaning the Streets	21	15	0	0	5	1	
Providing Electricity	21	7	0	0	5	9	
Providing Water	21	12	0	0	1	8	
Waste Water Network	21	20	0	0	0	1	
Others	21	21	0	0	0	0	
Tulkarm							
Collection of Wastes	35	3	1	3	16	12	
Cleaning the Streets	35	14	5	0	1	15	
Providing Electricity	35	0	2	0	4	29	
Providing Water	35	4	2	0	4	25	
Waste Water Network	35	30	0	0	0	5	
Others	35	35	0	0	0	0	
Nablus							
Collection of Wastes	62	6	0	5	12	39	
Cleaning the Streets	62	26	0	1	0	35	
Providing Electricity	62	1	6	1	7	47	
Providing Water	62	24	0	0	5	33	
Waste Water Network	62	49	0	2	0	11	
Others	62	61	0	0	0	1	

2008

:() 12

Table 12 (Cont.): Distribution of Localities in the Palestinian Territory by the Contribution of the Local Authority, the Available Services, and the Governorate, 2008

Service and Governorate	Contribution of Local Authority						
	Total	No Services	Not Provided by the Local Authority	Local Authority and Private Sector	Local Authority and Other Local Authority	Local Authority Only	
Qalqiliya							
Collection of Wastes	34	3	0	0	21	10	
Cleaning the Streets	34	13	2	0	1	18	
Providing Electricity	34	3	0	0	0	31	
Providing Water	34	6	0	0	0	28	
Waste Water Network	34	30	2	1	0	1	
Others	34	34	0	0	0	0	
Salfit							
Collection of Wastes	19	2	1	0	4	12	
Cleaning the Streets	19	14	0	0	0	5	
Providing Electricity	19	0	1	0	3	15	
Providing Water	19	2	0	1	2	14	
Waste Water Network	19	18	0	0	0	1	
Others	19	19	0	0	0	0	
Ramallah and Al-Bireh							
Collection of Wastes	75	7	3	0	17	48	
Cleaning the Streets	75	31	2	0	2	40	
Providing Electricity	75	1	67	4	1	2	
Providing Water	75	1	45	3	2	24	
Waste Water Network	75	65	0	0	0	10	
Others	75	73	0	0	0	2	

2008

:() 12

Table 12 (Cont.): Distribution of Localities in the Palestinian Territory by the Contribution of the Local Authority, the Available Services, and the Governorate, 2008

Service and Governorate	Contribution of Local Authority					
	Total	No Services	Not Provided by the Local Authority	Local Authority and Private Sector	Local Authority and Other Local Authority	Local Authority Only
Jericho and Al Aghwar						
Collection of Wastes	11	1	2	0	4	4
Cleaning the Streets	11	3	2	0	0	6
Providing Electricity	11	1	6	0	0	4
Providing Water	11	0	0	0	1	10
Waste Water Network	11	10	0	0	0	1
Others	11	8	0	0	0	3
Jerusalem						
Collection of Wastes	33	2	2	9	3	17
Cleaning the Streets	33	5	2	9	4	13
Providing Electricity	33	2	30	0	0	1
Providing Water	33	2	20	1	3	7
Waste Water Network	33	20	2	4	3	4
Others	33	28	1	2	1	1
Bethlehem						
Collection of Wastes	45	7	1	0	14	23
Cleaning the Streets	45	16	4	1	0	24
Providing Electricity	45	3	37	4	0	1
Providing Water	45	0	15	4	5	21
Waste Water Network	45	37	5	1	2	0
Others	45	35	1	0	0	9

Table 12 (Cont.): Distribution of Localities in the Palestinian Territory by the Contribution of the Local Authority, the Available Services, and the Governorate, 2008

Service and Governorate	Contribution of Local Authority					
	Total	No Services	Not Provided by the Local Authority	Local Authority and Private Sector	Local Authority and Other Local Authority	Local Authority Only
Hebron						
Collection of Wastes	89	43	2	0	5	39
Cleaning the Streets	89	59	3	0	1	26
Providing Electricity	89	18	18	4	7	42
Providing Water	89	42	0	0	7	40
Waste Water Network	89	85	0	0	0	4
Others	89	86	0	0	1	2
Gaza Strip						
Collection of Wastes	33	0	1	0	4	28
Cleaning the Streets	33	0	1	0	4	28
Providing Electricity	33	0	20	0	10	3
Providing Water	33	0	3	0	5	25
Waste Water Network	33	12	2	0	0	19
Others	33	26	2	0	2	3
North Gaza						
Collection of Wastes	5	0	0	0	0	5
Cleaning the Streets	5	0	0	0	0	5
Providing Electricity	5	0	1	0	4	0
Providing Water	5	0	0	0	1	4
Waste Water Network	5	0	0	0	0	5
Others	5	3	0	0	0	2

2008

:() 12

Table 12 (Cont.): Distribution of Localities in the Palestinian Territory by the Contribution of the Local Authority, the Available Services, and the Governorate, 2008

Service and Governorate	Contribution of Local Authority						
	Total	No Services	Not Provided by the Local Authority	Local Authority and Private Sector	Local Authority and Other Local Authority	Local Authority Only	
Gaza							
Collection of Wastes	5	0	0	0	1	4	
Cleaning the Streets	5	0	0	0	1	4	
Providing Electricity	5	0	4	0	0	1	
Providing Water	5	0	1	0	1	3	
Waste Water Network	5	1	1	0	0	3	
Others	5	4	0	0	0	1	
Deir Al-Balah							
Collection of Wastes	11	0	0	0	2	9	
Cleaning the Streets	11	0	0	0	2	9	
Providing Electricity	11	0	9	0	1	1	
Providing Water	11	0	2	0	0	9	
Waste Water Network	11	1	1	0	0	9	
Others	11	9	2	0	0	0	
Khan Yunis							
Collection of Wastes	8	0	0	0	1	7	
Cleaning the Streets	8	0	0	0	1	7	
Providing Electricity	8	0	2	0	5	1	
Providing Water	8	0	0	0	1	7	
Waste Water Network	8	8	0	0	0	0	
Others	8	6	0	0	2	0	

2008

:() 12

Table 12 (Cont.): Distribution of Localities in the Palestinian Territory by the Contribution of the Local Authority, the Available Services, and the Governorate, 2008

Service and Governorate	Contribution of Local Authority						
	Total	No Services	Not Provided by the Local Authority	Local Authority and Private Sector	Local Authority and Other Local Authority	Local Authority Only	
Rafah							
Collection of Wastes	4	0	1	0	0	3	
Cleaning the Streets	4	0	1	0	0	3	
Providing Electricity	4	0	4	0	0	0	
Providing Water	4	0	0	0	2	2	
Waste Water Network	4	2	0	0	0	2	
Others	4	4	0	0	0	0	

Table 13: Distribution of Local Authorities in the Palestinian Territory by Availability of Headquarter of the Local Authority and Governorate, 2008

Governorate	Availability of Headquarter of the Local Authority		
	Total	No Headquarter	There is a Headquarter
Palestinian Territory	517	101	416
West Bank	484	99	385
Jenin	78	19	59
Tubas	16	6	10
Tulkarm	35	7	28
Nablus	62	6	56
Qalqiliya	34	6	28
Salfit	19	0	19
Ramallah and Al-Bireh	74	9	65
Jericho and Al Aghwar	10	2	8
Jerusalem	31	5	26
Bethlehem	44	10	34
Hebron	81	29	52
Gaza Strip	33	2	31
North Gaza	5	0	5
Gaza	5	0	5
Deir AL-Balah	11	2	9
Khan Yunis	8	0	8
Rafah	4	0	4

Table 14: Distribution of Local Authorities in the Palestinian Territory by the Main Characteristics of the Headquarter of the Local Authority and Governorate, 2008

Governorate	No Headquarter	Headquarter Characteristics of the Local Authority					Average area (m ²)
		Headquarter Ownership				(²)	
		Total	Other	Rented	Owned		
Palestinian Territory	101	416	27	45	344	468.2	
West Bank	99	385	25	44	316	409.5	
Jenin	19	59	6	5	48	339.1	
Tubas	6	10	1	1	8	289.1	
Tulkarm	7	28	0	1	27	728.4	
Nablus	6	56	1	6	49	323.1	
Qalqiliya	6	28	1	3	24	198.8	
Salfit	0	19	0	0	19	740.2	
Ramallah and Al-Bireh	9	65	7	8	50	342.7	
Jericho and Al Aghwar	2	8	2	1	5	969.4	
Jerusalem	5	26	3	3	20	381.2	
Bethlehem	10	34	1	4	29	394.5	
Hebron	29	52	3	12	37	446.5	
Gaza Strip	2	31	2	1	28	1,195.1	
North Gaza	0	5	0	1	4	1,140.0	
Gaza	0	5	1	0	4	1,842.0	
Deir AL-Balah	2	9	0	0	9	863.3	
Khan Yunis	0	8	1	0	7	1,555.6	
Rafah	0	4	0	0	4	480.5	

2008

:15

Table 15: Distribution of Local Authorities in the Palestinian Territory by the Most Important Development Need for the Local Authority and Governorate, 2008

Governorate	The Most Important Need							
	Total	* Other*	Furniture	Computers	Training	Technical Staff	Administrative Staff	
Palestinian Territory	517	60	96	109	103	66	83	
West Bank	484	56	89	104	95	62	78	
Jenin	78	11	17	19	12	8	11	
Tubas	16	6	3	1	3	1	2	
Tulkarm	35	0	9	9	11	5	1	
Nablus	62	9	20	11	8	7	7	
Qalqiliya	34	3	5	10	7	4	5	
Salfit	19	0	3	7	3	1	5	
Ramallah and Al-Bireh	74	4	11	13	17	18	11	
Jericho and Al Aghwar	10	0	2	1	3	2	2	
Jerusalem	31	3	6	3	3	8	8	
Bethlehem	44	7	7	10	11	5	4	
Hebron	81	13	6	20	17	3	22	
Gaza Strip	33	4	7	5	8	4	5	
North Gaza	5	0	0	2	3	0	0	
Gaza	5	0	2	0	0	1	2	
Deir AL-Balah	11	2	2	1	3	1	2	
Khan Yunis	8	1	1	1	2	2	1	
Rafah	4	1	2	1	0	0	0	

* Includes: Headquarters, Financial, Engineering equipments

: *

Table 16: Distribution of Localities in the Palestinian Territory by Status of Structural Plan and Governorate, 2008

Governorate	Having no Structural Plan					Structural plan status		
	* Reasons for Having no Structural Plan *					Not Approved	Approved	
	Total	4	3	2	1			
Palestinian Territory	176	58	15	70	33	66	295	
West Bank	169	51	15	70	33	65	270	
Jenin.	22	12	1	6	3	8	50	
Tubas	12	2	1	5	4	3	6	
Tulkarm	5	2	0	3	0	3	27	
Nablus	14	1	1	7	5	12	36	
Qalqiliya	8	6	1	0	1	9	17	
Salfit	11	0	0	1	10	4	4	
Ramallah and Al-Bireh	21	6	1	7	7	10	44	
Jericho and Al Aghwar	2	2	0	0	0	2	7	
Jerusalem	8	5	1	1	1	2	23	
Bethlehem	17	5	0	10	2	5	23	
Hebron	49	10	9	30		7	33	
Gaza Strip	7	7	0	0	0	1	25	
North Gaza	1	1	0	0	0	0	4	
Gaza	1	1	0	0	0	1	3	
Deir AL-Balah	4	4	0	0	0	0	7	
Khan Yunis	1	1	0	0	0	0	7	
Rafah	0	0	0	0	0	0	4	

*Reasons for having no structural plan:

- | | |
|---|----|
| 1. The structural plan undergoes implementation | .1 |
| 2. The financial potentials do not allow for having a structural plan | .2 |
| 3. The idea of having structural plan was not considered | .3 |
| 4. Others | .4 |

Table 17: Distribution of Localities in the Palestinian Territory that have a Structural Plan by Year of Structural Plan Preparation and Governorate, 2008

Governorate	Having no Structural Plan	Year of Structural Plan Preparation							
		Total	Not stated	+1999	1998-1994	1993-1988	1987-1978	1977-1968	1968 Before1968
Palestinian Territory	176	361	17	176	78	35	34	7	14
West Bank	169	335	17	157	72	35	34	7	13
Jenin	22	58	3	17	19	10	6	1	2
Tubas	12	9	1	5	1	0	0	1	1
Tulkarm	5	30	1	17	2	4	6	0	0
Nablus	14	48	1	27	7	4	3	2	4
Qalqiliya	8	26	0	12	5	3	6	0	0
Salfit	11	8	2	5	1	0	0	0	0
Ramallah and Al-Bireh	21	54	6	24	12	6	3	1	2
Jericho and Al Aghwar	2	9	1	2	5	0	1	0	0
Jerusalem	8	25	1	15	8	1	0	0	0
Bethlehem	17	28	1	7	9	2	6	1	2
Hebron	49	40	0	26	3	5	3	1	2
Gaza Strip	7	26	0	19	6	0	0	0	1
North Gaza	1	4	0	4	0	0	0	0	0
Gaza	1	4	0	3	1	0	0	0	0
Deir AL-Balah	4	7	0	2	5	0	0	0	0
Khan Yunis	1	7	0	7	0	0	0	0	0
Rafah	0	4	0	3	0	0	0	0	1

Table 18: Distribution of Localities in the Palestinian Territory by Availability of Water Network and Year of Connection and Governorate

Governorate	Total	No Network	Year of Water Network Connection							
			Not stated	+1999	1998-1995	1994 - 1985	1984 - 1975	1974 - 1967	1967 Before 1967	
Palestinian Territory	537	123	3	64	51	66	138	60	32	
West Bank	504	123	3	58	48	65	127	52	28	
Jenin	80	30	1	9	9	14	11	4	2	
Tubas	21	12	0	3	1	1	2	1	1	
Tulkarm	35	4	0	8	8	4	7	2	2	
Nablus	62	24	0	4	6	7	13	6	2	
Qalqiliya	34	6	0	8	5	6	3	5	1	
Salfit	19	2	0	3	4	3	7	0	0	
Ramallah and Al-Bireh	75	1	1	7	6	10	25	13	12	
Jericho and Al Aghwar	11	0	0	5	1	1	4	0	0	
Jerusalem	33	2	0	1	1	2	20	4	3	
Bethlehem	45	0	1	1	6	6	22	6	3	
Hebron	89	42	0	9	1	11	13	11	2	
Gaza Strip	33	0	0	6	3	1	11	8	4	
North Gaza	5	0	0	1	0	0	2	1	1	
Gaza	5	0	0	2	1	0	1	0	1	
Deir AL-Balah	11	0	0	0	2	0	7	2	0	
Khan Yunis	8	0	0	1	0	1	1	3	2	
Rafah	4	0	0	2	0	0	0	2	0	

Table 19: Distribution of Localities in the Palestinian Territory by the Main Water Source of the Network and Governorate, 2008

Governorate	Total	No Network	Main Water Source of the Network					West Bank Water Department	Jerusalem Water Undertaking	
			Other	Another Local Authority	Well or Spring	() Israeli Source (Mekorot)				
Palestinian Territory	537	123	2	58	69	116	112	57		
West Bank	504	123	1	49	52	110	112	57		
Jenin	80	30	0	13	5	18	14	0		
Tubas	21	12	0	4	2	3	0	0		
Tulkarm	35	4	0	8	19	4	0	0		
Nablus	62	24	0	9	11	13	5	0		
Qalqiliya	34	6	0	7	10	11	0	0		
Salfit	19	2	0	1	0	11	5	0		
Ramallah and Al-Bireh	75	1	0	1	0	8	20	45		
Jericho and Al Aghwar	11	0	0	1	2	8	0	0		
Jerusalem	33	2	0	0	0	11	8	12		
Bethlehem	45	0	1	0	0	12	32	0		
Hebron	89	42	0	5	3	11	28	0		
Gaza Strip	33	0	1	9	17	6	0	0		
North Gaza	5	0	0	0	2	3	0	0		
Gaza	5	0	0	3	2	0	0	0		
Deir AL-Balah	11	0	0	3	7	1	0	0		
Khan Yunis	8	0	1	1	4	2	0	0		
Rafah	4	0	0	2	2	0	0	0		

2008

:20

Table 20: Connected Localities to Water Network in the Palestinian Territory by Average Hours of Water Availability Per day and Governorate, 2008

Governorate	Average Hours of Water Availability Per Day										All Day
	Average Hours of Water Availability Per Day During Winter					Average Hours of Water Availability Per Day During Summer					
	Not Stated	23-16	15-11	10-5	5 Less Than 5	Not Stated	23-16	15-11	10-5	5 Less Than 5	
Palestinian Territory	80	25	17	22	36	20	28	26	35	71	234
West Bank	75	17	11	15	34	19	21	17	27	68	229
Jenin	17	2	0	2	14	3	2	3	6	21	15
Tubas	1	0	2	1	2	1	0	1	3	1	3
Tulkarm	1	0	0	0	0	1	0	0	0	0	30
Nablus	6	0	0	1	7	0	1	0	3	10	24
Qalqiliya	1	0	1	0	0	1	0	0	0	1	26
Salfit	0	0	0	0	0	0	0	0	0	0	17
Ramallah and Al-Bireh	27	5	0	3	1	6	10	6	5	9	38
Jericho and Al Aghwar	1	0	0	0	1	0	1	0	0	1	9
Jerusalem	9	2	1	3	1	4	5	2	2	3	15
Bethlehem	6	5	6	3	2	2	1	4	4	11	23
Hebron	6	3	1	2	6	1	1	1	4	11	29
Gaza Strip	5	8	6	7	2	2	6	9	8	3	5
North Gaza	0	1	2	1	1	0	2	0	2	1	0
Gaza	0	0	2	2	0	0	0	3	1	0	1
Deir AL-Balah	3	2	2	0	0	0	1	4	2	0	4
Khan Yunis	1	3	0	3	1	0	3	2	2	1	0
Rafah	1	2	0	1	0	1	1	0	1	1	0

2008

:21

Table 21: Distribution of Localities in the Palestinian Territory Connected to Network by the Availability of Water Tank and the Capacity of Tanks and Governorate, 2008

Governorate	Total	No Tank Available	Capacity of Tanks (m ³)					
			Not Stated	+1001	1000 -501	500 -301	300 -101	
Palestinian Territory	414	222	5	26	24	41	72	24
West Bank	381	208	4	20	17	37	71	24
Jenin	50	20	0	9	2	11	6	2
Tubas	9	5	0	0	2	1	1	0
Tulkarm	31	6	1	1	2	5	15	1
Nablus	38	10	0	1	2	3	17	5
Qalqiliya	28	10	1	1	0	2	10	4
Salfit	17	6	0	0	1	1	9	0
Ramallah and Al-Bireh	74	62	2	0	1	2	5	2
Jericho and Al Aghwar	11	4	0	2	3	2	0	0
Jerusalem	31	24	0	1	1	2	1	2
Bethlehem	45	36	0	2	1	2	1	3
Hebron	47	25	0	3	2	6	6	5
Gaza Strip	33	14	1	6	7	4	1	0
North Gaza	5	3	0	2	0	0	0	0
Gaza	5	3	0	1	1	0	0	0
Deir AL-Balah	11	5	0	0	4	2	0	0
Khan Yunis	8	1	0	2	2	2	1	0
Rafah	4	2	1	1	0	0	0	0

2008

:22

Table 22: Localities in the Palestinian Territory by the Alternative Sources for the Public Water Network and Governorate, 2008

Governorate	The Alternative Water Source				
	Other	() Purchasing Water Tanks	Springs	Rain Water Collection Well	Artesian Wells
Palestinian Territory	36	398	96	421	157
West Bank	26	374	96	402	137
Jenin	5	68	5	76	9
Tubas	0	19	3	17	5
Tulkarm	2	5	0	18	15
Nablus	2	42	19	48	5
Qalqiliya	0	15	2	18	4
Salfit	1	19	19	19	19
Ramallah and Al-Bireh	2	70	22	72	70
Jericho and Al Aghwar	8	8	8	8	8
Jerusalem	4	31	3	19	0
Bethlehem	2	16	4	28	1
Hebron	0	81	11	79	1
Gaza Strip	10	24	0	19	20
North Gaza	1	4	0	4	3
Gaza	2	2	0	2	2
Deir AL-Balah	3	9	0	6	6
Khan Yunis	3	6	0	5	6
Rafah	1	3	0	2	3

Table 23: Localities in the Palestinian Territory by Drinking Water Problems and Governorate, 2008

Governorate	No Network	Drinking Water Problems					
		Others	Water Contamination	Non-Served Areas	Old Water Network	Interruption in Water Supply	
Palestinian Territory	123	40	119	192	251	247	
West Bank	123	38	106	174	243	227	
Jenin	30	8	9	24	26	36	
Tubas	12	0	4	3	6	7	
Tulkarm	4	2	9	13	16	13	
Nablus	24	3	12	16	22	19	
Qalqiliya	6	2	7	8	11	10	
Salfit	2	1	6	9	15	4	
Ramallah and Al-Bireh	1	6	19	35	53	52	
Jericho and Al Aghwar	0	1	3	4	5	3	
Jerusalem	2	2	10	13	24	18	
Bethlehem	0	10	11	16	35	29	
Hebron	42	3	16	33	30	36	
Gaza Strip	0	2	13	18	8	20	
North Gaza	0	0	7	4	2	3	
Gaza	0	0	2	3	1	4	
Deir AL-Balah	0	1	2	7	3	5	
Khan Yunis	0	1	2	3	1	5	
Rafah	0	0	0	1	1	3	

Table 24: Distribution of Localities in the Palestinian Territory by Development Project Stages in the Field of Water, Type of Project and Region, 2008

Type of project and Region	Total	Not Applicable	Stages of Development Water Project					
			Project Under Implementation	Ready Study	Plan under Revision	Necessary But There is No Plan	Not Necessary	
Palestinian Territory								
Construction of Water Tanks	537	6	27	130	86	172	116	
Installation of Water Network	537	84	25	93	49	91	195	
Expansion of Water Network	537	113	25	127	81	106	85	
Developing Water Network	537	113	28	126	78	110	82	
Changing Source of Water	537	92	7	30	25	58	325	
West Bank								
Construction of Water Tanks	504	6	25	118	81	167	107	
Installation of Water Network	504	84	22	86	46	90	176	
Expansion of Water Network	504	113	25	115	69	102	80	
Developing Water Network	504	112	25	118	68	104	77	
Changing Source of Water	504	89	7	27	20	58	303	
Gaza Strip								
Construction of Water Tanks	33	0	2	12	5	5	9	
Installation of Water Network	33	0	3	7	3	1	19	
Expansion of Water Network	33	0	0	12	12	4	5	
Developing Water Network	33	1	3	8	10	6	5	
Changing Source of Water	33	3	0	3	5	0	22	

Table 25: Distribution of Localities in the Palestinian Territory by Availability of Electricity Network, Year of Electricity Connection, and Governorate

Governorate	Total	No Electricity	Year of Electricity Network Connection							
			Not Stated	+1999	1998-1994	1993 - 1988	1987 - 1978	1977 - 1967	1967 Before 1967	
Palestinian Territory	537	38	8	102	65	48	172	73	31	
West Bank	504	38	7	100	60	46	167	58	28	
Jenin	80	4	1	34	15	8	16	1	1	
Tubas	21	7	0	11	1	2	0	0	0	
Tulkarm	35	0	0	10	2	4	13	6	0	
Nablus	62	0	1	9	12	7	20	11	2	
Qalqiliya	34	3	0	13	4	3	9	1	1	
Salfit	19	0	0	4	2	5	7	1	0	
Ramallah and Al-Bireh	75	1	1	2	0	3	40	15	13	
Jericho and Al Aghwar	11	1	1	0	0	2	5	1	1	
Jerusalem	33	1	2	1	0	2	13	10	4	
Bethlehem	45	3	0	1	2	0	27	8	4	
Hebron	89	18	1	15	22	10	17	4	2	
Gaza Strip	33	0	1	2	5	2	5	15	3	
North Gaza	5	0	0	0	1	0	0	3	1	
Gaza	5	0	0	1	2	0	0	2	0	
Deir AL-Balah	11	0	0	0	0	2	5	4	0	
Khan Yunis	8	0	0	1	0	0	0	5	2	
Rafah	4	0	1	0	2	0	0	1	0	

Table 26: Distribution of Localities in the Palestinian Territory by the Main Source of Electricity and Governorate, 2008

Governorate	Total	No Electricity	Main Electricity Source					
			Others	Community Council	Private Generator	Israeli Electricity Company	Jerusalem District Electricity Co.	
Palestinian Territory	537	38	40	27	8	272	152	
West Bank	504	38	14	24	8	268	152	
Jenin	80	4	1	12	6	57	0	
Tubas	21	7	3	0	0	11	0	
Tulkarm	35	0	3	2	0	30	0	
Nablus	62	0	0	2	0	60	0	
Qalqiliya	34	3	0	5	0	26	0	
Salfit	19	0	0	0	0	19	0	
Ramallah and Al-Bireh	75	1	0	0	0	0	74	
Jericho and Al Aghwar	11	1	1	0	0	4	5	
Jerusalem	33	1	1	0	0	0	31	
Bethlehem	45	3	0	0	0	2	40	
Hebron	89	18	5	3	2	59	2	
Gaza Strip	33	0	26	3	0	4	0	
North Gaza	5	0	1	1	0	3	0	
Gaza	5	0	4	0	0	1	0	
Deir AL-Balah	11	0	11	0	0	0	0	
Khan Yunis	8	0	6	2	0	0	0	
Rafah	4	0	4	0	0	0	0	

Table 27: Distribution the Connected Localities to Electricity in the Palestinian Territory by Street Lighting Services and Governorate, 2008

Governorate	Total	Street Lighting Services		
		No Street Lighting	Main and Sub Streets	Main Streets Only
Palestinian Territory	499	133	282	84
West Bank	466	130	259	77
Jenin	76	12	50	14
Tubas	14	3	9	2
Tulkarm	35	2	30	3
Nablus	62	4	49	9
Qalqiliya	31	3	26	2
Salfit	19	1	13	5
Ramallah and Al-Bireh	74	35	33	6
Jericho and Al Aghwar	10	4	2	4
Jerusalem	32	12	15	5
Bethlehem	42	28	11	3
Hebron	71	26	21	24
Gaza Strip	33	3	23	7
North Gaza	5	1	3	1
Gaza	5	0	2	3
Deir AL-Balah	11	0	11	0
Khan Yunis	8	0	6	2
Rafah	4	2	1	1

Table 28: Distribution the Connected Localities to Electricity in the Palestinian Territory by Average Hours of Electricity Availability Per Day and Governorate, 2008

Governorate	Average Hours of Electricity Availability Per Day										All Day
	Average Hours of Electricity Availability Per Day During Winter					Average Hours of Electricity Availability Per Day During Summer					
	Not Stated	23-16	15-11	10-5	5 Less Than 5	Not Stated	23-16	15-11	10-5	5 Less Than 5	
Palestinian Territory	9	22	6	9	6	11	22	2	12	5	447
West Bank	8	10	4	9	6	10	8	2	12	5	429
Jenin	0	1	3	4	2	0	1	1	7	1	66
Tubas	0	1	0	0	0	0	1	0	0	0	13
Tulkarm	0	0	0	1	0	0	0	0	1	0	34
Nablus	0	0	0	1	1	0	0	0	1	1	60
Qalqiliya	0	0	1	2	0	0	0	1	2	0	28
Salfit	0	0	0	0	0	0	0	0	0	0	19
Ramallah and Al-Bireh	6	8	0	0	0	8	6	0	0	0	60
Jericho and Al Aghwar	1	0	0	0	0	1	0	0	0	0	9
Jerusalem	1	0	0	0	0	1	0	0	0	0	31
Bethlehem	0	0	0	0	0	0	0	0	0	0	42
Hebron	0	0	0	1	3	0	0	0	1	3	67
Gaza Strip	1	12	2	0	0	1	14	0	0	0	18
North Gaza	0	1	0	0	0	0	1	0	0	0	4
Gaza	0	2	0	0	0	0	2	0	0	0	3
Deir AL-Balah	0	4	2	0	0	0	6	0	0	0	5
Khan Yunis	0	4	0	0	0	0	4	0	0	0	4
Rafah	1	1	0	0	0	1	1	0	0	0	2

Table 29: Localities in the Palestinian Territory by the Availability of Electricity and its Main Related Problems and Governorate, 2008

Governorate	No Electricity	Main Problems Related To Electricity In the Locality					
		Others	Non Served Areas	Old Electricity Network	Electrical Current Weakness	Electrical Current Disconnection	
Palestinian Territory	38	53	201	305	291	154	
West Bank	38	51	185	286	271	129	
Jenin	4	10	31	43	34	24	
Tubas	7	1	3	2	3	1	
Tulkarm	0	3	6	13	9	3	
Nablus	0	5	16	34	35	9	
Qalqiliya	3	2	7	14	16	9	
Salfit	0	1	8	17	11	2	
Ramallah and Al-Bireh	1	12	45	58	57	32	
Jericho and Al Aghwar	1	0	3	7	5	1	
Jerusalem	1	5	10	29	26	4	
Bethlehem	3	8	20	26	23	6	
Hebron	18	4	36	43	52	38	
Gaza Strip	0	2	16	19	20	25	
North Gaza	0	1	3	2	2	5	
Gaza	0	0	2	2	3	3	
Deir AL-Balah	0	0	6	8	6	8	
Khan Yunis	0	1	2	4	6	6	
Rafah	0	0	3	3	3	3	

Table 30: Distribution the Connected Localities to Electricity in the Palestinian Territory by Electricity Development Projects Stages and Region, 2008

Electricity Development Projects	Total	Development Project Stages in the Field of Electricity						
		Not Applicable	Project Under Implementation	Ready Study	Plan Under Revision	Necessary But There is No Plan	Not Necessary	
Palestinian Territory								
Electricity Network Extension	499	3	20	121	71	174	110	
Strengthening Transformers Installation	499	5	19	112	64	168	131	
Changing Electricity Source	499	32	3	16	10	33	405	
Improving Electricity Network	499	8	19	107	76	184	105	
Others	499	7	18	107	75	182	110	
West Bank								
Electricity Network Extension	466	3	20	115	70	162	96	
Strengthening Transformers Installation	466	5	19	106	64	163	109	
Changing Electricity Source	466	32	3	13	7	27	384	
Improving Electricity Network	466	7	18	103	72	169	97	
Others	466	7	18	103	71	167	100	
Gaza Strip								
Electricity Network Extension	31	0	0	6	1	12	14	
Strengthening Transformers Installation	31	0	0	6	0	5	22	
Changing Electricity Source	31	0	0	3	3	6	21	
Improving Electricity Network	33	1	1	4	4	15	8	
Others	31	0	0	4	4	15	10	

2008

:31

Table 31: Distribution of Localities in the Palestinian Territory by Wastewater Disposal Method and Governorate, 2008

Governorate	Wastewater Disposal Method*					
	Others	Sewage Network	Open Channels Without Network	Uncovered Sewage Network	Cesspit	
Palestinian Territory	15	85	11	3	511	
West Bank	15	64	11	3	478	
Jenin	4	3	1	0	77	
Tubas	1	1	0	0	20	
Tulkarm	0	5	0	1	35	
Nablus	1	13	1	0	58	
Qalqiliya	0	4	1	0	33	
Salfit	0	2	0	1	19	
Ramallah and Al-Bireh	3	10	0	0	71	
Jericho and Al Aghwar	0	1	1	0	10	
Jerusalem	4	13	0	0	29	
Bethlehem	0	8	1	0	43	
Hebron	2	4	6	1	83	
Gaza strip	0	21	0	0	33	
North Gaza	0	5	0	0	5	
Gaza	0	4	0	0	5	
Deir AL-Balah	0	10	0	0	11	
Khan Yunis	0	0	0	0	8	
Rafah	0	2	0	0	4	

* In some localities there are more than one wastewater disposal method

*

Table 32: Distribution of Localities in the Palestinian Territory by Availability of Sewage Network, Year of Connection* and Governorate

Governorate	Total	No Sewage Network	Year of Connection of the Network					
			+1999	1998-1994	1993 - 1987	1986 - 1967	1967 Before 1967	
Palestinian Territory	537	452	33	18	8	20	6	
West Bank	504	440	25	12	8	14	5	
Jenin	80	77	0	0	0	2	1	
Tubas	21	20	1	0	0	0	0	
Tulkarm	35	30	2	0	2	1	0	
Nablus	62	49	6	3	1	2	1	
Qalqiliya	34	30	2	1	0	0	1	
Salfit	19	17	1	1	0	0	0	
Ramallah and Al-Bireh	75	65	6	0	1	2	1	
Jericho and Al Aghwar	11	10	0	0	1	0	0	
Jerusalem	33	20	3	2	2	6	0	
Bethlehem	45	37	2	4	1	1	0	
Hebron	89	85	2	1	0	0	1	
Gaza Strip	33	12	8	6	0	6	1	
North Gaza	5	0	1	1	0	3	0	
Gaza	5	1	1	1	0	1	1	
Deir AL-Balah	11	1	6	3	0	1	0	
Khan Yunis	8	8	0	0	0	0	0	
Rafah	4	2	0	1	0	1	0	

* It is not necessary that the wastewater network covers all parts of the locality

*

Table 33: Localities in the Palestinian Territory by Wastewater Disposal Site, and Governorate, 2008

Governorate	Others		Valleys		Treatment Plant		
	% 50 More Than 50%	%50 Less Than or Equal to 50%	% 50 More Than 50%	%50 Less Than or Equal to 50%	% 50 More Than 50%	%50 Less Than or Equal to 50%	
Palestinian Territory	111	37	379	47	37	12	
West Bank	104	36	370	46	20	10	
Jenin	12	5	63	4	1	0	
Tubas	1	3	19	1	0	0	
Tulkarm	1	0	27	0	5	0	
Nablus	19	3	40	4	1	2	
Qalqiliya	0	0	33	1	1	0	
Salfit	4	1	13	1	0	3	
Ramallah and Al-Bireh	10	3	59	1	6	0	
Jericho and Al Aghwar	6	0	4	5	0	0	
Jerusalem	14	12	23	6	3	3	
Bethlehem	8	0	32	3	3	2	
Hebron	29	9	57	20	0	0	
Gaza Strip	7	1	9	1	17	2	
North Gaza	0	0	0	0	5	0	
Gaza	0	0	3	0	2	1	
Deir AL-Balah	0	0	5	0	6	0	
Khan Yunis	5	0	1	1	2	0	
Rafah	2	1	0	0	2	1	

* In some localities there are more than one wastewater disposal site

*

Table 34: Localities in the Palestinian Territory by Type and Distance of Wastewater Disposal Site from the Locality, and Region, 2008

Region and Type of the Wastewater Disposal Site	Distance of Disposal Site From the Locality (km) ()			
	3 More than 3	3 - 2.1	2-1.0	1 Up To 1
Palestinian Territory				
Treatment Plant	11	5	10	23
Valleys	71	57	98	200
Other	9	14	11	114
West Bank				
Treatment Plant	4	4	7	15
Valleys	68	54	96	198
Other	5	13	11	111
Gaza Strip				
Treatment Plant	7	1	3	8
Valleys	3	3	2	2
Other	4	1	0	3

Table 35: Localities in the Palestinian Territory by Health and Environmental Effects of the Wastewater Disposal Site and Governorate, 2008

Governorate	Health and Environmental Effects						
	Others	Source of Insects	Source of Epidemic	Source of Bad Smells	Plants Contamination	Ground Water Contamination	
Palestinian Territory	48	410	359	395	291	273	
West Bank	35	383	335	368	271	252	
Jenin	2	66	53	62	49	44	
Tubas	0	9	8	8	8	2	
Tulkarm	1	23	20	22	10	12	
Nablus	4	46	39	41	33	31	
Qalqiliya	2	30	27	30	23	23	
Salfit	11	19	19	19	14	16	
Ramallah and Al-Bireh	7	63	55	63	46	45	
Jericho and Al Aghwar	2	7	8	8	4	10	
Jerusalem	4	31	33	32	22	14	
Bethlehem	1	25	17	25	13	24	
Hebron	1	64	56	58	49	31	
Gaza Strip	13	27	24	27	20	21	
North Gaza	2	5	5	5	5	5	
Gaza	2	5	3	5	3	4	
Deir AL-Balah	3	8	7	8	5	6	
Khan Yunis	4	6	6	6	4	5	
Rafah	2	3	3	3	3	1	

Table 36: Distribution of Localities in the Palestinian Territory by the Number of Settlements that is Considered as Wastewater Source near the Locality and Governorate, 2008

Governorate	Total	Number of Settlements				
		+3	2	1	0	
Palestinian Territory	537	24	42	76	395	
West Bank	504	24	42	76	362	
Jenin	80	2	2	6	70	
Tubas	21	1	1	1	18	
Tulkarm	35	0	0	4	31	
Nablus	62	1	5	16	40	
Qalqiliya	34	7	3	3	21	
Salfit	19	1	2	9	7	
Ramallah and Al-Bireh	75	4	15	13	43	
Jericho and Al Aghwar	11	0	0	2	9	
Jerusalem	33	2	5	10	16	
Bethlehem	45	2	3	3	37	
Hebron	89	4	6	9	70	
Gaza Strip	33	0	0	0	33	
North Gaza	5	0	0	0	5	
Gaza	5	0	0	0	5	
Deir AL-Balah	11	0	0	0	11	
Khan Yunis	8	0	0	0	8	
Rafah	4	0	0	0	4	

Table 37: Distribution of Localities in the Palestinian Territory by the Project Stage of Constructing a Sewage Network and Governorate, 2008

Governorate	Total	Project Stage of Constructing a Sewage Network						
		Not Applicable	Implementation Stage	Ready Study	Plan Under Revision	Required But There is No Plan	Not Necessary	
Palestinian Territory	537	0	10	131	15	307	74	
West Bank	504	0	10	117	14	299	64	
Jenin	80	0	0	13	1	64	2	
Tubas	21	0	0	0	0	20	1	
Tulkarm	35	0	0	17	0	13	5	
Nablus	62	0	2	22	1	24	13	
Qalqiliya	34	0	0	7	2	22	3	
Salfit	19	0	0	7	1	9	2	
Ramallah and Al-Bireh	75	0	4	17	3	44	7	
Jericho and Al Aghwar	11	0	0	1	1	9	0	
Jerusalem	33	0	0	4	2	14	13	
Bethlehem	45	0	3	7	0	33	2	
Hebron	89	0	1	22	3	47	16	
Gaza Strip	33	0	0	14	1	8	10	
North Gaza	5	0	0	3	0	0	2	
Gaza	5	0	0	2	0	2	1	
Deir AL-Balah	11	0	0	3	0	1	7	
Khan Yunis	8	0	0	4	1	3	0	
Rafah	4	0	0	2	0	2	0	

Table 38: Distribution of Localities in the Palestinian Territory by Project Stage of Extentioning a Sewage Network and Governorate, 2008

Governorate	Total	Project Stage of Extentioning a Sewage Network						
		Not Applicable	Implementation Stage	Ready Study	Plan Under Revision	Required But There is No Plan	Not Necessary	
Palestinian Territory	537	403	10	51	5	35	33	
West Bank	504	393	9	41	1	31	29	
Jenin	80	77	0	1	0	2	0	
Tubas	21	20	0	0	0	1	0	
Tulkarm	35	19	0	3	0	1	12	
Nablus	62	45	1	6	0	2	8	
Qalqiliya	34	30	0	3	0	1	0	
Salfit	19	16	0	2	0	1	0	
Ramallah and Al-Bireh	75	45	4	10	1	12	3	
Jericho and Al Aghwar	11	10	0	0	0	1	0	
Jerusalem	33	19	1	9	0	3	1	
Bethlehem	45	31	1	5	0	6	2	
Hebron	89	81	2	2	0	1	3	
Gaza Strip	33	10	1	10	4	4	4	
North Gaza	5	0	0	2	1	1	1	
Gaza	5	2	1	1	0	1	0	
Deir AL-Balah	11	2	0	3	3	0	3	
Khan Yunis	8	4	0	2	0	2	0	
Rafah	4	2	0	2	0	0	0	

Table 39: Distribution of Localities in the Palestinian Territory by the Project Stage of Improving Sewage Network and Governorate, 2008

Governorate	Total	Project Stage of Improving Sewage Network						
		Not Applicable	Implementation Stage	Ready Study	Plan Under Revision	Required But There is No Plan	Not Necessary	
Palestinian Territory	537	405	6	44	2	42	38	
West Bank	504	393	6	34	1	37	33	
Jenin	80	76	0	3	0	1	0	
Tubas	21	20	0	0	0	1	0	
Tulkarm	35	16	1	3	0	1	14	
Nablus	62	45	0	2	0	6	9	
Qalqiliya	34	31	0	2	0	1	0	
Salfit	19	15	0	3	0	1	0	
Ramallah and Al-Bireh	75	46	3	9	1	13	3	
Jericho and Al Aghwar	11	10	0	0	0	1	0	
Jerusalem	33	19	1	8	0	3	2	
Bethlehem	45	33	0	3	0	7	2	
Hebron	89	82	1	1	0	2	3	
Gaza Strip	33	12	0	10	1	5	5	
North Gaza	5	0	0	2	1	1	1	
Gaza	5	2	0	0	0	2	1	
Deir AL-Balah	11	2	0	6	0	0	3	
Khan Yunis	8	6	0	0	0	2	0	
Rafah	4	2	0	2	0	0	0	

Table 40: Distribution of Localities in the Palestinian Territory by the Project Stage of Constructing Treatment Plant and Governorate, 2008

Governorate	Total	Project Sage of Constructing Treatment Plant						
		Not Applicable	Implementation Stage	Ready Study	Plan Under Revision	Required But There is No Plan	Not Necessary	
Palestinian Territory	537	256	6	45	9	136	85	
West Bank	504	250	5	36	8	129	76	
Jenin	80	43	1	5	0	23	8	
Tubas	21	17	0	0	0	3	1	
Tulkarm	35	18	0	1	0	2	14	
Nablus	62	14	0	8	1	26	13	
Qalqiliya	34	30	0	1	1	2	0	
Salfit	19	16	2	0	0	1	0	
Ramallah and Al-Bireh	75	19	2	7	4	39	4	
Jericho and Al Aghwar	11	9	0	1	0	0	1	
Jerusalem	33	13	0	4	1	8	7	
Bethlehem	45	28	0	2	0	10	5	
Hebron	89	43	0	7	1	15	23	
Gaza Strip	33	6	1	9	1	7	9	
North Gaza	5	0	1	1	1	2	0	
Gaza	5	0	0	2	0	0	3	
Deir AL-Balah	11	2	0	3	0	1	5	
Khan Yunis	8	4	0	1	0	2	1	
Rafah	4	0	0	2	0	2	0	

Table 41: Distribution of Localities in the Palestinian Territory by the Project Stage of Covering Sewage Open Channels and Governorate, 2008

Governorate	Total	Project Stage of Covering Sewage Open Channels						
		Not Applicable	Implementation Stage	Ready Study	Plan Under Revision	Required But There is No Plan	Not Necessary	
Palestinian Territory	537	426	5	11	2	34	59	
West Bank	504	413	3	9	2	31	46	
Jenin	80	64	0	1	0	3	12	
Tubas	21	19	0	0	0	2	0	
Tulkarm	35	30	0	0	0	0	5	
Nablus	62	49	1	2	0	3	7	
Qalqiliya	34	33	0	0	0	1	0	
Salfit	19	17	0	0	1	1	0	
Ramallah and Al-Bireh	75	52	2	5	1	12	3	
Jericho and Al Aghwar	11	10	0	0	0	0	1	
Jerusalem	33	27	0	0	0	1	5	
Bethlehem	45	35	0	0	0	5	5	
Hebron	89	77	0	1	0	3	8	
Gaza Strip	33	13	2	2	0	3	13	
North Gaza	5	3	0	0	0	0	2	
Gaza	5	3	0	0	0	0	2	
Deir AL-Balah	11	5	0	0	0	0	6	
Khan Yunis	8	1	2	2	0	2	1	
Rafah	4	1	0	0	0	1	2	

2008

:42

Table 42: Distribution of Localities in the Palestinian Territory by the Doer of Solid Waste Collection and Governorate, 2008

Governorate	Total	There is No Solid Waste Collection Service	Doer of Waste Collection				
			Others	UNRWA	Private Contractor	Local Authority	
Palestinian Territory	537	99	58	27	22	331	
West Bank	504	99	55	19	21	310	
Jenin	80	12	35	1	1	31	
Tubas	21	13	0	1	0	7	
Tulkarm	35	3	6	2	6	18	
Nablus	62	6	1	3	8	44	
Qalqiliya	34	3	0	0	0	31	
Salfit	19	2	0	0	0	17	
Ramallah and Al-Bireh	75	7	2	3	4	59	
Jericho and Al Agwar	11	1	4	2	0	4	
Jerusalem	33	2	1	2	2	26	
Bethlehem	45	7	1	3	0	34	
Hebron	89	43	5	2	0	39	
Gaza Strip	33	0	3	8	1	21	
North Gaza	5	0	1	1	0	3	
Gaza	5	0	0	1	0	4	
Deir AL-Balah	11	0	2	4	0	5	
Khan Yunis	8	0	0	1	0	7	
Rafah	4	0	0	1	1	2	

2008

:43

Table 43: Distribution of Localities in the Palestinian Territory by the Periodicity of Solid Waste Collection and Governorate, 2008

Governorate	Total	There is No Solid Waste Collection Service	Periodicity of Solid Waste Collection			
			Per Two Weeks or More	More Than Once a Week	Once a Week	Daily
Palestinian Territory	537	99	5	254	54	125
West Bank	504	99	5	243	53	104
Jenin	80	12	1	43	7	17
Tubas	21	13	0	5	2	1
Tulkarm	35	3	0	21	0	11
Nablus	62	6	0	38	5	13
Qalqiliya	34	3	0	28	0	3
Salfit	19	2	0	14	1	2
Ramallah and Al-Bireh	75	7	1	46	8	13
Jericho and Al Agwar	11	1	0	8	0	2
Jerusalem	33	2	0	14	6	11
Bethlehem	45	7	1	15	10	12
Hebron	89	43	2	11	14	19
Gaza Strip	33	0	0	11	1	21
North Gaza	5	0	0	1	1	3
Gaza	5	0	0	2	0	3
Deir AL-Balah	11	0	0	2	0	9
Khan Yunis	8	0	0	4	0	4
Rafah	4	0	0	2	0	2

2008

:44

Table 44: Distribution of Localities in the Palestinian Territory by the Mean of Solid Waste Collection and Governorate, 2008

Governorate	Total	There is No Solid Waste Collection Service	Mean of Solid Waste Collection		
			Others	Tractor	Special Garbage Vehicle
Palestinian Territory	537	99	17	69	352
West Bank	504	99	17	68	320
Jenin	80	12	7	15	46
Tubas	21	13	0	0	8
Tulkarm	35	3	1	11	20
Nablus	62	6	2	21	33
Qalqiliya	34	3	0	0	31
Salfit	19	2	1	4	12
Ramallah and Al-Bireh	75	7	2	14	52
Jericho and Al Agwar	11	1	0	1	9
Jerusalem	33	2	1	1	29
Bethlehem	45	7	2	0	36
Hebron	89	43	1	1	44
Gaza Strip	33	0	0	1	32
North Gaza	5	0	0	0	5
Gaza	5	0	0	0	5
Deir AL-Balah	11	0	0	0	11
Khan Yunis	8	0	0	0	8
Rafah	4	0	0	1	3

2008

:45

Table 45: Distribution of Localities in the Palestinian Territory by Method, Percentage of Solid Waste Disposal and Governorate, 2008

Governorate	Total	There is No Solid Waste Collection Service	Others		Buried		Burned		
			% 50 More Than 50%	%50 LessThan or Eequal to 50 %	% 50 More Than 50%	%50 LessThan or Eequal to 50 %	% 50 More Than 50%	%50 LessThan or Eequal to 50 %	
Palestinian Territory	537	99	60	25	135	14	177	27	
West Bank	504	99	57	22	129	12	158	27	
Jenin	80	12	3	2	62	0	1	0	
Tubas	21	13	5	3	0	0	0	0	
Tulkarm	35	3	2	1	4	0	25	0	
Nablus	62	6	5	9	3	2	37	0	
Qalqiliya	34	3	3	0	2	2	22	2	
Salfit	19	2	5	1	0	0	11	0	
Ramallah and Al-Bireh	75	7	14	2	4	1	45	2	
Jericho and Al Agwar	11	1	1	0	8	0	0	1	
Jerusalem	33	2	6	0	7	0	4	14	
Bethlehem	45	7	13	0	19	0	6	0	
Hebron	89	43	0	4	20	7	7	8	
Gaza Strip	33	0	3	3	6	2	19	0	
North Gaza	5	0	0	1	0	1	3	0	
Gaza	5	0	1	0	1	0	3	0	
Deir AL-Balah	11	0	1	1	2	0	7	0	
Khan Yunis	8	0	0	1	2	1	4	0	
Rafah	4	0	1	0	1	0	2	0	

Table 46: Distribution of Localities in the Palestinian Territory by the Periodicity of Burning or Buried of the Solid Waste and Governorate, 2008

Governorate	Total	There is No Solid Waste Collection Service	Others					Buried					Burned				
			5	4	3	2	1	5	4	3	2	1	5	4	3	2	1
Palestinian Territory	537	99	9	7	14	22	33	13	7	3	8	118	12	7	39	43	103
West Bank	504	99	9	7	13	22	28	12	7	3	5	114	12	7	36	41	89
Jenin	80	12	0	0	0	3	2	0	0	0	0	62	1	0	0	0	0
Tubas	21	13	0	1	1	4	2	0	0	0	0	0	0	0	0	0	0
Tulkarm	35	3	0	0	0	0	3	1	0	0	0	3	1	0	1	3	20
Nablus	62	6	1	2	1	2	8	2	0	1	0	2	6	3	8	9	11
Qalqiliya	34	3	2	0	1	0	0	2	0	0	1	1	0	0	0	2	22
Salfit	19	2	0	0	2	2	2	0	0	0	0	0	0	1	3	4	3
Ramallah and Al-Bireh	75	7	5	2	3	3	3	3	0	0	0	2	1	1	17	11	17
Jericho and Al Agwar	11	1	0	0	1	0	0	0	3	0	0	5	0	0	1	0	0
Jerusalem	33	2	0	0	1	0	5	0	0	0	0	7	0	1	5	9	3
Bethlehem	45	7	1	1	2	6	3	0	2	2	2	13	1	0	1	0	4
Hebron	89	43	0	1	1	2	0	4	2	0	2	19	2	1	0	3	9
Gaza Strip	33	0	0	0	1	0	5	1	0	0	3	4	0	0	3	2	14
North Gaza	5	0	0	0	0	0	1	0	0	0	1	0	0	0	1	0	2
Gaza	5	0	0	0	1	0	0	0	0	0	0	1	0	0	1	0	2
Deir AL-Balah	11	0	0	0	0	0	2	0	0	0	2	0	0	0	0	1	6
Khan Yunis	8	0	0	0	0	0	1	1	0	0	0	2	0	0	1	1	2
Rafah	4	0	0	0	0	0	1	0	0	0	0	1	0	0	0	0	2

1=Daily 2= Once a week 3= More than once a week =3 =2 =1
4= Once per tow weeks 5= Monthly =5 =4

2008

:47

Table 47: Distribution of Dumping Sites in the Palestinian Territory by Ownership of the Dumping Site and Governorate, 2008

Governorate	Ownership of the Dumping Site				Number of Dumping Sites
	Others	Rented	Governmental	Local Authority	
Palestinian Territory	33	27	7	55	122
West Bank	33	27	7	52	119
Jenin	1	0	0	1	2
Tubas	0	1	0	0	1
Tulkarm	3	1	0	4	8
Nablus	5	1	2	18	26
Qalqiliya	0	2	0	3	5
Salfit	1	4	0	6	11
Ramallah and Al-Bireh	15	6	4	13	38
Jericho and Al Agwar	1	0	0	1	2
Jerusalem	4	3	0	0	7
Bethlehem	1	3	0	1	5
Hebron	2	6	1	5	14
Gaza Strip	0	0	0	3	3
North Gaza	0	0	0	0	0
Gaza	0	0	0	1	1
Deir AL-Balah	0	0	0	1	1
Khan Yunis	0	0	0	0	0
Rafah	0	0	0	1	1

2008

:48

Table 48: Distribution of Dumping Sites in the Palestinian Territory by the Dumping Sites Establishment Year and Governorate, 2008

Governorate	Dumping Site Establishment Year						Number of Dumping Sites
	Not Stated	1999 After 1999	1998-1994	1993-1987	1986-1968	1968 Before 1968	
Palestinian Territory	3	65	35	7	11	1	122
West Bank	3	65	33	7	10	1	119
Jenin	0	1	0	0	1	0	2
Tubas	0	1	0	0	0	0	1
Tulkarm	0	3	3	0	2	0	8
Nablus	1	13	9	3	0	0	26
Qalqiliya	0	4	0	1	0	0	5
Salfit	0	8	2	0	1	0	11
Ramallah and Al-Bireh	0	22	8	3	4	1	38
Jericho and Al Agwar	0	1	1	0	0	0	2
Jerusalem	2	1	3	0	1	0	7
Bethlehem	0	4	1	0	0	0	5
Hebron	0	7	6	0	1	0	14
Gaza Strip	0	0	2	0	1	0	3
North Gaza	0	0	0	0	0	0	0
Gaza	0	0	0	0	1	0	1
Deir AL-Balah	0	0	1	0	0	0	1
Khan Yunis	0	0	0	0	0	0	0
Rafah	0	0	1	0	0	0	1

2008

:49

Table 49: Distribution of Dumping Sites in the Palestinian Territory by the Number of Localities that Use the Dumping Site and Governorate, 2008

Governorate	Number of Localities that Use the Dumping Site				Number of Dumping Sites
	11 More Than 11	10-3	2	1	
Palestinian Territory	10	31	14	67	122
West Bank	9	29	14	67	119
Jenin	1	0	0	1	2
Tubas	0	1	0	0	1
Tulkarm	1	2	1	4	8
Nablus	0	7	0	19	26
Qalqiliya	1	1	2	1	5
Salfit	0	1	2	8	11
Ramallah and Al-Bireh	1	9	7	21	38
Jericho and Al Agwar	0	2	0	0	2
Jerusalem	2	0	2	3	7
Bethlehem	0	3	0	2	5
Hebron	3	3	0	8	14
Gaza Strip	1	2	0	0	3
North Gaza	0	0	0	0	0
Gaza	0	1	0	0	1
Deir AL-Balah	1	0	0	0	1
Khan Yunis	0	0	0	0	0
Rafah	0	1	0	0	1

2008

:50

Table 50: Localities in the Palestinian Territory by Health and Environmental Effects of the Dumping Site on the Neighboring Residential Areas and Governorate, 2008

Governorate	There is No Solid Waste Collection Service	Health and Environmental Effects			
		Others	Source of Insects	Source of Epidemic	Source of Bad Smells
Palestinian Territory	99	44	248	223	245
West Bank	99	32	220	197	215
Jenin	12	0	2	1	3
Tubas	13	0	2	1	1
Tulkarm	3	3	19	17	17
Nablus	6	3	26	19	23
Qalqiliya	3	1	18	19	19
Salfit	2	2	15	14	16
Ramallah and Al-Bireh	7	14	53	49	51
Jericho and Al Agwar	1	0	3	3	3
Jerusalem	2	5	29	27	28
Bethlehem	7	1	18	14	19
Hebron	43	3	35	33	35
Gaza Strip	0	12	28	26	30
North Gaza	0	2	4	4	4
Gaza	0	3	5	5	5
Deir AL-Balah	0	3	7	7	9
Khan Yunis	0	2	8	6	8
Rafah	0	2	4	4	4

Table 51: Distribution of Antiquated Places in the Localities in the Palestinian Territory by Ownership and Governorate, 2008

Governorate	Ownership					Number of Antiquated Places
	Not Stated	No Man's Land	Endowment	Governmental	Private	
Palestinian Territory	3	83	110	84	278	558
West Bank	3	83	94	67	268	515
Jenin	0	9	12	8	39	68
Tubas	0	5	0	3	3	11
Tulkarm	0	4	2	0	24	30
Nablus	0	8	12	17	32	69
Qalqiliya	0	6	10	0	10	26
Salfit	0	13	3	3	32	51
Ramallah and Al-Bireh	0	6	23	19	46	94
Jericho and Al Agwar	1	1	2	1	11	16
Jerusalem	2	14	4	7	27	54
Bethlehem	0	9	15	3	10	37
Hebron	0	8	11	6	34	59
Gaza Strip	0	0	16	17	10	43
North Gaza	0	0	5	3	5	13
Gaza	0	0	11	10	1	22
Deir AL-Balah	0	0	0	2	2	4
Khan Yunis	0	0	0	2	2	4
Rafah	0	0	0	0	0	0

Table 52: Distribution of Antiquated Places in the Localities in the Palestinian Territory by Selected Variables and Governorate, 2008

Governorate	Visited by Tourists		The Site Appropriate for Tourism		Number of Antiquated Places
	No	Yes	No	Yes	
Palestinian Territory	316	242	296	262	558
West Bank	292	223	278	237	515
Jenin	33	35	33	35	68
Tubas	10	1	10	1	11
Tulkarm	14	16	24	6	30
Nablus	42	27	44	25	69
Qalqiliya	25	1	16	10	26
Salfit	21	30	28	23	51
Ramallah and Al-Bireh	55	39	48	46	94
Jericho and Al Agwar	5	11	5	11	16
Jerusalem	37	17	11	43	54
Bethlehem	16	21	14	23	37
Hebron	34	25	45	14	59
Gaza Strip	24	19	18	25	43
North Gaza	6	7	6	7	13
Gaza	13	9	6	16	22
Deir AL-Balah	4	0	4	0	4
Khan Yunis	1	3	2	2	4
Rafah	0	0	0	0	0

Table 53: Localities Having Schools in the Palestinian Territory by Number of Schools and Selected Variables and Governorate for the Scholastic Year 2007/2008

Governorate	Schools Having a Few Non-Classroom Halls			Number of Administrators		Number of Teachers		Number of Students		Number of Schools	Number of Localities Having Schools
	Workshops	Computer Laboratory	Science Laboratory	Female	Male	Female	Male	Female	Male		
Palestinian Territory	174	1,578	1,430	3,290	3,236	24,138	19,440	549,198	548,759	2,430	482
West Bank	110	1,070	994	2,556	2,403	15,805	11,657	328,414	325,803	1,809	451
Jenin	11	136	101	269	320	1,729	1,622	38,004	38,825	223	63
Tubas	4	22	22	58	56	301	253	7,635	7,727	39	11
Tulkarm	5	70	74	197	188	1,048	873	23,781	23,991	138	36
Nablus	16	142	142	363	323	2,033	1,656	47,712	47,709	252	58
Qalqiliya	3	55	57	96	121	604	523	13,448	14,035	75	25
Salfit	1	39	38	90	99	432	364	8,965	9,264	60	19
Ramallah and Al-Bireh	20	157	158	366	308	2,099	1,393	39,416	39,005	215	71
Jericho and Al Agwar	3	18	14	27	24	303	156	5,405	5,289	26	10
Jerusalem	15	125	109	324	190	2,230	849	32,694	29,580	194	33
Bethlehem	7	74	72	169	179	1,394	862	25,231	25,020	144	44
Hebron	25	232	207	597	595	3,632	3,106	86,123	85,358	443	81
Gaza Strip	64	508	436	734	833	8,333	7,783	220,784	222,956	621	31
North Gaza	10	94	78	134	154	1,548	1,441	41,598	41,005	109	6
Gaza	19	171	166	299	308	3,023	2,666	78,803	80,499	232	4
Deir AL-Balah	12	72	52	75	123	1,239	1,140	32,369	32,769	80	6
Khan Yunis	14	101	89	139	150	1,525	1,550	41,610	42,158	125	10
Rafah	9	70	51	87	98	998	986	26,404	26,525	75	5

Note: Jerusalem Governorate does not include Municipality and Culture Committee Schools

Table 54: Localities in the Palestinian Territory Have Unused Arable Land, by Reasons and Governorate During the Period 01/10/2006-30/09/2007

Governorate	Reasons of Uncultivation						Localities with Uncultivated Arable Land
	Others	Water	Financial	Economic Feasibility	Employment	Confiscated Land	
Palestinian Territory	119	321	333	307	208	238	397
West Bank	110	307	318	293	192	220	377
Jenin	9	29	28	23	23	23	44
Tubas	3	6	6	10	11	11	16
Tulkarm	10	17	16	7	6	8	22
Nablus	6	46	47	47	3	30	52
Qalqiliya	5	22	30	25	19	15	31
Salfit	8	11	15	17	17	13	18
Ramallah and Al-Bireh	41	55	59	56	51	52	59
Jericho and Al-Aghwar	1	3	5	6	7	7	8
Jerusalem	8	21	12	12	15	16	24
Bethlehem	14	34	38	33	21	18	39
Hebron	5	63	62	57	19	27	64
Gaza Strip	9	14	15	14	16	18	20
North Gaza	2	3	4	2	3	4	4
Gaza	2	2	2	2	2	3	2
Deir AL-Balah	2	4	4	3	3	3	5
Khan Yunis	1	3	3	5	6	6	7
Rafah	2	2	2	2	2	2	2

2007/09/30-2006/10/01

:55

Table 55: Distribution of Localities in the Palestinian Territory by Agricultural Roads Status and Governorate During the Period 01/10/2006-30/09/2007

Governorate	Total	Distribution of Communities by Status of Agricultural Roads			
		There is No Agricultural Roads	For Animal Use Only	For Agricultural Tractors Use	For Vehicle Use
Palestinian Territory	537	35	79	346	77
West Bank	504	29	77	327	71
Jenin	80	3	7	62	8
Tubas	21	1	0	20	0
Tulkarm	35	1	2	20	12
Nablus	62	4	8	42	8
Qalqiliya	34	0	3	22	9
Salfit	19	0	2	16	1
Ramallah and Al-Bireh	75	7	13	41	14
Jericho and Al-Aghwar	11	1	0	4	6
Jerusalem	33	4	8	21	0
Bethlehem	45	6	5	27	7
Hebron	89	2	29	52	6
Gaza Strip	33	6	2	19	6
North Gaza	5	1	0	3	1
Gaza	5	1	0	2	2
Deir AL-Balah	11	3	0	7	1
Khan Yunis	8	1	1	5	1
Rafah	4	0	1	2	1

2007/09/30-2006/10/01

: 56

Table 56: Localities in the Palestinian Territory by Number of Springs, Percent of Use and Governorate During the Period 01/10/2006-30/09/2007

Governorate	Percent of Use (%)				Springs		
	Not Used	Other	Irrigation	Drinking	Number of Springs	No. of Localities	
Palestinian Territory	9.6	22.1	42.5	25.8	383	152	
West Bank	9.6	22.1	42.5	25.8	383	152	
Jenin	18.1	11.2	40.5	30.2	34	12	
Tubas	0.0	6.8	87.3	5.9	11	3	
Tulkarm	11.2	18.8	21.1	48.9	0	0	
Nablus	50.0	0.0	40.0	10.0	78	37	
Qalqiliya	12.8	60.3	20.0	6.9	3	2	
Salfit	10.3	34.2	39.6	15.9	32	11	
Ramallah and Al-Bireh	0.0	0.0	87.0	13.0	95	37	
Jericho and Al Aghwar	13.8	19.5	31.7	35.0	7	4	
Jerusalem	0.0	6.9	92.7	0.4	26	11	
Bethlehem	4.4	9.1	55.6	30.9	29	7	
Hebron	9.6	22.1	42.5	25.8	68	28	
Gaza Strip	-	-	-	-	-	-	

(-): Nil

:(-)

2007/09/30-2006/10/01

:57

Table 57: Localities in the Palestinian Territory by Kind of Agriculture Plant Obstacles and Governorate During the Period 01/10/2006-30/09/2007

Governorate	Kind of Obstacles							
	Land Validity	Water	Closed and Military Area	Economic Feasibility	Agricultural Extension	Marketing	Employment	Finance
Palestinian Territory	124	369	143	252	231	320	73	396
West Bank	120	352	139	233	219	296	70	373
Jenin	4	64	9	38	33	54	10	56
Tubas	4	18	10	11	15	8	0	13
Tulkarm	7	19	10	13	15	31	6	28
Nablus	16	50	26	31	24	35	14	42
Qalqiliya	7	17	9	12	18	27	7	24
Salfit	7	9	10	8	9	2	0	16
Ramallah and Al-Bireh	19	43	12	35	31	42	10	50
Jericho and Al Aghwar	1	6	5	4	2	8	2	8
Jerusalem	10	23	19	12	12	18	5	20
Bethlehem	13	23	13	17	21	20	4	34
Hebron	32	80	16	52	39	51	12	82
Gaza Strip	4	17	4	19	12	24	3	23
North Gaza	1	3	1	2	1	3	1	3
Gaza	1	2	0	2	2	4	0	4
Deir AL-Balah	2	4	2	6	4	7	2	6
Khan Yunis	0	5	1	7	4	7	0	7
Rafah	0	3	0	2	1	3	0	3

2007/09/30-2006/10/01

:58

Table 58: Localities in the Palestinian Territory by Kind of Agriculture Livestock Obstacles and Governorate During the Period 01/10/2006-30/09/2007

Governorate	Kind of Obstacles							
	Land Validity	Water	Closed and Military Area	Economic Feasibility	Agricultural Extension	Marketing	Employment	Finance
Palestinian Territory	9	225	93	209	64	241	55	356
West Bank	9	219	93	199	61	225	52	334
Jenin	1	42	13	32	9	43	9	44
Tubas	0	16	6	15	0	6	0	14
Tulkarm	0	7	8	12	4	21	4	23
Nablus	2	28	8	29	11	38	5	43
Qalqiliya	1	7	8	13	1	17	3	24
Salfit	1	3	5	9	10	1	0	13
Ramallah and Al-Bireh	2	27	13	21	6	28	11	36
Jericho and Al Aghwar	0	3	0	4	0	7	1	6
Jerusalem	0	8	12	5	5	11	5	17
Bethlehem	2	12	11	14	4	11	4	36
Hebron	0	66	9	45	11	42	10	78
Gaza Strip	0	6	0	10	3	16	3	22
North Gaza	0	2	0	2	0	2	1	3
Gaza	0	1	0	1	1	2	0	5
Deir AL-Balah	0	2	0	3	2	4	0	6
Khan Yunis	0	0	0	3	0	5	2	5
Rafah	0	1	0	1	0	3	0	3

Table 59: Localities in the Palestinian Territory by Obstacles Facing Mining, Quarrying Sector and Governorate, 2008

Governorate	Obstacles										
	Others	Difficulties in Export	Smuggling	Weakness of Electric Current	Military Closure	Lack of Water	High Taxes	Shortage in Raw Materials	Marketing Problems	Lack in Labor-Force	Lack of Finance
Palestinian Territory	32	68	3	45	65	53	31	50	63	19	68
West Bank	32	68	3	45	65	53	31	50	63	19	68
Jenin	5	7	0	12	6	6	2	6	11	2	10
Tubas	1	1	0	0	0	1	0	0	1	0	1
Tulkarm	1	3	0	1	1	1	0	3	2	1	2
Nablus	9	11	1	11	14	12	4	2	9	3	6
Qalqiliya	1	3	0	0	2	0	1	3	3	0	2
Salfit	6	3	0	3	6	6	3	8	4	0	9
Ramallah and Al-Bireh	6	13	0	8	11	10	5	13	5	5	17
Jericho and Al Aghwar	0	3	0	0	1	1	0	3	3	0	3
Jerusalem	1	5	0	1	6	1	0	1	5	2	3
Bethlehem	0	11	2	3	11	6	10	7	14	4	5
Hebron	2	8	0	6	7	9	6	4	6	2	10
Gaza Strip	0	0	0	0	0	0	0	0	0	0	0
North Gaza	0	0	0	0	0	0	0	0	0	0	0
Gaza	0	0	0	0	0	0	0	0	0	0	0
Deir AL-Balah	0	0	0	0	0	0	0	0	0	0	0
Khan Yunis	0	0	0	0	0	0	0	0	0	0	0
Rafah	0	0	0	0	0	0	0	0	0	0	0

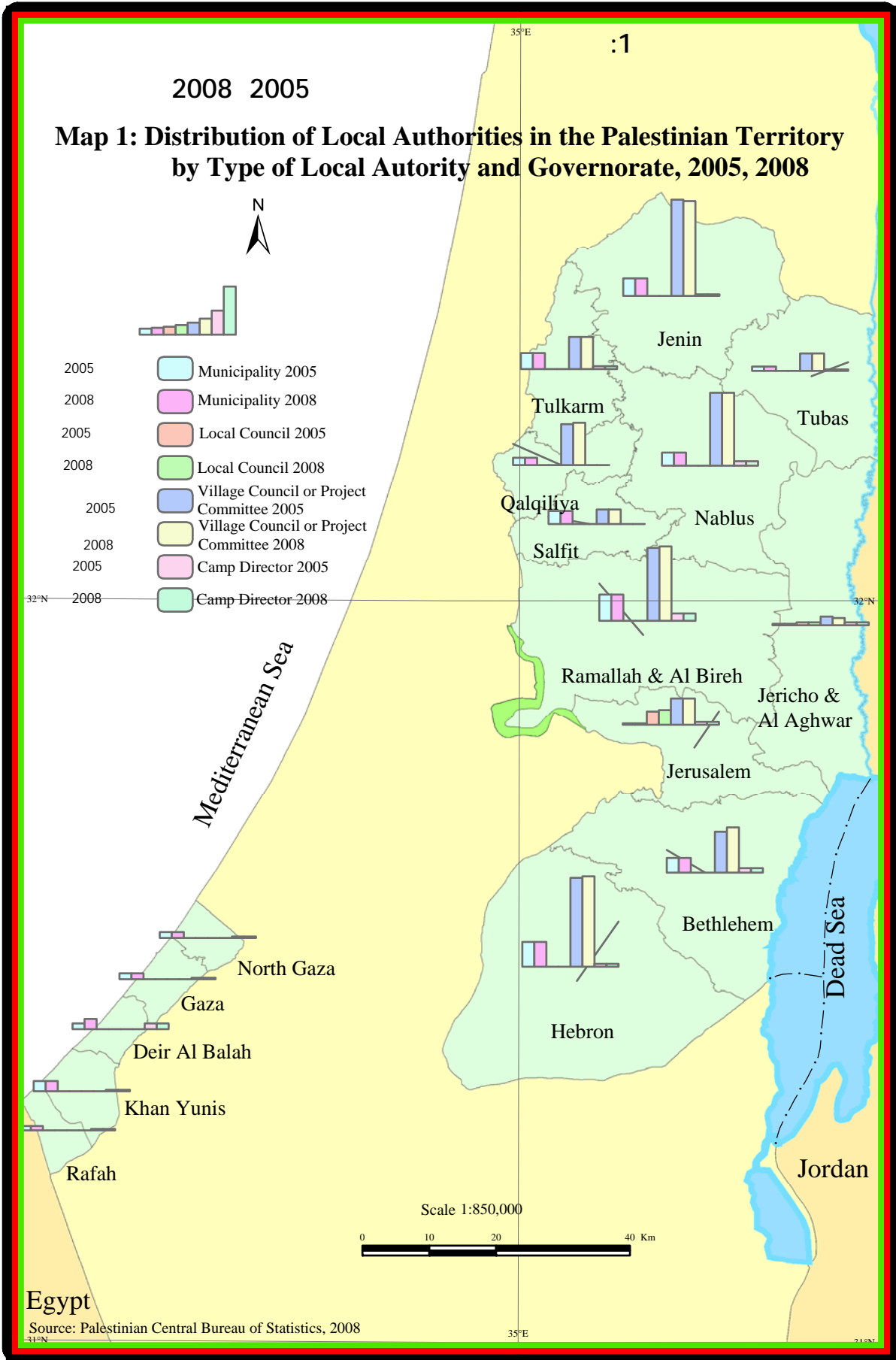
2008

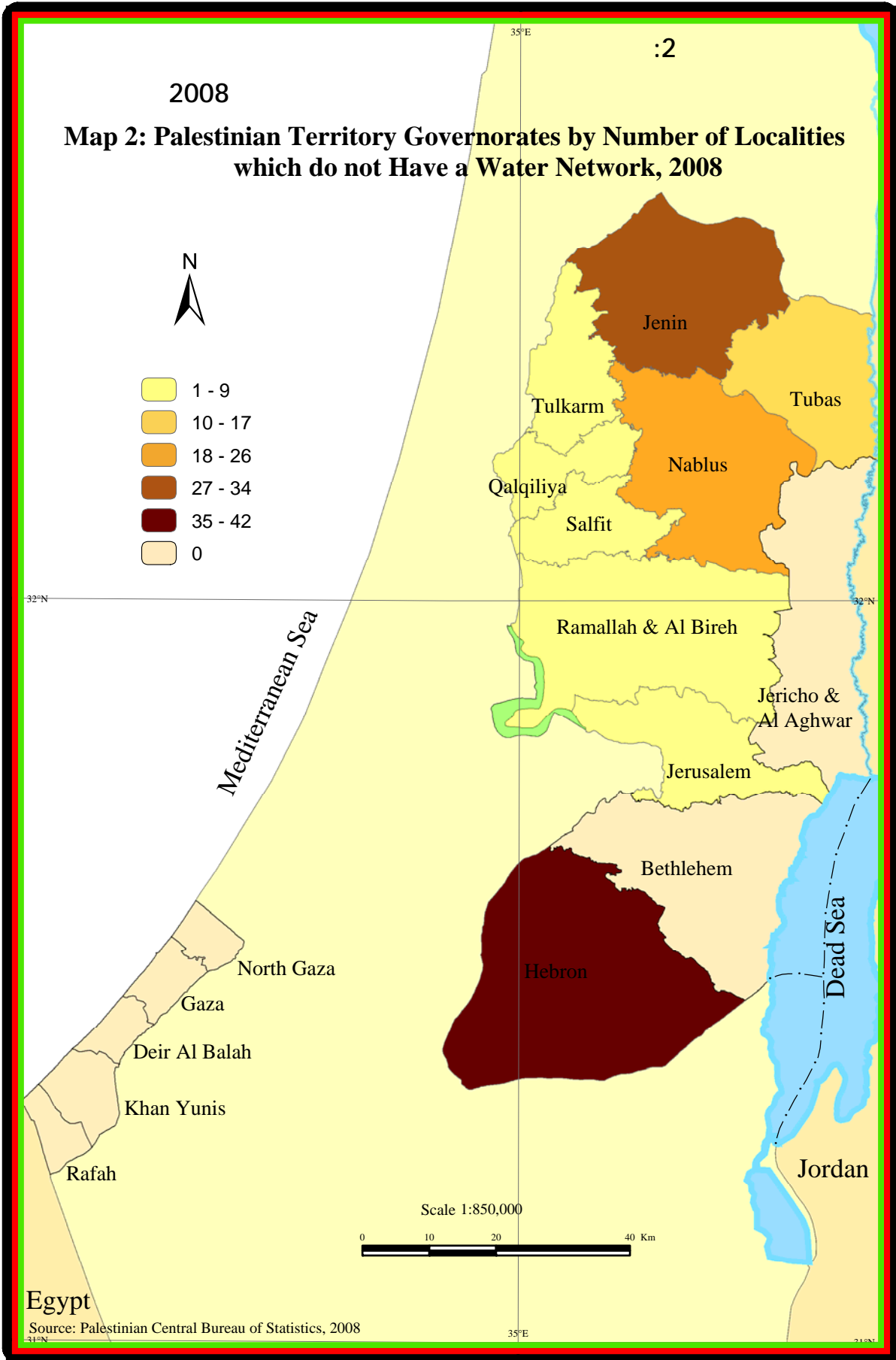
:60

Table 60: Localities in the Palestinian Territory by Obstacles Facing Manufacturing Industry Sector and Governorate, 2008

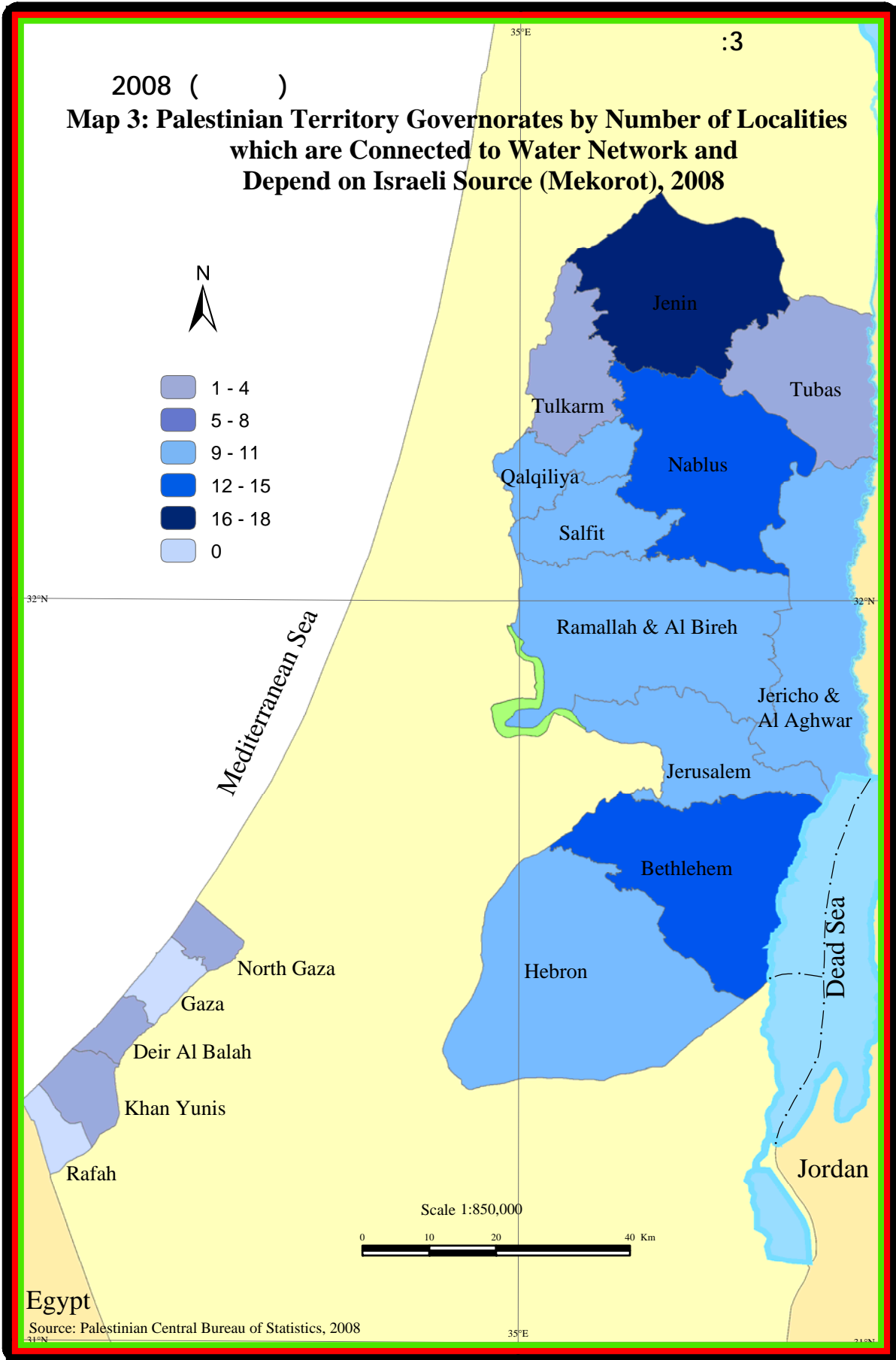
Governorate	Obstacles										
	Others	Difficulties in Export	Smuggling	Weakness of Electric Current	Military Closure	Lack of Water	High Taxes	Shortage in Raw Materials	Marketing Problems	Lack in Labor-Force	Lack of Finance
Palestinian Territory	121	79	9	55	98	44	42	74	120	24	124
West Bank	121	72	9	54	90	43	38	67	114	23	117
Jenin	21	8	0	11	8	6	4	13	18	2	18
Tubas	6	0	0	1	1	3	2	6	6	0	5
Tulkarm	16	9	0	3	9	1	8	7	12	4	13
Nablus	21	17	2	12	22	7	6	8	23	7	20
Qalqiliya	8	7	3	5	10	2	3	6	11	3	10
Salfit	9	3	1	4	8	5	3	8	8	1	10
Ramallah and Al-Bireh	15	13	1	8	9	6	6	5	13	4	12
Jericho and Al Aghwar	2	2	0	0	2	0	0	3	2	0	4
Jerusalem	4	2	1	0	6	1	2	1	4	0	3
Bethlehem	7	3	0	0	2	3	2	3	6	1	6
Hebron	12	8	1	10	13	9	2	7	11	1	16
Gaza Strip	0	7	0	1	8	1	4	7	6	1	7
North Gaza	0	3	0	0	3	0	1	3	1	0	3
Gaza	0	1	0	0	1	1	0	1	0	0	1
Deir AL-Balah	0	1	0	1	2	0	1	3	3	1	3
Khan Yunis	0	2	0	0	2	0	2	0	2	0	0
Rafah	0	0	0	0	0	0	0	0	0	0	0

Maps



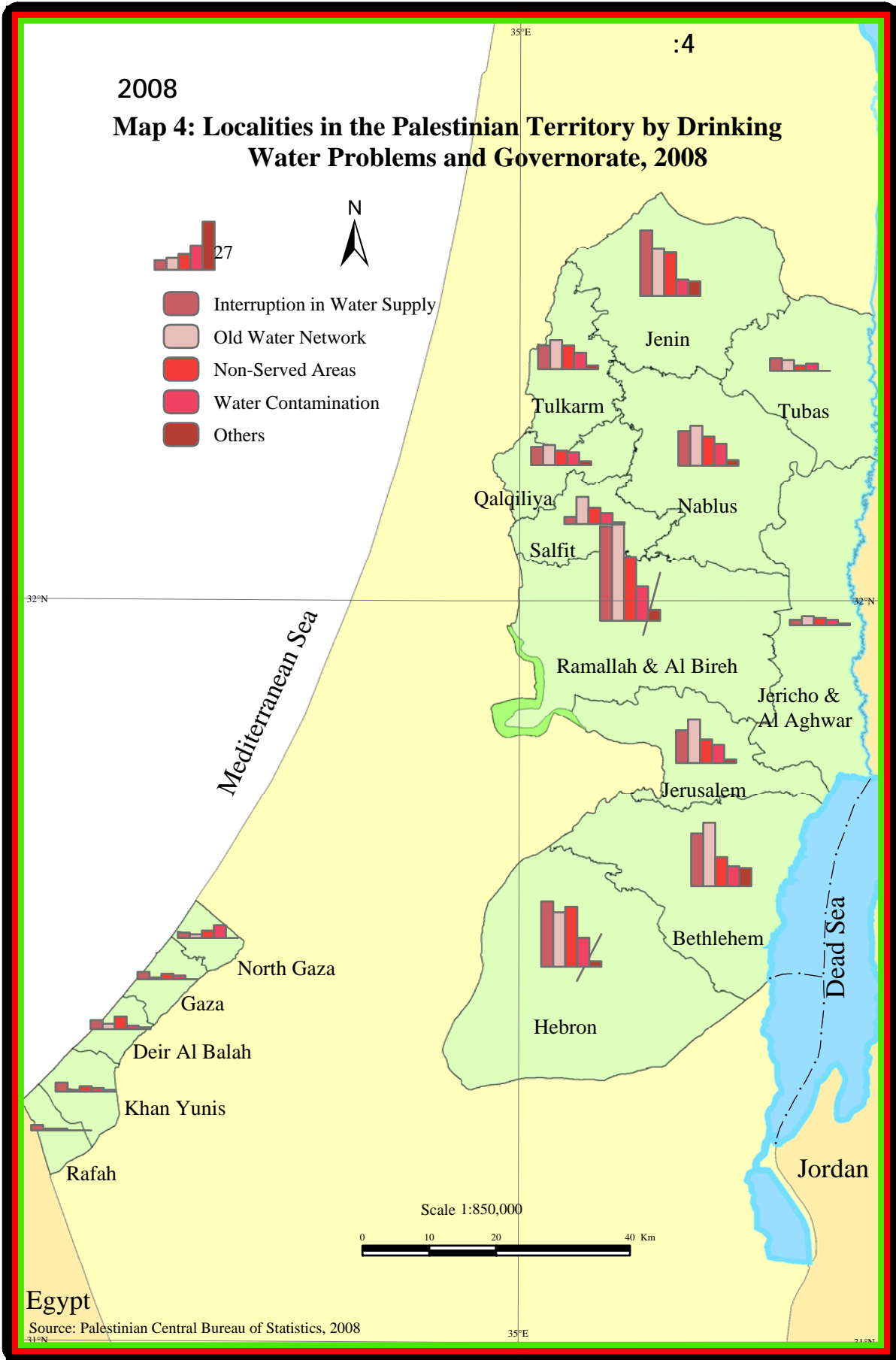


2008 ()
Map 3: Palestinian Territory Governorates by Number of Localities which are Connected to Water Network and Depend on Israeli Source (Mekorot), 2008



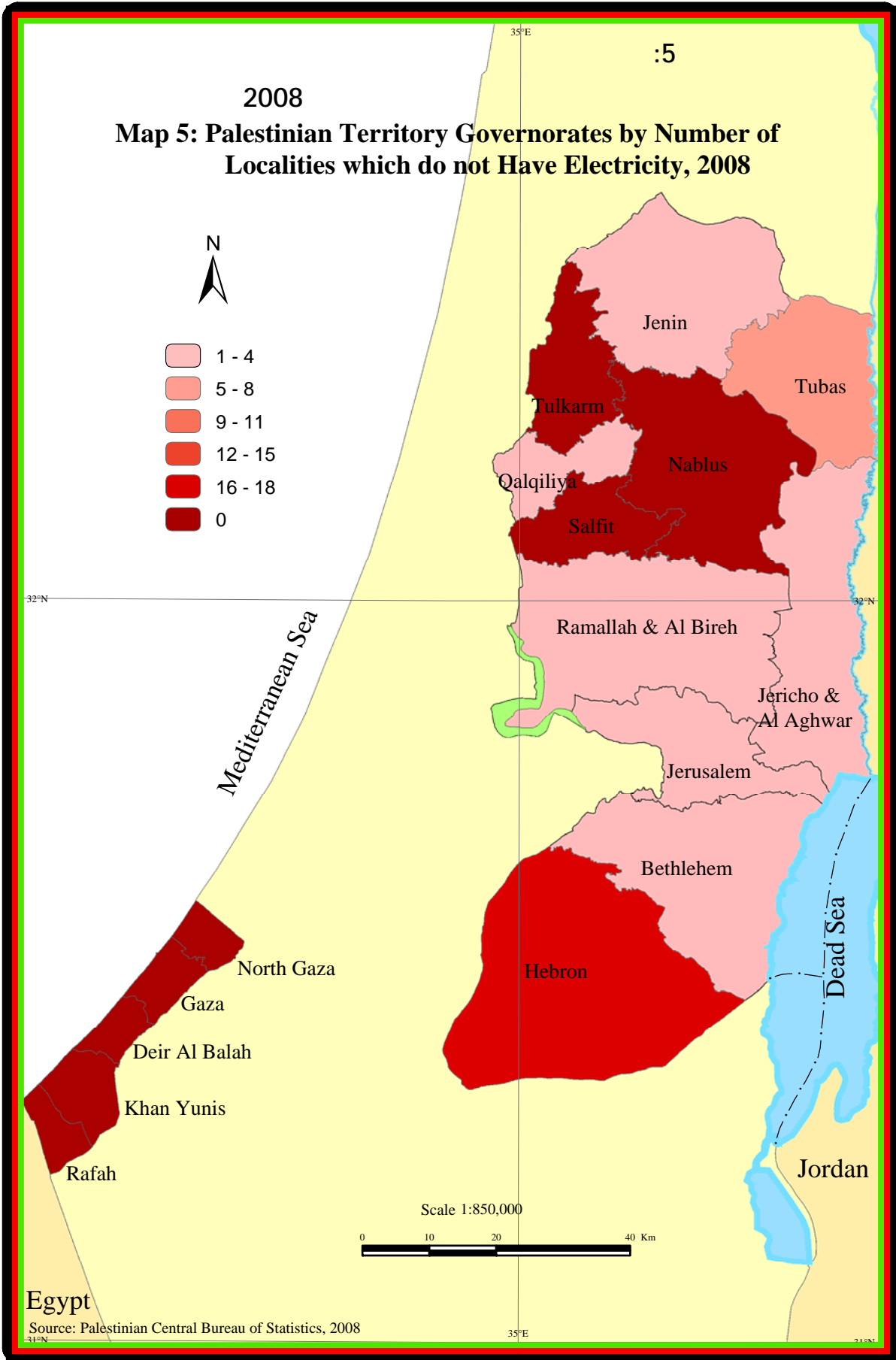
Egypt
 Source: Palestinian Central Bureau of Statistics, 2008

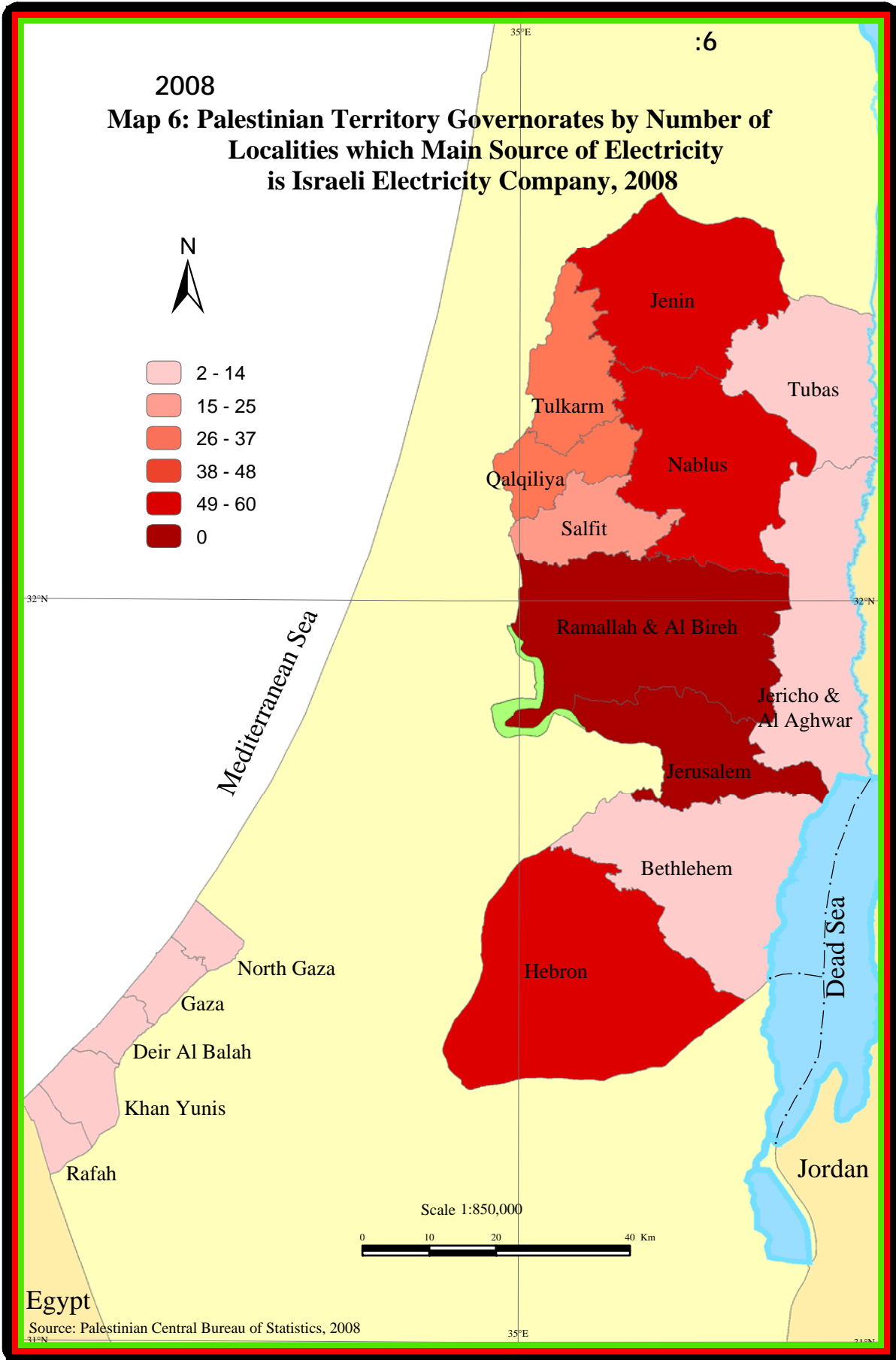
2008
Map 4: Localities in the Palestinian Territory by Drinking Water Problems and Governorate, 2008



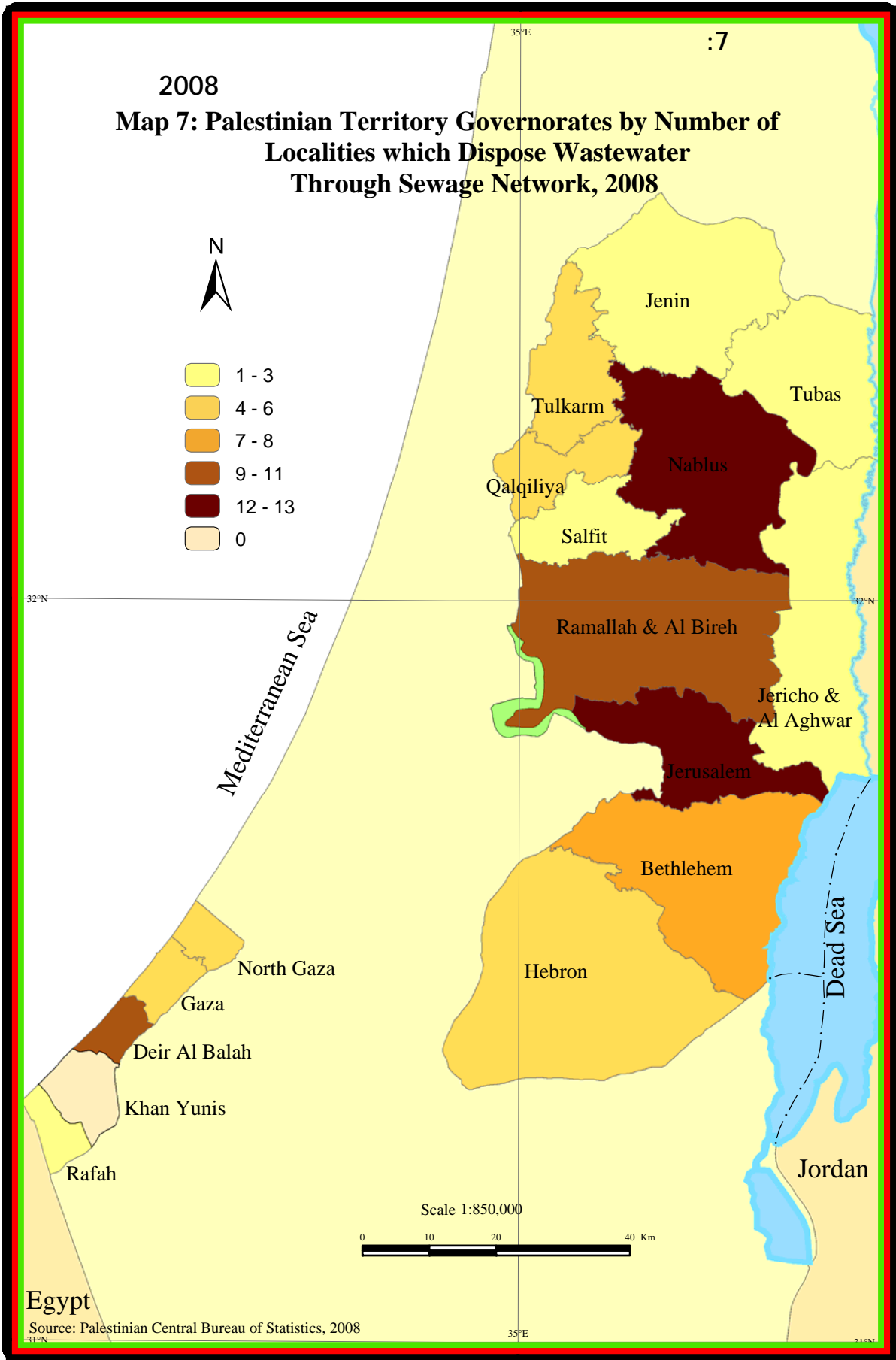
Source: Palestinian Central Bureau of Statistics, 2008

2008
Map 5: Palestinian Territory Governorates by Number of Localities which do not Have Electricity, 2008





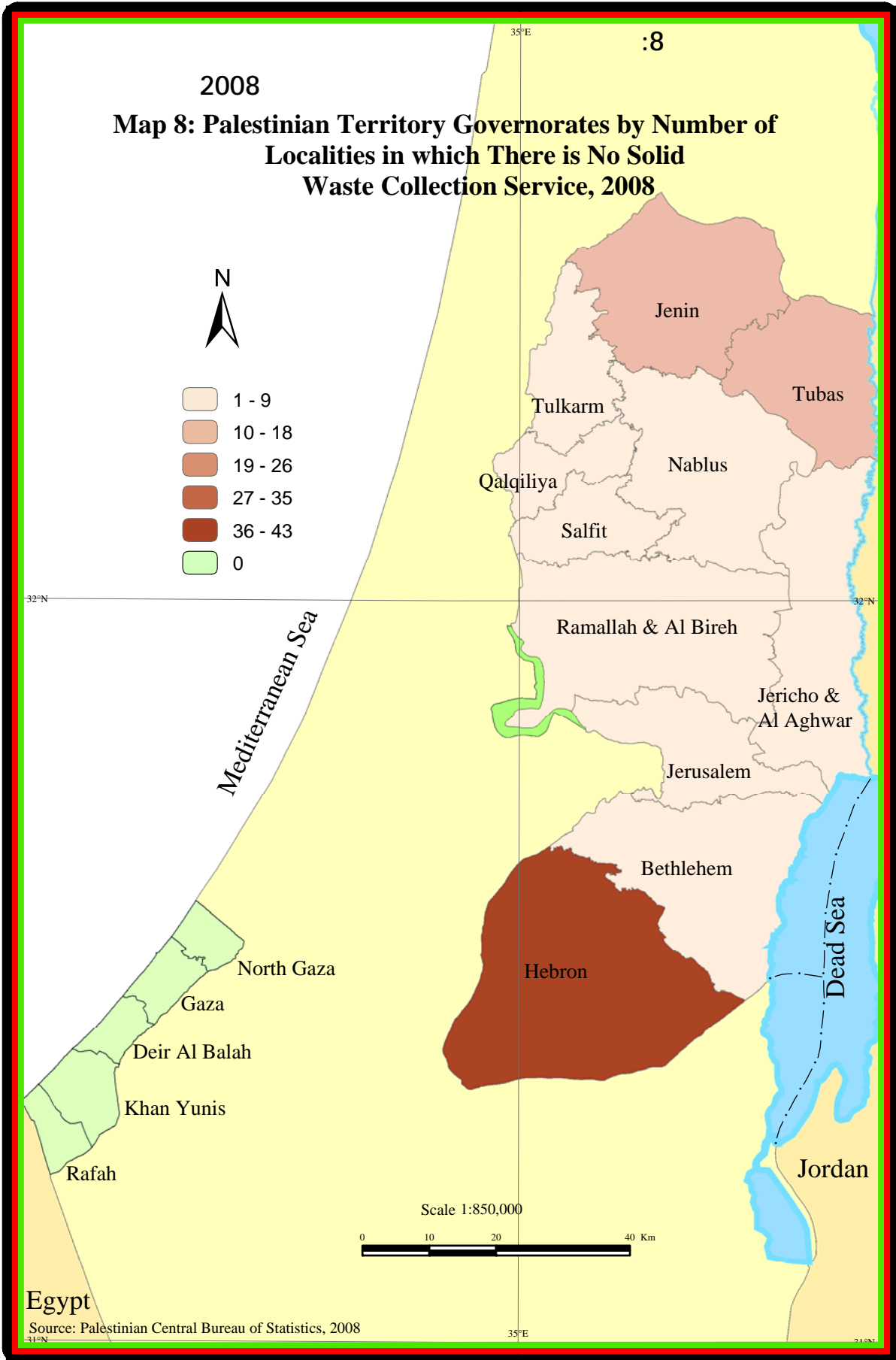
2008
Map 7: Palestinian Territory Governorates by Number of Localities which Dispose Wastewater Through Sewage Network, 2008



Egypt

Source: Palestinian Central Bureau of Statistics, 2008

2008
Map 8: Palestinian Territory Governorates by Number of Localities in which There is No Solid Waste Collection Service, 2008



Egypt

Source: Palestinian Central Bureau of Statistics, 2008



**Palestinian National Authority
Palestinian Central Bureau of Statistics**

**Local Community Survey - 2008
Main Findings**

November, 2008

“Cover price 5 US\$”

PAGE NUMBERS OF ENGLISH TEXT ARE PRINTED IN SQUARE BRACKETS.
TABLES ARE PRINTED IN THE ARABIC ORDER (FROM RIGHT TO LEFT)

**This document is prepared in accordance with the standard
procedures stated in the Code of Practice for Palestine
Official Statistics 2006**

© November, 2008.
All rights reserved.

Suggested Citation:

Palestinian Central Bureau of Statistics, 2008. *Local Community Survey 2008: Main Finding.* Ramallah - Palestine.

All correspondence should be directed to:
Palestinian Central Bureau of Statistics
P.O.Box 1647 Ramallah, Palestine.

Tel: (972/970) 2 242 6340
Fax: (972/970) 2 242 6343
E-Mail: diwan@pcbs.gov.ps
web-site: <http://www.pcbs.gov.ps>

Acknowledgment

Palestinian Central Bureau of Statistics (PCBS) expresses its gratitude to the Ministry of Local Government and Local Authorities for their commitment to implement this survey.

The funding for the Local Community Survey was provided by the Palestinian National Authority (PNA) and the Core Funding Group (CFG) for 2008. CFG members include Representative Office of Norway to the PNA, Representative Office of the Netherlands to PNA and Swiss Agency for Development and Cooperation (SDC).

PCBS extends its deep thanks to the members of the Core Funding Group (CFG) for the financial support to implement this survey.

Team Work

- **Technical Committee**
Ammar Abduh
Hatem Karareya
Feda Abu Aishah
Saleh Kassieb
Head of the Committee
- **Report Preperation**
Ammar Abduh
- **Dissemination Standard**
Hanan Janajreh
- **Maps Design**
Amal Jaber
- **Graphic Design**
Ahmad Sawalmeh
- **Perliminary Review**
Mahmoud Abd Al-Rahman
- **Final Review**
Mahmoud Jaradat
- **Overall Supervision**
Dr. Luay Shabaneh
PCBS President

Preface

Local authorities are responsible for providing essential services and public utilities for Palestinian localities. Therefore, the availability of accurate and comprehensive data on local authorities, services, public utilities, in addition to other indicators, constitutes a basic step for the development of the localities.

We have the pleasure to publishing this specialized satatistical report of the Local Community Survey 2008 in the Palestinian Territory, this survey is done according to our official efforts for creating and establishing the National Statistical System, and providing the necessary statsitics to Palestinian policy-planner and decision-makers in water, environemt and natural resources sector and localities development.

The Local Community Survey 2008 is considered the product of the fruitful cooperation between the Palestinian Central Bureau of Statistics (PCBS) and the data users in both the private and public sectors given their provision of the statistical data needed for all fields of development. The assistance of the Ministry of Local Government should also be emphasized, for its role in establishing a detailed and comprehensive database covering all the Palestinian Governorates.

This report presents the main results of the Local Community Survey which was conducted by PCBS during the period from 01/06/2008 to 29/06/2008. It includes the main characteristics of the local authorities, public utilities and services in the localities in addition to other related fields including demography and economic activity.

It is our hope that the main findings of this survey will contribute to the development and improvement of the localities, as well as providing reliable and useful statistics for palestinian planners and decision-makers.

November, 2008

Luay Shabaneh, Ph.D
President

Table of Contents

Subject	Page
List of Tables	
List of Figures	
List of Maps	
Executive Summary	
Chapter One: Introduction	[21]
1.1 Introduction	[21]
1.2 Survey Objectives	[21]
1.3 Report Structure	[21]
Chapter Two: Concepts and Definitions	[23]
Chapter Three: Main Findings	[25]
3.1 Population	[25]
3.2 Number of Localities	[25]
3.3 Local Authorities	[25]
3.4 Water	[27]
3.5 Electricity	[28]
3.6 Wastewater	[28]
3.7 Solid Waste	[29]
3.8 Touristic and Archeological Sites	[30]
3.9 Education	[30]
3.10 Agriculture	[30]
3.11 Economic Sectors	[31]
Chapter Four: Methodology	[33]
4.1 Questionnaire	[33]
4.2 Coverage	[33]
4.3 Data Sources	[33]
4.4 Fieldwork Operations	[33]
4.5 Data Processing	[33]
Chapter Five: Data Quality	[35]
5.1 Accuracy	[35]
5.2 Comparability	[35]
5.3 Data Quality Assurance Procedures	[35]
5.3 Special Technical Notes	[35]
References	[37]
Tables	47
Maps	117

List of Tables

Table	Page
Table 1: Selected Indicators for Localities in the Palestinian Territory by Region and Year, 2005, 2008	49
Table 2: Number of Population in the Palestinian Territory by Governorate 2007	51
Table 3: Distribution of Local Authorities in the Palestinian Territory by Type of Local Authority and Governorate, 2005, 2008	52
Table 4: Distribution of Local Authorities in the Palestinian Territory by Year of Nominating the Current Local Authority and Governorate	53
Table 5: Distribution of the Current Local Authority Members in the Palestinian Territory by Sex and Governorate, 2005, 2008	54
Table 6: Percentage Distribution of the Current Local Authority Members in the Palestinian Territory by Sex, Age and Governorate, 2008	55
Table 7: Distribution of Local Authorities in the Palestinian Territory by Number of Local Authority Members and Governorate, 2008	56
Table 8: Distribution of Local Authorities in the Palestinian Territory by Number of Women Among the Local Authority Members and Governorate, 2008	57
Table 9: Distribution of Local Authorities in the Palestinian Territory by Number of Paid Employees in the Local Authority and Governorate, 2008	58
Table 10: Distribution of Local Authorities in the Palestinian Territory by Number of Females Paid Employees in the Local Authority and Governorate, 2008	59
Table 11: Distribution of Paid Employees in Local Authorities in the Palestinian Territory by Sex, Year, and Governorate, 2005, 2008	60
Table 12: Distribution of Localities in the Palestinian Territory by the Contribution of the Local Authority, the Available Services, and the Governorate, 2008	61
Table 13: Distribution of Local Authorities in the Palestinian Territory by Availability of Headquarter of the Local Authority and Governorate, 2008	68
Table 14: Distribution of Local Authorities in the Palestinian Territory by the main characteristics of the Headquarter of the Local Authority and Governorate, 2008	69
Table 15: Distribution of Local Authorities in the Palestinian Territory by the Most Important Development Need for the Local Authority and Governorate, 2008	70
Table 16: Distribution of Localities in the Palestinian Territory by Status of Structural Plan and Governorate, 2008	71

Table	Page
Table 17: Distribution of Localities in the Palestinian Territory that have a Structural Plan by Year of Structural Plan Preparation and Governorate, 2008	72
Table 18: Distribution of Localities in the Palestinian Territory by Availability of Water Network and Year of Connection and Governorate	73
Table 19: Distribution of Localities in the Palestinian Territory by the Main Water Source of the Network and Governorate, 2008	74
Table 20: Connected Localities to Water Network in the Palestinian Territory by Average Hours of Water Availability Per day and Governorate, 2008	75
Table 21: Distribution of Localities in the Palestinian Territory Connected to Network by the Availability of Water Tank and the Capacity of Tanks and Governorate, 2008	76
Table 22: Localities in the Palestinian Territory by the Alternative Sources for the Public Water Network and Governorate, 2008	77
Table 23: Localities in the Palestinian Territory by Drinking Water Problems and Governorate, 2008	78
Table 24: Distribution of Localities in the Palestinian Territory by Development Project Stages in the Field of Water, Type of Project and Region, 2008	79
Table 25: Distribution of Localities in the Palestinian Territory by Availability of Electricity Network, Year of Electricity Connection, and Governorate	80
Table 26: Distribution of Localities in the Palestinian Territory by the Main Source of Electricity and Governorate, 2008	81
Table 27: Distribution the Connected Localities to Electricity in the Palestinian Territory by Street Lighting Services and Governorate, 2008	82
Table 28: Distribution the Connected Localities to Electricity in the Palestinian Territory by Average Hours of Electricity Availability Per Day and Governorate, 2008	83
Table 29: Localities in the Palestinian Territory by the Availability of Electricity and its Main Related Problems and Governorate, 2008	84
Table 30: Distribution the Connected Localities to Electricity in the Palestinian Territory by Electricity Development Projects Stages and Region, 2008	85
Table 31: Distribution of Localities in the Palestinian Territory by Wastewater Disposal Method and Governorate, 2008	86

Table	Page
Table 32: Distribution of Localities in the Palestinian Territory by Availability of Sewage Network, Year of Connection and Governorate	87
Table 33: Localities in the Palestinian Territory by Wastewater Disposal Site, and Governorate, 2008	88
Table 34: Localities in the Palestinian Territory by Type and Distance of Wastewater Disposal Site from the Locality, and Region, 2008	89
Table 35: Localities in the Palestinian Territory by Health and Environmental Effects of the Wastewater Disposal Site and Governorate, 2008	90
Table 36: Distribution of Localities in the Palestinian Territory by the Number of Settlements that is Considered as Wastewater Source near the Locality and Governorate, 2008	91
Table 37: Distribution of Localities in the Palestinian Territory by the Project Stage of Constructing a Sewage Network and Governorate, 2008	92
Table 38: Distribution of Localities in the Palestinian Territory by Project Stage of Extentioning a Sewage Network and Governorate, 2008	93
Table 39: Distribution of Localities in the Palestinian Territory by the Project Stage of Improving Sewage Network and Governorate, 2008	94
Table 40: Distribution of Localities in the Palestinian Territory by the Project Stage of Constructing Treatment Plant and Governorate, 2008	95
Table 41: Distribution of Localities in the Palestinian Territory by the Project Stage of Covering Sewage Open Channels and Governorate, 2008	96
Table 42: Distribution of Localities in the Palestinian Territory by the Doer of Solid Waste Collection and Governorate, 2008	97
Table 43: Distribution of Localities in the Palestinian Territory by the Periodicity of Solid Waste Collection and Governorate, 2008	98
Table 44: Distribution of Localities in the Palestinian Territory by the Mean of Solid Waste Collection and Governorate, 2008	99
Table 45: Distribution of Localities in the Palestinian Territory by Method, Percentage of Solid Waste Disposal and Governorate, 2008	100
Table 46: Distribution of Localities in the Palestinian Territory by the Periodicity of Burning or Buried of the Solid Waste and Governorate, 2008	101
Table 47: Distribution of Dumping Sites in the Palestinian Territory by Ownership of the Dumping Site and Governorate, 2008	102

Table	Page
Table 48: Distribution of Dumping Sites in the Palestinian Territory by the Dumping Sites Establishment Year and Governorate, 2008	103
Table 49: Distribution of Dumping Sites in the Palestinian Territory by the Number of Localities that Use the Dumping Site and Governorate, 2008	104
Table 50: Localities in the Palestinian Territory by Health and Environmental Effects of the Dumping Site on the Neighboring Residential Areas and Governorate, 2008	105
Table 51: Distribution of Antiquated Places in the Localities in the Palestinian Territory by Ownership and Governorate, 2008	106
Table 52: Distribution of Antiquated Places in the Localities in the Palestinian Territory by Selected Variables and Governorate, 2008	107
Table 53: Localities Having Schools in the Palestinian Territory by Number of Schools and Selected Variables and Governorate for the Scholastic Year 2007/2008	108
Table 54: Localities in the Palestinian Territory Have Unused Arable Land, by Reasons and Governorate During the Period 01/10/2006-30/09/2007	109
Table 55: Distribution of Localities in the Palestinian Territory by Agricultural Roads Status and Governorate During the Period 01/10/2006- 30/09/2007	110
Table 56: Localities in the Palestinian Territory by Number of Springs, Percent of Use and Governorate During the Period 01/10/2006-30/09/2007	111
Table 57: Localities in the Palestinian Territory by Kind of Agriculture Plant Obstacles and Governorate During the Period 01/10/2006-30/09/2007	112
Table 58: Localities in the Palestinian Territory by Kind of Agriculture Livestock Obstacles and Governorate During the Period 01/10/2006- 30/09/2007	113
Table 59: Localities in the Palestinian Territory by Obstacles Facing Mining, Quarrying Sector and Governorate, 2008	114
Table 60: Localities in the Palestinian Territory by Obstacles Facing Manufacturing Industry Sector and Governorate, 2008	115

List of Figures

Figure		Page
Figure 1:	Population in the Palestinian Territory by Region and Sex 2007	[25]
Figure 2:	Distribution of Local Authorities in the Palestinian Territory by Type of Current Local Authority and Region, 2008	[26]
Figure 3:	Distribution of Localities which are Connected to Water Network in the Palestinian Territory by the Main Water Network Source and Region, 2008	[27]
Figure 4:	Distribution of Connected Localities to Electricity in the Palestinian Territory by Main Source of Electricity and Region, 2008	[28]
Figure 5:	Distribution of Localities in the Palestinian Territory by Doer of Solid Waste Collection and Region, 2008	[29]
Figure 6:	Distribution of Localities in the Palestinian Territory by Mean of Solid Waste Collection and Region, 2008	[30]

List of Maps

Map		Page
Map 1:	Distribution of Local Authorities in the Palestinian Territory by Type of Local Authority and Governorate, 2005, 2008	119
Map 2:	Palestinian Territory Governorates by Number of Localities Which do not Have a Water Network, 2008	121
Map 3:	Palestinian Territory Governorates by Number of Localities Which are Connected to Water Network and Depend on Israeli Source (Mekorot), 2008	123
Map 4:	Localities in the Palestinian Territory by Drinking Water Problems and Governorate, 2008	125
Map 5:	Palestinian Territory Governorates by Number of Localities Which do not Have Electricity, 2008	127
Map 6:	Palestinian Territory Governorates by Number of Localities Which Main Source of Electricity is Israeli Electricity Company, 2008	129
Map 7:	Palestinian Territory Governorates by Number of Localities Which Which Dispose Wastewater Through Sweage Network, 2008	131
Map 8:	Palestinian Territory Governorates by Number of Localities in Which There is No Solid Waste Collection Service, 2008	133

Excutive Summary

Palestinian Central Bureau of Statistics (PCBS) conducted the Local Community Survey in the Palestinian Territory during the period 01/06/2008-29/06/2008. This survey is an important information tool for developing the Palestinian localities.

The number of localities was 537, according to the results of Local Community Survey 2008. And there was 517 Local Authorities in the Palestinian Territory distributed by type as: 121 municipalities, 12 local councils, 355 village councils or project committees, and 29 directors of refugee camps. It is worth mentioning that 20 local authorities provide services for more than one locality.

The results showed that 123 localities (22.9%) in the Palestinian Territory, with 177,275 persons, have no public water network, all of them in the West Bank. The results reveal also that 64 localities were connected to public water network after 1998, of which 58 in the West Bank.

There are 38 localities (7%) with 12,337 persons in the Palestinian Territory not connected to the public electricity network, and 102 localities were connected to public electricity network after 1998.

The results of the survey reveal that 85 localities (16%) are connected to public sewage system, of which 64 localities are in the West Bank. In addition 511 localities use cesspit for wastewater disposal, 478 in the West Bank and 33 in Gaza Strip.

The results reveal also that 33 localities were connected to public sewage system after 1998, of which 25 were in the West Bank and 8 in Gaza Strip.

The results reveal that 99 (18%) localities do not have the services of collecting solid waste with 59,444 projected persons all of them in the West Bank. The local authorities provide collecting solid waste services in 331 localities, of which 310 in the West Bank and 21 in Gaza Strip; while private contractors collect the solid waste in 22 localities all of them in the West Bank.

The result about the dumping sites indicate that there are 122 dumping sites in the Palestinian Territory, of which 119 are in the West Bank, and 3 in Gaza Strip. There are 67 dumping sites used by one locality, and 55 used by more than one locality.

Chapter One

Introduction

1.1 Introduction

Local authorities are responsible for providing essential services and public utilities for all the communities in the Palestinian Territory. The Palestinian Central Bureau of Statistics (PCBS) initiated the implementation of this survey to provide the necessary data for development planning in coordination with the different governmental and non-governmental institutions.

1.2 Survey Objectives

The main objective of the survey was to provide reliable and comprehensive data on the situation of the local communities in the Palestinian Territory, covering the following issues:

1. The infrastructure in the local communities including electricity and water resources, sewage means, solid waste disposal means, and communication and transportation means.
2. The actual provisions made available by the local authorities in terms of governmental services.
3. Health sector, including health centers and its capacity and number of employees
4. The availability of public services in the different social, cultural and tourism sectors.
5. Antiquities and historical places.
6. Economic situation by different indicators; agriculture, mining and quarrying, construction, and trading
7. Other related indicators.

1.3 Report Structure

This report consists of five chapters: the first chapter presents the survey objectives and the report structure, the second chapter describes the concepts and definitions and the third chapter briefly describes the main findings, while the fourth chapter presents the methodology used in the survey, consisting the questionnaire design, sampling design, fieldwork operations and data processing, the last chapter includes an assessment of data quality and technical notes

Chapter Two

Concepts and Definitions

Locality

A permanently inhabited place, with an independent municipal administration or other type of adopted administration.

Confiscated and Military Closed Area

Land that belongs to Palestinians and could not be cultivated because it was confiscated or closed by military law

Economic Feasibility

It is an evaluation of the cost of production compared to the output of the activity

Springs

Water that is discharged from the ground at an intersection point between the topographic surface and the groundwater table, it could be permanent or seasonal, and it is considered as one of the natural resources for irrigation.

Collection Wells

Wells that are dug in the ground for the purposes of collecting rain water.

Water Well (Artesian Wells)

A deep hole of a small diameter that is drilled in the ground to encounter groundwater, which is then pumped out to be used for different purposes.

Establishment

An enterprise or part of an enterprise in which one group of goods and services is produced (with the possibility of having secondary activities).

Public Water Network

A net of pipes for the purpose of providing clean water to households. It normally belongs to a municipality, the council or to a private company.

Electricity Service

Availability of public electricity grid inside the community.

Private Generator

A generator owned by a person or a group of persons for the purpose of covering electricity needs.

Local Source

Local generators owned by community council or local electricity corporation inside the local community.

Environment

The totality of all the external conditions affecting the life, development and survival of an organism.

Solid Waste Disposal

Waste elimination techniques comprising landfills containment, underground disposal methods.

Wastewater

Used water, typically discharged in to the sewage system. It contains matter and bacteria in solution or suspension.

Solid Waste

Useless and sometimes hazardous material with low liquid content. Solid waste includes municipal garbage, industrial and commercial waste, waste resulting from agricultural and animal husbandry operations and other connected activities, demolition waste and mining residues.

Waste Collection

Collection or transport of waste to the place of treatment or discharge organized by municipal services or similar institutions, by public or private corporations, specialized enterprises or by the government.

Solid Waste Burning

Out door burning of wastes such as lumber, used textile and others.

Cesspit

Well or pit in which night-soil and other refuse is stored; constructed with either tight or porous walls.

Sewage Network

System of collectors, pipelines, conduits and pumps to evacuate wastewater from any of the places of generation either to municipal sewage treatment plant or to a place where wastewater is discharged.

Dumping Site

Site used to dispose of solid wastes without environmental control.

Open Channel Network

Open channel beside roads, mainly found in the camps.

Waste Water Treatment

Process to render wastewater to fit environmental standards or other quality norms. Three broad types of treatment may be distinguished: mechanical, biological, and advanced.

Basic Education Stage

The first ten scholastic years of schooling on which other stages of education depend.

Secondary Education:

A tow-stream (literary and scientific streams), it consists of the first and second secondary grades.

Local Authority Headquarters

The building where the local authority is established and from where it acts.

Archeological and Historical Sites

Sites that have ancient monuments from ancient civilizations.

Tourism

Travel and stay of persons outside their usual environment for not more than one consecutive year for leisure, business and other purposes.

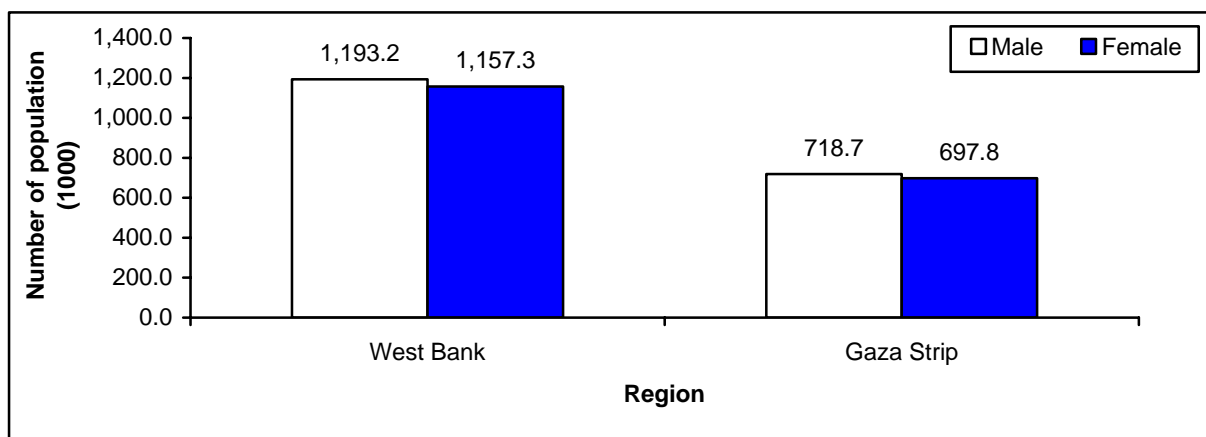
Main Findings

These chapter representative the main findings of the Local Community Survey, in the Palestinian Territory, 2008

3.1 Population

The preliminary findings of the Population, Buildings, Housing Units and Establishments census 2007, reveal that the population in 2007 totaled 3,767,122 persons, of whom 2,350,583 in the West Bank and 1,416,539 in Gaza Strip. And the population of males in the Palestinian Territory in 2007 was 1,911,952, where as 1,855,170 for females.

Figure 1: Population in the Palestinian Territory by Region and Sex 2007



3.2 Number of Localities

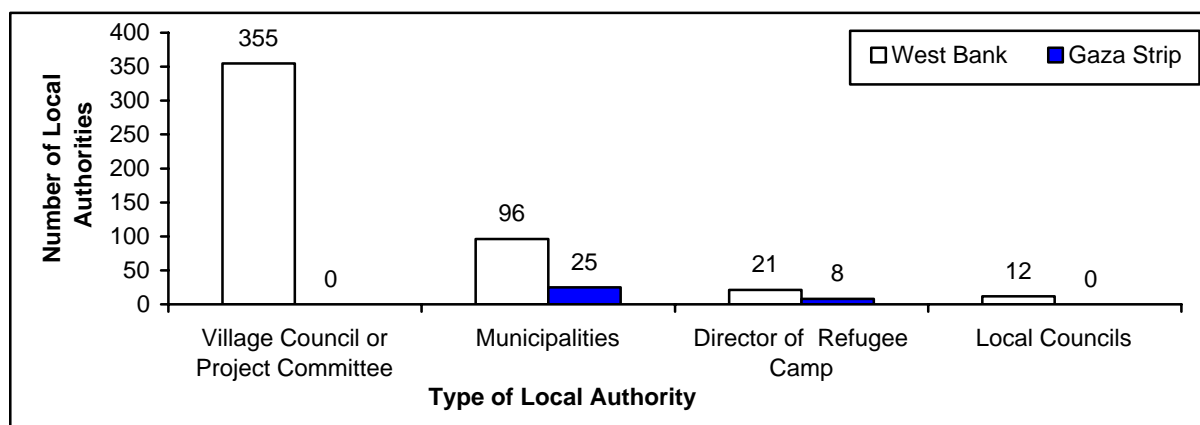
According to the official list of local authorities adopted for the Population and Housing Census 2007, there are 557 localities in the Palestinian Territory; however, the number of localities according to the Local Community Survey 2008 was 537 localities. And this decreasing in the number of localities is due to merging the smallest localities with other localities and some localities have not population. This worth to mention that the updating to localities frame was done by the cooperation with Ministry of Local Government.

3.3 Local Authorities

Type of local authority

The results of Local Community Survey 2008 showed that there are 517 local authorities in the Palestinian Territory distributed by type as 121 municipalities, 12 local councils, 355 village councils or project committees, and 29 directors of refugee camps. There are 20 local authorities provide services for more than one locality.

Figure 2: Distribution of Local Authorities in the Palestinian Territory by Type of Current Local Authority and Region, 2008



Local authorities members

The results revealed that there are 4,214 total local authorities members in the Palestinian Territory, of which 3,651 males and 563 females (13.4%), most of the female members are in the West Bank local authorities. In comparison there were 3,790 local authorities member in the Palestinian Territory in 2005. Of the male members 3.3% are less than 30 years of age, 76.5% between 30-50 years of age and 20.2% are more than 50 years of age. Of the female members 6.7% are less than 30 years of age, 85.1% between 30-50 years of age and 8.2% are more than 50 years of age.

Paid employees in the local authorities

The results show that the number of paid employees in the local authorities in the Palestinian Territory in 2008 amounted to 13,112 employees, of which 12,080 are males and 1,032 females, while the corresponding figure in 2005 was 12,301 employees.

Provided services

The local authorities in the Palestinian Territory provide the service of waste collection for 264 localities, and the service of street cleaning for 241 localities. Also the local authorities provide 250 localities by electricity services, and 270 localities by water services, and only 60 localities with sanitary services.

Local authority headquarters

There are 416 localities with local authority headquarters according to year 2008 results. The average area of the headquarters in the Palestinian Territory is 468.2 m². This average is higher in Gaza Strip (1,195.1 m²) than in the West Bank (409.5 m²). Concerning the tenure of these headquarters in the Palestinian Territory, results show that they are owned in 344, while they are rented in 45 localities.

The developmental needs for local authorities

The results indicate that 103 local authorities reported there needs to upgrade the capacity of technical and administrate staff, 109 reported the need for computers, while 60 reported the need for premises and necessary funding for development projects.

The structural plan of localities

There are 361 localities in the Palestinian Territory have a structural plan, however, the number of localities that have approved structural plans is 295.

3.4 Water

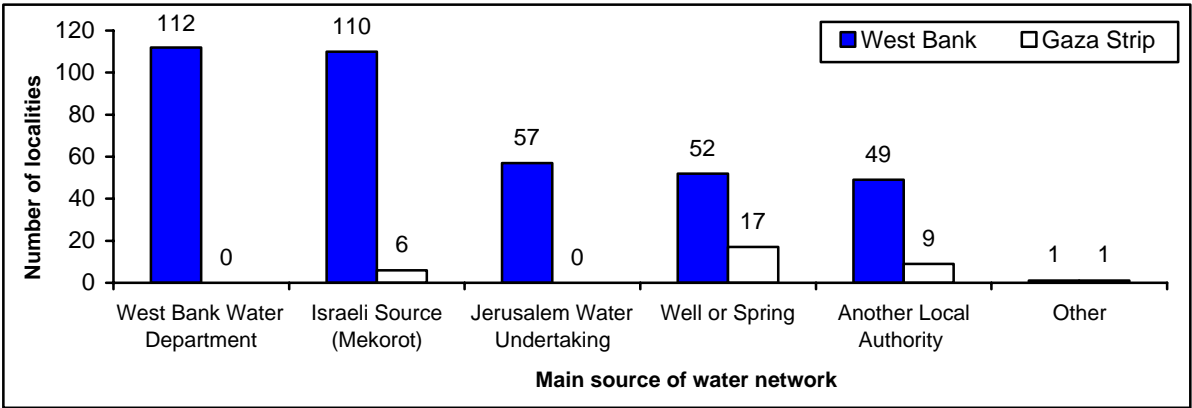
Connection to public water network

The results showed that 123 localities (22.9%) in the Palestinian Territory, with 177,275 persons, have no public water network, all of them in the West Bank. The results reveal also that 64 localities were connected to public water network after 1998, of which 58 in the West Bank.

Source of public water network

Regarding the main source of water, data show that 110 of the connected localities to public water networks in the West Bank in 2008 obtain water through Israeli Mekorot company, while 112 of the connected localities to the public network in the West Bank obtain water through the West Bank Water Department. However in Gaza Strip, 17 of the connected localities to the public network obtain water through Wells, and only 6 localities obtain water through Israeli Mekorot company.

Figure 3: Distribution of Localities which are Connected to Water Network in the Palestinian Territory by the Main Water Network Source and Region, 2008



Availability of water services

The results of the Local Community Survey 2008 indicated that 234 localities in the Palestinian Territory have access to water for 24 hours, distributed to 229 localities in the West Bank, and 5 localities in Gaza Strip.

Alternative sources of the public water network

The results indicate that 157 localities in the Palestinian Territory depend on ground water wells as an alternative to the public water network. And 421 localities in the Palestinian Territory depend on rainwater collecting wells as an alternative to the public water network.

The problems faced by the locality in obtaining drinking water services

The results show that 123 localities in the Palestinian Territory have no public water network, and 251 localities in the Palestinian Territory have old networks. And 247 localities suffer from the problem of interruption of water supply, and 192 localities suffer from the problem of non-served areas.

Developmental projects in the water sector

It is worth mentioning that most localities in the Palestinian Territory require developmental projects. There are 172 localities that need a public water tank, 106 localities need to expand their network, and 58 localities have problems in water supply and need to change the water source. However there are no plans and budgets to fulfill these requirements.

3.5 Electricity

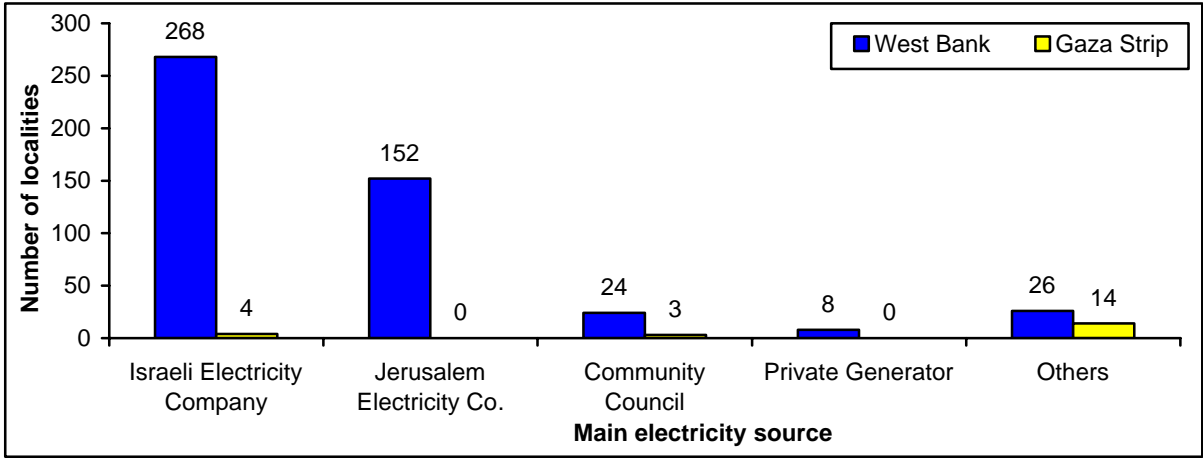
Connection with public electricity network

There are 38 localities (7%) with 12,337 persons in the Palestinian Territory not connected to the public electricity network, and 102 localities connected to public electricity network after 1998.

Main electricity network source

Data show that 272 localities in the Palestinian Territory are provided with electricity by the Israeli Electricity Company, and 152 localities are provided with electricity by the Jerusalem Electricity Company, all of them are in the West Bank.

Figure 4: Distribution of Connected Localities to Electricity in the Palestinian Territory by Main Source of Electricity and Region, 2008



Street lighting services

Street lighting services was not provided for 133 localities 27% of localities that connected to the electricity network in the Palestinian Territory. There are 84 localities have lights for the main streets only.

The electricity problems that the locality faces

The findings of the Local Community Survey 2008 indicate that 38 localities in the Palestinian Territory have no electricity network, 305 localities have old electricity networks, 154 localities have problems in electrical current disconnection, and 201 localities have non-served areas.

Developmental projects in the electricity sector

It is worth mentioning that most localities in the Palestinian Territory require development projects. There are 168 localities that need a strengthening electricity converter, 174 localities need to expand their network, and 33 localities have problems in electricity supply and need to change the electricity source, however there are no plans to fulfill these requirements.

3.6 Wastewater

Wastewater disposal method

The results of the survey reveal that 85 localities (16%) are connected to public sewage system, of which 64 localities in the West Bank. In addition 511 localities use cesspit for wastewater disposal, 478 in the West Bank and 33 in Gaza Strip.

The results reveal also that 33 localities were connected to public sewage system after 1998, of which 25 in the West Bank and 8 in Gaza Strip.

Developmental projects in the wastewater sector

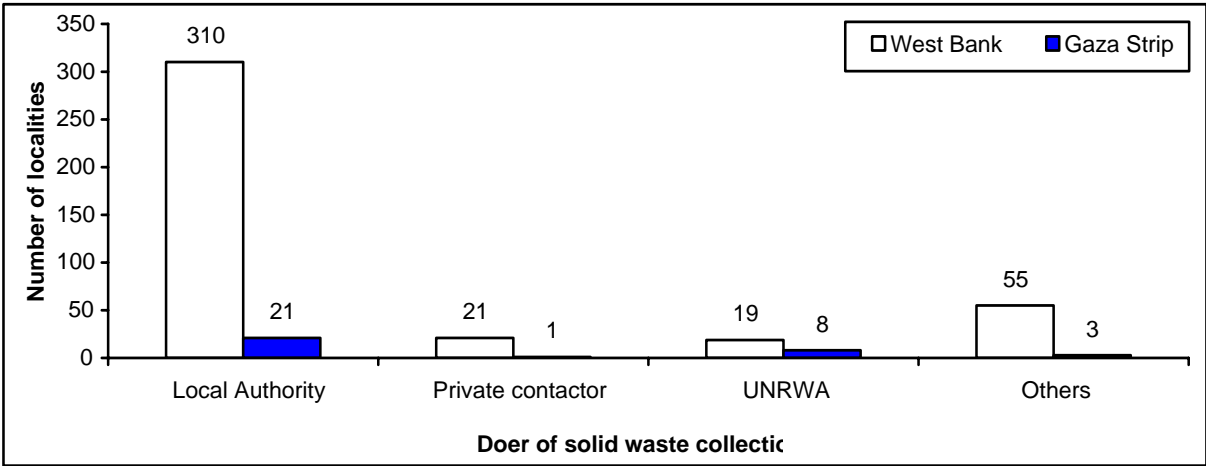
There are 307 localities in the Palestinian Territory need construction of sewage network, and 136 localities need treatment plants, 34 localities need to cover the open channels of waste water and finally there are 42 localities that need to develop the sewage network and there are no plans and no budgets to fulfill these requirements.

3.7 Solid Waste

Doer of solid waste collection

The results reveal that 99 (18%) localities do not have the services of collecting solid waste with 59,444 persons in the Palestinian Territory. The local authorities provide collecting solid waste services in 331 localities, of which 310 in the West Bank and 21 in Gaza Strip; while private contractors collect the solid waste in 22 localities.

Figure 5: Distribution of Localities in the Palestinian Territory by Doer of Solid Waste Collection and Region, 2008



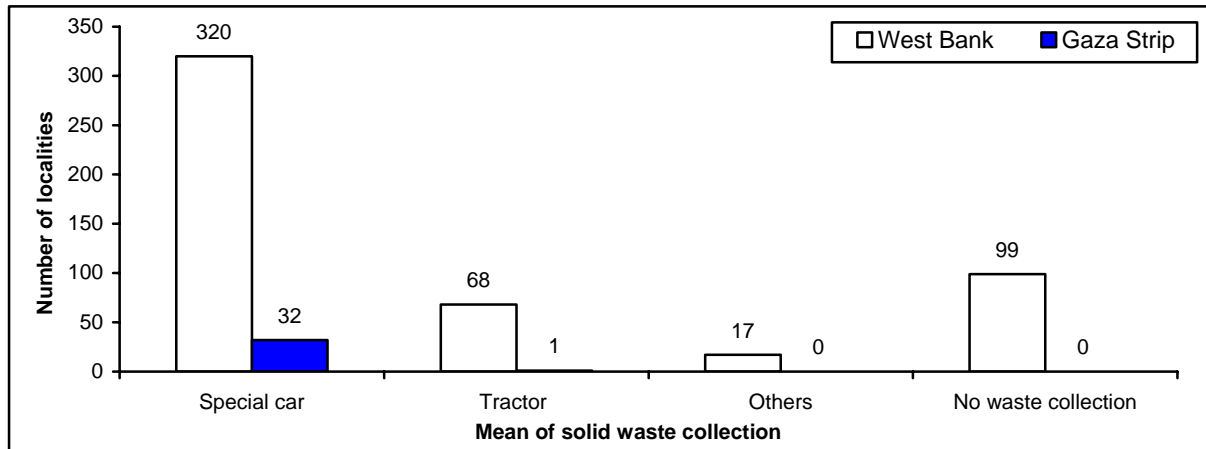
Periodicity of solid waste collection

The wastes are collected daily in 125 localities, and the collection is made more than once a week in 254 localities in the Palestinian Territory in 2008.

Mean of solid waste collection

The wastes are collected by using a specialized car in 352 localities in the Palestinian Territory, also there are 69 localities in the Palestinian Territory in which they use a tractor as a mean of collecting wastes.

Figure 6: Distribution of Localities in the Palestinian Territory by Mean of Solid Waste Collection and Region, 2008



Dumping sites

The result about the dumping sites indicate that there are 122 dumping sites in the Palestinian Territory, of which 119 in the West Bank, and 3 in Gaza Strip. There are 67 dumping sites used by one locality, and 55 used by more than one locality.

The health and environmental effects of the dumping sites

Dumping sites are considered as sources of insects for 248 localities in the Palestinian Territory, sources of bad smell for 245 localities and sources of epidemic diseases for 223 localities.

3.8 Touristic and Archeological Sites

The results show that the number of archeological sites in the Palestinian Territory is 558, where 515 of them are in the West Bank and 43 in Gaza Strip. The number of touristic sites is 262, of which 237 sites are in the West Bank and 25 sites in Gaza Strip.

3.9 Education

The database of the yearly educational survey 2007/2008 shows that the number of schools in the Palestinian Territory is 2,430, of which 1,809 are in the West Bank and 621 in Gaza Strip. The total number of students in the Palestinian Territory amount to 1,097,957 of which 654,217 are in the West Bank and 443,740 in Gaza Strip. The total number of teachers in the Palestinian Territory is 43,578 of which 27,462 are in the West Bank and 16,116 in Gaza Strip. The number of administrators is 6,526 where 4,959 of them are in the West Bank and 1,567 in Gaza Strip.

3.10 Agriculture

The local community survey for 2008 showed that there are 397 localities (74%), of the all localities in the Palestinian Territory) with unused areas for agriculture due to the unavailability of water, economic situation, and lack of workers and/or due to confiscation by Israeli occupation authorities.

The roads within 77 localities suit vehicles, while the roads of 346 localities suit tractors. The roads of 79 localities are only suitable for animals.

On the other hand, the results of the survey show that there are 383 water springs in 152 localities within the West Bank while there are no water springs in Gaza Strip.

3.11 Economic Sectors

The results reveal that 124 localities considered the lack of finance is the main obstacles that facing the manufacturing industry sector, followed by marketing problems for 120 localities, and difficulties in export and shortage in raw material.

Chapter Four

Methodology

4.1 Questionnaire

The survey s tool was designed taking into account the survey objectives, data processing and data collection requirements. It consists of two parts, the first part covered data that to be collected directly from the field including data about the services of local authorities, land use, infrastructure and agriculture. The other part was aggregated from the different statistical activities that have been conducted by the PCBS such as health and education.

4.2 Coverage

The survey frame was based on the list of localities used in the Population, Housing and Establishments Census 2007, which consisted of 557 localities. In addition, 11 localities within that part of Jerusalem which were annexed by Israel in 1967 were treated as one locality.

4.3 Data Sources

There are two sources of data; the first source is the local community members of the locality as they have a good knowledge about the community matters. The other source is the available data in PCBS.

4.4 Fieldwork Operations

Fieldwork operations included all needed processes and tools for collecting and providing accurate data according to the sum survey questionnaire.

Training

The recruitment and training of qualified interviewers, is considered as one of the main stages of the survey, since this training must provide the field workers with the necessary skills for collecting data. The interviewers were provided with the necessary training to meet the surveys aims, with explanation of the concepts of the questionnaire and also with instructions on how to fill the questionnaire.

Data Collection

The field operations started on 01/06/2008 in the West Bank and Gaza Strip and was finished after twenty days, except for the Jerusalem Governorate where it took longer to be finished, until 20/07/2008.

The fieldwork team consisted of (38) field workers, one coordinator and 7 supervisors. The PCBS Survey and Fieldwork Directorate administrated fieldwork activities including interviewing activities and field editing of questionnaires.

4.5 Data Processing

Questionnaires were edited before data entry and the incomplete ones were referred to the field. For the data entry, access software was used, this package is user-friendly and is capable of detecting a wide range of data entry and related errors. The package allows for the logical skipping between the questions and accepts only the possible answers for each question. The tabulation was performed using the SPSS program.

Data Quality

The concept of data quality consists of many aspects starting from the planning to the survey and on to the publishing method and data analysis. The main principles of statistical quality are accuracy, comparability, and data quality assurance procedures.

5.1 Accuracy

This survey is a comprehensive survey for all Local Communities, therefore, there is no sampling error in this survey but there is a possibility for some non-sampling errors that refer to the study frame, fieldwork operations and data processing.

Despite the big size of the questionnaire, the fieldwork team made a great effort in conducting this survey in the best possible way. All the localities were collaborative and filled in the questionnaire except one non-response in Jerusalem.

The field workers collected the data by relying on administrative records and other official sources (primary sources). But despite all the procedures that was taken in order to have less errors, some errors occurred due to the nature of the survey like the area of different land use in the locality, dumping site areas, discharge of springs, water consumption according to sector and electricity consumption according to sector.

5.2 Comparability

The data of the Local Community Survey is comparable geographically and among time, the results when comparing the data between different geographical areas and when comparing the data of this survey with the data of previous surveys and with the Population, Housing and Establishment Census 2007 and comparing the data about the local authorities with Ministry of Local Government were close.

5.3 Data Quality Assurance Procedures

Several measures were made to ensure quality control in the survey, such as the training of the fieldworkers on main skills before the start of data collection, and conducting field visits to field researchers to ensure the integrity of data collection. Audit of questionnaires was carried out before data entry, and then a program was used that does not allow any mistakes during the process of data entry. Data was examined to ensure that they were free from errors not previously discovered. After the receipt of the raw data file, cleaning and inspection of the anomalous values was made, and also inspection of the consistency between the different questions on the questionnaire.

5.4 Special Technical Notes

This survey depends on the frame of the Population, Housing and Establishment Census-2007 where some problems affected the accuracy of the data as follows:

1. The presence of a number of localities which do not have authorities and affiliated with localities nearby and shares its infrastructure services, as it is difficult to separate data from these localities, and which were therefore considered as followed localities.
2. There is no existence of a population such as Izbet Abu Adam in Salfit governorate, and Der Kult and Deir Hijleh data were collected in Jericho in of Jericho and Al-Aghwar

governorate, and Alrgoman and Tel al Khashabeh merged their data Aqraba in Nablus governorate in addition to and Wade Alamaer, Khirbat Bir Al-Aad count and Arab Al-Frejat in Hebron governorate.

3. Localities inside the check points. That part of Jerusalem which was annexed by Israel in 1967. It was difficult to get accurate and comprehensive data about these localities, and since it follows the Jerusalem municipality, they were all considered as one locality.
4. We have faced some problem in the collection of data from the Gaza Strip communities, the project management to assess some of the data based on 2005 survey compared to some of the data and the preliminary results of the Population, Housing, and Establishments census 2007 and other databases available in PCBS which serve the purpose of the survey

References

1. Palestinian Central Bureau of statistics, 2003. Local Community Survey. 2003, Main Finding. Ramallah – Palestine.
2. Palestinian Central Bureau of statistics, 2005. Local Community Survey. 2005, Main Finding. Ramallah– Palestine.
3. Palestinian Central Bureau of Statistics 2008. Educational Census Database for the scholastic years 2007/2008 Ministry of Education and Higher Education. Ramallah – Palestine.
4. Palestinian Central Bureau of Statistics 2008. The Population, Housing, and Establishment Census-2007, Press Conference on the Preliminary Findings, (Population, Buildings, Housing Units and Establishment). Ramallah – Palestine.
5. Palestinian Central Bureau of Statistics 2008. The Population, Housing, and Establishment Census-2007, Final Results of the West Bank, Summary (Population and Housing). Ramallah – Palestine