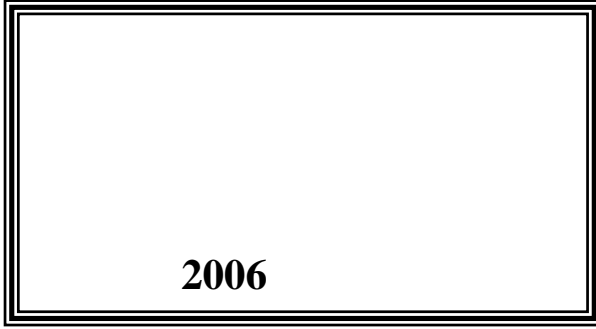


**2008**

**3 :  
2008 /**



© 1429 - 2008.

2008

2008.

1647

: 6340 242 (970/972)

: 6343 242 (970/972)

: diwan@pcbs.gov.ps

: http://www.pcbs.gov.ps



.

**2008**

**(PNA)**

**2008**

**(CFG)**

**.(SDC)**

.

**(CFG)**



•

•

•

•

•

.

1994

.1996

2008

.1996

**2008**

|           |     |   |
|-----------|-----|---|
| <b>21</b> |     | : |
| 21        | 1.1 |   |
| 21        | 2.1 |   |
| 22        | 3.1 |   |
| <b>23</b> |     | : |
| <b>25</b> |     | : |
| <b>29</b> |     | : |
| 29        | 1.4 |   |
| 29        | 2.4 |   |
| 30        | 3.4 |   |
| 30        | 4.4 |   |
| 30        | 5.4 |   |
| <b>33</b> |     | : |
| 33        | 1.5 |   |
| 33        | 2.5 |   |
| 33        | 3.5 |   |
| <b>37</b> |     |   |



|           |      |      |      |      |            |
|-----------|------|------|------|------|------------|
| <b>37</b> | 1997 |      |      |      | <b>:1</b>  |
|           |      |      |      | 2008 |            |
| <b>38</b> | -    |      |      |      | <b>:2</b>  |
|           |      |      |      | 2008 |            |
| <b>40</b> | -    |      |      |      | <b>:3</b>  |
|           |      |      |      | 2008 |            |
| <b>41</b> |      |      |      |      | <b>:4</b>  |
|           |      |      | 2008 | -    |            |
| <b>45</b> |      |      |      |      | <b>:5</b>  |
|           |      |      | 2008 | -    |            |
| <b>48</b> |      |      |      |      | <b>:6</b>  |
|           |      | 2008 | -    |      |            |
| <b>51</b> |      |      |      |      | <b>:7</b>  |
|           | -    |      |      |      |            |
|           |      |      |      | 2008 |            |
| <b>53</b> |      |      |      |      | <b>:8</b>  |
|           |      | 2008 | -    |      |            |
| <b>56</b> |      |      |      |      | <b>:9</b>  |
|           |      |      | 2008 | -    |            |
| <b>59</b> |      |      |      |      | <b>:10</b> |
|           |      |      |      | 2008 |            |
|           |      |      |      | -    |            |
| <b>63</b> | -    |      |      |      | <b>:11</b> |
|           |      |      |      | 2008 |            |

25 ت 2006 - 2008 :1

27 :2

2008

2008

:

: .1

1,096

:

2008

588 •

254 •

+

53 •

180 •

21 •

:

.2

:

458.8 ( )

121.0

263.1

384.1 •

6.5

68.2

74.7 •

:

.3

2.5

38

:

.4

296.7

1,397

:

234.3

1174

•

62.5

223

•

2007 -2006

%2.6 2008

.2007

%3.3

2006

%49.4 ,%23.5

2006

2008

.2007

2008

%55.1 %43.7

|   |   |            |
|---|---|------------|
|   | : | <b>1.1</b> |
|   | : |            |
|   | : |            |
|   | : |            |
|   | : |            |
|   | : | <b>2.1</b> |
| : |   |            |
|   |   | •          |
|   |   | •          |
|   |   | •          |
|   |   | •          |
|   |   | •          |
|   |   | •          |

:

:

:

•

:

•

.

:

•

:

•

:

•

.

:

•



.(

)

.1967

.1 :

2008

:2007 -2006

| 2007 (%)    | 2006 (%)    | *            |              |              |
|-------------|-------------|--------------|--------------|--------------|
|             |             | 2008         | 2007         | 2006         |
| -14.0       | 5.2         | 588          | 684          | 559          |
| 5.0         | -1.6        | 254          | 242          | 258          |
| 32.5        | 10.4        | 53           | 40           | 48           |
| 20.8        | -22.7       | 180          | 149          | 233          |
| 16.7        | -22.2       | 21           | 18           | 27           |
| <b>-3.3</b> | <b>-2.6</b> | <b>1,096</b> | <b>1,133</b> | <b>1,125</b> |

\*

%3.3 %2.6

2008

2007 2006

2008

%5.2

.2007

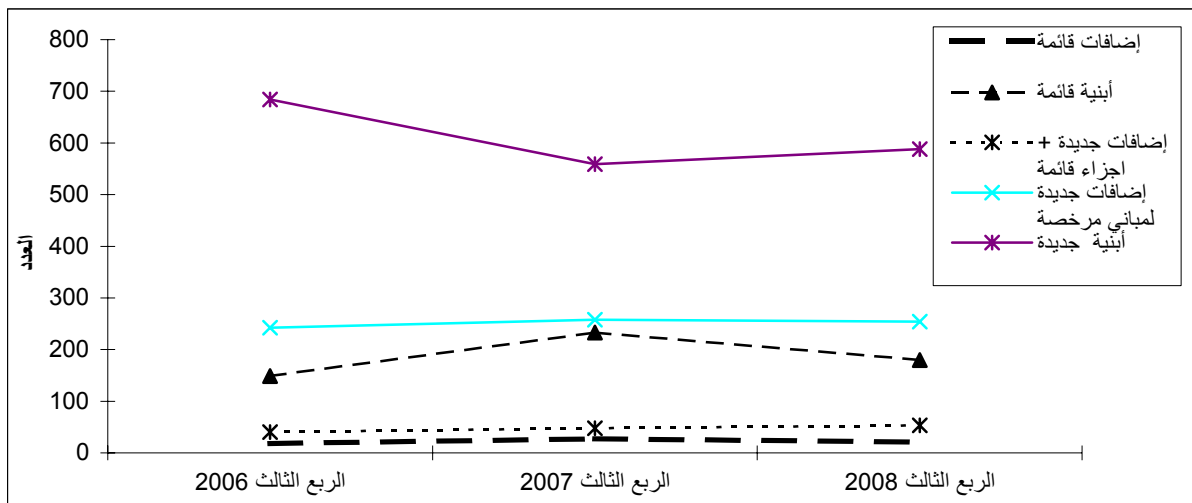
%14.0

2006

2008- 2006 ( )

2008 -2006

:1





: .2

2008

:2007 -2006

| 2007<br>(%) | 2006<br>(%) | *( )  |       |       |   |
|-------------|-------------|-------|-------|-------|---|
|             |             | 2008  | 2007  | 2006  |   |
| 4.3         | -2.4        | 458.8 | 440.1 | 470.1 | * |
| 6.2         | 2.6         | 384.1 | 361.8 | 374.5 | : |
| -6.5        | -4.7        | 263.1 | 281.3 | 276.2 |   |
| 50.3        | 23.1        | 121.0 | 80.5  | 98.3  |   |
| -4.5        | -21.9       | 74.7  | 78.3  | 95.6  | : |
| 8.3         | -15.3       | 68.2  | 63.0  | 80.5  |   |
| -57.5       | -57.0       | 6.5   | 15.3  | 15.1  |   |

\*

: .3

2008

:2007 -2006

| 2007<br>(%) | 2006<br>(%) |      |      |      |     |
|-------------|-------------|------|------|------|-----|
|             |             | 2008 | 2007 | 2006 |     |
| 0.0         | -46.5       | 38   | 38   | 71   |     |
| -19.4       | -56.1       | 2.5  | 3.1  | 5.7  | ( ) |

: .4

2008

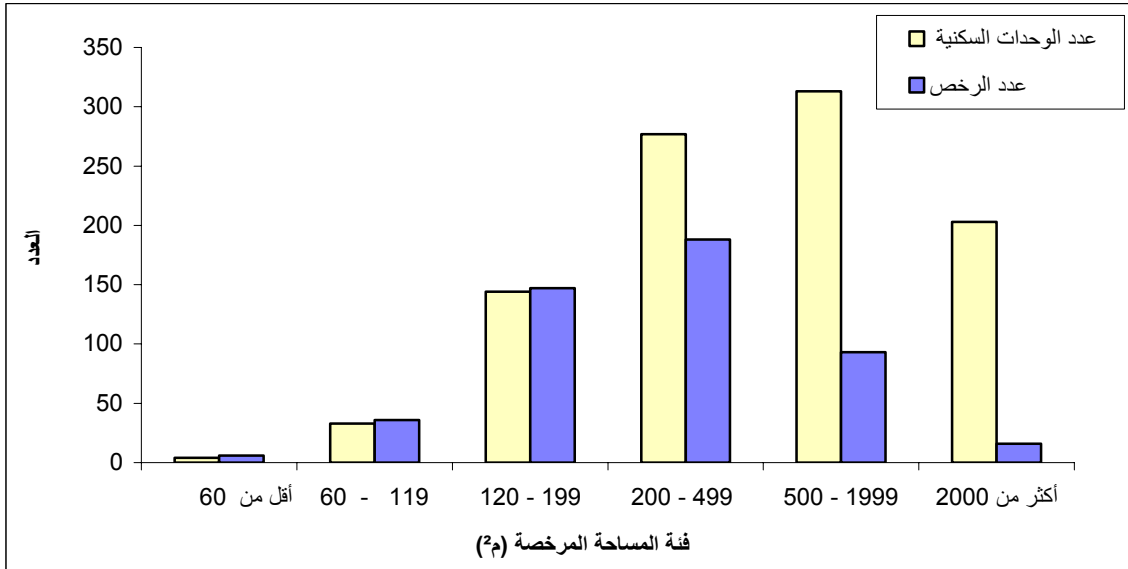
:2007 -2006

| 2007<br>(%) | 2006<br>(%) |       |       |       |     |
|-------------|-------------|-------|-------|-------|-----|
|             |             | 2008  | 2007  | 2006  |     |
| -43.7       | -23.5       | 1,174 | 2,085 | 1,535 |     |
| -7.8        | -7.7        | 234.3 | 254.1 | 253.7 | ( ) |
| -55.1       | -49.4       | 223   | 497   | 441   |     |
| 12.4        | -16.1       | 62.5  | 55.6  | 74.5  | ( ) |

:2008

:2

2008





|   |            |
|---|------------|
| : | <b>1.4</b> |
| : | •          |
| : | •          |
| : | •          |
| : | •          |
| : | •          |
| : | <b>2.4</b> |
| : | •          |
| : | •          |
| : | •          |
| : | •          |
| : | •          |
| : | (     )    |

.1996

: **3.4**

:

:

:

:

:

**4.4**

:

:

**5.4**

:





: 1.5

1.1.5

2.1.5

2.5

: 3.5

•

•

( ) 1967

(J2)

•

•





**2008                      1997                      \*                      :1**

**Table1: Buildings Licenses Issued\* in Remaining West Bank and Gaza Strip During the Period 1997 to the Third Quarter 2008**

| Period        | Licensed Dwellings         |              |                            |               | ( ² )<br>Licensed Areas (1000m²) |  |                | Number of Licenses  |                                   |   |  |                              |                  |             |
|---------------|----------------------------|--------------|----------------------------|---------------|----------------------------------|--|----------------|---------------------|-----------------------------------|---|--|------------------------------|------------------|-------------|
|               | Existing Dwellings         |              | New Dwellings              |               | Existing Areas                   | كافة المساحات الجديدة<br>All New Areas | Total          | Existing Extensions | أبنية قائمة<br>Existing Buildings | إضافات جديدة + أجزاء قائمة<br>Additions+ Existing Parts | إضافات جديدة لمباني مرخصة<br>Additions to Licensed Buildings | أبنية جديدة<br>New Buildings | المجموع<br>Total |             |
|               | ( ² )<br>Area<br>(1000 m²) | No.          | ( ² )<br>Area<br>(1000 m²) | No.           |                                  |  |                |                     |                                   |   |  |                              |                  |             |
| <b>1997</b>   | <b>391.8</b>               | <b>2,759</b> | <b>1,768.5</b>             | <b>1,3230</b> | <b>500.1</b>                     | <b>2,391.9</b>                         | <b>2,892.0</b> | <b>263</b>          | <b>1,155</b>                      | <b>187</b>  | <b>1,994</b>   | <b>4,789</b>                 | <b>8,388</b>     | <b>1997</b> |
| <b>1998</b>   | <b>387.1</b>               | <b>2,735</b> | <b>1,786.7</b>             | <b>1,2826</b> | <b>469.1</b>                     | <b>2,505.7</b>                         | <b>2,974.8</b> | <b>178</b>          | <b>1,144</b>                      | <b>265</b>  | <b>2,252</b>   | <b>5,117</b>                 | <b>8,956</b>     | <b>1998</b> |
| <b>1999</b>   | <b>439.0</b>               | <b>3,675</b> | <b>2,050.6</b>             | <b>1,4587</b> | <b>554.4</b>                     | <b>2,860.1</b>                         | <b>3,414.5</b> | <b>115</b>          | <b>1,470</b>                      | <b>475</b>  | <b>2,055</b>   | <b>5,803</b>                 | <b>9,918</b>     | <b>1999</b> |
| <b>2000</b>   | <b>383.3</b>               | <b>2,730</b> | <b>1,646.1</b>             | <b>1,0708</b> | <b>482.4</b>                     | <b>2,457.6</b>                         | <b>2,940.0</b> | <b>185</b>          | <b>1,318</b>                      | <b>448</b>  | <b>1,852</b>   | <b>4,498</b>                 | <b>8,301</b>     | <b>2000</b> |
| <b>2001</b>   | <b>256.0</b>               | <b>1,847</b> | <b>1,041.9</b>             | <b>7,037</b>  | <b>341.0</b>                     | <b>1,633.9</b>                         | <b>1,974.9</b> | <b>124</b>          | <b>774</b>                        | <b>273</b>  | <b>1,181</b>   | <b>2,781</b>                 | <b>5,133</b>     | <b>2001</b> |
| <b>2002</b>   | <b>137.6</b>               | <b>975</b>   | <b>794.3</b>               | <b>5,089</b>  | <b>171.8</b>                     | <b>1,080.4</b>                         | <b>1,252.2</b> | <b>52</b>           | <b>554</b>                        | <b>131</b>  | <b>675</b>   | <b>1,913</b>                 | <b>3,325</b>     | <b>2002</b> |
| <b>2003</b>   | <b>175.8</b>               | <b>1,671</b> | <b>1,234.2</b>             | <b>8,152</b>  | <b>226.1</b>                     | <b>1,863.9</b>                         | <b>2,090.0</b> | <b>99</b>           | <b>749</b>                        | <b>138</b>  | <b>1,268</b>   | <b>2,981</b>                 | <b>5,235</b>     | <b>2003</b> |
| <b>2004</b>   | <b>161.6</b>               | <b>1,229</b> | <b>1,248.6</b>             | <b>8,184</b>  | <b>222.0</b>                     | <b>1,803.9</b>                         | <b>2,025.8</b> | <b>111</b>          | <b>706</b>                        | <b>149</b>  | <b>1,113</b>   | <b>2,929</b>                 | <b>5,008</b>     | <b>2004</b> |
| <b>2005</b>   | <b>366.7</b>               | <b>2,522</b> | <b>1,729.5</b>             | <b>1,0362</b> | <b>474.2</b>                     | <b>2,427.4</b>                         | <b>2,901.6</b> | <b>127</b>          | <b>1,469</b>                      | <b>223</b>  | <b>1,293</b>   | <b>3,996</b>                 | <b>7,108</b>     | <b>2005</b> |
| <b>2006</b>   | <b>524.2</b>               | <b>3,301</b> | <b>1,193.6</b>             | <b>6,909</b>  | <b>679.2</b>                     | <b>1,666.9</b>                         | <b>2,346.1</b> | <b>112</b>          | <b>1,894</b>                      | <b>265</b>  | <b>1,087</b>   | <b>2,703</b>                 | <b>6,061</b>     | <b>2006</b> |
| <b>2007</b>   |                            |              |                            |               |                                  |  |                |                     |                                   |   |  |                              |                  | <b>2007</b> |
| Quarter I     | 68.0                       | 419          | 199.8                      | 1,160         | 92.6                             | 312.2                                  | 404.7          | 20                  | 246                               | 18  | 255  | 505                          | 1,044            |             |
| Quarter II    | 67.1                       | 389          | 238.1                      | 1,597         | 90.4                             | 360.6                                  | 451.0          | 16                  | 231                               | 40  | 273  | 615                          | 1,175            |             |
| Quarter III   | 64.1                       | 567          | 258.9                      | 2,109         | 90.3                             | 428.5                                  | 518.9          | 18                  | 209                               | 40  | 244  | 696                          | 1,207            |             |
| Quarter IIII  | 45.0                       | 275          | 286.3                      | 2,612         | 52.5                             | 347.1                                  | 399.6          | 10                  | 173                               | 42  | 197  | 640                          | 1,062            |             |
| <b>2008</b>   |                            |              |                            |               |                                  |  |                |                     |                                   |   |  |                              |                  | <b>2008</b> |
| Quarter I     | 88.3                       | 414          | 297.5                      | 1,850         | 107.0                            | 423.1                                  | 530.1          | 18                  | 191                               | 70  | 259  | 690                          | 1,228            |             |
| Quarter II    | 60.7                       | 331          | 195.2                      | 1,062         | 75.0                             | 279.8                                  | 354.8          | 16                  | 253                               | 64  | 208  | 614                          | 1,155            |             |
| Quarter III** | 62.5                       | 223          | 234.3                      | 1,174         | 74.7                             | 384.1                                  | 458.8          | 21                  | 180                               | 53  | 254  | 588                          | 1,096            | **          |

\*Excluding boundary walls licenses

\*\* Data were not available for Gaza Strip

Table2: Buildings Licenses Issued in Remaining West Bank by Building Ownership and Utilization - Third Quarter 2008

| Building Ownership          | Licensed Dwellings                                 |            |  |              | *( <sup>2</sup> )<br>Licensed Areas (1000m <sup>2</sup> )* |                  |              | Number of Issued Licenses |                       |           |                                     |  |                  |       |
|-----------------------------|--|------------|--|--------------|--|------------------|--------------|---------------------------|-----------------------|-----------|-------------------------------------|--|------------------|-------|
|                             | Existing Dwellings                                 |            | New Dwellings                                      |              | Existin<br>g Areas   | All New<br>Areas | Total        | Existing<br>Extensions    | Existing<br>Buildings | +         | Additions<br>+<br>Existing<br>Parts | Additions<br>to<br>Licensed<br>Buildings | New<br>Buildings | Total |
|                             | ( <sup>2</sup> )<br>Area<br>(1000 m <sup>2</sup> ) | No.        | ( <sup>2</sup> )<br>Area<br>(1000 m <sup>2</sup> ) | No.          |  |                  |              |                           |                       |           |                                     |  |                  |       |
| <b>Total</b>                | <b>62.5</b>  | <b>223</b> | <b>230.8</b>                                       | <b>1,161</b> | <b>68.2</b>  | <b>263.1</b>     | <b>331.2</b> | <b>21</b>                 | <b>168</b>            | <b>53</b> | <b>203</b>                          | <b>486</b>                               | <b>931</b>       |       |
| <b>Residential Building</b> | <b>62.5</b>  | <b>223</b> | <b>230.8</b>                                       | <b>1,161</b> | <b>68.2</b>  | <b>263.1</b>     | <b>331.2</b> | <b>21</b>                 | <b>168</b>            | <b>53</b> | <b>203</b>                          | <b>486</b>                               | <b>931</b>       |       |
| <b>Non-Res. Building</b>    | <b>0.0</b>   | <b>0</b>   | <b>3.5</b>   | <b>13</b>    | <b>6.5</b>   | <b>121.0</b>     | <b>127.5</b> | <b>0</b>                  | <b>12</b>             | <b>0</b>  | <b>51</b>                           | <b>102</b>                               | <b>165</b>       |       |
| <b>Boundary walls</b>       | <b>0.0</b>   | <b>0</b>   | <b>0.0</b>   | <b>0</b>     | <b>0.0</b>   | <b>2.5</b>       | <b>2.5</b>   | <b>0</b>                  | <b>0</b>              | <b>1</b>  | <b>3</b>                            | <b>34</b>                                | <b>38</b>        |       |
| <b>Private</b>              |  |            |  |              |  |                  |              |                           |                       |           |                                     |  |                  |       |
| Residential Buildings       | 62.5   | 223        | 230.8  | 1,161        | 68.2   | 263.1            | 331.2        | 21                        | 168                   | 53        | 203                                 | 486                                      | 931              |       |
| Non-Res. Buildings          | 0.0  | 0          | 3.2  | 12           | 5.6  | 71.8             | 77.4         | 0                         | 11                    | 0         | 42                                  | 61                                       | 114              |       |
| Boundary walls              | 0.0  | 0          | 0.0  | 0            | 0.0  | 2.5              | 2.5          | 0                         | 0                     | 1         | 3                                   | 34                                       | 38               |       |
| <b>Governmental</b>         |  |            |  |              |  |                  |              |                           |                       |           |                                     |  |                  |       |
| Residential Buildings       | 0.0  | 0          | 0.0  | 0            | 0.0  | 0.0              | 0.0          | 0                         | 0                     | 0         | 0                                   | 0  | 0                |       |
| Non-Res. Buildings          | 0.0  | 0          | 0.3  | 1            | 0.0  | 23.1             | 23.1         | 0                         | 0                     | 0         | 5                                   | 10                                       | 15               |       |
| Boundary walls              | 0.0  | 0          | 0.0  | 0            | 0.0  | 0.0              | 0.0          | 0                         | 0                     | 0         | 0                                   | 0  | 0                |       |
| <b>Local Authority</b>      |  |            |  |              |  |                  |              |                           |                       |           |                                     |  |                  |       |
| Residential Buildings       | 0.0  | 0          | 0.0  | 0            | 0.0  | 0.0              | 0.0          | 0                         | 0                     | 0         | 0                                   | 0  | 0                |       |
| Non-Res. Buildings          | 0.0  | 0          | 0.0  | 0            | 0.9  | 22.5             | 23.4         | 0                         | 1                     | 0         | 2                                   | 24                                       | 27               |       |
| Boundary walls              | 0.0  | 0          | 0.0  | 0            | 0.0  | 0.0              | 0.0          | 0                         | 0                     | 0         | 0                                   | 0  | 0                |       |

\*For boundary walls it refers to length in (1000 m.r)

\*

2008

-

:( ) 2

Table2 (cont.): Buildings Licenses Issued in Remaining West Bank by Building Ownership and Utilization - Third Quarter 2008

| Building Ownership    | Licensed Dwellings                              |     |   |     | *( <sup>2</sup> )<br>Licensed Areas (1000m <sup>2</sup> )* |               |       | Number of Issued Licenses |                    |   |                            |                                 |               |       |
|-----------------------|---|-----|---|-----|--|---------------|-------|---------------------------|--------------------|---|----------------------------|---------------------------------|---------------|-------|
|                       | Existing Dwellings                              |     | New Dwellings                                   |     | Existing Areas   | All New Areas | Total | Existing Extensions       | Existing Buildings | + | Additions + Existing Parts | Additions to Licensed Buildings | New Buildings | Total |
|                       | ( <sup>2</sup> )<br>Area (1000 m <sup>2</sup> ) | No. | ( <sup>2</sup> )<br>Area (1000 m <sup>2</sup> ) | No. |  |               |       |                           |                    |   |                            |                                 |               |       |
| <b>Cooperative</b>    |   |     |   |     |  |               |       |                           |                    |   |                            |                                 |               |       |
| Residential Buildings | 0.0   | 0   | 0.0   | 0   | 0.0  | 0.0           | 0.0   | 0                         | 0                  | 0 | 0                          | 0                               | 0             | 0     |
| Non-Res. Buildings    | 0.0   | 0   | 0.0   | 0   | 0.0  | 0.9           | 0.9   | 0                         | 0                  | 0 | 1                          | 1                               | 1             | 2     |
| Boundary walls        | 0.0   | 0   | 0.0   | 0   | 0.0  | 0.0           | 0.0   | 0                         | 0                  | 0 | 0                          | 0                               | 0             | 0     |
| <b>Charity</b>        |   |     |   |     |  |               |       |                           |                    |   |                            |                                 |               |       |
| Residential Buildings | 0.0   | 0   | 0.0   | 0   | 0.0  | 0.0           | 0.0   | 0                         | 0                  | 0 | 0                          | 0                               | 0             | 0     |
| Non-Res. Buildings    | 0.0   | 0   | 0.0   | 0   | 0.0  | 1.4           | 1.4   | 0                         | 0                  | 0 | 1                          | 2                               | 2             | 3     |
| Boundary walls        | 0.0   | 0   | 0.0   | 0   | 0.0  | 0.0           | 0.0   | 0                         | 0                  | 0 | 0                          | 0                               | 0             | 0     |
| <b>Others</b>         |   |     |   |     |  |               |       |                           |                    |   |                            |                                 |               |       |
| Residential Buildings | 0.0   | 0   | 0.0   | 0   | 0.0  | 0.0           | 0.0   | 0                         | 0                  | 0 | 0                          | 0                               | 0             | 0     |
| Non-Res. Buildings    | 0.0   | 0   | 0.0   | 0   | 0.0  | 1.3           | 1.3   | 0                         | 0                  | 0 | 0                          | 4                               | 4             | 4     |
| Boundary walls        | 0.0   | 0   | 0.0   | 0   | 0.0  | 0.0           | 0.0   | 0                         | 0                  | 0 | 0                          | 0                               | 0             | 0     |

\*For boundary walls it refers to length in (1000 m.r)

\*

Table 3: Buildings Licenses Issued in Remaining West Bank by Issuing Authority and Utilization - Third Quarter 2008

| License Issuing Authority       | Licensed Dwellings                           |     |  |      | *( <sup>2</sup> ) Licensed Areas (1000 m <sup>2</sup> )* |               |       | Number of Issued Licenses |                    |                              |                                 |               |       |
|---------------------------------|--|-----|--|------|--|---------------|-------|---------------------------|--------------------|------------------------------|---------------------------------|---------------|-------|
|                                 | Existing Dwellings                           |     | New Dwellings                                |      | Existing Areas   | All New Areas | Total | Existing Extensions       | Existing Buildings | + Additions + Existing Parts | Additions to Licensed Buildings | New Buildings | Total |
|                                 | ( <sup>2</sup> ) Area (1000 m <sup>2</sup> ) | No. | ( <sup>2</sup> ) Area (1000 m <sup>2</sup> ) | No.  |  |               |       |                           |                    |                              |                                 |               |       |
| <b>All Authorities</b>          |  |     |  |      |  |               |       |                           |                    |                              |                                 |               |       |
| <b>Residential Buildings</b>    | 62.5   | 223 | 230.8  | 1161 | 68.2   | 263.1         | 331.2 | 21                        | 168                | 53                           | 203                             | 486           | 931   |
| <b>Non-Res. Buildings</b>       | 0.0  | 0   | 3.5  | 13   | 6.5  | 121.0         | 127.5 | 0                         | 12                 | 0                            | 51                              | 102           | 165   |
| <b>Boundary walls</b>           | 0.0  | 0   | 0.0  | 0    | 0.0  | 2.5           | 2.5   | 0                         | 0                  | 1                            | 3                               | 34            | 38    |
| <b>Municipalities</b>           |  |     |  |      |  |               |       |                           |                    |                              |                                 |               |       |
| Residential Buildings           | 53.3   | 171 | 207.4  | 1021 | 58.3   | 231.4         | 289.8 | 19                        | 137                | 47                           | 197                             | 397           | 797   |
| Non-Res. Buildings              | 0.0  | 0   | 3.5  | 13   | 5.6  | 93.7          | 99.4  | 0                         | 11                 | 0                            | 48                              | 69            | 128   |
| Boundary walls                  | 0.0  | 0   | 0.0  | 0    | 0.0  | 2.2           | 2.2   | 0                         | 0                  | 1                            | 2                               | 32            | 35    |
| <b>Construction Authorities</b> |  |     |  |      |  |               |       |                           |                    |                              |                                 |               |       |
| Residential Buildings           | 9.2  | 52  | 23.4   | 140  | 9.8  | 31.6          | 41.5  | 2                         | 31                 | 6                            | 6                               | 89            | 134   |
| Non-Res. Buildings              | 0.0  | 0   | 0.0  | 0    | 0.9  | 27.2          | 28.1  | 0                         | 1                  | 0                            | 3                               | 33            | 37    |
| Boundary walls                  | 0.0  | 0   | 0.0  | 0    | 0.0  | 0.3           | 0.3   | 0                         | 0                  | 0                            | 1                               | 2             | 3     |

\*For boundary walls it refers to length in (1000 m.r)

\*

**Table 4: Buildings Licenses Issued in Remaining West Bank for New Buildings by Category of Licensed Area and Governorate- Third Quarter 2008**

| Governorate<br>&Area Category | Non-Res. Buildings                             |                              | Residential Buildings                          |  |   |                              |                        |
|-------------------------------|--|------------------------------|--|--|---|------------------------------|------------------------|
|                               | متوسط عدد الطوابق<br>Average No. of<br>Storeys | عدد الرخص<br>No. of Licenses | متوسط عدد الطوابق<br>Average No. of<br>Storeys | متوسط عدد الوحدات السكنية<br>Average No. of<br>Dwellings | مجموع عدد الوحدات<br>السكنية<br>Total No. of<br>Dwellings | عدد الرخص<br>No. of Licenses |                        |
| <b>All Governorates</b>       |  |                              |  |  |   |                              |                        |
| Less than 60 m <sup>2</sup>   | 0.6  | 10                           | 0.7  | 0.7  | 4   | 6                            | <sup>2</sup> 60        |
| 60- 119 m <sup>2</sup>        | 0.9  | 7                            | 1.2  | 0.9  | 33  | 36                           | <sup>2</sup> 119 -60   |
| 120-199m <sup>2</sup>         | 0.8  | 6                            | 1.1  | 1.0  | 144   | 147                          | <sup>2</sup> 199 -120  |
| 200- 499 m <sup>2</sup>       | 1.5  | 26                           | 1.7  | 1.5  | 277   | 188                          | <sup>2</sup> 499-200   |
| 500-1999 m <sup>2</sup>       | 2.4  | 43                           | 2.8  | 3.4  | 313   | 93                           | <sup>2</sup> 1999 -500 |
| 2000- m <sup>2</sup> and more | 4.6  | 10                           | 5.6  | 12.7   | 203   | 16                           | <sup>2</sup> 2000      |
| <b>Jenin</b>                  |  |                              |  |  |   |                              |                        |
| Less than 60 m <sup>2</sup>   | 0.0  | 0                            | 0.0  | 0.0  | 0   | 0                            | <sup>2</sup> 60        |
| 60-119 m <sup>2</sup>         | 1.0  | 1                            | 1.0  | 1.0  | 2   | 2                            | <sup>2</sup> 119 -60   |
| 120- 199 m <sup>2</sup>       | 0.0  | 0                            | 1.0  | 1.0  | 4   | 4                            | <sup>2</sup> 199 -120  |
| 200- 499 m <sup>2</sup>       | 1.0  | 4                            | 1.9  | 1.8  | 18  | 10                           | <sup>2</sup> 499 -200  |
| 500- 1999 m <sup>2</sup>      | 2.6  | 5                            | 2.4  | 3.0  | 15  | 5                            | <sup>2</sup> 1999 -500 |
| 2000 m <sup>2</sup> and more  | 0.0  | 0                            | 0.0  | 0.0  | 0   | 0                            | <sup>2</sup> 2000      |
| <b>Tubas</b>                  |  |                              |  |  |   |                              |                        |
| Less than 60 m <sup>2</sup>   | 0.0  | 0                            | 0.0  | 0.0  | 0   | 0                            | <sup>2</sup> 60        |
| 60- 119 m <sup>2</sup>        | 0.0  | 0                            | 0.0  | 0.0  | 0   | 0                            | <sup>2</sup> 119 -60   |
| 120-199m <sup>2</sup>         | 0.0  | 0                            | 1.1  | 1.0  | 9   | 9                            | <sup>2</sup> 199 -120  |
| 200- 499 m <sup>2</sup>       | 1.5  | 2                            | 2.0  | 2.0  | 8   | 4                            | <sup>2</sup> 499-200   |
| 500-1999 m <sup>2</sup>       | 1.0  | 1                            | 0.0  | 0.0  | 0   | 0                            | <sup>2</sup> 1999 -500 |
| 2000- m <sup>2</sup> and more | 0.0  | 0                            | 0.0  | 0.0  | 0   | 0                            | <sup>2</sup> 2000      |

**Table 4 (Cont.): Buildings Licenses Issued in Remaining West Bank for New Buildings by Category of Licensed Area and Governorate– Third Quarter 2008**

| Governorate & Area Category   | Non-Res. Buildings     |                 | Residential Buildings  |                          |                        |                 |                        |
|-------------------------------|------------------------|-----------------|------------------------|--------------------------|------------------------|-----------------|------------------------|
|                               | Average No. of Storeys | No. of Licenses | Average No. of Storeys | Average No. of Dwellings | Total No. of Dwellings | No. of Licenses |                        |
| <b>Tulkarm</b>                |                        |                 |                        |                          |                        |                 |                        |
| Less than 60 m <sup>2</sup>   | 0.0                    | 1               | 0.0                    | 0.0                      | 0                      | 0               | <sup>2</sup> 60        |
| 60-119 m <sup>2</sup>         | 0.0                    | 0               | 1.0                    | 1.0                      | 6                      | 6               | <sup>2</sup> 119 -60   |
| 120- 199 m <sup>2</sup>       | 1.0                    | 1               | 1.0                    | 1.0                      | 15                     | 15              | <sup>2</sup> 199 -120  |
| 200- 499 m <sup>2</sup>       | 1.2                    | 5               | 1.9                    | 1.3                      | 29                     | 23              | <sup>2</sup> 499 -200  |
| 500- 1999 m <sup>2</sup>      | 0.0                    | 0               | 2.3                    | 3.0                      | 21                     | 7               | <sup>2</sup> 1999 -500 |
| 2000 m <sup>2</sup> and more  | 3.0                    | 1               | 0.0                    | 0.0                      | 0                      | 0               | <sup>2</sup> 2000      |
| <b>Nablus</b>                 |                        |                 |                        |                          |                        |                 |                        |
| Less than 60 m <sup>2</sup>   | 0.6                    | 5               | 1.0                    | 1.0                      | 1                      | 1               | <sup>2</sup> 60        |
| 60- 119 m <sup>2</sup>        | 1.0                    | 2               | 1.1                    | 1.0                      | 10                     | 10              | <sup>2</sup> 119 -60   |
| 120-199m <sup>2</sup>         | 1.0                    | 2               | 1.1                    | 1.1                      | 21                     | 20              | <sup>2</sup> 199 -120  |
| 200- 499 m <sup>2</sup>       | 1.5                    | 6               | 1.8                    | 1.4                      | 45                     | 33              | <sup>2</sup> 499-200   |
| 500-1999 m <sup>2</sup>       | 3.4                    | 9               | 3.1                    | 3.4                      | 67                     | 20              | <sup>2</sup> 1999 -500 |
| 2000- m <sup>2</sup> and more | 5.5                    | 2               | 4.0                    | 12.0                     | 12                     | 1               | <sup>2</sup> 2000      |
| <b>Qalqilya</b>               |                        |                 |                        |                          |                        |                 |                        |
| Less than 60 m <sup>2</sup>   | 0.0                    | 0               | 1.0                    | 1.0                      | 1                      | 1               | <sup>2</sup> 60        |
| 60-119 m <sup>2</sup>         | 0.0                    | 0               | 1.4                    | 1.0                      | 5                      | 5               | <sup>2</sup> 119 -60   |
| 120- 199 m <sup>2</sup>       | 0.0                    | 1               | 1.1                    | 1.0                      | 16                     | 16              | <sup>2</sup> 199 -120  |
| 200- 499 m <sup>2</sup>       | 2.0                    | 1               | 1.7                    | 1.5                      | 28                     | 19              | <sup>2</sup> 499 -200  |
| 500- 1999 m <sup>2</sup>      | 2.0                    | 2               | 2.0                    | 6.0                      | 12                     | 2               | <sup>2</sup> 1999 -500 |
| 2000 m <sup>2</sup> and more  | 3.0                    | 1               | 0.0                    | 0.0                      | 0                      | 0               | <sup>2</sup> 2000      |

**Table 4 (Cont.): Buildings Licenses Issued in Remaining West Bank for New Buildings by Category of Licensed Area and Governorate– Third Quarter 2008**

| Governorate<br>&Area Category | Non-Res. Buildings     |                 | Residential Buildings  |                          |                        |                 |                        |
|-------------------------------|------------------------|-----------------|------------------------|--------------------------|------------------------|-----------------|------------------------|
|                               | Average No. of Storeys | No. of Licenses | Average No. of Storeys | Average No. of Dwellings | Total No. of Dwellings | No. of Licenses |                        |
| <b>Salfit</b>                 |                        |                 |                        |                          |                        |                 |                        |
| Less than 60 m <sup>2</sup>   | 1.0                    | 1               | 0.0                    | 0.0                      | 0                      | 0               | <sup>2</sup> 60        |
| 60- 119 m <sup>2</sup>        | 1.0                    | 1               | 1.7                    | 0.3                      | 1                      | 3               | <sup>2</sup> 119 -60   |
| 120-199m <sup>2</sup>         | 1.0                    | 1               | 1.2                    | 1.2                      | 6                      | 5               | <sup>2</sup> 199 -120  |
| 200- 499 m <sup>2</sup>       | 2.0                    | 1               | 1.9                    | 1.9                      | 13                     | 7               | <sup>2</sup> 499-200   |
| 500-1999 m <sup>2</sup>       | 0.0                    | 0               | 1.5                    | 2.0                      | 4                      | 2               | <sup>2</sup> 1999 -500 |
| 2000- m <sup>2</sup> and more | 0.0                    | 0               | 0.0                    | 0.0                      | 0                      | 0               | <sup>2</sup> 2000      |
| <b>Ramallah and Al-Bireh</b>  |                        |                 |                        |                          |                        |                 |                        |
| Less than 60 m <sup>2</sup>   | 0.0                    | 0               | 0.0                    | 0.0                      | 0                      | 1               | <sup>2</sup> 60        |
| 60-119 m <sup>2</sup>         | 0.0                    | 0               | 1.5                    | 1.5                      | 3                      | 2               | <sup>2</sup> 119 -60   |
| 120- 199 m <sup>2</sup>       | 0.0                    | 0               | 1.3                    | 0.9                      | 11                     | 12              | <sup>2</sup> 199 -120  |
| 200- 499 m <sup>2</sup>       | 2.0                    | 4               | 2.0                    | 1.8                      | 36                     | 20              | <sup>2</sup> 499 -200  |
| 500- 1999 m <sup>2</sup>      | 2.4                    | 10              | 3.1                    | 3.5                      | 118                    | 34              | <sup>2</sup> 1999 -500 |
| 2000 m <sup>2</sup> and more  | 5.2                    | 5               | 6.0                    | 12.8                     | 154                    | 12              | <sup>2</sup> 2000      |
| <b>Jericho and Al Aghwar</b>  |                        |                 |                        |                          |                        |                 |                        |
| Less than 60 m <sup>2</sup>   | 0.0                    | 0               | 0.0                    | 0.0                      | 0                      | 0               | <sup>2</sup> 60        |
| 60- 119 m <sup>2</sup>        | 1.0                    | 1               | 0.0                    | 0.0                      | 0                      | 0               | <sup>2</sup> 119 -60   |
| 120-199m <sup>2</sup>         | 0.0                    | 0               | 1.3                    | 1.0                      | 4                      | 4               | <sup>2</sup> 199 -120  |
| 200- 499 m <sup>2</sup>       | 0.0                    | 0               | 1.6                    | 1.4                      | 7                      | 5               | <sup>2</sup> 499-200   |
| 500-1999 m <sup>2</sup>       | 0.0                    | 0               | 2.0                    | 2.0                      | 2                      | 1               | <sup>2</sup> 1999 -500 |
| 2000- m <sup>2</sup> and more | 0.0                    | 0               | 0.0                    | 0.0                      | 0                      | 0               | <sup>2</sup> 2000      |



**Table 4 (Cont.): Buildings Licenses Issued in Remaining West Bank for New Buildings by Category of Licensed Area and Governorate– Third Quarter 2008**

| Governorate<br>&Area Category | Non-Res. Buildings     |                 | Residential Buildings  |                          |                        |                 |                        |
|-------------------------------|------------------------|-----------------|------------------------|--------------------------|------------------------|-----------------|------------------------|
|                               | Average No. of Storeys | No. of Licenses | Average No. of Storeys | Average No. of Dwellings | Total No. of Dwellings | No. of Licenses |                        |
| <b>Jerusalem</b>              |                        |                 |                        |                          |                        |                 |                        |
| Less than 60 m <sup>2</sup>   | 0.0                    | 0               | 0.0                    | 0.0                      | 0                      | 0               | <sup>2</sup> 60        |
| 60-119 m <sup>2</sup>         | 0.0                    | 0               | 0.0                    | 0.0                      | 0                      | 0               | <sup>2</sup> 119 -60   |
| 120- 199 m <sup>2</sup>       | 0.0                    | 0               | 1.5                    | 0.5                      | 1                      | 2               | <sup>2</sup> 199 -120  |
| 200- 499 m <sup>2</sup>       | 0.0                    | 0               | 1.6                    | 1.6                      | 8                      | 5               | <sup>2</sup> 499 -200  |
| 500- 1999 m <sup>2</sup>      | 0.0                    | 0               | 3.0                    | 3.3                      | 10                     | 3               | <sup>2</sup> 1999 -500 |
| 2000 m <sup>2</sup> and more  | 0.0                    | 0               | 0.0                    | 0.0                      | 0                      | 0               | <sup>2</sup> 2000      |
| <b>Bethlehem</b>              |                        |                 |                        |                          |                        |                 |                        |
| Less than 60 m <sup>2</sup>   | 0.5                    | 2               | 0.0                    | 0.0                      | 0                      | 0               | <sup>2</sup> 60        |
| 60- 119 m <sup>2</sup>        | 0.0                    | 1               | 1.0                    | 1.0                      | 1                      | 1               | <sup>2</sup> 119 -60   |
| 120-199m <sup>2</sup>         | 0.0                    | 0               | 1.0                    | 1.0                      | 7                      | 7               | <sup>2</sup> 199 -120  |
| 200- 499 m <sup>2</sup>       | 1.0                    | 2               | 1.6                    | 1.5                      | 33                     | 22              | <sup>2</sup> 499-200   |
| 500-1999 m <sup>2</sup>       | 2.1                    | 9               | 2.9                    | 3.7                      | 37                     | 10              | <sup>2</sup> 1999 -500 |
| 2000- m <sup>2</sup> and more | 3.0                    | 1               | 6.0                    | 18.0                     | 36                     | 2               | <sup>2</sup> 2000      |
| <b>Hebron</b>                 |                        |                 |                        |                          |                        |                 |                        |
| Less than 60 m <sup>2</sup>   | 1.0                    | 1               | 0.7                    | 0.7                      | 2                      | 3               | <sup>2</sup> 60        |
| 60-119 m <sup>2</sup>         | 1.0                    | 1               | 1.0                    | 0.7                      | 5                      | 7               | <sup>2</sup> 119 -60   |
| 120- 199 m <sup>2</sup>       | 1.0                    | 1               | 1.1                    | 0.9                      | 50                     | 53              | <sup>2</sup> 199 -120  |
| 200- 499 m <sup>2</sup>       | 2.0                    | 1               | 1.5                    | 1.3                      | 52                     | 40              | <sup>2</sup> 499 -200  |
| 500- 1999 m <sup>2</sup>      | 1.6                    | 7               | 1.9                    | 3.0                      | 27                     | 9               | <sup>2</sup> 1999 -500 |
| 2000 m <sup>2</sup> and more  | 0.0                    | 0               | 2.0                    | 1.0                      | 1                      | 1               | <sup>2</sup> 2000      |

**Table 5: Buildings Licenses Issued in Remaining West Bank for New Buildings by Construction Material of External Walls and Governorate—  
Third Quarter 2008**

| Governorate             | Non-Res. Buildings     |   |                 | Residential Buildings  |                          |                        |   |                 |  |
|-------------------------|------------------------|---|-----------------|------------------------|--------------------------|------------------------|---|-----------------|--|
|                         | Average No. of Storeys | (2 )<br>Licensed Area<br>(1000 m <sup>2</sup> ) | No. of Licenses | Average No. of Storeys | Average No. of Dwellings | Total No. of Dwellings | (2 )<br>Licensed Area<br>(1000 m <sup>2</sup> ) | No. of Licenses |  |
| <b>All Governorates</b> |                        |   |                 |                        |                          |                        |   |                 |  |
| Stone                   | 2.2                    | 82.2  | 71              | 2.0                    | 2.3                      | 808                    | 197.8   | 350             |  |
| Cement Block            | 1.6                    | 12.9  | 24              | 1.4                    | 1.2                      | 165                    | 28.3  | 135             |  |
| Concrete                | 1.0                    | 2.8   | 7               | 1.0                    | 1.0                      | 1                      | 0.1   | 1               |  |
| <b>Jenin</b>            |                        |   |                 |                        |                          |                        |   |                 |  |
| Stone                   | 1.0                    | 0.1   | 1               | 1.8                    | 2.0                      | 20                     | 4.9   | 10              |  |
| Cement Block            | 1.9                    | 7.3   | 8               | 1.7                    | 1.7                      | 19                     | 3.3   | 11              |  |
| Concrete                | 2.0                    | 1.0   | 1               | 0.0                    | 0.0                      | 0                      | 0.0   | 0               |  |
| <b>Tubas</b>            |                        |   |                 |                        |                          |                        |   |                 |  |
| Stone                   | 1.0                    | 1.1   | 1               | 1.8                    | 1.3                      | 5                      | 0.9   | 4               |  |
| Cement Block            | 1.5                    | 0.7   | 2               | 1.2                    | 1.3                      | 12                     | 1.7   | 9               |  |
| Concrete                | 0.0                    | 0.0   | 0               | 0.0                    | 0.0                      | 0                      | 0.0   | 0               |  |
| <b>Tulkarm</b>          |                        |   |                 |                        |                          |                        |   |                 |  |
| Stone                   | 1.0                    | 0.9   | 3               | 1.8                    | 1.8                      | 33                     | 7.6   | 18              |  |
| Cement Block            | 1.8                    | 3.0   | 4               | 1.5                    | 1.2                      | 37                     | 7.8   | 32              |  |
| Concrete                | 0.0                    | 0.0   | 1               | 1.0                    | 1.0                      | 1                      | 0.1   | 1               |  |
| <b>Nablus</b>           |                        |   |                 |                        |                          |                        |   |                 |  |
| Stone                   | 2.5                    | 25.3  | 21              | 2.1                    | 2.2                      | 127                    | 30.7  | 58              |  |
| Cement Block            | 1.3                    | 0.9   | 4               | 1.3                    | 1.1                      | 29                     | 4.2   | 27              |  |
| Concrete                | 1.0                    | 0.1   | 1               | 0.0                    | 0.0                      | 0                      | 0.0   | 0               |  |

**Table 5 (Cont.): Buildings Licenses Issued in Remaining West Bank for New Buildings by Construction Material of External Walls and Governorate - Third Quarter 2008**

| Governorate                  | Non-Res. Buildings     |   |                 | Residential Buildings  |                          |                        |   |                 |
|------------------------------|------------------------|---|-----------------|------------------------|--------------------------|------------------------|---|-----------------|
|                              | Average No. of Storeys | (2 )<br>Licensed Area<br>(1000 m <sup>2</sup> ) | No. of Licenses | Average No. of Storeys | Average No. of Dwellings | Total No. of Dwellings | (2 )<br>Licensed Area<br>(1000 m <sup>2</sup> ) | No. of Licenses |
| <b>Qalqilya</b>              |                        |   |                 |                        |                          |                        |   |                 |
| Stone                        | 1.8                    | 3.9   | 4               | 1.7                    | 2.7                      | 19                     | 3.3   | 7               |
| Cement Block                 | 2.0                    | 0.4   | 1               | 1.4                    | 1.2                      | 43                     | 6.7   | 36              |
| Concrete                     | 0.0                    | 0.0   | 0               | 0.0                    | 0.0                      | 0                      | 0.0   | 0               |
| <b>Salfit</b>                |                        |   |                 |                        |                          |                        |   |                 |
| Stone                        | 0.0                    | 0.0   | 0               | 2.0                    | 2.0                      | 8                      | 1.3   | 4               |
| Cement Block                 | 1.3                    | 0.6   | 4               | 1.5                    | 1.2                      | 16                     | 3.0   | 13              |
| Concrete                     | 0.0                    | 0.0   | 0               | 0.0                    | 0.0                      | 0                      | 0.0   | 0               |
| <b>Ramallah and Al-Bireh</b> |                        |   |                 |                        |                          |                        |   |                 |
| Stone                        | 3.1                    | 35.5  | 19              | 2.9                    | 4.0                      | 319                    | 83.1  | 79              |
| Cement Block                 | 0.0                    | 0.0   | 0               | 2.0                    | 1.5                      | 3                      | 0.5   | 2               |
| Concrete                     | 0.0                    | 0.0   | 0               | 0.0                    | 0.0                      | 0                      | 0.0   | 0               |
| <b>Jericho and Al Aghwar</b> |                        |   |                 |                        |                          |                        |   |                 |
| Stone                        | 0.0                    | 0.0   | 0               | 1.6                    | 1.4                      | 7                      | 1.7   | 5               |
| Cement Block                 | 1.0                    | 0.1   | 1               | 1.4                    | 1.2                      | 6                      | 1.2   | 5               |
| Concrete                     | 0.0                    | 0.0   | 0               | 0.0                    | 0.0                      | 0                      | 0.0   | 0               |
| <b>Jerusalem</b>             |                        |   |                 |                        |                          |                        |   |                 |
| Stone                        | 0.0                    | 0.0   | 0               | 2.0                    | 1.9                      | 19                     | 4.4   | 10              |
| Cement Block                 | 0.0                    | 0.0   | 0               | 0.0                    | 0.0                      | 0                      | 0.0   | 0               |
| Concrete                     | 0.0                    | 0.0   | 0               | 0.0                    | 0.0                      | 0                      | 0.0   | 0               |

2008

-

:( ) 5

**Table 5 (Cont.): Buildings Licenses Issued in Remaining West Bank for New Buildings by Construction Material of External Walls and Governorate - Third Quarter 2008**

| Governorate      | Non-Res. Buildings     |   |                 | Residential Buildings  |                          |                        |   |                 |  |
|------------------|------------------------|---|-----------------|------------------------|--------------------------|------------------------|---|-----------------|--|
|                  | Average No. of Storeys | (2 )<br>Licensed Area<br>(1000 m <sup>2</sup> ) | No. of Licenses | Average No. of Storeys | Average No. of Dwellings | Total No. of Dwellings | (2 )<br>Licensed Area<br>(1000 m <sup>2</sup> ) | No. of Licenses |  |
| <b>Bethlehem</b> |                        |   |                 |                        |                          |                        |   |                 |  |
| Stone            | 1.9                    | 9.6   | 13              | 2.0                    | 2.7                      | 114                    | 24.5  | 42              |  |
| Cement Block     | 0.0                    | 0.0   | 0               | 0.0                    | 0.0                      | 0                      | 0.0   | 0               |  |
| Concrete         | 0.0                    | 0.1   | 2               | 0.0                    | 0.0                      | 0                      | 0.0   | 0               |  |
| <b>Hebron</b>    |                        |   |                 |                        |                          |                        |   |                 |  |
| Stone            | 1.3                    | 5.8   | 9               | 1.3                    | 1.2                      | 137                    | 35.4  | 113             |  |
| Cement Block     | 0.0                    | 0.0   | 0               | 0.0                    | 0.0                      | 0                      | 0.0   | 0               |  |
| Concrete         | 2.0                    | 1.5   | 2               | 0.0                    | 0.0                      | 0                      | 0.0   | 0               |  |

**Table 6 : Buildings Licenses Issued in Remaining West Bank for New Additions to Licensed Existing Buildings by Construction Material of External Walls and Governorate– Third Quarter 2008**

| Governorate             | Non-Res. Buildings     |   |                 | Residential Buildings  |                          |                        |   |                 |  |
|-------------------------|------------------------|---|-----------------|------------------------|--------------------------|------------------------|---|-----------------|--|
|                         | Average No. of Storeys | (2 )<br>Licensed Area<br>(1000 m <sup>2</sup> ) | No. of Licenses | Average No. of Storeys | Average No. of Dwellings | Total No. of Dwellings | (2 )<br>Licensed Area<br>(1000 m <sup>2</sup> ) | No. of Licenses |  |
| <b>All Governorates</b> |                        |   |                 |                        |                          |                        |   |                 |  |
| Stone                   | 0.4                    | 3.4   | 46              | 1.4                    | 0.7                      | 108                    | 23.0  | 166             |  |
| Cement Block            | 1.8                    | 19.7  | 5               | 1.3                    | 0.7                      | 26                     | 4.1   | 35              |  |
| Concrete                | 0.0                    | 0.0   | 0               | 0.5                    | 0.5                      | 1                      | 0.2   | 2               |  |
| <b>Jenin</b>            |                        |   |                 |                        |                          |                        |   |                 |  |
| Stone                   | 1.0                    | 0.2   | 1               | 2.0                    | 1.8                      | 9                      | 1.7   | 5               |  |
| Cement Block            | 0.0                    | 0.0   | 0               | 1.0                    | 1.0                      | 5                      | 0.6   | 5               |  |
| Concrete                | 0.0                    | 0.0   | 0               | 0.0                    | 0.0                      | 0                      | 0.0   | 0               |  |
| <b>Tubas</b>            |                        |   |                 |                        |                          |                        |   |                 |  |
| Stone                   | 0.0                    | 0.0   | 0               | 0.0                    | 0.0                      | 0                      | 0.0   | 0               |  |
| Cement Block            | 0.0                    | 0.0   | 0               | 1.7                    | 1.0                      | 3                      | 0.4   | 3               |  |
| Concrete                | 0.0                    | 0.0   | 0               | 0.0                    | 0.0                      | 0                      | 0.0   | 0               |  |
| <b>Tulkarm</b>          |                        |   |                 |                        |                          |                        |   |                 |  |
| Stone                   | 0.0                    | 0.0   | 0               | 1.0                    | 1.0                      | 1                      | 0.2   | 1               |  |
| Cement Block            | 2.0                    | 0.1   | 1               | 1.5                    | 1.8                      | 7                      | 0.8   | 4               |  |
| Concrete                | 0.0                    | 0.0   | 0               | 0.0                    | 0.0                      | 0                      | 0.0   | 0               |  |
| <b>Nablus</b>           |                        |   |                 |                        |                          |                        |   |                 |  |
| Stone                   | 0.3                    | 2.3   | 42              | 1.4                    | 0.7                      | 80                     | 14.9  | 110             |  |
| Cement Block            | 1.0                    | 0.2   | 1               | 1.4                    | 0.6                      | 4                      | 0.7   | 7               |  |
| Concrete                | 0.0                    | 0.0   | 0               | 0.5                    | 0.5                      | 1                      | 0.2   | 2               |  |

**Table 6 (Cont.): Buildings Licenses Issued in Remaining West Bank for New Additions to Licensed Existing Buildings by Construction Material of External Walls and Governorate– Third Quarter 2008**

| Governorate                  | Non-Res. Buildings     |   |                 | Residential Buildings  |                          |                        |   |                 |  |
|------------------------------|------------------------|---|-----------------|------------------------|--------------------------|------------------------|---|-----------------|--|
|                              | Average No. of Storeys | (2 )<br>Licensed Area<br>(1000 m <sup>2</sup> ) | No. of Licenses | Average No. of Storeys | Average No. of Dwellings | Total No. of Dwellings | (2 )<br>Licensed Area<br>(1000 m <sup>2</sup> ) | No. of Licenses |  |
| <b>Qalqilya</b>              |                        |   |                 |                        |                          |                        |   |                 |  |
| Stone                        | 0.0                    | 0.0   | 0               | 1.0                    | 2.0                      | 2                      | 0.3   | 1               |  |
| Cement Block                 | 2.5                    | 1.8   | 2               | 1.1                    | 1.0                      | 7                      | 1.0   | 7               |  |
| Concrete                     | 0.0                    | 0.0   | 0               | 0.0                    | 0.0                      | 0                      | 0.0   | 0               |  |
| <b>Salfit</b>                |                        |   |                 |                        |                          |                        |   |                 |  |
| Stone                        | 0.0                    | 0.0   | 0               | 0.0                    | 0.0                      | 0                      | 0.0   | 0               |  |
| Cement Block                 | 0.0                    | 0.0   | 0               | 1.8                    | 0.0                      | 0                      | 0.3   | 4               |  |
| Concrete                     | 0.0                    | 0.0   | 0               | 0.0                    | 0.0                      | 0                      | 0.0   | 0               |  |
| <b>Ramallah and Al-Birah</b> |                        |   |                 |                        |                          |                        |   |                 |  |
| Stone                        | 1.0                    | 0.2   | 1               | 1.6                    | 0.0                      | 0                      | 3.6   | 38              |  |
| Cement Block                 | 0.0                    | 0.0   | 0               | 2.0                    | 0.0                      | 0                      | 0.2   | 1               |  |
| Concrete                     | 0.0                    | 0.0   | 0               | 0.0                    | 0.0                      | 0                      | 0.0   | 0               |  |
| <b>Jericho and Al Aghwar</b> |                        |   |                 |                        |                          |                        |   |                 |  |
| Stone                        | 0.0                    | 0.0   | 0               | 0.0                    | 0.0                      | 0                      | 0.0   | 0               |  |
| Cement Block                 | 1.0                    | 17.7  | 1               | 1.0                    | 0.0                      | 0                      | 0.2   | 4               |  |
| Concrete                     | 0.0                    | 0.0   | 0               | 0.0                    | 0.0                      | 0                      | 0.0   | 0               |  |
| <b>Bethlehem</b>             |                        |   |                 |                        |                          |                        |   |                 |  |
| Stone                        | 3.0                    | 0.3   | 1               | 1.3                    | 1.6                      | 11                     | 1.5   | 7               |  |
| Cement Block                 | 0.0                    | 0.0   | 0               | 0.0                    | 0.0                      | 0                      | 0.0   | 0               |  |
| Concrete                     | 0.0                    | 0.0   | 0               | 0.0                    | 0.0                      | 0                      | 0.0   | 0               |  |

2008

-

:6( )

**Table 6 (Cont.) : Buildings Licenses Issued in Remaining West Bank for New Additions to Licensed Existing Buildings by Construction Material of External Walls and Governorate– Third Quarter 2008**

| Governorate   | Non-Res. Buildings     |   |                 | Residential Buildings  |                          |                        |   |                 |  |
|---------------|------------------------|---|-----------------|------------------------|--------------------------|------------------------|---|-----------------|--|
|               | Average No. of Storeys | (2 )<br>Licensed Area<br>(1000 m <sup>2</sup> ) | No. of Licenses | Average No. of Storeys | Average No. of Dwellings | Total No. of Dwellings | (2 )<br>Licensed Area<br>(1000 m <sup>2</sup> ) | No. of Licenses |  |
| <b>Hebron</b> |                        |   |                 |                        |                          |                        |   |                 |  |
| Stone         | 1.0                    | 0.4   | 1               | 1.3                    | 1.3                      | 5                      | 0.8   | 4               |  |
| Cement Block  | 0.0                    | 0.0   | 0               | 0.0                    | 0.0                      | 0                      | 0.0   | 0               |  |
| Concrete      | 0.0                    | 0.0   | 0               | 0.0                    | 0.0                      | 0                      | 0.0   | 0               |  |

2008

-

**Table 7: Buildings Licenses Issued in Remaining West Bank for New Additions and Existing Parts to Unlicensed Existing Buildings by Construction Material of External Walls and Governorate– Third Quarter 2008**

| Governorate             | Non- Res. Buildings    |   |                 | Residential Buildings |                          |                        |   |                 |  |
|-------------------------|------------------------|---|-----------------|-----------------------|--------------------------|------------------------|---|-----------------|--|
|                         | Average No. of Storeys | ( <sup>2</sup> )<br>Licensed Area<br>(1000 m <sup>2</sup> ) | No. of Licenses | Average No of Storeys | Average No. of Dwellings | Total No. of Dwellings | ( <sup>2</sup> )<br>Licensed Area<br>(1000 m <sup>2</sup> ) | No. of Licenses |  |
| <b>All Governorates</b> |                        |   |                 |                       |                          |                        |   |                 |  |
| Stone                   | 0.0                    | 0.0   | 0               | 2.8                   | 1.3                      | 38                     | 9.7   | 30              |  |
| Cement Block            | 0.0                    | 0.0   | 0               | 2.2                   | 1.5                      | 32                     | 5.2   | 21              |  |
| Concrete                | 0.0                    | 0.0   | 0               | 2.0                   | 1.5                      | 3                      | 0.3   | 2               |  |
| <b>Jenin</b>            |                        |   |                 |                       |                          |                        |   |                 |  |
| Stone                   | 0.0                    | 0.0   | 0               | 0.0                   | 0.0                      | 0                      | 0.0   | 0               |  |
| Cement Block            | 0.0                    | 0.0   | 0               | 2.0                   | 2.0                      | 2                      | 0.3   | 1               |  |
| Concrete                | 0.0                    | 0.0   | 0               | 0.0                   | 0.0                      | 0                      | 0.0   | 0               |  |
| <b>Tubas</b>            |                        |   |                 |                       |                          |                        |   |                 |  |
| Stone                   | 0.0                    | 0.0   | 0               | 0.0                   | 0.0                      | 0                      | 0.0   | 0               |  |
| Cement Block            | 0.0                    | 0.0   | 0               | 2.2                   | 1.6                      | 8                      | 1.2   | 5               |  |
| Concrete                | 0.0                    | 0.0   | 0               | 0.0                   | 0.0                      | 0                      | 0.0   | 0               |  |
| <b>Tulkarem</b>         |                        |   |                 |                       |                          |                        |   |                 |  |
| Stone                   | 0.0                    | 0.0   | 0               | 4.0                   | 1.2                      | 7                      | 3.3   | 6               |  |
| Cement Block            | 0.0                    | 0.0   | 0               | 2.3                   | 1.7                      | 20                     | 3.4   | 12              |  |
| Concrete                | 0.0                    | 0.0   | 0               | 0.0                   | 0.0                      | 0                      | 0.0   | 0               |  |



2008

-

**Table 7 (Cont.): Buildings Licenses Issued in Remaining West Bank for New Additions and Existing Parts to Unlicensed Existing Buildings by Construction Material of External Walls and Governorate – Third Quarter 2008**

| Governorate     | Non- Res. Buildings    |   |                 | Residential Buildings |                          |                        |   |                 |  |
|-----------------|------------------------|---|-----------------|-----------------------|--------------------------|------------------------|---|-----------------|--|
|                 | Average No. of Storeys | ( <sup>2</sup> )<br>Licensed Area<br>(1000 m <sup>2</sup> ) | No. of Licenses | Average No of Storeys | Average No. of Dwellings | Total No. of Dwellings | ( <sup>2</sup> )<br>Licensed Area<br>(1000 m <sup>2</sup> ) | No. of Licenses |  |
| <b>Nablus</b>   |                        |   |                 |                       |                          |                        |   |                 |  |
| Stone           | 0.0                    | 0.0   | 0               | 2.5                   | 1.3                      | 31                     | 6.4   | 24              |  |
| Cement Block    | 0.0                    | 0.0   | 0               | 1.0                   | 0.0                      | 0                      | 0.1   | 1               |  |
| Concrete        | 0.0                    | 0.0   | 0               | 2.0                   | 1.5                      | 3                      | 0.3   | 2               |  |
| <b>Qalqilya</b> |                        |   |                 |                       |                          |                        |   |                 |  |
| Stone           | 0.0                    | 0.0   | 0               | 0.0                   | 0.0                      | 0                      | 0.0   | 0               |  |
| Cement Block    | 0.0                    | 0.0   | 0               | 2.0                   | 1.0                      | 2                      | 0.2   | 2               |  |
| Concrete        | 0.0                    | 0.0   | 0               | 0.0                   | 0.0                      | 0                      | 0.0   | 0               |  |

**Table 8: Buildings Licenses Issued in Remaining West Bank for Existing Buildings and Extensions by Construction Material of External Walls and Governorate– Third Quarter 2008**

| Governorate             | Non- Res. Buildings    |   |                 | Residential Buildings |                          |                        |   |                 |  |
|-------------------------|------------------------|---|-----------------|-----------------------|--------------------------|------------------------|---|-----------------|--|
|                         | Average No. of Storeys | ( <sup>2</sup> ) Licensed Area (1000 m <sup>2</sup> ) | No. of Licenses | Average No of Storeys | Average No. of Dwellings | Total No. of Dwellings | ( <sup>2</sup> ) Licensed Area (1000 m <sup>2</sup> ) | No. of Licenses |  |
| <b>All Governorates</b> |                        |   |                 |                       |                          |                        |   |                 |  |
| <b>Stone</b>            | 1.1                    | 4.9   | 10              | 1.4                   | 1.1                      | 162                    | 55.9  | 145             |  |
| <b>Cement Block</b>     | 1.0                    | 0.2   | 1               | 1.5                   | 0.9                      | 39                     | 6.4   | 42              |  |
| <b>Concrete</b>         | 2.0                    | 1.3   | 1               | 2.0                   | 0.5                      | 1                      | 0.3   | 2               |  |
| <b>Jenin</b>            |                        |   |                 |                       |                          |                        |   |                 |  |
| Stone                   | 0.0                    | 0.0   | 0               | 2.0                   | 5.3                      | 21                     | 2.1   | 4               |  |
| Cement Block            | 0.0                    | 0.0   | 0               | 2.0                   | 2.0                      | 4                      | 0.5   | 2               |  |
| Concrete                | 0.0                    | 0.0   | 0               | 0.0                   | 0.0                      | 0                      | 0.0   | 0               |  |
| <b>Tubas</b>            |                        |   |                 |                       |                          |                        |   |                 |  |
| Stone                   | 0.0                    | 0.0   | 0               | 0.0                   | 0.0                      | 0                      | 0.0   | 0               |  |
| Cement Block            | 0.0                    | 0.0   | 0               | 1.5                   | 1.0                      | 8                      | 1.3   | 8               |  |
| Concrete                | 0.0                    | 0.0   | 0               | 0.0                   | 0.0                      | 0                      | 0.0   | 0               |  |
| <b>Tulkarm</b>          |                        |   |                 |                       |                          |                        |   |                 |  |
| Stone                   | 0.0                    | 0.0   | 0               | 1.0                   | 0.5                      | 1                      | 0.1   | 2               |  |
| Cement Block            | 1.0                    | 0.2   | 1               | 1.1                   | 0.7                      | 7                      | 1.1   | 10              |  |
| Concrete                | 0.0                    | 0.0   | 0               | 0.0                   | 0.0                      | 0                      | 0.0   | 0               |  |
| <b>Nablus</b>           |                        |   |                 |                       |                          |                        |   |                 |  |
| Stone                   | 1.0                    | 0.2   | 1               | 2.0                   | 1.4                      | 28                     | 4.8   | 20              |  |
| Cement Block            | 0.0                    | 0.0   | 0               | 1.7                   | 0.6                      | 6                      | 1.4   | 10              |  |
| Concrete                | 0.0                    | 0.0   | 0               | 2.0                   | 0.5                      | 1                      | 0.3   | 2               |  |

**Table 8 (Cont.): Buildings Licenses Issued in Remaining West Bank for Existing Buildings and Extensions by Construction Material of External Walls and Governorate– Third Quarter 2008**

| Governorate                  | Non- Res. Buildings    |   |                 | Residential Buildings |                          |                        |   |                 |
|------------------------------|------------------------|---|-----------------|-----------------------|--------------------------|------------------------|---|-----------------|
|                              | Average No. of Storeys | ( <sup>2</sup> )<br>Licensed Area<br>(1000 m <sup>2</sup> ) | No. of Licenses | Average No of Storeys | Average No. of Dwellings | Total No. of Dwellings | ( <sup>2</sup> )<br>Licensed Area<br>(1000 m <sup>2</sup> ) | No. of Licenses |
| <b>Qalqilya</b>              |                        |   |                 |                       |                          |                        |   |                 |
| Stone                        | 0.0                    | 0.0   | 0               | 2.0                   | 1.0                      | 1                      | 0.6   | 1               |
| Cement Block                 | 0.0                    | 0.0   | 0               | 1.5                   | 1.2                      | 13                     | 2.0   | 11              |
| Concrete                     | 0.0                    | 0.0   | 0               | 0.0                   | 0.0                      | 0                      | 0.0   | 0               |
| <b>Salfit</b>                |                        |   |                 |                       |                          |                        |   |                 |
| Stone                        | 0.0                    | 0.0   | 0               | 0.0                   | 0.0                      | 0                      | 0.0   | 0               |
| Cement Block                 | 0.0                    | 0.0   | 0               | 1.0                   | 1.0                      | 1                      | 0.2   | 1               |
| Concrete                     | 0.0                    | 0.0   | 0               | 0.0                   | 0.0                      | 0                      | 0.0   | 0               |
| <b>Ramallah and Al-Bireh</b> |                        |   |                 |                       |                          |                        |   |                 |
| Stone                        | 1.3                    | 2.1   | 3               | 1.8                   | 1.8                      | 46                     | 12.3  | 25              |
| Cement Block                 | 0.0                    | 0.0   | 0               | 0.0                   | 0.0                      | 0                      | 0.0   | 0               |
| Concrete                     | 0.0                    | 0.0   | 0               | 0.0                   | 0.0                      | 0                      | 0.0   | 0               |
| <b>Jerusalem</b>             |                        |   |                 |                       |                          |                        |   |                 |
| Stone                        | 0.0                    | 0.0   | 0               | 1.0                   | 1.0                      | 1                      | 0.3   | 1               |
| Cement Block                 | 0.0                    | 0.0   | 0               | 0.0                   | 0.0                      | 0                      | 0.0   | 0               |
| Concrete                     | 0.0                    | 0.0   | 0               | 0.0                   | 0.0                      | 0                      | 0.0   | 0               |
| <b>Bethlehem</b>             |                        |   |                 |                       |                          |                        |   |                 |
| Stone                        | 0.5                    | 0.9   | 2               | 1.4                   | 1.3                      | 14                     | 2.5   | 11              |
| Cement Block                 | 0.0                    | 0.0   | 0               | 0.0                   | 0.0                      | 0                      | 0.0   | 0               |
| Concrete                     | 0.0                    | 0.0   | 0               | 0.0                   | 0.0                      | 0                      | 0.0   | 0               |

2008

:( ) 8

**Table 8 (Cont.): Buildings Licenses Issued in Remaining West Bank for Existing Buildings and Extensions by Construction Material of External Walls and Governorate– Third Quarter 2008**

| Governorate   | Non- Res. Buildings    |   |                 | Residential Buildings |                          |                        |   |                 |
|---------------|------------------------|---|-----------------|-----------------------|--------------------------|------------------------|---|-----------------|
|               | Average No. of Storeys | ( <sup>2</sup> )<br>Licensed Area<br>(1000 m <sup>2</sup> ) | No. of Licenses | Average No of Storeys | Average No. of Dwellings | Total No. of Dwellings | ( <sup>2</sup> )<br>Licensed Area<br>(1000 m <sup>2</sup> ) | No. of Licenses |
| <b>Hebron</b> |                        |   |                 |                       |                          |                        |   |                 |
| Stone         | 1.3                    | 1.7   | 4               | 1.0                   | 0.6                      | 50                     | 33.3  | 81              |
| Cement Block  | 0.0                    | 0.0   | 0               | 0.0                   | 0.0                      | 0                      | 0.0   | 0               |
| Concrete      | 2.0                    | 1.3   | 1               | 0.0                   | 0.0                      | 0                      | 0.0   | 0               |

**Table 9: Buildings Licenses Issued in Remaining West Bank for Residential Buildings by Status of Licensed Building and Governorate– Third Quarter 2008**

| Governorate             | ( ² )<br>Licensed Areas (000 m²) |           |       | Number of Issued Licenses |                    |   |                                       |                  |       |
|-------------------------|----------------------------------|-----------|-------|---------------------------|--------------------|---|---------------------------------------|------------------|-------|
|                         | Existing Areas                   | New Areas | Total | Existing Extensions       | Existing Buildings | +<br>New<br>Additions+Existing<br>Parts | Additions to<br>Licensed<br>Buildings | New<br>Buildings | Total |
| <b>All Governorates</b> |                                  |           |       |                           |                    |   |                                       |                  |       |
| Complete Dwellings      | 67.2                             | 254.9     | 322.2 | 4                         | 167                | 47                                      | 89                                    | 481              | 788   |
| Extension of Rooms      | 0.1                              | 2.8       | 2.9   | 2                         | 0                  | 1                                       | 22                                    | 3                | 28    |
| Other Extensions        | 0.3                              | 2.8       | 3.1   | 1                         | 1                  | 2                                       | 45                                    | 2                | 51    |
| Other                   | 0.5                              | 2.6       | 3.1   | 14                        | 0                  | 3                                       | 47                                    | 0                | 64    |
| <b>Jenin</b>            |                                  |           |       |                           |                    |   |                                       |                  |       |
| Complete Dwellings      | 2.7                              | 10.5      | 13.2  | 0                         | 6                  | 1                                       | 9                                     | 21               | 37    |
| Extension of Rooms      | 0.0                              | 0.0       | 0.0   | 0                         | 0                  | 0                                       | 0                                     | 0                | 0     |
| Other Extensions        | 0.0                              | 0.0       | 0.0   | 0                         | 0                  | 0                                       | 1                                     | 0                | 1     |
| Other                   | 0.0                              | 0.0       | 0.0   | 0                         | 0                  | 0                                       | 0                                     | 0                | 0     |
| <b>Tubas</b>            |                                  |           |       |                           |                    |   |                                       |                  |       |
| Complete Dwellings      | 1.7                              | 3.8       | 5.5   | 0                         | 7                  | 5                                       | 3                                     | 13               | 28    |
| Extension of Rooms      | 0.0                              | 0.0       | 0.0   | 0                         | 0                  | 0                                       | 0                                     | 0                | 0     |
| Other Extensions        | 0.0                              | 0.0       | 0.0   | 0                         | 0                  | 0                                       | 0                                     | 0                | 0     |
| Other                   | 0.0                              | 0.0       | 0.0   | 1                         | 0                  | 0                                       | 0                                     | 0                | 1     |
| <b>Tulkarm</b>          |                                  |           |       |                           |                    |   |                                       |                  |       |
| Complete Dwellings      | 4.4                              | 19.9      | 24.3  | 0                         | 7                  | 18                                      | 5                                     | 51               | 81    |
| Extension of Rooms      | 0.0                              | 0.0       | 0.0   | 0                         | 0                  | 0                                       | 0                                     | 0                | 0     |
| Other Extensions        | 0.0                              | 0.0       | 0.0   | 0                         | 0                  | 0                                       | 0                                     | 0                | 0     |
| Other                   | 0.1                              | 0.0       | 0.1   | 5                         | 0                  | 0                                       | 0                                     | 0                | 5     |

**Table 9 (Cont.): Buildings Licenses Issued in Remaining West Bank for Residential Buildings by Status of Licensed Building and Governorate—  
Third Quarter 2008**

| Governorate                     | Licensed Areas (000 m <sup>2</sup> ) |           |       | Number of Issued Licenses |                    |                                   |                                 |               |       |
|---------------------------------|--------------------------------------|-----------|-------|---------------------------|--------------------|-----------------------------------|---------------------------------|---------------|-------|
|                                 | Existing Areas                       | New Areas | Total | Existing Extensions       | Existing Buildings | +<br>New Additions+Existing Parts | Additions to Licensed Buildings | New Buildings | Total |
| <b>Nablus</b>                   |                                      |           |       |                           |                    |                                   |                                 |               |       |
| Complete Dwellings              | 7.4                                  | 52.6      | 60.1  | 0                         | 22                 | 22                                | 56                              | 85            | 185   |
| Extension of Rooms              | 0.0                                  | 0.1       | 0.1   | 0                         | 0                  | 0                                 | 3                               | 0             | 3     |
| Other Extensions                | 0.3                                  | 0.4       | 0.8   | 1                         | 1                  | 2                                 | 13                              | 0             | 17    |
| Other                           | 0.3                                  | 2.6       | 2.9   | 8                         | 0                  | 3                                 | 47                              | 0             | 58    |
| <b>Qalqilya</b>                 |                                      |           |       |                           |                    |                                   |                                 |               |       |
| Complete Dwellings              | 2.6                                  | 11.3      | 14.0  | 0                         | 12                 | 1                                 | 6                               | 43            | 62    |
| Extension of Rooms              | 0.0                                  | 0.1       | 0.2   | 0                         | 0                  | 1                                 | 2                               | 0             | 3     |
| Other Extensions                | 0.0                                  | 0.0       | 0.0   | 0                         | 0                  | 0                                 | 0                               | 0             | 0     |
| Other                           | 0.0                                  | 0.0       | 0.0   | 0                         | 0                  | 0                                 | 0                               | 0             | 0     |
| <b>Salfit</b>                   |                                      |           |       |                           |                    |                                   |                                 |               |       |
| Complete Dwellings              | 0.2                                  | 4.2       | 4.4   | 0                         | 1                  | 0                                 | 1                               | 15            | 17    |
| Extension of Rooms              | 0.0                                  | 0.4       | 0.4   | 0                         | 0                  | 0                                 | 2                               | 2             | 4     |
| Other Extensions                | 0.0                                  | 0.0       | 0.0   | 0                         | 0                  | 0                                 | 1                               | 0             | 1     |
| Other                           | 0.0                                  | 0.0       | 0.0   | 0                         | 0                  | 0                                 | 0                               | 0             | 0     |
| <b>Ramallah &amp; Al- Bireh</b> |                                      |           |       |                           |                    |                                   |                                 |               |       |
| Complete Dwellings              | 12.3                                 | 83.4      | 95.7  | 0                         | 25                 | 0                                 | 0                               | 79            | 104   |
| Extension of Rooms              | 0.0                                  | 2.0       | 2.0   | 0                         | 0                  | 0                                 | 13                              | 1             | 14    |
| Other Extensions                | 0.0                                  | 1.9       | 1.9   | 0                         | 0                  | 0                                 | 26                              | 1             | 27    |
| Other                           | 0.0                                  | 0.0       | 0.0   | 0                         | 0                  | 0                                 | 0                               | 0             | 0     |

**Table 9 (Cont): Buildings Licenses Issued in Remaining West Bank for Residential Buildings by Status of Licensed Building and Governorate—  
Third Quarter 2008**

| Governorate                  | Licensed Areas (000 m <sup>2</sup> ) |           |       | Number of Issued Licenses |                    |   |                                       |                  |       |  |
|------------------------------|--------------------------------------|-----------|-------|---------------------------|--------------------|---|---------------------------------------|------------------|-------|--|
|                              | Existing Areas                       | New Areas | Total | Existing Extensions       | Existing Buildings | +<br>New<br>Additions+Existing<br>Parts | Additions to<br>Licensed<br>Buildings | New<br>Buildings | Total |  |
| <b>Jericho and Al Aghwar</b> |                                      |           |       |                           |                    |   |                                       |                  |       |  |
| Complete Dwellings           | 0.0                                  | 2.9       | 2.9   | 0                         | 0                  | 0                                       | 0                                     | 10               | 10    |  |
| Extension of Rooms           | 0.0                                  | 0.0       | 0.0   | 0                         | 0                  | 0                                       | 0                                     | 0                | 0     |  |
| Other Extensions             | 0.0                                  | 0.2       | 0.2   | 0                         | 0                  | 0                                       | 4                                     | 0                | 4     |  |
| Other                        | 0.0                                  | 0.0       | 0.0   | 0                         | 0                  | 0                                       | 0                                     | 0                | 0     |  |
| <b>Jerusalem</b>             |                                      |           |       |                           |                    |   |                                       |                  |       |  |
| Complete Dwellings           | 0.3                                  | 4.2       | 4.6   | 0                         | 1                  | 0                                       | 0                                     | 9                | 10    |  |
| Extension of Rooms           | 0.0                                  | 0.0       | 0.0   | 0                         | 0                  | 0                                       | 0                                     | 0                | 0     |  |
| Other Extensions             | 0.0                                  | 0.2       | 0.2   | 0                         | 0                  | 0                                       | 0                                     | 1                | 1     |  |
| Other                        | 0.0                                  | 0.0       | 0.0   | 0                         | 0                  | 0                                       | 0                                     | 0                | 0     |  |
| <b>Bethlehem</b>             |                                      |           |       |                           |                    |   |                                       |                  |       |  |
| Complete Dwellings           | 2.5                                  | 25.9      | 28.4  | 0                         | 10                 | 0                                       | 5                                     | 42               | 57    |  |
| Extension of Rooms           | 0.0                                  | 0.1       | 0.1   | 1                         | 0                  | 0                                       | 2                                     | 0                | 3     |  |
| Other Extensions             | 0.0                                  | 0.0       | 0.0   | 0                         | 0                  | 0                                       | 0                                     | 0                | 0     |  |
| Other                        | 0.0                                  | 0.0       | 0.0   | 0                         | 0                  | 0                                       | 0                                     | 0                | 0     |  |
| <b>Hebron</b>                |                                      |           |       |                           |                    |   |                                       |                  |       |  |
| Complete Dwellings           | 33.2                                 | 36.2      | 69.3  | 4                         | 76                 | 0                                       | 4                                     | 113              | 197   |  |
| Extension of Rooms           | 0.1                                  | 0.0       | 0.1   | 1                         | 0                  | 0                                       | 0                                     | 0                | 1     |  |
| Other Extensions             | 0.0                                  | 0.0       | 0.0   | 0                         | 0                  | 0                                       | 0                                     | 0                | 0     |  |
| Other                        | 0.0                                  | 0.0       | 0.0   | 0                         | 0                  | 0                                       | 0                                     | 0                | 0     |  |

2008

-

:10

**Table 10: Buildings Licenses Issued in Remaining West Bank for Non-Residential Buildings  
by Utilization and Governorate– Third Quarter 2008**

| Governorate<br>& Utilization | Stores   |     | Licensed Areas (1000 m <sup>2</sup> ) |              |       | Number of Issued Licenses |                       |                                       |                                       |                  |       |
|------------------------------|--|-----|---------------------------------------|--------------|-------|---------------------------|-----------------------|---------------------------------------|---------------------------------------|------------------|-------|
|                              | (1000 m <sup>2</sup> )<br>Area<br>(1000 m <sup>2</sup> ) | No. | Existing<br>Areas                     | New<br>Areas | Total | Existing<br>Extensions    | Existing<br>Buildings | +<br>New Additions<br>+Existing Parts | Additions to<br>Licensed<br>Buildings | New<br>Buildings | Total |
|                              |  |     |                                       |              |       |                           |                       |                                       |                                       |                  |       |
| <b>All Governorates</b>      |  |     |                                       |              |       |                           |                       |                                       |                                       |                  |       |
| Industrial                   | 1.2  | 2   | 0.3                                   | 19.6         | 19.9  | 0                         | 1                     | 0                                     | 1                                     | 3                | 5     |
| Commercial                   | 39.5   | 153 | 4.0                                   | 43.1         | 47.1  | 0                         | 8                     | 0                                     | 12                                    | 42               | 62    |
| Educational                  | 2.7  | 1   | 0.9                                   | 41.2         | 42.0  | 0                         | 1                     | 0                                     | 5                                     | 28               | 34    |
| Health                       | 0.0  | 0   | 0.0                                   | 1.3          | 1.3   | 0                         | 0                     | 0                                     | 1                                     | 1                | 2     |
| Others                       | 0.9  | 2   | 1.4                                   | 15.7         | 17.1  | 0                         | 2                     | 0                                     | 32                                    | 28               | 62    |
| <b>Jenin</b>                 |  |     |                                       |              |       |                           |                       |                                       |                                       |                  |       |
| Industrial                   | 0.0  | 0   | 0.0                                   | 0.0          | 0.0   | 0                         | 0                     | 0                                     | 0                                     | 0                | 0     |
| Commercial                   | 1.1  | 8   | 0.0                                   | 1.1          | 1.1   | 0                         | 0                     | 0                                     | 1                                     | 2                | 3     |
| Educational                  | 0.0  | 0   | 0.0                                   | 7.5          | 7.5   | 0                         | 0                     | 0                                     | 0                                     | 8                | 8     |
| Health                       | 0.0  | 0   | 0.0                                   | 0.0          | 0.0   | 0                         | 0                     | 0                                     | 0                                     | 0                | 0     |
| Others                       | 0.0  | 0   | 0.0                                   | 0.0          | 0.0   | 0                         | 0                     | 0                                     | 0                                     | 0                | 0     |
| <b>Tubas</b>                 |  |     |                                       |              |       |                           |                       |                                       |                                       |                  |       |
| Industrial                   | 0.0  | 0   | 0.0                                   | 0.0          | 0.0   | 0                         | 0                     | 0                                     | 0                                     | 0                | 0     |
| Commercial                   | 1.3  | 11  | 0.0                                   | 1.3          | 1.3   | 0                         | 0                     | 0                                     | 0                                     | 2                | 2     |
| Educational                  | 0.0  | 0   | 0.0                                   | 0.0          | 0.0   | 0                         | 0                     | 0                                     | 0                                     | 0                | 0     |
| Health                       | 0.0  | 0   | 0.0                                   | 0.0          | 0.0   | 0                         | 0                     | 0                                     | 0                                     | 0                | 0     |
| Others                       | 0.0  | 0   | 0.0                                   | 0.4          | 0.4   | 0                         | 0                     | 0                                     | 0                                     | 1                | 1     |



2008

-

:( ) 10

**Table 10 (Cont.): Buildings Licenses Issued in Remaining West Bank for Non-Residential Buildings by Utilization and Governorate– Third Quarter 2008**

| Governorate<br>& Utilization | Stores                        |     | (² )<br>Licensed Areas (1000 m²) |              |       | Number of Issued Licenses |                       |                                  |                                       |                  |       |
|------------------------------|-------------------------------|-----|----------------------------------|--------------|-------|---------------------------|-----------------------|----------------------------------|---------------------------------------|------------------|-------|
|                              | (² 1000)<br>Area<br>(1000 m²) | No. | Existing<br>Areas                | New<br>Areas | Total | Existing<br>Extensions    | Existing<br>Buildings | +                                | Additions to<br>Licensed<br>Buildings | New<br>Buildings | Total |
|                              |                               |     |                                  |              |       |                           |                       | New Additions<br>+Existing Parts |                                       |                  |       |
| <b>Tulkarm</b>               |                               |     |                                  |              |       |                           |                       |                                  |                                       |                  |       |
| Industrial                   | 0.0                           | 0   | 0.0                              | 0.0          | 0.0   | 0                         | 0                     | 0                                | 0                                     | 0                | 0     |
| Commercial                   | 0.8                           | 14  | 0.2                              | 0.8          | 1.0   | 0                         | 1                     | 0                                | 1                                     | 2                | 4     |
| Educational                  | 0.0                           | 0   | 0.0                              | 2.4          | 2.4   | 0                         | 0                     | 0                                | 0                                     | 2                | 2     |
| Health                       | 0.0                           | 0   | 0.0                              | 0.0          | 0.0   | 0                         | 0                     | 0                                | 0                                     | 0                | 0     |
| Others                       | 0.0                           | 0   | 0.0                              | 0.9          | 0.9   | 0                         | 0                     | 0                                | 0                                     | 4                | 4     |
| <b>Nablus</b>                |                               |     |                                  |              |       |                           |                       |                                  |                                       |                  |       |
| Industrial                   | 0.3                           | 1   | 0.0                              | 1.2          | 1.2   | 0                         | 0                     | 0                                | 0                                     | 2                | 2     |
| Commercial                   | 4.2                           | 46  | 0.2                              | 4.8          | 5.0   | 0                         | 1                     | 0                                | 9                                     | 10               | 20    |
| Educational                  | 0.0                           | 0   | 0.0                              | 15.5         | 15.5  | 0                         | 0                     | 0                                | 2                                     | 7                | 9     |
| Health                       | 0.0                           | 0   | 0.0                              | 0.6          | 0.6   | 0                         | 0                     | 0                                | 1                                     | 0                | 1     |
| Others                       | 0.0                           | 0   | 0.0                              | 6.7          | 6.7   | 0                         | 0                     | 0                                | 31                                    | 7                | 38    |
| <b>Qalqilya</b>              |                               |     |                                  |              |       |                           |                       |                                  |                                       |                  |       |
| Industrial                   | 0.0                           | 0   | 0.0                              | 0.0          | 0.0   | 0                         | 0                     | 0                                | 0                                     | 0                | 0     |
| Commercial                   | 0.0                           | 0   | 0.0                              | 0.0          | 0.0   | 0                         | 0                     | 0                                | 0                                     | 0                | 0     |
| Educational                  | 0.6                           | 1   | 0.0                              | 4.6          | 4.6   | 0                         | 0                     | 0                                | 2                                     | 2                | 4     |
| Health                       | 0.0                           | 0   | 0.0                              | 0.0          | 0.0   | 0                         | 0                     | 0                                | 0                                     | 0                | 0     |
| Others                       | 0.0                           | 0   | 0.0                              | 1.6          | 1.6   | 0                         | 0                     | 0                                | 0                                     | 3                | 3     |

2008

-

:( ) 10

**Table 10 (Cont.): Buildings Licenses Issued in Remaining West Bank for Non-Residential Buildings by Utilization and Governorate– Third Quarter 2008**

| Governorate & Utilization    | Stores   |     | Licensed Areas (1000 m <sup>2</sup> ) |           |       | Number of Issued Licenses |                    |                                 |                                 |               |       |
|------------------------------|--|-----|---------------------------------------|-----------|-------|---------------------------|--------------------|---------------------------------|---------------------------------|---------------|-------|
|                              | ( <sup>2</sup> 1000) Area (1000 m <sup>2</sup> ) | No. | Existing Areas                        | New Areas | Total | Existing Extensions       | Existing Buildings | + New Additions +Existing Parts | Additions to Licensed Buildings | New Buildings | Total |
| <b>Salfit</b>                |  |     |                                       |           |       |                           |                    |                                 |                                 |               |       |
| Industrial                   | 0.0  | 0   | 0.0                                   | 0.0       | 0.0   | 0                         | 0                  | 0                               | 0                               | 0             | 0     |
| Commercial                   | 0.5  | 8   | 0.0                                   | 0.5       | 0.5   | 0                         | 0                  | 0                               | 0                               | 3             | 3     |
| Educational                  | 0.0  | 0   | 0.0                                   | 0.0       | 0.0   | 0                         | 0                  | 0                               | 0                               | 0             | 0     |
| Health                       | 0.0  | 0   | 0.0                                   | 0.0       | 0.0   | 0                         | 0                  | 0                               | 0                               | 0             | 0     |
| Others                       | 0.0  | 0   | 0.0                                   | 0.1       | 0.1   | 0                         | 0                  | 0                               | 0                               | 1             | 1     |
| <b>Ramallah and Al-Bireh</b> |  |     |                                       |           |       |                           |                    |                                 |                                 |               |       |
| Industrial                   | 0.0  | 0   | 0.0                                   | 0.0       | 0.0   | 0                         | 0                  | 0                               | 0                               | 0             | 0     |
| Commercial                   | 23.7   | 56  | 1.2                                   | 28.0      | 29.2  | 0                         | 2                  | 0                               | 0                               | 12            | 14    |
| Educational                  | 0.0  | 0   | 0.9                                   | 5.6       | 6.5   | 0                         | 1                  | 0                               | 0                               | 5             | 6     |
| Health                       | 0.0  | 0   | 0.0                                   | 0.0       | 0.0   | 0                         | 0                  | 0                               | 0                               | 0             | 0     |
| Others                       | 0.0  | 0   | 0.0                                   | 2.1       | 2.1   | 0                         | 0                  | 0                               | 1                               | 2             | 3     |
| <b>Jericho and Al Aghwar</b> |  |     |                                       |           |       |                           |                    |                                 |                                 |               |       |
| Industrial                   | 0.0  | 0   | 0.0                                   | 17.7      | 17.7  | 0                         | 0                  | 0                               | 1                               | 0             | 1     |
| Commercial                   | 0.1  | 2   | 0.0                                   | 0.1       | 0.1   | 0                         | 0                  | 0                               | 0                               | 1             | 1     |
| Educational                  | 0.0  | 0   | 0.0                                   | 0.0       | 0.0   | 0                         | 0                  | 0                               | 0                               | 0             | 0     |
| Health                       | 0.0  | 0   | 0.0                                   | 0.0       | 0.0   | 0                         | 0                  | 0                               | 0                               | 0             | 0     |
| Others                       | 0.0  | 0   | 0.0                                   | 0.0       | 0.0   | 0                         | 0                  | 0                               | 0                               | 0             | 0     |

2008

-

:( ) 10

**Table 10 (Cont.): Buildings Licenses Issued in Remaining West Bank for Non-Residential Buildings by Utilization and Governorate– Third Quarter 2008**

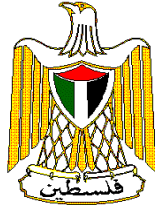
| Governorate<br>& Utilization | Stores   |     | Licensed Areas (1000 m <sup>2</sup> ) |              |       | Number of Issued Licenses |                       |                                       |                                       |                  |       |
|------------------------------|--|-----|---------------------------------------|--------------|-------|---------------------------|-----------------------|---------------------------------------|---------------------------------------|------------------|-------|
|                              | ( <sup>2</sup> 1000)<br>Area<br>(1000 m <sup>2</sup> ) | No. | Existing<br>Areas                     | New<br>Areas | Total | Existing<br>Extensions    | Existing<br>Buildings | +<br>New Additions<br>+Existing Parts | Additions to<br>Licensed<br>Buildings | New<br>Buildings | Total |
| <b>Bethlehem</b>             |  |     |                                       |              |       |                           |                       |                                       |                                       |                  |       |
| Industrial                   | 0.3  | 0   | 0.3                                   | 0.0          | 0.3   | 0                         | 1                     | 0                                     | 0                                     | 0                | 1     |
| Commercial                   | 5.2  | 0   | 0.7                                   | 4.6          | 5.3   | 0                         | 1                     | 0                                     | 1                                     | 6                | 8     |
| Educational                  | 2.0  | 0   | 0.0                                   | 2.0          | 2.0   | 0                         | 0                     | 0                                     | 0                                     | 1                | 1     |
| Health                       | 0.0  | 0   | 0.0                                   | 0.8          | 0.8   | 0                         | 0                     | 0                                     | 0                                     | 1                | 1     |
| Others                       | 0.9  | 1   | 0.0                                   | 2.7          | 2.7   | 0                         | 0                     | 0                                     | 0                                     | 7                | 7     |
| <b>Hebron</b>                |  |     |                                       |              |       |                           |                       |                                       |                                       |                  |       |
| Industrial                   | 0.6  | 1   | 0.0                                   | 0.6          | 0.6   | 0                         | 0                     | 0                                     | 0                                     | 1                | 1     |
| Commercial                   | 2.6  | 8   | 1.7                                   | 1.9          | 3.6   | 0                         | 3                     | 0                                     | 0                                     | 4                | 7     |
| Educational                  | 0.0  | 0   | 0.0                                   | 3.6          | 3.6   | 0                         | 0                     | 0                                     | 1                                     | 3                | 4     |
| Health                       | 0.0  | 0   | 0.0                                   | 0.0          | 0.0   | 0                         | 0                     | 0                                     | 0                                     | 0                | 0     |
| Others                       | 0.0  | 1   | 1.4                                   | 1.5          | 2.9   | 0                         | 2                     | 0                                     | 0                                     | 3                | 5     |

2008 -

:11

**Table 11: Buildings Licenses Issued in Remaining West Bank for Boundary Walls Only by Governorate– Third Quarter 2008**

| Governorate            | Existing and Existing Additions  |          | New and New Additions            |           |  |
|------------------------|----------------------------------|----------|----------------------------------|-----------|--|
|                        | ( . )<br>Total Length (1000 m.r) | Number   | ( . )<br>Total Length (1000 m.r) | Number    |  |
| <b>All Governorate</b> | <b>0.0</b>                       | <b>0</b> | <b>2.5</b>                       | <b>38</b> |  |
| Jenin                  | 0.0                              | 0        | 0.1                              | 3         |  |
| Tulkarm                | 0.0                              | 0        | 0.6                              | 6         |  |
| Nablus                 | 0.0                              | 0        | 1.0                              | 19        |  |
| Ramallah and Al-Bireh  | 0.0                              | 0        | 0.2                              | 2         |  |
| Bethlehem              | 0.0                              | 0        | 0.6                              | 8         |  |



**Palestinian National Authority  
Palestinian Central Bureau of Statistics**

**Building Licenses Statistics  
Third Quarter, 2008  
Remaining West Bank**

**Volume 13, Issue No. 3  
November, 2008**

Cover Price 3 US\$

PAGE NUMBERS OF ENGLISH TEXT ARE PRINTED IN SQUARE BRACKETS.  
TABLES ARE PRINTED IN THE ARABIC ORDER (FROM RIGHT TO LEFT)



This document is prepared in accordance with the standard procedures stated in the Code of Practice for Palestine Official Statistics 2006

© November, 2008  
**All rights reserved.**

**Suggested Citation:**

**Palestinian Central Bureau of Statistics, 2008.** *Building Licenses Statistics – Third Quarter 2008, Remaining West Bank.* Ramallah - Palestine.

All correspondence should be directed to:  
**Palestinian Central Bureau of Statistics**  
**P.O.Box 1647, Ramallah, Palestine.**

Tel: (972/970) 2 242 6340  
Fax: (972/970) 2 242 6343  
E-Mail : [diwan@pcbs.gov.ps](mailto:diwan@pcbs.gov.ps)  
web-site: <http://www.pcbs.gov.ps>



## **Acknowledgment**

**The Palestinian Central Bureau of Statistics (PCBS) would like to thank the Ministry of Local Governments and Municipal Affairs, all municipalities, and rural councils and construction authorities for their cooperation in providing PCBS with the requested data.**

**The funding of the Building Licenses Statistics (Third Quarter 2008) was provided by the Palestinian National Authority (PNA), and the Core Funding Group (CFG) for 2008. CFG members include the Representative Office of Norway to PNA; the Representative Office of Netherlands to PNA; the Swiss Agency for Development and Cooperation (SDC).**

**On this occasion, the PCBS extends special thanks to the members of the Core Funding Group (CFG) who contributed to funding this survey for their support**



## **Announcement**

The PCBS announce that data of Building licenses for Gaza Strip not available because of closure barriers.

## Team Work

- **Report Preparation**  
Jamil Alrimawi  
Ayman Qanir
- **Preliminary Review**  
Ibrahim Al-tarsha  
Saleh Al Kafri
- **Dissemination Standards**  
Hanan Janajreh
- **Final Review**  
Saleh Al Kafri
- **Overall Supervision**  
Dr. Luay Shabaneh                      PCBS President

## **Preface**

Construction is considered one of the important economic activities in the Palestinian economy. It contributes substantially to the Gross Domestic Product, recruits a large share of employees, and directly influences several other economic activities. Building construction in particular represents one of the major construction activities in general.

It has been necessary for the Palestinian Central Bureau of Statistics (PCBS) to establish statistical database that covers several aspects of construction activities in order to accommodate the different needs of users. The annual economic surveys series conducted by PCBS as of 1994 includes a survey for construction contractors. PCBS had also conducted the annual Existing Buildings Survey starting from the reference year 1996.

PCBS is pleased to present this report of Building Licenses Statistics, which provides statistical data on the size, and characteristics of licensed buildings in Remaining West Bank for the Third Quarter 2008, but Gaza Strip data not available.

Statistical data is currently collected through filling the designated from the administrative records of the different official licenses issuing authorities. This was initiated on quarterly basis since the First Quarter of 1996.

Publication of building licenses statistics will be pursued in the following years. PCBS hopes that the means by which these data are archived in the issuing authorities are developed, in the foreseeable future, in a manner that would reduce cost and time needed for preparing these statistics.

**November, 2008**

**Luay Shabaneh, Ph.D**  
**President**

## Table of Contents

| <b>Subject</b>    | <b>Page</b> |
|-------------------|-------------|
| List of Tables    |             |
| List of Figures   |             |
| Executive Summary |             |
| 1. Introduction   | [21]        |
| 2. Objectives     | [21]        |
| 3. Definitions    | [21]        |
| 4. Main Findings  | [22]        |
| 5. Data Quality   | [24]        |
| <b>Tables</b>     | <b>37</b>   |

## List of Tables

| <b>Table</b>  | <b>Page</b> |
|---|-------------|
| <b>Table 1:</b> Buildings Licenses Issued in Remaining West Bank and Gaza Strip During the Period 1997 to the Third Quarter 2008  | <b>37</b>   |
| <b>Table 2:</b> Buildings Licenses Issued in Remaining West Bank by Building Ownership and Utilization - Third Quarter 2008   | <b>38</b>   |
| <b>Table 3:</b> Buildings Licenses Issued in Remaining West Bank by Issuing Authority and Utilization - Third Quarter 2008  | <b>40</b>   |
| <b>Table 4:</b> Buildings Licenses Issued in Remaining West Bank for New Buildings by Category of Licensed Area and Governorate- Third Quarter 2008   | <b>41</b>   |
| <b>Table 5:</b> Buildings Licenses Issued in Remaining West Bank for New Buildings by Construction Material of External Walls and Governorate- Third Quarter 2008   | <b>45</b>   |
| <b>Table 6:</b> Buildings Licenses Issued in Remaining West Bank for New Additions to Licensed Existing Buildings by Construction Material of External Walls and Governorate- Third Quarter 2008                      | <b>48</b>   |
| <b>Table 7:</b> Buildings Licenses Issued in Remaining West Bank for New Additions and Existing Parts to Unlicensed Existing Buildings by Construction Material of External Walls and Governorate– Third Quarter 2008 | <b>51</b>   |
| <b>Table 8:</b> Buildings Licenses Issued in Remaining West Bank for Existing Buildings and Extensions by Construction Material of External Walls and Governorate- Third Quarter 2008                                 | <b>53</b>   |
| <b>Table 9:</b> Buildings Licenses Issued in Remaining West Bank for Residential Buildings by Status of Licensed Building and Governorate- Third Quarter 2008   | <b>56</b>   |
| <b>Table 10:</b> Buildings Licenses Issued in Remaining West Bank for Non-Residential Buildings by Utilization and Governorate- Third Quarter 2008  | <b>59</b>   |
| <b>Table 11:</b> Buildings Licenses Issued in Remaining West Bank for Boundary Walls Only by Governorate- Third Quarter 2008  | <b>63</b>   |

## List of Figures

| <b>Figure</b>   | <b>Page</b> |
|---|-------------|
| <b>Figure 1:</b> Number of Building Licenses Issued in Remaining West Bank for the Third Quarter 2006 – 2008  | <b>[23]</b> |
| <b>Figure 2:</b> Number of Building Licenses and Number of Dwellings for New Residential Buildings in Remaining West Bank by Licensed Area During the Third Quarter of 2008 | <b>[24]</b> |

## Executive Summary

This report covers data for the Third Quarter 2008.

### **The main findings of this quarter are as follow:**

1. Number of licenses: The number of building licenses issued in the Third Quarter 2008 totaled 1,096 and distributed as follows:
  - 588 licenses for new buildings
  - 254 licenses for new additions to licensed existing buildings
  - 53 licenses for new additions and existing parts
  - 180 licenses for existing buildings
  - 21 licenses for existing extensions
2. Licensed areas: The total areas of licensed buildings (residential & non residential) amounted to 458.8 thousand m<sup>2</sup> distributed as follows:
  - 384.1 thousand m<sup>2</sup> for new buildings areas, of which 263.1 thousand m<sup>2</sup> are residential and 121.0 thousand m<sup>2</sup> non-residential.
  - 74.7 thousand m<sup>2</sup> for existing buildings areas, of which 68.2 thousand m<sup>2</sup> are residential and 6.5 thousand m<sup>2</sup> non-residential.
3. Licensed boundary walls: 38 licenses issued for walls with total length of 2.5 thousand meters.
4. Number and area of dwellings licensed:
  - New dwellings: 1,174 units with a total area of 234.2 thousand m<sup>2</sup>.
  - Existing dwellings: 223 units with a total area of 62.5 thousand m<sup>2</sup>.

There was an obvious decline in the total number of issued buildings licenses for the third quarter of 2008 compared with the third quarter in the 2006, 2007 years ; the decline was 2.6% compared with the third quarter 2006, 3.3% compared with the third quarter 2007.

The results showed that in the third quarter 2008 the number of new dwellings and the number of existing dwellings decreased by 23.5%, 49.4% respectively compared with the same quarter 2006. There was a 43.7% decrease in the number of new dwellings and 55.1% in the number of existing dwellings when the third quarter 2008 was compared with the same quarter 2007.

## **1. Introduction:**

Construction is considered an important economic activity, particularly in countries undergoing economic development. This activity plays a vital role in the Palestinian economy and is significantly interrelated to other economic activities. The Palestinian Central Bureau of Statistics (PCBS) is committed to compiling statistical data on all aspects of construction activity in order to measure the main related variables.

Administrative record statistics shed light on the size and type of buildings licenses issued by official parties. Building license statistics are compiled by most countries. In addition to its own importance, buildings licenses statistics constitute the sampling frame for other surveys to be launched concerning identification of the actual constructed buildings against licenses, estimating construction costs and obtaining data on the technical characteristics of these buildings.

## **2. Objectives:**

These statistics provide data on the number of building licenses and licensed areas, and number and area of licensed dwellings and stores considering the following variables:

- Issuing authorities.
- Geographic location.
- Status of the buildings to be licensed (new, existing, new or existing additions, etc.).
- Building ownership (private, governmental, local authorities, cooperative, etc.).
- Utilization of the building (residential, non-residential: industrial, commercial, educational, etc.).
- Major external construction material (stone, concrete, block, etc.).

## **3. Definitions:**

### **1.1 Statistical Unit:**

The license issued by any authorized authority. The issuing authorities are the reporting units for this administrative records statistics.

### **1.2 Building Ownership:**

1. Private.
2. Governmental.
3. Local Authority.
4. Cooperative Society.
5. Charitable Society.
6. Other, e.g. religious groups, UNRWA, etc.

### **1.3 Status of the building to be licensed:**

1. New, when the building site is entirely vacant.
2. Addition to an already existing licensed building - either a vertical or horizontal addition.
3. Addition to non-licensed existing building (or part of a building) that needs licensing.
4. Existing building.
5. Existing extension.

### **1.4 Building Utilization:**



1. Residential: The building is considered residential if more than half of its total area is prepared for residential purposes. The building could consist of:
  - Complete dwellings.
  - Rooms added to the dwellings.
  - Extension of other facilities, e.g. kitchen, bathroom, cesspool, garage.
2. Non-Residential: industrial, commercial, educational, etc.
3. The boundary wall: in cases when the boundary wall undergoes separate licensing. If the building license includes the wall, then it is not included here.

### 3.5 Dwelling:

The housing unit of a single household.

### 3.6 Remaining West Bank:

The West Bank, except for those parts of Jerusalem Governorate that were annexed after 1967 occupation by Israel.

## 4. Main Findings

1. **Number of licenses:** The following table shows comparison between the number of buildings licenses for the Third Quarter 2008 with the same period for the years 2006-2007:

| Indicator                                     | No. of issued Licenses* |              |              | % Change of Q3 2008 from Q3 2006 | % Change of Q3 2008 from Q3 2007 |
|---|-------------------------|--------------|--------------|----------------------------------|----------------------------------|
|   | Q3 2006                 | Q3 2007      | Q3 2008      |                                  |                                  |
| Licenses for new buildings.                   | 559                     | 684          | 588          | 5.2                              | -14.0                            |
| Licenses for additions to licensed buildings. | 258                     | 242          | 254          | -1.6                             | 5.0                              |
| Licenses for additions + existing parts.      | 48                      | 40           | 53           | 10.4                             | 32.5                             |
| Licenses for existing buildings.              | 233                     | 149          | 180          | -22.7                            | 20.8                             |
| Licenses for existing extensions              | 27                      | 18           | 21           | -22.2                            | 16.7                             |
| <b>Total</b>                                  | <b>1,125</b>            | <b>1,133</b> | <b>1,096</b> | <b>-2.6</b>                      | <b>-3.3</b>                      |

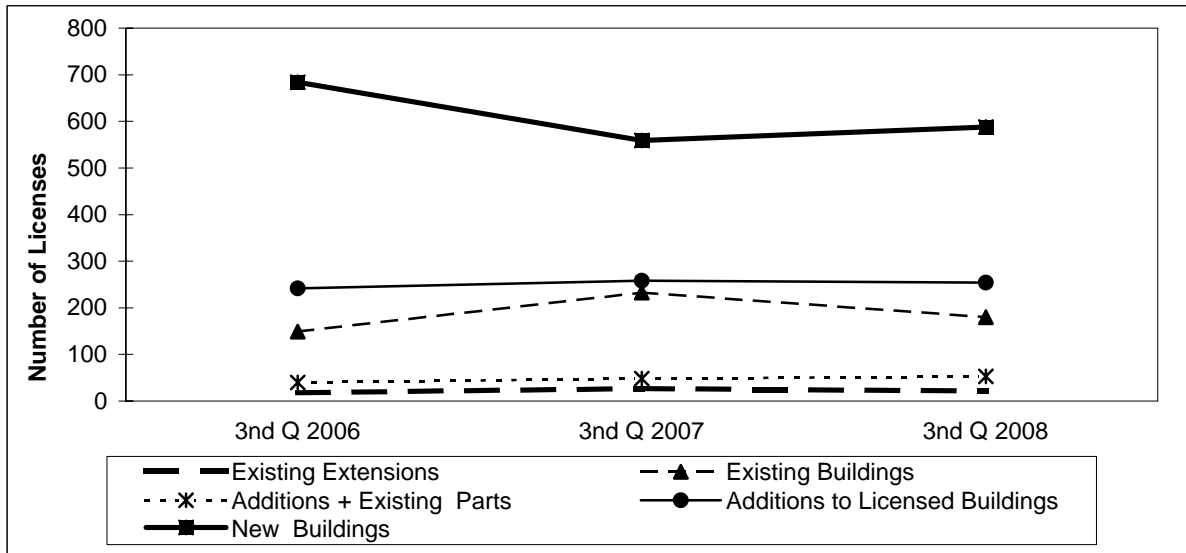
\*Excluding boundary wall licenses

The results showed a drop for buildings licenses indicators during the third quarter 2008 compared with the third quarter 2006-2007, despite some vacillation in some indicators, compared with same period or pervious quarters for the same years.

There was a decline in the total number of issued building licenses when the third quarter of 2008 was compared with the third quarter in the two previous years; the decline was 2.6% and 3.3% when compared with the third quarter 2006, and the third quarter 2007 respectively.

The following figure shows the number of building licenses issued in Remaining West Bank – 2006-2008 (Third Quarter):

**Figure 1: Number of Building Licenses Issued in Remaining West Bank for the Third Quarter 2006 – 2008**



**2. Licensed areas:** The following table shows comparison between the licensed areas for the Third Quarter 2008 with the same period for the years 2006-2007:

| Indicator             | Licensed Areas |              |              | % Change of Q3 2008 from Q3 2006 | % Change of Q3 2008 from Q3 2007 |
|-----------------------|----------------|--------------|--------------|----------------------------------|----------------------------------|
|                       | Q3 2006        | Q3 2007      | Q3 2008      |                                  |                                  |
| <b>Total areas</b>    | <b>470.1</b>   | <b>440.1</b> | <b>458.8</b> | <b>-2.4</b>                      | <b>4.3</b>                       |
| <b>New areas</b>      | <b>374.5</b>   | <b>361.8</b> | <b>384.1</b> | <b>2.6</b>                       | <b>6.2</b>                       |
| Residential           | 276.2          | 281.3        | 263.1        | -4.7                             | -6.5                             |
| Non-residential       | 98.3           | 80.5         | 121.0        | 23.1                             | 50.3                             |
| <b>Existing areas</b> | <b>95.6</b>    | <b>78.3</b>  | <b>74.7</b>  | <b>-21.9</b>                     | <b>-4.5</b>                      |
| Residential           | 80.5           | 63.0         | 68.2         | -15.3                            | 8.3                              |
| Non-residential       | 15.1           | 15.3         | 6.5          | -57.0                            | -57.5                            |

**3. Licensed boundary walls:** The following table shows comparison between the licenses issued for walls for the Third Quarter 2008 with the same period for the years 2006-2007:

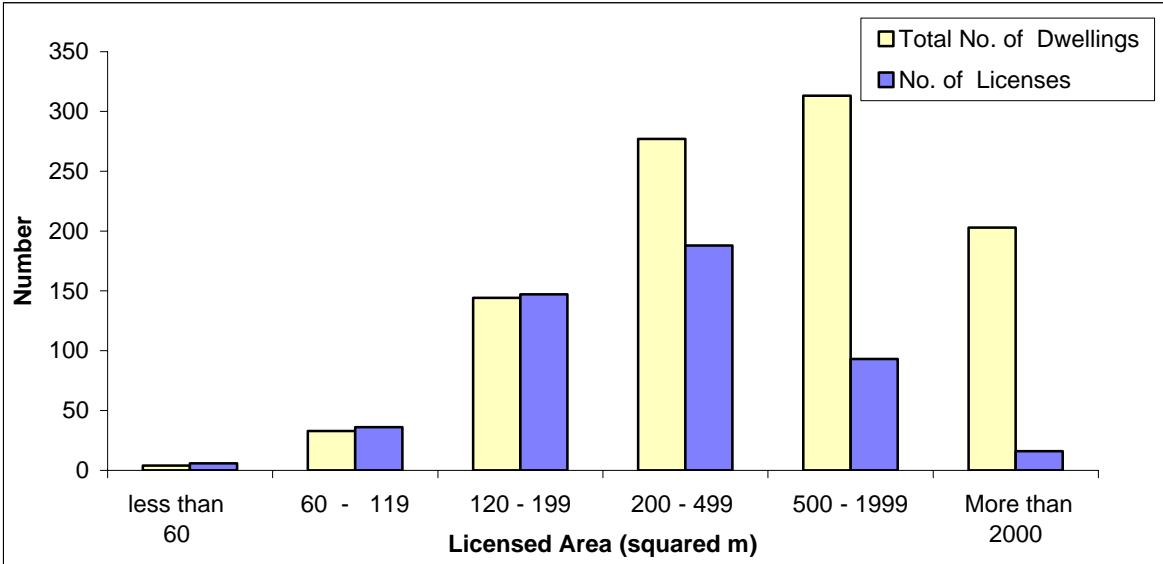
| Indicator                         | Licensed boundary walls |         |         | % Change of Q3 2008 from Q3 2006 | % Change of Q3 2008 from Q3 2007 |
|-----------------------------------|-------------------------|---------|---------|----------------------------------|----------------------------------|
|                                   | Q3 2006                 | Q3 2007 | Q3 2008 |                                  |                                  |
| Number of Walls licenses          | 71                      | 38      | 38      | -46.5                            | 0.0                              |
| Length of Walls licenses (meters) | 5.7                     | 3.1     | 2.5     | -56.1                            | -19.4                            |

**4. Number and area of dwellings licensed:** The following table shows comparison between the number and total area for the licensed dwellings for the Third Quarter 2008 and the same period for the years 2006- 2007:

| Indicator  | Number of dwellings and their area |         |         | % Change of Q3 2008 from Q3 2006 | % Change of Q3 2008 from Q3 2007 |
|--|------------------------------------|---------|---------|----------------------------------|----------------------------------|
|  | Q3 2006                            | Q3 2007 | Q3 2008 |                                  |                                  |
| Number of new dwellings                            | 1,535                              | 2,085   | 1,174   | -23.5                            | -43.7                            |
| Area for new dwellings (1000 m <sup>2</sup> )      | 253.7                              | 254.1   | 234.3   | -7.7                             | -7.8                             |
| Number of existing dwellings                       | 441                                | 497     | 223     | -49.4                            | -55.1                            |
| Area for existing dwellings (1000 m <sup>2</sup> ) | 74.5                               | 55.6    | 62.5    | -16.1                            | 12.4                             |

This figure shows the number of licenses and number of dwellings for new residential buildings by licensed area in Remaining West Bank the Third Quarter of 2008:

**Figure 2: Number of Building Licenses and Number of Dwellings for New Residential Buildings in Remaining West Bank by Licensed Area During the Third Quarter of 2008**



**5. Data Quality**

**5.1 Accuracy of the Data**

**5.1.1 Statistical Errors**

The survey was implemented on the basis of a comprehensive census for all studied statistical units (Licenses); therefore this survey was free of statistical (sampling) errors.

**5.1.2 Non-Statistical Errors**

Non-statistical errors are probable in all stages of the project, during data collection or processing. In this survey it is mostly referred to data entry errors. To avoid errors and reduce their effects, great efforts were made to train data entry staff. They were trained on the entry program that was examined before starting the data entry process, and preparing data entry program before data collection for checking readiness of the program for data entry. A set of validation rules was applied to the program for checking consistency of data. Periodic data

files were received by project management for checking accuracy and consistency, and notes of correction were provided for data entry management for correction.

## **5.2 Comparison of the Data**

Comparison exercises were done with previous years surveys of Building Licenses for the same quarter, and the results reveal consistency with previous survey data.

## **5.3 Technical Notes**

There are important technical notes which should be taken into consideration when reviewing this report, which are as follows:

- Tables exclude building licenses for those parts of Jerusalem which were annexed illegally by Israel in 1967, while they include licenses for some villages of Jerusalem Governorate.
- It may be noticed that the details of the value of some indicators may not add up to its total, due to rounding calculations.
- Data were not available for Gaza Strip.