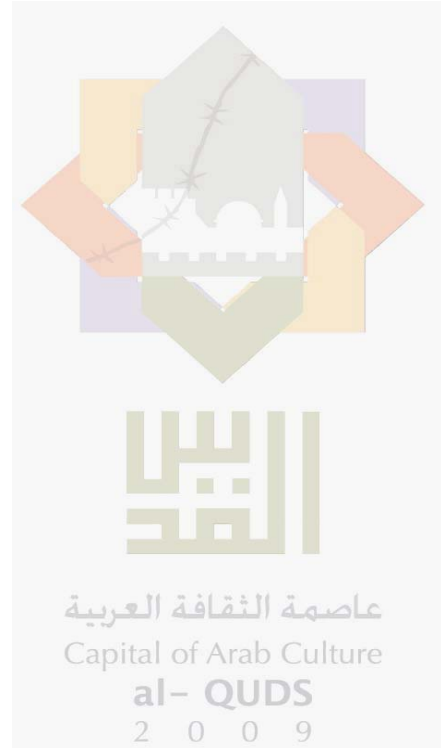


2007 -



( - )

2009 /



© 1430 - 2009.

:

) - -

.2009

-(

:

1647 . .

: (970/972) 2 242 6340

: (970/972) 2 242 6343

: diwan@pcbs.gov.ps

: http://www.pcbs.gov.ps

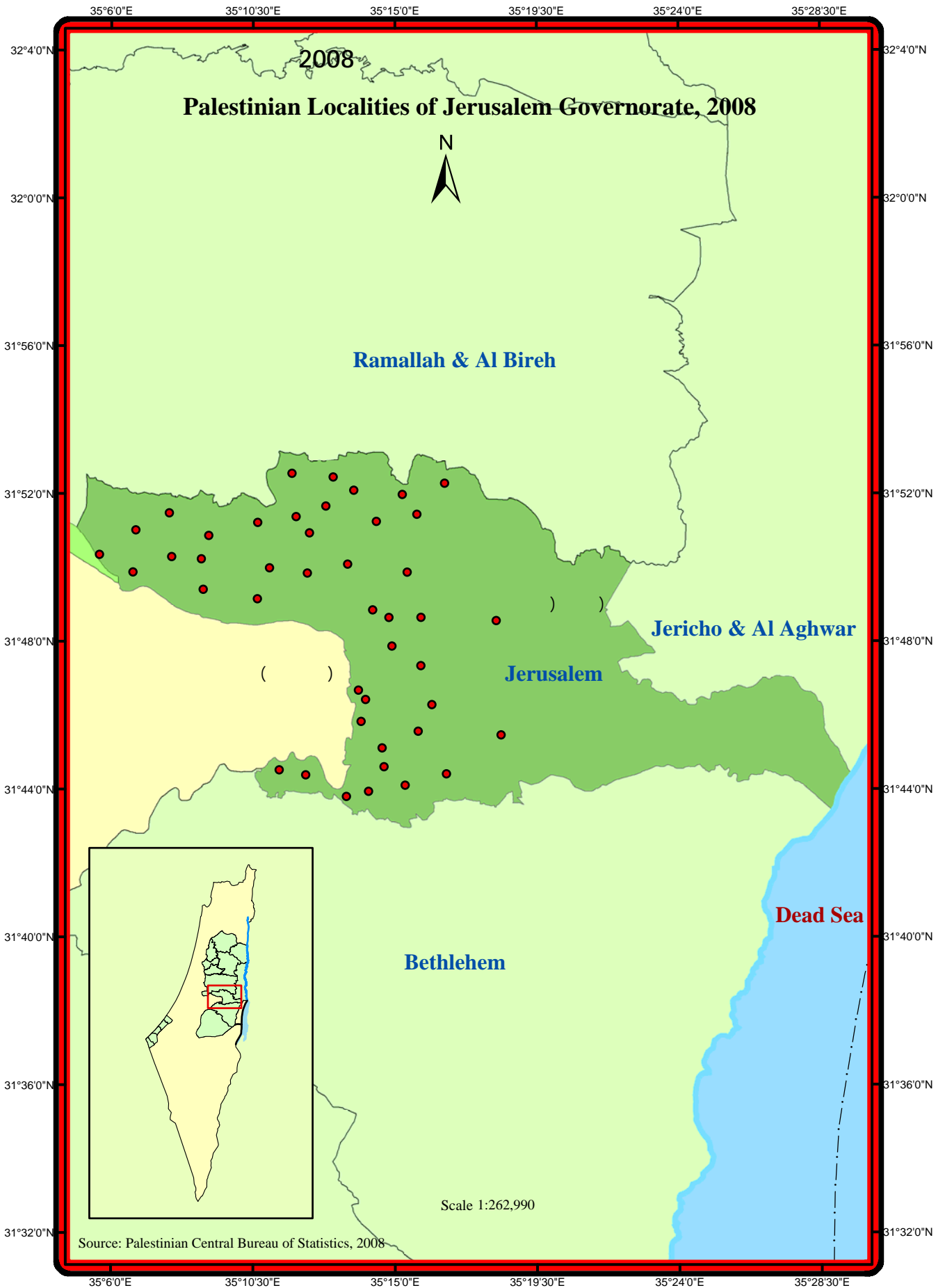


فخامة الرئيس محمود عباس "أبو مازن"

رئيس اللجنة التنفيذية لمنظمة التحرير الفلسطينية

رئيس السلطة الوطنية الفلسطينية







بِسْمِ اللَّهِ الرَّحْمَنِ الرَّحِيمِ

السلطة الوطنية الفلسطينية



منظمة التحرير الفلسطينية

بسم الله الرحمن الرحيم

تقديم من سيادة الرئيس محمود عباس "أبو مازن"  
رئيس السلطة الوطنية الفلسطينية

يعتبر التعداد العام للسكان والمساكن والمنشآت ركناً أساسياً من أركان النظام الإحصائي الرسمي في أي دولة، حيث يأتي تنفيذه خلال عام 2007 استحقاقاً قانونياً وتنموياً ووطنياً وسيادياً، ويمثل تنفيذه لبنة أساسية في عملية بناء الدولة وإرساء أسس التخطيط السليم بمعايير علمية نظراً لما يوفره من إحصاءات دقيقة وتفصيلية لكافة نواحي الحياة، ويساهم في بناء الدولة الفلسطينية وإنجاز الاستقلال السياسي والاقتصادي والاجتماعي، وتحقيق التنمية.

لقد جاء تنفيذ هذا المشروع الوطني الكبير في ظل ظروف غاية في التعقيد على مختلف الأصعدة، مما جعل تنفيذ التعداد مهمة صعبة تعترضها الكثير من التحديات والأخطار، إلا أن عزيمة الشعب الفلسطيني وإصرار الفريق الوطني، واحتضان القيادة السياسية جعلت من التغلب على هذا التحدي أمراً ممكناً أدى إلى تنفيذ التعداد العام الثاني في الأراضي الفلسطينية بجودة عالية وفق المعايير الدولية، بأيد وبخبرات فلسطينية وقرار فلسطيني مستقل، واستجابة للحاجات الوطنية في شتى المجالات.

بِسْمِ اللَّهِ الرَّحْمَنِ الرَّحِيمِ

السلطة الوطنية الفلسطينية



منظمة التحرير الفلسطينية

لقد أسهم التعداد في إعادة الموضوع التنموي على الأجندة الوطنية والدولية في فلسطين، بعد أن تراجع دورها لصالح الأجندة الإغاثية، فالتنمية أهم الدعامات الضرورية لتأسيس مجتمع ديمقراطي، وبناء إنسان حر ملتزم بالمبادئ الوطنية والإنسانية. والإحصاءات الدقيقة والعلمية هي العمود الفقري لوضع خطط تنموية مبنية على أسس سليمة تشكل رافعة لقضايا التنمية وتحقيق الأهداف المعلنة عليها.

لقد أبدى المجتمع الدولي اهتماماً بالغاً بهذا المشروع التنموي وعبر عن اهتمامه من خلال الدعم المادي والفني الذي قدمته بعض الدول الصديقة والمنظمات الدولية. فقد كان لصندوق الأمم المتحدة للسكان مساهمة مادية وفنية جادة، وكذلك صندوق أوبك للتنمية الدولية، وحكومات النرويج وهولندا وسويسرا وأستراليا، والمملكة العربية السعودية ومنظمة الأمم المتحدة للطفولة "اليونيسيف"

إننا إذ نهدي هذا الإنجاز التاريخي الى كل فلسطيني، فإننا نعبر عن تقديرنا وشكرنا لأسرة الجهاز المركزي للإحصاء الفلسطيني والفريق الوطني للتعداد على إصرارهم وعطائهم وتفانيهم في تحقيق هذا الإنجاز.

رام الله: 2008/5/22

محمود عباس

رئيس اللجنة التنفيذية لمنظمة التحرير الفلسطينية

رئيس السلطة الوطنية الفلسطينية



**2007**

**1994**

**(OFID)**

**(UNFPA)**

**(UNICEF)**

**.(EU)**

**2007**

**.2007**



•

•

•

•

•

•

/

.



2007

1997

2007

2009

/



J1

(J1)

.1967

:

.1

)

.2

(

•

:

(

)

[http://www.pcbs.gov.ps/Portals/\\_PCBS/Downloads/book1487.pdf](http://www.pcbs.gov.ps/Portals/_PCBS/Downloads/book1487.pdf)

(

)

•

:

[http://www.pcbs.gov.ps/Portals/\\_PCBS/Downloads/book1489.pdf](http://www.pcbs.gov.ps/Portals/_PCBS/Downloads/book1489.pdf)

(

)

•

:

[http://www.pcbs.gov.ps/Portals/\\_PCBS/Downloads/book1430.pdf](http://www.pcbs.gov.ps/Portals/_PCBS/Downloads/book1430.pdf)

%100

•

:

•

(-)

(.)

%.05

(0.0)





21

:

33

:

35



<b>37</b>		2007 1997		<b>:1</b>
<b>45</b>		2007		<b>:2</b>
<b>49</b>	2007		( 12)	<b>:3</b>
<b>51</b>		2007		<b>:4</b>
<b>53</b>			( 10)	<b>:5</b>
			2007	
<b>57</b>			( 10)	<b>:6</b>
			2007	
<b>61</b>	2007	/	/	<b>:7</b>
<b>62</b>		2007		<b>:8</b>
<b>64</b>		2007		<b>:9</b>
<b>66</b>		2007		<b>:10</b>
<b>68</b>	2007			<b>:11</b>
<b>70</b>		2007		<b>:12</b>
<b>72</b>	2007			<b>:13</b>
<b>74</b>		2007		<b>:14</b>
<b>76</b>				<b>:15</b>
			2007	
<b>78</b>				<b>:16</b>
			2007	





2007/12/01 •  
 •  
 2007/12/01 •  
 2007/12/01 •  
 .2007/12/01 •  
 •

2007/12/01 •

2007/12/01 •  
 •  
 •  
 •

:  
 .2007/12/01 .1  
 .2007/12/01 .2  
 2007/12/01 .3

:  
 : .1  
 :( ) .2

:  
 :  
 :  
 ( )  
 : .1

( ) ( ) ( ) : ( ) .2

: .3

: .4

:

:

:

:

:

:

: .1

: .2

: .3

: /

1948

( )

( )

( )

( )

: /

( )

: /  
( )

( )

: /

: /

: /

:

( )

: .1

: .2

: .3

: .4

:

:

:



:

:

35 (34-15) (14-1)

:

:

( 7) : **14-1** .1

14-1

( 7) : **34-15** .2

34-15

35

( 7) : **35** .3

:

-

( 7) : .4

( 7) : .5

:

-

( 7) : .6

( 7) : .7

( 7)

( 7) : / .8

( 7) ( ) : .9

( 7) : / / .10

: / .11

.....

: .12

:

:

:

) 12 : .1  
 ( 12 : .2  
 ( )  
 12 : .3  
 ( ) 12 : .4  
 ( ) / 12 : .5  
 / 12 : .6  
 /

:  
 : .1  
 : .2  
 : .3  
 : .4  
 : .5  
 : .6

:( )

:

.( ... ) .

: .1

: .2

: .3

: .4

( )

: .5

: .6

( )

: .7

:

:

: .1

: .2

( )

: .3

: .4

: .5

: .6

:

( ) 2 (4)

:

:

: .1

: .2

: .3

: .4

: .5

: .6

:

:

: .1

.( )

: .2

: .3

:( ) .4

: .5

:

:

( )

: .1

: .2

: .3

:

: .1

)

(

: .2

: .3

:

:

:

•

•

( )

:

•

•

( )

:

( )

.2007/09/30

:( )

: .1

(... ) : .2

: .3

( ) : .4

: .5

: .6

:

(%51)

**J2 J1**

:

:(**J1** )

) " " ) J1 .1967

(

.(

:(**J2** )

) J2 1967

) ( )

( ) (

.(





									<b>1.2</b>
.	363,649	2007/12/1-11/31							
			103.5					178,679	184,970
								1997	
			328,601						
									.%10.7
									<b>1.1.2</b>
	350,051								
									%96.3
									<b>2.2</b>
									<b>1.2.2</b>
		%36.8	128,918			14-0			
			.J2	43,558	J1			85,360	
						/			<b>2.2.2</b>
			1						
			. <sup>1</sup>					%4.5	5,570
									<b>3.2.2</b>
		%7.1	16,554					10	
	4,907	J1	11,647			10			
									.J2
			10						
			10						
						%3.9		9,151	

.1967

\_\_\_\_\_ : 1

						<b>4.2.2</b>
	9,524		10			
%9.6 J1					%12.3	
					.J2	%17.6
						<b>5.2.2</b>
		117,853			12	
37,227	J1		80,626		12	%54.6
						.J2
						<b>3.2</b>
5.2	1997		5.9			67,893
	.J2		5.4	5.0 J1		2007
						<b>4.2</b>
<sup>1</sup>		2007/11/10-10/20				
			67,893			17,217
						<b>5.2</b>
			4,117 <sup>1</sup>			
	2,006		9,180	11,186		

.1967

:

1

## **Tables**



Table 1: Summary Results of the Population, Housing and Establishment Census 1997, 2007

Indicator	2007		1997		
	(%)	No.*	(%)	No.*	
<b>Total Population**</b>					**
Males	50.9	184,970	50.5	166,001	
Females	49.1	178,679	49.5	162,600	
<b>Total</b>	<b>100.0</b>	<b>363,649</b>	<b>100.0</b>	<b>328,601</b>	
<b>Total Households Counted</b>					
Private Households	100.0	67,893	99.9	18,990	
Institutional Households	0.0	10	0.1	23	
<b>Total</b>	<b>100.0</b>	<b>67,903</b>	<b>100.0</b>	<b>19,013</b>	
<b>Counted Population Distribution by Household Type</b>					
Population of Private Households	100.0	349,868	99.1	112,818	
Population of Institutional Households	0.0	183	0.9	1,078	
<b>Total</b>	<b>100.0</b>	<b>350,051</b>	<b>100.0</b>	<b>113,896</b>	
<b>Distribution of Private Households by Nationality of Head of Household</b>					
Private Palestinian Households	100.0	67,879	99.7	18,929	
Private Foreign Households	0.0	14	0.3	61	
<b>Total</b>	<b>100.0</b>	<b>67,893</b>	<b>100.0</b>	<b>18,990</b>	
<b>Distribution of Population in Private Households by Nationality of Head of Household</b>					
Population of Private Palestinian Households	100.0	349,832	99.8	112,611	
Population of Private Foreign Households	0.0	36	0.2	207	
<b>Total</b>	<b>100.0</b>	<b>349,868</b>	<b>100.0</b>	<b>112,818</b>	
<b>Sex Ratio (Male Per 100 Female)</b>	-	<b>103.5</b>	-	<b>102.1</b>	( 100 )
<b>Average Household Size</b>	-	<b>5.2</b>	-	<b>5.9</b>	
<b>Private Households by Sex of Head of Household</b>					
Males	91.4	62,032	91.2	17,322	
Females	8.6	5,861	8.8	1,668	
<b>Total</b>	<b>100.0</b>	<b>67,893</b>	<b>100.0</b>	<b>18,990</b>	
<b>Type of Private Household</b>					
One Person	4.4	2,978	3.2	615	
Nuclear	80.5	54,664	76.5	14,526	
Extended	9.4	6,353	19.2	3,651	
Composite	0.1	65	1.0	198	
Not Stated	5.6	3,833	0.0	-	
<b>Total</b>	<b>100.0</b>	<b>67,893</b>	<b>100.0</b>	<b>18,990</b>	

**Note:** The 2007 census indicators includes area J1 of Jerusalem Governorate, while the 1997 census indicators does not include area J1. Unless otherwise stated. Comparing the indicators should be taken with cautious between the two censuses.

1997

J1

2007

:

.J1

\*Includes population and households counted during the years 1997, 2007. Unless otherwise stated

.2007 1997

\*

\*\*Includes population counted during the years 1997, 2007 and uncounted population estimates according to the post enumeration survey.

2007 1997

\*\*

Table 1 (Cont.): Summary Results of the Population, Housing and Establishment Census 1997, 2007

Indicator	2007		1997		
	(%)	No.*	(%)	No.*	
<b>Population by Nationality</b>					
Palestinians	100.0	349,978	99.7	113,557	
Not Palestinians	0.0	73	0.3	303	
Not Stated	0.0	-	0.0	36	
<b>Total</b>	<b>100.0</b>	<b>350,051</b>	<b>100.0</b>	<b>113,896</b>	
<b>Refugee Status for Palestinians</b>					
Refugee	31.4	109,993	40.8	46,293	
Non-Refugee	60.0	210,039	58.1	65,925	
Not Stated	8.6	29,946	1.2	1,339	
<b>Total</b>	<b>100.0</b>	<b>349,978</b>	<b>100.0</b>	<b>113,557</b>	
<b>Age Distribution</b>					
0 - 4	12.1	42,466	16.6	18,914	4 - 0
5 - 14	24.7	86,452	27.2	31,036	14 - 5
15 - 64	51.9	181,666	52.8	60,168	64 - 15
65+	2.9	10,073	3.1	3,558	+ 65
Not Stated	8.4	29,394	0.2	220	
<b>Total</b>	<b>100.0</b>	<b>350,051</b>	<b>100.0</b>	<b>113,896</b>	
<b>Median Age (Years)</b>	-	<b>19.0</b>	-	<b>17.0</b>	( )
<b>Palestinians 12 Years and Over by Marital Status</b>					12
<b>Legally Married and Never Married</b>					
Males	44.3	48,379	47.2	17,368	
Females	36.8	39,194	37.0	13,042	
<b>Married</b>					
Males	53.6	58,522	51.7	19,044	
Females	55.7	59,331	55.7	19,610	
<b>Divorced</b>					
Males	0.5	525	0.3	93	
Females	1.2	1,272	1.1	382	
<b>Widowed</b>					
Males	0.8	902	0.6	218	
Females	5.3	5,672	5.9	2,067	
<b>Separated</b>					
Males	0.2	245	.	.	
Females	0.5	484	.	.	
<b>Not Stated</b>					
Males	0.6	616	0.3	104	
Females	0.5	513	0.4	126	
<b>Total</b>					
<b>Males</b>	<b>100.0</b>	<b>109,189</b>	<b>100.0</b>	<b>36,827</b>	
<b>Females</b>	<b>100.0</b>	<b>106,466</b>	<b>100.0</b>	<b>35,227</b>	

\*Includes population and households counted during the year 1997, 2007.  
Unless otherwise stated

.2007 1997

\*

Table 1 (Cont.): Summary Results of the Population, Housing and Establishment Census 1997, 2007

Indicator	2007		1997		
	(%)	No.*	(%)	No.*	
<b>Median Age at First Marriage**</b>					**
Males	-	24.0	-	23.0	
Females	-	19.0	-	18.0	
<b>Dependency Ratio</b>	-	<b>76.5</b>	-	<b>88.9</b>	
<b>Palestinians 15 Years and Over According to Ability to Read/ Write</b>					/ 15
<b>Illiterate</b>					
Males	2.7	2,654	6.7	2,194	
Females	6.7	6,327	16.9	5,270	
<b>Literate</b>					
Males	96.8	93,861	92.8	30,203	
Females	92.8	87,912	81.9	25,482	
<b>Not stated</b>					
Males	0.5	439	0.5	151	
Females	0.5	488	1.1	357	
<b>Total</b>					
<b>Males</b>	<b>100.0</b>	<b>96,954</b>	<b>100.0</b>	<b>32,548</b>	
<b>Females</b>	<b>100.0</b>	<b>94,727</b>	<b>100.0</b>	<b>31,109</b>	
<b>Palestinians 10 Years and Over by Educational Attainment</b>					10
Illiterate	3.9	9,151	10.0	7,771	
Can Read and Write	12.5	29,210	15.4	12,016	
Secondary and below	71.1	165,998	66.4	51,650	
Associate Diploma	4.8	11,282	3.5	2,706	
Bachelor	6.3	14,673	3.4	2,637	
Higher Diploma and above	0.8	1,881	0.6	455	
Not stated	0.5	1,130	0.7	549	
<b>Total</b>	<b>100.0</b>	<b>233,325</b>	<b>100.0</b>	<b>77,784</b>	
<b>School Attendance for Palestinians 6-18 Years**</b>					** 18-6
Attending	89.5	31,758	85.5	32,589	
Not Attending	9.5	3,365	14.4	5,502	
Not Stated	1.0	372	0.1	35	
<b>Total</b>	<b>100.0</b>	<b>35,495</b>	<b>100.0</b>	<b>38,126</b>	
<b>Palestinians** by Disability/Difficulty Status***</b>					*** / **
With Disability/ Difficulty	4.5	5,570	1.7	1,920	/
Without Disability/ Without Difficulty	79.8	99,355	98.3	111,637	/
Not stated	15.8	19,637	0.0	-	
<b>Total</b>	<b>100.0</b>	<b>124,562</b>	<b>100.0</b>	<b>113,557</b>	

\*Includes population and households counted during the year 1997, 2007.  
Unless otherwise stated

.2007 1997

\*

\*\* Jerusalem Governorate: Except those parts of Jerusalem which were annexed by Israel in 1967. Also does not include Kafr 'Aqab locality in the 2007 census.

.2007

.1967

\*\*

\*\*\*There is a difference in the definition between the two censuses

\*\*\*

Table 1 (Cont.): Summary Results of the Population, Housing and Establishment Census 1997, 2007

Indicator	2007		1997		
	(%)	No.*	(%)	No.*	
<b>Disabled Palestinians** by Type of Disability/ Difficulty****</b>					**** / **
Seeing	2.8	3,449	0.3	300	
Hearing	1.1	1,429	0.1	111	
Moving	1.5	1,900	0.5	513	
Cognition	0.7	835	.	.	
Communication	0.6	776	.	.	
Others	.	.	0.9	996	
<b>Palestinians by Place of Birth**</b>					**
Inside Palestinian Territory	80.3	99,982	92.8	105,378	
Outside Palestinian Territory	4.5	5,587	6.9	7,885	
Not stated	15.2	18,993	0.3	294	
<b>Total</b>	<b>100.0</b>	<b>124,562</b>	<b>100.0</b>	<b>113,557</b>	
<b>Palestinians 10 Years and Over by Activity Status</b>					10
<b>Economically Active</b>	<b>33.3</b>	<b>77,670</b>	<b>35.7</b>	<b>27,764</b>	
Employed	87.7	68,146	86.1	23,891	
Unemployed Ever Worked	4.5	3,459	9.3	2,585	
Unemployed Never Worked	7.8	6,065	4.6	1,288	
<b>Not Economically Active</b>	<b>66.2</b>	<b>154,380</b>	<b>62.9</b>	<b>48,895</b>	
Studying/ Training	45.1	69,683	45.2	22,115	
Housekeeping	39.8	61,489	45.5	22,251	
Disability/ Aging/ Illness	10.4	16,028	4.4	2,173	/ /
Another Source of Income/ Retire	0.4	671	4.0	1,944	/
Others	4.2	6,509	0.8	412	
<b>Not Stated</b>	<b>0.5</b>	<b>1,275</b>	<b>1.4</b>	<b>1,125</b>	
<b>Total</b>	<b>100.0</b>	<b>233,325</b>	<b>100.0</b>	<b>77,784</b>	
<b>Palestinians 10 Years and Over Employed and Unemployed Ever Worked by Occupation</b>					10
Legislators and Managers	3.4	2,433	2.5	650	
Professionals	13.5	9,694	6.5	1,708	
Technicians and Associate Professionals	7.5	5,404	5.7	1,509	
Clerks	4.0	2,885	3.3	880	
Services and Sales Workers	16.8	12,012	14.9	3,941	
Skilled Agricultural and Fishery Workers	0.4	262	1.6	432	
Crafts and Related Workers	21.5	15,387	29.0	7,682	
Plant, Machine Operators and Assemblers	11.3	8,121	7.8	2,054	
Elementary Occupations	20.0	14,292	25.8	6,818	
Not Sated	1.6	1,115	3.0	802	
<b>Total</b>	<b>100.0</b>	<b>71,605</b>	<b>100.0</b>	<b>26,476</b>	

\*Includes population and households counted during the year 1997, 2007. Unless otherwise stated

.2007 1997

\*

\*\* Jerusalem Governorate: Except those parts of Jerusalem which were annexed by Israel in 1967. Also does not include Kafr 'Aqab locality in the 2007 census.

.2007

.1967

:

\*\*

\*\*\*\*Percentages represents percent out of total population

\*\*\*\*



Table 1 (Cont.): Summary Results of the Population, Housing and Establishment Census 1997, 2007

Indicator	2007		1997		
	(%)	No.*	(%)	No.*	
<b>Palestinians 10 Years and Over Employed and Unemployed Ever Worked by Economic Activity</b>					10
Agriculture, Hunting and Forestry	0.5	335	2.1	555	
Fishing	0.0	1	0.0	-	
Mining and Quarrying	0.1	53	0.4	98	
Manufacturing	12.3	8,782	15.1	3,991	
Electricity, Gas and Water Supply	0.8	605	0.6	169	
Construction	16.7	11,935	30.6	8,111	
Whole sale and Retail Trade	19.6	14,065	15.2	4,014	
Hotels and Restaurants	6.8	4,902	5.1	1,347	
Transport, Storage and Communication	7.3	5,231	6.0	1,579	
Financial Intermediation	0.8	602	0.8	210	
Real-estate, Renting and Business Activities	2.8	1,986	2.1	552	
Public Administration and Defense	4.1	2,959	5.3	1,405	
Education	12.1	8,666	6.9	1,816	
Health and Social Work	7.2	5,157	3.3	869	
Other Community Social and Personal service Activities	4.0	2,863	2.1	553	
Private Households with Employed Persons	0.2	121	0.0	3	
Extraterritorial Organizations and Bodies	3.0	2,147	0.5	130	
Not Stated	1.7	1,195	4.1	1,074	
<b>Total</b>	<b>100.0</b>	<b>71,605</b>	<b>100.0</b>	<b>26,476</b>	
<b>Average Number of Persons per Room</b>	-	<b>1.6</b>	-	<b>1.8</b>	
<b>Average Number of Rooms in Housing Unit</b>	-	<b>3.2</b>	-	<b>3.3</b>	
<b>Occupied Housing Units by Type</b>					
Villa	1.0	698	1.4	271	
House	37.9	25,711	41.6	7,822	
Apartment	57.1	38,756	53.8	10,122	
Independent Room	0.9	629	1.0	197	
Tent	0.2	152	1.2	217	
Marginal	0.5	319	0.9	164	
Others	0.0	10	0.0	5	
Not Stated	2.4	1,618	0.1	20	
<b>Total*****</b>	<b>100.0</b>	<b>67,893</b>	<b>100.0</b>	<b>18,818</b>	*****
<b>Private Households by Tenure of Housing Unit**</b>					**
Owned	67.3	15,596	72.0	13,675	
Rented Unfurnished	10.7	2,481	17.5	3,321	
Rented Furnished	1.0	224	1.1	200	
Without Payment	4.3	989	8.4	1,604	
For Work	0.2	39	0.3	49	
Others	0.2	41	0.2	40	
Not Stated	16.5	3,820	0.5	101	
<b>Total*****</b>	<b>100.0</b>	<b>23,190</b>	<b>100.0</b>	<b>18,990</b>	*****

\*Includes population and households counted during the year 1997, 2007. Unless otherwise stated

.2007 1997

\*

\*\* Jerusalem Governorate: Except those parts of Jerusalem which were annexed by Israel in 1967. Also does not include Kafr 'Aqab locality in the 2007 census.

.2007

.1967

\*\*

\*\*\*\*\*According to the definition used in the 1997 census, the house may contain more than one household, while in 2007 census, the house contains only one household.

1997

\*\*\*\*\*

2007

Table 1 (Cont.): Summary Results of the Population, Housing and Establishment Census 1997, 2007

Indicator	2007		1997		
	(%)	No.*	(%)	No.*	
<b>Occupied Housing Units by Connection to Electricity**</b>					**
Public Network	93.7	21,739	96.5	18,157	
Private Generator	0.6	131	0.7	129	
No Electricity	0.6	134	2.7	512	
Not Stated	5.1	1,186	0.1	20	
<b>Total</b>	<b>100.0</b>	<b>23,190</b>	<b>100.0</b>	<b>18,818</b>	
<b>Occupied Housing Units by Connection to Sewage System**</b>					**
Public Sewage System	37.7	8,742	21.7	4,082	
Porous Cesspit	54.1	12,547	74.1	13,939	
No Sewage System	1.8	426	3.9	742	
Not Stated	6.4	1,475	0.3	55	
<b>Total</b>	<b>100.0</b>	<b>23,190</b>	<b>100.0</b>	<b>18,818</b>	
<b>Private Household by Availability of Durable Goods**</b>					**
<b>Private Car</b>					
Available	25.4	5,880	29.3	5,568	
Not Available	57.6	13,351	70.2	13,334	
Not Stated	17.1	3,959	0.5	88	
<b>Refrigerator</b>					
Available	80.2	18,596	90.6	17,198	
Not Available	2.9	670	9.0	1,713	
Not Stated	16.9	3,924	0.4	79	
<b>Solar Boiler</b>					
Available	56.5	13,092	60.7	11,523	
Not Available	26.6	6,165	38.9	7,381	
Not Stated	17.0	3,933	0.5	86	
<b>Central Heating</b>					
Available	4.4	1,027	3.8	718	
Not Available	78.6	18,229	95.8	18,190	
Not Stated	17.0	3,934	0.4	82	
<b>Vacuum Cleaner</b>					
Available	30.3	7,030	.	.	
Not Available	52.7	12,213	.	.	
Not Stated	17.0	3,947	.	.	
<b>Gas Cooker/ Electricity</b>					/
Available	83.1	19,260	95.3	18,088	
Not Available	1.1	251	4.4	832	
Not Stated	15.9	3,679	0.4	70	
<b>Microwave</b>					
Available	33.1	7,675	.	.	
Not Available	49.9	11,570	.	.	
Not Stated	17.0	3,945	.	.	

\*Includes population and households counted during the year 1997, 2007.

.2007 1997

\*

Unless otherwise stated

\*\* Jerusalem Governorate: Except those parts of Jerusalem which were annexed by Israel in 1967. Also does not include Kafr 'Aqab locality in the 2007 census.

.2007

.1967

\*\*

Table 1 (Cont.): Summary Results of the Population, Housing and Establishment Census 1997, 2007

Indicator	2007		1997		
	(%)	No.*	(%)	No.*	
<b>Washing Machine</b>					
Available	77.5	17,964	79.9	15,176	
Not Available	5.6	1,288	19.6	3,725	
Not Stated	17.0	3,938	0.5	89	
<b>Home Library</b>					
Available	18.7	4,345	17.4	3,297	
Not Available	64.2	14,885	82.2	15,609	
Not Stated	17.1	3,960	0.4	84	
<b>Radio/ Recorder</b>					/
Available	62.4	14,479	.	.	
Not Available	20.5	4,764	.	.	
Not Stated	17.0	3,947	.	.	
<b>T.V.</b>					
Available	80.6	18,683	90.9	17,258	
Not Available	2.5	583	8.6	1,639	
Not Stated	16.9	3,924	0.5	93	
<b>Video/ DVD</b>					DVD /
Available	32.1	7,451	29.5	5,593	
Not Available	50.8	11,778	70.0	13,300	
Not Stated	17.1	3,961	0.5	97	
<b>Satellite/ Dish</b>					
Available	71.6	16,595	.	.	
Not Available	11.4	2,644	.	.	
Not Stated	17.0	3,951	.	.	
<b>Phone Line</b>					
Available	37.5	8,689	27.5	5,228	
Not Available	45.5	10,541	71.9	13,658	
Not Stated	17.1	3,960	0.5	104	
<b>Completed Buildings by Utilization**</b>					**
Residential	68.2	11,738	79.4	11,941	
Residential & Work	8.6	1,480	6.4	958	
Work	7.7	1,331	5.9	893	
Closed	6.5	1,126	2.1	323	
Vacant	7.1	1,220	6.2	930	
Deserted	1.7	301	.	.	
Not Stated	0.1	21	0.0	-	
<b>Total</b>	<b>100.0</b>	<b>17,217</b>	<b>100.0</b>	<b>15,045</b>	

\*Includes population and households counted during the year 1997, 2007. Unless otherwise stated

.2007 1997

\*

\*\* Jerusalem Governorate: Except those parts of Jerusalem which were annexed by Israel in 1967. Also does not include Kafr 'Aqab locality in the 2007 census.

.2007

.1967

\*\*

Table 1 (Cont.): Summary Results of the Population, Housing and Establishment Census 1997, 2007

Indicator	2007		1997		
	(%)	No.*	(%)	No.*	
<b>Number of Establishments in the Private Sector, Non Governmental Organizations Sector and Government Companies by Principal Economic Activity**</b>					**
Agriculture, Farming of Cattle and other Animals	3.5	145	4.4	131	( )
Mining & Quarrying	0.1	5	0.2	5	
Manufacturing	19.1	787	26.2	784	
Electricity And Water Supply	0.1	4	0.1	2	
Construction	0.5	19	0.3	9	
Wholesale, Retail Trade & Repairs	53.0	2,182	52.5	1,573	
Hotels and Restaurants	4.7	194	3.3	98	
Transport, Storage & Communications	0.8	33	0.9	27	
Financial Intermediation	0.7	27	0.6	17	
Real Estate, Renting & Business Activities	3.0	125	2.6	78	
Education	2.2	92	2.1	64	
Health & Social Work	3.4	138	2.8	84	
Other Community, Social & Personal Service	8.9	366	4.1	122	
<b>Total</b>	<b>100.0</b>	<b>4,117</b>	<b>100.0</b>	<b>2,994</b>	
<b>Number of Persons Engaged in the Private Sector, Non Governmental Organizations Sector and Government Companies**</b>					**
Males	82.1	9,180	80.2	6,509	
Females	17.9	2,006	19.8	1,609	
<b>Total</b>	<b>100.0</b>	<b>11,186</b>	<b>100.0</b>	<b>8,118</b>	

\*Includes population and households counted during the year 1997, 2007. Unless otherwise stated

.2007 1997

\*

\*\* Jerusalem Governorate: Except those parts of Jerusalem which were annexed by Israel in 1967. Also does not include Kafr 'Aqab locality in the 2007 census.

.2007

.1967

\*\*

Table 2: Population in the Governorate by Sex, Locality and Age Group, 2007

Locality	Sex	Total	Age Group																								
			Not Stated	+ 65	+ 95	94 - 90	89 - 85	84 - 80	79 - 75	74 - 70	69 - 65	64 - 15	64 - 60	59 - 55	54 - 50	49 - 45	44 - 40	39 - 35	34 - 30	29 - 25	24 - 20	19 - 15	14 - 0	14 - 10			9 - 5
Jerusalem Governorate	T	350,051	29,394	10,073	105	214	510	1,026	1,725	2,693	3,800	181,666	5,554	6,575	9,298	12,163	16,005	19,365	23,114	26,506	28,297	34,789	128,918	41,646	44,806	42,466	(J1)
	M	178,062	15,222	4,799	59	96	235	443	797	1,293	1,876	92,165	2,744	3,496	4,661	6,401	8,220	9,956	11,662	13,209	14,185	17,631	65,876	21,423	22,733	21,720	
	F	171,989	14,172	5,274	46	118	275	583	928	1,400	1,924	89,501	2,810	3,079	4,637	5,762	7,785	9,409	11,452	13,297	14,112	17,158	63,042	20,223	22,073	20,746	
Jerusalem (J1)	T	225,416	11,264	6,770	65	137	324	662	1,069	1,834	2,679	122,022	3,856	4,520	6,408	8,231	10,938	13,324	15,880	17,827	18,527	22,511	85,360	27,874	30,166	27,320	(J2)
	M	114,743	5,861	3,349	38	62	159	274	534	918	1,364	61,912	1,957	2,463	3,189	4,427	5,638	6,934	7,975	8,727	9,202	11,400	43,621	14,433	15,265	13,923	
	F	110,673	5,403	3,421	27	75	165	388	535	916	1,315	60,110	1,899	2,057	3,219	3,804	5,300	6,390	7,905	9,100	9,325	11,111	41,739	13,441	14,901	13,397	
Jerusalem (J2)	T	124,635	18,130	3,303	40	77	186	364	656	859	1,121	59,644	1,698	2,055	2,890	3,932	5,067	6,041	7,234	8,679	9,770	12,278	43,558	13,772	14,640	15,146	( )
	M	63,319	9,361	1,450	21	34	76	169	263	375	512	30,253	787	1,033	1,472	1,974	2,582	3,022	3,687	4,482	4,983	6,231	22,255	6,990	7,468	7,797	
	F	61,316	8,769	1,853	19	43	110	195	393	484	609	29,391	911	1,022	1,418	1,958	2,485	3,019	3,547	4,197	4,787	6,047	21,303	6,782	7,172	7,349	
Rafat	T	2,141	190	67	1	1	5	7	12	21	20	1,119	31	46	50	77	110	115	147	152	169	222	765	231	260	274	( )
	M	1,085	98	31	1	-	2	3	3	15	7	567	14	25	24	46	57	61	74	80	86	100	389	125	128	136	
	F	1,056	92	36	-	1	3	4	9	6	13	552	17	21	26	31	53	54	73	72	83	122	376	106	132	138	
Mikhmas	T	1,305	47	109	4	5	3	14	23	31	29	687	32	53	40	52	66	71	80	73	86	134	462	163	153	146	( )
	M	610	22	48	3	3	2	6	7	15	12	291	11	16	17	20	27	28	26	29	42	75	249	83	91	75	
	F	695	25	61	1	2	1	8	16	16	17	396	21	37	23	32	39	43	54	44	44	59	213	80	62	71	
Qalandiya Camp	T	7,962	420	233	3	5	20	31	40	60	74	4,179	80	130	193	269	342	450	518	626	668	903	3,130	1,020	1,034	1,076	( )
	M	4,124	230	103	3	2	9	10	17	28	34	2,151	27	74	94	134	188	228	275	317	346	468	1,640	519	543	578	
	F	3,838	190	130	-	3	11	21	23	32	40	2,028	53	56	99	135	154	222	243	309	322	435	1,490	501	491	498	
Jaba' (Tajammu' Badawi)	T	64	22	4	-	-	-	1	1	-	2	21	2	1	1	2	1	1	3	3	4	3	17	7	6	4	( )
	M	31	11	1	-	-	-	-	1	-	-	9	1	-	1	1	1	-	1	2	2	-	10	4	4	2	
	F	33	11	3	-	-	-	1	-	-	2	12	1	1	-	1	-	1	2	1	2	3	7	3	2	2	
Qalandiya	T	1,063	167	41	1	1	1	3	8	12	15	500	25	18	25	34	43	46	62	62	74	111	355	111	130	114	( )
	M	517	86	16	-	-	-	1	2	6	7	239	12	8	10	16	23	21	32	33	36	48	176	55	70	51	
	F	546	81	25	1	1	1	2	6	6	8	261	13	10	15	18	20	25	30	29	38	63	179	56	60	63	
Beit Duqqu	T	1,461	2	54	1	1	1	6	15	13	17	840	20	20	40	70	70	90	92	118	138	182	565	182	188	195	( )
	M	748	1	22	1	1	-	2	9	6	3	422	10	11	22	39	34	49	38	61	75	83	303	102	97	104	
	F	713	1	32	-	-	1	4	6	7	14	418	10	9	18	31	36	41	54	57	63	99	262	80	91	91	
Jaba'	T	2,870	155	65	2	-	3	7	15	14	24	1,412	38	32	66	62	104	140	178	201	246	345	1,238	370	438	430	( )
	M	1,492	85	25	1	-	1	4	4	4	11	733	14	16	32	31	49	71	96	102	141	181	649	194	229	226	
	F	1,378	70	40	1	-	2	3	11	10	13	679	24	16	34	31	55	69	82	99	105	164	589	176	209	204	

Table 2 (Cont.): Population in the Governorate by Sex, Locality and Age Group, 2007

Locality	Sex	Total	Age Group																							
			Not Stated	+ 65	+ 95	94 - 90	89 - 85	84 - 80	79 - 75	74 - 70	69 - 65	64 - 15	64 - 60	59 - 55	54 - 50	49 - 45	44 - 40	39 - 35	34 - 30	29 - 25	24 - 20	19 - 15	14 - 0	14 - 10	9 - 5	4 - 0
Al Judeira	T	2,052	227	44	1	1	-	3	9	12	18	957	35	26	43	61	74	77	134	159	149	199	824	253	282	289
	M	1,026	116	23	-	-	-	2	5	7	9	463	17	12	23	28	33	39	69	79	69	94	424	130	152	142
	F	1,026	111	21	1	1	-	1	4	5	9	494	18	14	20	33	41	38	65	80	80	105	400	123	130	147
Ar Ram & Dahiyat al Bareed	T	18,356	5,204	394	2	6	22	42	63	107	152	7,625	242	311	387	548	707	718	919	1,153	1,201	1,439	5,133	1,586	1,695	1,852
	M	9,450	2,689	194	2	3	11	23	26	48	81	3,906	125	160	196	284	347	356	472	616	590	760	2,661	829	862	970
	F	8,906	2,515	200	-	3	11	19	37	59	71	3,719	117	151	191	264	360	362	447	537	611	679	2,472	757	833	882
Beit 'Anan	T	3,589	95	137	2	2	13	20	34	31	35	2,083	57	59	114	140	179	206	240	308	351	429	1,274	410	442	422
	M	1,790	42	55	-	2	8	10	13	14	8	1,065	21	27	62	67	90	106	128	155	183	226	628	202	222	204
	F	1,799	53	82	2	-	5	10	21	17	27	1,018	36	32	52	73	89	100	112	153	168	203	646	208	220	218
Al Jib	T	3,805	465	106	1	2	6	14	22	26	35	1,813	53	67	75	115	161	188	233	261	298	362	1,421	445	516	460
	M	1,927	250	48	1	2	2	5	11	10	17	927	22	31	36	53	84	93	123	133	160	192	702	222	255	225
	F	1,878	215	58	-	-	4	9	11	16	18	886	31	36	39	62	77	95	110	128	138	170	719	223	261	235
Bir Nabala	T	4,343	901	133	1	5	2	12	32	47	34	1,838	50	66	78	139	197	216	188	259	249	396	1,471	478	469	524
	M	2,166	456	59	1	4	1	5	12	23	13	885	20	32	45	72	104	95	93	121	121	182	766	242	248	276
	F	2,177	445	74	-	1	1	7	20	24	21	953	30	34	33	67	93	121	95	138	128	214	705	236	221	248
Beit Ijza	T	629	17	9	-	-	-	-	-	1	8	320	10	7	16	14	33	35	50	38	50	67	283	102	89	92
	M	345	10	6	-	-	-	-	-	1	5	179	4	3	8	8	17	22	23	17	29	48	150	52	48	50
	F	284	7	3	-	-	-	-	-	-	3	141	6	4	8	6	16	13	27	21	21	19	133	50	41	42
Al Qubeiba	T	2,860	85	102	4	2	4	16	20	24	32	1,552	39	51	72	116	143	147	175	223	241	345	1,121	375	372	374
	M	1,457	46	34	1	-	-	2	11	6	14	793	16	25	40	57	69	74	89	118	118	187	584	208	183	193
	F	1,403	39	68	3	2	4	14	9	18	18	759	23	26	32	59	74	73	86	105	123	158	537	167	189	181
Kharayib Umm al Lahim	T	328	21	10	-	-	-	5	1	2	2	146	2	3	2	8	16	11	16	13	30	45	151	57	51	43
	M	160	11	5	-	-	-	3	1	-	1	78	1	1	-	5	8	4	8	7	18	26	66	30	20	16
	F	168	10	5	-	-	-	2	-	2	1	68	1	2	2	3	8	7	8	6	12	19	85	27	31	27
Biddu	T	6,129	102	150	2	5	17	15	25	37	49	3,349	81	87	137	199	245	345	434	515	583	723	2,528	804	878	846
	M	3,168	45	62	1	1	7	7	10	15	21	1,758	41	41	71	97	132	183	231	271	316	375	1,303	404	460	439
	F	2,961	57	88	1	4	10	8	15	22	28	1,591	40	46	66	102	113	162	203	244	267	348	1,225	400	418	407
An Nabi Samwil	T	233	12	5	-	-	-	2	-	1	2	127	5	4	11	6	9	19	15	16	17	25	89	28	32	29
	M	123	6	2	-	-	-	-	-	-	2	67	2	2	6	4	5	8	6	10	9	15	48	18	14	16
	F	110	6	3	-	-	-	2	-	1	-	60	3	2	5	2	4	11	9	6	8	10	41	10	18	13

Table 2 (Cont.): Population in the Governorate by Sex, Locality and Age Group, 2007

Locality	Sex	Total	Age Group																							
			Not Stated	+ 65	+ 95	94 - 90	89 - 85	84 - 80	79 - 75	74 - 70	69 - 65	64 - 15	64 - 60	59 - 55	54 - 50	49 - 45	44 - 40	39 - 35	34 - 30	29 - 25	24 - 20	19 - 15	14 - 0	14 - 10	9 - 5	4 - 0
Hizma	T	5,654	162	174	2	5	14	17	29	38	69	3,044	80	98	137	167	237	291	400	458	509	667	2,274	750	742	782
	M	2,804	74	79	1	2	5	11	16	12	32	1,506	41	45	67	70	125	145	195	236	263	319	1,145	374	372	399
	F	2,850	88	95	1	3	9	6	13	26	37	1,538	39	53	70	97	112	146	205	222	246	348	1,129	376	370	383
Beit Hanina al Balad	T	966	100	36	-	3	-	3	8	10	12	465	12	12	24	29	46	35	54	52	88	113	365	126	113	126
	M	496	49	13	-	-	-	1	1	3	8	236	4	8	10	14	20	16	33	30	44	57	198	66	61	71
	F	470	51	23	-	3	-	2	7	7	4	229	8	4	14	15	26	19	21	22	44	56	167	60	52	55
Qatanna	T	5,823	206	136	1	2	11	16	38	30	38	3,009	66	63	143	214	235	297	345	415	514	717	2,472	893	811	768
	M	2,923	112	54	-	1	2	9	12	13	17	1,544	32	27	72	96	132	142	160	229	287	367	1,213	429	407	377
	F	2,900	94	82	1	1	9	7	26	17	21	1,465	34	36	71	118	103	155	185	186	227	350	1,259	464	404	391
Beit Surik	T	3,505	2	83	3	3	4	10	22	19	22	1,936	35	60	95	116	147	189	221	286	356	431	1,484	521	506	457
	M	1,755	1	34	-	2	1	5	9	7	10	991	14	31	45	63	76	93	117	154	182	216	729	246	256	227
	F	1,750	1	49	3	1	3	5	13	12	12	945	21	29	50	53	71	96	104	132	174	215	755	275	250	230
Beit Ikxa	T	1,708	290	51	2	1	2	1	11	16	18	775	24	29	42	49	80	92	81	105	123	150	592	189	193	210
	M	868	153	19	-	1	-	-	5	7	6	380	8	14	20	28	45	54	36	48	56	71	316	103	101	112
	F	840	137	32	2	-	2	1	6	9	12	395	16	15	22	21	35	38	45	57	67	79	276	86	92	98
'Anata	T	10,864	2,140	196	1	5	4	19	35	50	82	4,722	122	137	209	275	404	482	609	721	840	923	3,806	1,149	1,281	1,376
	M	5,492	1,058	87	1	2	2	10	16	19	37	2,390	53	71	111	138	215	239	320	370	408	465	1,957	575	661	721
	F	5,372	1,082	109	-	3	2	9	19	31	45	2,332	69	66	98	137	189	243	289	351	432	458	1,849	574	620	655
Al Ka'abina (Tajammu' Badawi)	T	626	8	18	-	1	1	1	6	2	7	277	10	8	5	10	23	36	33	48	57	47	323	78	112	133
	M	306	2	8	-	1	1	-	3	1	2	134	3	4	3	5	12	19	17	23	25	23	162	44	57	61
	F	320	6	10	-	-	-	1	3	1	5	143	7	4	2	5	11	17	16	25	32	24	161	34	55	72
Az Za'ayyem	T	3,068	842	36	-	-	1	3	3	13	16	1,278	28	44	60	82	101	136	165	188	225	249	912	259	316	337
	M	1,590	440	21	-	-	1	2	-	6	12	658	11	27	32	50	54	65	93	90	110	126	471	133	161	177
	F	1,478	402	15	-	-	-	1	3	7	4	620	17	17	28	32	47	71	72	98	115	123	441	126	155	160
Al 'Eizariya	T	15,874	3,882	344	3	6	16	31	58	98	132	6,927	234	267	350	489	601	734	759	1,000	1,115	1,378	4,721	1,438	1,575	1,708
	M	8,022	1,962	155	2	1	6	15	23	49	59	3,517	115	132	185	258	304	378	382	536	565	662	2,388	715	801	872
	F	7,852	1,920	189	1	5	10	16	35	49	73	3,410	119	135	165	231	297	356	377	464	550	716	2,333	723	774	836
Abu Dis	T	9,721	1,442	312	2	9	19	28	82	71	101	4,931	175	228	297	351	392	479	611	712	819	867	3,036	905	988	1,143
	M	5,030	810	135	1	2	7	13	30	35	47	2,529	89	130	151	175	195	237	320	358	425	449	1,556	485	480	591
	F	4,691	632	177	1	7	12	15	52	36	54	2,402	86	98	146	176	197	242	291	354	394	418	1,480	420	508	552

Table 2 (Cont.): Population in the Governorate by Sex, Locality and Age Group, 2007

Locality	Sex	Total	Age Group																							
			Not Stated	+ 65	+ 95	94 - 90	89 - 85	84 - 80	79 - 75	74 - 70	69 - 65	64 - 15	64 - 60	59 - 55	54 - 50	49 - 45	44 - 40	39 - 35	34 - 30	29 - 25	24 - 20	19 - 15	14 - 0	14 - 10	9 - 5	4 - 0
'Arab al Jahalin	T	650	1	14	-	-	-	4	3	4	3	330	6	10	21	21	15	28	43	39	57	90	305	91	98	116
	M	328	1	6	-	-	-	2	1	2	1	158	5	4	9	9	5	14	19	20	24	49	163	40	56	67
	F	322	-	8	-	-	-	2	2	2	2	172	1	6	12	12	10	14	24	19	33	41	142	51	42	49
As Sawahira ash Sharqiya	T	5,229	654	181	-	4	17	26	28	50	56	2,523	72	85	111	153	216	283	330	363	375	535	1,871	578	659	634
	M	2,638	360	78	-	3	8	14	10	15	28	1,261	38	39	58	77	99	148	160	183	180	279	939	277	322	340
	F	2,591	294	103	-	1	9	12	18	35	28	1,262	34	46	53	76	117	135	170	180	195	256	932	301	337	294
Ash Sheikh Sa'd	T	1,757	269	59	1	2	-	7	13	19	17	859	32	33	46	64	70	84	99	112	138	181	570	173	211	186
	M	848	135	27	1	1	-	4	5	8	8	416	16	17	22	29	32	34	51	54	73	88	270	84	107	79
	F	909	134	32	-	1	-	3	8	11	9	443	16	16	24	35	38	50	48	58	65	93	300	89	104	107



2007

( 12)

:3

Table 3: Palestinian Population (12 Years and Over) by Locality, Sex and Marital Status, 2007

Locality	Total		Marital Status and Sex														
			Not Stated		Separated		Widowed		Divorced		Married		Legally Engaged		Never Married		
	Females	Males	Females	Males	Females	Males	Females	Males	Females	Males	Females	Males	Females	Males	Females	Males	
<b>Jerusalem Governorate</b>	<b>106,466</b>	<b>109,189</b>	<b>513</b>	<b>616</b>	<b>484</b>	<b>245</b>	<b>5,672</b>	<b>902</b>	<b>1,272</b>	<b>525</b>	<b>59,331</b>	<b>58,522</b>	<b>1,536</b>	<b>1,349</b>	<b>37,658</b>	<b>47,030</b>	
<b>Jerusalem (J1)</b>	<b>71,219</b>	<b>73,280</b>	<b>114</b>	<b>149</b>	<b>366</b>	<b>217</b>	<b>3,823</b>	<b>712</b>	<b>894</b>	<b>415</b>	<b>40,452</b>	<b>40,174</b>	<b>1,198</b>	<b>974</b>	<b>24,372</b>	<b>30,639</b>	<b>(J1)</b>
<b>Jerusalem (J2)</b>	<b>35,247</b>	<b>35,909</b>	<b>399</b>	<b>467</b>	<b>118</b>	<b>28</b>	<b>1,849</b>	<b>190</b>	<b>378</b>	<b>110</b>	<b>18,879</b>	<b>18,348</b>	<b>338</b>	<b>375</b>	<b>13,286</b>	<b>16,391</b>	<b>(J2)</b>
Rafat	647	678	4	4	3	3	36	10	4	1	353	343	2	3	245	314	
Mikhmas	499	391	5	1	4	-	58	5	3	1	226	192	3	-	200	192	
Qalandiya Camp	2,445	2,571	25	57	11	3	127	14	27	6	1,296	1,275	25	27	934	1,189	
Jaba' (Tajammu' Badawi)	18	14	1	-	-	-	2	-	-	-	8	7	-	-	7	7	( )
Qalandiya	317	291	6	1	2	-	19	2	-	2	156	148	2	2	132	136	
Beit Duqqu	503	504	2	2	5	-	25	2	6	-	263	255	13	11	189	234	
Jaba'	826	867	6	3	3	-	48	5	9	-	444	417	1	5	315	437	
Al Judeira	581	573	1	-	3	-	20	2	3	3	333	323	-	-	221	245	
Ar Ram & Dahiyat al Bareed	4,366	4,600	35	71	18	-	208	17	53	19	2,536	2,468	32	43	1,484	1,982	
Beit 'Anan	1,230	1,232	16	16	3	1	84	15	12	3	614	598	18	15	483	584	
Al Jib	1,088	1,097	3	1	2	2	78	8	16	7	569	549	13	12	407	518	
Bir Nabala	1,158	1,083	19	17	3	1	86	8	16	7	629	616	9	7	396	427	
Beit Ijza	174	214	-	-	-	-	6	-	-	1	107	103	-	3	61	107	
Al Qubeiba	935	954	36	3	4	1	45	1	17	2	469	457	12	21	352	469	
Kharayib Umm al Lahim	89	101	1	1	1	1	3	-	-	-	42	40	3	1	39	58	
Biddu	1,922	2,043	13	26	10	2	90	9	17	7	997	968	43	54	752	977	
An Nabi Samwil	66	82	-	-	-	-	4	-	1	-	43	39	-	-	18	43	
Hizma	1,854	1,819	20	34	2	-	-	10	14	2	895	864	17	25	841	884	
Beit Hanina al Balad	288	293	2	-	1	2	23	2	6	1	158	151	4	3	94	134	

2007

( 12)

:( ) 3

Table 3 (Cont.): Palestinian Population (12 Years and Over) by Locality, Sex and Marital Status, 2007

Locality	Total		Marital Status and Sex													
			Not Stated		Separated		Widowed		Divorced		Married		Legally Engaged		Never Married	
	Females	Males	Females	Males	Females	Males	Females	Males	Females	Males	Females	Males	Females	Males	Females	Males
Qatanna	1,835	1,869	9	5	6	2	78	11	26	3	878	848	30	39	808	961
Beit Surik	1,161	1,168	4	2	-	1	55	5	9	2	596	580	28	21	469	557
Beit Ikhsa	481	455	-	1	1	1	34	2	2	2	254	248	3	3	187	198
'Anata	2,769	2,820	25	23	13	1	113	12	23	2	1,560	1,521	19	16	1,016	1,245
Al Ka'abina (Tajammu' Badawi)	171	163	-	3	-	-	10	-	1	-	109	100	-	-	51	60
Az Za'ayyem	710	746	13	9	-	1	20	-	7	6	438	437	5	5	227	288
Al 'Eizariya	3,999	4,133	115	149	12	3	231	18	48	14	2,197	2,155	20	17	1,376	1,777
Abu Dis	2,819	2,977	17	12	4	2	167	20	36	10	1,541	1,532	28	35	1,026	1,366
'Arab al Jahalin	210	187	1	1	-	-	4	-	2	-	110	90	-	1	93	95
As Sawahira ash Sharqiya	1,551	1,498	11	12	5	1	88	9	16	8	797	766	7	5	627	697
Ash Sheikh Sa'd	535	486	9	13	2	-	22	3	4	1	261	258	1	1	236	210

Table 4: Palestinian Population by Locality, Sex and Refugee Status, 2007

Locality	Total		Refugee Status and Sex								
			Not Stated		ليس لاجيء Non-Refugee		Non-Registered Refugee		Registered Refugee		
	Females	Males	Females	Males	Females	Males	Females	Males	Females	Males	
<b>Jerusalem Governorate</b>	<b>171,928</b>	<b>178,050</b>	<b>14,511</b>	<b>15,435</b>	<b>103,131</b>	<b>106,908</b>	<b>9,404</b>	<b>9,315</b>	<b>44,882</b>	<b>46,392</b>	
<b>Jerusalem (J1)</b>	<b>110,673</b>	<b>114,743</b>	<b>5,168</b>	<b>5,512</b>	<b>73,539</b>	<b>76,618</b>	<b>7,849</b>	<b>7,907</b>	<b>24,117</b>	<b>24,706</b>	<b>(J1)</b>
<b>Jerusalem (J2)</b>	<b>61,255</b>	<b>63,307</b>	<b>9,343</b>	<b>9,923</b>	<b>29,592</b>	<b>30,290</b>	<b>1,555</b>	<b>1,408</b>	<b>20,765</b>	<b>21,686</b>	<b>(J2)</b>
Rafat	1,053	1,084	99	105	622	667	31	23	301	289	
Mikhmas	695	610	26	23	668	587	-	-	1	-	
Qalandiya Camp	3,832	4,124	189	226	202	142	74	76	3,367	3,680	
Jaba' (Tajammu' Badawi)	33	31	11	11	4	2	2	-	16	18	( )
Qalandiya	545	517	92	96	360	345	5	-	88	76	
Beit Duqqu	713	748	1	3	525	605	40	34	147	106	
Jaba'	1,378	1,492	68	88	1,081	1,168	4	6	225	230	
Al Judeira	1,024	1,026	115	123	857	876	2	-	50	27	
Ar Ram & Dahiyat al Bareed	8,894	9,445	2,502	2,679	4,038	4,301	213	203	2,141	2,262	
Beit 'Anan	1,799	1,790	57	47	708	714	94	85	940	944	
Al Jib	1,878	1,927	217	255	1,469	1,503	16	12	176	157	
Bir Nabala	2,172	2,164	448	461	1,209	1,200	46	46	469	457	
Beit Ijza	284	345	7	7	115	122	12	8	150	208	
Al Qubeiba	1,402	1,457	68	42	277	292	108	103	949	1,020	
Kharayib Umm al Lahim	168	160	9	9	-	-	11	10	148	141	
Biddu	2,961	3,168	79	69	49	26	209	187	2,624	2,886	
An Nabi Samwil	110	123	6	6	49	65	6	3	49	49	
Hizma	2,844	2,804	79	73	2,649	2,609	2	-	114	122	
Beit Hanina al Balad	470	496	53	51	274	278	27	26	116	141	

2007

:( ) 4

Table 4 (Cont.): Palestinian Population by Locality, Sex and Refugee Status, 2007

Locality	Total		Refugee Status and Sex							
			Not Stated		ليس لاجيء Non-Refugee		Non-Registered Refugee		Registered Refugee	
	Females	Males	Females	Males	Females	Males	Females	Males	Females	Males
Qatanna	2,899	2,923	118	138	50	41	139	101	2,592	2,643
Beit Surik	1,750	1,755	33	38	229	188	69	54	1,419	1,475
Beit Iksa	840	868	140	155	93	100	12	13	595	600
'Anata	5,372	5,492	1,111	1,072	3,206	3,371	126	120	929	929
Al Ka'abina (Tajammu' Badawi)	320	306	5	2	22	20	30	31	263	253
Az Za'ayyem	1,475	1,590	415	456	701	754	34	41	325	339
Al 'Eizariya	7,839	8,019	2,285	2,344	3,766	3,826	133	154	1,655	1,695
Abu Dis	4,684	5,030	640	819	3,578	3,751	45	24	421	436
'Arab al Jahalin	322	328	2	-	4	1	19	16	297	311
As Sawahira ash Sharqiya	2,591	2,638	333	395	2,020	2,026	44	31	194	186
Ash Sheikh Sa'd	908	847	135	130	767	710	2	1	4	6

Table 5: Palestinian Population (10 Years and Over) by Sex, Locality and Educational Attainment, 2007

Locality	Sex	Total	Educational Attainment												
			Not Stated	Ph.D	Master	Higher Diploma	Bachelor	Associate Diploma	Secondary	Preparatory	Elementary	Can Read and Write			Illiterate
Jerusalem Governorate	T	233,325	1,130	316	1,230	335	14,673	11,282	42,381	71,064	52,553	29,210	9,151		
	M	118,377	544	262	830	198	7,418	4,683	21,530	37,613	27,721	14,835	2,743		
	F	114,948	586	54	400	137	7,255	6,599	20,851	33,451	24,832	14,375	6,408		
Jerusalem (J1)	T	156,666	214	196	738	243	10,470	8,625	31,319	48,079	32,761	19,245	4,776	(J1)	
	M	79,694	105	161	482	134	5,314	3,469	15,980	25,375	17,251	9,883	1,540		
	F	76,972	109	35	256	109	5,156	5,156	15,339	22,704	15,510	9,362	3,236		
Jerusalem (J2)	T	76,659	916	120	492	92	4,203	2,657	11,062	22,985	19,792	9,965	4,375	(J2)	
	M	38,683	439	101	348	64	2,104	1,214	5,550	12,238	10,470	4,952	1,203		
	F	37,976	477	19	144	28	2,099	1,443	5,512	10,747	9,322	5,013	3,172		
Rafat	T	1,413	-	1	9	-	69	59	174	407	439	150	105		
	M	722	-	1	6	-	45	24	95	217	227	82	25		
	F	691	-	-	3	-	24	35	79	190	212	68	80		
Mikhmas	T	959	-	-	4	-	32	18	124	209	262	138	172		
	M	422	-	-	3	-	14	3	60	96	135	60	51		
	F	537	-	-	1	-	18	15	64	113	127	78	121		
Qalandiya Camp	T	5,426	10	4	15	4	163	239	658	1,841	1,390	794	308		
	M	2,773	2	4	11	2	81	112	334	1,023	726	381	97		
	F	2,653	8	-	4	2	82	127	324	818	664	413	211		
Jaba' (Tajammu' Badawi)	T	32	-	-	-	-	-	1	-	3	8	8	12	( )	
	M	14	-	-	-	-	-	-	-	2	5	4	3		
	F	18	-	-	-	-	-	1	-	1	3	4	9		
Qalandiya	T	652	9	-	4	1	34	52	109	207	145	49	42		
	M	310	4	-	2	1	17	19	55	104	77	22	9		
	F	342	5	-	2	-	17	33	54	103	68	27	33		
Beit Duqqu	T	1,076	1	2	11	-	95	64	240	292	215	113	43		
	M	546	1	2	9	-	51	32	149	147	95	48	12		
	F	530	-	-	2	-	44	32	91	145	120	65	31		
Jaba'	T	1,847	3	1	3	-	37	37	208	556	559	336	107		
	M	952	-	1	3	-	21	17	125	310	287	166	22		
	F	895	3	-	-	-	16	20	83	246	272	170	85		

2007

( 10)

:( ) 5

Table 5 (Cont.): Palestinian Population (10 Years and Over) by Sex, Locality and Educational Attainment, 2007

Locality	Sex	Total	Educational Attainment										
			Not Stated	Ph.D	Master	Higher Diploma	Bachelor	Associate Diploma	Secondary	Preparatory	Elementary	Can Read and Write	Illiterate
Al Judeira	T	1,252	1	-	3	3	44	17	166	327	461	157	73
	M	616	1	-	3	2	21	8	68	154	263	76	20
	F	636	-	-	-	1	23	9	98	173	198	81	53
Ar Ram & Dahiyat al Bareed	T	9,589	70	16	101	12	698	441	1,525	2,684	2,412	1,241	389
	M	4,924	36	12	68	8	378	183	749	1,383	1,338	647	122
	F	4,665	34	4	33	4	320	258	776	1,301	1,074	594	267
Beit 'Anan	T	2,630	-	-	3	2	121	98	373	903	635	339	156
	M	1,322	-	-	3	1	51	36	192	543	331	132	33
	F	1,308	-	-	-	1	70	62	181	360	304	207	123
Al Jib	T	2,364	2	1	4	2	59	55	293	709	719	351	169
	M	1,197	-	1	2	2	31	26	139	398	369	193	36
	F	1,167	2	-	2	-	28	29	154	311	350	158	133
Bir Nabala	T	2,442	5	6	15	-	128	85	368	609	685	379	162
	M	1,184	2	6	10	-	63	40	172	304	335	199	53
	F	1,258	3	-	5	-	65	45	196	305	350	180	109
Beit Ijza	T	431	-	-	3	-	9	8	60	135	123	80	13
	M	237	-	-	3	-	5	2	36	80	68	41	2
	F	194	-	-	-	-	4	6	24	55	55	39	11
Al Qubeiba	T	2,028	30	-	12	2	106	68	296	652	556	207	99
	M	1,035	-	-	7	1	52	31	159	368	286	107	24
	F	993	30	-	5	1	54	37	137	284	270	100	75
Kharayib Umm al Lahim	T	213	-	-	-	-	4	3	11	67	73	39	16
	M	113	-	-	-	-	3	1	2	42	36	20	9
	F	100	-	-	-	-	1	2	9	25	37	19	7
Biddu	T	4,303	37	2	10	2	193	127	596	1,376	1,224	544	192
	M	2,224	20	2	9	2	102	74	305	751	624	279	56
	F	2,079	17	-	1	-	91	53	291	625	600	265	136
An Nabi Samwil	T	160	-	-	1	-	4	8	11	65	39	18	14
	M	87	-	-	1	-	1	2	6	44	24	6	3
	F	73	-	-	-	-	3	6	5	21	15	12	11

2007

( 10)

:( ) 5

Table 5 (Cont.): Palestinian Population (10 Years and Over) by Sex, Locality and Educational Attainment, 2007

Locality	Sex	Total	Educational Attainment												
			Not Stated	Ph.D	Master	Higher Diploma	Bachelor	Associate Diploma	Secondary	Preparatory	Elementary	Can Read and Write			Illiterate
Hizma	T	3,962	14	9	28	5	329	58	593	1,240	963	455	268		
	M	1,959	6	7	22	5	165	31	321	602	518	213	69		
	F	2,003	8	2	6	-	164	27	272	638	445	242	199		
Beit Hanina al Balad	T	627	1	1	1	-	14	11	60	151	208	114	66		
	M	315	-	1	1	-	5	6	30	75	121	63	13		
	F	312	1	-	-	-	9	5	30	76	87	51	53		
Qatanna	T	4,037	20	4	7	3	128	87	486	1,278	1,312	549	163		
	M	2,027	8	3	3	-	67	52	258	705	656	231	44		
	F	2,010	12	1	4	3	61	35	228	573	656	318	119		
Beit Surik	T	2,540	45	1	15	4	94	96	314	766	715	378	112		
	M	1,271	23	1	12	4	53	48	154	434	367	150	25		
	F	1,269	22	-	3	-	41	48	160	332	348	228	87		
Beit Iksa	T	1,015	2	1	9	-	74	80	177	343	181	95	53		
	M	502	1	1	9	-	37	31	83	193	88	50	9		
	F	513	1	-	-	-	37	49	94	150	93	45	44		
'Anata	T	6,067	29	9	32	12	331	207	877	1,803	1,608	882	277		
	M	3,052	14	8	25	8	168	91	458	886	869	455	70		
	F	3,015	15	1	7	4	163	116	419	917	739	427	207		
Al Ka'abina (Tajammu' Badawi)	T	373	-	-	-	-	1	2	6	51	113	125	75		( )
	M	186	-	-	-	-	-	2	5	34	58	66	21		
	F	187	-	-	-	-	1	-	1	17	55	59	54		
Az Za'ayyem	T	1,570	21	1	5	4	69	76	200	470	382	247	95		
	M	812	9	1	4	4	36	24	104	250	198	144	38		
	F	758	12	-	1	-	33	52	96	220	184	103	57		
Al 'Eizariya	T	8,703	591	18	53	10	464	288	1,248	2,575	2,029	1,010	417		
	M	4,385	300	15	34	5	225	136	576	1,313	1,143	514	124		
	F	4,318	291	3	19	5	239	152	672	1,262	886	496	293		
Abu Dis	T	6,141	2	28	119	22	647	254	1,096	1,860	1,223	590	300		
	M	3,149	2	24	81	16	305	124	549	1,005	671	296	76		
	F	2,992	-	4	38	6	342	130	547	855	552	294	224		

2007

( 10)

:( ) 5

Table 5 (Cont.): Palestinian Population (10 Years and Over) by Sex, Locality and Educational Attainment, 2007

Locality	Sex	Total	Educational Attainment												
			Not Stated	Ph.D	Master	Higher Diploma	Bachelor	Associate Diploma	Secondary	Preparatory	Elementary	Can Read and Write			Illiterate
'Arab al Jahalin	T	435	-	-	-	-	11	-	29	105	138	71	81		
	M	204	-	-	-	-	3	-	9	61	74	33	24		
	F	231	-	-	-	-	8	-	20	44	64	38	57		
As Sawahira ash Sharqiya	T	3,282	18	15	24	3	189	90	599	955	719	375	295		
	M	1,616	9	11	16	2	85	47	282	518	357	202	87		
	F	1,666	9	4	8	1	104	43	317	437	362	173	208		
Ash Sheikh Sa'd	T	1,090	5	-	1	1	56	28	165	346	256	131	101		
	M	527	1	-	1	1	19	12	75	196	124	72	26		
	F	563	4	-	-	-	37	16	90	150	132	59	75		



2007

( 10)

:6

Table 6: Palestinian Population (10 Years and Over) by Sex , Locality and Activity Status, 2007

Locality	Sex	Total	Activity Status											
			Not Stated	Others	Another Source of income/Retire	Disability/ Aging/ Illness	Housekeeping	Studing/ Training	Not Economically Active	Unemployed Never Worked	Unemployed Ever Worked	Employed		Economically Active
Jerusalem Governorate	T	233,325	1,275	6,509	671	16,028	61,489	69,683	154,380	6,065	3,459	68,146	77,670	
	M	118,377	704	5,365	529	11,825	182	33,975	51,876	5,274	3,148	57,375	65,797	
	F	114,948	571	1,144	142	4,203	61,307	35,708	102,504	791	311	10,771	11,873	
Jerusalem (J1)	T	156,666	-	5,631	-	11,729	42,446	45,059	104,865	3,988	984	46,829	51,801	(J1)
	M	79,694	-	4,742	-	9,505	97	22,005	36,349	3,519	838	38,988	43,345	
	F	76,972	-	889	-	2,224	42,349	23,054	68,516	469	146	7,841	8,456	
Jerusalem (J2)	T	76,659	1,275	878	671	4,299	19,043	24,624	49,515	2,077	2,475	21,317	25,869	(J2)
	M	38,683	704	623	529	2,320	85	11,970	15,527	1,755	2,310	18,387	22,452	
	F	37,976	571	255	142	1,979	18,958	12,654	33,988	322	165	2,930	3,417	
Rafat	T	1,413	-	42	13	98	360	403	916	37	26	434	497	
	M	722	-	15	12	49	-	204	280	27	24	391	442	
	F	691	-	27	1	49	360	199	636	10	2	43	55	
Mikhmas	T	959	3	6	10	139	288	290	733	16	17	190	223	
	M	422	1	6	9	64	-	144	223	15	16	167	198	
	F	537	2	-	1	75	288	146	510	1	1	23	25	
Qalandiya Camp	T	5,426	69	47	52	328	1,317	1,812	3,556	181	144	1,476	1,801	
	M	2,773	49	39	37	167	9	898	1,150	154	137	1,283	1,574	
	F	2,653	20	8	15	161	1,308	914	2,406	27	7	193	227	
Jaba' (Tajammu' Badawi)	T	32	1	2	-	5	10	7	24	2	1	4	7	( )
	M	14	1	1	-	3	-	3	7	1	1	4	6	
	F	18	-	1	-	2	10	4	17	1	-	-	1	
Qalandiya	T	652	12	5	15	40	157	216	433	14	10	183	207	
	M	310	5	5	8	19	1	91	124	8	10	163	181	
	F	342	7	-	7	21	156	125	309	6	-	20	26	
Beit Duqqu	T	1,076	2	5	8	57	208	415	693	9	28	344	381	
	M	546	2	3	7	31	-	208	249	2	25	268	295	
	F	530	-	2	1	26	208	207	444	7	3	76	86	
Jaba'	T	1,847	11	9	18	124	476	644	1,271	33	121	411	565	
	M	952	11	9	12	62	3	336	422	31	105	383	519	
	F	895	-	-	6	62	473	308	849	2	16	28	46	

2007

( 10)

:( ) 6

Table 6 (Cont.): Palestinian Population (10 Years and Over) by Sex , Locality and Activity Status, 2007

Locality	Sex	Total	Activity Status										Economically Active
			Not Stated	Others	Another Source of income/Retire	Disability/ Aging/ Illness	Housekeeping	Studing/ Training	Not Economically Active	Unemployed Never Worked	Unemployed Ever Worked	Employed	
Al Judeira	T	1,252	2	7	25	53	353	399	837	10	25	378	413
	M	616	2	6	17	27	3	190	243	8	24	339	371
	F	636	-	1	8	26	350	209	594	2	1	39	42
Ar Ram & Dahiyat al Bareed	T	9,589	101	108	83	476	2,489	2,812	5,968	216	202	3,102	3,520
	M	4,924	59	77	66	289	7	1,414	1,853	168	185	2,659	3,012
	F	4,665	42	31	17	187	2,482	1,398	4,115	48	17	443	508
Beit 'Anan	T	2,630	5	82	16	216	544	839	1,697	89	89	750	928
	M	1,322	2	64	15	99	5	381	564	79	75	602	756
	F	1,308	3	18	1	117	539	458	1,133	10	14	148	172
Al Jib	T	2,364	5	22	56	130	668	699	1,575	186	76	522	784
	M	1,197	4	20	37	66	3	332	458	180	76	479	735
	F	1,167	1	2	19	64	665	367	1,117	6	-	43	49
Bir Nabala	T	2,442	39	27	57	121	643	821	1,669	34	80	620	734
	M	1,184	25	23	46	55	5	382	511	26	75	547	648
	F	1,258	14	4	11	66	638	439	1,158	8	5	73	86
Beit Ijza	T	431	1	-	1	18	111	158	288	2	7	133	142
	M	237	-	-	1	12	2	89	104	2	7	124	133
	F	194	1	-	-	6	109	69	184	-	-	9	9
Al Qubeiba	T	2,028	30	25	8	129	460	711	1,333	77	72	516	665
	M	1,035	0	15	8	66	2	376	467	67	67	434	568
	F	993	30	10	-	63	458	335	866	10	5	82	97
Kharayib Umm al Lahim	T	213	1	4	-	7	48	85	144	14	6	48	68
	M	113	1	1	-	4	-	42	47	13	6	46	65
	F	100	-	3	-	3	48	43	97	1	-	2	3
Biddu	T	4,303	43	87	14	287	974	1,478	2,840	117	153	1,150	1,420
	M	2,224	28	66	13	161	4	690	934	103	148	1,011	1,262
	F	2,079	15	21	1	126	970	788	1,906	14	5	139	158
An Nabi Samwil	T	160	-	-	3	11	40	44	98	12	-	50	62
	M	87	-	-	3	7	-	25	35	11	-	41	52
	F	73	-	-	-	4	40	19	63	1	-	9	10

2007

( 10)

:( ) 6

Table 6 (Cont.): Palestinian Population (10 Years and Over) by Sex , Locality and Activity Status, 2007

Locality	Sex	Total	Activity Status										Economically Active
			Not Stated	Others	Another Source of income/Retire	Disability/ Aging/ Illness	Housekeeping	Studing/ Training	Not Economically Active	Unemployed Never Worked	Unemployed Ever Worked	Employed	
Hizma	T	3,962	57	40	25	181	929	1,444	2,619	100	139	1,047	1,286
	M	1,959	37	35	22	114	3	693	867	77	132	846	1,055
	F	2,003	20	5	3	67	926	751	1,752	23	7	201	231
Beit Hanina al Balad	T	627	4	3	2	45	172	192	414	63	8	138	209
	M	315	4	3	2	21	1	89	116	61	8	126	195
	F	312	-	-	-	24	171	103	298	2	-	12	14
Qatanna	T	4,037	24	47	19	186	1,029	1,470	2,751	168	288	806	1,262
	M	2,027	12	36	12	100	13	695	856	159	288	712	1,159
	F	2,010	12	11	7	86	1,016	775	1,895	9	-	94	103
Beit Surik	T	2,540	44	11	28	107	595	906	1,647	50	33	766	849
	M	1,271	23	9	18	47	1	427	502	47	32	667	746
	F	1,269	21	2	10	60	594	479	1,145	3	1	99	103
Beit Iksa	T	1,015	2	4	16	59	254	350	683	19	19	292	330
	M	502	2	3	16	25	2	181	227	15	18	240	273
	F	513	-	1	-	34	252	169	456	4	1	52	57
'Anata	T	6,067	57	59	41	263	1,622	1,961	3,946	58	123	1,883	2,064
	M	3,052	33	45	34	149	5	940	1,173	45	114	1,687	1,846
	F	3,015	24	14	7	114	1,617	1,021	2,773	13	9	196	218
Al Ka'abina (Tajammu' Badawi)	T	373	3	5	1	24	145	74	249	22	36	63	121
	M	186	2	3	1	17	2	43	66	21	36	61	118
	F	187	1	2	-	7	143	31	183	1	-	2	3
Az Za'ayyem	T	1,570	35	23	16	50	425	434	948	21	36	530	587
	M	812	18	16	10	37	-	213	276	15	32	471	518
	F	758	17	7	6	13	425	221	672	6	4	59	69
Al 'Eizariya	T	8,703	643	110	48	497	2,104	2,428	5,187	240	267	2,366	2,873
	M	4,385	333	61	37	282	3	1,132	1,515	201	242	2,094	2,537
	F	4,318	310	49	11	215	2,101	1,296	3,672	39	25	272	336
Abu Dis	T	6,141	31	29	71	308	1,446	1,949	3,803	124	221	1,962	2,307
	M	3,149	22	25	62	173	2	1,005	1,267	96	201	1,563	1,860
	F	2,992	9	4	9	135	1,444	944	2,536	28	20	399	447

2007

( 10)

:( ) 6

Table 6 (Cont.): Palestinian Population (10 Years and Over) by Sex , Locality and Activity Status, 2007

Locality	Sex	Total	Activity Status										Economically Active
			Not Stated	Others	Another Source of income/Retire	Disability/ Aging/ Illness	Housekeeping	Studing/ Training	Not Economically Active	Unemployed Never Worked	Unemployed Ever Worked	Employed	
'Arab al Jahalin	T	435	1	4	1	26	137	142	310	9	43	72	124
	M	204	1	3	1	18	2	60	84	8	39	72	119
	F	231	-	1	-	8	135	82	226	1	4	-	5
As Sawahira ash Sharqiya	T	3,282	29	60	19	244	754	1,088	2,165	92	104	892	1,088
	M	1,616	19	32	18	119	3	518	690	71	96	740	907
	F	1,666	10	28	1	125	751	570	1,475	21	8	152	181
Ash Sheikh Sa'd	T	1,090	20	5	5	70	285	353	718	62	101	189	352
	M	527	8	2	5	37	4	169	217	44	91	167	302
	F	563	12	3	-	33	281	184	501	18	10	22	50

2007

/

\*

/

:7

**Table 7: Disabilities/Difficulties of Palestinian Population\* by Type of Disability/Difficulty and Sex, 2007**

Type of Disability/ Difficulty	Percentage	Females	Percentage	Males	Percentage	Both Sexes	/
Seeing	2.9	1,764	2.7	1,685	2.8	3,449	
Hearing	1.2	705	1.1	724	1.1	1,429	
Moving	1.5	944	1.5	956	1.5	1,900	
Cognition	0.6	382	0.7	453	0.7	835	
Communication	0.6	345	0.7	431	0.6	776	
<b>Total of Persons with Disabilities/Difficulties**</b>	<b>4.4</b>	<b>2,677</b>	<b>4.6</b>	<b>2,893</b>	<b>4.5</b>	<b>5,570</b>	** /
Total of Persons Without Disabilities/Difficulties	80.1	49,071	79.4	50,284	79.8	99,355	/
Not Stated	15.5	9,507	16.0	10,130	15.8	19,637	
<b>Total Population</b>	<b>100.0</b>	<b>61,255</b>	<b>100.0</b>	<b>63,307</b>	<b>100.0</b>	<b>124,562</b>	

\* Jerusalem Governorate: Except those parts of Jerusalem which were annexed by Israel in 1967.

.1967

:

\*

\*\*Includes those who have at least one Disability/Difficulty

/

\*\*

2007

:8

Table 8: Private Households by Locality and Household Size, 2007

Locality	Total		Household Size								
	أفراد Population	أسر Households	+8	7	6	5	4	3	2	1	
<b>Jerusalem Governorate</b>	<b>349,868</b>	<b>67,893</b>	<b>10,543</b>	<b>7,992</b>	<b>10,303</b>	<b>10,730</b>	<b>10,067</b>	<b>7,575</b>	<b>7,705</b>	<b>2,978</b>	
<b>Jerusalem (J1)</b>	<b>225,416</b>	<b>44,703</b>	<b>6,098</b>	<b>5,090</b>	<b>6,956</b>	<b>7,452</b>	<b>6,931</b>	<b>4,995</b>	<b>5,137</b>	<b>2,044</b>	<b>(J1)</b>
<b>Jerusalem (J2)</b>	<b>124,452</b>	<b>23,190</b>	<b>4,445</b>	<b>2,902</b>	<b>3,347</b>	<b>3,278</b>	<b>3,136</b>	<b>2,580</b>	<b>2,568</b>	<b>934</b>	<b>(J2)</b>
Rafat	2,141	379	75	62	61	53	38	39	36	15	
Mikhmas	1,305	281	45	35	35	26	28	29	48	35	
Qalandiya Camp	7,962	1,465	307	207	197	198	188	133	155	80	
Jaba' (Tajammu' Badawi)	64	14	2	1	1	3	1	3	1	2	( )
Qalandiya	1,063	193	47	25	32	21	17	19	21	11	
Beit Duqqu	1,461	278	44	37	45	45	40	34	23	10	
Jaba'	2,870	417	162	73	45	53	29	24	21	10	
Al Judeira	2,052	370	68	52	66	49	53	34	38	10	
Ar Ram & Dahiyat al Bareed	18,316	3,740	470	415	535	591	582	498	488	161	
Beit 'Anan	3,589	689	123	94	109	86	87	58	82	50	
Al Jib	3,805	648	156	87	115	79	73	61	56	21	
Bir Nabala	4,343	851	133	113	122	118	123	94	99	49	
Beit Ijza	629	108	24	16	21	9	22	7	9	-	
Al Qubeiba	2,819	497	111	59	93	58	62	52	49	13	
Kharayib Umm al Lahim	328	48	23	4	1	2	6	5	6	1	
Biddu	6,129	1,043	270	136	152	156	113	108	83	25	
An Nabi Samwil	233	39	9	4	10	6	3	3	3	1	
Hizma	5,654	926	259	130	130	108	110	101	63	25	
Beit Hanina al Balad	966	163	45	20	20	18	17	13	17	13	

2007

:( ) 8

Table 8 (Cont.): Private Households by Locality and Household Size, 2007

Locality	Total		Household Size								
	أفراد Population	أسر Households	+8	7	6	5	4	3	2	1	
Qatanna	5,823	964	331	89	108	102	96	97	108	33	
Beit Surik	3,505	567	179	76	65	84	54	60	38	11	
Beit Iksa	1,708	326	50	55	53	40	46	29	33	20	
'Anata	10,860	1,954	398	261	292	312	273	191	188	39	
Al Ka'abina (Tajammu' Badawi)	626	110	27	12	12	14	13	13	18	1	( )
Az Za'ayyem	3,068	627	86	62	83	99	106	84	94	13	
Al 'Eizariya	15,781	3,088	461	381	461	466	451	369	378	121	
Abu Dis	9,721	1,997	249	238	278	300	316	269	234	113	
'Arab al Jahalin	650	91	35	12	11	12	5	7	8	1	
As Sawahira ash Sharqiya	5,224	970	190	118	144	124	130	109	120	35	
Ash Sheikh Sa'd	1,757	347	66	28	50	46	54	37	51	15	

Table 9: Percentage of Households with Availability of Durable Goods by Locality, 2007

Locality	Total	Durable Goods														
		Phone Line	Satellite/Dish	DVD / Video/DVD	T.V	/ Radio/Recorder	Home Library	Washing Machine	Microwave	/ Gas Cooker/Electricity	Vacuum Cleaner	Central Heating	Solar Boiler	Refrigerator	Private Car	
<b>Jerusalem Governorate*</b>	<b>23,190</b>	<b>37.5</b>	<b>71.6</b>	<b>32.1</b>	<b>80.6</b>	<b>62.4</b>	<b>18.7</b>	<b>77.5</b>	<b>33.1</b>	<b>83.1</b>	<b>30.3</b>	<b>4.4</b>	<b>56.5</b>	<b>80.2</b>	<b>25.4</b>	*
Rafat	379	34.3	75.5	35.6	87.3	66.5	23.2	81.3	37.7	93.7	30.9	4.7	62.0	87.6	34.6	
Mikhmas	281	73.0	91.1	76.2	93.2	85.1	13.9	91.8	58.7	95.0	32.4	6.8	92.9	95.0	22.1	
Qalandiya Camp	1,465	25.4	74.7	25.9	91.1	60.7	11.1	87.0	33.4	93.4	21.7	2.6	47.0	89.8	15.5	
Jaba' (Tajammu' Badawi)	14	7.1	21.4	0.0	50.0	7.1	0.0	21.4	7.1	28.6	7.1	0.0	21.4	50.0	7.1	( )
Qalandiya	193	34.2	65.8	33.2	78.2	62.2	19.2	75.1	37.3	79.3	37.3	13.0	63.2	76.7	34.2	
Beit Duqqu	278	76.3	90.6	40.6	98.2	80.2	49.6	93.5	56.1	99.6	45.7	4.3	66.9	98.2	43.5	
Jaba'	417	31.2	79.9	42.2	91.4	74.3	14.6	87.3	37.2	92.1	14.9	0.2	69.1	89.9	21.1	
Al Judeira	370	41.6	77.3	40.0	83.2	64.9	11.6	79.7	32.4	90.5	20.0	2.4	59.5	84.1	29.7	
Ar Ram & Dahiyat al Bareed	3,740	36.3	64.5	34.5	69.3	56.6	21.0	67.3	36.1	71.8	42.7	9.0	49.4	69.1	26.7	
Beit 'Anan	689	54.7	79.7	45.3	93.5	71.8	22.4	87.1	42.7	96.8	13.9	2.2	69.1	92.6	33.5	
Al Jib	648	31.5	69.9	41.4	83.8	66.0	16.5	81.6	33.0	87.3	16.2	2.8	63.9	85.5	18.7	
Bir Nabala	851	45.5	70.9	40.2	76.1	65.2	19.2	73.1	42.9	77.6	37.3	17.5	64.9	74.9	31.0	
Beit Ijza	108	47.2	54.6	19.4	89.8	60.2	19.4	90.7	23.1	96.3	16.7	0.9	54.6	97.2	20.4	
Al Qubeiba	497	53.3	83.7	36.4	95.8	71.4	20.9	90.1	34.4	97.0	21.9	4.4	68.6	95.2	38.0	
Kharayib Umm al Lahim	48	20.8	66.7	22.9	79.2	52.1	2.1	83.3	22.9	89.6	8.3	0.0	52.1	85.4	45.8	
Biddu	1,043	42.1	73.2	32.2	94.6	71.6	17.9	90.3	40.3	97.1	17.8	2.1	66.3	94.5	32.3	
An Nabi Samwil	39	43.6	82.1	53.8	92.3	79.5	17.9	92.3	59.0	94.9	43.6	7.7	43.6	94.9	33.3	
Hizma	926	33.0	89.4	32.2	92.7	79.0	29.3	90.2	30.6	93.4	19.4	2.4	73.2	92.5	18.3	
Beit Hanina al Balad	163	33.7	73.0	31.9	84.7	57.1	17.8	78.5	33.7	87.7	22.1	3.7	57.7	84.0	20.9	
Qatanna	964	38.7	82.8	20.5	92.5	57.0	12.6	87.7	22.4	95.4	9.2	1.9	56.4	91.8	25.6	
Beit Surik	567	39.2	77.4	31.7	95.1	75.0	11.1	91.5	26.8	97.9	10.2	1.9	61.7	92.4	27.7	



2007

:( ) 9

Table 9 (Cont.): Percentage of Households with Availability of Durable Goods by Locality, 2007

Locality	Total	Durable Goods													
		Phone Line	Satellite/Dish	DVD / Video/DVD	T.V	/ Radio/Recorder	Home Library	Washing Machine	Microwave	/ Gas Cooker/Electricity	Vacuum Cleaner	Central Heating	Solar Boiler	Refrigerator	Private Car
Beit Iksa	326	54.6	77.9	32.5	80.7	72.4	24.2	79.8	44.5	83.4	42.6	2.1	65.3	81.0	19.3
'Anata	1,954	33.0	71.1	39.5	77.2	64.4	25.4	74.3	39.0	78.4	43.0	3.1	43.0	76.8	26.5
Al Ka'abina (Tajammu' Badawi)	110	0.0	17.3	2.7	27.3	25.5	2.7	10.9	0.0	19.1	0.0	0.0	0.0	12.7	3.6
Az Za'ayyem	627	19.1	61.9	41.3	67.3	61.1	29.8	64.3	39.4	67.5	44.2	4.0	38.3	66.5	36.5
Al 'Eizariya	3,088	36.0	62.7	25.0	69.1	52.7	14.5	66.6	24.0	72.7	29.1	2.7	48.1	68.6	22.9
Abu Dis	1,997	49.1	77.5	28.5	81.5	61.9	19.9	80.4	29.6	82.9	48.6	4.4	69.1	81.4	27.1
'Arab al Jahalin	91	4.4	14.3	2.2	90.1	87.9	4.4	76.9	5.5	93.4	3.3	2.2	12.1	83.5	9.9
As Sawahira ash Sharqiya	970	27.7	70.3	20.0	83.4	56.3	12.3	80.2	25.9	88.5	18.8	1.9	66.8	83.8	17.6
Ash Sheikh Sa'd	347	13.3	64.0	9.8	79.3	55.3	8.4	75.5	14.1	81.6	13.3	0.6	53.0	80.4	7.8

\* Jerusalem Governorate: Except those parts of Jerusalem which were annexed by Israel in 1967.

.1967

:

\*

2007

:10

Table 10: Occupied Housing Units by Locality and Type of Housing Unit, 2007

Locality	Total	Type of Housing Unit								
		Not Stated	Others	Marginal	Tent	Independent Room	Apartment	House	Villa	
<b>Jerusalem Governorate</b>	<b>67,893</b>	<b>1,618</b>	<b>10</b>	<b>319</b>	<b>152</b>	<b>629</b>	<b>38,756</b>	<b>25,711</b>	<b>698</b>	
<b>Jerusalem (J1)</b>	<b>44,703</b>	<b>151</b>	<b>9</b>	<b>98</b>	<b>49</b>	<b>598</b>	<b>24,170</b>	<b>19,270</b>	<b>358</b>	<b>(J1)</b>
<b>Jerusalem (J2)</b>	<b>23,190</b>	<b>1,467</b>	<b>1</b>	<b>221</b>	<b>103</b>	<b>31</b>	<b>14,586</b>	<b>6,441</b>	<b>340</b>	<b>(J2)</b>
Rafat	379	17	-	-	-	2	245	107	8	
Mikhmas	281	5	-	-	-	-	101	159	16	
Qalandiya Camp	1,465	35	-	-	-	2	928	484	16	
Jaba' (Tajammu' Badawi)	14	2	-	5	-	-	4	3	-	( )
Qalandiya	193	13	-	-	-	-	111	66	3	
Beit Duqqu	278	-	-	-	-	1	114	150	13	
Jaba'	417	10	-	1	6	1	192	202	5	
Al Judeira	370	7	-	-	-	-	281	80	2	
Ar Ram & Dahiyat al Bareed	3,740	397	-	-	6	-	2,863	421	53	
Beit 'Anan	689	9	-	-	-	2	378	295	5	
Al Jib	648	6	-	5	3	1	411	208	14	
Bir Nabala	851	57	-	5	13	-	557	194	25	
Beit Ijza	108	3	-	-	-	-	24	79	2	
Al Qubeiba	497	7	-	-	-	3	247	232	8	
Kharayib Umm al Lahim	48	5	-	-	-	-	13	28	2	
Biddu	1,043	8	-	-	2	5	647	370	11	
An Nabi Samwil	39	2	-	-	2	-	6	29	-	
Hizma	926	25	-	1	4	3	561	324	8	
Beit Hanina al Balad	163	12	-	1	11	-	89	45	5	

2007

:( ) 10

Table 10 (Cont.): Occupied Housing Units by Locality and Type of Housing Unit, 2007

Locality	Total	Type of Housing Unit							
		Not Stated	Others	Marginal	Tent	Independent Room	Apartment	House	Villa
Qatanna	964	21	-	-	-	5	441	485	12
Beit Surik	567	6	-	-	-	3	383	174	1
Beit Iksa	326	34	-	-	4	1	178	108	1
'Anata	1,954	91	-	27	9	-	1,485	317	25
Al Ka'abina (Tajammu' Badawi)	110	-	-	80	19	-	-	11	-
Az Za'ayyem	627	86	-	11	24	-	428	72	6
Al 'Eizariya	3,088	336	1	28	-	-	2,046	626	51
Abu Dis	1,997	169	-	-	-	1	1,404	392	31
'Arab al Jahalin	91	2	-	55	-	-	1	33	-
As Sawahira ash Sharqiya	970	71	-	2	-	-	359	523	15
Ash Sheikh Sa'd	347	31	-	-	-	1	89	224	2

Table 11: Occupied Housing Units by Locality and Main Source of Water in Housing Unit, 2007

Locality	Total		Main Source of Water												
			Not Stated		Other		( ) Water Tanks		Springs		Well (to gather rain water)		Public Local Network		
	(%)	(No.)	(%)	(No.)	(%)	(No.)	(%)	(No.)	(%)	(No.)	(%)	(No.)	(%)	(No.)	
<b>Jerusalem Governorate*</b>	<b>100.0</b>	<b>23,190</b>	<b>5.3</b>	<b>1,239</b>	<b>0.2</b>	<b>35</b>	<b>1.7</b>	<b>399</b>	<b>0.1</b>	<b>25</b>	<b>1.6</b>	<b>374</b>	<b>91.1</b>	<b>21,118</b>	*
Rafat	100.0	379	0.5	2	0.3	1	0.0	-	0.0	-	0.8	3	98.4	373	
Mikhmas	100.0	281	2.8	8	0.0	-	0.0	-	0.0	-	0.0	-	97.2	273	
Qalandiya Camp	100.0	1,465	1.4	20	0.0	-	0.0	-	0.0	-	0.1	1	98.6	1,444	
Jaba' (Tajammu' Badawi)	100.0	14	35.7	5	14.3	2	0.0	-	0.0	-	0.0	-	50.0	7	( )
Qalandiya	100.0	193	0.0	-	0.0	-	9.8	19	0.0	-	2.6	5	87.6	169	
Beit Duqqu	100.0	278	0.0	-	0.0	-	2.2	6	0.0	-	35.3	98	62.6	174	
Jaba'	100.0	417	0.2	1	0.7	3	1.7	7	0.2	1	1.7	7	95.4	398	
Al Judeira	100.0	370	0.0	-	0.8	3	0.3	1	0.0	-	0.0	-	98.9	366	
Ar Ram & Dahiyat al Bareed	100.0	3,740	9.9	369	0.0	1	0.2	6	0.0	1	0.1	5	89.8	3,358	
Beit 'Anan	100.0	689	0.9	6	0.3	2	2.3	16	0.0	-	8.7	60	87.8	605	
Al Jib	100.0	648	1.2	8	0.0	-	0.5	3	0.3	2	0.2	1	97.8	634	
Bir Nabala	100.0	851	2.9	25	0.1	1	1.4	12	0.0	-	0.6	5	94.9	808	
Beit Ijza	100.0	108	1.9	2	0.0	-	0.0	-	0.0	-	15.7	17	82.4	89	
Al Qubeiba	100.0	497	2.2	11	0.0	-	0.0	-	0.0	-	2.2	11	95.6	475	
Kharayib Umm al Lahim	100.0	48	10.4	5	0.0	-	31.3	15	0.0	-	56.3	27	2.1	1	
Biddu	100.0	1,043	0.3	3	0.4	4	4.8	50	0.0	-	2.0	21	92.5	965	
An Nabi Samwil	100.0	39	5.1	2	0.0	-	0.0	-	0.0	-	0.0	-	94.9	37	
Hizma	100.0	926	1.8	17	0.1	1	0.4	4	0.2	2	0.3	3	97.1	899	
Beit Hanina al Balad	100.0	163	0.0	-	0.0	-	1.2	2	6.7	11	1.8	3	90.2	147	
Qatanna	100.0	964	2.4	23	0.2	2	16.6	160	0.8	8	8.9	86	71.1	685	
Beit Surik	100.0	567	0.4	2	0.0	-	2.5	14	0.0	-	1.9	11	95.2	540	

Table 11 (Cont.): Occupied Housing Units by Locality and Main Source of Water in Housing Uni, 2007

Locality	Total		Main Source of Water											
			Not Stated		Other		( ) Water Tanks		Springs		Well (to gather rain water)		Public Local Network	
	(%)	(No.)	(%)	(No.)	(%)	(No.)	(%)	(No.)	(%)	(No.)	(%)	(No.)	(%)	(No.)
Beit Ikse	100.0	326	0.3	1	0.0	-	0.3	1	0.0	-	0.9	3	98.5	321
'Anata	100.0	1,954	5.9	115	0.2	4	0.4	7	0.0	-	0.1	1	93.5	1,827
Al Ka'abina (Tajammu' Badawi)	100.0	110	0.9	1	7.3	8	36.4	40	0.0	-	0.9	1	54.5	60
Az Za'ayem	100.0	627	7.7	48	0.0	-	5.4	34	0.0	-	0.0	-	86.9	545
Al 'Eizariya	100.0	3,088	7.9	244	0.1	2	0.1	2	0.0	-	0.1	4	91.8	2,836
Abu Dis	100.0	1,997	11.8	236	0.0	-	0.0	-	0.0	-	0.0	-	88.2	1,761
'Arab al Jahalin	100.0	91	1.1	1	0.0	-	0.0	-	0.0	-	0.0	-	98.9	90
As Sawahira ash Sharqiya	100.0	970	8.2	80	0.0	-	0.0	-	0.0	-	0.1	1	91.6	889
Ash Sheikh Sa'd	100.0	347	1.2	4	0.3	1	0.0	-	0.0	-	0.0	-	98.6	342

\* Jerusalem Governorate: Except those parts of Jerusalem which were annexed by Israel in 1967.

.1967

\*

Table 12: Occupied Housing Units by Locality and Connection to Electricity in the Housing Unit, 2007

Locality	Total		Connection to Electricity								
			Not Stated		No Electricity		Private Generator		Public Network		
	(%)	(No.)	(%)	(No.)	(%)	(No.)	(%)	(No.)	(%)	(No.)	
<b>Jerusalem Governorate*</b>	<b>100.0</b>	<b>23,190</b>	<b>5.1</b>	<b>1,186</b>	<b>0.6</b>	<b>134</b>	<b>0.6</b>	<b>131</b>	<b>93.7</b>	<b>21,739</b>	*
Rafat	100.0	379	0.5	2	0.5	2	0.0	-	98.9	375	
Mikhmas	100.0	281	2.5	7	0.0	-	0.0	-	97.5	274	
Qalandiya Camp	100.0	1,465	1.3	19	0.0	-	0.0	-	98.7	1,446	
Jaba' (Tajammu' Badawi)	100.0	14	35.7	5	14.3	2	0.0	-	50.0	7	( )
Qalandiya	100.0	193	0.0	-	0.0	-	0.0	-	100.0	193	
Beit Duqqu	100.0	278	0.0	-	0.0	-	0.0	-	100.0	278	
Jaba'	100.0	417	0.2	1	1.7	7	0.5	2	97.6	407	
Al Judeira	100.0	370	0.0	-	0.0	-	0.5	2	99.5	368	
Ar Ram & Dahiyat al Bareed	100.0	3,740	9.8	366	0.1	5	0.3	13	89.7	3,356	
Beit 'Anan	100.0	689	0.9	6	0.1	1	0.0	-	99.0	682	
Al Jib	100.0	648	1.1	7	0.5	3	0.8	5	97.7	633	
Bir Nabala	100.0	851	2.8	24	0.2	2	0.1	1	96.8	824	
Beit Ijza	100.0	108	1.9	2	0.0	-	2.8	3	95.4	103	
Al Qubeiba	100.0	497	2.4	12	0.2	1	0.2	1	97.2	483	
Kharayib Umm al Lahim	100.0	48	10.4	5	0.0	-	0.0	-	89.6	43	
Biddu	100.0	1,043	0.1	1	0.1	1	0.2	2	99.6	1,039	
An Nabi Samwil	100.0	39	5.1	2	0.0	-	0.0	-	94.9	37	
Hizma	100.0	926	1.6	15	0.4	4	0.6	6	97.3	901	
Beit Hanina al Balad	100.0	163	0.0	-	0.0	-	0.0	-	100.0	163	
Qatanna	100.0	964	2.4	23	0.1	1	0.0	-	97.5	940	
Beit Surik	100.0	567	0.4	2	0.0	-	0.5	3	99.1	562	

2007

:( ) 12

Table 12 (Cont.): Occupied Housing Units by Locality and Availability of Electricity in the Housing Unit, 2007

Locality	Total		Connection to Electricity							
			Not Stated		No Electricity		Private Generator		Public Network	
	(%)	(No.)	(%)	(No.)	(%)	(No.)	(%)	(No.)	(%)	(No.)
Beit Iksa	100.0	326	0.0	-	0.6	2	2.8	9	96.6	315
'Anata	100.0	1,954	5.2	101	0.3	5	0.4	7	94.2	1,841
Al Ka'abina (Tajammu' Badawi)	100.0	110	0.9	1	71.8	79	12.7	14	14.5	16
Az Za'ayyem	100.0	627	7.5	47	0.6	4	5.6	35	86.3	541
Al 'Eizariya	100.0	3,088	7.1	219	0.1	4	0.3	10	92.5	2,855
Abu Dis	100.0	1,997	11.9	237	0.4	7	0.4	8	87.4	1,745
'Arab al Jahalin	100.0	91	0.0	-	0.0	-	1.1	1	98.9	90
As Sawahira ash Sharqiya	100.0	970	8.2	80	0.3	3	0.8	8	90.6	879
Ash Sheikh Sa'd	100.0	347	0.6	2	0.3	1	0.3	1	98.8	343

\* Jerusalem Governorate: Except those parts of Jerusalem which were annexed by Israel in 1967.

.1967

:

\*

Table 13: Occupied Housing Units by Locality and Connection to the Sewage System in the Housing Unit, 2007

Locality	Total		Connection to Sewage System								
			Not Stated		No Sewage System		Cesspool		Public Sewage System		
	(%)	(No.)	(%)	(No.)	(%)	(No.)	(%)	(No.)	(%)	(No.)	
<b>Jerusalem Governorate*</b>	<b>100.0</b>	<b>23,190</b>	<b>6.4</b>	<b>1,475</b>	<b>1.8</b>	<b>426</b>	<b>54.1</b>	<b>12,547</b>	<b>37.7</b>	<b>8,742</b>	*
Rafat	100.0	379	0.5	2	0.3	1	99.2	376	0.0	-	
Mikhmas	100.0	281	3.6	10	0.4	1	96.1	270	0.0	-	
Qalandiya Camp	100.0	1,465	1.3	19	0.1	1	1.1	16	97.5	1,429	
Jaba' (Tajammu' Badawi)	100.0	14	35.7	5	35.7	5	28.6	4	0.0	-	( )
Qalandiya	100.0	193	1.6	3	0.0	-	48.2	93	50.3	97	
Beit Duqqu	100.0	278	0.0	-	0.7	2	99.3	276	0.0	-	
Jaba'	100.0	417	0.2	1	3.1	13	96.6	403	0.0	-	
Al Judeira	100.0	370	0.0	-	0.0	-	3.2	12	96.8	358	
Ar Ram & Dahiyat al Bareed	100.0	3,740	12.5	466	0.7	28	20.7	773	66.1	2,473	
Beit 'Anan	100.0	689	0.9	6	1.5	10	97.7	673	0.0	-	
Al Jib	100.0	648	1.2	8	0.9	6	18.5	120	79.3	514	
Bir Nabala	100.0	851	3.5	30	0.9	8	11.5	98	84.0	715	
Beit Ijza	100.0	108	1.9	2	0.0	-	98.1	106	0.0	-	
Al Qubeiba	100.0	497	2.8	14	3.2	16	94.0	467	0.0	-	
Kharayib Umm al Lahim	100.0	48	10.4	5	2.1	1	87.5	42	0.0	-	
Biddu	100.0	1,043	0.2	2	2.0	21	97.8	1,020	0.0	-	
An Nabi Samwil	100.0	39	5.1	2	2.6	1	56.4	22	35.9	14	
Hizma	100.0	926	1.9	18	0.6	6	97.4	902	0.0	-	
Beit Hanina al Balad	100.0	163	3.1	5	8.6	14	13.5	22	74.8	122	
Qatanna	100.0	964	2.4	23	7.8	75	89.8	866	0.0	-	
Beit Surik	100.0	567	1.2	7	0.4	2	98.4	558	0.0	-	



Table 13 (Cont.): Occupied Housing Units by Locality and Connection to the Sewage System in the Housing Unit, 2007

Locality	المجموع Total		Connection to Sewage System							
			Not Stated		No Sewage System		Cesspool		Public Sewage System	
	(%)	(No.)	(%)	(No.)	(%)	(No.)	(%)	(No.)	(%)	(No.)
Beit Ikxa	100.0	326	8.6	28	1.5	5	46.3	151	43.6	142
'Anata	100.0	1,954	5.1	100	1.7	33	1.8	35	91.4	1,786
Al Ka'abina (Tajammu' Badawi)	100.0	110	0.9	1	70.9	78	28.2	31	0.0	-
Az Za'ayyem	100.0	627	7.7	48	5.6	35	19.6	123	67.1	421
Al 'Eizariya	100.0	3,088	10.6	327	1.5	45	75.7	2,339	12.2	377
Abu Dis	100.0	1,997	12.7	253	0.1	2	80.3	1,603	7.0	139
'Arab al Jahalin	100.0	91	1.1	1	0.0	-	98.9	90	0.0	-
As Sawahira ash Sharqiya	100.0	970	8.9	86	1.1	11	77.6	753	12.4	120
Ash Sheikh Sa'd	100.0	347	0.9	3	1.7	6	87.3	303	10.1	35

\* Jerusalem Governorate: Except those parts of Jerusalem which were annexed by Israel in 1967.

.1967

\*

Table 14: Completed Buildings by Locality and Current Utilization, 2007

Locality	Total	Current Utilization							
		Not Stated	Deserted	Vacant	Closed	Work	Habitation & Work		Habitation
<b>Jerusalem Governorate*</b>	<b>17,217</b>	<b>21</b>	<b>301</b>	<b>1,220</b>	<b>1,126</b>	<b>1,331</b>	<b>1,480</b>	<b>11,738</b>	*
Rafat	288	-	-	21	-	47	11	209	
Mikhmas	373	1	16	7	107	25	17	200	
Qalandiya Camp	919	-	16	29	11	69	110	684	
Jaba' (Tajammu' Badawi)	31	-	-	-	1	16	1	13	( )
Qalandiya	143	-	2	-	6	14	3	118	
Beit Duqqu	254	-	1	11	19	15	12	196	
Jaba'	368	2	6	10	29	24	20	277	
Al Judeira	229	-	1	15	-	20	18	175	
Ar Ram & Dahiyat al Bareed	2,224	4	52	203	308	173	227	1,257	
Beit 'Anan	556	-	1	12	49	28	31	435	
Al Jib	527	1	20	51	7	18	15	415	
Bir Nabala	730	-	13	127	48	66	73	403	
Beit Ijza	92	-	1	9	2	7	8	65	
Al Qubeiba	451	-	2	33	17	54	38	307	
Kharayib Umm al Lahim	43	-	-	-	3	3	1	36	
Biddu	715	-	5	16	17	73	108	496	
An Nabi Samwil	27	-	-	3	-	2	1	21	
Hizma	678	-	2	29	6	45	93	503	
Beit Hanina al Balad	220	-	10	46	2	11	15	136	
Qatanna	836	-	5	45	36	36	30	684	
Beit Surik	371	-	-	22	4	28	24	293	

2007

:( ) 14

**Table 14 (Cont.): Completed Buildings by Locality and Current Utilization, 2007**

Locality	Total	Current Utilization						
		Not Stated	Deserted	Vacant	Closed	Work	Habitation & Work	
Beit Iksa	288	-	20	44	1	23	6	194
'Anata	1,223	3	-	145	4	124	119	828
Al Ka'abina (Tajammu' Badawi)	171	-	-	-	-	-	-	171
Az Za'ayem	347	-	9	8	23	19	24	264
Al 'Eizariya	2,289	-	72	170	198	255	266	1,328
Abu Dis	1,430	10	29	79	41	93	146	1,032
'Arab al Jahalin	95	-	-	1	4	3	3	84
As Sawahira ash Sharqiya	863	-	18	62	33	29	55	666
Ash Sheikh Sa'd	436	-	-	22	150	11	5	248

\* Jerusalem Governorate: Except those parts of Jerusalem which were annexed by Israel in 1967.

.1967

:

\*

**Table 15: Number of Establishments in Operation and Persons Engaged in the Private Sector, Non-Governmental Organizations Sector and Government Companies by Locality, 2007**

Locality	No. of Persons Engaged			No. of Establishments	
	Females	Males	Total		
<b>Jerusalem Governorate*</b>	<b>2,006</b>	<b>9,180</b>	<b>11,186</b>	<b>4,117</b>	*
Rafat	14	183	197	49	
Mikhmas	18	66	84	39	
Qalandiya Camp	68	215	283	160	
Jaba' (Tajammu' Badawi)	-	226	226	15	( )
Qalandiya	-	28	28	8	
Beit Duqqu	14	37	51	21	
Jaba'	10	54	64	41	
Al Judeira	17	81	98	46	
Ar Ram & Dahiyat al Bareed	543	2,531	3,074	921	
Beit 'Anan	41	132	173	79	
Al Jib	25	109	134	68	
Bir Nabala	103	446	549	170	
Beit Ijza	7	12	19	11	
Al Qubeiba	72	189	261	132	
Kharayib Umm al Lahim	2	1	3	3	
Biddu	128	522	650	267	
An Nabi Samwil	-	2	2	2	
Hizma	63	230	293	152	
Beit Hanina al Balad	4	26	30	19	
Qatanna	40	72	112	64	
Beit Surik	30	72	102	59	

2007

:( ) 15

**Table 15 (Cont.): Number of Establishments in Operation and Persons Engaged in the Private Sector, Non-Governmental Organizations Sector and Government Companies by Locality, 2007**

Locality	No. of Persons Engaged			No. of Establishments	
	Females	Males	Total		
Beit Iksa	7	33	40	29	
'Anata	93	645	738	288	
Al Ka'abina (Tajammu' Badawi)	70	60	130	36	( )
Az Za'ayem	15	154	169	73	
Al 'Eizariya	411	2,318	2,729	971	
Abu Dis	154	544	698	297	
'Arab al Jahalin	-	7	7	3	
As Sawahira ash Sharqiya	21	173	194	78	
Ash Sheikh Sa'd	36	12	48	16	

\* Jerusalem Governorate: Except those parts of Jerusalem which were annexed by Israel in 1967.

.1967

: \*

**Table 16: Number of Establishments in Operation and Persons Engaged in the Private Sector, Non-Governmental Organizations Sector and Government Companies by Main Economic Activity, 2007**

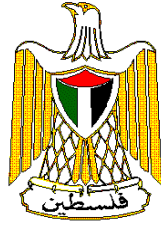
ISIC	Economic Activity	No. of Persons Engaged			No. of Est		
		Females	Males	Total			
	<b>Jerusalem Governorate*</b>	<b>2,006</b>	<b>9,180</b>	<b>11,186</b>	<b>4,117</b>		*
A	Agriculture (Farming of Cattle and other Animals)	99	254	353	145	(	)
C	Mining & Quarrying	-	90	90	5		
D	Manufacturing	289	2,412	2,701	787		
E	Electricity And Water Supply	-	55	55	4		
F	Construction	2	275	277	19		
G	Wholesale, Retail Trade & Repairs	366	4,125	4,491	2,182		
H	Hotels and Restaurants	32	370	402	194		
I	Transport, Storage & Communications	3	132	135	33		
J	Financial Intermediation	42	147	189	27		
K	Real Estate, Renting & Business Activities	44	239	283	125		
M	Education	595	196	791	92		
N	Health & Social Work	224	301	525	138		
O	Other Community, Social & Personal Service	310	584	894	366		

\* Jerusalem Governorate: Except those parts of Jerusalem which were annexed by Israel in 1967.

.1967

:

\*



**Palestinian National Authority  
Palestinian Central Bureau of Statistics  
Population, Housing and Establishment Census 2007**

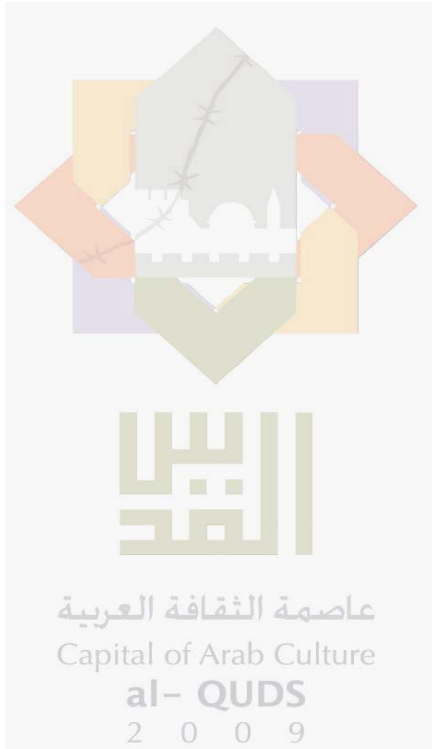


**Census Final Results - Summary  
(Population, Buildings, Housing, Establishments)**

**Jerusalem Governorate**

**February, 2009**

PAGE NUMBERS OF ENGLISH TEXT ARE PRINTED IN SQUARE BRACKETS.  
TABLES ARE PRINTED IN THE ARABIC ORDER (FROM RIGHT TO LEFT).



This document is prepared in accordance with the standard procedures stated in the Code of Practice for Palestine Official Statistics 2006

© February, 2009.  
**All rights reserved.**

**Suggested Citation:**

**Palestinian Central Bureau of Statistics, 2009.** *Census Final Results – Summary- (Population, Buildings, Housing, Establishments)- Jerusalem Governorate.* Ramallah - Palestine.

All correspondence should be directed to:  
**Palestinian Central Bureau of Statistics**  
**P.O.Box 1647 Ramallah, Palestine.**

Tel: (972/970) 2 242 6340  
Fax: (972/970) 2 242 6343  
E-Mail: diwan@pcbs.gov.ps  
web-site: <http://www.pcbs.gov.ps>



## **Acknowledgments**

**The Population, Housing and Establishment Census (PHC-2007) is the second census conducted by the Palestinian Central Bureau of Statistics (PCBS) since the Palestinian National Authority (PNA) was established in 1994. The PHC-2007 was conducted in a very critical and complicated political, administrative, financial and organizational environment. It could not have been accomplished without the generous support of a number of friendly countries, international and national institutions and personalities.**

**The implementation of the PHC-2007 was co-financed by the PNA, United Nations Population Fund (UNFPA), the Core Funding Group (CFG) of PCBS (Norway, Netherlands, and Switzerland), OPEC Fund for International Development (OFID), Australia, and the United Nations Children's Fund (UNICEF), and the European Union (EU).**

**PCBS would not have been able to implement the PHC-2007 as a national project in such complicated circumstances without the important contribution made by the PHC-2007 National Higher Committee, the committees in the governorates, publicity campaign committees, and many other official and popular supporting committees and bodies.**

**We would also like to highlight the outstanding efforts made by the Census National Director, Executive Director, and all census national team members to plan, manage, implement, supervise, monitor, and coordinate census activities: senior assistants of the national and executive directors, census directors in the governorates and their assistants, coordinators of the publicity campaign and their assistants, field supervisors, field observers, enumerators, administrators and other team members.**

**Printing of this document has been produced with financial assistance of the European Union. The contents of this document are the sole responsibility of the PCBS.**

**PCBS extends its deep thanks to all of these personalities and institutions for the tremendous efforts they exerted to bring the second Palestinian census to light.**



## **Work Team**

- **Report Preparation**

Mohammad Duraidi  
Omayma Al-Ahmad  
Ali Al-Husien  
Rawya Alawneh  
Nehaya Odeh  
Firas Jaradat

- **Maps Design**

Amal Jabr

- **Graphic Design**

Ahmad Sawalmeh

- **Dissemination Standard**

Hanan Janajreh

- **Preliminary Review**

Mahmoud Jaradat  
Abdallah Najjar  
Yousef Falah

- **Final Review and Overall Supervision**

Dr. Luay Shabaneh.

PCBS President / Census National Director



## **Preface**

The PHC-2007 is an important pillar of the national development process and a primary prerequisite for socioeconomic planning. Furthermore, it helps reinforce the Palestinian sovereignty on the ground. Countries around the world usually conduct censuses every decade according to the degree of population stability, the amount of potential change in the demographic characteristics and the availability of financial resources.

Realizing the importance of filling the gap regarding society's statistical needs on the current situation in the Palestinian Territory, PCBS conducted the first national Population, Housing and Establishment Census in 1997. PHC-2007 was conducted for legal, development and statistical considerations. Success was strongly attributed to the huge efforts exerted by the national census team and the continuous support of the Palestinian leadership.

The main objective of the PHC-2007 is to update statistical data on the Palestinian population, housing units, economic establishments and agricultural holdings, and to provide small area statistics to planners and decision makers. PHC-2007 will contribute to realizing a balanced and comprehensive development in all sectors.

PHC-2007 was designed and implemented in accordance with United Nations principles and recommendations of the Population and Housing Census taking into consideration the local Palestinian needs. Special attention was given to affording complete and adequate data on the size, structure, distribution and characteristics of the demographic, economic and social components of the Palestinian population; the characteristics of housing units, The number and characteristics of the economic establishments and making an inventory of agricultural holdings. Consequently, obtained statistical data will foster and support the role and efficiency of planning both on the national and local government levels.

As part of PCBS's efforts to provide users with the census results as soon as possible, the national census team made every possible effort to fulfill it. We were able to publish the preliminary results of the census five weeks after the end of the census field work events. This is considered record time compared to other contain in addition, the final results of the buildings and establishments data for the Palestinian.

We are pleased to present this report as part of the detailed reports about the population at the Governorate level. This report contains the census final results in Jerusalem Governorate.

We hope that it will be a reference for all planners, decision makers and policy makers in the public and private sectors and for civil society institutions.

**February, 2009**

**Luay Shabaneh, Ph.D.**  
**President of PCBS/  
Census National Director**



## Remarks

- **Special Questionnaire of Jerusalem Governorate**

Due to the special situation in the governorate of Jerusalem, particularly (J1) area. A short questionnaire was designed especially for household and housing conditions for the J1 area of Jerusalem, containing the following questions:

1. Number of nuclear households, type of housing unit and number of rooms.
2. Household members booklet which includes (relationship to the head of the household, sex, religion, age, refugee status, educational level and marital status).

- For more information about the methodology and data quality, please refer to the report titled "Census Final Results in the West Bank Summary -Population and Housing", which is available at:

[http://www.pcbs.gov.ps/Portals/\\_PCBS/Downloads/book1487.pdf](http://www.pcbs.gov.ps/Portals/_PCBS/Downloads/book1487.pdf)

- For more details on the buildings please refer to the report titled "Final Results- Buildings Report- Palestinian Territory", which is available at:

[http://www.pcbs.gov.ps/Portals/\\_PCBS/Downloads/book1489.pdf](http://www.pcbs.gov.ps/Portals/_PCBS/Downloads/book1489.pdf)

- For more details on the Establishments please refer to the report titled "Economic Establishments- Final Results", which is available at:

[http://www.pcbs.gov.ps/Portals/\\_PCBS/Downloads/book1430.pdf](http://www.pcbs.gov.ps/Portals/_PCBS/Downloads/book1430.pdf)

- In some tables the total of percentages might not add up to 100% due to rounding.
- A set of special symbols were used in the tables of this report. The representation of these symbols are:

(-) Nil (not found).

(.) Category not applicable.

(0.0) less than 0.05%.





## Table of Contents

<b>Subject</b>	<b>Page</b>
Acknowledgment	
Preface	
List of Tables	
Chapter One: <b>Concepts and Definitions</b>	<b>[15]</b>
Chapter Two: <b>Summary of Final Results</b>	<b>[25]</b>
<b>Tables</b>	<b>35</b>



## List of Tables

<b>Table</b>		<b>Page</b>
<b>Table 1:</b>	Summary Results of the Population, Housing and Establishment Census 1997, 2007	<b>37</b>
<b>Table 2:</b>	Population in the Governorate by Sex, Locality and Age Group, 2007	<b>45</b>
<b>Table 3:</b>	Palestinian Population (12 Years and Over) by Locality, Sex and Marital Status, 2007	<b>49</b>
<b>Table 4:</b>	Palestinian Population by Locality, Sex and Refugee Status, 2007	<b>51</b>
<b>Table 5:</b>	Palestinian Population (10 Years and Over) by Sex, Locality and Educational Attainment, 2007	<b>53</b>
<b>Table 6:</b>	Palestinian Population (10 Years and Over) by Sex, Locality and Activity Status, 2007	<b>57</b>
<b>Table 7:</b>	Disabilities/Difficulties of Palestinian Population by Type of Disability/Difficulty and Sex, 2007	<b>61</b>
<b>Table 8:</b>	Private Households by Locality and Household Size, 2007	<b>62</b>
<b>Table 9:</b>	Percentage of Households with Availability of Durable Goods by Locality, 2007	<b>64</b>
<b>Table 10:</b>	Occupied Housing Units by Locality and Type of Housing Unit, 2007	<b>66</b>
<b>Table 11:</b>	Occupied Housing Units by Locality and Main Source of Water in Housing Unit, 2007	<b>68</b>
<b>Table 12:</b>	Occupied Housing Units by Locality and Connection to Electricity in the Housing Unit, 2007	<b>70</b>
<b>Table 13:</b>	Occupied Housing Units by Locality and Connection to the Sewage System in the Housing Unit, 2007	<b>72</b>
<b>Table 14:</b>	Completed Buildings by Locality and Current Utilization, 2007	<b>74</b>
<b>Table 15:</b>	Number of Establishments in Operation and Persons Engaged in the Private Sector, Non-Governmental Organizations Sector and Government Companies by Locality, 2007	<b>76</b>
<b>Table 16:</b>	Number of Establishments in Operation and Persons Engaged in the Private Sector, Non-Governmental Organizations Sector and Government Companies by Main Economic Activity, 2007	<b>78</b>



## Concepts and Definitions

### Introduction

The definitions used in the PHC-2007 are based on the de-facto concept according to the United Nations standard concepts and definitions in order to be consistent with the 1997 census and to ensure comparability. The following concepts and definitions were used in this report:

### Population Census:

The process of collection, classification, processing, analysis, assessment, dissemination of statistical data on the number of population and their distribution by basic demographic and socio-economic characteristics in a specific reference period and within the boundaries of a specific geographic area.

### Collective Household:

This refers to the place constructed for the residence of a group of individuals, who live therein and benefit from the services it provides. The collective household may be comprised of one building or more or one housing unit or more. Examples of collective households include hotels, hostels, elderly and orphans homes, psycho-therapy clinics and hospitals, collective households for university students, collective living quarters (camps) at the passages, and housing units of priests and nuns in the monasteries and churches (who do not have other households).

### Household:

One person or a group of persons with or without a household relationship, who live in the same housing unit, share meals and make joint provision of food and other essentials of living. In PHC-2007, the household includes:

1. Household members found in the housing unit on the night of 01/12/2007.
2. Visitors living outside the Palestinian Territory but who spent the night of 01/12/2007 in the housing unit of the household (relatives and non-relatives).
3. Visitors from the Palestinian Territory who, as a whole household, remained for all of the enumeration period 1-16/12/2007.
4. Servants and other workers living usually within the household who spent the night of 01/12/2007 with the household.
5. New births born prior to the night of 01/12/2007 and still alive, irrespective of whether they were within the household or in the hospital.
6. Household members who spent the night of 01/12/2007 with the household and died after that night.
7. Household members who usually live in the housing unit but were not available on the night of 01/12/2007. This category includes:
  - Household members who spent the night of 01/12/2007 with another household inside the Palestinian Territory.
  - Household members working at night 01/12/2007 in factories, hospitals, airports, etc.
  - Individuals who spent the night of 01/12/2007 traveling in public ways inside the Palestinian Territory.
  - Fishermen who spent the night fishing in the regional waters.
  - Members of internal security forces, and civil defense forces irrespective of where they spent the night of 01/12/2007.

- Palestinian household members living usually within the household and who are holding an ID card, but who were abroad less than one year for temporary reasons (tourist, visit, pilgrim or any other reason).
- Palestinian household members living usually within the household but who were absent during the night of 01/12/2007 due to urgent causes including hospitalization, detention, etc.
- Palestinian household members living usually within the households but who were absent during the night of 01/12/2007 due to their stay in a hotel in the Palestinian Territory.
- Students studying abroad regardless of the length of their stay.
- Students studying in Palestinian universities, institutes and other educational institutions irrespective of place of existence.
- Household members detained in Israeli prisons.

**The following were excluded from households:**

- Persons who died before the night of 01/12/2007.
- Persons who were born after the night of 01/12/2007.
- Persons who stayed during the counting in elderly homes, orphans homes, psychotherapy clinics and hospitals, and other collective households in the Palestinian Territory.

**Type of households that underwent enumeration are divided into:**

**Private Households:** The households included in the aforementioned definition of the household.

**Collective (Institutional Households):** This refers to the households enumerated in the previously mentioned collective households.

**Palestinian Household:**

This refers to the private household whose head holds Palestinian nationality. As for the non Palestinian household, this refers to the household whose head holds non Palestinian nationality irrespective of the nationality of other household members.

**Special types of Households:**

**A one-person-household:** This refers to the household comprised of one individual.

**Nuclear household:** This refers to the living household comprised of a couple only; a couple and a son or a daughter (not adopted son or daughter) or more; or a male head of a household with a son or a daughter or more; or a female head of a household with a son or a daughter or more. It is worth noting that no other relatives or non-relatives live with this household.

**Extended Household:** A household of at least one nuclear household together with other relatives.

**Composite Household:** Refers to a household consisting of at least one nuclear household with other non-relatives.

**Average Household Size:**

This refers to the average number of household members calculated through dividing the total number of members for a certain category by the number of households for that particular category.

**Sex:**

Divided into male and female.

**Age in Completed Years:**

The completed age in years of the person enumerated, which is the difference between the date of birth and the survey reference period.

**Original Nationality:**

This refers to the political identity of the individuals, as Palestinian, Jordanian, Egyptian, Brazilian, French, etc.

**Refugee Status:**

This status relates to the Palestinians who were forced to leave their land in the Palestinian Territory occupied by Israel in 1948. It applies to their male sons and grandchildren.

1. **Registered Refugees:** This applies to registered refugees holding refugee registration cards issued by UNRWA.
2. **Non-Registered Refugees:** This applies to unregistered refugees who do not hold refugee registration cards issued by UNRWA.
3. **Non-Refugee:** This applies to any Palestinian not categorized under any of the two aforementioned statuses.

**Handicapped and Disabled:**

The disabled is defined as the person suffering from a clear and evident weakness in performing certain activities due to continuous difficulties emanating from a physical, mental or health state that lasted for more than six months.

**Seeing (Visual) Disability:**

This includes blind and one-eyed persons, and any person suffering from vision weakness even after using special devices, provided they do not suffer from any other disability.

**Hearing (Auditory) Disability:**

This includes deaf persons and any person suffering from clear auditory problems even after using special auditory devices, provided they do not suffer from any other disability.

**Movement Disability:**

This refers to the person suffering from evident problems in walking, climbing stairs, bending, bowing, kneeling, provided they does not suffer from any other disability.

**Cognition Disability:**

This refers to the individuals who suffer from difficulties in concentration and memory, decision-making, understanding speech, reading, identifying persons, identifying areas and the use of the map, calculations, reading and thinking.

**Communication Disability:**

Refers to people who do not have the ability to exchange information and ideas with others and to deal with them through the use of speech, or sign or movement or to write the information they want to share with others, which may be the result of the inability of hearing or speech, or lack of the mental capacity to understand or interpret what others say, whether signals, words or movements.

**Educational Attendance:**

Attendance means registering the person in any formal education stage irrespective of whether it took the form of continuous attendance or distance learning. Formal education stages include the elementary stage, preparatory stage, (both of which are referred to as the basic stage), secondary stage, and higher education stage (universities, colleges, vocational institutes, etc.).

Enrollment categories are as follows:

1. **Attending:** This applies if the person is currently enrolled in a regular education stage.
2. **Attended and left:** This applies if the person unsuccessfully left a regular education stage, i.e., without obtaining any degree.
3. **Attended and graduated:** This applies if the person successfully graduated from a regular education stage and did not enroll in any stage after that.
4. **Never attended:** This applies if the person is not currently enrolled and was never enrolled in any regular education stage.

**Years of Schooling Completed:**

For persons currently attending, attended and left, or successfully graduated, reference shall be made to the successfully completed formal educational years (completed years.) It neither includes drop out years, failure years, kindergartens years nor ongoing educational year. Educational training courses are not included among the years of regular study.

**Illiterate:**

This applies to persons unable to read or write in any language and who were never awarded a certificate from any formal education system.

**Can Read and Write:**

This applies to persons who are able to read and write without completing any of the educational stages. Such persons are generally able to read and write simple sentences.

**Specialization:**

This refers to the name of the subject the person successfully completed.

**Employed:**

Persons who were at work at least one hour during the reference period, whether for their own account or for others paid or unpaid, or in the interest of the household. Employees classified according to the number of weekly working hours of the workers (1-14) hours, workers (15-34) hours, workers 35 hours or more.

**Activity Status:**

A person's work status in terms of being inside or outside the labour force and also classified as follows:

1. **Employed 1-14 work hours:** All persons aged (7 years and above) who were at work at least one hour during the reference week, or who were not at work during the reference week, but held a job or owned a business from which they were temporarily absent and usually working 1-14 hours per week.
2. **Employed 15-34 work hours:** All persons aged (7 years and above) who were at work during the reference week, and held a job or owned a business from which they were temporarily absent and usually working 15-34 hours per week.



- 3. Employed 35 hours or more:** All persons aged (7 years and above) who were at work during the reference week, and held a job or owned a business from which they were temporarily absent and usually working 35 hours or more per week.

**Does not work and seeking work - who has ever been employed:**

- 4. Actively seeking a job during the reference week:** Those individuals aged (7 years and above) who did not work at all during the reference week, were not absent from a job, were available for work and actively seeking a job during the reference week, and looking for a job by one method of the following: registration at employment office, or registration at a labour union, or asking friends or relatives, or a personal visit to the premises, or reading the newspaper in order to obtain jobs, or searching for a building or land or machinery or equipment in order to establish a private project or seek of financial resources.
- 5. Not seeking work because of discouragement:** Those individuals aged (7 years and above) who had worked in the past but within a reference week did not work even one hour, were not looking for work and were willing to work or need to work and sought previously but had been unable to find work.

**Does not work and wants to work – Never Employed:**

- 6. Actively seeking a job during the reference week:** Those individuals aged (7 years and above) who did not work at all during the last period, were not absent from a job, were available for work and actively seeking a job during the reference week, and looking for a job by one method of the following: registration at employment office, or registration at a labour union, or asking friends or relatives, or a personal visit of the premises, or reading the newspaper in order to obtain jobs, or searching for a building or land or machinery or equipment in order to establish a private project or seek of financial resources.
- 7. Not seeking work because of discouragement:** Those individuals aged (7 years and above) who have not worked throughout their life with any kind of work, have not worked even for one hour during the reference period, were not looking for work, but have desire or need to work and sought work previously but were unable to find and have no income due to this and did not continue in looking for work.

**Does not work and does not want to work:**

Individuals aged (7 years or above) for which the concept of employed or unemployed does not apply, are classified outside the labour force, in the sense that this individual did not work even one hour during the reference period, nor looking for work and does not wish to work, falls under this definition:

- 8. Full-time study / training:** Individuals aged (7 years or above) who regularly study in order to obtain a qualified skill and not linked to work during a certain period of reference. It should be noted here that household chores and hobbies are not included in the concept of work.
- 9. Full-time housekeeping:** Any person (male or female) aged (7 years and above) not working but have capability to work and not looking for work and not attending regular study and aim at serving the household home. This does not include the servicing of the homes of others in return for payment in kind or cash since this type of service is within the workplace.

10. **Disabled /old age / illness:** An individual who is aged (7 years and above) who cannot do any kind of work due to chronic illness or due to any disability. This category also includes all individuals who are unable to work because of old age.
11. **The existence of income / retiree:** If an individual is able to work but does not work and did not wish to work nor look for work because there is revenue from real estate, or retirement, etc.
12. **Other:** Includes any individual for which all the previously stated did not apply, such as a prisoner, or individual capable of work but not wishing or looking for work and who has no income, such as sons and daughters who are not attending school, who do not apply to any situation mentioned previously.

### **Main Occupation:**

The main job or type of work performed by the employed person or used to be performed by the unemployed ever worked person. The occupation refers to the activity in which the employee works more than half of his/her working hours or the most frequent job during the last three months prior to the enumeration night.

### **Main Economic Activity:**

Economic activity refers to the activity of the establishment in which an employed person worked during the reference period, or last worked if unemployed. This activity is defined in terms of the kind of goods produced or services supplied by the unit in which the person works. Economic activities are classified according to the unified commodity classification in the West Bank and Gaza Strip which is based on the International Standard Classification of All Economic Activities (ISIC Rev3).

### **Marital Status:**

The status of those 12 years old and over in terms of marriage traditions and laws in the country.

May be one of the following cases:

1. **Never married:** It applies if the person aged 12 years and over has not been married or legally engaged (according to customs and traditions applicable in the country).
2. **Legally engaged:** It applies if the person aged 12 years and over has an official marriage document (issued by a competent court) but has not been actually married yet according to customs and traditions applicable in the country. The divorced, widowed, and married twice do not belong to this category.
3. **Married:** It applies if the person aged 12 years and over is actually and officially married (according to customs and traditions applicable in the country) irrespective of his / her past marital status as well as of whether the couple were together during the reference period or not. The person married to more than one wife is classified as married.
4. **Divorced:** The person aged 12 years and over who previously married and legally divorced but was not married again.
5. **Widowed:** The married person aged 12 years and over whose marriage was ended by the death of the spouse and was not married again.
6. **Separated:** The individual 12 years old and over who was married, but his/her marriage was revoked for some reason without any legal or official registration, and he/she did not marry again.

**Building:**

A building is defined as any fixed construction that is temporarily or permanently erected on the surface of the earth or water. A building is surrounded by four walls or with at least one completed ceiling at the time of the visit, regardless of the construction material and the purpose of construction and utilization at the time of the Census. The building might be utilized for habitation, for work, for both, vacant, closed, deserted, under preparation or under construction at the time of the Census.

**Ownership:**

It refers to the sector or party to which the building belongs, and not to the party operating the building. Ownership could be one of the following:

1. **Private:** This means that the building is owned by an individual, group of persons, or legal personality such as institutions or a private sector company or establishments regardless of whether this sector is national or international.
2. **Governmental:** This means that the building is owned by the Palestinian National Authority (excluding Waqf properties, e.g., mosques, buildings dedicated to charitable work, etc.), taking into account that the government buildings rented from individuals are considered private. This category does not include buildings belonging to foreign governmental entities.
3. **Local Authority:** It refers to a building owned by the municipality or village council.
4. **Charitable Societies:** (Non-profit organizations) This term refers to the building owned by non-profit organizations (such as sports, clubs, etc.).
5. **Waqf:** It refers to the buildings dedicated to charitable work, e.g., mosques, etc.
6. **United Nations Relief and Works Agency (UNRWA):** This term refers to the building owned by the UNRWA including schools and hospitals belonging to UNRWA not rented from other parties.
7. **Other:** This refers to buildings to which none of the aforementioned definitions apply or to cases in which a building is possessed by more than one of those aforementioned entities, e.g., possessed by a foreign or international entity other than the UNRWA.

**House:**

A building or part of a building constructed for one household only, with one or more independent entrance leading to the public road without passing through another housing unit.

**House type:**

Housing unit type may refer to any of the following:

1. **Villa:** A separately established building that is usually constructed from clean stone. It is constructed for the living of one household and consists of a 2-suite, single or double or multiple stories connected through internal stairs. One of the suites is constructed as bedrooms whereas the second suite is constructed for reception and involves the kitchen and other related services. In general, the villa is surrounded by a garden, regardless of the area of this garden, which is surrounded by boarder wall or fence. Villas normally have a roofed parking area (garage). Villas may also include a separate small building or extension as part of them.
2. **House:** A building usually established for the residence of one household or more; it is the typical form of residential buildings prevailing in Palestine. The house may be comprised of a single story or more that is utilized by a single household.

3. **Apartment:** It is a part of a building or a house, consisting of one room or more and annexed with kitchen, bathroom and toilet, which are all closed by an external door leading to the road through a stairway and/or path way. It is prepared usually for one household.
4. **Independent Room:** It is a separate room with no kitchen, bathroom or toilet, but sharing these basic services with other households, and it is prepared for living.
5. **Marginal:** It is a separate unit, usually comprised of one or more rooms. The main construction material of the ceiling and the external walls is zinc, tinplate, etc, but it does not undergo listing unless it is occupied.
6. **Tent:** It is made of textile, wool, or hair. It is typically used in the Bedouin localities.
7. **Other:** It refers to any type of building other than the aforementioned. Examples of this type include cottages, caves, grottos, and booths occupied by a tenant during the Census.

#### **Room:**

The housing unit or part of the housing unit surrounded with walls and having a ceiling, provided that its area is not less than 4 square meters.

#### **Tenure of the House:**

This section refers to the household tenure of the housing unit that could be one of the following categories:

1. **Owned:** This category applies when the household or one of the household members usually living therein owns the housing unit.
2. **Rented Unfurnished:** If the housing unit is rented without furniture.
3. **Rented Furnished:** If the housing unit is rented with furniture.
4. **Without Payment:** If the housing unit is used without any payments.
5. **For Work:** If the housing unit is offered to the household as a result of a working relation with one member of the household or more.
6. **Other:** If the tenure of the house is not mentioned above.

#### **Connection to Water:**

1. **Public Water Network:** A network of pipes for the purpose of providing clean water to households. It normally belongs to a municipality, the council or to a private company.
2. **Mekorot Israeli company:** A network of pipes for the purpose of providing clean water to households. It normally belongs to Mekorot Israeli company.
3. **Collection Water Wells:** Wells that are dug in the ground for the purpose of collecting rain water.
4. **Springs:** Water that is discharged from the ground at an intersection point between the topographic surface and the groundwater table; it could be permanent or seasonal, and it is considered as one of the natural resources for irrigation.
5. **Water Tanks:** Using water from vehicles that distribute and transfer water.
6. **Others:** If the source of water was not mentioned above.

#### **Electricity:**

1. **Public Network:** Electrical wiring deployed in residential areas and covering all or most of the households in the locality, particularly through electricity companies or local authorities (municipal or village).

2. **Private Generator:** Device used for electric power generation and supply to housing and owned by the owner of the household or group of individuals.
3. **Not Available:** In the case of lack of means and therefore foregoing electricity.

### **Connection to Sanitation:**

This question illustrates the house connections to sanitation which are:

1. **Sewage Network:** System of collectors, pipelines, conduits and pumps to evacuate wastewater (rainwater, domestic and other wastewater) from any of the location places generation either to municipal sewage treatment plant or to a location place where wastewater is discharged.
2. **Porous Cesspit:** A well or a pit in which night soil and other refuse is stored, constructed with porous walls.
3. **Tight Cesspit:** A well or a pit in which night soil and other refuse is stored, constructed of tight walls.
4. **Not Found:** In case of no provision from the above methods.

### **Establishment**

An enterprise or part of an enterprise in which one group of goods and services is produced (with the possibility of having secondary activities).

### **Number of Persons Engaged:**

This includes paid employees, unpaid owners and family members, and also all permanent and temporary staff aged 10 years and more

### **Establishment Status:**

Refers to the operational status of the establishment. It could be:

In operation: Means the establishment that works effectively

Others: Completely closed, temporarily closed, under preparation, or an auxiliary activity unit.

### **Ownership:**

This is the sector to which the establishment parent enterprise belongs. It is determined according to the majority of capital ownership or decision making rights. Ownership can be: private national, private foreign, non governmental organization sector, national government company, foreign government company, central government, local authority, foreign government, UNRWA and, lastly, international organization. It is worth mentioning that reference to national and foreign here is relevant to the residence concept as defined in the SNA-1993 and does not refer to nationality or citizenship.

### **Definitions of Jerusalem J1&J2**

Given the geographical and political situations in the Jerusalem governorate, it has been divided into two parts (J1, and J2).

For mere statistical purposes, the Jerusalem Governorate was divided into two parts.

**The first part (J1)** includes those parts of Jerusalem which were annexed by Israel in 1967. This part includes the following localities: (Beit Hanina, Shu'fat Refugees Camp, Shu'fat, Al' Isawiya, Jerusalem "Al - Quds" ( Sheikh Jarrah, Wadi Al - Joz, Bab Al-Sahira, As Suwwana, At -Tur, , Ash - Shayyah, Ras Al-Amud), Silwan, Ath – Thuri, Jabal Al – Mukabbir, As – Sawahira Al – Gharbiya, Beit Safafa, Sharafat, Sur Bahir, and Um Tuba and Kufr A'qab).

**The second part Jerusalem (J2)** Includes Jerusalem governorate except that part of Jerusalem which was forcefully Annexed by Israel following its occupation of the West Bank in 1967. This part includes the following localities: Rafat, Mikhmas, Qalandya Refugees Camp, the Bedouin Community - Jaba', Qalandya, Beit Duqqu, Jaba', Al - Judeira, Beit Anan, Al-Ram, Dahiat Al-Pareed, Al Al - Jib, Bir Nabala, Beit Ijza, Al - Qubeiba, Khirbet Um Al - Lahem, Biddu, An - Nabi Samu'eil, Hezma, Beit Hanina Al Balad, Qatanna, Beit Surik, Beit Iksa, A'nata, Al Ka'abina (the Bedouin Community - Al - Khan Al - Ahmar), Arab al Jahalin (the Bedouin Communitites, Al - Eizariya and Abu Deis), Az Za'eem, Al - Sawahreh Al - Sharqiyeh and Ash - Sheikh Sa'd.

## Summary of Final Results

### 2.1 Population

Findings show that the total population count of Jerusalem governorate on the midnight of 31/11- 1/12/ 2007 was 363,649 people, including 184,970 males and 178,679 females. The sex ratio is 103.5 males/100 females.

In comparison with the 1997 Census, the total counted population in Jerusalem governorate was 328,601, hence, the percentage of change in the population number is 10.7%.

#### 2.1.1 The actual count population

The findings of the actual count process show that the actually counted population in Jerusalem governorate was 350,051 people (96.3% of the total population), according to the findings of the post enumeration survey study.

### 2.2 Basic demographic and social characteristics of the population

#### 2.2.1 Population age structure

Findings show that the Palestinian community in Jerusalem governorate is young. The number of the population aged 0-14 years is 128,918 people (36.8% of the total governorate population), of whom 85,360 people in the J1 area, compared with 43,558 people in the J2 area.

#### 2.2.2 Basic characteristics of the handicapped

According to the census findings, the population of Jerusalem governorate<sup>1</sup> with at least one disability/difficulty was 5,570 (4.5% of the total population).

#### 2.2.3 Basic educational characteristics

The number of the population in the age group of 10 and over with a Bachelor degree and higher totals 16,554 (7.1% of the population in the age group of 10 and over of Jerusalem governorate), of whom 11,647 people in the J1 area, compared with 4,907 people in the J2 area.

Findings also show that the illiterate people in the age group category of 10 and over total 9,151 (3.9% of the population in the age group of 10 and over of Jerusalem governorate).

#### 2.2.4 Basic Labour characteristics

The number of unemployed people in Jerusalem governorate in the age group of 10 years and over is 9,524 (12.3% of the economically active population), while the unemployment rate in the J1 area is 9.6% compared with 17.6% in J2 area.

#### 2.2.5 Basic marriage characteristics

Findings show that married people aged 12 years and over total 117,853 (54.6% of the population 12 years and over of the Jerusalem governorate), of whom 80,626 people in the J1 area, compared with 37,227 people in the J2 area.

---

<sup>1</sup> Jerusalem Governorate: Except those parts of Jerusalem which were annexed by Israel in 1967.

### **2.3 Households**

The findings of the population count show that the number of the actual counted households in Jerusalem governorate was 67,893 households. The average household size dropped from 5.9 in 1997 to 5.2 in 2007. while the average household size in the J1 area is 5.0 compared with 5.4 in J2 area.

### **2.4 Buildings and houses**

The number of completed buildings which were counted between October 20 and November 10, 2007 in Jerusalem governorate<sup>1</sup> was 17,217. The number of occupied houses in Jerusalem governorate was 67,893.

### **2.5 Economic establishments**

The findings show that the number of operating establishments in Jerusalem governorate<sup>1</sup> is 4,117, employing 11,186 people including 9,180 males and 2,006 females, working in the NGO's, private and government companies sectors.