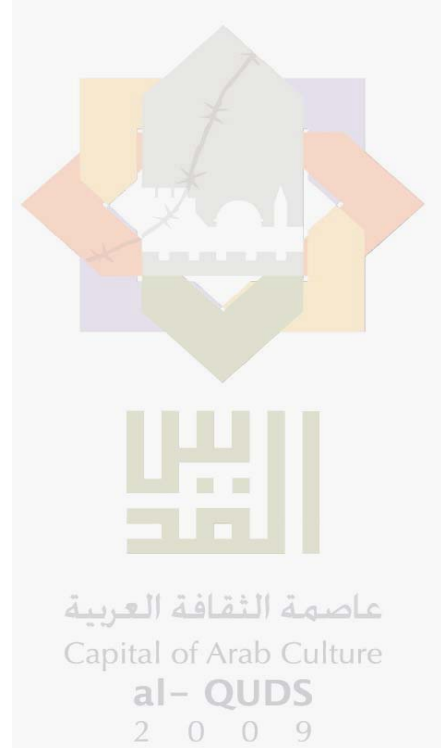
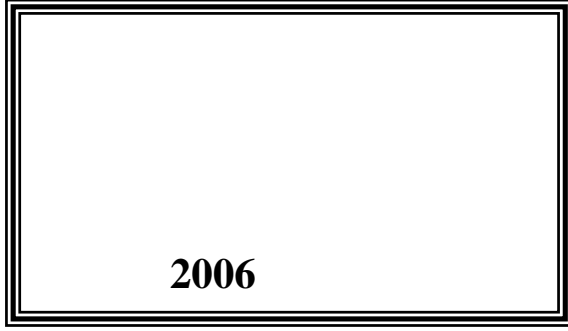


2008 -

(5) :
2009 /



© 1430 - 2009 .

.2008 -

.2009

1647 . . -

: 2 242 6340 (970/972)

: 2 242 6343 (970/972)

: diwan@pcbs.gov.ps

: http://www.pcbs.gov.ps



2008

(PNA)

2008 (CFG)

.(SDC)

(EU)

(CFG)

•

•

•

•

•

•

•

.1995

.2008

2009

21			:
21			1.1
21			2.1
22			3.1
22			4.1
23			:
27			:
27		2008	1.3
28		2008	2.3
28		2008	3.3
31		2008	4.3
35			5.3
35		2008	6.3
39			7.3
43			:
43			1.4
43			2.4
43			3.4
44			4.4
44			5.4
45			:
45			1.5
45		2008	2.5
47			

49	2008	:1-1
49	2008	:2-1
50	2008	:3-1
51	2008	:4-1
52	2008	:5-1
53	2008	:6-1
54	2008	:7-1
55	(/) -2008	:8-1
56		:1-2
		2008
58	2008	:2-2
59		:3-2
		2008
59	2008	:4-2
60		:5-2
		2008
61	2008	:6-2
63	2008	:7-2
65	2008	:8-2
67	2008	:9-2
69	2008	:10-2
		(/)

27	2008	:1
28	2008	:2
31	2008	:3
31	(2008-1999)	:4
35	2008	:5
39	1999 (2008-2000)	:6

29	2008	:1
33	2008	:2
37	2008	:3
41	2008	:4

	2008						
	117						
2008							
9,466	4,346	2008				87	.
				:	2008		
	446,133						•
	.1999				%40.8		2008
	1,127,286						•
		.1999		2008		%25.9	
181	1,164		1,345				•
			.%1.3				1999
				1,560.7		2008	•
					.1999		%17.1
%7.2			2008		%35.9		•
						.1999	
	.2008	(/)	2.5				•

1.1

1995

1995

.1996

.1996

2.1

3.1

:

.1

.2

.3

.4

.5

.6

4.1

:

:

•

:

•

:

•

:

•

.

:

•

.

:

•

1.2

:

:

:

:

(

(

:

.()

:

:

:

:

/

:

()

:()

()

()

:()

:

:

:

:

:

:

: **2.2**

: **1.2.2**

$$\underline{\hspace{2cm}} = .1$$

$$100 \times \frac{\underline{\hspace{2cm}}}{\times} = .2$$

$$\underline{\hspace{2cm}} = .3$$

$$100 \times \frac{\underline{\hspace{2cm}}}{\times} = .4$$

$$100 \times \underline{\hspace{2cm}} = .5$$

$$100 \times \underline{\hspace{2cm}} = .6$$

$$\underline{\hspace{2cm}} = .7$$

: **2.2.2**

$$\frac{\underline{\hspace{2cm}}}{3} = .1$$

$$\frac{\underline{\hspace{2cm}}}{3} = .2$$

$$\underline{\hspace{2cm}} = .3$$

$$100 \times \frac{\underline{\hspace{2cm}}}{\times} = .4$$

$$\underline{\hspace{2cm}} = (\quad / \quad) .5$$

$$\frac{\quad}{\quad} = \quad .6$$

$$100 \times \frac{\quad}{\quad \times \quad} = \quad .7$$

$$\quad : \quad = \quad \mathbf{3.2}$$

$$\frac{\quad}{12} = \quad .1$$

$$\frac{\quad}{365} = \quad .2$$

$$100 \times \frac{\quad}{365 \times \quad} = \quad .3$$

$$\frac{\quad}{12} = \quad .4$$

$$\frac{\quad}{365} = \quad .5$$

$$100 \times \frac{\quad}{365 \times \quad} = \quad .6$$

$$\frac{\quad}{\quad} = \quad .7$$

: 2008

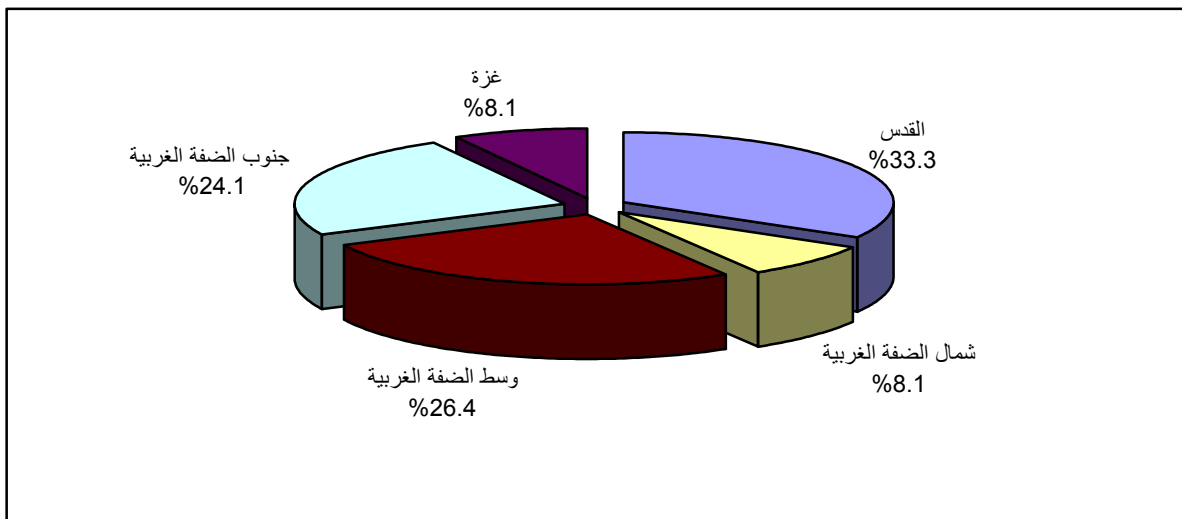
2008

1.3

2008	117	87	4,346
9,466			
267	118	7 :	•
2,192	957	23 :	•
3,052	1,315	29 :	•
3,249	1,553	21 :	•
	706	403	7 :

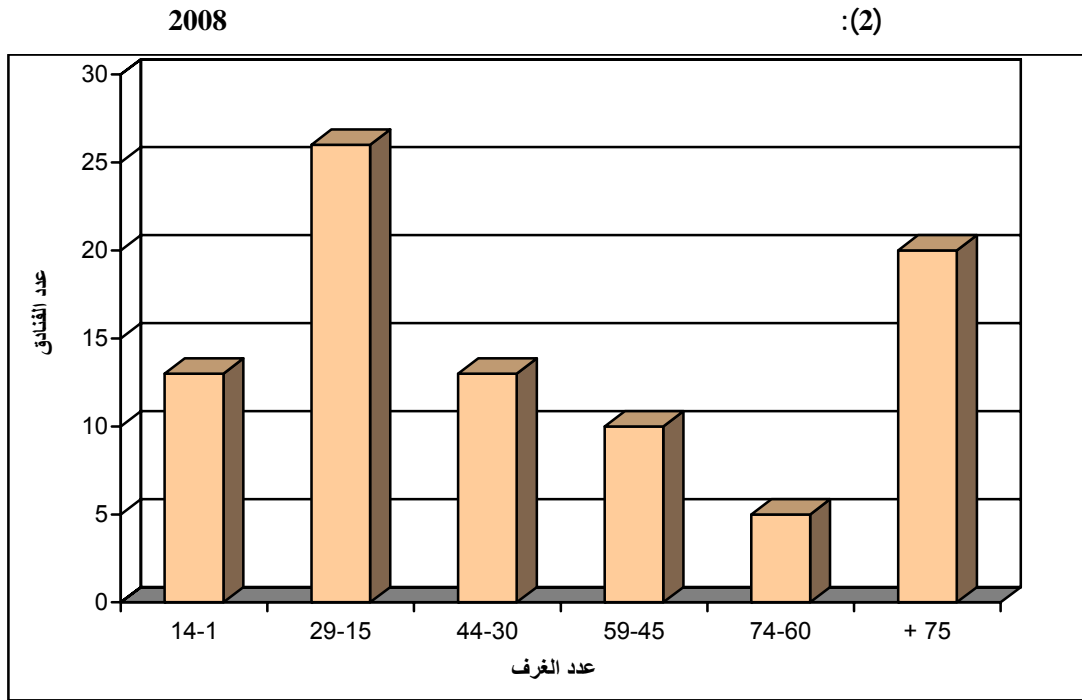
2008

:(1)



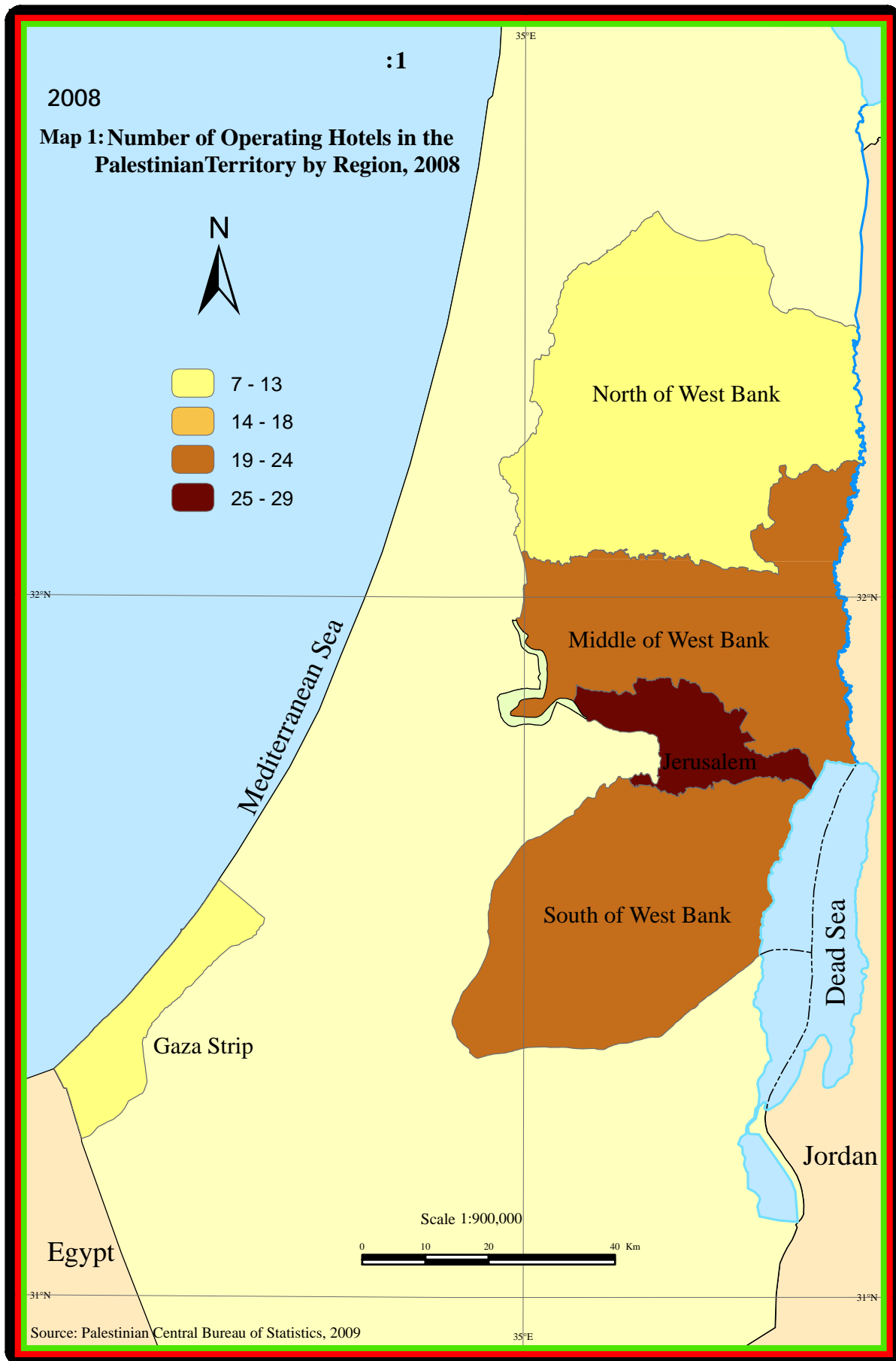
%29.9

75 %23.0 29 15 2008



2008		2.3
18,530	109	
78	17,158	114
		2,733
	15	15

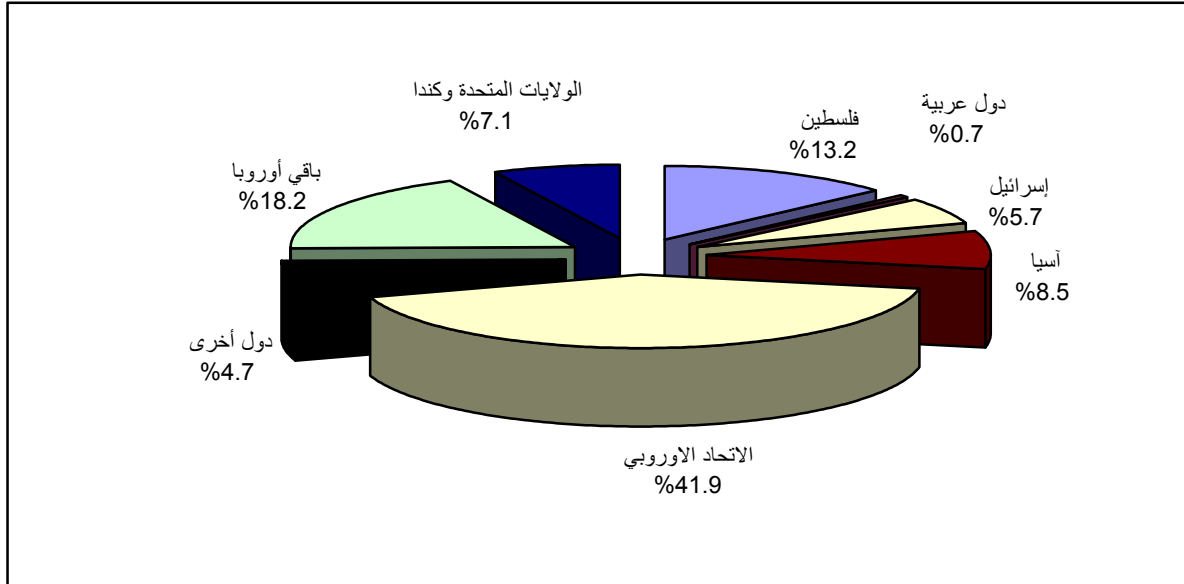
2008		3.3
:	1,345	
.	50	223
.	131	273
	941	1,072



2008 446,133
%41.9

2008

:(3)



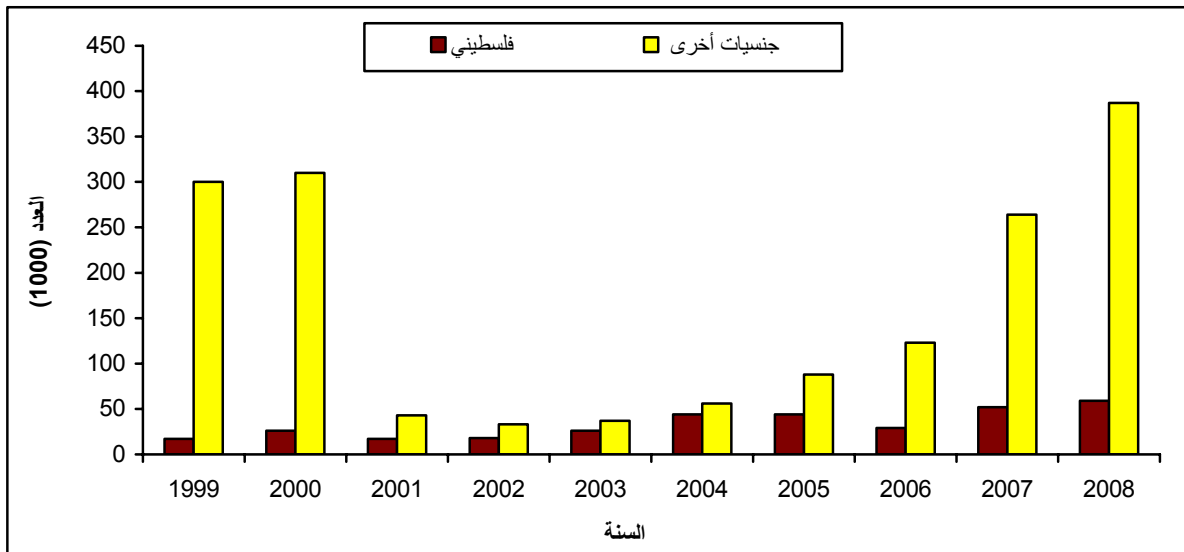
(4)

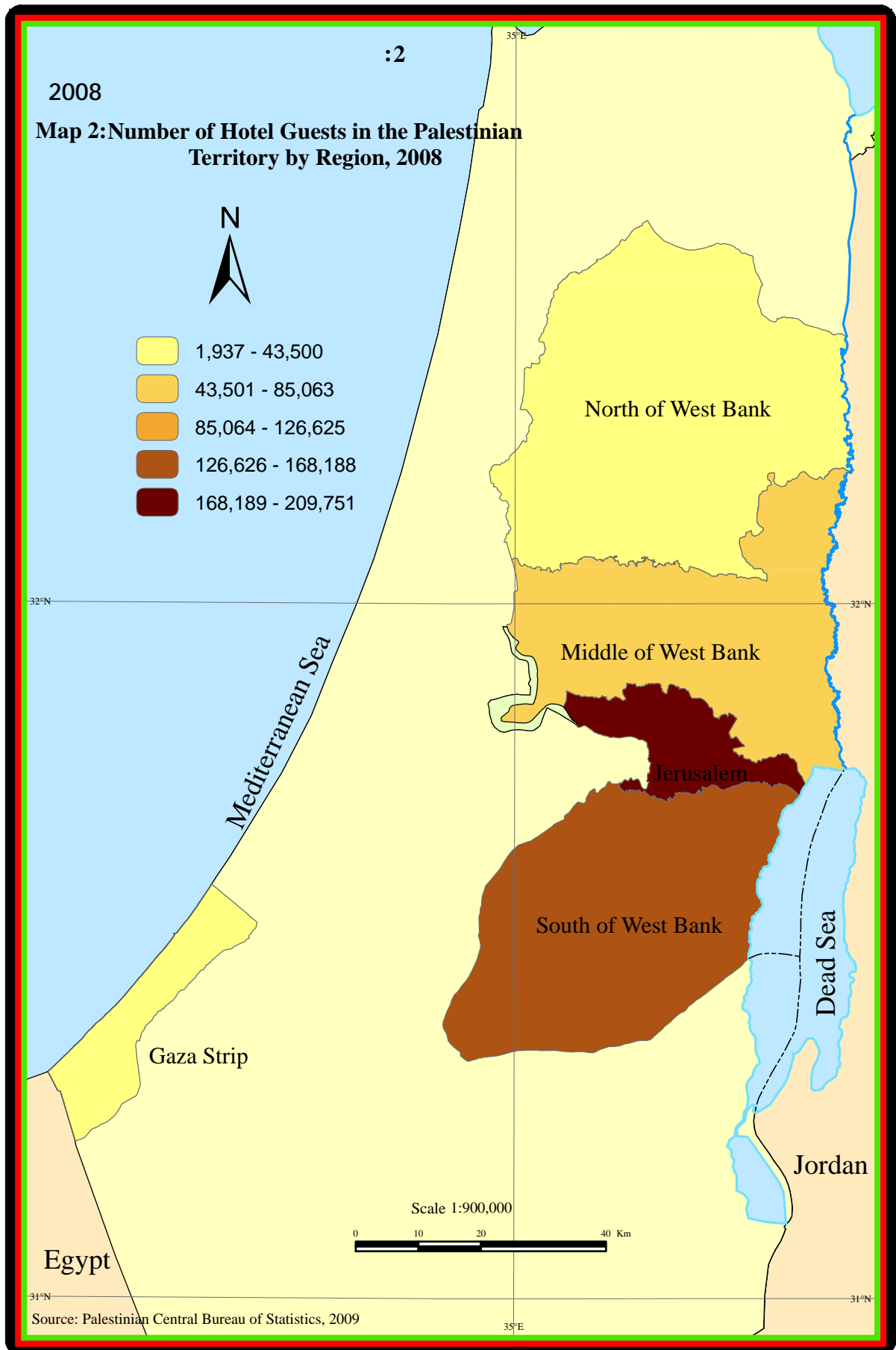
.1999

2008

(2008 - 1999)

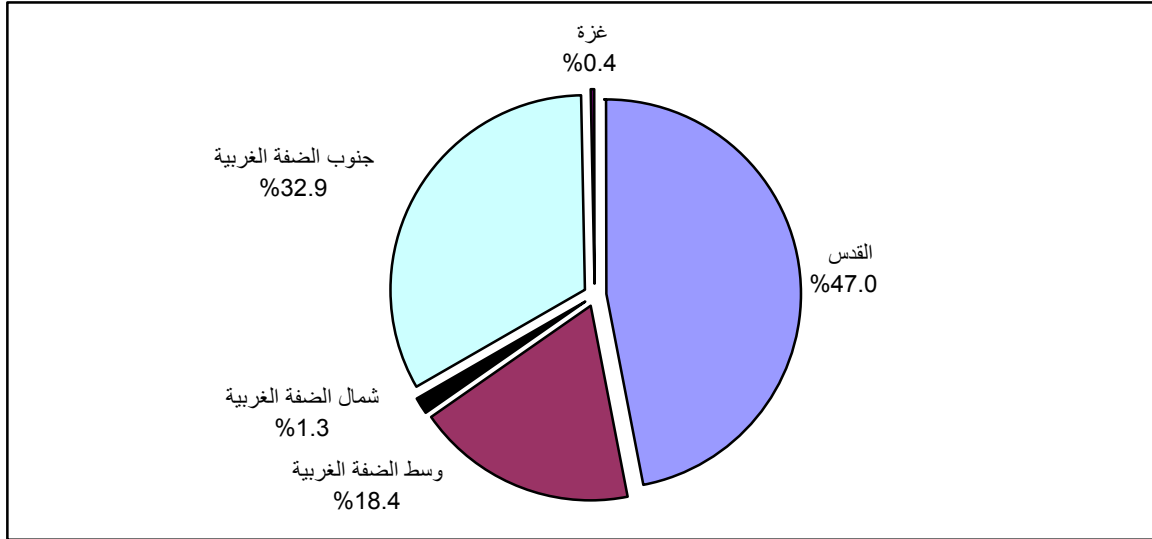
:(4)





(5) %47.0
%32.9

2008 : (5)



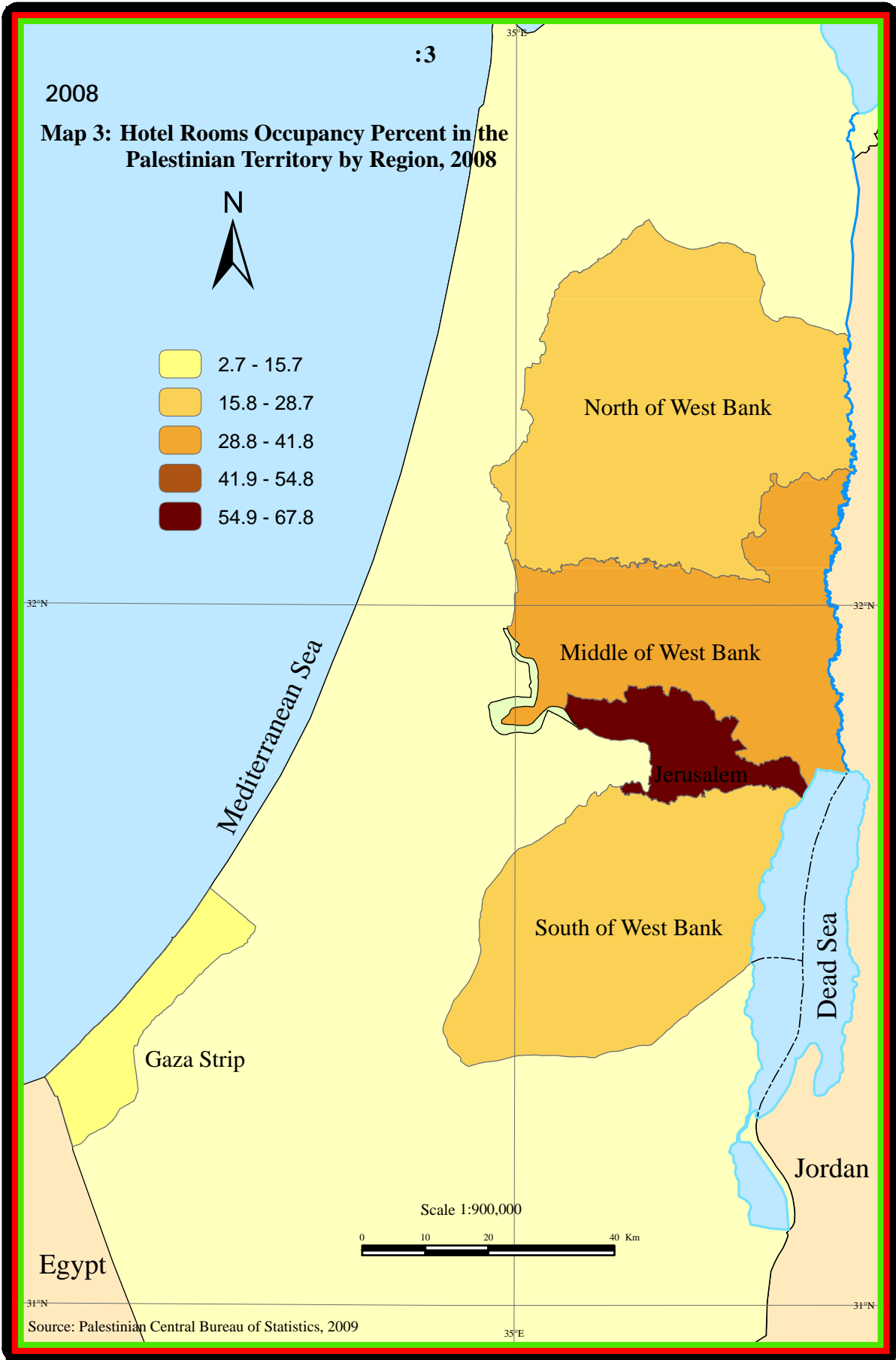
5.3

1560.7 2008 3088.5 %32.6 %35.9
(/) 2.5

2008 6.3

2008 1,127,286 %45.6 %10.1
%4.2 %7.9

%13.3 %32.4 %52.5
%0.7 %1.1



1999 (2007 -2000)
2000/9/28

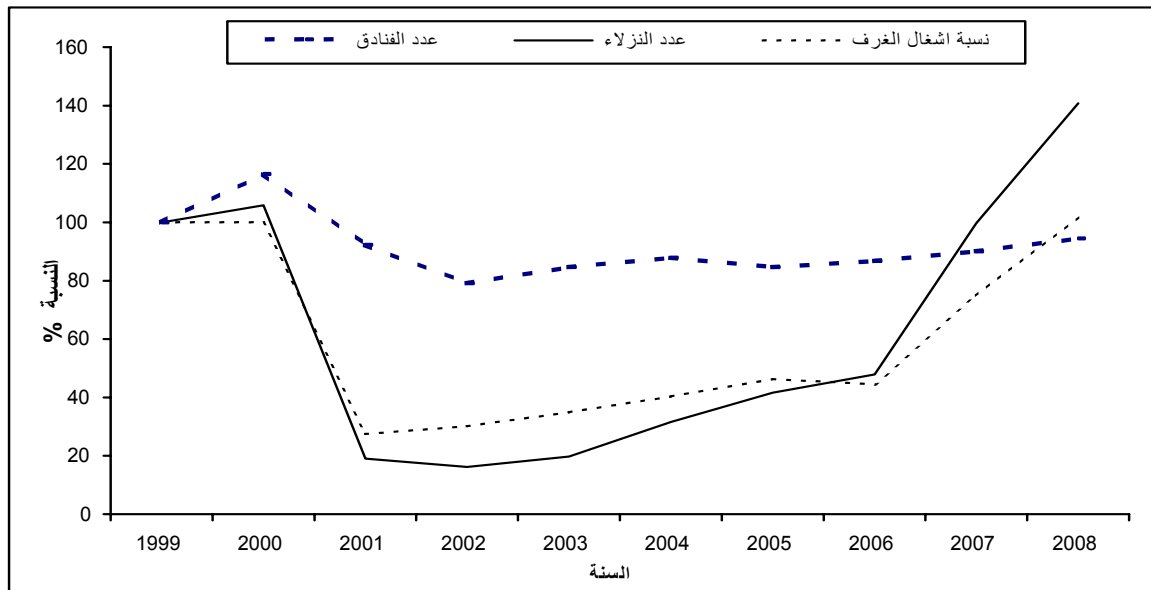
: 2008

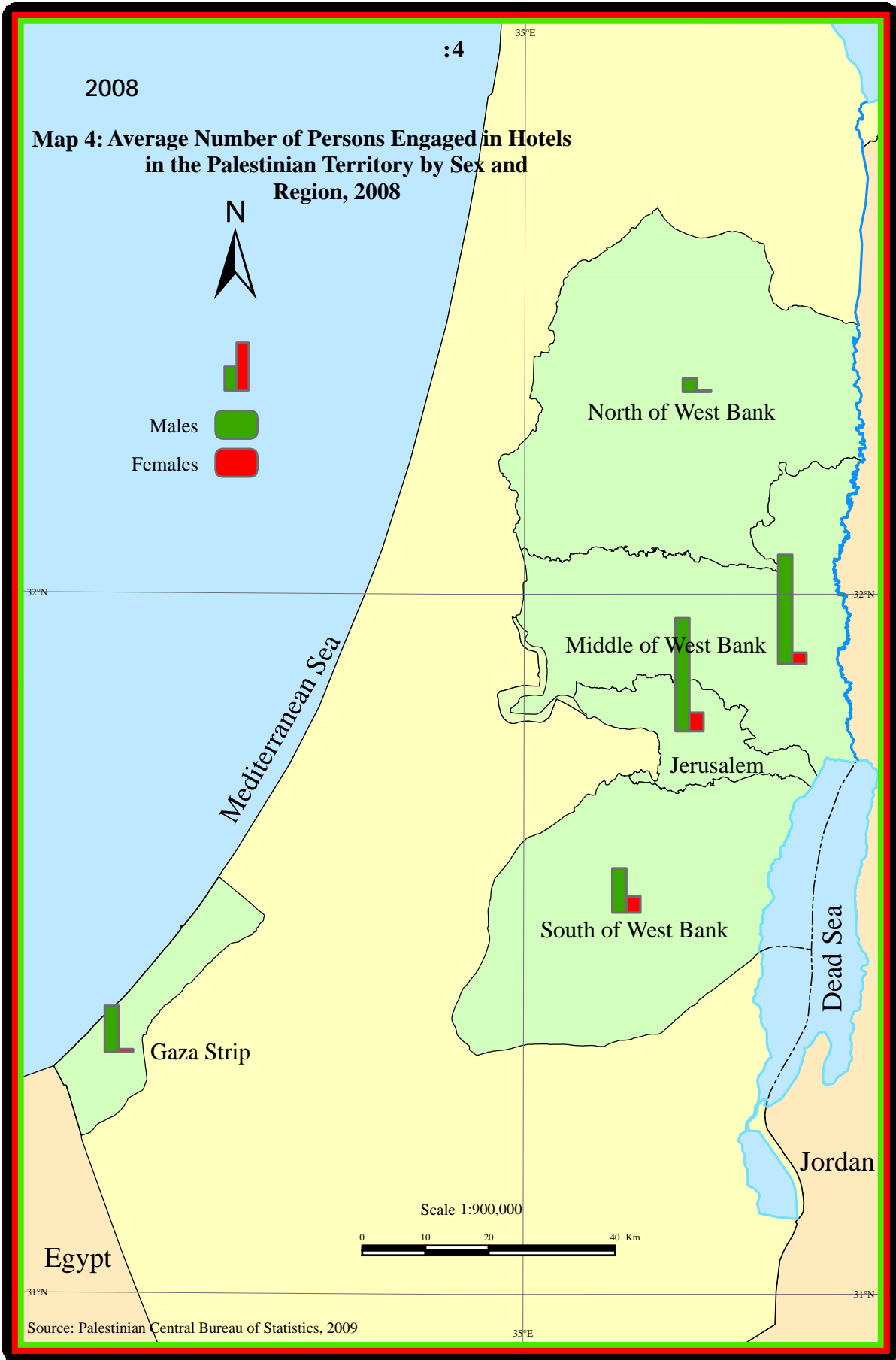
1999

%					2008	
2008	2006	2004	2002	2000		
5.5-	13.2-	12.1-	20.9-	16.5	87	
1.3-	18.8-	10.7-	11.9-	76.0	1,345	
40.8	52.1-	68.4-	83.8-	5.9	446,133	
25.9	57.2-	70.0-	81.1-	13.5	1,127,286	
17.1	53.8-	66.5-	77.3-	11.1	1,560.7	
25.9	57.2-	70.0-	81.1-	13.6	3,088.5	
7.2	55.5-	59.7-	69.9-	0.0	35.9	(%)
7.6	58.7-	66.3-	76.6-	2.3-	32.6	(%)

1999 2008 %40.8
%17.1 2008 %25.9
2000 %25.9

1999 (2008-2000) : (6)





1.4

-
-
-
-
-

2.4

.2004

3.4

.1

.2

.3

4.4

.1

.2

5.4

.1

.2

.3

.4

	:		.1
	:		.2
.%94	:		.3
	:		
	:		1.5
: 2008	:		•
	:		•
	:		•
	:	" "	•
	:	2008	2.5
	:		
	:		.1
2008	:		.2
:	:		

2008

215,980	88,854	9,051	4,157	84	I
328,284	129,842	9,478	4,367	88	II
260,159	100,942	10,010	4,482	86	III
322,863	126,495	9,323	4,378	87	IV
207,809	86,684	8,885	4,049	82	I
323,892	126,633	8,885	4,049	82	II
238,437	95,709	9,817	4,737	85	III
309,638	117,545	9,159	4,301	85	IV

Tables

2008

:1-1

Table 1-1: Main Indicators for Hotel Activities in the Palestinian Territory by Month, 2008

Month	Bed Occupancy		Room Occupancy		No. of Guest Nights	No. of Guests	No. of Beds	No. of Rooms	No. of Hotels	
	% Rate%	Average	% Rate%	Average						
January	18.2	1647.8	23.0	953.5	51083	21428	9061	4150	85	
February	24.3	2174.2	32.2	1308.2	60878	24331	8932	4065	82	
March	36.6	3355.5	48.5	2056.9	104019	43095	9160	4241	84	
April	52.1	4827.0	52.7	2231.2	144811	60624	9269	4232	86	
May	40.2	3793.3	45.3	1963.9	117591	43322	9443	4336	86	
June	22.6	2196.1	28.9	1288.0	65882	25896	9701	4458	88	
July	18.8	2094.5	26.9	1232.2	64931	26429	11114	4575	90	
August	34.2	3273.3	28.2	1245.4	101472	33981	9579	4420	84	
September	33.5	3125.2	31.3	1402.5	93756	40532	9337	4476	86	
October	43.0	4127.5	39.6	1797.5	127951	43527	9593	4538	89	
November	44.8	4213.6	47.4	2082.4	126408	53737	9411	4390	88	
December	24.6	2209.8	27.3	1166.7	68504	29231	8985	4270	87	
Annual Indicator *	32.6	3088.5	35.9	1560.7	1127286	446133	9466	4346	87	*

* Represents the annual average of indicators except number of guests and number of guest nights which represents the annual total.

* Data represents the operating hotels.

2008

:2-1

Table 1-2: Distribution of Hotels, Rooms, and Beds by Categories of Number of Rooms, 2008

Categories of Number of Rooms	No. of Beds				No. of Rooms				No. of Hotels				
	December	September	June	March	December	September	June	March	December	September	June	March	
1 - 14	377	262	358	394	115	98	89	102	13	11	10	11	14 - 1
15 - 29	1177	1102	1242	1209	547	515	517	462	26	25	26	24	29 - 15
30 - 44	854	775	951	871	397	349	428	399	13	12	14	13	44 - 30
45 - 59	827	830	951	943	397	389	450	454	10	10	11	11	59 - 45
60 - 74	539	532	417	284	273	269	205	140	5	6	5	4	74 - 60
75 +	5211	5836	5782	5459	2541	2856	2769	2684	20	22	22	21	+ 75
Total	8985	9337	9701	9160	4270	4476	4458	4241	87	86	88	84	

2008

:3-1

Table 1-3: Number of Persons Engaged in Hotels by Type of Work, Sex and Month, 2008

Month	Total		Operation		Administration		No. of Hotels
	Female	Male	Female	Male	Female	Male	
January	158	1109	106	892	52	217	85
February	148	1011	99	797	49	214	82
March	150	1092	101	874	49	218	84
April	165	1121	117	900	48	221	86
May	193	1052	147	840	46	212	86
June	192	1124	144	900	48	224	88
July	199	1285	147	1046	52	239	90
August	192	1266	139	1037	53	229	84
September	187	1310	138	1065	49	245	86
October	184	1229	136	997	48	232	89
November	200	1184	148	970	52	214	88
December	196	1179	145	966	51	213	87
Annual average	181	1164	131	941	50	223	87

2008

:4-1

Table 1- 4: Distribution of Guests in Hotels by Nationality and Month, 2008

Month	Nationality					No. of Hotels
	U.S.A & Canada	Asia	Israel	Arab Countries	Palestine	
January	1657	1349	2638	219	4208	85
February	1622	4084	1467	141	4506	82
March	2864	3750	1129	175	7965	84
April	2791	3004	1662	108	8261	86
May	2832	4231	1556	266	4793	86
June	2309	1341	1709	187	4942	88
July	1541	1844	2553	228	6078	90
August	2524	1732	3229	353	3802	84
September	2241	3893	1870	641	3302	86
October	2397	4149	2265	248	3105	89
November	5735	6138	2528	222	4282	88
December	3172	2374	2971	220	3746	87
Total	31685	37889	25577	3008	58990	87

2008

:() 4-1

Table 1-4 (Cont.): Distribution of Guests in Hotels by Nationality and Month, 2008

Month	Total	Nationality				
		Australia & New Zeland	Africa	Other European Count.	European Union	Central & South America
January	21428	79	2080	1610	7188	400
February	24331	10	354	2190	9443	514
March	43095	6	3062	5909	18064	171
April	60624	214	712	13317	29106	1449
May	43322	360	623	13326	14898	437
June	25896	39	88	4722	9947	612
July	26429	66	343	4773	8789	214
August	33981	1662	73	7604	12318	684
September	40532	62	666	5842	21796	219
October	43527	699	425	5677	23626	936
November	53737	202	680	9252	22914	1784
December	29231	56	573	6864	8907	348
Total	446133	3455	9679	81086	186996	7768

2008

:5-1

Table 1-5: Percentage Distribution of Guests in Hotels by Nationality and Month, 2008

Month	Nationality					No. of Hotels
	U.S.A & Canada	Asia	Israel	Arab Countries	Palestine	
January	7.7	6.3	12.3	1.0	19.6	85
February	6.7	16.8	6.0	0.6	18.5	82
March	6.6	8.7	2.6	0.4	18.5	84
April	4.6	5.0	2.7	0.2	13.6	86
May	6.5	9.8	3.6	0.6	11.1	86
June	8.9	5.2	6.6	0.7	19.1	88
July	5.8	7.0	9.7	0.9	23.0	90
August	7.4	5.1	9.5	1.0	11.2	84
September	5.5	9.6	4.6	1.6	8.1	86
October	5.5	9.5	5.2	0.6	7.1	89
November	10.7	11.4	4.7	0.4	8.0	88
December	10.9	8.0	10.1	0.8	12.8	87
Total	7.1	8.5	5.7	0.7	13.2	87

2008

:() 5-1

Table 1-5 (Cont.): Percentage Distribution of Guests in Hotels by Nationality and Month, 2008

Month	Total	Nationality				
		Australia & New Zeland	Africa	Other European Count.	European Union	Central & South America
January	100	0.4	9.8	7.5	33.5	1.9
February	100	0.0	1.5	9.0	38.8	2.1
March	100	0.0	7.2	13.7	41.9	0.4
April	100	0.4	1.1	22.0	48.0	2.4
May	100	0.8	1.4	30.8	34.4	1.0
June	100	0.2	0.3	18.2	38.4	2.4
July	100	0.2	1.2	18.1	33.3	0.8
August	100	4.9	0.3	22.4	36.2	2.0
September	100	0.2	1.7	14.4	53.8	0.5
October	100	1.6	1.0	13.0	54.3	2.2
November	100	0.4	1.3	17.2	42.6	3.3
December	100	0.2	2.0	23.5	30.5	1.2
Total	100	0.8	2.2	18.2	41.9	1.7

2008

: 6-1

Table 1-6: Distribution of Guest Nights in Hotels by Nationality and Month, 2008

Month	Nationality					No. of Hotels
	U.S.A & Canada	Asia	Israel	Arab Countries	Palestine	
January	6303	3822	5072	396	9218	85
February	4539	8059	2442	435	11505	82
March	7208	8054	1910	369	15444	84
April	8532	9028	3514	160	17701	86
May	9141	10669	2716	694	9742	86
June	6538	5259	3623	300	8595	88
July	4706	6593	4804	398	8618	90
August	7643	5756	6191	490	7938	84
September	5142	10779	3827	742	4904	86
October	6915	13162	4527	393	5460	89
November	13212	15326	4195	499	8171	88
December	9152	6559	4760	460	7120	87
Total	89031	103066	47581	5336	114416	87

2008

:() 6-1

Table 1-6 (Cont.): Distribution of Guest Nights in Hotels by Nationality and Month, 2008

Month	Total	Nationality				
		Australia & New Zeland	Africa	Other European Count.	European Union	Central & South America
January	51083	240	2398	3489	19347	798
February	60878	47	401	6180	24224	3046
March	104019	42	6263	14948	49283	498
April	144811	459	1212	28389	71099	4717
May	117591	798	973	30758	50931	1169
June	65882	193	232	11829	27715	1598
July	64931	140	925	12352	25553	842
August	101472	3107	137	33591	34602	2017
September	93756	328	753	16084	50523	674
October	127951	1157	1029	11372	80729	3207
November	126408	376	1770	18731	59054	5074
December	68504	228	1077	17355	21037	756
Total	1127286	7115	17170	205078	514097	24396

2008

:7-1

2008Table 1-7: Percentage Distribution of Guest Nights in Hotels by Nationality and Month,

Month	Nationality					No. of Hotels
	U.S.A & Canada	Asia	Israel	Arab Countries	Palestine	
January	12.3	7.5	9.9	0.8	18.0	85
February	7.5	13.2	4.0	0.7	18.9	82
March	6.9	7.8	1.8	0.4	14.8	84
April	5.9	6.2	2.4	0.1	12.2	86
May	7.8	9.1	2.3	0.6	8.3	86
June	9.9	8.0	5.5	0.5	13.0	88
July	7.2	10.2	7.4	0.6	13.3	90
August	7.5	5.7	6.1	0.5	7.8	84
September	5.5	11.5	4.1	0.8	5.2	86
October	5.4	10.3	3.5	0.3	4.3	89
November	10.5	12.1	3.3	0.4	6.5	88
December	13.4	9.6	6.9	0.7	10.4	87
Total	7.9	9.1	4.2	0.5	10.1	87

2008

:() 7-1

Table 1-7(Cont.): Percentage Distribution of Guest Nights in Hotels by Nationality and Month, 2008

Month	Total	Nationality				
		Australia & New Zealand	Africa	Other European Count.	European Union	Central & South America
January	100	0.5	4.7	6.8	37.9	1.6
February	100	0.1	0.7	10.2	39.7	5.0
March	100	0.0	6.0	14.4	47.4	0.5
April	100	0.3	0.8	19.7	49.1	3.3
May	100	0.7	0.7	26.2	43.3	1.0
June	100	0.3	0.3	18.0	42.1	2.4
July	100	0.2	1.4	19.0	39.4	1.3
August	100	3.1	0.1	33.1	34.1	2.0
September	100	0.3	0.8	17.2	53.9	0.7
October	100	0.9	0.8	8.9	63.1	2.5
November	100	0.3	1.4	14.8	46.7	4.0
December	100	0.3	1.6	25.3	30.7	1.1
Total	100	0.6	1.5	18.3	45.6	2.2

(/) -2008

:8-1

Table 1-8: Average Length of Stay per Guest in Hotels by Nationality and Month, 2008 - (Nights/Guest)

Month	Nationality					No. of Hotels
	U.S.A & Canada	Asia	Israel	Arab Countries	Palestine	
January	3.8	2.8	1.9	1.8	2.2	85
February	2.8	2.0	1.7	3.1	2.6	82
March	2.5	2.1	1.7	2.1	1.9	84
April	3.1	3.0	2.1	1.5	2.1	86
May	3.2	2.5	1.7	2.6	2.0	86
June	2.8	3.9	2.1	1.6	1.7	88
July	3.1	3.6	1.9	1.7	1.4	90
August	3.0	3.3	1.9	1.4	2.1	84
September	2.3	2.8	2.0	1.2	1.5	86
October	2.9	3.2	2.0	1.6	1.8	89
November	2.3	2.5	1.7	2.2	1.9	88
December	2.9	2.8	1.6	2.1	1.9	87
Total	2.8	2.7	1.9	1.8	1.9	87

(/) -2008

:() 8-1

Table 1-8 (Cont.): Average Length of Stay per Guest in Hotels by Nationality and Month, 2008 - (Nights/Guest)

Month	Total	Nationality				
		Australia & New Zeland	Africa	Other European Count.	European Union	Central & South America
January	2.4	3.0	1.2	2.2	2.7	2.0
February	2.5	4.7	1.1	2.8	2.6	5.9
March	2.4	7.0	2.0	2.5	2.7	2.9
April	2.4	2.1	1.7	2.1	2.4	3.3
May	2.7	2.2	1.6	2.3	3.4	2.7
June	2.5	4.9	2.6	2.5	2.8	2.6
July	2.5	2.1	2.7	2.6	2.9	3.9
August	3.0	1.9	1.9	4.4	2.8	2.9
September	2.3	5.3	1.1	2.8	2.3	3.1
October	2.9	1.7	2.4	2.0	3.4	3.4
November	2.4	1.9	2.6	2.0	2.6	2.8
December	2.3	4.1	1.9	2.5	2.4	2.2
Total	2.5	2.1	1.8	2.5	2.7	3.1

2008

:1-2

Table 2-1: Main Indicators for Hotel Activities in the Palestinian Territory by Region and Quarter, 2008

Region/Quarter	** No. of Nights**	** No. of Guests**	Average No. of Beds	Average No. of Rooms	* No. of Hotels*	/
Palestinian Territory	1127286	446133	9466	4346	87	
I	215980	88854	9051	4157	84	I
II	328284	129842	9478	4367	88	II
III	260159	100942	10010	4482	86	III
IV	322863	126495	9323	4378	87	IV
North of West Bank	12347	5672	267	118	7	
I	2306	1095	246	107	6	I
II	2890	1071	245	107	6	II
III	3424	1636	293	126	7	III
IV	3727	1870	282	133	7	IV
Middle of West Bank	150335	82055	2192	957	23	
I	44877	23799	2102	907	21	I
II	45944	23391	2123	906	22	II
III	27038	17069	2265	1010	23	III
IV	32476	17796	2280	1007	23	IV
Jerusalem	591596	209751	3052	1315	29	
I	107148	39279	2925	1266	26	I
II	180258	66446	3041	1345	27	II
III	130735	44613	3425	1343	26	III
IV	173455	59413	2816	1305	29	IV
South of West Bank	365082	146718	3249	1553	21	
I	57600	24061	3064	1456	19	I
II	97833	38487	3354	1588	21	II
III	97425	37120	3254	1581	20	III
IV	112224	47050	3323	1585	21	IV
Gaza Strip	7926	1937	706	403	7	
I	4049	620	714	421	12	I
II	1359	447	714	421	12	II
III	1537	504	772	422	10	III
IV	981	366	622	348	7	IV

* At the end of the quarter

*

** Represents the total of quarter months

**

2008

:() 1-2

Table 2-1 (Cont.): Main Indicators for Hotel Activities in the Palestinian Territory by Region and Quarter, 2008

Region/Quarter	Bed Occupancy		Room Occupancy		() Average length of Stay (Night)	/
	% Rate%	Average Occupancy	% Rate%	Average Occupancy		
Palestinian Territory	32.6	3088.5	35.9	1560.7	2.5	
I	26.5	2399.8	34.7	1443.9	2.4	I
II	38.1	3607.5	41.9	1829.2	2.5	II
III	28.2	2827.8	28.8	1292.2	2.6	III
IV	37.6	3509.4	38.3	1677.9	2.6	IV
North of West Bank	12.0	33.8	19.0	22.4	2.2	
I	10.4	25.6	16.7	17.9	2.1	I
II	12.9	31.8	20.7	22.2	2.7	II
III	12.7	37.2	18.4	23.2	2.1	III
IV	14.4	40.5	19.8	26.3	2.0	IV
Middle of West Bank	18.1	411.9	29.5	282.6	1.8	
I	23.7	498.6	37.2	337.5	1.9	I
II	23.8	504.9	35.0	316.8	2.0	II
III	13.0	293.9	21.2	214.4	1.6	III
IV	15.5	353.0	26.2	263.5	1.8	IV
Jerusalem	57.6	1620.8	67.8	891.3	2.8	
I	40.7	1190.5	58.3	738.5	2.7	I
II	65.1	1980.9	69.0	927.5	2.7	II
III	41.5	1421.0	58.4	784.6	2.9	III
IV	67.0	1885.4	85.2	1111.9	2.9	IV
South of West Bank	30.1	1000.2	22.8	353.6	2.5	
I	20.9	640.0	22.9	333.6	2.4	I
II	32.1	1075.1	35.1	556.8	2.5	II
III	32.5	1059.0	16.2	256.1	2.6	III
IV	36.7	1219.8	17.0	269.6	2.4	IV
Gaza Strip	3.5	21.7	2.7	10.7	4.1	
I	6.3	45.0	3.9	16.4	6.5	I
II	2.1	14.9	1.4	6.0	3.0	II
III	2.2	16.7	3.3	13.9	3.0	III
IV	1.7	10.7	1.9	6.7	2.7	IV

2008

:2-2

Table 2-2: Average Number of Hotel Rooms by Capacity, Region and Quarter, 2008

Region/Quarter	Total	Capacity						/
		Other	Suits	Quadruple	Triple	Double	Single	
Palestinian Territory	4346	46	235	120	469	2889	587	
I	4157	232	231	124	452	2711	602	I
II	4367	235	234	117	486	2943	556	II
III	4482	231	231	116	482	2978	615	III
IV	4378	239	237	123	456	2925	576	IV
North of West Bank	118	10	11	7	9	69	14	
I	107	12	12	6	7	69	13	I
II	107	12	12	4	9	69	13	II
III	126	9	9	8	9	72	18	III
IV	133	11	11	8	10	67	11	IV
Middle of West Bank	957	51	52	56	138	533	168	
I	907	50	50	54	137	486	174	I
II	906	48	48	56	138	511	148	II
III	1010	55	55	57	142	551	191	III
IV	1007	54	54	58	134	584	160	IV
Jerusalem	1315	60	61	24	158	906	146	
I	1266	59	58	29	149	842	159	I
II	1345	63	63	24	173	928	133	II
III	1343	53	54	19	164	943	146	III
IV	1305	68	68	23	144	910	146	IV
South of West Bank	1552	55	56	34	152	1130	175	
I	1456	55	56	35	145	1053	166	I
II	1588	55	55	33	152	1174	172	II
III	1581	58	57	33	153	1149	171	III
IV	1585	57	57	35	156	1144	191	IV
Gaza Strip	403	54	54	0	14	251	84	
I	421	56	56	0	14	261	90	I
II	421	56	56	0	14	261	90	II
III	422	56	56	0	14	262	90	III
IV	348	48	47	0	12	220	68	IV

2008

:3-2

Table 2-3: Number of Hotels and Rooms by Facilities and Region as of December, 2008

Region	Rooms Facilities								Total No. of Rooms	No. of Hotels
	Internet	Air Condition	Heaters	Private Bathroom	Radio	Telephone	Refrigerator	T.V		
Palestinian Territory	1641	3657	4013	4094	743	3707	2682	3662	4346	87
North of West Bank	0	99	99	99	0	99	99	99	118	7
Middle of West Bank	386	853	947	981	220	884	806	941	957	23
Jerusalem	42	1083	1154	1185	484	924	440	929	1315	29
South of West Bank	1186	1493	1677	1677	30	1653	1218	1553	1553	21
Gaza Strip	27	129	136	152	9	147	119	140	403	7

2008

:4-2

Table 2-4: Public Utilities Available in Hotels by Region as of December, 2008

Region	Conference Halls		Restaurants		No. of Hotels
	Capacity	Number	Capacity	Number	
Palestinian Territory	17158	114	18530	109	87
North of West Bank	565	5	3083	8	7
Middle of West Bank	5590	38	3282	26	23
Jerusalem	1735	28	2615	34	29
South of West Bank	7934	31	7713	31	21
Gaza Strip	1334	12	1837	10	7

2008

:() 4-2

Table 2-4 (Cont.): Public Utilities Available in Hotels by Region as of December, 2008

Region	/ No. of Playgrounds/Sport Halls	No. of swimming Pools	No. of Lifts	Parking	
				السعة Capacity	العدد Number
Palestinian Territory	15	15	91	2733	78
North of West Bank	0	0	4	37	4
Middle of West Bank	6	11	30	1240	31
Jerusalem	2	2	20	264	12
South of West Bank	4	1	30	1090	27
Gaza Strip	3	1	7	102	4

2008

:5-2

Table 2-5: Average Number of Persons Engaged in Hotels by Type of Work, Sex, Region and Quarter, 2008

Region/Quarter	Total		Operation		Administration		* No. of Hotels *	/
	Female	Male	Female	Male	Female	Male		
Palestinian Territory	181	1164	131	941	50	223	87	
I	152	1071	102	855	50	216	84	I
II	183	1100	136	881	47	219	88	II
III	192	1288	141	1050	51	238	86	III
IV	193	1196	143	977	50	219	87	IV
North of West Bank	7	48	4	32	3	16	7	
I	8	42	4	29	4	13	6	I
II	8	42	4	29	4	13	6	II
III	7	48	4	32	3	16	7	III
IV	7	59	5	39	2	20	7	IV
Middle of West Bank	40	390	27	331	13	59	23	
I	35	355	21	298	14	57	21	I
II	47	352	36	300	11	52	22	II
III	37	440	25	374	12	66	23	III
IV	40	411	28	352	12	59	23	IV
Jerusalem	66	404	47	336	19	68	29	
I	58	361	41	299	17	62	26	I
II	64	377	47	311	17	66	27	II
III	67	409	48	343	19	66	26	III
IV	74	468	51	389	23	79	29	IV
South of West Bank	58	158	48	118	10	40	21	
I	43	140	34	103	9	37	19	I
II	56	157	47	116	9	41	21	II
III	66	165	56	124	10	41	20	III
IV	66	166	56	127	10	39	21	IV
Gaza Strip	10	165	4	124	6	41	7	
I	8	172	2	125	6	47	12	I
II	8	172	2	125	6	47	12	II
III	15	226	8	177	7	49	10	III
IV	6	92	3	70	3	22	7	IV

*Represents No. of hotels at the end of the quarter

*

2008

:6-2

Table 2-6: Distribution of Guests in Hotels by Nationality, Region and Quarter, 2008

Region/Quarter	Nationality					* No. of Hotels *	/
	U.S.A & Canada	Asia	Israel	Arab Countries	Palestine		
Palestinian Territory	31685	37889	25577	3008	58990	87	
I	6143	9183	5234	535	16679	84	I
II	7932	8576	4927	561	17996	88	II
III	6306	7469	7652	1222	13182	86	III
IV	11304	12661	7764	690	11133	87	IV
North of West Bank	280	48	347	114	3819	7	
I	65	4	28	3	759	6	I
II	43	8	48	16	695	6	II
III	69	14	156	19	1100	7	III
IV	103	22	115	76	1265	7	IV
Middle of West Bank	8956	8036	2296	1960	40775	23	
I	1979	4498	409	509	11042	21	I
II	2674	1745	506	239	11886	22	II
III	1681	155	478	836	9935	23	III
IV	2622	1638	903	376	7912	23	IV
Jerusalem	18207	12296	15081	209	84	29	
I	3137	2534	3465	3	2	26	I
II	3942	3381	3608	21	0	27	II
III	4057	2821	4282	38	1	26	III
IV	7071	3560	3726	147	81	29	IV
South of West Bank	3908	17405	7803	693	13897	21	
I	882	2108	1315	8	4696	19	I
II	1191	3418	754	277	5303	21	II
III	390	4456	2724	322	2073	20	III
IV	1445	7423	3010	86	1825	21	IV
Gaza Strip	334	104	50	32	415	7	
I	80	39	17	12	180	12	I
II	82	24	11	8	112	12	II
III	109	23	12	7	73	10	III
IV	63	18	10	5	50	7	IV

* Represents No. of hotels at the end of the quarter

*

Table 2-6 (Cont.): Distribution of Guests in Hotels by Nationality, Region and Quarter, 2008

Region/Quarter	Total	Nationality					
		Australia & New Zealand	Africa	Other European Count.	European Union	Central & South America	
Palestinian Territory	446133	3455	9679	81086	186996	7768	
I	88854	95	5496	9709	34695	1085	I
II	129842	613	1423	31365	53951	2498	II
III	100942	1790	1082	18219	42903	1117	III
IV	126495	957	1678	21793	55447	3068	IV
North of West Bank	5672	13	0	56	974	21	
I	1095	4	0	6	219	7	I
II	1071	2	0	43	208	8	II
III	1636	0	0	0	277	1	III
IV	1870	7	0	7	270	5	IV
Middle of West Bank	82055	545	2983	2831	12838	835	
I	23799	39	2478	261	2322	262	I
II	23391	128	312	888	4778	235	II
III	17069	51	36	576	3232	89	III
IV	17796	327	157	1106	2506	249	IV
Jerusalem	209751	1024	4816	54754	98909	4371	
I	39279	41	2257	7881	19302	657	I
II	66446	464	363	25414	27953	1300	II
III	44613	167	759	11955	19806	727	III
IV	59413	352	1437	9504	31848	1687	IV
South of West Bank	146718	1832	1868	23344	73435	2533	
I	24061	11	759	1552	12574	156	I
II	38487	7	746	5011	20829	951	II
III	37120	1556	283	5641	19375	300	III
IV	47050	258	80	11140	20657	1126	IV
Gaza Strip	1937	41	12	101	840	8	
I	620	0	2	9	278	3	I
II	447	12	2	9	183	4	II
III	504	16	4	47	213	0	III
IV	366	13	4	36	166	1	IV

2008

:7-2

Table 2-7: Percentage Distribution of Guests in Hotels by Nationality, Region and Quarter, 2008

Region/Quarter	Nationality					* No. of Hotels *	/
	U.S.A & Canada	Asia	Israel	Arab Countries	Palestine		
Palestinian Territory	7.1	8.5	5.7	0.7	13.2	87	
I	6.9	10.4	5.9	0.6	18.8	84	I
II	6.1	6.6	3.8	0.4	13.9	88	II
III	6.2	7.4	7.6	1.2	13.1	86	III
IV	8.9	10.0	6.1	0.5	8.8	87	IV
North of West Bank	4.9	0.8	6.1	2.0	67.3	7	
I	5.9	0.4	2.6	0.3	69.3	6	I
II	4.0	0.7	4.5	1.5	64.9	6	II
III	4.2	0.9	9.5	1.2	67.2	7	III
IV	5.5	1.2	6.1	4.1	67.6	7	IV
Middle of West Bank	10.9	9.8	2.8	2.4	49.7	23	
I	8.3	18.9	1.7	2.1	46.4	21	I
II	11.4	7.5	2.2	1.0	50.8	22	II
III	9.8	0.9	2.8	4.9	58.2	23	III
IV	14.7	9.2	5.1	2.1	44.5	23	IV
Jerusalem	8.7	5.9	7.2	0.1	0.0	29	
I	8.0	6.5	8.8	0.0	0.0	26	I
II	5.9	5.1	5.4	0.0	0.0	27	II
III	9.1	6.3	9.6	0.1	0.0	26	III
IV	11.9	6.0	6.3	0.2	0.1	29	IV
South of West Bank	2.7	11.9	5.3	0.5	9.5	21	
I	3.6	8.8	5.5	0.0	19.5	19	I
II	3.1	8.9	2.0	0.7	13.8	21	II
III	1.1	12.0	7.2	0.9	5.6	20	III
IV	3.1	15.7	6.4	0.2	3.9	21	IV
Gaza Strip	17.2	5.4	2.6	1.7	21.4	7	
I	12.9	6.4	2.7	1.9	29.0	12	I
II	18.3	5.4	2.5	1.8	25.1	12	II
III	21.6	4.5	2.4	1.4	14.5	10	III
IV	17.2	4.8	2.7	1.4	13.7	7	IV

* Represents No. of hotels at the end of the quarter

*

2008

:()7-2

Table 2-7(Cont.): Percentage Distribution of Guests in Hotels by Nationality, Region and Quarter, 2008

Region/Quarter	Total	Nationality					/
		Australia & New Zeland	Africa	Other European Count.	European Union	Central & South America	
Palestinian Territory	100	0.8	2.2	18.2	41.9	1.7	
I	100	0.1	6.2	10.9	39.0	1.2	I
II	100	0.5	1.1	24.1	41.6	1.9	II
III	100	1.8	1.1	18.0	42.5	1.1	III
IV	100	0.8	1.4	17.3	43.8	2.4	IV
North of West Bank	100	0.2	0.0	1.0	17.3	0.4	
I	100	0.4	0.0	0.5	20.0	0.6	I
II	100	0.2	0.0	4.0	19.4	0.8	II
III	100	0.0	0.0	0.0	16.9	0.1	III
IV	100	0.4	0.0	0.4	14.4	0.3	IV
Middle of West Bank	100	0.7	3.6	3.5	15.6	1.0	
I	100	0.2	10.4	1.1	9.8	1.1	I
II	100	0.5	1.4	3.8	20.4	1.0	II
III	100	0.3	0.3	3.4	18.9	0.5	III
IV	100	1.8	0.9	6.2	14.1	1.4	IV
Jerusalem	100	0.5	2.2	26.1	47.2	2.1	
I	100	0.1	5.7	20.1	49.1	1.7	I
II	100	0.7	0.5	38.2	42.2	2.0	II
III	100	0.4	1.7	26.8	44.4	1.6	III
IV	100	0.6	2.4	16.0	53.6	2.9	IV
South of West Bank	100	1.2	1.3	15.9	50.1	1.6	
I	100	0.0	3.2	6.5	52.3	0.6	I
II	100	0.0	1.9	13.0	54.1	2.5	II
III	100	4.2	0.8	15.2	52.2	0.8	III
IV	100	0.5	0.2	23.7	43.9	2.4	IV
Gaza Strip	100	2.1	0.6	5.2	43.4	0.4	
I	100	0.0	0.3	1.5	44.8	0.5	I
II	100	2.7	0.4	2.0	40.9	0.9	II
III	100	3.2	0.8	9.3	42.3	0.0	III
IV	100	3.6	1.1	9.8	45.4	0.3	IV

Table 2-8: Distribution of Guest Nights in Hotels by Nationality, Region and Quarter, 2008

Region/Quarter	Nationality					No. of Hotels *	/
	U.S.A & Canada	Asia	Israel	Arab Countries	Palestine		
Palestinian Territory	89031	103066	47581	5336	114416	87	
I	18050	19935	9424	1200	36167	84	I
II	24211	24956	9853	1154	36038	88	II
III	17491	23128	14822	1630	21460	86	III
IV	29279	35047	13482	1352	20751	87	IV
North of West Bank	590	146	520	317	7860	7	
I	142	10	30	13	1564	6	I
II	90	18	64	37	1683	6	II
III	124	22	267	82	2314	7	III
IV	234	96	159	185	2299	7	IV
Middle of West Bank	15834	12697	3956	2981	77659	23	
I	3133	5372	795	983	25041	21	I
II	5318	3396	972	406	22217	22	II
III	2814	939	632	993	15426	23	III
IV	4569	2990	1557	599	14975	23	IV
Jerusalem	58699	50645	29669	552	157	29	
I	11316	9587	6368	4	2	26	I
II	15301	12546	7651	31	0	27	II
III	12599	13952	8562	76	7	26	III
IV	19483	14560	7088	441	148	29	IV
South of West Bank	12358	39168	13277	1262	27096	21	
I	2754	4723	2124	23	8502	19	I
II	3252	8933	1140	657	11799	21	II
III	1574	8156	5347	465	3556	20	III
IV	4778	17356	4666	117	3239	21	IV
Gaza Strip	1550	410	159	224	1644	7	
I	705	243	107	177	1058	12	I
II	250	63	26	23	339	12	II
III	380	59	14	14	157	10	III
IV	215	45	12	10	90	7	IV

* Represents No. of hotels at the end of the quarter.

*

Table 2-8 (Cont.): Distribution of Guest Nights in Hotels by Nationality, Region and Quarter, 2008

Region/Quarter	Total	Nationality					/
		Australia & New Zealand	Africa	Other European Count.	European Union	Central & South America	
Palestinian Territory	1127286	7115	17170	205078	514097	24396	
I	215980	329	9062	24617	92854	4342	I
II	328284	1450	2417	70976	149745	7484	II
III	260159	3575	1815	62027	110678	3533	III
IV	322863	1761	3876	47458	160820	9037	IV
North of West Bank	12347	52	0	93	2699	70	
I	2306	22	0	6	485	34	I
II	2890	12	0	78	895	13	II
III	3424	0	0	2	612	1	III
IV	3727	18	0	7	707	22	IV
Middle of West Bank	150335	1062	3866	5697	23577	3006	
I	44877	175	3165	587	4793	833	I
II	45944	194	316	3106	8812	1207	II
III	27038	169	46	613	5197	209	III
IV	32476	524	339	1391	4775	757	IV
Jerusalem	591596	2745	9892	141242	284520	13475	
I	107148	121	4716	20337	51682	3015	I
II	180258	1195	754	56576	83578	2626	II
III	130735	614	1290	37168	53835	2632	III
IV	173455	815	3132	27161	95425	5202	IV
South of West Bank	365082	3119	3379	57811	199812	7800	
I	57600	11	1175	3651	34197	440	I
II	97833	11	1343	11199	55886	3613	II
III	97425	2730	470	24135	50301	691	III
IV	112224	367	391	18826	59428	3056	IV
Gaza Strip	7926	137	33	235	3489	45	
I	4049	0	6	36	1697	20	I
II	1359	38	4	17	574	25	II
III	1537	62	9	109	733	0	III
IV	981	37	14	73	485	0	IV

2008

:9-2

Table 2-9: Percentage Distribution of Guest Nights in Hotels by Nationality, Region and Quarter, 2008

Region/Quarter	Nationality					* No. of Hotels *	/
	U.S.A & Canada	Asia	Israel	Arab Countries	Palestine		
Palestinian Territory	7.9	9.1	4.2	0.5	10.1	87	
I	8.4	9.2	4.4	0.6	16.7	84	I
II	7.4	7.6	3.0	0.3	11.0	88	II
III	6.7	8.9	5.7	0.7	8.2	86	III
IV	9.1	10.9	4.2	0.4	6.4	87	IV
North of West Bank	4.8	1.2	4.1	2.6	63.7	7	
I	6.2	0.4	1.2	0.6	67.8	6	I
II	3.1	0.6	2.3	1.3	58.2	6	II
III	3.6	0.6	7.8	2.4	67.6	7	III
IV	6.2	2.6	4.2	5.0	61.7	7	IV
Middle of West Bank	10.5	8.4	2.6	2.0	51.7	23	
I	7.0	12.0	1.8	2.2	55.7	21	I
II	11.6	7.4	2.1	0.9	48.4	22	II
III	10.3	3.5	2.3	3.7	57.1	23	III
IV	14.2	9.2	4.8	1.8	46.1	23	IV
Jerusalem	9.9	8.6	5.0	0.1	0.0	29	
I	10.6	8.9	5.9	0.0	0.0	26	I
II	8.5	7.0	4.2	0.0	0.0	27	II
III	9.6	10.7	6.5	0.1	0.0	26	III
IV	11.1	8.4	4.1	0.3	0.1	29	IV
South of West Bank	3.4	10.7	3.6	0.3	7.4	21	
I	4.8	8.2	3.7	0.0	14.8	19	I
II	3.3	9.1	1.2	0.7	12.1	21	II
III	1.6	8.4	5.5	0.5	3.6	20	III
IV	4.3	15.5	4.2	0.1	2.9	21	IV
Gaza Strip	19.6	5.2	2.0	2.8	20.7	7	
I	17.4	6.0	2.7	4.4	26.1	12	I
II	18.4	4.6	1.9	1.8	24.9	12	II
III	24.8	3.8	0.9	0.9	10.2	10	III
IV	21.9	4.6	1.3	1.0	9.2	7	IV

* Represents No. of hotels at the end of the quarter.

*

2008

:() 9-2

Table 2-9 (Cont.): Percentage Distribution of Guest Nights in Hotels by Nationality, Region and Quarter, 2008

Region/Quarter	Total	Nationality					/
		Australia & New Zeland	Africa	Other European Count.	European Union	Central & South America	
Palestinian Territory	100	0.6	1.5	18.3	45.6	2.2	
I	100	0.2	4.1	11.4	43.0	2.0	I
II	100	0.7	0.7	21.5	45.6	2.2	II
III	100	1.4	0.7	23.8	42.5	1.4	III
IV	100	0.5	1.2	14.7	49.8	2.8	IV
North of West Bank	100	0.4	0.0	0.8	21.8	0.6	
I	100	1.0	0.0	0.3	21.0	1.5	I
II	100	0.4	0.0	2.7	31.0	0.4	II
III	100	0.0	0.0	0.1	17.9	0.0	III
IV	100	0.5	0.0	0.2	19.0	0.6	IV
Middle of West Bank	100	0.7	2.6	3.8	15.7	2.0	
I	100	0.4	7.1	1.3	10.6	1.9	I
II	100	0.4	0.7	6.8	19.1	2.6	II
III	100	0.6	0.2	2.3	19.2	0.8	III
IV	100	1.6	1.0	4.3	14.7	2.3	IV
Jerusalem	100	0.5	1.7	23.9	48.1	2.2	
I	100	0.1	4.4	19	48.3	2.8	I
II	100	0.7	0.4	31.4	46.3	1.5	II
III	100	0.5	1.0	28.4	41.2	2.0	III
IV	100	0.5	1.8	15.7	55.0	3.0	IV
South of West Bank	100	0.9	0.9	15.8	54.8	2.2	
I	100	0.0	2.0	6.3	59.4	0.8	I
II	100	0.0	1.4	11.4	57.1	3.7	II
III	100	2.8	0.5	24.8	51.6	0.7	III
IV	100	0.3	0.3	16.7	53.0	2.7	IV
Gaza Strip	100	1.7	0.4	3.0	44.0	0.6	
I	100	0.0	0.1	0.9	41.9	0.5	I
II	100	2.8	0.3	1.3	42.2	1.8	II
III	100	4.0	0.6	7.1	47.7	0.0	III
IV	100	3.8	1.4	7.4	49.4	0.0	IV

**Table 2-10: Average Length of Stay per Guest by Nationality, Region and Quarter, 2008-
(Nights/Guest)**

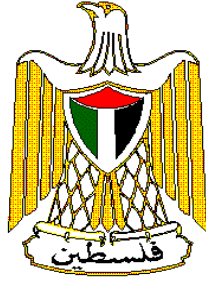
Region/Quarter	Nationality					* No. of Hotels *	/
	U.S.A & Canada	Asia	Israel	Arab Countries	Palestine		
Palestinian Territory	2.8	2.7	1.9	1.8	1.9	87	
I	2.9	2.2	1.8	2.2	2.2	84	I
II	3.1	2.9	2.0	2.1	2.0	88	II
III	2.8	3.1	1.9	1.3	1.6	86	III
IV	2.6	2.8	1.7	2.0	1.9	87	IV
North of West Bank	2.1	3.0	1.5	2.8	2.1	7	
I	2.2	2.5	1.1	4.3	2.1	6	I
II	2.1	2.3	1.3	2.3	2.4	6	II
III	1.8	1.6	1.7	4.3	2.1	7	III
IV	2.3	4.4	1.4	2.4	1.8	7	IV
Middle of West Bank	1.8	1.6	1.7	1.5	1.9	23	
I	1.6	1.2	1.9	1.9	2.3	21	I
II	2.0	1.9	1.9	1.7	1.9	22	II
III	1.7	6.1	1.3	1.2	1.6	23	III
IV	1.7	1.8	1.7	1.6	1.9	23	IV
Jerusalem	3.2	4.1	2.0	2.6	1.9	29	
I	3.6	3.8	1.8	1.3	1.0	26	I
II	3.9	3.7	2.1	1.5	0.0	27	II
III	3.1	4.9	2.0	2.0	7.0	26	III
IV	2.8	4.1	1.9	3.0	1.8	29	IV
South of West Bank	3.2	2.3	1.7	1.8	1.9	21	
I	3.1	2.2	1.6	2.9	1.8	19	I
II	2.7	2.6	1.5	2.4	2.2	21	II
III	4.0	1.8	2.0	1.4	1.7	20	III
IV	3.3	2.3	1.6	1.4	1.8	21	IV
Gaza Strip	4.6	3.9	3.2	7.0	4.0	7	
I	8.8	6.2	6.3	14.8	5.9	12	I
II	3.0	2.6	2.4	2.9	3.0	12	II
III	3.5	2.6	1.2	2.0	2.2	10	III
IV	3.4	2.5	1.2	2.0	1.8	7	IV

* Represents No. of hotels at the end of the quarter

*

Table 2-10 (Cont.): Average Length of Stay per Guest by Nationality, Region and Quarter, 2008-
(Nights/Guest)

Region/Quarter	Total	Nationality					/
		Australia & New Zeland	Africa	Other European Count.	European Union	Central & South America	
Palestinian Territory	2.5	2.1	1.8	2.5	2.7	3.1	
I	2.4	3.5	1.6	2.5	2.7	4.0	I
II	2.5	2.4	1.7	2.3	2.8	3.0	II
III	2.6	2.0	1.7	3.4	2.6	3.2	III
IV	2.6	1.8	2.3	2.2	2.9	2.9	IV
North of West Bank	2.2	4.0	0.0	1.7	2.8	3.3	
I	2.1	5.5	0.0	1.0	2.2	4.9	I
II	2.7	6.0	0.0	1.8	4.3	1.6	II
III	2.1	0.0	0.0	0.0	2.2	1.0	III
IV	2.0	2.6	0.0	1.0	2.6	4.4	IV
Middle of West Bank	1.8	1.9	1.3	2.0	1.8	3.6	
I	1.9	4.5	1.3	2.2	2.1	3.2	I
II	2.0	1.5	1.0	3.5	1.8	5.1	II
III	1.6	3.3	1.3	1.1	1.6	2.3	III
IV	1.8	1.6	2.2	1.3	1.9	3.0	IV
Jerusalem	2.8	2.7	2.1	2.6	2.9	3.1	
I	2.7	3.0	2.1	2.6	2.7	4.6	I
II	2.7	2.6	2.1	2.2	3.0	2.0	II
III	2.9	3.7	1.7	3.1	2.7	3.6	III
IV	2.9	2.3	2.2	2.9	3.0	3.1	IV
South of West Bank	2.5	1.7	1.8	2.5	2.7	3.1	
I	2.4	1.0	1.5	2.4	2.7	2.8	I
II	2.5	1.6	1.8	2.2	2.7	3.8	II
III	2.6	1.8	1.7	4.3	2.6	2.3	III
IV	2.4	1.4	4.9	1.7	2.9	2.7	IV
Gaza Strip	4.1	3.3	2.8	2.3	4.2	5.6	
I	6.5	0.0	3.0	4.0	6.1	6.7	I
II	3.0	3.2	2.0	1.9	3.1	6.3	II
III	3.0	3.9	2.3	2.3	3.4	0.0	III
IV	2.7	2.8	3.5	2.0	2.9	0.0	IV



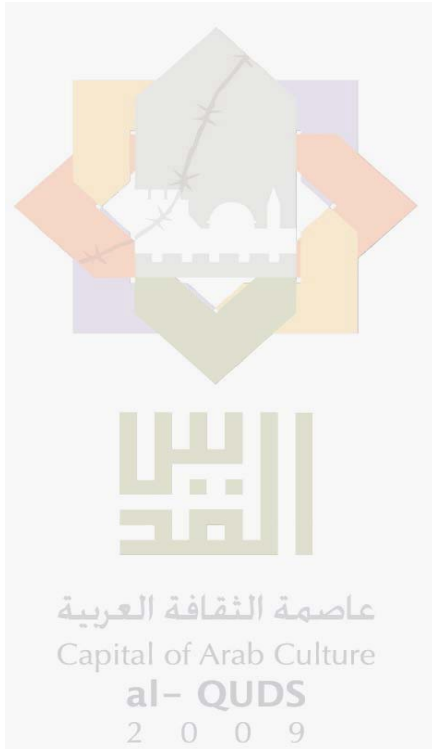
**Palestinian National Authority
Palestinian Central Bureau of Statistics**

**Hotel Activities in the Palestinian Territory
Annual Bulletin - 2008**

**Volume 14, Issue No. (5)
April, 2008**

Cover price 4 US\$

PAGE NUMBERS OF ENGLISH TEXT ARE PRINTED IN SQUARE BRACKETS.
TABLES ARE PRINTED IN THE ARABIC ORDER (FROM RIGHT TO LEFT)



This document is prepared in accordance with the standard procedures stated in the Code of Practice for Palestine Official Statistics 2006

© April, 2009
All rights reserved.

Suggested Citation:

Palestinian Central Bureau of Statistics, 2009. *Hotel Activities in the Palestinian Territory, (Annual Bulletin – 2008).* Ramallah – Palestine.

All correspondence should be directed to:

**Palestinian Central Bureau of Statistics
P.O.Box 1647, Ramallah, Palestine.**

Tel: (972/970) 2 242 6340

Fax: (972/970) 2 242 6343

E-Mail :diwan@pcbs.gov.ps

Web-Site: <http://www.pcbs.gov.ps>

Acknowledgement

The Palestinian Central Bureau of Statistics (PCBS) expresses to gratitude to all Palestinian hotels owners and managers who responded to the survey instrument, for their understanding during the fieldwork, which was truly remarkable and to all workers in this survey for their stock in the provision of information and data necessary for their commitment to implement this survey.

The funding for the Hotel Activity Survey 2008, was provided by the Palestinian National Authority (PNA) and the Core Funding Group (CFG) for 2008. CFG members include Representative Office of Norway to the PNA, Representative Office of the Netherlands to PNA and Swiss Agency for Development and Cooperation (SDC).

PCBS extends its deep thanks to the members of the Core Funding Group (CFG) for the financial support to implement this survey

Team Work

- **Report Preparation**
Rania Hassiba
 - **Maps Design**
Nibal Ismaeel
 - **Graphic Design**
Ahmad Sawalmeh
 - **Dissemination Standard**
Hanan Janajreh
 - **Preliminary Review**
Fathi Farasin
Mahmoud Abdal-rahman
 - **Final Review**
Mahmoud Jaradat
 - **Overall Supervision**
Dr. Luay Shabaneh
- PCBS President

Preface

The Palestinian tourism sector has great potential for becoming the main contributor to the Palestinian GDP. Tourism activities are, however, crippled by a multiplicity of internal and external factors which are not enabling this important economic activity to flourish.

PCBS has collected data on tourism activities since November 1995. However, due to reasons beyond our control, it was decided to limit these activities to the hotel activity.

PCBS is pleased to present the fourteenth annual bulletin on “Hotel Activities in the Palestinian Territory” which covers the statistics of hotel activity in the year 2008. PCBS is looking forward to expanding its activities to cover all branches of the tourism industry in the Palestinian Territory.

This report addresses the main indicators of hotel activity. These indicators include the number of operating hotels, number of rooms and beds, rooms and public facilities in the surveyed hotels, number of persons engaged in hotels, number of guest nights in the reference period, distribution of guests by nationality, and percent of beds occupancy and rooms occupancy.

It is hoped that the Hotels Survey conducted by PCBS comprises the first step towards a comprehensive statistical program that encompasses all aspects of tourism activities according to the latest international recommendations in this field.

April, 2009

**Luay Shabaneh, Ph D
President**

Table of Contents

Subject	Page
List of Tables	
List of Figures	
List of Maps	
Executive Summary	
Chapter One: Introduction	[19]
Chapter Two: Concepts and Definitions	[21]
Chapter Three: Main Findings	[23]
3.1. Distribution of Hotels During 2008	[23]
3.2. Employment During 2008	[23]
3.3. Number of Guests During 2008	[23]
3.4. The Impact of Israeli Measures on the Hotel Activities	[24]
Chapter Four: Methodology	[25]
Chapter Five: Data Quality	[27]
Tables	47

List of Tables

Table	Page
Table 1-1: Main Indicators for Hotel Activities in the Palestinian Territory by Month, 2008	49
Table 1-2: Distribution of Hotels, Rooms, and Beds by Categories of Number of Rooms, 2008	49
Table 1-3: Number of Persons Engaged in Hotels by Type of Work, Sex and Month, 2008	50
Table 1-4: Distribution of Guests in Hotels by Nationality and Month, 2008	51
Table 1-5: Percentage Distribution of Guests in Hotels by Nationality and Month, 2008	52
Table 1-6: Distribution of Guest Nights in Hotels by Nationality and Month, 2008	53
Table 1-7: Percentage Distribution of Guest Nights in Hotels by Nationality and Month, 2008	54
Table 1-8: Average Length of Stay per Guest in Hotels by Nationality and Month, 2008 - (Nights/Guest)	55
Table 2-1: Main Indicators for Hotel Activities in the Palestinian Territory by Region and Quarter, 2008.	56
Table 2-2: Average Number of Hotel Rooms by Capacity, Region and Quarter, 2008	58
Table 2-3: Number of Hotels and Rooms by Facilities and Region as of December, 2008	59
Table 2-4: Public Utilities Available in Hotels by Region as of December, 2008	59
Table 2-5: Average Number of Persons Engaged in Hotels by Type of Work, Sex, Region and Quarter, 2008	60
Table 2-6: Distribution of Guests in Hotels by Nationality, Region and Quarter, 2008	61
Table 2-7: Percentage Distribution of Guests in Hotels by Nationality, Region and Quarter, 2008	63
Table 2-8: Distribution of Guest Nights in Hotels by Nationality, Region and Quarter, 2008	65
Table 2-9: Percentage Distribution of Guest Nights in Hotels by Nationality, Region and Quarter, 2008	67
Table 2-10: Average Length of Stay per Guest by Nationality, Region and Quarter, 2008 - (Nights/Guest)	69

List of Figures

Figure	Page
Figure 1: Percentage Distribution of Operating Hotels by Region as of December, 2008	[23]
Figure 2: Percentage Distribution of Guests by Nationality, 2008	[24]

List of Maps

Map		Page
Map 1:	Number of operating Hotels in the Palestinian Territory by Region, 2008	29
Map 2:	Number of Hotel Guests in the Palestinian Territory by Region, 2008	33
Map 3:	Hotel Rooms Occupancy Percent in the Palestinian Territory by Region, 2008	37
Map 4:	Average Number of Persons Engaged in Hotels in the Palestinian Territory by Sex and Region, 2008	41

Executive Summary

Results revealed that the total number of hotels in the Palestinian Territory is 117 hotels, including the temporary closed hotels; there were 87 operating hotels in December 2008, with the average number of rooms at 4,346 rooms, and the average number of beds at 9,466 beds.

- During the year 2008, the total number of guests in the Palestinian Territory hotels reached 446,133, an increase of 40.8% compared with the year 1999.
- Total number of nights was 1,127,286 during the year 2008, and increase of 25.9% compared with the year 1999.
- The number of workers in the hotels was 1,345, of which 1,164 are males and 181 are females. The number of workers declined by 1.3% during the year 2008 compared with the year 1999.
- Average occupancy of rooms was 1,560.7, an increase of 17.1% during the year 2008 compared with the year 1999.
- The percentage of rooms occupancy was 35.9%, an increase of 7.2% during the year 2008 compared with the year 1999.
- The average length of stay in the Palestinian hotels was 2.5 nights per guest during the year 2008.

Chapter One

Introduction

PCBS conducts a hotel survey which aims at producing a comprehensive database on hotel activities in the Palestinian Territory. The ultimate goal is to compile and maintain data on the tourism industry. By this exercise, we hope eventually to be able to produce statistics regularly on the basic indicators recommended and adopted by World Tourism Organization (WTO) and the European Union (EU). In the mean time, this initiative in the present format aims to fill the existing gaps on the basic statistics of the hotel activities, which might help to provide data necessary for policy making to promote this industry in the Palestinian Territory.

This survey is conducted on a monthly basis to identify the changes in this sector during all seasons of the year. All hotels operating in the Palestinian Territory are covered. This periodic survey aims at establishing a time series including variables and indicators related to hotel activities.

Objectives

Through this survey program, we hope to provide a continuous flow of data on:

1. Number of operating hotels and their number of rooms and beds.
2. Rooms and public facilities in the surveyed hotels.
3. Number of persons engaged in hotels.
4. Number of guest nights in the reference period.
5. Number of guests by nationality.
6. Rates of bed occupancy and room occupancy.

Chapter Two

Concepts and Definitions

This section presents the main concepts and definitions used to derive the main indicators of tourism statistics. These concepts and definitions are based on international recommendations in the field of tourism statistics, and they are the same in all subjects in Palestinian Central Bureau of Statistics. The main concepts and expressions mentioned in this report were as follows:

Hotel:

It is defined as an accommodation establishment providing overnight lodging for the visitors in a room or unit. It should hold a number of persons exceeding that of an average single family. The establishment must be under one management, and provides different facilities and services to visitors.

Hotel Workers:

It refers to all persons working in the hotel on full or part time bases including owners and paid or unpaid household members.

Number of Rooms:

It refers to the furnished rooms for the use of guests. Such rooms might be single, double, triple, or quadruple. Rooms involving more than four beds were classified under (others) in the questionnaire. As for the suite, it is usually comprised of one bedroom or more, a living room and private toilet facilities.

Available Beds and Rooms:

It refers to beds and rooms, which are ready for use during the reference period. Closed rooms for maintenance or repairs are excluded.

Guests:

It refers to visitors staying in the hotels and using their facilities in return for a certain charge. Records of new guests are based on the number of visits regardless whether it's the same person or different.

Number of Guest Nights:

Number of beds booked for hotel guests. Such beds are considered as occupied whether they were actually used or not. It is measured by guest night unit.

Room Occupancy:

Number of booked and paid rooms. Such rooms are considered occupied whether they were actually used or not.

Bed Occupancy:

Number of booked and paid beds. Such beds are considered occupied whether they were actually used or not.

Average (rooms, beds) Occupancy:

It is defined as the total number of occupied (rooms, beds) divided by number of days.

Average Length of Stay:

Represents the total of guest nights by nationality divided by number of guests of the same nationality.

Percentage of (rooms, beds) Occupancy:

It is defined as the average of (rooms, beds) occupancy divided by available (rooms, beds) multiplied by one hundred.

North of West Bank Region:

Jenin, Tubas, Tulkarm, Nablus, Qalqiliya, and Salfit governorates.

Middle of West Bank Region:

Ramallah and Al-Bireh, Jericho and Al-Aghwar governorates.

Jerusalem Region:

Jerusalem governorate.

South of West Bank Region:

Bethlehem and Hebron governorates.

Gaza Strip:

Gaza North, Gaza, Deir Al-Balah, Khan Yunis and Rafah governorates.

Main Findings

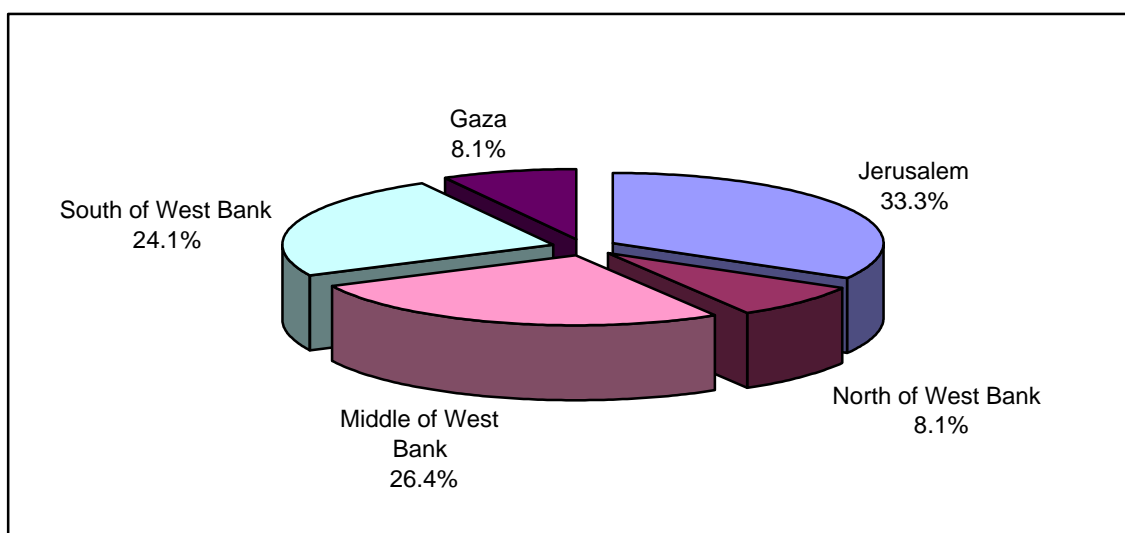
3.1 Distribution of Hotels During 2008

The total number of hotels in the Palestinian Territory is 117 hotels, including the temporary closed hotels. There are 87 operating hotels in 2008, with average number of rooms was 4,346 and average number of beds was 9,466 beds.

The operating hotels in the Palestinian Territory are distributed as follows:

- North of West Bank: 7 hotels including 118 rooms comprising 267 beds.
- Middle of West Bank: 23 hotels including 957 rooms comprising 2,192 beds.
- Jerusalem Region: 29 hotels including 1,315 rooms comprising 3,052 beds.
- South of West Bank: 21 hotels including 1,553 rooms comprising 3,249 beds.
- Gaza Strip: 7 hotels including 403 rooms comprising 706 beds..

Figure (1): Percentage Distribution of Operating Hotels by Region as of December, 2008



3.2 Employment During 2008

The number of persons employed in the hotels is 1,345. The distribution by type of work and sex as follows:

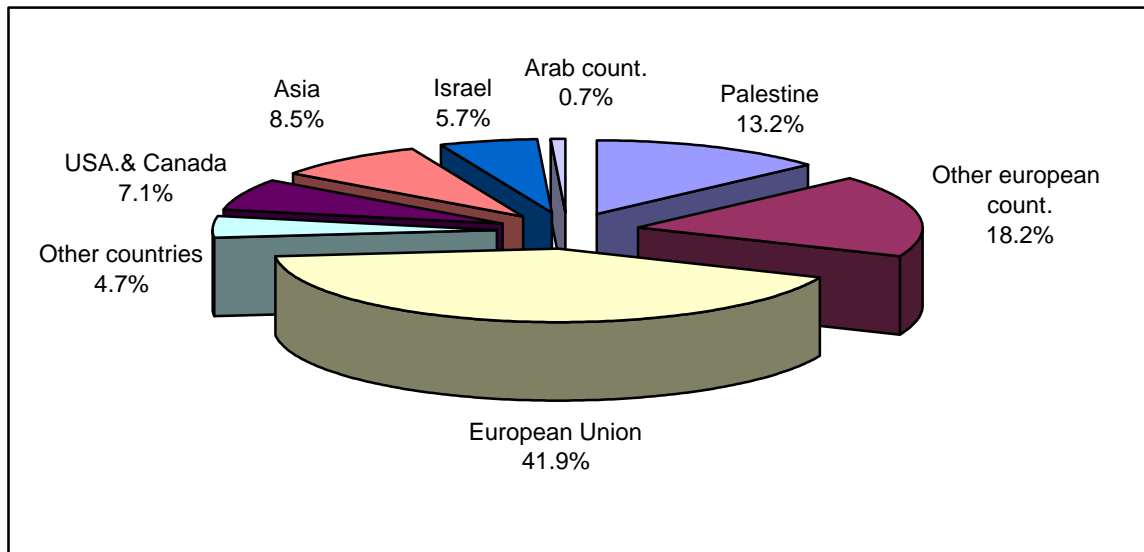
- 273 administrative staff of which 223 are males and 50 are females.
- 1,072 services workers of which 941 are males and 131 are females.

3.3 Number of Guests During 2008

During the year 2008, the total number of guests in Palestinian hotels was 446,133 persons, of which 13.2% were Palestinian guests, and 41.9% were from European Union countries.

The percentage distribution of guests by nationality is as in the figure below.

Figure (2): Percentage Distribution of Guests by Nationality, 2008



3.4 The Impact of Israeli Measures on the Hotel Activities

The data for this publication was collected for the year 2008. Tourist activities for the Palestinian hotels during the years (2000-2008) can be compared with the year 1999 to reveal the effect on hotel tourism of Israeli measures after the Israeli siege and closure on the Palestinian Territory.

The following table indicates that there was an increase in the number of guests and in the number of guest nights in comparison with the year 1999, of 40.8% and 25.9% respectively.

The reduction was passed away in the year 2008, which reflects an improvement in these indicators during the period.

Percentage Changes of Hotel Indicators During (2000, 2002, 2004, 2006, 2008) Compared with 1999

The Indicator	Value 2008	Percentage change (%)				
		2000	2002	2004	2006	2008
Number of operating hotels	87	16.5	-20.9	-12.1	-13.2	-5.5
Average number of workers	1,345	76.0	-11.9	-10.7	-18.8	-1.3
Number of guests	446,133	5.9	-83.8	-68.4	-52.1	40.8
Number of guest nights	1,127,286	13.5	-81.1	-70.0	-57.2	25.9
Average occupancy of rooms	1,560.7	11.1	-77.3	-66.5	-53.8	17.1
Average occupancy of beds	3,088.5	13.6	-81.1	-70.0	-57.2	25.9
Percentage occupancy of rooms %	35.9	0.0	-69.9	-59.7	-55.5	7.2
Percentage occupancy of beds %	32.6	-2.3	-76.6	-66.3	-58.7	7.6

Chapter Four

Methodology

- **Survey Questionnaire**

The questionnaire was designed according to international standards and recommendations. The Higher Council for the Arab Tourist Industry and the Arab Studies Society both contributed to the questionnaire design. The questionnaire was designed to provide hotel identification data, employed persons by type of work and sex, number of rooms and beds, number of guests, nationality, and occupancy of rooms and beds. The questionnaire was thoroughly updated as a result of a field test, November-December 1995, and is subject to continuous revision; the survey questionnaire is available on PCBS website.

- **Coverage**

The survey frame was based on the Establishments Census conducted by the PCBS in 2004. This frame undergoes continuous updating, adding newly established hotels and eliminating closed ones. Hotels which have ceased operations due to maintenance or repair activities are not surveyed until they become functional again, in view of the impact of such activities, and the small number of hotels operating in Palestine.

- **Field Work**

The field workers taking part in the implementation of the survey are selected from experienced staff. Before being recruited, field workers undergo theoretical and practical training to enable them to carry out their duty properly. Field work activities include data collection, developing fieldwork forms and manuals and other needed tools. Regular data collection rounds are made to collect data from respondents and in order to ensure precision and accuracy of filled-in data, particularly regarding guests.

- **Office Work Activities**

The completed questionnaires are delivered for office editing after undergoing necessary field editing. Any faulty questionnaires are returned back to the field. Upon completion of data editing, the questionnaires undergo a process of verification and coding in accordance with the coding manuals.

- **Tabulation and Data Processing**

After being edited, verified and coded, the data is entered using a special designed data-entry program. Such a program is developed in accordance with pre-designed tables and in a way that fulfills all survey objectives. Before initiating data entry, necessary theoretical and practical training sessions are offered to data entry operators, who are also provided with an instruction manual. The entered data undergoes electronic editing based on standard editing roles. In addition, random quality checks is undertaken to ensure error free data entry. Accordingly, a list of faulty questionnaires is prepared, if needed.

After completing data entry, editing and cleaning, the intended tables are drawn up according to the pre-designed forms.

Chapter Five

Data Quality

- Coverage: includes hotels, variables, registration period, and periodic survey.
- Completeness: the availability of the data and its completeness for most of the indicators of the hotels activities and how consistent it is with the data of the hotels administration registrations, with the response rate of 94%.
- Validity: serial editing operations are done; the questionnaires are edited in the field and in the office, then compared with data of the previous month; the questionnaires that contain mistakes are returned to the hotels for modification.

The Fieldwork and Office Operations Notes

Change in the number of hotels, rooms, and beds during the year of 2008 are due to:

- There were a number of hotels depends on the work to carry out repairs and maintenance, then they are not included in the findings result in those months.
- Non resondent hotels were not considered in this report.
- Many hotels were included although they did not receive any visitors in some months.
- Data includes all establishments that practice any hotel activity, whether it is categorized or not.

Comparing the Quarterly Reports with the Annual Bulletin of 2008:

The results show some differences between the annual bulletin and the quarterly reports due to the delay of questionnaires from some hotels in the field work; these data are included in the annual bulletin.

The table below shows the main differences:

Comparing the results of annual bulletin with quarterly reports, 2008

Quarter	No. of Hotels	Average No. of Rooms	Average No. of beds	No. of Guests	No. of Guests nights	
Annual bulletin	I	84	4,157	9,051	88,854	215,980
	II	88	4,367	9,478	129,842	328,284
	III	86	4,482	10,010	100,942	260,159
	IV	87	4,378	9,323	126,495	322,863
Quarterly reports	I	82	4,049	8,885	86,684	207,809
	II	82	4,049	8,885	126,633	323,892
	III	85	4,737	9,817	95,709	238,437
	IV	85	4,301	9,159	117,545	309,638