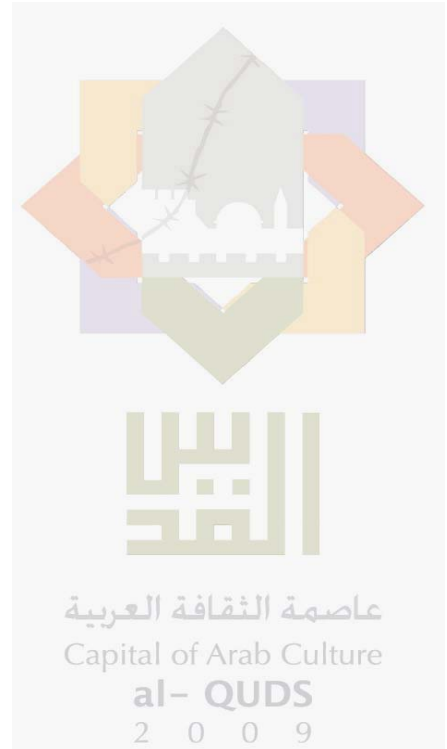
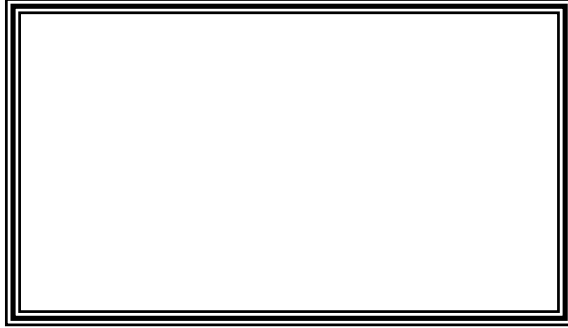


(12 )

-

**2009 -**

**2009 /**



© 1430 - 2009 .

:

- 2009 - 2009 . (12 ) .

:

1647 . .

(970/972) 2 242 6340 :

(970/972) 2 242 6343 :

diwan@pcbs.gov.ps :

http://www.pcbs.gov.ps :

:

:

:

:

(CFG) 2008 - " (PNA) 2009  
.(SDC)  
(CFG)

"

"

1997

:

2009

**21**

:

21

23

24

24

24

25

25

26

28

29

30

30

31

**32**

**33**

:

33

35

36

36

37

37

38

39

39

39

40

40

42 ( )

42

44

44

44 ( )

45

46

**48**

**49** :

50

50

51

52

52

54

56

56

57

57

59

60

**62**

**63** :

64

65

66

66

67

68

70

70

71

**72**

**73**

:

74

75

76

77

77

77

78

80

80

83

85

85

86

87

87

87

88

**90**



---

:

:

:

:

( )

( )

:

:

1,000

:

.( ) 1000

:

1000

( )

:

1,000

:

:

:

:( )

(SD 2-)

(SD 3-)

:( )

(SD2-)

(SD3-)

:( )

(SD 2-)

(SD 3-)

:

( )

:

:( )

:( )

:

:(BCG)

( )

(Sabin) (OPV)

:

( )

6

:

4

6

12

(IPV) (Salk)

9

:(Measles)

:(DPT)

:

4

6

4

6

12

( )

12-23

:

:

6-0

:

:

HIV

1. The first part of the document discusses the importance of maintaining accurate records of all transactions and activities. It emphasizes that proper record-keeping is essential for transparency and accountability, particularly in the context of public administration and government operations. This section also highlights the role of technology in streamlining record management processes and reducing the risk of errors or data loss.

2. The second part of the document focuses on the implementation of robust internal controls and risk management frameworks. It outlines the need for regular audits and assessments to identify potential vulnerabilities and ensure that organizational policies are effectively enforced. This section also discusses the importance of employee training and awareness programs to foster a culture of compliance and ethical behavior.

3. The third part of the document addresses the challenges of data security and privacy protection in the digital age. It provides guidance on how to safeguard sensitive information from unauthorized access, disclosure, or misuse. This includes recommendations for implementing strong encryption protocols, access controls, and incident response plans to mitigate the impact of potential security breaches.

4. The fourth part of the document explores the role of stakeholder engagement and communication in achieving organizational goals. It stresses the importance of maintaining open lines of communication with all relevant parties, including employees, customers, and the public. This section also discusses the benefits of transparency and how it can help build trust and credibility for the organization.

5. The fifth and final part of the document provides a summary of the key findings and recommendations. It reiterates the importance of a holistic approach to organizational management, one that integrates financial, operational, and ethical considerations. The document concludes by encouraging leadership to take proactive steps to address the identified challenges and opportunities, ensuring the long-term success and sustainability of the organization.

( )

)

.(2006

:

:

:  
: .1

: .2

: .3

: .4

:

:

:

:



25	( )	:	:(1-1)
	2006		
26	(19-15)	:	:(2-1)
		2006	
28	(19-15)	:	:(3-1)
		2006	
28	( )	:	:(4-1)
29	(49-15)	:	:(5-1)
		2006	
		:	
34	2006-2005	:	:(1-2)
36	( )	:	:(2-2)
		2006 2004	
41	( 23-12)	:	:(3-2)
	2006	( )	
43		( )	:(4-2)
	2006		
		:	
65	(17-10)	:	:(1-4)
		2006 2004	
69	(17-10)	:	:(2-4)
		2006	
69	(17-10)	:	:(3-4)
		2006	
		:	
75	2007	:	:(1-5)



75		2007		:(2-5)
76	2008		(17-10)	:(3-5)
78			(17-10)	:(4-5)
79	2008		(17-10)	:(5-5)

			:
22	2008		:(1-1)
23		2008-1997	:(2-1)
24	2015-1997		:(3-1)
27		19-15	:(4-1)
			:
38			:(1-2)
	/		
		2006	
40			:(2-2)
		2006	
42		( )	:(3-2)
		2006	
			:
53			:(1-3)
54			:(2-3)
55			:(3-3)
55			:(4-3)
58			:(5-3)
			:
65	2004	(17-10)	:(1-4)
			2006
67	2004	18	:(2-4)
			2006

---

.	:
(1 - )	

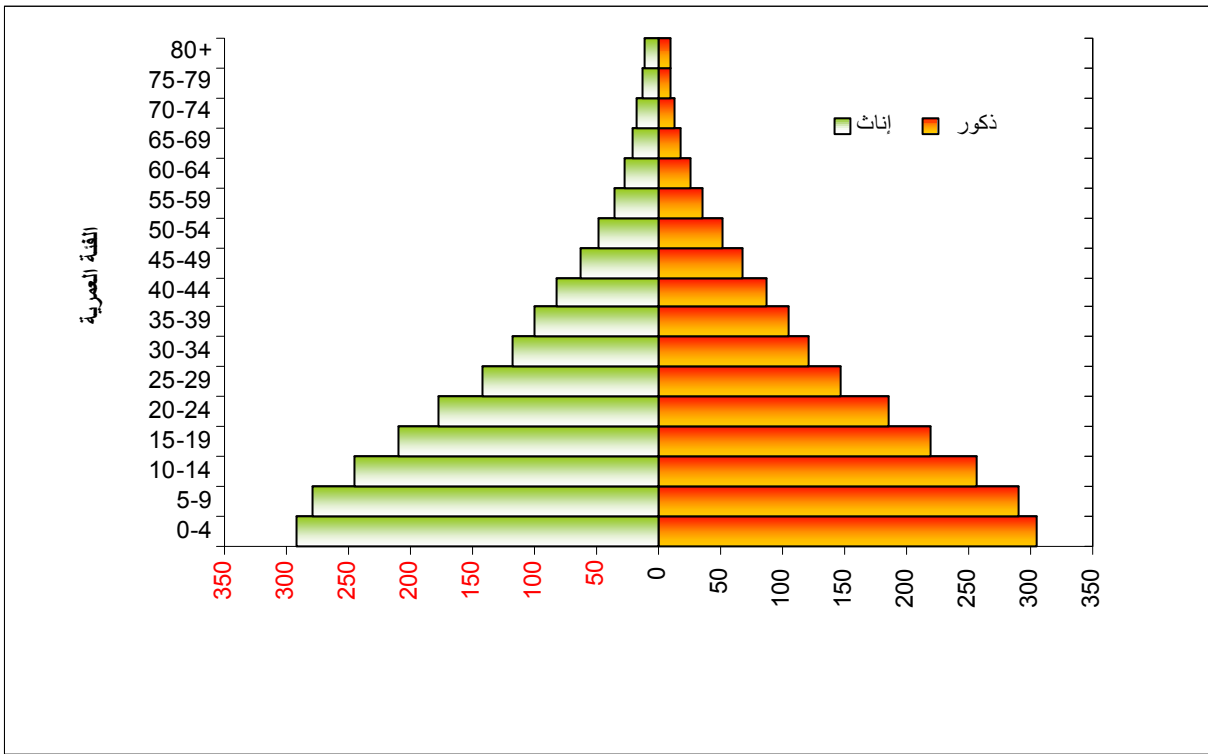
2010-2004

1989

.1997	%29.9	2007
2.3	3,825,512 2008	
(%37.7)	1.4	(%62.3)
	.1997	2,895,683 2008
	2008	
		(%42.5)

2008

:(1-1)



- . ( )

.2009

2008 %2.8

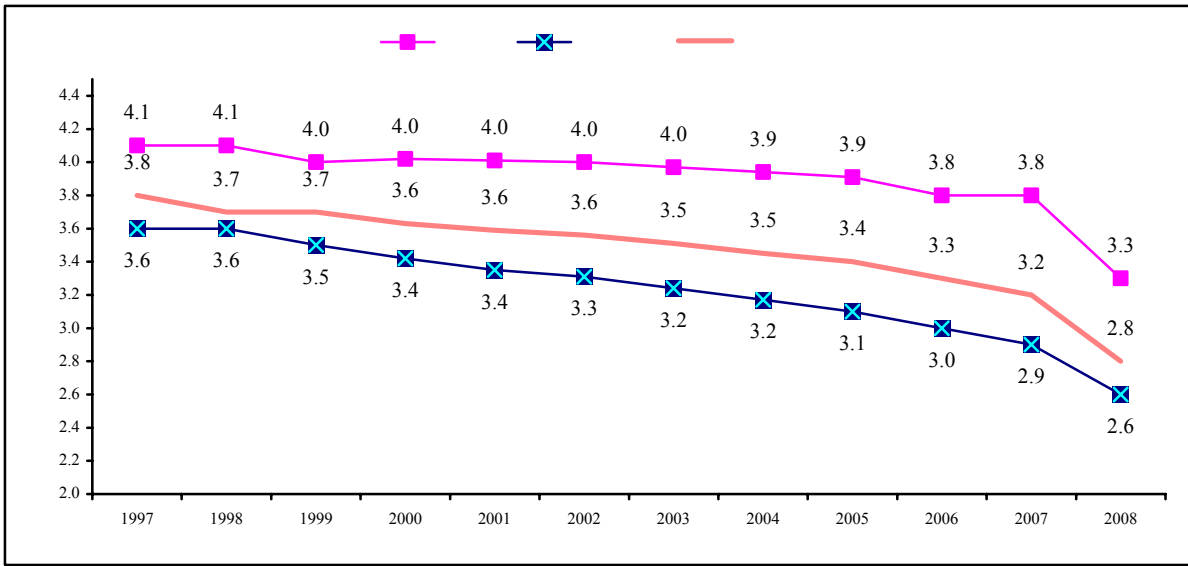
.%1.4

%3.3

%2.6

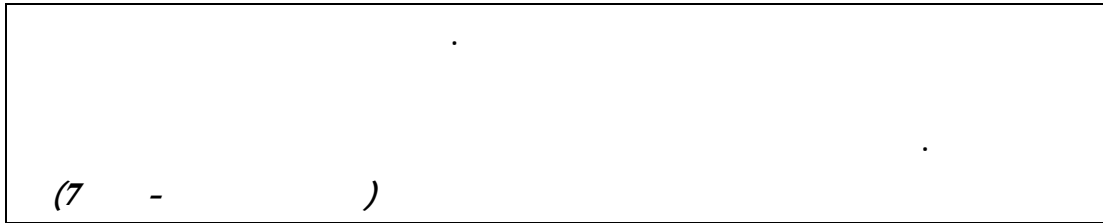
2008-1997

:(2-1)



. ( ) - .

.2009



(7 - )

:

1.3

.2008

2.1

2008

32.5

1997

42.7

35.5

30.6

.2008

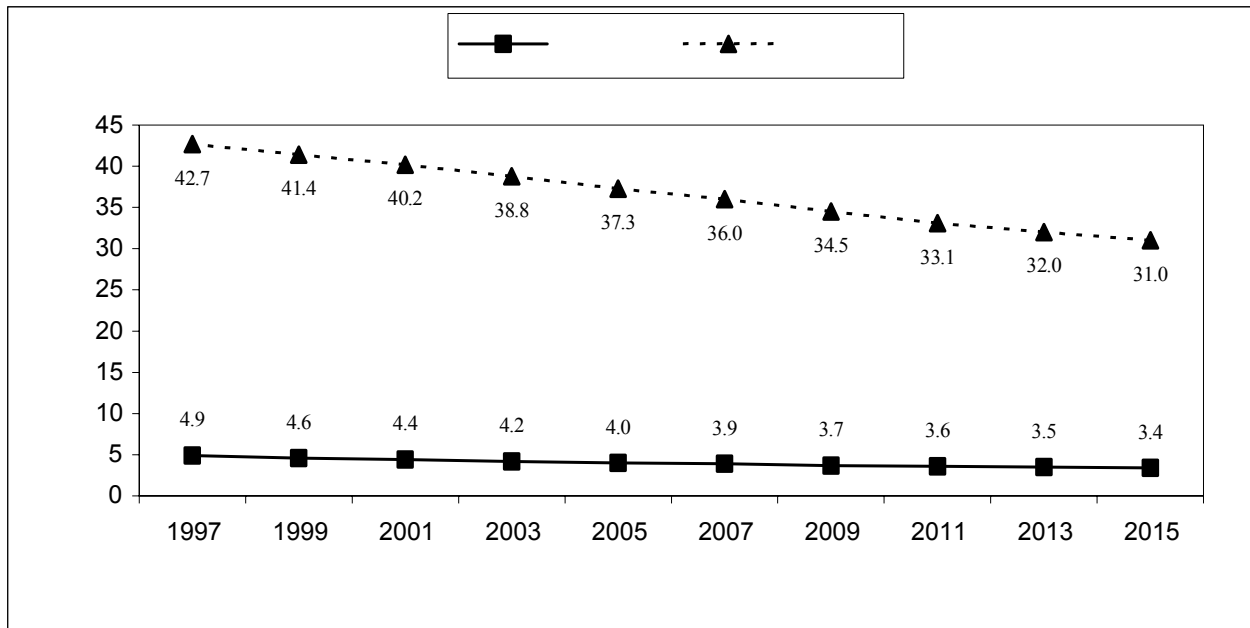
(24 - )

27.7

4.0 4.4 1968 19.6  
2008

2015-1997

:(3-1)



.2008

2007

23.0

18.0

1997

24.6

19.4

19.6 2007 1997  
 25.2 19.2  
 2007 24.0  
 26.4 23.8 " "  
 23.5 16.9  
 %1.5 %29.2 2007  
 %0.6 %15.6  
 %0.9 %13.6

( ) (1-1)

2006  
 4.5

2004

( ) :(1-1)

**2006**

2006			2007			
56.2	37.5	53.2	60.6	41.5	49.0	19-15
230.0	222.6	216.3	242.9	207.2	220.4	24-20
270.9	242.2	237.3	273.6	227.8	244.0	29-25
225.2	205.6	203.3	241.1	190.9	207.4	34-30
147.4	131.3	124.9	161.8	115.0	130.5	39-35
62.6	43.4	43.7	64.2	37.4	46.5	44-40
4.2	3.7	5.3	7.2	3.4	4.6	49-45
<b>5.0</b>	<b>4.4</b>	<b>4.4</b>	<b>5.3</b>	<b>4.1</b>	<b>4.5</b>	

2006

2007

(19-15)

-

18

( )  
2004

19-15

19-15

(2-1)

%1.7

%4.3

(19-15)

:(2-1)

2006

0.0	0.3	0.0	0.4	0.0	0.3	15
1.3	1.6	0.7	0.4	0.9	0.8	16
4.9	2.6	2.0	1.6	3.1	2.0	17
8.9	2.7	4.9	3.4	6.5	3.1	18
17.0	5.0	13.1	2.1	14.6	3.2	19
<b>5.6</b>	<b>2.2</b>	<b>3.5</b>	<b>1.4</b>	<b>4.3</b>	<b>1.7</b>	

2006

2007



2006 2000

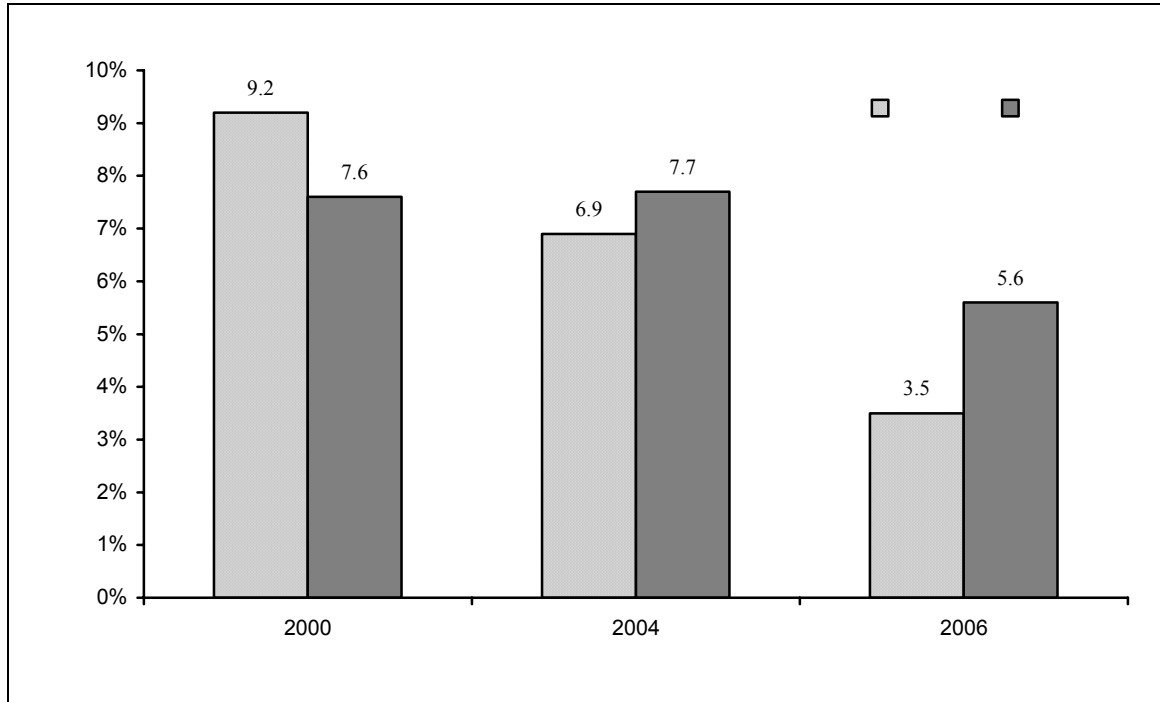
(4-1)

2000

2006

19-15

:(4-1)



2006 2000

15

(3-1)  
(%2.6)

.(%5.2)

19-  
(%4.2)

(19-15)

:(3-1)

2006

0.0	0.0	0.0	0.0	0.0	0.6	15
0.7	1.4	0.4	0.0	1.3	1.1	16
4.0	1.3	1.7	0.9	3.6	3.1	17
3.7	0.9	3.8	2.7	8.5	3.6	18
15.9	3.7	10.1	1.3	15.9	3.9	19
<b>4.2</b>	<b>1.4</b>	<b>2.6</b>	<b>0.8</b>	<b>5.2</b>	<b>2.3</b>	

- .2006

.2007

33.7 2006 28.5 2006

2004

( 29.3)

.2006 ( 27.2)

( )

:(4-1)

<b>2006</b>	<b>2004</b>	<b>2000</b>	
28.5	33.7	33.0	
29.3	34.7	34.1	
27.2	32.3	31.2	

- .2006

.2007

(49-15) %81.4 2006  
 %11.6 %5.9

%76.8 %83.9  
 %14.3 %10.1

40  
 -45) ( ) ( ) (49)

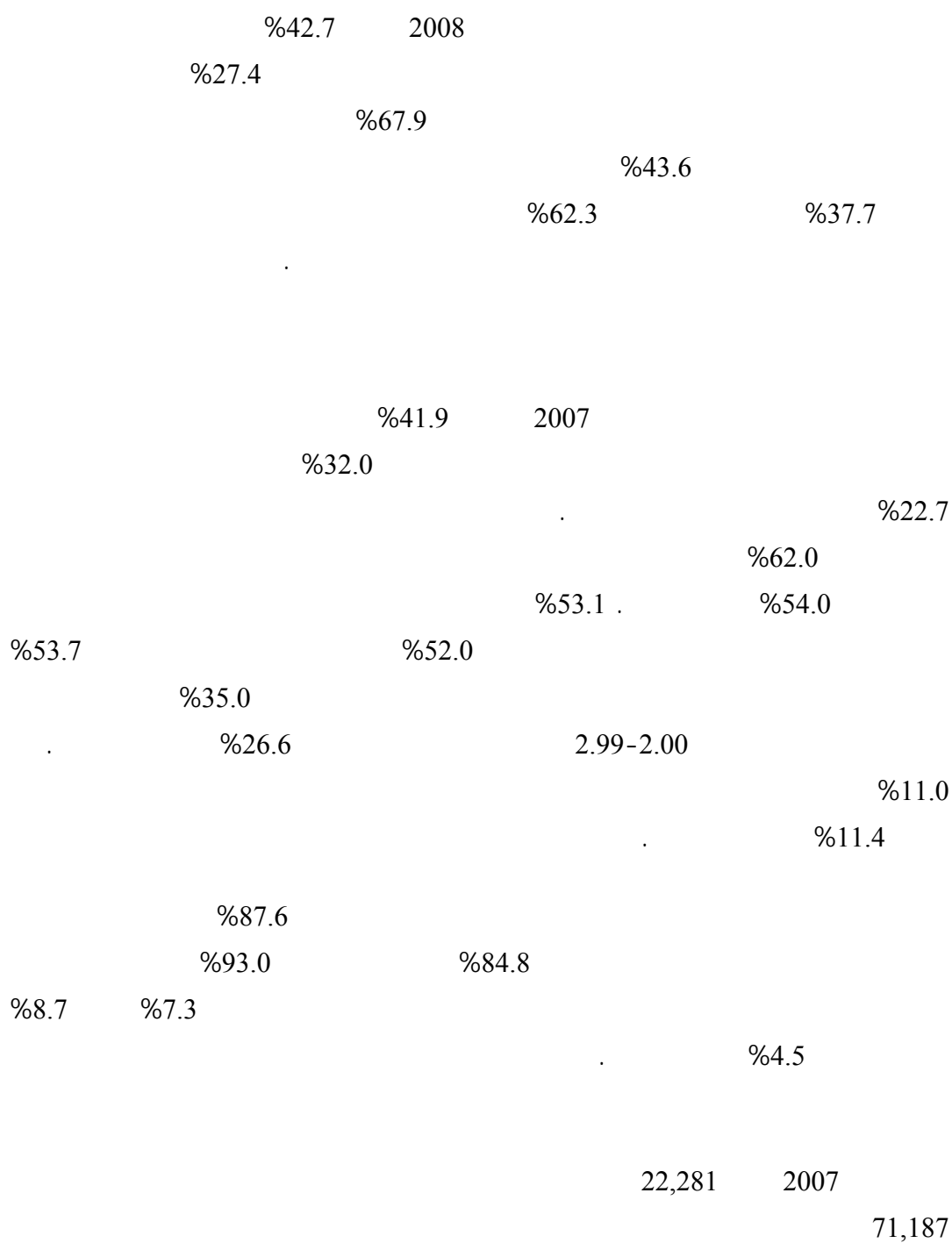
(49-15) : (5-1)

2006

	/				
<b>100</b>	2.0	16.5	4.7	76.8	19-15
<b>100</b>	1.2	11.8	5.6	81.4	24-20
<b>100</b>	0.6	10.3	4.8	84.3	29-25
<b>100</b>	1.0	10.1	5.9	83.0	34-30
<b>100</b>	1.2	12.1	5.6	81.1	39-35
<b>100</b>	1.4	10.9	7.6	80.1	44-40
<b>100</b>	2.1	14.9	7.0	76.0	49-45
<b>100</b>	<b>1.1</b>	<b>11.6</b>	<b>5.9</b>	<b>81.4</b>	

.2006

.2007



	1997	2,895,683				▪
		2.3		3,825,512	2008	
.2008		(%37.7)		1.4	(%62.3)	
						▪
	32.5		1997		42.7	
					.2008	
		27.7				▪
	4.0	4.4	1968		19.6	
			.2008			
	1997					▪
24.6		19.4		23.0		
					.2007	
						▪
%1.5				%29.2	2007	
						▪
		17			19 -15	
			19-15			▪
				%1.7	%4.3	
( 29.3)						▪
				.( 27.2)		
-15)	%81.4		2006			▪
					(49	
		%11.6		%5.9		
					%62.0	▪
				%54.0		

		<b>.2008</b>	-
	.	-	<b>.2007</b>
2006		<b>.2007</b>	-
	.	-	.
	.	<b>.2007</b>	-
	.	-	( )
2004		<b>.2005</b>	-
	.	-	.

---

(1-24 - )

( )

) ( )  
(

24

2015 1990

2006

) ( 28 )

-1990 ( ) ( 11

25 27 2006

2006 2005 18.1

7.5

**2006-2005**

**:(1-2)**

( 4-1)				
<b>28.2</b>	<b>2.9</b>	<b>25.6</b>	<b>7.5</b>	<b>18.1</b>
30.3	3.0	27.3	6.0	21.3
26.3	2.7	23.7	9.2	14.5
26.0	2.8	23.2	6.9	16.3
32.0	3.0	29.1	8.4	20.7

.2006

.2007



2007

2007

(%34.7)

(%13.4)

(%16.1)

2004 (%4.3)

(%18.3) (%16.0)

(%7.8) (%8.3)

(%36.2) ( )

2007

.2004 (%34.6) (%23.5)

%8.3

.2007 %8.1 2004

.%6.1 2007 2004

%99.1

**2007**

%44.1 2007 ( )  
 . (%12.8)

2006 %11.8 2007 %4.9  
 2006 %43.0 2007 %12.8  
 .2006 %6.9 2007 %4.4

%9.9 2004  
 %10.2 2006 ( )

2006 %2.9 2004 %4.9 ( )  
 %1.4 2004 %2.8 ( )

( ) .2006  
 :(2-2)

**2006 2004**

( )		)		)	
2006	2004	2006	2004	2006	2004
1.4	2.8	10.2	9.9	2.9	4.9
1.7	3.4	7.9	8.8	3.2	4.8
1.2	1.8	13.2	11.4	2.5	4.9
1.4	3.0	10.4	9.3	2.7	4.7
1.5	2.6	10.0	10.5	3.1	5.1

.2004- .2005  
 .2006 .2007

2006

%14.1

.(%13.5)

(%14.5)

/

73.0

.%69.7

%76.1

%

%38.7

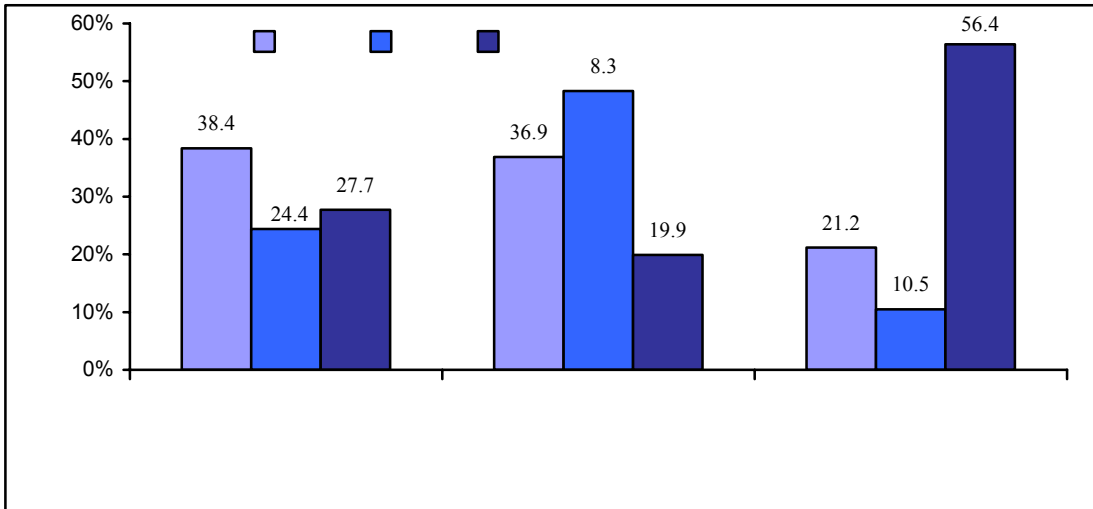
%52.5

%56.4

:(1-2)

2006

/



.2006

.2007

:

%95.9

%45.6

%69.9

%70.1

%80.8

%63.0

%39.4

%49.7

6

2

2007/1/20

2006/11/1

%11.8

%8.0

%7.9

( 23-0)

( 24)

.%17.6 %11.4  
/ %37.9  
%35.9  
%30.2 %33.5  
%24.8 %64.5  
.( %32.2 %30.2

(24-2- h )

%97.5 2006

%9.0 (%65.0)

12

2004

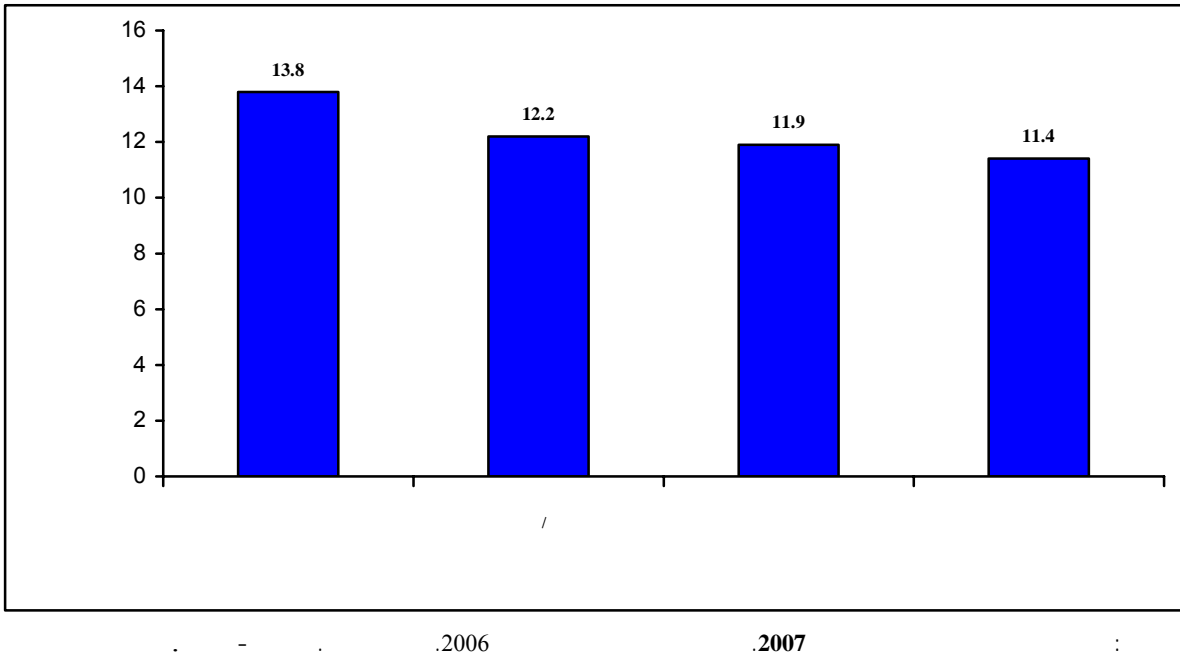
10.9 2000

2006

13.2

:(2-2)

2006



(%96.7)

%20 ( 23-16)

2006

(%7.3)

(%99.5)

(%9.3)

(%6.2)

%12.0

4

2.5

(%81.0)

4

( ) ( )

2006 (%66.7)

%62.8 %69.4

.%65.6 %67.6

( 23-12) %98.9

%98.7 ( )

%96.7 ( )

23-12)

(

( 23-12) :(3-2)

2006 ( )

( )	( )	( )	( )	( )
96.4	98.7	96.7	98.9	99.1
94.4	97.8	94.8	98.2	98.4
99.4	100	99.4	100	100
95.0	98.1	95.5	98.2	98.4
97.4	99.1	97.4	100.0	100.0
98.9	99.5	98.9	99.5	99.5
96.6	99.0	96.7	99.4	99.4
96.4	98.3	96.7	98.5	98.7
100.0	100.0	100.0	100.0	100.0
99.2	100.0	99.2	100.0	100.0 /
97.5	98.1	97.5	98.6	99.2
95.9	98.7	96.1	98.9	98.9

- .2006 .2007 :

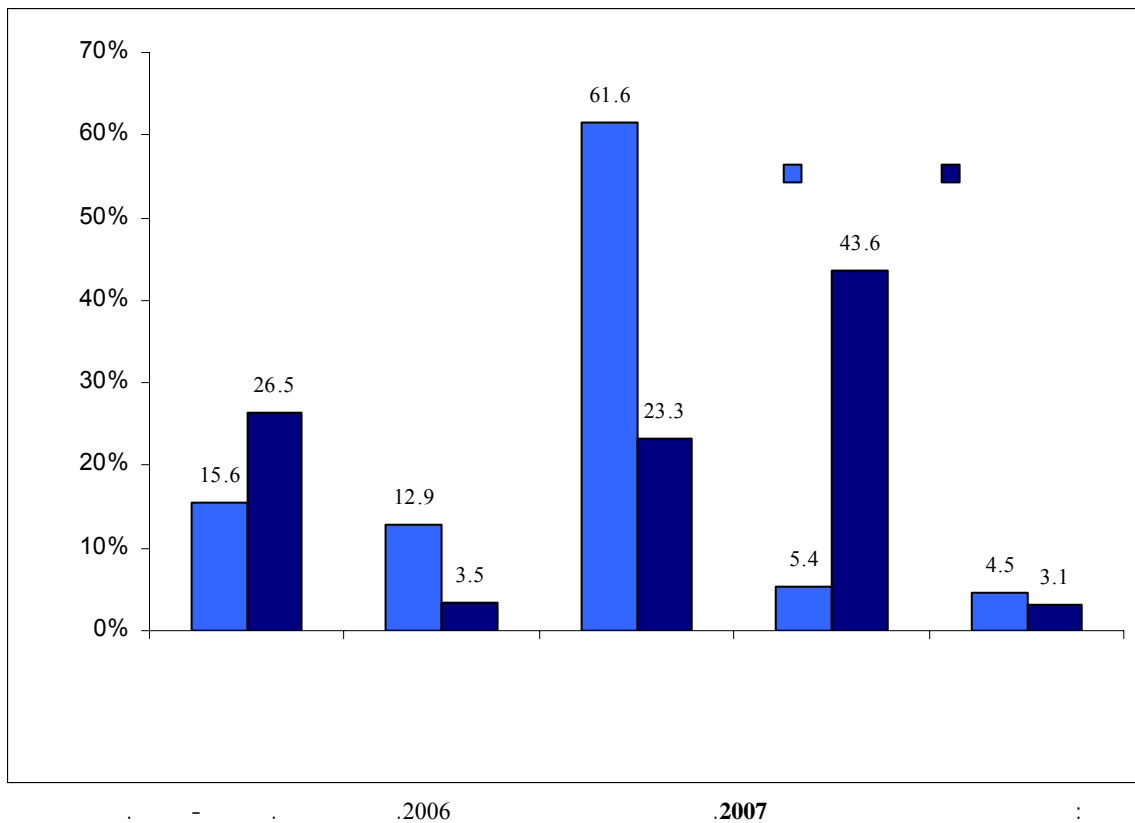
( )

%98.8 2006  
%99.1 %98.7

%46.5  
( ) %20.5 /  
. %19.9

( ) : (3-2)

2006





%19.1 2006

1

%16.6

%17.8

.(%8.2)

(%12.2)

( )

:(4-2)

**2006**

5.3	6.3	<b>5.9</b>	
12.2	8.2	<b>9.7</b>	
14.5	17.0	<b>16.1</b>	
19.0	19.1	<b>19.1</b>	
13.2	20.5	<b>17.8</b>	
5.0	5.6	<b>5.4</b>	
0.9	5.3	<b>3.7</b>	
14.0	18.1	<b>16.6</b>	
10.2	12.7	<b>11.8</b>	

.2006

.2007

:

%85.3

%90.0

%82.6

%84.3

%76.1

(%78.1)

%6.8

%13.7

(%12.0)

	2003		%37.4	2004
			%33.3	%43.6
			%34.1	2006
	%44.6	%27.8		
	%100		1994	
		2006		
98.9		%96.6		/
(%88.7)			%95.2	%
	(%4.8)		%3.4	
				.(%1.1)
	( )			
%15.0	(%75.9)	2006		
	/		%9.1	
				/
			( )	
			%30.0	
%29.7		2004	%34.1	
( )				%30.5
				%17.9
	(%11.8)	(%21.5)		

		2007				
	58		356	414		
	43		316	2000	359	.
35		%13) %15				.
		.			(	%

2006 2005 18.1  
 7.5  
 (%16.1) (%34.7)  
 ) .(%13.4)  
 (%23.5) ( 2007  
 ( )  
 %44.1 2007  
 %9.9 2004 ( )  
 %10.2 2006  
 %14.1  
 %13.5 (%14.5)  
 %11.8  
 %97.5  
 %65.0  
 2006  
 (%99.5)  
 .(%7.3)

( 23-12) %98.9 ■  
 ( )  
 %96.7 ( ) %98.7  
 .2006  
 %98.7 .2006 %99.1 %98.8 ■  
 46.5 2006 ■  
 %20.5 / %  
 .%19.9 ( )  
 %34.1 ■  
 %44.6 %27.8  
 .2006  
 2006 ■  
 %96.6 /  
 .%95.2 %98.9  
 %30.0 ■  
 .2004 %34.1 2006  
 2007 ■  
 356 414  
 . 58

- 2007		<b>.2008</b>	-
<hr/>			
2006 -		<b>.2007</b>	-
<hr/>			
-	.2008 -	<b>.2008</b>	-
	-	.(11 )	
<hr/>			
2004 -		<b>.2005</b>	-
<hr/>			
- 2004		<b>.2005</b>	-
<hr/>			
2000 -		<b>.2000</b>	-
<hr/>			

---

<p>· · · · ·</p> <p>·</p> <p style="text-align: right;">(28 - )</p>
---

1990

1989

2000

(29) (28)

(28)

(2) :

(6)

2

(3)

(29)

(12)

3

---

.1998 - : .1999 2

.1998 .1998 3





/1999            843    1995/1994            436  
                   2007/2006-2002/2001            %93.3            2000  
                                   945            806            %17.3  
                                   .2007/2006-1995/1994            %116.7

1997/1996                            69,134  
                   %21.9                            2008/2007                            84,289  
                   .    %51.8                            %48.2  
                   .    %32.9                            %67.1

                                  1995/1994                            / 29  
 / 25    2000/1999                            / 27  
                   .                            / 25.1    2008/2007                            2007/2006  
                   / 27                            1995/1994                            / 30  
                   .                            / 25            2007/2006                            2000/1999

/1994            %44.0  
                   %52.2                            2000/1999                            %47.3    1995  
                                   .2007/2006            %47.0                            2003/2002

15.9    1995/1994            %7.3  
                                   2007/2006            %21.3                            2000/1999            %

1995/1994                            572,529  
                   %67.9                            2008/2007                            961,320  
                                   %50.5            %49.5  
                   .1995/1994                            %51.4            %48.6                            .

2008/2007

		100	98.2
96.9	100	99.0	
			100

1995/1994

		45,339	
	%209.1	2008/2007	140,126
2008/2007			%53.1
	1996/1995	%54.5	%45.5

%4.9	2008/2007	7,002
------	-----------	-------

2008/2007

			%34.1
	%53.8		
-1996/1995			

2000/1999

1.9	2007/2006
-----	-----------

%0.7	%1.0		%1.4	%
------	------	--	------	---

2007/2006

%1.9	%1.5
%1.0	%0.8

2007/2006

4.4			1995/1994
-----	--	--	-----------

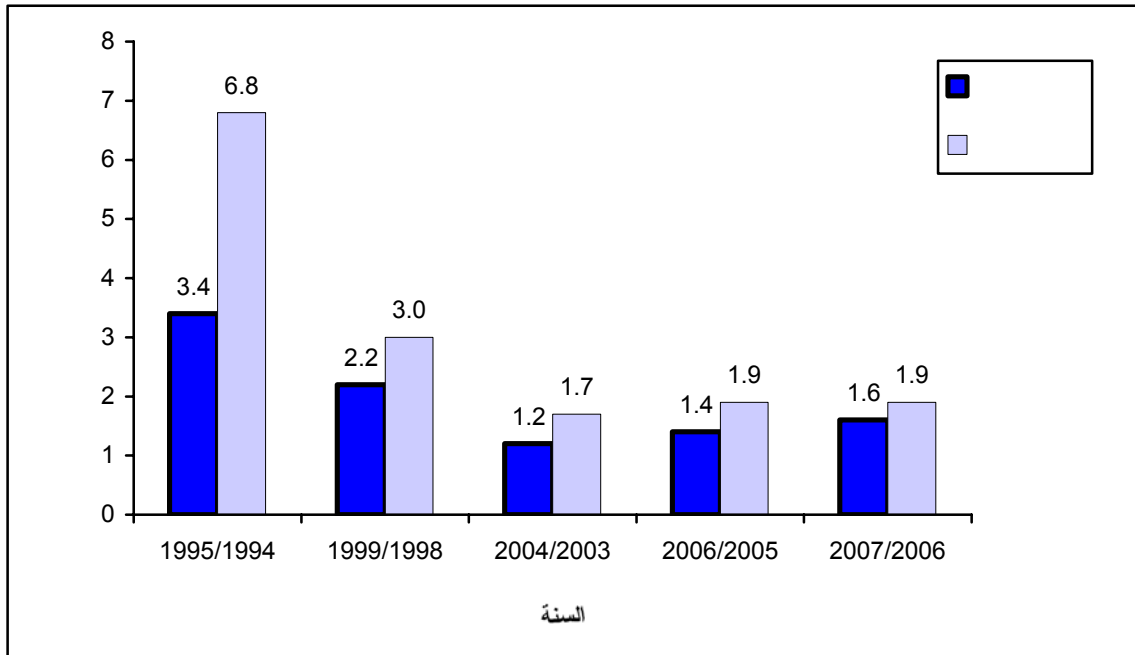
	2007/2006	%1.4	1995/1994	%
%0.7	1995/1994	%1.3		

2007/2006

2007/2006	%1.9	%5.0	1995/1994
.2007/2006	%1.0	1995/1994	%5.4

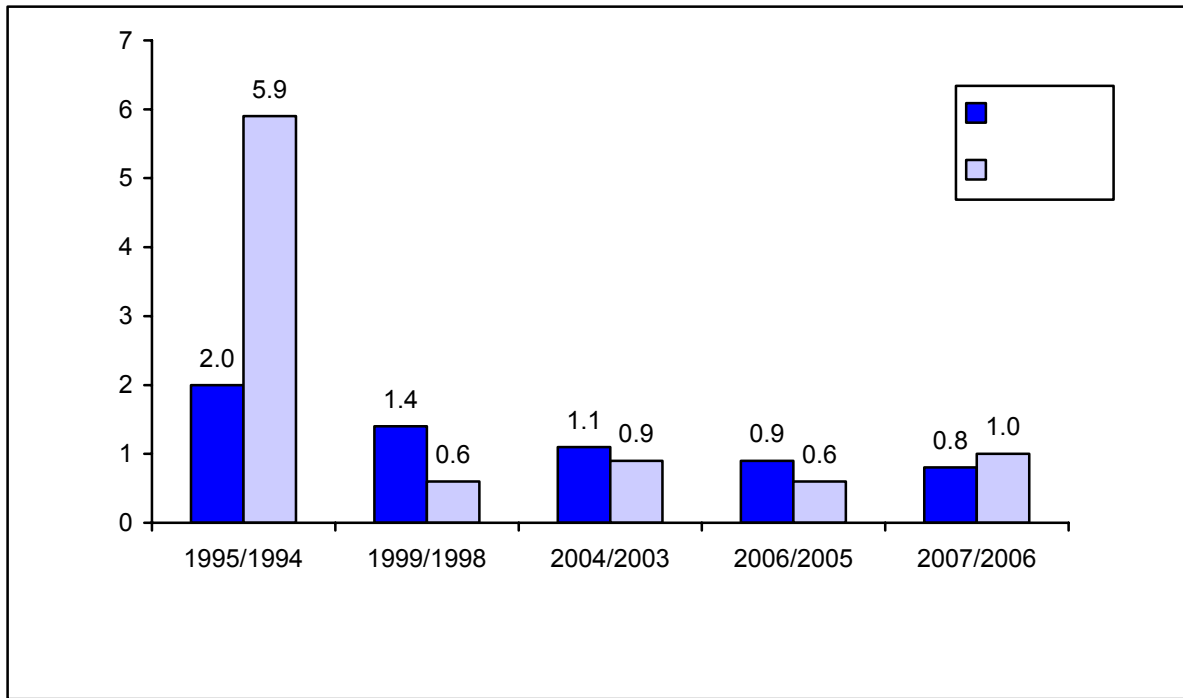
%5.0

:(1-3)



.2009

:(2-3)



.2009

1.3

2007/2006

%3.8 %3.0

%0.5 %

%0.6

2007/2006

%2.9

%0.5

%5.0

2007/2006-1995/1994

2007/2006

%0.5

1995/1994

%2.4

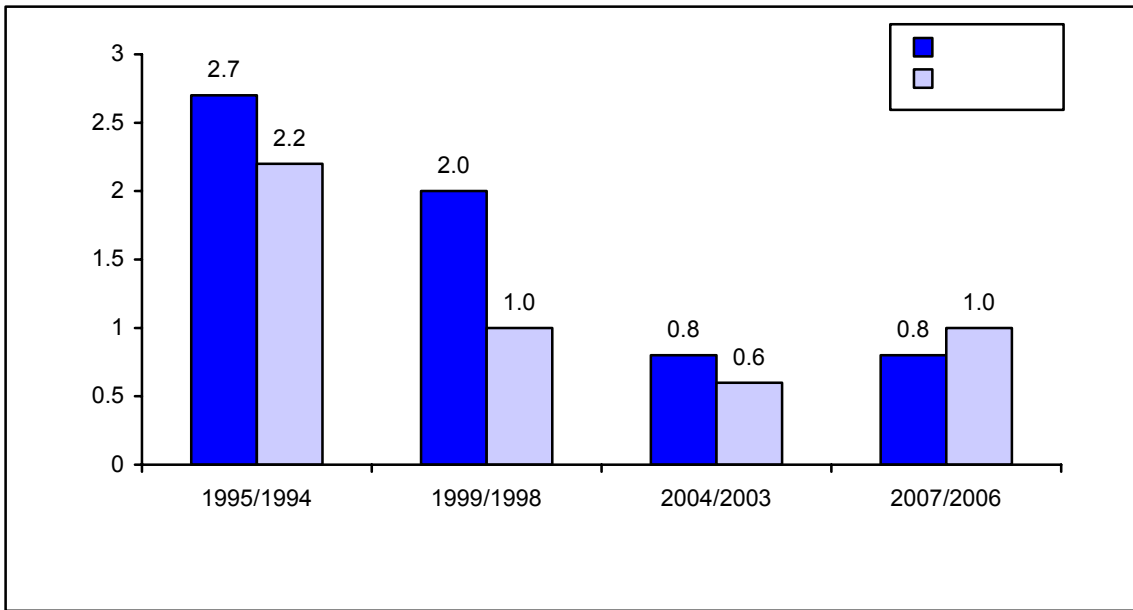
1995/1994

%9.7

.2007/2006

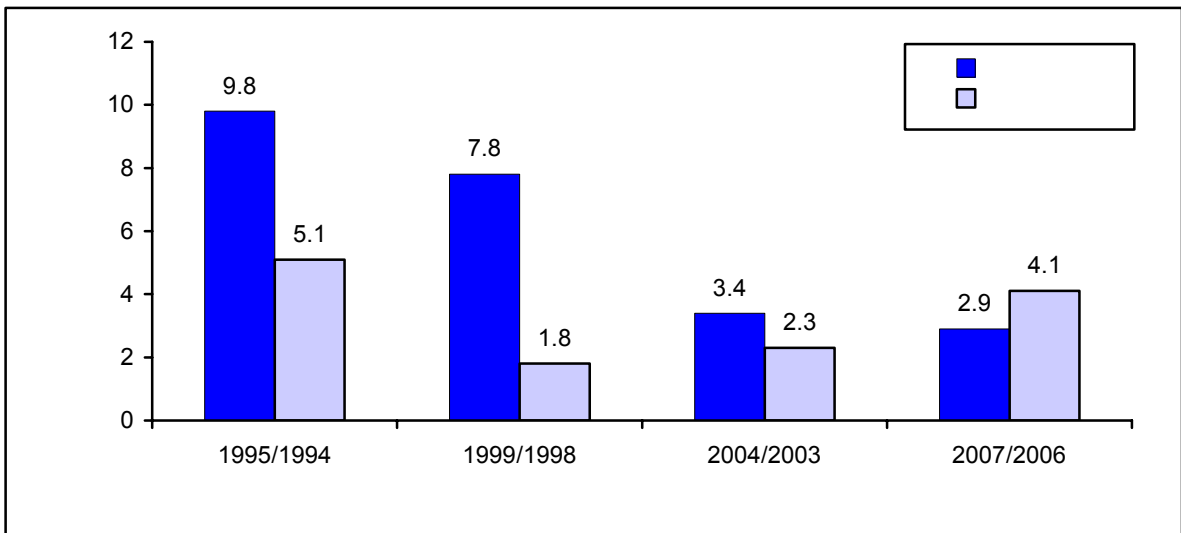
%3.8

:(3-3)



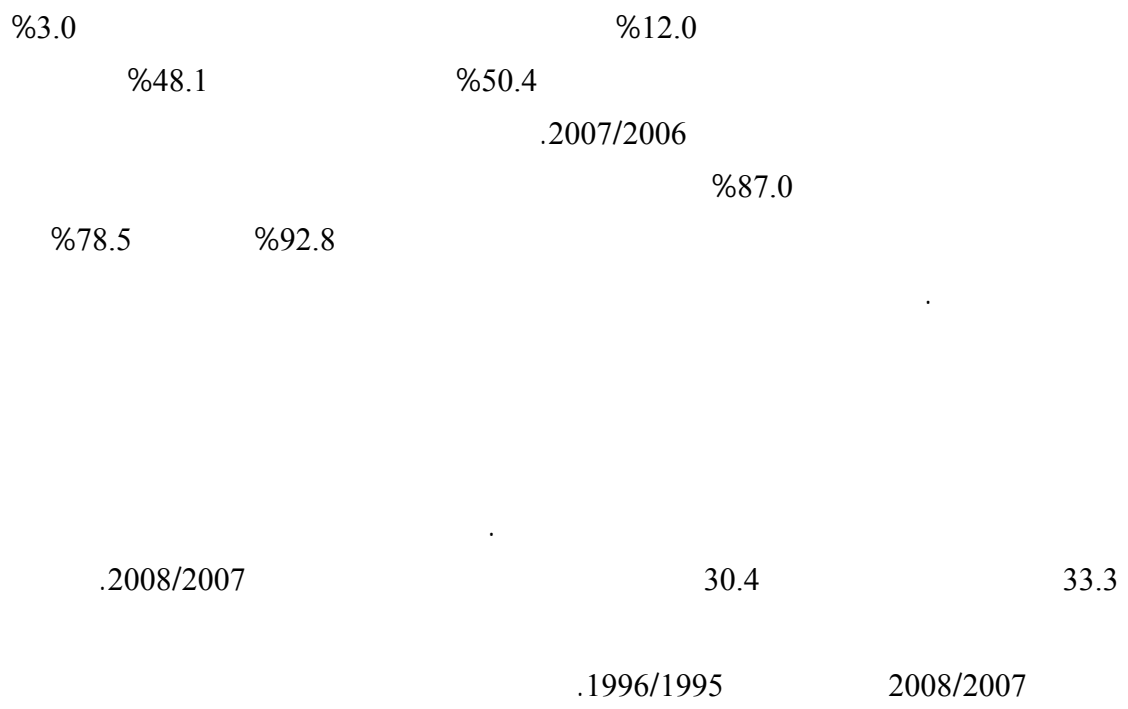
2009

:(4-3)

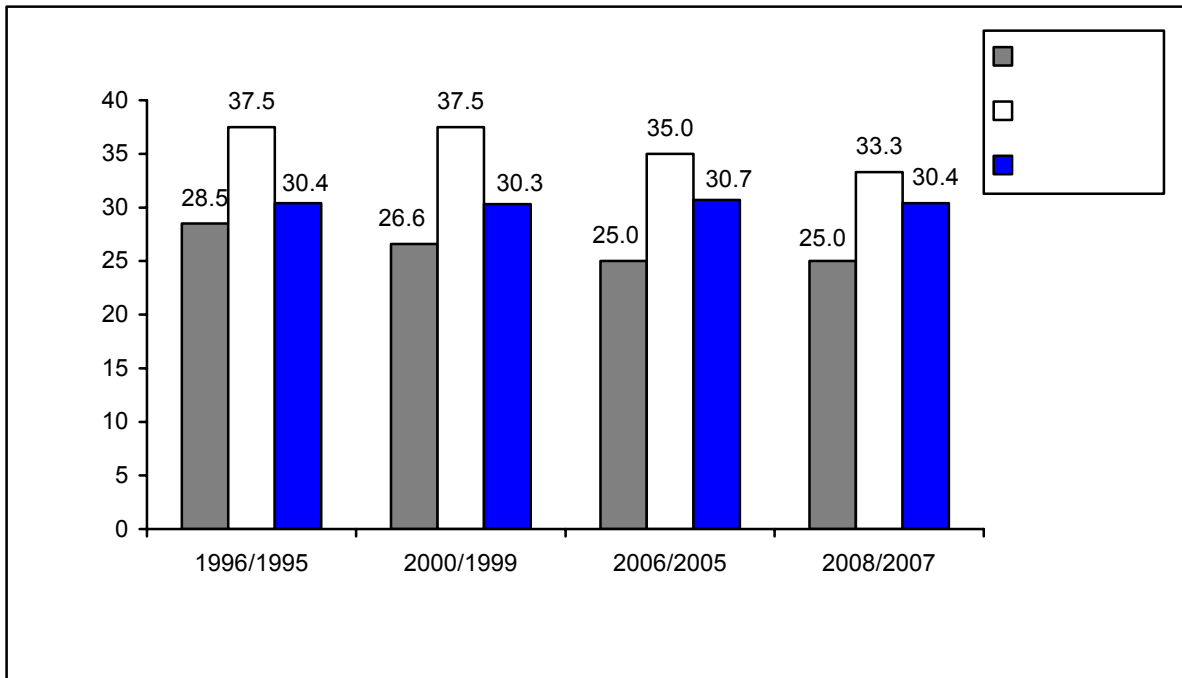


2009

815	1,615	2008/2007	2,430
		( 878) %36.2	
%74.4		.( 715) %29.4	( 837) %34.4
( 621) %25.6			( 1,809)
		%75.4	2008/2007
			%11.9
			%12.7
	1994		
1,615	2008/2007		
815		1996/1995	1,098
		. <sup>4</sup> 1996/1995	372
	%66.8	2008/2007	
			%79.9
/1994	%39.6		
%40.0		2007/2006	%56.7 1995
%31.3		2007/2006	%59.0 1995/1994
	%51.8	%47.6	%46.9
	%24.4		
%28.0		2007/2006	%64.4 1995/1994
%26.6		2007/2006	%65.5 1996/1995
	%55.1	%38.4	%66.4
%3.5			
		2007/2006	%62.3 1995/1994
		2007/2006	%59.7 1995/1994
	%72.7	2007/2006	1995/1994
/2006	%68.5	%13.6	
			.2007



:(5-3)



- . -2008/2007 2008. :

.2008/2007 30.7 38.1  
39.3  
26.3  
37.9  
33.0  
.2008/2007 25.0  
/1995 44.5  
2008/2007 37.9 1996



2008/2007		43,560		
	%55.4	%44.6	24,129	19,431
	%19.5	%70.2		%10.3
2008/2007		25.2		
		29.8		25.1
				17.3
2008/2007			%0.6	
%62.7		%24.8		
%0.4			%8.3	
				%3.2
/2007				2008
	%59.6		%53.8	
		%55.1		
	%34.1			%32.7
	%73.4			
%65.1	(	)		
				%74.8

2008/2007				▪
	.%50.0		1,097,957	
/2007				▪
	(	766,730) %69.8	2008	
	(	253,116) %23.1		
	.	(	78,111) %7.1	
/1994				▪
			2008/2007-1995	
	.		%77.7	
	69,134			▪
2008/2007		84,289	1997/1996	
			.%21.9	
	572,529			▪
2008/2007		961,320	1995/1994	
	.		%67.9	
	45,339			▪
2008/2007		140,126	1995/1994	
%46.9	%53.1	%209.1		
	.2008/2007			
				▪
	7,002			
.		%4.9	2008/2007	
2007/2006				▪
	.	%0.5	%1.3	
		.	%3.8	%3.0

1,615	2008/2007	2,430	▪
( 878)	%36.2	815	
	( 837) %34.4		
		.( 715) %29.4	
%39.6			▪
	.2007/2006	%56.7	1995/1994
30.4	33.3		▪
	.2008/2007		
	25.2		▪
29.8		25.1	2008/2007
	17.3		
			.
2008/2007			%0.6 ▪
	%24.8		
	%8.3	%62.7	
	%3.2	%0.4	
			.

		<b>2009</b>		-
	.	-	.	- 2008/2007
<hr/>				
		<b>2008</b>		-
	.	-	.	- 2007/2006
<hr/>				
		<b>.2006</b>		-
	.	-	.	- 2007/2006
<hr/>				
- 2005/2004		<b>.2005</b>		-
		.	-	.
<hr/>				
/2005)		<b>.2005</b>		-
		.		.(2015
<hr/>				
	.2006 .	.2006	<b>.2006</b>	-
<hr/>				
.1999/1998-1995/1994		<b>.1999</b>		-
<hr/>				

---

					"
	<i>( 31.1</i>	-		)	
					"
	<i>( 31.2</i>	-		)	

1995

1989

31

<b>2006</b>	<b>2004</b>	<b>%26.3</b>	<b>(17-10)</b>
-------------	-------------	--------------	----------------

(17-10)

2004 %56.0 2006 2004 %26.3  
.2006 %70.7

) %18.7 (17-10)  
%42.8 (2006 %73.6 2004 %62.0  
(2006 %66.1 2004 %46.3 )

. %69.3 %72.0

%51.4 2006  
2004 %7.0 %29.5  
. %7.7 %30.9 %45.7  
(17-10) %47.8 2006  
)  
.2006 2004 %45.8 (

(17-10) : (1-4)

2006 2004

2006	2004	2006	2004	2006	2004
52.9	49.3	45.1	50.6	47.8	50.2
1.0	6.8	2.1	9.1	1.7	8.4
42.5	36.7	47.6	35.0	45.8	35.6
2.3	3.7	5.2	3.1	4.2	3.3
1.3	3.5	-	2.2	0.5	2.5
<b>100</b>	<b>100</b>	<b>100</b>	<b>100</b>	<b>100</b>	<b>100</b>

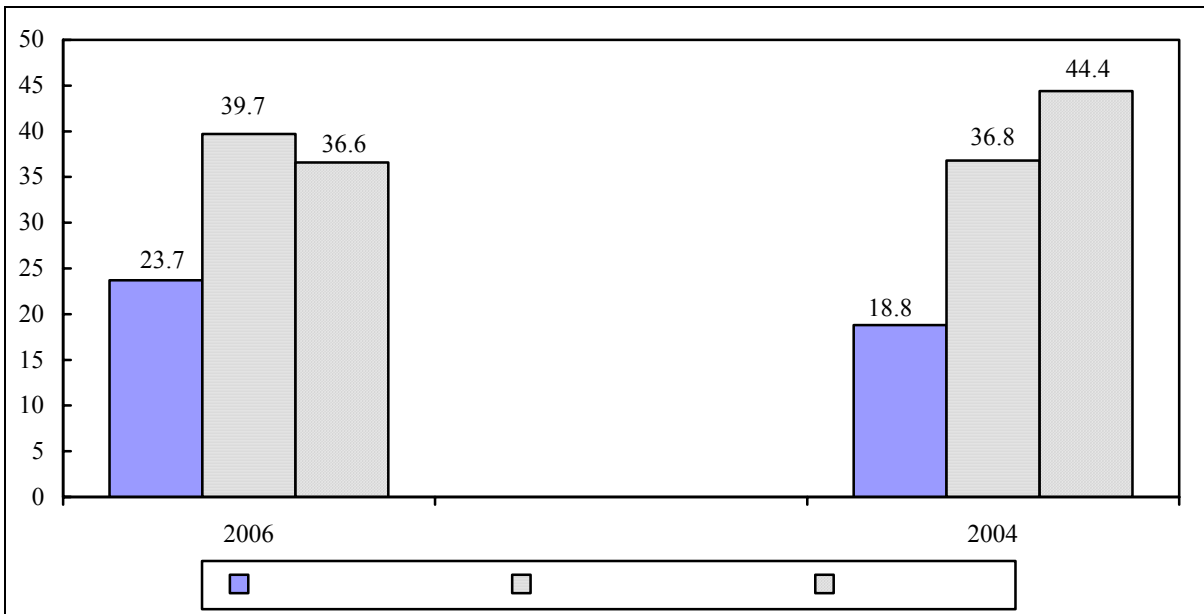
( )

:(-)

.2006 .2007 :  
- . -2004 - 2004 :

.2006 2004 %26.1 (17-10)  
.2006 %23.7 2004 %18.8

2006 2004 (17-10) : (1-4)



.2006 .2007 :  
- . -2004 - 2004 :

(%23.7) 2006  
 (%39.7)  
 (%36.6)

( 17-10)

2004 %50.2 ( %36.9 %56.6) %47.8  
 ( %57.6 %36.3) %45.8

.2004 %35.6

%63.0

%26.3

( 18 )

2004 %28.5 2006 2004 %26.3  
 ( 18 ) 2006 %36.0  
 2004 %9.3 %83.9

.2006 %17.1

%82.3 ( 18 )  
 %19.8 18

%23.6 2006

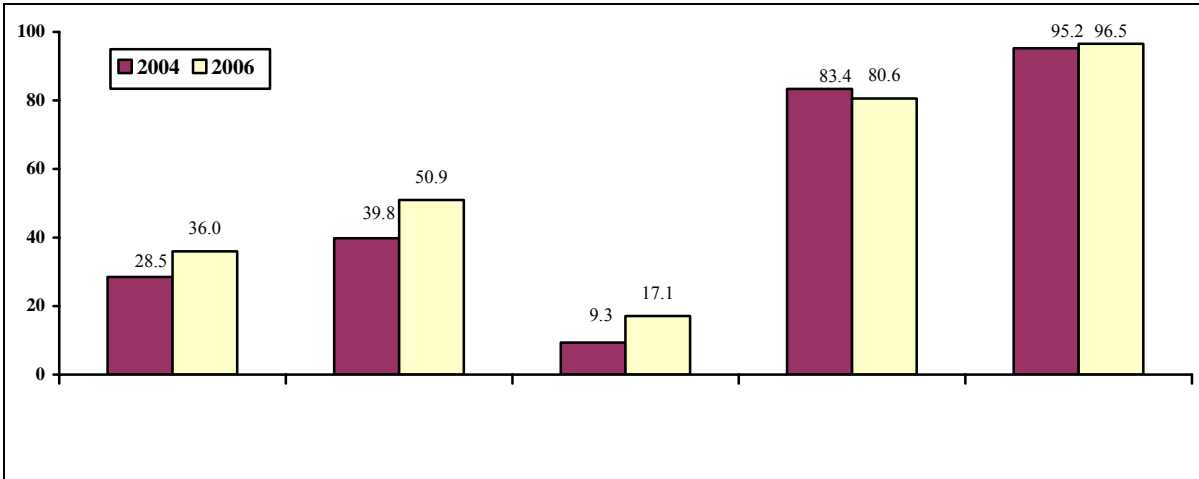
18

- - .2004 %28.4



.(2-31 )

2006 2004 18 :(2-4)



. - .2006 .2007 :  
 - . -2004 - 2004 :

(17-10) %24.2 2006  
 %32.7 2004 %37.0  
 .2004 %29.8 2006 (17-10)  
 %2.0 (17-10) %44.0  
 %42.9 %23.7  
 .2006  
 %47.6 2006  
 %35.1 %57.4 (17-10)  
 %3.0 %24.9 %15.8  
 . %3.0 %16.8  
 2005  
 52 122) 174 213  
 %60.3 .(  
 %74.3

%74.2	.	%69.0	%76.3
		.	%63.6 %80.0
		%82.8	2005
%36.5	%27.0	.	%92.3 %78.7
	%23.0		
		2006	
	( 17-10)		
%29.6	(	%76.4)	
	( 17-10)	%67.2	
		%32.8	
		%36.2	
		%13.1	%14.7
17-10)		%28.7	
	%20.4		(
		%27.4	
			.%10.6

(17-10)

:(2-4)

**2006**

2006			
9.4	6.7	<b>8.0</b>	
18.7	11.0	<b>14.7</b>	
12.1	10.0	<b>11.0</b>	
20.7	50.6	<b>36.2</b>	
14.8	11.6	<b>13.1</b>	
5.1	3.0	<b>4.0</b>	
7.3	1.7	<b>4.4</b>	
11.9	5.4	<b>8.6</b>	
<b>100</b>	<b>100</b>	<b>100</b>	

. - .2006 .2007 :

(17-10)

:(3-4)

**2006**

2006			
30.9	26.7	<b>28.7</b>	
8.0	4.5	<b>6.2</b>	
16.3	24.1	<b>20.4</b>	
23.8	30.8	<b>27.4</b>	
14.3	7.2	<b>10.6</b>	
3.1	3.5	<b>3.3</b>	
1.4	0.8	<b>1.1</b>	
2.2	2.4	<b>2.3</b>	
<b>100</b>	<b>100</b>	<b>100</b>	

. - .2006 .2007 :

( 18 )		%8.9	2006
	%59.8	%31.3	
)		%4.2	
%75.1	%20.7		( 18

( 18 )		%30.6	2006
%21.6	( )	%47.8	
			%24.6
	%29.3		
( 18 )			%13.6
%19.5		%26.9	

	(17-10)				▪
	2006	2004	%26.3		
	.2006	%70.7	2004	%56.0	
%26.1		(17-10)			▪
			.2006	2004	
			%23.7	%18.8	
		(%23.7)			▪
(%39.7)					
(%36.6)					
%47.8		( 17-10)		.2006	▪
					▪
2004		18			
18		%82.3		2006	
		%19.8			
			%23.6	2006	▪
				18	
					▪
	( 17-10)			2006	
(	%76.4)				
				%29.6	
	%8.9		2006		▪
%31.3			( 18 )		
			%59.8		

	%30.6	2006	▪
%47.8		( 18 )	
.	%21.6	( )	

	- 2007	-
	-	-2006
	- 2005	-
	-	-2005
2004	- 2004	-
		-
.1990	" "( )	-



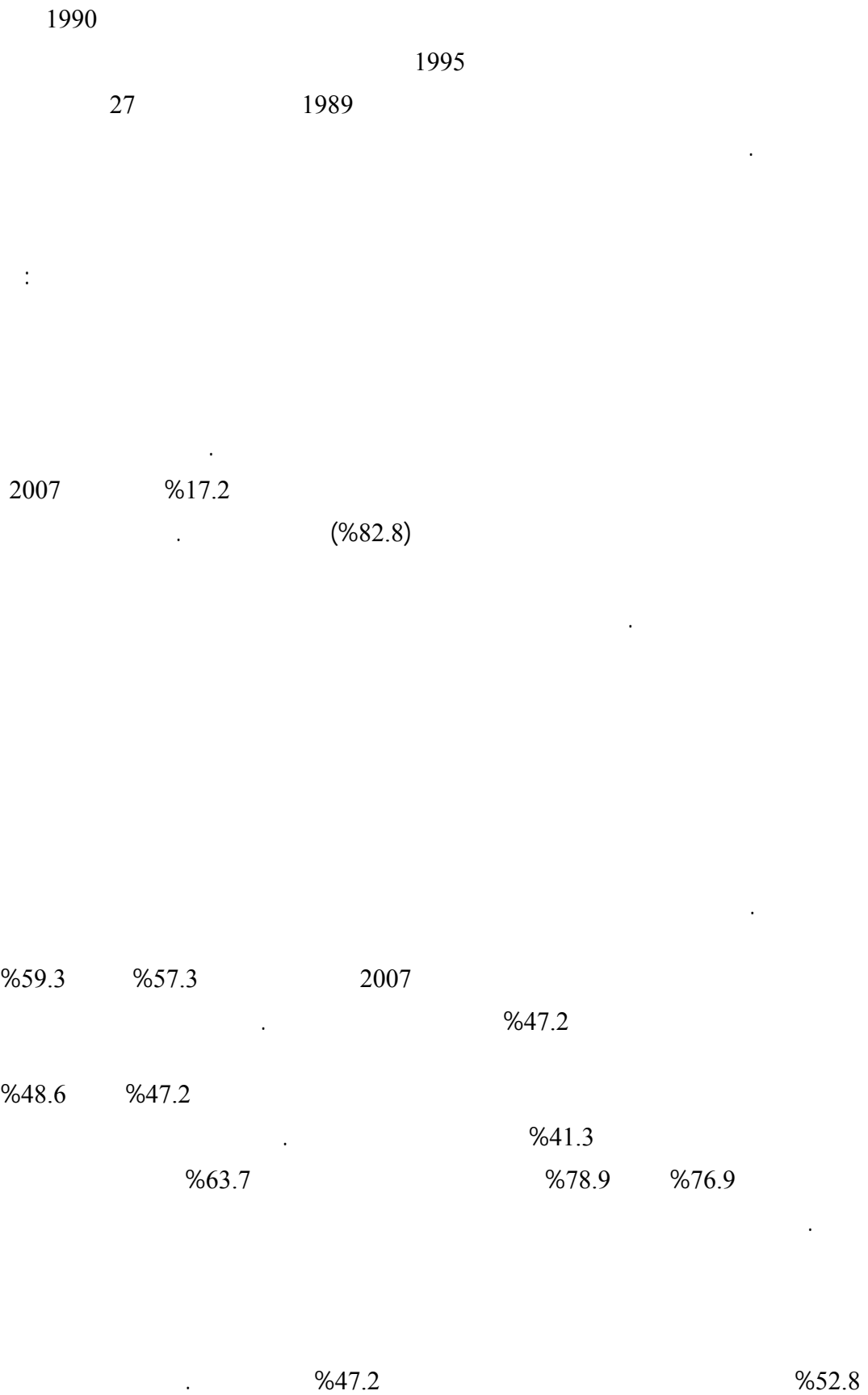
" " " " " "

18

/ / /

1989





2007

:(1-5)

<b>100.0</b>	<b>57.3</b>	<b>100.0</b>	<b>47.2</b>	<b>100.0</b>	<b>59.3</b>	
54.4	47.2	64.5	41.3	52.8	48.6	
45.6	76.9	35.5	63.7	47.2	78.9	

.2009

:

:(2-5)

2007

14.0	47.2	0
19.7	49.8	2-1
29.1	54.8	4-3
25.5	68.6	6-5
11.7	79.7	+7
<b>100.0</b>	<b>57.3</b>	

.2009

:

(1-32 - )

%20.0 2008 (17-10)  
 17-10) 2008  
 %3.7 ( ) ( )  
 2008 %1.2 %5.3  
 (17-10) :(3-5)  
 2008

100	96.3	3.7		
100	94.7	5.3		
100	98.8	1.2		
100	93.6	6.4		
100	99.0	1.0		
100	97.7	2.3		14-10
100	93.7	6.3		17-15
.2008	-	.2009	:	

:

- 
- 
- 
- 

<b>2008</b>	<b>%25.6</b>
-------------	--------------

2

2008

%25.6

" "

)

( )

.

: 4

( )

▪

▪

▪

( )

( )

2

(.0.846)

Q

( )

1

1 0

- .1998

" "

4



%45.4      2008

%29.6 (            %17.1            %49.7)

%69.5                    %23.8

%14.9    ) %13.8

%8.5    %7.5                    (            %5.8

.                    %0.5

**(17 - 10)                    :(5-5)**

**2008**

17.1	49.7	<b>45.5</b>	
5.8	14.9	<b>13.8</b>	
0.5	8.5	<b>7.5</b>	
69.5	23.8	<b>29.6</b>	
3.3	0.6	<b>0.9</b>	
3.8	2.5	<b>2.7</b>	
<b>100</b>	<b>100</b>	<b>100</b>	

.2008                    -                    .2009                    :

50.8                    17-10

.2008                    43



500,000

787,598

%91

2009/1/18– 2008/12/27

%43

454	164	
16	5	12
8	250	384
158	3	5
12		



2009/1/18-2008/12/27

"

(-37 - )

:

"

)-(5

(4 - ) ."

(2-2 - )

(32 - ) ."

-: -37

"

18

:

(37	-	)	"
-----	---	---	---

16

18

)

800

1948

42,000

(

30

11

2008

330

600

(

)

" "

1990

14

113/45

16

6-2  
 7)  
 (%20)  
 (%9)  
 (%40)  
 (%7)  
 (%7)  
 (%10)

10  
 24

18-16  
 21-2  
 12

%74.4  
 (%7)  
 (%7)

2008  
 %99

2008  
 %21.2  
 70

%40

%50

%15  
 %35

%77

%1

%5

%17

.  
%14

%83

.  
%3

( )

:

- 1990

14

113/45

-31

.  
-37

:

(1)-9

-10

(1) .20

48

"....

42

(1) .77

(2)

	%57.3	2007		▪
	.	%47.2		%59.3
%48.6	%47.2			▪
		%41.3		
		%78.9	%76.9	
				%63.7
		2009		▪
%5.3		%3.7 (	)	
	.2008		%1.2	
				%25.6
		%2.4	2009	▪
%0.8	%4.0 )	%0.6		%3.5)
%31.5)		%25.6	(	
%5.0	%34.5 )	%12.9		
				.(
)				%45.4
	%29.6 (	%17.1		%49.7
	%69.5	%23.8		
%14.9 )	%13.8			
.%7.5		(	%5.8	
5,901	2008/12/31			▪
	%16.3	18	959	
		573	384	
			.1948	
	1,334			▪
2007			108	417



	787,598	( 17-0)		%54.9
454	.	164	▪	
5		12		
)	2008		▪	
	.	330	(	
%35		2008	▪	
	%50			
		.	%15	

.	.2009	-
<hr/>		
:	.2009	-
	-	.2008
<hr/>		
-	.2008-	.2008
	.	-( 11 )
<hr/>		
	.	.2009
<hr/>		
	.2008-	-2009
<hr/>		
2009-		-
/1/18-2008/12/27		
		.2009
<hr/>		