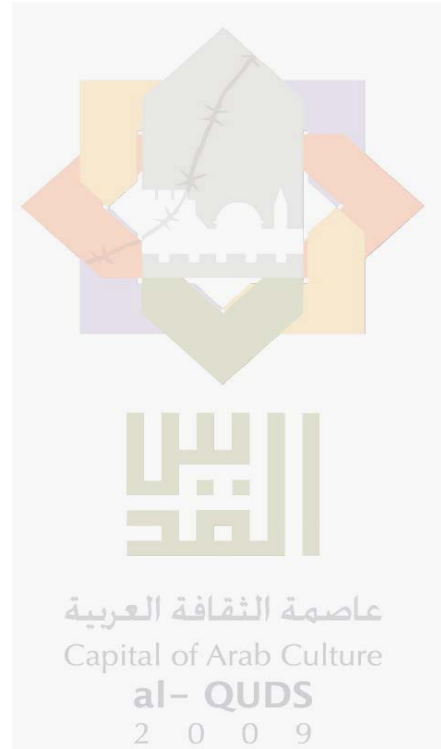
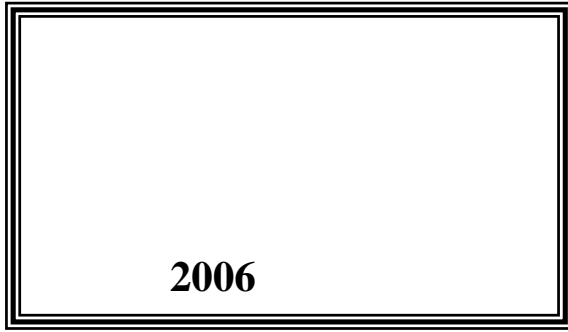


(2009 )

(1) :  
2009 /



© 1430 - 2009 .

:

(2009 )

.2009

- .(1) :

:

- 1647 . .

(970/972) 2 242 6340 :

(970/972) 2 242 6343 :

diwan@pcbs.gov.ps :

<http://www.pcbs.gov.ps> :



2009

(PNA)

2009

(CFG)

.(SDC)

(EU)

(CFG)

•

•

•

•

•

•

2009

1996

2008 2006 2005 1998  
2005

2008 2004

2008 2002

.2009

**2009**

<b>17</b>		:
<b>19</b>		:
<b>21</b>		:
21		1.3
21	2009	2.3
22	2009	3.3
22	2009	4.3
23	2009	5.3
<b>25</b>		

<b>27</b>	2009		<b>:1</b>
<b>28</b>			<b>:2</b>
		2009	
<b>29</b>	2009		<b>:3</b>
<b>30</b>			<b>:4</b>
		2009	
<b>31</b>	2009		<b>:5</b>
<b>33</b>	2009		<b>:6</b>
<b>35</b>		( / )	<b>:7</b>
		2009	
<b>21</b>	2009		<b>:1</b>
<b>22</b>	(2009 - 2000)		<b>:2</b>
<b>22</b>	2009		<b>:3</b>
<b>23</b>	2009		<b>:4</b>



2009

.

:

2009

3,694

2009

75

7,612

951.8

2009

%20.1

%23.8

.2008

%29.8

201

1,144

1,345

%11.9

%4.7

2008

.2008

69,380

2009

%20.0

%41.0

2008

.2008

%50.2

%10.7 %36.8

168,167

%45.7 2008

%19.1

.2009

( / ) 2.4

.1996

.2009

2000

2001



.

:

:

.

:

:

( )

:

:

:( )

./

:

:( )

( )

:( )

( )

( )

:

:

:

:

:

:

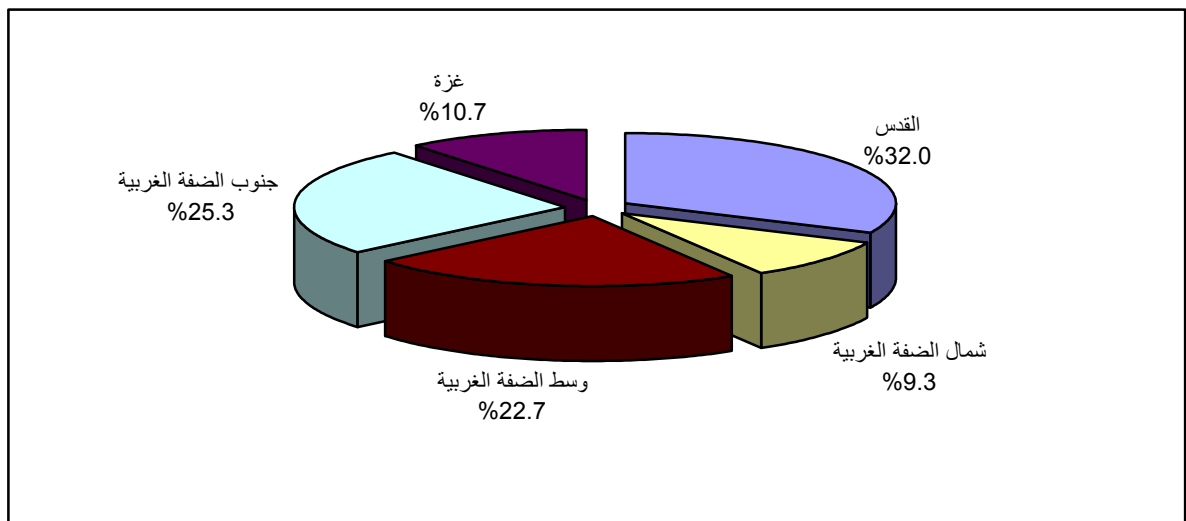
7,612      3,694      2009      117      75

2009				1.3
292	134	7 :		•
1,169	580	17 :		•
2,355	1,109	24 :		•
3,226	1,546	19 :		•
570	325	8 :		•

.2009

2009

:(1)



2009

2.3

%23.8

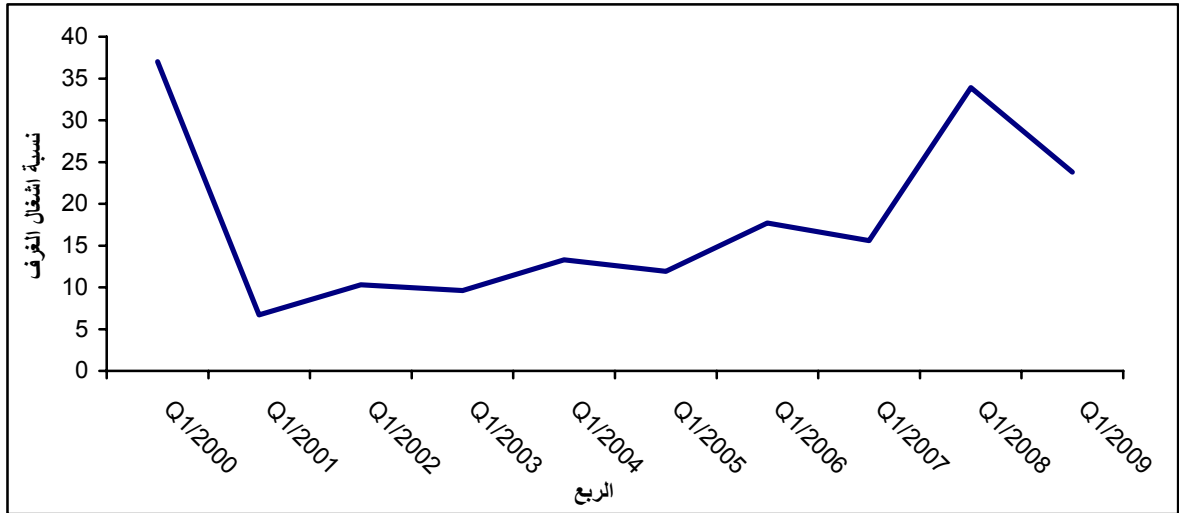
951.8

:

2001

(2009 - 2000)

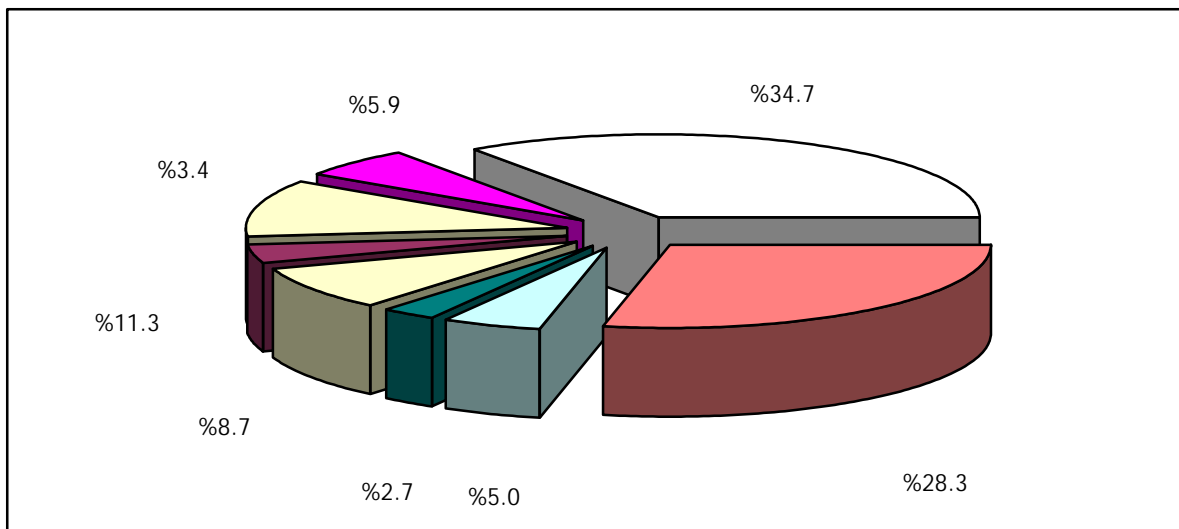
:(2)



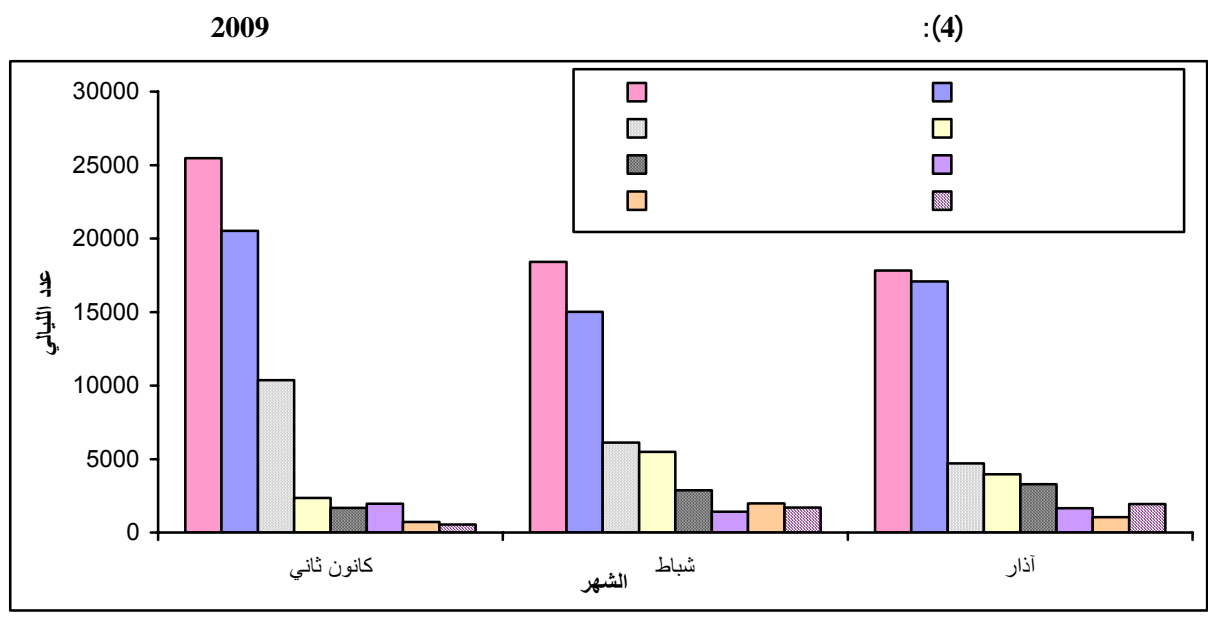
		2009		3.3	
		201	1,144	1,345	
		145	953	1,098	56
					191
					247
		2009		4.3	
%8.7	69,380	2009			
	2008				%34.7
	%.41.0				%20.0
			%50.2		
%1.9				%10.7	%36.8
					%0.4

2009

:(3)



2009 168,167 %36.7 %7.0  
 %12.6  
 %54.7 %19.1 2008  
 .2008  
 %9.1 %53.1 :  
 %0.2 %1.6 %36.0



2009 5.3  
 2.4  
 1.2 2.4 2.2 2.2  
 2.5

2009  
 .2008



**2008****2009**

(%)			
2008	2008		
-11.8	-8.5	75	
-4.7	11.9	1,345	
-41.0	-20.0	69,380	
-45.7	-19.1	168,167	
-23.3	-30.6	951.8	
-44.5	-18.2	1,827.9	
-20.1	-29.8	23.8	%
-41.8	-14.0	21.7	%

# Tables

2009

:1

Table 1: Main Indicators for Hotel Activities by Month and Region During the First Quarter, 2009

Region	Month	Bed Occupancy		Room Occupancy		No. of Nights	No. of Guests	No. of Beds	No. of Rooms	No. of Operating Hotels	
		%	Average	%	Average						
<b>Palestinian Territory *</b>		<b>22.1</b>	<b>1868.5</b>	<b>23.8</b>	<b>951.8</b>	<b>168167</b>	<b>69380</b>	<b>8441</b>	<b>4004</b>	<b>75</b>	
<b>All Regions</b>	<b>January</b>	<b>23.7</b>	<b>2053.1</b>	<b>25.5</b>	<b>1038.8</b>	<b>63646</b>	<b>23568</b>	<b>8659</b>	<b>4074</b>	<b>82</b>	
	<b>February</b>	<b>20.9</b>	<b>1892.5</b>	<b>23.8</b>	<b>1009.3</b>	<b>52989</b>	<b>25268</b>	<b>9053</b>	<b>4245</b>	<b>82</b>	
	<b>March</b>	<b>21.8</b>	<b>1662.3</b>	<b>22.0</b>	<b>812.9</b>	<b>51532</b>	<b>20544</b>	<b>7612</b>	<b>3694</b>	<b>75</b>	
North of West Bank	January	8.0	23.5	13.0	17.6	727	273	292	136	7	
	February	11.7	34.0	15.6	21.3	953	483	292	136	7	
	March	11.3	32.9	17.6	23.5	1021	550	292	134	7	
Middle of West Bank	January	6.1	85.5	11.7	68.7	2652	1161	1396	586	17	
	February	12.5	260.9	20.8	183.5	7305	4185	2087	884	19	
	March	14.9	174.5	22.9	133.1	5410	2073	1169	580	17	
Jerusalem	January	45.6	1407.3	57.7	817.8	43626	14289	3084	1417	29	
	February	31.5	933.5	46.5	654.5	26137	12933	2962	1408	28	
	March	26.8	630.1	43.6	483.5	19533	7655	2355	1109	24	
South of West Bank	January	15.7	529.6	8.0	129.4	16419	7664	3379	1613	21	
	February	19.4	661.0	9.0	147.4	18508	7602	3414	1632	22	
	March	25.6	824.5	11.2	172.5	25560	10258	3226	1546	19	
Gaza Strip	January	1.4	7.2	1.6	5.3	222	181	508	322	8	
	February	1.0	3.1	1.5	2.8	86	65	298	185	6	
	March	0.1	0.3	0.1	0.3	8	8	570	325	8	

\* Represents the quarter average except number of guests and number of guest nights which represent the total for the quarter.

\*

2009

:2

Table 2: Number of Hotels and Rooms by Facilities and Region as of March, 2009

Region	Facilities										No. of Rooms	No. of Operating Hotels
	Internet	DVD	Vedio	Telephone	Air Conditioning	Heating	Refrigerator	T.V	Radio	Private Bathroom		
<b>Palestinian Territory</b>	<b>1656</b>	<b>80</b>	<b>282</b>	<b>3426</b>	<b>3145</b>	<b>3205</b>	<b>2128</b>	<b>3323</b>	<b>943</b>	<b>3483</b>	<b>3694</b>	<b>75</b>
North of West Bank	79	0	0	93	119	119	94	113	12	115	134	7
Middle of West Bank	349	0	0	483	530	516	396	537	99	523	580	17
Jerusalem	221	79	281	1026	878	985	624	967	816	984	1109	24
South of West Bank	812	1	1	1524	1368	1546	755	1425	0	1546	1546	19
Gaza Strip	195	0	0	300	250	39	259	281	16	315	325	8

2009

:3

Table 3: Number of Hotels by Availability of Public Services and Region as of March, 2009

Region	Public Services												No. of Operating Hotels
	Other	Room Services	Hair Dresser	Shops	Laundry	Photocopying	Cofeshop	Typing	Bar	Internet	Fax	Puplic Telephone	
<b>Palestinian Territory</b>	<b>13</b>	<b>55</b>	<b>5</b>	<b>12</b>	<b>31</b>	<b>56</b>	<b>31</b>	<b>50</b>	<b>20</b>	<b>50</b>	<b>62</b>	<b>10</b>	<b>75</b>
North of West bank	1	7	0	1	4	5	3	4	0	4	5	1	7
Middle of West bank	9	17	1	0	9	14	10	12	4	9	16	5	17
Jerusalem	0	6	3	6	2	14	2	14	2	11	14	0	24
South of West bank	2	17	1	4	13	19	11	17	13	18	19	4	19
Gaza Strip	1	8	0	1	3	4	5	3	1	8	8	0	8

2009

:4

Table 4: Average Number of Workers in Hotels by Type of Work, Sex and Region During the First Quarter, 2009

Region	Total		Operation		Administration		* No. of Operating Hotels *
	Females	Males	Females	Males	Females	Males	
<b>Palestinian Territory</b>	<b>201</b>	<b>1144</b>	<b>145</b>	<b>953</b>	<b>56</b>	<b>191</b>	<b>75</b>
North of West Bank	6	54	4	34	2	20	7
Middle of West Bank	27	264	16	221	11	43	17
Jerusalem	75	471	50	397	25	74	24
South of West Bank	92	300	75	263	17	37	19
Gaza Strip	1	55	0	38	1	17	8

\* As in March, 2009

2009

\*

2009

:5

Table 5: Number and Percentage of Guests by Nationality and Region During the First Quarter, 2009

Region	Month	Nationality										No. of Operating Hotels
		U.S.A & Canada		Asia		Israel		Arab Countries		Palestine		
		%	Number	%	Number	%	Number	%	Number	%	Number	
<b>Palestinian Territory</b>		<b>11.3</b>	<b>7852</b>	<b>5.0</b>	<b>3443</b>	<b>3.4</b>	<b>2376</b>	<b>0.9</b>	<b>616</b>	<b>8.7</b>	<b>6053</b>	<b>75</b>
<b>All Regions</b>	<b>January</b>	<b>14.2</b>	<b>3339</b>	<b>2.6</b>	<b>613</b>	<b>1.6</b>	<b>366</b>	<b>0.7</b>	<b>162</b>	<b>5.1</b>	<b>1203</b>	<b>82</b>
	<b>February</b>	<b>11.6</b>	<b>2934</b>	<b>5.0</b>	<b>1270</b>	<b>5.3</b>	<b>1337</b>	<b>1.1</b>	<b>286</b>	<b>11.3</b>	<b>2867</b>	<b>82</b>
	<b>March</b>	<b>7.7</b>	<b>1579</b>	<b>7.6</b>	<b>1560</b>	<b>3.3</b>	<b>673</b>	<b>0.8</b>	<b>168</b>	<b>9.7</b>	<b>1983</b>	<b>75</b>
North of West Bank	January	3.7	10	0.4	1	1.1	3	2.6	7	82.4	225	7
	February	1.9	9	0.6	3	4.6	22	0.4	2	72.0	348	7
	March	3.3	18	3.1	17	12.9	71	2.0	11	60.9	335	7
Middle of West Bank	January	6.4	74	2.5	29	4.3	50	7.8	90	64.9	753	17
	February	8.6	360	1.2	52	7.6	320	6.3	262	53.2	2225	19
	March	8.0	166	1.2	24	6.1	126	4.7	97	61.6	1278	17
Jerusalem	January	20.5	2927	2.1	294	2.0	283	0.1	15	0.0	0	29
	February	17.2	2221	5.2	671	7.3	947	0.2	22	0.0	5	28
	March	15.3	1168	4.9	374	3.7	283	0.0	0	0.0	0	24
South of West Bank	January	4.2	321	3.5	272	0.4	30	0.0	2	2.9	223	21
	February	4.4	335	7.2	544	0.6	48	0.0	0	3.8	289	22
	March	2.2	227	11.2	1145	1.9	193	0.6	60	3.6	370	19
Gaza Strip	January	3.9	7	9.4	17	0.0	0	26.5	48	1.1	2	8
	February	13.8	9	0.0	0	0.0	0	0.0	0	0.0	0	6
	March	0.0	0	0.0	0	0.0	0	0.0	0	0.0	0	8

2009

:( ) 5

Table 5 (Cont.): Number and Percentage of Guests by Nationality and Region During the First Quarter, 2009

Region	Month	Total		Nationality									
				Australia & Newzeland		Africa		Other European Countries		European Union		Central & South America	
		%	العدد Number	%	العدد Number	%	العدد Number	%	العدد Number	%	العدد Number	%	العدد Number
<b>Palestinian Territory</b>		<b>100</b>	<b>69380</b>	<b>0.5</b>	<b>359</b>	<b>5.9</b>	<b>4088</b>	<b>28.3</b>	<b>19567</b>	<b>34.7</b>	<b>24093</b>	<b>1.3</b>	<b>933</b>
<b>All Regions</b>	<b>January</b>	<b>100</b>	<b>23568</b>	<b>0.1</b>	<b>19</b>	<b>6.3</b>	<b>1508</b>	<b>31.0</b>	<b>7304</b>	<b>38.0</b>	<b>8965</b>	<b>0.4</b>	<b>89</b>
	<b>February</b>	<b>100</b>	<b>25268</b>	<b>1.0</b>	<b>244</b>	<b>5.4</b>	<b>1351</b>	<b>25.7</b>	<b>6500</b>	<b>32.0</b>	<b>8080</b>	<b>1.6</b>	<b>399</b>
	<b>March</b>	<b>100</b>	<b>20544</b>	<b>0.5</b>	<b>96</b>	<b>6.0</b>	<b>1229</b>	<b>28.0</b>	<b>5763</b>	<b>34.2</b>	<b>7048</b>	<b>2.2</b>	<b>445</b>
North of West Bank	January	100	273	0.0	0	0.0	0	0.0	0	9.1	25	0.7	2
	February	100	483	0.0	0	0.0	0	0.0	0	20.1	97	0.4	2
	March	100	550	0.5	3	0.2	1	0.0	0	17.1	94	0.0	0
Middle of West Bank	January	100	1161	0.3	4	0.0	0	2.9	34	10.0	117	0.9	10
	February	100	4185	3.1	131	0.3	13	2.0	83	13.6	568	4.1	171
	March	100	2073	0.6	13	1.2	25	3.1	64	12.1	251	1.4	29
Jerusalem	January	100	14289	0.1	15	1.9	266	31.7	4526	41.3	5915	0.3	48
	February	100	12933	0.8	101	0.8	97	27.6	3574	39.2	5069	1.7	226
	March	100	7655	0.6	43	1.5	115	18.1	1389	51.5	3949	4.4	334
South of West Bank	January	100	7664	0.0	0	15.9	1219	34.9	2674	37.9	2897	0.3	26
	February	100	7602	0.1	10	16.3	1241	37.4	2843	30.2	2292	0.0	0
	March	100	10258	0.4	37	10.6	1088	42.0	4310	26.7	2746	0.8	82
Gaza Strip	January	100	181	0.0	0	12.7	23	38.7	70	6.0	11	1.7	3
	February	100	65	3.1	2	0.0	0	0.0	0	83.1	54	0.0	0
	March	100	8	0.0	0	0.0	0	0.0	0	100.0	8	0.0	0

2009

:6

Table 6: Number and Percentage of Guest Nights by Nationality and Region During the First Quarter, 2009

Region	Month	Nationality										No. of Operating Hotels
		U.S.A & Canada		Asia		Israel		Arab Countries		Palestine		
		%	Number	%	Number	%	Number	%	Number	%	Number	
<b>Palestinian Territory</b>		<b>12.6</b>	<b>21176</b>	<b>4.7</b>	<b>7845</b>	<b>2.2</b>	<b>3770</b>	<b>0.6</b>	<b>1036</b>	<b>7.0</b>	<b>11819</b>	<b>75</b>
<b>All Regions</b>	<b>January</b>	<b>16.3</b>	<b>10362</b>	<b>2.6</b>	<b>1682</b>	<b>1.1</b>	<b>727</b>	<b>0.5</b>	<b>316</b>	<b>3.7</b>	<b>2354</b>	<b>82</b>
	<b>February</b>	<b>11.5</b>	<b>6116</b>	<b>5.4</b>	<b>2870</b>	<b>3.7</b>	<b>1987</b>	<b>0.8</b>	<b>416</b>	<b>10.4</b>	<b>5491</b>	<b>82</b>
	<b>March</b>	<b>9.1</b>	<b>4698</b>	<b>6.4</b>	<b>3293</b>	<b>2.0</b>	<b>1056</b>	<b>0.6</b>	<b>304</b>	<b>7.7</b>	<b>3974</b>	<b>75</b>
North of West Bank	January	9.2	67	0.3	2	0.4	3	6.9	50	67.8	493	7
	February	1.9	18	0.3	3	2.7	26	1.3	12	73.1	697	7
	March	6.1	62	4.7	48	7.4	76	3.2	33	55.7	569	7
Middle of West Bank	January	10.1	269	5.8	155	5.1	134	5.5	145	54.5	1446	17
	February	8.1	591	2.8	208	6.3	457	4.5	332	54.7	3996	19
	March	12.7	686	4.4	237	4.1	224	3.6	193	53.0	2869	17
Jerusalem	January	20.7	9043	1.8	795	1.2	542	0.1	37	0.0	0	29
	February	16.4	4278	4.8	1242	5.5	1443	0.3	72	0.0	10	28
	March	16.8	3279	3.4	663	2.6	516	0.0	0	0.0	0	24
South of West Bank	January	5.9	976	4.3	707	0.3	48	0.0	3	2.5	413	21
	February	6.6	1220	7.7	1417	0.3	61	0.0	0	4.3	788	22
	March	2.6	671	9.2	2345	0.9	240	0.3	78	2.1	536	19
Gaza Strip	January	3.2	7	10.4	23	0.0	0	36.5	81	0.9	2	8
	February	10.5	9	0.0	0	0.0	0	0.0	0	0.0	0	6
	March	0.0	0	0.0	0	0.0	0	0.0	0	0.0	0	8



2009

:( ) 6

Table 6 (Cont.): Number and Percentage of Guest Nights by Nationality and Region During the First Quarter, 2009

Region	Month	Total		Nationality										الشهر
				& Australia NewZeland		Africa		Other European Countries		European Union		Central & South America		
		%	Number	%	Number	%	Number	%	Number	%	Number	%	Number	
<b>Palestinian Territory</b>		<b>100</b>	<b>168167</b>	<b>0.3</b>	<b>579</b>	<b>3.0</b>	<b>5051</b>	<b>31.4</b>	<b>52615</b>	<b>36.7</b>	<b>61700</b>	<b>1.5</b>	<b>2576</b>	
<b>All Regions</b>	<b>January</b>	<b>100</b>	<b>63646</b>	<b>0.1</b>	<b>34</b>	<b>3.1</b>	<b>1968</b>	<b>32.3</b>	<b>20526</b>	<b>40.0</b>	<b>25474</b>	<b>0.3</b>	<b>203</b>	
	<b>February</b>	<b>100</b>	<b>52989</b>	<b>0.7</b>	<b>345</b>	<b>2.7</b>	<b>1425</b>	<b>28.3</b>	<b>15006</b>	<b>34.7</b>	<b>18401</b>	<b>1.8</b>	<b>932</b>	
	<b>March</b>	<b>100</b>	<b>51532</b>	<b>0.4</b>	<b>200</b>	<b>3.2</b>	<b>1658</b>	<b>33.2</b>	<b>17083</b>	<b>34.6</b>	<b>17825</b>	<b>2.8</b>	<b>1441</b>	
North of West Bank	January	100	727	0.0	0	0.0	0	0.0	0	15.1	110	0.3	2	
	February	100	953	0.0	0	0.0	0	0.0	0	20.5	195	0.2	2	
	March	100	1021	1.3	12	0.1	1	0.0	0	21.5	220	0.0	0	
Middle of West Bank	January	100	2652	0.2	5	0.0	0	3.4	90	14.6	388	0.8	20	
	February	100	7305	2.0	141	0.2	14	1.6	116	15.5	1133	4.3	317	
	March	100	5410	0.7	41	0.8	41	4.1	220	16.0	864	0.6	35	
Jerusalem	January	100	43626	0.1	29	1.1	486	35.5	15470	39.2	17095	0.3	129	
	February	100	26137	0.6	182	0.7	170	28.1	7344	41.3	10783	2.3	613	
	March	100	19533	0.4	84	2.8	528	20.3	3969	48.2	9417	5.5	1077	
South of West Bank	January	100	16419	0.0	0	8.9	1459	29.9	4896	47.9	7868	0.3	49	
	February	100	18508	0.1	20	6.7	1241	40.7	7546	33.6	6215	0.0	0	
	March	100	25560	0.2	63	4.4	1088	50.4	12894	28.5	7316	1.4	329	
Gaza Strip	January	100	222	0.0	0	10.3	23	31.5	70	5.8	13	1.4	3	
	February	100	86	2.3	2	0.0	0	0.0	0	87.2	75	0.0	0	
	March	100	8	0.0	0	0.0	0	0.0	0	100.0	8	0.0	0	

2009

( / )

:7

**Table 7: Average Length of Stay for the Guests in Hotels (Nights/Guest) by Region, Month and Nationality During the First Quarter, 2009**

Region	Month	Nationality					No. of Operating Hotels		
		U.S.A & Canada	Asia	Israel	Arab Countries	Palestine			
<b>Palestinian Territory</b>		<b>2.7</b>	<b>2.3</b>	<b>1.6</b>	<b>1.7</b>	<b>2.0</b>	<b>75</b>		
<b>All Regions</b>	<b>January</b>	<b>3.1</b>	<b>2.7</b>	<b>2.0</b>	<b>2.0</b>	<b>2.0</b>	<b>82</b>		
	<b>February</b>	<b>2.1</b>	<b>2.3</b>	<b>1.5</b>	<b>1.5</b>	<b>1.9</b>	<b>82</b>		
	<b>March</b>	<b>3.0</b>	<b>2.1</b>	<b>1.6</b>	<b>1.8</b>	<b>2.0</b>	<b>75</b>		
North of West Bank	January	6.7	2.0	1.0	7.1	2.2	7		
	February	2.0	1.0	1.2	6.0	2.0	7		
	March	3.4	0.0	1.1	3.0	1.7	7		
Middle of West Bank	January	3.6	5.3	2.7	1.6	1.9	17		
	February	1.6	0.0	1.4	1.3	1.8	19		
	March	4.1	9.9	1.8	2.0	2.2	17		
Jerusalem	January	3.1	2.7	1.9	2.5	0.0	29		
	February	1.9	1.9	1.5	3.3	0.0	28		
	March	2.8	1.8	1.8	0.0	0.0	24		
South of West Bank	January	3.0	2.6	1.6	1.5	1.9	21		
	February	3.6	2.6	1.3	0.0	2.7	22		
	March	3.0	2.0	1.2	1.3	1.4	19		
Gaza Strip	January	1.0	1.4	0.0	1.7	1.0	8		
	February	1.0	0.0	0.0	0.0	0.0	6		
	March	0.0	0.0	0.0	0.0	0.0	8		

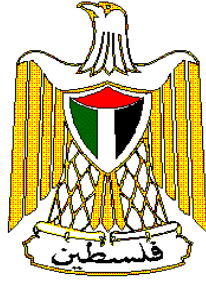
2009

( / )

:( ) 7

**Table 7 (Cont.): Average Length of Stay for the Guests in Hotels (Nights/Guest) by Region, Month and Nationality During the First Quarter, 2009**

Region	Month	Total	Nationality						
			Australia & New Zeland	Africa	Other European Count.	European Union	Central & South America		
<b>Palestinian Territory</b>		<b>2.4</b>	<b>1.6</b>	<b>1.2</b>	<b>2.7</b>	<b>2.6</b>	<b>2.8</b>		
<b>All Regions</b>	<b>January</b>	<b>2.7</b>	<b>1.8</b>	<b>1.3</b>	<b>2.8</b>	<b>2.8</b>	<b>2.3</b>		
	<b>February</b>	<b>2.1</b>	<b>1.4</b>	<b>1.1</b>	<b>2.3</b>	<b>2.3</b>	<b>2.3</b>		
	<b>March</b>	<b>2.5</b>	<b>2.1</b>	<b>1.3</b>	<b>3.0</b>	<b>2.5</b>	<b>3.2</b>		
North of West Bank	January	2.7	0.0	0.0	0.0	4.4	0.0		
	February	2.0	0.0	0.0	0.0	2.0	0.0		
	March	1.9	0.0	0.0	0.0	2.3	0.0		
Middle of West Bank	January	2.3	1.3	0.0	2.6	3.3	2.0		
	February	1.7	1.1	0.0	1.4	2.0	1.9		
	March	2.6	3.2	0.0	3.4	3.4	1.2		
Jerusalem	January	3.1	1.9	1.8	0.0	2.9	0.0		
	February	2.0	1.8	1.8	2.1	2.1	2.7		
	March	2.6	0.0	4.6	2.9	2.4	3.2		
South of West Bank	January	2.1	0.0	0.0	1.8	2.7	1.9		
	February	2.4	0.0	0.0	0.0	2.7	0.0		
	March	2.5	0.0	0.0	3.0	2.7	4.0		
Gaza Strip	January	1.2	0.0	0.0	0.0	1.2	0.0		
	February	1.3	1.0	0.0	0.0	1.4	0.0		
	March	1.0	0.0	0.0	0.0	1.0	0.0		



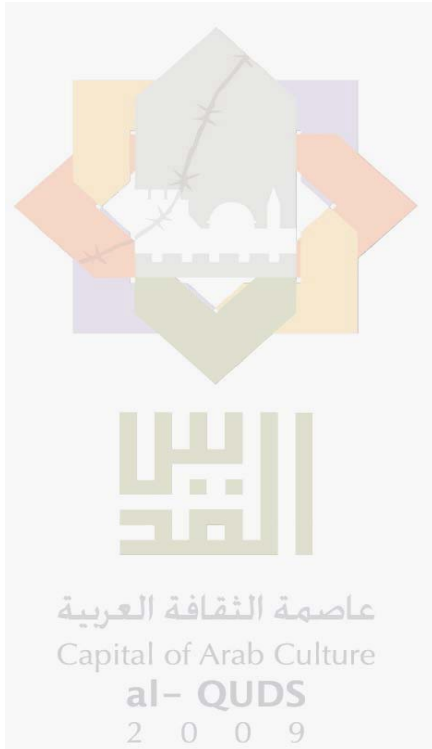
**Palestinian National Authority  
Palestinian Central Bureau of Statistics**

**Hotel Activities in the Palestinian Territory  
(First Quarter 2009)  
Executive Summary**

**Volume 15, Issue No. (1)  
May, 2009**

"Cover price 2 US\$"

PAGE NUMBERS OF ENGLISH TEXT ARE PRINTED IN SQUARE BRACKETS.  
TABLES ARE PRINTED IN THE ARABIC ORDER (FROM RIGHT TO LEFT)



**This document is prepared in accordance with the standard procedures stated in the Code of Practice for Palestine Official Statistics 2006**

© May, 2009  
All rights reserved.

**Suggested Citation:**

**Palestinian Central Bureau of Statistics, 2009.** *Hotel Activities in the Palestinian Territory, (First Quarter, 2009) Executive Summary.* Ramallah - Palestine.

All correspondence should be directed to:  
**Palestinian Central Bureau of Statistics**  
**P.O.Box 1647, Ramallah, Palestine.**

Tel: (972/970) 2 242 6340  
Fax: (972/970) 2 242 6343  
E-Mail :diwan@pcbs.gov.ps  
Web-Site: <http://www.pcbs.gov.ps>

## **Acknowledgments**

**The Palestinian Central Bureau of Statistics (PCBS) expresses to gratitude to all Palestinian hotels owners and managers who responded to the survey instrument for their understanding during the fieldwork, which was truly remarkable, and to all of those who worked on this survey for their contribution and commitment in implementing the survey and providing the necessary information and data.**

**The funding for this report was provided by the Palestinian National Authority (PNA) and the Core Funding Group (CFG) for 2009. CFG members include: the Representative Office of Norway to the PNA; the Representative Office of Netherlands to PNA; and the Swiss Agency for Development and Cooperation (SDC).**

**Data collection, processing, and printing of this document have been made possible through the financial assistance of the European Union. The contents of this document are the sole responsibility of the PCBS.**

**On this occasion, PCBS extends special thanks to the members of the CFG and the EU for their support.**

## Team Work

- **Report Preparation**  
Rania Hassiba
- **Maps Design**  
Nibal Ismaeel
- **Graphic Design**  
Ahmad Sawalmeh
- **Dissemination Standard**  
Hanan Janajreh
- **Preliminary Review**  
Fathi Farasin  
Mahmoud Abdalrahman
- **Final Review and Overall Supervision**  
Mahmoud Jaradat  
Ola Awad Acting President

## **Preface**

The Palestinian tourism sector has the potential to be a main contributor to the GDP in Palestine.

PCBS began publishing reports about hotel activities from the first quarter of 1996. PCBS is pleased to present the first issue of the fourteenth volume on “Hotel Activities in the Palestinian Territory” which covers statistics on the hotel industry for the first quarter of 2009.

PCBS has implemented several surveys to cover the supply and demand sides of tourism, including the Hotel Activity survey in the Palestinian Territory, a continuous and permanent survey since 1996, and a survey of Tourism Activities 2002 and 2007. In addition the Domestic Tourism survey for the years 1998, 2005 and 2006, the survey of Outbound Tourism in 2004, and a survey of Inbound Tourism 2005 were implemented to cover an important aspect of tourist demand and an additional step for the further implementation of surveys related to tourism statistics, to build the necessary database to establish the tourism satellite accounts (TSA) in the Palestinian Territory.

This report addresses the main indicators of the hotel industry. These indicators include the number of operating hotels, number of rooms and beds, public facilities in the surveyed hotels, number of employed persons in hotels, number of guest nights in the reference period, number of guests by nationality and rates of bed and room occupancy.

We hope that the Hotel Activities survey in the Palestinian Territory comprises a step towards supporting the tourism sector which contribute in enhancing the national economy.

**May, 2009**

**Ola Awad**  
**Acting President of PCBS**



## Table of Contents

<b>Subject</b>	<b>Page</b>
List of Tables and Figures	
Executive Summary	
Chapter One: <b>Introduction</b>	<b>[15]</b>
Chapter Two: <b>Concepts and Definitions</b>	<b>[17]</b>
Chapter Three: <b>Main Findings</b>	<b>[19]</b>
3.1 Hotels Capacity During the First Quarter 2009	[19]
3.2 Room Occupancy During the First Quarter 2009	[19]
3.3 Hotel Workers During the First Quarter 2009	[19]
3.4 Guests and Nights' Occupancy During the First Quarter 2009	[19]
<b>Tables</b>	<b>25</b>



## **List of Tables and Figures**

<b>Table</b>	<b>Page</b>
<b>Table 1:</b> Main Indicators for Hotel Activities by Month and Region During the First Quarter, 2009	<b>27</b>
<b>Table 2:</b> Number of Hotels and Rooms by Facilities and Region as of March, 2009	<b>28</b>
<b>Table 3:</b> Number of Hotels by Availability of Public Services and Region as of March, 2009	<b>28</b>
<b>Table 4:</b> Average Number of Workers in Hotels by Type of Work, Sex and Region During the First Quarter, 2009	<b>29</b>
<b>Table 5:</b> Number and Percentage of Guests by Nationality and Region During the First Quarter, 2009	<b>30</b>
<b>Table 6:</b> Number and Percentage of Guest Nights by Nationality and Region During the First Quarter, 2009	<b>32</b>
<b>Table 7:</b> Average Length of Stay for the Guests in Hotels (Nights/Guest) by Region, Month and Nationality During the First Quarter, 2009	<b>34</b>
<b>Figures</b>	
<b>Figure 1:</b> Percentage Distribution of Guests by Nationality During the First Quarter, 2009.	<b>[19]</b>

## **Executive Summary**

The main findings of the hotels survey during the first quarter of 2009 are as follows:

- There are 75 operating hotels in March 2009, offering 3,694 rooms with total available beds of 7,612.
- The average occupancy of rooms was 951.8; it declined by 30.6% compared with the same quarter of the year 2008, while it declined by 23.3% compared with the previous quarter.
- The average number of workers in the hotels 1,345 of which 201 were females.
- During the first quarter 2009, the total number of guests to the Palestinian Territory hotels reached 69,380; they declined by 20.0% compared with the same quarter of the year 2008.
- Most of the guests were in Jerusalem, representing 50.2% of the total guests, whereas the 10.7% of the guests were in Middle of the West Bank, 36.8% were in South of the West Bank, and 1.9% were in North of the West Bank, while the percentage of guests in Gaza Strip hotels was 0.4%.
- The total number of nights was 168,167. It declined by 45.7% during the first quarter 2009 compared with the previous quarter, while it declined by 19.1% compared with the corresponding quarter in the year 2008.
- The average length of stay in the Palestinian hotels was 2.4 nights per guest during the first quarter 2009.

## Chapter One

### **Introduction**

Tourism is considered a cornerstone of the Palestinian economy because there are many attractive touristic resorts for people of different interests. Therefore, PCBS commenced to collect statistical data on tourism and monitor hotel activities through a continuous and comprehensive survey since 1996, this survey is carried out on a monthly basis. Such activity following the World Tourism Organization and European Union recommendations. It aimed to produce a comprehensive database and time series of basic indicators on the hotel industry hoping to enable the development and promotion of the tourism industry in Palestine.

A quarterly report is regularly produced and a collective comprehensive report is produced annually. This publication presents data on hotels for the first quarter 2009; which its results indicated that the rate of decline is the lowest compared to the previous seven years.



## Chapter Two

### Concepts and Definitions

This section presents the main concepts and definitions used to derive the main indicators of tourism statistics. These concepts and definitions are based on international recommendations in the field of tourism statistics, and are applied to the rest of the cross cutting subjects in the Palestinian Central Bureau of Statistics. The main concepts and definitions mentioned in this report were as follows:

#### **Hotel:**

It is defined as an accommodation establishment providing overnight lodging for the visitors in a room or unit. It should hold a number of persons exceeding that of an average single family. The establishment must be under one management, and provides different facilities and services to visitors.

#### **Operating Hotels:**

It is defined as the hotels that included in the sample frame and results, excluding the non operating hotels that are carrying out repairs maintenance, and the hotels which didn't respond to the survey.

#### **Number of Rooms:**

It refers to the furnished rooms for the use of guests. Such rooms might be single, double, triple, or quadruple. Rooms involving more than four beds were classified under (others) in the questionnaire. As for the suite, it is usually comprised of one bedroom or more, a living room and private toilet facilities.

#### **Available Beds and Rooms:**

It refers to beds and rooms which are ready for use during the reference period. Rooms closed for maintenance or repairs are excluded.

#### **Guests:**

It refers to visitors staying in the hotels and using their facilities. Records of new guests are based on the number of visits regardless whether it's the same person or different.

#### **Number of Guest Nights (Bed Occupancy):**

Number of beds booked for hotel guests. Such beds are considered as occupied whether they were actually used or not. It is measured by guest night unit.

#### **Room Occupancy:**

Number of booked and paid rooms. Such rooms are considered occupied whether they were actually used or not.

#### **Average (rooms, beds) Occupancy:**

It is defined as the total number of occupied (rooms, beds) divided by the number of days.

#### **Percentage of (rooms, beds) Occupancy:**

It is defined as the average of (rooms, beds) occupancy divided by available (rooms, beds) multiplied by one hundred.

**Average Length of Stay:**

Represents the total of guest nights by nationality divided by number of guests of the same nationality.

**North of West Bank Region:**

Jenin, Tulkarm, Nablus, Qalqiliya, Salfit and Tubas governorates.

**Middle of West Bank Region:**

Ramallah and Al-Bireh, Jericho and Al-Aghwar governorates.

**Jerusalem Region:**

Jerusalem governorate.

**South of West Bank Region:**

Bethlehem and Hebron governorates.

**Gaza Strip:**

North Gaza, Gaza, Deir Al-Balah, Khan Yunis and Rafah governorates.



## Main Findings

The total number of hotels in the Palestinian Territory was 117 hotels, including those temporarily closed. There were 75 operating hotels in March 2009, offering 3,694 rooms with total available beds of 7,612.

### 3.1 Hotels Capacity During the First Quarter 2009

The operating hotels within the Palestinian Territory in March 2009 are distributed as follows:

- North of West Bank: 7 hotels including 134 rooms comprising 292 beds.
- Middle of West Bank: 17 hotels including 580 rooms comprising 1,169 beds.
- Jerusalem Region: 24 hotels including 1,109 rooms comprising 2,355 beds.
- South of West Bank: 19 hotels including 1,546 rooms comprising 3,226 beds.
- Gaza Strip: 8 hotels including 325 rooms comprising 570 beds.

### 3.2 Room Occupancy During the First Quarter 2009

The average occupancy of rooms in the Palestinian hotels was 951.8 representing 32.8% from the available rooms.

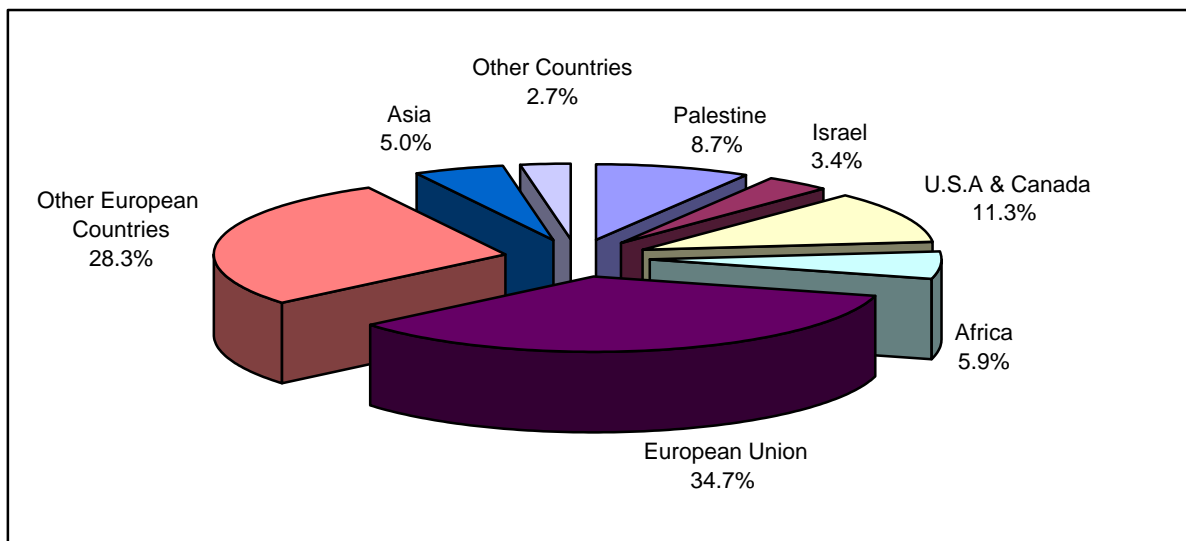
### 3.3 Hotel Workers During the First Quarter 2009

The average number of workers in the hotels was 1,345 of which 1,144 were males and 201 were females. The number of workers in hotel administration was 247, of which 191 were males and 56 were females. There were 1,098 workers in hotels services, of which 953 were males and 145 were females.

### 3.4 Guests and Nights Occupancy During the First Quarter 2009

The total number of guests in the Palestinian hotels was 69,380 persons, of which 8.7% were Palestinian guests, and 34.7% were from the European Union countries. The number of guests decreased by 20.0%, compared with the same quarter of the year 2008.

**Figure (1): Percentage Distribution of Guests by Nationality During the First Quarter, 2009**



The total number of guest nights in Palestinian hotels during the first quarter 2009 was 168,167 of which; 7.0% of these nights were occupied by Palestinian guests, 36.7% by guests from European Union countries, and 12.6% by guests from the United States and Canada.

The guests nights distributed according to the region are as follows:

Guests spent 53.1% of total nights in Jerusalem hotels, and 9.1%, 36.0%, 1.6% in Middle, South, and North of the West Bank, respectively, and 0.2% of nights in Gaza Strip hotels.

The below table presents the main results of the first quarter of 2009, and explains the changes that occurred in the main indicators for Palestinian hotels activities, compared with the previous quarter, and with the results of the first quarter of 2008.

**Percentage Change in the Variables During the First Quarter 2009, Compared with the Previous and First Quarter 2008**

The Indicator	Value During the 1st Quarter 2009	Percentage change (%) comparing with	
		1 <sup>st</sup> Quarter 2008	4 <sup>th</sup> Quarter 2008
Number of operating hotels	75	-8.5	-11.8
Average number of workers	1,345	11.9	-4.7
Number of guests	69,380	-20.0	-41.0
Number of guest nights	168,167	-19.1	-45.7
Average occupancy of rooms	951.8	-30.6	-23.3
Average occupancy of beds	1,827.9	-18.2	-44.5
Rooms occupancy %	23.8	-29.8	-20.1
Beds occupancy %	21.7	-14.0	-41.8