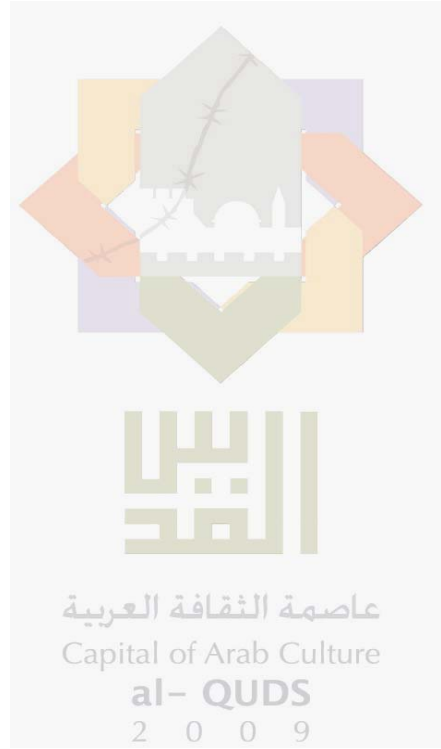
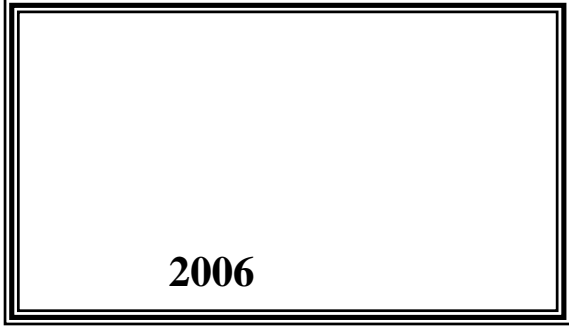


2008

2009 /



© 1430 .2009

:

.2009

.2008

:

1647

: (970/972) 2 242 6340

: (970/972) 2 242 6343

: diwan@pcbs.gov.ps

: <http://www.pcb.gov.ps>



2008

(PNA)

2009 (CFG)

.(SDC)

(EU)

(CFG)

:CFG

:EU

:GS

()

:ISIC-3

1967

:J1

J1

:J2

:NIS

:PCBS

:PNA

:RWB

1967

:RWBGS

:SDC

(-)

(.) :

•

•

•

•

•

.2008

2009

23		:
23	:1.1	
23	:2.1	
24	:3.1	
25		:
29		:
29	:1.3	
29	:2.3	
33	:3.3	
35	:4.3	
39		:
39	:1.4	
39	:2.4	
41		:
41	:1.5	
41	:2.5	
41	:3.5	
43		
45		
73		

47			:1
		2008-2003	
49	2008		:2
50			:3
		2008	
51			:4
		2008	
52		1000	:5
		2008	
53			:6
		2008	
54			:7
	2008		
55			:8
		2008	
56			:9
		2008 - 1999	
57			:10
		2008	
58			:11
		2008 - 2004	
59			:12
		2008	
60			:13
		2008	
61			:14
		2008-1999	
62			:15
		2008	

64	2008	:16
65		:17
66	2008	:18
67	2008-1999	:19
68	2008	:20
69	2008	:21
70	" "	:22
71	2008	:23
72	2008	:24

29		2008	:1
30	2008		:2
30	2008		:3
31		2008	:4
32		2008	:5
32	2008		:6
33	2008		:7
33		2008	:8
34		2008	:9
35		2008	:10
35	2008		:11
36		2008	:12
36	2008		:13
37		" "	:14

2008

75			:1
		2008	
77	2008		:2
79			:3
		2008	

			.2008	
			:	
		%5.0		•
			.2008	
			96,736	•
.2008	18,442			•
.2008	4,403		3,675	•
	320,123			•
		31,307		
		.2008	839,944	
		.2008	13,100	•
.2008	354,804			•
.2008			97,648,283	•
. 1,314,406		2008	" "	•

1.1

2008

2.1

1
2
3
4

:

:

:

:

:

:

:

() 9 ()

:()

() 9 ()

:

400

$\cdot^3 250$ $\cdot^3 250-100$ $\cdot^3 100-50$ () $\cdot^3 50$

:

:

.() 9

24

(1000 x /)

24

30

175

2,200

250

:

:

.()

:

:

:

:

(2) 90
. 600

140
900
. 2,000 20

:

24

:

:

90

140
900
2

(2)
. 600
5

:

2) 90 140
. 600 900 . 2 (

3
20 . 1.5
20-5

()

:()

.()

:()

()

.1967

1.3

2008
 23.0 24.2
 76.9
 21.5
 5.0
 1

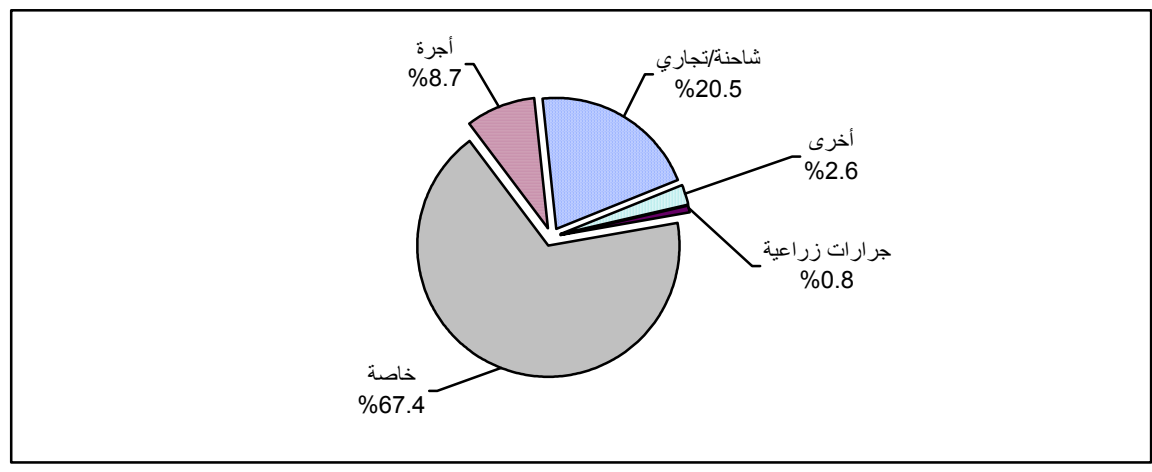
2.3

1.2.3

2008 96,736
 20.5 67.4
 0.8 8.7
 2.6
 1 2

2008

(1)



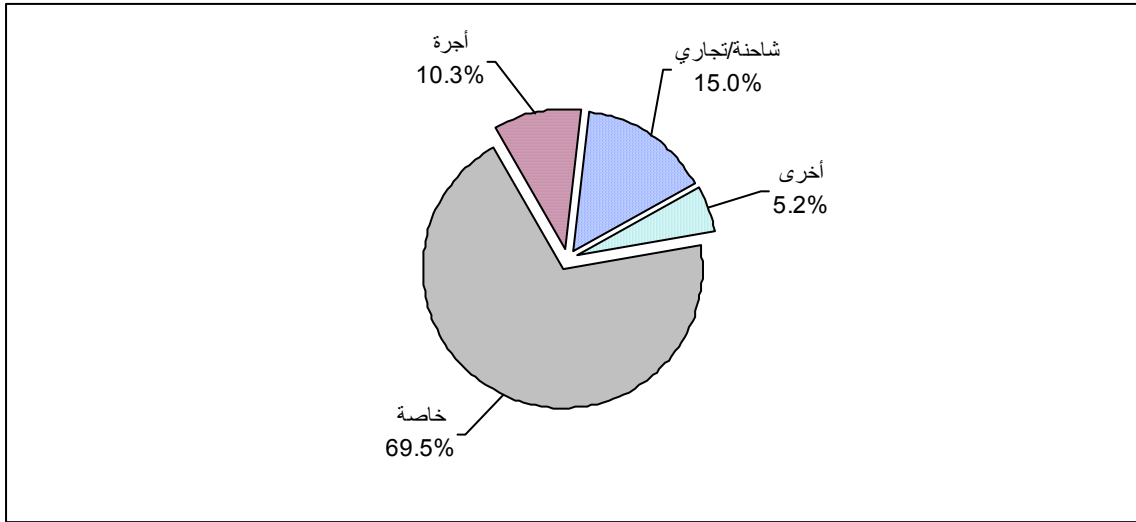
843

(3)

2008
 15.0 10.3 69.5
 5.2
 3

2008

:(2)



44.3

3.9

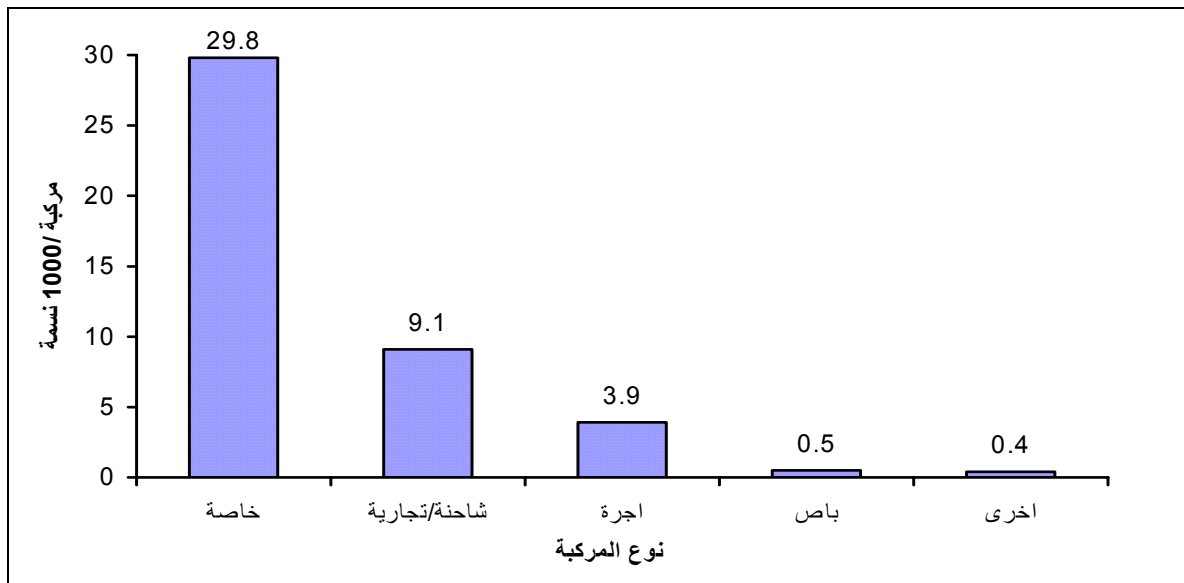
29.8

.(5

) 10.6

2008

:(3)



2.2.3

200

2008

3.3

3.8

.(6)

3.2.3

2008 82 749
9.1) (7

4.2.3

119 9.2 1,089

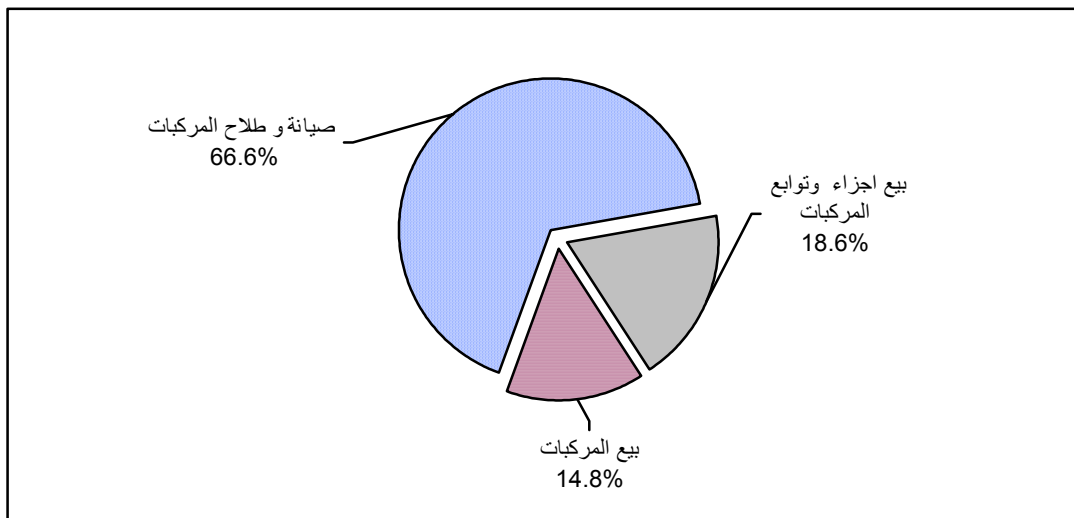
.(7) %49.0 %37.8

5.2.3

.2008 2,530

%14.8 %66.6
.(8) %18.6

2008 : (4)

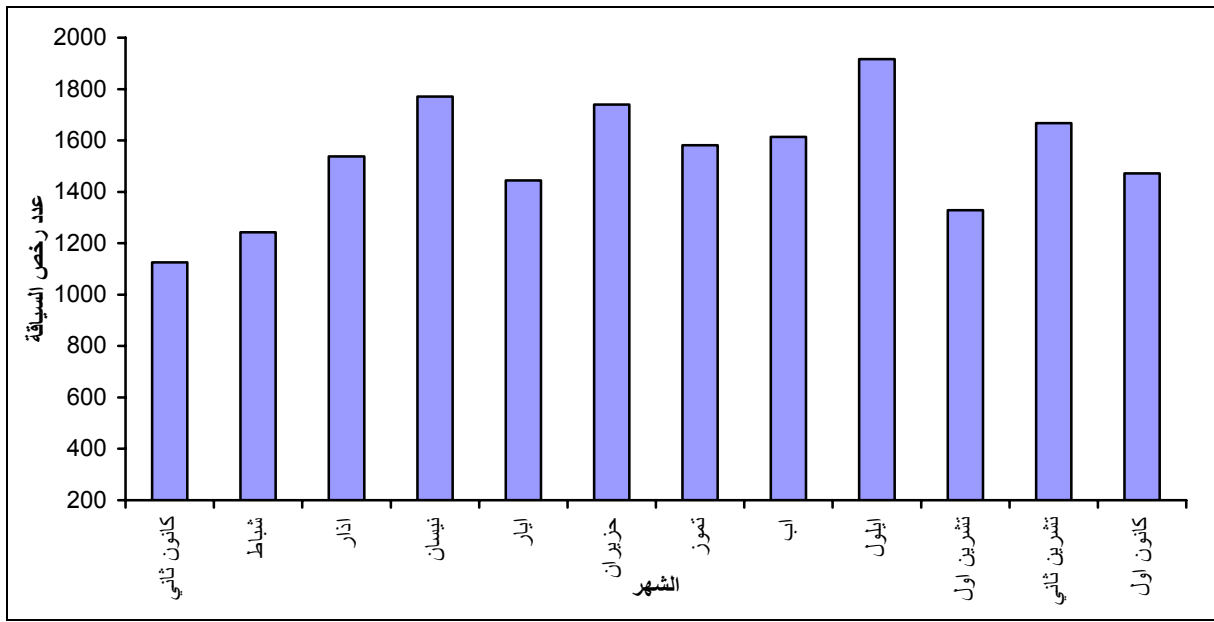


:6.2.3

5 18,442 2008
.(10)

2008

(5):



7.2.3:

1,293

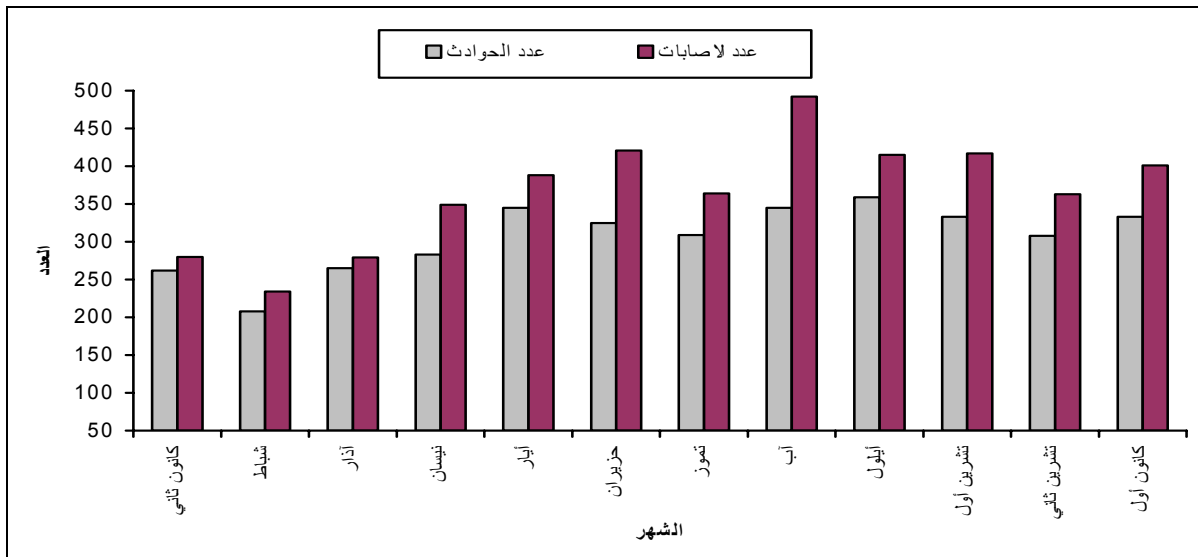
2008

3,675

(12) . (2)

2008

(6):



4,403

2008

6

%4.4

%14.3

%79.1

13

) 2007

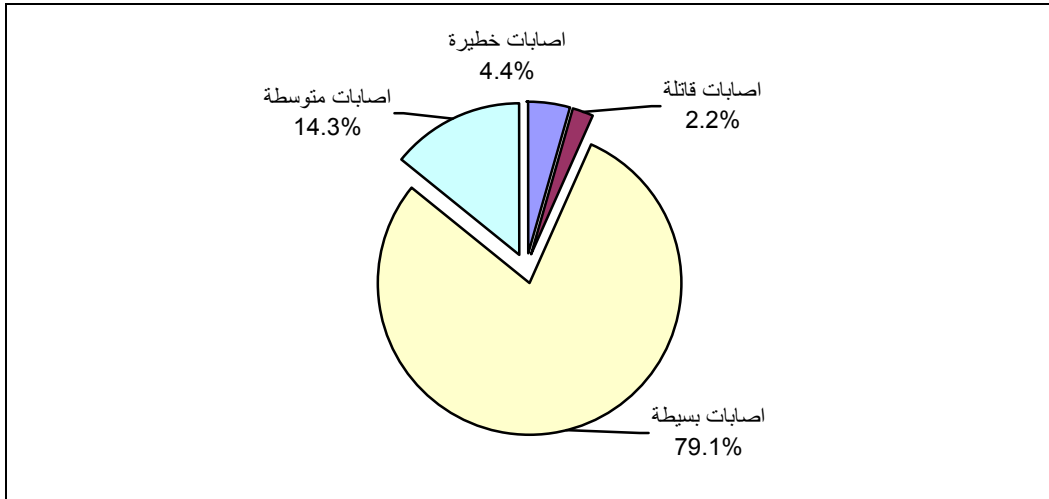
%2.9

%2.2

(3).

2008

:(7)



:3.3

2008

320,123

26,677

%89.4

%2.6

%5.6

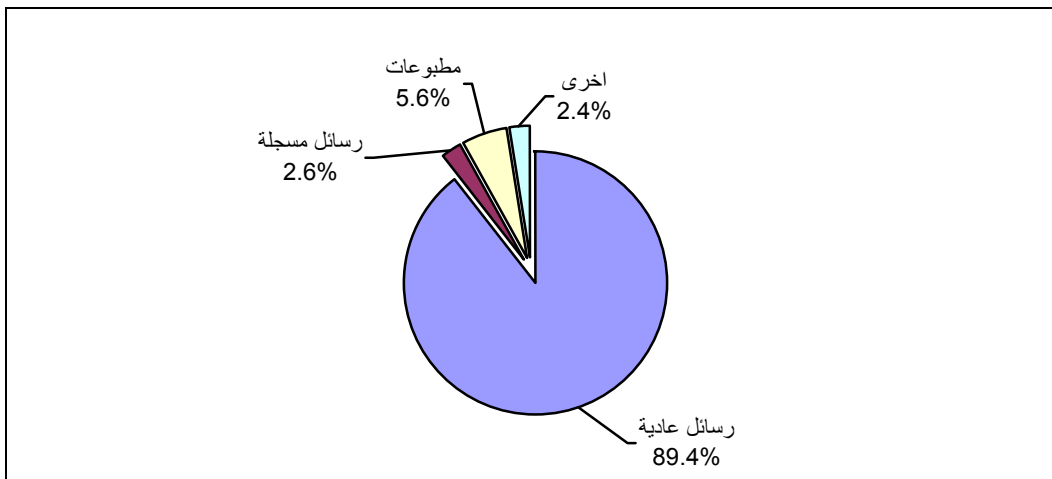
%.2.4

34,773

.(15) 18,442

2008

:(8)



2008

2,608

31,307

%0.9

%3.5

%15.3

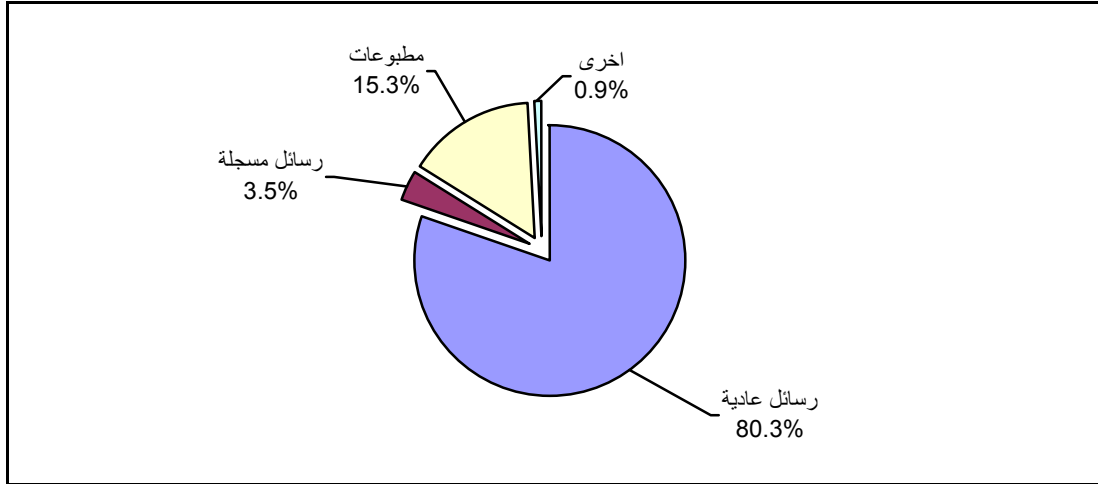
%80.3

5,573

(15)) 1,265

2008

:(9)



839,944

(16)) 69,995 2008

%95.7

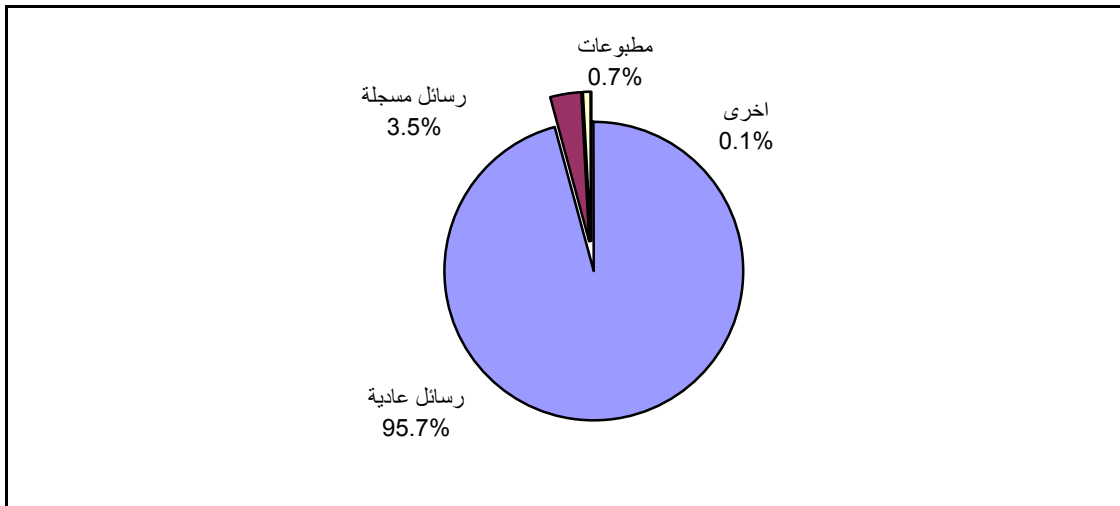
%0.7

%3.5

%0.1

2008

:(10)



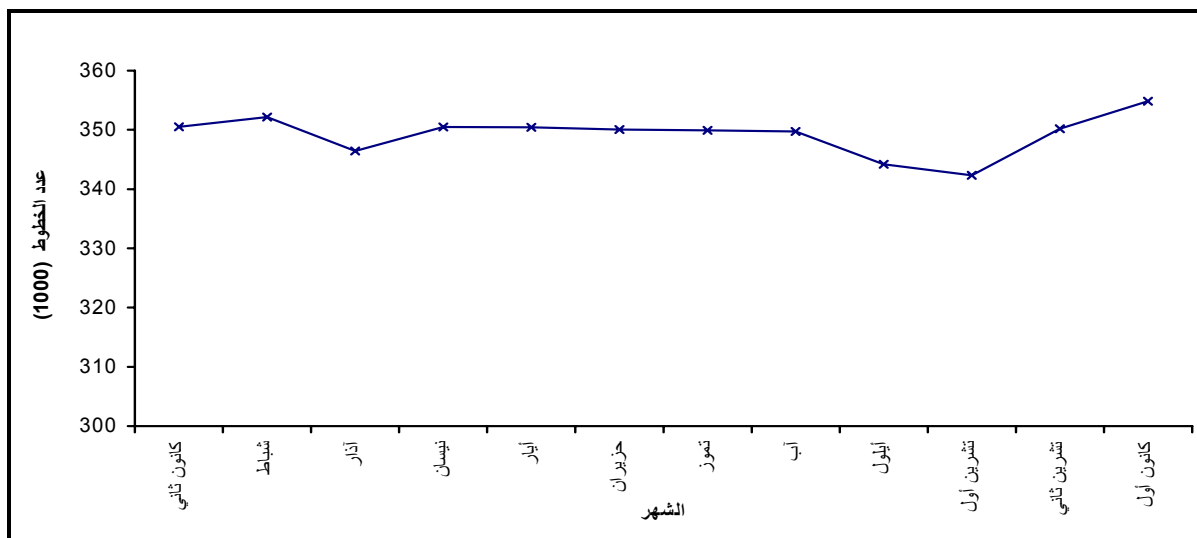
1.3.3

13,100 2008 227 79 306
) (17

4.3

2008 354,804 2008 %1.7 5,013
) (19 18

2008 :(11)

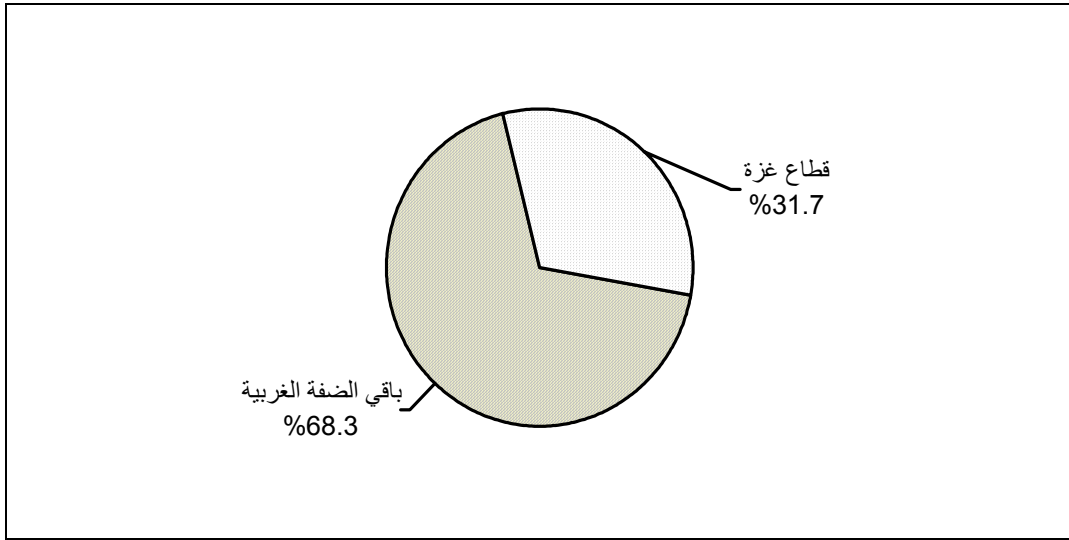


2,705 355 2,350 2008
) (20

%31.7 %68.3 2008 97,648,283

2008

:(12)



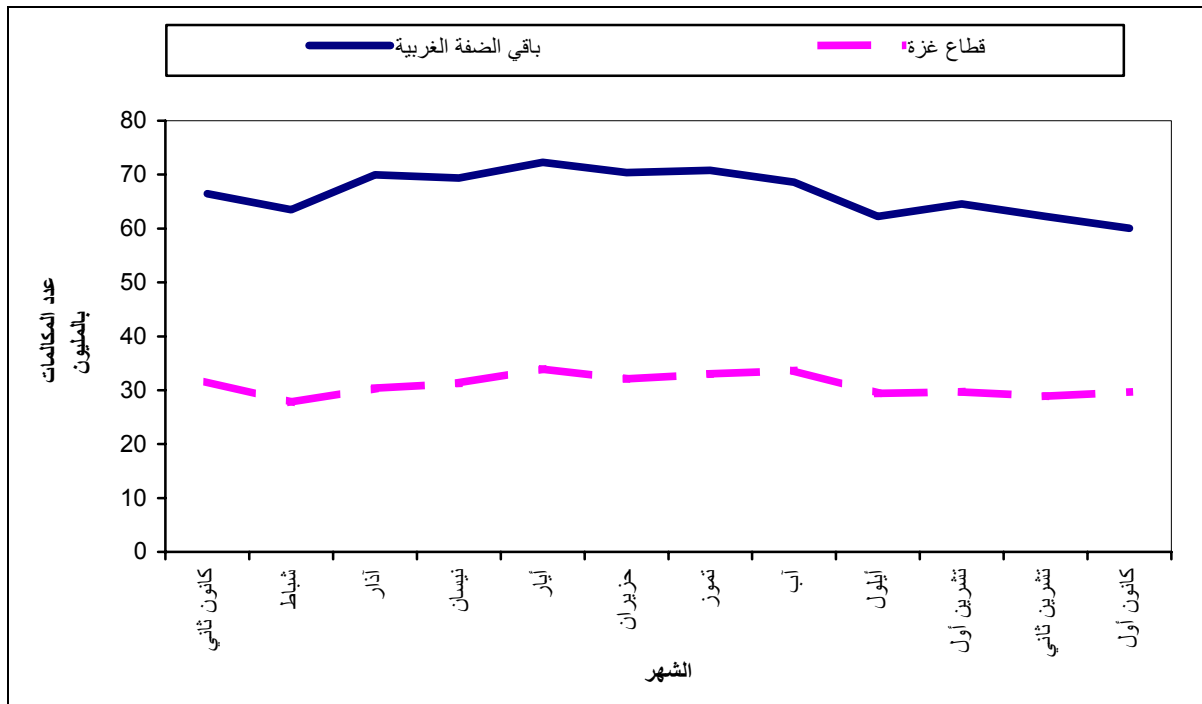
106,278,824

.(21) 2008

% 9.1

2008

:(13)



:1.4.3

1,314,406

2008

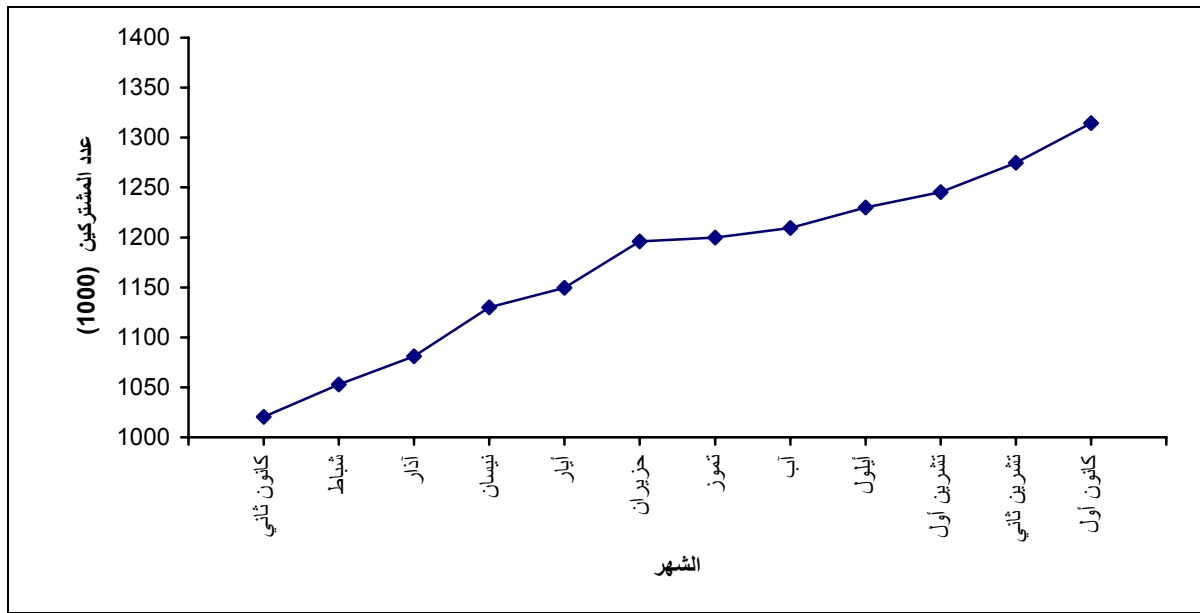
" "

.(22) . ()

2008

" "

:(14)



:2.4.3

329,324	448,903		
773,953 (ADSL)		.	119,579
.(23) 2008		213,259	560,694
.2008	23		
	39		
71		11.2	437
		.(24)	1.8

.....
1.4

2.4

2008

.2008

1967

1.5

1.1.5

2.1.5

2.5

3.5

•

•

•

•

•

	:	.1995	<i>.1</i>
		.1998	<i>.2</i>
	-	<i>(8)</i>	
-	<i>(2008-1999)</i>	.2008	<i>.3</i>
			<i>.4</i>
		-	<i>(2007-1998)</i>

Tables

2008 -2003

:1

Table 1: Employed Persons in the Transportation, Storage and Communication Activities in the Palestinian Territory by Selected Indicators, 2003-2008

Year and Region	Paid Employees						Percentage of Employed Persons in Transportation, Storage and Communication of Total Employment	
	(*) Median Daily Wage (NIS*)		Average Monthly Working Days per Employee		Average Weekly Working Hours			
	All Sectors	Transportation, Storage and Communication Sector	All Sectors	Transportation, Storage and Communication Sector	All Sectors	Transportation, Storage and Communication Sector		
Palestinian Territory								
2003	60.0	57.7	23.0	23.7	42.1	46.4	5.8	2003
2004	62.2	65.4	23.5	24.3	43.0	48.3	5.4	2004
2005	69.2	63.5	23.4	24.0	42.4	47.2	5.7	2005
2006	73.1	60.0	23.1	23.1	41.7	46.3	5.7	2006
2007	75.0	57.7	22.2	22.1	41.5	46.3	5.6	2007
2008	76.9	76.9	23.0	24.2	42.4	46.9	5.0	2008
West Bank								
2003	72.3	76.9	23.4	24.0	43.0	46.3	6.0	2003
2004	71.2	76.9	23.7	24.9	43.7	48.7	5.7	2004
2005	76.9	76.9	23.0	24.3	43.0	47.0	6.0	2005
2006	76.9	81.3	22.7	24.1	42.5	46.7	5.8	2006
2007	76.9	76.9	21.7	22.7	42.1	45.9	5.1	2007
2008	84.6	100	22.1	24.2	42.8	47.7	4.9	2008

2008 -2003

:() 1

Table 1 (Cont.): Employed Persons in the Transportation, Storage and Communication Activities in the Palestinian Territory by Selected Indicators, 2003-2008

Year and Region	Paid Employees						Percentage of Employed Persons in Transportation, Storage and Communication of Total Employment	
	(*) Median Daily Wage (NIS*)		Average Monthly Working Days per Employee		Average Weekly Working Hours			
	All Sectors	Transportation, Storage and Communication Sector	All Sectors	Transportation, Storage and Communication Sector	All Sectors	Transportation, Storage and Communication Sector		
Gaza Strip								
2003	50.0	38.5	22.4	22.9	40.6	46.8	5.2	2003
2004	53.8	38.5	23.2	22.8	41.6	47.4	4.7	2004
2005	57.7	40.0	24.0	23.4	41.2	47.7	5.1	2005
2006	65.4	35.0	23.9	21.3	40.0	45.5	5.6	2006
2007	57.7	35.0	23.3	21.3	40.0	46.9	6.9	2007
2008	57.7	36.4	24.7	23.8	40.8	44.8	5.2	2008

*The average exchange rates of NIS per US\$ during the years, 2003, 2004, 2005, 2006, 2007, 2008 :
 Are: 0.220, 0.223, 0.223, 0.224, 0.243, 0.279. Respectively.
 Source: Palestinian Central Bureau of Statistics, 2009. Database Labour Force Survey, (2003-2008).
 (2008-2003) 2009 :

2008

:2

Table 2: Licensed Road Vehicles in Remaining West Bank by Governorate and Type of Vehicle, 2008

Governorate	Total	Other Vehicles	Trucks and Commercial Cars	Road Tractors	Agricultural Tractors	Trailers and Semi-Trailers	Public Buses	Private Buses	Motorcycles and Moped	" " Taxis	Private Cars	
Jenin*	10,366	73	2,641	10	193	64	146	38	25	1064	6,112	*
Tulkarm	7,591	44	1,147	0	57	22	91	31	17	662	5,520	
Nablus**	16,829	78	2,796	1	98	40	134	61	35	1,491	12,095	**
Qalqiliya	3,292	33	823	0	49	10	10	6	23	214	2,124	
Ramallah & Al-Bireh	29,969	396	6,238	3	118	113	169	82	80	2,622	20,148	
Jericho & Al Aghwar	1,805	15	313	5	33	12	28	4	66	120	1,209	
Bethlehem	9,800	48	1,448	2	40	7	76	54	12	599	7,514	
Hebron	17,084	117	4,433	6	140	28	139	88	8	1,640	10,485	
Remaining West Bank	96,736	804	19,839	27	728	296	793	364	266	8,412	65,207	

* include Tubas, ** Include Salfit

** *

Source: Ministry of Transportation, 2008.

2008

:

2008

:3

Table 3: New Registered Road Vehicles in Remaining West Bank by Month and Type of Vehicle, 2008

Month	Total	Other Vehicles	Trucks and Commercial Cars	Road Tractors	Agricultural Tractors	Trailers and Semi-Trailers	Public Buses	Private Buses	Motorcycles and Moped	Taxis"	Private Cars
January	751	8	86	4	45	3	8	4	3	78	512
February	672	3	72	0	5	3	23	1	8	78	479
March	668	5	148	0	6	6	13	2	7	69	412
April	720	15	83	0	3	10	2	2	19	67	519
May	642	2	115	0	2	8	1	0	13	78	423
June	853	6	111	0	0	8	0	0	5	119	604
July	616	9	91	0	2	8	5	3	7	80	411
August	1,255	14	232	0	4	11	15	2	14	139	824
September	1,122	15	177	0	8	6	8	3	5	68	832
October	755	12	73	0	7	4	8	3	2	87	559
November	1,123	38	172	0	2	10	5	0	4	119	773
December	937	13	154	0	2	3	10	6	4	60	685
Total of Year	10,114	140	1,514	4	86	80	98	26	91	1,042	7,033

Source: Ministry of Transportation, 2008.

.2008

:

2008

:4

Table 4: New Registered Road Vehicles in Remaining West Bank by Governorate and Type of Vehicle, 2008

Governorate	Total	Other Vehicles	Trucks and Commercial Cars	جرارات Road Tractors	Agricultural Tractors	Trailers and Semi-Trailers	Public Buses	Private Buses	Motorcycles and Moped	" Taxis	Private Cars	
Jenin*	953	5	119	0	20	22	26	0	8	119	634	*
Tulkarm	571	5	48	0	6	1	7	1	3	70	430	
Nablus**	1,143	8	95	0	9	8	14	5	17	217	770	**
Qalqiliya	405	2	38	0	4	1	1	1	9	45	304	
Ramallah & Al-Bireh	4,269	93	860	4	24	30	17	13	18	335	2,875	
Jericho & Al Aghwar	150	0	11	0	2	2	2	1	29	5	98	
Bethlehem	828	6	54	0	4	1	7	3	6	82	665	
Hebron	1,795	21	289	0	17	15	24	2	1	169	1257	
Remaining West Bank	10,114	140	1,514	4	86	80	98	26	91	1,042	7,033	

*Include Tubas, ** Include Salfit

** *

Source: Ministry of Transportation, 2008.

.2008

:

2008

1000

:5

Table 5: Rate of Licensed Motorized Vehicles Per 1000 Capita in Remaining West Bank and Gaza Strip by Type of Vehicle and Region, 2008

Vehicle Type	Remaining West Bank and Gaza Strip	Gaza Strip*	Remaining West Bank	
Private Cars	29.83	()
Taxis	3.85	
Motorcycles and Moped	0.12	
Buses	0.53	
Trailers and Semi-Trailers	0.14	
Agricultural Tractors	0.33	
Road Tractors	0.01	
Trucks and Commercial Cars	9.07	
Other Vehicles	0.37	
All Types	44.25	

(..) The data not available.

(..)

Source: Palestinian Central Bureau of Statistics, 2008. Revised estimates, Based on the Final results
(population, Housing and Establishment census - 2007

.2008

:

.2007 -

2008

:6

Table 6: Driving Schools in Remaining West Bank and Gaza Strip by Governorate and Selected Indicators, 2008

Governorate	Number of Vehicles	Number of Trainers	Number of Driving Schools	
Remaining West Bank	663	753	200	
Jenin	74	100	22	
Tubas	11	12	5	
Tulkarm	44	66	16	
Nablus	94	111	30	
Qalqiliya	23	22	8	
Salfit	20	20	6	
Ramallah & Al-Bireh	150	140	35	
Jericho & Al Aghwar	31	22	10	
Jerusalem (J2)	20	18	6	(J2)
Bethlehem	73	95	27	
Hebron	123	147	35	
Gaza Strip	
Gaza North	
Gaza	
Deir El-Balah	
Khan Yunis	
Rafah	
Remaining West Bank and Gaza Strip	

(..) The data not available.

(..)

Source: Ministry of Transportation, 2008.

.2008

:

2008

:7

Table 7: Number of Bus Companies, Car Rental a Offices, Taxi Offices and Number of their Working Buses, Cars, Taxis in Remaining West Bank and Gaza Strip by Governorate, 2008

Governorate	Number of Taxis	Number of Taxi Offices	Number of Cars	Number of Car Rental Offices	Number of Buses	Number of Bus Companies	
Remaining West Bank	3,526	320	1,089	119	749	82	
Jenin	328	53	45	7	131	16	
Tubas	15	2	..	1	32	5	
Tulkarm	301	30	37	5	69	3	
Nablus	791	42	80	11	151	15	
Qalqiliya	201	14	139	7	8	1	
Salfit	9	3	14	5	26	1	
Ramallah & Al-Bireh	649	88	534	45	112	10	
Jericho & Al Aghwar	154	12	44	9	18	2	
Jerusalem (J2)	55	10	27	7	32	6	(J2)
Bethlehem	238	21	123	15	100	8	
Hebron	785	45	46	7	70	15	
Gaza Strip	
North Gaza	
Gaza	
Deir Al-Balah	
Khan Yunis	
Rafah	
Remaining West Bank and Gaza Strip	

(..) The data not available.

(..)

Source: Ministry of Transportation, 2008.

. 2008

:

2008

:8

Table 8: Licensed Garages in Remaining West Bank and Gaza Strip by Governorate and Type of Garage, 2008

Governorate	Total	Spare parts Stores	Motor vehicles repair workshops	Motor vehicles trading shops	
Remaining West Bank	2,530	471	1,685	374	
Jenin*	325	66	186	73	*
Tulkarm	359	63	279	17	
Nablus**	604	81	449	74	**
Qalqiliya	150	23	112	15	
Ramallah & Al-Bireh	506	105	295	106	
Jericho & Al Aghwar	21	1	17	3	
Bethlehem	244	46	166	32	
Hebron	321	86	181	54	
Gaza Strip	
North Gaza	
Gaza	
Deir Al-Balah	
Khan Yunis	
Rafah	
Remaining West Bank and Gaza Strip	

*Include Tubas, ** Include Salfit.

(..) The data not available.

Source: Ministry of Transportation, 2008.

.2008

:

(..)

2008-1999

:9

Table 9: Number of Driving Licences Issued in Remaining West Bank and Gaza Strip by Year and Region, 1999-2008

Year	Remaining West Bank and Gaza Strip	Gaza Strip	Remaining West Bank	
1999	20,434	6,910	13,524	1999
2000	21,597	7,188	14,409	2000
2001	17,088	5,916	11,172	2001
2002	11,338	5,408	5,930	2002
2003	15,575	6,647	8,928	2003
2004	17,838	7,622	10,216	2004
2005	21,133	6,392	14,741	2005
2006	14,147	6,289	7,858	2006
2007	17,085	2007
2008	18,442	2008

Source Ministry of Transportation, 2008

.2008

:

(..) The data not available

(..)

2008

:10

Table 10: Number of Driving Licences Issued in Remaining West Bank and Gaza Strip by Month and Region, 2008

Month	Total	Gaza Strip*	Remaining West Bank
January	1,126
February	1,243
March	1,538
April	1,771
May	1,445
June	1,740
July	1,581
August	1,614
September	1,917
October	1,328
November	1,667
December	1,472
Total of year	18,442

(..) The data not available.

(..)

Source: Ministry of Transportation, 2008.

.2008

:

2008–2004

:11

Table 11: Number of Registered Road Traffic Accidents and Casualties by Type of Injury in Remaining West Bank and Gaza Strip, 2004 –2008

Indicators	Remaining West Bank and Gaza Strip					Gaza Strip					Remaining West Bank					
	2008	2007	2006	2005	2004	2008	2007	2006	2005	2004	2008	2007	2006	2005	2004	
Number of Road Accidents	..	3,776	3,509	5,628	4,722	..	842	1,329	1,939	1,786	3,675	2,934	2,180	3,689	2,936	:
Total Number of Injured Persons:	..	5,137	6,026	6,667	5,107	..	841	1,676	2,367	1,966	4,403	4,296	4,350	4,300	3,141	
Slightly Injured	..	3,600	3,950	4,351	2,992	..	355	708	1161	765	3,482	3,245	3,242	3,190	2,227	
Moderate Injured	..	1,155	1,583	1,858	1,641	..	377	833	1062	981	631	778	750	796	660	
Seriously Injured	..	232	305	299	311	..	48	62	80	144	192	184	243	219	167	
Fatally Injured	..	150	188	159	163	..	61	73	64	76	98	89	115	95	87	

Source: General Commisariat of the Palestinian Police, 2008.

.2008

:

2008

:12

Table 12: Registered Road Traffic Accidents in Remaining West Bank and Gaza Strip by Governorate and Month, 2008

Governorate	Total	December	November	October	September	August	July	June	May	April	March	February	January	
Remaining West Bank	3,675	333	308	333	359	345	309	325	345	283	265	208	262	
Jenin	384	41	26	36	51	42	36	26	37	29	24	18	18	
Tubas	60	6	3	8	6	7	9	10	10	1	0	0	0	
Tulkarm	257	22	25	28	19	26	21	20	25	23	21	14	13	
Nablus	823	77	84	83	72	69	62	73	77	63	62	42	59	
Qalqiliya	188	20	12	18	25	22	16	12	17	10	9	16	11	
Salfit	94	7	4	9	11	11	10	8	5	13	2	4	10	
Ramallah & Al-Bireh	1,014	76	73	72	101	83	87	110	98	82	78	64	90	
Jericho & Al Aghwar	128	10	11	8	8	9	9	5	13	15	17	10	13	
Jerusalem (J2)	38	10	14	14	0	0	0	0	0	0	0	0	0	(J2)
Bethlehem	251	34	21	14	27	18	27	17	23	19	20	12	19	
Hebron	438	30	35	43	39	58	32	44	40	28	32	28	29	
Gaza Strip	
Gaza	
North Gaza	
Deir Al-Balah	
Khan Yunis	
Rafah	
Remaining West Bank and Gaza Strip	

Source: General Commisariat of the Palestinian Police, 2008

2008

:

2008

:13

Table 13 : Casualties in Registered Road Traffic Accidents in Remaining West Bank and Gaza Strip by Governorate and Type of Injury, 2008

Governorate	Total	Fatally Injured	Seriously Injured	Moderately Injured	Slightly Injured	
Remaining West Bank	4,403	98	192	631	3,482	
Jenin	608	20	23	93	472	
Tubas	95	1	3	8	83	
Tulkarm	382	2	8	42	330	
Nablus	864	19	80	73	692	
Qalqiliya	267	3	12	38	214	
Salfit	126	2	3	9	112	
Ramallah & Al-Bireh	863	23	18	97	725	
Jericho and Al Aghwar	200	0	2	27	171	
Jerusalem (J2)	52	0	1	5	46	(J2)
Bethlehem	350	5	8	108	229	
Hebron	596	23	34	131	408	
Gaza Strip	
Gaza	
North Gaza	
Deir Al-Balah	
Khan Yunis	
Rafah	
Remaining West Bank and Gaza Strip	

Source: General Commisariat of the Palestinian Police, 2008.

.2008

:

2008 - 1999

:14

Table 14: Regular Flights of the Palestinian Airlines by Selected Indicators, 1999-2008

Year	Number of Available Seats	Number of Passengers	Number of Flights	
1999	76,736	41,067	990	1999
2000	129,264	53,457	1,354	2000
2001*	16,540	9,723	268	*2001
2002*	15,828	6,035	156	*2002
2003*	5,136	2,542	104	*2003
2004*	9,704	5,318	202	*2004
2005*	7,776	5,327	162	*2005
2006*	6,624	4,022	138	*2006
2007	2007
2008	2008

* The data include departure and arrival Palestinian Airlines flights from and to AL- Arish Airport (Egypt)

()

*

(..) The data not available.

(..)

2008

:15

Table 15: International Dispatched & Receipt Mail From & to Remaining West Bank by Month and Type of Mail, 2008

Month	Printed Matters		Registered Letters		Regular Letters		* Express Mail*		
	Receipt	Dispatched	Receipt	Dispatched	Receipt	Dispatched	Receipt	Dispatched	
January	910	280	540	75	23,824	1,390	154	-	
February	895	272	580	80	21,750	1,360	140	-	
March	894	167	613	71	22,239	1,220	138	-	
April	1,020	300	680	105	26,350	2,430	148	-	
May	940	470	610	95	27,400	5,001	155	-	
June	860	728	501	75	25,299	3,080	158	-	
July	1,025	258	650	80	20,550	2,420	162	-	
August	1,180	176	603	81	18,800	1,004	136	-	
September	872	176	659	54	16,316	2,100	153	-	
October	2,850	831	965	95	26,840	1,520	215	-	
November	3,015	318	970	135	27,350	1,720	188	-	
December	3,580	840	971	137	29,312	1,883	259	-	
Total of year	18,041	4,816	8,342	1,083	286,030	25,128	2,006	-	

(-) Nil.

(-)

* The data does not include Private Companies for Transportation of Express Mail.

*

2008

:() 15

Table 15 (cont.): International Dispatched & Receipt Mail From & to Remaining West Bank by Month and Type of Mail, 2008

Month	Total		Small Packets		Telegrams		Parcels		
	Receipt	Dispatched	Receipt	Dispatched	Receipt	Dispatched	Receipt	Dispatched	
January	25,853	1,746	220	0	14	0	191	1	
February	23,743	1,715	195	1	5	0	178	2	
March	24,295	1,464	227	1	4	0	180	5	
April	28,643	2,843	260	2	0	0	185	6	
May	29,552	5,573	248	2	6	1	193	4	
June	27,267	3,888	246	2	8	0	195	3	
July	22,824	2,764	282	2	0	0	155	4	
August	21,170	1,265	295	1	16	0	140	3	
September	18,442	2,334	278	2	18	0	146	2	
October	31,466	2,525	388	75	20	0	188	4	
November	32,095	2,235	340	58	22	0	210	4	
December	34,773	2,955	397	90	28	0	226	5	
Total of year	320,123	31,307	3,376	236	141	1	2,187	43	

Source: Ministry of Telecom & Information Technology 2008

2008

:

2008

:16

Table 16: Domestic Mail in Remaining West Bank and Gaza Strip by Month and Type of Mail, 2008

Month	Gaza Strip						Remaining West Bank						
	Small Packets	Telegrams	Parcels	Printed Matters	Registered Letters	Regular Letters	Small Packets	Telegrams	Parcels	Printed Matters	Registered Letters	Regular Letters	
January	2	50	4	198	2,880	65,860	
February	4	56	1	220	2,750	62,780	
March	0	49	2	344	2,185	56,939	
April	6	37	6	585	2,570	67,850	
May	10	66	11	675	2,650	68,400	
June	0	135	3	677	2,792	68,900	
July	5	97	2	148	1,330	48,977	
August	9	105	4	234	2,100	47,740	
September	7	100	0	535	2,600	47,036	
October	11	58	1	488	2,062	88,217	
November	9	51	12	1,020	2,100	85,645	
December	13	39	14	1,088	2,890	95,500	
Total of year	76	843	60	6,212	28,909	803,844	

(..) The data not available.

(..)

Source: Ministry of Telecom & Information Technology 2008

2008

:

2008

:17

Table 17: Number of Mail Service Centers and P.O. Boxes in Remaining West Bank and Gaza Strip by Governorate, 2008

Region / Governorate	P.O. Boxes	Mail Service Centers			/
		Total	Mail Service Division	Mail Service Office	
Remaining West Bank	13,100	306	227	79	
Jenin	450	39	31	8	
Tubas	225	15	11	4	
Tulkarm	750	30	19	11	
Nablus	2,175	57	52	5	
Qalqiliya	435	20	13	7	
Salfit.	150	17	12	5	
Ramallah & Al-Bireh	4,250	75	59	16	
Jericho & Al Aghwar	360	3	1	2	
Jerusalem (J2)	225	7	4	3	(J2)
Bethlehem	2,145	16	11	5	
Hebron	1,935	27	14	13	
Gaza Strip	
North Gaza	
Gaza	
Deir Al-Balah	
Khan Yunis	
Rafah	
Remaining West Bank and Gaza Strip	

Source: Ministry of Telecom. & Information Technology 2008

2008

:

2008-1999

:18

Table 18: Number of Main Telephone Lines in Remaining West Bank and Gaza Strip by Year and Region, 1999-2008

Year	Remaining West Bank and Gaza Strip	Gaza Strip	Remaining West Bank	
1999	222,198	68,385	153,813	1999
2000	272,211	84,187	188,024	2000
2001	255,218	78,351	176,867	2001
2002	241,894	77,124	164,770	2002
2003	243,494	81,240	162,254	2003
2004	271,458	90,699	180,759	2004
2005	337,025	111,937	225,088	2005
2006	321,999	104,426	217,573	2006
2007	348,788	105,469	243,319	2007
2008	354,804	103,543	251,261	2008

Source: Palestine Telecommunications Company, 2008

2008

:

Table 19: Number of Main Telephone Lines in Remaining West Bank and Gaza Strip by Month, Region and Type of Subscription, 2008

Month	Grand Total			Governmental			Commercial			Household		
	Total	Gaza Strip	Remaining West Bank	Total	Gaza Strip	Remaining West Bank	Total	Gaza Strip	Remaining West Bank	Total	Gaza Strip	Remaining West Bank
January	350,526	105,349	245,177	10,044	3,861	6,183	52,733	12,404	40,329	287,749	89,084	198,665
February	352,185	105,839	246,346	10,053	3,842	6,211	52,925	12,428	40,497	289,207	89,569	199,638
March	346,442	103,184	243,258	9,982	3,768	6,214	52,437	12,206	40,231	284,023	87,210	196,813
April	350,482	104,302	246,180	10,002	3,726	6,276	53,058	12,283	40,775	287,422	88,293	199,129
May	350,426	104,271	246,155	9,939	3,694	6,245	53,221	12,252	40,969	287,266	88,325	198,941
June	350,051	103,999	246,052	9,833	3,602	6,231	53,264	12,209	41,055	286,954	88,188	198,766
July	349,937	103,980	245,957	9,830	3,602	6,228	53,255	12,205	41,050	286,852	88,173	198,679
August	349,745	103,819	245,926	9,115	2,763	6,352	53,577	12,338	41,239	287,053	88,718	198,335
September	344,182	102,201	241,981	8,952	2,698	6,254	52,672	12,132	40,540	282,558	87,371	195,187
October	342,342	100,944	241,398	9,039	2,714	6,325	52,773	12,024	40,749	280,530	86,206	194,324
November	350,194	103,269	246,925	9,186	2,761	6,425	54,041	12,268	41,773	286,967	88,240	198,727
December	354,804	103,543	251,261	9,277	2,784	6,493	54,816	12,419	42,397	290,711	88,340	202,371

Source: Palestine Telecommunications Company, 2008

2008

:

2008

:20

Table 20: Number of Main Telephone Lines in Remaining West Bank and Gaza Strip by Governorate and Type of Subscription, 2008

Region / Governorate	Total	Public phone	Type of Subscription			/
			Governmental	Commercial	Residential	
Remaining West Bank	253,611	2,350	6,493	42,397	202,371	باقي الضفة الغربية
Jenin	27,135	386	595	4,012	22,142	جنين
Tubas	3,504	13	133	324	3,034	طوباس
Tulkarm	21,684	313	422	2,722	18,227	طولكرم
Nablus	45,302	517	808	6,694	37,283	نابلس
Qalqiliya	8,362	140	254	1,307	6,661	قلقيلية
Salfit	9,722	102	261	795	8,564	سلفيت
Ramallah & Al-Bireh	54,114	309	2,125	12,026	39,654	رام الله والبيرة
Jericho and Al Aghwar	4,329	56	273	768	3,232	اريجا والأغوار
Jerusalem (J2)	15,805	101	265	2,486	12,953	(J2)
Bethlehem	22,103	178	454	4,163	17,308	بيت لحم
Hebron	41,551	235	903	7,100	33,313	الخليل
Gaza Strip	103,898	355	2,784	12,419	88,340	قطاع غزة
North Gaza	4,543	22	44	547	3,930	شمال غزة
Gaza	63,260	228	2,136	8,504	52,392	غزة
Deir Al-Balah	12,746	41	190	1,002	11,513	دير البلح
Khan Yunis	14,587	32	263	1,468	12,824	خان يونس
Rafah	8,762	32	151	898	7,681	رفح
Total	357,509	2,705	9,277	54,816	290,711	المجموع

Source: Palestine Telecommunications Company, 2008

2008

:

2008

:21

Table 21: Number of Telephone Calls in Remaining West Bank and Gaza Strip by Month, Region and Type of Call, 2008

Month	Total	To Jerusalem	To Israel	To Cellular Phone		Gaza Strip		Remaining West Bank	
				To Israeli Cellular Phone	To Palestinian Cellular Phone	International Calls	Local Calls	International Calls	Local Calls
January	98,039,660	31,607,688	..	66,431,972
February	91,180,522	27,718,736	..	63,461,786
March	100,326,878	30,343,708	..	69,983,170
April	100,625,243	31,285,500	..	69,339,743
May	106,278,824	33,972,426	..	72,306,398
June	102,449,026	32,071,735	..	70,377,290
July	103,845,760	33,042,933	..	70,802,827
August	102,287,480	33,675,732	..	68,611,747
September	91,655,976	29,391,069	..	62,264,907
October	94,259,534	29,705,837	..	64,553,697
November	91,111,221	28,840,683	..	62,270,537
December	89,719,269	29,695,248	..	60,024,021
Total of Year	1,171,779,393	371,351,296	..	800,428,097
Monthly Average	97,648,283	30,945,941	..	66,702,341

(..) The data not available.

(..)

Source: Palestine Telecommunications Company, 2008

2008

2008

" "

:22

Table 22: Number of Jawwal Cellular Phone Subscriptions in the Palestinian Territory by Month, 2008

Month	Bill and Card system users	
January	1,020,532	
February	1,052,717	
March	1,080,964	
April	1,129,896	
May	1,149,605	
June	1,195,838	
July	1,199,806	
August	1,209,304	
September	1,230,061	
October	1,245,190	
November	1,274,866	
December	1,314,406	

Source: Palestine Cellular Communication, (LTD), 2008

2008 ()

:

2008

:23

Table 23: Number of Subscribers and Number of (ADSL) Lines in Internet Service in Remaining West Bank and Gaza Strip by Region, 2008

Region	(ADSL) Number of (ADSL) Lines	Number of Subscribers by Service free Internet	
Remaining West Bank	560,694	329,324	
Urban*	478,265	247,982	*
Rural	82,429	81,342	
Gaza Strip	213,259	119,579	
Total	773,953	448,903	

'Source: Palestine Telecommunications Company, 2008

* The data includes Camps.

2008

:

*

2008

:24

Table 24: Licensed Internet Cafés in Remaining West Bank and Gaza Strip by Governorate and Selected Indicators, 2008

Region / Governorate	Number of Employees	Number of Computers	Number of Internet Cafe's	/
Remaining West Bank	71	437	39	
Jenin	4	20	3	
Tubas,	
Tulkarm	
Nablus	17	107	5	
Qalqiliya	9	42	3	
Salfit	
Ramallah & Al-Bireh	2	25	1	
Jericho & Al Aghwar	
Bethlehem	39	243	27	
Hebron	
Gaza Strip	
Gaza North	
Gaza	
Deir El-Balah	
Khan Yunis	
Rafah	
Remaining West Bank and Gaza Strip	

(..) The data not available.

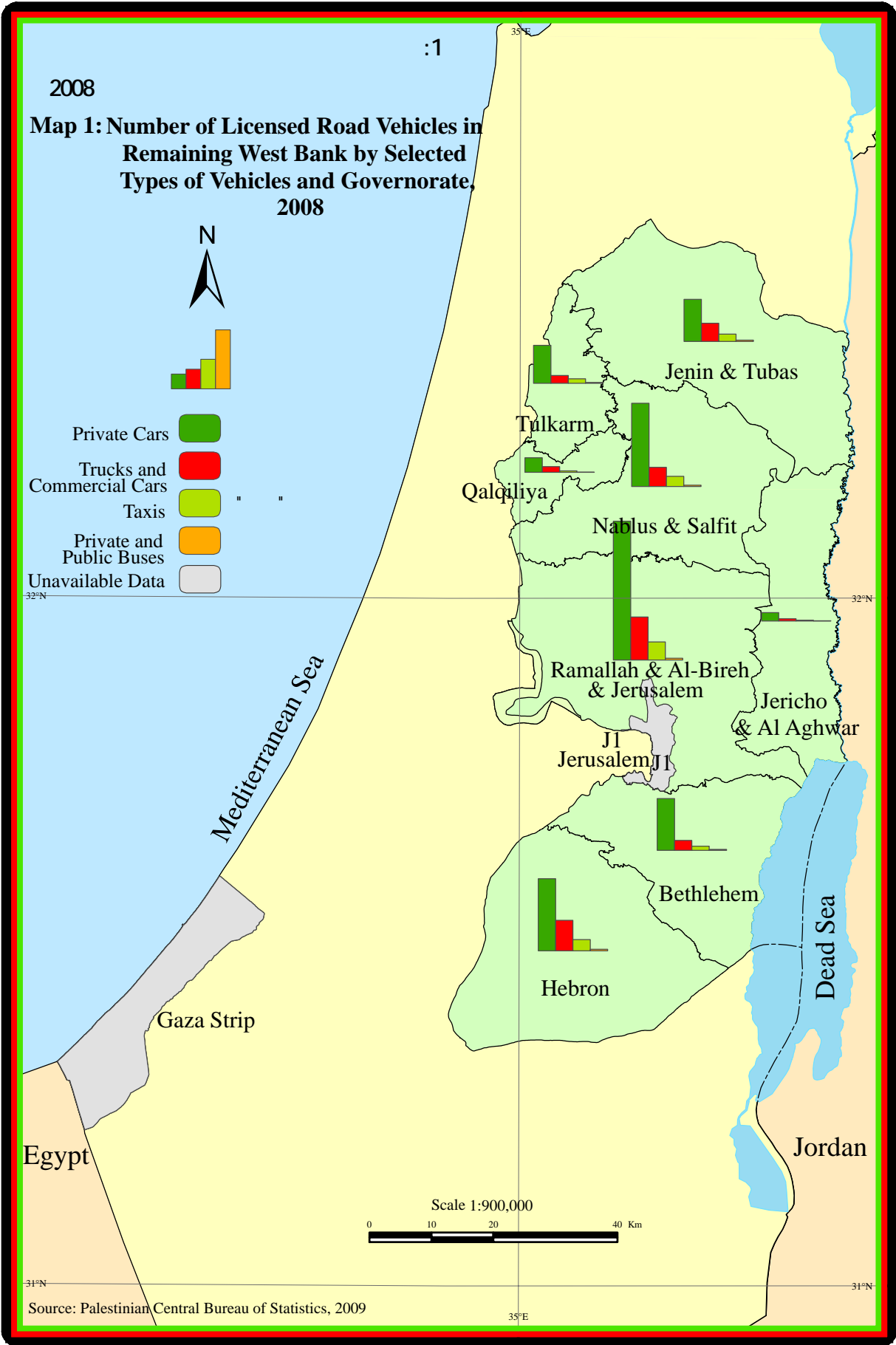
(..)

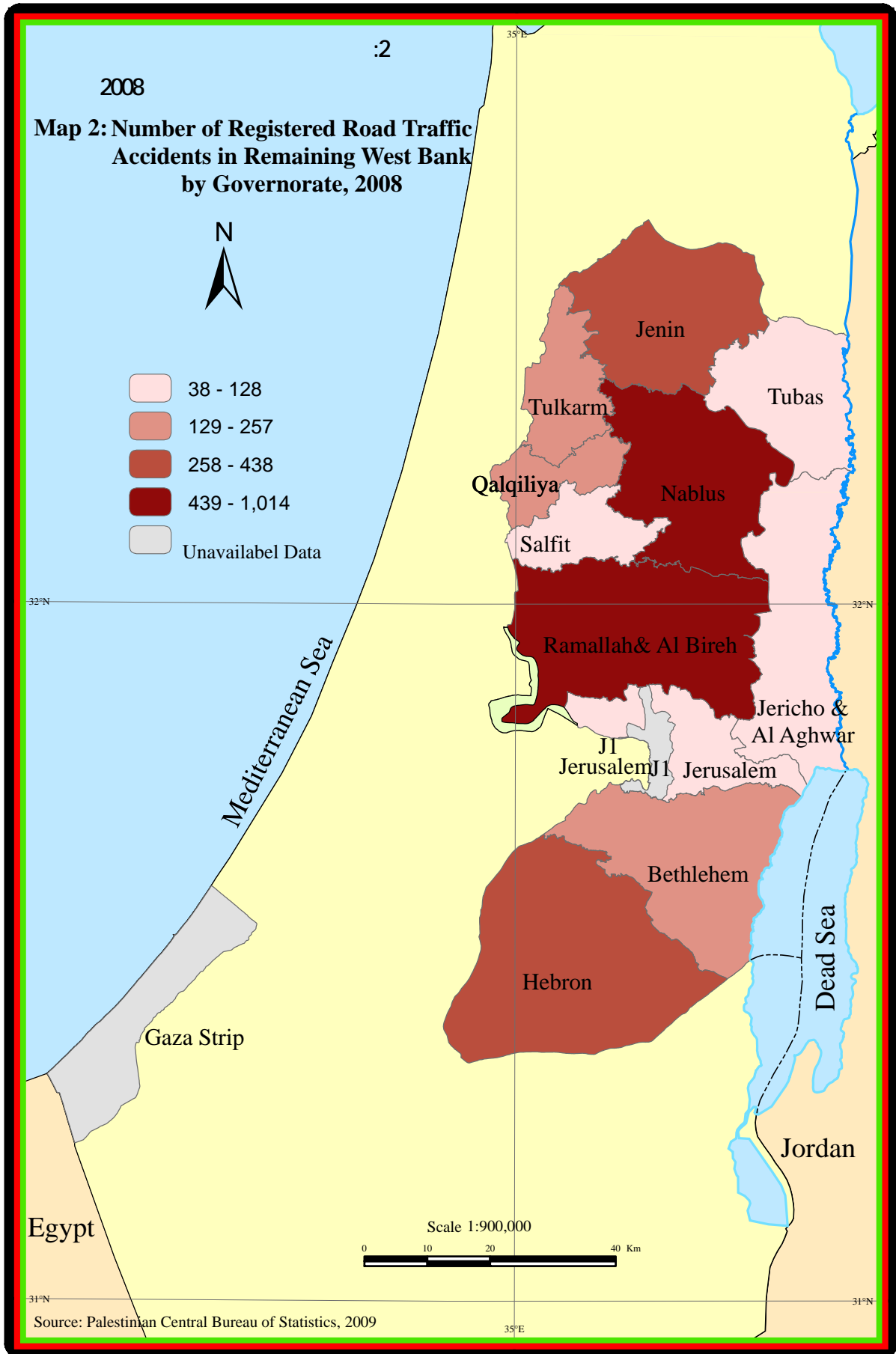
Source: Ministry of Telecom & Information Technology 2008

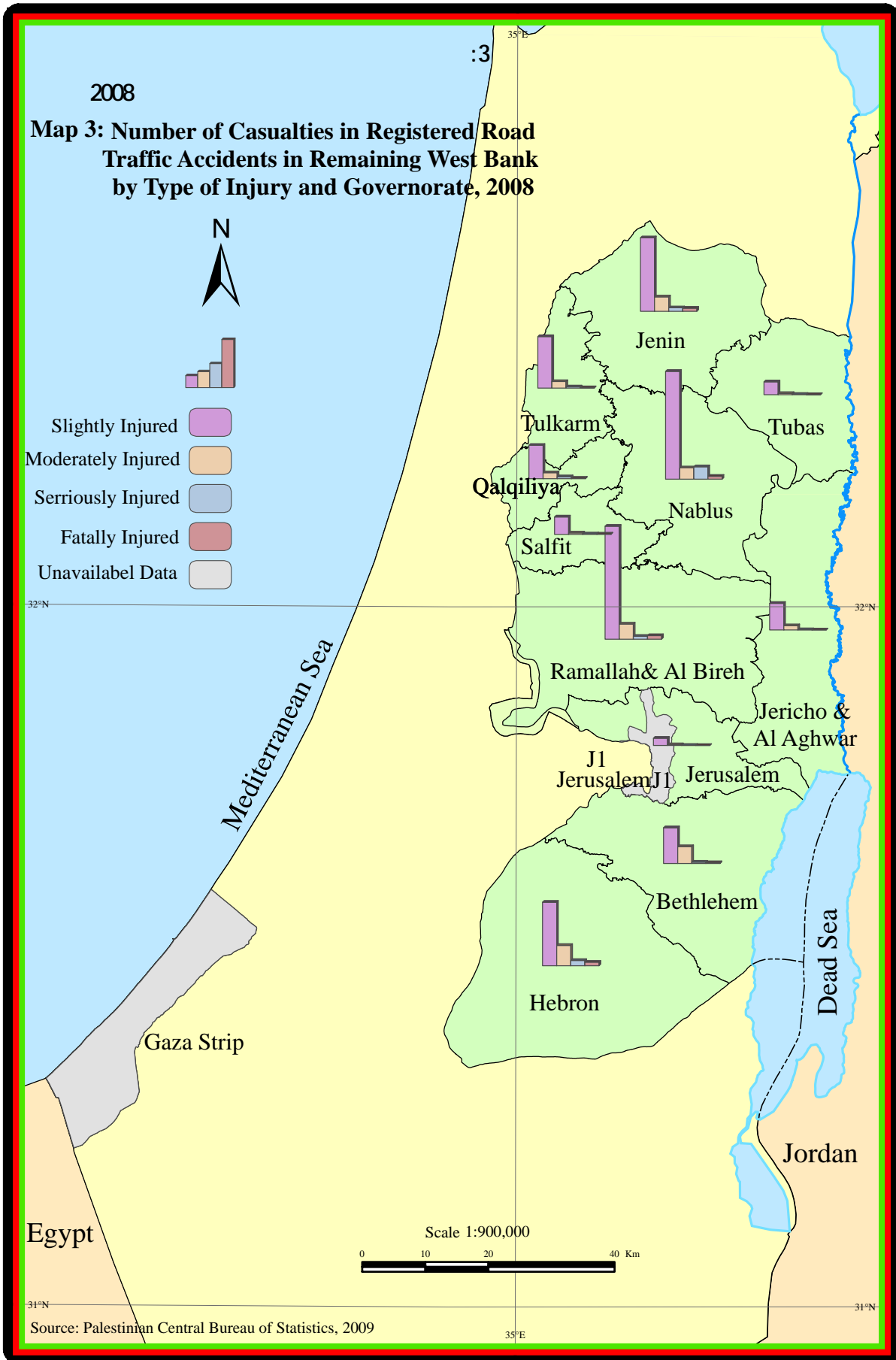
2008

:

Maps









**Palestinian National Authority
Palestinian Central Bureau of Statistic**

**Transportation and Communication Statistics in
the Palestinian Territory: Annual Report 2008**

July, 2009

"Cover price 3 US\$ "

PAGE NUMBERS OF ENGLISH TEXT ARE PRINTED IN SQUARE BRACKETS.
TABLES ARE PRINTED IN THE ARABIC ORDER (FROM RIGHT TO LEFT)



This document is prepared in accordance with the standard procedures stated in the Code of Practice for Palestine Official Statistics 2006

© July, 2009
All rights reserved.

Suggested Citation:

Palestinian Central Bureau of Statistics 2009, *Transportation and Communication Statistics in the Palestinian Territory: Annual Report 2008*. Ramallah-Palestine.

All correspondence should be directed to:
Palestinian Central Bureau of Statistics
P.O. Box 1647, Ramallah – Palestine

Tel: (972/970) 2 242 6340
Fax: (972/970) 2 242 6343
E-Mail :diwan@pcbs.gov.ps
Web-Site: <http://www.pcbs.gov.ps>

Acknowledgment

The Palestinian Central Bureau of Statistics (PCBS) would like to thank the ministries and public and private institutions that provide PCBS with the requested data derived from administrative records.

The funding of the Transportation and Communication report 2008 was provided by the Palestinian National Authority (PNA), and the Core Funding Group (CFG) for 2009. CFG members include the Representative Office of Norway to PNA; the Representative Office of Netherlands to PNA; the Swiss Agency for Development and Cooperation (SDC).

Printing of this document is funded by the European Union (EU). The contents of this document are the sole responsibility of the PCBS.

On this occasion, the PCBS extends special thanks to the members of the Core Funding Group (CFG) and the European Union (EU) who contributed to funding this report for their support

Abbrevitions

CFG	Core Funding Group
EU:	European Union
GS:	Gaza Strip.
ISIC-3:	International Standard Industrial Classification of All Economic Activities, version 3
J1:	Those parts of Jerusalem which were annexed by Israel in 1967.
J2:	Jerusalem Governorate Except J1
Km	Units in Kilometers
NIS	New Israeli Shekel
PCBS	Palestinian Central Bureau of Statistics
PNA	Palestinian National Authority
RWB:	Remaining West Bank.
RWBGS:	Remaining West Bank and Gaza Strip.
SDC	Swiss Agency for Development and Cooperation
Symbols Used in Tables:	(-): Nill. (.): Data not available.

Team Work

- **Report Preparation**

Maheer Al-shami

- **Maps Design**

Reham Dar Ali

- **Dissemination Standard**

Hanan Janajreh

- **Preliminary Review**

Rashad Yousef

Ibrahim Al-tarsha

- **Final Review & Overall Supervision**

Mahmoud Jaradat

Ola Awad

Acting President

Preface

The Palestinian Central Bureau of Statistics (PCBS) is pleased to introduce the annual report 2008 as the eleventh publication of report series on transportation and communication statistics in Palestinian Territory. The main objective of publishing this series is to establish a comprehensive database covering the main indicators on the transportation and communication sector in the Palestinian Territory, and to formulate a time series about these indicators that show the changes.

This report presents the available statistics on the main components of the transportation system. A major component is land transport which covers roads and their length, bypass roads which were built by the Israeli authorities to serve the Israeli settlements, vehicles by type, in addition to other indicators like driving schools, number of garages, etc. The report also shows the main indicators of the air transport sector, which covers the departure and arrival flights. Also the report presents figures on post including letters with their traditional classification, and the main elements of communication system including main telephone lines and their waiting list, telephone calls and their lengths.

PCBS hopes that this report will provide national governmental organizations, non-governmental organizations, and research institutions in the Palestinian Territory with the necessary statistical figures required for planning and development of Palestinian Territory.

July, 2009

**Ola Awad
Acting President**

Table of Contents

Subject	Page
List of Tables	
List of Figures	
List of Maps	
Executive Summary	
Chapter One: Introduction	[21]
Chapter Two: Concepts and Definitions	[23]
Chapter Three: Main Findings	[27]
3.1: Land Transportation	[27]
3.2: The Post Office Data	[28]
3.3: Telecommunications	[29]
Chapter Four: Methodology	[31]
4.1: Data Collection	[31]
4.2: Coverage	[31]
Chapter Five: Data Quality	[33]
5.1: Accuracy of the Data	[33]
5.2: Comparison of the Data	[33]
5.3: Technical Notes	[33]
References	[35]
Tables	45
Maps	73

List of Tables

Table	Page
Table 1: Employed Persons in the Transportation, Storage and Communication Activities in the Palestinian Territory by Selected Indicators, 2003- 2008	47
Table 2: Licensed Road Vehicles in Remaining West Bank by Governorate and Type of Vehicle, 2008	49
Table 3: New Registered Road Vehicles in Remaining West Bank by Month and Type of Vehicle, 2008	50
Table 4: New Registered Road Vehicles in Remaining West Bank by Governorate and Type of Vehicle, 2008	51
Table 5: Rate of Licensed Motorization Per 1000 Capita in Remaining West Bank and Gaza Strip by Type of Vehicle and Region, 2008	52
Table 6: Driving Schools in Remaining West Bank and Gaza Strip by Governorate and Selected Indicators, 2008	53
Table 7: Number of Bus Companies, Rent a Car Offices, Taxi Offices, and Number of their Working Buses, Cars, Taxis in Remaining West Bank and Gaza Strip by Governorate, 2008	54
Table 8: Licensed Garages in Remaining West Bank and Gaza Strip by Governorate and Type of Garage, 2008	55
Table 9: Number of Driving Licences Issued in Remaining West Bank and Gaza Strip by Year and Region, 1999-2008.	56
Table 10: Number of Driving Licences Issued in Remaining West Bank and Gaza Strip by Month and Region, 2008.	57
Table 11: Number of Registered Road Traffic Accidents and Casualties by Type of Injury in Remaining West Bank and Gaza Strip, 2004-2008.	58
Table 12: Registered Road Traffic Accidents in Remaining West Bank and Gaza Strip by Governorate and Month, 2008	59
Table 13: Casualties in Registered Road Traffic Accidents in Remaining West Bank and Gaza Strip by Governorate and Type of Injury, 2008	60
Table 14: Regular Flights of the Palestinian Airlines by Selected Indicators, 1999-2008	61
Table 15: International Dispatched & Receipt Mail From & to Remaining West Bank by Month and Type of Mail, 2008	62
Table 16: Domestic Mail in Remaining West Bank and Gaza Strip by Month and Type of Mail, 2008	64
Table 17: Number of Mail Service Centers and P.O.Boxes in Remaining West Bank and Gaza Strip by Governorate, 2008	65
Table 18: Number of Main Telephone Lines in Remaining West Bank and Gaza Strip by Year and Region, 1999-2008	66

Table		Page
Table 19:	Number of Main Telephone Lines in Remaining West Bank and Gaza Strip by Month, Region and Type of Subscription, 2008	67
Table 20:	Number of Main Telephone Lines in Remaining West Bank and Gaza Strip by Month, Region and Type of Subscription, 2008	68
Table 21:	Number of Telephone Calls in Remaining West Bank and Gaza Strip by Month, Region and Type of Calls, 2008	69
Table 22:	Number of Jawwal Cellular Phone Subscriptions in the Palestinian Territory by Month, 2008	70
Table 23:	Number of Subscribers and Number of (ADSL) Lines in Internet Service in Remaining West Bank and Gaza Strip by Region, 2008	71
Table 24:	Licensed Internet Cafes in Remaining West Bank and Gaza Strip by Governorate and Selected Indicators, 2008	72

List of Figures

Figure		Page
Figure 1:	Percentage Distribution of Vehicles in RWB by Type, 2008	27
Figure 2:	Percentage Distribution of New Registered Road Vehicles in RWB by Type, 2008	27
Figure 3:	Number of Issued Driving Licences in RWB by Month, 2008	28
Figure 4:	Number of Registered Road Accidents and Casualties in RWB by Month, 2008	28
Figure 5:	Percentage Distribution of International Mail to RWB, 2008	29
Figure 6:	Number of Main Telephone Lines in RWBGS by Month, 2008 (in thousands)	29
Figure 7:	Number of Cellular phone "Jawwal" Subscriptions in the Palestinian Territory by Month, 2008	30

List of Maps

Map		Page
Map 1:	Number of Licensed Road Vehicles in Remaining West Bank by Selected Types of Vehicles and Governorate, 2008	75
Map 2:	Number of Registered Road Traffic Accidents in Remaining West Bank by Governorate, 2008	77
Map 3:	Number of Casualties in Registered Road Traffic Accidents in Remaining West Bank by Type of Injury and Governorate, 2008	79

Executive Summary

The Transportation and communication sector is important due to its contribution to the gross domestic product and the provision of working opportunities, in addition to its vital role in connecting different localities.

The data of this report is based on the administrative records and the data extracted from some surveys conducted by the PCBS. This annual report provides data about transportation and communication statistics in the Palestinian Territory for the year 2008.

Main Findings:

- The transportation and communication activities contributed 5.0% of the total job opportunities in the Palestinian Territory in 2008.
- The total number of licensed vehicles in RWB in 2008 was 96,736 .
- The total number of driving licenses issued in RWB in 2008 was 18,442.
- The total number of registered road accidents in RWB amount to 3,675, and the number of casualties resulting from those accidents reached 4,403.
- The total number of main telephone lines in RWBGS at the end of 2008, was 354,804 lines.
- The total number of subscribers of Jawwal cellular phone at the end of 2008 in the Palestinian Territory was 1,314,406
- The total number of Post Office boxes in RWB at the end of 2008 was 13,100.
- The total number of International Mail Received in RWB consisted of 320,123 postal materials, and the International dispatched mail was 31,307 postal materials, and the domestic mail in RWB was 839,944 postal materials.
- The monthly average number of telephone calls in RWBGS was 97,648,283.

Chapter One

Introduction

The Transportation and Communication sector is one of the main economic sectors in Palestinian society. This sector contributes to the gross domestic product significantly, and provides working opportunities for a considerable number of people.

Geographically, this sector occupies special importance because it represents the primary means of communication inside the society and between the society and others.

This report is the eleventh one of a series of annual reports which aims to provide the data required to describe the transportation and communication situation in the Palestinian Territory in a comprehensive and standardized way.

The main objective of this report is to collect, arrange, classify and publish data related to the main indicators of the transportation and communication sector in Palestine in 2008, in order to provide the necessary data for research, analysis and decision making purposes.

Through this report, we hope to provide a continuous flow of data on:

1. Employment characteristics in the transportation and communication sector.
2. Land transportation section aims to present the results related to roads, vehicles, driving schools, bus companies, car rental offices, garages, number of driving licence and road accidents
3. Air transportation including departure and arrival flights, The post office and telecommunications data including received and dispatched postal materials, telephone calls, main telephone lines, Cellular phone

This report consists of five chapters along with a group of tables and graphs. The first chapter consists of an introduction to the report and the basic objectives of this report. The second chapter sheds light on the main concepts and definitions used in this report. The third chapter presents the main findings of the report, The forth chapter presents the methodology, and the last chapter presents the data quality

Chapter Two

Concepts and Definitions

Employee:

A person who works for a public or private employer and receives remuneration in wage, salary, commission, tips, piece-rates or pay in kind.

Average Weekly Working Hours:

Total weekly working hours of employees whose wages are known, divided by the number of employees.

Average Monthly Working Days per Employee:

Total monthly workdays of employees whose wages are known divided by the number of employees.

Average Daily Wage per Employee:

Total net wages paid to all employees divided by total working days. wages received in different currencies are converted into New Israeli Shiekles according to the exchange rate in the survey month.

Vehicle:

A vehicle running on wheels and intended for use on roads.

Motor Vehicle:

A vehicle fitted with auto propulsive engine, it is normally used for carrying persons or goods, and drawing vehicles.

Private Car:

A motor vehicle, other than motorcycle intended for the carriage of passengers and designed to seat no more than 9 persons (including the driver).

Taxi:

A motor vehicle intended for the carriage of passengers (in return for payment), and designed to seat no more than 9 persons (including the driver), and described in its license as a taxi.

Motorcycle:

Two wheeled motor vehicles with or without sidecar.

This category includes scooter, three-wheeled vehicles not exceeding 400 kg.

Motorcycles are classified according to the engine capacity as: less than 50 cm³, 50-100 cm³, 100-250 cm³, and greater than 250 cm³.

Bus:

A motor vehicle designed to carry more than 9 passengers (including the driver).

Trailer:

Goods road vehicles designed to be hauled by a road motor vehicle. Excluding agricultural trailers and caravans.

Semi-Trailer:

Goods road vehicle with no front axle designed in such a way as to be hauled by road tractor.

Road Tractor:

A motor vehicle designed exclusively or primarily to haul other vehicles, which are not power-driven. Agricultural tractors are excluded.

Truck:

A motor vehicle designed for another purpose than passenger transport, its height is more than 250 cm, and described in its license as a truck.

Commercial Car:

A motor vehicle designed for another purpose than passenger transport, weights more than 2200 kg, its height is more than 175 cm and less than or equal to 250 cm, and described in its license as a commercial vehicle.

Other Vehicle:

A vehicle designed for purposes other than the carriage of passengers or goods. This category includes: ambulances, mobile cranes, self-propelled rollers, bulldozers with metallic wheels or tracks, vehicles for recording film, radio, and TV programs, mobile library vehicles, towing vehicles for vehicles in need of repair.

Rate of Licensed Motorization per 1000 Capita:

Number of vehicles divided by the number of people multiplied by 1000 (number of vehicles/number of people x 1000).

Road Traffic Accident:

An accident, which occurred as a result of the vehicle being in a state of motion and in which people were injured.

Killed in Road Traffic Accident:

A person who died as a result of the accident, or died of his injuries within 30 days of the accident.

Seriously injured:

A person who was hospitalized as a result of the accident for a period of 24 hours or more.

Slightly injured:

A person who was injured as a result of road traffic accident and was not hospitalized, or was hospitalized for short period (up to 24 hours).

Regular Flights:

A series of flights fulfilling at least the following conditions: they are performed by a passenger aircraft, their tickets are open for free sale to the general public; they are planned and adjusted according to the needs of traffic, carried out according to existing aviation agreements, The operating license and the fixed timetables are also available to the general public.

Irregular Flights:

All the flights for remuneration other than those reported under regular flights.

Number of Passengers in a Flight:

All passengers, excluding airplane staff and infants (less than 2 years of age).

Number of Available Seats:

The total number of passenger seats available for sale between each pair of airports on a flight stage (excludes seats not actually available for the carriage of passengers because of the weight of fuel or other load).

Letter:

A post matter that has the property of communication. It could be written, typed or both. This includes commercial samples, which are contained in an envelope. The lowest limit of the shortest length is 140, while the lowest limit of the shortest width is $90 \text{ mm} \pm 2 \text{ mm}$. The sum of length, width, and thickness should not be greater than 900 mm. The highest limit of the length of any dimension is 600 mm. The weight of the letter should be between 20-2000 g.

Regular Letter:

A letter that is sent by normal post with regular fees.

Express Mail:

A letter intended to be delivered quickly (24 hours) from the moment of reception by the post center. Normally extra fees are applied.

Printed Matter:

A post matter, which is printed by a printing shop, or by any other method such as copying, books, and booklets. It has a cultural and scientific property, and not communication property. The lowest limit of the printed material length and width is 140, $90 \text{ mm} \pm 2 \text{ mm}$ respectively. The highest limit of the sum of length, width, and thickness is 900 mm. The highest limit of the length of any dimension is 600 mm. The highest weight of the printed material is 2 kg, it is also allowable to reach 5 kg when the printed material is book.

Registered Letter:

A letter to which extra fees is applied and for which the sender gets a receipt. It is normally delivered to the addressee or other person acting as such after checking his identity and taking his signature on a receipt.

Post Packet:

Material posted as presents, such as food, clothes, beauty-care materials, perfumes, and commercial samples. The lowest limit of post packet length and width is 140, $90 \text{ mm} \pm 2 \text{ mm}$ respectively. The highest limit for the sum of length, width, and thickness is 900 mm. The highest limit of the length of any dimension is 60 mm. The highest weight of the post packet is 2 kg.

Parcel:

Material posted as closed flexible or rigid packet, containing papers, books, food, clothes, etc. The highest limit for the sum of the parcel lengths, twice the width, and twice the thickness is 3 m. The highest limit of the length of any dimension is 1.5 m. The highest weight of inland parcel is 20 kg, while in case of parcels sent abroad the highest limit is 5-20 kg, or according to the rules of the receiving country.

Telegram:

Letter with a limited amount of words, sent inland or abroad by telex, fax, or telephone. Fees are paid according to the number of words.

Local Telephone Traffic (Minutes):

Local telephone traffic consists of effective (completed) fixed telephone line traffic exchanged within the local charging area in which the calling station is situated. This is the area within which one subscriber can call another on payment of the local charge (if applicable). This indicator should be reported in the number of minutes. If the indicator is reported in calls or meter units (pulses), then an appropriate conversion figure to minutes of traffic should be supplied.

International Outgoing Telephone Traffic (Minutes):

This covers the effective (completed) traffic originating in a given country to destinations outside that country. The indicator should be reported in number of minutes of traffic

Remaining West Bank:

Refers to all of the West Bank, excluding those parts of Jerusalem which were annexed by Israel in 1967.

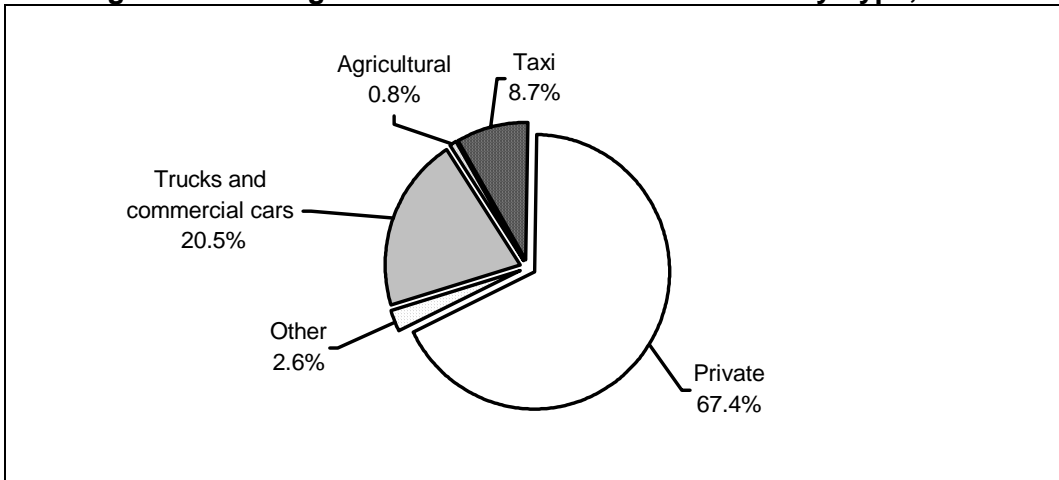
Main Findings

3.1 Land Transportation

3.1.1 Vehicles

The total number of licensed vehicles in RWB in 2008 was 96,736, the percentage distribution of licensed vehicles in RWB in 2008 shows that the majority were private cars 67.4%, On the other hand, the percentage of trucks and commercial cars was 20.5% in RWB, taxis formed 8.7% of the total vehicles in RWB. The percentage of agricultural tractors in RWB was 0.8%, while the remaining vehicles, formed 2.6% (*Table 2 & Map 1*).

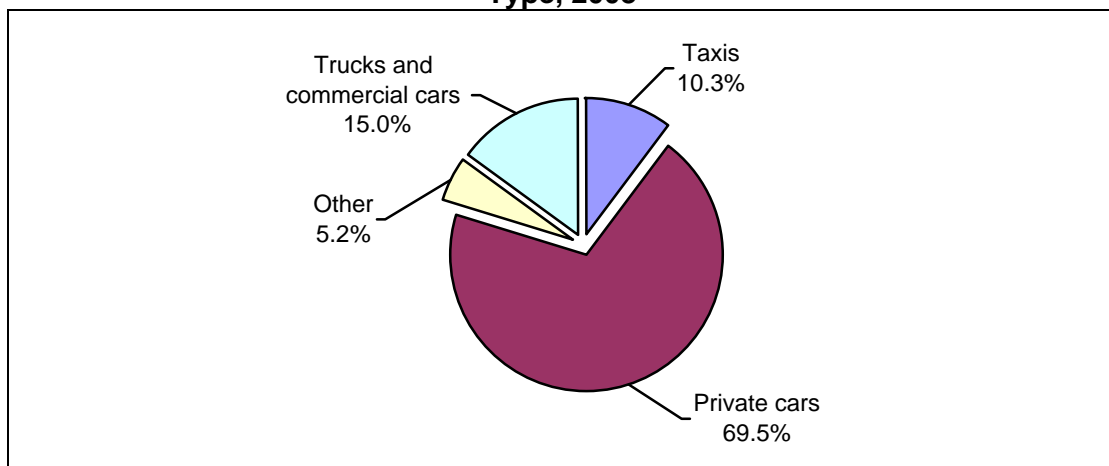
Fig. 1: Percentage Distribution of Vehicles in RWB by Type, 2008



Regarding new registered road vehicles in RWB in 2008, the monthly average of registered vehicles was 842 vehicles, (*Table 3*).

The percentage distribution of registered new vehicles in the RWB by type shows that the highest percentage was for registered private cars by 69.5% followed by the trucks and commercial cars, which was 15.0%. The percentage of taxis was 10.3%, on the other hand the percentage of other vehicles, which cover moped, motorcycles, buses, trailers and semi-trailers, road tractors, agricultural tractors, in addition to other vehicles, was 5.2% (*Table 3*).

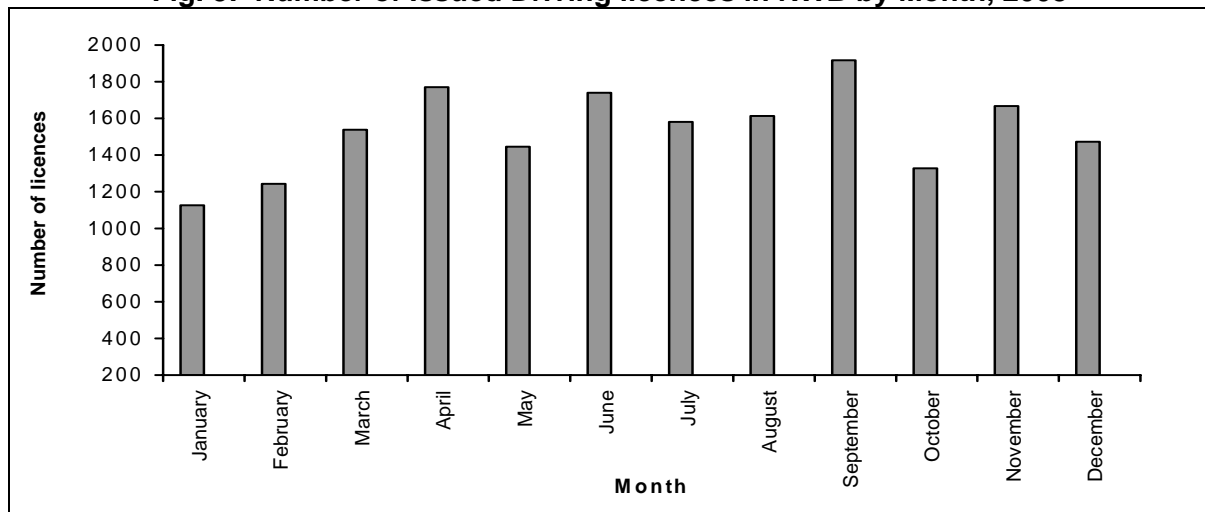
Fig. 2: Percentage Distribution of New Registered Road Vehicles in RWB by Type, 2008



3.1.2 Driving Licences

The total number of issued driving licences in RWB was 18,442 at the end of 2008, (Table 10).

Fig. 3: Number of Issued Driving Licences in RWB by Month, 2008

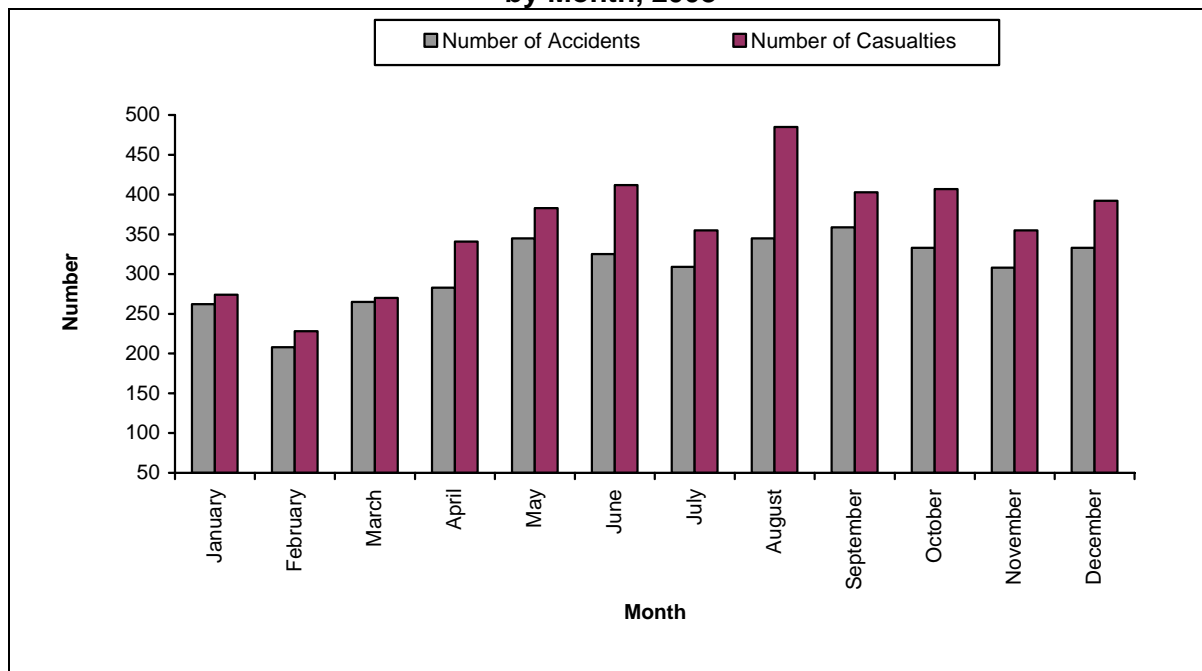


3.1.3 Road Accidents

The total number of registered road accidents in RWB amount to 3,675, of which 1,293 caused only tangible losses, (Table 12 & Map 2).

On the other hand, the number of casualties resulting from those accidents reached 4,403, figure 6 shows the number of road accidents and casualties in RWB.

Fig. 4: Number of Registered Road Accidents and Casualties in RWB by Month, 2008



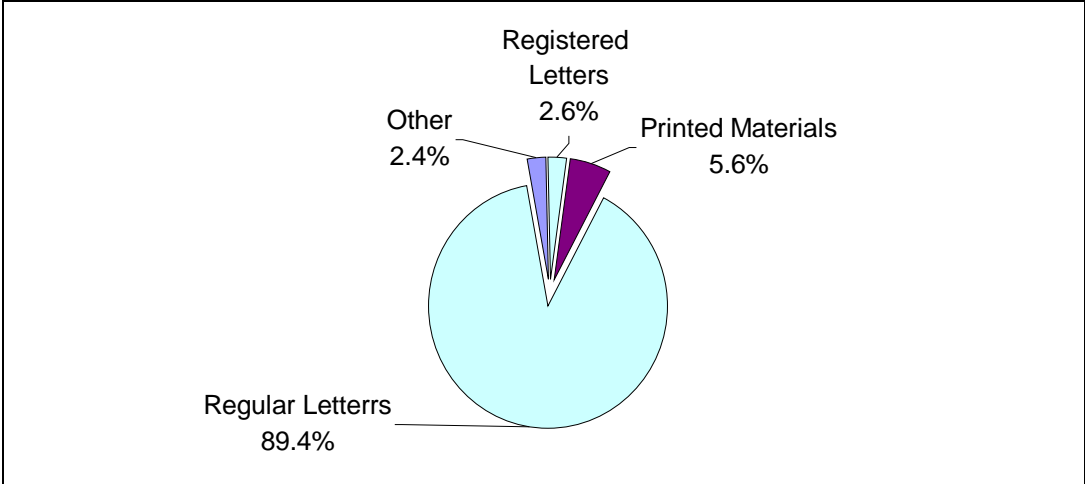
3.2 The Post Office Data

International received mail in RWB consisted of 320,123 postal materials in 2008, with a monthly average of 26,677 pieces.

The percentage distribution of these materials shows that the majority was regular letters, as they formed 89.4%. The percentage of printed materials was 5.6%, while the percentage of registered letters was 2.6%, and the remaining percentage 2.4% covered express mail, parcels, telegrams, and small packets.

The highest number of postal materials was in December, where there was 34,773 postal materials, and the lowest number of these materials was in September, where there was 18,442 pieces (*Table 15*).

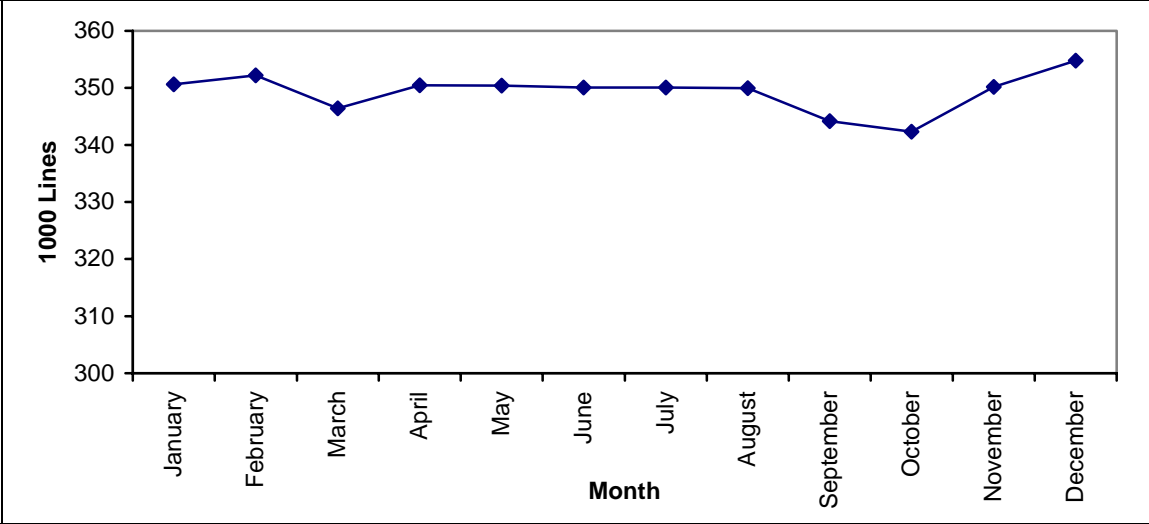
Fig. 5: Percentage Distribution of International Mail to RWB, 2008



3.3 Telecommunications

The total number of main telephone lines in RWBGS at the end of 2008 was 354,804 lines with a growth rate of 1.7% compared with the previous year, where the monthly average increase of these lines was of 5,013 during 2008. (*Tables 18, 19*).

Fig. 6: Number of Main Telephone Lines in RWBGS by Month, 2008 (In thousands)

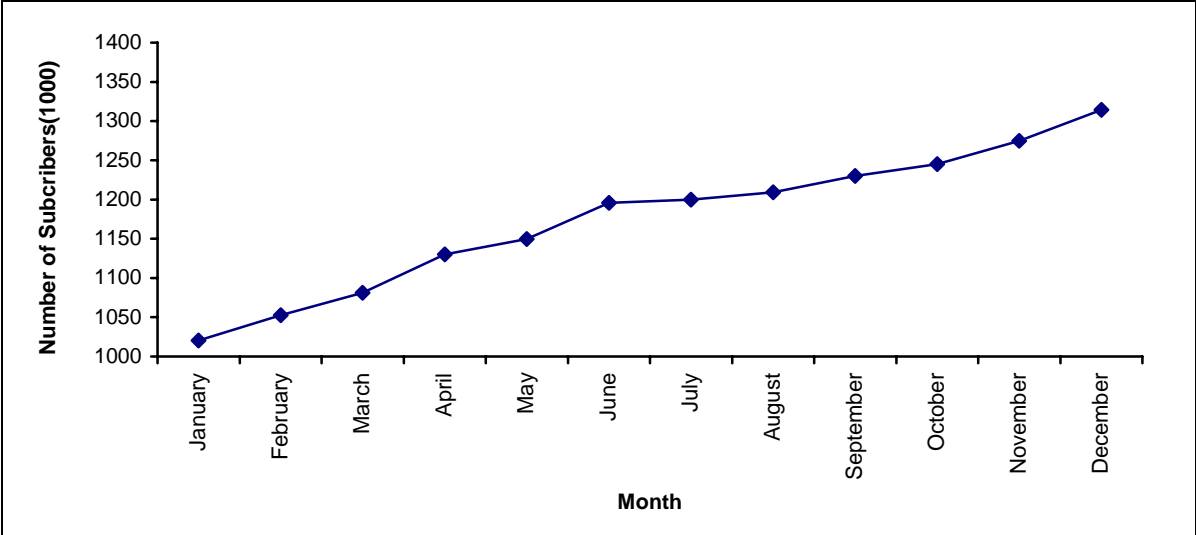


Regarding to the total number of public phone lines in RWBGS was 2,705 Lines at the end of 2008, and of which 2,350 in RWB and 355 in GS (*Tables 20*).

3.4 Cellular Phone

The total number of subscriptions of Jawwal cellular phone at the end of 2008 in Palestinian Territory was 1,314,406 used bill and card system. (*Table 22*).

Fig. 7: Number of Cellular phone "Jawwal " Subscriptions in the Palestinian Territory by Month, 2008



Chapter Four

Methodology

4.1 Data Collection

The data of this report is based primarily on administrative records of various institutions, in addition to data extracted from some surveys performed by PCBS. After getting data from its sources, it was rearranged, reclassified, and then tabulated in a way to achieve the purpose of this report.

4.2 Coverage

Although the main objective of publishing annual reports on transportation and communication is to construct time series of the main indicators related to the transportation and communication sector in the Palestinian Territory, it is noticed that this report mainly covers the main indicators related to transportation and communication during 2008, with only a few indicators from past years.

The majority of data does not provide information about Jerusalem, except data on labor force. and cellular phone.

Chapter Five

Data Quality

5.1 Accuracy of the Data

5.1.1 Statistical Errors

The report was implemented on the basis of a comprehensive census for all studied statistical units; therefore this survey was free of statistical (sampling) errors.

5.1.2 Non-Statistical Errors

Non-statistical errors are possible to occur at all stages of preparing the report, during the data collection or introduction, and to avoid errors and reduce their impact were made great efforts during the visit to check the data sources to ascertain data validity, and to examine the data entry program before starting the process of data entry.

5.2 Comparison of the Data

Comparison exercises were done with previous year's survey of transportation and communication statistics, the results reveal consistency with previous surveys data.

5.3 Technical Notes

There are important technical notes which should be taken into consideration when reviewing this report, which are as follows:

- Tables exclude data for those parts of Jerusalem which were annexed force fully by Israel in 1967, except for labor force and Cellular Phone data .
- It may be noticed that the details of the value of some indicators may not add to its total, due to rounding calculations.
- Vehicle data, characteristics, data on the level of monthly mail, database companies providing Internet service and Internet cafes in the Gaza Strip are not available from administrative records in 2008.
- The data of road network, air transport and data of length of calls in minutes in 2008 are not available.

References

1. **Palestinian Central Bureau of Statistics**, *Transportation and Communication Statistics in the Palestinian Territory: Annual Reports (1998-2007)*. Ramallah-Palestine.
2. **Palestinian Central Bureau of Statistics, 2008**. *Labour Force Survey. Database, (2000-2008)*. Ramallah-Palestine.
3. **Palestinian Central Bureau of Statistics, 1998**. *Transportation and Communication Statistics in the West Bank and Gaza Strip, Current Status Report (Series. No. 8)*. Ramallah-Palestine.
4. **The Intersecretariat Working Group on Transport Statistics** *EUROSTAT, ECMT, UN/ECE. Glossary for Transport Statistics. Second Edition*.