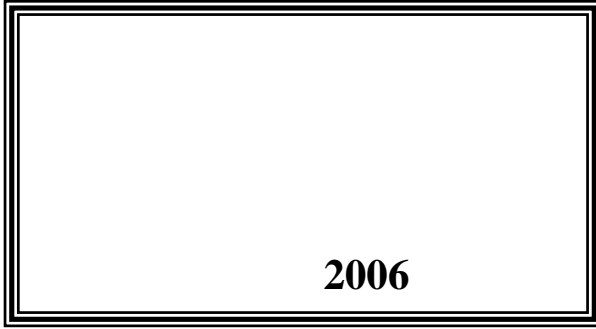


2009

**2 :
2009 /**



© 1430 - 2009.

:

2009

-

2009.

:

1647 . . . -

: (970/972) 2 242 6340

: (970/972) 2 242 6343

: diwan@pcbs.gov.ps

: http://www.pcbs.gov.ps



2009

(PNA)

2009

(CFG)

.(SDC)

(EU)

(CFG)

.2009

*

*

.1967

•

•

•

•

1994

.1996

2009

.1996

2009

21		:
21	1.1	
21	2.1	
22	3.1	
23		:
25		:
29		:
29	1.4	
29	2.4	
30	3.4	
30	4.4	
30	5.4	
33		:
33	1.5	
33	2.5	
33	3.5	
35		

37	1999			:1
			2009	
38	-			:2
			2009	
40	-			:3
			2009	
41				:4
		2009	-	
45				:5
		2009	-	
48				:6
	2009	-		
51				:7
	-			
			2009	
52				:8
		2009	-	
55				:9
			2009	-
58				:10
			2009	-
62	-			:11
			2009	

25 ت 2007 - 2009 :1

27 :2

2009

2009

:

: .1

2009

1,309

:

719 •

240 •

+ 57 •

266 •

27 •

: .2

: 522.9 ()

111.3 304.6 415.9 •

16.6 90.5 107.0 •

: .3

4.8 59

: .4

396.8 1,807

:

311.2 1,485 •

85.6 322 •

2008 ,2007

2008

%19.2 2009

.2007

%19.5

2009 %9.6

.2007

2009 %5.7

2008

	:	1.1
	:	.
	:	.
	:	.
	:	2.1
:		•
		•
.()		•
.()		•
.()		•
.()		•

: 3.1

:

:

•

:

•

.

:

•

:

•

.

:

•

:

•

.(

)

:

.

:

.

.

:

.

.

.1 :

2009

:2008 -2007

2008 (%)	2007 (%)	*			
		2009	2008	2007	
18.3	20.4	719	608	597	
23.1	-11.1	240	195	270	
-10.9	42.5	57	64	40	+
23.7	54.7	266	215	172	
68.8	68.8	27	16	16	
19.2	19.5	1,309	1,098	1,095	

2009 %19.2

.2007

2009

.2007

%18.3

%19.5

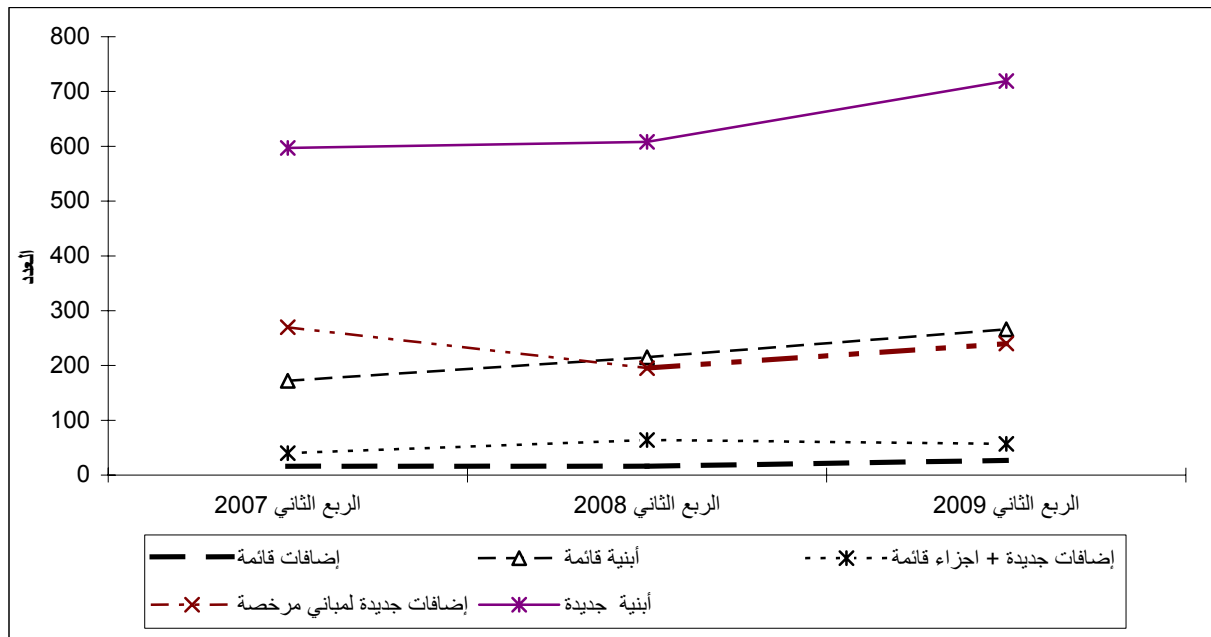
,2008

%20.4

2008

2009 -2007

:1



: .2

2009

:2008 -2007

2008 (%)	2007 (%)	*()			
		2009	2008	2007	
43.8	19.5	522.9	363.6	437.5	
42.9	17.3	415.9	291.1	354.6	:
44.6	15.2	304.6	210.6	264.5	
38.3	23.5	111.3	80.5	90.1	
47.6	29.1	107.0	72.5	82.9	:
51.6	37.1	90.5	59.7	66.0	
29.6	-1.8	16.6	12.8	16.9	

: .3

2009

:2008 -2007

2008 (%)	2007 (%)				
		2009	2008	2007	
22.9	25.5	59	48	47	
29.7	41.2	4.8	3.7	3.4	()

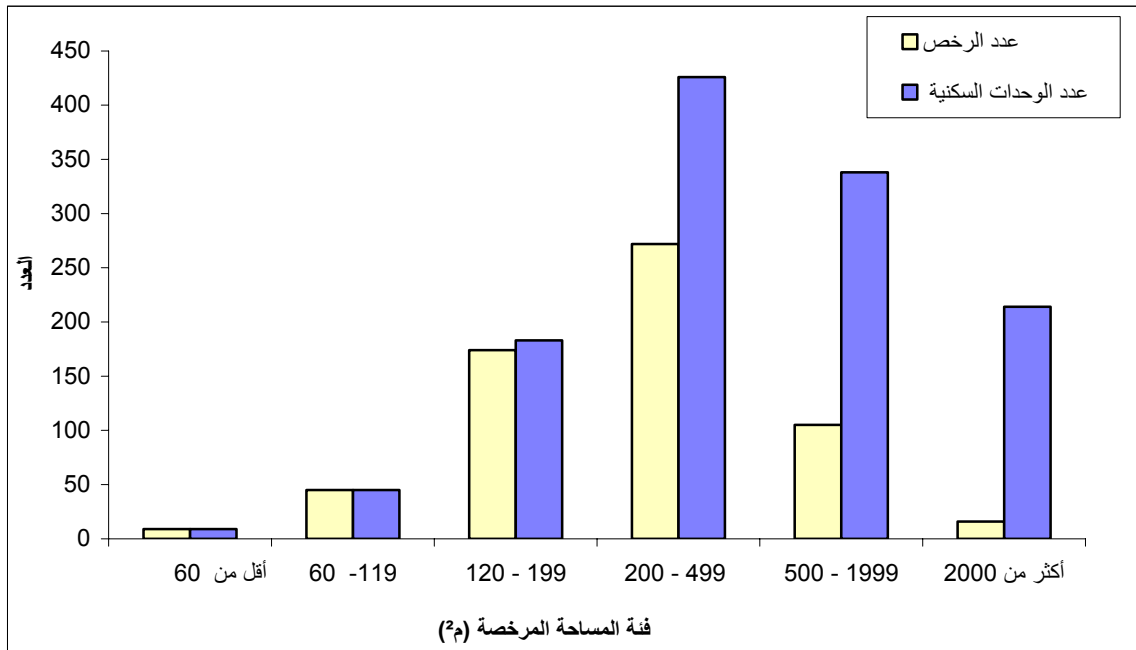
: .4

2009

:2008 -2007

2008 (%)	2007 (%)				
		2009	2008	2007	
9.6	-5.7	1,485	1,355	1,575	
60.7	32.8	311.2	193.6	234.3	()
-28.8	-0.6	322	452	324	
50.7	41.7	85.6	56.8	60.4	()

2009



:

:

:

:

:

4.4

:

:

5.4

:

:

.

:

.

: 1.5

: 1.1.5

: 2.1.5

: 2.5

: 3.5

•

•

() 1967
(J2)

•

2009 1999 ** * :1

Table 1: Buildings Licenses Issued* in the West Bank and Gaza Strip During the Period 1998 to the Second Quarter 2009**

Period	Licensed Dwellings				() Licensed Areas (1000m ²)			Number of Licenses							
	Existing Dwellings		New Dwellings		Existing Areas	All New Areas	Total	Exist ing Exte nsio ns	Existing Building	+	New Additions + Existing Parts	New Additions to Licensed Buildings	New Buildings		Total
	() Area (1000 m ²)	No.	() Area (1000 m ²)	No.											
1999	439.0	3,675	2,050.6	14,587	554.4	2,860.1	3,414.5	115	1,470	475	2,055	5,803	9,918	1999	
2000	383.3	2,730	1,646.1	10,708	482.4	2,457.6	2,940.0	185	1,318	448	1,852	4,498	8,301	2000	
2001	256.0	1,847	1,041.9	7,037	341.0	1,633.9	1,974.9	124	774	273	1,181	2,781	5,133	2001	
2002	137.6	975	794.3	5,089	171.8	1,080.4	1,252.2	52	554	131	675	1,913	3,325	2002	
2003	175.8	1,671	1,234.2	8,152	226.1	1,863.9	2,090.0	99	749	138	1,268	2,981	5,235	2003	
2004	161.6	1,229	1,248.6	8,184	222.0	1,803.9	2,025.8	111	706	149	1,113	2,929	5,008	2004	
2005	366.7	2,522	1,729.5	10,362	474.2	2,427.4	2,901.6	127	1,469	223	1,293	3,996	7,108	2005	
2006	524.2	3,301	1,193.6	6,909	679.2	1,666.9	2,346.1	112	1,894	265	1,087	2,703	6,061	2006	
2007	244.2	1650	983.1	7,478	325.8	1,448.4	1774.2	64	859	140	969	2456	4,488	2007	
2008														2008	
Quarter I***	88.3	414	297.5	1,850	107.0	423.1	530.1	18	191	70	259	690	1,228	***	
Quarter II	60.7	331	195.2	1,062	75.0	279.8	354.8	16	253	64	208	614	1,155		
Quarter III***	62.5	223	234.3	1,174	74.7	384.1	458.8	21	180	53	254	588	1,096	***	
Quarter VI***	51.6	202	195.5	1,111	81.9	303.6	385.5	19	175	50	210	526	980	***	
2009														2009	
Quarter I ***	74.3	261	245.6	1,266	107.4	361.8	469.2	24	229	63	254	649	1,219	***	
Quarter II ***	85.6	322	311.2	1,485	107.0	415.9	522.9	27	266	57	240	719	1,309	***	

*Excluding boundary walls licenses

** Doesn't include those parts of Jerusalem Governorate which were illegally annexed by Israel in 1967

** Data were not available for Gaza Strip

2009

-

*

:2

Table 2: Buildings Licenses Issued in the West Bank* by Building Ownership and Utilization - Second Quarter 2009

Building Ownership	Licensed Dwellings				**(²) Licensed Areas (1000m ²)**			Number of Issued Licenses						
	Existing Dwellings		New Dwellings		Existing Areas	All New Areas	Total	Existing Extensions	Existing Buildings	+ New Additions + Existing Parts	New Additions to Licensed Buildings	New Buildings	Total	
	(²) Area (1000 m ²)	No.	(²) Area (1000 m ²)	No.										
Total														
Residential Building	83.4	318	275.2	1,464	90.5	304.6	395.0	26	241	56	200	621	1,144	
Non-Res. Building	2.2	4	36.0	21	16.6	111.3	127.9	1	25	1	40	98	165	
Boundary walls	0.0	0	0.0	0	0.1	4.7	4.8	0	1	0	2	56	59	
Private														
Residential Buildings	83.4	318	274.3	1,459	90.5	303.5	394.0	26	241	56	200	619	1,142	
Non-Res. Buildings	2.2	4	10.8	20	16.5	70.6	87.1	1	25	1	37	79	143	
Boundary walls	0.0	0	0.0	0	0.1	4.7	4.8	0	1	0	2	56	59	
Governmental														
Residential Buildings	0.0	0	1.0	5	0.0	1.1	1.1	0	0	0	0	2	2	
Non-Res. Buildings	0.0	0	2.6	1	0.0	7.2	7.2	0	0	0	0	7	7	
Boundary walls	0.0	0	0.0	0	0.0	0.0	0.0	0	0	0	0	0	0	
Local Authority														
Residential Buildings	0.0	0	0.0	0	0.0	0.0	0.0	0	0	0	0	0	0	
Non-Res. Buildings	0.0	0	22.6	0	0.0	27.6	27.6	0	0	0	0	7	7	
Boundary walls	0.0	0	0.0	0	0.0	0.0	0.0	0	0	0	0	0	0	

* Doesn't include those parts of Jerusalem Governorate which were illegally annexed by Israel in 1967 .1967

*

**For boundary walls it refers to length in (1000 m.r)

**

2009

-

*

:() 2

Table 2 (cont.): Buildings Licenses Issued in the West Bank* by Building Ownership and Utilization - Second Quarter 2009

Building Ownership	Licensed Dwellings				** () Licensed Areas (1000m ²)**			Number of Issued Licenses						
	Existing Dwellings		New Dwellings		Existing Areas	All New Areas	Total	Existing Extensions	Existing Buildings	إضافات جديدة+ أجزاء قائمة New Additions + Existing Parts	New Additions to Licensed Buildings	New Buildings	Total	
	() Area (1000 m ²)	No.	() Area (1000 m ²)	No.										
Charity														
Residential Buildings	0.0	0	0.0	0	0.0	0.0	0.0	0	0	0	0	0	0	0
Non-Res. Buildings	0.0	0	0.0	0	0.0	3.9	3.9	0	0	0	3	3	3	6
Boundary walls	0.0	0	0.0	0	0.0	0.0	0.0	0	0	0	0	0	0	0
Other														
Residential Buildings	0.0	0	0.0	0	0.0	0.0	0.0	0	0	0	0	0	0	0
Non-Res. Buildings	0.0	0	0.0	0	0.0	2.0	2.0	0	0	0	0	2	2	2
Boundary walls	0.0	0	0.0	0	0.0	0.0	0.0	0	0	0	0	0	0	0

* Doesn't include those parts of Jerusalem Governorate which were illegally annexed by Israel in 1967 .1967

*

**For boundary walls it refers to length in (1000 m.r)

**

2009

-

*

:3

Table 3: Buildings Licenses Issued in the West Bank* by Issuing Authority and Utilization - Second Quarter 2009

License Issuing Authority	Licensed Dwellings				**(²) Licensed Areas (1000 m ²)**			Number of Issued Licenses						
	Existing Dwellings		New Dwellings		Existing Areas	All New Areas	Total	Existing Extensions	Existing Buildings	+ New Additions + Existing Parts	New Additions to Licensed Buildings	New Buildings	Total	
	(²) Area (1000 m ²)	No.	(²) Area (1000 m ²)	No.										
All Authorities														
Residential Buildings	83.4	318	275.2	1,464	90.5	304.6	395.0	26	241	56	200	621	1,144	
Non-Res. Buildings	2.2	4	36.0	21	16.6	111.3	127.9	1	25	1	40	98	165	
Boundary walls	0.0	0	0.0	0	0.1	4.7	4.8	0	1	0	2	56	59	
Municipalities														
Residential Buildings	73.7	263	250.0	1,315	80.3	277.3	357.6	23	205	47	192	528	995	
Non-Res. Buildings	2.2	4	36.0	21	14.1	102.2	116.4	1	23	1	39	90	154	
Boundary walls	0.0	0	0.0	0	0.1	4.5	4.6	0	1	0	2	54	57	
Rural Councils														
Residential Buildings	0.0	0	0.0	0	0.0	0.1	0.1	0	0	0	1	0	1	
Non-Res. Buildings	0.0	0	0.0	0	0.0	0.0	0.0	0	0	0	0	0	0	
Boundary walls	0.0	0	0.0	0	0.0	0.0	0.0	0	0	0	0	0	0	
Construction Authorities														
Residential Buildings	9.7	55	25.2	149	10.2	27.2	37.4	3	36	9	7	93	148	
Non-Res. Buildings	0.0	0	0.0	0	2.4	9.1	11.5	0	2	0	1	8	11	
Boundary walls	0.0	0	0.0	0	0.0	0.3	0.3	0	0	0	0	2	2	

* Doesn't include those parts of Jerusalem Governorate which were illegally annexed by Israel in 1967 .1967

*

**For boundary walls it refers to length in (1000 m.r)

**

Table 4: Buildings Licenses Issued in the West Bank* for New Buildings by Category of Licensed Area and Governorate- Second Quarter 2009

Governorate & Area Category	Non-Res. Buildings		Residential Buildings				
	Average No. of Storeys	No. of Licenses	Average No. of Storeys	Average No. of Dwellings	Total No. of Dwellings	No. of Licenses	
All Governorates							
Less than 60 m ²	0.4	9	1.0	1.0	9	9	² 60
60- 119 m ²	1.0	4	1.0	1.0	45	45	² 119 -60
120-199m ²	0.7	7	1.1	1.1	183	174	² 199 -120
200- 499 m ²	1.2	30	1.9	1.6	426	272	² 499-200
500-1999 m ²	1.6	36	3.0	3.2	338	105	² 1999 -500
2000- m ² and more	3.8	12	6.9	13.4	214	16	² 2000
Jenin							
Less than 60 m ²	1.0	2	0.0	0.0	0	0	² 60
60-119 m ²	2.0	1	1.0	1.0	4	4	² 119 -60
120- 199 m ²	1.0	1	1.2	1.2	13	11	² 199 -120
200- 499 m ²	0.0	0	2.1	2.1	37	18	² 499 -200
500- 1999 m ²	2.5	4	2.0	4.0	8	2	² 1999 -500
2000 m ² and more	0.0	0	0.0	0.0	0	0	² 2000
Tubas							
Less than 60 m ²	0.0	0	0.0	0.0	0	0	² 60
60- 119 m ²	1.0	1	0.0	0.0	0	0	² 119 -60
120-199m ²	0.0	0	1.0	1.0	11	11	² 199 -120
200- 499 m ²	1.0	2	1.9	1.3	21	16	² 499-200
500-1999 m ²	2.0	1	3.0	1.0	1	1	² 1999 -500
2000- m ² and more	0.0	0	0.0	0.0	0	0	² 2000

* Doesn't include those parts of Jerusalem Governorate which were illegally annexed by Israel in 1967 .1967

*

2009

-

*

:() 4

Table 4 (Cont.): Buildings Licenses Issued in the West Bank* for New Buildings by Category of Licensed Area and Governorate– Second Quarter 2009

Governorate & Area Category	Non-Res. Buildings		Residential Buildings				
	Average No. of Storeys	No. of Licenses	Average No. of Storeys	Average No. of Dwellings	Total No. of Dwellings	No. of Licenses	
Tulkarm							
Less than 60 m ²	0.0	0	1.0	1.0	1	1	² 60
60-119 m ²	0.0	0	1.0	1.0	7	7	² 119 -60
120- 199 m ²	0.0	1	1.2	1.0	33	33	² 199 -120
200- 499 m ²	1.6	5	1.9	1.6	52	33	² 499 -200
500- 1999 m ²	2.0	1	2.9	4.4	61	14	² 1999 -500
2000 m ² and more	6.0	1	0.0	0.0	0	0	² 2000
Nablus							
Less than 60 m ²	0.0	5	1.0	1.0	3	3	² 60
60- 119 m ²	0.0	0	1.0	1.0	8	8	² 119 -60
120-199m ²	1.0	1	1.1	1.0	23	23	² 199 -120
200- 499 m ²	0.9	8	2.0	1.5	83	57	² 499-200
500-1999 m ²	1.6	7	3.0	2.5	45	18	² 1999 -500
2000- m ² and more	4.7	3	10.0	24.5	49	2	² 2000
Qalqilya							
Less than 60 m ²	0.0	0	0.0	0.0	0	0	² 60
60-119 m ²	1.0	1	1.0	1.0	4	4	² 119 -60
120- 199 m ²	1.0	1	1.1	1.1	18	17	² 199 -120
200- 499 m ²	0.0	0	2.0	1.4	23	16	² 499 -200
500- 1999 m ²	0.0	0	2.0	4.0	4	1	² 1999 -500
2000 m ² and more	0.0	0	0.0	0.0	0	0	² 2000

* Doesn't include those parts of Jerusalem Governorate which were illegally annexed by Israel in 1967 .1967

*

Table 4 (Cont.): Buildings Licenses Issued in the West Bank* for New Buildings by Category of Licensed Area and Governorate– Second Quarter 2009

Governorate & Area Category	Non-Res. Buildings		Residential Buildings				
	Average No. of Storeys	No. of Licenses	Average No. of Storeys	Average No. of Dwellings	Total No. of Dwellings	No. of Licenses	
Salfit							
Less than 60 m ²	0.0	0	1.0	1.0	2	2	² 60
60- 119 m ²	0.0	1	1.0	1.0	6	6	² 119 -60
120-199m ²	0.0	0	1.2	1.1	18	17	² 199 -120
200- 499 m ²	1.0	1	1.9	1.7	36	21	² 499-200
500-1999 m ²	2.7	3	3.3	3.7	11	3	² 1999 -500
2000- m ² and more	3.0	1	0.0	0.0	0	0	² 2000
Ramallah and Al-Bireh							
Less than 60 m ²	1.0	1	0.0	0.0	0	0	² 60
60-119 m ²	0.0	0	1.0	1.0	2	2	² 119 -60
120- 199 m ²	0.0	0	1.1	1.0	8	8	² 199 -120
200- 499 m ²	2.0	1	2.0	1.4	46	33	² 499 -200
500- 1999 m ²	1.5	2	3.4	3.2	98	31	² 1999 -500
2000 m ² and more	5.3	3	6.6	12.3	148	12	² 2000
Jericho and Al Aghwar							
Less than 60 m ²	0.0	0	0.0	0.0	0	0	² 60
60- 119 m ²	0.0	0	0.0	0.0	0	0	² 119 -60
120-199m ²	0.0	0	1.7	1.6	11	7	² 199 -120
200- 499 m ²	1.0	2	1.8	1.6	8	5	² 499-200
500-1999 m ²	3.0	1	2.5	2.3	9	4	² 1999 -500
2000- m ² and more	3.0	1	0.0	0.0	0	0	² 2000

* Doesn't include those parts of Jerusalem Governorate which were illegally annexed by Israel in 1967 .1967

*

Table 4 (Cont.): Buildings Licenses Issued in the West Bank* for New Buildings by Category of Licensed Area and Governorate– Second Quarter 2009

Governorate & Area Category	Non-Res. Buildings		Residential Buildings				
	Average No. of Storeys	No. of Licenses	Average No. of Storeys	Average No. of Dwellings	Total No. of Dwellings	No. of Licenses	
Jarusalem							
Less than 60 m ²	0.0	0	0.0	0.0	0	0	² 60
60- 119 m ²	0.0	0	0.0	0.0	0	0	² 119 -60
120-199m ²	0.0	0	0.0	0.0	0	0	² 199 -120
200- 499 m ²	0.0	0	2.2	1.8	9	5	² 499-200
500-1999 m ²	0.0	0	4.0	4.0	4	1	² 1999 -500
2000- m ² and more	0.0	0	7.0	7.0	7	1	² 2000
Bethlehem							
Less than 60 m ²	1.0	1	0.0	0.0	0	0	² 60
60- 119 m ²	0.0	0	1.0	1.0	6	6	² 119 -60
120-199m ²	1.0	1	1.1	1.0	16	16	² 199 -120
200- 499 m ²	2.0	2	1.7	1.6	61	39	² 499-200
500-1999 m ²	1.2	5	3.1	3.1	56	18	² 1999 -500
2000- m ² and more	4.0	1	0.0	0.0	0	0	² 2000
Hebron							
Less than 60 m ²	0.0	0	1.0	1.0	3	3	² 60
60-119 m ²	0.0	0	1.0	1.0	8	8	² 119 -60
120- 199 m ²	0.5	2	1.0	1.0	32	31	² 199 -120
200- 499 m ²	1.0	9	1.9	1.7	50	29	² 499 -200
500- 1999 m ²	1.0	12	2.4	3.4	41	12	² 1999 -500
2000 m ² and more	0.0	2	5.0	10.0	10	1	² 2000

* Doesn't include those parts of Jerusalem Governorate which were illegally annexed by Israel in 1967 .1967

*

Table 5: Buildings Licenses Issued in the West Bank* for New Buildings by Construction Material of External Walls and Governorate– Second Quarter 2009.

Governorate	Non-Res. Buildings			Residential Buildings					
	Average No. of Storeys	(2) Licensed Area (1000 m ²)	No. of Licenses	Average No. of Storeys	Average No. of Dwellings	Total No. of Dwellings	(2) Licensed Area (1000 m ²)	No. of Licenses	
All Governorates									
Stone	1.6	95.7	80	2.2	2.3	912	206.9	399	
Cement Block	1.2	7.4	17	1.5	1.4	282	47.2	205	
Concrete	0.0	0.0	1	1.6	1.2	21	4.7	17	
Jenin									
Stone	2.0	1.5	5	1.8	1.9	48	7.5	25	
Cement Block	1.7	1.4	3	1.4	1.4	14	1.8	10	
Concrete	0.0	0.0	0	0.0	0.0	0	0.0	0	
Tubas									
Stone	1.3	1.0	3	1.7	1.2	18	4.6	15	
Cement Block	1.0	0.4	1	1.5	1.2	15	3.1	13	
Concrete	0.0	0.0	0	0.0	0.0	0	0.0	0	
Tulkarm									
Stone	2.1	7.8	7	2.4	2.9	55	9.9	19	
Cement Block	1.0	0.2	1	1.5	1.4	85	14.7	59	
Concrete	0.0	0.0	0	1.5	1.4	14	2.8	10	
Nablus									
Stone	1.8	16.0	18	2.3	2.2	170	40.9	76	
Cement Block	0.0	0.4	5	1.4	1.2	40	6.1	34	
Concrete	0.0	0.0	1	1.0	1.0	1	0.0	1	

* Doesn't include those parts of Jerusalem Governorate which were illegally annexed by Israel in 1967 .1967

*

2009

*

:() 5

Table 5 (Cont.): Buildings Licenses Issued in the West Bank* for New Buildings by Construction Material of External Walls and Governorate - Second Quarter 2009

Governorate	Non-Res. Buildings			Residential Buildings					
	Average No. of Storeys	(2) Licensed Area (1000 m ²)	No. of Licenses	Average No. of Storeys	Average No. of Dwellings	Total No. of Dwellings	(2) Licensed Area (1000 m ²)	No. of Licenses	
Qalqilya									
Stone	1.0	0.1	1	2.3	1.0	4	1.4	4	
Cement Block	1.0	0.1	1	1.4	1.3	45	7.3	34	
Concrete	0.0	0.0	0	0.0	0.0	0	0.0	0	
Salfit									
Stone	2.7	4.0	3	1.9	1.6	13	3.1	8	
Cement Block	1.3	1.8	3	1.5	1.5	59	9.3	40	
Concrete	0.0	0.0	0	2.0	1.0	1	0.2	1	
Ramallah and Al-Bireh									
Stone	3.1	15.0	7	3.2	3.7	296	77.3	80	
Cement Block	0.0	0.0	0	1.0	1.0	2	0.3	2	
Concrete	0.0	0.0	0	1.8	1.0	4	1.4	4	
Jericho and Al Aghwar									
Stone	0.0	0.3	1	2.3	2.0	6	1.1	3	
Cement Block	2.7	3.2	3	1.8	1.7	22	4.6	13	
Concrete	0.0	0.0	0	0.0	0.0	0	0.0	0	
Jarusalem									
Stone	0.0	0.0	0	3.1	2.9	20	4.8	7	
Cement Block	0.0	0.0	0	0.0	0.0	0	0.0	0	
Concrete	0.0	0.0	0	0.0	0.0	0	0.0	0	

* Doesn't include those parts of Jerusalem Governorate which were illegally annexed by Israel in 1967 .1967

*

2009

-

*

:() 5

Table 5 (Cont.): Buildings Licenses Issued in the West Bank* for New Buildings by Construction Material of External Walls and Governorate - Second Quarter 2009

Governorate	Non-Res. Buildings			Residential Buildings					
	Average No. of Storeys	(2) Licensed Area (1000 m ²)	No. of Licenses	Average No. of Storeys	Average No. of Dwellings	Total No. of Dwellings	(2) Licensed Area (1000 m ²)	No. of Licenses	
Bethlehem									
Stone	1.6	8.4	10	1.8	1.8	138	31.0	78	
Cement Block	0.0	0.0	0	0.0	0.0	0	0.0	0	
Concrete	0.0	0.0	0	2.0	1.0	1	0.3	1	
Hebron									
Stone	0.9	41.7	25	1.6	1.7	144	25.4	84	
Cement Block	0.0	0.0	0	0.0	0.0	0	0.0	0	
Concrete	0.0	0.0	0	0.0	0.0	0	0.0	0	

* Doesn't include those parts of Jerusalem Governorate which were illegally annexed by Israel in 1967 .1967

*

Table 6 : Buildings Licenses Issued in the West Bank* for New Additions to Licensed Existing Buildings by Construction Material of External Walls and Governorate– Second Quarter 2009

Governorate	Non-Res. Buildings			Residential Buildings					
	Average No. of Storeys	(2) Licensed Area (1000 m ²)	No. of Licenses	Average No. of Storeys	Average No. of Dwellings	Total No. of Dwellings	(2) Licensed Area (1000 m ²)	No. of Licenses	
All Governorates									
Stone	0.8	7.6	31	1.5	1.0	148	28.1	147	
Cement Block	0.3	0.5	9	1.5	0.9	49	8.3	52	
Concrete	0.0	0.0	0	1.0	1.0	1	0.1	1	
Jenin									
Stone	4.0	1.3	1	2.4	2.4	17	2.6	7	
Cement Block	0.0	0.0	0	1.6	1.2	6	0.7	5	
Concrete	0.0	0.0	0	0.0	0.0	0	0	0	
Tubas									
Stone	0.0	0.0	0	1.0	1.0	1	0.2	1	
Cement Block	0.0	0.0	0	1.0	1.0	1	0.1	1	
Concrete	0.0	0.0	0	0.0	0.0	0	0	0	
Tulkarm									
Stone	1.0	0.6	2	1.2	1.4	7	1.9	5	
Cement Block	1.0	0.1	1	1.0	0.9	6	0.9	7	
Concrete	0.0	0.0	0	1.0	1.0	1	0.1	1	

* Doesn't include those parts of Jerusalem Governorate which were illegally annexed by Israel in 1967 .1967

*

Table 6 (Cont.): Buildings Licenses Issued in the West Bank* for New Additions to Licensed Existing Buildings by Construction Material of External Walls and Governorate– Second Quarter 2009

Governorate	Non-Res. Buildings			Residential Buildings					
	Average No. of Storeys	(2) Licensed Area (1000 m ²)	No. of Licenses	Average No. of Storeys	Average No. of Dwellings	Total No. of Dwellings	(2) Licensed Area (1000 m ²)	No. of Licenses	
Nablus									
Stone	0.5	4.2	24	1.2	0.9	82	15.8	90	
Cement Block	0.0	0.0	4	1.4	0.8	6	1.0	8	
Concrete	0.0	0.0	0	0.0	0.0	0	0	0	
Qalqilya									
Stone	0.0	0.0	0	0.0	0.0	0	0	0	
Cement Block	0.0	0.0	0	1.6	1.3	26	4.5	20	
Concrete	0.0	0.0	0	0.0	0.0	0	0	0	
Salfit									
Stone	0.0	0.0	0	1.0	0.0	0	0.0	1	
Cement Block	1.0	0.0	1	2.0	0.0	0	0.8	7	
Concrete	0.0	0.0	0	0.0	0.0	0	0	0	
Ramallah and Al-Birah									
Stone	2.0	0.1	1	2.0	0.1	2	2.1	21	
Cement Block	0.0	0.0	0	0.0	0.0	0	0	0	
Concrete	0.0	0.0	0	0.0	0.0	0	0	0	

* Doesn't include those parts of Jerusalem Governorate which were illegally annexed by Israel in 1967 .1967

*

Table 6 (Cont.) : Buildings Licenses Issued in the West Bank* for New Additions to Licensed Existing Buildings by Construction Material of External Walls and Governorate– Second Quarter 2009

Governorate	Non-Res. Buildings			Residential Buildings					
	Average No. of Storeys	(2) Licensed Area (1000 m ²)	No. of Licenses	Average No. of Storeys	Average No. of Dwellings	Total No. of Dwellings	(2) Licensed Area (1000 m ²)	No. of Licenses	
Jericho and Al Aghwar									
Stone	0.0	0.0	0	0.0	0.0	0	0.5	1	
Cement Block	0.3	0.3	3	1.3	1.3	4	0.3	3	
Concrete	0.0	0.0	0	0.0	0.0	0	0	0	
Jarusalem									
Stone	0.0	0.0	0	0.0	0.0	0	0	0	
Cement Block	0.0	0.0	0	2.0	0.0	0	0.1	1	
Concrete	0.0	0.0	0	0.0	0.0	0	0	0	
Bethlehem									
Stone	1.7	1.4	3	1.5	2.1	30	2.9	14	
Cement Block	0.0	0.0	0	0.0	0.0	0	0	0	
Concrete	0.0	0.0	0	0.0	0.0	0	0	0	
Hebron									
Stone	0.0	0.0	0	2.0	1.3	9	2.0	7	
Cement Block	0.0	0.0	0	0.0	0.0	0	0	0	
Concrete	0.0	0.0	0	0.0	0.0	0	0	0	

* Doesn't include those parts of Jerusalem Governorate which were illegally annexed by Israel in 1967 .1967

*

Table 7: Buildings Licenses Issued in the West Bank* for New Additions and Existing Parts to Unlicensed Existing Buildings by Construction Material of External Walls and Governorate– Second Quarter 2009

Governorate	Non- Res. Buildings			Residential Buildings					
	Average No. of Storeys	(²) Licensed Area (1000 m ²)	No. of Licenses	Average No of Storeys	Average No. of Dwellings	Total No. of Dwellings	(²) Licensed Area (1000 m ²)	No. of Licenses	
All Governorates									
Stone	4.0	0.1	1	3.1	1.6	41	7.4	26	
Cement Block	0.0	0.0	0	2.3	1.6	48	8.1	30	
Tubas									
Stone	4.0	0.1	1	2.0	1.6	4	0.6	3	
Cement Block	0.0	0.0	0	2.0	2.0	6	0.9	3	
Tulkarem									
Stone	0.0	0.0	0	3.8	2.3	9	1.5	4	
Cement Block	0.0	0.0	0	2.3	1.6	38	6.5	25	
Nablus									
Stone	0.0	0.0	0	3.1	1.5	26	4.8	18	
Cement Block	0.0	0.0	0	1.3	0.7	1	0.2	2	
Qalqilya									
Stone	0.0	0.0	0	3.0	2.0	2	0.4	1	
Cement Block	0.0	0.0	0	3.0	3.0	3	0.5	1	

* Doesn't include those parts of Jerusalem Governorate which were illegally annexed by Israel in 1967 .1967

*

Table 8: Buildings Licenses Issued in the West Bank* for Existing Buildings and Extensions by Construction Material of External Walls and Governorate– Second Quarter 2009

Governorate	Non- Res. Buildings			Residential Buildings				
	Average No. of Storeys	(²) Licensed Area (1000 m ²)	No. of Licenses	Average No of Storeys	Average No. of Dwellings	Total No. of Dwellings	(²) Licensed Area (1000 m ²)	No. of Licenses
All Governorates								
Stone	0.8	15.2	25	1.2	1.1	204	72.3	193
Cement Block	1.0	0.2	1	1.3	1.0	62	10.0	64
Concrete	0.0	0.0	0	1.7	1.4	14	2.0	10
Jenin								
Stone	0.0	0.0	0	1.5	1.5	3	0.6	2
Cement Block	0.0	0.0	0	1.4	1.4	7	1.1	5
Concrete	0.0	0.0	0	0.0	0.0	0	0.0	0
Tubas								
Stone	0.0	0.0	0	1.8	1.3	5	0.9	4
Cement Block	1.0	0.2	1	1.2	1.0	5	0.7	5
Concrete	0.0	0.0	0	1.0	1.0	1	0.1	1
Tulkarm								
Stone	1.0	0.9	1	1.8	1.0	4	0.7	4
Cement Block	0.0	0.0	0	1.6	1.0	21	3.3	21
Concrete	0.0	0.0	0	1.5	1.5	3	0.4	2
Nablus								
Stone	1.0	0.7	4	1.9	1.2	27	4.7	23
Cement Block	0.0	0.0	0	0.8	0.5	10	1.8	19
Concrete	0.0	0.0	0	2.3	1.5	6	1.0	4

* Doesn't include those parts of Jerusalem Governorate which were illegally annexed by Israel in 1967

.1967

*

Table 8 (Cont.): Buildings Licenses Issued in the West Bank* for Existing Buildings and Extensions by Construction Material of External Walls and Governorate– Second Quarter 2009

Governorate	Non- Res. Buildings			Residential Buildings				
	Average No. of Storeys	(²) Licensed Area (1000 m ²)	No. of Licenses	Average No of Storeys	Average No. of Dwellings	Total No. of Dwellings	(²) Licensed Area (1000 m ²)	No. of Licenses
Qalqilya								
Stone	0.0	0.0	0	0.0	0.0	0	0.0	0
Cement Block	0.0	0.0	0	1.5	1.3	14	2.5	11
Concrete	0.0	0.0	0	0.0	0.0	0	0.0	0
Salfit								
Stone	0.0	0.0	0	1.0	1.0	1	0.2	1
Cement Block	0.0	0.0	0	1.7	1.7	5	0.6	3
Concrete	0.0	0.0	0	0.0	0.0	0	0.0	0
Ramallah and Al-Bireh								
Stone	1.2	2.7	6	1.9	2.5	63	11.8	25
Cement Block	0.0	0.0	0	0.0	0.0	0	0.0	0
Concrete	0.0	0.0	0	1.0	1.0	1	0.1	1
Jerusalem								
Stone	0.0	0.0	0	3.0	3.0	3	0.6	1
Cement Block	0.0	0.0	0	0.0	0.0	0	0.0	0
Concrete	0.0	0.0	0	0.0	0.0	0	0.0	0
Bethlehem								
Stone	1.0	0.0	1	1.3	1.3	20	5.1	16
Cement Block	0.0	0.0	0	0.0	0.0	0	0.0	0
Concrete	0.0	0.0	0	1.0	1.0	1	0.2	1

* Doesn't include those parts of Jerusalem Governorate which were illegally annexed by Israel in 1967

.1967

*

2009

-

*

:() 8

Table 8 (Cont.): Buildings Licenses Issued in the West Bank* for Existing Buildings and Extensions by Construction Material of External Walls and Governorate— Second Quarter 2009

Governorate	Non- Res. Buildings			Residential Buildings				
	Average No. of Storeys	(²) Licensed Area (1000 m ²)	No. of Licenses	Average No of Storeys	Average No. of Dwellings	Total No. of Dwellings	(²) Licensed Area (1000 m ²)	No. of Licenses
Hebron								
Stone	0.5	11.0	13	0.8	0.7	78	47.8	117
Cement Block	0.0	0.0	0.0	0.0	0.0	0	0.0	0
Concrete	0.0	0.0	0.0	2.0	2.0	2	0.2	1

* Doesn't include those parts of Jerusalem Governorate which were illegally annexed by Israel in 1967

.1967

*

2009

-

*

:9

Table 9: Buildings Licenses Issued in the West Bank* for Residential Buildings by Status of Licensed Building and Governorate– Second Quarter 2009

Governorate	(²) Licensed Areas (000 m²)			Number of Issued Licenses					
	Existing Areas	New Areas	Total	Existing Extensions	Existing Buildings	+ New Additions+Existing Parts	Additions to Licensed Buildings	New Buildings	Total
All Governorates									
Complete Dwellings	88.4	295.7	384.0	5	241	38	127	610	1,021
Extension of Rooms	0.4	3.7	4.1	7	0	1	34	2	44
Other Extensions	0.1	1.4	1.5	0	0	8	14	6	28
Other	1.6	3.9	5.4	14	0	9	25	3	51
Jenin									
Complete Dwellings	1.6	12.7	14.3	0	7	0	12	35	54
Extension of Rooms	0.0	0.0	0.0	0	0	0	0	0	0
Other Extensions	0.0	0.0	0.0	0	0	0	0	0	0
Other	0.0	0.0	0.0	0	0	0	0	0	0
Tubas									
Complete Dwellings	2.4	8.7	11.1	0	10	4	2	28	44
Extension of Rooms	0.0	0.1	0.1	0	0	1	0	0	1
Other Extensions	0.0	0.0	0.0	0	0	0	0	0	0
Other	0.0	0.0	0.0	0	0	0	0	0	0
Tulkarm									
Complete Dwellings	6.8	34.5	41.3	0	22	23	11	87	143
Extension of Rooms	0.0	0.0	0.1	1	0	0	0	1	2
Other Extensions	0.1	0.2	0.2	0	0	5	2	0	7
Other	0.9	0.1	1.0	4	0	2	0	0	6

* Doesn't include those parts of Jerusalem Governorate which were illegally annexed by Israel in 1967

.1967

*

2009

-

*

:() 9

Table 9 (Cont.): Buildings Licenses Issued in the West Bank* for Residential Buildings by Status of Licensed Building and Governorate— Second Quarter 2009

Governorate	Licensed Areas (000 m ²)			Number of Issued Licenses					
	Existing Areas	New Areas	Total	Existing Extensions	Existing Buildings	+ New Additions+Existing Parts	Additions to Licensed Buildings	New Buildings	Total
Nablus									
Complete Dwellings	8.0	65.1	73.1	1	31	9	58	109	208
Extension of Rooms	0.3	0.4	0.7	4	0	0	6	1	11
Other Extensions	0.0	0.5	0.5	0	0	3	9	1	13
Other	0.6	1.5	2.2	10	0	7	25	0	42
Qalqilya									
Complete Dwellings	3.1	13.4	16.5	0	10	2	20	37	69
Extension of Rooms	0.1	0.0	0.1	1	0	0	0	0	1
Other Extensions	0.0	0.0	0.0	0	0	0	0	0	0
Other	0.0	0.1	0.1	0	0	0	0	1	1
Salfit									
Complete Dwellings	0.8	11.5	12.3	0	4	0	0	46	50
Extension of Rooms	0.0	0.8	0.8	0	0	0	7	0	7
Other Extensions	0.0	0.1	0.1	0	0	0	1	2	3
Other	0.0	1.0	1.0	0	0	0	0	1	1
Ramallah & Al- Bireh									
Complete Dwellings	11.9	79.1	90.9	0	26	0	2	86	114
Extension of Rooms	0.0	2.0	2.0	0	0	0	17	0	17
Other Extensions	0.0	0.0	0.0	0	0	0	2	0	2
Other	0.0	0.0	0.0	0	0	0	0	0	0

* Doesn't include those parts of Jerusalem Governorate which were illegally annexed by Israel in 1967

.1967

*

2009

-

*

:() 9

Table 9 (Cont): Buildings Licenses Issued in the West Bank* for Residential Buildings by Status of Licensed Building and Governorate– Second Quarter 2009

Governorate	() Licensed Areas (000 m ²)			Number of Issued Licenses					
	Existing Areas	New Areas	Total	Existing Extensions	Existing Buildings	+ New Additions+Existing Parts	Additions to Licensed Buildings	New Buildings	Total
Jericho and Al Aghwar									
Complete Dwellings	0.0	5.2	5.2	0	0	0	3	15	18
Extension of Rooms	0.0	0.0	0.0	0	0	0	1	0	1
Other Extensions	0.0	0.0	0.0	0	0	0	0	0	0
Other	0.0	1.2	1.2	0	0	0	0	1	1
Jerusalem									
Complete Dwellings	0.6	4.8	5.3	0	1	0	0	7	8
Extension of Rooms	0.0	0.1	0.1	0	0	0	1	0	1
Other Extensions	0.0	0.0	0.0	0	0	0	0	0	0
Other	0.0	0.0	0.0	0	0	0	0	0	0
Bethlehem									
Complete Dwellings	5.3	33.9	39.2	0	17	0	12	79	108
Extension of Rooms	0.0	0.3	0.3	0	0	0	2	0	2
Other Extensions	0.0	0.0	0.0	0	0	0	0	0	0
Other	0.0	0.0	0.0	0	0	0	0	0	0
Hebron									
Complete Dwellings	48.0	26.8	74.8	4	113	0	7	81	205
Extension of Rooms	0.0	0.0	0.0	1	0	0	0	0	1
Other Extensions	0.0	0.6	0.6	0	0	0	0	3	3
Other	0.0	0.0	0.0	0	0	0	0	0	0

* Doesn't include those parts of Jerusalem Governorate which were illegally annexed by Israel in 1967

.1967

*

2009

-

*

:10

Table 10: Buildings Licenses Issued in the West Bank* for Non-Residential Buildings by Utilization and Governorate– Second Quarter 2009

Governorate & Utilization	Stores		Licensed Areas (1000 m ²)			Number of Issued Licenses					
	Area (1000 m ²)	No.	Existing Areas	New Areas	Total	Existing Extensions	Existing Buildings	+ New Additions +Existing Parts	Additions to Licensed Buildings	New Buildings	Total
All Governorates											
Industrial	1.9	22	0.6	3.6	4.2	0	1	0	2	0	3
Commercial	54.6	238	15.2	47.4	62.6	1	20	1	9	53	84
Educational	2.6	0	0.4	20.9	21.3	0	1	0	3	13	17
Health	0.0	0	0.0	0.6	0.6	0	0	0	0	1	1
Others	2.2	14	0.4	38.8	39.2	0	3	0	26	31	60
Jenin											
Industrial	1.3	22	0.0	1.3	1.3	0	0	0	1	0	1
Commercial	1.9	32	0.0	2.0	2.0	0	0	0	0	5	5
Educational	0.0	0	0.0	0.9	0.9	0	0	0	0	2	2
Health	0.0	0	0.0	0.0	0.0	0	0	0	0	0	0
Others	0.0	0	0.0	0.0	0.0	0	0	0	0	1	1
Tubas											
Industrial	0.0	0	0.0	0.0	0.0	0	0	0	0	0	0
Commercial	0.4	12	0.0	0.6	0.6	0	0	1	0	2	3
Educational	0.0	0	0.0	0.0	0.0	0	0	0	0	0	0
Health	0.0	0	0.0	0.0	0.0	0	0	0	0	0	0
Others	0.0	0	0.2	0.9	1.1	0	1	0	0	2	3

* Doesn't include those parts of Jerusalem Governorate which were illegally annexed by Israel in 1967 .1967

*

2009

-

*

:() 10

Table 10 (Cont.): Buildings Licenses Issued in the West Bank* for Non-Residential Buildings by Utilization and Governorate– Second Quarter 2009

Governorate & Utilization	Stores		Licensed Areas (1000 m ²)			Number of Issued Licenses					
	(² 1000) Area (1000 m ²)	No.	Existing Areas	New Areas	Total	Existing Extensions	Existing Buildings	+ New Additions +Existing Parts	Additions to Licensed Buildings	New Buildings	Total
Tulkarm											
Industrial	0.0	0	0.0	0.0	0.0	0	0	0	0	0	0
Commercial	7.5	29	2.0	6.3	8.3	1	0	0	1	4	6
Educational	0.0	0	0.0	0.4	0.4	0	0	0	0	1	1
Health	0.0	0	0.0	0.0	0.0	0	0	0	0	0	0
Others	0.0	0	0.0	2.1	2.1	0	0	0	2	3	5
Nablus											
Industrial	0.0	0	0.0	2.3	2.3	0	0	0	1	0	1
Commercial	7.7	50	0.7	9.1	9.8	0	3	0	4	11	18
Educational	0.0	0	0.0	3.9	3.9	0	0	0	3	1	4
Health	0.0	0	0.0	0.0	0.0	0	0	0	0	0	0
Others	0.0	0	0.0	5.3	5.3	0	1	0	20	12	33
Qalqilya											
Industrial	0.0	0	0.0	0.0	0.0	0	0	0	0	0	0
Commercial	0.2	3	0.0	0.2	0.2	0	0	0	0	2	2
Educational	0.0	0	0.0	0.0	0.0	0	0	0	0	0	0
Health	0.0	0	0.0	0.0	0.0	0	0	0	0	0	0
Others	0.0	0	0.0	0.0	0.0	0	0	0	0	0	0

* Doesn't include those parts of Jerusalem Governorate which were illegally annexed by Israel in 1967

.1967

*

2009

-

*

:() 10

Table 10 (Cont.): Buildings Licenses Issued in the West Bank* for Non-Residential Buildings by Utilization and Governorate– Second Quarter 2009

Governorate & Utilization	Stores		Licensed Areas (1000 m ²)			Number of Issued Licenses					
	(² 1000) Area (1000 m ²)	No.	Existing Areas	New Areas	Total	Existing Extensions	Existing Buildings	+ New Additions +Existing Parts	Additions to Licensed Buildings	New Buildings	Total
Salfit											
Industrial	0.0	0	0.0	0.0	0.0	0	0	0	0	0	0
Commercial	2.8	32	0.0	2.9	2.9	0	0	0	1	4	5
Educational	0.0	0	0.0	2.2	2.2	0	0	0	0	1	1
Health	0.0	0	0.0	0.0	0.0	0	0	0	0	0	0
Others	0.0	0	0.0	0.6	0.6	0	0	0	0	1	1
Ramallah and Al-Bireh											
Industrial	0.0	0	0.0	0.0	0.0	0	0	0	0	0	0
Commercial	13.7	32	2.3	14.0	16.2	0	5	0	1	5	11
Educational	0.0	0	0.4	1.2	1.6	0	1	0	0	2	3
Health	0.0	0	0.0	0.0	0.0	0	0	0	0	0	0
Others	0.0	0	0.0	0.0	0.0	0	0	0	0	0	0
Jericho and Al Aghwar											
Industrial	0.0	0	0.0	0.0	0.0	0	0	0	0	0	0
Commercial	0.3	1	0.0	0.3	0.3	0	0	0	1	1	2
Educational	0.0	0	0.0	2.3	2.3	0	0	0	0	1	1
Health	0.0	0	0.0	0.6	0.6	0	0	0	0	1	1
Others	0.0	0	0.0	0.5	0.5	0	0	0	2	1	3

* Doesn't include those parts of Jerusalem Governorate which were illegally annexed by Israel in 1967

.1967

*

2009

-

*

:() 10

Table 10 (Cont.): Buildings Licenses Issued in the West Bank* for Non-Residential Buildings by Utilization and Governorate– Second Quarter 2009

Governorate & Utilization	Stores		Licensed Areas (1000 m ²)			Number of Issued Licenses					
	(² 1000) Area (1000 m ²)	No.	Existing Areas	New Areas	Total	Existing Extensions	Existing Buildings	+ New Additions +Existing Parts	Additions to Licensed Buildings	New Buildings	Total
Bethlehem											
Industrial	0.0	0	0.0	0.0	0.0	0	0	0	0	0	0
Commercial	3.4	2	0.0	4.8	4.8	0	1	0	1	5	7
Educational	2.6	0	0.0	2.6	2.6	0	0	0	0	1	1
Health	0.0	0	0.0	0.0	0.0	0	0	0	0	0	0
Others	1.6	4	0.0	2.4	2.4	0	0	0	2	4	6
Hebron											
Industrial	0.6	0	0.6	0.0	0.6	0	1	0	0	0	1
Commercial	16.6	45	10.2	7.4	17.6	0	11	0	0	14	25
Educational	0.0	0	0.0	7.3	7.3	0	0	0	0	4	4
Health	0.0	0	0.0	0.0	0.0	0	0	0	0	0	0
Others	0.6	10	0.2	27.0	27.2	0	1	0	0	7	8

* Doesn't include those parts of Jerusalem Governorate which were illegally annexed by Israel in 1967

.1967

*

2009

-

*

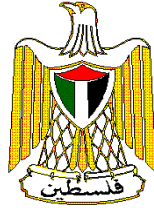
:11

Table 11: Buildings Licenses Issued in the West Bank* for Boundary Walls Only by Governorate– Second Quarter 2009

Governorate	Existing and Existing Additions		New and New Additions		
	(.) Total Length (1000 m.r)	Number	(.) Total Length (1000 m.r)	Number	
All Governorates	0.1	1	4.7	58	
Jenin	0.0	0	0.3	2	
Tulkarm	0.0	0	0.7	12	
Nablus	0.0	0	2.2	30	
Qalqilya	0.0	0	0.1	2	
Ramallah and Al-Bireh	0.0	0	0.4	6	
Bethlehem	0.0	0	0.7	4	
Hebron	0.1	1	0.3	2	

* Doesn't include those parts of Jerusalem Governorate which were illegally annexed by Israel in 1967 .1967

*



**Palestinian National Authority
Palestinian Central Bureau of Statistics**

**Building Licenses Statistics
Second Quarter, 2009
West Bank**

**Volume 14, Issue No. 2
August, 2009**

Cover Price 3 US\$

PAGE NUMBERS OF ENGLISH TEXT ARE PRINTED IN SQUARE BRACKETS.
TABLES ARE PRINTED IN THE ARABIC ORDER (FROM RIGHT TO LEFT)



This document is prepared in accordance with the standard procedures stated in the Code of Practice for Palestine Official Statistics 2006

© August, 2009
All rights reserved.

Suggested Citation:

Palestinian Central Bureau of Statistics, 2009. *Building Licenses Statistics – Second Quarter 2009, West Bank.* Ramallah - Palestine.

All correspondence should be directed to:
Palestinian Central Bureau of Statistics
P.O.Box 1647, Ramallah, Palestine.

Tel: (972/970) 2 242 6340

Fax: (972/970) 2 242 6343

E-Mail :diwan@pcbs.gov.ps

web-site: <http://www.pcbs.gov.ps>

Acknowledgment

The Palestinian Central Bureau of Statistics (PCBS) would like to thank the Ministry of Local Governments and Municipal Affairs, all municipalities, and rural councils and construction authorities for their cooperation in providing PCBS with the requested data.

The funding of the Building Licenses Statistics (Second Quarter 2009) was provided by the Palestinian National Authority (PNA), and the Core Funding Group (CFG) for 2009. CFG members include the Representative Office of Norway to PNA; the Representative Office of Netherlands to PNA; the Swiss Agency for Development and Cooperation (SDC).

Printing of this document has been produced with financial assistance of the European Union (EU). The contents of this document are the sole responsibility of the PCBS.

On this occasion, PCBS extends special thanks to the members of the CFG and the EU for their support.

Important Note

- It should be noted that obtaining data from Gaza Strip was not possible for the report of Building Licenses Q2 of 2009.
- Data for the West Bank doesn't include those parts of Jerusalem Governorate which were illegally annexed by Israel in 1967.

Project Team

- **Report Preparation**

Jamil Al-rimawi
Niveen Sarraj
Ayman Qunier

- **Dissemination Standards**

Hanan Janajreh

- **Preliminary Review**

Ibrahim Al-Tarsha
Saleh Al-Kafri

- **Final Review & Overall Supervision**

Mahmoud Jaradat
Ola Awad

Acting President

Preface

Construction is considered one of the important economic activities in the Palestinian economy. It contributes substantially to the Gross Domestic Product, recruits a large share of employees, and directly influences several other economic activities. Building construction in particular represents one of the major construction activities.

It has been necessary for PCBS to establish a statistical database that covers several aspects of construction activities in order to accommodate the different needs of users. The annual economic surveys series conducted by PCBS as of 1994 includes a survey for construction contractors. PCBS had also conducted the annual Existing Buildings Survey starting from the reference year 1996.

PCBS is pleased to present this report of Building Licenses Statistics, which provides statistical data on the size, and characteristics of licensed buildings in the West Bank for the Second Quarter 2009, but Gaza Strip data was not available.

Statistical data is currently collected through filling the designated form from the administrative records of the different official licenses issuing authorities. This has been initiated on quarterly basis since the Second Quarter of 1996.

Publication of building licenses statistics will be pursued in the following years. PCBS hopes that the means by which these data are archived in the issuing authorities are developed, in the foreseeable future, in a manner that would reduce the cost and time needed for preparing these statistics.

August, 2009

**Ola Awad
Acting President**

Table of Contents

Subject	Page
List of Tables	
List of Figures	
Executive Summary	
1. Introduction	[21]
2. Objectives	[21]
3. Definitions	[21]
4. Main Findings	[22]
5. Data Quality	[24]
Tables	35

List of Tables

Table	Page
Table 1: Buildings Licenses Issued in the West Bank and Gaza Strip During the Period 1999 to the Second Quarter 2009	37
Table 2: Buildings Licenses Issued in the West Bank by Building Ownership and Utilization - Second Quarter 2009	38
Table 3: Buildings Licenses Issued in the West Bank by Issuing Authority and Utilization - Second Quarter 2009	40
Table 4: Buildings Licenses Issued in the West Bank for New Buildings by Category of Licensed Area and Governorate- Second Quarter 2009	41
Table 5: Buildings Licenses Issued in the West Bank for New Buildings by Construction Material of External Walls and Governorate- Second Quarter 2009	45
Table 6: Buildings Licenses Issued in the West Bank for New Additions to Licensed Existing Buildings by Construction Material of External Walls and Governorate- Second Quarter 2009	48
Table 7: Buildings Licenses Issued in the West Bank for New Additions and Existing Parts to Unlicensed Existing Buildings by Construction Material of External Walls and Governorate– Second Quarter 2009	51
Table 8: Buildings Licenses Issued in the West Bank for Existing Buildings and Extensions by Construction Material of External Walls and Governorate- Second Quarter 2009	52
Table 9: Buildings Licenses Issued in the West Bank for Residential Buildings by Status of Licensed Building and Governorate- Second Quarter 2009	55
Table 10: Buildings Licenses Issued in the West Bank for Non-Residential Buildings by Utilization and Governorate- Second Quarter 2009	58
Table 11: Buildings Licenses Issued in the West Bank for Boundary Walls Only by Governorate- Second Quarter 2009	62

List of Figures

Figure	Page
Figure 1: Number of Building Licenses Issued in the West Bank for the Second Quarters of the Period 2007 – 2009	[23]
Figure 2: Number of Building Licenses and Number of Dwellings for New Residential Buildings in the West Bank by Licensed Area During the 2009Second Quarter	[24]

Executive Summary

This report covers data in the West Bank for the Second Quarter 2009.

The main findings of this quarter are as follows:

1. Number of licenses:

The number of building licenses issued in the Second Quarter 2009 totaled 1,309 and was distributed as follows:

- 719 licenses for new buildings
- 240 licenses for new additions to licensed existing buildings
- 57 licenses for new additions and existing parts
- 266 licenses for existing buildings
- 27 licenses for existing extensions

2. Licensed areas:

The total areas of licensed buildings (residential & non residential) amounted to 522.9 thousand m² distributed as follows:

- 415.9 thousand m² are the new buildings areas, of which 304.6 thousand m² are residential and 111.3 thousand m² are non-residential.
- 107.0 thousand m² are the existing buildings areas, of which 90.5 thousand m² are residential and 16.6 thousand m² are non-residential.

3. Licensed boundary walls:

59 licenses were issued for walls with total length of 4.8 thousand meters.

4. Number and area of dwellings licensed:

- New dwellings: 1,485 units with a total area of 311.2 thousand m².
- Existing dwellings: 322 units with a total area of 85.6 thousand m².

There was an increase of 19.2% in the total number of issued buildings licenses for the Second quarter of 2009 compared with the Second quarter of 2008, and also there was an increase by 19.5% in the total number of issued buildings licenses when the results of the Second quarter of 2009 were compared with the Second quarter of 2007.

The results showed that in the 2009 Second quarter the number of new dwellings increased by 9.6% compared with the same quarter of 2008. On the other hand, there was a decrease of 5.7% in the number of new dwellings when the Second quarter of 2009 was compared with the same quarter of 2007.

1. Introduction:

Construction is considered an important economic activity, particularly in countries undergoing economic development. This activity plays a vital role in the Palestinian economy and is significantly interrelated to other economic activities. The PCBS is committed to compiling statistical data on all aspects of construction activities in order to measure the main related variables.

Administrative record statistics shed light on the size and type of buildings licenses issued by the proper authorities. Building license statistics are compiled by most countries. In addition to its own importance, buildings licenses statistics constitute the sampling frame for other surveys to be launched concerning identification of the actually constructed buildings with issued licenses, estimating construction costs and obtaining data on the technical characteristics of these buildings.

2. Objectives:

These statistics provide data on the number of building licenses, licensed buildings areas, number and area of licensed dwellings and stores considering the following variables:

- Issuing authorities.
- Geographic location.
- Status of the buildings to be licensed (new, existing, new or existing additions, etc.).
- Building ownership (private, governmental, local authorities, cooperative, etc.).
- Utilization of the building (residential, non-residential: industrial, commercial, educational, etc.).
- Major external construction material (stone, concrete, block, etc.).

3. Definitions:

1.1 Statistical Unit:

The license issued by any authorized authority. The issuing authorities are the reporting units for this administrative records statistics.

1.2 Building Ownership:

1. Private.
2. Governmental.
3. Local Authority.
4. Cooperatives.
5. Charitable Organization.
6. Other, e.g. religious groups, UNRWA, etc.

1.3 Status of the building to be licensed:

1. New, when the building site is entirely vacant.
2. Addition to an already existing licensed building - either a vertical or horizontal addition.
3. Addition to non-licensed existing building (or part of a building) that needs licensing.
4. Existing building.
5. Existing extension.

1.4 Building Utilization:

1. Residential: The building is considered residential if more than half of its total area is prepared for residential purposes. The building could consist of:
 - Complete dwellings.
 - Rooms added to the dwellings.
 - Extension of other facilities, e.g. kitchen, bathroom, cesspool, garage.
2. Non-Residential: industrial, commercial, educational, etc.
3. The boundary wall: in cases when the boundary wall undergoes separate licensing. If the building license includes the wall, then it is not included here.

3.5 Dwelling:

The housing unit of a single household.

4. Main Findings

1. **Number of licenses:** The following table shows comparison between the number of buildings licenses for the Second Quarter 2009 in the West Bank with the same period for the years 2007-2008:

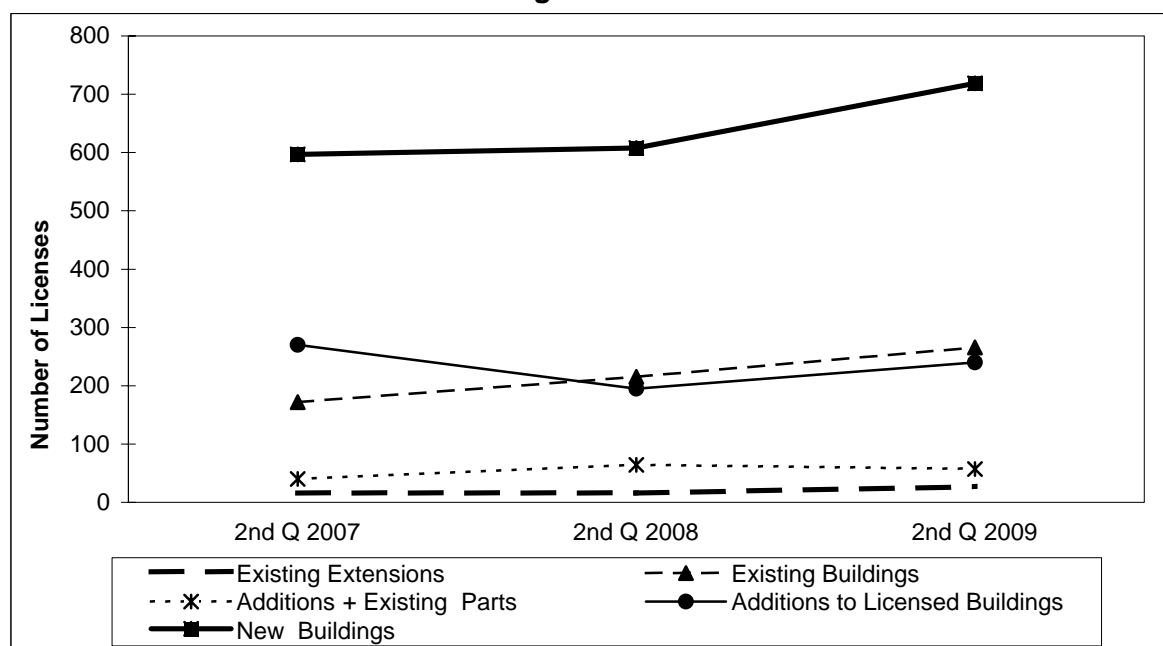
Indicator	No. of issued Licenses*			% Change in Q2 2009 from Q2 2007	% Change in Q2 2009 from Q2 2008
	Q2 2007	Q2 2008	Q2 2009		
Licenses for new buildings.	597	608	719	20.4	18.3
Licenses for additions to licensed buildings.	270	195	240	-11.1	23.1
Licenses for additions + existing parts.	40	64	57	42.5	-10.9
Licenses for existing buildings.	172	215	266	54.7	23.7
Licenses for existing extensions	16	16	27	68.8	68.8
Total	1,095	1,098	1,309	19.5	19.2

*Excluding boundary wall licenses

The results showed an increase for building licenses indicators during the 2009 Second Quarter compared with the 2008 Second Quarter, despite some vacillation in some indicators, compared with the same period or pervious quarters for the same years.

There was a 19.2% increase in the total number of issued building licenses in 2009 Second Quarter as compared with the 2008 Second Quarter, and also the total number of issued building licenses increased by 19.5% in the 2009 Second Quarter compared to the 2007 Second Quarter.

Figure 1: Number of Building Licenses Issued in the West Bank for the Second Quarters during the Period 2007–2009



2. Licensed areas: The following table shows comparison between the licensed areas for the 2009 Second Quarter in the West Bank with the same period for the years 2007-2008:

Indicator	Licensed Areas (1000 m ²)			% Change in Q2 2009 from Q2 2007	% Change in Q2 2009 from Q2 2008
	Q2 2007	Q2 2008	Q2 2009		
Total areas	437.5	363.6	522.9	19.5	43.8
New areas	354.6	291.1	415.9	17.3	42.9
Residential	264.5	210.6	304.6	15.2	44.6
Non-residential	90.1	80.5	111.3	23.5	38.3
Existing areas	82.9	72.5	107.0	29.1	47.6
Residential	66.0	59.7	90.5	37.1	51.6
Non-residential	16.9	12.8	16.6	-1.8	29.6

3. Licensed boundary walls: The following table shows comparison between the licenses issued for walls for the 2009 Second Quarter with the same period for the years 2007-2008:

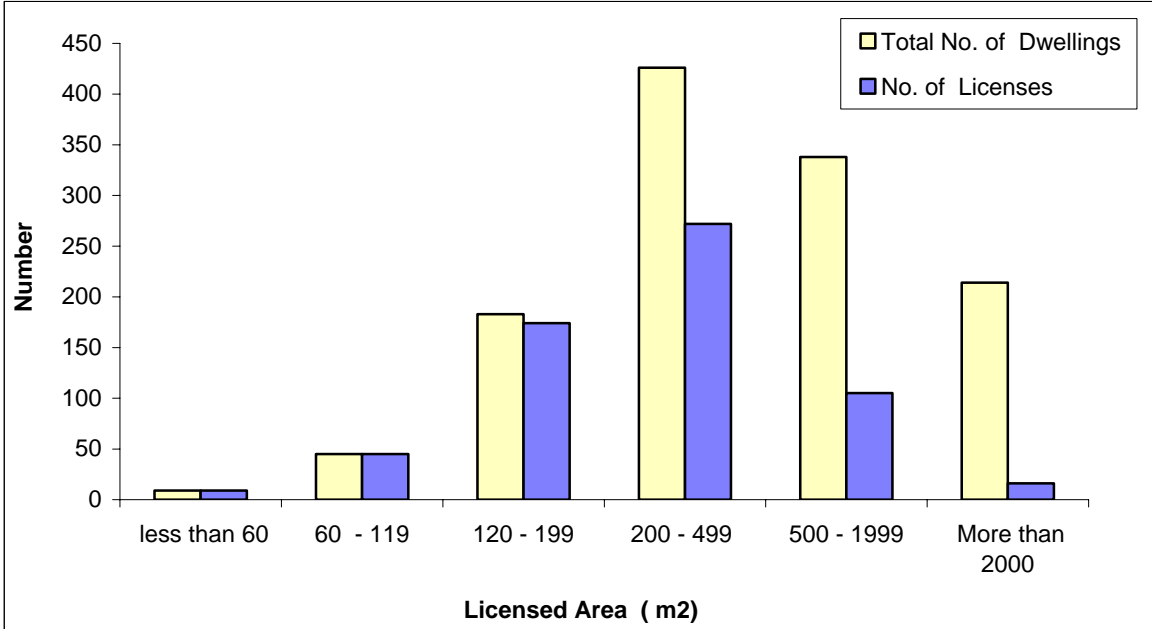
Indicator	Licensed boundary walls			% Change in Q2 2009 from Q2 2007	% Change in Q2 2009 from Q2 2008
	Q2 2007	Q2 2008	Q2 2009		
Number of Walls licenses	47	48	59	25.5	22.9
Length of Walls licenses (meters)	3.4	3.7	4.8	41.2	29.7

4. Number and area of licensed dwellings: The following table shows comparison between the number and total area for the licensed dwellings for the 2009 Second Quarter and the same period for the years 2007- 2008:

Indicator	Number of dwellings and their area			% Change in Q2 2009 from Q2 2007	% Change in Q2 2009 from Q2 2008
	Q2 2007	Q2 2008	Q2 2009		
Number of new dwellings	1,575	1,355	1,485	-5.7	9.6
Area for new dwellings (1000 m ²)	234.3	193.6	35.8	32.8	60.7
Number of existing dwellings	324	452	322	-0.6	-28.8
Area for existing dwellings (1000 m ²)	60.4	56.8	3.8	41.7	50.7

This figure shows the number of licenses and number of dwellings for new residential buildings by licensed area in Remaining West Bank for the Second Quarter of 2009:

Figure 2: Number of Building Licenses and Number of Dwellings for New Residential Buildings in the West Bank by Licensed Area During the 2009 Second Quarter



5. Data Quality

5.1 Accuracy of the Data

5.1.1 Statistical Errors

The survey was implemented on the basis of a comprehensive census for all studied statistical units (Licenses); therefore this survey was free of statistical (sampling) errors.

5.1.2 Non-Statistical Errors

Non-statistical errors are probable in all stages of the project, during data collection or processing. In this survey non-statistical errors are mostly referred to data entry errors. To avoid errors and reduce their effects, great efforts were made to train data entry staff. They were trained on the entry program that was tested before starting the data entry process. The data entry program was prepared before data collection to check its readiness. A set of

validation rules was applied to the program for checking consistency of data. Periodic data files were received by project management for checking accuracy and consistency, and notes of correction were given to data entry management for correction.

5.2 Comparison of the Data

Comparison exercises were done with previous years surveys of Building Licenses for the same quarter, and the results reveal consistency with previous survey data.

5.3 Technical Notes

There are important technical notes which should be taken into consideration when reviewing this report, which are as follows:

- Tables exclude building licenses for those parts of Jerusalem which were annexed illegally by Israel in 1967, while they include licenses for some villages of Jerusalem Governorate.
- It may be noticed that the details of the value of some indicators may not add up to their total, due to rounding calculations.
- Data were not available for the Gaza Strip.