

(13)

-

2010 /

2006

.2010 - 1431 ©

:

.2010

- .(13)

:

- **1647** . .

(970/972) 2 2982700 :

(970/972) 2 2982710 :

diwan@pcbs.gov.ps :

<http://www.pcbs.gov.ps> :



Source: Palestinian Central Bureau of Statistics

•

•

•

•

•

2010 (CFG) 2010 - (PNA)
.(SDC)
.(CFG)

"

"

1997

:

2010

25		:
25		1.1
27		2.1
28		3.1
28		4.1
29		5.1
29		1.5.1
30		2.5.1
31		6.1
32		7.1
33		
35		:
35		1.2
37		2.2
38		3.2
38		1.3.2
40		4.2
41	(5.2
41		1.5.2
41		2.5.2
43		6.2
44		

45

46	1.3
46	2.3
47	3.3
48	4.3
48	5.3
50	6.3
52	7.3
52	8.3
53	9.3
55	10.3

57

59

60	1.4
60	2.4
61	3.4
61	1.3.4
62	4.4
62	1.4.4
62	2.4.4
63	(17-5) 3.4.4

66	5.4
----	-----

67

69

70	1.5
71	2.5
72	3.5
73	4.5
73	5.5
73	1.5.5
74	2.5.5

76	6.5
76	7.5
78	8.5
79	1.8.5
80	2.8.5
80	3.8.5
81	4.8.5
81	5.8.5
82	6.8.5
83	9.5
85	

		:
29	()	:(1-1)
		2006
30	(19-15) 2006	:(2-1)
		:
63		:(1-4)
	2009	(17-5)
64		:(2-4)
	2009	(17-5)
65	(17-5)	:(3-4)
		2009
71	2007	:(1-5)
		:
71	2007	:(2-5)
72	(17-10)	:(3-5)
		2009
74	(17-10)	:(4-5)
		2009
75	(17 - 10)	:(5-5)
		2009

		:
26	2009	:(1-1)
26	2009-1997	:(2-1)
27		:(3-1)
28		:(4-1)
		:
36	2006-1996	:(1-2)
37	2006-1996	:(2-2)
39	2006-1990	:(3-2)
39	2006-1990	:(4-2)
42	2006-1996	:(5-2)
		:
49		:(1-3)
50		:(2-3)
51		:(3-3)
51		:(4-3)
53		:(5-3)
60	(17-10)	:(1-4)
	2009 2006	
		:
62	(18)	:(2-4)
	2009 2006	
63	(17-5)	:(3-4)
	2009	
64		:(4-4)
	2009 (17-5)	

:

:

:

:

()

()

:

1,000

:

1,000

.()

:

1,000

:

1,000

:

1,000

:

:

:()

(SD2-)

(SD3-)

:()

(SD3-)

(SD2-)

:

:()

:

:(**BCG**)

()

:

(Sabin) (OPV)

6

4

:

6

12

()

(IPV) (Salk)

:(Measles)

9

:(DPT)

4

4

6

12

()

6

:

12-23

:

:

:

:

:

:

:

:

:

:

:

:

:

:

:

:

:

:

:

:

:

:

() :

:

.()

:

:

:

: .1

: .2

: .3

: .4

:

:

.

:

.

:

.

الفصل الأول

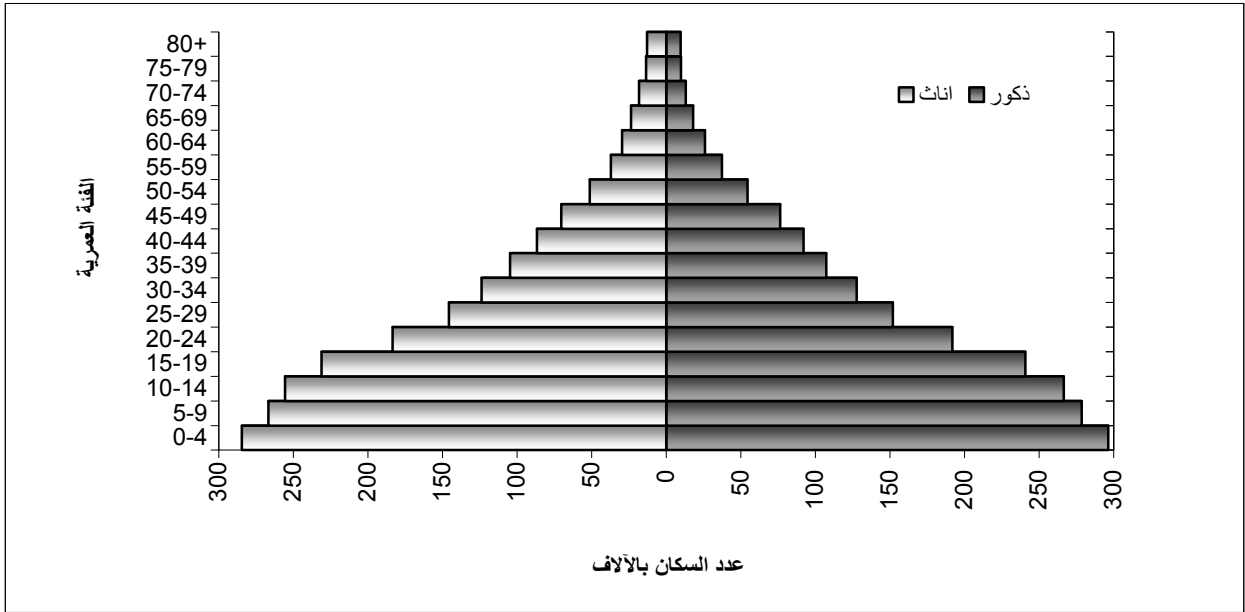
الواقع الديمغرافي

(1 -)	:
--------	---

	2010-2004		1989
			1.1
.1997		%29.9	2007
2.5	4	2009	
2009	(%37.8)	1.5	(%62.2)
		.1997	2.9

2009

:(1-1)



- .2007

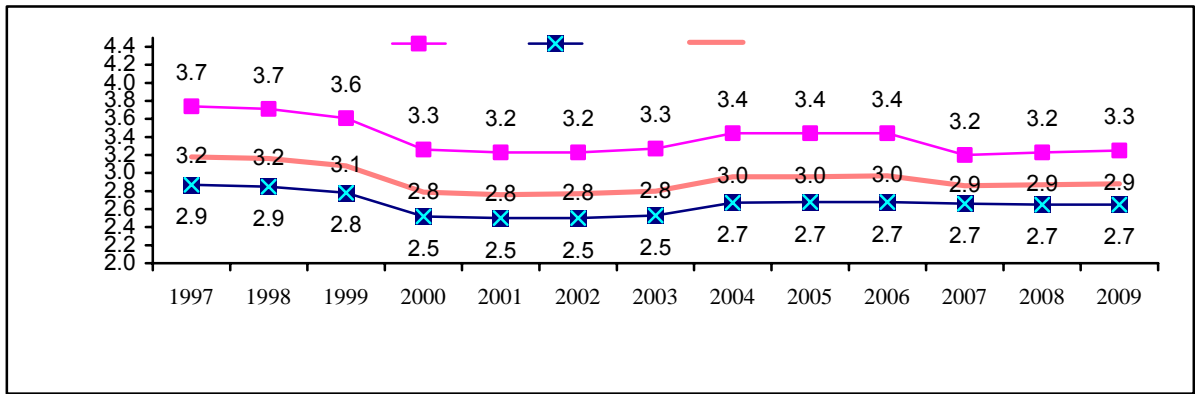
.2010

2009

(%41.9)

2009-1997

:(2-1)



- .2007

.2010

.2009 %2.9

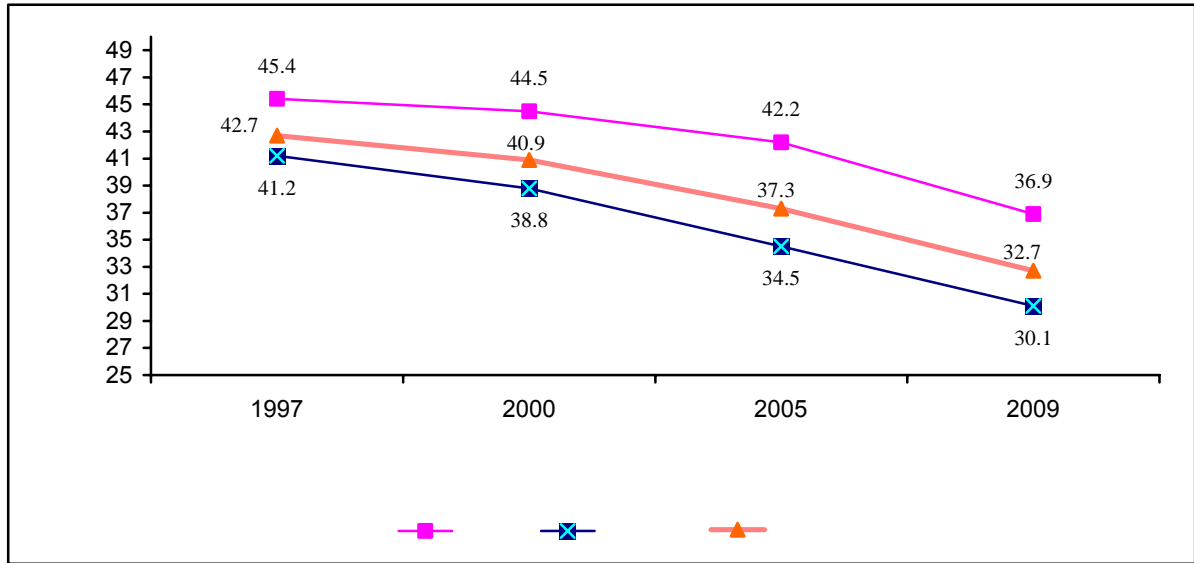
%.1.2

2009

%3.3 %2.7

(7 -)

:(3-1)



- .2007 .2010 :

:

.2009

1.9

32.7

1997

42.7

2009

36.9

30.1

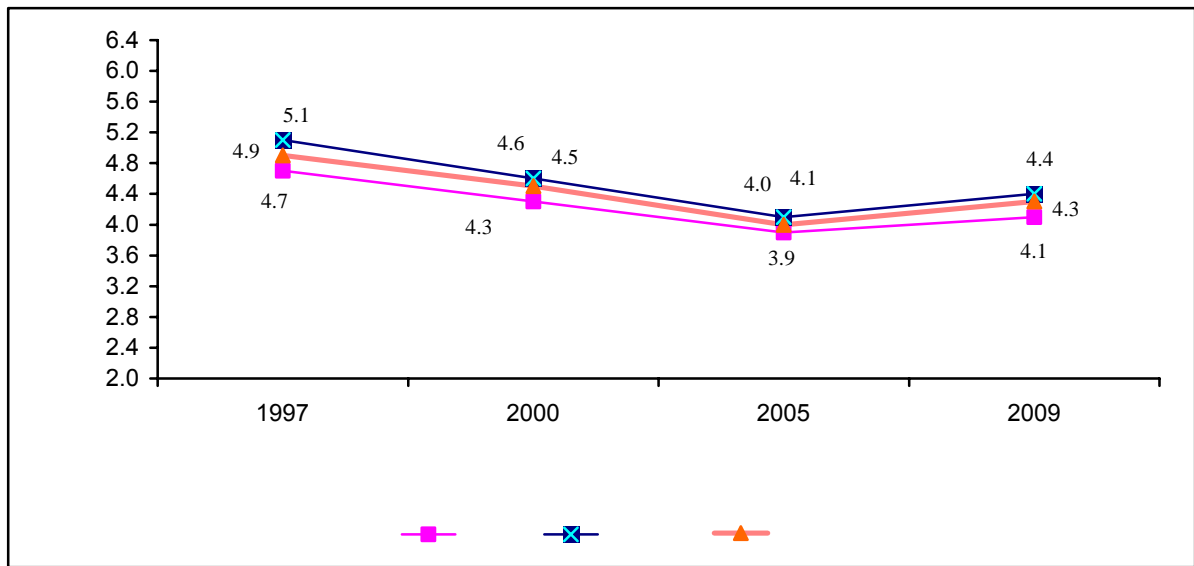
.2009

3.1

(24 -)

4.3 1997 4.9 2009
 5.1 2009 4.4 1997
 .2009 4.1 1997 4.7

:(4-1)



- .2007 .2010 :

4.1

24.8 19.5 2008 23.0 18.0 1997
 1997
 19.8 2008

(19-15)

2008 19.5

2.5.1

()
2004

(19-15)

(19-15)

(2-1)
%1.7 %4.3

(19-15) : (2-1)

2006

0.0	0.3	0.0	0.4	0.0	0.3	15
1.3	1.6	0.7	0.4	0.9	0.8	16
4.9	2.6	2.0	1.6	3.1	2.0	17
8.9	2.7	4.9	3.4	6.5	3.1	18
17.0	5.0	13.1	2.1	14.6	3.2	19
5.6	2.2	3.5	1.4	4.3	1.7	

.2006

.2007

:

				6.1
	%44.5		2009	
	%37.2			
		%56.0		
%37.2				%44.5
				%56.0

									7.1
%29.9			2007						•
							.1997		
	2009	%2.9							•
	%3.3	%2.7	2009						
2009			1.9						•
							%48.7		
30.1									•
.2009			36.9						
1997			4.9						•
					.2009			4.3	
									•
		23.0	18.0	1997					
					24.8	19.5	2008		
		()							•
4.5)					2006				
						(
									•
					%44.5				
					%56.0	%37.2			



		.2008	-
		.2007	-
2006		2007	-
			-
		.2010	-
		.2007	-
		.2010	-
	:	.2010	-
			-
			.2009

(1-24 -)

) ()
) ()
(

1.2

()
:

.2002 %19.0 1990 %28.0
5 %20.0

(2004) 2015 %10.0

" "

"

2007

. 2009 %24.5

%48.0

100

10

(2004)

%5.0

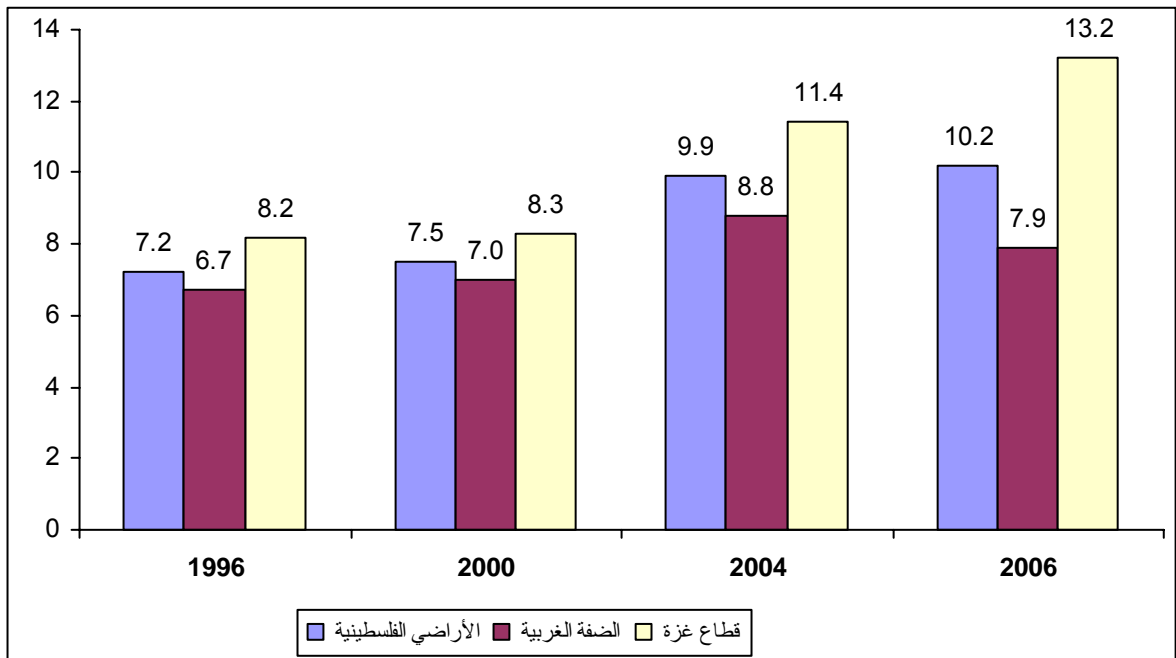
/

%41.6 2006 1996

.%59.0

2006-1996

:(1-2)



.2006

.2008

:

%13.2

%29.6

.%7.9

2.2

(%3.2) 2006 %2.9 (%2.4)

(%5.5 %6.0 %6.4)

(%2.4 %3.5 %3.7)

2000 1996

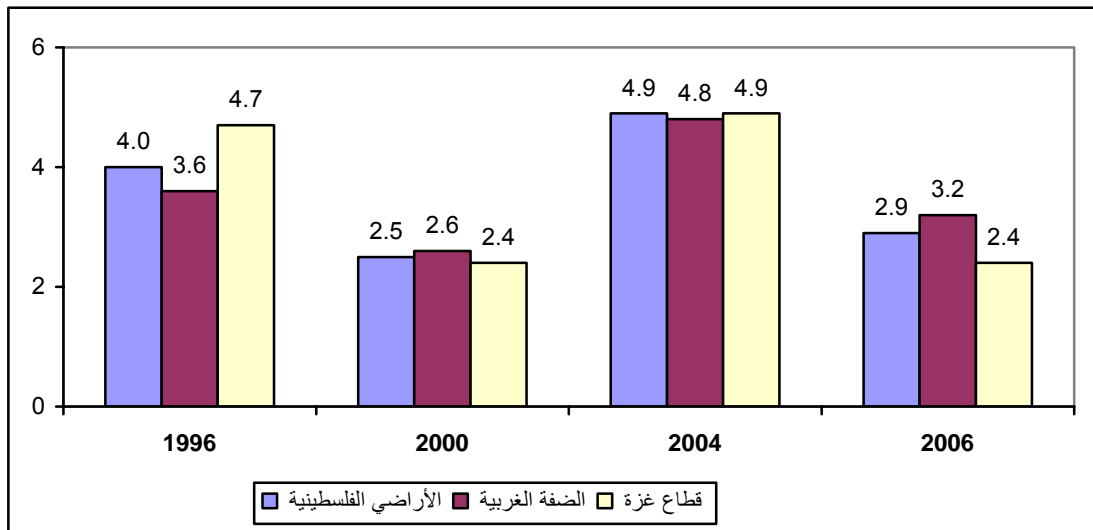
%2.9 2006 %4.9 2004

2007

2007 %57.3 %34.5

2006-1996

:(2-2)



.2008

.2006

24

2015 1990

2015-1990

23-12

:

1.3.2

1999 1994

1000

33.2

%6.6

28.7

1000 27.3

2006 -2001

25.5

.(

1000 28.6 30.7)

1000 26.1

1000

1000 31.3

2006 -2001

28.8 29.5)

.(

1000 33.8 34.9)

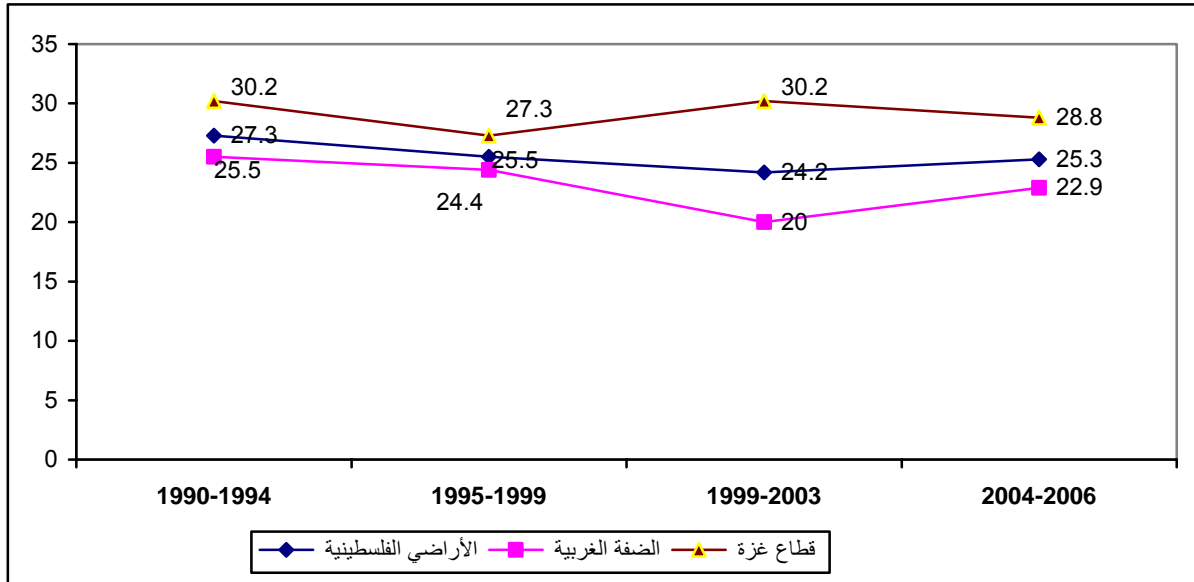
.(

1000

2000

.2006-2001

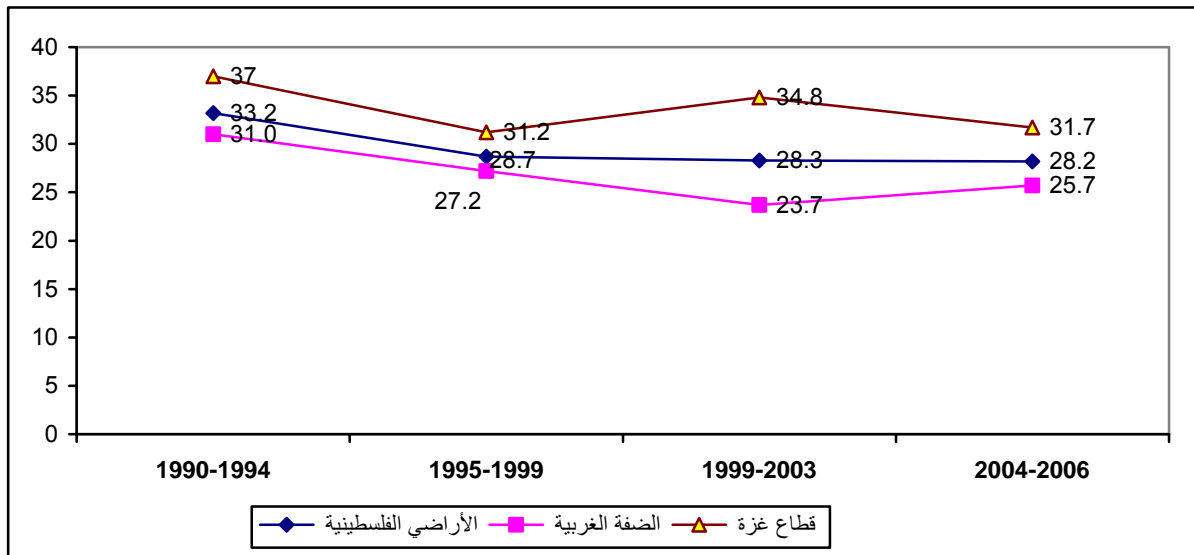
2006-1990 : (3-2)



.2008

- .2006

2006-1990 : (4-2)



2006

.2008

4.2

() ()

%96.7 23-12

(%94.8 %99.4)

.(%93.2)

%48.9

.2006 %96.7 1996

(23-12) %96.5

()

(%94.4 %99.4)

.(%93.2)

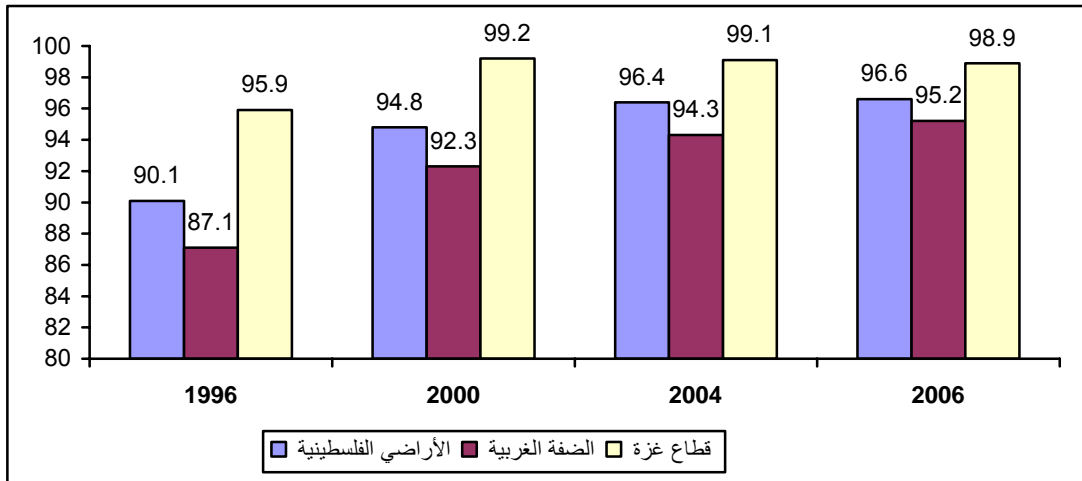
()

.1994 1990

.(2002)

2006-1996

:(5-2)



.2008

- .2006

(%10.4 %10.9)

%11.3

100

7

2006

1996

(%7.2)

(%2.8)

(%28.7 %11.5)

(%7.9 %4.3)

2006 -	.2007	-
<hr/>		
- .2009 -	.2009	-
	-(12)	
<hr/>		
2004 -	.2005	-
<hr/>		
	.2008	-
	-.2006	

الفصل الثالث

الواقع التعليمي

. :
(28 -)	.

1990

1989

2000

(29) (28)

(29) (28)

(3)

(2)

:

(12)

(6)

1

2

.1998

.1998

.1999

1

2

1.3

2009/2008

%50.0

1,109,126

%53.2

%49.5

%13.1

2009/2008

%86.9

%59.3

2009/2008

%58.7

%40.7

%41.3

2009/2008

(255,186) %23.0

(771,864) %69.6

(82,076) %7.4

3

-1995/1994

%79.5

2009/2008

%71.6

%92.4

2.3

%9.9

%50.6

3

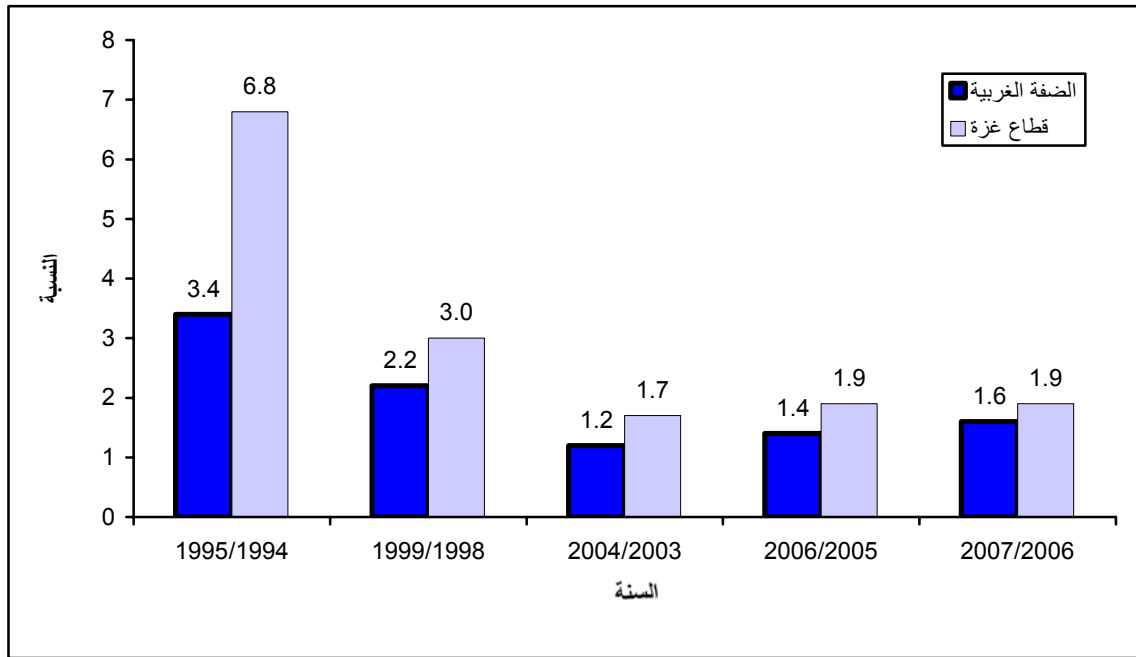
2009/2008

2000/1999	843	1995/1994	436
%4.4	2001/2000-2000/1999		%93.3
972	806	%20.6	2008/2007-2002/2001
	.2008/2007-1995/1994		%123
84,289	1997/1996	69,134	
%51.8	%48.2	%21.9	2008/2007
%67.1			%32.9
	1995/1994	/ 29	
/ 25		2000/1999	/ 27
		/ 25.1	2008/2007
2000/1999	/ 27	1995/1994	/ 30
		/ 25.7	2008/2007
1995/1994	%44.0		
2003/2002	%52.2	2000/1999	%47.3
		.2008/2007	%41.6
%15.9	1995/1994	%7.3	
		2008/2007	%28.7
			2000/1999
			3.3
963,991	1995/1994	572,529	
	%68.4	2009/2008	
		%50.5	%49.5
		.1995/1994	%51.4
			%48.6
2009/2008			
		100	98.1

100		96.6		100		99.0	
							4.3
145,135	1995/1994			45,339			
%53.2		%220.1		2009/2008			
		2009/2008					%46.8
				1996/1995	%54.5		%45.5
	%5.7	2009/2008				8,303	
%32.7		2009/2008					
					%54.5		
				2000/1999-1996/1995			
							5.3
%1.9		2007/2006					
	%0.7	%1.0					%1.4
/2006							
							2007
		%1.9		%1.5			
				%1.0		%0.8	
/1994		2007/2006					
%4.4							1995
				2007/2006	%1.4	1995/1994	
	2007/2006	%0.7	1995/1994		%1.3		
%5.0	1995/1994						
1995/1994	%5.4			2007/2006			%1.9
				2007/2006			%1.0

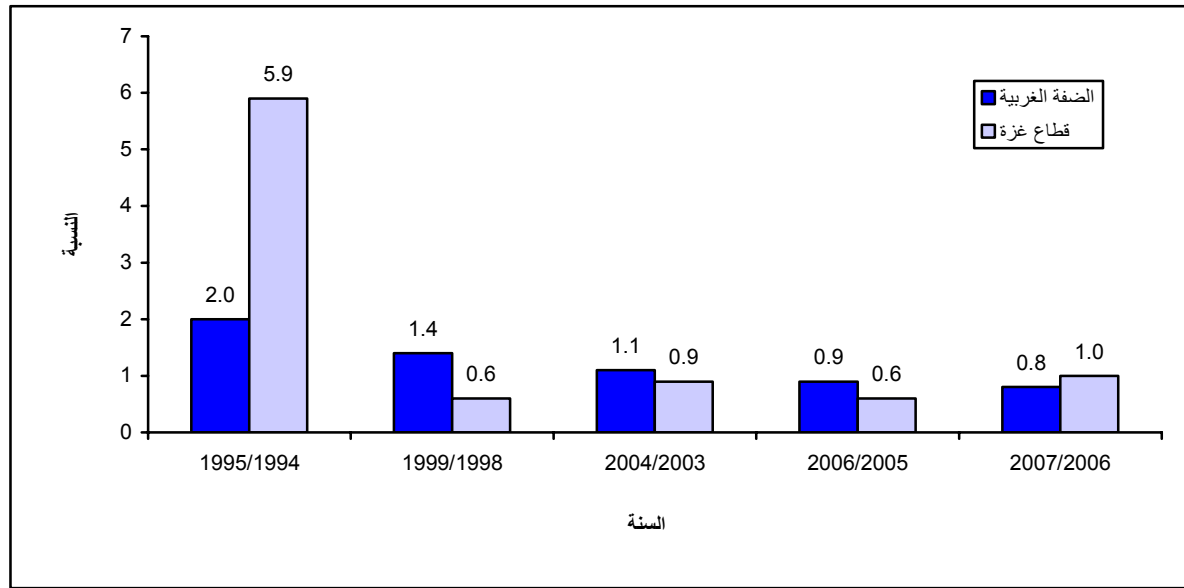
%5.0

:(1-3)



.2010

:(2-3)



2010

6.3

%1.3

2007/2006

%3.8

%3.0

%0.5

%0.5 %0.6

2007/2006

%5.0

%2.9

%1.5 %1.1

2007/2006

%3.1

%3.0

%2.4

2007/2006-1995/1994

2007/2006

%0.5

1995/1994

2007/2006

%3.8

1995/1994

%9.7

%2.6

2007/2006-1995/1994

2007/2006

%1.3

1995/1994

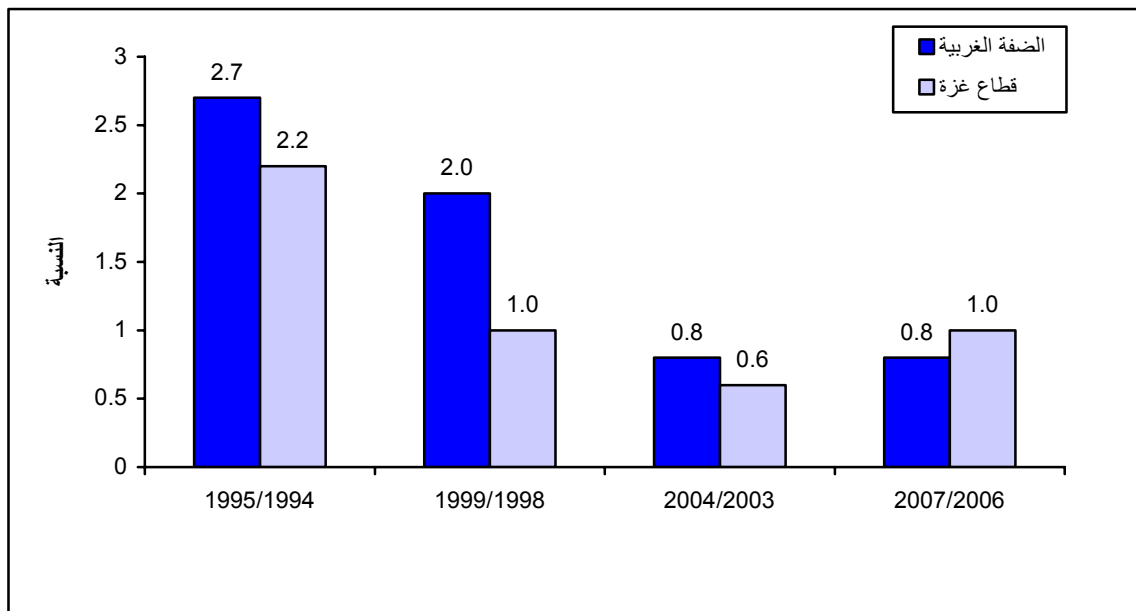
2007/2006

%3.0

1995/1994

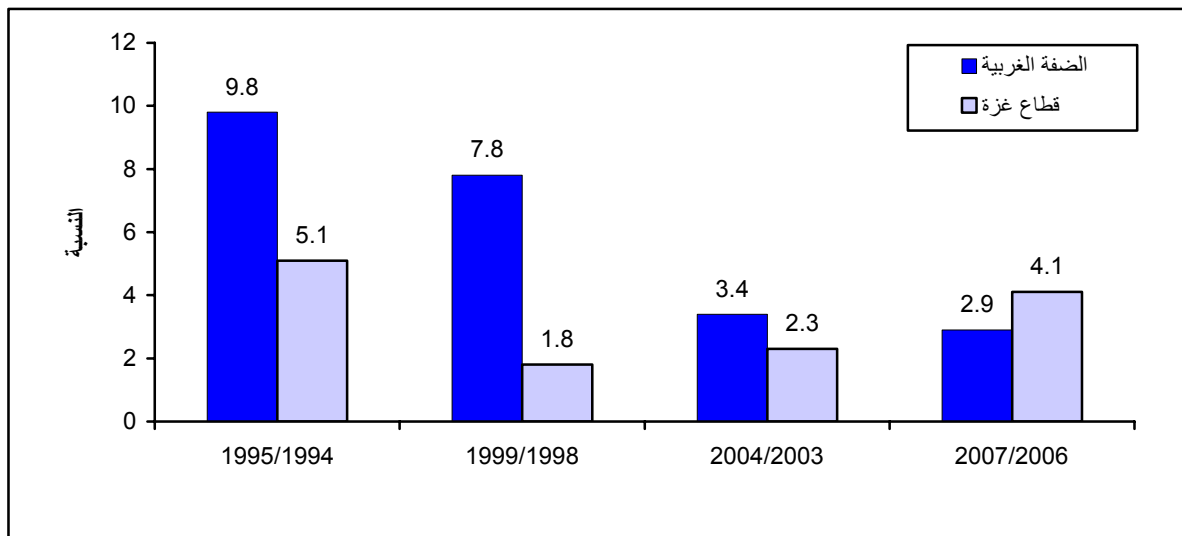
%6.5

:(3-3)



.2010

:(4-3)



.2010

7.3

	853	1,635	2009/2008	2,488	
(853) %34.3		(908) %36.5	
	(1,848) %74.3		(727) %29.2
			(640) %25.7	
%12.7		%75.2		2009/2008	
				%12.1	

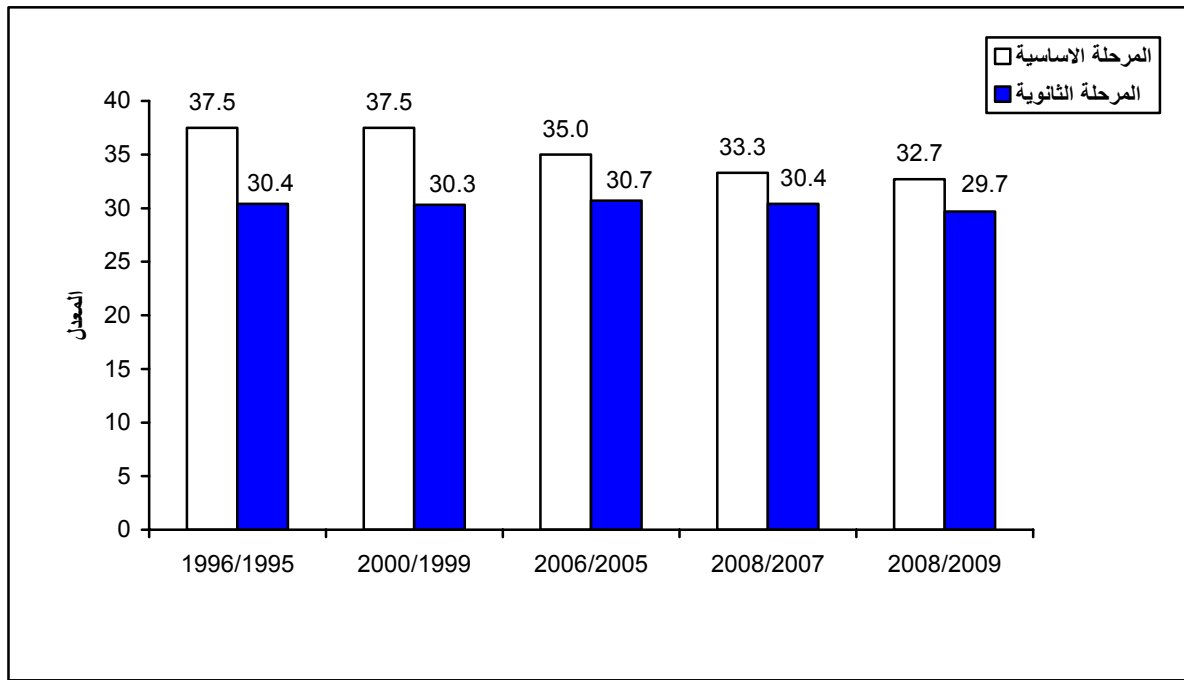
1994

	1,635	2009/2008		
372		853	1996/1995	1,098
				.41996/1995
		%62.3	2009/2008	
				%77.9

8.3

	32.7			
		.2009/2008		29.7
2009/2008	32.7	1996/1995	37.5	
	29.7	1996/1995	30.4	
				. 2009/2008

(3-5):



-2009/2008

.2010

:

37.5
 25.4
 37.3
 24.4
 1996/1995
 44.5
 19,431
 2008/2007
 %10.3

.2009/2008
 39.3
 30.1
 32.1
 .2009/2008
 2009/2008
 37.3
 9.3
 43,560
 %55.4
 %19.5

24,129
 %44.6
 %70.2

2008/2007		25.2		
17.3			29.8	25.1
2008/2007				%0.6
%62.7			%24.8	
%3.2	%0.4			%8.3
2008/2007				
			%59.6	%53.8
	%32.7			%55.1
			%34.1	
%73.4				
%65.1		()	
				%74.8

(1,109,126)	2009/2008				▪		
%69.6	2009/2008				▪		
(255,186)	%23.0	(771,864)			
			(82,076)	%7.4		
2009/2008-1995/1994					▪		
		%79.5					
84,289	1997/1996		69,134		▪		
		%21.9	2008/2007				
1995/1994		572,529			▪		
%68.4		2009/2008		963,991			
1995/1994		45,339			▪		
		%220.1	2009/2008	145,135			
	2009/2008			%46.8	%53.2		
					▪		
%5.7	2009/2008		8,303				
					▪		
	2007/2006						
	%3.8	%3.0		%0.5	%1.3		
853	1,635	2009/2008	2,488		▪		
		(908)	%36.5			
		(727)	%29.2	(853)	%34.3
					▪		
	29.7		32.7				
				2009/2008			

2008/2007	25.2			■
	29.8		25.1	
			17.3	
	2008/2007		%0.6	■
	%62.7	%24.8		
%3.2	%0.4		%8.3	

- 2009/2008	2010	-	-
- 2008/2007	2009	-	-
- 2007/2006	2008	-	-
- 2007/2006	2006	-	-
- 2005/2004	2005	-	-
.(2015/2005)	2005	-	-
.2006 .	.2006	2006	-
.1999/1998-1995/1994	1999	-	-

الفصل الرابع

الواقع الثقافي والترفيهي

					"
(31.1	-)			
					"
(31.2	-)			

1995

1989

31

1.4

2009	2006	%34.4	(17-10)
------	------	-------	----------

%34.4 (17-10)
 %95.0 2006 %70.7 2009 2006
 .2009

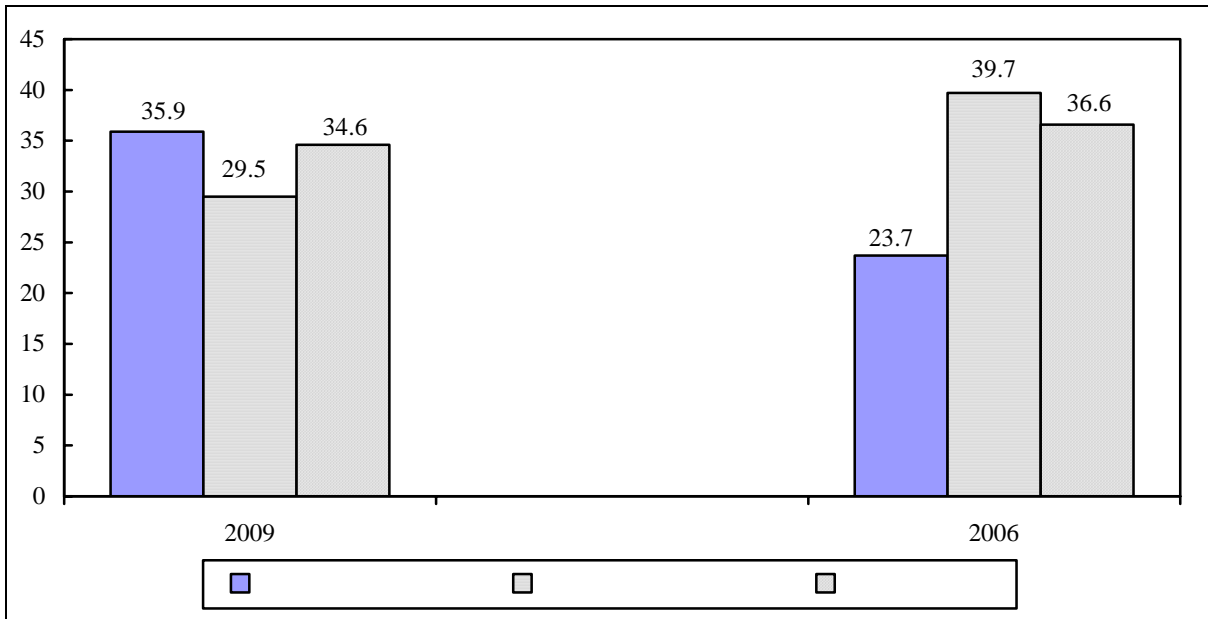
%29.5 (17-10)
 %45.4 (2009 %94.4 2006 %73.6)
 (2009 %96.1 2006 %66.1)

.2009 %93.6 %96.5
 %62.1 2009
 %6.1 %7.6 %24.2
 %7.0 %29.5 %51.4 2006

2.4

.2009 2006 %51.5 (17-10)
 .2009 %35.9 2006 %23.7

2009 2006 (17-10) :(1-4)



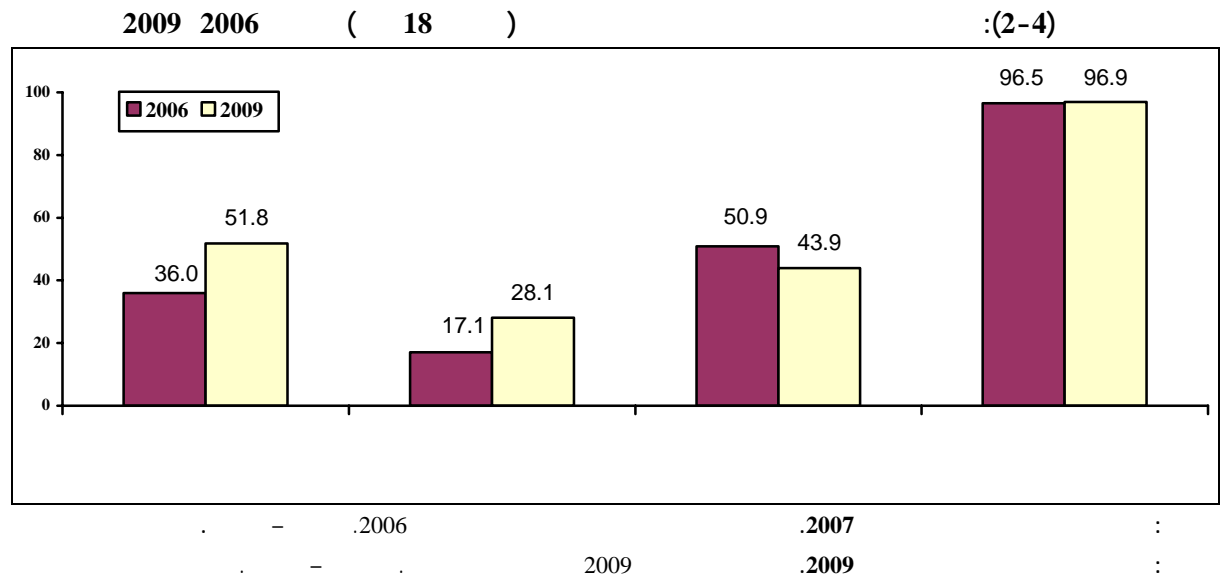
.2006 :
 .2009 :
 .2007 :
 .2009 :

(%35.9) 2009
 (%29.5)
 (%34.6)
 (17-10)
 2006 %25.6 (%42.0 %28.2) %34.6
 .2006 %26.0 (%22.2 %34.1) %28.6

3.4

1.3.4

(18)
 %51.8 2006 %36.0 2009 2006 %43.9
 (18) 2009
 .2009 %28.1 2006 %17.1 %64.3
 (18)
 (18) %96.4 %96.9
 %15.3 ()
 %20.2 2009
 .2006 %23.6 (18)
 - -
 .(2-31)



4.4

%8.8 2009 (17-10)
 %3.6 %13.5
 %3.9 %4.9 %3.5 %4.2
 %78.6 2009 (17-10)
 %21.4
 (17-10) %24.7
 %20.8
 %13.2 %17.6

1.4.4

(18) %13.2 2009
 %70.2 %16.6
 (17-10) %80.8 (17-10)
 %77.9 %83.5

2.4.4

(17-10) %56.9
) %38.3 (%61.6 %52.5)

) (%4.8 (%34.5 %41.8) (%5.6 %3.9

(17-5) 3.4.4

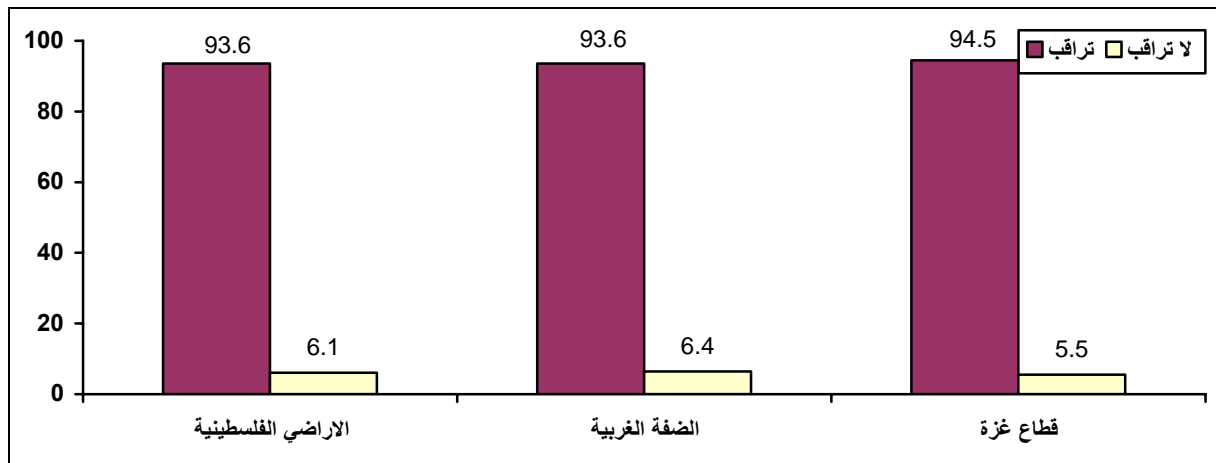
%6.1 2009

%5.5 %6.4 (17-5)

(17-5)

:(3-4)

2009



2009

.2009

:

(17-5)

:(1-4)

2009

				/
100.0	22.2	24.2	53.6	
100.0	25.9	21.0	53.1	
100.0	15.6	30.1	54.3	
100.0	19.1	24.8	56.1	
100.0	33.0	19.2	47.8	
100.0	25.7	29.7	44.6	

2009

.2009

:

(17-5)

%22.2

%15.6

%25.9

(17-5)

%25.7

%33.0 (17-5)

%19.1

(17-5)

:(2-4)

2009

				/
100.0	30.1	24.2	45.7	
100.0	24.1	21.1	54.8	
100.0	39.7	29.1	31.2	
100.0	29.1	24.8	46.1	
100.0	29.0	22.0	49.0	
100.0	38.6	22.9	38.5	

2009

.2009

%24.1 (17-5)

%39.7

(17-5)

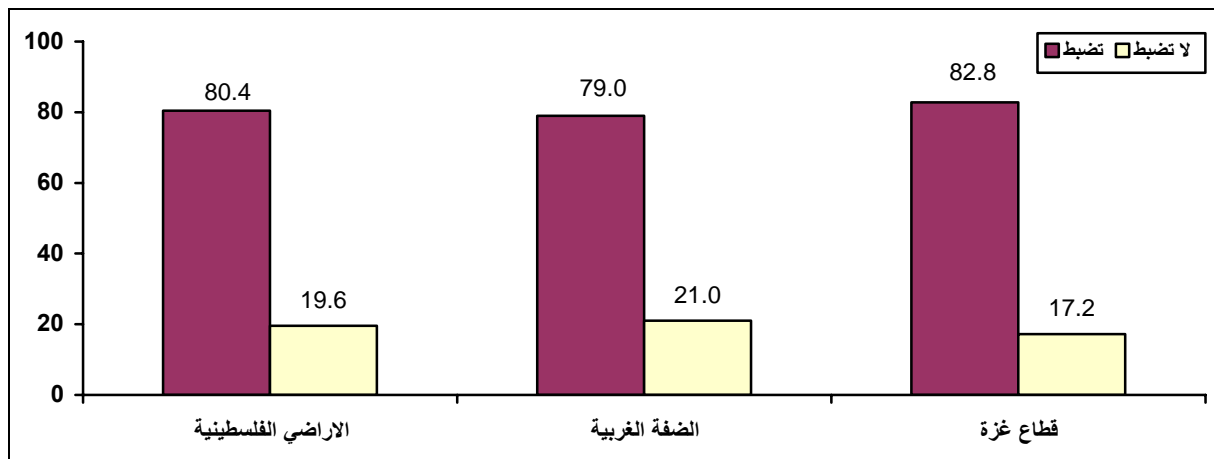
%29.0 %29.1

%38.6

(17-5)

:(4-4)

2009



2009

.2009

(17-5)

%17.2

%21.0

2009

(17-5)

:(3-4)

			/
100.0	4.7	95.3	
100.0	5.5	94.5	
100.0	3.1	96.9	
100.0	4.1	95.9	
100.0	7.3	92.7	
100.0	4.1	95.9	

2009

.2009

:

%95.3

%96.9

%94.5

2009

(17-5)

						5.4
			(17-10)			▪
	2006		%70.7		2009 2006	%34.4
					.2009	%95.0
	.2009 2006		%51.5	(17-10)		▪
.2009	%35.9	2006	%23.7			
			(%35.9)			▪
			(%29.5)			
			(%34.6)			
.2009	%34.6			(17-10)		▪
						▪
%43.9		2009 2006		(18)		
		%51.8		(18)		
(18)				%20.6 2009		▪
18)			%13.2	2009		▪
%70.2			%16.6		(
		(17-10)		%56.9 2009		•
		%4.8		()		%38.3
				2009		▪
		%39.7		%24.1 (17-5)		
				%95.3 2009		▪
	%96.9			%94.5 (17-5)		

2006		.2007	-
		.	-
	2009	.2009	-
		.	-
	.1990	" "()	-



الفصل الخامس

أطفال بحاجة إلى حماية خاصة

18

" " " " " "

/

/

/

/

1989

1990

27

1995

1989

:

2007

%17.2

(%82.8)

%59.3

%57.3

2007

%47.2

%48.6

%47.2

%76.9

%63.7

%41.3

%78.9

%52.8

%47.2

2007				:(1-5)		
100.0	57.3	100.0	47.2	100.0	59.3	
54.4	47.2	64.5	41.3	52.8	48.6	
45.6	76.9	35.5	63.7	47.2	78.9	
2007				.2010		:

2.5

2007		:(2-5)	
14.0	47.2		0
19.7	49.8		2-1
29.1	54.8		4-3
25.5	68.6		6-5
11.7	79.7		+7
100.0	57.3		
2007		.2010	

(1-32 -)

%20.7 2009 (17-10)
 (17-10) 2009
 %5.4 %3.7 ()
 . 2009 %0.9
 2009 (17-10) :(3-5)

	100	96.3	3.7	
	100	94.6	5.4	
	100	99.1	0.9	
	100	93.6	6.4	
	100	99.2	0.8	
	100	97.9	2.1	14-10
	100	93.6	6.4	17-15

.2009 - .2010 :

4.5

5.5

1.5.5

2009	%25.9
-------------	--------------

1

%25.9 2009

" "

() ()

: 2

()

()

()
1 0

()
(.0.846)

_____ 1

Q

1

- .1998

" "

2

()

%3.5

%2.2 2009

%25.9

(%0.7

%3.8)

%0.3

%5.3

%34.4)

%11.2

%33.3

.(

2009

(17-10)

:(4-5)

74.1	25.9	97.8	2.2	
66.7	33.3	96.5	3.5	
88.8	11.2	99.7	0.3	
65.6	34.4	96.2	3.8	
94.7	5.3	99.3	0.7	

.2009

-

.2010

:

2.5.5

(%67.3)

2009

%27.6 (

%63.3

%98.0)

%5.1 (

%31.0

%1.3)

%47.3 2009
 %27.3 (%15.8 %50.4)
 %62.9 %23.7
)
 %21.3 %25.9) %25.4 (.(

2009

(17 - 10)

:(5-5)

15.8	50.4	47.3	
62.9	23.7	27.3	
21.3	25.9	25.4	
100	100	100	

.2009

-

.2010

:

43.2

17-10

.2009

44.6

6.5

			"	"
(1-6	-)		
			"	"
(2-6	-)		

6

6

959 5,901 2008/12/31
 573 384 %16.3 18
 .³1948

7.5

2009/1/18-2008/12/27
 108 417 1,334
 %54.9 791,336 (17-0) 2007

17,000

4,100

112,000

200,000

(

) 2008

.2009

3

500,000

787,598

1.4

.4

%91

2009/1/18- 2008/12/27

%43

454

164

12

16

5

5

8

250

384

3

158

12

2009/1/18-2008/12/27

(-37 -)	"
----------	---

(5 -)	"
(4 -)	"
(2-2 -)	"
(32 -)	"

-37

-:

"	18
---	----

:

(37	-)	"
-----	---	---	---

18

16

326

2009

2009

(%4.3)

18-13

(135)

2009

33

315

7415

1.8.5

(33)

(55)

		(115)	(15)	(25)
%80.0				
(202)	(118)			
			18	(6)
				2.8.5

()

3.8.5

()

: - 1990 14 113/45

-31

-37

:
(1)-9

-10

4.8.5

(1) .20

5.8.5

48

"....

42

6.8.5

(1) .77

(2)

				9.5
	%59.3	%57.3	2007	▪
			%47.2	
	%48.6	%47.2		▪
%76.9			%41.3	
			%63.7	
			%78.9	
)			2009	▪
	%0.9	%5.4	%3.7 (
			%25.9	▪
%3.5)			%2.2 2009	▪
%25.9 (%0.7	%3.8) (%0.3
%34.4)		%11.2	%33.3)	
			.(%5.3
%50.4)				% 47.3
%23.7			%27.3 (%15.8
)				%62.9
(
			.(%21.3
			%25.9) %25.4
959	5,901	2008/12/31		▪
573	384	%16.3	18	
			.1948	
108	417	1,334		▪
	454	164		▪
12				
			5	

326

()

18-13

■

.2007		.2010	-
<hr/>			
.2009	:	.2010	-
<hr/>			
-	.2009-	.2009	-
		-(12)	
<hr/>			
		.2010	-
<hr/>			
		.2009	-
<hr/>			
-	. 2009-	-2010	-
<hr/>			
	2009-	-	-
	.2009/1/18-2008/12/27		
<hr/>			