

(2010)

2010 /

2006

.2010 - 1431 ©

(2010)

.2010

- 1647 . .

(+970/972) 2 2982700 :

(+970/972) 2 2982710 :

diwan@pcbs.gov.ps :

<http://www.pcbs.gov.ps> :

(2010)
(PNA)

2010 (CFG)
. (SDC)

(CFG)

•

•

•

•

2009

1996

:

2008 2006 2005 1998
2005

.2009

2007 2002
2004

.2010

2010

15		:
17		:
19		:
19	2009	1.3
19	2010	2.3
20	2010	3.3
20	2010	4.3
22	2010	5.3
23		

25	2010		:1
26			:2
		2010	
26	2010		:3
27			:4
		2010	
28	2010		:5
30	2010		:6
32		(/)	:7
		2010	
19	2010		:1
20	(2010 - 2000)		:2
21	2010		:3
21	2010		:4

2010

.
:

4,898

2010

95

10,520

1,554.1

2010

%63.3

%13.2

.2009

%15.4

.%31.0

2010

.2009

%30.4

2010

1,802

%9.3

254

1,548

.2009

%33.9

124,205

2010

%79.1

2009

.%12.8

%48.0

2010

%16.2 %34.1

285,879

2009

2010

%8.3

%70.0

.2010

(/) 2.3

1996

.2010

.(2009)

2001

:

:

:

:

.()

:

:

:()

. /

:

:()

()

:()

()

()

:

:

:

:

:

:

2010

4,898

2010

95

10,520

2010

1.3

363

166

7 :

2,369

1,062

25 :

3,195

1,467

30 :

4,057

1,882

25 :

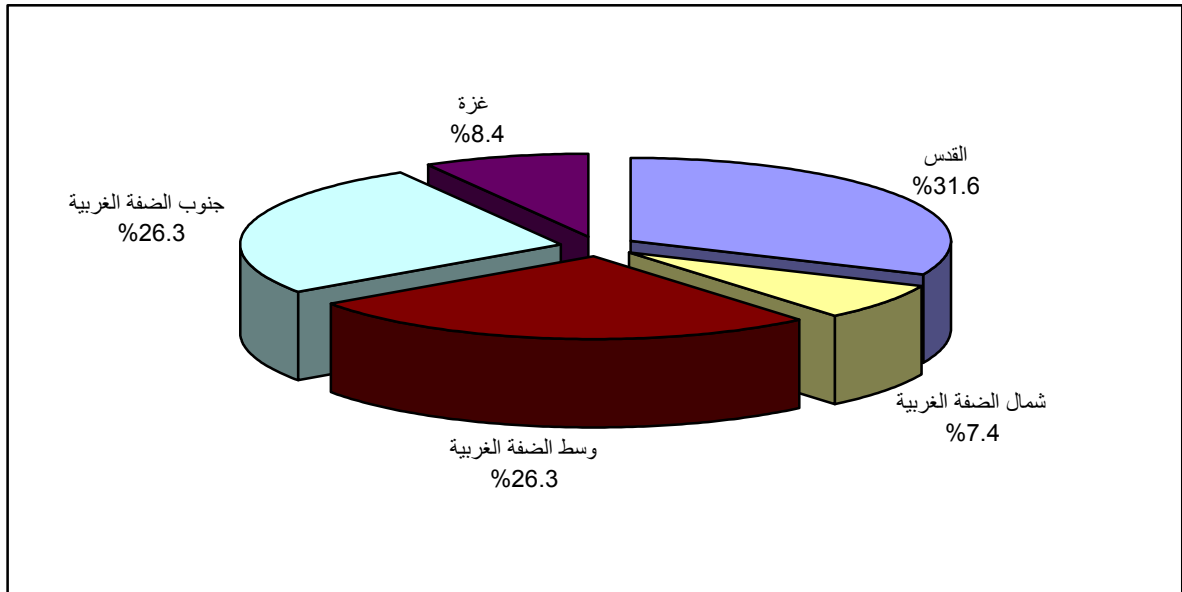
536

321

8 :

2010

:(1)



2010

2.3

%31.0

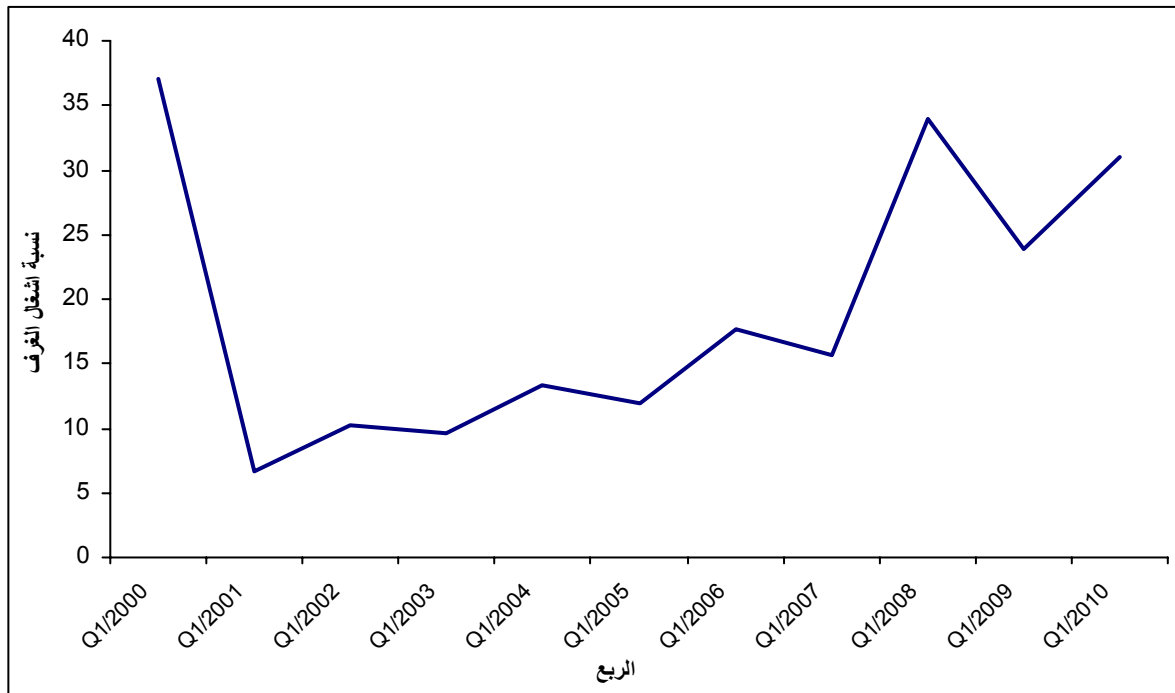
1,554.1

2001

:

(2010 -2000)

: (2)



2010

3.3

254

1,548

1,802

191

1,284

1,475

63

264

327

2010

4.3

%8.8

124,205

2010

2009

%37.1

(2009

)

%79.1

.%12.8

%48.0

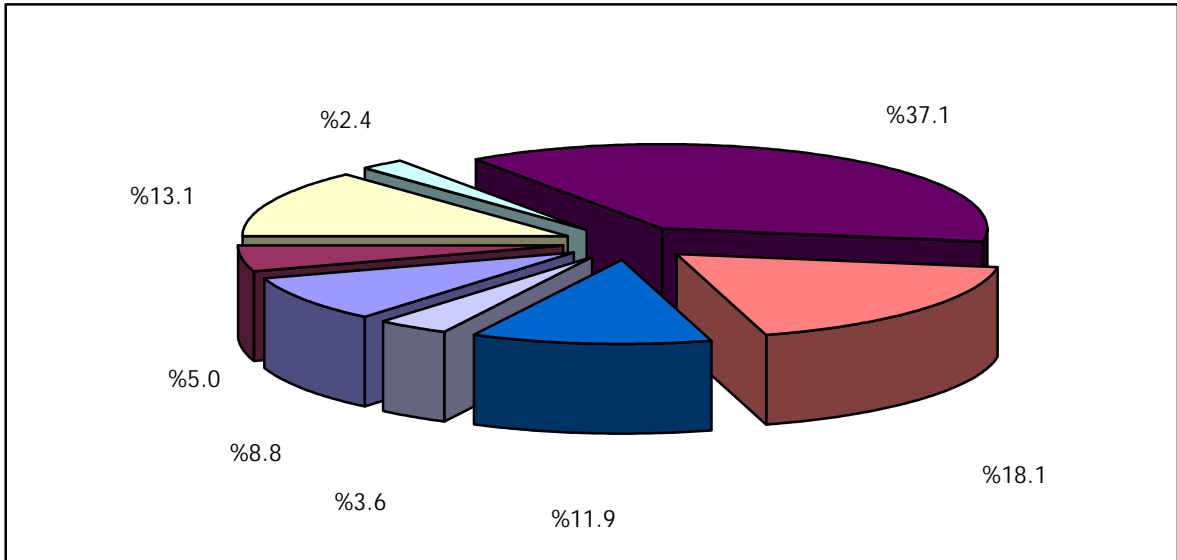
%1.5

%16.2 %34.1

%0.2

2010

:(3)



2010

285,879

%38.5

%8.9

%.12.7

%70.0

2009

%.8.3

2009

()

%17.9

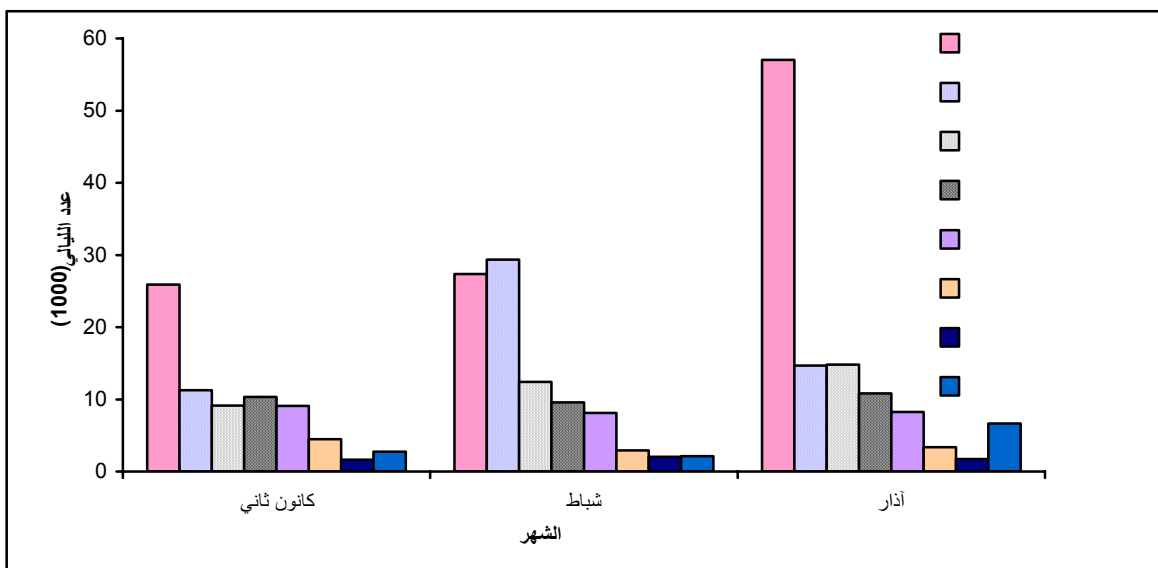
%41.0 :

%0.1

%1.3 %39.7

2010

:(4)



2010

5.3

2.3

2.7

2.0

2.5 2.0

1.3

2010

(2009) (2009)

2009

2010

2009		2010	
(%)			
2009	2009	2010	
26.7	-2.1	95	
33.9	9.3	1,802	
79.0	-12.8	124,205	
70.0	-8.3	285,879	
63.3	-13.2	1,554.1	
73.8	-6.2	3,176.4	
30.4	-15.4	31.0	%
36.9	-5.4	29.7	%

Tables

2010

:1

Table 1: Main Indicators for Hotel Activities by Month and Region During the First Quarter, 2010

Region	Month	Bed Occupancy		Room Occupancy		No. of Nights	No. of Guests	No. of Beds	No. of Rooms	No. of Hotels	
		%	Average	%	Average						
Palestinian Territory *		29.7	3,176.4	31.0	1,554.1	285,879	124,205	10,705	5,007		*
All Regions	January	22.4	2,406.3	26.3	1,331.0	74,596	33,856	10,756	5,061	99	
	February	31.0	3,355.5	33.3	1,686.0	93,955	41,562	10,839	5,061	99	
	March	36.0	3,784.8	33.9	1,658.2	117,328	48,787	10,520	4,898	95	
North of West Bank	January	13.5	49.0	19.0	31.6	1,518	787	363	166	7	
	February	9.9	35.9	13.6	22.6	1,006	523	363	166	7	
	March	10.3	37.5	15.4	25.5	1,162	499	363	166	7	
Middle of West Bank	January	22.0	515.4	34.4	369.3	15,977	6,432	2,340	1,074	25	
	February	23.5	550.2	36.6	392.6	15,405	5,806	2,344	1,074	25	
	March	27.0	640.5	41.1	436.3	19,855	7,890	2,369	1,062	25	
Jerusalem	January	31.4	1,122.1	47.9	775.5	34,784	17,123	3,569	1,618	34	
	February	41.3	1,474.5	63.2	1,023.3	41,286	21,820	3,569	1,618	34	
	March	41.6	1,327.9	59.6	874.1	41,164	20,655	3,195	1,467	30	
South of West Bank	January	18.2	717.8	8.2	154.6	22,252	9,482	3,948	1,882	25	
	February	32.0	1,289.9	13.1	247.5	36,118	13,301	4,027	1,882	25	
	March	43.7	1,774.6	17.1	322.2	55,012	19,634	4,057	1,882	25	
Gaza Strip**	January	0.4	2.1	0.6	1.7	65	32	536	321	8	**
	February	0.9	5.0	1.0	3.0	140	112	536	321	8	
	March	0.8	4.4	0.9	2.7	135	109	536	321	8	

*Represents the quarter average except number of guests and number of guest nights which represent the total for the quarter.

** Estimated data.

*

**

2010 :2
Table 2: Number of Hotels and Rooms by Facilities and Region as in March, 2010

Region	Facilities								No. of Rooms	No. of Hotels
	Internet	Telephone	Air Conditioning	Heating	Refrigerator	T.V	Radio	Private Bathroom		
Palestinian Territory	2,618	4,601	4,439	4,519	3,497	4,358	1,157	4,784	4,898	95
North of West Bank	137	129	149	149	149	149	0	149	166	7
Middle of West Bank	916	1,002	1,060	1,030	883	940	104	1,028	1,062	25
Jerusalem	509	1,391	1,321	1,398	1,077	1,245	1,028	1,421	1,467	30
South of West Bank	862	1,780	1,654	1,859	1,137	1,751	0	1,872	1,882	25
Gaza Strip	194	299	255	83	251	273	25	314	321	8

2010 :3
Table 3: Number of Hotels by Availability of Public Services and Region as in March, 2010

Region	Public Services											No. of Operating Hotels
	Other	Room Services	Shops	Laundry	Photocopying	Coffee-shop	Typing	Bar	Internet	Fax	Public Telephone	
Palestinian Territory	22	82	17	58	87	57	78	56	73	84	20	95
North of West bank	1	7	1	4	5	4	4	0	4	5	2	7
Middle of West bank	20	25	3	15	23	16	17	9	20	24	3	25
Jerusalem	0	23	1	19	27	22	27	20	21	30	1	30
South of West bank	1	25	7	16	24	14	22	19	25	25	6	25
Gaza Strip	0	2	5	4	8	1	8	8	3	0	8	8

2010

:4

Table 4: Average Number of Workers in Hotels by Type of Work, Sex and Region During the First Quarter, 2010

Region	Total			Operation			Administration			* No. of Hotels*
	Total	Females	Males	Total	Females	Males	Total	Females	Males	
Palestinian Territory	1802	254	1548	1,475	191	1,284	327	63	264	95
North of West Bank	66	9	57	44	7	37	22	2	20	7
Middle of West Bank	550	51	499	454	37	417	96	14	82	25
Jerusalem	610	84	526	492	57	435	118	27	91	30
South of West Bank	497	109	388	426	90	336	71	19	52	25
Gaza Strip	79	1	78	59	0	59	20	1	19	8

As in March, 2010

2010

*

2010

:5

Table 5: Number and Percentage of Guests by Nationality and Region During the First Quarter, 2010

Region	Month	Nationality										No. of Hotels
		U.S.A & Canada		Asia		Israel		Arab Countries		Palestine		
		%	Number	%	Number	%	Number	%	Number	%	Number	
Palestinian Territory		13.1	16,259	11.9	14,799	5.0	6,175	0.9	1,093	8.8	10,884	
All Regions	January	12.0	4,048	13.3	4,491	7.7	2,617	1.5	493	12.3	4,148	99
	February	13.8	5,735	12.0	5,007	4.4	1,831	0.3	134	8.1	3,346	99
	March	13.3	6,476	10.9	5,301	3.5	1,727	1.0	466	6.9	3,390	95
North of West Bank	January	2.8	22	1.5	12	24.8	195	3.6	28	53.2	419	7
	February	1.5	8	1.1	6	13.0	68	1.5	8	64.6	338	7
	March	2.6	13	1.6	8	27.3	136	1.2	6	54.7	273	7
Middle of West Bank	January	4.3	279	16.6	1,067	7.9	506	1.1	72	49.6	3,189	25
	February	4.9	287	11.3	658	6.6	385	0.7	40	45.1	2,617	25
	March	8.9	703	11.6	914	8.0	631	1.3	105	32.1	2,534	25
Jerusalem	January	20.0	3,433	9.0	1,546	3.8	645	0.0	0	0.0	0	34
	February	23.1	5,049	12.0	2,617	4.2	914	0.0	0	0.0	0	34
	March	24.8	5,130	6.3	1,304	3.6	743	0.0	0	0.0	0	30
South of West Bank	January	3.3	314	19.7	1,864	13.4	1,271	4.1	391	5.6	528	25
	February	2.9	391	13.0	1,724	3.5	464	0.6	86	2.8	378	25
	March	3.2	630	15.7	3,074	1.1	217	1.8	354	2.9	572	25
Gaza Strip	January	0.0	0	6.3	2	0.0	0	6.3	2	37.5	12	8
	February	0.0	0	1.8	2	0.0	0	0.0	0	11.6	13	8
	March	0.0	0	0.9	1	0.0	0	0.9	1	10.1	11	8

2010

:() 5

Table 5 (Cont.): Number and Percentage of Guests by Nationality and Region During the First Quarter, 2010

Region	Month	Total		Nationality									
				Australia & Newzeland		Africa		Other European Countries		European Union		Central & South America	
		%	العدد Number	%	العدد Number	%	العدد Number	%	العدد Number	%	العدد Number	%	العدد Number
Palestinian Territory		100	124,205	0.6	766	2.4	2,919	18.1	22,611	37.1	46,047	2.1	2,652
All Regions	January	100	33,856	0.4	134	3.0	1,026	14.1	4765	33.9	11,509	1.8	625
	February	100	41,562	0.5	215	2.4	1,012	27.1	11,245	30.4	12,612	1.0	425
	March	100	48,787	0.9	417	1.8	881	13.5	6,601	44.9	21,926	3.3	1,602
North of West Bank	January	100	787	0.0	0	0.0	0	0.0	0	14.1	111	0.0	0
	February	100	523	0.2	1	0.0	0	0.0	0	14.9	78	3.2	16
	March	100	499	0.0	0	0.0	0	0.0	0	12.6	63	0.0	0
Middle of West Bank	January	100	6,432	0.3	14	0.1	5	8.8	568	9.7	626	1.6	106
	February	100	5,806	0.7	35	0.1	3	13.3	772	16.6	966	0.7	43
	March	100	7,890	0.3	18	2.6	200	6.2	492	19.6	1,548	9.4	745
Jerusalem	January	100	17,123	0.7	113	3.5	587	13.9	2,383	47.2	8,087	1.9	329
	February	100	21,820	0.2	36	2.9	644	21.1	4,595	35.2	7,687	1.3	278
	March	100	20,655	1.9	386	2.9	606	14.6	2,991	42.7	8,824	3.2	671
South of West Bank	January	100	9,482	0.1	6	4.5	434	19.1	1,814	28.2	2,670	2.0	190
	February	100	13,301	1.1	142	2.7	365	44.2	5,878	28.5	3,786	0.7	87
	March	100	19,634	0.1	12	0.4	75	15.9	3,118	58.0	11,397	0.9	185
Gaza Strip	January	100	32	3.1	1	0.0	0	0.0	0	46.8	15	0.0	0
	February	100	112	0.9	1	0.0	0	0.0	0	84.8	95	0.9	1
	March	100	109	0.9	1	0.0	0	0.0	0	86.3	94	0.9	1

2010

:6

Table 6: Number and Percentage of Guest Nights by Nationality and Region During the First Quarter, 2010

Region	Month	Nationality										No. of Hotels
		U.S.A & Canada		Asia		Israel		Arab Countries		Palestine		
		%	Number	%	Number	%	Number	%	Number	%	Number	
Palestinian Territory		12.7	36,396	10.8	30,759	3.8	10,761	1.1	3,059	8.9	25,462	
All Region	January	12.3	9,156	13.9	10,349	6.0	4,462	1.1	817	12.2	9,083	99
	February	13.2	12,432	10.2	9,568	3.1	2,939	0.3	310	8.7	8,129	99
	March	12.6	14,808	9.2	10,842	2.9	3,360	1.6	1,932	7.0	8,250	95
North of West Bank	January	5.5	83	1.7	26	14.3	217	6.5	99	55.4	841	7
	February	2.1	21	0.7	7	6.8	68	4.8	48	61.9	623	7
	March	6.3	73	2.0	23	12.5	145	9.0	104	53.4	621	7
Middle of West Bank	January	8.9	1,427	15.3	2,446	6.4	1,020	1.5	240	46.5	7,428	25
	February	9.1	1,395	11.0	1,693	4.8	745	1.1	174	45.2	6,960	25
	March	12.1	2,407	10.4	2,073	7.0	1,386	2.3	459	32.5	6,459	25
Jerusalem	January	19.6	6,804	9.9	3,428	3.9	1,350	0.0	0	0.0	0	34
	February	23.5	9,710	11.5	4,761	3.8	1,558	0.0	0	0.0	0	34
	March	25.2	10,360	6.5	2,673	3.6	1,480	0.0	0	0.0	0	30
South of West Bank	January	3.8	842	20.0	4,449	8.4	1,871	2.1	476	3.5	784	25
	February	3.6	1,306	8.6	3,106	1.6	568	0.2	88	1.4	518	25
	March	3.6	1,968	11.0	6,073	0.6	347	2.5	1,368	2.1	1,141	25
Gaza Strip	January	0.0	0	0.0	0	6.2	4	3.1	2	46.2	30	8
	February	0.0	0	0.7	1	0.0	0	0.0	0	20.0	28	8
	March	0.0	0	0.0	0	1.5	2	0.7	1	21.5	29	8

2010

:() 6

Table 6 (Cont.): Number and Percentage of Guest Nights by Nationality and Region During the First Quarter, 2010

Region	Month	Total		Nationality										الشهر
				& Australia NewZeland		Africa		Other European Countries		European Union		Central & South America		
		%	Number	%	Number	%	Number	%	Number	%	Number	%	Number	
Palestinian Territory		100	285,879	0.8	2,202	1.9	5,367	19.3	55,302	38.5	110,296	2.2	6,275	
All Regions	January	100	74,596	0.6	471	2.2	1,622	15.1	11,271	34.6	25,887	2.0	1,478	
	February	100	93,955	0.8	792	2.2	2,036	31.3	29,364	29.1	27,367	1.1	1,018	
	March	100	117,328	0.8	939	1.5	1,709	12.5	14,667	48.7	57,042	3.2	3,779	
North of West Bank	January	100	1,518	0.0	0	0.0	0	0.0	0	16.6	252	0.0	0	
	February	100	1,006	0.3	3	0.0	0	0.0	0	21.8	220	1.6	16	
	March	100	1,162	0.0	0	0.0	0	0.0	0	16.8	196	0.0	0	
Middle of West Bank	January	100	15,977	0.6	93	0.2	34	6.2	987	12.7	2,029	1.7	273	
	February	100	15,405	1.0	148	0.0	4	9.7	1,496	17.2	2,653	0.9	137	
	March	100	19,855	0.7	135	1.3	252	3.6	710	21.0	4,165	9.1	1,809	
Jerusalem	January	100	34,784	1.0	351	3.3	1,136	15.1	5,243	45.3	15,795	1.9	677	
	February	100	41,286	0.2	88	3.4	1,422	21.9	9,058	34.4	14,150	1.3	539	
	March	100	41,164	1.9	767	3.3	1,363	14.8	6,072	41.2	17,015	3.5	1,434	
South of West Bank	January	100	22,252	0.1	26	2.0	452	22.7	5,041	35.0	7,783	2.4	528	
	February	100	36,118	1.5	552	1.7	610	52.1	18,810	28.4	10,235	0.9	325	
	March	100	55,012	0.1	36	0.2	94	14.3	7,885	64.6	35,565	1.0	535	
Gaza Strip	January	100	65	1.5	1	0.0	0	0.0	0	43.0	28	0.0	0	
	February	100	140	0.7	1	0.0	0	0.0	0	77.9	109	0.7	1	
	March	100	135	0.7	1	0.0	0	0.0	0	74.9	101	0.7	1	

2010

(/)

:7

Table 7: Average Length of Stay for the Guests in Hotels (Night/Guest) by Nationality and Region During the First Quarter, 2010

Region	Month	Nationality					No. of Hotels		
		U.S.A & Canada	Asia	Israel	Arab Countries	Palestine			
Palestinian Territory		2.2	2.1	1.7	2.8	2.3			
All Regions	January	2.3	2.3	1.7	1.7	2.2	94		
	February	2.2	1.9	1.6	2.3	2.4	93		
	March	2.3	2.0	1.9	4.2	2.4	97		
North of West Bank	January	3.8	2.2	1.1	3.5	2.0	7		
	February	2.6	1.2	1.0	6.0	1.8	7		
	March	5.6	2.9	1.1	17.3	2.3	7		
Middle of West Bank	January	5.1	2.3	2.0	3.3	2.3	25		
	February	4.9	2.6	1.9	4.4	2.7	25		
	March	3.4	2.3	2.2	4.4	2.5	26		
Jerusalem	January	2.0	2.2	2.1	0.0	0.0	32		
	February	1.9	1.8	1.7	0.0	0.0	30		
	March	2.0	2.0	2.0	0.0	0.0	33		
South of West Bank	January	2.7	2.4	1.5	1.2	1.5	22		
	February	3.3	1.8	1.2	1.0	1.4	23		
	March	3.1	2.0	1.6	3.9	2.0	23		
Gaza Strip	January	0.0	0.0	2.0	0.0	2.5	8		
	February	0.0	0.0	0.0	0.0	2.2	8		
	March	0.0	0.0	2.0	0.0	2.6	8		

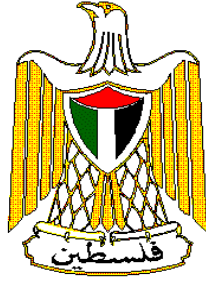
2010

(/)

:() 7

Table 7 (Cont.): Average Length of Stay for the Guests in Hotels (Night/Guest) by Nationality and Region During the First Quarter, 2010

Region	Month	Total	Nationality						
			Australia & New Zeland	Africa	Other European Count.	European Union	Central & South America		
Palestinian Territory		2.3	2.9	1.8	2.4	2.4	2.4		
All Regions	January	2.2	3.5	1.6	2.4	2.2	2.4		
	February	2.3	3.7	2.0	2.6	2.2	2.4		
	March	2.4	2.3	1.9	2.2	2.6	2.4		
North of West Bank	January	1.9	0.0	0.0	0.0	2.3	0.0		
	February	1.9	3.0	0.0	0.0	2.8	1.0		
	March	2.3	0.0	0.0	0.0	3.1	0.0		
Middle of West Bank	January	2.5	6.6	6.8	1.7	3.2	2.6		
	February	2.7	4.2	1.3	1.9	2.7	3.2		
	March	2.5	7.5	1.3	1.4	2.7	2.4		
Jerusalem	January	2.0	3.1	1.9	2.2	2.0	2.1		
	February	1.9	2.4	2.2	2.0	1.8	1.9		
	March	2.0	2.0	2.2	2.0	1.9	2.1		
South of West Bank	January	2.3	4.3	1.0	2.8	2.9	2.8		
	February	2.7	3.9	1.7	3.2	2.7	3.7		
	March	2.8	3.0	1.3	2.5	3.1	2.9		
Gaza Strip	January	2.0	1.0	0.0	0.0	1.9	0.0		
	February	1.3	1.0	0.0	0.0	1.1	1.0		
	March	1.2	1.0	0.0	0.0	1.1	1.0		



**Palestinian National Authority
Palestinian Central Bureau of Statistics**

**Hotel Activities in the Palestinian Territory
(First Quarter, 2010)
Executive Summary**

May, 2010

PAGE NUMBERS OF ENGLISH TEXT ARE PRINTED IN SQUARE BRACKETS.
TABLES ARE PRINTED IN THE ARABIC ORDER (FROM RIGHT TO LEFT)

**This document is prepared in accordance with the standard
procedures stated in the Code of Practice for Palestine Official
Statistics 2006**

©May, 2010
All rights reserved.

Suggested Citation:

Palestinian Central Bureau of Statistics, 2010. *Hotel Activities in the Palestinian Territory, (First Quarter 2010) Executive Summary.* Ramallah - Palestine.

All correspondence should be directed to:

**Palestinian Central Bureau of Statistics
P.O.Box 1647, Ramallah, Palestine.**

Tel: (+972/970) 2 2982700

Fax: (+972/970) 2 2982710

E-Mail :diwan@pcbs.gov.ps

Web-Site: <http://www.pcbs.gov.ps>

Acknowledgments

The Palestinian Central Bureau of Statistics (PCBS) would like first to thank all Palestinian hotels owners and managers who responded to the survey instrument, for their understanding during the fieldwork. PCBS also would like to thank all the staff who did considerable efforts in implementing this survey specially the fieldworkers for their dedication, commitment and hard work.

It also worth noting our acknowledgement and gratitude to the members of the Core Funding Group (CFG) represented by the Representative office of Norway to PNA, and the Swiss Development Agency (SDC), who contributed in funding this survey (Hotel Activities in the Palestinian Territory: First Quarter 2010) for their support.

On this occasion, the PCBS extends special thanks to the members of the CFG .

Preface

The Palestinian tourism sector has great potential and is expected to occupy a large share of the Palestinian GDP once the tourist resources are well exploited. Tourism activities are, however, crippled by a multiplicity of internal and external factors which are not enabling this important economic activity to flourish.

PCBS has implemented several surveys to cover the supply and demand sides of tourism, including the Hotel Activity survey in the Palestinian Territory, a continuous and permanent survey since 1996, a survey of Tourism Activities 2002 and 2007, and the Domestic Tourism survey for the years 1998, 2005, 2006, 2008 and 2009. In addition, the survey of Outbound Tourism in 2004, a survey of Inbound Tourism in 2005, a survey of Inbound Visitors in 2009 and a survey of Hotel Guests in 2008, 2009 were implemented. These statistical activities cover an important aspect of tourist-related statistics and is an additional step to further implement surveys for tourism. These statistics are important to build the necessary database to establish the Tourism Satellite Accounts (TSA) in the Palestinian Territory.

This report addresses the main indicators of the hotel industry. These indicators include the number of operating hotels, number of rooms and beds, public facilities in the surveyed hotels, number of employed persons in hotels, number of guest nights in the reference period, number of guests by nationality and rates of bed and room occupancy.

PCBS is pleased to present the first issue of the sixteenth volume on “Hotel Activities in the Palestinian Territory” as an important statistical reference on hotel activity. PCBS hopes that this bulletin will pave the way for developing a comprehensive tourist program to meet international standards and users needs.

May, 2010

**Ola Awad
Acting President**

Table of Contents

Subject	Page
List of Tables and Figures	
Executive Summary	
Chapter One: Introduction	[15]
Chapter Two: Concepts and Definitions	[17]
Chapter Three: Main Findings	[19]
3.1 Hotels Capacity during March, 2010	[19]
3.2 Room Occupancy during the First Quarter, 2010	[19]
3.3 Hotel Workers during the First Quarter, 2010	[19]
3.4 Guests and Nights' Occupancy during the First Quarter, 2010	[19]
Tables	23

List of Tables and Figures

Table	Page
Table 1: Main Indicators for Hotel Activities by Month and Region During the First Quarter, 2010	25
Table 2: Number of Hotels and Rooms by Facilities and Region as of March, 2010	26
Table 3: Number of Hotels by Availability of Public Services and Region as of March, 2010	26
Table 4: Average Number of Workers in Hotels by Type of Work, Sex and Region During the First Quarter, 2010	27
Table 5: Number and Percentage of Guests by Nationality and Region During the First Quarter, 2010	28
Table 6: Number and Percentage of Guest Nights by Nationality and Region During the First Quarter, 2010	30
Table 7: Average Length of Stay for the Guests in Hotels (Night/Guest) by Nationality and Region During the First Quarter, 2010	32
 Figures	
Figure 1: Percentage Distribution of Guests by Nationality During the First Quarter, 2010.	[19]

Executive Summary

The main findings of the Hotel Activities Survey during the First quarter of 2010 are as follows:

- There were 95 operating hotels in March 2010, offering 4,898 rooms with 10,520 total available beds.
- The average occupancy of rooms in the Palestinian hotels was 1,554.1 representing 31.0% from the available rooms.
- The percentage of rooms occupancy was 31.0%; with a decrease by 15.4% compared with the previous quarter of the year 2009. However, it increased by 30.4% compared with the same quarter of 2009.
- The average number of workers in the hotels was 1,802 of whom 254 were females.
- During the first quarter 2010, the total number of guests to hotels in the Palestinian Territory reached 124,205. The number shows an increase of 79.1% compared with the same quarter of the year 2009.
- The total number of guest nights was 285,879. The number reflects a decrease by 8.3% during the first quarter 2010 compared with the previous quarter, and it increased by 70.0% compared with the corresponding quarter in the year 2009.
- Most of the guests nights were in Jerusalem, representing 41.0% of the total guests, whereas 17.9% of the guests were in the middle of the West Bank and 39.7% were in the south of the West Bank.
- The average length of stay in Palestinian hotels was 2.3 nights per guest during the first quarter 2010.

Chapter One

Introduction

Tourism is considered a cornerstone of the Palestinian economy and there are many attractive touristic resorts for people of different interests. PCBS began to collect statistical data on tourism and monitor hotel activities through a continuous and comprehensive monthly survey since 1996, in accordance with the recommendations of the World Tourism Organization and European Union. The survey aims to produce a comprehensive database and time series of basic indicators on the hotel industry to enable the development and promotion of the tourism industry in the Palestinian Territory.

A quarterly report is regularly produced in addition to annual consolidated report . This publication presents data on hotels for the first quarter 2010; and results indicate an improvement in most indicators compared with the corresponding quarter since 2001, while it reflects a decrease in most indicators compared with the fourth quarter 2009.

Chapter Two

Concepts and Definitions

This section presents the main concepts and definitions used to derive the main indicators of tourism statistics. These concepts and definitions are based on international recommendations in the field of tourism statistics, and are applied to the rest of the common subjects in the PCBS. The main concepts and definitions mentioned in this report were as follows:

Hotel:

It is defined as an accommodation establishment providing overnight lodging for the visitors in a room or unit. It should hold a number of persons exceeding that of an average single family. The establishment must be under one management, and provides various facilities and services to visitors.

Operating Hotels:

It is defined as the hotels that included in the sample frame and results, excluding the non operating hotels that are carrying out repairs or maintenance, and the hotels which didn't respond to the survey.

Number of Rooms:

It refers to the furnished rooms for the use of guests. Such rooms might be single, double, triple, or quadruple. Rooms involving more than four beds were classified under (others) in the questionnaire. As for the suite, it is usually comprised of one bedroom or more, a living room and private toilet facilities.

Available Beds and Rooms:

It refers to beds and rooms which are ready for use during the reference period. Rooms closed for maintenance or repairs are excluded.

Guests:

It refers to visitors staying in the hotels and using their facilities. Records of new guests are based on the number of visits regardless whether it's the same person or different.

Number of Guest Nights (Bed Occupancy):

Number of beds booked for hotel guests. Such beds are considered as occupied whether they were actually used or not. It is measured by guest night unit.

Room Occupancy:

Number of booked and paid rooms. Such rooms are considered occupied whether they were actually used or not.

Average (rooms, beds) Occupancy:

It is defined as the total number of occupied (rooms, beds) divided by the number of days.

Percentage of (rooms, beds) Occupancy:

It is defined as the average of (rooms, beds) occupancy divided by available (rooms, beds) multiplied by one hundred.

Average Length of Stay:

Represents the total of guest nights by nationality divided by number of guests of the same nationality.

North of West Bank Region:

Jenin, Tulkarm, Nablus, Qalqiliya, Salfit and Tubas governorates.

Middle of West Bank Region:

Ramallah and Al-Bireh, Jericho and Al-Aghwar governorates.

Jerusalem Region:

Jerusalem governorate.

South of West Bank Region:

Bethlehem and Hebron governorates.

Gaza Strip:

North Gaza, Gaza, Deir Al-Balah, Khan Yunis and Rafah governorates.

Main Findings

The main findings of the Hotel Activities Survey during the first quarter of 2010, show that there were 95 operating hotels in March 2010 offering 4,898 rooms with 10,520 total available beds.

3.1 Hotel Capacity during March, 2010

The operating hotels within the Palestinian Territory in the first quarter 2010 were distributed as follows:

- North of West Bank: 7 hotels including 166 rooms comprising 363 beds.
- Middle of West Bank: 25 hotels including 1,062 rooms comprising 2,369 beds.
- Jerusalem Region: 30 hotels including 1,467 rooms comprising 3,195 beds.
- South of West Bank: 25 hotels including 1,882 rooms comprising 4,057 beds.
- Gaza Strip: 8 hotels including 321 rooms comprising 536 beds.

3.2 Room Occupancy during the First Quarter, 2010

The average occupancy of rooms in the Palestinian hotels was 1,554.1 representing 31.0% from the available rooms.

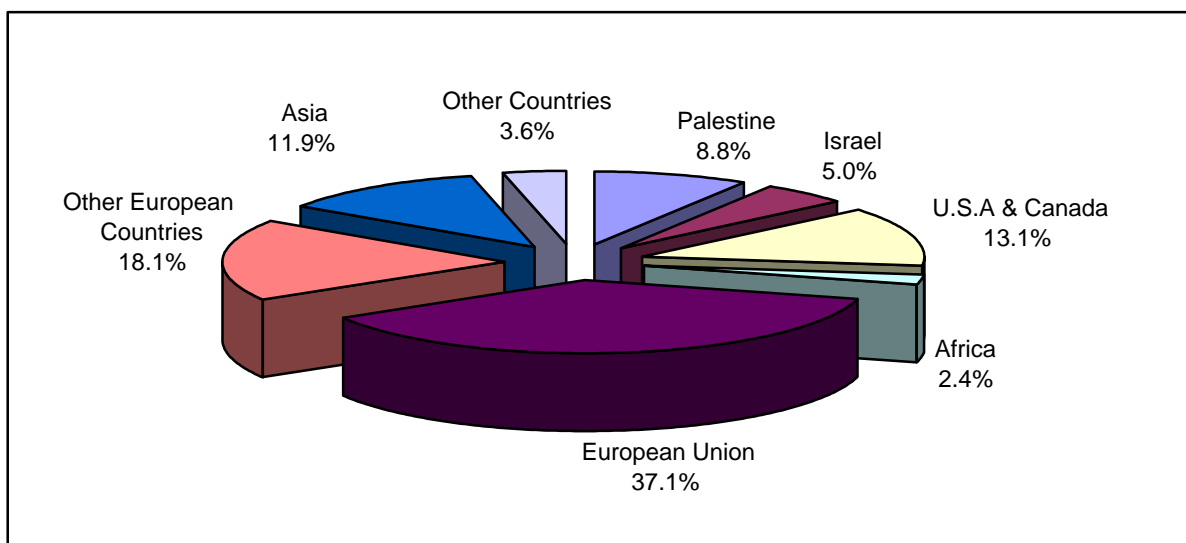
3.3 Hotel Workers during the First Quarter, 2010

The average number of workers in the hotels was 1,802 of whom 1,548 were males and 254 were females. The number of workers in hotel's administration was 327 of whom 264 were males and 63 were females. There were 1,475 workers in hotels services of whom 1,284 were males and 191 were females.

3.4 Guests and Nights Occupancy during the First Quarter, 2010

The total number of guests in the Palestinian hotels was 124,205 persons of whom 8.8% were Palestinian guests, and 37.1% were from the European Union countries. The number of guests showed an increase of 79.1% compared with the same quarter of the year 2009.

Figure (1): Percentage Distribution of Guests by Nationality During the First Quarter, 2010



The total number of guest nights in Palestinian hotels during the first quarter 2010 was 285,879 of which: 8.9% of these nights were occupied by Palestinian guests, 38.5% by guests from European Union countries, and 12.7% by guests from the United States and Canada.

The guest nights distributed according to region are as follows: guests spent 41.0% of total nights in Jerusalem hotels, and 17.9%, 39.7%, and 1.3% in Middle, South, and North of the West Bank, respectively; while 0.1% of nights in Gaza Strip hotels.

The table below presents the main results of the first quarter of 2010, and explains the changes that occurred in the main indicators for Palestinian hotels activities compared with the previous quarter and with the results of the first quarter of 2009.

Percentage Change in the Variables During the First Quarter 2010, Compared with the Fourth and First Quarter 2009

The Indicator	Value During the 1 st Quarter 2010	Percentage change (%) comparing with	
		4 th Quarter 2009	1 st Quarter 2009
Number of operating hotels	95	-2.1	26.7
Average number of workers	1,802	9.3	33.9
Number of guests	124,205	-12.8	79.0
Number of guest nights	285,879	-8.3	70.0
Average occupancy of rooms	1,554.1	-13.2	63.3
Average occupancy of beds	3,176.4	-6.2	73.8
Rooms occupancy %	31.0	-15.4	30.4
Beds occupancy %	29.7	-5.4	36.9