

2010

**1 :
2010 /**

2006

.2010 - 1431 ©

.2010 - **.2010**

- **1647** . .

(972/970) 2 2982700 :

(972/970) 2 2982710 :

diwan@pcbs.gov.ps :

<http://www.pcbs.gov.ps> :



Source: Palestinian Central Bureau of Statistics

.

2010

(PNA)

2010 (CFG)

.(SDC)

.

(CFG)

.2010

—

—

.1967

•

•

•

•

1994

.1996

2010

.1996

2010

| | | |
|-----------|-----|---|
| 21 | | : |
| 21 | 1.1 | |
| 21 | 2.1 | |
| 22 | 3.1 | |
| 23 | | : |
| 25 | | : |
| 29 | | : |
| 29 | 1.4 | |
| 29 | 2.4 | |
| 29 | 3.4 | |
| 30 | 4.4 | |
| 30 | 5.4 | |
| 33 | | : |
| 33 | 1.5 | |
| 33 | 2.5 | |
| 33 | 3.5 | |
| 35 | | |

| | | | | | |
|-----------|-------|------|------|------|------------|
| 37 | -1999 | | | | :1 |
| | | | | 2010 | |
| 38 | - | | | | :2 |
| | | | | 2010 | |
| 40 | - | | | | :3 |
| | | | | 2010 | |
| 41 | | | | | :4 |
| | | 2010 | - | | |
| 45 | | | | | :5 |
| | | 2010 | - | | |
| 48 | | | | | :6 |
| | 2010 | - | | | |
| 51 | | | | | :7 |
| | - | | | 2010 | |
| 52 | | | | | :8 |
| | | 2010 | - | | |
| 55 | | | | | :9 |
| | | | 2010 | - | |
| 58 | | | | | :10 |
| | | | 2010 | - | |
| 62 | - | | | | :11 |
| | | | | 2010 | |

25 ت 2007 - 2010 :1

27 :2

2010

2010

:

: .1

1,528

:

2010

814 •

290 •

+ 70 •

344 •

10 •

: .2

: 531.4 ()

96.7 311.6 408.3 •

21.3 101.8 123.1 •

: .3

4.3 52

: .4

388.6 1,974

293.2 1,513 •

95.4 461 •

2009 2008

2009 %25.3 2010

.2008 %24.4

2010 %19.5

2008 2010 %18.2

2009

| | | |
|---|---|------------|
| | : | 1.1 |
| | : | . |
| | : | . |
| | : | 2.1 |
| : | | • |
| | | • |
| | | • |
| | | • |
| | | • |
| | | • |

: 3.1

:

:

•

:

•

.

:

•

:

•

.

:

•

:

•

.(

:

.

:

)

:

.1 :

2010

:2009 - 2008

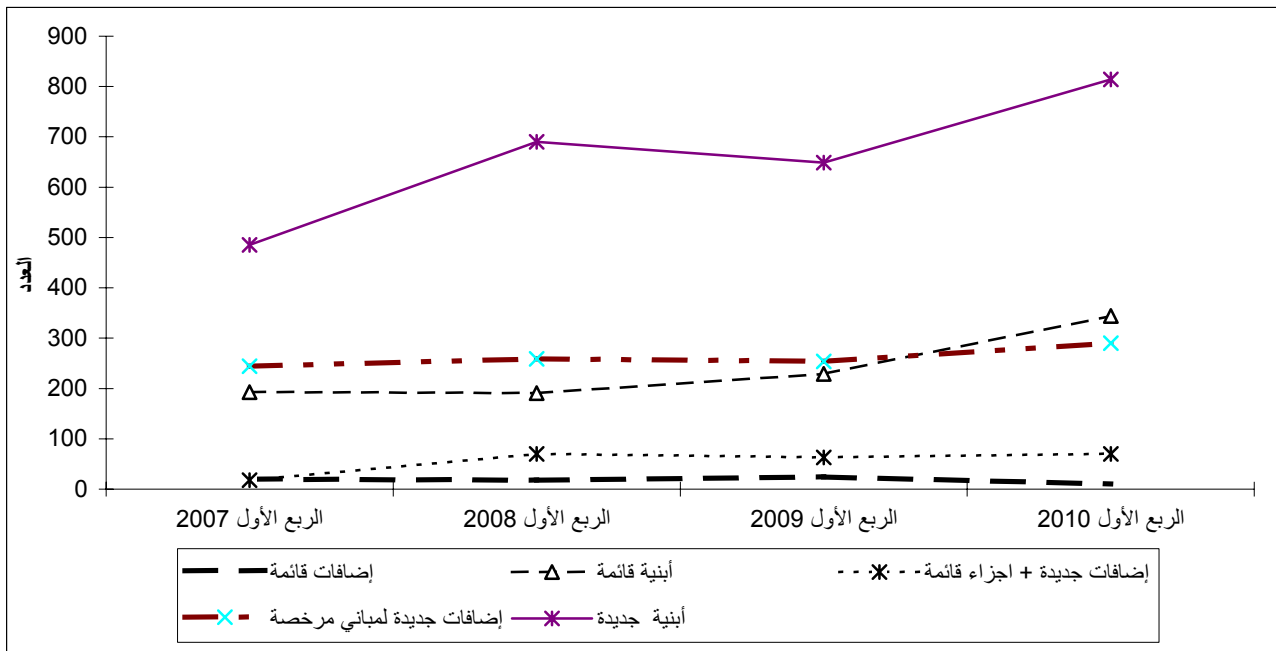
| 2009 (%) | 2008 (%) | * | | | |
|-------------|-------------|--------------|--------------|--------------|---|
| | | 2010 | 2009 | 2008 | |
| 25.4 | 18.0 | 814 | 649 | 690 | |
| 14.2 | 12.0 | 290 | 254 | 259 | |
| 11.1 | 0.0 | 70 | 63 | 70 | + |
| 50.2 | 80.1 | 344 | 229 | 191 | |
| -58.3 | -44.4 | 10 | 24 | 18 | |
| 25.3 | 24.4 | 1,528 | 1,219 | 1,228 | |

*

2010 25.3% 2008 2010 24.4% 2009 25.4% 2008 2010 18.0% 2009

2010 - 2007

:1



: .2

2010

:2009 -2008

| 2009 (%) | 2008 (%) | () | | | |
|-------------|-------------|-------|-------|-------|---|
| | | 2010 | 2009 | 2008 | |
| 13.3 | 0.2 | 531.4 | 469.2 | 530.1 | |
| 12.9 | -3.5 | 408.3 | 361.8 | 423.1 | : |
| 19.3 | -2.1 | 311.6 | 261.1 | 318.4 | |
| -4.0 | -7.6 | 96.7 | 100.7 | 104.7 | |
| 14.6 | 15.0 | 123.1 | 107.4 | 107.0 | : |
| 7.4 | 6.4 | 101.8 | 94.8 | 95.7 | |
| 69.0 | 88.5 | 21.3 | 12.6 | 11.3 | |

: .3

2010

:2009 -2008

| 2009 (%) | 2008 (%) | | | | |
|-------------|-------------|------|------|------|-----|
| | | 2010 | 2009 | 2008 | |
| 44.4 | 44.4 | 52 | 36 | 36 | |
| 72.0 | 65.4 | 4.3 | 2.5 | 2.6 | () |

: .4

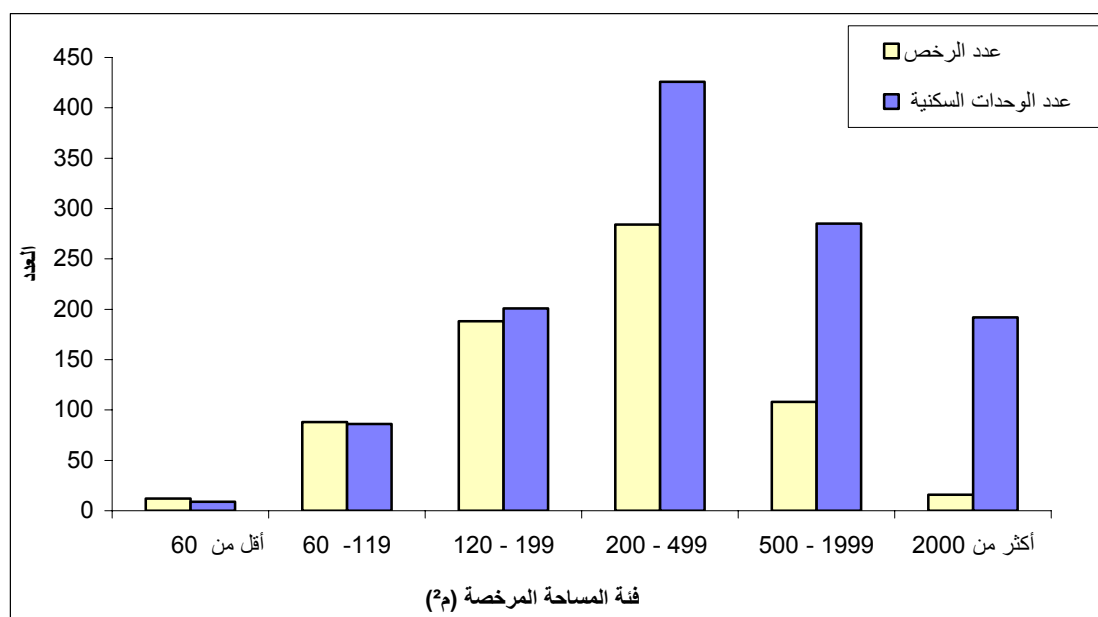
2010

:2009 -2008

| 2009 (%) | 2008 (%) | | | | |
|-------------|-------------|-------|-------|-------|-----|
| | | 2010 | 2009 | 2008 | |
| 19.5 | -18.2 | 1,513 | 1,266 | 1,850 | |
| 19.4 | -1.5 | 293.2 | 245.6 | 297.5 | () |
| 76.6 | 11.4 | 461 | 261 | 414 | |
| 28.4 | 8.0 | 95.4 | 74.3 | 88.3 | () |

:2

2010



| | | |
|-------|---|------------|
| | : | 1.4 |
| : | : | • |
| | : | • |
| | : | • |
| | : | • |
| | : | • |
| | : | • |
| | : | 2.4 |
| | : | • |
| | : | • |
| | : | • |
| | : | • |
| .1996 | : | 3.4 |
| | : | |

:

:

:

:

:

4.4

:

:

5.4

:

:

:

.

: 1.5

: 1.1.5

: 2.1.5

: 2.5

: 3.5

•

•

() 1967

(J2)

•

2010 -1999 ** * :1

Table 1: Buildings Licenses Issued* in the West Bank** and Gaza Strip During the Period 1999- First Quarter 2010

| Period | Licensed Dwellings | | | | (²) Licensed Areas (1000m²) | | | Number of Licenses | | | | | | |
|----------------|------------------------|-------|------------------------|--------|---------------------------------|---------------|---------|---------------------|-------------------|-------------------------------------|-------------------------------------|---------------|-------|------|
| | Existing Dwellings | | New Dwellings | | Existing Areas | All New Areas | Total | Existing Extensions | Existing Building | + New Additions + Existing Parts | New Additions to Licensed Buildings | New Buildings | Total | |
| | (²) Area (1000 m²) | No. | (²) Area (1000 m²) | No. | | | | | | | | | | |
| 1999 | 439.0 | 3,675 | 2,050.6 | 14,587 | 554.4 | 2,860.1 | 3,414.5 | 115 | 1,470 | 475 | 2,055 | 5,803 | 9,918 | 1999 |
| 2000 | 383.3 | 2,730 | 1,646.1 | 10,708 | 482.4 | 2,457.6 | 2,940.0 | 185 | 1,318 | 448 | 1,852 | 4,498 | 8,301 | 2000 |
| 2001 | 256.0 | 1,847 | 1,041.9 | 7,037 | 341.0 | 1,633.9 | 1,974.9 | 124 | 774 | 273 | 1,181 | 2,781 | 5,133 | 2001 |
| 2002 | 137.6 | 975 | 794.3 | 5,089 | 171.8 | 1,080.4 | 1,252.2 | 52 | 554 | 131 | 675 | 1,913 | 3,325 | 2002 |
| 2003 | 175.8 | 1,671 | 1,234.2 | 8,152 | 226.1 | 1,863.9 | 2,090.0 | 99 | 749 | 138 | 1,268 | 2,981 | 5,235 | 2003 |
| 2004 | 161.6 | 1,229 | 1,248.6 | 8,184 | 222.0 | 1,803.9 | 2,025.8 | 111 | 706 | 149 | 1,113 | 2,929 | 5,008 | 2004 |
| 2005 | 366.7 | 2,522 | 1,729.5 | 10,362 | 474.2 | 2,427.4 | 2,901.6 | 127 | 1,469 | 223 | 1,293 | 3,996 | 7,108 | 2005 |
| 2006 | 524.2 | 3,301 | 1,193.6 | 6,909 | 679.2 | 1,666.9 | 2,346.1 | 112 | 1,894 | 265 | 1,087 | 2,703 | 6,061 | 2006 |
| 2007 | 244.2 | 1,650 | 983.1 | 7,478 | 325.8 | 1,448.4 | 1,774.2 | 64 | 859 | 140 | 969 | 2,456 | 4,488 | 2007 |
| 2008 | 263.1 | 1,170 | 922.5 | 5,197 | 338.6 | 1,390.6 | 1,729.2 | 74 | 799 | 237 | 931 | 2,418 | 4,459 | 2008 |
| 2009 | | | | | | | | | | | | | | 2009 |
| Quarter I *** | 74.3 | 261 | 245.6 | 1,266 | 107.4 | 361.8 | 469.2 | 24 | 229 | 63 | 254 | 649 | 1,219 | *** |
| Quarter II *** | 85.6 | 322 | 311.2 | 1,485 | 107.0 | 415.9 | 522.9 | 27 | 266 | 57 | 240 | 719 | 1,309 | *** |
| Quarter III*** | 88.5 | 495 | 241.4 | 1,311 | 128.2 | 382.0 | 510.3 | 20 | 348 | 55 | 266 | 607 | 1,296 | *** |
| Quarter IV*** | 74.5 | 423 | 297.8 | 1,668 | 93.2 | 500.5 | 593.7 | 14 | 262 | 62 | 305 | 839 | 1,482 | *** |
| 2010 | | | | | | | | | | | | | | 2010 |
| Quarter I *** | 95.4 | 461 | 293.2 | 1,513 | 123.1 | 408.3 | 531.4 | 10 | 344 | 70 | 290 | 814 | 1,528 | *** |

*Excluding boundary walls licenses

** Doesn't include those parts of Jerusalem Governorate which were annexed by Israel in 1967

** Data were not available for Gaza Strip

2010

-

*

:2

Table 2: Buildings Licenses Issued in the West Bank* by Building Ownership and Utilization - First Quarter 2010

| Building Ownership | Licensed Dwellings | | | | ** () Licensed Areas (1000m ²)** | | | Number of Issued Licenses | | | | | | |
|-----------------------------|------------------------------------|-----|------------------------------------|-------|--|---------------|-------|---------------------------|--------------------|-------------------------------------|-------------------------------------|---------------|-------|--|
| | Existing Dwellings | | New Dwellings | | Existing Areas | All New Areas | Total | Existing Extensions | Existing Buildings | + New Additions + Existing Parts | New Additions to Licensed Buildings | New Buildings | Total | |
| | () Area (1000 m ²) | No. | () Area (1000 m ²) | No. | | | | | | | | | | |
| Total | | | | | | | | | | | | | | |
| Residential Building | 93.0 | 456 | 282.8 | 1,472 | 101.8 | 311.6 | 413.3 | 9 | 314 | 69 | 242 | 696 | 1,330 | |
| Non-Res. Building | 2.4 | 5 | 10.4 | 41 | 21.3 | 96.7 | 118.1 | 1 | 30 | 1 | 48 | 118 | 198 | |
| Boundary walls | 0.0 | 0 | 0.0 | 0 | 0.3 | 4.0 | 4.3 | 0 | 2 | 0 | 1 | 49 | 52 | |
| Private | | | | | | | | | | | | | | |
| Residential Buildings | 93.0 | 456 | 282.8 | 1,472 | 101.8 | 311.6 | 413.3 | 9 | 314 | 69 | 242 | 696 | 1,330 | |
| Non-Res. Buildings | 2.2 | 4 | 4.9 | 17 | 19.6 | 62.1 | 81.7 | 0 | 28 | 1 | 41 | 86 | 156 | |
| Boundary walls | 0.0 | 0 | 0.0 | 0 | 0.3 | 3.8 | 4.1 | 0 | 2 | 0 | 1 | 48 | 51 | |
| Governmental | | | | | | | | | | | | | | |
| Residential Buildings | 0.0 | 0 | 0.0 | 0 | 0.0 | 0.0 | 0.0 | 0 | 0 | 0 | 0 | 0 | 0 | |
| Non-Res. Buildings | 0.3 | 1 | 5.2 | 21 | 0.8 | 19.1 | 19.9 | 1 | 1 | 0 | 4 | 13 | 19 | |
| Boundary walls | 0.0 | 0 | 0.0 | 0 | 0.0 | 0.0 | 0.0 | 0 | 0 | 0 | 0 | 0 | 0 | |
| Local Authority | | | | | | | | | | | | | | |
| Residential Buildings | 0.0 | 0 | 0.0 | 0 | 0.0 | 0.0 | 0.0 | 0 | 0 | 0 | 0 | 0 | 0 | |
| Non-Res. Buildings | 0.0 | 0 | 0.0 | 0 | 1.0 | 10.4 | 11.4 | 0 | 1 | 0 | 1 | 13 | 15 | |
| Boundary walls | 0.0 | 0 | 0.0 | 0 | 0.0 | 0.0 | 0.0 | 0 | 0 | 0 | 0 | 0 | 0 | |

* Doesn't include those parts of Jerusalem Governorate which were annexed by Israel in 1967

.1967

*

**For boundary walls it refers to length in (1000 m.r)

**

2010

-

*

:() 2

Table 2 (cont.): Buildings Licenses Issued in the West Bank* by Building Ownership and Utilization - First Quarter 2010

| Building Ownership | Licensed Dwellings | | | | ** () Licensed Areas (1000m ²)** | | | Number of Issued Licenses | | | | | | |
|-----------------------|---------------------------------------|-----|---------------------------------------|-----|---|---------------|-------|---------------------------|--------------------|--|---|------------------|-------|---|
| | Existing Dwellings | | New Dwellings | | Existing Areas | All New Areas | Total | Existing Extensions | Existing Buildings | إضافات جديدة+ أجزاء قائمة New Additions + Existing Parts | New Additions to Licensed Buildings | New Buildings | Total | |
| | () Area (1000 m ²) | No. | () Area (1000 m ²) | No. | | | | | | | | | | |
| Corporative | | | | | | | | | | | | | | |
| Residential Buildings | 0.0 | 0 | 0.0 | 0 | 0.0 | 0.0 | 0.0 | 0 | 0 | 0 | 0 | 0 | 0 | 0 |
| Non-Res. Buildings | 0.0 | 0 | 0.0 | 0 | 0.0 | 1.0 | 1.0 | 0 | 0 | 0 | 0 | 2 | 2 | 2 |
| Boundary walls | 0.0 | 0 | 0.0 | 0 | 0.0 | 0.0 | 0.0 | 0 | 0 | 0 | 0 | 0 | 0 | 0 |
| Charity | | | | | | | | | | | | | | |
| Residential Buildings | 0.0 | 0 | 0.0 | 0 | 0.0 | 0.0 | 0.0 | 0 | 0 | 0 | 0 | 0 | 0 | 0 |
| Non-Res. Buildings | 0.0 | 0 | 0.0 | 1 | 0.0 | 2.9 | 2.9 | 0 | 0 | 0 | 1 | 2 | 3 | 3 |
| Boundary walls | 0.0 | 0 | 0.0 | 0 | 0.0 | 0.0 | 0.0 | 0 | 0 | 0 | 0 | 0 | 0 | 0 |
| Other | | | | | | | | | | | | | | |
| Residential Buildings | 0.0 | 0 | 0.0 | 0 | 0.0 | 0.0 | 0.0 | 0 | 0 | 0 | 0 | 0 | 0 | 0 |
| Non-Res. Buildings | 0.0 | 0 | 0.4 | 2 | 0.0 | 1.2 | 1.2 | 0 | 0 | 0 | 1 | 2 | 3 | 3 |
| Boundary walls | 0.0 | 0 | 0.0 | 0 | 0.0 | 0.2 | 0.2 | 0 | 0 | 0 | 0 | 1 | 1 | 1 |

* Doesn't include those parts of Jerusalem Governorate which were annexed by Israel in 1967

.1967

*

**For boundary walls it refers to length in (1000 m.r)

**

2010

-

*

:3

Table 3: Buildings Licenses Issued in the West Bank* by Issuing Authority and Utilization - First Quarter 2010

| License Issuing Authority | Licensed Dwellings | | | | ** () Licensed Areas (1000 m ²)** | | | Number of Issued Licenses | | | | | | |
|---------------------------------|------------------------------------|-----|------------------------------------|-------|---|---------------|-------|---------------------------|--------------------|-------------------------------------|-------------------------------------|---------------|-------|--|
| | Existing Dwellings | | New Dwellings | | Existing Areas | All New Areas | Total | Existing Extensions | Existing Buildings | + New Additions + Existing Parts | New Additions to Licensed Buildings | New Buildings | Total | |
| | () Area (1000 m ²) | No. | () Area (1000 m ²) | No. | | | | | | | | | | |
| All Authorities | | | | | | | | | | | | | | |
| Residential Buildings | 93.0 | 456 | 282.8 | 1,472 | 101.8 | 311.6 | 413.3 | 9 | 314 | 69 | 242 | 696 | 1,330 | |
| Non-Res. Buildings | 2.4 | 5 | 10.4 | 41 | 21.3 | 96.7 | 118.1 | 1 | 30 | 1 | 48 | 118 | 198 | |
| Boundary walls | 0.0 | 0 | 0.0 | 0 | 0.3 | 4.0 | 4.3 | 0 | 2 | 0 | 1 | 49 | 52 | |
| Municipalities | | | | | | | | | | | | | | |
| Residential Buildings | 79.4 | 385 | 229.7 | 1,180 | 87.2 | 254.0 | 341.2 | 7 | 271 | 58 | 234 | 515 | 1,085 | |
| Non-Res. Buildings | 2.3 | 4 | 8.6 | 39 | 14.1 | 74.0 | 88.1 | 1 | 21 | 0 | 44 | 96 | 162 | |
| Boundary walls | 0.0 | 0 | 0.0 | 0 | 0.0 | 3.6 | 3.6 | 0 | 1 | 0 | 1 | 46 | 48 | |
| Construction Authorities | | | | | | | | | | | | | | |
| Residential Buildings | 13.6 | 71 | 53.1 | 292 | 14.6 | 57.6 | 72.1 | 2 | 43 | 11 | 8 | 181 | 245 | |
| Non-Res. Buildings | 0.1 | 1 | 1.9 | 2 | 7.2 | 22.8 | 30.0 | 0 | 9 | 1 | 4 | 22 | 36 | |
| Boundary walls | 0.0 | 0 | 0.0 | 0 | 0.2 | 0.4 | 0.6 | 0 | 1 | 0 | 0 | 3 | 4 | |

* Doesn't include those parts of Jerusalem Governorate which were annexed by Israel in 1967

.1967

*

**For boundary walls it refers to length in (1000 m.r)

**

2010

-

*

:4

Table 4: Buildings Licenses Issued in the West Bank* for New Buildings by Category of Licensed Area and Governorate- First Quarter 2010

| Governorate &Area Category | Non-Res. Buildings | | Residential Buildings | | | | |
|-------------------------------|------------------------|-----------------|------------------------|--------------------------|------------------------|-----------------|------------------------|
| | Average No. of Storeys | No. of Licenses | Average No. of Storeys | Average No. of Dwellings | Total No. of Dwellings | No. of Licenses | |
| All Governorates | | | | | | | |
| Less than 60 m ² | 0.8 | 12 | 1.0 | 0.8 | 9 | 12 | ² 60 |
| 60- 119 m ² | 1.0 | 13 | 1.0 | 1.0 | 86 | 88 | ² 119 -60 |
| 120-199m ² | 1.1 | 10 | 1.2 | 1.1 | 201 | 188 | ² 199 -120 |
| 200- 499 m ² | 1.3 | 28 | 1.8 | 1.5 | 426 | 284 | ² 499-200 |
| 500-1999 m ² | 2.1 | 42 | 3.1 | 2.6 | 285 | 108 | ² 1999 -500 |
| 2000- m ² and more | 4.7 | 13 | 6.3 | 12.0 | 192 | 16 | ² 2000 |
| Jenin | | | | | | | |
| Less than 60 m ² | 0.0 | 0 | 1.0 | 1.0 | 1 | 1 | ² 60 |
| 60-119 m ² | 1.0 | 1 | 1.0 | 1.0 | 25 | 25 | ² 119 -60 |
| 120- 199 m ² | 1.5 | 2 | 1.3 | 1.2 | 27 | 23 | ² 199 -120 |
| 200- 499 m ² | 1.7 | 3 | 2.0 | 1.8 | 44 | 24 | ² 499 -200 |
| 500- 1999 m ² | 1.5 | 8 | 2.0 | 3.0 | 6 | 2 | ² 1999 -500 |
| 2000 m ² and more | 0.0 | 0 | 0.0 | 0.0 | 0 | 0 | ² 2000 |
| Tubas | | | | | | | |
| Less than 60 m ² | 1.0 | 2 | 0.0 | 0.0 | 0 | 0 | ² 60 |
| 60- 119 m ² | 1.0 | 1 | 1.0 | 1.0 | 2 | 2 | ² 119 -60 |
| 120-199m ² | 1.0 | 1 | 1.1 | 1.0 | 15 | 15 | ² 199 -120 |
| 200- 499 m ² | 1.0 | 1 | 1.9 | 1.4 | 24 | 17 | ² 499-200 |
| 500-1999 m ² | 2.0 | 1 | 2.3 | 2.3 | 7 | 3 | ² 1999 -500 |
| 2000- m ² and more | 3.0 | 1 | 0.0 | 0.0 | 0 | 0 | ² 2000 |

* Doesn't include those parts of Jerusalem Governorate which were annexed by Israel in 1967

.1967

*

2010

-

*

:() 4

**Table 4 (Cont.): Buildings Licenses Issued in the West Bank* for New Buildings by Category of Licensed Area and Governorate–
First Quarter 2010**

| Governorate & Area Category | Non-Res. Buildings | | Residential Buildings | | | | |
|--------------------------------|---------------------------|-----------------|---------------------------|-----------------------------|------------------------|-----------------|------------------------|
| | Average No. of Storeys | No. of Licenses | Average No. of Storeys | Average No. of Dwellings | Total No. of Dwellings | No. of Licenses | |
| Tulkarm | | | | | | | |
| Less than 60 m ² | 0.0 | 0 | 1.0 | 0.0 | 0 | 1 | ² 60 |
| 60-119 m ² | 1.0 | 1 | 1.0 | 1.0 | 9 | 9 | ² 119 -60 |
| 120- 199 m ² | 0.0 | 0 | 1.0 | 1.0 | 24 | 23 | ² 199 -120 |
| 200- 499 m ² | 1.5 | 2 | 2.0 | 1.7 | 71 | 42 | ² 499 -200 |
| 500- 1999 m ² | 2.0 | 2 | 3.3 | 5.3 | 32 | 6 | ² 1999 -500 |
| 2000 m ² and more | 5.0 | 1 | 0.0 | 0.0 | 0 | 0 | ² 2000 |
| Nablus | | | | | | | |
| Less than 60 m ² | 0.8 | 4 | 0.7 | 0.3 | 1 | 3 | ² 60 |
| 60- 119 m ² | 1.0 | 4 | 1.2 | 1.0 | 9 | 9 | ² 119 -60 |
| 120-199m ² | 1.0 | 3 | 1.2 | 1.0 | 28 | 27 | ² 199 -120 |
| 200- 499 m ² | 1.2 | 5 | 1.8 | 1.5 | 74 | 49 | ² 499-200 |
| 500-1999 m ² | 2.1 | 11 | 3.3 | 2.9 | 77 | 27 | ² 1999 -500 |
| 2000- m ² and more | 3.8 | 4 | 6.1 | 12.6 | 113 | 9 | ² 2000 |
| Qalqilya | | | | | | | |
| Less than 60 m ² | 0.0 | 0 | 1.0 | 1.0 | 1 | 1 | ² 60 |
| 60-119 m ² | 1.0 | 1 | 1.1 | 0.9 | 6 | 7 | ² 119 -60 |
| 120- 199 m ² | 1.0 | 1 | 1.1 | 1.0 | 23 | 22 | ² 199 -120 |
| 200- 499 m ² | 2.0 | 1 | 1.8 | 1.6 | 36 | 22 | ² 499 -200 |
| 500- 1999 m ² | 2.0 | 2 | 3.3 | 3.3 | 10 | 3 | ² 1999 -500 |
| 2000 m ² and more | 0.0 | 0 | 0.0 | 0.0 | 0 | 0 | ² 2000 |

* Doesn't include those parts of Jerusalem Governorate which were annexed by Israel in 1967

.1967

*

**Table 4 (Cont.): Buildings Licenses Issued in the West Bank* for New Buildings by Category of Licensed Area and Governorate–
First Quarter 2010**

| Governorate & Area Category | Non-Res. Buildings | | Residential Buildings | | | | |
|--------------------------------|---------------------------|-----------------|---------------------------|-----------------------------|------------------------|-----------------|------------------------|
| | Average No. of Storeys | No. of Licenses | Average No. of Storeys | Average No. of Dwellings | Total No. of Dwellings | No. of Licenses | |
| Salfit | | | | | | | |
| Less than 60 m ² | 1.0 | 1 | 0.0 | 0.0 | 0 | 0 | ² 60 |
| 60- 119 m ² | 0.0 | 0 | 1.0 | 1.0 | 6 | 6 | ² 119 -60 |
| 120-199m ² | 1.0 | 1 | 1.1 | 1.0 | 9 | 9 | ² 199 -120 |
| 200- 499 m ² | 1.0 | 3 | 1.8 | 1.7 | 22 | 13 | ² 499-200 |
| 500-1999 m ² | 2.0 | 1 | 3.0 | 3.0 | 9 | 3 | ² 1999 -500 |
| 2000- m ² and more | 0.0 | 0 | 0.0 | 0.0 | 0 | 0 | ² 2000 |
| Ramallah and Al-Bireh | | | | | | | |
| Less than 60 m ² | 1.0 | 1 | 1.0 | 1.0 | 1 | 1 | ² 60 |
| 60-119 m ² | 1.0 | 2 | 1.0 | 1.0 | 12 | 12 | ² 119 -60 |
| 120- 199 m ² | 0.0 | 0 | 1.3 | 1.1 | 15 | 14 | ² 199 -120 |
| 200- 499 m ² | 1.0 | 4 | 1.9 | 1.5 | 69 | 46 | ² 499 -200 |
| 500- 1999 m ² | 2.2 | 5 | 3.1 | 3.0 | 85 | 28 | ² 1999 -500 |
| 2000 m ² and more | 5.0 | 5 | 6.6 | 11.3 | 79 | 7 | ² 2000 |
| Jericho and Al Aghwar | | | | | | | |
| Less than 60 m ² | 0.0 | 1 | 1.0 | 1.0 | 2 | 2 | ² 60 |
| 60- 119 m ² | 0.0 | 0 | 1.0 | 0.7 | 2 | 3 | ² 119 -60 |
| 120-199m ² | 0.0 | 0 | 1.8 | 1.8 | 9 | 5 | ² 199 -120 |
| 200- 499 m ² | 0.0 | 0 | 1.3 | 1.7 | 15 | 9 | ² 499-200 |
| 500-1999 m ² | 0.0 | 0 | 3.0 | 3.0 | 3 | 1 | ² 1999 -500 |
| 2000- m ² and more | 0.0 | 0 | 0.0 | 0.0 | 0 | 0 | ² 2000 |

* Doesn't include those parts of Jerusalem Governorate which were annexed by Israel in 1967

.1967

*

2010

-

*

:() 4

**Table 4 (Cont.): Buildings Licenses Issued in the West Bank* for New Buildings by Category of Licensed Area and Governorate—
First Quarter 2010**

| Governorate & Area Category | Non-Res. Buildings | | Residential Buildings | | | | |
|--------------------------------|---------------------------|-----------------|---------------------------|-----------------------------|------------------------|-----------------|------------------------|
| | Average No. of Storeys | No. of Licenses | Average No. of Storeys | Average No. of Dwellings | Total No. of Dwellings | No. of Licenses | |
| Jerusalem | | | | | | | |
| Less than 60 m ² | 0.0 | 0 | 0.0 | 0.0 | 0 | 0 | ² 60 |
| 60- 119 m ² | 0.0 | 0 | 0.0 | 0.0 | 0 | 0 | ² 119 -60 |
| 120-199m ² | 0.0 | 0 | 1.0 | 1.0 | 1 | 1 | ² 199 -120 |
| 200- 499 m ² | 2.0 | 1 | 1.6 | 1.2 | 6 | 5 | ² 499-200 |
| 500-1999 m ² | 3.0 | 1 | 3.0 | 3.6 | 18 | 5 | ² 1999 -500 |
| 2000- m ² and more | 0.0 | 0 | 0.0 | 0.0 | 0 | 0 | ² 2000 |
| Bethlehem | | | | | | | |
| Less than 60 m ² | 1.0 | 2 | 1.5 | 1.0 | 2 | 2 | ² 60 |
| 60- 119 m ² | 1.0 | 2 | 1.0 | 1.0 | 7 | 7 | ² 119 -60 |
| 120-199m ² | 1.0 | 1 | 1.1 | 1.1 | 13 | 12 | ² 199 -120 |
| 200- 499 m ² | 1.0 | 2 | 1.6 | 1.6 | 42 | 27 | ² 499-200 |
| 500-1999 m ² | 2.6 | 5 | 3.3 | 2.8 | 25 | 9 | ² 1999 -500 |
| 2000- m ² and more | 8.0 | 1 | 0.0 | 0.0 | 0 | 0 | ² 2000 |
| Hebron | | | | | | | |
| Less than 60 m ² | 1.0 | 1 | 1.0 | 1.0 | 1 | 1 | ² 60 |
| 60-119 m ² | 1.0 | 1 | 1.0 | 1.0 | 8 | 8 | ² 119 -60 |
| 120- 199 m ² | 1.0 | 1 | 1.1 | 1.0 | 37 | 37 | ² 199 -120 |
| 200- 499 m ² | 1.5 | 6 | 1.7 | 0.8 | 23 | 30 | ² 499 -200 |
| 500- 1999 m ² | 2.7 | 6 | 2.8 | 0.6 | 13 | 21 | ² 1999 -500 |
| 2000 m ² and more | 5.0 | 1 | 0.0 | 0.0 | 0 | 0 | ² 2000 |

* Doesn't include those parts of Jerusalem Governorate which were annexed by Israel in 1967

.1967

*

Table 5: Buildings Licenses Issued in the West Bank* for New Buildings by Construction Material of External Walls and Governorate– First Quarter 2010.

| Governorate | Non-Res. Buildings | | | Residential Buildings | | | | | |
|-------------------------|------------------------|---|-----------------|------------------------|--------------------------|------------------------|---|-----------------|--|
| | Average No. of Storeys | (2) Licensed Area (1000 m ²) | No. of Licenses | Average No. of Storeys | Average No. of Dwellings | Total No. of Dwellings | (2) Licensed Area (1000 m ²) | No. of Licenses | |
| All Governorates | | | | | | | | | |
| Stone | 2.1 | 78.3 | 93 | 2.0 | 1.9 | 840 | 206.6 | 436 | |
| Cement Block | 1.2 | 9.6 | 25 | 1.5 | 1.4 | 356 | 56.0 | 257 | |
| Concrete | 0.0 | 0.0 | 0 | 1.0 | 1.0 | 3 | 0.4 | 3 | |
| Jenin | | | | | | | | | |
| Stone | 1.5 | 1.8 | 4 | 1.5 | 1.5 | 49 | 7.9 | 33 | |
| Cement Block | 1.5 | 5.8 | 10 | 1.3 | 1.3 | 54 | 6.8 | 42 | |
| Concrete | 0.0 | 0.0 | 0 | 0.0 | 0.0 | 0 | 0.0 | 0 | |
| Tubas | | | | | | | | | |
| Stone | 1.6 | 3.9 | 5 | 1.6 | 1.3 | 16 | 3.5 | 12 | |
| Cement Block | 1.0 | 0.1 | 2 | 1.5 | 1.3 | 32 | 5.8 | 25 | |
| Concrete | 0.0 | 0.0 | 0 | 0.0 | 0.0 | 0 | 0.0 | 0 | |
| Tulkarm | | | | | | | | | |
| Stone | 3.0 | 4.1 | 3 | 2.4 | 2.4 | 31 | 6.6 | 13 | |
| Cement Block | 1.3 | 1.0 | 3 | 1.5 | 1.5 | 105 | 17.8 | 68 | |
| Concrete | 0.0 | 0.0 | 0 | 0.0 | 0.0 | 0 | 0.0 | 0 | |
| Nablus | | | | | | | | | |
| Stone | 1.8 | 24.7 | 29 | 2.5 | 2.8 | 269 | 64.7 | 95 | |
| Cement Block | 1.0 | 0.4 | 2 | 1.4 | 1.1 | 33 | 5.2 | 29 | |
| Concrete | 0.0 | 0.0 | 0 | 0.0 | 0.0 | 0 | 0.0 | 0 | |

* Doesn't include those parts of Jerusalem Governorate which were annexed by Israel in 1967

.1967

*

2010

-

*

:() 5

Table 5 (Cont.): Buildings Licenses Issued in the West Bank* for New Buildings by Construction Material of External Walls and Governorate - First Quarter 2010

| Governorate | Non-Res. Buildings | | | Residential Buildings | | | | | |
|------------------------------|------------------------|---|-----------------|------------------------|--------------------------|------------------------|---|-----------------|--|
| | Average No. of Storeys | (2) Licensed Area (1000 m ²) | No. of Licenses | Average No. of Storeys | Average No. of Dwellings | Total No. of Dwellings | (2) Licensed Area (1000 m ²) | No. of Licenses | |
| Qalqilya | | | | | | | | | |
| Stone | 2.0 | 1.9 | 3 | 2.0 | 1.8 | 14 | 3.0 | 8 | |
| Cement Block | 1.0 | 0.8 | 2 | 1.4 | 1.3 | 62 | 9.4 | 47 | |
| Concrete | 0.0 | 0.0 | 0 | 0.0 | 0.0 | 0 | 0.0 | 0 | |
| Salfit | | | | | | | | | |
| Stone | 1.0 | 0.8 | 2 | 2.1 | 2.0 | 16 | 3.9 | 8 | |
| Cement Block | 1.3 | 1.0 | 4 | 1.4 | 1.3 | 30 | 4.3 | 23 | |
| Concrete | 0.0 | 0.0 | 0 | 0.0 | 0.0 | 0 | 0.0 | 0 | |
| Ramallah and Al-Bireh | | | | | | | | | |
| Stone | 2.6 | 17.7 | 16 | 2.5 | 2.5 | 236 | 59.7 | 93 | |
| Cement Block | 1.0 | 0.3 | 1 | 1.6 | 1.8 | 22 | 3.3 | 12 | |
| Concrete | 0.0 | 0.0 | 0 | 1.0 | 1.0 | 3 | 0.4 | 3 | |
| Jericho and Al Aghwar | | | | | | | | | |
| Stone | 0.0 | 0.0 | 0 | 1.6 | 1.4 | 13 | 1.8 | 9 | |
| Cement Block | 1.0 | 0.0 | 1 | 1.4 | 1.6 | 18 | 3.3 | 11 | |
| Concrete | 0.0 | 0.0 | 0 | 0.0 | 0.0 | 0 | 0.0 | 0 | |
| Jarusalem | | | | | | | | | |
| Stone | 2.5 | 1.9 | 2 | 2.2 | 2.3 | 25 | 4.9 | 11 | |
| Cement Block | 0.0 | 0.0 | 0 | 0.0 | 0.0 | 0 | 0.0 | 0 | |
| Concrete | 0.0 | 0.0 | 0 | 0.0 | 0.0 | 0 | 0.0 | 0 | |

* Doesn't include those parts of Jerusalem Governorate which were annexed by Israel in 1967

.1967

*

2010

-

*

:() 5

Table 5 (Cont.): Buildings Licenses Issued in the West Bank* for New Buildings by Construction Material of External Walls and Governorate - First Quarter 2010

| Governorate | Non-Res. Buildings | | | Residential Buildings | | | | | |
|------------------|------------------------|---|-----------------|------------------------|--------------------------|------------------------|---|-----------------|--|
| | Average No. of Storeys | (2) Licensed Area (1000 m ²) | No. of Licenses | Average No. of Storeys | Average No. of Dwellings | Total No. of Dwellings | (2) Licensed Area (1000 m ²) | No. of Licenses | |
| Bethlehem | | | | | | | | | |
| Stone | 2.2 | 9.1 | 13 | 1.7 | 1.6 | 89 | 18.7 | 57 | |
| Cement Block | 0.0 | 0.0 | 0 | 0.0 | 0.0 | 0 | 0.0 | 0 | |
| Concrete | 0.0 | 0.0 | 0 | 0.0 | 0.0 | 0 | 0.0 | 0 | |
| Hebron | | | | | | | | | |
| Stone | 2.1 | 12.4 | 16 | 1.6 | 0.8 | 82 | 31.7 | 97 | |
| Cement Block | 0.0 | 0.0 | 0 | 0.0 | 0.0 | 0 | 0.0 | 0 | |
| Concrete | 0.0 | 0.0 | 0 | 0.0 | 0.0 | 0 | 0.0 | 0 | |

* Doesn't include those parts of Jerusalem Governorate which were annexed by Israel in 1967

.1967

*

Table 6 : Buildings Licenses Issued in the West Bank* for New Additions to Licensed Existing Buildings by Construction Material of External Walls and Governorate– First Quarter 2010

| Governorate | Non-Res. Buildings | | | Residential Buildings | | | | | |
|-------------------------|------------------------|---|-----------------|------------------------|--------------------------|------------------------|---|-----------------|--|
| | Average No. of Storeys | (2) Licensed Area (1000 m ²) | No. of Licenses | Average No. of Storeys | Average No. of Dwellings | Total No. of Dwellings | (2) Licensed Area (1000 m ²) | No. of Licenses | |
| All Governorates | | | | | | | | | |
| Stone | 1.0 | 5.7 | 35 | 1.2 | 0.9 | 165 | 30.5 | 193 | |
| Cement Block | 0.6 | 1.8 | 8 | 1.3 | 0.9 | 43 | 7.0 | 48 | |
| Concrete | 0.2 | 0.7 | 5 | 1.0 | 1.0 | 1 | 0.2 | 1 | |
| Jenin | | | | | | | | | |
| Stone | 1.0 | 0.1 | 1 | 1.8 | 1.6 | 8 | 1.3 | 5 | |
| Cement Block | 1.0 | 0.7 | 1 | 1.0 | 1.0 | 1 | 0.1 | 1 | |
| Concrete | 0.0 | 0.0 | 0 | 0.0 | 0.0 | 0 | 0.0 | 0 | |
| Tubas | | | | | | | | | |
| Stone | 1.0 | 0.5 | 1 | 1.3 | 1.5 | 6 | 1.1 | 4 | |
| Cement Block | 0.0 | 0.0 | 0 | 2.0 | 0.5 | 1 | 0.3 | 2 | |
| Concrete | 0.0 | 0.0 | 0 | 0.0 | 0.0 | 0 | 0.0 | 0 | |
| Tulkarm | | | | | | | | | |
| Stone | 1.5 | 0.5 | 2 | 2.0 | 1.0 | 1 | 0.2 | 1 | |
| Cement Block | 0.0 | 0.0 | 0 | 1.1 | 1.1 | 10 | 1.3 | 9 | |
| Concrete | 0.0 | 0.0 | 0 | 0.0 | 0.0 | 0 | 0.0 | 0 | |

* Doesn't include those parts of Jerusalem Governorate which were annexed by Israel in 1967

.1967

*

Table 6 (Cont.): Buildings Licenses Issued in the West Bank* for New Additions to Licensed Existing Buildings by Construction Material of External Walls and Governorate– First Quarter 2010

| Governorate | Non-Res. Buildings | | | Residential Buildings | | | | | |
|------------------------------|------------------------|---|-----------------|------------------------|--------------------------|------------------------|---|-----------------|--|
| | Average No. of Storeys | (2) Licensed Area (1000 m ²) | No. of Licenses | Average No. of Storeys | Average No. of Dwellings | Total No. of Dwellings | (2) Licensed Area (1000 m ²) | No. of Licenses | |
| Nablus | | | | | | | | | |
| Stone | 0.8 | 3.8 | 24 | 1.1 | 0.7 | 106 | 21.3 | 143 | |
| Cement Block | 0.4 | 0.3 | 5 | 1.1 | 0.3 | 2 | 0.5 | 7 | |
| Concrete | 0.0 | 0.0 | 4 | 1.0 | 1.0 | 1 | 0.2 | 1 | |
| Qalqilya | | | | | | | | | |
| Stone | 0.0 | 0.0 | 0 | 1.0 | 1.2 | 6 | 0.9 | 5 | |
| Cement Block | 1.0 | 0.8 | 2 | 1.4 | 1.2 | 23 | 3.5 | 20 | |
| Concrete | 0.0 | 0.0 | 0 | 0.0 | 0.0 | 0 | 0.0 | 0 | |
| Salfit | | | | | | | | | |
| Stone | 0.0 | 0.0 | 0 | 1.0 | 0.0 | 0 | 0.1 | 3 | |
| Cement Block | 0.0 | 0.0 | 0 | 2.5 | 0.0 | 0 | 0.3 | 2 | |
| Concrete | 0.0 | 0.0 | 0 | 0.0 | 0.0 | 0 | 0.0 | 0 | |
| Ramallah and Al-Birah | | | | | | | | | |
| Stone | 1.5 | 0.2 | 2 | 1.7 | 0.3 | 3 | 1.2 | 10 | |
| Cement Block | 0.0 | 0.0 | 0 | 1.3 | 0.8 | 3 | 0.6 | 4 | |
| Concrete | 1.0 | 0.6 | 1 | 0.0 | 0.0 | 0 | 0.0 | 0 | |

* Doesn't include those parts of Jerusalem Governorate which were annexed by Israel in 1967

.1967

*

2010

-

*

:() 6

Table 6 (Cont.) : Buildings Licenses Issued in the West Bank* for New Additions to Licensed Existing Buildings by Construction Material of External Walls and Governorate– First Quarter 2010

| Governorate | Non-Res. Buildings | | | Residential Buildings | | | | | |
|------------------------------|------------------------|---|-----------------|------------------------|--------------------------|------------------------|---|-----------------|--|
| | Average No. of Storeys | (2) Licensed Area (1000 m ²) | No. of Licenses | Average No. of Storeys | Average No. of Dwellings | Total No. of Dwellings | (2) Licensed Area (1000 m ²) | No. of Licenses | |
| Jericho and Al Aghwar | | | | | | | | | |
| Stone | 2.0 | 0.1 | 1 | 1.3 | 1.3 | 4 | 0.6 | 3 | |
| Cement Block | 0.0 | 0.0 | 0 | 1.0 | 1.0 | 3 | 0.3 | 3 | |
| Concrete | 0.0 | 0.0 | 0 | 0.0 | 0.0 | 0 | 0.0 | 0 | |
| Bethlehem | | | | | | | | | |
| Stone | 1.5 | 0.4 | 4 | 1.4 | 1.6 | 23 | 2.7 | 14 | |
| Cement Block | 0.0 | 0.0 | 0 | 0.0 | 0.0 | 0 | 0.0 | 0 | |
| Concrete | 0.0 | 0.0 | 0 | 0.0 | 0.0 | 0 | 0.0 | 0 | |
| Hebron | | | | | | | | | |
| Stone | 0.0 | 0.0 | 0 | 2.0 | 1.6 | 8 | 1.2 | 5 | |
| Cement Block | 0.0 | 0.0 | 0 | 0.0 | 0.0 | 0 | 0.0 | 0 | |
| Concrete | 0.0 | 0.0 | 0 | 0.0 | 0.0 | 0 | 0.0 | 0 | |

* Doesn't include those parts of Jerusalem Governorate which were annexed by Israel in 1967

.1967

*

Table 7: Buildings Licenses Issued in the West Bank* for New Additions and Existing Parts to Unlicensed Existing Buildings by Construction Material of External Walls and Governorate– First Quarter 2010

| Governorate | Non- Res. Buildings | | | Residential Buildings | | | | | |
|-------------------------|------------------------|---|-----------------|-----------------------|--------------------------|------------------------|---|-----------------|--|
| | Average No. of Storeys | (²) Licensed Area (1000 m ²) | No. of Licenses | Average No of Storeys | Average No. of Dwellings | Total No. of Dwellings | (²) Licensed Area (1000 m ²) | No. of Licenses | |
| All Governorates | | | | | | | | | |
| Stone | 0.0 | 0.0 | 0 | 2.0 | 1.1 | 33 | 8.3 | 31 | |
| Cement Block | 2.0 | 1.5 | 1 | 2.0 | 1.7 | 64 | 9.0 | 38 | |
| Tubas | | | | | | | | | |
| Stone | 0.0 | 0.0 | 0 | 2.5 | 1.5 | 6 | 1.2 | 4 | |
| Cement Block | 0.0 | 0.0 | 0 | 2.1 | 1.8 | 18 | 2.6 | 10 | |
| Tulkarem | | | | | | | | | |
| Stone | 0.0 | 0.0 | 0 | 3.1 | 2.4 | 13 | 3.0 | 6 | |
| Cement Block | 0.0 | 0.0 | 0 | 2.0 | 1.7 | 38 | 5.3 | 23 | |
| Nablus | | | | | | | | | |
| Stone | 0.0 | 0.0 | 0 | 1.6 | 0.7 | 14 | 4.2 | 21 | |
| Cement Block | 2.0 | 1.5 | 1 | 1.3 | 1.0 | 3 | 0.6 | 3 | |
| Qalqilya | | | | | | | | | |
| Stone | 0.0 | 0.0 | 0 | 0.0 | 0.0 | 0 | 0.0 | 0 | |
| Cement Block | 0.0 | 0.0 | 0 | 3.0 | 2.5 | 5 | 0.5 | 2 | |

* Doesn't include those parts of Jerusalem Governorate which were annexed by Israel in 1967

.1967

*

Table 8: Buildings Licenses Issued in the West Bank* for Existing Buildings and Extensions by Construction Material of External Walls and Governorate– First Quarter 2010

| Governorate | Non- Res. Buildings | | | Residential Buildings | | | | | |
|-------------------------|------------------------|---|-----------------|-----------------------|--------------------------|------------------------|---|-----------------|--|
| | Average No. of Storeys | (²) Licensed Area (1000 m ²) | No. of Licenses | Average No of Storeys | Average No. of Dwellings | Total No. of Dwellings | (²) Licensed Area (1000 m ²) | No. of Licenses | |
| All Governorates | | | | | | | | | |
| Stone | 1.9 | 16.5 | 21 | 1.9 | 1.3 | 296 | 76.5 | 228 | |
| Cement Block | 1.3 | 3.7 | 9 | 1.4 | 1.3 | 125 | 18.8 | 94 | |
| Concrete | 2.0 | 0.4 | 1 | 2.0 | 2.0 | 2 | 0.1 | 1 | |
| Jenin | | | | | | | | | |
| Stone | 0.0 | 0.0 | 0 | 2.0 | 1.0 | 1 | 0.5 | 1 | |
| Cement Block | 1.0 | 0.6 | 1 | 1.3 | 1.3 | 8 | 1.6 | 6 | |
| Concrete | 0.0 | 0.0 | 0 | 2.0 | 2.0 | 2 | 0.1 | 1 | |
| Tubas | | | | | | | | | |
| Stone | 0.0 | 0.0 | 0 | 2.2 | 2.7 | 16 | 2.5 | 6 | |
| Cement Block | 1.0 | 0.1 | 1 | 1.5 | 1.4 | 26 | 3.8 | 19 | |
| Concrete | 0.0 | 0.0 | 0 | 0.0 | 0.0 | 0 | 0.0 | 0 | |
| Tulkarm | | | | | | | | | |
| Stone | 2.0 | 0.2 | 1 | 2.8 | 1.0 | 4 | 1.2 | 4 | |
| Cement Block | 1.0 | 1.6 | 1 | 1.5 | 1.3 | 28 | 4.6 | 21 | |
| Concrete | 0.0 | 0.0 | 0 | 0.0 | 0.0 | 0 | 0.0 | 0 | |
| Nablus | | | | | | | | | |
| Stone | 1.0 | 0.3 | 2 | 1.6 | 1.3 | 24 | 4.3 | 19 | |
| Cement Block | 2.0 | 0.6 | 2 | 0.9 | 0.8 | 11 | 1.9 | 13 | |
| Concrete | 2.0 | 0.4 | 1 | 0.0 | 0.0 | 0 | 0.0 | 0 | |

* Doesn't include those parts of Jerusalem Governorate which were annexed by Israel in 1967

.1967

*

Table 8 (Cont.): Buildings Licenses Issued in the West Bank* for Existing Buildings and Extensions by Construction Material of External Walls and Governorate— First Quarter 2010

| Governorate | Non- Res. Buildings | | | Residential Buildings | | | | |
|------------------------------|------------------------|---|-----------------|-----------------------|--------------------------|------------------------|---|-----------------|
| | Average No. of Storeys | (²) Licensed Area (1000 m ²) | No. of Licenses | Average No of Storeys | Average No. of Dwellings | Total No. of Dwellings | (²) Licensed Area (1000 m ²) | No. of Licenses |
| Qalqilya | | | | | | | | |
| Stone | 0.0 | 0.0 | 0 | 2.0 | 1.0 | 1 | 0.2 | 1 |
| Cement Block | 0.0 | 0.0 | 0 | 1.4 | 1.4 | 10 | 1.4 | 7 |
| Concrete | 0.0 | 0.0 | 0 | 0.0 | 0.0 | 0 | 0.0 | 0 |
| Salfit | | | | | | | | |
| Stone | 0.0 | 0.0 | 0 | 1.0 | 1.0 | 1 | 0.1 | 1 |
| Cement Block | 1.3 | 0.4 | 3 | 1.5 | 1.5 | 42 | 5.5 | 28 |
| Concrete | 0.0 | 0.0 | 0 | 0.0 | 0.0 | 0 | 0.0 | 0 |
| Ramallah and Al-Bireh | | | | | | | | |
| Stone | 2.1 | 8.8 | 7 | 2.2 | 2.4 | 47 | 9.3 | 20 |
| Cement Block | 0.0 | 0.0 | 0 | 0.0 | 0.0 | 0 | 0.0 | 0 |
| Concrete | 0.0 | 0.0 | 0 | 0.0 | 0.0 | 0 | 0.0 | 0 |
| Jericho and Al Aghwar | | | | | | | | |
| Stone | 0.0 | 0.0 | 0 | 0.0 | 0.0 | 0 | 0.0 | 0 |
| Cement Block | 1.0 | 0.3 | 1 | 0.0 | 0.0 | 0 | 0.0 | 0 |
| Concrete | 0.0 | 0.0 | 0 | 0.0 | 0.0 | 0 | 0.0 | 0 |
| Jerusalem | | | | | | | | |
| Stone | 3.0 | 1.8 | 2 | 2.3 | 1.3 | 4 | 1.6 | 3 |
| Cement Block | 0.0 | 0.0 | 0 | 0.0 | 0.0 | 0 | 0.0 | 0 |
| Concrete | 0.0 | 0.0 | 0 | 0.0 | 0.0 | 0 | 0.0 | 0 |

* Doesn't include those parts of Jerusalem Governorate which were annexed by Israel in 1967

.1967

*

2010

-

*

:() 8

Table 8 (Cont.): Buildings Licenses Issued in the West Bank* for Existing Buildings and Extensions by Construction Material of External Walls and Governorate— First Quarter 2010

| Governorate | Non- Res. Buildings | | | Residential Buildings | | | | |
|------------------|------------------------|---|-----------------|-----------------------|--------------------------|------------------------|---|-----------------|
| | Average No. of Storeys | (²) Licensed Area (1000 m ²) | No. of Licenses | Average No of Storeys | Average No. of Dwellings | Total No. of Dwellings | (²) Licensed Area (1000 m ²) | No. of Licenses |
| Bethlehem | | | | | | | | |
| Stone | 1.0 | 0.2 | 1 | 1.7 | 1.5 | 15 | 3.9 | 10 |
| Cement Block | 0.0 | 0.0 | 0 | 0.0 | 0.0 | 0 | 0.0 | 0 |
| Concrete | 0.0 | 0.0 | 0 | 0.0 | 0.0 | 0 | 0.0 | 0 |
| Hebron | | | | | | | | |
| Stone | 1.8 | 5.2 | 8 | 1.8 | 1.1 | 183 | 53.0 | 163 |
| Cement Block | 0.0 | 0.0 | 0 | 0.0 | 0.0 | 0 | 0.0 | 0 |
| Concrete | 0.0 | 0.0 | 0 | 0.0 | 0.0 | 0 | 0.0 | 0 |

* Doesn't include those parts of Jerusalem Governorate which were annexed by Israel in 1967

.1967

*

2010

-

*

:9

Table 9: Buildings Licenses Issued in the West Bank* for Residential Buildings by Status of Licensed Building and Governorate – First Quarter 2010

| Governorate | (²) Licensed Areas (000 m²) | | | Number of Issued Licenses | | | | | |
|-------------------------|---------------------------------|-----------|-------|---------------------------|--------------------|---|---------------------------------------|------------------|-------|
| | Existing Areas | New Areas | Total | Existing Extensions | Existing Buildings | + New Additions+Existing Parts | Additions to Licensed Buildings | New Buildings | Total |
| All Governorates | | | | | | | | | |
| Complete Dwellings | 100.2 | 305.6 | 405.8 | 3 | 313 | 51 | 142 | 689 | 1,198 |
| Extension of Rooms | 0.1 | 2.3 | 2.4 | 0 | 0 | 2 | 24 | 5 | 31 |
| Other Extensions | 0.7 | 1.0 | 1.8 | 1 | 0 | 4 | 23 | 2 | 30 |
| Other | 0.7 | 2.6 | 3.3 | 5 | 1 | 12 | 53 | 0 | 71 |
| Jenin | | | | | | | | | |
| Complete Dwellings | 2.2 | 16.1 | 18.3 | 0 | 8 | 0 | 5 | 75 | 88 |
| Extension of Rooms | 0.0 | 0.0 | 0.0 | 0 | 0 | 0 | 0 | 0 | 0 |
| Other Extensions | 0.0 | 0.0 | 0.0 | 0 | 0 | 0 | 1 | 0 | 1 |
| Other | 0.0 | 0.0 | 0.0 | 0 | 0 | 0 | 0 | 0 | 0 |
| Tubas | | | | | | | | | |
| Complete Dwellings | 7.3 | 13.1 | 20.3 | 0 | 25 | 13 | 4 | 37 | 79 |
| Extension of Rooms | 0.1 | 0.2 | 0.3 | 0 | 0 | 1 | 1 | 0 | 2 |
| Other Extensions | 0.0 | 0.0 | 0.0 | 0 | 0 | 0 | 0 | 0 | 0 |
| Other | 0.1 | 0.1 | 0.2 | 0 | 0 | 0 | 1 | 0 | 1 |
| Tulkarm | | | | | | | | | |
| Complete Dwellings | 8.8 | 30.5 | 39.3 | 0 | 23 | 24 | 9 | 80 | 136 |
| Extension of Rooms | 0.0 | 0.2 | 0.2 | 0 | 0 | 1 | 1 | 1 | 3 |
| Other Extensions | 0.2 | 0.0 | 0.2 | 0 | 0 | 3 | 0 | 0 | 3 |
| Other | 0.4 | 0.0 | 0.4 | 2 | 0 | 1 | 0 | 0 | 3 |

* Doesn't include those parts of Jerusalem Governorate which were annexed by Israel in 1967

.1967

*

2010

-

*

:() 9

Table 9 (Cont.): Buildings Licenses Issued in the West Bank* for Residential Buildings by Status of Licensed Building and Governorate – First Quarter 2010

| Governorate | () Licensed Areas (000 m ²) | | | Number of Issued Licenses | | | | | |
|---------------------------------|---|-----------|-------|---------------------------|--------------------|---|---------------------------------------|------------------|-------|
| | Existing Areas | New Areas | Total | Existing Extensions | Existing Buildings | + New Additions+Existing Parts | Additions to Licensed Buildings | New Buildings | Total |
| Nablus | | | | | | | | | |
| Complete Dwellings | 6.8 | 91.7 | 98.5 | 1 | 26 | 12 | 72 | 122 | 233 |
| Extension of Rooms | 0.0 | 0.3 | 0.3 | 0 | 0 | 0 | 6 | 1 | 7 |
| Other Extensions | 0.6 | 0.8 | 1.4 | 1 | 0 | 1 | 21 | 1 | 24 |
| Other | 0.2 | 2.5 | 2.7 | 3 | 1 | 11 | 52 | 0 | 67 |
| Qalqilya | | | | | | | | | |
| Complete Dwellings | 1.8 | 16.9 | 18.7 | 0 | 8 | 2 | 24 | 54 | 88 |
| Extension of Rooms | 0.0 | 0.2 | 0.2 | 0 | 0 | 0 | 1 | 1 | 2 |
| Other Extensions | 0.0 | 0.0 | 0.0 | 0 | 0 | 0 | 0 | 0 | 0 |
| Other | 0.0 | 0.0 | 0.0 | 0 | 0 | 0 | 0 | 0 | 0 |
| Salfit | | | | | | | | | |
| Complete Dwellings | 5.6 | 8.3 | 13.9 | 2 | 27 | 0 | 0 | 31 | 60 |
| Extension of Rooms | 0.0 | 0.3 | 0.3 | 0 | 0 | 0 | 4 | 0 | 4 |
| Other Extensions | 0.0 | 0.1 | 0.1 | 0 | 0 | 0 | 1 | 0 | 1 |
| Other | 0.0 | 0.0 | 0.0 | 0 | 0 | 0 | 0 | 0 | 0 |
| Ramallah & Al- Bireh | | | | | | | | | |
| Complete Dwellings | 9.3 | 64.3 | 73.6 | 0 | 20 | 0 | 4 | 108 | 132 |
| Extension of Rooms | 0.0 | 0.9 | 0.9 | 0 | 0 | 0 | 10 | 0 | 10 |
| Other Extensions | 0.0 | 0.0 | 0.0 | 0 | 0 | 0 | 0 | 0 | 0 |
| Other | 0.0 | 0.0 | 0.0 | 0 | 0 | 0 | 0 | 0 | 0 |

* Doesn't include those parts of Jerusalem Governorate which were annexed by Israel in 1967

.1967

*

2010

-

*

:() 9

Table 9 (Cont): Buildings Licenses Issued in the West Bank* for Residential Buildings by Status of Licensed Building and Governorate - First Quarter 2010

| Governorate | Licensed Areas (000 m ²) | | | Number of Issued Licenses | | | | | |
|------------------------------|--------------------------------------|-----------|-------|---------------------------|--------------------|--------------------------------|---------------------------------|---------------|-------|
| | Existing Areas | New Areas | Total | Existing Extensions | Existing Buildings | + New Additions+Existing Parts | Additions to Licensed Buildings | New Buildings | Total |
| Jericho and Al Aghwar | | | | | | | | | |
| Complete Dwellings | 0.0 | 5.8 | 5.8 | 0 | 0 | 0 | 5 | 19 | 24 |
| Extension of Rooms | 0.0 | 0.2 | 0.2 | 0 | 0 | 0 | 1 | 1 | 2 |
| Other Extensions | 0.0 | 0.0 | 0.0 | 0 | 0 | 0 | 0 | 0 | 0 |
| Other | 0.0 | 0.0 | 0.0 | 0 | 0 | 0 | 0 | 0 | 0 |
| Jerusalem | | | | | | | | | |
| Complete Dwellings | 1.6 | 4.9 | 6.5 | 0 | 3 | 0 | 0 | 11 | 14 |
| Extension of Rooms | 0.0 | 0.0 | 0.0 | 0 | 0 | 0 | 0 | 0 | 0 |
| Other Extensions | 0.0 | 0.0 | 0.0 | 0 | 0 | 0 | 0 | 0 | 0 |
| Other | 0.0 | 0.0 | 0.0 | 0 | 0 | 0 | 0 | 0 | 0 |
| Bethlehem | | | | | | | | | |
| Complete Dwellings | 3.9 | 21.3 | 25.2 | 0 | 10 | 0 | 14 | 56 | 80 |
| Extension of Rooms | 0.0 | 0.1 | 0.1 | 0 | 0 | 0 | 0 | 1 | 1 |
| Other Extensions | 0.0 | 0.0 | 0.0 | 0 | 0 | 0 | 0 | 0 | 0 |
| Other | 0.0 | 0.0 | 0.0 | 0 | 0 | 0 | 0 | 0 | 0 |
| Hebron | | | | | | | | | |
| Complete Dwellings | 53.0 | 32.8 | 85.8 | 0 | 163 | 0 | 5 | 96 | 264 |
| Extension of Rooms | 0.0 | 0.0 | 0.0 | 0 | 0 | 0 | 0 | 0 | 0 |
| Other Extensions | 0.0 | 0.1 | 0.1 | 0 | 0 | 0 | 0 | 1 | 1 |
| Other | 0.0 | 0.0 | 0.0 | 0 | 0 | 0 | 0 | 0 | 0 |

* Doesn't include those parts of Jerusalem Governorate which were annexed by Israel in 1967

.1967

*

2010

-

*

:10

Table 10: Buildings Licenses Issued in the West Bank* for Non-Residential Buildings by Utilization and Governorate - First Quarter 2010

| Governorate & Utilization | Stores | | Licensed Areas (1000 m ²) | | | Number of Issued Licenses | | | | | |
|---------------------------|--|-----|---------------------------------------|-----------|-------|---------------------------|--------------------|---------------------------------|---------------------------------|---------------|-------|
| | (² 1000) Area (1000 m ²) | No. | Existing Areas | New Areas | Total | Existing Extensions | Existing Buildings | + New Additions +Existing Parts | Additions to Licensed Buildings | New Buildings | Total |
| All Governorates | | | | | | | | | | | |
| Industrial | 2.2 | 24 | 1.6 | 4.3 | 6.0 | 0 | 1 | 0 | 0 | 4 | 5 |
| Commercial | 55.3 | 321 | 15.5 | 41.1 | 56.6 | 0 | 22 | 0 | 22 | 62 | 106 |
| Educational | 2.8 | 0 | 1.5 | 21.8 | 23.3 | 0 | 2 | 0 | 1 | 15 | 18 |
| Health | 0.0 | 0 | 0.0 | 2.9 | 2.9 | 0 | 0 | 0 | 2 | 2 | 4 |
| Other | 1.6 | 5 | 2.7 | 26.6 | 29.3 | 1 | 5 | 1 | 23 | 35 | 65 |
| Jenin | | | | | | | | | | | |
| Industrial | 0.0 | 0 | 0.0 | 0.7 | 0.7 | 0 | 0 | 0 | 0 | 1 | 1 |
| Commercial | 1.3 | 18 | 0.0 | 1.7 | 1.7 | 0 | 0 | 0 | 1 | 4 | 5 |
| Educational | 0.0 | 0 | 0.0 | 1.3 | 1.3 | 0 | 0 | 0 | 0 | 2 | 2 |
| Health | 0.0 | 0 | 0.0 | 0.0 | 0.0 | 0 | 0 | 0 | 0 | 0 | 0 |
| Other | 0.0 | 0.0 | 0.6 | 4.9 | 5.5 | 0 | 1 | 0 | 1 | 7 | 9 |
| Tubas | | | | | | | | | | | |
| Industrial | 0.0 | 0 | 0.0 | 0.0 | 0.0 | 0 | 0 | 0 | 0 | 0 | 0 |
| Commercial | 0.6 | 14 | 0.1 | 0.5 | 0.6 | 0 | 1 | 0 | 0 | 5 | 6 |
| Educational | 0.0 | 0 | 0.0 | 2.6 | 2.6 | 0 | 0 | 0 | 0 | 1 | 1 |
| Health | 0.0 | 0 | 0.0 | 0.5 | 0.5 | 0 | 0 | 0 | 1 | 0 | 1 |
| Other | 0.0 | 0 | 0.0 | 0.9 | 0.9 | 0 | 0 | 0 | 0 | 1 | 1 |

* Doesn't include those parts of Jerusalem Governorate which were annexed by Israel in 1967

.1967

*

2010

-

*

:() 10

Table 10 (Cont.): Buildings Licenses Issued in the West Bank* for Non-Residential Buildings by Utilization and Governorate - First Quarter 2010

| Governorate & Utilization | Stores | | Licensed Areas (1000 m ²) | | | Number of Issued Licenses | | | | | |
|---------------------------|-----------------------------|-----|---------------------------------------|-----------|-------|---------------------------|--------------------|--------------------------------|---------------------------------|---------------|-------|
| | Area (1000 m ²) | No. | Existing Areas | New Areas | Total | Existing Extensions | Existing Buildings | New Additions + Existing Parts | Additions to Licensed Buildings | New Buildings | Total |
| Tulkarm | | | | | | | | | | | |
| Industrial | 1.6 | 3 | 1.6 | 0.0 | 1.6 | 0 | 1 | 0 | 0 | 0 | 1 |
| Commercial | 1.9 | 18 | 0.0 | 2.9 | 2.9 | 0 | 0 | 0 | 2 | 3 | 5 |
| Educational | 0.0 | 0 | 0.0 | 2.2 | 2.2 | 0 | 0 | 0 | 0 | 1 | 1 |
| Health | 0.0 | 0 | 0.0 | 0.0 | 0.0 | 0 | 0 | 0 | 0 | 0 | 0 |
| Other | 0.0 | 0 | 0.2 | 0.6 | 0.8 | 0 | 1 | 0 | 0 | 2 | 3 |
| Nablus | | | | | | | | | | | |
| Industrial | 0.6 | 21 | 0.0 | 1.6 | 1.6 | 0 | 0 | 0 | 0 | 2 | 2 |
| Commercial | 8.7 | 69 | 0.5 | 9.2 | 9.7 | 0 | 2 | 0 | 14 | 12 | 28 |
| Educational | 0.0 | 0 | 0.0 | 5.5 | 5.5 | 0 | 0 | 0 | 0 | 3 | 3 |
| Health | 0.0 | 0 | 0.0 | 0.3 | 0.3 | 0 | 0 | 0 | 1 | 0 | 1 |
| Other | 0.1 | 1 | 1.6 | 13.3 | 14.9 | 0 | 3 | 1 | 18 | 14 | 36 |
| Qalqilya | | | | | | | | | | | |
| Industrial | 0.0 | 0 | 0.0 | 0.0 | 0.0 | 0 | 0 | 0 | 0 | 0 | 0 |
| Commercial | 1.1 | 6 | 0.0 | 1.1 | 1.1 | 0 | 0 | 0 | 1 | 3 | 4 |
| Educational | 0.0 | 0 | 0.0 | 2.1 | 2.1 | 0 | 0 | 0 | 1 | 1 | 2 |
| Health | 0.0 | 0 | 0.0 | 0.0 | 0.0 | 0 | 0 | 0 | 0 | 0 | 0 |
| Other | 0.0 | 0 | 0.0 | 0.3 | 0.3 | 0 | 0 | 0 | 0 | 1 | 1 |

* Doesn't include those parts of Jerusalem Governorate which were annexed by Israel in 1967

.1967

*

2010

-

*

:() 10

Table 10 (Cont.): Buildings Licenses Issued in the West Bank* for Non-Residential Buildings by Utilization and Governorate - First Quarter 2010

| Governorate & Utilization | Stores | | Licensed Areas (1000 m ²) | | | Number of Issued Licenses | | | | | |
|------------------------------|-----------------------------|-----|---------------------------------------|-----------|-------|---------------------------|--------------------|--------------------------------|---------------------------------|---------------|-------|
| | Area (1000 m ²) | No. | Existing Areas | New Areas | Total | Existing Extensions | Existing Buildings | New Additions + Existing Parts | Additions to Licensed Buildings | New Buildings | Total |
| Salfit | | | | | | | | | | | |
| Industrial | 0.0 | 0 | 0.0 | 0.0 | 0.0 | 0 | 0 | 0 | 0 | 0 | 0 |
| Commercial | 1.7 | 22 | 0.4 | 1.8 | 2.3 | 0 | 3 | 0 | 0 | 5 | 8 |
| Educational | 0.0 | 0 | 0.0 | 0.0 | 0.0 | 0 | 0 | 0 | 0 | 0 | 0 |
| Health | 0.0 | 0 | 0.0 | 0.0 | 0.0 | 0 | 0 | 0 | 0 | 0 | 0 |
| Other | 0.0 | 0 | 0.0 | 0.0 | 0.0 | 0 | 0 | 0 | 0 | 1 | 1 |
| Ramallah and Al-Bireh | | | | | | | | | | | |
| Industrial | 0.0 | 0 | 0.0 | 2.1 | 2.1 | 0 | 0 | 0 | 0 | 1 | 1 |
| Commercial | 19.9 | 130 | 8.8 | 15.6 | 24.4 | 0 | 7 | 0 | 2 | 14 | 23 |
| Educational | 0.0 | 0 | 0.0 | 0.0 | 0.0 | 0 | 0 | 0 | 0 | 0 | 0 |
| Health | 0.0 | 0 | 0.0 | 0.0 | 0.0 | 0 | 0 | 0 | 0 | 0 | 0 |
| Other | 0.1 | 1 | 0.0 | 1.2 | 1.2 | 0 | 0 | 0 | 1 | 2 | 3 |
| Jericho and Al Aghwar | | | | | | | | | | | |
| Industrial | 0.0 | 0 | 0.0 | 0.0 | 0.0 | 0 | 0 | 0 | 0 | 0 | 0 |
| Commercial | 0.2 | 3 | 0.0 | 0.1 | 0.1 | 0 | 0 | 0 | 1 | 1 | 2 |
| Educational | 0.0 | 0 | 0.0 | 0.0 | 0.0 | 0 | 0 | 0 | 0 | 0 | 0 |
| Health | 0.0 | 0 | 0.0 | 0.0 | 0.0 | 0 | 0 | 0 | 0 | 0 | 0 |
| Other | 0.0 | 0 | 0.3 | 0.0 | 0.3 | 1 | 0 | 0 | 0 | 0 | 1 |

* Doesn't include those parts of Jerusalem Governorate which were annexed by Israel in 1967

.1967

*

2010

-

*

:() 10

Table 10 (Cont.): Buildings Licenses Issued in the West Bank* for Non-Residential Buildings by Utilization and Governorate - First Quarter 2010

| Governorate & Utilization | Stores | | Licensed Areas (1000 m ²) | | | Number of Issued Licenses | | | | | |
|---------------------------|-----------------------------|------|---------------------------------------|-----------|-------|---------------------------|--------------------|--------------------------------|---------------------------------|---------------|-------|
| | Area (1000 m ²) | No. | Existing Areas | New Areas | Total | Existing Extensions | Existing Buildings | New Additions + Existing Parts | Additions to Licensed Buildings | New Buildings | Total |
| Jerusalem | | | | | | | | | | | |
| Industrial | 0.0 | 0.0 | 0.0 | 0.0 | 0.0 | 0 | 0 | 0 | 0 | 0 | 0 |
| Commercial | 1.2 | 15.0 | 0.8 | 0.4 | 1.2 | 0 | 1 | 0 | 0 | 1 | 2 |
| Educational | 0.0 | 0.0 | 1.0 | 1.6 | 2.5 | 0 | 1 | 0 | 0 | 1 | 2 |
| Health | 0.0 | 0.0 | 0.0 | 0.0 | 0.0 | 0 | 0 | 0 | 0 | 0 | 0 |
| Other | 0.0 | 0.0 | 0.0 | 0.0 | 0.0 | 0 | 0 | 0 | 0 | 0 | 0 |
| Bethlehem | | | | | | | | | | | |
| Industrial | 0.0 | 0.0 | 0.0 | 0.0 | 0.0 | 0 | 0 | 0 | 0 | 0 | 0 |
| Commercial | 1.3 | 4.0 | 0.2 | 1.1 | 1.3 | 0 | 1 | 0 | 1 | 4 | 6 |
| Educational | 2.2 | 0.0 | 0.0 | 4.9 | 4.9 | 0 | 0 | 0 | 0 | 5 | 5 |
| Health | 0.0 | 0.0 | 0.0 | 0.0 | 0.0 | 0 | 0 | 0 | 0 | 0 | 0 |
| Other | 0.4 | 3.0 | 0.0 | 3.4 | 3.4 | 0 | 0 | 0 | 3 | 4 | 7 |
| Hebron | | | | | | | | | | | |
| Industrial | 0.0 | 0.0 | 0.0 | 0.0 | 0.0 | 0 | 0 | 0 | 0 | 0 | 0 |
| Commercial | 17.2 | 22.0 | 4.7 | 6.7 | 11.4 | 0 | 7 | 0 | 0 | 10 | 17 |
| Educational | 0.5 | 0.0 | 0.5 | 1.6 | 2.2 | 0 | 1 | 0 | 0 | 1 | 2 |
| Health | 0.0 | 0.0 | 0.0 | 2.1 | 2.1 | 0 | 0 | 0 | 0 | 2 | 2 |
| Other | 1.1 | 0.0 | 0.0 | 1.9 | 1.9 | 0 | 0 | 0 | 0 | 3 | 3 |

* Doesn't include those parts of Jerusalem Governorate which were annexed by Israel in 1967

.1967

*

2010

-

*

:11

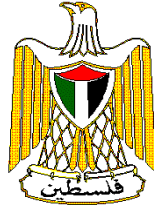
Table 11: Buildings Licenses Issued in the West Bank* for Boundary Walls Only by Governorate - First Quarter 2010

| Governorate | Existing and Existing Additions | | New and New Additions | | |
|-------------------------|----------------------------------|----------|----------------------------------|-----------|--|
| | (.) Total Length (1000 m.r) | Number | (.) Total Length (1000 m.r) | Number | |
| All Governorates | 0.3 | 2 | 4.0 | 50 | |
| Jenin | 0.0 | 0 | 0.1 | 1 | |
| Tulkarm | 0.0 | 0 | 0.7 | 8 | |
| Nablus | 0.1 | 1 | 1.6 | 21 | |
| Qalqilya | 0.0 | 0 | 0.1 | 2 | |
| Ramallah and Al-Bireh | 0.0 | 0 | 0.6 | 4 | |
| Jericho and Al Aghwar | 0.0 | 0 | 0.2 | 3 | |
| Bethlehem | 0.0 | 0 | 0.5 | 10 | |
| Hebron | 0.2 | 1 | 0.1 | 1 | |

* Doesn't include those parts of Jerusalem Governorate which were annexed by Israel in 1967

.1967

*



**Palestinian National Authority
Palestinian Central Bureau of Statistics**

**Building Licenses Statistics
First Quarter, 2010**

**Volume 15, Issue No. 1
May, 2010**

PAGE NUMBERS OF ENGLISH TEXT ARE PRINTED IN SQUARE BRACKETS.
TABLES ARE PRINTED IN THE ARABIC ORDER (FROM RIGHT TO LEFT)

**This document is prepared in accordance with the standard
procedures stated in the Code of Practice for Palestine's
Official Statistics 2006**

© May, 2010
All rights reserved.

Suggested Citation:

Palestinian Central Bureau of Statistics, 2010. *Building Licenses Statistics– First Quarter 2010*, Ramallah - Palestine.

All correspondence should be directed to:
**Palestinian Central Bureau of Statistics
P.O.Box 1647, Ramallah, Palestine.**

Tel: (972/970) 2 2982700

Fax: (972/970) 2 2982710

E-Mail : diwan@pcbs.gov.ps

web-site: <http://www.pcbs.gov.ps>

Acknowledgment

The Palestinian Central Bureau of Statistics (PCBS) would like to thank the Ministry of Local Government and Municipal Affairs, all municipalities, and rural councils and construction authorities for their cooperation in providing PCBS with the requested data.

The funding of the Building Licenses Statistics (First Quarter 2010) was provided by the Palestinian National Authority (PNA), and the Core Funding Group (CFG) for 2009. CFG members include the Representative Office of Norway to the PNA and the Swiss Agency for Development and Cooperation (SDC).

PCBS extends its gratitude to the members of the CFG for their support.

Important Note

- It should be noted that obtaining data from Gaza Strip was not possible for the report of Building Licenses Q1 of 2010.
- Data for the West Bank does not include those parts of Jerusalem Governorate, which were annexed by Israel in 1967.

Project Team

- **Report Preparation**

Jamil Rimawi
Niveen Al-sarraj
Ayman Qunier

- **Dissemination Standards**

Hanan Janajreh

- **Preliminary Review**

Ibrahim Al-Tarsha
Saleh Al-Kafri
Mahmoud Al-Qayya

- **Final Review & Overall Supervision**

Mahmoud Jaradat
Ola Awad

Acting President

Preface

Construction is considered one of the important economic activities in the Palestinian economy. It contributes substantially to the Gross Domestic Product, recruits a large share of employees, and directly influences several other economic activities. Building construction in particular represents one of the major construction activities.

It has been necessary for PCBS to establish a statistical database that covers several aspects of construction activities in order to accommodate the different needs of users. The annual economic surveys series conducted by PCBS as of 1994 includes a survey for construction contractors. PCBS had also conducted the annual Existing Buildings Survey starting from the reference year 1996.

PCBS is pleased to present this report of Building Licenses Statistics, which provides statistical data on the size and characteristics of licensed buildings in the West Bank for the First Quarter 2010. However, data for Gaza Strip was not available.

Statistical data is currently collected through filling the designated form from the administrative records of the different official licenses issuing authorities. This has been initiated on a quarterly basis since the First Quarter of 1996.

Publication of building licenses statistics will be pursued in the following years. PCBS hopes that the means by which these data are archived by the issuing authorities will be developed, in the foreseeable future, in a manner that would reduce the cost and time needed for preparing these statistics.

May, 2010

**Ola Awad
Acting President**

Table of Contents

| Subject | Page |
|-------------------|-------------|
| List of Tables | |
| List of Figures | |
| Executive Summary | |
| 1. Introduction | [19] |
| 2. Objectives | [19] |
| 3. Definitions | [19] |
| 4. Main Findings | [20] |
| 5. Data Quality | [22] |
| Tables | 35 |

List of Tables

| Table | Page |
|---|-------------|
| Table 1: Buildings Licenses Issued in the West Bank and Gaza Strip During the Period 1999- First Quarter 2010 | 37 |
| Table 2: Buildings Licenses Issued in the West Bank by Building Ownership and Utilization - First Quarter 2010 | 38 |
| Table 3: Buildings Licenses Issued in the West Bank by Issuing Authority and Utilization- First Quarter 2010 | 40 |
| Table 4: Buildings Licenses Issued in the West Bank for New Buildings by Category of Licensed Area and Governorate- First Quarter 2010 | 41 |
| Table 5: Buildings Licenses Issued in the West Bank for New Buildings by Construction Material of External Walls and Governorate- First Quarter 2010 | 45 |
| Table 6: Buildings Licenses Issued in the West Bank for New Additions to Licensed Existing Buildings by Construction Material of External Walls and Governorate- First Quarter 2010 | 48 |
| Table 7: Buildings Licenses Issued in the West Bank for New Additions and Existing Parts to Unlicensed Existing Buildings by Construction Material of External Walls and Governorate– First Quarter 2010 | 51 |
| Table 8: Buildings Licenses Issued in the West Bank for Existing Buildings and Extensions by Construction Material of External Walls and Governorate- First Quarter 2010 | 52 |
| Table 9: Buildings Licenses Issued in the West Bank for Residential Buildings by Status of Licensed Building and Governorate- First Quarter 2010 | 55 |
| Table 10: Buildings Licenses Issued in the West Bank for Non-Residential Buildings by Utilization and Governorate- First Quarter 2010 | 58 |
| Table 11: Buildings Licenses Issued in the West Bank for Boundary Walls Only by Governorate- First Quarter 2010 | 62 |

List of Figures

| Figure | Page |
|--|-------------|
| Figure 1: Number of Building Licenses Issued in the West Bank for the First Quarters of the Period 2007 – 2010 | [21] |
| Figure 2: Number of Building Licenses and Number of Dwellings for New Residential Buildings in the West Bank by Licensed Area During the First Quarter 2010 | [22] |

Executive Summary

This report covers data in the West Bank for the First Quarter 2010.

The main findings of this quarter are as follows:

1. Number of licenses:

The number of building licenses issued in the First Quarter 2010 totaled 1,528 and was distributed as follows:

- 814 licenses for new buildings.
- 290 licenses for new additions to licensed existing buildings.
- 70 licenses for new additions and existing parts.
- 344 licenses for existing buildings.
- 10 licenses for existing extensions.

2. Licensed areas:

The total area of licensed buildings (residential & non residential) amounted to 531.4 thousand m² distributed as follows:

- The new buildings areas amounted to 408.3 thousand m² of which 311.6 thousand m² are residential and 96.7 thousand m² are non-residential.
- The existing buildings areas amounted to 123.1 thousand m² of which 101.8 thousand m² are residential and 21.3 thousand m² are non-residential.

3. Licensed boundary walls:

52 licenses were issued for walls with total length of 4.3 thousand meters.

4. Number and area of dwellings licensed:

- New dwellings: 1,513 units with a total area of 293.2 thousand m².
- Existing dwellings: 461 units with a total area of 95.4 thousand m².

There was an increase of 25.3% in the total number of issued buildings licenses for the first quarter of 2010 compared with the first quarter of 2009, and also there was an increase by 24.4% in the total number of issued buildings licenses for the first quarter of 2010 compared with the first quarter of 2008.

The results showed that the number of new dwellings in the first quarter 2010 increased by 19.5% compared with the same quarter of 2009. On the other hand, there was a decrease of 18.2% in the number of new dwellings when the First quarter of 2010 was compared with the same quarter of 2008.

1. Introduction:

Construction is considered an important economic activity, particularly in countries undergoing economic development. This activity plays a vital role in the Palestinian economy and is significantly interrelated to other economic activities. PCBS is committed to compiling statistical data on all aspects of construction activities in order to measure the main relevant variables.

Administrative record statistics shed light on the size and type of building licenses issued by the designated authorities. Building licenses statistics are compiled by most countries. In addition to its own importance, buildings licenses statistics constitute the sampling frame for other surveys that aim to identify the actual buildings constructed with issued licenses, estimation of construction costs and obtaining data on the technical characteristics of these buildings.

2. Objectives:

These statistics provide data on the number of building licenses, licensed buildings areas, number and area of licensed dwellings and stores considering the following variables:

- Issuing authorities.
- Geographic location.
- Status of the buildings to be licensed (new, existing, new or existing additions, etc.).
- Building ownership (private, governmental, local authorities, cooperative, etc.).
- Utilization of the building (residential, non-residential: industrial, commercial, educational, etc.).
- Major external construction material (stone, concrete, block, etc.).

3. Definitions:

3.1 Statistical Unit:

The license issued by any authorized authority. The issuing authorities are the reporting units for these administrative records statistics.

3.2 Building Ownership:

1. Private.
2. Governmental.
3. Local Authority.
4. Cooperative.
5. Charitable Organization.
6. Other, e.g., religious groups, UNRWA, etc.

3.3 Status of the building to be licensed:

1. New, when the building site is entirely vacant.
2. Addition to an already existing licensed building - either a vertical or horizontal addition.
3. Addition to non-licensed existing building (or part of a building) that needs licensing.
4. Existing building.
5. Existing extension.

3.4 Building Utilization:

1. Residential: The building is considered residential if more than half of its total area is prepared for residential purposes. The building could consist of:
 - Complete dwellings.

- Rooms added to the dwellings.
 - Extension of other facilities, e.g., kitchen, bathroom, cesspool, garage.
2. Non-Residential: industrial, commercial, educational, etc.
 3. The boundary wall: in cases when the boundary wall undergoes separate licensing. If the building license includes the wall, then it is not included here.

3.5 Dwelling:

A building or a part of a building constructed for one household only, with one or more independent entrance leading to the public road without passing through another housing unit.

4. Main Findings

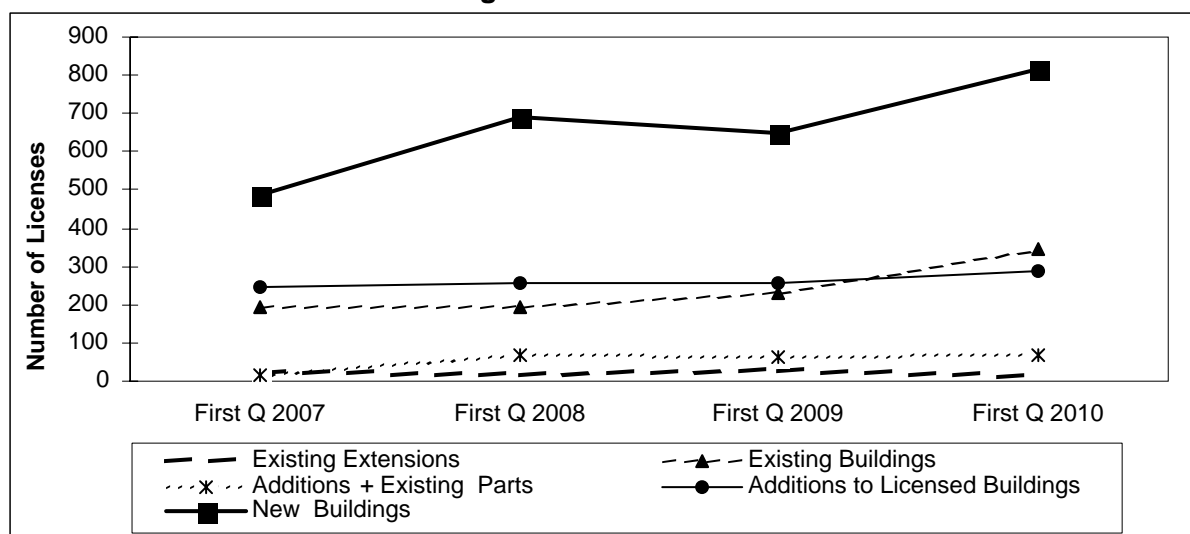
1. Number of licenses: The following table shows comparison between the number of buildings licenses for the First Quarter 2010 in the West Bank with the same period for the years 2008-2009:

| Indicator | No. of issued Licenses* | | | % Change in Q1 2010 from Q1 2008 | % Change in Q1 2010 from Q1 2009 |
|---|-------------------------|--------------|--------------|----------------------------------|----------------------------------|
| | Q1 2008 | Q1 2009 | Q1 2010 | | |
| Licenses for new buildings. | 690 | 649 | 814 | 18.0 | 25.4 |
| Licenses for additions to licensed buildings. | 259 | 254 | 290 | 12.0 | 14.2 |
| Licenses for additions + existing parts. | 70 | 63 | 70 | 0.0 | 11.1 |
| Licenses for existing buildings. | 191 | 229 | 344 | 80.1 | 50.2 |
| Licenses for existing extensions | 18 | 24 | 10 | -44.4 | -58.3 |
| Total | 1,228 | 1,219 | 1,528 | 24.4 | 25.3 |

*Excluding boundary wall licenses

There was a 25.3% increase in the total number of issued building licenses in the First Quarter 2010 as compared with the First Quarter 2009, and also the total number of issued building licenses increased by 24.4% in the First Quarter 2010 compared to the First Quarter 2008.

Figure 1: Number of Building Licenses Issued in the West Bank for the First Quarters during the Period 2007–2010



2. Licensed areas: The following table shows comparison between the licensed areas for the First Quarter 2010 in the West Bank with the same period for the years 2008-2009.

| Indicator | Licensed Areas (1000 m ²) | | | % Change in Q1 2010 from Q1 2008 | % Change in Q1 2010 from Q1 2009 |
|-----------------------|---------------------------------------|--------------|--------------|----------------------------------|----------------------------------|
| | Q1 2008 | Q1 2009 | Q1 2010 | | |
| Total areas | 530.1 | 469.2 | 531.4 | 0.2 | 13.3 |
| New areas | 423.1 | 361.8 | 408.3 | -3.5 | 12.9 |
| Residential | 318.4 | 261.1 | 311.6 | -2.1 | 19.3 |
| Non-residential | 104.7 | 100.7 | 96.7 | -7.6 | -4.0 |
| Existing areas | 107 | 107.4 | 123.1 | 15.0 | 14.6 |
| Residential | 95.7 | 94.8 | 101.8 | 6.4 | 7.4 |
| Non-residential | 11.3 | 12.6 | 21.3 | 88.5 | 69.0 |

3. Licensed boundary walls: The following table shows comparison between the licenses issued for walls for the First Quarter 2010 with the same period for the years 2008-2009:

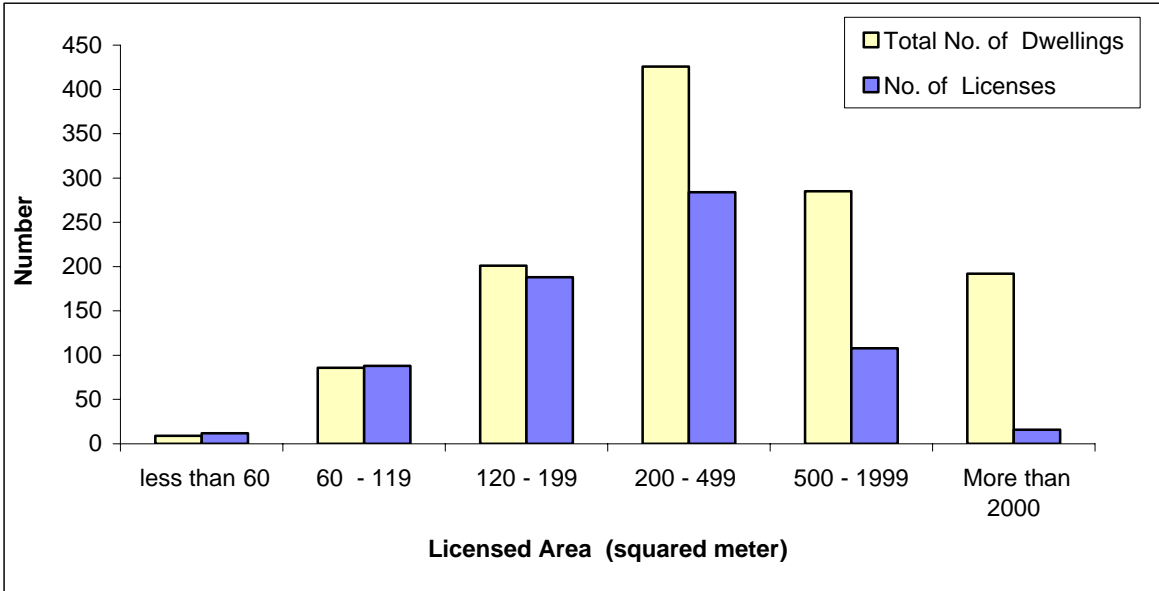
| Indicator | Licensed boundary walls | | | % Change in Q1 2010 from Q1 2008 | % Change in Q1 2010 from Q1 2009 |
|-----------------------------------|-------------------------|---------|---------|----------------------------------|----------------------------------|
| | Q1 2008 | Q1 2009 | Q1 2010 | | |
| Number of Walls licenses | 36 | 36 | 52 | 44.4 | 44.4 |
| Length of Walls licenses (meters) | 2.6 | 2.5 | 4.3 | 65.4 | 72.0 |

4. Number and area of licensed dwellings: The following table shows comparison between the number and total area for the licensed dwellings for the First Quarter 2010 and the same period for the years 2008- 2009:

| Indicator | Number of dwellings and their area | | | % Change in Q1 2010 from Q1 2008 | % Change in Q1 2010 from Q1 2009 |
|--|------------------------------------|---------|---------|----------------------------------|----------------------------------|
| | Q1 2008 | Q1 2009 | Q1 2010 | | |
| Number of new dwellings | 1,850 | 1,266 | 1,513 | -18.2 | 19.5 |
| Area for new dwellings (1000 m ²) | 297.5 | 245.6 | 293.2 | -1.5 | 19.4 |
| Number of existing dwellings | 414 | 261 | 461 | 11.4 | 76.6 |
| Area for existing dwellings (1000 m ²) | 88.3 | 74.3 | 95.4 | 8.0 | 28.4 |

This figure shows the number of licenses and number of dwellings for new residential buildings by licensed area in The West Bank for the First Quarter of 2010:

Figure 2: Number of Building Licenses and Number of Dwellings for New Residential Buildings in the West Bank by Licensed Area During the First Quarter 2010



5. Data Quality

5.1 Accuracy of the Data

5.1.1 Statistical Errors

The survey was implemented on the basis of a comprehensive census for all studied statistical units (Licenses); therefore this survey was free of statistical (sampling) errors.

5.1.2 Non-Statistical Errors

Non-statistical errors are probable in all stages of the project, during data collection or processing. In this survey non-statistical errors are mostly referred to data entry errors. To avoid errors and reduce their effects, great efforts were made to train data entry staff on the data entry program that was tested before starting the actual data entry process. The data entry program was prepared before data collection to check its readiness. A set of validation rules was applied to the program for checking consistency of data. Periodic data files were received by project management for checking accuracy and consistency of data.

5.2 Comparison of the Data

Comparison exercises were done with surveys of Building Licenses for the same quarter in previous years, and the results reveal fluctuation with previous survey data.

5.3 Technical Notes

There are important technical notes which should be taken into consideration when reviewing this report, which are as follows:

- Tables exclude building licenses for those parts of Jerusalem which were annexed by Israel in 1967
- It may be noticed that the details of the value of some indicators may not add up to their total, due to rounding calculations.
- Data were not available for the Gaza Strip.