

(2010)

2010 /

.2010 - 1431 ©

(2010)

.2010

- 1647 . .

(+970/972) 2 2982700 :

(+970/972) 2 2982710 :

diwan@pcbs.gov.ps :

<http://www.pcbs.gov.ps> :

(2010)
(PNA)

2010 (CFG)
. (SDC)

(CFG)

•

•

•

•

•

2009

1996

:

.2009

2008 2006 2005 1998

2007 2002

2005

2004

.2010

2010

15		:
17		:
19		:
19	2009	1.3
19	2010	2.3
20	2010	3.3
20	2010	4.3
22	2010	5.3
23		

25	2010		:1
26			:2
		2010	
26	2010		:3
27			:4
		2010	
28	2010		:5
30	2010		:6
32		(/)	:7
		2010	
19	2010		:1
20	(2010 - 2000)		:2
21	2010		:3
21	2010		:4

1996

.2010

.2001

.

:

:

.

:

:

()

:

:

:()

./

:

:()

()

:()

()

()

:

:

:

:

:

:

2010

4,800

2010

94

10,118

2010

1.3

363

166

7 :

2,038

994

25 :

3,165

1,452

29 :

4,016

1,867

25 :

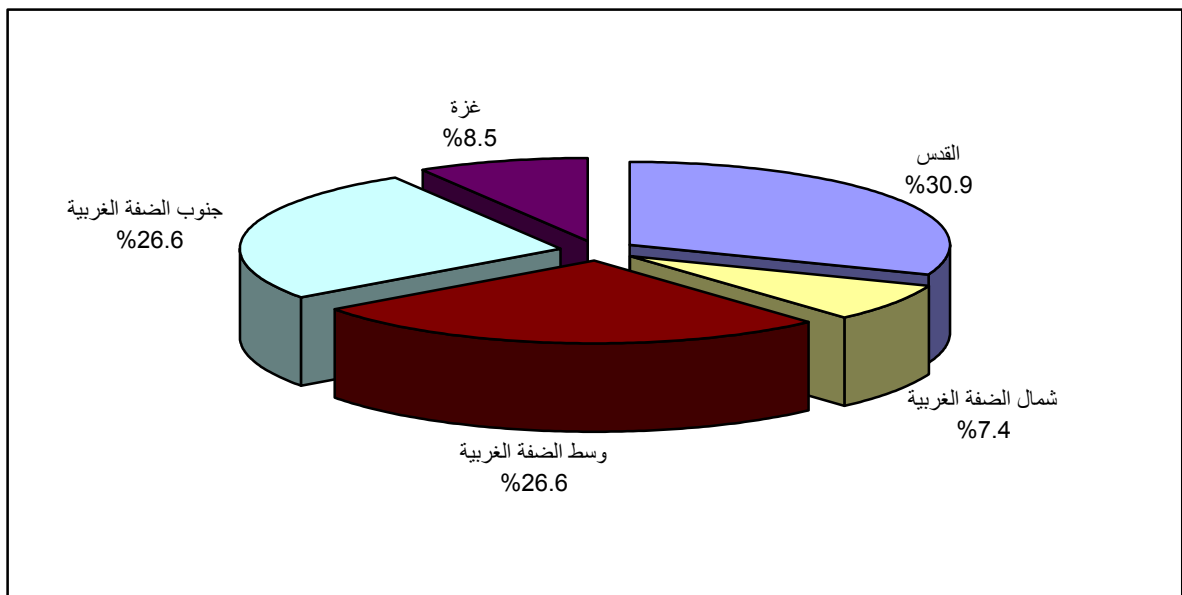
536

321

8 :

2010

(1)



2010

2.3

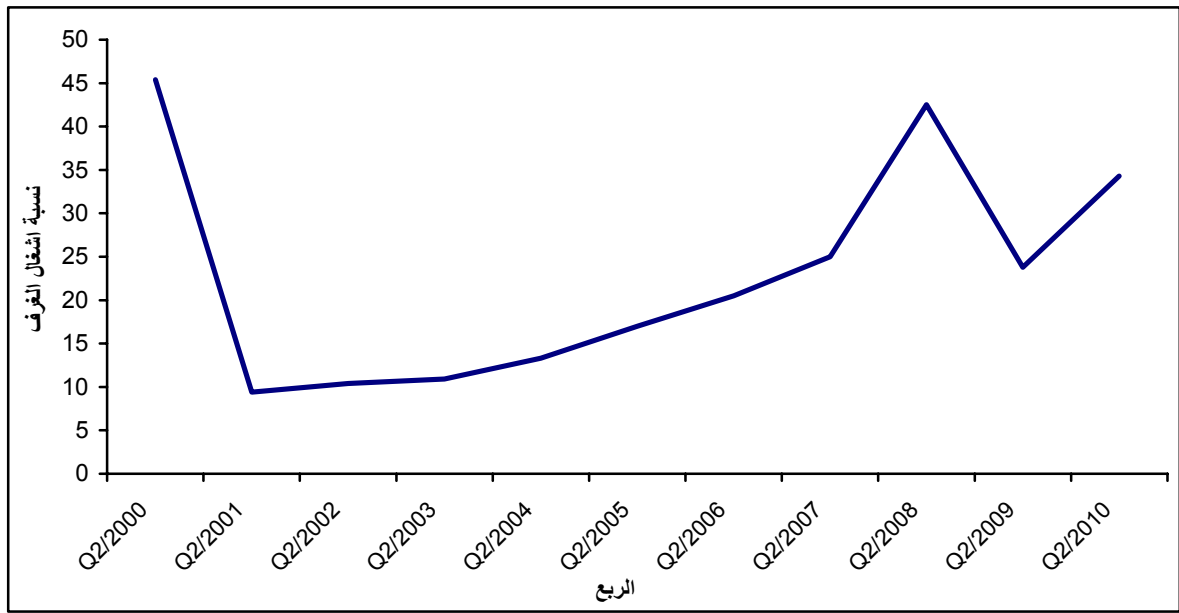
%34.3

1,648.0

2001

(2010 - 2000)

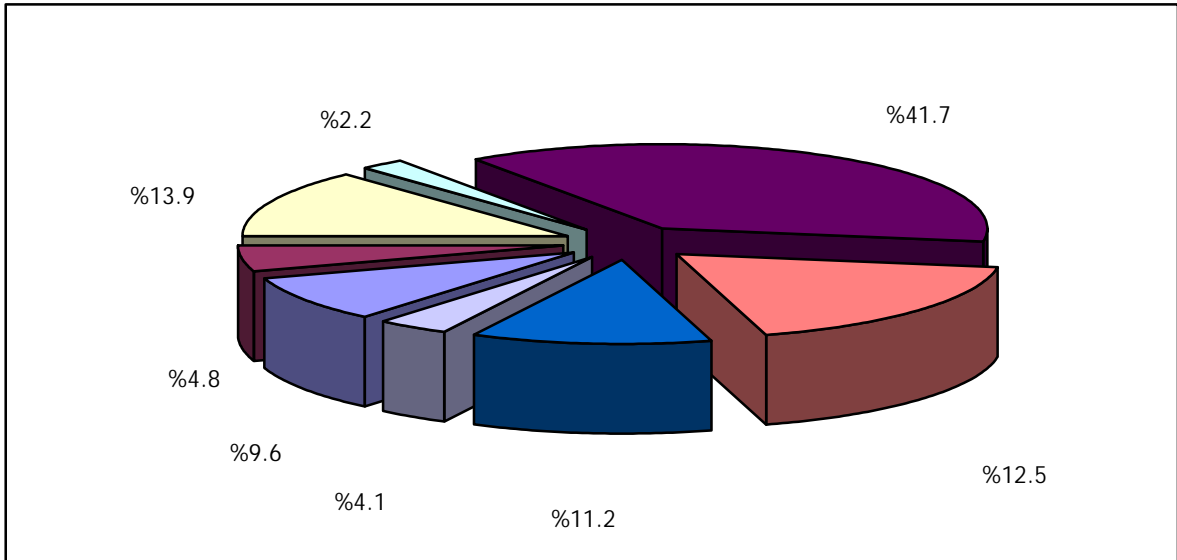
:(2)



				2010		3.3
		250	1,457	1,707		
.	188	1,211	1,399	62	246	308
				2010		4.3
%9.6	140,009		2010			
	2009				%41.7	
13.7	(2010)		%42.3		
						.%
			%46.0			
%2.1				%16.3	%35.4	
						%0.2

2010

:(3)



2010

318,371

%44.1

%9.1

%.12.9

%32.7

2009

%11.8

.(2010)

%16.0

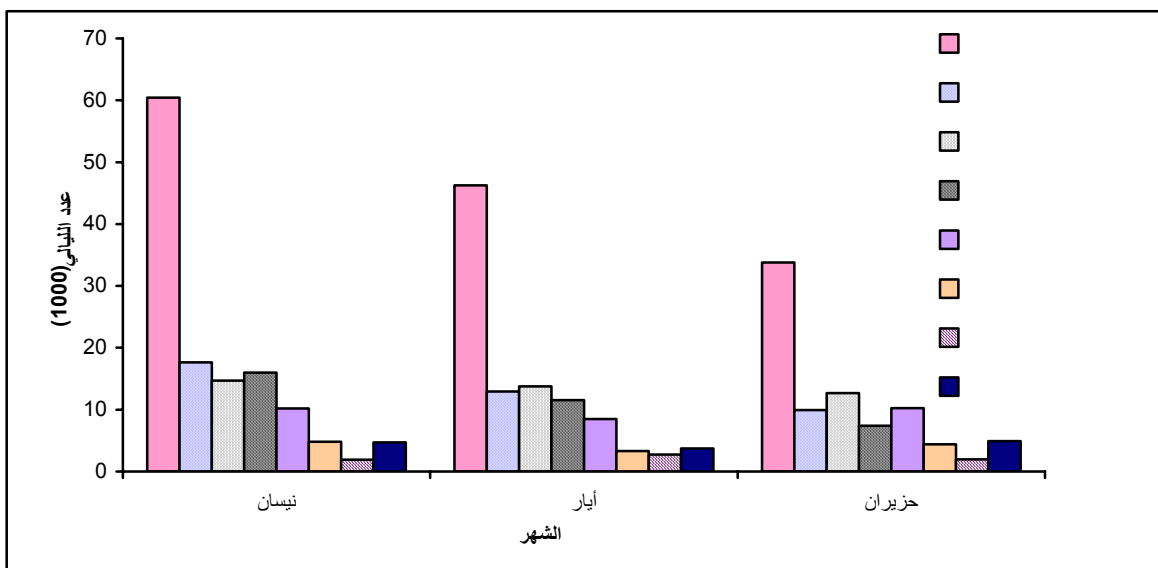
%39.2 :

%0.1

%1.6 %43.1

2010

:(4)



2010

5.3

2.3

2.7

2.0

2.5 1.6

1.3

2010

.(2009

)

(2010

)

2009

2010

2009		2010	
(%)			
2009	2010	2010	
3.3	-1.1	94	
14.6	-5.3	1,707	
42.3	13.7	140,009	
32.7	11.8	318,371	
30.2	6.0	1,648.0	
32.7	10.6	3,511.7	
16.3	10.6	34.3	%
18.8	15.2	34.2	%

Tables

2010

:1

Table 1: Main Indicators for Hotel Activities by Month and Region During the Second Quarter, 2010

Region	Month	Bed Occupancy		Room Occupancy		No. of Nights	No. of Guests	No. of Beds	No. of Rooms	No. of Hotels	
		%	Average	%	Average						
Palestinian Territory *		34.2	3,511.7	34.3	1,648.0	318,371	140,009	10,266	4,804	94	*
All Regions	April	41.7	4,358.7	37.1	1,804.6	130,365	55,719	10,463	4,864	94	
	May	32.6	3,325.9	32.9	1,561.5	102,707	45,072	10,216	4,749	94	
	June	28.2	2,856.6	32.9	1,580.7	85,299	39,218	10,118	4,800	94	
North of West Bank	April	19.6	64.2	25.8	37.4	1,827	995	328	145	6	
	May	13.4	48.5	17.6	29.2	1,356	821	363	166	7	
	June	17.1	62.2	19.9	33.1	1,765	1,203	363	166	7	
Middle of West Bank	April	31.4	747.4	50.4	533.9	22,322	11,492	2,379	1,059	25	
	May	21.4	458.9	36.4	338.7	13,671	5,274	2,149	931	25	
	June	24.4	498.0	36.3	360.9	14,841	6,040	2,038	994	25	
Jerusalem	April	38.6	1,234.5	56.5	829.0	36,937	19,157	3,195	1,467	30	
	May	43.3	1,437.4	58.9	909.5	43,023	21,961	3,323	1,544	30	
	June	47.4	1,501.2	71.5	1,037.8	44,937	23,288	3,165	1,452	29	
South of West Bank	April	57.4	2,309.2	21.4	401.4	69,177	24,024	4,025	1,872	25	
	May	38.7	1,486.8	15.7	281.1	44,505	16,896	3,845	1,787	24	
	June	19.7	791.6	7.9	146.7	23,649	8,601	4,016	1,867	25	
Gaza Strip**	April	0.6	3.4	0.9	2.9	102	51	536	321	8	**
	May	0.9	5.1	0.9	3.0	152	120	536	321	8	
	June	0.7	3.6	0.7	2.2	107	86	536	321	8	

*Represents the quarter average except number of guests and number of guest nights which represent the total for the quarter.

** Estimated data.

*

**

2010

:2

Table 2: Number of Hotels and Rooms by Facilities and Region as in June, 2010

Region	Facilities								No. of Rooms	No. of Hotels
	Internet	Telephone	Air Conditioning	Heating	Refrigerator	T.V	Radio	Private Bathroom		
Palestinian Territory	2,367	4,517	4,368	4,418	3,402	4,344	1,154	4,600	4,800	94
North of West Bank	118	129	149	149	149	149	0	149	166	7
Middle of West Bank	724	914	994	942	800	939	104	977	994	25
Jerusalem	488	1,370	1,316	1,377	1,066	1,237	1,025	1,293	1,452	29
South of West Bank	843	1,805	1,654	1,867	1,136	1,746	0	1,867	1,867	25
Gaza Strip	194	299	255	83	251	273	25	314	321	8

2010

:3

Table 3: Number of Hotels by Availability of Public Services and Region as in June, 2010

Region	Public Services											No. of Operating Hotels
	Other	Room Services	Shops	Laundry	Photocopying	Coffee-shop	Typing	Bar	Internet	Fax	Public Telephone	
Palestinian Territory	23	83	18	56	85	53	77	54	70	82	21	94
North of West bank	1	7	1	4	5	4	4	0	3	5	1	7
Middle of West bank	19	25	3	15	23	15	18	8	19	24	4	25
Jerusalem	1	24	2	17	25	20	25	19	20	28	2	29
South of West bank	2	25	7	16	24	13	22	19	25	25	6	25
Gaza Strip	0	2	5	4	8	1	8	8	3	0	8	8

2010

:4

Table 4: Average Number of Workers in Hotels by Type of Work, Sex and Region During the Second Quarter, 2010

Region	Total			Operation			Administration			* No. of Hotels*
	Total	Females	Males	Total	Females	Males	Total	Females	Males	
Palestinian Territory	1,707	250	1,457	1,399	188	1211	308	62	246	94
North of West Bank	66	9	57	45	7	38	21	2	19	7
Middle of West Bank	487	51	436	396	36	360	91	15	76	25
Jerusalem	584	82	502	477	56	421	107	26	81	29
South of West Bank	491	107	384	422	89	333	69	18	51	25
Gaza Strip	79	1	78	59	0	59	20	1	19	8

As in June, 2010

2010

*

2010

:5

Table 5: Number and Percentage of Guests by Nationality and Region During the Second Quarter, 2010

Region	Month	Nationality										No. of Hotels
		U.S.A & Canada		Asia		Israel		Arab Countries		Palestine		
		%	Number	%	Number	%	Number	%	Number	%	Number	
Palestinian Territory		13.9	19428	11.2	15747	4.8	6754	0.3	473	9.6	13454	94
All Regions	April	12.6	7004	13.0	7235	4.5	2495	0.3	163	9.5	5291	94
	May	14.7	6607	11.9	5369	4.5	2046	0.2	104	6.8	3080	94
	June	14.8	5817	8.0	3143	5.6	2213	0.5	206	13.0	5083	94
North of West Bank	April	1.4	14	0.3	3	38.2	380	3.4	34	30.7	305	6
	May	8.2	67	1.0	8	27.3	224	2.7	22	42.6	350	7
	June	6.6	79	0.7	8	35.2	424	1.8	22	47.8	575	7
Middle of West Bank	April	12.6	1445	8.0	917	8.3	949	0.4	48	37.5	4308	25
	May	13.1	689	0.7	38	6.4	336	0.9	46	36.3	1916	25
	June	7.0	423	6.9	419	9.6	578	2.0	119	52.8	3191	25
Jerusalem	April	26.1	5007	8.5	1634	3.4	648	0.0	0	0.0	0	30
	May	22.8	5010	9.3	2032	3.5	769	0.0	0	0.0	0	30
	June	21.6	5026	8.8	2042	3.5	809	0.0	0	0.0	0	29
South of West Bank	April	2.2	538	19.5	4678	2.2	518	0.3	78	2.7	659	25
	May	5.0	841	19.5	3289	4.2	717	0.2	36	4.7	800	24
	June	3.4	289	7.8	673	4.7	402	0.7	64	15.2	1308	25
Gaza Strip	April	0.0	0	6.3	3	0.0	0	6.3	3	37.5	19	8
	May	0.0	0	1.8	2	0.0	0	0.0	0	11.6	14	8
	June	0.0	0	0.9	1	0.0	0	0.9	1	10.1	9	8

2010

:() 5

Table 5 (Cont.): Number and Percentage of Guests by Nationality and Region During the Second Quarter, 2010

Region	Month	Total		Nationality									
				Australia & Newzeland		Africa		Other European Countries		European Union		Central & South America	
		%	العدد Number	%	العدد Number	%	العدد Number	%	العدد Number	%	العدد Number	%	العدد Number
Palestinian Territory		100	140,009	0.8	1,036	2.2	3,030	12.5	17,487	41.7	58,341	3.0	4,259
All Regions	April	100	55,719	0.6	409	1.4	756	12.6	7,028	42.2	23,516	3.3	1,822
	May	100	45,072	1.3	561	2.9	1,317	11.8	5,314	43.2	19,479	2.7	1,195
	June	100	39,218	0.2	67	2.5	957	13.1	5,145	39.1	15,346	3.2	1,242
North of West Bank	April	100	995	0.0	0	0.0	0	0.2	2	25.8	257	0.0	0
	May	100	821	0.0	0	0.0	0	0.0	0	18.1	149	0.1	1
	June	100	1,203	0.1	1	0.0	0	0.0	0	7.5	90	0.3	4
Middle of West Bank	April	100	11,492	0.2	28	0.6	67	6.8	787	17.9	2,062	7.7	881
	May	100	5,274	9.6	510	0.1	5	4.3	228	20.3	1,068	8.3	438
	June	100	6,040	0.1	8	3.0	180	7.1	430	9.5	571	2.0	121
Jerusalem	April	100	19,157	1.4	275	2.8	520	13.4	2,576	39.7	7,597	4.7	900
	May	100	21,961	0.2	50	5.7	1,255	12.9	2,830	43.6	9,571	2.0	444
	June	100	23,288	0.2	54	2.9	680	15.1	3,525	46.7	10,872	1.2	280
South of West Bank	April	100	24,024	0.4	104	0.8	169	15.2	3,663	56.5	13,576	0.2	41
	May	100	16,896	0.0	0	0.4	57	13.4	2,256	50.8	8,589	1.8	311
	June	100	8,601	0.0	3	1.2	97	13.8	1,190	43.5	3,739	9.7	836
Gaza Strip	April	100	51	3.1	2	0.0	0	0.0	0	46.8	24	0.0	0
	May	100	120	0.8	1	0.0	0	0.0	0	84.9	102	0.9	1
	June	100	86	0.9	1	0.0	0	0.0	0	86.3	74	0.9	1

2010

:6

Table 6: Number and Percentage of Guest Nights by Nationality and Region During the Second Quarter, 2010

Region	Month	Nationality										No. of Hotels
		U.S.A & Canada		Asia		Israel		Arab Countries		Palestine		
		%	Number	%	Number	%	Number	%	Number	%	Number	
Palestinian Territory		12.9	41106	11.0	34906	3.9	12523	0.6	1892	9.1	28943	12.9
All Region	April	11.3	14673	12.3	15990	3.7	4817	0.5	617	7.8	10216	11.3
	May	13.4	13774	11.2	11518	3.2	3311	0.4	443	8.2	8471	13.4
	June	14.8	12659	8.7	7398	5.2	4395	1.0	832	12.0	10256	14.8
North of West Bank	April	4.0	73	0.3	6	20.9	381	6.7	123	36.0	658	4.0
	May	11.6	157	2.8	38	17.6	239	2.8	38	48.2	653	11.6
	June	5.5	97	2.3	40	24.5	432	3.9	68	52.1	919	5.5
Middle of West Bank	April	14.1	3155	9.2	2055	9.4	2102	1.3	287	38.1	8509	14.1
	May	13.3	1823	3.3	453	4.8	656	2.3	314	47.9	6552	13.3
	June	11.6	1726	8.1	1199	9.2	1371	3.9	585	45.9	6808	11.6
Jerusalem	April	26.1	9631	7.9	2933	3.7	1381	0.0	0	0.0	0	26.1
	May	21.5	9255	10.0	4323	3.6	1566	0.0	0	0.0	0	21.5
	June	22.0	9866	9.2	4134	3.6	1620	0.0	0	0.0	0	22.0
South of West Bank	April	2.6	1814	15.9	10996	1.4	947	0.3	204	1.4	1002	2.6
	May	5.7	2539	15.1	6703	1.9	850	0.2	91	2.8	1236	5.7
	June	4.1	970	8.6	2025	4.1	970	0.8	178	10.6	2506	4.1
Gaza Strip	April	0.0	0	0.0	0	6.2	6	3.1	3	46.2	47	0.0
	May	0.0	0	0.7	1	0.0	0	0.0	0	20.0	30	0.0
	June	0.0	0	0.0	0	1.5	2	0.7	1	21.5	23	0.0

2010

:() 6

Table 6 (Cont.): Number and Percentage of Guest Nights by Nationality and Region During the Second Quarter, 2010

Region	Month	Total		Nationality										الشهر
				& Australia NewZeland		Africa		Other European Countries		European Union		Central & South America		
		%	Number	%	Number	%	Number	%	Number	%	Number	%	Number	
Palestinian Territory		100	318,371	0.7	2,247	2.1	6,656	12.7	40,478	44.1	140,454	2.9	9165	
All Regions	April	100	130,365	0.8	1,202	1.5	1,935	13.5	17,620	46.4	60,428	2.2	2867	
	May	100	102,707	0.9	795	2.7	2,759	12.6	12,934	45.0	46,229	2.4	2472	
	June	100	85,299	0.3	251	2.3	1,962	11.6	9,924	39.6	33,797	4.5	3826	
North of West Bank	April	100	1,827	0.0	0	0.0	0	0.1	2	32.0	584	0.0	0	
	May	100	1,356	0.0	0	0.0	0	0.0	0	16.9	230	0.1	1	
	June	100	1,765	0.1	2	0.0	0	0.0	0	11.4	203	0.2	4	
Middle of West Bank	April	100	22,322	0.7	148	0.7	164	5.2	1,159	17.0	3,780	4.3	963	
	May	100	13,671	5.0	688	0.1	16	1.7	228	17.8	2,417	3.8	524	
	June	100	14,841	0.6	83	2.6	389	4.1	609	12.4	1,834	1.6	237	
Jerusalem	April	100	36,937	1.7	642	3.1	1,154	14.1	5,211	38.6	14,239	4.8	1746	
	May	100	43,023	0.2	106	6.0	2,592	13.6	5,866	42.9	18,401	2.2	914	
	June	100	44,937	0.3	156	2.9	1,324	15.7	7,040	44.9	20,183	1.4	614	
South of West Bank	April	100	69,177	0.6	410	0.9	617	16.3	11,248	60.4	41,781	0.2	158	
	May	100	44,505	0.0	0	0.3	151	15.4	6,840	56.3	25,063	2.3	1032	
	June	100	23,649	0.0	9	1.1	249	9.5	2,275	48.6	11,497	12.6	2970	
Gaza Strip	April	100	102	1.5	2	0.0	0	0.0	0	43.0	44	0.0	0	
	May	100	152	0.7	1	0.0	0	0.0	0	77.9	118	0.7	1	
	June	100	107	0.7	1	0.0	0	0.0	0	74.9	80	0.7	1	

2010

(/)

:7

Table 7: Average Length of Stay for the Guests in Hotels (Night/Guest) by Nationality and Region During the Second Quarter, 2010

Region	Month	Nationality					No. of Hotels		
		U.S.A & Canada	Asia	Israel	Arab Countries	Palestine			
Palestinian Territory		2.1	2.2	1.9	4.0	2.2	94		
All Regions	April	2.1	2.2	1.9	3.8	1.9	94		
	May	2.1	2.1	1.6	4.3	2.8	94		
	June	2.2	2.4	2.0	4.0	2.0	94		
North of West Bank	April	5.2	2.0	1.0	3.6	2.2	6		
	May	2.3	4.8	1.1	1.7	1.9	7		
	June	1.2	5.0	1.0	3.1	1.6	7		
Middle of West Bank	April	2.2	2.2	2.2	6.0	2.0	25		
	May	2.6	11.9	2.0	6.8	3.4	25		
	June	4.1	2.9	2.4	4.9	2.1	25		
Jerusalem	April	1.9	1.8	2.1	0.0	0.0	30		
	May	1.8	2.1	2.0	0.0	0.0	30		
	June	2.0	2.0	2.0	0.0	0.0	29		
South of West Bank	April	3.4	2.4	1.8	2.6	1.5	25		
	May	3.0	2.0	1.2	2.5	1.5	24		
	June	3.4	3.0	2.4	2.8	1.9	25		
Gaza Strip	April	0.0	0.0	0.0	1.0	2.5	8		
	May	0.0	0.5	0.0	0.0	2.2	8		
	June	0.0	0.0	0.0	1.0	2.6	8		

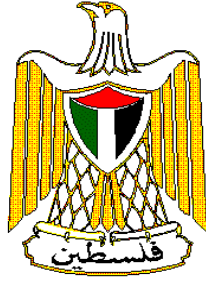
2010

(/)

:() 7

Table 7 (Cont.): Average Length of Stay for the Guests in Hotels (Night/Guest) by Nationality and Region During the Second Quarter, 2010

Region	Month	Total	Nationality						
			Australia & New Zeland	Africa	Other European Count.	European Union	Central & South America		
Palestinian Territory		2.3	2.2	2.2	2.3	2.4	2.2		
All Regions	April	2.3	2.9	2.6	2.5	2.6	1.6		
	May	2.3	1.4	2.1	2.4	2.4	2.1		
	June	2.2	3.8	2.1	1.9	2.2	3.1		
North of West Bank	April	1.8	0.0	0.0	1.0	2.3	0.0		
	May	1.7	0.0	0.0	0.0	1.5	1.0		
	June	1.5	2.0	0.0	0.0	2.3	1.0		
Middle of West Bank	April	1.9	5.3	2.4	1.5	1.8	1.1		
	May	2.6	1.3	3.2	1.0	2.3	1.2		
	June	2.5	10.4	2.2	1.4	3.2	2.0		
Jerusalem	April	1.9	2.3	2.2	2.0	1.9	1.9		
	May	2.0	2.1	2.1	2.1	1.9	2.1		
	June	1.9	2.9	1.9	2.0	1.9	2.2		
South of West Bank	April	2.9	3.9	3.7	3.1	3.1	3.9		
	May	2.6	0.0	2.6	3.0	2.9	3.3		
	June	2.7	3.0	2.6	1.9	3.1	3.6		
Gaza Strip	April	2.0	1.0	0.0	0.0	1.8	0.0		
	May	1.3	1.0	0.0	0.0	1.2	1.0		
	June	1.2	1.0	0.0	0.0	1.1	1.0		



**Palestinian National Authority
Palestinian Central Bureau of Statistics**

**Hotel Activities in the Palestinian Territory
(Second Quarter, 2010)
Executive Summary**

August, 2010

PAGE NUMBERS OF ENGLISH TEXT ARE PRINTED IN SQUARE BRACKETS.
TABLES ARE PRINTED IN THE ARABIC ORDER (FROM RIGHT TO LEFT)

**This document is prepared in accordance with the standard
procedures stated in the Code of Practice for Palestine Official
Statistics 2006**

©August, 2010
All rights reserved.

Suggested Citation:

Palestinian Central Bureau of Statistics, 2010. *Hotel Activities in the Palestinian Territory, (Second Quarter 2010) Executive Summary.* Ramallah - Palestine.

All correspondence should be directed to:

**Palestinian Central Bureau of Statistics
P.O.Box 1647, Ramallah, Palestine.**

Tel: (+972/970) 2 2982700

Fax: (+972/970) 2 2982710

E-Mail :diwan@pcbs.gov.ps

Web-Site: <http://www.pcbs.gov.ps>

Acknowledgments

The Palestinian Central Bureau of Statistics (PCBS) extends its deep appreciations to all Palestinian hotels owners and managers in the Palestinian Territory who contributed to the success of collecting the survey data and to all workers in the survey for being well dedicated in performing their duties.

The survey of Hotel Activities in the Palestinian Territory: Second Quarter 2010 has been planed and conducted by a technical team from PCBS and with joint funding by the Palestinian National Authority (PNA) and the Core Funding Group (CFG) for the year 2010 represented by the by the Representative office of Norway to PNA and the Swiss Development and Cooperation Agency (SDC).

Moreover, PCBS very much appreciates the distinctive efforts of the Core Funding Group (CFG) for their valuable contribution to funding the project.

Project Team

- **Report Preparation**
Fathi Farasin
- **Dissemination Standard**
Hanan Janajreh
- **Preliminary Review**
Fathi Farasin
Mustafa Khawaja
Mahmoud Abdalrahman
Mahmoud Al qayya
- **Final Review**
Mahmoud Jaradat
- **Overall Supervision**
Ola Awad Acting President

Preface

The Palestinian tourism sector has great potential and is expected to occupy a large share of the Palestinian GDP once the tourist resources are well exploited. Tourism activities are, however, crippled by a multiplicity of internal and external factors which are not enabling this important economic activity to flourish.

PCBS has implemented several surveys to cover the supply and demand sides of tourism, including the Hotel Activity survey in the Palestinian Territory, a continuous and permanent survey since 1996, a survey of Tourism Activities 2002 and 2007, and the Domestic Tourism survey for the years 1998, 2005, 2006, 2008 and 2009. In addition, the survey of Outbound Tourism in 2004, a survey of Inbound Tourism in 2005, a survey of Inbound Visitors in 2009 and a survey of Hotel Guests in 2008, 2009 were implemented. These statistical activities cover an important aspect of tourist-related statistics and is an additional step to further implement surveys for tourism. These statistics are important to build the necessary database to establish the Tourism Satellite Accounts (TSA) in the Palestinian Territory.

This report addresses the main indicators of the hotel industry. These indicators include the number of operating hotels, number of rooms and beds, public facilities in the surveyed hotels, number of employed persons in hotels, number of guest nights in the reference period, number of guests by nationality and rates of bed and room occupancy.

PCBS is pleased to present the second issue of the sixteenth volume on “Hotel Activities in the Palestinian Territory” as an important statistical reference on hotel activity. PCBS hopes that this bulletin will pave the way for developing a comprehensive tourist program to meet international standards and users needs.

August, 2010

**Ola Awad
Acting President**

Table of Contents

Subject	Page
List of Tables and Figures	
Executive Summary	
Chapter One: Introduction	[15]
Chapter Two: Concepts and Definitions	[17]
Chapter Three: Main Findings	[19]
3.1 Hotels Capacity during June, 2010	[19]
3.2 Room Occupancy during the Second Quarter, 2010	[19]
3.3 Hotel Workers during the Second Quarter, 2010	[19]
3.4 Guests and Nights' Occupancy during the Second Quarter, 2010	[19]
Tables	23

List of Tables and Figures

Table	Page
Table 1: Main Indicators for Hotel Activities by Month and Region During the Second Quarter, 2010	25
Table 2: Number of Hotels and Rooms by Facilities and Region as of June, 2010	26
Table 3: Number of Hotels by Availability of Public Services and Region as of June, 2010	26
Table 4: Average Number of Workers in Hotels by Type of Work, Sex and Region During the Second Quarter, 2010	27
Table 5: Number and Percentage of Guests by Nationality and Region During the Second Quarter, 2010	28
Table 6: Number and Percentage of Guest Nights by Nationality and Region During the Second Quarter, 2010	30
Table 7: Average Length of Stay for the Guests in Hotels (Night/Guest) by Nationality and Region During the Second Quarter, 2010	32
 Figures	
Figure 1: Percentage Distribution of Guests by Nationality During the Second Quarter, 2010.	[19]

Executive Summary

The main findings of the Hotel Activities Survey during the Second quarter of 2010 are as follows:

- There were 95 operating hotels in June 2010, offering 4,800 rooms with 10,118 total available beds.
- The average occupancy of rooms in the Palestinian hotels was 1,648.0 representing 34.3% from the available rooms.
- The percentage of rooms occupancy was 34.3%; it increased by 10.6% compared with the previous quarter of the year 2009.
- The average number of workers in the hotels was 1,707 of whom 250 were females.
- During the second quarter 2010, the total number of guests to hotels in the Palestinian Territory reached 140,009. The number shows an increase of 42.3% compared with the same quarter of the year 2009.
- The total number of guest nights was 318,371. The number reflects an increase by 11.8% during the second quarter 2010 compared with the previous quarter, and it increased by 32.7% compared with the corresponding quarter in the year 2009.
- Most of the guests nights were in the south of the West Bank and Jerusalem, representing 43.1% of the total guests in the south of the West Bank, whereas 39.2% of the guests were in Jerusalem hotels.
- The average length of stay in Palestinian hotels was 2.3 nights per guest during the second quarter 2010.

Chapter One

Introduction

Tourism is considered a cornerstone of the Palestinian economy and there are many attractive touristic resorts for people of different interests. PCBS began to collect statistical data on tourism and monitor hotel activities through a continuous and comprehensive monthly survey since 1996, in accordance with the recommendations of the World Tourism Organization and European Union. The survey aims to produce a comprehensive database and time series of basic indicators on the hotel industry to enable the development and promotion of the tourism industry in the Palestinian Territory.

A quarterly report is regularly produced in addition to annual consolidated report. This publication presents data on hotels for the second quarter 2010; and results indicate an improvement in most indicators compared with the corresponding quarter since 2001, while it reflects a decrease in most indicators compared with the fourth quarter 2009.

Chapter Two

Concepts and Definitions

This section presents the main concepts and definitions used to derive the main indicators of tourism statistics. These concepts and definitions are based on international recommendations in the field of tourism statistics, and are applied to the rest of the common subjects in the PCBS. The main concepts and definitions mentioned in this report were as follows:

Hotel:

It is defined as an accommodation establishment providing overnight lodging for the visitors in a room or unit. It should hold a number of persons exceeding that of an average single family. The establishment must be under one management, and provides various facilities and services to visitors.

Operating Hotels:

It is defined as the hotels that included in the sample frame and results, excluding the non operating hotels that are carrying out repairs or maintenance, and the hotels which didn't respond to the survey.

Number of Rooms:

It refers to the furnished rooms for the use of guests. Such rooms might be single, double, triple, or quadruple. Rooms involving more than four beds were classified under (others) in the questionnaire. As for the suite, it is usually comprised of one bedroom or more, a living room and private toilet facilities.

Available Beds and Rooms:

It refers to beds and rooms which are ready for use during the reference period. Rooms closed for maintenance or repairs are excluded.

Guests:

It refers to visitors staying in the hotels and using their facilities. Records of new guests are based on the number of visits regardless whether it's the same person or different.

Number of Guest Nights (Bed Occupancy):

Number of beds booked for hotel guests. Such beds are considered as occupied whether they were actually used or not. It is measured by guest night unit.

Room Occupancy:

Number of booked and paid rooms. Such rooms are considered occupied whether they were actually used or not.

Average (rooms, beds) Occupancy:

It is defined as the total number of occupied (rooms, beds) divided by the number of days.

Percentage of (rooms, beds) Occupancy:

It is defined as the average of (rooms, beds) occupancy divided by available (rooms, beds) multiplied by one hundred.

Average Length of Stay:

Represents the total of guest nights by nationality divided by number of guests of the same nationality.

North of West Bank Region:

Jenin, Tulkarm, Nablus, Qalqiliya, Salfit and Tubas governorates.

Middle of West Bank Region:

Ramallah and Al-Bireh, Jericho and Al-Aghwar governorates.

Jerusalem Region:

Jerusalem governorate.

South of West Bank Region:

Bethlehem and Hebron governorates.

Gaza Strip:

North Gaza, Gaza, Deir Al-Balah, Khan Yunis and Rafah governorates.

Main Findings

The main findings of the Hotel Activities Survey during the second quarter of 2010, show that there were 94 operating hotels in June 2010 offering 4,800 rooms with 10,118 total available beds.

3.1 Hotel Capacity during June, 2010

The operating hotels within the Palestinian Territory in the second quarter 2010 were distributed as follows:

- North of West Bank: 7 hotels including 166 rooms comprising 363 beds.
- Middle of West Bank: 25 hotels including 994 rooms comprising 2,038 beds.
- Jerusalem Region: 29 hotels including 1,452 rooms comprising 3,165 beds.
- South of West Bank: 25 hotels including 1,867 rooms comprising 4,016 beds.
- Gaza Strip: 8 hotels including 321 rooms comprising 536 beds.

3.2 Room Occupancy during the Second Quarter, 2010

The average occupancy of rooms in the Palestinian hotels was 1,648.0 representing 34.3% from the available rooms.

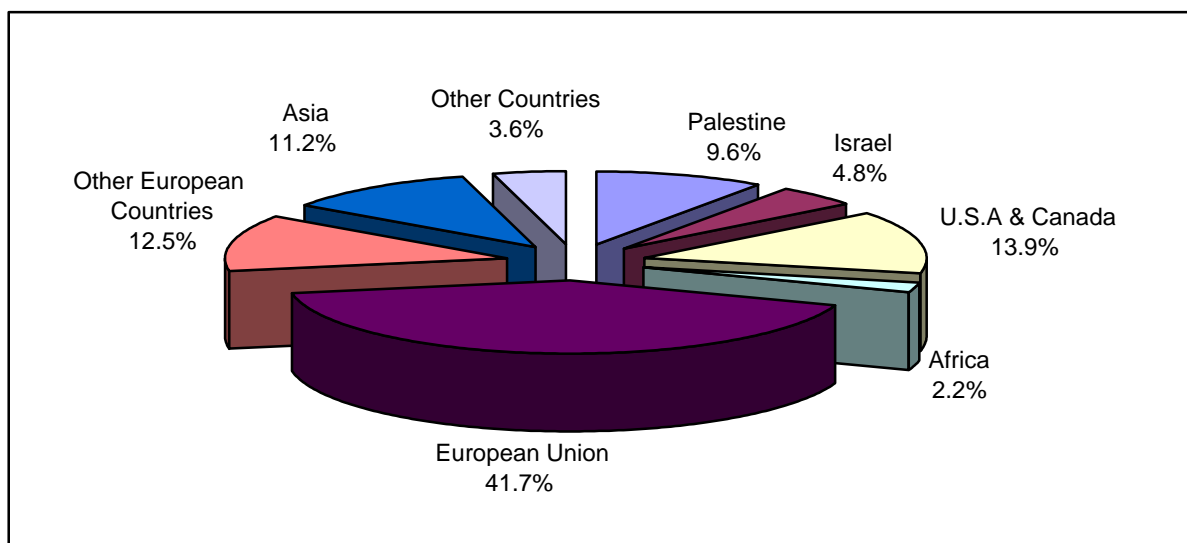
3.3 Hotel Workers during the Second Quarter, 2010

The average number of workers in the hotels was 1,707 of whom 1,457 were males and 250 were females. The number of workers in hotel's administration was 308 of whom 246 were males and 62 were females. There were 1,399 workers in hotels services of whom 1,211 were males and 188 were females.

3.4 Guests and Nights Occupancy during the Second Quarter, 2010

The total number of guests in the Palestinian hotels was 140,009 persons of whom 9.6% were Palestinian guests, and 41.7% were from the European Union countries. The number of guests showed an increase of 42.3% compared with the same quarter of the year 2009.

Figure (1): Percentage Distribution of Guests by Nationality During the Second Quarter, 2010



The total number of guest nights in Palestinian hotels during the second quarter 2010 was 318,371 of which: 9.1% of these nights were occupied by Palestinian guests, 44.1% by guests from European Union countries, and 12.9% by guests from the United States and Canada.

The guest nights distributed according to region are as follows: guests spent 39.2% of total nights in Jerusalem hotels, and 16.0%, 43.1%, and 1.6% in Middle, South, and North of the West Bank, respectively; while 0.1% of nights in Gaza Strip hotels.

The table below presents the main results of the second quarter of 2010, and explains the changes that occurred in the main indicators for Palestinian hotels activities compared with the previous quarter and with the results of the second quarter of 2009.

Percentage Change in the Variables During the Second Quarter 2010, Compared with the Previous and Second Quarter 2009

The Indicator	Value During the 2 nd Quarter 2010	Percentage change (%) comparing with	
		1 st Quarter 2010	2 nd Quarter 2009
Number of operating hotels	94	-1.1	3.3
Average number of workers	1,707	-5.3	14.6
Number of guests	140,009	13.7	42.3
Number of guest nights	318,371	11.8	32.7
Average occupancy of rooms	1,648.0	6.0	30.2
Average occupancy of beds	3,511.7	10.6	32.7
Rooms occupancy %	34.3	10.6	16.3
Beds occupancy %	34.2	15.2	18.8