

**2010**

**2011 /**

**2006**

© 1432 – 2011.

:

**.2010** :2010 .

:

1647 . . - .

: 2982700 (970/972) 2

: 2982710 (970/972) 2

: 1800300300

: [diwan@pcbs.gov.ps](mailto:diwan@pcbs.gov.ps)

: <http://www.pcbs.gov.ps>





.

2010

( PNA)

2010 (CFG)

.(SDC)

.

(CFG)



•

•

•

•

•

•

•





)

.2010

(

.

.

.

**2010**



<b>21</b>	:
21	1.1
21	2.1
21	3.1
<b>23</b>	:
<b>29</b>	:
29	1.3
34	2.3
39	3.3
<b>43</b>	:
43	1.4
43	2.4
44	3.4
44	4.4
45	5.4
<b>47</b>	:
47	1.5
49	2.5
49	3.5
49	4.5
<b>51</b>	
<b>53</b>	



<b>55</b>	.	<b>:1</b>
<b>56</b>	2010	<b>:2</b>
<b>57</b>	2010	<b>:3</b>
<b>58</b>		<b>:4</b>
	2010	
<b>59</b>		<b>:5</b>
	2010	
<b>60</b>		<b>:6</b>
	2010	
<b>61</b>		<b>:7</b>
	2010	
<b>62</b>		<b>:8</b>
	2010	
<b>63</b>		<b>:9</b>
	2010	
<b>64</b>		<b>:10</b>
	2010	
<b>65</b>		<b>:11</b>
	2010	
<b>66</b>		<b>:12</b>
	2010	
<b>67</b>		<b>:13</b>
	2010	
<b>68</b>	2010	<b>:14</b>
<b>69</b>	( )	<b>:15</b>
	2010	
<b>70</b>		<b>:16</b>
	2010	

<b>70</b>				<b>:17</b>
			2010	
<b>71</b>				<b>:18</b>
			2010	
<b>72</b>				<b>:19</b>
			2010	
<b>73</b>				<b>:20</b>
			2010	
<b>74</b>	2010			<b>:21</b>
<b>75</b>				<b>:22</b>
			2010	
<b>76</b>				<b>:23</b>
			2010	
<b>76</b>				<b>:24</b>
			2010	
<b>77</b>				<b>:25</b>
			2010	
<b>77</b>				<b>:26</b>
			2010	

<b>29</b>		<b>:1</b>
<b>30</b>	2010	<b>:2</b>
<b>33</b>		<b>:3</b>
	2010	
<b>33</b>	2010	<b>:4</b>
<b>35</b>		<b>:5</b>
	2010	
<b>36</b>	2010	<b>:6</b>
<b>39</b>		<b>:7</b>
	2010	
<b>40</b>	2010	<b>:8</b>





<b>31</b>	2010	<b>:1</b>
<b>37</b>	2010	<b>:2</b>
<b>41</b>	2010	<b>:3</b>



				2010/12/31 -10/1	
2010	2007				
	245,623		456,314		701,937
		.2007	%23.0		850,563
			2010		
			%47.8	%50.2	
		%40.8		%55.6	%0.9
					.2006
		%86.9	%81.8		%83.6
109	.2006	115	2000		86
		165	2010	153	
		%43.3			
		%6.8		150	
		2010			
		3.6		3.7	3.6
		%15.4			
			2-1		
				%.23.9	2006 2000
		/ 1.8	/ 1.6	/ 1.5	
			1.6	1.7	
		3		%13.1	

%71.6

%37.2

( )

%33.8

%3.4

%71.0    %72.1

**1.1**

.

.

.

2010

.2010

**2.1**

)

(

)

.(

)

(

**3.1**

.

.

.

.

.



.  
 :  
 :  
 ( )  
 ( )  
 .  
 :  
 :  
 10,000  
 9,999 - 4,000  
 ) :  
 . ( 4,000  
 9,999 - 4,000  
 .  
 :  
 : ( )  
 .  
 :

$\vdots$   
 $\cdot$   
 $\cdot ( \dots ) \cdot$   
 $\vdots \quad .1$

$\cdot$   
 $\vdots \quad .2$   
 $\cdot$   
 $\vdots \quad .3$

$) \quad \vdots \quad .4$   
 $\cdot ($   
 $\cdot$   
 $\vdots \quad .5$   
 $\vdots \quad .6$   
 $( \quad )$   
 $\vdots \quad .7$

$\cdot$   
 $\vdots$   
 $) :$   
 $\cdot ($   
 $( \quad )$   
 $\cdot$   
 $\vdots$   
 $( \quad )^2 (4)$   
 $( \quad )$



		:
(	(	) 2 (4)
(	)	.
.		.
		:
:		:
	:	.1
.		.
	:(	) .2
.		.
.	:	.3
.	:	.4
.		.
.	:(	) .5
.	:	.6
.	:	.
:	:	.1
.(	)	.
.	:	.2
.	.	.
.	:	.3
.	:	.
:	:	.
:	:	.
)	:	.
	(	.
(	)	:
.	.(	)
.	:	.

$$\vdots$$
$$\vdots$$

:

•

•

•

:

$$\vdots$$

:

:

•

•

:

$$\vdots$$
$$\vdots$$

:

$$\vdots$$
$$\vdash ( \quad )$$
$$\vdots$$

•

•

•

•

•

$$\vdots$$

•

•

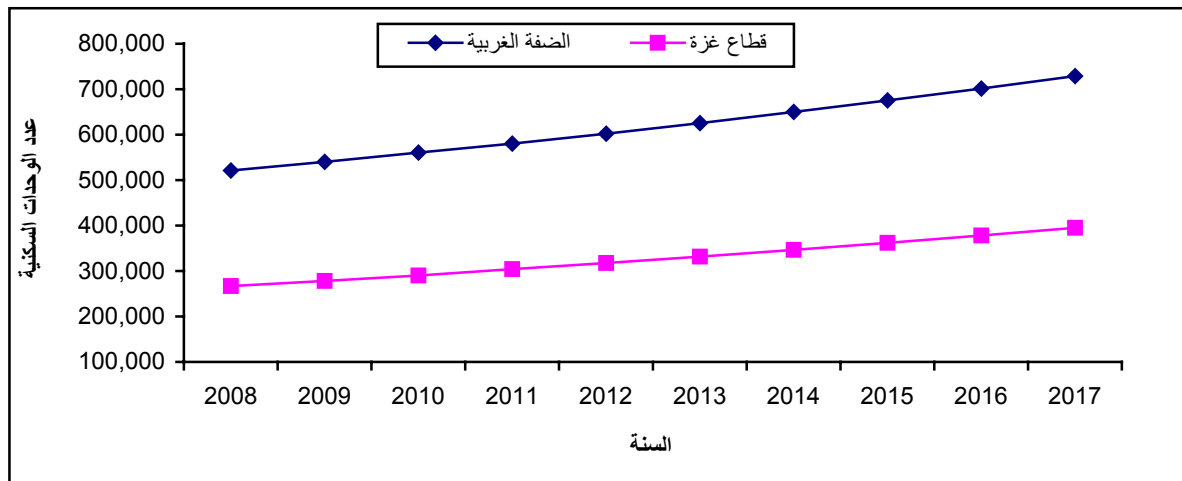
:

:  
 :  
 ( ... 10 )  
 .( )  
 :  
 . ( ... )  
 :  
 .  
 :  
 :  
 :(.)  
 :(-)



2007  
 456,314 2007 701,937 1997 466,651  
 245,623  
 2007 %23.0 850,563 2010

:1



2010

1.3

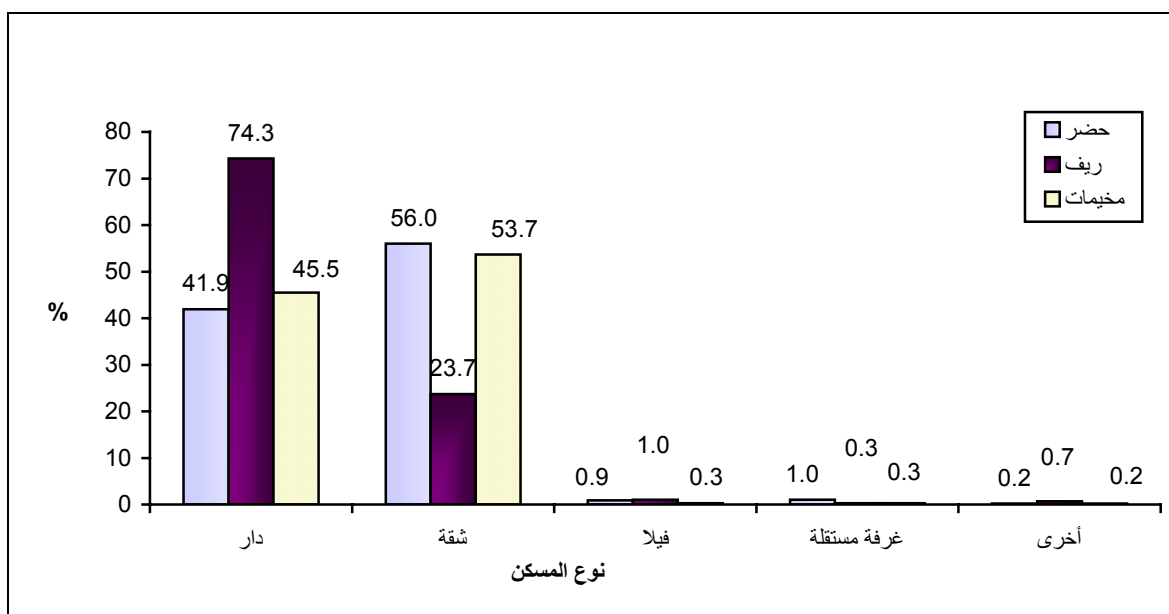
:

%47.8 %0.9  
 %55.6 %50.2  
 .2006 %1.6 %40.8  
 %41.9 %74.3 2010  
 %23.7 %56.0

%27.2      %51.3

2010

:2



:

2006      %56.9      %52.9      2010

%28.8      %99.3      2010

%86.1

%42.5

%0.4      %39.4

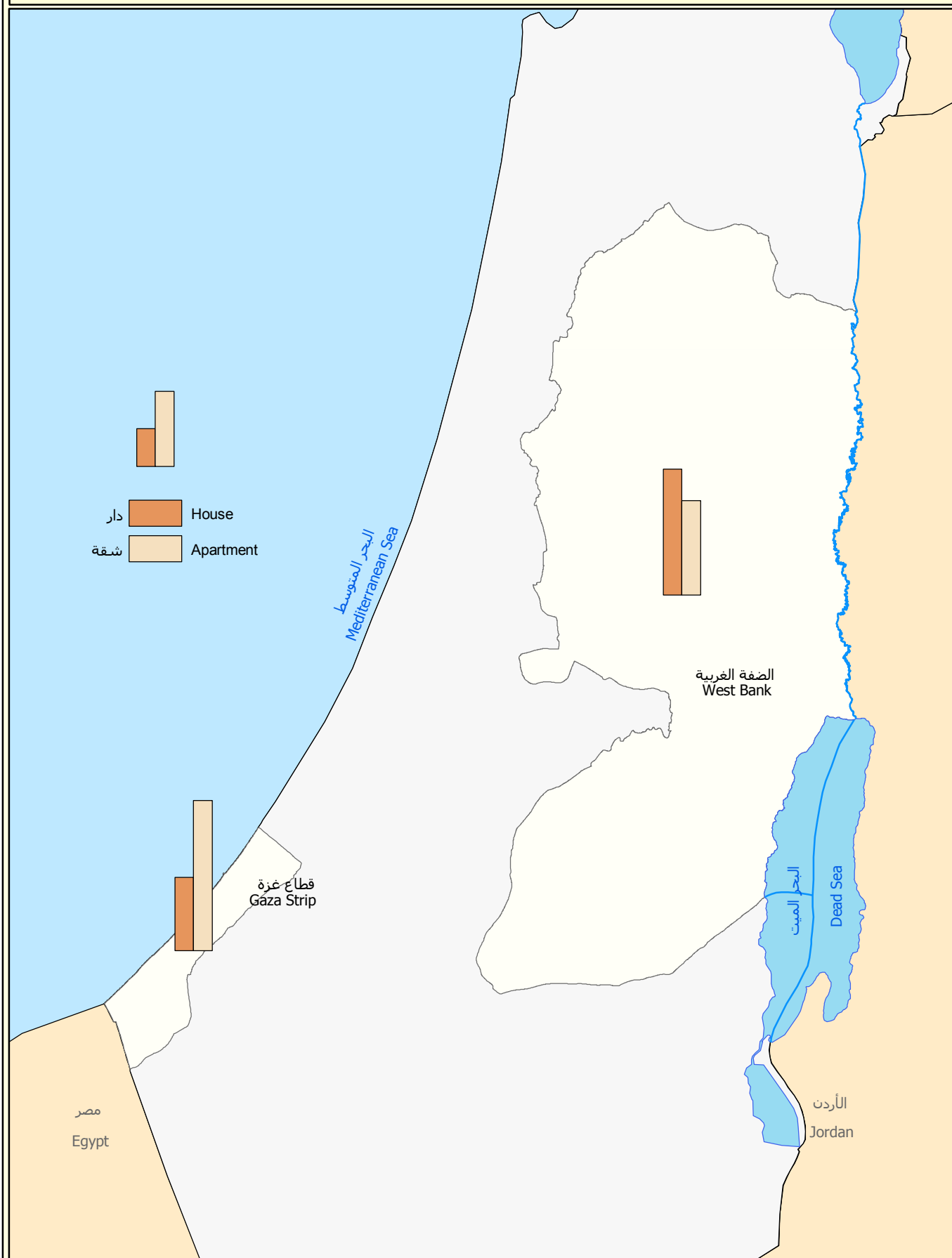
(<sup>2</sup>) :

( ) 80      %14.1

( ) 200

%7.2      %12.2      %8.8

خريطة 1: نسبة الأسر الفلسطينية التي تسكن دار و شقة حسب المنطقة، 2010  
 Map 1: Percentage of Palestinian Households Living in A House and Apartment by Region, 2010



Kilometers  
 0 4.5 9 18 27

المصدر: الجهاز المركزي للإحصاء الفلسطيني، 2011  
 Source: Palestinian Central Bureau of Statistics, 2011







:

%36.7

%7.8

2000

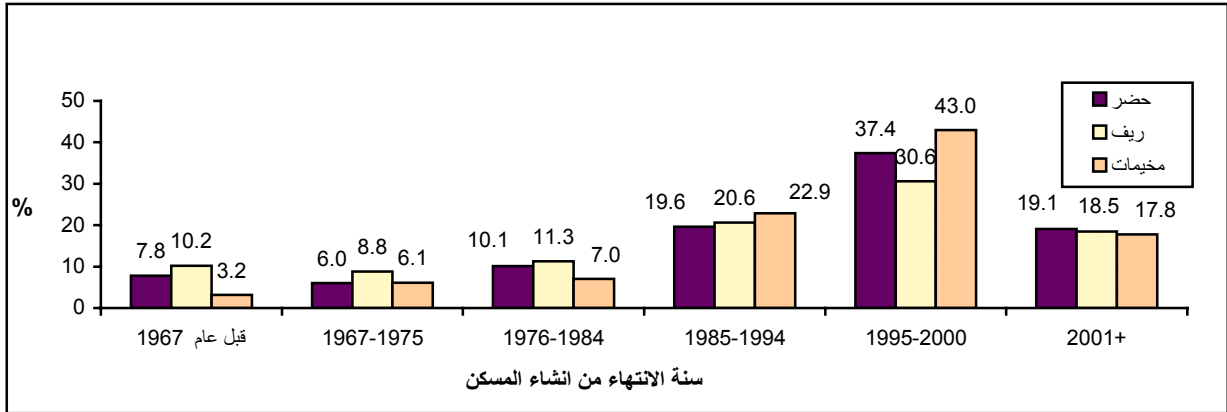
%18.8

2000-1995

.1967

2010

:3



:

1

%50.7

%76.9

%90.1

%45.1

%51.2

%16.0

:

%91.4

%96.9

%88.5

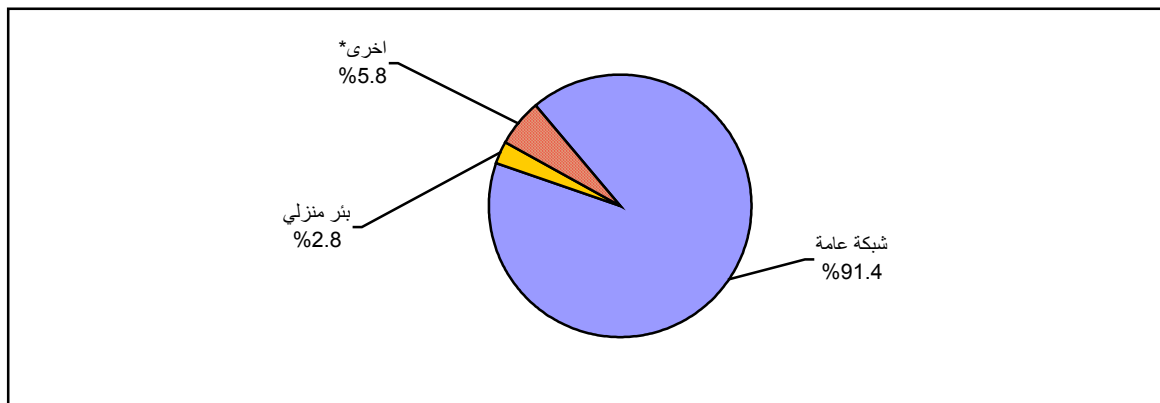
%99.8

%93.0

%79.6

2010

:4



\*

%5.8 %2.8

:( )

%99.8 %99.9

%99.9  
%99.7

%54.4  
%40.1

%.81.9  
%8.4  
%90.7

%60.6

:( )

%98.2  
%99.5 %97.5

%96.4  
%99.4 %98.5

%98.0  
%97.8 %99.4 %97.3

%99.8 %95.6

**2.3**

:

%83.6  
%86.9 %81.8

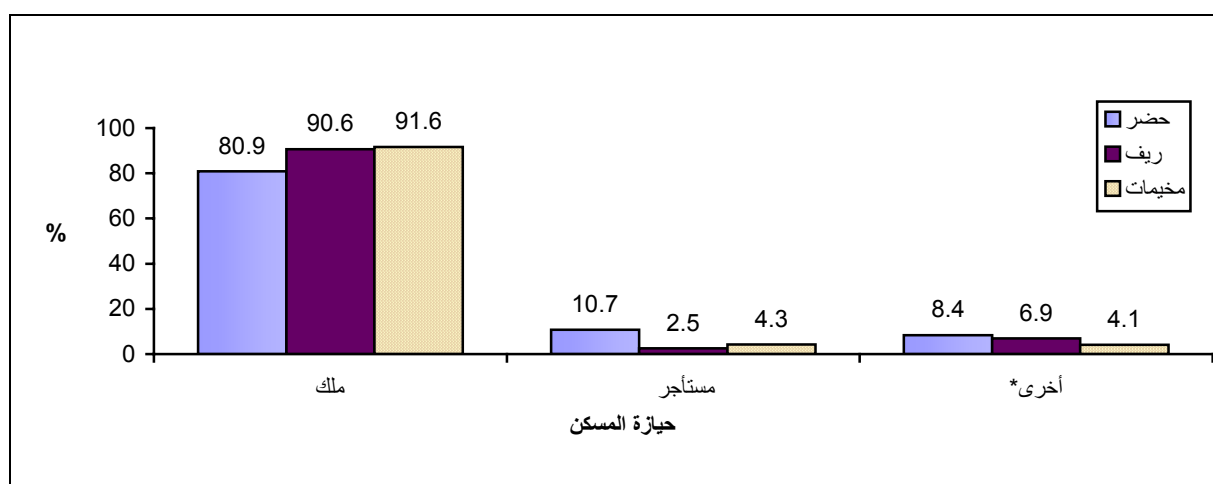
2010 2010 %8.7 2006 %11.5

%5.5 %10.3

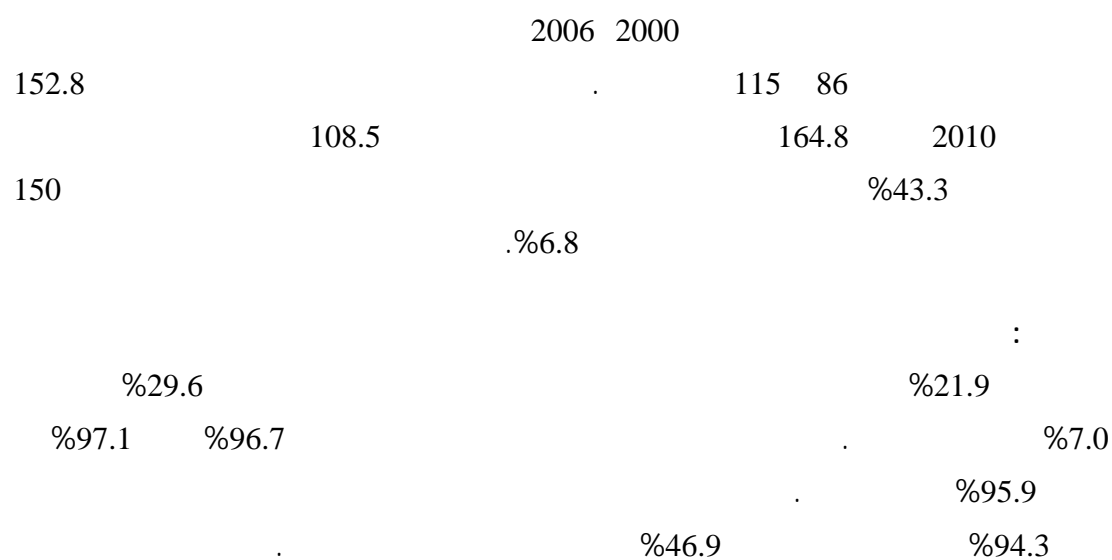
%91.6 %80.9 %90.6

2010

:5

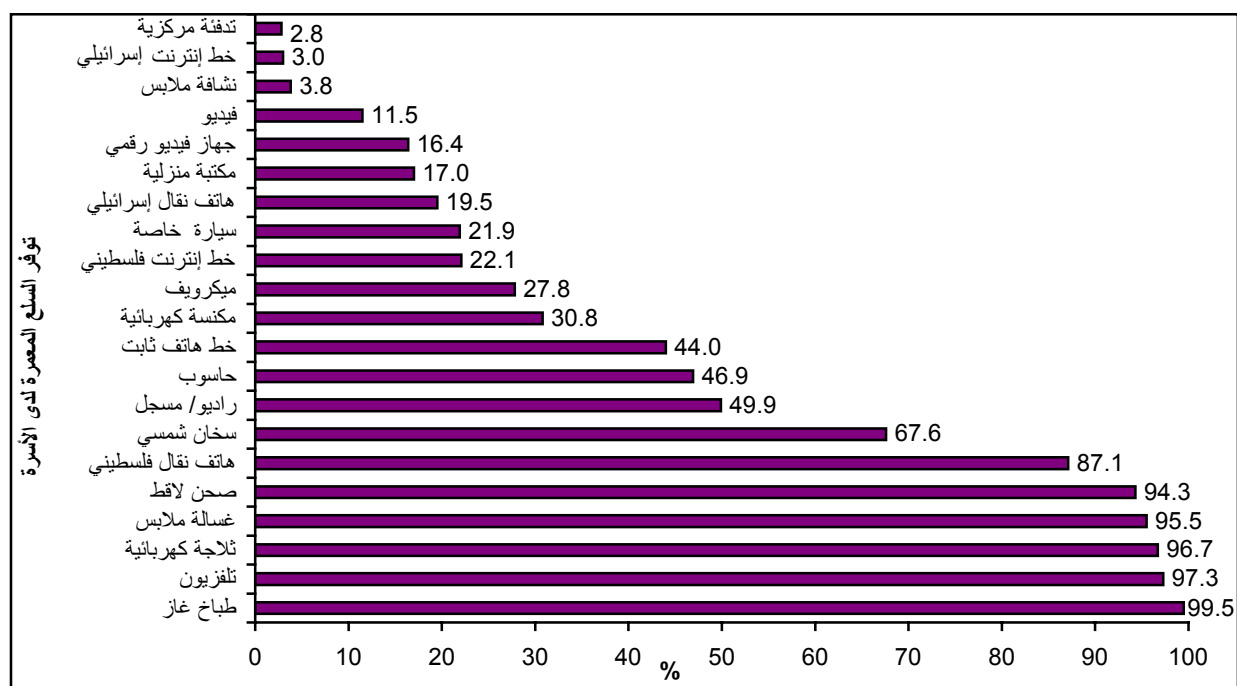


:

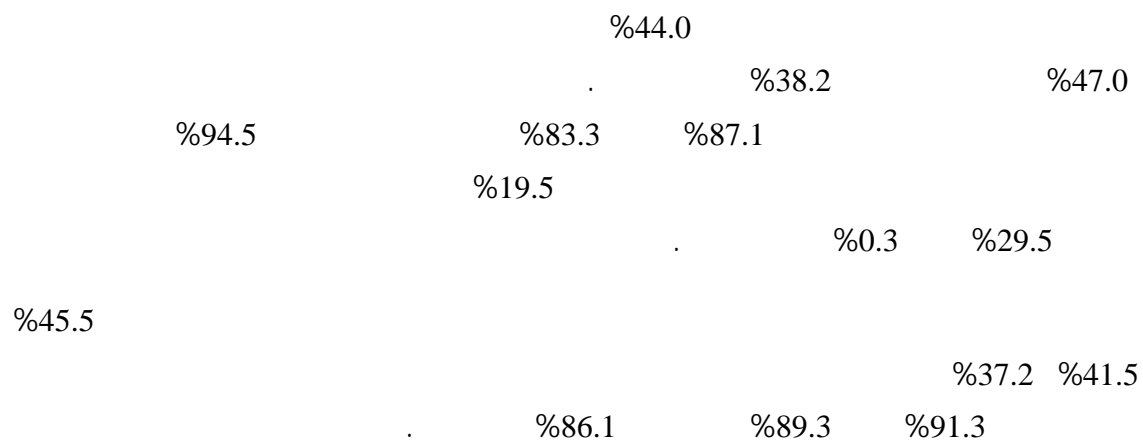


2010

:6

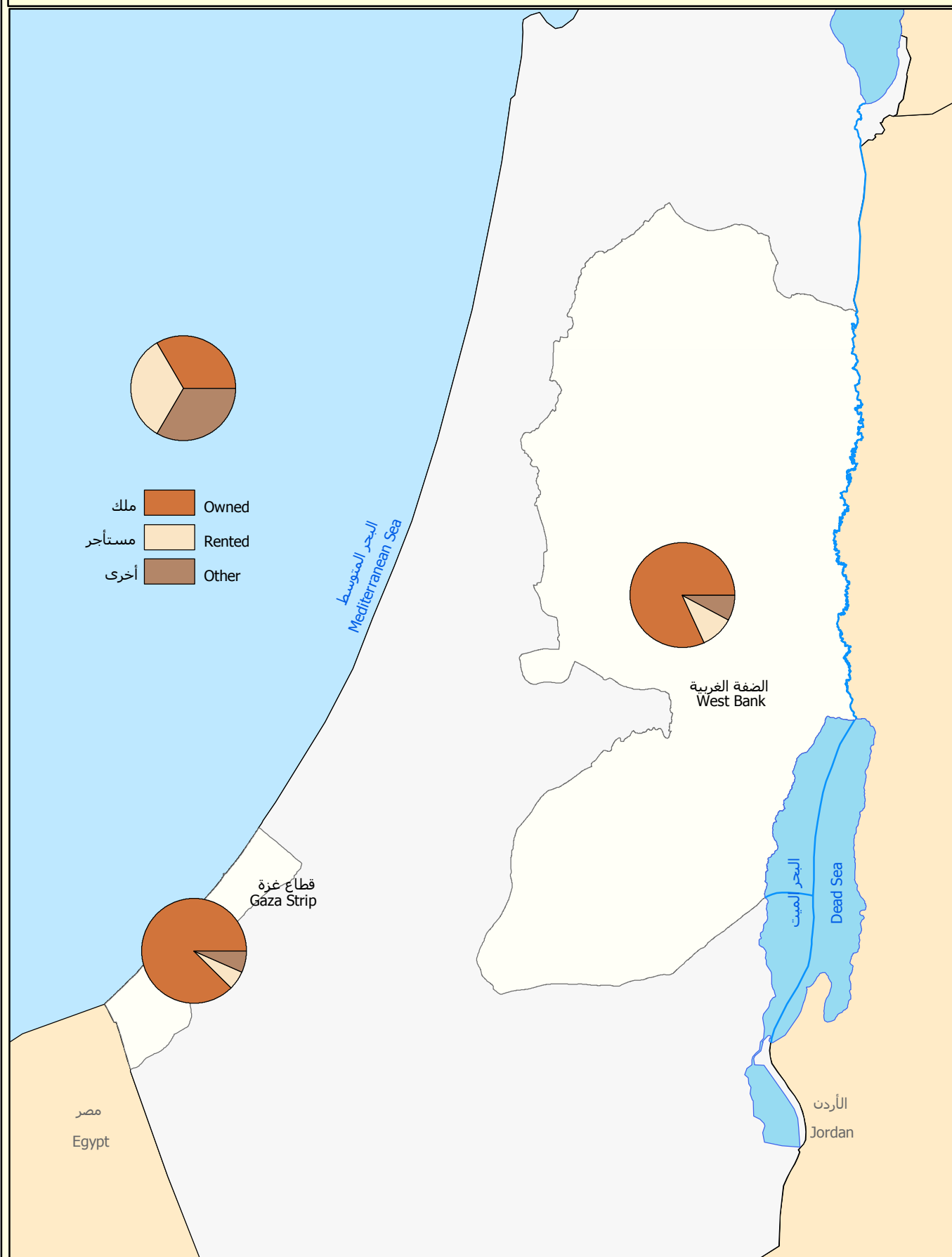


:



خريطة 2: التوزيع النسبي للأسر في الأراضي الفلسطينية حسب حيازة المسكن والمنطقة، 2010

Map 2: Percentage Distribution of Households in the Palestinian Territory by Tenure of Housing Unit and Region, 2010



Kilometers  
0 4.5 9 18 27

المصدر: الجهاز المركزي للإحصاء الفلسطيني، 2011  
Source: Palestinian Central Bureau of Statistics, 2011





3.3

:

3.6

3.3

2006

%15.4

.3.7

3.6

2010

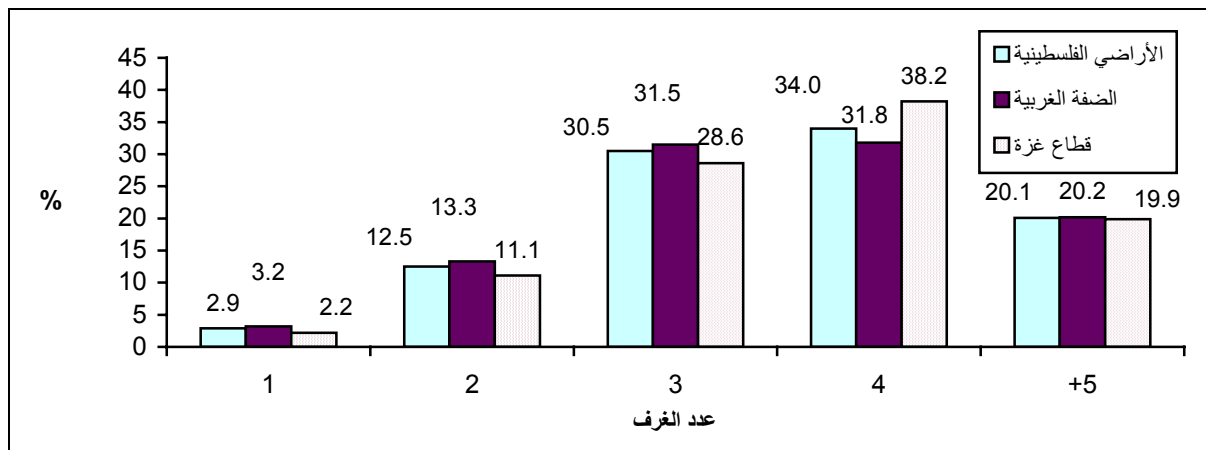
%16.5

2-1

%13.3

2010

:7



:

/ 1.6

( )

/ 1.8

/ 1.5

%9.5

%8.1

%12.2

3

%13.1

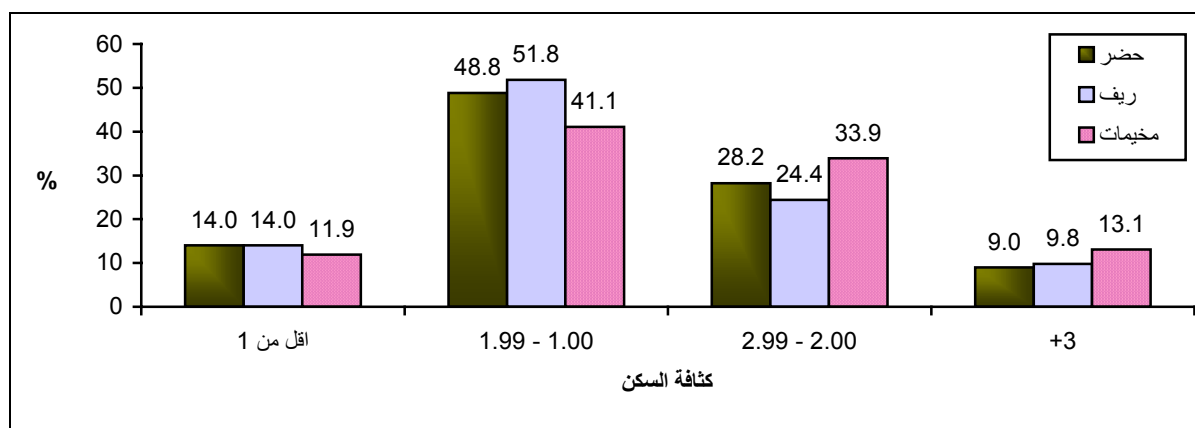
1.6

1.7

3

2010

:8



:

%71.6

%37.2

( )

%33.8

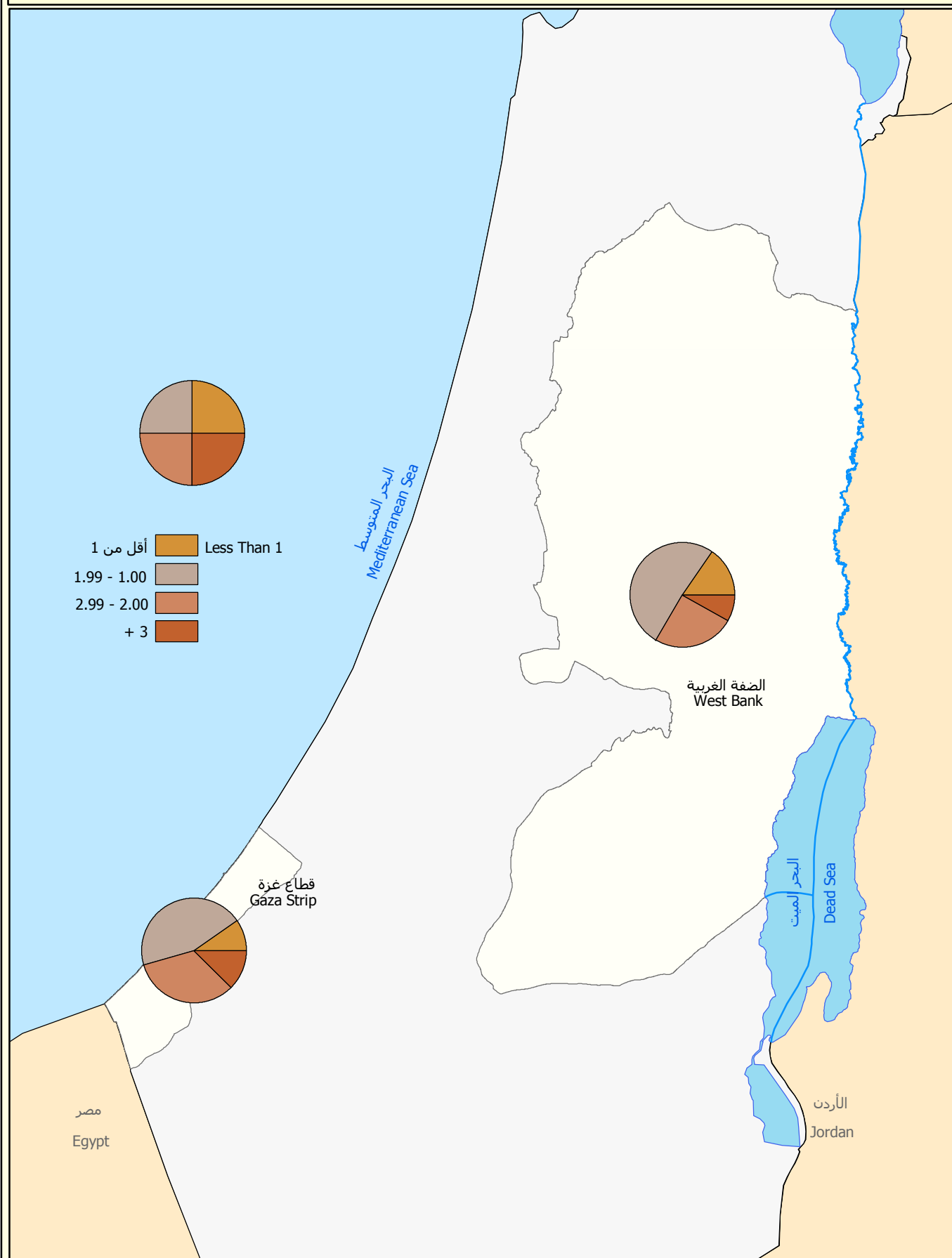
%3.4

%71.0 %72.1



خريطة 3: التوزيع النسبي للأسر في الأراضي الفلسطينية حسب كثافة المسكن والمنطقة، 2010

Map 3: Percentage Distribution of Households in the Palestinian Territory by Housing Density and Region, 2010



Kilometers  
0 4.5 9 18 27

المصدر: الجهاز المركزي للإحصاء الفلسطيني، 2011  
Source: Palestinian Central Bureau of Statistics, 2011





:1.4

2007

:2.4

:

( )

.2010

:

2007

150

(PSUs)

7820

59

:

:

502

:

40

:

80

16

16

8

80

:

:

.( 16) .1

.( ) .2

.

**3.4**

:

( )

.

( )

.2010

:

:

. ...

.

(Ultimate Clusters)

SPSS

.(Complex Sample)

**4.4**

3

4

20-10

:

.

.

:

.

.

.

- 
- 
- 

.

## 5.4

4

.SPSS, ACCESS

.



1.5

(SPSS)

%95		%			
50.7	41.3	5.2	2.4	46.0	200
77.1	66.4	3.8	2.7	72.1	
8.2	6.3	7.0	0.5	7.2	
189.46	140.14	7.6	12.49	164.8	
17.3	9.1	18.6	2.1	12.6	
27.4	23.4	4.0	1.0	25.3	
11.6	6.5	15	1.3	8.7	
					5

:

:

.1

.2

.3

.4

.5

:

5284

(7772)

(7820)

2488

%93.85

.%86.2

7820	
84	6749
243	74
54	43
92	333
48	

:

%100 x \_\_\_\_\_ =

%1.96 =

%100 x \_\_\_\_\_ =

%8.63 =

( ) - =

-%100 =

%91.37 =



:

$$fg = \frac{\sum_{ng} wi - \sum_{o.c} wi}{\sum_{rg} wi}$$

$$g \qquad \qquad \qquad : \qquad \sum_{ng} wi$$

$$: \qquad \sum_{o.cg} wi$$

$$: \qquad \sum_{rg} wi$$

:

$$w'i$$

$$w'gi = wi * fgi$$

$$fg$$

2.5

(1 )

2007

3.5

:

•

•

•

4.5

:

•

•

.( )



	:2007 -	.2009	•
-	.	:2006	•
2017		.2009	•
		( ) -	



# Tables



:1

**Table 1: Selected Main Indicators for Housing Conditions in the Palestinian Territory, Selected Years**

Indicator	2010	2006	2000	1997	
Percentage of Households Living in A House	47.8	55.6	58.0	52.0	
Percentage of Households Living in Apartment	50.2	40.8	39.9	45.2	
Percentage of Households Living in Villa	0.9	1.6	0.4	0.8	
Percentage of Households Living in Housing Units the Construction Material of External Walls is Cleaned Stone	26.0	16.4	17.8	19.8	
Percentage of Households Living in Owned Housing Units	83.6	81.5	85.6	78.1	
Percentage of Households Living in Rented Housing Units	8.7	11.5	8.5	9.7	
Average Monthly Rent (in Jordanian Dinar)	152.8	115	85.6	..	( )
Average Number of Rooms in the Housing Unit	3.6	3.3	3.4	3.4	
Percentage of Households Living in Housing Unit with 1-2 Room	15.4	23.9	23.9	31.2	2-1
Average Housing Density (Number of Persons Per Room)	1.6	1.8	1.9	2.0	
Percentage of Households Living in Housing Unit with 3+ Housing Density	9.5	18.7	20.6	25.3	+3
Percentage of Households who have A kitchen which is Connecting with Water	98.2	96.0	93.1	97.4	
Percentage of Households who have A Bathroom which is Connecting with Water	98.0	95.5	93.1	95.9	
Percentage of Households Living in Housing Unit Connected to Public Electricity Network	99.9	99.2	98.6	94.6	
Percentage of Households Living in Housing Unit Connected to Public Sewage Network	54.4	54.0	42.8	33.7	
Percentage of Households by Availability of Private Car	21.9	18.2	21.6	20.4	
Percentage of Households by Availability of Home Library	17.0	16.3	13.4	13.9	

2010

:2

Table 2: Percentage Distribution of Households in the Palestinian Territory by Type of Housing Unit, Region and Type of Locality, 2010

Region and Type of Locality	Total	Type of Housing Unit					
		* Other*	Independent Room	Apartment	House	Villa	
<b>Palestinian Territory</b>	<b>100</b>	<b>0.3</b>	<b>0.8</b>	<b>50.2</b>	<b>47.8</b>	<b>0.9</b>	
Urban	100	0.2	1.0	56.0	41.9	0.9	
Rural	100	0.7	0.3	23.7	74.3	1.0	
Camps	100	0.2	0.3	53.7	45.5	0.3	
<b>West Bank</b>	<b>100</b>	<b>0.3</b>	<b>0.8</b>	<b>41.9</b>	<b>55.8</b>	<b>1.2</b>	
Urban	100	0.2	1.0	47.5	50.0	1.3	
Rural	100	0.7	0.4	22.3	75.6	1.0	
Camps	100	0.0	0.5	57.1	41.7	0.7	
<b>Gaza Strip</b>	<b>100</b>	<b>0.1</b>	<b>0.7</b>	<b>66.4</b>	<b>32.5</b>	<b>0.3</b>	
Urban/ Rural	100	0.1	0.8	69.2	29.6	0.3	/
Camps	100	0.3	0.2	51.1	48.4	-	

\*Other include( Tent, Marginal and Other)

( ) \*



2010

:3

Table 3: Percentage Distribution of Households in the Palestinian Territory by Type of Housing Unit and Tenure of Housing Unit, 2010

Tenure of Housing Unit	Total	Type of Housing Unit					
		* Other*	Independent Room	شقة Apartment	House	فيلا Villa	
<b>Palestinian Territory</b>	<b>100</b>	<b>0.3</b>	<b>0.8</b>	<b>50.2</b>	<b>47.8</b>	<b>0.9</b>	
Owned	100	0.2	0.4	47.1	51.3	1.0	
Rented	100	0.2	0.4	71.9	27.2	0.3	
Other**	100	0.3	5.5	60.2	33.5	0.5	**
<b>West Bank</b>	<b>100</b>	<b>0.3</b>	<b>0.8</b>	<b>41.9</b>	<b>55.8</b>	<b>1.2</b>	
Owned	100	0.3	0.4	36.5	61.5	1.3	
Rented	100	0.3	0.5	72.1	27.0	0.1	
Other*	100	-	5.2	58.4	35.7	0.7	*
<b>Gaza Strip</b>	<b>100</b>	<b>0.1</b>	<b>0.7</b>	<b>66.4</b>	<b>32.5</b>	<b>0.3</b>	
Owned	100	0.1	0.3	66.3	33.1	0.2	
Rented	100	-	-	71.2	27.9	0.9	
Other*	100	0.9	6.3	63.5	29.3	-	*

\*Other include( Tent, Marginal and Other)

( ) \*

\*\*Other includes Without Payment and, For Work and Other

: \*\*

2010

:4

**Table 4: Percentage Distribution of Households in the Palestinian Territory by Construction Material of External Walls of the Housing Unit, Region and Type of Locality, 2010**

Region and Type of Locality	Total	Construction Material of External Walls							
		Other	Old Stone	Adobe Clay	Cement Block	Concrete	Stone and Concrete	Cleaned Stone	
<b>Palestinian Territory</b>	<b>100</b>	<b>0.3</b>	<b>5.1</b>	<b>0.1</b>	<b>52.9</b>	<b>11.0</b>	<b>4.6</b>	<b>26.0</b>	
Urban	100	0.2	5.5	0.1	51.1	8.6	4.6	29.9	
Rural	100	0.6	6.4	0.5	42.5	22.5	5.1	22.4	
Camps	100	0.2	0.1	0.1	86.1	8.5	3.0	2.0	
<b>West Bank</b>	<b>100</b>	<b>0.3</b>	<b>7.8</b>	<b>0.2</b>	<b>28.8</b>	<b>16.7</b>	<b>6.8</b>	<b>39.4</b>	
Urban	100	0.3	8.9	0.1	21.6	13.9	7.3	47.9	
Rural	100	0.6	6.7	0.5	39.1	23.9	5.4	23.8	
Camps	100	0.0	0.2	0.2	68.1	19.9	7.0	4.6	
<b>Gaza Strip</b>	<b>100</b>	<b>0.1</b>	<b>-</b>	<b>-</b>	<b>99.3</b>	<b>-</b>	<b>0.2</b>	<b>0.4</b>	
Urban and Rural*	100	0.1	-	-	99.2	-	0.2	0.5	
Camps	100	0.3	-	-	99.7	-	-	-	

2010

:5

Table 5: Percentage Distribution of Households in the Palestinian Territory by Area of Housing Unit, Region and Type of Locality, 2010

Region and Type of Locality	Total	Area of Housing Unit (m <sup>2</sup> )					(° )
		+200	199-160	159-120	119-81	80 Less Than 80	
<b>Palestinian Territory</b>	<b>100</b>	<b>8.8</b>	<b>14.7</b>	<b>35.1</b>	<b>27.3</b>	<b>14.1</b>	
Urban	100	9.8	16.2	35.9	25.4	12.7	
Rural	100	6.9	11.9	36.6	29.7	14.9	
Camps	100	5.9	8.2	25.4	37.2	23.3	
<b>West Bank</b>	<b>100</b>	<b>7.2</b>	<b>13.2</b>	<b>35.6</b>	<b>28.7</b>	<b>15.3</b>	
Urban	100	7.7	14.3	36.5	27.4	14.1	
Rural	100	6.7	12.0	36.2	29.6	15.5	
Camps	100	3.4	5.9	23.1	40.0	27.6	
<b>Gaza Strip</b>	<b>100</b>	<b>12.2</b>	<b>17.6</b>	<b>34.0</b>	<b>24.4</b>	<b>11.8</b>	
Urban and Rural	100	13.0	19.0	35.3	22.5	10.2	
Camps	100	7.6	10.0	27.2	35.1	20.1	

2010

:6

**Table 6: Percentage Distribution of Households in the Palestinian Territory by Year of Completing Housing Unit Construction, Region and Type of Locality, 2010**

Region and Type of Locality	Total	Year of Completing Housing Unit Construction						
		+2001	2000 - 1995	1994 - 1985	1984 - 1976	1975 - 1967	1967 Before 1967	
<b>Palestinian Territory</b>	<b>100</b>	<b>18.8</b>	<b>36.7</b>	<b>20.1</b>	<b>10.1</b>	<b>6.5</b>	<b>7.8</b>	
Urban	100	19.1	37.4	19.6	10.1	6.0	7.8	
Rural	100	18.5	30.6	20.6	11.3	8.8	10.2	
Camps	100	17.8	43.0	22.9	7.0	6.1	3.2	
<b>West Bank</b>	<b>100</b>	<b>19.9</b>	<b>27.5</b>	<b>21.9</b>	<b>11.4</b>	<b>8.4</b>	<b>10.9</b>	
Urban	100	20.2	26.8	21.8	11.5	8.0	11.7	
Rural	100	18.9	29.0	20.8	11.4	9.1	10.8	
Camps	100	20.2	29.2	28.1	8.9	10.5	3.1	
<b>Gaza Strip</b>	<b>100</b>	<b>16.9</b>	<b>54.4</b>	<b>16.6</b>	<b>7.6</b>	<b>2.8</b>	<b>1.7</b>	
Urban and Rural	100	17.0	54.6	16.1	8.0	2.8	1.5	
Camps	100	15.9	53.5	18.9	5.6	2.8	3.3	

2010

:7

**Table 7: Percentage Distribution of Households in the Palestinian Territory by Year of Completing Housing Unit Construction, Type of Housing Unit, and Region, 2010**

Region and Type of Housing Unit	Total	Year of Completing Housing Unit Construction						
		+2001	2000 - 1995	1994 - 1985	1984 - 1976	1975 - 1967	1967 Before 1967	
<b>Palestinian Territory</b>	<b>100</b>	<b>18.8</b>	<b>36.7</b>	<b>20.1</b>	<b>10.1</b>	<b>6.5</b>	<b>7.8</b>	
Villa	100	42.0	30.7	18.1	0.0	1.4	7.8	
House	100	18.8	31.6	20.2	10.4	8.7	10.3	
Apartment	100	18.4	41.8	20.1	10.0	4.5	5.2	
Independent Room	100	15.5	32.0	13.4	3.1	13.5	22.5	
Other*	100	50.5	17.6	14.7	0.0	3.7	13.5	*
<b>West Bank</b>	<b>100</b>	<b>19.9</b>	<b>27.5</b>	<b>21.9</b>	<b>11.4</b>	<b>8.4</b>	<b>10.9</b>	
Villa	100	45.8	27.7	16.2	0.0	1.6	8.7	
House	100	19.4	26.5	21.2	10.8	9.6	12.5	
Apartment	100	19.6	29.2	23.3	12.6	6.8	8.5	
Independent Room	100	12.0	25.0	10.1	0.0	19.8	33.1	
Other*	100	52.3	9.5	17.6	-	4.4	16.2	*
<b>Gaza Strip</b>	<b>100</b>	<b>16.9</b>	<b>54.4</b>	<b>16.6</b>	<b>7.6</b>	<b>2.8</b>	<b>1.7</b>	
Villa	100	9.6	56.1	34.3	-	-	-	
House	100	16.9	48.7	17.0	9.0	5.4	3.0	
Apartment	100	16.8	57.3	16.2	7.0	1.6	1.1	
Independent Room	100	22.8	46.8	20.7	9.7	-	-	
Other*	100	41.7	58.3	-	-	-	-	*

\*Other include( Tent, Marginal and Other)

( ) \*

2010

:8

**Table 8: Percentage Distribution of Households in the Palestinian Territory by Nearest Main Transportations, Region and Type of Locality, 2010**

Region and Type of Locality	Total	Nearest Main Transportations			
		5 More Than 5 Km	5 - 1 1-5 Km	1 Less Than 1 Km	
<b>Palestinian Territory</b>	<b>100</b>	<b>0.3</b>	<b>9.6</b>	<b>90.1</b>	
Urban	100	0.2	10.2	89.6	
Rural	100	0.8	11.6	87.6	
Camps	100	-	1.5	98.5	
<b>West Bank</b>	<b>100</b>	<b>0.4</b>	<b>12.1</b>	<b>87.5</b>	
Urban	100	0.3	13.2	86.5	
Rural	100	0.9	11.3	87.8	
Camps	100	-	3.5	96.5	
<b>Gaza Strip</b>	<b>100</b>	<b>0.0</b>	<b>4.9</b>	<b>95.1</b>	
Urban and Rural	100	-	5.8	94.2	
Camps	100	-	-	100	

2010

:9

**Table 9: Percentage Distribution of Households in the Palestinian Territory by Nearest Elementary School, Region and Type of Locality, 2010**

Region and Type of Locality	Total	Nearest Elementary School			
		5 More Than 5 Km	5 - 1 1-5 Km	1 Less Than 1 Km	
<b>Palestinian Territory</b>	<b>100</b>	<b>0.6</b>	<b>22.5</b>	<b>76.9</b>	
Urban	100	0.3	23.9	75.8	
Rural	100	2.3	25.8	71.9	
Camps	100	-	5.3	94.7	
<b>West Bank</b>	<b>100</b>	<b>1.0</b>	<b>25.5</b>	<b>73.5</b>	
Urban	100	0.6	26.9	72.5	
Rural	100	2.4	25.9	71.7	
Camps	100	-	7.3	92.7	
<b>Gaza Strip</b>	<b>100</b>	<b>-</b>	<b>16.7</b>	<b>83.3</b>	
Urban and Rural	100	-	19.0	81.0	
Camps	100	-	3.8	96.2	

2010

:10

Table 10: Percentage Distribution of Households in the Palestinian Territory by Nearest Doctor Clinic, Region and Type of Locality, 2010

Region and Type of Locality	Total	Nearest Doctor Clinic			
		5 More Than 5 Km	5 -1 1-5 Km	1 Less Than 1 Km	
<b>Palestinian Territory</b>	<b>100</b>	<b>5.8</b>	<b>43.5</b>	<b>50.7</b>	
Urban	100	3.0	45.9	51.1	
Rural	100	20.8	41.4	37.8	
Camps	100	0.2	28.7	71.1	
<b>West Bank</b>	<b>100</b>	<b>8.6</b>	<b>45.8</b>	<b>45.6</b>	
Urban	100	4.5	50.5	45.0	
Rural	100	22.0	39.2	38.8	
Camps	100	0.4	19.6	80.0	
<b>Gaza Strip</b>	<b>100</b>	<b>0.4</b>	<b>39.1</b>	<b>60.5</b>	
Urban and Rural	100	0.5	39.7	59.8	
Camps	100	-	35.6	64.4	



2010

:11

Table 11: Percentage Distribution of Households in the Palestinian Territory by Nearest Health Center, Region and Type of Locality, 2010

Region and Type of Locality	Total	Nearest Health Center			
		5 More Than 5 Km	5 - 1 1-5 Km	1 Less Than 1 Km	
<b>Palestinian Territory</b>	<b>100</b>	<b>3.0</b>	<b>45.8</b>	<b>51.2</b>	
Urban	100	2.0	50.3	47.7	
Rural	100	8.6	37.3	54.1	
Camps	100	-	26.4	73.6	
<b>West Bank</b>	<b>100</b>	<b>4.3</b>	<b>49.9</b>	<b>45.8</b>	
Urban	100	2.9	56.7	40.4	
Rural	100	9.0	35.6	55.4	
Camps	100	-	31.1	68.9	
<b>Gaza Strip</b>	<b>100</b>	<b>0.5</b>	<b>37.9</b>	<b>61.6</b>	
Urban and Rural	100	0.6	40.7	58.7	
Camps	100	-	22.9	77.1	

2010

:12

**Table 12: Percentage Distribution of Households in the Palestinian Territory by Nearest Maternal and Child Health Center, Region and Type of Locality, 2010**

Region and Type of Locality	Total	Nearest Maternal and Child Health Center			
		5 More Than 5 Km	5 - 1 1-5 Km	1 Less Than 1 Km	
<b>Palestinian Territory</b>	<b>100</b>	<b>8.7</b>	<b>46.2</b>	<b>45.1</b>	
Urban	100	9.4	49.1	41.5	
Rural	100	9.5	38.7	51.8	
Camps	100	1.5	36.8	61.7	
<b>West Bank</b>	<b>100</b>	<b>12.3</b>	<b>43.7</b>	<b>44.0</b>	
Urban	100	14.3	47.5	38.2	
Rural	100	9.2	36.4	54.4	
Camps	100	2.6	29.3	68.1	
<b>Gaza Strip</b>	<b>100</b>	<b>1.7</b>	<b>51.0</b>	<b>47.3</b>	
Urban and Rural	100	1.8	52.6	45.6	
Camps	100	0.6	42.6	56.8	

2010

:13

Table 13: Percentage Distribution of Households in the Palestinian Territory by Nearest Hospital, Region and Type of Locality, 2010

Region and Type of Locality	Total	Nearest Hospital			
		5 More Than 5 Km	5 - 1 1-5 Km	1 Less Than 1 Km	
<b>Palestinian Territory</b>	<b>100</b>	<b>45.3</b>	<b>38.7</b>	<b>16.0</b>	
Urban	100	38.1	43.3	18.6	
Rural	100	86.4	12.8	0.8	
Camps	100	26.5	49.9	23.6	
<b>West Bank</b>	<b>100</b>	<b>65.2</b>	<b>24.1</b>	<b>10.7</b>	
Urban	100	58.5	27.9	13.6	
Rural	100	89.2	10.0	0.8	
Camps	100	43.9	37.8	18.3	
<b>Gaza Strip</b>	<b>100</b>	<b>6.5</b>	<b>67.2</b>	<b>26.3</b>	
Urban and Rural	100	5.8	68.2	26.0	
Camps	100	10.8	61.5	27.7	

2010

:14

**Table 14: Percentage Distribution of Households in the Palestinian Territory by Main Source of Water and Connected to Electricity and Sewage, Region and Type of Locality, 2010**

Region and Type of Locality	Connection to Sewage System				Connection to Electricity			Main Source of Water				
	Total	No Sewage System	مجاري Cesspit	Public Sewage	Total	No Electricity	Public Network	Total	* Other*	Domestic Well	Public Network	
<b>Palestinian Territory</b>	<b>100</b>	<b>0.3</b>	<b>45.3</b>	<b>54.4</b>	<b>100</b>	<b>0.1</b>	<b>99.9</b>	<b>100</b>	<b>5.8</b>	<b>2.8</b>	<b>91.4</b>	
Urban	100	0.1	39.3	60.6	100	0.1	99.9	100	4.3	2.7	93.0	
Rural	100	1.3	90.3	8.4	100	0.3	99.7	100	15.3	5.1	79.6	
Camps	100	0.1	9.2	90.7	100	0.1	99.9	100	0.1	0.1	99.8	
<b>West Bank</b>	<b>100</b>	<b>0.4</b>	<b>59.5</b>	<b>40.1</b>	<b>100</b>	<b>0.2</b>	<b>99.8</b>	<b>100</b>	<b>8.8</b>	<b>2.7</b>	<b>88.5</b>	
Urban	100	0.2	51.5	48.3	100	0.1	99.9	100	7.0	2.0	91.0	
Rural	100	1.3	92.9	5.8	100	0.4	99.6	100	16.2	5.4	78.4	
Camps	100	0.1	13.7	86.2	100	-	100	100	-	-	100	
<b>Gaza Strip</b>	<b>100</b>	<b>0.1</b>	<b>18.0</b>	<b>81.9</b>	<b>100</b>	<b>0.1</b>	<b>99.9</b>	<b>100</b>	<b>0.1</b>	<b>3.0</b>	<b>96.9</b>	
Urban	100	0.1	19.3	80.6	100	0.1	99.9	100	-	3.7	96.3	
Rural	100	0.0	48.2	51.8	100	-	100	100	-	-	100	
Camps	100	0.0	5.8	94.2	100	0.2	99.8	100	0.2	0.2	99.6	

\*Note: Other include water tanks, springs and other resources not mentioned above.

\*

2010

( )

:15

**Table 15: Percentage Distribution of Households in the Palestinian Territory by Availability of (Kitchen, Bathroom and Toilet), Region and Type of Locality, 2010**

Region and Type of Locality	Availability of (Kitchen, Bathroom and Toilet) ( )												
	Toilet				حمام Bathroom				Kitchen				
	Total	No Toilet	Without Piped Water	With Piped Water	Total	No Bathroom	Without Piped Water	With Piped Water	Total	No Kitchen	Without Piped Water	With Piped Water	
Palestinian Territory	100	0.5	1.7	97.8	100	0.4	1.6	98.0	100	0.2	1.6	98.2	
Urban	100	0.4	1.5	98.1	100	0.3	1.4	98.3	100	0.2	1.3	98.5	
Rural	100	1.1	3.3	95.6	100	1.0	2.9	96.1	100	0.5	3.1	96.4	
Camps	100	-	0.2	99.8	100	0.1	0.2	99.7	100	0.1	0.5	99.4	
West Bank	100	0.7	2.4	96.9	100	0.4	2.3	97.3	100	0.4	2.1	97.5	
Urban	100	0.7	2.2	97.1	100	0.3	2.1	97.6	100	0.3	1.9	97.8	
Rural	100	1.2	3.4	95.4	100	1.0	3.1	95.9	100	0.5	3.2	96.3	
Camps	100	-	0.3	99.7	100	0.2	0.3	99.5	100	0.1	0.7	99.2	
Gaza Strip	100	-	0.5	99.5	100	0.3	0.3	99.4	100	0.1	0.4	99.5	
Urban	100	-	0.5	99.5	100	0.4	0.3	99.3	100	0.1	0.4	99.5	
Rural	100	-	1.6	98.4	100	-	1.6	98.4	100	-	1.6	98.4	
Camps	100	-	0.2	99.8	100	-	0.2	99.8	100	-	0.5	99.5	

2010

:16

**Table 16: Percentage Distribution of Households in the Palestinian Territory by Tenure of Housing Unit, Region and Type of Locality, 2010**

Region and Type of Locality	Total	Tenure of Housing Unit			
		* Other*	Rented	Owned	
<b>Palestinian Territory</b>	<b>100</b>	<b>7.8</b>	<b>8.7</b>	<b>83.6</b>	
Urban	100	8.4	10.7	80.9	
Rural	100	6.9	2.5	90.6	
Camps	100	4.1	4.3	91.6	
<b>West Bank</b>	<b>100</b>	<b>7.9</b>	<b>10.3</b>	<b>81.8</b>	
Urban	100	8.7	13.6	77.7	
Rural	100	7.0	2.6	90.4	
Camps	100	2.0	5.0	93.0	
<b>Gaza Strip</b>	<b>100</b>	<b>7.6</b>	<b>5.5</b>	<b>86.9</b>	
Urban	100	8.1	5.8	86.1	
Rural	100	4.9	2.2	92.9	
Camps	100	5.7	3.9	90.4	

\* Other include For Work and Without Payment.

\*

2010

:17

**Table 17: Percentage Distribution of Households Living in Rented Housing Units in the Palestinian Territory by Monthly Rent and Region, 2010**

Monthly Rent Jordanian Dinar	Region			
	Gaza Strip	West Bank	Palestinian Territory	
Less Than 50	1.2	11.3	9.1	50
50 - 99	43.3	23.3	27.5	99 - 50
100 - 149	48.7	22.1	27.8	149 - 100
150+	6.8	43.3	35.6	+ 150
<b>Total</b>	<b>100</b>	<b>100</b>	<b>100</b>	
<b>Average Monthly Rent</b>	<b>108.5</b>	<b>164.8</b>	<b>152.8</b>	

2010

:18

Table 18: Percentage of Households in the Palestinian Territory by Availability of Durable Goods, Region and Type of Locality, 2010

Durable Goods	Region and Type of Locality												
	Gaza Strip				West Bank				Palestinian Territory				
	Camps	Rural	Urban	Total	Camps	Rural	Urban	Total	Camps	Rural	Urban	Total	
Private Car	3.6	7.6	7.6	7.0	16.5	24.8	32.5	29.6	9.2	23.8	23.0	21.9	/
Refrigerator	97.6	91.9	95.7	95.9	97.8	96.1	97.4	97.1	97.7	95.8	96.7	96.7	
Washing Machine	96.0	93.7	94.6	94.8	95.4	94.8	96.3	95.9	95.8	94.7	95.6	95.5	
Television	98.9	93.8	96.7	96.9	98.6	97.1	97.6	97.5	98.8	96.9	97.2	97.3	
Video	3.1	4.1	2.1	2.3	8.9	15.0	17.4	16.3	5.6	14.4	11.6	11.5	
Satellite\ Dish	95.5	92.6	95.3	95.3	94.5	91.9	94.5	93.8	95.1	91.9	94.8	94.3	
Solar Boiler	60.5	57.4	60.9	60.7	57.4	74.3	71.3	71.2	59.2	73.4	67.3	67.6	
Central Heating	0.3	-	1.0	0.8	1.0	1.8	4.7	3.8	0.6	1.7	3.3	2.8	
Vacuum	8.3	14.2	14.8	13.8	24.1	28.0	45.2	39.6	15.1	27.2	33.6	30.8	
Cooking Stove	100.0	99.5	99.4	99.5	99.8	99.7	99.5	99.5	99.9	99.7	99.4	99.5	
Home Library	8.9	5.3	9.2	9.1	10.1	18.5	23.1	21.2	9.4	17.7	17.9	17.0	
Computer	46.1	39.2	42.1	42.6	42.6	45.9	50.9	49.2	44.6	45.5	47.6	46.9	
Telephone Line	37.0	34.5	38.5	38.2	37.3	42.0	49.7	47.0	37.2	41.5	45.5	44.0	
Palestinian Internet	23.0	25.8	22.7	22.8	14.3	20.3	23.0	21.8	19.3	20.6	22.9	22.1	
Israeli Internet	0.3	0.6	0.3	0.3	2.3	1.0	5.9	4.5	1.2	1.0	3.8	3.0	
Palestinian Mobile	94.4	94.8	94.5	94.5	87.1	89.0	81.0	83.3	91.3	89.3	86.1	87.1	
Israeli Mobile	-	-	0.4	0.3	21.1	26.8	31.2	29.5	9.1	25.2	19.5	19.5	
Tumble Drier	3.9	4.6	1.2	1.7	1.8	2.4	6.1	4.9	3.0	2.6	4.2	3.8	
Radio\ Recorder	33.6	27.3	34.4	34.1	54.9	52.9	60.2	58.1	42.8	51.5	50.4	49.9	
Microwave	12.3	12.6	12.2	12.2	31.3	30.5	38.2	35.9	20.5	29.5	28.3	27.8	
DVD	2.3	2.0	2.8	2.7	15.0	18.9	25.8	23.4	7.8	17.9	17.1	16.4	

2010

:19

**Table 19: Percentage Distribution of Households in the Palestinian Territory by Number of Rooms in the Housing Unit, Region and Type of Locality, 2010**

Region and Type of Locality	Average Number of Rooms in the Hosing Unit	Total	Number of Rooms					
			+5	4	3	2	1	
<b>Palestinian Territory</b>	<b>3.6</b>	<b>100</b>	<b>20.1</b>	<b>34.0</b>	<b>30.5</b>	<b>12.5</b>	<b>2.9</b>	
Urban	3.7	100	20.4	34.9	30.1	12.0	2.6	
Rural	3.7	100	21.3	31.9	30.8	12.3	3.7	
Camps	3.4	100	14.8	31.3	33.3	16.9	3.7	
<b>West Bank</b>	<b>3.6</b>	<b>100</b>	<b>20.2</b>	<b>31.8</b>	<b>31.5</b>	<b>13.3</b>	<b>3.2</b>	
Urban	3.6	100	20.6	32.4	31.2	12.9	2.9	
Rural	3.7	100	21.4	31.3	30.8	12.6	3.9	
Camps	3.2	100	10.8	27.3	37.1	20.3	4.5	
<b>Gaza Strip</b>	<b>3.7</b>	<b>100</b>	<b>19.9</b>	<b>38.2</b>	<b>28.6</b>	<b>11.1</b>	<b>2.2</b>	
Urban	3.7	100	20.3	38.8	28.2	10.6	2.1	
Rural	3.7	100	20.1	41.7	29.5	8.1	0.6	
Camps	3.6	100	17.9	34.3	30.5	14.4	2.9	



2010

:20

**Table 20: Percentage Distribution of Households in the Palestinian Territory by Number of Rooms for Sleeping in Housing Unit, Region and Type of Locality, 2010**

Region and Type of Locality	Average Number of Rooms for Sleeping in the Housing Unit	Total	Number of Rooms for Sleeping					
			+5	4	3	2	1	
<b>Palestinian Territory</b>	<b>2.2</b>	<b>100</b>	<b>0.7</b>	<b>4.2</b>	<b>30.7</b>	<b>45.6</b>	<b>18.8</b>	
Urban	2.2	100	0.6	4.2	31.5	45.9	17.8	
Rural	2.2	100	0.8	3.6	27.8	46.1	21.7	
Camps	2.2	100	0.8	4.9	30.2	43.0	21.1	
<b>West Bank</b>	<b>2.1</b>	<b>100</b>	<b>0.6</b>	<b>2.2</b>	<b>27.2</b>	<b>48.4</b>	<b>21.6</b>	
Urban	2.1	100	0.5	1.8	27.4	49.3	21.0	
Rural	2.2	100	0.8	3.3	27.1	46.4	22.4	
Camps	2.0	100	0.2	1.7	24.8	47.1	26.2	
<b>Gaza Strip</b>	<b>2.4</b>	<b>100</b>	<b>0.8</b>	<b>8.0</b>	<b>37.6</b>	<b>40.3</b>	<b>13.3</b>	
Urban	2.4	100	0.7	8.2	38.1	40.3	12.7	
Rural	2.5	100	0.6	8.5	39.9	41.1	9.9	
Camps	2.4	100	1.3	7.2	34.4	40.0	17.1	

2010

:21

Table 21: Percentage Distribution of Households in the Palestinian Territory by Housing Density, Region and Type of Locality, 2010

Region and Type of Locality	Average Housing Density	Total	Housing Density				
			+3	2.99 - 2.00	1.99 - 1.00	أقل من 1 Less Than 1	
<b>Palestinian Territory</b>	<b>1.6</b>	<b>100</b>	<b>9.5</b>	<b>28.1</b>	<b>48.7</b>	<b>13.7</b>	
Urban	1.6	100	9.0	28.2	48.8	14.0	
Rural	1.6	100	9.8	24.4	51.8	14.0	
Camps	1.7	100	13.1	33.9	41.1	11.9	
<b>West Bank</b>	<b>1.5</b>	<b>100</b>	<b>8.1</b>	<b>25.1</b>	<b>51.4</b>	<b>15.4</b>	
Urban	1.5	100	6.9	24.9	51.9	16.3	
Rural	1.6	100	9.9	23.9	52.3	13.9	
Camps	1.7	100	14.4	31.9	42.3	11.4	
<b>Gaza Strip</b>	<b>1.8</b>	<b>100</b>	<b>12.2</b>	<b>33.8</b>	<b>43.4</b>	<b>10.6</b>	
Urban	1.8	100	12.4	33.5	44.0	10.1	
Rural	1.6	100	8.2	33.3	43.6	14.9	
Camps	1.7	100	12.2	35.4	40.1	12.3	

**Table 22: Percentage Distribution of Households in the Palestinian Territory by Housing Density, Type of Housing Unit and Region, 2010**

Type of Housing Unit and Region	Total	Housing Density				
		+3	2.99 - 2.00	1.99 - 1.00	أقل من 1 Less Than 1	
<b>Palestinian Territory</b>	<b>100</b>	<b>9.5</b>	<b>28.1</b>	<b>48.6</b>	<b>13.8</b>	
Villa	100	4.5	13.9	51.6	30.0	
House	100	10.1	28.4	47.3	14.2	
Apartment	100	8.3	28.2	50.2	13.3	
Independent Room	100	41.4	15.4	43.2	-	
Other*	100	58.5	31.0	10.5	-	*
<b>West Bank</b>	<b>100</b>	<b>8.1</b>	<b>25.1</b>	<b>51.4</b>	<b>15.4</b>	
Villa	100	5.1	9.9	57.6	27.4	
House	100	8.8	26.1	49.8	15.3	
Apartment	100	6.5	24.3	53.5	15.7	
Independent Room	100	30.4	12.0	57.6	-	
Other*	100	50.3	37.1	12.6	-	*
<b>Gaza Strip</b>	<b>100</b>	<b>12.2</b>	<b>33.8</b>	<b>43.4</b>	<b>10.6</b>	
Villa	100	-	48.6	-	51.4	
House	100	14.3	35.9	39.1	10.7	
Apartment	100	10.5	32.9	46.1	10.5	
Independent Room	100	64.5	22.8	12.7	-	
Other*	100	100	-	-	-	*

\*Other include(Tent, Marginal and Other)

\*أخرى تشمل (خيمة، براكية، أخرى)

2010

:23

**Table 23: Percentage Distribution of Households in the Palestinian Territory by Housing Density, Tenure of Housing Unit and Region, 2010**

Tenure of Housing Unit and Region	Total	Housing Density				
		+3	2.99 - 2.00	1.99 - 1.00	1 Less Than 1	
<b>Palestinian Territory</b>	<b>100</b>	<b>9.5</b>	<b>28.1</b>	<b>48.6</b>	<b>13.8</b>	
Rented	100	9.0	28.2	48.8	14.0	
Owned	100	9.8	24.4	51.8	14.0	
Other*	100	13.1	33.9	41.1	11.9	*
<b>West Bank</b>	<b>100</b>	<b>8.1</b>	<b>25.1</b>	<b>51.4</b>	<b>15.4</b>	
Rented	100	7.9	24.9	50.8	16.4	
Owned	100	6.8	27.7	53.4	12.1	
Other*	100	11.6	23.7	54.6	10.1	*
<b>Gaza Strip</b>	<b>100</b>	<b>12.2</b>	<b>33.8</b>	<b>43.4</b>	<b>10.6</b>	
Rented	100	10.8	33.6	44.7	10.9	
Owned	100	10.2	35.7	46.8	7.3	
Other*	100	30.0	35.0	26.1	8.9	*

\* Other include For Work and Without Payment.

: \*

:24

2010

**Table 24: Percentage Distribution of Households in the Palestinian Territory by the Distance Between their Housing Units and the Nearest Housing Unit and Region, 2010**

The Distance between Housing Unit and the nearest Housing Unit	Region			
	Gaza Strip	West Bank	Palestinian Territory	
Less Than 5m	93.8	64.0	74.1	5
6-10m	4.3	24.2	17.5	م 10-6
11-20m	1.2	6.4	4.6	م 20-11
20+m	0.7	5.4	3.8	م +20
<b>Total</b>	<b>100</b>	<b>100</b>	<b>100</b>	<b>المجموع</b>
<b>Average Distance between Housing Unit and the nearest Housing Unit m</b>	<b>3.1</b>	<b>9.3</b>	<b>7.2</b>	

2010

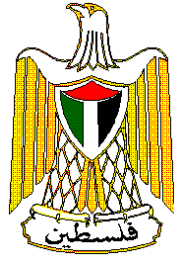
**Table 25: Percentage Distribution of Households in the Palestinian Territory by Household Need from Housing Units During the Next Ten Years, Region and Type of Locality, 2010**

Region and Type of Locality	Total	Household Need					
		+4	3	2	1	0	
<b>Palestinian Territory</b>	<b>100</b>	<b>8.0</b>	<b>10.2</b>	<b>17.7</b>	<b>35.7</b>	<b>28.4</b>	
Urban	100	8.1	10.5	17.7	35.5	28.2	
Rural	100	8.0	8.9	15.7	36.8	30.6	
Camps	100	7.5	10.4	21.5	35.8	24.8	
<b>West Bank</b>	<b>100</b>	<b>7.3</b>	<b>9.3</b>	<b>15.6</b>	<b>39.9</b>	<b>27.9</b>	
Urban	100	7.2	9.5	15.2	40.5	27.6	
Rural	100	7.9	8.9	15.4	37.1	30.7	
Camps	100	6.5	9.6	19.5	44.8	19.6	
<b>Gaza Strip</b>	<b>100</b>	<b>9.3</b>	<b>12.0</b>	<b>22.0</b>	<b>27.7</b>	<b>29.0</b>	
Urban	100	9.5	12.3	21.9	27.2	29.1	
Rural	100	9.0	8.3	20.4	33.2	29.1	
Camps	100	8.3	11.0	23.0	28.9	28.8	

2010

**Table 26: Percentage Distribution of Households in the Palestinian Territory by Number of Housing Units Which Household Can Build it During the Next Ten Years, Region and Type of Locality, 2010**

Region and Type of Locality	Total	Number of Housing Units			
		+2	1	0	
<b>Palestinian Territory</b>	<b>100</b>	<b>3.4</b>	<b>33.8</b>	<b>62.8</b>	
Urban	100	3.0	33.6	63.4	
Rural	100	5.7	35.2	59.1	
Camps	100	3.0	32.8	64.2	
<b>West Bank</b>	<b>100</b>	<b>4.5</b>	<b>41.1</b>	<b>54.4</b>	
Urban	100	4.0	42.6	53.4	
Rural	100	6.0	36.6	57.4	
Camps	100	3.6	41.9	54.5	
<b>Gaza Strip</b>	<b>100</b>	<b>1.5</b>	<b>19.5</b>	<b>79.0</b>	
Urban	100	1.3	18.7	80.0	
Rural	100	1.8	11.3	86.9	
Camps	100	2.5	25.0	72.5	



**Palestinian National Authority  
Palestinian Central Bureau of Statistics**

**Housing Conditions Survey 2010  
Main Results**

**April, 2011**

PAGE NUMBERS OF ENGLISH TEXT ARE PRINTED IN SQUARE BRACKETS.  
TABLES ARE PRINTED IN THE ARABIC ORDER (FROM RIGHT TO LEFT)

**This document is prepared in accordance with the standard procedures stated in the Code of Practice for Palestine Official Statistics 2006**

© April, 2011.  
**All rights reserved.**

**Suggested Citation:**

**Palestinian Central Bureau of Statistics, 2011.** *Housing Conditions Survey 2010: Main Results.* Ramallah - Palestine.

All correspondence should be directed to:  
**Palestinian Central Bureau of Statistics**  
**P.O.Box 1647 Ramallah, Palestine.**  
Tel: (972/970) 2 298 2700  
Fax: (972/970) 2 298 2710  
Toll Free: 1800300300  
E-Mail: [diwan@pcbs.gov.ps](mailto:diwan@pcbs.gov.ps)  
web-site: <http://www.pcbs.gov.ps>

## **Acknowledgments**

**The Palestinian Central Bureau of Statistics (PCBS) extends its deep appreciations to all Palestinian families who contributed to the success of collecting the survey data and to all workers in the survey for being well dedicated in performing their duties.**

**The survey of Housing Conditions Survey, 2010 in the Palestinian Territory has been planned and conducted by a technical team from PCBS and with joint funding by the Palestinian National Authority (PNA) and the Core Funding Group (CFG) for the year 2010 represented by the Representative Office of Norway to PNA and the Swiss Development and Cooperation Agency (SDC).**

**Moreover, PCBS very much appreciates the distinctive efforts of the Core Funding Group (CFG) for their valuable contribution to funding the project.**





## Team Work

- **Report Preparation**  
Ruba Qubbaj
  - **Maps Design**  
Akram khader
  - **Graphic Design**  
Ahmad Sawalmeh
  - **Dissemination Standard**  
Hanan Janajreh
  - **Preliminary Review**  
Mahmoud Abd-Alrhman  
Jawad Al-Saleh  
Mahmoud Al-Qayya
  - **Final Review**  
Mahmoud Jaradat
  - **Overall Supervision**  
Ola Awad
- PCBS President



## **Preface**

Statistics about housing and housing conditions are necessary to shed light on the housing characteristics of the Palestinian society. PCBS has committed itself to conduct a survey on the housing conditions periodically (every three years) to meet the increasing demands of users. The survey on the housing conditions for 2010 was conducted as an annex to the Labor force Survey (fourth quarter, 2010). The relevant data was collected during the period 01/10-13/12/2010.

This report on the Housing Conditions provides basic information on the main statistical indicators of housing conditions, including housing density, number of rooms in the housing unit, tenure of housing unit, facilities, water supply, electricity, sewage system and durable goods...etc.

PCBS is pleased to present this report on the findings of the Housing Conditions Survey, 2010 as a basic reference for planners, decision-makers and all users interested in utilizing housing data in the different demographic, social, economic and housing fields. The findings of the Housing Conditions contribute to the building process of the Palestinian independent state based on sound scientific basis.

**April, 2011**

**Ola Awad  
PCBS President**



## Table of Contents

Subject	Page
List of Tables	
List of Figures	
List of Maps	
Executive Summary	
Chapter One: <b>Introduction</b>	<b>[19]</b>
Chapter Two: <b>Concepts and Definitions</b>	<b>[21]</b>
Chapter Three: <b>Main Findings</b>	<b>[25]</b>
3.1 Housing Unit Characteristics	[25]
3.2 Housing Conditions	[26]
3.3 Housing Density	[27]
Chapter Four: <b>Methodology</b>	<b>[29]</b>
4.1 Questionnaire	[29]
4.2 Sample Frame	[29]
4.3 Field Work	[30]
4.4 Data Processing	[30]
4.5 Weight Calculation and the Estimation	[30]
Chapter Five: <b>Data Quality</b>	<b>[31]</b>
5.1 Accuracy	[31]
5.2 Comparability	[32]
5.3 Data Quality Assurance Procedures	[32]
5.4 Technical Notes	[32]
<b>References</b>	<b>[33]</b>
<b>Tables</b>	<b>53</b>



## List of Tables

Table	Page
<b>Table 1:</b> Selected Main Indicators for Housing Conditions in the Palestinian Territory, Selected Years	<b>55</b>
<b>Table 2:</b> Percentage Distribution of Households in the Palestinian Territory by Type of Housing Unit, Region and Type of Locality, 2010	<b>56</b>
<b>Table 3:</b> Percentage Distribution of Households in the Palestinian Territory by Type of Housing Unit and Tenure of Housing Unit, 2010	<b>57</b>
<b>Table 4:</b> Percentage Distribution of Households in the Palestinian Territory by Construction Material of External Walls of the Housing Unit, Region and Type of Locality, 2010	<b>58</b>
<b>Table 5:</b> Percentage Distribution of Households in the Palestinian Territory by Area of Housing Unit, Region and Type of Locality, 2010	<b>59</b>
<b>Table 6:</b> Percentage Distribution of Households in the Palestinian Territory by Year of Completing Housing Unit Construction, Region and Type of Locality, 2010	<b>60</b>
<b>Table 7:</b> Percentage Distribution of Households in the Palestinian Territory by Year of Completing Housing Unit Construction, Type of Housing Unit, and Region, 2010	<b>61</b>
<b>Table 8:</b> Percentage Distribution of Households in the Palestinian Territory by Nearest Main Transportations, Region and Type of Locality, 2010	<b>62</b>
<b>Table 9:</b> Percentage Distribution of Households in the Palestinian Territory by Nearest Elementary School, Region and Type of Locality, 2010	<b>63</b>
<b>Table 10:</b> Percentage Distribution of Households in the Palestinian Territory by Nearest Doctor Clinic, Region and Type of Locality, 2010	<b>64</b>
<b>Table 11:</b> Percentage Distribution of Households in the Palestinian Territory by Nearest Health Center, Region and Type of Locality, 2010	<b>65</b>
<b>Table 12:</b> Percentage Distribution of Households in the Palestinian Territory by Nearest Maternal and Child Health Center, Region and Type of Locality, 2010	<b>66</b>
<b>Table 13:</b> Percentage Distribution of Households in the Palestinian Territory by Nearest Hospital, Region and Type of Locality, 2010	<b>67</b>
<b>Table 14:</b> Percentage Distribution of Households in the Palestinian Territory by Main Source of Water and Connected to Electricity and Sewage, Region and Type of Locality, 2010	<b>68</b>
<b>Table 15:</b> Percentage Distribution of Households in the Palestinian Territory by Availability of (Kitchen, Bathroom and Toilet), Region and Type of Locality, 2010	<b>69</b>
<b>Table 16:</b> Percentage Distribution of Households in the Palestinian Territory by Tenure of Housing Unit, Region and Type of Locality, 2010	<b>70</b>
<b>Table 17:</b> Percentage Distribution of Households Living in Rented Housing Units in the Palestinian Territory by Monthly Rent and Region, 2010	<b>70</b>



<b>Table</b>	<b>Page</b>
<b>Table 18:</b> Percentage of Households in the Palestinian Territory by Availability of Durable Goods, Region and Type of Locality, 2010	<b>71</b>
<b>Table 19:</b> Percentage Distribution of Households in the Palestinian Territory by Number of Rooms in the Housing Unit, Region and Type of Locality, 2010	<b>72</b>
<b>Table 20:</b> Percentage Distribution of Households in the Palestinian Territory by Number of Rooms for Sleeping in Housing Unit, Region and Type of Locality, 2010	<b>73</b>
<b>Table 21:</b> Percentage Distribution of Households in the Palestinian Territory by Housing Density, Region and Type of Locality, 2010	<b>74</b>
<b>Table 22:</b> Percentage Distribution of Households in the Palestinian Territory by Housing Density, Type of Housing Unit and Region, 2010	<b>75</b>
<b>Table 23:</b> Percentage Distribution of Households in the Palestinian Territory by Housing Density, Tenure of Housing Unit and Region, 2010	<b>76</b>
<b>Table 24:</b> Percentage Distribution of Households in the Palestinian Territory by the Distance Between their Housing Units and the Nearest Housing Unit and Region, 2010	<b>76</b>
<b>Table 25:</b> Percentage Distribution of Households in the Palestinian Territory by Household Need from Housing Units During the Next Ten Years, Region and Type of Locality, 2010	<b>77</b>
<b>Table 26:</b> Percentage Distribution of Households in the Palestinian Territory by Number of Housing Units Which Household Can Build it During the Next Ten Years, Region and Type of Locality, 2010	<b>77</b>

## **List of Figures**

<b>Figures</b>	<b>Page</b>
<b>Figure 1:</b> Projected Housing Units in the Palestinian Territory by Region and Year	<b>[25]</b>
<b>Figure 2:</b> Percentage Distribution of Households in the Palestinian Territory by Type of Housing Unit and Type of Locality, 2010	<b>[26]</b>
<b>Figure 3:</b> Percentage of Households in the Palestinian Territory by Availability of Durable Goods, 2010	<b>[27]</b>



## **List of Maps**

<b>Maps</b>		<b>Page</b>
<b>Map 1:</b>	Percentage of Palestinian Households Living in A House and Apartment by Region, 2010	<b>31</b>
<b>Map 2:</b>	Percentage Distribution of Households in the Palestinian Territory by Tenure of Housing Unit and Region, 2010	<b>37</b>
<b>Map 3:</b>	Percentage Distribution of Households in the Palestinian Territory by Housing Density and Region, 2010	<b>41</b>



## **Executive Summery**

The findings of the Population, Housing, and Establishment Census that was conducted by PCBS in 2007 showed that the number of housing units in the Palestinian Territory reached 701,937; thereof 456,314 in the West Bank and 245,623 Housing Unit in Gaza Strip

According to PCBS estimated data, the number of housing units in the Palestinian Territory in 2010 was 850,563 reflecting an increase by 23% compared with 2007.

The results of the Housing Conditions survey in 2010 indicated that 0.9% of households in the Palestinian Territory live in a villa , 47.8% live in a house, while 50.2% live in apartments, compared with 55.6% live in houses and 40.8% live in apartments at the end of 2006. The percentage of households living in a house in rural areas in 2010 is 74.3% while 41.9% of households in urban areas live in a house.

The results of the Housing Conditions Survey for the years 2000, 2006 indicated that the average monthly rent paid for a housing unit in the Palestinian Territory was 86 and 115 Jordanian Dinar respectively. This amount was increased by 153 Jordanian Dinar to reach 165 Jordanian Dinar in the West Bank and 109 Jordanian Dinar in Gaza Strip.

According to the results of the Housing Conditions Survey 2010, the average number of rooms in the housing unit in the Palestinian Territory is 3.6 distributed as 3.6 for the West Bank, and more than the average in Gaza Strip to reach to 3.7.

The results show that the average housing density in the Palestinian Territory in general is 1.6 person per room. The average for the West Bank is 1.5 whereas the average for Gaza Strip is 1.8 person per room.

The data for the Housing Conditions survey 2010 show that 71.6% of households in the Palestinian Territory need to build new housing units during the next ten years, while 37.2% of households in the Palestinian Territory are capable to build additional housing units. In the West Bank, 72.1% of households need to build new housing units during the next ten years, while the percentage is 71.0% in Gaza Strip



## Chapter One

### Introduction

A series of basic requirements have to be met for a housing unit (regardless of its type and inhabitant) in order to be suitable for living purposes, such as hygiene and privacy. Thus, a healthy housing unit would be the one that provides enough space for living, sleeping (rooms and bedrooms) and eating (a kitchen). The housing unit must have ventilation, exposure to sunlight, toilet facilities, electricity and drinking water installation.

Henceforth, the housing unit should constitute a basic requirement of the living conditions for the Palestinians living in the Palestinian Territory, and it is therefore important to provide data on housing conditions, housing unit characteristics and housing density.

This report contains the main results of the Housing Conditions Survey in the Palestinian Territory that was implemented by PCBS as an annex to the Labour Force Survey during the period (1-10 to 31-12-2010).

The Housing Conditions Survey 2010 is the fourth specialized survey on the indicators of housing conditions that was carried out by PCBS. The Survey's questionnaire included the main indicators about housing conditions.

This survey aims to provide general reliable data on housing conditions in the Palestinian Territory, regional data for the West Bank and Gaza Strip, and data by type of locality (urban, rural and refugee camps). The survey is carried out once every three years.

This report comprises five chapters; the first chapter presents background on the Housing Conditions Survey 2010 and the housing statistics; chapter two presents the main definitions used in the report; the third chapter exhibits the main findings of the Housing Conditions Survey 2010 including type of housing unit, tenure of housing unit, housing density; chapter four discusses the methodology used in the Housing Conditions Survey 2010, and the fifth chapter details the quality of the data of the survey.





## Chapter Two

### Concepts and Definitions

This section presents the main concepts and definitions used to derive the main indicators of housing and housing conditions statistics. These concepts and definitions are based on international recommendations in the field of housing statistics, and they are the same in all subjects in PCBS. The main concepts and expressions mentioned in this report were as follows:

#### **Locality:**

A permanently inhabited place, which has an independent municipal administration or a permanently inhabited, separated place not included within the formal boundaries of another locality.

#### **Locality Type:**

Localities have been divided into three types: Urban, Rural, Camps

**Urban:** Any locality whose population amounts to 10,000 persons or more. This applies to all governorates/districts centers regardless of their size. Besides, it refers to all localities whose populations vary from 4,000 to 9,999 persons provided they have, at least, four of the following elements: public electricity network, public water network, post office, health center with a full – time physician and a school offering a general secondary education certificate.

**Rural:** Any locality whose population is less than 4,000 persons or whose population varies from 4,000 to 9,999 persons but lacking four of the aforementioned elements.

**Camp:** It refers to any locality referred to as a refugee camp and administered by the United Nations Refugees and Work Agency in the Near East (U.N.R.W.A.).

#### **Availability of Durable Goods:**

This section refers to the durable goods owned by the household: Private car, refrigerator, solar boiler, central heating, home library (availability of a minimum of 10 non –scholastic books used for developing the cultural, religious aspects of knowledge ...etc.), cooking stove, washing machine, television, video, computer, dish, ect.

#### **Average Housing Density:**

It refers to the average number of persons living in the room. This average calculated through dividing the total number of individuals for a certain category by the total number of rooms for that particular category.

#### **Bathroom:**

The bathroom is defined as the room used for taking a shower or a bath. It has a door that could be closed during the shower. A bathroom is classified as follows:

1. Bathroom with Piped Water: This category applies when there is a bathroom connected to water resources or when there is a water tap in the bathroom.
2. Bathroom without Piped Water: This category applies when there is a bathroom that is not connected to water resources.
3. No Bathroom: This category applies when there is no separate bathroom in the Housing unit.

**Connection to Water:**

1. **Public Water Network:** A network of pipes for the purpose of providing clean water to households. It normally belongs to a municipality, the council or to a private company.
2. **Mekorot Israeli company:** A network of pipes for the purpose of providing clean water to households. It normally belongs to Mekorot Israeli company.
3. **Collection Water Wells:** Wells that are dug in the ground for the purpose of collecting rain water.
4. **Springs:** Water that is discharged from the ground at an intersection point between the topographic surface and the groundwater table; it could be permanent or seasonal, and it is considered as one of the natural resources for irrigation.
5. **Water Tanks:** Using water from vehicles that distribute and transfer water.
6. **Others:** If the source of water was not mentioned above

**Connection to Electricity:**

1. **Public Network:** Electrical wiring deployed in residential areas and covering all or most of the households in the locality, particularly through electricity companies or local authorities (municipal or village),
2. **Private Generator:** Device used for electric power generation and supply to housing and owned by the owner of the household or group of individuals.
3. **Not Available:** In the case of lack of means and therefore foregoing electricity.

**Connection to Sanitation:**

This question illustrates the house connections to sanitation which are:

1. **Sewage Network:** System of collectors, pipelines, conduits and pumps to evacuate wastewater (rainwater, domestic and other wastewater) from any of the location places generation either to municipal sewage treatment plant or to a location place where wastewater is discharged.
2. **Cesspit:** A well or a pit in which night soil and other refuse is stored, constructed with either tight or porous walls
3. **Not Found:** In case of no provision from the above methods.

**Construction Material of External Walls:**

The main material construction of external sides of walls and it could comprise cleaned stone, stone and concrete, concrete, cement blocks, adobe clay, old stone or other.

**Household:**

The household is defined as one person or a group of persons with or without a family relationship, who live in the same housing unit share meals and make joint provision for food and other essentials of living.

**Housing Density (Number of persons per Room):**

It is defined as the number of occupants per room (number of persons who live in the household divided by the total number of occupied rooms of the household). Households, who live in housing units with unknown number of rooms are not considered in the calculation.

**Type of Housing Unit:**

This term describes one of the following: Villa, House, Apartment and other.

**Villa:** A separately established building that is usually constructed from clean stone. It is constructed for the living of one household and consists of a 2 - suite – single or double or multiple stories connected through internal stairs. One of the suites is constructed as bedrooms whereas the second suite is constructed for reception and involves the kitchen and other related services. In general, the villa is surrounded by a garden, regardless of the area of this garden, which is surrounded by boarding wall or fence. Villas normally have roofed parking area (garage). Villas also may include separate small building or extensions as part of them.

**House:** A building usually established for the residence of one household or more; it is the typical form of residential buildings prevailing in Palestine. The house may be comprised of single story or more that is utilized by a single household. Nevertheless, if the house is divided into housing units each of which has its own utilities and occupied by a different household, each housing unit would be classified as an apartment.

**Apartment:** It is a part of a building or a house, consisting of one room or more and annexed with kitchen, bathroom and toilet, which are all, closed by external door, leading to the road through a stair way and/or path way. It is prepared usually for one household.

**Independent Room:** It is a separate room with no kitchen, bathroom nor toilet, but sharing with other households these basic services, and it is prepared for living.

**Other:** It refers to any type of building other than the aforementioned. Examples of this type include tent, marginal, cottages, caves, grottos, and booths occupied by a tenant during the survey

**Housing Unit:**

A building or part of a building constructed for one household only, with one or more independent entrance leading to the public road without passing through another housing unit. The unit might not be constructed for living purposes but found occupied with a household during the enumeration. Likewise, the unit might be utilized for habitation or for work purposes or both purposes. Also, it might be closed, vacant or deserted.

**Kitchen:**

The kitchen is normally defined as a four – wall – room with a ceiling typically used for preparing food. Kitchens are classified as follows:

1. **Kitchen with Piped Water:** This category applies to cases involving a water tap in the kitchen.
2. **Kitchen without Piped Water:** This category applies to cases not involving a water tap in the kitchen.
3. **No Kitchen:** This category applies when there is no separate kitchen in the Housing unit.

**Rent:**

The amount paid periodically (weekly, monthly, etc.) for the space occupied by the household.

**Room:**

The housing unit or part of the housing unit surrounded with walls and has a ceiling, provided that its area is not less than 4m<sup>2</sup>. If the area of the glassy balcony equals or surpasses more than 4m<sup>2</sup> and is used for living purposes, it is considered a room. Likewise, the salon or living room is considered a room. The kitchen, bathroom, paths and toilet are not considered rooms. Areas allocated for animals and poultry along with those used for work purposes only, are not considered rooms.

**Bedroom:**

Any area equal to or greater than (4) m<sup>2</sup> (four square meters and over), surrounded by walls, ceiling and easy to isolate users from the others, used to sleep one person or more members of the household. The balconies (Frendat) repelling if the bedroom area equal to or more than four square meters, and used for the purpose of sleep.

**Tenure of Housing Unit:**

This section refers to the household tenure of the Housing unit that could be one of the following categories:

1. **Rented:** If the housing unit is rented.
2. **Owned:** This category applies when the household or one of the household member (usually live therein) owns the Housing unit.
3. **Without Payment:** If the housing unit is used without any payments.
4. **For Work:** If the housing unit is offered to the household as a result of working relation with one member of the family or more.

**Toilet:**

A toilet (WC) may be classified as follows:

1. **Toilet with Piped Water:** This category applies when there is a toilet connected to water resources or when there is a water tap in the toilet.
2. **Toilet without Piped Water:** This category applies when there is a toilet that is not connected to water resources.
3. **No Toilet:** This category applies when there is no separate toilet in the Housing unit.

**Symbols Used in Tables:**

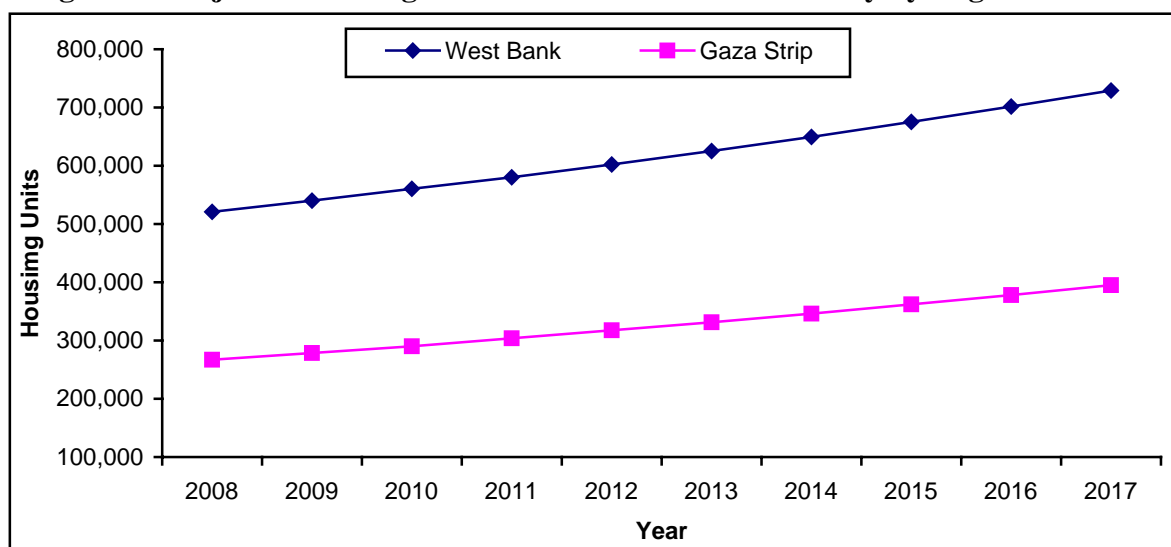
- (.): Data not available  
(-): Data Does not exist

## Main Findings

The findings of the Population, Housing, and Establishment Census-2007 that was conducted in by PCBS, show that the number of housing units in the Palestinian Territory was 701,937 of which 456,314 in the West Bank and 245,623 Housing Unit in Gaza Strip

According to PCBS estimates, the number of housing units in the Palestinian Territory in 2010 reached 850,563 housing unit; showing an increase by 23.0% compared with year 2007.

**Figure 1: Projected Housing Units in the Palestinian Territory by Region and Year**



This chapter presents the main findings of the Housing Conditions Survey-2010 that was conducted in the Palestinian Territory in 2010.

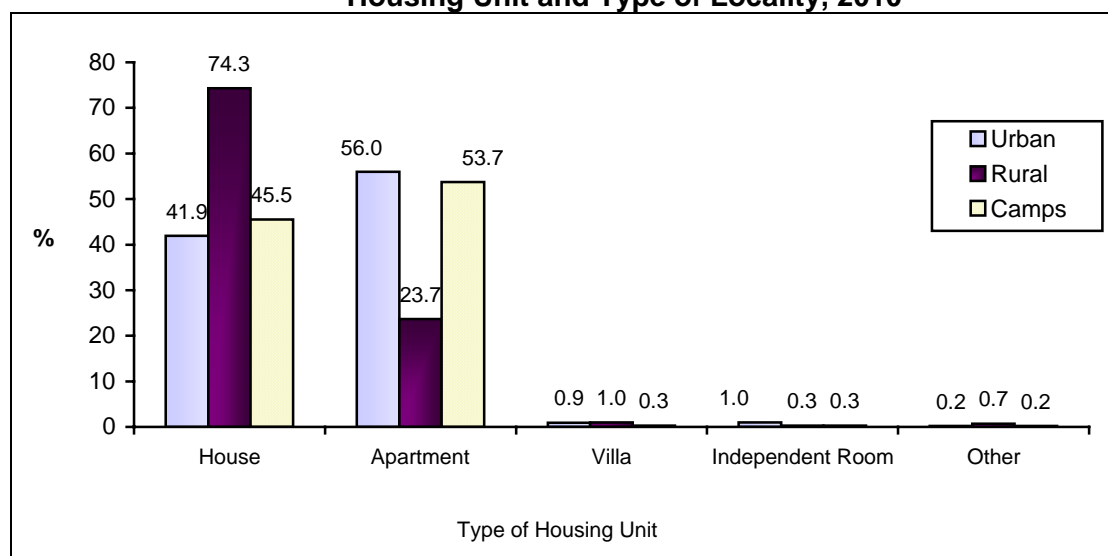
The survey provides statistics on key indicators pertaining to the housing conditions in the Palestinian Territory, most important of which housing conditions, housing characteristics and housing density.

### 3.1 Housing Unit Characteristics

#### Type of Housing Unit:

The results of the Housing Conditions Survey 2010 indicated that 0.9% of households in the Palestinian Territory live in a villa and 47.8% live in a house; while 50.2% live in apartments, compared to 55.6% live in house and 40.8% live in apartments at the end of year 2006. The percentage of households living in a house in rural areas in 2010 was 74.3% while 41.9% of households in urban areas live in a house

**Figure 2: Percentage Distribution of Households in the Palestinian Territory by Type of Housing Unit and Type of Locality, 2010**



#### **Construction Material of External Walls:**

The results of the survey indicated that 56.9% of households in the Palestinian Territory in 2006 live in housing units that were built of cement block, compared with 52.9% in the year 2010. About 28.8% of households in the West bank in 2010 live in housing units made of cement block compared with at least 99.3% in Gaza Strip.

#### **Year of Completing Housing Unit Construction:**

The results show that 36.7% of households in the Palestinian Territory live in housing units that were built between 1995-2000; 18.8% of households live in housing units that were built after the year 2000 and 7.8% of households live in housing units that were built before 1967.

### **3.2 Housing Conditions**

#### **Tenure of Housing Unit:**

The percentage of households living in owned housing units in the Palestinian Territory is 83.8%, including 81.8% in the West Bank and 86.9% in Gaza Strip. In addition, 8.7% of households live in rented housing units, including 10.3% in the West Bank and 5.5% in Gaza Strip compared with 8.5%, 11.5% in the years 2000, 2006.

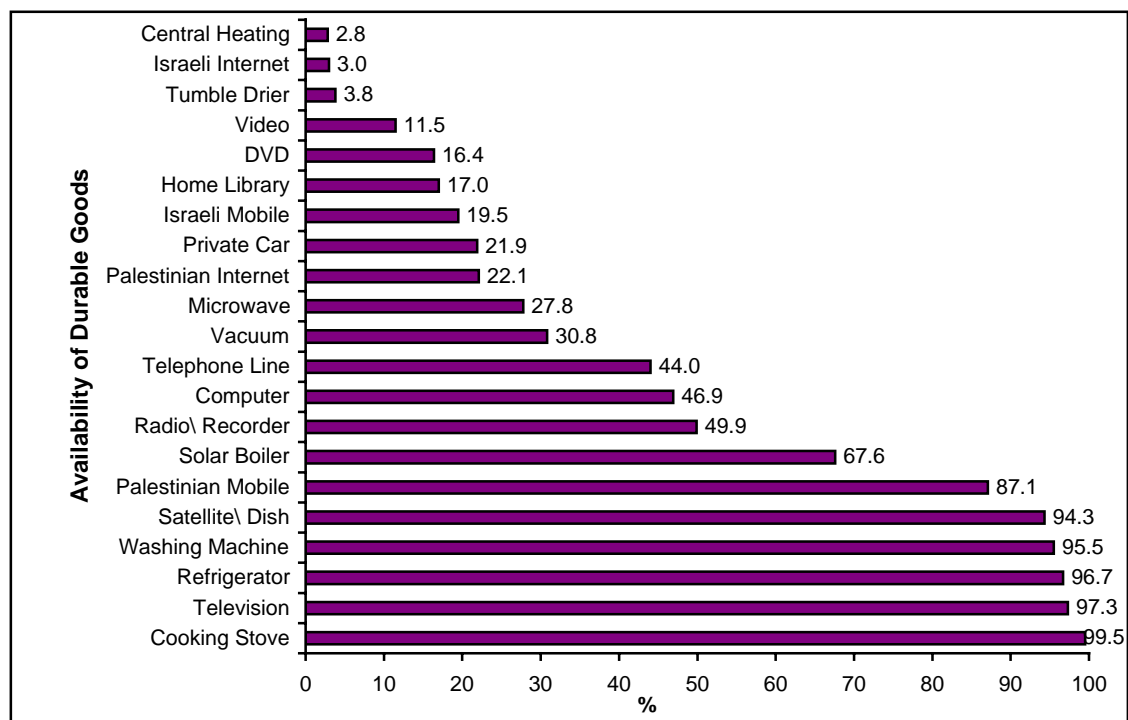
#### **Rent:**

The survey's results of the years 2000 and 2006 indicated that the average monthly rent paid for a housing unit in the Palestinian Territory was 85.6 and 115 Jordanian Dinar respectively. This average increased to reach 152.8 Jordanian Dinar in 2010, including 164.8 Jordanian Dinar in the West Bank and 108.5 Jordanian Dinar in Gaza Strip. Data also indicate that 43.3% of households in the West Bank live in rented housing units and pay a monthly rent of 150 Jordanian Dinar or more, whereas the percentage in Gaza Strip is 6.8%.

### Availability of Durable Goods:

Results show that 21.9% of the households in the Palestinian Territory have a private car, distributed as 29.6% in the West Bank and 7.0% in Gaza Strip, whereas 96.7% of households have a refrigerator in the Palestinian Territory. Also 94.3% households in the Palestinian Territory have Satellite\ Dish, while 46.9% have Computer

**Figure 3: Percentage of Households in the Palestinian Territory by Availability of Durable Goods, 2010**



### 3.3 Housing Density

3.2

#### Number of Rooms in the Housing Unit:

The results indicate that the average number of rooms in the housing unit in the Palestinian Territory is 3.6. In addition, 15.4% of the households in the Palestinian Territory live in housing units with 1-2 rooms; 16.5% in the West Bank and 13.3% in Gaza Strip.

#### Housing Density:

The results show that the average housing density in the Palestinian Territory in general is 1.6 person per room. The average housing density in the West Bank is 1.5 whereas the average in Gaza Strip is 1.8 persons per room. The results indicate that 9.5% of the households in the Palestinian Territory live in housing units with three persons or more per room including 12.2% in Gaza Strip and 8.1% in the West Bank.

#### Households Need from Housing Units:

The findings of the Housing Conditions Survey show that 71.6% of households in the Palestinian Territory need to build new housing units during the next ten years, while 37.2% of the households in the Palestinian Territory can build additional housing units. In the West Bank, 72.1% of households need to build new housing units during the next ten years, while the percentage is 71.0% in Gaza Strip.





## Chapter Four

### Methodology

This section presents a documentation of the methodology used in conducting the Housing Conditions Survey-2010 including the design of the survey's instruments, data collection, data processing and data tabulation.

#### 4.1 Questionnaire

The design of the questionnaire for the Housing Conditions Survey was based on the experiences of similar countries as well as on international standards and recommendations for the most important indicators, taking into account the special situation of the Palestinian Territory.

#### 4.2 Sample Frame

The sampling frame consists of all enumeration areas which were enumerated in 2007; each enumeration area consists of buildings and housing units with average of about 150 households in it. These enumeration areas are used as primary sampling units PSUs in the first stage of the sampling selection, then the households' frame for the chosen enumeration area in the first stage is used in selecting the households in the second stage.

#### Target Population:

It consists of all Palestinian households and persons who are normally residents in the Palestinian Territories during 2010.

#### Sampling design:

The sample is stratified cluster sample with two stages:

**First stage:** selection of a systematic random sample of 502 enumeration areas, excluding enumeration area that contain less than 40 households.

**Second stage:** selection of a random area sample of average 16 households from each enumeration area selected in the first stage, then selection of 16 households from each Enumeration Area that contain 80 households or more and then selection of 8 households from each EA that contain less than 80 households .

#### Stratification:

The population was divided by:

- 1- Governorates
- 2- Type of Locality (urban, rural, refugee camps)

#### Sample Unit:

In the first stage, the sampling units are the enumeration areas (clusters) from the master sample. In the second stage, the sampling units are households.

#### Sample Size:

The estimated sample size is the same as for the LFS sample size in Fourth Quarter which is equal 7,820 household.

### **4.3 Fieldwork**

#### **Training Fieldworkers:**

Fieldworkers were trained on the main skills relevant to the survey before the start of data collection. Instructions for filling the questionnaire were made available for the interviewers. The training provided fieldworkers with aims and definitions of the different indicators of the survey.

#### **Data Collection:**

Fieldwork activities started on 02/10/2010 and lasted until 31/12/2010. Fieldworkers were distributed to all governorates proportional to the sample size of each governorate. The fieldwork team consisted of 24 members, including one fieldwork coordinator, 4 supervisors, 4 editors and 15 interviewers.

### **4.4 Data Processing**

The data processing stage consisted of the following operations:

1. Editing and coding before data entry: All questionnaires were edited and coded in the office using the same instructions adopted for editing in the field.
2. Data entry: At this stage, data was entered into the computer using a data entry template developed in Access. The data entry program was prepared to satisfy a number of requirements such as:
  - To prevent the duplication of the questionnaires during data entry.
  - To apply integrity and consistency checks of entered data.
  - To handle errors in user friendly manner.
  - The ability to transfer captured data to another format for data analysis using statistical analysis software such as SPSS.

### **4.5 Weight Calculation and the Estimation**

The weight of statistical units (sampling unit) in the sample is defined as the mathematical inverse of the selection probability where the sample of the survey is two stage stratified cluster sample. Thus, the weights are calculated for each stage and the primary Households Weights is the multiplication of the two weights.

The primary weights for the households is adjusted to compensate for the non response of households and to be compatible with population size. This is done by calculating the adjustment factor for households weights and adjustment levels (Governorate and locality type) using households projection by adjustment levels in 2010.

## Chapter Five

### Data Quality

The concept of data quality is constructed from many aspects starting from planning of the survey to disseminating the findings and understanding the results. The main principles of quality in statistics include Accuracy, Comparability, and Data Quality Assurance Procedures.

#### 5.1 Accuracy

It includes many aspects of the survey, mainly statistical errors due to the sample and non statistical errors referring to the workers and tools of the survey. It includes also the response rates in the survey and their effect on the assumptions. This section includes:

##### 1. Sampling Errors

These types of errors evolved as a result of studying only part of the population and not all of it. Because this is a sampled survey, the data will be affected by sampling errors due to using a sample and not the whole frame of the population. Differences appear compared with the actual values that could be obtained through a census.

Variable	Estimate	Standard Error%	C.V %	95% confidence Interval	
				Lower	Upper
Percent of the household which own a computer in Gaza's camps	46	2.4	5.2	41.3	50.7
Percent of the household where the type of the housing unit is Apartment and tenure of housing unit is rent in west bank	72.1	2.7	3.8	66.4	77.1
Percent of the household where the Area of Housing Unit is above 200 (m <sup>2</sup> )	7.2	0.5	7	6.3	8.2
Average Monthly Rent (in Jordanian Dinar) where the Household tenure of housing unit is rent in west bank	164.8	12.49	7.6	140.14	189.46
Percentage of Households Living in Housing Unit with 3+ Housing Density in Gaza's camps	12.6	2.1	18.6	9.1	17.3
Percent of the household that can build one housing unit during the next 10 years	25.3	1	4	23.4	27.4
Percent of household where Nearest Doctor Clinic is More Than 5 Km in West bank	8.7	1.3	15	6.5	11.6

### **3. Non Sampling Errors:**

These errors are due to non-response cases as well as the implementation of surveys. In this survey, these errors emerged because of (a) the special content of the questionnaire itself, which some parts depend partially on estimation, (b) diversity of sources (e.g., the interviewers, respondents, editors, coders, data entry operator, etc).

The sources of these errors can be summarized as:

1. Some of the households were not in their houses and the interviewers could not meet them.
2. Some of the households did not give enough attention to the questionnaire.
3. Some errors occurred due to the way the questions were asked by interviewers.
4. Misunderstanding of the questions by the respondents.
5. Answering the questions related to monthly rent by making estimations.

### **5.2 Comparability**

The data of the Housing Conditions Survey 2010 is comparable geographically and over time by comparing the data between different geographical areas with the data of previous surveys and census 2007.

### **5.3 Data Quality Assurance Procedures**

Several measures had been taken to ensure the efficiency of quality controls in the survey, such as: the training of fieldworkers on the main skills before the start of data collection, conducting field visits to fieldworkers to ensure the integrity of data collection, editing of questionnaires before data entry, using data entry application that does not allow any mistakes during the process of data entry, and then examining the data. This was done to ensure data is error free ; while cleaning and inspection of the anomalous values have been made to ensure harmony between the different questions on the questionnaire.

### **5.4 Technical Notes**

This part presents the important technical notes on the indicators presented in the results of the survey:

1. The sample size is enough to allow dissemination at a more detailed level such as governorate for the main indicators like the house type and the area of the house.
2. In comparing data with previous years, it is important to take into consideration the declining of the exchange rate of major currencies (American Dollar, Jordanian Dinar) against the NIS. A table of exchange rates was included in this report.

## References

1. Palestinian Central Bureau of Statistics, 2006. *Housing Conditions Survey: Main Results 2006*. Ramallah - Palestine.
2. Palestinian Central Bureau of Statistics, 2009. *Population, Housing and Establishment Census 2007, Final Results- Housing Report – West Bank*. Ramallah - Palestine.
3. Palestinian Central Bureau of Statistics, 2009. *Housing Projections up to 2017*. Ramallah - Palestine. (Un published data)