

(14 )

-

**2011**

**2011 /**

**2006**

.2011 - 1432 ©

:

**.2011**

-(14 )

:

- **1647** . .

(970/972) 2 298 2700 :

(970/972 )2 298 2710 :

(1800300300) :

[diwan@pcbs.gov.ps](mailto:diwan@pcbs.gov.ps) :

[http:// www.pcbs.gov.ps](http://www.pcbs.gov.ps) :



Source: Palestinian Central Bureau of Statistics



•

•

•

•

•

•



**2011**

-

**(PNA)**

**2011 (CFG)**

**.(SDC)**

**(CFG)**





"

"

1997

:

2011



<b>21</b>		:
21		1.1
23		2.1
24		3.1
24		4.1
25		5.1
25		6.1
26		7.1
27		
<b>29</b>		:
29		1.2
30		2.2
31		3.2
33	(	4.2
35		5.2
36		
<b>37</b>		
38		1.3
38		2.3
39		3.3
39		4.3
40		5.3
40		6.3
41		7.3
42		8.3
44		

**45**

45

47

47

50

55

56

1.4

2.4

3.4

4.4

5.4

		:
<b>25</b>		<b>:(1-1)</b>
	2010	
		:
<b>46</b>	2010	<b>:(1-4)</b>
<b>46</b>	2010	<b>:(1-4)</b>
<b>47</b>		<b>:(3-4)</b>
	2010	
<b>48</b>	17-10	<b>:(4-4)</b>
		2010
<b>49</b>	17-10	<b>:(5-4)</b>
		2010
<b>50</b>	17 - 10	<b>:(6-4)</b>
		2010



		:
22	2010	:(1-1)
22	2010-1997	:(2-1)
23		:(3-1)
24		:(4-1)
		:
30	2010-2000	:(1-2)
31	2010-2000	:(2-2)
32	2010 2006	:(3-2)
32	2010 2006	:(4-2)
34	2010-2000	:(5-2)
		:
41		:(1-3)





:

:

:

:

( )

( )

:

1,000

:

1,000

.( )

:

1,000

:

1,000

:

1,000

:

:

:( )

(SD2-)

(SD3-)

:( )

(SD3-)

(SD2-)

:

:( )

:

:

:

:

:

:

:

:

:

:

:

:

:

:

:

:

:

:

.( )

:

:

:

:

.1

:

.2

:

.3

:

.4

:

:

:

:

## الفصل الأول

## الواقع الديمغرافي

(1 - )	:
--------	---

1989

1.1

(%62.1)

2.51

4.05

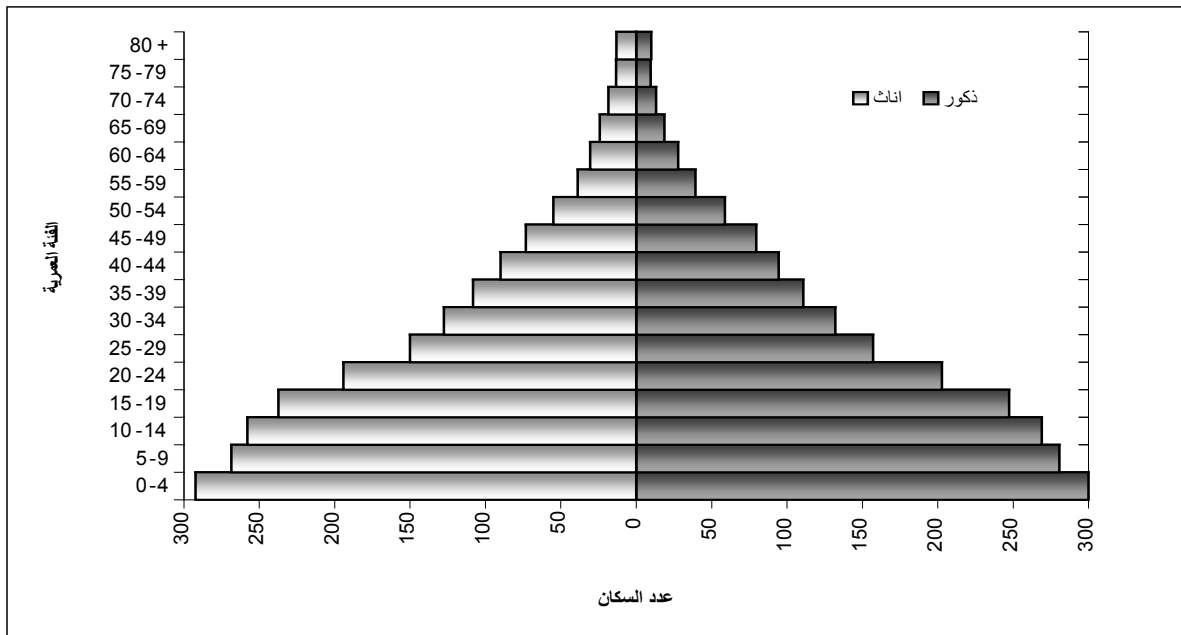
2010

. (%37.9)

1.54

2010

:(1-1)



- .2007

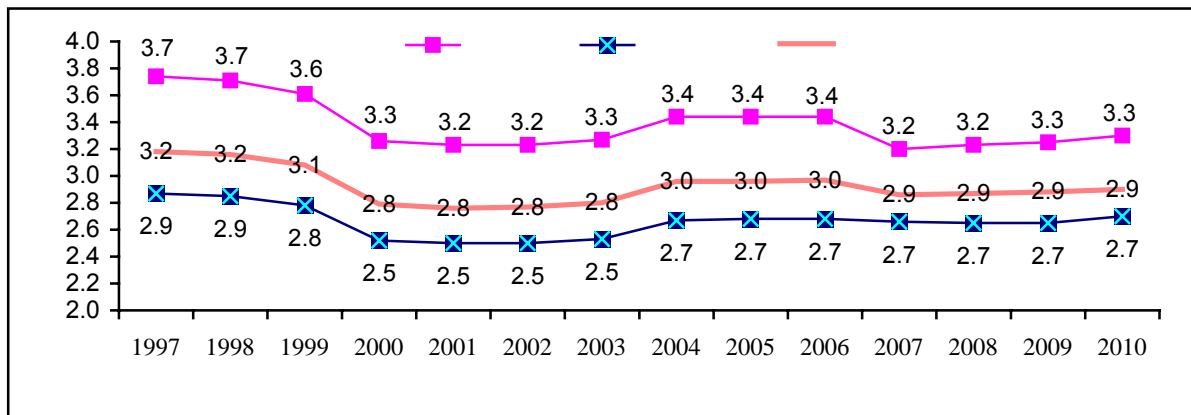
.2011

:

%41.3

2010-1997

:(2-1)



- .2007

.2011

:

.2010

%2.9

2010

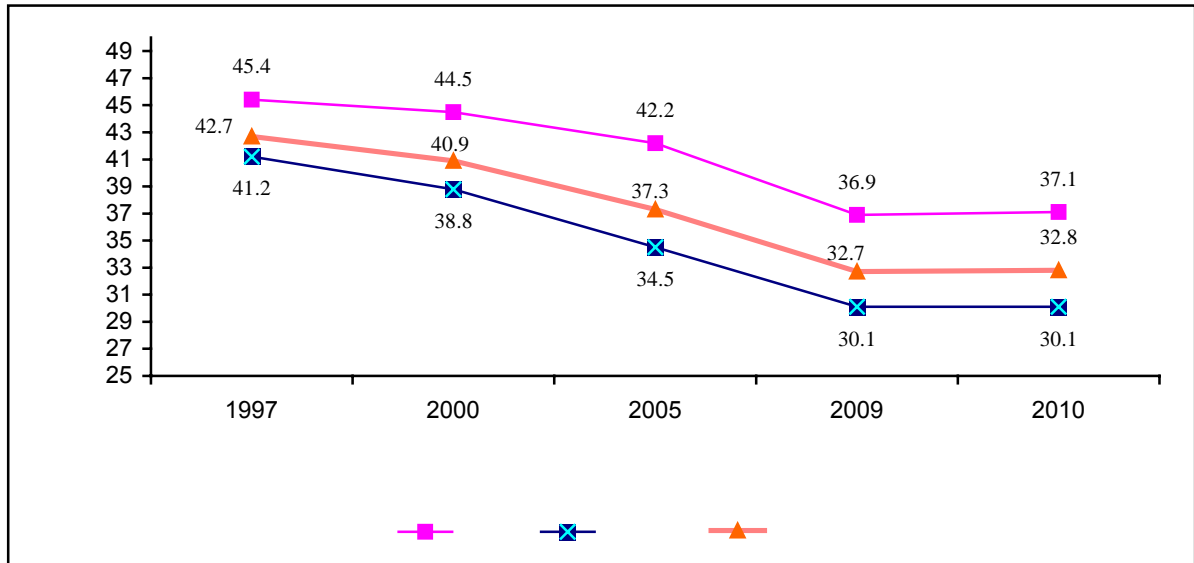
.%1.2

%3.3

%2.7

(7 - )

:(3-1)



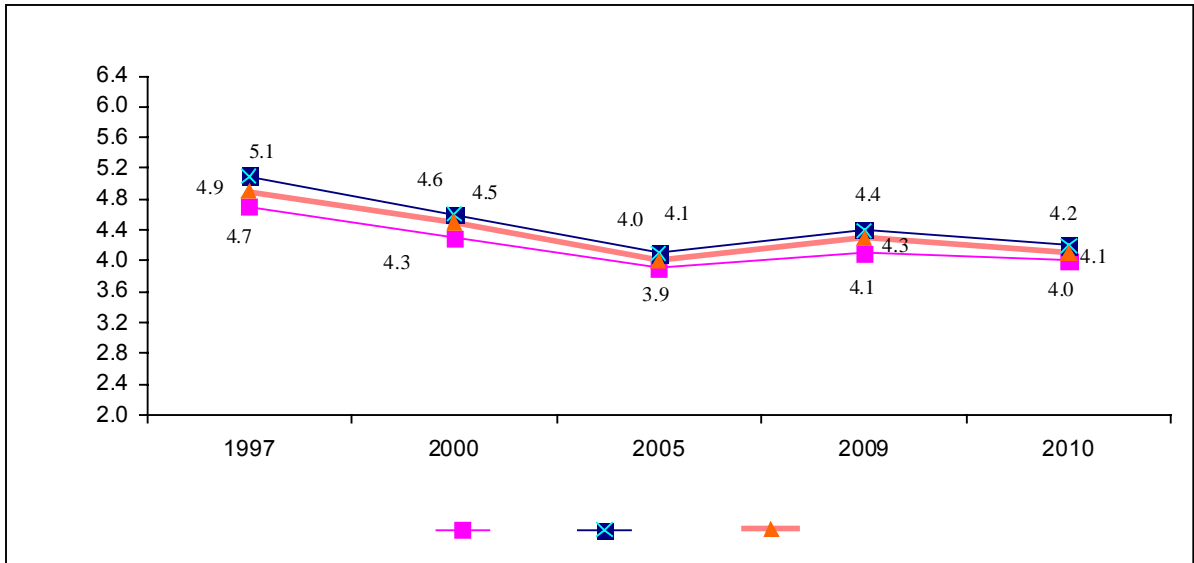
- .2007 .2011 :

42.7  
2010  
2010  
37.1  
30.1  
32.8  
1997  
30.1  
37.1  
32.8  
1997  
30.1

(24 - )

4.1 1997 4.9  
 2010  
 5.1  
 2010 4.2 1997  
 .2010 4.0 1997 4.7

:(4-1)



- .2007 .2011 :

1997  
 25.4 19.9 2009 23.0 18.0

" " 2009



24.8

17.4

27.4

24.5

%22.9 2009

%0.8

5.1

( )

(1-1)

2010

(4.5) 2006

4.2

\*2010

:(1-1)

44.1	34.8	38.4	19-15
209.5	184.6	194.0	24-20
278.9	217.3	240.4	29-25
214.0	163.9	182.1	34-30
158.6	119.1	132.9	39-35
58.0	28.7	39.7	44-40
8.5	2.1	4.2	49-45
<b>4.9</b>	<b>3.8</b>	<b>4.2</b>	

\*

6.1

%44.0

2010

%29.7

%44.4

%67.3

%67.0

%29.0

---

						7.1
		2010	%2.9			•
		%3.3	%2.7	2010		
.2010				1.97		•
30.1						•
.2010				37.1		
1997		4.9				•
				.2010		4.1
1997						•
.2009	25.4	19.9		.23.0	18.0	
	(	)				•
(	4.2)			2010		
	%29.0			%44.4		•
					%67.0	

---

.	.2010	.2011	-
-----			
		.2010	-
		.2007	-
-----			
		.2011	-
-----			
		.2008	-
		.2007	-
-----			
.	- .2010	.2011	-



(1-24 - )

) ( )  
) ( )  
(

1.2

( )  
:

100

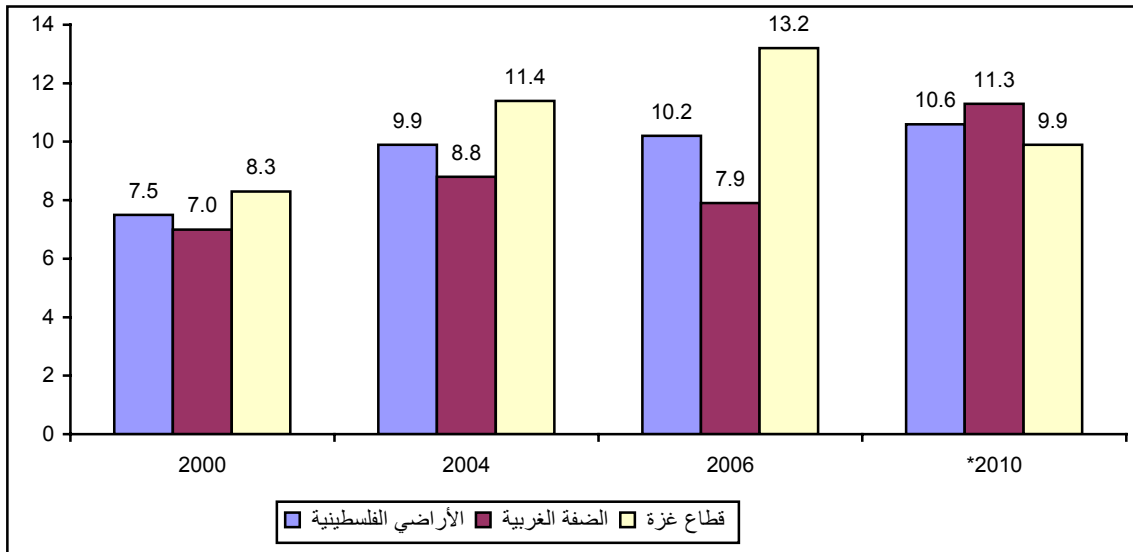
11

%5.0

%41.3 2010 2000  
 .%60.0

2010-2000

:(1-2)



\*

%11.3

%16.9

%.9.9

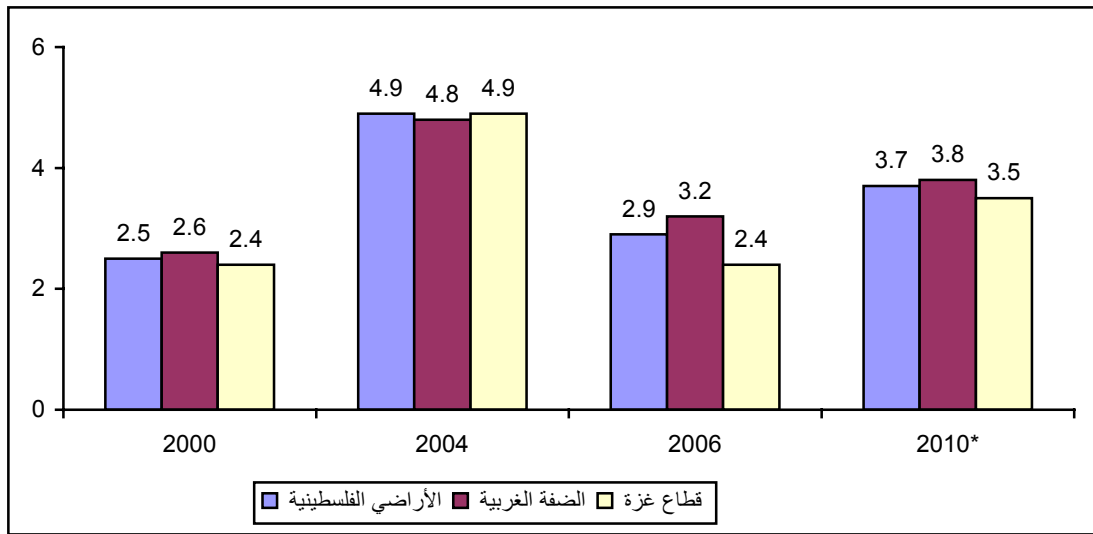
2.2

%3.5                      %3.8 2010                      %3.7  
 %3.9 %4.8 %5.6  
 %4.2 %4.3 %4.4

2000 1996  
 %3.7                      2010                      %4.9                      2004

2010-2000

:(2-2)



\*

3.2

24
----

2015 1990

2015-1990

23-12

:

1999 1994

1000

33.2

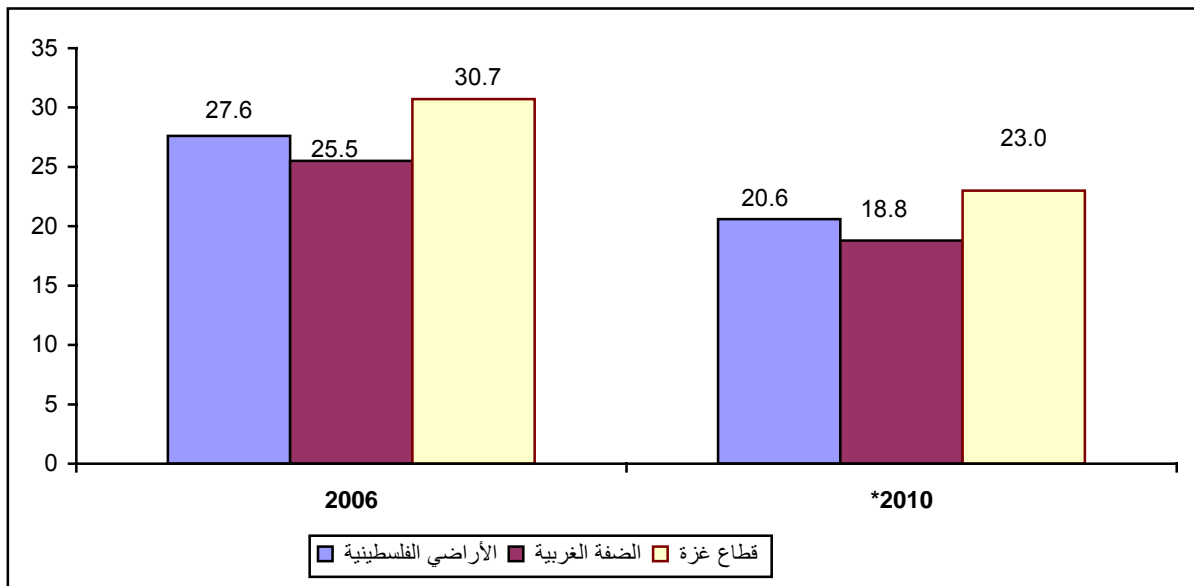
%6.6

28.7

1000 20.6  
 1000 23.0  
 1000 18.8  
 2010 -2005

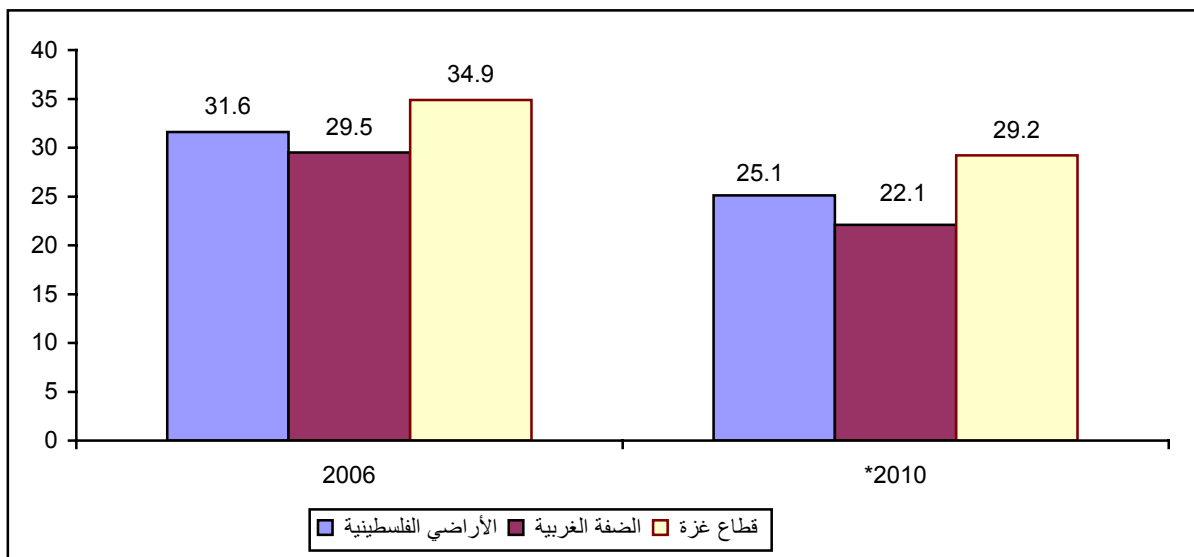
1000 25.1  
 1000 29.2  
 1000 22.1  
 2010 -2005

2010 2006 : (3-2)



\*

2010 2006 : (4-2)



\*



					2009		
%15.6	%16.9	%16.3			%33.5	%35.2	%34.5
	%12.6		%13.9	%13.4			
			%3.0		%14.1	%9.4	
%37.6	%36.1						
%11.4			%16.8				%34.0
				1	( 59-6)		
					( 59-6)		%19.4
							%13.4 %25.6
			%32.3				
						%19.4	%19.7
		%21.8	%31.3			%41.4	
%4.4 <sup>2</sup>			%7.5	( 59-6)			
%8.8 <sup>3</sup>			%11.8			%10.7	
						%15.0	
			(	)			<b>4.2</b>

**2015**

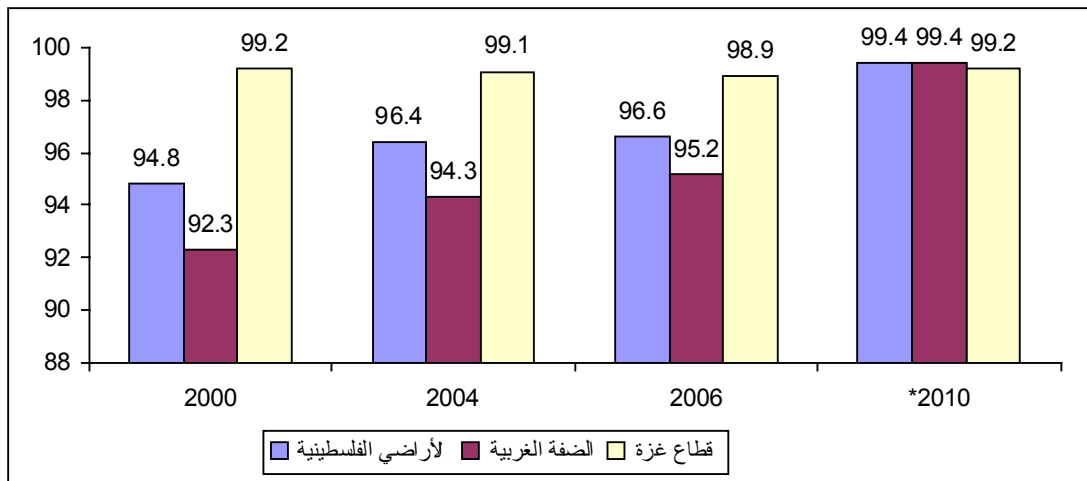
---

11 g/dl 1  
 9.9 g/dl -7.0 g/dl 2  
 10.9 g/dl -10.0 g/dl 3

(49-15) %26.7  
 %15.4 %39.1  
 %50.0  
 %26.7 %28.6  
 %55.9  
 %36.8 %45.1  
 %12.0 (49-15)  
 %14.7 %20.6 %4.1<sup>5</sup>  
 %18.7 %11.2<sup>6</sup>  
 %99.4 2010  
 2000 %4.9  
 .2010

2010-2000

:(5-2)



\*

.%1.4

%2.0

11.0 g/dl  
 9.9 g/dl - 7.0 g/dl  
 10.9 g/dl - 10.0 g/dl

4  
 5  
 6

5.2

•

%41.3 2010 2000

.%60.0

%3.8

%3.7

•

.2010

%3.5

1000 20.6

•

1000 23.0

2010 -2005

1000 18.8

1000 25.1

•

1000 29.2

2010 -2005

1000 22.1

%34.5

•

.2009

( 59-6)

•

(49-15)

%26.7

•

%99.4

•

2011 (14) . -

---

2006 - .2007 -

---

- .2010 - .2009 -  
- .(13 )

---

2004 - .2005 -

---

- .2010 .2011 -

---

.2009 - .2010 -

الفصل الثالث

الواقع التعليمي

. . .	. . .
(28 - )	.

1990

1989

2000

(29) (28)

(29) (28)

(3)

(2)

:

(12)

(6)

1

2

.1998

.1998

.1999

1

2

**1.3**

		2010/2009	
	%50.0		1,113,802
	%54.1	%49.4	
		%13.7	2010/2009
			%.86.3
		%59.4	2010/2009
	%58.5		%40.6
			%41.5
	2010/2009		
(	261,156) %23.4	(	766,190) %68.8
		(	86,456) %7.8

3

-1995/1994

%80.3

%72.5

.2010/2009

%92.9

**2.3**

729 2010/2009

731

%9.7

%52.7

3

.2010/2009

2010/2009		56,728			
			%51.4	%48.6	
119		56,609			
	2010/2009		/	23.9	
				/	18.5
%0.5	%99.5		3,064		
	2010/2009				
					<b>3.3</b>
961,654	1995/1994	572,529			
		%67.9	2010/2009		
			%50.6	%49.4	
			1995/1994	%51.4	%48.6
	2010/2009				
			100	97.5	
100	95.5		100	98.9	
					<b>4.3</b>
152,148	1995/1994	45,339			
%54.1		%235.5	2010/2009		
	2010/2009				%45.9
			1996/1995	%54.5	%45.5
	%6.1	2010/2009		9,319	
%35.6	2010/2009				
					%55.3
					2010/2009-1996/1995

**5.3**

880	1,697	2010/2009	2,577
( 866) %33.6		( 934) %36.2	
( 1,917) %74.4		( 777) %30.2	
		( 660) %25.6	
%12.6	%74.6	2010/2009	%12.8

1994

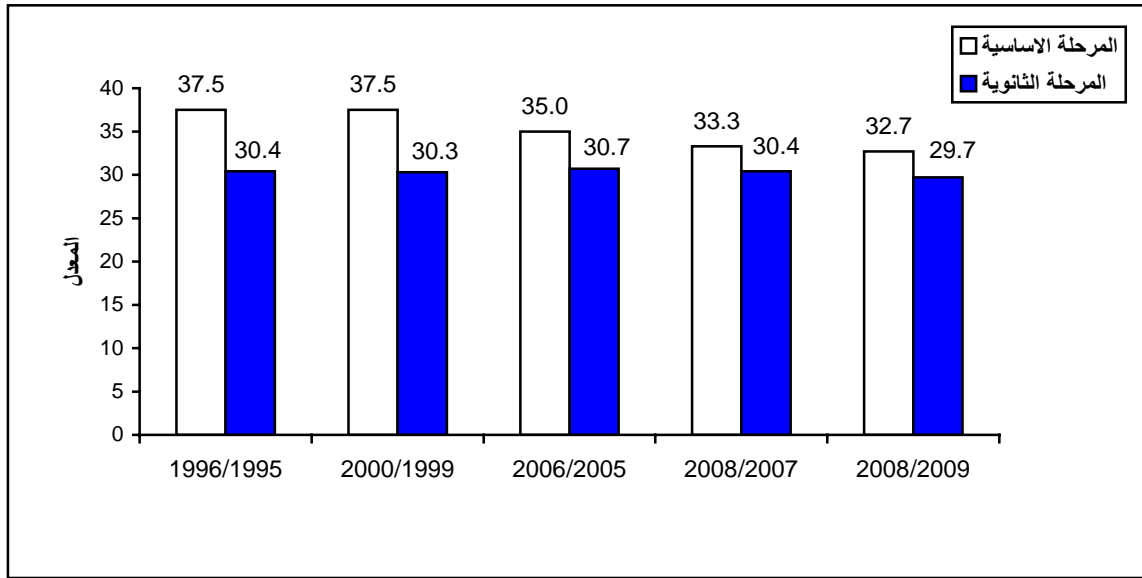
1,697	2010/2009		
372	808	1996/1995	1,098
			.41996/1995
	%65.1	2010/2009	%79.1

**6.3**

32.0			
	.2010/2009		29.4
2010/2009	32.0	1996/1995	37.5
29.4	1996/1995	30.4	
			. 2010/2009



:(1-3)



-2010/2009

.2011

36.8

.2010/2009

29.3

25.1

38.7

37.0

25.6

32.5

.2010/2009

1996/1995

44.5

2010/2009

37.0

**7.3**

2010/2009

29,390

%58.6

%41.4

17,228

12,162

%7.1

%78.1

%14.8

2010/2009

22.5

16.9

26.7

23.2

2010/2009			%0.5		
%78.3		%21.2			
2010/2009					
		%57.7	%74.8		
			%58.8		
%78.0					
%74.7	(	)			
			%81.7		
			<b>8.3</b>		
(1,113,802)	2010/2009		▪		
%68.8	2010/2009		▪		
(	261,156)	%23.4	(	766,190)	
			(	86,456)	%7.8
2010/2009-1995/1994			▪		
	%80.3				
.2010/2009		56,728	▪		
1995/1994		572,529	▪		
	%67.9	2010/2009	961,654		
152,148	1995/1994	45,339	▪		
%54.1	%235.5	2010/2009			
	.2010/2009		%45.9		
			▪		
%6.1	2010/2009	9,319			

2011 (14)	-				
880	1,697	2010/2009		2,577	▪
866) %33.6		(	934) %36.2		
		.(	777) %30.2	(	
	29.4		32.0		▪
				.2010/2009	
2010/2009		22.5			▪
	26.7			23.2	
				16.9	
2010/2009					%0.5 ▪
%78.3			%21.2		

2011 (14) . -

---

- 2010/2009	<b>2011</b>	-
- 2008/2007	<b>2009</b>	-
- 2007/2006	<b>2008</b>	-
- 2007/2006	<b>.2006</b>	-
- 2005/2004	<b>.2005</b>	-
.(2015/2005)	<b>.2005</b>	-
.2006 .	<b>.2006</b>	<b>.2006</b> -
.1999/1998-1995/1994	<b>.1999</b>	-

الفصل الرابع

أطفال بحاجة إلى حماية خاصة

18

" " " " " "

/ /

/ /

1989

1.4

1990

1995

27

1989

:

2010

%19.9

(%80.1)

%22.8    %21.4    2010  
 %15.8  
 %16.4    %16.0  
 %31.9    %14.6  
 %18.8    %34.4

%46.2

%53.8

2010

:(1-4)

<b>100.0</b>	<b>21.4</b>	<b>100.0</b>	<b>15.8</b>	<b>100.0</b>	<b>22.8</b>	
49.1	16.0	66.4	14.6	46.2	16.4	
50.9	31.9	33.6	18.8	53.8	34.4	

2010

.2011

:

%26.9

%38.4

%19.0

2010

:(2-4)

<b>14.6</b>	<b>26.9</b>	
8.8	19.0	
23.1	38.4	

2010

.2011

:

2.4

:(3-4)

2010

14.6	15.8	0
19.4	16.4	2-1
29.2	20.6	4-3
23.8	28.2	6-5
13.0	43.0	+7
<b>100</b>	<b>21.4</b>	

2010

2011

:

3.4

(1-32 - )

- 
- 
- 
-

%20.4      2010      17-10  
 17-10      2010  
 %5.7      %3.7  
 %0.6  
**2010**      **17-10**      **:(4-4)**

100	96.3	3.7	
100	94.3	5.7	
100	99.4	0.6	
100	93.7	6.3	
100	98.9	1.1	
100	97.7	2.3	14-10
100	93.9	6.1	17-15

.2010

-

.2011

:

<b>2010</b>	<b>%24.3</b>
-------------	--------------

1

%24.3      2010

" "

( )      ( )

( )      ( )  
 1 0      .(0.846)

Q

1



2

( )

( )

( )

- 
- 
- 
- 

%3.6

%2.3 2010

%24.3

(

%1.0

%3.6)

%0.1

.(

%3.2

%33.1)

%7.8

%33.4

2010

17-10

:(5-4)

2010		17-10		:(5-4)
75.7	24.3	97.7	2.3	
66.6	33.4	96.4	3.6	
92.2	7.8	99.9	0.1	
66.9	33.1	96.4	3.6	
96.8	3.2	99.0	1.0	

.2010

-

.2011

:

%63.0 2010

%31.4                      %57.9                      %94.2

%5.6                      %36.1                      %3.0

.

%24.7                      %49.0                      %47.6

%62.1                      %24.9                      %27.1

)

%26.1 %25.3                      (

.

%13.2

**2010**

**17 - 10**

**:(6-4)**

24.7	49.0	<b>47.6</b>	
62.1	24.9	<b>27.1</b>	
13.2	26.1	<b>25.3</b>	
<b>100</b>	<b>100</b>	<b>100</b>	

.2010

-

.2011

:

48.0

17-10

.2010

44.4

**4.4**

<p><i>(-37 - )</i></p>	<p>"</p>
------------------------	----------

:

(5	-	)	"
(4	-	)	"
(2-2	-	)	"
(32	-	)	"

-37

-:

			"
			18

:

(37	-	)	"
-----	---	---	---

18

16

221

2011/2/15

18-13

(34)

(%3.7)

2011

18-16

(187)

( )

( )

: - 1990 14 113/45

-31

-37

:

(1)-9

-10

(1) .20

48

"....

42

(1) 77

(2)

5.4

%22.8	%21.4	2010	%15.8	▪
%16.4	%16.0		%14.6	▪
		%18.8	%34.4	%31.9
)		2010		▪
%0.6	%5.7	%3.7	(	
				%24.3
%0.1	%3.6			%2.3
%7.8	%33.4			%24.3
%49.0				%47.6
%24.9		%27.1		%24.7
)				%62.1
(		%13.2	%26.1	%25.3
	2011/2/15			▪
	18-13		221	



.2010		.2011	-
<hr/>			

.2010	:	<b>.2011</b>	-
<hr/>			

-	.2010-	<b>.2010</b>	-
<hr/>			

- ( 13 )

		<b>.2011</b>	-
<hr/>			

- .2011/2/15

