

2010 -

2011 /

2006

.2011 - 1432 ©

.2010 - .2011

- 1647 . .

(+970/972) 2 2982700 :

(+970/972) 2 2982710 :

1800300300 :

diwan@pcbs.gov.ps :

<http://www.pcbs.gov.ps> :



2010

(PNA)

2010 (CFG)
(SDC)

(CFG)

•

•

•

•

•

•

.1995

.2010

2011

21			:
21			1.1
21			2.1
21			3.1
22			4.1
23			:
27			:
27		2010	1.3
28		2010	2.3
28		2010	3.3
31		2010	4.3
32	2010		5.3
32		2010	6.3
35			7.3
39			:
39			1.4
39			2.4
39			3.4
40			4.4
40			5.4
41			:
41			1.5
41		2010	2.5
43			

45	2010		:1-1
45		2010	:2-1
46		2010	:3-1
46		2010	:4-1
48		2010	:5-1
49		2010	:6-1
50		2010	:7-1
51	2010	(/)	:8-1
52			:1-2
		2010	
54		2010	:2-2
55			:3-2
		2010	
55	2010		:4-2
56			:5-2
		2010	
57		2010	:6-2
59	2010		:7-2
61		2010	:8-2
63	2010		:9-2
65		(/)	:10-2
		2010	

27	2010	:1
28	2010	:2
31	2010	:3
31	(2010-2001)	:4
32	2010	:5
36	1999 (2010 -2001)	:6

29	2010	:1
33	2010	:2
37	2010	:3

		1.1
1995	1995	
1995		1996
		2.1
		:
		3.1

:

.1

.2

.3

.4

.5

.6

4.1

:

:

•

:

•

:

•

:

•

:

•

:

•

:

:

:

(

(

:

.()

:

:

:

:

/

:

()

:()

()

()

:()

:

:

:

:

:

:

$$\underline{\hspace{2cm}} = .1$$

$$100 \times \frac{\underline{\hspace{2cm}}}{\times} = .2$$

$$\underline{\hspace{2cm}} = .3$$

$$100 \times \frac{\underline{\hspace{2cm}}}{\times} = .4$$

$$100 \times \underline{\hspace{2cm}} = .5$$

$$100 \times \underline{\hspace{2cm}} = .6$$

$$\underline{\hspace{2cm}} = .7$$

$$\frac{\underline{\hspace{2cm}}}{3} = .1$$

$$\frac{\underline{\hspace{2cm}}}{3} = .2$$

$$\underline{\hspace{2cm}} = .3$$

$$100 \times \frac{\quad}{\quad \times \quad} = \quad .4$$

$$\frac{\quad}{\quad} = \quad .5$$

$$100 \times \frac{\quad}{\quad \times \quad} = \quad .6$$

$$\frac{\quad}{12} = \quad .1$$

$$\frac{\quad}{365} = \quad .2$$

$$100 \times \frac{\quad}{365 \times \quad} = \quad .3$$

$$\frac{\quad}{12} = \quad .4$$

$$\frac{\quad}{365} = \quad .5$$

$$100 \times \frac{\quad}{365 \times \quad} = \quad .6$$

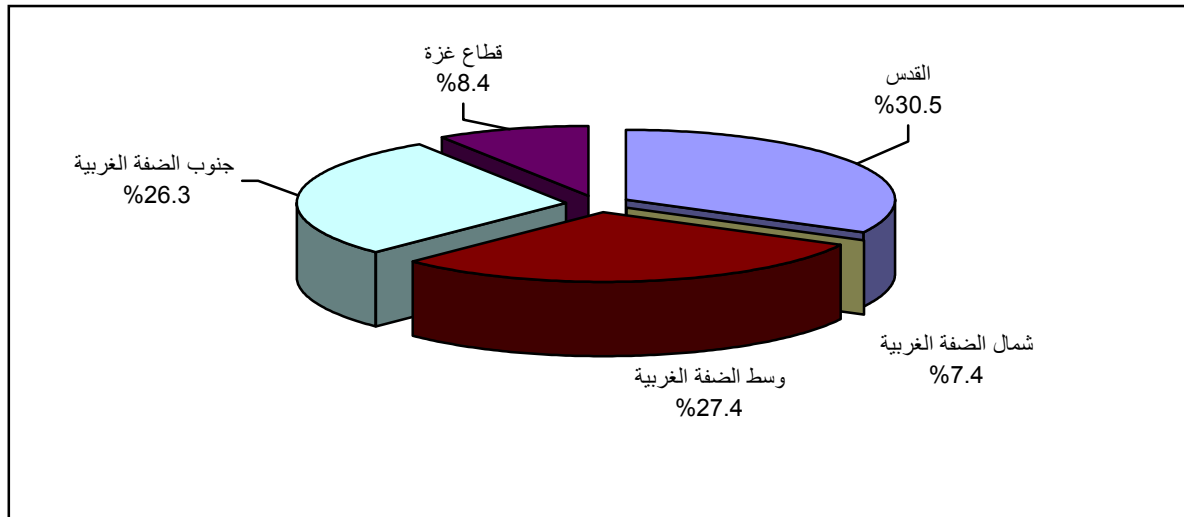
$$\frac{\quad}{\quad} = \quad .7$$

: 2010

2010		2010		1.3
10,543	4,929	112	95	
361	164	7	26	•
2,343	1,060	26	29	•
4,001	1,868	25	8	•
575	340			•

2010

:(1)



%21.1

75

%23.2

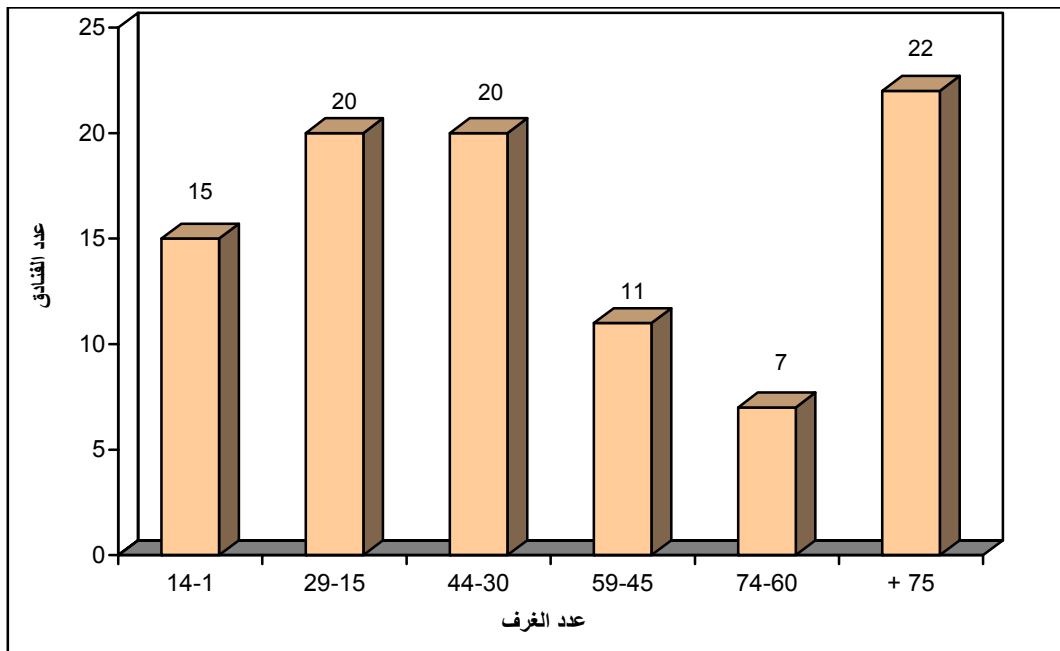
29

15

2010

2010

:(2)



2010

2.3

111

23,023

200

17,664

2,959

145

16

19

2010

3.3

:

1,795

66

260

326

•

195

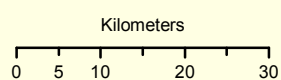
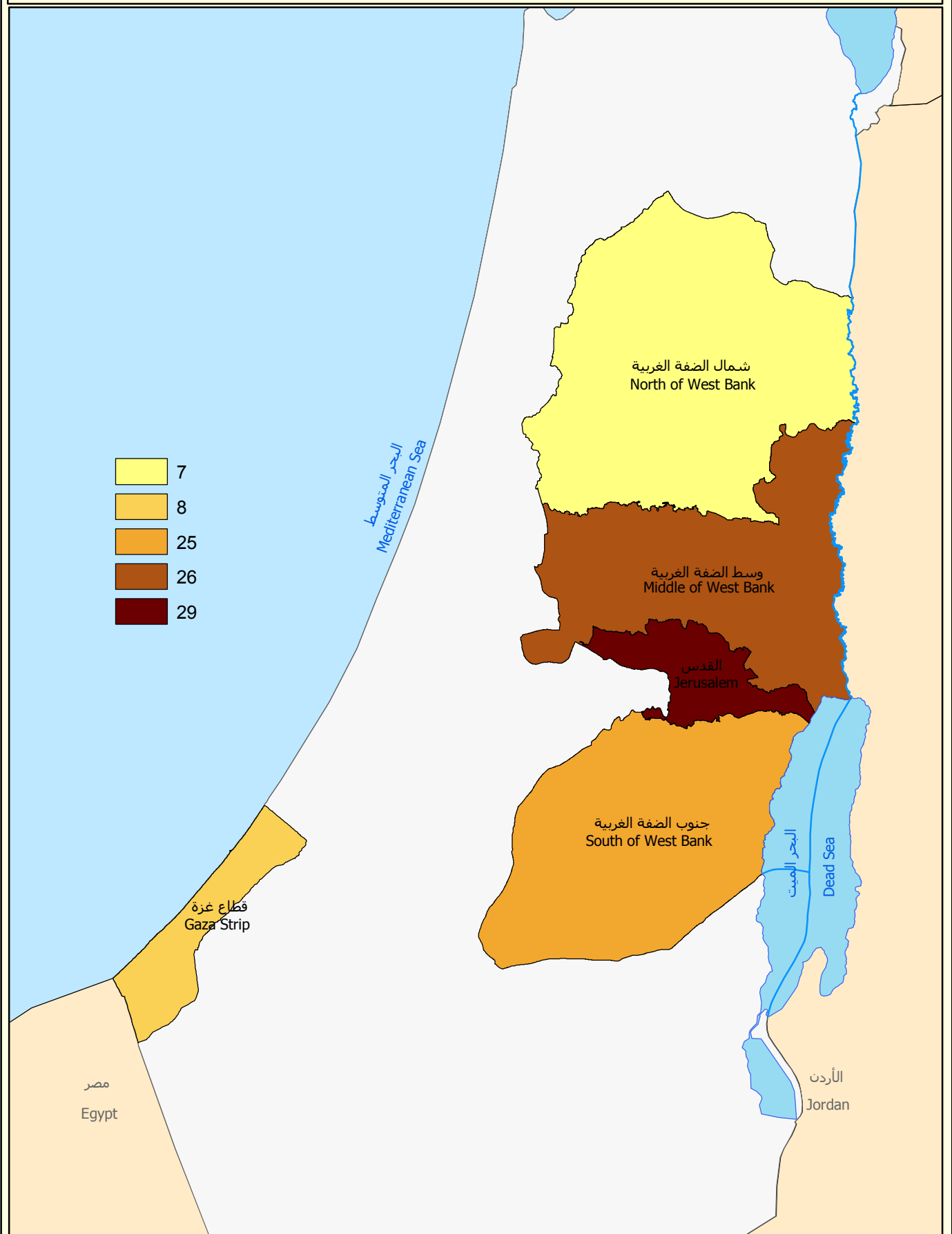
1,274

1,469

•

خريطة 1: عدد الفنادق العاملة في الأراضي الفلسطينية حسب المنطقة، 2010.

Map 1: Number of Operating Hotels in the Palestinian Territory by Region, 2010.



المصدر: الجهاز المركزي للإحصاء الفلسطيني، 2011
Source: Palestinian Central Bureau of Statistics, 2011



2010

4.3

2010

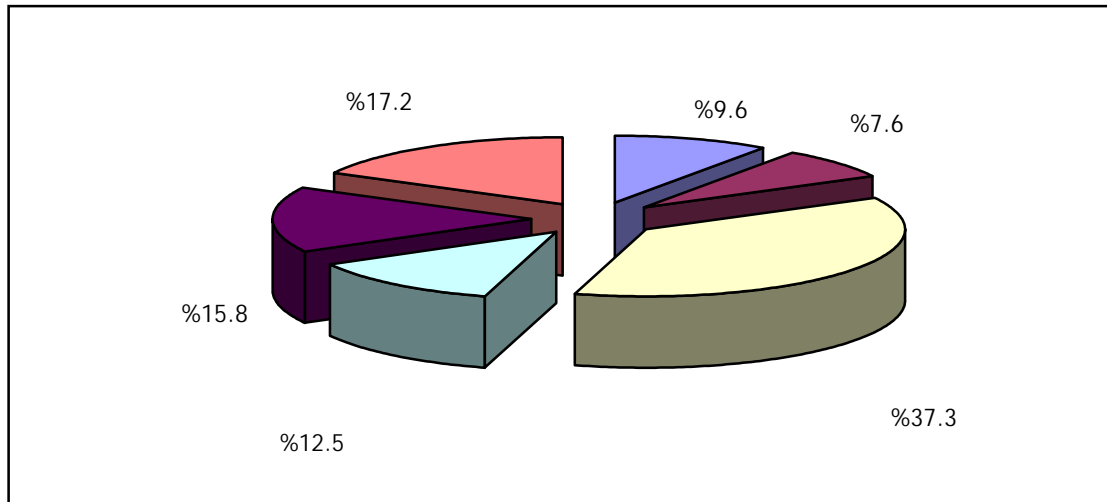
577,383

%9.6

%37.3

2010

:(3)



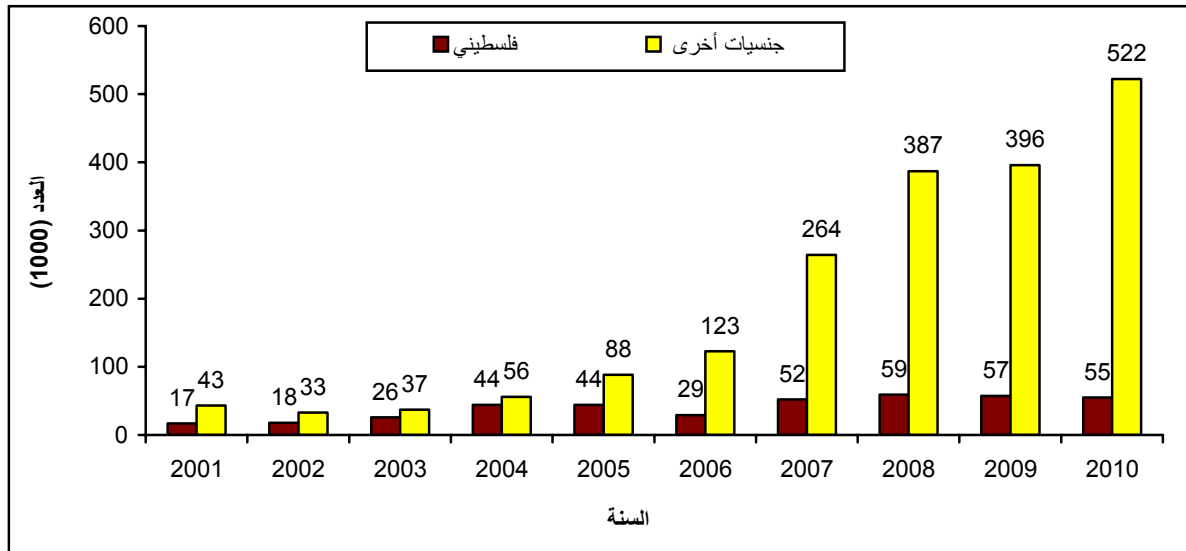
(4)

.2007

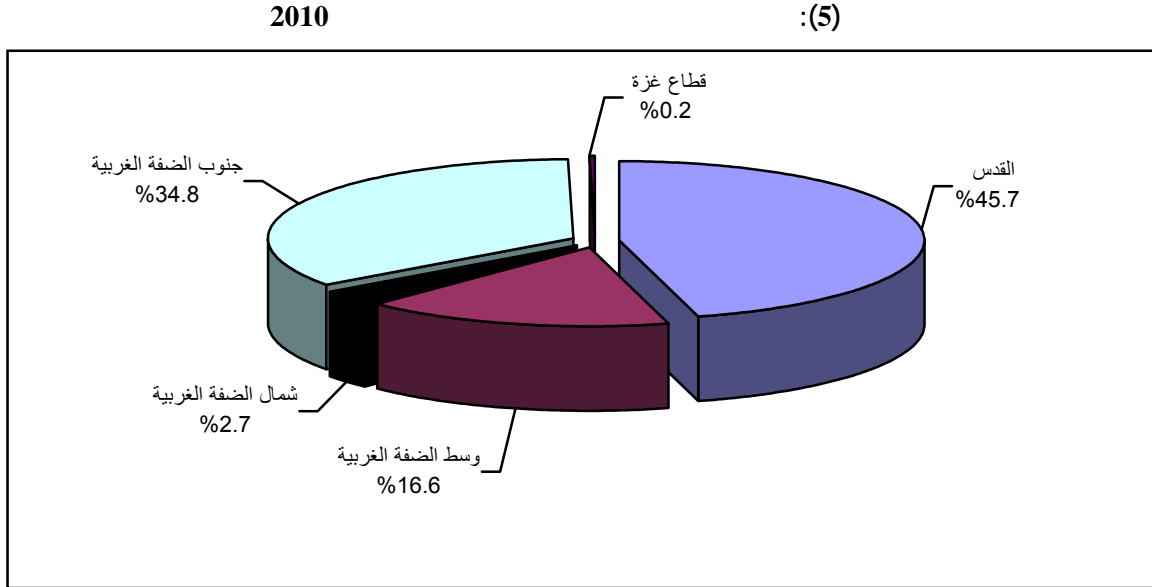
2010

(2010 - 2001)

:(4)



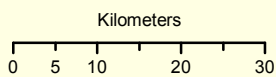
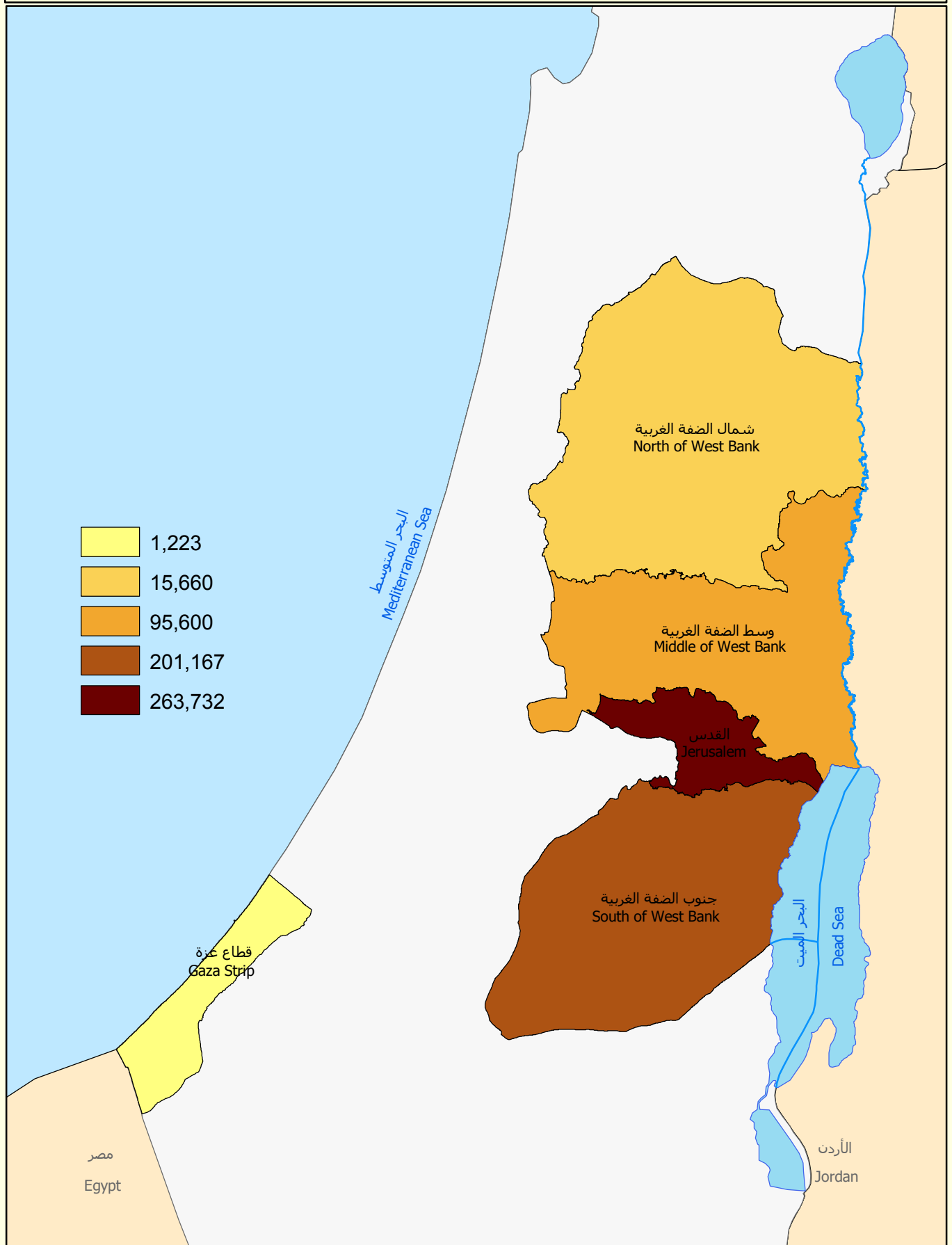
(5) %45.7
 %34.8



2010 5.3
 %35.4 1,747.3 2010
 %33.4 3,522.4
 . (/) 2.2

2010 6.3
 1,285,661
 %39.9 %9.3
 %6.0
 %12.2
 2010 %43.6 1999
 .2009 %23.3
 %16.6 %40.6 %40.8
 %0.2 %1.8

خريطة 2: عدد النزلاء في فنادق الأراضي الفلسطينية حسب المنطقة، 2010.
 Map 2: Number of Hotel Guests in the Palestinian Territory by Region, 2010.



المصدر: الجهاز المركزي للإحصاء الفلسطيني، 2011
 Source: Palestinian Central Bureau of Statistics, 2011



1999

(2007 -2000)

2000/9/28

:

1999

1999

1999 %							2010	
2010	2009	2008	2007	2005	2003	2001		
4.4	9.9	-5.5	-9.9	-15.4	-15.4	-7.7	95	
32.6	11.1	-1.3	-7.3	-6.5	-12.3	6.7	1,795	
82.2	42.8	40.8	-0.3	-58.4	-80.2	-81.0	577,383	
43.6	16.4	25.9	-24.8	-60.9	-77.7	-79.4	1,285,661	
31.1	11.1	17.1	-22.5	-57.7	-72.1	-77.3	1,747.30	
43.6	16.4	25.9	-24.8	-60.9	-77.7	-79.4	3,522.40	
5.7	-3.0	7.2	-25.1	-53.7	-65.1	-72.5	35.4	(%)
10.2	-4.0	7.6	-31.0	-59.1	-73.6	-75.9	33.4	(%)

1999

%82.2

2010

%43.6

%31.1

2010

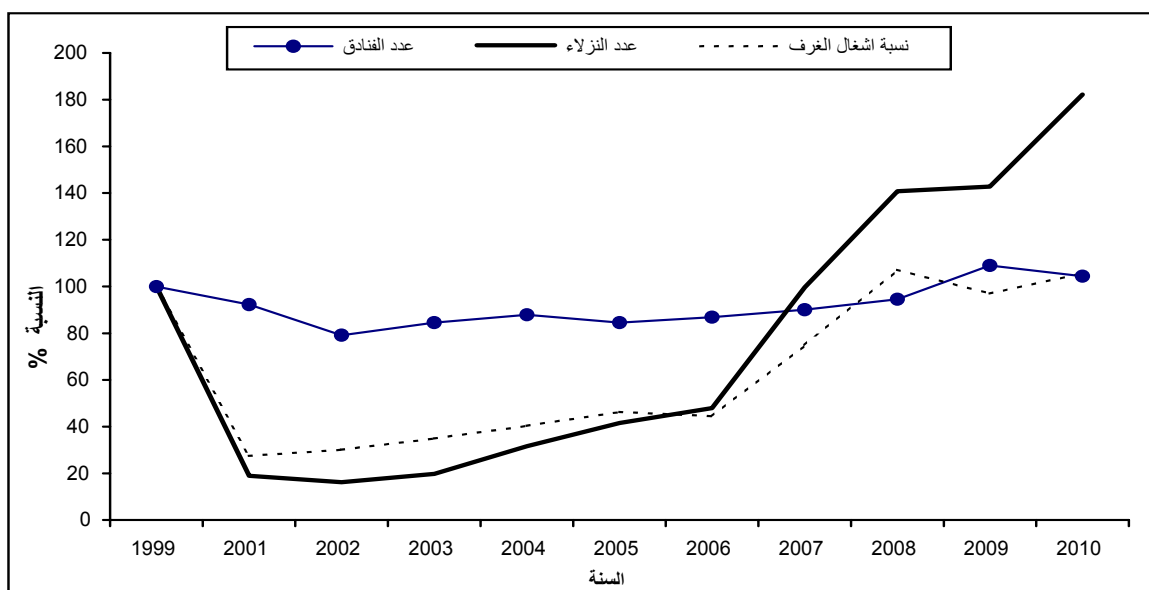
.%43.6

:

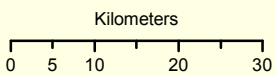
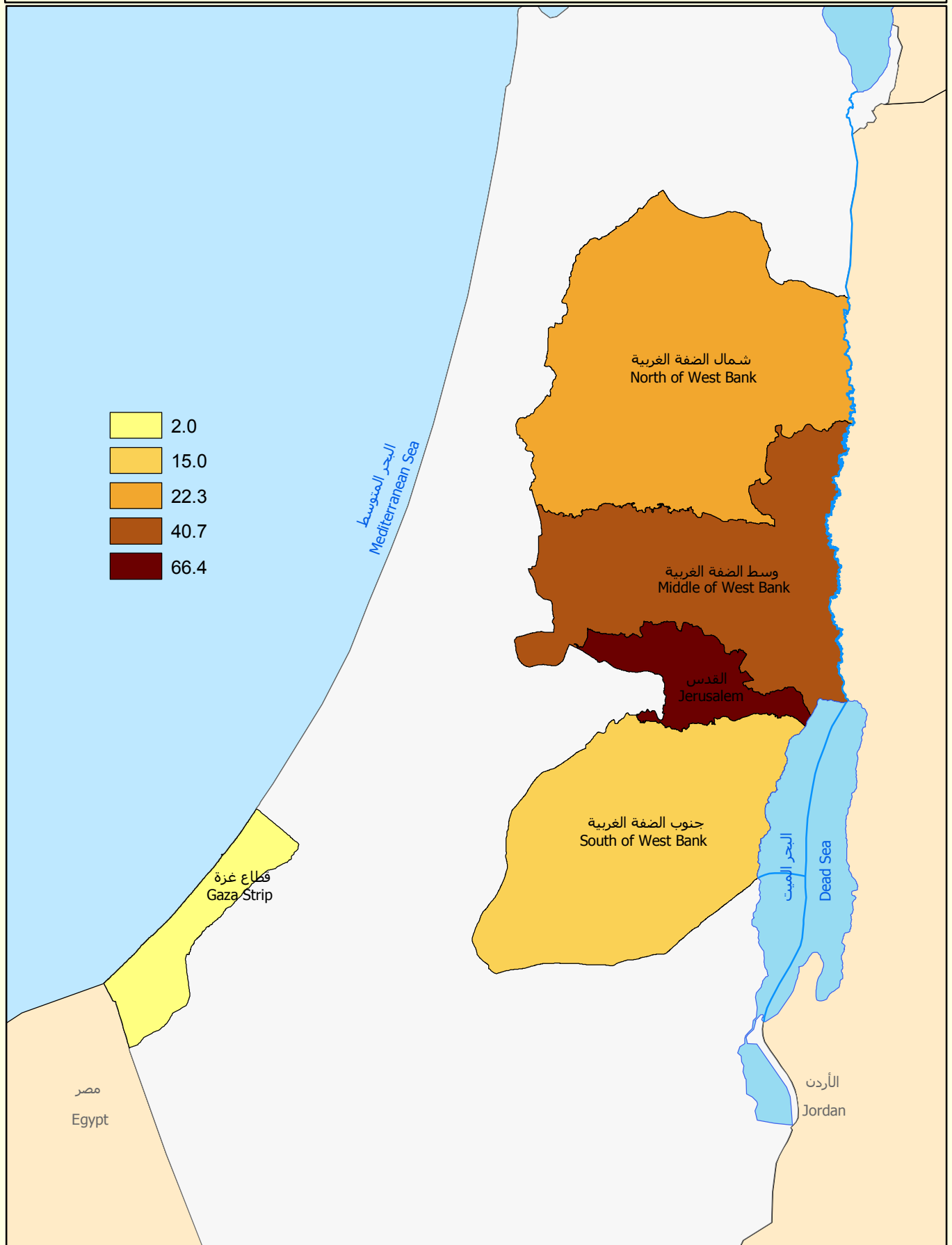
1999

(2010-2001)

:(6)



خريطة 3: نسبة اشغال الغرف في فنادق الأراضي الفلسطينية حسب المنطقة، 2010.
 Map 3: Room Occupancy Rate in Hotels in the Palestinian Territory by Region, 2010.



المصدر: الجهاز المركزي للإحصاء الفلسطيني، 2011
 Source: Palestinian Central Bureau of Statistics, 2011



1.4

-
-
-
-
-

2.4

.2007

3.4

.1

.2

.3

4.4

.1

.2

5.4

.1

.2

.3

	:		.1
	:		.2
.%94	:		.3
	:		
	:		1.5
: 2010	:		•
	:		•
	:		•
	:	" "	•
	:	2010	2.5
	:		
	:		.1
2010	:		.2
:	:		

2010

285,879	124,205	10,705	5,007	95	I	
318,907	140,317	10,276	4,810	95	II	
308,603	141,833	10,615	4,952	96	III	
372,272	171,028	10,578	4,948	95	IV	
285,879	124,205	10,705	5,007	95	I	
318,371	140,009	10,266	4,804	94	II	
304,504	137,733	10,327	4,833	94	III	
370,966	170,671	10,510	4,891	94	IV	

Tables

2010

:1-1

Table 1-1: Main Indicators for Hotel Activities in the Palestinian Territory by Month, 2010

Month	Bed Occupancy		Room Occupancy		No. of Guest Nights	No. of Guests	No. of Beds	No. of Rooms	No. of Hotels	
	% Rate%	Average	% Rate%	Average						
January	22.4	2406.3	26.3	1332.7	74,596	33,856	10,756	5,061	99	
February	31.0	3355.5	33.4	1689.0	93,955	41,562	10,839	5,061	99	
March	36.0	3784.8	33.9	1660.9	117,328	48,787	10,520	4,898	95	
April	41.5	4345.5	37.1	1804.6	130,365	55,719	10,463	4,864	94	
May	32.4	3313.1	32.9	1561.5	102,707	45,072	10,216	4,749	94	
June	28.2	2861.2	33.1	1593.9	85,835	39,527	10,148	4,815	95	
July	30.8	3281.0	37.1	1838.0	101,712	46,445	10,646	4,957	98	
August	31.2	3325.0	34.8	1727.4	103,075	47,437	10,641	4,962	97	
September	32.8	3460.5	33.7	1665.9	103,816	47,951	10,556	4,937	96	
October	42.4	4519.6	43.6	2163.3	140,108	62,872	10,652	4,958	97	
November	42.0	4493.7	43.2	2159.2	134,811	61,202	10,709	4,996	98	
December	30.3	3140.4	36.2	1772.5	97,353	46,953	10,375	4,890	95	
Annual Indicator *	33.4	3522.4	35.4	1747.3	1,285,661	577,383	10,543	4,929		*

* Represents the annual average of indicators except number of guests and number of guest nights which represents the annual total.

2010

:2-1

Table 1-2: Distribution of Hotels, Rooms, and Beds by Categories of Number of Rooms, 2010

Categories of Number of Rooms	No. of Beds				No. of Rooms				No. of Hotels				
	December	September	June	March	December	September	June	March	December	September	June	March	
1-14	450	458	466	465	155	157	162	162	15	16	16	15	14 - 1
15-29	921	992	1,034	912	431	461	482	431	20	21	22	20	29 - 15
30-44	1,483	1,320	1,350	1,320	692	617	619	609	20	18	17	20	44 - 30
45-59	1,152	1,174	1,163	1,251	534	544	538	589	11	11	11	11	59 - 45
60-74	882	898	890	888	424	431	426	426	7	7	7	7	74 - 60
75+	5,487	5,714	5,245	5,684	2654	2727	2,588	2,681	22	23	22	22	+ 75
Total	10,375	10,556	10,148	10,520	4,890	4,937	4,815	4,898	95	96	95	95	

2010

:3-1

Table 1-3: Number of Persons Engaged in Hotels by Type of Work, Sex and Month, 2010

Month	Total		Operation		Administration		No. of Hotels
	Female	Male	Female	Male	Female	Male	
January	252	1,573	190	1,304	62	269	99
February	255	1,572	192	1,302	63	270	99
March	255	1,495	192	1,244	63	251	95
April	253	1,489	191	1,241	62	248	94
May	248	1,403	185	1,160	63	243	94
June	256	1,484	192	1,235	64	249	95
July	265	1,565	195	1,298	70	267	98
August	265	1,562	195	1,297	70	265	97
September	263	1,554	194	1,291	69	263	96
October	259	1,517	191	1,259	68	258	97
November	269	1,569	199	1,305	70	264	98
December	296	1,625	225	1,357	71	268	95
Annual average	261	1,534	195	1,274	66	260	

2010

:4-1

Table 1-4: Distribution of Guests in Hotels by Nationality and Month, 2010

Month	Nationality					No. of Hotels
	U.S.A & Canada	Asia	Israel	Arab Countries	Palestine	
January	4,048	4,491	2,617	493	4,148	99
February	5,735	5,007	1,831	134	3,346	99
March	6,476	5,301	1,727	466	3,390	95
April	7,004	7,235	2,495	163	5,291	94
May	6,607	5,369	2,046	104	3,080	94
June	5,883	3,143	2,213	206	5,083	95
July	4,959	3,672	5,512	120	6,384	98
August	5,834	5,026	5,901	60	4,829	97
September	4,446	6,361	5,759	146	4,535	96
October	6,813	6,008	2,760	125	5,911	97
November	6,863	6,575	6,242	199	5,461	98
December	7,686	4,477	4,900	103	3,998	95
Total	72,354	62,665	44,003	2,319	55,456	

2010

:() 4-1

Table 1-4 (Cont.): Distribution of Guests in Hotels by Nationality and Month, 2010

Month	Total	Nationality					
		Australia & New Zeland	Africa	Other European Count.	European Union	Central & South America	
January	33,856	134	1,026	4,765	11,509	625	
February	41,562	215	1,012	11,245	12,612	425	
March	48,787	417	881	6,601	21,926	1,602	
April	55,719	409	756	7,028	23,516	1,822	
May	45,072	561	1,317	5,314	19,479	1,195	
June	39,527	67	957	5,286	15,445	1,244	
July	46,445	34	679	9,938	14,577	570	
August	47,437	392	961	5,753	17,573	1,108	
September	47,951	494	1,222	7,159	17,229	600	
October	62,872	1,308	868	11,025	25,258	2,796	
November	61,202	408	1,463	12,053	19,843	2,095	
December	46,953	114	2,984	5,139	16,267	1,285	
Total	577,383	4,553	14,126	91,306	215,234	15,367	

2010

:5-1

Table 1-5: Percentage Distribution of Guests in Hotels by Nationality and Month, 2010

Month	Nationality					No. of Hotels
	U.S.A & Canada	Asia	Israel	Arab Countries	Palestine	
January	12.0	13.3	7.6	1.5	12.3	99
February	13.8	12.0	4.5	0.3	8.1	99
March	13.3	10.9	3.5	1.0	6.9	95
April	12.6	13.0	4.4	0.3	9.5	94
May	14.7	11.9	4.5	0.3	6.8	94
June	14.9	8.0	5.5	0.5	12.9	95
July	10.7	7.9	11.9	0.3	13.7	98
August	12.3	10.6	12.4	0.1	10.4	97
September	9.3	13.3	12.0	0.3	9.5	96
October	10.8	9.6	4.4	0.2	9.4	97
November	11.3	10.7	10.2	0.3	8.9	98
December	16.6	9.5	10.4	0.2	8.5	95
Total	12.5	10.9	7.6	0.4	9.6	

2010

:() 5-1

Table 1-5 (Cont.): Percentage Distribution of Guests in Hotels by Nationality and Month, 2010

Month	Total	Nationality				
		Australia & New Zeland	Africa	Other European Count.	European Union	Central & South America
January	100	0.4	3.0	14.1	34.0	1.8
February	100	0.5	2.4	27.1	30.3	1.0
March	100	0.9	1.8	13.5	44.9	3.3
April	100	0.7	1.4	12.6	42.2	3.3
May	100	1.2	2.9	11.8	43.2	2.7
June	100	0.2	2.4	13.4	39.1	3.1
July	100	0.1	1.5	21.4	31.4	1.1
August	100	0.8	2.0	12.1	37.0	2.3
September	100	1.0	2.5	14.9	35.9	1.3
October	100	2.1	1.4	17.5	40.2	4.4
November	100	0.7	2.4	19.7	32.4	3.4
December	100	0.2	6.4	10.9	34.6	2.7
Total	100	0.8	2.4	15.8	37.3	2.7

2010

: 6-1

Table 1-6: Distribution of Guest Nights in Hotels by Nationality and Month, 2010

Month	Nationality					No. of Hotels
	U.S.A & Canada	Asia	Israel	Arab Countries	Palestine	
January	9,156	10,349	4,462	817	9,083	99
February	12,432	9,568	2,939	310	8,129	99
March	14,808	10,842	3,360	1,932	8,250	95
April	14,673	15,990	4,817	617	10,216	94
May	13,774	11,518	3,311	443	8,471	94
June	12,792	7,398	4,395	832	10,256	95
July	12,413	13,153	9,677	520	12,339	98
August	12,372	10,234	11,490	557	11,183	97
September	9,980	13,416	9,751	609	8,669	96
October	14,388	13,847	4,915	553	12,772	97
November	14,268	15,576	10,372	1,095	12,166	98
December	16,120	10,380	7,702	611	8,608	95
Total	157,176	142,271	77,191	8,896	120,142	

2010

:() 6-1

Table 1-6 (Cont.): Distribution of Guest Nights in Hotels by Nationality and Month, 2010

Month	Total	Nationality				
		Australia & New Zeland	Africa	Other European Count.	European Union	Central & South America
January	74,596	471	1,622	11,271	25,887	1,478
February	93,955	792	2,036	29,364	27,367	1,018
March	117,328	939	1,709	14,667	57,042	3,779
April	130,365	1,202	1,935	17,620	60,428	2,867
May	102,707	795	2,759	12,934	46,230	2,472
June	85,835	251	1,962	10,140	33,979	3,830
July	101,712	141	1,651	15,981	33,953	1,884
August	103,075	738	1,858	12,732	38,783	3,128
September	103,816	721	2,570	15,512	41,220	1,368
October	140,108	1,575	1,626	22,657	63,629	4,146
November	134,811	775	3,092	25,549	47,467	4,451
December	97,353	305	4,268	9,474	36,652	3,233
Total	1,285,661	8,705	27,088	197,901	512,637	33,654

2010

:7-1

Table 1-7: Percentage Distribution of Guest Nights in Hotels by Nationality and Month, 2010

Month	Nationality					No. of Hotels
	U.S.A & Canada	Asia	Israel	Arab Countries	Palestine	
January	12.3	13.9	6.0	1.1	12.2	99
February	13.2	10.2	3.1	0.3	8.7	99
March	12.6	9.2	2.9	1.6	7.0	95
April	11.3	12.3	3.7	0.5	7.8	94
May	13.4	11.2	3.2	0.4	8.2	94
June	14.9	8.6	5.1	1.0	11.9	95
July	12.2	12.9	9.5	0.5	12.1	98
August	12.0	9.9	11.1	0.5	10.8	97
September	9.6	12.9	9.4	0.6	8.5	96
October	10.3	9.9	3.5	0.4	9.1	97
November	10.6	11.6	7.7	0.8	9.0	98
December	16.6	10.7	7.9	0.6	8.8	95
Total	12.2	11.1	6.0	0.7	9.3	

2010

:() 7-1

Table 1-7(Cont.): Percentage Distribution of Guest Nights in Hotels by Nationality and Month, 2010

Month	Total	Nationality				
		Australia & New Zealand	Africa	Other European Count.	European Union	Central & South America
January	100	0.6	2.2	15.1	34.6	2.0
February	100	0.8	2.2	31.3	29.1	1.1
March	100	0.8	1.5	12.5	48.6	3.3
April	100	0.9	1.5	13.5	46.4	2.1
May	100	0.8	2.7	12.6	45.0	2.5
June	100	0.3	2.3	11.8	39.6	4.5
July	100	0.1	1.6	15.7	33.5	1.9
August	100	0.7	1.8	12.4	37.6	3.2
September	100	0.7	2.5	14.9	39.7	1.2
October	100	1.1	1.2	16.2	45.3	3.0
November	100	0.6	2.3	19.0	35.1	3.3
December	100	0.3	4.4	9.7	37.6	3.4
Total	100	0.7	2.1	15.4	39.9	2.6

2010

(/)

:8-1

Table 1-8: Average Length of Stay per Guest (Nights/Guest) in Hotels by Nationality and Month, 2010

Month	Nationality					No. of Hotels
	U.S.A & Canada	Asia	Israel	Arab Countries	Palestine	
January	2.3	2.3	1.7	1.7	2.2	99
February	2.2	1.9	1.6	2.3	2.4	99
March	2.3	2.0	1.9	4.1	2.4	95
April	2.1	2.2	1.9	3.8	1.9	94
May	2.1	2.1	1.6	4.3	2.8	94
June	2.2	2.4	2.0	4.0	2.0	95
July	2.5	3.6	1.8	4.3	1.9	98
August	2.1	2.0	1.9	9.3	2.3	97
September	2.2	2.1	1.7	4.2	1.9	96
October	2.1	2.3	1.8	4.4	2.2	97
November	2.1	2.4	1.7	5.5	2.2	98
December	2.1	2.3	1.6	5.9	2.2	95
Total	2.2	2.3	1.8	3.8	2.2	

2010

(/)

:() 8-1

Table 1-8 (Cont.): Average Length of Stay per Guest (Nights/Guest) in Hotels by Nationality and Month, 2010

Month	Total Average	Nationality				
		Australia & New Zeland	Africa	Other European Count.	European Union	Central & South America
January	2.2	3.5	1.6	2.4	2.2	2.4
February	2.3	3.7	2.0	2.6	2.2	2.4
March	2.4	2.3	1.9	2.2	2.6	2.4
April	2.3	2.9	2.6	2.5	2.6	1.6
May	2.3	1.4	2.1	2.4	2.4	2.1
June	2.2	3.7	2.1	1.9	2.2	3.1
July	2.2	4.1	2.4	1.6	2.3	3.3
August	2.2	1.9	1.9	2.2	2.2	2.8
September	2.2	1.5	2.1	2.2	2.4	2.3
October	2.2	1.2	1.9	2.1	2.5	1.5
November	2.2	1.9	2.1	2.1	2.4	2.1
December	2.1	2.7	1.4	1.8	2.3	2.5
Total	2.2	1.9	1.9	2.2	2.4	2.2

2010

:1-2

Table 2-1: Main Indicators for Hotel Activities in the Palestinian Territory by Region and Quarter, 2010

Region/Quarter	** No. of Nights**	** No. of Guests**	Average No. of Beds	Average No. of Rooms	* No. of Hotels*	/
Palestinian Territory	1,285,661	577,383	10,543	4,929		
I	285,879	124,205	10,705	5,007	95	I
II	318,907	140,318	10,276	4,810	95	II
III	308,603	141,833	10,615	4,952	96	III
IV	372,272	171,027	10,578	4,948	95	IV
North of West Bank	23,544	15,660	361	164		
I	3,686	1,809	363	166	7	I
II	4,948	3,019	351	159	7	II
III	9,124	6,910	364	166	7	III
IV	5,786	3,922	364	166	7	IV
Middle of West Bank	213,369	95,600	2,343	1,060		
I	51,237	20,128	2,351	1,070	25	I
II	50,834	22,806	2,189	995	25	II
III	55,632	24,507	2,390	1,067	24	III
IV	55,666	28,159	2,443	1,107	26	IV
Jerusalem	524,093	263,732	3,263	1,497		
I	117,234	59,598	3,444	1,568	30	I
II	125,433	64,714	3,238	1,493	30	II
III	128,308	62,870	3,187	1,467	30	III
IV	153,118	76,550	3,185	1,462	29	IV
South of West Bank	522,172	201,167	4,001	1,868		
I	113,382	42,417	4,011	1,882	25	I
II	137,331	49,521	3,962	1,842	25	II
III	114,412	47,138	4,025	1,875	25	III
IV	157,047	62,091	4,007	1,873	25	IV
Gaza Strip	2,483	1,224	575	340		
I	340	253	536	321	8	I
II	361	258	536	321	8	II
III	1,127	408	649	377	10	III
IV	655	305	579	340	8	IV

* At the end of the quarter

*

** Represents the total of quarter months

**

2010

:() 1-2

Table 2-1 (Cont.): Main Indicators for Hotel Activities in the Palestinian Territory by Region and Quarter, 2010

Region/Quarter	Bed Occupancy		Room Occupancy		() Average length of Stay (Night)	/
	% Rate%	Average Occupancy	% Rate%	Average Occupancy		
Palestinian Territory	33.4	3,522.4	35.4	1,747.3	2.2	
I	30.1	3,176.4	31.6	1,556.6	2.3	I
II	32.7	3,504.5	33.0	1,652.3	2.3	II
III	32.6	3,354.4	36.3	1,744.6	2.2	III
IV	38.1	4,046.4	41.0	2,030.3	2.2	IV
North of West Bank	17.9	64.5	22.3	36.6	1.6	
I	11.3	41.0	16.1	26.7	2.0	I
II	15.5	54.4	20.9	33.2	1.6	II
III	27.2	99.2	29.6	49.2	1.3	III
IV	17.3	62.9	22.3	37.0	1.5	IV
Middle of West Bank	24.9	584.6	40.7	431.5	2.3	
I	24.2	569.3	37.3	399.6	2.5	I
II	25.5	558.6	41.2	410.4	2.3	II
III	25.3	604.7	41.6	443.5	2.3	III
IV	24.8	605.1	42.6	471.6	2.0	IV
Jerusalem	44.0	1,435.9	66.4	993.8	2.0	
I	37.8	1,302.6	56.5	886.6	2.0	I
II	42.6	1,378.4	62.3	929.6	1.9	II
III	43.8	1,394.7	66.9	980.8	2.0	III
IV	52.3	1,664.3	80.4	1,175.2	2.0	IV
South of West Bank	35.8	1,430.6	15.0	280.4	2.6	
I	31.4	1,259.8	12.8	241.2	2.7	I
II	38.1	1,509.1	15.0	276.4	2.8	II
III	30.9	1,243.6	13.9	261.1	2.4	III
IV	42.6	1,707.0	18.3	341.9	2.5	IV
Gaza Strip	1.2	6.8	2.0	6.8	1.4	
I	0.7	3.8	0.8	2.4	1.2	I
II	0.7	4.0	0.8	2.7	1.4	II
III	1.9	12.3	2.7	10.0	1.5	III
IV	1.2	7.1	1.3	4.6	1.3	IV

2010

:2-2

Table 2-2: Average Number of Hotel Rooms by Capacity, Region and Quarter, 2010

Region/Quarter	Capacity							/
	Total	Other	Suits	Quadruple	Triple	Double	Single	
Palestinian Territory	4,929	27	243	142	659	3,183	675	
I	5,007	33	235	142	685	3,202	710	I
II	4,809	27	233	144	637	3,126	642	II
III	4,952	24	245	141	657	3,221	664	III
IV	4,948	24	257	142	655	3,182	688	IV
North of West Bank	164	1	24	3	22	70	44	
I	166	1	24	3	22	71	45	I
II	159	1	23	3	22	66	44	II
III	166	1	24	3	22	71	45	III
IV	166	1	24	2	21	71	47	IV
Middle of West Bank	1,060	8	61	75	120	607	189	
I	1,070	11	58	75	124	586	216	I
II	995	9	53	76	109	582	166	II
III	1,067	6	55	74	124	641	167	III
IV	1,107	4	78	75	124	619	207	IV
Jerusalem	1,497	17	73	24	183	1,070	130	
I	1,568	19	72	25	213	1,103	136	I
II	1,493	15	72	24	175	1,076	131	II
III	1,467	15	74	24	172	1,052	130	III
IV	1,462	17	72	24	172	1,048	129	IV
South of West Bank	1,868	2	63	41	325	1,253	184	
I	1,882	2	62	40	321	1,264	193	I
II	1,842	2	62	41	323	1,233	181	II
III	1,875	2	65	41	327	1,257	183	III
IV	1,873	2	62	41	327	1,258	183	IV
Gaza Strip	340	0	22	0	9	183	126	
I	321	0	19	0	6	178	118	I
II	321	0	23	0	8	169	121	II
III	377	0	26	0	12	200	139	III
IV	340	0	21	0	12	186	121	IV

2010

:3-2

Table 2-3: Number of Hotels and Rooms by Facilities and Region as of December, 2010

Region	Rooms Facilities								No. of Rooms	No. of Hotels
	Internet	Air Condition	Heaters	Private Bathroom	Radio	Telephone	Refrigerator	T.V		
Palestinian Territory	2,599	4,722	4,345	4,845	1,157	4,561	3,548	4,455	4,929	95
North of West Bank	118	149	149	149	0	149	149	149	164	7
Middle of West Bank	936	1,076	1,054	1,104	104	1,054	927	1,060	1,060	26
Jerusalem	494	1,383	1,376	1,406	1,028	1,376	1,072	1,252	1,497	29
South of West Bank	857	1,859	1,683	1,872	0	1,683	1,149	1,721	1,868	25
Gaza Strip	194	255	83	314	25	299	251	273	340	8

2010

:4-2

Table 2-4: Public Utilities Available in Hotels by Region as of December, 2010

Region	Conference Halls		Restaurants		No. of Hotels
	Capacity	Number	Capacity	Number	
Palestinian Territory	23,023	200	17,664	111	95
North of West Bank	2,078	8	470	8	7
Middle of West Bank	6,131	44	3,512	29	26
Jerusalem	2,684	41	3,199	29	29
South of West Bank	9,215	95	9,263	37	25
Gaza Strip	2,915	12	1,220	8	8

2010

:() 4-2

Table 2-4 (Cont.): Public Utilities Available in Hotels by Region as of December, 2010

Region	No. of Playgrounds/Sport Halls	No. of swimming Pools	No. of Lifts	Parking	
				السعة Capacity	العدد Number
Palestinian Territory	16	19	112	2,959	145
North of West Bank	1	1	6	85	4
Middle of West Bank	6	9	38	1,187	35
Jerusalem	1	1	25	260	18
South of West Bank	6	4	32	1,254	79
Gaza Strip	2	4	11	173	9

Table 2-5: Average Number of Persons Engaged in Hotels by Type of Work, Sex, Region and Quarter, 2010

Region/Quarter	Total		Operation		Administration		* No. of Hotels *	/
	Female	Male	Female	Male	Female	Male		
Palestinian Territory	261	1,534	195	1,274	66	260		
I	254	1,547	191	1,284	63	263	95	I
II	252	1,459	190	1,212	62	247	95	II
III	264	1,561	194	1,296	70	265	96	III
IV	275	1,570	204	1,307	71	263	95	IV
North of West Bank	9	57	6	37	3	20		
I	9	57	7	37	2	20	7	I
II	9	57	7	38	2	19	7	II
III	10	57	6	37	4	20	7	III
IV	9	57	5	36	4	21	7	IV
Middle of West Bank	57	484	41	403	16	81		
I	52	499	37	417	15	82	25	I
II	51	436	36	360	15	76	25	II
III	54	471	38	392	16	79	24	III
IV	72	529	53	443	19	86	26	IV
Jerusalem	82	508	56	424	26	84		
I	83	525	57	435	26	90	30	I
II	84	504	58	422	26	82	30	II
III	82	502	56	420	26	82	30	III
IV	80	500	54	419	26	81	29	IV
South of West Bank	109	387	90	336	19	51		
I	109	388	90	336	19	52	25	I
II	107	384	89	333	18	51	25	II
III	109	387	90	336	19	51	25	III
IV	109	387	90	336	19	51	25	IV
Gaza Strip	4	99	2	75	2	24		
I	1	78	1	59	0	19	8	I
II	1	78	1	59	0	19	8	II
III	9	144	4	111	5	33	10	III
IV	5	97	2	73	3	24	8	IV

*Represents No. of hotels at the end of the quarter

*

Table 2-6: Distribution of Guests in Hotels by Nationality, Region and Quarter, 2010

Region/Quarter	Nationality					* No. of Hotels *	/
	U.S.A & Canada	Asia	Israel	Arab Countries	Palestine		
Palestinian Territory	72,354	62,665	44,003	2,319	55,456		
I	16,259	14,799	6,175	1,093	10,884	95	I
II	19,494	15,747	6,754	473	13,454	95	II
III	15,239	15,059	17,172	326	15,748	96	III
IV	21,362	17,060	13,902	427	15,370	95	IV
North of West Bank	443	78	8,204	195	5,063		
I	43	26	399	42	1,030	7	I
II	160	19	1,028	78	1,230	7	II
III	135	21	4,525	32	1,748	7	III
IV	105	12	2,252	43	1,055	7	IV
Middle of West Bank	9,070	7,468	12,485	861	33,793		
I	1,269	2,639	1,522	217	8,340	25	I
II	2,557	1,374	1,863	213	9,415	25	II
III	1,825	1,178	5,952	185	8,724	24	III
IV	3,419	2,277	3,148	246	7,314	26	IV
Jerusalem	57,204	23,090	13,791	75	0		
I	13,612	5,467	2,302	0	0	30	I
II	15,109	5,708	2,226	0	0	30	II
III	12,001	4,598	3,590	0	0	30	III
IV	16,482	7,317	5,673	75	0	29	IV
South of West Bank	5,567	32,018	9,523	1,107	16,256		
I	1,335	6,662	1,952	831	1,478	25	I
II	1,668	8,640	1,637	178	2,767	25	II
III	1,234	9,262	3,105	69	5,119	25	III
IV	1,330	7,454	2,829	29	6,892	25	IV
Gaza Strip	70	11	0	81	344		
I	0	5	0	3	36	8	I
II	0	6	0	4	42	8	II
III	44	0	0	40	157	10	III
IV	26	0	0	34	109	8	IV

* Represents No. of hotels at the end of the quarter

*

Table 2-6 (Cont.): Distribution of Guests in Hotels by Nationality, Region and Quarter, 2010

Region/Quarter	Total	Nationality					/
		Australia & New Zeland	Africa	Other European Count.	European Union	Central & South America	
Palestinian Territory	577,383	4,553	14,126	91,306	215,234	15,367	
I	124,205	766	2,919	22,611	46,047	2,652	I
II	140,318	1,037	3,030	17,628	58,440	4,261	II
III	141,833	920	2,862	22,850	49,379	2,278	III
IV	171,027	1,830	5,315	28,217	61,368	6,176	IV
North of West Bank	15,660	6	2	5	1,617	47	
I	1,809	1	0	0	252	16	I
II	3,019	1	0	2	496	5	II
III	6,910	1	0	0	440	8	III
IV	3,922	3	2	3	429	18	IV
Middle of West Bank	95,600	2,618	504	9,345	14,263	5,193	
I	20,128	67	208	1,832	3,140	894	I
II	22,806	546	252	1,445	3,701	1,440	II
III	24,507	554	1	2,335	3,434	319	III
IV	28,159	1,451	43	3,733	3,988	2,540	IV
Jerusalem	263,732	1,535	8,230	42,758	110,610	6,439	
I	59,598	535	1,837	9,969	24,598	1,278	I
II	64,714	379	2,455	9,072	28,139	1,626	II
III	62,870	355	2,243	11,206	27,701	1,176	III
IV	76,550	266	1,695	12,511	30,172	2,359	IV
South of West Bank	201,167	387	5,390	39,198	88,147	3,574	
I	42,417	160	874	10,810	17,853	462	I
II	49,521	107	323	7,109	25,904	1,188	II
III	47,138	10	618	9,309	17,704	708	III
IV	62,091	110	3,575	11,970	26,686	1,216	IV
Gaza Strip	1,224	7	0	0	597	114	
I	253	3	0	0	204	2	I
II	258	4	0	0	200	2	II
III	408	0	0	0	100	67	III
IV	305	0	0	0	93	43	IV

Table 2-7: Percentage Distribution of Guests in Hotels by Nationality, Region and Quarter, 2010

Region/Quarter	Nationality					* No. of Hotels *	/
	U.S.A & Canada	Asia	Israel	Arab Countries	Palestine		
Palestinian Territory	12.5	10.9	7.6	0.4	9.6		
I	13.1	11.9	5.1	0.9	8.8	95	I
II	13.8	11.2	4.8	0.3	9.6	95	II
III	10.7	10.6	12.1	0.2	11.1	96	III
IV	12.5	10.0	8.1	0.2	9.0	95	IV
North of West Bank	3.1	0.7	44.9	1.6	37.5		
I	2.4	1.4	22.2	2.3	56.9	7	I
II	5.2	0.6	34.1	2.6	40.7	7	II
III	2.0	0.3	65.5	0.5	25.3	7	III
IV	2.7	0.3	57.4	1.1	26.9	7	IV
Middle of West Bank	9.3	8.0	12.8	0.9	36.1		
I	6.3	13.1	7.6	1.1	41.4	25	I
II	11.2	6.0	8.2	0.9	41.3	25	II
III	7.4	4.8	24.3	0.8	35.6	24	III
IV	12.1	8.1	11.2	0.9	26.0	26	IV
Jerusalem	21.7	8.7	5.1	0.0	0.0		
I	22.8	9.2	3.9	0.0	0.0	30	I
II	23.3	8.8	3.4	0.0	0.0	30	II
III	19.1	7.3	5.7	0.0	0.0	30	III
IV	21.5	9.6	7.4	0.1	0.0	29	IV
South of West Bank	2.8	16.2	4.8	0.6	7.8		
I	3.1	15.7	4.6	2.0	3.5	25	I
II	3.4	17.4	3.3	0.4	5.6	25	II
III	2.6	19.6	6.6	0.1	10.9	25	III
IV	2.1	12.0	4.6	0.0	11.1	25	IV
Gaza Strip	5.4	1.1	0.0	5.9	26.0		
I	0.0	2.0	0.0	1.2	14.2	8	I
II	0.0	2.3	0.0	1.6	16.3	8	II
III	10.8	0.0	0.0	9.8	38.5	10	III
IV	10.9	0.0	0.0	10.9	34.8	8	IV

* Represents No. of hotels at the end of the quarter

*

Table 207 (Cont.): Percentage Distribution of Guests in Hotels by Nationality, Region and Quarter, 2010

Region/Quarter	Total	Nationality					/
		Australia & New Zeland	Africa	Other European Count.	European Union	Central & South America	
Palestinian Territory	100	0.8	2.4	15.8	37.3	2.7	
I	100	0.6	2.4	18.2	37.1	2.0	I
II	100	0.7	2.2	12.6	41.5	3.1	II
III	100	0.6	2.0	16.0	34.8	1.8	III
IV	100	1.1	3.1	16.5	35.9	3.6	IV
North of West Bank	100	0.1	0.0	0.1	11.8	0.4	
I	100	0.1	0.0	0.0	13.9	0.9	I
II	100	0.0	0.0	0.1	16.5	0.3	II
III	100	0.0	0.0	0.0	6.3	0.2	III
IV	100	0.1	0.1	0.1	10.9	0.4	IV
Middle of West Bank	100	2.6	0.6	9.5	15.0	5.1	
I	100	0.3	1.0	9.1	15.6	4.5	I
II	100	2.4	1.1	6.3	16.2	6.4	II
III	100	2.3	0.0	9.4	14.0	1.3	III
IV	100	5.2	0.2	13.3	14.0	9.0	IV
Jerusalem	100	0.6	3.2	16.2	42.1	2.4	
I	100	0.9	3.1	16.7	41.3	2.1	I
II	100	0.6	3.8	14.0	43.5	2.6	II
III	100	0.6	3.6	17.8	44.1	1.8	III
IV	100	0.3	2.2	16.3	39.4	3.2	IV
South of West Bank	100	0.2	2.5	19.7	43.8	1.6	
I	100	0.4	2.1	25.5	42.1	1.0	I
II	100	0.2	0.7	14.4	52.3	2.3	II
III	100	0.0	1.3	19.7	37.6	1.6	III
IV	100	0.2	5.8	19.3	43.0	1.9	IV
Gaza Strip	100	0.7	0.0	0.0	53.1	7.8	
I	100	1.2	0.0	0.0	80.6	0.8	I
II	100	1.6	0.0	0.0	77.5	0.7	II
III	100	0.0	0.0	0.0	24.5	16.4	III
IV	100	0.0	0.0	0.0	29.7	13.7	IV

Table 2-8: Distribution of Guest Nights in Hotels by Nationality, Region and Quarter, 2010

Region/Quarter	Nationality					عدد الفنادق * No. of Hotels *	المنطقة/الربع
	الولايات المتحدة وكاندا U.S.A & Canada	آسيا Asia	إسرائيل Israel	دول عربية Arab Countries	فلسطين Palestine		
Palestinian Territory	157,176	142,271	77,191	8,896	120,142		الأراضي الفلسطينية
I	36,396	30,759	10,761	3,059	25,462	95	I
II	41,239	34,906	12,523	1,892	28,943	95	II
III	34,765	36,803	30,918	1,686	32,191	96	III
IV	44,776	39,803	22,989	2,259	33,546	95	IV
North of West Bank	974	277	9,016	748	9,054		شمال الضفة الغربية
I	177	56	430	251	2,085	7	I
II	327	84	1,052	229	2,230	7	II
III	257	96	4,882	110	2,894	7	III
IV	213	41	2,652	158	1,845	7	IV
Middle of West Bank	25,271	18,850	25,684	4,940	78,475		وسط الضفة الغربية
I	5,229	6,212	3,151	873	20,847	25	I
II	6,704	3,707	4,129	1,186	21,869	25	II
III	5,426	3,608	12,864	1,299	19,569	24	III
IV	7,912	5,323	5,540	1,582	16,190	26	IV
Jerusalem	115,039	47,614	24,913	378	0		القدس
I	26,874	10,862	4,388	0	0	30	I
II	28,885	11,390	4,567	0	0	30	II
III	26,307	9,464	6,215	0	0	30	III
IV	32,973	15,898	9,743	378	0	29	IV
South of West Bank	15,745	75,528	17,564	2,718	31,609		جنوب الضفة الغربية
I	4,116	13,628	2,786	1,932	2,443	25	I
II	5,323	19,724	2,767	473	4,744	25	II
III	2,681	23,635	6,957	212	9,211	25	III
IV	3,625	18,541	5,054	101	15,211	25	IV
Gaza Strip	147	2	14	112	1,004		قطاع غزة
I	0	1	6	3	87	8	I
II	0	1	8	4	100	8	II
III	94	0	0	65	517	10	III
IV	53	0	0	40	300	8	IV

* Represents No. of hotels at the end of the quarter.

* يمثل عدد الفنادق في نهاية الربع.

Table 2-8 (Cont.): Distribution of Guest Nights in Hotels by Nationality, Region and Quarter, 2010

Region/Quarter	Total	Nationality					/
		Australia & New Zealand	Africa	Other European Count.	European Union	Central & South America	
Palestinian Territory	1,285,661	8,705	27,088	197,901	512,637	33,654	
I	285,879	2,202	5,367	55,302	110,296	6,275	I
II	318,907	2,248	6,656	40,694	140,637	9,169	II
III	308,603	1,600	6,079	44,225	113,956	6,380	III
IV	372,272	2,655	8,986	57,680	147,748	11,830	IV
North of West Bank	23,544	11	2	5	3,363	94	
I	3,686	3	0	0	668	16	I
II	4,948	2	0	2	1,017	5	II
III	9,124	3	0	0	849	33	III
IV	5,786	3	2	3	829	40	IV
Middle of West Bank	213,369	3,892	1,075	12,977	34,736	7,469	
I	51,237	376	290	3,193	8,847	2,219	I
II	50,834	919	569	1,996	8,031	1,724	II
III	55,632	778	41	3,236	8,230	581	III
IV	55,666	1,819	175	4,552	9,628	2,945	IV
Jerusalem	524,093	3,506	17,559	86,245	215,426	13,413	
I	117,234	1,206	3,921	20,373	46,960	2,650	I
II	125,433	904	5,070	18,333	53,006	3,278	II
III	128,308	782	5,103	23,084	54,417	2,936	III
IV	153,118	614	3,465	24,455	61,043	4,549	IV
South of West Bank	522,172	1,289	8,452	98,674	258,353	12,240	
I	113,382	614	1,156	31,736	53,583	1,388	I
II	137,331	419	1,017	20,363	78,341	4,160	II
III	114,412	37	935	17,905	50,293	2,546	III
IV	157,047	219	5,344	28,670	76,136	4,146	IV
Gaza Strip	2,483	7	0	0	759	438	
I	340	3	0	0	238	2	I
II	361	4	0	0	242	2	II
III	1,127	0	0	0	167	284	III
IV	655	0	0	0	112	150	IV

2010

:9-2

Table 2-9: Percentage Distribution of Guest Nights in Hotels by Nationality, Region and Quarter, 2010

Region/Quarter	Nationality					* No. of Hotels *	/
	U.S.A & Canada	Asia	Israel	Arab Countries	Palestine		
Palestinian Territory	12.2	11.1	6.0	0.7	9.3		
I	12.7	10.8	3.8	1.1	8.8	95	I
II	12.9	10.9	3.9	0.6	9.1	95	II
III	11.3	11.9	10.0	0.5	10.5	96	III
IV	12.0	10.7	6.2	0.6	9.0	95	IV
North of West Bank	4.1	1.2	38.3	3.2	38.5		
I	4.8	1.5	11.7	6.8	56.6	7	I
II	6.6	1.7	21.3	4.6	45.1	7	II
III	2.8	1.1	53.5	1.2	31.7	7	III
IV	3.7	0.7	45.8	2.7	31.9	7	IV
Middle of West Bank	11.8	8.8	12.0	2.3	36.9		
I	10.2	12.1	6.1	1.7	40.8	25	I
II	13.2	7.3	8.1	2.4	43	25	II
III	9.8	6.5	23.1	2.3	35.2	24	III
IV	14.2	9.6	10.0	2.7	29.1	26	IV
Jerusalem	22.0	9.1	4.5	0.1	0.0		
I	22.9	9.3	3.7	0.0	0.0	30	I
II	23.0	9.1	3.7	0.0	0.0	30	II
III	20.5	7.4	4.8	0.0	0.0	30	III
IV	21.5	10.4	6.3	0.2	0.0	29	IV
South of West Bank	3.0	14.5	3.4	0.5	6.1	25	
I	3.6	12.0	2.5	1.7	2.2	25	I
II	3.9	14.4	2.1	0.3	3.5	25	II
III	2.3	20.7	6.1	0.2	8.1	25	III
IV	2.3	11.8	3.2	0.1	9.7	25	IV
Gaza Strip	5.9	0.1	0.5	4.5	40.5		
I	0.0	0.3	1.7	0.9	25.6	8	I
II	0.0	0.3	2.2	1.1	28.3	8	II
III	8.3	0.0	0.0	5.8	45.8	10	III
IV	8.1	0.0	0.0	6.1	46.0	8	IV

* Represents No. of hotels at the end of the quarter.

*

Table 2-9 (Cont.): Percentage Distribution of Guest Nights in Hotels by Nationality, Region and Quarter, 2010

Region/Quarter	Total	Nationality					/
		Australia & New Zealand	Africa	Other European Count.	European Union	Central & South America	
Palestinian Territory	100	0.7	2.1	15.4	39.9	2.6	
I	100	0.8	1.9	19.3	38.6	2.2	I
II	100	0.7	2.1	12.8	44.1	2.9	II
III	100	0.5	2.0	14.3	36.9	2.1	III
IV	100	0.7	2.4	15.5	39.7	3.2	IV
North of West Bank	100	0.0	0.0	0.0	14.3	0.4	
I	100	0.1	0.0	0.0	18.1	0.4	I
II	100	0.0	0.0	0.0	20.6	0.1	II
III	100	0.0	0.0	0.0	9.3	0.4	III
IV	100	0.1	0.0	0.1	14.3	0.7	IV
Middle of West Bank	100	1.8	0.5	6.1	16.3	3.5	
I	100	0.7	0.6	6.2	17.3	4.3	I
II	100	1.8	1.1	3.9	15.8	3.4	II
III	100	1.4	0.1	5.8	14.8	1.0	III
IV	100	3.3	0.3	8.2	17.3	5.3	IV
Jerusalem	100	0.7	3.4	16.5	41.1	2.6	
I	100	1.0	3.3	17.4	40.1	2.3	I
II	100	0.7	4.0	14.6	42.3	2.6	II
III	100	0.6	4.0	18.0	42.4	2.3	III
IV	100	0.4	2.3	16.0	39.9	3.0	IV
South of West Bank	100	0.2	1.6	18.9	49.5	2.3	
I	100	0.5	1.0	28.0	47.3	1.2	I
II	100	0.3	0.7	14.8	57.0	3.0	II
III	100	0.0	0.8	15.6	44.0	2.2	III
IV	100	0.1	3.4	18.3	48.5	2.6	IV
Gaza Strip	100	0.3	0.0	0.0	30.6	17.6	
I	100	0.9	0.0	0.0	70.0	0.6	I
II	100	1.1	0.0	0.0	67.0	0.0	II
III	100	0.0	0.0	0.0	14.9	25.2	III
IV	100	0.0	0.0	0.0	16.9	22.9	IV

Table 2-10: Average Length of Stay per Guest (Nights/Guest) by Nationality, Region and Quarter, 2010

Region/Quarter	Nationality					* No. of Hotels *	/
	U.S.A & Canada	Asia	Israel	Arab Countries	Palestine		
Palestinian Territory	2.2	2.3	1.8	3.8	2.2		
I	2.5	2.1	1.7	2.8	2.3	95	I
II	2.6	2.2	1.9	4.0	2.2	95	II
III	2.3	2.4	1.8	5.2	2.0	96	III
IV	0.9	2.3	1.7	5.3	2.2	95	IV
North of West Bank	2.2	3.6	1.1	3.8	1.8	7	
I	4.1	2.2	1.1	6.0	2.0	7	I
II	2.0	4.4	1.0	2.9	1.8	7	II
III	1.9	4.6	1.1	3.4	1.7	7	III
IV	2.0	3.4	1.2	3.7	1.7	7	IV
Middle of West Bank	2.8	2.5	2.1	5.7	2.3	26	
I	4.1	2.4	2.1	4.0	2.5	25	I
II	2.6	2.7	2.2	5.6	2.3	25	II
III	3.0	3.1	2.2	7.0	2.2	24	III
IV	2.3	2.3	1.8	6.4	2.2	26	IV
Jerusalem	2.0	2.1	1.8	5.0	0.0	29	
I	2.0	2.0	1.9	0.0	0.0	30	I
II	1.9	2.0	2.1	0.0	0.0	30	II
III	2.2	2.1	1.7	0.0	0.0	30	III
IV	0.2	2.2	1.7	5.0	0.0	29	IV
South of West Bank	2.8	2.4	1.8	2.5	1.9	25	
I	3.1	2.0	1.4	2.3	1.7	25	I
II	3.2	2.3	1.7	2.7	1.7	25	II
III	2.2	2.6	2.2	3.1	1.8	25	III
IV	2.7	2.5	1.8	3.5	2.2	25	IV
Gaza Strip	1.9	0.2	0.0	1.4	2.9	8	
I	0.0	0.2	0.0	1.0	2.4	8	I
II	0.0	0.2	0.0	1.0	2.4	8	II
III	2.1	0.0	0.0	1.6	3.3	10	III
IV	1.6	0.0	0.0	1.2	2.8	8	IV

* Represents No. of hotels at the end of the quarter

*

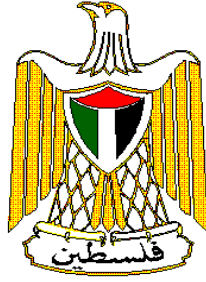
2010

(/)

:()10-2

Table 2-10(Cont.): Average Length of Stay per Guest (Nights/Guest) by Nationality, Region and Quarter, 2010

Region/Quarter	Total Average	Nationality					الجنسية	/
		Australia & New Zeland	Africa	Other European Count.	European Union	Central & South America		
Palestinian Territory	2.2	1.9	1.9	2.2	2.4	2.2		
I	2.3	2.9	1.8	2.4	2.4	2.4	I	
II	2.3	2.2	2.2	2.3	2.4	2.2	II	
III	2.2	1.7	2.1	1.9	2.3	2.8	III	
IV	2.1	1.5	1.7	2.0	2.4	1.9	IV	
North of West Bank	1.5	1.8	1.0	1.0	2.1	2.0		
I	2.0	3.0	0.0	0.0	2.7	1.0	I	
II	1.6	2.0	0.0	1.0	2.1	1.0	II	
III	1.3	3.0	0.0	0.0	1.9	4.1	III	
IV	1.5	1.0	1.0	1.0	1.9	2.2	IV	
Middle of West Bank	2.2	1.5	2.1	1.4	2.4	1.4		
I	2.5	5.6	1.4	1.7	2.8	2.5	I	
II	2.2	1.7	2.3	1.4	2.2	1.2	II	
III	2.3	1.4	41.0	1.4	2.4	1.8	III	
IV	2.0	1.3	4.1	1.2	2.4	1.2	IV	
Jerusalem	2.0	2.3	2.1	2.0	1.9	2.1		
I	2.0	2.3	2.1	2.0	1.9	2.1	I	
II	1.9	2.4	2.1	2.0	1.9	2.0	II	
III	2.0	2.2	2.3	2.1	2.0	2.5	III	
IV	1.6	2.3	2.0	2.0	2.0	1.9	IV	
South of West Bank	2.6	3.3	1.6	2.5	2.9	3.4		
I	2.7	3.8	1.3	2.9	3.0	3.0	I	
II	2.8	3.9	3.1	2.9	3.0	3.5	II	
III	2.4	3.7	1.5	1.9	2.8	3.6	III	
IV	2.5	2.0	1.5	2.4	2.9	3.4	IV	
Gaza Strip	2.0	1.0	0.0	0.0	1.3	3.8		
I	1.3	1.0	0.0	0.0	1.2	1.0	I	
II	1.4	1.0	0.0	0.0	1.2	0.0	II	
III	2.8	0.0	0.0	0.0	1.7	4.2	III	
IV	2.1	0.0	0.0	0.0	1.2	3.5	IV	



**Palestinian National Authority
Palestinian Central Bureau of Statistics**

**Hotel Activities in the Palestinian Territory
Annual Bulletin - 2010**

May, 2011

PAGE NUMBERS OF ENGLISH TEXT ARE PRINTED IN SQUARE BRACKETS.
TABLES ARE PRINTED IN THE ARABIC ORDER (FROM RIGHT TO LEFT)

**This document is prepared in accordance with the standard
procedures stated in the Code of Practice for Palestine Official
Statistics 2006**

© May, 2011
All rights reserved.

Suggested Citation:

Palestinian Central Bureau of Statistics, 2011. *Hotel Activities in the Palestinian Territory, (Annual Bulletin -2010).* Ramallah – Palestine.

All correspondence should be directed to:

**Palestinian Central Bureau of Statistics
P.O.Box 1647, Ramallah, Palestine.**

Tel: (+972/970) 2 2982700

Fax: (+972/970) 2 2982710

Toll free.: 1800300300

E-Mail :diwan@pcbs.gov.ps

Web-Site: <http://www.pcbs.gov.ps>

Acknowledgement

The Palestinian Central Bureau of Statistics (PCBS) extends its deep appreciations to all owners and managers of the hotels in the Palestinian Territory who contributed to the success of collecting the survey data and to all workers in the survey for being well dedicated in performing their duties.

The survey of Hotel Activities in the Palestinian Territory 2010, has been planned and conducted by a technical team from PCBS and with joint funding by the Palestinian National Authority (PNA) and the Core Funding Group (CFG) for the year 2010 represented by the Representative Office of Norway to PNA and the Swiss Development and Cooperation Agency (SDC).

Moreover, PCBS very much appreciates the distinctive efforts of the Core Funding Group (CFG) for their valuable contribution to funding the project.

Team Work

- **Report Preparation**

Fathi Farasin
Bihan Bader

- **Maps Design**

Amal Jaber

- **Dissemination Standard**

Hanan Janajreh

- **Preliminary Review**

Mahmoud Abdal-rahman
Jawad AL-Saleh
Mahmoud AL-Qayya

- **Final Review**

Mahmoud Jaradat

- **Overall Supervision**

Ola Awad

PCBS President

Preface

The Palestinian tourism sector has great potential and is expected to occupy a large share of the Palestinian GDP once the tourist resources are well exploited. Tourism activities are, however, crippled by a multiplicity of internal and external factors which are not enabling this important economic activity to flourish.

PCBS has collected data on tourism activities since November 1995. However, due to reasons beyond its control, PCBS had decided to limit its tourism statistics to the hotel activity and some surveys related to tourism.

PCBS is pleased to present the fifteen Annual Bulletin on “Hotel Activities in the Palestinian Territory”, which covers the statistics of hotel activity in the year 2010. PCBS is looking forward to expanding its activities to cover all branches of the tourism industry in the Palestinian Territory.

This report addresses the main indicators of hotel activity. These indicators include the number of operating hotels, number of rooms and beds, rooms and public facilities in the surveyed hotels, number of persons engaged in hotels, number of guest nights in the reference period, distribution of guests by nationality, and percent of beds as well as rooms occupancy.

PCBS is pleased to present this bulletin on hotel activities in the Palestinian Territory as an important statistical reference on hotel activity. PCBS hopes that this bulletin will pave the way for developing a comprehensive tourist program to meet international standards and needs of users.

May, 2011

**Ola Awad
President of PCBS**

Table of Contents

Subject	Page
List of Tables	
List of Figures	
List of Maps	
Executive Summary	
Chapter One: Introduction	[19]
Chapter Two: Concepts and Definitions	[21]
Chapter Three: Main Findings	[23]
3.1. Distribution of Hotels During 2010	[23]
3.2. Employment During 2010	[23]
3.3. Number of Guests During 2010	[23]
3.4. The Impact of Israeli Measures on the Hotel Activities	[24]
Chapter Four: Methodology	[25]
Chapter Five: Data Quality	[27]
5.1 Technical Notes	[27]
5.2 Comparing the Quarterly Reports with the Annual Bulletin of 2010	[27]
Tables	43

List of Tables

Table	Page
Table 1-1: Main Indicators for Hotel Activities in the Palestinian Territory by Month, 2010	45
Table 1-2: Distribution of Hotels, Rooms, and Beds by Categories of Number of Rooms, 2010	45
Table 1-3: Number of Persons Engaged in Hotels by Type of Work, Sex and Month, 2010	46
Table 1-4: Distribution of Guests in Hotels by Nationality and Month, 2010	46
Table 1-5: Percentage Distribution of Guests in Hotels by Nationality and Month, 2010	48
Table 1-6: Distribution of Guest Nights in Hotels by Nationality and Month, 2010	49
Table 1-7: Percentage Distribution of Guest Nights in Hotels by Nationality and Month, 2010	50
Table 1-8: Average Length of Stay per Guest (Nights/Guest) in Hotels by Nationality and Month, 2010.	51
Table 2-1: Main Indicators for Hotel Activities in the Palestinian Territory by Region and Quarter, 2010.	52
Table 2-2: Average Number of Hotel Rooms by Capacity, Region and Quarter, 2010	54
Table 2-3: Number of Hotels and Rooms by Facilities and Region as of December, 2010	55
Table 2-4: Public Utilities Available in Hotels by Region as of December, 2010	55
Table 2-5: Average Number of Persons Engaged in Hotels by Type of Work, Sex, Region and Quarter, 2010	56
Table 2-6: Distribution of Guests in Hotels by Nationality, Region and Quarter, 2010	57
Table 2-7: Percentage Distribution of Guests in Hotels by Nationality, Region and Quarter, 2010	59
Table 2-8: Distribution of Guest Nights in Hotels by Nationality, Region and Quarter, 2010	61
Table 2-9: Percentage Distribution of Guest Nights in Hotels by Nationality, Region and Quarter, 2010	63
Table 2-10: Average Length of Stay per Guest (Nights/Guest) by Nationality, Region and Quarter, 2010	65

List of Figures

Figure		Page
Figure 1:	Percentage Distribution of Operating Hotels by Region as of December, 2010	[23]
Figure 2:	Percentage Distribution of Guests by Nationality, 2010	[24]

List of Maps

Map		Page
Map 1:	Number of Operating Hotels in the Palestinian Territory by Region, 2010	29
Map 2:	Number of Hotel Guests in the Palestinian Territory by Region, 2010	33
Map 3:	Room Occupancy Rate in Hotels in the Palestinian Territory by Region, 2010	37

Executive Summary

There were 95 operating hotels activities in December 2010; while the average number of rooms reached 4,929 rooms and the average number of beds reached 10,543 beds.

- During the year 2010, the total number of guests in hotels in the Palestinian Territory reached about 577,383 with an increase of 82.2% compared with the year 1999, and with an increase of 27.6% compared with the year 2010.
- The total number of nights were 1,285,661 nights during the year 2010, with an increase of 43.6% compared with the year 1999, and with an increase of 23.3% compared with the year 2009.
- The number of workers in the hotels reached 1,795 of whom 1,534 were males and 261 were females. The number of workers had increased by 32.6% during the year 2010 compared with the year 1999, reflecting an increase of 19.4% compared with the year 2010.
- The percentage of rooms occupancy was 35.4%, which increased by 5.7% during the year 2010 compared with the year 1999, showing an increase of 8.9% compared with the year 2009.
- The average length of stay in the Palestinian hotels was 2.2 nights per guest during the year 2010.

Chapter One

Introduction

PCBS conducts a hotel survey which aims at producing a comprehensive database on hotel activities in the Palestinian Territory. The ultimate goal is to compile and maintain data on the tourism industry. By this exercise, PCBS strives to provide regular statistics on the main indicators recommended and adopted by World Tourism Organization (WTO) and the European Union (EU). In the mean time, this initiative in the present format aims fulfill the needs for basic statistics on hotel activities to provide necessary data for policy making to promote this industry in the Palestinian Territory.

This survey is conducted on a monthly basis to identify the changes in this sector during all seasons of the year. All hotels operating in the Palestinian Territory are covered. This periodic survey aims at establishing a time series including variables and indicators related to hotel activities.

Objectives

This survey aims to provide a continuous flow of data on:

1. Number of operating hotels and it's the available number of rooms and beds.
2. Rooms and facilities in the surveyed hotels.
3. Number of persons engaged in hotels.
4. Number of guest nights in the reference period.
5. Number of guests by nationality.
6. Rates of bed occupancy and room occupancy.

Chapter Two

Concepts and Definitions

This section presents the main concepts and definitions used to derive the main indicators of tourism statistics. These concepts and definitions are based on international recommendations in the field of tourism statistics, and are in line with standards of PCBS. The main concepts and definitions mentioned in this report were as follows:

Hotel:

It is defined as an accommodation establishment providing overnight lodging for the visitors in a room or unit. It should hold a number of persons exceeding an average of single family. The establishment must be under one management, and provides different facilities and services to visitors.

Hotel Workers:

It refers to all persons working in the hotel on full or part time bases including owners and paid or unpaid household members.

Number of Rooms:

It refers to the furnished rooms for the use of guests. Such rooms might be single, double, triple, or quadruple. Rooms involving more than four beds were classified under (others) in the questionnaire. As for the suite, it is usually comprised of one bedroom or more, a living room and private toilet facilities.

Number of Beds:

Is the total number of single beds in the hotel and prepared for use by guests with the exception of the beds, which added to the hotel upon request. A double bed is counted as two beds inside the hotel room.

Available Beds and Rooms:

It refers to beds and rooms, which are ready for use during the reference period. Closed rooms for maintenance or repairs are excluded.

Guests:

It refers to visitors staying in the hotels and using hotel's facilities in return for a certain charge. Records of new guests are based on the number of visits regardless whether it's the same person or different.

Number of Guest Nights:

Number of beds booked for hotel guests. Such beds are considered as occupied whether they were actually used or not. It is measured by guest night unit.

Room Occupancy:

Number of booked and paid rooms. Such rooms are considered occupied whether they were actually used or not.

Bed Occupancy:

Number of booked and paid beds. Such beds are considered occupied whether they were actually used or not.

Average (rooms, beds) Occupancy:

It is defined as the total number of occupied (rooms, beds) divided by number of days.

Average Length of Stay:

Represents the total of guest nights by nationality divided by number of guests of the same nationality.

Percentage of (rooms, beds) Occupancy:

It is defined as the average of (rooms, beds) occupancy divided by available (rooms, beds) multiplied by one hundred.

North of West Bank Region:

Jenin, Tubas, Tulkarm, Nablus, Qalqiliya, and Salfit governorates.

Middle of West Bank Region:

Ramallah and Al-Bireh, Jericho and Al-Aghwar governorates.

Jerusalem Region:

Jerusalem governorate.

South of West Bank Region:

Bethlehem and Hebron governorates.

Gaza Strip:

Gaza North, Gaza, Deir Al-Balah, Khan Yunis and Rafah governorates.

Main Findings

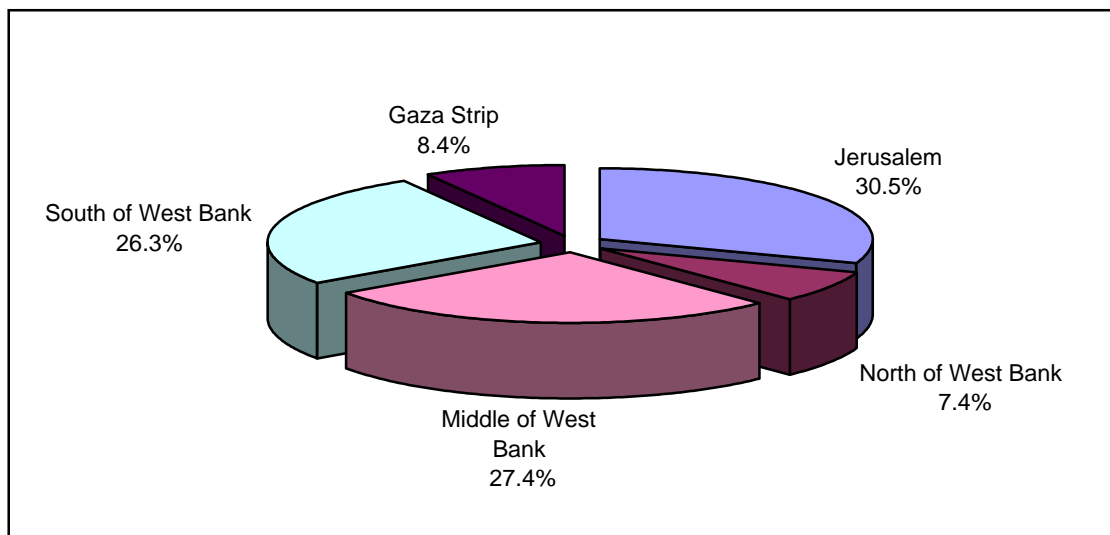
3.1 Distribution of Hotels During 2010

The total number of hotels in the Palestinian Territory was 112 hotels, including temporary closed hotels. There were 95 operating hotels in December 2010 with average number of rooms in all operating hotels amounted to 4,929 while average number of beds reached 10,543.

The operating hotels in the Palestinian Territory were distributed as follows:

- North of West Bank: 7 hotels including 164 rooms with 361 beds.
- Middle of West Bank: 26 hotels including 1,060 rooms with 2,343 beds.
- Jerusalem: 29 hotels including 1,497 rooms with 3,263 beds.
- South of West Bank: 25 hotels including 1,868 rooms with 4,001 beds.
- Gaza Strip: 8 hotels including 340 rooms with 575 beds.

Figure (1): Percentage Distribution of Operating Hotels by Region as of December, 2010



3.2 Employment During 2010

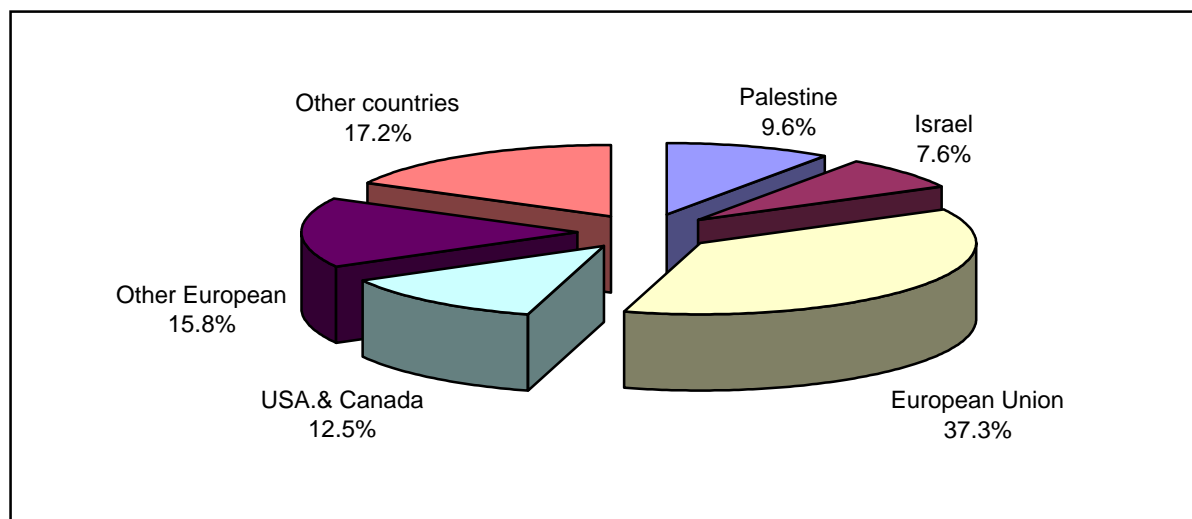
The number of employed persons in the hotels was 1,795 of whom

- 326 as administrative staff (260 males and 66 females), and
- 1,469 as services workers (1,274 males and 195 females).

3.3 Number of Guests During 2010

- During the year 2010, the total number of guests in the Palestinian hotels was 577,383 person of whom 9.6% were Palestinian guests, and 37.3% were from European Union countries.

Figure (2): Percentage Distribution of Guests by Nationality, 2010



3.4 The Impact of Israeli Measures on the Hotel Activities

During the period 2000-2007, hotel activity - among many other sectors - had been negatively affected due to Israeli measures on the Palestinian Territory (siege, closure, curfew...etc.).

In 2010, this activity had witnessed major improvements in comparison with the year 1999. The number of guests had increased in 2010 by 82.2% compared with 1999; while the guests nights had increased by 43.6%.

Percentage Changes of Hotel Indicators for Selected Years Compared with

The Indicator	Value 2010	Percentage change (%) compared with 1999						
		2001	2003	2005	2007	2008	2009	2010
Number of operating hotels	95	-7.7	-15.4	-15.4	-9.9	-5.5	9.9	4.4
Average number of workers	1,795	6.7	-12.3	-6.5	-7.3	-1.3	11.1	32.6
Number of guests	577,383	-81.0	-80.2	-58.4	-0.3	40.8	42.8	82.2
Number of guest nights	1,285,661	-79.4	-77.7	-60.9	-24.8	25.9	16.4	43.6
Average occupancy of rooms	1,747.30	-77.3	-72.1	-57.7	-22.5	17.1	11.1	31.1
Average occupancy of beds	3,522.40	-79.4	-77.7	-60.9	-24.8	25.9	16.4	43.6
Percentage occupancy of rooms %	35.4	-72.5	-65.1	-53.7	-25.1	7.2	-3.0	5.7
Percentage occupancy of beds %	33.4	-75.9	-73.6	-59.1	-31.0	7.6	-4.0	10.2

Chapter Four

Methodology

- **Survey Questionnaire**

The questionnaire was designed according to international standards and recommendations. The Higher Council for the Arab Tourist Industry and the Arab Studies Society both contributed to the questionnaire design. The questionnaire was designed to provide hotel identification data, employed persons by type of work and sex, number of rooms and beds, number of guests, nationality, and occupancy of rooms and beds. The questionnaire is subject to continuous revision and is available on PCBS' website.

- **Coverage**

The survey's frame was based on the Establishments Census conducted by the PCBS in 2007. This frame undergoes continuous updating, adding newly established hotels and eliminating closed ones. Hotels which have ceased operations due to maintenance or repair activities are not surveyed until they become functional again.

- **Fieldwork**

The recruited field workers for the implementation of this survey were selected based on their experience in similar projects. Before being recruited, field workers undergo theoretical and practical training to enable them to carry out their duty properly. Training of field workers include data collection, survey's manuals on concepts and definitions, interviewing and others.. Regular data collection rounds are made to collect data from respondents, to ensure precision and accuracy of filled-in data.

- **Office Work Activities**

The completed questionnaires are delivered for office editing. Upon completion of data editing, the questionnaires undergo a process of verification and coding in accordance with the coding manuals.

- **Tabulation and Data Processing**

After being edited, verified and coded, the data is electronically captured using a special designed data-entry program. Such a program is developed in accordance with pre-determined formats and in a way that fulfills all of survey's objectives. Before initiating data entry, necessary theoretical and practical training sessions are offered to data entry operators. The entered data undergoes electronic editing based on standard editing rules. In addition, random quality checks is undertaken to ensure error free data entry.

After completing data entry, editing and cleaning, the intended statistical tables are produced according to the dissemination plan.

Data Quality

- Coverage: includes hotels, variables, registration period, and periodicity of the survey.
- Completeness: the availability of the data and its completeness for most of the indicators of the hotels activities and how consistent the collected data with the data used by hotels administration. The response rate of the hotel activities reached 94%.
- Validity: A series of editing operations are applied during the implementation of the survey. The questionnaires are edited in the field and in the office, then compared with data of the previous month; the questionnaires that contain mistakes are returned to the hotels for revisions modification.

5.1 Technical Notes

Any changes in the number of hotels, rooms, and beds during the year of 2010 are due to:

- There were a number of hotels that are under repair or maintenance. These hotels are not included in the findings presented in this bulletin.
- Non respondent hotels were not considered in this report.
- Hotels that had not received any visitor during the reference period are still considered as in operation.
- Data includes all establishments that practice any hotel activity, whether it is categorized or not.

5.2 Comparing the Quarterly Reports with the Annual Bulletin of 2010:

The results show some differences between the annual bulletin and the quarterly reports due to the delay of receiving the questionnaires from some hotels. Delayed received data are included in the annual bulletin.

Comparison of the results of annual bulletin with quarterly reports, 2010

Quarter	No. of Hotels	Average No. of Rooms	Average No. of beds	No. of Guests	No. of Guests nights	
Annual bulletin	I	95	5,007	10,705	124,205	285,879
	II	95	4,810	10,276	140,317	318,907
	III	96	4,952	10,615	141,833	308,603
	IV	95	4,948	10,578	171,028	372,272
Quarterly reports	I	95	5,007	10,705	124,205	285,879
	II	94	4,804	10,266	140,009	318,371
	III	94	4,833	10,327	137,733	304,504
	IV	94	4,891	10,510	170,671	370,966