

**2009 -**

**(5) :**  
**2010 /**

**2006**

.2010 - 1431 ©

.2009

-

**.2010**

:

- **1647** . .

(+970/972) 2 2982700 :

(+970/972) 2 2982710 :

diwan@pcbs.gov.ps :

<http://www.pcbs.gov.ps> :



2009

(PNA)

2009 (CFG)

.(SDC)

(EU)

(CFG)



•

•

•

•

•



.1995

.2009

**2010**





<b>21</b>			:
21			1.1
21			2.1
21			3.1
22			4.1
<b>23</b>			:
<b>27</b>			:
27		2009	1.3
28		2009	2.3
28		2009	3.3
31		2009	4.3
35	2009		5.3
35		2009	6.3
39			7.3
<b>43</b>			:
43			1.4
43			2.4
43			3.4
44			4.4
44			5.4
<b>45</b>			:
45			1.5
45		2009	2.5
<b>47</b>			



<b>49</b>	2009	<b>:1-1</b>
<b>49</b>	2009	<b>:2-1</b>
<b>50</b>	2009	<b>:3-1</b>
<b>51</b>	2009	<b>:4-1</b>
<b>52</b>	2009	<b>:5-1</b>
<b>53</b>	2009	<b>:6-1</b>
<b>54</b>	2009	<b>:7-1</b>
<b>55</b>	( / ) 2009	<b>:8-1</b>
<b>56</b>		<b>:1-2</b>
		2009
<b>58</b>	2009	<b>:2-2</b>
<b>59</b>		<b>:3-2</b>
		2009
<b>59</b>	2009	<b>:4-2</b>
<b>60</b>		<b>:5-2</b>
		2009
<b>61</b>	2009	<b>:6-2</b>
<b>63</b>	2009	<b>:7-2</b>
<b>65</b>	2009	<b>:8-2</b>
<b>67</b>	2009	<b>:9-2</b>
<b>69</b>	2009	<b>:10-2</b>
		( / )



<b>27</b>	2009	<b>:1</b>
<b>28</b>	2009	<b>:2</b>
<b>31</b>	2009	<b>:3</b>
<b>31</b>	(2009-2001)	<b>:4</b>
<b>35</b>	2009	<b>:5</b>
<b>39</b>	1999 (2009 -2001)	<b>:6</b>

<b>29</b>	2009	<b>:1</b>
<b>33</b>	2009	<b>:2</b>
<b>37</b>	2009	<b>:3</b>
<b>41</b>	2009	<b>:4</b>





2009  
 115  
 2009  
 . 9,815 4,552 100  
 : 2009  
 17,451 117 •  
 297 20,280 141  
 3,141  
 . 15 20  
 453 •  
 %1.5 1999 %42.8 2009  
 .2008  
 %29.2 %48.5 •  
 •  
 %7.5 1999 2009 %16.4 •  
 .2008  
 228 1,286 1,514 •  
 .%12.6 2008 .%11.1 1999  
 %3.0 2009 %32.5 •  
 .2008 %9.5 1999  
 %4.0 2009 %29.1 •  
 .2008 %10.7 1999  
 .2009 ( / ) 2.3 •

		<b>1.1</b>
1995	1995	
1995		1996
		<b>2.1</b>
		:
		.
		.
		<b>3.1</b>

:	.1
.	.2
.	.3
.	.4
.	.5
.	.6
	<b>4.1</b>
:	•
:	•
:	•
:	•
.	•
.	•
:	•

1.2

:

:

:

:

(

(

:

( )

:

:

:

:

/

:

( )

:( )

( )

( )

:( )

:

:

:

:

:

:

2.2

1.2.2

$$\underline{\hspace{4cm}} = .1$$

$$100 \times \frac{\underline{\hspace{4cm}}}{\times} = .2$$

$$\underline{\hspace{4cm}} = .3$$

$$100 \times \frac{\underline{\hspace{4cm}}}{\times} = .4$$

$$100 \times \underline{\hspace{4cm}} = .5$$

$$100 \times \underline{\hspace{4cm}} = .6$$

$$\underline{\hspace{4cm}} = .7$$

2.2.2

$$\frac{\underline{\hspace{4cm}}}{3} = .1$$

$$\frac{\underline{\hspace{4cm}}}{3} = .2$$

$$\underline{\hspace{4cm}} = .3$$

$$100 \times \frac{\underline{\hspace{4cm}}}{\times} = .4$$

$$\underline{\hspace{10em}} = .5$$

$$100 \times \frac{\underline{\hspace{10em}}}{\times} = .6$$

**3.2**

$$\frac{\underline{\hspace{10em}}}{12} = .1$$

$$\frac{\underline{\hspace{10em}}}{365} = .2$$

$$100 \times \frac{\underline{\hspace{10em}}}{365 \times} = .3$$

$$\frac{\underline{\hspace{10em}}}{12} = .4$$

$$\frac{\underline{\hspace{10em}}}{365} = .5$$

$$100 \times \frac{\underline{\hspace{10em}}}{365 \times} = .6$$

$$\underline{\hspace{10em}} = .7$$

: 2009

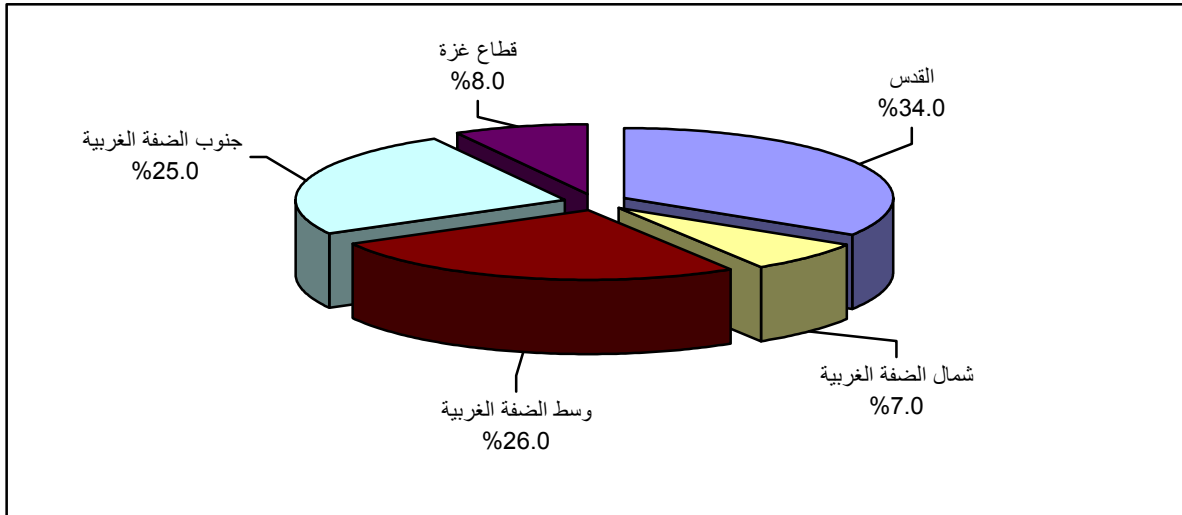
2009

1.3

2009	115	100	2009
9,815		4,552	
323	149	7	•
2,156	959	26	•
3,263	1,483	34	•
3,564	1,653	25	•
509	308	8	•

2009

:(1)



%23.0

75

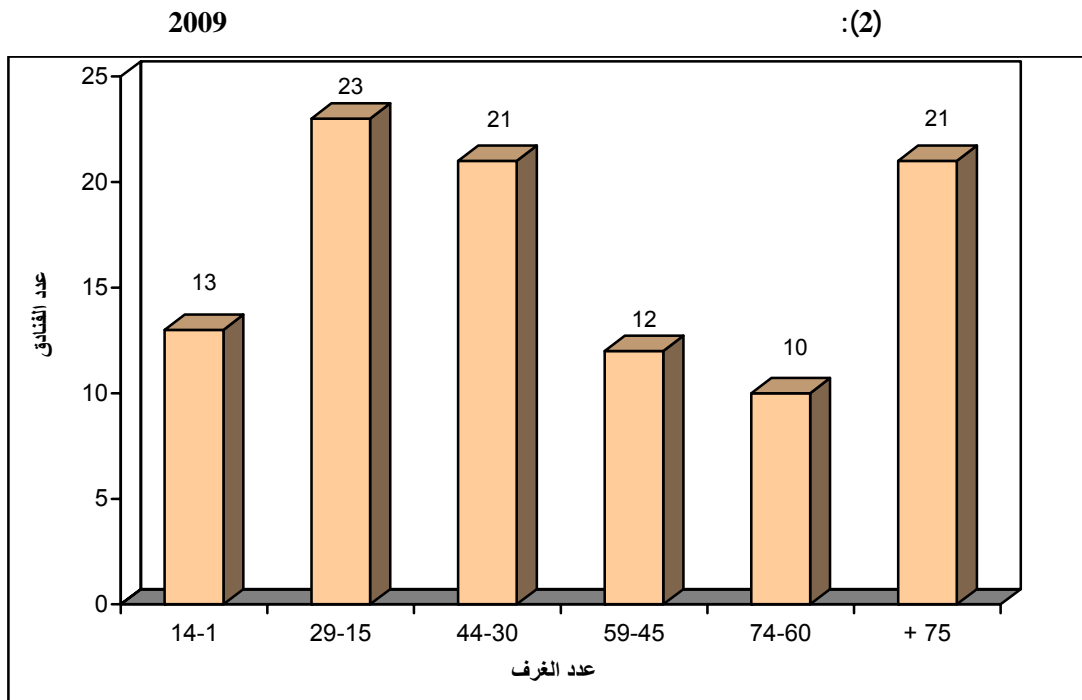
%21.0

29

15

2009



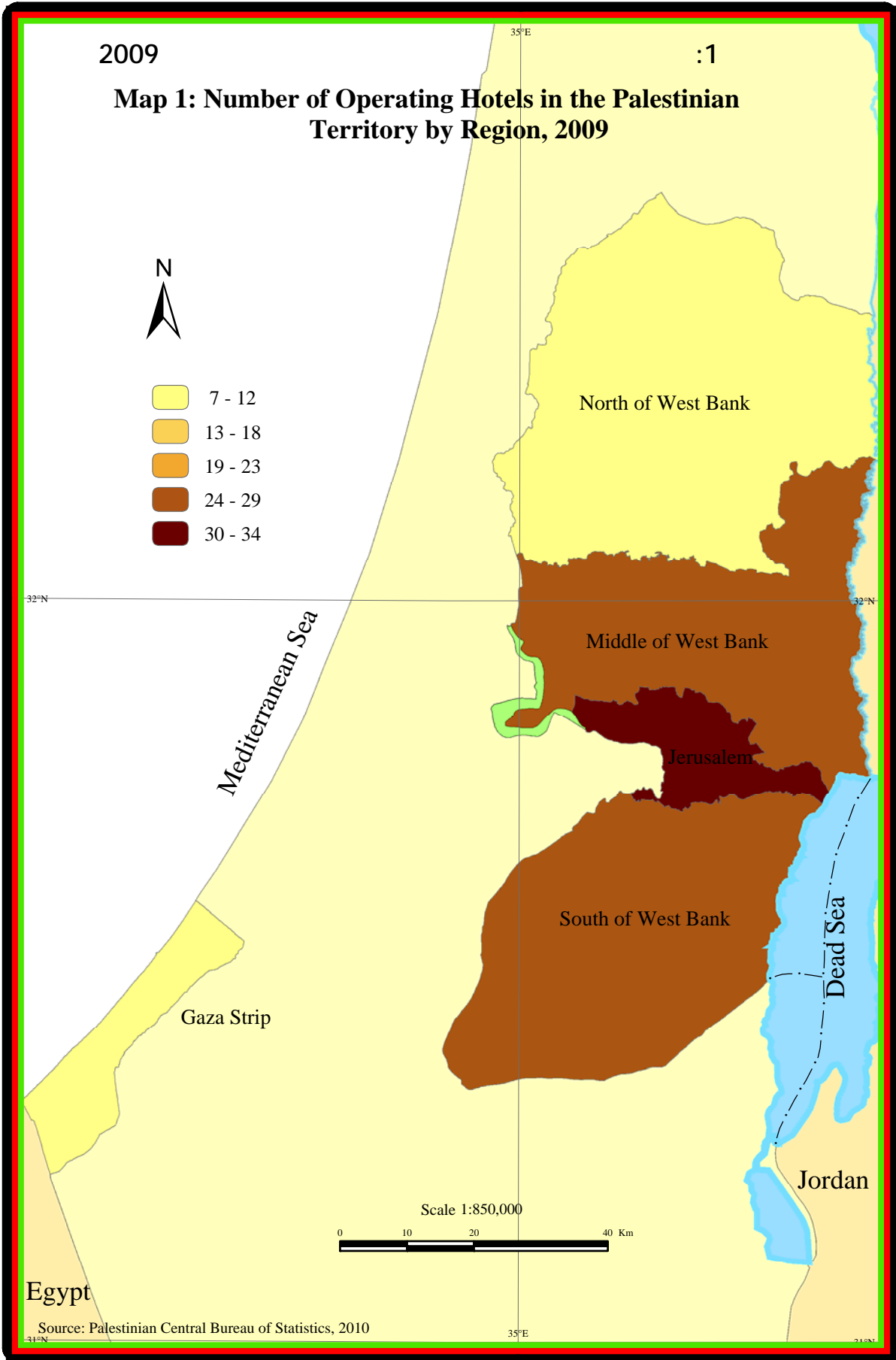


<b>2009</b>		<b>2.3</b>
17,451	117	
297	20,280	141
	3,141	
	15	20

<b>2009</b>		<b>3.3</b>
:	1,514	
.	59	215
.	169	274
	1,071	1,240

2009

### Map 1: Number of Operating Hotels in the Palestinian Territory by Region, 2009



Egypt

Source: Palestinian Central Bureau of Statistics, 2010



2009

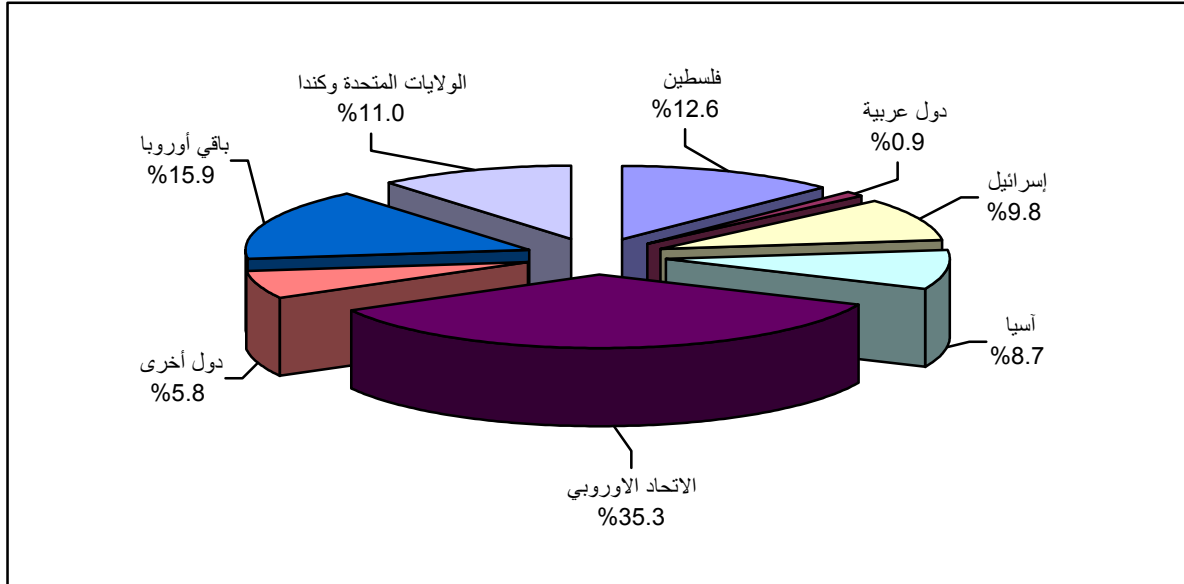
452,625

%12.6

%35.3

2009

:(3)



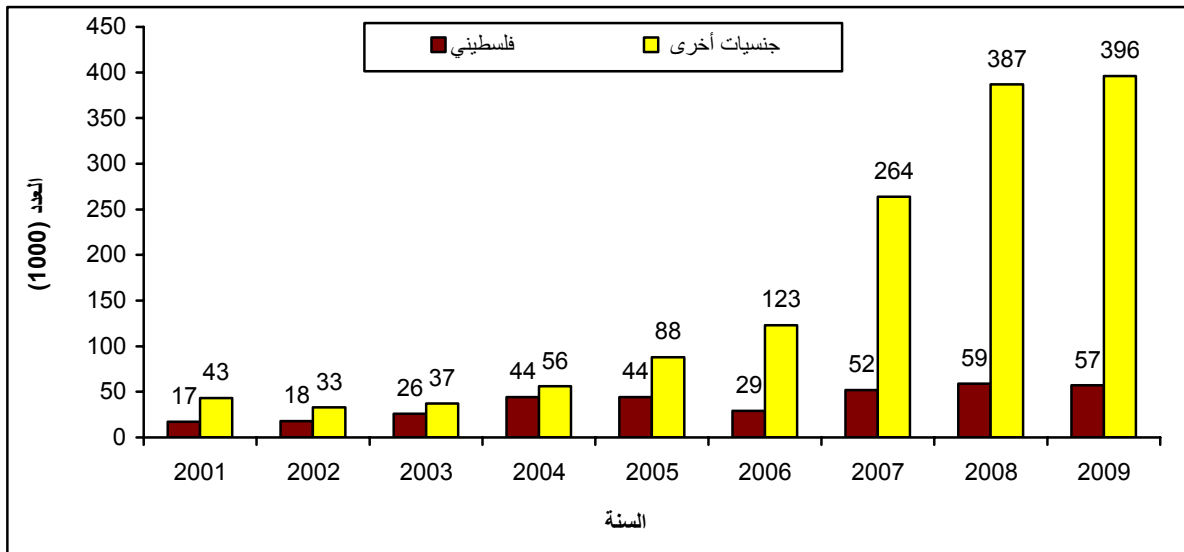
.2001

2009

(4)

(2009 - 2001)

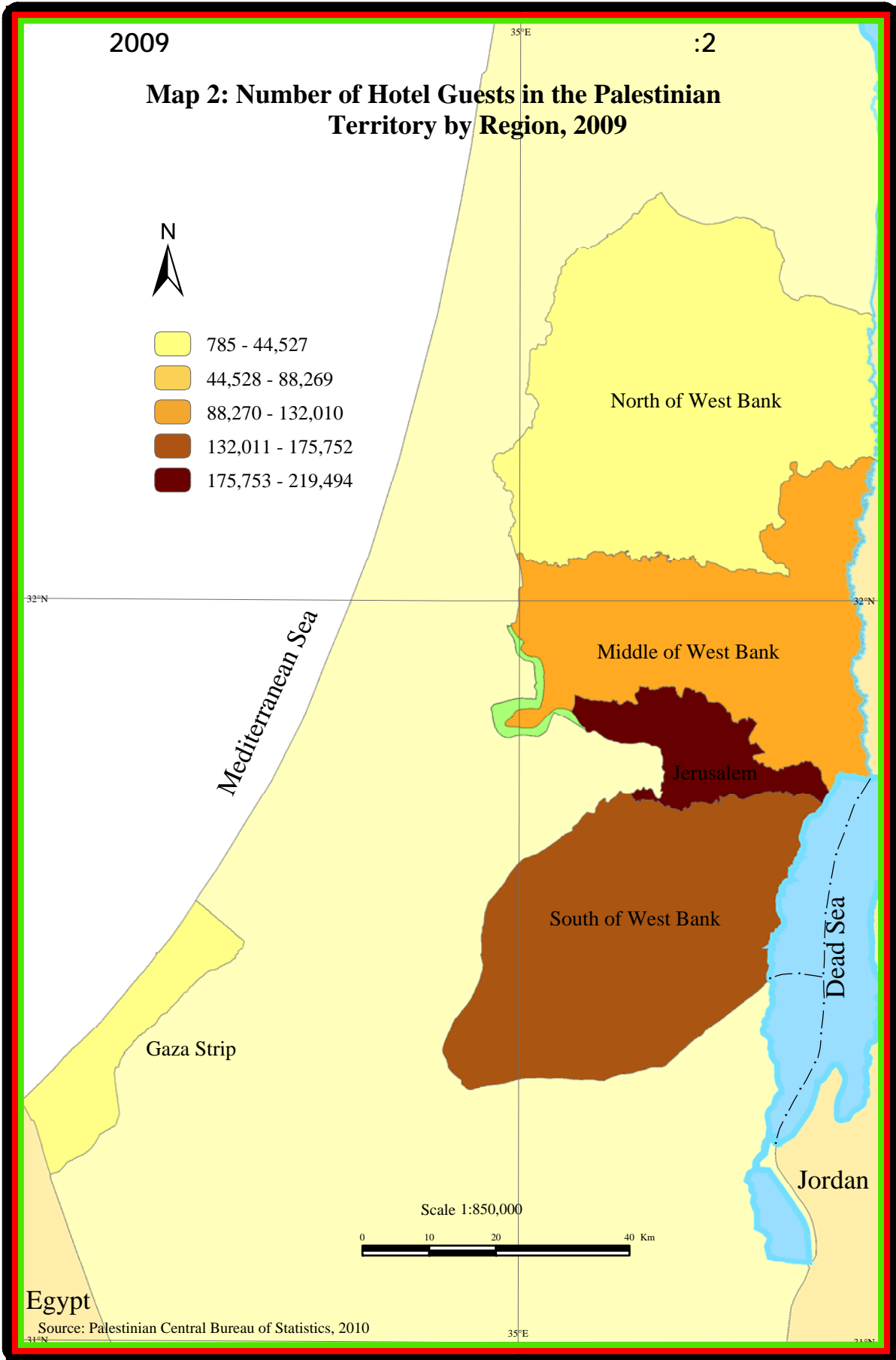
:(4)





2009

**Map 2: Number of Hotel Guests in the Palestinian Territory by Region, 2009**



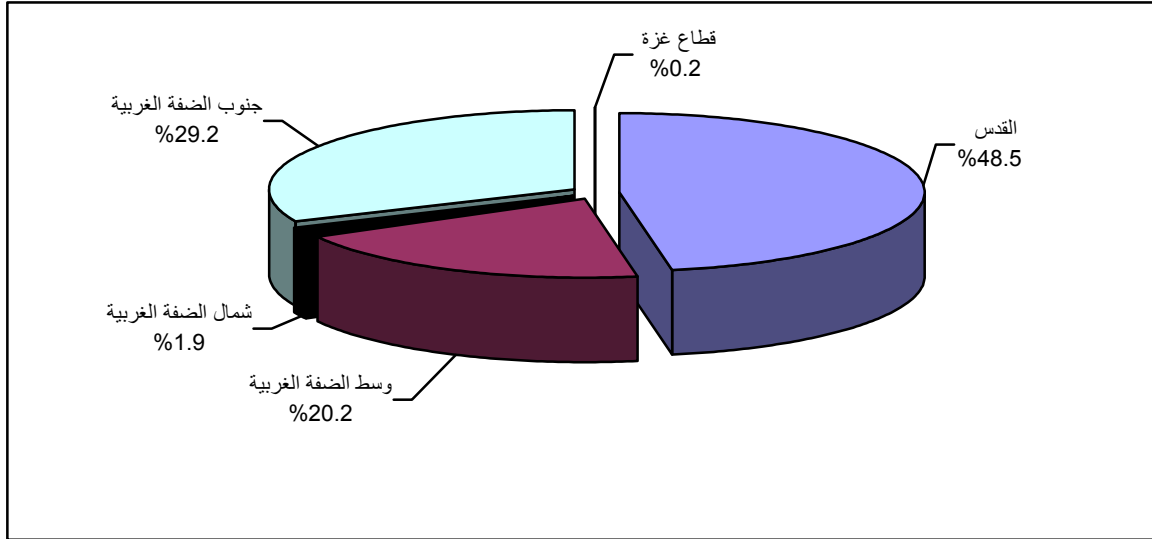
Egypt

Source: Palestinian Central Bureau of Statistics, 2010



(5) %29.2 %48.5

2009 : (5)



2009 5.3  
 1,481.3 2009  
 %29.1 2,855.6 %32.5  
 . ( / ) 2.3

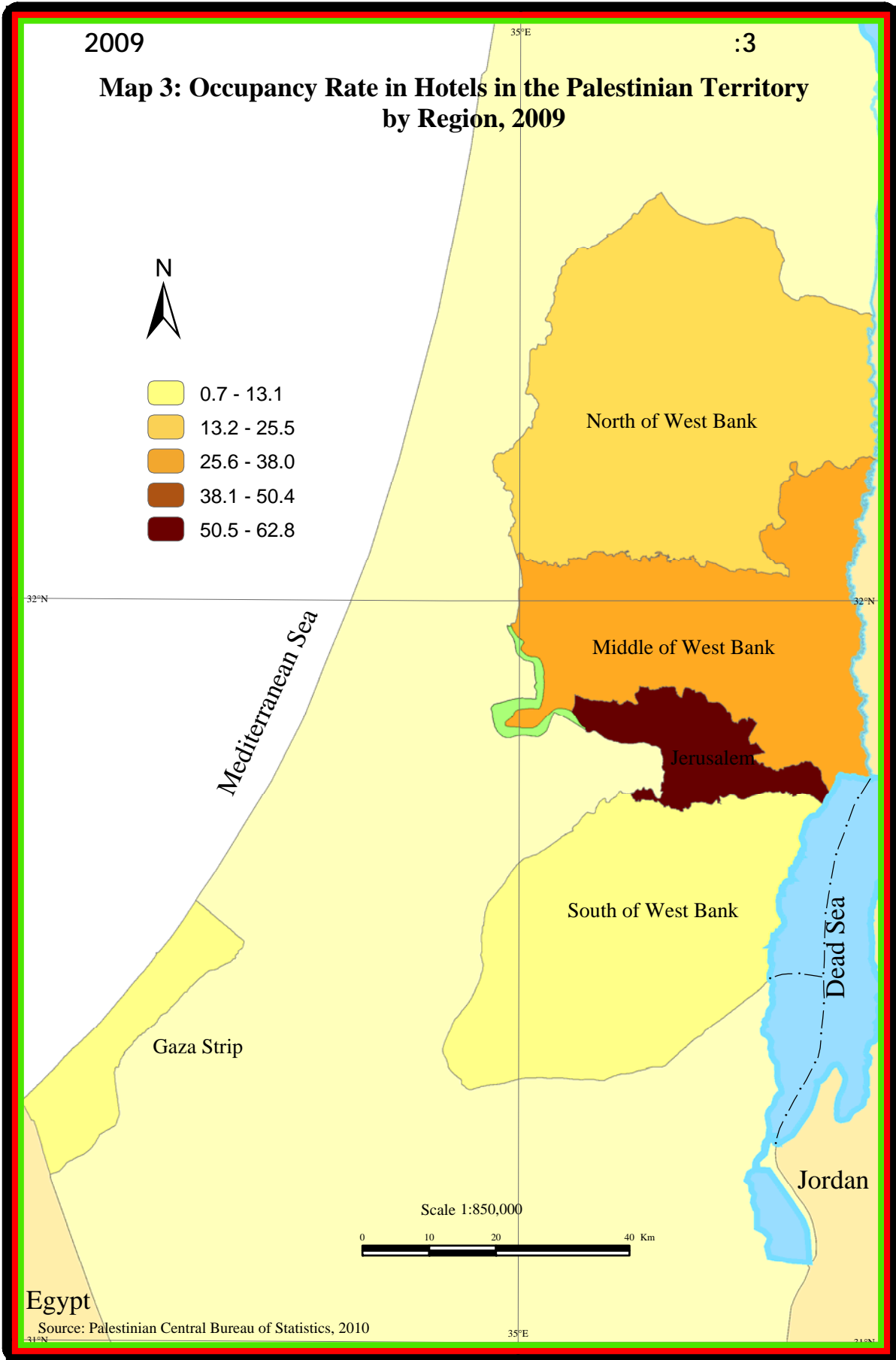
2009 1,042,290 2009 6.3  
 %38.6 %11.1  
 %7.7  
 %11.6

1999 2009 %16.4 2008 %7.5  
 2005 %197.6

%17.5 %32.4 %48.5  
 %0.1 %1.5









1999 (2007 - 2000)  
2000/9/28

2009 2008

:

1999

1999

1999 %						2009	
2009	2008	2007	2005	2003	2001		
9.9	-5.5	-9.9	-15.4	-15.4	-7.7	100	
11.1	-1.3	-7.3	-6.5	-12.3	6.7	1,514	
42.8	40.8	-0.3	-58.4	-80.2	-81.0	452,625	
16.4	25.9	-24.8	-60.9	-77.7	-79.4	1,042,290	
11.1	17.1	-22.5	-57.7	-72.1	-77.3	1,481.3	
16.4	25.9	-24.8	-60.9	-77.7	-79.4	2,855.6	
-3.0	7.2	-25.1	-53.7	-65.1	-72.5	32.5	(%)
-4.0	7.6	-31.0	-59.1	-73.6	-75.9	29.1	(%)

1999 %42.8 2009

%16.4 %11.1

2009

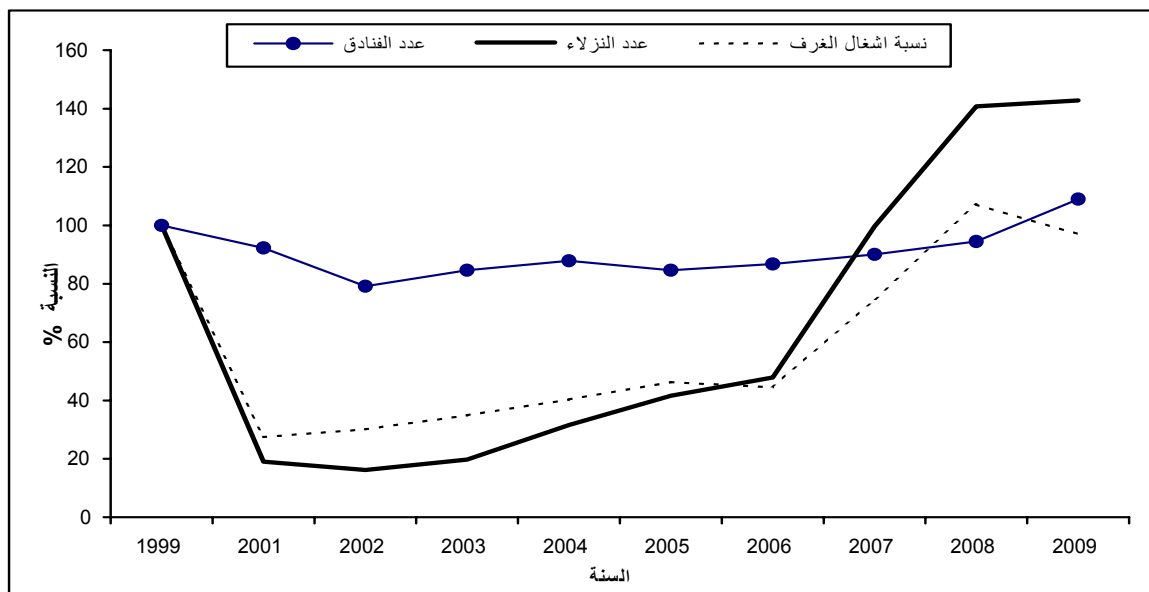
.%16.4

:

1999

(2009-2001)

:(6)

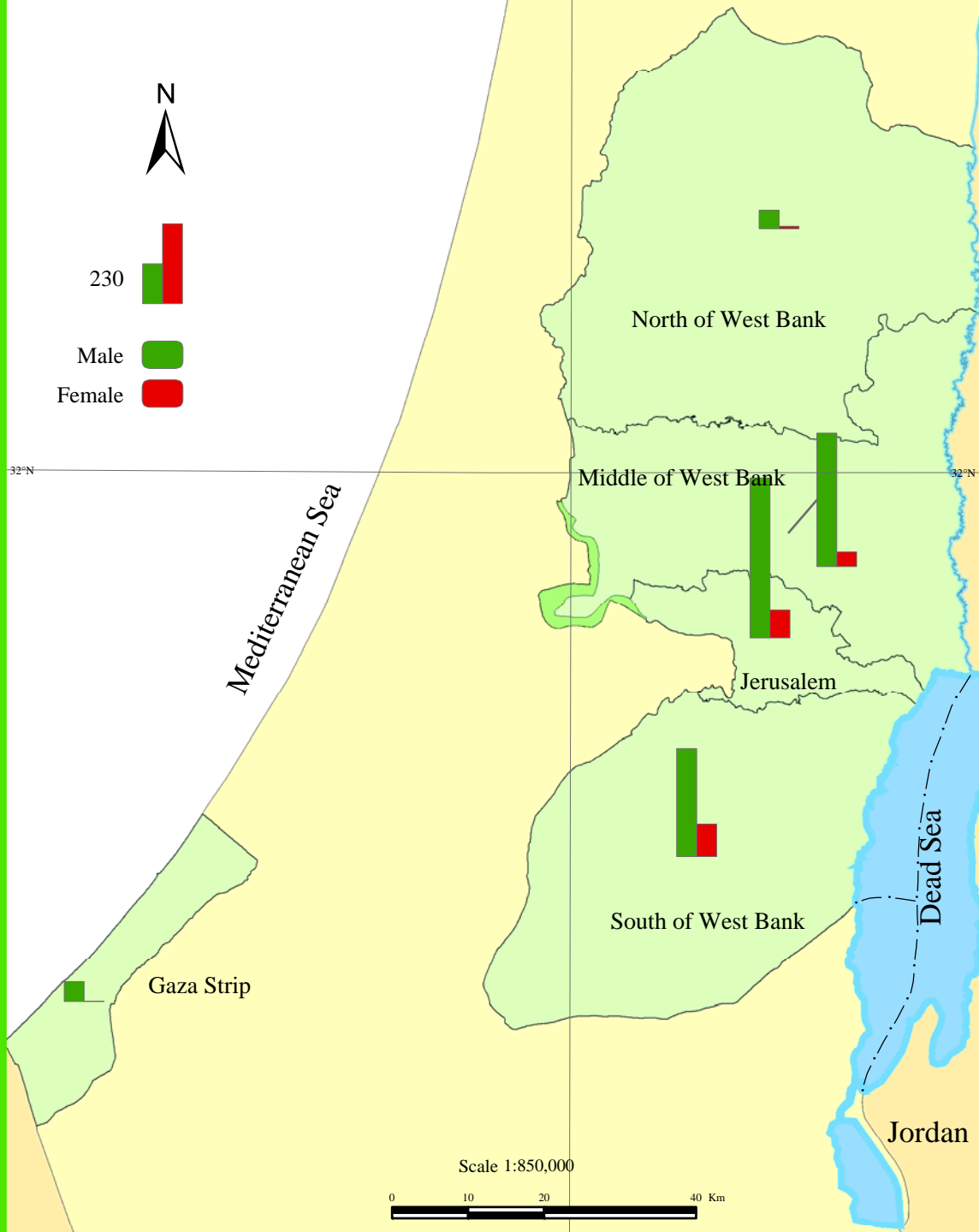




2009

:4

**Map 4: Average Number of Persons Engaged in Hotels in the Palestinian Territory by Sex and Region, 2009**



Egypt

Source: Palestinian Central Bureau of Statistics, 2010



**1.4**

- 
- 
- 
- 
- 

**2.4**

.2007

**3.4**

**.1**

**.2**



.3

4.4

.1

.2

5.4

.1

.2

.3

	:		.1
	:		.2
.%94	:		.3
	:		
	:		1.5
: 2009	:		•
	:		•
	:		•
	:	" "	•
	:	2009	2.5
	:		
	:		.1
2009	:		.2
:	:		

2009

178,726	74,545	8,984	4,239	81	I
240,388	99,148	9,269	4,373	87	II
310,643	135,939	10,145	4,668	89	III
312,533	142,993	10,857	4,926	100	IV
168,167	69,380	8,441	4,004	75	I
240,846	99,202	9,176	4,285	91	* II
310,643	135,939	10,010	4,604	89	III
311,617	142,504	10,774	4,879	97	IV

\*

# Tables

2009

:1-1

Table 1-1: Main Indicators for Hotel Activities in the Palestinian Territory by Month, 2009

Month	Bed Occupancy		Room Occupancy		No. of Guest Nights	No. of Guests	No. of Beds	No. of Rooms	No. of Hotels	
	% Rate%	Average	% Rate%	Average						
January	22.7	2,114.8	25.2	1,100.2	65,559	24,754	9,307	4,359	86	
February	20.8	1,897.4	23.8	1,014.3	53,127	25,283	9,101	4,265	83	
March	22.7	1,936.8	24.5	1,003.2	60,040	24,508	8,543	4,094	81	
April	25.8	2,278.4	25.0	1,052.1	68,352	26,412	8,822	4,211	82	
May	35.1	3,192.9	29.8	1,291.0	98,980	42,768	9,101	4,328	83	
June	24.6	2,435.2	30.7	1,407.2	73,056	29,968	9,899	4,585	87	
July	32.6	3,314.5	39.6	1,866.1	102,751	48,031	10,180	4,709	92	
August	36.7	3,672.2	40.7	1,887.5	113,838	46,996	10,016	4,633	89	
September	30.6	3,135.1	36.9	1,719.8	94,054	40,912	10,238	4,666	89	
October	37.8	4,026.1	41.9	2,013.5	124,809	54,661	10,654	4,811	94	
November	34.3	3,644.1	37.5	1,816.5	109,324	49,353	10,616	4,841	93	
December	22.4	2,529.0	30.5	1,561.8	78,400	38,979	11,301	5,126	100	
<b>Annual Indicator *</b>	<b>29.1</b>	<b>2,855.6</b>	<b>32.5</b>	<b>1,481.3</b>	<b>1,042,290</b>	<b>452,625</b>	<b>9,815</b>	<b>4,552</b>		*

\* Represents the annual average of indicators except number of guests and number of guest nights which represents the annual total.

2009

:2-1

Table 1-2: Distribution of Hotels, Rooms, and Beds by Categories of Number of Rooms, 2009

Categories of Number of Rooms	No. of Beds				No. of Rooms				No. of Hotels				
	December	September	June	March	December	September	June	March	December	September	June	March	
1 - 14	438	386	280	431	138	121	102	143	13	11	9	13	14 - 1
15 - 29	1,088	1,022	1,065	884	482	445	467	443	23	21	22	20	29 - 15
30 - 44	1,567	1,286	1,318	1,121	734	617	620	527	21	18	18	15	44 - 30
45 - 59	1,273	1,173	1,054	780	597	547	491	391	12	11	10	8	59 - 45
60 - 74	1,368	999	1,064	898	657	519	530	457	10	8	8	7	74 - 60
75 +	5,567	5,372	5,118	4,429	2,518	2,417	2,375	2,133	21	20	20	18	+ 75
<b>Total</b>	<b>11,301</b>	<b>10,238</b>	<b>9,899</b>	<b>8,543</b>	<b>5,126</b>	<b>4,666</b>	<b>4,585</b>	<b>4,094</b>	<b>100</b>	<b>89</b>	<b>87</b>	<b>81</b>	

2009

:3-1

Table 1-3: Number of Persons Engaged in Hotels by Type of Work, Sex and Month, 2009

Month	Total		Operation		Administration		No. of Hotels
	Female	Male	Female	Male	Female	Male	
January	218	1,244	159	1,039	59	205	86
February	211	1,281	153	1,073	58	208	83
March	209	1,172	154	971	55	201	81
April	211	1,112	159	938	52	174	82
May	220	1,197	158	978	62	219	83
June	227	1,278	167	1,065	60	213	87
July	231	1,322	171	1,098	60	224	92
August	226	1,277	170	1,069	56	208	89
September	227	1,328	171	1,113	56	215	89
October	244	1,391	180	1,155	64	236	94
November	255	1,379	191	1,149	64	230	93
December	263	1,446	200	1,195	63	251	100
<b>Annual average</b>	<b>228</b>	<b>1,286</b>	<b>169</b>	<b>1,071</b>	<b>59</b>	<b>215</b>	

2009

:4-1

Table 1- 4: Distribution of Guests in Hotels by Nationality and Month, 2009

Month	Nationality					No. of Hotels
	U.S.A & Canada	Asia	Israel	Arab Countries	Palestine	
January	3,812	633	366	164	1,474	86
February	2,941	1,270	1,337	286	2,867	83
March	2,125	1,574	748	168	2,399	81
April	2,405	3,112	1,766	300	2,884	82
May	3,364	5,852	4,650	514	6,991	83
June	3,794	2,597	2,394	284	5,205	87
July	4,732	3,564	8,477	481	8,437	92
August	5,016	2,910	8,498	560	8,343	89
September	4,334	3,361	5,176	232	3,166	89
October	6,198	5,574	2,384	393	4,784	94
November	6,103	5,359	3,343	453	5,525	93
December	5,066	3771	5,056	242	4,928	100
<b>Total</b>	<b>49,890</b>	<b>39,577</b>	<b>44,195</b>	<b>4,077</b>	<b>57,003</b>	

2009

:( ) 4-1

Table 1-4 (Cont.): Distribution of Guests in Hotels by Nationality and Month, 2009

Month	Total	Nationality				
		Australia & New Zeland	Africa	Other European Count.	European Union	Central & South America
January	<b>24,754</b>	19	1,509	7,382	9,237	158
February	<b>25,283</b>	244	1,351	6,500	8,085	402
March	<b>24,508</b>	96	1,336	6,443	8,965	654
April	<b>26,412</b>	106	243	5,027	10,118	451
May	<b>42,768</b>	114	256	5,114	13,272	2,641
June	<b>29,968</b>	49	360	3,753	10,937	595
July	<b>48,031</b>	46	338	4,761	15,886	1,309
August	<b>46,996</b>	45	702	6,218	13,799	905
September	<b>40,912</b>	319	476	5,930	17,008	910
October	<b>54,661</b>	242	1,277	7,802	23,852	2,155
November	<b>49,353</b>	173	1,119	8,089	17,156	2,033
December	<b>38,979</b>	127	2,769	4,808	11,357	855
<b>Total</b>	<b>452,625</b>	<b>1,580</b>	<b>11,736</b>	<b>71,827</b>	<b>159,672</b>	<b>13,068</b>

2009

:5-1

Table 1-5: Percentage Distribution of Guests in Hotels by Nationality and Month, 2009

Month	Nationality					No. of Hotels
	U.S.A & Canada	Asia	Israel	Arab Countries	Palestine	
January	15.4	2.6	1.5	0.7	5.9	86
February	11.6	5.0	5.3	1.1	11.3	83
March	8.7	6.4	3.1	0.7	9.8	81
April	9.1	11.8	6.7	1.1	10.9	82
May	7.9	13.7	10.9	1.2	16.3	83
June	12.7	8.7	8.0	0.9	17.4	87
July	9.9	7.4	17.6	1.0	17.6	92
August	10.7	6.2	18.1	1.2	17.8	89
September	10.6	8.2	12.7	0.6	7.7	89
October	11.3	10.2	4.4	0.7	8.8	94
November	12.4	10.9	6.8	0.9	11.2	93
December	13.0	9.7	13.0	0.6	12.6	100
<b>Total</b>	<b>11.0</b>	<b>8.7</b>	<b>9.8</b>	<b>0.9</b>	<b>12.6</b>	

2009

:( ) 5-1

Table 1-5 (Cont.): Percentage Distribution of Guests in Hotels by Nationality and Month, 2009

Month	Total	Nationality				
		Australia & New Zeland	Africa	Other European Count.	European Union	Central & South America
January	100	0.1	6.1	29.8	37.3	0.6
February	100	1.1	5.3	25.7	32.0	1.6
March	100	0.3	5.5	26.3	36.5	2.7
April	100	0.4	0.9	19.1	38.3	1.7
May	100	0.3	0.6	11.9	31.0	6.2
June	100	0.2	1.2	12.4	36.5	2.0
July	100	0.1	0.7	9.9	33.1	2.7
August	100	0.1	1.5	13.1	29.4	1.9
September	100	0.8	1.2	14.4	41.6	2.2
October	100	0.4	2.3	14.4	43.6	3.9
November	100	0.4	2.3	16.3	34.7	4.1
December	100	0.3	7.1	12.3	29.2	2.2
<b>Total</b>	<b>100</b>	<b>0.3</b>	<b>2.6</b>	<b>15.9</b>	<b>35.3</b>	<b>2.9</b>



2009

: 6-1

Table 1-6: Distribution of Guest Nights in Hotels by Nationality and Month, 2009

Month	Nationality					No. of Hotels
	U.S.A & Canada	Asia	Israel	Arab Countries	Palestine	
January	11,087	1,702	727	322	2,808	86
February	6,146	2,870	1,987	416	5,491	83
March	6,466	3,985	1,213	304	4,501	81
April	7,416	6,877	4,136	968	5,206	82
May	8,046	12,516	9,000	693	11,922	83
June	9,702	5,692	4,832	574	9,539	87
July	11,455	7,372	13,030	896	14,885	92
August	11,561	5,819	16,529	1,088	27,492	89
September	10,456	7,107	9,595	518	6,042	89
October	13,582	11,044	4,596	763	9,459	94
November	12,697	11,799	6,155	685	10,206	93
December	11,894	8,779	8,512	448	8,427	100
<b>Total</b>	<b>120,508</b>	<b>85,562</b>	<b>80,312</b>	<b>7,675</b>	<b>115,978</b>	

2009

:( ) 6-1

Table 1-6 (Cont.): Distribution of Guest Nights in Hotels by Nationality and Month, 2009

Month	Total	Nationality				
		Australia & New Zeland	Africa	Other European Count.	European Union	Central & South America
January	<b>65,559</b>	34	1,973	20,604	25,938	364
February	<b>53,127</b>	345	1,425	15,006	18,470	971
March	<b>60,040</b>	200	1,839	18,301	21,636	1,595
April	<b>68,352</b>	302	475	13,147	28,638	1,187
May	<b>98,980</b>	232	749	14,035	35,943	5,844
June	<b>73,056</b>	115	889	10,205	29,794	1,714
July	<b>102,751</b>	193	921	11,919	38,586	3,494
August	<b>113,838</b>	154	1,526	14,119	33,506	2,044
September	<b>94,054</b>	546	862	14,933	41,969	2,026
October	<b>124,809</b>	446	2,720	17,558	60,886	3,755
November	<b>109,324</b>	626	1,759	18,148	43,069	4,180
December	<b>78,400</b>	440	4,304	9,785	23,881	1,930
<b>Total</b>	<b>1,042,290</b>	<b>3,633</b>	<b>19,442</b>	<b>177,760</b>	<b>402,316</b>	<b>29,104</b>

2009

:7-1

Table 1-7: Percentage Distribution of Guest Nights in Hotels by Nationality and Month, 2009

Month	Nationality					No. of Hotels
	U.S.A & Canada	Asia	Israel	Arab Countries	Palestine	
January	16.9	2.6	1.1	0.5	4.3	86
February	11.6	5.4	3.7	0.8	10.3	83
March	10.8	6.6	2.0	0.5	7.5	81
April	10.8	10.1	6.1	1.4	7.6	82
May	8.1	12.6	9.1	0.7	12.0	83
June	13.3	7.8	6.6	0.8	13.1	87
July	11.1	7.2	12.7	0.9	14.5	92
August	10.2	5.1	14.5	1.0	24.2	89
September	11.1	7.6	10.2	0.6	6.4	89
October	10.9	8.8	3.7	0.6	7.6	94
November	11.6	10.8	5.6	0.6	9.3	93
December	15.2	11.2	10.9	0.6	10.7	100
<b>Total</b>	<b>11.6</b>	<b>8.2</b>	<b>7.7</b>	<b>0.7</b>	<b>11.1</b>	

2009

:( ) 7-1

Table 1-7(Cont.): Percentage Distribution of Guest Nights in Hotels by Nationality and Month, 2009

Month	Total	Nationality				
		Australia & New Zeland	Africa	Other European Count.	European Union	Central & South America
January	100	0.1	3.0	31.4	39.5	0.6
February	100	0.6	2.7	28.2	34.9	1.8
March	100	0.3	3.1	30.5	36.0	2.7
April	100	0.4	0.7	19.2	42.0	1.7
May	100	0.2	0.8	14.2	36.4	5.9
June	100	0.2	1.2	14.0	40.7	2.3
July	100	0.2	0.9	11.6	37.5	3.4
August	100	0.1	1.3	12.4	29.4	1.8
September	100	0.6	0.9	15.9	44.5	2.2
October	100	0.4	2.2	14.1	48.7	3.0
November	100	0.6	1.6	16.6	39.5	3.8
December	100	0.6	5.5	12.5	30.3	2.5
<b>Total</b>	<b>100</b>	<b>0.3</b>	<b>1.9</b>	<b>17.1</b>	<b>38.6</b>	<b>2.8</b>

( / ) 2009

:8-1

**Table 1-8: Average Length of Stay per Guest in Hotels by Nationality and Month, 2009 (Nights/Guest)**

Month	Nationality					No. of Hotels
	U.S.A & Canada	Asia	Israel	Arab Countries	Palestine	
January	2.9	2.7	2.0	2.0	1.9	86
February	2.1	2.3	1.5	1.5	1.9	83
March	3.0	2.5	1.6	1.8	1.9	81
April	3.1	2.2	2.3	3.2	1.8	82
May	2.4	2.1	1.9	1.3	1.7	83
June	2.6	2.2	2.0	2.0	1.8	87
July	2.4	2.1	1.5	1.9	1.8	92
August	2.3	2.0	1.9	1.9	3.3	89
September	2.4	2.1	1.9	2.2	1.9	89
October	2.2	2.0	1.9	1.9	2.0	94
November	2.1	2.2	1.8	1.5	1.8	93
December	2.3	2.3	1.7	1.9	1.7	100
<b>Total</b>	<b>2.4</b>	<b>2.2</b>	<b>1.8</b>	<b>1.9</b>	<b>2.0</b>	

( / ) -2009

:( ) 8-1

**Table 1-8 (Cont.): Average Length of Stay per Guest in Hotels by Nationality and Month, 2009 - ( Nights/Guest)**

Month	Total Average	Nationality				
		Australia & New Zeland	Africa	Other European Count.	European Union	Central & South America
January	2.6	1.8	1.3	2.8	2.8	2.3
February	2.1	1.4	1.1	2.3	2.3	2.4
March	2.4	2.1	1.4	2.8	2.4	2.4
April	2.6	2.8	2.0	2.6	2.8	2.6
May	2.3	2.0	2.9	2.7	2.7	2.2
June	2.4	2.3	2.5	2.7	2.7	2.9
July	2.1	4.2	2.7	2.5	2.4	2.7
August	2.4	3.4	2.2	2.3	2.4	2.3
September	2.3	1.7	1.8	2.5	2.5	2.2
October	2.3	1.8	2.1	2.3	2.6	1.7
November	2.2	3.6	1.6	2.2	2.5	2.1
December	2.0	3.5	1.6	2.0	2.1	2.3
<b>Total</b>	<b>2.3</b>	<b>2.3</b>	<b>1.7</b>	<b>2.5</b>	<b>2.5</b>	<b>2.2</b>

2009

:1-2

Table 2-1: Main Indicators for Hotel Activities in the Palestinian Territory by Region and Quarter, 2009

Region/Quarter	** No. of Nights**	** No. of Guests**	Average No. of Beds	Average No. of Rooms	* No. of Hotels*	/
<b>Palestinian Territory</b>	<b>1,042,290</b>	<b>452,625</b>	<b>9,815</b>	<b>4,552</b>		
I	178,726	74,545	8,984	4,239	81	I
II	240,388	99,148	9,269	4,373	87	II
III	310,643	135,939	10,145	4,668	89	III
IV	312,533	142,993	10,857	4,926	100	IV
<b>North of West Bank</b>	<b>15,631</b>	<b>8,579</b>	<b>323</b>	<b>149</b>		
I	2,701	1,306	292	136	7	I
II	3,255	1,834	292	136	7	II
III	4,863	2,855	343	156	7	III
IV	4,812	2,584	364	166	7	IV
<b>Middle of West Bank</b>	<b>182,485</b>	<b>91,493</b>	<b>2,156</b>	<b>959</b>		
I	19,239	10,222	1,921	836	20	I
II	51,092	25,514	2,055	919	22	II
III	59,497	29,047	2,222	989	22	III
IV	52,657	26,710	2,424	1,091	26	IV
<b>Jerusalem</b>	<b>505,939</b>	<b>219,494</b>	<b>3,263</b>	<b>1,483</b>		
I	95,983	37,239	2,972	1,394	27	I
II	107,552	43,375	3,056	1,405	29	II
III	150,852	68,849	3,478	1,554	30	III
IV	151,552	70,031	3,545	1,580	34	IV
<b>South of West Bank</b>	<b>337,191</b>	<b>132,274</b>	<b>3,564</b>	<b>1,653</b>		
I	60,487	25,524	3,340	1,597	19	I
II	78,243	28,245	3,349	1,597	22	II
III	95,277	35,082	3,578	1,651	22	III
IV	103,184	43,423	3,988	1,768	25	IV
<b>Gaza Strip</b>	<b>1,044</b>	<b>785</b>	<b>509</b>	<b>308</b>		
I	316	254	459	276	8	I
II	246	180	518	316	7	II
III	154	106	524	318	8	III
IV	328	245	536	321	8	IV

\* At the end of the quarter

\*

\*\* Represents the total of quarter months

\*\*

2009

:( ) 1-2

Table 2-1 (Cont.): Main Indicators for Hotel Activities in the Palestinian Territory by Region and Quarter, 2009

Region/Quarter	Bed Occupancy		Room Occupancy		( ) Average length of Stay (Night)	/
	% Rate%	Average Occupancy	% Rate%	Average Occupancy		
<b>Palestinian Territory</b>	<b>29.1</b>	<b>2,855.6</b>	<b>32.5</b>	<b>1,481.3</b>	<b>2.3</b>	
I	22.1	1,985.8	24.5	1,040.0	2.4	I
II	28.5	2,641.6	28.6	1,250.6	2.4	II
III	33.3	3,376.6	39.1	1,825.6	2.3	III
IV	31.3	3,397.1	36.5	1,797.1	2.2	IV
<b>North of West Bank</b>	<b>13.3</b>	<b>42.8</b>	<b>18.7</b>	<b>27.8</b>	<b>1.8</b>	
I	10.3	30.0	15.3	20.8	2.1	I
II	12.2	35.8	17.2	23.4	1.8	II
III	15.4	52.9	20.9	32.5	1.7	III
IV	14.4	52.3	20.7	34.4	1.9	IV
<b>Middle of West Bank</b>	<b>23.2</b>	<b>500.0</b>	<b>34.5</b>	<b>330.5</b>	<b>2.0</b>	
I	11.1	213.8	20.0	167.3	1.9	I
II	27.3	561.5	31.4	288.6	2.0	II
III	29.1	646.7	46.5	460.3	2.0	III
IV	23.6	572.4	36.8	401.7	2.0	IV
<b>Jerusalem</b>	<b>42.5</b>	<b>1,386.1</b>	<b>62.8</b>	<b>931.5</b>	<b>2.3</b>	
I	35.9	1,066.5	50.2	699.4	2.6	I
II	38.7	1,181.9	55.0	773.0	2.5	II
III	47.1	1,639.7	72.9	1,133.2	2.2	III
IV	46.5	1,647.3	70.5	1,113.7	2.2	IV
<b>South of West Bank</b>	<b>25.9</b>	<b>923.8</b>	<b>11.5</b>	<b>189.4</b>	<b>2.5</b>	جنوب الضفة الغربية
I	20.1	672.1	9.4	149.8	2.4	I
II	25.7	859.8	10.2	163.2	2.8	II
III	28.9	1,035.6	12.0	198.4	2.7	III
IV	28.1	1,121.6	13.9	244.9	2.4	IV
<b>Gaza Strip</b>	<b>0.6</b>	<b>2.9</b>	<b>0.7</b>	<b>2.2</b>	<b>1.3</b>	
I	0.8	3.5	1.0	2.8	1.2	I
II	0.5	2.7	0.8	2.4	1.4	II
III	0.3	1.7	0.4	1.3	1.5	III
IV	0.7	3.6	0.7	2.4	1.3	IV

2009

:2-2

Table 2-2: Average Number of Hotel Rooms by Capacity, Region and Quarter, 2009

Region/Quarter	Total	Capacity						/
		Other	Suits	Quadruple	Triple	Double	Single	
<b>Palestinian Territory</b>	<b>4,552</b>	<b>59</b>	<b>211</b>	<b>132</b>	<b>578</b>	<b>2,951</b>	<b>621</b>	
I	4,239	59	196	119	517	2,762	586	I
II	4,373	58	205	128	545	2,819	618	II
III	4,668	68	216	121	611	2,995	657	III
IV	4,926	48	228	163	640	3,215	632	IV
<b>North of West Bank</b>	<b>149</b>	<b>16</b>	<b>17</b>	<b>5</b>	<b>17</b>	<b>66</b>	<b>28</b>	
I	136	26	12	5	14	62	17	I
II	136	27	11	5	14	62	17	II
III	156	9	20	6	18	69	34	III
IV	166	0	24	5	22	70	45	IV
<b>Middle of West Bank</b>	<b>959</b>	<b>16</b>	<b>50</b>	<b>63</b>	<b>124</b>	<b>535</b>	<b>171</b>	
I	836	16	44	59	113	453	151	I
II	919	13	50	60	119	496	181	II
III	989	18	53	55	128	532	203	III
IV	1,091	16	51	77	134	657	156	IV
<b>Jerusalem</b>	<b>1,483</b>	<b>25</b>	<b>68</b>	<b>30</b>	<b>172</b>	<b>1,054</b>	<b>134</b>	
I	1,394	15	68	22	152	993	144	I
II	1,405	16	65	30	166	1,000	128	II
III	1,554	39	65	25	186	1,108	131	III
IV	1,580	30	75	45	186	1,111	133	IV
<b>South of West Bank</b>	<b>1,653</b>	<b>2</b>	<b>56</b>	<b>34</b>	<b>256</b>	<b>1,130</b>	<b>175</b>	
I	1,597	2	56	33	233	1,101	172	I
II	1,597	2	56	33	238	1,095	173	II
III	1,651	2	56	35	269	1,117	172	III
IV	1,768	2	58	36	287	1,201	184	IV
<b>Gaza Strip</b>	<b>308</b>	<b>0</b>	<b>20</b>	<b>0</b>	<b>9</b>	<b>166</b>	<b>113</b>	
I	276	0	16	0	5	153	102	I
II	316	0	23	0	8	166	119	II
III	318	0	22	0	10	169	117	III
IV	321	0	20	0	11	176	114	IV

2009

:3-2

Table 2-3: Number of Hotels and Rooms by Facilities and Region as of December, 2009

Region	Rooms Facilities								No. of Rooms	No. of Hotels
	Internet	Air Condition	Heaters	Private Bathroom	Radio	Telephone	Refrigerator	T.V		
<b>Palestinian Territory</b>	<b>2,454</b>	<b>4,446</b>	<b>4,540</b>	<b>4,861</b>	<b>1,306</b>	<b>4,540</b>	<b>3,271</b>	<b>4,394</b>	<b>4,926</b>	<b>100</b>
North of West Bank	62	93	93	93	12	93	93	93	166	7
Middle of West Bank	767	1,047	1,038	1,063	167	982	881	1,047	1,091	26
Jerusalem	572	1,397	1,566	1,591	949	1,449	957	1,299	1,580	34
South of West Bank	859	1,654	1,760	1,800	153	1,717	1,089	1,682	1,768	25
Gaza Strip	194	255	83	314	25	299	251	273	321	8

2009

:4-2

Table 2-4: Public Utilities Available in Hotels by Region as of December, 2009

Region	Conference Halls		Restaurants		No. of Hotels
	Capacity	Number	Capacity	Number	
<b>Palestinian Territory</b>	<b>20,280</b>	<b>141</b>	<b>17,451</b>	<b>117</b>	<b>100</b>
North of West Bank	1,965	8	695	10	7
Middle of West Bank	6,355	44	3,672	30	26
Jerusalem	2,345	42	3,270	30	34
South of West Bank	6,700	35	8,594	39	25
Gaza Strip	2,915	12	1,220	8	8

2009

:( ) 4-2

Table 2-4 (Cont.): Public Utilities Available in Hotels by Region as of December, 2009

Region	/	No. of Playgrounds/Sport Halls	No. of swimming Pools	No. of Lifts	Parking	
					السعة Capacity	العدد Number
<b>Palestinian Territory</b>		<b>15</b>	<b>20</b>	<b>134</b>	<b>3,141</b>	<b>297</b>
North of West Bank		1	1	8	86	4
Middle of West Bank		7	10	57	1,291	236
Jerusalem		1	1	26	275	16
South of West Bank		4	4	32	1,316	32
Gaza Strip		2	4	11	173	9

2009

:5-2

Table 2-5: Average Number of Persons Engaged in Hotels by Type of Work, Sex, Region and Quarter, 2009

Region/Quarter	Total		Operation		Administration		* No. of Hotels *	/
	Female	Male	Female	Male	Female	Male		
<b>Palestinian Territory</b>	<b>228</b>	<b>1,286</b>	<b>169</b>	<b>1,071</b>	<b>59</b>	<b>215</b>		
I	212	1,232	155	1,028	57	204	81	I
II	218	1,196	161	994	57	202	87	II
III	227	1,309	170	1,093	57	216	89	III
IV	254	1,406	190	1,167	64	239	100	IV
<b>North of West Bank</b>	<b>7</b>	<b>54</b>	<b>5</b>	<b>34</b>	<b>2</b>	<b>20</b>		
I	6	54	4	34	2	20	7	I
II	6	55	4	34	2	21	7	II
III	7	54	5	35	2	19	7	III
IV	8	53	6	33	2	20	7	IV
<b>Middle of West Bank</b>	<b>43</b>	<b>391</b>	<b>30</b>	<b>330</b>	<b>14</b>	<b>61</b>		
I	36	328	24	276	12	52	20	I
II	40	351	27	295	13	56	22	II
III	41	422	29	359	12	63	22	III
IV	56	461	38	389	18	72	26	IV
<b>Jerusalem</b>	<b>82</b>	<b>468</b>	<b>57</b>	<b>391</b>	<b>25</b>	<b>78</b>		
I	77	495	52	417	25	78	27	I
II	80	451	55	375	25	76	29	II
III	83	458	59	383	24	75	30	III
IV	87	469	62	388	25	81	34	IV
<b>South of West Bank</b>	<b>95</b>	<b>316</b>	<b>78</b>	<b>274</b>	<b>17</b>	<b>42</b>		
I	92	300	75	263	17	37	19	I
II	91	303	75	264	16	39	22	II
III	94	314	77	271	17	43	22	III
IV	102	345	84	298	18	47	25	IV
<b>Gaza Strip</b>	<b>1</b>	<b>58</b>	<b>0</b>	<b>42</b>	<b>1</b>	<b>16</b>		
I	1	55	0	38	1	17	8	I
II	1	36	0	26	1	10	7	II
III	2	61	0	45	2	16	8	III
IV	1	78	0	59	1	19	8	IV

\*Represents No. of hotels at the end of the quarter

\*



2009

:6-2

Table 2-6: Distribution of Guests in Hotels by Nationality, Region and Quarter, 2009

Region/Quarter	Nationality					* No. of Hotels *	/
	U.S.A & Canada	Asia	Israel	Arab Countries	Palestine		
<b>Palestinian Territory</b>	<b>49,890</b>	<b>39,577</b>	<b>44,195</b>	<b>4,077</b>	<b>57,003</b>		
I	8,878	3,477	2,451	618	6,740	81	I
II	9,563	11,561	8,810	1,098	15,080	87	II
III	14,082	9,835	22,151	1,273	19,946	89	III
IV	17,367	14,704	10,783	1,088	15,237	100	IV
<b>North of West Bank</b>	<b>366</b>	<b>87</b>	<b>2,137</b>	<b>130</b>	<b>4,603</b>		
I	37	21	96	20	908	7	I
II	90	32	233	32	1,139	7	II
III	126	22	1,000	34	1,310	7	III
IV	113	12	808	44	1,246	7	IV
<b>Middle of West Bank</b>	<b>5,977</b>	<b>5,510</b>	<b>15,853</b>	<b>2,822</b>	<b>41,061</b>		
I	1,112	125	496	451	4,943	20	I
II	934	1,932	3,548	696	11,619	22	II
III	1,483	1,040	9,428	779	12,547	22	III
IV	2,448	2,413	2,381	896	11,952	26	IV
<b>Jerusalem</b>	<b>38,705</b>	<b>14,606</b>	<b>14,492</b>	<b>216</b>	<b>22</b>	<b>34</b>	
I	6,830	1,353	1,588	37	5	27	I
II	7,187	3,826	3,301	33	17	29	II
III	11,598	4,482	6,328	142	0	30	III
IV	13,090	4,945	3,275	4	0	34	IV
<b>South of West Bank</b>	<b>4,808</b>	<b>19,346</b>	<b>11,709</b>	<b>847</b>	<b>11,201</b>		
I	883	1,961	271	62	882	19	I
II	1,350	5,763	1,724	337	2,263	22	II
III	859	4,291	5,395	308	6,050	22	III
IV	1,716	7,331	4,319	140	2,006	25	IV
<b>Gaza Strip</b>	<b>34</b>	<b>28</b>	<b>4</b>	<b>62</b>	<b>116</b>		
I	16	17	0	48	2	8	I
II	2	8	4	0	42	7	II
III	16	0	0	10	39	8	III
IV	0	3	0	4	33	8	IV

\* Represents No. of hotels at the end of the quarter

\*

2009

:( ) 6-2

Table 2-6 (Cont.): Distribution of Guests in Hotels by Nationality, Region and Quarter, 2009

Region/Quarter	Total	Nationality					
		Australia & New Zealand	Africa	Other European Count.	European Union	Central & South America	
<b>Palestinian Territory</b>	<b>452,625</b>	<b>1,580</b>	<b>11,736</b>	<b>71,827</b>	<b>159,672</b>	<b>13,068</b>	
I	74,545	359	4,196	20,325	26,287	1,214	I
II	99,148	269	859	13,894	34,327	3,687	II
III	135,939	410	1,516	16,909	46,693	3,124	III
IV	142,993	542	5,165	20,699	52,365	5,043	IV
<b>North of West Bank</b>	<b>8,579</b>	<b>16</b>	<b>13</b>	<b>5</b>	<b>1,197</b>	<b>25</b>	
I	1,306	3	1	0	216	4	I
II	1,834	5	2	3	290	8	II
III	2,855	3	8	1	347	4	III
IV	2,584	5	2	1	344	9	IV
<b>Middle of West Bank</b>	<b>91,493</b>	<b>296</b>	<b>321</b>	<b>5,041</b>	<b>11,037</b>	<b>3,575</b>	
I	10,222	148	39	678	1692	538	I
II	25,514	41	84	1,104	3851	1,705	II
III	29,047	72	88	1,096	2,241	273	III
IV	26,710	35	110	2,163	3,253	1,059	IV
<b>Jerusalem</b>	<b>219,494</b>	<b>1,000</b>	<b>5,272</b>	<b>39,849</b>	<b>97,098</b>	<b>8,234</b>	
I	37,239	159	585	9,750	16,371	561	I
II	43,375	201	711	7,768	18,585	1,746	II
III	68,849	197	1,202	12,122	30,299	2,479	III
IV	70,031	443	2,774	10,209	31,843	3,448	IV
<b>South of West Bank</b>	<b>132,274</b>	<b>264</b>	<b>6,107</b>	<b>26,862</b>	<b>49,911</b>	<b>1,219</b>	
I	25,524	47	3,548	9,827	7,935	108	I
II	28,245	22	62	5,019	11,477	228	II
III	35,082	138	218	3,690	13,776	357	III
IV	43,423	57	2,279	8,326	16,723	526	IV
<b>Gaza Strip</b>	<b>785</b>	<b>4</b>	<b>23</b>	<b>70</b>	<b>429</b>	<b>15</b>	
I	254	2	23	70	73	3	I
II	180	0	0	0	124	0	II
III	106	0	0	0	30	11	III
IV	245	2	0	0	202	1	IV

2009

:7-2

Table 2-7: Percentage Distribution of Guests in Hotels by Nationality, Region and Quarter, 2009

Region/Quarter	Nationality					* No. of Hotels *	/
	U.S.A & Canada	Asia	Israel	Arab Countries	Palestine		
<b>Palestinian Territory</b>	<b>11.0</b>	<b>8.7</b>	<b>9.8</b>	<b>0.9</b>	<b>12.6</b>		
I	11.9	4.7	3.3	0.8	9.0	81	I
II	9.6	11.7	8.9	1.1	15.2	87	II
III	10.4	7.2	16.3	0.9	14.7	89	III
IV	12.1	10.3	7.5	0.8	10.7	100	IV
<b>North of West Bank</b>	<b>4.3</b>	<b>1.0</b>	<b>24.9</b>	<b>1.5</b>	<b>53.7</b>		
I	2.8	1.6	7.4	1.5	69.5	7	I
II	4.9	1.7	12.7	1.7	62.1	7	II
III	4.4	0.8	35.0	1.2	45.9	7	III
IV	4.4	0.5	31.3	1.7	48.2	7	IV
<b>Middle of West Bank</b>	<b>6.5</b>	<b>6.0</b>	<b>17.3</b>	<b>3.1</b>	<b>44.9</b>		
I	10.9	1.2	4.9	4.4	48.4	20	I
II	3.7	7.6	13.9	2.7	45.5	22	II
III	5.1	3.6	32.5	2.7	43.2	22	III
IV	9.2	9.0	8.9	3.4	44.7	26	IV
<b>Jerusalem</b>	<b>17.6</b>	<b>6.7</b>	<b>6.6</b>	<b>0.1</b>	<b>0.0</b>		
I	18.3	3.6	4.3	0.1	0.0	27	I
II	16.6	8.8	7.6	0.1	0.0	29	II
III	16.8	6.5	9.2	0.2	0.0	30	III
IV	18.7	7.1	4.7	0.0	0.0	34	IV
<b>South of West Bank</b>	<b>3.6</b>	<b>14.6</b>	<b>8.9</b>	<b>0.6</b>	<b>8.5</b>	<b>25</b>	
I	3.5	7.7	1.1	0.2	3.5	19	I
II	4.8	20.4	6.1	1.2	8.0	22	II
III	2.4	12.2	15.4	0.9	17.2	22	III
IV	4.0	16.9	9.9	0.3	4.6	25	IV
<b>Gaza Strip</b>	<b>4.3</b>	<b>3.6</b>	<b>0.5</b>	<b>7.9</b>	<b>14.8</b>		
I	6.3	6.7	0.0	18.9	0.8	8	I
II	1.1	4.4	2.2	0.0	23.3	7	II
III	15.1	0.0	0.0	9.4	36.8	8	III
IV	0.0	1.2	0.0	1.6	13.5	8	IV

\* Represents No. of hotels at the end of the quarter

\*

2009

:( ) 7-2

Table 2-7 (Cont.): Percentage Distribution of Guests in Hotels by Nationality, Region and Quarter, 2009

Region/Quarter	Total	Nationality					/
		Australia & New Zeland	Africa	Other European Count.	European Union	Central & South America	
<b>Palestinian Territory</b>	<b>100</b>	<b>0.3</b>	<b>2.6</b>	<b>15.9</b>	<b>35.3</b>	<b>2.9</b>	
I	100	0.5	5.6	27.3	35.3	1.6	I
II	100	0.3	0.9	14.0	34.6	3.7	II
III	100	0.3	1.1	12.4	34.4	2.3	III
IV	100	0.4	3.6	14.5	36.6	3.5	IV
<b>North of West Bank</b>	<b>100</b>	<b>0.2</b>	<b>0.2</b>	<b>0.1</b>	<b>13.8</b>	<b>0.3</b>	
I	100	0.2	0.1	0.0	16.6	0.3	I
II	100	0.3	0.1	0.2	15.9	0.4	II
III	100	0.1	0.3	0.0	12.2	0.1	III
IV	100	0.2	0.1	0.0	13.3	0.3	IV
<b>Middle of West Bank</b>	<b>100</b>	<b>0.3</b>	<b>0.4</b>	<b>5.5</b>	<b>12.1</b>	<b>3.9</b>	
I	100	1.4	0.4	6.6	16.5	5.3	I
II	100	0.2	0.3	4.3	15.1	6.7	II
III	100	0.2	0.3	3.8	7.7	0.9	III
IV	100	0.1	0.4	8.1	12.2	4.0	IV
<b>Jerusalem</b>	<b>100</b>	<b>0.5</b>	<b>2.4</b>	<b>18.2</b>	<b>44.1</b>	<b>3.8</b>	
I	100	0.4	1.6	26.2	44.0	1.5	I
II	100	0.5	1.6	17.9	42.9	4.0	II
III	100	0.3	1.7	17.6	44.1	3.6	III
IV	100	0.6	4.0	14.6	45.4	4.9	IV
<b>South of West Bank</b>	<b>100</b>	<b>0.2</b>	<b>4.6</b>	<b>20.3</b>	<b>37.8</b>	<b>0.9</b>	
I	100	0.2	13.9	38.5	31.0	0.4	I
II	100	0.1	0.2	17.8	40.6	0.8	II
III	100	0.4	0.6	10.5	39.4	1.0	III
IV	100	0.1	5.2	19.2	38.6	1.2	IV
<b>Gaza Strip</b>	<b>100</b>	<b>0.5</b>	<b>2.9</b>	<b>8.9</b>	<b>54.7</b>	<b>1.9</b>	
I	100	0.8	9.1	27.6	28.6	1.2	I
II	100	0.0	0.0	0.0	69.0	0.0	II
III	100	0.0	0.0	0.0	28.3	10.4	III
IV	100	0.8	0.0	0.0	82.5	0.4	IV

Table 2-8: Distribution of Guest Nights in Hotels by Nationality, Region and Quarter, 2009

Region/Quarter	Nationality					* No. of Hotels *	/
	U.S.A & Canada	Asia	Israel	Arab Countries	Palestine		
<b>Palestinian Territory</b>	<b>120,508</b>	<b>85,562</b>	<b>80,312</b>	<b>7,675</b>	<b>115,978</b>		
I	23,699	8,557	3,927	1,042	12,800	81	I
II	25,164	25,085	17,968	2,235	26,667	87	II
III	33,472	20,298	39,154	2,502	48,419	89	III
IV	38,173	31,622	19,263	1,896	28,092	100	IV
<b>North of West Bank</b>	<b>942</b>	<b>310</b>	<b>2,348</b>	<b>403</b>	<b>9,027</b>		
I	147	53	105	95	1,759	7	I
II	204	123	255	120	1,973	7	II
III	264	96	1,079	88	2,658	7	III
IV	327	38	909	100	2,637	7	IV
<b>Middle of West Bank</b>	<b>16,360</b>	<b>12,369</b>	<b>30,942</b>	<b>4,617</b>	<b>77,105</b>		
I	2,333	620	815	676	9,292	20	I
II	3,140	4,027	7,855	1,047	21,052	22	II
III	4,643	2,635	17,066	1,260	24,717	22	III
IV	6,244	5,087	5,206	1,634	22,044	26	IV
<b>Jerusalem</b>	<b>88,259</b>	<b>31,593</b>	<b>26,314</b>	<b>457</b>	<b>48</b>		
I	18,336	3,392	2,658	109	10	27	I
II	17,202	7,982	6,523	70	38	29	II
III	26,026	9,168	10,425	270	0	30	III
IV	26,695	11,051	6,708	8	0	34	IV
<b>South of West Bank</b>	<b>14,912</b>	<b>41,253</b>	<b>20,704</b>	<b>2,103</b>	<b>29,556</b>		
I	2,867	4,469	349	81	1,737	19	I
II	4,615	12,942	3,331	998	3,522	22	II
III	2,523	8,399	10,584	874	20,973	22	III
IV	4,907	15,443	6,440	150	3,324	25	IV
<b>Gaza Strip</b>	<b>35</b>	<b>37</b>	<b>4</b>	<b>95</b>	<b>242</b>		
I	16	23	0	81	2	8	I
II	3	11	4	0	82	7	II
III	16	0	0	10	71	8	III
IV	0	3	0	4	87	8	IV

\* Represents No. of hotels at the end of the quarter.

\*

Table 2-8 (Cont.): Distribution of Guest Nights in Hotels by Nationality, Region and Quarter, 2009

Region/Quarter	Total	Nationality					/
		Australia & New Zealand	Africa	Other European Count.	European Union	Central & South America	
<b>Palestinian Territory</b>	<b>1,042,290</b>	<b>3,633</b>	<b>19,442</b>	<b>177,760</b>	<b>402,316</b>	<b>29,104</b>	
I	178,726	579	5,237	53,911	66,044	2,930	I
II	240,388	649	2,113	37,387	94,375	8,745	II
III	310,643	893	3,309	40,971	114,061	7,564	III
IV	312,533	1,512	8,783	45,491	127,836	9,865	IV
<b>North of West Bank</b>	<b>15,631</b>	<b>51</b>	<b>23</b>	<b>11</b>	<b>2,422</b>	<b>94</b>	
I	2,701	12	1	0	525	4	I
II	3,255	7	5	7	533	28	II
III	4,863	3	9	1	651	14	III
IV	4,812	29	8	3	713	48	IV
<b>Middle of West Bank</b>	<b>182,485</b>	<b>853</b>	<b>902</b>	<b>7,658</b>	<b>25,514</b>	<b>6,165</b>	
I	19,239	187	60	923	3475	858	I
II	51,092	117	234	2,084	8,173	3,363	II
III	5,9497	296	288	1,708	6,317	567	III
IV	52,657	253	320	2,943	7,549	1,377	IV
<b>Jerusalem</b>	<b>505,939</b>	<b>2,230</b>	<b>11,228</b>	<b>96,652</b>	<b>230,655</b>	<b>18,503</b>	
I	95,983	295	1,365	27,582	40,549	1,687	I
II	107,552	479	1,693	20,190	48,875	4,500	II
III	150,852	434	2,697	28,537	67,720	5,575	III
IV	151,552	1,022	5,473	20,343	73,511	6,741	IV
<b>South of West Bank</b>	<b>337,191</b>	<b>495</b>	<b>7,266</b>	<b>73,369</b>	<b>143,221</b>	<b>4,312</b>	
I	60,487	83	37,88	25,336	21,399	378	I
II	78,243	46	181	15,106	36,648	854	II
III	95,277	160	315	10,725	39,341	1,383	III
IV	103,184	206	2,982	22,202	45,833	1,697	IV
<b>Gaza Strip</b>	<b>1,044</b>	<b>4</b>	<b>23</b>	<b>70</b>	<b>504</b>	<b>30</b>	
I	316	2	23	70	96	3	I
II	246	0	0	0	146	0	II
III	154	0	0	0	32	25	III
IV	328	2	0	0	230	2	IV

2009

:9-2

Table 2-9: Percentage Distribution of Guest Nights in Hotels by Nationality, Region and Quarter, 2009

Region/Quarter	Nationality					* No. of Hotels *	/
	U.S.A & Canada	Asia	Israel	Arab Countries	Palestine		
<b>Palestinian Territory</b>	<b>11.6</b>	<b>8.2</b>	<b>7.7</b>	<b>0.7</b>	<b>11.1</b>		
I	13.3	4.8	2.2	0.6	7.2	81	I
II	10.5	10.4	7.5	0.9	11.1	87	II
III	10.8	6.5	12.6	0.8	15.6	89	III
IV	12.2	10.1	6.2	0.6	9.0	100	IV
<b>North of West Bank</b>	<b>6.0</b>	<b>2.0</b>	<b>15.0</b>	<b>2.6</b>	<b>57.8</b>		
I	5.4	2.0	3.9	3.5	65.1	7	I
II	6.3	3.8	7.8	3.7	60.6	7	II
III	5.4	2.0	22.2	1.8	54.7	7	III
IV	6.8	0.8	18.9	2.1	54.8	7	IV
<b>Middle of West Bank</b>	<b>9.0</b>	<b>6.8</b>	<b>17.0</b>	<b>2.5</b>	<b>42.3</b>		
I	12.1	3.2	4.2	3.5	48.3	20	I
II	6.1	7.9	15.4	2.0	41.2	22	II
III	7.8	4.4	28.7	2.1	41.5	22	III
IV	11.9	9.7	9.9	3.1	41.9	26	IV
<b>Jerusalem</b>	<b>17.4</b>	<b>6.2</b>	<b>5.2</b>	<b>0.1</b>	<b>0.0</b>		
I	19.1	3.5	2.8	0.1	0.0	27	I
II	16.0	7.4	6.1	0.1	0.0	29	II
III	17.3	6.1	6.9	0.2	0.0	30	III
IV	17.6	7.3	4.4	0.0	0.0	34	IV
<b>South of West Bank</b>	<b>4.4</b>	<b>12.2</b>	<b>6.1</b>	<b>0.6</b>	<b>8.8</b>		
I	4.7	7.4	0.6	0.1	2.9	19	I
II	5.9	16.5	4.3	1.3	4.5	22	II
III	2.6	8.8	11.1	0.9	22.0	22	III
IV	4.8	15.0	6.2	0.1	3.2	25	IV
<b>Gaza Strip</b>	<b>3.4</b>	<b>3.5</b>	<b>0.4</b>	<b>9.1</b>	<b>23.2</b>		
I	5.1	7.3	0.0	25.6	0.6	8	I
II	1.2	4.5	1.6	0.0	33.3	7	II
III	10.4	0.0	0.0	6.5	46.1	8	III
IV	0.0	0.9	0.0	1.2	26.5	8	IV

\* Represents No. of hotels at the end of the quarter.

\*

Table 2-9 (Cont.): Percentage Distribution of Guest Nights in Hotels by Nationality, Region and Quarter, 2009

Region/Quarter	Total	Nationality					/
		Australia & New Zeland	Africa	Other European Count.	European Union	Central & South America	
<b>Palestinian Territory</b>	<b>100</b>	<b>0.3</b>	<b>1.9</b>	<b>17.1</b>	<b>38.6</b>	<b>2.8</b>	
I	100	0.3	2.9	30.2	36.9	1.6	I
II	100	0.3	0.9	15.6	39.2	3.6	II
III	100	0.3	1.1	13.2	36.7	2.4	III
IV	100	0.5	2.8	14.6	40.8	3.2	IV
<b>North of West Bank</b>	<b>100</b>	<b>0.3</b>	<b>0.1</b>	<b>0.1</b>	<b>15.5</b>	<b>0.6</b>	
I	100	0.4	0.0	0.0	19.6	0.1	I
II	100	0.2	0.2	0.2	16.3	0.9	II
III	100	0.1	0.2	0.0	13.3	0.3	III
IV	100	0.6	0.2	0.1	14.7	1.0	IV
<b>Middle of West Bank</b>	<b>100</b>	<b>0.5</b>	<b>0.5</b>	<b>4.2</b>	<b>13.8</b>	<b>3.4</b>	
I	100	1.0	0.3	4.8	18.1	4.5	I
II	100	0.2	0.5	4.1	16.0	6.6	II
III	100	0.5	0.5	2.9	10.6	1.0	III
IV	100	0.5	0.6	5.6	14.2	2.6	IV
<b>Jerusalem</b>	<b>100</b>	<b>0.4</b>	<b>2.2</b>	<b>19.1</b>	<b>45.7</b>	<b>3.7</b>	
I	100	0.3	1.4	28.7	42.3	1.8	I
II	100	0.4	1.6	18.8	45.4	4.2	II
III	100	0.3	1.8	18.9	44.8	3.7	III
IV	100	0.7	3.6	13.4	48.6	4.4	IV
<b>South of West Bank</b>	<b>100</b>	<b>0.1</b>	<b>2.2</b>	<b>21.8</b>	<b>42.5</b>	<b>1.3</b>	
I	100	0.1	6.3	41.9	35.4	0.6	I
II	100	0.1	0.2	19.3	46.8	1.1	II
III	100	0.2	0.3	11.3	41.3	1.5	III
IV	100	0.2	2.9	21.5	44.5	1.6	IV
<b>Gaza Strip</b>	<b>100</b>	<b>0.4</b>	<b>2.2</b>	<b>6.7</b>	<b>48.2</b>	<b>2.9</b>	
I	100	0.6	7.3	22.2	30.4	0.9	I
II	100	0.0	0.0	0.0	59.4	0.0	II
III	100	0.0	0.0	0.0	20.8	16.2	III
IV	100	0.6	0.0	0.0	70.2	0.6	IV



**Table 2-10: Average Length of Stay per Guest by Nationality, Region and Quarter 2009 (Nights/Guest)**

Region/Quarter	Nationality					* No. of Hotels *	/
	U.S.A & Canada	Asia	Israel	Arab Countries	Palestine		
<b>Palestinian Territory</b>	<b>2.4</b>	<b>2.2</b>	<b>1.8</b>	<b>1.9</b>	<b>2.0</b>		
I	2.7	2.5	1.6	1.7	1.9	81	I
II	2.6	2.2	2.0	2.0	1.8	87	II
III	2.4	2.1	1.8	2.0	2.4	89	III
IV	2.2	2.2	1.8	1.7	1.8	100	IV
<b>North of West Bank</b>	<b>2.6</b>	<b>3.6</b>	<b>1.1</b>	<b>3.1</b>	<b>2.0</b>		
I	4.0	2.5	1.1	4.8	1.9	7	I
II	2.3	3.8	1.1	3.8	1.7	7	II
III	2.1	4.4	1.1	2.6	2.0	7	III
IV	2.9	3.2	1.1	2.3	2.1	7	IV
<b>Middle of West Bank</b>	<b>2.7</b>	<b>2.2</b>	<b>2.0</b>	<b>1.6</b>	<b>1.9</b>		
I	2.1	5.0	1.6	1.5	1.9	20	I
II	3.4	2.1	2.2	1.5	1.8	22	II
III	3.1	2.5	1.8	1.6	2.0	22	III
IV	2.6	2.1	2.2	1.8	1.8	26	IV
<b>Jerusalem</b>	<b>2.3</b>	<b>2.2</b>	<b>1.8</b>	<b>2.1</b>	<b>2.2</b>	<b>34</b>	
I	2.7	2.5	1.7	2.9	2.0	27	I
II	2.4	2.1	2.0	2.1	2.2	29	II
III	2.2	2.0	1.6	1.9	0.0	30	III
IV	2.0	2.2	2.0	2.0	0.0	34	IV
<b>South of West Bank</b>	<b>3.1</b>	<b>2.1</b>	<b>1.8</b>	<b>2.5</b>	<b>2.6</b>		
I	3.2	2.3	1.3	1.3	2.0	19	I
II	3.4	2.2	1.9	3.0	1.6	22	II
III	2.9	2.0	2.0	2.8	3.5	22	III
IV	2.9	2.1	1.5	1.1	1.7	25	IV
<b>Gaza Strip</b>	<b>1.0</b>	<b>1.3</b>	<b>1.0</b>	<b>1.5</b>	<b>2.1</b>		
I	1.0	1.4	0.0	1.7	1.0	8	I
II	1.5	1.4	1.0	0.0	2.0	7	II
III	1.0	0.0	0.0	1.0	1.8	8	III
IV	0.0	1.0	0.0	1.0	2.6	8	IV

\* Represents No. of hotels at the end of the quarter

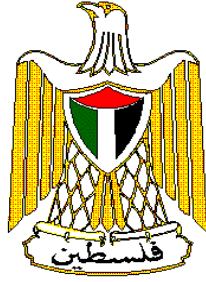
\*

( / ) 2009

:( )10-2

Table 2-10 (Cont.): Average Length of Stay per Guest by Nationality, Region and Quarter 2009 (Nights/Guest)

Region/Quarter	Total Average	Nationality					الجنسية	/
		Australia & New Zeland	Africa	Other European Count.	European Union	Central & South America		
<b>Palestinian Territory</b>	<b>2.3</b>	<b>2.3</b>	<b>1.7</b>	<b>2.5</b>	<b>2.5</b>	<b>2.2</b>		
I	2.4	1.6	1.2	2.7	2.5	2.4	I	
II	2.4	2.4	2.5	2.7	2.7	2.4	II	
III	2.3	2.2	2.2	2.4	2.4	2.4	III	
IV	2.2	2.8	1.7	2.2	2.4	2.0	IV	
<b>North of West Bank</b>	<b>1.8</b>	<b>3.2</b>	<b>1.8</b>	<b>2.2</b>	<b>2.0</b>	<b>3.8</b>		
I	2.1	4.0	1.0	0.0	2.4	1.0	I	
II	1.8	1.4	2.5	2.3	1.8	3.5	II	
III	1.7	1.0	1.1	1.0	1.9	3.5	III	
IV	1.9	5.8	4.0	3.0	2.1	5.3	IV	
<b>Middle of West Bank</b>	<b>2.0</b>	<b>2.9</b>	<b>2.8</b>	<b>1.5</b>	<b>2.3</b>	<b>1.7</b>		
I	1.9	1.3	1.5	1.4	2.1	1.6	I	
II	2.0	2.9	2.8	1.9	2.1	2.0	II	
III	2.0	4.1	3.3	1.6	2.8	2.1	III	
IV	2.0	7.2	2.9	1.4	2.3	1.3	IV	
<b>Jerusalem</b>	<b>2.3</b>	<b>2.2</b>	<b>2.1</b>	<b>2.4</b>	<b>2.4</b>	<b>2.2</b>		
I	2.6	1.9	2.3	2.8	2.5	3.0	I	
II	2.5	2.4	2.4	2.6	2.6	2.6	II	
III	2.2	2.2	2.2	2.4	2.2	2.2	III	
IV	2.2	2.3	2.0	2.0	2.3	2.0	IV	
<b>South of West Bank</b>	<b>2.5</b>	<b>1.9</b>	<b>1.2</b>	<b>2.7</b>	<b>2.9</b>	<b>3.5</b>		
I	2.4	1.8	1.1	2.6	2.7	3.5	I	
II	2.8	2.1	2.9	3.0	3.2	3.7	II	
III	2.7	1.2	1.4	2.9	2.9	3.9	III	
IV	2.4	3.6	1.3	2.7	2.7	3.2	IV	
<b>Gaza Strip</b>	<b>1.3</b>	<b>1.0</b>	<b>1.0</b>	<b>1.0</b>	<b>1.2</b>	<b>2.0</b>		
I	1.2	1.0	1.0	1.0	1.3	1.0	I	
II	1.4	0.0	0.0	0.0	1.2	0.0	II	
III	1.5	0.0	0.0	0.0	1.1	2.3	III	
IV	1.3	1.0	0.0	0.0	1.1	2.0	IV	



**Palestinian National Authority  
Palestinian Central Bureau of Statistics**

**Hotel Activities in the Palestinian Territory  
Annual Bulletin - 2009**

**Volume 15, Issue No. (5)  
April, 2010**

PAGE NUMBERS OF ENGLISH TEXT ARE PRINTED IN SQUARE BRACKETS.  
TABLES ARE PRINTED IN THE ARABIC ORDER (FROM RIGHT TO LEFT)

**This document is prepared in accordance with the standard  
procedures stated in the Code of Practice for Palestine Official  
Statistics 2006**

© April, 2010  
All rights reserved.

**Suggested Citation:**

**Palestinian Central Bureau of Statistics, 2010.** *Hotel Activities in the Palestinian Territory, (Annual Bulletin – 2009).* Ramallah – Palestine.

All correspondence should be directed to:

**Palestinian Central Bureau of Statistics  
P.O.Box 1647, Ramallah, Palestine.**

Tel: (+972/970) 2 2982700

Fax: (+972/970) 2 2982710

E-Mail :diwan@pcbs.gov.ps

Web-Site: <http://www.pcbs.gov.ps>

## **Acknowledgement**

**The Palestinian Central Bureau of Statistics (PCBS) expresses its gratitude to all Palestinian hotels owners and managers who responded to the survey instrument, for their understanding during the fieldwork, which was truly remarkable. The PCBS also expresses gratitude all of those who worked on this survey for their contribution and commitment in implementing the survey and providing the necessary information and data.**

**The funding for the Hotel Survey 2009, was provided by the Palestinian National Authority (PNA), European Union (EU), and the Core Funding Group (CFG) for 2009. CFG members include Representative Office of Norway to the PNA, Representative Office of the Netherlands to PNA and Swiss Agency for Development and Cooperation (SDC).**

**Data collection and data processing of this activity has been produced with the financial assistance of the European Union. The contents of this document are the sole responsibility of the PCBS.**

**On this occasion, PCBS extends special thanks to the members of the CFG and the EU for their support.**



## **Team Work**

- **Report Preparation**  
Fathi Farasin  
Adel Qrareya
- **Maps Design**  
Amal Jabr
- **Dissemination Standard**  
Hanan Janajreh
- **Preliminary Review**  
Mustafa Khawaja  
Mahmoud Al qayya  
Mahmoud Abdal-rahman
- **Final Review and Overall Supervision**  
Mahmoud Jaradat  
Ola Awad Acting President





## **Preface**

The Palestinian tourism sector has great potential and is expected to occupy a large share of the Palestinian GDP once the tourist resources are well exploited. Tourism activities are, however, crippled by a multiplicity of internal and external factors which are not enabling this important economic activity to flourish.

PCBS has collected data on tourism activities since November 1995. However, due to reasons beyond its control, PCBS had decided to limit its tourism statistics to the hotel activity and some surveys related to tourism.

PCBS is pleased to present the fifteen Annual Bulletin on “Hotel Activities in the Palestinian Territory”, which covers the statistics of hotel activity in the year 2009. PCBS is looking forward to expanding its activities to cover all branches of the tourism industry in the Palestinian Territory.

This report addresses the main indicators of hotel activity. These indicators include the number of operating hotels, number of rooms and beds, rooms and public facilities in the surveyed hotels, number of persons engaged in hotels, number of guest nights in the reference period, distribution of guests by nationality, and percent of beds as well as rooms occupancy.

PCBS is pleased to present this bulletin on hotel activities in the Palestinian Territory as an important statistical reference on hotel activity. PCBS hopes that this bulletin will pave the way for developing a comprehensive tourist program to meet international standards and users needs.

**April, 2010**

**Ola Awad  
Acting President**



## Table of Contents

<b>Subject</b>	<b>Page</b>
List of Tables	
List of Figures	
List of Maps	
Executive Summary	
Chapter One: <b>Introduction</b>	<b>[19]</b>
Chapter Two: <b>Concepts and Definitions</b>	<b>[21]</b>
Chapter Three: <b>Main Findings</b>	<b>[23]</b>
3.1. Distribution of Hotels During 2009	[23]
3.2. Employment During 2009	[23]
3.3. Number of Guests During 2009	[23]
3.4. The Impact of Israeli Measures on the Hotel Activities	[24]
Chapter Four: <b>Methodology</b>	<b>[25]</b>
Chapter Five: <b>Data Quality</b>	<b>[27]</b>
5.1 The Fieldwork and Office Operations Notes	[27]
5.2 Comparing the Quarterly Reports with the Annual Bulletin of 2009	[27]
<b>Tables</b>	<b>47</b>



## List of Tables

<b>Table</b>	<b>Page</b>
<b>Table 1-1:</b> Main Indicators for Hotel Activities in the Palestinian Territory by Month, 2009	<b>49</b>
<b>Table 1-2:</b> Distribution of Hotels, Rooms, and Beds by Categories of Number of Rooms, 2009	<b>49</b>
<b>Table 1-3:</b> Number of Persons Engaged in Hotels by Type of Work, Sex and Month, 2009	<b>50</b>
<b>Table 1-4:</b> Distribution of Guests in Hotels by Nationality and Month, 2009	<b>51</b>
<b>Table 1-5:</b> Percentage Distribution of Guests in Hotels by Nationality and Month, 2009	<b>52</b>
<b>Table 1-6:</b> Distribution of Guest Nights in Hotels by Nationality and Month, 2009	<b>53</b>
<b>Table 1-7:</b> Percentage Distribution of Guest Nights in Hotels by Nationality and Month, 2009	<b>54</b>
<b>Table 1-8:</b> Average Length of Stay per Guest in Hotels by Nationality and Month, 2009 - (Nights/Guest)	<b>55</b>
<b>Table 2-1:</b> Main Indicators for Hotel Activities in the Palestinian Territory by Region and Quarter, 2009.	<b>56</b>
<b>Table 2-2:</b> Average Number of Hotel Rooms by Capacity, Region and Quarter, 2009	<b>58</b>
<b>Table 2-3:</b> Number of Hotels and Rooms by Facilities and Region as of December, 2009	<b>59</b>
<b>Table 2-4:</b> Public Utilities Available in Hotels by Region as of December, 2009	<b>59</b>
<b>Table 2-5:</b> Average Number of Persons Engaged in Hotels by Type of Work, Sex, Region and Quarter, 2009	<b>60</b>
<b>Table 2-6:</b> Distribution of Guests in Hotels by Nationality, Region and Quarter, 2009	<b>61</b>
<b>Table 2-7:</b> Percentage Distribution of Guests in Hotels by Nationality, Region and Quarter, 2009	<b>63</b>
<b>Table 2-8:</b> Distribution of Guest Nights in Hotels by Nationality, Region and Quarter, 2009	<b>65</b>
<b>Table 2-9:</b> Percentage Distribution of Guest Nights in Hotels by Nationality, Region and Quarter, 2009	<b>67</b>
<b>Table 2-10:</b> Average Length of Stay per Guest by Nationality, Region and Quarter, 2009 - (Nights/Guest)	<b>69</b>



## List of Figures

<b>Figure</b>		<b>Page</b>
<b>Figure 1:</b>	Percentage Distribution of Operating Hotels by Region as of December, 2009	<b>[23]</b>
<b>Figure 2:</b>	Percentage Distribution of Guests by Nationality, 2009	<b>[24]</b>





## List of Maps

<b>Map</b>		<b>Page</b>
<b>Map 1:</b>	Number of Operating Hotels in the Palestinian Territory by Region, 2009	<b>29</b>
<b>Map 2:</b>	Number of Hotel Guests in the Palestinian Territory by Region, 2009	<b>33</b>
<b>Map 3:</b>	Average Occupancy Rate in Hotels in the Palestinian Territory by Region, 2009	<b>37</b>
<b>Map 4:</b>	Average Number of Persons Engaged in Hotels in the Palestinian Territory by Sex and Region, 2009	<b>41</b>



## **Executive Summary**

The results revealed that the total number of hotels in the Palestinian Territory amounted to 115 hotels, including temporary closed hotels. There were 100 operating hotels in December 2009; while the average number of rooms reached 4,552 rooms and the average number of beds reached 9,815 beds.

- During the year 2009, the total number of guests in hotels in the Palestinian Territory reached about 453 thousands with an increase of 42.8% compared with the year 1999, and with an increase of 1.5% compared with the year 2008.
- The total number of nights were about one million nights during the year 2009, with an increase of 16.4% compared with the year 1999, and a decrease of 7.5% compared with the year 2008
- The number of workers in the hotels was 1,514 of whom 1,286 were males and 228 were females. The number of workers had increased by 11.1% during the year 2009 compared with the year 1999.
- About 12.6% of the guests were Palestinians while 35.3% were from European countries.
- The percentage of rooms occupancy was 32.5%, which declined by 3.0% during the year 2009 compared with the year 1999, and decreased 9.5% compared with the year 2008
- The average length of stay in the Palestinian hotels was 2.3 nights per guest during the year 2009.

## Chapter One

### **Introduction**

PCBS conducts a hotel survey which aims at producing a comprehensive database on hotel activities in the Palestinian Territory. The ultimate goal is to compile and maintain data on the tourism industry. By this exercise, we hope eventually to be able to produce regular statistics on the main indicators recommended and adopted by World Tourism Organization (WTO) and the European Union (EU). In the mean time, this initiative in the present format aims to fill the existing gaps on the basic statistics of the hotel activities, which might help to provide data necessary for policy making to promote this industry in the Palestinian Territory.

This survey is conducted on a monthly basis to identify the changes in this sector during all seasons of the year. All hotels operating in the Palestinian Territory are covered. This periodic survey aims at establishing a time series including variables and indicators related to hotel activities.

### **Objectives**

This survey aims to provide a continuous flow of data on:

1. Number of operating hotels and its number of rooms and beds.
2. Rooms and public facilities in the surveyed hotels.
3. Number of persons engaged in hotels.
4. Number of guest nights in the reference period.
5. Number of guests by nationality.
6. Rates of bed occupancy and room occupancy.



## Chapter Two

### Concepts and Definitions

This section presents the main concepts and definitions used to derive the main indicators of tourism statistics. These concepts and definitions are based on international recommendations in the field of tourism statistics, and they are the same in all subjects in Palestinian Central Bureau of Statistics. The main concepts and expressions mentioned in this report were as follows:

#### **Hotel:**

It is defined as an accommodation establishment providing overnight lodging for the visitors in a room or unit. It should hold a number of persons exceeding an average of single family. The establishment must be under one management, and provides different facilities and services to visitors.

#### **Hotel Workers:**

It refers to all persons working in the hotel on full or part time bases including owners and paid or unpaid household members.

#### **Number of Rooms:**

It refers to the furnished rooms for the use of guests. Such rooms might be single, double, triple, or quadruple. Rooms involving more than four beds were classified under (others) in the questionnaire. As for the suite, it is usually comprised of one bedroom or more, a living room and private toilet facilities.

#### **Available Beds and Rooms:**

It refers to beds and rooms, which are ready for use during the reference period. Closed rooms for maintenance or repairs are excluded.

#### **Guests:**

It refers to visitors staying in the hotels and using their facilities in return for a certain charge. Records of new guests are based on the number of visits regardless whether it's the same person or different.

#### **Number of Guest Nights:**

Number of beds booked for hotel guests. Such beds are considered as occupied whether they were actually used or not. It is measured by guest night unit.

#### **Room Occupancy:**

Number of booked and paid rooms. Such rooms are considered occupied whether they were actually used or not.

#### **Bed Occupancy:**

Number of booked and paid beds. Such beds are considered occupied whether they were actually used or not.

#### **Average (rooms, beds) Occupancy:**

It is defined as the total number of occupied (rooms, beds) divided by number of days.

**Average Length of Stay:**

Represents the total of guest nights by nationality divided by number of guests of the same nationality.

**Percentage of (rooms, beds) Occupancy:**

It is defined as the average of (rooms, beds) occupancy divided by available (rooms, beds) multiplied by one hundred.

**North of West Bank Region:**

Jenin, Tubas, Tulkarm, Nablus, Qalqiliya, and Salfit governorates.

**Middle of West Bank Region:**

Ramallah and Al-Bireh, Jericho and Al-Aghwar governorates.

**Jerusalem Region:**

Jerusalem governorate.

**South of West Bank Region:**

Bethlehem and Hebron governorates.

**Gaza Strip:**

Gaza North, Gaza, Deir Al-Balah, Khan Yunis and Rafah governorates.

## Main Findings

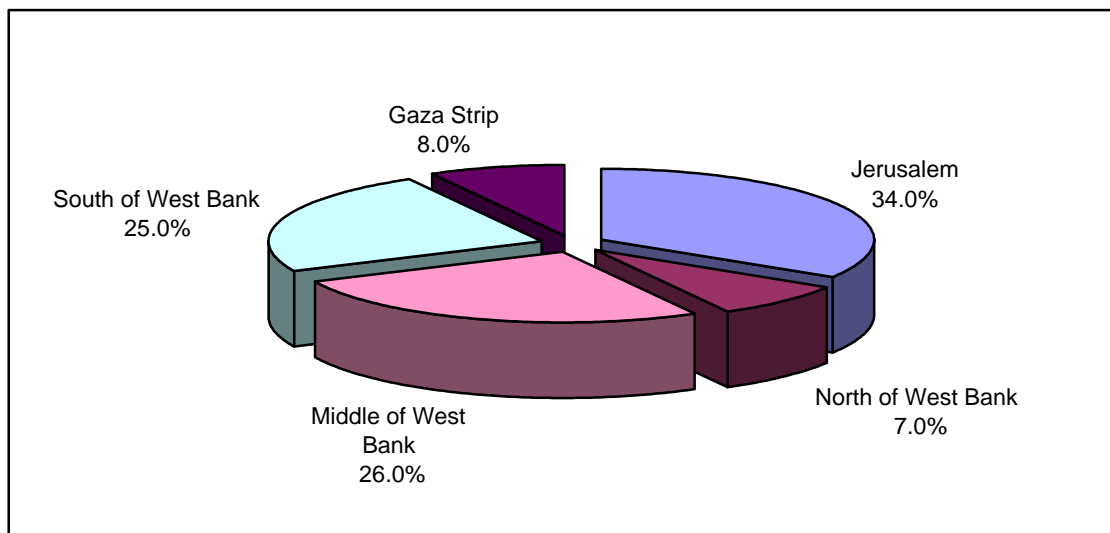
### 3.1 Distribution of Hotels During 2009

The total number of hotels in the Palestinian Territory was 115 hotels, including temporary closed hotels. There were 100 operating hotels in December 2009 with average rooms number in all hotels amounted to 4,552 while average number of beds reached 9,815.

The operating hotels in the Palestinian Territory were distributed as follows:

- North of West Bank: 7 hotels including 149 rooms with 323 beds.
- Middle of West Bank: 26 hotels including 959 rooms with 2,156 beds.
- Jerusalem: 34 hotels including 1,483 rooms with 3,263 beds.
- South of West Bank: 25 hotels including 1,653 rooms with 3,264 beds.
- Gaza Strip: 8 hotels including 308 rooms with 509 beds.

**Figure (1): Percentage Distribution of Operating Hotels by Region as of December, 2009**



### 3.2 Employment During 2009

The number of employed persons in the hotels was 1,514 of whom

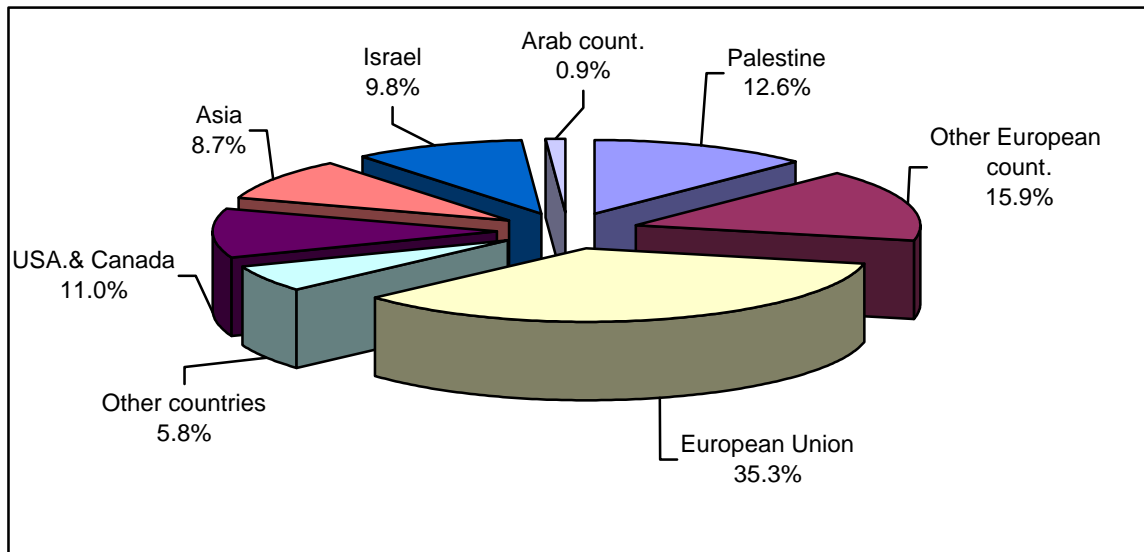
- 274 as administrative staff (215 males and 59 females), and
- 1,240 as services workers (1,071 males and 169 are females).

### 3.3 Number of Guests During 2009

During the year 2009, the total number of guests in the Palestinian hotels was 452,625 persons of whom 12.6% were Palestinian guests, and 35.3% were from European Union countries.



**Figure (2): Percentage Distribution of Guests by Nationality, 2009**



### 3.4 The Impact of Israeli Measures on the Hotel Activities

During the period 2000-2007, hotel activity - among many other sectors - had been negatively affected due to Israeli measures on the Palestinian Territory (siege, closure, curfew...etc.).

In 2009, this activity had witnessed major improvements in comparison with the year 1999, (prior the second Intifadah).

The number of guests had increased in 2009 by 42.8% compared with 1999; while the guests nights had increased by 16.4%.

**Percentage Changes of Hotel Indicators for Selected Years Compared with**

The Indicator	Value 2009	Percentage change (%) compared with 1999					
		2001	2003	2005	2007	2008	2009
Number of operating hotels	100	-7.7	-15.4	-15.4	-9.9	-5.5	9.9
Average number of workers	1,514	6.7	-12.3	-6.5	-7.3	-1.3	11.1
Number of guests	452,625	-81.0	-80.2	-58.4	-0.3	40.8	42.8
Number of guest nights	1,042,290	-79.4	-77.7	-60.9	-24.8	25.9	16.4
Average occupancy of rooms	1,481.3	-77.3	-72.1	-57.7	-22.5	17.1	11.1
Average occupancy of beds	2,855.6	-79.4	-77.7	-60.9	-24.8	25.9	16.4
Percentage occupancy of rooms %	32.5	-72.5	-65.1	-53.7	-25.1	7.2	-3.0
Percentage occupancy of beds %	29.1	-75.9	-73.6	-59.1	-31.0	7.6	-4.0

## Methodology

- **Survey Questionnaire**

The questionnaire was designed according to international standards and recommendations. The Higher Council for the Arab Tourist Industry and the Arab Studies Society both contributed to the questionnaire design. The questionnaire was designed to provide hotel identification data, employed persons by type of work and sex, number of rooms and beds, number of guests, nationality, and occupancy of rooms and beds. The questionnaire was thoroughly updated as a result of a field test, November-December 1995, and is subject to continuous revision; the survey questionnaire is available on PCBS website.

- **Coverage**

The survey frame was based on the Establishments Census conducted by the PCBS in 2004. This frame undergoes continuous updating, adding newly established hotels and eliminating closed ones. Hotels which have ceased operations due to maintenance or repair activities are not surveyed until they become functional again, in view of the impact of such activities, and the small number of hotels operating in Palestine.

- **Field Work**

The field workers taking part in the implementation of the survey are selected from experienced staff. Before being recruited, field workers undergo theoretical and practical training to enable them to carry out their duty properly. Field work activities include data collection, developing fieldwork forms and manuals and other needed tools. Regular data collection rounds are made to collect data from respondents, to ensure precision and accuracy of filled-in data.

- **Office Work Activities**

The completed questionnaires are delivered for office editing. Upon completion of data editing, the questionnaires undergo a process of verification and coding in accordance with the coding manuals.

- **Tabulation and Data Processing**

After being edited, verified and coded, the data is entered using a special designed data-entry program. Such a program is developed in accordance with pre-designed tables and in a way that fulfills all survey objectives. Before initiating data entry, necessary theoretical and practical training sessions are offered to data entry operators. The entered data undergoes electronic editing based on standard editing rules. In addition, random quality checks is undertaken to ensure error free data entry.

After completing data entry, editing and cleaning, the intended tables are drawn up according to the pre-designed forms.



## Chapter Five

### Data Quality

- Coverage: includes hotels, variables, registration period, and periodic survey.
- Completeness: the availability of the data and its completeness for most of the indicators of the hotels activities and how consistent it is with the data of the hotels administration registrations, with the response rate of 98%.
- Validity: serial editing operations are done; the questionnaires are edited in the field and in the office, then compared with data of the previous month; the questionnaires that contain mistakes are returned to the hotels for modification.

#### 5.1 The Fieldwork and Office Operations Notes

Change in the number of hotels, rooms, and beds during the year of 2009 may refer to:

- There were a number of hotels depends on the work to carry out repairs and maintenance, then they are not included in the findings result in those months.
- Non respondent hotels were not considered in this report.
- Many hotels were included although they did not receive any visitor in particular months.
- Data includes all establishments that practice any hotel activity, whether it is categorized or not.

#### 5.2 Comparing the Quarterly Reports with the Annual Bulletin of 2009:

The results show some differences between the annual bulletin and the quarterly reports due to the delay of receiving the questionnaires from some hotels in the field work; these data are included in the annual bulletin.

**Comparison of the results of annual bulletin with quarterly reports, 2009**

Quarter	No. of Hotels	Average No. of Rooms	Average No. of beds	No. of Guests	No. of Guests nights	
<b>Annual bulletin</b>	I	81	4,239	8,984	74,545	178,726
	II	87	4,373	9,269	99,148	240,388
	III	89	4,668	10,145	135,939	310,643
	IV	100	4,926	10,857	142,993	312,533
<b>Quarterly reports</b>	I	75	4,004	8,441	69,380	168,167
	II*	91	4,285	9,176	99,202	240,846
	III	89	4,604	10,010	135,939	310,643
	IV	97	4,879	10,774	142,504	311,617

\*: Data for the number of guests and guest nights for the Gaza Strip within the quarterly reports were estimated, which affected the total number during the second quarter compared with the total numbers for the quarter stated in the Annual Bulletin.