



2011

2012 /

2006

.2012 - 1433 ©

:

.2011

.2011

:

1647

(970/972) 2 2982700 :

(970/972) 2 2982710 :

1800300300 :

diwan@pcbs.gov.ps :

http://www.pcbs.gov.ps :



Source: Palestinian Central Bureau of Statistics

.

2011

(PNA)

2012 (CFG)

.(SDC)

.

(CFG)

•

•

•

•

•

•

•

<http://www.pcbs.gov.ps>

(-)

19	:
19	1.1
26	2.1
32	3.1
37	:
47	
49	

51	2012		:1
52			:2
		2007	
53	2010-2009		:3
54			:4
		2010-2009	
55			:5
		2010	
56		1000	:6
		2011	
57	2011		:7
58		(15)	:8
		2011	
59			:9
		2010	
60			:10
		2010	
61			:11
		2012/2011	
62			:12
		2012/2011	
63			:13
		2012/2011	
64		(15)	:14
		2012/2011	
65		(15)	:15
		2011	

66	(15)		:16
		2011	
67		2011	:17
68	2011		:18
69			:19
		2010/2009	
70	2010/2009		:20
71			:21
		2010/10/01	
72	2010		:22
73	2010		:23
74	2010		:24
75	2010		:25
76	2010		:26
77	2011		:27
78			:28
		2010	
79			:29
		2010	
80			:30
		2010	
81			:31
		2010	
82			:32
		2010	
83	2011		:33

84					:34
				2009	
85					:35
				2009	
86	2010				:36
87		2010			:37
88			-		:38
				2010	
89			-		:39
				2010	

2011

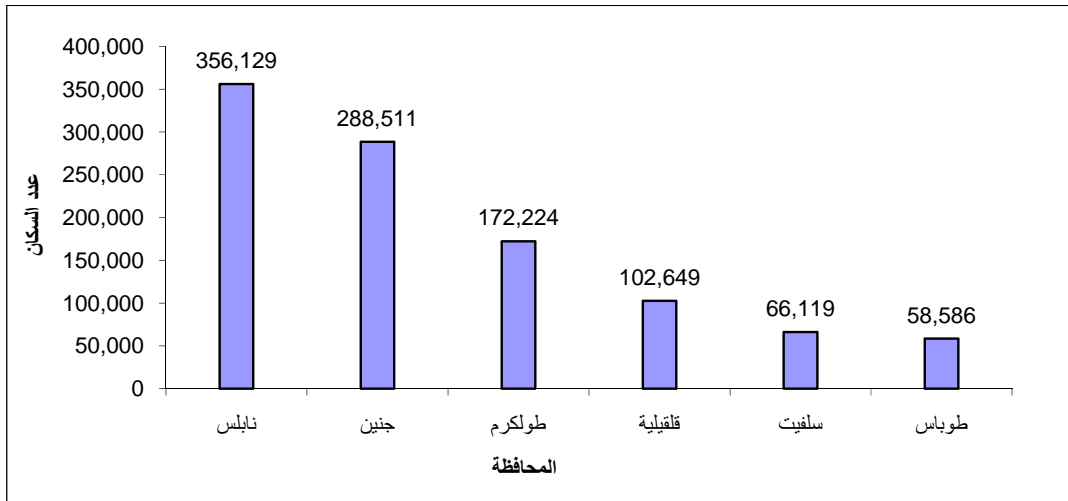
2012

1.1

%24.3 2012

%8.3 356

2012



272

%27.4

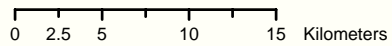
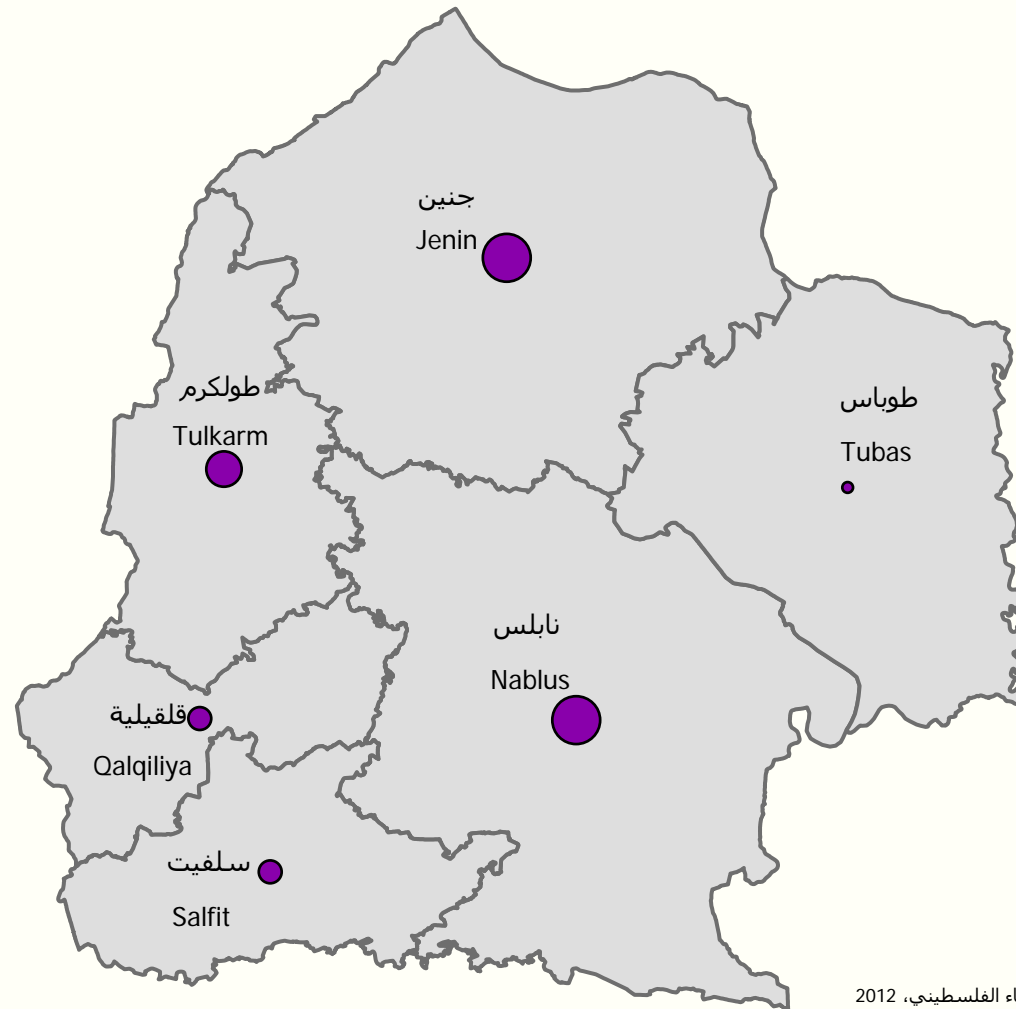
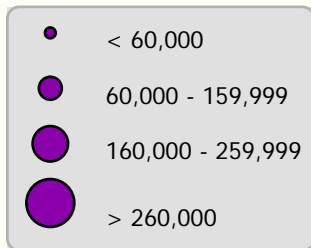
2007

624

%29.6

%47.0

عدد السكان المقدر في محافظات شمال الضفة الغربية منتصف العام، 2012
Estimated Population in West Bank Northern Governorates at Mid- Year, 2012



المصدر: الجهاز المركزي للإحصاء الفلسطيني، 2012
Source: Palestinian Central Bureau of Statistics, 2012



:

9,519

2010

%25.6

1000

9.2

2010

(

1000

12.0)

.(

1000

8.9)

20.3

26.0

2010

20.0

25.2

20.9

26.6

2010

%28.1

1,726

1000

1.5

2010

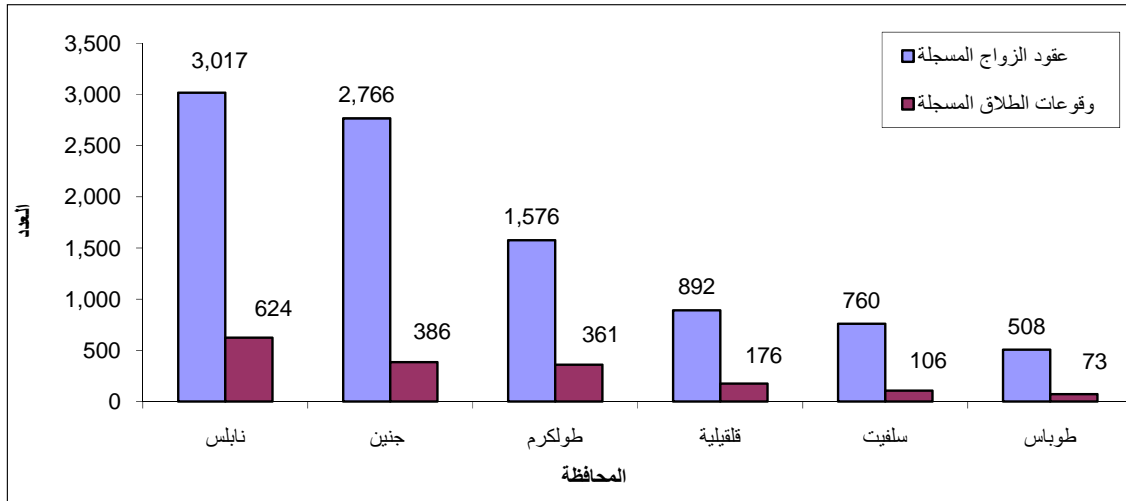
2.2

1000

1.4

1000

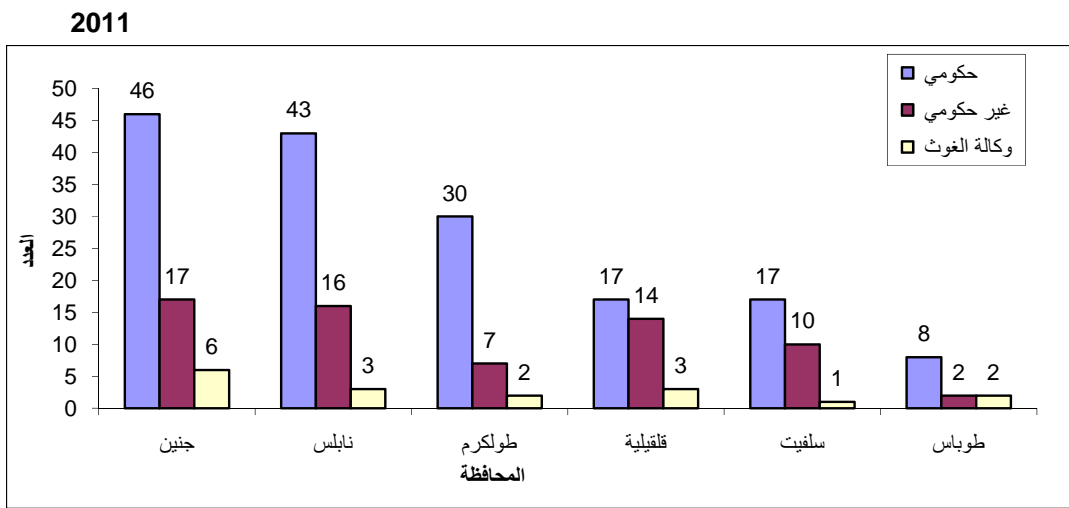
2010



2010
 27,506) %42.2
 13,351 (14,155
 %50.7 3,021
 1,404 1,617

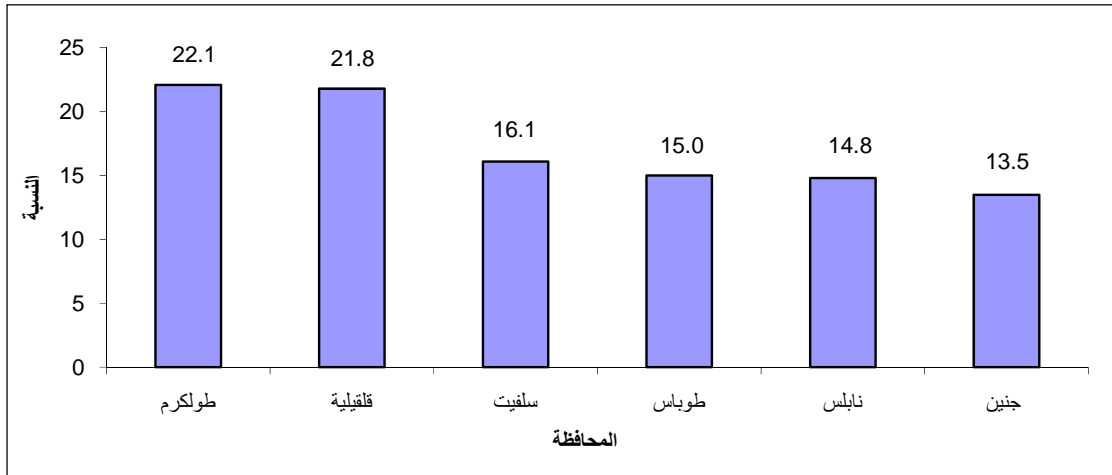
2011
 6 16
 1.0 1,025
 1.5
 1000 1000
 1000 0.6

2011
 244 161
 66 17



(15) 2011
 %46.6
 %71.5 %21.1
 %8.7 %83.7

2011



%14.7 %21.6 2011 %16.3

:

:

2010 %15.1

%18.3

:

981.4

1,075.1

769.7

:

2,704

876

2012/2011

37 (

363

414)

777

.(

13

49)

62 (

)

281,814

123,465

140,365

141,449

2012/2011

124,812

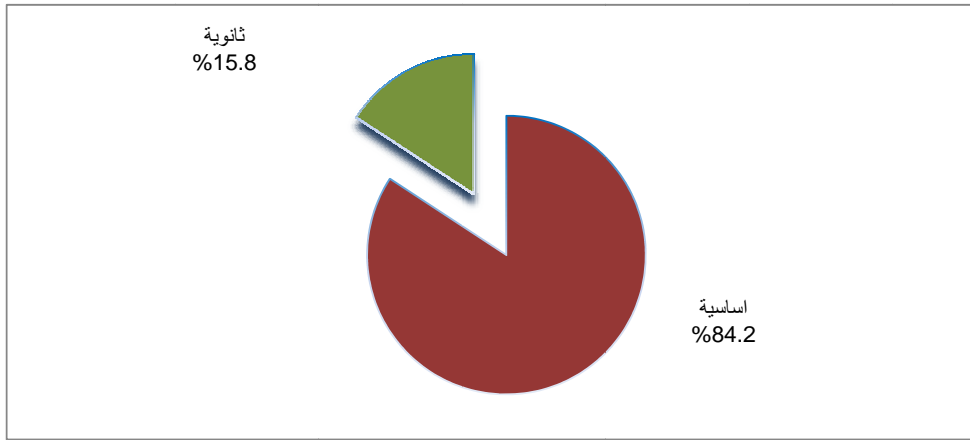
8,306

9,678

4,875

10,678

2012/2011



2011 (15)
 .%11.7 %10.9

.%10.4 %11.4 ()
 %4.6 . %15.9 %7.6
 . %7.9 %1.5 (15)

1,832 796

.2011

259 263
 7 531 2011 550
 . 10

2.1

:
 %39.0 2010 2,206
 %63.3 2 557.8
 %25.3
 .2010/2009

%53.5 48,596
 36,222

7,944		%74.5
4,430		%16.4
.2010/2009		%9.1

13,548	2010/10/01	
225,281		%55.8
57,600		%44.5
		%27.8

191	2010	
		%73.5
%84.2		18,452.3

.2010

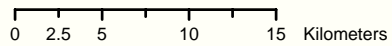
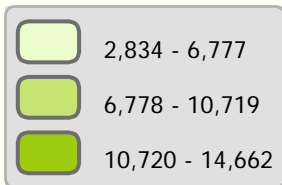
%70.5

977	2010
-----	------

5.6	2010
-----	------

%76.6

عدد الحيازات الزراعية في محافظات شمال الضفة الغربية، 2010 / 2009
Agricultural Holdings in West Bank Northern Governorates, 2009/2010



المصدر: الجهاز المركزي للإحصاء الفلسطيني، 2012
Source: Palestinian Central Bureau of Statistics, 2012

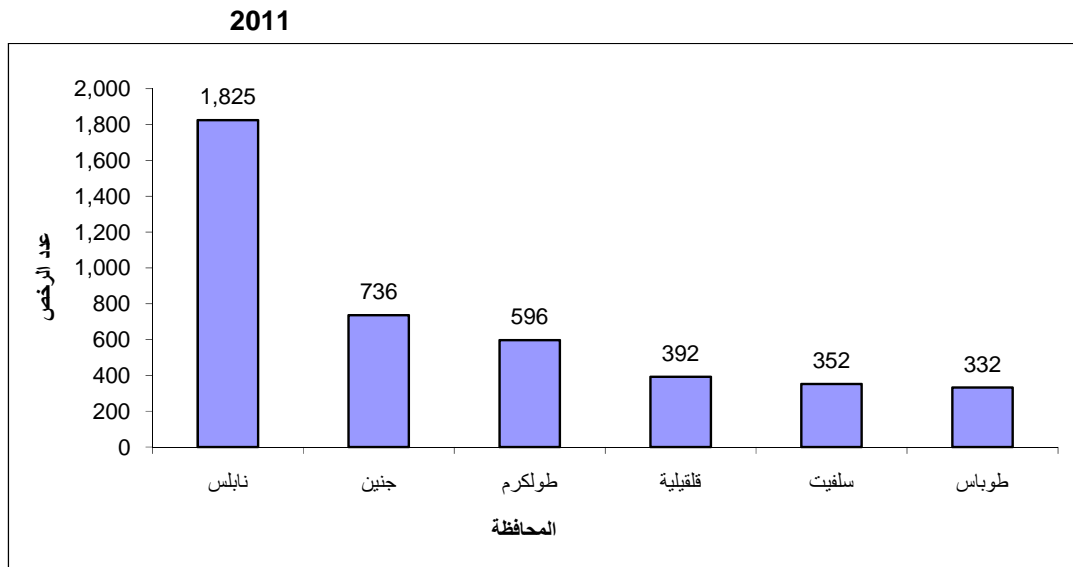


					:
%66.4			%33.0	2010	%85.8
					:
		()	
					: .1
	65		40	141	
			.2010		
					: .2
		211			
12			17		
			.2010		
					: .3
2010					
	7		18	166	
		31		4	
					: .4
26					
			234		
			.2010	7	
					:
	%8.8	2011	8		
14,807		508		185	
					.62.7

3.1

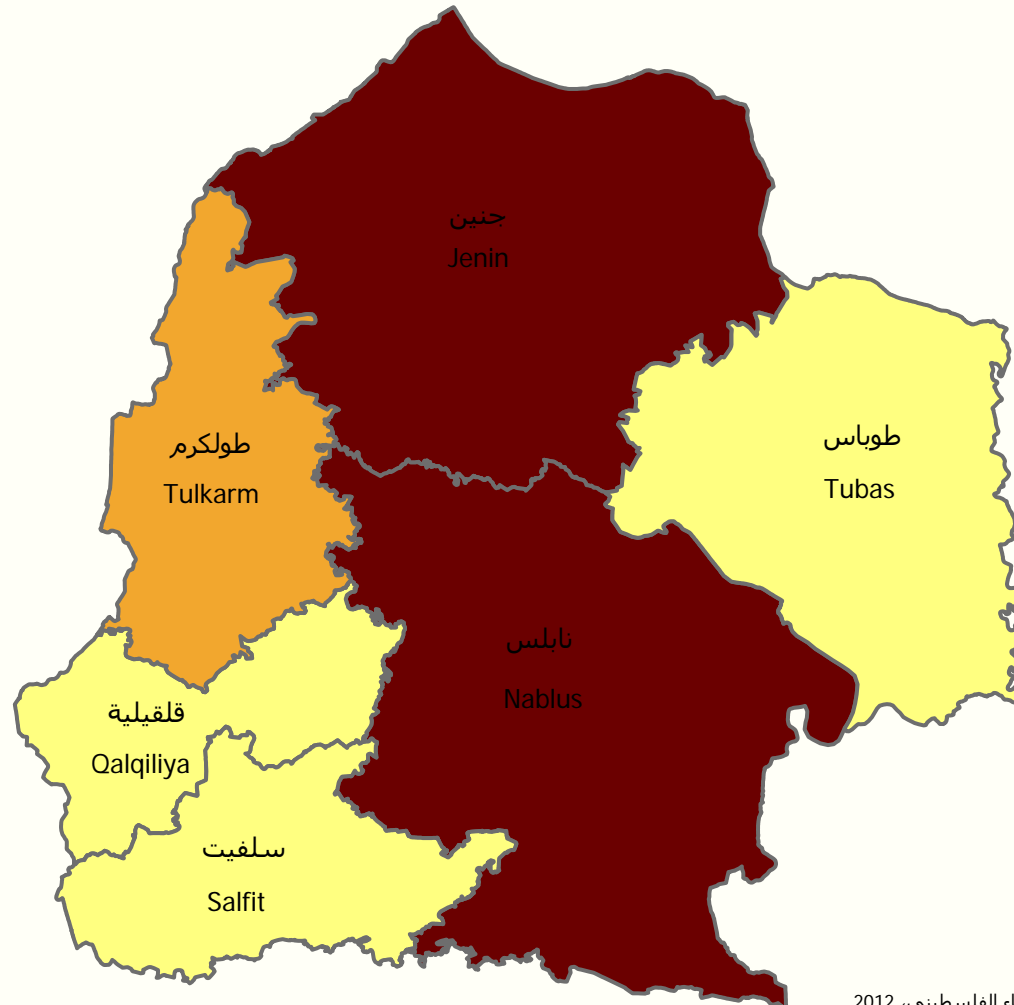
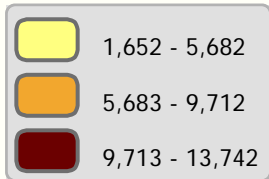
Year	Total	Category 1	Category 2	Category 3
2009	38,508	19,196	72,793	91,989
2010	45,966			
2011	6,805			

Year	Category 1	Category 2	Category 3
2009	37.8%	71.2%	33.9%
2010	2.8%	8.3%	71.4%
2011	4,242	1,156.4	1,349.1
			192.7



عدد المنشآت العاملة في القطاع الخاص والقطاع الأهلي والشركات الحكومية في محافظات شمال الضفة الغربية، 2011

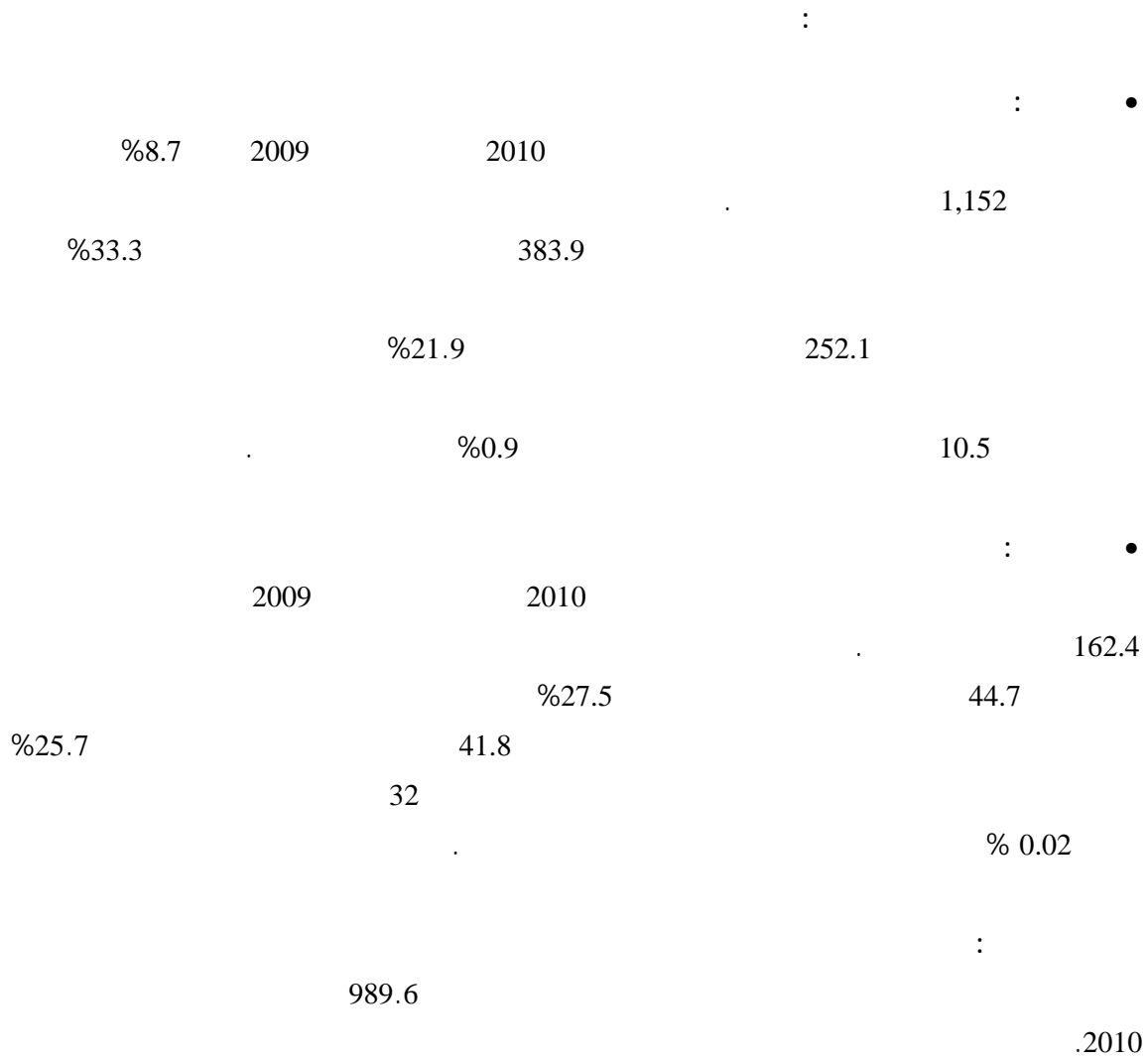
Number of Establishments in Operation in the Private Sector, Non Governmental Organization Sector and Government Companies in West Bank Northern Governorates, 2011



0 2.5 5 10 15 Kilometers

المصدر: الجهاز المركزي للإحصاء الفلسطيني، 2012
Source: Palestinian Central Bureau of Statistics, 2012





.()

:()
(13)

:

:

:

1948

-:

()

:

()

:

:

:

:

(50)

()

(5)

(50)

()

(3)

:

...

:

:

:

: .1

() ()

: .2

: .3

: .4

:

(0.5)

(1)

:

:

24

:

)

(

:

:

:

:

:

:

:

:

.()

:

()

:

:

(35)

:

:

()² (4)
()

:

:

(- -)

:

()
()

)

(

:

:

:

:

:

:

:

:

()

:

:

:

:

:

:()

()

:

:

:

:

:

:

:()

:

:

:

:

.()

:

:

)

(

.2010

:

:

:

:()

() ()

:

:()

(13)

:

()

:

:

.(...)

:

:()

.

		.2012	.1
		-	-2012/2011
.	-	.2011	.2012
		.2012	.3
		.	-
			.2011/2/10
	-	2012	.4
		.	-
			:2010
		:2010	.2011
		.	.5
	2010	.2011	.6
		.	-
		.2011	.7
		.	-
			.2011
	-	2010 -	.2011
		.	-
.2011		.2011	.9
		.2012	.10
		.	-
			.2007
-2009)		.2012	.11
		.	-
			.(2010
.	-	.2011	.2012
	-	.2011	-
.2010		.2012	.14
		.	-
.2011	:	.2012	.15
		.	-

	2011		:PCBS
	.2012		.16
	.	- .2007	
:	.2011		.17
	.	- .2010	
2007	.2012		.18
	.	- .2009	

Tables

جدول 1: عدد السكان المقدر في محافظات شمال الضفة الغربية منتصف العام حسب الجنس، 2012

Table 1: Estimated Population in the West Bank Northern Governorates by Sex, Mid-2012

Governorate /Region	اناث Females	ذكور Males	المجموع Total	المحافظة/المنطقة
Palestinian Territory	2,112,927	2,180,386	4,293,313	الأراضي الفلسطينية
West Bank	1,303,606	1,345,414	2,649,020	الضفة الغربية
North of West Bank	514,473	529,745	1,044,218	شمال الضفة الغربية
Jenin	141,948	146,563	288,511	جنين
Tubas	28,825	29,761	58,586	طوباس
Tulkarm	85,251	86,973	172,224	طولكرم
Nablus	175,928	180,201	356,129	نابلس
Qalqiliya	49,990	52,659	102,649	قلقيلية
Salfit	32,531	33,588	66,119	سلفيت

جدول 2: عدد السكان الفلسطينيين في محافظات شمال الضفة الغربية نهاية العام حسب حالة اللجوء، 2007
Table 2: Palestinian Population in the West Bank Northern Governorates by Refugee Status End-2007

Governorate/Region	Refugee Status				المحافظة/المنطقة
	المجموع Total	غير مبين Not Stated	غير لاجئ Not-Refugee	لاجئ Refugee	
Palestinian Territory	3,660,386	55,571	2,067,747	1,537,068	الأراضي الفلسطينية
WestBank	2,279,969	55,351	1,600,551	624,067	الضفة الغربية
North of West Bank	919,719	8,206	639,188	272,325	شمال الضفة الغربية
Jenin	251,740	3,437	165,755	82,548	جنين
Tubas	48,143	783	39,821	7,539	طوباس
Tulkarm	156,745	1,604	102,536	52,605	طولكرم
Nablus	315,773	1,321	231,337	83,115	نابلس
Qalqiliya	88,545	915	45,992	41,638	قلقيلية
Salfit	58,773	146	53,747	4,880	سلفيت

جدول 3: عدد عقود الزواج ووقوعات الطلاق المسجلة في محافظات شمال الضفة الغربية، 2009-2010

Table 3: Registered Marriages and Divorces in the West Bank Northern Governorates, 2009-2010

Governorate\Region	وقوعات الطلاق المسجلة Registered Divorces		عقود الزواج المسجلة Registered Marriages		المحافظة/المنطقة
	2010	2009	2010	2009	
Palestinian Territory	6,150	5,761	37,228	38,316	الأراضي الفلسطينية
West Bank	3,273	3,244	20,185	19,839	الضفة الغربية
North of West Bank	1,726	1,373	9,519	8,686	شمال الضفة الغربية
Jenin	386	307	2,766	2,511	جنين
Tubas	73	66	508	457	طوباس
Tulkarm	361	294	1,576	1,555	طولكرم
Nablus	624	470	3,017	2,714	نابلس
Qalqiliya	176	158	892	823	قلقيلية
Salfit	106	78	760	626	سلفيت

جدول 4: العمر الوسيط عند الزواج الأول في محافظات شمال الضفة الغربية حسب الجنس، 2009-2010

Table 4: Median Age at First Marriage in the West Bank Northern Governorates by Sex, 2009-2010

Governorate\Region	Females إناث		Male ذكور		المحافظة/المنطقة
	2010	2009	2010	2009	
Palestinian Territory	19.9	19.7	24.6	24.6	الأراضي الفلسطينية
West Bank	20.1	19.9	25.4	25.4	الضفة الغربية
North of West Bank	20.3	20.3	26.0	26.1	شمال الضفة الغربية
Jenin	20.1	20.0	25.9	25.7	جنين
Tubas	20.7	21.1	25.8	26.5	طوباس
Tulkarm	20.9	20.5	26.6	26.8	طولكرم
Nablus	20.3	20.3	26.1	26.2	نابلس
Qalqiliya	20.0	20.1	26.2	25.9	قلقيلية
Salfit	20.0	19.8	25.2	25.4	سلفيت

جدول 5: عدد المواليد الأحياء المسجلون والوفيات المسجلة في محافظات شمال الضفة الغربية حسب الجنس، 2010
Table 5: Registered Live Births and Deaths Registered in the West Bank Northern Governorates by Sex, 2010

Governorate\Region	Deaths			Births			المحافظة/المنطقة
	المجموع Total	إناث Females	ذكور Males	المجموع Total	إناث Females	ذكور Males	
West Bank	5,961	2,753	3,208	65,131	31,511	33,620	الضفة الغربية
North of West Bank	3,021	1,404	1,617	27,506	13,351	14,155	شمال الضفة الغربية
Jenin	845	386	459	7,295	3,532	3,763	جنين
Tubas	138	69	69	1,140	563	577	طوباس
Tulkarm	561	273	288	4,496	2,195	2,301	طولكرم
Nablus	1,024	462	562	9,539	4,631	4,908	نابلس
Qalqiliya	269	120	149	3,167	1,517	1,650	قلقيلية
Salfit	184	94	90	1,869	913	956	سلفيت

جدول 6: الأسرة لكل 1000 من السكان وعدد المستشفيات والأسرة في محافظات شمال الضفة الغربية، 2011

Table 6: Beds Per 1000 Inhabitant and Number of Hospitals and Beds in the West Bank Northern Governorates, 2011

Governorate\Region	عدد الأسرة Number of Beds	المستشفيات Hospitals	الأسرة لكل 1000 من السكان Beds Per 1000 Inhabitant	المحافظة/المنطقة
West Bank	3,063	51	1.2	الضفة الغربية
North of West Bank	1,025	16	1.0	شمال الضفة الغربية
Jenin	170	3	0.6	جنين
Tubas	-	-	-	طوباس
Tulkarm	153	3	0.9	طولكرم
Nablus	516	6	1.5	نابلس
Qalqiliya	136	3	1.4	قلقيلية
Salfit	50	1	0.8	سلفيت

جدول 7: فعاليات المستشفيات في محافظات شمال الضفة الغربية حسب الفعاليات، 2011
Table 7: Hospital Activities in the West Bank Northern Governorates, 2011

Activites	Governorate						الفعاليات
	سلفيت Salfit	قلقيلية Qalqiliya	نابلس Nablus	طولكرم Tulkarm	طوباس Tubas	جنين Jenin	
Governmental Hospitals	1	1	2	1	-	1	مستشفيات حكومية
Non-Governmental Hospitals	-	2	4	2	-	2	مستشفيات غير حكومية
Grand Total of Discharges	5,837	14,111	59,874	18,705	-	28,223	الإخراجات الكلية
Grand Total of Beds Occupancy Rate	65.3	86.4	63.0	65.4	-	77.3	معدل أشغال الأسرة الكلي
Mean of Duration (day)	2.0	3.0	2.0	2.0	-	1.7	معدل الإقامة الكلي (يوم)

جدول 8: التوزيع النسبي للأفراد (15 سنة فأكثر) في محافظات شمال الضفة الغربية حسب الجنس والعلاقة بقوة العمل، 2011
Table 8: Percentage Distribution of Population (15 Years and Above) in the West Bank Northern Governorates by Sex and Labor Force Status, 2011

Labor Force Status and Sex	الضفة الغربية Wset Bank	شمال الضفة الغربية North of West Bank	Governorate						العلاقة بقوة العمل والجنس
			سلفيت Salfit	قلقيلية Qalqiliya	نابلس Nablus	طولكرم Tulkarm	طوباس Tubas	جنين Jenin	
Both Sexes									كلا الجنسين
In Labor Force	45.5	46.6	48.2	44.8	49.3	41.8	50.8	46.8	داخل القوى العاملة
Outside Labor Force	54.5	53.4	51.8	55.2	50.7	58.2	49.2	53.2	خارج القوى العاملة
Total	100	100	100	100	100	100	100	100	المجموع
Full Employment	74.4	75.0	81.3	61.2	76.2	63.0	71.2	75.7	عمالة تامة
Underemployment	8.3	8.7	2.6	17.0	9.0	14.9	13.8	10.8	عمالة محدودة
Unemployment	17.3	16.3	16.1	21.8	14.8	22.1	15.0	13.5	بطالة
Total	100	100	100	100	100	100	100	100	المجموع
Males									ذكور
In Labor Force	71.4	71.5	69.8	68.9	75.6	66.5	71.9	72.4	داخل القوى العاملة
Outside Labor Force	28.6	28.5	30.2	31.1	24.4	33.5	28.1	27.6	خارج القوى العاملة
Total	100	100	100	100	100	100	100	100	المجموع
Full Employment	74.4	75.1	83.0	60.4	77.6	62.1	69.9	74.7	عمالة تامة
Underemployment	9.7	10.2	3.1	19.3	10.5	17.1	15.9	12.9	عمالة محدودة
Unemployment	15.9	14.7	13.9	20.3	11.9	20.8	14.2	12.4	بطالة
Total	100	100	100	100	100	100	100	100	المجموع
Females									إناث
In Labor Force	19.0	21.1	26.2	18.1	22.7	15.2	30.0	20.8	داخل القوى العاملة
Outside Labor Force	81.0	78.9	73.8	81.9	77.3	84.8	70.0	79.2	خارج القوى العاملة
Total	100	100	100	100	100	100	100	100	المجموع
Full Employment	74.3	74.9	76.9	64.9	71.3	67.1	74.3	79.2	عمالة تامة
Underemployment	3.1	3.5	1.2	7.3	4.1	4.3	8.6	3.4	عمالة محدودة
Unemployment	22.6	21.6	21.9	27.8	24.6	28.6	17.1	17.4	بطالة
Total	100	100	100	100	100	100	100	100	المجموع

جدول 9: متوسط إنفاق واستهلاك الأسرة الشهري بالدينار الأردني في محافظات شمال الضفة الغربية، 2010

Table 9: Average Monthly Household Expenditure and Consumption in Dinar (JD) in the West Bank Northern Governorates, 2010

Indicators	Governorate					المؤشرات
	نابلس Nablus	طوباس Tubas	طولكرم Tulkarm	قلقيلية/سلفيت Qalqiliya/Salfit	جنين Jenin	
Food cash expenditure	337.5	321.7	305.4	358.0	276.7	الإنفاق النقدي على مجموعات الطعام
Total Food Consumption	361.4	354.3	322.6	383.6	299.3	الاستهلاك الكلي من الطعام
Non-food cash expenditure	637.0	509.2	494.7	537.8	422.2	الإنفاق النقدي على غير الطعام
Total Non-Food Consumption	745.8	582.2	578.1	631.6	497.8	الاستهلاك الكلي من غير الطعام
Total Consumption	1,107.2	936.5	900.7	1,015.2	797.1	الاستهلاك الكلي
Total Cash Expenditure	1,075.1	880.0	868.4	981.4	769.7	الإنفاق النقدي الكلي

جدول 10: نسب الفقر بين الأفراد وفقاً لأنماط الاستهلاك الشهرية في محافظات شمال الضفة الغربية، 2010
**Table 10: Poverty Rates According to Actual Monthly Consumption Patterns of
 Individuals in the West Bank Northern Governorates, 2010**

Governorate/Region	نسب الفقر				المحافظة/المنطقة
	الفقر المدقع Deep Poverty	شدة الفقر Poverty Severity	فجوة الفقر Poverty Gap	الفقر Poverty	
West Bank	8.8	1.4	4.1	18.3	الضفة الغربية
North of West Bank	7.2	1.0	3.2	15.1	شمال الضفة الغربية
Jenin	11.4	2.1	5.9	24.8	جنين
Tubas	9.7	1.2	3.8	19.9	طوباس
Tulkarm	4.3	0.6	2.0	10.9	طولكرم
Nablus	5.8	0.6	2.1	11.3	نابلس
Qalqiliya/Salfit	4.4	0.4	1.4	8.4	قلقيلية / سلفيت

جدول 11: عدد المدارس وعدد الطلاب في محافظات شمال الضفة الغربية حسب المرحلة والجهة المشرفة للأعوام الدراسية، 2011/2012

Table 11: Schools and Students in West Bank Northern Governorates by Stage and Supervising Authority 2011/2012

Supervising Authority/ Governorate	المرحلة						الجهة المشرفة المحافظة/
	Stage		ثانوية		أساسية		
	Total	المجموع	Secondary	ثانوية	Basic	أساسية	
	عدد الطلبة	عدد المدارس	عدد الطلبة	عدد المدارس	عدد الطلبة	عدد المدارس	
	Number of Students	Number of Schools	Number of Students	Number of Schools	Number of Students	Number of Schools	
North of West Bank							شمال الضفة الغربية
Government	248,277	777	39,178	363	209,099	414	حكومة
UNRWA	20,356	37	-	-	20,356	37	وكالة الغوث
Private	13,181	62	770	13	12,411	49	خاصة
Total	281,814	876	39,948	376	241,866	500	المجموع
Jenin							جنين
Government	70,001	224	10,695	108	59,306	116	حكومة
UNRWA	3,970	10	-	-	3,970	10	وكالة الغوث
Private	3,090	16	196	4	2,894	12	خاصة
Total	77,061	250	10,891	112	66,170	138	المجموع
Tubas							طوباس
Government	13,388	40	2,121	14	11,267	26	حكومة
UNRWA	1,588	3	-	-	1,588	3	وكالة الغوث
Private	28	1	-	-	28	1	خاصة
Total	15,004	44	2,121	14	12,883	30	المجموع
Tulkarm							طولكرم
Government	42,203	134	6,984	57	35,219	77	حكومة
UNRWA	3,469	6	-	-	3,469	6	وكالة الغوث
Private	781	8	43	1	738	7	خاصة
Total	46,453	148	7,027	58	39,426	90	المجموع
Nablus							نابلس
Government	79,685	235	12,824	111	66,861	124	حكومة
UNRWA	9,082	15	-	-	9,082	15	وكالة الغوث
Private	8,240	28	519	7	7,721	21	خاصة
Total	97,007	278	13,343	118	83,664	160	المجموع
Qalqiliya							قلقيلية
Government	24,956	77	3,825	40	21,131	37	حكومة
UNRWA	2,247	3	-	-	2,247	3	وكالة الغوث
Private	460	6	12	1	448	5	خاصة
Total	27,663	86	3,837	41	23,826	45	المجموع
Salfit							سلفيت
Government	18,044	67	2,729	33	15,315	34	حكومة
UNRWA	-	-	-	-	-	-	وكالة الغوث
Private	582	3	-	-	582	3	خاصة
Total	18,626	70	2,729	33	15,897	37	المجموع

جدول 12: معدل عدد الطلبة لكل شعبة في محافظات شمال الضفة الغربية حسب المرحلة والجهة المشرفة، 2012/2011

Table 12: Average Number of Students Per Class in the West Bank Northern Governorates by Level and Supervisory Authority, 2011/2012

Stage / Governorate	Supervising Authority			المعدل العام/شعبية Grand Average	المرحلة/ المحافظة
	خاصة Private	وكالة الغوث UNRWA	الجهة المشرفة حكومة Government		
Basic					الأساسية
Jenin	21.6	30.3	27.5	27.3	جنين
Tubas	7.0	33.8	31.6	31.6	طوباس
Tulkarm	16.8	33.7	29.6	29.5	طولكرم
Nablus	26.4	34.4	30.3	30.3	نابلس
Qalqiliya	14.5	36.2	28.0	28.1	قلقيلية
Salfit	21.6	-	27.3	27.0	سلفيت
Secondary					الثانوية
Jenin	14.0	-	21.1	20.9	جنين
Tubas	-	-	22.8	22.8	طوباس
Tulkarm	14.3	-	23.8	23.7	طولكرم
Nablus	22.6	-	25.2	25.1	نابلس
Qalqiliya	4.0	-	21.6	21.3	قلقيلية
Salfit	-	-	20.2	20.2	سلفيت

جدول 13: معدل عدد الطلبة لكل معلم في محافظات شمال الضفة الغربية حسب الجهة المشرفة، 2012/2011
Table 13: Average Number of Students Per Teacher in the West Bank Northern Governorates by Supervisory Authority, 2011/2012

Governorate/Region	Supervising Authority			المحافظة/المنطقة
	خاصة Private	وكالة الغوث UNRWA	الجهة المشرفة حكومة Government	
West Bank	15.2	27.5	21.4	الضفة الغربية
North of West Bank	15.4	25.1	20.3	شمال الضفة الغربية
Jenin	14.1	22.4	19.2	جنين
Tubas	4.7	25.6	21.6	طوباس
Tulkarm	11.5	23.9	20.6	طولكرم
Nablus	17.5	26.2	21.5	نابلس
Qalqiliya	8.7	27.4	19.9	قلقيلية
Salfit	15.8	-	19.4	سلفيت

جدول 14: التوزيع النسبي للسكان الفلسطينيين (15 سنة فأكثر) في محافظات شمال الضفة الغربية حسب الحالة التعليمية، 2011

Table 14: Percentage Distribution of Palestinian Population (15 Years and Above) in the West Bank Northern Governorates by Educational Attainment, 2011

Educational Attainment	Governorate							الحالة التعليمية
	المجموع Total	سلفيت Salfit	قلقيلية Qalqiliya	نابلس Nablus	طولكرم Tulkarm	طوباس Tubas	جنين Jenin	
Illiterate	4.6	5.7	4.9	3.8	4.7	6.9	4.8	أمي
Can Read and Write	7.1	7.1	5.3	7.5	5.7	7.7	7.8	ملم
Elementary	16.0	15.5	16.5	14.7	14.6	15.9	18.4	ابتدائي
Preparatory	36.9	34.2	37.9	38.0	37.4	35.5	35.7	إعدادي
Secondary	19.8	20.6	20.7	18.2	22.0	20.3	19.8	ثانوي
Associate Diploma	4.7	3.8	4.2	5.7	5.8	3.3	3.6	دبلوم متوسط
Bachelor and Above	10.9	13.1	10.5	12.1	9.8	10.4	9.9	بكالوريوس فأعلى
Total	100	100	100	100	100	100	100	المجموع

جدول 15: التوزيع النسبي للسكان الفلسطينيين (15 سنة فأكثر) في محافظات شمال الضفة الغربية حسب الحالة التعليمية والجنس، 2011

Table 15: Percentage Distribution of Palestinian Population (15 Years and Above) in the West Bank Northern Governorates by Educational Attainment and Sex, 2011

Educational Attainment	North of West Bank			West Bank			الحالة التعليمية
	إناث Females	ذكور Males	كلا الجنسين Both sex	إناث Females	ذكور Males	كلا الجنسين Both sex	
Illiterate	7.9	1.5	4.6	7.8	2.1	4.9	أمي
Can Read and Write	8.0	6.1	7.1	7.2	6.4	6.8	ملم
Elementary	15.4	16.5	16.0	15.2	17.7	16.5	ابتدائي
Preparatory	34.2	39.5	36.9	35.5	39.3	37.5	إعدادي
Secondary	19.8	19.8	19.8	19.5	19.2	19.3	ثانوي
Associate Diploma	4.3	5.2	4.7	4.4	4.6	4.5	دبلوم متوسط
Bachelor and Above	10.4	11.4	10.9	10.4	10.7	10.5	بكالوريوس فأعلى
Total	100	100	100	100	100	100	المجموع

جدول 16: معدلات معرفة القراءة والكتابة للسكان الفلسطينيين (15 سنة فأكثر) في محافظات شمال الضفة الغربية حسب فئات العمر والجنس، 2011

Table 16: Literacy Rates of Palestinian Population (15 Years and Above) in the West Bank Northern Governorates by Sex and Age Group, 2011

Sex and Age Groups	الضفة الغربية Wset Bank	شمال الضفة الغربية North of West Bank	Governorate						المحافظة جنين Jenin	الجنس و الفئات العمرية
			سلفيت Salfit	قلقيلية Qalqiliya	نابلس Nablus	طولكرم Tulkarm	طوباس Tubas	جنين Jenin		
Both Sexes										كلا الجنسين
15-19	99.6	99.8	99.5	99.7	100.0	99.8	99.6	99.6	99.6	19-15
20-24	99.4	99.5	98.9	99.7	98.9	99.9	99.3	99.9	99.9	24-20
25-34	99.2	99.4	98.9	98.5	99.8	98.7	99.4	99.6	99.6	34-25
35-44	98.4	98.7	98.9	97.1	99.0	98.4	97.7	99.3	99.3	44-35
45+	81.7	83.0	80.6	81.7	86.3	84.0	74.5	80.8	80.8	+45
Total	95.1	95.4	94.3	95.1	96.2	95.3	93.1	95.2	95.2	المجموع
Males										ذكور
15-19	99.4	99.8	99.8	99.8	100.0	99.9	99.5	99.4	99.4	19-15
20-24	99.4	99.6	98.4	99.5	99.6	100	99.3	99.7	99.7	24-20
25-34	99.1	99.3	99.0	98.6	99.6	99.2	99.3	99.3	99.3	34-25
35-44	99.0	99.4	100.0	97.6	99.9	98.6	98.7	99.8	99.8	44-35
45+	93.4	95.2	96.5	95.9	96.0	93.6	94.0	95.1	95.1	+45
Total	97.9	98.5	98.6	98.2	98.9	98.1	98.0	98.5	98.5	المجموع
Females										إناث
15-19	99.7	99.8	99.1	99.7	100.0	99.8	99.8	99.7	99.7	19-15
20-24	99.4	99.3	99.3	100.0	98.2	99.8	99.3	100.0	100.0	24-20
25-34	99.2	99.4	98.8	98.4	100.0	97.9	99.4	99.9	99.9	34-25
35-44	97.7	98.1	98.0	96.6	98.0	98.2	96.7	98.9	98.9	44-35
45+	70.5	71.2	65.6	65.1	77.2	74.8	56.9	66.8	66.8	+45
Total	92.2	92.1	90.0	91.6	93.5	92.3	88.1	91.7	91.7	المجموع

جدول 17: المساجد العاملة في محافظات شمال الضفة الغربية، 2011

Table 17: Mosques in the West Bank Northern Governorates, 2011

Governorate/Region	العدد Number	المحافظة/المنطقة
West Bank	1,832	الضفة الغربية
North of West Bank	796	شمال الضفة الغربية
Jenin	219	جنين
Tubas	48	طوباس
Tulkarm	150	طولكرم
Nablus	226	نابلس
Qalqiliya	90	قلقيلية
Salfit	63	سلفيت

جدول 18: المؤسسات الثقافية العاملة في محافظات شمال الضفة الغربية، 2011

Table 18: Cultural Institutions In Operation in the West Bank Northern Governorates, 2011

Cultural Institutions	الضفة الغربية Wset Bank	شمال الضفة الغربية North of West Bank	Governorate						المؤسسات الثقافية
			سلفيت Salfit	قلقيلية Qalqiliya	نابلس Nablus	طولكرم Tulkarm	طوباس Tubas	جنين Jenin	
Cultural Centers	531	259	17	8	102	50	15	67	المراكز الثقافية
Theaters	7	2	-	-	-	1	-	1	المسارح
Museums	10	1	-	-	-	1	-	-	المتاحف
Cinema	2	1	-	-	1	-	-	-	السينما
Total	550	263	17	8	103	52	15	68	المجموع

جدول 19: المساحة الكلية والمساحة الأرضية المزروعة ونسبة مساحة الأراضي المزروعة في محافظات شمال الضفة

الغربية، 2010/2009

Table 19: Total Area, Cultivated Land Area and Percentage of Cultivated Land Area in the West Bank Northern Governorates, 2009/2010

Area: km²

المساحة: كم²

Governorate/Region	نسبة مساحة الأراضي المزروعة Percentage of Cultivated Land Area from Total Area	المساحة الأرضية المزروعة Cultivated Land Area	المساحة الكلية Total Area	المحافظة/المنطقة
West Bank	15.6	881.9	5,655	الضفة الغربية
North of West Bank	25.3	557.8	2,206	شمال الضفة الغربية
Jenin	31.8	185.4	583	جنين
Tubas	15.3	61.7	402	طوباس
Tulkarm	34.8	85.5	246	طولكرم
Nablus	20.4	123.5	605	نابلس
Qalqiliya	33.3	55.3	166	قلقيلية
Salfit	22.8	46.4	204	سلفيت

جدول 20: عدد الحيازات الزراعية في محافظات شمال الضفة الغربية حسب نوع الحيازة، 2010/2009

Table 20: Agricultural Holdings in the West Bank Northern Governorates by Type of Holding, 2009/2010

Governorate/Region	المجموع Total	نوع الحيازة Type of Holding			المحافظة/المنطقة
		مختلطة Mixed	حيوانية Animal	نباتية Plant	
West Bank	90,908	14,762	10,879	65,267	الضفة الغربية
North of West Bank	48,596	7,944	4,430	36,222	شمال الضفة الغربية
Jenin	14,662	2,629	1,521	10,512	جنين
Tubas	2,834	683	437	1,714	طوباس
Tulkarm	8,035	896	544	6,595	طولكرم
Nablus	13,450	2,422	1,307	9,721	نابلس
Qalqiliya	4,929	817	411	3,701	قلقيلية
Salfit	4,686	497	210	3,979	سلفيت

جدول 21: عدد حيوانات الماشية في محافظات شمال الضفة الغربية حسب النوع، كما هو في 2010/10/01

Table 21: Livestock in the West Bank Northern Governorates by Type, as on 01/10/20100

Governorate/Region	نوع الماشية			المحافظة/المنطقة
	الماعز Goats	الضأن Sheep	أبقار Cows	
West Bank	207,214	505,833	24,290	الضفة الغربية
North of West Bank	57,600	225,281	13,548	شمال الضفة الغربية
Jenin	17,583	58,580	4,798	جنين
Tubas	12,486	45,983	2,060	طوباس
Tulkarm	2,969	16,946	906	طولكرم
Nablus	16,970	77,396	4,438	نابلس
Qalqiliya	3,688	17,973	923	قلقيلية
Salfit	3,904	8,403	423	سلفيت

جدول 22: أهم المؤشرات الاقتصادية لمحافظة شمال الضفة الغربية لنشاط معاصر الزيتون، 2010

Table 22: Main Economic Indicators for Olive Presses in the West Bank Northern Governorates, 2010

(Quantity in Metric Ton and Value in US \$ 1000)

(الكمية بالطن المتري، والقيمة بالآلاف دولار أمريكي)

Indicators	شمال الضفة الغربية North of West Bank	المحافظة Governorate					المؤشرات
		سلفيت Salfit	قلقيلية Qalqiliya	نابلس Nablus	طولكرم Tulkarm	جنين وطوباس Jenin and Tubas	
Total Operating Olive Presses	191	25	17	51	37	61	إجمالي عدد المعاصر
No. of Olive Presses Temporarily Closed	13	4	1	1	4	3	عدد المعاصر المغلقة مؤقتاً
Quantity of Olive Pressed	75,956.2	9,439.2	7,239.6	12,954.5	15,005.2	31,317.7	كمية الزيتون المدروس
Quantity of Oil Extracted	18,452.3	2,339.2	1,807.0	3,225.2	3,897.1	7,183.8	كمية الزيت المستخرج
Number of Employed Persons	977	144	82	255	186	310	عدد العاملين
No. of Unpaid Employees	245	52	33	38	52	70	عدد العاملين بدون اجر
No. of Paid Employees	732	92	49	217	134	240	عدد العاملين بأجر
Compensation of Employees	751.6	83.9	50.2	174.6	139.2	303.7	تعويضات العاملين
Olive Presses Output	7,719.4	1,085.1	699.3	1,540.6	1,735.3	2,659.1	قيمة إنتاج المعاصر
Intermediate Consumption	2,106.9	202.1	178.1	474.6	338.7	913.4	الاستهلاك الوسيط
Gross Value Added	5,612.5	883.0	521.2	1,066.0	1,396.6	1,745.7	القيمة المضافة
Gross Fixed Capital Formation	5,867.9	1,010.0	476.1	1,420.2	1,356.9	1,604.7	التكوين الرأسمالي الثابت

جدول 23: التوزيع النسبي للأسر في محافظات شمال الضفة الغربية حسب نوع المسكن، 2010

Table 23: Percentage Distribution of Households in the West Bank Northern Governorates by Type of Housing Unit, 2011

Governorate/Region	Type of Housing Unit				المحافظة/المنطقة
	المجموع Total	أخرى* Other*	شقة Apartment	فيلا/دار villa/House	
West Bank	100	1.1	50.2	48.7	الضفة الغربية
North of West Bank	100	0.6	33.0	66.4	شمال الضفة الغربية
Jenin	100	1.3	10.0	88.7	جنين
Tubas	100	1.1	11.7	87.2	طوباس
Tulkarm	100	0.0	19.6	80.4	طولكرم
Nablus	100	0.2	70.9	28.9	نابلس
Qalqiliya	100	0.3	21.5	78.2	قلقيلية
Salfit	100	0.0	0.3	99.7	سلفيت

*Other: Includes Independent Room, or Tent, or marginal

* أخرى: تشمل غرفة مستقلة أو خيمة أو براكية

جدول 24: التوزيع النسبي للأسر في محافظات شمال الضفة الغربية حسب حيازة المسكن، 2010

Table 24: Percentage Distribution of Households in the West Bank Northern Governorates by Tenure of Housing Unit, 2010

Governorate/Region	Tenure of Housing Unit				المحافظة/المنطقة
	المجموع Total	أخرى* Other*	مستأجر Rented	ملك Owned	
West Bank	100	7.7	8.7	83.6	الضفة الغربية
North of West Bank	100	7.7	5.3	85.8	شمال الضفة الغربية
Jenin	100	2.4	3.8	93.8	جنين
Tubas	100	0.4	6.1	93.5	طوباس
Tulkarm	100	8.1	9.2	82.7	طولكرم
Nablus	100	8.2	11.3	80.5	نابلس
Qalqiliya	100	12.4	5.8	81.8	قلقيلية
Salfit	100	7.7	5.3	87.0	سلفيت

* Other includes From Work and Without Payment and Other

* أخرى تشمل من العمل ودون مقابل وأخرى

جدول 25: التوزيع النسبي للأسر في محافظات شمال الضفة الغربية حسب عدد الغرف في المسكن، 2010

Table 25: Percentage Distribution of Households in the West Bank Northern Governorates by Number of Rooms per Housing Unit, 2010

Governorate/Region	متوسط عدد الغرف Average Number of Rooms	عدد الغرف في المسكن Number of Rooms in the Housing Unit						المحافظة/المنطقة
		المجموع Total	+5	+4	3	2	1	
West Bank	3.6	100	20.2	31.8	31.5	13.3	3.2	الضفة الغربية
North of West Bank	3.5	100	16.1	31.3	34.5	14.6	3.5	شمال الضفة الغربية
Jenin	3.6	100	17.6	36.0	30.0	12.6	3.8	جنين
Tubas	3.6	100	19.6	39.0	26.2	9.8	5.4	طوباس
Tulkarm	3.1	100	7.8	22.7	45.5	21.0	3.0	طولكرم
Nablus	3.5	100	19.2	32.2	32.0	12.7	3.9	نابلس
Qalqiliya	3.2	100	8.1	23.3	45.9	21.5	1.2	قلقيلية
Salfit	3.7	100	24.1	34.9	27.0	10.8	3.2	سلفيت

*Other: Includes Independent Room or Tent or Marginal

اخرى: تشمل غرفة مستقلة او خيمة او براكية

جدول 26: التوزيع النسبي للأسر في محافظات شمال الضفة الغربية حسب كثافة السكن، 2010

Table 26: Percentage Distribution of Households in the West Bank Northern Governorates by Housing Density, 2010

Governorate/Region	متوسط كثافة المسكن Average of Housing Density	Housing Density					المحافظة/المنطقة
		المجموع Total	+3.00	2.99-2.00	1.99-1.00	أقل من 1	
West Bank	1.5	100	8.1	25.1	51.4	15.4	الضفة الغربية
North of West Bank	1.6	100	9.2	25.6	50.8	14.4	شمال الضفة الغربية
Jenin	1.5	100	6.3	25.0	55.5	13.2	جنين
Tubas	1.5	100	8.2	23.0	55.6	13.2	طوباس
Tulkarm	1.7	100	14.5	29.4	39.6	16.5	طولكرم
Nablus	1.5	100	8.6	23.7	52.5	15.2	نابلس
Qalqiliya	1.8	100	13.5	33.0	46.5	7.0	قلقيلية
Salfit	1.4	100	5.3	19.4	53.6	21.7	سلفيت

جدول 27: رخص الأبنية الصادرة في محافظات شمال الضفة الغربية حسب استخدام المبنى، 2011

Table 27: Building Licenses Issued in the West Bank Northern Governorates by Utilization, 2011

Governorate	الوحدات السكنية المرخصة Licensed Dwellings				المساحات المرخصة (الف م ²) Licensed Area (1000 m ²)			عدد الرخص الصادرة Number of Licenses					المحافظة	
	وحدات قائمة Existing Dwellings		وحدات جديدة New Dwellings		مساحات قائمة Existing Areas	مساحات جديدة New Areas	المجموع Total	إضافات قائمة Existing Extensions	أبنية قائمة Existing Buildings	إضافات جديدة أجزاء قائمة + Additions + Existing Parts	إضافات جديدة لمباني مرخصة Additions to Licensed Buildings	أبنية جديدة New Buildings		المجموع Total
	مساحة (الف م ²) Area (1000 m ²)	عدد No.	مساحة (الف م ²) Area (1000 m ²)	عدد No.										
Total														المجموع
Residential Buildings	214.8	918	801.7	4,808	161.8	880.0	1,041.8	82	517	303	839	1,965	3,706	مبنى سكني
Non-Res. Buildings	0.6	7	10.4	65	30.9	276.4	307.3	2	51	16	164	303	536	مبنى غير سكني
Jenin														جنين
Residential Buildings	21.0	125	167.4	1,116	21.5	178.4	199.8	-	71	6	116	465	658	مبنى سكني
Non-Res. Buildings	-	-	1.1	7	6.1	50.4	56.4	-	10	1	15	52	78	مبنى غير سكني
Tubas														طوباس
Residential Buildings	87.9	125	45.7	289	19.2	47.0	66.4	6	60	51	27	164	308	مبنى سكني
Non-Res. Buildings	0.1	1	0.3	3	2.7	7.4	10.1	-	5	4	-	15	24	مبنى غير سكني
Tulkarm														طولكرم
Residential Buildings	30.0	191	126.3	709	34.8	127.0	162.0	20	72	105	50	310	557	مبنى سكني
Non-Res. Buildings	0.1	2	0.3	2	3.1	31.3	34.5	-	6	4	4	25	39	مبنى غير سكني
Nablus														نابلس
Residential Buildings	38.5	226	338.7	1,861	46.3	395.1	441.1	55	143	133	503	652	1,486	مبنى سكني
Non-Res. Buildings	0.2	2	8.3	48	16.2	169.1	185.2	1	21	7	141	178	348	مبنى غير سكني
Qalqilya														قلقيلية
Residential Buildings	13.2	87	77.0	517	14.1	82.3	96.3	-	53	8	114	194	369	مبنى سكني
Non-Res. Buildings	0.1	1	0.3	2	0.4	8.7	9.1	-	2	-	3	18	23	مبنى غير سكني
Salfit														سلفيت
Residential Buildings	24.2	164	46.6	316	25.9	50.2	76.2	1	118	-	29	180	328	مبنى سكني
Non-Res. Buildings	0.1	1	0.1	3	2.4	9.5	12.0	1	7	-	1	15	24	مبنى غير سكني

جدول 28: عدد التجمعات السكانية في محافظات شمال الضفة الغربية حسب مقدم خدمة المياه من خلال الشبكة العامة، 2010
Table 28: Localities in the West Bank Northern Governorates by Water Provider Through a Public Network, 2010

Governorate/Region	لا يوجد شبكة مياه No Water Network	مقدم الخدمة Service Provider			المحافظة/المنطقة
		أخرى* Other*	هيئة محلية أخرى Other Local Authority	الهيئة المحلية Local Authority	
West Bank	109	24	48	279	الضفة الغربية
North of West Bank	65	8	40	141	شمال الضفة الغربية
Jenin	28	3	5	44	جنين
Tubas	11	1	4	5	طوباس
Tulkarm	2	1	12	20	طولكرم
Nablus	19	2	11	32	نابلس
Qalqiliya	4	1	6	23	قلقيلية
Salfit	1	0	2	17	سلفيت

*Other: include Jerusalem municipality or wells belonge to associations

*اخرى: تشمل بلدية القدس او ابار تابعة لاتحادات

جدول 29: عدد التجمعات السكانية في محافظات شمال الضفة الغربية حسب مصادر المياه البديلة للشبكة، 2010

Table 29: Localities in the West Bank Northern Governorates by Alternative Water Sources, 2010

Governorate/Region	Alternative Sources*					المصادر البديلة *		المحافظة/المنطقة
	المجموع Total	لا يوجد بديل No Alternative	أخرى Other	ينابيع Springs	آبار جمع مياه الأمطار Rain Water Collection Well	آبار ارتوازية Artesian Wells		
West Bank	524	43	20	38	242	181	الضفة الغربية	
North of West Bank	254	15	4	21	110	104	شمال الضفة الغربية	
Jenin	80	-	-	3	41	36	جنين	
Tubas	21	-	-	1	8	12	طوباس	
Tulkarm	35	4	2	-	11	18	طولكرم	
Nablus	64	2	2	12	27	21	نابلس	
Qalqiliya	34	8	-	1	11	14	قلقيلية	
Salfit	20	1	-	4	12	3	سلفيت	

*: The Alternative Water Source for localities is in the absence of water or network does not cover the localities needs.

*: المصادر البديلة المستخدمة في التجمعات للحصول على المياه في حالة عدم وجود

شبكة مياه عامة أو أن شبكة المياه لا تغطي احتياجات التجمعات.

جدول 30: عدد التجمعات السكانية في محافظات شمال الضفة الغربية حسب مقدم خدمة الكهرباء من خلال الشبكة العامة، 2010

Table 30: Localities in the West Bank Northern Governorates by Electricity Provider Through a Public Network, 2010

Governorate/Region	لا يوجد شبكة كهرباء No Electricity Network	مقدم الخدمة Service Provider			المحافظة/المنطقة
		أخرى Other	هيئة محلية أخرى Other Local Authority	الهيئة المحلية Local Authority	
West Bank	28	21	18	256	الضفة الغربية
North of West Bank	12	14	17	211	شمال الضفة الغربية
Jenin	1	10	6	63	جنين
Tubas	6	3	0	12	طوباس
Tulkarm	0	1	3	31	طولكرم
Nablus	0	0	5	59	نابلس
Qalqiliya	4	0	3	27	قلقيلية
Salfit	1	0	0	19	سلفيت

جدول 31: عدد التجمعات السكانية في محافظات شمال الضفة الغربية حسب الجهة التي تقوم بجمع النفايات الصلبة، 2010

Table 31: Localities in the West Bank Northern Governorates by the Provider of Solid Waste Collection Service, 2010

Governorate/Region	المجموع Total	لا يوجد خدمة جمع نفايات There is No Solid Waste Collection Servic	Doer of Waste Collection					المحافظة/المنطقة
			أخرى Other	هيئة محلية أخرى Other Local Authority	وكالة الغوث UNRWA	متعهد خاص Private Contractor	الهيئة المحلية Local Authority	
West Bank	524	79	15	50	20	26	334	الضفة الغربية
North of West Bank	254	31	4	28	7	18	166	شمال الضفة الغربية
Jenin	80	9	2	13	1	5	50	جنين
Tubas	21	10	-	-	1	-	10	طوباس
Tulkarm	35	3	-	2	2	6	22	طولكرم
Nablus	64	4	2	8	3	7	40	نابلس
Qalqiliya	34	3	-	3	-	-	28	قلقيلية
Salfit	20	2	-	2	-	-	16	سلفيت

جدول 32: عدد التجمعات السكانية في محافظات شمال الضفة الغربية حسب طريقة التخلص من المياه العادمة، 2010

Table 32: Localities in the West Bank Northern Governorates by Wastewater Disposal Method, 2010

Governorate/Region	غير مبيّن Not Stated	أكثر من طريقة More Than One method	مجري مكشوفة بدون شبكة Open Channels Without Network	حفرة امتصاصية وصماء Porous and Tight Cesspits	الاتصال بشبكة صرف صحي Wastewater Network Connection	المحافظة/المنطقة
West Bank	20	33	5	465	71	الضفة الغربية
North of West Bank	7	12	1	234	26	شمال الضفة الغربية
Jenin	-	-	-	80	3	جنين
Tubas	1	1	1	18	-	طوباس
Tulkarm	-	1	-	34	5	طولكرم
Nablus	5	8	-	51	12	نابلس
Qalqiliya	-	2	-	32	5	قلقيلية
Salfit	1	-	-	19	1	سلفيت

جدول 33: المؤشرات الرئيسية للنشاط الفندقية في محافظات شمال الضفة الغربية، 2011

Table 33: Main Indicators for Hotel Activities in the West Bank Northern Governorates, 2011

Region	متوسط اشغال الاسرة Average of Bed Occupancy	عدد النزلاء No. of Guests	متوسط عدد الاسرة المتاحة Average No. of Beds	متوسط عدد الغرف المتاحة Average No. of Rooms	عدد الفنادق No. of Hotels	المنطقة
North of West Bank	62.7	14,807	508	185	8	شمال الضفة الغربية
West Bank	3,412.4	507,372	10,704	4,992	91	الضفة الغربية

جدول 34: عدد المنشآت العاملة وعدد العاملين في القطاع الخاص والقطاع الأهلي والشركات الحكومية في محافظات شمال الضفة

الغربية، 2009

Table 34: Establishments in Operation and Employed Persons in the Private and Non Governmental Organization Sectors and Government Companies in the West Bank Northern Governorates, 2009

Governorate/Region	عدد العاملين			عدد المنشآت No. of Establishments	المحافظة/المنطقة
	المجموع Total	إناث Females	ذكور Males		
West Bank	211,168	42,699	168,469	77,059	الضفة الغربية
North of West Bank	91,989	19,196	72,793	38,508	شمال الضفة الغربية
Jenin	22,977	4,864	18,113	11,023	جنين
Tubas	3,166	634	2,532	1,652	طوباس
Tulkarm	14,212	3,276	10,936	6,111	طولكرم
Nablus	38,524	7,399	31,125	13,742	نابلس
Qalqiliya	8,697	1,981	6,716	3,847	قلقيلية
Salfit	4,413	1,042	3,371	2,133	سلفيت

جدول 35: عدد المنشآت العاملة في القطاع الخاص والقطاع الأهلي والشركات الحكومية في محافظات شمال الضفة الغربية حسب النشاط

الاقتصادي الرئيسي، 2009

Table 35: Establishments in Operation in the Private and Non Governmental Organization Sectors and Government Companies in the West Bank Northern Governorates, 2009

ISIC	Economic Activity	الضفة الغربية Wset Bank	شمال الضفة الغربية North of West Bank	Governorate						رمز النشاط	
				المحافظة	سلفيت Salfit	قلقيلية Qalqiliya	نابلس Nablus	طولكرم Tulkarm	طوباس Tubas		جنين Jenin
A	Agriculture (raising of cattle & other animals)	5,930	4,392	142	578	973	527	178	1,994	أ	الزراعة (تربية الماشية والحيوانات الأخرى)
C	Mining & quarrying	285	92	2	1	67	3	0	19	ج	التعدين واستغلال المحاجر
D	Manufacturing	11,554	5,375	343	575	2,278	799	173	1,207	د	الصناعة التحويلية
E	Electricity and water supply	197	170	0	52	7	47	11	53	هـ	إمدادات الكهرباء والمياه
F	Construction	308	128	4	9	73	13	3	26	و	الإبشاءات
G	Wholesale, retail trade & repairs	40,709	20,163	1,150	1,938	7,239	3,313	956	5,567	ز	تجارة الجملة والتجزئة وإصلاح
H	Hotels & restaurants	3,323	1,745	94	128	681	296	68	478	ح	الفنادق والمطاعم
I	Transport, storage & communication	653	277	8	23	103	54	13	76	ط	النقل والتخزين والاتصالات
J	Financial intermediation	594	267	12	29	125	39	8	54	ي	الوساطة المالية
K	Real estate, renting & business	2,839	1,162	55	98	484	192	38	295	ك	الأنشطة العقارية والأجارية
M	Education	1,547	670	45	56	235	129	30	175	م	التعليم
N	Health & social work	3,097	1,316	85	93	490	236	41	371	ن	الصحة والعمل الاجتماعي
O	Other community, social & personal	6,023	2,751	193	267	987	463	133	708	س	أنشطة الخدمة الاجتماعية والشخصية الأخرى
Total		77,059	38,508	2,133	3,847	13,742	6,111	1,652	11,023	المجموع	

جدول 36: عدد المركبات المسجلة* لأول مرة في محافظات شمال الضفة الغربية حسب نوع المركبة، 2010

Table 36: New Registered Vehicles in the West Bank Northern Governorates by Type of Vehicle 2010

Type of Vehicle	الضفة الغربية Wset Bank	شمال الضفة الغربية North of West Bank	Governorate				نوع المركبة
			قلقيلية Qalqiliya	نابلس وسلفيت Nablus & Salfit	طولكرم Tulkarm	جنين وطوباس Jenin & Tubas	
Private Cars	14,954	4,860	433	2,343	675	1,409	سيارات خاصة
Taxis	2,131	1,191	44	689	197	261	سيارات أجرة (تكسي)
Motorcycles and Moped	42	10	-	2	-	8	دراجات نارية و دراجات
Buses (Public/ Private)	204	72	3	21	17	31	باصات (عمومي/خصوصي)
Trailers and Semi-Trailers	190	73	5	17	9	42	مقطورات ونصف مقطورات
Agricultural Tractors	47	16	2	3	3	8	جرارات زراعية
Road Tractors	40	11	2	6	-	3	جرارات
Trucks and Commercial Cars	2,392	564	51	191	63	259	شاحنات وسيارات تجارية
Other Vehicles	48	8	3	3	-	2	مركبات أخرى
Total	20,048	6,805	543	3,275	964	2,023	المجموع

*: The number of licensed vehicles according to records of the Department of License in the Governorate did not reflect the actual number of vehicles.

*: عدد المركبات حسب سجلات مديرية الترخيص في المحافظة لا يعبر عن العدد الفعلي للمركبات

جدول 37: المركبات المرخصة* في محافظات شمال الضفة الغربية حسب نوع المركبة، 2010

Table 37: Licensed Road Vehicles in the West Bank Northern Governorates by Type of Vehicle, 2010

Type of Vehicle	الضفة الغربية Wset Bank	شمال الضفة الغربية North of West Bank	Governorate				المحافظة جنين وطوباس Jenin & Tubas	نوع المركبة
			قلقيلية Qalqiliya	نابلس وسلفيت Nablus & Salfit	طولكرم Tulkarm	المحافظة		
Private Cars	85,874	32,731	2,679	15,640	6,459	7,953	سيارات خاصة	
Taxis	8,616	3,541	223	1,520	655	1,143	سيارات أجرة (تكسي)	
Motorcycles and Moped	303	107	21	36	16	34	دراجات نارية و دراجات نارية صغيرة	
Buses (Public/ Private)	1,350	597	19	211	131	236	باصات (عمومي / خصوصي)	
Trailers and Semi-Trailers	693	265	26	76	43	120	مقطورات ونصف مقطورات	
Agricultural Tractors	830	496	51	118	68	259	جرارات زراعية	
Road Tractors	315	96	8	31	15	42	جرارات	
Trucks and Commercial Cars	23,114	8,055	890	2,904	1,245	3,016	شاحنات وسيارات تجارية	
Other Vehicles	470	78	8	39	17	14	مركبات أخرى	
Total	121,565	45,966	3,925	20,575	8,649	12,817	المجموع	

*: The number of licensed vehicles according to records of the Department of License in the Governorate did not reflect the actual number of vehicles.

*: عدد المركبات حسب سجلات مديرية الترخيص في المحافظة لا يعبر عن العدد الفعلي

للمركبات

جدول 38: قيمة الواردات المرصودة حسب الأبواب للتصنيف الدولي الموحد -التنقيح الثالث في محافظات شمال الضفة الغربية، 2010

Table 38: Value of Registered Imports by SITC-3 Categories in the West Bank Northern Governorates, 2010

Value in Thousand US\$

القيمة بالآلاف دولار أمريكي

Section	الضفة الغربية Wset Bank	شمال الضفة الغربية North of West Bank	المحافظة				نوع المركبة
			قليلية Qalqiliya	نابلس وسلفيت Nablus & Salfit	طولكرم Tulkarm	جنين وطوباس Jenin & Tubas	
Total Imports	3,573,318	1,151,815	118,344	555,863	149,402	328,205	مجموع الواردات
Food And Live Animals	592,534	252,096	17,879	99,107	36,298	98,812	الأغذية والحيوانات الحية
Beverages And Tobacco	154,830	35,499	1,495	23,737	1,258	9,009	المشروبات والتبغ
Raw Materials, Inedible Except Fuels	37,804	15,273	1,338	9,821	2,122	1,992	المواد الخام غير الصالحة للأكل باستثناء الوقود
Mineral Fuels, Lubricants And related Materials	1,046,322	383,938	50,991	159,158	56,018	117,771	وقود معدني ومزلاقات معدنية وما يتصل بذلك من مواد
Animal And Vegetable Oils, Fats And Waxes	20,861	10,475	14	8,341	718	1,402	زيوت ودهون وشحوم حيوانية ونباتية
Chemical And Related Products, n.e.s.*	345,604	75,959	9,674	39,754	12,036	14,495	مواد كيميائية ومنتجات متصلة بها غ.م.أ.*
Manufactured Goods Classified mainly By Material	604,663	175,338	20,870	92,422	22,602	39,444	سلع مصنوعة ومصنفة أساساً حسب المادة
Machinery And Transport	530,879	138,872	10,127	85,248	13,306	30,190	المكائن ومعدات النقل
Miscellaneous Manufactured	239,820	64,365	5,956	38,275	5,044	15,090	مصنوعات متنوعة

* n.e.s: not elsewhere

* غ.م.أ. غير مصنفة في موضع آخر

جدول 39: قيمة الصادرات المرصودة حسب الأبواب للتصنيف الدولي الموحد -التنقيح الثالث في محافظات شمال الضفة الغربية، 2010
Table 39: Value of Registered Exports by SITC-3 Categories in West Bank Northern Governorates,2010

Value in Thousand US\$

القيمة بالآلاف دولار أمريكي

Section	الضفة الغربية Wset Bank	شمال الضفة الغربية North of West Bank	Governorate				المحافظة جنين Jenin & Tubas	الباب
			قلقيلية Qalqiliya	نابلس Nablus & Salfit	طولكرم Tulkarm	توباس		
Total Exports	572,175	162,365	11,661	93,060	12,876	44,768	مجموع الصادرات	
Food And Live Animals	78,427	41,761	316	20,864	6,141	14,440	الأغذية والحيوانات الحية	
Beverages And Tobacco	24,013	15,066	39	14,210	243	574	المشروبات والتبغ	
Raw Materials, Inedible Except Fuels	9,286	6,608	921	3,009	220	2,458	المواد الخام غير الصالحة للأكل باستثناء الوقود	
Mineral Fuels, Lubricants And related Materials	1,548	32	—	20	2	10	وقود معدني ومزلاقات معدنية وما يتصل بذلك من مواد	
Animal And Vegetable Oils, Fats And Waxes	15,761	13,603	259	4,275	2,758	6,311	زيوت ودهون وشحوم حيوانية ونباتية	
Chemical And Related Products, n.e.s.*	73,984	9,142	462	5,364	366	2,950	مواد كيميائية ومنتجات متصلة بها غ.م.أ.*	
Manufactured Goods Classified mainly By Material	244,984	44,719	6,407	19,598	2,680	16,034	سلع مصنوعة ومصنفة أساساً حسب المادة	
Machinery And Transport Equipment's	32,976	8,483	902	7,062	146	373	المكائن ومعدات النقل	
Miscellaneous Manufactured Articles	91,196	22,950	2,355	18,657	320	1,618	مصنوعات متنوعة	

* n.e.s: not elsewhere specified

* غ.م.أ. غير مصنفة في موضع آخر



**Palestinian National Authority
Palestinian Central Bureau of Statistics**

**West Bank Northern Governorates Statistical
Yearbook, 2011**

April, 2012

PAGE NUMBERS OF ENGLISH TEXT ARE PRINTED IN SQUARE BRACKETS.
TABLES ARE PRINTED IN ARABIC FORMAT (FROM RIGHT TO LEFT)

**This document is prepared in accordance with the
standard procedures stated in the Code of Practice for
Palestine Official Statistics 2006**

© April, 2012.
All rights reserved.

Suggested Citation:

Palestinian Central Bureau of Statistics, 2011. West Bank Northern Governorates Statistical Yearbook, 2011. Ramallah - Palestine.

All correspondence should be directed to:
**Palestinian Central Bureau of Statistics
P.O.Box 1647 Ramallah, Palestine.**

Tel: (972/970) 2 298 2700
Fax: (972/970) 2 298 2710
Toll Free: 1800300300
E-Mail: diwan@pcbs.gov.ps
web-site: <http://www.pcbs.gov.ps>

Acknowledgment

The Palestinian Central Bureau of Statistics (PCBS) extends its deep appreciation to all those who contributed to produce this yearbook.

West Bank Northern Governorates Statistical Yearbook, 2011 in the Palestinian Territory was planned and prepared by a technical team from PCBS with joint funding from the Palestinian National Authority (PNA) and the Core Funding Group (CFG) for 2012, represented by the Representative Office of Norway to the PNA and the Swiss Development and Cooperation Agency (SDC).

PCBS is very grateful to the Core Funding Group (CFG) for the valuable contribution towards the funding of this project.

Work Team

- **Report Preparation**
Ghadeer Al Haj Ali
 - **Maps Design**
Nafir Massad
 - **Graphic Design**
Ahmad Sawalmeh
 - **Dissemination Standards**
Hanan Janajreh
 - **Preliminary Review**
Maen Salhab
Mohammad Omari
Nazmi Harb
 - **Final Review**
Mahmoud Jaradat
 - **Overall Supervision**
Ola Awad
- President of PCBS

Important Note

Statistical data were derived from PCBS publications. For further details of the methodology and data quality standards for individual topics, readers can visit <http://www.pcbs.gov.ps>.

Special symbols were used in the tables of this book as follows:

(-): Nil

Table of Contents

Subject	Page
List of Tables	
Introduction	
Chapter One: Main Indicators	[17]
1.1 Demographic Indicators	[17]
1.2 Geographic Indicators	[19]
1.3 Economic Indicators	[20]
Chapter Two: Concepts and Definitions	[23]
References	[29]
Tables	49

List of Tables

Table	Page
Table 1: Estimated Population in the West Bank Northern Governorates by Sex, Mid-2012	51
Table 2: Palestinian Population in the West Bank Northern Governorates by Refugee Status, End-2007	52
Table 3: Registered Marriages and Divorces in the West Bank Northern Governorates, 2009-2010	53
Table 4: Median Age at First Marriage in the West Bank Northern Governorates by Sex, 2009-2010	54
Table 5: Registered Live Births and Deaths Registered in the West Bank Northern Governorates by Sex, 2010	55
Table 6: Beds Per 1000 Inhabitant and Number of Hospitals and Beds in the West Bank Northern Governorates, 2011	56
Table 7: Hospital Activities in the West Bank Northern Governorates, 2011	57
Table 8: Percentage Distribution of Population (15 Years and Above) in the West Bank Northern Governorates by Sex and Labor Force Status, 2011	58
Table 9: Average Monthly Household Expenditure and Consumption in Dinar (JD) in the West Bank Northern Governorates, 2010	59
Table 10: Poverty Rates According to Actual Monthly Consumption Patterns of Individuals in the West Bank Northern Governorates, 2010	60
Table 11: Schools and Students in the West Bank Northern Governorates by Level and Supervisory Authority, 2011/2012	61
Table 12: Average Number of Students Per Class in the West Bank Northern Governorates by Level and Supervisory Authority, 2011/2012	62
Table 13: Average Number of Students Per Teacher in the West Bank Northern Governorates by Supervisory Authority, 2011/2012	63
Table 14: Percentage Distribution of Palestinian Population (15 Years and Above) in the West Bank Northern Governorates by Educational Attainment, 2011	64
Table 15: Percentage Distribution of Palestinian Population (15 Years and Above) in the West Bank Northern Governorates by Educational Attainment and Sex, 2011	65
Table 16: Literacy Rates of Palestinian Population (15 Years and Above) in the West Bank Northern Governorates by Sex and Age Group, 2011	66
Table 17: Mosques in the West Bank Northern Governorates, 2011	67
Table 18: Cultural Institutions In Operation in the West Bank Northern Governorates, 2011	68
Table 19: Total Area, Cultivated Land Area and Percentage of Cultivated Land Area in the West Bank Northern Governorates, 2009/2010	69

Table	Page
Table 20: Agricultural Holdings in the West Bank Northern Governorates by Type of Holding, 2009/2010	70
Table 21: Livestock in the West Bank Northern Governorates by Type, as on 01/10/2010	71
Table 22: Main Economic Indicators for Olive Presses in the West Bank Northern Governorates, 2010	72
Table 23: Percentage Distribution of Households in the West Bank Northern Governorates by Type of Housing Unit, 2011	73
Table 24: Percentage Distribution of Households in the West Bank Northern Governorates by Tenure of Housing Unit, 2010	74
Table 25: Percentage Distribution of Households in the West Bank Northern Governorates by Number of Rooms per Housing Unit, 2010	75
Table 26: Percentage Distribution of Households in the West Bank Northern Governorates by Housing Density, 2010	76
Table 27: Building Licenses Issued in the West Bank Northern Governorates by Utilization, 2011	77
Table 28: Localities in the West Bank Northern Governorates by Water Provider Through a Public Network, 2010	78
Table 29: Localities in the West Bank Northern Governorates by Alternative Water Sources, 2010	79
Table 30: Localities in the West Bank Northern Governorates by Electricity Provider Through a Public Network, 2010	80
Table 31: Localities in the West Bank Northern Governorates by the Provider of Solid Waste Collection Service, 2010	81
Table 32: Localities in the West Bank Northern Governorates by Wastewater Disposal Method, 2010	82
Table 33: Main Indicators for Hotel Activities in the West Bank Northern Governorates, 2011	83
Table 34: Establishments in Operation and Employed Persons in the Private and Non Governmental Organization Sectors and Government Companies in the West Bank Northern Governorates, 2009	84
Table 35: Establishments in Operation in the Private and Non Governmental Organization Sectors and Government Companies in the West Bank Northern Governorates, 2009	85
Table 36: New Registered Vehicles in the West Bank Northern Governorates by Type of Vehicle, 2011	86
Table 37: Licensed Road Vehicles in the West Bank Northern Governorates by Type of Vehicle, 2010	87
Table 38: Value of Registered Imports by SITC-3 Categories in the West Bank Northern Governorates, 2010	88
Table 39: Value of Registered Exports by SITC-3 Categories in the West Bank Northern Governorates, 2010	89

Introduction

Since its inception, PCBS has sought to build a system of Palestinian official statistics based on the needs of the society and in line with recommended standards, including full membership in the international statistical community. PCBS has adopted the principle of progression within existing Palestinian priorities as the basis for work towards developing the statistical system. PCBS has accomplished many statistical activities using primary sources, including censuses and field surveys, and secondary sources such as administrative records in cooperation with public and private sector institutions.

We are pleased to present the West Bank Northern Governorates Statistical Yearbook 2011 to provide continuous time series data of general trends in different areas through a comprehensive statistical reference that covers most population, social, economic, and geographic areas.

This book is one of the most important and comprehensive official statistical references relating to the West Bank Northern Governorates.

The yearbook is divided into three chapters: the first chapter defines the main indicators relating to the West Bank Northern Governorates. The second chapter explains the methodology of data collection, in addition to details regarding data quality and estimates of data sources. The third chapter contains the concepts and definitions used in this statistical yearbook

We believe that we have succeeded in bridging gaps in information and have contributed to providing a key reference of official Palestinian statistics that will serve the developmental process and assist decision makers to create plans based on professional and scientific criteria at national and governorate level.

April, 2012

**Ola Awad
President of PCBS**

Chapter One

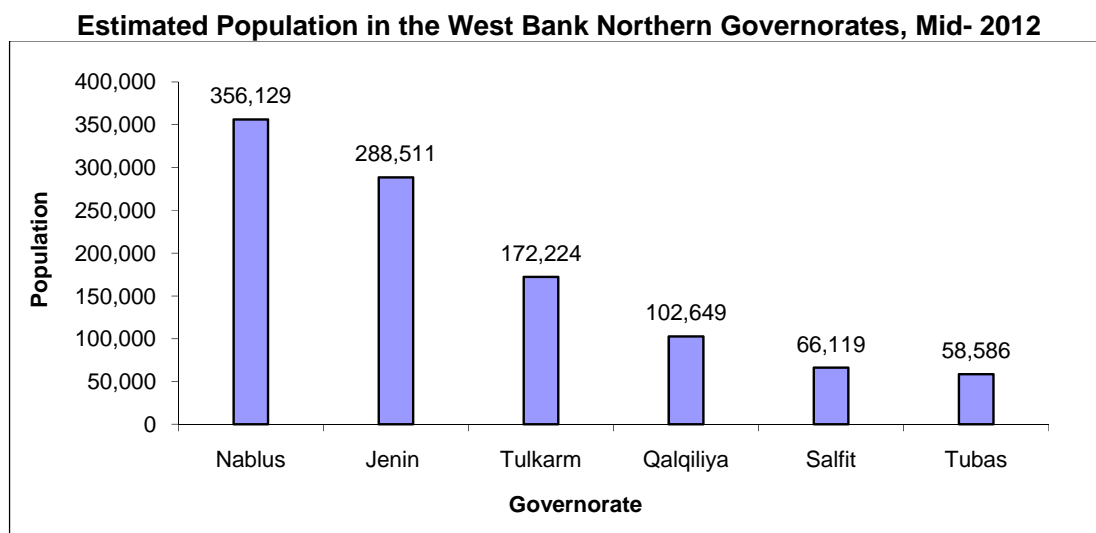
Main Indicators

This chapter presents the main findings of the most important demographic, geographic and economic indicators of the West Bank Northern Governorates.

1.1 Demographic Indicators

Population:

According to PCBS estimates, the population of **the** West Bank Northern Governorates was around 1.0 million in mid-2012.

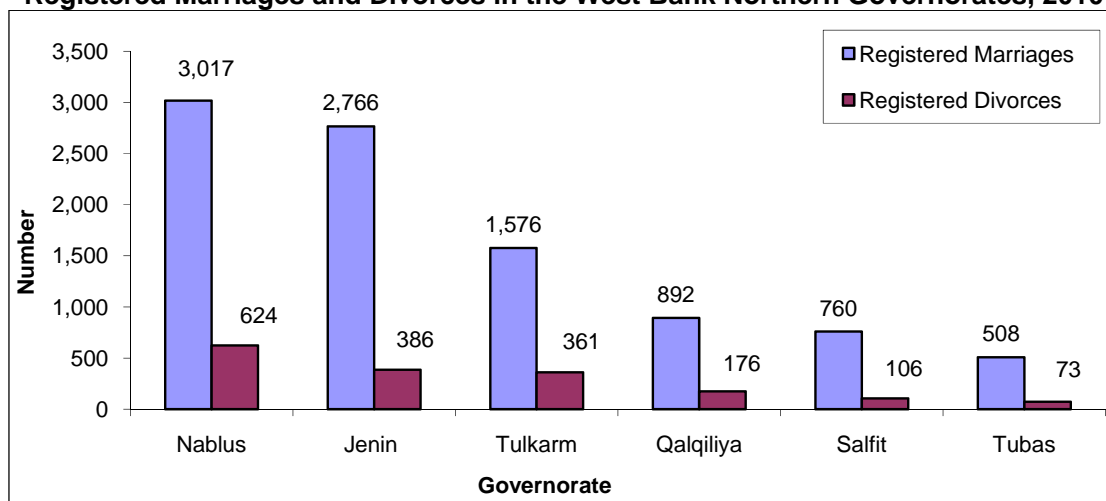


There are 272 thousand Palestinian refugees in the West bank northern governorate are refugees.

There were 9,519 registered marriages in Sharia courts and churches in the West Bank Northern Governorates in 2010, which accounted for 25.6% of all marriages in the Palestinian Territory.

There were 1,726 registered divorces in Sharia courts in 2010, which accounted for 28.1% of all cases of divorce in the Palestinian Territory.

Registered Marriages and Divorces in the West Bank Northern Governorates, 2010



The median age at first marriage in the West Bank Northern Governorates was 26 years for males and 20.3 years for females in 2010.

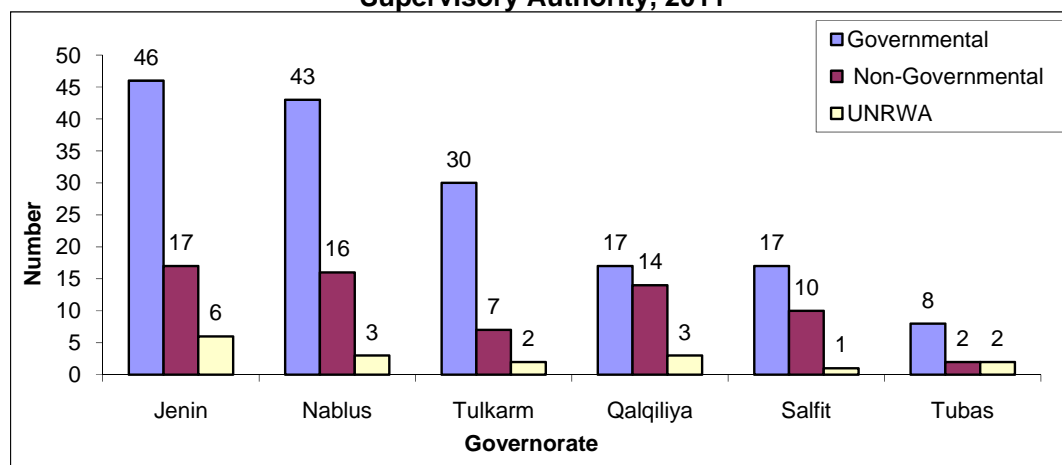
There were 27,506 registered live births in 2010 in the West Bank Northern Governorates, 14,155 male and 13,351 female, constituting 42.2% of the West Bank total births. In the same year, there were 3,021 registered deaths, 1,617 males and 1,404 females, representing 50.7% of all the West Bank deaths.

Health:

There were 16 hospitals in 2011 in the West Bank Northern Governorates, including six government hospitals and the rest non-governmental hospitals. The total number of beds was 1,025, making an average 1.0 beds per 1000 inhabitants.

There were 244 primary health care centers in 2011 in the West Bank Northern Governorates, with 161 health centers supervised by the Ministry of Health, 66 run by non-governmental organizations, and 17 health centers run by UNRWA.

Primary Health Care Clinics and Centers in the West Bank Northern Governorates by Supervisory Authority, 2011



Labor:

The labor force participation rate of persons aged 15 years and above in the West Bank Northern Governorates was 46.6%: 21.1% for females and 71.5% for males. Of these, 83.7% were in full employment while 8.7% were underemployed.

The unemployment rate in the northern governorates was 16.3%: 21.6% for females and 14.7% for males.

Poverty:

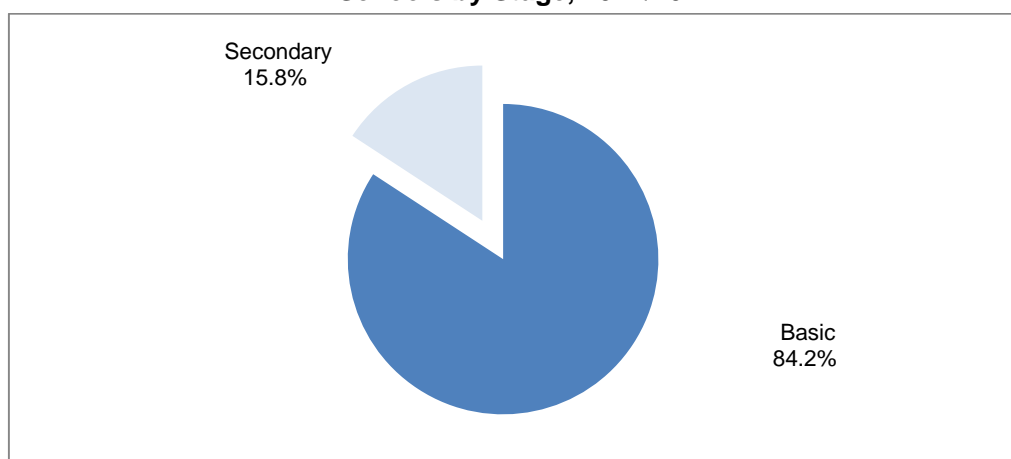
The poverty rate among individuals in the West Bank Northern Governorates was 15.1% in 2010, compared to 18.3% among individuals in the West Bank for the same year. Monthly household expenditure in the governorate of Nablus was higher than in the other northern governorates at JD 1,075.1.

Education:

Schools in the West Bank northern governorates

There were 876 schools in total with 281,814 students: 41,449 males and 140,365 females.

**Percent Distribution of Students in the West Bank Northern Governorates
Schools by Stage, 2011/2012**



2.1 Geographic Indicators

Environment:

There were 65 localities not connected to a water network in the West Bank Northern Governorates in 2010.

In 2010, the local authorities provided water to 141 localities via the public network in the West Bank Northern Governorates and other authorities provided water services to 40 localities.

There were 12 localities not connected to an electricity network in the West Bank Northern Governorates during 2010. Local authorities provided electricity via the public network to 211 localities and 17 localities were served by other local authorities or suppliers.

There were 31 localities in the West Bank Northern Governorates that had no solid waste collection service in 2010 while the local authority collected solid waste in 166 localities.

There were 234 localities without a wastewater network in the West Bank Northern Governorates and 26 localities were connected to a wastewater network in 2010.

Agriculture and Land Use:

The area of the West Bank Northern Governorates is 2,206 km² in year 2010, which represents around 39% of the total area of the West Bank. The cultivated land is 557.8 km² and represents 63.3% of the total cultivated land in the West Bank Northern Governorates, and 25.3% of the total area of the West Bank Northern Governorates, during the agricultural year 2009/2010.

During the agricultural year 2009/2010, there were 48,596 agricultural holdings in the West Bank Northern Governorates, representing 53.5% of all agricultural holdings in the West Bank. Plant holdings were the most common type of agricultural holding and numbered 36,222, equivalent to 74.5% of all agricultural holdings in the West Bank northern governorates. There were 7,944 mixed agricultural holdings, equivalent to 16.4% of all holdings, and 4,430 animal holdings, equivalent to 9.1% of all agricultural holdings in the West Bank northern governorates.

There were 13,548 cows raised in the West Bank Northern Governorates, representing 55.8% of all cows raised in the West Bank; 225,281 sheep representing 44.5% of all raised in the West Bank; and 57,600 goats, representing 27.8% of all goats raised in the West Bank on the enumeration day, the first of October 2010.

Housing Conditions:

66.4% of households in the West Bank Northern Governorates live in a villa or house and 33.0% live in an apartment.

Tourism:

There were eight hotels operating in the West Bank Northern Governorates with an average of 185 rooms and 508 beds. During 2011, the total number of hotel guests was 14,807. The percent of room occupancy in North of the West Bank hotels was 62.7%.

3.1 Economic Indicators

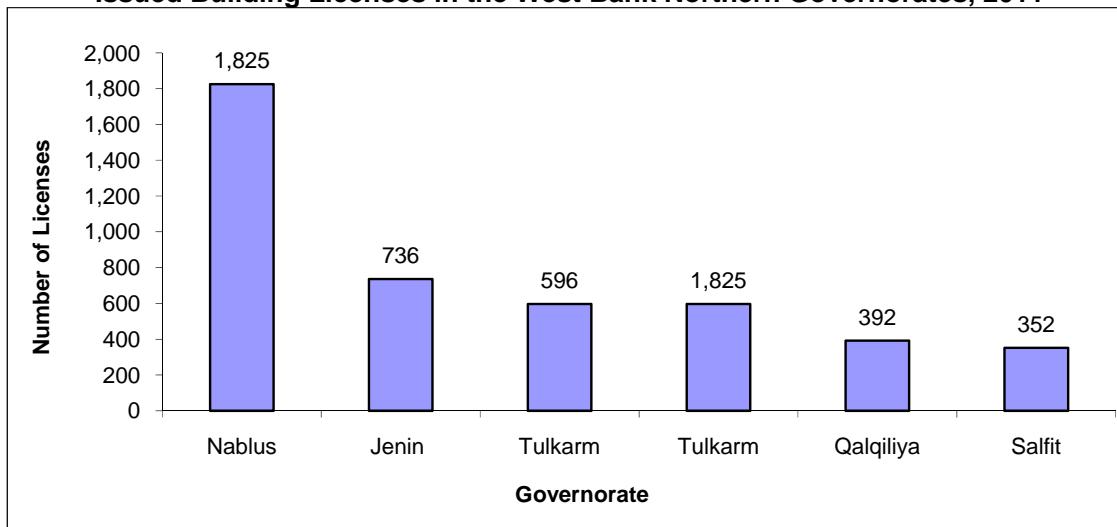
Establishments:

There were 38,508 economic establishments operating in the West Bank Northern Governorates in 2009 with a total of 91,989 workers, comprising 72,793 males and 19,196 females.

Building licenses:

In 2011, 4,242 building licenses were issued in the West Bank Northern Governorates with a total area of 1,349.1 m². Of these licenses, 1,156.4 m² were for new buildings and 192.7 m² were for existing buildings.

Issued Building Licenses in the West Bank Northern Governorates, 2011



Transportation:

Licensed vehicles in the West Bank Northern Governorates in 2010 was 45,966.

There were 6,805 new registered vehicles in the West Bank Northern Governorates in 2010.

Registered Foreign Trade:

Imports:

Imports increased by 8.7 percent in the West Bank Northern Governorates in 2010 compared to 2009 and totaled US\$1,152 million.

Exports:

Exports increased in the West Bank Northern Governorates in 2010 and totaled US\$162.4 million.

Trade Balance:

The trade balance for the West Bank Northern Governorates registered a deficit in 2010 of US\$989.5 million.

Chapter Two

Concepts and Definitions

Agricultural Holding:

It is an economic unit of agricultural production under single management comprising all kept, livestock and all land used totally or partially for agriculture production purposes regardless to title legal form or size. Single management may be exercised by an individual or household jointly by two or more individuals or households by a clan or tribe or by a juridical person such as: a corporation cooperative or government agency. The holdings land may consist of one or more parcels located in one or more separate areas or in one or more territorial or administrative divisions, providing the parcels share the same production means, such as labour, farm buildings, machinery or draught animals.

Agricultural Land:

It refers to the major classes of land use on agricultural holdings. For classification the "gross area" is surveyed for each class. Agricultural land includes land under scattered farm buildings, yards and their annexes, permanently uncultivated land, such as uncultivated patches, banks footpaths, ditches, headlands and shoulders (ECE 1986).

Animal Holding:

The presence of animals controlled by the holder, the holder should have any number of cattle's or camels, at least 5 heads of sheep or goats or pigs, at least 50 birds of poultry (Layers and broilers), or 50 rabbits or other poultry like turkeys, ducks, fer...etc, or a mixture of them, or at least 3 beehives controlled by the holder.

Average (rooms, beds) Occupancy:

It is defined as the total number of occupied (rooms, beds) divided by number of days.

Average Household Size:

It refers to the average number of household members calculated through dividing the total number of members for a certain category by the number of households for that particular category.

Average Housing Density:

This refers to the average number of persons living in the room. This average is calculated by dividing the total number of individuals of a certain category from households by the total number of rooms for that particular category.

Bed Occupancy:

Number of booked and paid beds. Such beds are considered occupied whether they were actually used or not.

Bed Occupancy Rate:

Hospitalization days for admitted patients divided by number of beds multiplied by days of year.

Building:

The building is defined as any fixed construction that is temporarily or permanently erected on the surface of the earth or water. The building is surrounded by four walls or with at least one completed ceiling .

Compensations of Employees:

The total remuneration, in cash or in kind, including social security contributions, payable by an olive presses to an employee in return for work done by the latter.

Death:

The permanent disappearance of all evidence of life at any time after live birth has taken place.

Discharges:

Discharged patient from a hospital after having the diagnostic and curative health care regardless of the discharged case (cured or dead).

Employed Persons:

A person who works in the Olive Press including owners, self-employed, unpaid family members, or waged workers who receive their compensations in cash or in kind during a specific reference period.

Employee:

A person who works for a public or private employer and receives remuneration in wage, salary, commission, tips, piece-rates or pay in kind.

Exports:

It refers to the whole commodities (goods and services), that are exported outside the country, conditioned with ownership transcription to another economy, or to free customs regions as a discount from the motional economy which is a result of transaction with nonresident economy.

Establishment:

An enterprise or part of an enterprise in which one group of goods and services is produced (with the possibility of having secondary activities).

Economic Activity:

The kind of work which is done by the establishment, and the main economic activity is the activity that contributes to the largest value added in establishments practicing more than one activity.

Government School:

Any educational institution run by MOE or any other ministry or governmental instrument.

Government Public Sector:

Includes all institutions of the three branches: legislative, judicial and executive.

Gross Value Added:

Value added is a central concept of production and refers to the generated value of any unit that carries out any productive activity. Gross value added is defined as the value of gross production less the value of intermediate consumption.

Guests:

It refers to visitors staying in the hotels and using their facilities. Records of new guests are based on the number of visits regardless whether it's the same person or different.

Health:

Many definitions exist. As defined by the World Health Organization: “A state of complete physical, mental and social well-being and not merely the absence of disease or infirmity”.

Hospital:

An institution whose primary function is to provide services (diagnostic and therapeutic) for a variety of medical conditions, both surgical and non-surgical. Most hospitals also provide some outpatient services, particularly emergency care.

Hotel:

It is defined as an accommodation establishment providing overnight lodging for the visitors in a room or unit. It should hold a number of persons exceeding that of an average single family. The establishment must be under one management, and provides different facilities and services to visitors.

Housing Unit:

A building or part of a building constructed for one household only, with one or more independent entrance leading to the public road without passing through another housing unit. The unit might not be constructed for living purposes but found occupied with a household during the enumeration. Likewise, the unit might be utilized for habitation or for work purposes or both purposes. Also, it might be closed, vacant or occupied by one or more households during the survey.

Housing Unit Type:

Housing unit type may refer to (villa, house, apartment, independent room, marginal, tent or other).

Household Expenditure:

This refers to the amount of cash spent on the purchase of goods and services for living purposes, and the value of goods and service payments, or part of payments, received from an employer, and cash expenditure spent as taxes (non-commercial or non-industrial), gifts, contributions, interest on debts, and other non-consumption items.

Household Consumption:

This refers to the amount of cash spent on the purchase of goods and services for living purposes, and the value of goods and service payments, or part of payments, received from an employer, and own-produced goods and food, including consumed quantities during the recording period, and imputed rent.

Imports:

It refers to the whole commodities (goods and services) entered the country by air, land and sea that are used in consumption, convertibility on the manufacturing sector, and re-exportation.

Intermediate Consumption:

It is the value of the goods and services consumed as inputs, used up or transformed during the production process. It is measured during a specific period in time in a way similar to measuring production. Intermediate consumption is estimated by purchase price, which is defined as the producers' price plus transportation and wholesale and retail trade margins. The value of the gross intermediate consumption on the level of the total economy is the same whether calculated by purchase or producers' price. However, on the detailed level, the two evaluations vary.

In Operation Establishment:

An establishment which is in operation during the implementation of establishment census.

Labor Force:

The economically active population (Labor Force) consisting of all persons aged 15 years and over who were either employed or unemployed.

Livestock:

Refers to all animals kept or reared mainly for agriculture purposes. Including cattle, buffaloes, sheep, goats, pigs, horses, mules, asses, camels, poultry, rabbits, bees and other domesticated animals as well as foxes, minks, etc.

Main Economic Activity:

Is the main work of the enterprise based on the (ISIC, rev4) and that contribute by the large proportion of the value added, whenever more than one activity exist in the enterprise.

Mean Duration:

Total hospitalization days divided by discharged patients.

Median Age at First Marriage:

The age dividing individuals into two categories, either married before it or married after it.

Mixed Holding:

If the holder has plant and animal holdings according to Plant and Animal Holding definition providing, both animal and plant activities, share the same production means, such as labour, farm buildings, machinery or draught animals.

Marriage Duration (For divorced):

The duration between the date of the actual marriage and the survey reference date, calculated in years.

North of the West Bank Region:

Jenin, Tubas, Tulkarm, Nablus, Qalqiliya, and Salfit governorates.

Number of Guest Nights:

Number of beds booked for hotel guests. Such beds are considered as occupied whether they were actually used or not. It is measured by guest night unit.

Number of Rooms:

It refers to furnished rooms for the use of guests. Such rooms might be single, double, triple, or quadruple. Rooms involving more than four beds were classified under (others) in the questionnaire. As for the suite, it is usually comprised of one bedroom or more, a living room and private toilet facilities.

Number of Persons Engaged:

This includes paid employees, unpaid owners and family members. Includes also all permanent and temporary staff aged 10 years and more.

Olive Press:

An enterprise or part of an enterprise in which one group of goods and services is produced (olive oil, with the possibility of having secondary activities).

Outputs:

It is the value of the final products of goods and services produced by a certain olive press which is used by other units for self-consumed or for the purposes of self gross fixed capital formation.

Percentage of (Rooms, Beds) Occupancy:

It is defined as the average occupancy of (rooms, beds) divided by available (rooms, beds) multiplied by one hundred.

Plant Holding:

The presence of cultivated or arable land area for any agricultural crops controlled by the holder, and must not be less than one dunum for open cultivated area and (0.5) dunum for protect cultivated area.

Population Density:

Number of population per km² of area.

Poverty:

Is often defined as “the absence of the minimum standard of income or resources to meet basic needs” and as “the inability to attain the minimum standard of living.” Two poverty lines have been developed according to actual spending patterns of Palestinian families. The first, termed “deep poverty line” was calculated to reflect a budget for food, clothing and housing. The second line adds other necessities including health care, education, transportation, personal care, and housekeeping supplies. Since consumption levels better reflect the population’s needs, and help to specify the poverty line in Palestine, the monthly consumption level is used rather than the monthly income.

Private sector:

Includes all institutions owned by individual/s or part of an organization and it's propose is for profit in most cases.

Public Water Network:

A network of pipes for the purpose of providing clean water to households. It normally belongs to a municipality, council or to a private company and for different domestic uses.

Refugee Status:

This status relates to the Palestinians who were forced to leave their land in the Palestinian Territory occupied by Israel in 1948. It applies to their male sons and grandchildren. Every Palestinian falls under one of the following categories:

Registered Refugee: It applies to registered refugee holding refugee registration card issued by UNRWA.

Non-Registered Refugee: It applies to unregistered refugee who do not hold refugee registration card issued by UNRWA.

Non-Refugee: It applies to any Palestinian not categorized under any of the two aforementioned statuses.

Residence:

Defined in economic terms, the main criterion to determine residence of an entity is centre of economic interest. Persons are considered residents of the country where they live for at least one year, excluding students, for illness and soldiers).

Room Occupancy:

Number of booked and paid rooms. Such rooms are considered occupied whether they were actually used or not.

School:

Any educational institution excluding kindergartens, regardless of students' number and grade structure.

Secondary School:

Includes schools with secondary stage, or basic and secondary stage.

Sewage Network:

System of collectors, pipelines, conduits and pumps to evacuate wastewater (rainwater, domestic and other wastewater) from any of the location paces generation either to municipal sewage treatment plant or to a location place where wastewater is discharged.

Tenure of Housing Unit:

Tenure status indicates whether the household occupies the housing unit as owner, rented, or other (include without payment, and for work).

Underemployment:

Underemployment exists when a person's employment is inadequate in relation to alternative employment, account being taken of his\her occupational skills. The underemployed persons are classified into two groups:1. Visible Underemployment: which refers to insufficient volume of employment :Persons worked less than 35 hours during the reference week or worked less than the normal hours of work in their occupation were considered as visibly underemployed.2. Invisible Underemployment: refers to a misapplication of labour resources or fundamental imbalance as between labour and other factors of production, such as insufficient income.

Unemployed (According to the ILO Standards):

Unemployed persons are those individuals aged 15 years and over who did not work at all during the reference period, who were not absent from a job, were available for work and actively seeking a job during the reference period by one of the following methods news paper, registered at employment office, ask friends or relatives or any other method.

UNRWA School:

Any school run or supervised by UNRWA.

References

1. Palestinian Central Bureau of Statistics. Primary Educational Census Database for the scholastic years 2011/2012. Ministry of Education and Higher Education. Ramallah-Palestine.
2. Palestinian Central Bureau of Statistics, 2012. Database of Culture Statistics 2011. Ramallah- Palestine.
3. Palestinian Central Bureau of Statistics, 2012. Health Statistics Data Base, 2010. Ramallah- Palestine.
4. Ministry of health, PHIC, Annual Health Report- 2010, Ramallah- Palestine.
5. Palestinian Central Bureau of Statistics, 2012. Population Register, Ministry of Interior, Updated Version Until 10/2/2011. Ramallah- Palestine.
6. Palestinian Central Bureau of Statistics, 2012. Foreign Trade Statistics, Goods and Services, 2010: Main Results. Ramallah – Palestine.
7. Palestinian Central Bureau of Statistics, 2011. Olive PRESSES Survey 2010- Main Results. Ramallah- Palestine.
8. Palestinian Central Bureau of Statistics, 2012. Database of Population, Housing and Establishment Census 2007, Ramallah – Palestine
9. Palestinian Central Bureau of Statistics, 2012. Revised Estimates based on the final results of Population, Housing and Establishment Census 2007. Ramallah-Palestine.
10. Palestinian Central Bureau of Statistics, 2012. Database of Marriage and Divorce Database, (2009-2010). Ramallah-Palestine
11. Palestinian Central Bureau of Statistics, 2012. Population, Housing and Establishment Census 2007 .and update until 2009.
12. Palestinian Central Bureau of Statistics, 2012. Expenditure and Consumption Survey 2010. Ramallah- Palestine.
13. Palestinian Central Bureau of Statistics, 2011. Local Community Survey 2010: Main Findings. Ramallah – Palestine
14. Palestinian Central Bureau of Statistics, 2011. Land Use Statistics Tables in the Palestinian Territory, 2008. Ramallah - Palestine.
15. Palestinian Central Bureau of Statistics, 2011, Agriculture Census 2010, Press Final Results. Ramallah- Palestine.
16. Palestinian Central Bureau of Statistics, 2011. Hotel Activities in Palestinian Territory, (Annual Bulletins, 2010). Ramallah - Palestine.

17. Palestinian Central Bureau of Statistics, 2012. Palestinian Labor Force Survey: annual Report, 2011. Ramallah – Palestine.
18. Palestinian Central Bureau of Statistics 2011, Transportation and Communication Statistics in the Palestinian Territory: Annual Report 2010. Ramallah-Palestine.