

2011

2012 /

2006

.2012 – 1433 ©

:

.2011

.2012

:

– 1647 . .

(970/972) 2 2982700 :

(970/972) 2 2982710 :

1800300300 :

diwan@pcbs.gov.ps :

http://www.pcbs.gov.ps :



.

2011

(PNA)

2012

(CFG)

.(SDC)

.

(CFG)

•

•

•

•

•

•

•

<http://www.pcbs.gov.ps>

.

(-)

19	:
19	1.1
26	2.1
32	3.1
37	:
47	
49	

51	2012	:1
52		:2
	2007	
53	2011-2010	:3
54		:4
	2011	
55		:5
	2011	
56	1000	:6
	2010	
57	2010	:7
58	(15)	:8
	2011	
59		:9
	2010	
60		:10
	2010	
61		:11
	2012/2011	
62		:12
	2012/2011	
63		:13
	2012/2011	
64	(15)	:14
	2011	
65	(15)	:15
	2011	

66	(15)	:16
	2011	
67	2011	:17
68	2011	:18
69		:19
	2010/2009	
70	2010/2009	:20
71		:21
	2010/10/01	
72	2011	:22
73	2010	:23
74	2010	:24
75	2010	:25
76	2010	:26
77	2011	:27
78		:28
	2010	
79		:29
	2010	
80		:30
	2010	
81		:31
	2010	
82		:32
	2010	
83	2011	:33

84 **:34**

2010

85 **:35**

2010

86 2010 **:36**

87 2010 **:37**

88 - **:38**

2010

89 - **:39**

2010

2011

2012

1.1

:

2012

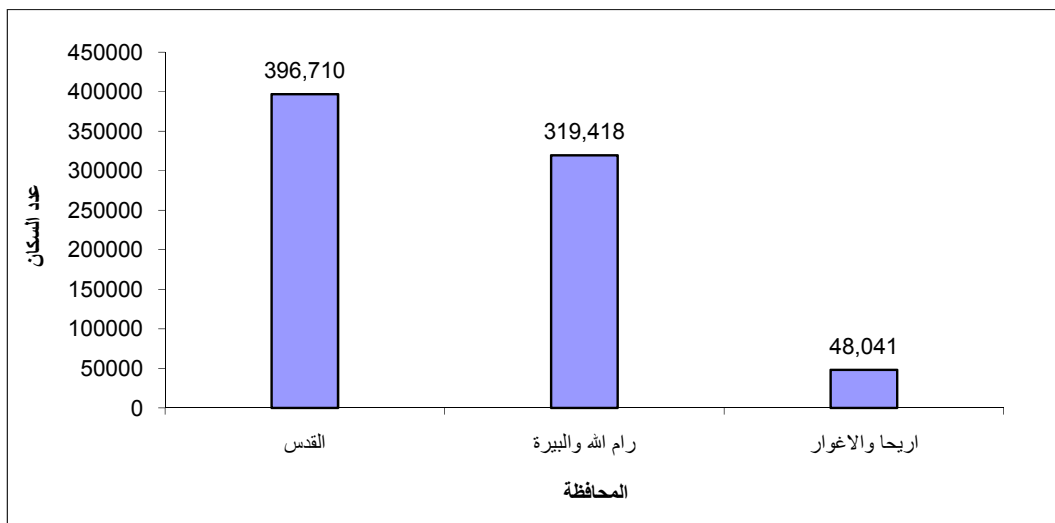
764

%17.8

%9.3

397

2012



:

%27.4

2007

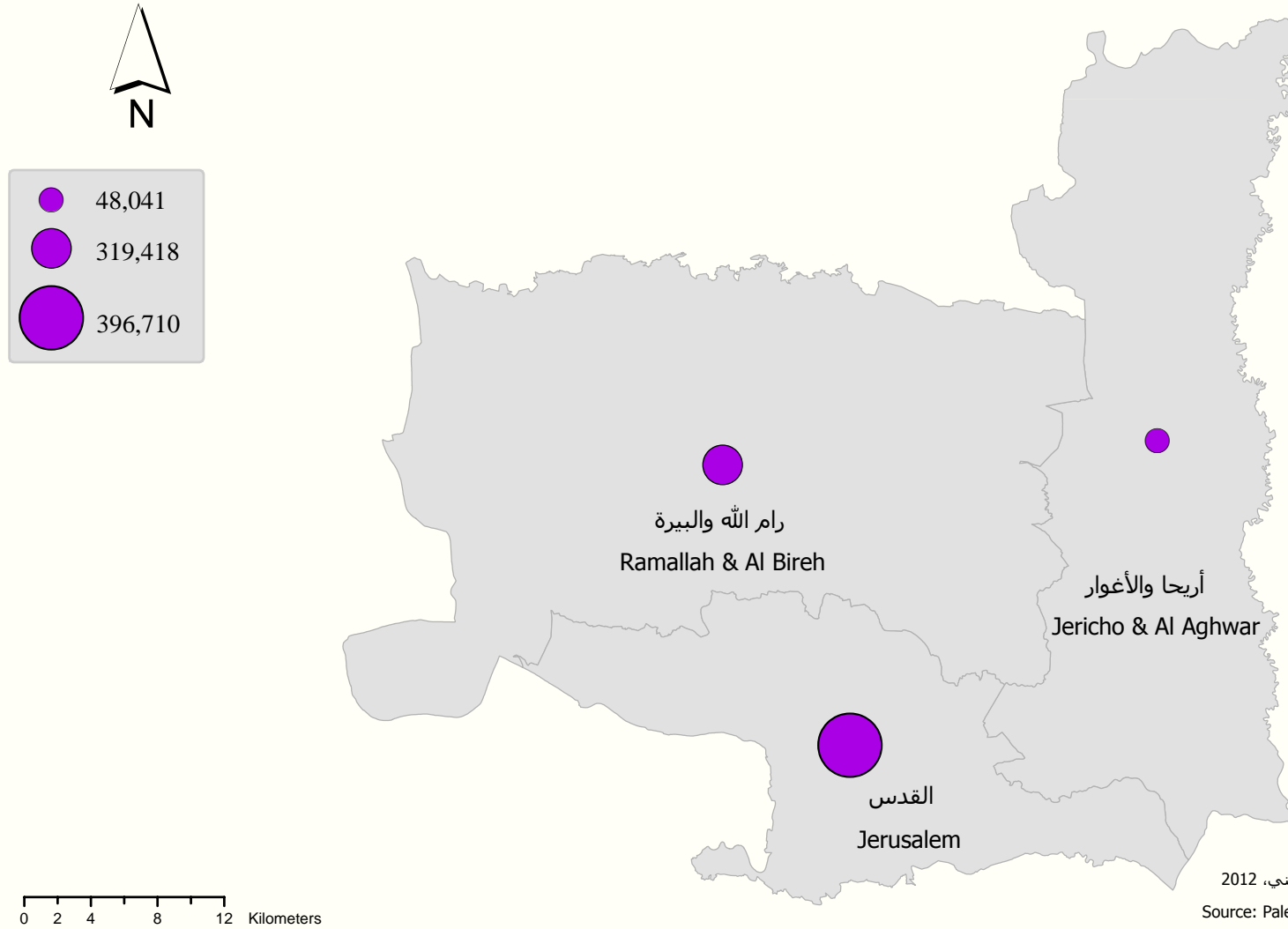
207

624

%31.8

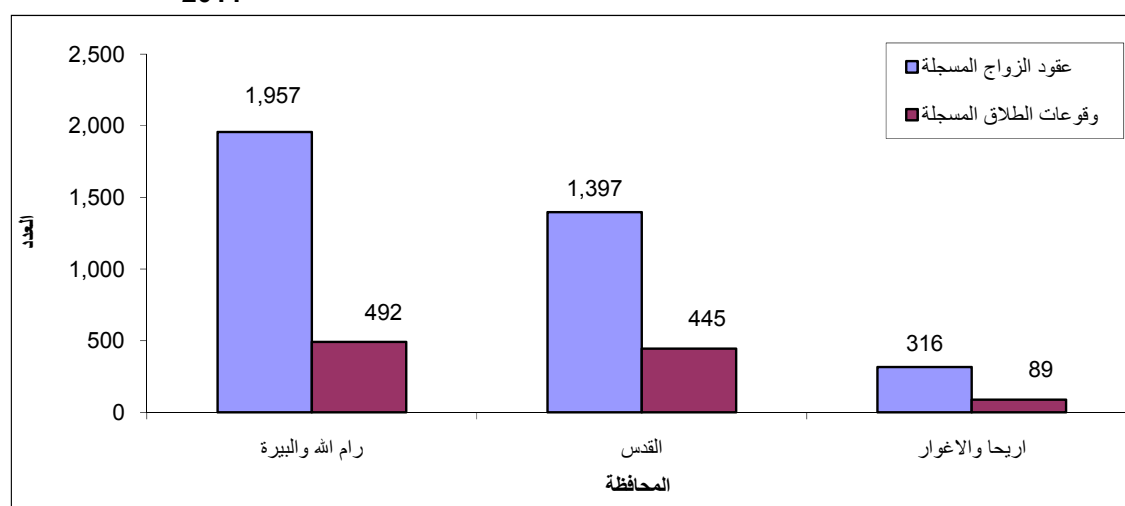
%51.3

عدد السكان المقدر في محافظات وسط الضفة الغربية منتصف العام، 2012
Estimated Population in the West Bank Central Governorates at Mid, 2012



3,670 2011 :
 %10.2
 1000 8.4 2011
 1000 6.8)
 .(1000 3.6)
 20.1 25.2 2011
 24.9 25.3
 . 19.8 20.5
 2011
 . %17.3 1,026
 1000 1.4 2011
 1.9
 1000 1.1 1000

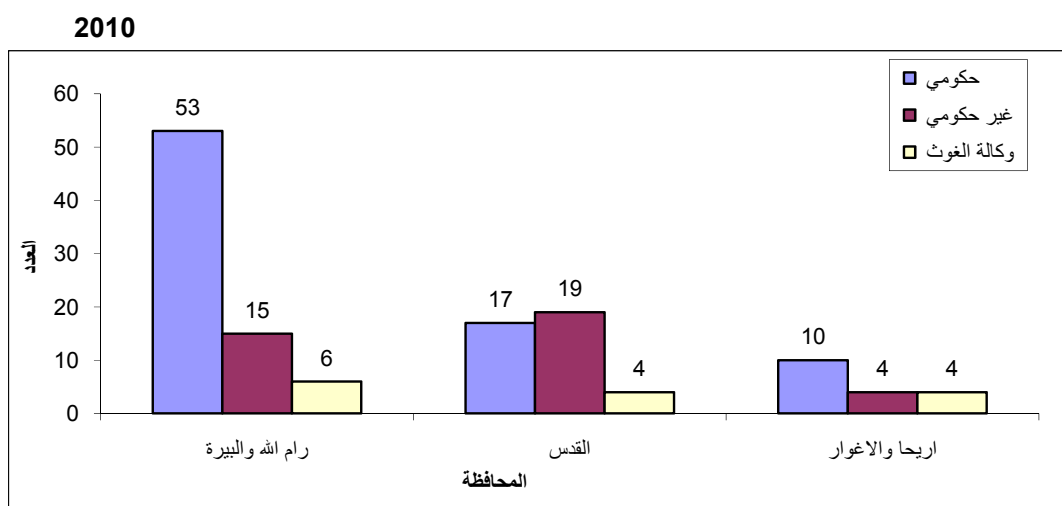
2011



:
 2011
 12,715
 6,132
 6,583
 1,213
 548
 19.7%)
 19.0%
 665

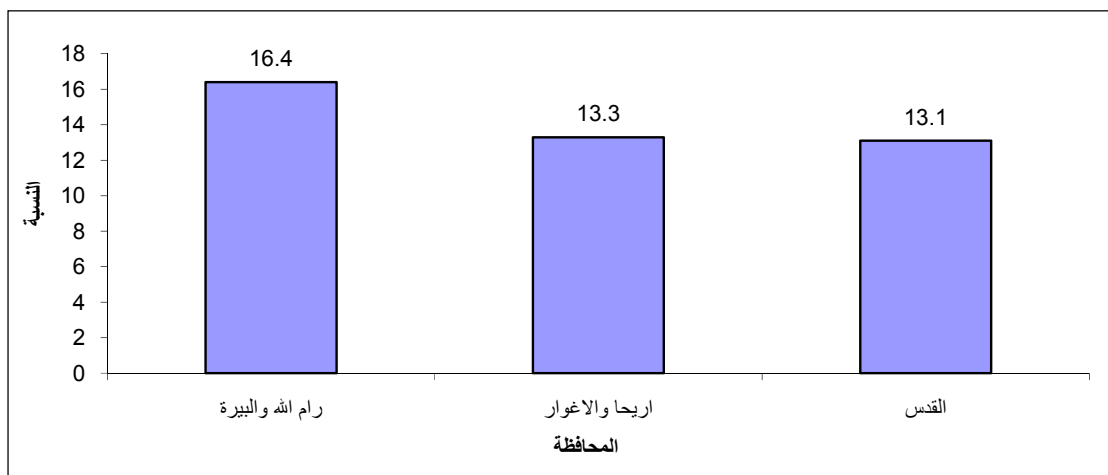
:
 2010
 1,021
 1.4
 1.7
 1000
 1000
 1.1
 1000

2010
 132
 38
 80
 14



:
 2011
 15)
 41.8%
 68.5%
 15.1%
 85.3%
 1.6%

2011



13.6%

19.7%

2011

14.7%

2010

10.7%

18.3%

1,098.0

671.3

1,460.9

2,704

498

2012/2011

34 (

)

166

140)

306

.

(

54

104)

158 (

)

160,065

45,006

81,683

78,382

2012/2011

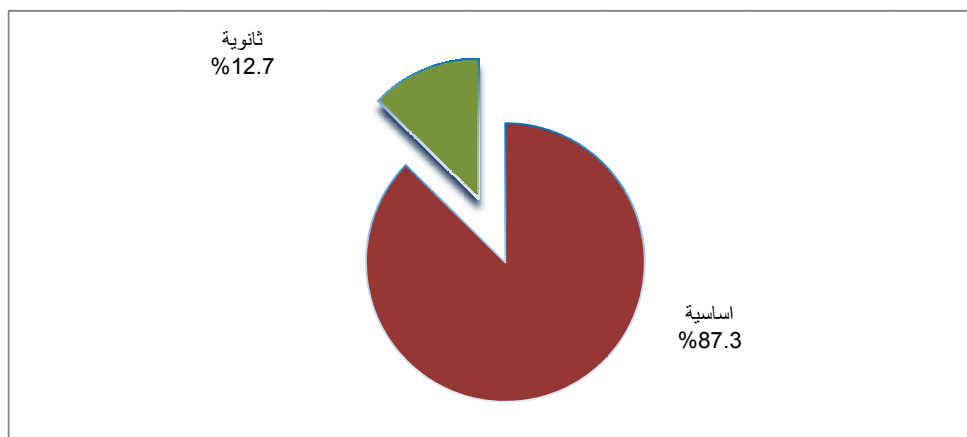
50,252

26,351

7,025

20,828

10,603

2012/2011

2011 (15)
 .%10.8 %10.7

.%10.8 %10.6 ()
 . %13.8 %7.9
 . %7.9 %2.2 (15) %5.1
 1,832 330

.2011

5 111 122
 531 2011 550 5
 10 7
2.1

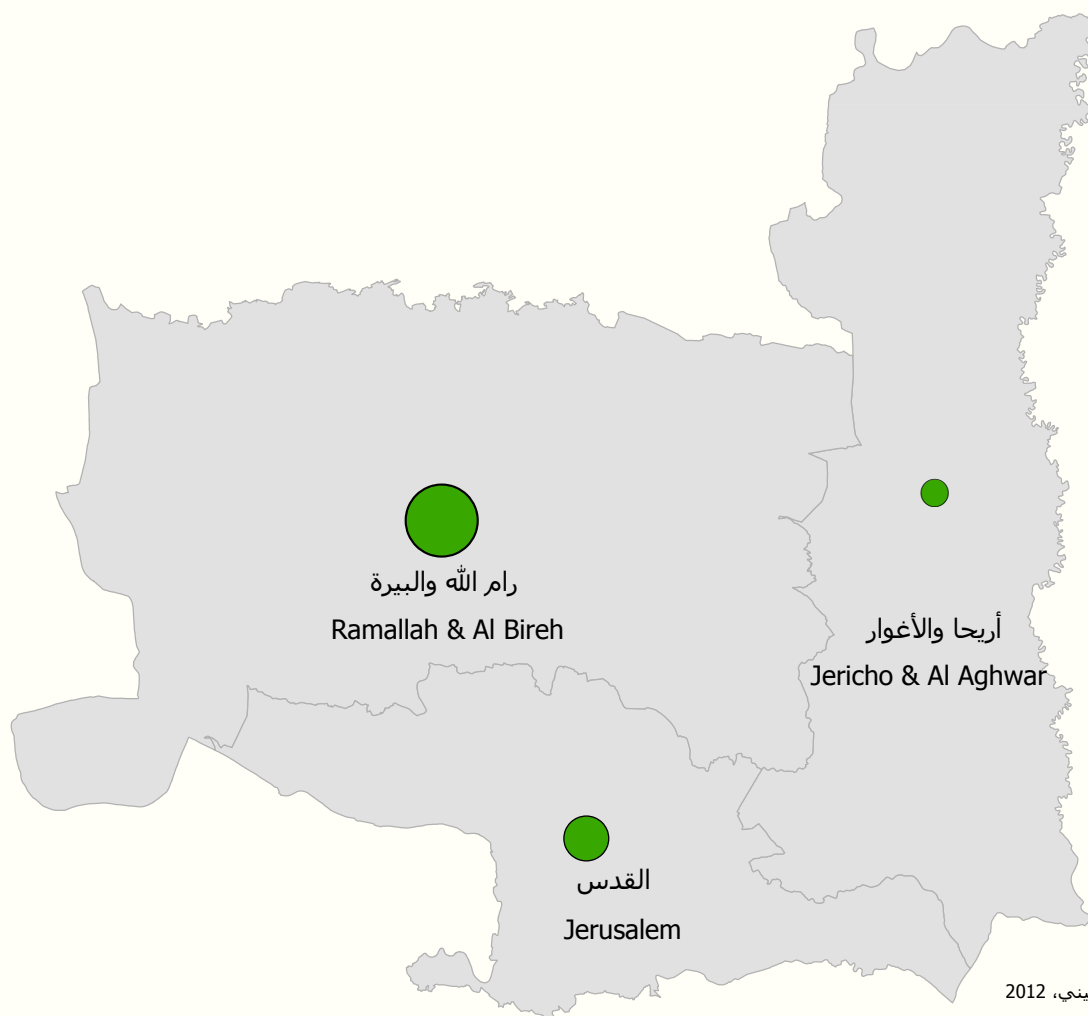
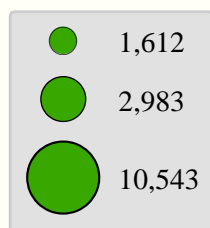
:

%31.7 2010 ² 1,793
 %15.7 ² 138.1
 %7.7
 .2010/2009

%16.7 15,138
 11,183

1,530				%73.9
2,425				%10.1
.2010/2009				%16.0
1,829	2010/10/01			
100,013				%7.5
74,263				%19.8
				%35.8
%14.6	37	2011		
4,417				
				%22.9
				.2011
				%20.1
			240	2011
2.1	2011			
				%31.6

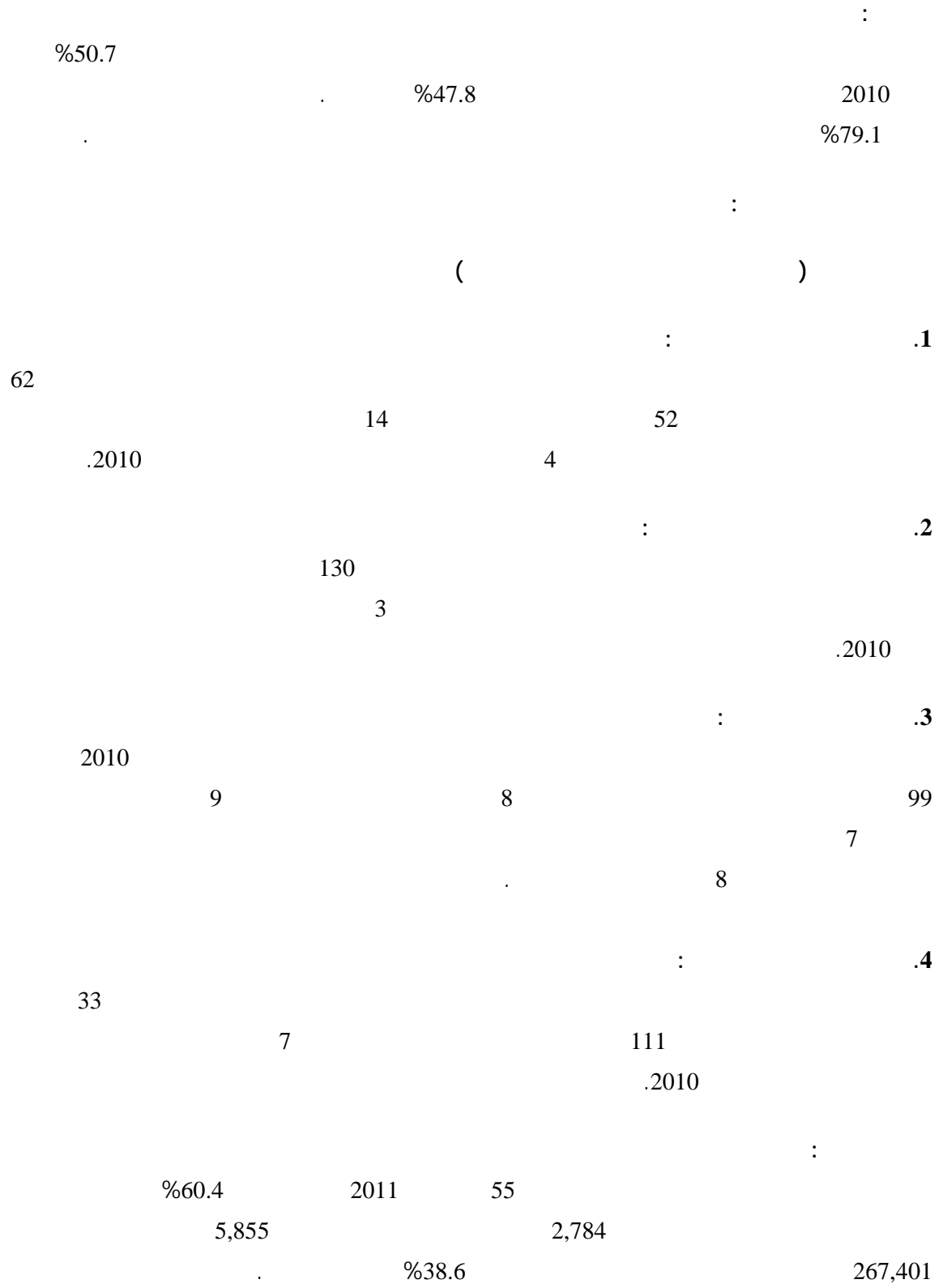
عدد الحيازات الزراعية في محافظات وسط الضفة الغربية، 2010 / 2009
Agricultural Holdings in the West Bank Central Governorates, 2009/ 2010



0 2 4 8 12 Kilometers

المصدر: الجهاز المركزي للإحصاء الفلسطيني، 2012
Source: Palestinian Central Bureau of Statistics, 2012





3.1

:

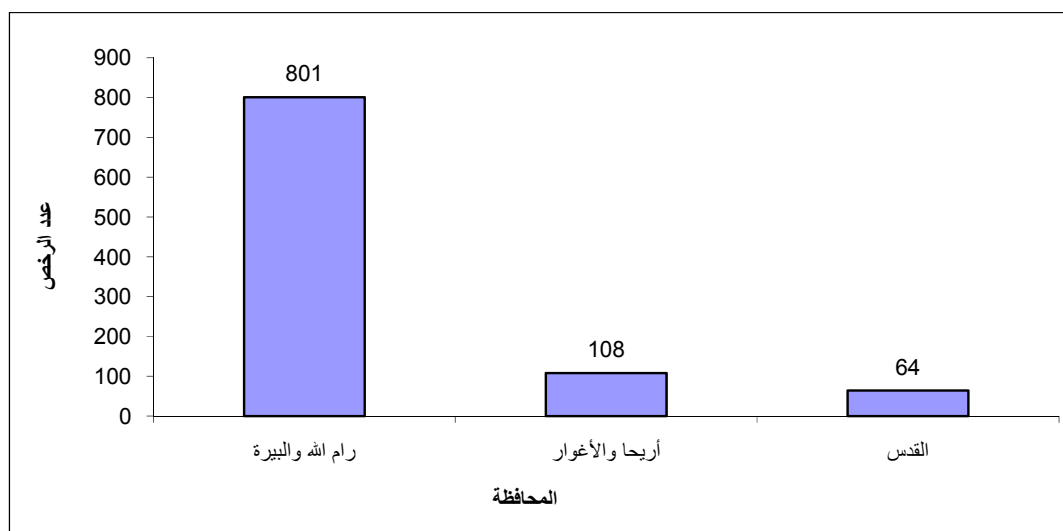
2010 16,291
13,081 44,779 57,860

:

%34.6 2010 42,070
%69.7
7,500
%37.4
%73.7
%3.6 %6.0 () %16.7
973 2011
746.3 809.3
63.0

2011

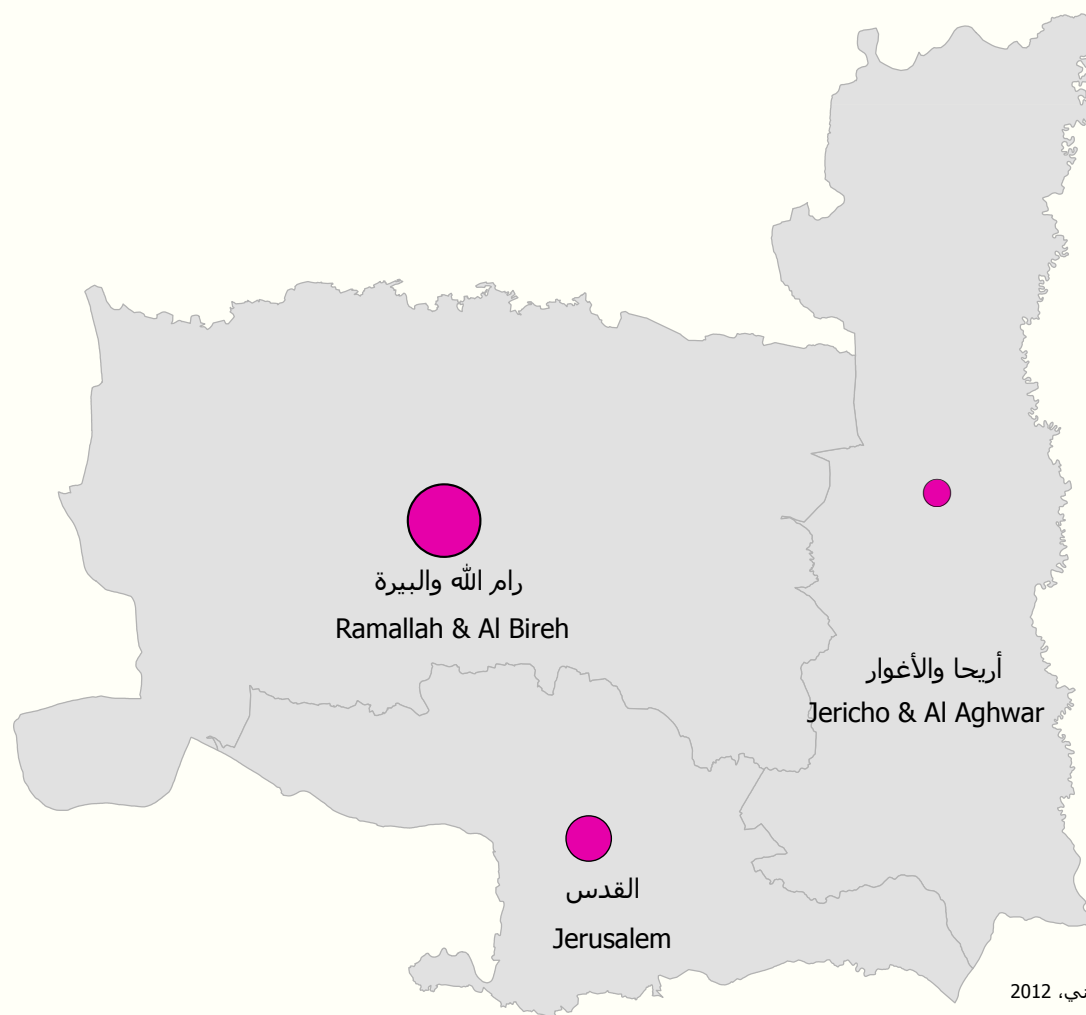
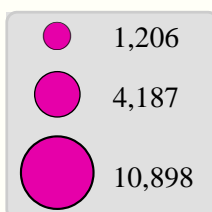
*



*

عدد المنشآت العاملة في القطاع الخاص والقطاع الأهلي والشركات الحكومية في محافظات وسط الضفة الغربية، 2010

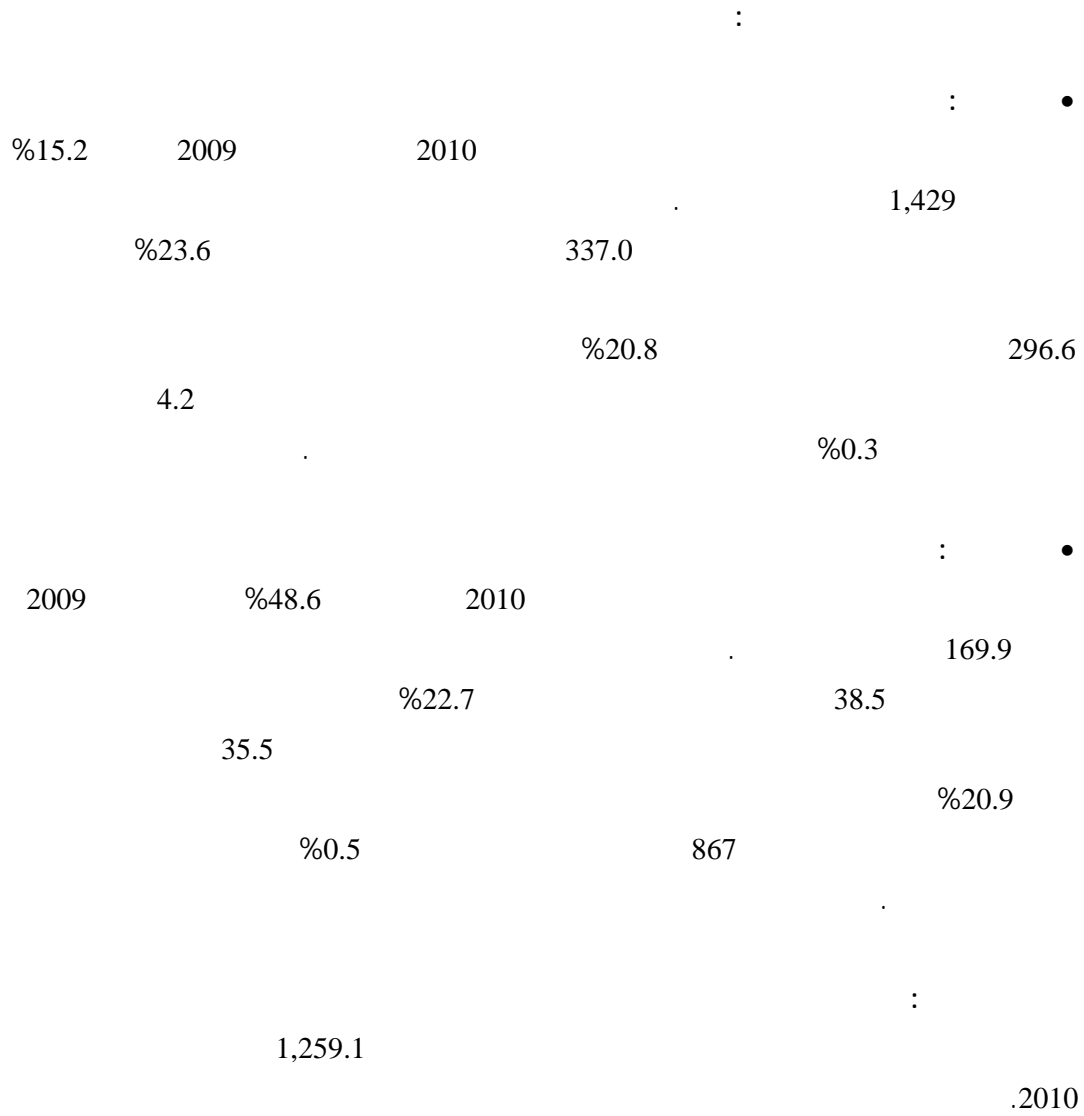
Number of Establishments in Operation in the Private Sector, Non Governmental Organization Sector
and Government Companies in the West Bank Central Governorates, 2010



0 2 4 8 12 Kilometers

المصدر: الجهاز المركزي للإحصاء الفلسطيني، 2012
Source: Palestinian Central Bureau of Statistics, 2012





.()

:()
(13)

:

:

:

1948

-:

()

()

:

:

:

:

:

(50)

()

(5)

(50)

()

(3)

:

...

.

:

.

:

:

: .1

.() ()

: .2

: .3

: .4

:

(0.5) (1)

:

.

:

24

:

:

)

(

.

:

.

:

.

:

.

:

.

:

.

:

.

:

.

.()

.

:

.

:

()

.

:

(35)

.

.

:

.

:

.

:

()² (4)
()

.

.

:

(- -)

.

:

()

.

:

.

:

)

(" ") . (")

("

)

(

:

:

:

:

:

:

.

:

.

:

()

.

:

.

:

.

:

.

:

.

:

.

:()

()

:

.

:

.

:

:

:

:

:()

:

:

:

:

.()

:

:

)

(

.2010

:

:

:

:()

() ()

:

:()

(13)

:

()

:

:

.(...)

:

:()

:

	.2012	.1
.	-	-2012/2011
.	- .2011	.2012 .2
.	.	.2012 .3
.	-	.2011/2/10
-	2012	.4
.	-	:2010
.	:2010	.2011 .5
.	2010	.2011 .6
.	-	.
.	.2011	.7
.	-	.2011
-	2010 -	.2011 .8
.	-	.
.2011	.2011	.9
.	.2012	.10
.	-	.2007
.2011	.2012	.11
.	.	.
.	- .2011	.2012 .12
-	.2011	- .13
.2010	.2012	.14
.	-	.
.2011	:	.2012 .15
.	-	.

	2011		:PCBS
	.2012		.16
	.	- .2007	
:	.2011		.17
	.	- .2010	
2007	.2012		.18
	.	- .2010	

Tables

2012

:1

Table 1: Estimated Population in the West Bank Central Governorates by Sex, Mid-2012

Governorate /Region	Females	Males	Total	المحافظة/المنطقة
Palestinian Territory	2,112,927	2,180,386	4,293,313	
West Bank	1,303,606	1,345,414	2,649,020	
Middle of West Bank	376,054	388,115	764,169	
Ramallah & Al Bireh	157,188	162,230	319,418	
Jericho & Al Aghwar	23,641	24,400	48,041	
Jerusalem	195,225	201,485	396,710	

2007

:2

Table 2: Palestinian Population in the West Bank Central Governorates by Refugee Status End-2007

Governorate/Region	Refugee Status				/
	Total	Not Stated	Not-Refugee	Refugee	
Palestinian Territory	3,660,386	55,571	2,067,747	1,537,068	
West Bank	2,279,969	55,351	1,600,551	624,067	
Middle of West Bank	652,846	38,100	407,252	207,494	
Ramallah & Al Bireh	262,563	6,922	178,830	76,811	
Jericho & Al Aghwar	40,305	1,232	18,383	20,690	
Jerusalem	349,978	29,946	210,039	109,993	

2011-2010

:3

Table 3: Registered Marriages and Divorces in the West Bank Central Governorates, 2010-2011

Governorate\Region	وقوعات الطلاق المسجلة Registered Divorces		عقود الزواج المسجلة Registered Marriages		/
	2011	2010	2011	2010	
Palestinian Territory	5,920	6,150	35,995	37,228	
West Bank	3,392	3,273	20,160	20,185	
Middle of West Bank	1,026	761	3,670	4,197	
Ramallah & Al Bireh	492	354	1,957	2,060	
Jericho & Al Aghwar	89	91	316	293	
Jerusalem	445	316	1,397	1,844	

2011

:4

Table 4: Median Age at First Marriage in the West Bank Central Governorates by Sex, 2011

Governorate\Region	Females	Male	/
Palestinian Territory	20.0	24.6	
West Bank	20.2	25.3	
Middle of West Bank	20.1	25.2	
Ramallah & Al Bireh	20.4	25.3	
Jericho & Al Aghwar	20.5	24.9	
Jerusalem	19.8	25.0	

2011

:5

Table 5: Registered Live Births and Deaths Registered in the West Bank Central Governorates by Sex, 2011

Governorate/Region	Deaths			Births			/
	Total	Females	Males	Total	Females	Males	
West Bank	6,398	3,005	3,393	64,519	31,434	33,085	
Middle of West Bank	1,213	548	665	12,715	6,132	6,583	
Ramallah & Al Bireh	797	373	424	7,430	3,584	3,846	
Jericho & Al Aghwar	158	63	95	2,178	1,040	1,138	
Jerusalem	258	112	146	3,107	1,508	1,599	

2010

1000 :6

Table 6: Beds Per 1000 Inhabitants and Number of Hospitals and Beds in the West Bank Central Governorates, 2010

Governorate\Region	Number of Beds	Hospitals	1000 Beds Per 1000 Inhabitant	/
West Bank	3,063	51	1.2	
Middle of West Bank	1,021	17	1.4	
Ramallah & Al Bireh	318	8	1.1	
Jericho & Al Aghwar	54	1	1.2	
Jerusalem	649	8	1.7	

2010

:7

Table 7: Hospital Activities in the West Bank Central Governorates, 2010

Activites	Governorate			
	Jerusalem	Jericho & Al Aghwar	Ramallah & Al Bireh	
Governmental Hospitals	-	1	1	
Non-Governmental Hospitals	8	-	7	
Grand Total of Discharges	31,833	5,301	26,450	
Grand Total of Beds Occupancy Rate	72.4	54.1	44.5	
Mean of Duration (day)	5.4	2.0	2.0	()

2011

(15)

:8

Table 8: Percentage Distribution of Population (15 Years and Above) in the West Bank Central Governorates by Sex and Labor Force Status, 2011

Labor Force Status and Sex	West Bank	Middle of West Bank	Governorate			
			القدس Jerusalem	Jericho & Al Aghwar	Ramallah & Al Bireh	
Both Sexes						كلا الجنسين
In Labor Force	45.5	41.8	37.8	49.0	45.3	داخل القوى العاملة
Outside Labor Force	54.5	58.2	62.2	51.0	54.7	خارج القوى العاملة
Total	100	100	100	100	100	المجموع
Full Employment	74.4	83.7	85.9	81.8	81.8	عمالة تامة
Underemployment	8.3	1.6	1.0	4.9	1.8	عمالة محدودة
Unemployment	17.3	14.7	13.1	13.3	16.4	بطالة
Total	100	100	100	100	100	المجموع
Males						ذكور
In Labor Force	71.4	68.5	66.5	76.5	69.7	داخل القوى العاملة
Outside Labor Force	28.6	31.5	33.5	23.5	30.3	خارج القوى العاملة
Total	100	100	100	100	100	المجموع
Full Employment	74.4	84.6	86.9	82.4	82.4	عمالة تامة
Underemployment	9.7	1.8	1.0	5.6	2.0	عمالة محدودة
Unemployment	15.9	13.6	12.1	12.0	15.6	بطالة
Total	100	100	100	100	100	المجموع
Females						إناث
In Labor Force	19.0	15.1	8.7	21.5	21.2	داخل القوى العاملة
Outside Labor Force	81.0	84.9	91.3	78.5	78.8	خارج القوى العاملة
Total	100	100	100	100	100	المجموع
Full Employment	74.3	79.3	77.4	79.6	80.0	عمالة تامة
Underemployment	3.1	1.0	0.6	2.3	1.0	عمالة محدودة
Unemployment	22.6	19.7	22.0	18.1	19.0	بطالة
Total	100	100	100	100	100	المجموع

2010

:9

Table 9: Average Monthly Household Expenditure and Consumption in Dinar (JD) in the West Bank Central Governorates, 2010

Indicators	Governorate			
	القدس Jerusalem	أريحا والأغوار Jericho & Al Aghwar	رام الله و البيرة Ramallah & Al Bireh	
Food cash expenditure	420.7	267.2	363.5	
Total Food Consumption	422.6	287.4	371.8	
Non-food cash expenditure	894.0	369.7	673.0	
Total Non-Food Consumption	1,098.5	461.9	830.2	
Total Consumption	1,521.2	749.3	1,202.0	الاستهلاك الكلي
Total Cash Expenditure	1,460.9	671.3	1,098.0	الإنفاق النقدي الكلي

2010

:10

Table 10: Poverty Rates According to Actual Monthly Consumption Patterns of Individuals in the West Bank Central Governorates, 2010

Governorate/Region	Poverty Rates				/
	Deep Poverty	Poverty Severity	Poverty Gap	Poverty	
West Bank	8.8	1.4	4.1	18.3	
Middle of West Bank	5.6	0.9	2.4	10.7	
Ramallah & Al Bireh	5.9	0.7	2.4	11.7	
Jericho & Al Aghwar	16.4	2.4	6.8	26.4	
Jerusalem	0.8	4.0	1.9	8.0	

2012/2011

:11

Table 11: Schools and Students in West Bank Central Governorates by Level and Supervising Authority 2011/2012

Supervising Authority/ Governorate	Total		Level				/
			Secondary		Basic		
	Number of Students	Number of Schools	Number of Students	Number of Schools	Number of Students	Number of Schools	
Middle of West Bank							
Government	95,258	306	16,175	166	79,083	140	
UNRWA	17,628	34	-	-	17,628	34	
Private	47,179	158	4,120	54	43,059	104	
Total	160,065	498	20,295	220	139,770	278	
Ramallah & Al Bireh							
Government	58,873	180	9,864	110	49,009	70	
UNRWA	6,434	12	-	-	6,434	12	
Private	15,217	49	1,563	23	13,654	26	
Total	80,524	241	11,427	133	69,097	108	
Jericho & Al Aghwar							
Government	5,906	21	1,359	12	4,547	9	
UNRWA	4,213	5	-	-	4,213	5	
Private	1,744	5	-	-	1,744	5	
Total	11,863	31	1,359	12	10,504	19	
Jerusalem							
Government	30,479	105	4,952	44	25,527	61	
UNRWA	6,981	17	-	-	6,981	17	
Private	30,218	104	2,557	31	27,661	73	
Total	67,678	226	7,509	75	60,169	151	

:12

2012/2011

Table 12: Average Number of Students Per Class in the West Bank Central Governorates by Level and Supervisory Authority, 2011/2012

Level / Governorate	Supervising Authority			Grand Average	/
	Private	UNRWA	Government		
Basic					
Ramallah & Al Bireh	22.4	32.0	28.3	27.2	
Jericho & Al Aghwar	28.1	34.5	25.5	29.0	
Jerusalem	24.3	31.3	25.9	25.6	
Secondary					
Ramallah & Al Bireh	17.0	-	24.4	23.0	
Jericho & Al Aghwar	-	-	23.0	23.0	
Jerusalem	20.0	-	23.2	22.0	

2012/2011

:13

Table 13: Average Number of Students Per Teacher in the West Bank Central Governorates by Supervisory Authority, 2011/2012

Governorate/Region	Supervising Authority			/
	Private	UNRWA	Government	
West Bank	15.2	27.5	21.4	
Middle of West Bank	15.7	24.2	19.5	
Ramallah & Al Bireh	14.4	24.4	20.2	
Jericho & Al Aghwar	20.6	25.8	17.7	
Jerusalem	0.0	0.0	0.0	

2011

(15)

:14

Table 14: Percentage Distribution of Palestinian Population (15 Years and Above) in the West Bank Central Governorates by Educational Attainment, 2011

Educational Attainment	Middle of West Bank	Governorate			
		القدس Jerusalem	Jericho & Al Aghwar	Ramallah & Al Bireh	
Illiterate	5.1	4.9	6.4	5.0	
Can Read and Write	5.8	6.0	8.1	5.2	
Elementary	17.5	20.1	21.2	14.1	
Preparatory	38.2	41.2	40.3	34.8	
Secondary	18.6	17.0	13.5	21.0	
Associate Diploma	4.1	3.1	3.8	5.3	
Bachelor and Above	10.7	7.7	6.7	14.6	
Total	100	100	100	100	

(15) :15

2011

Table 15: Percentage Distribution of Palestinian Population (15 Years and Above) in the West Bank Central Governorates by Educational Attainment and Sex, 2011

Educational Attainment	Middle of West Bank وسط الضفة الغربية			West Bank			
	Females						
Illiterate	7.9	2.2	5.1	7.8	2.1	4.9	
Can Read and Write	5.9	5.7	5.8	7.2	6.4	6.8	
Elementary	15.1	19.8	17.5	15.2	17.7	16.5	
Preparatory	36.5	40.0	38.2	35.5	39.3	37.5	
Secondary	18.9	18.3	18.6	19.5	19.2	19.3	
Associate Diploma	4.8	3.4	4.1	4.4	4.6	4.5	
Bachelor and Above	10.8	10.6	10.7	10.4	10.7	10.5	
Total	100	100	100	100	100	100	

(15)

:16

2011

Table 16: Literacy Rates of Palestinian Population (15 Years and Above) in the West Bank Central Governorates by Sex and Age Group, 2011

Sex and Age Groups	West Bank	Middle of West Bank	Governorate			
			القدس Jerusalem	Jericho & Al Aghwar	Ramallah & Al Bireh	
Both Sexes						
15-19	99.6	99.4	99.3	98.3	99.5	19-15
20-24	99.4	99.4	99.6	99.1	99.3	24-20
25-34	99.2	99.0	99.0	99.3	99.0	34-25
35-44	98.4	98.1	98.6	95.2	98.0	44-35
45+	81.7	81.9	81.9	76.9	82.5	+45
Total	95.1	94.9	95.1	93.6	95.0	
Males						
15-19	99.4	99.2	98.7	99.1	99.6	19-15
20-24	99.4	99.5	99.9	100.0	99.0	24-20
25-34	99.1	99.0	98.9	100.0	98.9	34-25
35-44	99.0	98.7	98.9	96.4	98.8	44-35
45+	93.4	93.4	92.9	88.7	94.5	+45
Total	97.9	97.8	97.7	96.8	98.0	
Females						
15-19	99.7	99.6	99.9	97.5	99.5	19-15
20-24	99.4	99.3	99.2	98.1	99.6	24-20
25-34	99.2	99.0	99.1	98.5	99.0	34-25
35-44	97.7	97.5	98.3	94.0	97.3	44-35
45+	70.5	71.3	71.9	65.6	71.3	+45
Total	92.2	92.1	92.4	90.4	92.0	

2011

:17

Table 17: Mosques in the West Bank Central Governorates, 2011

Governorate/Region	Number	/
West Bank	1,832	
Middle of West Bank	330	
Ramallah & Al Bireh	180	
Jericho & Al Aghwar	45	
Jerusalem	105	

2011

:18

Table 18: Cultural Institutions In Operation in the West Bank Central Governorates, 2011

Cultural Institutions	Wset Bank	Middle of West Bank	Governorate			
			القدس Jerusalem	Jericho & Al Aghwar	Ramallah & Al Bireh	
Cultural Centers	531	111	55	16	40	
Theaters	7	5	3	-	2	
Museums	10	5	2	-	3	
Cinema	2	1	0	-	1	
Total	550	122	60	16	46	

:19

2010/2009

Table 19: Total Area, Cultivated Land Area and Percentage of Cultivated Land Area in the West Bank Central Governorates, 2009/2010

Governorate/Region	Percentage of Cultivated Land Area from Total Area	Cultivated Land Area	Total Area	/
West Bank	15.6	881.9	5,655	
Middle of West Bank	7.7	138.1	1,793	
Ramallah & Al Bireh	11.2	95.4	855	
Jericho & Al Aghwar	4.9	29.2	593	
Jerusalem	3.9	13.5	345	

2010/2009

:20

Table 20: Agricultural Holdings in the West Bank Central Governorates by Type of Holding, 2009/2010

Governorate/Region	Total	Type of Holding			/
		مختلطة Mixed	حيوانية Animal	Plant	
West Bank	90,908	14,762	10,879	65,267	
Middle of West Bank	15,138	1,530	2,425	11,183	
Ramallah & Al Bireh	10,543	1,070	656	8,817	
Jericho & Al Aghwar	1,612	210	804	598	
Jerusalem	2,983	250	965	1,768	

2010/10/01

:21

Table 21: Livestock in the West Bank Central Governorates by Type, as on 01/10/2010

Governorate/Region	Type of Livestock			/
	Goats	Sheeps	Cows	
West Bank	207,214	505,833	24,290	
Middle of West Bank	74,263	100,013	1,829	
Ramallah & Al Bireh	21,399	34,723	580	
Jericho & Al Aghwar	26,450	32,747	870	
Jerusalem	26,414	32,543	379	

2011

:22

Table 22: Main Economic Indicators for Olive Presses in the West Bank Central Governorates, 2011

Quantity in Metric Ton and Value in US \$ 1000

Indicators	West Bank	Middle of West Bank	Governorate		
			القدس Jerusalem	Ramallah & Al Bireh	
Total Operating Olive Presses	254	37	4	33	
No. of Olive Presses Temporarily Closed	27	2	-	2	
Quantity of Olive Pressed	85,003	19,496	1,239	18,257	
Quantity of Oil Extracted	19,307	4,417	255	4,162	
Number of Employed Persons	1,192	240	25	215	
No. of Unpaid Employees	376	76	11	65	
No. of Paid Employees	816	164	14	150	
Compensation of Employees	887	203	27	176	
Olive Presses Output	8,795	2,487	241	2,246	
Intermediate Consumption	2,247	416	54	362	
Gross Value Added	6,548	2,071	187	1,884	
Gross Fixed Capital Formation	2,386	70	3	67	

2010

:23

Table 23: Percentage Distribution of Households in the West Bank Central Governorates by Type of Housing Unit, 2010

Governorate/Region	Type of Housing Unit				/
	Total	* Other*	Apartment	/ Villa/House	
West Bank	100	1.1	50.2	48.7	
Middle of West Bank	100	1.5	47.8	50.7	
Ramallah & Al Bireh	100	0.1	45.9	54.0	
Jericho & Al Aghwar	100	7.0	45.3	47.7	
Jerusalem	100	3.7	43.5	52.8	

*Other: Includes Independent Room, or Tent, or marginal

* أخرى: تشمل غرفة مستقلة أو خيمة أو براكية

2010

:24

Table 24: Percentage Distribution of Households in the West Bank Central Governorates by Tenure of Housing Unit, 2010

Governorate/Region	Tenure of Housing Unit				/
	Total	* Other*	Rented	Owned	
West Bank	100	7.7	8.7	83.6	
Middle of West Bank	100	8.8	12.1	79.1	
Ramallah & Al Bireh	100	5.1	14.0	80.9	
Jericho & Al Aghwar	100	6.1	9.5	84.4	
Jerusalem	100	4.8	16.4	78.8	

* Other includes From Work and Without Payment

*

2010

:25

Table 25: Percentage Distribution of Households in the West Bank Central Governorates by Number of Rooms per Housing Unit, 2010

Governorate/Region	Average Number of Rooms	Number of Rooms						/
		المجموع Total	+5	4	3	2	1	
West Bank	3.6	100	20.2	31.8	31.5	13.3	3.2	
Middle of West Bank	3.7	100	22.9	32.2	29.5	12.4	3.0	
Ramallah & Al Bireh	4.1	100	35.2	33.2	20.3	8.9	2.4	
Jericho & Al Aghwar	3.2	100	11.0	26.4	39.7	16.9	6.0	
Jerusalem	3.3	100	8.6	31.9	39.5	16.6	3.4	

2010

:26

Table 26: Percentage Distribution of Households in the West Bank Central Governorates by Housing Density, 2010

Governorate/Region	Average of Housing Density	Housing Density					/
		Total	+3.00	2.99-2.00	1.99-1.00	أقل من 1	
West Bank	1.5	100	8.1	25.1	51.4	15.4	
Middle of West Bank	1.5	100	7.3	24.8	51.8	16.1	
Ramallah & Al Bireh	1.3	100	4.7	17.4	55.6	22.3	
Jericho & Al Aghwar	1.9	100	18.8	29.5	43.8	7.9	
Jerusalem	1.4	100	5.9	17.9	54.5	21.7	

2011

:27

Table 27: Building Licenses Issued in the West Bank Central Governorates by Utilization, 2011

Governorate/Region	مساحة الوحدات السكنية الجديدة المرخصة (1000 م ²) Area of Licensed New Dwellings (1000 m ²)	عدد الوحدات السكنية الجديدة المرخصة Number of Licensed New Dwellings	المساحات المرخصة (الف م ²) Licensed Area (1000 m ²)*	عدد الرخص الصادرة Number of Licenses	المحافظة/المنطقة
Middle of West Bank					وسط الضفة الغربية
Residential Buildings	451.1	2,475	584.3	861	مبنى سكني
Non-Res. Buildings	3.2	19	225.0	112	مبنى غير سكني
Boundary walls	-	-	3.0	29	أسوار
Ramallah & Al Bireh					رام الله والبيرة
Residential Buildings	406.0	2,191	521.9	708	مبنى سكني
Non-Res. Buildings	2.1	13	207.1	93	مبنى غير سكني
Boundary walls	-	-	1.8	20	أسوار
Jericho & Al Aghwar					أريحا والأغوار
Residential Buildings	21.2	149	28.8	99	مبنى سكني
Non-Res. Buildings	1.0	5	8.1	9	مبنى غير سكني
Boundary walls	-	-	1.0	7	أسوار
Jerusalem					القدس
Residential Buildings	23.9	135	33.6	54	مبنى سكني
Non-Res. Buildings	0.1	1	9.8	10	مبنى غير سكني
Boundary walls	-	-	0.2	2	أسوار

*For boundary walls it refers to length in (1000 m)

*بالنسبة للأسوار تمثل الطول بالآلاف متر طولي

2010

:28

Table 28: Localities in the West Bank Central Governorates by Water Provider Through a Public Network, 2010

Governorate/Region	No Water Network	Service Provider				/
		* Other*	Jerusalem Water Undertaking	Other Local Authority	Local Authority	
West Bank	109	24	64	48	279	
Middle of West Bank	4	14	62	1	52	
Ramallah & Al Bireh	1	1	48	0	25	
Jericho & Al Aghwar	2	0	0	1	11	
Jerusalem	1	13	14	0	16	

*Other: include Jerusalem municipality or wells
belong to associations

: *

2010

:29

Table 29: Localities in the West Bank Central Governorates by Alternative Water Sources, 2010

Governorate/Region	Alternative Sources*						/
	Total	No Alternative	Other	Springs	Rain Water Collection Well	Artesian Wells	
West Bank	524	43	20	38	242	181	
Middle of West Bank	133	18	10	7	70	28	
Ramallah & Al Bireh	75	4	3	4	51	13	
Jericho & Al Aghwar	14	7	0	2	1	4	
Jerusalem	44	7	7	1	18	11	

*: The Alternative Water Source for localities is in the absence of water or network does not cover the localities needs.

.*

2010

:30

Table 30: Localities in the West Bank Central Governorates by Electricity Provider Through a Public Network, 2010

Governorate/Region	No Electricity Network	Service Provider			/
		أخرى Other	هيئة محلية أخرى Other Local Authority	الهيئة المحلية Local Authority	
West Bank	28	21	18	256	
Middle of West Bank	3	0	0	130	
Ramallah & Al Bireh	1	0	0	74	
Jericho & Al Aghwar	1	0	0	13	
Jerusalem	1	0	0	43	

2010

:31

Table 31: Localities in the West Bank Central Governorates by the Provider of Solid Waste Collection Services, 2010

Governorate/Region	There is No Solid Waste Collection Service	Doer of Waste Collection					/
		Other	Other Local Authority	UNRWA	Private Contractor	Local Authority	
West Bank	79	15	50	20	26	334	
Middle of West Bank	8	2	7	9	8	99	
Ramallah & Al Bireh	2	0	1	5	6	61	
Jericho & Al Aghwar	3	1	1	2	0	7	
Jerusalem	3	1	5	2	2	31	

2010

:32

Table 32: Localities in the West Bank Central Governorates by Wastewater Disposal Method, 2010

Governorate/Region	Not Stated	Open Channels Without Network	Porous and Tight Cesspits	Wastewater Network	/
West Bank	20	5	465	71	
Middle of West Bank	7	0	111	33	
Ramallah & Al Bireh	4	0	65	9	
Jericho & Al Aghwar	3	0	10	0	
Jerusalem	0	0	36	24	

Note: In some localities there are more than one wastewater disposal method.

2011

:33

Table 33: Main Indicators for Hotel Activities in the West Bank Central Governorates, 2011

Governorate/Region	Room Occupancy %	No. of Guest Nights	No. of Guests	Average No. of Beds	Average No. of Rooms	No. of Hotels	/
West Bank	28.4	1,245,509	507,372	10,704	4,992	91	الضفة الغربية
Middle of West Bank	38.6	652,998	267,401	5,855	2,784	55	وسط الضفة الغربية
Ramallah & Al Bireh	32.3	149,710	35,221	2,123	954	23	رام الله والبيرة
Jericho & Al Aghwar	42.5	70,652	47,711	653	352	4	أريحا والأغوار
Jerusalem	42.0	432,636	184,469	3,079	1,478	28	القدس

:34

2010

Table 34: Establishments in Operation and Employed Persons in the Private and Non Governmental Organization Sectors and Government Companies in the West Bank Central Governorates, 2010

Governorate/Region	No. of Employed Persons			No. of Establishments	/
	Total	Females	Males		
West Bank	211,878	43,592	168,286	76,760	
Middle of West Bank	57,860	13,081	44,779	16,291	
Ramallah & Al Bireh	42,966	10,155	32,811	10,898	
Jericho & Al Aghwar	3,576	881	2,695	1,206	
Jerusalem	11,318	2,045	9,273	4,187	

2010

:35

Table 35: Establishments in Operation in the Private and Non Governmental Organization Sectors and Government Companies in the West Bank Central Governorates, 2010

ISIC	Economic Activity	Wset Bank	Middle of West Bank	Governorate				
				Jerusalem	Jericho & Al Aghwar	Ramallah & Al Bireh		
A	Agriculture (raising of cattle & other animals)	5,930	880	146	251	483	()
C	Mining & quarrying	280	11	6		5		
D	Manufacturing	11,423	2,380	776	97	1,507		
E	Electricity and water supply	194	15	4	4	7		
F	Construction	285	84	8	5	71		
G	Wholesale, retail trade & repairs	40,668	8,110	2260	541	5,309		
H	Hotels & restaurants	3,320	889	200	70	619		
I	Transport, storage & communications	627	197	26	11	160		
J	Financial intermediation	596	183	27	15	141		
K	Real estate, renting & business activities	2,813	862	123	36	703		
M	Education	1,541	393	92	28	273		
N	Health & social work	3,086	693	141	43	509		
O	Other community, social & personal services	5,997	1,594	378	105	1,111		
Total		76,760	16,291	4,187	1,206	10,898		

2010

*

:36

Table 36: New Registered Vehicles* in the West Bank Central Governorates by Type of Vehicle 2010

Type of Vehicle	** West Bank**	** Middle of West Bank**	Governorate		
			Jericho & Al Aghwar	Ramallah & Al Bireh	
Private Cars	14,954	5,530	202	5,328	
Taxis	2,131	453	35	418	()
Motorcycles and Moped	42	29	2	27	
Buses (Public/ Private)	204	76	13	63	(/)
Trailers and Semi-Trailers	190	94	2	92	
Agricultural Tractors	47	15	4	11	
Road Tractors	40	20	-	20	
Trucks and Commercial Cars	2,392	1,250	24	1,226	
Other Vehicles	48	33	-	33	
Total	20,048	7,500	282	7,218	

*: The number of licensed vehicles according to records of the Department of License in the Governorate does not reflect the actual number of vehicles.

*:

** : Data does not include Jerusalem Governorate.

**:

2010

*

:37

Table 37: Licensed Road Vehicles* in the West Bank Central Governorates by Type of Vehicle, 2010

Type of Vehicle	** West** Bank	** Middle of West** Bank	Governorate		
			Jericho & Al Aghwar	Ramallah & Al Bireh	
Private Cars	85,874	29,310	1,464	27,846	
Taxis	8,616	2,804	132	2,672	()
Motorcycles and Moped	303	157	57	100	
Buses (Public/ Private)	1,350	358	41	317	(/)
Trailers and Semi-Trailers	693	335	15	320	
Agricultural Tractors	830	162	42	120	
Road Tractors	315	137	6	131	
Trucks and Commercial Cars	23,114	8,474	336	8,138	
Other Vehicles	470	333	5	328	
Total	121,565	42,070	2,098	39,972	

*: The number of licensed vehicles according to records of the Department of License in the Governorate does not reflect the actual number of vehicles.

** : Data does not include Jerusalem Governorate.

2010

-

:38

Table 38: Value of Registered Imports by SITC-3 Categories in the West Bank Central Governorates, 2010

Value in Thousand US\$

Section	West Bank	Middle of West Bank	Governorate			
			Jerusalem	Jericho & Al Aghwar	Ramallah & Al Bireh	
Total Imports	3,573,318	1,429,006	171,286	37,472	1,220,248	
Food And Live Animals	592,534	183,190	37,371	5,474	140,345	
Beverages And Tobacco	154,830	89,418	11,322	2,115	75,981	
Raw Materials, Inedible Except Fuels	37,804	26,744	1,359	956	24,429	
Mineral Fuels, Lubricants And related Materials	1,046,322	337,035	22,314	20,881	293,841	
Animal And Vegetable Oils, Fats And Waxes	20,861	4,242	1,557	31	2,655	
Chemical And Related Products, n.e.s.*	345,604	166,297	4,874	1,281	160,142	* . . .
Manufactured Goods Classified mainly By Material	604,663	241,072	33,974	3,309	203,788	
Machinery And Transport Equipment's	530,879	296,601	54,920	2,993	238,688	
Miscellaneous Manufactured Articles	239,820	84,408	3,597	432	80,379	

* n.e.s: not elsewhere specified

* . . .

2010

-

:39

Table 39: Value of Registered Exports by SITC-3 Categories in West Bank Central Governorates, 2010

Value in Thousand US\$

Section	Wset Bank	Middle of West Bank	Governorate			
			Jerusalem	Jericho & Al Aghwar	Ramallah & Al Bireh	
Total Exports	572,175	169,916	10,363	4,976	154,577	
Food And Live Animals	78,427	17,287	1,843	2,162	13,282	
Beverages And Tobacco	24,013	6,836	4,606	-	2,230	
Raw Materials, Inedible Except Fuels	9,286	20,293	1,522	1,847	16,925	
Mineral Fuels, Lubricants And related Materials	1,548	867	-	-	867	
Animal And Vegetable Oils, Fats And Waxes	15,761	1,841	-	-	1,841	
Chemical And Related Products, n.e.s.*	73,984	35,529	29	2	35,499	* . . .
Manufactured Goods Classified mainly By Material	244,984	38,495	2,229	15	36,251	
Machinery And Transport Equipment's	32,976	18,394	57	75	18,263	
Miscellaneous Manufactured Articles	91,196	30,374	80	875	29,419	

* n.e.s: not elsewhere specified

* . . .



**Palestinian National Authority
Palestinian Central Bureau of Statistics**

**West Bank Central Governorates Statistical
Yearbook, 2011**

May 2012

PAGE NUMBERS OF ENGLISH TEXT ARE PRINTED IN SQUARE BRACKETS.
TABLES ARE PRINTED IN ARABIC FORMAT (FROM RIGHT TO LEFT).

**This document is prepared in accordance with the
standard procedures stated in the Code of Practice for
Palestine Official Statistics 2006**

© May 2012.
All rights reserved.

Suggested Citation:

Palestinian Central Bureau of Statistics, 2012. West Bank Central Governorates Statistical Yearbook, 2011. Ramallah - Palestine.

All correspondence should be directed to:
**Palestinian Central Bureau of Statistics
P.O.Box 1647 Ramallah, Palestine.**

Tel: (972/970) 2 298 2700
Fax: (972/970) 2 298 2710
Toll Free: 1800300300
E-Mail: diwan@pcbs.gov.ps
web-site: <http://www.pcbs.gov.ps>

Acknowledgment

The Palestinian Central Bureau of Statistics (PCBS) extends its deep appreciation to all those who contributed to the production of this yearbook.

The West Bank Central Governorates Statistical Yearbook for 2011 was planned and prepared by a technical team from PCBS with joint funding from the Palestinian National Authority (PNA) and the Core Funding Group (CFG) for 2012, represented by the Representative Office of Norway to the PNA and the Swiss Development and Cooperation Agency (SDC).

PCBS is very grateful to the Core Funding Group (CFG) for its valuable contribution towards the funding of this yearbook.

Work Team

- **Report Preparation**
Rami Sarawan
 - **Maps Design**
Nafir Massad
 - **Graphic Design**
Ahmad Sawalmeh
 - **Dissemination Standards**
Hanan Janajreh
 - **Preliminary Review**
Maen Salhab
Mohammad Omari
Nazmi Harb
 - **Final Review**
Mahmoud Jaradat
 - **Overall Supervision**
Ola Awad
- President of PCBS

Important Note

Statistical data were derived from PCBS publications. For further details of the methodology and data quality standards for individual topics, readers can visit <http://www.pcbs.gov.ps>.

Special symbols were used in the tables of this book as follows:

(-): Nil, Data are not available.

Table of Contents

Subject	Page
List of Tables	
Introduction	
Chapter One: Main Indicators	[17]
1.1 Demographic Indicators	[17]
1.2 Geographic Indicators	[19]
1.3 Economic Indicators	[20]
Chapter Two: Concepts and Definitions	[23]
References	[29]
Tables	49

List of Tables

Table	Page
Table 1: Estimated Population in the West Bank Central Governorates by Sex, Mid-2012	51
Table 2: Palestinian Population in the West Bank Central Governorates by Refugee Status, End-2007	52
Table 3: Registered Marriages and Divorces in the West Bank Central Governorates, 2010-2011	53
Table 4: Median Age at First Marriage in the West Bank Central Governorates by Sex, 2011	54
Table 5: Registered Live Births and Deaths Registered in the West Bank Central Governorates by Sex, 2011	55
Table 6: Beds Per 1000 Inhabitants and Number of Hospitals and Beds in the West Bank Central Governorates, 2010	56
Table 7: Hospital Activities in the West Bank Central Governorates, 2010	57
Table 8: Percentage Distribution of Population (15 Years and Above) in the West Bank Central Governorates by Sex and Labor Force Status, 2011	58
Table 9: Average Monthly Household Expenditure and Consumption in Dinar (JD) in the West Bank Central Governorates, 2010	59
Table 10: Poverty Rates According to Actual Monthly Consumption Patterns of Individuals in the West Bank Central Governorates, 2010	60
Table 11: Schools and Students in the West Bank Central Governorates by Level and Supervisory Authority, 2011/2012	61
Table 12: Average Number of Students Per Class in the West Bank Central Governorates by Level and Supervisory Authority, 2011/2012	62
Table 13: Average Number of Students Per Teacher in the West Bank Central Governorates by Supervisory Authority, 2011/2012	63
Table 14: Percentage Distribution of Palestinian Population (15 Years and Above) in the West Bank Central Governorates by Educational Attainment, 2011	64
Table 15: Percentage Distribution of Palestinian Population (15 Years and Above) in the West Bank Central Governorates by Educational Attainment and Sex, 2011	65
Table 16: Literacy Rates of Palestinian Population (15 Years and Above) in the West Bank Central Governorates by Sex and Age Group, 2011	66
Table 17: Mosques in the West Bank Central Governorates, 2011	67
Table 18: Cultural Institutions In Operation in the West Bank Central Governorates, 2011	68
Table 19: Total Area, Cultivated Land Area and Percentage of Cultivated Land Area in the West Bank Central Governorates, 2009/2010	69

Table	Page
Table 20: Agricultural Holdings in the West Bank Central Governorates by Type of Holding, 2009/2010	70
Table 21: Livestock in the West Bank Central Governorates by Type, as on 01/10/2010	71
Table 22: Main Economic Indicators for Olive Presses in the West Bank Central Governorates, 2011	72
Table 23: Percentage Distribution of Households in the West Bank Central Governorates by Type of Housing Unit, 2010	73
Table 24: Percentage Distribution of Households in the West Bank Central Governorates by Tenure of Housing Unit, 2010	74
Table 25: Percentage Distribution of Households in the West Bank Central Governorates by Number of Rooms per Housing Unit, 2010	75
Table 26: Percentage Distribution of Households in the West Bank Central Governorates by Housing Density, 2010	76
Table 27: Building Licenses Issued in the West Bank Central Governorates by Utilization, 2011	77
Table 28: Localities in the West Bank Central Governorates by Water Provider Through a Public Network, 2010	78
Table 29: Localities in the West Bank Central Governorates by Alternative Water Sources, 2010	79
Table 30: Localities in the West Bank Central Governorates by Electricity Provider Through a Public Network, 2010	80
Table 31: Localities in the West Bank Central Governorates by the Provider of Solid Waste Collection Services, 2010	81
Table 32: Localities in the West Bank Central Governorates by Wastewater Disposal Method, 2010	82
Table 33: Main Indicators for Hotel Activities in the West Bank Central Governorates, 2011	83
Table 34: Establishments in Operation and Employed Persons in the Private and Non Governmental Organization Sectors and Government Companies in the West Bank Central Governorates, 2010	84
Table 35: Establishments in Operation in the Private and Non Governmental Organization Sectors and Government Companies in the West Bank Central Governorates, 2010	85
Table 36: New Registered Vehicles in the West Bank Central Governorates by Type of Vehicle, 2010	86
Table 37: Licensed Road Vehicles in the West Bank Central Governorates by Type of Vehicle, 2010	87
Table 38: Value of Registered Imports by SITC-3 Categories in the West Bank Central Governorates, 2010	88
Table 39: Value of Registered Exports by SITC-3 Categories in the West Bank Central Governorates, 2010	89

Introduction

Since its inception, PCBS has sought to build a system of Palestinian official statistics based on the needs of the society and in line with recommended standards, including full membership in the international statistical community. PCBS has adopted the principle of progression within existing Palestinian priorities as the basis for work towards developing the statistical system. PCBS has accomplished many statistical activities using primary sources, including censuses and field surveys, and secondary sources such as administrative records in cooperation with public and private sector institutions.

We are pleased to present the West Bank Central Governorates Statistical Yearbook for 2011 to provide continuous time series data of general trends in different areas through a comprehensive statistical reference that covers most population, social, economic, and geographic areas.

This book is one of the most important and comprehensive official statistical references relating to the West Bank Central Governorates.

This yearbook is divided into two chapters: the first chapter defines the main indicators relating to the West Bank Central Governorates. The second chapter contains the concepts and definitions used in this statistical yearbook

We believe that we have succeeded in bridging gaps in information and have contributed to providing a key reference of official Palestinian statistics that will serve the developmental process and assist decision makers to create plans based on professional and scientific criteria at national and governorate level.

May 2012

**Ola Awad
President of PCBS**

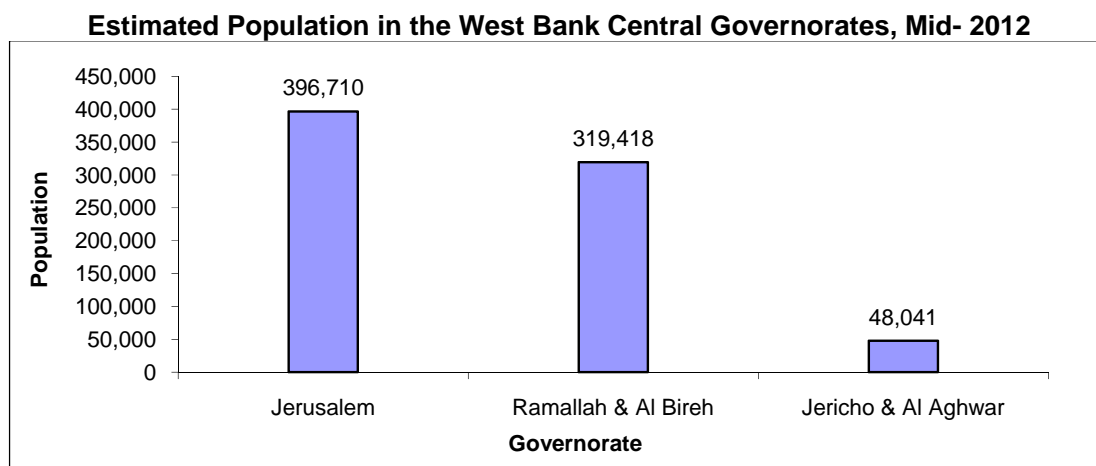
Chapter One

Main Indicators

This chapter presents the main findings of the most important demographic, geographic and economic indicators of the West Bank Central Governorates.

1.1 Demographic Indicators**Population:**

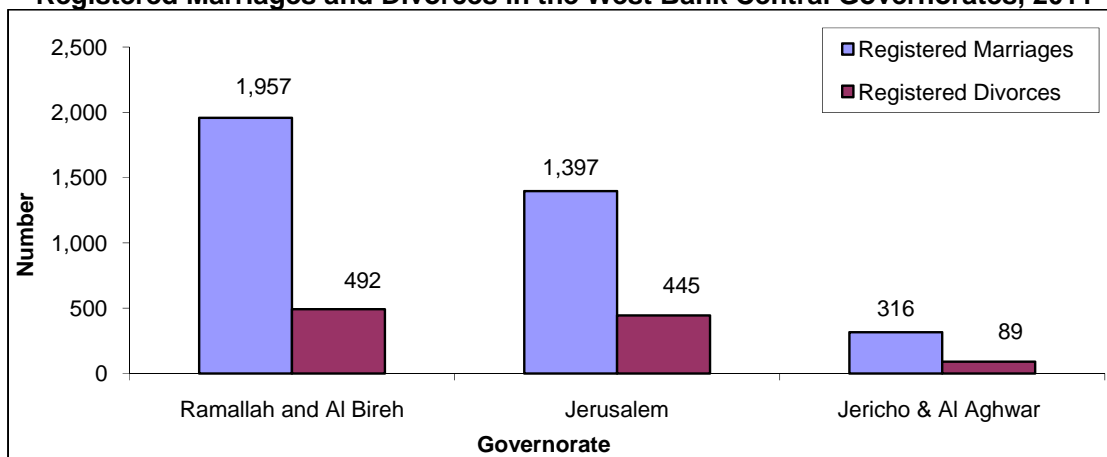
According to PCBS estimates, the population of the West Bank Central Governorates was around 764 thousand in mid-2012



There are 207 thousand Palestinian refugees in the West Bank Central Governorates are refugees.

There were 3,670 registered marriages in Sharia courts and churches in the West Bank Central Governorates in 2011, which accounted for 10.2% of all marriages in the Palestinian Territory.

There were 1,026 registered divorces in Sharia courts in 2011, which accounted for 17.3% of all cases of divorce in the Palestinian Territory.

Registered Marriages and Divorces in the West Bank Central Governorates, 2011

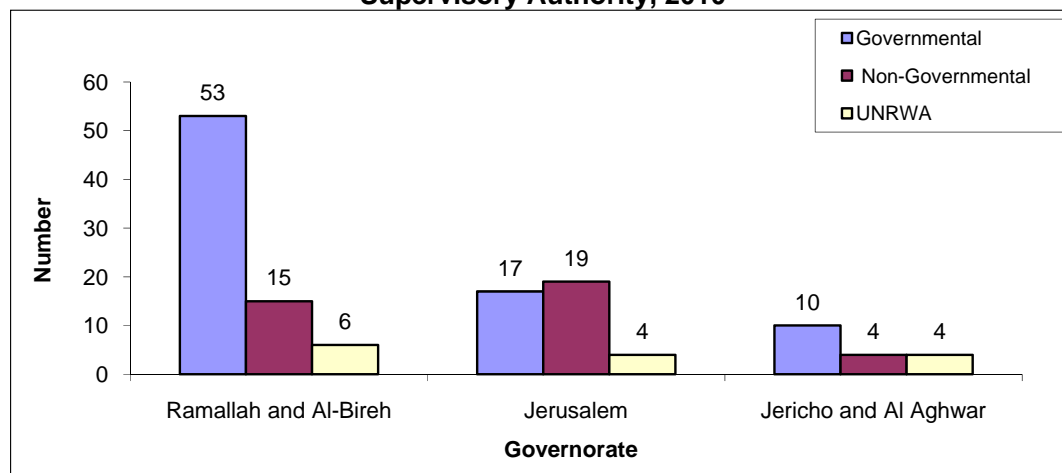
The median age at first marriage in the West Bank Central Governorates was 25.2 years for males and 20.1 years for females in 2011.

There were 12,715 registered live births in 2011 in the West Bank Central Governorates: 6,583 male and 6,132 female, and constituting 19.7% of all West Bank total births. In the same year, there were 1,213 registered deaths: 665 males and 548 females, representing 19.0% of all the West Bank deaths.

Health:

There were 17 hospitals in 2010 in the West Bank Central Governorates, including two government hospitals and the rest non-governmental hospitals. The total number of beds was 1,021, making an average of 1.4 beds per 1000 inhabitants.

There were 132 primary health care centers in 2010 in the West Bank Central Governorates, with 80 health centers supervised by the Ministry of Health, 38 run by non-governmental organizations, and 14 health centers run by UNRWA.

Primary Health Care Clinics and Centers in the West Bank Central Governorates by Supervisory Authority, 2010

Labor:

The labor force participation rate of persons aged 15 years and above in the West Bank Central Governorates was 41.8%: 15.1% for females and 68.5% for males. Of these, 83.7% were in full employment while 1.6% were underemployed.

The unemployment rate in the Central Governorates was 14.7%: 19.7% for females and 13.6% for males.

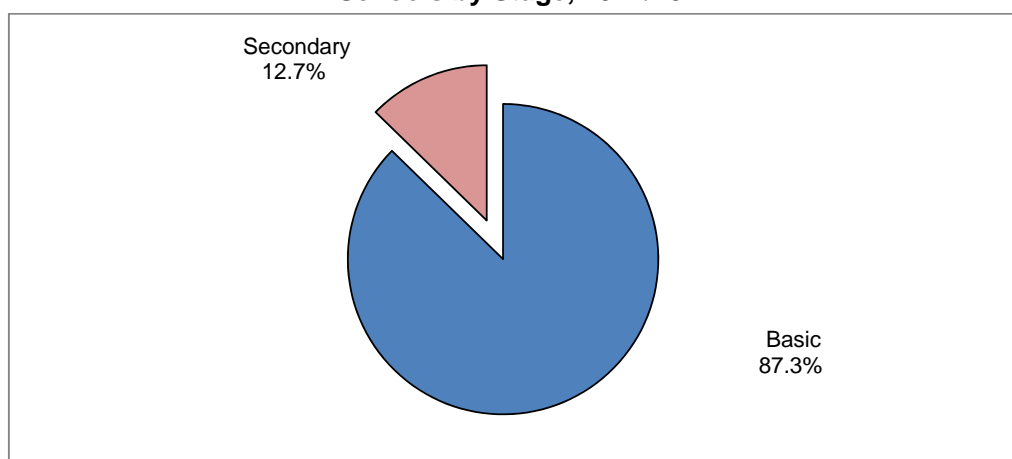
Poverty:

The poverty rate among individuals in the West Bank Central Governorates was 10.7% in 2010, compared to 18.3% among individuals in the West Bank for the same year. Monthly household expenditure in the governorate of Ramallah and Al Bireh was higher than in the other central governorates at JD 1,098.0.

Education:**Schools in the West Bank Central Governorates**

There were 498 schools in total with 160,065 students: 78,382 males and 81,683 females.

**Percent Distribution of Students in the West Bank Central Governorates
Schools by Stage, 2011/2012**

**2.1 Geographic Indicators****Environment:**

There were four localities not connected to a water network in the West Bank Central Governorates in 2010.

In 2010, the local authorities provided water to 52 localities via the public network in the West Bank Central Governorates and other authorities provided water services to one locality.

There were three localities not connected to an electricity network in the West Bank Central Governorates during 2010. Local authorities provided electricity via the public network to 130 localities.

There were eight localities in the West Bank Central Governorates that had no solid waste collection service in 2010, while the local authority collected solid waste in 99 localities.

There were 33 localities used wastewater network as disposal method in the West Bank Central Governorates in 2010, 111 localities used Porous and Tight Cesspits and 7 localities not stated.

Agriculture and Land Use:

The area of the West Bank Central Governorates is 1,793 km² in year 2010, which represents around 31.7% of the total area of the West Bank. The cultivated land is 138.1 km² and represents 15.7% of the total cultivated land in the West Bank Central Governorates, and 7.7% of the total area of the West Bank Central Governorates, during the agricultural year 2009/2010.

The results indicated that during the agricultural year 2009/2010, there were 15,138 agricultural holdings in the West Bank Central Governorates, which represent 16.7% of all agricultural holdings in the West Bank. The most common type of agricultural holding in the West Bank Central Governorates was plant holdings: there were 11,183 plant holdings comprising 73.9% of all agricultural holdings in the West Bank Central Governorates. There were 1,530 mixed agricultural holdings, comprising 10.1% of all holdings, and 2,425 animal holdings comprising 16.0% of all agricultural holdings in the West Bank Central Governorates.

There were 1,829 cows raised in the West Bank Central Governorates, which represent 7.5% of cows in the West Bank, in addition to 100,013 sheep representing 19.8% of sheep in the West Bank, and 74,263 goats representing 35.8% of goats raised in the West Bank on the enumeration day, the first of October 2010.

In 2011, there were 37 active olive presses in the West Bank Central Governorates representing 14.6% of all olive presses in operation in the West Bank. The quantity of oil extracted in the West Bank Central Governorates totaled 4,417 tons, equivalent to 22.9% of all oil produced in the West Bank.

The results show that 240 people were employed in olive pressing activities in the West Bank Central Governorates in 2011, comprising 20.1% all West Bank olive pressing employees.

The value added of olive pressing activities totaled USD 2.1 million in the West Bank Central Governorates in 2011, representing 31.6% of the overall value added in the West Bank.

Housing Conditions:

In the West Bank Central Governorates, 50.7% of households live in a villa or house and 47.8% live in an apartment.

Tourism:

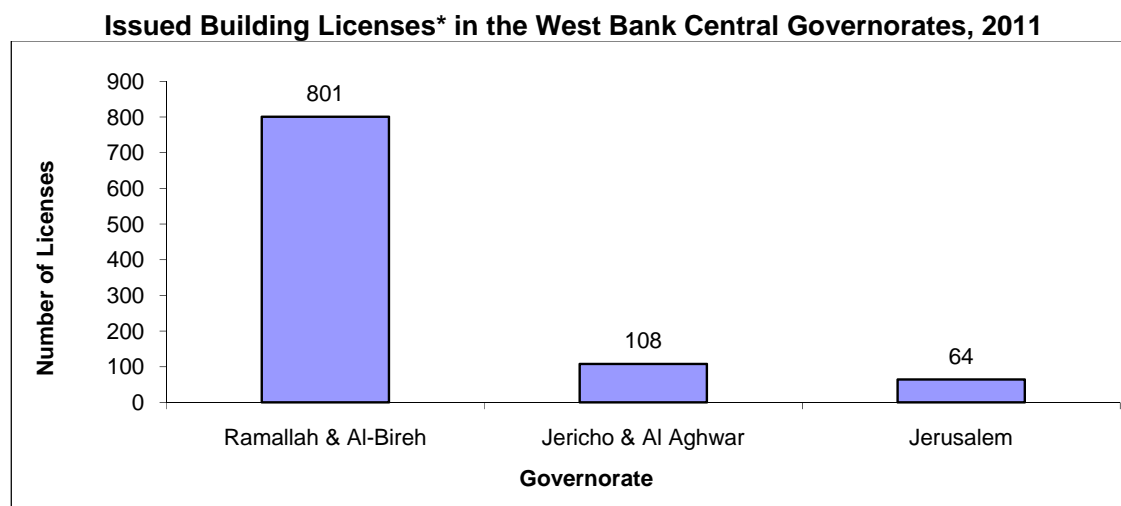
There were 55 hotels operating in the West Bank Central Governorates with an average of 2,784 rooms and 5,855 beds. During 2011, the total number of hotel guests was 267,401, spending 652,998 nights. The room occupancy rate in the West Bank Central Governorates hotels was 38.6%.

3.1 Economic Indicators**Establishments:**

There were 16,291 economic establishments operating in the West Bank Central Governorates in 2010 with a total of 57,860 workers, comprising 44,779 males and 13,081 females.

Building Licenses:

In 2011, 973 building licenses were issued in the West Bank Central Governorates with a total area of 809.3 m². Of these licenses, 746.3 m² were for new buildings and 63.0 m² were for existing buildings.



*Data do not include boundary walls licenses.

Transportation:

Licensed vehicles in the West Bank Central Governorates in 2010 was 42,070.

There were 7,500 new registered vehicles in the West Bank Central Governorates in 2010.

Registered Foreign Trade:**Imports:**

Imports increased by 15.2% in the West Bank Central Governorates in 2010 compared to 2009 and totaled USD 1,429 million.

Exports:

Exports increased in the West Bank Central Governorates in 2010 and totaled USD 169.9 million.

Trade Balance:

The trade balance for the West Bank Central Governorates registered a deficit in 2010 of USD 1,259.1 million.

Chapter Two

Concepts and Definitions**Agricultural Holding:**

It is an economic unit of agricultural production under single management comprising all kept livestock and all land used totally or partially for agricultural production purposes regardless of title, legal form, or size. Single management may be exercised by an individual or household, jointly by two or more individuals or households, by a clan or tribe, or by a juridical person such as a corporation, cooperative, or government agency. The land of the holdings may consist of one or more parcels located in one or more separate areas, or in one or more territorial or administrative divisions, providing the parcels share the same production means, such as labour, farm buildings, machinery or draught animals.

Agricultural Land:

It refers to the major classes of land use of agricultural holdings. For classification, the "gross area" is surveyed for each class. Agricultural land includes land under scattered farm buildings, yards and their annexes, plus permanently uncultivated land such as uncultivated patches, banks, footpaths, ditches, headlands and shoulders (ECE 1986).

Animal Holding:

The presence of animals controlled by the holder. The holder should have any number of cattle or camels, at least five heads of sheep, goats or pigs, at least 50 poultry birds (layers and broilers), or 50 rabbits or other poultry like turkeys, ducks, fer...etc, or a mixture of them, or at least three beehives controlled by the holder.

Average Room or Bed Occupancy:

It is defined as the total number of rooms or beds occupied and divided by the number of days.

Average Household Size:

It refers to the average number of household members calculated through dividing the total number of members for a certain category by the number of households for that particular category.

Average Housing Density:

This refers to the average number of persons living per room. This average is calculated by dividing the total number of individuals of a certain category from households by the total number of rooms for that particular category.

Bed Occupancy:

Number of beds booked and paid for. Such beds are considered occupied whether they were actually used or not.

Bed Occupancy Rate:

Days of hospitalization by admitted patients, divided by the number of beds and multiplied by the days of the year.

Building:

The building is defined as any fixed construction that is temporarily or permanently erected on the surface of the earth or water. The building is surrounded by four walls or with at least one completed ceiling.

Employee Compensation:

The total remuneration, in cash or in kind, including social security contributions, payable by an olive press to an employee in return for work done by the latter.

Death:

The permanent disappearance of all evidence of life at any time after live birth has taken place.

Discharges:

Patient discharged from a hospital after having received diagnostic and curative health care, regardless of the case of the discharged person (cured or dead).

Employed Persons:

A person who works in the olive press, including owners, self-employed, unpaid family members, or waged workers, who receive their compensation in cash or in kind during a specific reference period.

Employee:

A person who works for a public or private employer and receives remuneration in wages, salary, commission, tips, piece-rates, or pay in kind.

Exports:

It refers to the whole commodities (goods and services) that are exported outside the country, conditioned with ownership transcription to another economy, or to free customs regions as a discount from the national economy as a result of a transaction with a non-resident economy.

Establishment:

An enterprise or part of an enterprise in which one group of goods and services is produced (with the possibility of secondary activities).

Economic Activity:

The type of work conducted by an establishment in which the main economic activity contributes to the greatest value added in establishments practicing more than one activity.

Government School:

Any educational institution run by the Ministry of Education or any other ministry or governmental instrument.

Government Public Sector:

Includes all institutions of the three branches: legislative, judicial and executive.

Gross Value Added:

Value added is a central concept of production and refers to the generated value of any unit that carries out any productive activity. Gross value added is defined as the value of gross production less the value of intermediate consumption.

Guests:

It refers to visitors staying in hotels and using their facilities. Records of new guests are based on the number of visits regardless of whether it is the same person or not.

Health:

Many definitions exist. As defined by the World Health Organization: “A state of complete physical, mental and social well-being and not merely the absence of disease or infirmity”.

Hospital:

An institution whose primary function is to provide services (diagnostic and therapeutic) for a variety of medical conditions, both surgical and non-surgical. Most hospitals also provide some outpatient services, particularly emergency care.

Hotel:

It is defined as an accommodation establishment providing overnight lodging for visitors in a room or unit. It should hold a number of persons exceeding that of an average single family. The establishment must be under one management and provide different facilities and services to visitors.

Housing Unit:

A building or part of a building constructed for one household only, with one or more independent entrances leading to the public road without passing through another housing unit. The unit might not be constructed for living purposes but be found occupied by a household during the enumeration. Likewise, the unit might be utilized for habitation or for work purposes, or both. Also, it might be closed, vacant or occupied by one or more households during the survey.

Housing Unit Type:

Housing unit type may refer to a villa, house, apartment, independent room, marginal, tent or other.

Household Expenditure:

This refers to the amount of cash spent on the purchase of goods and services for living purposes and the value of goods and service payments, or part of payments, received from an employer, and cash expenditure spent as taxes (non-commercial or non-industrial), gifts, contributions, interest on debts, and other non-consumption items.

Household Consumption:

This refers to the amount of cash spent on the purchase of goods and services for living purposes and the value of goods and service payments, or part of payments, received from an employer, and own-produced goods and food, including consumed quantities during the recording period, and imputed rent.

Imports:

It refers to the whole commodities (goods and services) entering the country by air, land and sea that are used in consumption, convertibility in the manufacturing sector, and re-exportation.

Intermediate Consumption:

It is the value of the goods and services consumed as inputs, used up, or transformed during the production process. It is measured during a specific time period in a way similar to measuring production. Intermediate consumption is estimated by purchase price, which is defined as the producers' price plus transportation and wholesale and retail trade margins. The value of gross intermediate consumption on the level of the total economy is the same whether calculated by purchase or producers' price. However, on a detailed level, the two evaluations vary.

Establishment in Operation:

An establishment which is in operation during the implementation of the establishments census.

Labor Force:

The economically active population (labor force) consisting of all persons aged 15 years and over who were either employed or unemployed.

Livestock:

Refers to all animals kept or reared mainly for agricultural purposes, including cattle, buffaloes, sheep, goats, pigs, horses, mules, asses, camels, poultry, rabbits, bees and other domesticated animals, as well as foxes and minks.

Main Economic Activity:

Is the main work of the enterprise based on the ISIC- rev4 and that contribute the major proportion of the value added, whenever more than one activity exists in the enterprise.

Mean Duration:

Total days of hospitalization divided by the number of discharged patients.

Median Age at First Marriage:

The age that divides individuals into two categories, either married before it or married after it.

Mixed Holding:

Where the holder has plant and animal holdings according to the definition of a plant and animal holding, providing both animal and plant activities and sharing the same means of production, such as labour, farm buildings, machinery or draught animals.

Marriage Duration (For divorce):

The duration between the date of the actual marriage and the survey reference date, calculated in years.

North of the West Bank Region:

Jenin, Tubas, Tulkarm, Nablus, Qalqiliya, and Salfit governorates.

Number of Guest Nights:

Number of beds booked for hotel guests. Such beds are considered as occupied whether they were actually used or not. It is measured by guest night unit.

Number of Rooms:

It refers to furnished rooms for the use of guests. Such rooms might be single, double, triple, or quadruple. Rooms involving more than four beds were classified under 'others' in the questionnaire. A suite usually comprises one bedroom or more, a living room and private toilet facilities.

Number of Persons Engaged:

This includes paid employees, unpaid owners and family members, in addition to all permanent and temporary staff aged 10 years and more.

Olive Press:

An enterprise or part of an enterprise in which one group of goods and services is produced (olive oil, with the possibility of secondary activities).

Outputs:

It is the value of the final products of goods and services produced by a certain olive press which is used by other units for self-consumed or for the purposes of self gross fixed capital formation.

Percentage of Room or Bed Occupancy:

It is defined as the average occupancy of a room or bed, divided by the available rooms or beds and multiplied by one hundred.

Plant Holding:

The presence of cultivated or arable land area for any agricultural crops controlled by the holder. It must not be less than one dunum for an open cultivated area and 0.5 of a dunum for a protected cultivated area.

Population Density:

Number of population per km² of area.

Poverty:

Is often defined as “the absence of the minimum standard of income or resources to meet basic needs” and as “the inability to attain the minimum standard of living.” Two poverty lines have been developed according to actual spending patterns of Palestinian families. The first, termed “deep poverty line” was calculated to reflect a budget for food, clothing and housing. The second line adds other necessities including health care, education, transportation, personal care, and housekeeping supplies. Since consumption levels better reflect the population’s needs, and help to specify the poverty line in Palestine, the monthly consumption level is used rather than the monthly income.

Private Sector:

Includes all institutions owned by individual/s or part of an organization the purpose of which is for profit in most cases.

Public Water Network:

A network of pipes for the purpose of providing clean water to households. It normally belongs to a municipality, council or to a private company and may be for different domestic uses.

Refugee Status:

This status relates to the Palestinians who were forced to leave their land in the Palestinian Territory occupied by Israel in 1948. It applies to their male sons and grandchildren. Every Palestinian falls under one of the following categories:

Registered Refugee: It applies to a registered refugee holding a refugee registration card issued by UNRWA.

Non-Registered Refugee: It applies to an unregistered refugee who does not hold a refugee registration card issued by UNRWA.

Non-Refugee: It applies to any Palestinian not categorized under any of the two aforementioned statuses.

Residence:

Defined in economic terms, the main criterion to determine the residence of an entity is the centre of economic interest. Persons are considered residents of the country where they live for at least one year, excluding students, for reasons of illness, and soldiers.

Room Occupancy:

Number of rooms booked and paid for. Such rooms are considered occupied whether they were actually used or not.

School:

Any educational institution, excluding kindergartens, regardless of the number of students and grade structure.

Secondary School:

Includes schools with secondary stage, or basic and secondary stage.

Sewage Network:

System of collectors, pipelines, conduits and pumps to evacuate wastewater (rainwater, domestic and other wastewater) from any of the location paces generation either to a municipal sewage treatment plant or to a location where wastewater is discharged.

Tenure of Housing Unit:

Tenure status indicates whether the household occupies the housing unit as an owner, rented, or other (including without payment and for work purposes).

Underemployment:

Underemployment exists when a person's employment is inadequate in relation to alternative employment, with account being taken of his/her occupational skills. The underemployed persons are classified into two groups: 1. Visible Underemployment: this refers to an insufficient volume of employment: persons who worked less than 35 hours during the reference week or worked less than the normal hours of work in their occupation were considered as visibly underemployed. 2. Invisible Underemployment: refers to a misapplication of labour resources or fundamental imbalance between labour and other factors of production, such as insufficient income.

Unemployed (According to the ILO Standards):

Unemployed persons are those individuals aged 15 years and over who did not work at all during the reference period, who were not absent from a job, were available for work and actively seeking a job during the reference period by one of the following methods: news paper, registered at employment office, asking friends or relatives, or any other method.

UNRWA School:

Any school run or supervised by UNRWA.

References

1. Palestinian Central Bureau of Statistics. Primary Educational Census Database for the Scholastic Years 2011/2012. Ministry of Education and Higher Education. Ramallah- Palestine.
2. Palestinian Central Bureau of Statistics, 2012. Database of Culture Statistics 2011. Ramallah- Palestine.
3. Palestinian Central Bureau of Statistics, 2012. Health Statistics Database, 2010. Ramallah- Palestine.
4. Ministry of Health, PHIC. Annual Health Report- 2010. Ramallah- Palestine.
5. Palestinian Central Bureau of Statistics, 2012. Population Register, Ministry of Interior, Updated Version up to 10/2/2011. Ramallah- Palestine.
6. Palestinian Central Bureau of Statistics, 2012. Foreign Trade Statistics, Goods and Services, 2010: Main Results. Ramallah – Palestine.
7. Palestinian Central Bureau of Statistics, 2011. Olive Press Survey 2010- Main Results. Ramallah- Palestine.
8. Palestinian Central Bureau of Statistics, 2012. Database of Population, Housing and Establishments Census 2007. Ramallah – Palestine
9. Palestinian Central Bureau of Statistics, 2012. Revised Estimates based on the final results of Population, Housing and Establishments Census 2007. Ramallah-Palestine.
10. Palestinian Central Bureau of Statistics, 2012. Marriage and Divorce Database 2011. Ramallah-Palestine
11. Palestinian Central Bureau of Statistics, 2012. Population, Housing and Establishments Census 2007 and updated up to 2009.
12. Palestinian Central Bureau of Statistics, 2012. Expenditure and Consumption Survey 2010. Ramallah- Palestine.
13. Palestinian Central Bureau of Statistics, 2011. Local Community Survey 2010: Main Findings. Ramallah – Palestine.
14. Palestinian Central Bureau of Statistics, 2011. Land Use Statistics Tables in the Palestinian Territory, 2008. Ramallah - Palestine.
15. Palestinian Central Bureau of Statistics, 2011. Agriculture Census 2010: Final Results. Ramallah- Palestine.
16. Palestinian Central Bureau of Statistics, 2011. Hotel Activities in Palestinian Territory, (Annual Bulletins, 2010). Ramallah - Palestine.

17. Palestinian Central Bureau of Statistics, 2012. Palestinian Labor Force Survey: Annual Report, 2011. Ramallah – Palestine.
18. Palestinian Central Bureau of Statistics 2011. Transportation and Communication Statistics in the Palestinian Territory: Annual Report 2010. Ramallah-Palestine.