



2010



2012 /

2006

.2012 - 1434 ©

:

-2010

.2012

:

- **1647** . . .

(970/972) 2 298 2700 :

(970/972) 2 298 2710 :

1800 300 300 :

diwan@pcbs.gov.ps :

<http://www.pcbs.gov.ps> :

:

:

:

:

2010-

(PNA)

.(UNFPA)

(UNICEF)

(UNICEF)

.(UNFPA)

2010

	(29-15)	50 (24-5)	14-5
	10,027		60
8,740		13,629	15,355
			4,889
			233
			5,328

2012

10		
17		
19		.1
19		1.1
20		2.1
20		3.1
23		.2
23		1.2
25		2.2
28		3.2
30		4.2
33		.3
33		1.3
37		2.3
38		3.3
40		4.3
47	29-15	.4
47		1.4
48		2.4
49		3.4
55	60	.5

2010

					/	
20.4	22.2	20.0	23.2	24.3	(10)
18.8	21.1	22.6	19.3	22.2	(18)
						49-15
54.8	61.1	59.1	51.5	58.1		
31.3	24.8	23.5	22.7	26.0		49-15
97.0	98.2	100.0	100.0	98.4		49-15
)	
						(
93.9	94.8	99.3	93.8	95.5		49-15
					4)	
						(
95.7	97.1	97.5	95.7	95.3		49-15
24.1	25.6	19.3	35.5	26.2		49-15

2010

12.4	9.5	11.5	10.6	7.8	17.4	19.9	20.4	20.2	18.3	23.6
16.7	16.0	15.1	17.0	14.3	15.5	21.1	22.5	18.0	15.3	18.3
43.3	46.0	44.1	50.4	52.2	46.8	65.1	53.4	49.5	56.4	55.6
50.2	43.2	49.4	35.7	35.9	17.8	24.7	25.2	19.1	20.4	16.9
99.6	99.5	95.6	98.6	97.0	97.0	99.1	95.9	98.0	98.5	98.3
98.9	95.6	97.1	96.0	92.5	88.3	93.9	91.2	92.9	94.8	94.2
99.4	99.5	98.3	96.5	99.4	98.4	100	98.7	100	97.6	98.3
11.6	13.1	15.6	14.1	15.4	10.4	17.2	15.8	16.3	20.1	28.5

2010

					/
					49-15
38.3	44.4	47.6	50.7	44.5	
10.1	12.7	8.5	7.2	7.0	2.5
8.3	7.5	4.1	5.6	8.3	()
3.7	2.8	1.6	2.5	2.6	
1.7	1.6	2.3	3.1	3.0	
					()
96.2	95.8	96.8	97.1	96.5	
100.0	98.4	100.0	100.0	99.2	()
19.5	34.5	47.4	29.8	27.6	(5-0)
88.6	81.4	81.8	95.0	83.9	(12-0)
					/
7.1	6.8	2.0	6.8	5.1	
14.9	18.8	17.3	17.9	17.8	
77.5	62.0	72.3	53.5	71.1	(59-36)
12.4	12.5	12.1	18.1	21.1	(59-0)

2010

30.7	56.2	36.7	26.9	18.8	27.6	38.2	64.5	44.7	49.8	44.4
10.8	11.0	8.1	8.2	9.3	8.3	6.9	10.1	6.8	8.6	6.8
11.2	7.2	13.9	10.7	10.4	16.7	7.0	15.7	16.8	14.9	11.2
4.4	2.3	4.6	2.9	4.4	5.7	3.6	3.9	4.2	4.6	3.3
5.8	1.4	2.7	2.7	6.9	3.8	0.8	3.9	0.0	6.1	1.2
95.1	96.3	97.0	97.6	94.9	94.9	96.1	93.5	96.4	95.6	94.4
100.0	100.0	99.6	99.7	99.3	97.2	97.8	97.5	97.7	98.8	100.0
22.8	24.1	26.6	31.3	29.5	28.8	29.7	26.1	16.2	31.1	13.4
56.6	57.9	69.6	55.9	63.9	79.5	88.9	89.0	85.7	87.9	60.0
5.9	7.5	2.8	4.7	6.2	3.5	8.2	2.1	7.4	4.1	10.1
17.1	6.7	8.2	10.0	9.3	13.3	14.6	12.8	9.5	12.8	14.8
58.7	44.5	37.5	50.2	43.9	57.0	70.7	71.2	56.9	68.5	62.0
12.2	6.2	3.4	9.6	15.7	14.4	16.0	16.5	22.6	18.3	30.1

2010

/

94.6 95.3 94.3 98.3 95.5 (14-2)

2.8 10.0 5.9 26.8 13.4 (14-5)

100.0 99.8 100.0 99.4 99.9

61.2 60.7 59.8 53.0 63.9 15-12

6.8 15.5 18.4 12.2 17.6 23-20

2010

95.3	86.4	92.6	91.9	93.8	94.0	93.2	89.8	97.6	90.9	93.0
1.0	1.2	10.4	2.0	1.5	7.8	11.7	3.8	6.0	1.5	8.7
99.5	99.3	99.7	99.0	98.3	99.3	99.2	98.7	100.0	99.1	99.5
55.2	52.4	62.4	54.1	52.3	53.5	42.4	40.3	53.7	56.2	62.1
2.7	10.6	6.7	10.4	18.2	12.2	12.5	10.5	41.8	21.2	9.5

ملخص تنفيذي

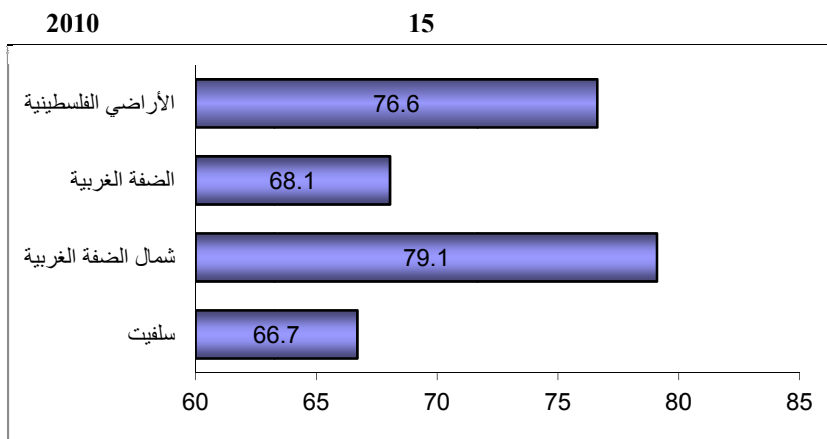
			• 66.7%
	10	23	•
%1.1	%45.2		
		18	• 8.3%
		49-15	• 55.6%
		49 -15	• 10.6%
	()	49-15	• 98.3%
		49-15	• 16.9%
		49-15	• 98.3%
		49-15	• 28.5%
		49-15	• 44.4%
(2,500)			• 6.8%

.()		%11.2 •
.	5-0	%13.4 •
/	12-0	%60.0 •
%14.8 .		%10.1 •
	59-36	%62.0 •
		%20.4 •
	10	
(14-2)		%93.0 •
)	14-5	%8.7 •
		.(
	29-15	%2.9 •
		%39.1
	29-15	%78.3 •
	29-15	•
	60	%72.7 •
	60	%54.8 •

.1

1.1

(15)



%66.7

.%68.1

%76.6

15

.2

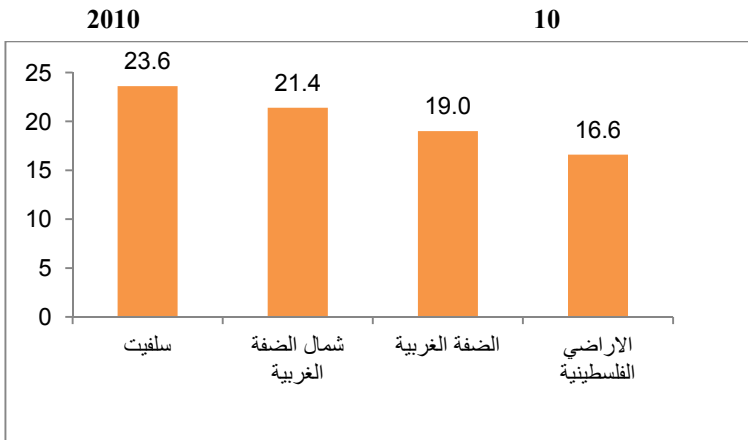
.1 : 3

.(

15)

.3

2.1



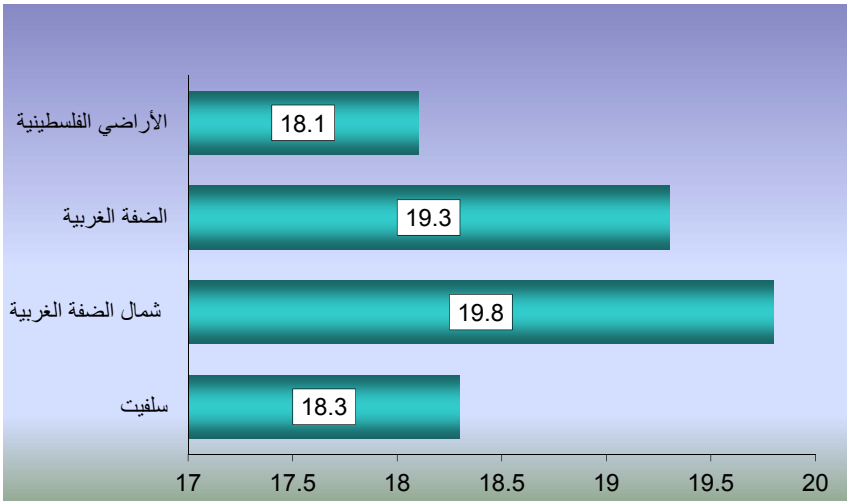
	10	10	%23.6
10	%16.6		
49-40			
	%28.0	%36.7	
	19-10	%10.2	
%45.2			%1.1
			3.1
	18	حوالي %18.3	
18	%18.1	%19.3	

%14.9

%21.7

18

2010



18

%6.9

2015

1.2

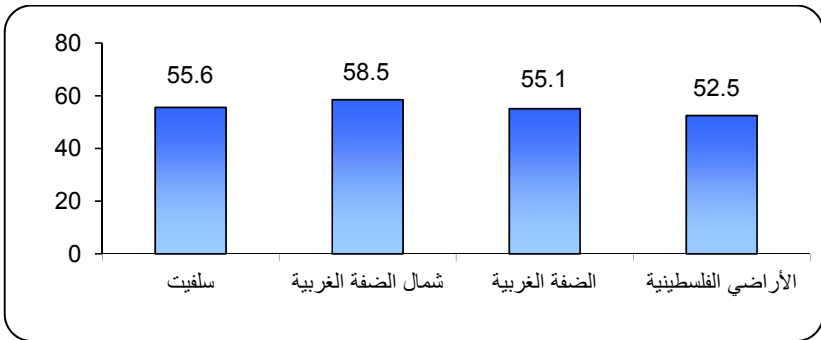
(24 2 -)	.
-----------	---

49) (18)

(

2010

49-15



(49-15) %55.6

%41.6 .%55.1

.%40.6

49-15

2010

5.8	5.8	6.1	1.3	
18.6	21.4	21.3	36.4	/
4.1	5.2	4.4	2.6	/
3.5	4.2	5.8	5.2	/
9.3	8.9	8.9	11.7	
29.2	40.6	39.8	41.6	
27.7	11.4	12.5	0.0	/
1.9	2.5	1.1	1.3	
100.0	100.0	100.0	100.0	

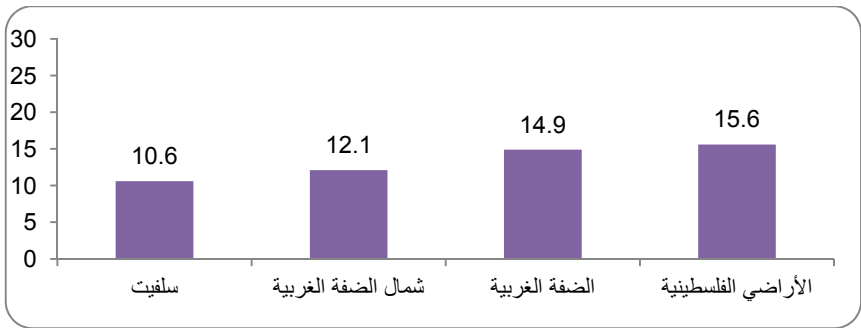
49-15

•
%10.6

.%15.6

49-15

2010



3.2

"

1990

"2015

%98.3

2010

49-15

()

%98.0

%97.8

%71.0

%44.5

2010

7.6	9.3	2.9	1.4	
12.6	12.5	12.2	20.3	
5.6	7.5	3.2	1.4	
2.9	3.7	3.7	4.3	
44.5	53.2	65.6	71.0	/
2.5	3.4	2.9	1.4	/
21.4	5.7	9.0	0.0	/
2.6	4.5	0.3	0.0	/
0.3	0.2	0.3	0.0	
100	100	100	100	

• **التتقيف الصحي أثناء الحمل**

%50.7

%39.4 %40.8

49-15

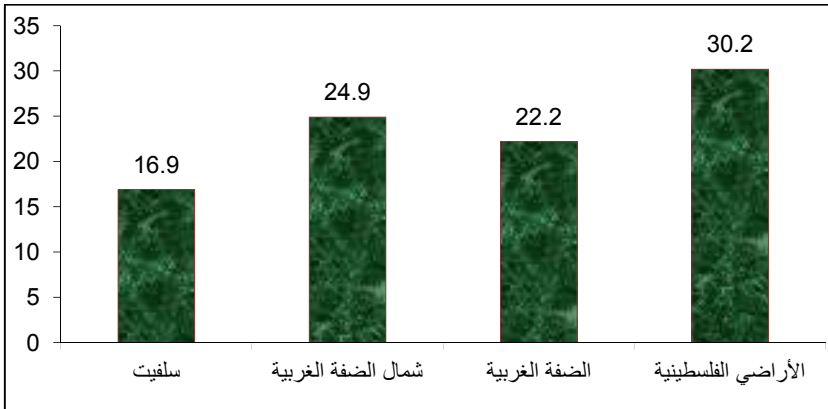
2010

56.9	53.3	53.1	39.4	
48.5	39.8	37.7	32.4	
63.4	58.2	58.4	37.5	
55.3	46.5	46.8	31.0	
50.5	46.8	49.8	40.8	
14.7	10.9	8.7	9.9	
63.6	58.9	60.8	50.7	

● التطعيم ضد التيتانوس

49-15

2010



%16.9.

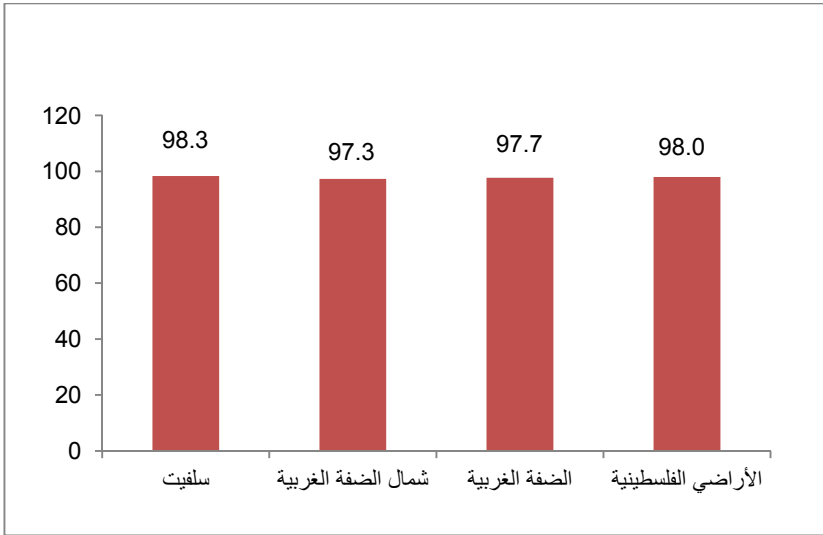
3.2

% 98.3

%98.0 %97.7

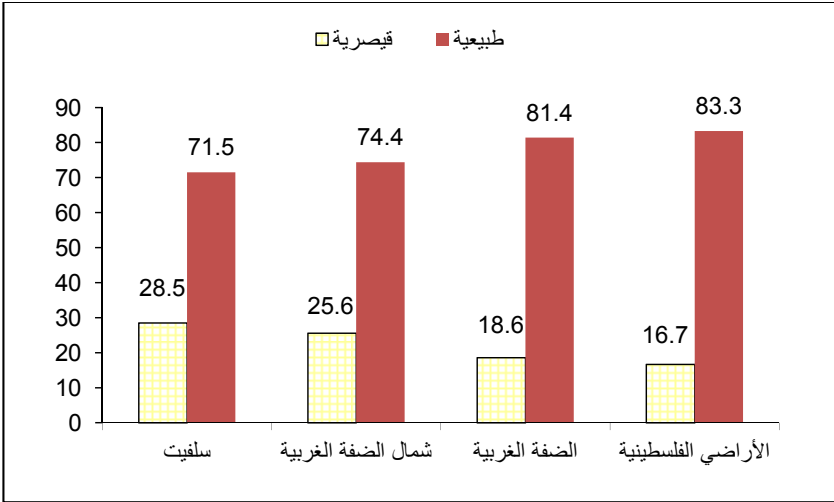
49-15

2010



•
%28.5

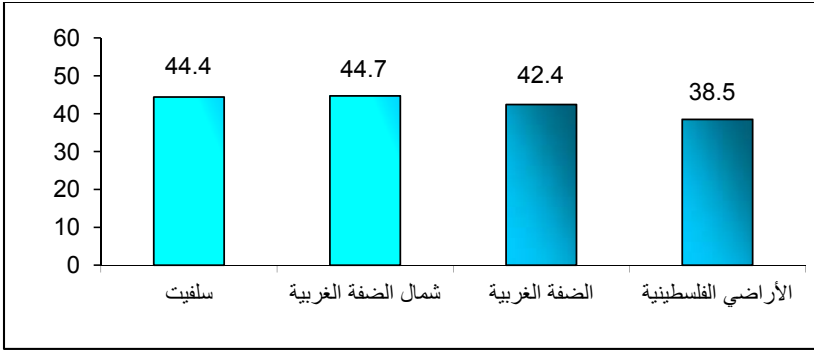
2010



4.2

49-15

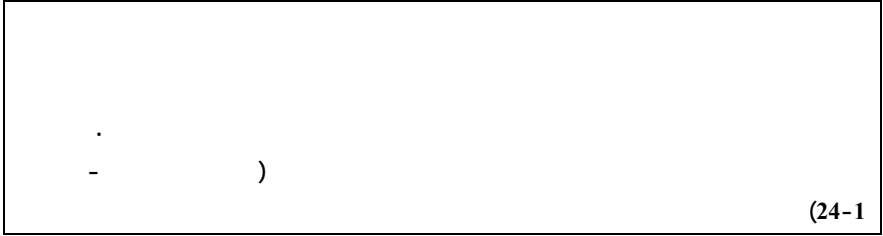
2010



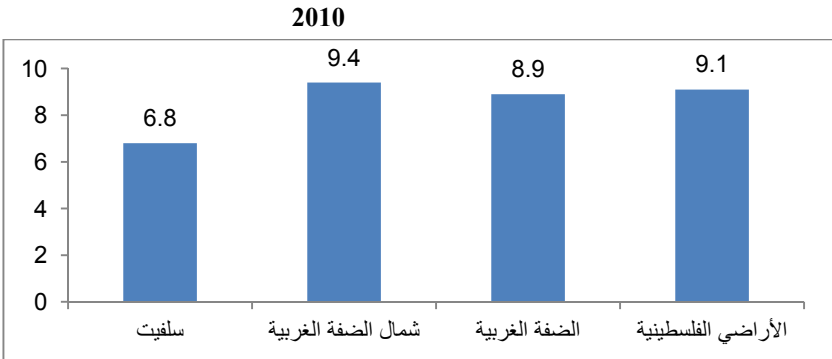
%44.4

.3

1.3



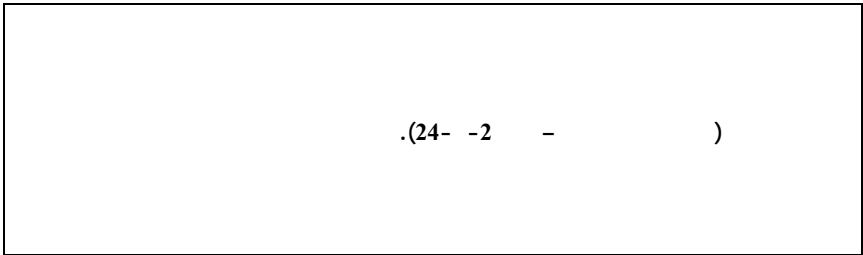
2.5



2010 7.2%

(2,500)

● سوء التغذية

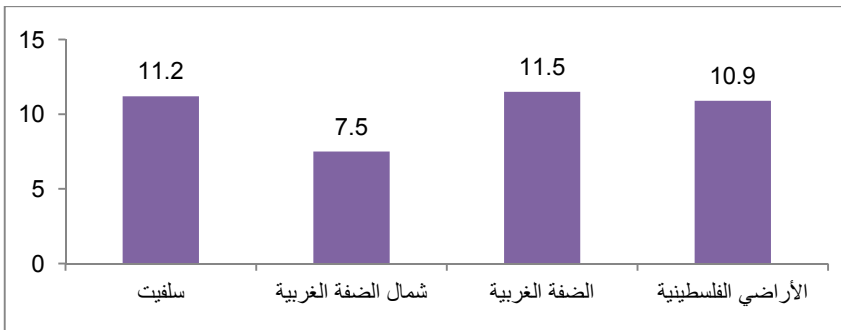


100 11

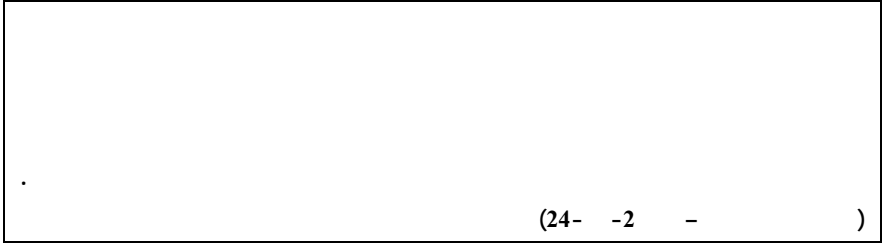
()

11.5% 10.9%

2010 ()

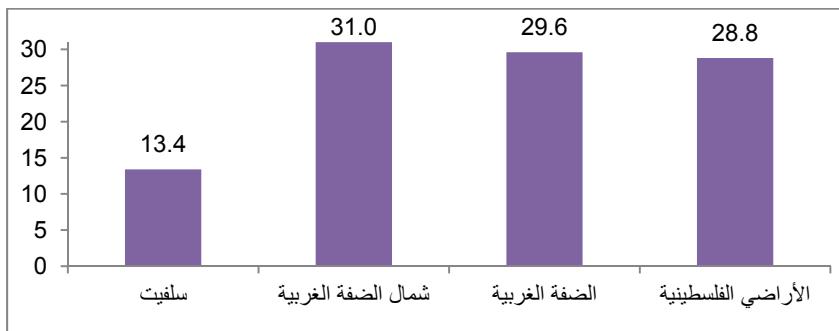


• الرضاعة الطبيعية



5-0 %13.4
% 86.6 من الأطفال

2010



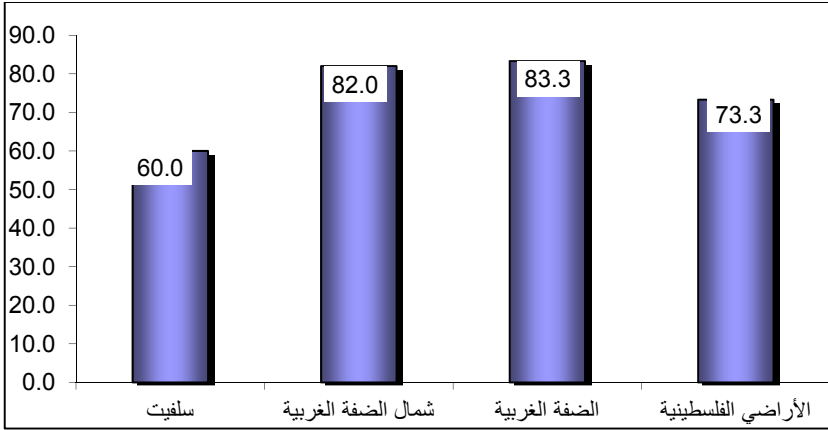
12-0

%60.0

/

12

2010



2.3

"

"2015 1990

(23-12)

2010

(23-12)

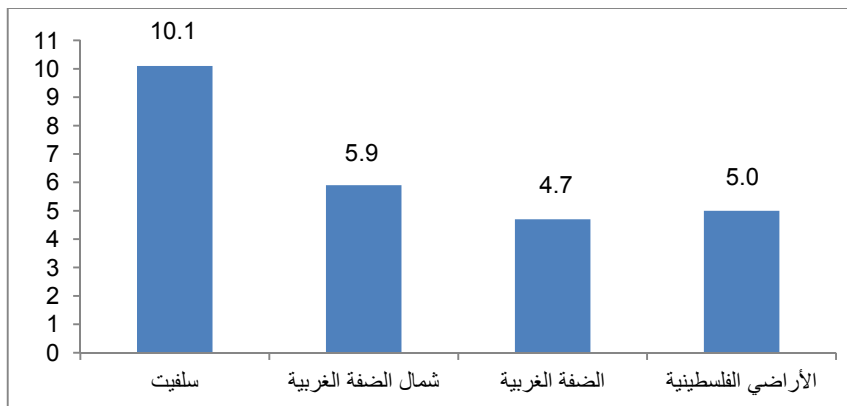
98.2	97.1	99.7	100.0	
90.9	88.0	93.6	84.3	
93.2	91.4	94.1	92.9	
91.9	91.6	94.6	90.0	
92.8	91.6	94.2	90.3	()

3.3

(24- -2 -) .

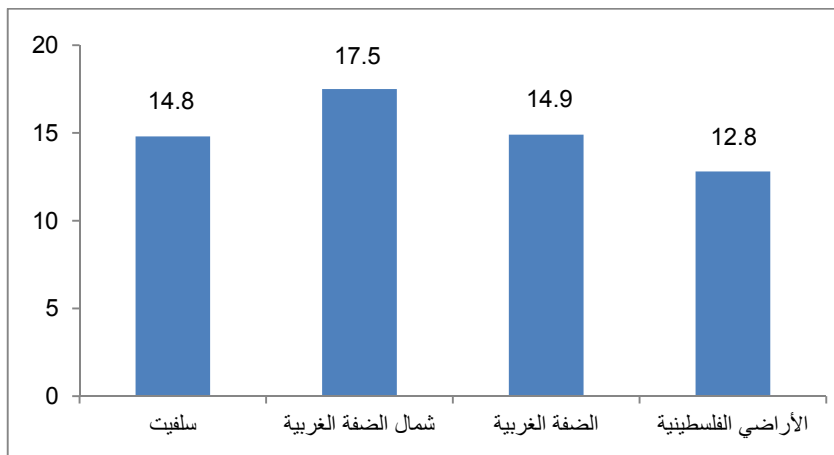
•

2010



.%10.1

2010



%14.8

4.3

"

.(5) "

2010				5
				10
11.8	13.8	13.7	20.4	10
3.0	4.4	4.1	11.9	
13.4	16.1	16.3	30.1	*

.*

10

%20.4

10

%.13.8

•

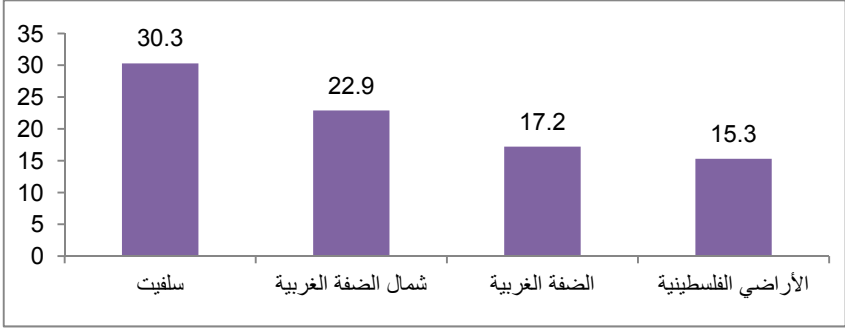
59-36

%30.3

(%15.3) (%17.2)

2010

59-36



59-36

%62.0

%65.3

59-36

2010

59-36		
2.8	62.0	
2.8	67.4	
2.9	65.3	
2.6	57.7	

5 (%20.3)
 3
 .(%15.1)

5 %95.4
 %10.9
 ()
 %67.6 %88.8
 .()

2010				5		
/				10	3	
26.3	95.4	10.9	66.5	2.4	20.3	
19.1	90.7	18.6	68.7	3.0	14.9	
17.5	88.8	20.2	67.6	3.3	15.1	
12.9	85.0	18.2	62.7	2.6	11.7	

14-2

2010

/					
6.7	93.0	25.3	72.8	90.1	
4.4	95.1	27.8	80.1	91.8	
5.4	93.5	24.2	75.9	90.1	
5.7	92.8	26.5	76.0	89.6	

14-2

%93.0

•

-) . (1-32

14-5

%5.7

%8.7

.%10.4

2010 14-5

14-5	14-12	11-5	
8.7	2.4	11.0	
10.4	8.4	11.2	
7.7	6.1	8.4	
5.7	4.7	6.2	

29-15 .4

(29-15)

1.4

29-15

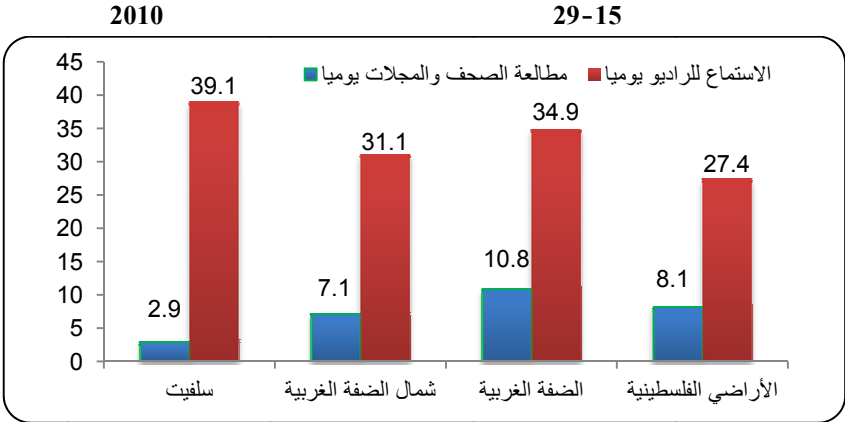
%10.3

.%10.8

29-15

%39.1

.%27.4



29-15

%41.4

.%25.0

2010		29-15		
25.0	27.2	29.5	37.1	
16.0	16.6	15.5	15.7	
8.5	7.6	6.3	5.7	
50.5	48.6	48.8	41.4	

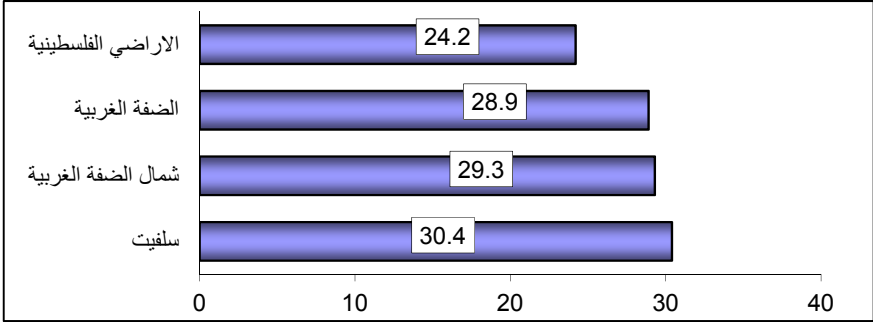
2.4

29-15

%30.4

. %24.2 %28.9

نسبة الشباب 15-29 سنة العاملون، 2010



29 - 15 %57.1

%68.0 %66.3

نسبة الشباب 15-29 سنة حسب الرضا عن العمل، 2010

0.0	42.9	57.1
1.6	32.2	66.3
10.6	22.0	67.4
7.7	24.3	68.0

3.4

29-15

%78.3

2010

29-15

83.9	80.6	80.2	78.3	
13.5	16.2	16.9	21.7	
2.6	3.1	2.7	0.0	

•

29-15

%85.3

% 44.1 %52.9

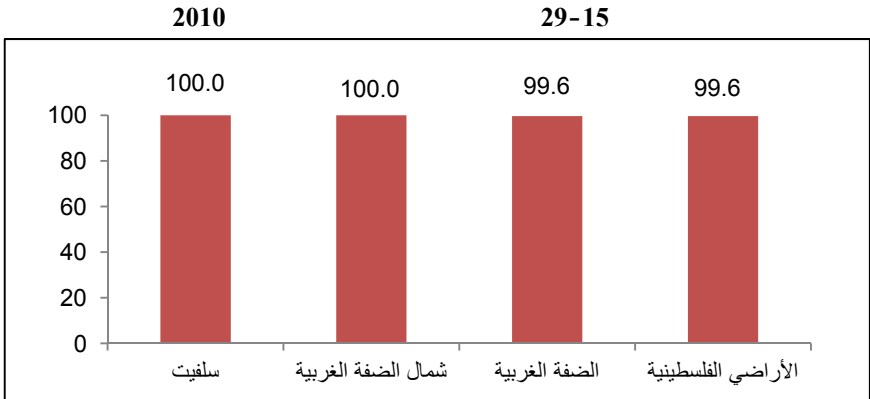
2010

29-15

60.6	70.2	73.3	85.3	
60.4	60.8	59.8	48.5	
55.4	58.5	57.8	52.9	
26.6	36.8	32.2	16.2	
25.4	34.6	31.2	19.1	
7.9	9.6	13.0	2.9	
12.8	8.3	11.9	1.5	
10.1	12.0	18.5	1.5	
34.1	16.4	22.7	1.5	
53.8	58.1	61.9	44.1	
15.2	20.6	25.0	13.2	
11.9	14.2	11.9	1.5	
2.3	2.5	3.4	2.9	

29-15

.%99.6



29-15

%45.6

6-4

.%48.9

2010		29-15		
19.7	18.8	25.3	15.8	3-1
46.5	42.5	48.9	45.6	6-4
3.5	2.0	1.8	3.5	7+
0.8	0.8	0.8	0.0	
29.5	35.9	23.2	35.1	/
100	100	100	100	

•

29-15

%66.5

%59.9 %64.4

2010		29-15	
52.2		47.8	
59.9		40.1	
64.4		35.6	
66.5		33.5	

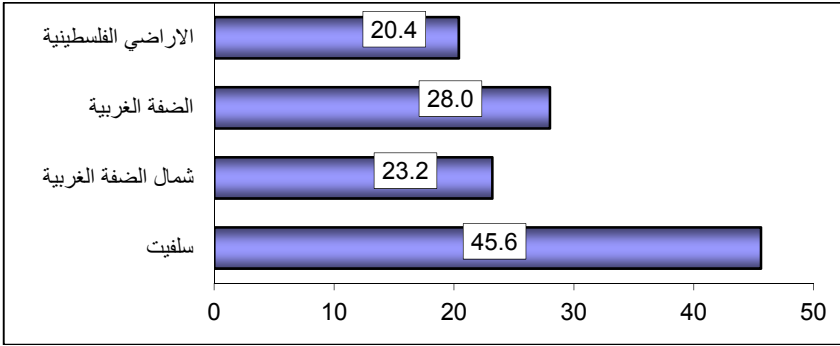
•

29-15

%45.6

2010

29-15



%91.2

.%79.4

2010

29-15

55.2	54.5	61.1	69.1	
53.9	55.2	55.0	63.2	
87.4	87.4	87.5	91.2	
66.0	71.4	70.2	79.4	
40.7	44.6	51.1	70.6	
70.4	68.0	75.8	91.2	
45.6	55.9	60.0	51.5	
25.3	29.2	26.8	36.8	
11.7	13.4	14.9	17.6	
11.2	13.4	16.7	19.1	
2.2	2.5	5.0	0.0	

60 .5

60

60

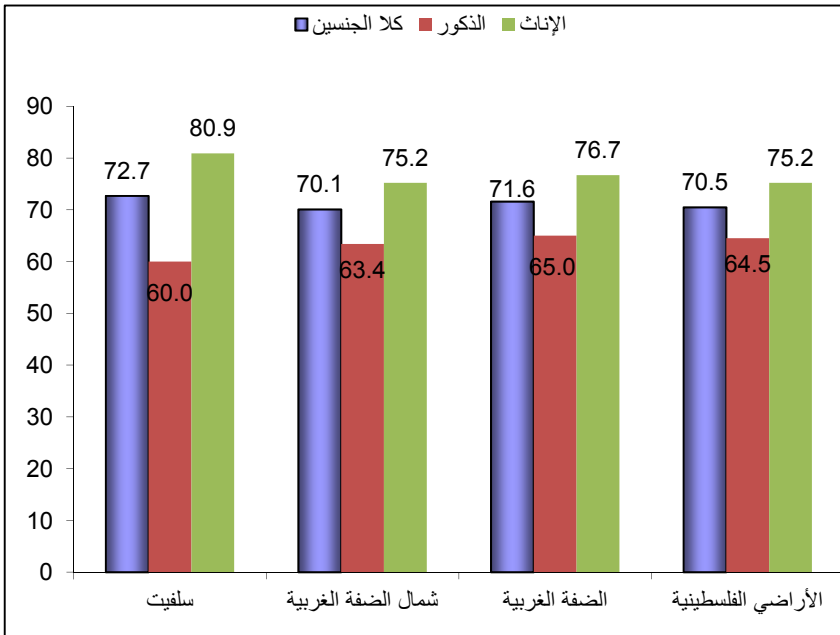
%70.5 %70.1 %71.6

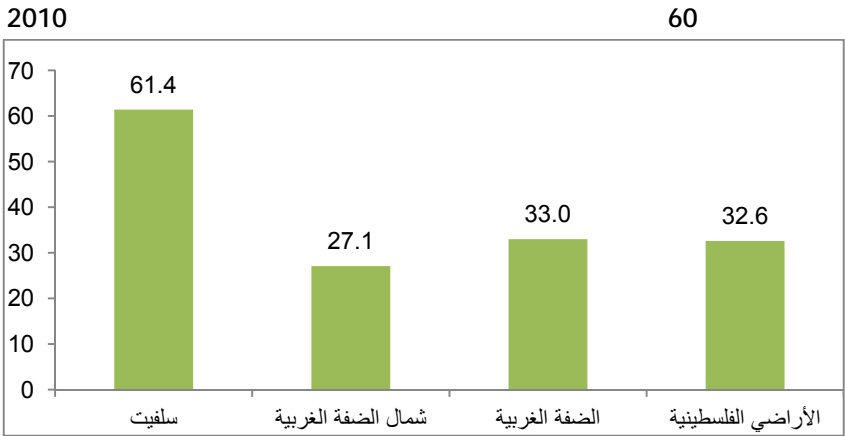
%60.0

%80.9

60

2010

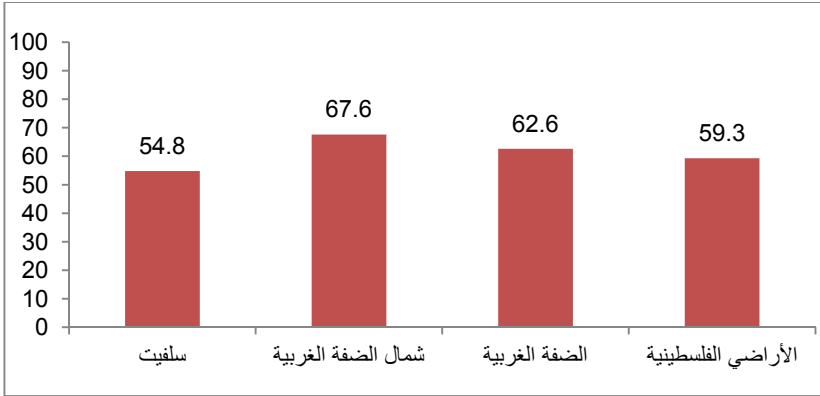




%59.3

.%54.8

2010



%76.1

%58.4 %57.6 %58.1

%17.4

%55.6

%67.4

%38.6 %64.0

%27.2



**Palestinian National Authority
Palestinian Central Bureau of
Statistics**

Palestinian Family Survey, 2010

Salfit Governorate



December, 2012

This document is prepared in accordance with the standard procedures stated in the Code of Practice for Palestine Official Statistics 2006

©December 2012.

All Rights Reserved

Suggested Citation:

Palestinian Central Bureau of Statistics, 2012. *Palestinian Family Health Survey, 2010: Salfit Governorate.*
Ramallah-Palestine.

All correspondence should be directed to:

Palestinian Central Bureau of Statistics

P.O.Box 1647, Ramallah, Palestine.

Tel: (972/970) 2 298 2700

Fax: (972/970) 2 298 2710

Toll Free: 1800 300 300

E-Mail : diwan@pcbs.gov.ps

Web-Site: <http://www.pcbs.gov.ps>

Summary of the Most Important Results of the Survey by Governorate, 2010

Indicator\Governorate	Jenin	Tubas	Tulkarm	Nablus	Qalqiliya	Salfit
Percentage of Persons Aged 10 Years and Over Who Were Reported as Smokers	24.3	23.2	20.0	22.2	20.4	23.6
Percentage of Persons 18 Years and Over Who Have at Least One Chronic Diseases and Receiving Treatment	22.2	19.3	22.6	21.1	18.8	18.3
Percentage of Currently Married Women Aged 15-49 Years Old Using Family Planning Method	58.1	51.5	59.1	61.1	54.8	55.6
Percentage of Women 15-49 Years Who Delivered in Two Years Preceding Survey and Reported Receiving the Tetanus Toxoid During the Last Pregnancy	26.0	22.7	23.5	24.8	31.3	16.9
Percentage of Women 15-49 Years Who Received Antenatal Care by skilled personnel During their last Pregnancy (At least once)	98.4	100.0	100.0	98.2	97.0	98.3
Percentage of Women 15-49 Years Who Received Antenatal Care by skilled personnel During their last Pregnancy (at least 4 visits)	95.5	93.8	99.3	94.8	93.9	94.2
Percentage of Women 15-49 Years Who Delivered in Two Years Preceding the Survey in Health Institutions	95.3	95.7	97.5	97.1	95.7	98.3
Percentage of Women 15-49 Years Who Delivered in Two Years Preceding the Survey by Caesarean section	26.2	35.5	19.3	25.6	24.1	28.5
Percentage of Women 15-49 Years Who Delivered in Two Years Preceding the Survey and Received Postnatal Care	44.5	50.7	47.6	44.4	38.3	44.4
Percentage of Births in the Last Two Years Preceding the Survey and Weighted less than 2.5 kg at Birth	7.0	7.2	8.5	12.7	10.1	6.8
Percentage of Children Under Five Years Who are Severely or Moderately Stunted	8.3	5.6	4.1	7.5	8.3	11.2

Summary of the Most Important Results of the Survey by Governorate, 2010

Ramallah & Al-Bireh	Jericho	Jerusalem	Bethlehem	Hebron	North Gaza	Gaza	Deir EL-Balah	Khan Yunis	Rafah
18.3	20.2	20.4	19.9	17.4	7.8	10.6	11.5	9.5	12.4
15.3	18.0	22.5	21.1	15.5	14.3	17.0	15.1	16.0	16.7
56.4	49.5	53.4	65.1	46.8	52.2	50.4	44.1	46.0	43.3
20.4	19.1	25.2	24.7	17.8	35.9	35.7	49.4	43.2	50.2
98.5	98.0	95.9	99.1	97.0	97.0	98.6	95.6	99.5	99.6
94.8	92.9	91.2	93.9	88.3	92.5	96.0	97.1	95.6	98.9
97.6	100	98.7	100	98.4	99.4	96.5	98.3	99.5	99.4
20.1	16.3	15.8	17.2	10.4	15.4	14.1	15.6	13.1	11.6
49.8	44.7	64.5	38.2	27.6	18.8	26.9	36.7	56.2	30.7
8.6	6.8	10.1	6.9	8.3	9.3	8.2	8.1	11.0	10.8
14.9	16.8	15.7	7.0	16.7	10.4	10.7	13.9	7.2	11.2

Summary of the Most Important Results of the Survey by Governorate, 2010

Indicator\Governorate	Jenin	Tubas	Tulkarm	Nablus	Qalqiliya	Salfit
Percentage of Children Under Five Years Who are suffer from Severe or Moderate Under-weight	2.6	2.5	1.6	2.8	3.7	3.3
Percentage of Children Under Five Years Who are Severely or Moderately Wasted	3.0	3.1	2.3	1.6	1.7	1.2
Percentage of last-born children in the 2 years preceding the survey who were ever breastfed	96.5	97.1	96.8	95.8	96.2	94.4
Percentage of last-born children in the 2 years preceding the survey and have been weighed at birth	99.2	100.0	100.0	98.4	100.0	100.0
Percentage of children 0-5 months exclusively breastfed	27.6	29.8	47.4	34.5	19.5	13.4
Percentage of children 0-12 months in the last 2 years preceding the survey who received vitamin a and d during the 6 months preceding the survey	83.9	95.0	81.8	81.4	88.6	60.0
Percentage of children under five years who had pneumonia in the two weeks preceding the survey	5.1	6.8	2.0	6.8	7.1	10.1
Percentage of children under five years who had diarrhea in the two weeks preceding the survey	17.8	17.9	17.3	18.8	14.9	14.8
Percentage of children aged 36-59 months for whom household members are engaged in activities that promote learning and school readiness	71.1	53.5	72.3	62.0	77.5	62.0
Percentage of Children Aged 0-59 Months Left with inadequate care in past week of the survey	21.1	18.1	12.1	12.5	12.4	30.1

Summary of the Most Important Results of the Survey by Governorate, 2010

Ramallah & Al-Bireh	Jericho	Jerusalem	Bethlehem	Hebron	North Gaza	Gaza	Deir El-Balah	Khan Yunis	Rafah
4.6	4.2	3.9	3.6	5.7	4.4	2.9	4.6	2.3	4.4
6.1	0.0	3.9	0.8	3.8	6.9	2.7	2.7	1.4	5.8
95.6	96.4	93.5	96.1	94.9	94.9	97.6	97.0	96.3	95.1
98.8	97.7	97.5	97.8	97.2	99.3	99.7	99.6	100.0	100.0
31.1	16.2	26.1	29.7	28.8	29.5	31.3	26.6	24.1	22.8
87.9	85.7	89.0	88.9	79.5	63.9	55.9	69.6	57.9	56.6
4.1	7.4	2.1	8.2	3.5	6.2	4.7	2.8	7.5	5.9
12.8	9.5	12.8	14.6	13.3	9.3	10.0	8.2	6.7	17.1
68.5	56.9	71.2	70.7	57.0	43.9	50.2	37.5	44.5	58.7
18.3	22.6	16.5	16.0	14.4	15.7	9.6	3.4	6.2	12.2

Summary of the Most Important Results of the Survey by Governorate, 2010

Indicator\Governorate	Jenin	Tubas	Tulkarm	Nablus	Qalqiliya	Salfit
Percentage of children aged 2-14 years who experienced any violent discipline method	95.5	98.3	94.3	95.3	94.6	93.0
Percentage of children aged 5-14 years involved in child labour	13.4	26.8	5.9	10.0	2.8	8.7
Percentage of children under age 5 whose birth is registered with civil authorities	99.9	99.4	100.0	99.8	100.0	99.5
Percentage of children aged 12-15 months breastfed (Continued breastfeeding at 1 year)	63.9	53.0	59.8	60.7	61.2	62.1
Percentage of children aged 20-23 months breastfed (Continued breastfeeding at 2 year)	17.6	12.2	18.4	15.5	6.8	9.5

Summary of the Most Important Results of the Survey by Governorate, 2010

Ramallah & Al-Bireh	Jericho	Jerusalem	Bethlehem	Hebron	North Gaza	Gaza	Deir El-Balah	Khan Yunis	Rafah
90.9	97.6	89.8	93.2	94.0	93.8	91.9	92.6	86.4	95.3
1.5	6.0	3.8	11.7	7.8	1.5	2.0	10.4	1.2	1.0
99.1	100.0	98.7	99.2	99.3	98.3	99.0	99.7	99.3	99.5
56.2	53.7	40.3	42.4	53.5	52.3	54.1	62.4	52.4	55.2
21.2	41.8	10.5	12.5	12.2	18.2	10.4	6.7	10.6	2.7

Executive Summary

The Palestinian Family Survey 2010, which also contains MICS indicators, was designed to provide detailed and accurate data on family health and reproductive health at the individual, household and community levels by measuring a large set of indicators on child and infant mortality, fertility rates, family health and social care, including that for ever married women under the age of 50 years and children under the age of five, child labor in the age group 5-14 years, child education (2-14 years), education of individuals in the age group 5-24 years, youth (15-29 years) and elderly people aged 60 years and above.

A total of 13,629 households were interviewed: 8,740 in the West Bank and 4,889 in Gaza Strip In Salfit Governorate 233 households were interviewed.

- **Iodized salt**

66.7% of households in Salfit Governorate consume iodized salt and it is less than the national average; 76.6% and the average for the West Bank 68.1%.

- **Smoking**

Around 23 of 100 individuals 10 years and Over in Salfit Governorate Smoke. Males smoke more often than females do, with smokers accounting for 45.2% of males and only 1.1% of females.

- **Chronic diseases**

8.3% of individuals in Salfit Governorate suffer from at least one chronic disease and receive treatment for it. Hypertension is the most prevalent chronic disease in Salfit Governorate (6.9%).

- **Family planning**

55.6% of women in the reproductive age (15-49) years in Salfit Governorate reported using family planning methods.

- Around 10.6% of married women aged 15-49 in Salfit Governorate reported unmet needs for family planning .

- **Antenatal care**

98.3% of women aged 15-49 years who delivered in two years preceding the survey in Salfit governorate received antenatal care by skilled personnel during their last pregnancy (At least once).

- **Tetanus vaccination**

16.9% of women in Salfit Governorate received at least one dose of tetanus toxoid during their last pregnancy.

- **Care during childbirth**

98.3% of women 15-49 years in Salfit Governorate gave birth in two years preceding the survey at health facilities.

- **Type of delivery**

28.5% of women 15-49 years in Salfit Governorate who delivered in two years preceding the survey gave birth through Cesarean section.

- **Postnatal care:**

44.4% of women 15-49 years in Salfit Governorate who delivered in two years preceding the survey received postnatal health care. This is less than the percentage for the West Bank (42.2%) and the Palestinian Territory (38.5%).

- **Newborn weight**

6.8% of babies in Salfit Governorate were born with weight less than normal for newborns (less than 2,500 grams).

- **Nutritional status**

11.2% of children under-five in Salfit Governorate were severely or moderately stunted.

- **Breastfeeding:**

13.4% of infants in the age 0-5 months in Salfit Governorate were breastfed exclusively.

- **Vitamin A\D**

60.0% of children 0-12 months in Salfit Governorate received vitamin A\D during the 6 months preceding the survey.

- **Childhood illnesses**

Among the under five children in Salfit Governorate, 10.1% suffered from Respiratory Tract Infection. And 14.8% of children in Salfit Governorate have suffered from diarrhea.

- **Early childhood education**

62.0% of children aged 36-59 months in Salfit Governorate engaged with their families in four or more activities that increase their motivation.

- **Child care**

20.4% of children in the age group 0-59 months in Salfit Governorate were left in the care of children under the age of 10 years old.

- **Child discipline**

93.0% of children in the age group 2-14 years have been subjected to physical or psychological punishment by their parents or other family members during the month preceding the survey in Salfit Governorate.

- **Child Labor**

8.7% of children in the age group 5-14 years in Salfit Governorate worked (paid or unpaid family worker).

- **Youth cultural activities**

2.9% of youth aged 15-29 years in Salfit Governorate read newspapers or magazines daily basis, while 39.1% listen to the radio on a daily basis.

- **Youth and Evaluation of their Health**

78.3% of youth aged 15-29 years in Salfit Governorate evaluated their health as good. In addition, 47.8% of youth engage in sports activities regularly.

- **Youth and Knowledge of AIDS**

All of youth aged 15-29 years in Salfit Governorate were aware of AIDS. No variations were reported between West Bank and Gaza Strip.

- **Chronic disease among the elderly**

Around 72.7% of the elderly aged 60 and over in Hebron Governorate suffered from at least one chronic disease and receive treatment for it.

- **Problems that limit daily activities of elderly**

54.8% of the elderly aged 60 and over in Salfit suffered from health problems that limit daily activities.