



2013 -

2013 /

2006

.2013 - 1434 ©

:

:2013 -

.2013

:

. - 1647 . .

(970/972) 2 2982700 :

(970/972) 2 2982710 :

1800300300 :

diwan@pcbs.gov.ps :

2008 :

<http://www.pcbs.gov.ps> :



.2013

2013

(CFG)

.(SDC)

2013

(CFG)

•

•

•

()

•

•

17		:
17	1.1	
17	2.1	
17	3.1	
19	4.1	
21	5.1	
22	6.1	
23	7.1	
27		:
27	1.2	
27	2.2	
27	3.2	
28	4.2	
28	5.2	
29	6.2	
29	7.2	
29	8.2	
31		:
35		
37		

39		2013	:1
40	2013		:2
41			:3
42		2013	:4
43	2013		:5
44			:6
45	2013		:7
46		2013	:8
47			:9
48			:10
49			:11
50			:12
51			:13
52		2013	:14
53			:15

54				:16
			2013	
55	2013			:17
56	2013	(.)		:18
57				:19
			2013	
58				:20
		2013		
59				:21
			2013	
60				:22
		2013		
61				:23
			2013	
62				:24
			2013	
63	2013			:25
			(/)	
64				:26
			2013	
65				:27
			2013	
66				:28
			2013	
67				:29
		2013		
68				:30
			2013	

69	2013		:31
		(/)	
70			:32
		2013	
71			:33
		2013	
72			:34
		2013	
73			:35
		2013	
74			:36
		2013	
75			:37
		2013	

2013

2013

2013

:2013

1.1

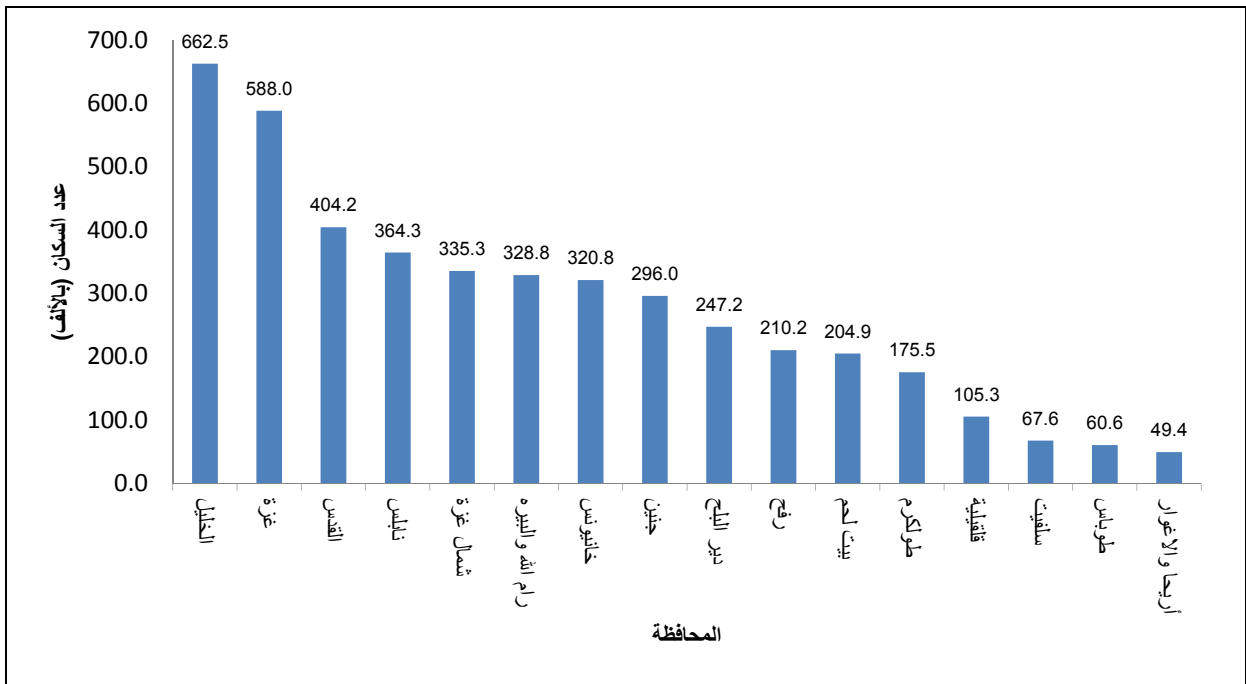
4,420,549

2013

1,701,437

2,719,112

2013



2.1

557

2007

33

524

3.1

10

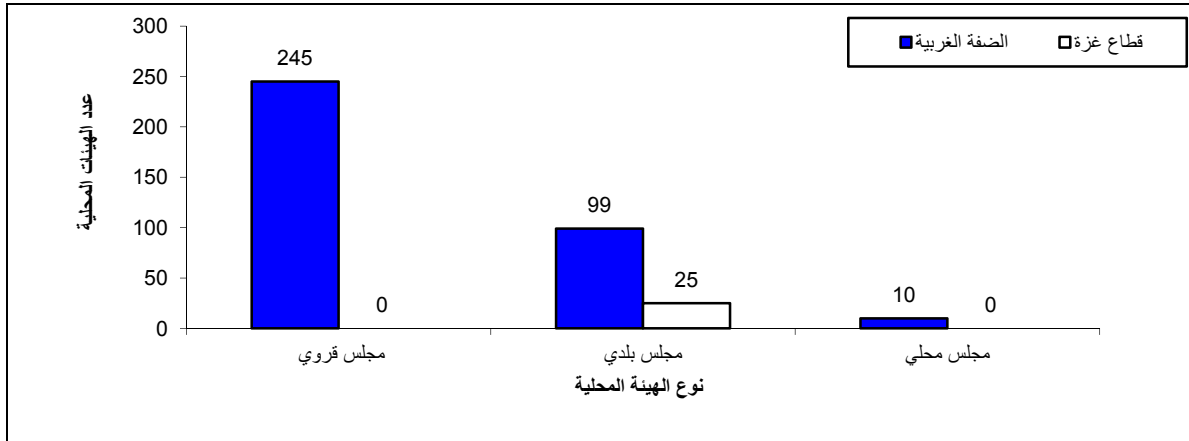
124

379

:

245

2013



204

.2013

211

7

264

228

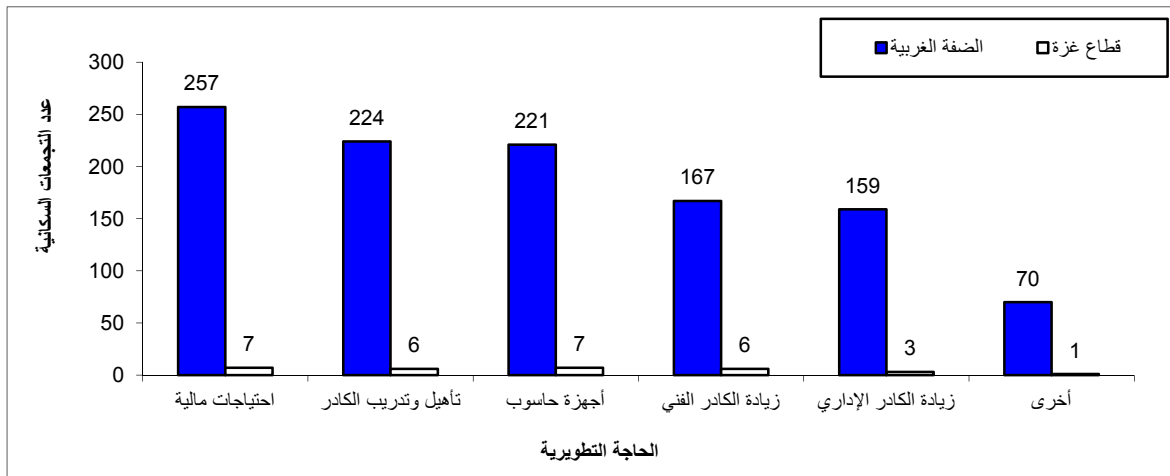
162

230

173

71

2013



329

242

303

%59

26

71 2013

41

4.1

:

2013

99

:

218 2013

109

73

136

2013

:

)

99

21

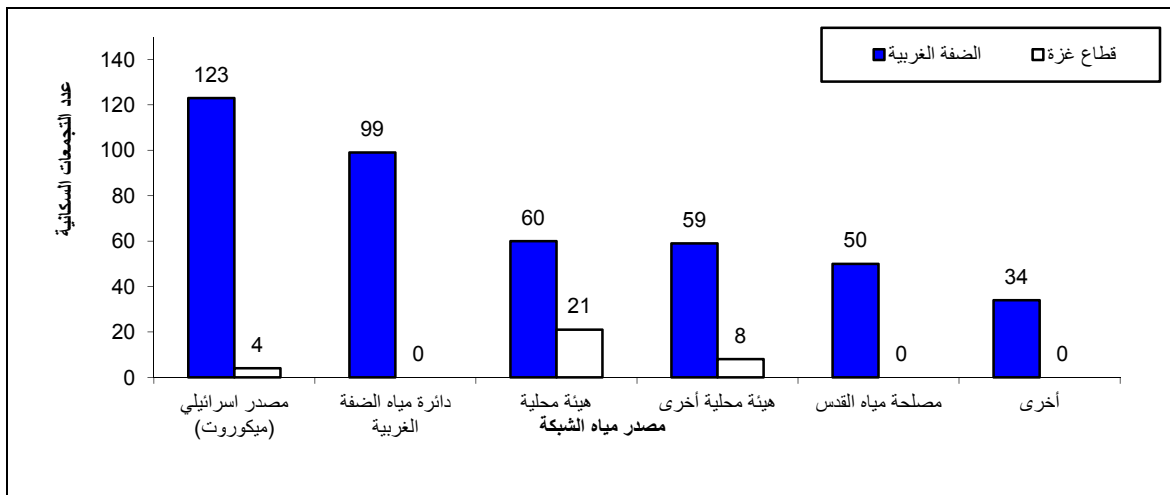
123 (

.)

)

4

2013



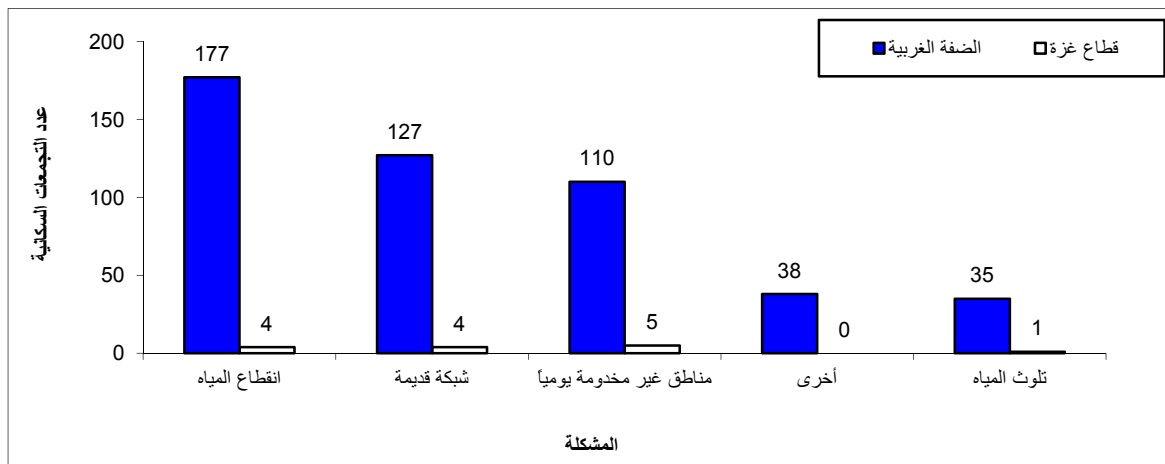
:

178

176

:
 100 2013
 142
 50
 :
 282 458
 %61.6 24 - 16
 393 24 - 16
 %85.8
 :
 175 198
 359 (2-1)
 (72) 41 3 500
 3 100
 :
 99
 181
 36 131
 115

2013



5.1

:

2013

%4.3

24

.(6) (11)

:

4.6 2013

2.8

2.2

3.5

:

135

111

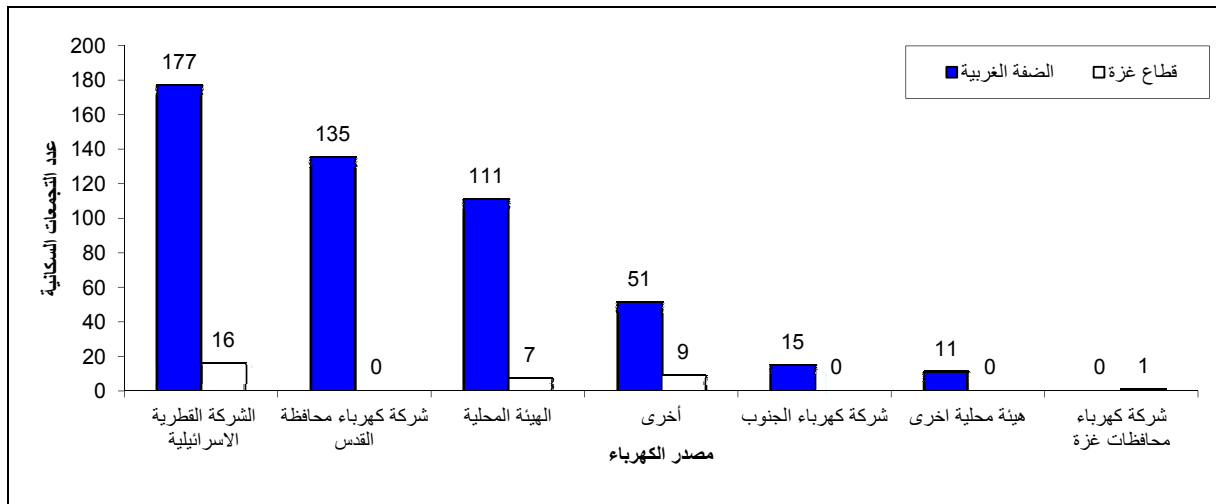
177

16

15

9

2013



:

31

29

10 :

354 533
 %66.4
 27 5 336
 157 24
 112 169
 34 185

6.1

449 2013 459
 %82.2
 10

69 91 22

109 2013 50 59

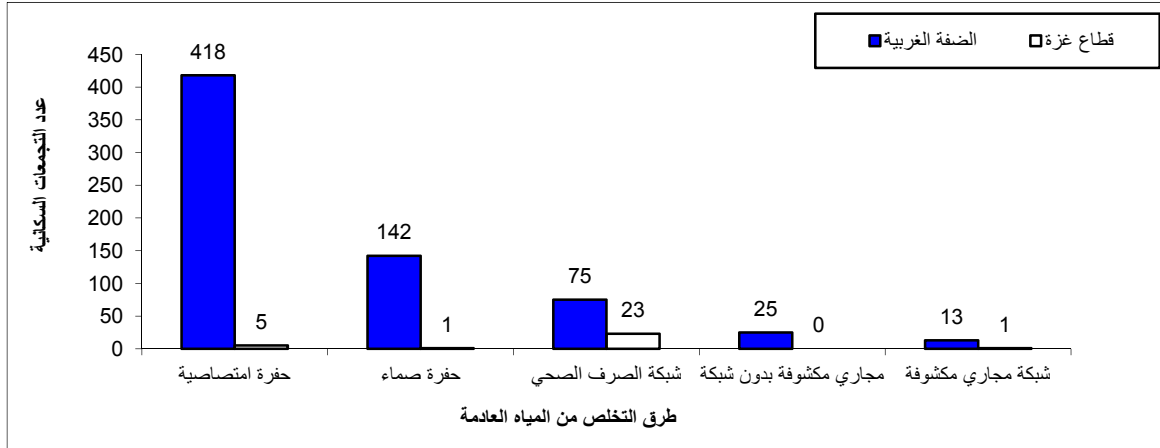
418 %17.8 99 423

143

5

38

2013



:

12

19

7

:

79

365

65

14

35

17

7.1

:

482

2013

33

449

:

932

1.6

2013

625

(%13.5)

:

75

291

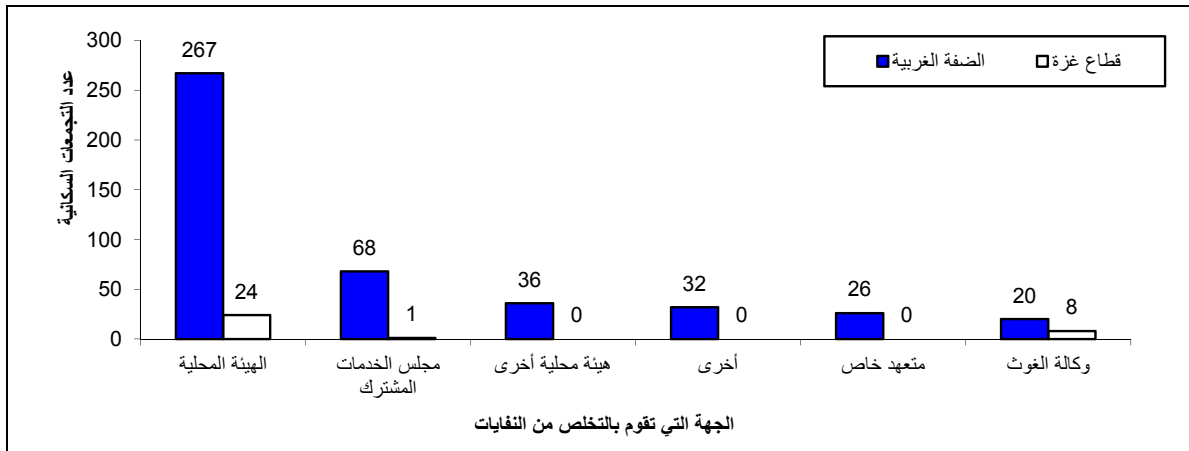
23

24

267

26

2013



:

101

119

210

221

18

:

348

369

82

21

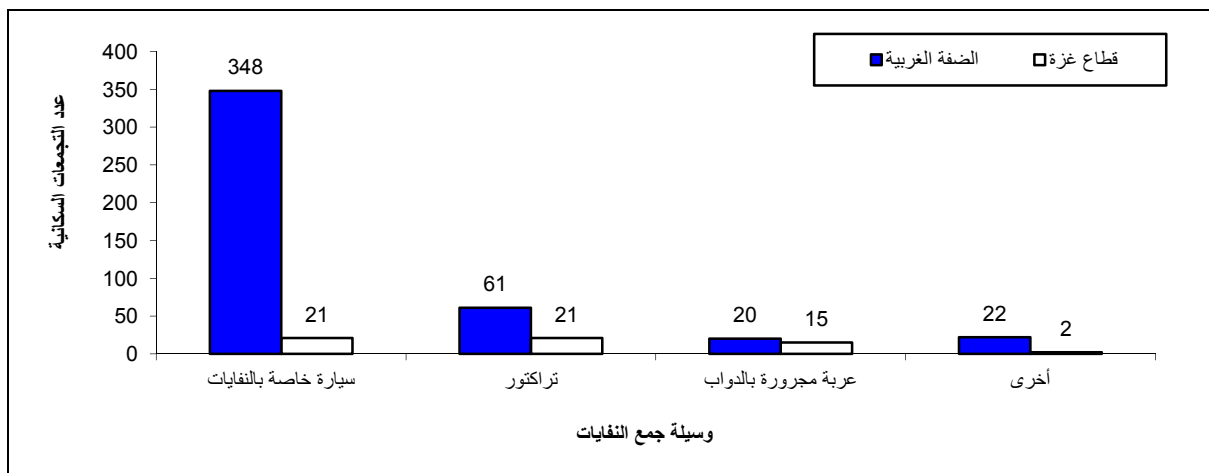
20

35

21

61

2013



226

232

37

6

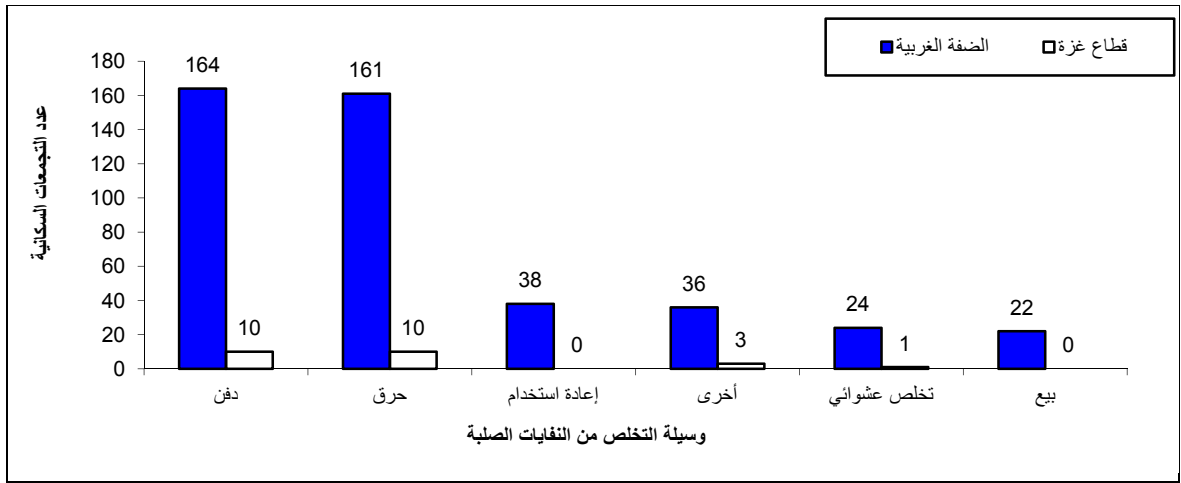
31

174

171 2013

25

2013



2013

1.2

2010 2008 2005 2003 1998 1994

:

.2007

2.2

557

3.2

:

:

4.2

5.2

.1

.2

Access

:

-
-
-
-
-
-
-

.SPSS

.3

.1

.2

.3

.4

SPSS

.5

6.2

:

1.6.2

2013

(Sampling Errors)

(Non Sampling Errors)

2.6.2

2007

7.2

8.2

:

.1

.2

.3

.4

:

:

:

:()

:

)

(

:

:)

:

:

.(

:

.()

:

:

.

:

:

:

:

:

:

:

:

:()

)

(

:

:

:

:

:

:

Tables

جدول 1: توزيع السكان في منتصف العام 2013 والتجمعات السكانية في فلسطين حسب المحافظات

Table 1: Distribution of Population in Middle of Year 2013 and Localities in Palestine by Governorates

Governorate	عدد التجمعات السكانية Number of localities	عدد السكان Number of population	المحافظة
Palestine	557	4,420,549	فلسطين
West Bank	524	2,719,112	الضفة الغربية
Jenin	80	295,985	جنين
Tubas	21	60,582	طوباس
Tulkarm	35	175,494	طولكرم
Nablus	64	364,333	نابلس
Qalqiliya	34	105,330	قلقيلية
Salfit	20	67,641	سلفيت
Ramallah and Al-Bireh	75	328,811	رام الله والبيرة
Jericho and Al Aghwar	14	49,390	أريحا والاعوار
Jerusalem	44	404,165	القدس
Bethlehem	45	204,929	بيت لحم
Hebron	92	662,452	الخليل
Gaza Strip	33	1,701,437	قطاع غزة
North Gaza	5	335,253	شمال غزة
Gaza	5	588,033	غزة
Deir AL-Balah	11	247,150	دير البلح
Khan Yunis	8	320,835	خان يونس
Rafah	4	210,166	رفح

جدول 2: توزيع الهيئات المحلية في فلسطين حسب نوع الهيئة المحلية والمحافظه، 2013
Table 2: Distribution of Local Authorities in Palestine by Type of Local Authority and Governrate, 2013

Governorate	المجموع Total	Type of Local Authority			المحافظة
		مجلس محلي Local council	مجلس قروي Village council	مجلس بلدي Municipality	
Palestine	379	10	245	124	فلسطين
West Bank	354	10	245	99	الضفة الغربية
Jenin	48	0	35	13	جنين
Tubas	11	0	8	3	طوباس
Tulkarm	20	0	8	12	طولكرم
Nablus	53	0	44	9	نابلس
Qalqiliya	22	0	17	5	قلقيلية
Salfit	18	0	9	9	سلفيت
Ramallah and Al-Bireh	67	0	49	18	رام الله والبيرة
Jericho and Al Aghwar	8	0	6	2	أريحا والأغوار
Jerusalem	28	10	18	0	القدس
Bethlehem	34	0	23	11	بيت لحم
Hebron	45	0	28	17	الخليل
Gaza Strip	25	0	0	25	قطاع غزة
North Gaza	4	0	0	4	شمال غزة
Gaza	4	0	0	4	غزة
Deir AL-Balah	7	0	0	7	دير البلح
Khan Yunis	7	0	0	7	خان يونس
Rafah	3	0	0	3	رفح

Source: Ministry of Local Government

المصدر: وزارة الحكم المحلي

جدول 3: توزيع التجمعات السكانية التي تشترك مع تجمعات أخرى في مجلس خدمات مشترك حسب الخدمات التي يقدمها مجلس الخدمات

البيانات - الفترة 2012
Table 3: Distribution of Localities that Shared in a Joint Services Council by Services that Provided by the Joint Services Council and Governorate, 2013

Governorate	الخدمات التي يقدمها مجلس الخدمات المشترك				اشترك التجمع في مجلس خدمات مشترك	المحافظة
	Services that provided by the joint services council	تخلص من المياه العادمة	جمع النفايات	تزويد المياه	Sharing in a joint services council	
	أخرى	Wastewater disposal service	Solid waste collection service	Water service		
	Others					
Palestine	32	10	165	37	211	فلسطين
West Bank	30	7	160	33	204	الضفة الغربية
Jenin	2	0	16	7	17	جنين
Tubas	0	0	8	0	10	طوباس
Tulkarm	4	1	7	1	14	طولكرم
Nablus	1	3	33	9	35	نابلس
Qalqiliya	6	0	6	0	15	قلقيلية
Salfit	1	0	11	2	13	سلفيت
Ramallah and Al-Bireh	6	1	31	1	36	رام الله والبيرة
Jericho and Al Aghwar	0	0	5	0	7	أريحا والاغوار
Jerusalem	3	2	14	4	23	القدس
Bethlehem	5	0	20	5	23	بيت لحم
Hebron	2	0	9	4	11	الخليل
Gaza Strip	2	3	5	4	7	قطاع غزة
North Gaza	0	2	1	0	2	شمال غزة
Gaza	0	0	0	0	0	غزة
Deir AL-Balah	2	0	1	1	2	دير البلح
Khan Yunis	0	0	2	2	2	خان يونس
Rafah	0	1	1	1	1	رفح

جدول 4: توزيع الهيئات المحلية في فلسطين حسب أهم حاجة تطويرية للهيئة المحلية والمحافظه، 2013

Table 4: Distribution of Local Authorities in Palestine by the Most Important Need and Governorate, 2013

Governorate	أخرى Others	احتياجات مالية Financial needs	أجهزة حاسوب Computers	تأهيل وتدريب الكادر Staff training	زيادة الكادر الفني Increasing technical staff	زيادة الكادر الإداري Increasing administrative staff	المحافظة
Palestine	71	264	228	230	173	162	فلسطين
West Bank	70	257	221	224	167	159	الضفة الغربية
Jenin	6	26	22	21	14	12	جنين
Tubas	5	9	10	8	5	6	طوباس
Tulkarm	7	18	14	18	11	8	طولكرم
Nablus	2	36	33	31	21	23	نابلس
Qalqiliya	6	15	12	14	7	7	قلقيلية
Salfit	5	12	10	13	9	9	سلفيت
Ramallah and Al-Bireh	12	49	42	35	28	25	رام الله والبيرة
Jericho and Al Aghwar	1	7	8	7	7	7	أريحا والاعوار
Jerusalem	9	21	15	20	17	15	القدس
Bethlehem	13	34	29	30	22	23	بيت لحم
Hebron	4	30	26	27	26	24	الخليل
Gaza Strip	1	7	7	6	6	3	قطاع غزة
North Gaza	1	2	2	2	2	1	شمال غزة
Gaza	0	0	0	0	0	0	غزة
Deir AL-Balah	0	2	2	2	2	1	دير البلح
Khan Yunis	0	2	2	1	1	0	خان يونس
Rafah	0	1	1	1	1	1	رفح

جدول 5: توزيع التجمعات السكانية في فلسطين حسب وضع المخطط الهيكلي والمحافظة، 2013

Table 5: Distribution of Localities in Palestine by Status of the Structural Plan and Governorate, 2013

Governorate	المجموع Total	غير مبين Not stated	وجود مخطط هيكلي للتنجيم			المحافظة
			Existence of structural plan			
			لا يوجد مخطط There is no structural plan	يوجد مخطط غير مصادق عليه There is an unapproved structural plan	يوجد مخطط مصادق عليه There is an approved structural plan	
Palestine	557	81	147	61	268	فلسطين
West Bank	524	74	147	61	242	الضفة الغربية
Jenin	80	5	23	9	43	جنين
Tubas	21	6	8	1	6	طوباس
Tulkarm	35	6	3	1	25	طولكرم
Nablus	64	3	27	4	30	نابلس
Qalqiliya	34	2	10	4	18	قلقيلية
Salfit	20	3	2	7	8	سلفيت
Ramallah and Al-Bireh	75	7	20	12	36	رام الله والبيرة
Jericho and Al Aghwar	14	5	3	4	2	أريحا والاغوار
Jerusalem	44	9	12	2	21	القدس
Bethlehem	45	2	16	8	19	بيت لحم
Hebron	92	26	23	9	34	الخليل
Gaza Strip	33	7	0	0	26	قطاع غزة
North Gaza	5	1	0	0	4	شمال غزة
Gaza	5	1	0	0	4	غزة
Deir AL-Balah	11	3	0	0	8	دير البلح
Khan Yunis	8	1	0	0	7	خان يونس
Rafah	4	1	0	0	3	رفح

جدول 6: توزيع التجمعات السكانية في فلسطين التي ليس لها مخطط هيكلية حسب أسباب عدم وجود مخطط هيكلية والمحافظات،
Table 6: Distribution of Localities in Palestine that do not have a Structural Plan by Reasons for not having a Structural Plan and Governorate, 2013

Governorate	المجموع Total	Reasons for not having a structural plan				المحافظة
		اخرى Others	لا يوجد فكرة لعمل مخطط There is no idea of such a plan	لا تتوفر الامكانية المالية Financial resources are not available	المخطط قيد التنفيذ Structural plan is under implementation	
Palestine	147	22	13	71	41	فلسطين
West Bank	147	22	13	71	41	الضفة الغربية
Jenin	23	2	2	15	4	جنين
Tubas	8	3	1	2	2	طوباس
Tulkarm	3	1	0	2	0	طولكرم
Nablus	27	4	1	14	8	نابلس
Qalqiliya	10	4	1	5	0	قلقيلية
Salfit	2	0	0	1	1	سلفيت
Ramallah and Al-Bireh	20	1	1	12	6	رام الله والبيرة
Jericho and Al Aghwar	3	2	0	0	1	أريحا والاغوار
Jerusalem	12	2	5	1	4	القدس
Bethlehem	16	2	0	9	5	بيت لحم
Hebron	23	1	2	10	10	الخليل
Gaza Strip	0	0	0	0	0	قطاع غزة
North Gaza	0	0	0	0	0	شمال غزة
Gaza	0	0	0	0	0	غزة
Deir AL-Balah	0	0	0	0	0	دير البلح
Khan Yunis	0	0	0	0	0	خان يونس
Rafah	0	0	0	0	0	رفح

جدول 7: توزيع التجمعات السكانية في فلسطين حسب توفر شبكة مياه عامة والمحافظه، 2013

Table 7: Distribution of Localities in Palestine by Availability of Water Network and Governorate, 2013

Governorate	المجموع Total	توفر شبكة مياه عامة Availability of water network		المحافظة
		غير متوفر Not available	متوفر Available	
Palestine	557	99	458	فلسطين
West Bank	524	99	425	الضفة الغربية
Jenin	80	22	58	جنين
Tubas	21	11	10	طوباس
Tulkarm	35	2	33	طولكرم
Nablus	64	18	46	نابلس
Qalqiliya	34	3	31	قلقيلية
Salfit	20	1	19	سلفيت
Ramallah and Al-Bireh	75	1	74	رام الله والبيره
Jericho and Al Aghwar	14	2	12	أريحا والأغوار
Jerusalem	44	1	43	القدس
Bethlehem	45	0	45	بيت لحم
Hebron	92	38	54	الخليل
Gaza Strip	33	0	33	قطاع غزة
North Gaza	5	0	5	شمال غزة
Gaza	5	0	5	غزة
Deir AL-Balah	11	0	11	دير البلح
Khan Yunis	8	0	8	خانيونس
Rafah	4	0	4	رفح

جدول 8: كمية المياه المزودة والمستهلكة في فلسطين منتصف العام 2013 حسب المحافظة، (مليون م³/سنة)

Table 8: The Amount of Water Supplied and Consumed in Palestine in Middle of the Year 2013 by Governorate, (MCM / year)

Governorate	كمية المياه المستهلكة* The amount of water consumed*	كمية المياه المزودة The amount of water supplied	المحافظة
Palestine	136.10	218.46	فلسطين
West Bank	73.82	109.77	الضفة الغربية
Jenin	4.75	7.24	جنين
Tubas	0.82	1.10	طوباس
Tulkarm	6.34	10.44	طولكرم
Nablus	8.24	12.90	نابلس
Qalqiliya	4.31	5.84	قلقيلية
Salfit	1.65	2.35	سلفيت
Ramallah and Al-Bireh	11.52	16.92	رام الله والبيرة
Jericho and Al Aghwar	3.30	4.13	أريحا والأغوار
Jerusalem	12.69	18.59	القدس
Bethlehem	6.66	10.92	بيت لحم
Hebron	13.54	19.34	الخليل
Gaza Strip	62.28	108.69	قطاع غزة
North Gaza	13.22	27.04	شمال غزة
Gaza	24.90	37.78	غزة
Deir AL-Balah	8.75	16.24	دير البلح
Khan Yunis	10.19	18.50	خان يونس
Rafah	5.22	9.13	رفح

* : The difference between the amount of water supplied and the amount of water consumed is due to technical losses and stealing

* : يعزى الفرق ما بين كمية المياه المزودة وكمية المياه المستهلكة الى الفاقد الفني والسرقات

جدول 9: توزيع التجمعات السكانية في فلسطين حسب مصدر مياه الشبكة العامة والمحافظه، 2013
Table 9: Distribution of Localities in Palestine by Sources of the Public Network Water and Governorate, 2013

Governorate	المجموع Total	لا يوجد شبكة There is no network water	Sources of the public network water					مصدر مياه الشبكة العامة		المحافظة
			أخرى Others	هيئة محلية أخرى Another local authority	مصدر إسرائيلي (شركة ميكوروت) An israeli source (mekorot company)	مصلحة مياه القدس Jerusalem water undertaker	دائرة مياه الضفة الغربية West Bank water department	الهيئة المحلية Local authority		
Palestine	557	99	33	67	127	52	99	80	فلسطين	
West Bank	524	99	33	59	123	52	99	59	الضفة الغربية	
Jenin	80	22	4	9	18	0	21	6	جنين	
Tubas	21	11	1	4	3	0	0	2	طوباس	
Tulkarm	35	2	7	10	2	0	0	14	طولكرم	
Nablus	64	18	2	13	7	0	13	11	نابلس	
Qalqiliya	34	3	4	6	9	0	4	8	قلقيلية	
Salfit	20	1	0	2	15	0	1	1	سلفيت	
Ramallah and Al-Bireh	75	1	0	0	20	38	16	0	رام الله والبيرة	
Jericho and Al Aghwar	14	2	0	1	7	0	0	4	أريحا والأغوار	
Jerusalem	44	1	11	1	12	13	6	0	القدس	
Bethlehem	45	0	2	4	15	1	19	4	بيت لحم	
Hebron	92	38	2	9	15	0	19	9	الخليل	
Gaza Strip	33	0	0	8	4	0	0	21	قطاع غزة	
North Gaza	5	0	0	1	0	0	0	4	شمال غزة	
Gaza	5	0	0	1	0	0	0	4	غزة	
Deir AL-Balah	11	0	0	3	0	0	0	8	دير البلح	
Khan Yunis	8	0	0	1	4	0	0	3	خان يونس	
Rafah	4	0	0	2	0	0	0	2	رفح	

جدول 10: توزيع التجمعات السكانية في فلسطين حسب الجهة المسؤولة عن إدارة الشبكة العامة للمياه والمحافظه، 2013
Table 10: Distribution of Localities in Palestine by Doer Responsible about Water Network and Governorate, 2013

Governorate	المجموع Total	لا يوجد شبكة There is no water network	Doer Responsible about water network						المحافظة
			أخرى Others	هيئة محلية أخرى Another local authority	مصدر إسرائيلي (شركة ميكوروت) An israeli source (mekorot company)	مصلحة مياه القدس Jerusalem water undertaker	دائرة مياه الضفة الغربية West Bank water department	الهيئة المحلية Local authority	
Palestine	557	99	38	44	4	54	30	288	فلسطين
West Bank	524	99	34	36	4	54	30	267	الضفة الغربية
Jenin	80	22	10	4	0	0	5	39	جنين
Tubas	21	11	1	2	0	0	0	7	طوباس
Tulkarm	35	2	1	5	0	0	0	27	طولكرم
Nablus	64	18	1	5	0	0	2	38	نابلس
Qalqiliya	34	3	0	3	1	0	0	27	قلقيلية
Salfit	20	1	0	1	1	0	0	17	سلفيت
Ramallah and Al-Bireh	75	1	0	3	0	38	10	23	رام الله والبيرة
Jericho and Al Aghwar	14	2	0	1	0	0	0	11	أريحا والأغوار
Jerusalem	44	1	16	1	0	13	2	11	القدس
Bethlehem	45	0	3	3	1	1	8	29	بيت لحم
Hebron	92	38	2	8	1	2	3	38	الخليل
Gaza Strip	33	0	4	8	0	0	0	21	قطاع غزة
North Gaza	5	0	0	1	0	0	0	4	شمال غزة
Gaza	5	0	0	1	0	0	0	4	غزة
Deir AL-Balah	11	0	0	3	0	0	0	8	دير البلح
Khan Yunis	8	0	2	1	0	0	0	5	خانيونس
Rafah	4	0	2	2	0	0	0	0	رفح

جدول 11: توزيع التجمعات السكانية في فلسطين حسب وجود مشتركين بحاجة إلى خدمة التزويد بالمياه عن طريق الصهاريج، 2013
Table 11: Distribution of Localities in Palestine with Subscribers Need to be Supplied with Drinking Water by Water Tanks and Governorate, 2013

Governorate	المجموع Total	غير مبين Not stated	وجود مشتركين بحاجة إلى خدمة التزويد بالمياه عن طريق الصهاريج Existence of subscribers need to be supplied with drinking water by water tanks		المحافظة
			لا No	نعم Yes	
Palestine	557	244	135	178	فلسطين
West Bank	524	218	130	176	الضفة الغربية
Jenin	80	37	11	32	جنين
Tubas	21	14	0	7	طوباس
Tulkarm	35	15	15	5	طولكرم
Nablus	64	27	14	23	نابلس
Qalqiliya	34	15	15	4	قلقيلية
Salfit	20	7	8	5	سلفيت
Ramallah and Al-Bireh	75	16	33	26	رام الله والبيرة
Jericho and Al Aghwar	14	6	4	4	أريحا والأغوار
Jerusalem	44	17	11	16	القدس
Bethlehem	45	9	15	21	بيت لحم
Hebron	92	55	4	33	الخليل
Gaza Strip	33	26	5	2	قطاع غزة
North Gaza	5	3	2	0	شمال غزة
Gaza	5	5	0	0	غزة
Deir AL-Balah	11	9	1	1	دير البلح
Khan Yunis	8	6	2	0	خان يونس
Rafah	4	3	0	1	رفح

جدول 12: توزيع التجمعات السكانية في فلسطين حسب مصادر المياه البديلة للشبكة والمحافظه، 2013

Table 12: Distribution of Localities in Palestine by Alternative Water Sources for the Network and Governorate, 2013

Governorate	Alternative water source for the network مصادر المياه البديلة للشبكة				المحافظة
	أخرى Others	ينابيع Springs	آبار جمع مياه الأمطار Rain water collection well	آبار ارتوازية Artesian wells	
Palestine	50	24	142	100	فلسطين
West Bank	49	24	141	97	الضفة الغربية
Jenin	8	3	20	12	جنين
Tubas	2	4	8	10	طوباس
Tulkarm	1	0	6	5	طولكرم
Nablus	2	3	21	14	نابلس
Qalqiliya	5	1	8	4	قلقيلية
Salfit	2	1	5	3	سلفيت
Ramallah and Al-Bireh	7	5	22	11	رام الله والبيره
Jericho and Al Aghwar	2	1	0	2	أريحا والأغوار
Jerusalem	6	0	6	1	القدس
Bethlehem	6	1	18	13	بيت لحم
Hebron	8	5	27	22	الخليل
Gaza Strip	1	0	1	3	قطاع غزة
North Gaza	0	0	0	0	شمال غزة
Gaza	0	0	0	0	غزة
Deir AL-Balah	0	0	1	1	دير البلح
Khan Yunis	0	0	0	1	خانيونس
Rafah	1	0	0	1	رفح

جدول 13: توزيع التجمعات السكانية المتصلة بشبكة المياه العامة في فلسطين حسب معدل عدد الساعات اليومية لتوفر خدمة المياه والمحافظه، 2013

Table 13: Distribution the Connected Localities to Public Water Network in Palestine by Average Hours of Water Availability Per Day and Governorate, 2013

Governorate	Average hours of water availability per day									المحافظة	
	المجموع Total	لا يوجد شبكة There is no water network	معدل عدد ساعات الخدمة اليومية شتاءً Average hours of water availability per day during winter				معدل عدد ساعات الخدمة اليومية صيفاً Average hours of water availability per day during summer				
			من 16 إلى 24 ساعة	من 11 إلى 15 ساعة	من 6 إلى 10 ساعات	أقل من 5 ساعات	من 16 إلى 24 ساعة	من 11 إلى 15 ساعة	من 6 إلى 10 ساعات		أقل من 5 ساعات
			16-24	11-15	6-10	Less than 5	16-24	11-15	6-10		Less than 5
Palestine	557	99	393	14	36	15	282	47	60	69	فلسطين
West Bank	524	99	365	14	34	12	255	45	57	68	الضفة الغربية
Jenin	80	22	44	2	10	2	27	6	12	13	جنين
Tubas	21	11	5	2	2	1	4	2	2	2	طوباس
Tulkarm	35	2	30	1	2	0	30	2	1	0	طولكرم
Nablus	64	18	33	4	8	1	27	3	11	5	نابلس
Qalqiliya	34	3	30	0	1	0	27	1	2	1	قلقيلية
Salfit	20	1	19	0	0	0	16	1	2	0	سلفيت
Ramallah and Al-Bireh	75	1	69	2	2	1	43	10	8	13	رام الله والبيرة
Jericho and Al Aghwar	14	2	12	0	0	0	6	6	0	0	أريحا والأغوار
Jerusalem	44	1	35	0	5	3	33	0	5	5	القدس
Bethlehem	45	0	40	2	1	2	24	9	5	7	بيت لحم
Hebron	92	38	48	1	3	2	18	5	9	22	الخليل
Gaza Strip	33	0	28	0	2	3	27	2	3	1	قطاع غزة
North Gaza	5	0	3	0	0	2	3	0	2	0	شمال غزة
Gaza	5	0	5	0	0	0	5	0	0	0	غزة
Deir AL-Balah	11	0	11	0	0	0	10	1	0	0	دير البلح
Khan Yunis	8	0	6	0	2	0	6	1	1	0	خان يونس
Rafah	4	0	3	0	0	1	3	0	0	1	رفح

جدول 14: توزيع التجمعات السكانية في فلسطين حسب عدد خزانات المياه العامة والمحافظه، 2013

Table 14: Distribution of Localities in Palestine by Number of Public Water Storage and Governorate, 2013

Governorate	المجموع Total	لا يوجد خزان There is no water storage	عدد خزانات المياه العامة Number of water storages			المحافظة
			6 فما فوق More than 6	من 3 إلى 5 3-5	من 1 إلى 2 1-2	
Palestine	557	359	3	20	175	فلسطين
West Bank	524	343	3	15	163	الضفة الغربية
Jenin	80	51	0	3	26	جنين
Tubas	21	16	0	0	5	طوباس
Tulkarm	35	10	1	2	22	طولكرم
Nablus	64	34	1	2	27	نابلس
Qalqiliya	34	16	0	3	15	قلقيلية
Salfit	20	7	0	1	12	سلفيت
Ramallah and Al-Bireh	75	64	0	0	11	رام الله والبيرة
Jericho and Al Aghwar	14	8	0	1	5	أريحا والأغوار
Jerusalem	44	37	0	1	6	القدس
Bethlehem	45	34	0	0	11	بيت لحم
Hebron	92	66	1	2	23	الخليل
Gaza Strip	33	16	0	5	12	قطاع غزة
North Gaza	5	4	0	1	0	شمال غزة
Gaza	5	2	0	1	2	غزة
Deir AL-Balah	11	6	0	0	5	دير البلح
Khan Yunis	8	1	0	2	5	خان يونس
Rafah	4	3	0	1	0	رفح

جدول 15: توزيع التجمعات السكانية في فلسطين حسب سعة خزانات المياه العامة والمحافظه، 2013

Table 15: Distribution of Localities in Palestine by Capacity of the Water Storages and Governorate, 2013

Governorate	المجموع Total	لا يوجد خزان No water storage	Capacity of the water storages (cubic meter)					المحافظة
			أكثر من 1000 More than 1000	من 501 إلى 1000 501-1000	من 301 إلى 500 301-500	من 101 إلى 300 101-300	من 1 إلى 100 1-100	
Palestine	557	359	23	18	38	47	72	فلسطين
West Bank	524	343	21	18	37	46	59	الضفة الغربية
Jenin	80	51	3	3	3	9	11	جنين
Tubas	21	16	1	0	2	0	2	طوباس
Tulkarm	35	10	0	1	9	9	6	طولكرم
Nablus	64	34	3	2	6	13	6	نابلس
Qalqiliya	34	16	1	2	3	4	8	قلقيلية
Salfit	20	7	1	0	4	5	3	سلفيت
Ramallah and Al-Bireh	75	64	2	1	2	1	5	رام الله والبيرة
Jericho and Al Aghwar	14	8	1	3	2	0	0	أريحا والأغوار
Jerusalem	44	37	0	1	1	2	3	القدس
Bethlehem	45	34	6	0	2	0	3	بيت لحم
Hebron	92	66	3	5	3	3	12	الخليل
Gaza Strip	33	16	2	0	1	1	13	قطاع غزة
North Gaza	5	4	0	0	0	0	1	شمال غزة
Gaza	5	2	0	0	0	0	3	غزة
Deir AL-Balah	11	6	1	0	1	0	3	دير البلح
Khan Yunis	8	1	1	0	0	1	5	خانيونس
Rafah	4	3	0	0	0	0	1	رفح

جدول 16: توزيع التجمعات السكانية في فلسطين حسب المشاكل الرئيسية التي يعاني منها التجمع في مجال المياه والمحافظة، 2013

Table 16: Distribution of Localities in Palestine by the Main Water Problems and Governorate, 2013

Governorate	المشاكل الرئيسية التي يعاني منها التجمع في مجال المياه					المحافظة
	أخرى Others	تلوث المياه Water pollution	مناطق غير مخدمة Non served areas	شبكة قديمة Old water network	إنقطاع المياه Water cuts	
Palestine	38	36	115	131	181	فلسطين
West Bank	38	35	110	127	177	الضفة الغربية
Jenin	3	3	11	15	19	جنين
Tubas	1	0	0	1	3	طوباس
Tulkarm	7	4	10	11	9	طولكرم
Nablus	7	4	8	10	11	نابلس
Qalqiliya	3	6	7	7	8	قلقيلية
Salfit	4	2	7	5	7	سلفيت
Ramallah and Al-Bireh	5	6	24	26	43	رام الله والبيرة
Jericho and Al Aghwar	1	0	3	6	8	أريحا والأغوار
Jerusalem	5	3	8	12	22	القدس
Bethlehem	2	6	17	22	30	بيت لحم
Hebron	0	1	15	12	17	الخليل
Gaza Strip	0	1	5	4	4	قطاع غزة
North Gaza	0	0	0	0	0	شمال غزة
Gaza	0	0	0	0	0	غزة
Deir AL-Balah	0	0	2	2	1	دير البلح
Khan Yunis	0	0	2	1	2	خانيونس
Rafah	0	1	1	1	1	رفح

جدول 17: توزيع التجمعات السكانية في فلسطين حسب توفر شبكة الكهرباء والمحافظات، 2013

Table 17: Distribution of Localities in Palestine by Availability of Electricity Network and Governorate, 2013

Governorate	المجموع Total	توفر شبكة الكهرباء Availability of Electricity network		المحافظة
		غير متوفر	متوفر	
		Not available	Available	
Palestine	557	24	533	فلسطين
West Bank	524	24	500	الضفة الغربية
Jenin	80	1	79	جنين
Tubas	21	6	15	طوباس
Tulkarm	35	0	35	طولكرم
Nablus	64	0	64	نابلس
Qalqiliya	34	2	32	قلقيلية
Salfit	20	1	19	سلفيت
Ramallah and Al-Bireh	75	1	74	رام الله والبيرة
Jericho and Al Aghwar	14	1	13	أريحا والأغوار
Jerusalem	44	0	44	القدس
Bethlehem	45	1	44	بيت لحم
Hebron	92	11	81	الخليل
Gaza Strip	33	0	33	قطاع غزة
North Gaza	5	0	5	شمال غزة
Gaza	5	0	5	غزة
Deir AL-Balah	11	0	11	دير البلح
Khan Yunis	8	0	8	خان يونس
Rafah	4	0	4	رفح

جدول 18: كمية الكهرباء المزودة، والمستهلكة (ميجاواط.ساعة) منتصف العام 2013 حسب المحافظة

Table 18: The Amount of Electricity Supplied and Consumed in Palestine in Middle of the Year 2013 by Governorate, (MWh)

Governorate	كمية الكهرباء المستهلكة (ميجاواط.ساعة)* The amount of electricity consumed (MWh)*	كمية الكهرباء المزودة (ميجاواط.ساعة) The amount of electricity supplied (MWh)	المحافظة
Palestine	3,505,890	4,621,686	فلسطين
West Bank	2,156,499	2,842,833	الضفة الغربية
Jenin	234,743	309,452	جنين
Tubas	48,047	63,339	طوباس
Tulkarm	139,182	183,479	طولكرم
Nablus	288,949	380,910	نابلس
Qalqiliya	83,536	110,123	قلقيلية
Salfit	53,645	70,719	سلفيت
Ramallah and Al-Bireh	260,776	343,772	رام الله والبيرة
Jericho and Al Aghwar	39,171	51,637	أريحا والأغوار
Jerusalem	320,539	422,555	القدس
Bethlehem	162,527	214,253	بيت لحم
Hebron	525,384	692,594	الخليل
Gaza Strip	1,349,391	1,778,853	قطاع غزة
North Gaza	265,885	350,507	شمال غزة
Gaza	466,363	614,789	غزة
Deir AL-Balah	196,012	258,395	دير البلح
Khan Yunis	254,451	335,433	خان يونس
Rafah	166,680	219,729	رفح

* : The difference between the amount of electricity supplied and the amount of electricity consumed is due to technical losses and stealing

* : يعزى الفرق ما بين كمية الكهرباء المزودة وكمية الكهرباء المستهلكة الى الفاقد الفني

والسرقات

جدول 19: توزيع التجمعات السكانية في فلسطين حسب المصدر الرئيسي للكهرباء والمحافظة، 2013

Table 19: Distribution of Localities in Palestine by the Main Source of Electricity and Governorate, 2013

Governorate	لا يوجد شبكة كهرباء There is no electricity network	المصدر الرئيسي للكهرباء Main electricity source							المحافظة
		أخرى Others	هيئة محلية أخرى Another local authority	جهة إسرائيلية (الشركة القطرية) An Israeli source (Israeli national company)	شركة كهرباء محافظات غزة Gaza electricity distribution co.	شركة كهرباء الجنوب Southern electricity co.	شركة كهرباء محافظة القدس Jerusalem district electricity co.	الهيئة المحلية Local authority	
Palestine	24	60	11	193	1	15	135	118	فلسطين
West Bank	24	51	11	177	0	15	135	111	الضفة الغربية
Jenin	1	22	4	37	0	0	0	16	جنين
Tubas	6	5	0	6	0	0	0	4	طوباس
Tulkarm	0	4	1	15	0	0	0	15	طولكرم
Nablus	0	16	0	40	0	0	0	8	نابلس
Qalqiliya	2	2	4	19	0	0	0	7	قلقيلية
Salfit	1	0	0	15	0	0	0	4	سلفيت
Ramallah and Al-Bireh	1	0	0	7	0	0	62	5	رام الله والبيرة
Jericho and Al Aghwar	1	0	0	5	0	0	3	5	أريحا والأغوار
Jerusalem	0	0	0	2	0	0	31	11	القدس
Bethlehem	1	0	0	2	0	0	39	3	بيت لحم
Hebron	11	2	2	29	0	15	0	33	الخليل
Gaza Strip	0	9	0	16	1	0	0	7	قطاع غزة
North Gaza	0	1	0	3	0	0	0	1	شمال غزة
Gaza	0	3	0	1	0	0	0	1	غزة
Deir AL-Balah	0	3	0	4	1	0	0	3	دير البلح
Khan Yunis	0	1	0	6	0	0	0	1	خان يونس
Rafah	0	1	0	2	0	0	0	1	رفح

جدول 20: توزيع التجمعات السكانية في فلسطين حسب وجود مشتركين بحاجة إلى خدمة التزويد بالكهرباء عن طريق المولدات

والمحافظة، 2013

Table 20: Distribution of Localities in Palestine by Existence of Subscribers Need to be Supplied with Electricity by Generators and Governorate, 2013

Governorate	المجموع Total	غير مبين Not stated	وجود مشتركين بحاجة إلى خدمة التزويد بالكهرباء عن طريق المولدات Existence of subscribers need to be supplied with electricity by generators		المحافظة
			لا No	نعم Yes	
			Palestine	557	
West Bank	524	104	391	29	الضفة الغربية
Jenin	80	5	71	4	جنين
Tubas	21	8	12	1	طوباس
Tulkarm	35	6	28	1	طولكرم
Nablus	64	5	57	2	نابلس
Qalqiliya	34	4	30	0	قلقيلية
Salfit	20	3	15	2	سلفيت
Ramallah and Al-Bireh	75	9	55	11	رام الله والبيرة
Jericho and Al Aghwar	14	5	8	1	أريحا والأغوار
Jerusalem	44	14	28	2	القدس
Bethlehem	45	8	36	1	بيت لحم
Hebron	92	37	51	4	الخليل
Gaza Strip	33	8	23	2	قطاع غزة
North Gaza	5	1	4	0	شمال غزة
Gaza	5	1	4	0	غزة
Deir AL-Balah	11	4	7	0	دير البلح
Khan Yunis	8	1	6	1	خان يونس
Rafah	4	1	2	1	رفح

جدول 21: توزيع التجمعات السكانية في فلسطين التي تستخدم مصادر الطاقة المتجددة في توليد الكهرباء حسب المحافظة، 2013

Table 21: Distribution of Localities in Palestine that Use Renewable Energy Resources in Electricity Generation by Governorate, 2013

Governorate	Using renewable energy resources in electricity generation		المحافظة
	المراوح الهوائية Wind fans	الطاقة الشمسية Solar energy	
Palestine	1	10	فلسطين
West Bank	1	9	الضفة الغربية
Jenin	1	0	جنين
Tubas	0	0	طوباس
Tulkarm	0	1	طولكرم
Nablus	0	0	نابلس
Qalqiliya	0	0	قلقيلية
Salfit	0	0	سلفيت
Ramallah and Al-Bireh	0	3	رام الله والبيرة
Jericho and Al Aghwar	0	1	أريحا والأغوار
Jerusalem	0	0	القدس
Bethlehem	0	3	بيت لحم
Hebron	0	1	الخليل
Gaza Strip	0	1	قطاع غزة
North Gaza	0	0	شمال غزة
Gaza	0	0	غزة
Deir AL-Balah	0	0	دير البلح
Khan Yunis	0	1	خان يونس
Rafah	0	0	رفح

جدول 22: توزيع التجمعات السكانية المتصلة بشبكة الكهرباء في فلسطين حسب معدل عدد الساعات اليومية لتوفر خدمة الكهرباء والمحافظات، 2013

Table 22: Distribution the Connected Localities to Electricity in Palestine by Average Hours of Electricity Availability Per Day and Governorate, 2013

Governorate	Average hours of electricity availability per day										المحافظة
	غير مبين	لا يوجد شبكة	معدل عدد ساعات الخدمة اليومية شتاءً				معدل عدد ساعات الخدمة اليومية صيفاً				
			Average hours of electricity availability per day during winter		Average hours of electricity availability per day during summer		Average hours of electricity availability per day during winter		Average hours of electricity availability per day during summer		
Not stated	There is no network	من 23 إلى 16	من 15 إلى 6	أقل من 5 ساعات	على مدار الساعة	من 23 إلى 16	من 15 إلى 6	أقل من 5 ساعات	على مدار الساعة		
		16-23	6-15	Less than 5	All day	16-23	6-15	Less than 5	All day		
Palestine	118	24	41	11	27	336	24	10	27	354	فلسطين
West Bank	88	24	40	9	27	336	23	8	27	354	الضفة الغربية
Jenin	4	1	4	4	1	66	3	4	1	67	جنين
Tubas	2	6	0	0	0	13	0	0	0	13	طوباس
Tulkarm	6	0	1	0	0	28	1	0	0	28	طولكرم
Nablus	5	0	5	0	3	51	5	0	3	51	نابلس
Qalqiliya	3	2	1	1	1	26	0	1	0	28	قلقيلية
Salfit	2	1	1	0	1	15	1	0	1	15	سلفيت
Ramallah and Al-Bireh	7	1	10	1	9	47	3	1	9	54	رام الله والبيرة
Jericho and Al Aghwar	5	1	7	0	0	1	7	0	0	1	أريحا والأغوار
Jerusalem	13	0	5	2	5	19	2	1	5	23	القدس
Bethlehem	9	1	2	1	3	29	0	1	3	31	بيت لحم
Hebron	32	11	4	0	4	41	1	0	5	43	الخليل
Gaza Strip	30	0	1	2	0	0	1	2	0	0	قطاع غزة
North Gaza	5	0	0	0	0	0	0	0	0	0	شمال غزة
Gaza	5	0	0	0	0	0	0	0	0	0	غزة
Deir AL-Balah	10	0	0	1	0	0	0	1	0	0	دير البلح
Khan Yunis	7	0	0	1	0	0	0	1	0	0	خانيونس
Rafah	3	0	1	0	0	0	1	0	0	0	رفح

جدول 23: توزيع التجمعات السكانية في فلسطين حسب المشاكل الرئيسية التي يعاني منها التجمع في مجال الكهرباء والمحافظه، 2013

Table 23: Distribution of Localities in Palestine by the Main Electricity Problems and Governorate, 2013

Governorate	Main electricity problems in the locality المشاكل الرئيسية التي يعاني منها التجمع في مجال الكهرباء					المحافظة
	أخرى Others	مناطق غير مخدمة Non served areas	شبكة كهرباء قديمة Old electricity network	ضعف التيار الكهربائي Electrical current weakness	إنقطاع التيار الكهربائي Electrical current disconnection	
Palestine	34	112	157	185	169	فلسطين
West Bank	34	110	154	182	165	الضفة الغربية
Jenin	7	15	22	24	28	جنين
Tubas	2	6	5	5	4	طوباس
Tulkarm	2	9	11	16	12	طولكرم
Nablus	7	5	16	27	15	نابلس
Qalqiliya	4	8	5	6	10	قلقيلية
Salfit	2	9	8	10	6	سلفيت
Ramallah and Al-Bireh	3	20	34	41	36	رام الله والبيرة
Jericho and Al Aghwar	0	2	4	7	6	أريحا والأغوار
Jerusalem	0	7	13	14	11	القدس
Bethlehem	2	15	16	12	18	بيت لحم
Hebron	5	14	20	20	19	الخليل
Gaza Strip	0	2	3	3	4	قطاع غزة
North Gaza	0	0	0	0	1	شمال غزة
Gaza	0	0	0	0	0	غزة
Deir AL-Balah	0	0	1	1	1	دير البلح
Khan Yunis	0	1	1	1	1	خان يونس
Rafah	0	1	1	1	1	رفح

جدول 24: توزيع التجمعات السكانية في فلسطين حسب توفر شبكة صرف صحي والمحافظة، 2013

Table 24: Distribution of Localities in Palestine by Availability of Wastewater Network and Governorate, 2013

Governorate	المجموع Total	توفر شبكة صرف صحي Availability of Wastewater network		المحافظة
		غير متوفر Not available	متوفر Available	
		Palestine	557	
West Bank	524	449	75	الضفة الغربية
Jenin	80	77	3	جنين
Tubas	21	21	0	طوباس
Tulkarm	35	28	7	طولكرم
Nablus	64	51	13	نابلس
Qalqiliya	34	28	6	قلقيلية
Salfit	20	19	1	سلفيت
Ramallah and Al-Bireh	75	66	9	رام الله والبيرة
Jericho and Al Aghwar	14	14	0	أريحا والأغوار
Jerusalem	44	23	21	القدس
Bethlehem	45	36	9	بيت لحم
Hebron	92	86	6	الخليل
Gaza Strip	33	10	23	قطاع غزة
North Gaza	5	0	5	شمال غزة
Gaza	5	1	4	غزة
Deir AL-Balah	11	1	10	دير البلح
Khan Yunis	8	6	2	خان يونس
Rafah	4	2	2	رفح

جدول 25: كميات المياه العادمة المنتجة في فلسطين منتصف العام 2013 حسب المحافظة (ألف متر مكعب/سنة)

Table 25: The Amounts Generated of Wastewater in Palestine in Middle of the Year 2013, by Governorate, (1000 MCM / year)

Governorate	كمية المياه العادمة المنتجة (ألف متر مكعب/سنة) The amounts generated of wastewater (1000 MCM/year)	المحافظة
Palestine	109,051	فلسطين
West Bank	59,191	الضفة الغربية
Jenin	3,781	جنين
Tubas	663	طوباس
Tulkarm	5,060	طولكرم
Nablus	6,649	نابلس
Qalqiliya	3,460	قلقيلية
Salfit	1,333	سلفيت
Ramallah and Al-Bireh	9,241	رام الله والبيرة
Jericho and Al Aghwar	2,632	اريجا والأغوار
Jerusalem	10,179	القدس
Bethlehem	5,311	بيت لحم
Hebron	10,881	الخليل
Gaza Strip	49,860	قطاع غزة
North Gaza	10,524	شمال غزة
Gaza	19,961	غزة
Deir AL-Balah	7,036	دير البلح
Khan Yunis	8,197	خان يونس
Rafah	4,142	رفح

جدول 26: توزيع التجمعات السكانية في فلسطين حسب الجهة المسؤولة عن إدارة شبكة الصرف الصحي والمحافظة، 2013

Table 26: Distribution of Localities in Palestine by Doer Responsible about Wastewater Network and Governorate, 2013

Governorate	المجموع Total	لا يوجد شبكة صرف صحي There is no wastewater network	الجهة المسؤولة عن إدارة شبكة الصرف الصحي Doer responsible about wastewater network						المحافظة
			أخرى Others	هيئة محلية أخرى Another local authority	جهة إسرائيلية (شركة ميكوروت) An israeli source (Israeli national company)	مصلحة مياه محافظة Jerusalem water undertaker	دائرة مياه الضفة الغربية West Bank water department	الهيئة المحلية Local authority	
Palestine	557	459	5	0	1	0	1	91	فلسطين
West Bank	524	449	4	0	1	0	1	69	الضفة الغربية
Jenin	80	77	0	0	0	0	0	3	جنين
Tubas	21	21	0	0	0	0	0	0	طوباس
Tulkarm	35	28	0	0	0	0	0	7	طولكرم
Nablus	64	51	0	0	0	0	0	13	نابلس
Qalqiliya	34	28	0	0	0	0	0	6	قلقيلية
Salfit	20	19	0	0	0	0	0	1	سلفيت
Ramallah and Al-Bireh	75	66	0	0	0	0	0	9	رام الله والبيرة
Jericho and Al Aghwar	14	14	0	0	0	0	0	0	أريحا والأغوار
Jerusalem	44	23	0	0	1	0	0	20	القدس
Bethlehem	45	36	4	0	0	0	1	4	بيت لحم
Hebron	92	86	0	0	0	0	0	6	الخليل
Gaza Strip	33	10	1	0	0	0	0	22	قطاع غزة
North Gaza	5	0	0	0	0	0	0	5	شمال غزة
Gaza	5	1	0	0	0	0	0	4	غزة
Deir AL-Balah	11	1	0	0	0	0	0	10	دير البلح
Khan Yunis	8	6	0	0	0	0	0	2	خانيونس
Rafah	4	2	1	0	0	0	0	1	رفح

جدول 27: توزيع التجمعات السكانية في فلسطين حسب طريقة التخلص من المياه العادمة والمحافظه، 2013

Table 27: Distribution of Localities in Palestine by Wastewater Disposal Method and Governorate,

Governorate	Wastewater disposal method					المحافظة
	مجري مكشوفة بدون شبكة	شبكة مجري مكشوفة	حفرة صماء	حفرة إمتصاصية	شبكة صرف صحي	
	Exposed wastewater channels without network	Exposed wastewater network	Tight cesspit	Cesspit	Sewage network	
Palestine	25	14	143	423	98	فلسطين
West Bank	25	13	142	418	75	الضفة الغربية
Jenin	2	1	20	73	3	جنين
Tubas	3	1	7	13	0	طوباس
Tulkarm	1	0	13	25	7	طولكرم
Nablus	1	0	16	53	13	نابلس
Qalqiliya	0	0	6	30	6	قلقيلية
Salfit	0	0	8	16	1	سلفيت
Ramallah and Al-Bireh	3	3	28	67	9	رام الله والبيره
Jericho and Al Aghwar	0	0	1	9	0	أريحا والأغوار
Jerusalem	8	3	11	30	21	القدس
Bethlehem	3	2	10	40	9	بيت لحم
Hebron	4	3	22	62	6	الخليل
Gaza Strip	0	1	1	5	23	قطاع غزة
North Gaza	0	1	0	1	5	شمال غزة
Gaza	0	0	0	0	4	غزة
Deir AL-Balah	0	0	0	2	10	دير البلح
Khan Yunis	0	0	0	1	2	خان يونس
Rafah	0	0	1	1	2	رفح

جدول 28: توزيع التجمعات السكانية في فلسطين حسب وجود محطات معالجة للمياه العادمة والمحافظه، 2013

Table 28: Distribution of Localities in Palestine by Existence of Wastewater Treatment Plants and Governorate, 2013

Governorate	المجموع Total	وجود محطات معالجة للمياه العادمة Existence of treatment plants		المحافظة
		لا يوجد Not available	يوجد Available	
Palestine	557	538	19	فلسطين
West Bank	524	512	12	الضفة الغربية
Jenin	80	79	1	جنين
Tubas	21	21	0	طوباس
Tulkarm	35	33	2	طولكرم
Nablus	64	62	2	نابلس
Qalqiliya	34	32	2	قلقيلية
Salfit	20	20	0	سلفيت
Ramallah and Al-Bireh	75	71	4	رام الله والبيرة
Jericho and Al Aghwar	14	14	0	أريحا والأغوار
Jerusalem	44	44	0	القدس
Bethlehem	45	45	0	بيت لحم
Hebron	92	91	1	الخليل
Gaza Strip	33	26	7	قطاع غزة
North Gaza	5	3	2	شمال غزة
Gaza	5	4	1	غزة
Deir AL-Balah	11	10	1	دير البلح
Khan Yunis	8	6	2	خان يونس
Rafah	4	3	1	رفح

جدول 29: توزيع التجمعات السكانية في فلسطين حسب المشاكل الرئيسية التي يعاني منها التجمع في مجال المياه العادمة والمحافظه، 2013

Table 29: Distribution of Localities in Palestine by the Main Wastewater Problems and Governorate, 2013

Governorate	Main wastewater problems in the locality المشاكل الرئيسية التي يعاني منها التجمع في مجال المياه العادمة						المحافظة
	أخرى	ضعف كفاءة المحطة	عدم وجود محطات معالجة	مناطق غير مخدمة	شبكة قديمة	عدم وجود شبكة صرف صحي	
	Others	Wastewater network weakness	Not existence of treatment plants	Non served areas	Old wastewater network	Not existence of sewage network	
Palestine	17	14	79	65	35	365	فلسطين
West Bank	16	14	78	64	35	363	الضفة الغربية
Jenin	2	1	4	3	1	67	جنين
Tubas	0	0	4	0	0	14	طوباس
Tulkarm	4	3	8	7	4	23	طولكرم
Nablus	3	1	3	5	2	47	نابلس
Qalqiliya	0	0	6	5	2	27	قلقيلية
Salfit	1	0	3	1	0	16	سلفيت
Ramallah and Al-Bireh	2	3	14	10	7	57	رام الله والبيرة
Jericho and Al Aghwar	0	0	6	0	0	9	أريحا والأغوار
Jerusalem	1	3	8	12	11	25	القدس
Bethlehem	1	1	10	11	4	34	بيت لحم
Hebron	2	2	12	10	4	44	الخليل
Gaza Strip	1	0	1	1	0	2	قطاع غزة
North Gaza	1	0	0	0	0	0	شمال غزة
Gaza	0	0	0	0	0	0	غزة
Deir AL-Balah	0	0	1	1	0	0	دير البلح
Khan Yunis	0	0	0	0	0	1	خان يونس
Rafah	0	0	0	0	0	1	رفح

جدول 30: توزيع التجمعات السكانية في فلسطين حسب وجود خدمة جمع النفايات الصلبة والمحافظه، 2013

Table 30: Distribution of Localities in Palestine by Existence of Solidwaste Collection Service and Governorate, 2013

Governorate	المجموع Total	لا توجد خدمة جمع النفايات There is no solidwaste collection service	وجود خدمة جمع النفايات Existence of solidwaste collection	المحافظة
Palestine	557	75	482	فلسطين
West Bank	524	75	449	الضفة الغربية
Jenin	80	9	71	جنين
Tubas	21	9	12	طوباس
Tulkarm	35	3	32	طولكرم
Nablus	64	3	61	نابلس
Qalqiliya	34	3	31	قلقيلية
Salfit	20	2	18	سلفيت
Ramallah and Al-Bireh	75	2	73	رام الله والبيرة
Jericho and Al Aghwar	14	3	11	اريجا والأغوار
Jerusalem	44	3	41	القدس
Bethlehem	45	5	40	بيت لحم
Hebron	92	33	59	الخليل
Gaza Strip	33	0	33	قطاع غزة
North Gaza	5	0	5	شمال غزة
Gaza	5	0	5	غزة
Deir AL-Balah	11	0	11	دير البلح
Khan Yunis	8	0	8	خان يونس
Rafah	4	0	4	رفح

جدول 31: كمية النفايات الصلبة المنتجة في فلسطين منتصف العام 2013 حسب المحافظة، (طن/سنة)

Table 31: The Amount of Generated Solidwaste in Palestine in Middle of the Year 2013 by Governorate, (tons / year)

Governorate	كمية النفايات الصلبة المنتجة (طن/سنة) The amount of generated solidwaste (ton/ year)	المحافظة
Palestine	1,557,773	فلسطين
West Bank	932,350	الضفة الغربية
Jenin	99,442	جنين
Tubas	21,516	طوباس
Tulkarm	62,340	طولكرم
Nablus	123,331	نابلس
Qalqiliya	35,124	قلقيلية
Salfit	20,483	سلفيت
Ramallah and Al-Bireh	108,375	رام الله والبيرة
Jericho and Al Aghwar	17,528	اريجا والأغوار
Jerusalem	129,643	القدس
Bethlehem	72,773	بيت لحم
Hebron	241,795	الخليل
Gaza Strip	625,423	قطاع غزة
North Gaza	124,202	شمال غزة
Gaza	206,573	غزة
Deir AL-Balah	94,435	دير البلح
Khan Yunis	120,645	خان يونس
Rafah	79,568	رفح

جدول 32: توزيع التجمعات السكانية في فلسطين حسب الجهة المسؤولة عن خدمة جمع النفايات الصلبة والمحافظه، 2013

Table 32: Distribution of Localities in Palestine by the Doer Responsible about Solidwaste Collection Service and Governorate, 2013

Governorate	المجموع Total	لا يوجد خدمة جمع نفايات There is no solid waste collection service	Doer responsible about solidwaste collection service						المحافظة
			أخرى Others	مجلس خدمات مشترك Joint services council	هيئة محلية أخرى Another local authority	وكالة الغوث UNRWA	متعهد خاص Special contractor	الهيئة المحلية Local authority	
Palestine	557	75	32	69	36	28	26	291	فلسطين
West Bank	524	75	32	68	36	20	26	267	الضفة الغربية
Jenin	80	9	9	6	11	1	9	35	جنين
Tubas	21	9	1	6	1	1	0	3	طوباس
Tulkarm	35	3	1	6	3	2	5	15	طولكرم
Nablus	64	3	5	18	2	3	4	29	نابلس
Qalqiliya	34	3	0	5	2	0	2	22	قلقيلية
Salfit	20	2	1	6	1	0	0	10	سلفيت
Ramallah and Al-Bireh	75	2	0	3	1	5	5	59	رام الله والبيره
Jericho and Al Aghwar	14	3	1	5	1	2	0	2	اريجا والأغوار
Jerusalem	44	3	1	1	4	2	1	32	القدس
Bethlehem	45	5	1	10	3	3	0	23	بيت لحم
Gaza Strip	33	0	0	1	0	8	0	24	قطاع غزة
North Gaza	5	0	0	1	0	1	0	3	شمال غزة
Gaza	5	0	0	0	0	1	0	4	غزة
Deir AL-Balah	11	0	0	0	0	3	0	8	دير البلح
Khan Yunis	8	0	0	0	0	2	0	6	خان يونس
Rafah	4	0	0	0	0	1	0	3	رفح

جدول 33: توزيع التجمعات السكانية في فلسطين حسب دورية جمع النفايات الصلبة والمحافظه، 2013

Table 33: Distribution of Localities in Palestine by the Periodicity of Solidwaste Collection and Governorate, 2013

Governorate	المجموع Total	لا يوجد خدمة جمع نفايات There is no solidwaste collection service	Periodicity of solidwaste collection				المحافظة
			دورية جمع النفايات الصلبة				
			كل أسبوعين أو أكثر Per two weeks or more	أكثر من مرة في الأسبوع More than once a week	مرة في الأسبوع Once a week	يوميًا Daily	
Palestine	557	75	6	221	136	119	فلسطين
West Bank	524	75	6	210	132	101	الضفة الغربية
Jenin	80	9	0	45	14	12	جنين
Tubas	21	9	0	2	6	4	طوباس
Tulkarm	35	3	0	18	9	5	طولكرم
Nablus	64	3	0	29	21	11	نابلس
Qalqiliya	34	3	0	28	0	3	قلقيلية
Salfit	20	2	0	15	1	2	سلفيت
Ramallah and Al-Bireh	75	2	0	23	33	17	رام الله والبيره
Jericho and Al Aghwar	14	3	0	5	3	3	اريجا والأغوار
Jerusalem	44	3	0	20	7	14	القدس
Bethlehem	45	5	1	7	16	16	بيت لحم
Hebron	92	33	5	18	22	14	الخليل
Gaza Strip	33	0	0	11	4	18	قطاع غزة
North Gaza	5	0	0	1	1	3	شمال غزة
Gaza	5	0	0	2	1	2	غزة
Deir AL-Balah	11	0	0	2	1	8	دير البلح
Khan Yunis	8	0	0	3	1	4	خانيونس
Rafah	4	0	0	3	0	1	رفح

جدول 34: توزيع التجمعات السكانية في فلسطين حسب استخدام وسائل جمع النفايات الصلبة والمحافظه، 2013
Table 34: Distribution of Localities in Palestine by Using the Means of Solidwaste Collection and Governorate, 2013

Governorate	وسيلة جمع النفايات الصلبة				المحافظة
	Mean of solidwaste collection أخرى Others	تراكتور Tractor	عربة مجرورة بالدواب Tracked vehicle animals	سيارة خاصة بالنفايات Special carbage vehicle	
Palestine	24	82	35	369	فلسطين
West Bank	22	61	20	348	الضفة الغربية
Jenin	3	6	5	60	جنين
Tubas	0	3	1	11	طوباس
Tulkarm	2	8	2	21	طولكرم
Nablus	0	6	1	49	نابلس
Qalqiliya	2	1	1	28	قلقيلية
Salfit	0	0	1	17	سلفيت
Ramallah and Al-Bireh	5	23	5	53	رام الله والبيره
Jericho and Al Aghwar	0	0	0	6	اريجا والأغوار
Jerusalem	4	8	3	29	القدس
Bethlehem	4	0	0	35	بيت لحم
Hebron	2	6	1	39	الخليل
Gaza Strip	2	21	15	21	قطاع غزة
North Gaza	1	3	3	4	شمال غزة
Gaza	0	3	1	3	غزة
Deir AL-Balah	0	6	3	7	دير البلح
Khan Yunis	0	6	5	5	خانيونس
Rafah	1	3	3	2	رفح

جدول 35: توزيع التجمعات السكانية في فلسطين حسب استخدام مكبات للنفايات الصلبة والمحافظه، 2013

Table 35: Distribution of Localities in Palestine by Using of Dumping Sites and Governorate,

Governorate	المجموع Total	لا يوجد خدمة جمع نفايات There is no solid waste collection service	استخدام مكبات النفايات الصلبة Using of dumping sites		المحافظة
			لا NO	نعم Yes	
Palestine	557	75	250	232	فلسطين
West Bank	524	75	223	226	الضفة الغربية
Jenin	80	9	21	50	جنين
Tubas	21	9	5	7	طوباس
Tulkarm	35	3	20	12	طولكرم
Nablus	64	3	34	27	نابلس
Qalqiliya	34	3	12	19	قلقيلية
Salfit	20	2	5	13	سلفيت
Ramallah and Al-Bireh	75	2	32	41	رام الله والبيره
Jericho and Al Aghwar	14	3	6	5	اريجا والأغوار
Jerusalem	44	3	20	21	القدس
Bethlehem	45	5	26	14	بيت لحم
Hebron	92	33	42	17	الخليل
Gaza Strip	33	0	27	6	قطاع غزة
North Gaza	5	0	3	2	شمال غزة
Gaza	5	0	5	0	غزة
Deir AL-Balah	11	0	9	2	دير البلح
Khan Yunis	8	0	7	1	خان يونس
Rafah	4	0	3	1	رفح

جدول 36: توزيع التجمعات السكانية في فلسطين التي تستخدم مكبات للنفايات حسب ملكية موقع المكب والمحافظة، 2013

Table 36: Distribution of Localities in Palestine that Using Dumping Site by Ownership of the Dumping Site and Governorate, 2013

Governorate	المجموع Total	ملكية موقع المكب							المحافظة
		Ownership of the dumping site							
		غير مبين Not stated	أخرى Others	مستأجر Rented	وقف Endowment	هيئة محلية أخرى Another local authority	حكومي (أميري) Governmental	الهيئة المحلية Local authority	
Palestine	232	69	47	31	2	15	31	37	فلسطين
West Bank	226	69	46	30	2	13	30	36	الضفة الغربية
Jenin	50	30	8	1	0	0	11	0	جنين
Tubas	7	2	4	0	0	0	1	0	طوباس
Tulkarm	12	3	5	1	0	0	0	3	طولكرم
Nablus	27	4	11	0	0	1	2	9	نابلس
Qalqiliya	19	7	1	3	0	1	3	4	قلقيلية
Salfit	13	1	0	4	0	0	1	7	سلفيت
Ramallah and Al-Bireh	41	9	7	6	0	4	5	10	رام الله والبيرة
Jericho and Al Aghwar	5	0	1	2	2	0	0	0	اريجا والأغوار
Jerusalem	21	2	9	4	0	2	3	1	القدس
Bethlehem	14	1	0	7	0	2	3	1	بيت لحم
Hebron	17	10	0	2	0	3	1	1	الخليل
Gaza Strip	6	0	1	1	0	2	1	1	قطاع غزة
North Gaza	2	0	0	0	0	1	1	0	شمال غزة
Gaza	0	0	0	0	0	0	0	0	غزة
Deir AL-Balah	2	0	1	0	0	0	0	1	دير البلح
Khan Yunis	1	0	0	0	0	1	0	0	خان يونس
Rafah	1	0	0	1	0	0	0	0	رفح

جدول 37: توزيع التجمعات السكانية في فلسطين حسب طريقة التخلص من النفايات الصلبة والمحافظه، 2013
Table 37: Distribution of Localities in Palestine by Method of Solidwaste Disposal and Governorate, 2013

Governorate	Method of solid waste disposal طريقة التخلص من النفايات الصلبة						المحافظة
	أخرى Others	التخلص العشوائي Random disposal	إعادة إستخدام النفايات Re-use of solid waste	بيع Sale	دفن Buried	حرق Burned	
Palestine	39	25	38	22	174	171	فلسطين
West Bank	36	24	38	22	164	161	الضفة الغربية
Jenin	5	1	22	6	47	6	جنين
Tubas	1	1	0	1	6	3	طوباس
Tulkarm	11	0	4	2	5	8	طولكرم
Nablus	1	2	3	1	5	6	نابلس
Qalqiliya	1	1	6	0	11	9	قلقيلية
Salfit	0	2	0	0	3	16	سلفيت
Ramallah and Al-Bireh	2	5	2	6	20	50	رام الله والبيره
Jericho and Al Aghwar	0	0	0	1	5	8	اريجا والأغوار
Jerusalem	5	4	1	3	13	17	القدس
Bethlehem	7	6	0	1	23	17	بيت لحم
Hebron	3	2	0	1	26	21	الخليل
Gaza Strip	3	1	0	0	10	10	قطاع غزة
North Gaza	1	0	0	0	2	1	شمال غزة
Gaza	0	0	0	0	3	2	غزة
Deir AL-Balah	0	0	0	0	3	4	دير البلح
Khan Yunis	1	1	0	0	1	2	خانيونس
Rafah	1	0	0	0	1	1	رفح



State of Palestine

**Palestinian Central
Bureau of Statistics**

**Ministry of Local
Government**

Local Community Survey - 2013 Main Findings

September, 2013

PAGE NUMBERS OF ENGLISH TEXT ARE PRINTED IN SQUARE BRACKETS.
TABLES ARE PRINTED IN THE ARABIC ORDER (FROM RIGHT TO LEFT)

**This document is prepared in accordance with the standard
procedures stated in the Code of Practice for Palestine
Official Statistics 2006**

© September, 2013.
All rights reserved.

Suggested Citation:

Palestinian Central Bureau of Statistics, 2013. *Local Community Survey - 2013: Main Findings.* Ramallah - Palestine.

All correspondence should be directed to:
Palestinian Central Bureau of Statistics
P.O.Box 1647 Ramallah, Palestine.

Tel: (972/970) 2 298 2700
Fax: (972/970) 2 298 2710
Toll Free: 1800300300
E-Mail: diwan@pcbs.gov.ps
web-site: <http://www.pcbs.gov.ps>

Reference ID: 2008

Acknowledgement

The Palestinian Central Bureau of Statistics (PCBS) extends its deep appreciations to Ministry of Local Government and Local Authorities that provide data for the Local Community Survey, 2013.

The Local Community Survey, 2013 report has been prepared by a technical team from PCBS and with joint funding by State of Palestine, and the Core Funding Group (CFG) for the year 2013 represented by the Representative Office of Norway to Palestine and the Swiss Development and Cooperation Agency (SDC).

Moreover, PCBS very much appreciates the distinctive efforts of the Core Funding Group (CFG) for their valuable contribution to funding the report.

Team Work

- **Report Preparation**
Mahmoud Souf
Suffiea Ibrahim
Zahran Ikhlaif
- **Dissemination Standard**
Hanan Janajreh
- **Preliminary Review**
Mahmoud Abd-Alrhman
Mohammad Jad Allah (Ministry of Local Government)
- **Final Review**
Mahmoud Jaradat
- **Overall Supervision**
Ola Awad President of PCBS

Table of Contents

Subject	Page
	List of Tables
	Introduction
Chapter One:	Main Findings [15] 1.1 Population [15] 1.2 Number of Localities [15] 1.3 Local Authorities [15] 1.4 Water [17] 1.5 Electricity [18] 1.6 Wastewater [19] 1.7 Solid Waste [20]
Chapter Two:	Methodology and Data Quality [23] 2.1 Questionnaire Survey [23] 2.2 Coverage [23] 2.3 Data Sources [23] 2.4 Fieldwork Operations [23] 2.5 Data Processing [23] 2.6 Data Quality [24] 2.6.1 Accuracy [24] 2.6.2 Comparability [24] 2.6.3 Data Quality Assurance Procedures [24] 2.6.4 Special Technical Notes [24]
Chapter Three:	Concepts and Definitions [25] References [27] Tables 37

List of Tables

Table	Page
Table 1: Distribution of Population in Middle of Year 2013 and Localities in Palestine by Governorates	39
Table 2: Distribution of Local Authorities in Palestine by Type of Local Authorit and Governrate, 2013	40
Table 3: Distribution of Localities that Shared in a Joint Services Council by Services that Provided by the Joint Services Council and Governorate, 2013	41
Table 4: Distribution of Local Authorities in Palestine by the Most Important Need and Governoratet, 2013	42
Table 5: Distribution of Localities in Palestine by Status of the Structural Plan and Governorate, 2013	43
Table 6: Distribution of Localities in Palestine that do not have a Structural Plan by Reasons for not having Structural Plan and Governorate, 2013	44
Table 7: Distribution of Localities in Palestine by Availability of Water Network and Governorate, 2013	45
Table 8: The Amount of Water Supplied and Consumed in Palestine in Middle of the Year 2013 and Governorate, (MCM / year)	46
Table 9: Distribution of Localities in Palestine by Sources of the Public Network Water and Governorate, 2013	47
Table 10: Distribution of Localities in Palestine by Doer Responsible about Water Network and Governorate, 2013	48
Table 11: Distribution of Localities in Palestine with Subscribers Need to be Supplied with Drinking Water by Water Tanks and Governorate, 2013	49
Table 12: Distribution of Localities in Palestine by Alternative Water Sources for the Network and Governorate, 2013	50
Table 13: Distribution the Connected Localities to Public Water Network in Palestine by Average Hours of Water Availability Per Day and Governorate, 2013	51
Table 14: Distribution of Localities in Palestine by Number of Public Water Storage and Governorate, 2013	52
Table 15: Distribution of Localities in Palestine by Capacity of the Water Storages and Governorate, 2013	53
Table 16: Distribution of Localities in Palestine by the Main Water Problems and Governorate, 2013	54

Table	Page
Table 17: Distribution of Localities in Palestine by Availability of Electricity Network and Governorate, 2013	55
Table 18: The Amount of Electricity Supplied and Consumed in Palestine in Middle of the Year 2013 by Governorate, (MWh)	56
Table 19: Distribution of Localities in Palestine by the Main Source of Electricity and Governorate, 2013	57
Table 20: Distribution of Localities in Palestine by Existence of Subscribers Need to be Supplied with Electricity by Generators and Governorate, 2013	58
Table 21: Distribution of Localities in Palestine that Use Renewable Energy Resources in Electricity Generation by Governorate, 2013	59
Table 22: Distribution the Connected Localities to Electricity in Palestine by Average Hours of Electricity Availability Per Day and Governorate, 2013	60
Table 23: Distribution of Localities in Palestine by the Main Electricity Problems and Governorate, 2013	61
Table 24: Distribution of Localities in Palestine by Availability of Wastewater Network and Governorate, 2013	62
Table 25: The Amounts Generated of Wastewater in Palestine in Middle of the Year 2013, Governorate, (1000 MCM / year)	63
Table 26: Distribution of Localities in Palestine by Doer Responsible about Wastewater Network and Governorate, 2013	64
Table 27: Distribution of Localities in Palestine by Wastewater Disposal Method and Governorate, 2013	65
Table 28: Distribution of Localities in Palestine by Existence of Wastewater Treatment Plants and Governorate, 2013	66
Table 29: Distribution of Localities in Palestine by the Main Wastewater Problems and Governorate, 2013	67
Table 30: Distribution of Localities in Palestine by Existence of Solidwaste Collection Service and Governorate, 2013	68
Table 31: The Amount of Generated Solidwaste in Palestine in Middle of the Year 2013 by Governorate, (tons / year)	69
Table 32: Distribution of Localities in Palestine by the Doer Responsible about Solidwaste Collection Service and Governorate, 2013	70
Table 33: Distribution of Localities in Palestine by the Periodicity of Solidwaste Collection and Governorate, 2013	71
Table 34: Distribution of Localities in Palestine by Using the Means of Solidwaste Collection and Governorate, 2013	72

Table		Page
Table 35:	Distribution of Localities in Palestine by Using of Dumping Sites and Governorate, 2013	73
Table 36:	Distribution of Localities in Palestine that Using Dumping Site by Ownership of the Dumping Site and Governorate, 2013	74
Table 37:	Distribution of Localities in Palestine by Method of Solidwaste Disposal and Governorate, 2013	75

Introduction

PCBS and the Ministry of Local Government are pleased to present this detailed statistical report of the Local Community Survey 2013 in Palestine. This survey was conducted as part of our official task to create and establish national statistical system and provide vital statistics to Palestinian planners and decision makers on water, the environment, natural resources and regional development.

Local authorities are responsible for providing essential services and public utilities to Palestinian localities and the availability of accurate and comprehensive data on local authorities, services, public utilities and other indicators therefore constitutes the foundations for regional development.

This report is divided into three chapters: the first chapter defines the main findings of the report. The second chapter explains the methodology of data collection and tabulation, in addition to details regarding data quality and estimates of data sources. The third chapter contains the concepts and definitions used in this report.

Ola Awad
President of PCBS

Dr. Sa'ed Al-Kawni
Minister of Local Government

September, 2013

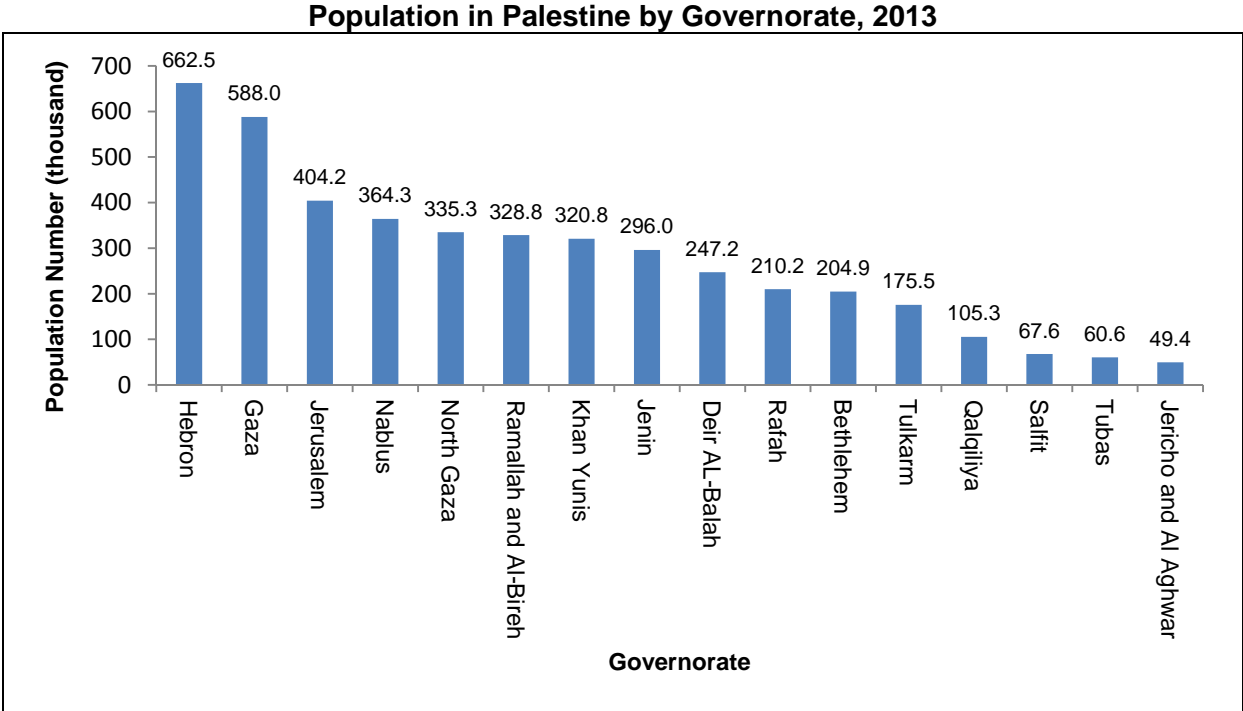
Chapter One

Main Findings

This chapter presents the main findings of the Local Community Survey 2013 in Palestine.

1.1 Population

The population in Palestine in mid-2013 totaled 4,420,549: 2,719,112 in West Bank and 1,701,437 in Gaza Strip.



1.2 Number of Localities

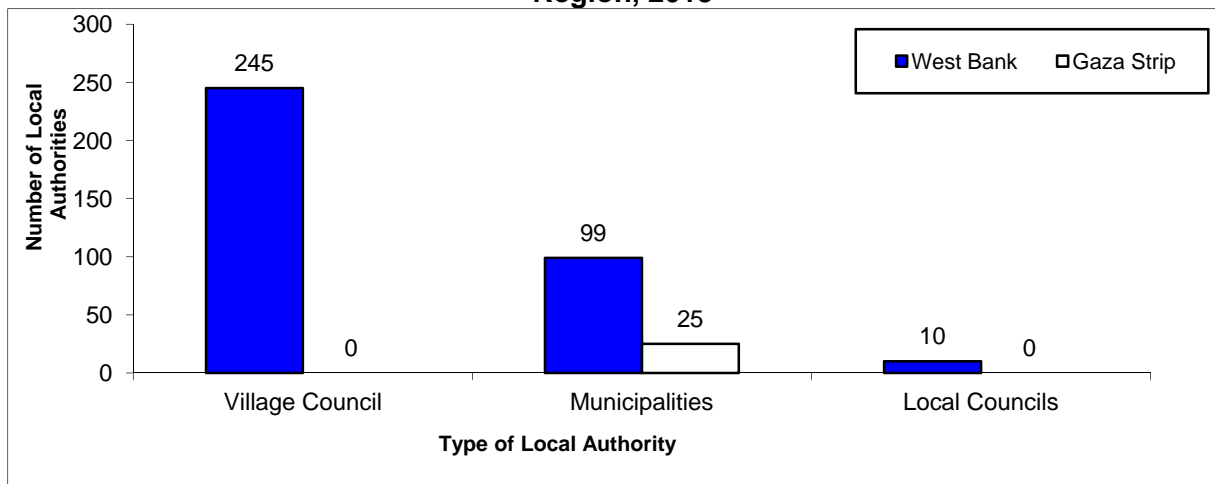
Data identified 557 localities in Palestine, distributed into 524 localities in West Bank and 33 in Gaza Strip.

1.3 Local Authorities

Type of Local Authority:

The results of the Local Community Survey 2013 showed that there were 379 local authorities in Palestine, distributed into 124 municipalities, 10 local councils and 245 village councils.

Distribution of Local Authorities in Palestine by Type of Current Local Authority and Region, 2013



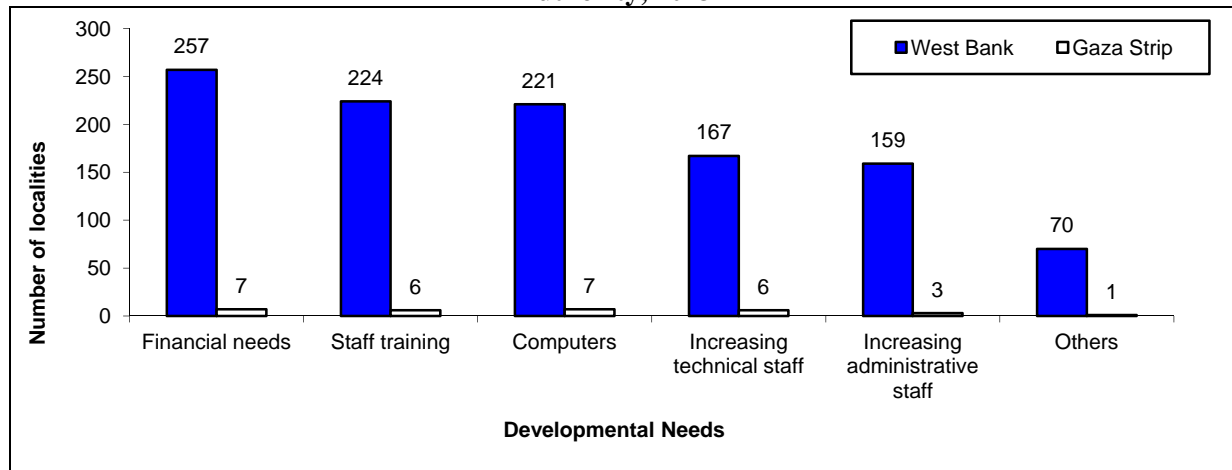
Services Provided:

The results indicated that 211 localities in Palestine were members of the Joint Services Council: 204 localities in West Bank and 7 in Gaza Strip.

Developmental Needs of Local Authorities:

The results indicated that 264 local authorities reported needing funding, 230 wanted to build the skills of staff, 228 needed computers, 173 required additional technical staff, 162 required more administrative staff and 71 local authorities required headquarters.

Distribution of Localities in Palestine by the Most Important Needs for the Local Authority, 2013



Structural Plan of Localities:

During 2013, 329 localities in Palestine had a structural plan: 303 localities in West Bank, of which 242 localities had approved structural plans, and 26 localities in Gaza Strip, all with approved plans.

In addition, 71 localities in Palestine did not have a structural plan because of lack of funding, while 41 localities were preparing a structural plan.

1.4 Water

Connection to Public Water Network:

Results for 2013 showed that 99 localities in Palestine were not connected to a public water network, all of them in West Bank.

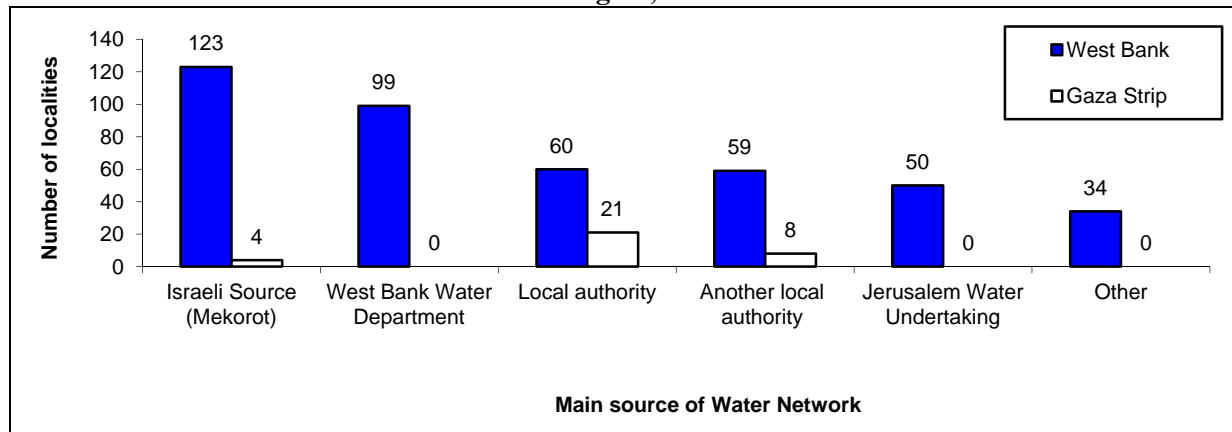
Water Supplied and Consumed:

The total amount of water supplied from all sources in mid-2013 in Palestine was estimated at about 218 million cubic meters (MCM), of which 109 MCM were supplied to West Bank. The amount of water consumed in mid-2013 in Palestine was estimated at about 136 MCM, of which 73 MCM was consumed in West Bank.

Source of Public Water Network:

Data showed that 99 localities connected to the public water network obtain water from West Bank Water Department and 123 localities obtain water from an Israeli source (Mekorot Company).

Distribution of Connected Localities to Water Network in Palestine by the Main Water Source and Region, 2013



Drinking Water Supplied by Water Tanks:

Data showed that consumers in 178 localities in Palestine received their drinking water by water tanks: 176 localities in West Bank and 2 localities in Gaza Strip.

Alternative Sources of Public Water:

During 2013, data showed that 100 localities in Palestine relied on artesian water wells as an alternative source of water to the public water network. In addition, 142 localities relied on rain water collection wells, 24 localities relied on springs and 50 localities relied on other sources.

Availability of Water Services:

The results of the Local Community Survey 2013 indicated that 282 localities in Palestine had access to water for 16-24 hours daily in summer, while 393 localities in Palestine had access to water from 16-24 hours daily in winter.

Water Storage and Capacity:

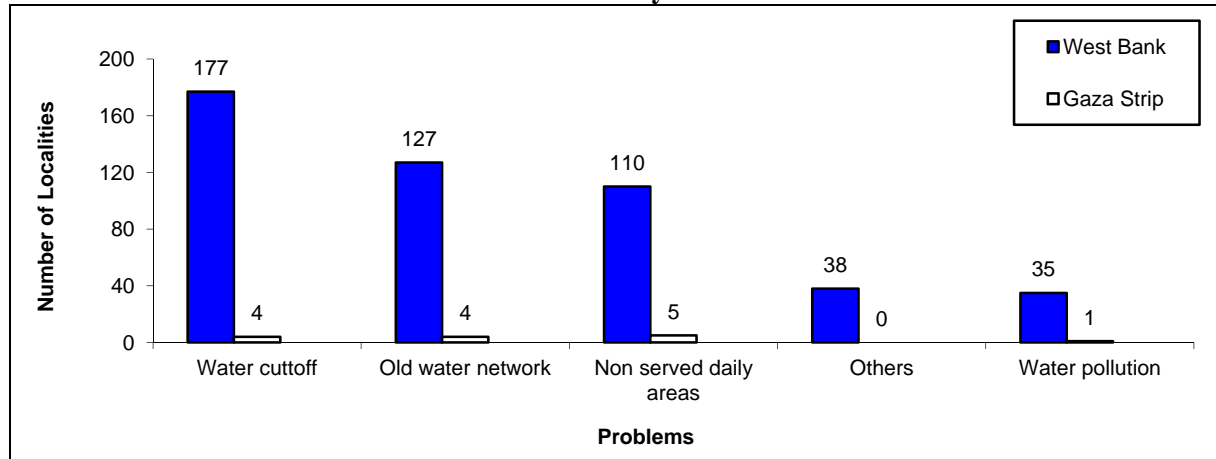
During 2013, data showed that 198 localities in Palestine had water storage facilities, of which 175 localities had one to two water storage facilities. A further 359 localities did not have any water storage facilities.

Data indicate that 41 localities had water storage capacity of more than 500 m³ and 72 localities had water storage capacity of less than 100 m³.

Problems of Water Supply in Localities:

The findings of the Local Community Survey 2013 showed that 99 localities in Palestine have no public water network, 131 localities have old networks, 181 localities undergo cuts in the water supply, 115 localities have areas without a water supply and 36 localities suffer from water pollution.

Distribution of Localities in Palestine by the Main Water Problems 2013



1.5 Electricity

Connection to Public Electricity Network:

Data for 2013 showed that 24 localities (4.3%) in Palestine are not connected to the public electricity network: all of these localities were located in West Bank.

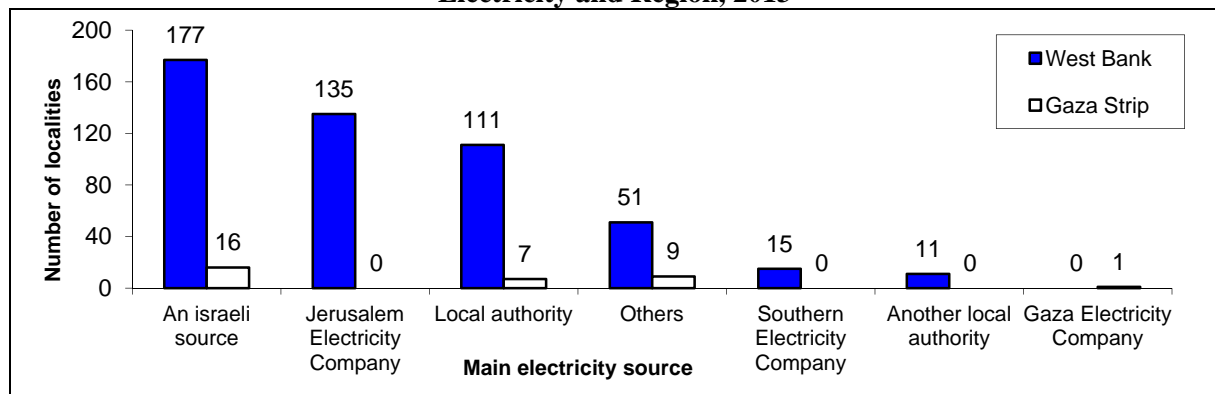
Electricity Supplied and Consumed:

The electricity supplied to localities in Palestine was estimated at about 4.6 million (MWh) in mid-2013, of which 2.8 million (MWh) was supplied to West Bank. The amount of electricity consumed by localities in Palestine in mid-2013 was estimated at about 3.5 million (MWh), of which 2.2 million (MWh) was consumed in West Bank.

Main Electricity Source:

Data showed that 135 localities in West Bank were supplied with electricity by the Jerusalem Electricity Company, 177 localities were supplied by the Israeli Electricity Company, 111 localities were supplied by the local authority and 15 localities were supplied by the Southern Electricity Company. In Gaza Strip 16 localities were supplied by the Israeli Electricity Company and 9 localities were supplied by other sources.

Distribution of Connected Localities to Electricity Network in Palestine by Main Source of Electricity and Region, 2013



Electricity Supplied by Generators:

Data showed that consumers in 31 localities in Palestine were supplied with electricity by generators: 29 localities in West Bank and two in Gaza Strip.

Use of Renewable Energy Sources in Electricity Generation:

During 2013, 10 localities in Palestine used solar energy to generate electricity, in addition to one locality in Jenin governorate that uses wind turbines.

Availability of Electricity Services:

The results of the Local Community Survey 2013 indicated that 354 localities in Palestine have access to electricity for 24 hours daily in summer and 27 localities have access to electricity for less than five hours in summer. In winter 336 localities in Palestine have access to electricity all day.

Problems of Electricity Supply in Localities:

The results of the Local Community Survey 2013 showed that 24 localities in Palestine have no electricity network, 157 localities have old electricity networks, 169 localities undergo cuts in the electricity supply, 112 localities have areas without any electricity supply, 185 localities have a weak electricity current and 34 localities complain of other problems.

1.6 Wastewater

Connection to Wastewater Network:

Data showed that 459 localities in Palestine do not have a wastewater network: 449 localities in West Bank and 10 in Gaza Strip.

Party Responsible for Wastewater Network:

Data for 2013 showed that local authorities were responsible for the wastewater network in 91 localities in Palestine: 69 in West Bank and 22 in Gaza Strip.

Amount of Wastewater Generated:

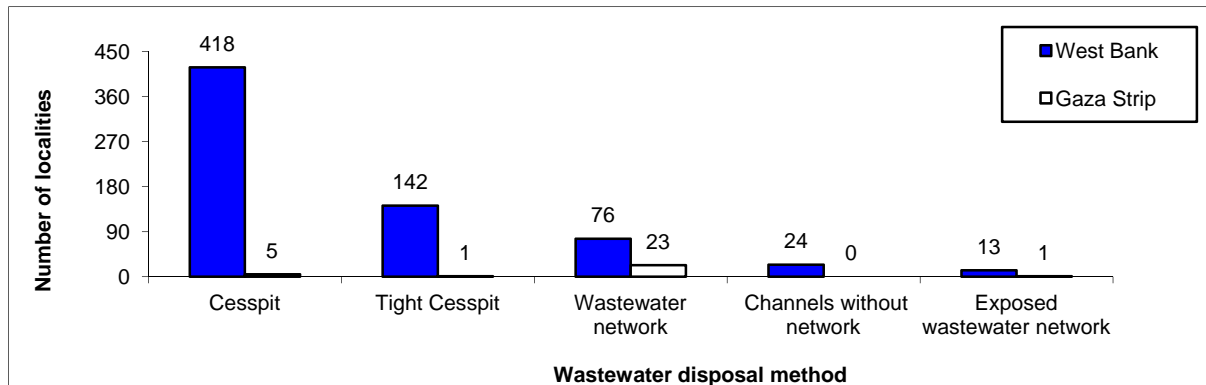
In mid-2013 the amount of wastewater generated in Palestine was estimated at about 109 MCM/year: 59 MCM in West Bank and 50 MCM in Gaza Strip.

Method of Wastewater Disposal:

The results of the survey revealed that 99 localities (17.8%) were connected to a wastewater network. A further 423 localities used a cesspit for wastewater disposal: 418 in West Bank

and five in Gaza Strip. Also, 143 localities used a tight cesspit for wastewater disposal and 38 localities used exposed wastewater channels.

Distribution of Localities in Palestine by Wastewater Disposal Method, 2013



Treatment Plants:

Data showed that during 2013 there were 19 localities in Palestine with treatment plants: 12 in West Bank and seven in Gaza Strip.

Problems of Wastewater Services in Localities:

The results of the Local Community Survey 2013 showed that 365 localities in Palestine do not have a wastewater network, 79 localities do not have treatment plants, 35 localities have old wastewater networks, 65 localities have areas without any services, 14 localities have problems due to the poor condition of the treatment plant and 17 localities suffer from other wastewater problems.

1.7 Solid Waste

Existence of Solidwaste Collection Service:

Data showed that 482 localities in Palestine during 2013 had access to a solid waste collection service: 449 localities in West Bank and 33 localities in Gaza Strip.

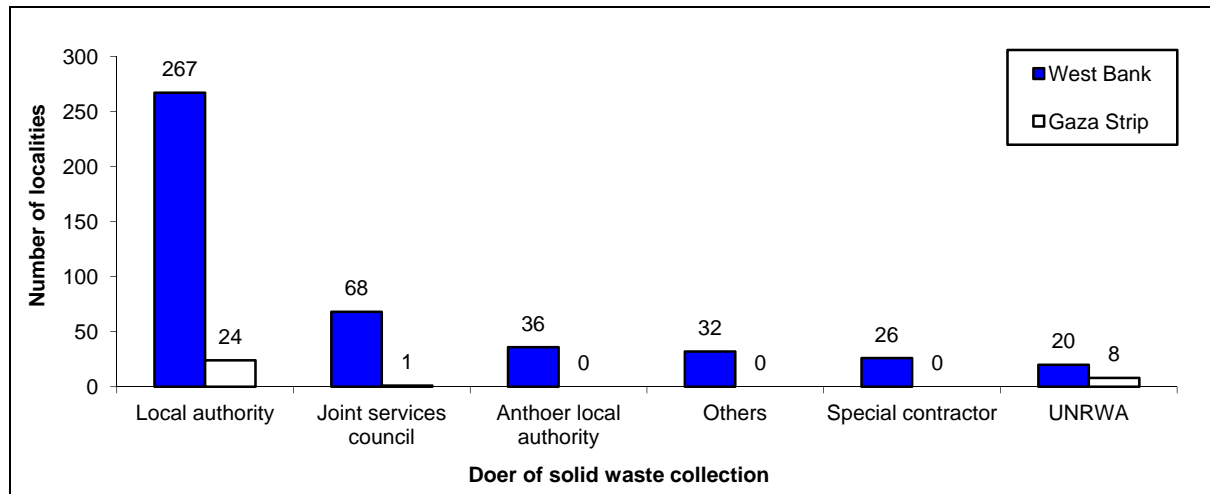
Solid Waste Generated:

The amount of solid waste generated in Palestine in mid-2013 was estimated at about 1.6 million tons: 932 thousand tons in West Bank and 625 thousand tons in Gaza Strip.

Party Responsible for Solid Waste Collection:

Data showed that 75 localities (13.5%) in Palestine during 2013 did not have a solid waste collection service and local authorities served 291 localities with a solid waste collection service: 267 in West Bank and 24 in Gaza Strip.

Distribution of Localities in Palestine by Doer of Solid Waste Collection and Region, 2013



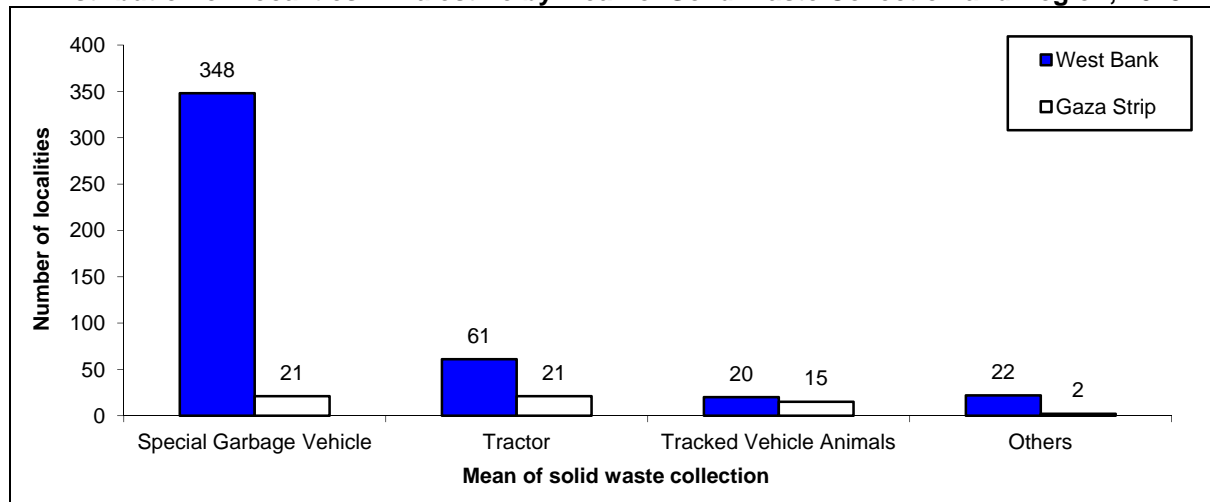
Regularity of Solid Waste Collection:

Data showed that waste is collected daily in 119 localities: 101 localities in West Bank and 18 localities in Gaza Strip. In 221 localities waste is collected more than once a week.

Means of Solid Waste Collection:

Waste is collected by a specialized vehicle in 369 localities in Palestine: 348 localities in West Bank and 21 in Gaza Strip. A further 82 localities in Palestine use a tractor as a means of collecting waste: 61 localities in West Bank and 21 in Gaza Strip.

Distribution of Localities in Palestine by Mean of Solid Waste Collection and Region, 2013



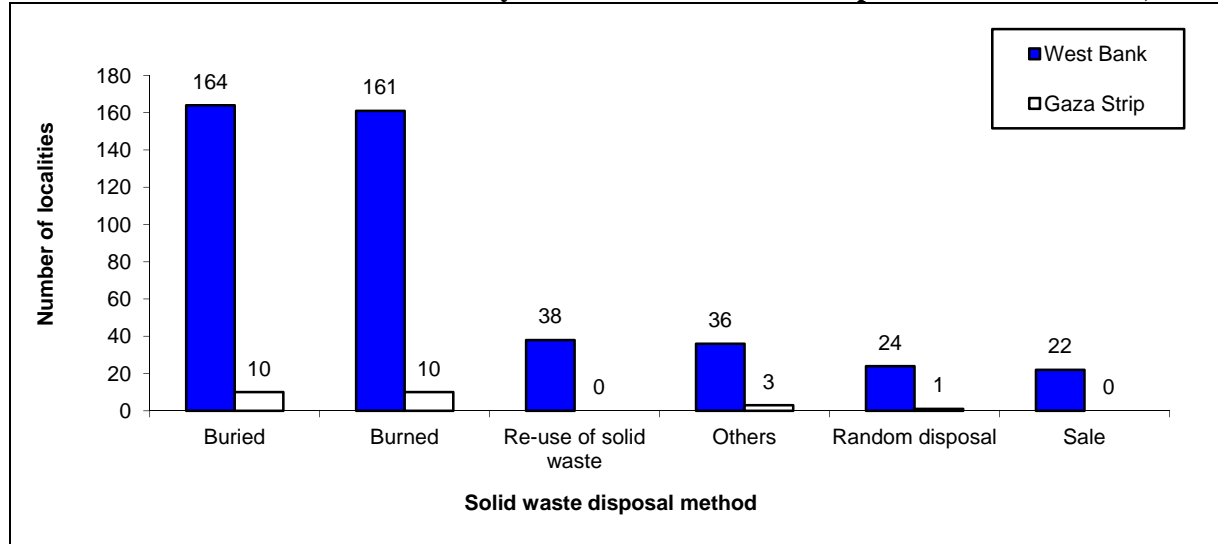
Dumping Sites:

Data showed that 232 localities in Palestine used dumping sites: 226 localities in West Bank and six in Gaza Strip. Of these, 37 localities used dumping sites owned by the local authority and 31 localities used rented dumping sites.

Solid Waste Disposal Methods:

Data showed that in Palestine in 2013 171 localities used burning as a method of solid waste disposal, 174 localities buried solid waste and 25 localities disposed of solid waste by other means.

Distribution of Localities in Palestine by Method of Solid Waste Disposal and Governorate, 2013



Chapter Two

Methodology and Data Quality

This chapter presents the scientific methodology used in the planning and implementation of Local Community Survey 2013 including the design of the survey tools, fieldwork collection, data processing and analysis of data.

2.1 Questionnaire Survey

The survey tool was designed taking into account the survey objectives, data processing and data collection requirements. It consists of two parts, the first part covered data that to be collected directly from the field including data about the services of local authorities, land use, infrastructure and agriculture. The other part was aggregated from the different statistical activities that have been conducted by the PCBS.

Sections Included in the Questionnaire

- Cover page with data about the locality
- Local authority properties
- Land use
- Infrastructure services (water, electricity, wastewater, solid waste and roads).
- Public facilities

2.2 Coverage

The survey frame was based on the list of localities used in the Population, Housing and Establishments Census 2007, which consisted of 557 localities

2.3 Data Sources

There are two sources of data; the first source is the local community, the other source is the available data in PCBS.

2.4 Fieldwork Operations

Fieldwork operations included all needed processes and tools for collecting and providing accurate data according to the survey questionnaire. Data were collected through the Ministry of Local Government.

Data Collection

PCBS prepared and designed the survey tools and send it to the Ministry of Local Government which have the responsibility on the data collection, at the end of the data collection stage, the questionnaires were sent tom PCBS for data entry and processing.

2.5 Data Processing

Questionnaires were edited before data entry and the incomplete ones were referred to the Ministry of Local Government. For the data entry, access software was used, this package is user-friendly and is capable of detecting a wide range of data entry and related errors. The package allows for the logical skipping between the questions and accepts only the possible answers for each question. The tabulation was performed using the SPSS program.

2.6 Data Quality

The concept of data quality consists of many aspects starting from the planning to the survey and on to the publishing method and data analysis. The main principles of statistical quality are accuracy, comparability, and data quality assurance procedures.

2.6.1 Accuracy

This survey is a comprehensive survey for all Local Communities, therefore, there is no sampling error in this survey but there is a possibility for some non-sampling errors that refer to the study frame, fieldwork operations and data processing.

2.6.2 Comparability

The data of the Local Community Survey is comparable geographically and among time, the results when comparing the data between different geographical areas and when comparing the data of this survey with the data of previous surveys and with the Population, Housing and Establishment Census 2007 and comparing the data about the local authorities with Ministry of Local Government were close.

2.6.3 Data Quality Assurance Procedures

Several measures were made to ensure quality control in the survey, and meeting with the Ministry of Local Government to follow the data collection process, audit of questionnaires was carried out before data entry, and then a program was used that does not allow any mistakes during the process of data entry, data was examined to ensure that they were free from errors not previously discovered, after the receipt of the raw data file, cleaning and inspection of the anomalous values was made, and also inspection of the consistency between the different questions on the questionnaire.

2.6.4 Special Technical Notes

- Unreasonable of the data of some indicators such as land use and roads lengths.
- Items non-response which is indicated in the tables as "not stated".
- Inaccuracy of financial data and budgets.

Chapter Three

Concepts and Definitions

Locality:

A permanently inhabited place, with an independent municipal administration or other type of adopted administration.

Springs:

It refers to water that discharged from the ground at an intersection point between the topographic surface and the ground water table, it could be permanent or seasonal.

Rain Water Harvesting Cisterns:

Wells that are dug in the ground for the purposes of collecting rain water.

Water Well (Artesian Wells):

A deep hole of a small diameter that is drilled in the ground to encounter groundwater, which is then pumped out to be used for different purposes.

Establishment:

An establishment is an enterprise, or part of an enterprise, that is situated in a single location and in which only a single (non-ancillary) productive activity is carried out or in which the principal productive activity accounts for most of the value added.

Public Water Network:

A net of pipes for the purpose of providing clean water to households. It normally belongs to a municipality, the council or to a private company.

Electricity Network:

Electrical wiring deployed in residential areas and covering all or most of the households in the locality, particularly through electricity companies or local authorities (municipal or village).

Private Generator:

A generator owned by a person or a group of persons for the purpose of covering electricity needs.

Electricity Local Source:

Local generators owned by community council or local electricity corporation inside the local community.

Environment:

The totality of all the external conditions affecting the life, development and survival of an organism.

Solid Waste Disposal:

Ultimate deposition or placement of refuse that is not salvaged or recycled.

Wastewater:

Used water, typically discharged in to the sewage system. It contains matter and bacteria in solution or suspension.

Solid Waste:

Useless and sometimes hazardous material with low liquid content. Solid waste includes municipal garbage, industrial and commercial waste, waste resulting from agricultural and animal husbandry operations and other connected activities, demolition waste and mining residues.

Waste Collection:

Collection or transport of waste to the place of treatment or discharge organized by municipal services or similar institutions, by public or private corporations, specialized enterprises or by the government.

Solid Waste Burning:

Out door burning of wastes such as lumber, used textile and others.

Cesspit:

Well or pit in which night-soil and other refuse is stored; constructed with either tight or porous walls.

Sewage Network:

System of collectors, pipelines, conduits and pumps to evacuate wastewater from any of the places of generation either to municipal sewage treatment plant or to a place where wastewater is discharged.

Dump:

Site used to dispose of solid wastes without environmental control.

Open Channel Network:

Open channel beside roads, mainly found in the camps.

Waste Water Treatment:

Process to render wastewater to fit environmental standards or other quality norms. Three broad types of treatment may be distinguished: mechanical, biological, and advanced.

Local Authority

The authority that serve the infrastructure services to the locality and is approved by the Ministry of local Government.

Local Authority Headquarters:

The building where the local authority is established and from where it acts.

References

1. Palestinian Central Bureau of statistics, 2003. Local Community Survey. 2003, Main Finding. Ramallah – Palestine.
2. Palestinian Central Bureau of statistics, 2005. Local Community Survey. 2005, Main Finding. Ramallah– Palestine.
3. Palestinian Central Bureau of Statistics 2008. The Population, Housing, and Establishment Census-2007, Press Conference on the Preliminary Findings, (Population, Buildings, Housing Units and Establishment). Ramallah – Palestine.
4. Palestinian Central Bureau of Statistics 2008. The Population, Housing, and Establishment Census-2007, Final Results of the West Bank, Summary (Population and Housing). Ramallah – Palestine
5. Palestinian Central Bureau of statistics, 2008. Local Community Survey. 2008, Main Finding. Ramallah– Palestine.
6. Palestinian Central Bureau of statistics, 2010. Local Community Survey. 2010, Main Finding. Ramallah– Palestine.
7. Ministry of Local Government, 2013. Data base. Ramallah– Palestine.