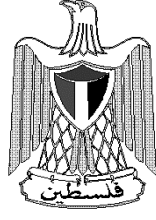


**2001**

**4 :  
2002 /**



**2001**

**4 :  
2002 /**

." 3 : "

.2002 - 1423 ©

:

.2001 - .2002

:

/

- 1647 . .

(970-2) 240 6343 :

<http://www.pcbs.org> :

(970-2) 240 6340 :

[diwan@pcbs.pna.org](mailto:diwan@pcbs.pna.org) :



1994

.1996

.2001

.1996

2000

**2002**

|           |  |   |     |
|-----------|--|---|-----|
| <b>17</b> |  | : |     |
| 17        |  |   | 1.1 |
| 17        |  |   | 2.1 |
| 18        |  |   | 3.1 |
| <b>19</b> |  | : |     |
| <b>21</b> |  | : |     |
| <b>23</b> |  | : |     |
| 23        |  |   | 1.4 |
| 23        |  |   | 2.4 |
| 24        |  |   | 3.4 |
| 25        |  |   | 4.4 |
| 25        |  |   | 5.4 |
| <b>26</b> |  | : |     |
| 26        |  |   | 1.5 |
| 26        |  |   | 2.5 |
| 26        |  |   | 3.5 |
| <b>28</b> |  |   |     |
| <b>71</b> |  |   |     |

|           |      |      |      |            |
|-----------|------|------|------|------------|
| <b>30</b> |      |      |      | <b>:1</b>  |
|           |      |      | 2001 | 1996       |
| <b>32</b> |      |      |      | <b>:2</b>  |
|           |      |      | 2001 | -          |
| <b>33</b> |      |      |      | <b>:3</b>  |
|           |      |      | 2001 | -          |
| <b>34</b> |      |      |      | <b>:4</b>  |
|           |      | 2001 | -    |            |
| <b>40</b> |      |      |      | <b>:5</b>  |
|           |      | 2001 | -    |            |
| <b>46</b> | 2001 | -    |      | <b>:6</b>  |
| <b>50</b> |      |      |      | <b>:7</b>  |
|           | 2001 | -    |      |            |
| <b>53</b> |      |      |      | <b>:8</b>  |
|           |      | 2001 | -    |            |
| <b>58</b> |      |      |      | <b>:9</b>  |
|           |      | 2001 | -    |            |
| <b>64</b> |      |      |      | <b>:10</b> |
|           |      | 2001 | -    |            |
| <b>69</b> |      |      |      | <b>:11</b> |
|           |      |      | 2001 | -          |

---

|           |      |      |      |           |
|-----------|------|------|------|-----------|
| <b>73</b> |      |      |      | <b>:1</b> |
|           | 2001 | 1999 |      |           |
| <b>74</b> |      |      |      | <b>:2</b> |
|           |      | 2001 | 1999 |           |
| <b>75</b> |      |      |      | <b>:3</b> |
|           |      | 2001 | -    |           |
| <b>76</b> |      |      |      | <b>:4</b> |
|           | 2001 | -    |      |           |
| <b>77</b> |      |      |      | <b>:5</b> |
|           |      | 2001 | -    |           |
| <b>78</b> |      |      |      | <b>:6</b> |
|           |      |      | 2001 | -         |



1996

2001/12/31- 10/1

1036 2001

:

: .1

:

575 •

234 •

+ 52 •

151 •

24 •

:

.2

: 387.8 ( )

84.4 244.4 328.8 •

8.1 50.9 59.0 •

: .3

. 5354 59

: .4

413.6 3340

:

. 303.1 2466 : •

. 110.6 874 : •

2000 1999

2000 %17.5 2001  
1999 %57.1 2001

. 1999 %48 2000

1.1

2.1

( )  
( )  
( )  
( )

- 
- 
- 
- 
- 
-

: 3.1

:

- : •
- : •
- : •
- : •

- : •
- : •
- : •



.( ) :

:

:

.1967

: .1

2001

:2000 1999

| 2000        | 1999        |             |             |             |   |
|-------------|-------------|-------------|-------------|-------------|---|
|             |             | 2001        | 2000        | 1999        |   |
| 7.1         | 56.9        | 575         | 619         | 1334        | . |
| 26.4        | 56.2        | 234         | 318         | 534         |   |
| 21.2        | 57.7        | 52          | 66          | 123         | + |
| 30.4        | 62.2        | 151         | 217         | 399         | . |
| 33.3        | 0.0         | 24          | 36          | 24          | . |
| <b>17.5</b> | <b>57.1</b> | <b>1036</b> | <b>1256</b> | <b>2414</b> | / |

1999

2001

2000

%17.5

%57.1

%48.0

1999

2000

.1996

2001

: .2

:2000 1999

2001

| 2000        | 1999        | ( )          |              |              |   |
|-------------|-------------|--------------|--------------|--------------|---|
|             |             | 2001         | 2000         | 1999         |   |
| <b>33.9</b> | <b>53.6</b> | <b>328.8</b> | <b>497.6</b> | <b>700.4</b> | : |
| 33.6        | 55.5        | 244.4        | 367.9        | 548.6        |   |
| 34.9        | 44.5        | 84.4         | 129.7        | 151.8        |   |
| <b>16.4</b> | <b>53.1</b> | <b>59</b>    | <b>70.6</b>  | <b>125.8</b> | : |
| 18.3        | 56.3        | 50.9         | 62.3         | 116.5        |   |
| 2.4         | 10.8        | 8.1          | 8.3          | 9.3          |   |

: .3

| 2000 | 1999 | 2001 | 2000  | 1999 |     |
|------|------|------|-------|------|-----|
| 22.7 | 49.1 | 59   | 75    | 114  |     |
| 59.9 | 31.6 | 5354 | 13357 | 7823 | ( ) |

: .4

2001

:2000 1999

| 2000 | 1999 | 2001  | 2000  | 1999  |     |
|------|------|-------|-------|-------|-----|
| 30.7 | 67.5 | 1265  | 1828  | 3861  |     |
| 36.0 | 55.8 | 206.2 | 322.5 | 466.1 | ( ) |
| 26.3 | 69.6 | 289   | 392   | 950   |     |
| 21.1 | 57.9 | 43.3  | 54.9  | 102.8 | ( ) |



1.4

- 
- 
- 
- 
- 
- 
- 

2.4

(453)

(472)

19

( )

.1996

: 3.4

: 1.3.4

: 2.3.4

: 3.3.4

: 4.3.4

: 5.3.4

: 4.4

: 1.4.4

: 2.4.4

: 5.4

: 1.5.4

: 2.5.4

: 3.5.4

: 4.5.4

|      |        |            |
|------|--------|------------|
|      | :      | <b>1.5</b> |
|      |        | .1         |
|      |        | .2         |
| 1967 |        |            |
|      | :      | <b>2.5</b> |
|      |        | .1         |
| (..) |        |            |
|      |        | .2         |
| 2000 |        |            |
|      | :      | <b>3.5</b> |
|      |        | .1         |
| (    | ) 1967 |            |
|      |        | .2         |

جدول 1: تطور رخص الأبنية الصادرة في باقي الضفة الغربية وقطاع غزة للفترة من الربع الأول 1996 الى الربع الرابع 2001\*

**Table 1: Development of Building Licenses Issued in Remaining West Bank and Gaza Strip  
From First Quarter 1996 to Forth Quarter 2001\***

| Period       | الوحدات السكنية المرخصة     |             |                             |              | المساحات المرخصة (الف م <sup>2</sup> ) |               |               | عدد الرخص الصادرة  |                     |                            |                                 |                |             | الفترة         |
|--------------|-----------------------------|-------------|-----------------------------|--------------|--|---------------|---------------|--------------------|---------------------|----------------------------|---------------------------------|----------------|-------------|----------------|
|              | Licensed Dwellings          |             |                             |              | Licensed Area (1000 m <sup>2</sup> )   |               |               | Number of Licenses |                     |                            |                                 |                |             |                |
|              | وحدات قائمة                 |             | وحدات جديدة                 |              | مساحات قائمة                           | مساحات جديدة  | المجموع       | إضافات قائمة       | أبنية قائمة         | إضافات جديدة + أجزاء قائمة | إضافات جديدة لمباني مرخصة       | أبنية جديدة    | المجموع     |                |
|              | مساحة (الف م <sup>2</sup> ) | عدد         | مساحة (الف م <sup>2</sup> ) | عدد          | Existing Areas                         | New Areas     | Total         | Existing Additions | Existing Build-ings | Additions +Existing Parts  | Additions to Licensed Buildings | New Build-ings | Total       |                |
| <b>1996</b>  |                             |             |                             |              |  |               |               |                    |                     |                            |                                 |                |             | <b>1996</b>    |
| Quarter I    | 33.3                        | 258         | 277.3                       | 2154         | 48.8                                   | 391.1         | 439.9         | 39                 | 116                 | 26                         | 429                             | 852            | 1462        | الربع الأول    |
| Quarter II   | 74.3                        | 532         | 356.7                       | 3038         | 100.6                                  | 493.6         | 594.2         | 33                 | 248                 | 11                         | 467                             | 863            | 1622        | الربع الثاني   |
| Quarter III  | 34.5                        | 251         | 513.4                       | 4299         | 44.9                                   | 691.2         | 736.1         | 16                 | 116                 | 24                         | 584                             | 1452           | 2192        | الربع الثالث   |
| Quarter IV   | 85.7                        | 638         | 493.5                       | 3648         | 108.1                                  | 714.2         | 822.3         | 36                 | 329                 | 14                         | 582                             | 1373           | 2334        | الربع الرابع   |
| <b>Total</b> | <b>227.8</b>                | <b>1679</b> | <b>1640.9</b>               | <b>13139</b> | <b>302.4</b>                           | <b>2290.1</b> | <b>2592.5</b> | <b>124</b>         | <b>809</b>          | <b>75</b>                  | <b>2062</b>                     | <b>4540</b>    | <b>7610</b> | <b>المجموع</b> |
| <b>1997</b>  |                             |             |                             |              |  |               |               |                    |                     |                            |                                 |                |             | <b>1997</b>    |
| Quarter I    | 78.8                        | 541         | 445.3                       | 3374         | 114.0                                  | 600.7         | 714.7         | 50                 | 231                 | 26                         | 491                             | 1139           | 1937        | الربع الأول    |
| Quarter II   | 89.9                        | 645         | 436.6                       | 3273         | 111.3                                  | 624.6         | 735.9         | 40                 | 254                 | 43                         | 527                             | 1172           | 2036        | الربع الثاني   |
| Quarter III  | 123.9                       | 894         | 460.5                       | 3402         | 150.9                                  | 592.4         | 743.3         | 111                | 358                 | 50                         | 453                             | 1280           | 2252        | الربع الثالث   |
| Quarter IV   | 99.2                        | 679         | 426.1                       | 3181         | 123.9                                  | 574.2         | 698.1         | 62                 | 312                 | 68                         | 523                             | 1198           | 2163        | الربع الرابع   |
| <b>Total</b> | <b>391.8</b>                | <b>2759</b> | <b>1768.5</b>               | <b>13230</b> | <b>500.1</b>                           | <b>2391.9</b> | <b>2892.0</b> | <b>263</b>         | <b>1155</b>         | <b>187</b>                 | <b>1994</b>                     | <b>4789</b>    | <b>8388</b> | <b>المجموع</b> |
| <b>1998</b>  |                             |             |                             |              |  |               |               |                    |                     |                            |                                 |                |             | <b>1998</b>    |
| Quarter I    | 102.7                       | 669         | 422.7                       | 3055         | 120.5                                  | 569.3         | 689.8         | 55                 | 265                 | 39                         | 460                             | 1055           | 1874        | الربع الأول    |
| Quarter II   | 97.5                        | 693         | 387.3                       | 2841         | 121.6                                  | 535.2         | 656.8         | 47                 | 264                 | 65                         | 468                             | 1246           | 2090        | الربع الثاني   |
| Quarter III  | 101.0                       | 732         | 524.5                       | 3735         | 121.3                                  | 743.6         | 864.9         | 46                 | 297                 | 71                         | 715                             | 1488           | 2617        | الربع الثالث   |
| Quarter IV   | 85.9                        | 641         | 452.2                       | 3195         | 105.7                                  | 657.6         | 763.3         | 30                 | 318                 | 90                         | 609                             | 1328           | 2375        | الربع الرابع   |
| <b>Total</b> | <b>387.1</b>                | <b>2735</b> | <b>1786.7</b>               | <b>12826</b> | <b>469.1</b>                           | <b>2505.7</b> | <b>2974.8</b> | <b>178</b>         | <b>1144</b>         | <b>265</b>                 | <b>2252</b>                     | <b>5117</b>    | <b>8956</b> | <b>المجموع</b> |
| <b>1999</b>  |                             |             |                             |              |  |               |               |                    |                     |                            |                                 |                |             | <b>1999</b>    |
| Quarter I    | 112.0                       | 730         | 398.0                       | 2664         | 135.7                                  | 554.0         | 689.7         | 38                 | 349                 | 87                         | 446                             | 1105           | 2025        | الربع الأول    |
| Quarter II   | 115.7                       | 872         | 579.0                       | 4069         | 147.9                                  | 778.2         | 926.1         | 10                 | 365                 | 126                        | 597                             | 1593           | 2691        | الربع الثاني   |
| Quarter III  | 108.5                       | 1123        | 607.5                       | 3993         | 145.0                                  | 827.5         | 972.4         | 43                 | 357                 | 139                        | 478                             | 1771           | 2788        | الربع الثالث   |
| Quarter IV   | 102.8                       | 950         | 466.1                       | 3861         | 125.8                                  | 700.4         | 826.2         | 24                 | 399                 | 123                        | 534                             | 1334           | 2414        | الربع الرابع   |
| <b>Total</b> | <b>439.0</b>                | <b>3675</b> | <b>2050.6</b>               | <b>14587</b> | <b>554.4</b>                           | <b>2860.1</b> | <b>3414.4</b> | <b>115</b>         | <b>1470</b>         | <b>475</b>                 | <b>2055</b>                     | <b>5803</b>    | <b>9918</b> | <b>المجموع</b> |

\* Excluding boundary walls licenses

\* لا تشمل رخص الأسوار

جدول 1 (تابع): تطور رخص الأبنية الصادرة في باقي الضفة الغربية وقطاع غزة للفترة من الربع الأول 1996 الى الربع الرابع 2001\*

Table 1 (Cont.): Development of Building Licenses Issued in Remaining West Bank and Gaza Strip  
From First Quarter 1996 to Forth Quarter 2001\*

| Period       | الوحدات السكنية المرخصة     |             |                             |              | المساحات المرخصة (الف م <sup>2</sup> ) |                |               | عدد الرخص الصادرة  |                     |                             |                                    |                | الفترة      |                |
|--------------|-----------------------------|-------------|-----------------------------|--------------|--|----------------|---------------|--------------------|---------------------|-----------------------------|------------------------------------|----------------|-------------|----------------|
|              | Licensed Dwellings          |             |                             |              | Licensed Area (1000 m <sup>2</sup> )   |                |               | Number of Licenses |                     |                             |                                    |                |             |                |
|              | وحدات قائمة                 |             | وحدات جديدة                 |              | مساحات قائمة                           | مساحات جديدة   | المجموع       | إضافات قائمة       | أبنية قائمة         | إضافات جديدة +              | إضافات جديدة لمباني مرخصة          | أبنية جديدة    |             | المجموع        |
|              | مساحة (الف م <sup>2</sup> ) | عدد         | مساحة (الف م <sup>2</sup> ) | عدد          | Existing Areas                         | New Areas      | Total         | Existing Additions | Existing Build-ings | أجزاء قائمة +Existing Parts | إضافات جديدة to Licensed Buildings | New Build-ings |             | Total          |
| <b>2000</b>  |                             |             |                             |              |  |                |               |                    |                     |                             |                                    |                |             | <b>2000</b>    |
| Quarter I    | 90.3                        | 627         | 362.3                       | 2411         | 110.1                                  | 551.7          | 661.8         | 35                 | 340                 | 79                          | 424                                | 1044           | 1922        | الربع الأول    |
| Quarter II   | 102.8                       | 702         | 425.1                       | 2904         | 138.3                                  | 602.3          | 740.6         | 57                 | 346                 | 140                         | 520                                | 1312           | 2375        | الربع الثاني   |
| Quarter III  | 135.3                       | 1009        | 536.2                       | 3565         | 163.4                                  | 806.0          | 969.4         | 57                 | 415                 | 163                         | 590                                | 1523           | 2748        | الربع الثالث   |
| Quarter IV   | 54.9                        | 392         | 322.5                       | 1828         | 70.6                                   | 497.6          | 568.2         | 36                 | 217                 | 66                          | 318                                | 619            | 1256        | الربع الرابع   |
| <b>Total</b> | <b>383.3</b>                | <b>2730</b> | <b>1646.1</b>               | <b>10708</b> | <b>482.4</b>                           | <b>2457.6</b>  | <b>2940.0</b> | <b>185</b>         | <b>1318</b>         | <b>448</b>                  | <b>1852</b>                        | <b>4498</b>    | <b>8301</b> | <b>المجموع</b> |
| <b>2001</b>  |                             |             |                             |              |  |                |               |                    |                     |                             |                                    |                |             | <b>2001</b>    |
| Quarter I    | 46.0                        | 311         | 283.1                       | 1763         | 70.2                                   | 480.5          | 550.7         | 31                 | 176                 | 71                          | 285                                | 679            | 1242        | الربع الأول    |
| Quarter II   | 110.6                       | 874         | 303.1                       | 2466         | 132.8                                  | 442.7          | 575.5         | 41                 | 222                 | 88                          | 371                                | 829            | 1551        | الربع الثاني   |
| Quarter III  | 56.1                        | 373         | 249.6                       | 1543         | 79.0                                   | 381.9          | 460.9         | 28                 | 225                 | 62                          | 291                                | 698            | 1304        | الربع الثالث   |
| Quarter IV   | 43.3                        | 289         | 206.2                       | 1265         | 59                                     | 328.8          | 387.8         | 24                 | 151                 | 52                          | 234                                | 575            | 1036        | الربع الرابع   |
| <b>Total</b> | <b>256.0</b>                | <b>1847</b> | <b>1041.918</b>             | <b>7037</b>  | <b>341</b>                             | <b>1633.86</b> | <b>1974.8</b> | <b>124</b>         | <b>774</b>          | <b>273</b>                  | <b>1181</b>                        | <b>2781</b>    | <b>5133</b> | <b>المجموع</b> |

\* Excluding boundary walls licenses

\* لا تشمل رخص الأسوار

جدول 2: رخص الأبنية الصادرة في باقي الضفة الغربية وقطاع غزة حسب ملكية البناء واستخدام المبنى - الربع الرابع 2001

Table 2: Building Licenses Issued in Remaining West Bank and Gaza Strip  
by Building Ownership and Utilization - Forth Quarter 2001

| Building Ownership    | الوحدات السكنية المرخصة     |     |                             |      | المساحات المرخصة (الف م <sup>2</sup> )* |              |         | عدد الرخص الصادرة  |             |                            |                                 |               | ملكية البناء |               |
|-----------------------|-----------------------------|-----|-----------------------------|------|---|--------------|---------|--------------------|-------------|----------------------------|---------------------------------|---------------|--------------|---------------|
|                       | Licensed Dwellings          |     |                             |      | Licensed Area (1000 m <sup>2</sup> )*   |              |         | Number of Licenses |             |                            |                                 |               |              |               |
|                       | وحدات قائمة                 |     | وحدات جديدة                 |      | مساحات قائمة                            | مساحات جديدة | المجموع | إضافات قائمة       | أبنية قائمة | إضافات جديدة +             | إضافات جديدة لمباني             | أبنية جديدة   |              | المجموع       |
|                       | مساحة (الف م <sup>2</sup> ) | عدد | مساحة (الف م <sup>2</sup> ) | عدد  | Existing Areas                          | New Areas    | Total   | Extensions         | Buildings   | Additions + Existing Parts | Additions to Licensed Buildings | New Buildings |              | Total         |
| <b>Total</b>          |                             |     |                             |      |   |              |         |                    |             |                            |                                 |               |              | المجموع       |
| Residential Buildings | 42.2                        | 283 | 204.6                       | 1255 | 50.9                                    | 244.4        | 295.3   | 23                 | 139         | 47                         | 219                             | 480           | 908          | مبنى سكني     |
| Non-Res. Buildings    | 1.1                         | 6   | 1.6                         | 10   | 8.1                                     | 84.4         | 92.5    | 1                  | 12          | 5                          | 15                              | 95            | 128          | مبنى غير سكني |
| Boundary walls        | 0.0                         | 0   | 0.0                         | 0    | 0.2                                     | 5.2          | 5.4     | 0                  | 3           | 0                          | 10                              | 46            | 59           | أسوار         |
| <b>Private</b>        |                             |     |                             |      |   |              |         |                    |             |                            |                                 |               |              | خاص           |
| Residential Buildings | 39.1                        | 267 | 203.3                       | 1244 | 47.1                                    | 242.8        | 289.9   | 22                 | 138         | 47                         | 219                             | 478           | 904          | مبنى سكني     |
| Non-Res. Buildings    | 1.1                         | 6   | 1.6                         | 10   | 4.7                                     | 43.3         | 48.0    | 1                  | 11          | 3                          | 6                               | 72            | 93           | مبنى غير سكني |
| Boundary walls        | 0.0                         | 0   | 0.0                         | 0    | 0.2                                     | 4.5          | 4.7     | 0                  | 3           | 0                          | 10                              | 44            | 57           | أسوار         |
| <b>Governmental</b>   |                             |     |                             |      |   |              |         |                    |             |                            |                                 |               |              | حكومي         |
| Residential Buildings | 0.0                         | 0   | 0.5                         | 4    | 0.0                                     | 0.5          | 0.5     | 0                  | 0           | 0                          | 0                               | 1             | 1            | مبنى سكني     |
| Non-Res. Buildings    | 0.0                         | 0   | 0.0                         | 0    | 0.9                                     | 34.3         | 35.2    | 0                  | 0           | 2                          | 5                               | 21            | 28           | مبنى غير سكني |
| Boundary walls        | 0.0                         | 0   | 0.0                         | 0    | 0.0                                     | 0.0          | 0.0     | 0                  | 0           | 0                          | 0                               | 0             | 0            | أسوار         |
| <b>Cooperative</b>    |                             |     |                             |      |   |              |         |                    |             |                            |                                 |               |              | تعاوني        |
| Residential Buildings | 3.1                         | 16  | 0.8                         | 7    | 3.8                                     | 1.1          | 4.9     | 1                  | 1           | 0                          | 0                               | 1             | 3            | مبنى سكني     |
| Non-Res. Buildings    | 0.0                         | 0   | 0.0                         | 0    | 0.0                                     | 0.0          | 0.0     | 0                  | 0           | 0                          | 0                               | 0             | 0            | مبنى غير سكني |
| Boundary walls        | 0.0                         | 0   | 0.0                         | 0    | 0.0                                     | 0.0          | 0.0     | 0                  | 0           | 0                          | 0                               | 0             | 0            | أسوار         |
| <b>Other</b>          |                             |     |                             |      |   |              |         |                    |             |                            |                                 |               |              | أخرى          |
| Residential Buildings | 0.0                         | 0   | 0.0                         | 0    | 0.0                                     | 0.0          | 0.0     | 0                  | 0           | 0                          | 0                               | 0             | 0            | مبنى سكني     |
| Non-Res. Buildings    | 0.0                         | 0   | 0.0                         | 0    | 2.4                                     | 6.9          | 9.3     | 0                  | 1           | 0                          | 4                               | 2             | 7            | مبنى غير سكني |
| Boundary walls        | 0.0                         | 0   | 0.0                         | 0    | 0.0                                     | 0.7          | 0.7     | 0                  | 0           | 0                          | 0                               | 2             | 2            | أسوار         |

\*For boundary walls it refers to length in (1000 m.r)

\*بالنسبة للأسوار تمثل الطول بالآلاف متر طولي

جدول 3: رخص الأبنية الصادرة في باقي الضفة الغربية وقطاع غزة حسب الجهة المانحة واستخدام المبنى - الربع الرابع 2001

Table 3: Building Licenses Issued in Remaining West Bank and Gaza Strip  
by Issuing Authority and Utilization - Forth Quarter 2001

| Issuing Authority               | الوحدات السكنية المرخصة     |     |                             |      | المساحات المرخصة (الف م <sup>2</sup> )* |              |         | عدد الرخص الصادرة    |                     |                           |                                 |                |         | الجهة المانحة للرخصة |
|---------------------------------|-----------------------------|-----|-----------------------------|------|---|--------------|---------|----------------------|---------------------|---------------------------|---------------------------------|----------------|---------|----------------------|
|                                 | Licensed Dwellings          |     |                             |      | Licensed Area (1000 m <sup>2</sup> )*   |              |         | Number of Licenses   |                     |                           |                                 |                |         |                      |
|                                 | وحدات قائمة                 |     | وحدات جديدة                 |      | مساحات قائمة                            | مساحات جديدة | المجموع | إضافات قائمة         | أبنية قائمة         | إضافات جديدة +            | إضافات جديدة لمباني مرخصة       | أبنية جديدة    | المجموع |                      |
|                                 | مساحة (الف م <sup>2</sup> ) | عدد | مساحة (الف م <sup>2</sup> ) | عدد  | Existing Areas                          | New Areas    | Total   | Existing Exten-sions | Existing Build-ings | Additions +Existing Parts | Additions to Licensed Buildings | New Build-ings | Total   |                      |
| <b>All Authorities</b>          |                             |     |                             |      |   |              |         |                      |                     |                           |                                 |                |         |                      |
| Residential Buildings           | 42.2                        | 283 | 204.6                       | 1255 | 50.9                                    | 244.4        | 295.3   | 23                   | 139                 | 47                        | 219                             | 480            | 908     | مبنى سكني            |
| Non-Res. Buildings              | 1.1                         | 6   | 1.6                         | 10   | 8.1                                     | 84.4         | 92.5    | 1                    | 12                  | 5                         | 15                              | 95             | 128     | مبنى غير سكني        |
| Boundary walls                  | 0.0                         | 0   | 0.0                         | 0    | 0.2                                     | 5.2          | 5.4     | 0                    | 3                   | 0                         | 10                              | 46             | 59      | أسوار                |
| <b>Municipalities</b>           |                             |     |                             |      |   |              |         |                      |                     |                           |                                 |                |         |                      |
| Residential Buildings           | 30.9                        | 215 | 177.7                       | 1083 | 38.1                                    | 212.3        | 250.4   | 22                   | 113                 | 45                        | 217                             | 382            | 779     | مبنى سكني            |
| Non-Res. Buildings              | 1.1                         | 6   | 1.6                         | 10   | 6.3                                     | 74.0         | 80.3    | 1                    | 10                  | 2                         | 11                              | 75             | 99      | مبنى غير سكني        |
| Boundary walls                  | 0.0                         | 0   | 0.0                         | 0    | 0.2                                     | 4.7          | 4.9     | 0                    | 3                   | 0                         | 10                              | 44             | 57      | أسوار                |
| <b>Rural Councils **</b>        |                             |     |                             |      |   |              |         |                      |                     |                           |                                 |                |         |                      |
| Residential Buildings           | 0.0                         | 0   | 0.0                         | 0    | 0.0                                     | 0.0          | 0.0     | 0                    | 0                   | 0                         | 0                               | 0              | 0       | مبنى سكني            |
| Non-Res. Buildings              | 0.0                         | 0   | 0.0                         | 0    | 0.0                                     | 0.0          | 0.0     | 0                    | 0                   | 0                         | 0                               | 0              | 0       | مبنى غير سكني        |
| Boundary walls                  | 0.0                         | 0   | 0.0                         | 0    | 0.0                                     | 0.0          | 0.0     | 0                    | 0                   | 0                         | 0                               | 0              | 0       | أسوار                |
| <b>Construction Authorities</b> |                             |     |                             |      |   |              |         |                      |                     |                           |                                 |                |         |                      |
| Residential Buildings           | 11.3                        | 68  | 26.4                        | 171  | 12.8                                    | 31.7         | 44.5    | 1                    | 26                  | 2                         | 2                               | 97             | 128     | مبنى سكني            |
| Non-Res. Buildings              | 0.0                         | 0   | 0.0                         | 0    | 1.8                                     | 10.4         | 12.2    | 0                    | 2                   | 3                         | 4                               | 20             | 29      | مبنى غير سكني        |
| Boundary walls                  | 0.0                         | 0   | 0.0                         | 0    | 0.0                                     | 0.5          | 0.5     | 0                    | 0                   | 0                         | 0                               | 2              | 2       | أسوار                |
| <b>UNRWA</b>                    |                             |     |                             |      |   |              |         |                      |                     |                           |                                 |                |         |                      |
| Residential Buildings           | 0.0                         | 0   | 0.5                         | 1    | 0.0                                     | 0.4          | 0.4     | 0                    | 0                   | 0                         | 0                               | 1              | 1       | مبنى سكني            |
| Non-Res. Buildings              | 0.0                         | 0   | 0.0                         | 0    | 0.0                                     | 0.0          | 0.0     | 0                    | 0                   | 0                         | 0                               | 0              | 0       | مبنى غير سكني        |
| Boundary walls                  | 0.0                         | 0   | 0.0                         | 0    | 0.0                                     | 0.0          | 0.0     | 0                    | 0                   | 0                         | 0                               | 0              | 0       | أسوار                |
| <b>Other**</b>                  |                             |     |                             |      |   |              |         |                      |                     |                           |                                 |                |         |                      |
| Residential Buildings           | 0.0                         | 0   | 0.0                         | 0    | 0.0                                     | 0.0          | 0.0     | 0                    | 0                   | 0                         | 0                               | 0              | 0       | مبنى سكني            |
| Non-Res. Buildings              | 0.0                         | 0   | 0.0                         | 0    | 0.0                                     | 0.0          | 0.0     | 0                    | 0                   | 0                         | 0                               | 0              | 0       | مبنى غير سكني        |
| Boundary walls                  | 0.0                         | 0   | 0.0                         | 0    | 0.0                                     | 0.0          | 0.0     | 0                    | 0                   | 0                         | 0                               | 0              | 0       | أسوار                |

\* For Boundary Walls it refers to length in (1000 m.r)

\* بالنسبة للأسوار تمثل الطول بالآلاف متر طولي

\*\* Includes Ministry of Local Governments in Gaza Strip which issues licenses in the green zones

\*\* تشمل أيضا وزارة الحكم المحلي التي تصدر الرخص في قطاع غزة في المناطق الإقليمية بشكل مباشر



جدول 4: رخص الأبنية الصادرة في باقي الضفة الغربية وقطاع غزة للأبنية الجديدة حسب فئة المساحة المرخصة والمحافظه - الربع الرابع 2001

Table 4: Building Licenses Issued in Remaining West Bank and Gaza Strip for New Buildings by Categories of Licensed Area and Governorate -Forth Quarter 2001

| Governorate                  | Non-Res. Buildings                             | أبنية غير سكنية                 | Residential Buildings                             |   |   | أبنية سكنية                     | المحافظة                  |
|------------------------------|--|---------------------------------|---|---|---|---------------------------------|---------------------------|
|                              | متوسط عدد الطوابق<br>Average No.<br>of Storeys | عدد الرخص<br>No. of<br>Licenses | متوسط عدد<br>الطوابق<br>Average No.<br>of Storeys | متوسط عدد<br>الوحدات السكنية<br>Average No.<br>of Dwellings | مجموع عدد<br>الوحدات السكنية<br>Total No.<br>of Dwellings | عدد الرخص<br>No. of<br>Licenses |                           |
| <b>All Governorates</b>      |  |                                 |   |   |   |                                 | <b>كافة المحافظات</b>     |
| Less than 60 m <sup>2</sup>  | 1.0  | 5                               | 1.0   | 1.0   | 10  | 10                              | أقل من 60 م <sup>2</sup>  |
| 60-119 m <sup>2</sup>        | 1.1  | 9                               | 1.0   | 1.0   | 50  | 49                              | 60-119 م <sup>2</sup>     |
| 120-199 m <sup>2</sup>       | 1.3  | 13                              | 1.1   | 1.1   | 156   | 138                             | 120-199 م <sup>2</sup>    |
| 200-499 m <sup>2</sup>       | 1.2  | 30                              | 1.7   | 1.7   | 325   | 186                             | 200-499 م <sup>2</sup>    |
| 500-1999 m <sup>2</sup>      | 2.2  | 32                              | 2.5   | 3.1   | 322   | 89                              | 500-1999 م <sup>2</sup>   |
| 2000 m <sup>2</sup> and more | 4.4  | 6                               | 3.1   | 3.9   | 62  | 8                               | 2000 م <sup>2</sup> فأكثر |
| <b>Jenin</b>                 |  |                                 |   |   |   |                                 | <b>جنين</b>               |
| Less than 60 m <sup>2</sup>  | 0.0  | 0                               | 0.0   | 0.0   | 0   | 0                               | أقل من 60 م <sup>2</sup>  |
| 60-119 m <sup>2</sup>        | 1.0  | 2                               | 1.0   | 1.0   | 4   | 4                               | 60-119 م <sup>2</sup>     |
| 120-199 m <sup>2</sup>       | 1.0  | 1                               | 1.1   | 1.1   | 10  | 9                               | 120-199 م <sup>2</sup>    |
| 200-499 m <sup>2</sup>       | 0.0  | 0                               | 1.8   | 1.7   | 22  | 13                              | 200-499 م <sup>2</sup>    |
| 500-1999 m <sup>2</sup>      | 1.0  | 1                               | 2.5   | 2.0   | 12  | 6                               | 500-1999 م <sup>2</sup>   |
| 2000 m <sup>2</sup> and more | 8.0  | 1                               | 5.0   | 3.0   | 3   | 1                               | 2000 م <sup>2</sup> فأكثر |
| <b>Tubas</b>                 |  |                                 |   |   |   |                                 | <b>طوباس</b>              |
| Less than 60 m <sup>2</sup>  | 0.0  | 0                               | 0.0   | 0.0   | 0   | 0                               | أقل من 60 م <sup>2</sup>  |
| 60-119 m <sup>2</sup>        | 0.0  | 0                               | 1.0   | 1.0   | 5   | 5                               | 60-119 م <sup>2</sup>     |
| 120-199 m <sup>2</sup>       | 0.0  | 0                               | 1.3   | 1.2   | 11  | 9                               | 120-199 م <sup>2</sup>    |
| 200-499 m <sup>2</sup>       | 0.0  | 0                               | 1.5   | 1.5   | 9   | 6                               | 200-499 م <sup>2</sup>    |
| 500-1999 m <sup>2</sup>      | 5.0  | 1                               | 0.0   | 0.0   | 0   | 0                               | 500-1999 م <sup>2</sup>   |
| 2000 m <sup>2</sup> and more | 0.0  | 0                               | 0.0   | 0.0   | 0   | 0                               | 2000 م <sup>2</sup> فأكثر |

جدول 4 (تابع): رخص الأبنية الصادرة في باقي الضفة الغربية وقطاع غزة للأبنية الجديدة حسب فئة المساحة المرخصة والمحافظه - الربع الرابع 2001

Table 4 (Cont.): Building Licenses Issued in Remaining West Bank and Gaza Strip for New Buildings by Categories of Licensed Area and Governorate - Forth Quarter 2001

| Governorate                  | Non-Res. Buildings                             | أبنية غير سكنية                 | Residential Buildings                             |   |   | أبنية سكنية                     | المحافظة                  |
|------------------------------|--|---------------------------------|---|---|---|---------------------------------|---------------------------|
|                              | متوسط عدد الطوابق<br>Average No.<br>of Storeys | عدد الرخص<br>No. of<br>Licenses | متوسط عدد<br>الطوابق<br>Average No.<br>of Storeys | متوسط عدد<br>الوحدات السكنية<br>Average No.<br>of Dwellings | مجموع عدد<br>الوحدات السكنية<br>Total No.<br>of Dwellings | عدد الرخص<br>No. of<br>Licenses |                           |
| <b>Tulkarm</b>               |  |                                 |   |   |   |                                 | <b>طولكرم</b>             |
| Less than 60 m <sup>2</sup>  | 1.0  | 1                               | 0.0   | 0.0   | 0   | 0                               | أقل من 60 م <sup>2</sup>  |
| 60-119 m <sup>2</sup>        | 0.0  | 0                               | 1.0   | 1.0   | 5   | 5                               | 60-119 م <sup>2</sup>     |
| 120-199 m <sup>2</sup>       | 0.0  | 0                               | 1.2   | 1.1   | 15  | 14                              | 120-199 م <sup>2</sup>    |
| 200-499 m <sup>2</sup>       | 1.3  | 3                               | 1.8   | 1.8   | 43  | 24                              | 200-499 م <sup>2</sup>    |
| 500-1999 m <sup>2</sup>      | 3.0  | 2                               | 2.3   | 4.7   | 14  | 3                               | 500-1999 م <sup>2</sup>   |
| 2000 m <sup>2</sup> and more | 3.0  | 1                               | 0.0   | 0.0   | 0   | 0                               | 2000 م <sup>2</sup> فأكثر |
| <b>Nablus</b>                |  |                                 |   |   |   |                                 | <b>نابلس</b>              |
| Less than 60 m <sup>2</sup>  | 1.0  | 1                               | 0.0   | 0.0   | 0   | 0                               | أقل من 60 م <sup>2</sup>  |
| 60-119 m <sup>2</sup>        | 1.5  | 2                               | 1.0   | 1.0   | 1   | 1                               | 60-119 م <sup>2</sup>     |
| 120-199 m <sup>2</sup>       | 1.3  | 3                               | 1.2   | 1.1   | 21  | 20                              | 120-199 م <sup>2</sup>    |
| 200-499 m <sup>2</sup>       | 1.1  | 12                              | 1.5   | 1.8   | 44  | 24                              | 200-499 م <sup>2</sup>    |
| 500-1999 m <sup>2</sup>      | 2.6  | 7                               | 2.5   | 2.7   | 57  | 21                              | 500-1999 م <sup>2</sup>   |
| 2000 m <sup>2</sup> and more | 4.0  | 3                               | 0.0   | 0.0   | 0   | 0                               | 2000 م <sup>2</sup> فأكثر |
| <b>Qalqilya</b>              |  |                                 |   |   |   |                                 | <b>قلقيلية</b>            |
| Less than 60 m <sup>2</sup>  | 0.0  | 0                               | 0.0   | 0.0   | 0   | 0                               | أقل من 60 م <sup>2</sup>  |
| 60-119 m <sup>2</sup>        | 0.0  | 0                               | 1.0   | 1.0   | 3   | 3                               | 60-119 م <sup>2</sup>     |
| 120-199 m <sup>2</sup>       | 0.0  | 0                               | 1.3   | 1.5   | 6   | 4                               | 120-199 م <sup>2</sup>    |
| 200-499 m <sup>2</sup>       | 0.0  | 0                               | 1.7   | 1.7   | 5   | 3                               | 200-499 م <sup>2</sup>    |
| 500-1999 m <sup>2</sup>      | 0.0  | 0                               | 3.5   | 3.5   | 7   | 2                               | 500-1999 م <sup>2</sup>   |
| 2000 m <sup>2</sup> and more | 0.0  | 0                               | 0.0   | 0.0   | 0   | 0                               | 2000 م <sup>2</sup> فأكثر |

جدول 4 (تابع): رخص الأبنية الصادرة في باقي الضفة الغربية وقطاع غزة للأبنية الجديدة حسب فئة المساحة المرخصة والمحافظه - الربع الرابع 2001

Table 4 (Cont.): Building Licenses Issued in Remaining West Bank and Gaza Strip for New Buildings by Categories of Licensed Area and Governorate - Forth Quarter 2001

| Governorate                  | Non-Res. Buildings                             |  | Residential Buildings                             |   |  | المحافظة |                                 |
|------------------------------|--|--|---|---|--|----------|---------------------------------|
|                              | متوسط عدد الطوابق<br>Average No.<br>of Storeys | أبنية غير سكنية<br>عدد الرخص<br>No. of<br>Licenses | متوسط عدد<br>الطوابق<br>Average No.<br>of Storeys | متوسط عدد<br>الوحدات السكنية<br>Average No.<br>of Dwellings | أبنية سكنية<br>مجموع عدد<br>الوحدات السكنية<br>Total No.<br>of Dwellings |          | عدد الرخص<br>No. of<br>Licenses |
| <b>Salfit</b>                |  |  |   |   |  | سلفيت    |                                 |
| Less than 60 m <sup>2</sup>  | 0.0  | 0  | 0.0   | 0.0   | 0  | 0        | أقل من 60 م <sup>2</sup>        |
| 60-119 m <sup>2</sup>        | 0.0  | 0  | 1.0   | 1.0   | 2  | 2        | 60-119 م <sup>2</sup>           |
| 120-199 m <sup>2</sup>       | 0.0  | 0  | 1.2   | 1.2   | 7  | 6        | 120-199 م <sup>2</sup>          |
| 200-499 m <sup>2</sup>       | 0.0  | 0  | 2.5   | 1.5   | 3  | 2        | 200-499 م <sup>2</sup>          |
| 500-1999 m <sup>2</sup>      | 0.0  | 0  | 0.0   | 0.0   | 0  | 0        | 500-1999 م <sup>2</sup>         |
| 2000 m <sup>2</sup> and more | 0.0  | 0  | 0.0   | 0.0   | 0  | 0        | 2000 م <sup>2</sup> فأكثر       |
| <b>Ramallah and Al-Bireh</b> |  |  |   |   |  |          | رام الله والبيرة                |
| Less than 60 m <sup>2</sup>  | 1.0  | 2  | 0.0   | 0.0   | 0  | 0        | أقل من 60 م <sup>2</sup>        |
| 60-119 m <sup>2</sup>        | 1.0  | 1  | 1.0   | 1.0   | 9  | 9        | 60-119 م <sup>2</sup>           |
| 120-199 m <sup>2</sup>       | 1.0  | 1  | 1.1   | 1.1   | 21   | 19       | 120-199 م <sup>2</sup>          |
| 200-499 m <sup>2</sup>       | 1.0  | 2  | 1.9   | 1.8   | 55   | 30       | 200-499 م <sup>2</sup>          |
| 500-1999 m <sup>2</sup>      | 1.4  | 5  | 3.9   | 4.6   | 60   | 13       | 500-1999 م <sup>2</sup>         |
| 2000 m <sup>2</sup> and more | 4.0  | 1  | 4.5   | 5.3   | 32   | 3        | 2000 م <sup>2</sup> فأكثر       |
| <b>Jericho</b>               |  |  |   |   |  |          | أريحا                           |
| Less than 60 m <sup>2</sup>  | 0.0  | 0  | 0.0   | 0.0   | 0  | 0        | أقل من 60 م <sup>2</sup>        |
| 60-119 m <sup>2</sup>        | 1.0  | 1  | 2.0   | 2.0   | 2  | 1        | 60-119 م <sup>2</sup>           |
| 120-199 m <sup>2</sup>       | 1.0  | 1  | 1.3   | 1.3   | 9  | 6        | 120-199 م <sup>2</sup>          |
| 200-499 m <sup>2</sup>       | 2.0  | 1  | 1.3   | 1.7   | 5  | 3        | 200-499 م <sup>2</sup>          |
| 500-1999 m <sup>2</sup>      | 0.0  | 0  | 3.0   | 3.0   | 3  | 1        | 500-1999 م <sup>2</sup>         |
| 2000 m <sup>2</sup> and more | 0.0  | 0  | 0.0   | 0.0   | 0  | 0        | 2000 م <sup>2</sup> فأكثر       |

جدول 4 (تابع): رخص الأبنية الصادرة في باقي الضفة الغربية وقطاع غزة للأبنية الجديدة حسب فئة المساحة المرخصة والمحافظه - الربع الرابع 2001

Table 4 (Cont.): Building Licenses Issued in Remaining West Bank and Gaza Strip for New Buildings by Categories of Licensed Area and Governorate - Forth Quarter 2001

| Governorate                  | Non-Res. Buildings                             |                                 | Residential Buildings                             |   |   | أبنية سكنية                     |                           | المحافظة       |
|------------------------------|--|---------------------------------|---|---|---|---------------------------------|---------------------------|----------------|
|                              | متوسط عدد الطوابق<br>Average No.<br>of Storeys | عدد الرخص<br>No. of<br>Licenses | متوسط عدد<br>الطوابق<br>Average No.<br>of Storeys | متوسط عدد<br>الوحدات السكنية<br>Average No.<br>of Dwellings | مجموع عدد<br>الوحدات السكنية<br>Total No.<br>of Dwellings | عدد الرخص<br>No. of<br>Licenses |                           |                |
| <b>Jerusalem</b>             |  |                                 |   |   |   |                                 |                           | <b>القدس</b>   |
| Less than 60 m <sup>2</sup>  | 0.0  | 0                               | 0.0   | 0.0   | 0   | 0                               | أقل من 60 م <sup>2</sup>  |                |
| 60-119 m <sup>2</sup>        | 0.0  | 0                               | 0.0   | 0.0   | 0   | 0                               | 60-119 م <sup>2</sup>     |                |
| 120-199 m <sup>2</sup>       | 2.0  | 3                               | 1.3   | 1.3   | 5   | 4                               | 120-199 م <sup>2</sup>    |                |
| 200-499 m <sup>2</sup>       | 1.0  | 2                               | 1.9   | 1.8   | 29  | 16                              | 200-499 م <sup>2</sup>    |                |
| 500-1999 m <sup>2</sup>      | 2.0  | 1                               | 3.1   | 3.6   | 25  | 7                               | 500-1999 م <sup>2</sup>   |                |
| 2000 m <sup>2</sup> and more | 0.0  | 0                               | 3.0   | 6.0   | 6   | 1                               | 2000 م <sup>2</sup> فأكثر |                |
| <b>Bethlehem</b>             |  |                                 |   |   |   |                                 |                           | <b>بيت لحم</b> |
| Less than 60 m <sup>2</sup>  | 0.0  | 0                               | 0.0   | 0.0   | 0   | 0                               | أقل من 60 م <sup>2</sup>  |                |
| 60-119 m <sup>2</sup>        | 0.0  | 0                               | 1.0   | 1.0   | 1   | 1                               | 60-119 م <sup>2</sup>     |                |
| 120-199 m <sup>2</sup>       | 1.0  | 1                               | 1.3   | 1.3   | 5   | 4                               | 120-199 م <sup>2</sup>    |                |
| 200-499 m <sup>2</sup>       | 1.3  | 4                               | 2.0   | 1.2   | 6   | 5                               | 200-499 م <sup>2</sup>    |                |
| 500-1999 m <sup>2</sup>      | 3.7  | 3                               | 2.8   | 3.6   | 18  | 5                               | 500-1999 م <sup>2</sup>   |                |
| 2000 m <sup>2</sup> and more | 0.0  | 0                               | 0.0   | 0.0   | 0   | 0                               | 2000 م <sup>2</sup> فأكثر |                |
| <b>Hebron</b>                |  |                                 |   |   |   |                                 |                           | <b>الخليل</b>  |
| Less than 60 m <sup>2</sup>  | 0.0  | 0                               | 1.0   | 1.0   | 2   | 2                               | أقل من 60 م <sup>2</sup>  |                |
| 60-119 m <sup>2</sup>        | 1.0  | 2                               | 1.1   | 1.0   | 15  | 15                              | 60-119 م <sup>2</sup>     |                |
| 120-199 m <sup>2</sup>       | 1.0  | 2                               | 1.0   | 1.0   | 20  | 20                              | 120-199 م <sup>2</sup>    |                |
| 200-499 m <sup>2</sup>       | 1.3  | 4                               | 1.9   | 1.6   | 64  | 40                              | 200-499 م <sup>2</sup>    |                |
| 500-1999 m <sup>2</sup>      | 1.8  | 12                              | 2.3   | 3.5   | 38  | 11                              | 500-1999 م <sup>2</sup>   |                |
| 2000 m <sup>2</sup> and more | 0.0  | 0                               | 3.0   | 8.0   | 8   | 1                               | 2000 م <sup>2</sup> فأكثر |                |

جدول 4 (تابع): رخص الأبنية الصادرة في باقي الضفة الغربية وقطاع غزة للأبنية الجديدة حسب فئة المساحة المرخصة والمحافظه - الربع الرابع 2001

Table 4 (Cont.): Building Licenses Issued in Remaining West Bank and Gaza Strip for New Buildings by Categories of Licensed Area and Governorate - Forth Quarter 2001

| Governorate                  | Non-Res. Buildings                             |                                 | Residential Buildings                             |   |   | أبنية سكنية                     |                           | المحافظة  |
|------------------------------|--|---------------------------------|---|---|---|---------------------------------|---------------------------|-----------|
|                              | متوسط عدد الطوابق<br>Average No.<br>of Storeys | عدد الرخص<br>No. of<br>Licenses | متوسط عدد<br>الطوابق<br>Average No.<br>of Storeys | متوسط عدد<br>الوحدات السكنية<br>Average No.<br>of Dwellings | مجموع عدد<br>الوحدات السكنية<br>Total No.<br>of Dwellings | عدد الرخص<br>No. of<br>Licenses |                           |           |
| <b>North Gaza</b>            |  |                                 |   |   |   |                                 |                           | شمال غزة  |
| Less than 60 m <sup>2</sup>  | 0.0  | 0                               | 0.0   | 0.0   | 0   | 0                               | أقل من 60 م <sup>2</sup>  |           |
| 60-119 m <sup>2</sup>        | 0.0  | 0                               | 0.0   | 0.0   | 0   | 0                               | 60-119 م <sup>2</sup>     |           |
| 120-199 m <sup>2</sup>       | 0.0  | 0                               | 1.0   | 1.3   | 5   | 4                               | 120-199 م <sup>2</sup>    |           |
| 200-499 m <sup>2</sup>       | 1.0  | 1                               | 1.4   | 1.6   | 8   | 4                               | 200-499 م <sup>2</sup>    |           |
| 500-1999 m <sup>2</sup>      | 0.0  | 0                               | 2.7   | 5.3   | 16  | 3                               | 500-1999 م <sup>2</sup>   |           |
| 2000 m <sup>2</sup> and more | 0.0  | 0                               | 0.0   | 0.0   | 0   | 0                               | 2000 م <sup>2</sup> فأكثر |           |
| <b>Gaza</b>                  |  |                                 |   |   |   |                                 |                           | غزة       |
| Less than 60 m <sup>2</sup>  | 1.0  | 1                               | 1.0   | 1.0   | 1   | 1                               | أقل من 60 م <sup>2</sup>  |           |
| 60-119 m <sup>2</sup>        | 1.0  | 1                               | 1.0   | 1.0   | 1   | 1                               | 60-119 م <sup>2</sup>     |           |
| 120-199 m <sup>2</sup>       | 1.0  | 1                               | 0.9   | 0.8   | 9   | 7                               | 120-199 م <sup>2</sup>    |           |
| 200-499 m <sup>2</sup>       | 1.0  | 1                               | 1.1   | 1.3   | 23  | 11                              | 200-499 م <sup>2</sup>    |           |
| 500-1999 m <sup>2</sup>      | 0.0  | 0                               | 1.7   | 2.3   | 72  | 17                              | 500-1999 م <sup>2</sup>   |           |
| 2000 m <sup>2</sup> and more | 0.0  | 0                               | 1.6   | 1.9   | 13  | 2                               | 2000 م <sup>2</sup> فأكثر |           |
| <b>Deir Al-Balah</b>         |  |                                 |   |   |   |                                 |                           | دير البلح |
| Less than 60 m <sup>2</sup>  | 0.0  | 0                               | 0.0   | 0.0   | 0   | 0                               | أقل من 60 م <sup>2</sup>  |           |
| 60-119 m <sup>2</sup>        | 0.0  | 0                               | 1.0   | 1.0   | 1   | 1                               | 60-119 م <sup>2</sup>     |           |
| 120-199 m <sup>2</sup>       | 0.0  | 0                               | 1.0   | 1.0   | 2   | 2                               | 120-199 م <sup>2</sup>    |           |
| 200-499 m <sup>2</sup>       | 0.0  | 0                               | 2.0   | 2.0   | 4   | 2                               | 200-499 م <sup>2</sup>    |           |
| 500-1999 m <sup>2</sup>      | 0.0  | 0                               | 0.0   | 0.0   | 0   | 0                               | 500-1999 م <sup>2</sup>   |           |
| 2000 m <sup>2</sup> and more | 0.0  | 0                               | 0.0   | 0.0   | 0   | 0                               | 2000 م <sup>2</sup> فأكثر |           |

جدول 4 (تابع): رخص الأبنية الصادرة في باقي الضفة الغربية وقطاع غزة للأبنية الجديدة حسب فئة المساحة المرخصة والمحافظه - الربع الرابع 2001

Table 4 (Cont.): Building Licenses Issued in Remaining West Bank and Gaza Strip for New Buildings by Categories of Licensed Area and Governorate - Forth Quarter 2001

| Governorate                  | Non-Res. Buildings                             | أبنية غير سكنية                 | Residential Buildings                             |   |   | أبنية سكنية                     | المحافظة                  |
|------------------------------|--|---------------------------------|---|---|---|---------------------------------|---------------------------|
|                              | متوسط عدد الطوابق<br>Average No.<br>of Storeys | عدد الرخص<br>No. of<br>Licenses | متوسط عدد<br>الطوابق<br>Average No.<br>of Storeys | متوسط عدد<br>الوحدات السكنية<br>Average No.<br>of Dwellings | مجموع عدد<br>الوحدات السكنية<br>Total No.<br>of Dwellings | عدد الرخص<br>No. of<br>Licenses |                           |
| <b>Rafah</b>                 |  |                                 |   |   |   |                                 | <b>رفح</b>                |
| Less than 60 m <sup>2</sup>  | 0.0  | 0                               | 1.0   | 1.0   | 7   | 7                               | أقل من 60 م <sup>2</sup>  |
| 60-119 m <sup>2</sup>        | 0.0  | 0                               | 1.0   | 1.0   | 1   | 1                               | 60-119 م <sup>2</sup>     |
| 120-199 m <sup>2</sup>       | 0.0  | 0                               | 1.0   | 1.0   | 10  | 10                              | 120-199 م <sup>2</sup>    |
| 200-499 m <sup>2</sup>       | 0.0  | 0                               | 1.7   | 1.7   | 5   | 3                               | 200-499 م <sup>2</sup>    |
| 500-1999 m <sup>2</sup>      | 0.0  | 0                               | 0.0   | 0.0   | 0   | 0                               | 500-1999 م <sup>2</sup>   |
| 2000 m <sup>2</sup> and more | 0.0  | 0                               | 0.0   | 0.0   | 0   | 0                               | 2000 م <sup>2</sup> فأكثر |

جدول 5 : رخص الأبنية الصادرة في باقي الضفة الغربية وقطاع غزة للأبنية الجديدة حسب مادة البناء للجدران الخارجية والمحافظه - الربع الرابع 2001

**Table 5: Building Licenses Issued in Remaining West Bank and Gaza Strip for New Buildings by Construction Material of External Walls and Governorate - Forth Quarter 2001**

| Governorate             | Non-Res. Buildings                          |  |                              | Residential Buildings                       |   |   | أبنية سكنية  |                              | المحافظة       |
|-------------------------|---|--|------------------------------|---|---|---|--|------------------------------|----------------|
|                         | متوسط عدد الطوابق<br>Average No. of Storeys | المساحة المرخصة (الف م <sup>2</sup> )<br>Licensed Area (1000m <sup>2</sup> ) | عدد الرخص<br>No. of Licenses | متوسط عدد الطوابق<br>Average No. of Storeys | متوسط عدد الوحدات السكنية<br>Average No. of Dwellings | مجموع عدد الوحدات السكنية<br>Total No. of Dwellings | المساحة المرخصة (الف م <sup>2</sup> )<br>Licensed Area (1000m <sup>2</sup> ) | عدد الرخص<br>No. of Licenses |                |
| <b>All Governorates</b> |   |  |                              |   |   |   |  |                              | كافة المحافظات |
| Stone                   | 2.0   | 64.8   | 69                           | 1.9   | 2.0   | 545   | 113.5  | 271                          | حجر            |
| Cement Block            | 1.1   | 2.8  | 14                           | 1.4   | 1.6   | 339   | 63.8   | 179                          | طوب اسمنتي     |
| Concrete                | 1.3   | 3.0  | 8                            | 1.4   | 1.4   | 41  | 5.9  | 30                           | خرسانة         |
| Other                   | 1.0   | 1.6  | 4                            | 0.0   | 0.0   | 0   | 0.0  | 0                            | أخرى           |
| <b>Jenin</b>            |   |  |                              |   |   |   |  |                              | جنين           |
| Stone                   | 4.5   | 2.9  | 2                            | 1.9   | 1.6   | 42  | 11.7   | 26                           | حجر            |
| Cement Block            | 1.0   | 0.3  | 2                            | 1.3   | 1.3   | 5   | 0.8  | 4                            | طوب اسمنتي     |
| Concrete                | 0.0   | 0.0  | 0                            | 1.3   | 1.3   | 4   | 0.5  | 3                            | خرسانة         |
| Other                   | 1.0   | 0.7  | 1                            | 0.0   | 0.0   | 0   | 0.0  | 0                            | أخرى           |
| <b>Tubas</b>            |   |  |                              |   |   |   |  |                              | طوباس          |
| Stone                   | 5.0   | 1.6  | 1                            | 1.2   | 1.2   | 7   | 1.2  | 6                            | حجر            |
| Cement Block            | 0.0   | 0.0  | 0                            | 1.4   | 1.3   | 18  | 2.2  | 14                           | طوب اسمنتي     |
| Concrete                | 0.0   | 0.0  | 0                            | 0.0   | 0.0   | 0   | 0.0  | 0                            | خرسانة         |
| Other                   | 0.0   | 0.0  | 0                            | 0.0   | 0.0   | 0   | 0.0  | 0                            | أخرى           |

جدول 5 (تابع): رخص الأبنية الصادرة في باقي الضفة الغربية وقطاع غزة للأبنية الجديدة حسب مادة البناء للجدران الخارجية والمحافظه - الربع الرابع 2001

**Table 5 (Cont.): Building Licenses Issued in Remaining West Bank and Gaza Strip for New Buildings by Construction Material of External Walls and Governorate - Forth Quarter 2001**

| Governorate     | أبنية غير سكنية        |                                       |                 | Residential Buildings  |                           |                           | أبنية سكنية                           |                 | المحافظة   |
|-----------------|------------------------|---------------------------------------|-----------------|------------------------|---------------------------|---------------------------|---------------------------------------|-----------------|------------|
|                 | متوسط عدد الطوابق      | المساحة المرخصة (الف م <sup>2</sup> ) | عدد الرخص       | متوسط عدد الطوابق      | متوسط عدد الوحدات السكنية | مجموع عدد الوحدات السكنية | المساحة المرخصة (الف م <sup>2</sup> ) | عدد الرخص       |            |
|                 | Average No. of Storeys | Licensed Area (1000m <sup>2</sup> )   | No. of Licenses | Average No. of Storeys | Average No. of Dwellings  | Total No. of Dwellings    | Licensed Area (1000m <sup>2</sup> )   | No. of Licenses |            |
| <b>Tulkarm</b>  |                        |                                       |                 |                        |                           |                           |                                       |                 | طولكرم     |
| Stone           | 2.8                    | 5.4                                   | 4               | 1.8                    | 1.9                       | 17                        | 2.8                                   | 9               | حجر        |
| Cement Block    | 1.0                    | 0.6                                   | 3               | 1.5                    | 1.6                       | 60                        | 9.9                                   | 37              | طوب اسمنتي |
| Concrete        | 0.0                    | 0.0                                   | 0               | 0.0                    | 0.0                       | 0                         | 0.0                                   | 0               | خرسانة     |
| Other           | 0.0                    | 0.0                                   | 0               | 0.0                    | 0.0                       | 0                         | 0.0                                   | 0               | أخرى       |
| <b>Nablus</b>   |                        |                                       |                 |                        |                           |                           |                                       |                 | نابلس      |
| Stone           | 2.1                    | 31.1                                  | 22              | 1.8                    | 1.9                       | 100                       | 22.3                                  | 51              | حجر        |
| Cement Block    | 1.0                    | 0.3                                   | 1               | 1.6                    | 1.5                       | 17                        | 2.7                                   | 11              | طوب اسمنتي |
| Concrete        | 1.3                    | 0.8                                   | 3               | 1.5                    | 1.5                       | 6                         | 0.8                                   | 4               | خرسانة     |
| Other           | 1.0                    | 0.5                                   | 2               | 0.0                    | 0.0                       | 0                         | 0.0                                   | 0               | أخرى       |
| <b>Qalqilya</b> |                        |                                       |                 |                        |                           |                           |                                       |                 | قلقيلية    |
| Stone           | 0.0                    | 0.0                                   | 0               | 0.0                    | 0.0                       | 0                         | 0.0                                   | 0               | حجر        |
| Cement Block    | 0.0                    | 0.0                                   | 0               | 1.7                    | 1.8                       | 21                        | 3.2                                   | 12              | طوب اسمنتي |
| Concrete        | 0.0                    | 0.0                                   | 0               | 0.0                    | 0.0                       | 0                         | 0.0                                   | 0               | خرسانة     |
| Other           | 0.0                    | 0.0                                   | 0               | 0.0                    | 0.0                       | 0                         | 0.0                                   | 0               | أخرى       |



جدول 5 (تابع): رخص الأبنية الصادرة في باقي الضفة الغربية وقطاع غزة للأبنية الجديدة حسب مادة البناء للجدران الخارجية والمحافظلة - الربع الرابع 2001

**Table 5 (Cont.): Building Licenses Issued in Remaining West Bank and Gaza Strip for New Buildings by Construction Material of External Walls and Governorate - Forth Quarter 2001**

| Governorate                  | Non-Res. Buildings                          |  |                              | Residential Buildings                       |   |   | أبنية سكنية  |                              | المحافظة                |
|------------------------------|---|--|------------------------------|---|---|---|--|------------------------------|-------------------------|
|                              | متوسط عدد الطوابق<br>Average No. of Storeys | المساحة المرخصة (الف م <sup>2</sup> )<br>Licensed Area (1000m <sup>2</sup> ) | عدد الرخص<br>No. of Licenses | متوسط عدد الطوابق<br>Average No. of Storeys | متوسط عدد الوحدات السكنية<br>Average No. of Dwellings | مجموع عدد الوحدات السكنية<br>Total No. of Dwellings | المساحة المرخصة (الف م <sup>2</sup> )<br>Licensed Area (1000m <sup>2</sup> ) | عدد الرخص<br>No. of Licenses |                         |
| <b>Salfit</b>                |   |  |                              |   |   |   |  |                              | <b>سلفيت</b>            |
| Stone                        | 0.0   | 0.0  | 0                            | 0.0   | 0.0   | 0   | 0.0  | 0                            | حجر                     |
| Cement Block                 | 0.0   | 0.0  | 0                            | 1.4   | 1.1   | 9   | 1.2  | 8                            | طوب اسمنتي              |
| Concrete                     | 0.0   | 0.0  | 0                            | 1.5   | 1.5   | 3   | 0.6  | 2                            | خرسانة                  |
| Other                        | 0.0   | 0.0  | 0                            | 0.0   | 0.0   | 0   | 0.0  | 0                            | أخرى                    |
| <b>Ramallah and Al-Bireh</b> |   |  |                              |   |   |   |  |                              | <b>رام الله والبيرة</b> |
| Stone                        | 1.6   | 6.0  | 8                            | 2.5   | 2.7   | 142   | 29.7   | 50                           | حجر                     |
| Cement Block                 | 0.0   | 0.0  | 0                            | 2.0   | 2.0   | 12  | 2.0  | 6                            | طوب اسمنتي              |
| Concrete                     | 1.1   | 2.0  | 4                            | 1.3   | 1.3   | 23  | 2.9  | 18                           | خرسانة                  |
| Other                        | 0.0   | 0.0  | 0                            | 0.0   | 0.0   | 0   | 0.0  | 0                            | أخرى                    |
| <b>Jericho</b>               |   |  |                              |   |   |   |  |                              | <b>أريحا</b>            |
| Stone                        | 0.0   | 0.0  | 0                            | 0.0   | 0.0   | 0   | 0.0  | 0                            | حجر                     |
| Cement Block                 | 1.3   | 0.7  | 3                            | 1.5   | 1.6   | 19  | 2.8  | 11                           | طوب اسمنتي              |
| Concrete                     | 0.0   | 0.0  | 0                            | 0.0   | 0.0   | 0   | 0.0  | 0                            | خرسانة                  |
| Other                        | 0.0   | 0.0  | 0                            | 0.0   | 0.0   | 0   | 0.0  | 0                            | أخرى                    |

جدول 5 (تابع): رخص الأبنية الصادرة في باقي الضفة الغربية وقطاع غزة للأبنية الجديدة حسب مادة البناء للجدران الخارجية والمحافظه - الربع الرابع 2001

**Table 5 (Cont.): Building Licenses Issued in Remaining West Bank and Gaza Strip for New Buildings by Construction Material of External Walls and Governorate - Forth Quarter 2001**

| Governorate      | Non-Res. Buildings                          |  |                              | Residential Buildings                       |   |   | أبنية سكنية  |                              | المحافظة       |
|------------------|---|--|------------------------------|---|---|---|--|------------------------------|----------------|
|                  | متوسط عدد الطوابق<br>Average No. of Storeys | المساحة المرخصة (الف م <sup>2</sup> )<br>Licensed Area (1000m <sup>2</sup> ) | عدد الرخص<br>No. of Licenses | متوسط عدد الطوابق<br>Average No. of Storeys | متوسط عدد الوحدات السكنية<br>Average No. of Dwellings | مجموع عدد الوحدات السكنية<br>Total No. of Dwellings | المساحة المرخصة (الف م <sup>2</sup> )<br>Licensed Area (1000m <sup>2</sup> ) | عدد الرخص<br>No. of Licenses |                |
| <b>Jerusalem</b> |   |  |                              |   |   |   |  |                              | <b>القدس</b>   |
| Stone            | 1.6   | 1.9  | 5                            | 2.2   | 2.4   | 60  | 12.8   | 25                           | حجر            |
| Cement Block     | 0.0   | 0.0  | 0                            | 0.0   | 0.0   | 0   | 0.0  | 0                            | طوب اسمنتي     |
| Concrete         | 2.0   | 0.2  | 1                            | 2.0   | 1.7   | 5   | 1.1  | 3                            | خرسانة         |
| Other            | 0.0   | 0.0  | 0                            | 0.0   | 0.0   | 0   | 0.0  | 0                            | أخرى           |
| <b>Bethlehem</b> |   |  |                              |   |   |   |  |                              | <b>بيت لحم</b> |
| Stone            | 2.3   | 4.1  | 7                            | 2.0   | 2.0   | 30  | 5.6  | 15                           | حجر            |
| Cement Block     | 0.0   | 0.0  | 0                            | 0.0   | 0.0   | 0   | 0.0  | 0                            | طوب اسمنتي     |
| Concrete         | 0.0   | 0.0  | 0                            | 0.0   | 0.0   | 0   | 0.0  | 0                            | خرسانة         |
| Other            | 1.0   | 0.4  | 1                            | 0.0   | 0.0   | 0   | 0.0  | 0                            | أخرى           |
| <b>Hebron</b>    |   |  |                              |   |   |   |  |                              | <b>الخليل</b>  |
| Stone            | 1.6   | 11.7   | 20                           | 1.6   | 1.7   | 147   | 27.4   | 89                           | حجر            |
| Cement Block     | 0.0   | 0.0  | 0                            | 0.0   | 0.0   | 0   | 0.0  | 0                            | طوب اسمنتي     |
| Concrete         | 0.0   | 0.0  | 0                            | 0.0   | 0.0   | 0   | 0.0  | 0                            | خرسانة         |
| Other            | 0.0   | 0.0  | 0                            | 0.0   | 0.0   | 0   | 0.0  | 0                            | أخرى           |

جدول 5 (تابع): رخص الأبنية الصادرة في باقي الضفة الغربية وقطاع غزة للأبنية الجديدة حسب مادة البناء للجدران الخارجية والمحافظلة - الربع الرابع 2001

**Table 5 (Cont.): Building Licenses Issued in Remaining West Bank and Gaza Strip for New Buildings by Construction Material of External Walls and Governorate - Forth Quarter 2001**

| Governorate          | Non-Res. Buildings                          |  |                              | Residential Buildings                       |   |   | أبنية سكنية  |                              | المحافظة         |
|----------------------|---|--|------------------------------|---|---|---|--|------------------------------|------------------|
|                      | متوسط عدد الطوابق<br>Average No. of Storeys | المساحة المرخصة (الف م <sup>2</sup> )<br>Licensed Area (1000m <sup>2</sup> ) | عدد الرخص<br>No. of Licenses | متوسط عدد الطوابق<br>Average No. of Storeys | متوسط عدد الوحدات السكنية<br>Average No. of Dwellings | مجموع عدد الوحدات السكنية<br>Total No. of Dwellings | المساحة المرخصة (الف م <sup>2</sup> )<br>Licensed Area (1000m <sup>2</sup> ) | عدد الرخص<br>No. of Licenses |                  |
| <b>North Gaza</b>    |   |  |                              |   |   |   |  |                              | <b>شمال غزة</b>  |
| Stone                | 0.0   | 0.0  | 0                            | 0.0   | 0.0   | 0   | 0.0  | 0                            | حجر              |
| Cement Block         | 1.0   | 0.3  | 1                            | 1.6   | 2.4   | 29  | 5.1  | 11                           | طوب اسمنتي       |
| Concrete             | 0.0   | 0.0  | 0                            | 0.0   | 0.0   | 0   | 0.0  | 0                            | خرسانة           |
| Other                | 0.0   | 0.0  | 0                            | 0.0   | 0.0   | 0   | 0.0  | 0                            | أخرى             |
| <b>Gaza</b>          |   |  |                              |   |   |   |  |                              | <b>غزة</b>       |
| Stone                | 0.0   | 0.0  | 0                            | 0.0   | 0.0   | 0   | 0.0  | 0                            | حجر              |
| Cement Block         | 1.0   | 0.6  | 4                            | 1.4   | 1.7   | 119   | 30.1   | 39                           | طوب اسمنتي       |
| Concrete             | 0.0   | 0.0  | 0                            | 0.0   | 0.0   | 0   | 0.0  | 0                            | خرسانة           |
| Other                | 0.0   | 0.0  | 0                            | 0.0   | 0.0   | 0   | 0.0  | 0                            | أخرى             |
| <b>Deir Al-Balah</b> |   |  |                              |   |   |   |  |                              | <b>دير البلح</b> |
| Stone                | 0.0   | 0.0  | 0                            | 0.0   | 0.0   | 0   | 0.0  | 0                            | حجر              |
| Cement Block         | 0.0   | 0.0  | 0                            | 1.4   | 1.4   | 7   | 1.1  | 5                            | طوب اسمنتي       |
| Concrete             | 0.0   | 0.0  | 0                            | 0.0   | 0.0   | 0   | 0.0  | 0                            | خرسانة           |
| Other                | 0.0   | 0.0  | 0                            | 0.0   | 0.0   | 0   | 0.0  | 0                            | أخرى             |

جدول 5 (تابع): رخص الأبنية الصادرة في باقي الضفة الغربية وقطاع غزة للأبنية الجديدة حسب مادة البناء للجدران الخارجية والمحافظه - الربع الرابع 2001

**Table 5 (Cont.): Building Licenses Issued in Remaining West Bank and Gaza Strip for New Buildings by Construction Material of External Walls and Governorate - Forth Quarter 2001**

| Governorate  | Non-Res. Buildings                          |  |                              | Residential Buildings                       |   |   | أبنية سكنية  |                              | المحافظة   |
|--------------|---|--|------------------------------|---|---|---|--|------------------------------|------------|
|              | متوسط عدد الطوابق<br>Average No. of Storeys | المساحة المرخصة (الف م <sup>2</sup> )<br>Licensed Area (1000m <sup>2</sup> ) | عدد الرخص<br>No. of Licenses | متوسط عدد الطوابق<br>Average No. of Storeys | متوسط عدد الوحدات السكنية<br>Average No. of Dwellings | مجموع عدد الوحدات السكنية<br>Total No. of Dwellings | المساحة المرخصة (الف م <sup>2</sup> )<br>Licensed Area (1000m <sup>2</sup> ) | عدد الرخص<br>No. of Licenses |            |
| <b>Rafah</b> |   |  |                              |   |   |   |  |                              | <b>رفح</b> |
| Stone        | 0.0   | 0.0  | 0                            | 0.0   | 0.0   | 0   | 0.0  | 0                            | حجر        |
| Cement Block | 0.0   | 0.0  | 0                            | 1.1   | 1.1   | 23  | 2.8  | 21                           | طوب اسمنتي |
| Concrete     | 0.0   | 0.0  | 0                            | 0.0   | 0.0   | 0   | 0.0  | 0                            | خرسانة     |
| Other        | 0.0   | 0.0  | 0                            | 0.0   | 0.0   | 0   | 0.0  | 0                            | أخرى       |

جدول 6: رخص الأبنية الصادرة في باقي الضفة الغربية وقطاع غزة للإضافات الجديدة للأبنية القائمة المرخصة حسب مادة البناء للجدران الخارجية والمحافظات - الربع الرابع 2001

Table 6: Building Licenses Issued in Remaining West Bank and Gaza Strip for Additions to Licensed Existing Buildings by Construction Material of External Walls and Governorate - Forth Quarter 2001

| Governorate             | Non-Res. Buildings<br>أبنية غير سكنية       |  |                              | Residential Buildings                       |   |   | أبنية سكنية  |                              | المحافظة       |
|-------------------------|---|--|------------------------------|---|---|---|--|------------------------------|----------------|
|                         | متوسط عدد الطوابق<br>Average No. of Storeys | المساحة المرخصة (الف م <sup>2</sup> )<br>Licensed Area (1000m <sup>2</sup> ) | عدد الرخص<br>No. of Licenses | متوسط عدد الطوابق<br>Average No. of Storeys | متوسط عدد الوحدات السكنية<br>Average No. of Dwellings | مجموع عدد الوحدات السكنية<br>Total No. of Dwellings | المساحة المرخصة (الف م <sup>2</sup> )<br>Licensed Area (1000m <sup>2</sup> ) | عدد الرخص<br>No. of Licenses |                |
| <b>All Governorates</b> |   |  |                              |   |   |   |  |                              | كافة المحافظات |
| Stone                   | 1.7   | 5.4  | 9                            | 1.6   | 1.3   | 228   | 46.7   | 180                          | حجر            |
| Cement Block            | 2.0   | 1.1  | 3                            | 1.4   | 1.1   | 33  | 4.4  | 30                           | طوب اسمنتي     |
| Concrete                | 1.7   | 2.4  | 3                            | 1.6   | 0.9   | 8   | 1.9  | 9                            | خرسانة         |
| Other                   | 0.0   | 0.0  | 0                            | 0.0   | 0.0   | 0   | 0.0  | 0                            | اخرى           |
| <b>Jenin</b>            |   |  |                              |   |   |   |  |                              | جنين           |
| Stone                   | 0.0   | 0.0  | 0                            | 1.9   | 1.5   | 12  | 2.7  | 8                            | حجر            |
| Cement Block            | 0.0   | 0.0  | 0                            | 2.0   | 1.3   | 4   | 0.5  | 3                            | طوب اسمنتي     |
| Concrete                | 0.0   | 0.0  | 0                            | 1.8   | 1.3   | 5   | 0.6  | 4                            | خرسانة         |
| Other                   | 0.0   | 0.0  | 0                            | 0.0   | 0.0   | 0   | 0.0  | 0                            | اخرى           |
| <b>Tubas</b>            |   |  |                              |   |   |   |  |                              | طوباس          |
| Stone                   | 0.0   | 0.0  | 0                            | 1.0   | 1.5   | 3   | 0.4  | 2                            | حجر            |
| Cement Block            | 0.0   | 0.0  | 0                            | 1.5   | 0.5   | 1   | 0.2  | 2                            | طوب اسمنتي     |
| Concrete                | 0.0   | 0.0  | 0                            | 1.0   | 1.0   | 1   | 0.2  | 1                            | خرسانة         |
| Other                   | 0.0   | 0.0  | 0                            | 0.0   | 0.0   | 0   | 0.0  | 0                            | اخرى           |

جدول 6 (تابع): رخص الأبنية الصادرة في باقي الضفة الغربية وقطاع غزة للإضافات الجديدة للأبنية القائمة المرخصة

حسب مادة البناء للجدران الخارجية والمحافظه - الربع الرابع 2001

**Table 6 (Cont.): Building Licenses Issued in Remaining West Bank and Gaza Strip for Additions to Licensed Existing Buildings by Construction Material of External Walls and Governorate - Forth Quarter 2001**

| Governorate     | Non-Res. Buildings<br>أبنية غير سكنية       |  |                              | Residential Buildings                       |   |   | أبنية سكنية  |                              | المحافظة       |
|-----------------|---|--|------------------------------|---|---|---|--|------------------------------|----------------|
|                 | متوسط عدد الطوابق<br>Average No. of Storeys | المساحة المرخصة (الف م <sup>2</sup> )<br>Licensed Area (1000m <sup>2</sup> ) | عدد الرخص<br>No. of Licenses | متوسط عدد الطوابق<br>Average No. of Storeys | متوسط عدد الوحدات السكنية<br>Average No. of Dwellings | مجموع عدد الوحدات السكنية<br>Total No. of Dwellings | المساحة المرخصة (الف م <sup>2</sup> )<br>Licensed Area (1000m <sup>2</sup> ) | عدد الرخص<br>No. of Licenses |                |
| <b>Tulkarm</b>  |   |  |                              |   |   |   |  |                              | <b>طولكرم</b>  |
| Stone           | 0.0   | 0.0  | 0                            | 3.0   | 3.0   | 3   | 0.2  | 1                            | حجر            |
| Cement Block    | 2.0   | 0.5  | 1                            | 1.3   | 1.2   | 14  | 2.0  | 12                           | طوب اسمنتي     |
| Concrete        | 0.0   | 0.0  | 0                            | 0.0   | 0.0   | 0   | 0.0  | 0                            | خرسانة         |
| Other           | 0.0   | 0.0  | 0                            | 0.0   | 0.0   | 0   | 0.0  | 0                            | اخرى           |
| <b>Nablus</b>   |   |  |                              |   |   |   |  |                              | <b>نابلس</b>   |
| Stone           | 1.6   | 0.5  | 5                            | 1.5   | 0.8   | 75  | 15.5   | 92                           | حجر            |
| Cement Block    | 2.0   | 0.4  | 1                            | 1.0   | 0.0   | 0   | 0.1  | 1                            | طوب اسمنتي     |
| Concrete        | 1.0   | 0.2  | 1                            | 0.0   | 0.0   | 0   | 0.0  | 0                            | خرسانة         |
| Other           | 0.0   | 0.0  | 0                            | 0.0   | 0.0   | 0   | 0.0  | 0                            | اخرى           |
| <b>Qalqilya</b> |   |  |                              |   |   |   |  |                              | <b>قلقيلية</b> |
| Stone           | 0.0   | 0.0  | 0                            | 0.0   | 0.0   | 0   | 0.0  | 0                            | حجر            |
| Cement Block    | 0.0   | 0.0  | 0                            | 1.3   | 1.4   | 11  | 1.2  | 8                            | طوب اسمنتي     |
| Concrete        | 0.0   | 0.0  | 0                            | 0.0   | 0.0   | 0   | 0.0  | 0                            | خرسانة         |
| Other           | 0.0   | 0.0  | 0                            | 0.0   | 0.0   | 0   | 0.0  | 0                            | اخرى           |

جدول 6 (تابع): رخص الأبنية الصادرة في باقي الضفة الغربية وقطاع غزة للإضافات الجديدة للأبنية القائمة المرخصة

حسب مادة البناء للجدران الخارجية والمحافظه - الربع الرابع 2001

**Table 6 (Cont.): Building Licenses Issued in Remaining West Bank and Gaza Strip for Additions to Licensed Existing Buildings by Construction Material of External Walls and Governorate - Forth Quarter 2001**

| Governorate                  | Non-Res. Buildings<br>أبنية غير سكنية       |  |                              | Residential Buildings                       |   |   | أبنية سكنية  |                              | المحافظة                |
|------------------------------|---|--|------------------------------|---|---|---|--|------------------------------|-------------------------|
|                              | متوسط عدد الطوابق<br>Average No. of Storeys | المساحة المرخصة (الف م <sup>2</sup> )<br>Licensed Area (1000m <sup>2</sup> ) | عدد الرخص<br>No. of Licenses | متوسط عدد الطوابق<br>Average No. of Storeys | متوسط عدد الوحدات السكنية<br>Average No. of Dwellings | مجموع عدد الوحدات السكنية<br>Total No. of Dwellings | المساحة المرخصة (الف م <sup>2</sup> )<br>Licensed Area (1000m <sup>2</sup> ) | عدد الرخص<br>No. of Licenses |                         |
| <b>Salfit</b>                |   |  |                              |   |   |   |  |                              | <b>سلفيت</b>            |
| Stone                        | 0.0   | 0.0  | 0                            | 2.0   | 1.0   | 1   | 0.3  | 1                            | حجر                     |
| Cement Block                 | 0.0   | 0.0  | 0                            | 1.3   | 0.8   | 3   | 0.4  | 4                            | طوب اسمنتي              |
| Concrete                     | 0.0   | 0.0  | 0                            | 1.0   | 0.0   | 0   | 0.1  | 1                            | خرسانة                  |
| Other                        | 0.0   | 0.0  | 0                            | 0.0   | 0.0   | 0   | 0.0  | 0                            | اخرى                    |
| <b>Ramallah and Al-Bireh</b> |   |  |                              |   |   |   |  |                              | <b>رام الله والبيرة</b> |
| Stone                        | 1.8   | 4.9  | 4                            | 2.0   | 1.8   | 87  | 19.8   | 47                           | حجر                     |
| Cement Block                 | 0.0   | 0.0  | 0                            | 0.0   | 0.0   | 0   | 0.0  | 0                            | طوب اسمنتي              |
| Concrete                     | 2.0   | 2.2  | 2                            | 1.7   | 0.7   | 2   | 1.2  | 3                            | خرسانة                  |
| Other                        | 0.0   | 0.0  | 0                            | 0.0   | 0.0   | 0   | 0.0  | 0                            | اخرى                    |
| <b>Jerusalem</b>             |   |  |                              |   |   |   |  |                              | <b>القدس</b>            |
| Stone                        | 0.0   | 0.0  | 0                            | 2.0   | 0.0   | 0   | 0.0  | 1                            | حجر                     |
| Cement Block                 | 2.0   | 0.2  | 1                            | 0.0   | 0.0   | 0   | 0.0  | 0                            | طوب اسمنتي              |
| Concrete                     | 0.0   | 0.0  | 0                            | 0.0   | 0.0   | 0   | 0.0  | 0                            | خرسانة                  |
| Other                        | 0.0   | 0.0  | 0                            | 0.0   | 0.0   | 0   | 0.0  | 0                            | اخرى                    |

جدول 6 (تابع): رخص الأبنية الصادرة في باقي الضفة الغربية وقطاع غزة للإضافات الجديدة للأبنية القائمة المرخصة

حسب مادة البناء للجدران الخارجية والمحافظه - الربع الرابع 2001

**Table 6 (Cont.): Building Licenses Issued in Remaining West Bank and Gaza Strip for Additions to Licensed Existing Buildings by Construction Material of External Walls and Governorate - Forth Quarter 2001**

| Governorate      | Non-Res. Buildings<br>أبنية غير سكنية       |  |                              | Residential Buildings                       |   |   | أبنية سكنية  |                              | المحافظة       |
|------------------|---|--|------------------------------|---|---|---|--|------------------------------|----------------|
|                  | متوسط عدد الطوابق<br>Average No. of Storeys | المساحة المرخصة (الف م <sup>2</sup> )<br>Licensed Area (1000m <sup>2</sup> ) | عدد الرخص<br>No. of Licenses | متوسط عدد الطوابق<br>Average No. of Storeys | متوسط عدد الوحدات السكنية<br>Average No. of Dwellings | مجموع عدد الوحدات السكنية<br>Total No. of Dwellings | المساحة المرخصة (الف م <sup>2</sup> )<br>Licensed Area (1000m <sup>2</sup> ) | عدد الرخص<br>No. of Licenses |                |
| <b>Bethlehem</b> |   |  |                              |   |   |   |  |                              | <b>بيت لحم</b> |
| Stone            | 0.0   | 0.0  | 0                            | 1.1   | 1.1   | 8   | 1.3  | 7                            | حجر            |
| Cement Block     | 0.0   | 0.0  | 0                            | 0.0   | 0.0   | 0   | 0.0  | 0                            | طوب اسمنتي     |
| Concrete         | 0.0   | 0.0  | 0                            | 0.0   | 0.0   | 0   | 0.0  | 0                            | خرسانة         |
| Other            | 0.0   | 0.0  | 0                            | 0.0   | 0.0   | 0   | 0.0  | 0                            | اخرى           |
| <b>Hebron</b>    |   |  |                              |   |   |   |  |                              | <b>الخليل</b>  |
| Stone            | 0.0   | 0.0  | 0                            | 1.4   | 1.9   | 39  | 6.4  | 21                           | حجر            |
| Cement Block     | 0.0   | 0.0  | 0                            | 0.0   | 0.0   | 0   | 0.0  | 0                            | طوب اسمنتي     |
| Concrete         | 0.0   | 0.0  | 0                            | 0.0   | 0.0   | 0   | 0.0  | 0                            | خرسانة         |
| Other            | 0.0   | 0.0  | 0                            | 0.0   | 0.0   | 0   | 0.0  | 0                            | اخرى           |



جدول 7: رخص الأبنية الصادرة في باقي الضفة الغربية وقطاع غزة للإضافات الجديدة لأبنية قائمة مطلوب ترخيصها

حسب مادة البناء للجدران الخارجية والمحافظه - الربع الرابع 2001 \*

**Table 7: Building Licenses Issued in Remaining West Bank and Gaza Strip for Additons to Unlicensed Existing Buildings by Construction Material of External Walls and Governorate -Forth Quarter 2001 \***

| Governorate             | Non-Res. Buildings                          |  |                              | Residential Buildings                       |   |   | أبنية سكنية  |                              | المحافظة       |
|-------------------------|---|--|------------------------------|---|---|---|--|------------------------------|----------------|
|                         | متوسط عدد الطوابق<br>Average No. of Storeys | المساحة المرخصة (الف م <sup>2</sup> )<br>Licensed Area (1000m <sup>2</sup> ) | عدد الرخص<br>No. of Licenses | متوسط عدد الطوابق<br>Average No. of Storeys | متوسط عدد الوحدات السكنية<br>Average No. of Dwellings | مجموع عدد الوحدات السكنية<br>Total No. of Dwellings | المساحة المرخصة (الف م <sup>2</sup> )<br>Licensed Area (1000m <sup>2</sup> ) | عدد الرخص<br>No. of Licenses |                |
| <b>All Governorates</b> |   |  |                              |   |   |   |  |                              | كافة المحافظات |
| Stone                   | 2   | 1.4  | 1                            | 3.1   | 1.8   | 35  | 5.2  | 19                           | حجر            |
| Cement Block            | 2   | 2.4  | 2                            | 3.2   | 2.4   | 59  | 8.6  | 25                           | طوب اسمنتي     |
| Concrete                | 3   | 0.9  | 2                            | 2.0   | 1.3   | 4   | 0.5  | 3                            | خرسانة         |
| Other                   | 0   | 0.0  | 0                            | 0.0   | 0.0   | 0   | 0.0  | 0                            | أخرى           |
| <b>Tubas</b>            |   |  |                              |   |   |   |  |                              | طوباس          |
| Stone                   | 0   | 0.0  | 0                            | 3.8   | 2.8   | 11  | 1.4  | 4                            | حجر            |
| Cement Block            | 0   | 0.0  | 0                            | 2.7   | 1.5   | 9   | 1.3  | 6                            | طوب اسمنتي     |
| Concrete                | 0   | 0.0  | 0                            | 2.0   | 1.0   | 1   | 0.1  | 1                            | خرسانة         |
| Other                   | 0   | 0.0  | 0                            | 0.0   | 0.0   | 0   | 0.0  | 0                            | أخرى           |
| <b>Tulkarm</b>          |   |  |                              |   |   |   |  |                              | طولكرم         |
| Stone                   | 0   | 0.0  | 0                            | 3.5   | 0.5   | 1   | 0.3  | 2                            | حجر            |
| Cement Block            | 2   | 0.2  | 1                            | 2.9   | 1.5   | 24  | 4.2  | 16                           | طوب اسمنتي     |
| Concrete                | 0   | 0.0  | 0                            | 0.0   | 0.0   | 0   | 0.0  | 0                            | خرسانة         |
| Other                   | 0   | 0.0  | 0                            | 0.0   | 0.0   | 0   | 0.0  | 0                            | أخرى           |

\* Includes data of both additions and existing parts to be licensed

\* تشمل بيانات الإضافات الجديدة والأجزاء القائمة المطلوب ترخيصها في نفس الرخصة

جدول 7 (تابع): رخص الأبنية الصادرة في باقي الضفة الغربية وقطاع غزة للإضافات الجديدة لأبنية قائمة مطلوب ترخيصها

حسب مادة البناء للجدران الخارجية والمحافظه - الربع الرابع 2001 \*

**Table 7 (Cont.): Building Licenses Issued in Remaining West Bank and Gaza Strip for Additions to Unlicensed Existing Buildings by Construction Material of External Walls and Governorate -Forth Quarter 2001 \***

| Governorate                  | Non-Res. Buildings                          |  |                              | Residential Buildings                       |   |   | أبنية سكنية  |                              | المحافظة          |
|------------------------------|---|--|------------------------------|---|---|---|--|------------------------------|-------------------|
|                              | متوسط عدد الطوابق<br>Average No. of Storeys | المساحة المرخصة (الف م <sup>2</sup> )<br>Licensed Area (1000m <sup>2</sup> ) | عدد الرخص<br>No. of Licenses | متوسط عدد الطوابق<br>Average No. of Storeys | متوسط عدد الوحدات السكنية<br>Average No. of Dwellings | مجموع عدد الوحدات السكنية<br>Total No. of Dwellings | المساحة المرخصة (الف م <sup>2</sup> )<br>Licensed Area (1000m <sup>2</sup> ) | عدد الرخص<br>No. of Licenses |                   |
| <b>Nablus</b>                |   |  |                              |   |   |   |  |                              | نابلس             |
| Stone                        | 0   | 0.0  | 0                            | 3.0   | 1.6   | 13  | 2.1  | 8                            | حجر               |
| Cement Block                 | 2   | 2.1  | 1                            | 0.0   | 0.0   | 0   | 0.0  | 0                            | طوب اسمنتي        |
| Concrete                     | 3   | 0.7  | 1                            | 2.0   | 1.0   | 1   | 0.2  | 1                            | خرسانة            |
| Other                        | 0   | 0.0  | 0                            | 0.0   | 0.0   | 0   | 0.0  | 0                            | أخرى              |
| <b>Ramallah and Al-Bireh</b> |   |  |                              |   |   |   |  |                              | رام الله والبييرة |
| Stone                        | 2   | 1.4  | 1                            | 2.5   | 2.0   | 8   | 1.1  | 4                            | حجر               |
| Cement Block                 | 0   | 0.0  | 0                            | 0.0   | 0.0   | 0   | 0.0  | 0                            | طوب اسمنتي        |
| Concrete                     | 0   | 0.0  | 0                            | 2.0   | 2.0   | 2   | 0.2  | 1                            | خرسانة            |
| Other                        | 0   | 0.0  | 0                            | 0.0   | 0.0   | 0   | 0.0  | 0                            | أخرى              |
| <b>Jerusalem</b>             |   |  |                              |   |   |   |  |                              | القدس             |
| Stone                        | 0   | 0.0  | 0                            | 0.0   | 0.0   | 0   | 0.0  | 0                            | حجر               |
| Cement Block                 | 0   | 0.0  | 0                            | 0.0   | 0.0   | 0   | 0.0  | 0                            | طوب اسمنتي        |
| Concrete                     | 3   | 0.2  | 1                            | 0.0   | 0.0   | 0   | 0.0  | 0                            | خرسانة            |
| Other                        | 0   | 0.0  | 0                            | 0.0   | 0.0   | 0   | 0.0  | 0                            | أخرى              |

\* Includes data of both additions and existing parts to be licensed

\* تشمل بيانات الإضافات الجديدة والأجزاء القائمة المطلوب ترخيصها في نفس الرخصة

جدول 7 (تابع): رخص الأبنية الصادرة في باقي الضفة الغربية وقطاع غزة للإضافات الجديدة لأبنية قائمة مطلوب ترخيصها

حسب مادة البناء للجدران الخارجية والمحافظه - الربع الرابع 2001 \*

**Table 7 (Cont.): Building Licenses Issued in Remaining West Bank and Gaza Strip for Additions to Unlicensed Existing Buildings by Construction Material of External Walls and Governorate -Forth Quarter 2001 \***

| Governorate   | Non-Res. Buildings                          |  |                              | Residential Buildings                       |   |   | أبنية سكنية  |                              | المحافظة      |
|---------------|---|--|------------------------------|---|---|---|--|------------------------------|---------------|
|               | متوسط عدد الطوابق<br>Average No. of Storeys | المساحة المرخصة (الف م <sup>2</sup> )<br>Licensed Area (1000m <sup>2</sup> ) | عدد الرخص<br>No. of Licenses | متوسط عدد الطوابق<br>Average No. of Storeys | متوسط عدد الوحدات السكنية<br>Average No. of Dwellings | مجموع عدد الوحدات السكنية<br>Total No. of Dwellings | المساحة المرخصة (الف م <sup>2</sup> )<br>Licensed Area (1000m <sup>2</sup> ) | عدد الرخص<br>No. of Licenses |               |
| <b>Hebron</b> |   |  |                              |   |   |   |  |                              | <b>الخليل</b> |
| Stone         | 0   | 0.0  | 0                            | 2.0   | 2.0   | 2   | 0.3  | 1                            | حجر           |
| Cement Block  | 0   | 0.0  | 0                            | 0.0   | 0.0   | 0   | 0.0  | 0                            | طوب اسمنتي    |
| Concrete      | 0   | 0.0  | 0                            | 0.0   | 0.0   | 0   | 0.0  | 0                            | خرسانة        |
| Other         | 0   | 0.0  | 0                            | 0.0   | 0.0   | 0   | 0.0  | 0                            | أخرى          |
| <b>Gaza</b>   |   |  |                              |   |   |   |  |                              | <b>غزة</b>    |
| Stone         | 0   | 0.0  | 0                            | 0.0   | 0.0   | 0   | 0.0  | 0                            | حجر           |
| Cement Block  | 0   | 0.0  | 0                            | 5.3   | 8.7   | 26  | 3.1  | 3                            | طوب اسمنتي    |
| Concrete      | 0   | 0.0  | 0                            | 0.0   | 0.0   | 0   | 0.0  | 0                            | خرسانة        |
| Other         | 0   | 0.0  | 0                            | 0.0   | 0.0   | 0   | 0.0  | 0                            | أخرى          |

\* Includes data of both additions and existing parts to be licensed

\* تشمل بيانات الإضافات الجديدة والأجزاء القائمة المطلوب ترخيصها في نفس الرخصة

جدول 8: رخص الأبنية الصادرة في باقي الضفة الغربية وقطاع غزة للأبنية والإضافات القائمة حسب مادة البناء للجدران الخارجية والمحافظات - الربع الرابع 2001

**Table 8: Building Licenses Issued in Remaining West Bank and Gaza Strip for Existing Buildings and Extensions by Construction Material of External Walls and Governorate -Forth Quarter 2001**

| Governorate             | Non-Res. Buildings<br>أبنية غير سكنية |                                       |                 | Residential Buildings  |                           |                           | أبنية سكنية                           |                 | المحافظة              |
|-------------------------|---------------------------------------|---------------------------------------|-----------------|------------------------|---------------------------|---------------------------|---------------------------------------|-----------------|-----------------------|
|                         | متوسط عدد الطوابق                     | المساحة المرخصة (الف م <sup>2</sup> ) | عدد الرخص       | متوسط عدد الطوابق      | متوسط عدد الوحدات السكنية | مجموع عدد الوحدات السكنية | المساحة المرخصة (الف م <sup>2</sup> ) | عدد الرخص       |                       |
|                         | Average No. of Storeys                | Licensed Area (1000m <sup>2</sup> )   | No. of Licenses | Average No. of Storeys | Average No. of Dwellings  | Total No. of Dwellings    | Licensed Area (1000m <sup>2</sup> )   | No. of Licenses |                       |
| <b>All Governorates</b> |                                       |                                       |                 |                        |                           |                           |                                       |                 | <b>كافة المحافظات</b> |
| Stone                   | 2.2                                   | 5.0                                   | 9               | 2.3                    | 1.9                       | 138                       | 29.1                                  | 71              | حجر                   |
| Cement Block            | 1.0                                   | 1.0                                   | 2               | 1.4                    | 1.2                       | 102                       | 14.6                                  | 85              | طوب اسمنتي            |
| Concrete                | 1.5                                   | 0.8                                   | 2               | 1.2                    | 1.0                       | 6                         | 0.8                                   | 6               | خرسانة                |
| Other                   | 0.0                                   | 0.0                                   | 0               | 0.0                    | 0.0                       | 0                         | 0.0                                   | 0               | أخرى                  |
| <b>Jenin</b>            |                                       |                                       |                 |                        |                           |                           |                                       |                 | <b>جنين</b>           |
| Stone                   | 0.0                                   | 0.0                                   | 0               | 0.0                    | 0.0                       | 0                         | 0.0                                   | 0               | حجر                   |
| Cement Block            | 0.0                                   | 0.0                                   | 0               | 1.0                    | 1.0                       | 1                         | 0.1                                   | 1               | طوب اسمنتي            |
| Concrete                | 0.0                                   | 0.0                                   | 0               | 0.0                    | 0.0                       | 0                         | 0.0                                   | 0               | خرسانة                |
| Other                   | 0.0                                   | 0.0                                   | 0               | 0.0                    | 0.0                       | 0                         | 0.0                                   | 0               | أخرى                  |
| <b>Tubas</b>            |                                       |                                       |                 |                        |                           |                           |                                       |                 | <b>طوباس</b>          |
| Stone                   | 0.0                                   | 0.0                                   | 0               | 0.0                    | 0.0                       | 0                         | 0.0                                   | 0               | حجر                   |
| Cement Block            | 0.0                                   | 0.0                                   | 0               | 1.0                    | 0.3                       | 1                         | 0.1                                   | 4               | طوب اسمنتي            |
| Concrete                | 0.0                                   | 0.0                                   | 0               | 0.0                    | 0.0                       | 0                         | 0.0                                   | 0               | خرسانة                |
| Other                   | 0.0                                   | 0.0                                   | 0               | 0.0                    | 0.0                       | 0                         | 0.0                                   | 0               | أخرى                  |

جدول 8 (تابع): رخص الأبنية الصادرة في باقي الضفة الغربية وقطاع غزة للأبنية والإضافات القائمة

حسب مادة البناء للجدران الخارجية والمحافظه - الربع الرابع 2001

**Table 8 (Cont.): Building Licenses Issued in Remaining West Bank and Gaza Strip for Existing Buildings and Extensions by Construction Material of External Walls and Governorate -Forth Quarter 2001**

| Governorate     | Non-Res. Buildings                          |  |                              | Residential Buildings                       |   |   | أبنية سكنية  |                              | المحافظة |            |
|-----------------|---|--|------------------------------|---|---|---|--|------------------------------|----------|------------|
|                 | متوسط عدد الطوابق<br>Average No. of Storeys | المساحة المرخصة (الف م <sup>2</sup> )<br>Licensed Area (1000m <sup>2</sup> ) | عدد الرخص<br>No. of Licenses | متوسط عدد الطوابق<br>Average No. of Storeys | متوسط عدد الوحدات السكنية<br>Average No. of Dwellings | مجموع عدد الوحدات السكنية<br>Total No. of Dwellings | المساحة المرخصة (الف م <sup>2</sup> )<br>Licensed Area (1000m <sup>2</sup> ) | عدد الرخص<br>No. of Licenses |          |            |
| <b>Tulkarm</b>  |   |  |                              |   |   |   |  |                              | طولكرم   |            |
| Stone           | 4.0   | 2.4  | 1                            | 3.5   | 2.3   | 14  | 3.9  | 6                            |          | حجر        |
| Cement Block    | 0.0   | 0.0  | 0                            | 1.9   | 0.9   | 18  | 3.3  | 19                           |          | طوب اسمنتي |
| Concrete        | 0.0   | 0.0  | 0                            | 0.0   | 0.0   | 0   | 0.0  | 0                            |          | خرسانة     |
| Other           | 0.0   | 0.0  | 0                            | 0.0   | 0.0   | 0   | 0.0  | 0                            | أخرى     |            |
| <b>Nablus</b>   |   |  |                              |   |   |   |  |                              | نابلس    |            |
| Stone           | 2.5   | 0.1  | 2                            | 2.0   | 1.1   | 9   | 2.0  | 8                            |          | حجر        |
| Cement Block    | 0.0   | 0.0  | 0                            | 1.0   | 0.0   | 0   | 0.1  | 3                            |          | طوب اسمنتي |
| Concrete        | 1.0   | 0.3  | 1                            | 1.0   | 1.0   | 1   | 0.1  | 1                            |          | خرسانة     |
| Other           | 0.0   | 0.0  | 0                            | 0.0   | 0.0   | 0   | 0.0  | 0                            | أخرى     |            |
| <b>Qalqilya</b> |   |  |                              |   |   |   |  |                              | قلقيلية  |            |
| Stone           | 0.0   | 0.0  | 0                            | 0.0   | 0.0   | 0   | 0.0  | 0                            |          | حجر        |
| Cement Block    | 0.0   | 0.0  | 0                            | 1.5   | 2.0   | 4   | 0.5  | 2                            |          | طوب اسمنتي |
| Concrete        | 0.0   | 0.0  | 0                            | 0.0   | 0.0   | 0   | 0.0  | 0                            |          | خرسانة     |
| Other           | 0.0   | 0.0  | 0                            | 0.0   | 0.0   | 0   | 0.0  | 0                            | أخرى     |            |

جدول 8 (تابع): رخص الأبنية الصادرة في باقي الضفة الغربية وقطاع غزة للأبنية والإضافات القائمة

حسب مادة البناء للجدران الخارجية والمحافظه - الربع الرابع 2001

Table 8 (Cont.): Building Licenses Issued in Remaining West Bank and Gaza Strip for Existing Buildings and Extensions by Construction Material of External Walls and Governorate -Forth Quarter 2001

| Governorate                  | Non-Res. Buildings                          |  |                              | Residential Buildings                       |   |   | أبنية سكنية  |                              | المحافظة         |
|------------------------------|---|--|------------------------------|---|---|---|--|------------------------------|------------------|
|                              | متوسط عدد الطوابق<br>Average No. of Storeys | المساحة المرخصة (الف م <sup>2</sup> )<br>Licensed Area (1000m <sup>2</sup> ) | عدد الرخص<br>No. of Licenses | متوسط عدد الطوابق<br>Average No. of Storeys | متوسط عدد الوحدات السكنية<br>Average No. of Dwellings | مجموع عدد الوحدات السكنية<br>Total No. of Dwellings | المساحة المرخصة (الف م <sup>2</sup> )<br>Licensed Area (1000m <sup>2</sup> ) | عدد الرخص<br>No. of Licenses |                  |
| <b>Salfit</b>                |   |  |                              |   |   |   |  |                              | سلفيت            |
| Stone                        | 0.0   | 0.0  | 0                            | 0.0   | 0.0   | 0   | 0.0  | 0                            | حجر              |
| Cement Block                 | 0.0   | 0.0  | 0                            | 2.3   | 1.3   | 4   | 0.8  | 3                            | طوب اسمنتي       |
| Concrete                     | 0.0   | 0.0  | 0                            | 0.0   | 0.0   | 0   | 0.0  | 0                            | خرسانة           |
| Other                        | 0.0   | 0.0  | 0                            | 0.0   | 0.0   | 0   | 0.0  | 0                            | أخرى             |
| <b>Ramallah and Al-Bireh</b> |   |  |                              |   |   |   |  |                              | رام الله والبيرة |
| Stone                        | 1.3   | 0.3  | 3                            | 2.5   | 2.2   | 41  | 9.0  | 19                           | حجر              |
| Cement Block                 | 0.0   | 0.0  | 0                            | 1.0   | 1.0   | 1   | 0.1  | 1                            | طوب اسمنتي       |
| Concrete                     | 0.0   | 0.0  | 0                            | 1.2   | 1.0   | 5   | 0.7  | 5                            | خرسانة           |
| Other                        | 0.0   | 0.0  | 0                            | 0.0   | 0.0   | 0   | 0.0  | 0                            | أخرى             |
| <b>Jerusalem</b>             |   |  |                              |   |   |   |  |                              | القدس            |
| Stone                        | 0.0   | 0.0  | 0                            | 2.4   | 2.5   | 32  | 7.6  | 13                           | حجر              |
| Cement Block                 | 0.0   | 0.0  | 0                            | 0.0   | 0.0   | 0   | 0.0  | 0                            | طوب اسمنتي       |
| Concrete                     | 2.0   | 0.5  | 1                            | 0.0   | 0.0   | 0   | 0.0  | 0                            | خرسانة           |
| Other                        | 0.0   | 0.0  | 0                            | 0.0   | 0.0   | 0   | 0.0  | 0                            | أخرى             |

جدول 8 (تابع): رخص الأبنية الصادرة في باقي الضفة الغربية وقطاع غزة للأبنية والإضافات القائمة

حسب مادة البناء للجدران الخارجية والمحافظه - الربع الرابع 2001

**Table 8 (Cont.): Building Licenses Issued in Remaining West Bank and Gaza Strip for Existing Buildings and Extensions by Construction Material of External Walls and Governorate -Forth Quarter 2001**

| Governorate       | Non-Res. Buildings                          |  |                              | Residential Buildings                       |   |   | أبنية سكنية  |                              | المحافظة        |
|-------------------|---|--|------------------------------|---|---|---|--|------------------------------|-----------------|
|                   | متوسط عدد الطوابق<br>Average No. of Storeys | المساحة المرخصة (الف م <sup>2</sup> )<br>Licensed Area (1000m <sup>2</sup> ) | عدد الرخص<br>No. of Licenses | متوسط عدد الطوابق<br>Average No. of Storeys | متوسط عدد الوحدات السكنية<br>Average No. of Dwellings | مجموع عدد الوحدات السكنية<br>Total No. of Dwellings | المساحة المرخصة (الف م <sup>2</sup> )<br>Licensed Area (1000m <sup>2</sup> ) | عدد الرخص<br>No. of Licenses |                 |
| <b>Bethlehem</b>  |   |  |                              |   |   |   |  |                              | <b>بيت لحم</b>  |
| Stone             | 1.0   | 0.1  | 1                            | 1.0   | 0.8   | 3   | 0.5  | 4                            | حجر             |
| Cement Block      | 0.0   | 0.0  | 0                            | 0.0   | 0.0   | 0   | 0.0  | 0                            | طوب اسمنتي      |
| Concrete          | 0.0   | 0.0  | 0                            | 0.0   | 0.0   | 0   | 0.0  | 0                            | خرسانة          |
| Other             | 0.0   | 0.0  | 0                            | 0.0   | 0.0   | 0   | 0.0  | 0                            | أخرى            |
| <b>Hebron</b>     |   |  |                              |   |   |   |  |                              | <b>الخليل</b>   |
| Stone             | 3.0   | 2.0  | 2                            | 2.0   | 1.9   | 39  | 6.2  | 21                           | حجر             |
| Cement Block      | 0.0   | 0.0  | 0                            | 0.0   | 0.0   | 0   | 0.0  | 0                            | طوب اسمنتي      |
| Concrete          | 0.0   | 0.0  | 0                            | 0.0   | 0.0   | 0   | 0.0  | 0                            | خرسانة          |
| Other             | 0.0   | 0.0  | 0                            | 0.0   | 0.0   | 0   | 0.0  | 0                            | أخرى            |
| <b>North Gaza</b> |   |  |                              |   |   |   |  |                              | <b>شمال غزة</b> |
| Stone             | 0.0   | 0.0  | 0                            | 0.0   | 0.0   | 0   | 0.0  | 0                            | حجر             |
| Cement Block      | 1.0   | 0.4  | 1                            | 1.5   | 1.5   | 6   | 1.6  | 4                            | طوب اسمنتي      |
| Concrete          | 0.0   | 0.0  | 0                            | 0.0   | 0.0   | 0   | 0.0  | 0                            | خرسانة          |
| Other             | 0.0   | 0.0  | 0                            | 0.0   | 0.0   | 0   | 0.0  | 0                            | أخرى            |

جدول 8 (تابع): رخص الأبنية الصادرة في باقي الضفة الغربية وقطاع غزة للأبنية والإضافات القائمة

حسب مادة البناء للجدران الخارجية والمحافظه - الربع الرابع 2001

**Table 8 (Cont.): Building Licenses Issued in Remaining West Bank and Gaza Strip for Existing Buildings and Extensions by Construction Material of External Walls and Governorate -Forth Quarter 2001**

| Governorate          | Non-Res. Buildings                          |  |                              | Residential Buildings                       |   |   | أبنية سكنية  |                              | المحافظة   |
|----------------------|---|--|------------------------------|---|---|---|--|------------------------------|------------|
|                      | متوسط عدد الطوابق<br>Average No. of Storeys | المساحة المرخصة (الف م <sup>2</sup> )<br>Licensed Area (1000m <sup>2</sup> ) | عدد الرخص<br>No. of Licenses | متوسط عدد الطوابق<br>Average No. of Storeys | متوسط عدد الوحدات السكنية<br>Average No. of Dwellings | مجموع عدد الوحدات السكنية<br>Total No. of Dwellings | المساحة المرخصة (الف م <sup>2</sup> )<br>Licensed Area (1000m <sup>2</sup> ) | عدد الرخص<br>No. of Licenses |            |
| <b>Deir Al-Balah</b> |   |  |                              |   |   |   |  |                              | دير البلح  |
| Stone                | 0.0   | 0.0  | 0                            | 0.0   | 0.0   | 0   | 0.0  | 0                            | حجر        |
| Cement Block         | 0.0   | 0.0  | 0                            | 2.0   | 2.0   | 8   | 1.5  | 4                            | طوب اسمنتي |
| Concrete             | 0.0   | 0.0  | 0                            | 0.0   | 0.0   | 0   | 0.0  | 0                            | خرسانة     |
| Other                | 0.0   | 0.0  | 0                            | 0.0   | 0.0   | 0   | 0.0  | 0                            | أخرى       |
| <b>Rafah</b>         |   |  |                              |   |   |   |  |                              | رفح        |
| Stone                | 0.0   | 0.0  | 0                            | 0.0   | 0.0   | 0   | 0.0  | 0                            | حجر        |
| Cement Block         | 1.0   | 0.6  | 1                            | 1.2   | 1.3   | 59  | 6.5  | 44                           | طوب اسمنتي |
| Concrete             | 0.0   | 0.0  | 0                            | 0.0   | 0.0   | 0   | 0.0  | 0                            | خرسانة     |
| Other                | 0.0   | 0.0  | 0                            | 0.0   | 0.0   | 0   | 0.0  | 0                            | أخرى       |



جدول 9: رخص الأبنية الصادرة في باقي الضفة الغربية وقطاع غزة للأبنية السكنية حسب وضع البناء المرخص والمحافظه - الربع الرابع 2001

**Table 9: Building Licenses Issued in Remaining West Bank and Gaza Strip for Residential Buildings by Status of Licensed Building and Governorate - Forth Quarter 2001**

| Governorate             | المساحات المرخصة (الف م <sup>2</sup> ) |              |                     | عدد الرخص الصادرة  |                                |                                 |                           |             |               | المحافظة                   |
|-------------------------|--|--------------|---------------------|--------------------|--------------------------------|---------------------------------|---------------------------|-------------|---------------|----------------------------|
|                         | Licensed Area (1000m <sup>2</sup> )    |              |                     | Number of Licenses |                                |                                 |                           |             |               |                            |
|                         | مساحات قائمة                           | مساحات جديدة | المجموع Total       | إضافات قائمة       | أبنية قائمة                    | إضافات جديدة + أجزاء قائمة      | إضافات جديدة لمباني مرخصة | أبنية جديدة | المجموع Total |                            |
| Existing Areas          | New Areas                              |              | Existing Extensions | Existing Buildings | New Additions + Existing Parts | Additions to Licensed Buildings | New Buildings             |             |               |                            |
| <b>All Governorates</b> |  |              |                     |                    |                                |                                 |                           |             |               | <b>كافة المحافظات</b>      |
| Complete Dwellings      | 48.1                                   | 238.2        | 286.3               | 2                  | 138                            | 40                              | 147                       | 480         | 807           | وحدات سكنية كاملة          |
| Extension of Rooms      | 0.2                                    | 0.5          | 0.7                 | 4                  | 1                              | 0                               | 11                        | 0           | 16            | إضافة غرف لوحدات سكنية     |
| Other Extensions        | 2.6                                    | 5.7          | 8.3                 | 17                 | 0                              | 7                               | 61                        | 0           | 85            | إضافة منافع أو مباني فرعية |
| <b>Jenin</b>            |  |              |                     |                    |                                |                                 |                           |             |               | <b>جنين</b>                |
| Complete Dwellings      | 0.1                                    | 16.6         | 16.7                | 1                  | 0                              | 0                               | 13                        | 33          | 47            | وحدات سكنية كاملة          |
| Extension of Rooms      | 0.0                                    | 0.0          | 0.0                 | 0                  | 0                              | 0                               | 1                         | 0           | 1             | إضافة غرف لوحدات سكنية     |
| Other Extensions        | 0.0                                    | 0.1          | 0.1                 | 0                  | 0                              | 0                               | 1                         | 0           | 1             | إضافة منافع أو مباني فرعية |
| <b>Tubas</b>            |  |              |                     |                    |                                |                                 |                           |             |               | <b>طوباس</b>               |
| Complete Dwellings      | 1.0                                    | 5.9          | 6.9                 | 0                  | 1                              | 11                              | 4                         | 20          | 36            | وحدات سكنية كاملة          |
| Extension of Rooms      | 0.0                                    | 0.2          | 0.2                 | 1                  | 0                              | 0                               | 1                         | 0           | 2             | إضافة غرف لوحدات سكنية     |
| Other Extensions        | 0.0                                    | 0.0          | 0.0                 | 2                  | 0                              | 0                               | 0                         | 0           | 2             | إضافة منافع أو مباني فرعية |

جدول 9 (تابع): رخص الأبنية الصادرة في باقي الضفة الغربية وقطاع غزة للأبنية السكنية حسب وضع البناء المرخص والمحافظه - الربع الرابع 2001

Table 9 (Cont.): Building Licenses Issued in Remaining West Bank and Gaza Strip for Residential Buildings by Status of Licensed Building and Governorate - Forth Quarter 2001

| Governorate        | المساحات المرخصة (الف م <sup>2</sup> ) |              |                     | عدد الرخص الصادرة  |                                |                                 |                           |             |               | المحافظة                   |
|--------------------|--|--------------|---------------------|--------------------|--------------------------------|---------------------------------|---------------------------|-------------|---------------|----------------------------|
|                    | Licensed Area (1000m <sup>2</sup> )    |              |                     | Number of Licenses |                                |                                 |                           |             |               |                            |
|                    | مساحات قائمة                           | مساحات جديدة | المجموع Total       | إضافات قائمة       | أبنية قائمة                    | إضافات جديدة+ أجزاء قائمة       | إضافات جديدة لمباني مرخصة | أبنية جديدة | المجموع Total |                            |
| Existing Areas     | New Areas                              |              | Existing Extensions | Existing Buildings | New Additions + Existing Parts | Additions to Licensed Buildings | New Buildings             |             |               |                            |
| <b>Tulkarm</b>     |  |              |                     |                    |                                |                                 |                           |             |               | <b>طولكرم</b>              |
| Complete Dwellings | 8.0                                    | 16.9         | 24.9                | 0                  | 17                             | 12                              | 12                        | 46          | 87            | وحدات سكنية كاملة          |
| Extension of Rooms | 0.0                                    | 0.0          | 0.0                 | 1                  | 0                              | 0                               | 0                         | 0           | 1             | إضافة غرف لوحدات سكنية     |
| Other Extensions   | 1.5                                    | 0.1          | 1.6                 | 7                  | 0                              | 6                               | 1                         | 0           | 14            | إضافة منافع أو مباني فرعية |
| <b>Nablus</b>      |  |              |                     |                    |                                |                                 |                           |             |               | <b>نابلس</b>               |
| Complete Dwellings | 2.8                                    | 40.8         | 43.6                | 0                  | 6                              | 8                               | 46                        | 66          | 126           | وحدات سكنية كاملة          |
| Extension of Rooms | 0.1                                    | 0.1          | 0.2                 | 2                  | 0                              | 0                               | 6                         | 0           | 8             | إضافة غرف لوحدات سكنية     |
| Other Extensions   | 0.2                                    | 1.8          | 2.0                 | 4                  | 0                              | 1                               | 41                        | 0           | 46            | إضافة منافع أو مباني فرعية |
| <b>Qalqilya</b>    |  |              |                     |                    |                                |                                 |                           |             |               | <b>قلقيلية</b>             |
| Complete Dwellings | 0.5                                    | 4.4          | 4.8                 | 0                  | 2                              | 0                               | 7                         | 12          | 21            | وحدات سكنية كاملة          |
| Extension of Rooms | 0.0                                    | 0.0          | 0.0                 | 0                  | 0                              | 0                               | 0                         | 0           | 0             | إضافة غرف لوحدات سكنية     |
| Other Extensions   | 0.0                                    | 0.0          | 0.0                 | 0                  | 0                              | 0                               | 1                         | 0           | 1             | إضافة منافع أو مباني فرعية |

جدول 9 (تابع): رخص الأبنية الصادرة في باقي الضفة الغربية وقطاع غزة للأبنية السكنية حسب وضع البناء المرخص والمحافظه - الربع الرابع 2001

Table 9 (Cont.): Building Licenses Issued in Remaining West Bank and Gaza Strip for Residential Buildings by Status of Licensed Building and Governorate - Forth Quarter 2001

| Governorate                  | المساحات المرخصة (الف م <sup>2</sup> ) |              |                     | عدد الرخص الصادرة  |                                |                                 |                           |             |               | المحافظة                   |
|------------------------------|--|--------------|---------------------|--------------------|--------------------------------|---------------------------------|---------------------------|-------------|---------------|----------------------------|
|                              | Licensed Area (1000m <sup>2</sup> )    |              |                     | Number of Licenses |                                |                                 |                           |             |               |                            |
|                              | مساحات قائمة                           | مساحات جديدة | المجموع Total       | إضافات قائمة       | أبنية قائمة                    | إضافات جديدة+ أجزاء قائمة       | إضافات جديدة لمباني مرخصة | أبنية جديدة | المجموع Total |                            |
| Existing Areas               | New Areas                              |              | Existing Extensions | Existing Buildings | New Additions + Existing Parts | Additions to Licensed Buildings | New Buildings             |             |               |                            |
| <b>Salfit</b>                |  |              |                     |                    |                                |                                 |                           |             |               | سلفيت                      |
| Complete Dwellings           | 0.8                                    | 2.5          | 3.3                 | 0                  | 3                              | 0                               | 3                         | 10          | 16            | وحدات سكنية كاملة          |
| Extension of Rooms           | 0.0                                    | 0.0          | 0.0                 | 0                  | 0                              | 0                               | 0                         | 0           | 0             | إضافة غرف لوحدات سكنية     |
| Other Extensions             | 0.0                                    | 0.1          | 0.1                 | 0                  | 0                              | 0                               | 3                         | 0           | 3             | إضافة منافع أو مباني فرعية |
| <b>Ramallah and Al-Bireh</b> |  |              |                     |                    |                                |                                 |                           |             |               | رام الله والبيرة           |
| Complete Dwellings           | 9.6                                    | 52.7         | 62.3                | 0                  | 21                             | 5                               | 35                        | 74          | 135           | وحدات سكنية كاملة          |
| Extension of Rooms           | 0.0                                    | 0.1          | 0.1                 | 0                  | 0                              | 0                               | 1                         | 0           | 1             | إضافة غرف لوحدات سكنية     |
| Other Extensions             | 0.8                                    | 3.6          | 4.5                 | 4                  | 0                              | 0                               | 14                        | 0           | 18            | إضافة منافع أو مباني فرعية |
| <b>Jericho</b>               |  |              |                     |                    |                                |                                 |                           |             |               | أريحا                      |
| Complete Dwellings           | 0.0                                    | 2.8          | 2.8                 | 0                  | 0                              | 0                               | 0                         | 11          | 11            | وحدات سكنية كاملة          |
| Extension of Rooms           | 0.0                                    | 0.0          | 0.0                 | 0                  | 0                              | 0                               | 0                         | 0           | 0             | إضافة غرف لوحدات سكنية     |
| Other Extensions             | 0.0                                    | 0.0          | 0.0                 | 0                  | 0                              | 0                               | 0                         | 0           | 0             | إضافة منافع أو مباني فرعية |

جدول 9 (تابع): رخص الأبنية الصادرة في باقي الضفة الغربية وقطاع غزة للأبنية السكنية حسب وضع البناء المرخص والمحافظه - الربع الرابع 2001

Table 9 (Cont.): Building Licenses Issued in Remaining West Bank and Gaza Strip for Residential Buildings by Status of Licensed Building and Governorate - Forth Quarter 2001

| Governorate        | المساحات المرخصة (الف م <sup>2</sup> ) |              |                     | عدد الرخص الصادرة  |                                |                                 |                           |             |               | المحافظة                   |
|--------------------|--|--------------|---------------------|--------------------|--------------------------------|---------------------------------|---------------------------|-------------|---------------|----------------------------|
|                    | Licensed Area (1000m <sup>2</sup> )    |              |                     | Number of Licenses |                                |                                 |                           |             |               |                            |
|                    | مساحات قائمة                           | مساحات جديدة | المجموع Total       | إضافات قائمة       | أبنية قائمة                    | إضافات جديدة+ أجزاء قائمة       | إضافات جديدة لمباني مرخصة | أبنية جديدة | المجموع Total |                            |
| Existing Areas     | New Areas                              |              | Existing Extensions | Existing Buildings | New Additions + Existing Parts | Additions to Licensed Buildings | New Buildings             |             |               |                            |
| <b>Jerusalem</b>   |  |              |                     |                    |                                |                                 |                           |             |               | <b>القدس</b>               |
| Complete Dwellings | 7.6                                    | 14.0         | 21.6                | 0                  | 13                             | 0                               | 0                         | 28          | 41            | وحدات سكنية كاملة          |
| Extension of Rooms | 0.0                                    | 0.0          | 0.0                 | 0                  | 0                              | 0                               | 1                         | 0           | 1             | إضافة غرف لوحدات سكنية     |
| Other Extensions   | 0.0                                    | 0.0          | 0.0                 | 0                  | 0                              | 0                               | 0                         | 0           | 0             | إضافة منافع أو مباني فرعية |
| <b>Bethlehem</b>   |  |              |                     |                    |                                |                                 |                           |             |               | <b>بيت لحم</b>             |
| Complete Dwellings | 0.4                                    | 6.8          | 7.3                 | 0                  | 3                              | 0                               | 6                         | 15          | 24            | وحدات سكنية كاملة          |
| Extension of Rooms | 0.0                                    | 0.0          | 0.0                 | 0                  | 1                              | 0                               | 1                         | 0           | 2             | إضافة غرف لوحدات سكنية     |
| Other Extensions   | 0.0                                    | 0.0          | 0.0                 | 0                  | 0                              | 0                               | 0                         | 0           | 0             | إضافة منافع أو مباني فرعية |
| <b>Hebron</b>      |  |              |                     |                    |                                |                                 |                           |             |               | <b>الخليل</b>              |
| Complete Dwellings | 6.3                                    | 33.9         | 40.2                | 1                  | 20                             | 1                               | 21                        | 89          | 132           | وحدات سكنية كاملة          |
| Extension of Rooms | 0.0                                    | 0.0          | 0.0                 | 0                  | 0                              | 0                               | 0                         | 0           | 0             | إضافة غرف لوحدات سكنية     |
| Other Extensions   | 0.0                                    | 0.0          | 0.0                 | 0                  | 0                              | 0                               | 0                         | 0           | 0             | إضافة منافع أو مباني فرعية |

جدول 9 (تابع): رخص الأبنية الصادرة في باقي الضفة الغربية وقطاع غزة للأبنية السكنية حسب وضع البناء المرخص والمحافظه - الربع الرابع 2001

Table 9 (Cont.): Building Licenses Issued in Remaining West Bank and Gaza Strip for Residential Buildings by Status of Licensed Building and Governorate - Forth Quarter 2001

| Governorate          | المساحات المرخصة (الف م <sup>2</sup> ) |              |                     | عدد الرخص الصادرة  |                                |                                 |                           |             |               | المحافظة                   |
|----------------------|--|--------------|---------------------|--------------------|--------------------------------|---------------------------------|---------------------------|-------------|---------------|----------------------------|
|                      | Licensed Area (1000m <sup>2</sup> )    |              |                     | Number of Licenses |                                |                                 |                           |             |               |                            |
|                      | مساحات قائمة                           | مساحات جديدة | المجموع Total       | إضافات قائمة       | أبنية قائمة                    | إضافات جديدة+ أجزاء قائمة       | إضافات جديدة لمباني مرخصة | أبنية جديدة | المجموع Total |                            |
| Existing Areas       | New Areas                              |              | Existing Extensions | Existing Buildings | New Additions + Existing Parts | Additions to Licensed Buildings | New Buildings             |             |               |                            |
| <b>North Gaza</b>    |  |              |                     |                    |                                |                                 |                           |             |               | شمال غزة                   |
| Complete Dwellings   | 1.6                                    | 5.1          | 6.7                 | 0                  | 4                              | 0                               | 0                         | 11          | 15            | وحدات سكنية كاملة          |
| Extension of Rooms   | 0.0                                    | 0.0          | 0.0                 | 0                  | 0                              | 0                               | 0                         | 0           | 0             | إضافة غرف لوحدات سكنية     |
| Other Extensions     | 0.0                                    | 0.0          | 0.0                 | 0                  | 0                              | 0                               | 0                         | 0           | 0             | إضافة منافع أو مباني فرعية |
| <b>Gaza</b>          |  |              |                     |                    |                                |                                 |                           |             |               | غزة                        |
| Complete Dwellings   | 1.4                                    | 31.9         | 33.2                | 0                  | 0                              | 3                               | 0                         | 39          | 42            | وحدات سكنية كاملة          |
| Extension of Rooms   | 0.0                                    | 0.0          | 0.0                 | 0                  | 0                              | 0                               | 0                         | 0           | 0             | إضافة غرف لوحدات سكنية     |
| Other Extensions     | 0.0                                    | 0.0          | 0.0                 | 0                  | 0                              | 0                               | 0                         | 0           | 0             | إضافة منافع أو مباني فرعية |
| <b>Deir Al-Balah</b> |  |              |                     |                    |                                |                                 |                           |             |               | دير البلح                  |
| Complete Dwellings   | 1.5                                    | 1.1          | 2.6                 | 0                  | 4                              | 0                               | 0                         | 5           | 9             | وحدات سكنية كاملة          |
| Extension of Rooms   | 0.0                                    | 0.0          | 0.0                 | 0                  | 0                              | 0                               | 0                         | 0           | 0             | إضافة غرف لوحدات سكنية     |
| Other Extensions     | 0.0                                    | 0.0          | 0.0                 | 0                  | 0                              | 0                               | 0                         | 0           | 0             | إضافة منافع أو مباني فرعية |

جدول 9 (تابع): رخص الأبنية الصادرة في باقي الضفة الغربية وقطاع غزة للأبنية السكنية حسب وضع البناء المرخص والمحافظه - الربع الرابع 2001

Table 9 (Cont.): Building Licenses Issued in Remaining West Bank and Gaza Strip for Residential Buildings by Status of Licensed Building and Governorate - Forth Quarter 2001

| Governorate        | المساحات المرخصة (الف م <sup>2</sup> ) |              |                     | عدد الرخص الصادرة  |                                |                                 |                           |             |               | المحافظة                   |
|--------------------|--|--------------|---------------------|--------------------|--------------------------------|---------------------------------|---------------------------|-------------|---------------|----------------------------|
|                    | Licensed Area (1000m <sup>2</sup> )    |              |                     | Number of Licenses |                                |                                 |                           |             |               |                            |
|                    | مساحات قائمة                           | مساحات جديدة | المجموع Total       | إضافات قائمة       | أبنية قائمة                    | إضافات جديدة + أجزاء قائمة      | إضافات جديدة لمباني مرخصة | أبنية جديدة | المجموع Total |                            |
| Existing Areas     | New Areas                              |              | Existing Extensions | Existing Buildings | New Additions + Existing Parts | Additions to Licensed Buildings | New Buildings             |             |               |                            |
| <b>Rafah</b>       |  |              |                     |                    |                                |                                 |                           |             |               | رفح                        |
| Complete Dwellings | 6.5                                    | 2.8          | 9.3                 | 0                  | 44                             | 0                               | 0                         | 21          | 65            | وحدات سكنية كاملة          |
| Extension of Rooms | 0.0                                    | 0.0          | 0.0                 | 0                  | 0                              | 0                               | 0                         | 0           | 0             | إضافة غرف لوحدات سكنية     |
| Other Extensions   | 0.0                                    | 0.0          | 0.0                 | 0                  | 0                              | 0                               | 0                         | 0           | 0             | إضافة منافع أو مباني فرعية |

جدول 10: رخص الأبنية الصادرة في باقي الضفة الغربية وقطاع غزة للأبنية غير السكنية حسب استخدام المبنى و المحافظة - الربع الرابع 2001

Table 10: Building Licenses Issued in Remaining West Bank and Gaza Strip for Non-Residential Buildings by Utilization and Governorate - Forth Quarter 2001

| Governorate             | المخازن   |            | المساحات المرخصة (الف م <sup>2</sup> ) |                           |                  | عدد الرخص الصادرة                   |                                   |  |  |                              |                  | المحافظة       |
|-------------------------|---|------------|--|---------------------------|------------------|-------------------------------------|-----------------------------------|--|--|------------------------------|------------------|----------------|
|                         | Stores  |            | Licensed Area (1000m <sup>2</sup> )    |                           |                  | Number of Licenses                  |                                   |  |  |                              |                  |                |
|                         | مساحة (الف م <sup>2</sup> )<br>Area (1000m <sup>2</sup> ) | عدد<br>No. | مساحات قائمة<br>Existing Areas         | مساحات جديدة<br>New Areas | المجموع<br>Total | إضافات قائمة<br>Existing Extensions | أبنية قائمة<br>Existing Buildings | إضافات جديدة + أجزاء قائمة<br>New Additions + Existing Parts | إضافات جديدة لمباني مرخصة<br>Additions to Licensed Buildings | أبنية جديدة<br>New Buildings | المجموع<br>Total |                |
| <b>All Governorates</b> |   |            |  |                           |                  |                                     |                                   |  |  |                              |                  | كافة المحافظات |
| Industrial              | 0.0   | 0          | 0.0                                    | 4.8                       | 4.8              | 0                                   | 0                                 | 0  | 3  | 5                            | 8                | صناعي          |
| Commercial              | 26.8  | 384        | 3.7                                    | 32.3                      | 36.0             | 1                                   | 8                                 | 3  | 1  | 55                           | 68               | تجاري          |
| Educational             | 0.0   | 0          | 3.3                                    | 33.5                      | 36.8             | 0                                   | 1                                 | 2  | 7  | 12                           | 22               | تعليمي         |
| Health                  | 0.0   | 0          | 0.0                                    | 0.2                       | 0.2              | 0                                   | 0                                 | 0  | 2  | 0                            | 2                | صحي            |
| Other                   | 0.0   | 0          | 1.1                                    | 13.6                      | 14.7             | 0                                   | 3                                 | 0  | 2  | 23                           | 28               | أخرى           |
| <b>Jenin</b>            |   |            |  |                           |                  |                                     |                                   |  |  |                              |                  | جنين           |
| Industrial              | 0.0   | 0          | 0.0                                    | 0.0                       | 0.0              | 0                                   | 0                                 | 0  | 0  | 0                            | 0                | صناعي          |
| Commercial              | 2.9   | 55         | 0.0                                    | 2.9                       | 2.9              | 0                                   | 0                                 | 0  | 0  | 1                            | 1                | تجاري          |
| Educational             | 0.0   | 0          | 0.0                                    | 0.0                       | 0.0              | 0                                   | 0                                 | 0  | 0  | 0                            | 0                | تعليمي         |
| Health                  | 0.0   | 0          | 0.0                                    | 0.0                       | 0.0              | 0                                   | 0                                 | 0  | 0  | 0                            | 0                | صحي            |
| Other                   | 0.0   | 0          | 0.0                                    | 1.1                       | 1.1              | 0                                   | 0                                 | 0  | 0  | 4                            | 4                | أخرى           |
| <b>Tubas</b>            |   |            |  |                           |                  |                                     |                                   |  |  |                              |                  | طوباس          |
| Industrial              | 0.0   | 0          | 0.0                                    | 0.0                       | 0.0              | 0                                   | 0                                 | 0  | 0  | 0                            | 0                | صناعي          |
| Commercial              | 0.0   | 0          | 0.0                                    | 0.0                       | 0.0              | 0                                   | 0                                 | 0  | 0  | 0                            | 0                | تجاري          |
| Educational             | 0.0   | 0          | 0.0                                    | 0.0                       | 0.0              | 0                                   | 0                                 | 0  | 0  | 0                            | 0                | تعليمي         |
| Health                  | 0.0   | 0          | 0.0                                    | 0.0                       | 0.0              | 0                                   | 0                                 | 0  | 0  | 0                            | 0                | صحي            |
| Other                   | 0.0   | 0          | 0.0                                    | 1.6                       | 1.6              | 0                                   | 0                                 | 0  | 0  | 1                            | 1                | أخرى           |

جدول 10 (تابع): رخص الأبنية الصادرة في باقي الضفة الغربية وقطاع غزة للأبنية غير السكنية حسب استخدام المبنى و المحافظة - الربع الرابع 2001

Table 10 (Cont.): Building Licenses Issued in Remaining West Bank and Gaza Strip for Non-Residential Buildings by Utilization and Governorate - Forth Quarter 2001

| Governorate                  | المخازن<br>Stores   |            | المساحات المرخصة (الف م <sup>2</sup> )<br>Licensed Area (1000m <sup>2</sup> ) |                                 |                  | عدد الرخص الصادرة<br>Number of Licenses   |   |  |   |   |                  | المحافظة          |
|------------------------------|---|------------|---|---------------------------------|------------------|---|---|--|---|---|------------------|-------------------|
|                              | مساحة<br>(الف م <sup>2</sup> )<br>Area<br>(1000m <sup>2</sup> ) | عدد<br>No. | مساحات<br>قائمة<br>Existing<br>Areas  | مساحات<br>جديدة<br>New<br>Areas | المجموع<br>Total | إضافات<br>قائمة<br>Existing<br>Extensions | أبنية<br>قائمة<br>New<br>Additions +<br>Existing<br>Parts | إضافات جديدة+<br>أجزاء قائمة<br>Additions +<br>Existing<br>Parts | إضافات جديدة<br>لمباني مرخصة<br>Additions to<br>Licensed<br>Buildings | أبنية<br>جديدة<br>New<br>Build-<br>ings | المجموع<br>Total |                   |
|                              | <b>Tulkarm</b>  |            |   |                                 |                  |   |   |  |   |   |                  |                   |
| Industrial                   | 0.0   | 0          | 0.0   | 0.3                             | 0.3              | 0   | 0   | 0  | 0   | 1                                       | 1                | صناعي             |
| Commercial                   | 1.4   | 15         | 0.2   | 2.2                             | 2.4              | 0   | 0   | 1  | 0   | 4                                       | 5                | تجاري             |
| Educational                  | 0.0   | 0          | 2.4   | 3.6                             | 5.9              | 0   | 1   | 0  | 1   | 1                                       | 3                | تعليمي            |
| Health                       | 0.0   | 0          | 0.0   | 0.0                             | 0.0              | 0   | 0   | 0  | 0   | 0                                       | 0                | صحي               |
| Other                        | 0.0   | 0          | 0.0   | 0.5                             | 0.5              | 0   | 0   | 0  | 0   | 1                                       | 1                | أخرى              |
| <b>Nablus</b>                |   |            |   |                                 |                  |   |   |  |   |   |                  | نابلس             |
| Industrial                   | 0.0   | 0          | 0.0   | 0.5                             | 0.5              | 0   | 0   | 0  | 1   | 2                                       | 3                | صناعي             |
| Commercial                   | 5.7   | 84         | 0.1   | 9.9                             | 10.0             | 0   | 2   | 0  | 1   | 14                                      | 17               | تجاري             |
| Educational                  | 0.0   | 0          | 0.9   | 21.6                            | 22.5             | 0   | 0   | 2  | 3   | 4                                       | 9                | تعليمي            |
| Health                       | 0.0   | 0          | 0.0   | 0.0                             | 0.0              | 0   | 0   | 0  | 1   | 0                                       | 1                | صحي               |
| Other                        | 0.0   | 0          | 0.3   | 3.7                             | 4.0              | 0   | 1   | 0  | 1   | 8                                       | 10               | أخرى              |
| <b>Ramallah and Al-Bireh</b> |   |            |   |                                 |                  |   |   |  |   |   |                  | رام الله والبييرة |
| Industrial                   | 0.0   | 0          | 0.0   | 3.5                             | 3.5              | 0   | 0   | 0  | 2   | 1                                       | 3                | صناعي             |
| Commercial                   | 4.6   | 57         | 0.3   | 4.8                             | 5.1              | 1   | 1   | 1  | 0   | 6                                       | 9                | تجاري             |
| Educational                  | 0.0   | 0          | 0.0   | 5.0                             | 5.0              | 0   | 0   | 0  | 3   | 1                                       | 4                | تعليمي            |
| Health                       | 0.0   | 0          | 0.0   | 0.0                             | 0.0              | 0   | 0   | 0  | 0   | 0                                       | 0                | صحي               |
| Other                        | 0.0   | 0          | 0.1   | 3.0                             | 3.1              | 0   | 1   | 0  | 1   | 4                                       | 6                | أخرى              |



جدول 10 (تابع): رخص الأبنية الصادرة في باقي الضفة الغربية وقطاع غزة للأبنية غير السكنية حسب استخدام المبنى و المحافظة - الربع الرابع 2001

Table 10 (Cont.): Building Licenses Issued in Remaining West Bank and Gaza Strip for Non-Residential Buildings by Utilization and Governorate - Forth Quarter 2001

| Governorate      | المخازن                     |         | المساحات المرخصة (الف م <sup>2</sup> ) |                        |               | عدد الرخص الصادرة                |                                |   |   |                           |               | المحافظة |         |
|------------------|-----------------------------|---------|--|------------------------|---------------|----------------------------------|--------------------------------|---|---|---------------------------|---------------|----------|---------|
|                  | Stores                      |         | Licensed Area (1000m <sup>2</sup> )    |                        |               | Number of Licenses               |                                |   |   |                           |               |          |         |
|                  | مساحة (الف م <sup>2</sup> ) | عدد No. | مساحات قائمة Existing Areas            | مساحات جديدة New Areas | المجموع Total | إضافات قائمة Existing Extensions | أبنية قائمة Existing Buildings | إضافات جديدة + أجزاء قائمة New Additions + Existing Parts | إضافات جديدة لمباني مرخصة Additions to Licensed Buildings | أبنية جديدة New Buildings | المجموع Total |          |         |
| <b>Jericho</b>   |                             |         |  |                        |               |                                  |                                |   |   |                           |               |          | أريحا   |
| Industrial       | 0.0                         | 0       | 0.0                                    | 0.0                    | 0.0           | 0                                | 0                              | 0   | 0   | 0                         | 0             | 0        | صناعي   |
| Commercial       | 0.2                         | 5       | 0.0                                    | 0.2                    | 0.2           | 0                                | 0                              | 0   | 0   | 2                         | 2             | 2        | تجاري   |
| Educational      | 0.0                         | 0       | 0.0                                    | 0.0                    | 0.0           | 0                                | 0                              | 0   | 0   | 0                         | 0             | 0        | تعليمي  |
| Health           | 0.0                         | 0       | 0.0                                    | 0.0                    | 0.0           | 0                                | 0                              | 0   | 0   | 0                         | 0             | 0        | صحي     |
| Other            | 0.0                         | 0       | 0.0                                    | 0.4                    | 0.4           | 0                                | 0                              | 0   | 0   | 1                         | 1             | 1        | أخرى    |
| <b>Jerusalem</b> |                             |         |  |                        |               |                                  |                                |   |   |                           |               |          | القدس   |
| Industrial       | 0.0                         | 0       | 0.0                                    | 0.0                    | 0.0           | 0                                | 0                              | 0   | 0   | 0                         | 0             | 0        | صناعي   |
| Commercial       | 2.3                         | 35      | 0.5                                    | 2.3                    | 2.8           | 0                                | 1                              | 1   | 0   | 6                         | 8             | 8        | تجاري   |
| Educational      | 0.0                         | 0       | 0.0                                    | 0.0                    | 0.0           | 0                                | 0                              | 0   | 0   | 0                         | 0             | 0        | تعليمي  |
| Health           | 0.0                         | 0       | 0.0                                    | 0.2                    | 0.2           | 0                                | 0                              | 0   | 1   | 0                         | 1             | 1        | صحي     |
| Other            | 0.0                         | 0       | 0.0                                    | 0.0                    | 0.0           | 0                                | 0                              | 0   | 0   | 0                         | 0             | 0        | أخرى    |
| <b>Bethlehem</b> |                             |         |  |                        |               |                                  |                                |   |   |                           |               |          | بيت لحم |
| Industrial       | 0.0                         | 0       | 0.0                                    | 0.4                    | 0.4           | 0                                | 0                              | 0   | 0   | 1                         | 1             | 1        | صناعي   |
| Commercial       | 2.1                         | 35      | 0.1                                    | 2.7                    | 2.8           | 0                                | 1                              | 0   | 0   | 5                         | 6             | 6        | تجاري   |
| Educational      | 0.0                         | 0       | 0.0                                    | 0.0                    | 0.0           | 0                                | 0                              | 0   | 0   | 0                         | 0             | 0        | تعليمي  |
| Health           | 0.0                         | 0       | 0.0                                    | 0.0                    | 0.0           | 0                                | 0                              | 0   | 0   | 0                         | 0             | 0        | صحي     |
| Other            | 0.0                         | 0       | 0.0                                    | 1.4                    | 1.4           | 0                                | 0                              | 0   | 0   | 2                         | 2             | 2        | أخرى    |

جدول 10 (تابع): رخص الأبنية الصادرة في باقي الضفة الغربية وقطاع غزة للأبنية غير السكنية حسب استخدام المبنى و المحافظة - الربع الرابع 2001

Table 10 (Cont.): Building Licenses Issued in Remaining West Bank and Gaza Strip for Non-Residential Buildings by Utilization and Governorate - Forth Quarter 2001

| Governorate       | المخازن<br>Stores   |            | المساحات المرخصة (الف م <sup>2</sup> )<br>Licensed Area (1000m <sup>2</sup> ) |                                 |                  | عدد الرخص الصادرة<br>Number of Licenses   |  |   |   |   |                  | المحافظة |
|-------------------|---|------------|---|---------------------------------|------------------|---|--|---|---|---|------------------|----------|
|                   | مساحة<br>(الف م <sup>2</sup> )<br>Area<br>(1000m <sup>2</sup> ) | عدد<br>No. | مساحات<br>قائمة<br>Existing<br>Areas  | مساحات<br>جديدة<br>New<br>Areas | المجموع<br>Total | إضافات<br>قائمة<br>Existing<br>Extensions | أبنية<br>قائمة<br>Existing<br>Build-<br>ings | إضافات جديدة+<br>أجزاء قائمة<br>New<br>Additions +<br>Existing<br>Parts | إضافات جديدة<br>لمباني مرخصة<br>Additions to<br>Licensed<br>Buildings | أبنية<br>جديدة<br>New<br>Build-<br>ings | المجموع<br>Total |          |
|                   | <b>Hebron</b>   |            |   |                                 |                  |   |  |   |   |   |                  |          |
| Industrial        | 0.0   | 0          | 0.0   | 0.0                             | 0.0              | 0   | 0  | 0   | 0   | 0                                       | 0                | صناعي    |
| Commercial        | 6.3   | 78         | 2.0   | 6.4                             | 8.4              | 0   | 2  | 0   | 0   | 12                                      | 14               | تجاري    |
| Educational       | 0.0   | 0          | 0.0   | 3.4                             | 3.4              | 0   | 0  | 0   | 0   | 6                                       | 6                | تعليمي   |
| Health            | 0.0   | 0          | 0.0   | 0.0                             | 0.0              | 0   | 0  | 0   | 0   | 0                                       | 0                | صحي      |
| Other             | 0.0   | 0          | 0.0   | 2.0                             | 2.0              | 0   | 0  | 0   | 0   | 2                                       | 2                | أخرى     |
| <b>North Gaza</b> |   |            |   |                                 |                  |   |  |   |   |   |                  | شمال غزة |
| Industrial        | 0.0   | 0          | 0.0   | 0.0                             | 0.0              | 0   | 0  | 0   | 0   | 0                                       | 0                | صناعي    |
| Commercial        | 0.7   | 8          | 0.4   | 0.3                             | 0.7              | 0   | 1  | 0   | 0   | 1                                       | 2                | تجاري    |
| Educational       | 0.0   | 0          | 0.0   | 0.0                             | 0.0              | 0   | 0  | 0   | 0   | 0                                       | 0                | تعليمي   |
| Health            | 0.0   | 0          | 0.0   | 0.0                             | 0.0              | 0   | 0  | 0   | 0   | 0                                       | 0                | صحي      |
| Other             | 0.0   | 0          | 0.0   | 0.0                             | 0.0              | 0   | 0  | 0   | 0   | 0                                       | 0                | أخرى     |
| <b>Gaza</b>       |   |            |   |                                 |                  |   |  |   |   |   |                  | غزة      |
| Industrial        | 0.0   | 0          | 0.0   | 0.0                             | 0.0              | 0   | 0  | 0   | 0   | 0                                       | 0                | صناعي    |
| Commercial        | 0.6   | 12         | 0.0   | 0.6                             | 0.6              | 0   | 0  | 0   | 0   | 4                                       | 4                | تجاري    |
| Educational       | 0.0   | 0          | 0.0   | 0.0                             | 0.0              | 0   | 0  | 0   | 0   | 0                                       | 0                | تعليمي   |
| Health            | 0.0   | 0          | 0.0   | 0.0                             | 0.0              | 0   | 0  | 0   | 0   | 0                                       | 0                | صحي      |
| Other             | 0.0   | 0          | 0.0   | 0.0                             | 0.0              | 0   | 0  | 0   | 0   | 0                                       | 0                | أخرى     |

جدول 10 (تابع): رخص الأبنية الصادرة في باقي الضفة الغربية وقطاع غزة للأبنية غير السكنية حسب استخدام المبنى و المحافظة - الربع الرابع 2001

Table 10 (Cont.): Building Licenses Issued in Remaining West Bank and Gaza Strip for Non-Residential Buildings by Utilization and Governorate - Forth Quarter 2001

| Governorate | المخازن<br>Stores   |            | المساحات المرخصة (الف م <sup>2</sup> )<br>Licensed Area (1000m <sup>2</sup> ) |                                 |                  | عدد الرخص الصادرة<br>Number of Licenses   |  |   |   |   |                  | المحافظة |
|-------------|---|------------|---|---------------------------------|------------------|---|--|---|---|---|------------------|----------|
|             | مساحة<br>(الف م <sup>2</sup> )<br>Area<br>(1000m <sup>2</sup> ) | عدد<br>No. | مساحات<br>قائمة<br>Existing<br>Areas  | مساحات<br>جديدة<br>New<br>Areas | المجموع<br>Total | إضافات<br>قائمة<br>Existing<br>Extensions | أبنية<br>قائمة<br>Existing<br>Build-<br>ings | إضافات جديدة+<br>أجزاء قائمة<br>New<br>Additions +<br>Existing<br>Parts | إضافات جديدة<br>لمباني مرخصة<br>Additions to<br>Licensed<br>Buildings | أبنية<br>جديدة<br>New<br>Build-<br>ings | المجموع<br>Total |          |
|             | <b>Rafah</b>  |            |   |                                 |                  |   |  |   |   |   |                  |          |
| Industrial  | 0.0   | 0          | 0.0   | 0.0                             | 0.0              | 0   | 0  | 0   | 0   | 0                                       | 0                | صناعي    |
| Commercial  | 0.0   | 0          | 0.0   | 0.0                             | 0.0              | 0   | 0  | 0   | 0   | 0                                       | 0                | تجاري    |
| Educational | 0.0   | 0          | 0.0   | 0.0                             | 0.0              | 0   | 0  | 0   | 0   | 0                                       | 0                | تعليمي   |
| Health      | 0.0   | 0          | 0.0   | 0.0                             | 0.0              | 0   | 0  | 0   | 0   | 0                                       | 0                | صحي      |
| Other       | 0.0   | 0          | 0.6   | 0.0                             | 0.6              | 0   | 1  | 0   | 0   | 0                                       | 1                | أخرى     |

جدول 11: رخص الأبنية الصادرة في باقي الضفة الغربية وقطاع غزة للأسوار فقط حسب المحافظة - الربع الرابع 2001

**Table 11: Building Licenses Issued in Remaining West Bank and Gaza Strip  
for Boundary Walls Only by Governorate - Forth Quarter 2001**

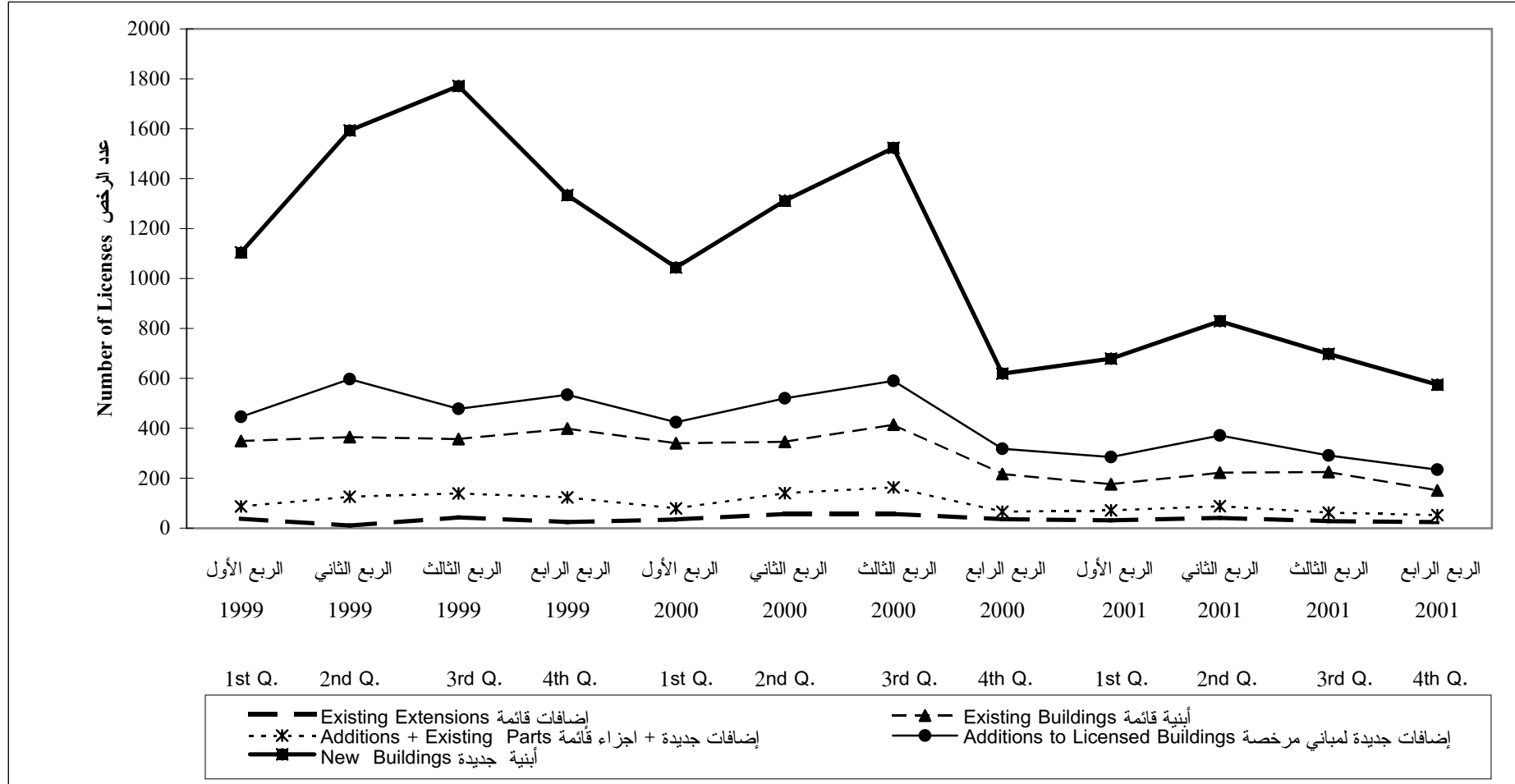
| Governorate             | Existing and Existing Additions         |                 | New and New Additions                   |                 | المحافظة              |
|-------------------------|---|-----------------|---|-----------------|-----------------------|
|                         | الطول الكلي (م.ط)<br>Total Length (m.r) | العدد<br>Number | الطول الكلي (م.ط)<br>Total Length (m.r) | العدد<br>Number |                       |
| <b>All Governorates</b> | <b>224</b>                              | <b>3</b>        | <b>5130</b>                             | <b>56</b>       | <b>كافة المحافظات</b> |
| Jenin                   | 0                                       | 0               | 287                                     | 3               | جنين                  |
| Tubas                   | 0                                       | 0               | 57                                      | 2               | طوباس                 |
| Tulkarm                 | 22                                      | 1               | 832                                     | 8               | طولكرم                |
| Nablus                  | 0                                       | 0               | 1213                                    | 18              | نابلس                 |
| Qalqilya                | 0                                       | 0               | 61                                      | 1               | قلقيلية               |
| Salfit                  | 0                                       | 0               | 0                                       | 0               | سلفيت                 |
| Ramallah and Al-Bireh   | 0                                       | 0               | 1070                                    | 13              | رام الله والبيرة      |
| Jericho                 | 0                                       | 0               | 216                                     | 2               | أريحا                 |
| Jerusalem*              | 0                                       | 0               | 0                                       | 0               | القدس*                |
| Bethlehem               | 0                                       | 0               | 392                                     | 1               | بيت لحم               |
| Hebron                  | 0                                       | 0               | 880                                     | 7               | الخليل                |
| North Gaza              | 0                                       | 0               | 0                                       | 0               | شمال غزة              |
| Gaza                    | 0                                       | 0               | 0                                       | 0               | غزة                   |
| Deir Al-Balah           | 202                                     | 2               | 122                                     | 1               | دير البلح             |
| Khan Younis             | 0                                       | 0               | 0                                       | 0               | خان يونس              |
| Rafah                   | 0                                       | 0               | 0                                       | 0               | رفح                   |

\* Excludes those parts of Jerusalem Governorate which were annexed after 1967 occupation by Israel.

\* باستثناء ذلك الجزء من محافظة القدس الذي ضمته اسرائيل  
عنوان بعيد احتلالها للضفة الغربية عام 1967.

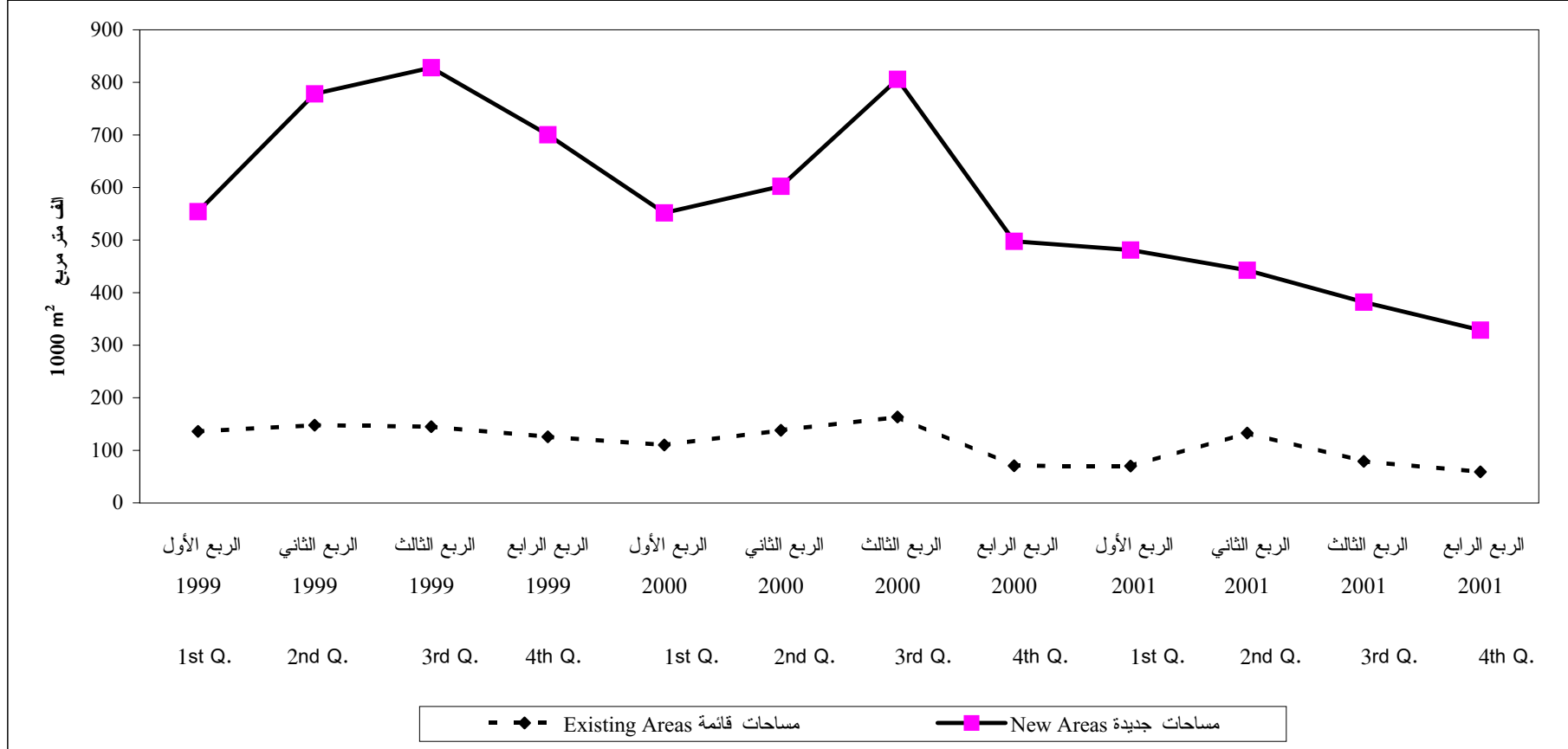
شكل 1: تطور عدد رخص الأبنية الصادرة في باقي الضفة الغربية وقطاع غزة حسب وضع البناء المرخص للفترة من الربع الأول 1999 الى الربع الرابع 2001

Figure 1: Development of Building Licenses Number Issued in Remaining West Bank and Gaza Strip by Status of Licensed Building from First Quarter 1999 to Forth Quarter 2001



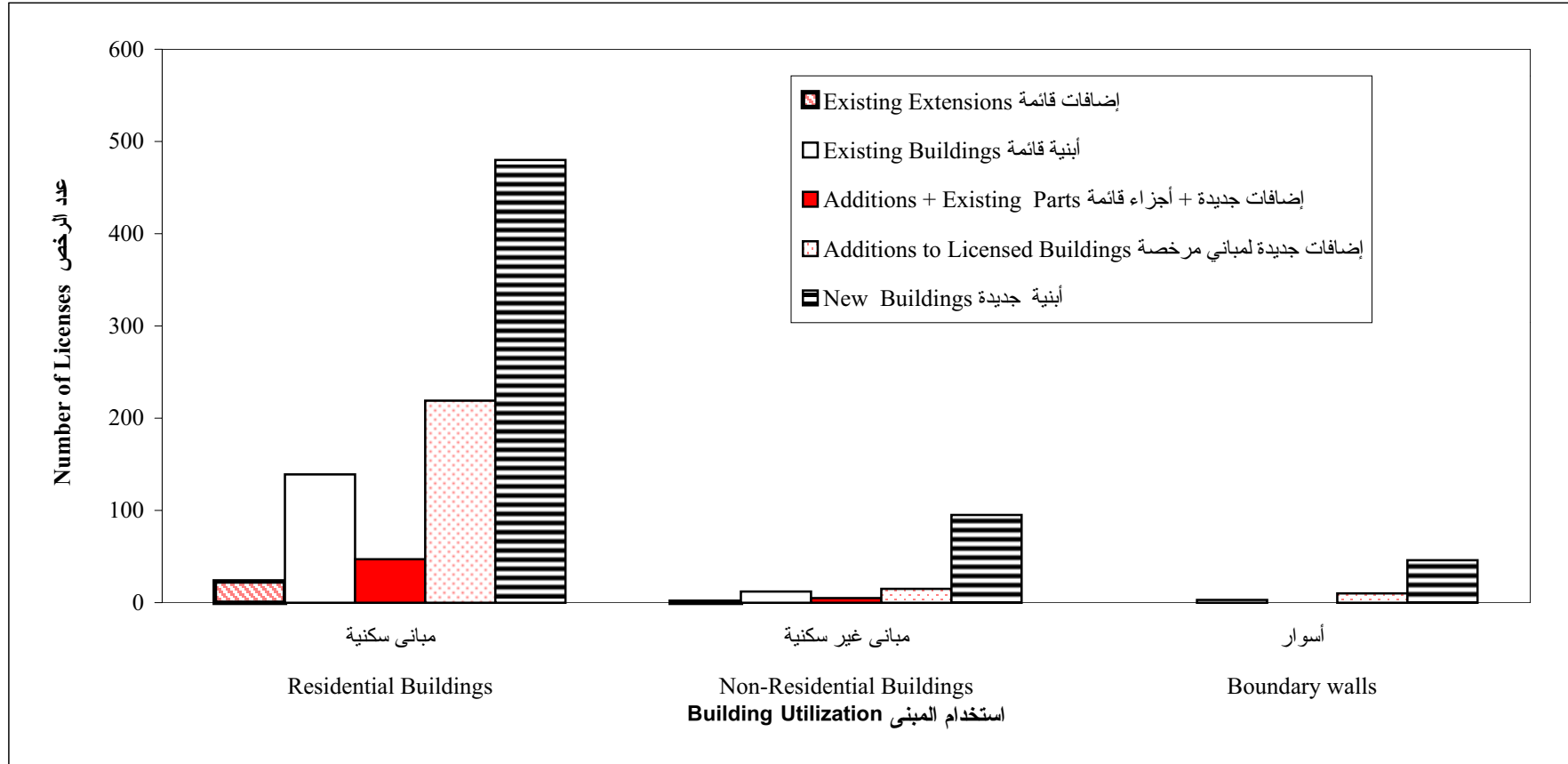
شكل 2: تطور مساحات الأبنية المرخصة في باقي الضفة الغربية وقطاع غزة للفترة من الربع الأول 1999 الى الربع الرابع 2001

Figure 2: Development of Building Licensed Area in Remaining West Bank and Gaza Strip from First Quarter 1999 to Forth Quarter 2001



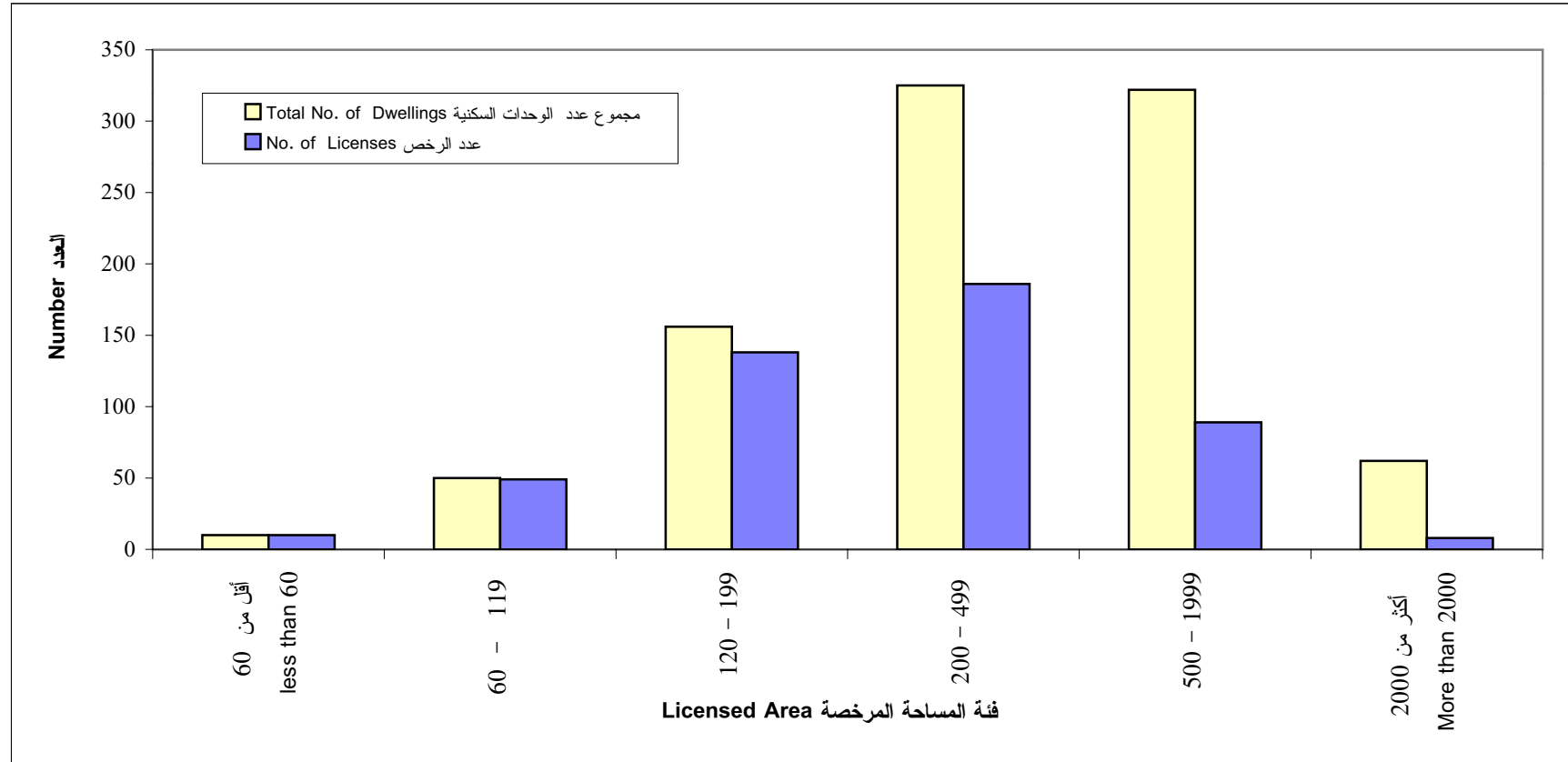
شكل 3: رخص الأبنية الصادرة في باقي الضفة الغربية وقطاع غزة حسب وضع البناء المرخص واستخدام المبنى - الربع الرابع 2001

Figure 3: Building Licenses Issued in Remaining West Bank and Gaza Strip by Status of Licensed Building and Utilization - Forth Quarter 2001



شكل 4: عدد الرخص وعدد الوحدات السكنية للأبنية السكنية الجديدة حسب فئة المساحة المرخصة في باقي الضفة الغربية وقطاع غزة - الربع الرابع 2001

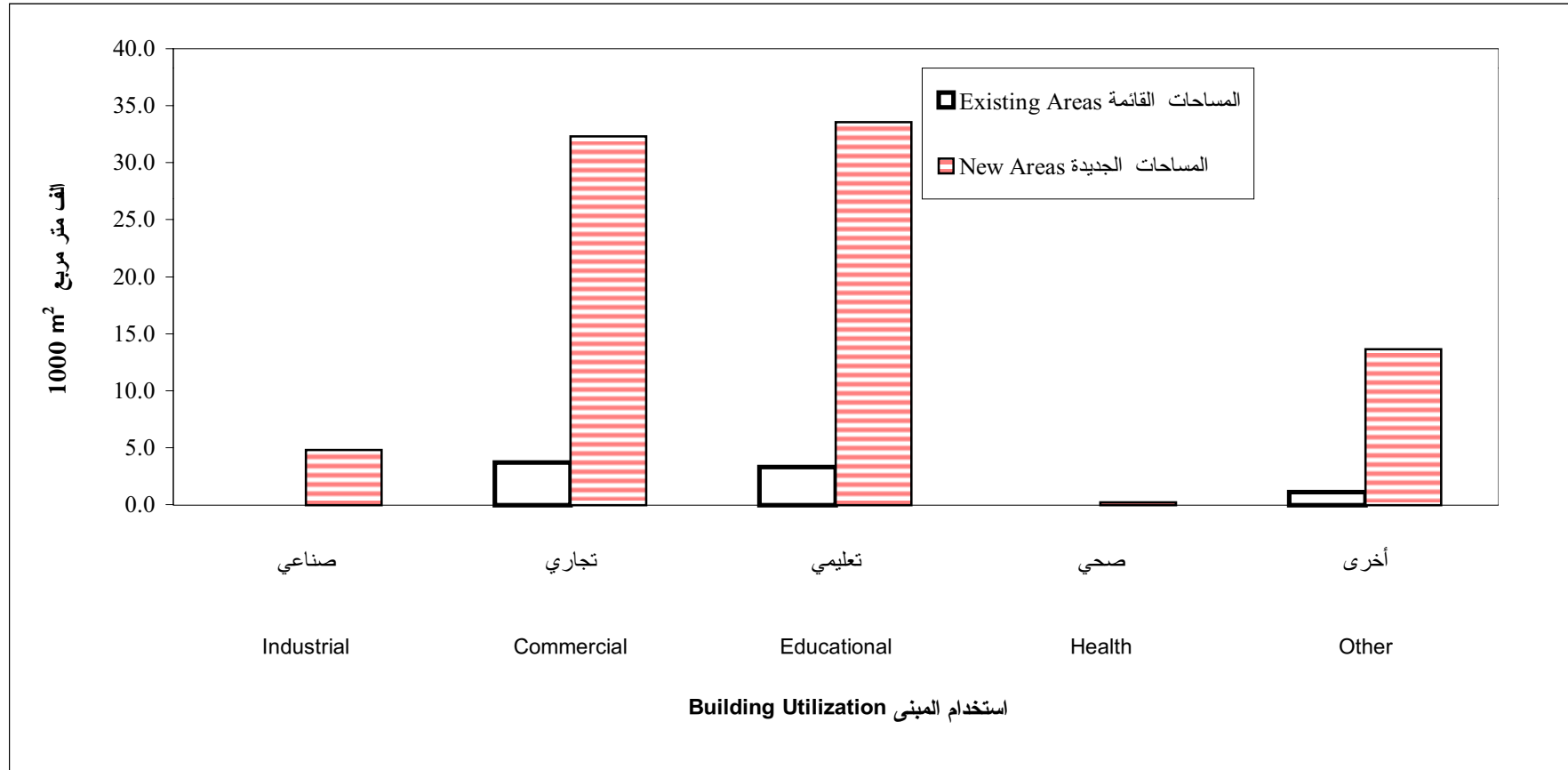
**Figure 4: Number of Licenses and Number of Dwellings for New Residential Buildings by Licensed Area in Remaining West Bank and Gaza Strip- Forth Quarter 2001**





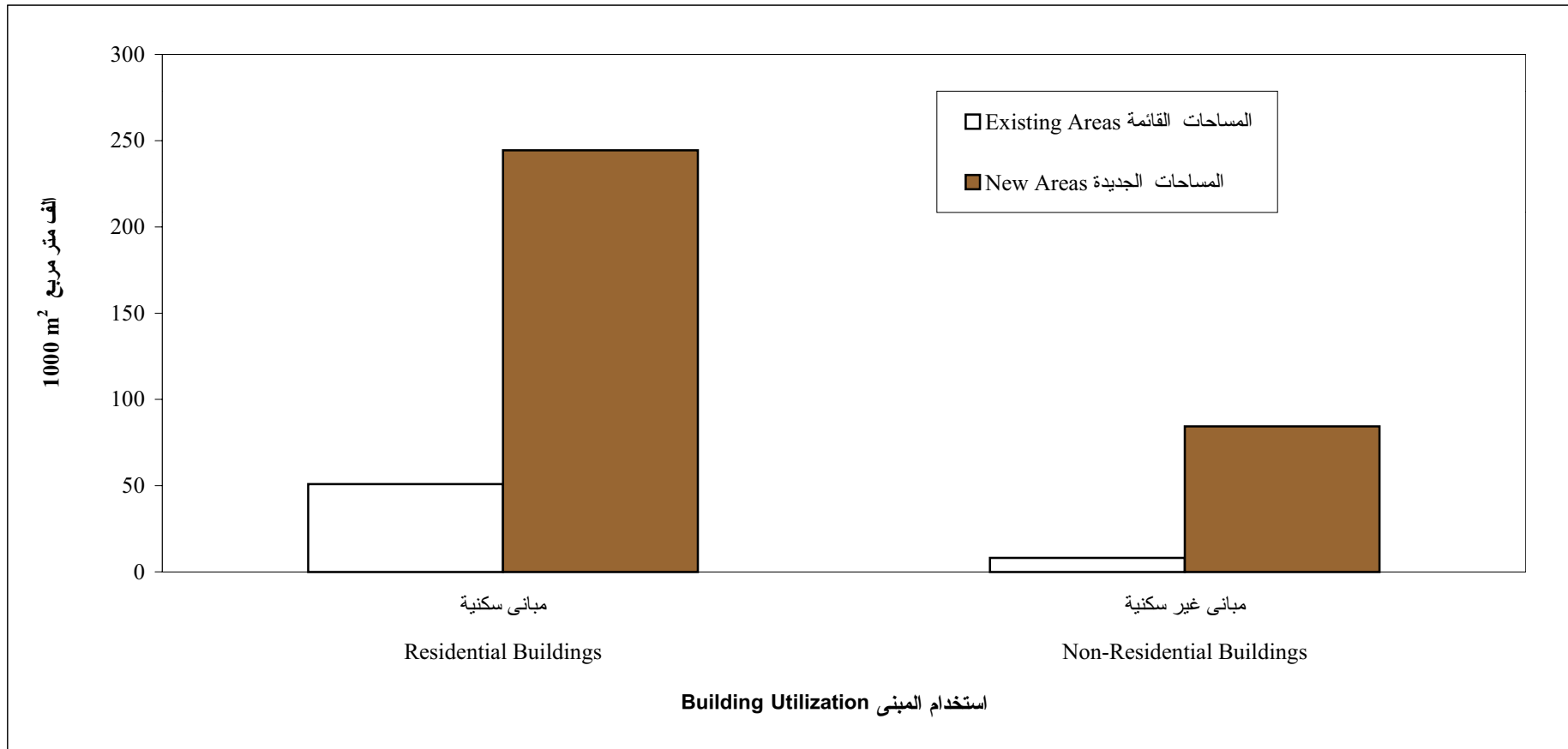
شكل 5: المساحات المرخصة للأبنية غير السكنية الجديدة والقائمة حسب استخدام المبنى في باقي الضفة الغربية وقطاع غزة - الربع الرابع 2001

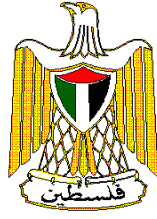
Figure 5: Licensed Area for Non-Residential Buildings by Utilization in Remaining West Bank and Gaza Strip- Forth Quarter 2001



شكل 6: المساحات المرخصة الجديدة والقائمة حسب استخدام المبنى في باقي الضفة الغربية وقطاع غزة- الربع الرابع 2001

Figure 6: New and Existing Licensed Areas by Utilization in Remaining West Bank and Gaza Strip- Forth Quarter 2001





# **Palestinian Central Bureau of Statistics**

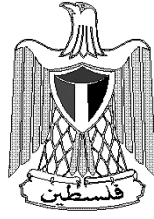
## **Construction Statistics**

**Statistics Building Licenses**

### **Forth Quarter, 2001**

**Volume 6, Issue No. 4**

**May, 2002**



# **Palestinian Central Bureau of Statistics**

## **Construction Statistics**

**Building Licenses Statistics**

### **Forth Quarter, 2001**

**Volume 6, Issue No. 4**

**May, 2002**

“Cover price: 3 US\$”

PAGE NUMBERS OF ENGLISH TEXT ARE PRINTED IN SQUARE BRACKETS.  
TABLES ARE PRINTED IN THE ARABIC ORDER (FROM RIGHT TO LEFT)

© May, 2002  
All rights reserved.

**Suggested Citation:**

**Palestinian Central Bureau of Statistics, 2002.** *Building Licenses Statistics –  
Forth Quarter 2001*, Ramallah - Palestine.

All correspondence should be directed to:  
Dissemination & Documentation Department/ Division of User Services  
**Palestinian Central Bureau of Statistics**  
P.O.Box 1647, Ramallah, Palestine.

Tel: 970-2-240 6340  
E-Mail : [diwan@pcbs.pna.org](mailto:diwan@pcbs.pna.org)

Fax: 970-2-240 6343  
web-site: <http://www.pcbs.org>

## **Acknowledgment**

**PCBS would like to thank the Ministry of Local Governments and Municipal Affairs, all municipalities, rural councils and construction authorities for their cooperation in providing PCBS with the requested data.**

## **Preface**

Construction is considered one of the important economic activities in the Palestinian economy. It contributes substantially to the Gross Domestic Product, recruits a large share of employees, and directly influences other several economic activities. Building construction in particular represents one of the major construction activities in general.

It has been necessary for PCBS to establish statistical database that covers several aspects of construction activities in order to accommodate the different needs of users. The annual economic surveys series conducted by PCBS as of 1994 includes a survey for construction contractors. PCBS had also conducted the annual Existing Buildings Survey starting from the reference year 1996.

It is the pleasure of PCBS to present this report of Building Licenses Statistics, which provides statistical data on the size, and characteristics of licensed buildings in the Palestinian Territory.

Statistical data is currently collected through filling the designated form from the administrative records of the different official licenses issuing authorities. This was initiated on quarterly basis since First Quarter of 1996.

It is important to mention that Al – Aqsa Intifada that took place in all the Palestinian Territory since September 2000, is still going on during this quarter. As a result of the Israeli closure all the aspects of the economic activities have been affected especially the construction activities.

Publication of building licenses statistics will be pursued in the following years. PCBS hopes that the means by which these data are archived in the issuing authorities are developed, in the foreseeable future, in a manner that would reduce cost and time needed for preparing these statistics.

**May, 2002**

**Hasan Abu-Libdeh, Ph.D.  
President**

## Table of Contents

| <b><u>Subject</u></b>    | <b><u>Page</u></b> |
|--------------------------|--------------------|
| <b>List of tables</b>    |                    |
| <b>List of figures</b>   |                    |
| <b>Executive Summary</b> | <b>[15]</b>        |
| 1. Introduction          | [15]               |
| 2. Objectives            | [15]               |
| 3. Definitions           | [15]               |
| 4. Main Findings         | [16]               |
| 5. Methodology           | [17]               |
| 6. Explanatory Notes     | [18]               |
| <b>Tables</b>            | <b>28</b>          |
| <b>Figures</b>           | <b>71</b>          |



## List of Tables

| <b><u>Table</u></b> |   | <b><u>Page</u></b> |
|---------------------|---|--------------------|
| <b>Table 1:</b>     | Development of Building Licenses Issued in Remaining West Bank and Gaza Strip from First Quarter 1996 to Forth Quarter 2001   | <b>30</b>          |
| <b>Table 2:</b>     | Building Licenses Issued in Remaining West Bank and Gaza Strip by Building Ownership and Utilization - Forth Quarter 2001   | <b>32</b>          |
| <b>Table 3:</b>     | Building Licenses Issued in Remaining West Bank and Gaza Strip by Issuing Authority and Utilization - Forth Quarter 2001  | <b>33</b>          |
| <b>Table 4:</b>     | Building Licenses Issued in Remaining West Bank and Gaza Strip for New Buildings by Categories of Licensed Area and Governorate - Forth Quarter 2001  | <b>34</b>          |
| <b>Table 5:</b>     | Building Licenses Issued in Remaining West Bank and Gaza Strip for New Buildings by Construction Material of External Walls and Governorate - Forth Quarter 2001                              | <b>40</b>          |
| <b>Table 6:</b>     | Building Licenses Issued in Remaining West Bank and Gaza Strip for Additions to Licensed Existing Buildings by Construction Material of External Walls and Governorate - Forth Quarter 2001   | <b>46</b>          |
| <b>Table 7:</b>     | Building Licenses Issued in Remaining West Bank and Gaza Strip for Additions to Unlicensed Existing Buildings by Construction Material of External Walls and Governorate - Forth Quarter 2001 | <b>50</b>          |
| <b>Table 8:</b>     | Building Licenses Issued in Remaining West Bank and Gaza Strip for Existing Buildings and Extensions by Construction Material of External Walls and Governorate - Forth Quarter 2001          | <b>53</b>          |
| <b>Table 9:</b>     | Building Licenses Issued in Remaining West Bank and Gaza Strip for Residential Buildings by Status of Licensed Building and Governorate - Forth Quarter 2001                                  | <b>58</b>          |
| <b>Table 10:</b>    | Building Licenses Issued in Remaining West Bank and Gaza Strip for Non-Residential Buildings by Utilization and Governorate - Forth Quarter 2001  | <b>64</b>          |
| <b>Table 11:</b>    | Building Licenses Issued in Remaining West Bank and Gaza Strip for Boundary Walls Only by Governorate - Forth Quarter 2001  | <b>69</b>          |

## List of Figures

| <b><u>Figure</u></b> |   | <b><u>Page</u></b> |
|----------------------|---|--------------------|
| <b>Figure 1:</b>     | Development of Building Licenses Number Issued in Remaining West Bank and Gaza Strip by Status of Licensed Building from First Quarter 1999 to Forth Quarter 2001 | <b>73</b>          |
| <b>Figure 2:</b>     | Development of Building Licensed Area in Remaining West Bank and Gaza Strip from First Quarter 1999 to Forth Quarter 2001   | <b>74</b>          |
| <b>Figure 3:</b>     | Building Licenses Issued in Remaining West Bank and Gaza Strip by Status of Licensed Building and Utilization - Forth Quarter 2001                                | <b>75</b>          |
| <b>Figure 4:</b>     | Number of Licenses and Number of Dwellings for New Residential Buildings by Licensed Area in Remaining West Bank and Gaza Strip - Forth Quarter 2001              | <b>76</b>          |
| <b>Figure 5:</b>     | Licensed Areas for Non-Residential Buildings by Utilization in Remaining West Bank and Gaza Strip - Forth Quarter 2001  | <b>77</b>          |
| <b>Figure 6:</b>     | New and Existing Licensed Areas by Utilization in Remaining West Bank and Gaza Strip - Forth Quarter 2001   | <b>78</b>          |

## Summary Results

The Palestinian Central Bureau of Statistics is conducting the building licenses statistics on quarterly basis as of 1996 first quarter, which provides statistical data on the size and characteristics of licensed buildings in the Palestinian Territory, as a part of its efforts to provide data on the different aspects of the construction activity, as an important economic activity in the Palestinian Economy in order to accommodate the needs of the users.

These statistics are conducted by collecting the data from the administrative records of the different official licenses issuing authorities. The data are collected quarterly from municipalities and rural councils in the Palestinian Governorates. The report provides data on number, size, and area for the new and existing residential and non-residential buildings, by utilization, status, external material, building ownership and the issuing authority.

This report covers data on the fourth quarter, from 1/10 to 13/12/2001, which have been collected under the continuous of the closure and siege on the Palestinian Territory, which had negative effects on all the economic activities including the construction and building activity.

The fieldwork on collecting the data of this report from the resources also have been effected by the closure, but although the difficulties of movement, the data was obtained, but the issuing of the report was delayed from the determined time.

### **The main findings of this quarter are as follow:**

1. Number of licenses: The number of building licenses issued in the fourth Quarter, 2001 amounted to 1036 distributed as follows:
  - 575 licenses for new buildings.
  - 234 licenses for additions to licensed buildings.
  - 52 licenses for additions + existing parts.
  - 151 licenses for existing buildings.
  - 24 licenses for existing extensions.
2. Licensed areas: The total number of areas for licensed buildings amounted to 387.8 thousand square meters (1000 m<sup>2</sup>) distributed as follows:
  - 328.8 (1000 m<sup>2</sup>) for new areas, of which 244.4 residential and 84.4 non-residential.
  - 59 (1000 m<sup>2</sup>) for existing areas, of which 50.9 residential and 8.1 non-residential.
3. Licensed boundary walls: 59 Licenses issued for walls with total length of 5354 meters.
4. Number of dwellings and their area:
  - New dwellings: 1265 units with a total area of 206.2 (1000 m<sup>2</sup>).
  - Existing dwellings: 289 units with a total area of 43.3 (1000 m<sup>2</sup>).

Comparing the results of this quarter with the same period in years 1999 and 2000, there is a gradual decline of the issued building licenses due to the continuous of the Israeli occupation measures and siege.

There was a general decline in the total number of issued building licenses in the fourth quarter 2001 around 17.5% compared with the fourth quarter 2000, also there was decrease in the number of issued building licenses in the fourth quarter 2001 around 57.1% compared with the

forth quarter 1999, meanwhile the issued licenses in the same period of year 2000 declined around 48% compared with the forth quarter in the year 1999.

# Executive Summary

## 1. Introduction:

The construction is considered as one of the important economic activities, particularly in countries undergoing economic development. This activity plays a vital role in the Palestinian economy and significantly interrelated to the remaining economic activities. Thus, the Palestinian Central Bureau of Statistics (PCBS) committed to comply statistical data on all aspects of construction activity in order to measure the main related variables.

The administrative record statistics shed light on size and type of building licenses issued from official parties. Buildings licenses statistics are compiled in most countries all over the world. In addition to its own significance, building licenses statistics constitute the sampling frame of other surveys to be launched for identifying the actual constructed buildings against licenses, to endeavor estimating construction costs and obtaining data on the technical characteristics of these buildings.

## 2. Objectives:

These statistics provide data on numbers of building licenses, licensed areas, number and area of licensed dwellings and stores by the following variables:

- Issuing authorities.
- Geographic location.
- Status of building to be licensed (new, existing, new or existing additions....etc.).
- Building ownership (private, governmental, local authorities, cooperative.....etc.).
- Utilization of the building (residential, non-residential: industrial, commercial, educational.....etc.).
- Major external construction material (stone, concrete, block...etc.).

## 3. Definitions:

### 3.1 Statistical Unit:

The license issued by any authorized authority. The issuing authorities are the reporting units for this administrative records statistics.

### 3.2 Building Ownership:

1. Private.
2. Governmental.
3. Local Authority.
4. Cooperative Society.
5. Charitable Society.
6. Other, e.g. religious groups, UNRWA.....etc.

### 3.3 Status of the building to be licensed:

1. New, when the building site is entirely vacant.
2. Addition to an already existing licensed building - it could be vertical or horizontal addition.
3. Addition to non-licensed existing building (or part of building) that needs licensing.
4. Existing building.
5. Existing extensions.

### 3.4 Building Utilization:

1. Residential: The building is considered residential if more than half of its total area is prepared for residential purposes. The building could consist of:
  - Complete dwellings.
  - Rooms added to the dwellings.
  - Extension of other facilities, e.g. kitchen, bathroom, cesspool, garage.
2. Non-Residential: industrial, commercial, educational,...etc.
3. The boundary wall: This is when boundary wall undergoes separate licensing. If the building license includes the wall, then it is not included herein.

### 3.5 Dwelling:

The housing unit of a single household.

### 3.6 Remaining West Bank:

The West Bank except for those parts of Jerusalem Governorate, which were annexed after 1967 occupation by Israel.

## 4. Main Findings:

**1. Number of licenses:** The following table shows comparing between the number of Building Licenses for the 4<sup>th</sup> quarter 2001 and the same period for the years 1999 and 2000:

| Indicator                                     | No. Of issued Licenses |             |             | Retraction Percentage of issued building licenses to 1999 | Retraction Percentage of issued building licenses to 2000 |
|---|------------------------|-------------|-------------|---|---|
|   | Q4 1999                | Q4 2000     | Q4 2001     |   |   |
| Licenses for new buildings.                   | 1334                   | 619         | 575         | 56.9  | 7.1   |
| Licenses for additions to licensed buildings. | 534                    | 318         | 234         | 56.2  | 26.4  |
| Licenses for additions + existing parts.      | 123                    | 66          | 52          | 57.7  | 21.2  |
| Licenses for existing buildings.              | 399                    | 217         | 151         | 62.2  | 30.4  |
| Licenses for existing extensions              | 24                     | 36          | 24          | 0.0   | 33.3  |
| <b>Total/Average</b>                          | <b>2414</b>            | <b>1256</b> | <b>1036</b> | <b>57.1</b>   | <b>17.5</b>   |

Despite the fact that there is a gradual annual increase of the issued building licenses since 1996, there was a general decrease in the number of issued building licenses in the forth

quarter 2001 of about 17.5% compared with the fourth quarter 2000 and 57.1% with the fourth quarter 1999.

The declining in the number of building licenses continued in the fourth quarter due to the several Israeli measures and siege that restricted the movement of the Palestinian people and goods from one place to another.

**2. Licensed areas:** The following table shows comparing between the Licensed Areas for the 4<sup>th</sup> quarter 2001 and the same period for the years 1999 and 2000:

| Indicator              | Licensed Areas |              |              | Retraction Percentage of licensed areas to 1999 | Retraction Percentage of licensed to 2000 |
|------------------------|----------------|--------------|--------------|---|---|
|                        | Q4 1999        | Q4 2000      | Q4 2001      |   |   |
| <b>New areas:</b>      | <b>700.4</b>   | <b>497.6</b> | <b>328.8</b> | <b>53.6</b>                                     | <b>33.9</b>                               |
| Residential            | 548.6          | 367.9        | 244.4        | 55.5  | 33.6                                      |
| Non-residential        | 151.8          | 129.7        | 84.4         | 44.5  | 34.9                                      |
| <b>Existing areas:</b> | <b>125.8</b>   | <b>70.6</b>  | <b>59</b>    | <b>53.1</b>                                     | <b>16.4</b>                               |
| Residential            | 116.5          | 62.3         | 50.9         | 56.3  | 18.3                                      |
| Non-residential        | 9.3            | 8.3          | 8.1          | 10.8  | 2.4                                       |

**3. Licensed boundary walls:** The following table shows comparing between the Licenses issued for walls for the 4<sup>th</sup> quarter 2001 and the same period for the years 1999 and 2000:

| Indicator                         | Q4 1999 | Q4 2000 | Q4 2001 | Retraction Percentage of licensed areas to 1999 | Retraction Percentage of licensed areas to 2000 |
|-----------------------------------|---------|---------|---------|---|---|
| Number of Walls licenses          | 114     | 75      | 58      | 49.1  | 22.7  |
| Length of Walls licenses (meters) | 7823    | 13357   | 5354    | 31.6  | 59.9  |

**4. Number of dwellings and their area:** The following table shows comparing between the number and total area for the licensed dwellings for the 4<sup>th</sup> quarter 2001 and the same period for the years 1999 and 2000:

| Indicator   | Q4 1999 | Q4 2000 | Q4 2001 | Retraction Percentage of number and area of the licensed dwellings to 1999 | Retraction Percentage of number and area of the licensed dwellings to 2000 |
|---|---------|---------|---------|--|--|
| Number of new dwellings                             | 3861    | 1828    | 1265    | 67.5   | 30.7   |
| Total area for new dwellings (m <sup>2</sup> )      | 466.1   | 322.5   | 206.2   | 55.8   | 36.0   |
| Number of existing dwellings                        | 950     | 392     | 289     | 69.6   | 26.3   |
| Total area for existing dwellings (m <sup>2</sup> ) | 102.8   | 54.9    | 43.3    | 57.9   | 21.1   |

## **5. Methodology:**

### **5.1 Data collection form:**

The form was designed to meet the objectives of this statistics.

### **5.2 Coverage:**

Comprehensive coverage of all parties engaged in issuing building licenses in the Palestinian territory; they include:

- Municipalities: Excluding Jerusalem.
- The construction authorities: They issue licenses in the villages within each governorate in the West Bank, while rural councils issue building licenses in the villages in Gaza Strip. There are 472 villages at present in the Palestinian Territory, 453 of which are in West Bank, while the rest are in Gaza Strip.
- Rural councils: They issue licenses in some villages particularly in Gaza Strip. Some rural councils in the Gaza Strip were formulated for the refugee camps, they issue building licenses for privately owned lands neighbouring these camps.
- Ministry of Local Governments: It issues building licenses in the regional zones that are outside the boundaries of municipalities and rural councils in Gaza Strip.
- UNRWA: The UNRWA issues licenses in the 19 refugee camps of the West Bank. In Gaza Strip, building licenses in the camps are not allowed.

Data are collected on a quarterly basis. These statistics have been initiated as of the first quarter of 1996.

## **6. Explanatory Notes:**

- Tables do not include building licenses for East Jerusalem issued at present by the Israeli Municipality, while includes licenses for some villages of Jerusalem Governorate, meanwhile the tables include the building licenses which issued from some localities of Jerusalem Governorate.
- Some Governorates are not mentioned in some or all tables because the value of the variables in these Governorates equal zero.
- The Israeli measures during Al – Aqsa Intifada that took place in the Palestinian Territory at the end of September 2000, have affected all the aspects of the economic activities, especially the construction activities, consequently the number of issued licenses had declined during the forth quarter 2001.