



Palestine
Palestinian Central Bureau of Statistics

Palestine in Figures

2002

May, 2003

© May, 2003

All rights Reserved

Suggested Citation:

Palestinian Central Bureau of Statistics, 2003. *Palestine in Figures 2002*. Ramallah - Palestine

All correspondence should be directed to:

Dissemination and Documentation Department/Division of Users Services

Palestinian Central Bureau of Statistics

P. O. Box 1647. Ramallah - Palestine

Tel:(972/970) 2 2406340

Fax: (972/970) 2 2406343

E-Mail: diwan@pcbs.pna.org

Web-site: <http://www.pcbs.org>

MAP OF PALESTINE

About the Palestinian Central Bureau of Statistics

Palestinian Central Bureau of Statistics (PCBS) is the central statistical office in Palestine. Its main function is to provide truthful and impartial official statistics on demographic, social, economic and area statistics and trends to serve the Palestinian citizenry, and to serve the instrumental needs of businesses and their organizations for statistical information.

PCBS plays a vital role in providing essential statistical information to the citizens and their organizations as well as elected representatives, scholars, governmental and non-governmental organizations, mass media, the private sector, and international organizations.

By presenting this booklet, PCBS intends to provide easy and accessible statistics covering different areas of the Palestinian society. For more information, please do not hesitate to contact us.

How can PCBS help you?

Over the last few years we have laid great emphasis on developing and enhancing our services in order to meet our users' needs, and to achieve the overall goal of providing our users with better-quality products and services. PCBS' Division of Users Services is responsible for enabling the public to access statistical information on Palestine, and answer specific questions for users on a daily basis through direct communication with PCBS statisticians.

Personal visits to PCBS are encouraged. We welcome you to visit our office:

Division of Users Services, *Palestinian Central Bureau of Statistics, Al-Balo', EHSA St. Bld. 5*

Ramallah, Palestine

Tel: (972/970) 2 2406340

Fax: (972/970) 2 2406343

E-mail: diwan@pcbs.pna.org

Explanation of Symbols:

(-)	= Nil
(0)	= Less than half of the unit
(..)	= not available
Scholastics Year	= starts in August from every year and ends in June of the next year
Agricultural Year	= starts in October from every year and ends in September of the next year

Note: The data mentioned in this report represent the Palestinian Territory (West Bank Including Jerusalem, and Gaza Strip), unless otherwise stated.

Table of Contents

Subject	Page
Population	9
Labor	14
Education	20
Culture	30
Health	32
Consumer Price Index	35
Foreign Trade	36
Establishments	38
Agriculture	39
Housing Conditions	41
Tourism	43
Transportation & Communication	45
Al-Aqsa Uprising (Intifada)	48

Population

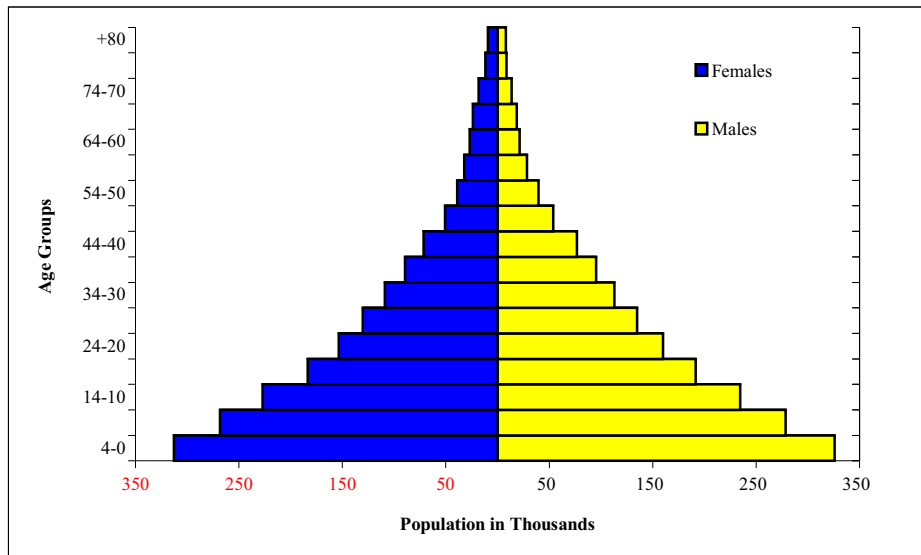
Estimated Number of Palestinians in the World, End Year 2002

Country	Number	percent
Palestinian Territory	3,559,999	38.2
Israel	1,037,752	11.2
Jordan	2,716,188	29.2
Lebanon	402,977	4.3
Syria	423,453	4.6
Egypt	60,114	0.6
Sudi- Arabia	300,565	3.2
Kuwait	38,254	0.4
Other Gulf Countries	120,612	1.3
Iraq & Libya	112,177	1.2
Other Arab Countries	6,333	0.1
United State	231,723	2.5
Other Foregion Countries	295,075	3.2
Total	9,305,222	100.0

Projected Population at the End Year by Region, 1997-2005

Years	Palestinian Territory	West Bank	Gaza Strip
1997	2,840,268	1,822,717	1,017,551
1998	2,958,578	1,895,254	1,063,324
1999	3,084,880	1,972,283	1,112,597
2000	3,224,504	2,057,145	1,167,359
2001	3,381,751	2,152,501	1,229,250
2002	3,559,999	2,260,596	1,299,403
2003	3,721,543	2,356,810	1,364,733
2004	3,897,702	2,461,637	1,436,065
2005	4,077,981	2,568,149	1,509,832

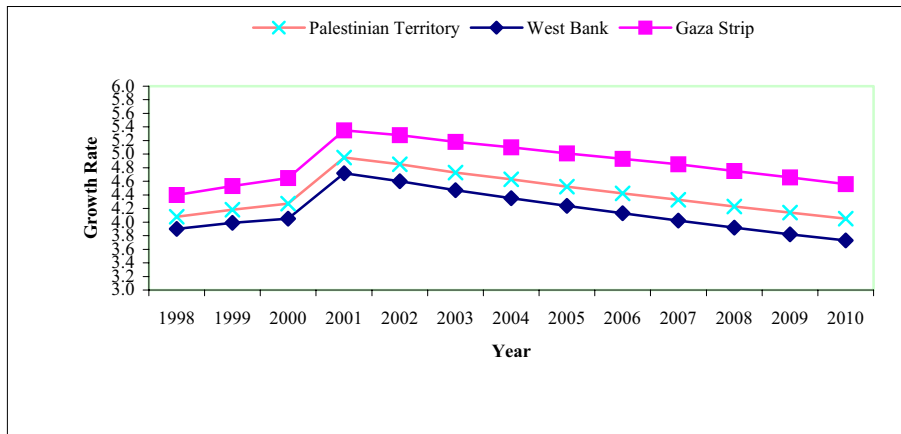
Palestinian Population Pyramid, Projected End Year, 2002



Projected Population in The End Year by Governorate, 2000-2003

Governorate/District	2000	2001	2002	2003
Palestinian Territory	3,224,504	3,381,751	3,559,999	3,721,543
Total West Bank	2,057,145	2,152,501	2,260,596	2,356,810
Jenin	220,918	231,070	242,603	252,813
Tubas District	40,153	42,088	44,283	46,243
Tulkarm	146,027	152,715	160,306	167,009
Qalqiliya	79,986	84,116	88,779	92,990
Salfit District	53,366	55,967	58,913	61,549
Nablus	284,469	297,484	312,241	325,269
Ramallah and Al-Bireh	237,561	249,958	263,956	276,636
Jerusalem	360,710	373,713	388,444	401,073
Jericho	36,209	38,017	40,053	41,867
Bethlehem	150,537	157,766	165,951	173,244
Hebron	447,209	469,607	495,067	518,117
Total Gaza Strip	1,167,359	1,229,250	1,299,403	1,364,733
North Gaza	216,056	229,321	244,250	258,412
Gaza	414,741	435,463	459,045	480,871
Deir Al-Balah	169,168	178,149	188,292	197,681
Khan Yunis	227,679	239,395	252,726	265,122
Rafah	139,715	146,922	155,090	162,647

Projected Annual Population Growth Rate by Region, 1998-2010



Labor

Population 15 Years and Over by Region and Labor Force Status, 2002 (ILO Standards).

Labor Force Status	Palestinian Territory	West Bank (%)	Gaza Strip (%)
Population aged 15 years and over (Man Power)	1,856,000	1,221,000	635,000
Full Employment (working full time: 35 hours and above)	455,000	323,000	132,000
Working less than usual (Lack of employment)	14,000	12,000	2,000
Working poor conditions or for insufficient income	17,000	15,000	2,000
Did not work and seeking job	221,000	138,000	83,000
Did not work and did not seek job due to discouragement	121,000	78,000	43,000
Did not work – Old or illness	98,000	67,000	31,000
Did not work – Home duties	597,000	383,000	214,000
Did not work – Students	333,000	205,000	128,000
Population less than 15 years	1,609,000	982,000	627,000
Total Population in mid year 2002	3,465,000	2,203,000	1,262,000

Population Aged 15 Years and Over by Labor Force Status and Region, 1998-2002

Labor Force Status and Region	1998	1999	2000	2001	2002
Palestinian Territory					
Labor Force Participation Rate	41.4	41.6	41.5	38.7	38.1
Unemployment Rate	14.4	11.8	14.1	25.5	31.3
West Bank					
Labor Force Participation Rate	44.2	43.4	43.6	41.5	40.0
Unemployment Rate	11.5	9.5	12.1	21.9	28.2
Gaza Strip					
Labor Force Participation Rate	36.4	38.0	37.5	33.4	34.5
Unemployment Rate	20.9	16.9	18.7	34.2	38.0

Percent Distribution of Population Aged 15 Years and Over by Labor Force Status and Region, 2002.

Region	Labor Force	Outside Labor Force	Total	Employment	Unemployment	Total
Unemployed (According to the ILO Standards)						
Palestinian Territory	38.1	61.9	100	68.7	31.3	100
West Bank	40.0	60.0	100	71.8	28.2	100
Gaza Strip	34.5	65.5	100	62.0	38.0	100
Unemployed (According to the Relaxed Definition)						
Palestinian Territory	44.6	55.4	100	58.8	41.2	100
West Bank	46.3	53.7	100	61.9	38.1	100
Gaza Strip	41.2	58.8	100	51.9	48.1	100

Unemployed (According to the ILO Standards):

Unemployed persons are those individuals (15 years and over) who did not work at all during the reference week, and were not absent from a job and were available for work and actively seeking a job during the reference week. Persons who work in Israel and were absent from work due to closer are considered unemployed, and also those persons never worked and not looking for work but waiting to return back to their works in Israel and settlements.

Unemployed (According to Relaxed Definition):

The Number of Unemployed Persons was calculated under the definition by adding to unemployed persons according to the ILO Standards, those Persons outside labor force because they were frustrated.

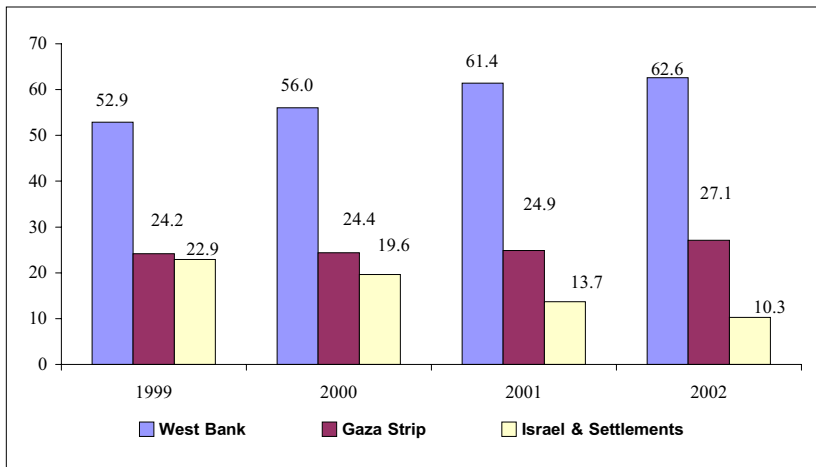
Unemployment Rate by Sex and Years of Schooling (%), 1998-2002

Sex and Years of Schooling	1998	1999	2000	2001	2002
Males					
0	10.0	9.3	11.9	22.4	29.2
1-6	16.3	13.4	17.6	33.8	41.3
7-9	15.0	12.4	15.9	31.1	38.9
10-12	15.0	11.7	14.7	28.9	34.9
13+	10.9	8.8	9.3	14.1	17.5
Total	14.4	11.6	14.4	27.3	33.5
Females					
0	2.3	1.1	0.3	0.7	2.2
1-6	4.7	3.2	3.2	5.2	7.6
7-9	10.5	6.3	7.8	8.7	12.7
10-12	16.5	11.6	8.0	7.7	18.2
13+	23.5	21.9	21.9	22.2	22.5
Total	15.2	13.0	12.3	14.1	17.1
Both Sexes					
0	6.9	5.4	5.7	12.2	17.4
1-6	15.2	12.2	16.0	31.1	37.9
7-9	14.7	11.9	15.3	29.8	37.3
10-12	15.1	11.7	14.0	27.4	33.6
13+	14.1	12.5	12.8	16.3	18.9
Total	14.4	11.8	14.1	25.5	31.3

Percentage Distribution of Employed Persons by Industry, 1998-2002

Industry	1998	1999	2000	2001	2002
Agriculture, Hunting, Forestry & Fishing	12.1	12.6	13.7	12.0	14.8
Mining, Quarrying & Manufacturing	15.9	15.5	14.3	14.0	12.9
Construction	22.0	22.1	19.7	14.6	10.9
Commerce, Hotels & Restaurants	18.2	17.0	17.5	19.4	20.0
Transportation, Storage & Communication	4.7	4.7	4.9	5.5	5.5
Services & Other Branches	27.1	28.1	29.9	34.5	35.9
Total (%)	100.0	100.0	100.0	100.0	100.0

Percentage Distribution of Employed Persons by Place of Work, 1999-2002



Education

Higher Education Indicators, 1997/1998-2001/2002

Indicator	Scholastic Years				
	1997/1998	1998/1999	1999/2000	2000/2001	2001/2002
University Students					
Males	29,546	33,548	35,696	40,220	43,844
Females	22,881	27,298	30,354	35,359	39,564
Both Sexes	52,427	60,846	66,050	75,579	83,408
University Graduates					
Males	3,328	4,449	4,717	5,408	..
Females	2,995	3,931	3,587	5,386	..
Both Sexes	6,323	8,380	8,304	10,794	..
Teaching Staff at Universities*					
Males	1,489	1,579	1,666	2,045	1,817
Females	235	215	238	294	250
Both Sexes	1,724	1,794	1,904	2,339	2,067

Higher Education Indicators, 1997/1998-2001/2002 (Cont.)

Indicator	Scholastic Years				
	1997/1998	1998/1999	1999/2000	2000/2001	2001/2001
Community College Students**					
Males	1,949	2,533	2,388	2,129	2,399
Females	2,350	2,903	2,769	2,835	2,914
Both Sexes	4,299	5,436	5,157	4,964	5,313
Community College Graduates					
Males	798	722	797	1,140	..
Females	1,167	1,058	1,207	1,204	..
Both Sexes	1,965	1,780	2,004	2,344	..
Teaching Staff at Community Colleges*					
Males	175	240	269	286	311
Females	80	89	113	106	128
Both Sexes	255	329	382	392	439

**Full Time Only*

*** Data on community college students for the scholastic year 1997/1998 do not include second year students at An-Najah Community College, nor students at Kalandia Community College*

Data on Universities for the Scholastic year 2001/2002, do not include palestinian Technical college/ Tulkarm, Al-dawa Islamic college and Ibn Sina Nbursing coolege data.

Basic and Secondary Education Indicators 1998/1999-2002/2003

Indicator	1998/1999	1999/2000	2000/2001	2001/2002	2002/2003*
Schools					
Government	1,230	1,289	1,344	1,415	1,490
UNRWA	265	264	263	264	269
Private	196	214	228	239	249
Total	1,691	1,767	1,835	1,918	2,008
Students					
Males	411,851	436,442	454,801	476,037	502,055
Females	400,871	429,098	452,327	471,262	490,020
Both Sexes	812,722	865,540	907,128	947,299	992,075

Basic and Secondary Education Indicators 1998/1999-2002/2003, (cont.)

Indicator	1998/1999	1999/2000	2000/2001	2001/2002	2002/2003*
Teachers					
Males	13,933	14,535	15,797	16,081	17,548
Females	13,528	14,651	16,705	17,451	18,979
Both Sexes	27,461	29,186	32,502	33,532	36,527
Classes					
Males	8,623	9,478	9,778	10,277	10,885
Females	8,237	9,196	9,685	10,173	10,812
Co-Education	4,058	4,864	5,323	5,549	5,548
Total	20,918	23,538	24,786	25,999	27,245

Note: the data do not include the Israeli Municipality and Culture Committee Schools in Jerusalem

* Data for the scholastic year 2002/2003 considered as primary data.

Pre School Education Indicators 1997/1998-2001/2002

Indicator	1997/1998	1998/1999	1999/2000	2000/2001	2001/2002
Kindergartens					
Government	-	-	3	1	17
Private	789	823	840	810	789
Total	789	823	843	811	806
Children					
Males	38,778	40,246	40,600	36,574	34,958
Females	36,254	36,927	36,802	32,673	31,548
Both Sexes	75,032	77,173	77,402	69,247	66,506

Pre School Education Indicators 1997/1998-2001/2002 (cont.)

Indicator	1997/1998	1998/1999	1999/2000	2000/2001	2001/2002
Teachers					
Males	-	-	15	7	12
Females	2,648	2,701	2,859	2,736	2,538
Both Sexes	2,648	2,701	2,874	2,743	2,550
Classes					
Males	15	16	11	12	14
Females	26	30	25	23	25
Co-Education	2,652	2,797	2,875	2,734	2,653
Total	2,693	2,843	2,911	2,769	2,692

Note: the data do not include the Israeli Municipality and Culture Committee Schools in Jerusalem

Drop-Out Rates from Schools by Stage and Sex, 1997/1998-2000/2001

Stage and Sex	Scholastic Year			
	1997/1998	1998/1999	1999/2000	2000/2001
Basic Stage				
Males	2.0	1.8	1.7	1.5
Females	1.5	1.4	1.1	0.9
Both Sexes	1.8	1.6	1.4	1.2
Secondary Stage				
Males	4.3	4.0	4.4	3.5
Females	8.3	6.6	7.3	5.5
Both Sexes	6.2	5.3	5.9	4.5

Note: the data do not include the Israeli Municipality and Culture Committee Schools in Jerusalem

Repetition Rates at Schools by Stage and Sex, 1997/1998-2000/2001

Stage and Sex	Scholastic Year			
	1997/1998	1998/1999	1999/2000	2000/2001
Basic Stage				
Males	3.0	2.8	2.6	2.2
Females	2.4	2.3	2.0	1.8
Both Sexes	2.7	2.5	2.3	2.0
Secondary Stage				
Males	1.2	1.5	1.6	1.4
Females	0.7	0.7	1.9	0.8
Both Sexes	0.9	1.1	1.8	1.1

Note: the data do not include the Israeli Municipality and Culture Committee Schools in Jerusalem.

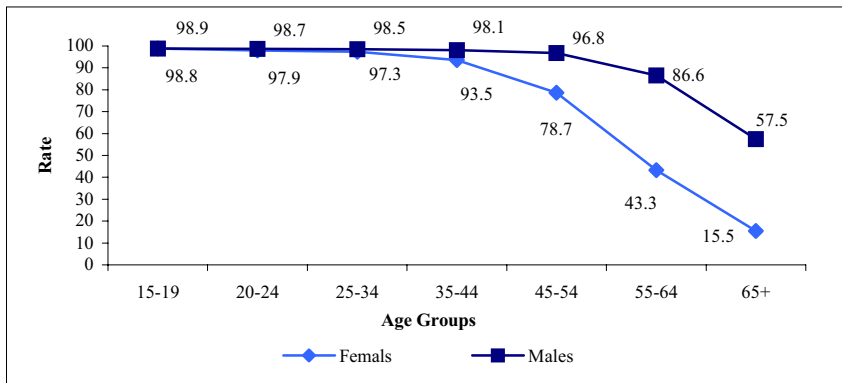
Gross Enrollment Ratio by Stage and Sex, 1998/1999 - 2002/2003

Stage and Sex	Scholastic Year				
	1998/1999	1999/2000	2000/2001	2001/2002	2002/2003*
Basic Stage					
Males	94.8	96.0	95.8	95.6	94.6
Females	95.9	97.6	98.0	97.2	94.9
Both Sexes	95.3	96.8	96.8	96.4	94.8
Secondary Stage					
Males	52.2	54.3	53.7	57.2	61.0
Females	55.1	59.6	61.5	65.5	66.3
Both Sexes	53.6	56.9	57.5	61.2	63.6

Note: the data do not include the Israeli Municipality and Culture Committee Schools in Jerusalem

** Data for the scholastic year 2002/2003 considered as primary data*

Literacy Rate For Palestinian Population (15 Years and Over) By Sex and Age Groups, 2002



Culture

Selected Indicators 1998-2002

Indicator	1998	1999	2000	2001	2002*
Number of Newspapers (In Operation)	13	13	16	16	14
Number of Magazines (In Operation)	42	33	32	30	32
Number of Domestic Radio Stations	7	11	12	15	13
Number of Domestic Television Stations	29	29	32	32	26
Number of Cultural Institutions (In Operation)					
Cultural Centers	83	72	66	69	47
Theaters	7	6	10	5	4
Cinemas	3	3	3	4	2
Museums	10	9	10	9	5
Number of Cultural Institutions Visitors (In Operation)					
Cultural Centers	227,640	424,997	150,568	238,491	109,985
Theaters	71,355	86,824	84,166	45,681	24,119
Cinemas	18,000	46,696	18,914	41,257	23,932
Museums	101,708	164,870	117,761	15,751	9,512

* Data for 2002 considered as primary data

Selected Indicators for Households by Availability of Mass Media for the Household, 2002

Indicator	Palestinian Territory	West Bank	Gaza Strip
Percentage of Households that have			
TV Set	93.0	95.1	89.2
Satellite Dish	54.2	54.2	54.3
Video	16.7	20.2	10.1
Jawwal Phone / Israeli Mobile Phone	60.4	66.9	48.4
Telephone Line	36.1	40.1	27.7
Computer	12.6	13.6	10.6
Internet at Home	1.8	2.0	1.6

Health

Main Nutritional Indicators by Region, 2002

Indicator	Palestinian Territory	West Bank	Gaza Strip
Households facing difficulties in obtaining necessary food items during Intifada	63.4	62.5	65.0
Households facing difficulties in obtaining health services during Intifada	40.0	44.6	32.1
Prevalence of anemia among children 6-59 months	38.0	35.5	41.6
Children who suffered from stunting	9.0	8.0	10.5
Children who suffered from wasting	2.5	2.9	2.0
Children who suffered from under weight	3.5	4.0	2.6
Prevalence of anemia among women 15-49 years	33.2	31.4	36.4

Governmental & Non-Governmental Hospitals* Activities by Activity, 1998-2002

Item	1998	1999	2000	2001	2002
Number of Governmental Hospitals	14	15	17	20	21
Number of Non-Governmental Hospitals	40	42	48	50	..
Total Number of Beds	3,771	3,850	4,555	4,522*	2,695
Grand Total of Beds Occupancy Rate (%)	63.3	61.8	71.4 ⁽¹⁾	73.5 ⁽¹⁾	63.6
Mean of Duration (Days)	3.0	3.0	3.0 ⁽¹⁾	3.0 ⁽¹⁾	2.8
Grand Total of Hospitalization Days	871,452	868,869	570,674 ⁽¹⁾	666,508 ⁽¹⁾	625,576

* Only hospitals that provided complete data for purpose of publishing

⁽¹⁾ Data represent government hospitals only.

Data of 2002 represent government hospitals only, and Consider as primary Data.

Rates of Physicians, Dentists, and Beds per 1000 Population, 1997-2002

Year	Rates per 1000 Population		
	Physicians	Dentists	Beds
1997	0.99	0.25	1.09
1998	1.15	0.33	1.30
1999	1.28	0.37	1.27
2000	1.40	0.39	1.40
2001	1.40	0.40	1.40
2002	1.50	0.38	1.35

Consumer Price Index

Consumer Price Index and Rate of Change by Major Groups of Expenditure, 2000-2002

(Base Year 1996=100)

Major groups of Expenditure	Ave.2000	Ave.2001	Ave.2002	Inflation Rate 2000-2001	Inflation Rate 2001-2002
Food	121.22	120.65	123.78	-0.47	2.59
Beverages and tobacco	130.22	131.94	144.67	1.32	9.65
Textiles, clothing and footwear	125.89	123.35	128.33	-2.02	4.04
Housing	126.46	133.16	143.96	5.30	8.11
Furniture, household goods & services	123.68	118.76	120.82	-3.97	1.73
Transport and communications	125.19	137.04	160.88	9.47	17.39
Education	114.62	117.87	123.11	2.84	4.44
Medical care	126.65	128.73	131.08	1.64	1.82
Recreational, cultural goods & services	95.50	93.43	93.25	-2.16	-0.19
Miscellaneous goods and services	127.56	128.71	133.58	0.90	3.78
All-Items consumer price index	123.28	124.79	131.92	1.23	5.71

Foreign Trade Indicators, 1997-2000

Value in Million US \$

Exports Imports Indicators	1997	1998	1999	2000
Total Palestinian Exports	382	395	372	401
Total Palestinian Exports by Country				
Exports to Israel	358	382	360	370
Exports to Arab Countries	19	11	10	29
Export to other countries	5	2	2	2
Total Exports by Country of Origin				
National Exports	259	267	269	295
Re- Exports	123	128	103	106
Total Exports by region				
From West Bank	338	355	330	323
From Gaza Strip	44	40	42	78
Total Exports By Land	382	395	372	382

Note: PCBS advises to use the number cautiously as they are based on variant statistical sources due to the Palestinian particularities in terms of entries and borders

Foreign Trade Indicators, 1997-2000 (Cont.)

Value in Million US \$

Exports Imports Indicators	1997	1998	1999**	2000
Total Palestinian Imports	2,239	2,375	3,007	2,383
Total Imports by Means of Transportation				
By Land*	2,077	2,157	2,816	2,129
By Postal Packages	1	1	0	0
Through Electricity Networks & Petroleum Pipes	161	217	191	254
Total Imports by Country				
From Israel	1,852	1,833	1,853	1,739
From EUCC	155	231	485	264
From Arab Countries	54	85	81	40
From American Countries	28	39	100	67
From other countries	150	187	488	273
Net Trade Balance	-1,857	-1,980	-2,635	-1,982

* Include imports through crossing borders, ports and deliveries from Israel

** Adjusted figures

Establishments

Number of Enterprises by Economic Activity, 1999- 2002

Economic Activity	1999	2000	2001	2002
Industrial	16,057	16,030	14,578	14,158
Financial Intermediation	691	696	578	475
Construction	502	462	328	274
Transport, storage & communications	756	750	507	443
Services activities (profit and non-profit)	14,318	14,332	12,708	12,700
Wholesale, retail trade & repairs	41,918	41,918	39,421	40,089
Total	74,242	74,188	68,120	68,139

Agriculture

Agricultural Indicators, 1997/1998-2001/2002

Area: dunum, Value:US\$1000

Indicator	Agricultural Year				
	1997/1998	1998/1999	1999/2000	2000/2001	2001/2002*
Field Crops Area	530,276	328,882	469,682	467,122	472,984
Vegetables Area	181,984	159,116	173,862	173,417	247,644
Fruit Trees Area	1,148,405	1,124,015	1,192,630	1,174,458	1,250,592
Cattle	22,050	23,858	23,688	26,601	**18,225
Sheep	537,998	504,078	566,409	615,838	764,197
Goats	252,258	295,033	308,845	313,583	357,207
Broilers (1000)	38,550	48,418	43,457	47,890	38,863
Layers (1000)	2,061	2,059	2,518	2,518	3,111
Bee Hives	57,850	46,195	46,020	46,585	47,836
Value of Agricultural Production	953,617	760,639	979,817	801,601	..
Value Added in Agricultural Sector	570,840	431,326	588,680	387,877	..

* Ministry of Agriculture (MoA): Primary Data (unpublished)

** Number includes mothers only.

Note: PCBS advises to use numbers cautiously as they are based on localities instead of holdings as normally recommended by FAO

Olive Presses, 1998-2002

Quantity. Metric ton, Value: US\$1000

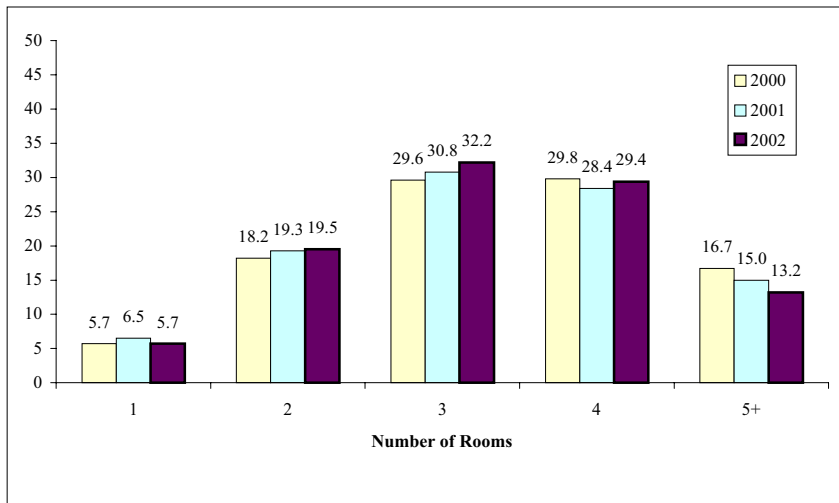
Indicator	1998	1999	2000	2001	2002
Number of Operating Olive Presses	227	165	249	194	246
Quantity of Olives Pressed	64,213	15,092	126,149	22,154	124,564
Quantity of Oil Extracted	14,998	3,436	27,062	5,443	27,744
Number of Persons Engaged	1,237	641	1,406	1,003	1,840
Number of Paid Employees	892	372	971	670	1,410
Olive Presses Revenues	4,437	1,335	8,099	2,033	5,819
Value Added	3,237	968	6,747	1,090	4,067

Housing Conditions

Percentage Distribution of Households by Housing Density and Year, 1997-2002

Housing Density	1997	1999	2000	2001	2002
Less than 1	10.1	8.0	9.4	8.8	9.1
1.00- 1.99	35.5	37.7	39.2	36.6	37.7
2.00- 2.99	29.1	30.8	30.8	32.9	33.0
3.00+	25.3	23.5	20.6	21.7	20.2
Total	100.0	100.0	100.0	100.0	100.0
Average Housing Density	2.0	2.0	1.9	2.0	2.1

Percentage Distribution of Households by Number of Rooms in the Housing Units, 2000-2002

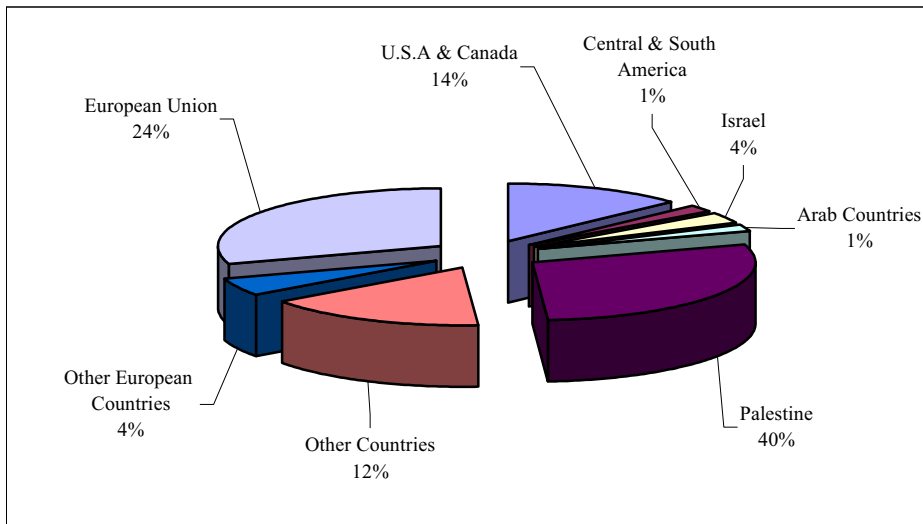


Tourism

Hotel Activities, 1997-2002

Indicator	1997	1998	1999	2000	2001	2002
Number of Hotels	85	92	91	106	84	72
Number of Guests	220,850	214,220	316,871	335,711	60,208	51,357
Number of Beds	7,419	7,986	8,053	10,063	6,240	6,473
Number of Rooms	3,425	3,682	3,781	4,708	2,860	3,098
Number of Guest Nights	639,344	601,085	895,540	1,016,683	184,857	169,641

Percent Distribution of Guest Nights by Nationality, 2002



Transportation & Communication

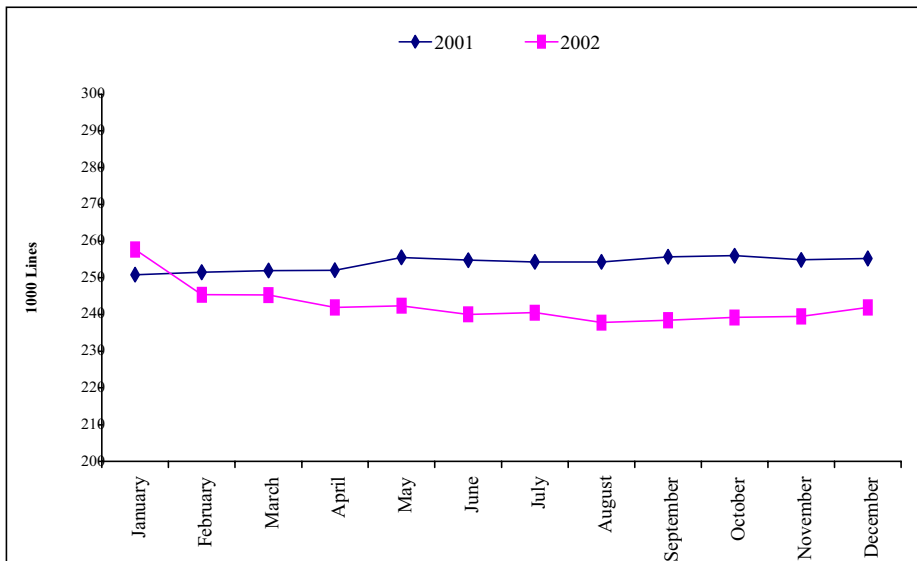
Main Indicators of Transportation & Communication *1998-2001

Indicator	1998	1999	2000	2001
Road network Length (kilometers)**	2,495	4,924
Number of Licensed Road Vehicles	140,212	137,057	123,868	114,546
Number of Material Received by Mail	3,549,481	3,526,136	5,213,175	4,003,327
Number of Material Dispatched by Mail	1,693,062	1,877,153	3,810,276	2,413,080
Number of Jawwal Cellular Phone Subscribers	175,941
Number of Main Telephone	167,271	222,198	272,311	255,218
Monthly Average of Calls Number	19,809,806	25,910,943	30,848,326	29,762,592
Monthly Average of Calls Length (minutes)	47,629,336	67,244,469	83,299,749	90,069,702

* Data do not include those parts of Jerusalem Governorate, which were annexed by Israel in 1967.

** Data does not include By pass roads but includes those parts of Jerusalem Governorate, which were annexed by Israel in 1967.

Number of Main Telephone Lines in Remaining West Bank*, and Gaza Strip by Month, 2001-2002 (in thousands)



* Remaining West Bank includes West Bank without those parts of Jerusalem, which were annexed by Israel in 1967.

Main Water and Wastewater Indicators by Year, 1998-2002

Indicator	1998	1999	2000	2002
Percentage of households that obtain water from public network	85.9	84.8	85.5	80.5
Percentage of households that use sewage network to dispose their wastewater	37.9	39.3	43.9	45.8
Percentage of households that use cesspit to dispose their wastewater	62.1	59.5	55.4	53.2

Al-Aqsa Uprising (Intifada)

Palestinians Martyrs in Al-Aqsa Uprising (Intifada) by District of Residence and Age Group, 29/9/2000-10/4/2003

District of Residence (Governorate)	Age Groups						Total
	Less than 18	18-29	30-39	40-49	50+	Not Stated	
Total	475	1,276	362	139	173	7	2,432
West Bank	233	697	237	80	117	7	1,371
Jenin	40	135	44	13	31	-	263
Tubas	9	31	3	0	0	-	43
Tulkarm	22	82	30	10	14	-	158
Nablus	56	180	48	22	23	7	336
Qalqiliya	11	25	12	4	7	-	59
Salfit	4	10	4	4	3	-	25
Ramallah & Al-Bireh	25	54	15	8	13	-	115
Jericho	1	7	4	0	1	-	13
Jerusalem	13	26	8	1	4	-	52
Bethlehem	20	52	34	6	10	-	122
Hebron	32	95	35	12	11	-	185

**Palestinians Martyrs in Al-Aqsa Uprising (Intifada) by District of Residence and Age Group,
29/9/2000-10/4/2003 (Cont.)**

District of Residence (Governorate)	Age Groups						Total
	Less than 18	18-29	30-39	40-49	50+	Not Stated	
Gaza Strip	241	561	122	55	54	-	1,033
North Gaza	31	121	17	6	6	-	181
Gaza	70	157	40	18	15	-	300
Deir Al-Balah	34	85	14	8	13	-	154
Khan Younis	47	97	23	12	9	-	188
Rafah	59	101	28	11	11	-	210
Within Israel	1	11	1	3	1	-	17
Abroad	-	7	2	1	1	-	11

The Data may change due to ongoing research it reflects documented cases only, taking into account that the Israel forces Could Disclosed some of martyrs bodies, especially in Jenin refugee camp and Nablus.