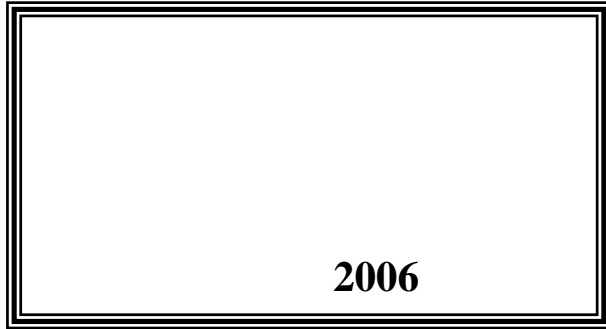


**2008**

**2009 /**



2009 – 1430 ©

:

2008

2009.

:

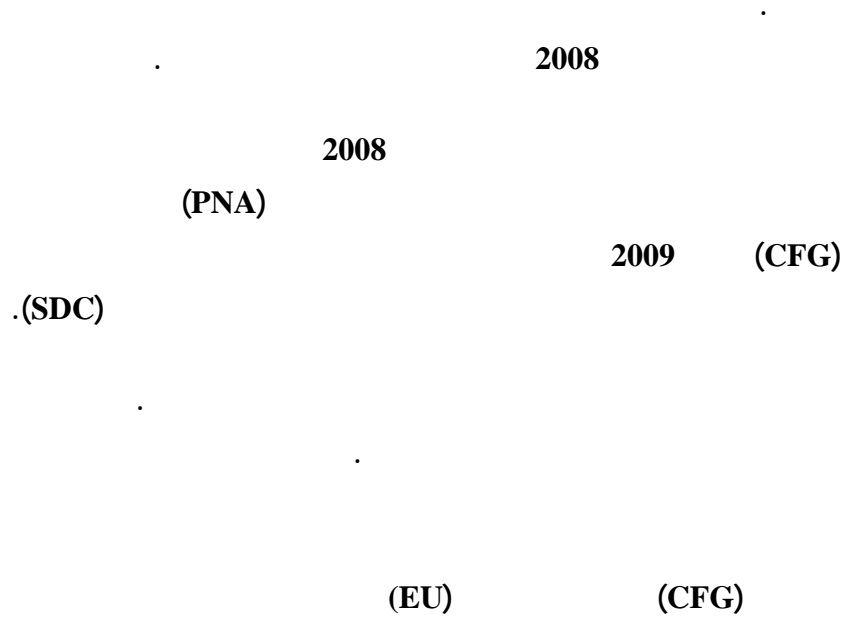
– 1647 . .

(970/972) 2 242 6340 :

(970/972) 2 242 6343 :

diwan@pcbs.gov.ps :

<http://www.pcbs.gov.ps> :





•

•

•

•

•

•



1995

2008

2009





<b>19</b>	:
19	1.1
19	2.1
19	3.1
<b>21</b>	:
<b>23</b>	:
23	1.3
23	2.3
23	2008
23	3.3
27	4.3
27	5.3
27	6.3
28	7.3
31	8.3
<b>33</b>	:
33	1.4
33	2.4
34	3.4
35	4.4
<b>37</b>	:
37	1.5
38	2.5
<b>39</b>	
<b>41</b>	



43

**:1**

2008

43

**:2**

2008

44

**:3**

2008

45

**:4**

2008

46

**:5**

2008

46

**:6**

2008

47

**:7**

2008

47

**:8**

2008

48

:9

2008



23			2008	:1
27			2008	:2
27			2008	:3
28	2008			:4
28			2008	:5



**25**

**:1**

2008

**29**

**:2**

.2008





			6,523		
				:	
2008	%29.8				•
	.	%33.9	%27.8		
			%99.6		•
			.		
194,543					•
	.	74,323	120,220		
			%26.2		•
.	%13.2		%21.5		
			%38.6		•
		.		%25.3	
2008	41.4				•
	.	32.5		47.2	
%91.8			%85.5		•
			.		



1.1

2008

2007 2006

1999

2.1

3.1







2008

1.3

%29.8

( )

.2008

%70.2

%17.9

%33.9

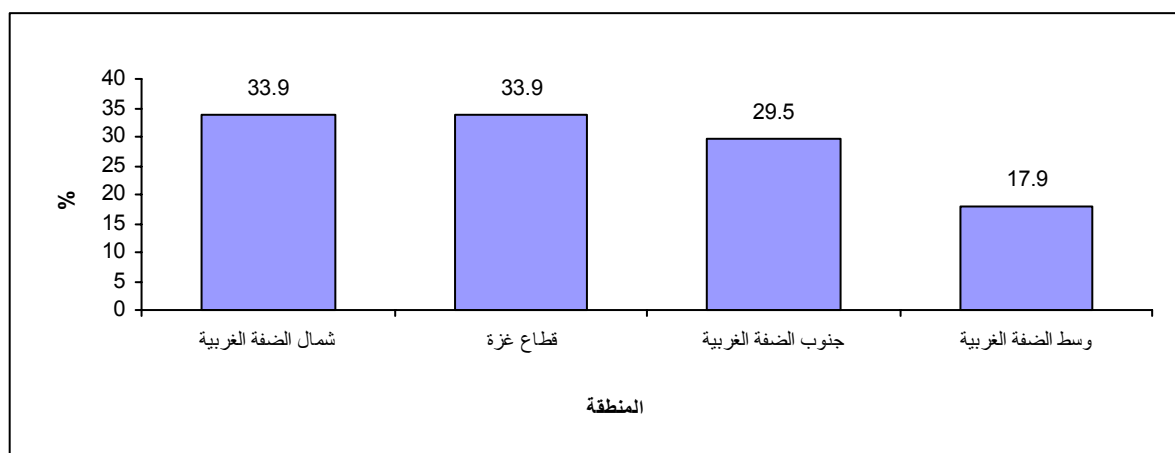
%33.9

%29.5

.2008

2008

:(1)



2008

2.3

2008

%47.6

194,543

3.3

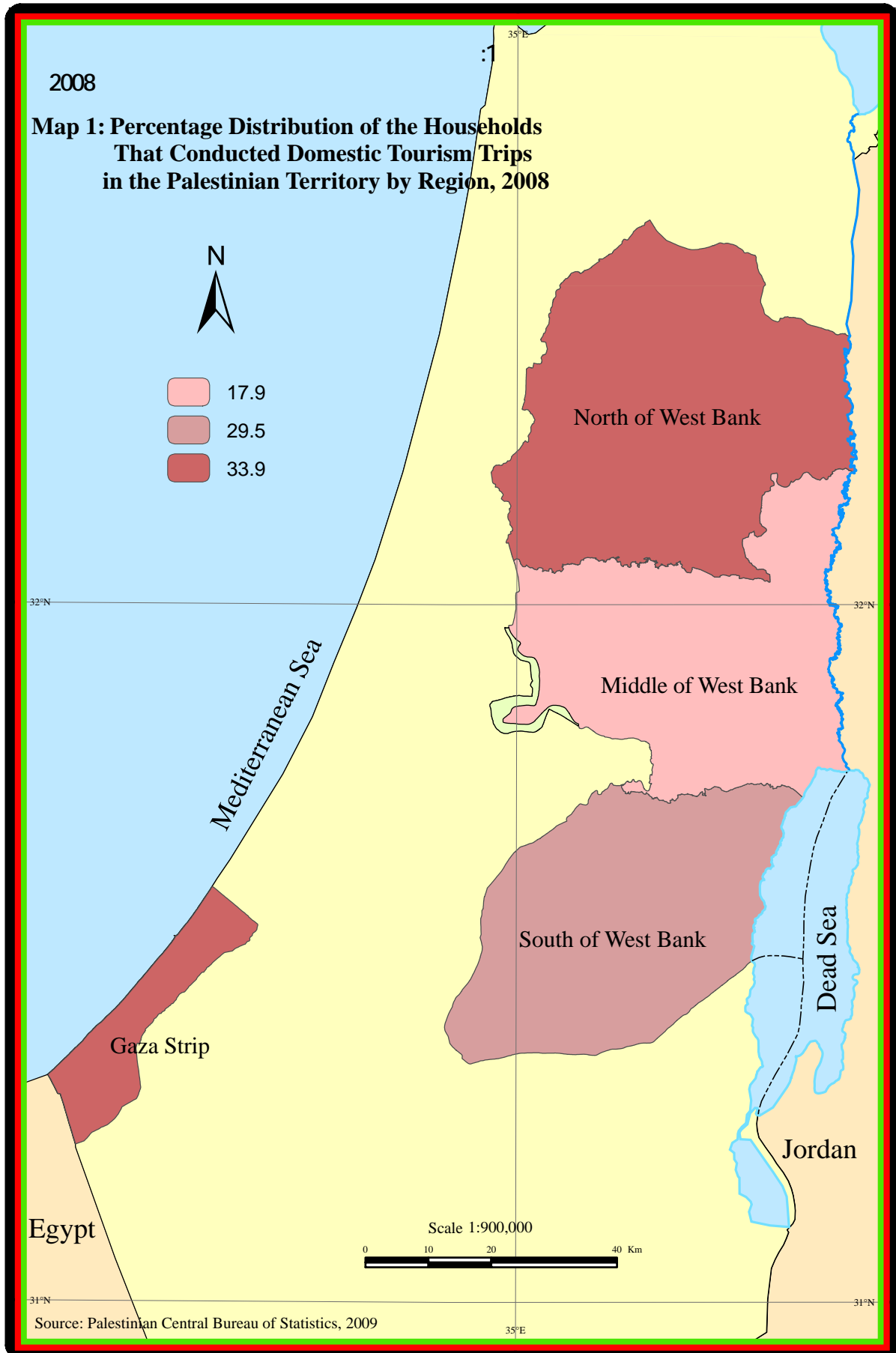
%26.2

%13.2

%21.5



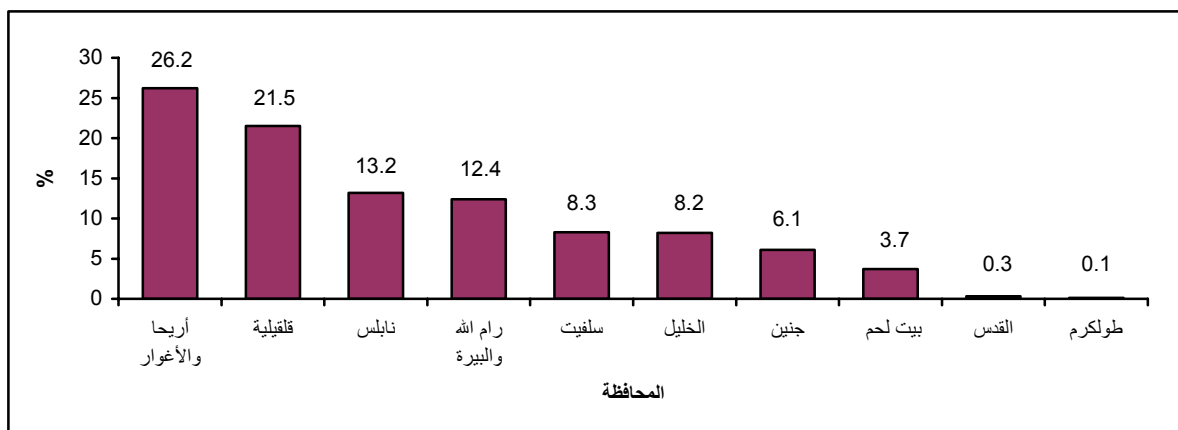






2008

:(2)



4.3

%38.6

%19.8

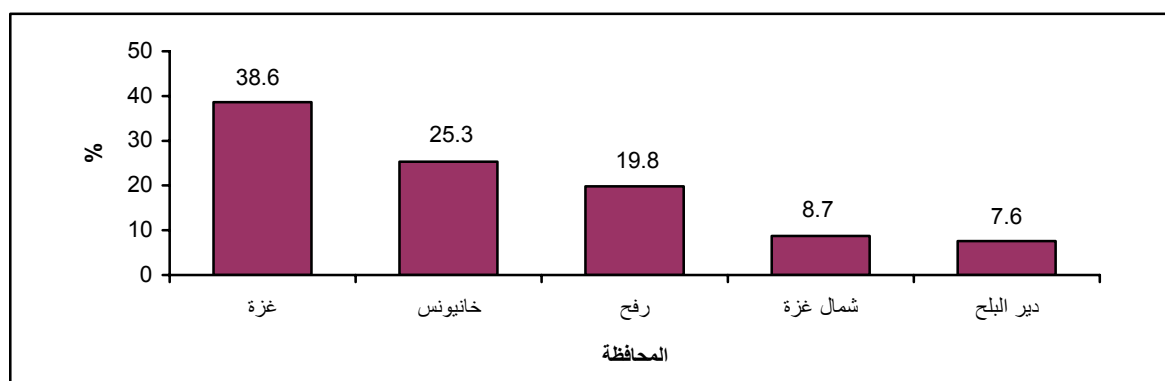
%25.3

%7.6

%8.7

2008

:(3)



5.3

%99.9

%0.1

6.3

41.4

32.5

47.2

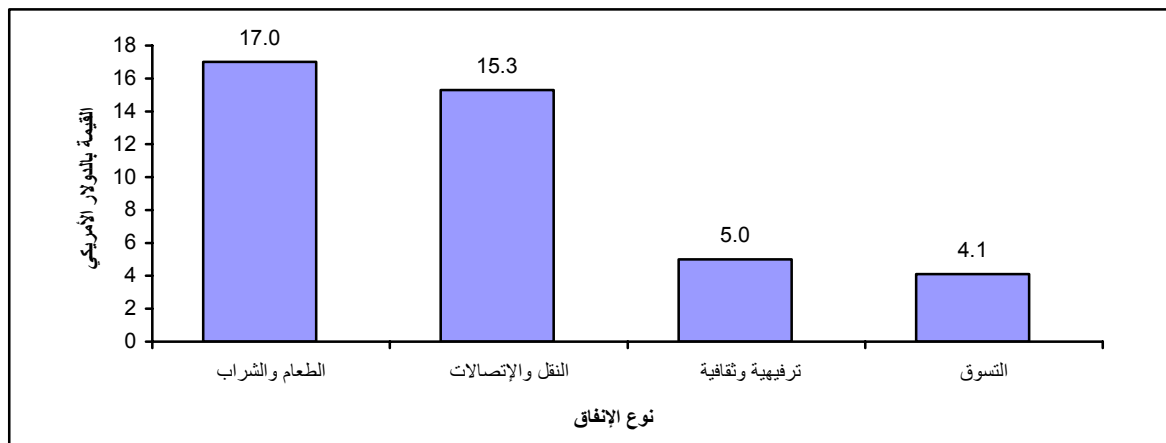
15.3

17.0

5.0

4.1

( 2008 ) (4):



7.3

%91.8

%64.6

%85.5

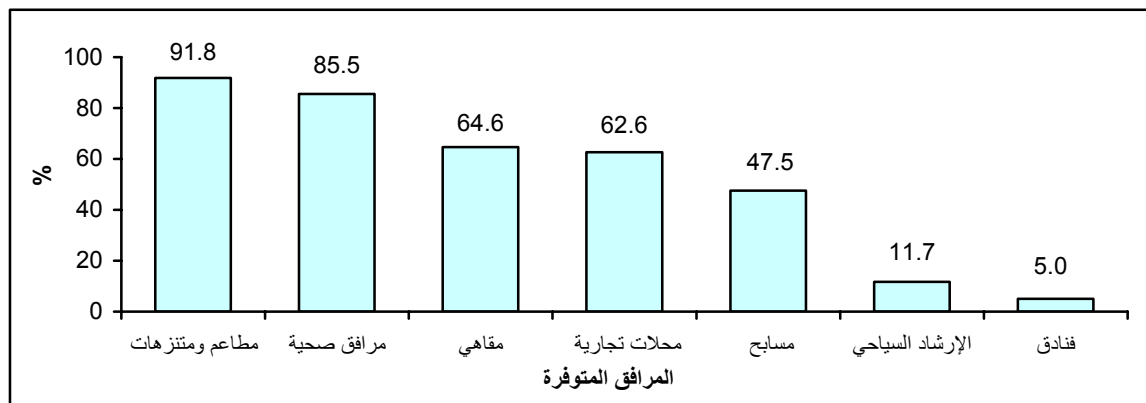
%47.5

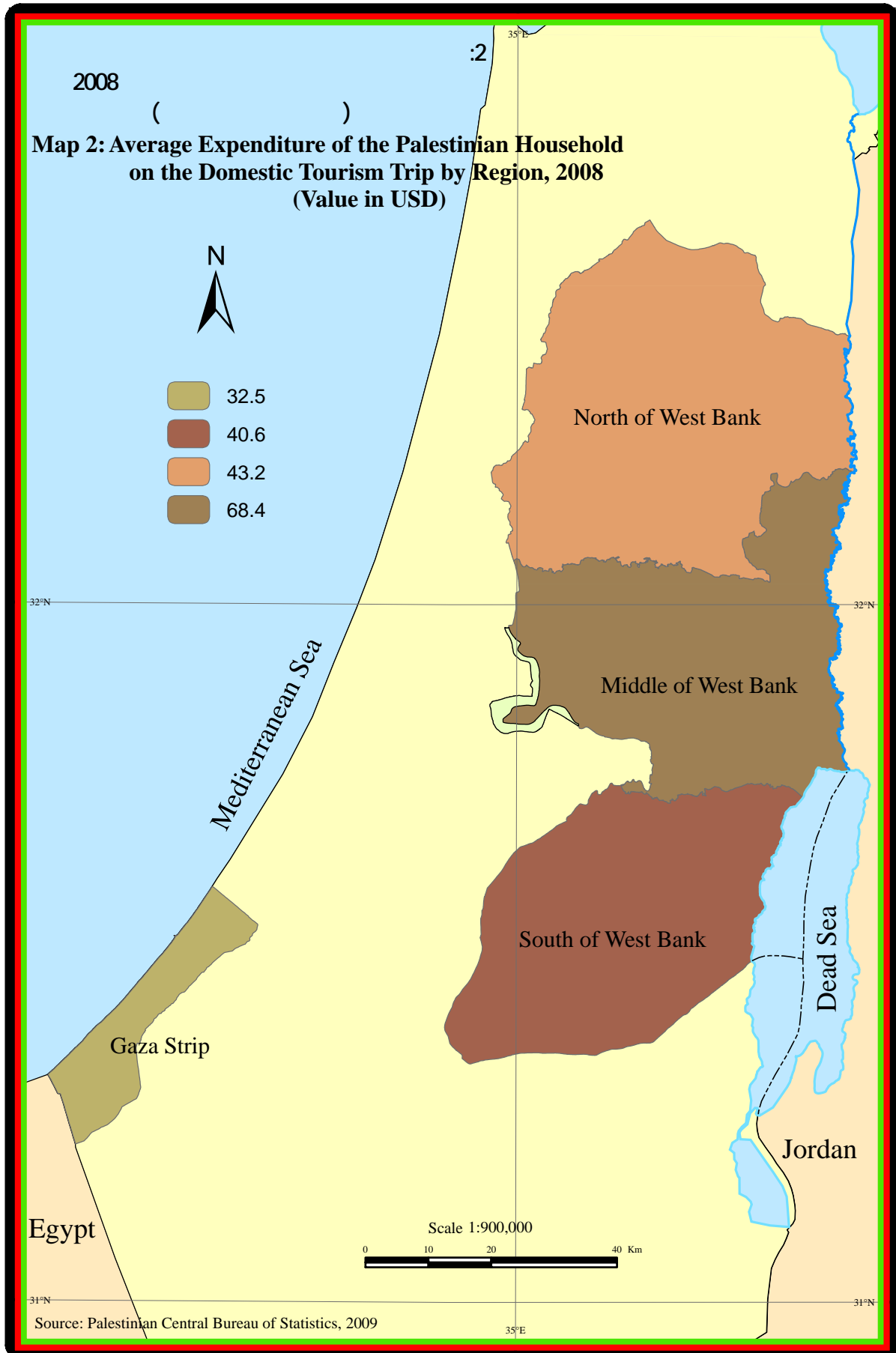
%62.6

%5.0

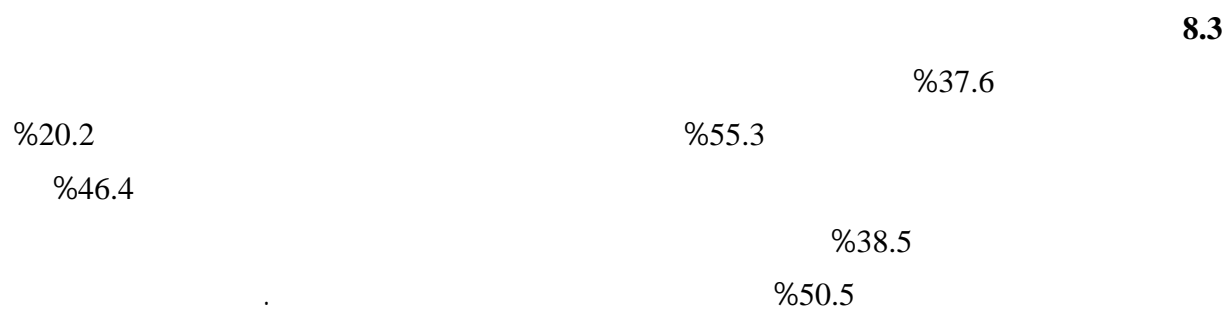
%11.7

2008 (5):













2008

1.4

2.4

2008 : ( )  
( )

2007

( )  
(PSUs)

7,552 11 6,523 13 1995

.2007

.( )

- 
- 
- 
-

.(Video Conference)

:

- 
- 
- 

2009/04/15

2009/01/20

(4)

(24)

(15)

(4)

6,523

:

6,345

66

12

100

**4.4**

:

**.1**

**.2**

Access

:

•

•

•

•

•

•

.(User-Friendly)

.SPSS

2008

2007

.2008

.2007



1.5

.1

2008

( )

.2

( ) ( )

:

- 
- 
- 
- 
- 

%95		%	%				
31.6	28.1	0.029	0.9	29.8			
71.9	68.4	0.013	0.9	70.2			
36.8	31.1	0.043	1.5	33.9			
68.9	63.2	0.022	1.5	66.1			
20.8	15.4	0.076	1.4	17.9			
84.6	79.2	0.017	1.4	82.1			
32.7	26.5	0.053	1.6	29.5			
73.5	67.3	0.022	1.6	70.5			
37.9	30.1	0.058	2.0	33.9			
69.9	62.1	0.030	2.0	66.1			

	.	1994		.1
	.	–	.1998	.2
:1998			.1999	.3
			.	–
:2005			.2006	.4
			.	–
:2006			.2007	.5
			.	–





# Tables



2008

:1

**Table 1: Percentage Distribution of the Households by Domestic Tourism Trips in the Palestinian Territory and Region, 2008**

Conducting Trips	Region						
	Gaza Strip	South of the West Bank	Middle of the West Bank	North of the West Bank	West Bank	Palestinian Territory	
Conducted Trips	33.9	29.5	17.9	33.9	27.8	29.8	
Not conducted	66.1	70.5	82.1	66.1	72.2	70.2	
<b>Total</b>	<b>100</b>	<b>100</b>	<b>100</b>	<b>100</b>	<b>100</b>	<b>100</b>	

2008

:2

**Table2: Percentage Distribution of the Households that Traveled for Domestic Tourism in the Palestinian Territory by the Objective of Trip and Region, 2008**

Objective of Trip	Region						
	Gaza Strip	South of the West Bank	Middle of the West Bank	North of the West Bank	West Bank	Palestinian Territory	
Entertainments	99.7	99.4	100.0	99.4	99.5	99.6	
Work or official business	0.3	0.6	0.0	0.6	0.5	0.4	
<b>Total</b>	<b>100</b>	<b>100</b>	<b>100</b>	<b>100</b>	<b>100</b>	<b>100</b>	

2008

:3

**Table 3: Distribution of the Households that Traveled for Domestic Tourism in the Palestinian Territory by Number of Trips and Region, 2008**

Number of Trips	Region						
	Gaza Strip	South of the West Bank	Middle of the West Bank	North of the West Bank	West Bank	Palestinian Territory	
1	25,723	18,806	13,179	34,971	66,956	92,679	1
2	20,969	11,113	6,709	15,402	33,224	54,193	2
3	11,759	2,595	1,844	5,975	10,414	22,173	3
4	3,933	2,118	845	1,679	4,642	8,575	4
5	4,505	1,183	465	396	2,044	6,549	5
6	1,575	196	82	408	686	2,261	6
7	560	296	187	0	483	1,043	7
8	1,157	204	0	0	204	1,361	8
9	158	92	163	263	518	676	9
10	2,231	0	0	309	309	2,540	10
More Than 10	1,753	151	445	144	740	2,493	أكثر من 10
<b>Total</b>	<b>74,323</b>	<b>36,754</b>	<b>23,919</b>	<b>59,547</b>	<b>120,220</b>	<b>194,543</b>	

2008

:4

**Table 4: Percentage Distribution of the Households that Traveled for Domestic Tourism Trips in the Palestinian Territory by Destination of Trip and Region, 2008**

Destination of Trip	Region					
	Gaza Strip	South of the West Bank	Middle of the West Bank	North of the West Bank	West Bank	
Jenin	0.0	0.8	1.6	11.3	6.1	
Tulkarm	0.0	0.1	0.0	0.0	0.1	
Nablus	0.0	0.4	12.6	21.4	13.2	
Qalqilya	0.0	1.8	9.0	38.5	21.5	
Salfit	0.0	0.0	11.4	12.3	8.3	
Ramallah and Al-Bireh	0.0	21.0	12.0	7.2	12.4	
Jericho and Al-Aghwar	0.0	40.7	49.5	8.1	26.2	
Jerusalem	0.0	0.0	0.2	0.5	0.3	
Bethlehem	0.0	10.1	2.2	0.3	3.7	
Hebron	0.0	25.1	1.5	0.4	8.2	
North Gaza	8.7	0.0	0.0	0.0	0.0	
Gaza	38.6	0.0	0.0	0.0	0.0	
Deir El-Balah	7.6	0.0	0.0	0.0	0.0	
Khan Younis	25.3	0.0	0.0	0.0	0.0	
Rafah	19.8	0.0	0.0	0.0	0.0	
<b>Total</b>	<b>100</b>	<b>100</b>	<b>100</b>	<b>100</b>	<b>100</b>	

\*2008

:5

**Table 5: Distribution of the Households that Traveled for Domestic Tourism in the Palestinian Territory by Number of duration Days and Region, 2008\***

Number of Days	Region						
	Gaza Strip	South of the West Bank	Middle of the West Bank	North of the West Bank	West Bank	Palestinian Territory	
1	350	36,001	23,464	58,908	118,373	118,723	1
2	123	480	163	137	780	903	2
3	63	0	45	170	215	278	3
4	37	0	0	37	37	74	4
5+	229	0	45	294	339	568	+ 5
<b>Total</b>	<b>802</b>	<b>36,481</b>	<b>23,717</b>	<b>59,546</b>	<b>119,744</b>	<b>120,546</b>	

\*: The number of **Households** here is just families, which lasted more than 12 hours in the trip.

12

:\*

2008

:6

**Table 6: Percentage Distribution of the Households that Traveled for Domestic Tourism in the Palestinian Territory by the Way of Organization and Region, 2008**

Way of Organization Visit	Region						
	Gaza Strip	South of the West Bank	Middle of the West Bank	North of the West Bank	West Bank	Palestinian Territory	
By Household	100	100	99.7	100	99.9	99.9	
Travel Agency	0.0	0.0	0.3	0.0	0.1	0.1	
<b>Total</b>	<b>100</b>	<b>100</b>	<b>100</b>	<b>100</b>	<b>100</b>	<b>100</b>	

( ) 2008

:7

**Table 7: Average Expenditure of the Palestinian Household on the Domestic Tourism Trip by Type of Expenditure and Region, 2008  
(Value in US\$)**

Type of Expenditure	Region						
	Gaza Strip	South of the West Bank	Middle of the West Bank	North of the West Bank	West Bank	Palestinian Territory	
Food and Drinks	17.4	14.8	23.1	15.5	16.8	17.0	
Transp. & Telecom.	10.1	19.6	25.7	15.3	18.6	15.3	
Entertainments	2.2	4.6	11.7	6.5	6.9	5.0	
Shopping	2.8	1.6	7.8	6.0	4.9	4.1	
<b>Total</b>	<b>32.5</b>	<b>40.6</b>	<b>68.3</b>	<b>43.3</b>	<b>47.2</b>	<b>41.4</b>	

2008

:8

**Table 8 :Percentage Distribution of Available Services in the Visited Areas in the Palestinian Territory by Type of Service, 2008**

Type of Service	Available Services			
	Total	Not Available	Available	
Restaurants & Parks	100	8.2	91.8	
Basic health facilities	100	14.5	85.5	
Swimming Pools	100	52.5	47.5	
Hotels	100	95.0	5.0	
Commercial Shops	100	37.4	62.6	
Coffee Shops	100	35.4	64.6	
Tourism Guides	100	88.3	11.7	

2008

:9

**Table 9: Percentage Distribution of the Level of Satisfaction of Available Services in the Visited Areas in the Palestinian Territory by Service, 2008**

Satisfaction Level of Service	Service						
Very good	23.7	20.2	29.3	38.5	25.6	37.6	
Good	71.9	46.4	61.5	50.5	63.7	55.3	
Accepted	3.1	24.9	8.5	9.9	9.8	6.6	
Bad	1.2	6.5	0.6	1.0	0.8	0.4	
Very Bad	0.1	2.0	0.1	0.1	0.1	0.1	
<b>Total</b>	<b>100</b>	<b>100</b>	<b>100</b>	<b>100</b>	<b>100</b>	<b>100</b>	المجموع