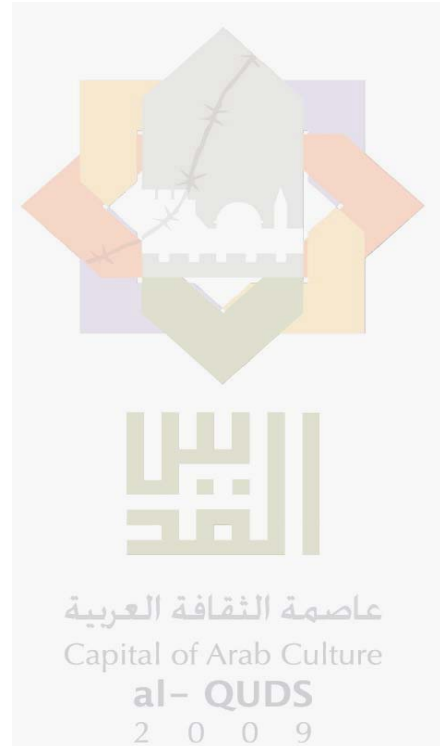
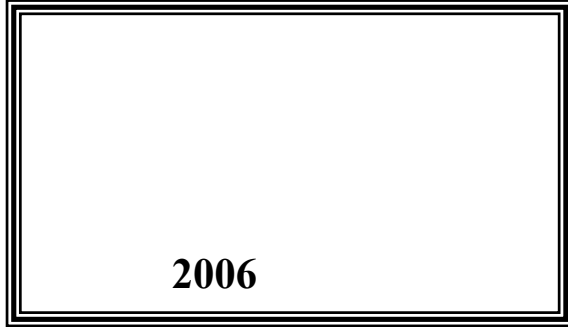


**2017**

**2009 /**



© 1431 - 2009.

.2017

.2009

1647 . .

: 2982700 2 (970/972)

: 2982710 2 (970/972)

: diwan@pcbs.gov.ps

: http://www.pcbs.gov.ps





2017

(PNA)

المركزي للإحصاء الفلسطيني

2009

(CFG)

.(SDC)

(EU)

(CFG)



•

•

•

•

•





%54.5

.1997

2007

1997

2007

%50.2

.2017

**2009**



<b>21</b>			:
<b>23</b>			:
<b>25</b>			:
25		1.3	
25		1.1.3	
26		2.1.3	
28		3.1.3	
<b>29</b>			:
29		1.4	
29		2.4	
29		(2007 – 1948)	1.2.4
30		(2007– 1967)	2.2.4
30		(2007 – 1987)	3.2.4
30		(2007 – 2000)	4.2.4
31			3.4
31			1.3.4
31	0.05		2.3.4
31	0.1		3.3.4
32			4.4
<b>35</b>			
<b>37</b>			
<b>45</b>			



39 :1

40 :2

41 :3

(2007 )

42 :4

0.05

43 :5

0.1



29 :1

31 :2

32 :3

32 :4

33 :5





47			:1
		(2007 )	
48			:2
		2007-1948	
52			:3
		2007-1967	
55			:4
		2007-1987	
57			:5
		2007-2000	
58	2007		:6
60			:7
67			:8
74			:9
		2007	
75			:10
		0.05	
76			:11
		0.1	



-1948)

0.05

.2017 2007

(2007-2000 2007-1987 2007-1967 2007

0.1

1,124,063 2007 %62.6 2017

395,182 728,881

0.05

1,077,722 2017

360,753 716,969

0.05

%50.2 2007 1997 2007

0.05

.2007 %55.9 2017



(2017-2008)  
.1997

(2017-2008)



:( )

:

:

:

:

:

:

:(.)





( )

**1.3**

**1.1.3**

2007

2007

(2017-2008)

(5 4 3 2 )

(2007-1987) (2007-1967) (2007-1948) :

(2007-2000)

2007

)

2007

(2017-2008)

(

(2007-1948) :

(2007-2000) (2007-1987) (2007-1967)

( ) : .1  
 . .2

$$\text{Annual Increasing Average} = \frac{\text{HUN}}{\text{AHUN}} \times 100$$

Annual Increasing Average :  
 HUN :  
 AHUN : .3

(2017.... 2010 2009 2008) .4

\* = -  
 + = -  
 2007 2008  
 ( )  
 (2007) 2008  
 2008

**2.1.3**

: ( ) .1  
 %79 .2  
 .2007 .3  
 . 10 .4  
 .100 .4  
 .( 10 ) .5

$$\text{Head of Household Average} = \frac{\text{NHH}(10 \text{ years above by sex})}{\text{NP}(10 \text{ years above by sex})} \times 100$$

Head of Household Average :  
 NHH(10 years by sex) : ( ) 10  
 NP(10 years by sex) : ( ) 10

$$\text{Number of Households Estemating Year} = \frac{\text{HHA}(10 \text{ years above by sex}) \times \text{ENP}(10 \text{ years above by sex})}{100}$$

Number of Households Estemating Year :  
 HHA(10 years above by sex) : ( ) 10  
 ENP(10 years above by sex) : ( ) 10  
 ( )

$$\text{Number of Housing Units} = \frac{\text{NHEY} \times \text{PCVH}}{\text{POH}} + \text{NHEY}$$

Number of Housing Units :  
 NHEY :  
 PCVH : ( )  
 POH :  
 ( )  
 .2017

(7 )

2007

( ) 2007  
**3.1.3**

(2007 )  
 5.5 2007  
 .(9 ) 5.8 6.5

0.05  
 (9) 0.1

:(  
 .(2007) •  
 5.0 0.05 •  
 .2017 6.0  
 4.5 0.1 •  
 .2017 5.5

:(  
 (2017 – 2008) .1

(2017 – 2008) .2

:

$$\text{Number of Housing Units} = \frac{\text{NHEY X PCVH}}{\text{POH}} + \text{NHEY}$$

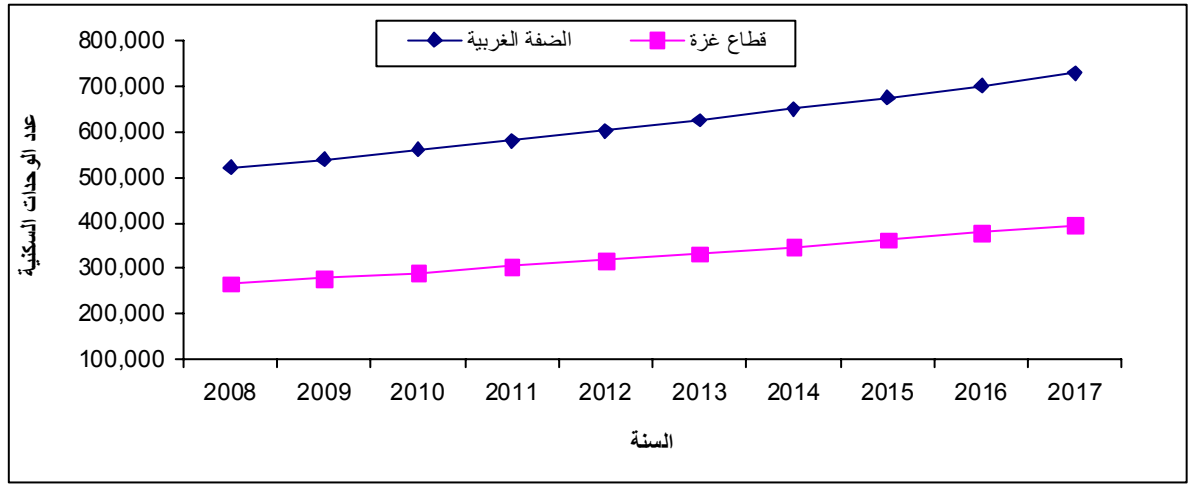
:2007

1.4

691,463  
 2012 919,801 2007  
 .%33.0  
 1,124,063 2017  
 395,182 728,881

(1)

:1



2.4

:

(2007 - 1948)

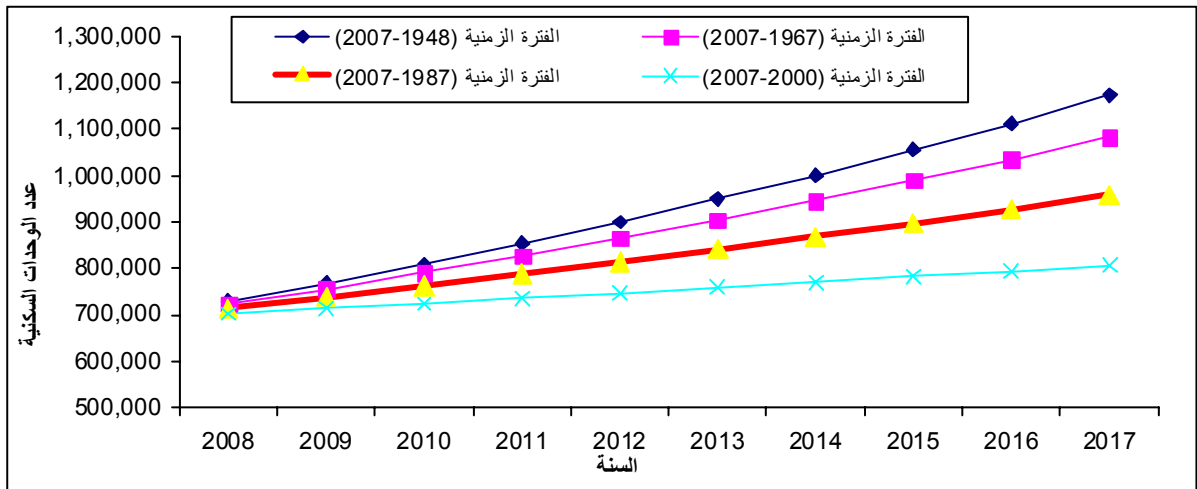
1.2.4

691,463  
 .%30.2 2012 900,388 2007

	1,172,834	2017		(2007 – 1948)
	430,882		741,952	
			<b>(2007–1967)</b>	<b>2.2.4</b>
691,463				
.%19.6		2012	864,687	2007
	1,082,694	2017		(2007 – 1967)
	416,052		666,642	
			<b>(2007–1987)</b>	<b>3.2.4</b>
691,463				
.%17.7		2012	813,830	2007
	958,308	2017		(2007–1987)
	355,306		603,002	
			<b>(2007–2000)</b>	<b>4.2.4</b>
691,463				
.%8.0		2012	746,959	2007
	807,099	2017		(2007–2000)
	294,199		512,900	

(2)

:2



3.4

:

1.3.4

691,463		2012	856,435	2007
.%23.9				
984,792	2017			
333,002		651,790		

0.05

2.3.4

691,463		2012	895,067	2007
.%29.5				
1,077,722	2017			
360,753		716,969		

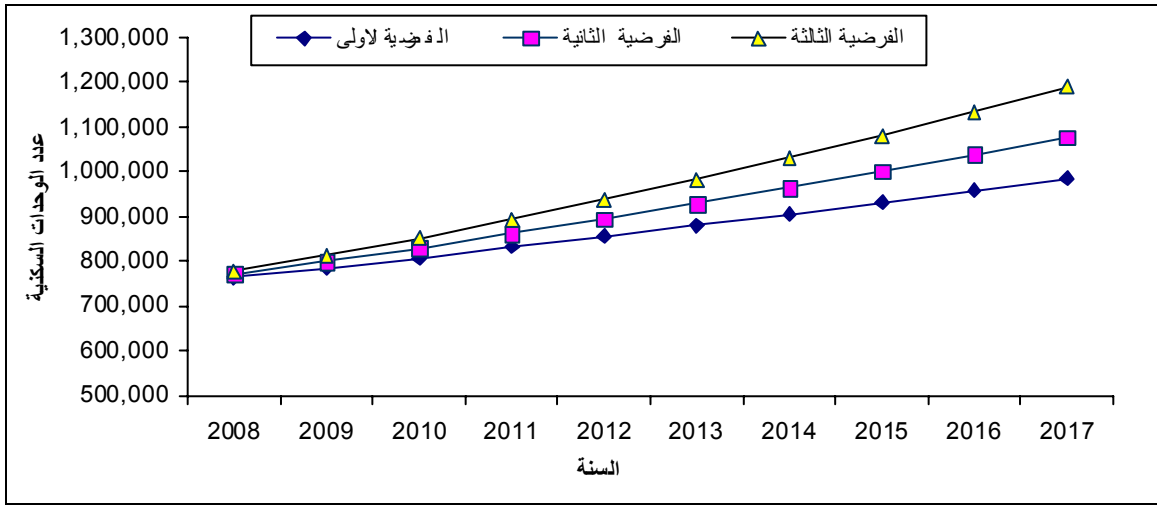
0.1

3.3.4

691,463		2012	937,374	2007
.%35.6				
1,190,181	2017			
393,548		796,633		

(3)

:3



(2007)

0.05

0.1

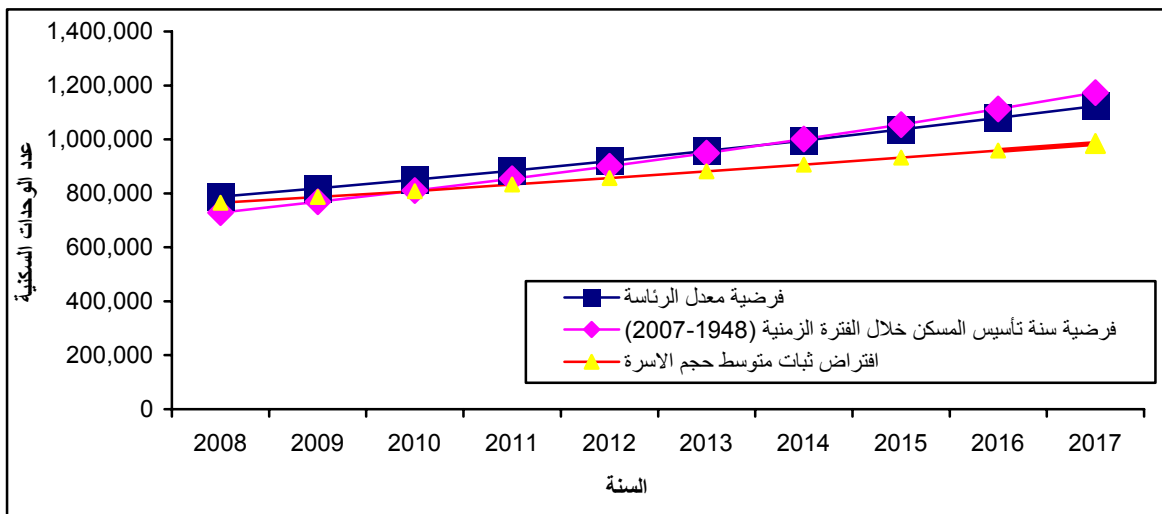
4.4

(2007 - 1948)

2007

(0.5)

:4





2007 (0.05)

(0.05)

2007 5.8 1997 6.4

0.06 0.06

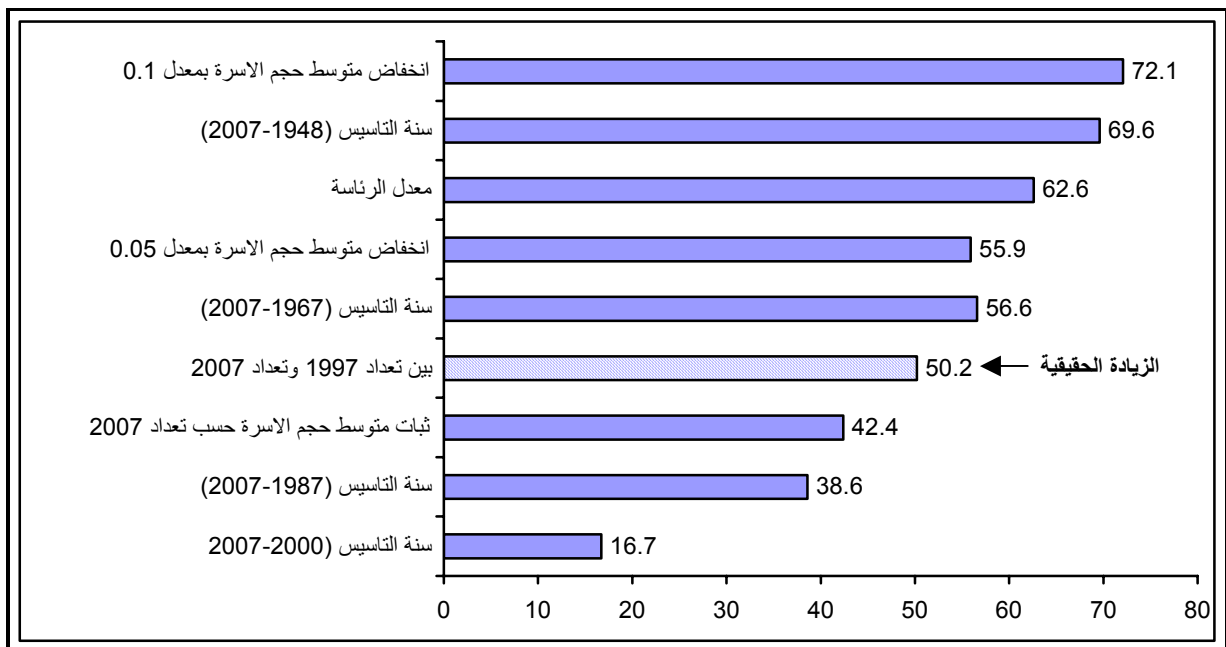
0.05 0.04

%50.2 2007 1997

0.05

.2007 2017 %55.9

:5





<i>.2010</i>			<i>.2002</i>		<i>.1</i>
				<i>.</i>	<i>-</i>
					<i>.2</i>
		<i>.1994</i>		<i>54</i>	
<i>.</i>	<i>-</i>	<i>.2017-2007</i>	<i>.2008</i>		<i>.3</i>
<i>:2007 -</i>			<i>.2008</i>		<i>.4</i>
		<i>.</i>	<i>-</i>	<i>-</i>	<i>-</i>



# Tables



**Table 1: Projected Households and Housing Units in the Palestinian Territory Using Average of Head of Households Hypothesis by Region and year**

Region and Year	Number of Housing Units	Number of Households	
<b>Palestinian Territory</b>			
2008	788,110	675,853	2008
2009	818,663	702,113	2009
2010	850,563	729,532	2010
2011	884,385	758,670	2011
2012	919,801	789,130	2012
2013	957,010	821,130	2013
2014	996,011	854,672	2014
2015	1,036,839	889,787	2015
2016	1,079,525	926,503	2016
2017	1,124,063	964,816	2017
<b>West Bank</b>			
2008	521,042	436,154	2008
2009	540,273	452,252	2009
2010	560,327	469,039	2010
2011	580,463	485,894	2011
2012	602,427	504,280	2012
2013	625,511	523,603	2013
2014	649,702	543,853	2014
2015	675,001	565,030	2015
2016	701,403	587,131	2016
2017	728,881	610,132	2017
<b>Gaza Strip</b>			
2008	267,068	239,699	2008
2009	278,390	249,861	2009
2010	290,236	260,493	2010
2011	303,922	272,776	2011
2012	317,374	284,850	2012
2013	331,499	297,527	2013
2014	346,309	310,819	2014
2015	361,838	324,757	2015
2016	378,122	339,372	2016
2017	395,182	354,684	2017

**Table 2: Projected Households and Housing Units in the Palestinian Territory Using Year of Construction of Housing Units Hypothesis by year and Region**

Year	Region			
	Gaza Strip	West Bank	Palestinian Territory	
<b>Period (1948- 2007)</b>				<b>( 2007-1948)</b>
2008	256,250	472,686	<b>728,936</b>	2008
2009	271,482	496,968	<b>768,450</b>	2009
2010	287,619	522,498	<b>810,117</b>	2010
2011	304,716	549,339	<b>854,055</b>	2011
2012	322,829	577,559	<b>900,388</b>	2012
2013	342,019	607,229	<b>949,248</b>	2013
2014	362,349	638,423	<b>1,000,772</b>	2014
2015	383,888	671,219	<b>1,055,107</b>	2015
2016	406,707	705,700	<b>1,112,407</b>	2016
2017	430,882	741,952	<b>1,172,834</b>	2017
<b>Period (1967- 2007)</b>				<b>( 2007-1967)</b>
2008	255,354	467,654	<b>723,008</b>	2008
2009	269,587	486,443	<b>756,030</b>	2009
2010	284,613	505,987	<b>790,600</b>	2010
2011	300,477	526,316	<b>826,793</b>	2011
2012	317,225	547,462	<b>864,687</b>	2012
2013	334,906	569,458	<b>904,364</b>	2013
2014	353,573	592,338	<b>945,911</b>	2014
2015	373,280	616,137	<b>989,417</b>	2015
2016	394,086	640,892	<b>1,034,978</b>	2016
2017	416,052	666,642	<b>1,082,694</b>	2017
<b>Period (1987- 2007)</b>				<b>( 2007-1987)</b>
2008	251,356	462,985	<b>714,341</b>	2008
2009	261,211	476,779	<b>737,990</b>	2009
2010	271,452	490,984	<b>762,436</b>	2010
2011	282,094	505,612	<b>787,706</b>	2011
2012	293,154	520,676	<b>813,830</b>	2012
2013	304,647	536,189	<b>840,836</b>	2013
2014	316,591	552,164	<b>868,755</b>	2014
2015	329,003	568,615	<b>897,618</b>	2015
2016	341,902	585,556	<b>927,458</b>	2016
2017	355,306	603,002	<b>958,308</b>	2017
<b>Period (2000- 2007)</b>				<b>( 2007-2000)</b>
2008	246,657	455,552	<b>702,209</b>	2008
2009	251,535	461,593	<b>713,128</b>	2009
2010	256,510	467,715	<b>724,225</b>	2010
2011	261,583	473,918	<b>735,501</b>	2011
2012	266,756	480,203	<b>746,959</b>	2012
2013	272,032	486,571	<b>758,603</b>	2013
2014	277,412	493,024	<b>770,436</b>	2014
2015	282,898	499,562	<b>782,460</b>	2015
2016	288,493	506,187	<b>794,680</b>	2016
2017	294,199	512,900	<b>807,099</b>	2017



**Table 3: Projected Households and Housing Units in the Palestinian Territory Assuming Firmness the Average of Households (Census 2007) by Region and Year**

Region and Year	Number of Housing Units	Number of Households	
<b>Palestinian Territory</b>			
2008	764,678	655,019	2008
2009	786,144	673,469	2009
2010	808,328	692,540	2010
2011	832,397	713,276	2011
2012	856,435	733,960	2012
2013	881,135	755,217	2013
2014	906,364	776,934	2014
2015	932,084	799,080	2015
2016	958,249	821,613	2016
2017	984,792	844,477	2017
<b>West Bank</b>			
2008	517,787	433,429	2008
2009	531,285	444,728	2009
2010	545,190	456,368	2010
2011	559,514	468,358	2011
2012	574,259	480,701	2012
2013	589,340	493,325	2013
2014	604,664	506,152	2014
2015	620,204	519,161	2015
2016	635,928	532,323	2016
2017	651,790	545,601	2017
<b>Gaza Strip</b>			
2008	246,891	221,590	2008
2009	254,859	228,741	2009
2010	263,138	236,172	2010
2011	272,883	244,918	2011
2012	282,176	253,259	2012
2013	291,795	261,892	2013
2014	301,700	270,782	2014
2015	311,880	279,919	2015
2016	322,321	289,290	2016
2017	333,002	298,876	2017

**Table 4: Projected Households and Housing Units in the Palestinian Territory Assuming that the Average Size of Household is Decreased Yearly by 0.05 Person by Region and Year**

Region and Year	Number of Housing Units	Number of Households	
<b>Palestinian Territory</b>			
2008	771,340	660,712	2008
2009	799,965	685,279	2009
2010	829,829	710,914	2010
2011	862,175	738,726	2011
2012	895,067	766,980	2012
2013	929,254	796,350	2013
2014	964,626	826,742	2014
2015	1,001,178	858,153	2015
2016	1,038,890	890,565	2016
2017	1,077,722	923,944	2017
<b>West Bank</b>			
2008	522,536	437,405	2008
2009	541,124	452,964	2009
2010	560,475	469,163	2010
2011	580,628	486,032	2011
2012	601,604	503,591	2012
2013	623,340	521,786	2013
2014	645,756	540,550	2014
2015	668,847	559,879	2015
2016	692,595	579,758	2016
2017	716,969	600,161	2017
<b>Gaza Strip</b>			
2008	248,804	223,307	2008
2009	258,841	232,315	2009
2010	269,354	241,751	2010
2011	281,547	252,694	2011
2012	293,463	263,389	2012
2013	305,914	274,564	2013
2014	318,870	286,192	2014
2015	332,331	298,274	2015
2016	346,295	310,807	2016
2017	360,753	323,783	2017

**Table 5: Projected Households and Housing Units in the Palestinian Territory Assuming that the Average Size of Household is Decreased Yearly by 0.1 Person by Region and Year**

Region and Year	عدد الوحدات السكنية Number of Housing Units	عدد الأسر Number of Households	المنطقة والسنة
<b>Palestinian Territory</b>			
2008	778,123	666,507	2008
2009	814,282	697,513	2009
2010	852,514	730,297	2010
2011	894,174	766,071	2011
2012	937,374	803,135	2012
2013	982,973	842,257	2013
2014	1,030,955	883,428	2014
2015	1,081,424	926,735	2015
2016	1,134,472	972,256	2016
2017	1,190,181	1,020,063	2017
<b>West Bank</b>			
2008	527,375	441,455	2008
2009	551,333	461,510	2009
2010	576,643	482,697	2010
2011	603,397	505,092	2011
2012	631,684	528,771	2012
2013	661,504	553,732	2013
2014	692,843	579,966	2014
2015	725,771	607,529	2015
2016	760,349	636,473	2016
2017	796,633	666,846	2017
<b>Gaza Strip</b>			
2008	250,748	225,052	2008
2009	262,949	236,003	2009
2010	275,871	247,600	2010
2011	290,777	260,979	2011
2012	305,690	274,364	2012
2013	321,469	288,525	2013
2014	338,112	303,462	2014
2015	355,653	319,206	2015
2016	374,123	335,783	2016
2017	393,548	353,217	2017



# **Annexes**



(2007 )

:1

**Annex 1: Number of Housing Units by Utilization and Region, (Census 2007)**

Utilization	Region			
	Palestinian Territory	Gaza Strip	West Bank	
Habitation	<b>589,677</b>	216,230	373,447	
Habitation & Work	<b>3,752</b>	856	2,896	
Closed	<b>35,373</b>	10,383	24,990	
Vacant	<b>57,031</b>	13,430	43,601	
Deserted	<b>5,630</b>	974	4,656	
<b>Total</b>	<b>691,463</b>	<b>241,873</b>	<b>449,590</b>	

**Annex 2: Average of Annual Increase of Housing Units by Region and Year of Construction  
During 1948- 2007**

Region and Year of Construction	% Average of Annual Increase%	% Annual Increase%	Accumulative Number of Housing Units	Number of Housing Units	
<b>West Bank</b>					
1948	.	.	24,950	1,504	1948
1949	5.1	1.3	25,271	321	1949
1950	5.1	27.2	32,152	6,881	1950
1951	5.1	1.6	32,670	518	1951
1952	5.1	4.0	33,984	1,314	1952
1953	5.1	2.5	34,848	864	1953
1954	5.1	2.3	35,644	796	1954
1955	5.1	14.9	40,970	5,326	1955
1956	5.1	4.2	42,671	1,701	1956
1957	5.1	5.0	44,795	2,124	1957
1958	5.1	4.6	46,846	2,051	1958
1959	5.1	2.5	48,012	1,166	1959
1960	5.1	26.3	60,625	12,613	1960
1961	5.1	3.4	62,661	2,036	1961
1962	5.1	8.6	68,037	5,376	1962
1963	5.1	3.5	70,437	2,400	1963
1964	5.1	6.6	75,105	4,668	1964
1965	5.1	10.6	83,070	7,965	1965
1966	5.1	4.3	86,657	3,587	1966
1967	5.1	9.0	94,436	7,779	1967
1968	5.1	4.1	98,326	3,890	1968
1969	5.1	2.5	100,811	2,485	1969
1970	5.1	17.0	117,987	17,176	1970
1971	5.1	2.5	120,951	2,964	1971
1972	5.1	4.3	126,170	5,219	1972
1973	5.1	3.9	131,076	4,906	1973
1974	5.1	4.3	136,705	5,629	1974
1975	5.1	8.8	148,721	12,016	1975
1976	5.1	6.7	158,712	9,991	1976
1977	5.1	5.3	167,136	8,424	1977
1978	5.1	3.4	172,782	5,646	1978
1979	5.1	3.0	177,936	5,154	1979
1980	5.1	10.8	197,205	19,269	1980
1981	5.1	2.2	201,543	4,338	1981
1982	5.1	4.5	210,531	8,988	1982



**Annex 2 (Cont.): Average of Annual Increase of Housing Units by Region and Year of Construction During 1948- 2007**

Region and Year of Construction	% Average of Annual Increase%	% Annual Increase%	Accumulative Number of Housing Units	Number of Housing Units	
<b>West Bank</b>					
1983	5.1	2.2	215,232	4,701	1983
1984	5.1	2.2	220,052	4,820	1984
1985	5.1	5.8	232,883	12,831	1985
1986	5.1	2.5	238,625	5,742	1986
1987	5.1	5.0	250,544	11,919	1987
1988	5.1	2.2	255,953	5,409	1988
1989	5.1	2.0	261,127	5,174	1989
1990	5.1	6.9	279,208	18,081	1990
1991	5.1	2.1	285,025	5,817	1991
1992	5.1	3.7	295,434	10,409	1992
1993	5.1	2.8	303,846	8,412	1993
1994	5.1	3.1	313,173	9,327	1994
1995	5.1	5.6	330,671	17,498	1995
1996	5.1	3.2	341,203	10,532	1996
1997	5.1	5.1	358,624	17,421	1997
1998	5.1	3.7	371,765	13,141	1998
1999	5.1	3.4	384,548	12,783	1999
2000	5.1	5.2	404,702	20,154	2000
2001	5.1	1.9	412,447	7,745	2001
2002	5.1	2.1	421,252	8,805	2002
2003	5.1	1.9	429,071	7,819	2003
2004	5.1	1.8	436,770	7,699	2004
2005	5.1	1.6	443,640	6,870	2005
2006	5.1	0.9	447,815	4,175	2006
2007	5.1	0.4	449,590	1,775	2007
2008	.	.	472,686	23,096	2008
2009	.	.	496,968	24,282	2009
2010	.	.	522,498	25,530	2010
2011	.	.	549,339	26,841	2011
2012	.	.	577,559	28,220	2012
2013	.	.	607,229	29,670	2013
2014	.	.	638,423	31,194	2014
2015	.	.	671,219	32,796	2015
2016	.	.	705,700	34,481	2016
2017	.	.	741,952	36,252	2017

**Annex 2 (Cont.): Average of Annual Increase of Housing Units by Region and Year of Construction During 1948- 2007**

Region and Year of Construction	% Average of Annual Increase%	% Annual Increase%	Accumulative Number of Housing Units	Number of Housing Units	
<b>Gaza strip</b>					
1948	.	.	5,640	680	1948
1949	5.9	3.2	5,828	188	1949
1950	5.9	36.9	9,236	3,408	1950
1951	5.9	3.7	9,592	356	1951
1952	5.9	6.3	10,233	641	1952
1953	5.9	2.6	10,505	272	1953
1954	5.9	8.3	11,457	952	1954
1955	5.9	6.8	12,297	840	1955
1956	5.9	9.0	13,506	1,209	1956
1957	5.9	7.1	14,541	1,035	1957
1958	5.9	2.7	14,942	401	1958
1959	5.9	2.3	15,296	354	1959
1960	5.9	24.8	20,329	5,033	1960
1961	5.9	1.5	20,635	306	1961
1962	5.9	3.2	21,307	672	1962
1963	5.9	2.6	21,866	559	1963
1964	5.9	2.4	22,407	541	1964
1965	5.9	9.3	24,698	2,291	1965
1966	5.9	1.7	25,136	438	1966
1967	5.9	12.6	28,756	3,620	1967
1968	5.9	1.9	29,306	550	1968
1969	5.9	1.8	29,832	526	1969
1970	5.9	20.2	37,402	7,570	1970
1971	5.9	1.8	38,093	691	1971
1972	5.9	4.6	39,950	1,857	1972
1973	5.9	4.9	42,018	2,068	1973
1974	5.9	2.7	43,178	1,160	1974
1975	5.9	12.6	49,424	6,246	1975
1976	5.9	4.9	51,985	2,561	1976
1977	5.9	9.3	57,341	5,356	1977
1978	5.9	5.0	60,358	3,017	1978
1979	5.9	4.6	63,260	2,902	1979
1980	5.9	17.0	76,188	12,928	1980
1981	5.9	3.4	78,830	2,642	1981
1982	5.9	7.8	85,458	6,628	1982

**Annex 2 (Cont.): Average of Annual Increase of Housing Units by Region and Year of Construction During 1948- 2007**

Region and Year of Construction	% Average of Annual Increase%	% Annual Increase%	Accumulative Number of Housing Units	Number of Housing Units	
<b>Gaza strip</b>					
1983	5.9	3.4	88,477	3,019	1983
1984	5.9	3.0	91,206	2,729	1984
1985	5.9	8.9	100,065	8,859	1985
1986	5.9	3.5	103,693	3,628	1986
1987	5.9	7.8	112,517	8,824	1987
1988	5.9	3.1	116,098	3,581	1988
1989	5.9	2.6	119,234	3,136	1989
1990	5.9	8.6	130,521	11,287	1990
1991	5.9	2.5	133,808	3,287	1991
1992	5.9	4.4	139,903	6,095	1992
1993	5.9	3.7	145,312	5,409	1993
1994	5.9	4.8	152,634	7,322	1994
1995	5.9	6.8	163,742	11,108	1995
1996	5.9	3.8	170,237	6,495	1996
1997	5.9	5.5	180,136	9,899	1997
1998	5.9	3.6	186,928	6,792	1998
1999	5.9	3.4	193,604	6,676	1999
2000	5.9	6.4	206,886	13,282	2000
2001	5.9	2.3	211,718	4,832	2001
2002	5.9	2.9	218,014	6,296	2002
2003	5.9	2.8	224,268	6,254	2003
2004	5.9	2.7	230,380	6,112	2004
2005	5.9	2.7	236,685	6,305	2005
2006	5.9	1.5	240,184	3,499	2006
2007	5.9	0.7	241,873	1,689	2007
2008	.	.	256,250	14,377	2008
2009	.	.	271,482	15,232	2009
2010	.	.	287,619	16,137	2010
2011	.	.	304,716	17,097	2011
2012	.	.	322,829	18,113	2012
2013	.	.	342,019	19,190	2013
2014	.	.	362,349	20,330	2014
2015	.	.	383,888	21,539	2015
2016	.	.	406,707	22,819	2016
2017	.	.	430,882	24,175	2017

**Annex 3: Average of Annual Increase of Housing Units by Region and Year of Construction  
During 1967- 2007**

Region and Year of Construction	% Average of Annual Increase%	% Annual Increase%	Accumulative Number of Housing Units	Number of Housing Units	
<b>West Bank</b>					
1967	.	4.1	94,436	7,779	1967
1968	4.0	2.5	98,326	3,890	1968
1969	4.0	17.0	100,811	2,485	1969
1970	4.0	2.5	117,987	17,176	1970
1971	4.0	4.3	120,951	2,964	1971
1972	4.0	3.9	126,170	5,219	1972
1973	4.0	4.3	131,076	4,906	1973
1974	4.0	8.8	136,705	5,629	1974
1975	4.0	6.7	148,721	12,016	1975
1976	4.0	5.3	158,712	9,991	1976
1977	4.0	3.4	167,136	8,424	1977
1978	4.0	3.0	172,782	5,646	1978
1979	4.0	10.8	177,936	5,154	1979
1980	4.0	2.2	197,205	19,269	1980
1981	4.0	4.5	201,543	4,338	1981
1982	4.0	2.2	210,531	8,988	1982
1983	4.0	2.2	215,232	4,701	1983
1984	4.0	5.8	220,052	4,820	1984
1985	4.0	2.5	232,883	12,831	1985
1986	4.0	5.0	238,625	5,742	1986
1987	4.0	2.2	250,544	11,919	1987
1988	4.0	2.0	255,953	5,409	1988
1989	4.0	6.9	261,127	5,174	1989
1990	4.0	2.1	279,208	18,081	1990
1991	4.0	3.7	285,025	5,817	1991
1992	4.0	2.8	295,434	10,409	1992
1993	4.0	3.1	303,846	8,412	1993
1994	4.0	5.6	313,173	9,327	1994
1995	4.0	3.2	330,671	17,498	1995
1996	4.0	5.1	341,203	10,532	1996
1997	4.0	3.7	358,624	17,421	1997
1998	4.0	3.4	371,765	13,141	1998

**Annex 3 (Cont.): Average of Annual Increase of Housing Units by Region and Year of Construction During 1967- 2007**

Region and Year of Construction	% Average of Annual Increase%	% Annual Increase%	Accumulative Number of Housing Units	Number of Housing Units	
<b>West Bank</b>					
1999	4.0	5.2	384,548	12,783	1999
2000	4.0	1.9	404,702	20,154	2000
2001	4.0	4.1	412,447	7,745	2001
2002	4.0	2.1	421,252	8,805	2002
2003	4.0	1.9	429,071	7,819	2003
2004	4.0	1.8	436,770	7,699	2004
2005	4.0	1.6	443,640	6,870	2005
2006	4.0	0.9	447,815	4,175	2006
2007	4.0	0.4	449,590	1,775	2007
2008	.	.	467,654	18,064	2008
2009	.	.	486,443	18,789	2009
2010	.	.	505,987	19,544	2010
2011	.	.	526,316	20,329	2011
2012	.	.	547,462	21,146	2012
2013	.	.	569,458	21,996	2013
2014	.	.	592,338	22,880	2014
2015	.	.	616,137	23,799	2015
2016	.	.	640,892	24,755	2016
2017	.	.	666,642	25,750	2017
<b>Gaza strip</b>					
1967	5.9	12.6	28,756	3,620	1967
1968	5.9	1.9	29,306	550	1968
1969	5.9	1.8	29,832	526	1969
1970	5.9	20.2	37,402	7,570	1970
1971	5.9	1.8	38,093	691	1971
1972	5.9	4.6	39,950	1,857	1972
1973	5.9	4.9	42,018	2,068	1973
1974	5.9	2.7	43,178	1,160	1974
1975	5.9	12.6	49,424	6,246	1975
1976	5.9	4.9	51,985	2,561	1976
1977	5.9	9.3	57,341	5,356	1977
1978	5.9	5.0	60,358	3,017	1978

**Annex 3 (Cont.): Average of Annual Increase of Housing Units by Region and Year of Construction During 1967- 2007**

Region and Year of Construction	% Average of Annual Increase%	% Annual Increase%	Accumulative Number of Housing Units	Number of Housing Units	
<b>Gaza strip</b>					
1979	5.9	4.6	63,260	2,902	1979
1980	5.9	17.0	76,188	12,928	1980
1981	5.9	3.4	78,830	2,642	1981
1982	5.9	7.8	85,458	6,628	1982
1983	5.9	3.4	88,477	3,019	1983
1984	5.9	3.0	91,206	2,729	1984
1985	5.9	8.9	100,065	8,859	1985
1986	5.9	3.5	103,693	3,628	1986
1987	5.9	7.8	112,517	8,824	1987
1988	5.9	3.1	116,098	3,581	1988
1989	5.9	2.6	119,234	3,136	1989
1990	5.9	8.6	130,521	11,287	1990
1991	5.9	2.5	133,808	3,287	1991
1992	5.9	4.4	139,903	6,095	1992
1993	5.9	3.7	145,312	5,409	1993
1994	5.9	4.8	152,634	7,322	1994
1995	5.9	6.8	163,742	11,108	1995
1996	5.9	3.8	170,237	6,495	1996
1997	5.9	5.5	180,136	9,899	1997
1998	5.9	3.6	186,928	6,792	1998
1999	5.9	3.4	193,604	6,676	1999
2000	5.9	6.4	206,886	13,282	2000
2001	5.9	2.3	211,718	4,832	2001
2002	5.9	2.9	218,014	6,296	2002
2003	5.9	2.8	224,268	6,254	2003
2004	5.9	2.7	230,380	6,112	2004
2005	5.9	2.7	236,685	6,305	2005
2006	5.9	1.5	240,184	3,499	2006
2007	5.9	0.7	241,873	1,689	2007
2008		.	255,354	13,481	2008
2009		.	269,587	14,233	2009
2010		.	284,613	15,026	2010
2011		.	300,477	15,864	2011
2012		.	317,225	16,748	2012
2013		.	334,906	17,681	2013
2014		.	353,573	18,667	2014
2015		.	373,280	19,707	2015
2016		.	394,086	20,806	2016
2017		.	416,052	21,966	2017

**Annex 4: Average of Annual Increase of Housing Units by Region and Year of Construction  
During 1987- 2007**

Region and Year of Construction	% Average of Annual Increase%	% Annual Increase%	Accumulative Number of Housing Units	Number of Housing Units	
<b>West Bank</b>					
1987			250,544	11,919	1987
1988	3.0	2.2	255,953	5,409	1988
1989	3.0	2.0	261,127	5,174	1989
1990	3.0	6.9	279,208	18,081	1990
1991	3.0	2.1	285,025	5,817	1991
1992	3.0	3.7	295,434	10,409	1992
1993	3.0	2.8	303,846	8,412	1993
1994	3.0	3.1	313,173	9,327	1994
1995	3.0	5.6	330,671	17,498	1995
1996	3.0	3.2	341,203	10,532	1996
1997	3.0	5.1	358,624	17,421	1997
1998	3.0	3.7	371,765	13,141	1998
1999	3.0	3.4	384,548	12,783	1999
2000	3.0	5.2	404,702	20,154	2000
2001	3.0	1.9	412,447	7,745	2001
2002	3.0	2.1	421,252	8,805	2002
2003	3.0	1.9	429,071	7,819	2003
2004	3.0	1.8	436,770	7,699	2004
2005	3.0	1.6	443,640	6,870	2005
2006	3.0	0.9	447,815	4,175	2006
2007	3.0	0.4	449,590	1,775	2007
2008	.	.	462,985	13,395	2008
2009	.	.	476,779	13,794	2009
2010	.	.	490,984	14,205	2010
2011	.	.	505,612	14,628	2011
2012	.	.	520,676	15,064	2012
2013	.	.	536,189	15,513	2013
2014	.	.	552,164	15,975	2014
2015	.	.	568,615	16,451	2015
2016	.	.	585,556	16,941	2016
2017	.	.	603,002	17,446	2017

2007 - 1967

:( ) 4

**Annex 4 (Cont.): Average of Annual Increase of Housing Units by Region and Year of Construction During 1967- 2007**

Region and Year of Construction	% Average of Annual Increase%	% Annual Increase%	Accumulative Number of Housing Units	Number of Housing Units	
<b>Gaza strip</b>					
1987			112,517	8,824	1987
1988	3.9	3.2	116,098	3,581	1988
1989	3.9	2.7	119,234	3,136	1989
1990	3.9	9.5	130,521	11,287	1990
1991	3.9	2.5	133,808	3,287	1991
1992	3.9	4.6	139,903	6,095	1992
1993	3.9	3.9	145,312	5,409	1993
1994	3.9	5.0	152,634	7,322	1994
1995	3.9	7.3	163,742	11,108	1995
1996	3.9	4.0	170,237	6,495	1996
1997	3.9	5.8	180,136	9,899	1997
1998	3.9	3.8	186,928	6,792	1998
1999	3.9	3.6	193,604	6,676	1999
2000	3.9	6.9	206,886	13,282	2000
2001	3.9	2.3	211,718	4,832	2001
2002	3.9	3.0	218,014	6,296	2002
2003	3.9	2.9	224,268	6,254	2003
2004	3.9	2.7	230,380	6,112	2004
2005	3.9	2.7	236,685	6,305	2005
2006	3.9	1.5	240,184	3,499	2006
2007	3.9	0.7	241,873	1,689	2007
2008	.	.	251,356	9,483	2008
2009	.	.	261,211	9,855	2009
2010	.	.	271,452	10,241	2010
2011	.	.	282,094	10,642	2011
2012	.	.	293,154	11,060	2012
2013	.	.	304,647	11,493	2013
2014	.	.	316,591	11,944	2014
2015	.	.	329,003	12,412	2015
2016	.	.	341,902	12,899	2016
2017	.	.	355,306	13,404	2017



**Annex 5: Average of Annual Increase of Housing Units by Region and Year of Construction  
During 2000- 2007**

Region and Year of Construction	% Average of Annual Increase%	% Annual Increase%	Accumulative Number of Housing Units	Number of Housing Units	
<b>West Bank</b>					
2000			404,702	20,154	2000
2001	1.3	1.9	412,447	7,745	2001
2002	1.3	2.1	421,252	8,805	2002
2003	1.3	1.9	429,071	7,819	2003
2004	1.3	1.8	436,770	7,699	2004
2005	1.3	1.6	443,640	6,870	2005
2006	1.3	0.9	447,815	4,175	2006
2007	1.3	0.4	449,590	1,775	2007
2008	.	.	455,552	5,962	2008
2009	.	.	461,593	6,041	2009
2010	.	.	467,715	6,122	2010
2011	.	.	473,918	6,203	2011
2012	.	.	480,203	6,285	2012
2013	.	.	486,571	6,368	2013
2014	.	.	493,024	6,453	2014
2015	.	.	499,562	6,538	2015
2016	.	.	506,187	6,625	2016
2017	.	.	512,900	6,713	2017
<b>Gaza strip</b>					
2000	2.0	2.3	206,886	13,282	2000
2001	2.0	3.0	211,718	4,832	2001
2002	2.0	2.9	218,014	6,296	2002
2003	2.0	2.7	224,268	6,254	2003
2004	2.0	2.7	230,380	6,112	2004
2005	2.0	1.5	236,685	6,305	2005
2006	2.0	0.7	240,184	3,499	2006
2007	2.0	2.3	241,873	1,689	2007
2008	.	.	246,657	4,784	2008
2009	.	.	251,535	4,878	2009
2010	.	.	256,510	4,975	2010
2011	.	.	261,583	5,073	2011
2012	.	.	266,756	5,173	2012
2013	.	.	272,032	5,276	2013
2014	.	.	277,412	5,380	2014
2015	.	.	282,898	5,486	2015
2016	.	.	288,493	5,595	2016
2017	.	.	294,199	5,706	2017

## Annex 6: Average Head of Households by Sex, Age, and Region 2007

Region and Age and Sex	(%) Average Head of Households(%)	( 10) Population (10 Years and above)	Head of Households	
<b>West Bank</b>				
<b>Male</b>				
10 - 14	0.003	152,480	4	14 - 10
15- 19	0.425	133,501	567	19 -15
20 - 24	10.199	102,342	10,438	24 - 20
25- 29	47.934	86,085	41,264	29 -25
30 - 34	81.605	74,983	61,190	34 - 30
35 - 39	92.834	64,949	60,295	39 - 35
40 - 44	96.199	55,910	53,785	44 - 40
45 - 49	97.390	43,107	41,982	49 - 45
50 - 54	97.741	28,901	28,248	54 - 50
55 - 59	97.711	21,628	21,133	59 - 55
60 - 64	96.988	15,903	15,424	64 - 60
65+	89.774	32,633	29,296	+65
<b>Total</b>	<b>44.758</b>	<b>812,422</b>	<b>363,626</b>	
<b>Female</b>				
10 - 14	0.001	145,108	2	14 - 10
15- 19	0.060	127,638	76	19 -15
20 - 24	0.349	97,158	339	24 - 20
25- 29	1.047	83,159	871	29 -25
30 - 34	2.216	73,344	1,625	34 - 30
35 - 39	3.967	62,238	2,469	39 - 35
40 - 44	6.328	52,451	3,319	44 - 40
45 - 49	9.685	40,043	3,878	49 - 45
50 - 54	13.936	28,960	4,036	54 - 50
55 - 59	19.317	20,366	3,934	59 - 55
60 - 64	24.291	18,624	4,524	64 - 60
65+	33.286	43,300	14,413	+65
<b>Total</b>	<b>4.983</b>	<b>792,389</b>	<b>39,486</b>	
<b>Both Sexes</b>				
10 - 14	0.002	297,588	6	14 - 10
15- 19	0.246	261,139	643	19 -15
20 - 24	5.402	199,500	10,777	24 - 20
25- 29	24.896	169,244	42,135	29 -25
30 - 34	42.349	148,327	62,815	34 - 30
35 - 39	49.348	127,187	62,764	39 - 35
40 - 44	52.698	108,361	57,104	44 - 40
45 - 49	55.153	83,150	45,860	49 - 45
50 - 54	55.796	57,861	32,284	54 - 50
55 - 59	59.692	41,994	25,067	59 - 55
60 - 64	57.775	34,527	19,948	64 - 60
65+	57.563	75,933	43,709	+65
<b>Total</b>	<b>25.119</b>	<b>1,604,811</b>	<b>403,112</b>	

## Annex 6 (Cont.): Average Head of Households by Sex, Age, and Region 2007

Region and Age and Sex	(%) Average Head of Households(%)	( 10) Population (10 Years and above)	Head of Households	
<b>Gaza Strip</b>				
<b>Male</b>				
10 - 14	0.000	95,725	0	14 - 10
15- 19	0.254	80,240	204	19 -15
20 - 24	5.654	61,236	3,462	24 - 20
25- 29	41.748	49,270	2,569	29 -25
30 - 34	90.862	40,120	36,454	34 - 30
35 - 39	110.475	30,970	34,214	39 - 35
40 - 44	123.348	26,747	32,992	44 - 40
45 - 49	121.723	20,412	24,846	49 - 45
50 - 54	118.490	14,781	17,514	54 - 50
55 - 59	107.220	11,966	12,830	59 - 55
60 - 64	86.810	8,446	7,332	64 - 60
65+	67.166	19,708	13,237	+65
<b>Total</b>	<b>44.309</b>	<b>459,621</b>	<b>203,654</b>	
<b>Female</b>				
10 - 14	0.000	92,945	0	14 - 10
15- 19	0.060	77,909	47	19 -15
20 - 24	0.208	60,141	125	24 - 20
25- 29	0.619	47,839	296	29 -25
30 - 34	1.399	38,955	545	34 - 30
35 - 39	3.415	30,070	1,027	39 - 35
40 - 44	5.196	26,653	1,385	44 - 40
45 - 49	7.970	20,502	1,634	49 - 45
50 - 54	13.880	14,352	1,992	54 - 50
55 - 59	15.545	11,618	1,806	59 - 55
60 - 64	25.672	7,518	1,930	64 - 60
65+	27.972	17,085	4,779	+65
<b>Total</b>	<b>3.493</b>	<b>445,587</b>	<b>15,566</b>	
<b>Both Sexes</b>				
10 - 14	0.000	188,670	0	14 - 10
15- 19	0.159	158,149	251	19 -15
20 - 24	2.955	121,377	3,587	24 - 20
25- 29	21.486	97,109	20,865	29 -25
30 - 34	46.790	79,075	36,999	34 - 30
35 - 39	57.734	61,040	35,241	39 - 35
40 - 44	64.376	53,400	34,377	44 - 40
45 - 49	64.721	40,914	26,480	49 - 45
50 - 54	66.955	29,133	19,506	54 - 50
55 - 59	62.059	23,584	14,636	59 - 55
60 - 64	58.018	15,964	9,262	64 - 60
65+	48.966	3,793	18,016	+65
<b>Total</b>	<b>24.218</b>	<b>905,208</b>	<b>219,220</b>	

## Annex 7: Projected Households in the West Bank by Age, Sex and Year

Age and Sex	Households No.	Population No. (Midyear)	2007 Average of Head of Households 1997	
<b>2008</b>				<b>2008</b>
<b>Male</b>				
10 - 14	4	161,051	0.003	14 - 10
15- 19	614	144,622	0.425	19 - 15
20 - 24	11,475	112,514	10.199	24 - 20
25- 29	44,280	92,378	47.934	29 - 25
30 - 34	65,926	80,786	81.605	34 - 30
35 - 39	64,437	69,411	92.834	39 - 35
40 - 44	57,275	59,538	96.199	44 - 40
45 - 49	46,969	48,228	97.390	49 - 45
50 - 54	32,263	33,009	97.741	54 - 50
55 - 59	22,769	23,302	97.711	59 - 55
60 - 64	16,147	16,648	96.988	64 - 60
65+	31,416	34,994	89.774	+65
<b>Female</b>				
10 - 14	2	153,581	0.001	14 - 10
15- 19	82	137,814	0.060	19 - 15
20 - 24	375	107,379	0.349	24 - 20
25- 29	926	88,403	1.047	29 - 25
30 - 34	1,734	78,270	2.216	34 - 30
35 - 39	2,667	67,234	3.967	39 - 35
40 - 44	3,540	55,938	6.328	44 - 40
45 - 49	4,353	44,951	9.685	49 - 45
50 - 54	4,351	31,220	13.936	54 - 50
55 - 59	4,473	23,158	19.317	59 - 55
60 - 64	4,677	19,253	24.291	64 - 60
65+	15,398	46,259	33.286	+65
<b>2009</b>				<b>2009</b>
<b>Male</b>				
10 - 14	4	162,430	0.003	14 - 10
15- 19	634	149,208	0.425	19 - 15
20 - 24	12,146	119,084	10.199	24 - 20
25- 29	45,541	95,008	47.934	29 - 25
30 - 34	67,622	82,865	81.605	34 - 30
35 - 39	66,479	71,610	92.834	39 - 35
40 - 44	59,004	61,335	96.199	44 - 40
45 - 49	49,275	50,595	97.390	49 - 45
50 - 54	34,995	35,804	97.741	54 - 50
55 - 59	23,887	24,447	97.711	59 - 55
60 - 64	17,009	17,537	96.988	64 - 60
65+	31,715	35,328	89.774	+65

## Annex 7 (Cont.): Projected Households in the West Bank by Age, Sex and Year

Age and Sex	Households No.	Population No. (Midyear)	2007 Average of Head of Households 1997	
<b>2009</b>				<b>2009</b>
<b>Female</b>				
10 - 14	2	155,014	0.001	14 - 10
15- 19	85	142,212	0.060	19 -15
20 - 24	397	113,646	0.349	24 - 20
25- 29	952	90,860	1.047	29 -25
30 - 34	1,774	80,082	2.216	34 - 30
35 - 39	2,758	69,533	3.967	39 - 35
40 - 44	3,674	58,057	6.328	44 - 40
45 - 49	4,563	47,120	9.685	49 - 45
50 - 54	4,705	33,763	13.936	54 - 50
55 - 59	4,640	24,021	19.317	59 - 55
60 - 64	4,779	19,672	24.291	64 - 60
65+	15,613	46,905	33.286	+65
<b>2010</b>				<b>2010</b>
<b>Male</b>				
10 - 14	4	163,325	0.003	14 - 10
15- 19	650	153,053	0.425	19 -15
20 - 24	12,856	126,052	10.199	24 - 20
25- 29	46,985	98,021	47.934	29 -25
30 - 34	69,337	84,967	81.605	34 - 30
35 - 39	68,582	73,876	92.834	39 - 35
40 - 44	60,690	63,088	96.199	44 - 40
45 - 49	51,400	52,777	97.390	49 - 45
50 - 54	37,912	38,788	97.741	54 - 50
55 - 59	25,141	25,730	97.711	59 - 55
60 - 64	17,954	18,512	96.988	64 - 60
65+	32,130	35,790	89.774	+65
<b>Female</b>				
10 - 14	2	156,004	0.001	14 - 10
15- 19	87	145,909	0.060	19 -15
20 - 24	420	120,297	0.349	24 - 20
25- 29	982	93,723	1.047	29 -25
30 - 34	1,814	81,880	2.216	34 - 30
35 - 39	2,849	71,814	3.967	39 - 35
40 - 44	3,809	60,191	6.328	44 - 40
45 - 49	4,761	49,157	9.685	49 - 45
50 - 54	5,087	36,503	13.936	54 - 50
55 - 59	4,843	25,074	19.317	59 - 55
60 - 64	4,889	20,125	24.291	64 - 60
65+	15,854	47,628	33.286	+65

## Annex 7 (Cont.): Projected Households in the West Bank by Age, Sex and Year

Age and Sex	Households No.	) ( Population No. (Midyear)	2007 Average of Head of Households 1997	
<b>2011</b>				<b>2011</b>
<b>Male</b>				
10 - 14	4	163,696	0.003	14 - 10
15- 19	663	155,996	0.425	19 - 15
20 - 24	13,524	132,604	10.199	24 - 20
25- 29	48,700	101,598	47.934	29 - 25
30 - 34	71,021	87,030	81.605	34 - 30
35 - 39	70,553	75,999	92.834	39 - 35
40 - 44	62,323	64,785	96.199	44 - 40
45 - 49	53,317	54,746	97.390	49 - 45
50 - 54	40,736	41,678	97.741	54 - 50
55 - 59	26,628	27,252	97.711	59 - 55
60 - 64	18,919	19,507	96.988	64 - 60
65+	32,630	36,347	89.774	+65
<b>Female</b>				
10 - 14	2	156,504	0.001	14 - 10
15- 19	89	148,767	0.060	19 - 15
20 - 24	442	126,557	0.349	24 - 20
25- 29	1,017	97,138	1.047	29 - 25
30 - 34	1,853	83,649	2.216	34 - 30
35 - 39	2,931	73,881	3.967	39 - 35
40 - 44	3,939	62,251	6.328	44 - 40
45 - 49	4,947	51,081	9.685	49 - 45
50 - 54	5,458	39,166	13.936	54 - 50
55 - 59	5,097	26,389	19.317	59 - 55
60 - 64	5,010	20,626	24.291	64 - 60
65+	16,088	48,333	33.286	+65
<b>2012</b>				<b>2012</b>
<b>Male</b>				
10 - 14	4	164,191	0.003	14 - 10
15- 19	673	158,563	0.425	19 - 15
20 - 24	14,142	138,654	10.199	24 - 20
25- 29	50,916	106,221	47.934	29 - 25
30 - 34	72,933	89,373	81.605	34 - 30
35 - 39	72,541	78,140	92.834	39 - 35
40 - 44	64,140	66,674	96.199	44 - 40
45 - 49	55,228	56,708	97.390	49 - 45
50 - 54	43,415	44,419	97.741	54 - 50
55 - 59	28,521	29,189	97.711	59 - 55
60 - 64	19,936	20,555	96.988	64 - 60
65+	33,317	37,112	89.774	+65

## Annex 7 (Cont.): Projected Households in the West Bank by Age, Sex and Year

Age and Sex	Households No.	Population No. (Midyear)	2007 Average of Head of Households 1997	
<b>2012</b>				<b>2012</b>
<b>Female</b>				
10 - 14	2	157,121	0.001	14 - 10
15- 19	90	151,282	0.060	19 - 15
20 - 24	462	132,351	0.349	24 - 20
25- 29	1,064	101,553	1.047	29 - 25
30 - 34	1,899	85,727	2.216	34 - 30
35 - 39	3,011	75,900	3.967	39 - 35
40 - 44	4,076	64,417	6.328	44 - 40
45 - 49	5,143	53,110	9.685	49 - 45
50 - 54	5,812	41,704	13.936	54 - 50
55 - 59	5,429	28,104	19.317	59 - 55
60 - 64	5,165	21,262	24.291	64 - 60
65+	16,360	49,150	33.286	+65
<b>2013</b>				<b>2013</b>
<b>Male</b>				
10 - 14	4	164,684	0.003	14 - 10
15- 19	682	160,513	0.425	19 - 15
20 - 24	14,677	143,902	10.199	24 - 20
25- 29	53,625	111,872	47.934	29 - 25
30 - 34	74,936	91,827	81.605	34 - 30
35 - 39	74,460	80,207	92.834	39 - 35
40 - 44	66,101	68,713	96.199	44 - 40
45 - 49	57,044	58,573	97.390	49 - 45
50 - 54	45,872	46,932	97.741	54 - 50
55 - 59	30,813	31,535	97.711	59 - 55
60 - 64	20,954	21,605	96.988	64 - 60
65+	34,176	38,069	89.774	+65
<b>Female</b>	0			
10 - 14	2	157,737	0.001	14 - 10
15- 19	91	153,235	0.060	19 - 15
20 - 24	479	137,381	0.349	24 - 20
25- 29	1,120	106,952	1.047	29 - 25
30 - 34	1,949	87,966	2.216	34 - 30
35 - 39	3,085	77,773	3.967	39 - 35
40 - 44	4,217	66,639	6.328	44 - 40
45 - 49	5,344	55,184	9.685	49 - 45
50 - 54	6,135	44,018	13.936	54 - 50
55 - 59	5,839	30,227	19.317	59 - 55
60 - 64	5,342	21,990	24.291	64 - 60
65+	16,656	50,038	33.286	+65

## Annex 7 (Cont.): Projected Households in the West Bank by Age, Sex and Year

Age and Sex	Households No.	Population No. (Midyear)	2007 Average of Head of Households 1997	
<b>2014</b>				<b>2014</b>
<b>Male</b>				
10 - 14	4	165,194	0.003	14 - 10
15- 19	687	161,832	0.425	19 - 15
20 - 24	15,138	148,424	10.199	24 - 20
25- 29	56,743	118,378	47.934	29 - 25
30 - 34	77,052	94,421	81.605	34 - 30
35 - 39	76,364	82,258	92.834	39 - 35
40 - 44	68,188	70,882	96.199	44 - 40
45 - 49	58,769	60,344	97.390	49 - 45
50 - 54	48,132	49,245	97.741	54 - 50
55 - 59	33,440	34,223	97.711	59 - 55
60 - 64	21,999	22,682	96.988	64 - 60
65+	35,220	39,232	89.774	+65
<b>Female</b>				
10 - 14	2	158,365	0.001	14 - 10
15- 19	92	154,610	0.060	19 - 15
20 - 24	494	141,723	0.349	24 - 20
25- 29	1,185	113,163	1.047	29 - 25
30 - 34	2,003	90,394	2.216	34 - 30
35 - 39	3,156	79,560	3.967	39 - 35
40 - 44	4,360	68,910	6.328	44 - 40
45 - 49	5,546	57,271	9.685	49 - 45
50 - 54	6,431	46,148	13.936	54 - 50
55 - 59	6,317	32,702	19.317	59 - 55
60 - 64	5,544	22,823	24.291	64 - 60
65+	16,983	51,022	33.286	+65
<b>2015</b>				<b>2015</b>
<b>Male</b>				
10 - 14	4	165,687	0.003	14 - 10
15- 19	691	162,694	0.425	19 - 15
20 - 24	15,526	152,225	10.199	24 - 20
25- 29	60,058	125,293	47.934	29 - 25
30 - 34	79,490	97,408	81.605	34 - 30
35 - 39	78,295	84,338	92.834	39 - 35
40 - 44	70,349	73,128	96.199	44 - 40
45 - 49	60,458	62,078	97.390	49 - 45
50 - 54	50,222	51,383	97.741	54 - 50
55 - 59	36,247	37,096	97.711	59 - 55
60 - 64	23,173	23,893	96.988	64 - 60
65+	36,433	40,583	89.774	+65



## Annex 7 (Cont.): Projected Households in the West Bank by Age, Sex and Year

Age and Sex	Households No.	Population No. (Midyear)	2007 Average of Head of Households 1997	
<b>2015</b>				<b>2015</b>
<b>Female</b>				
10 - 14	2	158,977	0.001	14 - 10
15- 19	93	155,565	0.060	19 - 15
20 - 24	507	145,382	0.349	24 - 20
25- 29	1,254	119,773	1.047	29 - 25
30 - 34	2,066	93,232	2.216	34 - 30
35 - 39	3,227	81,340	3.967	39 - 35
40 - 44	4,504	71,172	6.328	44 - 40
45 - 49	5,751	59,385	9.685	49 - 45
50 - 54	6,710	48,150	13.936	54 - 50
55 - 59	6,832	35,370	19.317	59 - 55
60 - 64	5,792	23,845	24.291	64 - 60
65+	17,346	52,112	33.286	+65
<b>2016</b>				<b>2016</b>
<b>Male</b>				
10 - 14	4	166,106	0.003	14 - 10
15- 19	694	163,294	0.425	19 - 15
20 - 24	15,848	155,382	10.199	24 - 20
25- 29	63,274	132,002	47.934	29 - 25
30 - 34	82,514	101,114	81.605	34 - 30
35 - 39	80,323	86,523	92.834	39 - 35
40 - 44	72,486	75,350	96.199	44 - 40
45 - 49	62,194	63,861	97.390	49 - 45
50 - 54	52,195	53,402	97.741	54 - 50
55 - 59	39,028	39,942	97.711	59 - 55
60 - 64	24,610	25,374	96.988	64 - 60
65+	37,791	42,096	89.774	+65
<b>Female</b>				
10 - 14	2	159,519	0.001	14 - 10
15- 19	93	156,284	0.060	19 - 15
20 - 24	518	148,443	0.349	24 - 20
25- 29	1,322	126,188	1.047	29 - 25
30 - 34	2,144	96,778	2.216	34 - 30
35 - 39	3,302	83,229	3.967	39 - 35
40 - 44	4,641	73,337	6.328	44 - 40
45 - 49	5,958	61,521	9.685	49 - 45
50 - 54	6,986	50,129	13.936	54 - 50
55 - 59	7,345	38,025	19.317	59 - 55
60 - 64	6,110	25,155	24.291	64 - 60
65+	17,748	53,320	33.286	+65

## Annex 7 (Cont.): Projected Households in the West Bank by Age, Sex and Year

Age and Sex	Households No.	Population No. (Midyear)	2007 Average of Head of Households 1997	
<b>2017</b>				<b>2017</b>
<b>Male</b>				
10 - 14	4	166,299	0.003	14 - 10
15- 19	696	163,802	0.425	19 -15
20 - 24	16,111	157,960	10.199	24 - 20
25- 29	66,173	138,051	47.934	29 -25
30 - 34	86,286	105,736	81.605	34 - 30
35 - 39	82,502	88,870	92.834	39 - 35
40 - 44	74,554	77,500	96.199	44 - 40
45 - 49	64,033	65,749	97.390	49 - 45
50 - 54	54,098	55,349	97.741	54 - 50
55 - 59	41,623	42,598	97.711	59 - 55
60 - 64	26,394	27,214	96.988	64 - 60
65+	39,284	43,759	89.774	+65
<b>Female</b>	0			
10 - 14	2	159,875	0.001	14 - 10
15- 19	93	156,912	0.060	19 -15
20 - 24	527	150,972	0.349	24 - 20
25- 29	1,382	131,987	1.047	29 -25
30 - 34	2,242	101,195	2.216	34 - 30
35 - 39	3,385	85,317	3.967	39 - 35
40 - 44	4,769	75,363	6.328	44 - 40
45 - 49	6,168	63,687	9.685	49 - 45
50 - 54	7,268	52,148	13.936	54 - 50
55 - 59	7,826	40,514	19.317	59 - 55
60 - 64	6,515	26,820	24.291	64 - 60
65+	18,196	54,665	33.286	+65

## Annex 8: Projected Households in Gaza Strip by Age, Sex and Year

Age and Sex	Households No.	( ) Population No. (Midyear)	2007 Average of Head of Households 1997	
<b>2008</b>				<b>2008</b>
<b>Male</b>				
10 - 14	0	102,123	0.000	14 - 10
15- 19	225	88,550	0.254	19 - 15
20 - 24	3,887	68,755	5.654	24 - 20
25- 29	22,814	54,648	41.748	29 - 25
30 - 34	38,812	42,715	90.862	34 - 30
35 - 39	38,183	34,563	110.475	39 - 35
40 - 44	37,145	30,114	123.348	44 - 40
45 - 49	29,957	24,611	121.723	49 - 45
50 - 54	20,564	17,355	118.490	54 - 50
55 - 59	13,157	12,271	107.220	59 - 55
60 - 64	6,787	7,818	86.810	64 - 60
65+	10,139	15,096	67.166	+65
<b>Female</b>				
10 - 14	0	98,703	0.000	14 - 10
15- 19	52	85,835	0.060	19 - 15
20 - 24	137	65,919	0.208	24 - 20
25- 29	323	52,197	0.619	29 - 25
30 - 34	584	41,761	1.399	34 - 30
35 - 39	1,154	33,802	3.415	39 - 35
40 - 44	1,436	27,642	5.196	44 - 40
45 - 49	1,770	22,209	7.970	49 - 45
50 - 54	2,296	16,541	13.880	54 - 50
55 - 59	1,960	12,606	15.545	59 - 55
60 - 64	2,453	9,554	25.672	64 - 60
65+	5,863	20,959	27.972	+65
<b>2009</b>				<b>2009</b>
<b>Male</b>				
10 - 14	0	104,003	0.000	14 - 10
15- 19	233	91,600	0.254	19 - 15
20 - 24	4,106	72,619	5.654	24 - 20
25- 29	23,716	56,807	41.748	29 - 25
30 - 34	40,780	44,881	90.862	34 - 30
35 - 39	39,455	35,714	110.475	39 - 35
40 - 44	37,981	30,792	123.348	44 - 40
45 - 49	31,361	25,764	121.723	49 - 45
50 - 54	22,078	18,633	118.490	54 - 50
55 - 59	13,872	12,938	107.220	59 - 55
60 - 64	7,360	8,478	86.810	64 - 60
65+	10,243	15,250	67.166	+65

## Annex 8 (Cont.): Projected Households in Gaza Strip by Age, Sex and Year

Age and Sex	Households No.	( ) Population No. (Midyear)	2007 Average of Head of Households 1997	
<b>2009</b>				<b>2009</b>
<b>Female</b>				
10 - 14	0	100,359	0.000	14 - 10
15- 19	54	88,845	0.060	19 -15
20 - 24	145	69,857	0.208	24 - 20
25- 29	335	54,205	0.619	29 -25
30 - 34	610	43,633	1.399	34 - 30
35 - 39	1,199	35,099	3.415	39 - 35
40 - 44	1,491	28,688	5.196	44 - 40
45 - 49	1,847	23,180	7.970	49 - 45
50 - 54	2,431	17,514	13.880	54 - 50
55 - 59	2,039	13,120	15.545	59 - 55
60 - 64	2,559	9,969	25.672	64 - 60
65+	5,966	21,327	27.972	+65
<b>2010</b>				<b>2010</b>
<b>Male</b>				
10 - 14	0	105,707	0.000	14 - 10
15- 19	240	94,353	0.254	19 -15
20 - 24	4,334	76,668	5.654	24 - 20
25- 29	24,653	59,052	41.748	29 -25
30 - 34	42,873	47,184	90.862	34 - 30
35 - 39	40,914	37,035	110.475	39 - 35
40 - 44	38,784	31,443	123.348	44 - 40
45 - 49	32,663	26,834	121.723	49 - 45
50 - 54	23,675	19,981	118.490	54 - 50
55 - 59	14,610	13,626	107.220	59 - 55
60 - 64	7,987	9,201	86.810	64 - 60
65+	10,392	15,472	67.166	+65
<b>Female</b>				
10 - 14	0	101,818	0.000	14 - 10
15- 19	55	91,519	0.060	19 -15
20 - 24	154	73,996	0.208	24 - 20
25- 29	349	56,356	0.619	29 -25
30 - 34	638	45,605	1.399	34 - 30
35 - 39	1,246	36,469	3.415	39 - 35
40 - 44	1,547	29,771	5.196	44 - 40
45 - 49	1,923	24,133	7.970	49 - 45
50 - 54	2,575	18,551	13.880	54 - 50
55 - 59	2,125	13,670	15.545	59 - 55
60 - 64	2,676	10,422	25.672	64 - 60
65+	6,080	21,735	27.972	+65

## Annex 8 (Cont.): Projected Households in Gaza Strip by Age, Sex and Year

Age and Sex	Households No.	( ) Population No. (Midyear)	2007 Average of Head of Households 1997	
<b>2011</b>				<b>2011</b>
<b>Male</b>				
10 - 14	0	107,754	0.000	14 - 10
15- 19	247	97,264	0.254	19 - 15
20 - 24	4,578	80,969	5.654	24 - 20
25- 29	25,817	61,842	41.748	29 - 25
30 - 34	45,185	49,729	90.862	34 - 30
35 - 39	42,751	38,698	110.475	39 - 35
40 - 44	39,834	32,294	123.348	44 - 40
45 - 49	33,984	27,919	121.723	49 - 45
50 - 54	25,368	21,409	118.490	54 - 50
55 - 59	15,522	14,477	107.220	59 - 55
60 - 64	8,652	9,967	86.810	64 - 60
65+	10,655	15,864	67.166	+65
<b>Female</b>				
10 - 14	0	103,594	0.000	14 - 10
15- 19	57	94,299	0.060	19 - 15
20 - 24	163	78,367	0.208	24 - 20
25- 29	366	59,094	0.619	29 - 25
30 - 34	669	47,819	1.399	34 - 30
35 - 39	1,301	38,101	3.415	39 - 35
40 - 44	1,612	31,022	5.196	44 - 40
45 - 49	2,008	25,199	7.970	49 - 45
50 - 54	2,731	19,678	13.880	54 - 50
55 - 59	2,232	14,361	15.545	59 - 55
60 - 64	2,808	10,940	25.672	64 - 60
65+	6,234	22,287	27.972	+65
<b>2012</b>				<b>2012</b>
<b>Male</b>				
10 - 14	0	109,439	0.000	14 - 10
15- 19	253	99,686	0.254	19 - 15
20 - 24	4,791	84,752	5.654	24 - 20
25- 29	27,089	64,888	41.748	29 - 25
30 - 34	47,332	52,092	90.862	34 - 30
35 - 39	44,688	40,451	110.475	39 - 35
40 - 44	40,932	33,184	123.348	44 - 40
45 - 49	35,085	28,824	121.723	49 - 45
50 - 54	26,906	22,707	118.490	54 - 50
55 - 59	16,546	15,432	107.220	59 - 55
60 - 64	9,274	10,683	86.810	64 - 60
65+	10,969	16,331	67.166	+65

## Annex 8 (Cont.): Projected Households in Gaza Strip by Age, Sex and Year

Age and Sex	Households No.	( ) Population No. (Midyear)	2007 Average of Head of Households 1997	
<b>2012</b>				<b>2012</b>
<b>Female</b>				
10 - 14	0	105,009	0.000	14 - 10
15- 19	58	96,572	0.060	19 -15
20 - 24	171	82,197	0.208	24 - 20
25- 29	384	62,133	0.619	29 -25
30 - 34	698	49,910	1.399	34 - 30
35 - 39	1,357	39,737	3.415	39 - 35
40 - 44	1,675	32,236	5.196	44 - 40
45 - 49	2,089	26,217	7.970	49 - 45
50 - 54	2,876	20,723	13.880	54 - 50
55 - 59	2,350	15,116	15.545	59 - 55
60 - 64	2,936	11,438	25.672	64 - 60
65+	6,388	22,837	27.972	+65
<b>2013</b>				<b>2013</b>
<b>Male</b>				
10 - 14	0	111,117	0.000	14 - 10
15- 19	259	101,902	0.254	19 -15
20 - 24	4,986	88,194	5.654	24 - 20
25- 29	28,564	68,422	41.748	29 -25
30 - 34	49,396	54,363	90.862	34 - 30
35 - 39	46,881	42,436	110.475	39 - 35
40 - 44	42,216	34,225	123.348	44 - 40
45 - 49	36,053	29,619	121.723	49 - 45
50 - 54	28,356	23,931	118.490	54 - 50
55 - 59	17,750	16,555	107.220	59 - 55
60 - 64	9,852	11,349	86.810	64 - 60
65+	11,380	16,943	67.166	+65
<b>Female</b>				
10 - 14	0	106,422	0.000	14 - 10
15- 19	59	98,596	0.060	19 -15
20 - 24	178	85,646	0.208	24 - 20
25- 29	407	65,708	0.619	29 -25
30 - 34	727	51,974	1.399	34 - 30
35 - 39	1,418	41,513	3.415	39 - 35
40 - 44	1,741	33,507	5.196	44 - 40
45 - 49	2,173	27,264	7.970	49 - 45
50 - 54	3,016	21,732	13.880	54 - 50
55 - 59	2,485	15,989	15.545	59 - 55
60 - 64	3,065	11,939	25.672	64 - 60
65+	6,564	23,466	27.972	+65

## Annex 8 (Cont.): Projected Households in Gaza Strip by Age, Sex and Year

Age and Sex	Households No.	( ) Population No. (Midyear)	2007 Average of Head of Households 1997	
<b>2014</b>				<b>2014</b>
<b>Male</b>				
10 - 14	0	112,796	0.000	14 - 10
15- 19	264	103,892	0.254	19 - 15
20 - 24	5,164	91,338	5.654	24 - 20
25- 29	30,206	72,354	41.748	29 - 25
30 - 34	51,411	56,581	90.862	34 - 30
35 - 39	49,318	44,642	110.475	39 - 35
40 - 44	43,684	35,415	123.348	44 - 40
45 - 49	36,920	30,331	121.723	49 - 45
50 - 54	29,729	25,090	118.490	54 - 50
55 - 59	19,093	17,807	107.220	59 - 55
60 - 64	10,409	11,990	86.810	64 - 60
65+	11,887	17,698	67.166	+65
<b>Female</b>				
10 - 14	0	107,835	0.000	14 - 10
15- 19	61	100,363	0.060	19 - 15
20 - 24	184	88,756	0.208	24 - 20
25- 29	431	69,718	0.619	29 - 25
30 - 34	756	54,040	1.399	34 - 30
35 - 39	1,483	43,434	3.415	39 - 35
40 - 44	1,810	34,841	5.196	44 - 40
45 - 49	2,259	28,341	7.970	49 - 45
50 - 54	3,153	22,717	13.880	54 - 50
55 - 59	2,637	16,963	15.545	59 - 55
60 - 64	3,197	12,452	25.672	64 - 60
65+	6,764	24,181	27.972	+65
<b>2015</b>				<b>2015</b>
<b>Male</b>				
10 - 14	0	114,471	0.000	14 - 10
15- 19	269	105,713	0.254	19 - 15
20 - 24	5,326	94,201	5.654	24 - 20
25- 29	31,929	76,481	41.748	29 - 25
30 - 34	53,512	58,893	90.862	34 - 30
35 - 39	51,918	46,995	110.475	39 - 35
40 - 44	45,360	36,774	123.348	44 - 40
45 - 49	37,762	31,023	121.723	49 - 45
50 - 54	31,014	26,174	118.490	54 - 50
55 - 59	20,512	19,131	107.220	59 - 55
60 - 64	10,987	12,656	86.810	64 - 60
65+	12,478	18,578	67.166	+65

## Annex 8 (Cont.): Projected Households in Gaza Strip by Age, Sex and Year

Age and Sex	Households No.	( ) Population No. (Midyear)	2007 Average of Head of Households 1997	
<b>2015</b>				<b>2015</b>
<b>Female</b>				
10 - 14	0	109,243	0.000	14 - 10
15- 19	61	101,942	0.060	19 - 15
20 - 24	190	91,539	0.208	24 - 20
25- 29	458	73,945	0.619	29 - 25
30 - 34	787	56,260	1.399	34 - 30
35 - 39	1,552	45,456	3.415	39 - 35
40 - 44	1,884	36,259	5.196	44 - 40
45 - 49	2,347	29,450	7.970	49 - 45
50 - 54	3,289	23,695	13.880	54 - 50
55 - 59	2,799	18,003	15.545	59 - 55
60 - 64	3,338	13,004	25.672	64 - 60
65+	6,986	24,976	27.972	+65
<b>2016</b>				<b>2016</b>
<b>Male</b>				
10 - 14	0	116,100	0.000	14 - 10
15- 19	273	107,444	0.254	19 - 15
20 - 24	5,474	96,823	5.654	24 - 20
25- 29	33,625	80,543	41.748	29 - 25
30 - 34	55,878	61,497	90.862	34 - 30
35 - 39	54,565	49,391	110.475	39 - 35
40 - 44	47,268	38,321	123.348	44 - 40
45 - 49	38,681	31,778	121.723	49 - 45
50 - 54	32,193	27,169	118.490	54 - 50
55 - 59	21,923	20,447	107.220	59 - 55
60 - 64	11,653	13,424	86.810	64 - 60
65+	13,132	19,552	67.166	+65
<b>Female</b>				
10 - 14	0	110,606	0.000	14 - 10
15- 19	62	103,412	0.060	19 - 15
20 - 24	195	94,046	0.208	24 - 20
25- 29	483	78,088	0.619	29 - 25
30 - 34	823	58,828	1.399	34 - 30
35 - 39	1,623	47,532	3.415	39 - 35
40 - 44	1,963	37,775	5.196	44 - 40
45 - 49	2,440	30,612	7.970	49 - 45
50 - 54	3,425	24,678	13.880	54 - 50
55 - 59	2,961	19,051	15.545	59 - 55
60 - 64	3,501	13,637	25.672	64 - 60
65+	7,229	25,845	27.972	+65



## Annex 8 (Cont.): Projected Households in Gaza Strip by Age, Sex and Year

Age and Sex	Households No.	( ) Population No. (Midyear)	2007 Average of Head of Households 1997	
<b>2017</b>				<b>2017</b>
<b>Male</b>				
10 - 14	0	117,605	0.000	14 - 10
15- 19	277	109,135	0.254	19 - 15
20 - 24	5,611	99,250	5.654	24 - 20
25- 29	35,201	84,319	41.748	29 - 25
30 - 34	58,645	64,543	90.862	34 - 30
35 - 39	57,171	51,750	110.475	39 - 35
40 - 44	49,427	40,071	123.348	44 - 40
45 - 49	39,763	32,667	121.723	49 - 45
50 - 54	33,257	28,067	118.490	54 - 50
55 - 59	23,270	21,703	107.220	59 - 55
60 - 64	12,435	14,324	86.810	64 - 60
65+	13,844	20,612	67.166	+65
<b>Female</b>	0			
10 - 14	0	111,842	0.000	14 - 10
15- 19	63	104,835	0.060	19 - 15
20 - 24	200	96,328	0.208	24 - 20
25- 29	507	81,920	0.619	29 - 25
30 - 34	866	61,867	1.399	34 - 30
35 - 39	1,695	49,627	3.415	39 - 35
40 - 44	2,048	39,412	5.196	44 - 40
45 - 49	2,536	31,823	7.970	49 - 45
50 - 54	3,566	25,691	13.880	54 - 50
55 - 59	3,121	20,077	15.545	59 - 55
60 - 64	3,689	14,370	25.672	64 - 60
65+	7,492	26,784	27.972	+65

**Annex 9: Estimation of Households and Housing Units Assuming Firmness of the Average Size of Household for 2007 by Region and Year**

Region and Year	Projected Housing Units	Projected Households	Projected Population	2007 Average of Housing Units 2007	
<b>Palestinian Territory</b>					
2008	764,678	655,019	3,824,190	.	2008
2009	786,144	673,469	3,932,821	.	2009
2010	808,328	692,540	4,045,143	.	2010
2011	832,397	713,276	4,167,937	.	2011
2012	856,435	733,960	4,290,034	.	2012
2013	881,135	755,217	4,415,584	.	2013
2014	906,364	776,934	4,543,915	.	2014
2015	932,084	799,080	4,674,858	.	2015
2016	958,249	821,613	4,808,162	.	2016
2017	984,792	844,477	4,943,501	.	2017
<b>West Bank</b>					
2008	517,787	433,429	2,383,858	5.5	2008
2009	531,285	444,728	2,446,005	5.5	2009
2010	545,190	456,368	2,510,023	5.5	2010
2011	559,514	468,358	2,575,967	5.5	2011
2012	574,259	480,701	2,643,853	5.5	2012
2013	589,340	493,325	2,713,288	5.5	2013
2014	604,664	506,152	2,783,835	5.5	2014
2015	620,204	519,161	2,855,385	5.5	2015
2016	635,928	532,323	2,927,777	5.5	2016
2017	651,790	545,601	3,000,806	5.5	2017
<b>Gaza Strip</b>					
2008	246,891	221,590	1,440,332	6.5	2008
2009	254,859	228,741	1,486,816	6.5	2009
2010	263,138	236,172	1,535,120	6.5	2010
2011	272,883	244,918	1,591,970	6.5	2011
2012	282,176	253,259	1,646,181	6.5	2012
2013	291,795	261,892	1,702,296	6.5	2013
2014	301,700	270,782	1,760,080	6.5	2014
2015	311,880	279,919	1,819,473	6.5	2015
2016	322,321	289,290	1,880,385	6.5	2016
2017	333,002	298,876	1,942,695	6.5	2017

**Annex 10: Estimation of Households and Housing Units Assuming that the Average Size of Household is Reducing 0.05 Person Annually by Region and Year**

Region and Year	Projected Housing Units	Projected Households	Projected Population	2007 Average of Housing Units 2007	
<b>Palestinian Territory</b>					
2008	771,340	660,712	3,824,190	.	2008
2009	799,965	685,279	3,932,821	.	2009
2010	829,829	710,914	4,045,143	.	2010
2011	862,175	738,726	4,167,937	.	2011
2012	895,067	766,980	4,290,034	.	2012
2013	929,254	796,350	4,415,584	.	2013
2014	964,626	826,742	4,543,915	.	2014
2015	1,001,178	858,153	4,674,858	.	2015
2016	1,038,890	890,565	4,808,162	.	2016
2017	1,077,722	923,944	4,943,501	.	2017
<b>West Bank</b>					
2008	522,536	437,405	2,383,858	5.5	2008
2009	541,124	452,964	2,446,005	5.4	2009
2010	560,475	469,163	2,510,023	5.4	2010
2011	580,628	486,032	2,575,967	5.3	2011
2012	601,604	503,591	2,643,853	5.3	2012
2013	623,340	521,786	2,713,288	5.2	2013
2014	645,756	540,550	2,783,835	5.2	2014
2015	668,847	559,879	2,855,385	5.1	2015
2016	692,595	579,758	2,927,777	5.1	2016
2017	716,969	600,161	3,000,806	5.0	2017
<b>Gaza Strip</b>					
2008	248,804	223,307	1,440,332	6.5	2008
2009	258,841	232,315	1,486,816	6.4	2009
2010	269,354	241,751	1,535,120	6.4	2010
2011	281,547	252,694	1,591,970	6.3	2011
2012	293,463	263,389	1,646,181	6.3	2012
2013	305,914	274,564	1,702,296	6.2	2013
2014	318,870	286,192	1,760,080	6.2	2014
2015	332,331	298,274	1,819,473	6.1	2015
2016	346,295	310,807	1,880,385	6.1	2016
2017	360,753	323,783	1,942,695	6.0	2017

**Annex 11: Estimation of Households and Housing Units Assuming that the Average Size of Household is Reducing 0.1 Person Annually by Region and Year**

Region and Year	Projected Housing Units	Projected Households	Projected Population	2007 Average of Housing Units 2007	
<b>Palestinian Territory</b>					
2008	778,123	666,507	3,824,190	.	2008
2009	814,282	697,513	3,932,821	.	2009
2010	852,514	730,297	4,045,143	.	2010
2011	894,174	766,071	4,167,937	.	2011
2012	937,374	803,135	4,290,034	.	2012
2013	982,973	842,257	4,415,584	.	2013
2014	1,030,955	883,428	4,543,915	.	2014
2015	1,081,424	926,735	4,674,858	.	2015
2016	1,134,472	972,256	4,808,162	.	2016
2017	1,190,181	1,020,063	4,943,501	.	2017
<b>West Bank</b>					
2008	527,375	441,455	2,383,858	5.4	2008
2009	551,333	461,510	2,446,005	5.3	2009
2010	576,643	482,697	2,510,023	5.2	2010
2011	603,397	505,092	2,575,967	5.1	2011
2012	631,684	528,771	2,643,853	5.0	2012
2013	661,504	553,732	2,713,288	4.9	2013
2014	692,843	579,966	2,783,835	4.8	2014
2015	725,771	607,529	2,855,385	4.7	2015
2016	760,349	636,473	2,927,777	4.6	2016
2017	796,633	666,846	3,000,806	4.5	2017
<b>Gaza Strip</b>					
2008	250,748	225,052	1,440,332	6.4	2008
2009	262,949	236,003	1,486,816	6.3	2009
2010	275,871	247,600	1,535,120	6.2	2010
2011	290,777	260,979	1,591,970	6.1	2011
2012	305,690	274,364	1,646,181	6.0	2012
2013	321,469	288,525	1,702,296	5.9	2013
2014	338,112	303,462	1,760,080	5.8	2014
2015	355,653	319,206	1,819,473	5.7	2015
2016	374,123	335,783	1,880,385	5.6	2016
2017	393,548	353,217	1,942,695	5.5	2017

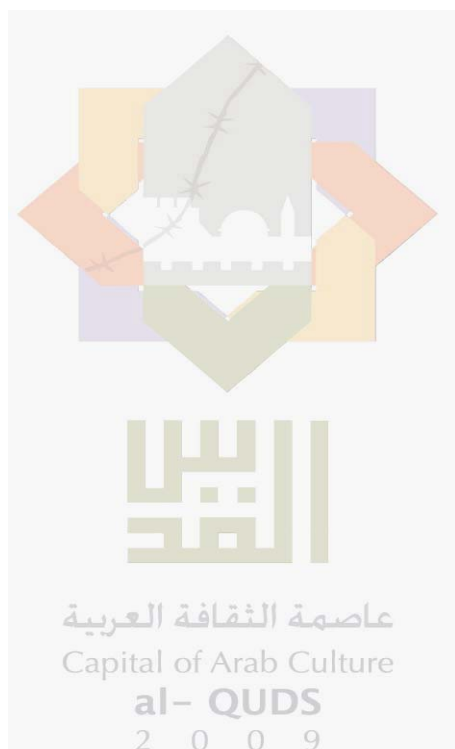


**Palestinian National Authority  
Palestinian Central Bureau of Statistics**

**Housing Projections up to 2017**

**December, 2009**

PAGE NUMBERS OF ENGLISH TEXT ARE PRINTED IN SQUARE BRACKETS.  
TABLES ARE PRINTED IN THE ARABIC ORDER (FROM RIGHT TO LEFT)



**This document is prepared in accordance with the standard procedures stated in the Code of Practice for Palestine Official Statistics 2006**

© December, 2009.  
All rights reserved.

**Suggested Citation:**

**Palestinian Central Bureau of Statistics, 2009. *Housing Projections up to 2017.***  
Ramallah - Palestine.

All correspondence should be directed to:  
**Palestinian Central Bureau of Statistics**  
**P.O.Box 1647 Ramallah, Palestine.**

Tel: ( 970/972 ) 2 2982700  
Fax: ( 970/972 ) 2 2982710  
E-Mail: diwan@pcbs.gov.ps  
web-site: <http://www.pcbs.gov.ps>

## **Acknowledgments**

**The Palestinian Central Bureau of Statistics (PCBS) would like to thank all the cooperating Palestinian Organizations and appreciates their commitment to bring this achievement into light.**

**The funding for the Housing Projections up 2017 in the Palestinian Territory report was provided by the Palestinian National Authority (PNA) and the Core Funding Group (CFG) for 2009. CFG members include the Representative Office of Norway to the PNA; the Representative Office of Netherlands to PNA; and the Swiss Agency for Development and Cooperation (SDC).**

**Printing of this document was funded by the European Union. The content of this document are the sole responsibility of the PCBS.**

**On this occasion, PCBS extends special thanks to the members of the CFG and the EU for their support.**





## **Team Work**

- **Report Preparation**  
Ruba Qubbaj
- **Graphic Design**  
Ahmad Sawalmeh
- **Dissemination Standard**  
Hanan Janajreh
- **Preliminary Review**  
Mahmoud Abd-Alrahman
- **Final Review and Overall Supervision**  
Inaya Zidan  
Ola Awad Acting President



## **Preface**

The Palestinian society requires data about statistics for housing and housing conditions, because information about the housing unit, conditions, facilities, ownership and safe protection of inhabitants gives a basic understanding of the living conditions of a society.

Projection is very important for future planning. Future expectations according to a determining hypothesis give insight into developing trends and basic changes in this field.

The housing sector has developed in size, the number of households in the Palestinian Territory increased by 54.5% in the Census 2007 compared with the 1997 Census, which naturally led to an increased demand for housing units. This amounted to a 50.2% increase in housing units in Census 2007 compared to Census 1997, showing that the demand on housing units increased.

PCBS is pleased to present this report (Housing Projections up to 2017) as a basic reference for all planners, decision-makers, and users in the different demographic, social, economic and housing fields interested in utilizing housing data. This will facilitate the building of the Palestinian independent state on a sound scientific basis.

**December, 2009**

**Ola Awad  
Acting President**



## Table of Contents

Subject	Page
List of Tables	
List of Figures	
List of Annexes	
Executive Summary	
Chapter One: <b>Introduction</b>	<b>[19]</b>
Chapter Two: <b>Concepts and Definitions</b>	<b>[21]</b>
Chapter Three: <b>Projection Methods</b>	<b>[23]</b>
3.1 Scenarios of Housing and Households' Projections in the Palestinian Territory	[23]
3.1.1 Establishment Year Method	[23]
3.1.2 Head of Households Rate Method	[24]
3.1.3 Average of Household Size Method	[25]
Chapter Four: <b>Main Findings</b>	<b>[27]</b>
4.1 Head of Households Rate Method	[27]
4.2 Year of Establishment Method	[27]
4.2.1 1948-2007	[27]
4.2.2 1967-2007	[27]
4.2.3 1987-2007	[27]
4.2.4 2000-2007	[28]
4.3 Average of Household Size Method	[28]
4.3.1 Based on fixed Average of Household Size	[28]
4.3.2 Based on the Assumption of the Average of Household Size Would Drop by 0.05	[28]
4.4 Conclusions and Suggestions	[28]
<b>References</b>	<b>[31]</b>
<b>Tables</b>	<b>37</b>
<b>Annexes</b>	<b>45</b>



## List of Tables

<b>Table</b>	<b>Page</b>
<b>Table 1:</b> Projected Households and Housing Units in the Palestinian Territory Using Average of Head of Households Hypothesis by Region and year	<b>39</b>
<b>Table 2:</b> Projected Households and Housing Units in the Palestinian Territory Using Year of Construction of Housing Units Hypothesis by year and Region.	<b>40</b>
<b>Table 3:</b> Projected Households and Housing Units in the Palestinian Territory Assuming Firmness the Average of Households (Census 2007) by Region and Year	<b>41</b>
<b>Table 4:</b> Projected Households and Housing Units in the Palestinian Territory Assuming that the Average Size of Household is Decreased Yearly by 0.05 Person by Region and Year	<b>42</b>
<b>Table 5:</b> Projected Households and Housing Units in the Palestinian Territory Assuming that the Average Size of Household is Decreased Yearly by 0.1 Person by Region and Year	<b>43</b>





## List of Figures

<b>Figure</b>		<b>Page</b>
<b>Figure 1:</b>	Projected Housing Units in the Palestinian Territory Using Average of Head of Households Hypothesis by Region and Year	[27]
<b>Figure 2:</b>	Projected Housing Units in the Palestinian Territory Using the Average Size of Household Hypothesis and Year	[28]
<b>Figure 3:</b>	Projected Housing Units in the Palestinians Territory by Different Hypothesis and Year	[29]



## **List of Annexes**

<b>Annexe</b>	<b>Page</b>
<b>Annex 1:</b> Number of Housing Units by Utilization and Region, (Census 2007)	<b>47</b>
<b>Annex 2:</b> Average of Annual Increase of Housing Units by Region and Year of Construction During 1948- 2007	<b>48</b>
<b>Annex 3:</b> Average of Annual Increase of Housing Units by Region and Year of Construction During 1967 – 2007	<b>52</b>
<b>Annex 4:</b> Average of Annual Increase of Housing Units by Region and Year of Construction During 1987 - 2007	<b>55</b>
<b>Annex 5:</b> Average of Annual Increase of Housing Units by Region and Year of Construction During 2000 - 2007	<b>57</b>
<b>Annex 6:</b> Average Head of Households by Sex, Age and Region, 2007	<b>58</b>
<b>Annex 7:</b> Projected Households in the West Bank by Age, Sex and Year	<b>60</b>
<b>Annex 8:</b> Projected Households in Gaza Strip by Age, Sex and Year	<b>67</b>
<b>Annex 9:</b> Estimation of Households and Housing Units Assuming Firmness of the Average Size of Household for 2007 by Region and Year	<b>74</b>
<b>Annex 10:</b> Estimation of Households and Housing Units Assuming that the Average Size of Household is Reducing 0.05 Person Annually by Region and Year	<b>75</b>
<b>Annex 11:</b> Estimation of Households and Housing Units Assuming that the Average Size of Household is Reducing 0.1 Person Annually by Region and Year	<b>76</b>



## **Executive Summary**

Development planners require future estimates about households and housing units in order to create appropriate strategies for short-term and long-term services in line with the size and needs of the Palestinian society.

There are several projection methods for households and housing units. However internationally applied housing unit projection methods cannot be applied to the Palestinian Territory in the present time due to lack of necessary data. Household projections have been used to identify the number of housing units which the Palestinian Territory will need in the coming years.

A number of countries use the head of household rate method, which provides detailed and highly useful projections. The data of this method, which is recommended by the United Nations committees involved in these fields, are made available through the census.

In this report future estimates concerning the number of households and housing units are based on the three methods of projection: head of household rate method, year of establishment method which depends on four periods (1948-2007, 1967-2007, 1987-2007, 2000-2007), and the average household size, based on three criteria: assuming a constant average household size, or assuming a decrease in the average household size at a rate of 0.05 persons per household, or assuming a decrease in the average household size at a rate of 0.1 persons per household.

On the assumption that the average household size is declining at a rate 0.05 per person for every household, it is estimated that the number of housing units in the Palestinian territories in 2017 will reach 1,077,722 units. This number is divided by region as 716.969 units in the West Bank, compared to 360.753 units in the Gaza Strip.

The findings and conclusions about the method of head of household rate are closer to reality, especially since this method has been used in many countries in the world and is one of those recommended by the United Nations. It has been suitable for use in many countries, including those that have not developed statistics or adequate methods of analysis. The use of the average household size hypothesis, which assumes a decline in this average rate of 0.05 per person per year, is according to the Census 2007; this showed results close to the results obtained by using the hypothesis of the rate of the head of household. Comparing the increase between the Census 1997 and Census 2007 in the number of housing units this amounted to an increase of 50.2% over the ten years; according to the hypothesis that the average household size would be declining at a rate 0.05 percentage, the increase in 2017 would be about 55.9% over the number of housing units for the year 2007.



## Chapter One

### **Introduction**

Policy making and the drawing of future plans in the field of housing in the Palestinian Territory is contingent on the availability of estimates of future trends of housing statistics. This planning helps estimating the Palestinian future needs of housing units for a specific a period of time; these estimations are based on the international experience, and on the population projections by the PCBS.

The main objective of this report is to provide estimates and future household needs of housing units in 2008-2017.

This report contains four chapters: in addition to the introduction, chapter two presents the main Concepts and Definitions, chapter three gives Projection Methods and Hypothesis related to households and housing units estimation, and the Main Results are in chapter four.





## Chapter Two

### Concepts and Definitions

**Average Household Size:**

It refers to the average number of household members calculated through dividing the total number of members for a certain category by the number of households for that particular category.

**Building:**

A Building is defined as any fixed construction that is temporarily or permanently erected on the surface of the earth or water. A building is surrounded by four walls or with at least one completed ceiling at the time of the visit, regardless of the construction material and the purpose of construction and utilization at the time of the Census. The building might be utilized for habitation, for work, or for both, vacant, closed, deserted, under preparation or under construction at the time of Census.

**Head of the household:**

It refers to the person who usually lives within the household and is considered as the head of the household by its other members. Often, he \ she is the main decision-maker and responsible for financial support and economic welfare of the household.

**Household:**

One person or a group of persons with or without a household relationship, who live in the same housing unit, share meals and make joint provision of food and other essentials of living.

**Housing Unit:**

A building or part of a building constructed for one household only, with one or more independent entrance leading to the public road without passing through another house.

**Year of Construction:** It refers to the year in which the foundations were laid, i.e. the construction of the oldest part of the building.

**Symbols Used in Annexes:** (.): Category not applicable.



## Projection Methods

Development planners require future estimates about households and housing units in order to create appropriate strategies for short-term and long-term services in line with the size and need of the Palestinian society.

There are several projection methods for households and housing units. However internationally applied housing unit projection methods cannot be applied to the Palestinian Territory in the present time due to lack of necessary data. Household projections have been used to identify the number of housing units which the Palestinian Territory will need in the coming years.

A number of countries use the head of household rate method, which provides detailed and highly useful projections. The data of this method, which is recommended by the United Nations Committees involved in these fields, are made available through the census.

### 3.1 Scenarios of Housing and Household Projections in the Palestinian Territory

The following explains the suggested projection methods, the used assumptions, and the approach followed for making such projections.

#### 3.1.1 Establishment Year Method

This method is based on the Population, Housing, and Establishment Census 2007. The base year is the census year where all estimates are based. The method relies on the variable of establishment year of a housing unit in accordance with the 2007 Census. The annual rate of increase in the previous years can produce estimates of the number of housing units between 2008 and 2017.

Annexes (2, 3, 4, 5) show the annual increase in the housing units by establishment year as well as the annual rate of increase of housing units divided by the following periods 1948-2007, 1967-2007, 1987-2007 and 2000-2007 in the West Bank and Gaza Strip. The annual rate of increase has been calculated throughout the aforementioned periods.

This scenario is based on the number of housing units by establishment year of the housing unit to the base year 2007, which are based on the population, housing, and establishment Census 2007. The number of housing units of the West Bank and Gaza Strip for 2000-2017 has been estimated throughout different periods based on the number of housing units during 1948-2007, 1967-2007, 1987-2007, and 2000-2007.

The implementation of the method followed these procedures:

1. Producing an accumulative repetition of the number of housing units (total of housing units during the previous year and the following year) for each of the periods stated above.
2. Calculating the annual increase in the number of housing units for each period through the following formula:

$$\text{Annual rate of increase} = \frac{\text{HUN}}{\text{AHUN}} \times 100$$

Where: HUN = the number of built housing units in a certain year

AHUN= the accumulative number of built housing units in the previous year

3. Calculating the annual rate of increase for a number of years. There is a direct relation between the length of the period and the annual rate of increase, i.e., short periods mean lower rate of annual increase.
4. The estimated number of housing units of the years of estimate (2008, 2009, 2010...2017) can be reached through the following formulas:

The estimated number of housing units to be built in the year of estimate = the number of housing units of the previous year \* the annual rate of increase.

The number of housing units of the year of estimate = the estimated number of housing units to be built in the year of estimate + the number of housing units of the previous year.

Henceforth, the total number of housing units of the base year 2007 of the West Bank and Gaza Strip is multiplied by the annual rate of increase in order to produce the estimated number of housing units to be built in 2008. The produced estimated number is then added to the number of housing units of the base year 2007 in order to produce the number of housing units for 2008 and so on and so forth.

### 3.1.2 Head of Household Rate Method

Calculation of future need of housing units (based on the head of household rate method) followed these procedures:

1. Assuming that each household would normally require one housing unit (79% of households in the Palestinian Territory are nuclear households).
2. The head of household rate was calculated using head of household rates by age and sex based on the data of the 2007 Census.
3. The number of population and the number of housing units do not include individuals below the age of 10.
4. The head of household rate was calculated by dividing the number of heads of households of each stratum by the number of population of the same stratum and multiplying it by 100.
5. Total population includes only population of age groups where there are no household heads (age groups of 10 and over).

Head of household rate is calculated through using the following formula:

$$\text{Head of Households rate} = \frac{\text{NHH}(10 + \text{by sex})}{\text{NP}(10 + \text{by sex})} \times 100$$

Where NHH (10 + by sex) = number of household heads (10 + years) by sex for a certain age group

NP (10 + by sex) = population (10 + years) for the same age group by sex

The calculation of the estimates of the number of households for coming years is based on the assumption if each household would live in one housing unit; the head of household rate would remain fixed according to the following formula:

$$\text{Number of Households of Year of estimate} = \frac{\text{HHA}(10 + \text{years by sex}) \times \text{ENP}(10 + \text{years by sex})}{100}$$

Where HHA (10 + years by sex) = head of household rate (10 + years) for a certain age group by sex.  
 NP (10 + years by sex) year of estimate population for the same age group by sex.

The number of housing units of a certain year is estimated based on percentage of closed or vacant housing units and the percentage of occupied housing units (Census data) according to the following formula:

$$\text{Number of Housing Units} = \frac{\text{NHEY X PCVH}}{\text{POH}} + \text{NHEY}$$

Where NHEY = the number of households of the year of estimate  
 PCVH = percentage of closed or empty housing units (Census data)  
 POH = percentage of occupied housing units (Census data)

The head of household rate method and housing projections (PCBS middle series) were used to estimate the need for housing units up to 2017.

Annex 7 shows the 2007 Census-based head of household rates by sex and age groups for each projection year. It was assumed that the head of household rate is fixed for each age group, sex, and region during the projection years based on 2007 (base year).

**3.1.3 Average of Household Size Method**

According to this method, the average of household size is assumed to be fixed in accordance with the base year of Census 2007 where the average household size of the West Bank was (5.5), (6.5) for Gaza Strip, and 5.8 for the Palestinian Territory (see Annex 9).

The second method, on the other hand, assumes an annual drop of 0.05 in the average household size in the coming years. The third method assumes a drop in the average household size by 0.1 (Annex 10 shows estimated number of households and housing units according to the average household size method).

This method is based on the average household size by assuming that:

- The average household size would remain fixed according to the 2007 Census.
- The average household size would gradually drop by 0.05 annually to 5.0 in the West Bank and 6.0 in Gaza Strip in 2017.
- The average household size would gradually drop by 0.1 annually to 4.5 in the West Bank and 5.5 in Gaza Strip in 2017.

The procedures of the assumption can be summarized as follows:

1. Estimating the number of households according to the years of estimate (2008-2017) by dividing population of the year of estimate by average household size
2. Estimating the number of housing units of the years of estimate (2008-2017) using the following formula (the same formula used in estimating the number of housing units).

$$\text{Number of Housing Units} = \frac{\text{NHEY X PCVH}}{\text{POH}} + \text{NHEY}$$



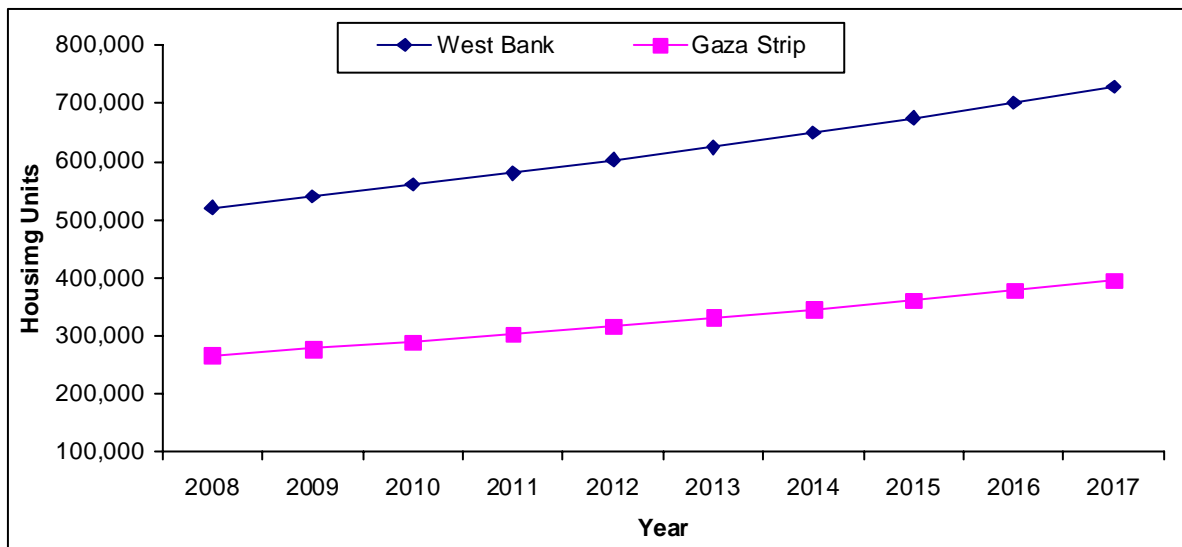
## Main Findings

This chapter presents a summary of the future estimates concerning the number of households and housing units based on the three methods of projection dependence on the Population, Housing, and Establishment Census 2007:

### 4.1 Head of Household Rate Method

According to estimates, the number of housing units of the Palestinian Territory will rise from 691,463 in Census 2007 to 919,801 in 2012 at a rate of 33.0%. Estimates also show that the number of housing units of the Palestinian Territory of 2017 will be 1,124,063 including 728,881 in the West Bank and 395,182 in Gaza Strip.

**Figure 1: Projected Housing Units in the Palestinian Territory Using Average of Head of Households Hypothesis by Region and Year**



### 4.2 Year of Establishment Method

This method is based on four periods in time:

#### 4.2.1 (1948-2007)

The number of housing units in the Palestinian Territory, according to estimates based on the year of establishment method, for 1948-2007 will rise to 1,172,834 in 2017 including 741,952 in the West Bank and 430,882 in Gaza Strip.

#### 4.2.2 (1967-2007)

According to estimates, the number of housing units in the Palestinian Territory will rise from 691,463 in Census 2007 to 1,082,694 in 2017 (666,642 in the West Bank and 416,052 in Gaza Strip).

#### 4.2.3 (1987-2007)

Estimates show that the number of housing units of the Palestinian Territory will increase from 691,463 in Census 2007 to 958,308 in 2017 (603,002 in the West Bank and 355,306 in Gaza Strip).

**4.2.4 (2000-2007)**

Accounting to estimates, the number of housing units in the Palestinian territory will rise from 691,463 in Census 2007 to approximately 807,099 in 2017 (512,900 in the West Bank and 294,199 in Gaza Strip).

**4.3 Average Household Size Method**

**4.3.1 Based on Fixed Average Household Size**

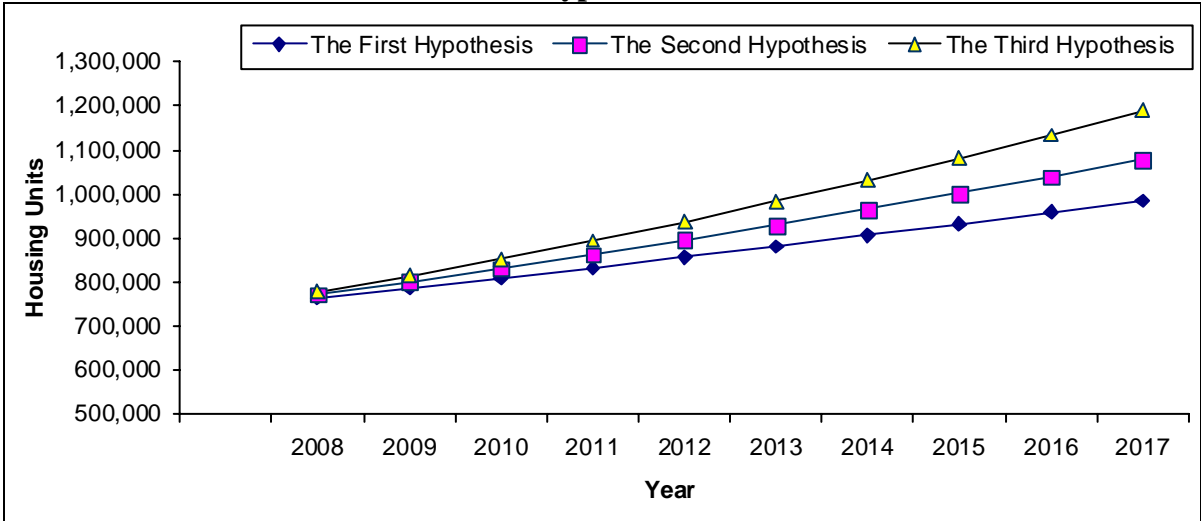
Estimates here show that the number of housing units of the Palestinian Territory will rise from 691,463 in Census 2007 to 856,435 in 2012 or by 23.9%.

The number of housing units in the Palestinian Territory, according to estimates based on average household size method, will rise to 984,792 in 2012 including 651,790 in the West Bank and 333,002 in Gaza Strip.

**4.3.2 Based on the Assumption that the Average Household Size Would Drop by 0.05**

According to estimates, the number of housing units of the Palestinian Territory will rise from 691,463 in Census 2007 to 895,067 in 2012 or by 29.5%. The estimates for the number of the housing units in 2017 predict that it would reach 1,077,722 (716,969 in the West Bank and 360,753 in Gaza Strip).

**Figure 2: Projected Housing Units in the Palestinian Territory Using the Average Size of Household Hypothesis and Year**

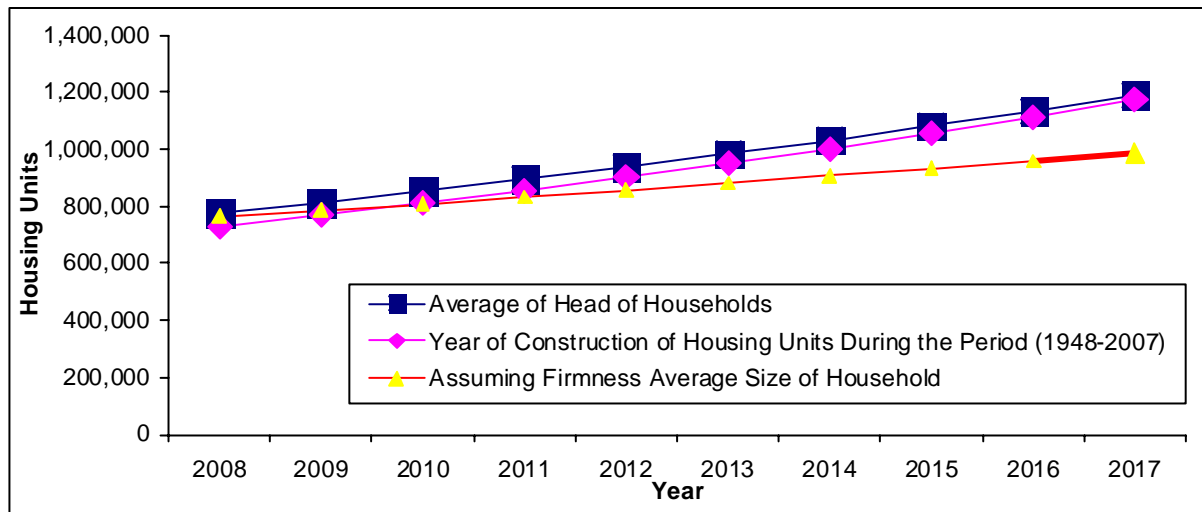


**4.4 Conclusions and Suggestions**

The methods of housing projections reveal consistency among their results; for instance, the results of the head of household rate method and the results of the year of establishment method of 1948-2007 are close. The results of using the average household size method where such size of 2007 Census-based was assumed to drop by 0.5 were close to the other results, too.



**Figure 3: Projected Housing Units in the Palestinians Territory by Different Hypothesis and Year**



Based on the foregoing findings and conclusions about the projections of housing it can be argued that the results of the method of head of household rate of household are closer to reality, especially that this method has been used in many countries in the world, is one of the ways recommended by the United Nations, and is suitable for use in many countries, including those that did not develop statistics and adequate methods of analysis. In addition, it could be argued that the use of the average household size hypothesis, which assumes a decline in this average rate of 0.05 per person per year and is according to the Census 2007, has shown results close to the results obtained by using the hypothesis of the head of household rate and is internationally recommended.

We recommend using the rate of the head of household, which is recommended by the United Nations, and is used in many countries of the world. The average household size hypothesis, which assumes a decline in this average rate of 0.05 persons per year, a somewhat lower average household size than during the previous ten years in the Palestinian Territory, gives results that are close to that of the rate of head of household. After implementation of the Population and Housing Census II in the Palestinian Territory, the average household size on the Palestinian Territory fell from 6.4 in 1997 to 5.8 in the Census 2007. This lower average of 0.06 per person per year fell in the West Bank at the same rate, and in the Gaza Strip at 0.04 per person per year, close to the assumed rate of decrease of the average household size of 0.05 per person per year, and since the increase in the number of housing units between 1997 Census and 2007 amounted to 50.2%, this is close to the rate of increase of housing units over the next decade using the assumed reduction of the average size of household rate of 0.05 which is expected to increase the proportion of 55.9% in the year 2017 from the year 2007.



## References

1. Palestinian Central Bureau of Statistics, 2001. Housing Projections up to 2010. Ramallah – Palestine.
2. Department of Economic and Social Affairs Population Studies, Methods of Projecting Households and Families, Manuals on Methods of estimating Population No. 54, 1994.
3. Palestinian Central Bureau of Statistics, 2008. Population, Housing and Establishment Census-2007, Final Results- Buildings Report- Palestinian Territory. Ramallah –Palestine.
4. Palestinian Central Bureau of Statistics, 2008. Population in the Palestinian Territory, 2008-2017. Ramallah-Palestine.