

.

.1

1967

" "

.1

.2

:

.2006	1
.2006	2

1

%61.0

%26.7

%68.6

%43.5

%17.5

%10.0

.2006

%35.6

%38.3

%16.0

3

%20

1-1

()

1948

1967

1948

31,388

1935

661

408,044

54,795

3,653

3,990

6,579

625

40

.1967 1919

()

⁴1946 :1

150,590 65,010

103,530 99,320

160 110

164,440 254,280

1968 5728

- .1948

.1988 ⁴

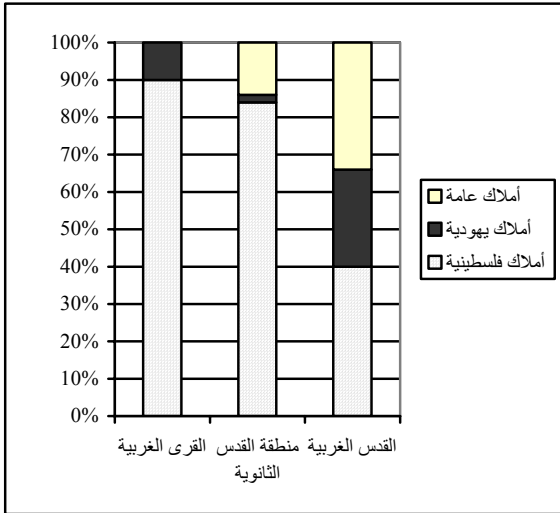
1946

:1

110

.1967

40



)
(

(1)

(1)

1946

%27

%73

564

1995

1967

%10.8

544

1991

%28

%72

1967

.%90

%74

66.3

. %20

%99

1991

2-1

:

.1

.2

.3

.4

3-1

(J1)

1967

1967

.2

1-2

1972

1967

.%73.5

.%75

1-1-2

" "

" "

2000 - 1967

:2

99	1985	105	1967
84	1986	395	1968
23	1987	178	1969
2	1988	327	1970
32	1989	126	1971
36	1990	93	1972
20	1991	77	1973
41	1992	45	1974
32	1993	54	1975
45	1994	42	1976
96	1995	35	1977
739	1996	36	1978
1067	1997	91	1979
788	1998	158	1980
411	1999	51	1981
207	2000	74	1982
272	2003	616	1983
-	2004	161	1984

(2)

2000-1967

6,386

2000 -1997 :

:2

2000	1999	1998	1997
18	136	188	229
13	53	72	210
7	31	39	138
-	38	-	-
5	62	54	183
9	6	13	38
70	455	596	276

-1967

3,634

1999

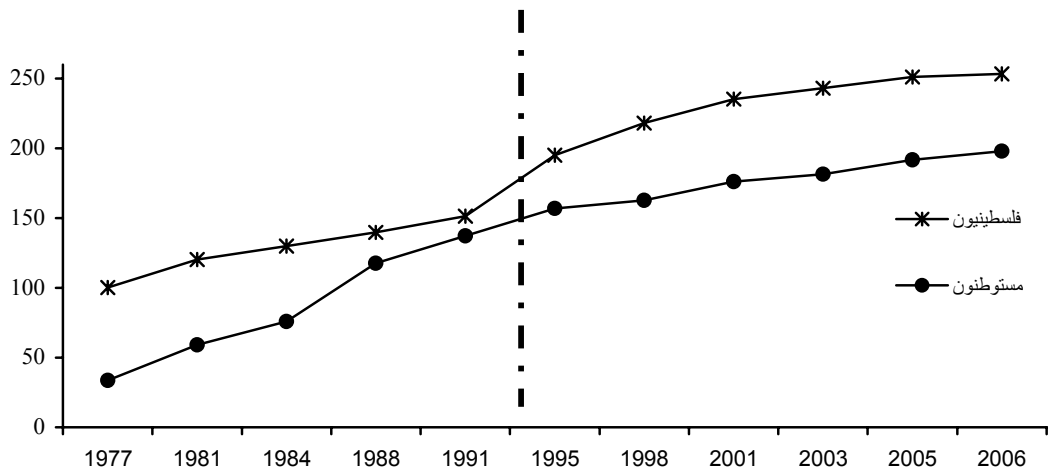
2000-1995

3,308

%50

2006-1977

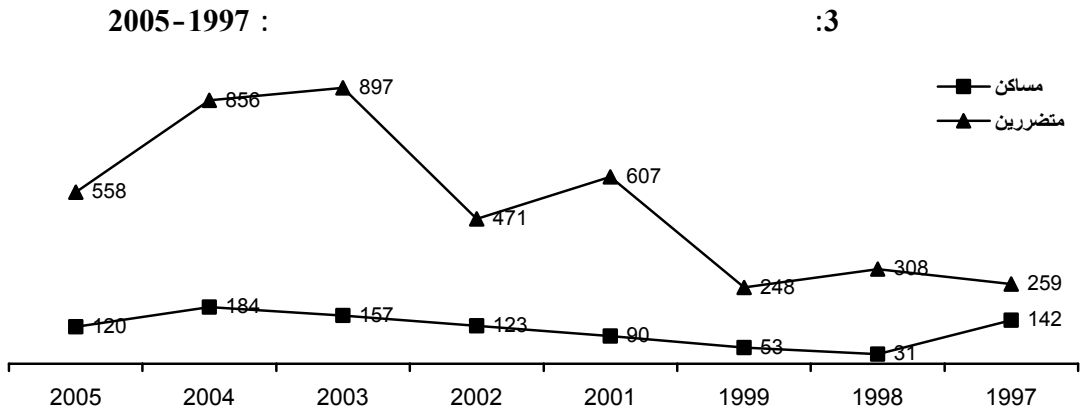
: 2



(2)

2-1-2

(3)



3-1-2

.1
.2
.3
.4

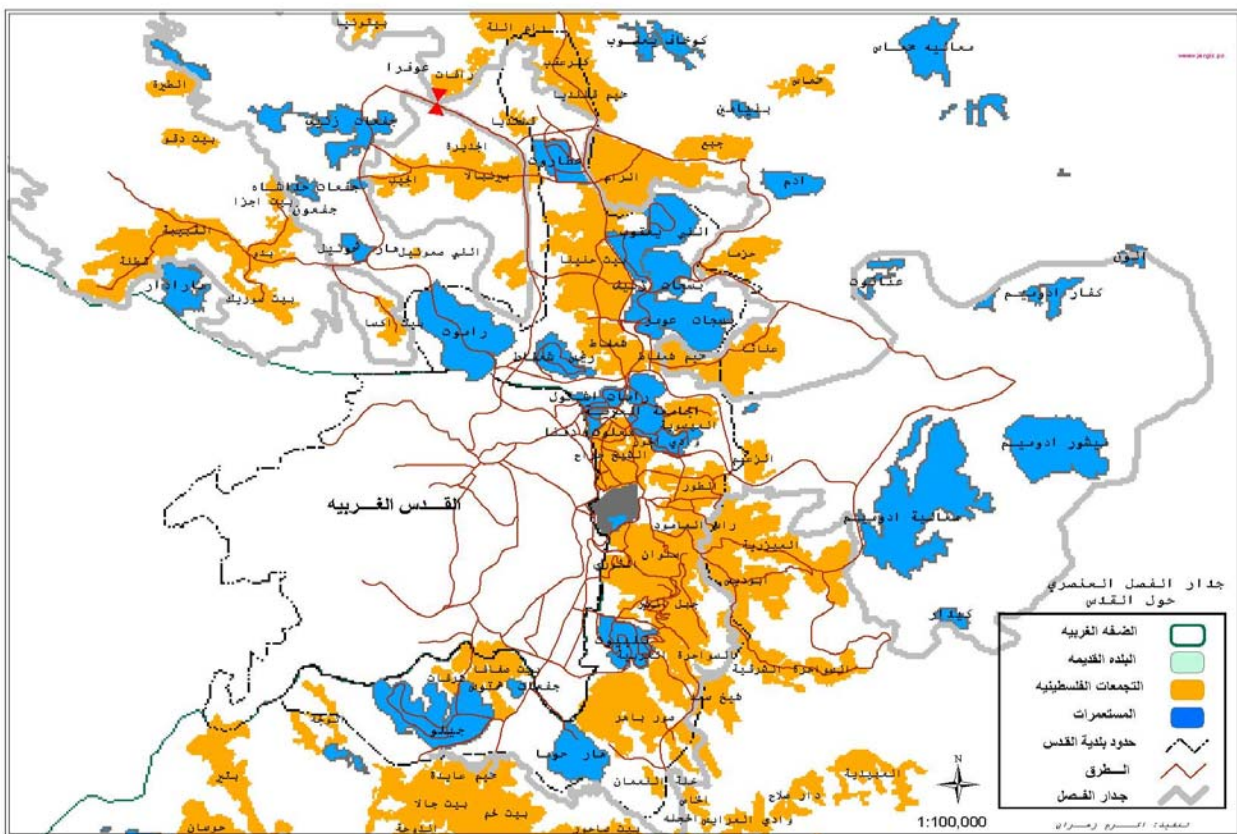
70 1967
15 28

()
2004 222
10 %33
%80-75 2000-1967

1943 " 185

() E1
)² 60 " ")² 13 E1
 10 ()
 %9 %44 %34 E1
 %13

خريطة 1: جدار الضم والتوسع في محافظة القدس، 2006



2020

2000

2020

.⁶2020 %40 380 2020

2002

75

()

(1)

1993

" "

12

7

.2007

6

8

()

2-2

1-2-2

/

7

: .2002 ()

8

2006-1969

:3

	1969
	1985
	1995
	1996
	1997
(4	1998
20	1999
	2001
	2002
	2004
	2006

2-2-2

1968

5728

)

(

3-2-2

24

17

"

"

"

"

42

185

2007

"

"

"

78

"

%4

17

3-2 آثار السياسة الإسرائيلية على اقتصاد القدس

9

1-2-3

%80

2004

2005

9

%45

¹⁰.%53 2004

2-2-3

%21

3-2-3

%17 2004 %23 1999 %11

2005

.%28 %16

()

.(4)

11

:4

2006	2005	2004	
7,077	6,868	6,519	(4 2)
2,300	2,143	1,934	(4 2)
70.8	62.7	69.4	
87.2	82.1	82.7	
3.4	3.9	2.1	
24.3	15.8	19.0	

¹⁰

2002

¹¹

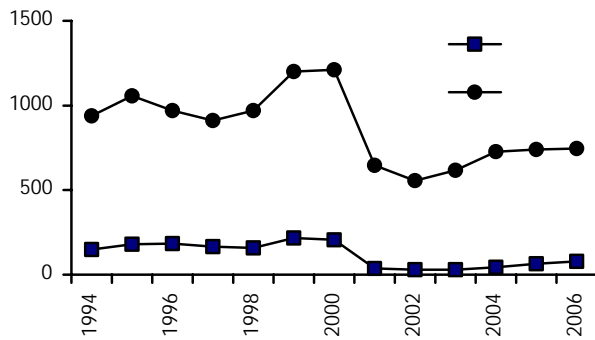
.2006-2004

CPI

5,926

:4

2006-1994



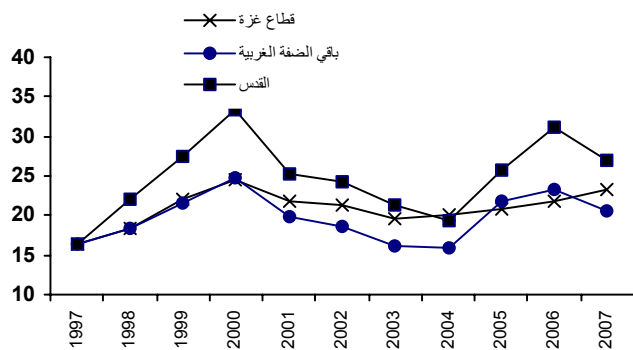
(4)

2006-1994

1997

:5

2007-

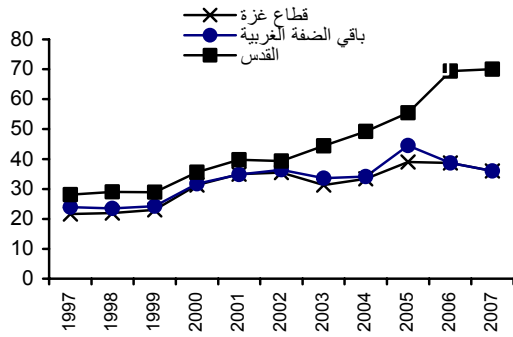


(6)

(5)

:6

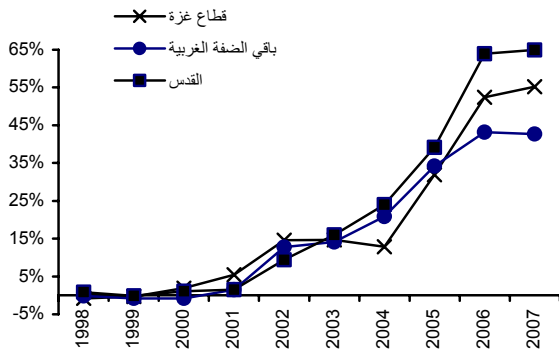
2007-1997



21
25
%135
%141
()
20
(12)

(1997)

:7



2007-1997
%43
%55
%65
(7)
(1997=)

12

" "

4-2-3

1987

13

.13

%20

5-2-3

(population mobility)

2006

%54

%83

%30

%33

(

%52

%55)

%19

.%17

%39

%32

%12

%35

(16)

(16)

.(%53

%51) %52

.(

%58

%79) %64

1993

" "

25)

¹⁴(2006

15

.4

1990

.2006	.2006	14
		15

1948

1-4

2-4

1-2-4

1993

)
()

)
(

“ ” “ ”

16

17

16

17

2-2-4

()

3-2-4

3-4

.5

1-5

() ()

18

()

-

2001

18

2-5

600

(2001)

TOKTEN

(PALESTA)

(Palestine Scientists and Technologists Abroad)
(Across Border)

3-5

19

300

4-5

.2001

19

(AIPAC)

.6

)

(

16 %87
%85 %77
 %73

16	"	:	"	.1
		.80-79	-1994	-95
	:	.2002 ()		.2
		.2004		.3
		.2004		
	"		"	.4
	-	.1948		.1988
	/		.2001	.6
			.2004	.7
			()	
	.149-140	1988	"	"
	.191-190		"	"
		.2006		.10
		1427	25-23	
	"		"	.11
		.16 -14		1991
	/	85	13	"
				.1991
	-		.2006	.13
		.2007		.14
	:			
		25	.2006	.15
		()		
			.2005	.16

.	-	:	.2004	.17
.	.	.	.2005	.18