

:

:

1999

1() 1990

- .()

.1996

1

- -

.()

1995

.1998-1995

1995

1997

1999

1997

1-2

2.9 1997 1997
 %53.1 15
 1.5 ()

15 1994 %69.2
 %44
 2 %31
 .1996 113 95 3

2-2

1997
 %40.5 (15)
 %35.7 %43.2
 1996
 .5 %77.3 %75.9 %79.3 4%54
 .61992 %47.2 %43.7 1993
 602,000 %29
 .1996 2
 (15) 3
 .(64-15)
 .1997 4

Canada and other countries in labor

5

⁶ International Labour Office, 1995. Yearbook of labour statistics. Geneva.

%9.1

%16.7

.7%44 1996

.(1.2) .

%26.7
%4.5

%68.8

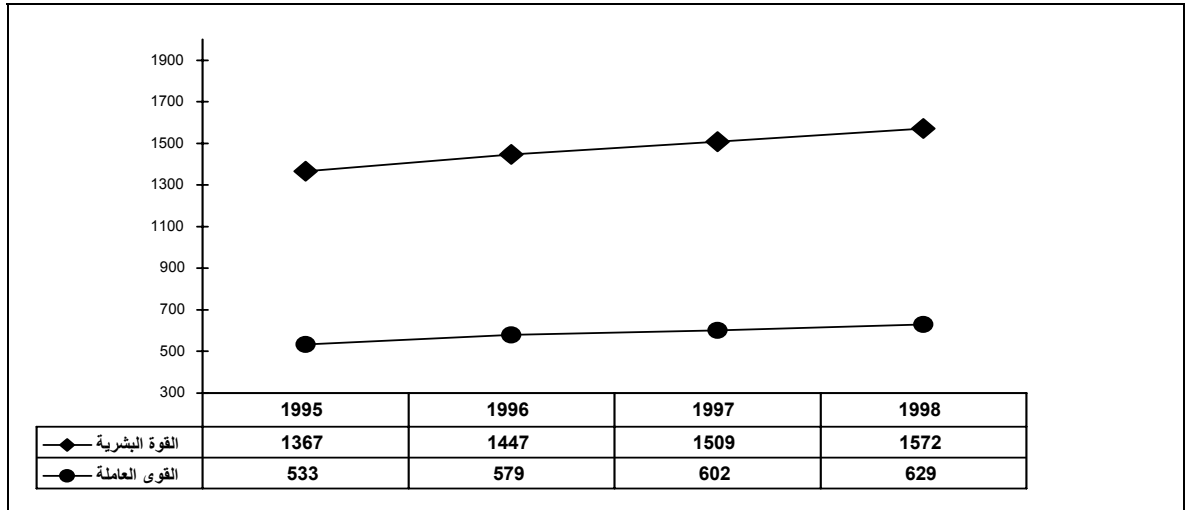
1997
211)

1995

%80
70

265
(

() 1998 - 1995



3-2

.1997

7

481 1997

%15

%17

%20

%19

%80

%29

%15

%43

%18

%8

%17

(3)

4-2

1998

1997

1998 - 1995

1996

1995

%20.3

%23.8

%18.2

%14.4

1996-1995

()

1998

(46)

81997

(39)

(Median)

(90)

.1997 8

(19)

(24)

(23)

1997

82

.%17

9%25.7

%14

%86

%10

%17

.(4) .10

()

%36

.(%44)

%7

.%37

.(5) .

%41

%24

%49

()

%27

%28

%29

(1996)

10

%8

%16

%.18

%23

%27

.(6) .

%54

%57

%46

%18

%14

.(7) .

()

.11 _____

5-2

2.25

1997

(51) 4.25

.(8) .

(56)

17

50

.(9) .

1994

1-3

(Dynamic)

(Transition Matrix)

%83)

(

:

.(-)

.1

.(-)

.2

2-3

)

(

)) 15 () 10 %10.3 (

40.8	5.0	35.8	
59.2	53.9	5.3	
100.0	58.9	41.1	

15
%5.0
%5.3
%53.9
%35.8

.1998-1995

)
100	87.9	6.1	6.0	1996
100	89.9	5.7	5.1	1996
100	90.3	4.8	4.9	1997
100	89.5	4.0	6.5	1997
100	88.4	5.9	5.7	1997
100	88.9	5.5	5.6	1998
100	91.5	3.7	4.8	1998
100	91.0	4.5	4.5	1998
100	90.1	4.7	5.2	1998
100	89.4	5.3	5.3	

%87.9
1997
%91.5 1998

%6.0-%4.5

%6.1-%3.7

.1998-1995

()

%82.1 1998-1995
%10.1 %7.8

%11.3 %5.4

.%15 %6.2

				()
100	76.7	15.0	8.3	1996
100	80.6	11.3	8.1	1996
100	80.9	10.0	9.1	1997
100	81.3	10.1	8.6	1997
100	79.8	8.9	11.3	1997
100	80.7	13.1	6.2	1998
100	85.9	8.2	5.9	1998
100	86.7	6.2	7.1	1998
100	86.4	8.2	5.4	1998
100	82.1	10.1	7.8	

(labour shock)

1996

:
.1998-1995

%15.0

%89.4

34-25

%23.1

24-15

%36.0

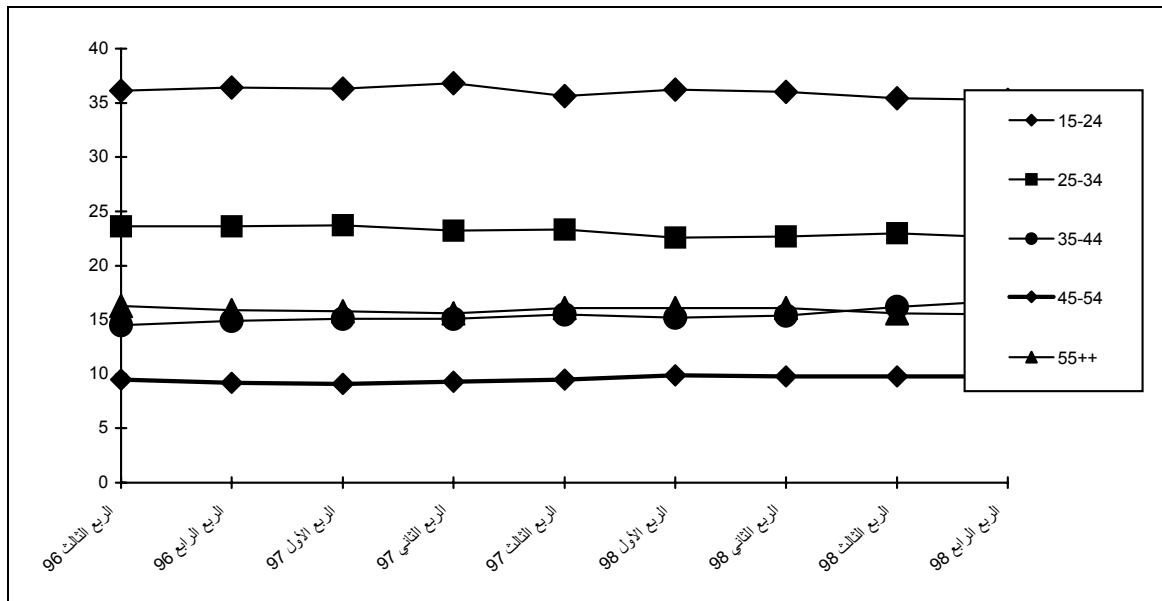
%15.9 54-45 %9.5 44-25 %15.4

55

()

54

1998-1995 :



%30.5

%16.9

%17.5

%19.3

%10.7

%12.5 - %9.1

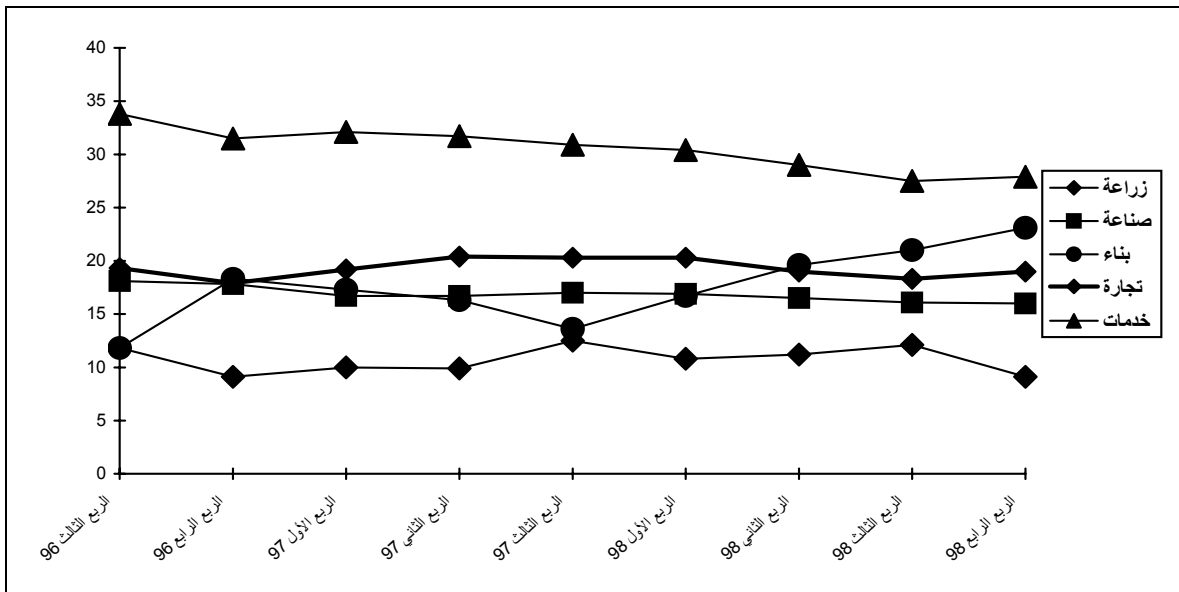
%23.1

1996

%11.8

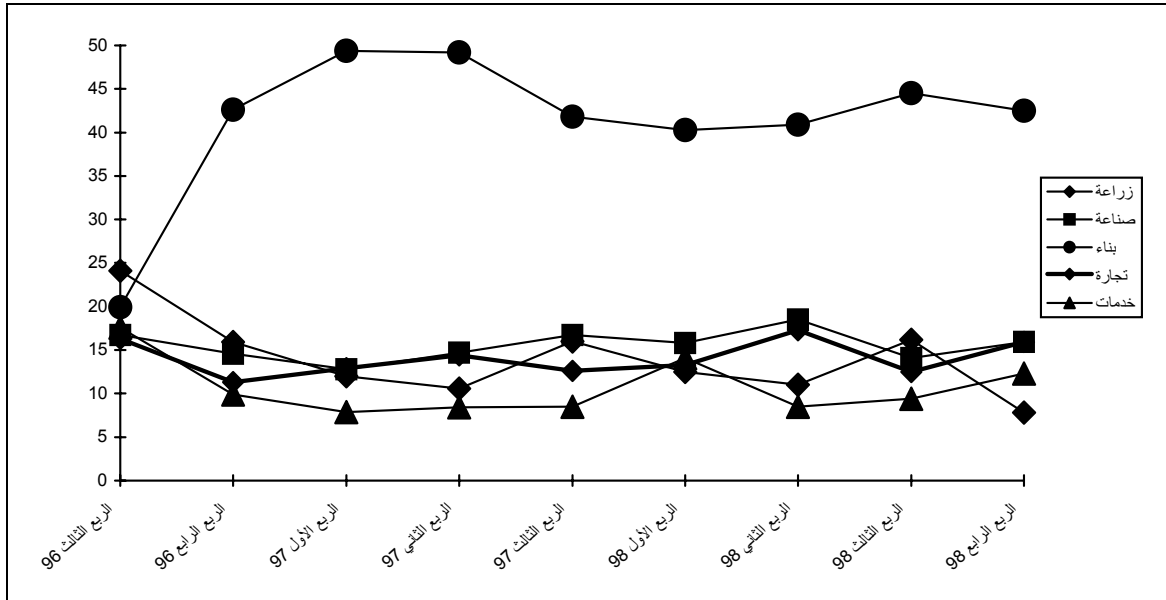
.1998

1998-1995 :



%41.2
 %14.1
 %10.7
 %4.4
 %15.5
 %14.0
 %67.5

1998-1995 :



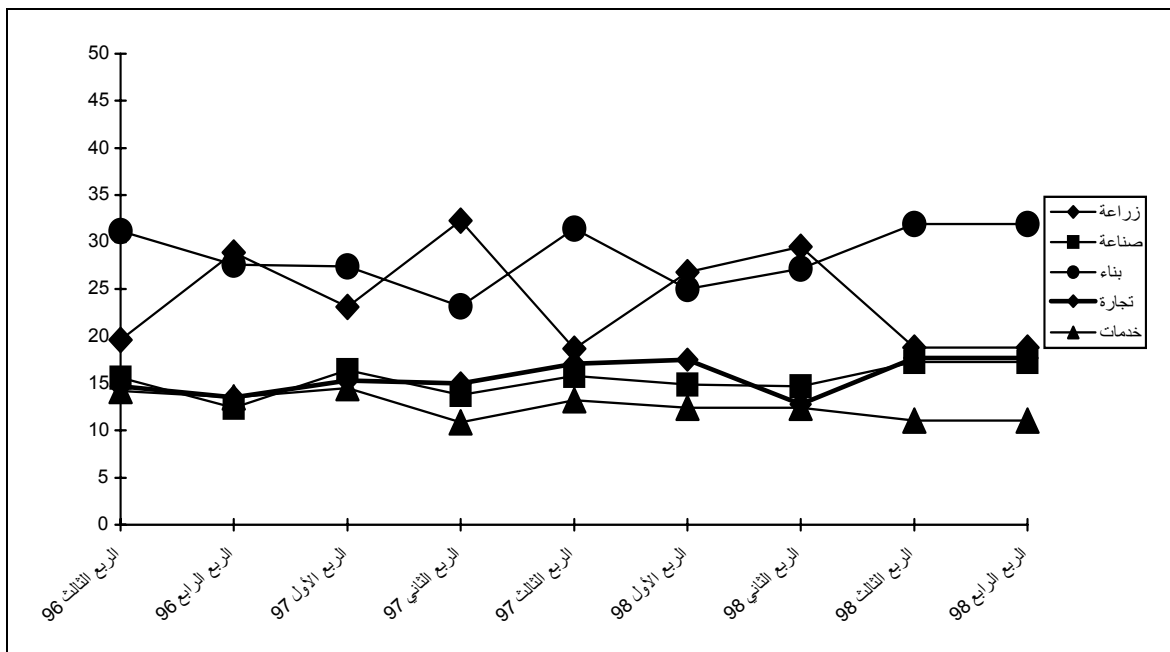
%27.8

%25.7

%14.7

%15.4

1998-1995 :



12()

94	20	26	6	42	
95	8	15	6	66	
119	7	28	16	68	
106	9	16	6	75	
27	1	4	2	20	
142	7	13	4	118	
583	52	102	40	389	

1998-1995

:

%83

%45

%67

.13

12

.1997

13

- .1997

14 %55

%28

%27

)

%80

%15

%36

1997

.15

(

()

%17

%16

.Regression Analysis

(Method of Components)

.1997

%50

2025 1997

.162000-1997 50,000

1997

2005-2000

2001

1.80

1997

16

9.11

2010

13.64

%50

2025

%50

50,000

.(

) .2000-1997

“RUP”

()

(Regression Analysis)

1999-1995

:

1999-1995

.1

1999-1995

.2

.3

.4

.1999-1995

.5

" "

1996 1995

Linear Transformation

1996

1995

11... 1·2·3

2005..

Curve Estimation

“SPSS”

:

(t)

(Y)

.1
.2
.3
.4

1998-1995

:

$$Y_t = \alpha_0 + \alpha_1 t + \alpha_2 t^2 + \varepsilon, \quad \alpha_2 \neq 0, \alpha_0, \alpha_1, \alpha_2, \varepsilon \in \mathbb{R}, t = 1, 2, 3, \dots, 11$$

.2005-2000

2-4

2.9 1997

3.97

.2005 4.52

4.95 2001

1.54

(15)

.100.3 (100)

1998

.1998

%41

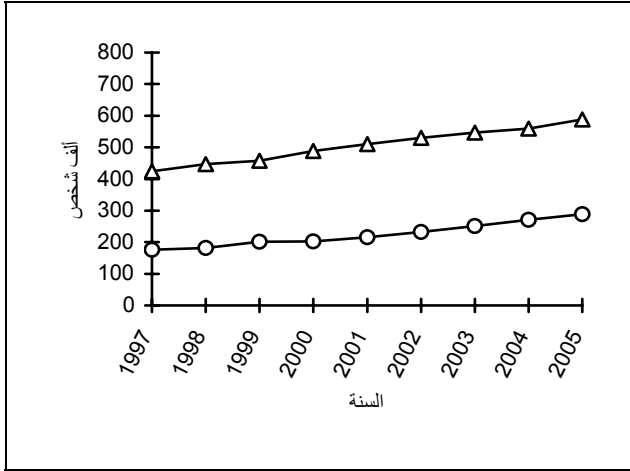
2.17 2005

%47 %38

2005-1998

737 2005 139
144

2005-1997 :



2005 288 588
%33 2005
2000 %4
%29
%20
%43

%80

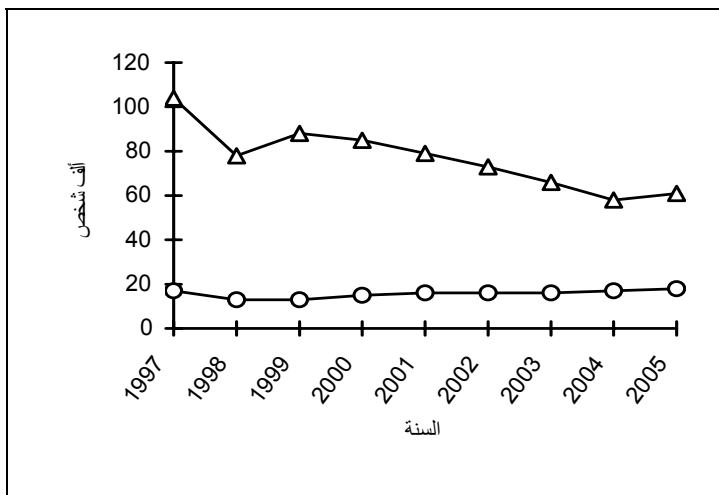
99 86

3-4

1999-1995

2005-2000

2005-1997 :



79 2005
.1999-1995
%9 2005
%8.4
%12.2

		%13	2000	%27	2005-2000
(10) .		62		17
				2000	%14.5
100	2000		1998	91	
	%42	2005- 2000			
.		%15.9			2000

1998-1995

()

(Labor Shocks)

1997-1996

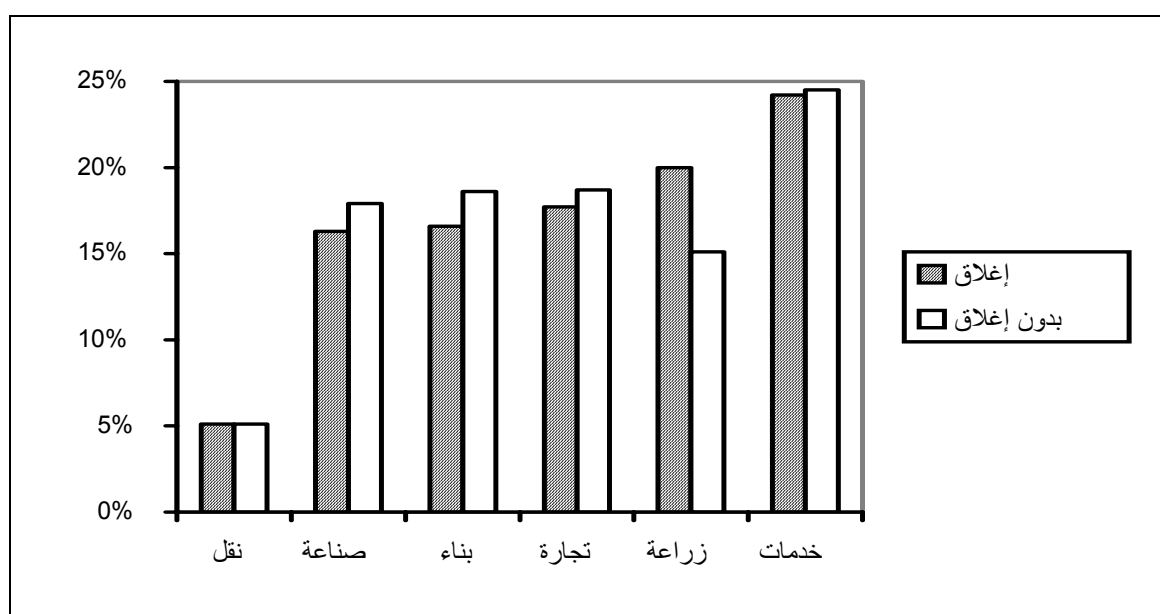
()

2-5

%24.4 - %15.1

%17.1 - %14.0

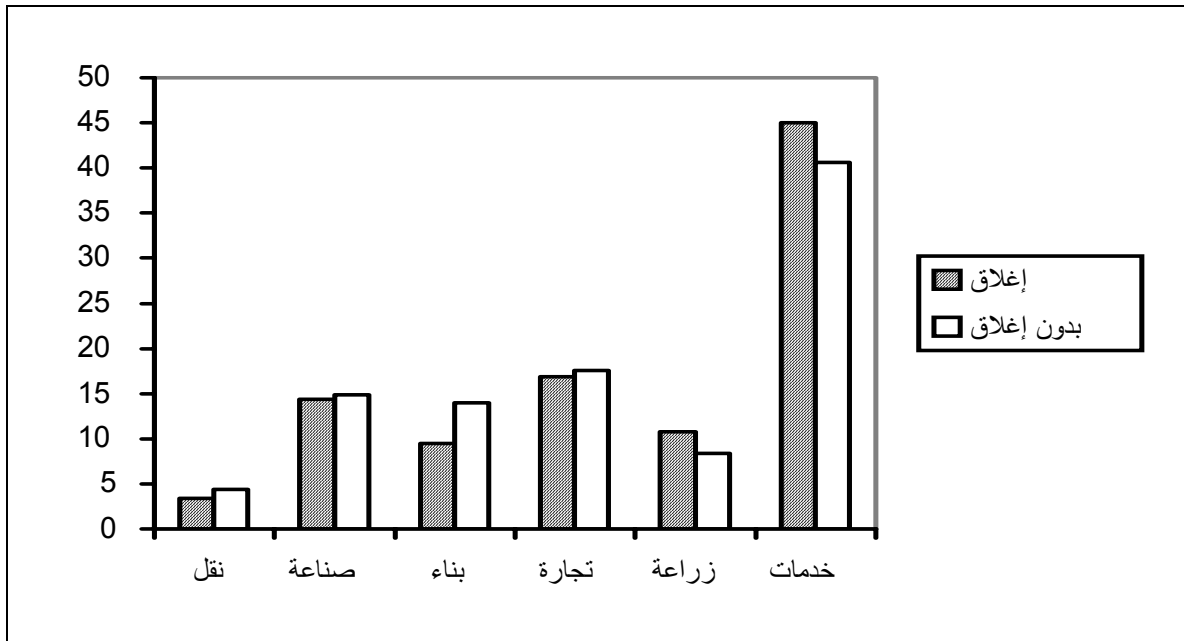
1997-1996 :



() ()

(15 14 13) .

1997-1996 :



3-5

%25

%45

%27.2

()

.%29.9 1997

1996

- 1996

%14.8

%16

1996

.1996

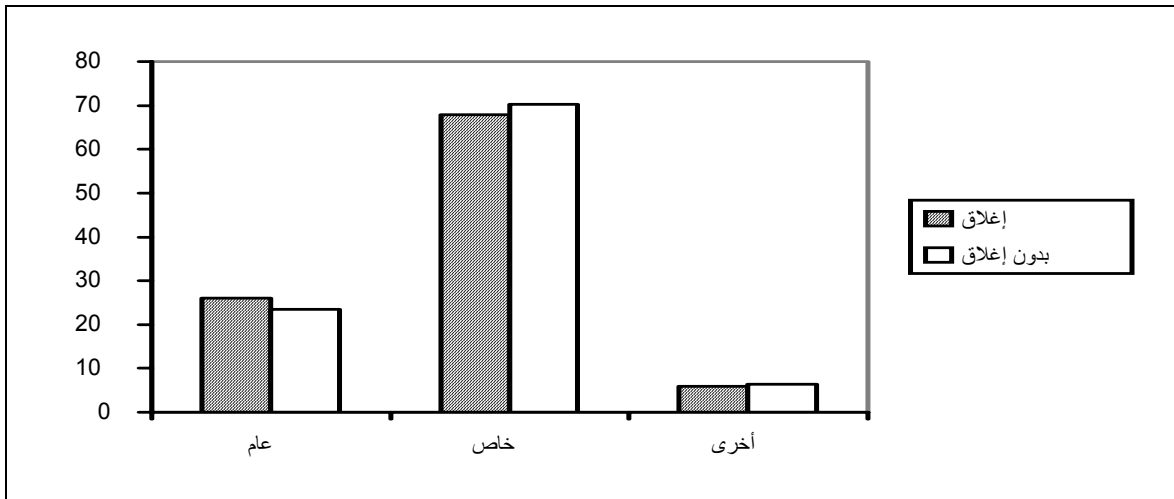
-

%2.8

1997

18

1997-1996 :



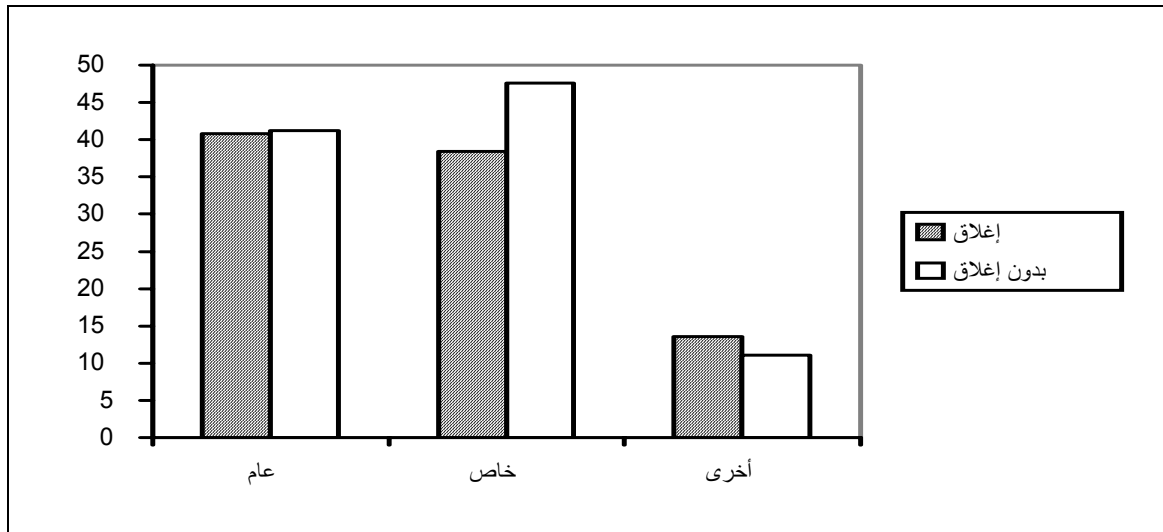
.(

10)

1996

18

1997-1996 :



(18 17 16) .

: 1997 –

"Investment Cost"

"Operational Cost".

()

..
(Account receivable – Account payable)

: "ISIC-3"

_____ =

+ + =

.1997

1997

1997

:

	(20)				
	8,520		8,930		
	32,870			7,290	
					6,500
					6,980
805		571.4	1996		
	1996				
					161.7
			227.7		
			32.0		
		45.1			
31.8		22.6			
			(% 10)
					318.3
783.5	1996			.1996	% 19.9
		476.2			
				100.0	
					318.3
			()
	1997			6,485	1996
	(1.076)			1996	
		.(20) .	6,980	

50,000

:1 •

1994

1997

%18

1997

%19

1994

%52

1994

%54

1994

%0.6

1997

.1997

% 0.7

%31

1994

%25

.1997

1997

%34

1994

%31

%2

1994

%15

.1997

6,800

(21)

75.91

8,500

.4647

76.68

9,000

2,400

69.26

9,500

13,800

78.89

89.70

437.90

:2 •

()

50,000

(22)

50,000

87.93

452.24

89.13

79.77

91.66

103.75

:3 •

%20.5

%16.8

%13

%31.7

%18.0

		50,000	
8,600		47.12	6,750
	74.55	8750	76.79
	67.43		9,250
14,150		82.18	2,500
		91.98	
	440.05		50,000
			:4 •

	1997	
1,800		1,600
	(24)	

(24)

50,000

11,900

(24)

98.23

11,000

83.06

9,100

30.67

3,600

2,700

66.34

11,700

88.75

50,000

76.05

443.10

:5

•

%40 %30

%17

(26)

.

)

%20.9

%12.4

.%33.2

%5.5

%15.6

%12.4

6,200

(26)

92.87

10,400

43.28

7,800

52.82

6,200

	2,800	56.86		
107.90		16,600	92.04	
445.77				.
				.

)

()

(

50,000

.%8

.1997	.1998	.1
	.1997-	
) . - .1997 -	.1999	.2
	(
- . :1996-1995	.1998	.3
- . .1997 ()		.4
- . .1996		.5
:	.1997	.6
	-	
-) . :	.1996	.7
	.(1)	.(1995)
-) . :	.1996	.8
	.(2)	.(1996)
- .1996 :	.1998	.9
- .1997 :	.1998	.10
- .1998 :	.1999	.11
	() .	

