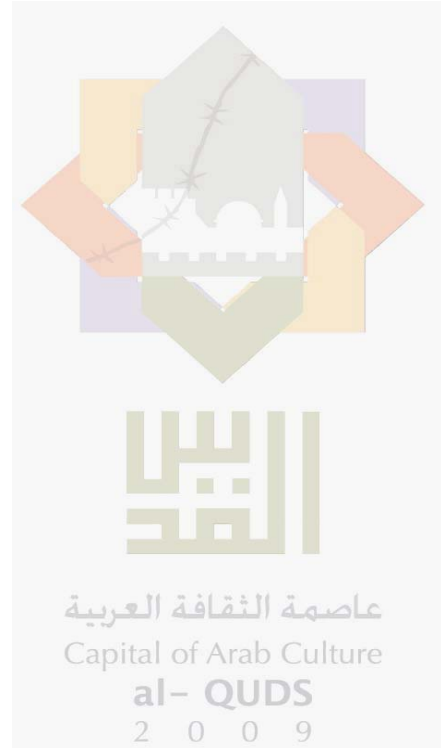
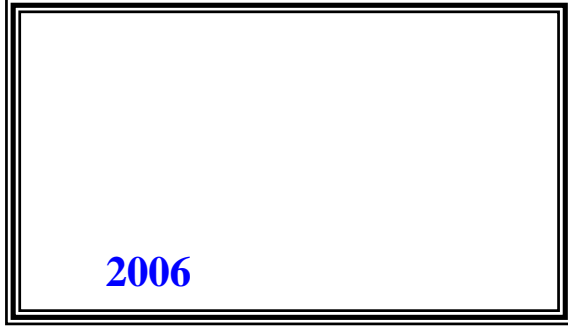




2009

/

2009 /



© 1430 - 2009.

:

/

2009.

2009

:

1647 . . -

: 2 242 6340 (970/972)

: 2 242 6343 (970/972)

: diwan@pcbs.gov.ps

: <http://www.pcbs.gov.ps>

5

/

2009

9

/
2009

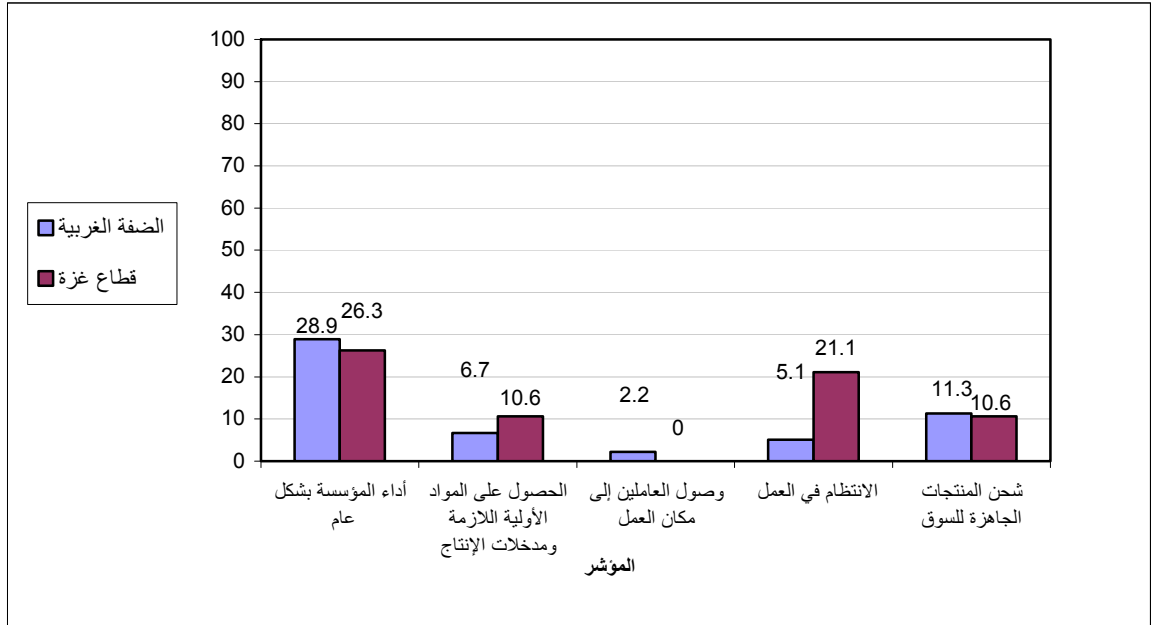
/ 50
/ 2009 2009/05/23-03
55 358
2007
%70
.2007

2009 **2009**
2009 %28.9 2009 2009
%26.3
/ %23.0
%21.1 %23.7
/ %1.3
2009
%28.6 2009
/ %32.1

:
 / %90.0
 %59.7 .(%73.7 %91.0)
 %58.5) /
 %18.0) %17.1 (%85.7
 %23.2 ((%14.3 %23.5)
 .(%85.1 (%5.3 %8.1) 2009
 .(%89.4 %84.8) :
 / %7.9
 .3
 1-3
 - /
 / %38.7 -(2009)
 .(%26.3 %39.4)
 /
 .(%21.1 %12.8) %13.3 2009
 / %37.5
 .(%21.1 %38.5) 2009
 2-3
 ()
 %53.2
 (%42.1 %53.8)
 %26.3 %27.0) %26.9
 / %54.1 (%54.8)
 .(%42.1

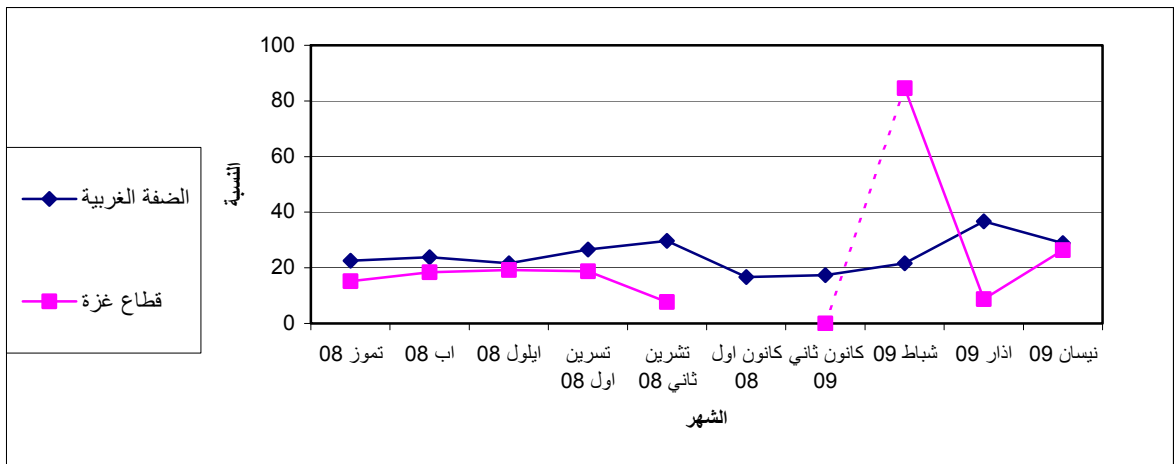
2009

:1



(2009 -2008)

:2



.2008

*

Tables

:1-1

2009

Table 1-1: Percentage of the Industrial Enterprises Witnessed an Improved Situation During the Reference Month Compared to that before the Reference Month for the Main Indicators in the Palestinian Territory 2009

Indicator	Reference Month									
	2009				2008					
	نيسان Apr.	آذار Mar.	شباط Feb.	كانون ثاني Jan.	كانون أول Dec.	تشرين ثاني Nov.	تشرين أول Oct.	Sept.	Aug.	July
Enterprise performance in general	28.7	34.7	26.4	16.1	-	25.0	24.8	21.0	22.2	20.9
Obtaining needed raw materials and inputs	6.9	13.1	8.5	9.9	-	10.6	12.2	10.5	12.4	10.6
Reaching the employees for their work place	2.1	6.9	9.1	4.0	-	3.5	6.1	63.	3.9	3.9
Regularity of work	6.0	10.7	10.0	5.7	-	6.8	9.8	7.3	7.8	4.2
Transporting finished goods to market	11.2	11.6	11.8	7.1	-	9.2	8.5	7.1	8.3	11.4

(-) No Data Available

(-)

:2-1

2009

Table 1-2: Percentage of Industrial Enterprises Witnessed an Improved Situation During the Reference Month Compared to that before the Reference Month for the Main Indicators in the West Bank 2009

Indicator	Reference Month									
	2009				2008					
	نيسان Apr.	آذار Mar.	شباط Feb.	كانون ثاني Jan.	كانون أول Dec.	تشرين ثاني Nov.	تشرين أول Oct.	Sept.	Aug.	July
Enterprise performance in general	28.9	36.7	21.6	17.4	16.7	29.7	26.6	21.6	23.8	22.5
Obtaining needed raw materials and inputs	6.7	13.5	7.0	10.7	7.0	11.7	10.6	88.	10.6	11.1
Reaching the employees for their work place	2.2	7.1	3.8	4.3	3.1	4.4	6.5	5.0	4.8	3.9
Regularity of work	5.1	11.5	5.1	6.1	3.5	7.2	8.9	6.4	5.2	3.2
Transporting finished goods to market	11.3	12.1	7.6	7.7	5.4	11.4	8.2	8.2	10.3	13.6

2009

Table 1-3: Percentage of Industrial Enterprises Witnessed an Improved Situation During the Reference Month Compared to that before the Reference Month for the Main Indicators in Gaza Strip 2009

Indicator	Reference Month									
	2009				2008					
	نيسان Apr.	آذار Mar.	شباط Feb.	كانون ثاني Jan.	كانون أول Dec.	تشرين ثاني Nov.	تشرين أول Oct.	Sept.	Aug.	July
Enterprise performance in general	26.3	8.7	84.6	0.0	-	7.7	18.8	19.2	18.4	15.2
Obtaining needed raw materials and inputs	10.6	8.7	26.9	0.0	-	6.4	17.7	115.	16.7	8.9
Reaching the employees for their work place	:	4.3	73.1	0.0	-	0.0	4.7	0.0	1.8	3.8
Regularity of work	21.1	0.0	69.2	0.0	-	5.1	13.0	10.1	114.	7.6
Transporting finished goods to market	10.6	4.3	61.6	0.0	-	1.3	9.4	4.0	3.5	3.8

(-) No Data Available

(-)

(:) No Observations in the Sample

(:)

Table 2-1: Percentage Distribution of Owners/ Managers of the Industrial Enterprises According to Their Opinions of Main Indicators During April 2009 Compared March 2009 in the Palestinian Territory

Problem	Total	Not Exist	Much Worse	Somewhat Worse	/ About the Same/ Unchanged	Somewhat Better	Much Better
Enterprise performance in general	100	-	3.6	18.1	49.6	26.9	1.8
Production situation	100	1.2	3.9	18.4	48.4	26.0	2.1
Employees productivity	100	0.9	1.5	16.3	60.2	19.9	1.2
Obtaining needed raw materials and inputs	100	-	2.4	6.9	83.8	6.0	0.9
Reaching the employees for their work place	100	0.6	-	1.2	96.1	1.8	0.3
Regularity of work	100	-	0.6	7.3	86.1	5.1	0.9
Transporting finished goods to market	100	1.8	1.5	11.8	73.7	10.0	1.2
Financial situations	100	-	2.1	19.3	55.6	22.4	0.6
Banks credits & facilities	100	34.1	-	1.8	62.9	1.2	-
Level of employment	100	-	0.3	8.5	83.7	6.9	0.6
Value of sales	100	0.6	3.9	21.5	46.5	25.4	2.1

(-) No Data Available

(-)

Table 2-2: Percentage Distribution of Owners/ Managers of the Industrial Enterprises According to Their Opinions of Main Indicators During April 2009 Compared to March 2009 in the West Bank

Problem	Total	Not Exist	Much Worse	Somewhat Worse	/ About the Same/ Unchanged	Somewhat Better	Much Better
Enterprise performance in general	100	-	3.8	19.2	48.1	27.6	1.3
Production situation	100	-	4.2	19.6	48.0	26.6	1.6
Employees productivity	100	-	1.6	17.3	59.3	20.8	1.0
Obtaining needed raw materials and inputs	100	-	2.6	6.7	84.0	6.1	0.6
Reaching the employees for their work place	100	0.3	-	1.3	96.2	1.9	0.3
Regularity of work	100	-	0.6	7.4	86.9	4.5	0.6
Transporting finished goods to market	100	0.3	1.6	12.5	74.3	10.3	1.0
Financial situations	100	-	2.2	20.5	54.3	22.4	0.6
Banks credits & facilities	100	32.7	-	1.9	64.1	1.3	-
Level of employment	100	-	0.3	8.7	83.7	6.7	0.6
Value of sales	100	0.6	4.2	22.8	44.8	26.0	1.6

(-) No Data Available

(-)

Table 2-3: Percentage Distribution of Owners/ Managers of the Industrial Enterprises According to Their Opinions of Main Indicators During April 2009 Compared to March 2009 in Gaza Strip

Problem	Total	Not Exist	Much Worse	Somewhat Worse	/ About the Same/ Unchanged	Somewhat Better	Much Better
Enterprise performance in general	100	-	-	-	73.7	15.8	10.5
Production situation	100	21.1	-	-	52.6	15.8	10.5
Employees productivity	100	15.8	-	-	73.6	5.3	5.3
Obtaining needed raw materials and inputs	100	-	-	10.5	78.9	5.3	5.3
Reaching the employees for their work place	100	5.3	-	-	94.7	-	-
Regularity of work	100	-	-	5.3	73.6	15.8	5.3
Transporting finished goods to market	100	26.3	-	-	63.1	5.3	5.3
Financial situations	100	-	-	-	78.9	21.1	-
Banks credits & facilities	100	57.9	-	-	42.1	-	-
Level of employment	100	-	-	5.3	84.2	10.5	-
Value of sales	100	-	-	-	73.7	15.8	10.5

(-) No Data Available

(-)

Table 3: Percentage of Industrial Enterprises Witnessed an Improved Situation During the Reference Month (April 2009) Compared to that before the Reference Month for the Main Indicators by Region

Indicator	Gaza Strip	West Bank	Palestinian Territory	
Employees productivity	10.6	21.8	21.1	
Financial situations	21.1	23.7	23.0	
Banks credits & facilities	0.0	1.3	1.2	
Level of employment	10.5	7.3	7.5	
Value of sales	26.3	27.6	27.5	

/ :4

2009

Table 4: Percentage Distribution of Owners/Managers of the Active Industrial Enterprises According to the Reasons for Sales Level Stability or Decline by Region During April 2009

Reason	Gaza Strip	West Bank	Palestinian Territory	
Decrease in demand	:	28.6	:	
Difficulties in exporting finished goods	:	3.6	:	
Decline in the consumer purchasing power	:	32.1	:	
Product Marketing Obstacles	:	1.2	:	()
Competence product	:	8.3	:	
Seasonally related	:	7.1	:	
Military check points/ israeli actions/ closures	:	8.3	:	/ /
Other	:	10.8	:	
Total	:	100	:	

(:) No Observations in the Sample

(:)

2009

:5

Table 5: Percentage Distribution of the Active Industrial Enterprises According to the Employment Mobility During April 2009 by Region

Employment Mobility	Gaza Strip	West Bank	Palestinian Territory	
Hiring employees	5.3	7.1	7.0	
Firing employees	5.3	8.1	7.9	
No change	89.4	84.8	85.1	
Total	100	100	100	

2009

/

:6

Table 6: Percentage Distribution of the Existing of Competition Against the Main Product According to the Owners\ Managers of the Active Industrial Enterprises During April 2009 by Region

Competence existence	Gaza Strip	West Bank	Palestinian Territory	
There is competition	73.7	91.0	90.0	
There is no competition	26.3	9.0	10.0	
Total	100	100	100	

2009

/

:7

Table 7: Percentage Distribution of the Type of Competition According to the Owners\ Managers of the Active Industrial Enterprises During April 2009 by Region

Type of competence	Gaza Strip	West Bank	Palestinian Territory	
Local	85.7	58.5	59.7	
Foreign	:	18.0	17.1	
Both	14.3	23.5	23.2	
Total	100	100	100	

(:) No Observations in the Sample

(:)

Table 8: Expectations of Owners/ Managers of the Active Industrial Enterprises for the Month that Follows the Reference Month Compared to the Reference Month (April, 2009) for the Main Indicators by Region

Indicator	Reference Month									
	2009				2008					
	نيسان Apr.	آذار Mar.	شباط Feb.	كانون ثاني Jan.	كانون أول Dec.	تشرين ثاني Nov.	تشرين أول Oct.	Sept.	Aug.	July
Percentage of who are expecting better Enterprise situation										
Palestinian Territory	38.7	38.7	33.9	33.4	-	27.5	32.0	33.0	28.0	30.3
West Bank	39.4	38.8	37.1	29.1	26.5	27.3	30.7	29.8	21.6	26.3
Gaza Strip	26.3	39.1	65.3	85.1	-	28.9	39.2	46.8	58.9	53.2
Percentage of who are expecting higher employment level										
Palestinian Territory	13.3	12.8	18.1	17.0	-	12.0	10.0	116.	615.	10.1
West Bank	12.8	12.1	14.4	11.0	11.2	9.7	6.1	10.3	58.	3.7
Gaza Strip	21.1	21.7	61.5	88.8	-	28.9	31.4	40.3	50.0	46.8
Percentage of who are expecting higher sales volume										
Palestinian Territory	37.5	36.9	39.3	34.8	-	27.5	30.9	33.9	28.6	28.7
West Bank	38.5	36.4	37.1	29.7	28.1	27.3	29.4	30.9	22.3	24.5
Gaza Strip	21.1	43.4	65.3	96.3	-	28.9	39.2	46.8	58.9	53.2

(-) No Data Available

(-)

Table 9: Expectations of Owners/ Managers of the Active Industrial Enterprises for the Six Months that Follow the Reference Month Compared to the Reference Month (April, 2009) for the Main Indicators by Region

Indicator	Reference Month									
	2009					2008				
	نيسان Apr.	آذار Mar.	شباط Feb.	كانون ثاني Jan.	كانون أول Dec.	تشرين ثاني Nov.	تشرين أول Oct.	Sept.	Aug.	July
Percentage of who are expecting better Enterprise situation										
Palestinian Territory	53.2	39.1	56.8	62.3	-	44.9	41.2	38.8	39.9	34.5
West Bank	53.8	60.2	55.7	60.5	50.2	44.6	39.3	35.0	35.7	30.4
Gaza Strip	42.1	39.1	69.1	85.2	-	47.4	51.0	54.8	60.7	58.7
Percentage of who are expecting higher employment level										
Palestinian Territory	26.9	21.7	28.5	36.0	-	20.9	17.4	21.6	19.2	15.1
West Bank	27.0	28.8	25.5	31.6	18.9	18.0	12.7	14.8	12.9	8.5
Gaza Strip	26.3	26.1	65.4	88.9	-	42.1	43.2	50.0	50.0	54.4
Percentage of who are expecting higher sales volume										
Palestinian Territory	54.1	43.4	56.5	62.9	-	45.6	41.1	42.5	40.9	35.1
West Bank	54.8	58.8	55.8	60.2	52.7	45.3	39.3	39.5	36.8	31.1
Gaza Strip	42.1	43.4	65.4	96.3	-	47.4	51.0	54.8	60.7	58.7

(-) No Data Available

(-)

(2009)

/ :10

Table 10: Expectations of Owners/ Managers of the Active Industrial Enterprises about Better Expectations for their Enterprises for the Month that Follows the Reference Month (April, 2009) Compared to the Reference Month by Region

Indicator	Gaza Strip	West Bank	Palestinian Territory	
Enterprise performance in general	26.3	40.1	39.3	
Employees productivity	5.3	30.4	29.0	
Obtaining needed raw materials and inputs	31.6	11.8	13.0	
Reaching the employees for their work place	-	1.9	1.8	
Regularity of work	21.1	9.9	10.6	
Transporting finished goods to market	5.3	15.4	14.8	
Financial situations	26.3	29.8	29.6	
Banks credits & facilities	5.3	4.5	4.5	

(-) No Data Available

(-)

Table 11: Expectations of Owners/ Managers of the Active Industrial Enterprises about Better Expectations for their Enterprises for the Six Months that Follow the Reference Month (April, 2009) Compared to the Reference Month for the Main Indicators by Region

Indicator	Gaza Strip	West Bank	Palestinian Territory	
Enterprise performance in general	47.4	54.5	54.1	
Employees productivity	5.3	44.2	42.0	
Obtaining needed raw materials and inputs	36.8	18.5	19.6	
Reaching the employees for their work place	-	1.0	0.9	
Regularity of work	26.3	21.2	21.5	
Transporting finished goods to market	5.3	23.4	22.4	
Financial situations	36.8	43.3	42.9	
Banks credits & facilities	10.5	8.3	8.5	

(-) No Data Available

(-)

(2009)

/

:1-12

Table 12-1: Percentage Distribution of Owners/ Managers of the Active Industrial Enterprises According to Their Opinions of Main Indicators for the Month that Follows the Reference Month (April, 2009) Compared to the Reference Month in the Palestinian Territory

Indicator	Total	Not Exist	Much Worse	Somewhat Worse	/ About the Same/ Unchanged	Somewhat Better	Much Better	
Enterprise performance in general	100	-	0.3	12.7	47.7	37.8	1.5	
Production situation	100	0.6	-	13.9	46.8	37.2	1.5	
Volume of sales	100	0.6	-	13.9	48.0	36.3	1.2	
Employees productivity	100	0.3	0.3	8.8	61.6	28.7	0.3	
Obtaining needed raw materials and inputs	100	-	1.5	2.7	82.8	12.7	0.3	
Reaching the employees for their work place	100	-	-	0.9	97.3	1.8	-	
Regularity of work	100	-	0.6	4.5	84.3	10.6	-	
Level of employment	100	-	0.9	6.6	79.2	13.3	-	
Transporting finished goods to market	100	1.2	1.8	4.5	77.7	14.5	0.3	
Financial situations	100	-	0.9	11.8	57.7	28.4	1.2	
Banks credits & facilities	100	34.1	0.3	0.9	60.2	4.5	-	

(-) No Data Available

(-)

(2009)

/

:2-12

Table 12-2: Percentage Distribution of Owners/ Managers of the Active Industrial Enterprises According to Their Opinions of Main Indicators for the Month that Follows the Reference Month (April, 2009) Compared to the Reference Month in the West Bank

Indicator	Total	Not Exist	Much Worse	Somewhat Worse	/ About the Same/ Unchanged	Somewhat Better	Much Better	
Enterprise performance in general	100	-	0.3	12.8	46.8	38.5	1.6	
Production situation	100	-	-	14.1	46.5	37.8	1.6	
Volume of sales	100	-	-	14.1	47.4	37.2	1.3	
Employees productivity	100	-	0.3	9.3	60.0	30.1	0.3	
Obtaining needed raw materials and inputs	100	-	1.6	2.6	84.0	11.5	0.3	
Reaching the employees for their work place	100	-	-	0.6	97.5	1.9	-	
Regularity of work	100	-	0.6	4.2	85.3	9.9	-	
Level of employment	100	-	1.0	6.4	79.8	12.8	-	
Transporting finished goods to market	100	-	1.9	4.5	78.2	15.1	0.3	
Financial situations	100	-	1.0	12.2	57.0	28.5	1.3	
Banks credits & facilities	100	33.0	0.3	1.0	61.2	4.5	-	

(-) No Data Available

(-)

Table 12-3: Percentage Distribution of Owners/ Managers of the Active Industrial Enterprises According to Their Opinions of Main Indicators for the Month that Follows the Reference Month (April, 2009) Compared to the Reference Month in Gaza Strip

Indicator	Total	Not Exist	Much Worse	Somewhat Worse	/ About the Same/ Unchanged	Somewhat Better	Much Better	
Enterprise performance in general	100	-	-	10.5	63.2	26.3	-	
Production situation	100	10.5	-	10.5	52.7	26.3	-	
Volume of sales	100	10.5	-	10.5	57.9	21.1	-	
Employees productivity	100	5.3	-	-	89.4	5.3	-	
Obtaining needed raw materials and inputs	100	-	-	5.3	63.1	31.6	-	
Reaching the employees for their work place	100	-	-	5.3	94.7	-	-	
Regularity of work	100	-	-	10.5	68.4	21.1	-	
Level of employment	100	-	-	10.5	68.4	21.1	-	
Transporting finished goods to market	100	21.1	-	5.3	68.2	5.3	-	
Financial situations	100	-	-	5.3	68.4	26.3	-	
Banks credits & facilities	100	52.6	-	-	42.1	5.3	-	

(-) No Data Available

(-)

(2009)

/

:1-13

Table 13-1: Percentage Distribution of Owners/ Managers of the Active Industrial Enterprises According to Their Opinions of Main Indicators During the Next Six Months Compared to Reference Month (April, 2009) in the Palestinian Territory

Indicator	Total	Not Exist	Much Worse	Somewhat Worse	/ About the Same/ Unchanged	Somewhat Better	Much Better	
Enterprise performance in general	100	-	0.3	11.2	34.4	46.2	7.9	
Production situation	100	0.6	0.6	11.8	33.8	45.3	7.9	
Volume of sales	100	0.6	1.2	11.5	32.6	46.8	7.3	
Employees productivity	100	0.3	0.3	7.6	49.8	38.7	3.3	
Obtaining needed raw materials and inputs	100	-	1.8	3.0	75.6	19.0	0.6	
Reaching the employees for their work place	100	-	0.3	0.6	98.2	0.9	-	
Regularity of work	100	-	1.2	4.5	72.8	21.5	-	
Level of employment	100	-	0.9	6.9	65.3	26.0	0.9	
Transporting finished goods to market	100	1.2	2.7	5.4	68.3	22.4	-	
Financial situations	100	-	0.9	10.9	45.3	36.3	6.6	
Banks credits & facilities	100	34.1	0.3	0.9	56.2	8.5	-	

(-) No Data Available

(-)

Table 13-2: Percentage Distribution of Owners/ Managers of the Active Industrial Enterprises According to Their Opinions of Main Indicators During the Next Six Months Compared to Reference Month (April, 2009) in the West Bank

Indicator	Total	Not Exist	Much Worse	Somewhat Worse	/ About the Same/ Unchanged	Somewhat Better	Much Better	
Enterprise performance in general	100	-	0.3	11.2	34.0	46.5	8.0	
Production situation	100	-	0.6	11.9	33.7	45.8	8.0	
Volume of sales	100	-	1.3	11.5	32.4	47.1	7.7	
Employees productivity	100	-	0.3	8.0	47.5	40.7	3.5	
Obtaining needed raw materials and inputs	100	-	1.9	2.9	76.7	17.9	0.6	
Reaching the employees for their work place	100	-	0.3	0.6	98.1	1.0	-	
Regularity of work	100	-	1.3	4.2	73.3	21.2	-	
Level of employment	100	-	1.0	6.7	65.3	26.0	1.0	
Transporting finished goods to market	100	-	2.9	5.4	68.3	23.4	-	
Financial situations	100	-	1.0	11.2	44.5	36.2	7.1	
Banks credits & facilities	100	33.0	0.3	1.0	57.4	8.3	-	

(-) No Data Available

(-)

(2009)

/

:3-13

Table 13-3: Percentage Distribution of Owners/ Managers of the Active Industrial Enterprises According to Their Opinions of Main Indicators During the Next Six Months Compared to Reference Month (April, 2009) in Gaza Strip

Indicator	Total	Not Exist	Much Worse	Somewhat Worse	/ About the Same/ Unchanged	Somewhat Better	Much Better	
Enterprise performance in general	100	-	-	10.5	42.1	42.1	5.3	
Production situation	100	10.5	-	10.5	36.9	36.8	5.3	
Volume of sales	100	10.5	-	10.5	36.9	42.1	-	
Employees productivity	100	5.3	-	-	89.4	5.3	-	
Obtaining needed raw materials and inputs	100	-	-	5.3	57.9	36.8	-	
Reaching the employees for their work place	100	-	-	-	100.0	-	-	
Regularity of work	100	-	-	10.5	63.2	26.3	-	
Level of employment	100	-	-	10.5	63.2	26.3	-	
Transporting finished goods to market	100	21.1	-	5.3	68.3	5.3	-	
Financial situations	100	-	-	5.3	57.9	36.8	-	
Banks credits & facilities	100	52.6	-	-	36.9	10.5	-	

(-) No Data Available

(-)