

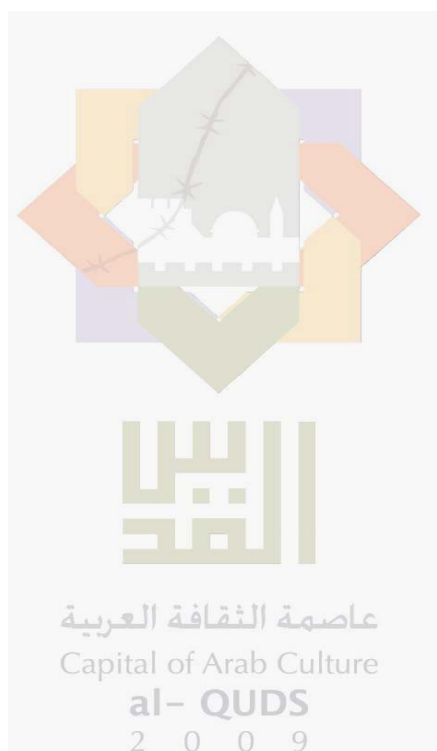
**Palestinian National Authority
Palestinian Central Bureau of Statistics**

**Survey of the Perceptions of the Owners / Managers of
Industrial Enterprises Regarding the Economic Situation,
April 2009**

Press Release on the Survey Results

May, 2009

PAGE NUMBERS OF ENGLISH TEXT ARE PRINTED IN SQUARE BRACKETS.
TABLES ARE PRINTED IN THE ARABIC ORDER (FROM RIGHT TO LEFT).



This document is prepared in accordance with the standard procedures stated in the Code of Practice for Palestine Official Statistics 2006

© May, 2009
All rights reserved.

Suggested Citation:

Palestinian Central Bureau of Statistics, 2009. *Survey of the Perceptions of the Owners / Managers of Industrial Enterprises Regarding the Economic Situation, April 2009. Press Release on the survey's results.*

Ramallah- Palestine

All correspondence should be directed to:
Palestinian Central Bureau of Statistics.
P.O. Box 1647, Ramallah - Palestine.

Tel: (972/970) 2 242 6340
Fax: (972/970) 2 242 6343
E-mail: diwan@pcbs.gov.ps
Web-site: <http://www.pcbs.gov.ps>

Table of Contents

Subject	Page
Press Release: Main Findings of the Survey of the Perceptions of the Owners/Managers of Industrial Enterprises Regarding the Economic Situation, April 2009	[5]
Tables	9

Press Release

Main Findings of the Survey of the Perceptions of the Owners/Managers of Industrial Enterprises Regarding the Economic Situation, April 2009

The following statement presents the basic findings of the 50th round on the perceptions of the owners/managers of industrial enterprises regarding the economic situation for April 2009. The round was conducted during the period 03-23/05/2009, using April 2009 as the reference month. The aim of the survey is to observe and monitor the trends of the opinions of the owners/managers of the industrial enterprises. The sample size was 358 industrial enterprises in the West Bank, and 55 industrial enterprises in Gaza Strip. A two-stage sample was designed for this survey: in the first stage, the industrial survey 2007 was used as a sampling frame for the survey, while in the second stage all the industrial enterprises constituting approximately 70% of the total industrial production, were selected.

Performance of industrial enterprises in April 2009 compared with March 2009

According to 28.7% of the owners/managers of the industrial enterprises in the Palestinian Territory, the production performance of their enterprises during April 2009 improved compared with March 2009 (28.9% in the West Bank, 26.3% in Gaza Strip).

According to the results, 23.0% of the owners/managers reported that their enterprise's financial situation improved (23.7% in the West bank, 21.1% in Gaza Strip), while 1.2% reported that banks loans were more accessible during April 2009 (1.3% in the West bank, non of the respondent in Gaza Strip indicates this accessibility).

Challenges

Drop in sales level

32.1% of the owners/managers of industrial enterprises in the West Bank indicated that the main reason was the decline in the consumer purchasing power, while 28.6% of the owners/managers of industrial enterprises indicated that the main reason was the decrease on the demand of the enterprise product.

Local and external competition

In the Palestinian Territory, 90.0% of the owners/managers of the industrial enterprises indicated that their enterprise's main product faced local or external competition (91.0% in the West bank, 73.7% in Gaza Strip).

According to 59.7% of the owners/managers of the industrial enterprises in the Palestinian Territory (58.5% in the West bank, 85.7% in Gaza Strip), indicated that the main product faced local competition; where as 17.1% of the owners/managers of the industrial enterprises in the Palestinian Territory indicated that their main product faced external competition (18.0% in the West bank, non of the respondent in Gaza Strip indicates the external competition in Gaza Strip). On the other hand 23.2% of the owners/managers of the industrial enterprises indicated that their main product faced both local and external competition (23.5% in the West bank, 14.3% in Gaza Strip).

Employment

7.9 % of the owners/managers of the industrial enterprises in the Palestinian Territory laid off workers in April 2009 (8.1% in the West Bank, 5.3% in Gaza Strip); however, 85.1% of the owners/managers of the industrial enterprises in the Palestinian Territory stated that there was no change in the number of workers (84.8% in the West bank, 89.4% in Gaza Strip).

3. Expectations

3-1 Short term

The expectations of the owners/ managers of the active industrial enterprises in the short term, i.e. after one month of the reference month (April 2009), shows that 38.7% expected improvement in their production in general (39.4% in the West Bank and 26.3% in Gaza Strip); whereas.

The expectations in the Palestinian Territory concerning employment in April 2009 indicate pessimism since only 13.3% expected increase during May 2009 (12.8% in the West Bank and 21.1% in Gaza Strip).

The results show that 37.5% of the owners /managers of the industrial enterprises in the Palestinian Territory expected sales to increase during May 2009 (38.5% in the West Bank and 21.1% in Gaza Strip).

3-2 Medium term

The expectations of the owners /managers of the active industrial enterprises in the medium term (in the next six months) were as follows: 53.2% business people expected improvement in production in the next six months (53.8% in the West Bank and 42.1% in Gaza Strip).

According to expectations concerning employment in the Palestinian Territory, 26.9% expect increase in employment (27.0% in the West Bank and 26.3% in Gaza Strip).

Sales during the next six months will rise, according to the expectations of 54.1% of the owners and managers of the active industrial enterprises in the Palestinian Territory(54.8% in the West Bank and 42.1% in Gaza Strip).

Figure 1: Percentage of Industrial Enterprises Owners / Managers who Encountered Improvement in Economic Conditions during April 2009 Compared to the Previous Month for the Main Indicators by region

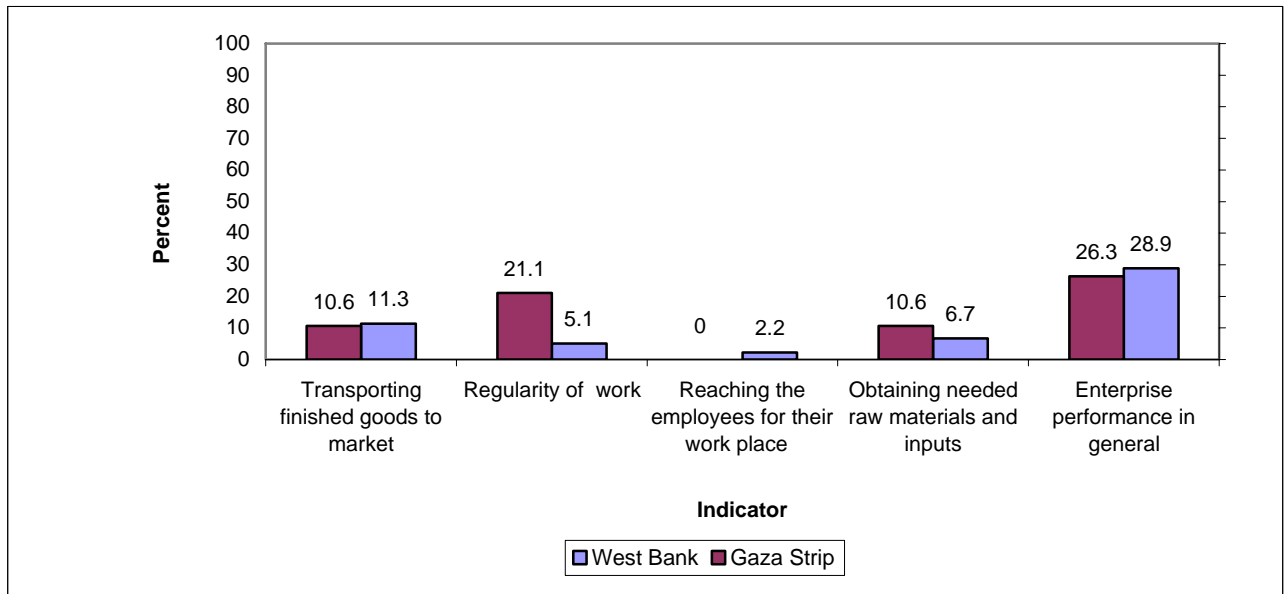
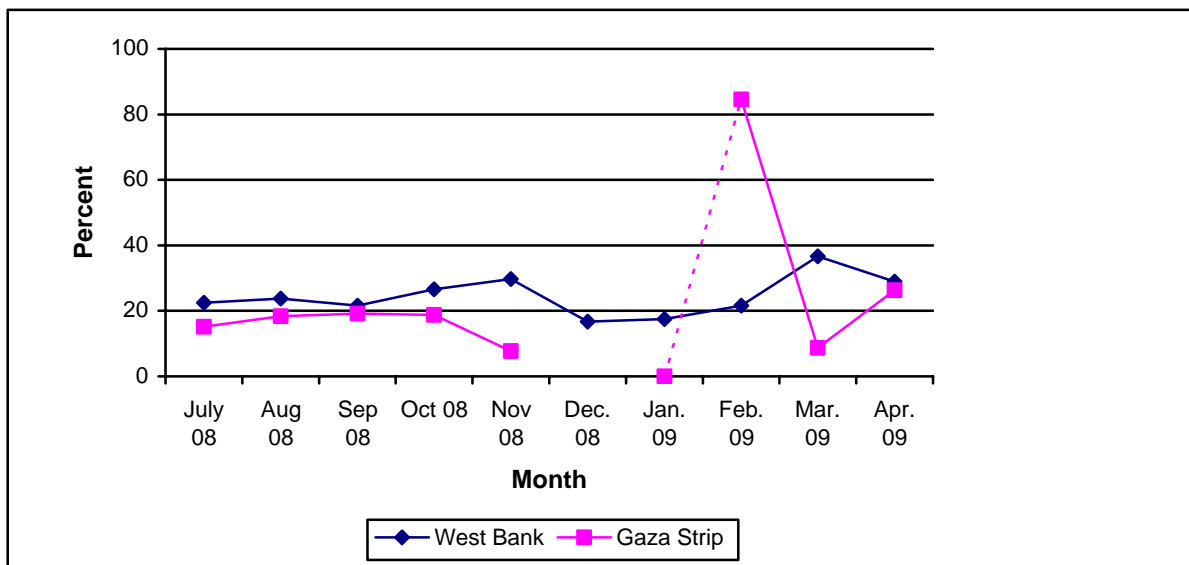


Figure 2: Trends of Enterprises Witnessed an Improved Situation in Production Performance During (July 08-April 09) Compared to the Previous Month by region



* The cut in the Figure is due to unavailability of data for Gaza Strip in December 2008.

Data Collection and processing of this document has been produced with the financial assistance of the European Union. The contents of this document are the sole responsibility of the PCBS.

:1-1

2009

Table 1-1: Percentage of the Industrial Enterprises Witnessed an Improved Situation During the Reference Month Compared to that before the Reference Month for the Main Indicators in the Palestinian Territory 2009

Indicator	Reference Month									
	2009				2008					
	نيسان Apr.	آذار Mar.	شباط Feb.	كانون ثاني Jan.	كانون أول Dec.	تشرين ثاني Nov.	تشرين أول Oct.	Sept.	Aug.	July
Enterprise performance in general	28.7	34.7	26.4	16.1	-	25.0	24.8	21.0	22.2	20.9
Obtaining needed raw materials and inputs	6.9	13.1	8.5	9.9	-	10.6	12.2	10.5	12.4	10.6
Reaching the employees for their work place	2.1	6.9	9.1	4.0	-	3.5	6.1	63.	3.9	3.9
Regularity of work	6.0	10.7	10.0	5.7	-	6.8	9.8	7.3	7.8	4.2
Transporting finished goods to market	11.2	11.6	11.8	7.1	-	9.2	8.5	7.1	8.3	11.4

(-) No Data Available

(-)

:2-1

2009

Table 1-2: Percentage of Industrial Enterprises Witnessed an Improved Situation During the Reference Month Compared to that before the Reference Month for the Main Indicators in the West Bank 2009

Indicator	Reference Month									
	2009				2008					
	نيسان Apr.	آذار Mar.	شباط Feb.	كانون ثاني Jan.	كانون أول Dec.	تشرين ثاني Nov.	تشرين أول Oct.	Sept.	Aug.	July
Enterprise performance in general	28.9	36.7	21.6	17.4	16.7	29.7	26.6	21.6	23.8	22.5
Obtaining needed raw materials and inputs	6.7	13.5	7.0	10.7	7.0	11.7	10.6	88.	10.6	11.1
Reaching the employees for their work place	2.2	7.1	3.8	4.3	3.1	4.4	6.5	5.0	4.8	3.9
Regularity of work	5.1	11.5	5.1	6.1	3.5	7.2	8.9	6.4	5.2	3.2
Transporting finished goods to market	11.3	12.1	7.6	7.7	5.4	11.4	8.2	8.2	10.3	13.6

2009

Table 1-3: Percentage of Industrial Enterprises Witnessed an Improved Situation During the Reference Month Compared to that before the Reference Month for the Main Indicators in Gaza Strip 2009

Indicator	Reference Month									
	2009				2008					
	نيسان Apr.	آذار Mar.	شباط Feb.	كانون ثاني Jan.	كانون أول Dec.	تشرين ثاني Nov.	تشرين أول Oct.	Sept.	Aug.	July
Enterprise performance in general	26.3	8.7	84.6	0.0	-	7.7	18.8	19.2	18.4	15.2
Obtaining needed raw materials and inputs	10.6	8.7	26.9	0.0	-	6.4	17.7	115.	16.7	8.9
Reaching the employees for their work place	:	4.3	73.1	0.0	-	0.0	4.7	0.0	1.8	3.8
Regularity of work	21.1	0.0	69.2	0.0	-	5.1	13.0	10.1	114.	7.6
Transporting finished goods to market	10.6	4.3	61.6	0.0	-	1.3	9.4	4.0	3.5	3.8

(-) No Data Available

(-)

(:) No Observations in the Sample

(:)

Table 2-1: Percentage Distribution of Owners/ Managers of the Industrial Enterprises According to Their Opinions of Main Indicators During April 2009 Compared March 2009 in the Palestinian Territory

Problem	Total	Not Exist	Much Worse	Somewhat Worse	/ About the Same/ Unchanged	Somewhat Better	Much Better
Enterprise performance in general	100	-	3.6	18.1	49.6	26.9	1.8
Production situation	100	1.2	3.9	18.4	48.4	26.0	2.1
Employees productivity	100	0.9	1.5	16.3	60.2	19.9	1.2
Obtaining needed raw materials and inputs	100	-	2.4	6.9	83.8	6.0	0.9
Reaching the employees for their work place	100	0.6	-	1.2	96.1	1.8	0.3
Regularity of work	100	-	0.6	7.3	86.1	5.1	0.9
Transporting finished goods to market	100	1.8	1.5	11.8	73.7	10.0	1.2
Financial situations	100	-	2.1	19.3	55.6	22.4	0.6
Banks credits & facilities	100	34.1	-	1.8	62.9	1.2	-
Level of employment	100	-	0.3	8.5	83.7	6.9	0.6
Value of sales	100	0.6	3.9	21.5	46.5	25.4	2.1

(-) No Data Available

(-)

Table 2-2: Percentage Distribution of Owners/ Managers of the Industrial Enterprises According to Their Opinions of Main Indicators During April 2009 Compared to March 2009 in the West Bank

Problem	Total	Not Exist	Much Worse	Somewhat Worse	/ About the Same/ Unchanged	Somewhat Better	Much Better
Enterprise performance in general	100	-	3.8	19.2	48.1	27.6	1.3
Production situation	100	-	4.2	19.6	48.0	26.6	1.6
Employees productivity	100	-	1.6	17.3	59.3	20.8	1.0
Obtaining needed raw materials and inputs	100	-	2.6	6.7	84.0	6.1	0.6
Reaching the employees for their work place	100	0.3	-	1.3	96.2	1.9	0.3
Regularity of work	100	-	0.6	7.4	86.9	4.5	0.6
Transporting finished goods to market	100	0.3	1.6	12.5	74.3	10.3	1.0
Financial situations	100	-	2.2	20.5	54.3	22.4	0.6
Banks credits & facilities	100	32.7	-	1.9	64.1	1.3	-
Level of employment	100	-	0.3	8.7	83.7	6.7	0.6
Value of sales	100	0.6	4.2	22.8	44.8	26.0	1.6

(-) No Data Available

(-)

Table 2-3: Percentage Distribution of Owners/ Managers of the Industrial Enterprises According to Their Opinions of Main Indicators During April 2009 Compared to March 2009 in Gaza Strip

Problem	Total	Not Exist	Much Worse	Somewhat Worse	/ About the Same/ Unchanged	Somewhat Better	Much Better
Enterprise performance in general	100	-	-	-	73.7	15.8	10.5
Production situation	100	21.1	-	-	52.6	15.8	10.5
Employees productivity	100	15.8	-	-	73.6	5.3	5.3
Obtaining needed raw materials and inputs	100	-	-	10.5	78.9	5.3	5.3
Reaching the employees for their work place	100	5.3	-	-	94.7	-	-
Regularity of work	100	-	-	5.3	73.6	15.8	5.3
Transporting finished goods to market	100	26.3	-	-	63.1	5.3	5.3
Financial situations	100	-	-	-	78.9	21.1	-
Banks credits & facilities	100	57.9	-	-	42.1	-	-
Level of employment	100	-	-	5.3	84.2	10.5	-
Value of sales	100	-	-	-	73.7	15.8	10.5

(-) No Data Available

(-)

Table 3: Percentage of Industrial Enterprises Witnessed an Improved Situation During the Reference Month (April 2009) Compared to that before the Reference Month for the Main Indicators by Region

Indicator	Gaza Strip	West Bank	Palestinian Territory	
Employees productivity	10.6	21.8	21.1	
Financial situations	21.1	23.7	23.0	
Banks credits & facilities	0.0	1.3	1.2	
Level of employment	10.5	7.3	7.5	
Value of sales	26.3	27.6	27.5	

/ :4

2009

Table 4: Percentage Distribution of Owners/Managers of the Active Industrial Enterprises According to the Reasons for Sales Level Stability or Decline by Region During April 2009

Reason	Gaza Strip	West Bank	Palestinian Territory	
Decrease in demand	:	28.6	:	
Difficulties in exporting finished goods	:	3.6	:	
Decline in the consumer purchasing power	:	32.1	:	
Product Marketing Obstacles	:	1.2	:	()
Competence product	:	8.3	:	
Seasonally related	:	7.1	:	
Military check points/ israeli actions/ closures	:	8.3	:	/ /
Other	:	10.8	:	
Total	:	100	:	

(:) No Observations in the Sample

(:)

2009

:5

Table 5: Percentage Distribution of the Active Industrial Enterprises According to the Employment Mobility During April 2009 by Region

Employment Mobility	Gaza Strip	West Bank	Palestinian Territory	
Hiring employees	5.3	7.1	7.0	
Firing employees	5.3	8.1	7.9	
No change	89.4	84.8	85.1	
Total	100	100	100	

2009

/

:6

Table 6: Percentage Distribution of the Existing of Competition Against the Main Product According to the Owners\ Managers of the Active Industrial Enterprises During April 2009 by Region

Competence existence	Gaza Strip	West Bank	Palestinian Territory	
There is competition	73.7	91.0	90.0	
There is no competition	26.3	9.0	10.0	
Total	100	100	100	

2009

/

:7

Table 7: Percentage Distribution of the Type of Competition According to the Owners\ Managers of the Active Industrial Enterprises During April 2009 by Region

Type of competence	Gaza Strip	West Bank	Palestinian Territory	
Local	85.7	58.5	59.7	
Foreign	:	18.0	17.1	
Both	14.3	23.5	23.2	
Total	100	100	100	

(:) No Observations in the Sample

(:)

Table 8: Expectations of Owners/ Managers of the Active Industrial Enterprises for the Month that Follows the Reference Month Compared to the Reference Month (April, 2009) for the Main Indicators by Region

Indicator	Reference Month									
	2009				2008					
	نيسان Apr.	آذار Mar.	شباط Feb.	كانون ثاني Jan.	كانون أول Dec.	تشرين ثاني Nov.	تشرين أول Oct.	Sept.	Aug.	July
Percentage of who are expecting better Enterprise situation										
Palestinian Territory	38.7	38.7	33.9	33.4	-	27.5	32.0	33.0	28.0	30.3
West Bank	39.4	38.8	37.1	29.1	26.5	27.3	30.7	29.8	21.6	26.3
Gaza Strip	26.3	39.1	65.3	85.1	-	28.9	39.2	46.8	58.9	53.2
Percentage of who are expecting higher employment level										
Palestinian Territory	13.3	12.8	18.1	17.0	-	12.0	10.0	116.	615.	10.1
West Bank	12.8	12.1	14.4	11.0	11.2	9.7	6.1	10.3	58.	3.7
Gaza Strip	21.1	21.7	61.5	88.8	-	28.9	31.4	40.3	50.0	46.8
Percentage of who are expecting higher sales volume										
Palestinian Territory	37.5	36.9	39.3	34.8	-	27.5	30.9	33.9	28.6	28.7
West Bank	38.5	36.4	37.1	29.7	28.1	27.3	29.4	30.9	22.3	24.5
Gaza Strip	21.1	43.4	65.3	96.3	-	28.9	39.2	46.8	58.9	53.2

(-) No Data Available

(-)

Table 9: Expectations of Owners/ Managers of the Active Industrial Enterprises for the Six Months that Follow the Reference Month Compared to the Reference Month (April, 2009) for the Main Indicators by Region

Indicator	Reference Month									
	2009				2008					
	نيسان Apr.	آذار Mar.	شباط Feb.	كانون ثاني Jan.	كانون أول Dec.	تشرين ثاني Nov.	تشرين أول Oct.	Sept.	Aug.	July
Percentage of who are expecting better Enterprise situation										
Palestinian Territory	53.2	39.1	56.8	62.3	-	44.9	41.2	38.8	39.9	34.5
West Bank	53.8	60.2	55.7	60.5	50.2	44.6	39.3	35.0	35.7	30.4
Gaza Strip	42.1	39.1	69.1	85.2	-	47.4	51.0	54.8	60.7	58.7
Percentage of who are expecting higher employment level										
Palestinian Territory	26.9	21.7	28.5	36.0	-	20.9	17.4	21.6	19.2	15.1
West Bank	27.0	28.8	25.5	31.6	18.9	18.0	12.7	14.8	12.9	8.5
Gaza Strip	26.3	26.1	65.4	88.9	-	42.1	43.2	50.0	50.0	54.4
Percentage of who are expecting higher sales volume										
Palestinian Territory	54.1	43.4	56.5	62.9	-	45.6	41.1	42.5	40.9	35.1
West Bank	54.8	58.8	55.8	60.2	52.7	45.3	39.3	39.5	36.8	31.1
Gaza Strip	42.1	43.4	65.4	96.3	-	47.4	51.0	54.8	60.7	58.7

(-) No Data Available

(-)

(2009)

/ :10

Table 10: Expectations of Owners/ Managers of the Active Industrial Enterprises about Better Expectations for their Enterprises for the Month that Follows the Reference Month (April, 2009) Compared to the Reference Month by Region

Indicator	Gaza Strip	West Bank	Palestinian Territory	
Enterprise performance in general	26.3	40.1	39.3	
Employees productivity	5.3	30.4	29.0	
Obtaining needed raw materials and inputs	31.6	11.8	13.0	
Reaching the employees for their work place	-	1.9	1.8	
Regularity of work	21.1	9.9	10.6	
Transporting finished goods to market	5.3	15.4	14.8	
Financial situations	26.3	29.8	29.6	
Banks credits & facilities	5.3	4.5	4.5	

(-) No Data Available

(-)

Table 11: Expectations of Owners/ Managers of the Active Industrial Enterprises about Better Expectations for their Enterprises for the Six Months that Follow the Reference Month (April, 2009) Compared to the Reference Month for the Main Indicators by Region

Indicator	Gaza Strip	West Bank	Palestinian Territory	
Enterprise performance in general	47.4	54.5	54.1	
Employees productivity	5.3	44.2	42.0	
Obtaining needed raw materials and inputs	36.8	18.5	19.6	
Reaching the employees for their work place	-	1.0	0.9	
Regularity of work	26.3	21.2	21.5	
Transporting finished goods to market	5.3	23.4	22.4	
Financial situations	36.8	43.3	42.9	
Banks credits & facilities	10.5	8.3	8.5	

(-) No Data Available

(-)

(2009)

/

:1-12

Table 12-1: Percentage Distribution of Owners/ Managers of the Active Industrial Enterprises According to Their Opinions of Main Indicators for the Month that Follows the Reference Month (April, 2009) Compared to the Reference Month in the Palestinian Territory

Indicator	Total	Not Exist	Much Worse	Somewhat Worse	/ About the Same/ Unchanged	Somewhat Better	Much Better	
Enterprise performance in general	100	-	0.3	12.7	47.7	37.8	1.5	
Production situation	100	0.6	-	13.9	46.8	37.2	1.5	
Volume of sales	100	0.6	-	13.9	48.0	36.3	1.2	
Employees productivity	100	0.3	0.3	8.8	61.6	28.7	0.3	
Obtaining needed raw materials and inputs	100	-	1.5	2.7	82.8	12.7	0.3	
Reaching the employees for their work place	100	-	-	0.9	97.3	1.8	-	
Regularity of work	100	-	0.6	4.5	84.3	10.6	-	
Level of employment	100	-	0.9	6.6	79.2	13.3	-	
Transporting finished goods to market	100	1.2	1.8	4.5	77.7	14.5	0.3	
Financial situations	100	-	0.9	11.8	57.7	28.4	1.2	
Banks credits & facilities	100	34.1	0.3	0.9	60.2	4.5	-	

(-) No Data Available

(-)

(2009)

/

:2-12

Table 12-2: Percentage Distribution of Owners/ Managers of the Active Industrial Enterprises According to Their Opinions of Main Indicators for the Month that Follows the Reference Month (April, 2009) Compared to the Reference Month in the West Bank

Indicator	Total	Not Exist	Much Worse	Somewhat Worse	/ About the Same/ Unchanged	Somewhat Better	Much Better	
Enterprise performance in general	100	-	0.3	12.8	46.8	38.5	1.6	
Production situation	100	-	-	14.1	46.5	37.8	1.6	
Volume of sales	100	-	-	14.1	47.4	37.2	1.3	
Employees productivity	100	-	0.3	9.3	60.0	30.1	0.3	
Obtaining needed raw materials and inputs	100	-	1.6	2.6	84.0	11.5	0.3	
Reaching the employees for their work place	100	-	-	0.6	97.5	1.9	-	
Regularity of work	100	-	0.6	4.2	85.3	9.9	-	
Level of employment	100	-	1.0	6.4	79.8	12.8	-	
Transporting finished goods to market	100	-	1.9	4.5	78.2	15.1	0.3	
Financial situations	100	-	1.0	12.2	57.0	28.5	1.3	
Banks credits & facilities	100	33.0	0.3	1.0	61.2	4.5	-	

(-) No Data Available

(-)

Table 12-3: Percentage Distribution of Owners/ Managers of the Active Industrial Enterprises According to Their Opinions of Main Indicators for the Month that Follows the Reference Month (April, 2009) Compared to the Reference Month in Gaza Strip

Indicator	Total	Not Exist	Much Worse	Somewhat Worse	/ About the Same/ Unchanged	Somewhat Better	Much Better	
Enterprise performance in general	100	-	-	10.5	63.2	26.3	-	
Production situation	100	10.5	-	10.5	52.7	26.3	-	
Volume of sales	100	10.5	-	10.5	57.9	21.1	-	
Employees productivity	100	5.3	-	-	89.4	5.3	-	
Obtaining needed raw materials and inputs	100	-	-	5.3	63.1	31.6	-	
Reaching the employees for their work place	100	-	-	5.3	94.7	-	-	
Regularity of work	100	-	-	10.5	68.4	21.1	-	
Level of employment	100	-	-	10.5	68.4	21.1	-	
Transporting finished goods to market	100	21.1	-	5.3	68.2	5.3	-	
Financial situations	100	-	-	5.3	68.4	26.3	-	
Banks credits & facilities	100	52.6	-	-	42.1	5.3	-	

(-) No Data Available

(-)

(2009)

/

:1-13

Table 13-1: Percentage Distribution of Owners/ Managers of the Active Industrial Enterprises According to Their Opinions of Main Indicators During the Next Six Months Compared to Reference Month (April, 2009) in the Palestinian Territory

Indicator	Total	Not Exist	Much Worse	Somewhat Worse	/ About the Same/ Unchanged	Somewhat Better	Much Better	
Enterprise performance in general	100	-	0.3	11.2	34.4	46.2	7.9	
Production situation	100	0.6	0.6	11.8	33.8	45.3	7.9	
Volume of sales	100	0.6	1.2	11.5	32.6	46.8	7.3	
Employees productivity	100	0.3	0.3	7.6	49.8	38.7	3.3	
Obtaining needed raw materials and inputs	100	-	1.8	3.0	75.6	19.0	0.6	
Reaching the employees for their work place	100	-	0.3	0.6	98.2	0.9	-	
Regularity of work	100	-	1.2	4.5	72.8	21.5	-	
Level of employment	100	-	0.9	6.9	65.3	26.0	0.9	
Transporting finished goods to market	100	1.2	2.7	5.4	68.3	22.4	-	
Financial situations	100	-	0.9	10.9	45.3	36.3	6.6	
Banks credits & facilities	100	34.1	0.3	0.9	56.2	8.5	-	

(-) No Data Available

(-)

Table 13-2: Percentage Distribution of Owners/ Managers of the Active Industrial Enterprises According to Their Opinions of Main Indicators During the Next Six Months Compared to Reference Month (April, 2009) in the West Bank

Indicator	Total	Not Exist	Much Worse	Somewhat Worse	/ About the Same/ Unchanged	Somewhat Better	Much Better	
Enterprise performance in general	100	-	0.3	11.2	34.0	46.5	8.0	
Production situation	100	-	0.6	11.9	33.7	45.8	8.0	
Volume of sales	100	-	1.3	11.5	32.4	47.1	7.7	
Employees productivity	100	-	0.3	8.0	47.5	40.7	3.5	
Obtaining needed raw materials and inputs	100	-	1.9	2.9	76.7	17.9	0.6	
Reaching the employees for their work place	100	-	0.3	0.6	98.1	1.0	-	
Regularity of work	100	-	1.3	4.2	73.3	21.2	-	
Level of employment	100	-	1.0	6.7	65.3	26.0	1.0	
Transporting finished goods to market	100	-	2.9	5.4	68.3	23.4	-	
Financial situations	100	-	1.0	11.2	44.5	36.2	7.1	
Banks credits & facilities	100	33.0	0.3	1.0	57.4	8.3	-	

(-) No Data Available

(-)

(2009)

/

:3-13

Table 13-3: Percentage Distribution of Owners/ Managers of the Active Industrial Enterprises According to Their Opinions of Main Indicators During the Next Six Months Compared to Reference Month (April, 2009) in Gaza Strip

Indicator	Total	Not Exist	Much Worse	Somewhat Worse	/ About the Same/ Unchanged	Somewhat Better	Much Better	
Enterprise performance in general	100	-	-	10.5	42.1	42.1	5.3	
Production situation	100	10.5	-	10.5	36.9	36.8	5.3	
Volume of sales	100	10.5	-	10.5	36.9	42.1	-	
Employees productivity	100	5.3	-	-	89.4	5.3	-	
Obtaining needed raw materials and inputs	100	-	-	5.3	57.9	36.8	-	
Reaching the employees for their work place	100	-	-	-	100.0	-	-	
Regularity of work	100	-	-	10.5	63.2	26.3	-	
Level of employment	100	-	-	10.5	63.2	26.3	-	
Transporting finished goods to market	100	21.1	-	5.3	68.3	5.3	-	
Financial situations	100	-	-	5.3	57.9	36.8	-	
Banks credits & facilities	100	52.6	-	-	36.9	10.5	-	

(-) No Data Available

(-)