



2009

/

2009 /

:1-1

2009

Table 1-1: Percentage of the Industrial Enterprises Witnessed an Improved Situation During the Reference Month Compared to that before the Reference Month for the Main Indicators in the Palestinian Territory 2009

Indicator	Reference Month									
	2009								2008	
	آب Aug.	تموز Jul.	حزيران Jun.	أيار May	نيسان Apr.	آذار Mar.	شباط Feb.	كانون ثاني Jan.	كانون أول Dec.	تشرين ثاني Nov.
Enterprise performance in general	29.9	31.7	33.2	-	28.7	34.7	26.4	16.1	-	25.0
Obtaining needed raw materials and inputs	8.0	5.6	9.6	-	6.9	13.1	8.5	9.9	-	10.6
Reaching the employees for their work place	1.2	3.5	3.0	-	2.1	6.9	9.1	4.0	-	3.5
Regularity of work	7.1	8.2	9.9	-	6.0	10.7	10.0	5.7	-	6.8
Transporting finished goods to market	11.8	15.7	17.0	-	11.2	11.6	11.8	7.1	-	9.2

(-) No Data Available

(-)

:2-1

2009

Table 1-2: Percentage of Industrial Enterprises Witnessed an Improved Situation During the Reference Month Compared to that before the Reference Month for the Main Indicators in the West Bank 2009

Indicator	Reference Month									
	2009								2008	
	آب Aug.	تموز Jul.	حزيران Jun.	أيار May	نيسان Apr.	آذار Mar.	شباط Feb.	كانون ثاني Jan.	كانون أول Dec.	تشرين ثاني Nov.
Enterprise performance in general	29.7	32.7	33.9	35.1	28.9	36.7	21.6	17.4	16.7	29.7
Obtaining needed raw materials and inputs	8.1	5.8	9.8	8.9	6.7	13.5	7.0	10.7	7.0	11.7
Reaching the employees for their work place	1.2	3.7	3.1	2.9	2.2	7.1	3.8	4.3	3.1	4.4
Regularity of work	6.5	8.6	9.4	9.9	5.1	11.5	5.1	6.1	3.5	7.2
Transporting finished goods to market	12.1	16.5	17.7	15.5	11.3	12.1	7.6	7.7	5.4	11.4

2009

Table 1-3: Percentage of Industrial Enterprises Witnessed an Improved Situation During the Reference Month Compared to that before the Reference Month for the Main Indicators in Gaza Strip 2009

Indicator	Reference Month									
	2009								2008	
	أب Aug.	تموز Jul.	حزيران Jun.	أيار May	نيسان Apr.	آذار Mar.	شباط Feb.	كانون ثاني Jan.	كانون أول Dec.	تشرين ثاني Nov.
Enterprise performance in general	33.4	11.8	22.2	-	26.3	8.7	84.6	0.0	-	7.7
Obtaining needed raw materials and inputs	6.7	:	5.6	-	10.6	8.7	26.9	0.0	-	6.4
Reaching the employees for their work place	:	:	:	-	:	4.3	73.1	0.0	-	0.0
Regularity of work	20.0	:	16.7	-	21.1	0.0	69.2	0.0	-	5.1
Transporting finished goods to market	6.7	:	5.6	-	10.6	4.3	61.6	0.0	-	1.3

(-) No Data Available

(-)

(:) No Observations in the Sample

(:)

Table 2-1: Percentage Distribution of Owners/ Managers of the Industrial Enterprises According to Their Opinions of Main Indicators During August 2009 Compared to July 2009 in the Palestinian Territory

Problem	Total	Not Exist	Much Worse	Somewhat Worse	/ About the Same/ Unchanged	Somewhat Better	Much Better
Enterprise performance in general	100	:	1.5	20.1	48.5	28.7	1.2
Production situation	100	1.2	1.8	23.7	42.5	29.0	1.8
Employees productivity	100	0.9	1.5	22.5	47.0	26.6	1.5
Obtaining needed raw materials and inputs	100	0.3	0.6	6.8	84.3	7.7	0.3
Reaching the employees for their work place	100	0.9	0.3	0.9	96.7	0.9	0.3
Regularity of work	100	:	1.5	9.5	81.9	6.8	0.3
Transporting finished goods to market	100	1.8	1.5	10.7	74.2	11.5	0.3
Financial situations	100	:	1.5	17.5	63.5	17.2	0.3
Banks credits & facilities	100	30.8	0.9	0.6	66.5	1.2	:
Level of employment	100	1.2	1.5	9.8	77.7	9.5	0.3
Value of sales	100	:	1.8	25.8	40.9	30.0	1.5

(:) No Observations in the Sample

(:)

Table 2-2: Percentage Distribution of Owners/ Managers of the Industrial Enterprises According to Their Opinions of Main Indicators During August 2009 Compared to July 2009 in the West Bank

Problem	Total	Not Exist	Much Worse	Somewhat Worse	/ About the Same/ Unchanged	Somewhat Better	Much Better
Enterprise performance in general	100	:	1.5	21.1	47.7	28.8	0.9
Production situation	100	:	1.9	24.8	42.4	29.4	1.5
Employees productivity	100	:	1.5	23.5	45.9	27.6	1.5
Obtaining needed raw materials and inputs	100	:	0.6	6.5	84.8	7.8	0.3
Reaching the employees for their work place	100	0.6	0.3	0.9	97.0	0.9	0.3
Regularity of work	100	:	1.5	9.6	82.4	6.2	0.3
Transporting finished goods to market	100	:	1.5	11.1	75.3	11.8	0.3
Financial situations	100	:	1.5	18.3	62.9	17.0	0.3
Banks credits & facilities	100	29.7	0.9	0.6	67.6	1.2	:
Level of employment	100	1.2	1.5	9.9	77.8	9.3	0.3
Value of sales	100	:	1.9	27.0	40.1	29.8	1.2

(:) No Observations in the Sample

(:)

Table 2-3: Percentage Distribution of Owners/ Managers of the Industrial Enterprises According to Their Opinions of Main Indicators During August 2009 Compared to July 2009 in Gaza Strip

Problem	Total	Not Exist	Much Worse	Somewhat Worse	/ About the Same/ Unchanged	Somewhat Better	Much Better
Enterprise performance in general	100	:	:	:	66.6	26.7	6.7
Production situation	100	26.7	:	:	46.6	20.0	6.7
Employees productivity	100	20.0	:	:	73.3	6.7	:
Obtaining needed raw materials and inputs	100	6.7	:	13.3	73.3	6.7	:
Reaching the employees for their work place	100	6.7	:	:	93.3	:	:
Regularity of work	100	:	:	6.7	73.3	20.0	:
Transporting finished goods to market	100	40.0	:	:	53.3	6.7	:
Financial situations	100	:	:	:	80.0	20.0	:
Banks credits & facilities	100	53.3	:	:	46.7	:	:
Level of employment	100	:	:	6.7	80.0	13.3	:
Value of sales	100	:	:	:	60.0	33.3	6.7

(:) No Observations in the Sample

(:)

Table 3: Percentage of Industrial Enterprises Witnessed an Improved Situation During the Reference Month (August 2009) Compared to that before the Reference Month for the Main Indicators by Region

Indicator	Gaza Strip	West Bank	Palestinian Territory	
Employees productivity	6.7	29.1	28.1	
Financial situations	20.0	17.3	17.5	
Banks credits & facilities	0.0	1.2	1.2	
Level of employment	13.3	9.6	9.8	
Value of sales	40.0	31.0	31.5	

(:) No Observations in the Sample

(:) تعني لا يوجد مشاهدات بالعينة

/

:4

2009

Table 4: Percentage Distribution of Owners/Managers of the Active Industrial Enterprises According to the Reasons for Sales Level Stability or Decline by Region During August 2009

Reason	Gaza Strip	West Bank	Palestinian Territory	
Decrease in demand	:	34.3	-	
Difficulties in exporting finished goods	:	4.3	-	
Decline in the consumer purchasing power	:	24.7	-	
Product Marketing Obstacles	:	1.1	-	()
Competence product	:	6.5	-	
Seasonally related	:	12.9	-	
Military check points/ israeli actions/ closures	:	1.1	-	/ /
Other	:	15.1	-	
Total	:	100	-	

(-) No Data Available

(-)

(:) No Observations in the Sample

(:) تعني لا يوجد مشاهدات بالعينة

2009

:5

Table 5: Percentage Distribution of the Active Industrial Enterprises According to the Employment Mobility During August 2009 by Region

Employment Mobility	Gaza Strip	West Bank	Palestinian Territory	
Hiring employees	6.7	6.2	6.2	
Firing employees	6.7	7.8	7.7	
No change	86.6	86.0	86.1	
Total	100.0	100	100.0	

2009

/

:6

Table 6: Percentage Distribution of the Existing of Competition Against the Main Product According to the Owners\ Managers of the Active Industrial Enterprises During August 2009 by Region

Competence existence	Gaza Strip	West Bank	Palestinian Territory	
There is competition	80.0	94.1	93.5	
There is no competition	20.0	5.9	6.5	
Total	100.0	100	100.0	

2009

/

:7

Table 7: Percentage Distribution of the Type of Competition According to the Owners\ Managers of the Active Industrial Enterprises During August 2009 by Region

Type of competence	Gaza Strip	West Bank	Palestinian Territory	
Local	75.0	55.6	56.3	
Foreign	25.0	12.5	13.0	
Both	:	31.9	30.7	
Total	100.0	100	100.0	

(:) No Observations in the Sample

(:)

Table 8: Expectations of Owners/ Managers of the Active Industrial Enterprises for the Month that Follows the Reference Month Compared to the Reference Month (August, 2009) for the Main Indicators by Region

Indicator	Reference Month									
	2009								2008	
	آب Aug.	تموز Jul.	حزيران Jun.	أيار May	نيسان Apr.	آذار Mar.	شباط Feb.	كانون ثاني Jan.	كانون أول Dec.	تشرين ثاني Nov.
Percentage of who are expecting better Enterprise situation										
Palestinian Territory	28.1	32.3	37.9	-	38.7	38.7	33.9	33.4	-	27.5
West Bank	28.5	33.6	38.8	44.1	39.4	38.8	37.1	29.1	26.5	27.3
Gaza Strip	20.0	5.9	22.2	-	26.3	39.1	65.3	85.1	-	28.9
Percentage of who are expecting higher employment level										
Palestinian Territory	11.3	11.9	11.3	-	13.3	12.8	18.1	17.0	-	12.0
West Bank	10.5	12.5	11.0	17.5	12.8	12.1	14.4	11.0	11.2	9.7
Gaza Strip	26.7	:	16.7	-	21.1	21.7	61.5	88.8	-	28.9
Percentage of who are expecting higher sales volume										
Palestinian Territory	27.8	32.9	38.2	-	37.5	36.9	39.3	34.8	-	27.5
West Bank	28.2	34.2	39.4	42.7	38.5	36.4	37.1	29.7	28.1	27.3
Gaza Strip	20.0	5.9	16.7	-	21.1	43.4	65.3	96.3	-	28.9

(-) No Data Available

(:) No Observations in the Sample

(-)

(:) تعني لا يوجد مشاهدات بالعينة

Table 9: Expectations of Owners/ Managers of the Active Industrial Enterprises for the Six Months that Follow the Reference Month Compared to the Reference Month (August, 2009) for the Main Indicators by Region

Indicator	Reference Month									
	2009								2008	
	أب Aug.	تموز Jul.	حزيران Jun.	أيار May	نيسان Apr.	آذار Mar.	شباط Feb.	كانون ثاني Jan.	كانون أول Dec.	تشرين ثاني Nov.
Percentage of who are expecting better Enterprise situation										
Palestinian Territory	48.7	44.4	51.1	-	53.2	39.1	56.8	62.3	-	44.9
West Bank	49.1	45.5	51.1	49.0	53.8	60.2	55.7	60.5	50.2	44.6
Gaza Strip	40.0	5.9	50.0	-	42.1	39.1	69.1	85.2	-	47.4
Percentage of who are expecting higher employment level										
Palestinian Territory	19.3	21.5	24.8	-	26.9	21.7	28.5	36.0	-	20.9
West Bank	18.7	22.6	24.6	24.5	27.0	28.8	25.5	31.6	18.9	18.0
Gaza Strip	33.3	:	27.8	-	26.3	26.1	65.4	88.9	-	42.1
Percentage of who are expecting higher sales volume										
Palestinian Territory	48.5	44.8	51.7	-	54.1	43.4	56.5	62.9	-	45.6
West Bank	48.6	46.8	51.4	48.4	54.8	58.8	55.8	60.2	52.7	45.3
Gaza Strip	46.7	5.9	55.6	-	42.1	43.4	65.4	96.3	-	47.4

(-) No Data Available

(:) No Observations in the Sample

(-)

(:) تعني لا يوجد مشاهدات بالعينة

(2009)

/ :10

Table 10: Expectations of Owners/ Managers of the Active Industrial Enterprises about Better Expectations for their Enterprises for the Month that Follows the Reference Month (August, 2009) Compared to the Reference Month by Region

Indicator	Gaza Strip	West Bank	Palestinian Territory	
Enterprise performance in general	26.7	28.5	28.4	
Employees productivity	6.7	25.0	24.3	
Obtaining needed raw materials and inputs	33.3	7.4	8.6	
Reaching the employees for their work place	:	4.0	3.9	
Regularity of work	26.7	9.9	10.7	
Transporting finished goods to market	6.7	12.6	12.4	
Financial situations	26.7	17.3	17.8	
Banks credits & facilities	6.7	3.4	3.6	

(:) No Observations in the Sample

(:) تعني لا يوجد مشاهدات بالعينة

(2009)

/ :11

Table 11: Expectations of Owners/ Managers of the Active Industrial Enterprises about Better Expectations for their Enterprises for the Six Months that Follow the Reference Month (August, 2009) Compared to the Reference Month for the Main Indicators by Region

Indicator	Gaza Strip	West Bank	Palestinian Territory	
Enterprise performance in general	53.3	48.3	48.5	
Employees productivity	6.7	42.3	40.7	
Obtaining needed raw materials and inputs	46.7	9.9	11.6	
Reaching the employees for their work place	:	4.9	4.8	
Regularity of work	33.3	19.3	19.9	
Transporting finished goods to market	6.7	19.9	19.3	
Financial situations	40.0	28.9	29.4	
Banks credits & facilities	13.3	4.0	4.5	

(:) No Observations in the Sample

(:) تعني لا يوجد مشاهدات بالعينة

(2009)

/

:1-12

Table 12-1: Percentage Distribution of Owners/ Managers of the Active Industrial Enterprises According to Their Opinions of Main Indicators for the Month that Follows the Reference Month (August, 2009) Compared to the Reference Month in the Palestinian Territory

Indicator	Total	Not Exist	Much Worse	Somewhat Worse	/ About the Same/ Unchanged	Somewhat Better	Much Better	
Enterprise performance in general	100	:	0.9	23.1	47.6	26.0	2.4	
Production situation	100	0.6	0.9	23.7	46.7	26.0	2.1	
Volume of sales	100	0.3	0.9	24.3	46.7	25.4	2.4	
Employees productivity	100	:	0.9	21.3	53.5	22.8	1.5	
Obtaining needed raw materials and inputs	100	:	0.3	1.5	89.6	7.4	1.2	
Reaching the employees for their work place	100	0.3	0.3	1.8	93.7	3.3	0.6	
Regularity of work	100	:	0.3	5.9	83.1	9.8	0.9	
Level of employment	100	0.9	0.9	4.4	82.5	10.1	1.2	
Transporting finished goods to market	100	1.2	0.6	5.0	80.8	10.9	1.5	
Financial situations	100	:	0.9	13.6	67.7	16.9	0.9	
Banks credits & facilities	100	30.5	0.6	0.6	64.7	3.3	0.3	

(:) No Observations in the Sample

(:) تعني لا يوجد مشاهدات بالعينة

(2009)

/

:2-12

Table 12-2: Percentage Distribution of Owners/ Managers of the Active Industrial Enterprises According to Their Opinions of Main Indicators for the Month that Follows the Reference Month (August, 2009) Compared to the Reference Month in the West Bank

Indicator	Total	Not Exist	Much Worse	Somewhat Worse	/ About the Same/ Unchanged	Somewhat Better	Much Better	
Enterprise performance in general	100	:	0.9	23.8	46.8	26.0	2.5	
Production situation	100	:	0.9	24.5	46.1	26.3	2.2	
Volume of sales	100	:	0.9	25.1	45.8	25.7	2.5	
Employees productivity	100	:	0.9	22.3	51.8	23.5	1.5	
Obtaining needed raw materials and inputs	100	:	0.3	1.5	90.8	6.2	1.2	
Reaching the employees for their work place	100	0.3	0.3	1.5	93.9	3.4	0.6	
Regularity of work	100	:	0.3	5.9	83.9	9.0	0.9	
Level of employment	100	0.9	0.9	4.3	83.4	9.3	1.2	
Transporting finished goods to market	100	:	0.6	5.3	81.5	11.1	1.5	
Financial situations	100	:	0.9	13.9	67.9	16.4	0.9	
Banks credits & facilities	100	29.7	0.6	0.6	65.7	3.1	0.3	

(:) No Observations in the Sample

(:) تعني لا يوجد مشاهدات بالعينة

(2009)

/

:3-12

Table 12-3: Percentage Distribution of Owners/ Managers of the Active Industrial Enterprises According to Their Opinions of Main Indicators for the Month that Follows the Reference Month (August, 2009) Compared to the Reference Month in Gaza Strip

Indicator	Total	Not Exist	Much Worse	Somewhat Worse	/ About the Same/ Unchanged	Somewhat Better	Much Better	
Enterprise performance in general	100	:	:	6.7	66.6	26.7	:	
Production situation	100	13.3	:	6.7	60.0	20.0	:	
Volume of sales	100	6.7	:	6.7	66.6	20.0	:	
Employees productivity	100	:	:	:	93.3	6.7	:	
Obtaining needed raw materials and inputs	100	:	:	:	66.7	33.3	:	
Reaching the employees for their work place	100	:	:	6.7	93.3	:	:	
Regularity of work	100	:	:	6.7	66.6	26.7	:	
Level of employment	100	:	:	6.7	66.6	26.7	:	
Transporting finished goods to market	100	26.7	:	:	66.6	6.7	:	
Financial situations	100	:	:	6.7	66.6	26.7	:	
Banks credits & facilities	100	46.7	:	:	46.6	6.7	:	

(:) No Observations in the Sample

(:) تعني لا يوجد مشاهدات بالعينة

(2009)

/

:1-13

Table 13-1: Percentage Distribution of Owners/ Managers of the Active Industrial Enterprises According to Their Opinions of Main Indicators During the Next Six Months Compared to Reference Month (August, 2009) in the Palestinian Territory

Indicator	Total	Not Exist	Much Worse	Somewhat Worse	/ About the Same/ Unchanged	Somewhat Better	Much Better	
Enterprise performance in general	100	:	3.9	18.5	29.1	46.4	2.1	
Production situation	100	0.6	3.9	18.4	28.4	46.6	2.1	
Volume of sales	100	0.3	4.2	19.6	27.4	46.4	2.1	
Employees productivity	100	:	3.0	16.0	40.3	39.2	1.5	
Obtaining needed raw materials and inputs	100	:	0.6	2.1	85.7	10.4	1.2	
Reaching the employees for their work place	100	0.3	0.3	0.6	94.0	3.6	1.2	
Regularity of work	100	:	2.1	6.8	71.2	18.1	1.8	
Level of employment	100	0.9	2.7	5.3	71.8	17.8	1.5	
Transporting finished goods to market	100	1.2	2.1	6.2	71.2	17.8	1.5	
Financial situations	100	:	2.7	13.9	54.0	27.6	1.8	
Banks credits & facilities	100	30.9	0.3	:	64.3	3.9	0.6	

(:) No Observations in the Sample

(:) تعني لا يوجد مشاهدات بالعينة

Table 13-2: Percentage Distribution of Owners/ Managers of the Active Industrial Enterprises According to Their Opinions of Main Indicators During the Next Six Months Compared to Reference Month (August, 2009) in the West Bank

Indicator	Total	Not Exist	Much Worse	Somewhat Worse	/ About the Same/ Unchanged	Somewhat Better	Much Better	
Enterprise performance in general	100	:	4.0	18.7	29.0	46.1	2.2	
Production situation	100	:	4.0	18.6	28.3	46.9	2.2	
Volume of sales	100	:	4.4	19.9	27.1	46.4	2.2	
Employees productivity	100	:	3.1	16.8	37.8	40.7	1.6	
Obtaining needed raw materials and inputs	100	:	0.6	2.2	87.3	8.7	1.2	
Reaching the employees for their work place	100	0.3	0.3	0.6	93.9	3.7	1.2	
Regularity of work	100	:	2.2	6.8	71.7	17.4	1.9	
Level of employment	100	0.9	2.8	5.3	72.3	17.1	1.6	
Transporting finished goods to market	100	:	2.2	6.5	71.4	18.3	1.6	
Financial situations	100	:	2.8	14.3	54.0	27.0	1.9	
Banks credits & facilities	100	30.1	0.3	:	65.6	3.4	0.6	

(:) No Observations in the Sample

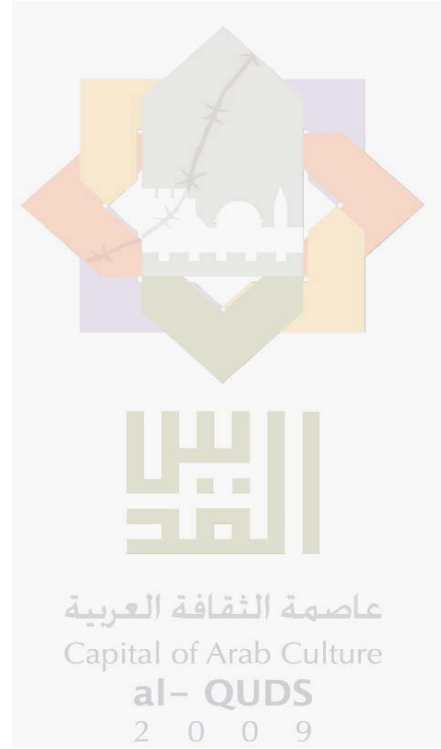
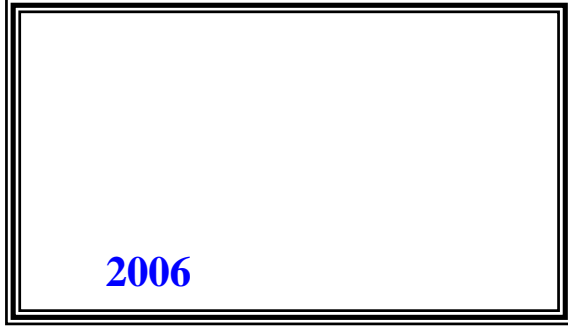
(:) تعني لا يوجد مشاهدات بالعينة

Table 13-3: Percentage Distribution of Owners/ Managers of the Active Industrial Enterprises According to Their Opinions of Main Indicators During the Next Six Months Compared to Reference Month (August, 2009) in Gaza Strip

Indicator	Total	Not Exist	Much Worse	Somewhat Worse	/ About the Same/ Unchanged	Somewhat Better	Much Better	
Enterprise performance in general	100	:	:	13.3	33.4	53.3	:	
Production situation	100	13.3	:	13.3	33.4	40.0	:	
Volume of sales	100	6.7	:	13.3	33.3	46.7	:	
Employees productivity	100	:	:	:	93.3	6.7	:	
Obtaining needed raw materials and inputs	100	:	:	:	53.3	46.7	:	
Reaching the employees for their work place	100	:	:	:	100.0	:	:	
Regularity of work	100	:	:	6.7	60.0	33.3	:	
Level of employment	100	:	:	6.7	60.0	33.3	:	
Transporting finished goods to market	100	26.7	:	:	66.6	6.7	:	
Financial situations	100	:	:	6.7	53.3	40.0	:	
Banks credits & facilities	100	46.7	:	:	40.0	13.3	:	

(:) No Observations in the Sample

(:) تعني لا يوجد مشاهدات بالعينة



© 1430 - 2009.

:

/

2009.

2009

:

1647 . . -

: 2 242 6340 (970/972)

: 2 242 6343 (970/972)

: diwan@pcbs.gov.ps

: <http://www.pcbs.gov.ps>

5

/

2009

9

/
2009

54

/ 2009 2009/09/23-03
55 358
2007
%70

.2007

2009

2009

2009 %29.9 2009 2009
.(%33.4 %29.7)
/ %17.5 :
%17.3)

.(%20.0

/ %1.2 :
%1.2)

.(

:

/ %34.3

%24.7 2009

:

/ %93.5

%56.3 .(%80.0 %94.1)

%55.6)

%12.5)

%13.0

(

%75.0

%30.7

(

%25.0

.(

%31.9)

:

/ %7.7

%7.8) 2009

(%6.7

%86.1 (%86.6 %86.0)

. (

.3

1-3

-

/

/ %28.1 -(2009)

. (%20.0 %28.5)

/

. (%26.7 %10.5) %11.3 2009

/ %27.8

. (%20.0 %28.2) 2009

2-3

()

%48.7

. (%40.0 %49.1)

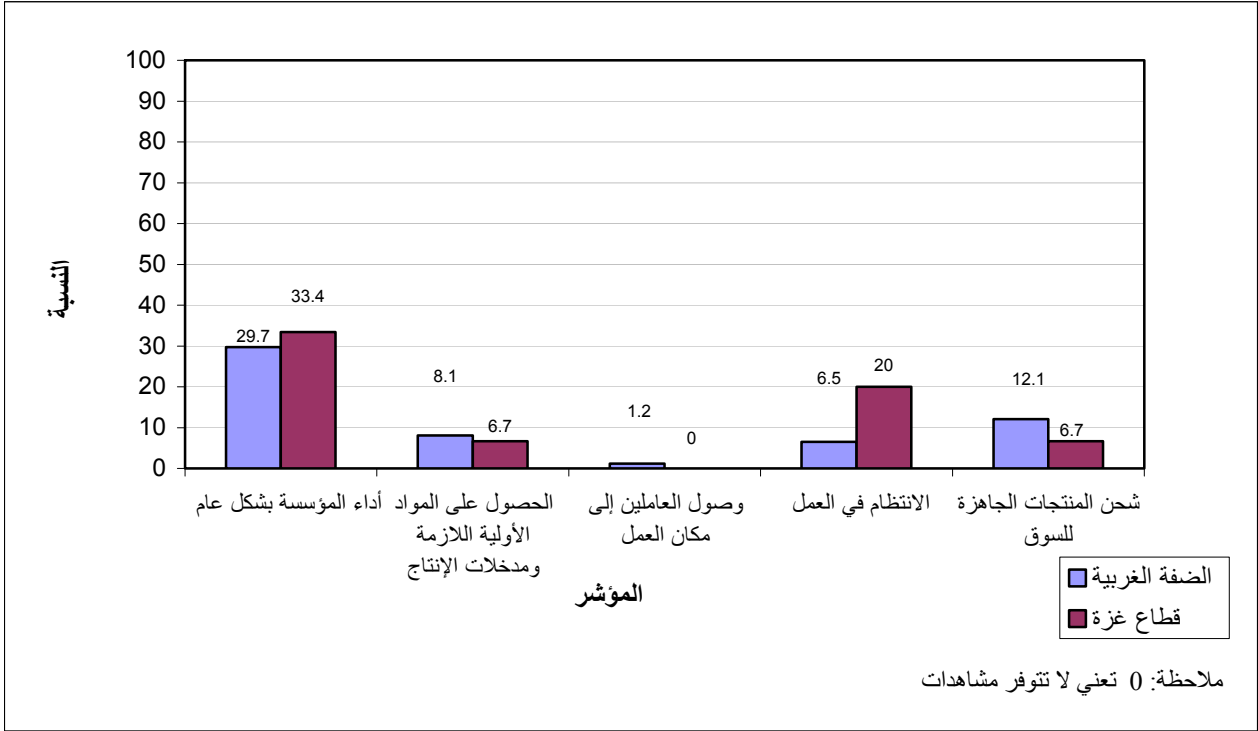
%19.3

. (%33.3 %18.7)

/ %48.5

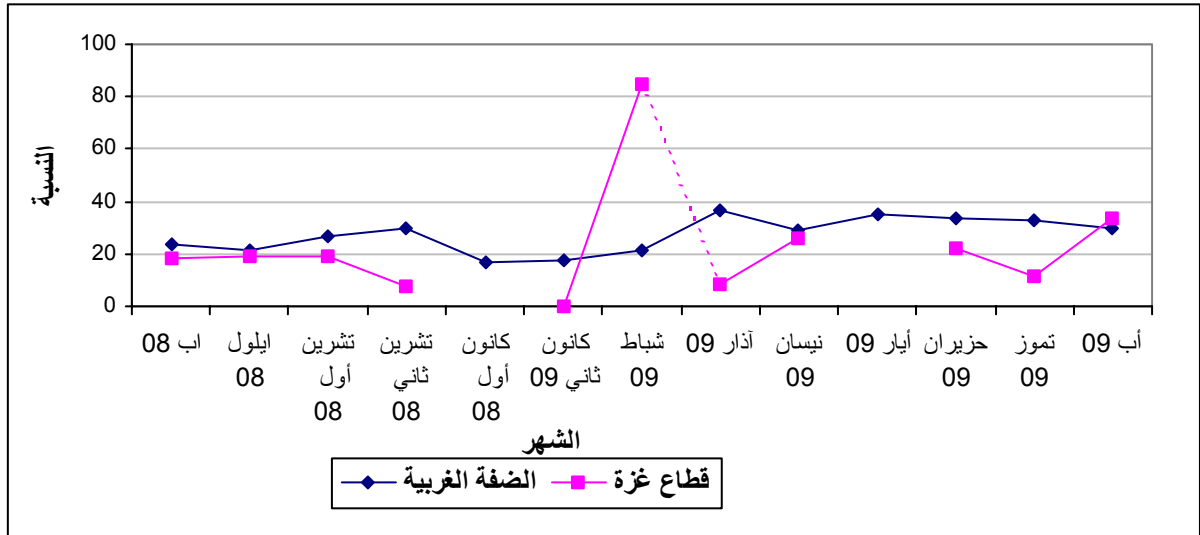
%48.6)

. (%46.7



(2009 - 2008)

:2



*

Tables