



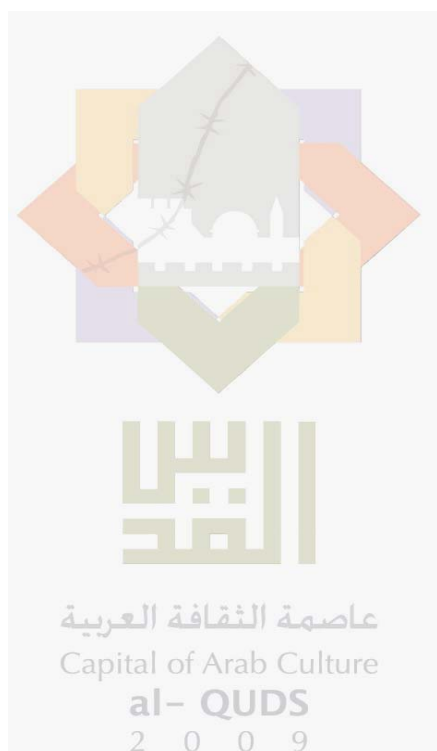
**Palestinian National Authority
Palestinian Central Bureau of Statistics**

**Survey of the Perceptions of the Owners / Managers of
Industrial Enterprises Regarding the Economic Situation,
August 2009**

Press Release on the Survey Results

September, 2009

PAGE NUMBERS OF ENGLISH TEXT ARE PRINTED IN SQUARE BRACKETS.
TABLES ARE PRINTED IN THE ARABIC ORDER (FROM RIGHT TO LEFT).



This document is prepared in accordance with the standard procedures stated in the Code of Practice for Palestine Official Statistics 2006

© September, 2009
All rights reserved.

Suggested Citation:

Palestinian Central Bureau of Statistics, 2009. *Survey of the Perceptions of the Owners / Managers of Industrial Enterprises Regarding the Economic Situation, August 2009. Press Release on the survey's results.*

Ramallah- Palestine

All correspondence should be directed to:
Palestinian Central Bureau of Statistics.
P.O. Box 1647, Ramallah - Palestine.

Tel: (972/970) 2 242 6340
Fax: (972/970) 2 242 6343
E-mail: diwan@pcbs.gov.ps
Web-site: <http://www.pcbs.gov.ps>

Table of Contents

Subject	Page
Press Release: Main Findings of the Survey of the Perceptions of the Owners/Managers of Industrial Enterprises Regarding the Economic Situation, August 2009	[5]
Tables	9

Press Release

Main Findings of the Survey of the Perceptions of the Owners/Managers of Industrial Enterprises Regarding the Economic Situation, August 2009

The following statement presents the basic findings of the 54th round on the perceptions of the owners/managers of industrial enterprises regarding the economic situation for August 2009. The round was conducted during the period 03-23/09/2009, using August 2009 as the reference month. The aim of the survey is to observe and monitor the trends of the opinions of the owners/managers of the industrial enterprises. The sample size was 358 industrial enterprises in the Palestinian Territory, and 55 industrial enterprises in Gaza Strip. A two-stage sample was designed for this survey: in the first stage, the industrial survey 2007 was used as a sampling frame for the survey, while in the second stage all the industrial enterprises constituting approximately 70% of the total industrial production, were selected.

Performance of industrial enterprises in August 2009 compared with July 2009

According to 29.9% of the owners/managers of the industrial enterprises in the Palestinian Territory, the general performance of their enterprises during August 2009 improved compared with July 2009 (29.7% West Bank, 33.4 % Gaza Strip).

According to the results, 17.5% of the owners/managers reported that their enterprise's financial situation improved in the Palestinian Territory (17.3% West Bank, 20.0% Gaza Strip), while 1.2% reported that banks loans were more accessible during August 2009 (1.2% West Bank, non of the respondent in Gaza strip reported that banks loans were more accessible).

Challenges

Drop in sales level

34.3% of the owners/managers of industrial enterprises in the West Bank indicated that the main reason for the drop in the sales level referred to the decrease on the demand of the enterprise product, while 24.7% of the owners/managers of industrial enterprises indicated that the main reason was the decrease in the consumer purchasing power, while there was no available data on Gaza Strip for this indicator.

Local and external competition

In the Palestinian Territory, 93.5% of the owners/managers of the industrial enterprises indicated that their enterprise's main product faced local or external competition (94.1% West Bank, 80.0% Gaza Strip).

According to 56.3% of the owners/managers of the industrial enterprises in the Palestinian Territory, the main product faced local competition (55.6% West Bank, 75.0% Gaza Strip); where as 13.0% of the owners/managers of the industrial enterprises in the Palestinian Territory indicated that their main product faced external competition (12.5% West Bank, 25.0% Gaza Strip). On the other hand 30.7% of the owners/managers of the industrial enterprises in the Palestinian Territory indicated that their main product faced both local and external competition (31.9% West Bank, whereas no respondent in Gaza strip indicate that their main product faced both local and external competition).

Employment

7.7% of the owners/managers of the industrial enterprises in the Palestinian Territory fired employees in August 2009 (7.8% West Bank, 6.7% Gaza strip); however, 86.1% of the

owners/managers of the industrial enterprises in the Palestinian Territory stated that there was no change in the number of workers (86.0% West Bank, 86.6% Gaza strip).

3. Expectations

3-1 Short term

The expectations of the owners/ managers of the active industrial enterprises in the short term, i.e. after one month of the reference month (August 2009), shows that 28.1% in the Palestinian Territory expected improvement in their production in general (28.5% West Bank, 20.0% Gaza Strip).

The expectations in the Palestinian Territory concerning employment in September 2009 indicate pessimism since only 11.3% expected increase during September 2009 (10.5% West Bank, 26.7% Gaza strip).

The results show that 27.8% of the owners /managers of the industrial enterprises in the Palestinian Territory expected sales to increase during September 2009 (28.2% West Bank, 20.0% Gaza Strip).

3-2 Med term

The expectations of the owners /managers of the active industrial enterprises in the medium term (in the next six months) were as follows: 48.7% business people in the Palestinian Territory expected improvement in production in the next six months (49.1% West Bank, 40.0% Gaza Strip).

According to expectations concerning employment in the Palestinian Territory, 19.3% expect increase in employment (18.7% West Bank, 33.3% Gaza strip).

Sales during the next six months will rise, according to the expectations of 48.5% of the owners and managers of the active industrial enterprises in the Palestinian Territory (48.6% West Bank, 46.7% Gaza Strip).

Figure 1: Percentage of Industrial Enterprises Owners / Managers who Encountered Improvement in Economic Conditions during August 2009 Compared to the Previous Month for the Main Indicators by region

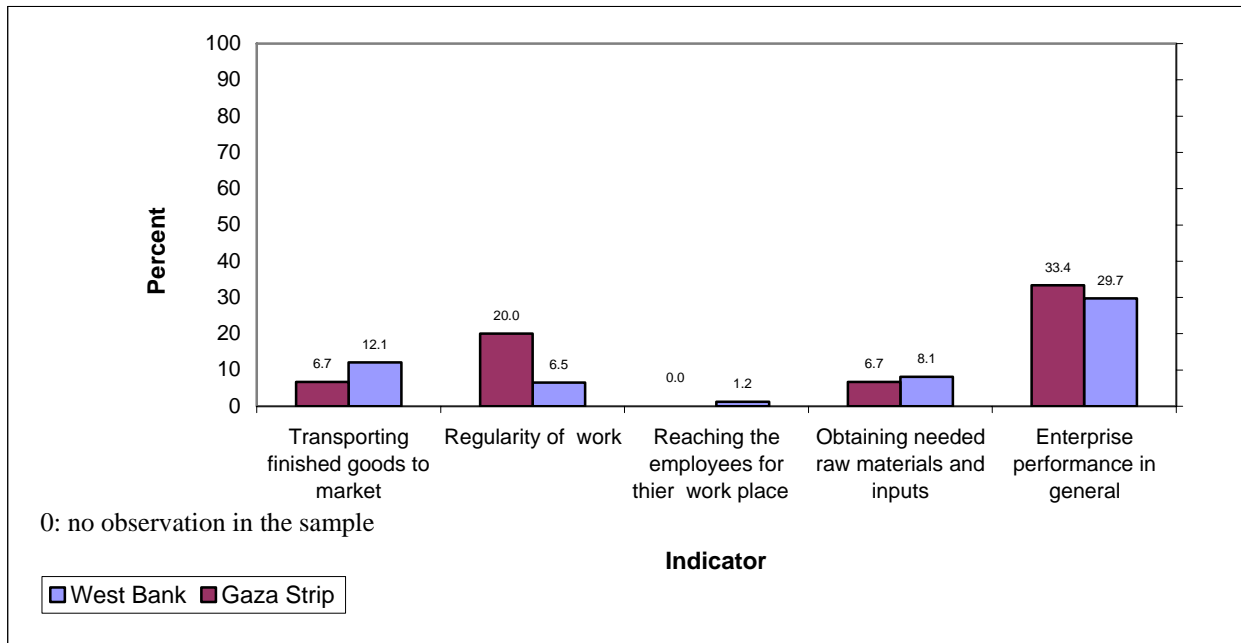
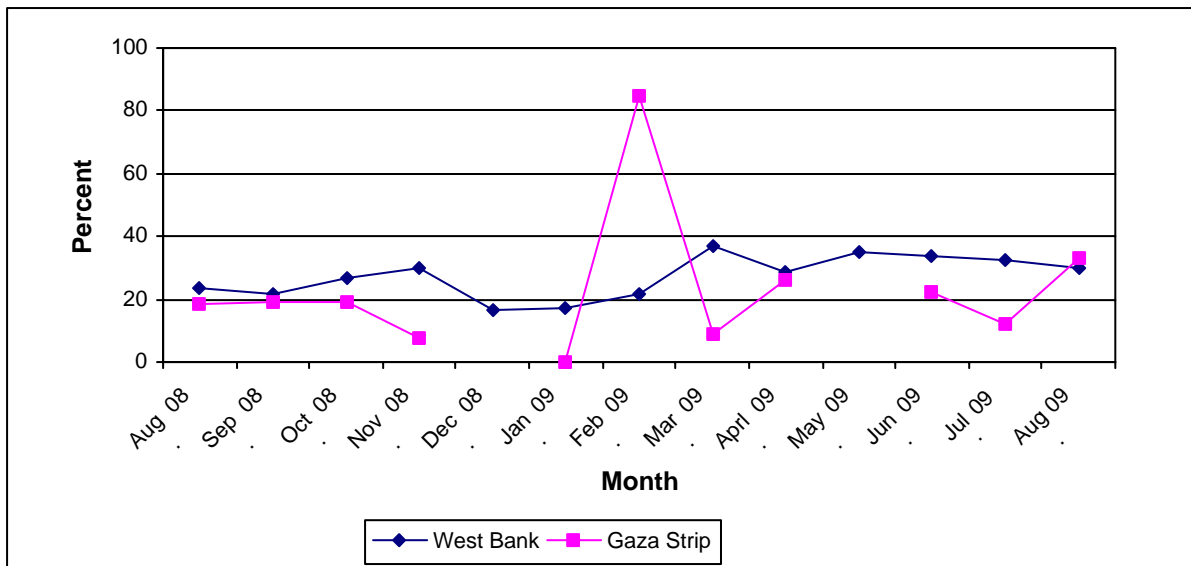


Figure 2: Trends of Enterprises Witnessed an Improved Situation in Production Performance During (August 08-August 09) Compared to the Previous Month by region



* The cut in the Figure is due to unavailability of data for Gaza Strip.

Data Collection and processing of this document has been produced with the financial assistance of the European Union. The contents of this document are the sole responsibility of the PCBS.

:1-1

2009

Table 1-1: Percentage of the Industrial Enterprises Witnessed an Improved Situation During the Reference Month Compared to that before the Reference Month for the Main Indicators in the Palestinian Territory 2009

Indicator	Reference Month									
	2009								2008	
	آب Aug.	تموز Jul.	حزيران Jun.	أيار May	نيسان Apr.	آذار Mar.	شباط Feb.	كانون ثاني Jan.	كانون أول Dec.	تشرين ثاني Nov.
Enterprise performance in general	29.9	31.7	33.2	-	28.7	34.7	26.4	16.1	-	25.0
Obtaining needed raw materials and inputs	8.0	5.6	9.6	-	6.9	13.1	8.5	9.9	-	10.6
Reaching the employees for their work place	1.2	3.5	3.0	-	2.1	6.9	9.1	4.0	-	3.5
Regularity of work	7.1	8.2	9.9	-	6.0	10.7	10.0	5.7	-	6.8
Transporting finished goods to market	11.8	15.7	17.0	-	11.2	11.6	11.8	7.1	-	9.2

(-) No Data Available

(-)

:2-1

2009

Table 1-2: Percentage of Industrial Enterprises Witnessed an Improved Situation During the Reference Month Compared to that before the Reference Month for the Main Indicators in the West Bank 2009

Indicator	Reference Month									
	2009								2008	
	آب Aug.	تموز Jul.	حزيران Jun.	أيار May	نيسان Apr.	آذار Mar.	شباط Feb.	كانون ثاني Jan.	كانون أول Dec.	تشرين ثاني Nov.
Enterprise performance in general	29.7	32.7	33.9	35.1	28.9	36.7	21.6	17.4	16.7	29.7
Obtaining needed raw materials and inputs	8.1	5.8	9.8	8.9	6.7	13.5	7.0	10.7	7.0	11.7
Reaching the employees for their work place	1.2	3.7	3.1	2.9	2.2	7.1	3.8	4.3	3.1	4.4
Regularity of work	6.5	8.6	9.4	9.9	5.1	11.5	5.1	6.1	3.5	7.2
Transporting finished goods to market	12.1	16.5	17.7	15.5	11.3	12.1	7.6	7.7	5.4	11.4

2009

Table 1-3: Percentage of Industrial Enterprises Witnessed an Improved Situation During the Reference Month Compared to that before the Reference Month for the Main Indicators in Gaza Strip 2009

Indicator	Reference Month									
	2009								2008	
	أب Aug.	تموز Jul.	حزيران Jun.	أيار May	نيسان Apr.	آذار Mar.	شباط Feb.	كانون ثاني Jan.	كانون أول Dec.	تشرين ثاني Nov.
Enterprise performance in general	33.4	11.8	22.2	-	26.3	8.7	84.6	0.0	-	7.7
Obtaining needed raw materials and inputs	6.7	:	5.6	-	10.6	8.7	26.9	0.0	-	6.4
Reaching the employees for their work place	:	:	:	-	:	4.3	73.1	0.0	-	0.0
Regularity of work	20.0	:	16.7	-	21.1	0.0	69.2	0.0	-	5.1
Transporting finished goods to market	6.7	:	5.6	-	10.6	4.3	61.6	0.0	-	1.3

(-) No Data Available

(-)

(:) No Observations in the Sample

(:)

Table 2-1: Percentage Distribution of Owners/ Managers of the Industrial Enterprises According to Their Opinions of Main Indicators During August 2009 Compared to July 2009 in the Palestinian Territory

Problem	Total	Not Exist	Much Worse	Somewhat Worse	/ About the Same/ Unchanged	Somewhat Better	Much Better
Enterprise performance in general	100	:	1.5	20.1	48.5	28.7	1.2
Production situation	100	1.2	1.8	23.7	42.5	29.0	1.8
Employees productivity	100	0.9	1.5	22.5	47.0	26.6	1.5
Obtaining needed raw materials and inputs	100	0.3	0.6	6.8	84.3	7.7	0.3
Reaching the employees for their work place	100	0.9	0.3	0.9	96.7	0.9	0.3
Regularity of work	100	:	1.5	9.5	81.9	6.8	0.3
Transporting finished goods to market	100	1.8	1.5	10.7	74.2	11.5	0.3
Financial situations	100	:	1.5	17.5	63.5	17.2	0.3
Banks credits & facilities	100	30.8	0.9	0.6	66.5	1.2	:
Level of employment	100	1.2	1.5	9.8	77.7	9.5	0.3
Value of sales	100	:	1.8	25.8	40.9	30.0	1.5

(:) No Observations in the Sample

(:)

Table 2-2: Percentage Distribution of Owners/ Managers of the Industrial Enterprises According to Their Opinions of Main Indicators During August 2009 Compared to July 2009 in the West Bank

Problem	Total	Not Exist	Much Worse	Somewhat Worse	/ About the Same/ Unchanged	Somewhat Better	Much Better
Enterprise performance in general	100	:	1.5	21.1	47.7	28.8	0.9
Production situation	100	:	1.9	24.8	42.4	29.4	1.5
Employees productivity	100	:	1.5	23.5	45.9	27.6	1.5
Obtaining needed raw materials and inputs	100	:	0.6	6.5	84.8	7.8	0.3
Reaching the employees for their work place	100	0.6	0.3	0.9	97.0	0.9	0.3
Regularity of work	100	:	1.5	9.6	82.4	6.2	0.3
Transporting finished goods to market	100	:	1.5	11.1	75.3	11.8	0.3
Financial situations	100	:	1.5	18.3	62.9	17.0	0.3
Banks credits & facilities	100	29.7	0.9	0.6	67.6	1.2	:
Level of employment	100	1.2	1.5	9.9	77.8	9.3	0.3
Value of sales	100	:	1.9	27.0	40.1	29.8	1.2

(:) No Observations in the Sample

(:)

Table 2-3: Percentage Distribution of Owners/ Managers of the Industrial Enterprises According to Their Opinions of Main Indicators During August 2009 Compared to July 2009 in Gaza Strip

Problem	Total	Not Exist	Much Worse	Somewhat Worse	/ About the Same/ Unchanged	Somewhat Better	Much Better
Enterprise performance in general	100	:	:	:	66.6	26.7	6.7
Production situation	100	26.7	:	:	46.6	20.0	6.7
Employees productivity	100	20.0	:	:	73.3	6.7	:
Obtaining needed raw materials and inputs	100	6.7	:	13.3	73.3	6.7	:
Reaching the employees for their work place	100	6.7	:	:	93.3	:	:
Regularity of work	100	:	:	6.7	73.3	20.0	:
Transporting finished goods to market	100	40.0	:	:	53.3	6.7	:
Financial situations	100	:	:	:	80.0	20.0	:
Banks credits & facilities	100	53.3	:	:	46.7	:	:
Level of employment	100	:	:	6.7	80.0	13.3	:
Value of sales	100	:	:	:	60.0	33.3	6.7

(:) No Observations in the Sample

(:)

Table 3: Percentage of Industrial Enterprises Witnessed an Improved Situation During the Reference Month (August 2009) Compared to that before the Reference Month for the Main Indicators by Region

Indicator	Gaza Strip	West Bank	Palestinian Territory	
Employees productivity	6.7	29.1	28.1	
Financial situations	20.0	17.3	17.5	
Banks credits & facilities	0.0	1.2	1.2	
Level of employment	13.3	9.6	9.8	
Value of sales	40.0	31.0	31.5	

(:) No Observations in the Sample

(:) تعني لا يوجد مشاهدات بالعينة

/

:4

2009

Table 4: Percentage Distribution of Owners/Managers of the Active Industrial Enterprises According to the Reasons for Sales Level Stability or Decline by Region During August 2009

Reason	Gaza Strip	West Bank	Palestinian Territory	
Decrease in demand	:	34.3	-	
Difficulties in exporting finished goods	:	4.3	-	
Decline in the consumer purchasing power	:	24.7	-	
Product Marketing Obstacles	:	1.1	-	()
Competence product	:	6.5	-	
Seasonally related	:	12.9	-	
Military check points/ israeli actions/ closures	:	1.1	-	/ /
Other	:	15.1	-	
Total	:	100	-	

(-) No Data Available

(-)

(:) No Observations in the Sample

(:) تعني لا يوجد مشاهدات بالعينة

2009

:5

Table 5: Percentage Distribution of the Active Industrial Enterprises According to the Employment Mobility During August 2009 by Region

Employment Mobility	Gaza Strip	West Bank	Palestinian Territory	
Hiring employees	6.7	6.2	6.2	
Firing employees	6.7	7.8	7.7	
No change	86.6	86.0	86.1	
Total	100.0	100	100.0	

2009

/

:6

Table 6: Percentage Distribution of the Existing of Competition Against the Main Product According to the Owners\ Managers of the Active Industrial Enterprises During August 2009 by Region

Competence existence	Gaza Strip	West Bank	Palestinian Territory	
There is competition	80.0	94.1	93.5	
There is no competition	20.0	5.9	6.5	
Total	100.0	100	100.0	

2009

/

:7

Table 7: Percentage Distribution of the Type of Competition According to the Owners\ Managers of the Active Industrial Enterprises During August 2009 by Region

Type of competence	Gaza Strip	West Bank	Palestinian Territory	
Local	75.0	55.6	56.3	
Foreign	25.0	12.5	13.0	
Both	:	31.9	30.7	
Total	100.0	100	100.0	

(:) No Observations in the Sample

(:)

Table 8: Expectations of Owners/ Managers of the Active Industrial Enterprises for the Month that Follows the Reference Month Compared to the Reference Month (August, 2009) for the Main Indicators by Region

Indicator	Reference Month									
	2009								2008	
	آب Aug.	تموز Jul.	حزيران Jun.	أيار May	نيسان Apr.	آذار Mar.	شباط Feb.	كانون ثاني Jan.	كانون أول Dec.	تشرين ثاني Nov.
Percentage of who are expecting better Enterprise situation										
Palestinian Territory	28.1	32.3	37.9	-	38.7	38.7	33.9	33.4	-	27.5
West Bank	28.5	33.6	38.8	44.1	39.4	38.8	37.1	29.1	26.5	27.3
Gaza Strip	20.0	5.9	22.2	-	26.3	39.1	65.3	85.1	-	28.9
Percentage of who are expecting higher employment level										
Palestinian Territory	11.3	11.9	11.3	-	13.3	12.8	18.1	17.0	-	12.0
West Bank	10.5	12.5	11.0	17.5	12.8	12.1	14.4	11.0	11.2	9.7
Gaza Strip	26.7	:	16.7	-	21.1	21.7	61.5	88.8	-	28.9
Percentage of who are expecting higher sales volume										
Palestinian Territory	27.8	32.9	38.2	-	37.5	36.9	39.3	34.8	-	27.5
West Bank	28.2	34.2	39.4	42.7	38.5	36.4	37.1	29.7	28.1	27.3
Gaza Strip	20.0	5.9	16.7	-	21.1	43.4	65.3	96.3	-	28.9

(-) No Data Available

(:) No Observations in the Sample

(-)

(:) تعني لا يوجد مشاهدات بالعينة

(2009)

/ :9

Table 9: Expectations of Owners/ Managers of the Active Industrial Enterprises for the Six Months that Follow the Reference Month Compared to the Reference Month (August, 2009) for the Main Indicators by Region

Indicator	Reference Month									
	2009								2008	
	أب Aug.	تموز Jul.	حزيران Jun.	أيار May	نيسان Apr.	آذار Mar.	شباط Feb.	كانون ثاني Jan.	كانون أول Dec.	تشرين ثاني Nov.
Percentage of who are expecting better Enterprise situation										
Palestinian Territory	48.7	44.4	51.1	-	53.2	39.1	56.8	62.3	-	44.9
West Bank	49.1	45.5	51.1	49.0	53.8	60.2	55.7	60.5	50.2	44.6
Gaza Strip	40.0	5.9	50.0	-	42.1	39.1	69.1	85.2	-	47.4
Percentage of who are expecting higher employment level										
Palestinian Territory	19.3	21.5	24.8	-	26.9	21.7	28.5	36.0	-	20.9
West Bank	18.7	22.6	24.6	24.5	27.0	28.8	25.5	31.6	18.9	18.0
Gaza Strip	33.3	:	27.8	-	26.3	26.1	65.4	88.9	-	42.1
Percentage of who are expecting higher sales volume										
Palestinian Territory	48.5	44.8	51.7	-	54.1	43.4	56.5	62.9	-	45.6
West Bank	48.6	46.8	51.4	48.4	54.8	58.8	55.8	60.2	52.7	45.3
Gaza Strip	46.7	5.9	55.6	-	42.1	43.4	65.4	96.3	-	47.4

(-) No Data Available

(:) No Observations in the Sample

(-)

(:) تعني لا يوجد مشاهدات بالعينة

(2009)

/ :10

Table 10: Expectations of Owners/ Managers of the Active Industrial Enterprises about Better Expectations for their Enterprises for the Month that Follows the Reference Month (August, 2009) Compared to the Reference Month by Region

Indicator	Gaza Strip	West Bank	Palestinian Territory	
Enterprise performance in general	26.7	28.5	28.4	
Employees productivity	6.7	25.0	24.3	
Obtaining needed raw materials and inputs	33.3	7.4	8.6	
Reaching the employees for their work place	:	4.0	3.9	
Regularity of work	26.7	9.9	10.7	
Transporting finished goods to market	6.7	12.6	12.4	
Financial situations	26.7	17.3	17.8	
Banks credits & facilities	6.7	3.4	3.6	

(:) No Observations in the Sample

(:) تعني لا يوجد مشاهدات بالعينة

(2009)

/ :11

Table 11: Expectations of Owners/ Managers of the Active Industrial Enterprises about Better Expectations for their Enterprises for the Six Months that Follow the Reference Month (August, 2009) Compared to the Reference Month for the Main Indicators by Region

Indicator	Gaza Strip	West Bank	Palestinian Territory	
Enterprise performance in general	53.3	48.3	48.5	
Employees productivity	6.7	42.3	40.7	
Obtaining needed raw materials and inputs	46.7	9.9	11.6	
Reaching the employees for their work place	:	4.9	4.8	
Regularity of work	33.3	19.3	19.9	
Transporting finished goods to market	6.7	19.9	19.3	
Financial situations	40.0	28.9	29.4	
Banks credits & facilities	13.3	4.0	4.5	

(:) No Observations in the Sample

(:) تعني لا يوجد مشاهدات بالعينة

(2009)

/

:1-12

Table 12-1: Percentage Distribution of Owners/ Managers of the Active Industrial Enterprises According to Their Opinions of Main Indicators for the Month that Follows the Reference Month (August, 2009) Compared to the Reference Month in the Palestinian Territory

Indicator	Total	Not Exist	Much Worse	Somewhat Worse	/ About the Same/ Unchanged	Somewhat Better	Much Better	
Enterprise performance in general	100	:	0.9	23.1	47.6	26.0	2.4	
Production situation	100	0.6	0.9	23.7	46.7	26.0	2.1	
Volume of sales	100	0.3	0.9	24.3	46.7	25.4	2.4	
Employees productivity	100	:	0.9	21.3	53.5	22.8	1.5	
Obtaining needed raw materials and inputs	100	:	0.3	1.5	89.6	7.4	1.2	
Reaching the employees for their work place	100	0.3	0.3	1.8	93.7	3.3	0.6	
Regularity of work	100	:	0.3	5.9	83.1	9.8	0.9	
Level of employment	100	0.9	0.9	4.4	82.5	10.1	1.2	
Transporting finished goods to market	100	1.2	0.6	5.0	80.8	10.9	1.5	
Financial situations	100	:	0.9	13.6	67.7	16.9	0.9	
Banks credits & facilities	100	30.5	0.6	0.6	64.7	3.3	0.3	

(:) No Observations in the Sample

(:) تعني لا يوجد مشاهدات بالعينة

(2009)

/

:2-12

Table 12-2: Percentage Distribution of Owners/ Managers of the Active Industrial Enterprises According to Their Opinions of Main Indicators for the Month that Follows the Reference Month (August, 2009) Compared to the Reference Month in the West Bank

Indicator	Total	Not Exist	Much Worse	Somewhat Worse	/ About the Same/ Unchanged	Somewhat Better	Much Better	
Enterprise performance in general	100	:	0.9	23.8	46.8	26.0	2.5	
Production situation	100	:	0.9	24.5	46.1	26.3	2.2	
Volume of sales	100	:	0.9	25.1	45.8	25.7	2.5	
Employees productivity	100	:	0.9	22.3	51.8	23.5	1.5	
Obtaining needed raw materials and inputs	100	:	0.3	1.5	90.8	6.2	1.2	
Reaching the employees for their work place	100	0.3	0.3	1.5	93.9	3.4	0.6	
Regularity of work	100	:	0.3	5.9	83.9	9.0	0.9	
Level of employment	100	0.9	0.9	4.3	83.4	9.3	1.2	
Transporting finished goods to market	100	:	0.6	5.3	81.5	11.1	1.5	
Financial situations	100	:	0.9	13.9	67.9	16.4	0.9	
Banks credits & facilities	100	29.7	0.6	0.6	65.7	3.1	0.3	

(:) No Observations in the Sample

(:) تعني لا يوجد مشاهدات بالعينة

(2009)

/

:3-12

Table 12-3: Percentage Distribution of Owners/ Managers of the Active Industrial Enterprises According to Their Opinions of Main Indicators for the Month that Follows the Reference Month (August, 2009) Compared to the Reference Month in Gaza Strip

Indicator	Total	Not Exist	Much Worse	Somewhat Worse	/ About the Same/ Unchanged	Somewhat Better	Much Better	
Enterprise performance in general	100	:	:	6.7	66.6	26.7	:	
Production situation	100	13.3	:	6.7	60.0	20.0	:	
Volume of sales	100	6.7	:	6.7	66.6	20.0	:	
Employees productivity	100	:	:	:	93.3	6.7	:	
Obtaining needed raw materials and inputs	100	:	:	:	66.7	33.3	:	
Reaching the employees for their work place	100	:	:	6.7	93.3	:	:	
Regularity of work	100	:	:	6.7	66.6	26.7	:	
Level of employment	100	:	:	6.7	66.6	26.7	:	
Transporting finished goods to market	100	26.7	:	:	66.6	6.7	:	
Financial situations	100	:	:	6.7	66.6	26.7	:	
Banks credits & facilities	100	46.7	:	:	46.6	6.7	:	

(:) No Observations in the Sample

(:) تعني لا يوجد مشاهدات بالعينة

(2009)

/

:1-13

Table 13-1: Percentage Distribution of Owners/ Managers of the Active Industrial Enterprises According to Their Opinions of Main Indicators During the Next Six Months Compared to Reference Month (August, 2009) in the Palestinian Territory

Indicator	Total	Not Exist	Much Worse	Somewhat Worse	/ About the Same/ Unchanged	Somewhat Better	Much Better	
Enterprise performance in general	100	:	3.9	18.5	29.1	46.4	2.1	
Production situation	100	0.6	3.9	18.4	28.4	46.6	2.1	
Volume of sales	100	0.3	4.2	19.6	27.4	46.4	2.1	
Employees productivity	100	:	3.0	16.0	40.3	39.2	1.5	
Obtaining needed raw materials and inputs	100	:	0.6	2.1	85.7	10.4	1.2	
Reaching the employees for their work place	100	0.3	0.3	0.6	94.0	3.6	1.2	
Regularity of work	100	:	2.1	6.8	71.2	18.1	1.8	
Level of employment	100	0.9	2.7	5.3	71.8	17.8	1.5	
Transporting finished goods to market	100	1.2	2.1	6.2	71.2	17.8	1.5	
Financial situations	100	:	2.7	13.9	54.0	27.6	1.8	
Banks credits & facilities	100	30.9	0.3	:	64.3	3.9	0.6	

(:) No Observations in the Sample

(:) تعني لا يوجد مشاهدات بالعينة

Table 13-2: Percentage Distribution of Owners/ Managers of the Active Industrial Enterprises According to Their Opinions of Main Indicators During the Next Six Months Compared to Reference Month (August, 2009) in the West Bank

Indicator	Total	Not Exist	Much Worse	Somewhat Worse	/ About the Same/ Unchanged	Somewhat Better	Much Better	
Enterprise performance in general	100	:	4.0	18.7	29.0	46.1	2.2	
Production situation	100	:	4.0	18.6	28.3	46.9	2.2	
Volume of sales	100	:	4.4	19.9	27.1	46.4	2.2	
Employees productivity	100	:	3.1	16.8	37.8	40.7	1.6	
Obtaining needed raw materials and inputs	100	:	0.6	2.2	87.3	8.7	1.2	
Reaching the employees for their work place	100	0.3	0.3	0.6	93.9	3.7	1.2	
Regularity of work	100	:	2.2	6.8	71.7	17.4	1.9	
Level of employment	100	0.9	2.8	5.3	72.3	17.1	1.6	
Transporting finished goods to market	100	:	2.2	6.5	71.4	18.3	1.6	
Financial situations	100	:	2.8	14.3	54.0	27.0	1.9	
Banks credits & facilities	100	30.1	0.3	:	65.6	3.4	0.6	

(:) No Observations in the Sample

(:) تعني لا يوجد مشاهدات بالعينة

Table 13-3: Percentage Distribution of Owners/ Managers of the Active Industrial Enterprises According to Their Opinions of Main Indicators During the Next Six Months Compared to Reference Month (August, 2009) in Gaza Strip

Indicator	Total	Not Exist	Much Worse	Somewhat Worse	/ About the Same/ Unchanged	Somewhat Better	Much Better	
Enterprise performance in general	100	:	:	13.3	33.4	53.3	:	
Production situation	100	13.3	:	13.3	33.4	40.0	:	
Volume of sales	100	6.7	:	13.3	33.3	46.7	:	
Employees productivity	100	:	:	:	93.3	6.7	:	
Obtaining needed raw materials and inputs	100	:	:	:	53.3	46.7	:	
Reaching the employees for their work place	100	:	:	:	100.0	:	:	
Regularity of work	100	:	:	6.7	60.0	33.3	:	
Level of employment	100	:	:	6.7	60.0	33.3	:	
Transporting finished goods to market	100	26.7	:	:	66.6	6.7	:	
Financial situations	100	:	:	6.7	53.3	40.0	:	
Banks credits & facilities	100	46.7	:	:	40.0	13.3	:	

(:) No Observations in the Sample

(:) تعني لا يوجد مشاهدات بالعينة