



**2008**

/

**2008 /**

**2006**

.2008 - 1429 ©

:

/

**.2008**

*2008*

-

:

/

- **1647** . .

(970/972) 2 242 6340 :

(970/972) 2 242 6343 :

[diwan@pcbs.gov.ps](mailto:diwan@pcbs.gov.ps) :

<http://www.pcbs.gov.ps> :



---

**9**

/

2008

**13**

. 496

(2006 - 2006 )

2006

346

35

(J1)

**:J1**

.1967

/  
2008

42  
2008/09/23-03  
138 / 343 ) 496  
(J1 15  
2004  
%70  
20 2004

2008

2008

%23.8 :  
آب 2008  
%18.4 تموز 2008  
%10.6 :  
آب 2008 مقارنة مع  
شهر تموز 2008 %16.7  
%23.8 :  
%17.5  
%16.9 :  
%14.1  
%2.3 :  
%0.0

%40.0

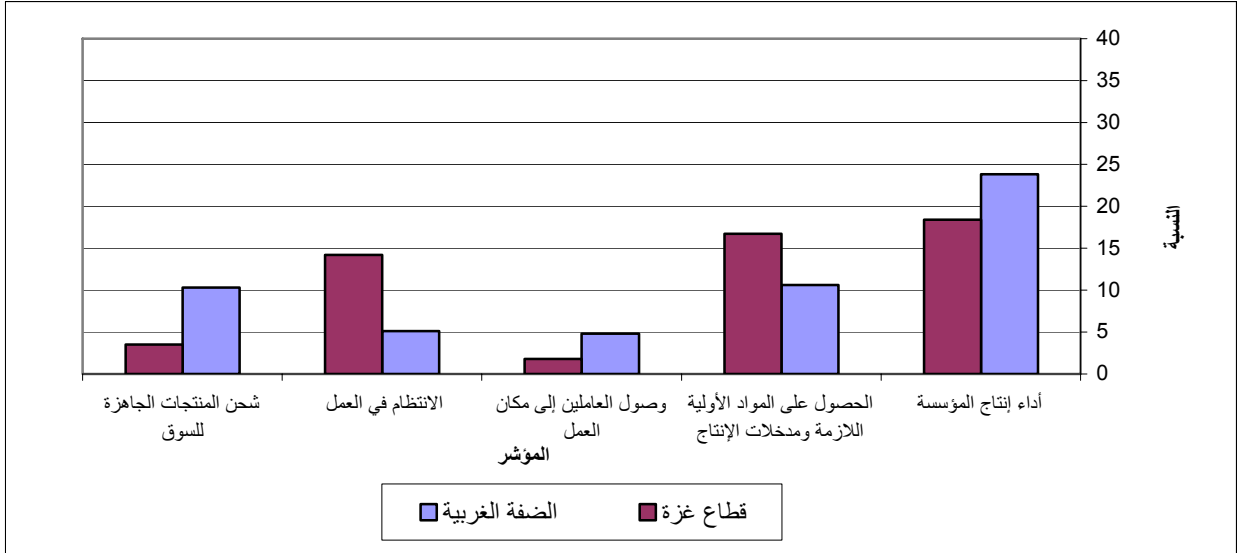
:  
/ %37.0

:  
 / %90.0  
 .( %92.3 %78.6)  
 / %78.4  
 %11.4) %21.6 ( %76.6 %88.6)  
 .( %23.4  
 :  
 / %7.6  
 %78.0 ( %8.8 %1.9) 2008  
 %79.6 %77.7)  
 .( )  
 - / /  
 / %28.0 -(2008 )  
 . /  
 %28.6 %15.6 2008  
 .2008 /  
 ( )  
 %39.9  
 .( %60.7 %35.7)  
 %19.2  
 .( %50.0 %12.9)  
 / %40.9  
 %36.8)  
 .( %60.7

2008

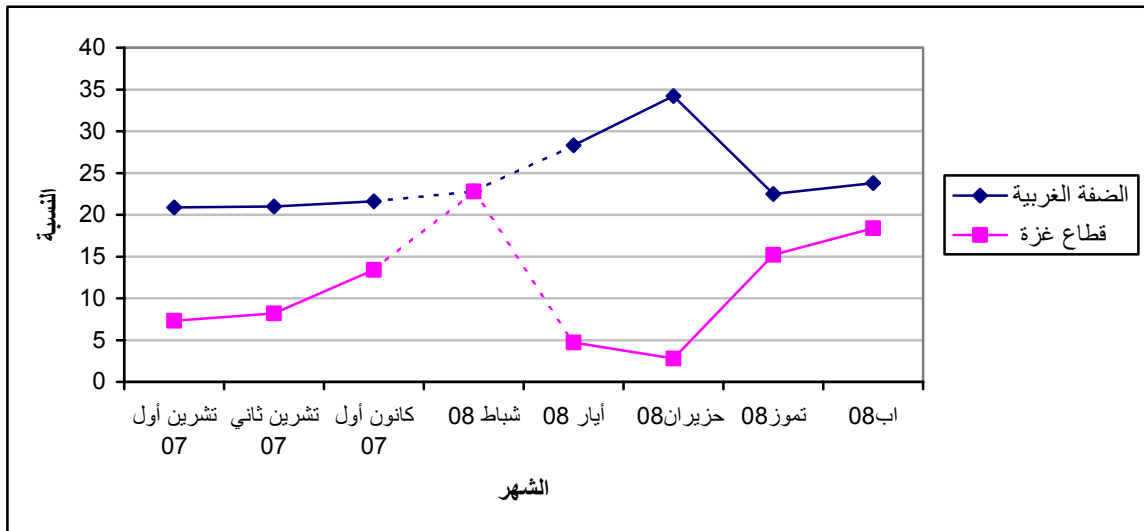
2008

:1



( 2008 )

:2





# Tables

2008

**Table 1-1: Percentage of the Industrial Establishments Encountered Improvement Situation During the Reference Month Compared to that before the Reference Month for the Main Indicators in the Palestinian Territory 2008**

Indicator	Reference Month									
	2008								2007	
	August	July	June	May	April	Mar.	Feb.	Jan.	Dec.	Nov.
Establishment performance in general	22.2	20.9	27.4	23.7	-	-	22.8	-	19.9	18.5
Obtaining needed raw materials and inputs	12.4	10.6	29.8	27.9	-	-	21.4	-	17.9	19.8
Problems of employees reaching place of work	3.9	3.9	26.2	25.2	-	-	16.7	-	16.2	17.9
Regularity of work	7.8	4.2	12.4	9.4	-	-	6.3	-	6.4	7.0
Transporting finished goods to market	8.3	11.4	4.5	4.6	-	-	4.0	-	5.7	6.7

(-) No Data Available

(-)

:2-1

2008 \*

**Table 1-2: Percentage of Industrial Establishments Encountered Improvement Situation During the Reference Month Compared to that before the Reference Month for the Main Indicators in the West Bank\* 2008**

Indicator	Reference Month									
	2008								2007	
	August	July	June	May	April	Mar.	Feb.	Jan.	Dec.	Nov.
Establishment performance in general	23.8	22.5	34.2	28.3	-	-	22.8	-	21.6	21.0
Obtaining needed raw materials and inputs	10.6	11.1	37.3	33.6	-	-	21.2	-	19.5	22.2
Problems of employees reaching place of work	4.8	3.9	32.6	30.1	-	-	15.7	-	17.4	19.8
Regularity of work	5.2	3.2	15.4	10.9	-	-	6.3	-	5.9	7.9
Transporting finished goods to market	10.3	13.6	5.4	5.3	-	-	2.8	-	5.1	7.1

\* West Bank includes Jerusalem Governorate with J1

\*

(-) No Data Available

(-)

2008

**Table 1-3: Percentage of Industrial Establishments Encountered Improvement Situation During the Reference Month Compared to that before the Reference Month for the Main Indicators in Gaza Strip 2008**

Indicator	Reference Month									
	2008								2007	
	August	July	June	May	April	Mar.	Feb.	Jan.	Dec.	Nov.
Establishment performance in general	18.4	15.2	2.8	4.7	-	-	22.8	-	13.4	8.2
Obtaining needed raw materials and inputs	16.7	8.9	2.8	4.7	-	-	22.8	-	11.7	9.8
Problems of employees reaching place of work	1.8	3.8	2.8	4.7	-	-	22.8	-	11.7	9.8
Regularity of work	14.1	7.6	1.4	3.1	-	-	6.8	-	8.3	3.3
Transporting finished goods to market	3.5	3.8	1.4	1.6	-	-	11.4	-	8.3	4.9

(-) No Data Available

(-)

**Table 2-1: Percentage Distribution of Owners/ Managers of the Industrial Establishments According to Their Opinions for Main Indicators During August 2008 Compared with July 2008 in the Palestinian Territory**

<b>Problem</b>	<b>Total</b>	<b>Much Worse</b>	<b>Somewhat Worse</b>	<b>/ About the Same/ Unchanged</b>	<b>Somewhat Better</b>	<b>Much Better</b>	
Establishment performance in general	<b>100</b>	2.3	16.8	58.7	19.4	2.8	
Production situation	<b>100</b>	2.3	19.1	54.9	20.9	2.8	
Employees productivity	<b>100</b>	2.3	15.0	60.7	18.9	3.1	
Obtaining needed raw materials and inputs	<b>100</b>	2.8	9.3	75.5	10.6	1.8	
Problems of employees reaching place of work	<b>100</b>	0.0	1.8	94.3	3.6	0.3	
Regularity of work	<b>100</b>	0.5	4.9	86.8	6.0	1.8	
Transporting finished goods to market	<b>100</b>	0.5	13.4	77.8	8.0	0.3	
Financial situations	<b>100</b>	0.3	17.3	66.4	14.2	1.8	
Banks credits & facilities	<b>100</b>	0.3	1.6	96.5	1.6	0.0	
Level of employment	<b>100</b>	0.3	7.5	81.8	8.8	1.6	
Value of sales	<b>100</b>	3.4	21.7	49.9	21.4	3.6	

\*

**Table 2-2: Percentage Distribution of Owners/ Managers of the Industrial Establishments According to Their Opinions for Main Indicators During August 2008 Compared with July 2008 in the West Bank**

Problem	Total	Much Worse	Somewhat Worse	/ About the Same/ Unchanged	Somewhat Better	Much Better	
Establishment performance in general	100	0.4	22.3	53.5	22.3	1.5	
Production situation	100	0.4	26.0	47.6	24.5	1.5	
Employees productivity	100	0.4	20.1	55.7	22.0	1.8	
Obtaining needed raw materials and inputs	100	0.7	12.1	76.6	9.9	0.7	
Problems of employees reaching place of work	100	0.0	2.6	92.6	4.4	0.4	
Regularity of work	100	0.0	5.9	88.9	4.8	0.4	
Transporting finished goods to market	100	0.4	19.0	70.3	9.9	0.4	
Financial situations	100	0.0	23.4	59.7	16.5	0.4	
Banks credits & facilities	100	0.4	2.3	95.0	2.3	0.0	
Level of employment	100	0.0	10.6	77.7	11.0	0.7	
Value of sales	100	1.1	28.9	42.5	26.4	1.1	

\* West Bank includes Jerusalem Governorate with J1

\*

**Table 2-3: : Percentage Distribution of Owners/ Managers of the Industrial Establishments According to Their Opinions for Main Indicators During August 2008 Compared with July 2008 in Gaza Strip**

Problem	Total	Much Worse	Somewhat Worse	/ About the Same/ Unchanged	Somewhat Better	Much Better	
Establishment performance in general	100	7.0	3.5	71.1	12.3	6.1	
Production situation	100	7.0	2.6	72.0	12.3	6.1	
Employees productivity	100	7.0	2.6	72.9	11.4	6.1	
Obtaining needed raw materials and inputs	100	7.9	2.6	72.8	12.3	4.4	
Problems of employees reaching place of work	100	0.0	0.0	98.2	1.8	0.0	
Regularity of work	100	1.8	2.7	81.4	8.8	5.3	
Transporting finished goods to market	100	0.9	0.0	95.6	3.5	0.0	
Financial situations	100	0.9	2.6	82.4	8.8	5.3	
Banks credits & facilities	100	0.0	0.0	100.0	0.0	0.0	
Level of employment	100	0.9	0.0	92.1	3.5	3.5	
Value of sales	100	8.8	4.4	67.6	9.6	9.6	

**Table 3: Percentage of Industrial Establishments Encountered Improvement Situation During the Reference Month (August 2008) Compared to that before the Reference Month for the Main Indicators by Region**

Indicator	Gaza Strip	* West Bank*	Palestinian Territory	
Employees productivity	17.5	23.8	22.0	
Financial situations	14.1	16.9	16.0	
Banks credits & facilities	0.0	2.3	1.6	
Level of employment	7.0	11.7	10.4	
Value of sales	19.2	27.5	25.0	

\* West Bank includes Jerusalem Governorate with J1

\*

/

:4

2008

**Table 4: Percentage Distribution of Owners/Managers of the Active Industrial Establishments According to the Reasons for Sales Level Stability or Decline by Region During August 2008**

Reason	Gaza Strip	* West Bank*	Palestinian Territory	
Decrease in demand	0.0	11.1	9.4	
Difficulties in exporting finished goods	0.0	4.9	4.2	
Decline in the consumer purchasing power	6.7	37.0	32.3	
Product Marketing Obstacles	0.0	5.0	4.1	( )
Competence product	33.3	6.2	10.4	
Seasonally related	6.7	6.2	6.3	
Military check points/ israeli actions/ closures	40.0	7.4	12.5	/ /
Other	13.3	22.2	20.8	
<b>Total</b>	<b>100</b>	<b>100</b>	<b>100</b>	

\* West Bank includes Jerusalem Governorate with J1

\*

2008

:5

**Table 5: Percentage Distribution of the Active Industrial Establishments According to the Employment Mobility During August 2008 by Region**

Employment Mobility	Gaza Strip	* West Bank*	Palestinian Territory
Hiring employees	18.5	13.5	14.4
Firing employees	1.9	8.8	7.6
No change	79.6	77.7	78.0
<b>Total</b>	<b>100</b>	<b>100</b>	<b>100</b>

\* West Bank includes Jerusalem Governorate with J1

\*

2008

/

:6

**Table 6: Percentage Distribution of the Existing of Competence of the Main Product According to the Owners\ Managers of the Active Industrial Establishments During August 2008 by Region**

Competence existence	Gaza Strip	* West Bank*	Palestinian Territory
There is competition	78.6	92.3	90.0
There is no competition	21.4	7.7	10.0
<b>Total</b>	<b>100</b>	<b>100</b>	<b>100</b>

\* West Bank includes Jerusalem Governorate with J1

\*

2008

/

:7

**Table 7: Percentage Distribution of the Type of Competence According to the Owners\ Managers of the Active Industrial Establishments During August 2008 by Region**

Type of competence	Gaza Strip	* West Bank*	Palestinian Territory
Local	88.6	76.6	78.4
Foreign	11.4	23.4	21.6
<b>Total</b>	<b>100</b>	<b>100</b>	<b>100</b>

\* West Bank includes Jerusalem Governorate with J1

\*



**Table 8: Expectations of Owners/ Managers of the Active Industrial Establishments for the Month that Follow the Reference Month Compared With the Reference (August, 2008) Month for the Main Indicators by Region**

Indicator	Reference Month											
	2008									2007		
	August	July	June	May	April	Mar.	Feb.	Jan.	Dec.	Nov.		
<b>Percentage of who are expecting better establishment situation</b>												
Palestinian Territory	28.0	30.3	32.5	32.8	-	-	31.8	28.7	18.2	18.8		
West Bank*	21.6	26.3	29.6	29.4	36.0	35.4	31.5	26.2	19.5	22.2	*	
Gaza Strip	58.9	53.2	54.3	46.9	-	-	34.1	56.5	13.3	4.9		
<b>Percentage of who are expecting higher employment level</b>												
Palestinian Territory	15.6	10.1	11.9	15.2	-	-	7.3	6.9	5.4	5.4		
West Bank*	8.5	3.7	6.2	8.0	10.3	10.5	5.1	4.7	5.1	6.0	*	
Gaza Strip	50.0	46.8	54.3	45.4	-	-	20.5	30.4	6.8	3.3		
<b>Percentage of who are expecting higher sales volume</b>												
Palestinian Territory	28.6	28.7	32.0	33.2	-	-	33.3	31.2	19.9	19.1		
West Bank*	22.3	24.5	29.0	29.9	38.9	37.1	33.1	28.9	21.2	22.2	*	
Gaza Strip	58.9	53.2	54.3	46.9	-	-	34.1	56.5	15.0	6.6		

(-) No Data Available

(-)

\* West Bank includes Jerusalem Governorate with J1

\*

**Table 9: Expectations of Owners/ Managers of the Active Industrial Establishments for the Six Months that Follow the Reference Month Compared With the Reference Month (August, 2008) for the Main Indicators by Region**

Indicator	Reference Month										
	2008							2007			
	August	July	June	May	April	Mar.	Feb.	Jan.	Dec.	Nov.	
<b>Percentage of who are expecting better establishment situation</b>											
Palestinian Territory	39.9	34.5	35.7	41.6	-	-	61.7	59.6	33.5	36.0	
West Bank*	35.7	30.4	32.9	38.5	49.4	57.2	62.2	58.2	36.5	33.3	*
Gaza Strip	60.7	58.7	57.1	54.7	-	-	58.4	78.9	20.3	52.4	
<b>Percentage of who are expecting higher employment level</b>											
Palestinian Territory	19.2	15.1	15.4	22.3	-	-	25.2	22.7	13.2	21.6	
West Bank*	12.9	8.5	9.7	14.8	15.8	22.9	23.2	20.5	11.9	19.0	*
Gaza Strip	50.0	54.4	57.1	53.1	-	-	38.9	52.6	18.6	38.1	
<b>Percentage of who are expecting higher sales volume</b>											
Palestinian Territory	40.9	35.1	36.6	43.9	-	-	67.6	64.1	36.5	38.6	
West Bank*	36.8	31.1	34.1	41.3	53.8	59.8	68.9	63.0	39.8	36.4	*
Gaza Strip	60.7	58.7	55.9	54.7	-	-	58.4	78.9	22.0	52.4	

(-) No Data Available

(-)

\* West Bank includes Jerusalem Governorate with J1

\*

**Table 10: Expectations of Owners/ Managers of the Active Industrial Establishments about Better Expectations for their Establishments for the Month that Follow the Reference Month (August, 2008) Compared With the Reference Month by Region**

Indicator	Gaza Strip	* West Bank*	Palestinian Territory	
Establishment performance in general	58.9	19.4	26.2	
Employees productivity	53.6	14.3	21.0	
Obtaining needed raw materials and inputs	58.9	7.3	16.1	
Problems of employees reaching place of work	10.7	5.9	6.7	
Regularity of work	50.0	5.9	13.4	
Transporting finished goods to market	14.3	9.2	10.0	
Financial situations	58.9	15.8	23.2	
Banks credits & facilities	1.8	2.4	2.3	

\* West Bank includes Jerusalem Governorate with J1

\*

**Table 11: Expectations of Owners/ Managers of the Active Industrial Establishments about Better Expectations for their Establishments for the Six Months that Follow the Reference Month (August,2008) Compared With the Reference Month for the Main Indicators by Region**

Indicator	Gaza Strip	* West Bank*	Palestinian Territory	
Establishment performance in general	60.7	33.8	38.4	
Employees productivity	55.3	29.0	33.5	
Obtaining needed raw materials and inputs	60.7	12.5	20.7	
Problems of employees reaching place of work	12.5	7.4	8.2	
Regularity of work	50.0	9.5	16.5	
Transporting finished goods to market	12.5	13.2	13.1	
Financial situations	60.7	23.9	30.3	
Banks credits & facilities	1.8	3.5	3.2	

\* West Bank includes Jerusalem Governorate with J1

\*

**Table 12-1: Percentage Distribution of Owners/ Managers of the Active Industrial Establishments According to Their Opinions for Main Indicators for the Month that Follow the Reference Month (August, 2008) Compared With the Reference Month in the Palestinian Territory**

<b>Problem</b>	<b>Total</b>	<b>Much Worse</b>	<b>Somewhat Worse</b>	<b>/ About the Same/ Unchanged</b>	<b>Somewhat Better</b>	<b>Much Better</b>	
Establishment performance in general	100	2.4	26.7	44.7	20.7	5.5	
Production situation	100	3.3	35.3	33.4	22.5	5.5	
Volume of sales	100	3.6	36.2	31.6	23.1	5.5	
Employees productivity	100	3.0	29.2	46.8	15.8	5.2	
Obtaining needed raw materials and inputs	100	0.3	9.4	74.2	10.6	5.5	
Problems of employees reaching place of work	100	0.0	5.8	87.5	6.1	0.6	
Regularity of work	100	0.6	14.0	72.0	9.4	4.0	
Level of employment	100	0.6	8.8	75.0	11.6	4.0	
Transporting finished goods to market	100	0.9	11.9	77.2	8.8	1.2	
Financial situations	100	0.9	25.0	50.9	18.6	4.6	
Banks credits & facilities	100	0.0	7.1	90.6	2.3	0.0	

\*

(أب 2008)

/

:2-12

**Table 12-2: Percentage Distribution of Owners/ Managers of the Active Industrial Establishments According to Their Opinions for Main Indicators for the Month that Follow the Reference Month (August, 2008) Compared With the Reference Month in the West Bank\***

<b>Problem</b>	<b>Total</b>	<b>Much Worse</b>	<b>Somewhat Worse</b>	<b>/ About the Same/ Unchanged</b>	<b>Somewhat Better</b>	<b>Much Better</b>	
Establishment performance in general	100	2.6	30.8	47.2	18.3	1.1	
Production situation	100	3.7	41.0	33.7	20.5	1.1	
Volume of sales	100	4.0	42.5	31.2	21.2	1.1	
Employees productivity	100	3.3	34.1	48.3	13.2	1.1	
Obtaining needed raw materials and inputs	100	0.0	10.3	82.4	6.2	1.1	
Problems of employees reaching place of work	100	0.0	6.2	87.9	5.9	0.0	
Regularity of work	100	0.4	15.8	77.9	5.5	0.4	
Level of employment	100	0.4	9.5	81.6	8.1	0.4	
Transporting finished goods to market	100	1.1	13.6	76.1	8.8	0.4	
Financial situations	100	0.7	29.0	54.5	15.4	0.4	
Banks credits & facilities	100	0.0	7.8	89.8	2.4	0.0	

\* West Bank includes Jerusalem Governorate with J1

\*

**Table 12-3: Percentage Distribution of Owners/ Managers of the Active Industrial Establishments According to Their Opinions for Main Indicators for the Month that Follow the Reference Month (August, 2008) Compared With the Reference Month in Gaza Strip**

<b>Problem</b>	<b>Total</b>	<b>Much Worse</b>	<b>Somewhat Worse</b>	<b>/ About the Same/ Unchanged</b>	<b>Somewhat Better</b>	<b>Much Better</b>	
Establishment performance in general	100	1.8	7.1	32.2	32.1	26.8	
Production situation	100	1.8	7.1	32.2	32.1	26.8	
Volume of sales	100	1.8	5.4	33.9	32.1	26.8	
Employees productivity	100	1.8	5.4	39.2	28.6	25.0	
Obtaining needed raw materials and inputs	100	1.8	5.4	33.9	32.1	26.8	
Problems of employees reaching place of work	100	0.0	3.6	85.7	7.1	3.6	
Regularity of work	100	1.8	5.4	42.8	28.6	21.4	
Level of employment	100	1.8	5.4	42.8	28.6	21.4	
Transporting finished goods to market	100	0.0	3.6	82.1	8.9	5.4	
Financial situations	100	1.8	5.4	33.9	33.9	25.0	
Banks credits & facilities	100	0.0	3.6	94.6	1.8	0.0	

**Table 13-1: Percentage Distribution of Owners/ Managers of the Active Industrial Establishments According to Their Opinions for Main Indicators During the Next Six Months Compared with Reference Month (August, 2008) in the Palestinian Territory**

<b>Problem</b>	<b>Total</b>	<b>Much Worse</b>	<b>Somewhat Worse</b>	<b>/ About the Same/ Unchanged</b>	<b>Somewhat Better</b>	<b>Much Better</b>	
Establishment performance in general	100	2.1	17.4	42.1	31.7	6.7	
Production situation	100	3.7	24.1	32.3	33.5	6.4	
Volume of sales	100	4.3	24.4	30.4	34.5	6.4	
Employees productivity	100	4.0	17.1	45.4	27.7	5.8	
Obtaining needed raw materials and inputs	100	1.2	7.0	71.1	15.2	5.5	
Problems of employees reaching place of work	100	0.6	2.4	88.8	6.4	1.8	
Regularity of work	100	1.5	8.3	73.7	11.6	4.9	
Level of employment	100	1.2	7.6	72.0	14.6	4.6	
Transporting finished goods to market	100	1.8	8.2	76.9	10.7	2.4	
Financial situations	100	2.4	19.6	47.7	24.8	5.5	
Banks credits & facilities	100	0.6	3.5	92.7	3.2	0.0	



\*

(أب 2008)

/

:2-13

**Table 13-2: Percentage Distribution of Owners/ Managers of the Active Industrial Establishments According to Their Opinions for Main Indicators During the Next Six Months Compared with Reference Month (August, 2008) in the West Bank\***

<b>Problem</b>	<b>Total</b>	<b>Much Worse</b>	<b>Somewhat Worse</b>	<b>About the Same/ Unchanged</b>	<b>Somewhat Better</b>	<b>Much Better</b>
Establishment performance in general	100	1.5	18.4	46.3	30.9	2.9
Production situation	100	3.3	26.5	34.5	33.1	2.6
Volume of sales	100	4.0	27.2	32.0	34.2	2.6
Employees productivity	100	3.7	18.8	48.5	26.8	2.2
Obtaining needed raw materials and inputs	100	1.1	6.6	79.8	11.0	1.5
Problems of employees reaching place of work	100	0.0	1.8	90.8	5.9	1.5
Regularity of work	100	0.7	8.5	81.3	7.7	1.8
Level of employment	100	0.4	7.7	79.0	11.4	1.5
Transporting finished goods to market	100	2.2	8.8	75.8	11.4	1.8
Financial situations	100	1.8	22.1	52.2	22.1	1.8
Banks credits & facilities	100	0.8	3.1	92.6	3.5	0.0

\* West Bank includes Jerusalem Governorate with J1

\*

**Table 13-3: Percentage Distribution of Owners/ Managers of the Active Industrial Establishments According to Their Opinions for Main Indicators During the Next Six Months Comparing with Reference Month (August, 2008) in Gaza Strip**

<b>Problem</b>	<b>Total</b>	<b>Much Worse</b>	<b>Somewhat Worse</b>	<b>/ About the Same/ Unchanged</b>	<b>Somewhat Better</b>	<b>Much Better</b>	
Establishment performance in general	100	5.4	12.5	21.4	35.7	25.0	
Production situation	100	5.4	12.5	21.4	35.7	25.0	
Volume of sales	100	5.4	10.7	23.2	35.7	25.0	
Employees productivity	100	5.4	8.9	30.4	32.1	23.2	
Obtaining needed raw materials and inputs	100	1.8	8.9	28.6	35.7	25.0	
Problems of employees reaching place of work	100	3.6	5.4	78.5	8.9	3.6	
Regularity of work	100	5.4	7.1	37.5	30.4	19.6	
Level of employment	100	5.4	7.1	37.5	30.4	19.6	
Transporting finished goods to market	100	0.0	5.4	82.1	7.1	5.4	
Financial situations	100	5.4	7.1	26.8	37.5	23.2	
Banks credits & facilities	100	0.0	5.4	92.8	1.8	0.0	