

(2005)

2006 /

2006 - 1426 ©

:

.2006

. - .(2005)

:

/

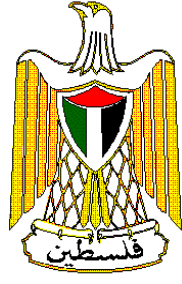
- 1647 . .

(970/972) 2 240 6343 :

<http://www.pcbs.gov.ps> :

(970/972) 2 240 6340 :

diwan@pcbs.gov.ps :



.1) (2005.

.2

.3

1997

2005

2005

(2005)

2005

%0.2

2005

Ø

()

2005

2004

2005

2005

%4.9

4,456.4

2005

.2004

%1.7

à

2005

1,268.2

.2004

2005

%0.2

2005

.1997

%9.3

2004

2005

323.0

2005

%1.1

%.6.1

2004

2005

:

2004

2005

-

%16.7

%2.7

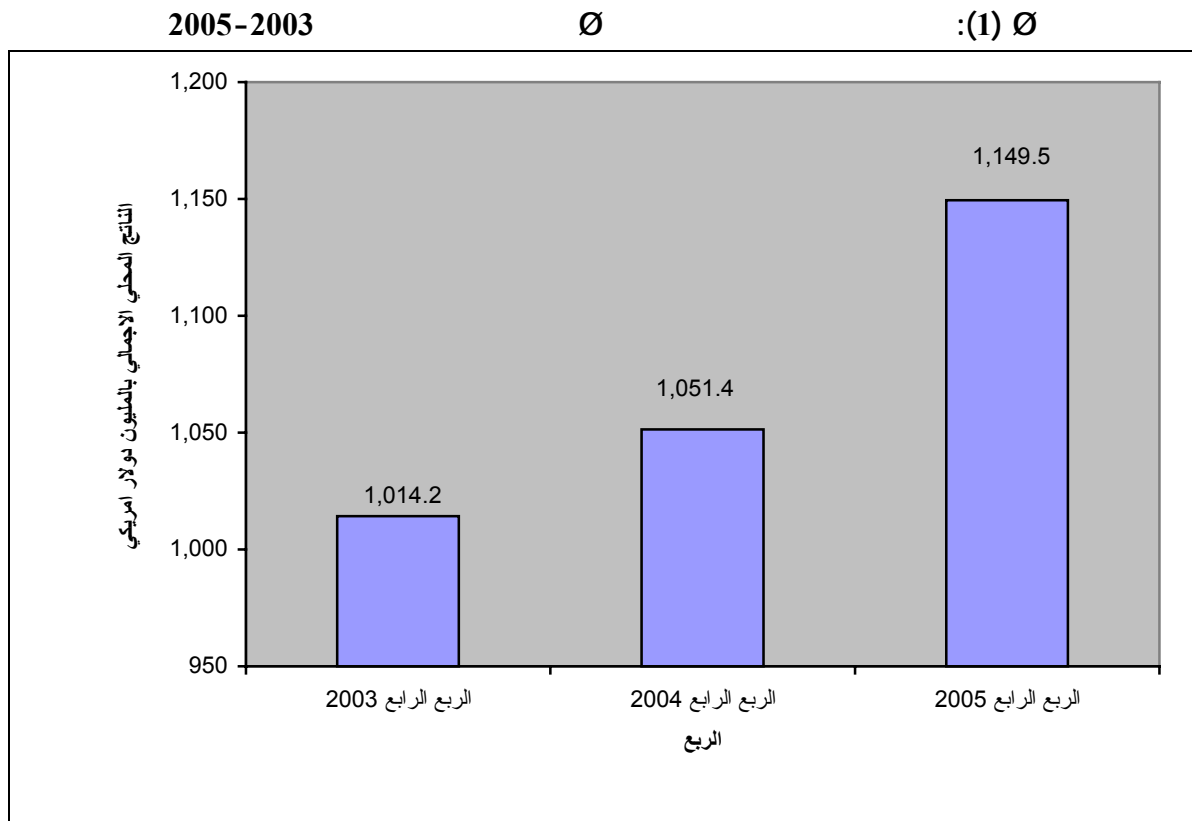
.2004

				2005		-
%8.4			.2004		%2.3	
2005		%2.8				-
		%6.2				
					.2004	
2005				Ø		-
	%5.9				%4.1	
					.2004	
	2005					-
.2004		%14.4		%6.0		
2005						-
		%1.1		%3.1	2005	
					.2004	
2005		%0.7				-
.2004			%15.3		2005	
	2005					-
2004				%12.4		
					.%0.5	
						-
	%1.0		%3.9		2005	
					.2004	
)						
			(2004		2005	
(%11.0)	(%12.0)	2004		(%12.3)		
(%8.7)					.2005	
2005			(%8.0)	(%8.3)	2004	

2004 (10.9%) 2005 (9.9%) 2005 (10.2%)

(9.5%) 2005 (7.0%) 2004 (7.2%) 2005 (11.8%) 2005 (9.7%) 2004 (10.1%) 2005 (4.3%) 2005 (4.5%) 2005 (4.2%) 2004 (17.6%) 2005 (19.2%) (18.5%) 2004

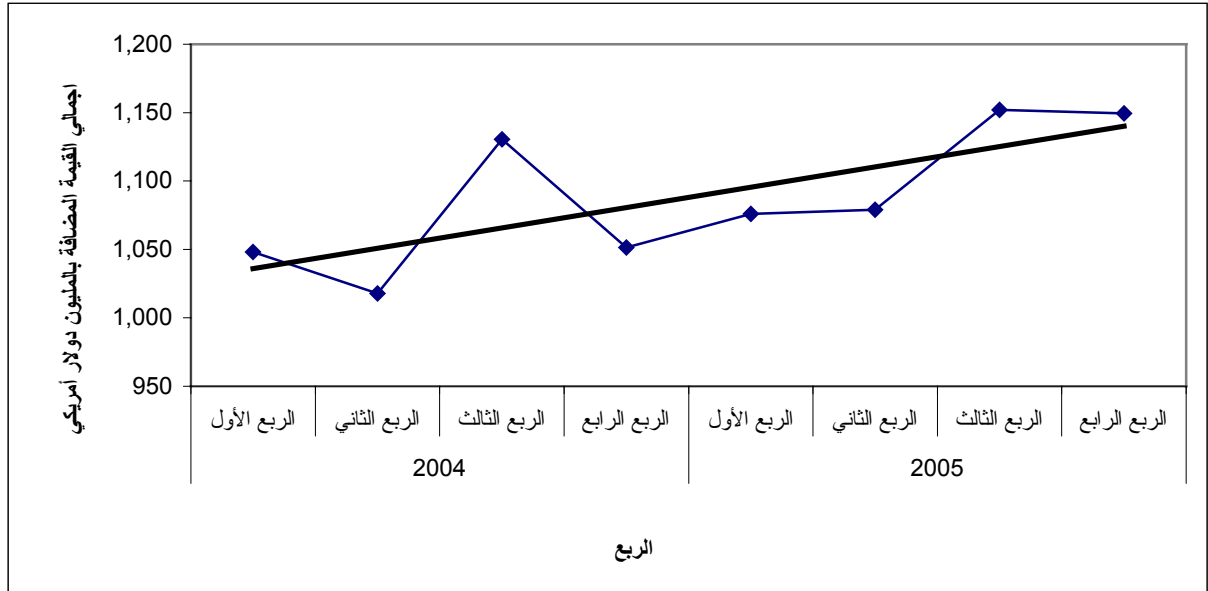
2005-2003



2005-2004.

2005-2004

Ø (2):



:
: (SNA'93)
:(Institutional Unit- Enterprise) - Ô Ô -

) : (Establishment) Ô -
(

:

:

:

()

:

:

:

:

:

.1967

1997 : 2005

:(1) Ø

Table (1): GDP in Remaining West Bank and Gaza Strip by Economic Activity for the Quarters of year 2005 at Constant Prices: (1997 is the base year)

Value in million US\$

Economic Activity	2005					
	** Q IV	*** Q III	* Q II	*Ø Q I	** Annual Data	
Agriculture and fishing	83.2	81.0	84.5	63.9	312.6	
Mining, manufacturing, electr. and water	126.4	138.1	144.5	155.8	564.8	
Mining and quarrying	4.6	4.7	4.8	4.2	18.3	
Manufacturing	106.2	116.3	121.8	132.2	476.5	
Electricity and water supply	15.6	17.1	17.9	19.4	70.0	
Construction	29.3	30.2	31.3	28.6	119.4	○○○○○○○○
Wholesale and retail trade	92.3	95.3	98.9	87.4	373.9	
Transport, Storage and Communications	116.3	111.7	115.5	118.0	461.5	Ø
Financial intermediation	51.8	48.8	45.1	41.7	187.4	
Other services	284.2	285.1	263.9	267.0	1,100.2	○○○○○○○○○○
Real estate, renting and business services	113.3	118.0	107.4	108.1	446.8	
Community, social and personal services	10.6	10.8	10.5	11.3	43.2	
Hotels and restaurants	15.2	17.4	16.4	19.1	68.1	
Education	90.1	90.8	82.3	79.3	342.5	
Health and social work	55.0	48.1	47.3	49.2	199.6	
Public administration and defense	220.6	212.6	182.0	180.9	796.1	
Households with employed persons	2.1	2.1	2.1	2.2	8.5	
Less: FISIM	-36.7	-35.4	-34.6	-33.0	-139.7	:
Plus: Customs duties	81.5	77.5	66.5	66.4	291.9	:
Plus: VAT on imports, net	98.5	105.0	79.2	97.1	379.8	:
Quarterly Gross Domestic Product	1,149.5	1,152.0	1,078.9	1,076.0	4,456.4	

* Second Revision

** Flash Estimates

*** First Revision

()

*

**

2005

:(2) Ø

Table (2):Percentage Contribution to GDP in Remaining West Bank and Gaza Strip by Economic Activity for the Quarters of year 2005

Economic Activity	2005					
	** Q IV	** Q III	* Q II	*Ø Q I	** Annual Data	
Agriculture and fishing	7.2	7.0	7.8	5.9	7.0	
Mining, manufacturing, electr. and water	11.0	12.0	13.4	14.5	12.7	
Mining and quarrying	0.4	0.4	0.4	0.4	0.4	
Manufacturing	9.2	10.1	11.3	12.3	10.7	
Electricity and water supply	1.4	1.5	1.7	1.8	1.6	
Construction	2.5	2.6	2.9	2.7	2.7	○○○○○○○
Wholesale and retail trade	8.0	8.3	9.2	8.1	8.4	
Transport, Storage and Communications	10.1	9.7	10.7	11.0	10.4	Ø
Financial intermediation	4.5	4.2	4.2	3.9	4.2	
Other services	24.7	24.7	24.5	24.8	24.7	○○○○○○○○○○
Real estate, renting and business services	9.9	10.2	10.0	10.0	10.0	
Community, social and personal services	0.9	0.9	1.0	1.0	1.0	
Hotels and restaurants	1.3	1.5	1.5	1.8	1.5	
Education	7.8	7.9	7.6	7.4	7.7	
Health and social work	4.8	4.2	4.4	4.6	4.5	
Public administration and defense	19.2	18.5	16.9	16.8	17.9	
Households with employed persons	0.2	0.2	0.2	0.2	0.2	
Less: FISIM	-3.2	-3.1	-3.3	-3.1	-3.1	:
Plus: Customs duties	7.2	6.8	6.2	6.2	6.5	:
Plus: VAT on imports, net	8.6	9.1	7.3	9.0	8.4	:
Total	100.0	100.0	100.0	100.0	100.0	

* Second Revision

*

** Flash Estimates

()

**

*** First Revision

1997 : 2005 : (3) Ø

Table (3): GDP Per Capita by Quarters in 2005 at Constant Prices: (1997 is the base year)

Value in US\$

Indicator	GDP per capita 2005					
Region	Q IV	Q III	Q II	Ø Q I	Annual Estimate	
Remaining West Bank and Gaza Strip	323.0	326.4	308.5	310.3	1,268.2	

1997

:

2005 2004

:(4) Ø

Table (4): GDP in Remaining West Bank and Gaza Strip by Economic Activity and Quarter for the years 2004, 2005 at Constant Prices: (1997 is the base year)

Value in million US\$

Economic Activity	2005				2004				
	***	***	*	*Ø	*	*	*	*Ø	
	Q IV	Q III	Q II	Q I	Q IV	Q III	Q II	Q I	
Agriculture and fishing	83.2	81.0	84.5	63.9	99.8	71.9	74.7	72.6	
Mining, manufacturing, electr. and water	126.4	138.1	144.5	155.8	129.4	139.2	143.2	152.5	
Mining and quarrying	4.6	4.7	4.8	4.2	4.0	4.4	4.5	4.6	
Manufacturing	106.2	116.3	121.8	132.2	109.6	117.8	121.2	129.1	
Electricity and water supply	15.6	17.1	17.9	19.4	15.8	17.0	17.5	18.8	
Construction	29.3	30.2	31.3	28.6	27.6	31.0	23.7	21.4	○○○○○○○
Wholesale and retail trade	92.3	95.3	98.9	87.4	91.3	96.5	87.6	83.6	
Transport, Storage and Communications	116.3	111.7	115.5	118.0	123.7	109.5	98.2	113.0	Ø
Financial intermediation	51.8	48.8	45.1	41.7	45.3	44.7	41.2	38.8	
Other services	284.2	285.1	263.9	267.0	270.0	260.9	252.3	264.0	○○○○○○○○○
Real estate, renting and business services	113.3	118.0	107.4	108.1	114.4	106.9	99.0	108.6	
Community, social and personal services	10.6	10.8	10.5	11.3	10.8	10.4	11.2	10.9	
Hotels and restaurants	15.2	17.4	16.4	19.1	15.1	19.6	13.3	13.8	
Education	90.1	90.8	82.3	79.3	78.2	79.4	83.6	83.7	
Health and social work	55.0	48.1	47.3	49.2	51.5	44.6	45.2	47.0	
Public administration and defense	220.6	212.6	182.0	180.9	185.0	189.0	183.1	179.3	
Households with employed persons	2.1	2.1	2.1	2.2	2.1	2.1	2.2	2.2	
Less: FISIM	-36.7	-35.4	-34.6	-33.0	-32.4	-31.9	-30.8	-29.8	:
Plus: Customs duties	81.5	77.5	66.5	66.4	50.8	99.0	60.0	68.1	:
Plus: VAT on imports, net	98.5	105.0	79.2	97.1	58.8	118.5	82.5	82.3	:
Gross Domestic Product	1,149.5	1,152.0	1,078.9	1,076.0	1,051.4	1,130.4	1,017.9	1,048.0	

* Second Revision

*

** Flash Estimates

()

**

*** First Revision

1997 : 2005 -1999

:(5) Ø

Table (5): GDP in Remaining West Bank and Gaza Strip by Economic Activity for the years 1999- 2005 at Constant Prices: (1997 is the base year)

Value in million US\$

Economic Activity	**2005	*2004	2003	2002	2001	2000	1999	
Agriculture and fishing	312.6	319.0	311.2	269.6	350.1	388.0	470.7	
Mining, manufacturing, electr. and water	564.8	564.3	532.9	580.0	614.6	668.6	655.5	
Mining and quarrying	18.3	17.5	17.0	33.0	28.9	32.6	35.7	
Manufacturing	476.5	477.7	450.7	476.3	504.6	570.2	566.4	
Electricity and water supply	70.0	69.1	65.2	70.7	81.1	65.8	53.4	
Construction	119.4	103.7	96.9	67.5	85.5	270.4	616.9	ØØØØØØØØ
Wholesale and retail trade	373.9	359.0	340.4	350.0	414.8	519.2	537.8	
Transport, Storage and Communications	461.5	444.4	392.0	349.6	317.3	292.5	231.0	Ø
Financial intermediation	187.4	170.0	158.9	149.9	138.1	191.5	169.1	
Other services	1,100.2	1,047.2	1,002.5	899.1	994.6	1055.7	990.8	ØØØØØØØØØØØØ
Real estate, renting and business services	446.8	428.9	404.1	392.7	444.6	566.7	444.3	
Community, social and personal services	43.2	43.3	42.5	33.2	29.3	32.2	28.3	
Hotels and restaurants	68.1	61.8	58.0	60.7	104.4	93.7	128.0	
Education	342.5	324.9	315.1	287.7	290.8	244.4	262.4	
Health and social work	199.6	188.3	182.8	124.8	125.5	118.7	127.8	
Public administration and defense	796.1	736.4	694.7	578.1	628.9	559.3	497.7	
Households with employed persons	8.5	8.6	8.4	8.2	7.7	9.1	8.7	
Less: FISIM	-139.7	-124.9	-118.9	-109.6	-117.4	-154.4	-129.5	:
Plus: Customs duties	291.9	277.9	262.2	75.8	174.6	196.3	208.6	:
Plus: VAT on imports, net	379.8	342.1	313.8	338.2	309.0	264.9	254.4	:
Gross Domestic Product	4,456.4	4,247.7	3,995.0	3,556.4	3,917.8	4,261.1	4,511.7	

* Second Revision
** Flash Estimates

()

*
**