



**Palestinian National Authority
Palestinian Central Bureau of Statistics**

**Survey on the Perceptions of the Owners/Managers of the
Industrial Establishments Towards the Economic
Conditions, April 2007**

The Press Release of the Survey Results

May, 2007

**PAGE NUMBERS OF ENGLISH TEXT ARE PRINTED IN SQUARE BRACKETS.
TABLES ARE PRINTED IN THE ARABIC ORDER (FROM RIGHT TO LEFT).**

New Web Site:

- PCBS has launched the electronic atlas of Palestine on <http://atlas.pcbs.gov.ps>
- All of PCBS publications are available online in electronic format on PCBS web site <http://www.pcbs.gov.ps>
- For additional data requests, online form is available on PCBS web site and users can track the status of their request and download the data once made available.

**Opinion Expressed in This Report are Those of the Authors,
and do not Necessarily Reflect Those of PCBS**

© May, 2007
All rights reserved.

Suggested Citation:

Palestinian Central Bureau of Statistics, 2007. *Survey on the Perceptions of the Owners/Managers of the Industrial Establishments Towards the Economic Conditions, April 2007. The Press Release of the Survey Results.*
Ramallah- Palestine

All correspondence should be directed to:
Dissemination and Documentation Department\Division of user services
Palestinian Central Bureau of Statistics.
P.O. Box 1647, Ramallah - Palestine.

Tel: (972/970) 2 240 6340
E-mail: diwan@pcbs.gov.ps

Fax: (972/970) 2 240 6343
Web-site: <http://www.pcbs.gov.ps>



Population, Housing and Establishment Census- 2007

Table of Contents

Subject	Page
Press Release on the Findings of the Survey on the Perception of the Owners/Managers of the Industrial Establishments Towards the Economic Conditions, April 2007	[9]
Tables	[13]

Notice to users of this report

PCBS would like to indicate to users of this press release that the data presented was based on a sample of 482 establishments.

PCBS indicates also that the size of the sample for the previous rounds (January-July 2006) was 346 establishments, that resulted in small discrepancies for the percentage distribution of the opinions in Remaining West Bank and Gaza Strip as a total and in both regions separately.

Its worthy to mention that the increases in the sample improve the data quality and to insure more comprehensive representation of the sample for economic activities that were not covered in the previous sample.

**Press Release on
The Main findings of the of the Perceptions of the Owners/Managers of
Industries with respect to the Economic Situation
April 2007**

The following shows the basic findings of round 24 of the trends of the owners/ managers survey of industrial establishments, concerning the economic situation for April 2006. The round was conducting during the period of May 3-23, 2007, taking into consideration January, 2007 as reference month. The aim of the survey is to observe and monitor the trends of the opinions of the owners/ managers of the industrial establishments. The sample size is 482 industrial establishments (344 in the Remaining West Bank and 138 in Gaza Strip). A purposive two stages sample was designed for this survey; In the first stage the industrial survey 2004 was used as a sampling frame for the survey, while in the second stage: All the industrial establishments that constituted approximately 70% of the total industrial production were selected, establishments that employed less than 20 employees were excluded.

1. Performance of industrial establishments in April 2007

According to 19.4% of the owners/ managers of the industrial establishments, the performance of their establishments during April 2007 had become worse than in March 2007; meanwhile, 24.7% refers that their production situation become worse.

On the other hand, 18.4% of the owners/ managers of the industrial establishments refer that transporting finished goods to markets was worse during April 2007 compared with March 2007, while 13.1% refer that obtaining needed raw materials and inputs encountered worse situation during April 2007.

As for sales, 30.3% of the managers refer that the sales during April encountered problems, while 17.0% refer that employees productivity was worse.

According to results, 16.7% of the owners/ managers refer that their establishments financial situation was worse, while 5.9% refers that the banks credits was worse during April 2007.

2. Challenges

2-1 Drop in sales level

The expectations of 43.1% of the owners/managers of industrial establishments revealed that the main reason for an expected drawback or steady sales level is the plunge in the purchasing power of the consumers (43.6% in Remaining West Bank, 41.9% in Gaza Strip), meanwhile 24.8% indicate that the main reason was the demand decline on the final establishment production (35.5% in Gaza Strip and 20.5% in Remaining West Bank), 11.9% believe that the falling or steady sales level is due to closure of the border crossings as well as security reasons and roadblocks (14.1% in Remaining West Bank and 6.5% in Gaza Strip), while 7.3% refers that differentiating seasons were the main reason (10.3% in Remaining West Bank, while there was no opinion refers to that reason in Gaza Strip).

2-2 Local and external competition

In the remaining West Bank and Gaza Strip, 93.1% of the owners of the industrial establishments indicated that the main product of their establishments faced local or external competition, (90.9% for the Remaining West Bank and 98.9% for Gaza Strip).

According to 76.4% of the owners of the industrial establishments in the Remaining West Bank and Gaza Strip, the main product faced local competition (93.6% for Gaza Strip and

69.7% for the Remaining West Bank); on the other hand, 23.6% of the owners of the industrial establishments indicated that their main product faced external competition (30.3% for the Remaining West Bank and 6.4% for Gaza Strip).

2-3 Employment

According to 8.3% of the owners of the industrial establishments in the remaining West Bank and Gaza Strip, their establishments laid off workers in April 2007 (9.5% for Gaza Strip and 7.9% for Remaining West Bank); however, 79.5% (89.4% for Gaza Strip and 75.9% for Remaining West Bank) of the owners of the industrial establishments stated that there had not been any change to the number of workers.

3. Expectations

3-1 Short term

The expectations of the owners/ managers of the industrial establishments in the short term, i.e. after one month of the reference month (April 2007); show that 45.0% expected improvement in their production in general in remaining West Bank and Gaza Strip (48.4% in Gaza Strip and 43.7% in remaining West Bank).

The expectations in the remaining West Bank and Gaza Strip concerning employment for February 2007 indicate pessimism since 22.2% only (32.7% in Gaza Strip and 18.5% in the remaining West Bank) expected increases during May 2007.

The results showed that 44.2% of the owners/ managers of the industrial establishments in the remaining West Bank and Gaza Strip expected sales to increase during May 2007 (48.4% in Gaza Strip and 42.6% in remaining West Bank).

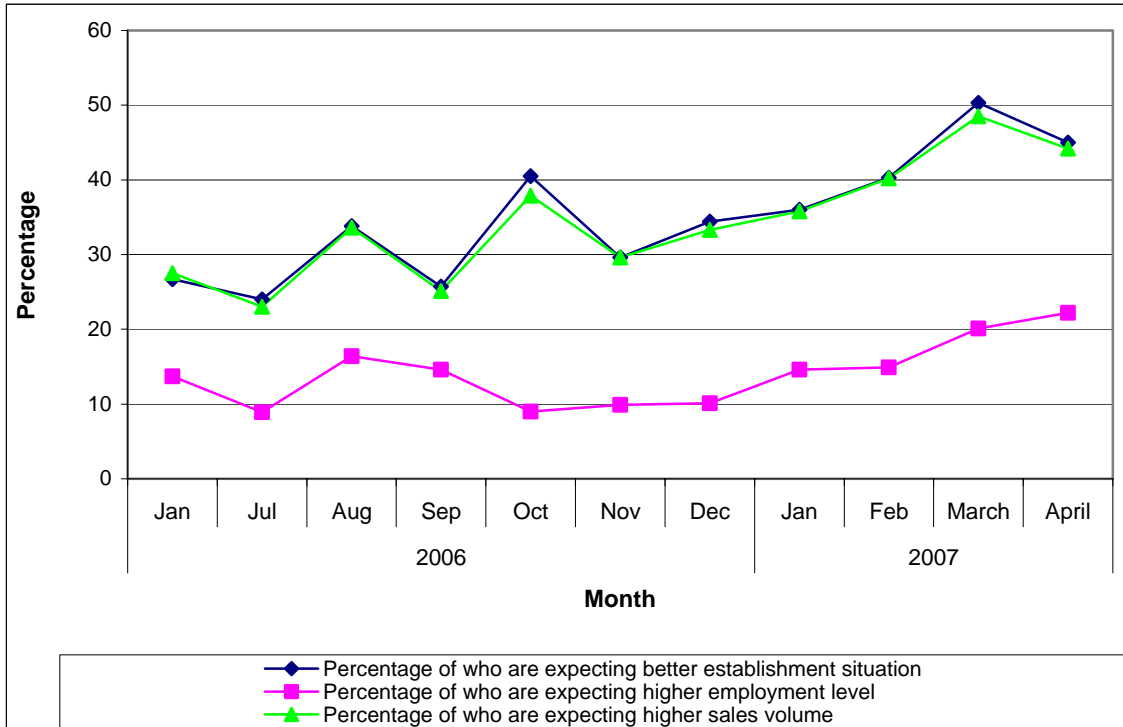
3-2 Medium term

The expectations of the owners/ managers of the industrial establishments in the medium term (in the next six months) 62.8% expected improvement in production in the next six months in remaining West Bank and Gaza Strip (63.4% in remaining West Bank and 61.3% in Gaza Strip).

According to expectations concerning employment in remaining West Bank and Gaza Strip, 30.2% expect increase in employment (44.0% in Gaza Strip and 25.4% in remaining West Bank).

Sales during the next six months will rise, according to the expectations of 62.6% of the owners and managers of the industrial establishments in remaining West Bank and Gaza Strip (63.0% in remaining West Bank and 61.3% in Gaza Strip).

The Direction of Optimism Among the Owners/ Managers of the Industrial Establishments Performance in the remaining West Bank and Gaza Strip.



2007

Table 1-1: Percentage of Industrial Establishments Encountered Worse Situation During the Reference Month Compared to that Before the Reference Month for the Main Indicators in Remaining West Bank and Gaza Strip 2007

Indicator	Reference Month									
	2007					2006				
	Apr.	Mar.	Feb.	Jan.	Dec.	Nov.	Oct.	Feb.	Jan.	
Establishment performance in general	19.4	18.6	22.7	22.4	29.6	28.5	32.2	35.0	28.8	
Obtaining needed raw materials and inputs	13.1	10.5	12.5	11.4	15.1	18.7	17.9	29.8	27.1	
Problems of employees reaching place of work	2.3	3.3	3.8	4.3	3.0	6.4	4.5	5.1	5.9	
Regularity of work	3.3	5.7	9.1	8.5	11.2	10.1	13.3	6.5	11.9	
Transporting finished goods to market	18.4	16.2	18.8	20.6	22.9	25.9	21.5	23.9	26.3	

2007

Table 1-2: Percentage of Industrial Establishments Encountered Worse Situation During the Reference Month Compared to that Before the Reference Month for the Main Indicators in Remaining West Bank 2007

Indicator	Reference Month									
	2007					2006				
	Apr.	Mar.	Feb.	Jan.	Dec.	Nov.	Oct.	Feb.	Jan.	
Establishment performance in general	16.6	16.7	20.9	19.0	29.6	28.5	32.2	22.1	17.2	
Obtaining needed raw materials and inputs	11.3	7.1	10.2	7.1	15.1	18.7	17.9	14.4	8.5	
Problems of employees reaching place of work	1.9	2.5	4.0	4.1	3.0	6.4	4.5	5.0	3.6	
Regularity of work	3.4	4.6	9.4	8.5	11.2	10.1	13.3	7.3	10.4	
Transporting finished goods to market	14.7	14.7	16.4	18.8	22.9	25.9	21.5	14.2	14.9	

2007

:3-1

Table 1-3: Percentage of Industrial Establishments Encountered Worse Situation During the Reference Month Compared to that Before the Reference Month for the Main Indicators in Gaza Strip 2007

Indicator	Reference Month									
	2007				2006					
	Apr.	Mar.	Feb.	Jan.	Dec.	Nov.	Oct.	Feb.	Jan.	
Establishment performance in general	27.4	23.4	26.8	30.9	29.1	28.5	28.6	79.6	53.2	
Obtaining needed raw materials and inputs	17.9	19.1	18.0	22.4	21.4	24.8	23.5	83.5	65.0	
Problems of employees reaching place of work	3.2	5.3	3.3	4.7	1.9	6.4	3.0	5.6	10.6	
Regularity of work	3.2	8.5	8.3	8.4	3.9	7.3	7.1	4.2	15.2	
Transporting finished goods to market	28.5	20.2	24.5	25.3	26.2	23.0	23.4	57.5	49.7	

Table 2-1: Percentage Distribution of Owners/ Managers of the Industrial Establishments According to Their Opinions for Main Indicators During April 2007 Compared with March 2007 in Remaining West Bank and Gaza Strip

Problem	Total	Much Worse	Somewhat Worse	/ About the Same/ Unchanged	Somewhat Better	Much Better	
Establishment performance in general	100	1.1	18.3	52.2	25.3	3.1	
Production situation	100	1.9	22.8	44.2	27.8	3.3	
Employees productivity	100	1.7	15.3	55.5	24.7	2.8	
Obtaining needed raw materials and inputs	100	1.1	12.0	72.7	12.8	1.4	
Problems of employees reaching place of work	100	0.3	2.0	92.7	4.2	0.8	
Regularity of work	100	1.4	1.9	88.0	8.1	0.6	
Transporting finished goods to market	100	1.1	17.3	67.9	12.0	1.7	
Financial situations	100	1.4	15.3	64.4	17.5	1.4	
Banks credits & facilities	100	0.3	5.6	89.0	5.1	-	
Level of employment	100	0.8	7.8	81.1	10.0	0.3	
Value of sales	100	2.8	27.5	39.7	28.9	1.1	

(-) Number of observations is too small

(-)

Table 2-2: Percentage Distribution of Owners/ Managers of the Industrial Establishments According to Their Opinions for Main Indicators During April 2007 Compared with March 2007 in Remaining West Bank

Problem	Total	Much Worse	Somewhat Worse	/ About the Same/ Unchanged	Somewhat Better	Much Better	
Establishment performance in general	100	1.1	15.5	53.2	27.2	3.0	
Production situation	100	2.3	21.1	42.6	30.6	3.4	
Employees productivity	100	1.9	11.3	57.8	26.4	2.6	
Obtaining needed raw materials and inputs	100	1.1	10.2	74.7	12.5	1.5	
Problems of employees reaching place of work	100	0.4	1.5	95.0	2.7	0.4	
Regularity of work	100	1.9	1.5	88.6	8.0	-	
Transporting finished goods to market	100	1.1	13.6	74.7	9.8	0.8	
Financial situations	100	1.5	11.0	69.7	17.0	0.8	
Banks credits & facilities	100	0.4	5.4	90.7	3.5	-	
Level of employment	100	1.1	6.4	81.9	10.6	-	
Value of sales	100	3.4	26.0	37.7	32.5	0.4	

(-) Number of observations is too small

(-)

Table 2-3: : Percentage Distribution of Owners/ Managers of the Industrial Establishments According to Their Opinions for Main Indicators During April 2007 Compared with March 2007 in Gaza Strip

Problem	Total	Much Worse	Somewhat Worse	/ About the Same/ Unchanged	Somewhat Better	Much Better	
Establishment performance in general	100	1.1	26.3	49.4	20.0	3.2	
Production situation	100	1.1	27.4	48.3	20.0	3.2	
Employees productivity	100	1.1	26.3	49.4	20.0	3.2	
Obtaining needed raw materials and inputs	100	1.1	16.8	67.3	13.7	1.1	
Problems of employees reaching place of work	100	-	3.2	86.3	8.4	2.1	
Regularity of work	100	-	3.2	86.3	8.4	2.1	
Transporting finished goods to market	100	1.1	27.4	49.4	17.9	4.2	
Financial situations	100	1.1	27.4	49.4	18.9	3.2	
Banks credits & facilities	100	-	6.3	84.2	9.5	-	
Level of employment	100	-	11.6	78.9	8.4	1.1	
Value of sales	100	1.1	31.6	45.2	18.9	3.2	

(-) Number of observations is too small

(-)

Table 3: Percentage of Industrial Establishments Encountered Worse Situation During the Reference Month (April 2007) Compared to that Before the Reference Month for the Main Indicators by Region

	Region			
	Gaza Strip	Remaining West Bank	Remaining West Bank and Gaza Strip	
Employees productivity	27.4	13.2	17.0	
Financial situations	28.5	12.5	16.7	
Banks credits & facilities	6.3	5.8	5.9	
Level of employment	11.6	7.5	8.6	
Value of sales	32.7	29.4	30.3	

/

:4

2007

Table 4: Percentage Distribution of Owners/Managers of the Industrial Establishments According to the Reasons for Sales Level Stability or Decline by Region During April 2007

Reason	Gaza Strip	Remaining West Bank	Remaining West Bank and Gaza Strip	
Decrease in demand	35.5	20.5	24.8	
Difficulties in exporting finished goods	3.2	3.8	3.7	
Decline in the consumer purchasing power	41.9	43.6	43.1	
Obstacles in marketing	3.2	1.3	1.8	
Competitive goods	3.2	3.8	3.7	
Seasonally related	-	10.3	7.3	
Military check points/ israeli actions/ closures	6.5	14.1	11.9	/
Other	6.5	2.6	3.7	/
Total	100	100	100	

(-) Number of observations is too small

(-)

2007

:5

Table 5: Percentage Distribution of the Industrial Establishments According to the Employment Mobility During April 2007 by Region

Employment Mobility	Gaza Strip	Remaining West Bank	Remaining West Bank and Gaza Strip
Employment	1.1	16.2	12.2
Laid off employees	9.5	7.9	8.3
No change	89.4	75.9	79.5
Total	100	100	100

2007

/

:6

Table 6: Percentage Distribution of the Existing of Competence of the Main Product According to the Owners\ Managers of the Industrial Establishments During April 2007 by Region

Competence existence	Gaza Strip	Remaining West Bank	Remaining West Bank and Gaza Strip
There is competition	98.9	90.9	93.1
There is no competition	1.1	9.1	6.9
Total	100	100	100

2007

/

:7

Table 7: Percentage Distribution of the Type of Competence According to the Owners\ Managers of the Industrial Establishments During April 2007 by Region

Type of competence	Gaza Strip	Remaining West Bank	Remaining West Bank and Gaza Strip
Local	93.6	69.7	76.4
Foreign	6.4	30.3	23.6
Total	100	100	100

(2007)

/ :8

Table 8: Expectations of Owners/ Managers of the Industrial Establishments for the Month that Follow the Reference Month Compared With the Reference (April, 2007) Month for the Main Indicators by Region 2007

Indicator	Reference Month									
	2007					2006				
	Apr.	Mar.	Feb.	Jan.	Dec.	Nov.	Oct.	Feb.	Jan.	
Percentage of who are expecting better establishment situation										
Remaining West Bank and Gaza Strip.	45.0	50.3	40.3	36.0	34.4	29.6	40.5	36.7	26.7	
Remaining West Bank	43.7	50.8	38.0	31.1	32.2	26.7	41.2	24.9	25.3	
Gaza Strip	48.4	49.0	45.8	48.6	39.8	36.7	38.8	52.5	30.4	
Percentage of who are expecting higher employment level										
Remaining West Bank and Gaza S.	22.2	20.1	14.9	14.6	10.1	9.9	9.0	17.9	13.7	
Remaining West Bank	18.5	16.7	12.5	8.9	11.4	6.5	6.5	5.4	9.5	
Gaza Strip	32.7	28.7	20.5	28.9	6.8	18.3	16.3	30.0	31.2	
Percentage of who are expecting higher sales volume										
Remaining West Bank and Gaza S.	44.2	48.5	40.2	35.8	33.3	29.6	37.9	26.0	27.5	
Remaining West Bank	42.6	47.9	37.8	30.7	31.0	26.4	37.9	27.3	34.7	
Gaza Strip	48.4	50.0	46.3	48.6	39.8	36.7	37.7	36.7	27.9	

(2007)

/ :9

Table 9: Expectations of Owners/ Managers of the Industrial Establishments for the Six Months that Follow the Reference Month Compared With the Reference Month (April, 2007) for the Main Indicators by Region

Indicator	Reference Month									
	2007				2006					
	Apr.	Mar.	Feb.	Jan.	Dec.	Nov.	Oct.	Feb.	Jan.	
Percentage of who are expecting better establishment situation										
Remaining West Bank and Gaza S.	62.8	67.0	69.8	69.7	34.7	40.8	25.7	42.8	59.0	
Remaining West Bank	63.4	69.2	72.4	71.5	29.9	40.4	26.8	48.3	41.7	
Gaza Strip	61.3	61.3	63.5	65.4	46.8	41.9	22.6	71.7	81.4	
Percentage of who are expecting higher employment level										
Remaining West Bank and Gaza S.	30.2	30.1	30.9	29.2	13.6	13.8	14.6	23.5	31.8	
Remaining West Bank	25.4	24.7	28.8	24.8	8.1	11.9	12.7	6.0	13.1	
Gaza Strip	44.0	44.1	36.0	40.1	27.5	19.4	19.6	43.3	86.3	
Percentage of who are expecting higher sales volume										
Remaining West Bank and Gaza S.	62.6	67.0	70.1	69.5	35.2	41.3	25.1	32.8	60.3	
Remaining West Bank	63.0	68.8	72.5	71.1	30.3	41.2	26.0	50.4	44.9	
Gaza Strip	61.3	62.4	64.0	65.4	47.7	41.8	22.6	38.8	81.3	

(2007)

/ :10

Table 10: Expectations of Owners/ Managers of the Industrial Establishments about Better Expectations for their Establishments for the Month that Follow the Reference Month (April, 2007) Compared With the Reference Month by Region

Indicator	Region			
	Gaza Strip	Remaining West Bank	Remaining West Bank and Gaza Strip	
Establishment performance in general	47.4	39.3	41.4	
Employees productivity	48.4	29.8	34.7	
Obtaining needed raw materials and inputs	46.3	15.5	23.6	
Problems of employees reaching place of work	23.2	3.4	8.6	
Regularity of work	32.7	18.5	22.2	
Transporting finished goods to market	47.4	15.1	23.6	
Financial situations	48.4	28.3	33.6	
Banks credits & facilities	22.1	3.1	8.1	

(2007)

/ :11

Table 11: Expectations of Owners/ Managers of the Industrial Establishments about Better Expectations for their Establishments for the Six Months that Follow the Reference Month (April, 2007) Compared With the Reference Month for the Main Indicators by Region

Indicator	Region			
	Gaza Strip	Remaining West Bank	Remaining West Bank and Gaza Strip	
Establishment performance in general	60.2	56.3	57.3	
Employees productivity	61.2	44.6	48.9	
Obtaining needed raw materials and inputs	59.1	20.4	30.4	
Problems of employees reaching place of work	28.0	4.5	10.6	
Regularity of work	44.1	20.3	26.5	
Transporting finished goods to market	60.2	18.4	29.3	
Financial situations	61.3	33.6	40.8	
Banks credits & facilities	23.7	4.6	9.6	

(نيسان، 2007)

/

:1-12

Table 12-1: Percentage Distribution of Owners/ Managers of the Industrial Establishments According to Their Opinions for Main Indicators for the Month that Follow the Reference Month (April, 2007) Compared With the Reference Month in Remaining West Bank and Gaza Strip

Problem	Total	Much Worse	Somewhat Worse	About the Same/ Unchanged	Somewhat Better	Much Better
Establishment performance in general	100	1.1	17.8	39.7	37.8	3.6
Production situation	100	1.4	18.1	35.5	41.1	3.9
Value of sales	100	1.4	18.9	35.5	41.4	2.8
Employees productivity	100	1.1	11.4	52.8	32.2	2.5
Obtaining needed raw materials and inputs	100	0.6	10.0	65.8	21.9	1.7
Problems of employees reaching place of work	100	0.3	2.8	88.3	7.8	0.8
Regularity of work	100	0.3	6.7	70.8	20.3	1.9
Level of employment	100	0.3	8.1	69.4	21.4	0.8
Transporting finished goods to market	100	1.4	12.8	62.2	21.9	1.7
Financial situations	100	1.1	15.6	49.7	31.9	1.7
Banks credits & facilities	100	0.3	5.6	86.0	7.8	0.3

(نيسان، 2007)

/

:2-12

Table 12-2: Percentage Distribution of Owners/ Managers of the Industrial Establishments According to Their Opinions for Main Indicators for the Month that Follow the Reference Month (April, 2007) Compared With the Reference Month in Remaining West Bank

Problem	Total	Much Worse	Somewhat Worse	About the Same/ Unchanged	Somewhat Better	Much Better
Establishment performance in general	100	1.5	13.2	46.0	35.1	4.2
Production situation	100	1.9	13.6	40.8	39.2	4.5
Value of sales	100	1.9	14.7	40.8	39.6	3.0
Employees productivity	100	1.5	5.7	63.0	27.2	2.6
Obtaining needed raw materials and inputs	100	0.8	4.5	79.2	14.0	1.5
Problems of employees reaching place of work	100	0.4	1.9	94.3	2.6	0.8
Regularity of work	100	0.4	4.9	76.2	16.2	2.3
Level of employment	100	0.4	6.0	75.1	17.7	0.8
Transporting finished goods to market	100	1.9	6.4	76.6	13.6	1.5
Financial situations	100	1.5	10.2	60.0	26.8	1.5
Banks credits & facilities	100	0.4	4.6	91.9	2.7	0.4

(نيسان، 2007)

/

:3-12

Table 12-3: Percentage Distribution of Owners/ Managers of the Industrial Establishments According to Their Opinions for Main Indicators for the Month that Follow the Reference Month (April, 2007) Compared With the Reference Month in Gaza Strip

Problem	Total	Much Worse	Somewhat Worse	About the Same/ Unchanged	Somewhat Better	Much Better
Establishment performance in general	100	-	30.5	22.1	45.3	2.1
Production situation	100	-	30.5	21.1	46.3	2.1
Value of sales	100	-	30.5	21.1	46.3	2.1
Employees productivity	100	-	27.4	24.2	46.3	2.1
Obtaining needed raw materials and inputs	100	-	25.3	28.4	44.2	2.1
Problems of employees reaching place of work	100	-	5.3	71.5	22.1	1.1
Regularity of work	100	-	11.6	55.7	31.6	1.1
Level of employment	100	-	13.7	53.6	31.6	1.1
Transporting finished goods to market	100	-	30.5	22.1	45.3	2.1
Financial situations	100	-	30.5	21.1	46.3	2.1
Banks credits & facilities	100	-	8.4	69.5	22.1	-

(-) Number of observations is too small

(-)

(نيسان، 2007)

:1-13

Table 13-1: Percentage Distribution of Owners/ Managers of the Industrial Establishments According to Their Opinions for Main Indicators During the Next Six Months Compared with Reference Month (April, 2007) in Remaining West Bank and Gaza Strip

Problem	Total	Much Worse	Somewhat Worse	About the Same/ Unchanged	Somewhat Better	Much Better
Establishment performance in general	100	1.4	14.8	26.5	51.7	5.6
Production situation	100	1.4	16.5	19.3	56.1	6.7
Value of sales	100	1.4	17.0	19.0	55.6	7.0
Employees productivity	100	1.1	11.5	38.5	44.7	4.2
Obtaining needed raw materials and inputs	100	1.1	9.8	58.7	28.2	2.2
Problems of employees reaching place of work	100	0.3	2.5	86.6	9.5	1.1
Regularity of work	100	0.8	7.8	64.9	24.0	2.5
Level of employment	100	0.6	8.7	60.5	28.0	2.2
Transporting finished goods to market	100	2.0	12.3	56.4	26.5	2.8
Financial situations	100	1.4	14.0	43.8	36.9	3.9
Banks credits & facilities	100	0.6	6.7	83.1	9.0	0.6

(نيسان، 2007)

/

:2-13

Table 13-2: Percentage Distribution of Owners/ Managers of the Industrial Establishments According to Their Opinions for Main Indicators During the Next Six Months Compared with Reference Month (April, 2007) in Remaining West Bank

Problem	Total	Much Worse	Somewhat Worse	About the Same/ Unchanged	Somewhat Better	Much Better
Establishment performance in general	100	1.5	10.9	31.3	49.9	6.4
Production situation	100	1.5	13.2	21.9	55.5	7.9
Value of sales	100	1.5	14.0	21.5	54.7	8.3
Employees productivity	100	1.1	7.5	46.8	40.1	4.5
Obtaining needed raw materials and inputs	100	1.1	6.0	72.5	18.1	2.3
Problems of employees reaching place of work	100	0.4	1.5	93.6	3.4	1.1
Regularity of work	100	1.1	6.0	72.6	17.7	2.6
Level of employment	100	0.8	6.4	67.4	23.1	2.3
Transporting finished goods to market	100	2.3	7.5	71.8	15.8	2.6
Financial situations	100	1.5	9.8	55.1	29.4	4.2
Banks credits & facilities	100	0.8	6.1	88.5	3.8	0.8

(نيسان، 2007)

/

:3-13

Table 13-3: Percentage Distribution of Owners/ Managers of the Industrial Establishments According to Their Opinions for Main Indicators During the Next Six Months Comparing with Reference Month (April, 2007) in Gaza Strip

Problem	Total	Much Worse	Somewhat Worse	About the Same/ Unchanged	Somewhat Better	Much Better
Establishment performance in general	100	1.1	25.8	12.9	57.0	3.2
Production situation	100	1.1	25.8	11.8	58.1	3.2
Value of sales	100	1.1	25.8	11.8	58.1	3.2
Employees productivity	100	1.1	22.6	15.1	58.0	3.2
Obtaining needed raw materials and inputs	100	1.1	20.4	19.4	56.9	2.2
Problems of employees reaching place of work	100	-	5.4	66.6	26.9	1.1
Regularity of work	100	-	12.9	43.0	41.9	2.2
Level of employment	100	-	15.1	40.9	41.8	2.2
Transporting finished goods to market	100	1.1	25.8	12.9	57.0	3.2
Financial situations	100	1.1	25.8	11.8	58.1	3.2
Banks credits & facilities	100	-	8.6	67.7	23.7	-

(-) Number of observations is too small

(-)