



2010

/

2010

2006

.2010 - 1431 ©

:

/

.2010

2010

-

:

- **1647** . .

(970/972) 2 2982700 :

(970/972) 2 2982710 :

diwan@pcbs.gov.ps :

<http://www.pcbs.gov.ps> :

5

/

2010

9

/
2010

/ 59
/ 2010 2010/02/23-03
. 55 358 .
2007
%70
.2007

2010 **.1**

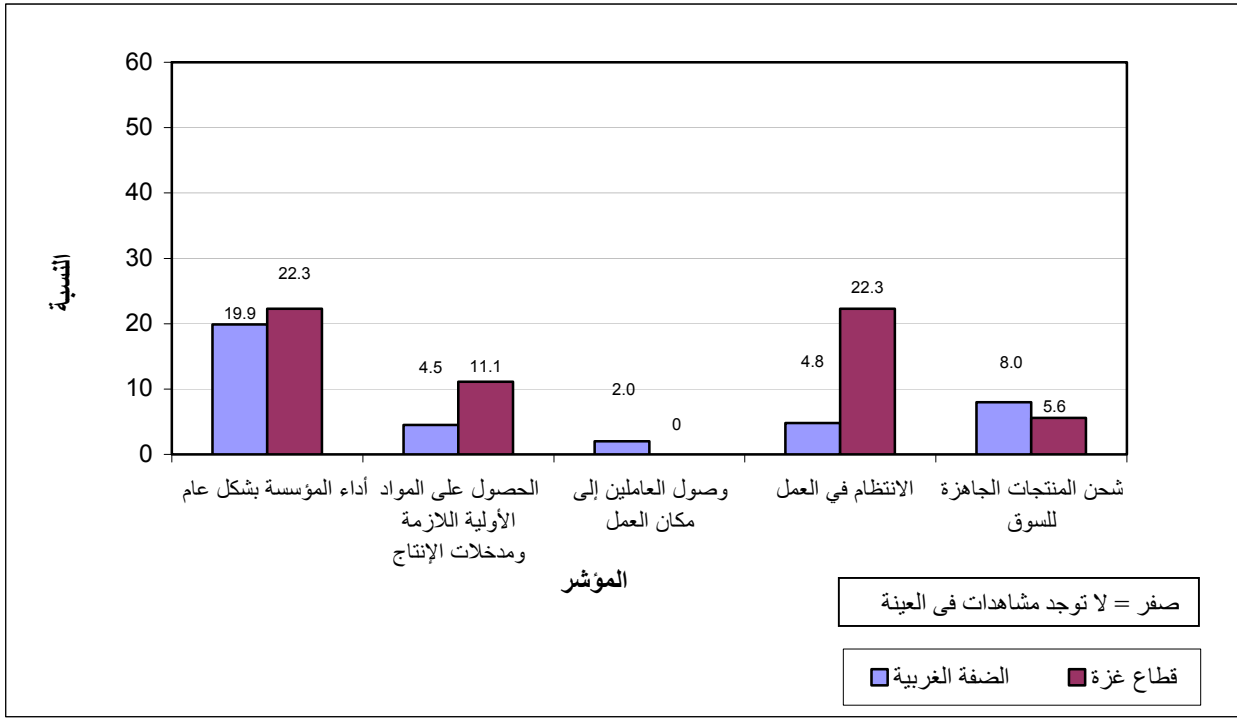
2009 **2010**

:
%20.0 2009 2010
.(%22.3 %19.9) 2010
/ %16.4 :
%16.4)
.(%16.7
/ %0.9 :
%1.0)
.(

.2

:
/ %35.0
%27.0 2010
%20.0
:
/ %92.7
%58.7 .(%77.8 %93.6)
%58.4)
/ %19.2) %19.7 (%64.3

%21.6 (%28.6
 .(%7.1 %22.4)
 :
 / %9.8
 %80.4 (%11.1 %9.7) 2010
 .(%83.3 %80.3)
 .3
 1-3
 - /
 / %40.7 -(2010)
 .(%11.1 %42.5)
 /
 .(%16.7 %13.2) %13.4 2010
 / %40.7
 . (%11.1 %42.5) 2010
 2-3
 ()
 %71.6
 .(%38.9 %73.6)
 %25.4
 .(%33.3 %25.8)
 / %69.6
 %71.1)
 .(%44.4

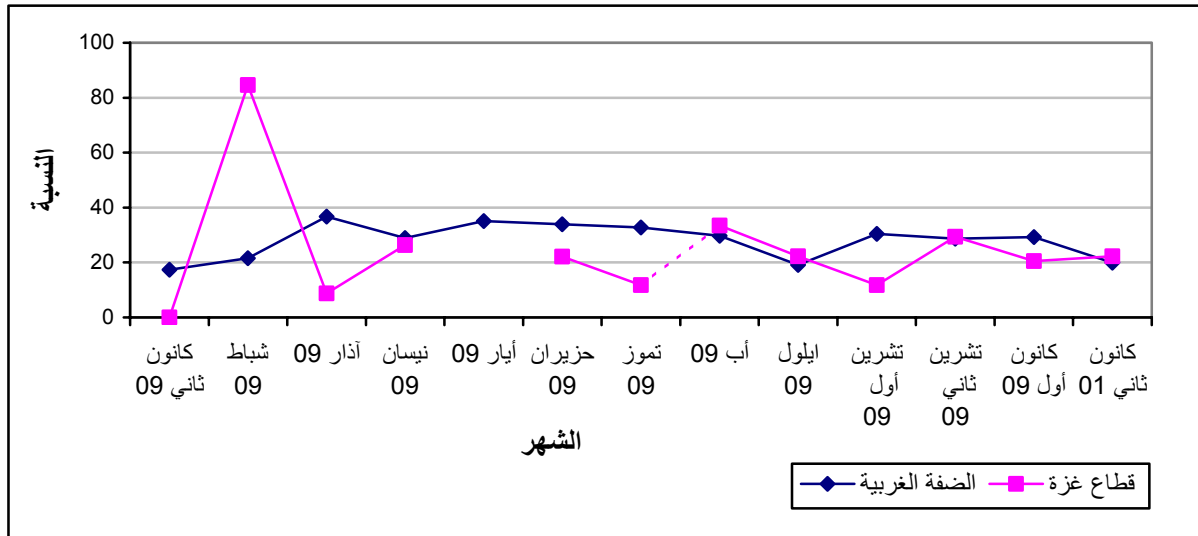


(2010

-2010

)

:2



*

Table 1-1: Percentage of the Industrial Enterprises Witnessed an Improved Situation During January 2010 Compared with the Previous Month for the Main Indicators in the Palestinian Territory

Indicator	Reference Month									
	2010	2009								
	كانون ثاني Jan.	كانون أول Dec.	تشرين ثاني Nov.	تشرين أول Oct.	أيلول Sep.	آب Aug.	تموز Jul.	حزيران Jun.	أيار May	نيسان Apr.
Enterprise performance in general	20.0	28.8	28.7	29.5	19.2	29.9	31.7	33.2	-	28.7
Obtaining needed raw materials and inputs	4.9	9.7	9.7	5.5	7.7	8.0	5.6	9.6	-	6.9
Reaching the employees for their work place	1.8	4.3	3.6	2.2	3.4	1.2	3.5	3.0	-	2.1
Regularity of work	5.8	9.2	10.3	9.6	7.4	7.1	8.2	9.9	-	6.0
Transporting finished goods to market	7.9	12.2	16.9	8.3	8.3	11.8	15.7	17.0	-	11.2

(-) No Data Available

(-)

Table 1-2: Percentage of Industrial Enterprises Witnessed an Improved Situation During January 2010 Compared with the Previous Month for the Main Indicators in the West Bank

Indicator	Reference Month									
	2010	2009								
	كانون ثاني Jan.	كانون أول Dec.	تشرين ثاني Nov.	تشرين أول Oct.	أيلول Sep.	آب Aug.	تموز Jul.	حزيران Jun.	أيار May	نيسان Apr.
Enterprise performance in general	19.9	29.3	28.6	30.4	19.1	29.7	32.7	33.9	35.1	28.9
Obtaining needed raw materials and inputs	4.5	9.7	9.9	5.5	7.8	8.1	5.8	9.8	8.9	6.7
Reaching the employees for their work place	2.0	4.4	3.8	2.3	3.6	1.2	3.7	3.1	2.9	2.2
Regularity of work	4.8	8.9	9.6	9.8	6.9	6.5	8.6	9.4	9.9	5.1
Transporting finished goods to market	8.0	12.6	17.2	8.9	8.5	12.1	16.5	17.7	15.5	11.3

Table 1-3: Percentage of Industrial Enterprises Witnessed an Improved Situation During January 2010 Compared with the Previous Month for the Main Indicators in Gaza Strip

Indicator	Reference Month									
	2010	2009								
	كانون ثاني Jan.	كانون أول Dec.	تشرين ثاني Nov.	تشرين أول Oct.	أيلول Sep.	أب Aug.	تموز Jul.	حزيران Jun.	أيار May	نيسان Apr.
Enterprise performance in general	22.3	20.5	29.4	11.8	22.3	33.4	11.8	22.2	-	26.3
Obtaining needed raw materials and inputs	11.1	10.3	5.9	5.9	5.6	6.7	:	5.6	-	10.6
Reaching the employees for their work place	:	1.3	:	:	:	:	:	:	-	:
Regularity of work	22.3	12.8	23.5	5.9	16.7	20.0	:	16.7	-	21.1
Transporting finished goods to market	5.6	5.1	11.8	:	5.6	6.7	:	5.6	-	10.6

(-) No Data Available

(-)

(:) No Observations in the Sample

(:)

2010

/

:1-2

2009

Table 2-1: Percentage Distribution of Owners/ Managers of the Industrial Enterprises According to their Opinions of Main Indicators During January 2010 Compared to December 2009 in the Palestinian Territory

Problem	Total	Not Exist	Much Worse	Somewhat Worse	/ About the Same/ Unchanged	Somewhat Better	Much Better
Enterprise performance in general	100	:	4.9	22.5	52.6	19.1	0.9
Production situation	100	1.2	4.9	22.5	51.1	19.5	0.9
Employees productivity	100	0.9	3.3	16.7	62.6	15.5	0.9
Obtaining needed raw materials and inputs	100	0.6	0.3	5.8	88.4	4.0	0.9
Reaching the employees for their work place	100	0.3	:	1.2	96.7	0.9	0.9
Regularity of work	100	:	0.9	8.5	84.8	4.9	0.9
Transporting finished goods to market	100	1.5	1.2	12.5	76.9	7.6	0.3
Financial situations	100	0.3	3.6	21.6	58.1	16.1	0.3
Banks credits & facilities	100	23.4	:	0.9	74.8	0.9	:
Level of employment	100	:	1.5	9.1	81.8	7.3	0.3
Value of sales	100	:	3.4	27.1	47.6	21.0	0.9

(:) No Observations in the Sample

(:)

2009

Table 2-2: Percentage Distribution of Owners/ Managers of the Industrial Enterprises According to their Opinions of Main Indicators During January 2010 Compared to December 2009 in the West Bank

Problem	Total	Not Exist	Much Worse	Somewhat Worse	/ About the Same/ Unchanged	Somewhat Better	Much Better
Enterprise performance in general	100	:	4.8	23.5	51.8	19.3	0.6
Production situation	100	:	4.8	23.8	51.1	19.6	0.6
Employees productivity	100	:	3.2	17.7	62.1	16.1	1.0
Obtaining needed raw materials and inputs	100	:	0.3	5.1	90.0	3.5	1.0
Reaching the employees for their work place	100	:	:	1.3	96.8	1.0	1.0
Regularity of work	100	:	1.0	8.4	85.9	4.2	0.6
Transporting finished goods to market	100	:	1.3	13.2	77.5	7.7	0.3
Financial situations	100	:	3.9	22.5	57.2	16.1	0.3
Banks credits & facilities	100	20.6	:	1.0	77.5	1.0	:
Level of employment	100	:	1.3	9.0	82.3	7.1	0.3
Value of sales	100	:	3.2	28.4	46.8	21.3	0.3

(:) No Observations in the Sample

(:)

2009

Table 2-3: Percentage Distribution of Owners/ Managers of the Industrial Enterprises According to their Opinions of Main Indicators During January 2010 Compared to December 2009 in Gaza Strip

Problem	Total	Not Exist	Much Worse	Somewhat Worse	/ About the Same/ Unchanged	Somewhat Better	Much Better
Enterprise performance in general	100	:	5.6	5.6	66.7	16.7	5.6
Production situation	100	22.2	5.6	:	50.0	16.7	5.6
Employees productivity	100	16.7	5.6	:	72.2	5.6	:
Obtaining needed raw materials and inputs	100	11.1	:	16.7	61.1	11.1	:
Reaching the employees for their work place	100	5.6	:	:	94.4	:	:
Regularity of work	100	:	:	11.1	66.7	16.7	5.6
Transporting finished goods to market	100	27.8	:	:	66.7	5.6	:
Financial situations	100	5.6	:	5.6	72.2	16.7	:
Banks credits & facilities	100	72.2	:	:	27.8	:	:
Level of employment	100	:	5.6	11.1	72.2	11.1	:
Value of sales	100	:	5.6	5.6	61.1	16.7	11.1

(:) No Observations in the Sample

(:)

Table 3: Percentage of Industrial Enterprises Witnessed an Improved Situation During January 2010 Compared to the Previous Month for the Main Indicators by Region

Indicator	Gaza Strip	West Bank	Palestinian Territory	
Employees productivity	5.6	17.1	16.4	
Financial situations	16.7	16.4	16.4	
Banks credits & facilities	:	1.0	0.9	
Level of employment	11.1	7.4	7.6	
Value of sales	27.8	21.6	21.9	

(:) No Observations in the Sample

(:)

/

:4

2010

Table 4: Percentage Distribution of Owners/Managers of the Active Industrial Enterprises According to the Reasons for Sales Level Stability or Decline by Region During January 2010

Reason	Gaza Strip	West Bank	Palestinian Territory	
Decrease in demand	:	20.4	20.0	
Difficulties in exporting finished goods	:	1.0	1.0	
Decline in the consumer purchasing power	:	27.6	27.0	
Product Marketing Obstacles	:	2.0	2.0	()
Competence product	:	4.1	5.0	
Seasonally related	:	35.7	35.0	
Military check points/ israeli actions/ closures	:	:	1.0	/ /
Other	:	9.2	9.0	
Total	100	100	100	

(:) No Observations in the Sample

(:)

2010

:5

Table 5: Percentage Distribution of the Active Industrial Enterprises According to the Employment Mobility During January 2010 by Region

Employment Mobility	Gaza Strip	West Bank	Palestinian Territory	
Hiring employees	5.6	10.0	9.8	
Firing employees	11.1	9.7	9.8	
No change	83.3	80.3	80.4	
Total	100	100	100	

2010

/

:6

Table 6: Percentage Distribution of the Existing of Competition Against the Main Product According to the Owners\ Managers of the Active Industrial Enterprises During January 2010 by Region

Competence existence	Gaza Strip	West Bank	Palestinian Territory	
There is competition	77.8	93.6	92.7	
There is no competition	22.2	6.4	7.3	
Total	100	100	100	

2010

/

:7

Table 7: Percentage Distribution of the Type of Competition According to the Owners\ Managers of the Active Industrial Enterprises During January 2010 by Region

Type of competence	Gaza Strip	West Bank	Palestinian Territory	
Local	64.3	58.4	58.7	
Foreign	28.6	19.2	19.7	
Both	7.1	22.3	21.6	
Total	100	100	100	

Table 8: Expectations of Owners/ Managers of the Active Industrial Enterprises for the Month that Follows the Reference Month Compared to the Reference Month (January, 2010) for the Main Indicators by Region

Indicator	Reference Month									
	2010	2009								
	كانون ثاني Jan.	كانون أول Dec.	تشرين ثاني Nov.	تشرين أول Oct.	أيلول Sep.	أب Aug.	تموز Jul.	حزيران Jun.	أيار May	نيسان Apr.
Percentage of who are expecting better Enterprise situation										
Palestinian Territory	40.7	41.3	29.9	37.8	53.2	28.1	32.3	37.9	-	38.7
West Bank	42.5	42.4	29.9	39.5	55.7	28.5	33.6	38.8	44.1	39.4
Gaza Strip	11.1	23.1	29.4	5.9	11.1	20.0	5.9	22.2	-	26.3
Percentage of who are expecting higher employment level										
Palestinian Territory	13.4	13.9	8.2	8.6	20.4	11.3	11.9	11.3	-	13.3
West Bank	13.2	13.6	7.4	8.8	20.7	10.5	12.5	11.0	17.5	12.8
Gaza Strip	16.7	17.9	23.5	5.9	16.7	26.7	:	16.7	-	21.1
Percentage of who are expecting higher sales volume										
Palestinian Territory	40.7	40.2	29.0	38.2	50.7	27.8	32.9	38.2	-	37.5
West Bank	42.5	41.4	29.3	40.0	53.4	28.2	34.2	39.4	42.7	38.5
Gaza Strip	11.1	21.8	23.5	5.9	5.6	20.0	5.9	16.7	-	21.1

(-) No Data Available

(-)

Table 9: Expectations of Owners/ Managers of the Active Industrial Enterprises for the Six Months that Follow the Reference Month Compared to the Reference Month (January, 2010) for the Main Indicators by Region

Indicator	Reference Month									
	2010	2009								
	كانون Jan. ثاني	كانون أول Dec.	تشرين ثاني Nov.	تشرين أول Oct.	أيلول Sep.	آب Aug.	تموز Jul.	حزيران Jun.	أيار May	نيسان Apr.
Percentage of who are expecting better Enterprise situation										
Palestinian Territory	71.8	58.3	51.0	45.8	56.2	48.7	44.4	51.1	-	53.2
West Bank	73.6	59.7	50.9	47.3	57.8	49.1	45.5	51.1	49.0	53.8
Gaza Strip	38.9	37.2	53.0	17.6	27.8	40.0	5.9	50.0	-	42.1
Percentage of who are expecting higher employment level										
Palestinian Territory	25.8	26.7	15.7	11.4	26.6	19.3	21.5	24.8	-	26.9
West Bank	25.4	26.7	15.0	11.4	26.6	18.7	22.6	24.6	24.5	27.0
Gaza Strip	33.3	26.9	29.4	11.8	27.8	33.3	-	27.8	-	26.3
Percentage of who are expecting higher sales volume										
Palestinian Territory	69.6	58.2	52.3	45.5	55.3	48.5	44.8	51.7	-	54.1
West Bank	71.1	59.2	52.2	46.8	56.5	48.6	46.8	51.4	48.4	54.8
Gaza Strip	44.4	42.3	52.9	23.5	33.3	46.7	5.9	55.6	-	42.1

(-) No Data Available

(-)

(2010)

/ :10

Table 10: Expectations of Owners/ Managers of the Active Industrial Enterprises about Better Expectations for their Enterprises for the Month that Follows the Reference Month (January, 2010) Compared to the Reference Month by Region

Indicator	Gaza Strip	West Bank	Palestinian Territory	
Enterprise performance in general	16.7	42.5	41.0	
Employees productivity	:	29.0	27.3	
Obtaining needed raw materials and inputs	22.2	7.1	7.9	
Reaching the employees for their work place	:	3.8	3.6	
Regularity of work	16.7	15.1	15.2	
Transporting finished goods to market	:	13.5	12.8	
Financial situations	16.7	36.7	35.5	
Banks credits & facilities	5.6	1.9	2.1	

(:) No Observations in the Sample

(:)

(2010)

/ :11

Table 11: Expectations of Owners/ Managers of the Active Industrial Enterprises about Better Expectations for their Enterprises for the Six Months that Follow the Reference Month (January, 2010) Compared to the Reference Month for the Main Indicators by Region

Indicator	Gaza Strip	West Bank	Palestinian Territory	
Enterprise performance in general	50.0	73.9	72.7	
Employees productivity	11.1	52.1	49.8	
Obtaining needed raw materials and inputs	38.9	11.5	13.0	
Reaching the employees for their work place	:	6.4	6.1	
Regularity of work	33.3	26.4	26.7	
Transporting finished goods to market	:	28.6	27.0	
Financial situations	33.3	58.5	57.2	
Banks credits & facilities	11.1	3.2	3.6	

(:) No Observations in the Sample

(:)

(2010)

/

:1-12

Table 12-1: Percentage Distribution of Owners/ Managers of the Active Industrial Enterprises According to Their Opinions of Main Indicators for the Month that Follows the Reference Month (January, 2010) Compared to the Reference Month in the Palestinian Territory

Indicator	Total	Not Exist	Much Worse	Somewhat Worse	/ About the Same/ Unchanged	Somewhat Better	Much Better	
Enterprise performance in general	100	:	:	8.8	50.2	38.9	2.1	
Production situation	100	0.9	:	8.8	49.5	38.3	2.4	
Volume of sales	100	0.3	:	8.8	50.2	38.6	2.1	
Employees productivity	100	:	:	5.2	67.5	26.1	1.2	
Obtaining needed raw materials and inputs	100	0.3	0.3	3.0	88.4	7.0	0.9	
Reaching the employees for their work place	100	:	:	1.5	94.8	3.0	0.6	
Regularity of work	100	0.3	0.3	4.0	80.2	14.6	0.6	
Level of employment	100	:	0.6	2.7	83.3	13.1	0.3	
Transporting finished goods to market	100	1.5	:	4.9	80.9	12.2	0.6	
Financial situations	100	0.3	:	7.3	56.8	34.3	1.2	
Banks credits & facilities	100	22.5	:	0.3	75.1	2.1	:	

(:) No Observations in the Sample

(:)

(2010)

/

:2-12

Table 12-2: Percentage Distribution of Owners/ Managers of the Active Industrial Enterprises According to Their Opinions of Main Indicators for the Month that Follows the Reference Month (January, 2010) Compared to the Reference Month in the West Bank

Indicator	Total	Not Exist	Much Worse	Somewhat Worse	/ About the Same/ Unchanged	Somewhat Better	Much Better	
Enterprise performance in general	100	:	:	9.0	48.6	40.2	2.3	
Production situation	100	:	:	9.0	48.6	39.9	2.6	
Volume of sales	100	:	:	9.3	48.2	40.2	2.3	
Employees productivity	100	:	:	5.1	65.9	27.7	1.3	
Obtaining needed raw materials and inputs	100	:	:	3.2	89.7	6.1	1.0	
Reaching the employees for their work place	100	:	:	1.3	94.9	3.2	0.6	
Regularity of work	100	0.3	:	3.5	81.0	14.5	0.6	
Level of employment	100	:	:	2.6	84.2	12.9	0.3	
Transporting finished goods to market	100	:	:	5.1	81.4	12.9	0.6	
Financial situations	100	:	:	7.4	55.9	35.4	1.3	
Banks credits & facilities	100	19.9	:	0.3	77.8	1.9	:	

(:) No Observations in the Sample

(:)

Table 12-3: Percentage Distribution of Owners/ Managers of the Active Industrial Enterprises According to Their Opinions of Main Indicators for the Month that Follows the Reference Month (January, 2010) Compared to the Reference Month in Gaza Strip

Indicator	Total	Not Exist	Much Worse	Somewhat Worse	/ About the Same/ Unchanged	Somewhat Better	Much Better	
Enterprise performance in general	100	:	:	5.6	77.8	16.7	:	
Production situation	100	16.7	:	5.6	66.7	11.1	:	
Volume of sales	100	5.6	:	:	83.3	11.1	:	
Employees productivity	100	:	:	5.6	94.4	:	:	
Obtaining needed raw materials and inputs	100	5.6	5.6	:	66.7	22.2	:	
Reaching the employees for their work place	100	:	:	5.6	94.4	:	:	
Regularity of work	100	:	5.6	11.1	66.7	16.7	:	
Level of employment	100	:	11.1	5.6	66.7	16.7	:	
Transporting finished goods to market	100	27.8	:	:	72.2	:	:	
Financial situations	100	5.6	:	5.6	72.2	16.7	:	
Banks credits & facilities	100	66.7	:	:	27.8	5.6	:	

(:) No Observations in the Sample

(:)

(2010)

/

:1-13

Table 13-1: Percentage Distribution of Owners/ Managers of the Active Industrial Enterprises According to Their Opinions of Main Indicators During the Next Six Months Compared to Reference Month (January, 2010) in the Palestinian Territory

Indicator	Total	Not Exist	Much Worse	Somewhat Worse	/ About the Same/ Unchanged	Somewhat Better	Much Better	
Enterprise performance in general	100	:	0.3	4.6	22.5	66.6	6.1	
Production situation	100	0.9	0.6	4.0	22.8	65.7	6.1	
Volume of sales	100	0.3	0.3	4.9	24.9	62.6	7.0	
Employees productivity	100	:	0.3	3.3	46.5	46.5	3.3	
Obtaining needed raw materials and inputs	100	0.3	:	2.7	83.9	11.2	1.8	
Reaching the employees for their work place	100	:	:	1.2	92.7	4.6	1.5	
Regularity of work	100	:	0.3	4.0	69.0	24.0	2.7	
Level of employment	100	:	0.3	4.0	69.9	24.0	1.8	
Transporting finished goods to market	100	1.5	:	4.3	67.2	25.2	1.8	
Financial situations	100	0.3	0.3	4.0	38.3	51.7	5.5	
Banks credits & facilities	100	22.2	:	0.3	73.9	3.6	:	

(:) No Observations in the Sample

(:)

(2010)

/

:2-13

Table 13-2: Percentage Distribution of Owners/ Managers of the Active Industrial Enterprises According to Their Opinions of Main Indicators During the Next Six Months Compared to Reference Month (January, 2010) in the West Bank

Indicator	Total	Not Exist	Much Worse	Somewhat Worse	/ About the Same/ Unchanged	Somewhat Better	Much Better	
Enterprise performance in general	100	:	:	4.5	21.5	67.5	6.4	
Production situation	100	:	:	4.2	22.2	67.2	6.4	
Volume of sales	100	:	:	5.1	23.8	63.7	7.4	
Employees productivity	100	:	:	3.5	44.4	48.6	3.5	
Obtaining needed raw materials and inputs	100	:	:	2.6	85.9	9.6	1.9	
Reaching the employees for their work place	100	:	:	1.0	92.6	4.8	1.6	
Regularity of work	100	:	:	3.9	69.8	23.5	2.9	
Level of employment	100	:	:	3.9	70.7	23.5	1.9	
Transporting finished goods to market	100	:	:	4.5	66.9	26.7	1.9	
Financial situations	100	:	:	4.2	37.3	52.7	5.8	
Banks credits & facilities	100	19.6	:	0.3	76.8	3.2	:	

(:) No Observations in the Sample

(:)

Table 13-3: Percentage Distribution of Owners/ Managers of the Active Industrial Enterprises According to Their Opinions of Main Indicators During the Next Six Months Compared to Reference Month (January, 2010) in Gaza Strip

Indicator	Total	Not Exist	Much Worse	Somewhat Worse	/ About the Same/ Unchanged	Somewhat Better	Much Better	
Enterprise performance in general	100	:	5.6	5.6	38.9	50.0	:	
Production situation	100	16.7	11.1	:	33.3	38.9	:	
Volume of sales	100	5.6	5.6	:	44.4	44.4	:	
Employees productivity	100	:	5.6	:	83.3	11.1	:	
Obtaining needed raw materials and inputs	100	5.6	:	5.6	50.0	38.9	:	
Reaching the employees for their work place	100	:	:	5.6	94.4	:	:	
Regularity of work	100	:	5.6	5.6	55.6	33.3	:	
Level of employment	100	:	5.6	5.6	55.6	33.3	:	
Transporting finished goods to market	100	27.8	:	:	72.2	:	:	
Financial situations	100	5.6	5.6	:	55.6	33.3	:	
Banks credits & facilities	100	66.7	:	:	22.2	11.1	:	

(:) No Observations in the Sample

(:) تعني لا يوجد مشاهدات بالعينة