



**2008**

/

**2008 /**

**2006**

.2008 - 1429 ©

:

/

**.2008**

*2008*

-

:

/

- **1647** . .

(970/972) 2 242 6340 :

(970/972) 2 242 6343 :

[diwan@pcbs.gov.ps](mailto:diwan@pcbs.gov.ps) :

<http://www.pcbs.gov.ps> :



---

**9**

/

2008

**13**

. 496

(2006 - 2006 )

2006

346

35

(J1)

**:J1**

.1967

/  
**2008**

/ 41  
2008/08/23-03  
/ 138 343 ) 496  
(J1 15  
2004  
%70  
20 2004

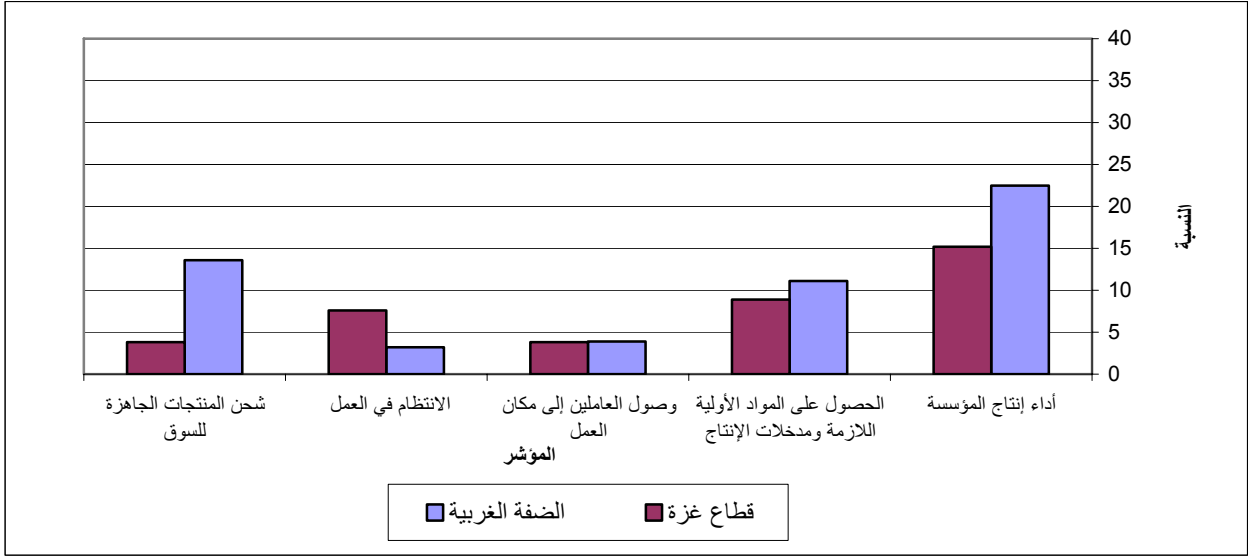
**2008** **2008**  
/ %22.5 :  
%15.2 حزيران 2008 تموز 2008  
/ %11.1 :  
تموز 2008 مقارنة  
%8.9 مع شهر حزيران 2008  
/ %27.1 :  
%16.4  
/ %17.5 :  
%11.4  
/ %3.7 :  
%1.3  
:  
/ %35.6  
%57.9

:  
 / %89.0  
 .( %91.1 %76.6)  
 / %76.6  
 %13.9) %23.4 ( %75.2 %86.1)  
 .( %24.8  
 :  
 / %8.9  
 %78.8 ( %7.8 %14.9) 2008  
 %72.3 %79.9  
 .(  
 - /  
 / %30.3 -(2008 )  
 . /  
 %28.7 %10.1 2008  
 .2008 /  
 ( )  
 %34.5  
 .( %58.7 %30.4)  
 %15.1  
 .( %54.4 %8.5)  
 / %35.1  
 %31.1)  
 .( %58.7

2008

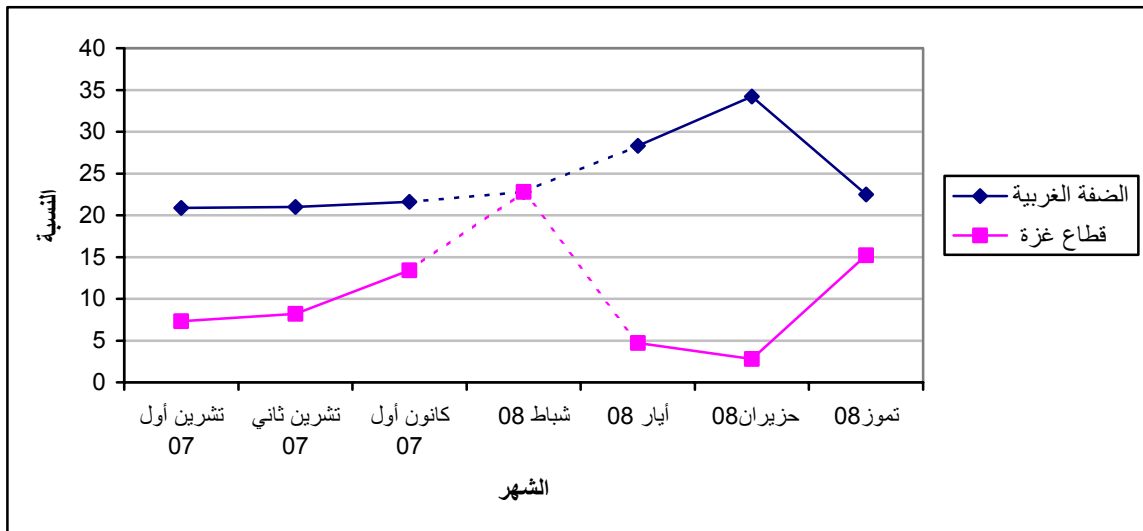
2008

:1



( 2008 )

:2





# Tables

2008

**Table 1-1: Percentage of the Industrial Establishments Encountered Improvement Situation During the Reference Month Compared to that before the Reference Month for the Main Indicators in the Palestinian Territory 2008**

Indicator	Reference Month									
	2008							2007		
	July	June	May	April	Mar.	Feb.	Jan.	Dec.	Nov.	Oct.
Establishment performance in general	20.9	27.4	23.7	-	-	22.8	-	19.9	18.5	18.5
Obtaining needed raw materials and inputs	10.6	29.8	27.9	-	-	21.4	-	17.9	19.8	20.1
Problems of employees reaching place of work	3.9	26.2	25.2	-	-	16.7	-	16.2	17.9	16.0
Regularity of work	4.2	12.4	9.4	-	-	6.3	-	6.4	7.0	7.0
Transporting finished goods to market	11.4	4.5	4.6	-	-	4.0	-	5.7	6.7	8.3

(-) No Data Available

(-)

:2-1

2008 \*

**Table 1-2: Percentage of Industrial Establishments Encountered Improvement Situation During the Reference Month Compared to that before the Reference Month for the Main Indicators in the West Bank\* 2008**

Indicator	Reference Month									
	2008							2007		
	July	June	May	April	Mar.	Feb.	Jan.	Dec.	Nov.	Oct.
Establishment performance in general	22.5	34.2	28.3	-	-	22.8	-	21.6	21.0	20.9
Obtaining needed raw materials and inputs	11.1	37.3	33.6	-	-	21.2	-	19.5	22.2	22.9
Problems of employees reaching place of work	3.9	32.6	30.1	-	-	15.7	-	17.4	19.8	17.8
Regularity of work	3.2	15.4	10.9	-	-	6.3	-	5.9	7.9	7.4
Transporting finished goods to market	13.6	5.4	5.3	-	-	2.8	-	5.1	7.1	8.9

\* West Bank includes Jerusalem Governorate with J1

\*

(-) No Data Available

(-)

2008

**Table 1-3: Percentage of Industrial Establishments Encountered Improvement Situation During the Reference Month Compared to that before the Reference Month for the Main Indicators in Gaza Strip 2008**

Indicator	Reference Month									
	2008							2007		
	July	June	May	April	Mar.	Feb.	Jan.	Dec.	Nov.	Oct.
Establishment performance in general	15.2	2.8	4.7	-	-	22.8	-	13.4	8.2	7.3
Obtaining needed raw materials and inputs	8.9	2.8	4.7	-	-	22.8	-	11.7	9.8	7.3
Problems of employees reaching place of work	3.8	2.8	4.7	-	-	22.8	-	11.7	9.8	7.3
Regularity of work	7.6	1.4	3.1	-	-	6.8	-	8.3	3.3	5.4
Transporting finished goods to market	3.8	1.4	1.6	-	-	11.4	-	8.3	4.9	5.4

(-) No Data Available

(-)

**Table 2-1: Percentage Distribution of Owners/ Managers of the Industrial Establishments According to Their Opinions for Main Indicators During July 2008 Compared with June 2008 in the Palestinian Territory**

<b>Problem</b>	<b>Total</b>	<b>Much Worse</b>	<b>Somewhat Worse</b>	<b>About the Same/ Unchanged</b>	<b>Somewhat Better</b>	<b>Much Better</b>
Establishment performance in general	100	2.8	16.1	60.2	17.8	3.1
Production situation	100	2.8	21.1	48.0	25.3	2.8
Employees productivity	100	2.8	16.1	56.4	21.9	2.8
Obtaining needed raw materials and inputs	100	4.2	11.7	73.5	8.9	1.7
Problems of employees reaching place of work	100	0.6	1.4	94.1	3.3	0.6
Regularity of work	100	1.9	5.6	88.3	3.1	1.1
Transporting finished goods to market	100	1.4	13.3	73.9	10.6	0.8
Financial situations	100	1.7	14.2	68.0	14.4	1.7
Banks credits & facilities	100	0.6	2.0	94.2	2.9	0.3
Level of employment	100	1.9	8.9	76.9	11.7	0.6
Value of sales	100	3.3	22.8	46.4	25.3	2.2

2008

/

:2-2

\*

2008

**Table 2-2: Percentage Distribution of Owners/ Managers of the Industrial Establishments According to Their Opinions for Main Indicators During July 2008 Compared with June 2008 in the West Bank**

Problem	Total	Much Worse	Somewhat Worse	About the Same/ Unchanged	Somewhat Better	Much Better
Establishment performance in general	100	0.7	17.1	59.7	21.4	1.1
Production situation	100	0.7	23.6	44.2	30.4	1.1
Employees productivity	100	0.7	17.1	55.1	26.4	0.7
Obtaining needed raw materials and inputs	100	1.4	10.7	76.8	10.4	0.7
Problems of employees reaching place of work	100	0.0	1.4	94.7	3.9	0.0
Regularity of work	100	0.4	3.9	92.5	3.2	0.0
Transporting finished goods to market	100	0.7	16.1	69.6	13.2	0.4
Financial situations	100	0.7	17.1	64.7	17.1	0.4
Banks credits & facilities	100	0.0	2.6	93.7	3.7	0.0
Level of employment	100	1.1	9.0	75.9	14.0	0.0
Value of sales	100	0.7	25.4	42.0	31.2	0.7

\* West Bank includes Jerusalem Governorate with J1

\*

**Table 2-3: : Percentage Distribution of Owners/ Managers of the Industrial Establishments According to Their Opinions for Main Indicators During July 2008 Compared with June 2008 in Gaza Strip**

Problem	Total	Much Worse	Somewhat Worse	/ About the Same/ Unchanged	Somewhat Better	Much Better	
Establishment performance in general	100	10.1	12.7	62.0	5.1	10.1	
Production situation	100	10.1	12.7	60.7	7.6	8.9	
Employees productivity	100	10.1	12.7	60.8	6.3	10.1	
Obtaining needed raw materials and inputs	100	13.9	15.2	62.0	3.8	5.1	
Problems of employees reaching place of work	100	2.5	1.3	92.4	1.3	2.5	
Regularity of work	100	7.6	11.4	73.4	2.5	5.1	
Transporting finished goods to market	100	3.8	3.8	88.6	1.3	2.5	
Financial situations	100	5.1	3.8	79.7	5.1	6.3	
Banks credits & facilities	100	2.5	0.0	96.2	0.0	1.3	
Level of employment	100	5.1	8.9	79.7	3.8	2.5	
Value of sales	100	12.7	13.9	60.7	5.1	7.6	

**Table 3: Percentage of Industrial Establishments Encountered Improvement Situation During the Reference Month (July 2008) Compared to that before the Reference Month for the Main Indicators by Region**

Indicator	Gaza Strip	* West Bank*	Palestinian Territory	
Employees productivity	16.4	27.1	24.7	
Financial situations	11.4	17.5	16.1	
Banks credits & facilities	1.3	3.7	3.2	
Level of employment	6.3	14.0	12.3	
Value of sales	12.7	31.9	27.5	

\* West Bank includes Jerusalem Governorate with J1

\*

/

:4

2008

**Table 4: Percentage Distribution of Owners/Managers of the Active Industrial Establishments According to the Reasons for Sales Level Stability or Decline by Region During July 2008**

Reason	Gaza Strip	* West Bank*	Palestinian Territory	
Decrease in demand	0.0	5.5	4.3	
Difficulties in exporting finished goods	0.0	2.7	2.2	
Decline in the consumer purchasing power	15.8	35.6	31.5	
Product Marketing Obstacles	0.0	2.8	2.2	( )
Competence product	26.3	8.2	12.0	
Seasonally related	0.0	27.4	21.7	
Military check points/ israeli actions/ closures	57.9	6.8	5.4	/ /
Other	0.0	11.0	20.7	
<b>Total</b>	<b>100</b>	<b>100</b>	<b>100</b>	

\* West Bank includes Jerusalem Governorate with J1

\*

2008

:5

**Table 5: Percentage Distribution of the Active Industrial Establishments According to the Employment Mobility During July 2008 by Region**

Employment Mobility	Gaza Strip	* West Bank*	Palestinian Territory
Hiring employees	12.8	12.3	12.3
Firing employees	14.9	7.8	8.9
No change	72.3	79.9	78.8
<b>Total</b>	<b>100</b>	<b>100</b>	<b>100</b>

\* West Bank includes Jerusalem Governorate with J1

\*

2008

/

:6

**Table 6: Percentage Distribution of the Existing of Competence of the Main Product According to the Owners\ Managers of the Active Industrial Establishments During July 2008 by Region**

Competence existence	Gaza Strip	* West Bank*	Palestinian Territory
There is competition	76.6	91.1	89.0
There is no competition	23.4	8.9	11.0
<b>Total</b>	<b>100</b>	<b>100</b>	<b>100</b>

\* West Bank includes Jerusalem Governorate with J1

\*

2008

/

:7

**Table 7: Percentage Distribution of the Type of Competence According to the Owners\ Managers of the Active Industrial Establishments During July 2008 by Region**

Type of competence	Gaza Strip	* West Bank*	Palestinian Territory
Local	86.1	75.2	76.6
Foreign	13.9	24.8	23.4
<b>Total</b>	<b>100</b>	<b>100</b>	<b>100</b>

\* West Bank includes Jerusalem Governorate with J1

\*



**Table 8: Expectations of Owners/ Managers of the Active Industrial Establishments for the Month that Follow the Reference Month Compared With the Reference (July, 2008) Month for the Main Indicators by Region**

Indicator	Reference Month										
	2008							2007			
	July	June	May	April	Mar.	Feb.	Jan.	Dec.	Nov.	Oct.	
<b>Percentage of who are expecting better establishment situation</b>											
Palestinian Territory	30.3	32.5	32.8	-	-	31.8	28.7	18.2	18.8	22.1	
West Bank*	26.3	29.6	29.4	36.0	35.4	31.5	26.2	19.5	22.2	22.1	*
Gaza Strip	53.2	54.3	46.9	-	-	34.1	56.5	13.3	4.9	22.6	
<b>Percentage of who are expecting higher employment level</b>											
Palestinian Territory	10.1	11.9	15.2	-	-	7.3	6.9	5.4	5.4	9.6	
West Bank*	3.7	6.2	8.0	10.3	10.5	5.1	4.7	5.1	6.0	9.3	*
Gaza Strip	46.8	54.3	45.4	-	-	20.5	30.4	6.8	3.3	13.2	
<b>Percentage of who are expecting higher sales volume</b>											
Palestinian Territory	28.7	32.0	33.2	-	-	33.3	31.2	19.9	19.1	23.4	
West Bank*	24.5	29.0	29.9	38.9	37.1	33.1	28.9	21.2	22.2	24.1	*
Gaza Strip	53.2	54.3	46.9	-	-	34.1	56.5	15.0	6.6	22.6	

(-) No Data Available

(-)

\* West Bank includes Jerusalem Governorate with J1

\*

**Table 9: Expectations of Owners/ Managers of the Active Industrial Establishments for the Six Months that Follow the Reference Month Compared With the Reference Month (July, 2008) for the Main Indicators by Region**

Indicator	Reference Month										
	2008							2007			
	July	June	May	April	Mar.	Feb.	Jan.	Dec.	Nov.	Oct.	
<b>Percentage of who are expecting better establishment situation</b>											
Palestinian Territory	34.5	35.7	41.6	-	-	61.7	59.6	33.5	36.0	37.4	
West Bank*	30.4	32.9	38.5	49.4	57.2	62.2	58.2	36.5	33.3	36.3	*
Gaza Strip	58.7	57.1	54.7	-	-	58.4	78.9	20.3	52.4	43.2	
<b>Percentage of who are expecting higher employment level</b>											
Palestinian Territory	15.1	15.4	22.3	-	-	25.2	22.7	13.2	21.6	16.4	
West Bank*	8.5	9.7	14.8	15.8	22.9	23.2	20.5	11.9	19.0	14.3	*
Gaza Strip	54.4	57.1	53.1	-	-	38.9	52.6	18.6	38.1	27.3	
<b>Percentage of who are expecting higher sales volume</b>											
Palestinian Territory	35.1	36.6	43.9	-	-	67.6	64.1	36.5	38.6	38.5	
West Bank*	31.1	34.1	41.3	53.8	59.8	68.9	63.0	39.8	36.4	37.5	*
Gaza Strip	58.7	55.9	54.7	-	-	58.4	78.9	22.0	52.4	43.2	

(-) No Data Available

(-)

\* West Bank includes Jerusalem Governorate with J1

\*

**Table 10: Expectations of Owners/ Managers of the Active Industrial Establishments about Better Expectations for their Establishments for the Month that Follow the Reference Month (July, 2008) Compared With the Reference Month by Region**

Indicator	Gaza Strip	* West Bank*	Palestinian Territory	
Establishment performance in general	53.2	20.7	25.5	
Employees productivity	53.2	20.4	25.2	
Obtaining needed raw materials and inputs	51.0	4.8	11.7	
Problems of employees reaching place of work	14.9	4.1	5.7	
Regularity of work	44.7	4.8	10.7	
Transporting finished goods to market	42.5	8.5	13.6	
Financial situations	51.0	8.9	15.2	
Banks credits & facilities	8.5	1.5	2.6	

\* West Bank includes Jerusalem Governorate with J1

\*

**Table 11: Expectations of Owners/ Managers of the Active Industrial Establishments about Better Expectations for their Establishments for the Six Months that Follow the Reference Month (July,2008) Compared With the Reference Month for the Main Indicators by Region**

Indicator	Gaza Strip	* West Bank*	Palestinian Territory	
Establishment performance in general	57.5	26.0	30.6	
Employees productivity	56.5	26.0	30.4	
Obtaining needed raw materials and inputs	52.2	9.6	15.8	
Problems of employees reaching place of work	15.2	6.3	7.6	
Regularity of work	54.4	7.8	14.5	
Transporting finished goods to market	45.7	14.1	18.6	
Financial situations	56.6	13.8	20.0	
Banks credits & facilities	8.7	3.1	4.0	

\* West Bank includes Jerusalem Governorate with J1

\*

(2008 )

/

:1-12

**Table 12-1: Percentage Distribution of Owners/ Managers of the Active Industrial Establishments According to Their Opinions for Main Indicators for the Month that Follow the Reference Month (July, 2008) Compared With the Reference Month in the Palestinian Territory**

<b>Problem</b>	<b>Total</b>	<b>Much Worse</b>	<b>Somewhat Worse</b>	<b>/ About the Same/ Unchanged</b>	<b>Somewhat Better</b>	<b>Much Better</b>	
Establishment performance in general	100	1.6	16.1	56.8	23.3	2.2	
Production situation	100	1.6	21.1	47.0	28.1	2.2	
Volume of sales	100	1.6	23.3	46.4	26.5	2.2	
Employees productivity	100	1.6	17.7	55.5	23.3	1.9	
Obtaining needed raw materials and inputs	100	1.6	5.4	81.3	9.8	1.9	
Problems of employees reaching place of work	100	0.6	1.3	92.4	5.4	0.3	
Regularity of work	100	1.3	8.2	79.8	9.8	0.9	
Level of employment	100	2.2	7.3	80.4	8.5	1.6	
Transporting finished goods to market	100	0.9	9.1	76.4	12.3	1.3	
Financial situations	100	1.3	14.2	69.3	13.6	1.6	
Banks credits & facilities	100	0.6	1.3	95.5	2.6	0.0	

\*

(2008 )

/

:2-12

**Table 12-2: Percentage Distribution of Owners/ Managers of the Active Industrial Establishments According to Their Opinions for Main Indicators for the Month that Follow the Reference Month (July, 2008) Compared With the Reference Month in the West Bank\***

<b>Problem</b>	<b>Total</b>	<b>Much Worse</b>	<b>Somewhat Worse</b>	<b>About the Same/ Unchanged</b>	<b>Somewhat Better</b>	<b>Much Better</b>
Establishment performance in general	100	0.0	16.3	63.0	20.0	0.7
Production situation	100	0.0	22.2	51.5	25.9	0.4
Volume of sales	100	0.0	24.8	50.7	24.1	0.4
Employees productivity	100	0.0	18.5	61.1	20.4	0.0
Obtaining needed raw materials and inputs	100	0.4	3.7	91.1	4.4	0.4
Problems of employees reaching place of work	100	0.0	0.4	95.5	4.1	0.0
Regularity of work	100	0.0	7.0	88.2	4.8	0.0
Level of employment	100	1.1	5.9	89.3	3.7	0.0
Transporting finished goods to market	100	0.4	9.3	81.8	8.5	0.0
Financial situations	100	0.4	14.8	75.9	8.9	0.0
Banks credits & facilities	100	0.0	0.8	97.7	1.5	0.0

\* West Bank includes Jerusalem Governorate with J1

\*

**Table 12-3: Percentage Distribution of Owners/ Managers of the Active Industrial Establishments According to Their Opinions for Main Indicators for the Month that Follow the Reference Month (July, 2008) Compared With the Reference Month in Gaza Strip**

<b>Problem</b>	<b>Total</b>	<b>Much Worse</b>	<b>Somewhat Worse</b>	<b>About the Same/ Unchanged</b>	<b>Somewhat Better</b>	<b>Much Better</b>
Establishment performance in general	100	10.6	14.9	21.3	42.6	10.6
Production situation	100	10.6	14.9	21.3	40.4	12.8
Volume of sales	100	10.6	14.9	21.3	40.4	12.8
Employees productivity	100	10.6	12.8	23.4	40.4	12.8
Obtaining needed raw materials and inputs	100	8.5	14.9	25.6	40.4	10.6
Problems of employees reaching place of work	100	4.3	6.4	74.4	12.8	2.1
Regularity of work	100	8.5	14.9	31.9	38.3	6.4
Level of employment	100	8.5	14.9	29.8	36.2	10.6
Transporting finished goods to market	100	4.3	8.5	44.7	34.0	8.5
Financial situations	100	6.4	10.6	32.0	40.4	10.6
Banks credits & facilities	100	4.3	4.3	82.9	8.5	0.0

**Table 13-1: Percentage Distribution of Owners/ Managers of the Active Industrial Establishments According to Their Opinions for Main Indicators During the Next Six Months Compared with Reference Month (July, 2008) in the Palestinian Territory**

<b>Problem</b>	<b>Total</b>	<b>Much Worse</b>	<b>Somewhat Worse</b>	<b>/ About the Same/ Unchanged</b>	<b>Somewhat Better</b>	<b>Much Better</b>	
Establishment performance in general	100	2.2	19.6	47.6	26.2	4.4	
Production situation	100	4.4	29.7	31.4	30.1	4.4	
Volume of sales	100	4.7	32.3	27.9	31.3	3.8	
Employees productivity	100	4.4	23.4	41.8	26.9	3.5	
Obtaining needed raw materials and inputs	100	2.5	6.3	75.4	13.6	2.2	
Problems of employees reaching place of work	100	0.6	1.9	89.9	7.0	0.6	
Regularity of work	100	3.8	13.9	67.8	12.0	2.5	
Level of employment	100	3.5	8.9	72.5	12.3	2.8	
Transporting finished goods to market	100	1.9	11.7	67.8	16.1	2.5	
Financial situations	100	2.5	19.0	58.5	16.8	3.2	
Banks credits & facilities	100	1.3	2.3	92.4	3.3	0.7	



\*

(2008 )

/

:2-13

**Table 13-2: Percentage Distribution of Owners/ Managers of the Active Industrial Establishments According to Their Opinions for Main Indicators During the Next Six Months Compared with Reference Month (July, 2008) in the West Bank\***

<b>Problem</b>	<b>Total</b>	<b>Much Worse</b>	<b>Somewhat Worse</b>	<b>About the Same/ Unchanged</b>	<b>Somewhat Better</b>	<b>Much Better</b>
Establishment performance in general	100	1.1	20.4	52.5	23.0	3.0
Production situation	100	3.3	32.6	33.7	27.4	3.0
Volume of sales	100	3.7	35.6	29.6	28.9	2.2
Employees productivity	100	3.3	25.6	45.1	24.1	1.9
Obtaining needed raw materials and inputs	100	1.5	5.2	83.7	8.5	1.1
Problems of employees reaching place of work	100	0.0	1.1	92.6	5.6	0.7
Regularity of work	100	3.0	14.1	75.1	6.3	1.5
Level of employment	100	2.6	8.1	80.8	7.0	1.5
Transporting finished goods to market	100	1.5	12.2	72.2	12.6	1.5
Financial situations	100	1.9	20.0	64.3	11.9	1.9
Banks credits & facilities	100	0.8	1.9	94.2	2.3	0.8

\* West Bank includes Jerusalem Governorate with J1

\*

**Table 13-3: Percentage Distribution of Owners/ Managers of the Active Industrial Establishments According to Their Opinions for Main Indicators During the Next Six Months Comparing with Reference Month (July, 2008) in Gaza Strip**

<b>Problem</b>	<b>Total</b>	<b>Much Worse</b>	<b>Somewhat Worse</b>	<b>About the Same/ Unchanged</b>	<b>Somewhat Better</b>	<b>Much Better</b>
Establishment performance in general	100	8.5	14.9	19.1	44.7	12.8
Production situation	100	10.9	13.0	17.4	45.7	13.0
Volume of sales	100	10.9	13.0	17.4	45.7	13.0
Employees productivity	100	10.9	10.9	21.7	43.5	13.0
Obtaining needed raw materials and inputs	100	8.7	13.0	26.1	43.5	8.7
Problems of employees reaching place of work	100	4.3	6.5	74.0	15.2	0.0
Regularity of work	100	8.7	13.0	23.9	45.7	8.7
Level of employment	100	8.7	13.0	23.9	43.5	10.9
Transporting finished goods to market	100	4.3	8.7	41.3	37.0	8.7
Financial situations	100	6.5	13.0	23.9	45.7	10.9
Banks credits & facilities	100	4.3	4.3	82.7	8.7	0.0