



(2011 - )  
2011

---

2011/5/18

تم إعداد هذا التقرير حسب الإجراءات المعيارية المحددة في ميثاق الممارسات للإحصاءات  
الرسمية الفلسطينية 2006

© 1432 - 2011

2011 : ( 2011 - ) : 2011

1647 . .

(970/972) 2 298 2700 :

(970/972) 2 298 2710 :

1800300300 :

diwan@pcbs.gov.ps :

<http://www.pcbs.gov.ps> :

---

7

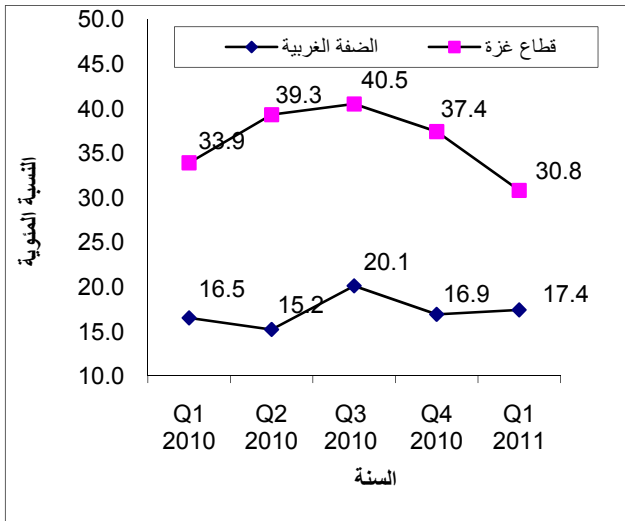
11

13

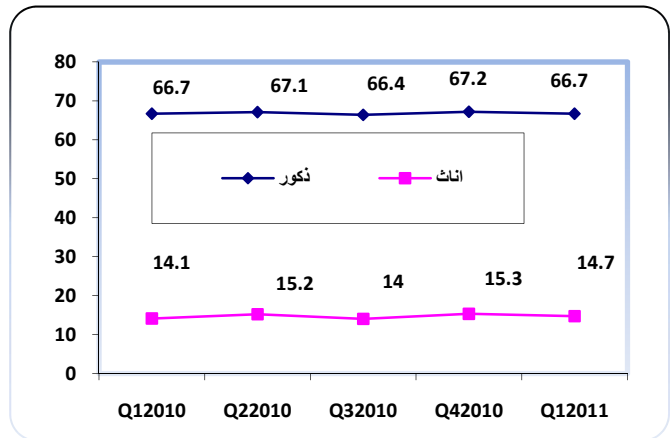
(2011 - ) 2011

• 15 %41.0  
 13  
 .%34.9  
 • 2011 997  
 %22.8 673  
 %22.4 324  
 .%35.2 %43.2  
 %37.0  
 • %66.7  
 2010 %29.9  
 .2011 %27.7 %14.7

2011-2010



2011-2010



%21.7

217

117

2011 2010

2010 687 100  
 2011 702 %30.8 •  
 13 %17.4 2011  
 27 %20.5 •  
 %27.3  
 19-15 •  
 %38.4  
 .2011  
 %40.9

2011 20.4 20.9 2010 39.0 39.8 2010

39.0 39.8 2010

2011

%66.7 %73.9 %68.8

%18.7 %18.9 %18.8

%5.8

%6.4 %4.4

%3.0 %8.0 %6.6

%55.2 %34.3

%41.7

85.0

64.6

43.2

2011 42.6 2010

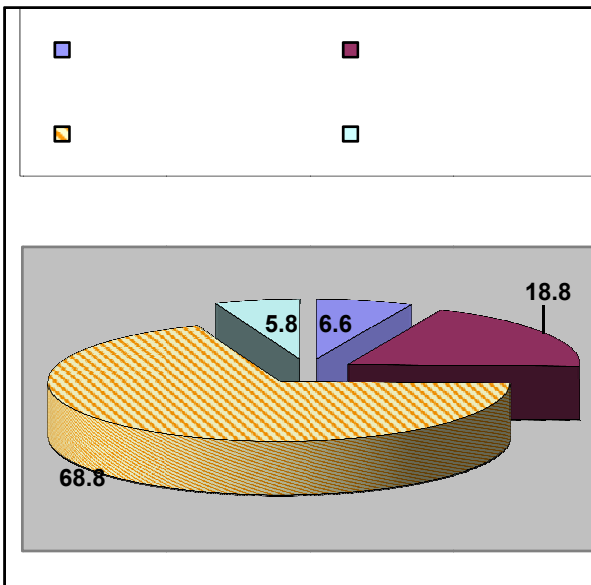
22.0

39.2 37.8

23.3 23.7

2011

78



2010 79

2011 78

31 2011 16

9 30

11 2010

2011

%19.3 %31.0 %49.7

%53.8

2010 160.5

2011 164.0



15

:

:

:

:

-4

-3

-2

.1

:(

)

:

:(

)

:(

)

:

35)

(

:

(

)

.(

)

( )

15

:1

2011 -

**Table 1: Percentage Distribution of Persons Aged 15 Years and Over in the Palestinian Territory by Labour Force Status and Region (Relaxed Definition), January- March, 2011**

Region	Labour Force Status					
	Total		Outside Labour Force		In Labour Force	
	(%)	Number	(%)	العدد Number	(%)	Number
<b>Palestinian Territory</b>	<b>100</b>	<b>2,432,200</b>	<b>55.6</b>	<b>1,353,000</b>	<b>44.4</b>	<b>1,079,200</b>
West Bank	100	1,556,800	53.2	827,700	46.8	729,100
Gaza Strip	100	875,400	60.0	525,300	40.0	350,100

( )

15

:2

2011 -

**Table 2: Percentage Distribution of Labour Force Participants Aged 15 Years and Over in the Palestinian Territory by Labour Force Components and Region (Relaxed Definition), January- March, 2011**

Region	Labour Force Components					
	Total		Unemployment		Employment	
	(%)	Number	(%)	العدد Number	(%)	Number
<b>Palestinian Territory</b>	<b>100</b>	<b>1,079,200</b>	<b>27.7</b>	<b>299,000</b>	<b>72.3</b>	<b>780,200</b>
West Bank	100	729,100	23.8	173,200	76.2	555,900
Gaza Strip	100	350,100	35.9	125,800	64.1	224,300



2011 -

**Table 3: Percentage Distribution of Persons Aged 15 Years and Over in the Palestinian Territory by Labour Force Status, Region and Sex(ILO Standards), January- March, 2011**

Region	Labour Force Status					
	Total		Outside Labour Force		In Labour Force	
	(%)	Number	(%)	العدد Number	(%)	Number
<b>Palestinian Territory</b>						
Males	100	1,230,200	33.3	409,600	66.7	820,600
Females	100	1,202,000	85.3	1,025,700	14.7	176,300
<b>Total</b>	<b>100</b>	<b>2,432,200</b>	<b>59.0</b>	<b>1,435,300</b>	<b>41.0</b>	<b>996,900</b>
<b>West Bank</b>						
Males	100	788,000	31.0	243,900	69.0	544,100
Females	100	768,800	83.3	640,200	16.7	128,600
<b>Total</b>	<b>100</b>	<b>1,556,800</b>	<b>56.8</b>	<b>884,100</b>	<b>43.2</b>	<b>672,700</b>
<b>Gaza Strip</b>						
Males	100	442,200	37.5	165,700	62.5	276,500
Females	100	433,200	89.0	385,500	11.0	47,700
<b>Total</b>	<b>100</b>	<b>875,400</b>	<b>63.0</b>	<b>551,200</b>	<b>37.0</b>	<b>324,200</b>

2011 -

**Table 4: Percentage Distribution of Labour Force Participants Aged 15 Years and Over in the Palestinian Territory by Labour Force Components, Region and Sex (ILO Standards), January- March, 2011**

Region and Sex	Labour Force Components							
	Total		Unemployment		العمالة Underemployment		Full Employment	
	(%)	Number	(%)	العدد Number	(%)	Number	(%)	Number
<b>Palestinian Territory</b>								
Males	100	820,600	20.5	168,600	10.0	82,300	69.5	569,700
Females	100	176,300	27.3	48,100	3.2	5,600	69.5	122,600
<b>Total</b>	<b>100</b>	<b>996,900</b>	<b>21.7</b>	<b>216,700</b>	<b>8.8</b>	<b>87,900</b>	<b>69.5</b>	<b>692,300</b>
<b>West Bank</b>								
Males	100	544,100	16.3	88,800	11.7	63,800	72.0	391,500
Females	100	128,600	21.8	28,000	3.0	3,900	75.2	96,700
<b>Total</b>	<b>100</b>	<b>672,700</b>	<b>17.4</b>	<b>116,800</b>	<b>10.1</b>	<b>67,700</b>	<b>72.5</b>	<b>488,200</b>
<b>Gaza Strip</b>								
Males	100	276,500	28.9	79,800	6.7	18,500	64.4	178,200
Females	100	47,700	42.1	20,100	3.6	1,700	54.3	25,900
<b>Total</b>	<b>100</b>	<b>324,200</b>	<b>30.8</b>	<b>99,900</b>	<b>6.2</b>	<b>20,200</b>	<b>63.0</b>	<b>204,100</b>

2011 -

**Table 5: Labour Force Status for Graduates who hold Associate Diploma Certificate and Above by Specialization (ILO Standards), January- March, 2011**

Specialization	Total	المتعطلون Unemployed	العاملون Employed	Outside Labour Force	Labour Force
Education Science and Teacher Rehabilitation	100	32.9	67.1	31.9	68.1
Humanities	100	23.9	76.1	27.9	72.1
Social and Behavioral Science	100	26.6	73.4	18.5	81.5
Mass media and Information	100	33.4	66.6	10.3	89.7
Business and Administration	100	20.9	79.1	22.5	77.5
Law	100	12.2	87.8	23.3	76.7
Natural Sciences	100	22.1	77.9	24.2	75.8
Mathematics and Statistics	100	31.4	68.6	19.5	80.5
Computer	100	24.8	75.2	20.3	79.7
Engineering and Engineering Occupations	100	18.0	82.0	13.0	87.0
Architectural and Construction	100	20.0	80.0	17.9	82.1
Health	100	16.9	83.1	20.0	80.0
Personal Services	100	18.5	81.5	19.0	81.0
Other Specialization	100	23.6	76.4	24.6	75.4
<b>Total</b>	<b>100</b>	<b>23.3</b>	<b>76.7</b>	<b>22.6</b>	<b>77.4</b>

2011 -

**Table 6: Labour Force Participation Rate of Persons Aged 15 Years and Over in the Palestinian Territory by Age Group and Sex (ILO Standards), January- March, 2011**

Age Group	Total	Sex		
		Females	Males	
15-19	13.8	1.5	25.6	19-15
20-24	40.6	16.5	63.7	24-20
25-29	55.0	24.7	83.8	29-25
30-34	57.1	21.3	91.6	34-30
35-39	57.5	20.6	93.5	39-35
40-44	57.5	21.6	91.9	44-40
45-49	56.2	18.8	90.8	49-45
50+	29.6	8.5	52.5	+50
<b>Total</b>	<b>41.0</b>	<b>14.7</b>	<b>66.7</b>	

2011 -

**Table 7: Labour Force Participation Rate of Persons Aged 15 Years and Over in the Palestinian Territory by Age and Region (ILO Standards), January- March, 2011**

Age Group	Region			
	Gaza Strip	West Bank	Palestinian Territory	
15-19	9.4	16.6	13.8	19-15
20-24	36.1	43.3	40.6	24-20
25-29	54.3	55.3	55.0	29-25
30-34	54.5	58.6	57.1	34-30
35-39	54.8	58.8	57.5	39-35
40-44	53.4	59.6	57.5	44-40
45-49	53.9	57.4	56.2	49-45
50+	24.3	32.2	29.6	+50
<b>Total</b>	<b>37.0</b>	<b>43.2</b>	<b>41.0</b>	

2011 -

**Table 8: Labour Force Participation Rate of Persons Aged 15 Years and Over in the Palestinian Territory by Years of Schooling and Sex (ILO Standards), January- March, 2011**

Years of Schooling	Total	Sex		
		Females	Males	
0	10.3	5.6	25.9	0
1-6	43.5	10.2	72.8	6-1
7-9	39.6	5.4	68.7	9-7
10-12	35.5	5.9	64.6	12-10
13+	55.0	40.6	68.4	+13
<b>Total</b>	<b>41.0</b>	<b>14.7</b>	<b>66.7</b>	

2011 -

**Table 9: Labour Force Participation Rate of Persons Aged 15 Years and Over in the Palestinian Territory by Years of Schooling and Region (ILO Standards), January- March, 2011**

Years of Schooling	Region			
	Gaza Strip	West Bank	Palestinian Territory	
0	7.3	11.9	10.3	0
1-6	46.1	42.4	43.5	6-1
7-9	32.4	43.1	39.6	9-7
10-12	28.1	39.9	35.5	12-10
13+	54.8	55.2	55.0	+13
<b>Total</b>	<b>37.0</b>	<b>43.2</b>	<b>41.0</b>	

2011 - (ILO )

**Table 10: Labour Force Participation Rate and Unemployment Rate of Persons Aged 15 Years and Over in the Palestinian Territory by Region, Sex and Refugee Status (ILO Standards), January- March, 2011**

Refugee Status and Region	Unemployment Rate			Labour Force Participation Rate		
	Total	Females	Males	Total	Females	Males
<b>Palestinian Territory</b>						
Refugee	26.7	33.1	25.3	39.1	14.1	64.1
Non-Refugee	18.9	23.9	17.9	42.2	15.1	68.3
<b>Total</b>	<b>21.7</b>	<b>27.3</b>	<b>20.5</b>	<b>41.0</b>	<b>14.7</b>	<b>66.7</b>
<b>West Bank</b>						
Refugee	21.4	22.7	21.1	42.1	15.7	68.4
Non-Refugee	16.1	21.5	14.8	43.6	17.1	69.3
<b>Total</b>	<b>17.4</b>	<b>21.8</b>	<b>16.3</b>	<b>43.2</b>	<b>16.7</b>	<b>69.0</b>
<b>Gaza Strip</b>						
Refugee	30.9	42.2	28.6	36.9	12.9	61.0
Non-Refugee	30.6	42.0	29.3	37.2	7.9	64.9
<b>Total</b>	<b>30.8</b>	<b>42.1</b>	<b>28.9</b>	<b>37.0</b>	<b>11.0</b>	<b>62.5</b>

2011 - (ILO )

**Table 11: Labour Force Participation Rate and Unemployment Rate of Persons Aged 15 Years and Over in the Palestinian Territory by Region, Sex and Marital Status (ILO Standards), January- March, 2011**

Marital Status and Region	Unemployment Rate			Labour Force Participation Rate		
	Total	Females	Males	Total	Females	Males
<b>Palestinian Territory</b>						
Never Married	35.3	36.8	35.0	32.0	13.8	45.9
Currently Married	15.8	23.3	14.4	49.0	15.9	83.1
Other	17.9	15.8	21.8	12.2	8.8	42.0
<b>Total</b>	<b>21.7</b>	<b>27.3</b>	<b>20.5</b>	<b>41.0</b>	<b>14.7</b>	<b>66.7</b>
<b>West Bank</b>						
Never Married	27.2	27.2	27.2	35.9	16.7	50.5
Currently Married	12.7	19.4	11.3	50.1	17.6	83.6
Other	15.1	14.8	15.6	13.1	9.9	42.7
<b>Total</b>	<b>17.4</b>	<b>21.8</b>	<b>16.3</b>	<b>43.2</b>	<b>16.7</b>	<b>69.0</b>
<b>Gaza Strip</b>						
Never Married	55.5	67.2	53.3	25.1	8.9	37.8
Currently Married	21.8	33.2	20.0	47.1	12.8	82.3
Other	24.2	18.4	32.7	10.5	7.0	40.7
<b>Total</b>	<b>30.8</b>	<b>42.1</b>	<b>28.9</b>	<b>37.0</b>	<b>11.0</b>	<b>62.5</b>

2011 - (ILO )

**Table 12: Labour Force Participation Rate and Unemployment Rate for Persons Aged 15 Years and Over in the Palestinian Territory by Region, Type of locality and Sex (ILO Standards), January- March, 2011**

Type of locality and Region	Unemployment Rate			Labour Force Participation Rate		
	Total	Females	Males	Total	Females	Males
<b>Palestinian Territory</b>						
Urban	22.2	28.5	20.9	40.8	14.4	66.4
Rural	18.0	20.3	17.4	44.2	17.1	69.8
Camps	26.1	34.0	24.3	36.8	12.6	63.1
<b>Total</b>	<b>21.7</b>	<b>27.3</b>	<b>20.5</b>	<b>41.0</b>	<b>14.7</b>	<b>66.7</b>
<b>West Bank</b>						
Urban	17.0	22.5	15.7	43.0	16.7	68.8
Rural	17.3	19.1	16.8	44.5	17.4	70.0
Camps	21.8	26.1	20.8	40.5	14.5	68.2
<b>Total</b>	<b>17.4</b>	<b>21.8</b>	<b>16.3</b>	<b>43.2</b>	<b>16.7</b>	<b>69.0</b>
<b>Gaza Strip</b>						
Urban	31.0	42.1	29.1	37.5	10.9	62.9
Rural	30.8	47.5	27.9	40.0	12.1	67.4
Camps	29.8	41.2	27.4	34.1	11.3	59.3
<b>Total</b>	<b>30.8</b>	<b>42.1</b>	<b>28.9</b>	<b>37.0</b>	<b>11.0</b>	<b>62.5</b>

(ILO )

(29-15)

:13

2011 -

**Table 13: Percentage Distribution of Youth Aged (15-29) Years in the Palestinian Territory by Labour Force Status, Region and Sex (ILO Standards), January- March, 2011**

Labour Force Status	Gaza Strip			West Bank			Palestinian Territory		
	Total	Females	Males	Total	Females	Males	Total	Females	Males
In Labour Force	29.9	10.5	48.6	35.7	13.8	56.6	33.5	12.6	53.6
Outside Labour Force	70.1	89.5	51.4	64.3	86.2	43.4	66.5	87.4	46.4
<b>Total</b>	<b>100</b>	<b>100</b>	<b>100</b>	<b>100</b>	<b>100</b>	<b>100</b>	<b>100</b>	<b>100</b>	<b>100</b>
Full Employment	45.6	31.2	48.7	62.6	56.7	63.9	56.8	48.6	58.7
Underemployment	7.4	4.7	8.0	10.2	4.6	11.5	9.3	4.6	10.3
Unemployment	47.0	64.1	43.3	27.2	38.7	24.6	33.9	46.8	31.0
<b>Total</b>	<b>100</b>	<b>100</b>	<b>100</b>	<b>100</b>	<b>100</b>	<b>100</b>	<b>100</b>	<b>100</b>	<b>100</b>

2011 - (ILO )

**Table 14: Unemployment Rate of Participants in the Labour Force Aged 15 Years and Over in the Palestinian Territory by Age Group and Sex (ILO Standards), January- March, 2011**

Age Group	Total	Sex		
		Females	Males	
15-19	38.4	27.5	39.0	19-15
20-24	38.1	56.7	33.5	24-20
25-29	28.2	40.2	24.8	29-25
30-34	15.9	25.0	13.9	34-30
35-39	11.8	12.4	11.6	39-35
40-44	12.8	11.3	13.2	44-40
45-49	13.3	4.0	15.1	49-45
50+	12.0	3.0	13.6	+50
<b>Total</b>	<b>21.7</b>	<b>27.3</b>	<b>20.5</b>	

2011 - (ILO )

**Table 15: Unemployment Rate of Participants in the Labour Force Aged 15 Years and Over in the Palestinian Territory by Age and Region (ILO Standards), January- March, 2011**

Age Group	Region			
	Gaza Strip	West Bank	Palestinian Territory	
15-19	54.1	32.8	38.4	19-15
20-24	57.1	28.4	38.1	24-20
25-29	36.2	23.4	28.2	29-25
30-34	20.7	13.4	15.9	34-30
35-39	14.8	10.3	11.8	39-35
40-44	17.6	10.7	12.8	44-40
45-49	21.5	9.5	13.3	49-45
50+	19.5	9.3	12.0	+50
<b>Total</b>	<b>30.8</b>	<b>17.4</b>	<b>21.7</b>	

2011 - (ILO )

**Table 16: Unemployment Rate of Participants in the Labour Force Aged 15 Years and Over in the Palestinian Territory by Years of Schooling and Sex (ILO Standards), January- March, 2011**

Years of Schooling	Total	Sex		
		Females	Males	
0	15.5	4.1	23.4	0
1-6	23.1	2.2	25.6	6-1
7-9	22.6	9.9	23.4	9-7
10-12	20.5	19.5	20.6	12-10
13+	22.1	34.9	15.1	+13
<b>Total</b>	<b>21.7</b>	<b>27.3</b>	<b>20.5</b>	

2011 - (ILO )

**Table 17: Unemployment Rate of Participants in the Labour Force Aged 15 Years and Over in the Palestinian Territory by Years of Schooling and Region (ILO Standards), January- March, 2011**

Years of Schooling	Region			
	Gaza Strip	West Bank	Palestinian Territory	
0	40.9	7.4	15.5	0
1-6	38.0	16.1	23.1	6-1
7-9	33.2	18.6	22.6	9-7
10-12	27.9	17.3	20.5	12-10
13+	29.4	17.5	22.1	+13
<b>Total</b>	<b>30.8</b>	<b>17.4</b>	<b>21.7</b>	<b>المجموع</b>

:18

2011 - (ILO )

**Table 18: Labour Force Participation, Employment and Unemployment and Average Daily Wage in NIS for Wage Employees in the Palestinian Territory by Governorate (ILO Standards), January- March, 2011**

Governorate and Region	Average Daily Wage in NIS for Wage Employees	Unemployment		العمالة Employment		Labour Force Participation	
		عدد Number	نسبة (%)	عدد Number	نسبة (%)	عدد Number	نسبة (%)
Jenin	87.1	11,400	15.3	63,100	84.7	74,500	42.6
Tubas	84.1	1,900	12.1	13,800	87.9	15,700	45.4
Tulkarm	84.8	7,100	17.8	32,900	82.2	40,000	37.6
Nablus	87.0	11,200	11.6	85,900	88.4	97,100	46.4
Qalqilia	89.0	4,300	16.9	21,200	83.1	25,500	40.0
Salfeet	110.6	3,600	19.2	15,100	80.8	18,700	47.5
Ramallah & Al-Bireh	106.0	15,600	18.6	68,400	81.4	84,000	42.7
Jericho & AL- Aghwar	84.5	1,500	11.1	11,900	88.9	13,400	48.1
Jerusalem	144.9	11,700	13.2	76,900	86.8	88,600	38.2
Bethlehem	109.1	12,500	22.8	42,200	77.2	54,700	47.3
Hebron	91.2	36,000	22.4	124,500	77.6	160,500	45.0
<b>West Bank</b>	<b>101.8</b>	<b>116,800</b>	<b>17.4</b>	<b>555,900</b>	<b>82.6</b>	<b>672,700</b>	<b>43.2</b>
GS-North	67.4	18,800	29.6	44,800	70.4	63,600	38.2
Gaza City	64.4	33,300	30.6	75,400	69.4	108,700	35.0
Deir ALBalah	69.8	11,900	24.9	35,800	75.1	47,700	38.0
Khan Younis	54.6	22,500	35.2	41,400	64.8	63,900	38.2
Rafah	70.1	13,400	33.2	26,900	66.8	40,300	38.4
<b>Gaza Strip</b>	<b>64.6</b>	<b>99,900</b>	<b>30.8</b>	<b>224,300</b>	<b>69.2</b>	<b>324,200</b>	<b>37.0</b>
<b>Palestinian Territory</b>	<b>92.4</b>	<b>216,700</b>	<b>21.7</b>	<b>780,200</b>	<b>78.3</b>	<b>996,900</b>	<b>41.0</b>

2011 -

**Table 19: The Average of Unemployment Duration in Months in the Palestinian Territory by Region and Sex (ILO Standards), January- March, 2011**

Region	Total	Sex	
		Females	Males
<b>Palestinian Territory</b>	<b>13.4</b>	<b>16.4</b>	<b>12.6</b>
West Bank	9.1	14.7	7.4
Gaza Strip	18.5	18.9	18.4

**Note:** Unemployed period means the period of being Unemployed since the individual was a available for work or leaving last work

2011 -

**Table 20: Percentage Distribution of Employed Persons Aged 15 Years and Over in the Palestinian Territory by Governorate and Place of work (ILO Standards), January- March, 2011**

Governorate and Region	Percentage of Employment	Place of work			
		Total	Israel and Settlements	Other Governorate	Same Governorate
<b>Jenin</b>	84.7	100	9.6	11.7	78.7
Tubas	87.9	100	8.2	20.2	71.5
Tulkarm	82.2	100	8.2	13.4	78.4
Nablus	88.4	100	8.2	11.0	80.8
Qalqilia	83.1	100	16.6	9.3	74.1
Salfeet	80.8	100	19.4	18.3	62.3
Ramallah & Al-Bireh	81.4	100	5.0	1.1	93.9
Jericho & AL- Aghwar	88.9	100	11.8	1.9	86.3
Jerusalem	86.8	100	39.6	9.9	50.5
Bethlehem	77.2	100	11.3	6.8	81.9
Hebron	77.6	100	11.6	6.0	82.4
<b>West Bank</b>	<b>82.6</b>	<b>100</b>	<b>14.0</b>	<b>8.6</b>	<b>77.4</b>
GS-North	70.4	100	0.0	35.9	64.1
Gaza City	69.4	100	0.0	4.9	95.1
Deir ALBalah	75.1	100	0.0	31.7	68.3
Khan Younis	64.8	100	0.0	15.3	84.7
Rafah	66.8	100	0.0	18.6	81.4
<b>Gaza Strip</b>	<b>69.2</b>	<b>100</b>	<b>0.0</b>	<b>18.9</b>	<b>81.1</b>
<b>Palestinian Territory</b>	<b>78.3</b>	<b>100</b>	<b>10.0</b>	<b>11.6</b>	<b>78.4</b>



2011 -

**Table 21: Percentage Distribution of Employed Persons Aged 15 Years and Over in the Palestinian Territory by Economic Activity and Place of work (ILO Standards), January- March, 2011**

Economic Activity	Total	Place of work		
		Israel and Settlements	Gaza Strip	West Bank
Agriculture, fishing and forestry	10.6	5.7	10.5	11.5
Mining, quarrying and manufacturing	11.5	12.8	5.0	14.4
Construction	13.8	53.8	4.9	11.5
Commerce, restaurants and hotels	20.0	13.1	16.8	22.7
Transportation, storage and communication	6.4	7.6	7.6	5.6
Services and other branches	37.7	7.0	55.2	34.3
<b>Total</b>	<b>100</b>	<b>100</b>	<b>100</b>	<b>100</b>

2011 -

**Table 22: Number of Employed Persons Aged 15 Years and Over in the Palestinian Territory by Place of work and Region (ILO Standards), January- March, 2011**

Place of work	Region		
	Gaza Strip	West Bank	Palestinian Territory
West Bank	0	477,500	477,500
Gaza Strip	224,300	0	224,300
Israel	0	67,100	67,100
Settlements	0	10,800	10,800
Abroad*	0	500	500
<b>Total</b>	<b>224,300</b>	<b>555,900</b>	<b>780,200</b>

(\* ): Represent only head of households who are working abroad and they back annually to their households in the Palestinian Territory, and do not include household member who are living and working abroad.

:(\*)

2011 -

**Table 23: Percentage Distribution of Employed Persons Aged 15 Years and Over in the Palestinian Territory by Economic Activity, Sex and Region (ILO Standards), January- March, 2011**

Economic Activity and Sex	Region			
	Gaza Strip	West Bank	Palestinian Territory	
<b>Both Sexes</b>				
Agriculture, fishing and forestry	10.5	10.6	10.6	
Mining, quarrying and manufacturing	5.0	14.1	11.5	
Construction	4.9	17.4	13.8	
Commerce, restaurants and hotels	16.8	21.3	20.0	
Transportation, storage and communication	7.6	5.9	6.4	
Services and other branches	55.2	30.7	37.7	
<b>Total</b>	<b>100</b>	<b>100</b>	<b>100</b>	
<b>Males</b>				ذكور
Agriculture, fishing and forestry	10.5	8.8	9.3	
Mining, quarrying and manufacturing	5.6	14.8	12.0	
Construction	5.5	21.2	16.5	
Commerce, restaurants and hotels	18.6	23.7	22.2	
Transportation, storage and communication	8.6	7.0	7.5	
Services and other branches	51.2	24.5	32.5	
<b>Total</b>	<b>100</b>	<b>100</b>	<b>100</b>	
<b>Females</b>				
Agriculture, fishing and forestry	10.7	18.9	17.1	
Mining, quarrying and manufacturing	0.5	11.0	8.8	
Construction	-	0.2	0.2	
Commerce, restaurants and hotels	3.9	10.6	9.2	
Transportation, storage and communication	0.7	0.8	0.8	
Services and other branches	84.2	58.5	63.9	
<b>Total</b>	<b>100</b>	<b>100</b>	<b>100</b>	

(-): means there are no enough observations in this section

:(-)

**Table 24: Percentage Distribution of Employed Persons Aged 15 Years and Over in the Palestinian Territory by Governorate, Region and Economic Activity (ILO Standards), January- March, 2011**

Governorate And Region	Economic Activity									
	Total	Services and other branches	Health	Education	Transportation, storage and communication	Commerce, restaurants and hotels	Construction	Mining, quarrying and manufacturing	Agriculture, fishing and forestry	
Jenin	100	16.5	3.5	9.2	3.1	26.2	8.2	11.8	21.5	
Tubas	100	17.5	2.6	9.4	5.6	15.0	6.4	4.6	38.9	
Tulkarm	100	21.9	4.4	9.1	5.4	15.8	18.4	9.7	15.3	
Nablus	100	19.6	3.0	10.8	7.7	23.6	11.5	15.8	8.0	
Qalqilia	100	18.9	3.9	12.1	7.6	19.4	15.9	12.8	9.4	
Salfeet	100	27.1	1.7	15.4	8.1	16.7	9.0	16.9	5.1	
Ramallah & Al-Bireh	100	27.4	3.2	13.7	5.9	21.4	10.6	15.2	2.6	
Jericho & AL- Aghwar	100	26.8	1.4	6.9	4.3	13.9	8.0	5.2	33.5	
Jerusalem	100	19.3	6.0	14.3	9.5	23.6	14.1	10.5	2.7	
Bethlehem	100	17.0	5.8	15.0	3.7	19.5	12.0	18.2	8.8	
Hebron	100	12.9	4.0	10.6	3.9	26.5	11.0	17.8	13.3	
<b>West Bank</b>	<b>100</b>	<b>18.8</b>	<b>3.9</b>	<b>11.6</b>	<b>5.6</b>	<b>22.7</b>	<b>11.5</b>	<b>14.4</b>	<b>11.5</b>	
GS-North	100	39.8	5.9	15.2	7.7	13.5	4.5	4.6	8.8	
Gaza City	100	31.0	7.6	13.0	9.1	25.2	4.0	7.4	2.7	
Deir ALBalah	100	35.9	4.9	13.5	7.0	10.4	5.9	3.4	19.0	
Khan Younis	100	35.2	5.5	12.5	6.2	15.3	6.1	2.9	16.3	
Rafah	100	35.2	8.8	16.2	6.2	9.5	4.6	4.2	15.3	
<b>Gaza Strip</b>	<b>100</b>	<b>34.8</b>	<b>6.6</b>	<b>13.8</b>	<b>7.6</b>	<b>16.8</b>	<b>4.9</b>	<b>5.0</b>	<b>10.5</b>	
<b>Palestinian Territory</b>	<b>100</b>	<b>23.8</b>	<b>4.8</b>	<b>12.3</b>	<b>6.3</b>	<b>20.8</b>	<b>9.4</b>	<b>11.4</b>	<b>11.2</b>	

**Note:** Workers in Israel and Settlements are excluded

:

2011 -

**Table 25: Percentage Distribution of Employed Persons Aged 15 Years and Over in the Palestinian Territory by Economic Activity, Employment Status and Region (ILO Standards), January- March, 2011**

Economic Activity and Region	Employment Status				
	Total	Unpaid Family Member	Wage Employee	Self Employed	Employer
<b>Palestinian Territory</b>					
Agriculture, fishing and forestry	10.6	62.9	3.8	20.7	6.3
Mining, quarrying and manufacturing	11.5	9.5	11.2	9.0	23.3
Construction	13.8	3.9	16.2	6.8	18.1
Commerce, restaurants and hotels	20.0	21.6	12.9	40.0	35.9
Transportation, storage and communication	6.4	0.8	5.1	14.1	2.4
Services and other branches	37.7	1.3	50.8	9.4	14.0
<b>Total</b>	<b>100</b>	<b>100</b>	<b>100</b>	<b>100</b>	<b>100</b>
<b>West Bank</b>					
Agriculture, fishing and forestry	10.6	64.9	2.9	21.8	5.2
Mining, quarrying and manufacturing	14.1	11.0	14.1	11.1	24.4
Construction	17.4	2.5	21.7	6.8	19.2
Commerce, restaurants and hotels	21.3	19.3	15.2	38.0	34.6
Transportation, storage and communication	5.9	1.0	5.3	11.5	2.2
Services and other branches	30.7	1.3	40.8	10.8	14.4
<b>Total</b>	<b>100</b>	<b>100</b>	<b>100</b>	<b>100</b>	<b>100</b>
<b>Gaza Strip</b>					
Agriculture, fishing and forestry	10.5	55.6	5.9	17.8	13.5
Mining, quarrying and manufacturing	5.0	4.3	4.9	3.6	15.6
Construction	4.9	9.0	3.9	6.7	10.5
Commerce, restaurants and hotels	16.8	29.8	7.8	45.0	44.7
Transportation, storage and communication	7.6	-	4.9	20.7	4.2
Services and other branches	55.2	1.3	72.6	6.2	11.5
<b>Total</b>	<b>100</b>	<b>100</b>	<b>100</b>	<b>100</b>	<b>100</b>

(-): means there are no enough observations in this section

:(-)

2011 - (ILO )

**Table 26: Percentage Distribution of Employed Persons From the Palestinian Territory by Economic Activity and Weekly Work Hours (ILO Standards), January- March, 2011**

Economic Activity	Total	Weekly Work Hours		
		+35	34-15	14-1
Agriculture, Hunting & Fishing	11.5	8.5	18.5	45.9
Mining, Quarrying & Manufacturing	12.2	12.8	9.4	12.0
Construction	14.7	13.6	20.5	12.7
Commerce, Hotels & Restaurants	21.6	25.0	7.7	10.9
Transportation, Storage & Communication	6.9	7.9	3.0	3.7
Services & Other Branches	33.1	32.2	40.9	14.8
<b>Total</b>	<b>100</b>	<b>100</b>	<b>100</b>	<b>100</b>

**Note:** Employed persons excluding absent persons

:

(ILO )

15

:27

2011 -

**Table 27: Percentage Distribution of Employed Persons Aged 15 Years and Over in the Palestinian Territory by Occupation and Region (ILO Standards), January- March, 2011**

Occupation	Region		
	Gaza Strip	West Bank	Palestinian Territory
Legislators, Senior Officials & Managers	2.5	6.3	5.2
Professionals, Technicians, Associates and Clerks	33.7	23.1	26.2
Service, Shop & Market Workers	24.3	16.5	18.8
Skilled Agricultural & Fishery Workers	6.1	8.7	8.0
Craft and Related Trade Workers	9.4	18.1	15.6
Plant & Machine Operators & Assemblers	8.3	7.8	7.9
Elementary Occupations	15.7	19.5	18.3
<b>Total</b>	<b>100</b>	<b>100</b>	<b>100</b>

2011 -

**Table 28: Percentage Distribution of Employed Persons Aged 15 Years and Over in the Palestinian Territory by Occupation, Educational Qualification and Region (ILO Standards), January- March, 2011**

Occupation and Region	Educational Qualification				
	Total	Bachelor and above	Associate diploma	Secondary certificate	Preparatory & less
<b>Palestinian Territory</b>					
Legislators, Senior Officials & Managers	100	36.3	8.5	17.1	38.1
Professionals, Technicians, Associates and Clerks	100	66.7	15.9	9.7	7.7
Service, Shop & Market Workers	100	7.0	6.6	24.1	62.3
Skilled Agricultural & Fishery Workers	100	2.7	1.0	12.2	84.1
Craft and Related Trade Workers	100	2.2	3.7	15.9	78.2
Plant & Machine Operators & Assemblers	100	2.4	4.9	19.7	73.0
Elementary Occupations	100	1.9	3.1	12.8	82.2
<b>Total</b>	<b>100</b>	<b>21.7</b>	<b>7.5</b>	<b>15.3</b>	<b>55.5</b>
<b>West Bank</b>					
Legislators, Senior Officials & Managers	100	30.3	9.0	17.5	43.2
Professionals, Technicians, Associates and Clerks	100	63.4	17.3	9.4	9.9
Service, Shop & Market Workers	100	6.0	6.5	22.2	65.3
Skilled Agricultural & Fishery Workers	100	2.7	0.8	11.8	84.7
Craft and Related Trade Workers	100	1.6	3.2	15.7	79.5
Plant & Machine Operators & Assemblers	100	2.1	5.4	18.7	73.8
Elementary Occupations	100	2.0	3.1	11.8	83.1
<b>Total</b>	<b>100</b>	<b>18.6</b>	<b>7.3</b>	<b>14.6</b>	<b>59.5</b>
<b>Gaza Strip</b>					
Legislators, Senior Officials & Managers	100	73.3	5.3	14.7	6.7
Professionals, Technicians, Associates and Clerks	100	71.9	13.7	10.3	4.1
Service, Shop & Market Workers	100	8.7	6.7	27.4	57.2
Skilled Agricultural & Fishery Workers	100	3.0	1.7	13.4	81.9
Craft and Related Trade Workers	100	5.1	6.0	16.9	72.0
Plant & Machine Operators & Assemblers	100	2.6	3.9	22.1	71.4
Elementary Occupations	100	1.6	3.0	16.0	79.4
<b>Total</b>	<b>100</b>	<b>29.4</b>	<b>7.8</b>	<b>17.2</b>	<b>45.6</b>

2011 -

**Table 29: Percentage Distribution of Employed Persons Aged 15 Years and Over in the Palestinian Territory by Employment Status, Sex and Region (ILO Standards), January- March, 2011**

Employment Status and Sex	Region			
	Gaza Strip	West Bank	Palestinian Territory	
<b>Both Sexes</b>				
Employer	3.0	8.0	6.6	
Self Employed	18.7	18.9	18.8	
Wage Employee	73.9	66.7	68.8	
Unpaid Family Member	4.4	6.4	5.8	
<b>Total</b>	<b>100</b>	<b>100</b>	<b>100</b>	
<b>Males</b>				ذكور
Employer	3.1	9.4	7.5	
Self Employed	20.8	20.2	20.4	
Wage Employee	72.5	66.5	68.3	
Unpaid Family Member	3.6	3.9	3.8	
<b>Total</b>	<b>100</b>	<b>100</b>	<b>100</b>	
<b>Females</b>				
Employer	1.8	2.0	1.9	
Self Employed	4.2	13.0	11.1	
Wage Employee	84.3	67.4	71.1	
Unpaid Family Member	9.7	17.6	15.9	
<b>Total</b>	<b>100</b>	<b>100</b>	<b>100</b>	

2011 -

**Table 30: Percentage Distribution of Employed Persons Aged 15 Years and Over in the Palestinian Territory by Place of Work and Region (ILO Standards), January- March, 2011**

Place of Work	Region						
	Gaza Strip		West Bank		Palestinian Territory		
	(%)	Number	(%)	Number	(%)	Number	
Palestinian Territory	100.0	224,300	85.9	477,500	89.9	701,800	
Israel and Settlements (Persons who have Permit)	0	0	5.6	31,300	4.0	31,300	)
Israel and Settlements (Persons who not have Permit)	0	0	3.0	16,400	2.1	16,400	)
Israel and Settlements (Persons who have Israeli Identity or foreign passport)	0	0	5.4	30,200	3.9	30,200	)
Abroad*	0	0	0.1	500	0.1	500	)
<b>Total</b>	<b>100</b>	<b>224,300</b>	<b>100</b>	<b>555,900</b>	<b>100</b>	<b>780,200</b>	

(\* ): Represent only head of households who are working abroad and they back annually to their households in the Palestinian Territory, and do not include household member who are living and working abroad.

:(\*)

2011 -

**Table 31: Percentage Distribution of Employed Persons Aged 15 Years and Over in the Palestinian Territory by Governorate, Region and Employment Status (ILO Standards), January- March, 2011**

Governorate and Region	Total	Employment Status				
		Unpaid Family Member	Wage Employee	Self Employed	Employer	
Jenin	100	12.3	56.8	25.4	5.5	
Tubas	100	19.8	55.0	20.9	4.3	
Tulkarm	100	4.7	72.6	14.4	8.3	
Nablus	100	4.4	64.4	22.4	8.8	
Qalqilia	100	2.2	76.7	15.5	5.6	
Salfeet	100	3.6	72.4	17.9	6.1	
Ramallah & Al-Bireh	100	3.2	74.9	16.4	5.5	
Jericho & AL- Aghwar	100	15.0	63.0	18.6	3.4	
Jerusalem	100	2.4	76.3	13.1	8.2	
Bethlehem	100	6.3	67.8	16.6	9.3	
Hebron	100	8.3	60.0	20.5	11.2	
<b>West Bank</b>	<b>100</b>	<b>6.4</b>	<b>66.7</b>	<b>18.9</b>	<b>8.0</b>	
GS-North	100	4.3	76.1	16.8	2.8	
Gaza City	100	2.6	75.7	18.5	3.2	
Deir ALBalah	100	8.7	64.4	24.2	2.7	
Khan Younis	100	5.4	74.5	17.0	3.1	
Rafah	100	2.4	77.1	17.9	2.6	
<b>Gaza Strip</b>	<b>100</b>	<b>4.4</b>	<b>73.9</b>	<b>18.7</b>	<b>3.0</b>	
<b>Palestinian Territory</b>	<b>100</b>	<b>5.8</b>	<b>68.8</b>	<b>18.8</b>	<b>6.6</b>	



2011 -

**Table 32: Percentage Distribution of Employed Persons Aged 15 Years and Over in the Palestinian Territory by Governorate, Region and Sector (ILO Standards), January- March, 2011**

Governorate and Region	المجموع Total	Sector				المحافظة والمنطقة
		اسرائيل والمستوطنات Israel and Settlements	قطاعات أخرى Other Sectors	قطاع خاص Private Sector	قطاع عام Public Sector	
Jenin	100	9.6	1.6	71.7	17.1	جنين
Tubas	100	8.3	2.4	70.0	19.3	طوباس
Tulkarm	100	8.1	1.8	65.2	24.9	طولكرم
Nablus	100	8.2	2.1	72.5	17.2	نابلس
Qalqilia	100	16.7	2.5	59.8	21.0	قلقيلية
Salfeet	100	19.3	0.7	52.5	27.5	سلفيت
Ramallah & Al-Bireh	100	5.1	2.9	74.6	17.4	رام الله والبييرة
Jericho & AL- Aghwar	100	11.7	3.5	63.2	21.6	أريحا والأغوار
Jerusalem	100	39.6	4.1	50.9	5.4	القدس
Bethlehem	100	11.2	4.8	71.4	12.6	بيت لحم
Hebron	100	11.7	1.2	73.9	13.2	الخليل
<b>West Bank</b>	<b>100</b>	<b>14.0</b>	<b>2.4</b>	<b>68.2</b>	<b>15.4</b>	<b>الضفة الغربية</b>
GS-North	100	0.0	8.1	46.8	45.1	شمال غزة
Gaza City	100	0.0	5.5	56.6	37.9	غزة
Deir ALBalah	100	0.0	7.7	50.4	41.9	دير البلح
Khan Younis	100	0.0	5.5	51.7	42.8	خان يونس
Rafah	100	0.0	10.8	44.6	44.6	رفح
<b>Gaza Strip</b>	<b>100</b>	<b>0.0</b>	<b>7.0</b>	<b>51.3</b>	<b>41.7</b>	<b>قطاع غزة</b>
<b>Palestinian Territory</b>	<b>100</b>	<b>10.0</b>	<b>3.8</b>	<b>63.3</b>	<b>22.9</b>	<b>الأراضي الفلسطينية</b>

2011 - (ILO )

**Table 33: Average Weekly Work Hours, Monthly Work Days and Daily Wage in NIS for Wage Employees Aged 15 Years and Over by Place of Work (ILO Standards), January- March, 2011**

Indicator	Total	Place of work			
		Israel and Settlements	Gaza Strip	West Bank	
Average weekly work hours	41.3	39.8	39.2	42.6	*
Average monthly work days*	22.2	20.9	23.3	22.0	
Median daily net wage in NIS	76.9	153.8	50.0	76.9	
Average daily net wage in NIS	92.4	164.0	64.6	85.0	

\*: Including paid days that have been not worked

:\*

(ILO )

:34

2011 -

**Table 34: Average Daily Wage in NIS for Wage Employees in the Palestinian Territory by Region and Sector (ILO Standards), January- March, 2011**

Region	Total	Sector				
		Israel and Settlements	Other Sector	Private Sector	* Public Sector*	
<b>Palestinian Territory</b>	<b>92.4</b>	<b>164.0</b>	<b>107.9</b>	<b>70.6</b>	<b>88.6</b>	
West Bank	101.8	164.0	125.0	78.8	93.1	
Gaza Strip	64.6	0	94.2	44.7	80.4	

\*:Palestinian National Authority institutions

:\*

(ILO )

:35

2011 -

**Table 35: Average Daily Wage in NIS for Wage Employees in the Palestinian Territory by Region and Sex (ILO Standards), January- March, 2011**

Region	Total	Sex		
		Females	Males	
<b>Palestinian Territory</b>	<b>78.9</b>	<b>78.3</b>	<b>79.1</b>	
West Bank	85.0	79.6	86.5	
Gaza Strip	64.6	74.6	62.6	

**Note:** Workers in Israel and Settlements are excluded

:

2011 -

**Table 36: Average Daily Wage in NIS for Wage Employees in the Palestinian Territory by Economic Activity and Place of work (ILO Standards), January- March, 2011**

Economic Activity	Total	Place of work		
		Israel and Settlements	Gaza Strip	West Bank
Agriculture, fishing and forestry	54.2	102.5	30.4	58.4
Mining, quarrying and manufacturing	77.9	148.1	38.0	68.9
Construction	119.2	168.2	39.8	82.5
Commerce, restaurants and hotels	71.0	159.9	33.4	63.1
Transportation, Storage & Communication	106.4	210.0	45.3	95.1
Services and other branches	94.6	166.8	82.8	97.9
<b>Total</b>	<b>92.4</b>	<b>164.0</b>	<b>64.6</b>	<b>85.0</b>

2011 -

**Table 37: Average Monthly Wage in NIS for Wage Employees in the Palestinian Territory by Occupation, and Educational Qualification (ILO Standards), January- March, 2011**

Occupation	Educational Qualification				
	Total	Bachelor and above	Associate diploma	Secondary certificate	Preparatory & less
Legislators, Senior Officials & Managers	4,287	4,681	-	-	-
Professionals, Technicians, Associates and Clerks	2,542	2,706	2,362	2,138	1,969
Service, Shop & Market Workers	1,723	1,856	1,845	1,882	1,631
Skilled Agricultural & Fishery Workers	-	-	-	-	-
Craft and Related Trade Workers	2,671	-	-	2,935	2,625
Plant & Machine Operators & Assemblers	2,522	-	-	2,521	2,547
Elementary Occupations	2,162	-	2,653	2,065	2,161
<b>Total</b>	<b>2,404</b>	<b>2,789</b>	<b>2,436</b>	<b>2,272</b>	<b>2,232</b>

(-): means there are no enough observations in this section

:(-)

2011 -

**Table 38: Average Monthly Wage in NIS for Wage Employees in the Palestinian Territory by Length of Services in Years, Educational Qualification and Region (ILO Standards), January- March, 2011**

Length of Services in years and Region	Educational Qualification					
	Total	Bachelor and above	Associate diploma	Secondary certificate	Preparatory & less	
<b>Palestinian Territory</b>						
0-1	1,554	1,973	1,453	1,534	1,376	1-0
2-3	2,199	2,303	2,215	2,075	2,182	3-2
4-6	2,478	2,805	2,662	2,432	2,310	6-4
7-9	2,557	2,812	-	2,251	2,498	9-7
10+	3,060	3,633	2,769	2,957	2,861	+10
<b>Total</b>	<b>2,404</b>	<b>2,789</b>	<b>2,436</b>	<b>2,272</b>	<b>2,232</b>	
<b>West Bank</b>						
0-1	1,837	2,156	1,690	1,748	1,720	1-0
2-3	2,390	2,495	2,395	2,297	2,380	3-2
4-6	2,715	3,000	3,072	2,782	2,538	6-4
7-9	2,698	2,925	-	2,545	2,649	9-7
10+	3,195	3,716	2,869	3,180	3,065	+10
<b>Total</b>	<b>2,646</b>	<b>2,967</b>	<b>2,634</b>	<b>2,561</b>	<b>2,534</b>	
<b>Gaza Strip</b>						
0-1	1,070	1,630	-	1,044	842	1-0
2-3	1,608	2,076	-	-	1,118	3-2
4-6	1,710	2,389	-	-	1,256	6-4
7-9	2,029	2,575	-	-	1,067	9-7
10+	2,482	3,458	2,389	1,895	1,331	+10
<b>Total</b>	<b>1,679</b>	<b>2,460</b>	<b>1,824</b>	<b>1,357</b>	<b>1,045</b>	

(-): means there are no enough observations in this section

:(-)

2011 - (ILO )

**Table 39: Percentage Distribution of Persons Aged 15 Years and Over Outside the Labour Force in the Palestinian Territory by Reason, Sex and Region (ILO Standards), January- March, 2011**

Reason and Sex	Region			
	Gaza Strip	West Bank	Palestinian Territory	
<b>Both Sexes</b>				
Old/illness	9.3	11.5	10.6	/
Housekeeping	46.3	46.7	46.5	
Studying or training	39.7	35.4	37.1	/
Others	4.7	6.4	5.8	
<b>Total</b>	<b>100</b>	<b>100</b>	<b>100</b>	
<b>Males</b>				
Old/illness	23.9	24.6	24.3	/
Housekeeping	1.3	0.8	1.0	
Studying or training	63.1	56.4	59.1	/
Others	11.7	18.2	15.6	
<b>Total</b>	<b>100</b>	<b>100</b>	<b>100</b>	
<b>Females</b>				
Old/illness	2.9	6.5	5.2	/
Housekeeping	65.7	64.2	64.7	
Studying or training	29.7	27.4	28.3	/
Others	1.7	1.9	1.8	
<b>Total</b>	<b>100</b>	<b>100</b>	<b>100</b>	

(-): means there are no enough observations in this section

:(-)

2011 -

**Table 40: Percentage Distribution for Wage Employees in Private Sector in the Palestinian Territory by Some Indicators and Work Advantages and Region, January- March, 2011**

Indicator	Region			
	Gaza Strip	West Bank	Palestinian Territory	
<b>Distribution of Wage Employees by Nature of Work:</b>				:
Permanently / full time	73.3	96.3	90.4	
Temporarily / Part time	0.9	2.1	1.8	
seasonal / casual	25.8	1.6	7.8	/ /
<b>Total</b>	<b>100</b>	<b>100</b>	<b>100</b>	
<b>Distribution of Wage Employees by Contract Availability:</b>				:
With Contract	35.5	29.5	31.0	
Collective Agreement	1.5	25.4	19.3	/
Without Contract	63.0	45.1	49.7	
<b>Total</b>	<b>100</b>	<b>100</b>	<b>100</b>	
<b>Wage Employees by Advantages provided by Employers:</b>				:
Contributions to the pension fund	21.7	24.9	24.1	/
Annual paid Vacations	23.3	27.9	26.7	
Sick Paid Vacations	24.0	28.4	27.2	
Maternity Paid Vacations	49.3	54.1	53.0	

2011 -

**Table 41: Percentage Distribution of Employed Persons Aged 15 Years and Over in the Palestinian Territory by Affiliation to Workers Vocational Union, Sex and Region, January- March, 2011**

Affiliation to Workers Vocational Union & Sex	Region			
	Gaza Strip	West Bank	Palestinian Territory	
<b>Both Sexes</b>				
Affiliated to Workers Vocational Union	16.2	17.1	16.8	/
Not Affiliated to Workers Vocational Union	83.8	82.9	83.2	/
<b>Total</b>	<b>100</b>	<b>100</b>	<b>100</b>	
<b>Males</b>				
Affiliated to Workers Vocational Union	16.7	17.4	17.2	/
Not Affiliated to Workers Vocational Union	83.3	82.6	82.8	/
<b>Total</b>	<b>100</b>	<b>100</b>	<b>100</b>	
<b>Females</b>				
Affiliated to Workers Vocational Union	12.5	15.7	15.0	/
Not Affiliated to Workers Vocational Union	87.5	84.3	85.0	/
<b>Total</b>	<b>100</b>	<b>100</b>	<b>100</b>	

(ILO )

17-10

:42

2011 -

**Table 42: Percentage Distribution of Children Aged 10-17 Years in the Palestinian Territory by Labour Force Status and Region (ILO Definition), January- March, 2011**

Labour Force Status	Region			
	Gaza Strip	West Bank	Palestinian Territory	
Employed	1.0	4.3	3.0	
Unemployed	1.1	1.2	1.2	
Outside Labour Force	97.9	94.5	95.8	
<b>Total</b>	<b>100</b>	<b>100</b>	<b>100</b>	

(ILO )

:43

2011 -

**Table 43: Percentage of Households which are headed by Women in the Palestinian Territory by Region (ILO Definition), October- December, 2010**

Region	Percentage of Households which are headed by Women	
<b>Palestinian Territory</b>	<b>10.7</b>	
West Bank	11.1	
Gaza Strip	9.9	

(ILO ) 2011-2000

## Basic Changes in the Labour Force Indicators in Palestinian Territory During 2000 - 2011 (ILO Standards)

Indicator	60	59	58	57	56	55	54	53	52	51	50	49	48	47	46	45	44	43	42	41	40	39	38	37	36	19	18	
	Q1-2011	Q4-2010	Q3-2010	Q2-2010	Q1-2010	Q4-2009	Q3-2009	Q2-2009	Q1-2009	Q4-2008	Q3-2008	Q2-2008	Q1-2008	Q4-2007	Q3-2007	Q2-2007	Q1-2007	Q4-2006	Q3-2006	Q2-2006	Q1-2006	Q4-2005	Q3-2005	Q2-2005	Q1-2005	Q4-2000	Q3-2000	
Labour Force Participation Rate	41.0	41.5	40.5	41.5	40.7	41.5	41.6	41.7	41.4	41.4	41.6	41.6	40.6	41.4	42.7	42.4	41.2	43.0	41.3	40.9	40.0	40.3	41.7	41.2	39.7	39.2	43.5	
Full Employment Rate	69.5	69.6	67.0	68.7	71.2	68.6	69.1	71.6	68.7	65.7	66.7	66.0	71.3	72.1	68.2	70.1	71.5	69.8	67.9	68.7	67.5	69.1	70.2	72.7	67.9	66.9	83.6	
Underemployment Rate	8.8	7.0	6.4	8.4	6.8	6.6	5.1	6.2	5.9	6.4	5.8	8.2	6.1	5.7	8.6	10.7	6.9	8.2	7.9	8.4	7.2	7.1	7.1	6.1	5.8	4.8	6.4	
Unemployment Rate	21.7	23.4	26.6	22.9	22.0	24.8	25.8	22.2	25.4	27.9	27.5	25.8	22.6	22.2	23.2	19.2	21.6	22.0	24.2	22.9	25.3	23.8	22.7	21.2	26.3	28.3	10.0	
Employed in Agriculture	10.6	12.5	10.2	12.7	11.8	12.4	10.7	12.3	11.7	13.0	12.7	14.9	12.9	15.3	15.1	17.3	14.7	21.5	13.7	15.2	13.2	14.4	14.9	15.6	13.3	16.9	12.7	
Employed in Construction	13.8	12.7	13.8	13.4	12.7	11.4	12.2	12.3	11.1	10.8	12.7	10.8	9.4	10.4	11.6	11.1	10.7	9.5	11.4	11.5	12.2	12.3	13.0	13.0	13.4	10.8	21.7	
Employed in Manufacturing	11.5	10.7	11.4	10.9	12.6	12.6	11.8	11.4	12.6	11.1	12.4	12.1	13.0	12.3	12.8	12.6	12.5	12.2	13.5	12.3	11.6	13.2	13.0	13.2	12.5	12.8	15.0	
Employed in Services	37.7	38.7	38.9	38.4	37.7	37.9	39.4	40.4	40.5	39.4	37.2	38.2	38.5	36.4	35.3	34.8	36.7	34.4	35.1	36.1	36.4	34.9	33.7	33.4	35.8	35.2	28.6	
Elementary Occupation Workers	18.3	17.3	18.8	18.0	18.3	16.5	15.6	14.6	15.8	17.9	15.6	15.7	14.9	14.3	14.8	13.1	13.8	13.2	15.1	16.0	16.0	16.6	14.6	15.2	15.6	13.7	19.8	
Craft and Related Trade Workers	15.6	15.1	16.0	15.7	16.8	15.5	15.1	16.1	15.7	13.6	16.9	15.5	16.3	14.7	17.8	17.2	16.5	15.1	17.2	15.8	16.5	16.8	18.6	17.4	17.3	16.2	24.5	
Employed in Israel & Settlements	10.0	10.3	10.5	10.1	11.1	10.0	10.7	10.2	10.0	12.1	12.1	10.8	11.2	10.0	9.3	8.5	9.8	9.5	10.5	8.7	9.8	9.6	9.9	10.2	10.2	9.1	22.1	
Employers	6.6	6.0	6.4	6.6	6.4	6.6	6.5	6.2	5.8	4.6	4.5	4.0	3.8	4.3	4.2	4.0	3.6	5.2	4.7	4.3	4.2	4.1	4.6	4.6	4.0	4.6	4.4	
Self - Employed	18.8	17.6	18.6	18.8	20.2	20.5	19.0	18.0	19.1	15.3	21.0	22.4	24.3	23.3	23.5	25.0	24.9	22.2	25.0	26.6	26.6	26.0	25.4	26.3	26.8	23.1	18.1	
Wage Employees	68.8	68.6	68.6	66.8	66.5	65.1	66.9	66.9	67.2	70.7	65.1	63.0	62.5	60.5	59.6	58.1	61.0	57.2	59.6	59.6	61.1	60.6	58.3	58.1	61.0	59.3	67.6	
Unpaid Family Members	5.8	7.8	6.4	7.8	6.9	7.7	7.6	8.9	7.9	9.4	9.4	10.6	9.4	11.9	12.7	12.9	10.5	15.4	10.7	9.5	8.1	9.3	11.7	11.0	8.2	13.0	9.9	
Average Monthly Work Days *	22.4	22.5	22.6	22.6	22.3	22.6	23.0	23.2	21.9	23.3	23.2	22.7	22.7	22.6	22.1	22.7	22.7	22.6	23.9	24.0	23.3	23.6	23.9	23.9	23.6	23.3	22.8	*
Average Weekly Work Hours *	41.6	41.6	42.4	42.3	41.7	41.1	42.7	41.8	41.2	42.2	43.0	42.1	41.0	39.5	41.8	41.7	41.4	40.0	42.4	41.8	41.1	40.5	43.3	42.8	41.6	40.7	45.0	*
Median Daily Net Wage (NIS) *	70.0	70.0	69.2	70.0	70.0	70.0	70.0	70.0	70.0	73.1	69.2	70.0	70.0	69.2	67.3	65.4	69.2	65.4	69.2	69.2	69.2	65.4	60.0	60.0	57.7	61.5	70.0	*

Note:

\*: Workers in Israel and Settlements are excluded

Q: Quarter, Example: Q1-99 means: First Quarter of 1999

1999

Q1-99 :

:Q



(ILO ) 2011-2000

## Basic Changes in the Labour Force Indicators in West Bank During 2000 -2011 (ILO Standards)

Indicator	60	59	58	57	56	55	54	53	52	51	50	49	48	47	46	45	44	43	42	41	40	39	38	37	36	19	18		
	Q1-2011	Q4-2010	Q3-2010	Q2-2010	Q1-2010	Q4-2009	Q3-2009	Q2-2009	Q1-2009	Q4-2008	Q3-2008	Q2-2008	Q1-2008	Q4-2007	Q3-2007	Q2-2007	Q1-2007	Q4-2006	Q3-2006	Q2-2006	Q1-2006	Q4-2005	Q3-2005	Q2-2005	Q1-2005	Q4-2000	Q3-2000		
Labour Force Participation Rate	43.2	44.5	43.0	43.9	43.2	44.1	43.7	44.4	42.8	42.8	43.4	43.5	42.3	44.0	44.8	44.8	42.7	45.7	44.6	43.7	42.5	42.4	44.1	43.7	41.4	42.9	45.3		
Full Employment Rate	72.5	74.0	73.0	75.9	77.4	74.8	76.9	78.0	74.4	74.1	73.1	75.8	74.1	73.4	70.5	72.0	75.2	75.3	71.1	71.6	69.6	68.9	70.9	74.9	69.7	68.1	84.8		
Underemployment Rate	10.1	9.1	6.9	9.0	6.1	7.1	5.3	6.1	6.1	6.1	6.2	7.9	6.9	7.4	10.9	12.2	7.5	8.5	9.8	10.4	9.0	9.3	9.2	7.9	7.7	5.6	7.7		
Unemployment Rate	17.4	16.9	20.1	15.2	16.5	18.1	17.8	15.9	19.5	19.8	20.7	16.3	19.0	19.2	18.6	15.8	17.3	16.2	19.1	18.0	21.4	21.8	19.9	17.2	22.6	26.3	7.5		
Employed in Agriculture	10.6	15.1	10.9	15.4	12.5	14.2	12.6	14.9	13.1	15.0	13.5	15.7	13.0	15.9	16.1	19.2	15.3	24.0	15.1	16.8	14.3	15.7	16.6	17.0	13.4	17.1	11.3		
Employed in Construction	17.4	15.8	17.2	12.3	17.0	15.1	16.0	16.5	15.1	14.2	16.8	14.1	12.7	13.9	14.8	13.1	12.8	11.1	13.7	13.4	13.6	13.3	14.7	14.4	15.0	13.3	24.2		
Employed in Manufacturing	14.1	12.9	13.6	13.3	15.1	15.0	13.8	13.9	15.4	13.9	15.0	14.5	16.2	15.0	15.4	14.5	14.8	14.2	16.1	14.7	13.2	15.0	15.0	14.7	14.6	14.6	16.1		
Employed in Services	30.7	30.8	31.6	33.5	29.9	30.0	31.5	30.9	31.6	29.8	29.1	30.9	32.8	30.2	28.6	29.1	30.9	27.7	28.2	29.6	30.9	28.9	27.2	27.8	30.1	29.0	24.6		
Elementary Occupation Workers	19.5	17.9	19.6	18.9	19.3	17.4	17.2	16.2	17.5	19.7	16.6	17.0	16.9	16.3	10.4	14.1	15.5	14.1	16.5	16.1	16.2	16.4	15.3	15.8	16.3	15.2	20.5		
Craft and Related Trade Workers	18.1	17.5	18.9	18.6	19.5	17.8	17.8	19.4	19.0	16.3	20.4	18.3	18.5	17.2	17.8	18.2	18.1	16.9	19.6	17.7	18.3	18.2	19.8	18.4	19.3	18.2	25.7		
Employed in Israel & Settlements	14.0	13.8	14.2	13.6	15.3	13.4	14.3	13.8	14.0	16.1	16.3	14.2	15.9	14.0	12.9	11.9	13.7	12.8	14.0	11.8	13.2	13.6	13.6	13.6	14.2	11.3	24.8		
Employers	8.0	7.0	7.0	7.3	7.1	7.3	7.5	7.0	6.0	5.0	4.5	4.3	4.2	5.0	4.7	4.2	3.4	4.4	5.0	4.7	4.8	4.8	5.3	5.2	4.7	4.8	4.6		
Self - Employed	18.9	19.3	20.2	20.6	21.4	22.0	20.2	19.8	20.8	16.4	22.8	24.1	22.9	23.5	24.7	26.3	26.9	24.5	26.7	28.6	28.5	27.9	26.7	27.6	28.3	24.6	19.9		
Wage Employees	66.7	64.0	64.9	62.3	63.3	62.0	63.1	62.5	64.6	67.9	62.2	60.4	64.2	59.7	57.6	55.6	59.0	53.7	55.9	56.0	57.4	56.9	55.0	55.3	58.6	57.0	66.2		
Unpaid Family Members	6.4	9.7	7.9	9.8	8.2	8.7	9.2	10.7	8.6	10.7	10.5	11.2	8.7	11.8	13.0	13.9	10.7	17.4	12.4	10.7	9.3	10.4	13.0	11.9	8.4	13.6	9.3		
Average Monthly Work Days *	22.0	22.1	22.4	22.6	22.0	22.3	22.7	22.6	22.1	22.7	22.3	22.1	22.2	22.0	22.3	22.2	22.1	23.5	23.8	23.2	23.4	23.7	23.8	23.5	23.2	24.3	*		
Average Weekly Work Hours *	42.6	43.2	43.4	43.6	42.8	42.3	43.3	42.7	42.0	43.1	42.8	42.7	41.2	39.9	42.5	42.4	41.9	41.5	42.9	42.7	41.6	40.8	43.7	43.3	42.2	40.6	46.2	*	
Median Daily Net Wage (NIS) *	76.9	76.9	76.9	76.9	76.9	76.9	76.9	76.9	76.9	76.9	71.2	76.9	76.9	70.0	70.0	69.2	70.0	67.3	69.2	69.2	70.0	69.2	65.4	65.4	60.0	61.5	63.2	*	

## Note:

\*: Workers in Israel and Settlements are excluded

Q: Quarter, Example: Q1-99 means: First Quarter of 1999

1999

Q1-99 :

:Q

(ILO ) 2011-2000

Basic Changes in the Labour Force Indicators in Gaza Strip During 2000 - 2011 (ILO Standards)

Indicator	60	59	58	57	56	55	54	53	52	51	50	49	48	47	46	45	44	43	42	41	40	39	38	37	36	19	18	
	Q1-2011	Q4-2010	Q3-2010	Q2-2010	Q1-2010	Q4-2009	Q3-2009	Q2-2009	Q1-2009	Q4-2008	Q3-2008	Q2-2008	Q1-2008	Q4-2007	Q3-2007	Q2-2007	Q1-2007	Q4-2006	Q3-2006	Q2-2006	Q1-2006	Q4-2005	Q3-2005	Q2-2005	Q1-2005	Q4-2000	Q3-2000	
Labour Force Participation Rate	37.0	36.3	36.0	37.0	36.3	36.9	37.7	36.9	38.9	38.8	38.2	38.0	37.5	36.6	38.9	38.0	38.3	38.0	35.3	35.7	35.3	36.4	37.1	36.5	36.6	32.0	40.1	
Full Employment Rate	63.0	60.3	54.1	53.6	58.0	55.3	53.1	57.7	57.5	48.2	53.0	45.7	65.8	69.3	63.4	66.2	63.8	57.6	60.3	62.0	62.8	69.3	68.4	67.6	64.0	63.7	81.0	
Underemployment Rate	6.2	2.3	5.4	7.1	8.1	5.4	4.6	6.3	5.5	7.0	5.1	8.8	4.4	1.7	3.7	7.4	5.8	7.6	3.4	4.0	3.1	2.5	2.6	2.2	2.0	2.8	3.5	
Unemployment Rate	30.8	37.4	40.5	39.3	33.9	39.3	42.3	36.0	37.0	44.8	41.9	45.5	29.8	29.0	32.9	26.4	30.4	34.8	36.3	34.0	34.1	28.2	29.0	30.2	34.0	33.5	15.5	
Employed in Agriculture	10.5	5.1	8.0	7.8	9.9	7.3	4.9	4.8	8.4	7.1	10.6	12.3	12.5	13.9	12.7	12.7	13.3	14.1	9.2	10.7	10.1	11.4	10.5	12.0	13.1	16.1	16.2	
Employed in Construction	4.9	4.0	4.0	2.5	1.3	1.0	0.9	0.7	1.0	0.8	0.7	0.4	1.6	1.5	3.7	6.2	5.6	4.9	4.6	6.1	8.3	9.8	8.7	9.3	9.2	3.5	15.9	
Employed in Manufacturing	5.0	4.3	5.1	3.8	6.0	5.7	6.0	4.2	5.6	2.7	4.8	4.6	5.5	5.5	5.8	8.0	7.1	6.3	5.7	5.7	7.3	8.7	8.0	9.2	7.3	7.5	12.3	
Employed in Services	55.2	61.3	59.9	63.1	58.2	60.1	63.2	67.0	63.0	67.9	60.7	61.4	52.0	52.2	52.2	48.9	50.5	53.4	56.3	54.1	51.7	49.2	50.0	48.1	50.3	53.7	38.0	
Elementary Occupation Workers	15.7	15.5	16.8	15.1	15.5	13.9	10.3	10.5	10.8	12.1	12.4	11.1	10.0	9.1	14.8	10.5	9.8	10.5	11.2	15.5	15.5	17.1	12.9	13.6	14.1	9.9	18.0	
Craft and Related Trade Workers	9.4	8.4	7.8	7.1	9.4	8.7	7.4	6.8	7.6	6.7	6.9	6.5	11.1	8.4	15.8	14.8	12.7	10.1	9.9	10.4	11.7	13.4	15.5	14.8	12.3	10.5	21.7	
Employed in Israel & Settlements	-	-	-	-	-	-	-	-	-	-	-	-	-	-	-	-	-	-	-	-	-	0.5	-	0.5	1.0	-	2.7	15.4
Employers	3	3.2	4.7	4.7	4.3	4.8	3.6	3.9	5.3	3.5	4.6	3.3	2.9	2.4	3.0	3.4	4.1	7.2	3.7	3.0	2.5	2.4	2.9	2.9	2.0	4.0	4.0	
Self - Employed	18.7	12.4	14.0	13.6	17.1	16.3	15.4	13.2	14.9	12.0	15.7	16.9	27.3	22.7	20.5	21.5	19.9	15.6	19.9	21.0	21.5	21.7	22.0	23.1	23.1	18.7	13.6	
Wage Employees	73.9	81.8	79.1	80.0	75.0	74.2	78.2	79.5	73.7	79.0	73.3	71.3	58.5	62.5	64.8	64.3	65.8	67.3	70.6	69.8	71.0	69.4	66.6	65.3	67.2	65.9	71.0	
Unpaid Family Members	4.4	2.6	2.2	1.7	3.6	4.7	2.8	3.4	6.1	5.5	6.4	8.5	11.3	12.4	11.7	10.8	10.2	9.9	5.8	6.2	5.0	6.5	8.5	8.7	7.7	11.4	11.4	
Average Monthly Work Days *	23.3	23.7	23.2	23.7	23.1	23.7	23.9	24.9	21.3	25.0	24.8	24.2	20.4	23.8	22.4	23.5	23.5	23.5	24.5	24.3	23.5	23.9	24.3	24.2	23.7	24.8	23.7	
Average Weekly Work Hours *	39.2	37.8	39.9	38.8	39.1	38.1	41.2	39.5	38.8	39.9	43.4	40.0	40.2	38.2	39.7	40.4	40.6	37.7	41.5	40.4	40.4	40.0	42.5	42.0	40.5	40.6	42.8	
Median Daily Net Wage (NIS) *	50.0	50.0	50.0	50.0	46.2	54.7	57.7	57.7	57.7	57.7	50.0	57.7	57.7	60.7	57.7	57.7	61.5	61.5	65.4	67.3	65.4	61.5	53.8	55.8	55.8	53.8	46.2	

Note:

\*: Workers in Israel and Settlements are excluded

Q: Quarter, Example: Q1-99 means: First Quarter of 1999

(-) means there are no enough observations in this section.

\*: لا يشمل العاملين من الأراضي الفلسطينية في إسرائيل والمستوطنات

Q1-99 :

(-):

(ILO ) 2010-1995

## Basic Changes in the Labour Force Indicators in Palestinian Territory During 1995 - 2010 (ILO Standards)

Indicator	2010	2009	2008	2007	2006	2005	2004	2003	2002	2001	2000	1999	1998	1997	1996	1995	
Labour Force Participation Rate	41.1	41.6	41.3	41.9	41.3	40.7	40.4	40.3	38.1	38.7	41.5	41.6	41.4	40.5	40.0	39.0	
Woman Labour Force Participation Rate	14.7	15.5	15.2	15.7	14.5	13.4	13.5	12.8	10.4	10.3	12.7	12.3	11.3	11.5	11.0	11.2	
Full Employment Rate	69.2	69.5	67.4	70.5	68.5	69.9	66.8	68.1	64.4	70.9	80.9	82.8	79.1	70.4	64.3	60.7	
Underemployment Rate	7.1	5.9	6.6	8.0	7.9	6.6	6.4	6.3	4.3	3.9	5.0	5.4	6.5	9.3	11.9	21.1	
Unemployment Rate	23.7	24.5	26.0	21.5	23.6	23.5	26.8	25.6	31.3	25.2	14.1	11.8	14.4	20.3	23.8	18.2	
Unemployment Rate among women	26.8	26.4	24.2	19.1	20.5	22.2	20.0	18.2	17.0	13.8	12.4	13.0	15.2	20.1	19.5	16.2	
Employed in Agriculture	11.8	11.8	13.4	15.6	16.1	14.6	15.9	15.7	14.9	11.7	13.7	12.6	12.1	13.1	14.2	12.7	
Employed in Construction	13.2	11.7	10.9	11.0	11.1	12.9	11.7	13.1	10.9	14.5	19.7	22.1	22.0	18.4	16.8	19.2	
Employed in Manufacturing	11.4	12.1	12.1	12.5	12.4	13.0	12.7	12.5	12.9	13.9	14.3	15.5	15.9	16.4	16.8	18.0	
Employed in Services	38.3	39.6	38.4	35.8	35.5	34.4	34.9	32.8	35.7	34.6	29.9	28.1	27.1	28.2	29.2	25.6	
Elementary Occupation Workers	18.1	15.7	15.9	14.0	14.9	15.5	14.3	14.1	14.1	15.9	21.1	29.7	31.0	28.9	28.7	18.3	
Craft and Related Trade Workers	15.9	15.6	15.6	16.1	16.1	17.5	17.1	18.7	17.5	19.0	22.0	22.7	24.7	24.6	24.0	27.5	
Employed in Israel & Settlements	10.5	10.2	11.6	9.4	9.6	9.9	8.7	9.7	10.3	13.8	19.6	23.0	21.7	17.1	14.1	16.2	
Employers	6.4	6.3	4.2	4.0	4.6	4.3	4.1	3.5	3.7	4.7	4.6	5.5	5.8	5.3	5.5	6.9	
Self - Employed	18.8	19.2	20.7	24.2	25.0	26.1	26.5	27.8	26.8	24.0	19.6	18.7	21.0	22.9	22.3	21.2	
Wage Employees	67.6	66.5	65.3	59.8	59.3	59.5	58.3	57.2	59.2	62.1	66.1	67.8	65.3	62.0	61.4	61.7	
Unpaid Family Members	7.2	8.0	9.7	12.0	11.1	10.1	11.1	11.5	10.3	9.2	9.7	8.0	7.9	9.8	10.8	10.2	
Average Monthly Work Days *	22.5	22.7	23.0	22.6	23.4	23.8	23.7	23.2	23.3	23.9	23.2	22.6	23.0	22.0	22.0	21.0	*
Average Weekly Work Hours *	42.0	41.7	42.1	41.1	41.3	42.0	42.5	41.7	40.6	42.1	43.1	44.2	45.0	44.0	43.5	42.1	*
Median Daily Net Wage (NIS) *	70.0	70.0	70.0	69.2	69.2	60.0	57.7	55.8	57.7	57.7	57.7	69.2	57.7	50.0	46.2	46.3	*

**Note:**

\*: Workers in Israel and Settlements are excluded

(ILO ) 2010-1995

## Basic Changes in the Labour Force Indicators in West Bank During 1995 - 2010 (ILO Standards)

Indicator	2010	2009	2008	2007	2006	2005	2004	2003	2002	2001	2000	1999	1998	1997	1996	1995	
Labour Force Participation Rate	43.7	43.8	43.0	44.1	44.1	42.9	42.5	41.8	40.0	41.5	43.6	43.4	44.2	43.2	42.0	40.6	
Women Labour Force Participation Rate	17.2	17.4	17.1	18.3	17.9	15.8	15.9	14.7	12.4	12.0	13.8	14.1	14.3	14.5	13.2	12.6	
Full Employment Rate	75.0	76.0	74.2	72.8	72.0	71.2	68.8	68.7	66.4	73.8	81.7	83.5	80.1	71.1	67.6	65.3	
Underemployment Rate	7.8	6.2	6.8	9.5	9.4	8.5	8.3	7.5	5.4	4.7	6.2	7.0	8.4	11.6	12.8	20.7	
Unemployment Rate	17.2	17.8	19.0	17.7	18.6	20.3	22.9	23.8	28.2	21.5	12.1	9.5	11.5	17.3	19.6	13.9	
Unemployment Rate Among Women	19.7	18.8	16.7	15.5	17.6	18.3	16.6	15.8	14.0	10.9	9.9	11.1	12.8	17.7	16.0	13.0	
Employed in Agriculture	13.3	13.7	14.3	16.6	17.8	15.7	16.9	14.9	14.1	11.8	12.5	11.5	13.8	15.1	16.2	13.3	
Employed in Construction	16.8	15.6	14.5	13.6	12.9	14.4	13.0	14.3	12.7	18.0	22.2	23.9	22.7	19.1	18.3	20.3	
Employed in Manufacturing	13.7	14.5	14.9	14.9	14.6	14.8	14.0	14.0	14.5	15.4	15.4	16.5	16.8	17.2	17.6	18.8	
Employed in Services	30.6	31.0	30.6	29.8	29.0	28.5	29.5	29.4	31.1	28.0	25.5	24.7	23.0	23.8	24.2	22.6	
Elementary Occupation Workers	18.8	17.0	17.4	15.8	15.6	16.0	14.8	13.3	14.1	17.6	21.9	31.1	30.5	28.7	28.7	18.2	
Craft and Related Trade Workers	18.6	18.5	18.4	17.8	18.1	18.9	18.0	19.9	19.1	20.7	23.3	22.9	25.0	25.0	25.1	28.7	
Employed in Israel & Settlements	14.2	13.9	15.6	13.1	13.0	13.8	11.6	12.5	13.3	18.0	22.4	25.9	24.0	19.5	16.6	20.2	
Employers	7.1	7.0	4.5	4.4	4.4	5.0	5.0	4.1	4.1	4.6	5.1	6.6	6.5	5.9	6.0	7.1	
Self - Employed	20.3	20.7	21.6	25.4	27.0	27.6	28.1	29.3	27.8	25.6	20.6	18.6	21.5	23.6	23.5	21.3	
Wage Employees	63.6	63.0	63.7	57.9	55.7	56.4	55.1	55.3	57.5	60.1	64.7	66.5	63.0	59.3	59.0	61.3	
Unpaid Family Members	9.0	9.3	10.2	12.3	12.6	11.0	11.8	11.3	10.6	9.7	9.6	8.3	9.0	11.2	11.5	9.9	
Average Monthly Work Days *	22.2	22.4	22.4	22.2	23.1	23.6	24.0	23.7	22.8	23.6	24.4	23.5	23.0	23.0	22.6	22.0	*
Average Weekly Work Hours *	43.3	42.5	42.5	41.7	42.2	42.5	43.0	42.3	40.9	43.2	43.6	44.6	45.0	43.0	43.5	43.0	*
Median Daily Net Wage (NIS) *	76.9	76.9	76.9	70.0	69.2	65.4	61.5	60.0	60.0	60.0	61.5	60.0	50.0	46.3	44.7	42.3	*

**Note:**

\*: Workers in Israel and Settlements are excluded

(ILO ) 2009-1995

## Basic Changes in the Labour Force Indicators in Gaza Strip During 1995 - 2009 (ILO Standards)

Indicator	2010	2009	2008	2007	2006	2005	2004	2003	2002	2001	2000	1999	1998	1997	1996	1995	
Labour Force Participation Rate	36.4	37.6	38.1	38.0	36.1	36.7	36.4	37.5	34.4	33.3	37.5	38.0	36.4	35.7	36.4	35.4	
Women Labour Force Participation	10.2	12.2	11.7	11.0	8.1	9.0	9.1	9.2	6.5	7.1	10.6	8.8	5.9	6.3	7.0	7.3	
Full Employment Rate	56.5	55.9	53.0	65.6	60.6	67.4	62.5	67.2	60.1	63.9	79.0	81.2	76.8	68.8	57.5	48.6	
Underemployment Rate	5.7	5.5	6.4	4.7	4.6	2.3	2.1	3.6	1.8	1.9	2.3	1.9	2.3	4.4	10.0	22.0	
Unemployment Rate	37.8	38.6	40.6	29.7	34.8	30.3	35.4	29.2	38.1	34.2	18.7	16.9	20.9	26.8	32.5	29.4	
Unemployment Rate among Women	47.2	45.8	42.8	29.7	32.3	35.2	31.6	26.8	28.4	24.2	18.5	19.3	25.2	29.8	31.4	28.6	
Employed in Agriculture	7.7	6.4	10.7	13.1	11.1	11.7	13.4	17.5	16.7	11.4	16.5	15.2	8.0	8.0	9.1	10.8	
Employed in Construction	3.0	0.9	0.9	4.3	6.0	9.3	8.2	10.4	6.3	4.4	13.5	17.8	20.5	16.5	13.1	15.4	
Employed in Manufacturing	4.8	5.4	4.4	6.6	6.3	8.3	9.1	9.2	8.9	9.7	11.5	13.1	13.6	14.5	14.9	15.2	
Employed in Services	60.6	63.3	60.2	50.9	53.7	49.4	49.1	40.8	47.5	53.3	41.0	36.5	37.0	38.9	41.4	35.2	
Elementary Occupation Workers	15.8	11.4	11.3	10	13.2	14.4	13.0	15.8	14.3	11.0	18.7	26.4	30.9	29.5	29.3	18.4	
Craft and Related Trade Workers	8.2	7.6	7.7	11.7	10.5	14.0	14.7	15.9	13.4	14.2	18.9	22.2	23.8	23.6	21.2	23.5	
Employed in Israel & Settlements	-	-	-	-	-	0.4	1.1	3.1	2.5	1.9	12.9	15.7	16.2	11.0	8.1	3.3	
Employers	4.2	4.4	3.5	3.2	4.2	2.6	1.9	2.2	2.6	5.0	3.3	2.8	4.0	3.7	4.4	6.1	
Self - Employed	14.3	14.9	18.4	21.2	19.4	22.4	22.2	24.5	24.3	19.5	17.2	19.1	19.7	21.0	19.4	20.4	
Wage Employees	78.9	76.4	70.0	64.4	69.6	67.1	66.5	61.7	63.6	67.7	69.5	71.1	71.0	68.4	67.3	62.6	
Unpaid Family Members	2.6	4.3	8.1	11.2	6.8	7.9	9.4	11.6	9.5	7.8	10.0	7.0	5.3	6.9	8.9	10.8	
Average Monthly Work Days *	23.4	23.6	24.7	23.3	24.0	24.0	23.2	22.6	24.1	24.6	24.5	24.0	24.0	24.0	23.3	21.7	*
Average Weekly Work Hours *	38.8	39.4	40.8	39.9	39.9	41.2	41.6	40.6	40.0	40.1	41.7	43.2	43.0	43.0	44.0	43.2	*
Median Daily Net Wage (NIS) *	46.2	57.7	57.7	57.7	65.4	57.7	52.5	50.0	50.0	50.0	50.0	46.2	40.0	38.5	34.6	34.6	*

**Note:**

\*: Workers in Israel and Settlements are excluded

(-) means there are no enough observations in this section.

**The date of field work for every round**

<b>Round Number</b>	<b>The Round</b>		
<b>Round (28)</b>	January - March, 2003	2003	- (28)
<b>Round (29)</b>	April - June, 2003	2003	- (29)
<b>Round (30)</b>	July - September, 2003	2003	- (30)
<b>Round (31)</b>	October -December, 2003	2003	- (31)
<b>Round (32)</b>	January - March, 2004	2004	- (32)
<b>Round (33)</b>	April - June, 2004	2004	- (33)
<b>Round (34)</b>	July - September, 2004	2004	- (34)
<b>Round (35)</b>	October -December, 2004	2004	- (35)
<b>Round (36)</b>	January - March, 2005	2005	- (36)
<b>Round (37)</b>	April - June, 2005	2005	- (37)
<b>Round (38)</b>	July - September, 2005	2005	- (38)
<b>Round (39)</b>	October -December, 2005	2005	- (39)
<b>Round (40)</b>	January - March, 2006	2006	- (40)
<b>Round (41)</b>	April - June, 2006	2006	- (41)
<b>Round (42)</b>	July - September, 2006	2006	- (42)
<b>Round (43)</b>	October -December, 2006	2006	- (43)
<b>Round (44)</b>	January - March, 2007	2007	- (44)
<b>Round (45)</b>	April - June, 2007	2007	- (45)
<b>Round (46)</b>	July - September, 2007	2007	- (46)
<b>Round (47)</b>	October -December, 2007	2007	- (47)
<b>Round (48)</b>	January - March, 2008	2008	- (48)
<b>Round (49)</b>	April - June, 2008	2008	- (49)
<b>Round (50)</b>	July - September, 2008	2008	- (50)
<b>Round (51)</b>	October –December, 2008	2008	- (51)
<b>Round (52)</b>	January - March, 2009	2009	- (52)
<b>Round (53)</b>	April - June, 2009	2009	- (53)
<b>Round (54)</b>	July - September, 2009	2009	- (54)
<b>Round (55)</b>	October –December, 2009	2009	- (55)
<b>Round (56)</b>	January – March, 2010	2010	- (56)
<b>Round (57)</b>	April –June, 2010	2010	- (57)
<b>Round (58)</b>	July - September, 2010	2010	- (58)
<b>Round (59)</b>	October –December, 2010	2010	- (59)
<b>Round (60)</b>	January – March, 2011	2011	- (60)