

(2011 - )

2011

---

2011/8/17

تم إعداد هذا التقرير حسب الإجراءات المعيارية المحددة في ميثاق الممارسات للإحصاءات  
الرسمية الفلسطينية 2006

© 1432 - 2011.

2011 : ( 2011 - ) : 2011

1647 . .  
: (970/972) 2 298 2700  
: (970/972) 2 298 2710  
: 1800300300  
: diwan@pcbs.gov.ps  
: http://www.pcbs.gov.ps

---

5

9

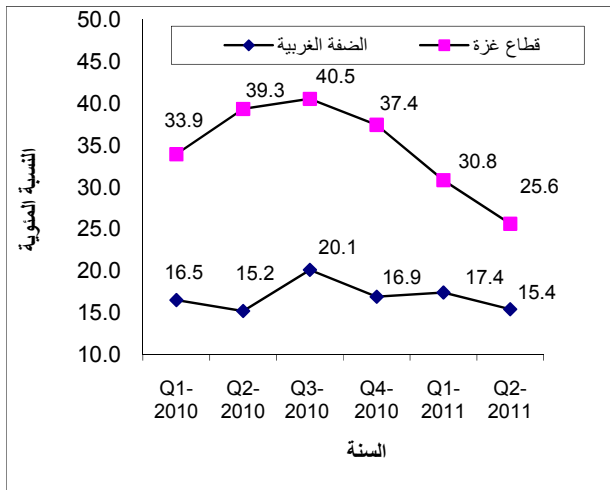
11

---

(2011 - ) 2011

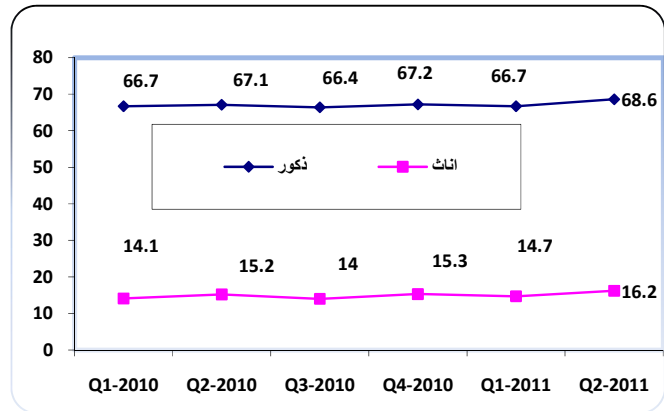
• 15 %42.7  
 13  
 .%39.2  
 • 1.048  
 %19.9 %21.1 711 2011  
 . 337  
 .%31.0 %45.3  
 . %38.1  
 • %68.6  
 2011 %27.7  
 .2011 %24.0

2011-2010



2011-2010

%18.7



195

109 2011

2011

86

2011

702

%15.4 2011

2011

768

%16.4 •

39

%28.6

27

24-20 •

%32.9

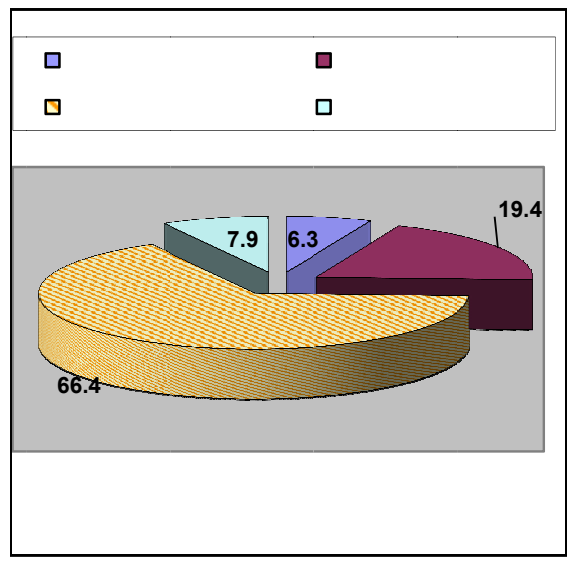
.2011

2011 164.0 6 %52.0 %32.0  
 .2011 160.5  
 39.8 %38.6  
 2011 38.9 2011 %14.5  
 20.9 84.8  
 20.6 2011 61.8  
 .2011

**2011**

%66.4 2011 42.6  
 %70.3 2011 42.8  
 %64.7 22.0  
 %19.4 22.5  
 %20.3 2011 39.2  
 %19.0 2011 37.5  
 %8.7 23.3  
 %6.4 .2011 23.7 2011  
 %6.3  
 %3.0 %7.6 **84**

**2011**



2011 78 84  
 2011 33 2011 21 30  
 11 12 2011  
 .2011  
 %51.0

		%28.7
%25.8		%45.5
	/	%23.8
	%24.6	
%24.9		
	%52.8	
		%15.5
	%16.3	
		%13.8
	( 17-10)	%4.0
	( 17-10)	%4.0
%1.7	%5.5	

-  
هاتف: (970/972) 02-2982700  
فاكس: (970/972) 02- 2982710  
خط مجاني: 1800300300  
بريد إلكتروني: diwan@pcbs.gov.ps

15

:

:

:

:

-4

-3

-2

.1

:(

)

:

:(

)

:(

)

:

35)

(

:

(

)

.(

)

( )

15

:1

2011 -

**Table 1: Percentage Distribution of Persons Aged 15 Years and Over in the Palestinian Territory by Labour Force Status and Region (Relaxed Definition), April- June, 2011**

Region	Labour Force Status					
	Total		Outside Labour Force		In Labour Force	
	(%)	Number	(%)	العدد Number	(%)	Number
<b>Palestinian Territory</b>	<b>100</b>	<b>2,454,700</b>	<b>54.3</b>	<b>1,332,700</b>	<b>45.7</b>	<b>1,122,000</b>
West Bank	100	1,570,400	51.4	806,600	48.6	763,800
Gaza Strip	100	884,300	59.5	526,100	40.5	358,200

( )

15

:2

2011 -

**Table 2: Percentage Distribution of Labour Force Participants Aged 15 Years and Over in the Palestinian Territory by Labour Force Components and Region (Relaxed Definition), April- June, 2011**

Region	Labour Force Components					
	Total		Unemployment		Employment	
	(%)	Number	(%)	العدد Number	(%)	Number
<b>Palestinian Territory</b>	<b>100</b>	<b>1,122,000</b>	<b>24.0</b>	<b>269,600</b>	<b>76.0</b>	<b>852,400</b>
West Bank	100	763,800	21.2	162,100	78.8	601,700
Gaza Strip	100	358,200	30.0	107,500	70.0	250,700



2011 -

**Table 3: Percentage Distribution of Persons Aged 15 Years and Over in the Palestinian Territory by Labour Force Status, Region and Sex(ILO Standards), April- June, 2011**

Region	Labour Force Status						
	Total		Outside Labour Force		In Labour Force		
	(%)	Number	(%)	العدد Number	(%)	Number	
<b>Palestinian Territory</b>							
Males	100	1,241,600	31.4	390,100	68.6	851,500	
Females	100	1,213,100	83.8	1,016,700	16.2	196,400	
<b>Total</b>	<b>100</b>	<b>2,454,700</b>	<b>57.3</b>	<b>1,406,800</b>	<b>42.7</b>	<b>1,047,900</b>	
<b>West Bank</b>							
Males	100	794,900	28.2	229,300	71.2	565,600	
Females	100	775,500	81.2	630,000	18.8	145,500	
<b>Total</b>	<b>100</b>	<b>1,570,400</b>	<b>54.7</b>	<b>859,300</b>	<b>45.3</b>	<b>711,100</b>	
<b>Gaza Strip</b>							
Males	100	446,700	36.0	160,800	64.0	285,900	
Females	100	437,600	88.4	386,700	11.6	50,900	
<b>Total</b>	<b>100</b>	<b>884,300</b>	<b>61.9</b>	<b>547,500</b>	<b>38.1</b>	<b>336,800</b>	

2011 -

**Table 4: Percentage Distribution of Labour Force Participants Aged 15 Years and Over in the Palestinian Territory by Labour Force Components, Region and Sex (ILO Standards), April- June, 2011**

Region and Sex	Labour Force Components							
	Total		Unemployment		ة Underemployment		Full Employment	
	(%)	Number	(%)	العدد Number	(%)	Number	(%)	Number
<b>Palestinian Territory</b>								
Males	100	851,500	16.4	139,400	9.1	77,600	74.5	634,500
Females	100	196,400	28.6	56,100	3.5	6,900	67.9	133,400
<b>Total</b>	<b>100</b>	<b>1,047,900</b>	<b>18.7</b>	<b>195,500</b>	<b>8.1</b>	<b>84,500</b>	<b>73.2</b>	<b>767,900</b>
<b>West Bank</b>								
Males	100	565,600	13.4	75,500	10.1	57,400	76.5	432,700
Females	100	145,500	23.3	33,900	3.4	4,900	73.3	106,700
<b>Total</b>	<b>100</b>	<b>711,100</b>	<b>15.4</b>	<b>109,400</b>	<b>8.8</b>	<b>62,300</b>	<b>75.8</b>	<b>539,400</b>
<b>Gaza Strip</b>								
Males	100	285,900	22.4	63,900	7.1	20,200	70.5	201,800
Females	100	50,900	43.6	22,200	3.9	2,000	52.5	26,700
<b>Total</b>	<b>100</b>	<b>336,800</b>	<b>25.6</b>	<b>86,100</b>	<b>6.6</b>	<b>22,200</b>	<b>67.8</b>	<b>228,500</b>

2011 -

**Table 5: Labour Force Status for Graduates who hold Associate Diploma Certificate and Above by Specialization (ILO Standards), April- June, 2011**

Specialization	Total	المتعطلون Unemployed	العاملون Employed	Outside Labour Force	Labour Force
Education Science and Teacher Rehabilitation	100	39.9	60.1	24.4	75.6
Humanities	100	26.4	73.6	24.8	75.2
Social and Behavioral Science	100	20.7	79.3	15.7	84.3
Mass media and Information	100	45.2	54.8	2.1	97.9
Business and Administration	100	18.9	81.1	19.7	80.3
Law	100	15.2	84.8	28.2	71.8
Natural Sciences	100	23.3	76.7	9.4	90.6
Mathematics and Statistics	100	28.6	71.4	17.1	82.9
Computer	100	33.1	66.9	21.0	79.0
Engineering and Engineering Occupations	100	15.1	84.9	13.7	86.3
Architectural and Construction	100	18.2	81.8	18.5	81.5
Health	100	16.7	83.3	17.1	82.9
Personal Services	100	7.8	92.2	35.3	64.7
Other Specialization	100	27.7	72.3	24.2	75.8
<b>Total</b>	<b>100</b>	<b>24.0</b>	<b>76.0</b>	<b>20.0</b>	<b>80.0</b>

2011 -

**Table 6: Labour Force participation Rate of Persons Aged 15 Years and Over in the Palestinian Territory by Age Group and Sex (ILO Standards), April- June, 2011**

Age Group	Total	Sex		
		Females	Males	
15-19	14.9	1.4	27.9	19-15
20-24	42.8	18.3	66.3	24-20
25-29	57.6	27.3	86.6	29-25
30-34	59.0	24.1	92.6	34-30
35-39	57.9	20.2	94.7	39-35
40-44	59.1	23.1	93.6	44-40
45-49	56.0	19.4	89.9	49-45
50+	32.2	11.5	54.5	+50
<b>Total</b>	<b>42.7</b>	<b>16.2</b>	<b>68.6</b>	

(ILO )

15

:7

2011 -

**Table 7: Labour Force Participation Rate of Persons Aged 15 Years and Over in the Palestinian Territory by Age and Region (ILO Standards), April- June, 2011**

Age Group	Region			
	Gaza Strip	West Bank	Palestinian Territory	
15-19	9.2	18.5	14.9	19-15
20-24	38.3	45.5	42.8	24-20
25-29	55.2	59.1	57.6	29-25
30-34	56.6	60.3	59.0	34-30
35-39	55.8	58.9	57.9	39-35
40-44	53.8	61.7	59.1	44-40
45-49	52.8	57.6	56.0	49-45
50+	26.3	35.0	32.2	+50
<b>Total</b>	<b>38.1</b>	<b>45.3</b>	<b>42.7</b>	

(ILO )

15

:8

2011 -

**Table 8: Labour Force Participation Rate of Persons Aged 15 Years and Over in the Palestinian Territory by Years of Schooling and Sex (ILO Standards), April- June, 2011**

Years of Schooling	Total	Sex		
		Females	Males	
0	10.1	6.5	22.4	0
1-6	44.9	13.2	72.1	6-1
7-9	40.3	6.4	69.5	9-7
10-12	37.6	6.4	68.2	12-10
13+	57.9	44.3	70.6	+13
<b>Total</b>	<b>42.7</b>	<b>16.2</b>	<b>68.6</b>	

(ILO )

15

:9

2011 -

**Table 9: Labour Force Participation Rate of Persons Aged 15 Years and Over in the Palestinian Territory by Years of Schooling and Region (ILO Standards), April- June, 2011**

Years of Schooling	Region			
	Gaza Strip	West Bank	Palestinian Territory	
0	5.9	12.5	10.1	0
1-6	45.5	44.6	44.9	6-1
7-9	33.7	43.7	40.3	9-7
10-12	29.4	42.5	37.6	12-10
13+	56.9	58.5	57.9	+13
<b>Total</b>	<b>38.1</b>	<b>45.3</b>	<b>42.7</b>	

2011 - (ILO )

**Table 10: Labour Force Participation Rate and Unemployment Rate of Persons Aged 15 Years and Over in the Palestinian Territory by Region, Sex and Refugee Status (ILO Standards), April- June, 2011**

Refugee Status and Region	Unemployment Rate			Labour Force Participation Rate		
	Total	Females	Males	Total	Females	Males
<b>Palestinian Territory</b>						
Refugee	23.8	36.9	20.6	40.4	16.1	64.6
Non-Refugee	15.7	23.3	14.1	44.1	16.2	71.0
<b>Total</b>	<b>18.7</b>	<b>28.6</b>	<b>16.4</b>	<b>42.7</b>	<b>16.2</b>	<b>68.6</b>
<b>West Bank</b>						
Refugee	19.6	28.9	17.0	44.5	19.6	69.1
Non-Refugee	14.1	21.4	12.2	45.5	18.5	71.8
<b>Total</b>	<b>15.4</b>	<b>23.3</b>	<b>13.4</b>	<b>45.3</b>	<b>18.8</b>	<b>71.2</b>
<b>Gaza Strip</b>						
Refugee	27.3	44.8	23.4	37.5	13.7	61.4
Non-Refugee	22.8	40.2	20.9	39.0	7.9	68.2
<b>Total</b>	<b>25.6</b>	<b>43.6</b>	<b>22.4</b>	<b>38.1</b>	<b>11.6</b>	<b>64.0</b>

2011 - (ILO )

**Table 11: Labour Force Participation Rate and Unemployment Rate of Persons Aged 15 Years and Over in the Palestinian Territory by Region, Sex and Marital Status (ILO Standards), April- June, 2011**

Marital Status and Region	Unemployment Rate			Labour Force Participation Rate		
	Total	Females	Males	Total	Females	Males
<b>Palestinian Territory</b>						
Never Married	28.3	36.7	26.2	33.7	15.7	47.8
Currently Married	14.5	25.6	12.2	50.8	17.0	84.6
Other	12.6	13.1	11.0	14.5	12.2	38.6
<b>Total</b>	<b>18.7</b>	<b>28.6</b>	<b>16.4</b>	<b>42.7</b>	<b>16.2</b>	<b>68.6</b>
<b>West Bank</b>						
Never Married	22.4	28.8	20.6	38.4	19.2	53.2
Currently Married	12.1	21.5	10.0	52.1	19.2	85.1
Other	8.2	9.9	1.6	16.6	14.3	41.7
<b>Total</b>	<b>15.4</b>	<b>23.3</b>	<b>13.4</b>	<b>45.3</b>	<b>18.8</b>	<b>71.2</b>
<b>Gaza Strip</b>						
Never Married	43.8	62.6	39.9	25.6	9.8	38.3
Currently Married	19.0	36.4	16.3	48.5	13.2	83.8
Other	26.8	24.5	31.9	10.3	7.9	33.0
<b>Total</b>	<b>25.6</b>	<b>43.6</b>	<b>22.4</b>	<b>38.1</b>	<b>11.6</b>	<b>64.0</b>

2011 - (ILO )

**Table 12: Labour Force Participation Rate and Unemployment Rate for Persons Aged 15 Years and Over in the Palestinian Territory by Region, Type of locality and Sex (ILO Standards), April- June, 2011**

Type of locality and Region	Unemployment Rate			Labour Force Participation Rate		
	Total	Females	Males	Total	Females	Males
<b>Palestinian Territory</b>						
Urban	18.9	29.3	16.6	42.4	15.4	68.6
Rural	14.2	19.3	12.9	46.2	19.5	71.9
Camps	26.6	42.6	22.3	38.7	16.2	62.4
<b>Total</b>	<b>18.7</b>	<b>28.6</b>	<b>16.4</b>	<b>42.7</b>	<b>16.2</b>	<b>68.6</b>
<b>West Bank</b>						
Urban	15.6	24.2	13.5	45.0	18.4	71.0
Rural	13.7	18.2	12.5	46.7	19.9	72.4
Camps	20.2	35.5	16.1	42.5	17.9	67.5
<b>Total</b>	<b>15.4</b>	<b>23.3</b>	<b>13.4</b>	<b>45.3</b>	<b>18.8</b>	<b>71.2</b>
<b>Gaza Strip</b>						
Urban	24.5	42.3	21.6	38.4	10.9	65.0
Rural	24.1	44.7	19.9	38.4	13.1	63.4
Camps	31.7	48.1	27.2	36.2	15.0	58.8
<b>Total</b>	<b>25.6</b>	<b>43.6</b>	<b>22.4</b>	<b>38.1</b>	<b>11.6</b>	<b>64.0</b>

(ILO )

(29-15)

:13

2011 -

**Table 13: Percentage Distribution of Youth Aged (15-29) Years in the Palestinian Territory by Labour Force Status, Region and Sex (ILO Standards), April- June, 2011**

Labour Force Status	Gaza Strip			West Bank			Palestinian Territory		
	Total	Females	Males	Total	Females	Males	Total	Females	Males
In Labour Force	30.8	10.5	50.4	38.3	15.9	59.6	35.4	13.8	56.1
Outside Labour Force	69.2	89.5	49.6	61.7	84.1	40.4	64.6	86.2	43.9
<b>Total</b>	<b>100</b>	<b>100</b>	<b>100</b>	<b>100</b>	<b>100</b>	<b>100</b>	<b>100</b>	<b>100</b>	<b>100</b>
Full Employment	53.7	32.5	57.9	65.5	53.1	68.5	61.5	47.1	64.9
Underemployment	8.2	4.7	8.9	10.7	4.4	12.4	9.9	4.5	11.2
Unemployment	38.1	62.8	33.2	23.8	42.5	19.1	28.6	48.4	23.9
<b>Total</b>	<b>100</b>	<b>100</b>	<b>100</b>	<b>100</b>	<b>100</b>	<b>100</b>	<b>100</b>	<b>100</b>	<b>100</b>

2011 - (ILO )

**Table 14: Unemployment Rate of Participants in the Labour Force Aged 15 Years and Over in the Palestinian Territory by Age Group and Sex (ILO Standards), April- June, 2011**

Age Group	Total	Sex		
		Females	Males	
15-19	24.1	27.1	23.9	19-15
20-24	32.9	53.2	27.6	24-20
25-29	26.2	45.9	20.3	29-25
30-34	14.0	25.6	11.1	34-30
35-39	11.4	16.4	10.3	39-35
40-44	8.9	9.2	8.8	44-40
45-49	12.9	8.0	13.9	49-45
50+	10.4	4.3	11.8	+50
<b>Total</b>	<b>18.7</b>	<b>28.6</b>	<b>16.4</b>	

2011 - (ILO )

**Table 15: Unemployment Rate of Participants in the Labour Force Aged 15 Years and Over in the Palestinian Territory by Age and Region (ILO Standards), April- June, 2011**

Age Group	Region			
	Gaza Strip	West Bank	Palestinian Territory	
15-19	32.8	21.4	24.1	19-15
20-24	48.1	25.1	32.9	24-20
25-29	30.6	23.7	26.2	29-25
30-34	20.5	10.5	14.0	34-30
35-39	13.8	10.3	11.4	39-35
40-44	11.5	7.7	8.9	44-40
45-49	17.3	11.0	12.9	49-45
50+	15.9	8.4	10.4	+50
<b>Total</b>	<b>25.6</b>	<b>15.4</b>	<b>18.7</b>	

2011 - (ILO )

**Table 16: Unemployment Rate of Participants in the Labour Force Aged 15 Years and Over in the Palestinian Territory by Years of Schooling and Sex (ILO Standards), April- June, 2011**

Years of Schooling	Total	Sex		
		Females	Males	
0	11.9	5.1	18.5	0
1-6	16.5	4.3	18.4	6-1
7-9	17.8	7.4	18.6	9-7
10-12	16.1	12.6	16.4	12-10
13+	22.8	39.2	13.1	+13
<b>Total</b>	<b>18.7</b>	<b>28.6</b>	<b>16.4</b>	

2011 - (ILO )

**Table 17: Unemployment Rate of Participants in the Labour Force Aged 15 Years and Over in the Palestinian Territory by Years of Schooling and Region (ILO Standards), April- June, 2011**

Years of Schooling	Region			
	Gaza Strip	West Bank	Palestinian Territory	
0	34.7	5.9	11.9	0
1-6	26.0	12.2	16.5	6-1
7-9	24.6	15.2	17.8	9-7
10-12	22.9	13.3	16.1	12-10
13+	27.7	19.7	22.8	+13
<b>Total</b>	<b>25.6</b>	<b>15.4</b>	<b>18.7</b>	<b>المجموع</b>

:18

2011 - (ILO )

**Table 18: Labour Force Participation, Employment and Unemployment and Average Daily Wage in NIS for Wage Employees in the Palestinian Territory by Governorate (ILO Standards), April- June, 2011**

Governorate and Region	Average Daily Wage in NIS for Wage Employees	Unemployment		العمالة Employment		Labour Force Participation	
		عدد Number	نسبة (%)	عدد Number	نسبة (%)	عدد Number	نسبة (%)
Jenin	90.2	10,800	13.0	72,500	87.0	83,300	47.6
Tubas	84.7	2,100	11.9	16,100	88.1	18,200	50.4
Tulkarm	73.9	8,500	19.2	35,800	80.8	44,300	41.3
Nablus	92.2	12,800	12.4	89,900	87.6	102,700	48.1
Qalqilia	91.5	5,400	21.1	20,100	78.9	25,500	40.5
Salfeet	106.5	2,500	13.4	15,900	86.6	18,400	46.6
Ramallah & Al-Bireh	107.2	12,500	13.3	81,300	86.7	93,800	46.3
Jericho & AL- Aghwar	80.2	1,600	12.4	11,600	87.6	13,200	47.8
Jerusalem	138.2	9,300	10.6	78,100	89.4	87,400	38.0
Bethlehem	97.5	11,100	18.8	48,200	81.2	59,300	50.2
Hebron	90.5	32,800	19.9	132,200	80.1	165,000	46.1
<b>West Bank</b>	<b>100.6</b>	<b>109,400</b>	<b>15.4</b>	<b>601,700</b>	<b>84.6</b>	<b>711,100</b>	<b>45.3</b>
GS-North	64.4	17,000	26.3	47,600	73.7	64,600	37.8
Gaza City	62.3	23,600	21.1	88,300	78.9	111,900	36.2
Deir ALBalah	65.8	13,900	27.1	37,400	72.9	51,300	39.0
Khan Younis	55.8	18,400	27.7	48,200	72.3	66,600	40.1
Rafah	61.6	13,200	31.0	29,200	69.0	42,400	39.9
<b>Gaza Strip</b>	<b>61.8</b>	<b>86,100</b>	<b>25.6</b>	<b>250,700</b>	<b>74.4</b>	<b>336,800</b>	<b>38.1</b>
<b>Palestinian Territory</b>	<b>90.8</b>	<b>195,500</b>	<b>18.7</b>	<b>852,400</b>	<b>81.3</b>	<b>1,047,900</b>	<b>42.7</b>

2011 -

**Table 19: The Average of Unemployment Duration in Months in the Palestinian Territory by Region and Sex (ILO Standards), April- June, 2011**

Region	Total	Sex	
		Females	Males
<b>Palestinian Territory</b>	<b>12.2</b>	15.2	10.9
West Bank	<b>8.4</b>	13.9	6.0
Gaza Strip	<b>16.9</b>	17.3	16.8

**Note:** Unemployed period means the period of being Unemployed since the individual was a available for work or leaving last work

2011 -

**Table 20: Percentage Distribution of Employed Persons Aged 15 Years and Over in the Palestinian Territory by Governorate and Place of work (ILO Standards), April- June, 2011**

Governorate and Region	Percentage of Employment	Place of work			
		Total	Israel and Settlements	Other Governorate	Same Governorate
<b>Jenin</b>	87.0	100	9.3	9.2	81.5
Tubas	88.1	100	12.9	15.7	71.4
Tulkarm	80.8	100	9.7	11.8	78.5
Nablus	87.6	100	8.7	11.0	80.3
Qalqilia	78.9	100	17.2	8.5	74.3
Salfeet	86.6	100	20.3	16.5	63.2
Ramallah & Al-Bireh	86.7	100	5.6	2.0	92.4
Jericho & AL- Aghwar	87.6	100	17.3	3.5	79.2
Jerusalem	89.4	100	40.2	8.0	51.8
Bethlehem	81.2	100	10.4	5.6	84.0
Hebron	80.1	100	10.9	5.9	83.2
<b>West Bank</b>	<b>84.6</b>	<b>100</b>	<b>14.0</b>	<b>7.7</b>	<b>78.3</b>
GS-North	73.7	100	0.0	35.5	64.5
Gaza City	78.9	100	0.0	2.9	97.1
Deir ALBalah	72.9	100	0.0	32.2	67.8
Khan Younis	72.3	100	0.0	15.2	84.8
Rafah	69.0	100	0.0	18.2	81.8
<b>Gaza Strip</b>	<b>74.4</b>	<b>100</b>	<b>0.0</b>	<b>17.6</b>	<b>82.4</b>
<b>Palestinian Territory</b>	<b>81.3</b>	<b>100</b>	<b>9.9</b>	<b>10.6</b>	<b>79.5</b>



2011 -

**Table 21: Percentage Distribution of Employed Persons Aged 15 Years and Over in the Palestinian Territory by Economic Activity and Place of work (ILO Standards), April- June, 2011**

Economic Activity	Total	Place of work			
		Israel and Settlements	Gaza Strip	West Bank	
Agriculture, fishing and forestry	11.5	6.5	9.5	13.2	
Mining, quarrying and manufacturing	12.3	13.4	5.7	15.2	
Construction	14.5	51.0	6.2	12.6	
Commerce, restaurants and hotels	20.4	16.5	19.4	21.6	
Transportation, storage and communication	6.1	6.7	7.2	5.4	
Services and other branches	35.2	5.9	52.0	32.0	
<b>Total</b>	<b>100</b>	<b>100</b>	<b>100</b>	<b>100</b>	

2011 -

**Table 22: Number of Employed Persons Aged 15 Years and Over in the Palestinian Territory by Place of work and Region (ILO Standards), April- June, 2011**

Place of work	Region			
	Gaza Strip	West Bank	Palestinian Territory	
West Bank	0	516,900	516,900	
Gaza Strip	250,700	0	250,700	
Israel	0	71,700	71,700	
Settlements	0	12,300	12,300	
Abroad*	0	800	800	*
<b>Total</b>	<b>250,700</b>	<b>601,700</b>	<b>852,400</b>	

(\* ): Represent only head of households who are working abroad and they back annually to their households in the Palestinian Territory, and do not include household member who are living and working abroad.

:(\*)

2011 -

**Table 23: Percentage Distribution of Employed Persons Aged 15 Years and Over in the Palestinian Territory by Economic Activity, Sex and Region (ILO Standards), April- June, 2011**

Economic Activity and Sex	Region			
	Gaza Strip	West Bank	Palestinian Territory	
<b>Both Sexes</b>				
Agriculture, fishing and forestry	9.5	12.3	11.5	
Mining, quarrying and manufacturing	5.7	15.0	12.3	
Construction	6.2	18.0	14.5	
Commerce, restaurants and hotels	19.4	20.9	20.4	
Transportation, storage and communication	7.2	5.6	6.1	
Services and other branches	52.0	28.2	35.2	
<b>Total</b>	<b>100</b>	<b>100</b>	<b>100</b>	
<b>Males</b>				ذكور
Agriculture, fishing and forestry	9.9	9.9	9.9	
Mining, quarrying and manufacturing	6.4	16.0	13.0	
Construction	6.9	21.9	17.2	
Commerce, restaurants and hotels	21.1	23.5	22.8	
Transportation, storage and communication	8.1	6.6	7.1	
Services and other branches	47.6	22.1	30.0	
<b>Total</b>	<b>100</b>	<b>100</b>	<b>100</b>	
<b>Females</b>				
Agriculture, fishing and forestry	6.9	22.8	19.6	
Mining, quarrying and manufacturing	0.9	10.5	8.5	
Construction	0.4	0.8	0.7	
Commerce, restaurants and hotels	6.5	9.2	8.7	
Transportation, storage and communication	-	1.2	0.9	
Services and other branches	85.3	55.5	61.6	
<b>Total</b>	<b>100</b>	<b>100</b>	<b>100</b>	

(-): means there are no enough observations in this section

:(-)

**Table 24: Percentage Distribution of Employed Persons Aged 15 Years and Over in the Palestinian Territory by Governorate, Region and Economic Activity (ILO Standards), April- June, 2011**

Governorate And Region	Economic Activity									
	Total	Services and other branches	Health	Education	Transportation, storage and communication	Commerce, restaurants and hotels	Construction	Mining, quarrying and manufacturing	Agriculture, fishing and forestry	
Jenin	100	12.1	2.9	11.8	3.8	19.5	13.8	13.9	22.2	
Tubas	100	12.7	2.9	9.0	6.5	11.7	5.7	4.7	46.8	
Tulkarm	100	18.9	2.5	8.2	4.6	19.8	17.1	12.4	16.5	
Nablus	100	18.2	2.4	10.0	6.7	25.7	11.3	15.7	10.0	
Qalqilia	100	18.1	3.2	13.6	6.4	19.1	14.3	11.2	14.1	
Salfeet	100	22.8	4.6	13.0	7.7	13.5	9.3	20.6	8.5	
Ramallah & Al-Bireh	100	28.2	3.3	13.0	6.6	17.4	14.1	13.6	3.8	
Jericho & AL- Aghwar	100	28.0	2.5	10.0	5.1	12.1	7.8	4.8	29.7	
Jerusalem	100	19.2	3.7	13.4	7.1	20.9	21.5	9.3	4.9	
Bethlahem	100	17.2	5.7	13.0	2.0	19.9	11.4	18.8	12.0	
Hebron	100	10.6	3.6	9.8	4.9	27.1	9.0	20.6	14.4	
<b>West Bank</b>	<b>100</b>	<b>17.4</b>	<b>3.4</b>	<b>11.2</b>	<b>5.4</b>	<b>21.6</b>	<b>12.6</b>	<b>15.2</b>	<b>13.2</b>	
GS-North	100	33.3	5.9	12.2	7.4	19.7	5.9	3.6	12.0	
Gaza City	100	35.0	5.0	9.2	5.9	25.7	8.0	8.9	2.3	
Deir ALBalah	100	35.0	4.7	13.4	8.6	10.8	5.8	5.7	16.0	
Khan Younis	100	32.6	5.4	12.8	8.4	17.6	5.5	3.2	14.5	
Rafah	100	35.9	10.5	14.7	7.2	13.8	2.8	3.9	11.2	
<b>Gaza Strip</b>	<b>100</b>	<b>34.5</b>	<b>5.8</b>	<b>11.7</b>	<b>7.2</b>	<b>19.4</b>	<b>6.2</b>	<b>5.7</b>	<b>9.5</b>	
<b>Palestinian Territory</b>	<b>100</b>	<b>22.9</b>	<b>4.2</b>	<b>11.4</b>	<b>6.0</b>	<b>20.9</b>	<b>10.5</b>	<b>12.1</b>	<b>12.0</b>	

Note: Workers in Israel and Settlements are excluded

2011 -

**Table 25: Percentage Distribution of Employed Persons Aged 15 Years and Over in the Palestinian Territory by Economic Activity, Employment Status and Region (ILO Standards), April- June, 2011**

Economic Activity and Region	Employment Status				
	Total	Unpaid Family Member	Wage Employee	Self Employed	Employer
<b>Palestinian Territory</b>					
Agriculture, fishing and forestry	11.5	58.9	4.4	17.9	5.9
Mining, quarrying and manufacturing	12.3	9.6	12.2	11.0	19.9
Construction	14.5	7.0	16.6	7.3	23.9
Commerce, restaurants and hotels	20.4	22.8	13.2	39.4	35.1
Transportation, storage and communication	6.1	0.3	4.5	14.9	2.3
Services and other branches	35.2	1.4	49.1	9.5	12.9
<b>Total</b>	<b>100</b>	<b>100</b>	<b>100</b>	<b>100</b>	<b>100</b>
<b>West Bank</b>					
Agriculture, fishing and forestry	12.3	65.3	4.0	19.1	5.7
Mining, quarrying and manufacturing	15.0	10.1	15.3	14.2	20.0
Construction	18.0	5.2	22.3	6.4	24.8
Commerce, restaurants and hotels	20.9	17.9	14.9	37.1	34.7
Transportation, storage and communication	5.6	-	4.9	11.8	2.2
Services and other branches	28.2	1.5	38.6	11.4	12.6
<b>Total</b>	<b>100</b>	<b>100</b>	<b>100</b>	<b>100</b>	<b>100</b>
<b>Gaza Strip</b>					
Agriculture, fishing and forestry	9.5	38.3	5.4	15.0	7.1
Mining, quarrying and manufacturing	5.7	7.9	5.5	3.7	19.8
Construction	6.2	12.7	4.1	9.4	18.9
Commerce, restaurants and hotels	19.4	38.5	9.6	44.7	37.3
Transportation, storage and communication	7.2	1.3	3.7	21.8	2.7
Services and other branches	52.0	1.3	71.7	5.4	14.2
<b>Total</b>	<b>100</b>	<b>100</b>	<b>100</b>	<b>100</b>	<b>100</b>

(-): means there are no enough observations in this section

:(-)

2011 - (ILO )

**Table 26: Percentage Distribution of Employed Persons From the Palestinian Territory by Economic Activity and Weekly Work Hours (ILO Standards), April- June, 2011**

Economic Activity	Total	Weekly Work Hours		
		+35	34-15	14-1
Agriculture, Hunting & Fishing	12.4	8.5	18.9	55.9
Mining, Quarrying & Manufacturing	13.1	13.8	11.2	9.1
Construction	15.2	14.6	20.0	7.3
Commerce, Hotels & Restaurants	22.0	24.8	10.4	15.0
Transportation, Storage & Communication	6.6	7.7	2.6	2.4
Services & Other Branches	30.7	30.6	36.9	10.3
<b>Total</b>	<b>100</b>	<b>100</b>	<b>100</b>	<b>100</b>

**Note:** Employed persons excluding absent persons

:

(ILO )

15

:27

2011 -

**Table 27: Percentage Distribution of Employed Persons Aged 15 Years and Over in the Palestinian Territory by Occupation and Region (ILO Standards), April- June, 2011**

Occupation	Region		
	Gaza Strip	West Bank	Palestinian Territory
Legislators, Senior Officials & Managers	2.5	5.4	4.6
Professionals, Technicians, Associates and Clerks	30.3	20.7	23.5
Service, Shop & Market Workers	28.4	15.7	19.5
Skilled Agricultural & Fishery Workers	6.1	9.8	8.7
Craft and Related Trade Workers	11.3	20.1	17.5
Plant & Machine Operators & Assemblers	7.2	8.4	8.1
Elementary Occupations	14.2	19.9	18.1
<b>Total</b>	<b>100</b>	<b>100</b>	<b>100</b>

2011 -

**Table 28: Percentage Distribution of Employed Persons Aged 15 Years and Over in the Palestinian Territory by Occupation, Educational Qualification and Region (ILO Standards), April- June, 2011**

Occupation and Region	Educational Qualification				
	Total	Bachelor and above	Associate diploma	Secondary certificate	Preparatory & less
<b>Palestinian Territory</b>					
Legislators, Senior Officials & Managers	100	39.1	10.1	15.4	35.4
Professionals, Technicians, Associates and Clerks	100	64.7	17.8	9.3	8.2
Service, Shop & Market Workers	100	7.9	5.7	24.6	61.8
Skilled Agricultural & Fishery Workers	100	3.2	2.4	12.1	82.3
Craft and Related Trade Workers	100	1.8	3.9	15.5	78.8
Plant & Machine Operators & Assemblers	100	2.1	3.9	17.6	76.4
Elementary Occupations	100	1.9	2.8	12.4	82.9
<b>Total</b>	<b>100</b>	<b>19.6</b>	<b>7.5</b>	<b>15.1</b>	<b>57.8</b>
<b>West Bank</b>					
Legislators, Senior Officials & Managers	100	32.8	10.9	16.2	40.1
Professionals, Technicians, Associates and Clerks	100	64.1	16.9	8.9	10.1
Service, Shop & Market Workers	100	7.2	6.2	22.4	64.2
Skilled Agricultural & Fishery Workers	100	3.0	2.4	11.8	82.8
Craft and Related Trade Workers	100	2.0	3.3	15.2	79.5
Plant & Machine Operators & Assemblers	100	1.5	2.7	16.6	79.2
Elementary Occupations	100	2.3	3.3	11.8	82.6
<b>Total</b>	<b>100</b>	<b>17.5</b>	<b>6.8</b>	<b>14.2</b>	<b>61.5</b>
<b>Gaza Strip</b>					
Legislators, Senior Officials & Managers	100	71.8	5.5	11.4	11.3
Professionals, Technicians, Associates and Clerks	100	65.8	19.1	9.9	5.2
Service, Shop & Market Workers	100	8.6	5.2	27.5	58.7
Skilled Agricultural & Fishery Workers	100	3.8	2.5	13.5	80.2
Craft and Related Trade Workers	100	1.7	6.2	16.6	75.5
Plant & Machine Operators & Assemblers	100	3.5	7.4	20.7	68.4
Elementary Occupations	100	0.5	1.2	14.7	83.6
<b>Total</b>	<b>100</b>	<b>25.0</b>	<b>9.0</b>	<b>17.3</b>	<b>48.7</b>

2011 -

**Table 29: Percentage Distribution of Employed Persons Aged 15 Years and Over in the Palestinian Territory by Employment Status, Sex and Region (ILO Standards), April- June, 2011**

Employment Status and Sex	Region			
	Gaza Strip	West Bank	Palestinian Territory	
<b>Both Sexes</b>				
Employer	3.0	7.6	6.3	
Self Employed	20.3	19.0	19.4	
Wage Employee	70.3	64.7	66.4	
Unpaid Family Member	6.4	8.7	7.9	
<b>Total</b>	<b>100</b>	<b>100</b>	<b>100</b>	
<b>Males</b>				ذكور
Employer	3.3	8.9	7.2	
Self Employed	22.2	20.6	21.1	
Wage Employee	68.3	65.1	66.1	
Unpaid Family Member	6.2	5.4	5.6	
<b>Total</b>	<b>100</b>	<b>100</b>	<b>100</b>	
<b>Females</b>				
Employer	0.9	2.0	1.8	
Self Employed	5.1	12.1	10.7	
Wage Employee	85.5	63.0	67.6	
Unpaid Family Member	8.5	22.9	19.9	
<b>Total</b>	<b>100</b>	<b>100</b>	<b>100</b>	

2011 -

**Table 30: Distribution of Employed Persons Aged 15 Years and Over in the Palestinian Territory by Place of Work and Region (ILO Standards), April- June, 2011**

Place of Work	Region						
	Gaza Strip		West Bank		Palestinian Territory		
	(%)	Number	(%)	Number	(%)	Number	
Palestinian Territory	100.0	250,700	85.9	516,900	90.0	767,600	
Israel and Settlements (Persons who have Permit)	0	0	5.5	33,100	3.9	33,100	)
Israel and Settlements (Persons who not have Permit)	0	0	3.5	21,100	2.5	21,100	)
Israel and Settlements (Persons who have Israeli Identity or foreign passport)	0	0	5.0	29,800	3.5	29,800	)
Abroad*	0	0	0.1	800	0.1	800	/
<b>Total</b>	<b>100</b>	<b>250,700</b>	<b>100</b>	<b>601,700</b>	<b>100</b>	<b>852,400</b>	*

(\*): Represent only head of households who are working abroad and they back annually to their households in the Palestinian Territory, and do not include household member who are living and working abroad.

:(\*)

2011 -

**Table 31: Percentage Distribution of Employed Persons Aged 15 Years and Over in the Palestinian Territory by Governorate, Region and Employment Status (ILO Standards), April- June, 2011**

Governorate and Region	Total	Employment Status			
		Unpaid Family Member	Wage Employee	Self Employed	Employer
Jenin	100	14.7	57.3	20.6	7.4
Tubas	100	24.3	47.0	19.5	9.2
Tulkarm	100	3.9	70.7	16.8	8.6
Nablus	100	8.6	58.1	24.7	8.6
Qalqilia	100	4.0	70.6	20.4	5.0
Salfeet	100	5.8	66.9	20.6	6.7
Ramallah & Al-Bireh	100	4.2	73.9	14.9	7.0
Jericho & AL- Aghwar	100	11.4	72.5	12.7	3.4
Jerusalem	100	2.3	79.8	12.6	5.3
Bethlahem	100	9.8	63.4	18.3	8.5
Hebron	100	11.4	58.0	21.7	8.9
<b>West Bank</b>	<b>100</b>	<b>8.7</b>	<b>64.7</b>	<b>19.0</b>	<b>7.6</b>
GS-North	100	4.7	69.4	22.5	3.4
Gaza City	100	6.5	70.2	20.3	3.0
Deir ALBalah	100	8.5	66.1	22.2	3.2
Khan Younis	100	7.8	69.2	20.4	2.6
Rafah	100	4.4	78.9	13.9	2.8
<b>Gaza Strip</b>	<b>100</b>	<b>6.4</b>	<b>70.3</b>	<b>20.3</b>	<b>3.0</b>
<b>Palestinian Territory</b>	<b>100</b>	<b>7.9</b>	<b>66.4</b>	<b>19.4</b>	<b>6.3</b>



2011 -

**Table 32: Percentage Distribution of Employed Persons Aged 15 Years and Over in the Palestinian Territory by Governorate, Region and Sector (ILO Standards), April- June, 2011**

Governorate and Region	المجموع Total	Sector			القطاع		المحافظة والمنطقة
		اسرائيل والمستوطنات Israel and Settlements	قطاعات أخرى Other Sectors	قطاع خاص Private Sector	قطاع عام Public Sector		
Jenin	100	9.3	1.8	73.1	15.8	جنين	
Tubas	100	12.9	1.5	71.4	14.2	طوباس	
Tulkarm	100	9.7	1.6	70.5	18.2	طولكرم	
Nablus	100	8.7	1.9	73.6	15.8	نابلس	
Qalqilia	100	17.2	1.1	60.9	20.8	قلقيلية	
Salfeet	100	20.3	1.4	55.5	22.8	سلفيت	
Ramallah & Al-Bireh	100	5.6	4.1	71.1	19.2	رام الله والبيرة	
Jericho & AL- Aghwar	100	17.3	4.6	54.9	23.2	أريحا والأغوار	
Jerusalem	100	40.2	2.5	51.0	6.3	القدس	
Bethlahem	100	10.4	4.0	74.0	11.6	بيت لحم	
Hebron	100	10.9	1.8	75.1	12.2	الخليل	
<b>West Bank</b>	100	<b>14.0</b>	<b>2.4</b>	<b>69.1</b>	<b>14.5</b>	<b>الضفة الغربية</b>	
GS-North	100	0.0	5.6	54.5	39.9	شمال غزة	
Gaza City	100	0.0	5.5	60.1	34.4	غزة	
Deir ALBalah	100	0.0	9.0	49.7	41.3	دير البلح	
Khan Yunis	100	0.0	6.3	54.6	39.1	خان يونس	
Rafah	100	0.0	10.9	44.1	45.0	رفح	
<b>Gaza Strip</b>	100	<b>0.0</b>	<b>6.8</b>	<b>54.6</b>	<b>38.6</b>	<b>قطاع غزة</b>	
<b>Palestinian Territory</b>	100	<b>9.9</b>	<b>3.7</b>	<b>64.8</b>	<b>21.6</b>	<b>الأراضي الفلسطينية</b>	

2011 - (ILO )

**Table 33: Average Weekly Work Hours, Monthly Work Days and Daily Wage in NIS for Wage Employees Aged 15 Years and Over by Place of Work (ILO Standards), April- June, 2011**

Indicator	Total	Place of work			
		Israel and Settlements	Gaza Strip	West Bank	
Average weekly work hours	<b>40.9</b>	38.9	37.5	42.8	
Average monthly work days*	<b>22.5</b>	20.6	23.7	22.5	*
Median daily net wage in NIS	<b>76.9</b>	153.8	48.1	76.9	
Average daily net wage in NIS	<b>90.8</b>	160.5	61.8	84.8	

\*: Including paid days that have been not worked

:\*

(ILO )

:34

2011 -

**Table 34: Average Daily Wage in NIS for Wage Employees in the Palestinian Territory by Region and Sector (ILO Standards), April- June, 2011**

Region	Total	Sector				
		Israel and Settlements	Other Sector	Private Sector	* Public Sector*	
<b>Palestinian Territory</b>	<b>90.8</b>	<b>160.5</b>	<b>99.9</b>	<b>70.2</b>	<b>88.0</b>	
West Bank	100.6	160.5	121.0	78.8	92.9	
Gaza Strip	61.8	0	83.7	43.4	79.0	

\*:Palestinian National Authority institutions

:\*

(ILO )

:35

2011 -

**Table 35: Average Daily Wage in NIS for Wage Employees in the Palestinian Territory by Region and Sex (ILO Standards), April- June, 2011**

Region	Total	Sex		
		Females	Males	
<b>Palestinian Territory</b>	<b>77.8</b>	<b>76.9</b>	<b>78.1</b>	
West Bank	84.8	79.8	86.1	
Gaza Strip	61.8	68.4	60.4	

**Note:** Workers in Israel and Settlements are excluded

:

2011 -

**Table 36: Average Daily Wage in NIS for Wage Employees in the Palestinian Territory by Economic Activity and Place of work (ILO Standards), April- June, 2011**

Economic Activity	Total	Place of work		
		Israel and Settlements	Gaza Strip	West Bank
Agriculture, fishing and forestry	55.0	101.8	29.1	57.5
Mining, quarrying and manufacturing	76.9	156.1	34.9	67.5
Construction	117.7	166.0	43.0	87.9
Commerce, restaurants and hotels	73.5	151.8	30.2	66.9
Transportation, Storage & Communication	107.7	-	45.1	97.4
Services and other branches	91.9	164.6	80.0	95.9
<b>Total</b>	<b>90.8</b>	<b>160.5</b>	<b>61.8</b>	<b>84.8</b>

(-): means there are no enough observations in this section

:(-)

2011 -

**Table 37: Average Monthly Wage in NIS for Wage Employees in the Palestinian Territory by Occupation, and Educational Qualification (ILO Standards), April- June, 2011**

Occupation	Educational Qualification					
	Total	Bachelor and above	Associate diploma	Secondary certificate	Preparatory & less	
Legislators, Senior Officials & Managers	3,991	4,338	-	-	-	
Professionals, Technicians, Associates and Clerks	2,516	2,689	2,256	2,080	2,095	
Service, Shop & Market Workers	1,712	2,329	1,661	1,750	1,624	
Skilled Agricultural & Fishery Workers	-	-	-	-	-	
Craft and Related Trade Workers	2,476	-	-	2,604	2,475	
Plant & Machine Operators & Assemblers	2,646	-	-	2,845	2,649	
Elementary Occupations	2,183	-	2,240	2,041	2,199	
<b>Total</b>	<b>2,360</b>	<b>2,778</b>	<b>2,231</b>	<b>2,166</b>	<b>2,232</b>	

(-): means there are no enough observations in this section

:(-)

2011 -

**Table 38: Average Monthly Wage in NIS for Wage Employees in the Palestinian Territory by Length of Services in Years, Educational Qualification and Region (ILO Standards), April- June, 2011**

Length of Services in years and Region	Educational Qualification					
	Total	Bachelor and above	Associate diploma	Secondary certificate	Preparatory & less	
<b>Palestinian Territory</b>						
0-1	1,552	1,904	1,406	1,459	1,474	1-0
2-3	2,028	2,299	1,679	1,776	2,020	3-2
4-6	2,590	2,832	2,046	2,524	2,557	6-4
7-9	2,688	2,744	2,441	-	2,552	9-7
10+	3,067	3,517	2,713	2,880	2,942	+10
<b>Total</b>	<b>2,360</b>	<b>2,778</b>	<b>2,231</b>	<b>2,166</b>	<b>2,232</b>	
<b>West Bank</b>						
0-1	1,877	2,219	1,588	1,706	1,844	1-0
2-3	2,237	2,370	1,927	1,973	2,281	3-2
4-6	2,877	3,070	-	2,864	2,850	6-4
7-9	2,809	2,761	-	-	2,705	9-7
10+	3,181	3,584	2,770	3,063	3,119	+10
<b>Total</b>	<b>2,616</b>	<b>2,950</b>	<b>2,397</b>	<b>2,432</b>	<b>2,559</b>	
<b>Gaza Strip</b>						
0-1	957	1,422	-	891	781	1-0
2-3	1,403	2,154	-	-	907	3-2
4-6	1,657	2,156	-	1,816	1,194	6-4
7-9	2,296	2,721	-	-	-	9-7
10+	2,575	3,371	2,525	-	1,498	+10
<b>Total</b>	<b>1,606</b>	<b>2,435</b>	<b>1,843</b>	<b>1,382</b>	<b>991</b>	

(-): means there are no enough observations in this section

:(-)

2011 - (ILO )

**Table 39: Percentage Distribution of Persons Aged 15 Years and Over Outside the Labour Force in the Palestinian Territory by Reason, Sex and Region (ILO Standards), April- June, 2011**

Reason and Sex	Region			
	Gaza Strip	West Bank	Palestinian Territory	
<b>Both Sexes</b>				
Old/illness	9.1	10.3	9.8	/
Housekeeping	46.9	48.7	48.0	
Studying or training	40.1	34.9	36.9	/
Others	3.9	6.1	5.3	
<b>Total</b>	<b>100</b>	<b>100</b>	<b>100</b>	
<b>Males</b>				
Old/illness	24.8	25.6	25.3	/
Housekeeping	-	-	-	
Studying or training	64.3	54.7	58.7	/
Others	10.9	19.7	16.0	
<b>Total</b>	<b>100</b>	<b>100</b>	<b>100</b>	
<b>Females</b>				
Old/illness	2.5	4.7	3.9	/
Housekeeping	66.4	66.4	66.4	
Studying or training	30.0	27.7	28.6	/
Others	1.1	1.2	1.1	
<b>Total</b>	<b>100</b>	<b>100</b>	<b>100</b>	

(-): means there are no enough observations in this section

:(-)

2011 -

**Table 40: Percentage Distribution for Wage Employees in Private Sector in the Palestinian Territory by Some Indicators and Work Advantages and Region, April- June, 2011**

Indicator	Region			
	Gaza Strip	West Bank	Palestinian Territory	
<b>Distribution of Wage Employees by Nature of Work:</b>				:
Permanently / full time	84.7	96.1	93.1	
Temporarily / Part time	1.3	1.6	1.5	
seasonal / casual	14.0	2.3	5.4	/ /
<b>Total</b>	<b>100</b>	<b>100</b>	<b>100</b>	
<b>Distribution of Wage Employees by Contract Availability:</b>				:
With written Contract/ Limited period	9.2	8.2	8.5	
With written Contract/ Unlimited period	22.8	19.2	20.2	
Collective Agreement	0.6	2.9	2.3	
Oral Agreement	0.9	31.6	23.5	
Without Contract	66.5	38.1	45.5	
<b>Total</b>	<b>100</b>	<b>100</b>	<b>100</b>	
<b>Wage Employees by Advantages provided by Employers:</b>				:
Contributions to the pension fund	18.4	25.7	23.8	/
Annual paid Vacations	20.2	26.2	24.6	
Sick Paid Vacations	20.6	26.5	24.9	
Maternity Paid Vacations	41.0	58.4	52.8	

2011 -

**Table 41: Percentage Distribution of Employed Persons Aged 15 Years and Over in the Palestinian Territory by Affiliation to Workers Vocational Union, Sex and Region, April- June, 2011**

Affiliation to Workers Vocational Union & Sex	Region			
	Gaza Strip	West Bank	Palestinian Territory	
<b>Both Sexes</b>				
Affiliated to Workers Vocational Union	13.8	16.3	15.5	/
Not Affiliated to Workers Vocational Union	86.2	83.7	84.5	/
<b>Total</b>	<b>100</b>	<b>100</b>	<b>100</b>	
<b>Males</b>				
Affiliated to Workers Vocational Union	14.5	16.5	15.9	/
Not Affiliated to Workers Vocational Union	85.5	83.5	84.1	/
<b>Total</b>	<b>100</b>	<b>100</b>	<b>100</b>	
<b>Females</b>				
Affiliated to Workers Vocational Union	8.2	15.4	13.9	/
Not Affiliated to Workers Vocational Union	91.8	84.6	86.1	/
<b>Total</b>	<b>100</b>	<b>100</b>	<b>100</b>	

(ILO )

17-10

:42

2011 -

**Table 42: Percentage Distribution of Children Aged 10-17 Years in the Palestinian Territory by Labour Force Status and Region (ILO Definition), April- June, 2011**

Labour Force Status	Region			
	Gaza Strip	West Bank	Palestinian Territory	
Employed	1.7	5.5	4.0	
Unemployed	0.9	1.0	1.0	
Outside Labour Force	97.4	93.5	95.0	
<b>Total</b>	<b>100</b>	<b>100</b>	<b>100</b>	

(ILO )

:43

2011 -

**Table 43: Percentage of Households which are headed by Women in the Palestinian Territory by Region (ILO Definition), April- June, 2011**

Region	Percentage of Households which are headed by Women	
<b>Palestinian Territory</b>	<b>11.1</b>	
West Bank	11.9	
Gaza Strip	9.6	

(ILO ) 2011-2000

## Basic Changes in the Labour Force Indicators in Palestinian Territory During 2000 - 2011 (ILO Standards)

Indicator	61	60	59	58	57	56	55	54	53	52	51	50	49	48	47	46	45	44	43	42	41	40	39	38	37	36	19	18	
	Q2-2011	Q1-2011	Q4-2010	Q3-2010	Q2-2010	Q1-2010	Q4-2009	Q3-2009	Q2-2009	Q1-2009	Q4-2008	Q3-2008	Q2-2008	Q1-2008	Q4-2007	Q3-2007	Q2-2007	Q1-2007	Q4-2006	Q3-2006	Q2-2006	Q1-2006	Q4-2005	Q3-2005	Q2-2005	Q1-2005	Q4-2000	Q3-2000	
Labour Force Participation Rate	42.7	41.0	41.5	40.5	41.5	40.7	41.5	41.6	41.7	41.4	41.4	41.6	41.6	40.6	41.4	42.7	42.4	41.2	43.0	41.3	40.9	40.0	40.3	41.7	41.2	39.7	39.2	43.5	
Full Employment Rate	73.2	69.5	69.6	67.0	68.7	71.2	68.6	69.1	71.6	68.7	65.7	66.7	66.0	71.3	72.1	68.2	70.1	71.5	69.8	67.9	68.7	67.5	69.1	70.2	72.7	67.9	66.9	83.6	
Underemployment Rate	8.1	8.8	7.0	6.4	8.4	6.8	6.6	5.1	6.2	5.9	6.4	5.8	8.2	6.1	5.7	8.6	10.7	6.9	8.2	7.9	8.4	7.2	7.1	6.1	5.8	4.8	6.4		
Unemployment Rate	18.7	21.7	23.4	26.6	22.9	22.0	24.8	25.8	22.2	25.4	27.9	27.5	25.8	22.6	22.2	23.2	19.2	21.6	22.0	24.2	22.9	25.3	23.8	22.7	21.2	26.3	28.3	10.0	
Employed in Agriculture	11.5	10.6	12.5	10.2	12.7	11.8	12.4	10.7	12.3	11.7	13.0	12.7	14.9	12.9	15.3	15.1	17.3	14.7	21.5	13.7	15.2	13.2	14.4	14.9	15.6	13.3	16.9	12.7	
Employed in Construction	14.5	13.8	12.7	13.8	13.4	12.7	11.4	12.2	12.3	11.1	10.8	12.7	10.8	9.4	10.4	11.6	11.1	10.7	9.5	11.4	11.5	12.2	12.3	13.0	13.0	13.4	10.8	21.7	
Employed in Manufacturing	12.3	11.5	10.7	11.4	10.9	12.6	12.6	11.8	11.4	12.6	11.1	12.4	12.1	13.0	12.3	12.8	12.6	12.5	12.2	13.5	12.3	11.6	13.2	13.0	13.2	12.5	12.8	15.0	
Employed in Services	35.2	37.7	38.7	38.9	38.4	37.7	37.9	39.4	40.4	40.5	39.4	37.2	38.2	38.5	36.4	35.3	34.8	36.7	34.4	35.1	36.1	36.4	34.9	33.7	33.4	35.8	35.2	28.6	
Elementary Occupation Workers	18.1	18.3	17.3	18.8	18.0	18.3	16.5	15.6	14.6	15.8	17.9	15.6	15.7	14.9	14.3	14.8	13.1	13.8	13.2	15.1	16.0	16.0	16.6	14.6	15.2	15.6	13.7	19.8	
Craft and Related Trade Workers	17.5	15.6	15.1	16.0	15.7	16.8	15.5	15.1	16.1	15.7	13.6	16.9	15.5	16.3	14.7	17.8	17.2	16.5	15.1	17.2	15.8	16.5	16.8	18.6	17.4	17.3	16.2	24.5	
Employed in Israel & Settlements	9.9	10.0	10.3	10.5	10.1	11.1	10.0	10.7	10.2	10.0	12.1	12.1	10.8	11.2	10.0	9.3	8.5	9.8	9.5	10.5	8.7	9.8	9.6	9.9	10.2	10.2	9.1	22.1	
Employers	6.3	6.6	6.0	6.4	6.6	6.4	6.6	6.5	6.2	5.8	4.6	4.5	4.0	3.8	4.3	4.2	4.0	3.6	5.2	4.7	4.3	4.2	4.1	4.6	4.6	4.0	4.6	4.4	
Self - Employed	19.4	18.8	17.6	18.6	18.8	20.2	20.5	19.0	18.0	19.1	15.3	21.0	22.4	24.3	23.3	23.5	25.0	24.9	22.2	25.0	26.6	26.6	26.0	25.4	26.3	26.8	23.1	18.1	
Wage Employees	66.4	68.8	68.6	68.6	66.8	66.5	65.1	66.9	66.9	67.2	70.7	65.1	63.0	62.5	60.5	59.6	58.1	61.0	57.2	59.6	59.6	61.1	60.6	58.3	58.1	61.0	59.3	67.6	
Unpaid Family Members	7.9	5.8	7.8	6.4	7.8	6.9	7.7	7.6	8.9	7.9	9.4	9.4	10.6	9.4	11.9	12.7	12.9	10.5	15.4	10.7	9.5	8.1	9.3	11.7	11.0	8.2	13.0	9.9	
Average Monthly Work Days *	22.8	22.4	22.5	22.6	22.6	22.3	22.6	23.0	23.2	21.9	23.3	23.2	22.7	22.7	22.6	22.1	22.7	22.7	22.6	23.9	24.0	23.3	23.6	23.9	23.9	23.6	23.3	22.8	*
Average Weekly Work Hours *	41.2	41.6	41.6	42.4	42.3	41.7	41.1	42.7	41.8	41.2	42.2	43.0	42.1	41.0	39.5	41.8	41.7	41.4	40.0	42.4	41.8	41.1	40.5	43.3	42.8	41.6	40.7	45.0	*
Median Daily Net Wage (NIS) *	70.0	70.0	70.0	69.2	70.0	70.0	70.0	70.0	70.0	70.0	73.1	69.2	70.0	70.0	69.2	67.3	65.4	69.2	65.4	69.2	69.2	69.2	65.4	60.0	60.0	57.7	61.5	70.0	*

Note:

\*: Workers in Israel and Settlements are excluded

Q: Quarter, Example: Q1-99 means: First Quarter of 1999

1999

Q1-99 :

:Q



(ILO ) 2011-2000

Basic Changes in the Labour Force Indicators in West Bank During 2000 -2011 (ILO Standards)

Indicator	61	60	59	58	57	56	55	54	53	52	51	50	49	48	47	46	45	44	43	42	41	40	39	38	37	36	19	18	
	Q2-2011	Q1-2011	Q4-2010	Q3-2010	Q2-2010	Q1-2010	Q4-2009	Q3-2009	Q2-2009	Q1-2009	Q4-2008	Q3-2008	Q2-2008	Q1-2008	Q4-2007	Q3-2007	Q2-2007	Q1-2007	Q4-2006	Q3-2006	Q2-2006	Q1-2006	Q4-2005	Q3-2005	Q2-2005	Q1-2005	Q4-2000	Q3-2000	
Labour Force Participation Rate	45.3	43.2	44.5	43.0	43.9	43.2	44.1	43.7	44.4	42.8	42.8	43.4	43.5	42.3	44.0	44.8	44.8	42.7	45.7	44.6	43.7	42.5	42.4	44.1	43.7	41.4	42.9	45.3	
Full Employment Rate	75.8	72.5	74.0	73.0	75.9	77.4	74.8	76.9	78.0	74.4	74.1	73.1	75.8	74.1	73.4	70.5	72.0	75.2	75.3	71.1	71.6	69.6	68.9	70.9	74.9	69.7	68.1	84.8	
Underemployment Rate	8.8	10.1	9.1	6.9	9.0	6.1	7.1	5.3	6.1	6.1	6.1	6.2	7.9	6.9	7.4	10.9	12.2	7.5	8.5	9.8	10.4	9.0	9.3	9.2	7.9	7.7	5.6	7.7	
Unemployment Rate	15.4	17.4	16.9	20.1	15.2	16.5	18.1	17.8	15.9	19.5	19.8	20.7	16.3	19.0	19.2	18.6	15.8	17.3	16.2	19.1	18.0	21.4	21.8	19.9	17.2	22.6	26.3	7.5	
Employed in Agriculture	12.3	10.6	15.1	10.9	15.4	12.5	14.2	12.6	14.9	13.1	15.0	13.5	15.7	13.0	15.9	16.1	19.2	15.3	24.0	15.1	16.8	14.3	15.7	16.6	17.0	13.4	17.1	11.3	
Employed in Construction	18.0	17.4	15.8	17.2	12.3	17.0	15.1	16.0	16.5	15.1	14.2	16.8	14.1	12.7	13.9	14.8	13.1	12.8	11.1	13.7	13.4	13.6	13.3	14.7	14.4	15.0	13.3	24.2	
Employed in Manufacturing	15.0	14.1	12.9	13.6	13.3	15.1	15.0	13.8	13.9	15.4	13.9	15.0	14.5	16.2	15.0	15.4	14.5	14.8	14.2	16.1	14.7	13.2	15.0	15.0	14.7	14.6	14.6	16.1	
Employed in Services	28.2	30.7	30.8	31.6	33.5	29.9	30.0	31.5	30.9	31.6	29.8	29.1	30.9	32.8	30.2	28.6	29.1	30.9	27.7	28.2	29.6	30.9	28.9	27.2	27.8	30.1	29.0	24.6	
Elementary Occupation Workers	19.9	19.5	17.9	19.6	18.9	19.3	17.4	17.2	16.2	17.5	19.7	16.6	17.0	16.9	16.3	10.4	14.1	15.5	14.1	16.5	16.1	16.2	16.4	15.3	15.8	16.3	15.2	20.5	
Craft and Related Trade Workers	20.1	18.1	17.5	18.9	18.6	19.5	17.8	17.8	19.4	19.0	16.3	20.4	18.3	18.5	17.2	17.8	18.2	18.1	16.9	19.6	17.7	18.3	18.2	19.8	18.4	19.3	18.2	25.7	
Employed in Israel & Settlements	14.0	14.0	13.8	14.2	13.6	15.3	13.4	14.3	13.8	14.0	16.1	16.3	14.2	15.9	14.0	12.9	11.9	13.7	12.8	14.0	11.8	13.2	13.6	13.6	13.6	14.2	11.3	24.8	
Employers	7.6	8.0	7.0	7.0	7.3	7.1	7.3	7.5	7.0	6.0	5.0	4.5	4.3	4.2	5.0	4.7	4.2	3.4	4.4	5.0	4.7	4.8	4.8	5.3	5.2	4.7	4.8	4.6	
Self - Employed	19.0	18.9	19.3	20.2	20.6	21.4	22.0	20.2	19.8	20.8	16.4	22.8	24.1	22.9	23.5	24.7	26.3	26.9	24.5	26.7	28.6	28.5	27.9	26.7	27.6	28.3	24.6	19.9	
Wage Employees	64.7	66.7	64.0	64.9	62.3	63.3	62.0	63.1	62.5	64.6	67.9	62.2	60.4	64.2	59.7	57.6	55.6	59.0	53.7	55.9	56.0	57.4	56.9	55.0	55.3	58.6	57.0	66.2	
Unpaid Family Members	8.7	6.4	9.7	7.9	9.8	8.2	8.7	9.2	10.7	8.6	10.7	10.5	11.2	8.7	11.8	13.0	13.9	10.7	17.4	12.4	10.7	9.3	10.4	13.0	11.9	8.4	13.6	9.3	
Average Monthly Work Days *	22.5	22.0	22.1	22.4	22.6	22.0	22.3	22.7	22.6	22.1	22.7	22.7	22.3	22.1	22.2	22.0	22.3	22.2	22.1	23.5	23.8	23.2	23.4	23.7	23.8	23.5	23.2	24.3	*
Average Weekly Work Hours *	42.8	42.6	43.2	43.4	43.6	42.8	42.3	43.3	42.7	42.0	43.1	42.8	42.7	41.2	39.9	42.5	42.4	41.9	41.5	42.9	42.7	41.6	40.8	43.7	43.3	42.2	40.6	46.2	*
Median Daily Net Wage (NIS) *	76.9	76.9	76.9	76.9	76.9	76.9	76.9	76.9	76.9	76.9	76.9	71.2	76.9	76.9	70.0	70.0	69.2	70.0	67.3	69.2	69.2	70.0	69.2	65.4	65.4	60.0	61.5	63.2	*

Note:

\*: Workers in Israel and Settlements are excluded

Q: Quarter, Example: Q1-99 means: First Quarter of 1999

1999

Q1-99 :

:0

(ILO ) 2011-2000

Basic Changes in the Labour Force Indicators in Gaza Strip During 2000 - 2011 (ILO Standards)

Indicator	61	60	59	58	57	56	55	54	53	52	51	50	49	48	47	46	45	44	43	42	41	40	39	38	37	36	19	18
	Q2-2011	Q1-2011	Q4-2010	Q3-2010	Q2-2010	Q1-2010	Q4-2009	Q3-2009	Q2-2009	Q1-2009	Q4-2008	Q3-2008	Q2-2008	Q1-2008	Q4-2007	Q3-2007	Q2-2007	Q1-2007	Q4-2006	Q3-2006	Q2-2006	Q1-2006	Q4-2005	Q3-2005	Q2-2005	Q1-2005	Q4-2000	Q3-2000
Labour Force Participation Rate	38.1	37.0	36.3	36.0	37.0	36.3	36.9	37.7	36.9	38.9	38.8	38.2	38.0	37.5	36.6	38.9	38.0	38.3	38.0	35.3	35.7	35.3	36.4	37.1	36.5	36.6	32.0	40.1
Full Employment Rate	67.8	63.0	60.3	54.1	53.6	58.0	55.3	53.1	57.7	57.5	48.2	53.0	45.7	65.8	69.3	63.4	66.2	63.8	57.6	60.3	62.0	62.8	69.3	68.4	67.6	64.0	63.7	81.0
Underemployment Rate	6.6	6.2	2.3	5.4	7.1	8.1	5.4	4.6	6.3	5.5	7.0	5.1	8.8	4.4	1.7	3.7	7.4	5.8	7.6	3.4	4.0	3.1	2.5	2.6	2.2	2.0	2.8	3.5
Unemployment Rate	25.6	30.8	37.4	40.5	39.3	33.9	39.3	42.3	36.0	37.0	44.8	41.9	45.5	29.8	29.0	32.9	26.4	30.4	34.8	36.3	34.0	34.1	28.2	29.0	30.2	34.0	33.5	15.5
Employed in Agriculture	9.5	10.5	5.1	8.0	7.8	9.9	7.3	4.9	4.8	8.4	7.1	10.6	12.3	12.5	13.9	12.7	12.7	13.3	14.1	9.2	10.7	10.1	11.4	10.5	12.0	13.1	16.1	16.2
Employed in Construction	6.2	4.9	4.0	4.0	2.5	1.3	1.0	0.9	0.7	1.0	0.8	0.7	0.4	1.6	1.5	3.7	6.2	5.6	4.9	4.6	6.1	8.3	9.8	8.7	9.3	9.2	3.5	15.9
Employed in Manufacturing	5.7	5.0	4.3	5.1	3.8	6.0	5.7	6.0	4.2	5.6	2.7	4.8	4.6	5.5	5.5	5.8	8.0	7.1	6.3	5.7	5.7	7.3	8.7	8.0	9.2	7.3	7.5	12.3
Employed in Services	52.0	55.2	61.3	59.9	63.1	58.2	60.1	63.2	67.0	63.0	67.9	60.7	61.4	52.0	52.2	52.2	48.9	50.5	53.4	56.3	54.1	51.7	49.2	50.0	48.1	50.3	53.7	38.0
Elementary Occupation Workers	14.2	15.7	15.5	16.8	15.1	15.5	13.9	10.3	10.5	10.8	12.1	12.4	11.1	10.0	9.1	14.8	10.5	9.8	10.5	11.2	15.5	15.5	17.1	12.9	13.6	14.1	9.9	18.0
Craft and Related Trade Workers	11.3	9.4	8.4	7.8	7.1	9.4	8.7	7.4	6.8	7.6	5.7	6.9	6.5	11.1	8.4	15.8	14.8	12.7	10.1	9.9	10.4	11.7	13.4	15.5	14.8	12.3	10.5	21.7
Employed in Israel & Settlements	0.0	0.0	0.0	0.0	0.0	0.0	0.0	0.0	0.0	0.0	0.0	0.0	0.0	0.0	0.0	0.0	0.0	0.0	0.0	0.0	0.0	0.5	0.0	0.5	1.0	0.0	2.7	15.4
Employers	3.0	3.0	3.2	4.7	4.7	4.3	4.8	3.6	3.9	5.3	3.5	4.6	3.3	2.9	2.4	3.0	3.4	4.1	7.2	3.7	3.0	2.5	2.4	2.9	2.9	2.0	4.0	4.0
Self - Employed	20.3	18.7	12.4	14.0	13.6	17.1	16.3	15.4	13.2	14.9	12.0	15.7	16.9	27.3	22.7	20.5	21.5	19.9	15.6	19.9	21.0	21.5	21.7	22.0	23.1	23.1	18.7	13.6
Wage Employees	70.3	73.9	81.8	79.1	80.0	75.0	74.2	78.2	79.5	73.7	79.0	73.3	71.3	58.5	62.5	64.8	64.3	65.8	67.3	70.6	69.8	71.0	69.4	66.6	65.3	67.2	65.9	71.0
Unpaid Family Members	6.4	4.4	2.6	2.2	1.7	3.6	4.7	2.8	3.4	6.1	5.5	6.4	8.5	11.3	12.4	11.7	10.8	10.2	9.9	5.8	6.2	5.0	6.5	8.5	8.7	7.7	11.4	11.4
Average Monthly Work Days *	23.7	23.3	23.7	23.2	23.7	23.1	23.7	23.9	24.9	21.3	25.0	24.8	24.2	20.4	23.8	22.4	23.5	23.5	23.5	24.5	24.3	23.5	23.9	24.3	24.2	23.7	24.8	23.7
Average Weekly Work Hours *	37.5	39.2	37.8	39.9	38.8	39.1	38.1	41.2	39.5	38.8	39.9	43.4	40.0	40.2	38.2	39.7	40.4	40.6	37.7	41.5	40.4	40.0	42.5	42.0	40.5	40.6	42.8	
Median Daily Net Wage (NIS) *	48.1	50.0	50.0	50.0	50.0	46.2	54.7	57.7	57.7	57.7	57.7	50.0	57.7	57.7	60.7	57.7	57.7	61.5	61.5	65.4	67.3	65.4	61.5	53.8	55.8	55.8	53.8	46.2

Note:

\*: Workers in Israel and Settlements are excluded

Q: Quarter, Example: Q1-99 means: First Quarter of 1999

(-) means there are no enough observations in this section.

\*: لا يشمل العاملين من الأراضي الفلسطينية في إسرائيل والمستوطنات

Q: ربع، مثال: Q1-99 : Q1-99 :

(-) يعني عدم وجود ملاحظات كافية في هذا القسم.

(ILO ) 2010-1995

## Basic Changes in the Labour Force Indicators in Palestinian Territory During 1995 - 2010 (ILO Standards)

Indicator	2010	2009	2008	2007	2006	2005	2004	2003	2002	2001	2000	1999	1998	1997	1996	1995	
Labour Force Participation Rate	41.1	41.6	41.3	41.9	41.3	40.7	40.4	40.3	38.1	38.7	41.5	41.6	41.4	40.5	40.0	39.0	
Woman Labour Force Participation Rate	14.7	15.5	15.2	15.7	14.5	13.4	13.5	12.8	10.4	10.3	12.7	12.3	11.3	11.5	11.0	11.2	
Full Employment Rate	69.2	69.5	67.4	70.5	68.5	69.9	66.8	68.1	64.4	70.9	80.9	82.8	79.1	70.4	64.3	60.7	
Underemployment Rate	7.1	5.9	6.6	8.0	7.9	6.6	6.4	6.3	4.3	3.9	5.0	5.4	6.5	9.3	11.9	21.1	
Unemployment Rate	23.7	24.5	26.0	21.5	23.6	23.5	26.8	25.6	31.3	25.2	14.1	11.8	14.4	20.3	23.8	18.2	
Unemployment Rate among women	26.8	26.4	24.2	19.1	20.5	22.2	20.0	18.2	17.0	13.8	12.4	13.0	15.2	20.1	19.5	16.2	
Employed in Agriculture	11.8	11.8	13.4	15.6	16.1	14.6	15.9	15.7	14.9	11.7	13.7	12.6	12.1	13.1	14.2	12.7	
Employed in Construction	13.2	11.7	10.9	11.0	11.1	12.9	11.7	13.1	10.9	14.5	19.7	22.1	22.0	18.4	16.8	19.2	
Employed in Manufacturing	11.4	12.1	12.1	12.5	12.4	13.0	12.7	12.5	12.9	13.9	14.3	15.5	15.9	16.4	16.8	18.0	
Employed in Services	38.3	39.6	38.4	35.8	35.5	34.4	34.9	32.8	35.7	34.6	29.9	28.1	27.1	28.2	29.2	25.6	
Elementary Occupation Workers	18.1	15.7	15.9	14.0	14.9	15.5	14.3	14.1	14.1	15.9	21.1	29.7	31.0	28.9	28.7	18.3	
Craft and Related Trade Workers	15.9	15.6	15.6	16.1	16.1	17.5	17.1	18.7	17.5	19.0	22.0	22.7	24.7	24.6	24.0	27.5	
Employed in Israel & Settlements	10.5	10.2	11.6	9.4	9.6	9.9	8.7	9.7	10.3	13.8	19.6	23.0	21.7	17.1	14.1	16.2	
Employers	6.4	6.3	4.2	4.0	4.6	4.3	4.1	3.5	3.7	4.7	4.6	5.5	5.8	5.3	5.5	6.9	
Self - Employed	18.8	19.2	20.7	24.2	25.0	26.1	26.5	27.8	26.8	24.0	19.6	18.7	21.0	22.9	22.3	21.2	
Wage Employees	67.6	66.5	65.3	59.8	59.3	59.5	58.3	57.2	59.2	62.1	66.1	67.8	65.3	62.0	61.4	61.7	
Unpaid Family Members	7.2	8.0	9.7	12.0	11.1	10.1	11.1	11.5	10.3	9.2	9.7	8.0	7.9	9.8	10.8	10.2	
Average Monthly Work Days *	22.5	22.7	23.0	22.6	23.4	23.8	23.7	23.2	23.3	23.9	23.2	22.6	23.0	22.0	22.0	21.0	*
Average Weekly Work Hours *	42.0	41.7	42.1	41.1	41.3	42.0	42.5	41.7	40.6	42.1	43.1	44.2	45.0	44.0	43.5	42.1	*
Median Daily Net Wage (NIS) *	70.0	70.0	70.0	69.2	69.2	60.0	57.7	55.8	57.7	57.7	57.7	69.2	57.7	50.0	46.2	46.3	*

**Note:**

\*: Workers in Israel and Settlements are excluded

(ILO ) 2010-1995

## Basic Changes in the Labour Force Indicators in West Bank During 1995 - 2010 (ILO Standards)

Indicator	2010	2009	2008	2007	2006	2005	2004	2003	2002	2001	2000	1999	1998	1997	1996	1995	
Labour Force Participation Rate	43.7	43.8	43.0	44.1	44.1	42.9	42.5	41.8	40.0	41.5	43.6	43.4	44.2	43.2	42.0	40.6	
Women Labour Force Participation Rate	17.2	17.4	17.1	18.3	17.9	15.8	15.9	14.7	12.4	12.0	13.8	14.1	14.3	14.5	13.2	12.6	
Full Employment Rate	75.0	76.0	74.2	72.8	72.0	71.2	68.8	68.7	66.4	73.8	81.7	83.5	80.1	71.1	67.6	65.3	
Underemployment Rate	7.8	6.2	6.8	9.5	9.4	8.5	8.3	7.5	5.4	4.7	6.2	7.0	8.4	11.6	12.8	20.7	
Unemployment Rate	17.2	17.8	19.0	17.7	18.6	20.3	22.9	23.8	28.2	21.5	12.1	9.5	11.5	17.3	19.6	13.9	
Unemployment Rate Among Women	19.7	18.8	16.7	15.5	17.6	18.3	16.6	15.8	14.0	10.9	9.9	11.1	12.8	17.7	16.0	13.0	
Employed in Agriculture	13.3	13.7	14.3	16.6	17.8	15.7	16.9	14.9	14.1	11.8	12.5	11.5	13.8	15.1	16.2	13.3	
Employed in Construction	16.8	15.6	14.5	13.6	12.9	14.4	13.0	14.3	12.7	18.0	22.2	23.9	22.7	19.1	18.3	20.3	
Employed in Manufacturing	13.7	14.5	14.9	14.9	14.6	14.8	14.0	14.0	14.5	15.4	15.4	16.5	16.8	17.2	17.6	18.8	
Employed in Services	30.6	31.0	30.6	29.8	29.0	28.5	29.5	29.4	31.1	28.0	25.5	24.7	23.0	23.8	24.2	22.6	
Elementary Occupation Workers	18.8	17.0	17.4	15.8	15.6	16.0	14.8	13.3	14.1	17.6	21.9	31.1	30.5	28.7	28.7	18.2	
Craft and Related Trade Workers	18.6	18.5	18.4	17.8	18.1	18.9	18.0	19.9	19.1	20.7	23.3	22.9	25.0	25.0	25.1	28.7	
Employed in Israel & Settlements	14.2	13.9	15.6	13.1	13.0	13.8	11.6	12.5	13.3	18.0	22.4	25.9	24.0	19.5	16.6	20.2	
Employers	7.1	7.0	4.5	4.4	4.4	5.0	5.0	4.1	4.1	4.6	5.1	6.6	6.5	5.9	6.0	7.1	
Self - Employed	20.3	20.7	21.6	25.4	27.0	27.6	28.1	29.3	27.8	25.6	20.6	18.6	21.5	23.6	23.5	21.3	
Wage Employees	63.6	63.0	63.7	57.9	55.7	56.4	55.1	55.3	57.5	60.1	64.7	66.5	63.0	59.3	59.0	61.3	
Unpaid Family Members	9.0	9.3	10.2	12.3	12.6	11.0	11.8	11.3	10.6	9.7	9.6	8.3	9.0	11.2	11.5	9.9	
Average Monthly Work Days *	22.2	22.4	22.4	22.2	23.1	23.6	24.0	23.7	22.8	23.6	24.4	23.5	23.0	23.0	22.6	22.0	*
Average Weekly Work Hours *	43.3	42.5	42.5	41.7	42.2	42.5	43.0	42.3	40.9	43.2	43.6	44.6	45.0	43.0	43.5	43.0	*
Median Daily Net Wage (NIS) *	76.9	76.9	76.9	70.0	69.2	65.4	61.5	60.0	60.0	60.0	61.5	60.0	50.0	46.3	44.7	42.3	*

Note:

\*: Workers in Israel and Settlements are excluded

(ILO ) 2009-1995

## Basic Changes in the Labour Force Indicators in Gaza Strip During 1995 - 2009 (ILO Standards)

Indicator	2010	2009	2008	2007	2006	2005	2004	2003	2002	2001	2000	1999	1998	1997	1996	1995	
Labour Force Participation Rate	36.4	37.6	38.1	38.0	36.1	36.7	36.4	37.5	34.4	33.3	37.5	38.0	36.4	35.7	36.4	35.4	
Women Labour Force Participation	10.2	12.2	11.7	11.0	8.1	9.0	9.1	9.2	6.5	7.1	10.6	8.8	5.9	6.3	7.0	7.3	
Full Employment Rate	56.5	55.9	53.0	65.6	60.6	67.4	62.5	67.2	60.1	63.9	79.0	81.2	76.8	68.8	57.5	48.6	
Underemployment Rate	5.7	5.5	6.4	4.7	4.6	2.3	2.1	3.6	1.8	1.9	2.3	1.9	2.3	4.4	10.0	22.0	
Unemployment Rate	37.8	38.6	40.6	29.7	34.8	30.3	35.4	29.2	38.1	34.2	18.7	16.9	20.9	26.8	32.5	29.4	
Unemployment Rate among Women	47.2	45.8	42.8	29.7	32.3	35.2	31.6	26.8	28.4	24.2	18.5	19.3	25.2	29.8	31.4	28.6	
Employed in Agriculture	7.7	6.4	10.7	13.1	11.1	11.7	13.4	17.5	16.7	11.4	16.5	15.2	8.0	8.0	9.1	10.8	
Employed in Construction	3.0	0.9	0.9	4.3	6.0	9.3	8.2	10.4	6.3	4.4	13.5	17.8	20.5	16.5	13.1	15.4	
Employed in Manufacturing	4.8	5.4	4.4	6.6	6.3	8.3	9.1	9.2	8.9	9.7	11.5	13.1	13.6	14.5	14.9	15.2	
Employed in Services	60.6	63.3	60.2	50.9	53.7	49.4	49.1	40.8	47.5	53.3	41.0	36.5	37.0	38.9	41.4	35.2	
Elementary Occupation Workers	15.8	11.4	11.3	10	13.2	14.4	13.0	15.8	14.3	11.0	18.7	26.4	30.9	29.5	29.3	18.4	
Craft and Related Trade Workers	8.2	7.6	7.7	11.7	10.5	14.0	14.7	15.9	13.4	14.2	18.9	22.2	23.8	23.6	21.2	23.5	
Employed in Israel & Settlements	-	-	-	-	-	0.4	1.1	3.1	2.5	1.9	12.9	15.7	16.2	11.0	8.1	3.3	
Employers	4.2	4.4	3.5	3.2	4.2	2.6	1.9	2.2	2.6	5.0	3.3	2.8	4.0	3.7	4.4	6.1	
Self - Employed	14.3	14.9	18.4	21.2	19.4	22.4	22.2	24.5	24.3	19.5	17.2	19.1	19.7	21.0	19.4	20.4	
Wage Employees	78.9	76.4	70.0	64.4	69.6	67.1	66.5	61.7	63.6	67.7	69.5	71.1	71.0	68.4	67.3	62.6	
Unpaid Family Members	2.6	4.3	8.1	11.2	6.8	7.9	9.4	11.6	9.5	7.8	10.0	7.0	5.3	6.9	8.9	10.8	
Average Monthly Work Days *	23.4	23.6	24.7	23.3	24.0	24.0	23.2	22.6	24.1	24.6	24.5	24.0	24.0	24.0	23.3	21.7	*
Average Weekly Work Hours *	38.8	39.4	40.8	39.9	39.9	41.2	41.6	40.6	40.0	40.1	41.7	43.2	43.0	43.0	44.0	43.2	*
Median Daily Net Wage (NIS) *	46.2	57.7	57.7	57.7	65.4	57.7	52.5	50.0	50.0	50.0	50.0	46.2	40.0	38.5	34.6	34.6	*

## Note:

\*: Workers in Israel and Settlements are excluded

(-) means there are no enough observations in this section.

**The date of field work for every round**

<b>Round Number</b>	<b>The Round</b>		
<b>Round (28)</b>	January - March, 2003	2003	- (28)
<b>Round (29)</b>	April - June, 2003	2003	- (29)
<b>Round (30)</b>	July - September, 2003	2003	- (30)
<b>Round (31)</b>	October -December, 2003	2003	- (31)
<b>Round (32)</b>	January - March, 2004	2004	- (32)
<b>Round (33)</b>	April - June, 2004	2004	- (33)
<b>Round (34)</b>	July - September, 2004	2004	- (34)
<b>Round (35)</b>	October -December, 2004	2004	- (35)
<b>Round (36)</b>	January - March, 2005	2005	- (36)
<b>Round (37)</b>	April - June, 2005	2005	- (37)
<b>Round (38)</b>	July - September, 2005	2005	- (38)
<b>Round (39)</b>	October -December, 2005	2005	- (39)
<b>Round (40)</b>	January - March, 2006	2006	- (40)
<b>Round (41)</b>	April - June, 2006	2006	- (41)
<b>Round (42)</b>	July - September, 2006	2006	- (42)
<b>Round (43)</b>	October -December, 2006	2006	- (43)
<b>Round (44)</b>	January - March, 2007	2007	- (44)
<b>Round (45)</b>	April - June, 2007	2007	- (45)
<b>Round (46)</b>	July - September, 2007	2007	- (46)
<b>Round (47)</b>	October -December, 2007	2007	- (47)
<b>Round (48)</b>	January - March, 2008	2008	- (48)
<b>Round (49)</b>	April - June, 2008	2008	- (49)
<b>Round (50)</b>	July - September, 2008	2008	- (50)
<b>Round (51)</b>	October -December, 2008	2008	- (51)
<b>Round (52)</b>	January - March, 2009	2009	- (52)
<b>Round (53)</b>	April - June, 2009	2009	- (53)
<b>Round (54)</b>	July - September, 2009	2009	- (54)
<b>Round (55)</b>	October -December, 2009	2009	- (55)
<b>Round (56)</b>	January - March, 2010	2010	- (56)
<b>Round (57)</b>	April -June, 2010	2010	- (57)
<b>Round (58)</b>	July - September, 2010	2010	- (58)
<b>Round (59)</b>	October -December, 2010	2010	- (59)
<b>Round (60)</b>	January - March, 2011	2011	- (60)
<b>Round (61)</b>	April -June, 2011	2011	- (61)