



**Palestinian National Authority  
Palestinian Central Bureau of Statistics**

**Survey on the Perceptions of the Owners / Managers of  
Industrial Establishments Regarding the Economic  
Situation, October 2008**

**Press Release on the Survey Results**

**November, 2008**

PAGE NUMBERS OF ENGLISH TEXT ARE PRINTED IN SQUARE BRACKETS.  
TABLES ARE PRINTED IN THE ARABIC ORDER (FROM RIGHT TO LEFT).



This document is prepared in accordance with the standard procedures stated in the Code of Practice for Palestine Official Statistics 2006

© November, 2008  
All rights reserved.

**Suggested Citation:**

**Palestinian Central Bureau of Statistics, 2008.** *Survey on the Perceptions of the Owners / Managers of Industrial Establishments Regarding the Economic Situation, October 2008. Press Release on the survey's preliminary results.* Ramallah- Palestine

All correspondence should be directed to:  
Dissemination and Documentation Department\Division of User Services  
**Palestinian Central Bureau of Statistics.**  
**P.O. Box 1647, Ramallah - Palestine.**

Tel: (972/970) 2 242 6340  
Fax: (972/970) 2 242 6343  
E-mail: [diwan@pcbs.gov.ps](mailto:diwan@pcbs.gov.ps)  
Web-site: <http://www.pcbs.gov.ps>

## **Table of Contents**

<b>Subject</b>	<b>Page</b>
Press Release: Survey Findings of the Perceptions of Owners / Managers of Industries Regarding the Economic Situation October 2008	<b>[9]</b>
Tables	<b>13</b>

## **Notice to users of this report**

PCBS would like to single out to users of this press release that the data presented was based on a sample of 496 establishments.

The size of the sample for the previous rounds (January 2006-July 2006) was 346 establishments, which resulted in minor discrepancies for the percentage distribution of opinions in Remaining West Bank and Gaza Strip as a total and in both regions separately.

It is worth noting that the increase in the sample improves data quality and insures more comprehensive representation of the sample for economic activities that were not covered in the previous sample.

The available data refers to the West Bank which includes Jerusalem Governorate that J1 is part of it since the round 35, meanwhile the previous rounds refer to the Remaining West Bank without J1.

**Jerusalem J1:** That part of the governorate of Jerusalem which was annexed after the 1967 occupation by Israel. Jerusalem

**Press Release**  
**Main Findings of the Survey of the Perceptions of the Owners / Managers of  
Industrial Establishments Regarding the Economic Situation  
October 2008**

The following statement shows that the basic findings of round 44 on the perceptions of the owners / managers of industrial establishments concerning the economic situation for October 2008. The round was conducted during the period 3-23 November, 2008, taking October 2008 as the reference month. The aim of the survey is to observe and monitor the trends of the opinions of the owners / managers of the industrial establishments. The sample size is 496 industrial establishments (343 in the West Bank, and 138 in Gaza Strip in addition to 15 in Jerusalem J1). A two-stage sample was designed for this survey: in the first stage the industrial survey 2004 was used as a sampling frame for the survey, while in the second stage all the industrial establishments, constituting approximately 70% of the total industrial production, were selected; establishments that employed less than 20 employees were excluded.

**Performance of industrial establishments in October 2008 compared with September 2008**

According to 24.8% of the owners / managers of the industrial establishments, the production performance of their establishments during October 2008 was improved in comparison to September 2008 (18.8% for Gaza Strip and 26.6% for the West Bank).

12.2% reported facing an improved situation in trying to obtain needed raw materials and inputs during October 2008 (17.7% for Gaza Strip and 10.6% for the West Bank), while 22.5% reported that employee productivity increased compared with the previous month (20.0% for Gaza Strip and 23.2% for the West Bank).

According to the results, 18.0% of the owners / managers reported that their establishments' financial situation improved (13.0% for Gaza Strip and 19.5% for the West Bank), while 2.7% reported that banks loans were more accessible during October 2008 (1.2% for Gaza Strip and 3.1% for the West Bank) comparing to the previous month..

**Challenges**

**Drop in sales level**

The perceptions of 55.0% the owners / managers of industrial establishments in Gaza Strip reported that the main reason for the cutback or drop in sales level is due to the Israeli closures. At the same time, 27.0% of the owners / managers of industrial establishments in the West Bank indicates that the main reason was the decline in consumer power of purchase.

**Local and external competition**

In the Palestinian Territory, 90.6% of the owners / managers of the industrial establishments indicated that their establishments' main product faced local or external competition (83.7% for Gaza Strip and 91.8% for the West Bank).

According to 73.1% of the owners / managers of the industrial establishments in the Palestinian Territory, the main product faced local competition (90.2% for Gaza Strip and 70.3% for the West Bank); on the other hand, 26.9% of the owners / managers of the industrial establishments indicated that their main product faced external competition (29.7% for the West Bank, and 9.8% for Gaza Strip).

## **Employment**

10.7% of the owners / managers of the industrial establishments in the Palestinian Territory laid off workers in October 2008 (14.0% for Gaza Strip and 7.9% for the West Bank); however, 80.4% of the owners / managers of the industrial establishments stated that there had no change in the number of workers, (84.5% for the West Bank and 58.0% for Gaza Strip).

## **Expectations**

### **Short term**

The expectations of the owners / managers of the industrial establishments in the short term, i.e., one month after the reference month (October 2008); show that 32.0% expected an improvement in their production in general in the Palestinian Territory.

The expectations of the owners / managers of the industrial establishments in the Palestinian Territory concerning employment were pessimistic since only 10.0% expected increases during October 2008.

The results showed that 30.9% of the owners / managers of the industrial establishments in the Palestinian Territory expected sales to increase during September 2008.

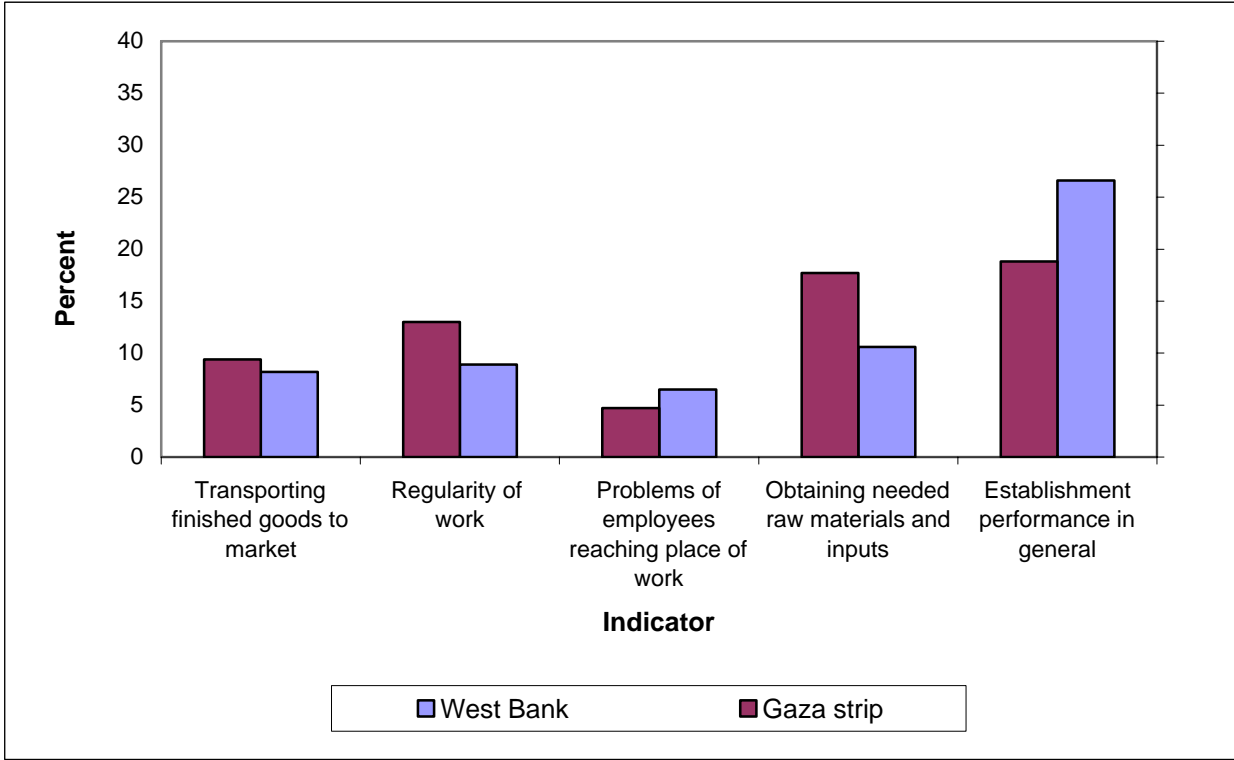
### **Medium term**

The expectations of 41.2% of the owners / managers of the industrial establishments in the medium term (in the next six months) were optimistic since they expected an improvement in production in the Palestinian Territory (39.3% in the West Bank and 51.0% in Gaza Strip).

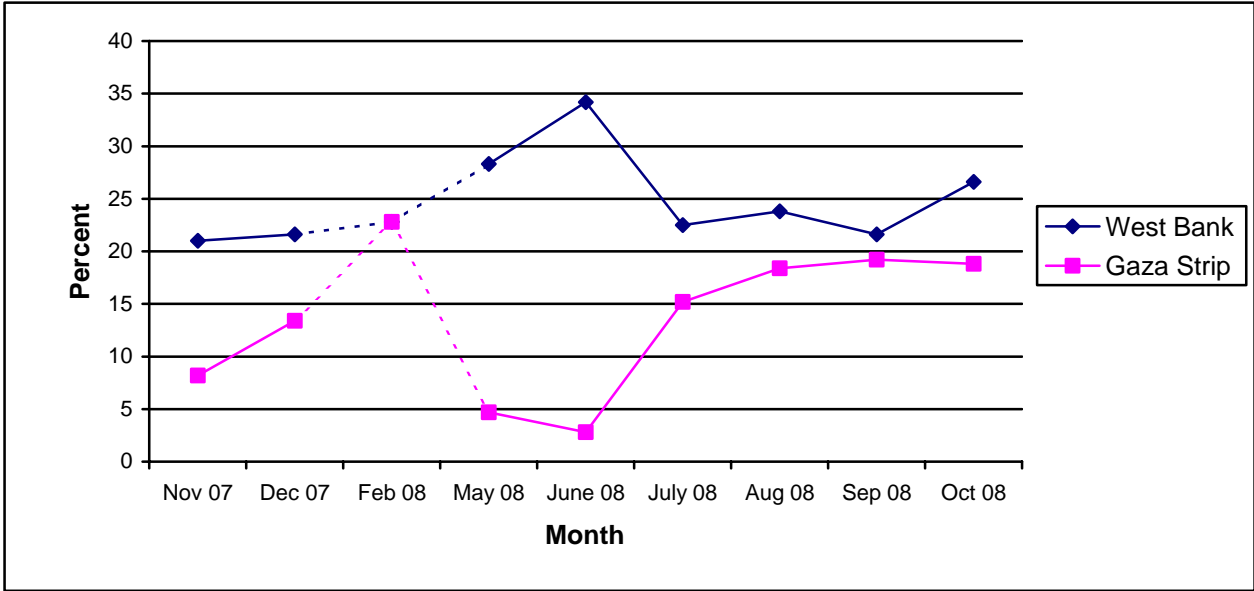
Concerning expectations for employment in the Palestinian Territory, 17.4% expected an increase in employment (43.2% in Gaza Strip and 12.7% in the West Bank).

Sales during the next six months will rise, according to the expectations of 41.1% of the owners / managers of the industrial establishments in the Palestinian Territory (51.0% in Gaza Strip and 39.3% in the West Bank).

**Figure 1: Percentage of Industrial Establishment Owners / Managers who Encountered Improvement in Economic Conditions during October 2008 Compared to the Previous Month for the Main Indicators by Region**



**Figure 2: Trends of Establishments Witnessed an Improved Situation in Production Performance during October 2008 Compared to the Previous Month by Region**



# Tables



2008

**Table 1-1: Percentage of the Industrial Establishments Witnessed an Improved Situation During the Reference Month Compared to that before the Reference Month for the Main Indicators in the Palestinian Territory 2008**

Indicator	Reference Month									
	2008									
	تشرين أول Oct.	Sept.	Aug.	July	June	May	April	Mar.	Feb.	Jan.
Establishment performance in general	24.8	21.0	22.2	20.9	27.4	23.7	-	-	22.8	-
Obtaining needed raw materials and inputs	12.2	10.5	12.4	10.6	29.8	27.9	-	-	21.4	-
Problems of employees reaching place of work	6.1	3.6	3.9	3.9	26.2	25.2	-	-	16.7	-
Regularity of work	9.8	7.3	7.8	4.2	12.4	9.4	-	-	6.3	-
Transporting finished goods to market	8.5	7.1	8.3	11.4	4.5	4.6	-	-	4.0	-

(-) No Data Available

(-)

:2-1

2008 \*

**Table 1-2: Percentage of Industrial Establishments Witnessed an Improved Situation During the Reference Month Compared to that before the Reference Month for the Main Indicators in the West Bank\* 2008**

Indicator	Reference Month									
	2008									
	تشرين أول Oct.	Sept.	Aug.	July	June	May	April	Mar.	Feb.	Jan.
Establishment performance in general	26.6	21.6	23.8	22.5	34.2	28.3	-	-	22.8	-
Obtaining needed raw materials and inputs	10.6	8.8	10.6	11.1	37.3	33.6	-	-	21.2	-
Problems of employees reaching place of work	6.5	5.0	4.8	3.9	32.6	30.1	-	-	15.7	-
Regularity of work	8.9	6.4	5.2	3.2	15.4	10.9	-	-	6.3	-
Transporting finished goods to market	8.2	8.2	10.3	13.6	5.4	5.3	-	-	2.8	-

(-) No Data Available

(-)

2008

**Table 1-3: Percentage of Industrial Establishments Witnessed an Improved Situation During the Reference Month Compared to that before the Reference Month for the Main Indicators in Gaza Strip 2008**

Indicator	Reference Month									
	2008									
	تشرين أول Oct.	Sept.	Aug.	July	June	May	April	Mar.	Feb.	Jan.
Establishment performance in general	18.8	19.2	18.4	15.2	2.8	4.7	-	-	22.8	-
Obtaining needed raw materials and inputs	17.7	15.1	16.7	8.9	2.8	4.7	-	-	22.8	-
Problems of employees reaching place of work	4.7	0.0	1.8	3.8	2.8	4.7	-	-	22.8	-
Regularity of work	13.0	10.1	14.1	7.6	1.4	3.1	-	-	6.8	-
Transporting finished goods to market	9.4	4.0	3.5	3.8	1.4	1.6	-	-	11.4	-

(-) No Data Available

(-)

2008

**Table 2-1: Percentage Distribution of Owners/ Managers of the Industrial Establishments According to Their Opinions of Main Indicators During October 2008 Compared to September 2008 in the Palestinian Territory**

Problem	Total	Much Worse	Somewhat Worse	/ About the Same/ Unchanged	Somewhat Better	Much Better	
Establishment performance in general	100	4.2	26.1	44.9	22.2	2.6	
Production situation	100	4.5	27.2	40.9	24.5	2.9	
Employees productivity	100	3.2	19.8	54.5	20.4	2.1	
Obtaining needed raw materials and inputs	100	4.0	11.7	72.1	11.1	1.1	
Problems of employees reaching place of work	100	0.3	0.8	92.8	5.6	0.5	
Regularity of work	100	0.8	5.0	84.4	8.5	1.3	
Transporting finished goods to market	100	1.1	14.6	75.8	7.7	0.8	
Financial situations	100	2.9	19.6	59.5	15.9	2.1	
Banks credits & facilities	100	0.8	1.9	94.6	2.7	0.0	
Level of employment	100	0.5	9.3	78.8	10.1	1.3	
Value of sales	100	5.3	27.2	40.6	24.0	2.9	

\*

2008

**Table 2-2: Percentage Distribution of Owners/ Managers of the Industrial Establishments According to Their Opinions of Main Indicators During October 2008 Compared to September 2008 in the West Bank**

Problem	Total	Much Worse	Somewhat Worse	About the Same/ Unchanged	Somewhat Better	Much Better
Establishment performance in general	100	3.4	26.9	43.1	23.5	3.1
Production situation	100	3.7	29.3	37.4	26.2	3.4
Employees productivity	100	2.0	20.1	54.7	20.8	2.4
Obtaining needed raw materials and inputs	100	1.4	12.7	75.3	9.6	1.0
Problems of employees reaching place of work	100	0.0	0.3	93.2	5.8	0.7
Regularity of work	100	0.0	3.8	87.3	7.5	1.4
Transporting finished goods to market	100	1.0	17.1	73.7	7.5	0.7
Financial situations	100	3.4	20.2	56.9	17.1	2.4
Banks credits & facilities	100	0.7	1.4	94.8	3.1	0.0
Level of employment	100	0.0	9.9	80.1	8.6	1.4
Value of sales	100	4.1	31.0	35.6	25.9	3.4

2008

**Table 2-3: : Percentage Distribution of Owners/ Managers of the Industrial Establishments According to Their Opinions of Main Indicators During October 2008 Compared to September 2008 in Gaza Strip**

Problem	Total	Much Worse	Somewhat Worse	/ About the Same/ Unchanged	Somewhat Better	Much Better	
Establishment performance in general	100	7.1	23.5	50.6	17.6	1.2	
Production situation	100	7.1	20.0	52.9	18.8	1.2	
Employees productivity	100	7.1	18.8	54.1	18.8	1.2	
Obtaining needed raw materials and inputs	100	12.9	8.2	61.2	16.5	1.2	
Problems of employees reaching place of work	100	1.2	2.4	91.7	4.7	0.0	
Regularity of work	100	3.5	9.4	74.1	11.8	1.2	
Transporting finished goods to market	100	1.2	5.9	83.5	8.2	1.2	
Financial situations	100	1.2	17.6	68.2	11.8	1.2	
Banks credits & facilities	100	1.2	3.5	94.1	1.2	0.0	
Level of employment	100	2.4	7.1	74.0	15.3	1.2	
Value of sales	100	9.4	14.1	57.7	17.6	1.2	

**Table 3: Percentage of Industrial Establishments Witnessed an Improved Situation During the Reference Month (October 2008) Compared to that before the Reference Month for the Main Indicators by Region**

Indicator	Gaza Strip	* West Bank*	Palestinian Territory	
Employees productivity	20.0	23.2	22.5	
Financial situations	13.0	19.5	18.0	
Banks credits & facilities	1.2	3.1	2.7	
Level of employment	16.5	10.0	11.4	
Value of sales	18.8	29.3	26.9	

/ :4

2008

**Table 4: Percentage Distribution of Owners/Managers of the Active Industrial Establishments According to the Reasons for Sales Level Stability or Decline by Region During October 2008**

Reason	Gaza Strip	* West Bank*	Palestinian Territory	
Decrease in demand	25.0	15.0	16.7	
Difficulties in exporting finished goods	0.0	2.0	1.6	
Decline in the consumer purchasing power	5.0	27.0	23.3	
Product Marketing Obstacles	0.0	5.0	4.2	( )
Competence product	10.0	3.0	4.2	
Seasonally related	0.0	20.0	16.7	
Military check points/ israeli actions/ closures	55.0	11.0	18.3	/ /
Other	5.0	17.0	15.0	
<b>Total</b>	<b>100</b>	<b>100</b>	<b>100</b>	

2008

:5

**Table 5: Percentage Distribution of the Active Industrial Establishments According to the Employment Mobility During October 2008 by Region**

<b>Employment Mobility</b>	<b>Gaza Strip</b>	<b>* West Bank*</b>	<b>Palestinian Territory</b>	
Hiring employees	28.0	7.6	10.7	
Firing employees	14.0	7.9	8.9	
No change	58.0	84.5	80.4	
<b>Total</b>	<b>100</b>	<b>100</b>	<b>100</b>	

2008

/

:6

**Table 6: Percentage Distribution of the Existing of Competition against the Main Product According to the Owners\ Managers of the Active Industrial Establishments During October 2008 by Region**

<b>Competence existence</b>	<b>Gaza Strip</b>	<b>* West Bank*</b>	<b>Palestinian Territory</b>	
There is competition	83.7	91.8	90.6	
There is no competition	16.3	8.2	9.4	
<b>Total</b>	<b>100</b>	<b>100</b>	<b>100</b>	

2008

/

:7

**Table 7: Percentage Distribution of the Type of Competition According to the Owners\ Managers of the Active Industrial Establishments During October 2008 by Region**

<b>Type of competence</b>	<b>Gaza Strip</b>	<b>* West Bank*</b>	<b>Palestinian Territory</b>	
Local	90.2	70.3	73.1	
Foreign	9.8	29.7	26.9	
<b>Total</b>	<b>100</b>	<b>100</b>	<b>100</b>	

**Table 8: Expectations of Owners/ Managers of the Active Industrial Establishments for the Month that Follows the Reference Month Compared to the Reference (October, 2008) Month for the Main Indicators by Region**

Indicator	Reference Month											
	2008											
	تشرين أول October	Sept.	August	July	June	May	April	Mar.	Feb.	Jan.		
<b>Percentage of who are expecting better establishment situation</b>												
Palestinian Territory	32.0	33.0	28.0	30.3	32.5	32.8	-	-	31.8	28.7		
West Bank*	30.7	29.8	21.6	26.3	29.6	29.4	36.0	35.4	31.5	26.2	*	
Gaza Strip	39.2	46.8	58.9	53.2	54.3	46.9	-	-	34.1	56.5		
<b>Percentage of who are expecting higher employment level</b>												
Palestinian Territory	10.0	16.1	15.6	10.1	11.9	15.2	-	-	7.3	6.9		
West Bank*	6.1	10.3	8.5	3.7	6.2	8.0	10.3	10.5	5.1	4.7	*	
Gaza Strip	31.4	40.3	50.0	46.8	54.3	45.4	-	-	20.5	30.4		
<b>Percentage of who are expecting higher sales volume</b>												
Palestinian Territory	30.9	33.9	28.6	28.7	32.0	33.2	-	-	33.3	31.2		
West Bank*	29.4	30.9	22.3	24.5	29.0	29.9	38.9	37.1	33.1	28.9	*	
Gaza Strip	39.2	46.8	58.9	53.2	54.3	46.9	-	-	34.1	56.5		

(-) No Data Available

(-)



**Table 9: Expectations of Owners/ Managers of the Active Industrial Establishments for the Six Months that Follow the Reference Month Compared to the Reference Month (October, 2008) for the Main Indicators by Region**

Indicator	Reference Month										
	2008										
	تشرين أول October	Sept.	August	July	June	May	April	Mar.	Feb.	Jan.	
<b>Percentage of who are expecting better establishment situation</b>											
Palestinian Territory	41.2	38.8	39.9	34.5	35.7	41.6	-	-	61.7	59.6	
West Bank*	39.3	35.0	35.7	30.4	32.9	38.5	49.4	57.2	62.2	58.2	*
Gaza Strip	51.0	54.8	60.7	58.7	57.1	54.7	-	-	58.4	78.9	
<b>Percentage of who are expecting higher employment level</b>											
Palestinian Territory	17.4	21.6	19.2	15.1	15.4	22.3	-	-	25.2	22.7	
West Bank*	12.7	14.8	12.9	8.5	9.7	14.8	15.8	22.9	23.2	20.5	*
Gaza Strip	43.2	50.0	50.0	54.4	57.1	53.1	-	-	38.9	52.6	
<b>Percentage of who are expecting higher sales volume</b>											
Palestinian Territory	41.1	42.5	40.9	35.1	36.6	43.9	-	-	67.6	64.1	
West Bank*	39.3	39.5	36.8	31.1	34.1	41.3	53.8	59.8	68.9	63.0	*
Gaza Strip	51.0	54.8	60.7	58.7	55.9	54.7	-	-	58.4	78.9	

(-) No Data Available

(-)

**Table 10: Expectations of Owners/ Managers of the Active Industrial Establishments about Better Expectations for their Establishments for the Month that Follows the Reference Month (October, 2008) Compared to the Reference Month by Region**

<b>Indicator</b>	<b>Gaza Strip</b>	<b>* West Bank*</b>	<b>Palestinian Territory</b>	
Establishment performance in general	39.2	28.2	29.9	
Employees productivity	39.2	18.6	21.8	
Obtaining needed raw materials and inputs	35.3	7.2	11.5	
Problems of employees reaching place of work	11.8	4.7	5.8	
Regularity of work	31.4	5.8	9.7	
Transporting finished goods to market	17.6	8.3	9.7	
Financial situations	35.3	22.2	24.2	
Banks credits & facilities	8.0	2.2	3.0	

**Table 11: Expectations of Owners/ Managers of the Active Industrial Establishments about Better Expectations for their Establishments for the Six Months that Follow the Reference Month (October,2008) Compared to the Reference Month for the Main Indicators by Region**

Indicator	Gaza Strip	* West Bank*	Palestinian Territory	
Establishment performance in general	51.0	37.5	39.7	
Employees productivity	51.0	23.1	27.4	
Obtaining needed raw materials and inputs	47.1	9.7	15.5	
Problems of employees reaching place of work	23.5	6.2	8.8	
Regularity of work	43.2	8.6	14.0	
Transporting finished goods to market	29.4	11.9	14.6	
Financial situations	47.1	28.5	31.4	
Banks credits & facilities	18.0	3.6	5.8	

(2008 )

/

:1-12

**Table 12-1: Percentage Distribution of Owners/ Managers of the Active Industrial Establishments According to Their Opinions of Main Indicators for the Month that Follows the Reference Month (October, 2008) Compared to the Reference Month in the Palestinian Territory**

<b>Problem</b>	<b>Total</b>	<b>Much Worse</b>	<b>Somewhat Worse</b>	<b>/ About the Same/ Unchanged</b>	<b>Somewhat Better</b>	<b>Much Better</b>	
Establishment performance in general	100	1.8	25.7	42.6	27.2	2.7	
Production situation	100	1.8	27.5	38.7	29.3	2.7	
Volume of sales	100	2.1	29.1	37.9	28.8	2.1	
Employees productivity	100	1.2	19.1	57.9	20.0	1.8	
Obtaining needed raw materials and inputs	100	2.1	10.0	76.4	10.6	0.9	
Problems of employees reaching place of work	100	0.0	4.2	90.0	5.5	0.3	
Regularity of work	100	0.9	10.9	78.5	9.1	0.6	
Level of employment	100	1.2	10.9	77.9	9.4	0.6	
Transporting finished goods to market	100	1.5	10.3	78.5	9.1	0.6	
Financial situations	100	1.8	23.0	51.0	22.4	1.8	
Banks credits & facilities	100	0.6	4.6	91.8	3.0	0.0	

\*

(2008 )

/

:2-12

**Table 12-2: Percentage Distribution of Owners/ Managers of the Active Industrial Establishments According to Their Opinions of Main Indicators for the Month that Follows the Reference Month (October, 2008) Compared to the Reference Month in the West Bank\***

<b>Problem</b>	<b>Total</b>	<b>Much Worse</b>	<b>Somewhat Worse</b>	<b>About the Same/ Unchanged</b>	<b>Somewhat Better</b>	<b>Much Better</b>
Establishment performance in general	100	1.1	24.3	46.4	25.7	2.5
Production situation	100	1.1	26.4	41.8	28.2	2.5
Volume of sales	100	1.1	28.3	41.2	27.6	1.8
Employees productivity	100	0.4	16.5	64.5	17.2	1.4
Obtaining needed raw materials and inputs	100	1.1	6.1	85.6	6.8	0.4
Problems of employees reaching place of work	100	0.0	0.7	94.6	4.3	0.4
Regularity of work	100	0.0	6.5	87.7	5.4	0.4
Level of employment	100	0.4	6.8	86.7	5.7	0.4
Transporting finished goods to market	100	1.4	7.2	83.1	7.6	0.7
Financial situations	100	1.1	21.1	55.6	20.8	1.4
Banks credits & facilities	100	0.7	1.4	95.7	2.2	0.0

(2008 )

/

:3-12

**Table 12-3: Percentage Distribution of Owners/ Managers of the Active Industrial Establishments According to Their Opinions of Main Indicators for the Month that Follows the Reference Month (October, 2008) Compared to the Reference Month in Gaza Strip**

<b>Problem</b>	<b>Total</b>	<b>Much Worse</b>	<b>Somewhat Worse</b>	<b>/ About the Same/ Unchanged</b>	<b>Somewhat Better</b>	<b>Much Better</b>	
Establishment performance in general	100	5.9	33.3	21.6	35.3	3.9	
Production situation	100	5.9	33.3	21.6	35.3	3.9	
Volume of sales	100	7.8	33.3	19.7	35.3	3.9	
Employees productivity	100	5.9	33.3	21.6	35.3	3.9	
Obtaining needed raw materials and inputs	100	7.8	31.4	25.5	31.4	3.9	
Problems of employees reaching place of work	100	0.0	23.5	64.7	11.8	0.0	
Regularity of work	100	5.9	35.3	27.4	29.4	2.0	
Level of employment	100	5.9	33.3	29.4	29.4	2.0	
Transporting finished goods to market	100	2.0	27.5	52.9	17.6	0.0	
Financial situations	100	5.9	33.3	25.5	31.4	3.9	
Banks credits & facilities	100	0.0	22.0	70.0	8.0	0.0	

**Table 13-1: Percentage Distribution of Owners/ Managers of the Active Industrial Establishments According to Their Opinions of Main Indicators During the Next Six Months Compared to Reference Month (October, 2008) in the Palestinian Territory**

<b>Problem</b>	<b>Total</b>	<b>Much Worse</b>	<b>Somewhat Worse</b>	<b>/ About the Same/ Unchanged</b>	<b>Somewhat Better</b>	<b>Much Better</b>	
Establishment performance in general	100	2.4	26.8	31.1	35.7	4.0	
Production situation	100	4.3	29.3	25.2	37.2	4.0	
Volume of sales	100	4.6	29.0	25.3	38.1	3.0	
Employees productivity	100	3.7	20.1	48.8	25.3	2.1	
Obtaining needed raw materials and inputs	100	2.7	8.8	73.0	13.7	1.8	
Problems of employees reaching place of work	100	0.6	2.4	88.2	8.5	0.3	
Regularity of work	100	2.7	9.1	74.2	13.1	0.9	
Level of employment	100	1.8	10.4	70.4	16.2	1.2	
Transporting finished goods to market	100	2.1	9.1	74.2	13.4	1.2	
Financial situations	100	3.7	22.9	42.0	29.9	1.5	
Banks credits & facilities	100	1.2	3.1	89.9	5.8	0.0	

\*

(2008 )

/

:2-13

**Table 13-2: Percentage Distribution of Owners/ Managers of the Active Industrial Establishments According to Their Opinions of Main Indicators During the Next Six Months Compared to Reference Month (October, 2008) in the West Bank\***

<b>Problem</b>	<b>Total</b>	<b>Much Worse</b>	<b>Somewhat Worse</b>	<b>About the Same/ Unchanged</b>	<b>Somewhat Better</b>	<b>Much Better</b>
Establishment performance in general	100	1.8	26.4	34.3	33.2	4.3
Production situation	100	4.0	29.2	27.5	35.0	4.3
Volume of sales	100	4.0	29.2	27.5	36.1	3.2
Employees productivity	100	3.2	18.8	54.9	20.9	2.2
Obtaining needed raw materials and inputs	100	1.8	6.5	82.0	7.9	1.8
Problems of employees reaching place of work	100	0.7	0.0	93.1	5.8	0.4
Regularity of work	100	2.2	5.4	83.8	7.9	0.7
Level of employment	100	1.1	7.2	79.0	11.6	1.1
Transporting finished goods to market	100	2.2	7.2	78.7	10.5	1.4
Financial situations	100	3.2	21.7	46.6	27.1	1.4
Banks credits & facilities	100	1.4	0.7	94.3	3.6	0.0



**Table 13-3: Percentage Distribution of Owners/ Managers of the Active Industrial Establishments According to Their Opinions of Main Indicators During the Next Six Months Comparing to Reference Month (October, 2008) in Gaza Strip**

<b>Problem</b>	<b>Total</b>	<b>Much Worse</b>	<b>Somewhat Worse</b>	<b>/ About the Same/ Unchanged</b>	<b>Somewhat Better</b>	<b>Much Better</b>	
Establishment performance in general	100	5.9	29.4	13.7	49.0	2.0	
Production situation	100	5.9	29.4	13.7	49.0	2.0	
Volume of sales	100	7.8	27.5	13.7	49.0	2.0	
Employees productivity	100	5.9	27.5	15.6	49.0	2.0	
Obtaining needed raw materials and inputs	100	7.8	21.6	23.5	45.1	2.0	
Problems of employees reaching place of work	100	0.0	15.7	60.8	23.5	0.0	
Regularity of work	100	5.9	29.4	21.5	41.2	2.0	
Level of employment	100	5.9	27.5	23.4	41.2	2.0	
Transporting finished goods to market	100	2.0	19.6	49.0	29.4	0.0	
Financial situations	100	5.9	29.4	17.6	45.1	2.0	
Banks credits & facilities	100	0.0	16.0	66.0	18.0	0.0	