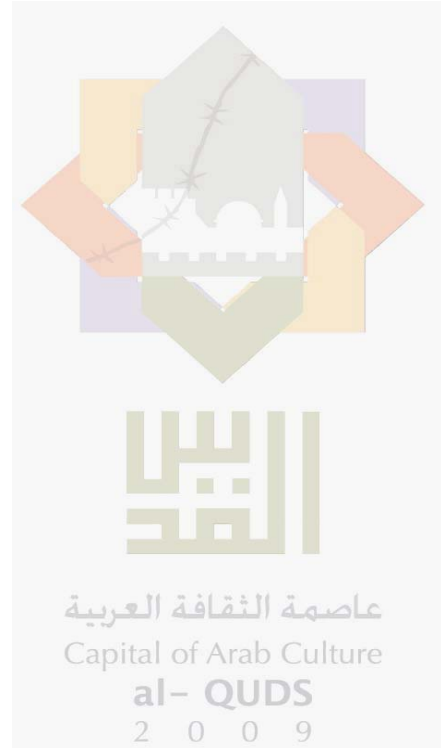
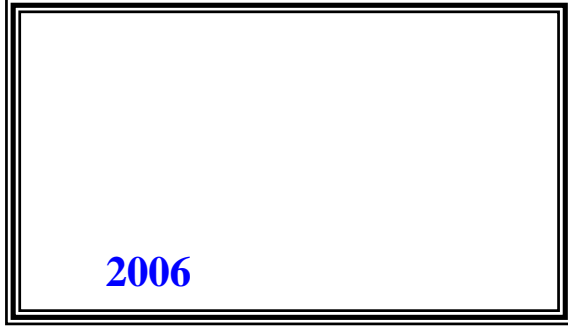




2009

/

2009 /



© 1430 - 2009.

:

/

2009.

2009

:

/

1647 . . -

: 2 242 6340 (970/972)

: 2 242 6343 (970/972)

: diwan@pcbs.gov.ps

: <http://www.pcbs.gov.ps>

5

/

2009

9

/

2009

/ 49

2009 2009/04/23-03

55 358

2007

%70

.2007

2009 **.1**

1-1

%34.7

أذار 2009 /

%45.2 (%8.7 %36.7) 2009

.(%65.2 %43.7)

2-1

%83.7

%82.7 %83.8 2009

%83.1 .

%82.1

%66.6 . %95.7

%67.7)

. (%52.2

3-1

%93.5 2009

%6.5

.2

1-2

:

/ %30.8

2009 /

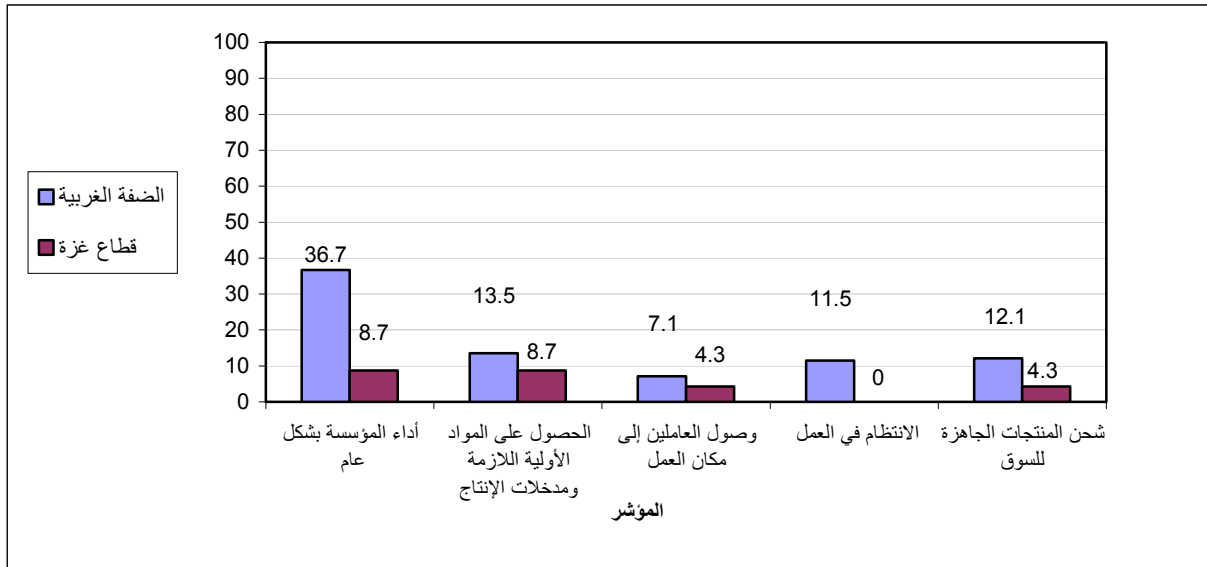
%40.0

.2009

%51.5 .
 %61.5
 %56.1 2009
 : 3-2
 / %92.2
 %59.3 .(%73.9 %93.6)
 %59.7) /
 %16.9) %18.3 (%52.9
 %22.4 (%41.2
 .(%5.9 %23.4)
 : 4-2
 / %9.7
 %82.5 (%4.3 %10.1) 2009
 .(%95.7 %81.5)
 .3
 1-3
 - /
 / %38.7 -(2009)
 .(%39.1 %38.8)
 /
 %21.7 %12.1) %12.8 2009
 / %36.9 .()
 .(%43.4 %36.4) 2009
 2-3
 ()
 %58.6
 (%39.1 %60.2)
 %26.1 %28.8) %21.7
 / %43.4 ()
 %58.8)
 .(%43.4

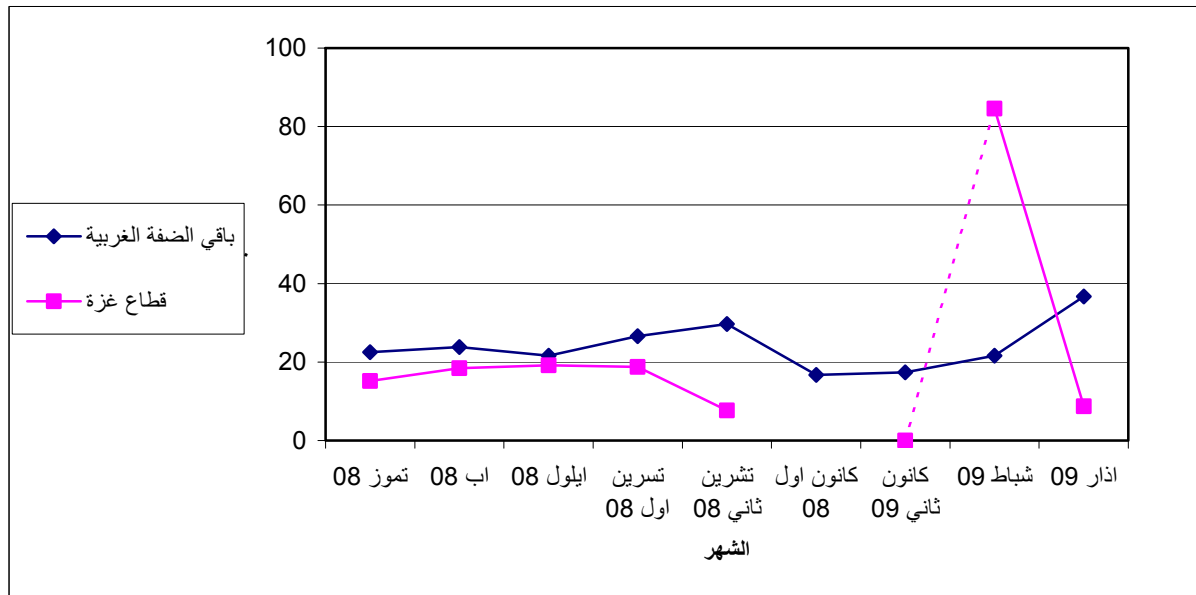
2009

:1



(2009 - 2008)

:2



.2008

*

Tables

:1-1

2009

Table 1-1: Percentage of the Industrial Enterprises Witnessed an Improved Situation During the Reference Month Compared to that before the Reference Month for the Main Indicators in the Palestinian Territory 2009

Indicator	Reference Month									
	2009			2008						
	آذار Mar.	شباط Feb.	كانون ثاني Jan.	كانون أول Dec.	تشرين ثاني Nov.	تشرين أول Oct.	Sept.	Aug.	July	June
Enterprise performance in general	34.7	26.4	16.1	-	25.0	24.8	21.0	22.2	20.9	27.4
Obtaining needed raw materials and inputs	13.1	8.5	9.9	-	10.6	12.2	10.5	12.4	10.6	29.8
Reaching the employees for their work place	6.9	9.1	4.0	-	3.5	6.1	63.	3.9	3.9	26.2
Regularity of work	10.7	10.0	5.7	-	6.8	9.8	7.3	7.8	4.2	12.4
Transporting finished goods to market	11.6	11.8	7.1	-	9.2	8.5	7.1	8.3	11.4	4.5

(-) No Data Available

(-)

:2-1

2009

Table 1-2: Percentage of Industrial Enterprises Witnessed an Improved Situation During the Reference Month Compared to that before the Reference Month for the Main Indicators in the West Bank 2009

Indicator	Reference Month									
	2009			2008						
	آذار Mar.	شباط Feb.	كانون ثاني Jan.	كانون أول Dec.	تشرين ثاني Nov.	تشرين أول Oct.	Sept.	Aug.	July	June
Enterprise performance in general	36.7	21.6	17.4	16.7	29.7	26.6	21.6	23.8	22.5	34.2
Obtaining needed raw materials and inputs	13.5	7.0	10.7	7.0	11.7	10.6	88.	10.6	11.1	37.3
Reaching the employees for their work place	7.1	3.8	4.3	3.1	4.4	6.5	5.0	4.8	3.9	32.6
Regularity of work	11.5	5.1	6.1	3.5	7.2	8.9	6.4	5.2	3.2	15.4
Transporting finished goods to market	12.1	7.6	7.7	5.4	11.4	8.2	8.2	10.3	13.6	5.4

2009

Table 1-3: Percentage of Industrial Enterprises Witnessed an Improved Situation During the Reference Month Compared to that before the Reference Month for the Main Indicators in Gaza Strip 2009

Indicator	Reference Month									
	2009			2008						
	آذار Mar.	شباط Feb.	كانون ثاني Jan.	كانون أول Dec.	تشرين ثاني Nov.	تشرين أول Oct.	Sept.	Aug.	July	June
Enterprise performance in general	8.7	84.6	0.0	-	7.7	18.8	19.2	18.4	15.2	2.8
Obtaining needed raw materials and inputs	8.7	26.9	0.0	-	6.4	17.7	115.	16.7	8.9	2.8
Reaching the employees for their work place	4.3	73.1	0.0	-	0.0	4.7	0.0	1.8	3.8	2.8
Regularity of work	0.0	69.2	0.0	-	5.1	13.0	10.1	114.	7.6	1.4
Transporting finished goods to market	4.3	61.6	0.0	-	1.3	9.4	4.0	3.5	3.8	1.4

(-) No Data Available

(-)

Table 2-1: Percentage Distribution of Owners/ Managers of the Industrial Enterprises According to Their Opinions of Main Indicators During March 2009 Compared February 2009 in the Palestinian Territory

Problem	Total	Not Exist	Much Worse	Somewhat Worse	/ About the Same/ Unchanged	Somewhat Better	Much Better
Enterprise performance in general	100	0.0	3.8	16.3	45.2	27.8	6.9
Production situation	100	1.6	3.1	18.1	42.1	28.8	6.3
Employees productivity	100	0.9	0.9	11.9	60.1	23.4	2.8
Obtaining needed raw materials and inputs	100	0.3	1.3	8.4	76.9	10.6	2.5
Reaching the employees for their work place	100	0.0	0.0	0.3	92.8	4.7	2.2
Regularity of work	100	0.0	0.3	5.7	83.3	8.2	2.5
Transporting finished goods to market	100	1.6	2.8	11.9	72.1	9.7	1.9
Financial situations	100	0.0	2.2	18.4	51.9	22.8	4.7
Banks credits & facilities	100	34.4	1.3	1.6	60.5	2.2	0.0
Level of employment	100	0.0	2.5	8.1	78.1	10.0	1.3
Value of sales	100	0.6	4.1	24.1	35.0	30.6	5.6

Table 2-2: Percentage Distribution of Owners/ Managers of the Industrial Enterprises According to Their Opinions of Main Indicators During March 2009 Compared to February 2009 in the West Bank

Problem	Total	Not Exist	Much Worse	Somewhat Worse	/ About the Same/ Unchanged	Somewhat Better	Much Better
Enterprise performance in general	100	0.0	3.4	16.2	43.7	29.3	7.4
Production situation	100	0.0	3.0	17.8	42.2	30.3	6.7
Employees productivity	100	0.0	1.0	12.1	59.7	24.2	3.0
Obtaining needed raw materials and inputs	100	0.0	1.3	7.1	78.1	10.8	2.7
Reaching the employees for their work place	100	0.0	0.0	0.3	92.6	4.7	2.4
Regularity of work	100	0.0	0.3	5.1	83.1	8.8	2.7
Transporting finished goods to market	100	0.0	3.0	12.5	72.4	10.1	2.0
Financial situations	100	0.0	2.4	19.2	48.7	24.6	5.1
Banks credits & facilities	100	34.3	1.3	1.7	60.3	2.4	0.0
Level of employment	100	0.0	2.4	8.4	77.1	10.8	1.3
Value of sales	100	0.3	3.7	23.2	35.1	31.6	6.1

Table 2-3: Percentage Distribution of Owners/ Managers of the Industrial Enterprises According to Their Opinions of Main Indicators During March 2009 Compared to February 2009 in Gaza Strip

Problem	Total	Not Exist	Much Worse	Somewhat Worse	/ About the Same/ Unchanged	Somewhat Better	Much Better	
Enterprise performance in general	100	0.0	8.7	17.4	65.2	8.7	0.0	
Production situation	100	21.7	4.3	21.7	43.6	8.7	0.0	
Employees productivity	100	13.0	0.0	8.7	65.3	13.0	0.0	
Obtaining needed raw materials and inputs	100	4.3	0.0	26.1	60.9	8.7	0.0	
Reaching the employees for their work place	100	0.0	0.0	0.0	95.7	4.3	0.0	
Regularity of work	100	0.0	0.0	13.0	87.0	0.0	0.0	
Transporting finished goods to market	100	21.7	0.0	4.3	69.7	4.3	0.0	
Financial situations	100	0.0	0.0	8.7	91.3	0.0	0.0	
Banks credits & facilities	100	34.8	0.0	0.0	65.2	0.0	0.0	
Level of employment	100	0.0	4.3	4.3	91.4	0.0	0.0	
Value of sales	100	4.3	8.7	34.8	34.8	17.4	0.0	

Table 3: Percentage of Industrial Enterprises Witnessed an Improved Situation During the Reference Month (March 2009) Compared to that before the Reference Month for the Main Indicators by Region

Indicator	Gaza Strip	West Bank	Palestinian Territory	
Employees productivity	13.0	27.2	26.2	
Financial situations	0.0	29.7	27.5	
Banks credits & facilities	0.0	2.4	2.2	
Level of employment	0.0	12.1	11.3	
Value of sales	17.4	37.7	36.2	

/ :4

2009

Table 4: Percentage Distribution of Owners/Managers of the Active Industrial Enterprises According to the Reasons for Sales Level Stability or Decline by Region During March 2009

Reason	Gaza Strip	West Bank	Palestinian Territory	
Decrease in demand	30.0	30.8	30.7	
Difficulties in exporting finished goods	:	:	:	
Decline in the consumer purchasing power	40.0	29.5	30.7	
Product Marketing Obstacles	:	2.5	2.2	()
Competence product	:	11.5	10.2	
Seasonally related	:	9.0	8.0	
Military check points/ israeli actions/ closures	30.0	9.0	11.4	/ /
Other	:	7.7	6.8	
Total	100	100	100	

(:) No Observations in the Sample

(:)

2009

:5

Table 5: Percentage Distribution of the Active Industrial Enterprises According to the Employment Mobility During March 2009 by Region

Employment Mobility	Gaza Strip	West Bank	Palestinian Territory	
Hiring employees	:	8.4	7.8	
Firing employees	4.3	10.1	9.7	
No change	95.7	81.5	82.5	
Total	100	100	100	

(:) No Observations in the Sample

(:)

2009

/

:6

Table 6: Percentage Distribution of the Existing of Competition against the Main Product According to the Owners\ Managers of the Active Industrial Enterprises During March 2009 by Region

Competence existence	Gaza Strip	West Bank	Palestinian Territory	
There is competition	73.9	93.6	92.2	
There is no competition	26.1	6.4	7.8	
Total	100	100	100	

2009

/

:7

Table 7: Percentage Distribution of the Type of Competition According to the Owners\ Managers of the Active Industrial Enterprises During March 2009 by Region

Type of competence	Gaza Strip	West Bank	Palestinian Territory	
Local	52.9	59.7	59.3	
Foreign	41.2	16.9	18.3	
Both	5.9	23.4	22.4	
Total	100	100	100	

Table 8: Expectations of Owners/ Managers of the Active Industrial Enterprises for the Month that Follows the Reference Month Compared to the Reference Month (March, 2009) for the Main Indicators by Region

Indicator	Reference Month									
	2009			2008						
	آذار Mar.	شباط Feb.	كانون ثاني Jan.	كانون أول Dec.	تشرين ثاني Nov.	تشرين أول Oct.	Sept.	Aug.	July	June
Percentage of who are expecting better Enterprise situation										
Palestinian Territory	38.7	33.9	33.4	-	27.5	32.0	33.0	28.0	30.3	32.5
West Bank	38.8	37.1	29.1	26.5	27.3	30.7	29.8	21.6	26.3	29.6
Gaza Strip	39.1	65.3	85.1	-	28.9	39.2	46.8	58.9	53.2	54.3
Percentage of who are expecting higher employment level										
Palestinian Territory	12.8	18.1	17.0	-	12.0	10.0	116.	615.	10.1	11.9
West Bank	12.1	14.4	11.0	11.2	9.7	6.1	10.3	58.	3.7	6.2
Gaza Strip	21.7	61.5	88.8	-	28.9	31.4	40.3	50.0	46.8	54.3
Percentage of who are expecting higher sales volume										
Palestinian Territory	36.9	39.3	34.8	-	27.5	30.9	33.9	28.6	28.7	32.0
West Bank	36.4	37.1	29.7	28.1	27.3	29.4	30.9	22.3	24.5	29.0
Gaza Strip	43.4	65.3	96.3	-	28.9	39.2	46.8	58.9	53.2	54.3

(-) No Data Available

(-)

Table 9: Expectations of Owners/ Managers of the Active Industrial Enterprises for the Six Months that Follow the Reference Month Compared to the Reference Month (March, 2009) for the Main Indicators by Region

Indicator	Reference Month									
	2009			2008						
	آذار Mar.	شباط Feb.	كانون ثاني Jan.	كانون أول Dec.	تشرين ثاني Nov.	تشرين أول Oct.	Sept.	Aug.	July	June
Percentage of who are expecting better Enterprise situation										
Palestinian Territory	39.1	56.8	62.3	-	44.9	41.2	38.8	39.9	34.5	35.7
West Bank	60.2	55.7	60.5	50.2	44.6	39.3	35.0	35.7	30.4	32.9
Gaza Strip	39.1	69.1	85.2	-	47.4	51.0	54.8	60.7	58.7	57.1
Percentage of who are expecting higher employment level										
Palestinian Territory	21.7	28.5	36.0	-	20.9	17.4	21.6	19.2	15.1	15.4
West Bank	28.8	25.5	31.6	18.9	18.0	12.7	14.8	12.9	8.5	9.7
Gaza Strip	26.1	65.4	88.9	-	42.1	43.2	50.0	50.0	54.4	57.1
Percentage of who are expecting higher sales volume										
Palestinian Territory	43.4	56.5	62.9	-	45.6	41.1	42.5	40.9	35.1	36.6
West Bank	58.8	55.8	60.2	52.7	45.3	39.3	39.5	36.8	31.1	34.1
Gaza Strip	43.4	65.4	96.3	-	47.4	51.0	54.8	60.7	58.7	55.9

(-) No Data Available

(-)

Table 10: Expectations of Owners/ Managers of the Active Industrial Enterprises about Better Expectations for their Enterprises for the Month that Follows the Reference Month (March, 2009) Compared to the Reference Month by Region

Indicator	Gaza Strip	West Bank	Palestinian Territory	
Enterprise performance in general	47.8	38.1	38.7	
Employees productivity	17.3	27.3	26.6	
Obtaining needed raw materials and inputs	34.7	13.4	15.0	
Reaching the employees for their work place	4.3	6.4	6.3	
Regularity of work	26.1	10.5	11.5	
Transporting finished goods to market	8.7	16.5	15.9	
Financial situations	17.4	33.1	32.0	
Banks credits & facilities	4.3	3.7	3.7	

Table 11: Expectations of Owners/ Managers of the Active Industrial Enterprises about Better Expectations for their Enterprises for the Six Months that Follow the Reference Month (March, 2009) Compared to the Reference Month for the Main Indicators by Region

Indicator	Gaza Strip	West Bank	Palestinian Territory	
Enterprise performance in general	47.8	58.1	47.8	
Employees productivity	17.3	44.3	17.3	
Obtaining needed raw materials and inputs	34.7	26.0	34.7	
Reaching the employees for their work place	4.3	8.5	4.3	
Regularity of work	30.4	23.4	26.1	
Transporting finished goods to market	8.7	26.3	8.7	
Financial situations	21.7	51.0	17.4	
Banks credits & facilities	4.3	8.4	4.3	

(2009)

/

:1-12

Table 12-1: Percentage Distribution of Owners/ Managers of the Active Industrial Enterprises According to Their Opinions of Main Indicators for the Month that Follows the Reference Month (March, 2009) Compared to the Reference Month in the Palestinian Territory

Indicator	Total	Not Exist	Much Worse	Somewhat Worse	/ About the Same/ Unchanged	Somewhat Better	Much Better	
Enterprise performance in general	100	0.0	1.6	12.8	46.9	35.3	3.4	
Production situation	100	1.0	1.6	12.8	45.9	35.3	3.4	
Volume of sales	100	0.3	1.6	13.4	47.8	34.1	2.8	
Employees productivity	100	0.3	0.9	7.2	65.0	24.4	2.2	
Obtaining needed raw materials and inputs	100	0.3	0.3	5.6	78.8	14.4	0.6	
Reaching the employees for their work place	100	0.0	0.3	0.6	92.8	4.7	1.6	
Regularity of work	100	0.0	0.9	4.1	83.5	10.9	0.6	
Level of employment	100	0.0	1.3	3.4	82.5	11.9	0.9	
Transporting finished goods to market	100	1.3	2.2	4.7	75.9	15.0	0.9	
Financial situations	100	0.0	1.9	11.3	54.8	29.5	2.5	
Banks credits & facilities	100	35.1	0.0	0.9	60.3	3.4	0.3	

(2009)

/

:2-12

Table 12-2: Percentage Distribution of Owners/ Managers of the Active Industrial Enterprises According to Their Opinions of Main Indicators for the Month that Follows the Reference Month (March, 2009) Compared to the Reference Month in the West Bank

Indicator	Total	Not Exist	Much Worse	Somewhat Worse	/ About the Same/ Unchanged	Somewhat Better	Much Better	
Enterprise performance in general	100	0.0	1.7	12.5	47.7	34.7	3.4	
Production situation	100	0.0	1.7	12.5	47.0	35.4	3.4	
Volume of sales	100	0.0	1.7	13.1	48.8	33.7	2.7	
Employees productivity	100	0.0	1.0	7.1	64.6	25.3	2.0	
Obtaining needed raw materials and inputs	100	0.0	0.3	4.7	81.6	13.1	0.3	
Reaching the employees for their work place	100	0.0	0.3	0.7	92.6	4.7	1.7	
Regularity of work	100	0.0	1.0	4.0	84.5	9.8	0.7	
Level of employment	100	0.0	1.4	3.4	83.1	11.1	1.0	
Transporting finished goods to market	100	0.0	2.4	4.7	76.4	15.5	1.0	
Financial situations	100	0.0	2.0	11.1	53.8	30.4	2.7	
Banks credits & facilities	100	35.8	0.0	1.0	59.5	3.4	0.3	

(2009)

/

:3-12

Table 12-3: Percentage Distribution of Owners/ Managers of the Active Industrial Enterprises According to Their Opinions of Main Indicators for the Month that Follows the Reference Month (March, 2009) Compared to the Reference Month in Gaza Strip

Indicator	Total	Not Exist	Much Worse	Somewhat Worse	/ About the Same/ Unchanged	Somewhat Better	Much Better	
Enterprise performance in general	100	0.0	0.0	17.4	34.8	43.5	4.3	
Production situation	100	13.0	0.0	17.4	30.5	34.8	4.3	
Volume of sales	100	4.3	0.0	17.4	34.9	39.1	4.3	
Employees productivity	100	4.3	0.0	8.7	69.7	13.0	4.3	
Obtaining needed raw materials and inputs	100	4.3	0.0	17.4	43.6	30.4	4.3	
Reaching the employees for their work place	100	0.0	0.0	0.0	95.7	4.3	0.0	
Regularity of work	100	0.0	0.0	4.3	69.6	26.1	0.0	
Level of employment	100	0.0	0.0	4.4	73.9	21.7	0.0	
Transporting finished goods to market	100	17.4	0.0	4.3	69.6	8.7	0.0	
Financial situations	100	0.0	0.0	13.0	69.6	17.4	0.0	
Banks credits & facilities	100	26.1	0.0	0.0	69.6	4.3	0.0	

(2009)

/

:1-13

Table 13-1: Percentage Distribution of Owners/ Managers of the Active Industrial Enterprises According to Their Opinions of Main Indicators During the Next Six Months Compared to Reference Month (March, 2009) in the Palestinian Territory

Indicator	Total	Not Exist	Much Worse	Somewhat Worse	/ About the Same/ Unchanged	Somewhat Better	Much Better	
Enterprise performance in general	100	0.0	0.0	17.4	34.8	43.5	4.3	
Production situation	100	13.0	0.0	17.4	30.5	34.8	4.3	
Volume of sales	100	4.3	0.0	17.4	34.9	39.1	4.3	
Employees productivity	100	4.3	0.0	8.7	69.7	13.0	4.3	
Obtaining needed raw materials and inputs	100	4.3	0.0	17.4	43.6	30.4	4.3	
Reaching the employees for their work place	100	0.0	0.0	0.0	95.7	4.3	0.0	
Regularity of work	100	0.0	0.0	4.3	69.6	26.1	0.0	
Level of employment	100	0.0	0.0	4.4	73.9	21.7	0.0	
Transporting finished goods to market	100	17.4	0.0	4.3	69.6	8.7	0.0	
Financial situations	100	0.0	0.0	13.0	69.6	17.4	0.0	
Banks credits & facilities	100	26.1	0.0	0.0	69.6	4.3	0.0	

Table 13-2: Percentage Distribution of Owners/ Managers of the Active Industrial Enterprises According to Their Opinions of Main Indicators During the Next Six Months Compared to Reference Month (March, 2009) in the West Bank

Indicator	Total	Not Exist	Much Worse	Somewhat Worse	/ About the Same/ Unchanged	Somewhat Better	Much Better	
Enterprise performance in general	100	0.0	0.7	11.8	29.4	50.7	7.4	
Production situation	100	0.0	1.0	10.8	28.0	52.4	7.8	
Volume of sales	100	0.0	1.7	12.2	27.3	51.0	7.8	
Employees productivity	100	0.0	1.3	5.4	49.0	40.9	3.4	
Obtaining needed raw materials and inputs	100	0.0	1.0	3.0	70.0	25.0	1.0	
Reaching the employees for their work place	100	0.0	0.7	0.7	90.1	6.8	1.7	
Regularity of work	100	0.0	1.4	2.4	72.8	22.4	1.0	
Level of employment	100	0.0	1.0	3.7	66.5	26.8	2.0	
Transporting finished goods to market	100	0.0	3.0	4.1	66.6	25.3	1.0	
Financial situations	100	0.0	2.4	9.8	36.8	44.6	6.4	
Banks credits & facilities	100	35.3	0.0	0.7	55.6	8.1	0.3	

Table 13-3: Percentage Distribution of Owners/ Managers of the Active Industrial Enterprises According to Their Opinions of Main Indicators During the Next Six Months Compared to Reference Month (March, 2009) in Gaza Strip

Indicator	Total	Not Exist	Much Worse	Somewhat Worse	/ About the Same/ Unchanged	Somewhat Better	Much Better	
Enterprise performance in general	100	0.0	0.6	12.2	29.8	50.2	7.2	
Production situation	100	0.9	0.9	11.3	28.2	51.1	7.5	
Volume of sales	100	0.3	1.6	12.5	27.9	50.2	7.5	
Employees productivity	100	0.3	1.3	5.6	50.5	38.9	3.4	
Obtaining needed raw materials and inputs	100	0.3	0.9	4.1	68.0	25.4	1.3	
Reaching the employees for their work place	100	0.0	0.6	0.6	90.6	6.6	1.6	
Regularity of work	100	0.0	1.3	2.5	72.3	23.0	0.9	
Level of employment	100	0.0	0.9	3.8	66.7	26.7	1.9	
Transporting finished goods to market	100	1.3	2.8	4.1	66.8	24.1	0.9	
Financial situations	100	0.0	2.2	10.0	38.9	42.9	6.0	
Banks credits & facilities	100	34.6	0.0	0.6	56.6	7.9	0.3	

Table 14: Percentage Distribution of Owners/Managers of the Industrial Enterprises Opinion About the Factors Affecting Production Cost During the First Quarter 2009 by Region

Factors		Opinion						
		No effect	Relatively weak effect	Weak effect	Relatively large effect	Large effect		
Foreign competition	Palestinian Territory	39.4	6.9	11.9	13.4	28.4		
	West bank	37.4	7.0	12.5	13.1	30.0		
	Gaza strip	65.3	4.3	4.3	17.4	8.7		
Informal Sector	Palestinian Territory	34.7	6.6	14.7	20.6	23.4		
	West bank	31.3	6.7	15.8	21.5	24.7		
	Gaza strip	78.3	4.3	0.0	8.7	8.7		
Local Competition	Palestinian Territory	14.1	5.0	9.4	22.3	49.2		
	West bank	12.5	4.7	8.4	22.3	52.1		
	Gaza strip	34.9	8.7	21.7	21.7	13.0		
Transport cost	Palestinian Territory	15.3	5.3	12.8	24.4	42.2		
	West bank	13.1	5.4	13.8	25.6	42.1		
	Gaza strip	43.5	4.3	0.0	8.7	43.5		
Political situation	Palestinian Territory	6.6	3.4	6.9	23.4	59.7		
	West bank	7.1	3.7	7.1	24.9	57.2		
	Gaza strip	0.0	0.0	4.3	4.3	91.4		
Costs of raw materials and inputs	Palestinian Territory	6.0	3.1	7.2	25.1	58.6		
	West bank	5.4	3.4	7.4	26.0	57.8		
	Gaza strip	13.0	0.0	4.3	13.0	69.7		

2009

/

:15

Table 15: Percentage Distribution of the Frequency of Loans Requested From the Banks According to the Owners/Managers of the Industrial Enterprises Opinion During the First Quarter 2009 by Region

Frequency	Gaza Strip	West Bank	Palestinian Territory	
No loan request	100.0	93.0	93.5	
Once	:	7.0	6.5	
2-5	:	:	:	5-2
Total	100	100	100	

(:) No Observations in the Sample

(:)

Table 16: Percentage Distribution of Owners/ Managers of the Industrial Enterprises According to Their Views About the Export Obstacles During the First Quarter 2009 by Region

Problems	Region	Not applicable	I don't know	Large difficulty	Medium difficulty	Small difficulty	No difficulty		
Commitment to international market requirements	Palestinian Territory	-	-	-	-	-	-		
	West bank	2.3	0.8	2.3	3.1	10.8	80.7		
	Gaza strip	-	-	-	-	-	-		
Commitment to export market packaging requirements	Palestinian Territory	-	-	-	-	-	-		
	West bank	0.8	0.8	-	0.8	11.5	86.1		
	Gaza strip	-	-	-	-	-	-		
Price competition in the export market	Palestinian Territory	-	-	-	-	-	-		
	West bank	-	0.8	10.8	13.8	22.3	52.3		
	Gaza strip	-	-	-	-	-	-		
Compliance to quantity demanded and delivery time	Palestinian Territory	-	-	-	-	-	-		
	West bank	-	0.8	2.3	3.8	13.1	80.0		
	Gaza strip	-	-	-	-	-	-		
Export financing	Palestinian Territory	-	-	-	-	-	-		
	West bank	4.6	-	2.3	4.6	15.4	73.1		
	Gaza strip	-	-	-	-	-	-		
Marketing ability	Palestinian Territory	-	-	-	-	-	-		
	West bank	7.7	-	3.8	5.4	26.2	56.9		
	Gaza strip	-	-	-	-	-	-		
Regular achievement of raw materials	Palestinian Territory	-	-	-	-	-	-		
	West bank	0.8	-	5.4	9.2	26.2	58.4		
	Gaza strip	-	-	-	-	-	-		

(-) No Exports from Gaza Strip

(-)

Table 16 (Cont): Percentage Distribution of Owners/ Managers of the Industrial Enterprises According to Their Views About the Export Obstacles During the First Quarter 2009 by Region

Problems	Region	Not applicable	I don't know	Large difficulty	Medium difficulty	Small difficulty	No difficulty		
Regular achievement of export	Palestinian Territory	-	-	-	-	-	-		
	West bank	1.5	-	6.9	9.2	40.0	42.4		
	Gaza strip	-	-	-	-	-	-		
Regular achievement of employee	Palestinian Territory	-	-	-	-	-	-		
	West bank	1.5	-	0.8	3.1	2.3	92.3		
	Gaza strip	-	-	-	-	-	-		
Palestinian export regulation and license	Palestinian Territory	-	-	-	-	-	-		
	West bank	-	-	4.6	7.7	13.8	73.9		
	Gaza strip	-	-	-	-	-	-		
Information access to the foreign market	Palestinian Territory	-	-	-	-	-	-		
	West bank	6.2	-	7.7	5.4	36.2	44.5		
	Gaza strip	-	-	-	-	-	-		
Traveling problems imposed on entering foreign markets	Palestinian Territory	-	-	-	-	-	-		
	West bank	-	-	13.8	8.5	33.1	44.6		
	Gaza strip	-	-	-	-	-	-		
Import regulation in the foreign market	Palestinian Territory	-	-	-	-	-	-		
	West bank	-	-	7.7	6.9	36.9	48.5		
	Gaza strip	-	-	-	-	-	-		
Customer payment guarantee	Palestinian Territory	-	-	-	-	-	-		
	West bank	-	-	31.5	7.7	22.3	38.5		
	Gaza strip	-	-	-	-	-	-		

(-) No Exports from Gaza Strip

(-)

2009

:17

Table 17: Percentage of Mechanism of Finding Customers in the Export Market During the First Quarter 2009 by Region

Approaching Customers	Gaza Strip	West Bank	Palestinian Territory	
Market researches	-	23.3	-	
Information gathered from commerce chamber industrial union etc...	-	9.3	-	
Participate in international exhibitions and organized business missions	-	23.3	-	
Self-organized visits to the export market	-	39.5	-	
Personal relationships and contacts	-	94.6	-	
Through internet	-	20.8	-	
Customer self initiative	-	62.8	-	

(-) No Exports from Gaza Strip

(-)