



**2007**

/

**2007**

/

:

[.http://atlas.pcbs.gov.ps](http://atlas.pcbs.gov.ps)

<http://www.pcbs.gov.ps>

**2006**

.2007 - 1428 ©

:

/

**.2007**

*2007*

:

/

- 1647 . .

(970/972) 2 240 6343 :

<http://www.pcbs.gov.ps> :

(970/972) 2 240 6340 :

[diwan@pcbs.gov.ps](mailto:diwan@pcbs.gov.ps) :



2007 -

---

**9**

/

2007

**13**

. 481

(2006 - 2006 )

2006

346

/  
**2007**

/10/23-3 / 31  
/ 2007 2007  
( 138 343 ) 481  
2004  
%70

2004 . 20

**2007** **2007**  
/ %40.0 :  
%21.3 2007 2007  
%40.0 :  
2007 2007

. %18.6  
%41.8 :  
%17.5

%41.8 :  
%14.8  
%9.1 :  
%3.9

:  
/ %76.9

%11.5  
%35.4  
%34.2

:

%95.2

%94.6                                  %98.2)

%84.2                                  .(

%15.8                                  (                                  %81.1                                  %98.1)

.                                  .(                                  %1.9                                  %18.9)

:

%7.7

%86.6                                  (                                  %6.6                                  %12.7) 2007

%83.6                                  %87.2)

.                                  .(

-

/

/                                  %22.1                                  -(2007                                  )

.

%9.6                                  2007

%23.4

.2007

(                                  )

%36.0

.                                  .(                                  %52.4                                  %33.3)

%21.6

.                                  .(                                  %19.0                                  %38.1)

%38.6

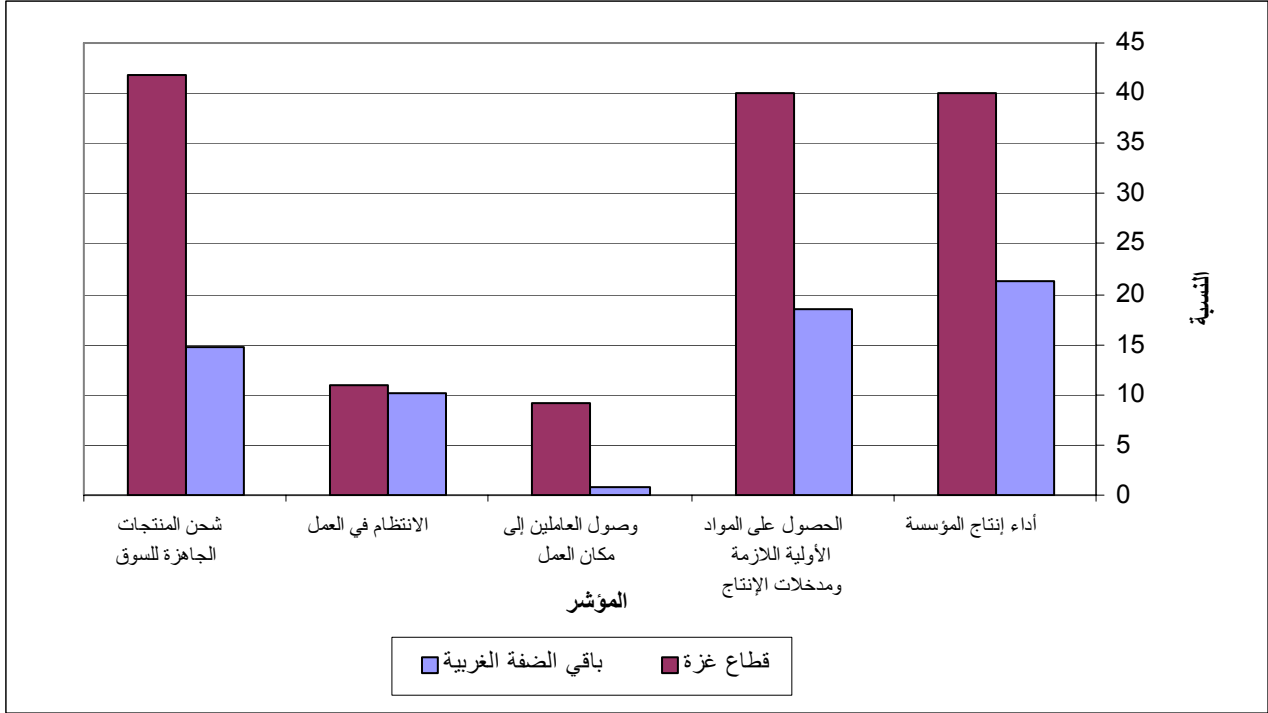
%52.4)

.                                  .(                                  %36.4

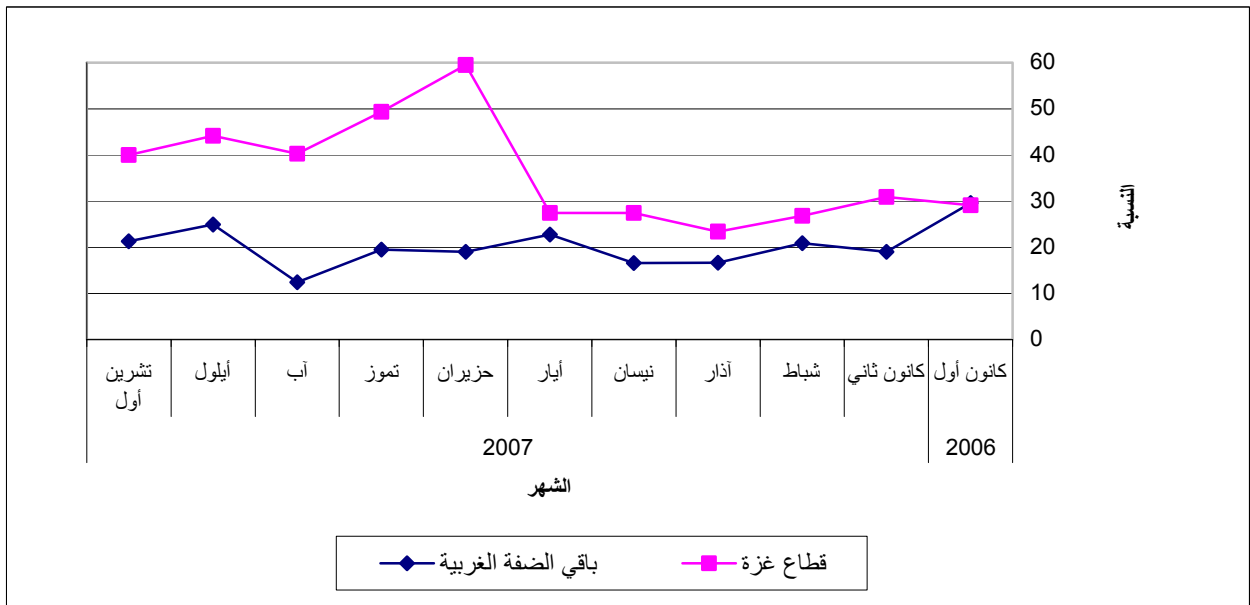
2007

2007

:1



:2





2007

**Table 1-1: Percentage of Industrial Establishments Encountered Worse Situation During the Reference Month Compared to that before the Reference Month for the Main Indicators in Remaining West Bank and Gaza Strip 2007**

Indicator	Reference Month								
	2007								
	Oct.	Sep.	Aug.	Jul.	Jun.	May.	April.	Mar.	Feb.
Establishment performance in general	24.6	28.4	18.4	27.0	29.5	24.0	19.4	18.6	22.7
Obtaining needed raw materials and inputs	22.4	29.7	18.4	22.3	23.2	16.0	13.1	10.5	12.5
Problems of employees reaching place of work	2.2	7.6	6.9	6.0	10.7	4.5	2.3	3.3	3.8
Regularity of work	10.2	11.7	7.2	5.7	13.9	7.0	3.3	5.7	9.1
Transporting finished goods to market	19.5	19.7	18.4	19.5	27.6	20.8	18.4	16.2	18.8

:2-1

2007

**Table 1-2: Percentage of Industrial Establishments Encountered Worse Situation During the Reference Month Compared to that before the Reference Month for the Main Indicators in Remaining West Bank 2007**

Indicator	Reference Month								
	2007								
	Oct.	Sep.	Aug.	Jul.	Jun.	May	April	Mar.	Feb.
Establishment performance in general	21.3	24.9	12.4	19.5	19.0	22.8	16.6	16.7	20.9
Obtaining needed raw materials and inputs	18.6	15.1	15.8	11.5	10.4	13.4	11.3	7.1	10.2
Problems of employees reaching place of work	0.8	7.2	3.9	3.6	4.4	2.0	1.9	2.5	4.0
Regularity of work	10.1	11.4	3.5	2.4	5.6	4.7	3.4	4.6	9.4
Transporting finished goods to market	14.7	14.8	12.4	13.1	16.9	16.9	14.7	14.7	16.4

**Table 1-3: Percentage of Industrial Establishments Encountered Worse Situation During the Reference Month Compared to that before the Reference Month for the Main Indicators in Gaza Strip 2007**

Indicator	Reference Month								
	2007								
	Oct.	Sep.	Aug.	Jul.	Jun.	May	April	Mar.	Feb.
Establishment performance in general	40.0	44.2	40.3	49.4	59.5	27.4	27.4	23.4	26.8
Obtaining needed raw materials and inputs	40.0	32.6	27.8	54.1	59.5	22.6	17.9	19.1	18.0
Problems of employees reaching place of work	9.1	9.6	18.0	13.0	28.1	10.7	3.2	5.3	3.3
Regularity of work	11.0	13.4	20.8	15.3	37.1	12.7	3.2	8.5	8.3
Transporting finished goods to market	41.8	42.3	40.3	38.8	57.3	30.4	28.5	20.2	24.5

2007

/

:1-2

2007

**Table 2-1: Percentage Distribution of Owners/ Managers of the Industrial Establishments According to Their Opinions for Main Indicators During October 2007 Compared with September 2007 in Remaining West Bank and Gaza Strip**

<b>Problem</b>	<b>Total</b>	<b>Much Worse</b>	<b>Somewhat Worse</b>	<b>/ About the Same/ Unchanged</b>	<b>Somewhat Better</b>	<b>Much Better</b>	
Establishment performance in general	<b>100</b>	2.2	22.4	56.9	18.2	0.3	
Production situation	<b>100</b>	2.9	24.6	52.4	19.5	0.6	
Employees productivity	<b>100</b>	1.6	20.1	62.3	15.7	0.3	
Obtaining needed raw materials and inputs	<b>100</b>	2.6	19.8	70.6	6.7	0.3	
Problems of employees reaching place of work	<b>100</b>	0.3	1.9	89.5	7.7	0.6	
Regularity of work	<b>100</b>	0.3	9.9	83.4	6.1	0.3	
Transporting finished goods to market	<b>100</b>	1.0	18.5	70.0	10.2	0.3	
Financial situations	<b>100</b>	1.3	18.2	67.4	12.8	0.3	
Banks credits & facilities	<b>100</b>	0.6	4.2	88.8	6.1	0.3	
Level of employment	<b>100</b>	0.6	12.1	75.5	11.2	0.6	
Value of sales	<b>100</b>	1.9	31.6	46.0	19.5	1.0	

2007

/

: :2-2

2007

**Table 2-2: Percentage Distribution of Owners/ Managers of the Industrial Establishments According to Their Opinions for Main Indicators During October 2007 Compared with September 2007 in Remaining West Bank**

Problem	Total	Much Worse	Somewhat Worse	/ About the Same/ Unchanged	Somewhat Better	Much Better	
Establishment performance in general	100	1.9	19.4	57.8	20.9	-	
Production situation	100	2.7	21.7	52.7	22.5	0.4	
Employees productivity	100	1.2	16.3	64.7	17.8	-	
Obtaining needed raw materials and inputs	100	2.3	16.3	74.0	7.4	-	
Problems of employees reaching place of work	100	0.4	0.4	90.3	8.5	0.4	
Regularity of work	100	0.4	9.7	83.3	6.6	-	
Transporting finished goods to market	100	0.4	14.3	74.0	11.3	-	
Financial situations	100	0.8	14.0	70.9	14.3	-	
Banks credits & facilities	100	0.8	3.1	89.5	6.6	-	
Level of employment	100	0.8	11.6	74.4	12.8	0.4	
Value of sales	100	1.6	29.1	46.0	22.5	0.8	

(-) Number of observations is too small

(-)

2007

**Table 2-3: : Percentage Distribution of Owners/ Managers of the Industrial Establishments According to Their Opinions for Main Indicators During October 2007 Compared with September 2007 in Gaza Strip**

Problem	Total	Much Worse	Somewhat Worse	/ About the Same/ Unchanged	Somewhat Better	Much Better	
Establishment performance in general	100	3.6	36.4	52.7	5.5	1.8	
Production situation	100	3.6	38.2	50.9	5.5	1.8	
Employees productivity	100	3.6	38.2	50.9	5.5	1.8	
Obtaining needed raw materials and inputs	100	3.6	36.4	54.6	3.6	1.8	
Problems of employees reaching place of work	100	-	9.1	85.5	3.6	1.8	
Regularity of work	100	-	11.0	83.6	3.6	1.8	
Transporting finished goods to market	100	3.6	38.2	50.9	5.5	1.8	
Financial situations	100	3.6	38.2	50.9	5.5	1.8	
Banks credits & facilities	100	-	9.1	85.5	3.6	1.8	
Level of employment	100	-	14.6	80.0	3.6	1.8	
Value of sales	100	3.6	43.6	45.5	5.5	1.8	

(-) Number of observations is too small

(-)

**Table 3: Percentage of Industrial Establishments Encountered Worse Situation During the Reference Month (October 2007) Compared to that before the Reference Month for the Main Indicators by Region**

	Region			
	Gaza Strip	Remaining West Bank	Remaining West Bank and Gaza Strip	
Employees productivity	41.8	17.5	21.7	
Financial situations	41.8	14.8	19.5	
Banks credits & facilities	9.1	3.9	4.8	
Level of employment	14.6	12.4	12.7	
Value of sales	47.2	30.7	33.5	

/ :4

2007

**Table 4: Percentage Distribution of Owners/Managers of the Industrial Establishments According to the Reasons for Sales Level Stability or Decline by Region During October 2007**

Reason	Gaza Strip	Remaining West Bank	Remaining West Bank and Gaza Strip	
Decrease in demand	3.9	6.3	5.7	
Difficulties in exporting finished goods	-	1.3	1.0	
Decline in the consumer purchasing power	7.7	34.2	27.6	
Competence product	-	5.1	3.8	
Seasonally related	-	35.4	26.7	
Military check points/ israeli actions/ closures	76.9	-	19.0	/
Other	11.5	17.7	16.2	/
<b>Total</b>	<b>100</b>	<b>100</b>	<b>100</b>	

(-) Number of observations is too small

(-)

2007

:5

**Table 5: Percentage Distribution of the Industrial Establishments According to the Employment Mobility During October 2007 by Region**

Employment Mobility	Gaza Strip	Remaining West Bank	Remaining West Bank and Gaza Strip
Hiring employees	3.7	6.2	5.9
Firing employees	12.7	6.6	7.7
No change	83.6	87.2	86.4
<b>Total</b>	<b>100</b>	<b>100</b>	<b>100</b>

2007

/

:6

**Table 6: Percentage Distribution of the Existing of Competence of the Main Product According to the Owners\ Managers of the Industrial Establishments During October 2007 by Region**

Competence existence	Gaza Strip	Remaining West Bank	Remaining West Bank and Gaza Strip
There is competition	98.2	94.6	95.2
There is no competition	1.8	5.4	4.8
<b>Total</b>	<b>100</b>	<b>100</b>	<b>100</b>

(-) Number of observations is too small

(-)

2007

/

:7

**Table 7: Percentage Distribution of the Type of Competence According to the Owners\ Managers of the Industrial Establishments During October 2007 by Region**

Type of competence	Gaza Strip	Remaining West Bank	Remaining West Bank and Gaza Strip
Local	98.1	81.1	84.2
Foreign	1.9	18.9	15.8
<b>Total</b>	<b>100</b>	<b>100</b>	<b>100</b>

**Table 8: Expectations of Owners/ Managers of the Industrial Establishments for the Month that Follow the Reference Month Compared With the Reference (October, 2007) Month for the Main Indicators by Region 2007**

Indicator	Reference Month								
	2007								
	Oct.	Sep.	Aug.	Jul.	Jun.	May.	April.	Mar.	Feb.
<b>Percentage of who are expecting better establishment situation</b>									
Remaining West Bank and Gaza Strip.	22.1	19.4	30.6	35.1	33.0	36.2	45.0	50.3	40.3
Remaining West Bank	22.1	19.4	31.4	39.7	34.8	37.0	43.7	50.8	38.0
Gaza Strip	22.6	19.2	27.8	21.0	28.1	34.3	48.4	49.0	45.8
<b>Percentage of who are expecting higher employment level</b>									
Remaining West Bank and Gaza S.	9.6	9.0	13.9	19.3	13.0	15.3	22.2	20.1	14.9
Remaining West Bank	9.3	8.0	14.0	20.4	13.2	13.1	18.5	16.7	12.5
Gaza Strip	13.2	13.5	13.9	16.0	12.4	20.6	32.7	28.7	20.5
<b>Percentage of who are expecting higher sales volume</b>									
Remaining West Bank and Gaza S.	23.4	20.8	30.9	35.1	32.8	35.5	44.2	48.5	40.2
Remaining West Bank	24.1	21.1	31.8	39.7	34.4	36.0	42.6	47.9	37.8
Gaza Strip	22.6	19.2	27.8	21.0	28.1	34.3	48.4	50.0	46.3



**Table 9: Expectations of Owners/ Managers of the Industrial Establishments for the Six Months that Follow the Reference Month Compared With the Reference Month (October, 2007) for the Main Indicators by Region**

Indicator	Reference Month								
	2007								
	Oct.	Sep.	Aug.	Jul.	Jun.	May.	April.	Mar.	Feb.
<b>Percentage of who are expecting better establishment situation</b>									
Remaining West Bank and Gaza S.	36.0	37.4	41.5	40.3	40.7	42.1	62.8	67.0	69.8
Remaining West Bank	33.3	36.3	41.8	42.9	43.7	44.5	63.4	69.2	72.4
Gaza Strip	52.4	43.2	39.7	32.0	32.2	36.3	61.3	61.3	63.5
<b>Percentage of who are expecting higher employment level</b>									
Remaining West Bank and Gaza S.	21.6	16.4	21.5	20.3	14.8	20.3	30.2	30.1	30.9
Remaining West Bank	19.0	14.3	19.8	18.8	14.0	19.8	25.4	24.7	28.8
Gaza Strip	38.1	27.3	28.6	25.3	17.2	21.6	44.0	44.1	36.0
<b>Percentage of who are expecting higher sales volume</b>									
Remaining West Bank and Gaza S.	38.6	38.5	42.7	40.6	41.2	42.2	62.6	67.0	70.1
Remaining West Bank	36.4	37.5	43.4	43.7	44.3	44.7	63.0	68.8	72.5
Gaza Strip	52.4	43.2	39.7	30.7	32.2	36.3	61.3	62.4	64.0

**Table 10: Expectations of Owners/ Managers of the Industrial Establishments about Better Expectations for their Establishments for the Month that Follow the Reference Month (October, 2007) Compared With the Reference Month by Region**

Indicator	Region			
	Gaza Strip	Remaining West Bank	Remaining West Bank and Gaza Strip	
Establishment performance in general	22.6	19.0	19.6	
Employees productivity	22.6	20.6	20.9	
Obtaining needed raw materials and inputs	22.6	8.2	10.6	
Problems of employees reaching place of work	13.2	8.9	9.6	
Regularity of work	13.2	10.5	11.2	
Transporting finished goods to market	22.6	11.7	12.9	
Financial situations	22.6	13.6	14.4	
Banks credits & facilities	11.3	7.7	7.8	

**Table 11: Expectations of Owners/ Managers of the Industrial Establishments about Better Expectations for their Establishments for the Six Months that Follow the Reference Month (October ,2007) Compared With the Reference Month for the Main Indicators by Region**

Indicator	Region			
	Gaza Strip	Remaining West Bank	Remaining West Bank and Gaza Strip	
Establishment performance in general	52.4	29.9	33.0	
Employees productivity	52.4	28.3	31.7	
Obtaining needed raw materials and inputs	52.4	12.4	18.0	
Problems of employees reaching place of work	28.6	8.9	11.6	
Regularity of work	38.1	14.8	18.0	
Transporting finished goods to market	52.4	19.0	23.6	
Financial situations	52.4	20.9	25.3	
Banks credits & facilities	19.0	10.5	11.7	

**Table 12-1: Percentage Distribution of Owners/ Managers of the Industrial Establishments According to Their Opinions for Main Indicators for the Month that Follow the Reference Month (October, 2007) Compared With the Reference Month in Remaining West Bank and Gaza Strip**

Problem	Total	Much Worse	Somewhat Worse	/ About the Same/ Unchanged	Somewhat Better	Much Better	
Establishment performance in general	100	1.6	20.3	58.5	19.0	0.6	
Production situation	100	1.6	26.0	50.3	21.5	0.6	
Value of sales	100	1.9	27.7	47.0	22.8	0.6	
Employees productivity	100	1.6	23.8	53.7	20.3	0.6	
Obtaining needed raw materials and inputs	100	1.3	14.8	73.3	10.3	0.3	
Problems of employees reaching place of work	100	1.0	4.8	84.6	9.0	0.6	
Regularity of work	100	0.6	10.3	77.9	10.6	0.6	
Level of employment	100	1.0	10.3	79.1	9.3	0.3	
Transporting finished goods to market	100	1.9	13.9	71.3	12.6	0.3	
Financial situations	100	1.9	18.3	65.4	14.1	0.3	
Banks credits & facilities	100	1.0	5.5	85.7	7.4	0.4	

**Table 12-2: Percentage Distribution of Owners/ Managers of the Industrial Establishments According to Their Opinions for Main Indicators for the Month that Follow the Reference Month (October, 2007) Compared With the Reference Month in Remaining West Bank**

Problem	Total	Much Worse	Somewhat Worse	/ About the Same/ Unchanged	Somewhat Better	Much Better	
Establishment performance in general	100	0.8	16.3	63.9	18.2	0.8	
Production situation	100	0.8	23.3	53.8	21.3	0.8	
Value of sales	100	1.2	25.2	49.5	22.9	1.2	
Employees productivity	100	0.8	20.5	58.1	19.8	0.8	
Obtaining needed raw materials and inputs	100	0.4	9.7	81.7	7.8	0.4	
Problems of employees reaching place of work	100	0.8	2.3	88.0	8.1	0.8	
Regularity of work	100	0.4	7.8	81.3	10.1	0.4	
Level of employment	100	0.8	7.8	82.1	8.5	0.8	
Transporting finished goods to market	100	1.2	8.6	78.5	10.5	1.2	
Financial situations	100	1.2	14.0	71.2	12.4	1.2	
Banks credits & facilities	100	1.2	5.0	86.1	6.6	1.1	

(-) Number of observations is too small

(-)

**Table 12-3: Percentage Distribution of Owners/ Managers of the Industrial Establishments According to Their Opinions for Main Indicators for the Month that Follow the Reference Month (October, 2007) Compared With the Reference Month in Gaza Strip**

Problem	Total	Much Worse	Somewhat Worse	About the Same/ Unchanged	Somewhat Better	Much Better	
Establishment performance in general	100	5.7	39.6	32.1	22.6	-	
Production situation	100	5.7	39.6	32.1	22.6	-	
Value of sales	100	5.7	39.6	32.1	22.6	-	
Employees productivity	100	5.7	39.6	32.1	22.6	-	
Obtaining needed raw materials and inputs	100	5.7	39.6	32.1	22.6	-	
Problems of employees reaching place of work	100	1.9	17.0	67.9	13.2	-	
Regularity of work	100	1.9	22.6	62.3	13.2	-	
Level of employment	100	1.9	22.6	62.3	13.2	-	
Transporting finished goods to market	100	5.7	39.6	32.1	22.6	-	
Financial situations	100	5.7	39.6	32.1	22.6	-	
Banks credits & facilities	100	-	7.5	81.2	11.3	-	

(-) Number of observations is too small

(-)

**Table 13-1: Percentage Distribution of Owners/ Managers of the Industrial Establishments According to Their Opinions for Main Indicators During the Next Six Months Compared with Reference Month (October, 2007) in Remaining West Bank and Gaza Strip**

Problem	Total	Much Worse	Somewhat Worse	/ About the Same/ Unchanged	Somewhat Better	Much Better	
Establishment performance in general	100	3.3	21.3	42.4	32.7	0.3	
Production situation	100	6.3	23.7	34.0	35.7	0.3	
Value of sales	100	6.7	26.0	28.7	38.3	0.3	
Employees productivity	100	6.0	20.3	42.0	31.7	-	
Obtaining needed raw materials and inputs	100	2.7	16.7	62.6	17.7	0.3	
Problems of employees reaching place of work	100	2.7	3.7	82.0	11.3	0.3	
Regularity of work	100	4.3	10.7	67.0	17.3	0.7	
Level of employment	100	3.0	12.0	63.4	21.3	0.3	
Transporting finished goods to market	100	3.0	14.0	59.4	23.3	0.3	
Financial situations	100	5.7	17.0	52.0	25.0	0.3	
Banks credits & facilities	100	1.7	8.0	78.6	11.7	-	

(-) Number of observations is too small

(-)

**Table 13-2: Percentage Distribution of Owners/ Managers of the Industrial Establishments According to Their Opinions for Main Indicators During the Next Six Months Compared with Reference Month (October, 2007) in Remaining West Bank**

Problem	Total	Much Worse	Somewhat Worse	/ About the Same/ Unchanged	Somewhat Better	Much Better	
Establishment performance in general	100	1.6	20.5	48.0	29.5	0.4	
Production situation	100	5.0	23.3	38.4	32.9	0.4	
Value of sales	100	5.4	26.0	32.2	36.0	0.4	
Employees productivity	100	4.7	19.4	47.6	28.3	-	
Obtaining needed raw materials and inputs	100	0.8	15.1	71.7	12.0	0.4	
Problems of employees reaching place of work	100	1.2	2.3	87.6	8.5	0.4	
Regularity of work	100	3.1	10.1	72.0	14.0	0.8	
Level of employment	100	1.6	11.6	67.8	18.6	0.4	
Transporting finished goods to market	100	1.2	12.0	67.8	18.6	0.4	
Financial situations	100	4.3	15.5	59.3	20.5	0.4	
Banks credits & facilities	100	1.6	7.8	80.1	10.5	-	

(-) Number of observations is too small

(-)



**Table 13-3: Percentage Distribution of Owners/ Managers of the Industrial Establishments According to Their Opinions for Main Indicators During the Next Six Months Comparing with Reference Month (October, 2007) in Gaza Strip**

Problem	Total	Much Worse	Somewhat Worse	About the Same/ Unchanged	Somewhat Better	Much Better	
Establishment performance in general	100	14.3	26.2	7.1	52.4	-	
Production situation	100	14.3	26.2	7.1	52.4	-	
Value of sales	100	14.3	26.2	7.1	52.4	-	
Employees productivity	100	14.3	26.2	7.1	52.4	-	
Obtaining needed raw materials and inputs	100	14.3	26.2	7.1	52.4	-	
Problems of employees reaching place of work	100	11.9	11.9	47.6	28.6	-	
Regularity of work	100	11.9	14.3	35.7	38.1	-	
Level of employment	100	11.9	14.3	35.7	38.1	-	
Transporting finished goods to market	100	14.3	26.2	7.1	52.4	-	
Financial situations	100	14.3	26.2	7.1	52.4	-	
Banks credits & facilities	100	2.4	9.5	69.1	19.0	-	

(-) Number of observations is too small

(-)