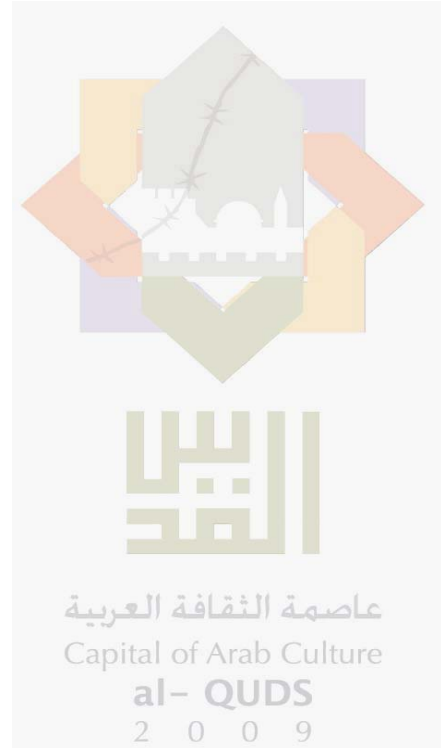
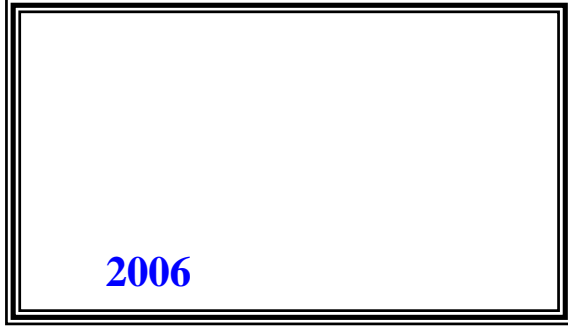




2009

/

2009



© 1430 - 2009.

:

/

2009.

2009

- 1647 . .

: 2 242 6340 (970/972)

: 2 242 6343 (970/972)

: diwan@pcbs.gov.ps

: <http://www.pcbs.gov.ps>

5

/

2009

9

2009 /

52 / 2009/07/23-03
/ 2009 358
55
2007
%70
.2007

2009 .1

1-1

حزيران 2009 / %33.2
(%22.2 %33.9) 2009
.(%72.2 %42.7) %44.3

2-1

%85.1
%83.3 %85.2 2009
%71.0 %72.2 %78.2
%72.6 %78.5
.(%44.5

3-1

%92.5 2009
%5.7 (%100 %92.1)
%1.8

5-2

.2

1-2

100 2009 / %40.6
/ %

.2009

%56.0 2009

%51.0

%50.4

: 3-2

/ %94.3

%59.3 .(%73.9 %93.6)

%59.7) /

%23.4) %18.3 (%52.9

%23.4) %22.4 (%5.9

.(%5.9

: 4-2

/ %9.7

%82.5 (%4.3 %10.1) 2009

.(%95.7 %81.5)

.3

1-3

- / %38.7 -(2009)

.(%39.1 %38.8)

/

%21.7 %12.1) %12.8 2009

/ %36.9 .(

.(%43.4 %36.4) 2009

2-3

()

%39.1

(%39.1 %60.2)

%26.1 %28.8) %21.7

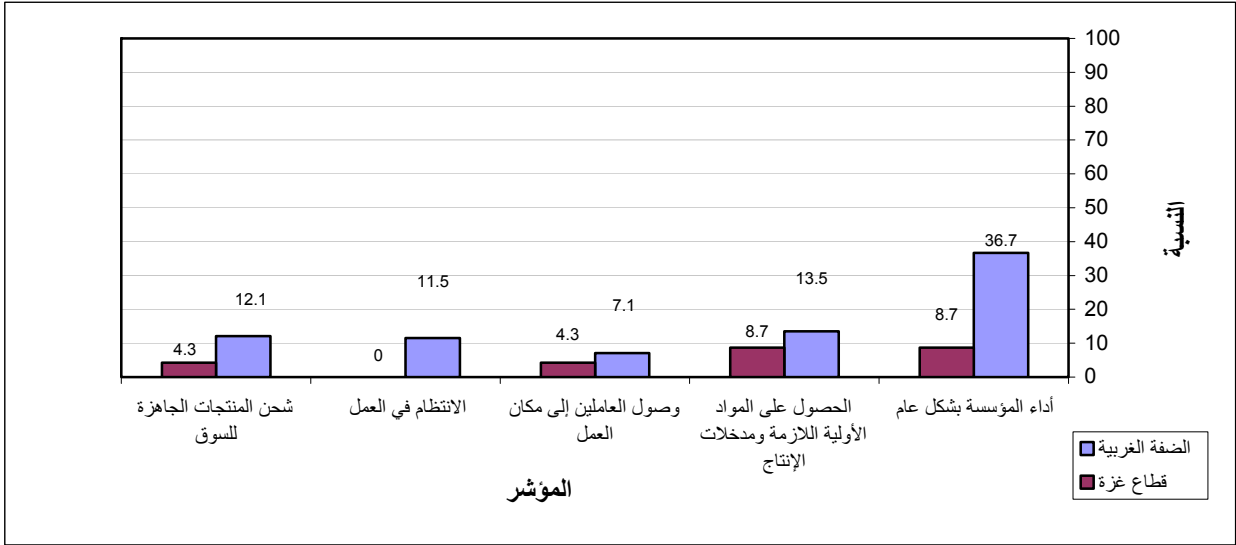
/ %43.4 (

%58.8)

.(%43.4

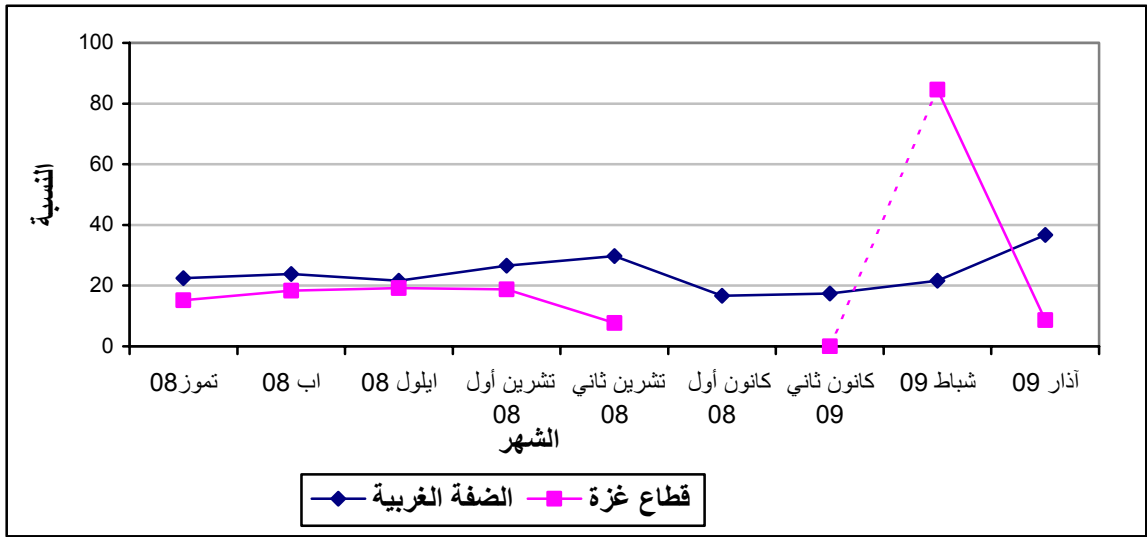
2009

:1



(2009)

:2



.2008

*

:1-1

2009

Table 1-1: Percentage of the Industrial Enterprises Witnessed an Improved Situation During the Reference Month Compared to that before the Reference Month for the Main Indicators in the Palestinian Territory 2009

| Indicator | Reference Month | | | | | | | | | |
|---|-----------------|--------------|---------------|--------------|--------------|-----------------------|-------------------|-----------------------|----------------------|-------|
| | 2009 | | | | | | 2008 | | | |
| | حزيران Jun. | أيار May. | نيسان Apr. | آذار Mar. | شباط Feb. | كانون ثاني Jan. | كانون أول Dec. | تشرين ثاني Nov. | تشرين أول Oct. | Sept. |
| Enterprise performance in general | 33.2 | - | 28.7 | 34.7 | 26.4 | 16.1 | - | 25.0 | 24.8 | 21.0 |
| Obtaining needed raw materials and inputs | 9.6 | - | 6.9 | 13.1 | 8.5 | 9.9 | - | 10.6 | 12.2 | 10.5 |
| Reaching the employees for their work place | 3.0 | - | 2.1 | 6.9 | 9.1 | 4.0 | - | 3.5 | 6.1 | 6.3 |
| Regularity of work | 9.9 | - | 6.0 | 10.7 | 10.0 | 5.7 | - | 6.8 | 9.8 | 7.3 |
| Transporting finished goods to market | 17.0 | - | 11.2 | 11.6 | 11.8 | 7.1 | - | 9.2 | 8.5 | 7.1 |

(-) No Data Available

(-)

:2-1

2009

Table 1-2: Percentage of Industrial Enterprises Witnessed an Improved Situation During the Reference Month Compared to that before the Reference Month for the Main Indicators in the West Bank 2009

| Indicator | Reference Month | | | | | | | | | |
|---|-----------------|--------------|---------------|--------------|--------------|-----------------------|-------------------|-----------------------|----------------------|-------|
| | 2009 | | | | | | 2008 | | | |
| | حزيران Jun. | أيار May. | نيسان Apr. | آذار Mar. | شباط Feb. | كانون ثاني Jan. | كانون أول Dec. | تشرين ثاني Nov. | تشرين أول Oct. | Sept. |
| Enterprise performance in general | 33.9 | 35.1 | 28.9 | 36.7 | 21.6 | 17.4 | 16.7 | 29.7 | 26.6 | 21.6 |
| Obtaining needed raw materials and inputs | 9.8 | 8.9 | 6.7 | 13.5 | 7.0 | 10.7 | 7.0 | 11.7 | 10.6 | 8.8 |
| Reaching the employees for their work place | 3.1 | 2.9 | 2.2 | 7.1 | 3.8 | 4.3 | 3.1 | 4.4 | 6.5 | 5.0 |
| Regularity of work | 9.4 | 9.9 | 5.1 | 11.5 | 5.1 | 6.1 | 3.5 | 7.2 | 8.9 | 6.4 |
| Transporting finished goods to market | 17.7 | 15.5 | 11.3 | 12.1 | 7.6 | 7.7 | 5.4 | 11.4 | 8.2 | 8.2 |

2009

Table 1-3: Percentage of Industrial Enterprises Witnessed an Improved Situation During the Reference Month Compared to that before the Reference Month for the Main Indicators in Gaza Strip 2009

| Indicator | Reference Month | | | | | | | | | |
|---|-----------------|--------------|---------------|--------------|--------------|-----------------------|-------------------|-----------------------|----------------------|-------|
| | 2009 | | | | | | 2008 | | | |
| | حزيران Jun. | أيار May. | نيسان Apr. | آذار Mar. | شباط Feb. | كانون ثاني Jan. | كانون أول Dec. | تشرين ثاني Nov. | تشرين أول Oct. | Sept. |
| Enterprise performance in general | 22.2 | - | 26.3 | 8.7 | 84.6 | 0.0 | - | 7.7 | 18.8 | 19.2 |
| Obtaining needed raw materials and inputs | 5.6 | - | 10.6 | 8.7 | 26.9 | 0.0 | - | 6.4 | 17.7 | 11.5 |
| Reaching the employees for their work place | : | - | : | 4.3 | 73.1 | 0.0 | - | 0.0 | 4.7 | 0.0 |
| Regularity of work | 16.7 | - | 21.1 | 0.0 | 69.2 | 0.0 | - | 5.1 | 13.0 | 10.1 |
| Transporting finished goods to market | 5.6 | - | 10.6 | 4.3 | 61.6 | 0.0 | - | 1.3 | 9.4 | 4.0 |

(-) No Data Available

(-)

(:) No Observations in the Sample

(:)

2009

/

:1-2

2009

Table 2-1: Percentage Distribution of Owners/ Managers of the Industrial Enterprises According to Their Opinions of Main Indicators During June 2009 Compared to May 2009 in the Palestinian Territory

| Problem | Total | Not Exist | Much Worse | Somewhat Worse | / About the Same/ Unchanged | Somewhat Better | Much Better |
|---|-------|-----------|------------|----------------|-----------------------------------|-----------------|-------------|
| Enterprise performance in general | 100 | : | 1.5 | 21.0 | 44.3 | 31.1 | 2.1 |
| Production situation | 100 | 1.2 | 1.8 | 25.1 | 36.4 | 33.4 | 2.1 |
| Employees productivity | 100 | 1.2 | 0.9 | 24.5 | 40.6 | 31.3 | 1.5 |
| Obtaining needed raw materials and inputs | 100 | 0.6 | : | 9.6 | 80.2 | 9.3 | 0.3 |
| Reaching the employees for their work place | 100 | 0.9 | : | 0.9 | 95.2 | 2.7 | 0.3 |
| Regularity of work | 100 | : | : | 9.0 | 81.1 | 9.3 | 0.6 |
| Transporting finished goods to market | 100 | 1.5 | 0.9 | 11.6 | 69.0 | 16.7 | 0.3 |
| Financial situations | 100 | : | 1.5 | 15.8 | 55.5 | 26.6 | 0.6 |
| Banks credits & facilities | 100 | 32.2 | 0.3 | 3.3 | 61.2 | 3.0 | : |
| Level of employment | 100 | 0.6 | 0.9 | 11.0 | 74.7 | 11.9 | 0.9 |
| Value of sales | 100 | 0.3 | 2.1 | 26.6 | 33.4 | 35.5 | 2.1 |

(:) No Observations in the Sample

(:)

2009

/

:2-2

2009

Table 2-2: Percentage Distribution of Owners/ Managers of the Industrial Enterprises According to Their Opinions of Main Indicators During June 2009 Compared to May 2009 in the West Bank

| Problem | Total | Not Exist | Much Worse | Somewhat Worse | / About the Same/ Unchanged | Somewhat Better | Much Better |
|---|-------|-----------|------------|----------------|-----------------------------------|-----------------|-------------|
| Enterprise performance in general | 100 | : | 1.6 | 21.8 | 42.7 | 32.3 | 1.6 |
| Production situation | 100 | : | 1.9 | 26.2 | 35.6 | 34.7 | 1.6 |
| Employees productivity | 100 | 0.3 | 0.9 | 25.6 | 38.8 | 33.1 | 1.3 |
| Obtaining needed raw materials and inputs | 100 | : | : | 9.1 | 81.1 | 9.5 | 0.3 |
| Reaching the employees for their work place | 100 | 0.6 | : | 0.9 | 95.4 | 2.8 | 0.3 |
| Regularity of work | 100 | : | : | 9.1 | 81.5 | 8.8 | 0.6 |
| Transporting finished goods to market | 100 | : | 0.9 | 12.3 | 69.1 | 17.4 | 0.3 |
| Financial situations | 100 | : | 1.6 | 16.7 | 54.3 | 26.8 | 0.6 |
| Banks credits & facilities | 100 | 30.3 | 0.3 | 3.5 | 62.7 | 3.2 | : |
| Level of employment | 100 | 0.6 | 0.9 | 11.4 | 74.5 | 11.7 | 0.9 |
| Value of sales | 100 | : | 2.2 | 27.8 | 32.1 | 36.3 | 1.6 |

(:) No Observations in the Sample

(:)

Table 2-3: Percentage Distribution of Owners/ Managers of the Industrial Enterprises According to Their Opinions of Main Indicators During June 2009 Compared to May 2009 in Gaza Strip

| Problem | Total | Not Exist | Much Worse | Somewhat Worse | / About the Same/ Unchanged | Somewhat Better | Much Better |
|---|-------|-----------|------------|----------------|-----------------------------------|-----------------|-------------|
| Enterprise performance in general | 100 | : | : | 5.6 | 72.2 | 11.1 | 11.1 |
| Production situation | 100 | 22.2 | : | 5.6 | 50.0 | 11.1 | 11.1 |
| Employees productivity | 100 | 16.7 | : | 5.6 | 72.1 | : | 5.6 |
| Obtaining needed raw materials and inputs | 100 | 11.1 | : | 16.7 | 66.6 | 5.6 | : |
| Reaching the employees for their work place | 100 | 5.6 | : | : | 94.4 | : | : |
| Regularity of work | 100 | : | : | 5.6 | 77.7 | 16.7 | : |
| Transporting finished goods to market | 100 | 27.8 | : | : | 66.6 | 5.6 | : |
| Financial situations | 100 | : | : | : | 77.8 | 22.2 | : |
| Banks credits & facilities | 100 | 66.7 | : | : | 33.3 | : | : |
| Level of employment | 100 | : | : | 5.6 | 77.7 | 16.7 | : |
| Value of sales | 100 | 5.6 | : | 5.6 | 55.5 | 22.2 | 11.1 |

(:) No Observations in the Sample

(:)

Table 3: Percentage of Industrial Enterprises Witnessed an Improved Situation During the Reference Month (June 2009) Compared to that before the Reference Month for the Main Indicators by Region

| Indicator | Gaza Strip | West Bank | Palestinian Territory | |
|----------------------------|------------|-----------|-----------------------|--|
| Employees productivity | 5.6 | 34.4 | 32.8 | |
| Financial situations | 22.2 | 27.4 | 27.2 | |
| Banks credits & facilities | : | 3.2 | 3.0 | |
| Level of employment | 16.7 | 12.6 | 12.8 | |
| Value of sales | 33.3 | 37.9 | 37.6 | |

(:) No Observations in the Sample

(:)

/

:4

2009

Table 4: Percentage Distribution of Owners/Managers of the Active Industrial Enterprises According to the Reasons for Sales Level Stability or Decline by Region During June 2009

| Reason | Gaza Strip | West Bank | Palestinian Territory | |
|--|------------|------------|-----------------------|-----|
| Decrease in demand | 100.0 | 17.7 | 18.6 | |
| Difficulties in exporting finished goods | - | 4.2 | 4.1 | |
| Decline in the consumer purchasing power | : | 40.6 | 40.1 | |
| Product Marketing Obstacles | : | 2.1 | 2.1 | () |
| Competence product | : | 10.4 | 10.3 | |
| Seasonally related | : | 5.2 | 5.2 | |
| Military check points/ israeli actions/ closures | : | 5.2 | 5.2 | / / |
| Other | : | 14.6 | 14.4 | |
| Total | 100 | 100 | 100 | |

(:) No Observations in the Sample

(:)

(-) No Data Available

(-)

2009

:5

Table 5: Percentage Distribution of the Active Industrial Enterprises According to the Employment Mobility During June 2009 by Region

| Employment Mobility | Gaza Strip | West Bank | Palestinian Territory | |
|---------------------|------------|------------|-----------------------|--|
| Hiring employees | 11.1 | 9.2 | 9.3 | |
| Firing employees | 5.6 | 10.8 | 10.5 | |
| No change | 83.3 | 80.0 | 80.2 | |
| Total | 100 | 100 | 100 | |

2009

/

:6

Table 6: Percentage Distribution of the Existing of Competition Against the Main Product According to the Owners\ Managers of the Active Industrial Enterprises During June 2009 by Region

| Competence existence | Gaza Strip | West Bank | Palestinian Territory | |
|-------------------------|------------|------------|-----------------------|--|
| There is competition | 77.8 | 95.3 | 94.3 | |
| There is no competition | 22.2 | 4.7 | 5.7 | |
| Total | 100 | 100 | 100 | |

2009

/

:7

Table 7: Percentage Distribution of the Type of Competition According to the Owners\ Managers of the Active Industrial Enterprises During June 2009 by Region

| Type of competence | Gaza Strip | West Bank | Palestinian Territory | |
|--------------------|------------|------------|-----------------------|--|
| Local | 85.7 | 52.3 | 53.8 | |
| Foreign | 14.3 | 14.9 | 14.9 | |
| Both | : | 32.8 | 31.3 | |
| Total | 100 | 100 | 100 | |

(:) No Observations in the Sample

(:)

Table 8: Expectations of Owners/ Managers of the Active Industrial Enterprises for the Month that Follows the Reference Month Compared to the Reference Month (June, 2009) for the Main Indicators by Region

| Indicator | Reference Month | | | | | | | | | |
|--|-----------------|--------------|---------------|--------------|--------------|--------------------|-------------------|--------------------|-------------------|-------|
| | 2009 | | | | | | 2008 | | | |
| | حزيران June. | أيار May. | نيسان Apr. | آذار Mar. | شباط Feb. | كانون ثاني Jan. | كانون أول Dec. | تشرين ثاني Nov. | تشرين أول Oct. | Sept. |
| Percentage of who are expecting better Enterprise situation | | | | | | | | | | |
| Palestinian Territory | 37.9 | - | 38.7 | 38.7 | 33.9 | 33.4 | - | 27.5 | 32.0 | 33.0 |
| West Bank | 38.8 | 44.1 | 39.4 | 38.8 | 37.1 | 29.1 | 26.5 | 27.3 | 30.7 | 29.8 |
| Gaza Strip | 22.2 | - | 26.3 | 39.1 | 65.3 | 85.1 | - | 28.9 | 39.2 | 46.8 |
| Percentage of who are expecting higher employment level | | | | | | | | | | |
| Palestinian Territory | 11.3 | - | 13.3 | 12.8 | 18.1 | 17.0 | - | 12.0 | 10.0 | 11.6 |
| West Bank | 11.0 | 17.5 | 12.8 | 12.1 | 14.4 | 11.0 | 11.2 | 9.7 | 6.1 | 10.3 |
| Gaza Strip | 16.7 | - | 21.1 | 21.7 | 61.5 | 88.8 | - | 28.9 | 31.4 | 40.3 |
| Percentage of who are expecting higher sales volume | | | | | | | | | | |
| Palestinian Territory | 38.2 | - | 37.5 | 36.9 | 39.3 | 34.8 | - | 27.5 | 30.9 | 33.9 |
| West Bank | 39.4 | 42.7 | 38.5 | 36.4 | 37.1 | 29.7 | 28.1 | 27.3 | 29.4 | 30.9 |
| Gaza Strip | 16.7 | - | 21.1 | 43.4 | 65.3 | 96.3 | - | 28.9 | 39.2 | 46.8 |

(-) No Data Available

(-)

Table 9: Expectations of Owners/ Managers of the Active Industrial Enterprises for the Six Months that Follow the Reference Month Compared to the Reference Month (June, 2009) for the Main Indicators by Region

| Indicator | Reference Month | | | | | | | | | |
|--|-----------------|--------------|---------------|--------------|--------------|--------------------|-------------------|--------------------|-------------------|-------|
| | 2009 | | | | | 2008 | | | | |
| | حزيران June. | أيار May. | نيسان Apr. | آذار Mar. | شباط Feb. | كانون ثاني Jan. | كانون أول Dec. | تشرين ثاني Nov. | تشرين أول Oct. | Sept. |
| Percentage of who are expecting better Enterprise situation | | | | | | | | | | |
| Palestinian Territory | 51.1 | - | 53.2 | 39.1 | 56.8 | 62.3 | - | 44.9 | 41.2 | 38.8 |
| West Bank | 51.1 | 49.0 | 53.8 | 60.2 | 55.7 | 60.5 | 50.2 | 44.6 | 39.3 | 35.0 |
| Gaza Strip | 50.0 | - | 42.1 | 39.1 | 69.1 | 85.2 | - | 47.4 | 51.0 | 54.8 |
| Percentage of who are expecting higher employment level | | | | | | | | | | |
| Palestinian Territory | 24.8 | - | 26.9 | 21.7 | 28.5 | 36.0 | - | 20.9 | 17.4 | 21.6 |
| West Bank | 24.6 | 24.5 | 27.0 | 28.8 | 25.5 | 31.6 | 18.9 | 18.0 | 12.7 | 14.8 |
| Gaza Strip | 27.8 | - | 26.3 | 26.1 | 65.4 | 88.9 | - | 42.1 | 43.2 | 50.0 |
| Percentage of who are expecting higher sales volume | | | | | | | | | | |
| Palestinian Territory | 51.7 | - | 54.1 | 43.4 | 56.5 | 62.9 | - | 45.6 | 41.1 | 42.5 |
| West Bank | 51.4 | 48.4 | 54.8 | 58.8 | 55.8 | 60.2 | 52.7 | 45.3 | 39.3 | 39.5 |
| Gaza Strip | 55.6 | - | 42.1 | 43.4 | 65.4 | 96.3 | - | 47.4 | 51.0 | 54.8 |

(-) No Data Available

(-)

Table 10: Expectations of Owners/ Managers of the Active Industrial Enterprises about Better Expectations for their Enterprises for the Month that Follows the Reference Month (June, 2009) Compared to the Reference Month by Region

| Indicator | Gaza Strip | West Bank | Palestinian Territory | |
|---|------------|-----------|-----------------------|--|
| Enterprise performance in general | 22.2 | 37.9 | 37.0 | |
| Employees productivity | : | 35.6 | 33.7 | |
| Obtaining needed raw materials and inputs | 22.2 | 11.3 | 11.9 | |
| Reaching the employees for their work place | : | 1.9 | 1.8 | |
| Regularity of work | 16.7 | 8.8 | 9.3 | |
| Transporting finished goods to market | : | 14.8 | 14.0 | |
| Financial situations | 22.2 | 28.0 | 27.8 | |
| Banks credits & facilities | 5.6 | 1.6 | 1.8 | |

(:) No Observations in the Sample

(:)

Table 11: Expectations of Owners/ Managers of the Active Industrial Enterprises about Better Expectations for their Enterprises for the Six Months that Follow the Reference Month (June, 2009) Compared to the Reference Month for the Main Indicators by Region

| Indicator | Gaza Strip | West Bank | Palestinian Territory | |
|---|------------|-----------|-----------------------|--|
| Enterprise performance in general | 61.1 | 49.8 | 50.5 | |
| Employees productivity | 5.6 | 47.9 | 45.7 | |
| Obtaining needed raw materials and inputs | 44.4 | 21.1 | 22.4 | |
| Reaching the employees for their work place | : | 3.5 | 3.3 | |
| Regularity of work | 27.8 | 19.6 | 20.0 | |
| Transporting finished goods to market | 5.6 | 24.3 | 23.3 | |
| Financial situations | 38.9 | 39.4 | 39.4 | |
| Banks credits & facilities | 11.1 | 2.5 | 3.0 | |

(:) No Observations in the Sample

(:)

(2009)

/

:1-12

Table 12-1: Percentage Distribution of Owners/ Managers of the Active Industrial Enterprises According to Their Opinions of Main Indicators for the Month that Follows the Reference Month (June, 2009) Compared to the Reference Month in the Palestinian Territory

| Indicator | Total | Not Exist | Much Worse | Somewhat Worse | / About the Same/ Unchanged | Somewhat Better | Much Better | |
|---|-------|-----------|------------|----------------|-----------------------------------|-----------------|-------------|--|
| Enterprise performance in general | 100 | : | : | 9.6 | 53.4 | 35.5 | 1.5 | |
| Production situation | 100 | 0.9 | 0.3 | 9.6 | 51.3 | 37.3 | 0.6 | |
| Volume of sales | 100 | 0.6 | 0.3 | 9.9 | 51.0 | 37.6 | 0.6 | |
| Employees productivity | 100 | 0.6 | 0.3 | 8.1 | 57.3 | 33.1 | 0.6 | |
| Obtaining needed raw materials and inputs | 100 | 0.3 | : | 2.4 | 85.4 | 11.3 | 0.6 | |
| Reaching the employees for their work place | 100 | 0.6 | : | 1.2 | 96.4 | 1.2 | 0.6 | |
| Regularity of work | 100 | : | 0.3 | 4.5 | 85.9 | 8.7 | 0.6 | |
| Level of employment | 100 | 0.6 | : | 3.0 | 85.1 | 10.7 | 0.6 | |
| Transporting finished goods to market | 100 | 1.5 | 0.6 | 4.2 | 79.7 | 13.4 | 0.6 | |
| Financial situations | 100 | : | 0.6 | 7.8 | 63.8 | 27.2 | 0.6 | |
| Banks credits & facilities | 100 | 31.0 | : | 0.6 | 66.6 | 1.8 | : | |

(:) No Observations in the Sample

(:)

Table 12-2: Percentage Distribution of Owners/ Managers of the Active Industrial Enterprises According to Their Opinions of Main Indicators for the Month that Follows the Reference Month (June, 2009) Compared to the Reference Month in the West Bank

| Indicator | Total | Not Exist | Much Worse | Somewhat Worse | / About the Same/ Unchanged | Somewhat Better | Much Better | |
|---|-------|-----------|------------|----------------|-----------------------------------|-----------------|-------------|--|
| Enterprise performance in general | 100 | : | : | 9.8 | 52.3 | 36.3 | 1.6 | |
| Production situation | 100 | : | 0.3 | 9.8 | 51.1 | 38.2 | 0.6 | |
| Volume of sales | 100 | : | 0.3 | 10.1 | 50.2 | 38.8 | 0.6 | |
| Employees productivity | 100 | 0.3 | 0.3 | 8.5 | 55.3 | 35.0 | 0.6 | |
| Obtaining needed raw materials and inputs | 100 | : | : | 2.2 | 86.5 | 10.7 | 0.6 | |
| Reaching the employees for their work place | 100 | 0.6 | : | 0.9 | 96.6 | 1.3 | 0.6 | |
| Regularity of work | 100 | : | 0.3 | 4.4 | 86.5 | 8.2 | 0.6 | |
| Level of employment | 100 | 0.6 | : | 2.8 | 85.6 | 10.4 | 0.6 | |
| Transporting finished goods to market | 100 | : | 0.6 | 4.4 | 80.2 | 14.2 | 0.6 | |
| Financial situations | 100 | : | 0.6 | 8.2 | 63.2 | 27.4 | 0.6 | |
| Banks credits & facilities | 100 | 29.7 | : | 0.6 | 68.1 | 1.6 | : | |

(:) No Observations in the Sample

(:)

Table 12-3: Percentage Distribution of Owners/ Managers of the Active Industrial Enterprises According to Their Opinions of Main Indicators for the Month that Follows the Reference Month (June, 2009) Compared to the Reference Month in Gaza Strip

| Indicator | Total | Not Exist | Much Worse | Somewhat Worse | / About the Same/ Unchanged | Somewhat Better | Much Better | |
|---|-------|-----------|------------|----------------|-----------------------------------|-----------------|-------------|--|
| Enterprise performance in general | 100 | : | : | 5.6 | 72.2 | 22.2 | : | |
| Production situation | 100 | 16.7 | : | 5.6 | 55.5 | 22.2 | : | |
| Volume of sales | 100 | 11.1 | : | 5.6 | 66.6 | 16.7 | : | |
| Employees productivity | 100 | 5.6 | : | : | 94.4 | : | : | |
| Obtaining needed raw materials and inputs | 100 | 5.6 | : | 5.6 | 66.6 | 22.2 | : | |
| Reaching the employees for their work place | 100 | : | : | 5.6 | 94.4 | : | : | |
| Regularity of work | 100 | : | : | 5.6 | 77.7 | 16.7 | : | |
| Level of employment | 100 | : | : | 5.6 | 77.7 | 16.7 | : | |
| Transporting finished goods to market | 100 | 27.8 | : | : | 72.2 | : | : | |
| Financial situations | 100 | : | : | : | 77.8 | 22.2 | : | |
| Banks credits & facilities | 100 | 55.6 | : | : | 38.8 | 5.6 | : | |

(:) No Observations in the Sample

(:)

(2009)

/

:1-13

Table 13-1: Percentage Distribution of Owners/ Managers of the Active Industrial Enterprises According to Their Opinions of Main Indicators During the Next Six Months Compared to Reference Month (June, 2009) in the Palestinian Territory

| Indicator | Total | Not Exist | Much Worse | Somewhat Worse | / About the Same/ Unchanged | Somewhat Better | Much Better | |
|---|-------|-----------|------------|----------------|-----------------------------------|-----------------|-------------|--|
| Enterprise performance in general | 100 | : | 1.5 | 20.0 | 28.0 | 47.8 | 2.7 | |
| Production situation | 100 | 0.9 | 1.8 | 20.9 | 25.3 | 48.4 | 2.7 | |
| Volume of sales | 100 | 0.6 | 1.8 | 20.9 | 25.0 | 49.0 | 2.7 | |
| Employees productivity | 100 | 0.6 | 1.5 | 18.2 | 34.0 | 43.0 | 2.7 | |
| Obtaining needed raw materials and inputs | 100 | 0.3 | 0.6 | 3.0 | 73.7 | 20.0 | 2.4 | |
| Reaching the employees for their work place | 100 | 0.6 | 0.6 | 1.8 | 93.7 | 1.5 | 1.8 | |
| Regularity of work | 100 | : | 1.5 | 7.2 | 71.3 | 17.9 | 2.1 | |
| Level of employment | 100 | 0.6 | 1.5 | 5.1 | 68.0 | 22.7 | 2.1 | |
| Transporting finished goods to market | 100 | 1.5 | 1.5 | 5.1 | 68.6 | 20.9 | 2.4 | |
| Financial situations | 100 | : | 1.8 | 14.0 | 44.8 | 37.0 | 2.4 | |
| Banks credits & facilities | 100 | 30.4 | : | 0.3 | 66.3 | 3.0 | : | |

(:) No Observations in the Sample

(:)

(2009)

/

:2-13

Table 13-2: Percentage Distribution of Owners/ Managers of the Active Industrial Enterprises According to Their Opinions of Main Indicators During the Next Six Months Compared to Reference Month (June, 2009) in the West Bank

| Indicator | Total | Not Exist | Much Worse | Somewhat Worse | / About the Same/ Unchanged | Somewhat Better | Much Better | |
|---|-------|-----------|------------|----------------|-----------------------------------|-----------------|-------------|--|
| Enterprise performance in general | 100 | : | 1.6 | 20.8 | 27.8 | 47.0 | 2.8 | |
| Production situation | 100 | : | 1.9 | 21.8 | 25.2 | 48.3 | 2.8 | |
| Volume of sales | 100 | : | 1.9 | 21.8 | 24.9 | 48.6 | 2.8 | |
| Employees productivity | 100 | 0.3 | 1.6 | 19.2 | 31.0 | 45.1 | 2.8 | |
| Obtaining needed raw materials and inputs | 100 | : | 0.6 | 2.8 | 75.5 | 18.6 | 2.5 | |
| Reaching the employees for their work place | 100 | 0.6 | 0.6 | 1.9 | 93.4 | 1.6 | 1.9 | |
| Regularity of work | 100 | : | 1.6 | 7.3 | 71.5 | 17.4 | 2.2 | |
| Level of employment | 100 | 0.6 | 1.6 | 5.0 | 68.2 | 22.4 | 2.2 | |
| Transporting finished goods to market | 100 | : | 1.6 | 5.4 | 68.7 | 21.8 | 2.5 | |
| Financial situations | 100 | : | 1.9 | 14.8 | 43.9 | 36.9 | 2.5 | |
| Banks credits & facilities | 100 | 29.0 | : | 0.3 | 68.2 | 2.5 | : | |

(:) No Observations in the Sample

(:)

(2009)

/

:3-13

Table 13-3: Percentage Distribution of Owners/ Managers of the Active Industrial Enterprises According to Their Opinions of Main Indicators During the Next Six Months Compared to Reference Month (June, 2009) in Gaza Strip

| Indicator | Total | Not Exist | Much Worse | Somewhat Worse | / About the Same/ Unchanged | Somewhat Better | Much Better | |
|---|-------|-----------|------------|----------------|-----------------------------------|-----------------|-------------|--|
| Enterprise performance in general | 100 | : | : | 5.6 | 33.3 | 61.1 | : | |
| Production situation | 100 | 16.7 | : | 5.6 | 27.7 | 50.0 | : | |
| Volume of sales | 100 | 11.1 | : | 5.6 | 27.7 | 55.6 | : | |
| Employees productivity | 100 | 5.6 | : | : | 88.8 | 5.6 | : | |
| Obtaining needed raw materials and inputs | 100 | 5.6 | : | 5.6 | 44.4 | 44.4 | : | |
| Reaching the employees for their work place | 100 | : | : | : | 100.0 | : | : | |
| Regularity of work | 100 | : | : | 5.6 | 66.6 | 27.8 | : | |
| Level of employment | 100 | : | : | 5.6 | 66.6 | 27.8 | : | |
| Transporting finished goods to market | 100 | 27.8 | : | : | 66.6 | 5.6 | : | |
| Financial situations | 100 | : | : | : | 61.1 | 38.9 | : | |
| Banks credits & facilities | 100 | 55.6 | : | : | 33.3 | 11.1 | : | |

(:) No Observations in the Sample

(:) تعني لا يوجد مشاهدات بالعينة

Table 14: Percentage Distribution of Owners/Managers of the Industrial Enterprises Opinion About the Factors Affecting Production Cost During the second Quarter 2009 by Region

| Factors | | Opinion | | | | | | |
|-----------------------------------|-----------------------|-----------|------------------------|-------------|-------------------------|--------------|--|--|
| | | No effect | Relatively weak effect | Weak effect | Relatively large effect | Large effect | | |
| Foreign competition | Palestinian Territory | 35.2 | 7.5 | 13.4 | 22.4 | 21.5 | | |
| | West bank | 33.1 | 7.6 | 14.2 | 22.7 | 22.4 | | |
| | Gaza strip | 72.2 | 5.5 | : | 16.7 | 5.6 | | |
| Informal Sector | Palestinian Territory | 35.0 | 6.5 | 23.4 | 24.9 | 10.2 | | |
| | West bank | 32.3 | 7.0 | 24.7 | 25.6 | 10.4 | | |
| | Gaza strip | 83.3 | : | : | 11.1 | 5.6 | | |
| Local Competition | Palestinian Territory | 10.1 | 2.8 | 16.1 | 37.9 | 33.1 | | |
| | West bank | 9.1 | 2.8 | 15.5 | 38.5 | 34.1 | | |
| | Gaza strip | 27.7 | : | 27.8 | 27.8 | 16.7 | | |
| Transport cost | Palestinian Territory | 9.8 | 6.3 | 17.6 | 41.8 | 24.5 | | |
| | West bank | 7.9 | 6.3 | 18.3 | 42.6 | 24.9 | | |
| | Gaza strip | 44.3 | 5.6 | 5.6 | 27.8 | 16.7 | | |
| Political situation | Palestinian Territory | 5.6 | 2.7 | 13.5 | 39.7 | 38.5 | | |
| | West bank | 4.8 | 2.8 | 13.9 | 41.3 | 37.2 | | |
| | Gaza strip | 22.2 | : | 5.6 | 11.1 | 61.1 | | |
| Costs of raw materials and inputs | Palestinian Territory | 4.7 | 1.8 | 8.4 | 27.8 | 57.3 | | |
| | West bank | 4.1 | 1.9 | 8.8 | 28.7 | 56.5 | | |
| | Gaza strip | 16.7 | : | : | 11.1 | 72.2 | | |

(:) No Observations in the Sample

(:) تعني لا يوجد مشاهدات بالعينة

2009

/

:15

Table 15: Percentage Distribution of the Frequency of Loans Requested From the Banks According to the Owners/Managers of the Industrial Enterprises Opinion During the second Quarter 2009 by Region

| Frequency | Gaza Strip | West Bank | Palestinian Territory | |
|-----------------|------------|------------|-----------------------|-----|
| No loan request | 100.0 | 92.1 | 92.5 | |
| Once | : | 6.0 | 5.7 | |
| 2-5 | : | 1.9 | 1.8 | 5-2 |
| Total | 100 | 100 | 100 | |

(:) No Observations in the Sample

(:)

Table 16: Percentage Distribution of Owners/ Managers of the Industrial Enterprises According to Their Views About the Export Obstacles During the second Quarter 2009 by Region

| Problems | Region | Not applicable | I don't know | Large difficulty | Medium difficulty | Small difficulty | No difficulty | | |
|--|-----------------------|----------------|--------------|------------------|-------------------|------------------|---------------|--|--|
| Commitment to international market requirements | Palestinian Territory | - | - | - | - | - | - | | |
| | West bank | 1.3 | : | 0.7 | 2.6 | 16.5 | 78.9 | | |
| | Gaza strip | - | - | - | - | - | - | | |
| Commitment to export market packaging requirements | Palestinian Territory | - | - | - | - | - | - | | |
| | West bank | 2.0 | : | : | 2.6 | 8.6 | 86.8 | | |
| | Gaza strip | - | - | - | - | - | - | | |
| Price competition in the export market | Palestinian Territory | - | - | - | - | - | - | | |
| | West bank | 1.3 | : | 4.6 | 14.5 | 27.0 | 52.6 | | |
| | Gaza strip | - | - | - | - | - | - | | |
| Compliance to quantity demanded and delivery time | Palestinian Territory | - | - | - | - | - | - | | |
| | West bank | 1.3 | : | 1.3 | 7.9 | 12.5 | 77.0 | | |
| | Gaza strip | - | - | - | - | - | - | | |
| Export financing | Palestinian Territory | - | - | - | - | - | - | | |
| | West bank | 3.3 | 0.7 | 3.3 | 2.6 | 13.8 | 76.3 | | |
| | Gaza strip | - | - | - | - | - | - | | |
| Marketing ability | Palestinian Territory | - | - | - | - | - | - | | |
| | West bank | 4.6 | : | 1.3 | 5.3 | 22.4 | 66.4 | | |
| | Gaza strip | - | - | - | - | - | - | | |
| Regular achievement of raw materials | Palestinian Territory | - | - | - | - | - | - | | |
| | West bank | 9.3 | : | 2.0 | 4.0 | 22.5 | 62.2 | | |
| | Gaza strip | - | - | - | - | - | - | | |

(-) No Data Available

(:) No Observations in the Sample

(-)

(:)

2009

/

:()16

Table 16 (Cont): Percentage Distribution of Owners/ Managers of the Industrial Enterprises According to Their Views About the Export Obstacles During the second Quarter 2009 by Region

| Problems | Region | Not applicable | I don't know | Large difficulty | Medium difficulty | Small difficulty | No difficulty | | |
|--|-----------------------|----------------|--------------|------------------|-------------------|------------------|---------------|--|--|
| Regular achievement of export | Palestinian Territory | - | - | - | - | - | - | | |
| | West bank | 3.3 | 0.7 | 3.3 | 6.0 | 41.7 | 45.0 | | |
| | Gaza strip | - | - | - | - | - | - | | |
| Regular achievement of employee | Palestinian Territory | - | - | - | - | - | - | | |
| | West bank | 9.3 | : | 0.7 | 0.7 | 3.3 | 86.0 | | |
| | Gaza strip | - | - | - | - | - | - | | |
| Palestinian export regulation and license | Palestinian Territory | - | - | - | - | - | - | | |
| | West bank | 1.3 | : | 1.3 | 6.0 | 17.9 | 73.5 | | |
| | Gaza strip | - | - | - | - | - | - | | |
| Information access to the foreign market | Palestinian Territory | - | - | - | - | - | - | | |
| | West bank | 2.6 | 0.7 | 2.6 | 6.0 | 22.5 | 65.6 | | |
| | Gaza strip | - | - | - | - | - | - | | |
| Traveling problems imposed on entering foreign markets | Palestinian Territory | - | - | - | - | - | - | | |
| | West bank | 0.7 | 0.7 | 11.3 | 8.6 | 30.5 | 48.2 | | |
| | Gaza strip | - | - | - | - | - | - | | |
| Import regulation in the foreign market | Palestinian Territory | - | - | - | - | - | - | | |
| | West bank | 1.3 | 1.3 | 5.3 | 9.3 | 34.4 | 48.4 | | |
| | Gaza strip | - | - | - | - | - | - | | |
| Costumer payment guarantee | Palestinian Territory | - | - | - | - | - | - | | |
| | West bank | 0.7 | 2.0 | 9.9 | 17.8 | 28.3 | 41.3 | | |
| | Gaza strip | - | - | - | - | - | - | | |

(-) No Data Available

(:) No Observations in the Sample

(-)

(:)

2009

:17

Table 17: Percentage of Mechanism of Finding Customers in the Export Market During the second Quarter 2009 by Region

| Approaching Customers | Gaza Strip | West Bank | Palestinian Territory | |
|--|------------|-----------|-----------------------|--|
| Market researches | - | 25.8 | - | |
| Information gathered from commerce chamber industrial union etc... | - | 10.6 | - | |
| Participate in international exhibitions and organized business missions | - | 27.8 | - | |
| Self-organized visits to the export market | - | 40.4 | - | |
| Personal relationships and contacts | - | 93.4 | - | |
| Through internet | - | 19.2 | - | |
| Customer self initiative | - | 66.9 | - | |

(-) No Data Available

(-)